

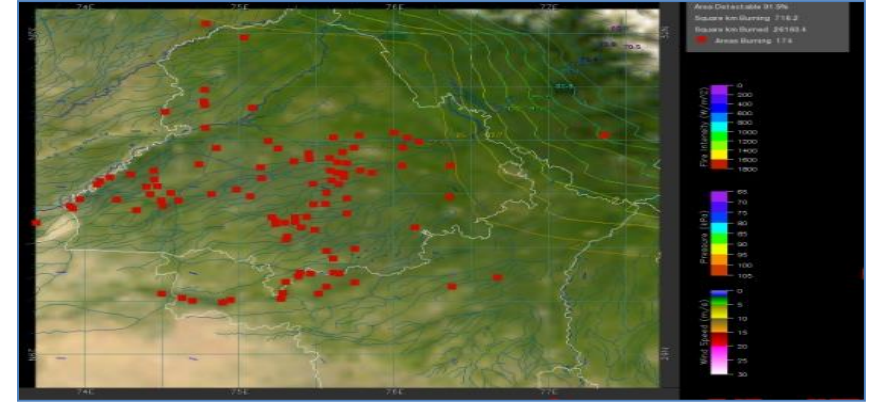
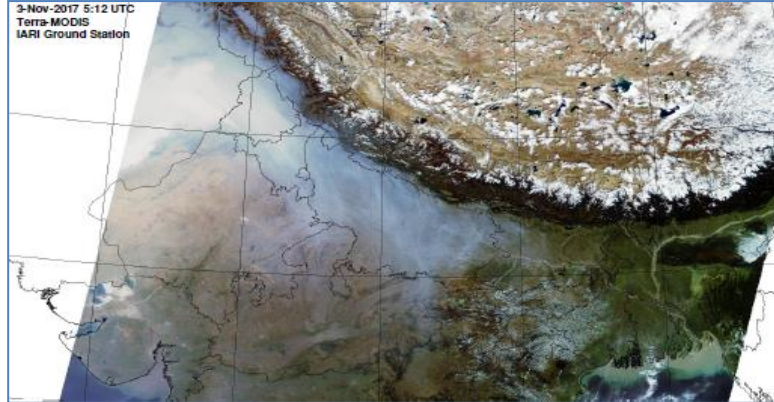


MONITORING PADDY RESIDUE BURNING IN INDIA USING SATELLITE REMOTE SENSING DURING 2025

Bulletin
No. 41

Events Date:
25-Oct-2025

Issued on:
25-Oct-2025



Consortium for Research on Agroecosystem Monitoring and Modeling from Space (CREAMS)
Laboratory,

Division of Agricultural Physics, ICAR – Indian Agricultural Research Institute, New Delhi – 110012

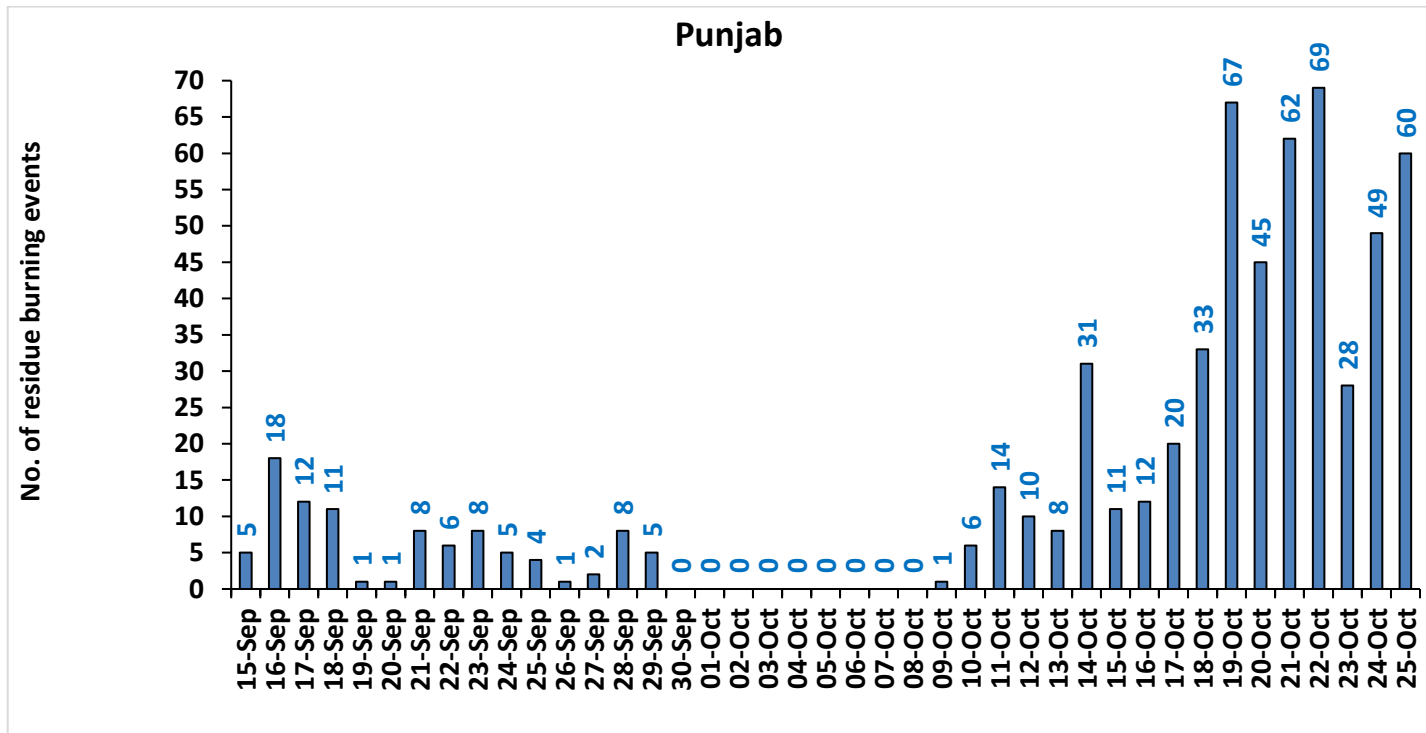
<https://creams.iari.res.in>



Highlights for 25-Oct-2025

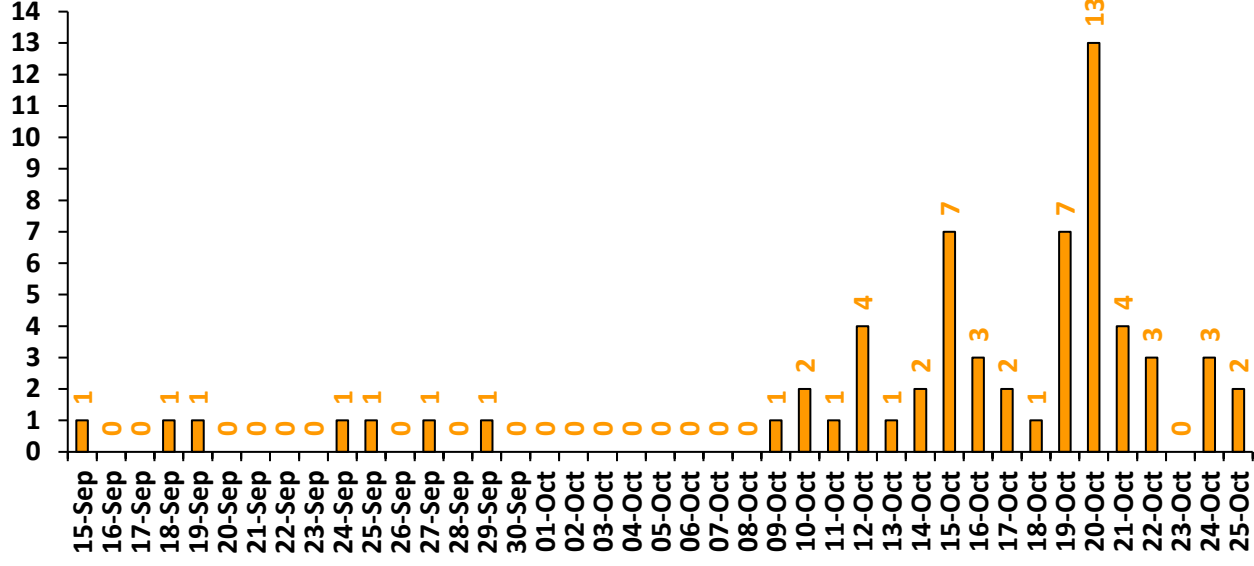
- The active fire events due to rice residue burning were monitored using satellite remote sensing, following the "Standard Protocol for Estimation of Crop Residue Burning Fire Events using Satellite Data".
- Satellites detected **242** residue burning events in the six study States on **25-Oct-2025**.
- The state wise events detected on **25-Oct-2025** were **60** in Punjab, **02** in Haryana, **49** in UP, **00** in Delhi, **115** in Rajasthan and **16** in MP.
- Total **2403** burning events were detected in the six states between **15-Sept-2025** and **25-Oct-2025**, which are distributed as **621, 63, 783, 03, 473** and **460** in Punjab, Haryana, UP, Delhi, Rajasthan and MP, respectively.

Temporal distribution of rice residue burning events for the study States in 2025



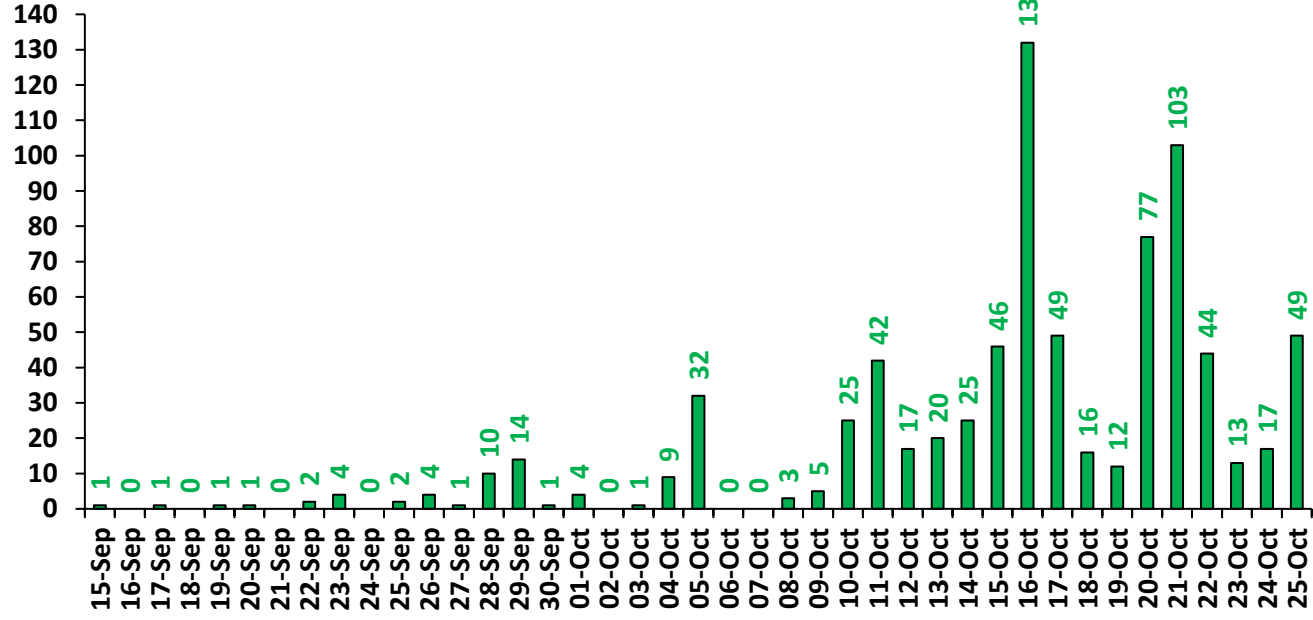
Haryana

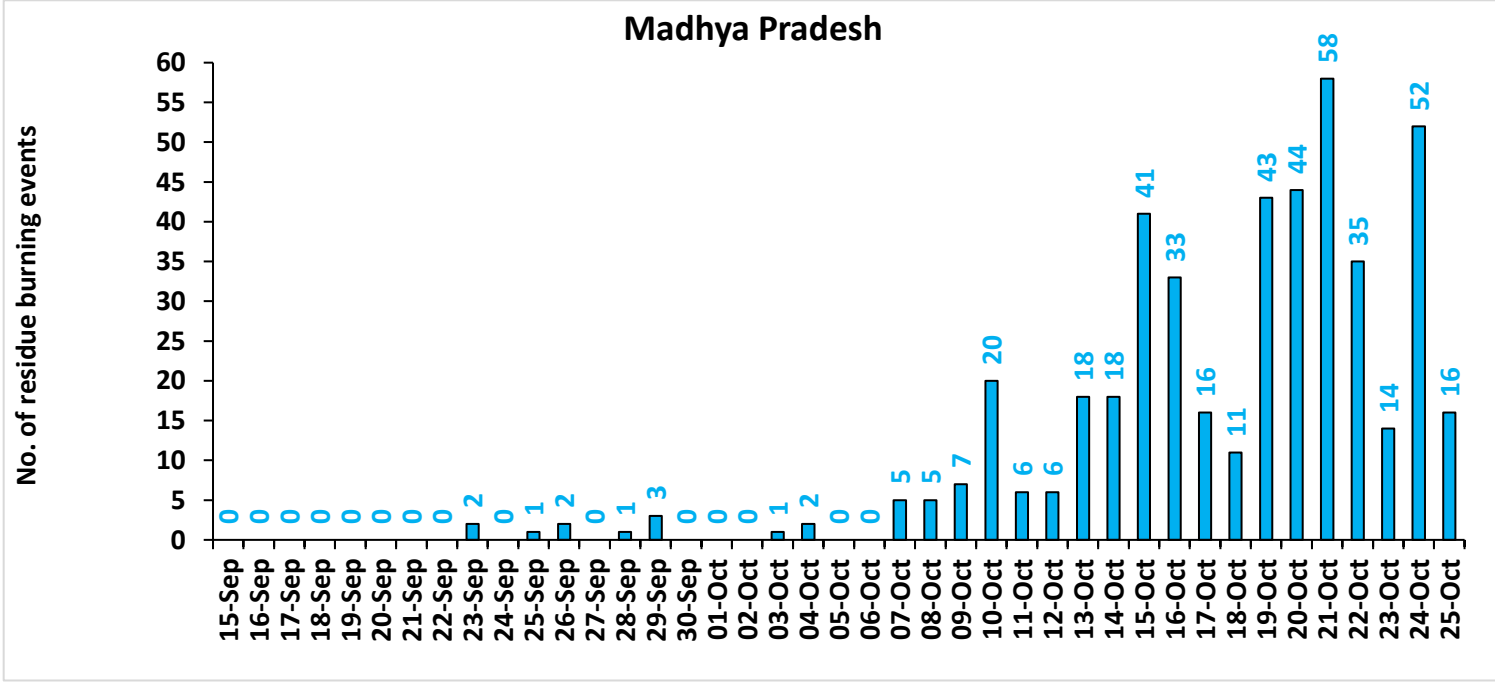
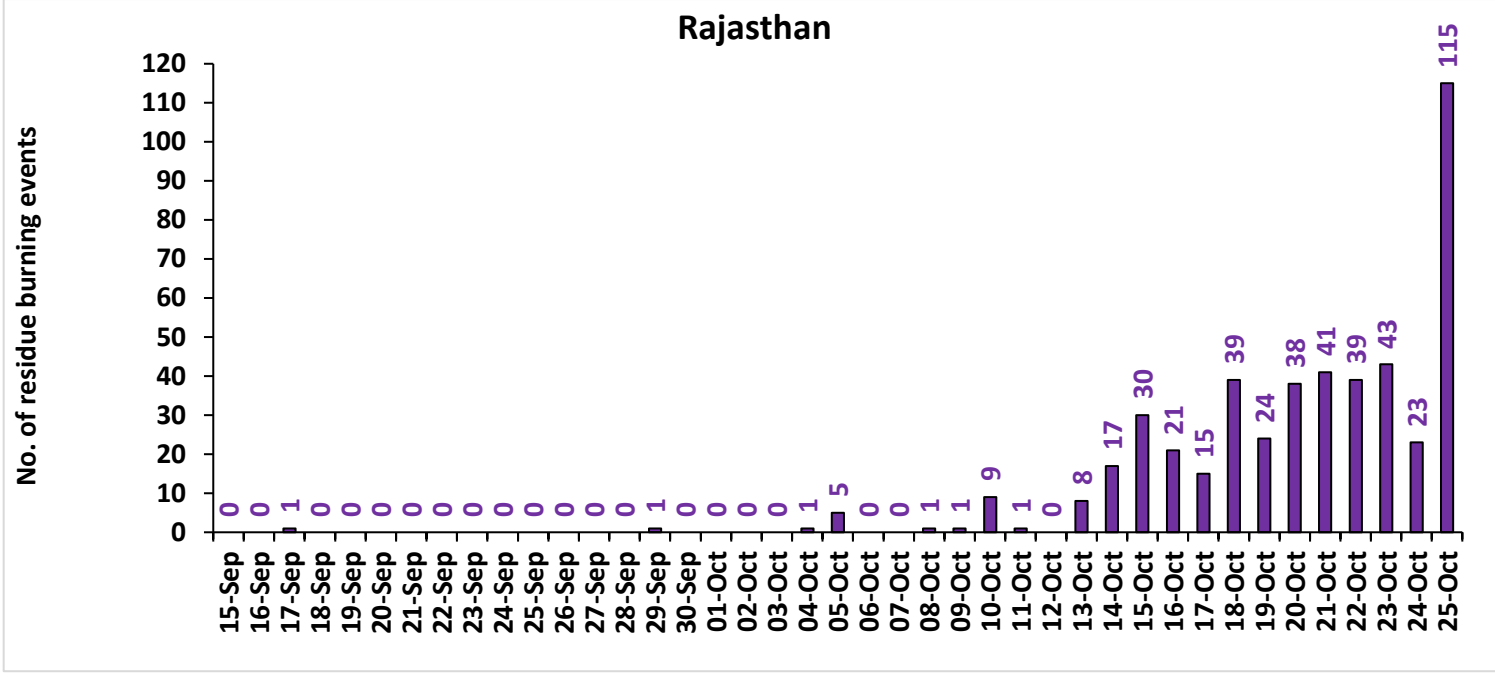
No. of residue burning events



Uttar Pradesh

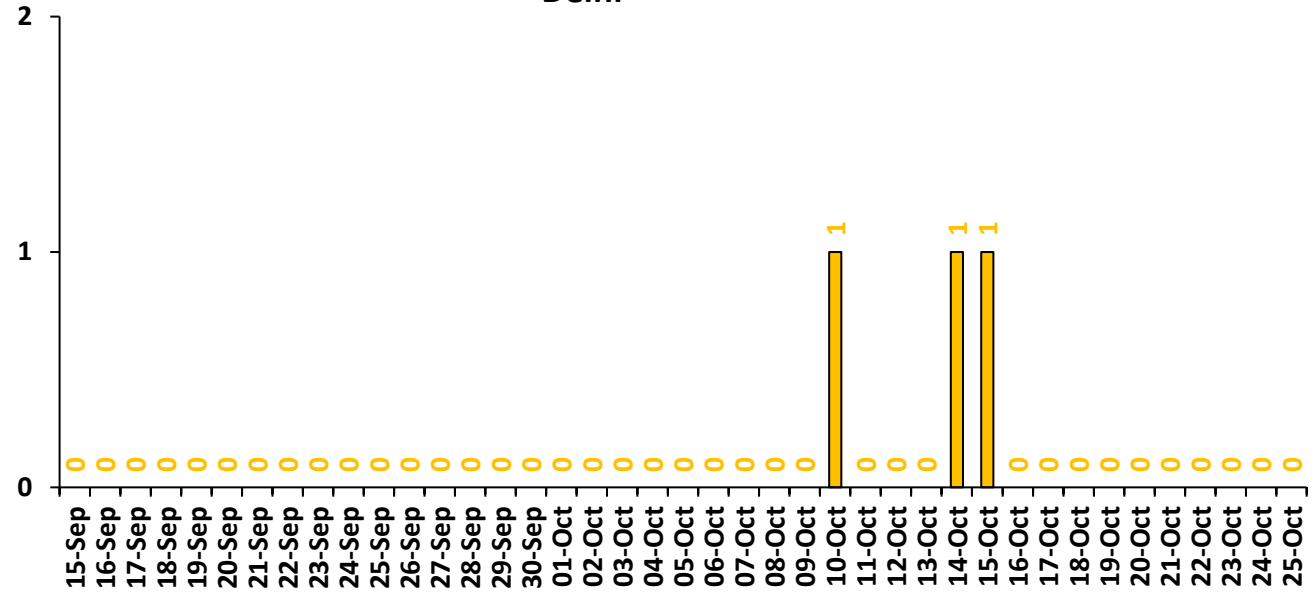
No. of residue burning events





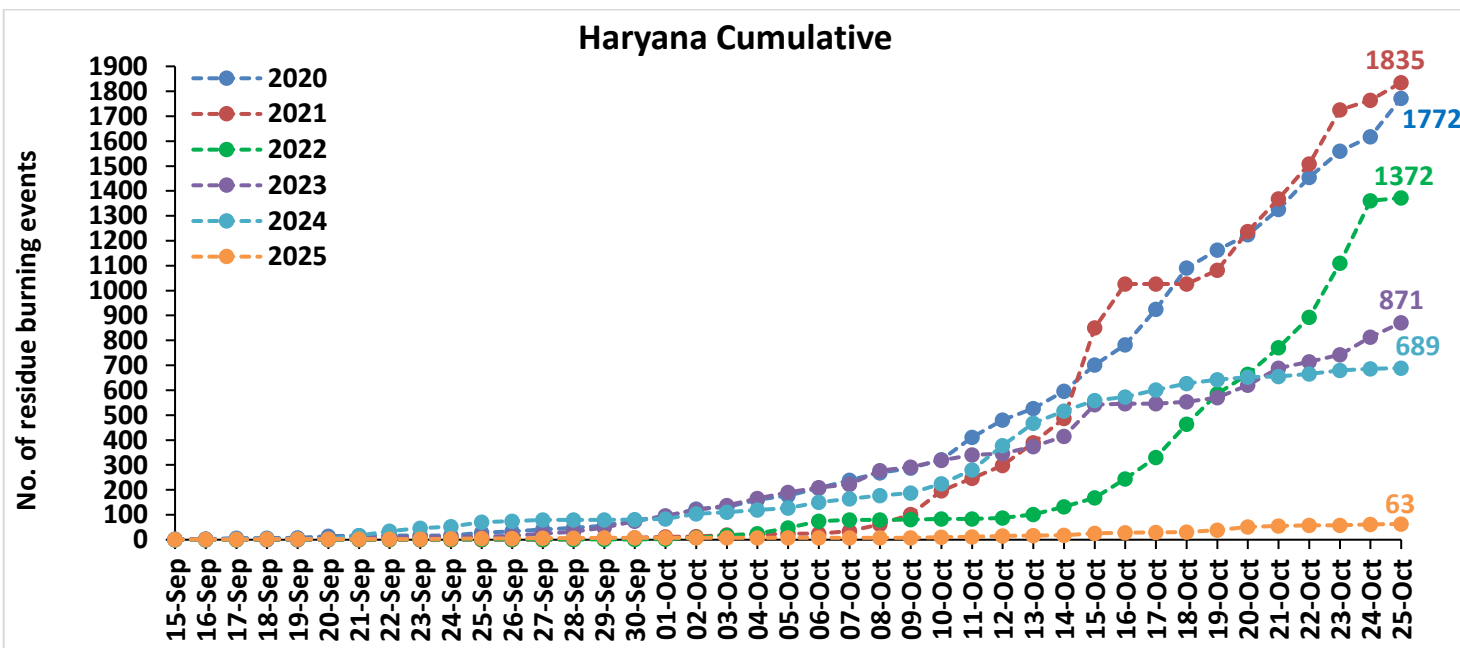
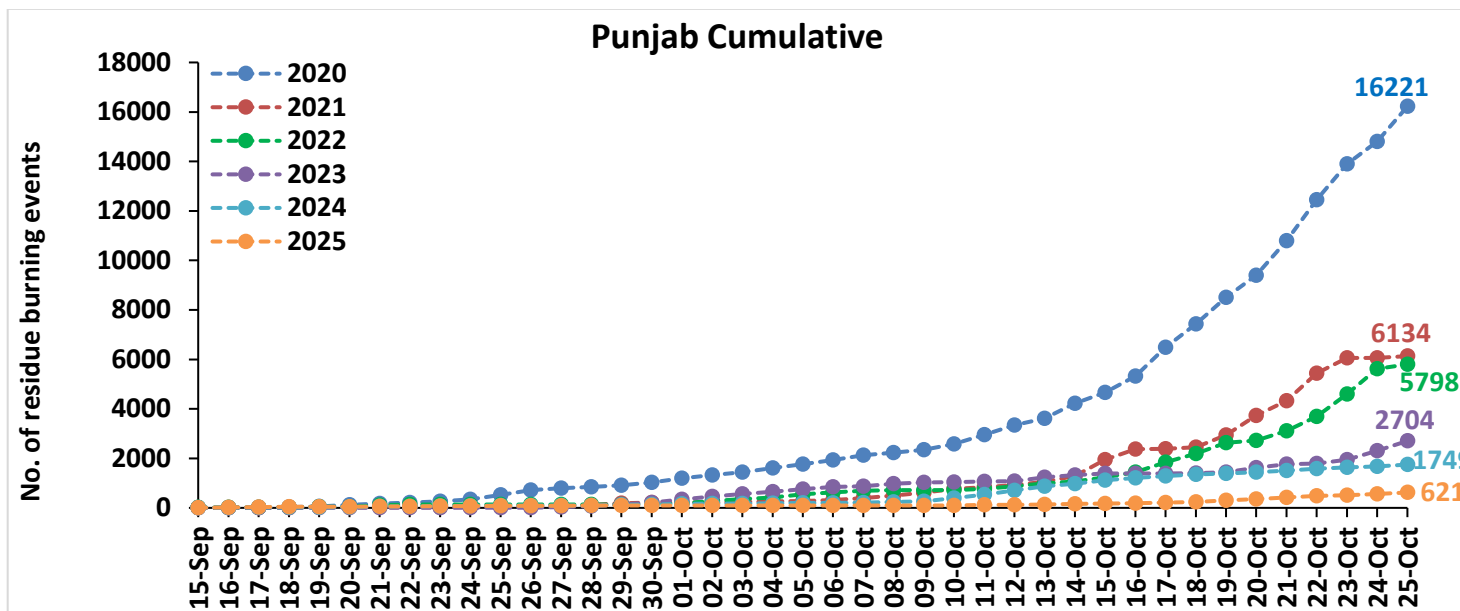
Delhi

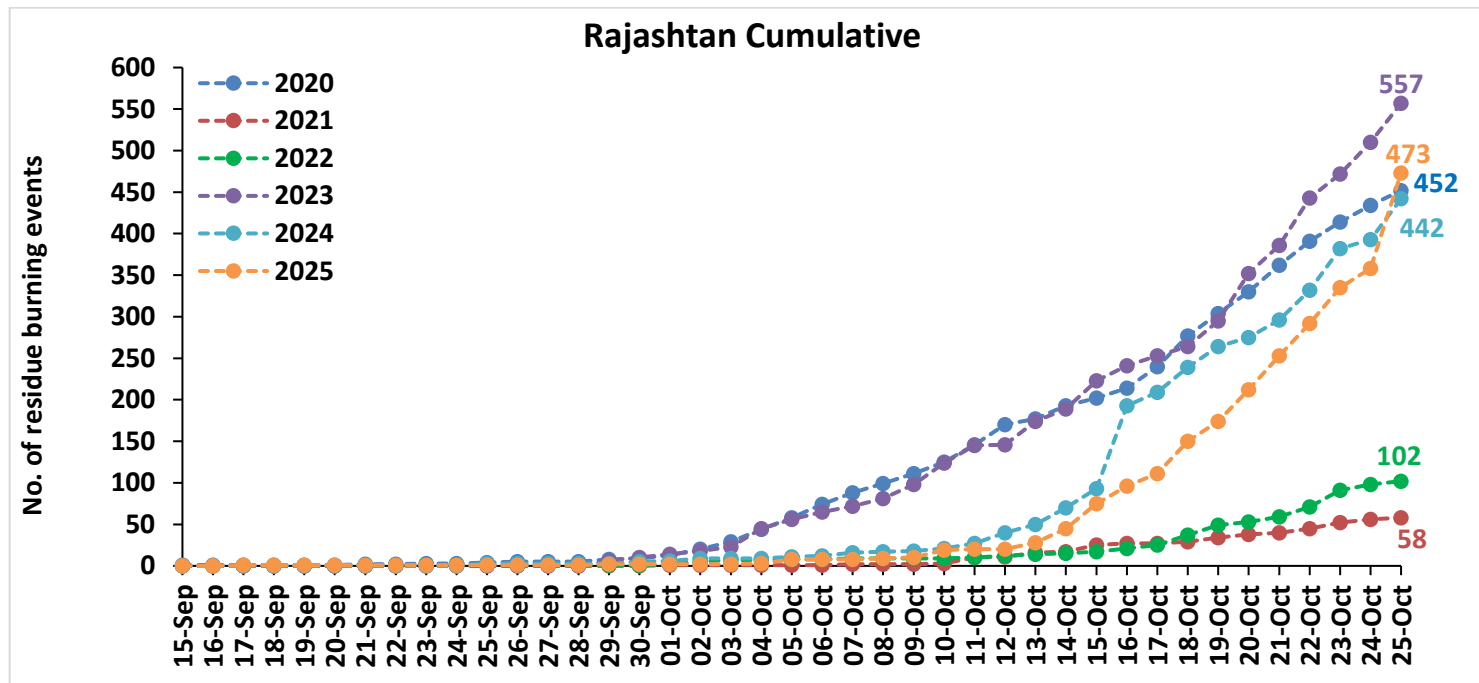
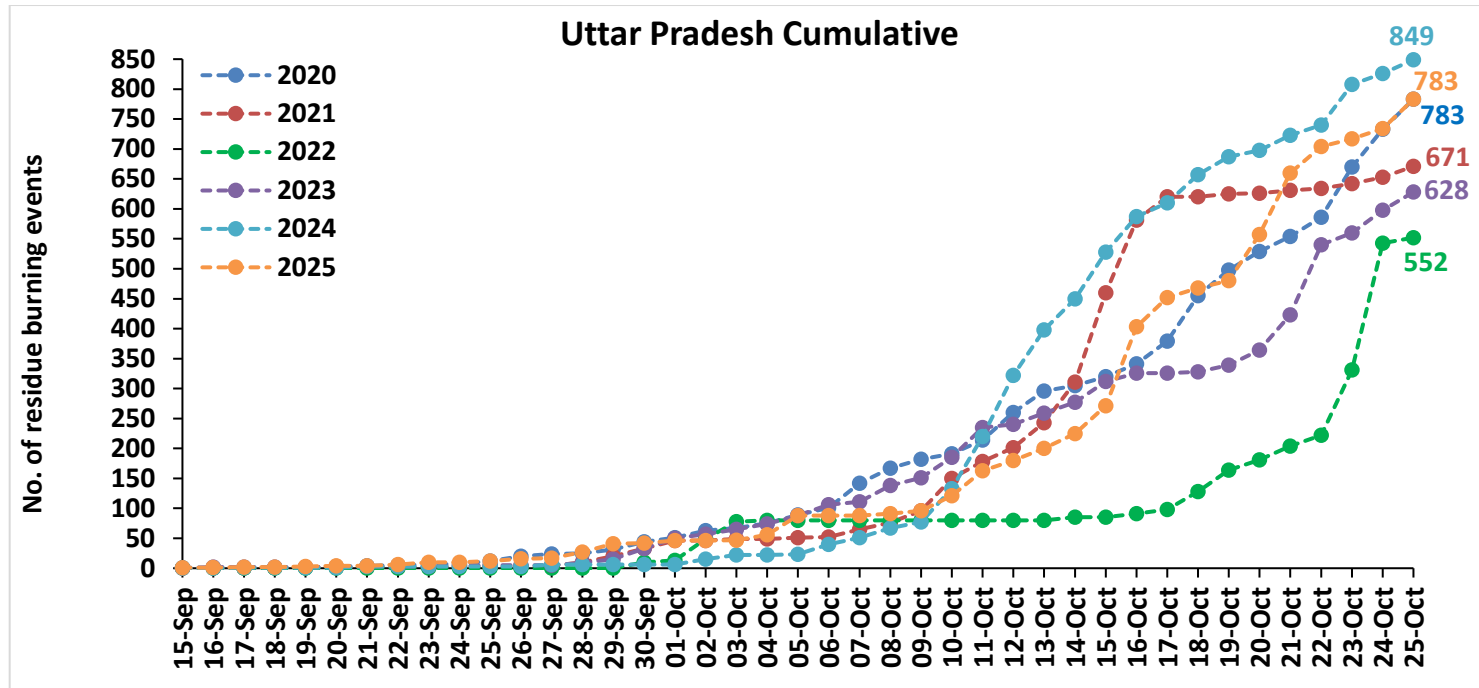
No. of residue burning events

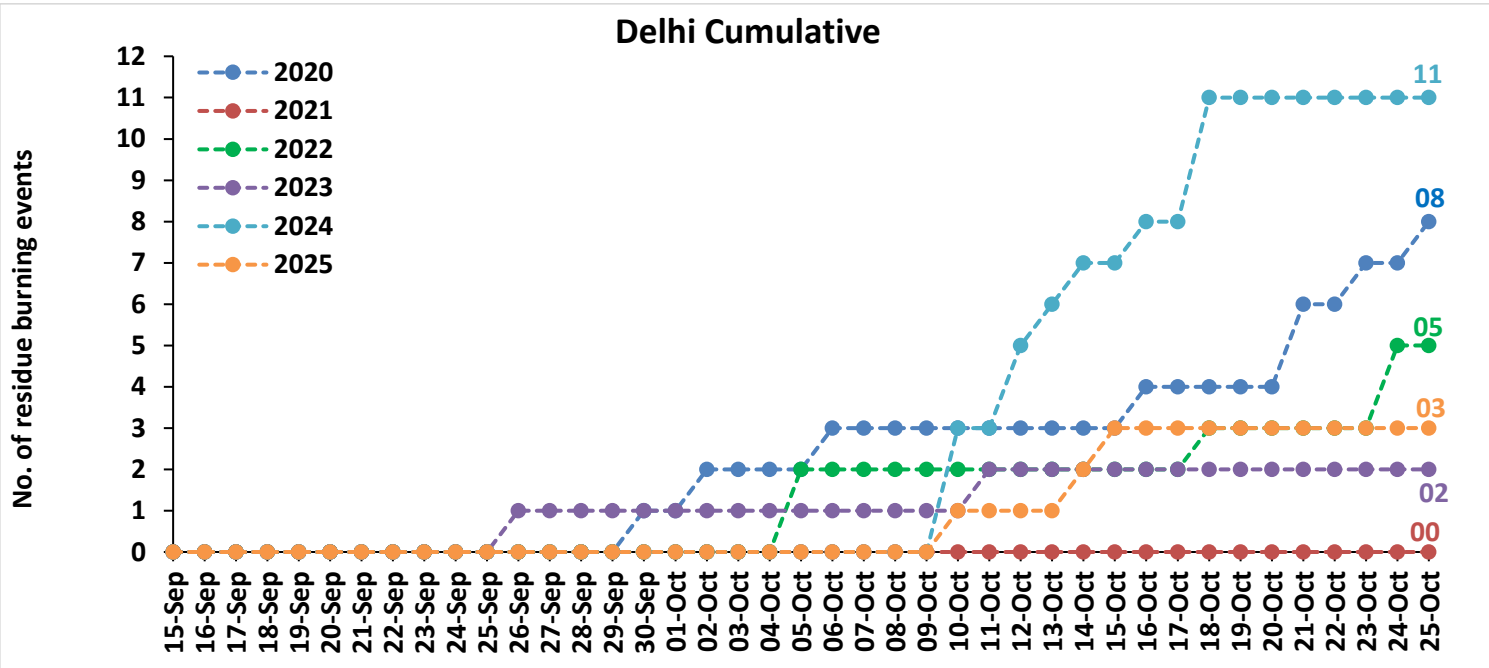
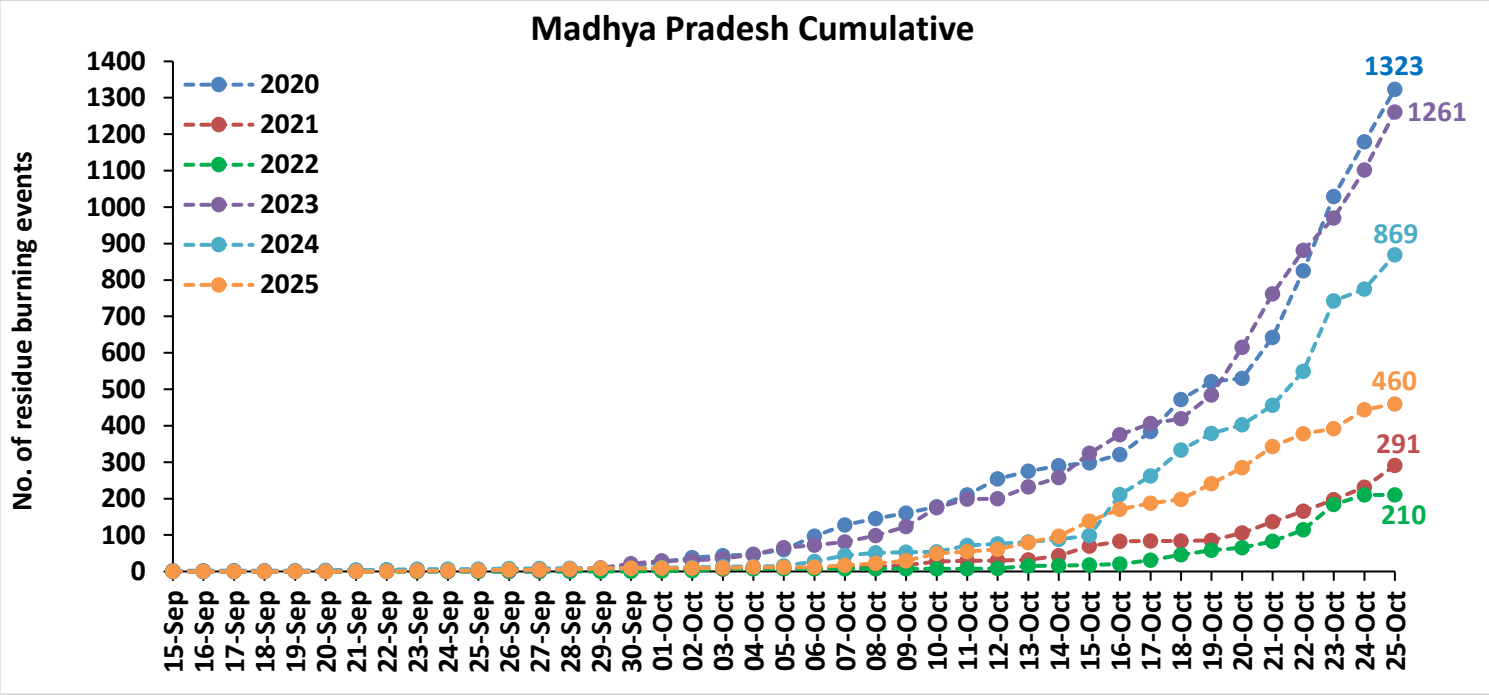


Comparison of residue burning events in current year (2025) with previous years (2020,2021,2022, 2023 and 2024) for the study

States

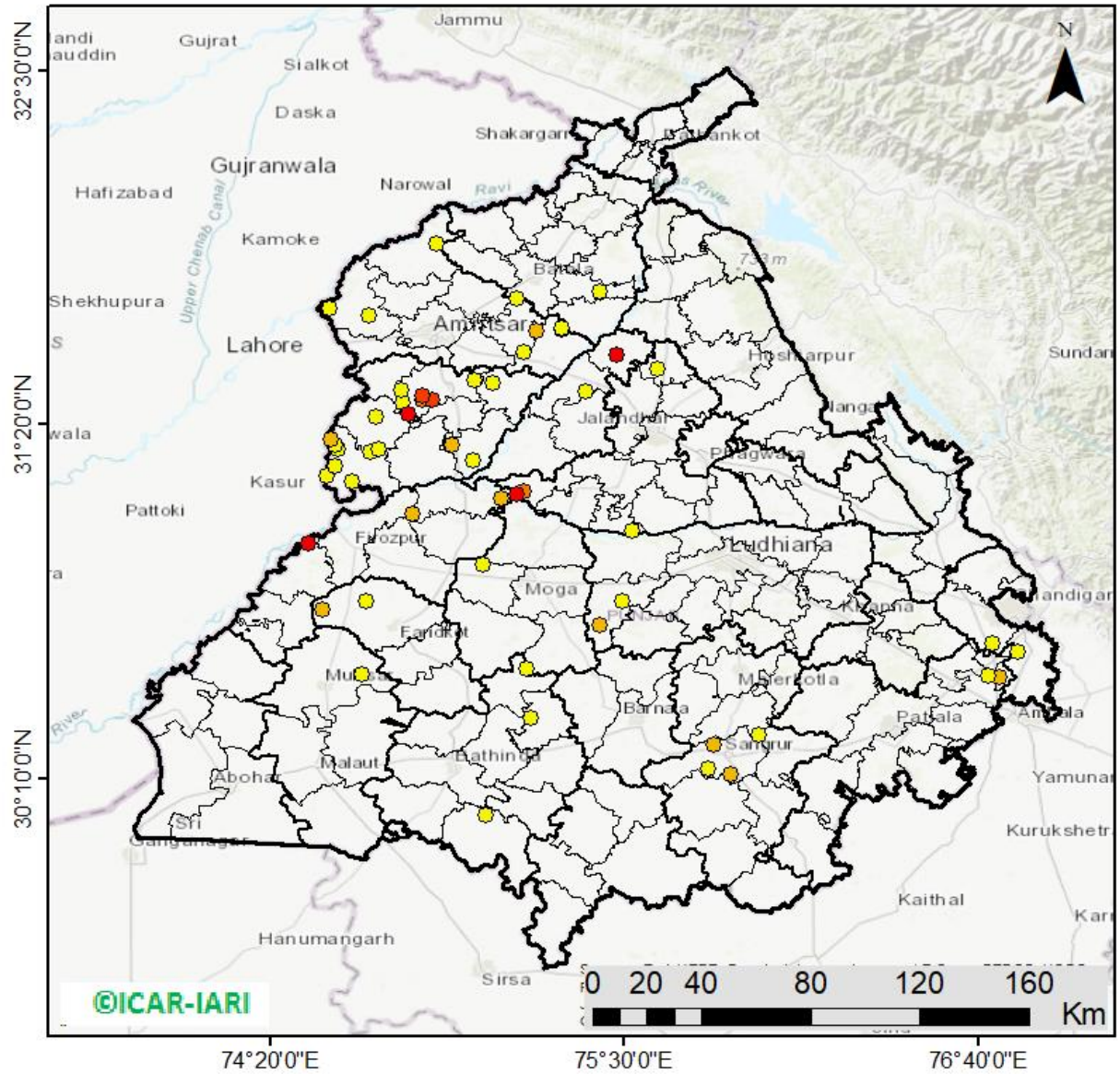






Punjab

RICE RESIDUE BURNING IN PUNJAB



60 burning events detected in Punjab during (25th Oct 2025)

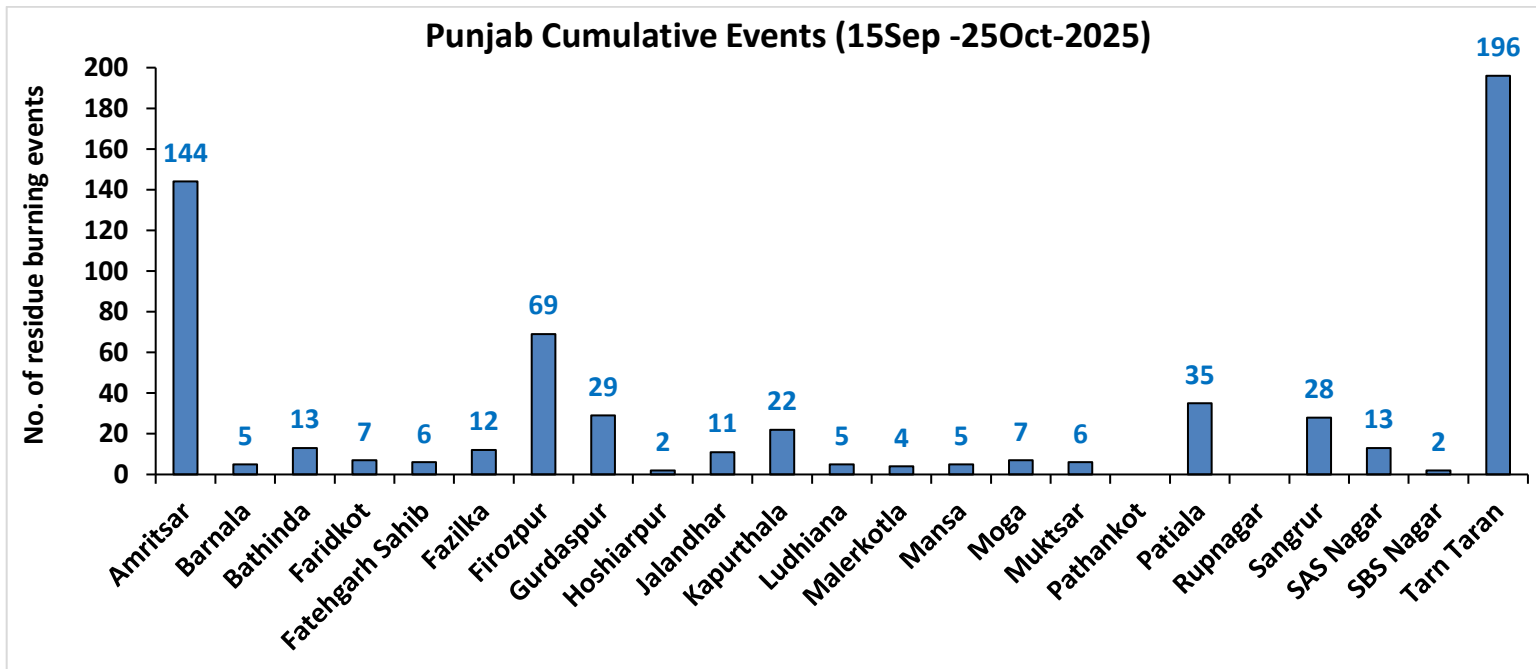
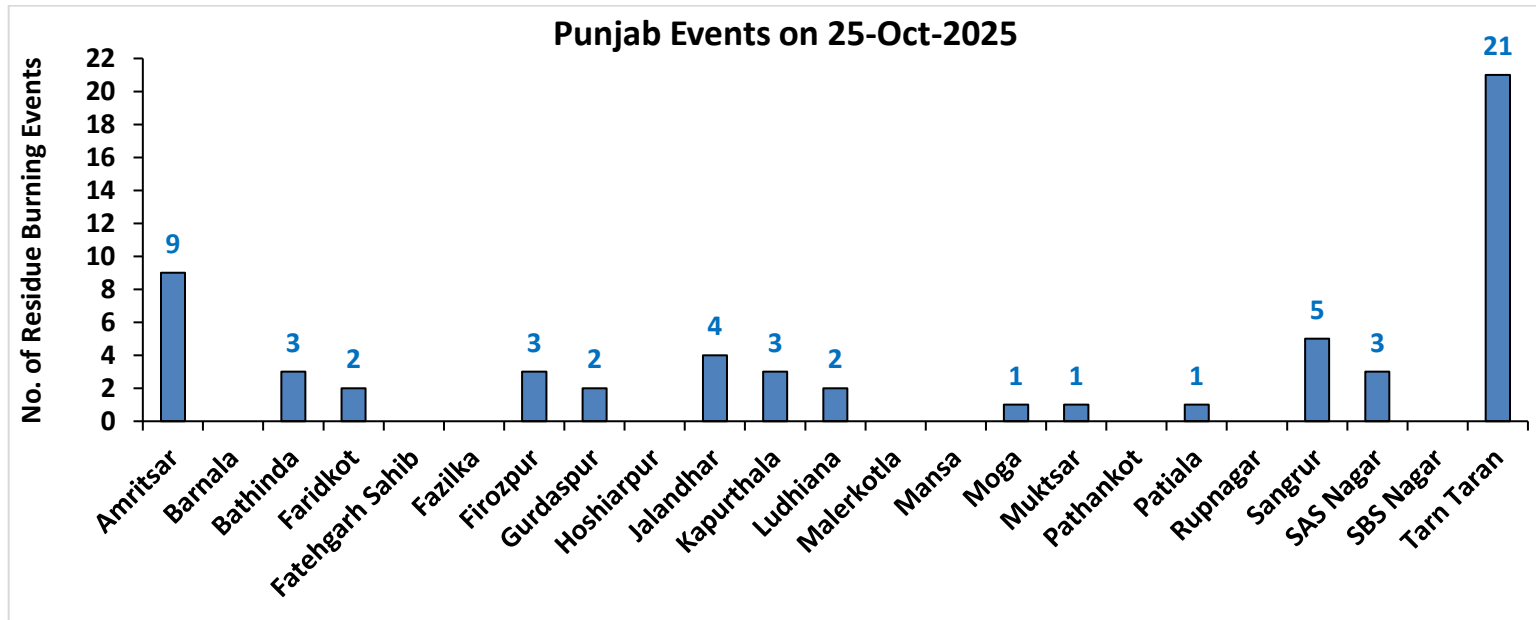
Fire Intensity (W/m²)

- 0 - 5
- 6 - 10
- 11 - 15
- 16 - 20
- >20



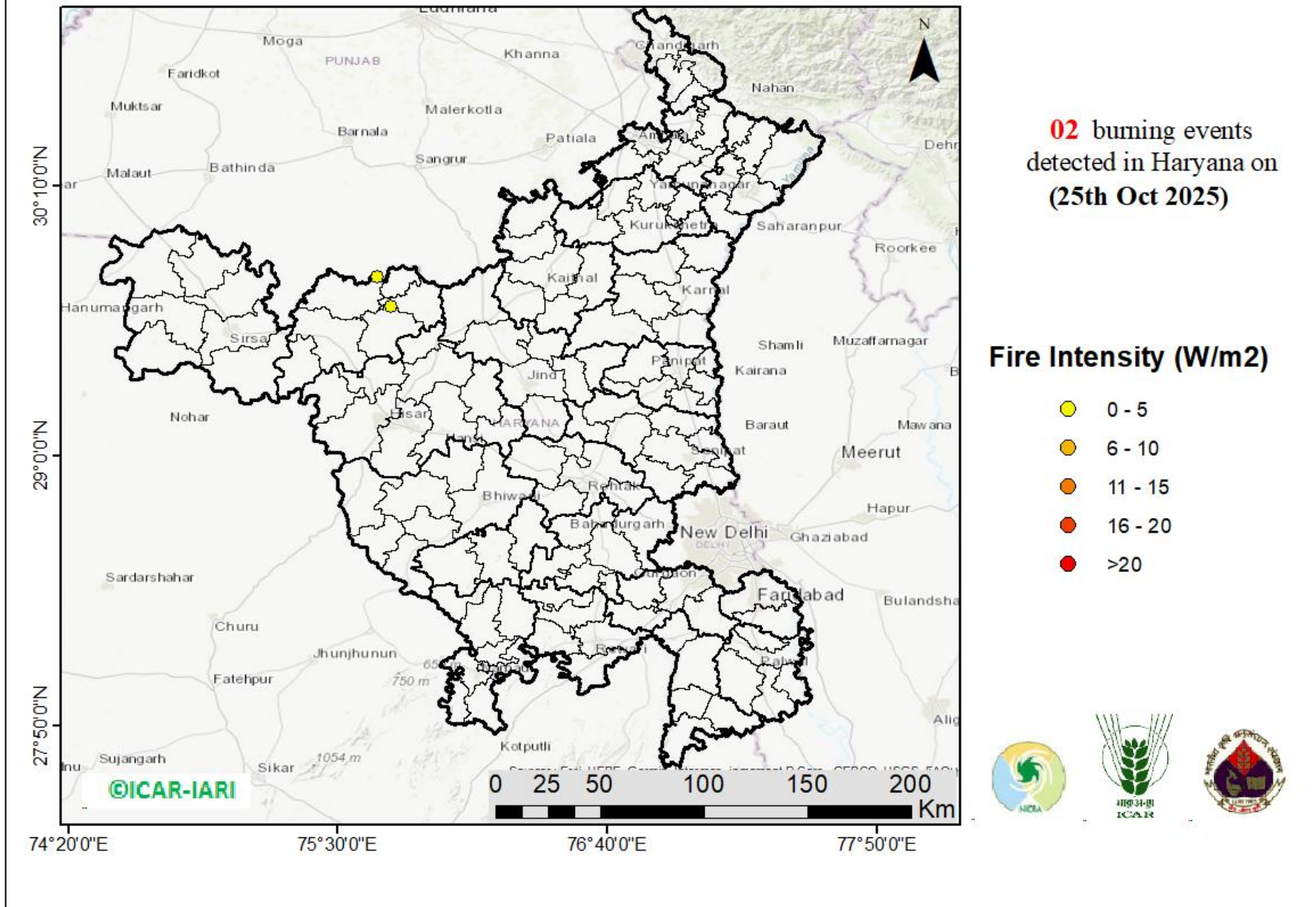
©ICAR-IARI

District-wise cumulative number of residues burning events in Punjab (15Sep-25Oct-2025)

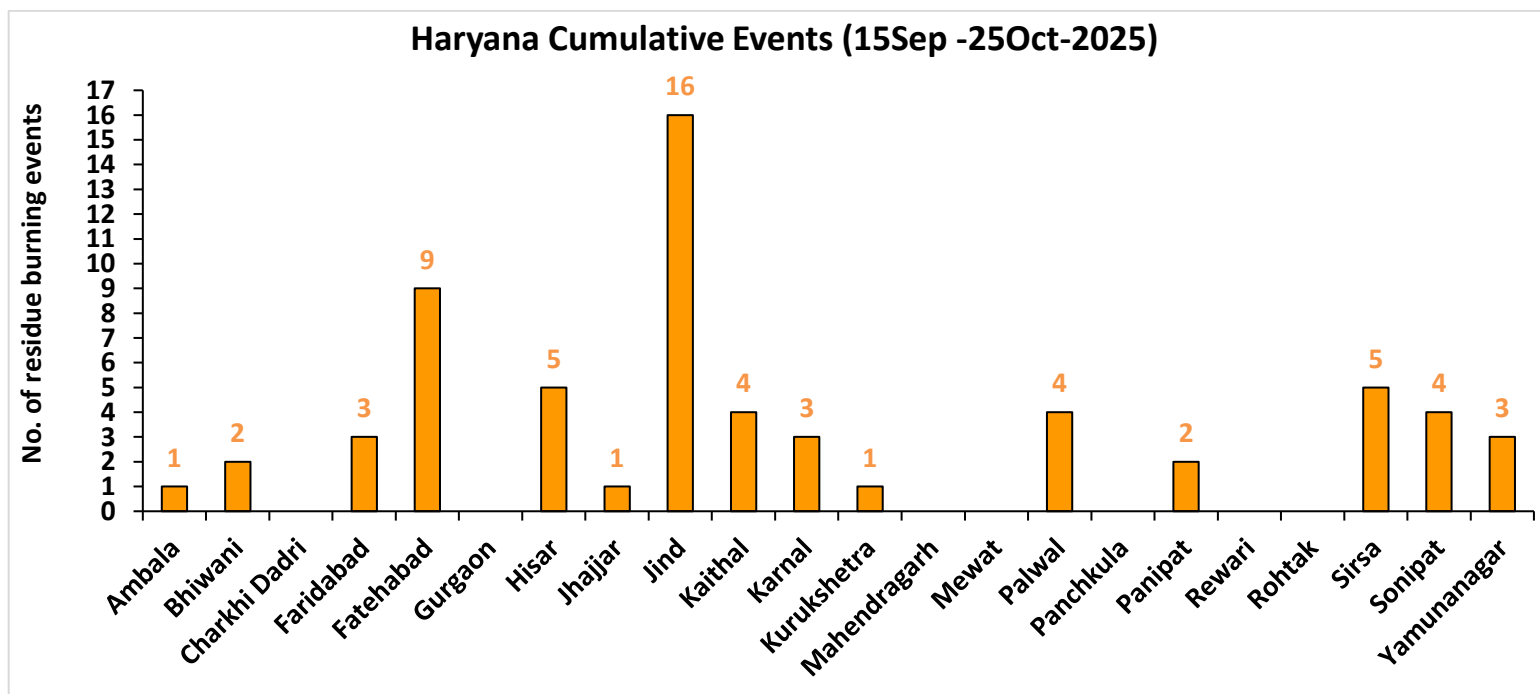
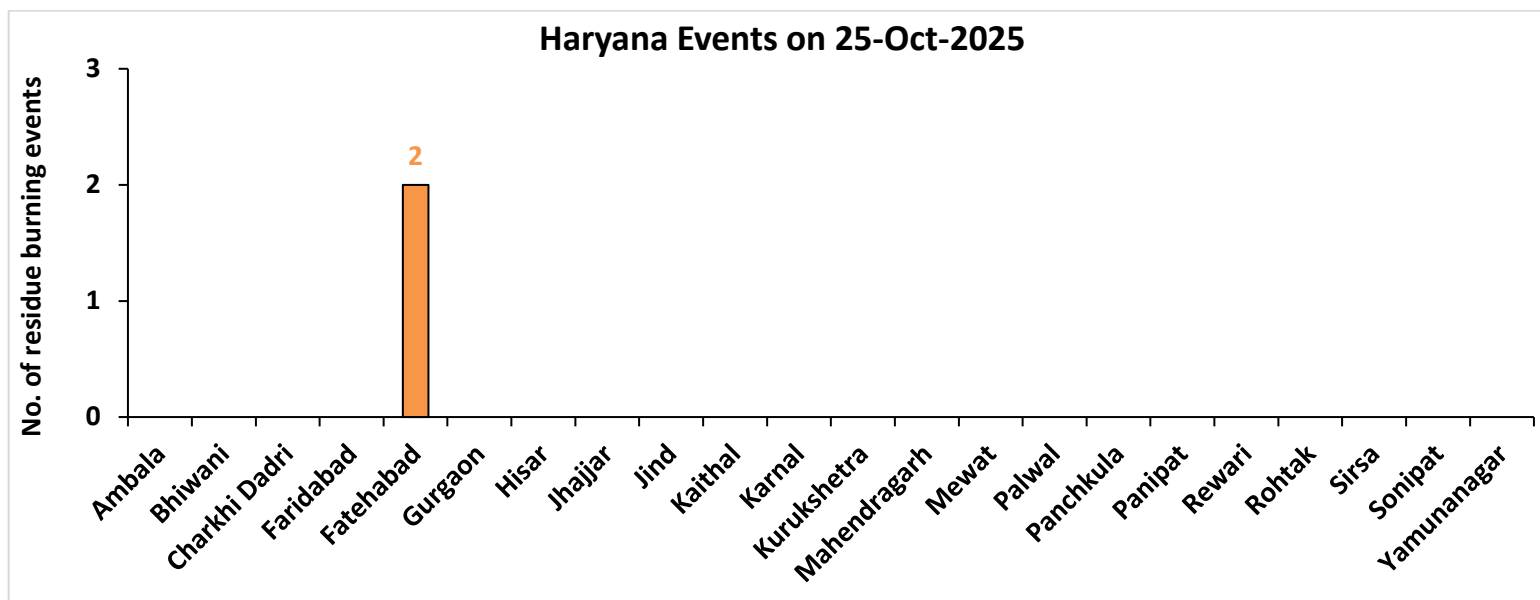


Haryana

RICE RESIDUE BURNING IN HARYANA

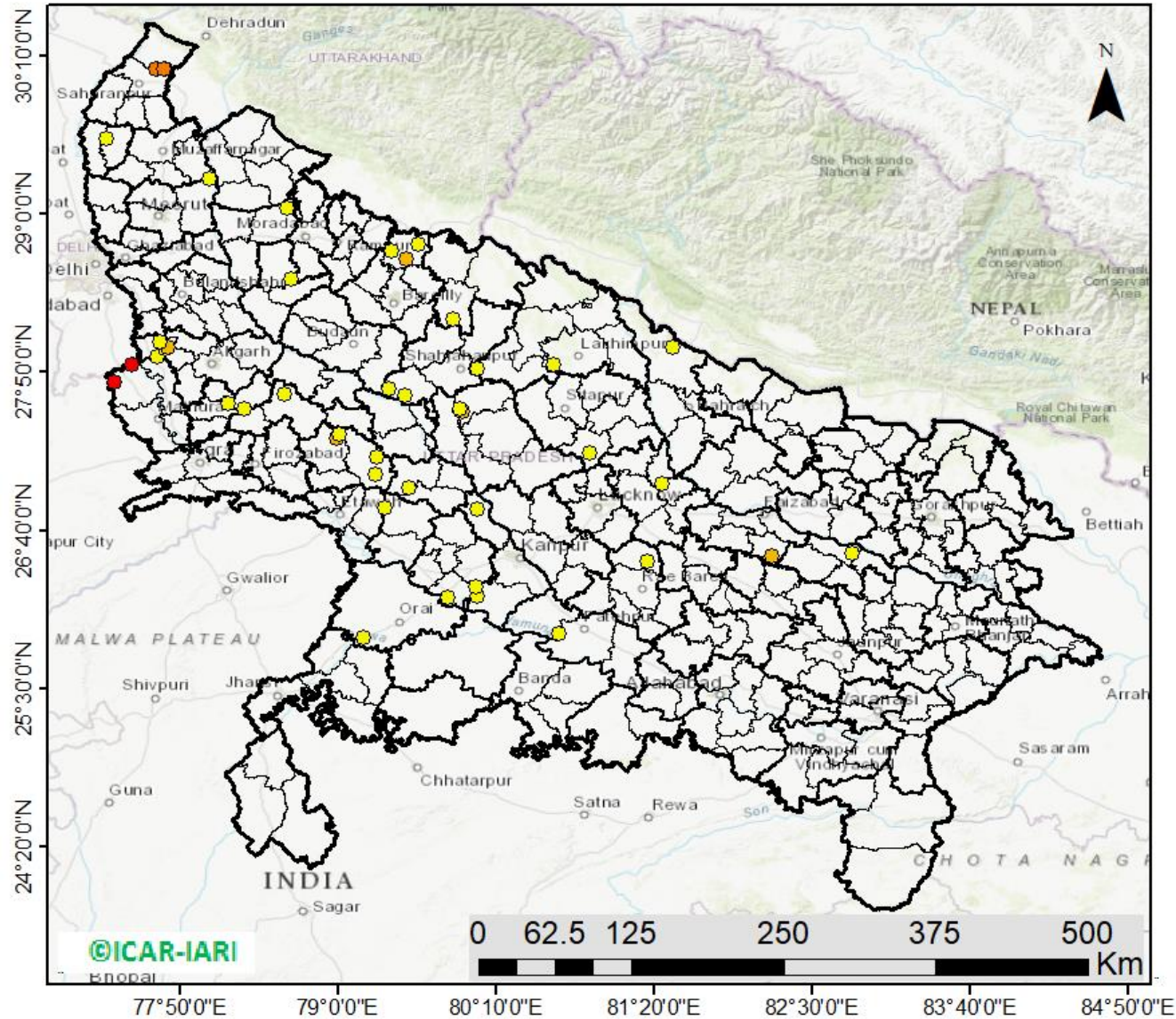


District-wise cumulative number of residues burning events in Haryana (15Sep-25Oct-2025)



Uttar Pradesh

RICE RESIDUE BURNING IN UTTAR PRADESH



49 burning events detected in Uttar Pradesh on (25th Oct 2025)

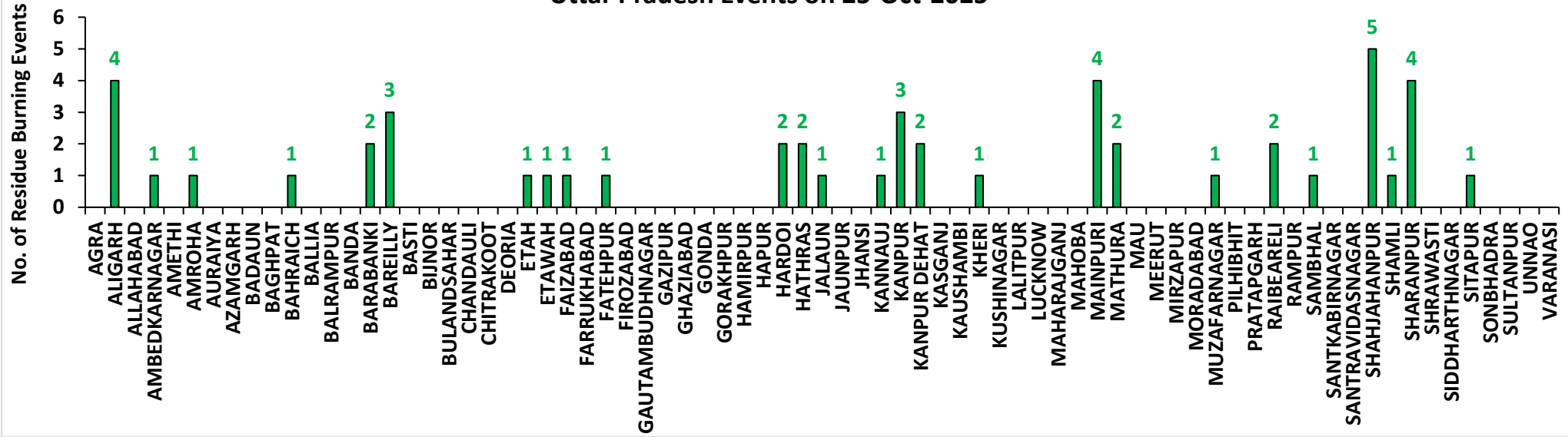
Fire Intensity (W/m²)

- 0 - 5
- 6 - 10
- 11 - 15
- 16 - 20
- >20

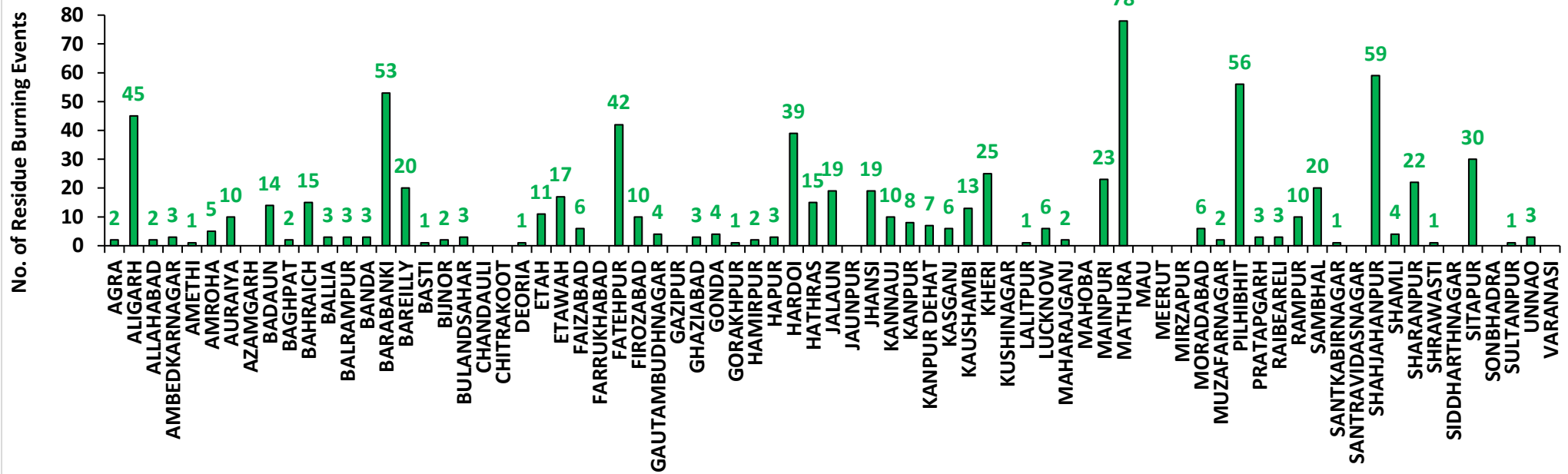


District-wise cumulative number of residues burning events in Uttar Pradesh (15Sep-25Oct-2025)

Uttar Pradesh Events on 25-Oct-2025

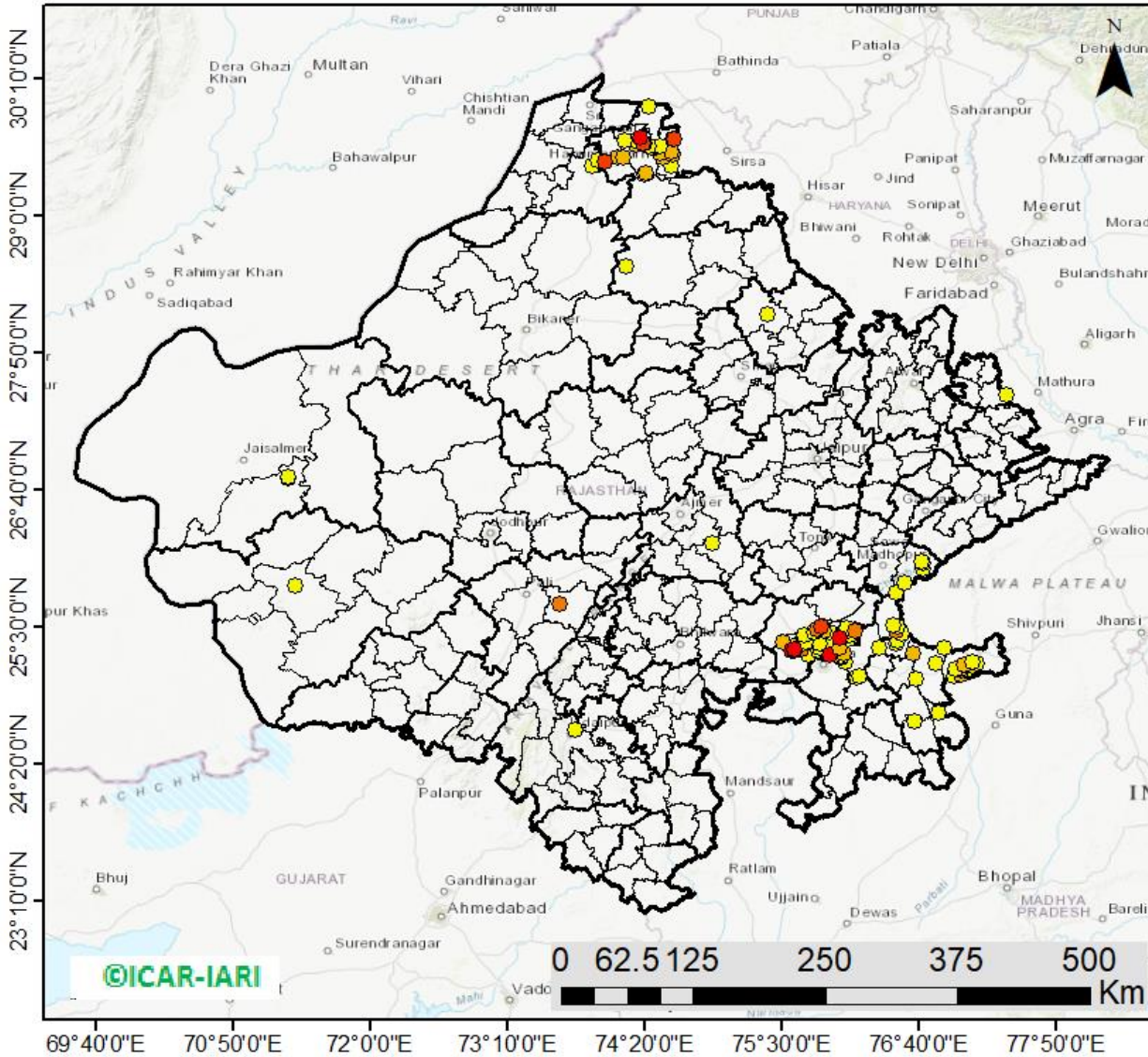


Uttar Pradesh Cumulative Events (15Sep -25Oct-2025)



Rajasthan

RICE RESIDUE BURNING IN RAJASTHAN



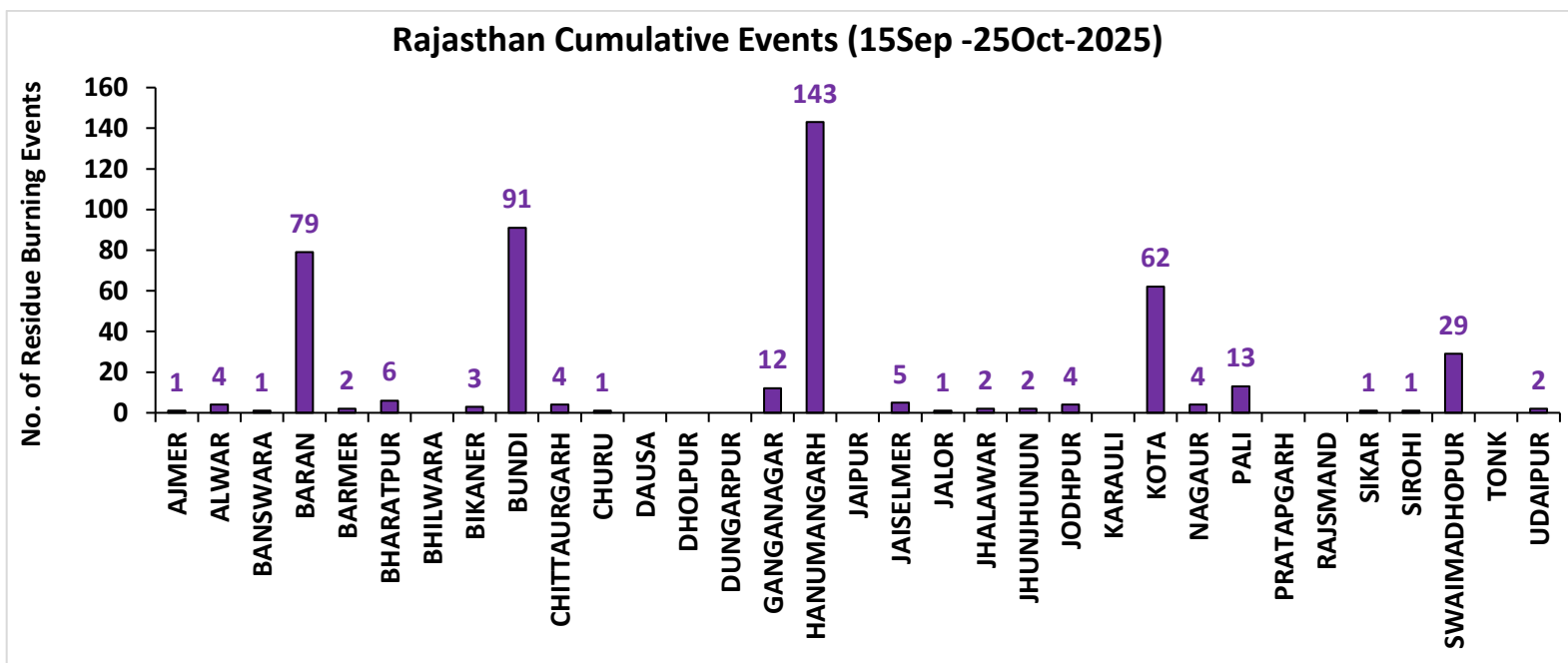
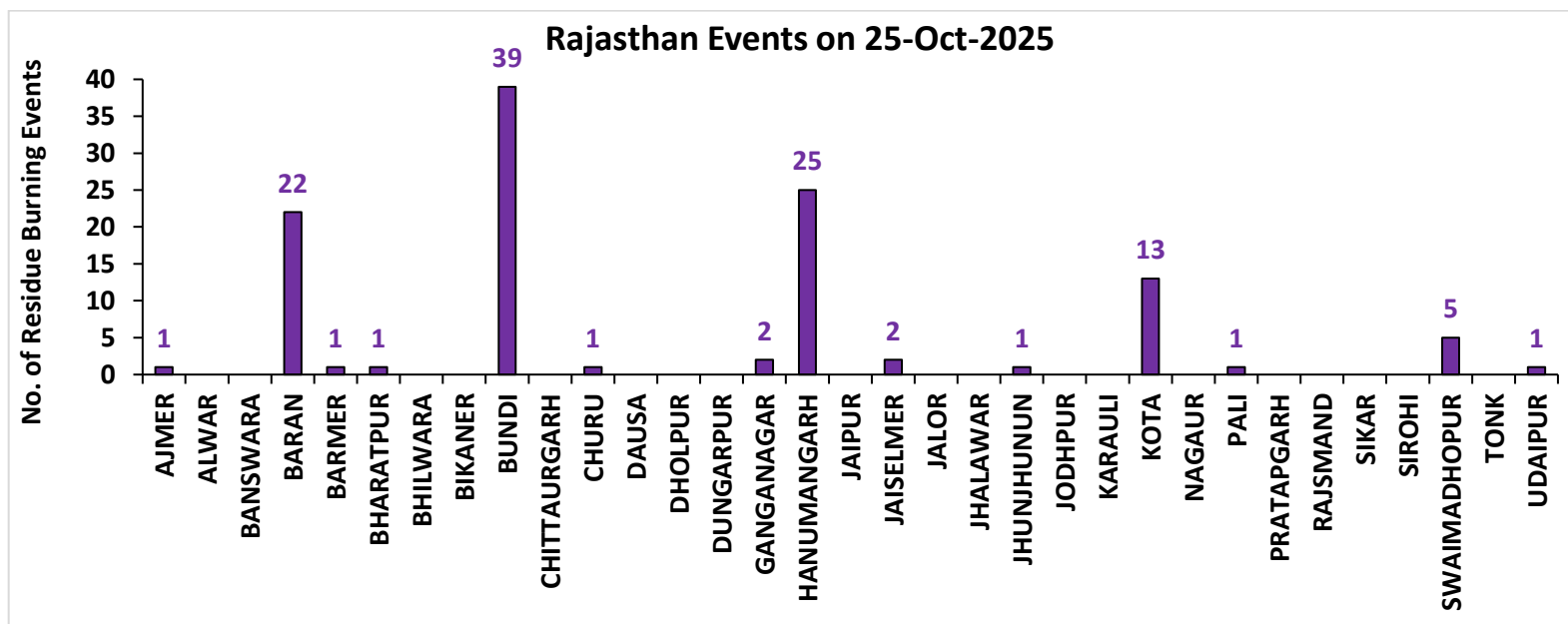
115 burning events
detected in Rajasthan on
(25th Oct 2025)

Fire Intensity (W/m²)

- 0 - 5
- 6 - 10
- 11 - 15
- 16 - 20
- >20

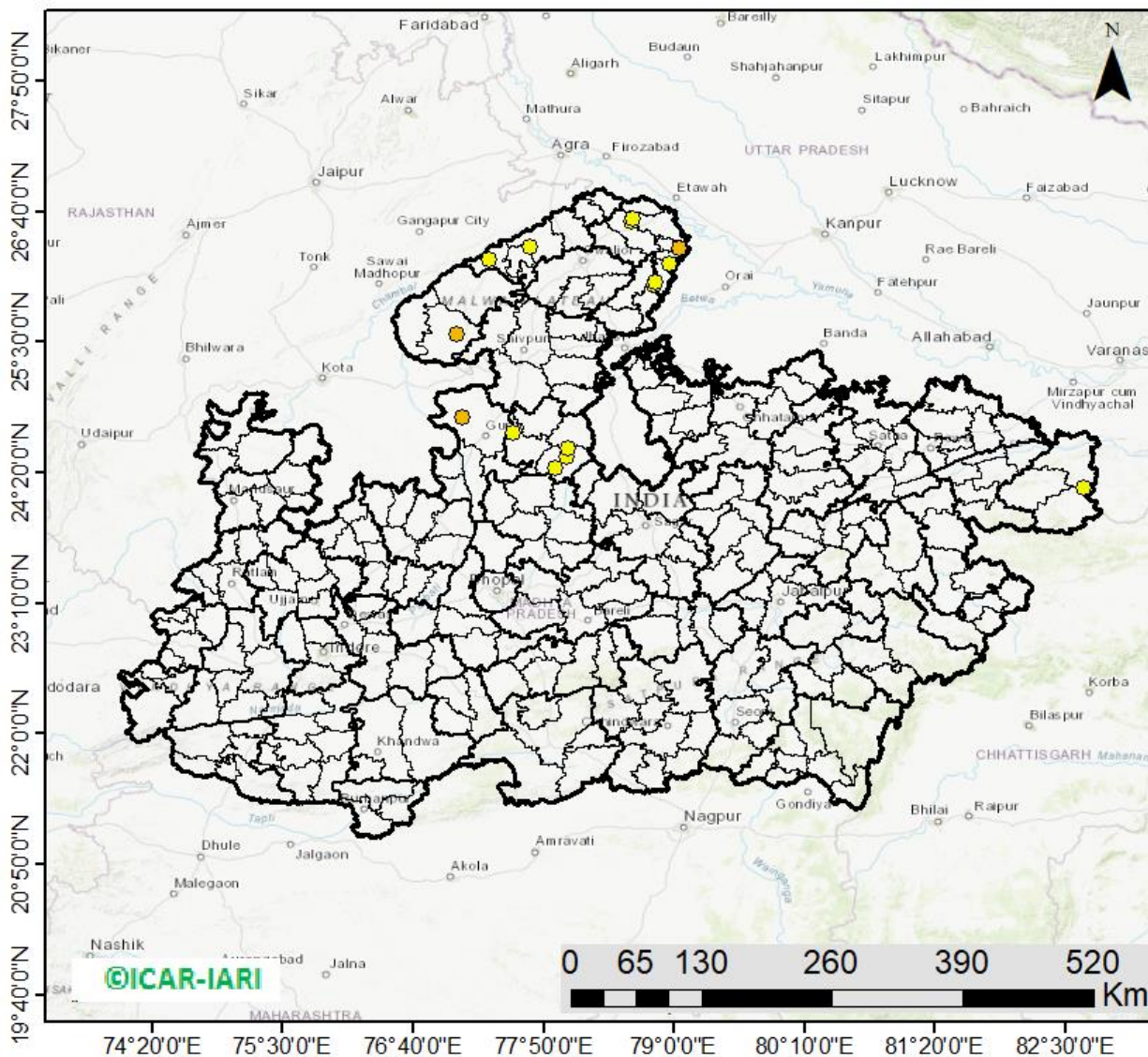


District-wise cumulative number of residues burning events in Rajasthan (15Sep-25Oct-2025)



Madhya Pradesh

RICE RESIDUE BURNING IN MADHYA PRADESH



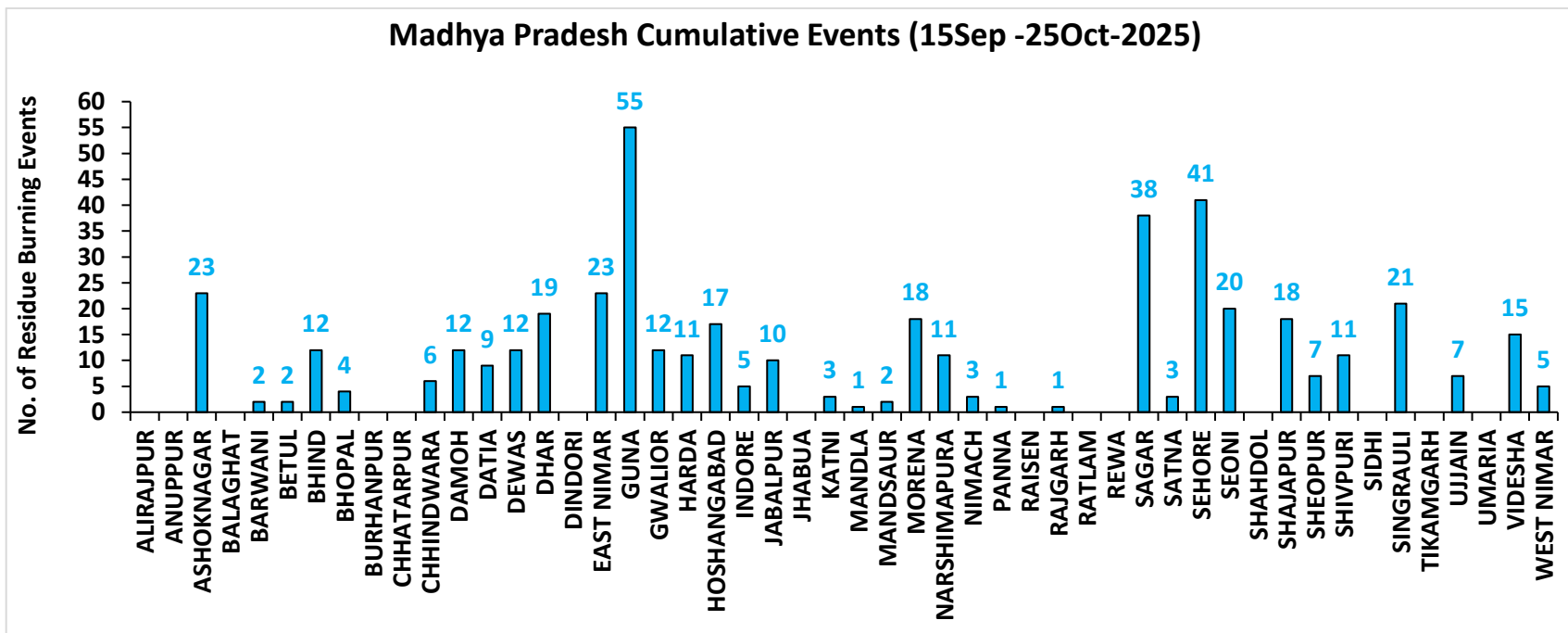
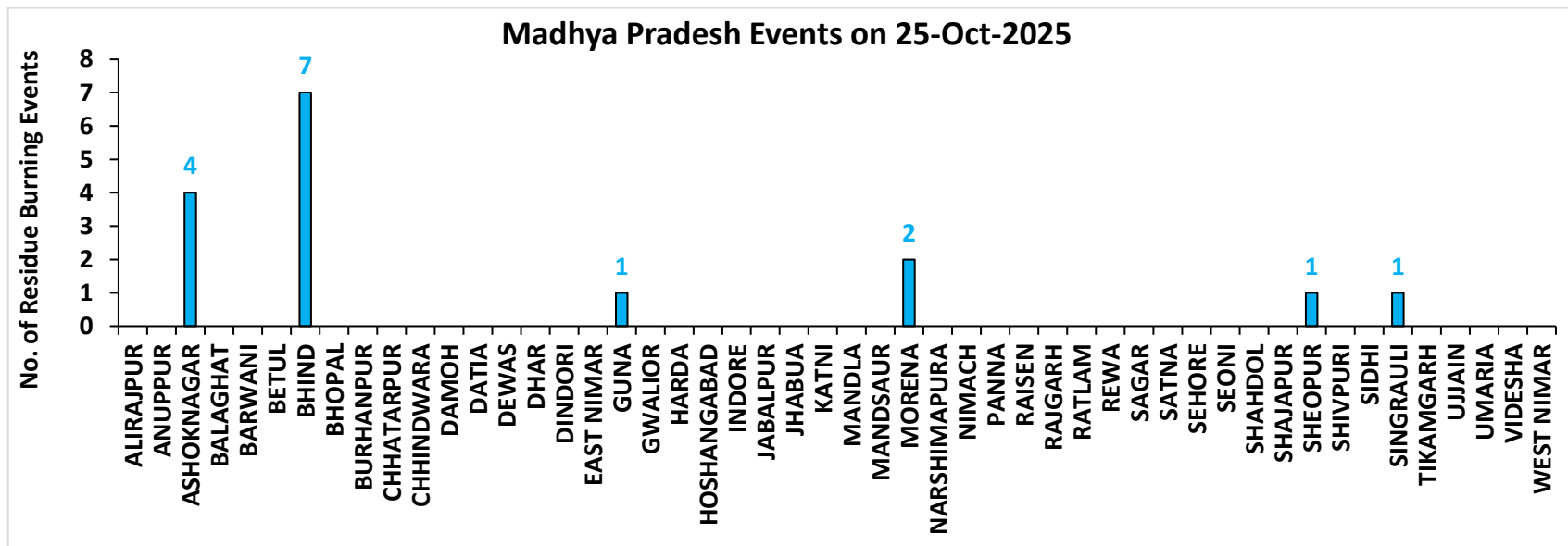
16 burning events
detected in MP on
(25th Oct 2025)

Fire Intensity (W/m²)

- 0 - 5
- 6 - 10
- 11 - 15
- 16 - 20
- >20



District-wise cumulative number of residues burning events in Madhya Pradesh (15Sep-25Oct-2025)



District-wise cumulative number of residues burning events detected in 2020, 2021, 2022, 2023, 2024 and 2025
(Period: 15 September -25 October)

(a) Punjab

District	15 Sep- 25 Oct					
	2020	2021	2022	2023	2024	2025
Amritsar	2367	947	1085	834	462	144
Barnala	100	47	39	19	11	5
Bathinda	225	75	90	15	15	13
Faridkot	844	301	54	40	12	7
Fatehgarh Sahib	536	286	234	120	50	6
Fazilka	246	86	52	25	21	12
Firozpur	2125	399	305	206	158	69
Gurdaspur	1295	394	577	45	52	29
Hoshiarpur	232	58	51	4	0	2
Jalandhar	400	274	282	54	22	11
Kapurthala	845	392	395	126	78	22
Ludhiana	456	389	257	110	34	5
Malerkotla	0	0	0	10	26	4
Mansa	152	33	50	115	35	5
Moga	316	134	138	58	16	7
Muktsar	320	96	29	7	4	6
Pathankot	7	0	0	0	0	0
Patiala	1527	517	482	325	225	35
Rupnagar	78	46	52	5	4	0
Sangrur	595	149	222	177	154	28
SAS NAGAR (Mohali)	86	54	45	85	28	13
SBS Nagar	37	34	9	5	4	2
Tarn Taran	3432	1423	1350	319	338	196
Total	16221	6134	5798	2704	1749	621

(b) Haryana

District	15 Sep- 25 Oct					
	2020	2021	2022	2023	2024	2025
AMBALA	222	87	93	114	74	1
BHIWANI	0	0	0	2	0	2
CHARKHI DADRI	0	0	0	0	0	0
FARIDABAD	1	1	1	2	34	3
FATEHABAD	129	116	139	128	41	9
GURGAON	0	0	0	0	0	0
HISAR	10	8	23	55	20	5
JHAJJAR	1	0	0	4	3	1
JIND	55	82	113	110	52	16
KAITHAL	378	513	379	113	131	4
KARNAL	437	568	224	55	72	3
KURUKSHETRA	348	325	246	102	100	1
MAHENDRAGARH	0	0	0	0	0	0
MEWAT	0	0	0	0	0	0
PALWAL	30	28	16	45	26	4
PANCHKULA	0	0	0	1	14	0
PANIPAT	13	22	20	18	28	2
REWARI	0	0	0	0	0	0
ROHTAK	2	0	0	7	8	0
SIRSA	35	17	28	13	18	5
SONIPAT	17	7	10	49	41	4
YAMUNANAGAR	94	61	80	53	27	3
Total	1772	1835	1372	871	689	63

(c) Uttar Pradesh

District	15 Sep- 25 Oct																			
	2020	2021	2022	2023	2024	2025	GAUTAMBU DHNAGAR	6	8	7	7	24	4	MUZAFARNAGAR	3	2	1	1	7	2
AGRA	2	0	0	1	0	2	GAZIPUR	0	0	0	0	0	0	PILHIBHIT	10	108	81	72	27	56
ALIGARH	55	21	23	77	150	45	GHAZIABAD	5	2	2	11	9	3	PRATAPGARH	4	0	0	1	1	3
ALLAHABAD	0	1	2	2	1	2	GONDA	0	0	0	0	0	4	RAIBEARELI	1	0	2	1	2	3
AMBEDKARNA GAR	0	0	0	0	2	3	GORAKHPU R	1	0	0	0	1	1	RAMPUR	60	50	41	39	17	10
AMETHI	0	1	4	1	0	1	HAMIRPUR	1	0	0	0	0	2	SAMBHAL	7	7	6	12	84	20
AMROHA	2	0	0	2	4	5	HAPUR	7	1	1	0	9	3	SANTKABIRNAGAR	0	0	0	1	0	1
AURAIYA	19	7	7	10	1	10	HARDOI	19	6	7	10	15	39	SANTRAVIDASNAG AR	0	0	0	0	0	0
AZAMGARH	0	0	0	0	0	0	HATHRAS	0	0	0	2	13	15	SHAHJAHANPUR	51	183	182	30	52	59
BADAUN	2	6	0	2	21	14	JALAUN	0	0	0	0	0	19	SHAMLI	21	15	5	5	8	4
BAGHPAT	4	1	1	1	3	2	JAUNPUR	0	0	0	1	0	0	SHARANPUR	46	20	4	2	5	22
BAHRAICH	23	2	5	2	4	15	JHANSI	30	6	0	24	9	19	SHRAWASTI	8	0	0	2	2	1
BALLIA	0	0	0	0	1	3	KANNAUJ	7	2	0	1	5	10	SIDDHARTHANAGAR	0	0	0	0	1	0
BALRAMPUR	5	1	1	1	0	3	KANPUR	5	7	10	20	2	8	SITAPUR	21	9	3	4	47	30
BANDA	0	0	0	0	0	3	KANPUR DEHAT	15	1	0	9	3	7	SONBHADRA	0	0	0	0	0	0
BARABANKI	23	21	20	41	68	53	KASGANJ	2	2	0	1	1	6	SULTANPUR	1	0	0	0	0	1
BAREILLY	25	15	9	19	13	20	KAUSHAMBI	17	3	2	17	3	13	UNNAO	7	1	0	7	6	3
BASTI	3	1	0	0	1	1	KHERI	52	55	60	8	17	25	VARANASI	1	0	0	0	0	0
BIJNOR	8	4	2	6	4	2	KUSHINAGA R	0	0	0	0	0	0	Total	783	671	552	628	849	783
BULANDSAHAR	18	2	7	6	27	3	LALITPUR	0	1	3	1	0	1							
CHANDAULI	0	0	0	0	0	0	LUCKNOW	4	0	1	4	5	6							
CHITRAKOOT	0	1	2	3	0	0	MAHARAJG ANJ	0	0	1	2	1	2							
DEORIA	0	0	0	2	0	1	MAHOBA	12	0	0	0	0	0							
ETAH	12	6	1	11	10	11	MAINPURI	15	7	11	13	18	23							
ETAWAH	10	7	6	29	10	17	MATHURA	61	56	9	76	73	78							
FAIZABAD	3	0	0	2	4	6	MAU	0	0	0	0	0	0							
FARRUKHABAD	1	0	0	0	0	0	MEERUT	16	4	4	3	9	0							
FATEHPUR	26	6	17	17	22	42	MIRZAPUR	6	5	2	0	2	0							
FIROZABAD	12	4	0	3	4	10	MORADABA D	8	3	0	3	21	6							

(d) Delhi

District	15 Sep- 25 Oct					
	2020	2021	2022	2023	2024	2025
CENTRAL	0	0	0	0	0	0
EAST	0	0	0	0	0	0
NEW DELHI	0	0	0	0	0	0
NORTH	2	0	5	2	8	3
NORTH EAST	0	0	0	0	0	0
NORTH WEST DELHI	3	0	0	0	3	0
SHAHADRA	0	0	0	0	0	0
SOUTH	1	0	0	0	0	0
SOUTH EAST	0	0	0	0	0	0
SOUTH WEST DELHI	0	0	0	0	0	0
WEST DELHI	2	0	0	0	0	0
Total	8	0	5	2	11	3

(e) Rajasthan

District	15 Sep- 25 Oct					
	2020	2021	2022	2023	2024	2025
AJMER	2	0	0	0	0	1
ALWAR	2	0	0	0	0	4
BANSWARA	0	0	0	0	0	1
BARAN	109	0	10	219	141	79
BARMER	2	0	0	0	0	2
BHARATPUR	2	0	0	2	6	6
BHILWARA	4	0	0	0	0	0
BIKANER	1	0	0	0	0	3
BUNDI	26	3	36	102	75	91
CHITTAURGARH	0	2	2	8	2	4
CHURU	0	0	0	0	0	1
DAUSA	0	0	0	0	0	0
DHOLPUR	0	0	0	0	0	0
DUNGARPUR	0	0	0	0	0	0
GANGANAGAR	5	2	5	9	19	12
HANUMANGARH	222	48	19	64	120	143
JAIPUR	2	0	0	0	0	0
JAISELMER	2	0	0	0	0	5
JALOR	0	0	0	0	0	1
JHALAWAR	1	0	2	8	1	2
JHUNJHUNUN	1	0	0	0	0	2
JODHPUR	1	0	0	0	0	4
KARALI	1	0	0	0	0	0
KOTA	43	3	25	106	52	62
NAGPUR	0	0	0	0	0	4
PALI	2	0	0	0	0	13
PRATAPGARH	4	0	0	0	0	0
RAJSMAND	0	0	0	0	0	0
SIKAR	0	0	0	0	0	1
SIROHI	1	0	0	0	0	1
SWAIMADHOPUR	16	0	3	39	26	29
TONK	3	0	0	0	0	0
UDAIPUR	0	0	0	0	0	2
Total	452	58	102	557	442	473

(f) Madhya Pradesh

District	15 Sep- 25 Oct													
	2020	2021	2022	2023	2024	2025	PANNA	10	1	0	1	6	1	
ALIRAJPUR	0	0	0	0	0	0	RAISEN	79	3	7	28	6	0	
ANUPPUR	0	0	0	0	0	0	RAJGARH	7	1	3	9	1	1	
ASHOKNAGAR	50	1	5	78	128	23	RATLAM	0	0	0	1	0	0	
BALAGHAT	0	0	0	0	0	0	REWA	19	1	1	1	0	0	
BARWANI	0	0	0	0	0	2	SAGAR	20	15	14	30	37	38	
BETUL	4	1	1	3	4	2	SATNA	44	10	1	7	8	3	
BHIND	16	1	7	30	21	12	SEHORE	21	10	25	28	9	41	
BHOPAL	14	5	3	12	3	4	SEONI	149	103	26	60	16	20	
BURHANPUR	0	0	0	3	0	0	SHAHDOL	0	0	0	0	1	0	
CHHATARPUR	4	0	0	3	2	0	SHAJAPUR	5	0	0	8	12	18	
CHHINDWARA	17	11	4	11	2	6	SHEOPUR	54	1	3	167	3	7	
DAMOH	41	15	13	20	24	12	SHIVPURI	27	0	9	37	76	11	
DATIA	136	8	11	137	43	9	SIDHI	0	0	0	0	0	0	
DEWAS	3	0	0	7	4	12	SINGRAULI	0	0	0	0	6	21	
DHAR	23	0	0	27	8	19	TIKAMGARH	1	0	0	3	0	0	
DINDORI	0	0	0	1	0	0	UJJAIN	5	0	0	14	7	7	
EAST NIMAR	10	5	4	4	1	23	UMARIA	0	0	0	0	0	0	
GUNA	29	2	11	218	261	55	VIDESHA	74	13	16	45	46	15	
GWALIOR	147	2	4	36	6	12	WEST NIMAR	16	1	0	10	2	5	
HARDA	10	17	4	19	7	11	Total	1323	291	210	1261	869	460	
HOSHANGABAD	169	34	17	105	13	17								
INDORE	2	0	0	12	12	5								
JABALPUR	40	10	6	33	33	10								
JHABUA	0	0	0	0	0	0								
KATNI	22	0	0	2	2	3								
MANDLA	5	5	0	2	1	1								
MANDSAUR	3	0	0	1	13	2								
MORENA	23	5	3	29	24	18								
NARSHIMAPURA	24	10	12	19	20	11								
NIMACH	0	0	0	0	1	3								

State-wise and date-wise number of paddy residue burning events detected in 2020 ,2021 ,2022, 2023, 2024 and 2025

(Period: 15 September -25 October)

Number of Paddy Residue Burning Events Detected

Date	Punjab						Haryana						Uttar Pradesh					
	2020	2021	2022	2023	2024	2025	2020	2021	2022	2023	2024	2025	2020	2021	2022	2023	2024	2025
15-Sep	5	0	14	0	11	5	2	0	0	1	1	1	1	0	0	0	0	1
16-Sep	0	2	0	6	0	18	1	0	0	1	0	0	0	0	0	2	0	0
17-Sep	5	0	1	0	5	11	3	0	0	0	1	0	0	0	0	0	1	0
18-Sep	17	9	7	0	2	12	0	0	1	0	0	1	0	1	0	0	0	1
19-Sep	30	5	18	0	0	1	2	0	0	1	0	1	0	1	0	0	0	1
20-Sep	67	8	10	0	13	1	6	0	0	2	1	0	2	0	0	0	0	1
21-Sep	54	0	56	1	21	8	2	0	0	2	13	0	1	0	0	1	2	0
22-Sep	34	0	30	0	11	6	1	0	0	2	18	0	1	0	0	0	0	2
23-Sep	49	0	3	1	6	8	0	0	0	3	12	0	1	0	0	0	0	4
24-Sep	78	5	0	0	12	5	0	0	0	0	6	1	1	1	0	1	0	0
25-Sep	184	11	0	0	12	4	11	0	0	1	18	1	5	0	0	1	0	2
26-Sep	190	19	0	3	5	1	5	0	0	2	5	0	8	0	0	0	0	4
27-Sep	78	37	0	21	0	2	8	0	0	9	5	1	4	1	0	0	3	1
28-Sep	55	28	0	33	0	8	6	1	0	8	0	0	1	6	0	4	0	10
29-Sep	63	64	0	68	21	5	9	4	0	17	0	1	6	10	0	6	0	14
30-Sep	116	27	8	81	10	0	22	2	0	26	1	0	13	13	10	18	0	1
01-Oct	165	13	45	123	26	0	15	4	1	21	3	0	7	13	3	17	0	4
02-Oct	141	0	83	119	16	0	30	2	7	24	20	0	12	0	36	7	9	0
03-Oct	110	9	75	105	8	0	8	6	8	17	6	0	4	3	29	8	7	1
04-Oct	162	23	65	95	9	0	29	2	7	29	9	0	8	0	2	9	0	9
05-Oct	161	18	130	98	5	0	17	3	24	24	8	0	14	2	0	14	1	32
06-Oct	171	42	85	91	3	0	30	0	26	19	23	0	12	1	0	18	17	0
07-Oct	197	72	62	32	18	0	32	11	6	13	14	0	41	13	0	5	11	0
08-Oct	95	108	19	92	20	0	29	27	0	55	13	0	25	11	0	27	16	3
09-Oct	121	114	3	58	33	1	20	39	1	14	10	1	15	20	0	13	10	5
10-Oct	232	150	4	10	123	6	33	95	2	28	38	2	9	54	0	34	56	25
11-Oct	377	64	45	26	143	14	90	51	0	21	55	1	23	28	0	50	87	42

12-Oct	388	97	104	13	177	10	69	51	4	5	98	4	46	23	0	5	102	17
13-Oct	266	132	120	154	162	8	47	91	15	29	90	1	36	42	0	19	76	20
14-Oct	605	229	82	89	97	31	69	98	30	41	49	2	9	68	5	18	52	25
15-Oct	449	660	169	69	144	11	106	363	36	127	42	7	15	149	0	35	78	46
16-Oct	654	429	206	0	99	12	80	176	76	4	14	3	21	121	6	14	59	132
17-Oct	1172	14	403	1	77	20	143	0	86	0	28	2	38	39	7	0	23	49
18-Oct	938	57	342	18	59	33	166	1	134	8	26	1	76	0	30	2	47	16
19-Oct	1080	496	436	37	45	67	72	55	122	16	15	7	43	5	36	11	30	12
20-Oct	890	788	96	174	52	45	62	155	78	51	11	13	31	1	17	25	11	77
21-Oct	1392	597	393	146	65	62	101	131	107	68	2	4	25	5	23	59	25	103
22-Oct	1665	1111	582	30	71	69	128	140	122	25	10	3	32	3	18	117	17	44
23-Oct	1438	620	902	152	57	28	106	218	217	29	15	0	84	8	109	20	68	13
24-Oct	911	0	1019	360	40	49	57	38	250	70	6	3	63	11	212	38	18	17
25-Oct	1416	76	181	398	71	60	155	71	12	58	3	2	50	18	9	30	23	49
Total	16221	6134	5798	2704	1749	621	1772	1835	1372	871	689	63	783	671	552	628	849	783

Number of Paddy Residue Burning Events Detected

Delhi							Rajasthan						Madhya Pradesh					
Date	2020	2021	2022	2023	2024	2025	2020	2021	2022	2023	2024	2025	2020	2021	2022	2023	2024	2025
15-Sep	0	0	0	0	0	0	1	0	0	0	0	0	2	0	0	0	0	0
16-Sep	0	0	0	0	0	0	0	0	0	0	0	0	0	0	0	0	0	0
17-Sep	0	0	0	0	0	0	0	0	0	0	0	0	0	0	0	0	1	0
18-Sep	0	0	0	0	0	0	0	0	0	0	0	0	0	0	0	0	0	0
19-Sep	0	0	0	0	0	0	0	0	0	0	0	0	0	0	0	1	0	0
20-Sep	0	0	0	0	0	0	0	0	0	0	0	0	0	0	0	1	2	0
21-Sep	0	0	0	0	0	0	1	0	1	0	0	0	2	0	0	0	1	0
22-Sep	0	0	0	0	0	0	0	0	0	0	0	0	0	0	0	0	1	0
23-Sep	0	0	0	0	0	0	1	0	0	0	0	0	0	0	0	0	1	2
24-Sep	0	0	0	0	0	0	0	0	0	0	0	0	0	0	0	0	0	0
25-Sep	0	0	0	0	0	0	1	0	0	0	3	0	0	0	0	1	0	1
26-Sep	0	0	0	1	0	0	1	0	0	0	0	0	2	0	0	0	2	2
27-Sep	0	0	0	0	0	0	0	0	0	0	0	0	1	0	0	0	0	0

28-Sep	0	0	0	0	0	0	0	0	0	0	0	0	1	1	0	2	0	1
29-Sep	0	0	0	0	0	0	3	0	0	6	0	1	0	4	0	5	0	3
30-Sep	1	0	0	0	0	0	1	0	0	4	2	0	5	0	0	11	0	0
01-Oct	0	0	0	0	0	0	4	1	1	4	1	0	13	0	1	8	3	0
02-Oct	1	0	0	0	0	0	7	0	3	4	3	0	12	0	1	1	0	0
03-Oct	0	0	0	0	0	0	9	0	2	5	0	0	5	1	5	5	2	1
04-Oct	0	0	0	0	0	0	15	0	0	22	0	1	4	2	0	12	0	2
05-Oct	0	0	2	0	0	0	14	0	1	11	2	5	13	1	0	18	2	0
06-Oct	1	0	0	0	0	0	16	0	0	9	1	0	37	1	0	7	12	0
07-Oct	0	0	0	0	0	0	14	1	1	7	4	0	31	1	0	9	17	5
08-Oct	0	0	0	0	0	0	11	0	0	9	1	1	17	2	0	18	7	5
09-Oct	0	0	0	0	0	0	12	0	0	17	1	1	15	4	0	24	2	7
10-Oct	0	0	0	0	3	1	14	1	0	26	3	9	18	10	0	52	1	20
11-Oct	0	0	0	1	0	0	21	7	1	21	6	1	32	2	0	24	17	6
12-Oct	0	0	0	0	2	0	24	1	2	1	13	0	44	1	1	1	5	6
13-Oct	0	0	0	0	1	0	7	5	2	28	10	8	21	2	7	32	5	18
14-Oct	0	0	0	0	1	1	16	1	1	15	20	17	15	11	1	26	7	18
15-Oct	0	0	0	0	0	1	9	8	2	34	23	30	8	27	2	66	11	41
16-Oct	1	0	0	0	1	0	12	2	4	18	100	21	23	13	2	51	112	33
17-Oct	0	0	0	0	0	0	26	0	4	12	16	15	63	1	11	31	51	16
18-Oct	0	0	1	0	3	0	37	2	12	11	30	39	88	0	15	13	71	11
19-Oct	0	0	0	0	0	0	27	5	12	31	25	24	49	1	12	65	46	43
20-Oct	0	0	0	0	0	0	26	4	4	57	11	38	9	21	7	131	24	44
21-Oct	2	0	0	0	0	0	32	2	6	34	21	41	112	30	18	147	53	58
22-Oct	0	0	0	0	0	0	29	5	12	57	36	39	183	29	31	119	93	35
23-Oct	1	0	0	0	0	0	23	7	20	29	50	43	204	32	70	89	194	14
24-Oct	0	0	2	0	0	0	20	4	7	38	11	23	150	34	26	132	32	52
25-Oct	1	0	0	0	0	0	18	2	4	47	49	115	144	60	0	159	94	16
Total	8	0	5	2	11	3	452	58	102	557	442	473	1323	291	210	1261	869	460

Details of residue burning events in Punjab on 25-Oct-2025

S. No.	District	Tehsil / Block	Satellite	Latitude	Longitude	ACQ_TIME	Day / Night	Fire Power (W/m ²)
1	AMRITSAR	AJNALA	S-NPP	31.93240	74.88223	13:44:59	D	3.40
2	AMRITSAR	CHOGAWAN	S-NPP	31.69553	74.65922	13:44:59	D	2.40
3	AMRITSAR	CHOGAWAN	S-NPP	31.71785	74.53119	13:44:59	D	1.90
4	AMRITSAR	MAJITHA	S-NPP	31.75098	75.14821	13:44:59	D	2.80
5	AMRITSAR	RAYYA	S-NPP	31.64103	75.21392	13:44:59	D	5.20
6	AMRITSAR	RAYYA	S-NPP	31.64749	75.29493	13:44:59	D	1.90
7	AMRITSAR	RAYYA	S-NPP	31.64949	75.29752	13:44:59	D	5.30
8	AMRITSAR	RAYYA	S-NPP	31.65106	75.29431	13:44:59	D	4.80
9	AMRITSAR	TARSIKKA	S-NPP	31.57498	75.17076	13:44:59	D	4.10
10	BATHINDA	BHAGTA BHAI KA	S-NPP	30.52891	75.18033	13:44:59	D	1.60
11	BATHINDA	PHUL	S-NPP	30.36556	75.19283	13:44:59	D	1.90
12	BATHINDA	TALWANDI SABO	S-NPP	30.04774	75.04335	13:44:59	D	4.30
13	FARIDKOT	FARIDKOT	S-NPP	30.72344	74.50590	13:44:59	D	5.40
14	FARIDKOT	FARIDKOT	S-NPP	30.75308	74.64787	13:44:59	D	4.00
15	FIROZPUR	FIROZPUR	S-NPP	31.03918	74.80386	13:44:59	D	5.40
16	FIROZPUR	MAKHU	S-NPP	31.09180	75.09657	13:44:59	D	8.20
17	FIROZPUR	MAMDOT	AQUA	30.94300	74.45800	15:36:57	D	21.30
18	GURDASPUR	QADIAN	S-NPP	31.77306	75.41988	13:44:59	D	1.60
19	GURDASPUR	QADIAN	S-NPP	31.77404	75.42136	13:44:59	D	2.70
20	JALANDHAR	BHOGPUR	S-NPP	31.51965	75.61235	13:44:59	D	4.10
21	JALANDHAR	LOHIAN	S-NPP	31.11591	75.17232	13:44:59	D	12.70
22	JALANDHAR	LOHIAN	AQUA	31.10500	75.14600	15:36:57	D	25.50
23	JALANDHAR	MEHATPUR	S-NPP	30.98220	75.52635	13:44:59	D	3.20
24	KAPURTHALA	KAPURTHALA	S-NPP	31.44395	75.37242	13:44:59	D	4.00
25	KAPURTHALA	NADALA	S-NPP	31.56510	75.47633	13:44:59	D	25.00
26	KAPURTHALA	NADALA	S-NPP	31.56607	75.47782	13:44:59	D	25.30
27	LUDHIANA	JAGRAON	S-NPP	30.67164	75.42004	13:44:59	D	5.60
28	LUDHIANA	JAGRAON	S-NPP	30.75205	75.49374	13:44:59	D	4.70
29	MOGA	MOGA 2	S-NPP	30.87218	75.03419	13:44:59	D	2.30
30	MUKTSAR	MUKTSAR	S-NPP	30.51120	74.63538	13:44:59	D	1.60
31	PATIALA	RAJPURA	S-NPP	30.50546	76.70096	13:44:59	D	2.70
32	SANGRUR	BHAWANIGARH	S-NPP	30.32896	76.04735	13:44:59	D	75.20

33	SANGRUR	DHURI	S-NPP	30.31245	75.94621	13:44:59	D	2.80
34	SANGRUR	SANGRUR	S-NPP	30.18187	75.85356	13:44:59	D	6.50
35	SANGRUR	SANGRUR	S-NPP	30.19794	75.77827	13:44:59	D	2.60
36	SANGRUR	SANGRUR	S-NPP	30.27856	75.79557	13:44:59	D	7.10
37	SAS NAGAR	DERABASSI	S-NPP	30.50234	76.73895	13:44:59	D	7.20
38	SAS NAGAR	DERABASSI	S-NPP	30.58614	76.79876	13:44:59	D	4.80
39	SAS NAGAR	KHARAR	S-NPP	30.61073	76.71394	13:44:59	D	4.40
40	TARN TARAN	BHIKHIWIND	S-NPP	31.24322	74.66492	13:44:59	D	1.60
41	TARN TARAN	BHIKHIWIND	S-NPP	31.24426	74.66576	13:44:59	D	2.30
42	TARN TARAN	BHIKHIWIND	S-NPP	31.25470	74.69125	13:44:59	D	2.00
43	TARN TARAN	BHIKHIWIND	S-NPP	31.35807	74.68392	13:44:59	D	2.00
44	TARN TARAN	CHOHLA SAHIB	S-NPP	31.21618	75.00155	13:44:59	D	3.90
45	TARN TARAN	CHOHLA SAHIB	S-NPP	31.26750	74.92735	13:44:59	D	8.30
46	TARN TARAN	CHOHLA SAHIB	S-NPP	31.26810	74.93188	13:44:59	D	8.40
47	TARN TARAN	KHADUR SAHIB	S-NPP	31.47251	75.06832	13:44:59	D	2.80
48	TARN TARAN	TARN TARAN	S-NPP	31.40522	74.77200	13:44:59	D	2.20
49	TARN TARAN	TARN TARAN	S-NPP	31.41698	74.83466	13:44:59	D	13.20
50	TARN TARAN	TARN TARAN	S-NPP	31.44710	74.76456	13:44:59	D	3.70
51	TARN TARAN	TARN TARAN	S-NPP	31.48294	75.00987	13:44:59	D	3.10
52	TARN TARAN	TARN TARAN	AQUA	31.36900	74.79100	15:36:57	D	22.70
53	TARN TARAN	TARN TARAN	AQUA	31.41700	74.86700	15:36:57	D	15.50
54	TARN TARAN	TARN TARAN	AQUA	31.42800	74.83800	15:36:57	D	17.60
55	TARN TARAN	VALTOHA	S-NPP	31.14653	74.60509	13:44:59	D	4.20
56	TARN TARAN	VALTOHA	S-NPP	31.16710	74.52018	13:44:59	D	3.30
57	TARN TARAN	VALTOHA	S-NPP	31.19540	74.54662	13:44:59	D	2.50
58	TARN TARAN	VALTOHA	S-NPP	31.25106	74.55562	13:44:59	D	2.30
59	TARN TARAN	VALTOHA	S-NPP	31.26777	74.54808	13:44:59	D	4.20
60	TARN TARAN	VALTOHA	S-NPP	31.28388	74.53613	13:44:59	D	5.40

Details of residue burning events in Haryana on 25-Oct-2025

S. No.	District	Tehsil / Block	Satellite	Latitude	Longitude	ACQ_TIME	Day / Night	Fire Power (W/m2)
1	FATEHABAD	RATIA	S-NPP	29.77015	75.66799	13:44:59	D	4.20
2	FATEHABAD	TOHANA	S-NPP	29.64284	75.72872	13:44:59	D	4.90

Details of residue burning events in Uttar Pradesh on 25-Oct-2025

S. No.	District	Tehsil / Block	Satellite	Latitude	Longitude	ACQ_TIME	Day / Night	Fire Power (W/m2)
1	ALIGARH	KHAIR	S-NPP	27.94870	77.67156	13:48:00	D	4.00
2	ALIGARH	KHAIR	S-NPP	28.00338	77.72639	13:48:00	D	1.85
3	ALIGARH	KHAIR	S-NPP	28.01814	77.75169	13:48:00	D	7.35
4	ALIGARH	KHAIR	S-NPP	28.05417	77.69140	13:48:00	D	3.59
5	AMBEDKARNAGAR	TANDA	S-NPP	26.49580	82.79171	13:48:00	D	2.68
6	AMROHA	AMROHA	S-NPP	29.04704	78.62926	13:48:00	D	2.16
7	BAHRAICH	NANPARA	S-NPP	28.01997	81.47137	13:48:00	D	3.32
8	BARABANKI	SIRAULI GAUSPUR	S-NPP	27.01117	81.39176	02:31:00	N	0.81
9	BARABANKI	SIRAULI GAUSPUR	S-NPP	27.01298	81.39504	02:31:00	N	0.46
10	BAREILLY	BAHERI	S-NPP	28.66581	79.50633	13:48:00	D	5.11
11	BAREILLY	BAHERI	S-NPP	28.73109	79.40108	13:48:00	D	3.26
12	BAREILLY	BAHERI	S-NPP	28.77776	79.59752	13:48:00	D	2.37
13	ETAH	ETAH	S-NPP	27.67581	78.60397	13:48:00	D	1.21
14	ETAWAH	BHARTHNA	S-NPP	26.83413	79.34383	13:48:00	D	4.10
15	FAIZABAD	BIKAPUR	S-NPP	26.47366	82.20131	13:48:00	D	6.55
16	FATEHPUR	BINKI	S-NPP	25.90748	80.63522	13:48:00	D	4.77
17	HARDOI	SHAHABAD	S-NPP	27.54128	79.91827	13:48:00	D	7.79
18	HARDOI	SHAHABAD	S-NPP	27.56213	79.90608	13:48:00	D	3.25
19	HATHRAS	HATHRAS	S-NPP	27.60661	78.19387	13:48:00	D	2.19
20	HATHRAS	SIKANDRA RAO	S-NPP	27.56394	78.30949	13:48:00	D	2.49
21	JALAUN	KONCH	S-NPP	25.87492	79.18920	13:48:00	D	2.94
22	KANNAUJ	CHHIBRAMAU	S-NPP	26.97805	79.52580	13:48:00	D	2.04
23	KANPUR	BILHAUR	S-NPP	26.82454	80.03244	13:48:00	D	4.03
24	KANPUR	GHATAMPUR	S-NPP	26.18423	80.03105	13:48:00	D	3.20
25	KANPUR	GHATAMPUR	S-NPP	26.24571	80.01622	13:48:00	D	4.40
26	KANPUR DEHAT	BHOGANIPUR	S-NPP	26.16894	79.81534	13:48:00	D	8.29
27	KANPUR DEHAT	BHOGANIPUR	S-NPP	26.17221	79.81701	13:48:00	D	3.88
28	KHERI	LAKHIMPUR	S-NPP	27.88793	80.58953	13:48:00	D	2.61
29	MAINPURI	BHOGAON	S-NPP	27.07513	79.27940	13:48:00	D	3.33
30	MAINPURI	BHOGAON	S-NPP	27.20897	79.29247	13:48:00	D	2.73
31	MAINPURI	MAINPURI	S-NPP	27.34622	78.99734	13:48:00	D	6.22

32	MAINPURI	MAINPURI	S-NPP	27.37569	79.01470	13:48:00	D	4.77
33	MATHURA	CHHATA	AQUA	27.75555	77.35192	15:39:00	D	38.09
34	MATHURA	CHHATA	AQUA	27.89162	77.48228	15:39:00	D	41.27
35	MUZAFARNAGAR	JANSATH	S-NPP	29.26360	78.05659	13:48:00	D	3.44
36	RAIBEARELI	MAHARAJGANG	S-NPP	26.43318	81.28337	13:48:00	D	3.13
37	RAIBEARELI	MAHARAJGANG	S-NPP	26.43433	81.28038	13:48:00	D	2.65
38	SAMBHAL	CHANDAUSI	S-NPP	28.52040	78.66162	13:48:00	D	2.28
39	SHAHJAHANPUR	JALALABAD	S-NPP	27.65725	79.49346	13:48:00	D	4.25
40	SHAHJAHANPUR	JALALABAD	S-NPP	27.71008	79.38312	13:48:00	D	3.07
41	SHAHJAHANPUR	SHAHJAHANPUR	S-NPP	27.85840	80.02309	13:48:00	D	3.91
42	SHAHJAHANPUR	SHAHJAHANPUR	S-NPP	27.85890	80.02793	13:48:00	D	3.91
43	SHAHJAHANPUR	TILHAR	S-NPP	28.22184	79.84821	13:48:00	D	2.54
44	SHAMLI	SHAMLI	S-NPP	29.55657	77.29313	13:48:00	D	3.10
45	SHARANPUR	BEHAT	TERRA	30.06707	77.67233	10:04:00	D	12.42
46	SHARANPUR	BEHAT	TERRA	30.06714	77.73316	10:04:00	D	14.52
47	SHARANPUR	BEHAT	TERRA	30.06946	77.71993	10:04:00	D	14.32
48	SHARANPUR	SHARANPUR	TERRA	30.06929	77.65920	10:04:00	D	11.11
49	SITAPUR	SIDHAULI	S-NPP	27.23443	80.86043	13:48:00	D	4.37

Details of residue burning events in Rajasthan on 25-Oct-2025

S. No.	District	Tehsil / Block	Satellite	Latitude	Longitude	ACQ_TIME	Day / Night	Fire Power (W/m2)
1	AJMER	SARWAR	S-NPP	26.19778	74.91251	13:48:00	D	3.56
2	BARAN	CHHABRA	S-NPP	24.75887	76.82882	13:46:00	D	2.10
3	BARAN	CHHIPABAROD	S-NPP	24.68599	76.63015	13:46:00	D	2.45
4	BARAN	KISHANGUNJ	S-NPP	25.04235	76.64006	13:46:00	D	2.98
5	BARAN	KISHANGUNJ	S-NPP	25.04305	76.63903	13:46:00	D	3.70
6	BARAN	KISHANGUNJ	S-NPP	25.18347	76.81204	13:46:00	D	2.03
7	BARAN	KISHANGUNJ	S-NPP	25.26109	76.61160	13:46:00	D	9.00
8	BARAN	KISHANGUNJ	S-NPP	25.31469	76.88358	13:46:00	D	3.15
9	BARAN	MANGROL	S-NPP	25.30854	76.32113	13:46:00	D	3.11
10	BARAN	MANGROL	S-NPP	25.35096	76.47442	13:46:00	D	2.98
11	BARAN	MANGROL	S-NPP	25.37440	76.48840	13:46:00	D	1.71
12	BARAN	SHAHBAD	S-NPP	25.07211	76.96379	13:46:00	D	3.63
13	BARAN	SHAHBAD	S-NPP	25.08706	77.02112	13:46:00	D	4.98
14	BARAN	SHAHBAD	S-NPP	25.08815	77.02217	13:46:00	D	7.91
15	BARAN	SHAHBAD	S-NPP	25.11859	77.05903	13:46:00	D	2.71
16	BARAN	SHAHBAD	S-NPP	25.12171	77.02619	13:46:00	D	5.06
17	BARAN	SHAHBAD	S-NPP	25.13074	77.01095	13:46:00	D	3.33
18	BARAN	SHAHBAD	S-NPP	25.13742	76.97771	13:46:00	D	3.04
19	BARAN	SHAHBAD	S-NPP	25.15631	77.12287	13:46:00	D	5.87
20	BARAN	SHAHBAD	S-NPP	25.17267	77.05061	13:46:00	D	5.06
21	BARAN	SHAHBAD	S-NPP	25.17555	77.15730	13:46:00	D	3.47
22	BARAN	SHAHBAD	S-NPP	25.17918	77.15672	13:46:00	D	4.93
23	BARAN	SHAHBAD	S-NPP	25.18886	77.11778	13:46:00	D	3.32
24	BARMER	BARMER	S-NPP	25.83910	71.35509	13:48:00	D	3.73
25	BHARATPUR	DEEG	S-NPP	27.46487	77.41376	13:48:00	D	4.37
26	BUNDI	BUNDI	S-NPP	25.25089	75.73012	13:46:00	D	3.98
27	BUNDI	BUNDI	S-NPP	25.26029	75.85026	13:46:00	D	1.73
28	BUNDI	BUNDI	S-NPP	25.28210	75.82979	13:46:00	D	3.49
29	BUNDI	BUNDI	S-NPP	25.28262	75.85921	13:46:00	D	5.91
30	BUNDI	BUNDI	S-NPP	25.28959	75.80751	13:46:00	D	2.53

31	BUNDI	BUNDI	S-NPP	25.29488	75.66851	13:48:00	D	12.57
32	BUNDI	BUNDI	S-NPP	25.31647	75.82408	13:48:00	D	3.14
33	BUNDI	BUNDI	S-NPP	25.32734	75.62559	13:48:00	D	6.71
34	BUNDI	BUNDI	S-NPP	25.33190	75.63314	13:48:00	D	2.18
35	BUNDI	BUNDI	S-NPP	25.33470	75.63297	13:48:00	D	4.15
36	BUNDI	BUNDI	S-NPP	25.33532	75.63257	13:48:00	D	2.18
37	BUNDI	BUNDI	S-NPP	25.34371	75.67316	13:48:00	D	4.80
38	BUNDI	BUNDI	S-NPP	25.34454	75.82363	13:48:00	D	3.91
39	BUNDI	BUNDI	S-NPP	25.36557	75.50331	13:48:00	D	9.23
40	BUNDI	BUNDI	S-NPP	25.36588	75.70708	13:48:00	D	2.99
41	BUNDI	BUNDI	S-NPP	25.42011	75.69377	13:48:00	D	2.91
42	BUNDI	BUNDI	S-NPP	25.44126	75.77002	13:48:00	D	3.55
43	BUNDI	BUNDI	S-NPP	25.44868	75.89985	13:48:00	D	2.88
44	BUNDI	BUNDI	S-NPP	25.45272	75.85253	13:48:00	D	5.68
45	BUNDI	BUNDI	S-NPP	25.45616	75.85196	13:48:00	D	5.32
46	BUNDI	BUNDI	S-NPP	25.47249	75.79916	13:48:00	D	13.71
47	BUNDI	BUNDI	S-NPP	25.48732	75.83051	13:48:00	D	18.53
48	BUNDI	BUNDI	AQUA	25.28906	75.58555	15:39:00	D	23.50
49	BUNDI	BUNDI	AQUA	25.29148	75.60925	15:39:00	D	17.01
50	BUNDI	BUNDI	AQUA	25.30021	75.60313	15:39:00	D	23.49
51	BUNDI	KESHORAIPATAN	S-NPP	25.26164	75.97985	13:46:00	D	7.23
52	BUNDI	KESHORAIPATAN	S-NPP	25.30374	75.91065	13:46:00	D	6.30
53	BUNDI	KESHORAIPATAN	S-NPP	25.33305	75.89311	13:48:00	D	4.98
54	BUNDI	KESHORAIPATAN	S-NPP	25.34167	75.87900	13:48:00	D	2.15
55	BUNDI	KESHORAIPATAN	S-NPP	25.38541	76.06775	13:48:00	D	1.22
56	BUNDI	KESHORAIPATAN	S-NPP	25.40643	76.03054	13:48:00	D	11.05
57	BUNDI	KESHORAIPATAN	S-NPP	25.42654	76.07446	13:48:00	D	1.92
58	BUNDI	KESHORAIPATAN	S-NPP	25.44108	76.02484	13:48:00	D	1.83
59	BUNDI	KESHORAIPATAN	S-NPP	25.45366	76.11739	13:48:00	D	4.33
60	BUNDI	KESHORAIPATAN	S-NPP	25.46815	76.11935	13:48:00	D	6.03
61	BUNDI	KESHORAIPATAN	S-NPP	25.47630	76.04910	13:48:00	D	2.67
62	BUNDI	KESHORAIPATAN	TERRA	25.31720	75.99213	10:04:00	D	5.30
63	BUNDI	KESHORAIPATAN	AQUA	25.39191	75.98985	15:39:00	D	20.22
64	BUNDI	KESHORAIPATAN	TERRA	25.45134	76.11917	10:04:00	D	14.20

65	CHURU	SARDARSHAR	S-NPP	28.55655	74.17338	13:48:00	D	2.01
66	GANGANAGAR	SURATGARH	S-NPP	29.41129	73.87952	13:48:00	D	2.35
67	GANGANAGAR	SURATGARH	S-NPP	29.46632	73.92769	13:48:00	D	3.56
68	HANUMANGARH	HANUMANGARH	S-NPP	29.33811	74.32843	13:48:00	D	3.32
69	HANUMANGARH	HANUMANGARH	S-NPP	29.35398	74.34254	13:48:00	D	5.87
70	HANUMANGARH	HANUMANGARH	S-NPP	29.49026	74.14583	13:48:00	D	5.21
71	HANUMANGARH	HANUMANGARH	S-NPP	29.49084	74.14994	13:48:00	D	7.05
72	HANUMANGARH	HANUMANGARH	S-NPP	29.57305	74.39000	13:48:00	D	6.68
73	HANUMANGARH	HANUMANGARH	S-NPP	29.58031	74.36730	13:48:00	D	3.96
74	HANUMANGARH	HANUMANGARH	S-NPP	29.58949	74.25552	13:48:00	D	6.92
75	HANUMANGARH	HANUMANGARH	S-NPP	29.62672	74.24873	13:48:00	D	1.75
76	HANUMANGARH	HANUMANGARH	S-NPP	29.63539	74.16222	13:48:00	D	1.86
77	HANUMANGARH	HANUMANGARH	AQUA	29.60687	74.32746	15:39:00	D	17.62
78	HANUMANGARH	HANUMANGARH	AQUA	29.60731	74.31985	15:39:00	D	17.89
79	HANUMANGARH	HANUMANGARH	AQUA	29.65648	74.29095	15:39:00	D	23.69
80	HANUMANGARH	PILIBANGA	S-NPP	29.48727	74.10000	13:48:00	D	5.32
81	HANUMANGARH	PILIBANGA	AQUA	29.44657	73.99406	15:39:00	D	16.02
82	HANUMANGARH	SANGHRIYA	S-NPP	29.91762	74.36541	13:48:00	D	2.10
83	HANUMANGARH	TIBI	S-NPP	29.41616	74.56371	13:48:00	D	2.78
84	HANUMANGARH	TIBI	S-NPP	29.48240	74.48730	13:48:00	D	7.99
85	HANUMANGARH	TIBI	S-NPP	29.51109	74.57318	13:48:00	D	6.48
86	HANUMANGARH	TIBI	S-NPP	29.52397	74.46319	13:48:00	D	7.05
87	HANUMANGARH	TIBI	S-NPP	29.52983	74.55686	13:48:00	D	18.06
88	HANUMANGARH	TIBI	S-NPP	29.53041	74.56107	13:48:00	D	7.91
89	HANUMANGARH	TIBI	S-NPP	29.56752	74.42529	13:48:00	D	2.22
90	HANUMANGARH	TIBI	S-NPP	29.57957	74.46175	13:48:00	D	2.31
91	HANUMANGARH	TIBI	AQUA	29.64299	74.57459	15:39:00	D	16.22
92	HANUMANGARH	TIBI	AQUA	29.64429	74.58209	15:39:00	D	15.85
93	JAISELMER	FATEHGARH	S-NPP	26.75255	71.30404	13:48:00	D	1.67
94	JAISELMER	FATEHGARH	S-NPP	26.76951	71.30052	13:48:00	D	3.73
95	JHUNJHUNUN	JHUNJHUNUN	S-NPP	28.15232	75.37662	13:48:00	D	3.38
96	KOTA	DIGOD	S-NPP	25.07714	76.15408	13:46:00	D	1.72
97	KOTA	DIGOD	S-NPP	25.18842	76.03873	13:46:00	D	4.14
98	KOTA	DIGOD	TERRA	25.26045	76.03087	10:04:00	D	7.74

99	KOTA	LADPURA	S-NPP	25.23285	76.00162	13:46:00	D	4.36
100	KOTA	LADPURA	S-NPP	25.23630	76.00106	13:46:00	D	4.36
101	KOTA	LADPURA	S-NPP	25.26049	75.94607	13:46:00	D	10.75
102	KOTA	LADPURA	AQUA	25.25306	75.90861	15:39:00	D	24.41
103	KOTA	PIPALDA	S-NPP	25.42844	76.51530	13:48:00	D	3.90
104	KOTA	PIPALDA	S-NPP	25.45744	76.46701	13:48:00	D	10.43
105	KOTA	PIPALDA	S-NPP	25.49264	76.48805	13:48:00	D	3.03
106	KOTA	PIPALDA	S-NPP	25.50211	76.45094	13:48:00	D	4.66
107	KOTA	PIPALDA	S-NPP	25.78192	76.47671	13:48:00	D	3.28
108	KOTA	SANGOD	S-NPP	25.05691	76.13595	13:46:00	D	2.81
109	PALI	MARWARJUN	S-NPP	25.68484	73.61353	13:48:00	D	11.61
110	SWAIMADHOPUR	KHANDAR	S-NPP	25.86269	76.54032	13:48:00	D	3.11
111	SWAIMADHOPUR	KHANDAR	S-NPP	25.98700	76.69485	13:48:00	D	3.30
112	SWAIMADHOPUR	KHANDAR	S-NPP	26.03306	76.69816	13:48:00	D	1.95
113	SWAIMADHOPUR	KHANDAR	S-NPP	26.03365	76.70270	13:48:00	D	4.51
114	SWAIMADHOPUR	KHANDAR	S-NPP	26.04264	76.68743	13:48:00	D	4.47
115	UDAIPUR	GIRWA	TERRA	24.61580	73.74570	10:04:00	D	4.95

Details of residue burning events in Madhya Pradesh on 25-Oct-2025

S. No.	District	Tehsil / Block	Satellite	Latitude	Longitude	ACQ_TIME	Day / Night	Fire Power (W/m2)
1	ASHOKNAGAR	ASHOKNAGAR	S-NPP	24.68667	77.56152	13:46:00	D	2.94
2	ASHOKNAGAR	MUNGAOLI	S-NPP	24.37055	77.94057	13:46:00	D	4.85
3	ASHOKNAGAR	MUNGAOLI	S-NPP	24.46793	78.04322	13:46:00	D	3.74
4	ASHOKNAGAR	MUNGAOLI	S-NPP	24.54190	78.05258	13:46:00	D	2.91
5	BHIND	BHIND	S-NPP	26.56611	78.62195	13:48:00	D	3.27
6	BHIND	BHIND	S-NPP	26.59253	78.62849	13:48:00	D	1.65
7	BHIND	LAHAR	S-NPP	26.00514	78.82162	13:48:00	D	4.11
8	BHIND	LAHAR	S-NPP	26.02721	78.83610	13:48:00	D	2.59
9	BHIND	LAHAR	S-NPP	26.19004	78.96136	13:48:00	D	2.16
10	BHIND	LAHAR	S-NPP	26.19027	78.96150	13:48:00	D	2.59
11	BHIND	MAJHGAWAN	S-NPP	26.33101	79.04277	13:48:00	D	6.49
12	GUNA	GUNA	S-NPP	24.82472	77.10962	13:46:00	D	6.68
13	MORENA	JORA	S-NPP	26.34028	77.71507	13:48:00	D	2.13
14	MORENA	SABALGARH	S-NPP	26.23345	77.34648	13:48:00	D	2.44
15	SHEOPUR	KARAHAL	S-NPP	25.56985	77.05093	13:48:00	D	7.59
16	SINGRAULI	SINGRAULI	S-NPP	24.18688	82.66112	02:31:00	N	1.14

The study used data received from following Satellites at NRSC Ground Station/ NASA FIRMS

S. No.	Satellite Name	Sensor	Resolution (meter)	Day / Night Passes
1.	Suomi NPP	VIIRS	375 / 750	Both
2.	Terra	MODIS	1000	Both
3.	Aqua	MODIS	1000	Both

**The rice mask for the Punjab and Haryana were provided by MNCFC, MoA&FW, Govt of India
The kharif crop mask for Delhi, Uttar Pradesh, Rajasthan and Madhya Pradesh were provided by NRSC**

Study Team

ICAR – HQ	Dr.S.N. Jha	DDG (AG. ENGG.)	ddgengg@icar.org.in
	Dr. Rajbir Singh	DDG (AG. EXTN)	ddgextn.icar@gov.in
ICAR - IARI	Dr V.K. Sehgal	Principal & Nodal Scientist	iaricreams@gmail.com
	Dr Rajkumar Dhakar	Senior Scientist	raidhakar.iari@gmail.com
	Mr Mohd Jahangir	YP-I (FASAL 2.0)	mjahangir198@gmail.com
ICAR - ATARI	Dr.Parvender Sheoran	Director ATARI (Zone-I) Ludhiana	zcu1ldh@gmail.com
	Dr. J.P. Mishra	Director ATARI (Zone-II) Jodhpur	jp.mishra67@gov.in
	Dr. S.K. Dubey	Director ATARI (Zone-III) Kanpur	zpdicarkanpur@gmail.com
ICAR - IASRI	Dr Rajender Parsad	Director, IASRI	rajender.parsad@icar.org.in

**GIS Maps of fire events can be visualized online on ICAR KRISHI Geoportal website <https://creams.iari.res.in/geokrishi/>
(Part of KRISHI Portal initiative)**
