

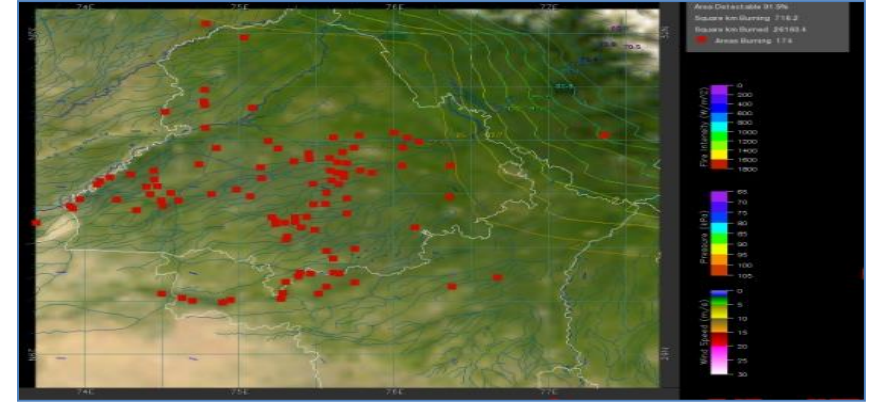
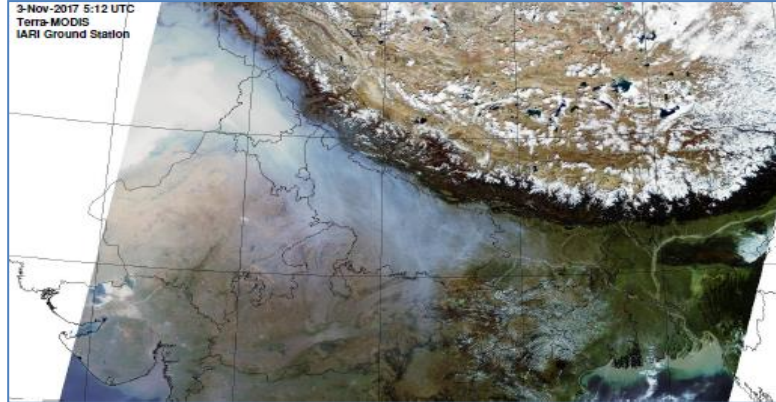


MONITORING PADDY RESIDUE BURNING IN INDIA USING SATELLITE REMOTE SENSING DURING 2025

**Bulletin
No. 36**

**Events Date:
20-Oct-2025**

**Issued on:
20-Oct-2025**



**Consortium for Research on Agroecosystem Monitoring and Modeling from Space (CREAMS)
Laboratory,**

Division of Agricultural Physics, ICAR – Indian Agricultural Research Institute, New Delhi – 110012

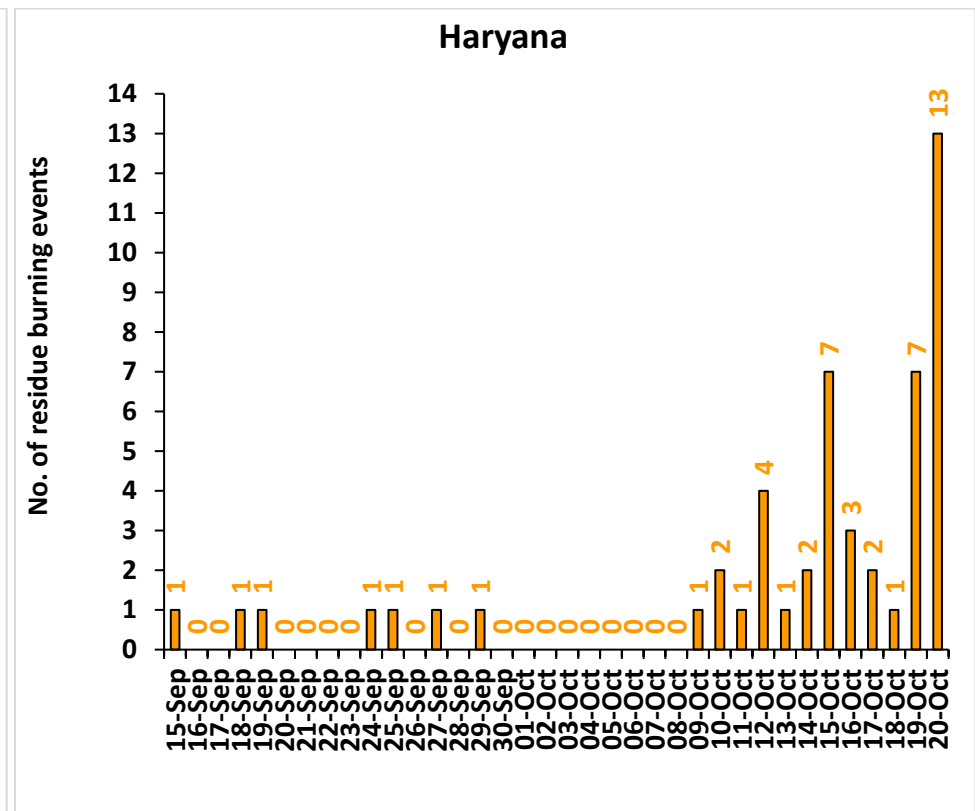
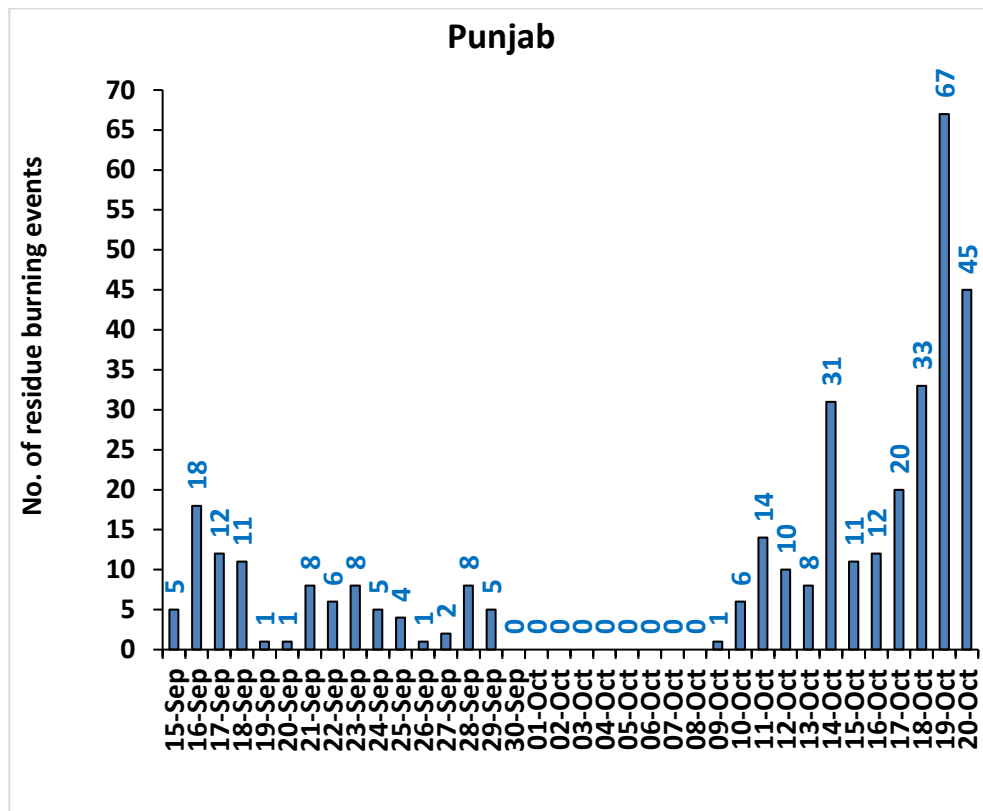
<https://creams.iari.res.in>



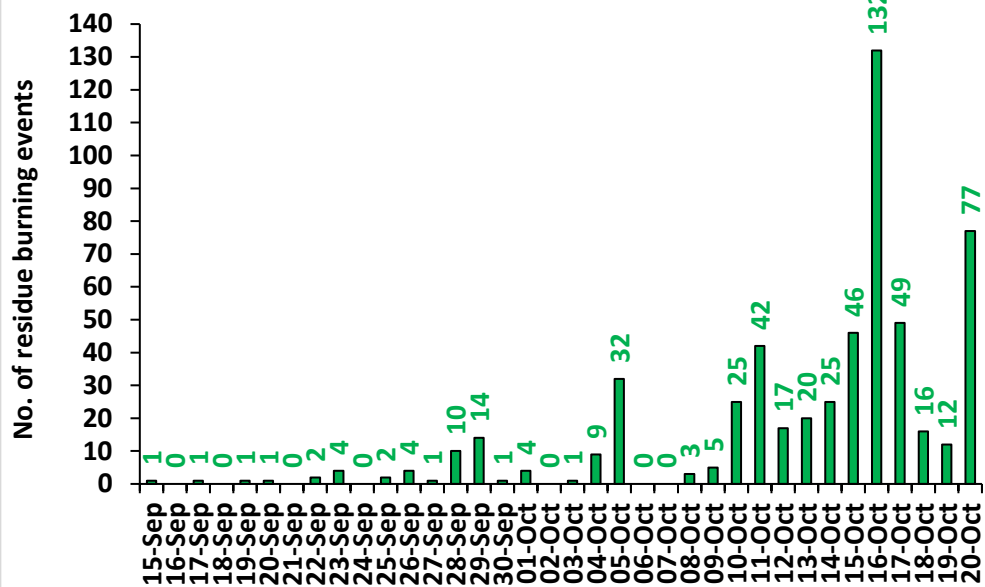
Highlights for 20-Oct-2025

- The active fire events due to rice residue burning were monitored using satellite remote sensing, following the "Standard Protocol for Estimation of Crop Residue Burning Fire Events using Satellite Data".
- Satellites detected **217** residue burning events in the six study States on **20-Oct-2025**.
- The state wise events detected on **20-Oct-2025** were **45** in Punjab, **13** in Haryana, **77** in UP, **00** in Delhi, **38** in Rajasthan and **45** in MP.
- Total **1461** burning events were detected in the six states between **15-Sept-2025** and **20-Oct-2025**, which are distributed as **353, 51, 557, 03, 212** and **285** in Punjab, Haryana, UP, Delhi, Rajasthan and MP, respectively.

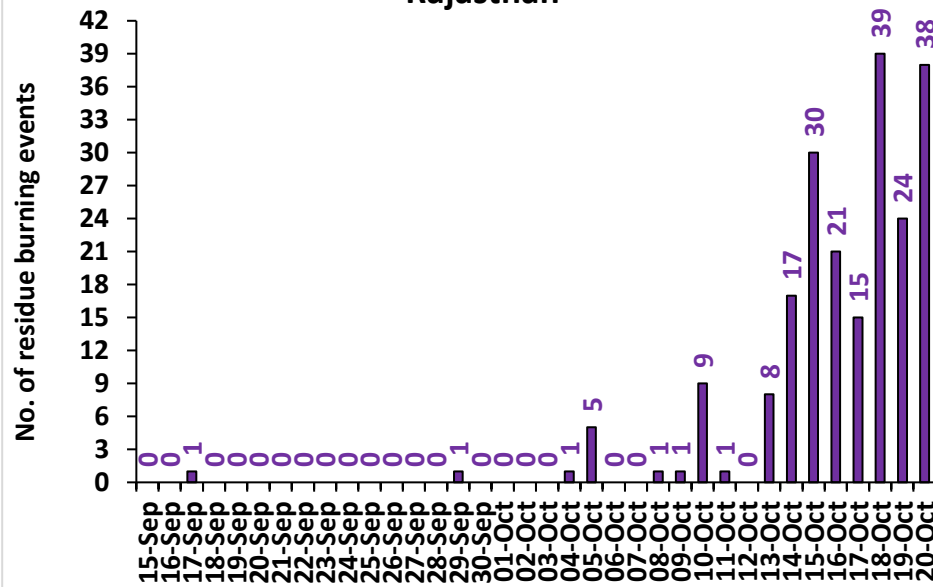
Temporal distribution of rice residue burning events for the study States in 2025



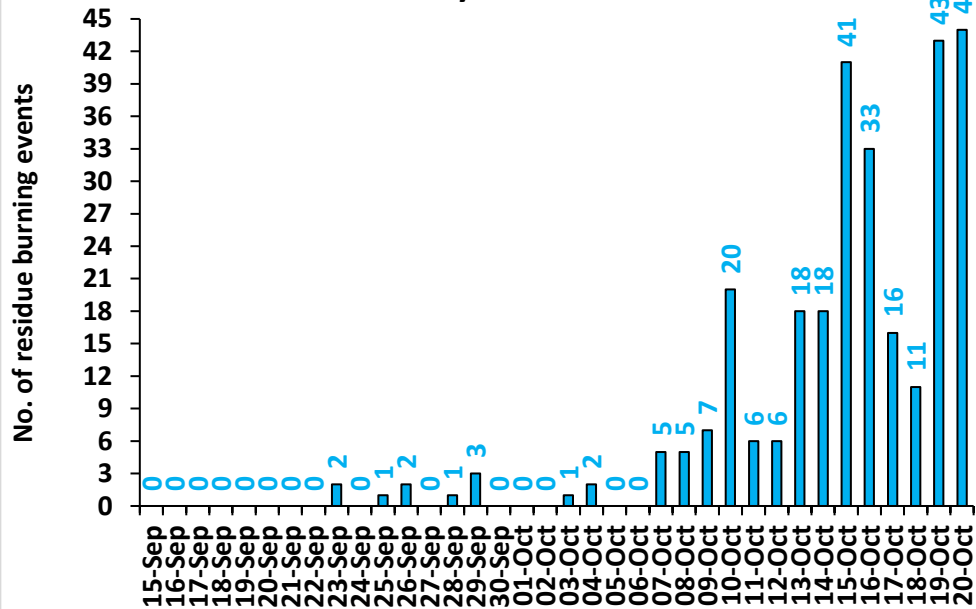
Uttar Pradesh



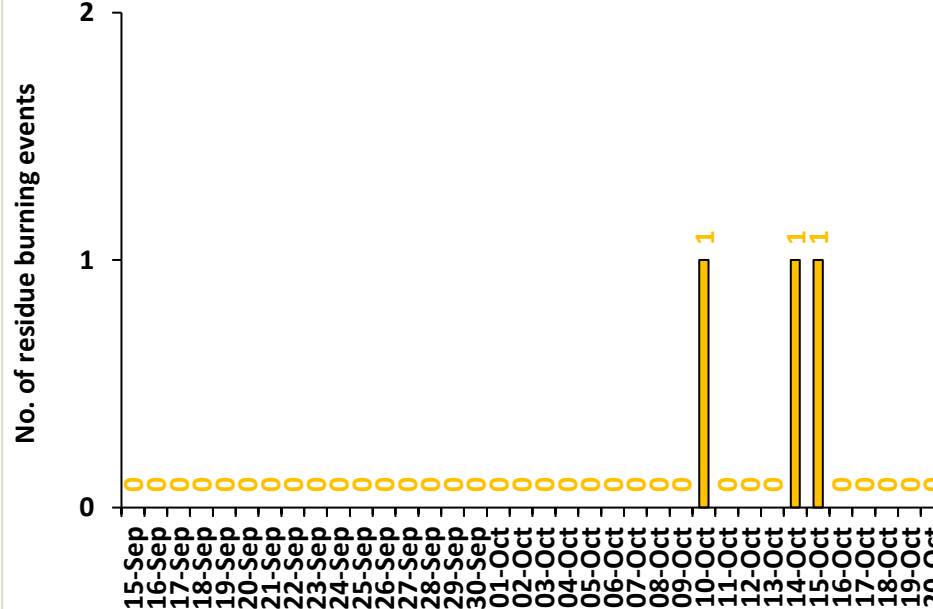
Rajasthan



Madhya Pradesh

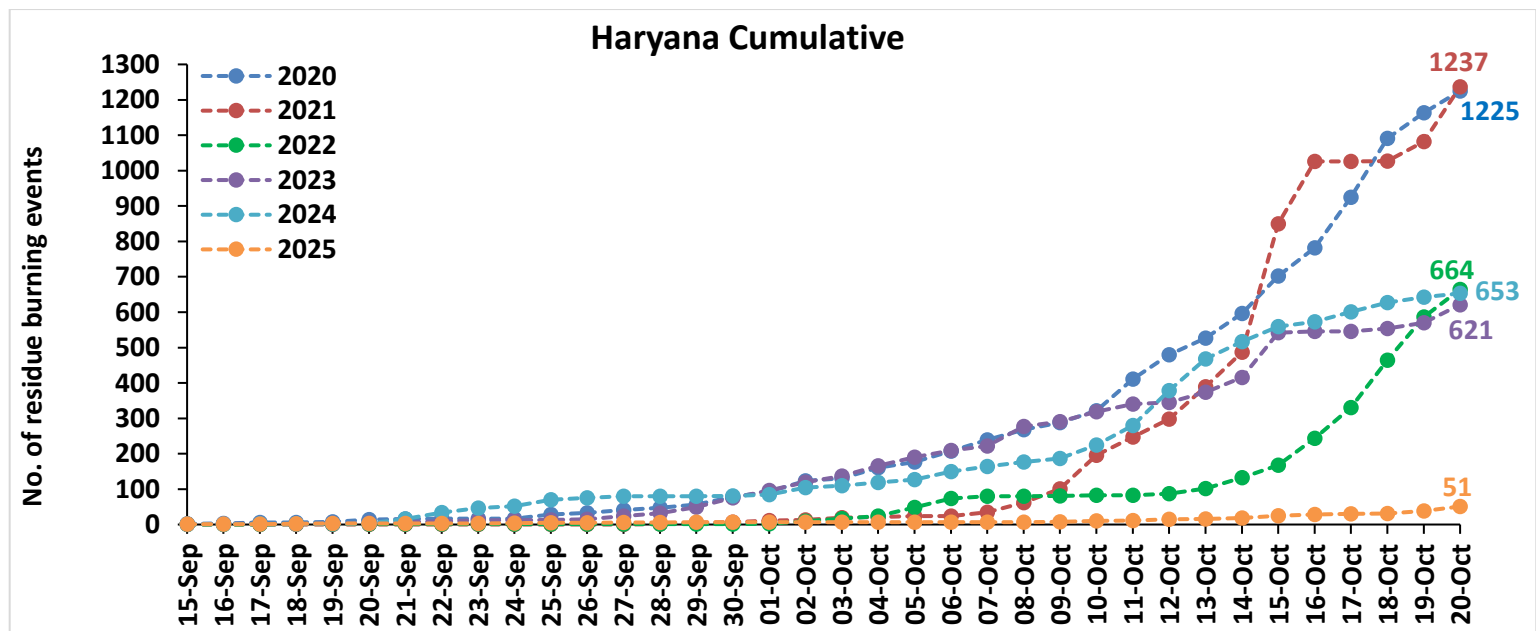
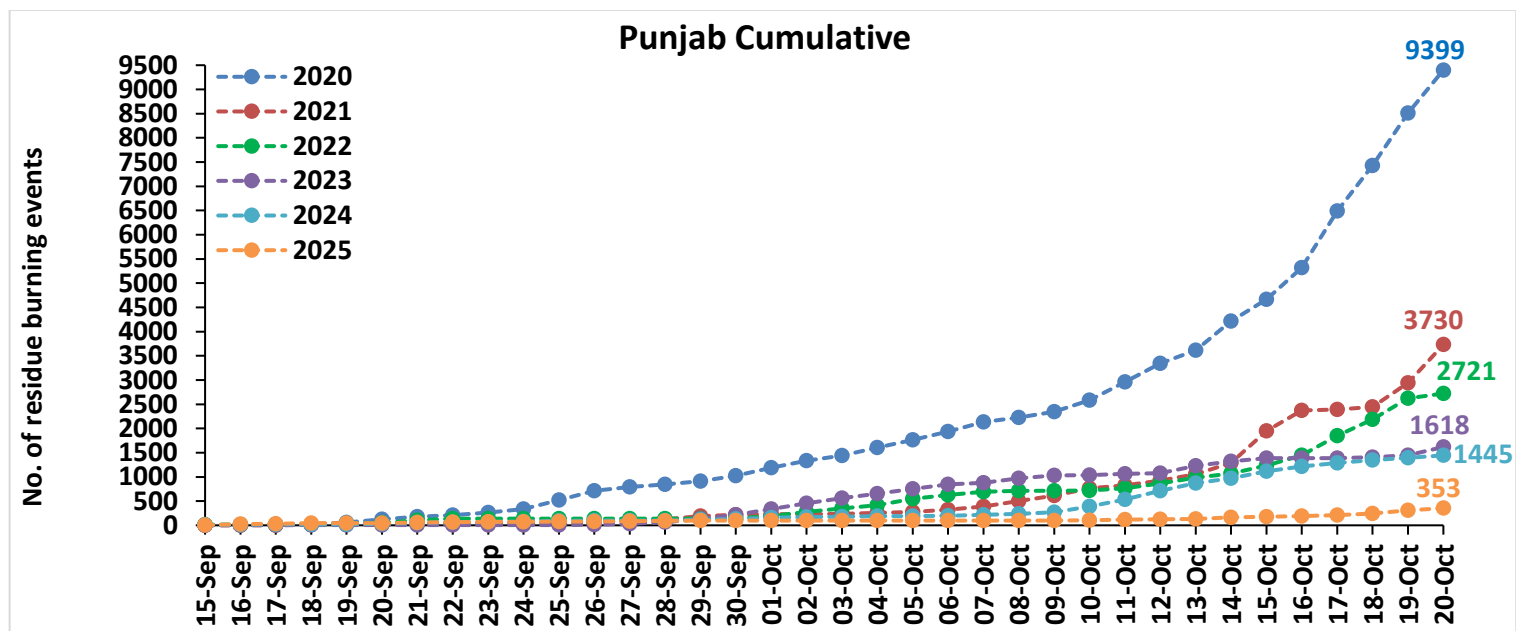


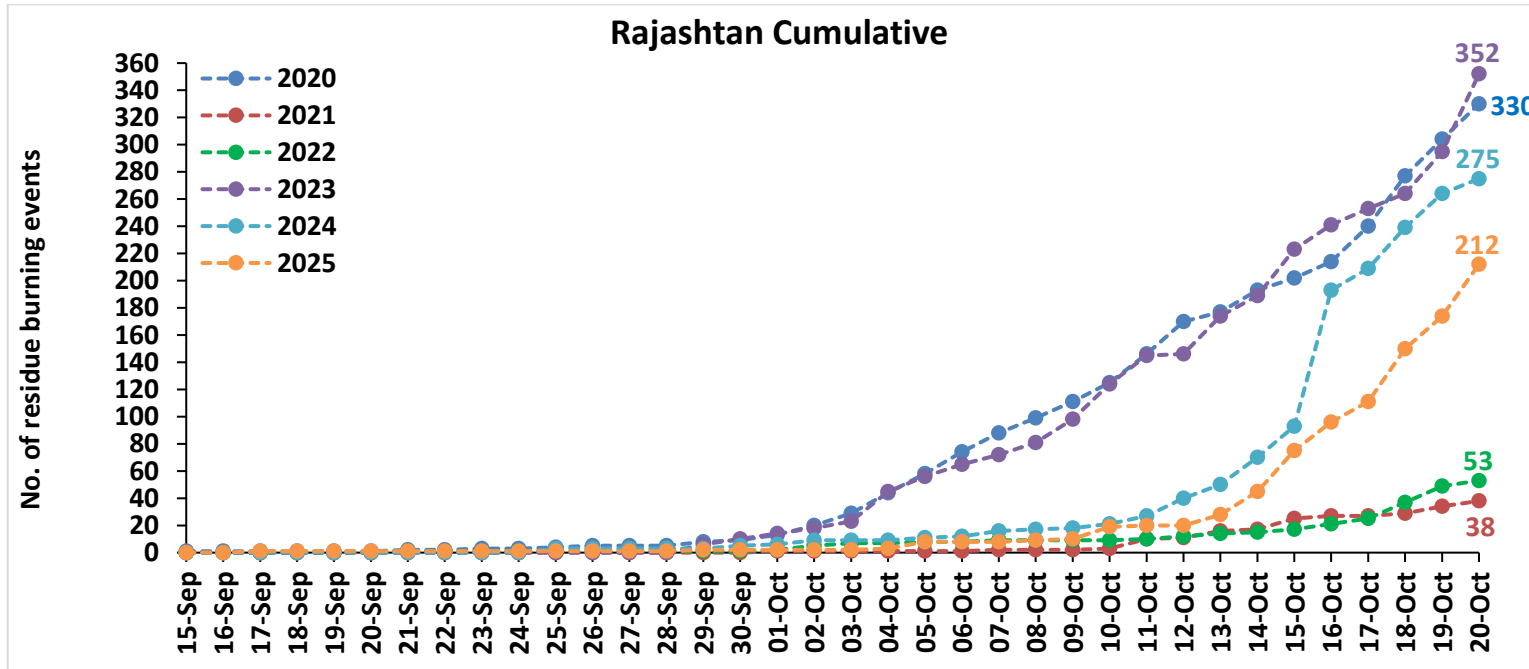
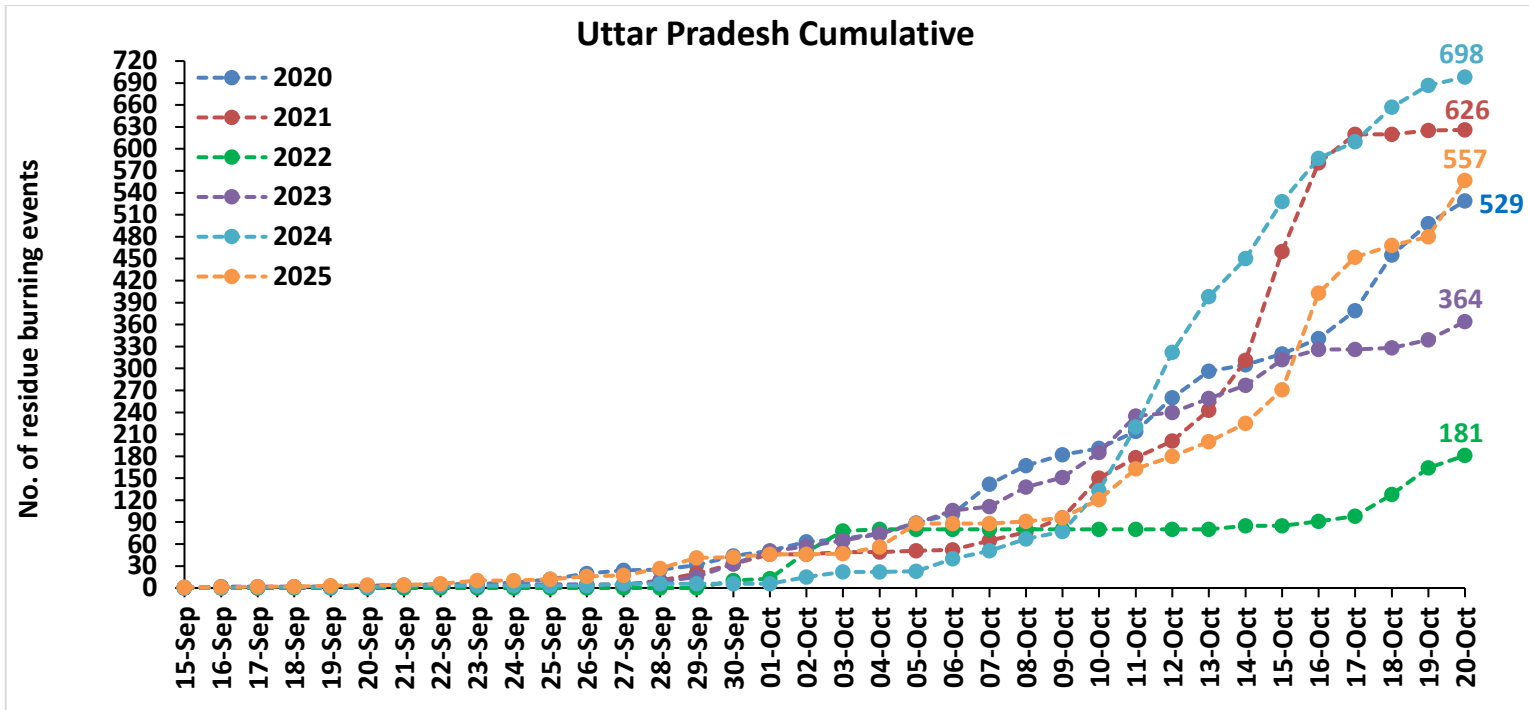
Delhi

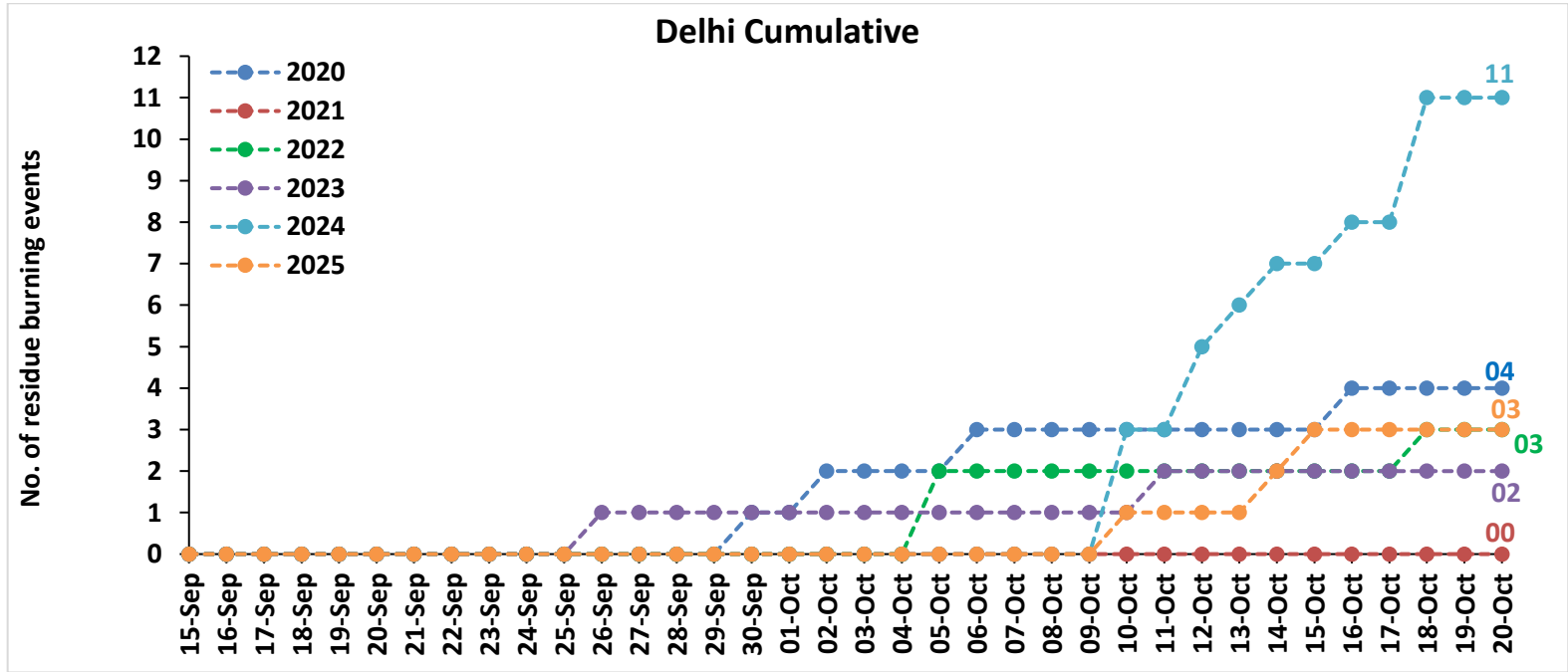
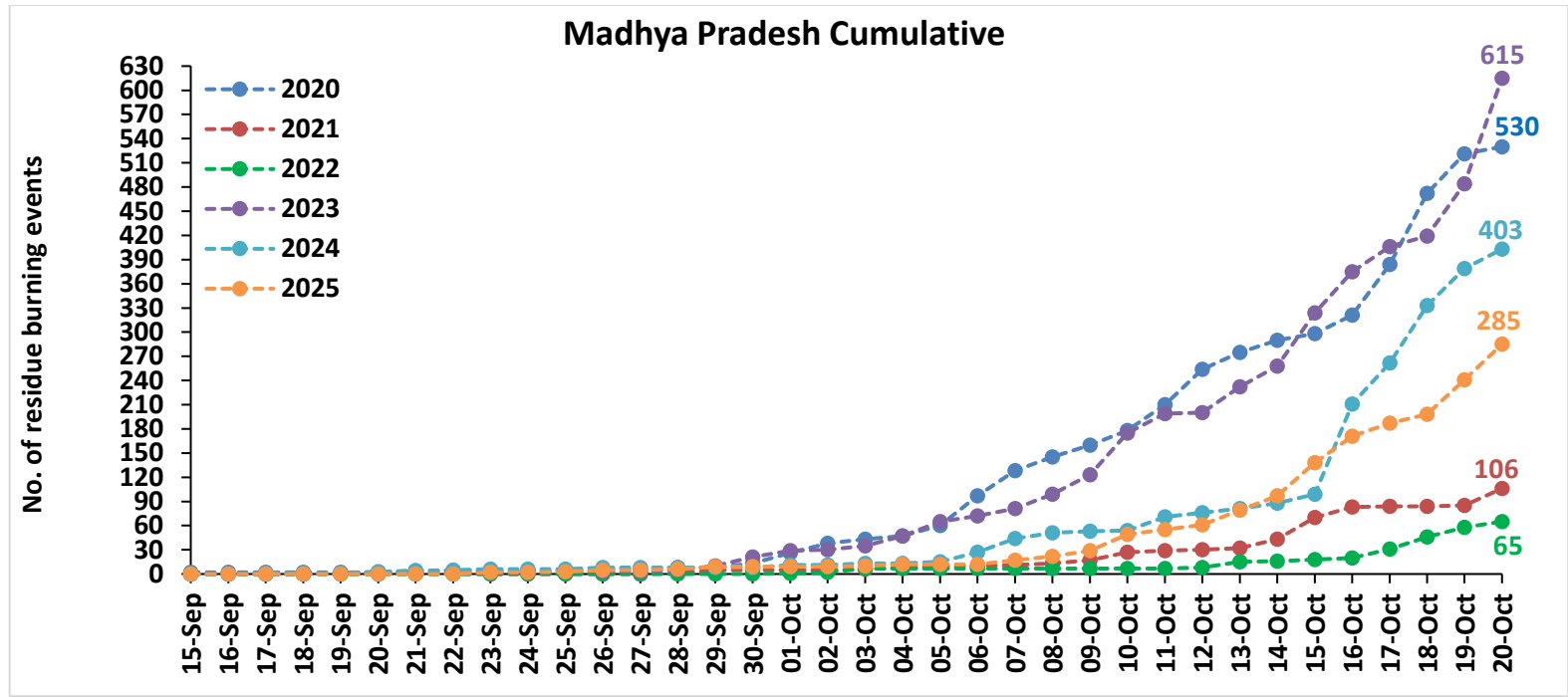


Comparison of residue burning fire power in current year (2025) with previous years (2020,2021,2022, 2023 and 2024) for the study

States

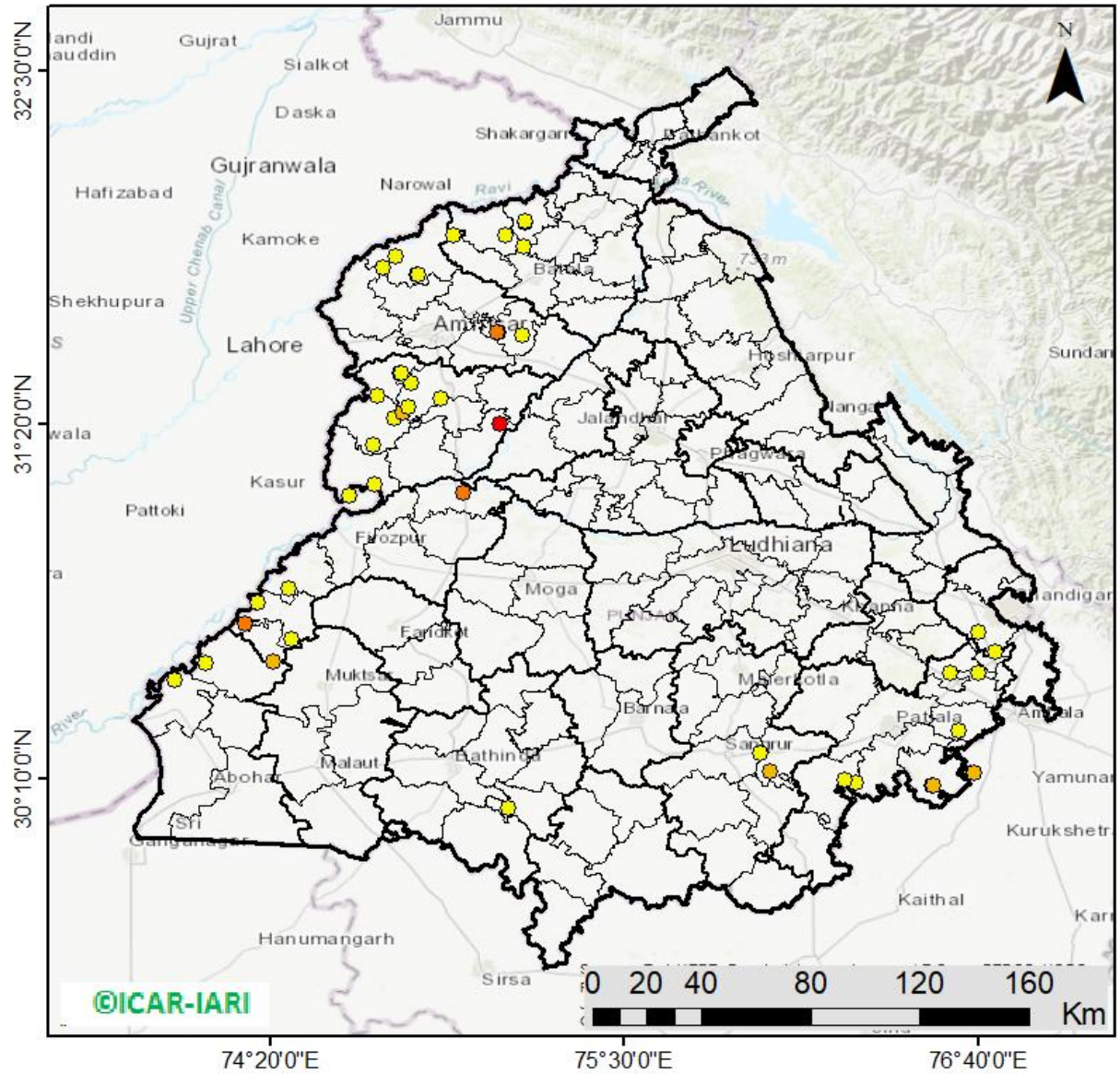






Punjab

RICE RESIDUE BURNING IN PUNJAB



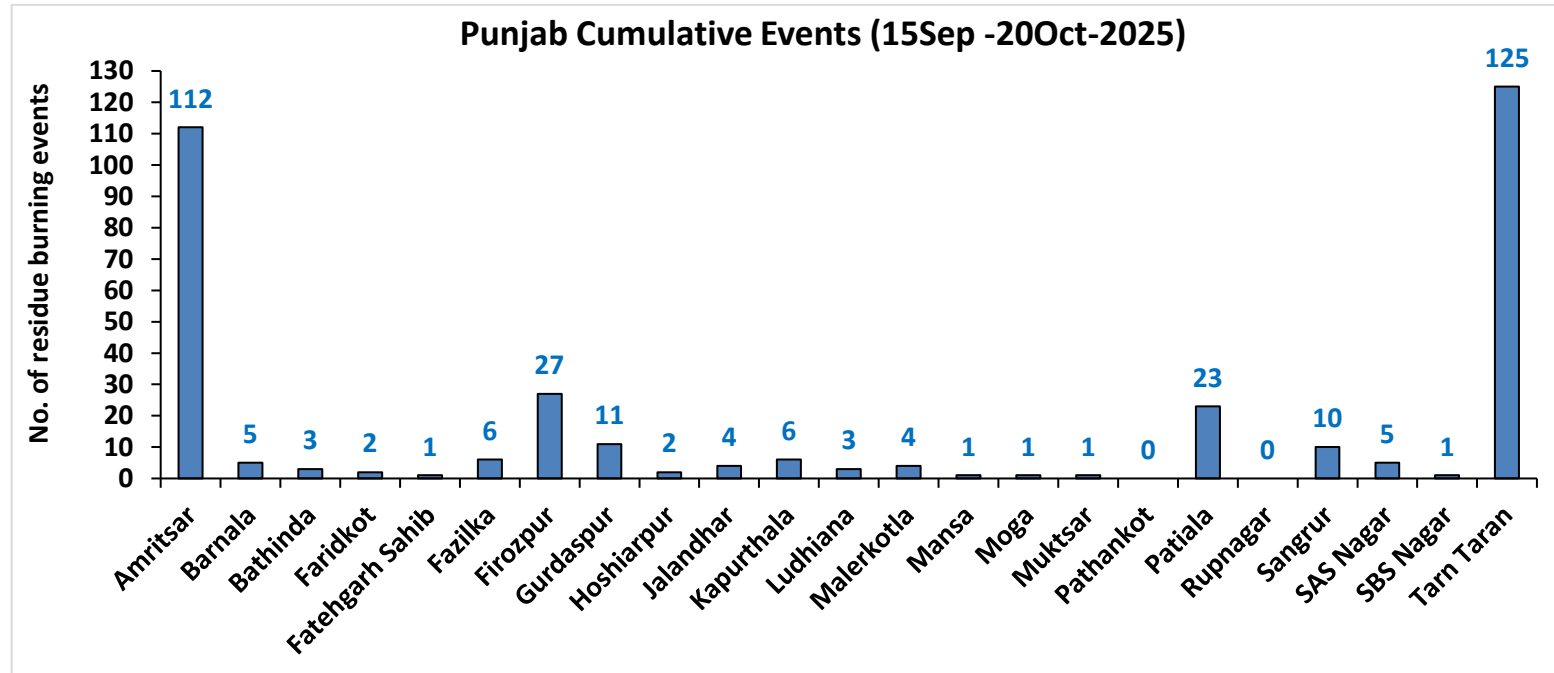
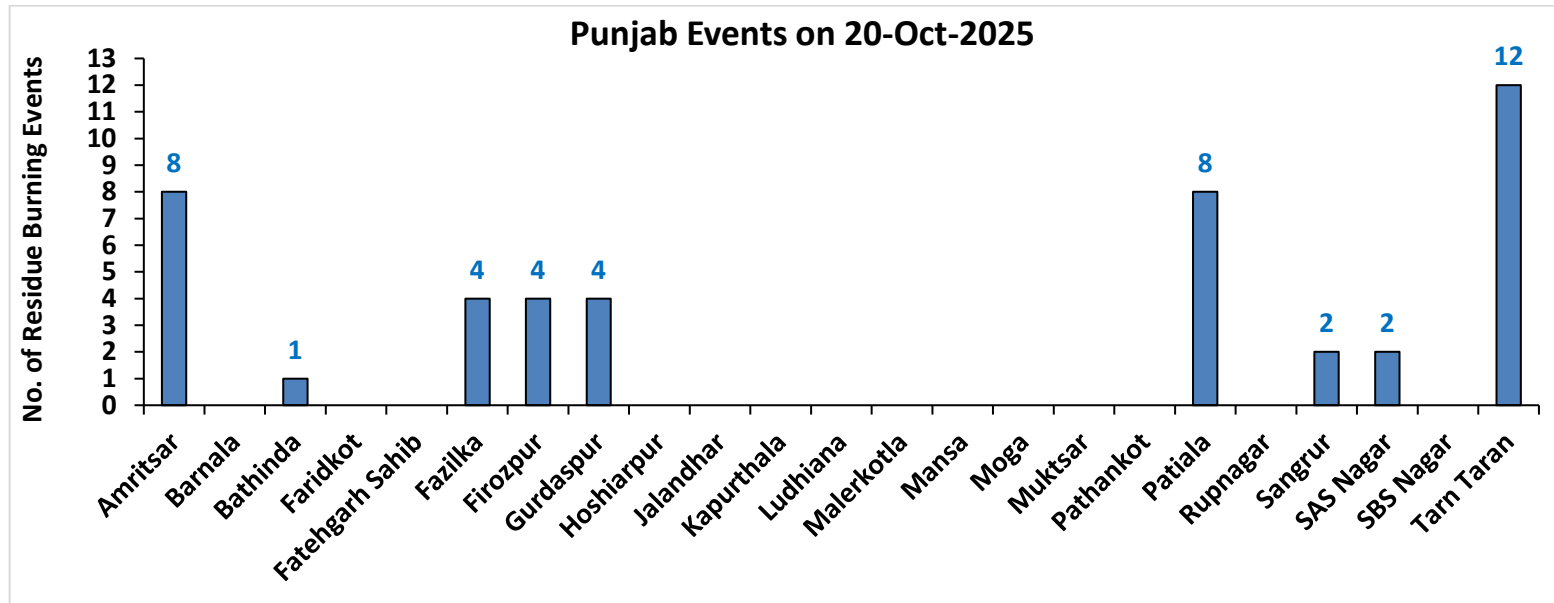
45 burning events detected in Punjab during (20th Oct 2025)

Fire Intensity (W/m²)

- 0 - 5
- 6 - 10
- 11 - 15
- 16 - 20
- >20

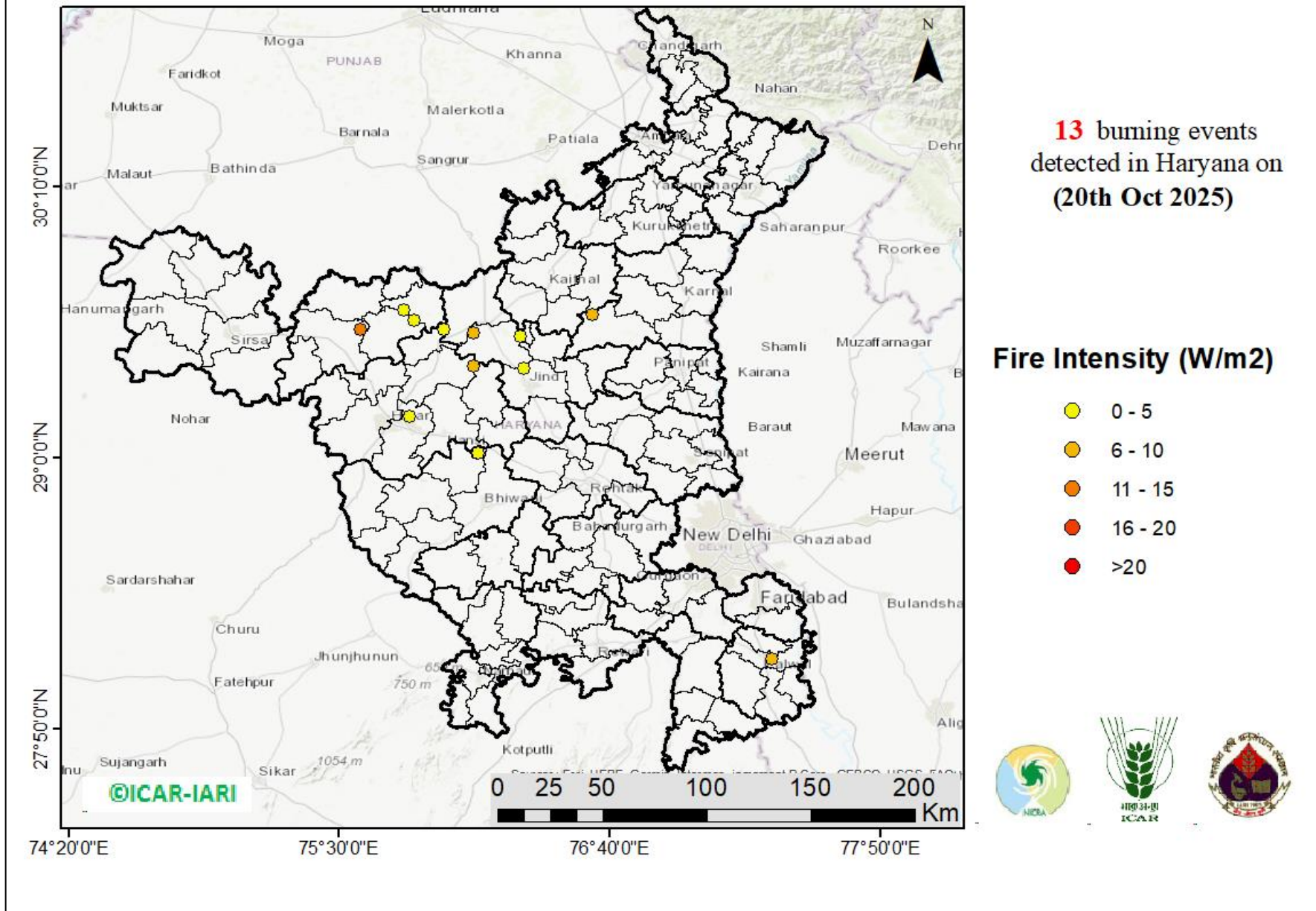


District-wise cumulative number of residues burning events in Punjab (15Sep-20Oct-2025)

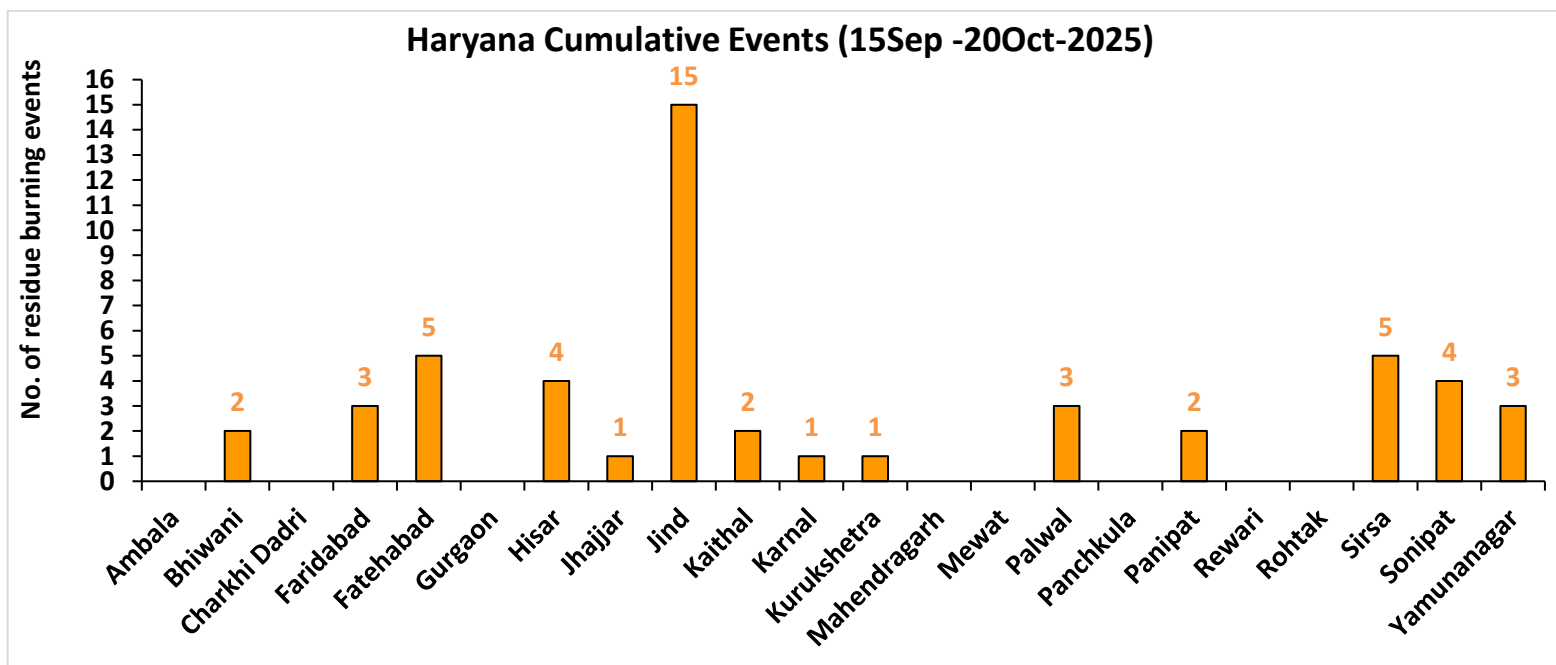
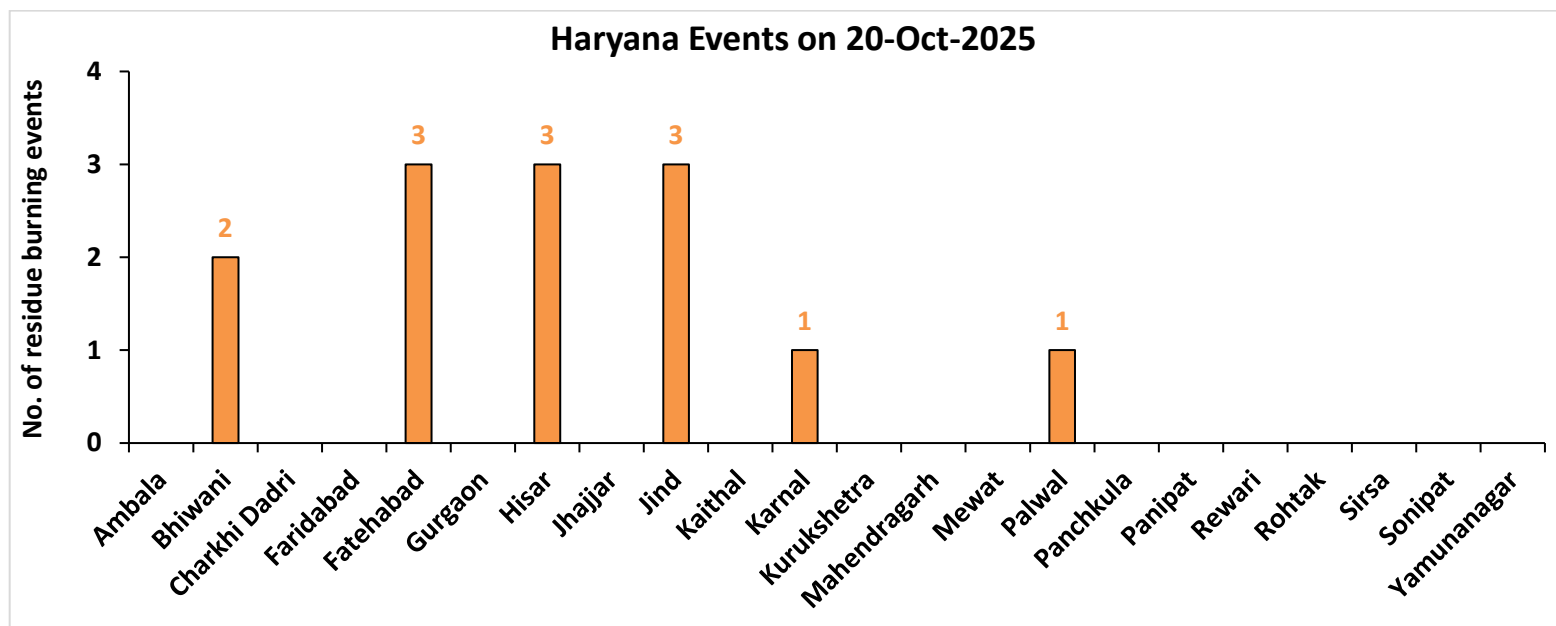


Haryana

RICE RESIDUE BURNING IN HARYANA

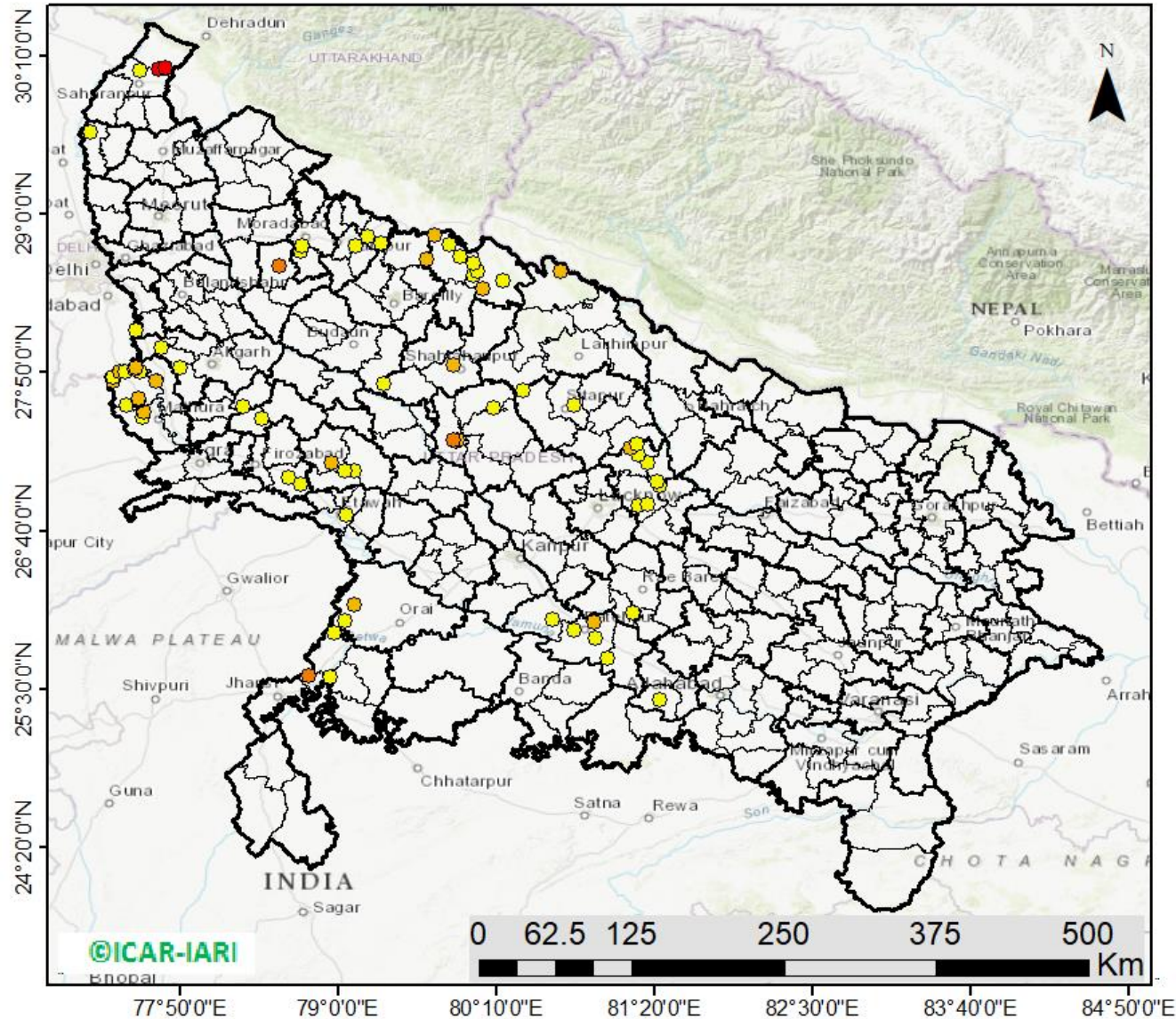


District-wise cumulative number of residues burning events in Haryana (15Sep-20Oct-2025)



Uttar Pradesh

RICE RESIDUE BURNING IN UTTAR PRADESH



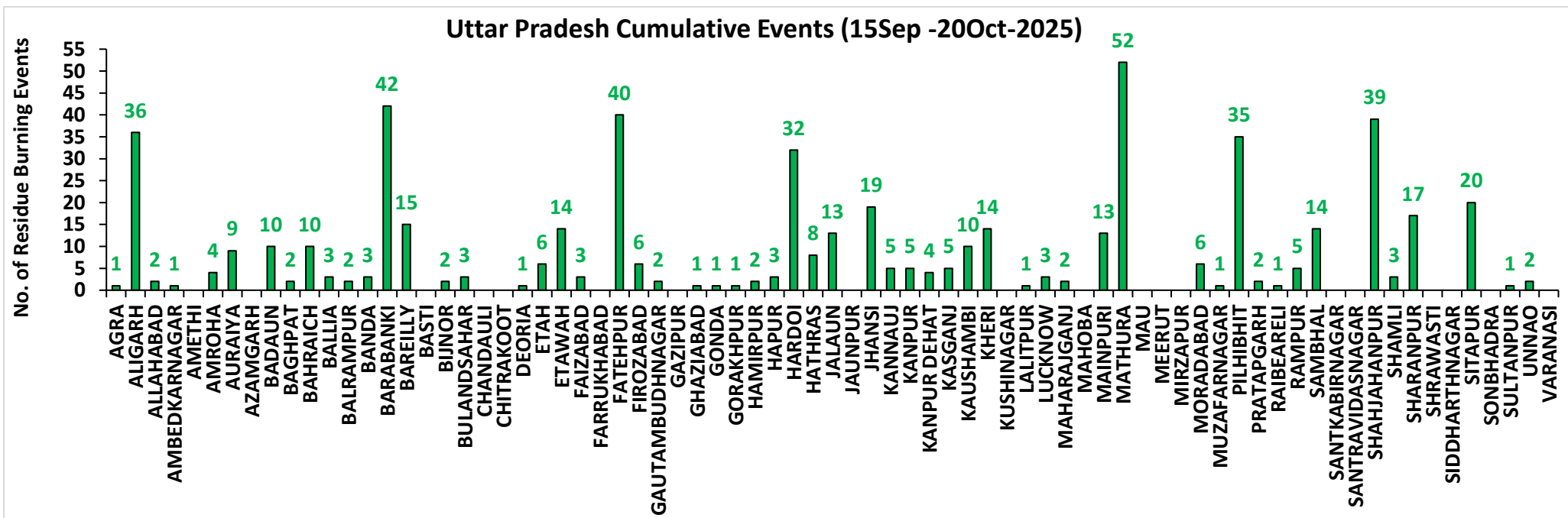
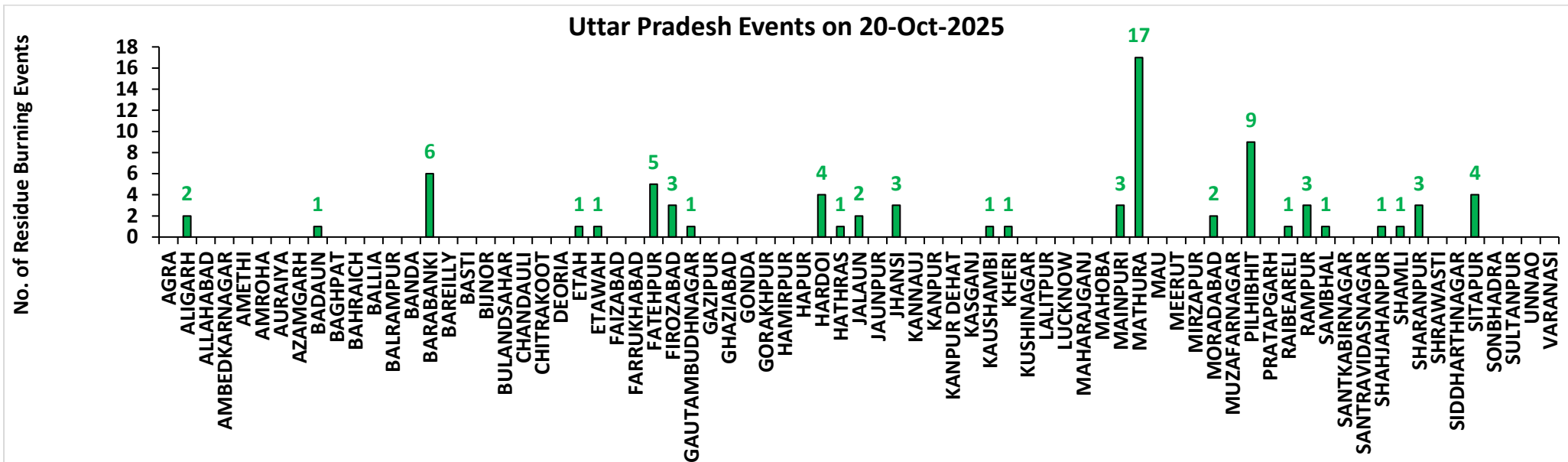
77 burning events detected in Uttar Pradesh on (20th Oct 2025)

Fire Intensity (W/m²)

- 0 - 5
- 6 - 10
- 11 - 15
- 16 - 20
- >20

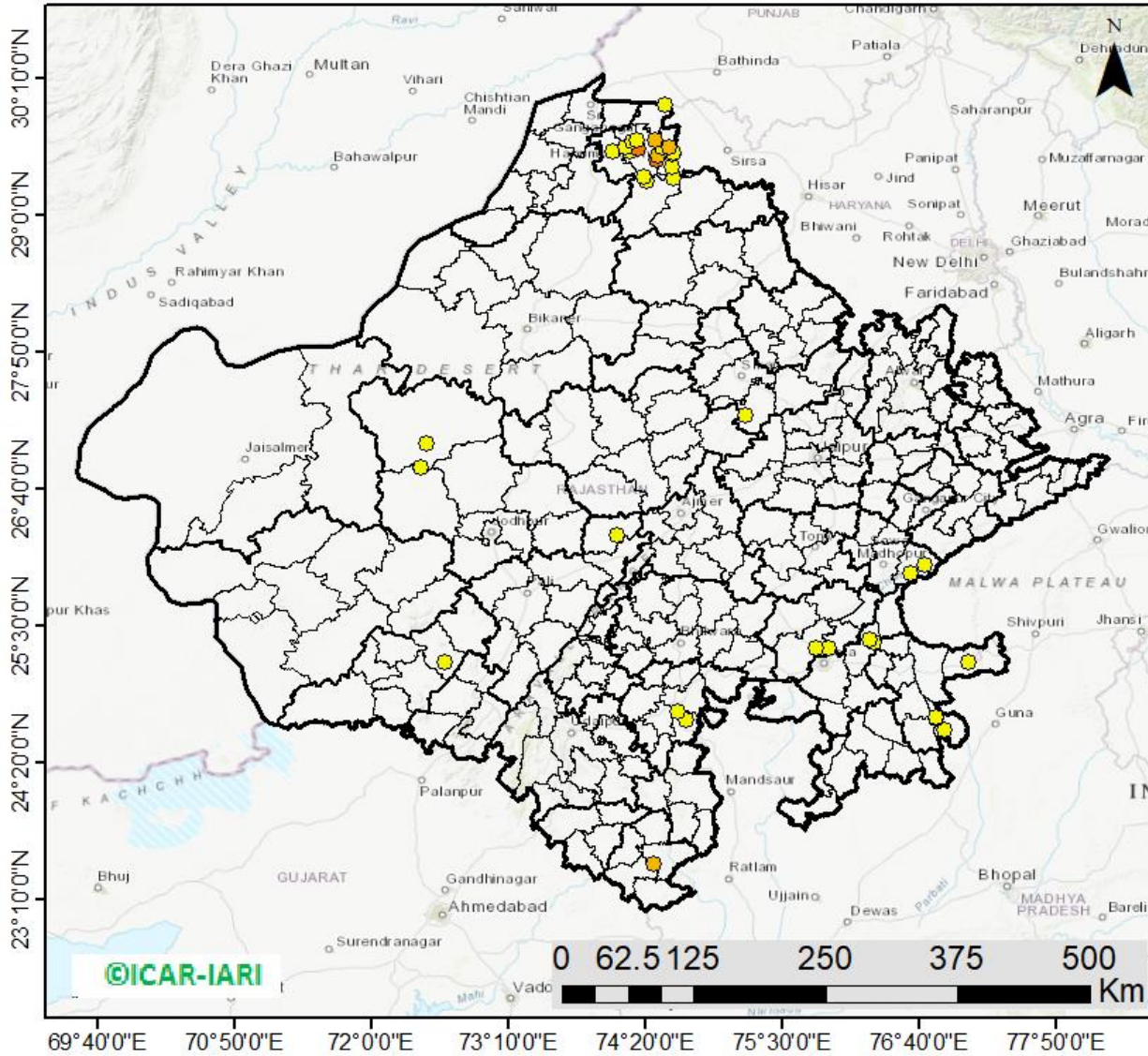


District-wise cumulative number of residues burning events in Uttar Pradesh (15Sep-20Oct-2025)



Rajasthan

RICE RESIDUE BURNING IN RAJASTHAN



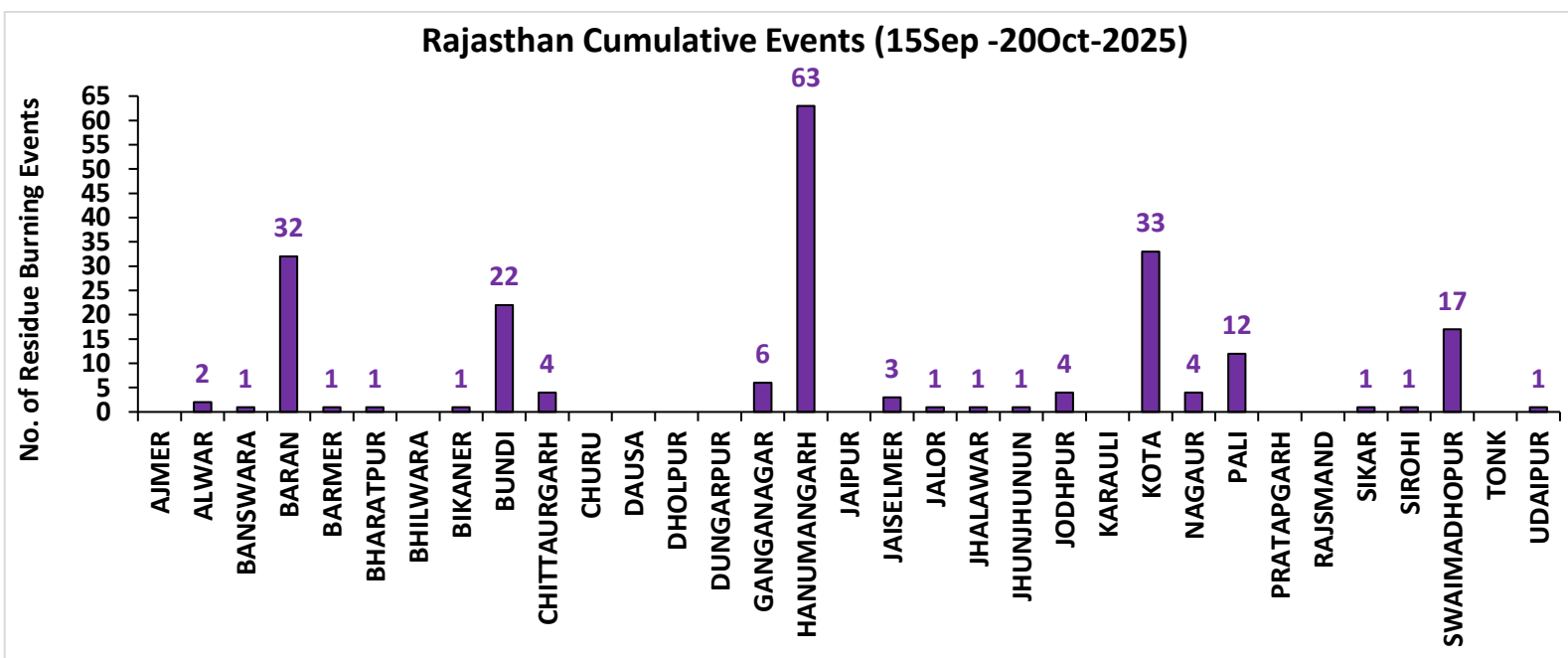
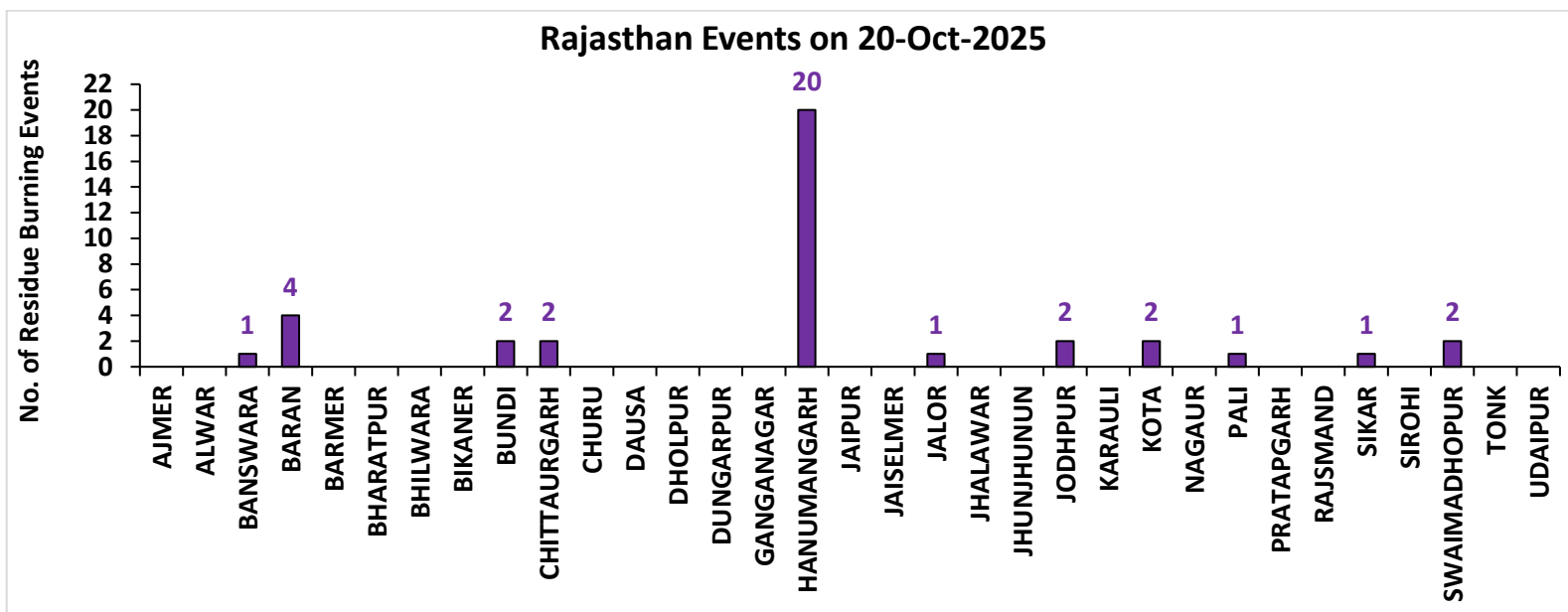
38 burning events
detected in Rajasthan on
(20th Oct 2025)

Fire Intensity (W/m²)

- 0 - 5
- 6 - 10
- 11 - 15
- 16 - 20
- >20

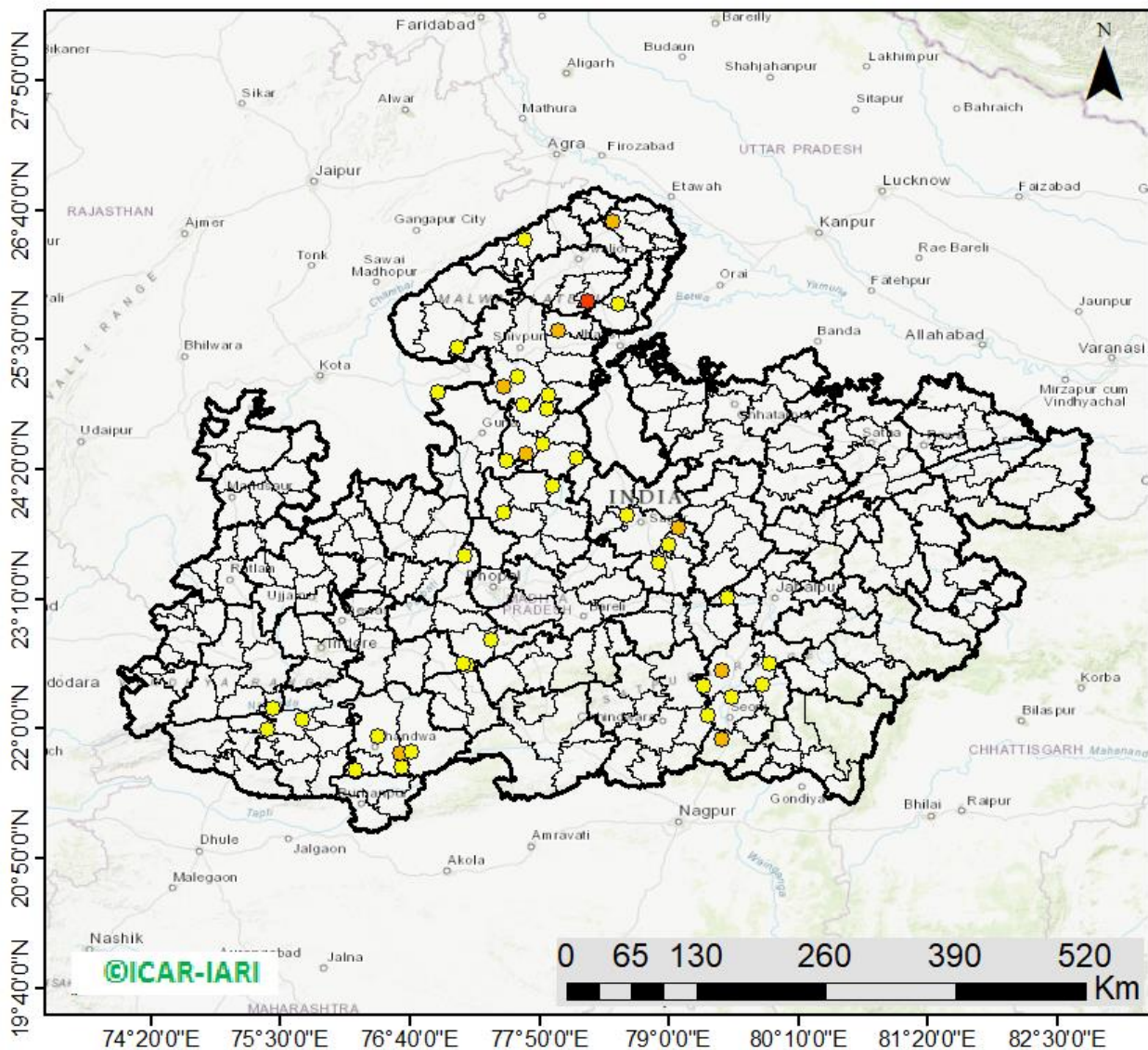


District-wise cumulative number of residues burning events in Rajasthan (15Sep-20Oct-2025)



Madhya Pradesh

RICE RESIDUE BURNING IN MADHYA PRADESH



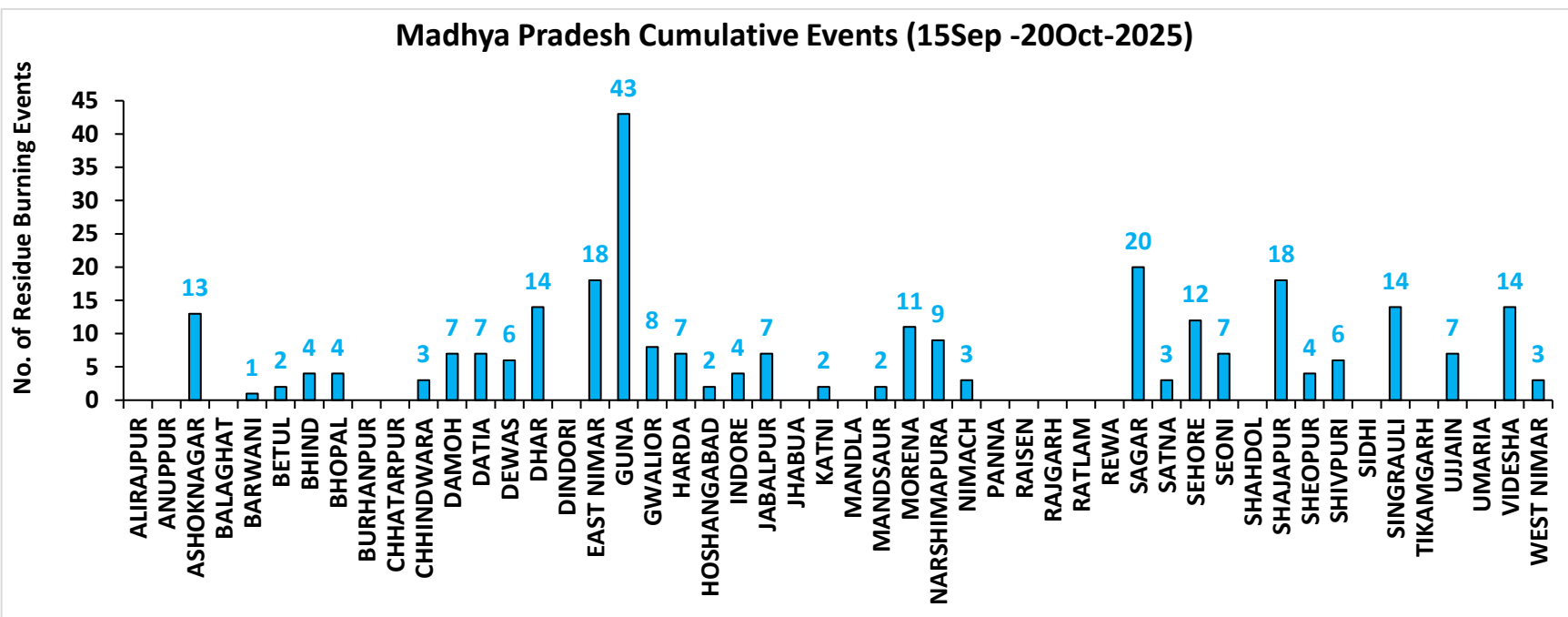
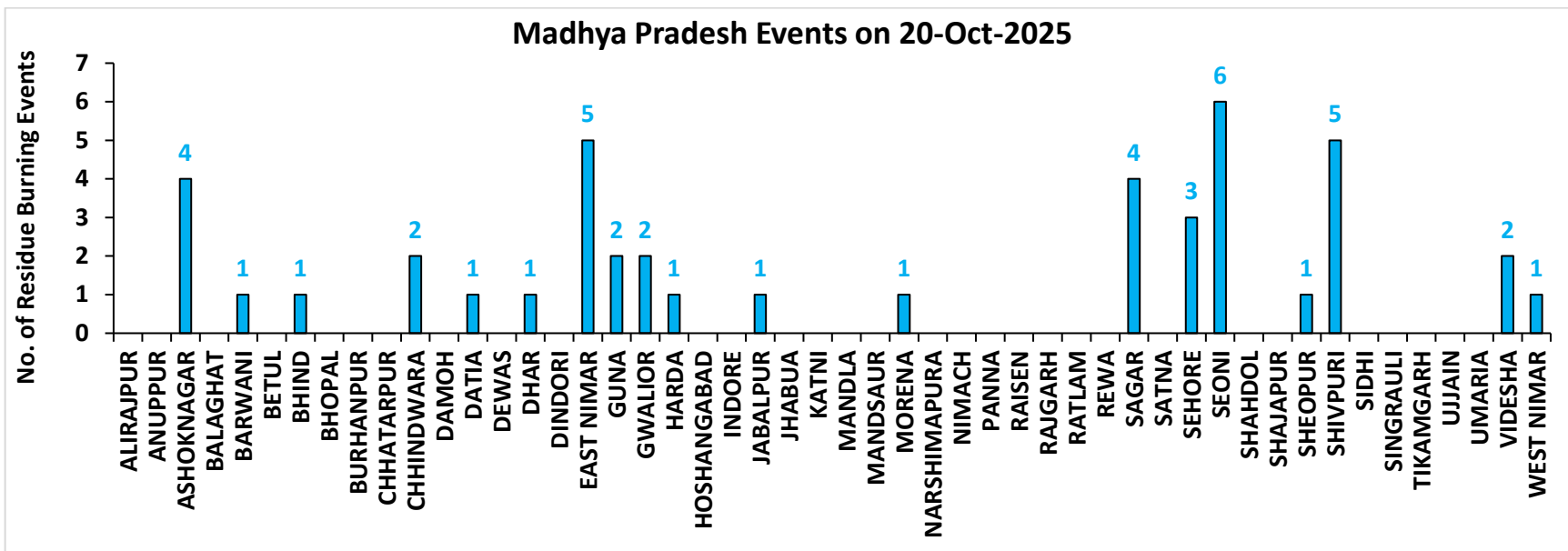
44 burning events
detected in MP on
(20th Oct 2025)

Fire Intensity (W/m²)

- 0 - 5
- 6 - 10
- 11 - 15
- 16 - 20
- >20



District-wise cumulative number of residues burning events in Madhya Pradesh (15Sep-20Oct-2025)



District-wise cumulative number of residues burning events detected in 2020, 2021, 2022, 2023, 2024 and 2025
(Period: 15 September -20 October)

(a) Punjab

District	15 Sep- 20 Oct					
	2020	2021	2022	2023	2024	2025
Amritsar	2111	752	792	665	434	112
Barnala	28	29	13	8	8	5
Bathinda	113	33	14	4	6	3
Faridkot	459	151	14	19	2	2
Fatehgarh Sahib	238	152	55	36	32	1
Fazilka	116	56	23	11	11	6
Firozpur	1026	203	127	83	96	27
Gurdaspur	664	234	230	13	47	11
Hoshiarpur	81	27	4	2	0	2
Jalandhar	188	150	107	26	16	4
Kapurthala	435	172	142	89	64	6
Ludhiana	216	232	70	34	27	3
Malerkotla	0	0	0	3	25	4
Mansa	77	12	17	45	25	1
Moga	129	76	52	28	10	1
Muktsar	94	49	5	1	4	1
Pathankot	4	0	0	0	0	0
Patiala	780	335	131	181	181	23
Rupnagar	46	27	8	1	2	0
Sangrur	210	71	81	95	130	10
SAS NAGAR (Mohali)	58	37	13	56	26	5
SBS Nagar	18	18	2	2	3	1
Tarn Taran	2308	914	821	216	296	125
Total	9399	3730	2721	1618	1445	353

(b) Haryana

District	15 Sep- 20 Oct					
	2020	2021	2022	2023	2024	2025
AMBALA	143	55	37	86	74	0
BHIWANI	0	0	0	2	0	2
CHARKHI DADRI	0	0	0	0	0	0
FARIDABAD	0	1	1	2	30	3
FATEHABAD	69	71	56	91	40	5
GURGAON	0	0	0	0	0	0
HISAR	9	2	10	37	19	4
JHAJJAR	1	0	0	4	1	1
JIND	34	51	55	80	49	15
KAITHAL	228	342	184	60	127	2
KARNAL	340	397	117	41	69	1
KURUKSHETRA	266	216	141	72	91	1
MAHENDRAGARH	0	0	0	0	0	0
MEWAT	0	0	0	0	0	0
PALWAL	19	25	4	32	26	3
PANCHKULA	0	0	0	1	14	0
PANIPAT	10	16	11	15	27	2
REWARI	0	0	0	0	0	0
ROHTAK	1	0	0	4	6	0
SIRSA	21	10	8	7	16	5
SONIPAT	12	5	6	44	40	4
YAMUNANAGAR	72	46	34	43	24	3
Total	1225	1237	664	621	653	51

(c) Uttar Pradesh

District	15 Sep- 20 Oct																			
	2020	2021	2022	2023	2024	2025	GAUTAMBU DHNAGAR	2	7	2	6	22	2	MUZAFARNAGAR	3	2	1	0	5	1
AGRA	2	0	0	0	0	1	GAZIPUR	0	0	0	0	0	0	PILHIBHIT	8	108	24	39	21	35
ALIGARH	38	21	4	68	136	36	GHAZIABAD	3	2	1	7	8	1	PRATAPGARH	1	0	0	0	0	2
ALLAHABAD	0	1	0	0	1	2	GONDA	0	0	0	0	0	1	RAIBEARELI	1	0	0	0	1	1
AMBEDKARNA GAR	0	0	0	0	2	1	GORAKHPU R	1	0	0	0	0	1	RAMPUR	35	50	6	17	13	5
AMETHI	0	1	4	1	0	0	HAMIRPUR	1	0	0	0	0	2	SAMBHAL	7	7	4	9	83	14
AMROHA	1	0	0	2	4	4	HAPUR	3	1	0	0	8	3	SANTKABIRNAGAR	0	0	0	0	0	0
AURAIYA	17	6	5	4	1	9	HARDOI	13	6	2	4	12	32	SANTRAVIDASNAG AR	0	0	0	0	0	0
AZAMGARH	0	0	0	0	0	0	HATHRAS	0	0	0	2	9	8	SHAHJAHANPUR	47	181	78	21	39	39
BADAUN	1	6	0	2	18	10	JALAUN	0	0	0	0	0	13	SHAMLI	20	11	4	3	5	3
BAGHPAT	3	1	1	1	3	2	JAUNPUR	0	0	0	1	0	0	SHARANPUR	33	17	2	0	4	17
BAHRAICH	9	2	4	0	3	10	JHANSI	10	6	0	7	2	19	SHRAWASTI	7	0	0	0	0	0
BALLIA	0	0	0	0	1	3	KANNAUJ	3	1	0	1	4	5	SIDDHARTHANAGAR	0	0	0	0	1	0
BALRAMPUR	1	1	1	0	0	2	KANPUR	3	7	10	3	1	5	SITAPUR	14	9	0	2	42	20
BANDA	0	0	0	0	0	3	KANPUR DEHAT	11	1	0	3	1	4	SONBHADRA	0	0	0	0	0	0
BARABANKI	15	20	0	22	59	42	KASGANJ	2	2	0	1	1	5	SULTANPUR	0	0	0	0	0	1
BAREILLY	19	15	2	10	11	15	KAUSHAMBI	9	3	0	6	3	10	UNNAO	5	0	0	3	4	2
BASTI	3	1	0	0	1	0	KHERI	44	54	11	4	11	14	VARANASI	1	0	0	0	0	0
BIJNOR	6	3	2	5	4	2	KUSHINAGA R	0	0	0	0	0	0	Total	529	626	181	364	698	557
BULANDSAHAR	15	2	2	5	24	3	LALITPUR	0	1	2	0	0	1							
CHANDAULI	0	0	0	0	0	0	LUCKNOW	2	0	0	1	4	3							
CHITRAKOOT	0	1	1	0	0	0	MAHARAJG ANJ	0	0	0	0	1	2							
DEORIA	0	0	0	2	0	1	MAHOBA	3	0	0	0	0	0							
ETAH	8	6	0	11	8	6	MAINPURI	11	7	3	7	11	13							
ETAWAH	5	7	0	13	6	14	MATHURA	31	27	1	57	57	52							
FAIZABAD	1	0	0	0	4	3	MAU	0	0	0	0	0	0							
FARRUKHABAD	0	0	0	0	0	0	MEERUT	12	4	1	2	7	0							
FATEHPUR	18	6	1	8	12	40	MIRZAPUR	6	5	2	0	2	0							
FIROZABAD	10	4	0	2	0	6	MORADABA D	5	3	0	2	18	6							

(d) Delhi

District	15 Sep- 20 Oct					
	2020	2021	2022	2023	2024	2025
CENTRAL	0	0	0	0	0	0
EAST	0	0	0	0	0	0
NEW DELHI	0	0	0	0	0	0
NORTH	2	0	3	2	8	3
NORTH EAST	0	0	0	0	0	0
NORTH WEST DELHI	1	0	0	0	3	0
SHAHADRA	0	0	0	0	0	0
SOUTH	1	0	0	0	0	0
SOUTH EAST	0	0	0	0	0	0
SOUTH WEST DELHI	0	0	0	0	0	0
WEST DELHI	0	0	0	0	0	0
Total	4	0	3	2	11	3

(e) Rajasthan

District	15 Sep- 20 Oct					
	2020	2021	2022	2023	2024	2025
AJMER	0	0	0	0	0	0
ALWAR	1	0	0	0	0	2
BANSWARA	0	0	0	0	0	1
BARAN	88	0	7	141	82	32
BARMER	2	0	0	0	0	1
BHARATPUR	2	0	0	2	4	1
BHILWARA	2	0	0	0	0	0
BIKANER	1	0	0	0	0	1
BUNDI	11	0	22	39	31	22
CHITTAURGARH	0	2	2	7	1	4
CHURU	0	0	0	0	0	0
DAUSA	0	0	0	0	0	0
DHOLPUR	0	0	0	0	0	0
DUNGARPUR	0	0	0	0	0	0
GANGANAGAR	3	0	1	9	17	6
HANUMANGARH	170	35	8	48	89	63
JAIPUR	1	0	0	0	0	0
JAISELMER	2	0	0	0	0	3
JALOR	0	0	0	0	0	1
JHALAWAR	1	0	1	8	1	1
JHUNJHUNUN	1	0	0	0	0	1
JODHPUR	1	0	0	0	0	4
KARALI	1	0	0	0	0	0
KOTA	27	1	9	73	38	33
NAGPUR	0	0	0	0	0	4
PALI	1	0	0	0	0	12
PRATAPGARH	4	0	0	0	0	0
RAJSMAND	0	0	0	0	0	0
SIKAR	0	0	0	0	0	1
SIROHI	1	0	0	0	0	1
SWAIMADHOPUR	8	0	3	25	12	17
TONK	2	0	0	0	0	0
UDAIPUR	0	0	0	0	0	1
Total	330	38	53	352	275	212

(f) Madhya Pradesh

District	15 Sep- 20 Oct													
	2020	2021	2022	2023	2024	2025	PANNA	3	0	0	0	0	0	
ALIRAJPUR	0	0	0	0	0	0	RAISEN	18	2	1	10	1	0	
ANUPPUR	0	0	0	0	0	0	RAJGARH	7	1	3	9	1	0	
ASHOKNAGAR	19	1	3	34	38	13	RATLAM	0	0	0	1	0	0	
BALAGHAT	0	0	0	0	0	0	REWA	4	0	1	0	0	0	
BARWANI	0	0	0	0	0	1	SAGAR	15	9	5	14	18	20	
BETUL	1	0	0	3	4	2	SATNA	11	6	0	2	3	3	
BHIND	9	1	0	14	11	4	SEHORE	9	3	9	13	7	12	
BHOPAL	6	5	2	7	1	4	SEONI	37	15	1	13	2	7	
BURHANPUR	0	0	0	0	0	0	SHAHDOL	0	0	0	0	0	0	
CHHATARPUR	4	0	0	3	1	0	SHAJAPUR	5	0	0	7	7	18	
CHHINDWARA	4	5	0	3	2	3	SHEOPUR	16	0	1	42	0	4	
DAMOH	20	4	5	13	11	7	SHIVPURI	9	0	7	17	21	6	
DATIA	77	8	1	65	14	7	SIDHI	0	0	0	0	0	0	
DEWAS	3	0	0	7	3	6	SINGRAULI	0	0	0	0	6	14	
DHAR	21	0	0	23	5	14	TIKAMGARH	1	0	0	2	0	0	
DINDORI	0	0	0	1	0	0	UJJAIN	5	0	0	14	5	7	
EAST NIMAR	2	1	3	1	1	18	UMARIA	0	0	0	0	0	0	
GUNA	16	2	4	142	129	43	VIDESHA	60	8	7	26	30	14	
GWALIOR	48	0	1	19	1	8	WEST NIMAR	6	0	0	6	2	3	
HARDA	8	10	0	15	3	7	Total	530	106	65	615	403	285	
HOSHANGABAD	38	8	3	30	1	2								
INDORE	2	0	0	12	11	4								
JABALPUR	12	4	3	16	20	7								
JHABUA	0	0	0	0	0	0								
KATNI	3	0	0	1	0	2								
MANDLA	1	0	0	0	0	0								
MANDSAUR	3	0	0	1	11	2								
MORENA	18	5	0	19	19	11								
NARSHIMAPURA	9	8	5	10	13	9								
NIMACH	0	0	0	0	1	3								

State-wise and date-wise number of paddy residue burning events detected in 2020 ,2021 ,2022, 2023, 2024 and 2025

(Period: 15 September -20 October)

Number of Paddy Residue Burning Events Detected

Date	Punjab						Haryana						Uttar Pradesh					
	2020	2021	2022	2023	2024	2025	2020	2021	2022	2023	2024	2025	2020	2021	2022	2023	2024	2025
15-Sep	5	0	14	0	11	5	2	0	0	1	1	1	1	0	0	0	0	1
16-Sep	0	2	0	6	0	18	1	0	0	1	0	0	0	0	0	2	0	0
17-Sep	5	0	1	0	5	11	3	0	0	0	1	0	0	0	0	0	1	0
18-Sep	17	9	7	0	2	12	0	0	1	0	0	1	0	1	0	0	0	1
19-Sep	30	5	18	0	0	1	2	0	0	1	0	1	0	1	0	0	0	1
20-Sep	67	8	10	0	13	1	6	0	0	2	1	0	2	0	0	0	0	1
21-Sep	54	0	56	1	21	8	2	0	0	2	13	0	1	0	0	1	2	0
22-Sep	34	0	30	0	11	6	1	0	0	2	18	0	1	0	0	0	0	2
23-Sep	49	0	3	1	6	8	0	0	0	3	12	0	1	0	0	0	0	4
24-Sep	78	5	0	0	12	5	0	0	0	0	6	1	1	1	0	1	0	0
25-Sep	184	11	0	0	12	4	11	0	0	1	18	1	5	0	0	1	0	2
26-Sep	190	19	0	3	5	1	5	0	0	2	5	0	8	0	0	0	0	4
27-Sep	78	37	0	21	0	2	8	0	0	9	5	1	4	1	0	0	3	1
28-Sep	55	28	0	33	0	8	6	1	0	8	0	0	1	6	0	4	0	10
29-Sep	63	64	0	68	21	5	9	4	0	17	0	1	6	10	0	6	0	14
30-Sep	116	27	8	81	10	0	22	2	0	26	1	0	13	13	10	18	0	1
01-Oct	165	13	45	123	26	0	15	4	1	21	3	0	7	13	3	17	0	4
02-Oct	141	0	83	119	16	0	30	2	7	24	20	0	12	0	36	7	9	0
03-Oct	110	9	75	105	8	0	8	6	8	17	6	0	4	3	29	8	7	1
04-Oct	162	23	65	95	9	0	29	2	7	29	9	0	8	0	2	9	0	9
05-Oct	161	18	130	98	5	0	17	3	24	24	8	0	14	2	0	14	1	32
06-Oct	171	42	85	91	3	0	30	0	26	19	23	0	12	1	0	18	17	0
07-Oct	197	72	62	32	18	0	32	11	6	13	14	0	41	13	0	5	11	0
08-Oct	95	108	19	92	20	0	29	27	0	55	13	0	25	11	0	27	16	3
09-Oct	121	114	3	58	33	1	20	39	1	14	10	1	15	20	0	13	10	5
10-Oct	232	150	4	10	123	6	33	95	2	28	38	2	9	54	0	34	56	25
11-Oct	377	64	45	26	143	14	90	51	0	21	55	1	23	28	0	50	87	42

12-Oct	388	97	104	13	177	10	69	51	4	5	98	4	46	23	0	5	102	17
13-Oct	266	132	120	154	162	8	47	91	15	29	90	1	36	42	0	19	76	20
14-Oct	605	229	82	89	97	31	69	98	30	41	49	2	9	68	5	18	52	25
15-Oct	449	660	169	69	144	11	106	363	36	127	42	7	15	149	0	35	78	46
16-Oct	654	429	206	0	99	12	80	176	76	4	14	3	21	121	6	14	59	132
17-Oct	1172	14	403	1	77	20	143	0	86	0	28	2	38	39	7	0	23	49
18-Oct	938	57	342	18	59	33	166	1	134	8	26	1	76	0	30	2	47	16
19-Oct	1080	496	436	37	45	67	72	55	122	16	15	7	43	5	36	11	30	12
20-Oct	890	788	96	174	52	45	62	155	78	51	11	13	31	1	17	25	11	77
Total	9399	3730	2721	1618	1445	353	1225	1237	664	621	653	51	529	626	181	364	698	557

Number of Paddy Residue Burning Events Detected																		
Delhi							Rajasthan						Madhya Pradesh					
Date	2020	2021	2022	2023	2024	2025	2020	2021	2022	2023	2024	2025	2020	2021	2022	2023	2024	2025
15-Sep	0	0	0	0	0	0	1	0	0	0	0	0	2	0	0	0	0	0
16-Sep	0	0	0	0	0	0	0	0	0	0	0	0	0	0	0	0	0	0
17-Sep	0	0	0	0	0	0	0	0	0	0	0	0	0	0	0	0	1	0
18-Sep	0	0	0	0	0	0	0	0	0	0	0	0	0	0	0	0	0	0
19-Sep	0	0	0	0	0	0	0	0	0	0	0	0	0	0	0	0	1	0
20-Sep	0	0	0	0	0	0	0	0	0	0	0	0	0	0	0	0	1	2
21-Sep	0	0	0	0	0	0	1	0	1	0	0	0	2	0	0	0	1	0
22-Sep	0	0	0	0	0	0	0	0	0	0	0	0	0	0	0	0	1	0
23-Sep	0	0	0	0	0	0	1	0	0	0	0	0	0	0	0	0	1	2
24-Sep	0	0	0	0	0	0	0	0	0	0	0	0	0	0	0	0	0	0
25-Sep	0	0	0	0	0	0	1	0	0	0	3	0	0	0	0	1	0	1
26-Sep	0	0	0	1	0	0	1	0	0	0	0	0	2	0	0	0	2	2
27-Sep	0	0	0	0	0	0	0	0	0	0	0	0	1	0	0	0	0	0
28-Sep	0	0	0	0	0	0	0	0	0	0	0	0	1	1	0	2	0	1
29-Sep	0	0	0	0	0	0	3	0	0	6	0	1	0	4	0	5	0	3
30-Sep	1	0	0	0	0	0	1	0	0	4	2	0	5	0	0	11	0	0
01-Oct	0	0	0	0	0	0	4	1	1	4	1	0	13	0	1	8	3	0

02-Oct	1	0	0	0	0	0	7	0	3	4	3	0	12	0	1	1	0	0
03-Oct	0	0	0	0	0	0	9	0	2	5	0	0	5	1	5	5	2	1
04-Oct	0	0	0	0	0	0	15	0	0	22	0	1	4	2	0	12	0	2
05-Oct	0	0	2	0	0	0	14	0	1	11	2	5	13	1	0	18	2	0
06-Oct	1	0	0	0	0	0	16	0	0	9	1	0	37	1	0	7	12	0
07-Oct	0	0	0	0	0	0	14	1	1	7	4	0	31	1	0	9	17	5
08-Oct	0	0	0	0	0	0	11	0	0	9	1	1	17	2	0	18	7	5
09-Oct	0	0	0	0	0	0	12	0	0	17	1	1	15	4	0	24	2	7
10-Oct	0	0	0	0	3	1	14	1	0	26	3	9	18	10	0	52	1	20
11-Oct	0	0	0	1	0	0	21	7	1	21	6	1	32	2	0	24	17	6
12-Oct	0	0	0	0	2	0	24	1	2	1	13	0	44	1	1	1	5	6
13-Oct	0	0	0	0	1	0	7	5	2	28	10	8	21	2	7	32	5	18
14-Oct	0	0	0	0	1	1	16	1	1	15	20	17	15	11	1	26	7	18
15-Oct	0	0	0	0	0	1	9	8	2	34	23	30	8	27	2	66	11	41
16-Oct	1	0	0	0	1	0	12	2	4	18	100	21	23	13	2	51	112	33
17-Oct	0	0	0	0	0	0	26	0	4	12	16	15	63	1	11	31	51	16
18-Oct	0	0	1	0	3	0	37	2	12	11	30	39	88	0	15	13	71	11
19-Oct	0	0	0	0	0	0	27	5	12	31	25	24	49	1	12	65	46	43
20-Oct	0	0	0	0	0	0	26	4	4	57	11	38	9	21	7	131	24	44
Total	4	0	3	2	11	3	330	38	53	352	275	212	530	106	65	615	403	285

Details of residue burning events in Punjab on 20-Oct-2025

S. No.	District	Tehsil / Block	Satellite	Latitude	Longitude	ACQ_TIME	Day / Night	Fire Power (W/m ²)
1	AMRITSAR	AJNALA	S-NPP	31.82906	74.81698	13:38:36	D	2.20
2	AMRITSAR	AJNALA	S-NPP	31.82965	74.82113	13:38:36	D	2.20
3	AMRITSAR	AJNALA	S-NPP	31.85099	74.70611	13:38:36	D	2.30
4	AMRITSAR	AJNALA	S-NPP	31.88943	74.74609	13:38:36	D	1.90
5	AMRITSAR	AJNALA	S-NPP	31.95805	74.93842	13:38:36	D	2.10
6	AMRITSAR	TARSIKKA	S-NPP	31.62733	75.16360	13:38:36	D	2.30
7	AMRITSAR	TARSIKKA	S-NPP	31.63696	75.08423	13:38:36	D	13.20
8	AMRITSAR	TARSIKKA	S-NPP	31.64032	75.08359	13:38:36	D	13.20
9	BATHINDA	MAUR	S-NPP	30.06901	75.11908	13:38:36	D	1.70
10	FAZILKA	FAZILKA	S-NPP	30.49035	74.01683	13:38:36	D	4.30
11	FAZILKA	GURUHAR SAHAI	S-NPP	30.55334	74.34554	13:38:36	D	7.60
12	FAZILKA	GURUHAR SAHAI	S-NPP	30.67794	74.25091	13:38:36	D	12.00
13	FAZILKA	JALALABAD	S-NPP	30.54688	74.12051	13:38:36	D	2.90
14	FIROZPUR	GURUHAR SAHAI	S-NPP	30.62596	74.40561	13:38:36	D	3.20
15	FIROZPUR	GURUHAR SAHAI	S-NPP	30.74810	74.29098	13:38:36	D	1.10
16	FIROZPUR	MAKHU	S-NPP	31.10844	74.97261	13:38:36	D	14.00
17	FIROZPUR	MAMDOT	S-NPP	30.79400	74.39349	13:38:36	D	3.10
18	GURDASPUR	DERA BABA NANAK	S-NPP	31.95813	75.11124	13:38:36	D	1.30
19	GURDASPUR	KALANAUR	S-NPP	31.92131	75.17041	13:38:36	D	3.20
20	GURDASPUR	KALANAUR	S-NPP	32.00194	75.17676	13:38:36	D	4.20
21	GURDASPUR	KALANAUR	S-NPP	32.00532	75.17611	13:38:36	D	4.20
22	PATIALA	BHUNARHERI	S-NPP	30.14246	76.51779	13:38:36	D	7.30
23	PATIALA	BHUNARHERI	S-NPP	30.14305	76.52219	13:38:36	D	7.30
24	PATIALA	BHUNARHERI	S-NPP	30.18686	76.65594	13:38:36	D	5.60
25	PATIALA	GHANAUR	S-NPP	30.32346	76.60585	13:38:36	D	4.00
26	PATIALA	RAJPURA	S-NPP	30.51470	76.66697	13:38:36	D	2.10
27	PATIALA	RAJPURA	S-NPP	30.51700	76.57494	13:38:36	D	2.10
28	PATIALA	SAMANA	S-NPP	30.15313	76.26725	13:38:36	D	3.30
29	PATIALA	SAMANA	S-NPP	30.16224	76.23026	13:38:36	D	2.80
30	SANGRUR	BHAWANIGARH	S-NPP	30.19168	75.98405	13:38:36	D	9.50
31	SANGRUR	SANGRUR	S-NPP	30.25300	75.95187	13:38:36	D	3.00
32	SAS NAGAR	KHARAR	S-NPP	30.58663	76.72359	13:38:36	D	4.80
33	SAS NAGAR	KHARAR	S-NPP	30.65125	76.66766	13:38:36	D	3.50
34	TARN TARAN	BHIKHIWIND	S-NPP	31.26791	74.67338	13:38:36	D	2.60

35	TARN TARAN	BHIKHIWIND	S-NPP	31.35535	74.74518	13:38:36	D	2.70
36	TARN TARAN	BHIKHIWIND	S-NPP	31.37617	74.77067	13:38:36	D	6.30
37	TARN TARAN	CHOHLA SAHIB	AQUA	31.33900	75.09200	15:40:40	D	21.60
38	TARN TARAN	GANDIWIND TATLA	S-NPP	31.42826	74.68938	13:38:36	D	2.20
39	TARN TARAN	GANDIWIND TATLA	S-NPP	31.50406	74.76331	13:38:36	D	4.40
40	TARN TARAN	GANDIWIND TATLA	S-NPP	31.50466	74.76743	13:38:36	D	4.60
41	TARN TARAN	TARN TARAN	S-NPP	31.39248	74.78863	13:38:36	D	2.30
42	TARN TARAN	TARN TARAN	S-NPP	31.41848	74.89799	13:38:36	D	2.40
43	TARN TARAN	TARN TARAN	S-NPP	31.47146	74.79933	13:38:36	D	3.40
44	TARN TARAN	VALTOHA	S-NPP	31.09989	74.59277	13:38:36	D	2.80
45	TARN TARAN	VALTOHA	S-NPP	31.13618	74.67773	13:38:36	D	3.00

Details of residue burning events in Haryana on 20-Oct-2025

S. No.	District	Tehsil / Block	Satellite	Latitude	Longitude	ACQ_TIME	Day / Night	Fire Power (W/m2)
1	BHIWANI	BAWANI KHERA	S-NPP	29.01900	76.09212	13:38:36	D	3.80
2	BHIWANI	BAWANI KHERA	S-NPP	29.01958	76.09628	13:38:36	D	4.50
3	FATEHABAD	BHUNA	S-NPP	29.58751	75.82342	13:38:36	D	2.50
4	FATEHABAD	FATEHABAD	S-NPP	29.55109	75.58945	13:38:36	D	12.70
5	FATEHABAD	TOHANA	S-NPP	29.63382	75.77747	13:38:36	D	4.20
6	HISAR	BARWALA	S-NPP	29.39325	76.07938	13:38:36	D	5.20
7	HISAR	HISAR-I	S-NPP	29.17677	75.80272	13:38:36	D	4.50
8	HISAR	UKLANA	S-NPP	29.54948	75.94965	13:38:36	D	2.80
9	JIND	JIND	S-NPP	29.38395	76.29243	13:38:36	D	2.70
10	JIND	UCHANA	S-NPP	29.52156	76.27741	13:38:36	D	3.30
11	JIND	UCHANA	S-NPP	29.53581	76.07586	13:38:36	D	6.10
12	KARNAL	ASSANDH	S-NPP	29.61352	76.59131	13:38:36	D	7.60
13	PALWAL	PALWAL	S-NPP	28.12914	77.36247	13:38:36	D	5.20

Details of residue burning events in Uttar Pradesh on 20-Oct-2025

S. No.	District	Tehsil / Block	Satellite	Latitude	Longitude	ACQ_TIME	Day / Night	Fire Power (W/m2)
1	ALIGARH	KHAIR	S-NPP	27.87087	77.83812	13:41:00	D	3.38
2	ALIGARH	KHAIR	S-NPP	28.01904	77.69882	13:41:00	D	3.75
3	BADAUN	DATAGANJ	S-NPP	27.74825	79.34156	13:41:00	D	3.80
4	BARABANKI	FATEHPUR	S-NPP	27.22182	81.21450	13:39:00	D	4.81
5	BARABANKI	NAWABGANJ	S-NPP	26.85527	81.21297	13:39:00	D	3.79
6	BARABANKI	NAWABGANJ	S-NPP	26.86315	81.28377	13:39:00	D	3.78
7	BARABANKI	RAMNAGAR	S-NPP	27.02783	81.35529	13:39:00	D	1.76
8	BARABANKI	RAMNAGAR	S-NPP	27.17053	81.28311	13:39:00	D	4.03
9	BARABANKI	SIRAULI GAUSPUR	S-NPP	27.00391	81.37681	13:39:00	D	2.86
10	ETAH	JALESAR	S-NPP	27.49536	78.44014	13:41:00	D	2.85
11	ETAWAH	ETAWAH	S-NPP	26.78414	79.06445	13:39:00	D	4.17
12	FATEHPUR	BINKI	S-NPP	26.01345	80.58102	13:39:00	D	1.70
13	FATEHPUR	FATEHPUR	S-NPP	25.72712	80.99028	13:39:00	D	3.18
14	FATEHPUR	FATEHPUR	S-NPP	25.87618	80.90022	13:39:00	D	2.05
15	FATEHPUR	FATEHPUR	S-NPP	25.93716	80.74022	13:39:00	D	2.27
16	FATEHPUR	FATEHPUR	S-NPP	25.99411	80.88454	13:39:00	D	6.56
17	FIROZABAD	SIKOHABAD	S-NPP	27.00454	78.73035	13:39:00	D	4.04
18	FIROZABAD	SIKOHABAD	S-NPP	27.06067	78.63741	13:41:00	D	4.84
19	FIROZABAD	SIKOHABAD	S-NPP	27.06128	78.64225	13:41:00	D	4.84
20	GAUTAMBUDHNAGAR	JEVAR	S-NPP	28.14457	77.51074	13:41:00	D	3.86
21	HARDOI	SHAHABAD	S-NPP	27.56847	80.14645	13:41:00	D	2.28
22	HARDOI	SIWAIJPUR	S-NPP	27.32649	79.87306	13:41:00	D	5.07
23	HARDOI	SIWAIJPUR	S-NPP	27.33111	79.87814	13:41:00	D	5.07
24	HARDOI	SIWAIJPUR	S-NPP	27.33961	79.84828	13:41:00	D	12.95
25	HATHRAS	SIKANDRA RAO	S-NPP	27.57745	78.30206	13:41:00	D	2.72
26	JALAUN	KONCH	S-NPP	26.00046	79.05180	13:39:00	D	3.85
27	JALAUN	KONCH	S-NPP	26.12436	79.12508	13:39:00	D	5.77
28	JHANSI	MOTH	S-NPP	25.90880	78.96899	13:39:00	D	3.94
29	JHANSI	TAHRAULI	S-NPP	25.59081	78.94408	13:39:00	D	2.80
30	JHANSI	TAHRAULI	S-NPP	25.59633	78.78431	13:39:00	D	12.43
31	KAUSHAMBI	MANJHANPUR	S-NPP	25.42069	81.37733	13:39:00	D	2.84
32	KHERI	PALIA KALAN	S-NPP	28.58191	80.64092	13:41:00	D	6.65

33	MAINPURI	BHOGAON	S-NPP	27.10514	79.11688	13:41:00	D	4.08
34	MAINPURI	KARHAL	S-NPP	27.10518	79.05462	13:41:00	D	3.10
35	MAINPURI	MAINPURI	S-NPP	27.16495	78.95003	13:41:00	D	5.52
36	MATHURA	CHHATA	S-NPP	27.59424	77.44554	13:41:00	D	3.04
37	MATHURA	CHHATA	S-NPP	27.62042	77.53589	13:41:00	D	4.60
38	MATHURA	CHHATA	S-NPP	27.62688	77.53030	13:41:00	D	7.88
39	MATHURA	CHHATA	S-NPP	27.64450	77.52738	13:41:00	D	5.13
40	MATHURA	CHHATA	S-NPP	27.76655	77.66366	13:41:00	D	6.48
41	MATHURA	CHHATA	S-NPP	27.76719	77.34163	13:41:00	D	6.62
42	MATHURA	CHHATA	S-NPP	27.80005	77.34612	13:41:00	D	2.30
43	MATHURA	CHHATA	S-NPP	27.83913	77.39799	13:41:00	D	6.21
44	MATHURA	CHHATA	S-NPP	27.84027	77.43388	13:41:00	D	4.56
45	MATHURA	CHHATA	S-NPP	27.84364	77.54223	13:41:00	D	2.22
46	MATHURA	CHHATA	S-NPP	27.85663	77.50367	13:41:00	D	4.20
47	MATHURA	CHHATA	S-NPP	27.86016	77.50308	13:41:00	D	8.33
48	MATHURA	CHHATA	S-NPP	27.86427	77.50695	13:41:00	D	8.33
49	MATHURA	MATHURA	S-NPP	27.49843	77.56219	13:41:00	D	3.42
50	MATHURA	MATHURA	S-NPP	27.49852	77.56342	13:41:00	D	3.72
51	MATHURA	MATHURA	S-NPP	27.50147	77.55840	13:41:00	D	4.37
52	MATHURA	MATHURA	S-NPP	27.53962	77.57471	13:41:00	D	8.92
53	MORADABAD	BILARI	S-NPP	28.73246	78.72909	13:41:00	D	4.07
54	MORADABAD	BILARI	S-NPP	28.76451	78.73999	13:41:00	D	4.15
55	PILHIBHIT	PILHIBHIT	S-NPP	28.66499	79.65395	13:41:00	D	6.44
56	PILHIBHIT	PILHIBHIT	S-NPP	28.68491	79.90206	13:41:00	D	1.99
57	PILHIBHIT	PILHIBHIT	S-NPP	28.77888	79.82612	02:25:00	N	1.46
58	PILHIBHIT	PILHIBHIT	S-NPP	28.84925	79.71249	13:41:00	D	5.06
59	PILHIBHIT	PURANPUR	S-NPP	28.45219	80.06478	13:41:00	D	8.10
60	PILHIBHIT	PURANPUR	S-NPP	28.50985	80.21341	13:41:00	D	1.87
61	PILHIBHIT	PURANPUR	S-NPP	28.55147	79.99777	13:41:00	D	2.95
62	PILHIBHIT	PURANPUR	S-NPP	28.57566	80.03100	13:41:00	D	2.22
63	PILHIBHIT	PURANPUR	S-NPP	28.64037	80.00439	02:25:00	N	2.08
64	RAIBEARELI	DALMAU	S-NPP	26.06038	81.17608	13:39:00	D	3.46
65	RAMPUR	BILASPUR	S-NPP	28.78411	79.31619	02:25:00	N	0.74
66	RAMPUR	BILASPUR	S-NPP	28.83298	79.21909	13:41:00	D	3.54
67	RAMPUR	MILAK	S-NPP	28.76357	79.12936	13:41:00	D	3.39
68	SAMBHAL	SAMBHAL	S-NPP	28.62062	78.56554	13:41:00	D	11.70
69	SHAHJAHANPUR	SHAHJAHANPUR	S-NPP	27.89030	79.85573	13:41:00	D	5.09

70	SHAMLI	KAIRANA	S-NPP	29.61147	77.17492	13:41:00	D	3.44
71	SHARANPUR	BEHAT	TERRA	30.06896	77.67612	10:04:00	D	22.27
72	SHARANPUR	BEHAT	TERRA	30.07962	77.73253	10:04:00	D	38.44
73	SHARANPUR	SHARANPUR	S-NPP	30.06443	77.53773	13:41:00	D	4.32
74	SITAPUR	MAHMUDABAD	S-NPP	27.27578	81.15318	13:39:00	D	5.20
75	SITAPUR	MAHMUDABAD	S-NPP	27.30122	81.20091	13:39:00	D	3.27
76	SITAPUR	MISRIK	S-NPP	27.69684	80.36821	13:41:00	D	2.86
77	SITAPUR	SITAPUR	S-NPP	27.59331	80.74025	13:41:00	D	2.82

Details of residue burning events in Rajasthan on 20-Oct-2025

S. No.	District	Tehsil / Block	Satellite	Latitude	Longitude	ACQ_TIME	Day / Night	Fire Power (W/m2)
1	BANSWARA	BANSWARA	S-NPP	23.46223	74.39905	13:39:00	D	5.54
2	BARAN	CHHABRA	S-NPP	24.60655	76.88416	13:39:00	D	3.88
3	BARAN	CHHABRA	S-NPP	24.69626	76.80520	13:39:00	D	1.34
4	BARAN	CHHABRA	S-NPP	24.71363	76.80623	13:39:00	D	3.99
5	BARAN	SHAHBAD	S-NPP	25.17835	77.09014	13:39:00	D	2.65
6	BUNDI	BUNDI	S-NPP	25.29805	75.78246	13:39:00	D	2.89
7	BUNDI	KESHORAIPTAN	S-NPP	25.29685	75.88866	13:39:00	D	2.25
8	CHITTAURGARH	CHITTAURGARH	S-NPP	24.76530	74.60778	02:25:00	N	0.91
9	CHITTAURGARH	NIMBAHERA	S-NPP	24.69023	74.68134	02:25:00	N	0.83
10	HANUMANGARH	HANUMANGARH	S-NPP	29.46143	74.42198	13:41:00	D	11.01
11	HANUMANGARH	HANUMANGARH	S-NPP	29.52875	74.19738	13:41:00	D	1.60
12	HANUMANGARH	HANUMANGARH	S-NPP	29.55725	74.27304	13:41:00	D	12.24
13	HANUMANGARH	HANUMANGARH	S-NPP	29.57078	74.16055	13:41:00	D	3.45
14	HANUMANGARH	HANUMANGARH	S-NPP	29.62102	74.22476	13:41:00	D	2.48
15	HANUMANGARH	HANUMANGARH	S-NPP	29.62521	74.25241	13:41:00	D	3.96
16	HANUMANGARH	NOHAR	S-NPP	29.30510	74.57403	13:41:00	D	2.52
17	HANUMANGARH	PILIBANGA	S-NPP	29.53678	74.04945	13:41:00	D	4.87
18	HANUMANGARH	PILIBANGA	S-NPP	29.53739	74.05340	13:41:00	D	4.87
19	HANUMANGARH	RAWATSAR	S-NPP	29.28385	74.34281	13:41:00	D	2.04
20	HANUMANGARH	RAWATSAR	S-NPP	29.31709	74.32014	13:41:00	D	3.55
21	HANUMANGARH	SANGHRIYA	S-NPP	29.63342	74.41673	13:41:00	D	5.46
22	HANUMANGARH	SANGHRIYA	S-NPP	29.93316	74.49802	13:41:00	D	2.43
23	HANUMANGARH	TIBI	S-NPP	29.39810	74.56418	13:41:00	D	2.83

24	HANUMANGARH	TIBI	S-NPP	29.49535	74.44378	13:41:00	D	9.78
25	HANUMANGARH	TIBI	S-NPP	29.50924	74.55912	13:41:00	D	3.06
26	HANUMANGARH	TIBI	S-NPP	29.52425	74.56841	13:41:00	D	2.86
27	HANUMANGARH	TIBI	S-NPP	29.56720	74.47456	13:41:00	D	3.10
28	HANUMANGARH	TIBI	S-NPP	29.56779	74.47852	13:41:00	D	3.10
29	HANUMANGARH	TIBI	S-NPP	29.57277	74.53458	13:41:00	D	8.21
30	JALOR	JALORE	S-NPP	25.18341	72.62837	13:39:00	D	1.14
31	JODHPUR	PHALODI	S-NPP	26.83785	72.42005	13:41:00	D	4.01
32	JODHPUR	PHALODI	S-NPP	27.03899	72.46072	13:41:00	D	2.72
33	KOTA	DIGOD	S-NPP	25.34803	76.28252	13:39:00	D	4.93
34	KOTA	DIGOD	S-NPP	25.37020	76.24683	13:39:00	D	1.76
35	PALI	JAITARAN	S-NPP	26.25767	74.09566	02:25:00	N	1.22
36	SIKAR	DANTA RAMGARG	S-NPP	27.28035	75.18311	02:25:00	N	0.66
37	SWAIMADHOPUR	KHANDAR	S-NPP	25.93681	76.59087	13:39:00	D	4.63
38	SWAIMADHOPUR	KHANDAR	S-NPP	26.01350	76.71265	13:39:00	D	4.28

Details of residue burning events in Madhya Pradesh on 20-Oct-2025

S. No.	District	Tehsil / Block	Satellite	Latitude	Longitude	ACQ_TIME	Day / Night	Fire Power (W/m2)
1	ASHOKNAGAR	ASHOKNAGAR	S-NPP	24.46334	77.70326	13:39:00	D	9.09
2	ASHOKNAGAR	ASHOKNAGAR	S-NPP	24.55333	77.85442	13:39:00	D	2.59
3	ASHOKNAGAR	ISAGARH	S-NPP	24.87600	77.90297	13:39:00	D	3.12
4	ASHOKNAGAR	MUNGAOLI	S-NPP	24.43624	78.16004	13:39:00	D	4.30
5	BARWANI	THIKRI	S-NPP	21.99026	75.37611	13:39:00	D	3.16
6	BHIND	MAHGAWAN	S-NPP	26.55256	78.49026	13:39:00	D	5.14
7	CHHINDWARA	AMARWARA	S-NPP	22.37484	79.31250	13:39:00	D	2.82
8	CHHINDWARA	CHAURAI	S-NPP	22.11476	79.34345	13:39:00	D	2.67
9	DATIA	SEONDHA	S-NPP	25.82014	78.53593	13:39:00	D	4.09
10	DHAR	DHARMPURI	S-NPP	22.17860	75.43435	13:39:00	D	2.68
11	EAST NIMAR	HARSUD	S-NPP	21.78209	76.67073	13:39:00	D	1.32
12	EAST NIMAR	KHANDWA	S-NPP	21.64370	76.58355	13:39:00	D	2.00
13	EAST NIMAR	KHANDWA	S-NPP	21.77152	76.57725	13:39:00	D	5.12
14	EAST NIMAR	KHANDWA	S-NPP	21.91786	76.38042	13:39:00	D	3.89
15	EAST NIMAR	PANDHANA	S-NPP	21.62301	76.17717	13:39:00	D	2.44
16	GUNA	ARON	S-NPP	24.40122	77.53379	13:39:00	D	3.22
17	GUNA	GUNA	S-NPP	25.01776	76.91606	13:39:00	D	2.53
18	GWALIOR	DABRA	S-NPP	25.84031	78.26848	13:39:00	D	5.65
19	GWALIOR	DABRA	S-NPP	25.84388	78.26791	13:39:00	D	18.28
20	HARDA	TIMURNI	S-NPP	22.56481	77.18662	13:39:00	D	4.15
21	JABALPUR	SAHPURA	S-NPP	23.17398	79.52647	13:39:00	D	4.52
22	MORENA	JORA	S-NPP	26.38905	77.69714	13:39:00	D	3.61
23	SAGAR	GARHAKOTA	S-NPP	23.79883	79.08302	13:39:00	D	6.47
24	SAGAR	KESALI	S-NPP	23.48628	78.90282	13:39:00	D	3.34
25	SAGAR	REHLI	S-NPP	23.65367	78.99319	13:39:00	D	2.50
26	SAGAR	SAGAR	S-NPP	23.91500	78.61155	13:39:00	D	4.88
27	SEHORE	NASRULLAHGANJ	S-NPP	22.57935	77.14501	13:39:00	D	2.45
28	SEHORE	NASRULLAHGANJ	S-NPP	22.79354	77.39313	13:39:00	D	2.54
29	SEHORE	SEHORE	S-NPP	23.54332	77.15755	13:39:00	D	1.62
30	SEONI	GHANSAUR	S-NPP	22.38462	79.84024	13:39:00	D	3.51
31	SEONI	GHANSAUR	S-NPP	22.58043	79.89688	13:39:00	D	4.81
32	SEONI	KURAI	S-NPP	21.89429	79.47019	13:39:00	D	5.75

33	SEONI	LAKHNADOU	S-NPP	22.51426	79.47265	13:39:00	D	7.54
34	SEONI	SEONI	S-NPP	22.28090	79.56111	13:39:00	D	4.96
35	SEONI	SEONI	S-NPP	22.28149	79.56570	13:39:00	D	4.96
36	SHEOPUR	KARAHAL	S-NPP	25.42204	77.09099	13:39:00	D	4.01
37	SHIVPURI	KHANIYADHAN	S-NPP	24.99622	77.91483	13:39:00	D	1.06
38	SHIVPURI	KOLARAS	S-NPP	24.90699	77.68824	13:39:00	D	3.03
39	SHIVPURI	KOLARAS	S-NPP	25.06644	77.51105	13:39:00	D	8.64
40	SHIVPURI	KOLARAS	S-NPP	25.16271	77.63133	13:39:00	D	2.77
41	SHIVPURI	NARWAR	S-NPP	25.57784	77.99754	13:39:00	D	5.63
42	VIDESHA	KORWAI	S-NPP	24.18401	77.94558	13:39:00	D	3.35
43	VIDESHA	LETERI	S-NPP	23.93829	77.50930	13:39:00	D	2.13
44	WEST NIMAR	KASRAWAD	S-NPP	22.07944	75.68896	13:39:00	D	1.70

The study used data received from following Satellites at NRSC Ground Station/ NASA FIRMS

S. No.	Satellite Name	Sensor	Resolution (meter)	Day / Night Passes
1.	Suomi NPP	VIIRS	375 / 750	Both
2.	Terra	MODIS	1000	Both
3.	Aqua	MODIS	1000	Both

**The rice mask for the Punjab and Haryana were provided by MNCFC, MoA&FW, Govt of India
The kharif crop mask for Delhi, Uttar Pradesh, Rajasthan and Madhya Pradesh were provided by NRSC**

Study Team

ICAR – HQ	Dr.S.N. Jha	DDG (AG. ENGG.)	ddgengg@icar.org.in
	Dr. Rajbir Singh	DDG (AG. EXTN)	ddgextn.icar@gov.in
ICAR - IARI	Dr V.K. Sehgal	Principal & Nodal Scientist	iaricreams@gmail.com
	Dr Rajkumar Dhakar	Senior Scientist	raidhakar.iari@gmail.com
	Mr Mohd Jahangir	YP-I (FASAL 2.0)	mjahangir198@gmail.com
ICAR - ATARI	Dr.Parvender Sheoran	Director ATARI (Zone-I) Ludhiana	zcu1ldh@gmail.com
	Dr. J.P. Mishra	Director ATARI (Zone-II) Jodhpur	jp.mishra67@gov.in
	Dr. S.K. Dubey	Director ATARI (Zone-III) Kanpur	zpdicarkanpur@gmail.com
ICAR - IASRI	Dr Rajender Parsad	Director, IASRI	rajender.parsad@icar.org.in

**GIS Maps of fire events can be visualized online on ICAR KRISHI Geoportal website <https://creams.iari.res.in/geokrishi/>
(Part of KRISHI Portal initiative)**
