



**Bulletin
No. 77**

**Events Date:
30-Nov-2022**

**Issued on:
30-Nov-2022**



MONITORING PADDY RESIDUE BURNING IN INDIA USING SATELLITE REMOTE SENSING DURING 2022



Prepared by:

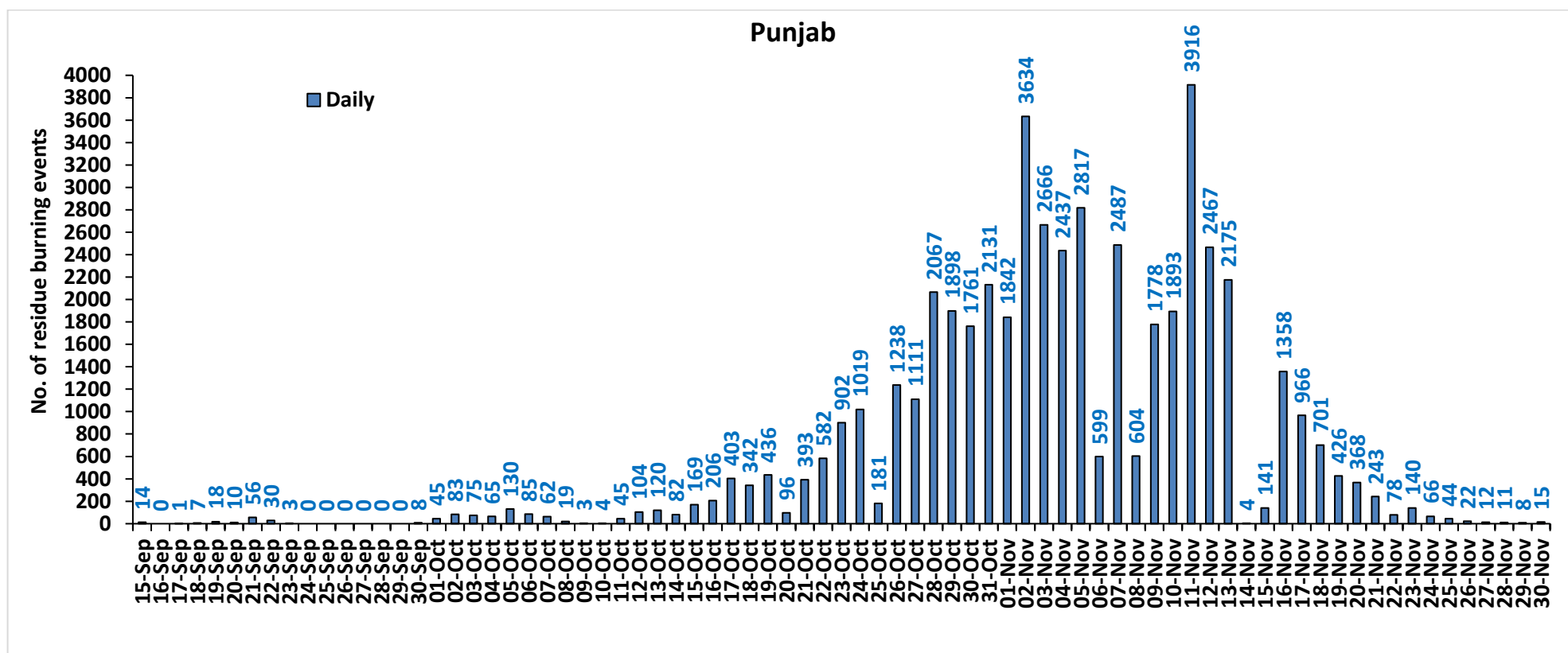
**Consortium for Research on Agroecosystem Monitoring and Modeling from Space (CREAMS) Laboratory,
Division of Agricultural Physics, ICAR – Indian Agricultural Research Institute, New Delhi – 110012**

<http://creams.iari.res.in>

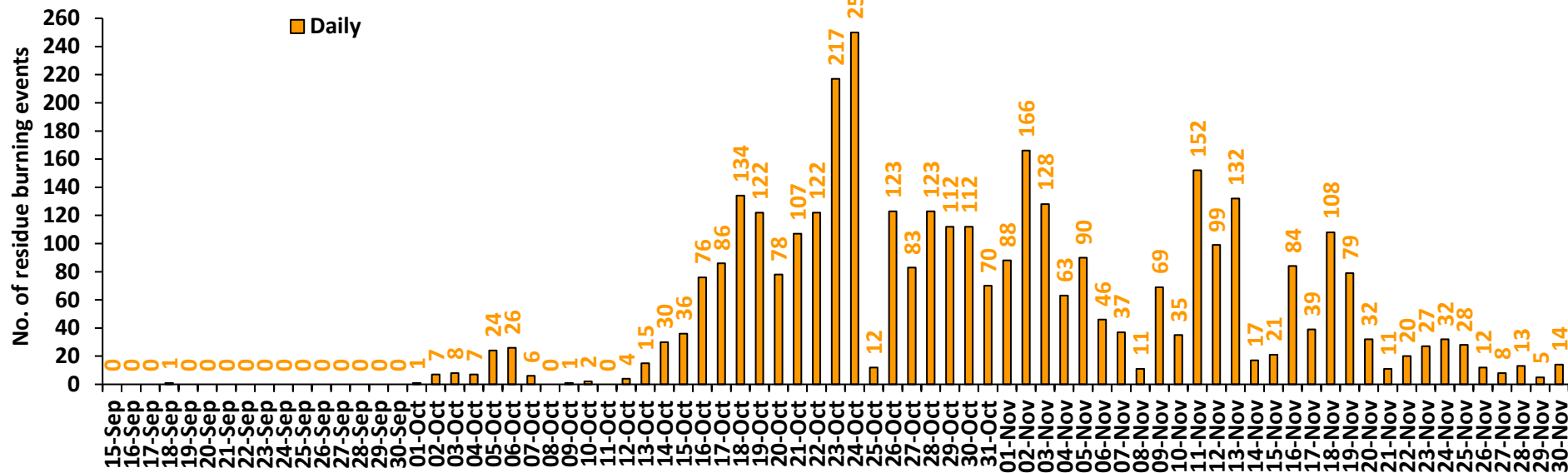
Highlights for 30-Nov-2022

- The active fire events due to rice residue burning were monitored using satellite remote sensing, following the "Standard Protocol for Estimation of Crop Residue Burning Fire Events using Satellite Data".
- Satellites detected **361** residue burning events in the six study States on 30-Nov-2022.
- The state wise events detected on 30-Nov-2022 were **15** in Punjab, **14** in Haryana, **180** in UP, **0** in Delhi, **1** in Rajasthan and **151** in MP.
- Total **69615** burning events were detected in the six states between 15-Sept-2022 and 30-Nov-2022, which are distributed as **49922**, **3661**, **3017**, **10,1268** and **11737** in Punjab, Haryana, UP, Delhi, Rajasthan and MP respectively.

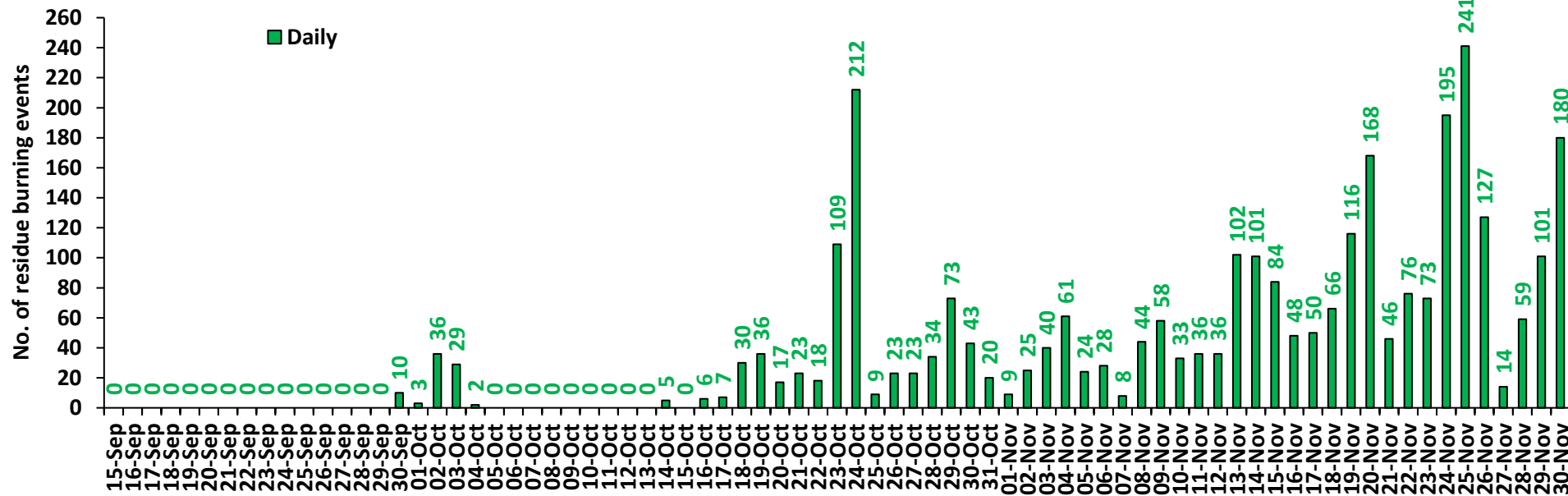
Temporal distribution of rice residue burning events for the study States in 2022



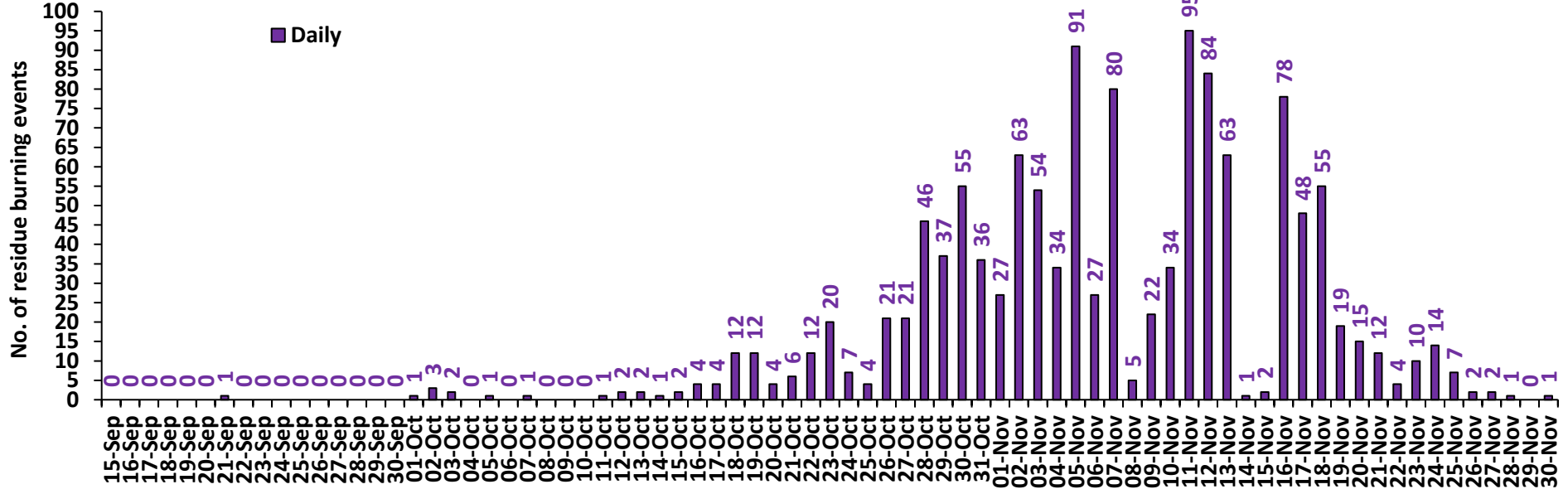
Haryana



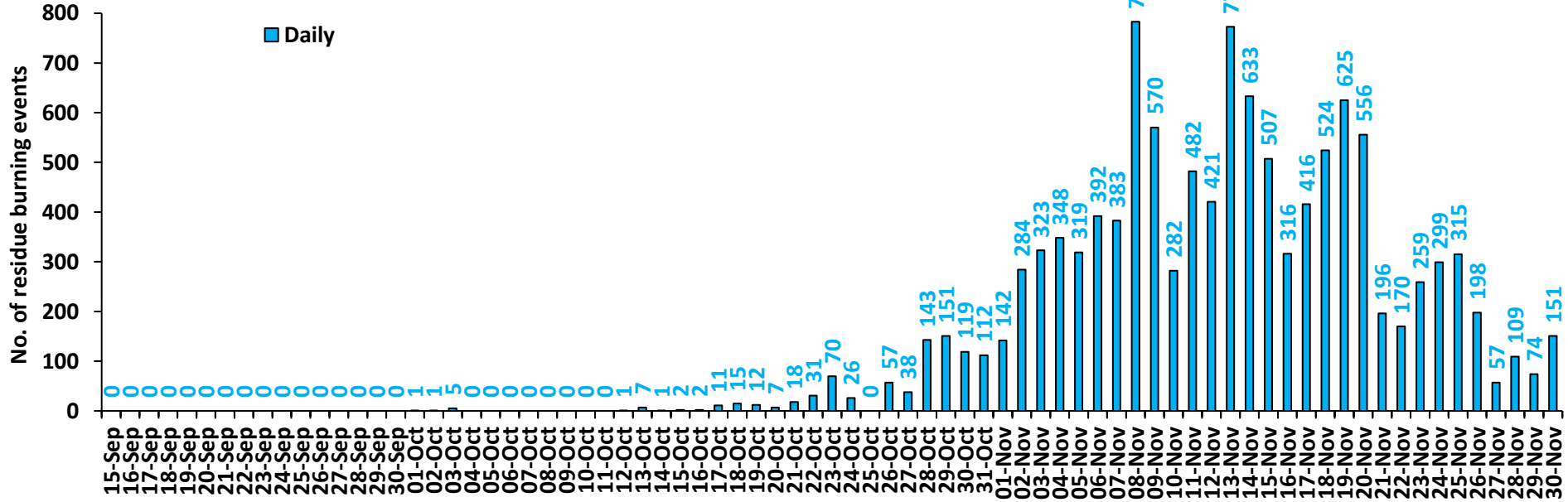
Uttar Pradesh



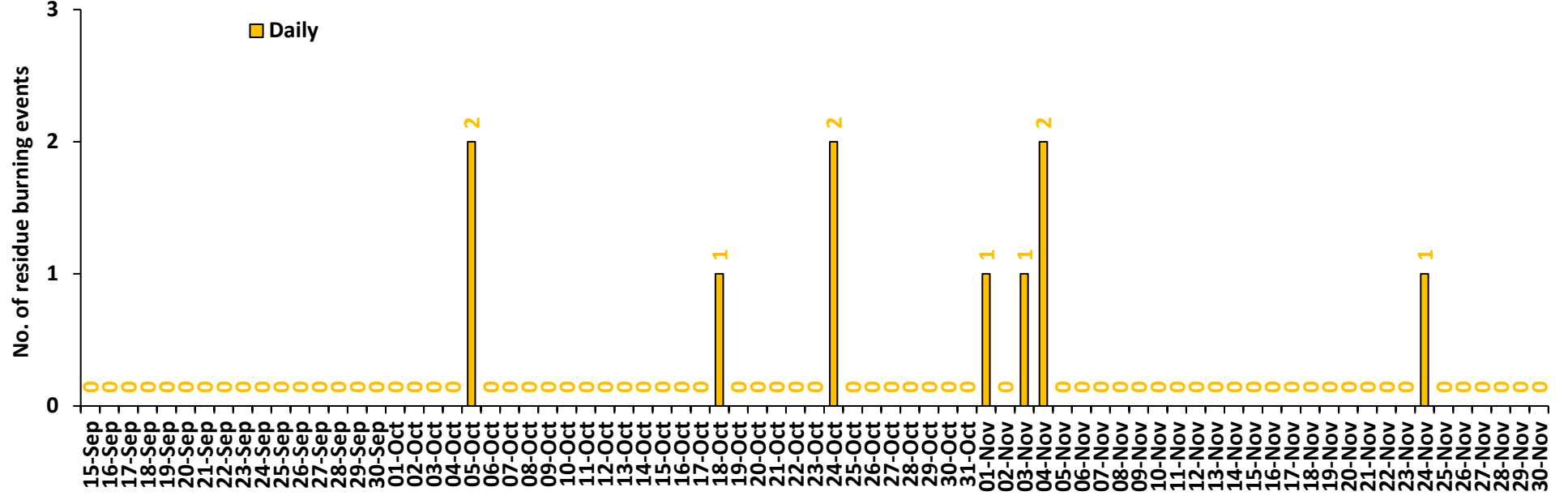
Rajasthan



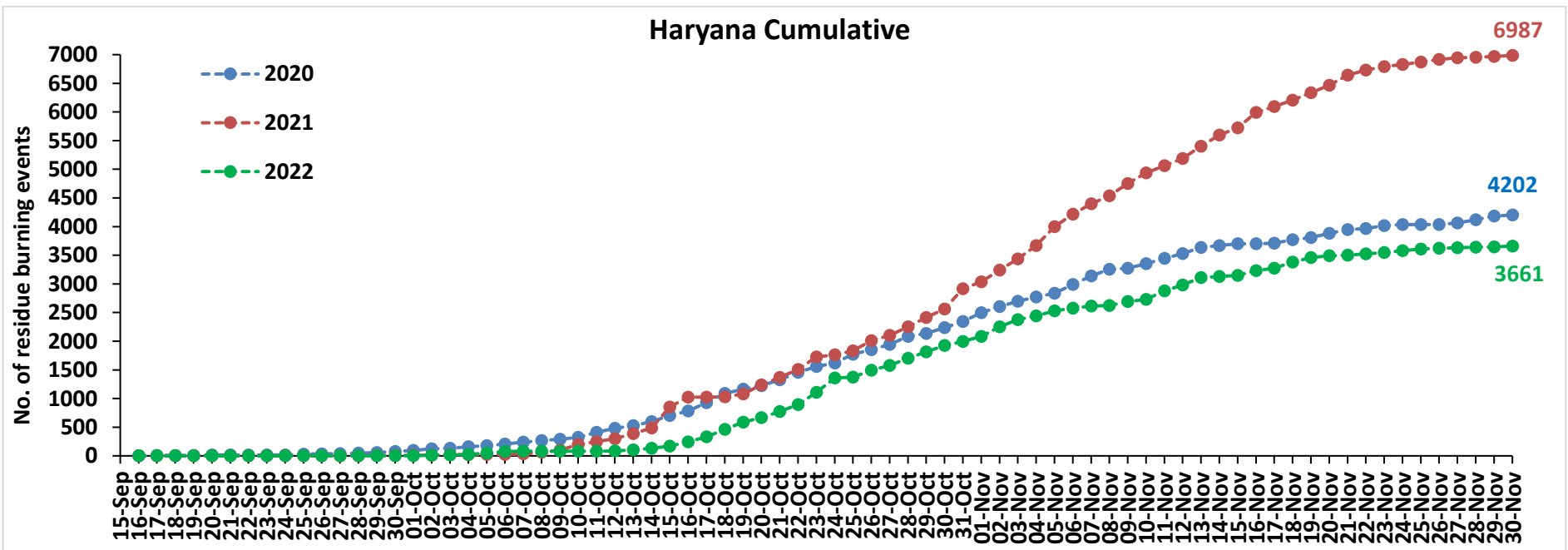
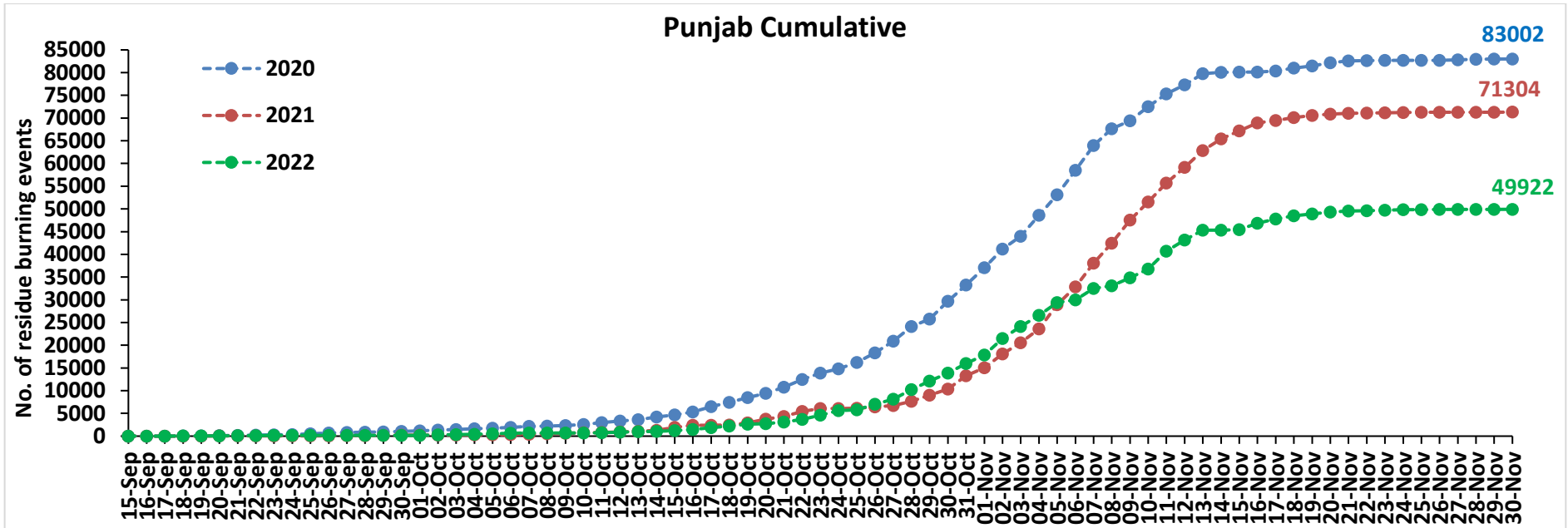
Madhya Pradesh



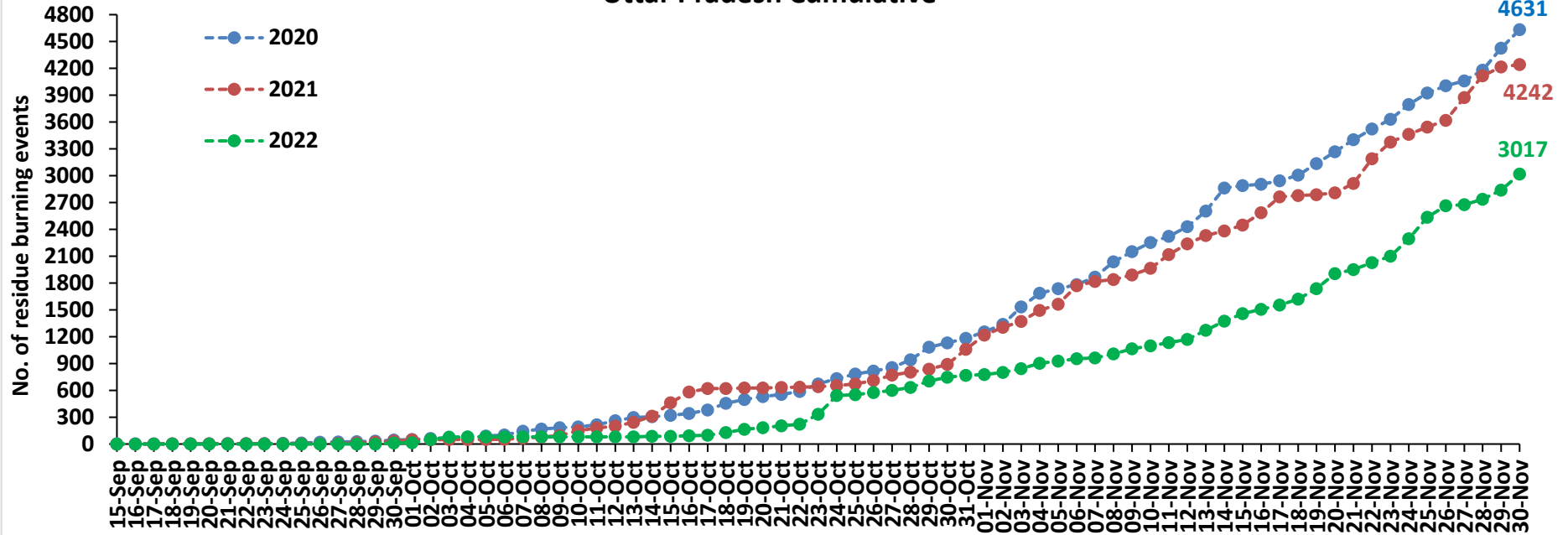
Delhi



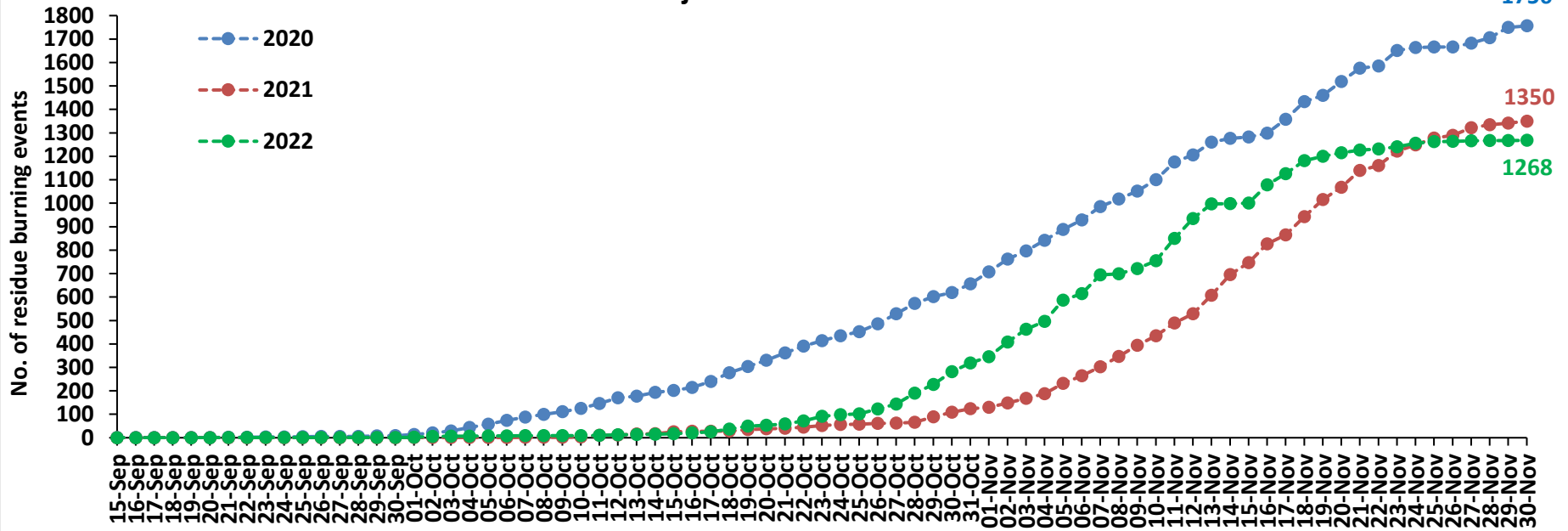
Comparison of residue burning events in current year (2022) with previous years (2020 and 2021) for the study States



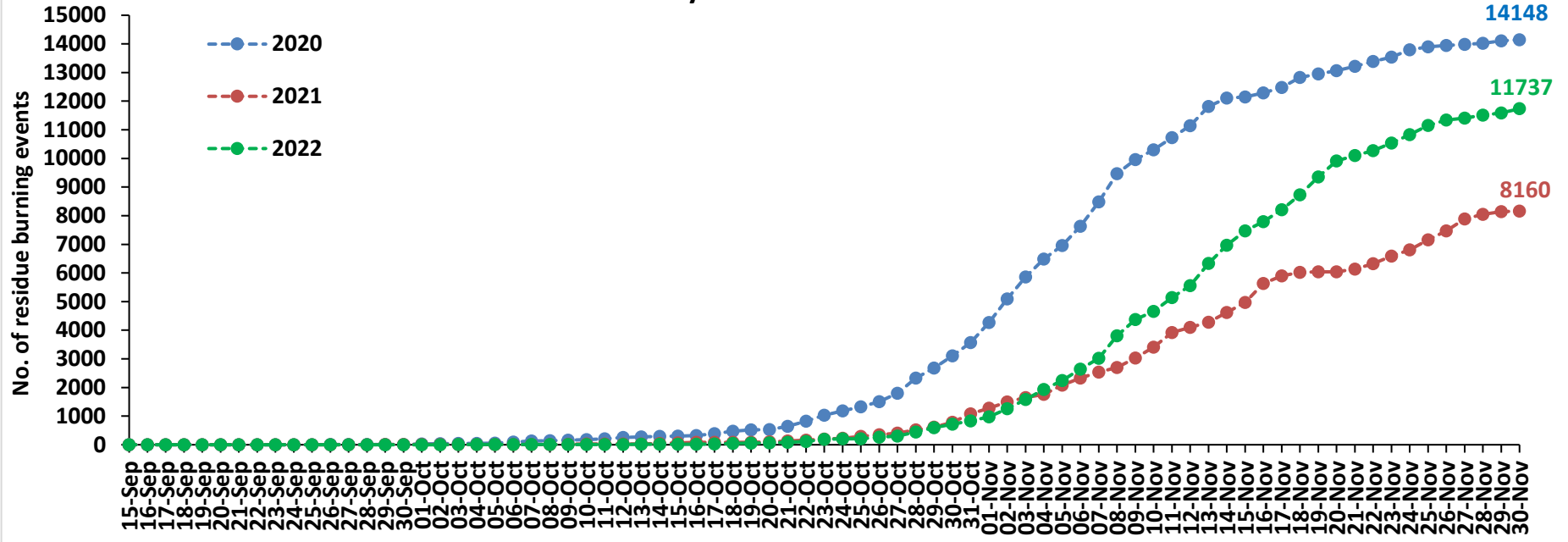
Uttar Pradesh Cumulative



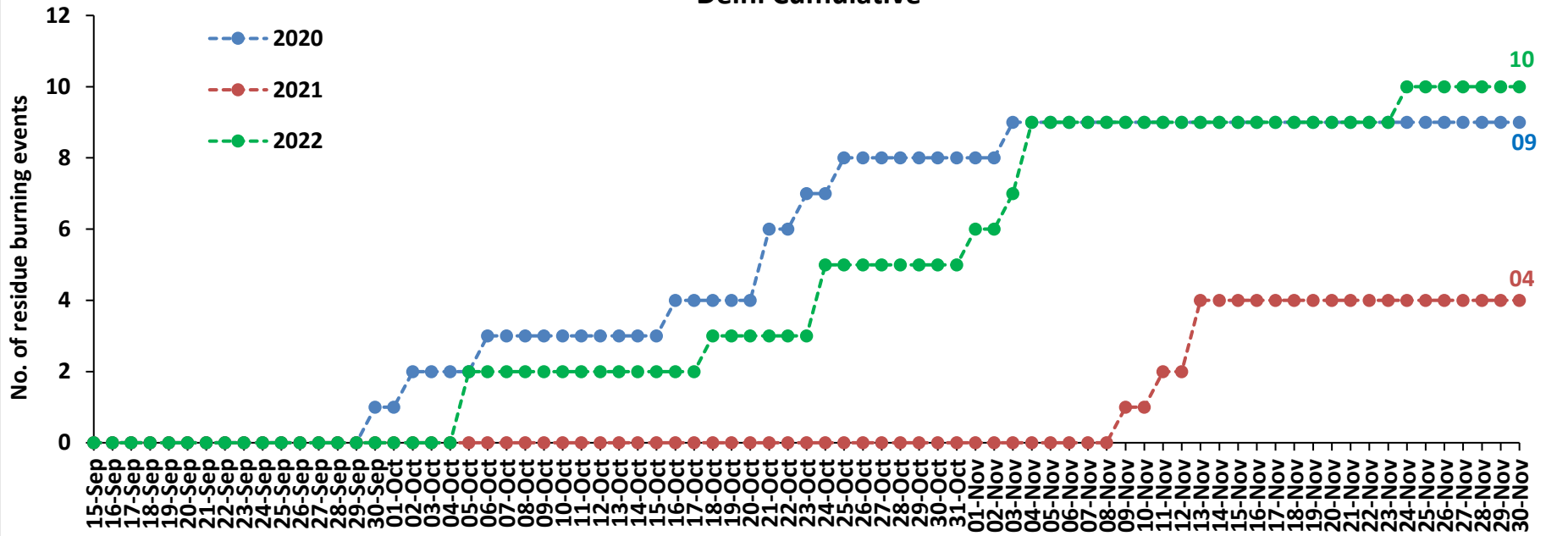
Rajasthan Cumulative



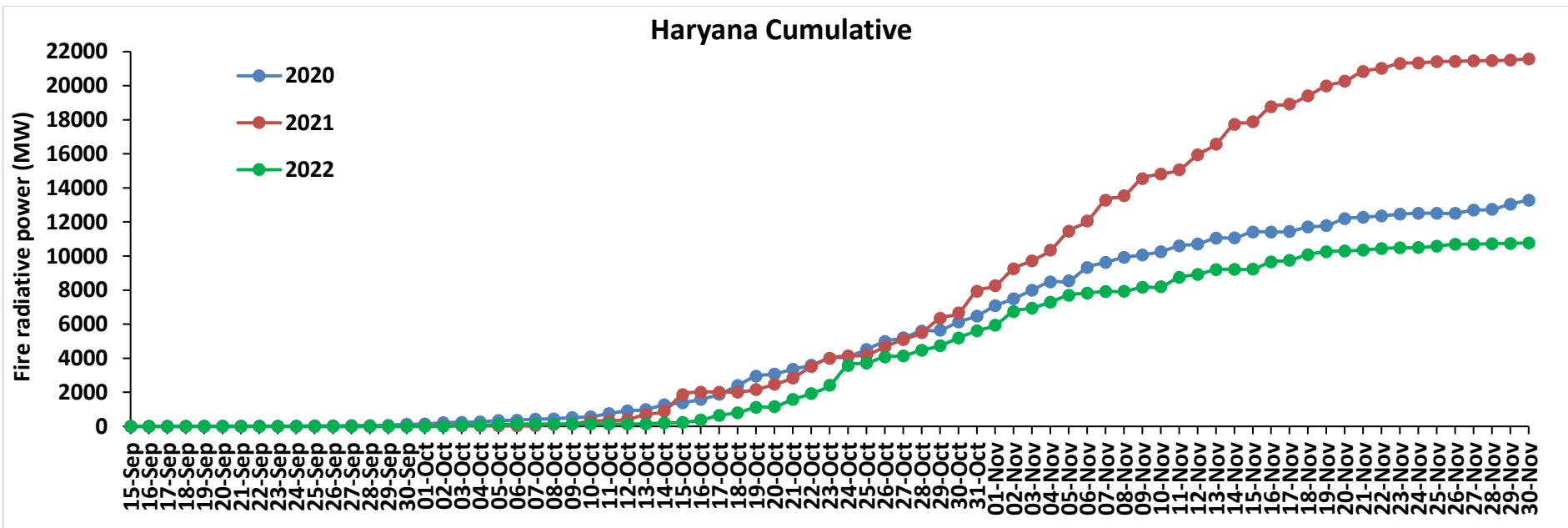
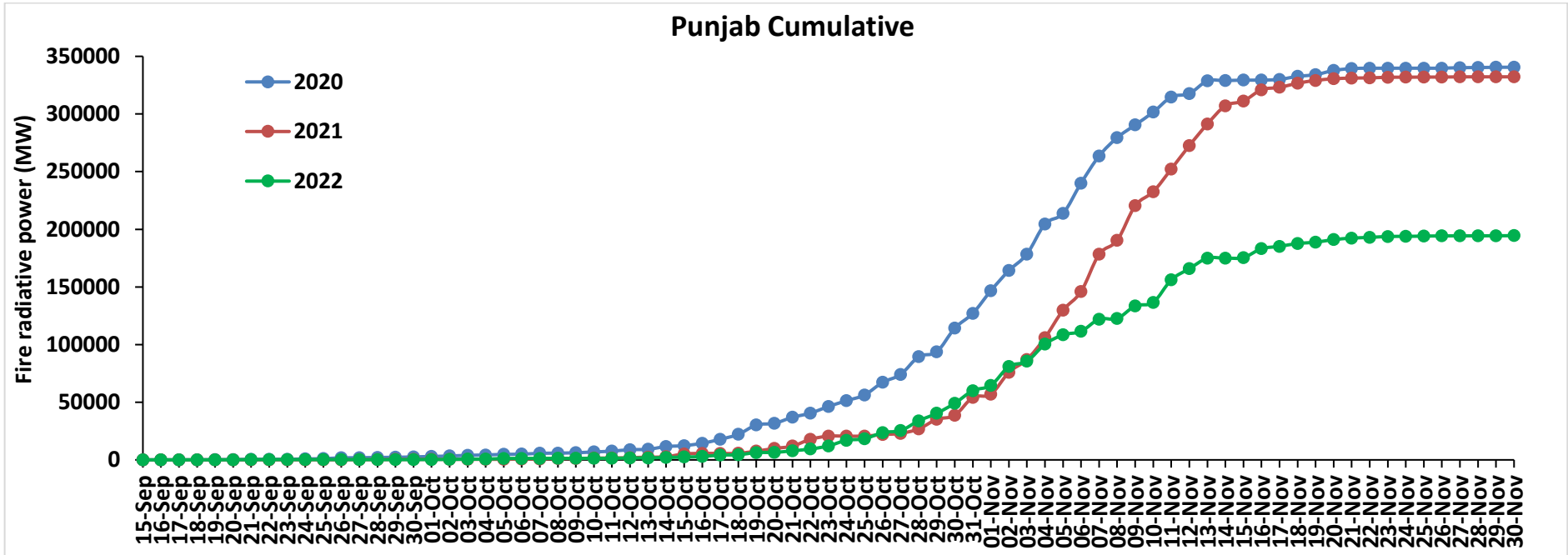
Madhya Pradesh Cumulative



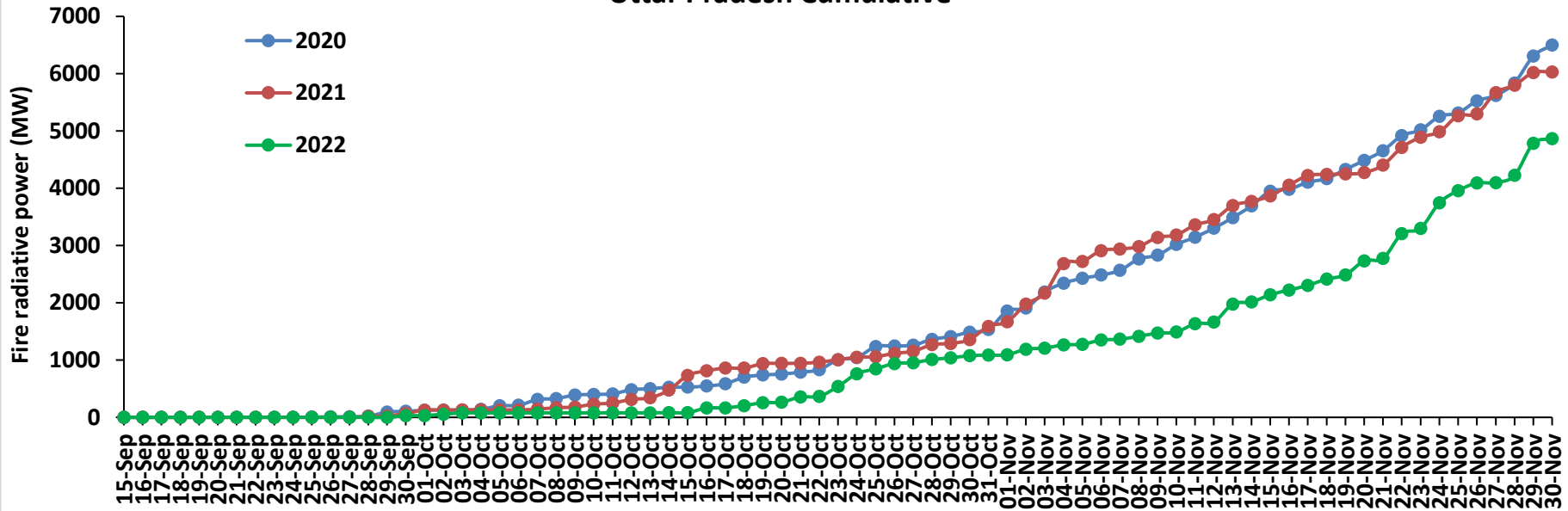
Delhi Cumulative



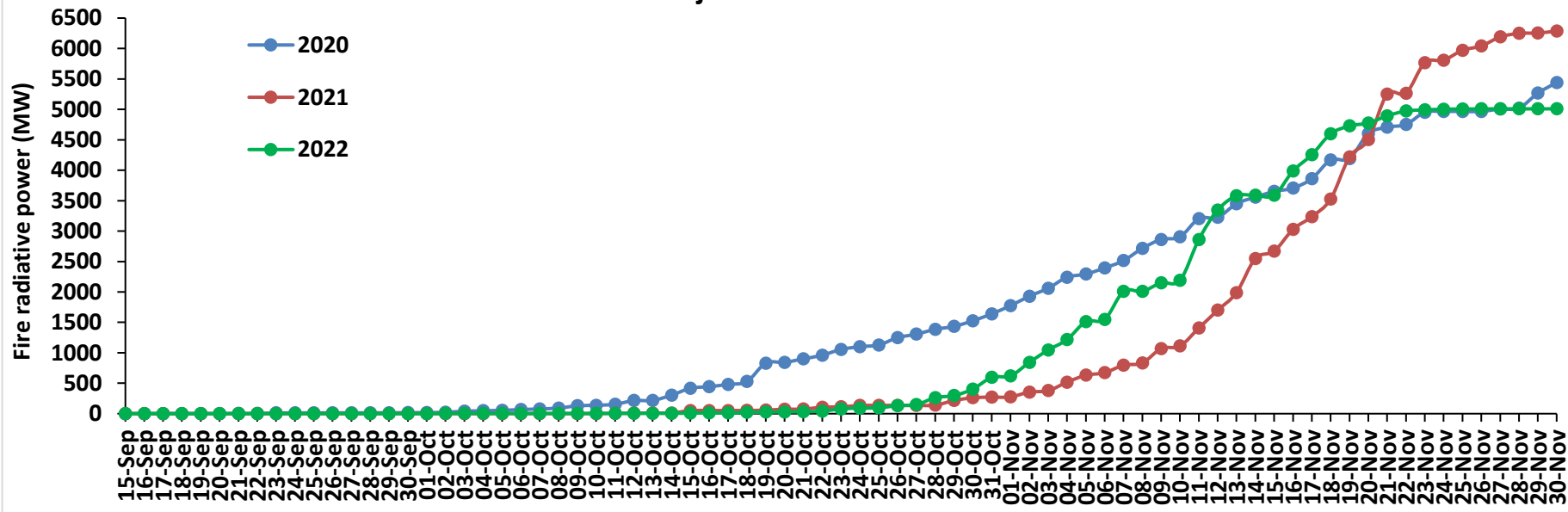
Comparison of residue burning fire power in current year (2022) with previous years (2021 and 2020) for the study States



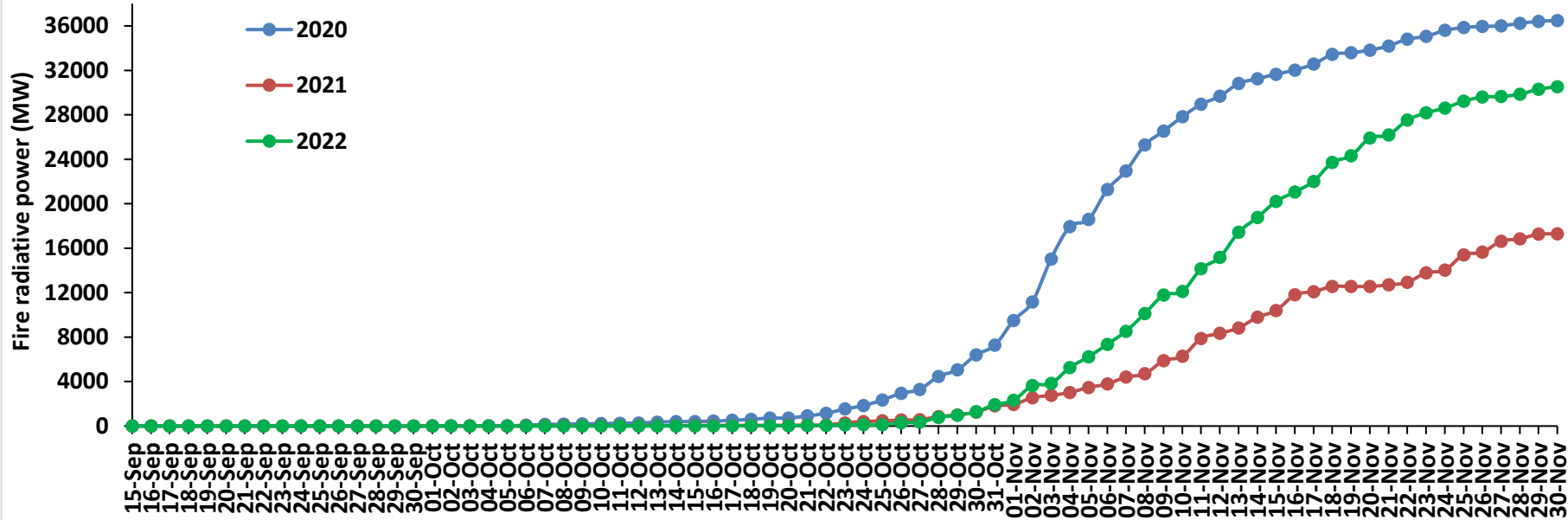
Uttar Pradesh Cumulative



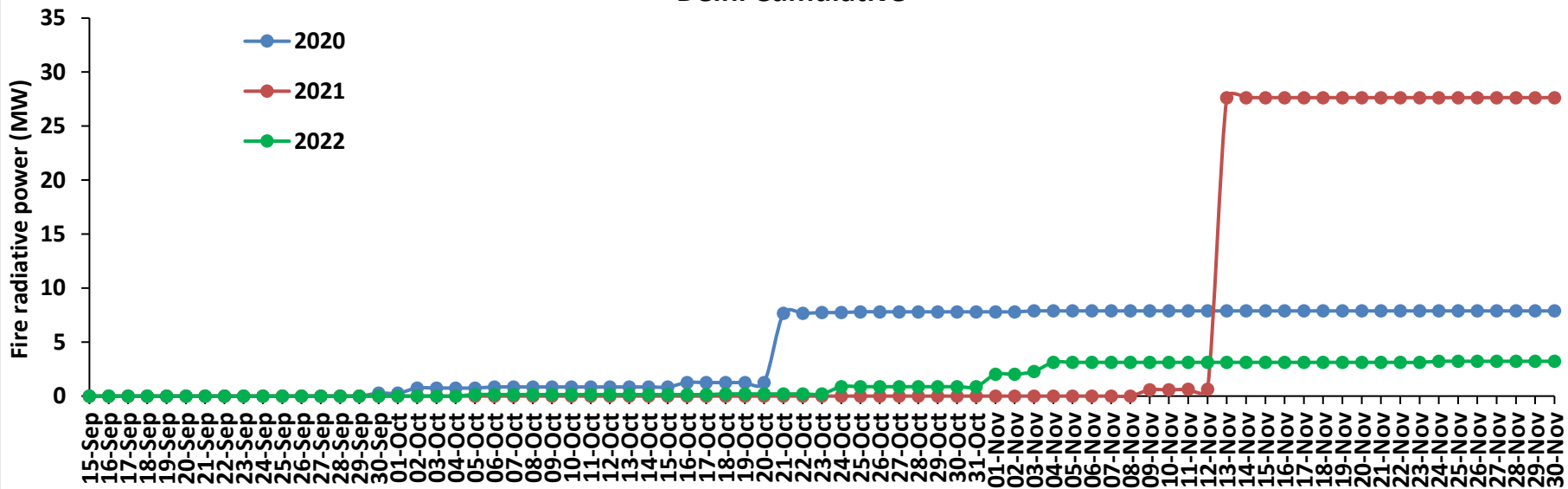
Rajasthan Cumulative



Madhya Pradesh Cumulative

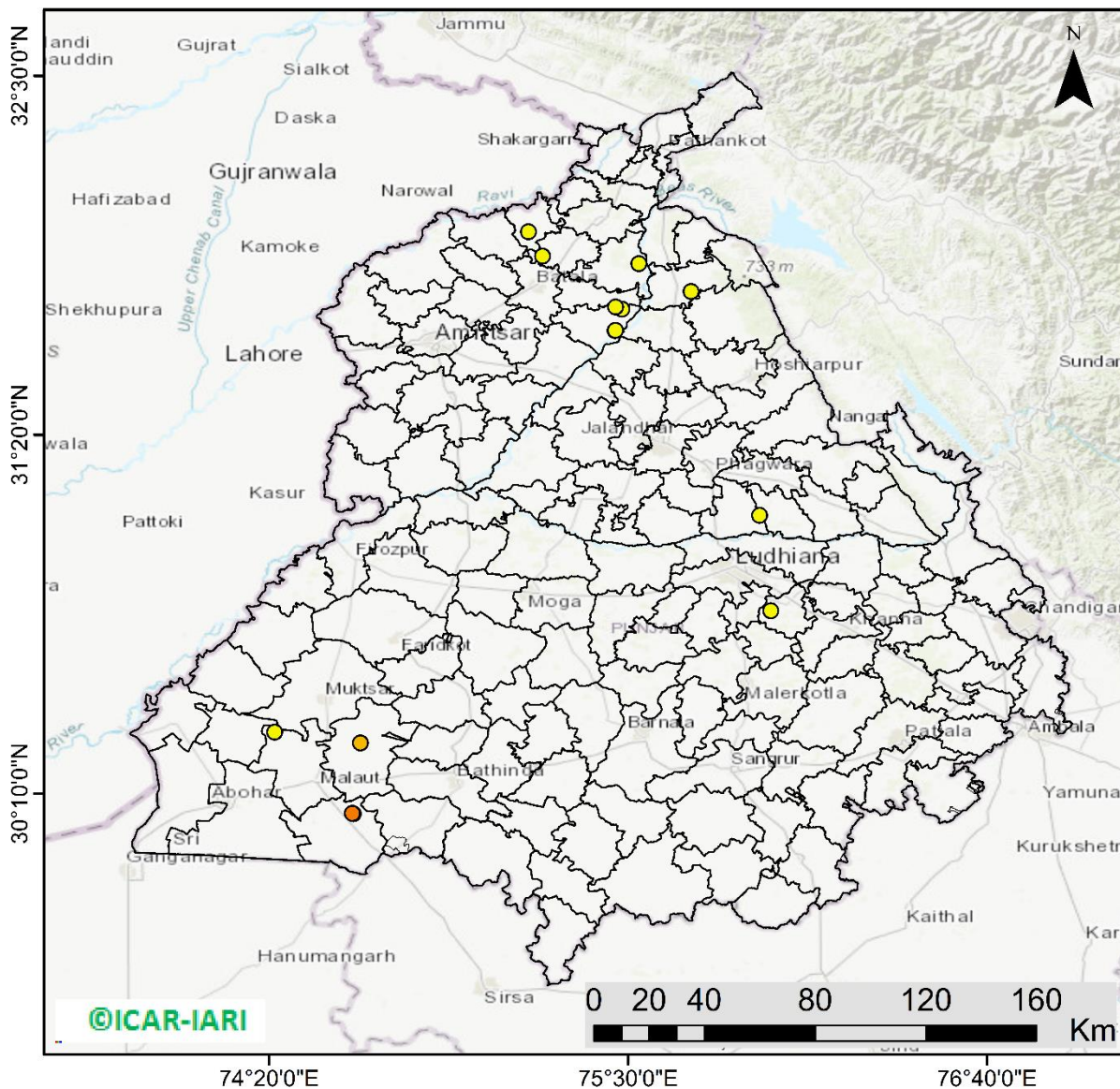


Delhi Cumulative



Punjab

RICE RESIDUE BURNING IN PUNJAB



15 burning events detected in Punjab during (30th Nov 2022)

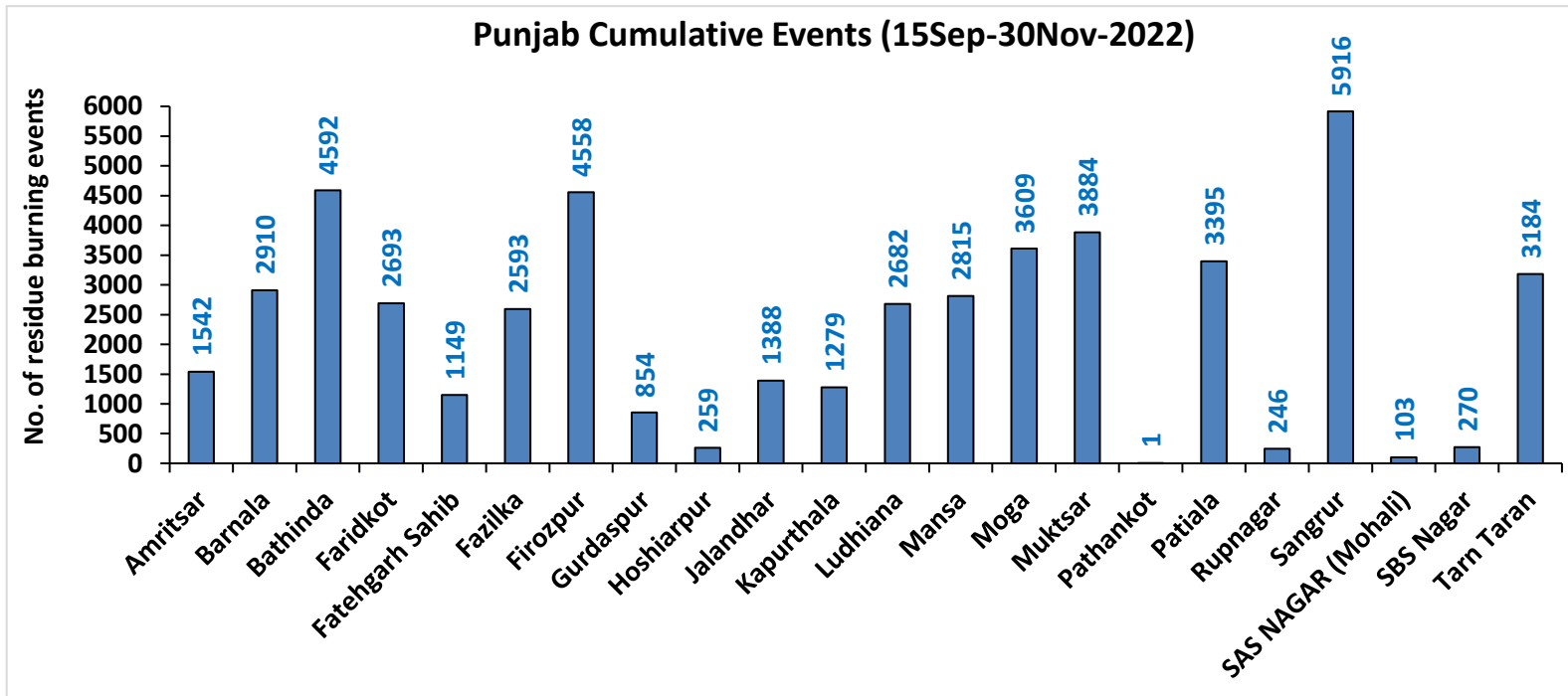
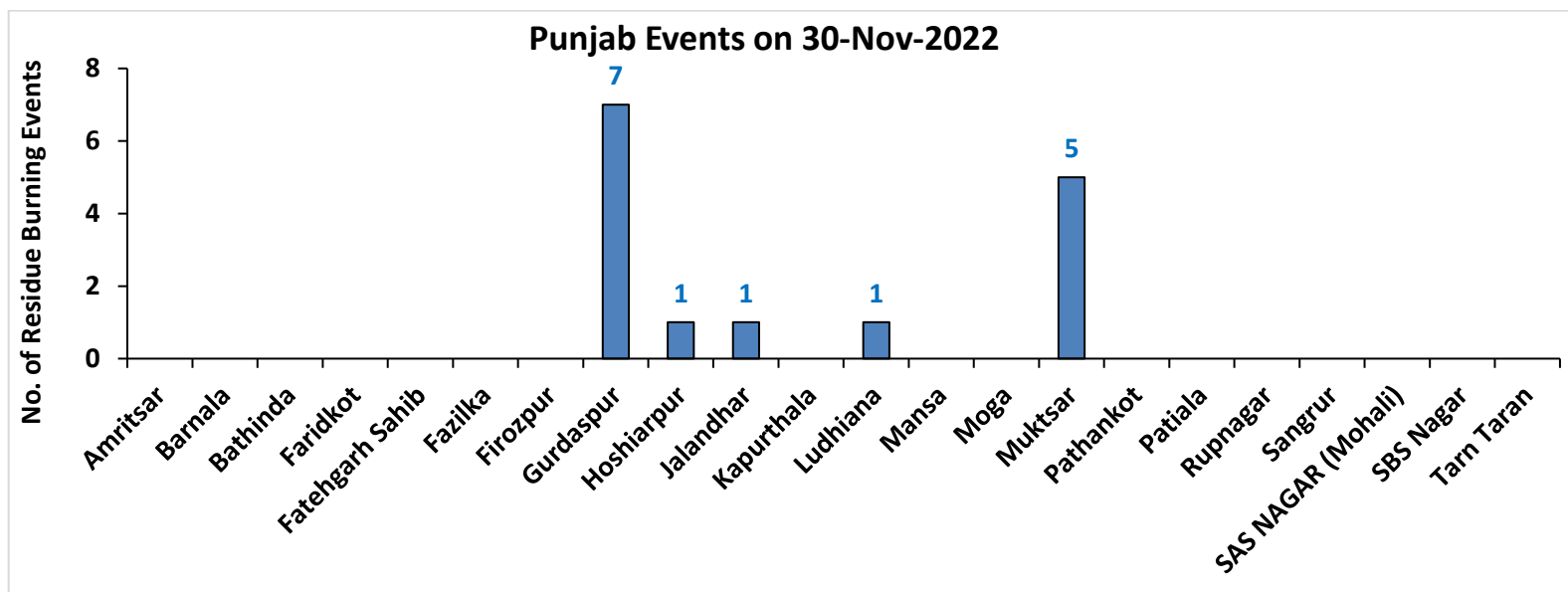
Fire Intensity (W/m²)

- 0 - 5
- 6 - 10
- 11 - 15
- 16 - 20
- >20



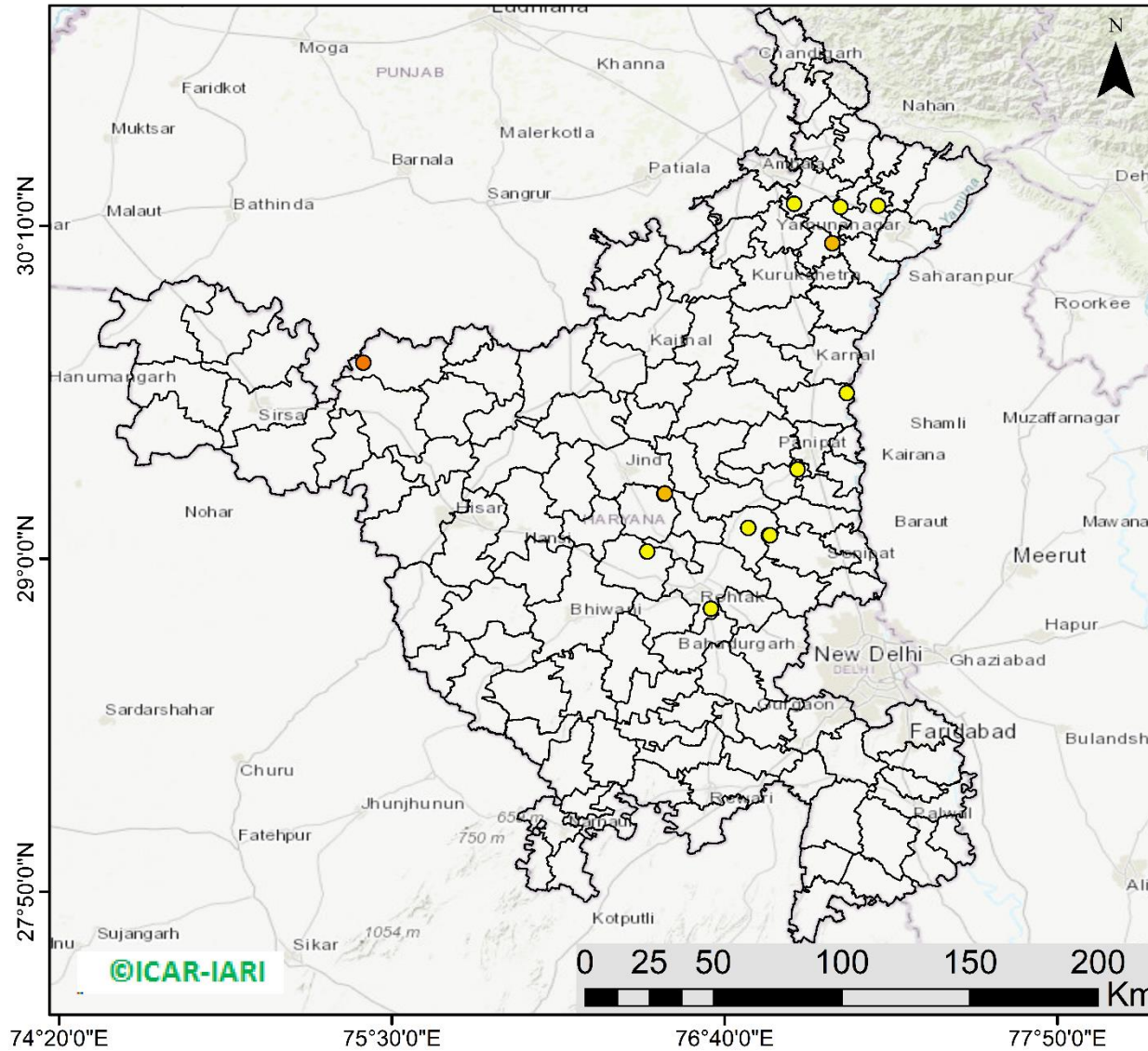
<http://geoportal.icar.gov.in:8080/geoexplorer/composer/>

District-wise cumulative number of residues burning events in Punjab (15Sep- 30Nov-2022)



Haryana

RICE RESIDUE BURNING IN HARYANA



14 burning events detected in Haryana on (30th Nov 2022)

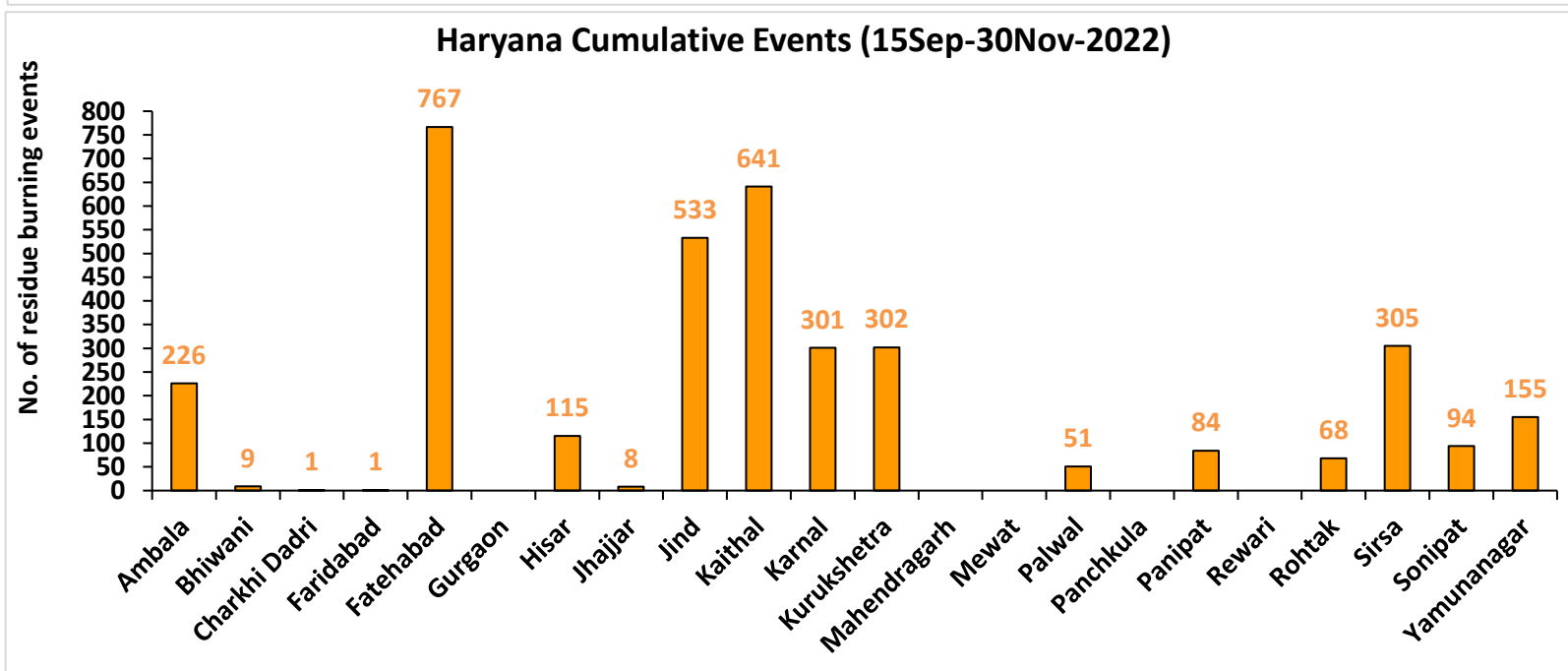
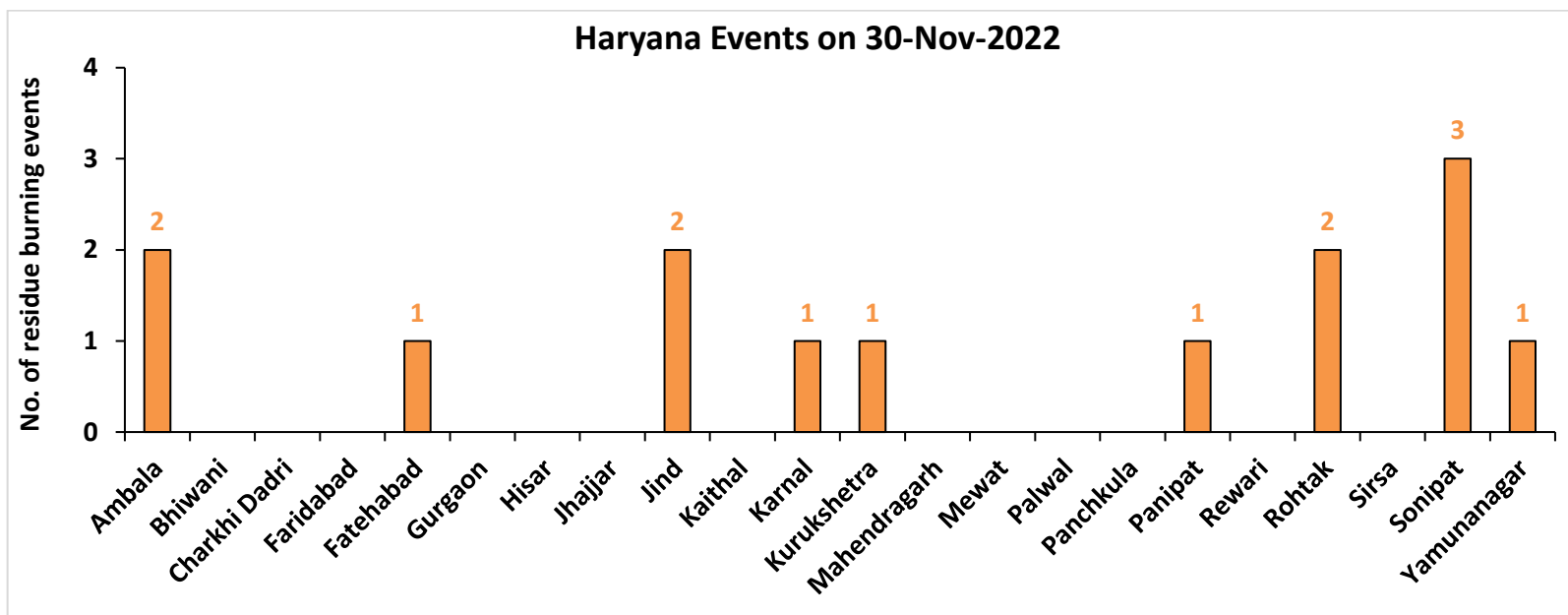
Fire Intensity (W/m²)

- 0 - 5
- 6 - 10
- 11 - 15
- 16 - 20
- >20



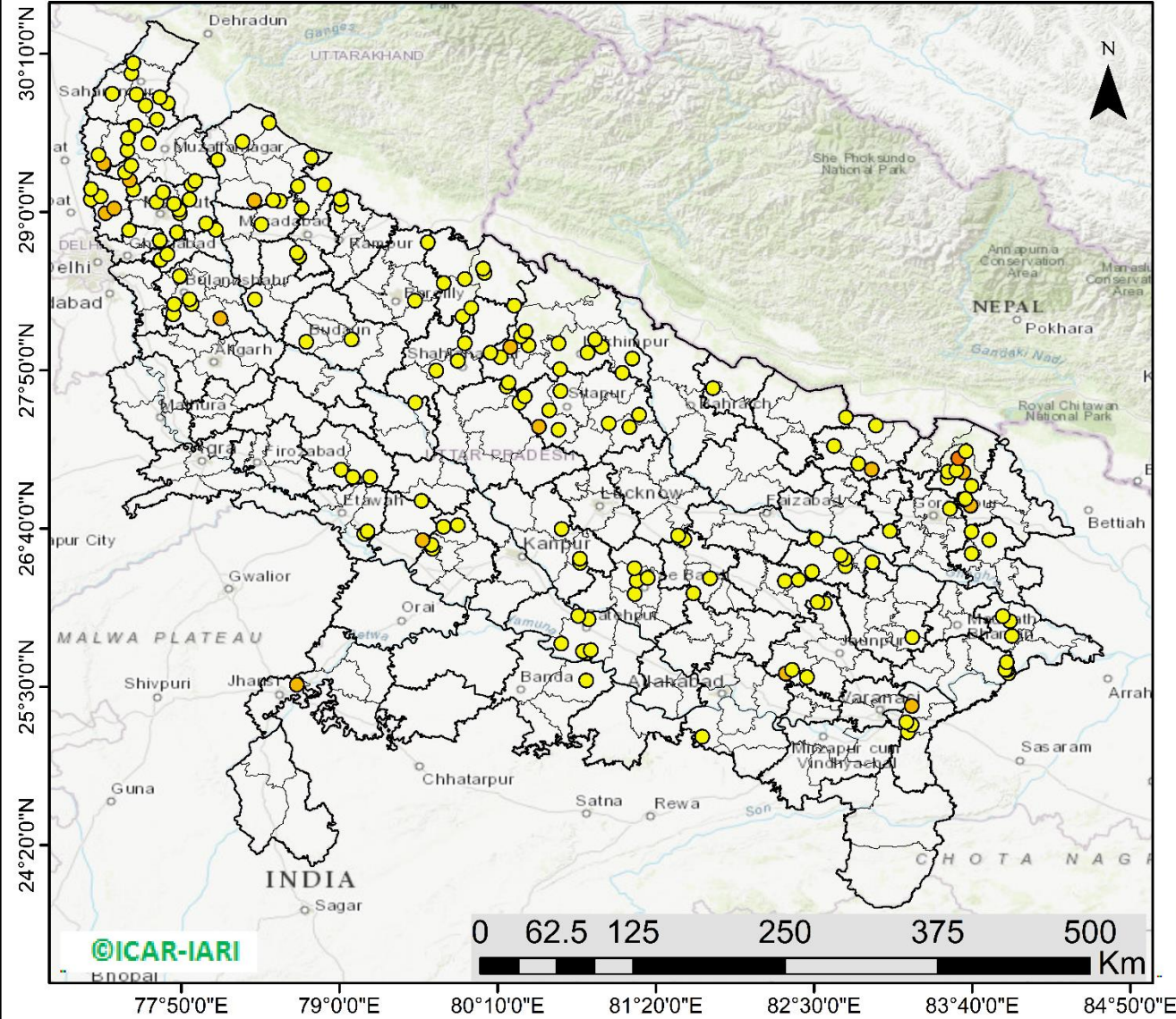
<http://geoportal.icar.gov.in:8080/geoexplorer/composer/>

District-wise cumulative number of residues burning events in Haryana (15Sep- 30Nov-2022)



Uttar Pradesh

RICE RESIDUE BURNING IN UTTAR PRADESH



180 burning events detected in Uttar Pradesh on (30th Nov 2022)

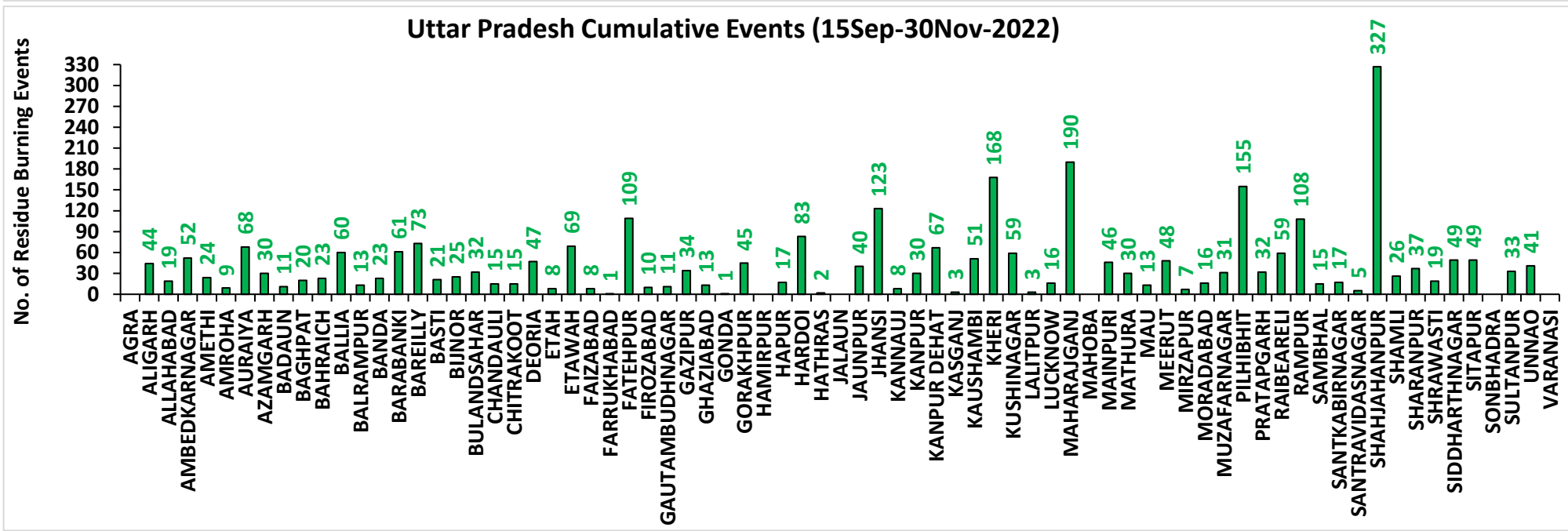
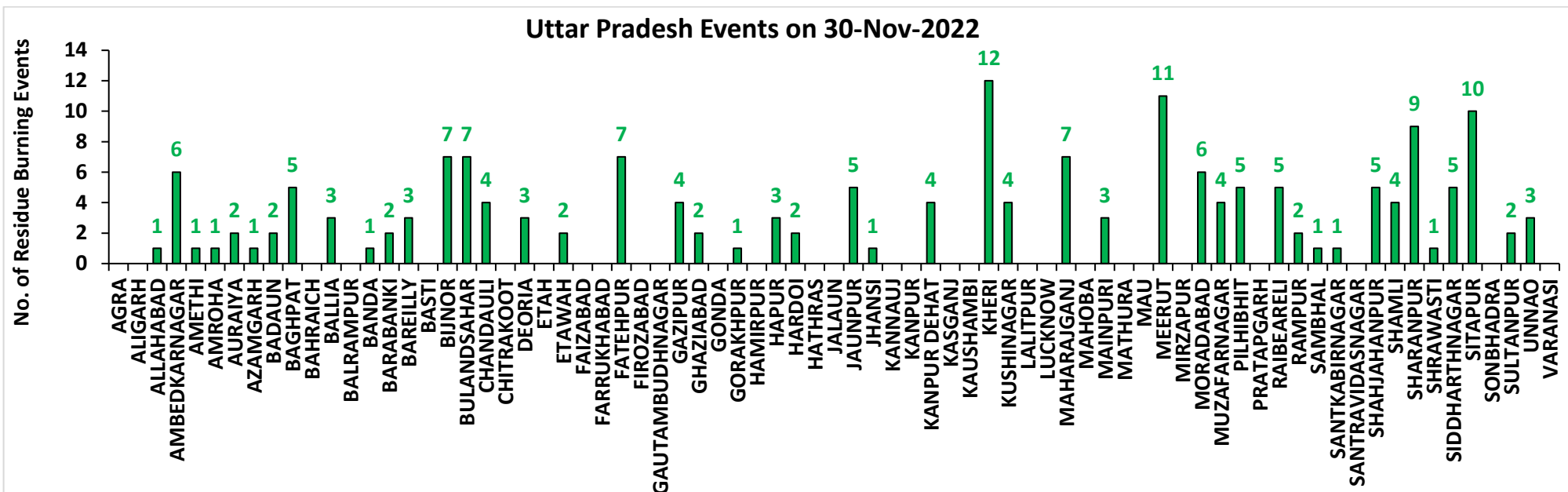
Fire Intensity (W/m2)

- 0 - 5
- 6 - 10
- 11 - 15
- 16 - 20
- >20



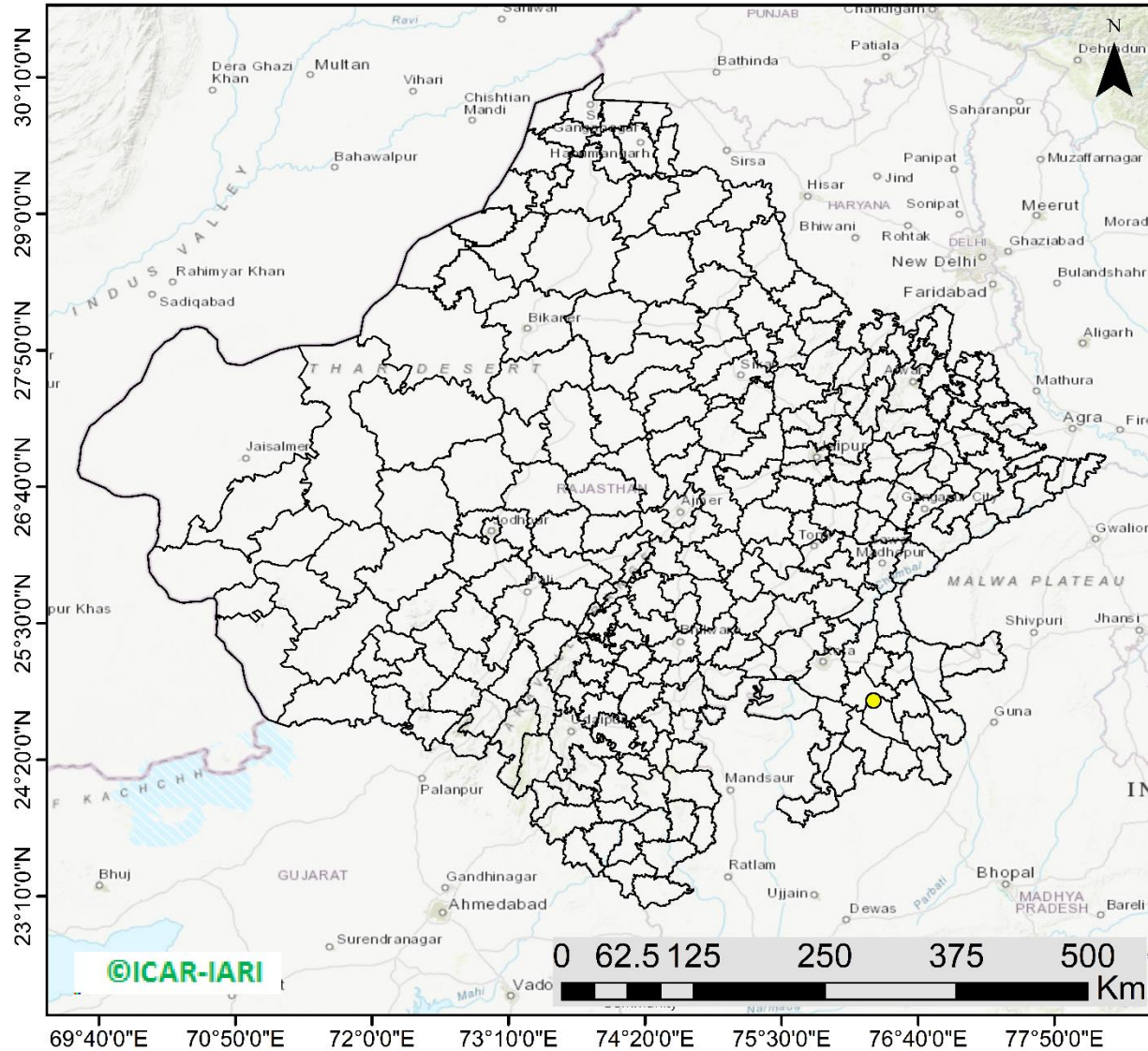
<http://geoportal.icar.gov.in:8080/geoexplorer/composer/>

District-wise cumulative number of residues burning events in Uttar Pradesh (15Sep- 30Nov-2022)



Rajasthan

RICE RESIDUE BURNING IN RAJASTHAN



01 burning events
detected in Rajasthan on
(30th Nov 2022)

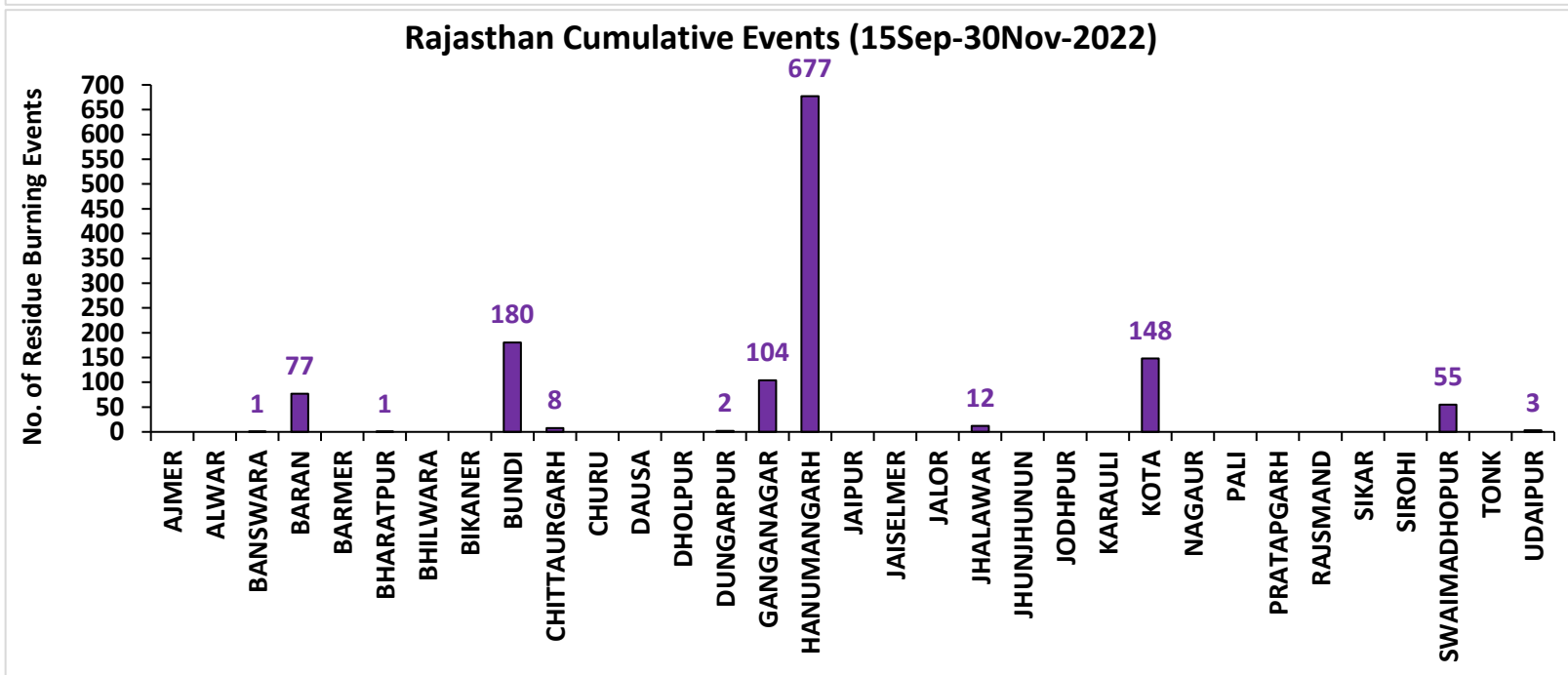
Fire Intensity (W/m²)

- 0 - 5
- 6 - 10
- 11 - 15
- 16 - 20
- >20



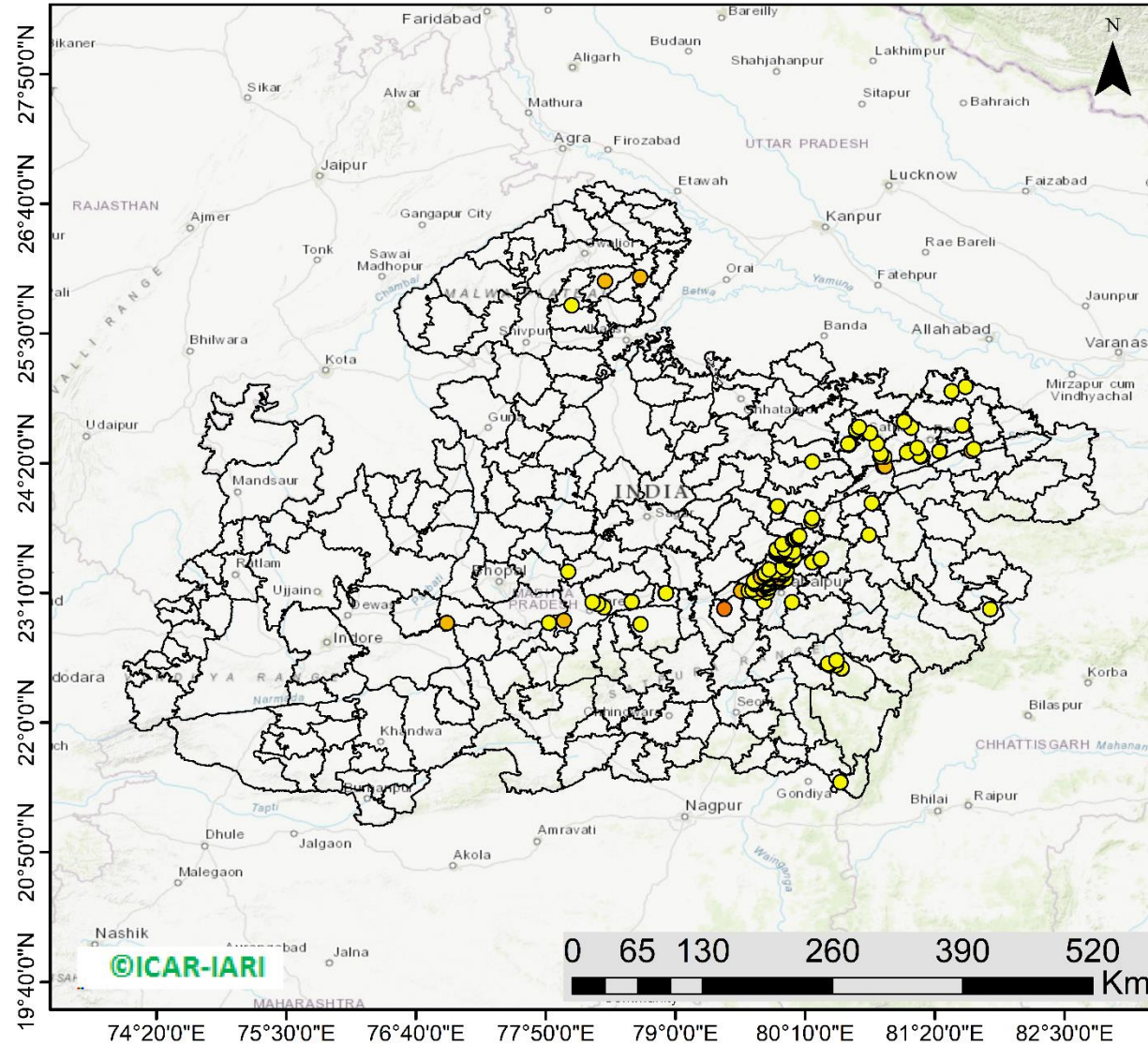
<http://geoportal.icar.gov.in:8080/geoexplorer/composer/>

District-wise cumulative number of residues burning events in Rajasthan (15Sep- 30Nov-2022)



Madhya Pradesh

RICE RESIDUE BURNING IN MADHYA PRADESH



151 burning events
detected in MP on
(30th Nov 2022)

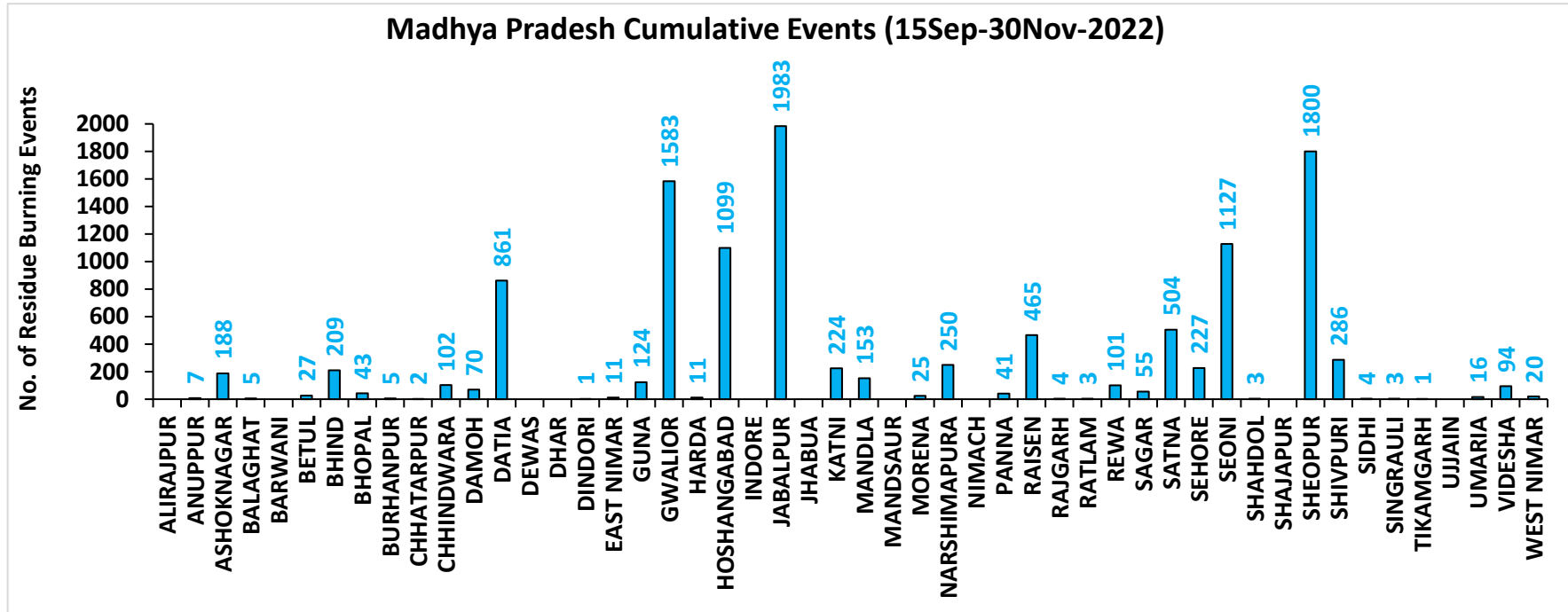
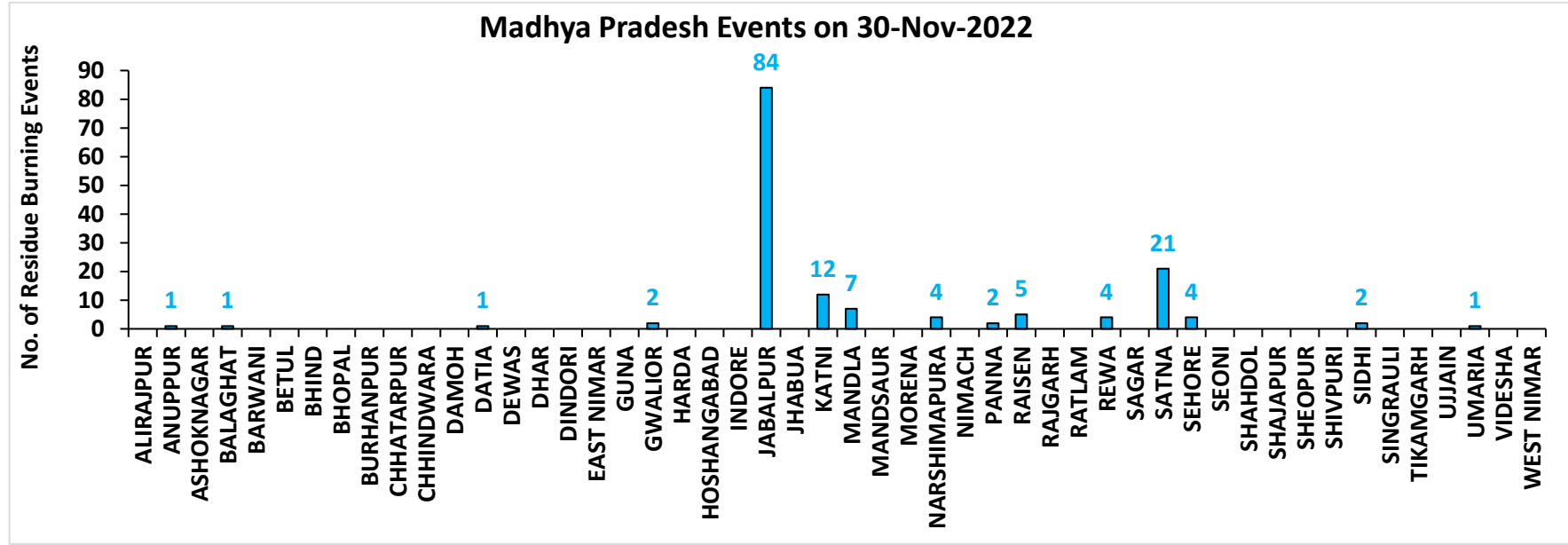
Fire Intensity (W/m²)

- 0 - 5
- 6 - 10
- 11 - 15
- 16 - 20
- >20



<http://geoportal.icar.gov.in:8080/geoexplorer/composer/>

District-wise cumulative number of residues burning events in Madhya Pradesh (15Sep- 30Nov-2022)



District-wise cumulative number of residues burning events detected in 2020 ,2021 and 2022
(Period: 15 September-30 November)

(a) Punjab

District	15 Sep-30 Nov 2022		
	2020	2021	2022
Amritsar	3067	2174	1542
Barnala	5342	4326	2910
Bathinda	5239	4481	4592
Faridkot	4734	3953	2693
Fatehgarh Sahib	1536	1724	1149
Fazilka	2616	2389	2593
Firozpur	8525	6289	4558
Gurdaspur	2132	1396	854
Hoshiarpur	388	331	259
Jalandhar	1951	2548	1388
Kapurthala	1886	1798	1279
Ludhiana	5065	5817	2682
Mansa	3786	3217	2815
Moga	7421	6515	3609
Muktsar	5072	4598	3884
Pathankot	13	6	1
Patiala	6433	5426	3395
Rupnagar	205	307	246
Sangrur	11727	9389	5916
SAS NAGAR (Mohali)	127	148	103
SBS Nagar	132	355	270
Tarn Taran	5605	4117	3184
Total	83002	71304	49922

(b) Haryana

District	15 Sep-30 Nov 2022		
	2020	2021	2022
AMBALA	346	308	226
BHIWANI	5	12	9
CHARKHI DADRI	0	0	1
FARIDABAD	1	3	1
FATEHABAD	880	1479	767
GURGAON	0	0	0
HISAR	56	245	115
JHAJJAR	6	7	8
JIND	347	919	533
KAITHAL	840	1157	641
KARNAL	592	955	301
KURUKSHETRA	406	538	302
MAHENDRAGARH	0	0	0
MEWAT	0	0	0
PALWAL	46	115	51
PANCHKULA	0	0	0
PANIPAT	55	254	84
REWARI	0	0	0
ROHTAK	50	78	68
SIRSA	357	551	305
SONIPAT	72	219	94
YAMUNANAGAR	143	147	155
Total	4202	6987	3661

(c) Uttar Pradesh

District	15 Sep-30 Nov 2022										
	2020	2021	2022	GAUTAMBUDHNAGAR	16	19	11	MUZAFARNAGAR	66	41	31
AGRA	7	0	0	GAZIPUR	41	30	34	PILHIBHIT	36	224	155
ALIGARH	114	40	44	GHAZIABAD	29	17	13	PRATAPGARH	46	43	32
ALLAHABAD	56	46	19	GONDA	14	13	1	RAIBEARELI	49	104	59
AMBEDKARNAGAR	55	40	52	GORAKHPUR	47	38	45	RAMPUR	167	193	108
AMETHI	15	33	24	HAMIRPUR	7	0	0	SAMBHAL	22	22	15
AMROHA	24	10	9	HAPUR	42	22	17	SANTKABIRNAGAR	33	24	17
AURAIYA	105	81	68	HARDOI	112	119	83	SANTRAVIDASNAGAR	5	6	5
AZAMGARH	68	43	30	HATHRAS	0	0	2	SHAHJAHANPUR	161	423	327
BADAUN	15	19	11	JALAUN	51	0	0	SHAMLI	52	50	26
BAGHPAT	28	24	20	JAUNPUR	59	44	40	SAHARANPUR	110	92	37
BAHRAICH	110	60	23	JHANSI	380	173	123	SHRAWASTI	48	45	19
BALLIA	174	88	60	KANNAUJ	34	6	8	SIDDHARTHANAGAR	77	140	49
BALRAMPUR	69	21	13	KANPUR	45	39	30	SITAPUR	84	56	49
BANDA	50	15	23	KANPUR DEHAT	102	53	67	SONBHADRA	1	2	0
BARABANKI	36	73	61	KASGANJ	3	2	3	SULTANPUR	15	40	33
BAREILLY	95	69	73	KAUSHAMBI	101	92	51	UNNAO	52	34	41
BASTI	58	53	21	KHERI	214	186	168	VARANASI	2	5	0
BIJNOR	57	55	25	KUSHINAGAR	88	61	59	Total	4631	4242	3017
BULANDSAHAR	75	16	32	LALITPUR	3	6	3				
CHANDAULI	53	26	15	LUCKNOW	35	34	16				
CHITRAKOOT	19	9	15	MAHARAJGANJ	64	210	190				
DEORIA	90	41	47	MAHOBA	27	0	0				
ETAH	17	10	8	MAINPURI	69	52	46				
ETAWAH	93	108	69	MATHURA	161	240	30				
FAIZABAD	16	13	8	MAU	43	23	13				
FARRUKHABAD	7	4	1	MEERUT	99	63	48				
FATEHPUR	138	108	109	MIRZAPUR	14	18	7				
FIROZABAD	27	17	10	MORADABAD	34	16	16				

(d) Delhi

District	15 Sep-30 Nov 2022		
	2020	2021	2022
CENTRAL	0	0	0
EAST	0	0	0
NEW DELHI	0	0	0
NORTH	3	3	9
NORTH EAST	0	0	0
NORTH WEST DELHI	3	1	0
SHAHADRA	0	0	0
SOUTH	1	0	0
SOUTH EAST	0	0	0
SOUTH WEST DELHI	0	0	0
WEST DELHI	2	0	1
Total	9	4	10

(e) Rajasthan

District	15 Sep-30 Nov 2022		
	2020	2021	2022
AJMER	3	0	0
ALWAR	10	0	0
BANSWARA	0	0	1
BARAN	167	13	77
BARMER	4	0	0
BHARATPUR	2	3	1
BHILWARA	11	0	0
BIKANER	1	0	0
BUNDI	128	87	180
CHITTAURGARH	5	13	8
CHURU	0	0	0
DAUSA	1	0	0
DHOLPUR	0	0	0
DUNGARPUR	0	0	2
GANGANAGAR	226	146	104
HANUMANGARH	952	995	677
JAIPUR	4	0	0
JAISELMER	5	0	0
JALOR	2	0	0
JHALAWAR	10	1	12
JHUNJHUNUN	1	0	0
JODHPUR	5	0	0
KARAULI	1	0	0
KOTA	116	57	148
NAGAUR	4	0	0
PALI	13	0	0
PRATAPGARH	8	0	0
RAJSMAND	1	0	0
SIKAR	1	0	0
SIROHI	3	0	0
SWAIMADHOPUR	65	34	55
TONK	5	0	0
UDAIPUR	2	1	3
Total	1756	1350	1268

(f) Madhya Pradesh

District	15 Sep-30 Nov 2022						
	2020	2021	2022	PANNA	50	23	41
ALIRAJPUR	0	0	0	RAISEN	619	361	465
ANUPPUR	3	2	7	RAJGARH	13	3	5
ASHOKNAGAR	156	90	188	RATLAM	10	7	3
BALAGHAT	9	6	5	REWA	143	120	101
BARWANI	6	0	0	SAGAR	28	31	55
BETUL	37	16	27	SATNA	577	526	504
BHIND	269	159	209	SEHORE	164	153	227
BHOPAL	52	40	43	SEONI	1234	897	1127
BURHANPUR	16	3	5	SHAHDOL	3	1	3
CHHATARPUR	9	0	2	SHAJAPUR	22	0	0
CHHINDWARA	136	59	102	SHEOPUR	1862	1013	1800
DAMOH	75	53	70	SHIVPURI	396	112	286
DATIA	1188	498	861	SIDHI	4	6	4
DEWAS	8	0	0	SINGRAULI	0	7	3
DHAR	48	0	0	TIKAMGARH	5	0	1
DINDORI	0	0	1	UJJAIN	18	0	0
EAST NIMAR	23	7	11	UMARIA	9	11	16
GUNA	70	12	124	VIDESHA	145	123	94
GWALIOR	2058	848	1583	WEST NIMAR	68	12	20
HARDA	14	21	11	Total	14148	8160	11737
HOSHANGABAD	1060	1067	1099				
INDORE	4	0	0				
JABALPUR	2671	1426	1982				
JHABUA	0	0	0				
KATNI	326	119	224				
MANDLA	152	119	153				
MANDSAUR	15	0	0				
MORENA	62	37	25				
NARSHIMAPURA	309	172	250				
NIMACH	2	0	0				

State-wise and date-wise number of paddy residue burning events detected in 2020, 2021 and 2022
(Period: 15 September - 30 November 2022)

Number of Paddy Residue Burning Events Detected

	Punjab			Haryana			Uttar Pradesh			Delhi			Rajasthan			Madhya Pradesh		
	2020	2021	2022	2020	2021	2022	2020	2021	2022	2020	2021	2022	2020	2021	2022	2020	2021	2022
15-Sep	5	0	14	2	0	0	1	0	0	0	0	0	1	0	0	2	0	0
16-Sep	0	2	0	1	0	0	0	0	0	0	0	0	0	0	0	0	0	0
17-Sep	5	0	1	3	0	0	0	0	0	0	0	0	0	0	0	0	0	0
18-Sep	17	9	7	0	0	1	0	1	0	0	0	0	0	0	0	0	0	0
19-Sep	30	5	18	2	0	0	0	1	0	0	0	0	0	0	0	0	0	0
20-Sep	67	8	10	6	0	0	2	0	0	0	0	0	0	0	0	0	0	0
21-Sep	54	0	56	2	0	0	1	0	0	0	0	0	1	0	1	2	0	0
22-Sep	34	0	30	1	0	0	1	0	0	0	0	0	0	0	0	0	0	0
23-Sep	49	0	3	0	0	0	1	0	0	0	0	0	1	0	0	0	0	0
24-Sep	78	5	0	0	0	0	1	1	0	0	0	0	0	0	0	0	0	0
25-Sep	184	11	0	11	0	0	5	0	0	0	0	0	1	0	0	0	0	0
26-Sep	190	19	0	5	0	0	8	0	0	0	0	0	1	0	0	2	0	0
27-Sep	78	37	0	8	0	0	4	1	0	0	0	0	0	0	0	1	0	0
28-Sep	55	28	0	6	1	0	1	6	0	0	0	0	0	0	0	1	1	0
29-Sep	63	64	0	9	4	0	6	10	0	0	0	0	3	0	0	0	4	0
30-Sep	116	27	8	22	2	0	13	13	10	1	0	0	1	0	0	5	0	0
01-Oct	165	13	45	15	4	1	7	13	3	0	0	0	4	1	1	13	0	1
02-Oct	141	0	83	30	2	7	12	0	36	1	0	0	7	0	3	12	0	1
03-Oct	110	9	75	8	6	8	4	3	29	0	0	0	9	0	2	5	1	5
04-Oct	162	23	65	29	2	7	8	0	2	0	0	0	15	0	0	4	2	0
05-Oct	161	18	130	17	3	24	14	2	0	0	0	2	14	0	1	13	1	0
06-Oct	171	42	85	30	0	26	12	1	0	1	0	0	16	0	0	37	1	0
07-Oct	197	72	62	32	11	6	41	13	0	0	0	0	14	1	1	31	1	0
08-Oct	95	108	19	29	27	0	25	11	0	0	0	0	11	0	0	17	2	0

09-Oct	121	114	3	20	39	1	15	20	0	0	0	0	12	0	0	15	4	0
10-Oct	232	150	4	33	95	2	9	54	0	0	0	0	14	1	0	18	10	0
11-Oct	377	64	45	90	51	0	23	28	0	0	0	0	21	7	1	32	2	0
12-Oct	388	97	104	69	51	4	46	23	0	0	0	0	24	1	2	44	1	1
13-Oct	266	132	120	47	91	15	36	42	0	0	0	0	7	5	2	21	2	7
14-Oct	605	229	82	69	98	30	9	68	5	0	0	0	16	1	1	15	11	1
15-Oct	449	660	169	106	363	36	15	149	0	0	0	0	9	8	2	8	27	2
16-Oct	654	429	206	80	176	76	21	121	6	1	0	0	12	2	4	23	13	2
17-Oct	1172	14	403	143	0	86	38	39	7	0	0	0	26	0	4	63	1	11
18-Oct	938	57	342	166	1	134	76	0	30	0	0	1	37	2	12	88	0	15
19-Oct	1080	496	436	72	55	122	43	5	36	0	0	0	27	5	12	49	1	12
20-Oct	890	788	96	62	155	78	31	1	17	0	0	0	26	4	4	9	21	7
21-Oct	1392	597	393	101	131	107	25	5	23	2	0	0	32	2	6	112	30	18
22-Oct	1665	1111	582	128	140	122	32	3	18	0	0	0	29	5	12	183	29	31
23-Oct	1438	620	902	106	218	217	84	8	109	1	0	0	23	7	20	204	32	70
24-Oct	911	0	1019	57	38	250	63	11	212	0	0	2	20	4	7	150	34	26
25-Oct	1416	76	181	155	71	12	50	18	9	1	0	0	18	2	4	144	60	0
26-Oct	2126	329	1238	77	175	123	33	41	23	0	0	0	34	3	21	178	55	57
27-Oct	2563	279	1111	96	93	83	40	58	23	0	0	0	42	1	21	294	62	38
28-Oct	3232	906	2067	139	149	123	87	35	34	0	0	0	45	4	46	537	110	143
29-Oct	1624	1353	1898	52	161	112	139	32	73	0	0	0	29	23	37	349	97	151
30-Oct	3946	1373	1761	100	148	112	50	53	43	0	0	0	17	20	55	428	168	119
31-Oct	3531	2895	2131	108	353	70	49	170	20	0	0	0	37	15	36	455	299	112
01-Nov	3835	1796	1842	151	124	88	74	157	9	0	0	1	51	5	27	709	198	142
02-Nov	4098	3001	3634	111	203	166	82	87	25	0	0	0	55	19	63	820	214	284
03-Nov	2818	2512	2666	93	197	128	197	66	40	1	0	1	34	20	54	771	148	323
04-Nov	4584	3032	2437	72	228	63	152	123	61	0	0	2	46	19	34	618	123	348
05-Nov	4529	5327	2817	66	331	90	52	70	24	0	0	0	46	45	91	474	320	319
06-Nov	5382	3942	599	151	219	46	43	208	28	0	0	0	40	32	27	678	248	392
07-Nov	5491	5199	2487	150	182	37	86	46	8	0	0	0	57	38	80	848	199	383
08-Nov	3674	4397	604	115	138	11	169	21	44	0	0	0	33	44	5	981	170	783

09-Nov	1718	5079	1778	21	217	69	115	51	58	0	1	0	34	48	22	495	330	570
10-Nov	3127	4008	1893	80	184	35	101	77	33	0	0	0	48	40	34	346	380	282
11-Nov	2822	4156	3916	93	126	152	71	151	36	0	1	0	75	55	95	418	506	482
12-Nov	1989	3403	2467	83	127	99	108	120	36	0	0	0	31	40	84	422	185	421
13-Nov	2441	3742	2175	105	210	132	172	95	102	0	2	0	54	78	63	670	171	773
14-Nov	307	2541	4	35	195	17	258	49	101	0	0	0	16	88	1	294	346	633
15-Nov	32	1761	141	31	129	21	29	67	84	0	0	0	6	51	2	35	353	507
16-Nov	8	1757	1358	0	269	84	15	138	48	0	0	0	16	81	78	145	660	316
17-Nov	248	523	966	9	101	39	38	177	50	0	0	0	60	38	48	191	261	416
18-Nov	670	680	701	60	111	108	62	14	66	0	0	0	75	77	55	352	126	524
19-Nov	454	448	426	37	132	79	129	11	116	0	0	0	27	73	19	124	16	625
20-Nov	677	283	368	77	127	32	134	20	168	0	0	0	59	53	15	106	6	556
21-Nov	457	168	243	65	178	11	135	106	46	0	0	0	57	72	12	159	95	196
22-Nov	46	66	78	15	91	20	120	276	76	0	0	0	9	21	4	165	188	170
23-Nov	43	91	140	52	59	27	106	186	73	0	0	0	66	61	10	150	262	259
24-Nov	9	34	66	20	37	32	167	87	195	0	0	1	13	26	14	258	224	299
25-Nov	0	31	44	1	41	28	127	80	241	0	0	0	2	30	7	106	343	315
26-Nov	16	21	22	0	48	12	83	74	127	0	0	0	0	11	2	48	318	198
27-Nov	124	19	12	26	28	8	54	257	14	0	0	0	16	33	2	39	416	57
28-Nov	84	5	11	57	9	13	118	241	59	0	0	0	24	12	1	38	163	109
29-Nov	55	8	8	65	14	5	247	101	101	0	0	0	44	7	0	83	95	74
30-Nov	21	5	15	17	18	14	206	26	180	0	0	0	6	9	1	41	14	151
Total	83002	71304	49922	4202	6987	3661	4631	4242	3017	9	4	10	1756	1350	1268	14148	8160	11737

Details of residue burning events in Punjab on 30-Nov-2022

S. No.	District	Tehsil / Block	Satellite	Latitude	Longitude	ACQ_TIME	Day / Night	Fire Power (W/m2)
1	GURDASPUR	DHARIWAL	S-NPP	31.91342	75.22205	13:16:26	D	1.90
2	GURDASPUR	KAHNUWAN	S-NPP	31.88883	75.53536	13:16:26	D	3.50
3	GURDASPUR	KALANAUR	S-NPP	31.99257	75.17606	13:16:26	D	2.30
4	GURDASPUR	SRI HARGOBINDPUR	S-NPP	31.67176	75.45753	13:16:26	D	4.60
5	GURDASPUR	SRI HARGOBINDPUR	S-NPP	31.67198	75.45888	13:16:26	D	4.70
6	GURDASPUR	SRI HARGOBINDPUR	S-NPP	31.74099	75.48007	13:16:26	D	4.90
7	GURDASPUR	SRI HARGOBINDPUR	S-NPP	31.74823	75.45943	13:16:26	D	2.50
8	HOSHIARPUR	DASUYA	S-NPP	31.79831	75.70499	13:16:26	D	2.50
9	JALANDHAR	PHILLAUR	S-NPP	31.07075	75.92746	13:16:26	D	3.00
10	LUDHIANA	DORAHA	S-NPP	30.76075	75.96426	13:16:26	D	2.70
11	MUKTSAR	KOT BHAI AT GIDDERBAHA	AQUA	30.32900	74.61600	14:06:27	D	105.00
12	MUKTSAR	KOT BHAI AT GIDDERBAHA	AQUA	30.33100	74.63000	14:06:27	D	5.70
13	MUKTSAR	LAMBI	S-NPP	30.10069	74.60684	13:16:26	D	2.30
14	MUKTSAR	LAMBI	S-NPP	30.10185	74.60393	13:16:26	D	12.00
15	MUKTSAR	MALOUT	S-NPP	30.36601	74.35117	13:16:26	D	4.80

Details of residue burning events in Haryana on 30-Nov-2022

S. No.	District	Tehsil / Block	Satellite	Latitude	Longitude	ACQ_TIME	Day / Night	Fire Power (W/m2)
1	AMBALA	BARARA	S-NPP	30.23252	77.07287	13:16:26	D	3.20
2	AMBALA	SAHA	S-NPP	30.24380	76.91042	13:16:26	D	3.10
3	FATEHABAD	RATIA	AQUA	29.68700	75.40000	14:06:27	D	13.30
4	JIND	JULANA	S-NPP	29.22727	76.45552	13:16:26	D	8.30
5	JIND	JULANA	S-NPP	29.22843	76.45696	13:16:26	D	5.90
6	KARNAL	GHARAUNDA	S-NPP	29.58042	77.09505	13:16:26	D	4.50
7	KURUKSHETRA	BABAIN	S-NPP	30.10533	77.04430	13:16:26	D	7.60
8	PANIPAT	ISRANA	S-NPP	29.31250	76.92242	13:16:26	D	1.70
9	ROHTAK	MEHAM	S-NPP	29.02510	76.39535	13:16:26	D	2.40
10	ROHTAK	ROHTAK	S-NPP	28.82469	76.61890	13:16:26	D	2.90
11	SONIPAT	GOHANA	S-NPP	29.08121	76.82178	13:16:26	D	2.40
12	SONIPAT	GOHANA	S-NPP	29.08194	76.82603	13:16:26	D	3.20
13	SONIPAT	GOHANA	S-NPP	29.10790	76.74960	13:16:26	D	2.30
14	YAMUNANAGAR	MUSTAFABAD	S-NPP	30.23710	77.20480	13:16:26	D	2.00

Details of residue burning events in Uttar Pradesh on 30-Nov-2022

S. No.	District	Tehsil / Block	Satellite	Latitude	Longitude	ACQ_TIME	Day / Night	Fire Power (W/m2)
1	ALLAHABAD	BARA	S-NPP	25.13071	81.67546	13:16:26	D	2.80
2	AMBEDKARNAGAR	AKBARPUR	S-NPP	26.34721	82.48600	13:16:26	D	2.10
3	AMBEDKARNAGAR	ALAPUR	S-NPP	26.41691	82.93107	13:16:26	D	3.30
4	AMBEDKARNAGAR	JALALPUR	S-NPP	26.38752	82.73119	13:16:26	D	3.70
5	AMBEDKARNAGAR	TANDA	S-NPP	26.44108	82.72871	13:16:26	D	3.20
6	AMBEDKARNAGAR	TANDA	S-NPP	26.46928	82.69733	13:16:26	D	3.80
7	AMBEDKARNAGAR	TANDA	S-NPP	26.58879	82.51514	13:16:26	D	2.90
8	AMETHI	GAURIGANJ	S-NPP	26.29908	81.73378	13:16:26	D	2.10
9	AMROHA	AMROHA	S-NPP	28.90800	78.42504	13:16:26	D	2.90
10	AURAIYA	AURAIYA	S-NPP	26.57990	79.61292	13:16:26	D	5.30
11	AURAIYA	BIDHUNA	S-NPP	26.86992	79.60534	13:16:26	D	2.40
12	AZAMGARH	MEHNAGAR	S-NPP	25.86419	83.22545	13:16:26	D	4.80
13	BADAUN	BADAUN	S-NPP	28.06025	79.09012	13:16:26	D	1.80
14	BADAUN	SAHASWAN	S-NPP	28.04208	78.75565	13:16:26	D	2.40
15	BAGHPAT	BAGHPAT	S-NPP	28.98968	77.27499	13:16:26	D	5.40
16	BAGHPAT	BAGHPAT	S-NPP	29.02499	77.34010	13:16:26	D	6.40
17	BAGHPAT	BARAUT	S-NPP	29.09130	77.16767	13:16:26	D	1.20
18	BAGHPAT	BARAUT	S-NPP	29.11391	77.24020	13:16:26	D	2.10
19	BAGHPAT	BARAUT	S-NPP	29.16841	77.16866	13:16:26	D	2.20
20	BALLIA	BELTHARA ROAD	S-NPP	26.01909	83.89235	13:16:26	D	3.50
21	BALLIA	RASRA	S-NPP	25.87309	83.96026	13:16:26	D	4.40
22	BALLIA	RASRA	S-NPP	25.98269	83.94564	13:16:26	D	3.30
23	BANDA	BABERU	S-NPP	25.54577	80.82056	02:07:08	N	1.10
24	BARABANKI	HAIARGARH	S-NPP	26.58579	81.54420	13:16:26	D	2.20
25	BARABANKI	HAIARGARH	S-NPP	26.61399	81.49801	13:16:26	D	1.90
26	BAREILLY	BAHERI	S-NPP	28.77529	79.65199	13:16:26	D	1.80
27	BAREILLY	BAREILLY	S-NPP	28.34506	79.55705	13:16:26	D	2.00
28	BAREILLY	NAWABGANJ	S-NPP	28.47477	79.76958	13:16:26	D	1.70
29	BIJNOR	AFZALGARH	S-NPP	29.39997	78.79459	13:16:26	D	2.50

30	BIJNOR	BIJNOR	S-NPP	29.38350	78.10273	13:16:26	D	2.00
31	BIJNOR	CHANDPUR	S-NPP	29.08373	78.37292	13:16:26	D	6.10
32	BIJNOR	DHAMPUR	S-NPP	29.07927	78.56151	13:16:26	D	2.40
33	BIJNOR	DHAMPUR	S-NPP	29.08506	78.51144	13:16:26	D	1.50
34	BIJNOR	NAGINA	S-NPP	29.65694	78.48263	13:16:26	D	2.40
35	BIJNOR	NAJIBABAD	S-NPP	29.51769	78.28512	13:16:26	D	1.70
36	BULANSAHAR	BULANSHAHR	S-NPP	28.52305	77.82304	13:16:26	D	4.30
37	BULANSAHAR	BULANSHAHR	S-NPP	28.52640	77.82235	13:16:26	D	4.30
38	BULANSAHAR	KHURJA	S-NPP	28.24476	77.77547	13:16:26	D	3.20
39	BULANSAHAR	SHIKARPUR	S-NPP	28.21485	78.12238	13:16:26	D	5.70
40	BULANSAHAR	SHIKARPUR	S-NPP	28.32015	77.91053	13:16:26	D	1.80
41	BULANSAHAR	SHIKARPUR	S-NPP	28.35567	77.89481	13:16:26	D	2.00
42	BULANSAHAR	SIKANDARABAD	S-NPP	28.31977	77.78126	13:16:26	D	3.00
43	CHANDAULI	CHANDAULI	S-NPP	25.16346	83.19301	13:16:26	D	2.10
44	CHANDAULI	CHANDAULI	S-NPP	25.21778	83.22036	13:16:26	D	3.20
45	CHANDAULI	CHANDAULI	S-NPP	25.23795	83.18118	13:16:26	D	4.40
46	CHANDAULI	SHAKALDIHA	S-NPP	25.35804	83.22164	13:16:26	D	7.80
47	DEORIA	DEORIA	S-NPP	26.58146	83.79314	13:16:26	D	3.10
48	DEORIA	DEORIA	S-NPP	26.64213	83.66178	13:16:26	D	3.20
49	DEORIA	RUDRAPUR	S-NPP	26.48009	83.66299	13:16:26	D	2.70
50	ETAWAH	BHARTHNA	S-NPP	26.64516	79.20795	13:16:26	D	3.20
51	ETAWAH	CHAKARNAGAR	S-NPP	26.62533	79.18398	13:16:26	D	1.80
52	FATEHPUR	BINKI	S-NPP	26.02131	80.76192	13:16:26	D	2.70
53	FATEHPUR	FATEHPUR	S-NPP	25.74376	80.82358	13:16:26	D	3.80
54	FATEHPUR	FATEHPUR	S-NPP	25.74708	80.82298	13:16:26	D	3.80
55	FATEHPUR	FATEHPUR	S-NPP	25.76030	80.79688	13:16:26	D	1.30
56	FATEHPUR	FATEHPUR	S-NPP	25.76880	80.85472	13:16:26	D	1.70
57	FATEHPUR	FATEHPUR	S-NPP	25.81726	80.63652	13:16:26	D	3.40
58	FATEHPUR	FATEHPUR	S-NPP	25.99621	80.83799	13:16:26	D	2.70
59	GAZIPUR	MUHAMMADBAD	S-NPP	25.59851	83.93430	13:16:26	D	3.20
60	GAZIPUR	MUHAMMADBAD	S-NPP	25.62374	83.92557	13:16:26	D	2.90
61	GAZIPUR	MUHAMMADBAD	S-NPP	25.62561	83.91063	13:16:26	D	3.20
62	GAZIPUR	MUHAMMADBAD	S-NPP	25.67970	83.92194	13:16:26	D	2.90

63	GHAZIABAD	MODINAGAR	S-NPP	28.79012	77.67657	13:16:26	D	3.10
64	GHAZIABAD	MODINAGAR	S-NPP	28.86489	77.44996	13:16:26	D	4.10
65	GORAKHPUR	GORAKHPUR	S-NPP	26.81102	83.50221	13:16:26	D	3.80
66	HAPUR	GARHMUKTESAR	S-NPP	28.86784	78.08873	13:16:26	D	2.30
67	HAPUR	HAPUR	S-NPP	28.64631	77.68091	13:16:26	D	2.40
68	HAPUR	HAPUR	S-NPP	28.68722	77.73156	13:16:26	D	2.10
69	HARDOI	SHAHABAD	S-NPP	27.71165	80.23335	13:16:26	D	1.20
70	HARDOI	SHAHABAD	S-NPP	27.74109	80.24798	13:16:26	D	2.20
71	JAUNPUR	MACHHALI SAHAR	S-NPP	25.59621	82.29184	13:16:26	D	5.10
72	JAUNPUR	MACHHALI SAHAR	S-NPP	25.62364	82.33811	13:16:26	D	4.30
73	JAUNPUR	MARIAHU	S-NPP	25.56997	82.44867	13:16:26	D	1.50
74	JAUNPUR	SHHGANJ	S-NPP	26.11580	82.57928	13:16:26	D	4.10
75	JAUNPUR	SHHGANJ	S-NPP	26.12282	82.52572	13:16:26	D	2.60
76	JHANSI	JHANSI	S-NPP	25.51449	78.68568	13:16:26	D	6.00
77	KANPUR DEHAT	DERAPUR	S-NPP	26.51663	79.68818	13:16:26	D	2.30
78	KANPUR DEHAT	DERAPUR	S-NPP	26.54578	79.67870	13:16:26	D	4.80
79	KANPUR DEHAT	RASULABAD	S-NPP	26.67818	79.76839	13:16:26	D	2.70
80	KANPUR DEHAT	RASULABAD	S-NPP	26.69067	79.87280	13:16:26	D	5.00
81	KHERI	DHAURAHRA	S-NPP	27.91842	81.16059	13:16:26	D	1.50
82	KHERI	GOLA	S-NPP	28.01570	80.39610	13:16:26	D	1.90
83	KHERI	GOLA	S-NPP	28.08261	80.33912	13:16:26	D	2.80
84	KHERI	GOLA	S-NPP	28.12023	80.37275	13:16:26	D	3.70
85	KHERI	LAKHIMPUR	S-NPP	27.83955	80.62662	13:16:26	D	1.60
86	KHERI	LAKHIMPUR	S-NPP	27.96142	80.82967	13:16:26	D	3.00
87	KHERI	LAKHIMPUR	S-NPP	28.00473	80.93346	13:16:26	D	4.40
88	KHERI	LAKHIMPUR	S-NPP	28.03163	80.61612	13:16:26	D	3.50
89	KHERI	LAKHIMPUR	S-NPP	28.06012	80.88626	13:16:26	D	1.80
90	KHERI	MOHMADI	TERRA	28.00300	80.26100	10:23:24	D	10.00
91	KHERI	MOHMADI	S-NPP	27.92830	80.18913	13:16:26	D	2.70
92	KHERI	MOHMADI	S-NPP	27.96159	80.11445	13:16:26	D	1.70
93	KUSHINAGAR	HATA	S-NPP	26.83359	83.65559	13:16:26	D	3.10
94	KUSHINAGAR	HATA	S-NPP	26.83519	83.65363	13:16:26	D	5.70
95	KUSHINAGAR	HATA	S-NPP	26.87981	83.60406	13:16:26	D	2.30

96	KUSHINAGAR	HATA	S-NPP	26.88531	83.61798	13:16:26	D	2.90
97	MAHARAJGANJ	MAHARAJGANJ	S-NPP	26.97950	83.66081	13:16:26	D	3.40
98	MAHARAJGANJ	MAHARAJGANJ	S-NPP	27.03881	83.48581	13:16:26	D	4.10
99	MAHARAJGANJ	MAHARAJGANJ	S-NPP	27.07951	83.60253	13:16:26	D	6.20
100	MAHARAJGANJ	MAHARAJGANJ	S-NPP	27.08404	83.48855	13:16:26	D	3.70
101	MAHARAJGANJ	MAHARAJGANJ	S-NPP	27.09558	83.55063	13:16:26	D	4.30
102	MAHARAJGANJ	MAHARAJGANJ	S-NPP	27.18235	83.56405	13:16:26	D	10.50
103	MAHARAJGANJ	NICHLAUL	S-NPP	27.23460	83.62057	13:16:26	D	2.50
104	MAINPURI	BHOGAON	S-NPP	27.04516	79.22677	13:16:26	D	1.90
105	MAINPURI	KARHAL	S-NPP	27.04404	79.09988	02:07:08	N	0.60
106	MAINPURI	MAINPURI	S-NPP	27.09938	79.01245	13:16:26	D	2.00
107	MEERUT	MAWANA	S-NPP	28.91477	78.01704	13:16:26	D	1.70
108	MEERUT	MAWANA	S-NPP	29.09150	77.89422	13:16:26	D	1.70
109	MEERUT	MAWANA	S-NPP	29.19941	77.90936	13:16:26	D	1.80
110	MEERUT	MAWANA	S-NPP	29.22791	77.93658	13:16:26	D	2.40
111	MEERUT	MEERUT	S-NPP	28.84890	77.80233	13:16:26	D	1.90
112	MEERUT	MEERUT	S-NPP	28.98882	77.82327	13:16:26	D	1.40
113	MEERUT	MEERUT	S-NPP	29.01554	77.81763	13:16:26	D	1.40
114	MEERUT	SARDHANA	S-NPP	29.05917	77.78021	13:16:26	D	2.90
115	MEERUT	SARDHANA	S-NPP	29.07279	77.65169	13:16:26	D	4.60
116	MEERUT	SARDHANA	S-NPP	29.14460	77.69989	13:16:26	D	2.00
117	MEERUT	SARDHANA	S-NPP	29.16417	77.48089	13:16:26	D	3.00
118	MORADABAD	BILARI	S-NPP	28.66778	78.70438	13:16:26	D	1.40
119	MORADABAD	BILARI	S-NPP	28.67109	78.70372	13:16:26	D	1.40
120	MORADABAD	BILARI	S-NPP	28.69901	78.68594	13:16:26	D	1.80
121	MORADABAD	KANTH	S-NPP	29.02646	78.72246	13:16:26	D	3.00
122	MORADABAD	THAKUR DWARA	S-NPP	29.18793	78.69479	13:16:26	D	1.70
123	MORADABAD	THAKUR DWARA	S-NPP	29.20072	78.88707	13:16:26	D	2.20
124	MUZAFARNAGAR	BUDHANA	S-NPP	29.23337	77.45370	13:16:26	D	5.10
125	MUZAFARNAGAR	BUDHANA	S-NPP	29.29153	77.42065	13:16:26	D	2.50
126	MUZAFARNAGAR	BUDHANA	S-NPP	29.34066	77.46521	13:16:26	D	3.30
127	MUZAFARNAGAR	MUZAFFARNAGAR	S-NPP	29.50448	77.59160	13:16:26	D	2.20
128	PILHIBHIT	BISALPUR	S-NPP	28.22868	79.90820	13:16:26	D	2.30

129	PILHIBHIT	BISALPUR	S-NPP	28.29179	79.97271	13:16:26	D	1.70
130	PILHIBHIT	PILHIBHIT	S-NPP	28.50465	79.92529	13:16:26	D	2.20
131	PILHIBHIT	PURANPUR	S-NPP	28.54989	80.07063	13:16:26	D	2.60
132	PILHIBHIT	PURANPUR	S-NPP	28.58252	80.06044	13:16:26	D	1.50
133	RAIBEARELI	RAEBARELI	S-NPP	26.18276	81.17757	13:16:26	D	2.50
134	RAIBEARELI	RAEBARELI	S-NPP	26.28112	81.19255	13:16:26	D	1.90
135	RAIBEARELI	RAEBARELI	S-NPP	26.30080	81.27402	13:16:26	D	1.30
136	RAIBEARELI	RAEBARELI	S-NPP	26.37286	81.17628	13:16:26	D	2.40
137	RAIBEARELI	SALON	S-NPP	26.18772	81.61136	13:16:26	D	2.10
138	RAMPUR	TANDA	S-NPP	29.04108	79.01526	13:16:26	D	1.90
139	RAMPUR	TANDA	S-NPP	29.09453	79.00867	13:16:26	D	3.00
140	SAMBHAL	GUNNAUR	S-NPP	28.35445	78.37715	13:16:26	D	2.00
141	SANTKABIRNAGAR	GHANGHATA	S-NPP	26.64666	83.06048	13:16:26	D	1.50
142	SHAHJAHANPUR	JALALABAD	S-NPP	27.59377	79.55994	13:16:26	D	2.40
143	SHAHJAHANPUR	PUWANYA	S-NPP	28.03174	79.92528	13:16:26	D	1.00
144	SHAHJAHANPUR	PUWANYA	S-NPP	28.30875	80.28929	13:16:26	D	3.60
145	SHAHJAHANPUR	SHAHJAHANPUR	S-NPP	27.83033	79.71434	13:16:26	D	2.50
146	SHAHJAHANPUR	SHAHJAHANPUR	S-NPP	27.90177	79.87286	13:16:26	D	2.10
147	SHAMLI	KAIRANA	S-NPP	29.35583	77.26184	13:16:26	D	6.20
148	SHAMLI	KAIRANA	S-NPP	29.41949	77.22356	13:16:26	D	3.00
149	SHAMLI	SHAMLI	S-NPP	29.45495	77.43755	13:16:26	D	3.80
150	SHAMLI	SHAMLI	S-NPP	29.54344	77.44032	13:16:26	D	2.40
151	SHARANPUR	DEOBAND	S-NPP	29.68031	77.65571	13:16:26	D	1.50
152	SHARANPUR	DEOBAND	S-NPP	29.80205	77.73499	13:16:26	D	2.10
153	SHARANPUR	DEOBAND	S-NPP	29.84416	77.67580	13:16:26	D	2.80
154	SHARANPUR	NAKUR	S-NPP	29.87087	77.32428	13:16:26	D	1.20
155	SHARANPUR	RAMPUR MANIHARRAN	S-NPP	29.63356	77.49742	13:16:26	D	1.40
156	SHARANPUR	RAMPUR MANIHARRAN	S-NPP	29.78229	77.57148	13:16:26	D	1.10
157	SHARANPUR	RAMPUR MANIHARRAN	S-NPP	29.86568	77.50335	13:16:26	D	1.60
158	SHARANPUR	SHARANPUR	S-NPP	30.02047	77.46705	13:16:26	D	1.70
159	SHARANPUR	SHARANPUR	S-NPP	30.09648	77.48053	13:16:26	D	3.00
160	SHRAWASTI	BHINGA	S-NPP	27.70074	81.75564	13:16:26	D	0.80
161	SIDDHARTHANAGAR	BANSI	S-NPP	27.10166	82.92550	13:16:26	D	10.00

162	SIDDHARTHANAGAR	BANSI	S-NPP	27.14339	82.82635	13:16:26	D	3.40
163	SIDDHARTHANAGAR	DOMARIYAGANJ	S-NPP	27.27371	82.64742	13:16:26	D	3.70
164	SIDDHARTHANAGAR	SHOHRATGARH	S-NPP	27.42471	82.95780	13:16:26	D	1.70
165	SIDDHARTHANAGAR	SHOHRATGARH	S-NPP	27.48573	82.73532	13:16:26	D	1.90
166	SITAPUR	BISWAN	S-NPP	27.43995	80.98653	13:16:26	D	4.70
167	SITAPUR	BISWAN	S-NPP	27.50402	81.21056	13:16:26	D	1.90
168	SITAPUR	LAHARPUR	S-NPP	27.81381	81.08704	13:16:26	D	4.20
169	SITAPUR	MAHMUDABAD	S-NPP	27.41342	81.13928	13:16:26	D	1.30
170	SITAPUR	MISRIK	S-NPP	27.39331	80.61668	13:16:26	D	3.50
171	SITAPUR	MISRIK	S-NPP	27.41562	80.47182	13:16:26	D	5.80
172	SITAPUR	MISRIK	S-NPP	27.53785	80.54691	13:16:26	D	1.80
173	SITAPUR	MISRIK	S-NPP	27.59367	80.32745	13:16:26	D	2.30
174	SITAPUR	MISRIK	S-NPP	27.64043	80.36702	13:16:26	D	1.30
175	SITAPUR	SITAPUR	S-NPP	27.67886	80.63093	13:16:26	D	2.00
176	SULTANPUR	JAISINGHPUR	S-NPP	26.27734	82.28513	13:16:26	D	2.00
177	SULTANPUR	JAISINGHPUR	S-NPP	26.28759	82.38703	13:16:26	D	2.00
178	UNNAO	BIGHAPUR	S-NPP	26.41280	80.77566	13:16:26	D	2.30
179	UNNAO	HASANGANJ	S-NPP	26.66243	80.63956	13:16:26	D	2.40
180	UNNAO	PURWA	S-NPP	26.44334	80.77416	13:16:26	D	2.10

Details of residue burning events in Rajasthan on 30-Nov-2022

S. No.	District	Tehsil / Block	Satellite	Latitude	Longitude	ACQ_TIME	Day / Night	Fire Power (W/m ²)
1	KOTA	SANGOD	S-NPP	24.83765	76.28687	13:16:26	D	3.10

Details of residue burning events in Madhya Pradesh on 30-Nov-2022

S. No.	District	Tehsil / Block	Satellite	Latitude	Longitude	ACQ_TIME	Day / Night	Fire Power (W/m2)
1	ANUPPUR	JAITHRI	S-NPP	23.01987	81.83282	13:16:26	D	3.10
2	BALAGHAT	LANJI	S-NPP	21.46309	80.48543	13:16:26	D	1.80
3	DATIA	SEONDHA	S-NPP	26.00693	78.68266	13:16:26	D	6.30
4	GWALIOR	BHITARWAR	S-NPP	25.75286	78.06735	13:16:26	D	3.30
5	GWALIOR	DABRA	S-NPP	25.97109	78.36793	13:16:26	D	6.00
6	JABALPUR	JABALPUR	S-NPP	23.08220	80.04942	13:16:26	D	2.10
7	JABALPUR	JABALPUR	S-NPP	23.17187	79.82769	13:16:26	D	4.90
8	JABALPUR	JABALPUR	S-NPP	23.24642	79.84505	13:16:26	D	2.90
9	JABALPUR	JABALPUR	S-NPP	23.26514	79.94263	13:16:26	D	3.30
10	JABALPUR	JABALPUR	S-NPP	23.26846	79.94203	13:16:26	D	2.40
11	JABALPUR	JABALPUR	S-NPP	23.28787	79.94212	13:16:26	D	2.90
12	JABALPUR	JABALPUR	S-NPP	23.29329	79.99175	13:16:26	D	1.60
13	JABALPUR	JABALPUR	S-NPP	23.29995	79.93214	13:16:26	D	1.50
14	JABALPUR	JABALPUR	S-NPP	23.30285	79.84222	13:16:26	D	2.90
15	JABALPUR	JABALPUR	S-NPP	23.30386	79.93530	13:16:26	D	5.50
16	JABALPUR	JABALPUR	S-NPP	23.32969	79.96935	13:16:26	D	3.40
17	JABALPUR	JABALPUR	S-NPP	23.33348	79.90655	13:16:26	D	17.90
18	JABALPUR	JABALPUR	S-NPP	23.34141	79.97882	13:16:26	D	2.90
19	JABALPUR	JABALPUR	S-NPP	23.34782	79.95437	13:16:26	D	3.30
20	JABALPUR	JABALPUR	S-NPP	23.35114	79.95377	13:16:26	D	4.70
21	JABALPUR	JABALPUR	S-NPP	23.35553	79.89471	13:16:26	D	4.00
22	JABALPUR	JABALPUR	S-NPP	23.36003	79.90165	13:16:26	D	3.00
23	JABALPUR	JABALPUR	AQUA	23.27100	79.93200	14:06:27	D	19.90
24	JABALPUR	JABALPUR	AQUA	23.34300	79.97200	14:06:27	D	17.40
25	JABALPUR	MAJHOULI	S-NPP	23.39779	79.96845	13:16:26	D	2.30
26	JABALPUR	MAJHOULI	S-NPP	23.46110	80.04972	13:16:26	D	8.50
27	JABALPUR	MAJHOULI	S-NPP	23.46169	80.05348	13:16:26	D	4.70
28	JABALPUR	MAJHOULI	S-NPP	23.46206	80.03406	13:16:26	D	6.00
29	JABALPUR	MAJHOULI	S-NPP	23.46441	80.04911	13:16:26	D	8.50

30	JABALPUR	MAJHOULI	S-NPP	23.46500	80.05288	13:16:26	D	4.70
31	JABALPUR	MAJHOULI	S-NPP	23.46714	80.04474	13:16:26	D	3.20
32	JABALPUR	MAJHOULI	S-NPP	23.47611	80.05858	13:16:26	D	3.50
33	JABALPUR	MAJHOULI	S-NPP	23.49170	80.07121	13:16:26	D	1.70
34	JABALPUR	MAJHOULI	S-NPP	23.50397	80.01861	13:16:26	D	3.30
35	JABALPUR	MAJHOULI	S-NPP	23.50445	79.94072	13:16:26	D	1.40
36	JABALPUR	MAJHOULI	S-NPP	23.51013	79.95519	13:16:26	D	2.30
37	JABALPUR	MAJHOULI	S-NPP	23.52162	79.94144	13:16:26	D	2.90
38	JABALPUR	MAJHOULI	S-NPP	23.52612	79.94837	13:16:26	D	1.60
39	JABALPUR	MAJHOULI	S-NPP	23.52623	79.90565	13:16:26	D	2.00
40	JABALPUR	MAJHOULI	S-NPP	23.53275	79.94714	13:16:26	D	2.70
41	JABALPUR	MAJHOULI	S-NPP	23.53524	79.91952	13:16:26	D	1.30
42	JABALPUR	MAJHOULI	S-NPP	23.53719	80.06261	13:16:26	D	2.50
43	JABALPUR	MAJHOULI	S-NPP	23.54424	79.93339	13:16:26	D	10.80
44	JABALPUR	MAJHOULI	S-NPP	23.55786	79.91147	13:16:26	D	3.30
45	JABALPUR	MAJHOULI	S-NPP	23.55913	79.98497	13:16:26	D	2.90
46	JABALPUR	MAJHOULI	S-NPP	23.60317	79.96135	13:16:26	D	1.70
47	JABALPUR	MAJHOULI	AQUA	23.46300	80.00200	14:06:27	D	28.40
48	JABALPUR	MAJHOULI	AQUA	23.47200	79.99400	14:06:27	D	16.90
49	JABALPUR	MAJHOULI	AQUA	23.47400	80.01800	14:06:27	D	19.10
50	JABALPUR	PATAN	S-NPP	23.19528	79.69460	13:16:26	D	1.30
51	JABALPUR	PATAN	S-NPP	23.20630	79.82912	13:16:26	D	1.80
52	JABALPUR	PATAN	S-NPP	23.21533	79.84301	13:16:26	D	2.50
53	JABALPUR	PATAN	S-NPP	23.23109	79.81285	13:16:26	D	9.80
54	JABALPUR	PATAN	S-NPP	23.24395	79.72074	13:16:26	D	2.70
55	JABALPUR	PATAN	S-NPP	23.24668	79.71632	13:16:26	D	2.90
56	JABALPUR	PATAN	S-NPP	23.24711	79.80598	13:16:26	D	6.60
57	JABALPUR	PATAN	S-NPP	23.24728	79.72012	13:16:26	D	3.10
58	JABALPUR	PATAN	S-NPP	23.25068	79.82869	13:16:26	D	6.10
59	JABALPUR	PATAN	S-NPP	23.25147	79.74667	13:16:26	D	1.80
60	JABALPUR	PATAN	S-NPP	23.25420	79.74226	13:16:26	D	1.80
61	JABALPUR	PATAN	S-NPP	23.25436	79.80855	13:16:26	D	2.80
62	JABALPUR	PATAN	S-NPP	23.25614	79.74175	13:16:26	D	2.30

63	JABALPUR	PATAN	S-NPP	23.25766	79.72977	13:16:26	D	2.40
64	JABALPUR	PATAN	S-NPP	23.25826	79.73355	13:16:26	D	6.70
65	JABALPUR	PATAN	S-NPP	23.25947	79.74113	13:16:26	D	2.30
66	JABALPUR	PATAN	S-NPP	23.26038	79.72536	13:16:26	D	2.30
67	JABALPUR	PATAN	S-NPP	23.27128	79.70771	13:16:26	D	4.80
68	JABALPUR	PATAN	S-NPP	23.28957	79.84468	13:16:26	D	3.30
69	JABALPUR	PATAN	S-NPP	23.29595	79.82015	13:16:26	D	2.70
70	JABALPUR	PATAN	S-NPP	23.30326	79.77983	13:16:26	D	5.40
71	JABALPUR	PATAN	S-NPP	23.31203	79.77042	13:16:26	D	6.70
72	JABALPUR	PATAN	S-NPP	23.32645	79.81840	13:16:26	D	2.20
73	JABALPUR	PATAN	S-NPP	23.33462	79.80520	13:16:26	D	6.00
74	JABALPUR	PATAN	S-NPP	23.34187	79.80776	13:16:26	D	2.70
75	JABALPUR	PATAN	S-NPP	23.37498	79.84446	13:16:26	D	3.40
76	JABALPUR	PATAN	AQUA	23.20800	79.80500	14:06:27	D	20.10
77	JABALPUR	PATAN	TERRA	23.26900	79.75500	10:23:24	D	8.60
78	JABALPUR	PATAN	TERRA	23.27700	79.74900	10:23:24	D	7.70
79	JABALPUR	SAHPURA	S-NPP	23.08967	79.79998	13:16:26	D	3.40
80	JABALPUR	SAHPURA	S-NPP	23.16621	79.72735	13:16:26	D	3.10
81	JABALPUR	SAHPURA	S-NPP	23.16681	79.73114	13:16:26	D	3.10
82	JABALPUR	SAHPURA	S-NPP	23.18228	79.59122	13:16:26	D	6.30
83	JABALPUR	SAHPURA	S-NPP	23.18318	79.66163	13:16:26	D	2.40
84	JABALPUR	SAHPURA	S-NPP	23.18652	79.66101	13:16:26	D	2.40
85	JABALPUR	SAHPURA	S-NPP	23.19639	79.78809	13:16:26	D	7.50
86	JABALPUR	SAHPURA	AQUA	23.15500	79.77000	14:06:27	D	15.80
87	JABALPUR	SIHORA	S-NPP	23.37206	80.00034	13:16:26	D	2.60
88	JABALPUR	SIHORA	S-NPP	23.44165	80.23103	13:16:26	D	1.80
89	JABALPUR	SIHORA	S-NPP	23.47670	80.06235	13:16:26	D	3.50
90	KATNI	BAHURIBAND	S-NPP	23.64525	80.05885	13:16:26	D	2.30
91	KATNI	BAHURIBAND	S-NPP	23.64877	80.08141	13:16:26	D	3.60
92	KATNI	BAHURIBAND	S-NPP	23.65149	80.07706	13:16:26	D	2.90
93	KATNI	BAHURIBAND	S-NPP	23.65208	80.08081	13:16:26	D	3.60
94	KATNI	BAHURIBAND	S-NPP	23.66280	80.10594	13:16:26	D	2.30
95	KATNI	BAHURIBAND	S-NPP	23.67721	80.11105	13:16:26	D	2.80

96	KATNI	BAHURIBAND	S-NPP	23.67779	80.11481	13:16:26	D	2.40
97	KATNI	BIJERAGHOGARH	S-NPP	23.97367	80.76745	13:16:26	D	2.60
98	KATNI	DHIMERKHEDA	S-NPP	23.46708	80.30737	13:16:26	D	4.80
99	KATNI	DHIMERKHEDA	S-NPP	23.47096	80.31052	13:16:26	D	4.80
100	KATNI	RITHI	S-NPP	23.81318	80.22515	13:16:26	D	1.40
101	KATNI	RITHI	S-NPP	23.84138	80.23161	13:16:26	D	3.90
102	MANDLA	BACHHIYA	S-NPP	22.48457	80.49692	13:16:26	D	4.30
103	MANDLA	BACHHIYA	S-NPP	22.48787	80.49633	13:16:26	D	4.30
104	MANDLA	BACHHIYA	S-NPP	22.51659	80.44482	13:16:26	D	3.20
105	MANDLA	MANDLA	S-NPP	22.51726	80.38337	13:16:26	D	1.40
106	MANDLA	MANDLA	S-NPP	22.52603	80.37412	13:16:26	D	2.00
107	MANDLA	MANDLA	S-NPP	22.52934	80.37353	13:16:26	D	3.00
108	MANDLA	MANDLA	S-NPP	22.55804	80.44888	13:16:26	D	3.90
109	NARSHIMAPURA	GADARWARA	S-NPP	22.88449	78.68709	13:16:26	D	2.00
110	NARSHIMAPURA	GOTECAON	TERRA	23.02200	79.44000	10:23:24	D	10.60
111	NARSHIMAPURA	TENDUKHERA	S-NPP	23.16347	78.91270	13:16:26	D	3.30
112	NARSHIMAPURA	TENDUKHERA	S-NPP	23.16411	78.91663	13:16:26	D	4.80
113	PANNA	PAWAI	S-NPP	24.34577	80.23221	13:16:26	D	2.10
114	PANNA	SHAHNAGAR	S-NPP	23.94518	79.92156	13:16:26	D	2.20
115	RAISEN	BARELI	S-NPP	23.03563	78.35779	13:16:26	D	1.90
116	RAISEN	BARELI	S-NPP	23.06596	78.30531	13:16:26	D	2.30
117	RAISEN	BARELI	S-NPP	23.08254	78.25530	13:16:26	D	3.20
118	RAISEN	GAIRATGANJ	S-NPP	23.35743	78.03673	13:16:26	D	2.40
119	RAISEN	UDAIPURA	S-NPP	23.08483	78.60774	13:16:26	D	2.00
120	REWA	HUZUR	S-NPP	24.43894	81.37513	13:16:26	D	2.00
121	REWA	SIRMAUR	S-NPP	24.67451	81.57995	13:16:26	D	1.70
122	REWA	TEONTHAR	S-NPP	24.97839	81.48503	13:16:26	D	2.30
123	REWA	TEONTHAR	S-NPP	25.02041	81.60989	13:16:26	D	2.60
124	SATNA	AMARPATAN	S-NPP	24.39319	81.20255	13:16:26	D	4.10
125	SATNA	AMARPATAN	S-NPP	24.39652	81.20197	13:16:26	D	4.10
126	SATNA	AMARPATAN	S-NPP	24.39932	81.22106	13:16:26	D	5.70
127	SATNA	AMARPATAN	S-NPP	24.39984	81.20139	13:16:26	D	2.00
128	SATNA	AMARPATAN	S-NPP	24.43006	81.08270	13:16:26	D	1.60

129	SATNA	AMARPATAN	S-NPP	24.47053	81.17729	13:16:26	D	4.00
130	SATNA	MAIHAR	S-NPP	24.30340	80.87151	13:16:26	D	2.30
131	SATNA	MAIHAR	S-NPP	24.30566	80.88663	13:16:26	D	7.00
132	SATNA	NAGOD	S-NPP	24.49706	80.56111	13:16:26	D	2.80
133	SATNA	NAGOD	S-NPP	24.50641	80.55554	13:16:26	D	3.00
134	SATNA	NAGOD	S-NPP	24.62565	80.62727	13:16:26	D	2.40
135	SATNA	NAGOD	S-NPP	24.62622	80.63105	13:16:26	D	2.20
136	SATNA	NAGOD	S-NPP	24.63558	80.62549	13:16:26	D	1.70
137	SATNA	RAGURAJNAGAR	S-NPP	24.60351	80.75179	13:16:26	D	3.70
138	SATNA	RAGURAJNAGAR	S-NPP	24.65667	80.65279	13:16:26	D	2.80
139	SATNA	RAMPURBAGHLEAN	S-NPP	24.38962	80.87952	13:16:26	D	2.10
140	SATNA	RAMPURBAGHLEAN	S-NPP	24.65215	81.12180	13:16:26	D	2.70
141	SATNA	RAMPURBAGHLEAN	S-NPP	24.70669	81.05742	13:16:26	D	3.40
142	SATNA	UCHAHAR	S-NPP	24.39115	80.84426	13:16:26	D	3.30
143	SATNA	UCHAHAR	S-NPP	24.41506	80.84776	13:16:26	D	2.50
144	SATNA	UCHAHAR	S-NPP	24.50745	80.81169	13:16:26	D	2.10
145	SEHORE	BUDHNI	S-NPP	22.89672	77.86378	02:07:08	N	1.10
146	SEHORE	BUDHNI	S-NPP	22.91646	77.99867	13:16:26	D	5.10
147	SEHORE	ICHHAWAR	S-NPP	22.89418	76.94743	13:16:26	D	7.20
148	SEHORE	ICHHAWAR	S-NPP	22.89504	76.94553	13:16:26	D	6.10
149	SIDHI	CHORHAT	S-NPP	24.44293	81.66340	13:16:26	D	8.70
150	SIDHI	CHORHAT	S-NPP	24.45969	81.68444	13:16:26	D	2.20
151	UMARIA	BANDHOGARH	S-NPP	23.68892	80.74083	13:16:26	D	1.80

The study used data received from following Satellites at NRSC Ground Station

S. No.	Satellite Name	Sensor	Resolution (meter)	Day / Night Passes
1.	Suomi NPP	VIIRS	375 / 750	Both
2.	Terra	MODIS	1000	Both
3.	Aqua	MODIS	1000	Both

**The rice mask for the Punjab and Haryana were provided by MNCFC, MoA&FW, Govt of India
The kharif crop mask for Delhi, Uttar Pradesh, Rajasthan and Madhya Pradesh were provided by NRSC**

Study Team

ICAR - IARI	Dr V.K. Sehgal	Principal & Nodal Scientist	iaricreams@gmail.com
	Dr Rajkumar Dhakar	Scientist	rajdhakar.iari@gmail.com
	Mr Mohd Jahangir	Lab Assistant (KRISHI)	mjahangir198@gmail.com
ICAR - ATARI	Dr Rajbir Singh	Director ATARI (Zone-I) Ludhiana	rajbirsingh.zpd@gmail.com
	Dr S.K. Singh	Director ATARI (Zone-II) Jodhpur	sushilsinghiipr@yahoo.co.in
	Dr Atar Singh	Director ATARI (Zone-III) Kanpur	zpdicarkanpur@gmail.com
ICAR - IASRI	Dr Rajender Parsad	Director	rajender.parsad@icar.gov.in

GIS Maps of fire events can be visualized online on ICAR KRISHI Geoportal website: <http://geoportal.icar.gov.in:8080/geoexplorer/composer/>

(Part of KRISHI Portal: <https://krishi.icar.gov.in> initiative)

and on IARI CREAMS website (<http://creams.iari.res.in/cms2/index.php>)
