



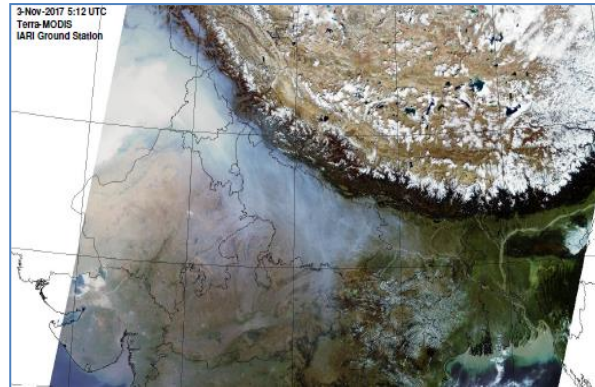
**Bulletin
No. 61**

**Events Date:
14-Nov-2022**

**Issued on:
14-Nov-2022**



MONITORING PADDY RESIDUE BURNING IN INDIA USING SATELLITE REMOTE SENSING DURING 2022



Prepared by:

**Consortium for Research on Agroecosystem Monitoring and Modeling from Space (CREAMS) Laboratory,
Division of Agricultural Physics, ICAR – Indian Agricultural Research Institute, New Delhi – 110012**

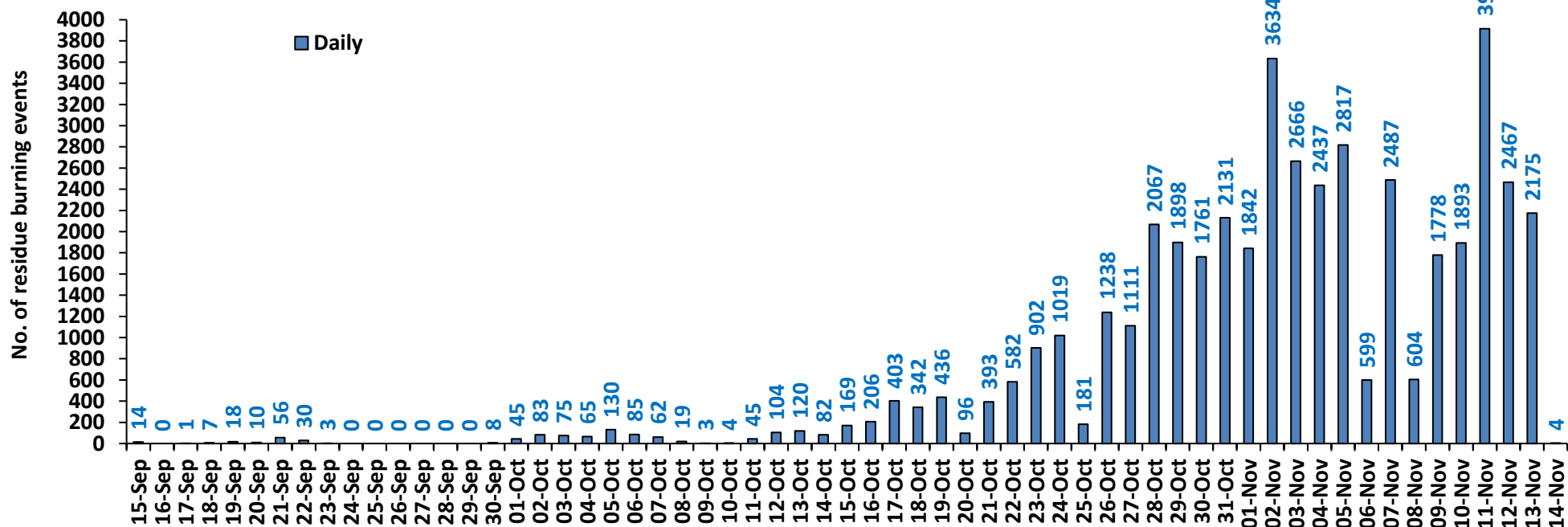
<http://creams.iari.res.in>

Highlights for 14-Nov-2022

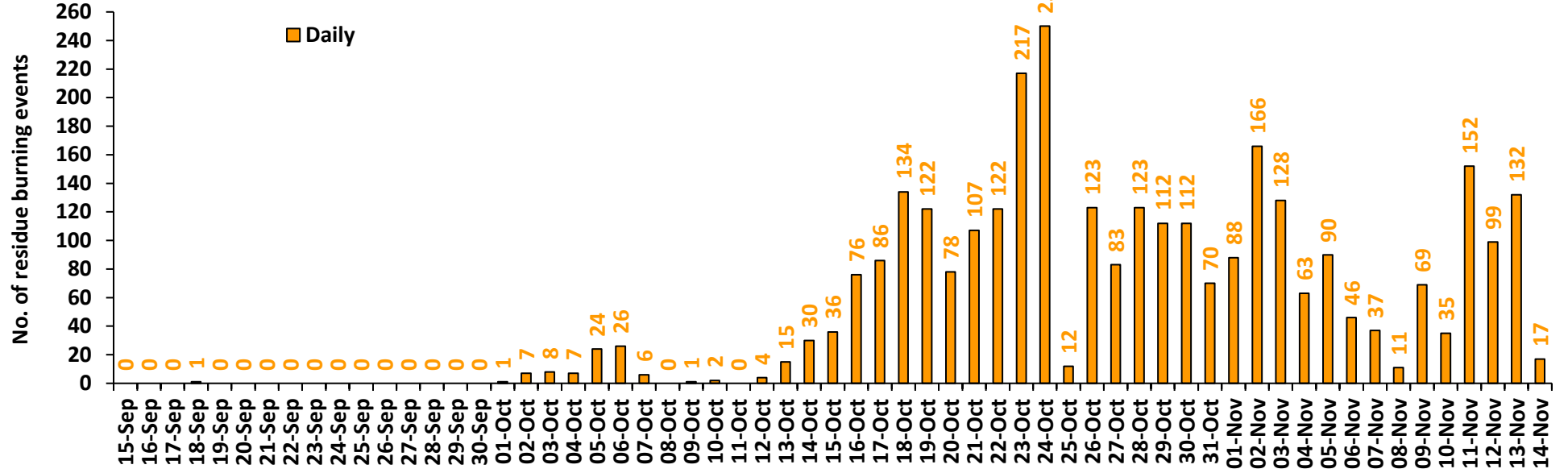
- The active fire events due to rice residue burning were monitored using satellite remote sensing, following the "Standard Protocol for Estimation of Crop Residue Burning Fire Events using Satellite Data".
- Satellites detected **756** residue burning events in the six study States on 14-Nov-2022.
- The state wise events detected on 14-Nov-2022 were **4** in Punjab, **17** in Haryana, **101** in UP, **0** in Delhi, **1** in Rajasthan and **633** in MP.
- Total **57796** burning events were detected in the six states between 15-Sept-2022 and 14-Nov-2022, which are distributed as **45323**, **3128**, **1373**, **9**, **998** and **6965** in Punjab, Haryana, UP, Delhi, Rajasthan and MP respectively.
- Detection of events was hampered by the presence of thick clouds over Punjab, Haryana and northern Rajasthan.

Temporal distribution of rice residue burning events for the study States in 2022

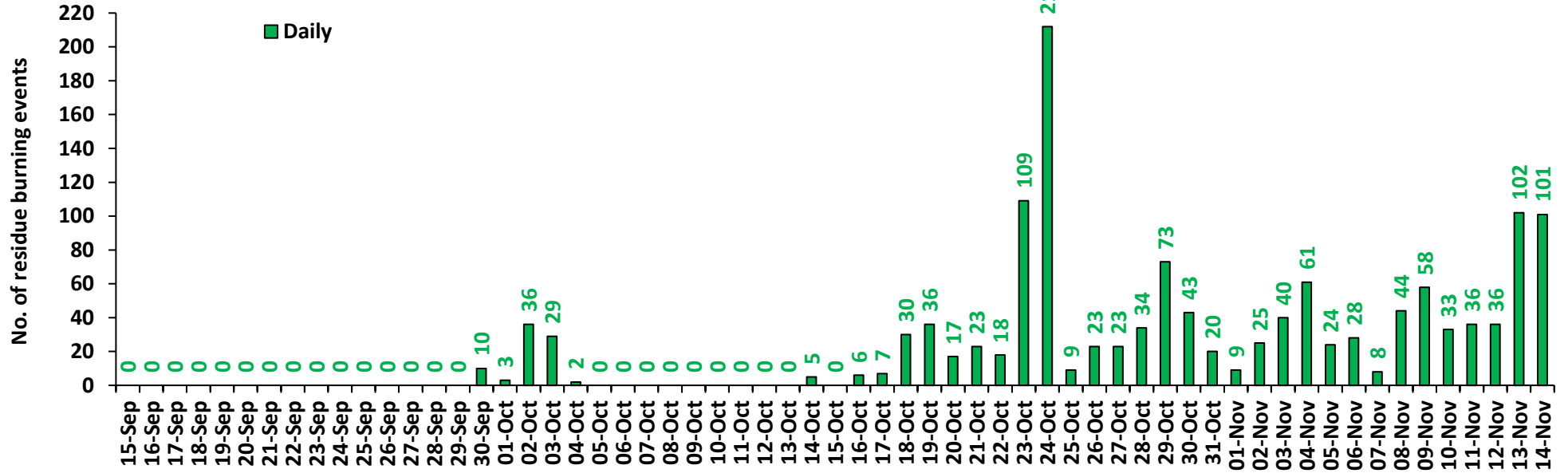
Punjab



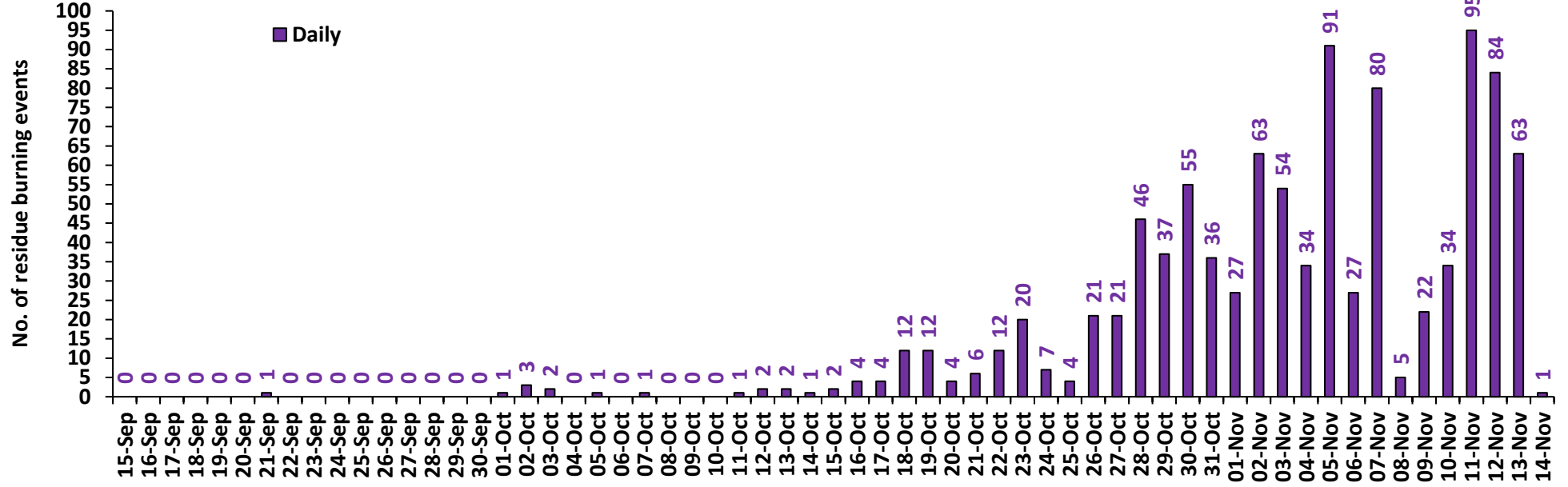
Haryana



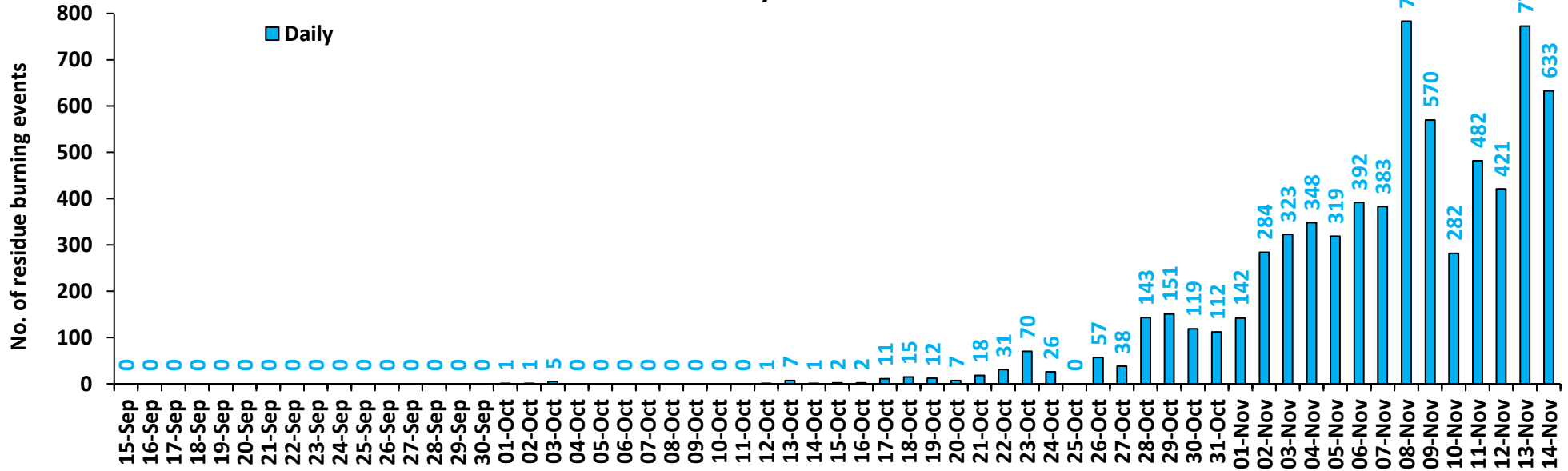
Uttar Pradesh



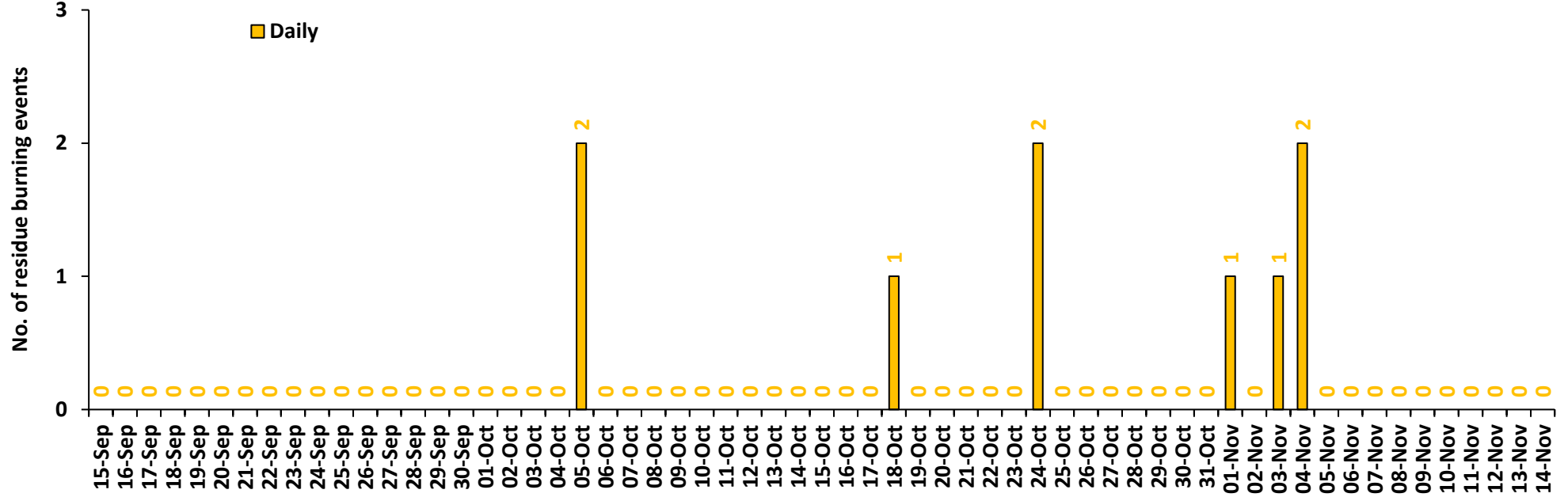
Rajasthan



Madhya Pradesh

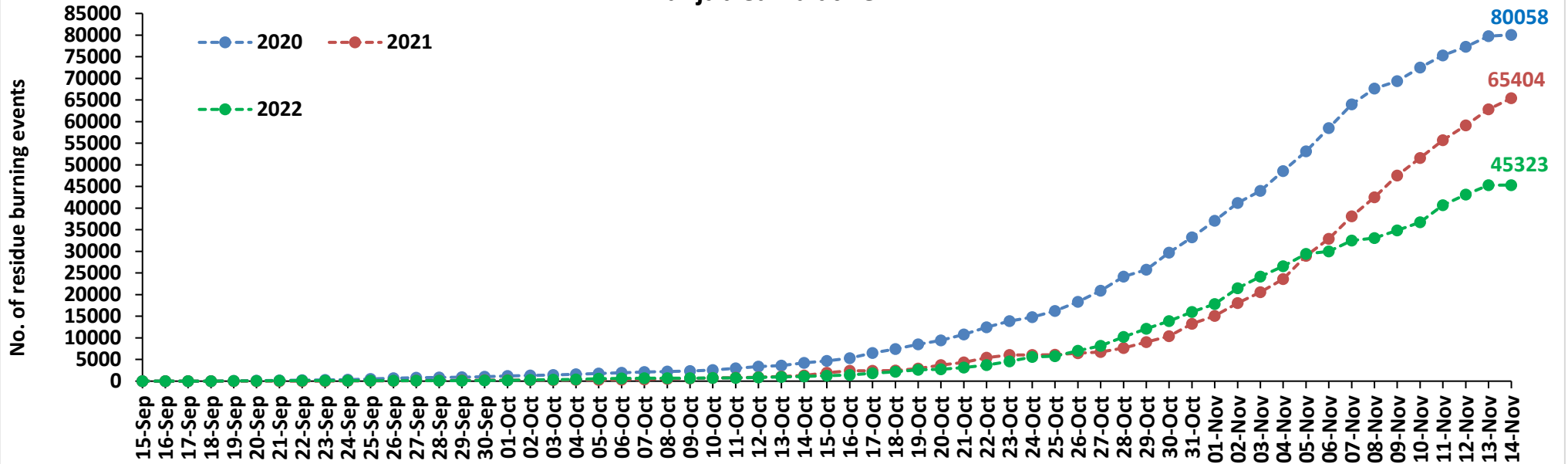


Delhi

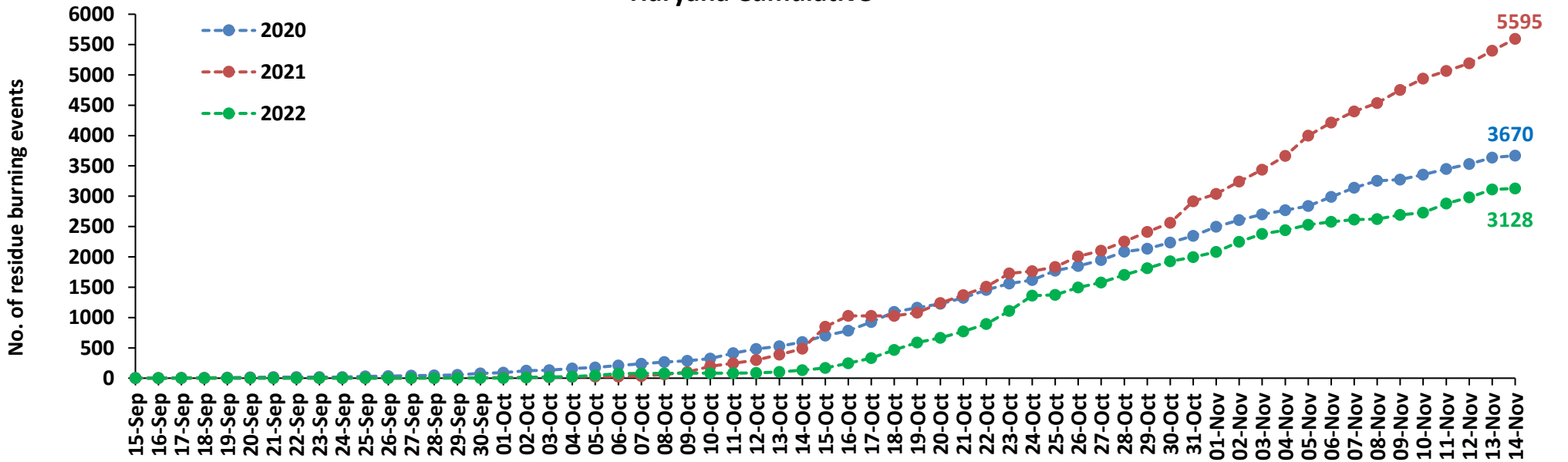


Comparison of residue burning events in current year (2022) with previous years (2020 and 2021) for the study States

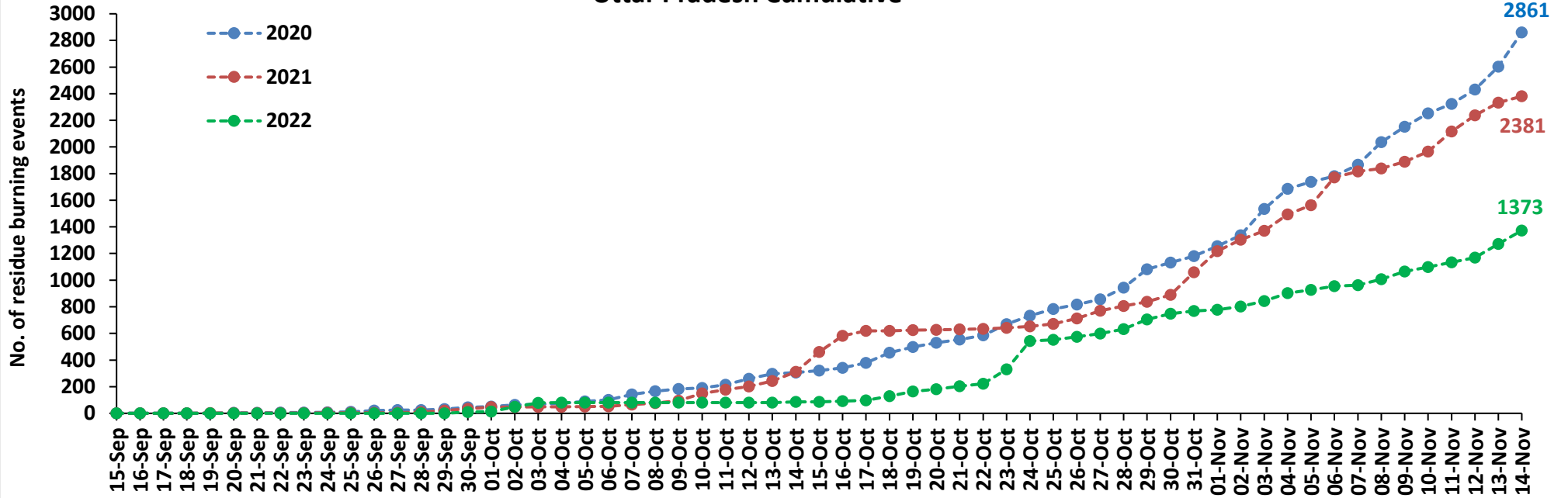
Punjab Cumulative



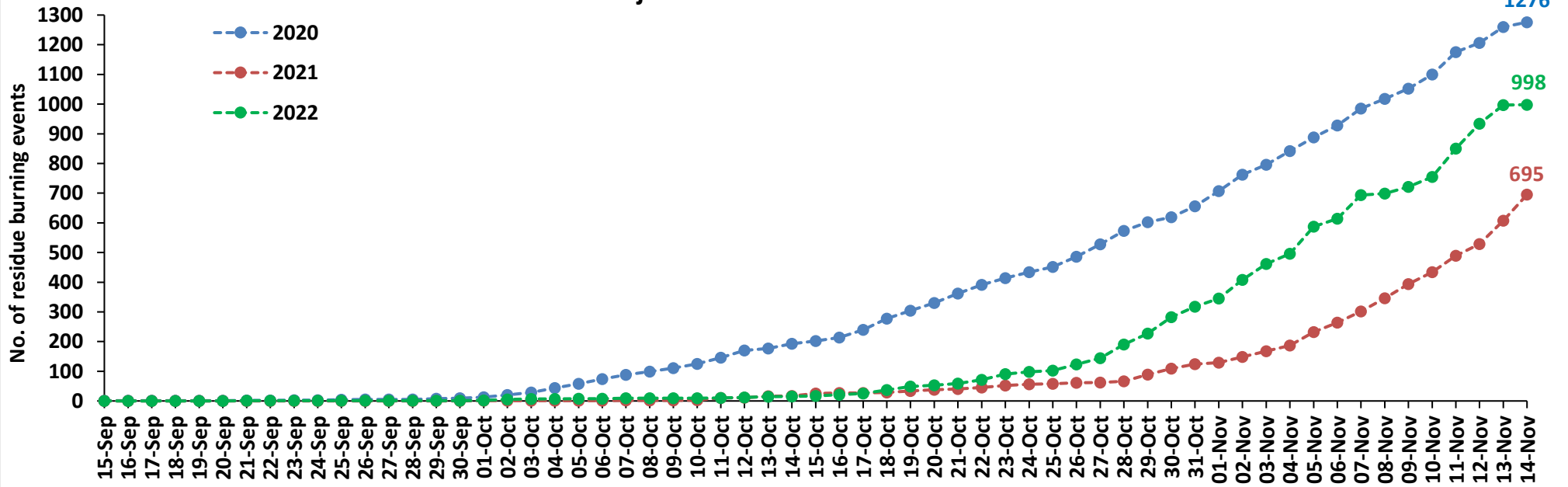
Haryana Cumulative



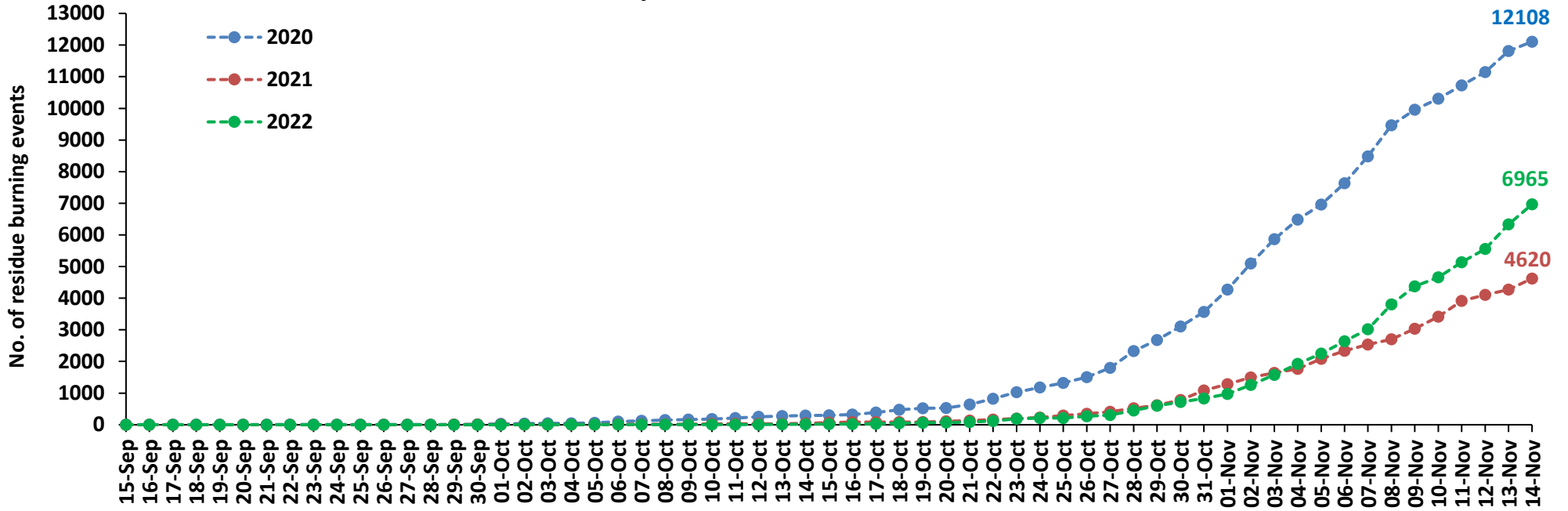
Uttar Pradesh Cumulative



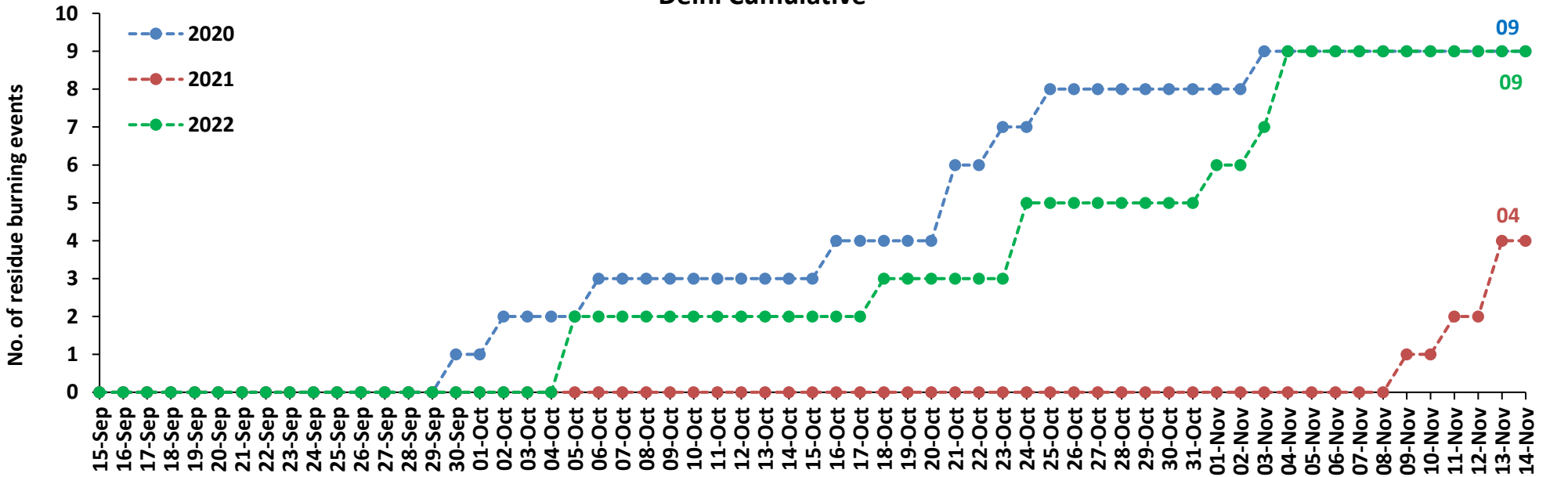
Rajasthan Cumulative



Madhya Pradesh Cumulative

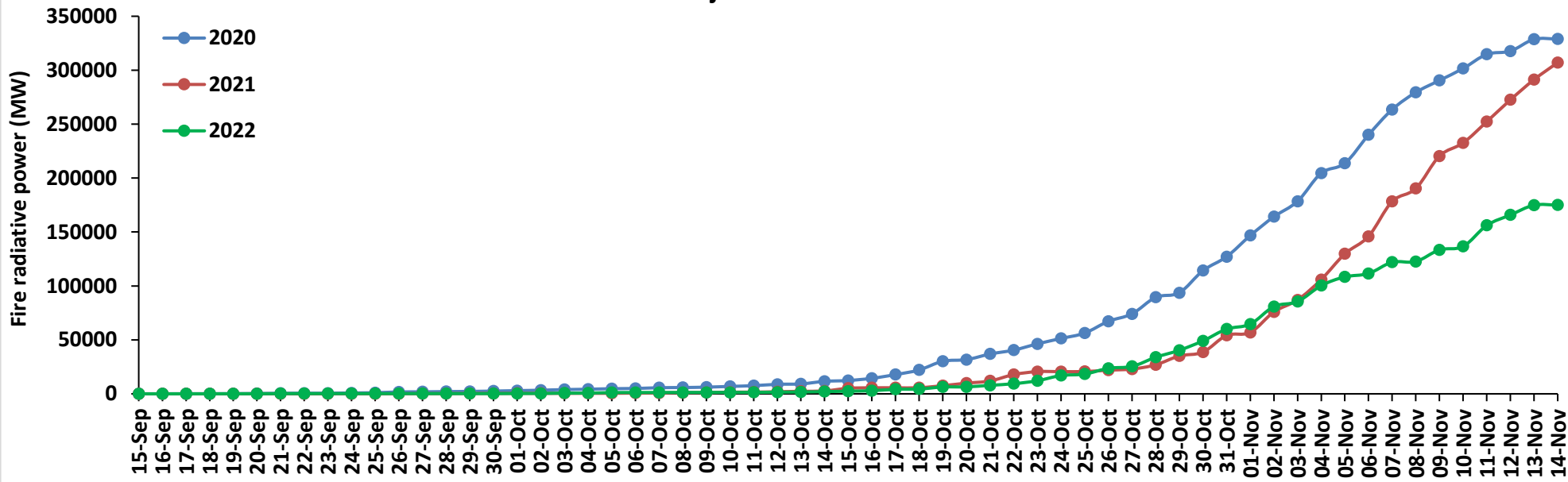


Delhi Cumulative

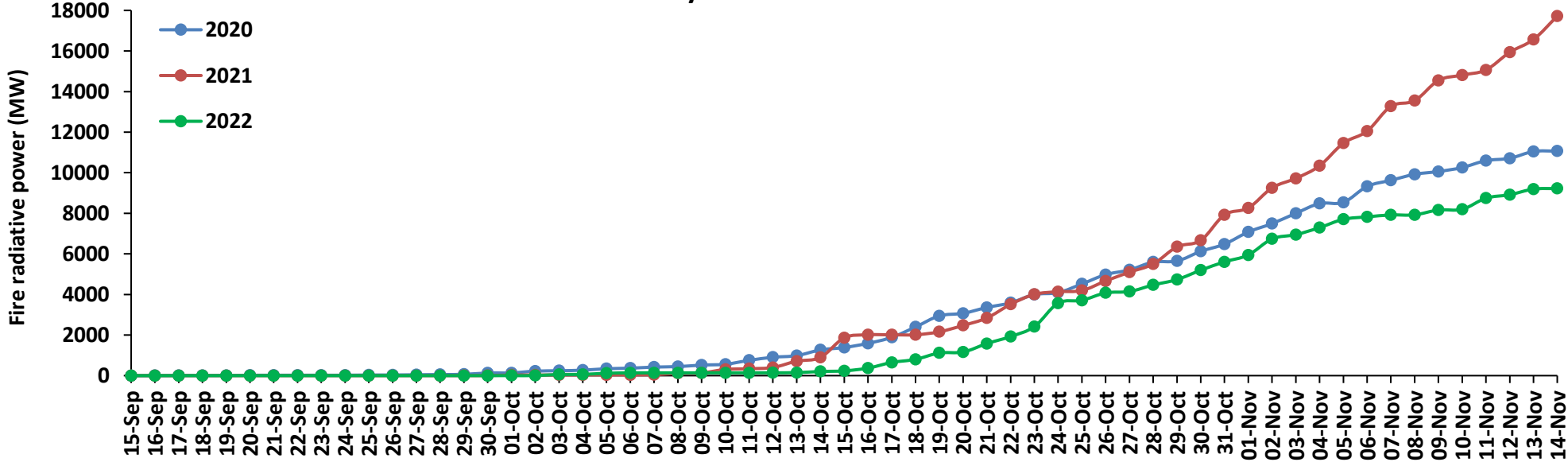


Comparison of residue burning fire power in current year (2022) with previous years (2021 and 2020) for the study States

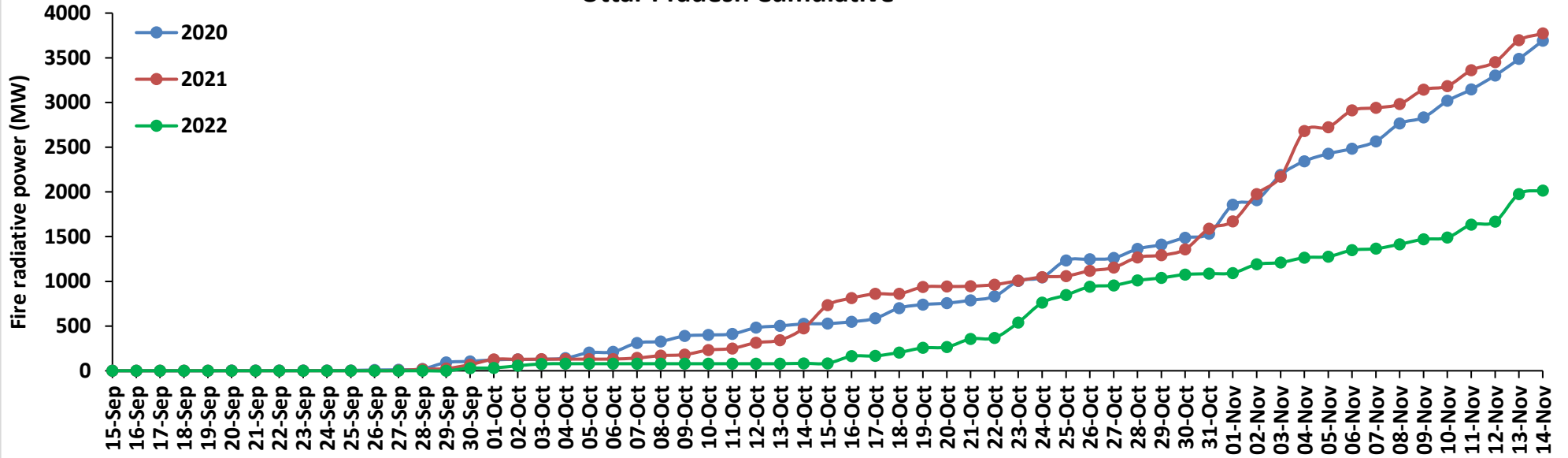
Punjab Cumulative



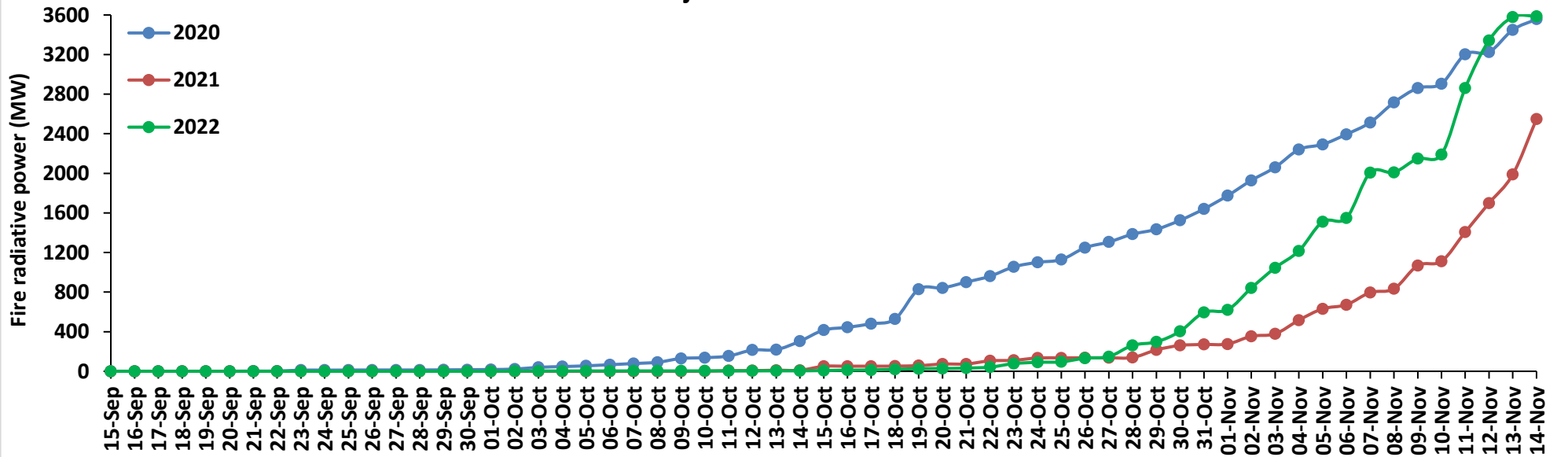
Haryana Cumulative



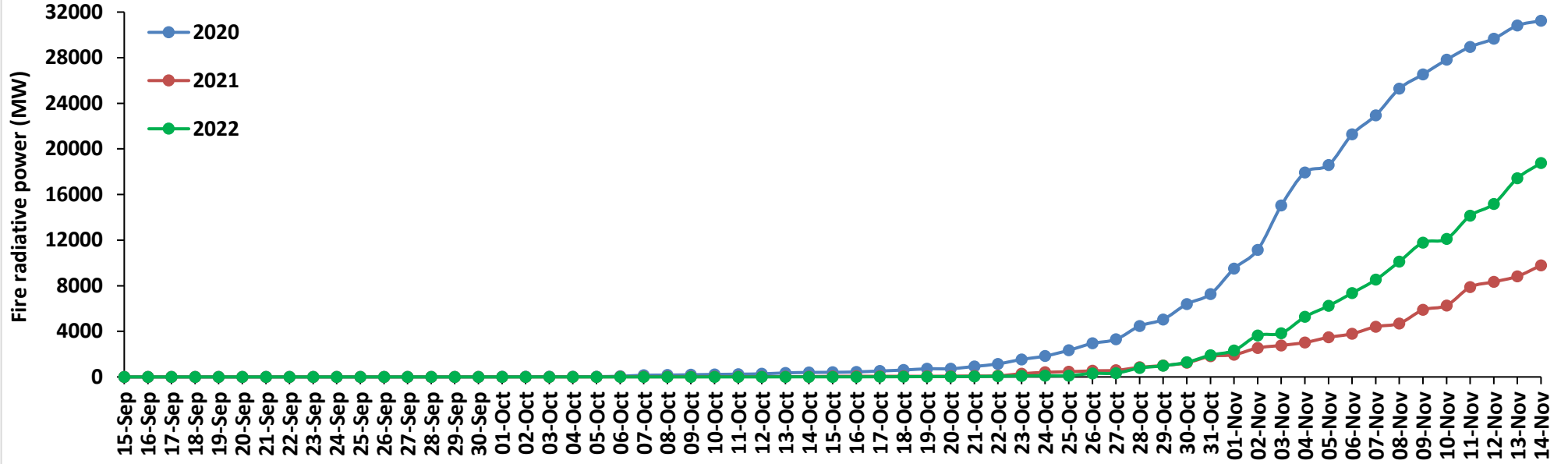
Uttar Pradesh Cumulative



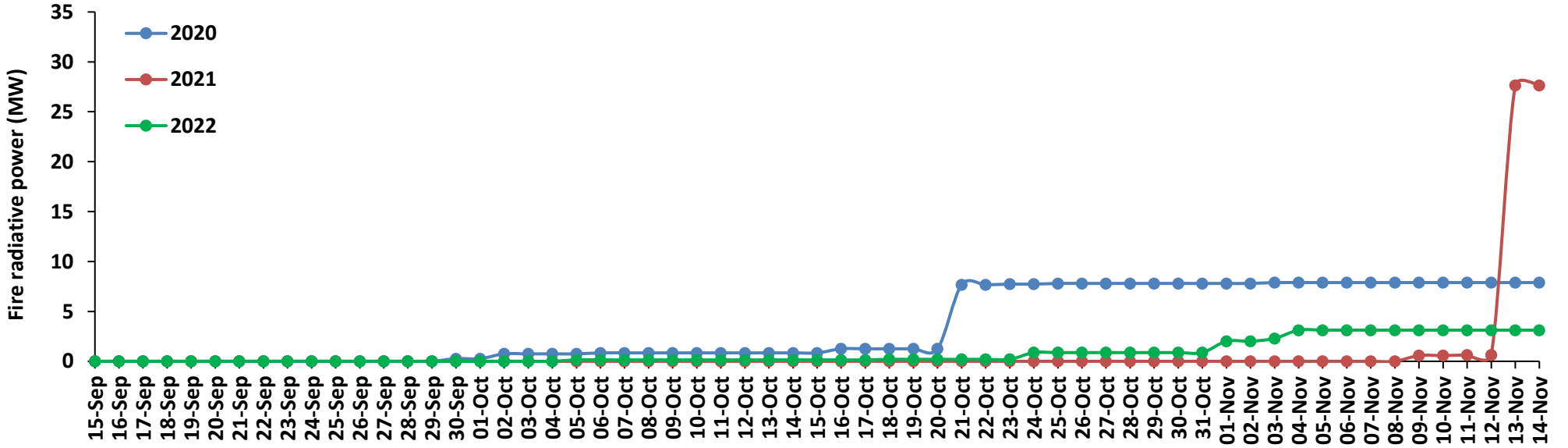
Rajasthan Cumulative



Madhya Pradesh Cumulative

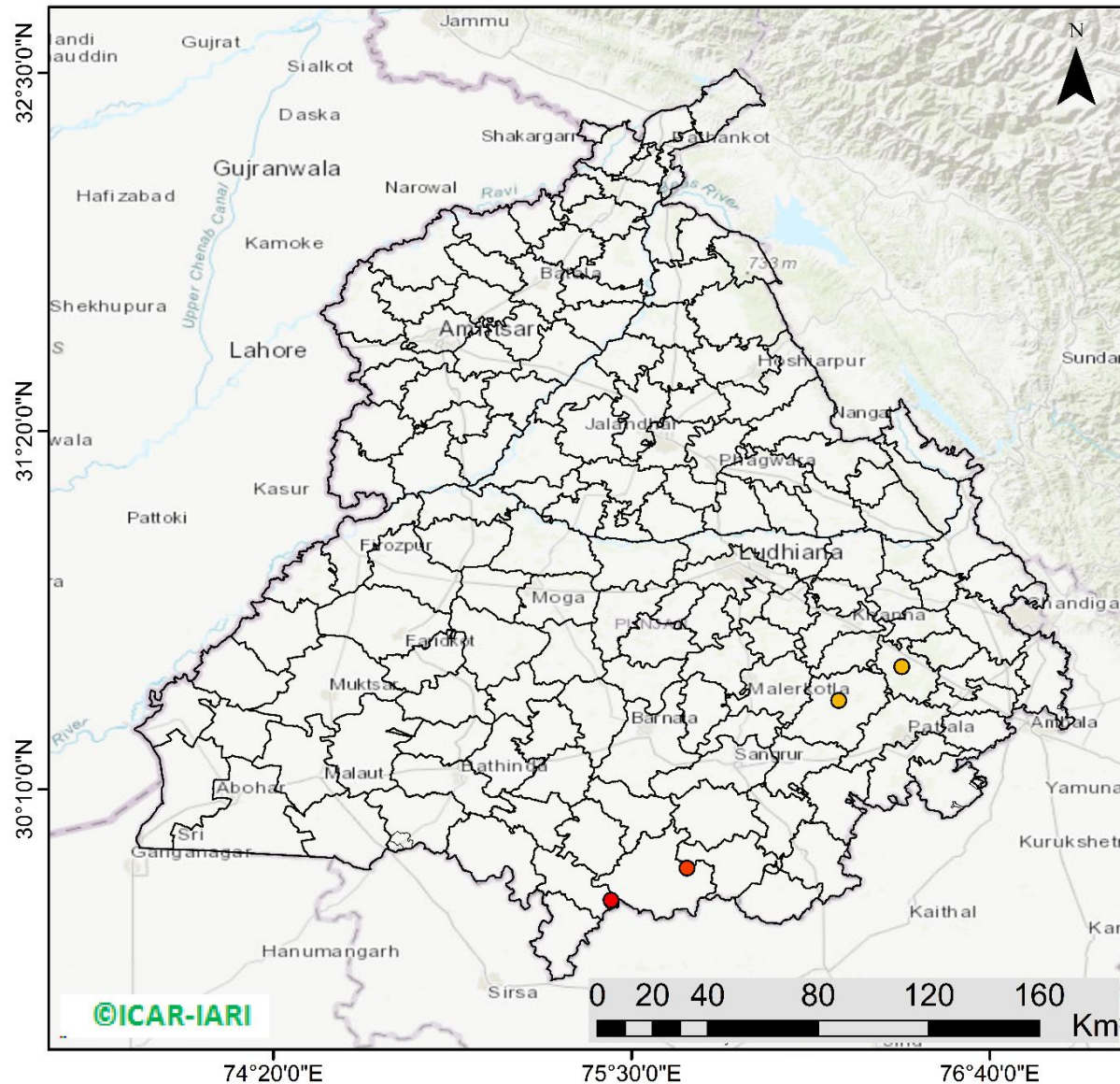


Delhi Cumulative



Punjab

RICE RESIDUE BURNING IN PUNJAB



04 burning events detected in Punjab during (14th Nov 2022)

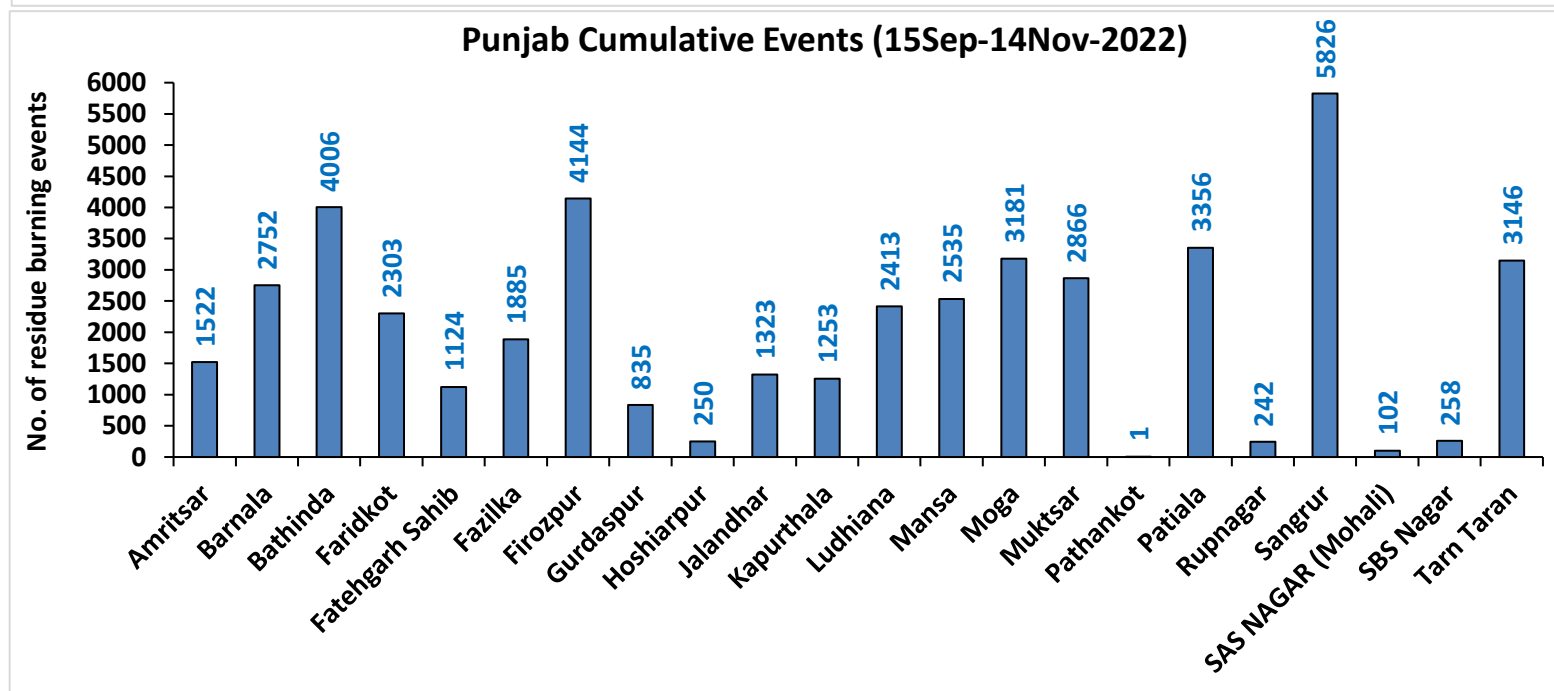
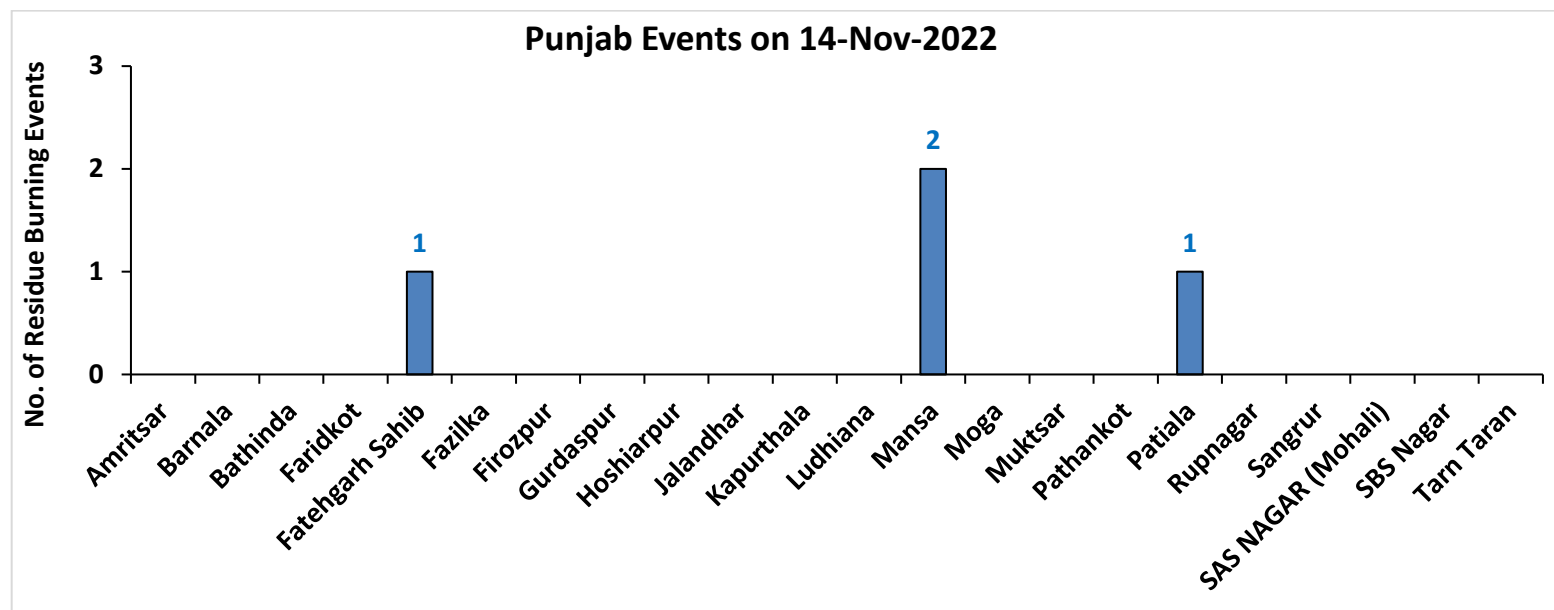
Fire Intensity (W/m²)

- 0 - 5
- 6 - 10
- 11 - 15
- 16 - 20
- >20



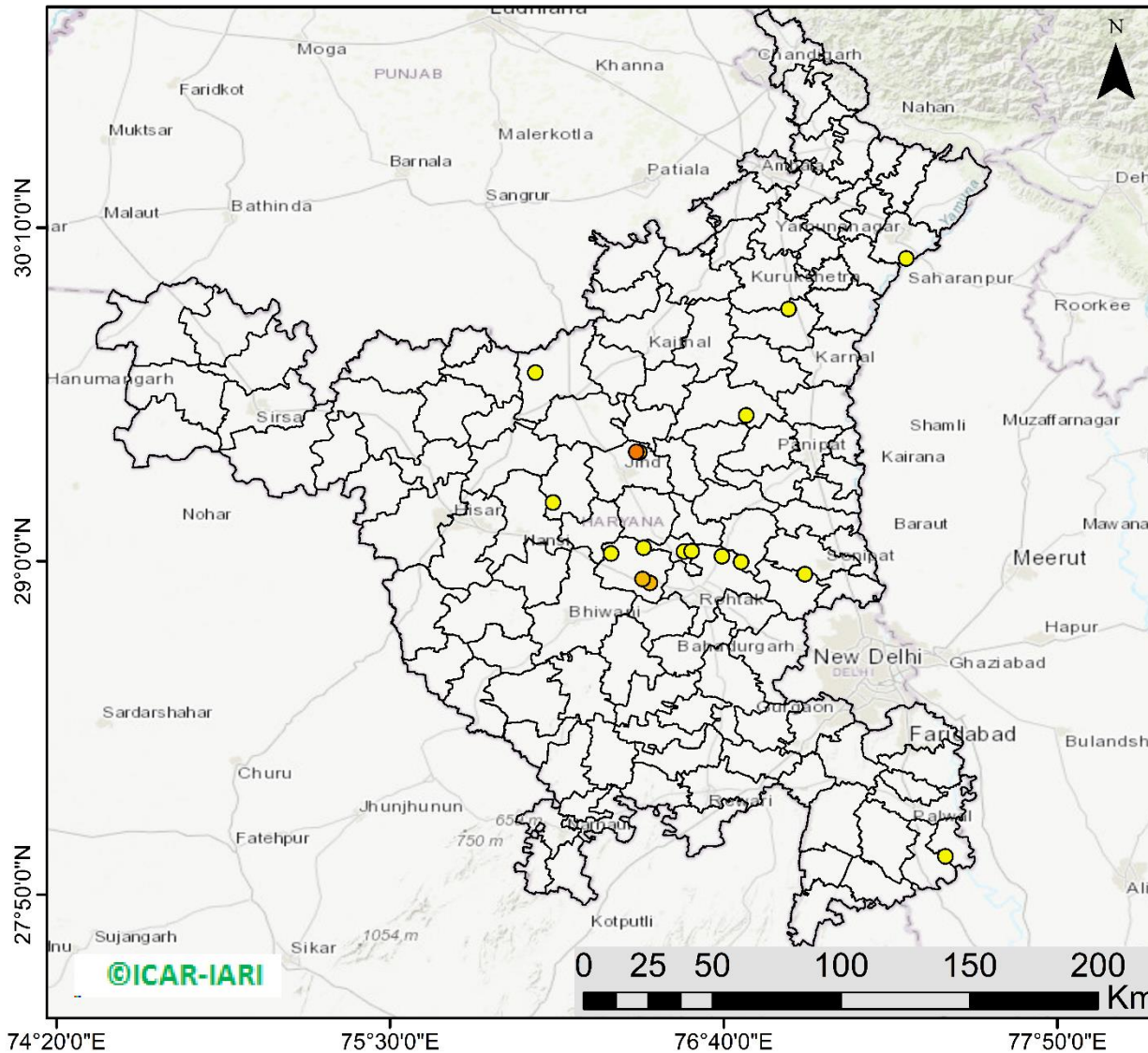
<http://geoportal.icar.gov.in:8080/geoexplorer/composer/>

District-wise cumulative number of residues burning events in Punjab (15Sep- 14Nov-2022)



Haryana

RICE RESIDUE BURNING IN HARYANA



17 burning events detected in Haryana on (14th Nov 2022)

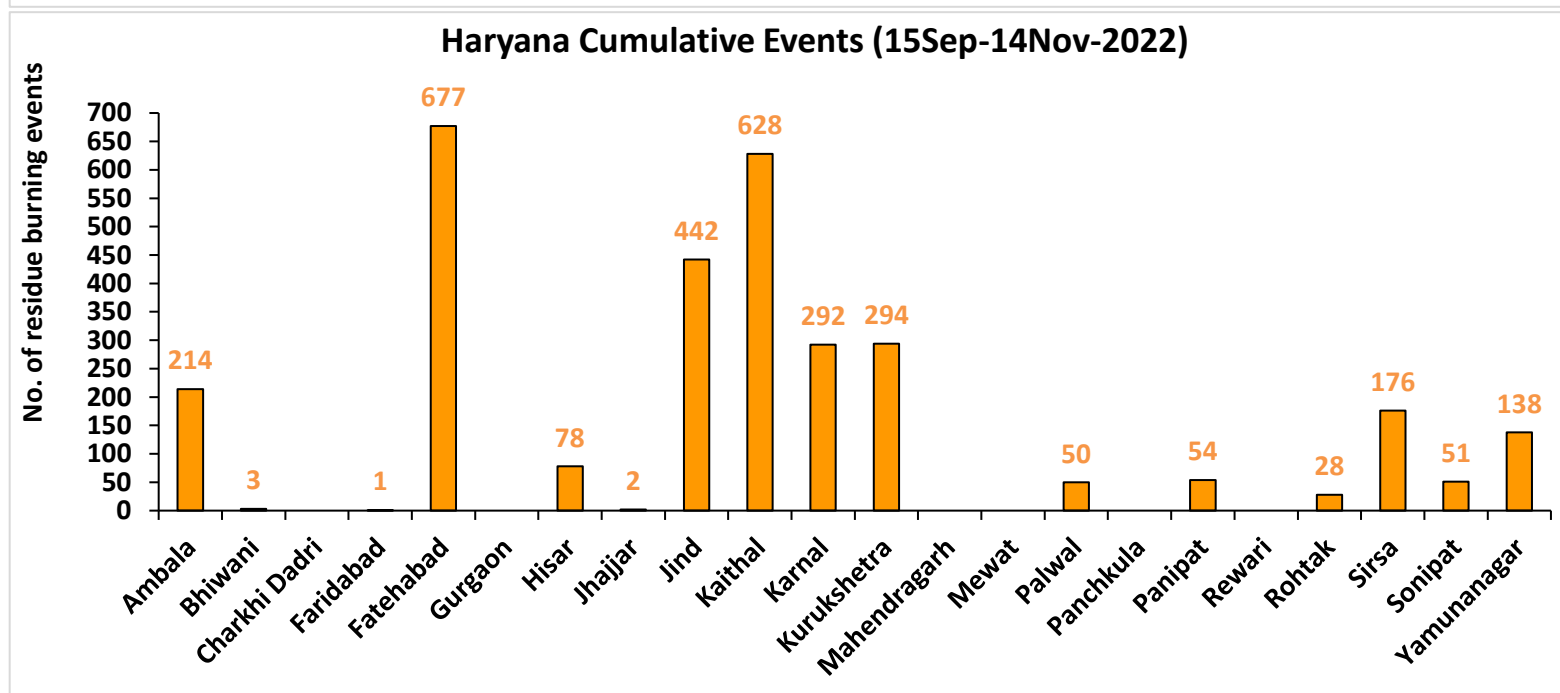
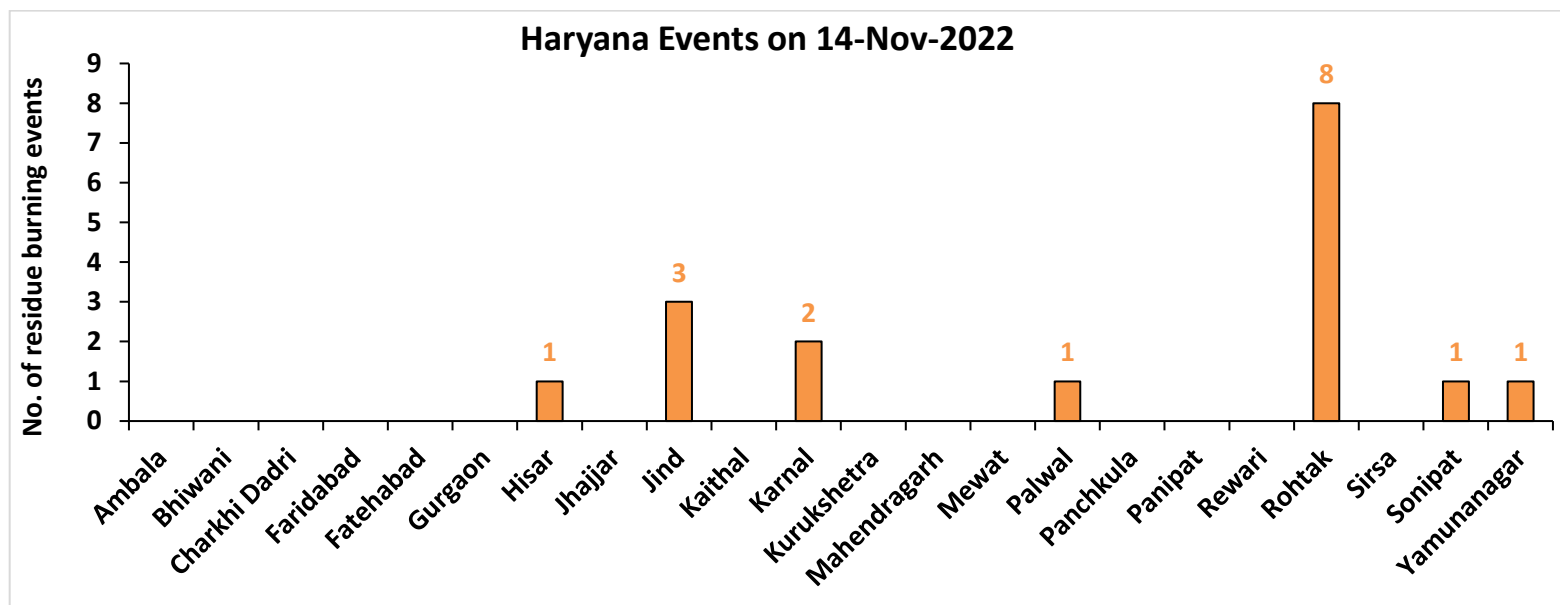
Fire Intensity (W/m²)

- 0 - 5
- 6 - 10
- 11 - 15
- 16 - 20
- >20



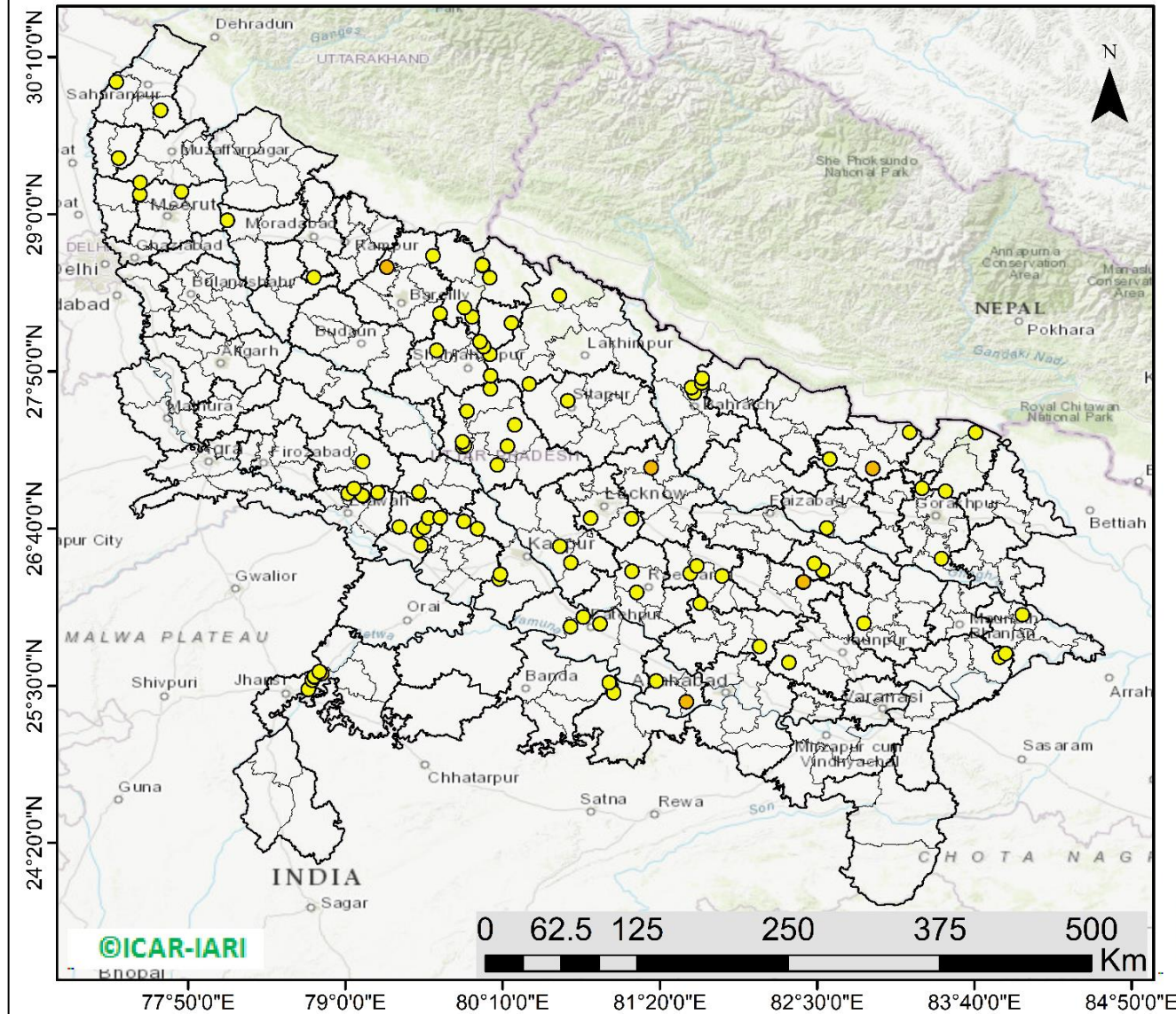
<http://geoportal.icar.gov.in:8080/geoexplorer/composer/>

District-wise cumulative number of residues burning events in Haryana (15Sep- 14Nov-2022)



Uttar Pradesh

RICE RESIDUE BURNING IN UTTAR PRADESH



101 burning events detected in Uttar Pradesh on (14th Nov 2022)

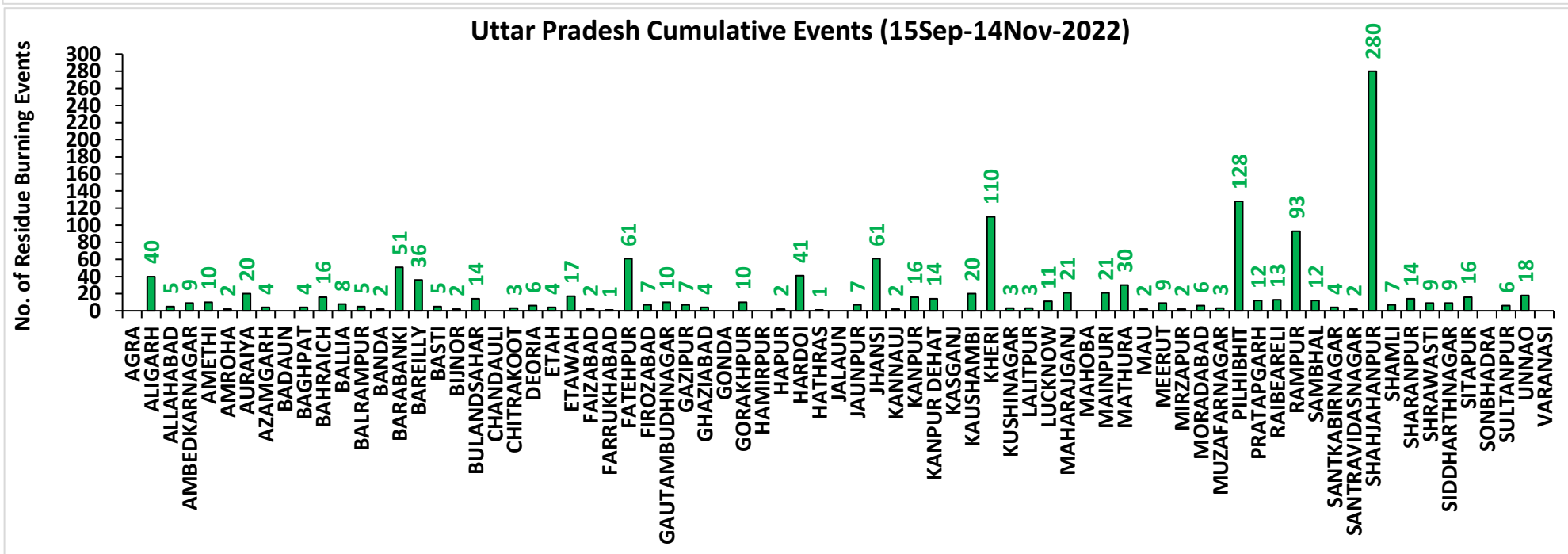
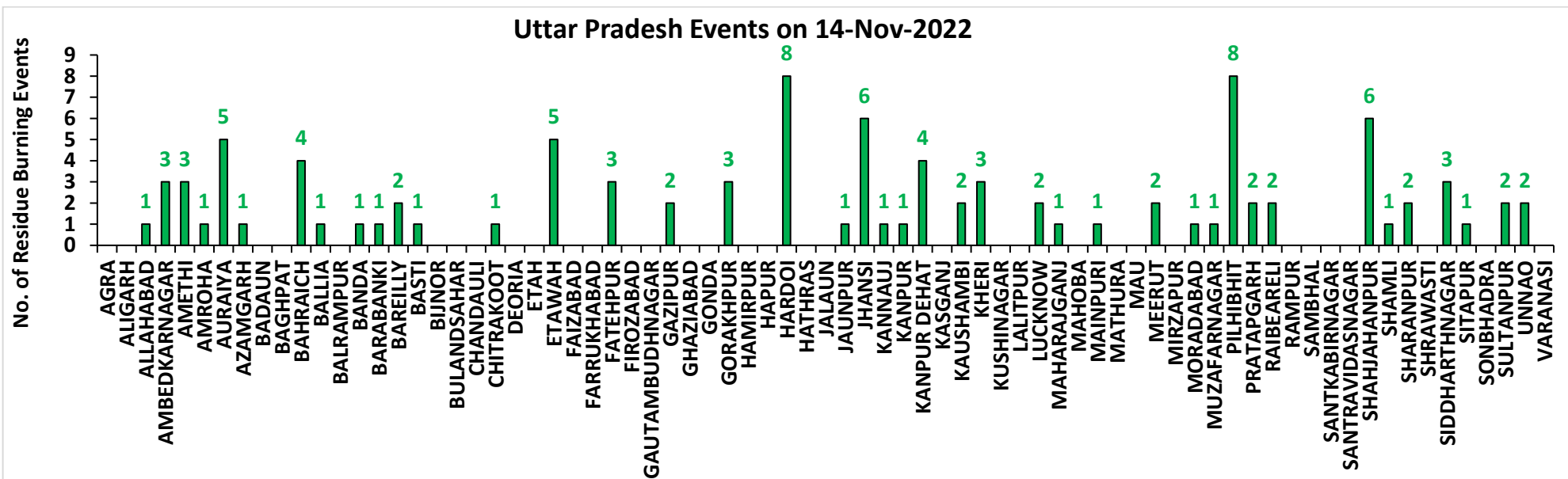
Fire Intensity (W/m²)

- 0 - 5
- 6 - 10
- 11 - 15
- 16 - 20
- >20



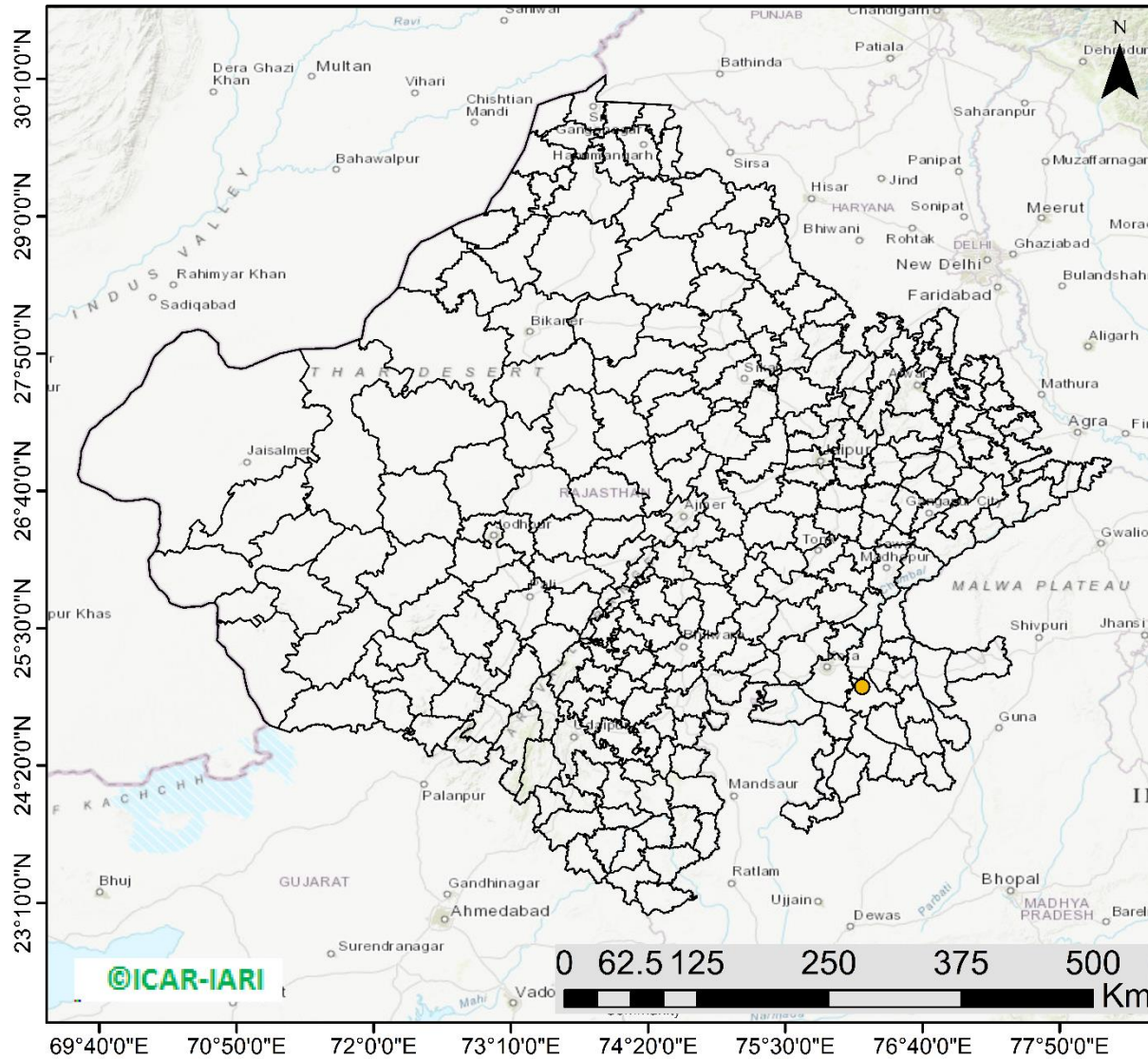
<http://geoportal.icar.gov.in:8080/geoexplorer/composer/>

District-wise cumulative number of residues burning events in Uttar Pradesh (15Sep- 14Nov-2022)



Rajasthan

RICE RESIDUE BURNING IN RAJASTHAN



01 burning events
detected in Rajasthan on
(14th Nov 2022)

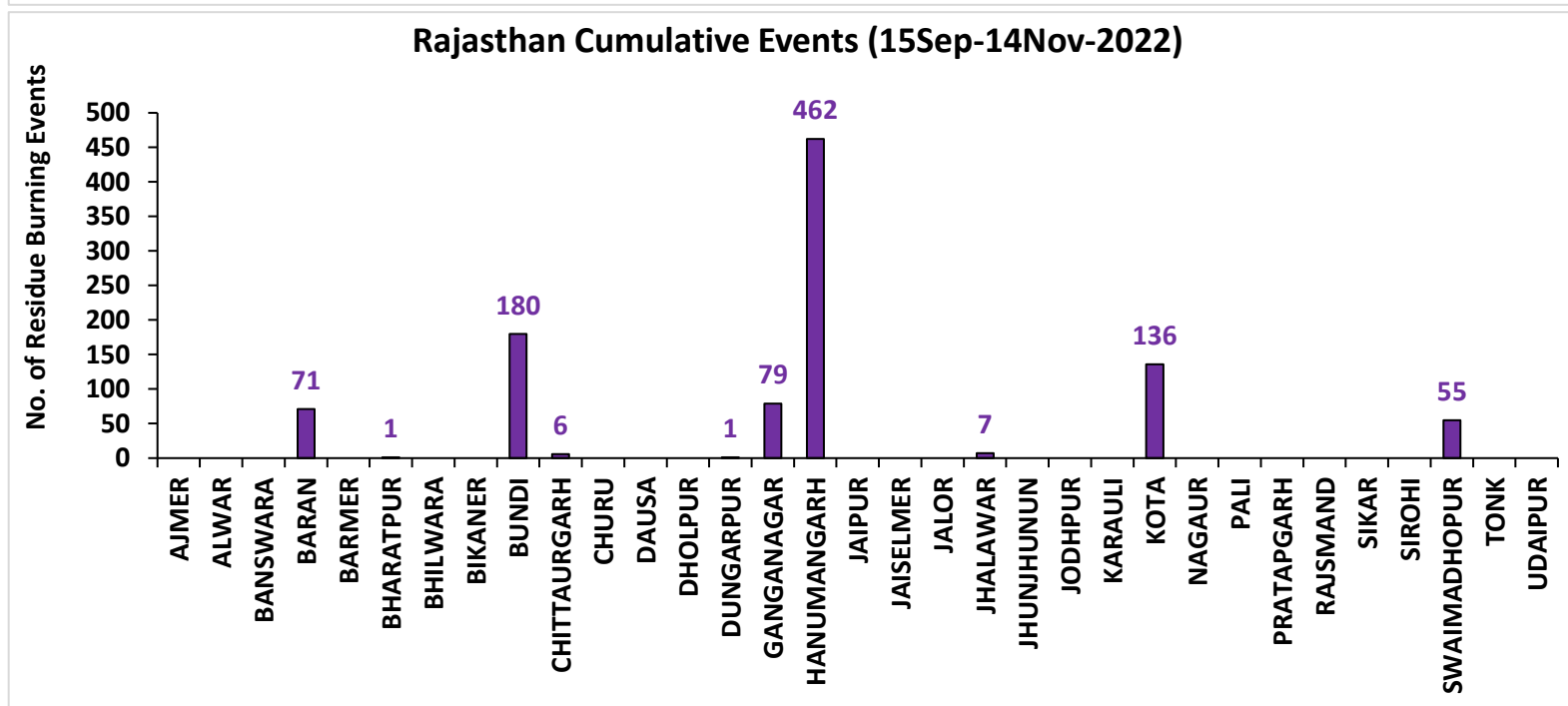
Fire Intensity (W/m²)

- 0 - 5
- 6 - 10
- 11 - 15
- 16 - 20
- >20



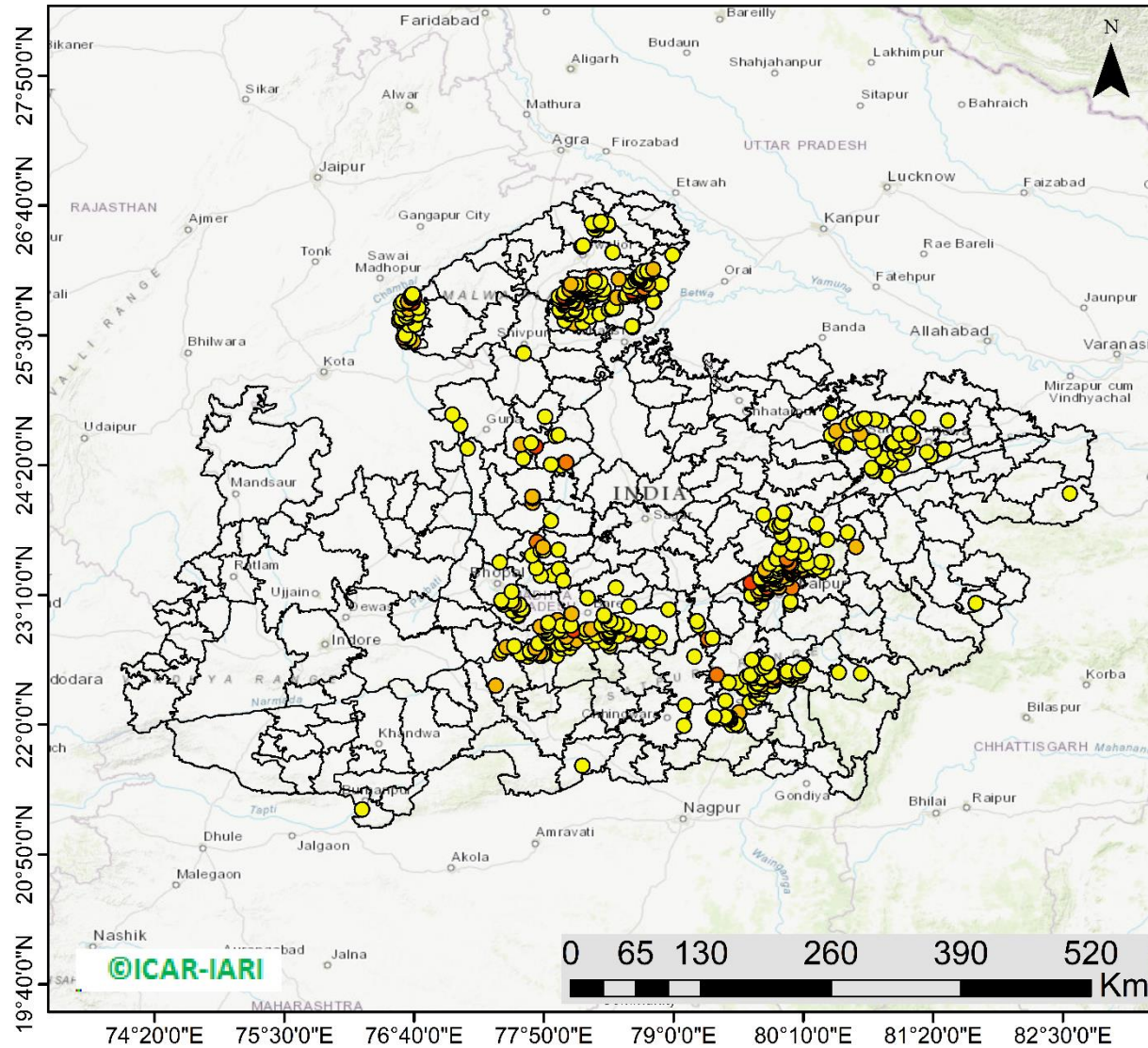
<http://geoportal.icar.gov.in:8080/geoexplorer/composer/>

District-wise cumulative number of residues burning events in Rajasthan (15Sep- 14Nov-2022)



Madhya Pradesh

RICE RESIDUE BURNING IN MADHYA PRADESH



633 burning events detected in MP on (14th Nov 2022)

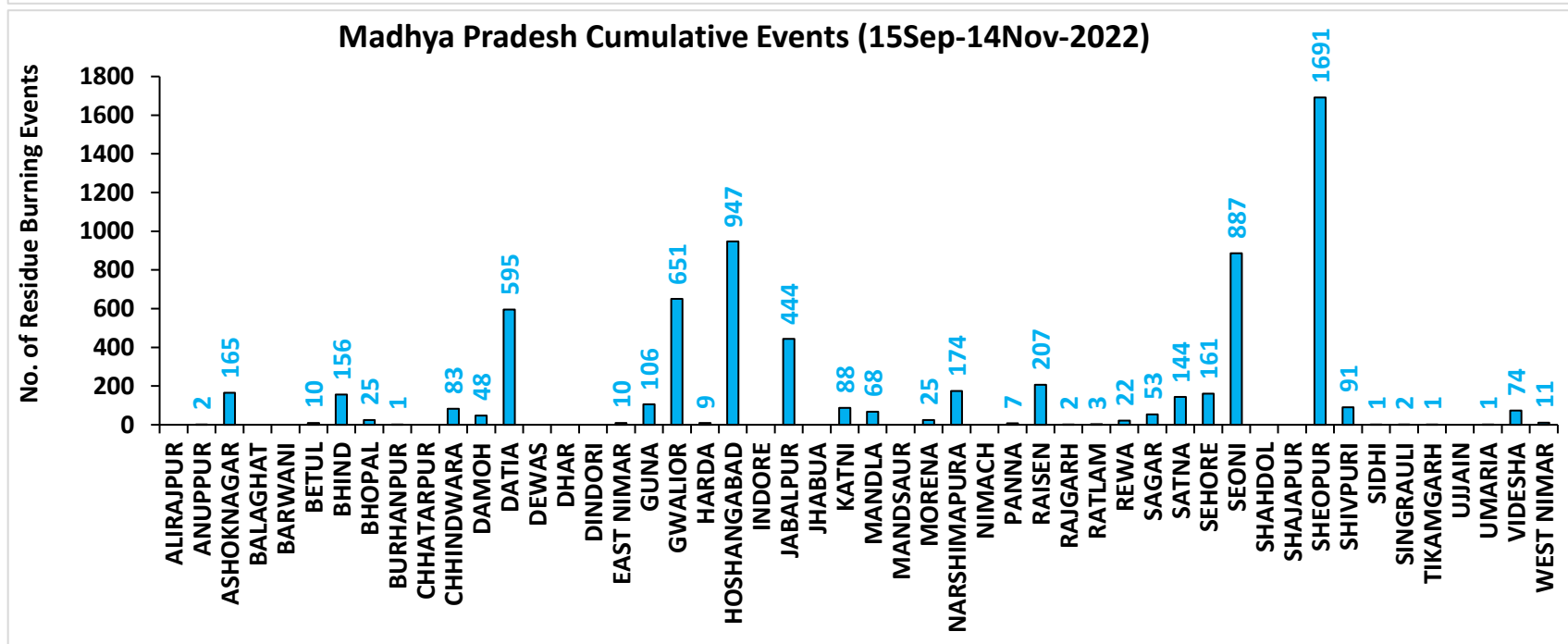
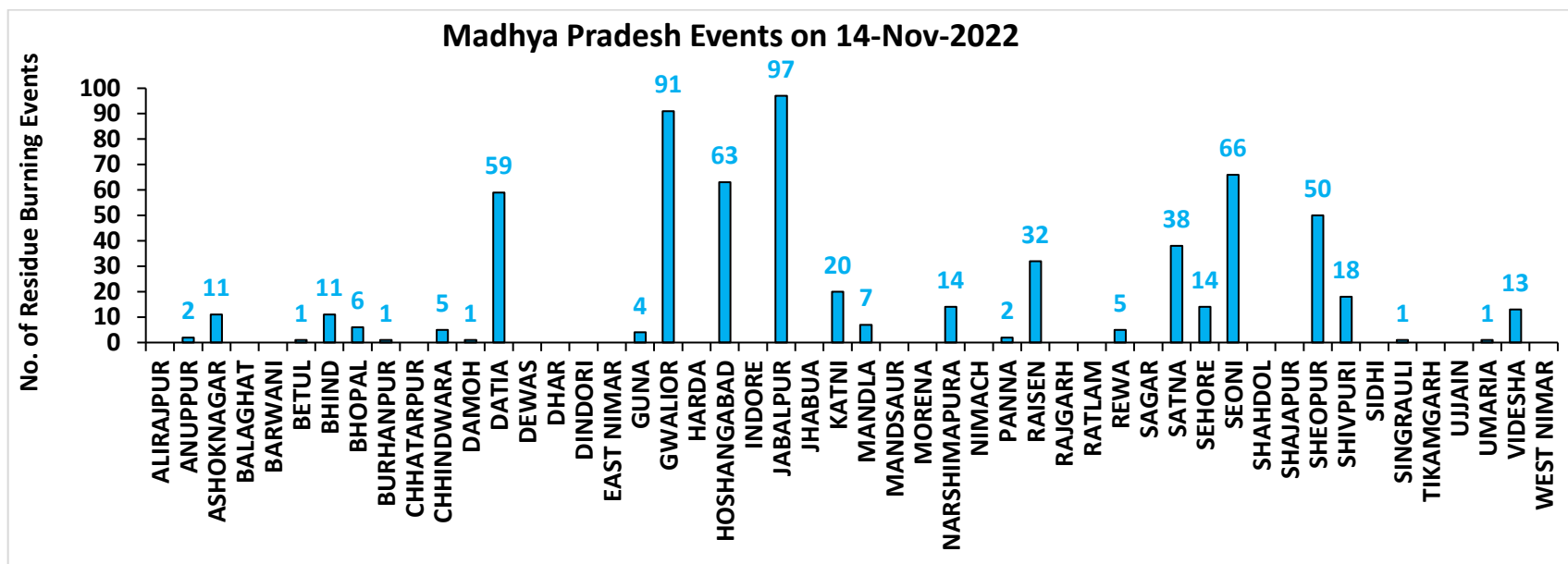
Fire Intensity (W/m²)

- 0 - 5
- 6 - 10
- 11 - 15
- 16 - 20
- >20



<http://geoportal.icar.gov.in:8080/geoexplorer/composer/>

District-wise cumulative number of residues burning events in Madhya Pradesh (15Sep- 14Nov-2022)



District-wise cumulative number of residues burning events detected in 2020 ,2021 and 2022
(Period: 15 September-14 November)

(a) Punjab

District	15 Sep-14 Nov 2022		
	2020	2021	2022
Amritsar	3049	2060	1522
Barnala	5210	4171	2752
Bathinda	5005	4068	4006
Faridkot	4602	3677	2303
Fatehgarh Sahib	1527	1582	1124
Fazilka	1810	1703	1885
Firozpur	8226	5831	4144
Gurdaspur	2119	1364	835
Hoshiarpur	386	319	250
Jalandhar	1928	2387	1323
Kapurthala	1879	1756	1253
Ludhiana	4959	5423	2413
Mansa	3647	2756	2535
Moga	7234	6065	3181
Muktsar	4392	3841	2866
Pathankot	13	5	1
Patiala	6377	4902	3356
Rupnagar	205	289	242
Sangrur	11643	8683	5826
SAS NAGAR (Mohali)	127	144	102
SBS Nagar	131	330	258
Tarn Taran	5589	4048	3146
Total	80058	65404	45323

(b) Haryana

District	15 Sep-14 Nov 2022		
	2020	2021	2022
AMBALA	344	292	214
BHIWANI	3	1	3
CHARKHI DADRI	0	0	0
FARIDABAD	1	3	1
FATEHABAD	690	1202	677
GURGAON	0	0	0
HISAR	48	89	78
JHAJJAR	6	0	2
JIND	327	651	442
KAITHAL	816	1114	628
KARNAL	577	902	292
KURUKSHETRA	404	528	294
MAHENDRAGARH	0	0	0
MEWAT	0	0	0
PALWAL	46	107	50
PANCHKULA	0	0	0
PANIPAT	42	152	54
REWARI	0	0	0
ROHTAK	40	16	28
SIRSA	126	284	176
SONIPAT	61	110	51
YAMUNANAGAR	139	144	138
Total	3670	5595	3128

(c) Uttar Pradesh

District	15 Sep-14 Nov 2022										
	2020	2021	2022	GAUTAMBUDHNAGAR	11	19	10	MUZAFARNAGAR	27	13	3
AGRA	7	0	0	GAZIPUR	5	3	7	PILHIBHIT	12	197	128
ALIGARH	109	38	40	GHAZIABAD	20	7	4	PRATAPGARH	27	9	12
ALLAHABAD	21	9	5	GONDA	11	6	0	RAIBEARELI	13	25	13
AMBEDKARNAGAR	14	8	9	GORAKHPUR	21	15	10	RAMPUR	145	172	93
AMETHI	3	8	10	HAMIRPUR	3	0	0	SAMBHAL	14	13	12
AMROHA	6	5	2	HAPUR	17	7	2	SANTKABIRNAGAR	23	11	4
AURAIYA	73	26	20	HARDOI	90	82	41	SANTRAVIDASNAGAR	3	1	2
AZAMGARH	24	1	4	HATHRAS	0	0	1	SHAHJAHANPUR	111	376	280
BADAUN	12	16	0	JALAUN	33	0	0	SHAMLI	35	25	7
BAGHPAT	11	7	4	JAUNPUR	26	7	7	SAHARANPUR	88	54	14
BAHRAICH	103	43	16	JHANSI	223	53	61	SHRAWASTI	43	29	9
BALLIA	43	5	8	KANNAUJ	31	4	2	SIDDHARTHANAGAR	45	78	9
BALRAMPUR	60	9	5	KANPUR	26	27	16	SITAPUR	49	36	16
BANDA	18	3	2	KANPUR DEHAT	67	23	14	SONBHADRA	0	0	0
BARABANKI	33	54	51	KASGANJ	2	2	0	SULTANPUR	2	8	6
BAREILLY	63	48	36	KAUSHAMBI	44	44	20	UNNAO	39	19	18
BASTI	47	36	5	KHERI	115	138	110	VARANASI	1	2	0
BIJNOR	28	26	2	KUSHINAGAR	40	6	3	Total	2861	2381	1373
BULANDSAHAR	46	4	14	LALITPUR	1	6	3				
CHANDAULI	1	0	0	LUCKNOW	35	30	11				
CHITRAKOOT	12	7	3	MAHARAJGANJ	25	42	21				
DEORIA	55	3	6	MAHOBA	27	0	0				
ETAH	17	8	4	MAINPURI	59	34	21				
ETAWAH	65	34	17	MATHURA	159	236	30				
FAIZABAD	8	4	2	MAU	13	5	2				
FARRUKHABAD	4	2	1	MEERUT	43	14	9				
FATEHPUR	103	70	61	MIRZAPUR	7	5	2				
FIROZABAD	26	16	7	MORADABAD	18	8	6				

(d) Delhi

District	15 Sep-14 Nov 2022		
	2020	2021	2022
CENTRAL	0	0	0
EAST	0	0	0
NEW DELHI	0	0	0
NORTH	3	3	8
NORTH EAST	0	0	0
NORTH WEST DELHI	3	1	0
SHAHADRA	0	0	0
SOUTH	1	0	0
SOUTH EAST	0	0	0
SOUTH WEST DELHI	0	0	0
WEST DELHI	2	0	1
Total	9	4	9

(e) Rajasthan

District	15 Sep-14 Nov 2022		
	2020	2021	2022
AJMER	3	0	0
ALWAR	8	0	0
BANSWARA	0	0	0
BARAN	165	9	71
BARMER	3	0	0
BHARATPUR	2	3	1
BHILWARA	8	0	0
BIKANER	1	0	0
BUNDI	128	70	180
CHITTAURGARH	1	9	6
CHURU	0	0	0
DAUSA	1	0	0
DHOLPUR	0	0	0
DUNGARPUR	0	0	1
GANGANAGAR	116	73	79
HANUMANGARH	610	448	462
JAIPUR	4	0	0
JAISELMER	4	0	0
JALOR	2	0	0
JHALAWAR	8	1	7
JHUNJHUNUN	1	0	0
JODHPUR	4	0	0
KARAULI	1	0	0
KOTA	115	52	136
NAGAUR	2	0	0
PALI	7	0	0
PRATAPGARH	8	0	0
RAJSMAND	1	0	0
SIKAR	0	0	0
SIROHI	2	0	0
SWAIMADHOPUR	65	29	55
TONK	5	0	0
UDAIPUR	1	1	0
Total	1276	695	998

(f) Madhya Pradesh

District	15 Sep-14 Nov 2022						
	2020	2021	2022	PANNA	49	13	7
ALIRAJPUR	0	0	0	RAISEN	537	151	207
ANUPPUR	0	0	2	RAJGARH	10	3	3
ASHOKNAGAR	152	78	165	RATLAM	2	4	3
BALAGHAT	5	2	0	REWA	117	39	22
BARWANI	3	0	0	SAGAR	28	27	53
BETUL	33	13	10	SATNA	537	195	144
BHIND	251	97	156	SEHORE	142	118	161
BHOPAL	46	29	25	SEONI	1221	861	887
BURHANPUR	11	1	1	SHAHDOL	3	0	0
CHHATARPUR	7	0	0	SHAJAPUR	16	0	0
CHHINDWARA	118	50	83	SHEOPUR	1773	613	1691
DAMOH	73	49	48	SHIVPURI	323	33	91
DATIA	1171	317	595	SIDHI	4	2	1
DEWAS	8	0	0	SINGRAULI	0	2	2
DHAR	41	0	0	TIKAMGARH	4	0	1
DINDORI	0	0	0	UJJAIN	10	0	0
EAST NIMAR	22	7	10	UMARIA	6	3	1
GUNA	66	7	106	VIDESHA	129	66	74
GWALIOR	1908	253	651	WEST NIMAR	58	9	11
HARDA	14	21	9	Total	12108	4620	6965
HOSHANGABAD	1042	973	947				
INDORE	4	0	0				
JABALPUR	1461	317	443				
JHABUA	0	0	0				
KATNI	269	47	88				
MANDLA	124	85	68				
MANDSAUR	12	0	0				
MORENA	62	37	25				
NARSHIMAPURA	234	98	174				
NIMACH	2	0	0				

State-wise and date-wise number of paddy residue burning events detected in 2020, 2021 and 2022
(Period: 15 September - 14 November 2022)

Number of Paddy Residue Burning Events Detected

	Punjab			Haryana			Uttar Pradesh			Delhi			Rajasthan			Madhya Pradesh		
	2020	2021	2022	2020	2021	2022	2020	2021	2022	2020	2021	2022	2020	2021	2022	2020	2021	2022
15-Sep	5	0	14	2	0	0	1	0	0	0	0	0	1	0	0	2	0	0
16-Sep	0	2	0	1	0	0	0	0	0	0	0	0	0	0	0	0	0	0
17-Sep	5	0	1	3	0	0	0	0	0	0	0	0	0	0	0	0	0	0
18-Sep	17	9	7	0	0	1	0	1	0	0	0	0	0	0	0	0	0	0
19-Sep	30	5	18	2	0	0	0	1	0	0	0	0	0	0	0	0	0	0
20-Sep	67	8	10	6	0	0	2	0	0	0	0	0	0	0	0	0	0	0
21-Sep	54	0	56	2	0	0	1	0	0	0	0	0	1	0	1	2	0	0
22-Sep	34	0	30	1	0	0	1	0	0	0	0	0	0	0	0	0	0	0
23-Sep	49	0	3	0	0	0	1	0	0	0	0	0	1	0	0	0	0	0
24-Sep	78	5	0	0	0	0	1	1	0	0	0	0	0	0	0	0	0	0
25-Sep	184	11	0	11	0	0	5	0	0	0	0	0	1	0	0	0	0	0
26-Sep	190	19	0	5	0	0	8	0	0	0	0	0	1	0	0	2	0	0
27-Sep	78	37	0	8	0	0	4	1	0	0	0	0	0	0	0	1	0	0
28-Sep	55	28	0	6	1	0	1	6	0	0	0	0	0	0	0	1	1	0
29-Sep	63	64	0	9	4	0	6	10	0	0	0	0	3	0	0	0	4	0
30-Sep	116	27	8	22	2	0	13	13	10	1	0	0	1	0	0	5	0	0
01-Oct	165	13	45	15	4	1	7	13	3	0	0	0	4	1	1	13	0	1
02-Oct	141	0	83	30	2	7	12	0	36	1	0	0	7	0	3	12	0	1
03-Oct	110	9	75	8	6	8	4	3	29	0	0	0	9	0	2	5	1	5
04-Oct	162	23	65	29	2	7	8	0	2	0	0	0	15	0	0	4	2	0
05-Oct	161	18	130	17	3	24	14	2	0	0	0	2	14	0	1	13	1	0
06-Oct	171	42	85	30	0	26	12	1	0	1	0	0	16	0	0	37	1	0
07-Oct	197	72	62	32	11	6	41	13	0	0	0	0	14	1	1	31	1	0
08-Oct	95	108	19	29	27	0	25	11	0	0	0	0	11	0	0	17	2	0

09-Oct	121	114	3	20	39	1	15	20	0	0	0	0	12	0	0	15	4	0
10-Oct	232	150	4	33	95	2	9	54	0	0	0	0	14	1	0	18	10	0
11-Oct	377	64	45	90	51	0	23	28	0	0	0	0	21	7	1	32	2	0
12-Oct	388	97	104	69	51	4	46	23	0	0	0	0	24	1	2	44	1	1
13-Oct	266	132	120	47	91	15	36	42	0	0	0	0	7	5	2	21	2	7
14-Oct	605	229	82	69	98	30	9	68	5	0	0	0	16	1	1	15	11	1
15-Oct	449	660	169	106	363	36	15	149	0	0	0	0	9	8	2	8	27	2
16-Oct	654	429	206	80	176	76	21	121	6	1	0	0	12	2	4	23	13	2
17-Oct	1172	14	403	143	0	86	38	39	7	0	0	0	26	0	4	63	1	11
18-Oct	938	57	342	166	1	134	76	0	30	0	0	1	37	2	12	88	0	15
19-Oct	1080	496	436	72	55	122	43	5	36	0	0	0	27	5	12	49	1	12
20-Oct	890	788	96	62	155	78	31	1	17	0	0	0	26	4	4	9	21	7
21-Oct	1392	597	393	101	131	107	25	5	23	2	0	0	32	2	6	112	30	18
22-Oct	1665	1111	582	128	140	122	32	3	18	0	0	0	29	5	12	183	29	31
23-Oct	1438	620	902	106	218	217	84	8	109	1	0	0	23	7	20	204	32	70
24-Oct	911	0	1019	57	38	250	63	11	212	0	0	2	20	4	7	150	34	26
25-Oct	1416	76	181	155	71	12	50	18	9	1	0	0	18	2	4	144	60	0
26-Oct	2126	329	1238	77	175	123	33	41	23	0	0	0	34	3	21	178	55	57
27-Oct	2563	279	1111	96	93	83	40	58	23	0	0	0	42	1	21	294	62	38
28-Oct	3232	906	2067	139	149	123	87	35	34	0	0	0	45	4	46	537	110	143
29-Oct	1624	1353	1898	52	161	112	139	32	73	0	0	0	29	23	37	349	97	151
30-Oct	3946	1373	1761	100	148	112	50	53	43	0	0	0	17	20	55	428	168	119
31-Oct	3531	2895	2131	108	353	70	49	170	20	0	0	0	37	15	36	455	299	112
01-Nov	3835	1796	1842	151	124	88	74	157	9	0	0	1	51	5	27	709	198	142
02-Nov	4098	3001	3634	111	203	166	82	87	25	0	0	0	55	19	63	820	214	284
03-Nov	2818	2512	2666	93	197	128	197	66	40	1	0	1	34	20	54	771	148	323
04-Nov	4584	3032	2437	72	228	63	152	123	61	0	0	2	46	19	34	618	123	348
05-Nov	4529	5327	2817	66	331	90	52	70	24	0	0	0	46	45	91	474	320	319
06-Nov	5382	3942	599	151	219	46	43	208	28	0	0	0	40	32	27	678	248	392
07-Nov	5491	5199	2487	150	182	37	86	46	8	0	0	0	57	38	80	848	199	383
08-Nov	3674	4397	604	115	138	11	169	21	44	0	0	0	33	44	5	981	170	783

09-Nov	1718	5079	1778	21	217	69	115	51	58	0	1	0	34	48	22	495	330	570
10-Nov	3127	4008	1893	80	184	35	101	77	33	0	0	0	48	40	34	346	380	282
11-Nov	2822	4156	3916	93	126	152	71	151	36	0	1	0	75	55	95	418	506	482
12-Nov	1989	3403	2467	83	127	99	108	120	36	0	0	0	31	40	84	422	185	421
13-Nov	2441	3742	2175	105	210	132	172	95	102	0	2	0	54	78	63	670	171	773
14-Nov	307	2541	4	35	195	17	258	49	101	0	0	0	16	88	1	294	346	633
Total	80058	65404	45323	3670	5595	3128	2861	2381	1373	9	4	9	1276	695	998	12108	4620	6965

Details of residue burning events in Punjab on 14-Nov-2022

S. No.	District	Tehsil / Block	Satellite	Latitude	Longitude	ACQ_TIME	Day / Night	Fire Power (W/m2)
1	FATEHGARH SAHIB	SIRHIND	TERRA	30.56500	76.38000	10:51:15	D	7.50
2	MANSA	BUDHLADA	TERRA	29.80500	75.43300	10:51:15	D	37.50
3	MANSA	BUDHLADA	TERRA	29.90900	75.68100	10:51:15	D	19.60
4	PATIALA	NABHA	TERRA	30.45500	76.17500	10:51:15	D	7.90

Details of residue burning events in Haryana on 14-Nov-2022

S. No.	District	Tehsil / Block	Satellite	Latitude	Longitude	ACQ_TIME	Day / Night	Fire Power (W/m2)
1	HISAR	HANSI-I	S-NPP	29.20510	76.07000	13:16:54	D	3.50
2	JIND	JIND	TERRA	29.38100	76.37200	10:51:15	D	6.80
3	JIND	JIND	TERRA	29.38200	76.36100	10:51:15	D	14.10
4	JIND	NARWANA	S-NPP	29.65920	76.00810	13:16:54	D	4.60
5	KARNAL	ASSANDH	S-NPP	29.50940	76.74560	13:16:54	D	2.50
6	KARNAL	NILOKHERI	S-NPP	29.88160	76.89370	13:16:54	D	3.30
7	PALWAL	HODAL	S-NPP	27.96700	77.44240	13:16:54	D	3.50
8	ROHTAK	LAKHAN MAJRA	S-NPP	29.03370	76.52820	13:16:54	D	2.50
9	ROHTAK	LAKHAN MAJRA	S-NPP	29.03470	76.55480	13:16:54	D	1.90
10	ROHTAK	MEHAM	S-NPP	28.92350	76.40880	13:16:54	D	5.90
11	ROHTAK	MEHAM	S-NPP	28.93700	76.38310	13:16:54	D	5.20
12	ROHTAK	MEHAM	S-NPP	29.02640	76.27300	13:16:54	D	2.50
13	ROHTAK	MEHAM	S-NPP	29.04630	76.38670	13:16:54	D	3.40
14	ROHTAK	ROHTAK	S-NPP	28.99660	76.72760	13:16:54	D	3.40
15	ROHTAK	ROHTAK	S-NPP	29.01720	76.66110	13:16:54	D	3.90
16	SONIPAT	SONIPAT	S-NPP	28.95400	76.95070	13:16:54	D	3.60
17	YAMUNANAGAR	JAGADHRI	S-NPP	30.05880	77.30520	13:16:54	D	3.50

Details of residue burning events in Uttar Pradesh on 14-Nov-2022

S. No.	District	Tehsil / Block	Satellite	Latitude	Longitude	ACQ_TIME	Day / Night	Fire Power (W/m ²)
1	ALLAHABAD	HADIYA	S-NPP	25.48290	82.18560	02:06:54	N	0.30
2	AMBEDKARNAGAR	AKBARPUR	S-NPP	26.34950	82.54460	13:16:54	D	1.40
3	AMBEDKARNAGAR	AKBARPUR	S-NPP	26.35300	82.54410	13:16:54	D	1.60
4	AMBEDKARNAGAR	AKBARPUR	S-NPP	26.40590	82.47970	13:16:54	D	0.70
5	AMETHI	GAURIGANJ	S-NPP	26.31340	81.79520	13:16:54	D	2.50
6	AMETHI	GAURIGANJ	S-NPP	26.33270	81.55880	13:16:54	D	3.70
7	AMETHI	GAURIGANJ	S-NPP	26.38820	81.60750	13:16:54	D	3.60
8	AMROHA	DHANAURA	S-NPP	28.95370	78.12450	13:16:54	D	2.10
9	AURAIYA	AURAIYA	S-NPP	26.54200	79.56150	13:16:54	D	4.00
10	AURAIYA	AURAIYA	S-NPP	26.65080	79.54090	13:16:54	D	2.00
11	AURAIYA	BIDHUNA	S-NPP	26.67440	79.58390	13:16:54	D	2.10
12	AURAIYA	BIDHUNA	S-NPP	26.67700	79.40130	13:16:54	D	2.90
13	AURAIYA	BIDHUNA	S-NPP	26.74360	79.61800	13:16:54	D	2.90
14	AZAMGARH	PHULPUR	S-NPP	25.96270	82.84780	13:16:54	D	4.80
15	BAHRAICH	NANPARA	S-NPP	27.67300	81.58840	13:16:54	D	3.50
16	BAHRAICH	NANPARA	S-NPP	27.71240	81.56880	13:16:54	D	1.50
17	BAHRAICH	NANPARA	S-NPP	27.74730	81.64430	13:16:54	D	2.20
18	BAHRAICH	NANPARA	S-NPP	27.78200	81.64760	13:16:54	D	3.50
19	BALLIA	SIKANDARPUR	S-NPP	26.02640	84.02370	13:16:54	D	2.10
20	BANDA	BABERU	S-NPP	25.52290	80.95790	13:16:54	D	3.50
21	BARABANKI	FATEHPUR	S-NPP	27.11750	81.26880	13:16:54	D	5.50
22	BAREILLY	FARIDPUR	S-NPP	28.26220	79.70280	13:16:54	D	1.70
23	BAREILLY	MIRGANJ	S-NPP	28.60610	79.30770	13:16:54	D	5.80
24	BASTI	HARRAIYA	S-NPP	26.66950	82.57180	13:16:54	D	3.90
25	CHITRAKOOT	KARWI	S-NPP	25.44680	80.99100	13:16:54	D	1.20
26	ETAWAH	BHARTHNA	S-NPP	26.93290	79.24140	13:16:54	D	3.90
27	ETAWAH	ETAWAH	S-NPP	26.90890	79.13070	13:16:54	D	2.90
28	ETAWAH	ETAWAH	S-NPP	26.91160	79.12620	13:16:54	D	2.30
29	ETAWAH	SAIFAI	S-NPP	26.92560	79.01980	13:16:54	D	1.40

30	ETAWAH	SAIFAI	S-NPP	26.96280	79.06450	13:16:54	D	2.40
31	FATEHPUR	FATEHPUR	S-NPP	25.93740	80.67070	13:16:54	D	1.20
32	FATEHPUR	FATEHPUR	S-NPP	25.95900	80.88940	13:16:54	D	1.80
33	FATEHPUR	FATEHPUR	S-NPP	26.00930	80.76500	13:16:54	D	3.10
34	GAZIPUR	MUHAMMADBAD	S-NPP	25.71050	83.85330	13:16:54	D	3.10
35	GAZIPUR	MUHAMMADBAD	S-NPP	25.73870	83.89820	13:16:54	D	4.80
36	GORAKHPUR	BANSGAON	S-NPP	26.44230	83.42320	13:16:54	D	2.60
37	GORAKHPUR	CAMPIERGANJ	S-NPP	26.96580	83.27950	13:16:54	D	3.90
38	GORAKHPUR	GORAKHPUR	S-NPP	26.94280	83.45320	13:16:54	D	3.30
39	HARDOI	BILGRAM	S-NPP	27.13850	80.12790	13:16:54	D	2.00
40	HARDOI	HARDOI	S-NPP	27.27790	80.20190	13:16:54	D	1.70
41	HARDOI	HARDOI	S-NPP	27.43530	80.25720	13:16:54	D	2.80
42	HARDOI	SHAHABAD	S-NPP	27.53790	79.90260	13:16:54	D	2.20
43	HARDOI	SHAHABAD	S-NPP	27.70200	80.07600	02:06:54	N	1.30
44	HARDOI	SIWAIJPUR	S-NPP	27.27300	79.87170	13:16:54	D	3.70
45	HARDOI	SIWAIJPUR	S-NPP	27.28530	79.88540	13:16:54	D	1.90
46	HARDOI	SIWAIJPUR	S-NPP	27.30960	79.86900	13:16:54	D	1.90
47	JAUNPUR	MACHHALI SAHAR	S-NPP	25.67180	82.29060	13:16:54	D	3.30
48	JHANSI	JHANSI	S-NPP	25.47220	78.72450	13:16:54	D	4.00
49	JHANSI	TAHRAULI	S-NPP	25.54070	78.75550	13:16:54	D	2.20
50	JHANSI	TAHRAULI	S-NPP	25.56390	78.77110	13:16:54	D	3.60
51	JHANSI	TAHRAULI	S-NPP	25.56720	78.77040	13:16:54	D	4.10
52	JHANSI	TAHRAULI	S-NPP	25.59000	78.82620	13:16:54	D	7.60
53	JHANSI	TAHRAULI	S-NPP	25.60410	78.80740	13:16:54	D	1.40
54	KANNAUJ	TIRWA	S-NPP	26.93570	79.54650	13:16:54	D	3.40
55	KANPUR	GHATAMPUR	S-NPP	26.29170	80.14060	13:16:54	D	2.80
56	KANPUR DEHAT	AKBARPUR	S-NPP	26.32700	80.14980	13:16:54	D	3.10
57	KANPUR DEHAT	RASULABAD	S-NPP	26.66370	79.98120	13:16:54	D	1.90
58	KANPUR DEHAT	RASULABAD	S-NPP	26.71950	79.87990	13:16:54	D	3.30
59	KANPUR DEHAT	RASULABAD	S-NPP	26.74660	79.70450	13:16:54	D	4.00
60	KAUSHAMBI	CHAIL	S-NPP	25.38060	81.53060	13:16:54	D	5.50
61	KAUSHAMBI	SIRATHU	S-NPP	25.53360	81.30700	13:16:54	D	2.70
62	KHERI	MOHMADI	S-NPP	27.73860	80.36440	02:06:54	N	0.80
63	KHERI	MOHMADI	S-NPP	27.80000	80.07840	02:06:54	N	2.00

64	KHERI	PALIA KALAN	S-NPP	28.39430	80.58850	13:16:54	D	4.90
65	LUCKNOW	LUCKNOW	S-NPP	26.74310	80.81970	13:16:54	D	3.50
66	LUCKNOW	MOHANLAL GANJ	S-NPP	26.73860	81.12470	13:16:54	D	2.70
67	MAHARAJGANJ	NICHLAUL	S-NPP	27.37920	83.67630	13:16:54	D	2.80
68	MAINPURI	BHOGAON	S-NPP	27.16300	79.12920	13:16:54	D	1.90
69	MEERUT	MAWANA	S-NPP	29.16630	77.78460	13:16:54	D	1.70
70	MEERUT	SARDHANA	S-NPP	29.14670	77.47480	13:16:54	D	2.00
71	MORADABAD	BILARI	S-NPP	28.52980	78.76660	13:16:54	D	1.90
72	MUZAFARNAGAR	BUDHANA	S-NPP	29.23480	77.47740	13:16:54	D	3.10
73	PILHIBHIT	BISALPUR	S-NPP	28.23720	79.94090	13:16:54	D	3.90
74	PILHIBHIT	BISALPUR	S-NPP	28.30600	79.88370	13:16:54	D	2.50
75	PILHIBHIT	PILHIBHIT	S-NPP	28.69070	79.65020	13:16:54	D	3.30
76	PILHIBHIT	PURANPUR	S-NPP	28.52780	80.07120	02:06:54	N	1.00
77	PILHIBHIT	PURANPUR	S-NPP	28.61780	80.01970	02:06:54	N	0.90
78	PILHIBHIT	PURANPUR	S-NPP	28.61870	80.01720	02:06:54	N	2.00
79	PILHIBHIT	PURANPUR	S-NPP	28.62120	80.02050	02:06:54	N	0.90
80	PILHIBHIT	PURANPUR	S-NPP	28.62190	80.01630	02:06:54	N	0.90
81	PRATAPGARH	LALGANJ	S-NPP	26.10980	81.63290	13:16:54	D	1.80
82	PRATAPGARH	PATTI	S-NPP	25.79080	82.07270	13:16:54	D	3.50
83	RAIBEARELI	RAEBARELI	S-NPP	26.19190	81.16130	13:16:54	D	1.80
84	RAIBEARELI	RAEBARELI	S-NPP	26.34810	81.12670	13:16:54	D	0.80
85	SHAHJAHANPUR	PUWANYA	S-NPP	27.95910	80.07240	13:16:54	D	2.50
86	SHAHJAHANPUR	PUWANYA	S-NPP	28.00540	80.00670	02:06:54	N	0.30
87	SHAHJAHANPUR	PUWANYA	S-NPP	28.01610	80.02660	02:06:54	N	0.80
88	SHAHJAHANPUR	PUWANYA	S-NPP	28.05330	79.99940	13:16:54	D	3.90
89	SHAHJAHANPUR	PUWANYA	S-NPP	28.19200	80.23230	13:16:54	D	1.90
90	SHAHJAHANPUR	TILHAR	S-NPP	27.98840	79.67830	13:16:54	D	3.70
91	SHAMLI	SHAMLI	S-NPP	29.41540	77.31760	13:16:54	D	2.80
92	SHARANPUR	DEOBAND	S-NPP	29.77040	77.62980	13:16:54	D	1.80
93	SHARANPUR	NAKUR	S-NPP	29.98080	77.30050	13:16:54	D	1.70
94	SIDDHARTHANAGAR	BANSI	S-NPP	27.11190	82.91280	13:16:54	D	6.60
95	SIDDHARTHANAGAR	DOMARIYAGANJ	S-NPP	27.18160	82.59360	13:16:54	D	1.90
96	SIDDHARTHANAGAR	NAUGARH	S-NPP	27.38010	83.18700	13:16:54	D	2.50
97	SITAPUR	SITAPUR	S-NPP	27.61410	80.64940	13:16:54	D	2.00

98	SULTANPUR	JAISINGHPUR	S-NPP	26.26890	82.39530	13:16:54	D	4.60
99	SULTANPUR	JAISINGHPUR	S-NPP	26.26940	82.39950	13:16:54	D	8.90
100	UNNAO	BIGHAPUR	S-NPP	26.41150	80.67380	13:16:54	D	2.10
101	UNNAO	UNNAO	S-NPP	26.53470	80.59170	13:16:54	D	2.40

Details of residue burning events in Rajasthan on 14-Nov-2022

S. No.	District	Tehsil / Block	Satellite	Latitude	Longitude	ACQ_TIME	Day / Night	Fire Power (W/m2)
1	KOTA	SANGOD	TERRA	25.00200	76.15400	10:51:15	D	7.30

Details of residue burning events in Madhya Pradesh on 14-Nov-2022

S. No.	District	Tehsil / Block	Satellite	Latitude	Longitude	ACQ_TIME	Day / Night	Fire Power (W/m ²)
1	ANUPPUR	ANUPUR	S-NPP	23.08720	81.71910	13:16:54	D	2.90
2	ANUPPUR	ANUPUR	S-NPP	23.09050	81.71860	13:16:54	D	2.90
3	ASHOKNAGAR	ASHOKNAGAR	S-NPP	24.50000	77.76010	13:16:54	D	19.20
4	ASHOKNAGAR	ASHOKNAGAR	S-NPP	24.51680	77.62690	13:16:54	D	7.10
5	ASHOKNAGAR	ASHOKNAGAR	S-NPP	24.53240	77.71910	13:16:54	D	4.70
6	ASHOKNAGAR	CHANDERI	S-NPP	24.59410	77.93800	13:16:54	D	1.20
7	ASHOKNAGAR	CHANDERI	S-NPP	24.60230	77.96610	13:16:54	D	5.00
8	ASHOKNAGAR	ISAGARH	S-NPP	24.76740	77.84540	13:16:54	D	3.30
9	ASHOKNAGAR	MUNGAOLI	S-NPP	24.32790	77.98590	13:16:54	D	3.80
10	ASHOKNAGAR	MUNGAOLI	S-NPP	24.33810	77.89860	13:16:54	D	2.80
11	ASHOKNAGAR	MUNGAOLI	S-NPP	24.35400	78.03570	13:16:54	D	13.90
12	ASHOKNAGAR	MUNGAOLI	S-NPP	24.35680	78.03100	13:16:54	D	12.20
13	ASHOKNAGAR	MUNGAOLI	S-NPP	24.35750	78.03510	13:16:54	D	13.90
14	BETUL	MULTAI	S-NPP	21.63040	78.18070	13:16:54	D	3.20
15	BHIND	GOHAD	S-NPP	26.44650	78.31520	13:16:54	D	3.50
16	BHIND	GOHAD	S-NPP	26.45600	78.28870	13:16:54	D	3.00
17	BHIND	GOHAD	S-NPP	26.48810	78.29450	13:16:54	D	2.50
18	BHIND	GOHAD	S-NPP	26.49000	78.41260	13:16:54	D	2.10
19	BHIND	GOHAD	S-NPP	26.50000	78.41060	13:16:54	D	2.50
20	BHIND	GOHAD	S-NPP	26.50220	78.29580	13:16:54	D	3.30
21	BHIND	GOHAD	S-NPP	26.50770	78.26600	13:16:54	D	2.50
22	BHIND	GOHAD	S-NPP	26.52050	78.34530	13:16:54	D	3.30
23	BHIND	LAHAR	S-NPP	25.95820	78.88750	13:16:54	D	1.60
24	BHIND	LAHAR	TERRA	25.96800	78.86700	10:51:15	D	8.30
25	BHIND	MAJHGAWAN	S-NPP	26.22260	78.99190	13:16:54	D	2.80
26	BHOPAL	BERASIYA	S-NPP	23.45880	77.43770	13:16:54	D	0.80
27	BHOPAL	HUZUR	S-NPP	23.09650	77.45650	13:16:54	D	3.30
28	BHOPAL	HUZUR	S-NPP	23.11430	77.45290	13:16:54	D	1.30
29	BHOPAL	HUZUR	S-NPP	23.11630	77.45330	13:16:54	D	2.00

30	BHOPAL	HUZUR	S-NPP	23.16630	77.54380	02:06:54	N	0.20
31	BHOPAL	HUZUR	S-NPP	23.19470	77.54560	13:16:54	D	2.40
32	BURHANPUR	BURHANPUR	S-NPP	21.23750	76.19970	13:16:54	D	2.50
33	CHHINDWARA	AMARWARA	S-NPP	22.17350	79.10480	13:16:54	D	2.50
34	CHHINDWARA	AMARWARA	S-NPP	22.61030	79.18790	13:16:54	D	2.40
35	CHHINDWARA	CHAURAI	S-NPP	22.05760	79.35760	13:16:54	D	2.40
36	CHHINDWARA	CHAURAI	S-NPP	22.07290	79.36670	13:16:54	D	2.70
37	CHHINDWARA	CHHINDWARA	S-NPP	21.99020	79.09410	13:16:54	D	3.10
38	DAMOH	PATERA	S-NPP	23.88560	79.81070	13:16:54	D	4.20
39	DATIA	BHANDER	S-NPP	25.57260	78.63220	13:16:54	D	2.70
40	DATIA	BHANDER	S-NPP	25.80000	78.82550	13:16:54	D	2.40
41	DATIA	BHANDER	S-NPP	25.80330	78.82480	13:16:54	D	2.40
42	DATIA	BHANDER	S-NPP	25.80540	78.81640	13:16:54	D	4.10
43	DATIA	BHANDER	S-NPP	25.86160	78.68150	13:16:54	D	3.50
44	DATIA	BHANDER	S-NPP	25.86260	78.64500	13:16:54	D	11.10
45	DATIA	BHANDER	S-NPP	25.88160	78.67750	13:16:54	D	6.80
46	DATIA	BHANDER	S-NPP	25.88600	78.64040	13:16:54	D	2.80
47	DATIA	BHANDER	S-NPP	25.89140	78.63120	13:16:54	D	17.50
48	DATIA	BHANDER	S-NPP	25.90580	78.72110	13:16:54	D	4.60
49	DATIA	BHANDER	S-NPP	25.90640	78.72500	13:16:54	D	4.60
50	DATIA	BHANDER	S-NPP	25.90930	78.76470	13:16:54	D	2.60
51	DATIA	BHANDER	S-NPP	25.91210	78.76010	13:16:54	D	3.80
52	DATIA	BHANDER	S-NPP	25.91390	78.77180	13:16:54	D	2.70
53	DATIA	BHANDER	S-NPP	25.91680	78.81140	13:16:54	D	2.00
54	DATIA	BHANDER	S-NPP	25.92040	78.66180	13:16:54	D	2.10
55	DATIA	BHANDER	S-NPP	25.92500	78.73350	13:16:54	D	10.60
56	DATIA	BHANDER	S-NPP	25.95950	78.76700	13:16:54	D	5.70
57	DATIA	BHANDER	S-NPP	25.96010	78.77090	13:16:54	D	5.70
58	DATIA	BHANDER	S-NPP	25.98570	78.73770	13:16:54	D	9.20
59	DATIA	BHANDER	S-NPP	25.98700	78.74550	13:16:54	D	1.30
60	DATIA	DATIA	S-NPP	25.58200	78.62630	13:16:54	D	2.70
61	DATIA	DATIA	S-NPP	25.68970	78.33660	13:16:54	D	1.60
62	DATIA	DATIA	S-NPP	25.73090	78.41840	13:16:54	D	2.90

63	DATIA	DATIA	S-NPP	25.73870	78.44540	13:16:54	D	5.60
64	DATIA	DATIA	S-NPP	25.74450	78.48090	13:16:54	D	1.80
65	DATIA	DATIA	S-NPP	25.74670	78.45200	13:16:54	D	5.00
66	DATIA	SEONDHA	S-NPP	25.83780	78.49180	13:16:54	D	6.70
67	DATIA	SEONDHA	S-NPP	25.84650	78.56720	13:16:54	D	2.90
68	DATIA	SEONDHA	S-NPP	25.86230	78.60060	13:16:54	D	2.10
69	DATIA	SEONDHA	S-NPP	25.86250	78.58030	13:16:54	D	2.70
70	DATIA	SEONDHA	S-NPP	25.93630	78.60220	13:16:54	D	4.90
71	DATIA	SEONDHA	S-NPP	25.98170	78.60540	13:16:54	D	1.40
72	DATIA	SEONDHA	S-NPP	25.98380	78.72600	13:16:54	D	3.30
73	DATIA	SEONDHA	S-NPP	25.98610	78.69730	13:16:54	D	6.20
74	DATIA	SEONDHA	S-NPP	25.98950	78.69670	13:16:54	D	3.50
75	DATIA	SEONDHA	S-NPP	25.98970	78.67650	13:16:54	D	3.30
76	DATIA	SEONDHA	S-NPP	25.99380	78.65960	13:16:54	D	3.90
77	DATIA	SEONDHA	S-NPP	26.01090	78.68040	13:16:54	D	4.60
78	DATIA	SEONDHA	S-NPP	26.01370	78.67580	13:16:54	D	3.40
79	DATIA	SEONDHA	S-NPP	26.01430	78.67970	13:16:54	D	3.40
80	DATIA	SEONDHA	S-NPP	26.01700	78.67520	13:16:54	D	3.40
81	DATIA	SEONDHA	S-NPP	26.02200	78.70640	13:16:54	D	3.70
82	DATIA	SEONDHA	S-NPP	26.02550	78.68560	13:16:54	D	3.40
83	DATIA	SEONDHA	S-NPP	26.03140	78.70050	13:16:54	D	3.90
84	DATIA	SEONDHA	S-NPP	26.03800	78.70760	13:16:54	D	2.60
85	DATIA	SEONDHA	S-NPP	26.05570	78.79650	13:16:54	D	5.40
86	DATIA	SEONDHA	S-NPP	26.05610	78.75630	13:16:54	D	4.60
87	DATIA	SEONDHA	S-NPP	26.06090	78.80750	13:16:54	D	2.80
88	DATIA	SEONDHA	S-NPP	26.06320	78.77900	13:16:54	D	11.50
89	DATIA	SEONDHA	S-NPP	26.06700	78.73810	13:16:54	D	5.80
90	DATIA	SEONDHA	S-NPP	26.07410	78.76080	13:16:54	D	3.80
91	DATIA	SEONDHA	S-NPP	26.07470	78.76470	13:16:54	D	3.80
92	DATIA	SEONDHA	S-NPP	26.07570	78.72830	13:16:54	D	4.00
93	DATIA	SEONDHA	S-NPP	26.07800	78.76410	13:16:54	D	3.80
94	DATIA	SEONDHA	S-NPP	26.09340	78.81720	13:16:54	D	6.90
95	DATIA	SEONDHA	AQUA	26.03300	78.69000	14:12:10	D	30.50

96	DATIA	SEONDHA	AQUA	26.05500	78.77300	14:12:10	D	35.20
97	DATIA	SEONDHA	AQUA	26.05600	78.76700	14:12:10	D	34.80
98	GUNA	ARON	S-NPP	24.39020	77.64760	13:16:54	D	3.20
99	GUNA	GUNA	S-NPP	24.69080	77.08180	13:16:54	D	2.40
100	GUNA	GUNA	S-NPP	24.78710	77.01240	13:16:54	D	2.90
101	GUNA	RAGHOGARH	S-NPP	24.48320	77.14790	02:06:54	N	0.80
102	GWALIOR	BHITARWAR	S-NPP	25.71780	78.03830	13:16:54	D	4.50
103	GWALIOR	BHITARWAR	S-NPP	25.72250	78.06650	13:16:54	D	3.80
104	GWALIOR	BHITARWAR	S-NPP	25.72440	78.12020	13:16:54	D	4.80
105	GWALIOR	BHITARWAR	S-NPP	25.72780	78.11950	13:16:54	D	4.80
106	GWALIOR	BHITARWAR	S-NPP	25.73730	78.11340	13:16:54	D	4.70
107	GWALIOR	BHITARWAR	S-NPP	25.77000	78.01520	13:16:54	D	0.90
108	GWALIOR	BHITARWAR	S-NPP	25.78590	78.13270	13:16:54	D	5.10
109	GWALIOR	BHITARWAR	S-NPP	25.78630	78.00770	13:16:54	D	2.80
110	GWALIOR	BHITARWAR	S-NPP	25.78900	78.00300	13:16:54	D	3.10
111	GWALIOR	BHITARWAR	S-NPP	25.79310	78.00630	13:16:54	D	7.70
112	GWALIOR	BHITARWAR	S-NPP	25.79690	78.09310	13:16:54	D	3.40
113	GWALIOR	BHITARWAR	S-NPP	25.80250	78.02110	13:16:54	D	16.00
114	GWALIOR	BHITARWAR	S-NPP	25.80320	78.02520	13:16:54	D	16.00
115	GWALIOR	BHITARWAR	S-NPP	25.80660	78.02450	13:16:54	D	10.70
116	GWALIOR	BHITARWAR	S-NPP	25.81040	78.09040	13:16:54	D	2.60
117	GWALIOR	BHITARWAR	S-NPP	25.82470	77.96680	13:16:54	D	4.60
118	GWALIOR	BHITARWAR	S-NPP	25.82800	78.02880	13:16:54	D	4.30
119	GWALIOR	BHITARWAR	S-NPP	25.83140	78.02810	13:16:54	D	5.30
120	GWALIOR	BHITARWAR	S-NPP	25.83210	78.03220	13:16:54	D	5.80
121	GWALIOR	BHITARWAR	S-NPP	25.83620	77.99380	13:16:54	D	1.80
122	GWALIOR	BHITARWAR	S-NPP	25.83680	78.06040	13:16:54	D	4.80
123	GWALIOR	BHITARWAR	S-NPP	25.84500	78.00450	13:16:54	D	7.60
124	GWALIOR	BHITARWAR	S-NPP	25.84570	78.00860	13:16:54	D	7.60
125	GWALIOR	BHITARWAR	S-NPP	25.84900	78.07040	13:16:54	D	3.40
126	GWALIOR	BHITARWAR	S-NPP	25.84910	78.00790	13:16:54	D	10.10
127	GWALIOR	BHITARWAR	S-NPP	25.84960	78.07440	13:16:54	D	3.40
128	GWALIOR	BHITARWAR	S-NPP	25.84970	78.01190	13:16:54	D	16.70

129	GWALIOR	BHITARWAR	S-NPP	25.84980	77.97010	13:16:54	D	4.20
130	GWALIOR	BHITARWAR	S-NPP	25.85310	78.01120	13:16:54	D	16.70
131	GWALIOR	BHITARWAR	S-NPP	25.85440	78.08180	13:16:54	D	1.80
132	GWALIOR	BHITARWAR	S-NPP	25.86380	78.09650	13:16:54	D	2.60
133	GWALIOR	BHITARWAR	S-NPP	25.87340	78.04880	13:16:54	D	3.90
134	GWALIOR	BHITARWAR	S-NPP	25.87870	78.10180	13:16:54	D	4.20
135	GWALIOR	BHITARWAR	S-NPP	25.88230	78.01790	13:16:54	D	3.00
136	GWALIOR	BHITARWAR	S-NPP	25.88480	78.09640	13:16:54	D	4.70
137	GWALIOR	BHITARWAR	S-NPP	25.88540	78.10040	13:16:54	D	4.70
138	GWALIOR	BHITARWAR	S-NPP	25.88950	78.10380	13:16:54	D	4.50
139	GWALIOR	BHITARWAR	S-NPP	25.90220	78.13850	13:16:54	D	9.50
140	GWALIOR	BHITARWAR	S-NPP	25.90830	78.11240	13:16:54	D	4.40
141	GWALIOR	BHITARWAR	S-NPP	25.91120	78.06620	13:16:54	D	8.00
142	GWALIOR	BHITARWAR	S-NPP	25.92520	78.12980	13:16:54	D	9.80
143	GWALIOR	BHITARWAR	S-NPP	25.93060	78.12040	13:16:54	D	3.60
144	GWALIOR	BHITARWAR	S-NPP	25.93940	78.10670	13:16:54	D	2.30
145	GWALIOR	BHITARWAR	S-NPP	25.94720	78.17920	13:16:54	D	11.40
146	GWALIOR	BHITARWAR	S-NPP	25.94750	78.09260	13:16:54	D	31.80
147	GWALIOR	BHITARWAR	S-NPP	25.94780	78.18320	13:16:54	D	9.60
148	GWALIOR	BHITARWAR	S-NPP	25.95120	78.18250	13:16:54	D	9.60
149	GWALIOR	BHITARWAR	S-NPP	25.95550	78.12000	13:16:54	D	1.80
150	GWALIOR	BHITARWAR	S-NPP	25.95830	78.07380	13:16:54	D	9.50
151	GWALIOR	BHITARWAR	S-NPP	25.95900	78.07780	13:16:54	D	9.50
152	GWALIOR	BHITARWAR	AQUA	25.73500	78.10400	14:12:10	D	18.20
153	GWALIOR	BHITARWAR	TERRA	25.83000	78.14000	10:51:15	D	3.80
154	GWALIOR	BHITARWAR	TERRA	25.84500	78.04100	10:51:15	D	4.50
155	GWALIOR	BHITARWAR	AQUA	25.85100	78.00300	14:12:10	D	20.50
156	GWALIOR	BHITARWAR	AQUA	25.85300	78.18000	14:12:10	D	19.90
157	GWALIOR	BHITARWAR	AQUA	25.86500	78.00100	14:12:10	D	23.30
158	GWALIOR	BHITARWAR	AQUA	25.87400	78.10100	14:12:10	D	19.90
159	GWALIOR	DABRA	S-NPP	25.85650	78.30830	13:16:54	D	4.50
160	GWALIOR	DABRA	S-NPP	25.86440	78.14200	13:16:54	D	3.50
161	GWALIOR	DABRA	S-NPP	25.86570	78.34340	13:16:54	D	1.90

162	GWALIOR	DABRA	S-NPP	25.86820	78.20740	13:16:54	D	2.00
163	GWALIOR	DABRA	S-NPP	25.87080	78.24400	13:16:54	D	1.70
164	GWALIOR	DABRA	S-NPP	25.87160	78.35460	13:16:54	D	2.70
165	GWALIOR	DABRA	S-NPP	25.87410	78.24330	13:16:54	D	8.00
166	GWALIOR	DABRA	S-NPP	25.87820	78.24660	13:16:54	D	3.10
167	GWALIOR	DABRA	S-NPP	25.88480	78.26590	13:16:54	D	2.00
168	GWALIOR	DABRA	S-NPP	25.88980	78.19070	13:16:54	D	3.60
169	GWALIOR	DABRA	S-NPP	25.90530	78.20000	13:16:54	D	7.80
170	GWALIOR	DABRA	S-NPP	25.91050	78.35920	13:16:54	D	3.40
171	GWALIOR	DABRA	S-NPP	25.91250	78.37110	13:16:54	D	2.00
172	GWALIOR	DABRA	S-NPP	25.91380	78.25180	13:16:54	D	3.30
173	GWALIOR	DABRA	S-NPP	25.91540	78.19790	13:16:54	D	11.80
174	GWALIOR	DABRA	S-NPP	25.91720	78.25120	13:16:54	D	3.20
175	GWALIOR	DABRA	S-NPP	25.91730	78.23060	13:16:54	D	4.20
176	GWALIOR	DABRA	S-NPP	25.91770	78.27570	13:16:54	D	2.90
177	GWALIOR	DABRA	S-NPP	25.91880	78.19730	13:16:54	D	11.80
178	GWALIOR	DABRA	S-NPP	25.92000	78.22590	13:16:54	D	9.80
179	GWALIOR	DABRA	S-NPP	25.92340	78.22520	13:16:54	D	9.80
180	GWALIOR	DABRA	S-NPP	25.93080	78.22790	13:16:54	D	7.30
181	GWALIOR	DABRA	S-NPP	25.93900	78.32070	13:16:54	D	1.80
182	GWALIOR	DABRA	S-NPP	25.94670	78.26170	13:16:54	D	2.60
183	GWALIOR	DABRA	S-NPP	25.95670	78.28030	13:16:54	D	3.50
184	GWALIOR	DABRA	S-NPP	25.97710	78.34180	13:16:54	D	4.50
185	GWALIOR	DABRA	S-NPP	25.97830	78.34200	13:16:54	D	4.80
186	GWALIOR	DABRA	S-NPP	25.98730	78.29100	13:16:54	D	3.70
187	GWALIOR	DABRA	S-NPP	26.00390	78.50780	13:16:54	D	5.40
188	GWALIOR	DABRA	AQUA	25.95200	78.26500	14:12:10	D	25.90
189	GWALIOR	DABRA	TERRA	26.02100	78.28500	10:51:15	D	12.40
190	GWALIOR	GWALIOR	S-NPP	26.24480	78.45320	13:16:54	D	3.60
191	GWALIOR	GWALIOR	S-NPP	26.29680	78.17250	13:16:54	D	2.40
192	GWALIOR	GWALIOR	S-NPP	26.30620	78.18710	13:16:54	D	2.60
193	HOSHANGABAD	BABAI	S-NPP	22.68210	78.00030	13:16:54	D	4.10
194	HOSHANGABAD	BABAI	S-NPP	22.68940	78.06380	13:16:54	D	2.50

195	HOSHANGABAD	BABAI	S-NPP	22.72180	77.95760	13:16:54	D	2.50
196	HOSHANGABAD	BABAI	S-NPP	22.72480	77.99620	13:16:54	D	4.70
197	HOSHANGABAD	BABAI	S-NPP	22.73330	78.06810	13:16:54	D	2.70
198	HOSHANGABAD	BABAI	S-NPP	22.73550	78.10220	13:16:54	D	2.30
199	HOSHANGABAD	BABAI	S-NPP	22.75210	78.05140	13:16:54	D	2.50
200	HOSHANGABAD	BABAI	S-NPP	22.78310	77.87250	13:16:54	D	2.80
201	HOSHANGABAD	BABAI	S-NPP	22.78660	77.87180	13:16:54	D	2.80
202	HOSHANGABAD	BABAI	S-NPP	22.78880	78.03250	13:16:54	D	4.10
203	HOSHANGABAD	BABAI	S-NPP	22.78950	78.03670	13:16:54	D	6.60
204	HOSHANGABAD	BABAI	S-NPP	22.82160	77.86490	13:16:54	D	2.80
205	HOSHANGABAD	BABAI	S-NPP	22.83840	77.83520	13:16:54	D	6.90
206	HOSHANGABAD	BABAI	S-NPP	22.85200	77.85090	13:16:54	D	3.80
207	HOSHANGABAD	BABAI	TERRA	22.78000	77.96900	10:51:15	D	4.50
208	HOSHANGABAD	BANKHERI	S-NPP	22.79600	78.50510	13:16:54	D	2.70
209	HOSHANGABAD	BANKHERI	S-NPP	22.87650	78.44450	13:16:54	D	3.90
210	HOSHANGABAD	BANKHERI	S-NPP	22.88050	78.51040	13:16:54	D	6.30
211	HOSHANGABAD	BANKHERI	S-NPP	22.88390	78.50980	13:16:54	D	7.90
212	HOSHANGABAD	BANKHERI	S-NPP	22.89290	78.47890	13:16:54	D	14.80
213	HOSHANGABAD	BANKHERI	S-NPP	22.89470	78.55340	13:16:54	D	2.00
214	HOSHANGABAD	BANKHERI	S-NPP	22.90450	78.48490	13:16:54	D	25.40
215	HOSHANGABAD	BANKHERI	S-NPP	22.90740	78.41750	13:16:54	D	4.20
216	HOSHANGABAD	BANKHERI	S-NPP	22.90790	78.48430	13:16:54	D	4.80
217	HOSHANGABAD	BANKHERI	S-NPP	22.93520	78.43100	02:06:54	N	0.70
218	HOSHANGABAD	BANKHERI	TERRA	22.81500	78.57500	10:51:15	D	11.10
219	HOSHANGABAD	HOSHANGABAD	S-NPP	22.63570	77.62500	13:16:54	D	3.00
220	HOSHANGABAD	HOSHANGABAD	S-NPP	22.68420	77.75830	13:16:54	D	6.20
221	HOSHANGABAD	HOSHANGABAD	S-NPP	22.68780	77.75760	13:16:54	D	6.20
222	HOSHANGABAD	HOSHANGABAD	S-NPP	22.72880	77.78490	13:16:54	D	1.90
223	HOSHANGABAD	ITARSI	S-NPP	22.61160	77.69140	13:16:54	D	4.70
224	HOSHANGABAD	ITARSI	S-NPP	22.61720	77.81050	13:16:54	D	3.90
225	HOSHANGABAD	ITARSI	S-NPP	22.61920	77.95070	13:16:54	D	2.20
226	HOSHANGABAD	ITARSI	S-NPP	22.63340	77.84360	13:16:54	D	3.20
227	HOSHANGABAD	ITARSI	S-NPP	22.63350	77.84260	13:16:54	D	2.50

228	HOSHANGABAD	ITARSI	S-NPP	22.63390	77.82590	13:16:54	D	1.50
229	HOSHANGABAD	ITARSI	S-NPP	22.64010	77.79820	13:16:54	D	6.60
230	HOSHANGABAD	ITARSI	S-NPP	22.64080	77.71800	13:16:54	D	2.70
231	HOSHANGABAD	ITARSI	S-NPP	22.64150	77.72240	13:16:54	D	3.60
232	HOSHANGABAD	ITARSI	S-NPP	22.65770	77.71020	13:16:54	D	3.90
233	HOSHANGABAD	ITARSI	S-NPP	22.66120	77.70950	13:16:54	D	3.50
234	HOSHANGABAD	ITARSI	TERRA	22.64400	77.71000	10:51:15	D	12.80
235	HOSHANGABAD	ITARSI	TERRA	22.65300	77.77200	10:51:15	D	5.60
236	HOSHANGABAD	PIPARIYA	S-NPP	22.70260	78.42640	13:16:54	D	3.10
237	HOSHANGABAD	PIPARIYA	S-NPP	22.73080	78.42510	13:16:54	D	1.60
238	HOSHANGABAD	PIPARIYA	S-NPP	22.74470	78.38950	13:16:54	D	1.90
239	HOSHANGABAD	PIPARIYA	S-NPP	22.78660	78.42750	13:16:54	D	3.20
240	HOSHANGABAD	PIPARIYA	S-NPP	22.80320	78.42010	13:16:54	D	3.30
241	HOSHANGABAD	PIPARIYA	S-NPP	22.82040	78.39580	13:16:54	D	6.20
242	HOSHANGABAD	PIPARIYA	S-NPP	22.82510	78.42420	13:16:54	D	2.50
243	HOSHANGABAD	PIPARIYA	S-NPP	22.84300	78.42490	13:16:54	D	2.70
244	HOSHANGABAD	PIPARIYA	S-NPP	22.84500	78.42550	13:16:54	D	2.80
245	HOSHANGABAD	PIPARIYA	S-NPP	22.89320	78.35310	13:16:54	D	3.90
246	HOSHANGABAD	PIPARIYA	S-NPP	22.89660	78.35250	13:16:54	D	3.90
247	HOSHANGABAD	SEONI MALWA	S-NPP	22.34970	77.40160	13:16:54	D	5.50
248	HOSHANGABAD	SOHAGPUR	S-NPP	22.73920	78.29350	13:16:54	D	2.50
249	HOSHANGABAD	SOHAGPUR	S-NPP	22.75780	78.12780	13:16:54	D	5.80
250	HOSHANGABAD	SOHAGPUR	S-NPP	22.79250	78.22790	13:16:54	D	1.40
251	HOSHANGABAD	SOHAGPUR	S-NPP	22.80620	78.31000	13:16:54	D	2.10
252	HOSHANGABAD	SOHAGPUR	S-NPP	22.82480	78.20130	13:16:54	D	2.50
253	HOSHANGABAD	SOHAGPUR	S-NPP	22.85270	78.21750	02:06:54	N	0.40
254	HOSHANGABAD	SOHAGPUR	S-NPP	22.85600	78.25900	13:16:54	D	5.80
255	HOSHANGABAD	SOHAGPUR	TERRA	22.79000	78.25500	10:51:15	D	5.60
256	JABALPUR	JABALPUR	S-NPP	23.07920	80.04850	13:16:54	D	2.10
257	JABALPUR	JABALPUR	S-NPP	23.10360	80.05180	13:16:54	D	2.20
258	JABALPUR	JABALPUR	S-NPP	23.23010	80.06360	13:16:54	D	12.60
259	JABALPUR	JABALPUR	S-NPP	23.23240	79.94730	13:16:54	D	5.20
260	JABALPUR	JABALPUR	S-NPP	23.23570	79.94670	13:16:54	D	5.20

261	JABALPUR	JABALPUR	S-NPP	23.26330	79.88350	13:16:54	D	3.20
262	JABALPUR	JABALPUR	S-NPP	23.26830	79.93680	13:16:54	D	13.20
263	JABALPUR	JABALPUR	S-NPP	23.27470	79.91240	13:16:54	D	3.60
264	JABALPUR	JABALPUR	S-NPP	23.29710	79.94700	13:16:54	D	2.50
265	JABALPUR	JABALPUR	S-NPP	23.29770	79.95080	13:16:54	D	2.50
266	JABALPUR	JABALPUR	S-NPP	23.30530	79.91810	13:16:54	D	4.60
267	JABALPUR	JABALPUR	S-NPP	23.30590	79.92190	13:16:54	D	5.10
268	JABALPUR	JABALPUR	S-NPP	23.31110	79.88990	13:16:54	D	4.50
269	JABALPUR	JABALPUR	S-NPP	23.31270	80.02540	13:16:54	D	2.80
270	JABALPUR	JABALPUR	S-NPP	23.32460	79.91070	13:16:54	D	2.60
271	JABALPUR	JABALPUR	S-NPP	23.32920	79.98340	13:16:54	D	6.60
272	JABALPUR	JABALPUR	S-NPP	23.33300	79.92080	13:16:54	D	4.20
273	JABALPUR	JABALPUR	S-NPP	23.34570	79.91460	13:16:54	D	4.00
274	JABALPUR	JABALPUR	S-NPP	23.35090	79.88260	13:16:54	D	5.00
275	JABALPUR	JABALPUR	S-NPP	23.37420	79.94420	13:16:54	D	3.20
276	JABALPUR	JABALPUR	AQUA	23.26500	79.90700	14:12:10	D	30.80
277	JABALPUR	JABALPUR	AQUA	23.26800	79.91100	14:12:10	D	30.80
278	JABALPUR	MAJHOULI	S-NPP	23.39860	79.94750	13:16:54	D	1.70
279	JABALPUR	MAJHOULI	S-NPP	23.40050	79.98200	13:16:54	D	7.10
280	JABALPUR	MAJHOULI	S-NPP	23.41670	79.99830	13:16:54	D	2.20
281	JABALPUR	MAJHOULI	S-NPP	23.42640	79.95380	13:16:54	D	4.00
282	JABALPUR	MAJHOULI	S-NPP	23.43040	80.02280	13:16:54	D	4.60
283	JABALPUR	MAJHOULI	S-NPP	23.43100	80.02650	13:16:54	D	4.60
284	JABALPUR	MAJHOULI	S-NPP	23.43880	80.03280	13:16:54	D	6.40
285	JABALPUR	MAJHOULI	S-NPP	23.43890	79.92450	13:16:54	D	2.40
286	JABALPUR	MAJHOULI	S-NPP	23.43900	80.05600	13:16:54	D	5.70
287	JABALPUR	MAJHOULI	S-NPP	23.43960	80.05970	13:16:54	D	2.40
288	JABALPUR	MAJHOULI	S-NPP	23.44660	79.86490	13:16:54	D	3.40
289	JABALPUR	MAJHOULI	S-NPP	23.44720	80.04290	13:16:54	D	10.80
290	JABALPUR	MAJHOULI	S-NPP	23.48060	80.01740	13:16:54	D	3.70
291	JABALPUR	MAJHOULI	S-NPP	23.48320	79.98990	13:16:54	D	3.10
292	JABALPUR	MAJHOULI	S-NPP	23.48650	79.98930	13:16:54	D	3.10
293	JABALPUR	MAJHOULI	S-NPP	23.49040	79.92670	13:16:54	D	2.60

294	JABALPUR	MAJHOULI	S-NPP	23.49120	80.01940	13:16:54	D	10.50
295	JABALPUR	MAJHOULI	S-NPP	23.53330	80.18160	13:16:54	D	1.90
296	JABALPUR	MAJHOULI	S-NPP	23.54440	80.05940	13:16:54	D	1.50
297	JABALPUR	MAJHOULI	S-NPP	23.57550	79.95310	13:16:54	D	1.40
298	JABALPUR	MAJHOULI	AQUA	23.43800	80.00200	14:12:10	D	42.60
299	JABALPUR	PATAN	S-NPP	23.18810	79.83920	13:16:54	D	11.00
300	JABALPUR	PATAN	S-NPP	23.19140	79.83850	13:16:54	D	11.00
301	JABALPUR	PATAN	S-NPP	23.19290	79.82660	13:16:54	D	2.70
302	JABALPUR	PATAN	S-NPP	23.20000	79.76310	13:16:54	D	5.80
303	JABALPUR	PATAN	S-NPP	23.21580	79.84180	13:16:54	D	2.50
304	JABALPUR	PATAN	S-NPP	23.22160	79.81360	13:16:54	D	2.60
305	JABALPUR	PATAN	S-NPP	23.22620	79.77770	13:16:54	D	2.90
306	JABALPUR	PATAN	S-NPP	23.23240	79.83880	13:16:54	D	20.00
307	JABALPUR	PATAN	S-NPP	23.26320	79.81750	13:16:54	D	22.70
308	JABALPUR	PATAN	S-NPP	23.27280	79.83520	13:16:54	D	3.10
309	JABALPUR	PATAN	S-NPP	23.27350	79.69480	13:16:54	D	18.50
310	JABALPUR	PATAN	S-NPP	23.28960	79.79690	13:16:54	D	3.50
311	JABALPUR	PATAN	S-NPP	23.29020	79.80060	13:16:54	D	3.20
312	JABALPUR	PATAN	S-NPP	23.30200	79.81010	13:16:54	D	2.50
313	JABALPUR	PATAN	S-NPP	23.31010	79.83970	13:16:54	D	13.20
314	JABALPUR	PATAN	S-NPP	23.31340	79.83910	13:16:54	D	13.20
315	JABALPUR	PATAN	S-NPP	23.31440	79.78060	13:16:54	D	2.50
316	JABALPUR	PATAN	S-NPP	23.31770	79.78000	13:16:54	D	2.50
317	JABALPUR	PATAN	S-NPP	23.33840	79.84610	13:16:54	D	3.10
318	JABALPUR	PATAN	S-NPP	23.34950	79.85190	13:16:54	D	0.90
319	JABALPUR	PATAN	S-NPP	23.35980	79.83050	13:16:54	D	0.80
320	JABALPUR	PATAN	S-NPP	23.37910	79.82310	13:16:54	D	1.70
321	JABALPUR	PATAN	S-NPP	23.38540	79.84130	13:16:54	D	3.10
322	JABALPUR	PATAN	S-NPP	23.39520	79.82000	13:16:54	D	7.20
323	JABALPUR	PATAN	TERRA	23.28600	79.74300	10:51:15	D	8.10
324	JABALPUR	SAHPURA	S-NPP	23.09170	79.78710	13:16:54	D	2.40
325	JABALPUR	SAHPURA	S-NPP	23.13890	79.73940	13:16:54	D	4.40
326	JABALPUR	SAHPURA	S-NPP	23.15350	79.70170	13:16:54	D	2.50

327	JABALPUR	SAHPURA	S-NPP	23.16260	79.70000	13:16:54	D	3.30
328	JABALPUR	SAHPURA	S-NPP	23.16990	79.78430	13:16:54	D	5.00
329	JABALPUR	SAHPURA	S-NPP	23.17250	79.78380	13:16:54	D	6.90
330	JABALPUR	SAHPURA	S-NPP	23.17520	79.81830	13:16:54	D	2.50
331	JABALPUR	SAHPURA	S-NPP	23.17790	79.81770	13:16:54	D	3.40
332	JABALPUR	SAHPURA	AQUA	23.16200	79.73900	14:12:10	D	35.60
333	JABALPUR	SAHPURA	AQUA	23.16200	79.74600	14:12:10	D	33.10
334	JABALPUR	SIHORA	S-NPP	23.35210	80.06430	13:16:54	D	4.50
335	JABALPUR	SIHORA	S-NPP	23.35260	80.06800	13:16:54	D	6.00
336	JABALPUR	SIHORA	S-NPP	23.36800	80.05750	13:16:54	D	2.10
337	JABALPUR	SIHORA	S-NPP	23.37970	80.06690	13:16:54	D	5.40
338	JABALPUR	SIHORA	S-NPP	23.38690	80.06950	13:16:54	D	8.00
339	JABALPUR	SIHORA	S-NPP	23.38760	80.16200	13:16:54	D	5.70
340	JABALPUR	SIHORA	S-NPP	23.39080	80.13830	13:16:54	D	3.50
341	JABALPUR	SIHORA	S-NPP	23.39410	80.13760	13:16:54	D	3.50
342	JABALPUR	SIHORA	S-NPP	23.39490	80.09890	13:16:54	D	0.90
343	JABALPUR	SIHORA	S-NPP	23.39640	80.15270	13:16:54	D	5.40
344	JABALPUR	SIHORA	S-NPP	23.40540	80.10090	13:16:54	D	5.30
345	JABALPUR	SIHORA	S-NPP	23.41540	80.25330	13:16:54	D	1.50
346	JABALPUR	SIHORA	S-NPP	23.41570	80.29940	13:16:54	D	2.10
347	JABALPUR	SIHORA	S-NPP	23.42120	80.07100	13:16:54	D	2.40
348	JABALPUR	SIHORA	S-NPP	23.42540	80.12040	13:16:54	D	2.60
349	JABALPUR	SIHORA	S-NPP	23.42770	80.13540	13:16:54	D	2.50
350	JABALPUR	SIHORA	S-NPP	23.42910	80.10040	13:16:54	D	11.10
351	JABALPUR	SIHORA	S-NPP	23.43570	80.16480	13:16:54	D	2.10
352	JABALPUR	SIHORA	S-NPP	23.45260	80.20800	13:16:54	D	2.40
353	KATNI	BAHURIBAND	S-NPP	23.60590	80.14860	13:16:54	D	5.10
354	KATNI	BAHURIBAND	S-NPP	23.60920	80.14800	13:16:54	D	2.90
355	KATNI	BAHURIBAND	S-NPP	23.61250	80.14740	13:16:54	D	2.90
356	KATNI	BAHURIBAND	S-NPP	23.61860	80.07680	13:16:54	D	1.90
357	KATNI	BAHURIBAND	S-NPP	23.61920	80.08060	13:16:54	D	1.80
358	KATNI	BAHURIBAND	S-NPP	23.68230	79.98440	13:16:54	D	1.40
359	KATNI	BAHURIBAND	S-NPP	23.69220	79.98260	13:16:54	D	1.60

360	KATNI	BAHURIBAND	S-NPP	23.71090	79.97140	13:16:54	D	2.40
361	KATNI	BAHURIBAND	S-NPP	23.78000	79.93910	13:16:54	D	2.00
362	KATNI	BAHURIBAND	S-NPP	23.79030	79.91780	13:16:54	D	1.70
363	KATNI	BAHURIBAND	S-NPP	23.79290	79.95610	13:16:54	D	2.90
364	KATNI	BAHURIBAND	S-NPP	23.81620	79.97500	13:16:54	D	2.20
365	KATNI	BARBARA	S-NPP	23.72750	80.56650	13:16:54	D	1.60
366	KATNI	DHIMERKHEDA	S-NPP	23.37840	80.34460	13:16:54	D	2.50
367	KATNI	DHIMERKHEDA	S-NPP	23.45810	80.37640	13:16:54	D	2.10
368	KATNI	DHIMERKHEDA	S-NPP	23.46440	80.32910	13:16:54	D	5.00
369	KATNI	DHIMERKHEDA	S-NPP	23.66200	80.38130	13:16:54	D	2.70
370	KATNI	RITHI	S-NPP	23.80310	80.28660	13:16:54	D	2.80
371	KATNI	RITHI	S-NPP	23.89390	79.99550	13:16:54	D	3.60
372	KATNI	RITHI	S-NPP	23.90330	79.98990	13:16:54	D	1.70
373	MANDLA	BACHHIYA	S-NPP	22.45970	80.68590	13:16:54	D	3.70
374	MANDLA	BACHHIYA	S-NPP	22.46970	80.48540	13:16:54	D	3.10
375	MANDLA	NAINPUR	S-NPP	22.43970	80.13810	13:16:54	D	1.90
376	MANDLA	NAINPUR	S-NPP	22.46120	80.12270	13:16:54	D	3.50
377	MANDLA	NAINPUR	S-NPP	22.47750	80.14630	13:16:54	D	2.90
378	MANDLA	NAINPUR	S-NPP	22.48120	80.12640	13:16:54	D	3.10
379	MANDLA	NAINPUR	S-NPP	22.51150	80.16720	13:16:54	D	2.80
380	NARSHIMAPURA	GADARWARA	S-NPP	22.74930	78.79400	13:16:54	D	1.60
381	NARSHIMAPURA	GADARWARA	S-NPP	22.78260	78.86910	13:16:54	D	1.90
382	NARSHIMAPURA	GADARWARA	S-NPP	22.78320	78.87310	13:16:54	D	3.60
383	NARSHIMAPURA	GADARWARA	S-NPP	22.80010	78.69870	13:16:54	D	2.90
384	NARSHIMAPURA	GADARWARA	S-NPP	22.80070	78.70270	13:16:54	D	2.90
385	NARSHIMAPURA	GADARWARA	S-NPP	22.81710	78.69540	13:16:54	D	1.70
386	NARSHIMAPURA	GADARWARA	S-NPP	22.82250	78.81310	13:16:54	D	2.80
387	NARSHIMAPURA	GADARWARA	S-NPP	22.83410	78.69210	13:16:54	D	3.30
388	NARSHIMAPURA	GADARWARA	S-NPP	22.85780	78.60100	13:16:54	D	4.00
389	NARSHIMAPURA	GADARWARA	S-NPP	23.03440	78.95580	13:16:54	D	3.50
390	NARSHIMAPURA	NARSIMHAPUR	S-NPP	22.76640	79.30970	13:16:54	D	13.90
391	NARSHIMAPURA	NARSIMHAPUR	S-NPP	22.77650	79.35140	13:16:54	D	2.90
392	NARSHIMAPURA	NARSIMHAPUR	S-NPP	22.89310	79.22240	13:16:54	D	2.10

393	NARSHIMAPURA	NARSIMHAPUR	S-NPP	22.92940	79.21160	13:16:54	D	2.70
394	PANNA	PANNA	S-NPP	24.60120	80.41650	13:16:54	D	2.90
395	PANNA	PANNA	S-NPP	24.80010	80.41200	13:16:54	D	2.60
396	RAISEN	BARELI	S-NPP	22.84400	78.10350	13:16:54	D	16.80
397	RAISEN	BARELI	S-NPP	22.84750	78.10280	13:16:54	D	16.80
398	RAISEN	BARELI	S-NPP	22.89110	78.07770	13:16:54	D	4.00
399	RAISEN	BARELI	S-NPP	22.97110	78.38050	13:16:54	D	8.00
400	RAISEN	BARELI	S-NPP	22.98410	78.37380	13:16:54	D	2.30
401	RAISEN	BARELI	S-NPP	22.99600	78.08290	13:16:54	D	6.60
402	RAISEN	GOHARGANJ	S-NPP	22.97570	77.60150	13:16:54	D	2.30
403	RAISEN	GOHARGANJ	S-NPP	22.97920	77.60080	13:16:54	D	2.30
404	RAISEN	GOHARGANJ	S-NPP	22.98630	77.59930	13:16:54	D	3.00
405	RAISEN	GOHARGANJ	S-NPP	23.02140	77.55290	13:16:54	D	2.10
406	RAISEN	GOHARGANJ	S-NPP	23.03220	77.63580	13:16:54	D	6.00
407	RAISEN	GOHARGANJ	S-NPP	23.03270	77.61790	13:16:54	D	2.80
408	RAISEN	GOHARGANJ	S-NPP	23.03320	77.61680	13:16:54	D	2.50
409	RAISEN	GOHARGANJ	S-NPP	23.03370	77.64440	13:16:54	D	5.90
410	RAISEN	GOHARGANJ	S-NPP	23.03400	77.64340	13:16:54	D	10.20
411	RAISEN	GOHARGANJ	S-NPP	23.03580	77.63510	13:16:54	D	6.00
412	RAISEN	GOHARGANJ	S-NPP	23.03610	77.63410	13:16:54	D	3.90
413	RAISEN	GOHARGANJ	S-NPP	23.04000	77.63870	13:16:54	D	1.40
414	RAISEN	GOHARGANJ	S-NPP	23.07740	77.47400	13:16:54	D	4.20
415	RAISEN	GOHARGANJ	S-NPP	23.07940	77.61300	13:16:54	D	3.40
416	RAISEN	GOHARGANJ	S-NPP	23.08890	77.56180	13:16:54	D	3.30
417	RAISEN	GOHARGANJ	S-NPP	23.08960	77.56610	13:16:54	D	5.10
418	RAISEN	GOHARGANJ	S-NPP	23.11150	77.54380	13:16:54	D	4.60
419	RAISEN	RAISEN	S-NPP	23.29400	78.00950	02:06:54	N	0.40
420	RAISEN	RAISEN	S-NPP	23.33750	77.80640	13:16:54	D	4.80
421	RAISEN	RAISEN	S-NPP	23.40680	77.76690	13:16:54	D	2.20
422	RAISEN	RAISEN	S-NPP	23.51990	77.72750	13:16:54	D	3.50
423	RAISEN	RAISEN	TERRA	23.34300	77.91200	10:51:15	D	4.50
424	RAISEN	SILVANI	S-NPP	23.13550	78.22660	13:16:54	D	3.20
425	RAISEN	SILVANI	S-NPP	23.13760	78.22670	13:16:54	D	3.40

426	RAISEN	SILVANI	S-NPP	23.23000	78.48110	13:16:54	D	2.70
427	RAISEN	UDAIPURA	S-NPP	23.06060	78.60020	13:16:54	D	1.10
428	REWA	HUZUR	S-NPP	24.41260	81.31240	13:16:54	D	3.90
429	REWA	HUZUR	S-NPP	24.44880	81.27860	13:16:54	D	1.40
430	REWA	HUZUR	S-NPP	24.47170	81.43650	13:16:54	D	3.60
431	REWA	SIRMAUR	S-NPP	24.73190	81.46750	13:16:54	D	2.20
432	REWA	SIRMAUR	S-NPP	24.75790	81.19740	13:16:54	D	2.40
433	SATNA	AMARPATAN	S-NPP	24.33650	81.06310	13:16:54	D	1.60
434	SATNA	AMARPATAN	S-NPP	24.47760	81.10880	13:16:54	D	2.60
435	SATNA	AMARPATAN	S-NPP	24.49420	81.08240	13:16:54	D	2.30
436	SATNA	AMARPATAN	S-NPP	24.49750	81.08180	13:16:54	D	2.30
437	SATNA	MAIHAR	S-NPP	24.23710	80.92080	13:16:54	D	2.00
438	SATNA	MAIHAR	S-NPP	24.27890	80.81240	13:16:54	D	2.40
439	SATNA	MAIHAR	S-NPP	24.27990	80.79670	13:16:54	D	1.30
440	SATNA	MAIHAR	S-NPP	24.30710	80.78000	13:16:54	D	3.70
441	SATNA	MAJHGAWAN	S-NPP	24.72780	80.87670	13:16:54	D	2.30
442	SATNA	NAGOD	S-NPP	24.51720	80.55600	13:16:54	D	4.90
443	SATNA	NAGOD	S-NPP	24.61010	80.67920	13:16:54	D	6.70
444	SATNA	NAGOD	S-NPP	24.63900	80.46410	13:16:54	D	6.50
445	SATNA	NAGOD	S-NPP	24.69190	80.56730	13:16:54	D	5.30
446	SATNA	NAGOD	TERRA	24.52800	80.51100	10:51:15	D	7.00
447	SATNA	RAGURAJNAGAR	S-NPP	24.70500	80.65440	13:16:54	D	2.00
448	SATNA	RAGURAJNAGAR	S-NPP	24.71290	80.62220	13:16:54	D	3.60
449	SATNA	RAGURAJNAGAR	S-NPP	24.74130	80.67560	13:16:54	D	3.60
450	SATNA	RAGURAJNAGAR	S-NPP	24.74440	80.81160	13:16:54	D	3.70
451	SATNA	RAGURAJNAGAR	S-NPP	24.74750	80.71730	13:16:54	D	5.20
452	SATNA	RAGURAJNAGAR	S-NPP	24.75080	80.71680	13:16:54	D	2.50
453	SATNA	RAMPURBAGHLEAN	S-NPP	24.37340	80.95110	13:16:54	D	1.80
454	SATNA	RAMPURBAGHLEAN	S-NPP	24.38540	80.91780	13:16:54	D	1.20
455	SATNA	RAMPURBAGHLEAN	S-NPP	24.39700	80.88070	13:16:54	D	5.00
456	SATNA	RAMPURBAGHLEAN	S-NPP	24.43380	80.99120	13:16:54	D	2.20
457	SATNA	RAMPURBAGHLEAN	S-NPP	24.44440	81.04010	13:16:54	D	2.60
458	SATNA	RAMPURBAGHLEAN	S-NPP	24.50680	81.00580	13:16:54	D	2.50

459	SATNA	RAMPURBAGHLEAN	S-NPP	24.52550	80.97120	13:16:54	D	4.70
460	SATNA	RAMPURBAGHLEAN	S-NPP	24.53330	80.97770	13:16:54	D	2.30
461	SATNA	RAMPURBAGHLEAN	S-NPP	24.53440	80.96190	13:16:54	D	3.30
462	SATNA	RAMPURBAGHLEAN	S-NPP	24.53660	80.97710	13:16:54	D	2.30
463	SATNA	RAMPURBAGHLEAN	S-NPP	24.53970	81.09010	13:16:54	D	2.10
464	SATNA	RAMPURBAGHLEAN	S-NPP	24.58230	81.15710	13:16:54	D	5.70
465	SATNA	RAMPURBAGHLEAN	S-NPP	24.60870	81.03480	13:16:54	D	1.60
466	SATNA	RAMPURBAGHLEAN	S-NPP	24.61440	81.12010	13:16:54	D	2.90
467	SATNA	RAMPURBAGHLEAN	S-NPP	24.61770	81.11950	13:16:54	D	2.90
468	SATNA	UCHAHAR	S-NPP	24.46640	80.80230	13:16:54	D	1.90
469	SATNA	UCHAHAR	S-NPP	24.53650	80.70790	13:16:54	D	3.50
470	SATNA	UCHAHAR	S-NPP	24.54510	80.78820	13:16:54	D	1.90
471	SEHORE	BUDHNI	S-NPP	22.66620	77.46010	13:16:54	D	4.70
472	SEHORE	BUDHNI	S-NPP	22.69590	77.49690	13:16:54	D	6.10
473	SEHORE	BUDHNI	S-NPP	22.70470	77.56770	13:16:54	D	3.60
474	SEHORE	BUDHNI	S-NPP	22.84260	78.00520	02:06:54	N	0.50
475	SEHORE	BUDHNI	S-NPP	22.85000	77.96840	13:16:54	D	3.40
476	SEHORE	BUDHNI	S-NPP	22.87580	77.84180	13:16:54	D	2.90
477	SEHORE	BUDHNI	S-NPP	22.87970	77.80150	13:16:54	D	7.40
478	SEHORE	BUDHNI	S-NPP	22.88900	77.87350	02:06:54	N	3.70
479	SEHORE	BUDHNI	S-NPP	22.89010	77.99740	02:06:54	N	0.50
480	SEHORE	BUDHNI	S-NPP	22.91390	77.87370	13:16:54	D	1.80
481	SEHORE	BUDHNI	TERRA	22.63900	77.43900	10:51:15	D	7.00
482	SEHORE	BUDHNI	TERRA	22.69300	77.56800	10:51:15	D	7.40
483	SEHORE	BUDHNI	TERRA	22.85700	77.94800	10:51:15	D	8.60
484	SEHORE	BUDHNI	TERRA	22.93800	77.95800	10:51:15	D	5.10
485	SEONI	GHANSAUR	S-NPP	22.40830	79.80740	13:16:54	D	7.00
486	SEONI	GHANSAUR	S-NPP	22.41690	79.72000	13:16:54	D	4.00
487	SEONI	GHANSAUR	S-NPP	22.42230	79.79690	13:16:54	D	2.00
488	SEONI	GHANSAUR	S-NPP	22.43120	79.65890	13:16:54	D	4.70
489	SEONI	GHANSAUR	S-NPP	22.43970	79.71200	13:16:54	D	4.80
490	SEONI	GHANSAUR	S-NPP	22.44330	79.69180	13:16:54	D	4.50
491	SEONI	GHANSAUR	S-NPP	22.44600	79.68740	13:16:54	D	2.30

492	SEONI	GHANSAUR	S-NPP	22.44660	79.69120	13:16:54	D	3.30
493	SEONI	GHANSAUR	S-NPP	22.44880	79.87750	13:16:54	D	2.50
494	SEONI	GHANSAUR	S-NPP	22.45220	79.87690	13:16:54	D	2.50
495	SEONI	GHANSAUR	S-NPP	22.50740	79.79310	13:16:54	D	2.50
496	SEONI	GHANSAUR	S-NPP	22.51880	79.82210	13:16:54	D	3.40
497	SEONI	GHANSAUR	S-NPP	22.55200	79.84310	13:16:54	D	2.20
498	SEONI	GHANSAUR	AQUA	22.44800	79.69200	14:12:10	D	34.40
499	SEONI	KEWLARI	S-NPP	22.31930	79.80820	13:16:54	D	1.90
500	SEONI	KEWLARI	S-NPP	22.34120	79.73030	13:16:54	D	3.80
501	SEONI	KEWLARI	S-NPP	22.34140	79.83910	13:16:54	D	4.90
502	SEONI	KEWLARI	S-NPP	22.34310	79.89310	13:16:54	D	1.90
503	SEONI	KEWLARI	S-NPP	22.35750	79.78950	13:16:54	D	5.20
504	SEONI	KEWLARI	S-NPP	22.36820	79.74870	13:16:54	D	4.40
505	SEONI	KEWLARI	S-NPP	22.37000	79.76000	13:16:54	D	3.60
506	SEONI	KEWLARI	S-NPP	22.39360	79.88780	13:16:54	D	4.10
507	SEONI	KEWLARI	S-NPP	22.39380	79.91100	13:16:54	D	1.60
508	SEONI	KEWLARI	S-NPP	22.39420	79.89150	13:16:54	D	4.10
509	SEONI	KEWLARI	S-NPP	22.40240	79.87840	13:16:54	D	5.10
510	SEONI	KEWLARI	S-NPP	22.40300	79.88220	13:16:54	D	5.10
511	SEONI	KEWLARI	S-NPP	22.40360	80.05990	13:16:54	D	3.50
512	SEONI	KEWLARI	S-NPP	22.41720	80.03810	13:16:54	D	4.00
513	SEONI	KEWLARI	S-NPP	22.42770	79.90870	13:16:54	D	12.90
514	SEONI	KEWLARI	S-NPP	22.43890	80.04580	13:16:54	D	2.90
515	SEONI	KEWLARI	S-NPP	22.44110	80.03760	13:16:54	D	3.60
516	SEONI	KEWLARI	S-NPP	22.44300	80.00640	13:16:54	D	2.90
517	SEONI	KEWLARI	S-NPP	22.45030	80.01640	13:16:54	D	3.50
518	SEONI	KEWLARI	S-NPP	22.47650	80.03090	13:16:54	D	4.60
519	SEONI	KEWLARI	S-NPP	22.47860	80.02280	13:16:54	D	2.20
520	SEONI	KEWLARI	TERRA	22.41700	79.89900	10:51:15	D	6.50
521	SEONI	KEWLARI	TERRA	22.41900	79.88700	10:51:15	D	13.50
522	SEONI	LAKHNADOU	S-NPP	22.33010	79.63870	13:16:54	D	4.70
523	SEONI	LAKHNADOU	S-NPP	22.37720	79.56730	13:16:54	D	2.30
524	SEONI	LAKHNADOU	S-NPP	22.37760	79.49630	13:16:54	D	2.60

525	SEONI	LAKHNADOU	S-NPP	22.44660	79.38900	13:16:54	D	13.80
526	SEONI	LAKHNADOU	S-NPP	22.58150	79.70560	13:16:54	D	2.30
527	SEONI	LAKHNADOU	TERRA	22.38200	79.48600	10:51:15	D	11.10
528	SEONI	SEONI	S-NPP	21.99230	79.58300	13:16:54	D	3.10
529	SEONI	SEONI	S-NPP	21.99650	79.52320	13:16:54	D	3.40
530	SEONI	SEONI	S-NPP	22.00590	79.56080	13:16:54	D	1.80
531	SEONI	SEONI	S-NPP	22.04280	79.51060	13:16:54	D	2.60
532	SEONI	SEONI	S-NPP	22.04430	79.51040	13:16:54	D	2.00
533	SEONI	SEONI	S-NPP	22.05540	79.42940	13:16:54	D	1.80
534	SEONI	SEONI	S-NPP	22.05870	79.42880	13:16:54	D	2.40
535	SEONI	SEONI	S-NPP	22.06440	79.50660	13:16:54	D	2.60
536	SEONI	SEONI	S-NPP	22.06470	79.48690	13:16:54	D	2.70
537	SEONI	SEONI	S-NPP	22.06680	79.47860	13:16:54	D	2.50
538	SEONI	SEONI	S-NPP	22.07170	79.46590	13:16:54	D	3.10
539	SEONI	SEONI	S-NPP	22.20140	79.68570	13:16:54	D	4.00
540	SEONI	SEONI	S-NPP	22.21470	79.46750	13:16:54	D	2.30
541	SEONI	SEONI	S-NPP	22.24230	79.74840	13:16:54	D	3.10
542	SEONI	SEONI	S-NPP	22.24300	79.75220	13:16:54	D	2.50
543	SEONI	SEONI	S-NPP	22.27500	79.78130	13:16:54	D	2.10
544	SEONI	SEONI	S-NPP	22.30760	79.71310	13:16:54	D	5.40
545	SEONI	SEONI	S-NPP	22.31090	79.71250	13:16:54	D	5.40
546	SEONI	SEONI	S-NPP	22.31240	79.74340	13:16:54	D	2.30
547	SEONI	SEONI	S-NPP	22.32490	79.62790	13:16:54	D	4.40
548	SEONI	SEONI	S-NPP	22.33700	79.74660	13:16:54	D	2.30
549	SEONI	SEONI	TERRA	22.10700	79.59400	10:51:15	D	11.00
550	SEONI	SEONI	TERRA	22.11000	79.58900	10:51:15	D	8.90
551	SHEOPUR	SHEOPUR	S-NPP	25.44030	76.59410	13:16:54	D	4.50
552	SHEOPUR	SHEOPUR	S-NPP	25.44750	76.59250	13:16:54	D	3.60
553	SHEOPUR	SHEOPUR	S-NPP	25.46480	76.61930	13:16:54	D	5.30
554	SHEOPUR	SHEOPUR	S-NPP	25.46740	76.62120	13:16:54	D	7.60
555	SHEOPUR	SHEOPUR	S-NPP	25.46910	76.62310	13:16:54	D	5.30
556	SHEOPUR	SHEOPUR	S-NPP	25.47170	76.62500	13:16:54	D	8.70
557	SHEOPUR	SHEOPUR	S-NPP	25.47270	76.62230	13:16:54	D	2.50

558	SHEOPUR	SHEOPUR	S-NPP	25.47890	76.57390	13:16:54	D	10.10
559	SHEOPUR	SHEOPUR	S-NPP	25.50010	76.58820	13:16:54	D	2.10
560	SHEOPUR	SHEOPUR	S-NPP	25.59220	76.62160	13:16:54	D	2.60
561	SHEOPUR	SHEOPUR	S-NPP	25.59470	76.67720	13:16:54	D	4.50
562	SHEOPUR	SHEOPUR	S-NPP	25.63220	76.53290	13:16:54	D	8.00
563	SHEOPUR	SHEOPUR	S-NPP	25.64620	76.54880	13:16:54	D	6.80
564	SHEOPUR	SHEOPUR	S-NPP	25.64970	76.54800	13:16:54	D	3.90
565	SHEOPUR	SHEOPUR	S-NPP	25.65410	76.55180	13:16:54	D	3.30
566	SHEOPUR	SHEOPUR	S-NPP	25.65730	76.61230	13:16:54	D	5.10
567	SHEOPUR	SHEOPUR	S-NPP	25.66920	76.59570	13:16:54	D	2.30
568	SHEOPUR	SHEOPUR	S-NPP	25.68450	76.70450	13:16:54	D	3.20
569	SHEOPUR	SHEOPUR	S-NPP	25.68800	76.70370	13:16:54	D	3.20
570	SHEOPUR	SHEOPUR	S-NPP	25.69830	76.60510	13:16:54	D	2.70
571	SHEOPUR	SHEOPUR	S-NPP	25.72840	76.56570	13:16:54	D	3.50
572	SHEOPUR	SHEOPUR	S-NPP	25.73440	76.62080	13:16:54	D	7.10
573	SHEOPUR	SHEOPUR	S-NPP	25.74590	76.70670	13:16:54	D	2.10
574	SHEOPUR	SHEOPUR	S-NPP	25.78200	76.55420	13:16:54	D	2.10
575	SHEOPUR	SHEOPUR	S-NPP	25.78230	76.55070	13:16:54	D	1.60
576	SHEOPUR	SHEOPUR	S-NPP	25.78540	76.63780	13:16:54	D	5.00
577	SHEOPUR	SHEOPUR	S-NPP	25.78620	76.64230	13:16:54	D	5.00
578	SHEOPUR	SHEOPUR	S-NPP	25.79210	76.65500	13:16:54	D	18.10
579	SHEOPUR	SHEOPUR	S-NPP	25.79380	76.62200	13:16:54	D	3.10
580	SHEOPUR	SHEOPUR	S-NPP	25.79570	76.65420	13:16:54	D	18.10
581	SHEOPUR	SHEOPUR	S-NPP	25.80350	76.60710	13:16:54	D	5.40
582	SHEOPUR	SHEOPUR	S-NPP	25.80420	76.56950	13:16:54	D	4.20
583	SHEOPUR	SHEOPUR	S-NPP	25.80430	76.61160	13:16:54	D	5.40
584	SHEOPUR	SHEOPUR	S-NPP	25.83560	76.64220	13:16:54	D	5.00
585	SHEOPUR	SHEOPUR	S-NPP	25.83640	76.64670	13:16:54	D	4.30
586	SHEOPUR	SHEOPUR	S-NPP	25.83960	76.66460	13:16:54	D	15.20
587	SHEOPUR	SHEOPUR	S-NPP	25.84040	76.66910	13:16:54	D	15.20
588	SHEOPUR	SHEOPUR	S-NPP	25.84790	76.64890	13:16:54	D	23.30
589	SHEOPUR	SHEOPUR	S-NPP	25.86720	76.65410	13:16:54	D	3.60
590	SHEOPUR	SHEOPUR	TERRA	25.44700	76.66000	10:51:15	D	5.30

591	SHEOPUR	SHEOPUR	AQUA	25.46600	76.57800	14:12:10	D	35.30
592	SHEOPUR	SHEOPUR	AQUA	25.47800	76.57700	14:12:10	D	79.10
593	SHEOPUR	SHEOPUR	AQUA	25.48100	76.57100	14:12:10	D	26.70
594	SHEOPUR	SHEOPUR	TERRA	25.68800	76.58200	10:51:15	D	8.50
595	SHEOPUR	SHEOPUR	AQUA	25.72400	76.56700	14:12:10	D	30.20
596	SHEOPUR	SHEOPUR	AQUA	25.80000	76.65000	14:12:10	D	17.20
597	SHEOPUR	SHEOPUR	TERRA	25.85400	76.65200	10:51:15	D	8.10
598	SHEOPUR	SHEOPUR	AQUA	25.86100	76.64200	14:12:10	D	23.80
599	SHEOPUR	SHEOPUR	AQUA	25.86300	76.66200	14:12:10	D	24.40
600	SHEOPUR	SHEOPUR	AQUA	25.86500	76.65600	14:12:10	D	33.50
601	SHIVPURI	NARWAR	S-NPP	25.60270	78.10590	13:16:54	D	6.10
602	SHIVPURI	NARWAR	S-NPP	25.61190	78.18300	13:16:54	D	1.70
603	SHIVPURI	NARWAR	S-NPP	25.63060	78.02130	13:16:54	D	2.40
604	SHIVPURI	NARWAR	S-NPP	25.66860	78.25030	13:16:54	D	3.80
605	SHIVPURI	NARWAR	S-NPP	25.68740	78.06830	13:16:54	D	1.10
606	SHIVPURI	NARWAR	S-NPP	25.68860	78.13870	13:16:54	D	4.90
607	SHIVPURI	NARWAR	S-NPP	25.69490	78.07100	13:16:54	D	3.60
608	SHIVPURI	NARWAR	S-NPP	25.70400	78.16880	13:16:54	D	2.90
609	SHIVPURI	NARWAR	S-NPP	25.70960	77.98980	13:16:54	D	1.80
610	SHIVPURI	NARWAR	S-NPP	25.71440	78.03900	13:16:54	D	3.20
611	SHIVPURI	NARWAR	S-NPP	25.71570	78.02620	13:16:54	D	6.50
612	SHIVPURI	NARWAR	S-NPP	25.71780	78.01740	13:16:54	D	1.90
613	SHIVPURI	NARWAR	S-NPP	25.73140	77.97280	13:16:54	D	3.70
614	SHIVPURI	NARWAR	TERRA	25.70500	77.99000	10:51:15	D	4.50
615	SHIVPURI	NARWAR	AQUA	25.70800	78.02400	14:12:10	D	21.80
616	SHIVPURI	NARWAR	AQUA	25.71400	78.03100	14:12:10	D	26.00
617	SHIVPURI	SHIVPURI	S-NPP	25.33680	77.65250	13:16:54	D	3.00
618	SHIVPURI	SHIVPURI	TERRA	25.34000	77.65200	10:51:15	D	5.10
619	SINGRAULI	SINGRAULI	S-NPP	24.07800	82.56320	13:16:54	D	1.90
620	UMARIA	BANDHOGARH	S-NPP	23.59660	80.64000	13:16:54	D	6.70
621	VIDESHA	BASODA	S-NPP	23.83080	77.89770	13:16:54	D	3.30
622	VIDESHA	SIRANJ	S-NPP	23.99490	77.73230	13:16:54	D	6.40
623	VIDESHA	SIRANJ	S-NPP	24.03520	77.73360	13:16:54	D	5.70

624	VIDESHA	SIRANJ	S-NPP	24.03870	77.73290	13:16:54	D	5.70
625	VIDESHA	SIRANJ	S-NPP	24.04560	77.73150	13:16:54	D	5.80
626	VIDESHA	SIRANJ	S-NPP	24.04640	77.73570	13:16:54	D	4.20
627	VIDESHA	SIRANJ	S-NPP	24.04910	77.73080	13:16:54	D	9.30
628	VIDESHA	VIDESHA	S-NPP	23.56570	77.80570	13:16:54	D	1.80
629	VIDESHA	VIDESHA	S-NPP	23.56720	77.83590	13:16:54	D	3.90
630	VIDESHA	VIDESHA	S-NPP	23.57110	77.96480	13:16:54	D	2.50
631	VIDESHA	VIDESHA	S-NPP	23.59440	77.82610	13:16:54	D	5.20
632	VIDESHA	VIDESHA	TERRA	23.39900	77.96900	10:51:15	D	4.80
633	VIDESHA	VIDESHA	TERRA	23.64100	77.77100	10:51:15	D	12.70

The study used data received from following Satellites at NRSC Ground Station

S. No.	Satellite Name	Sensor	Resolution (meter)	Day / Night Passes
1.	Suomi NPP	VIIRS	375 / 750	Both
2.	Terra	MODIS	1000	Both
3.	Aqua	MODIS	1000	Both

The rice mask for the Punjab and Haryana were provided by MNCFC, MoA&FW, Govt of India
The kharif crop mask for Delhi, Uttar Pradesh, Rajasthan and Madhya Pradesh were provided by NRSC

Study Team

ICAR - IARI	Dr V.K. Sehgal	Principal & Nodal Scientist	iaricreams@gmail.com
	Dr Rajkumar Dhakar	Scientist	rajdhakar.iari@gmail.com
	Mr Mohd Jahangir	Lab Assistant (KRISHI)	mjahangir198@gmail.com
ICAR - ATARI	Dr Rajbir Singh	Director ATARI (Zone-I) Ludhiana	rajbirsingh.zpd@gmail.com
	Dr S.K. Singh	Director ATARI (Zone-II) Jodhpur	sushilsinghiipr@yahoo.co.in
	Dr Atar Singh	Director ATARI (Zone-III) Kanpur	zpdicarkanpur@gmail.com
ICAR - IASRI	Dr Rajender Parsad	Director	rajender.parsad@icar.gov.in

GIS Maps of fire events can be visualized online on ICAR KRISHI Geoportal website: <http://geoportal.icar.gov.in:8080/geoexplorer/composer/>

(Part of KRISHI Portal: <https://krishi.icar.gov.in> initiative)

and on IARI CREAMS website (<http://creams.iari.res.in/cms2/index.php>)
