



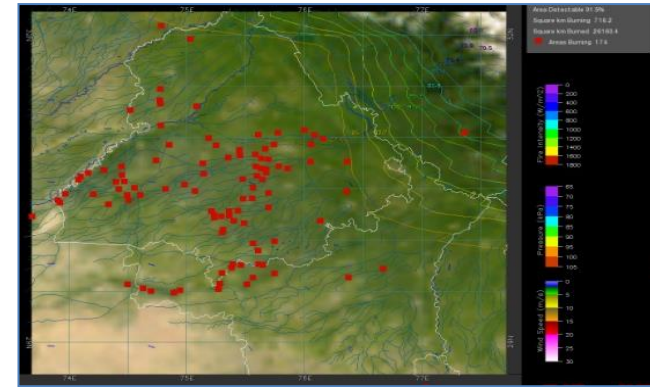
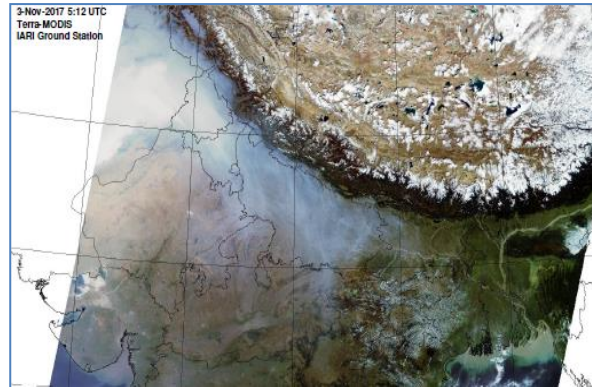
Bulletin No. 34

Events Date:
18-Oct-2022

Issued on:
18-Oct-2022



MONITORING PADDY RESIDUE BURNING IN INDIA USING SATELLITE REMOTE SENSING DURING 2022



Prepared by:

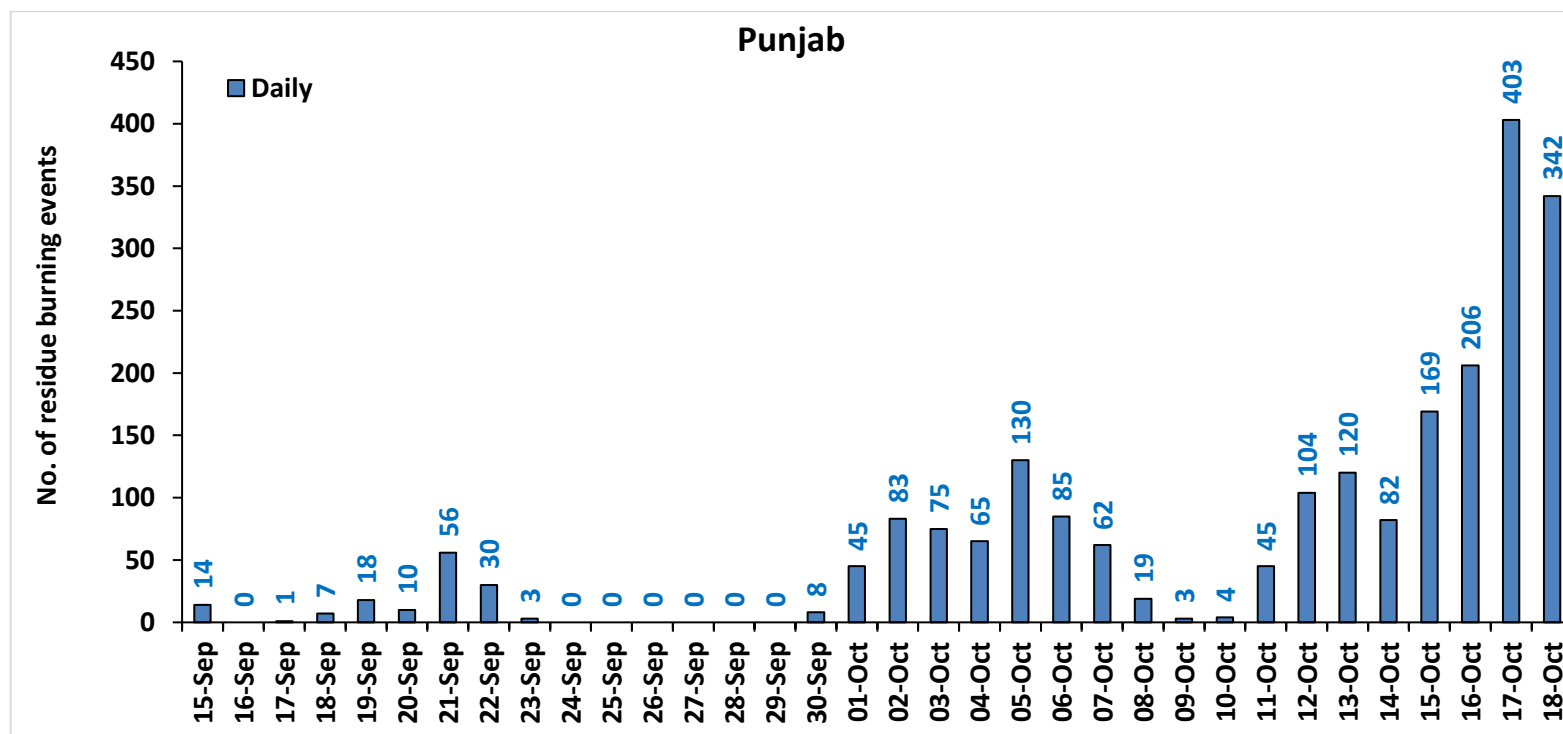
Consortium for Research on Agroecosystem Monitoring and Modeling from Space (CREAMS) Laboratory,
Division of Agricultural Physics, ICAR – Indian Agricultural Research Institute, New Delhi – 110012

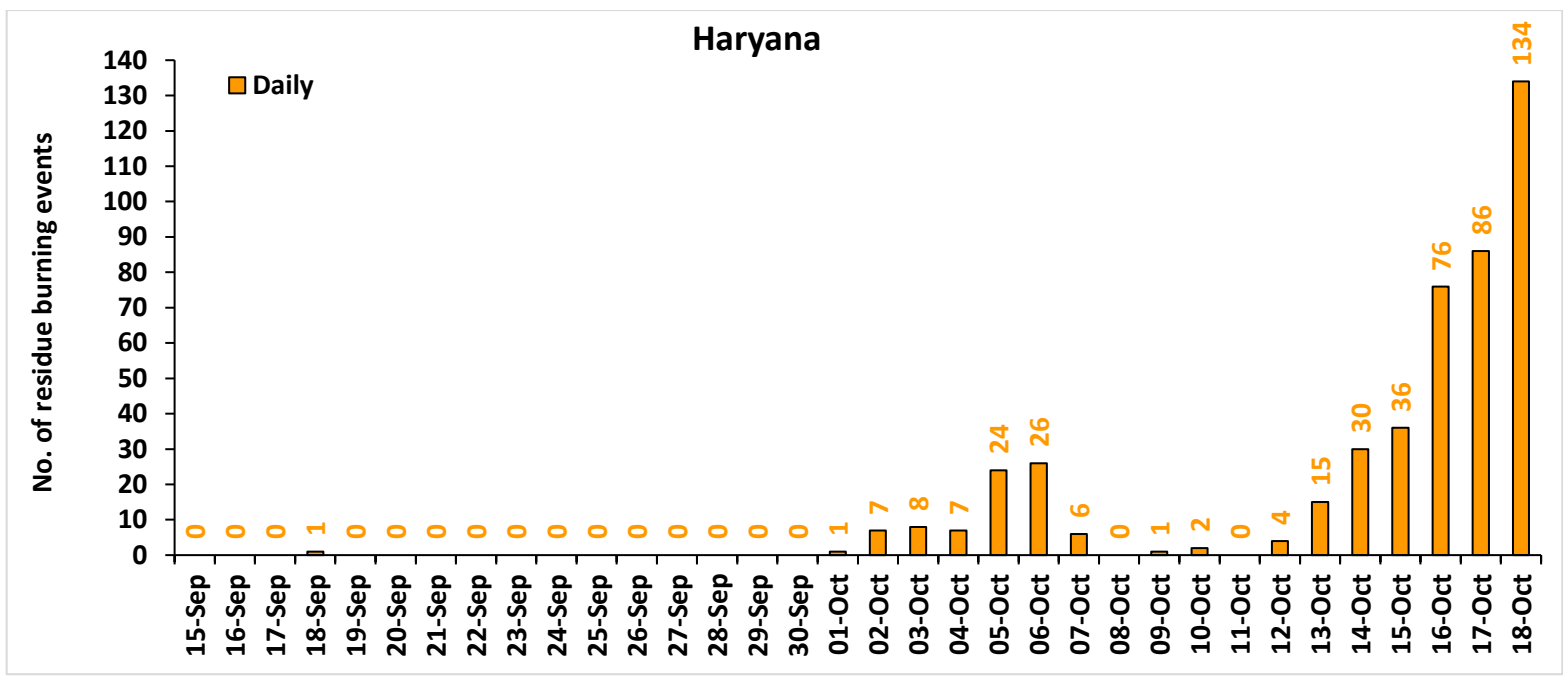
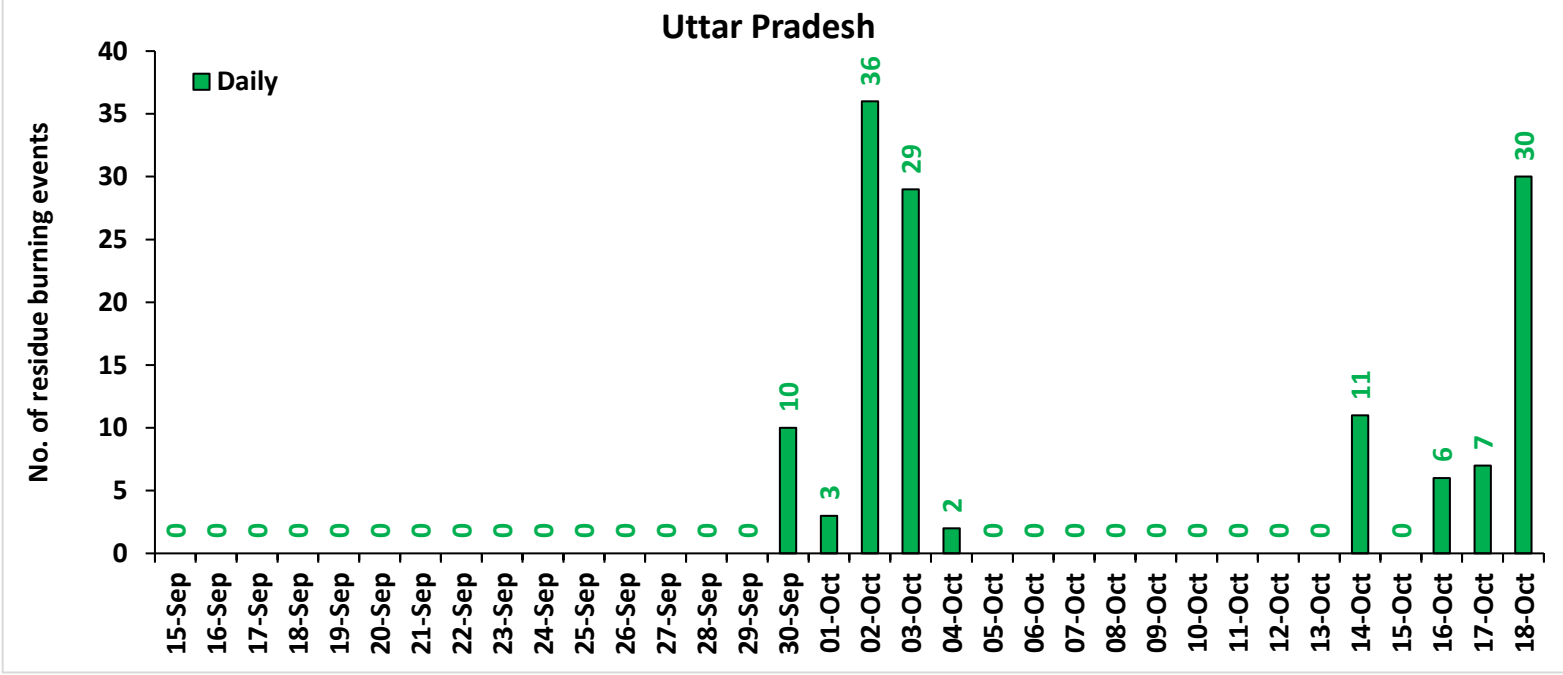
<http://creams.iari.res.in>

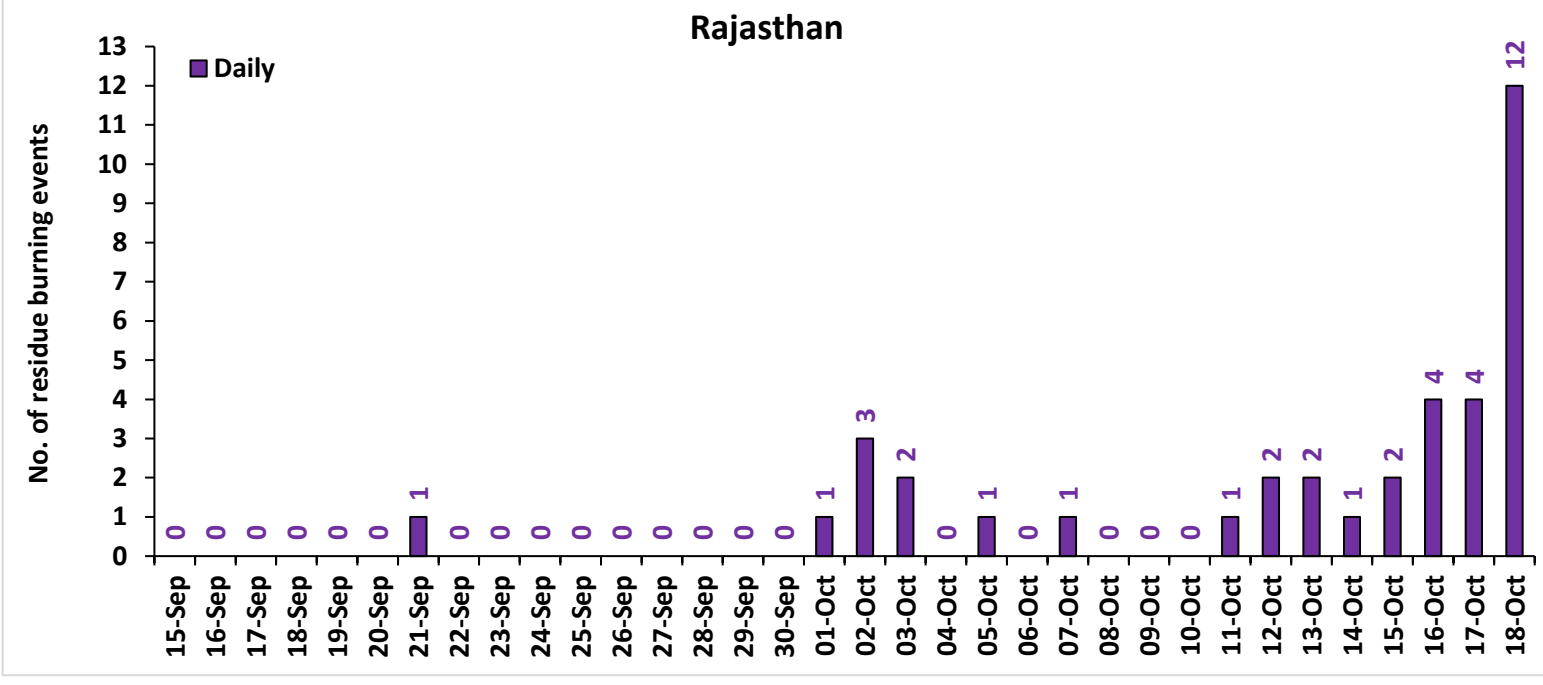
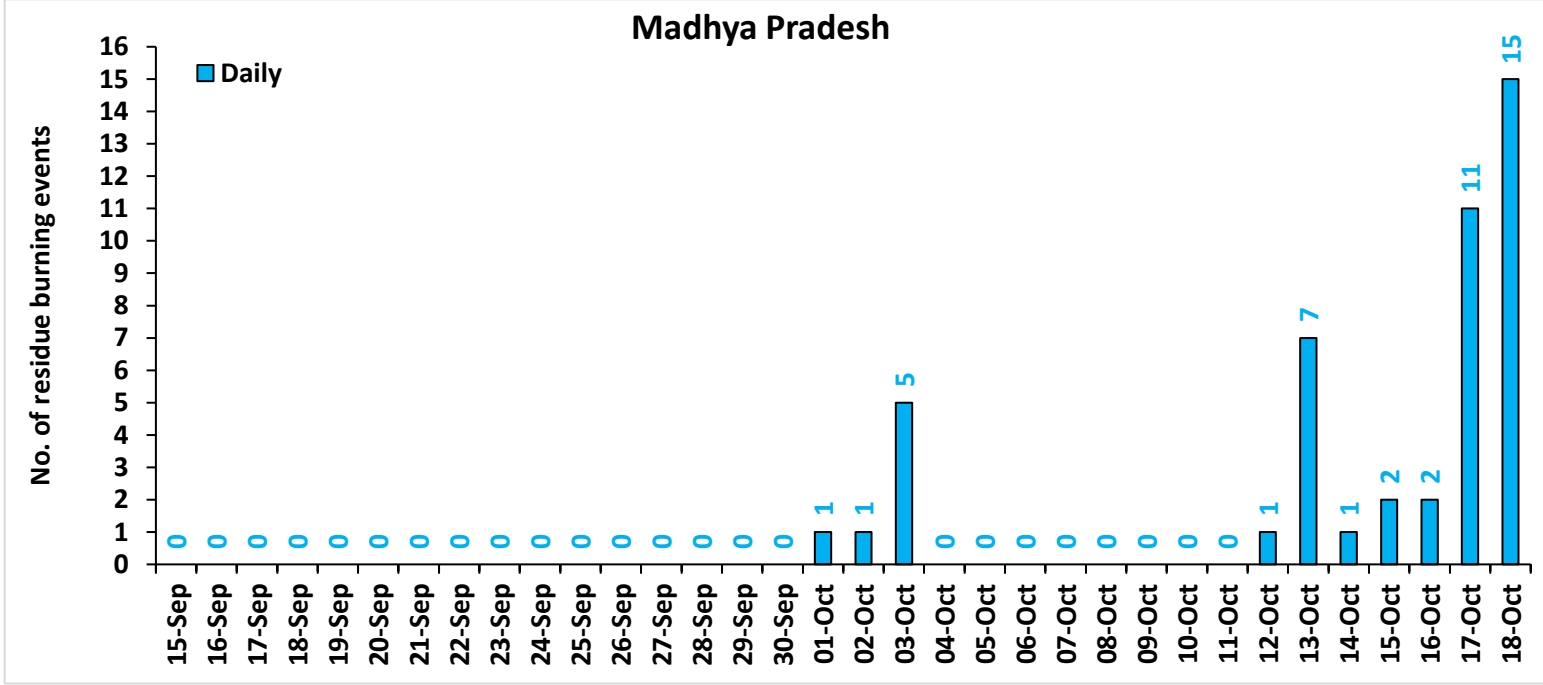
Highlights for 18-Oct-2022

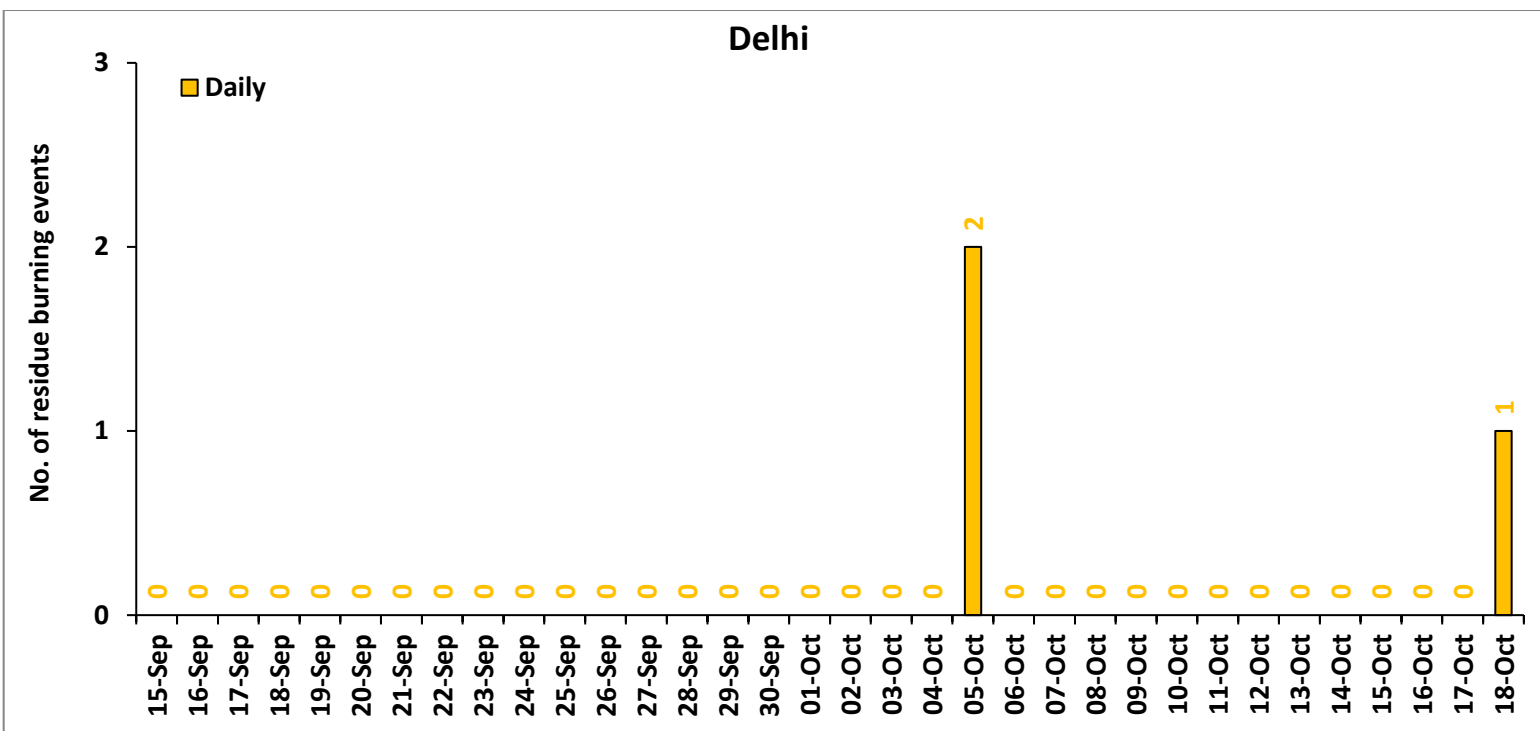
- The active fire events due to rice residue burning were monitored using satellite remote sensing, following the "Standard Protocol for Estimation of Crop Residue Burning Fire Events using Satellite Data".
- Satellites detected **534** residue burning events in the six study States on 18-Oct-2022.
- The state wise events detected on 18-Oct-2022 were **342** in Punjab, **134** in Haryana, **30** in UP, **1** in Delhi, **12** in Rajasthan and **15** in MP.
- Total **2873** burning events were detected in the six states between 15-Sept-2022 and 18-Oct-2022, which are distributed as **2189**, **464**, **134**, **3**, **37** and **46** in Punjab, Haryana, UP, Delhi, Rajasthan and MP, respectively.

Temporal distribution of rice residue burning events for the study States in 2022

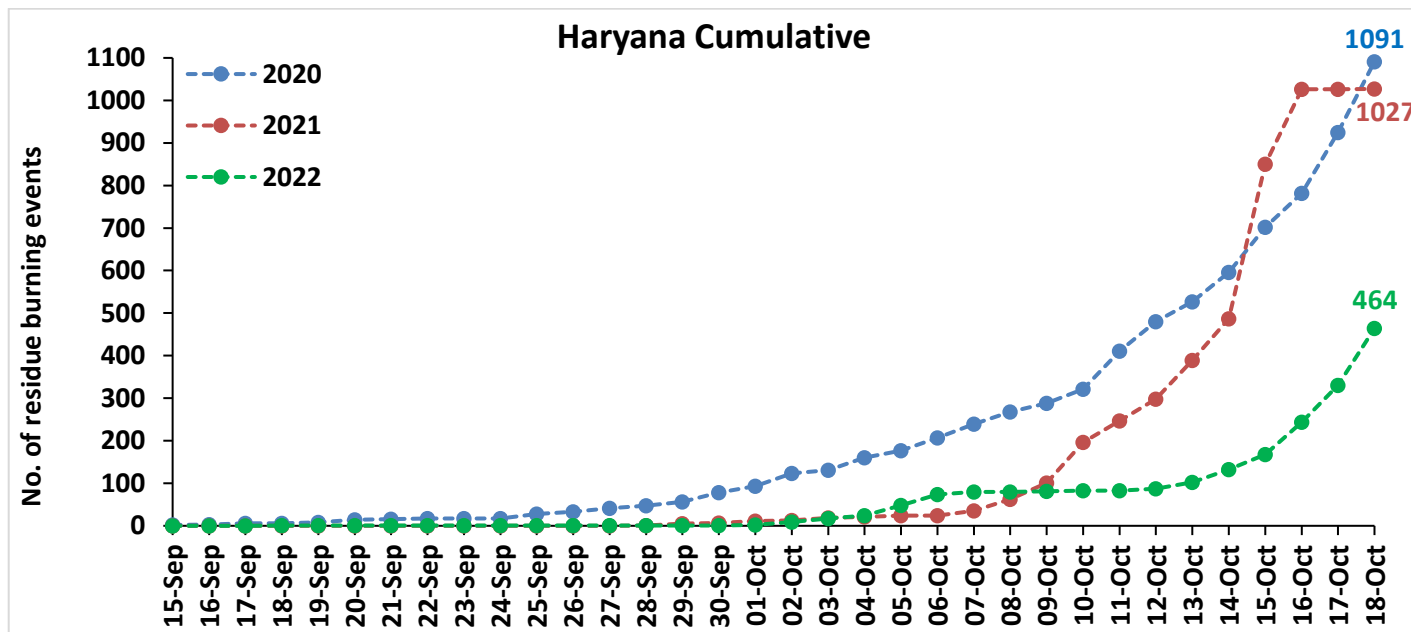
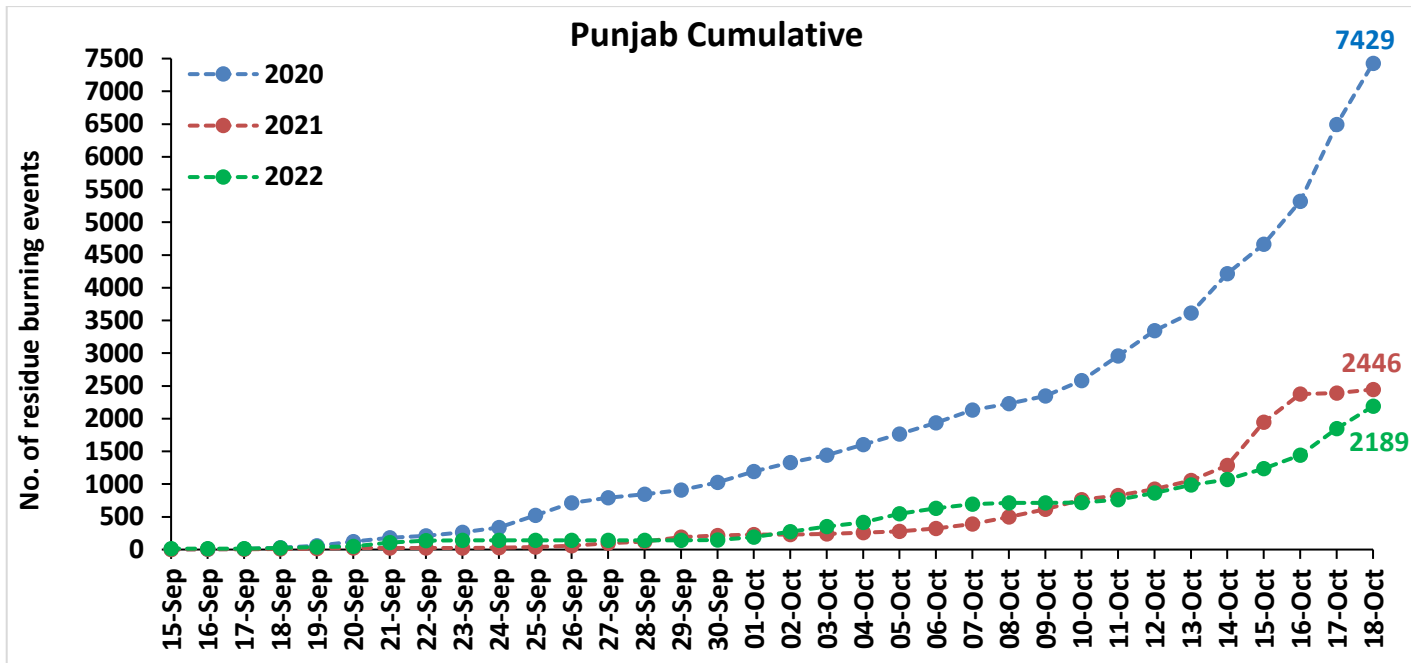


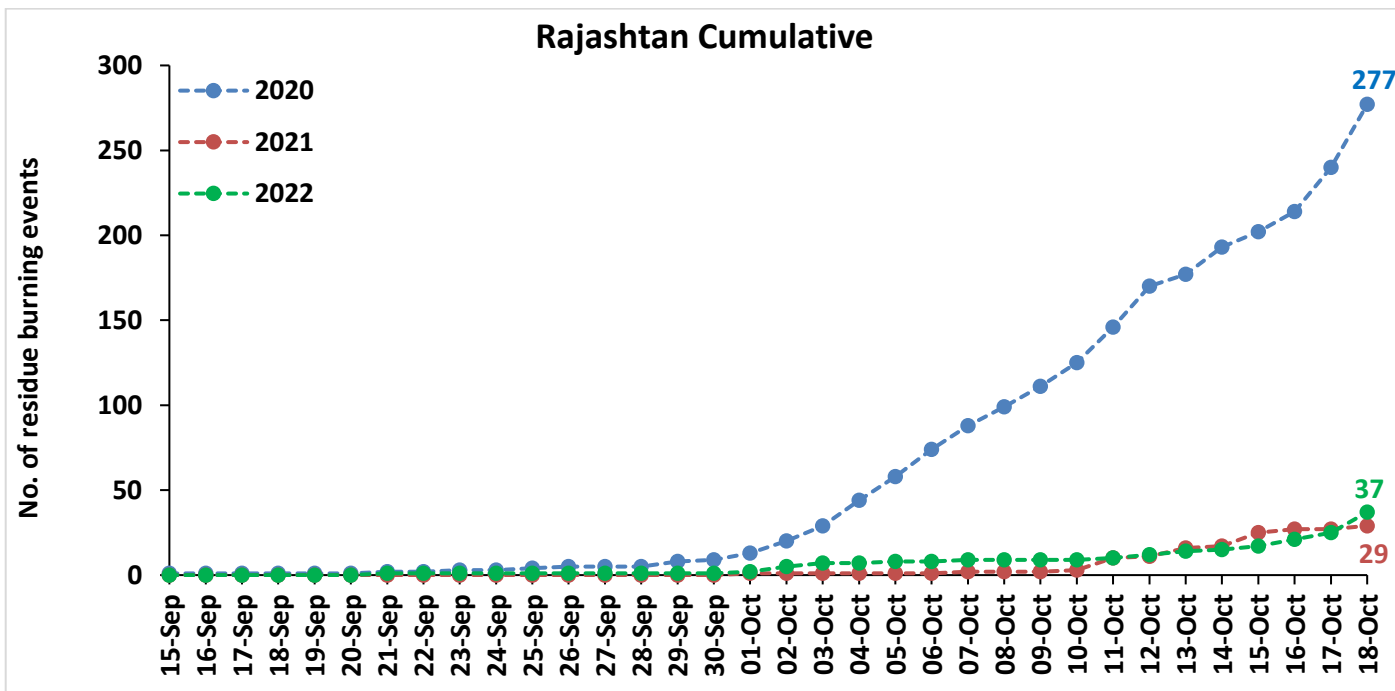
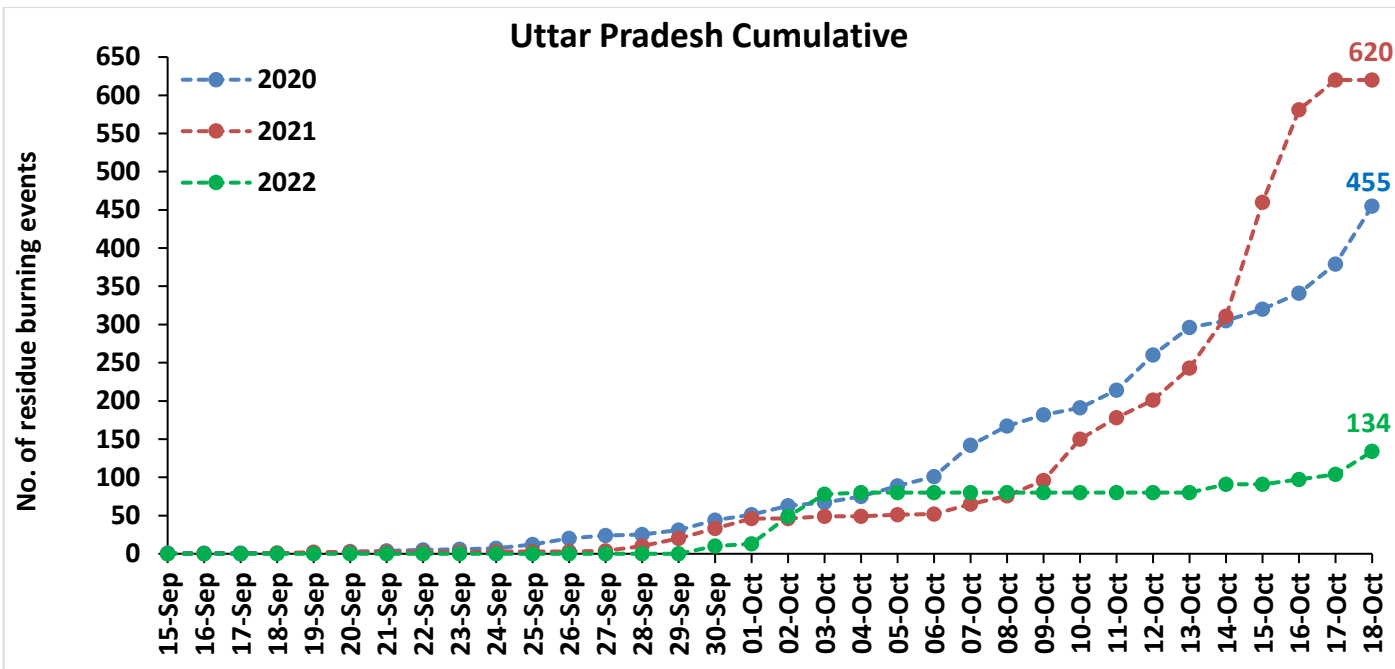


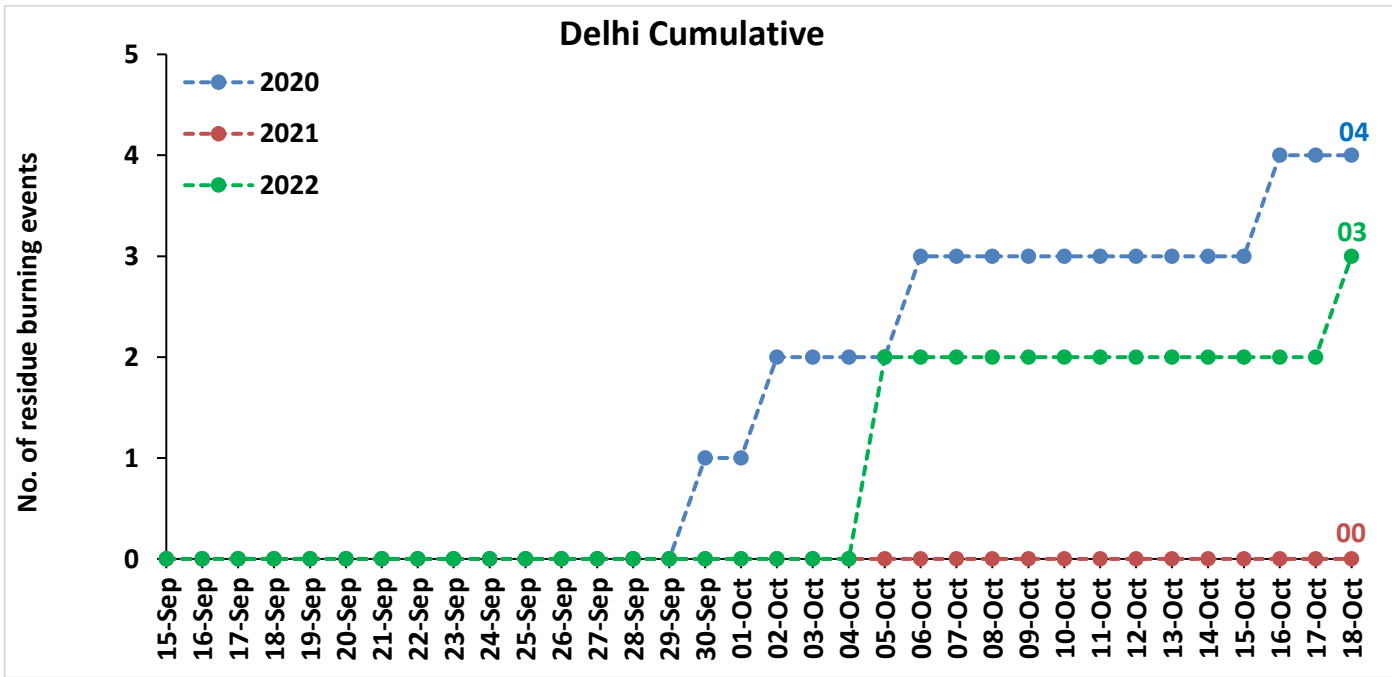
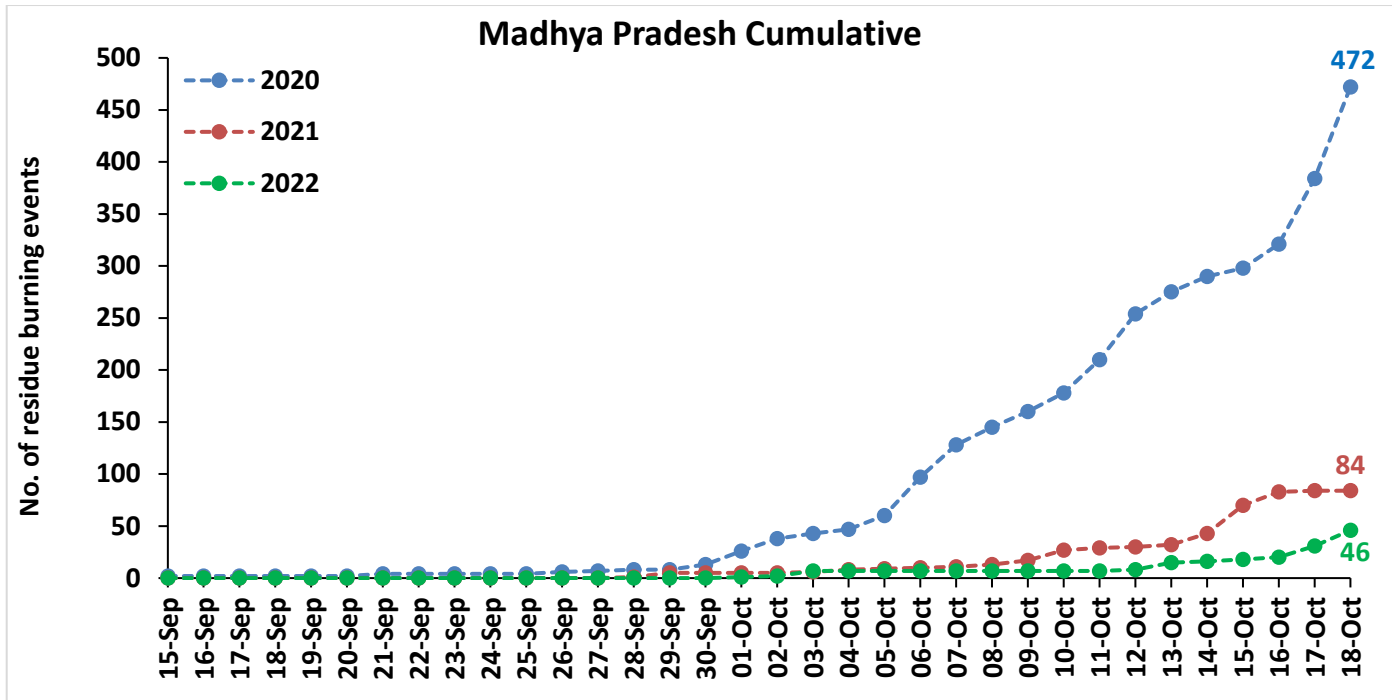




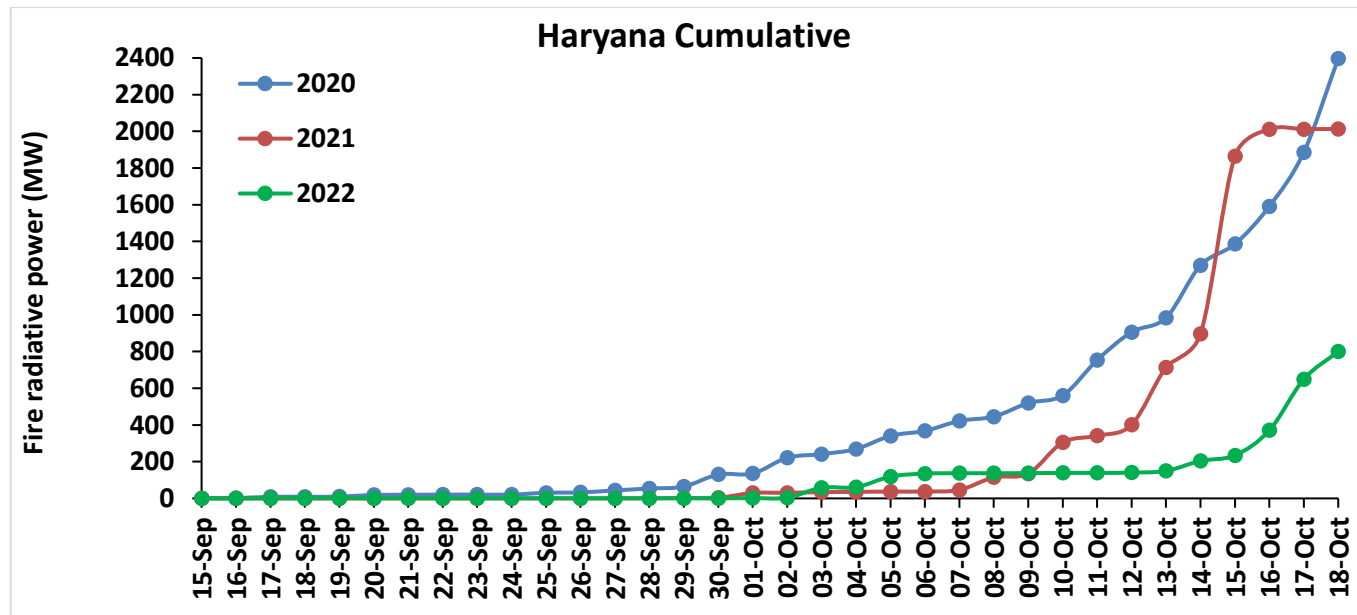
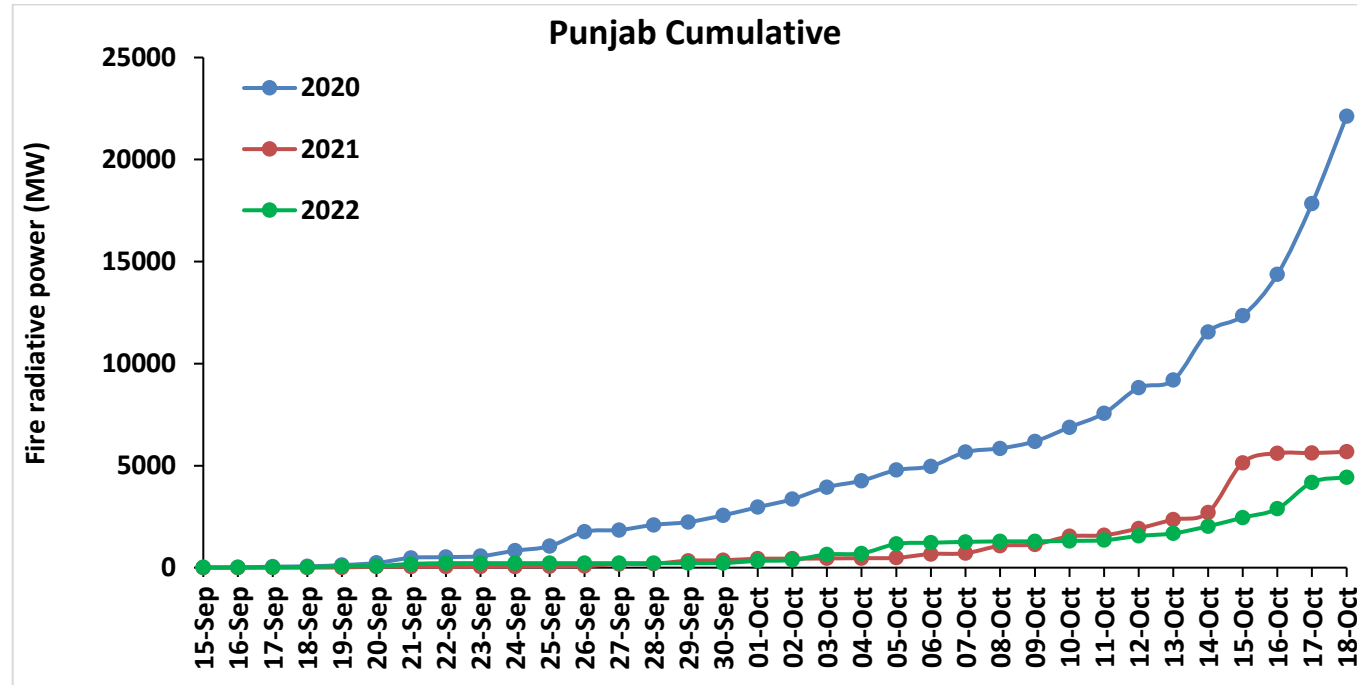
Comparison of residue burning events in current year (2022) with previous years (2020 and 2021) for the study States

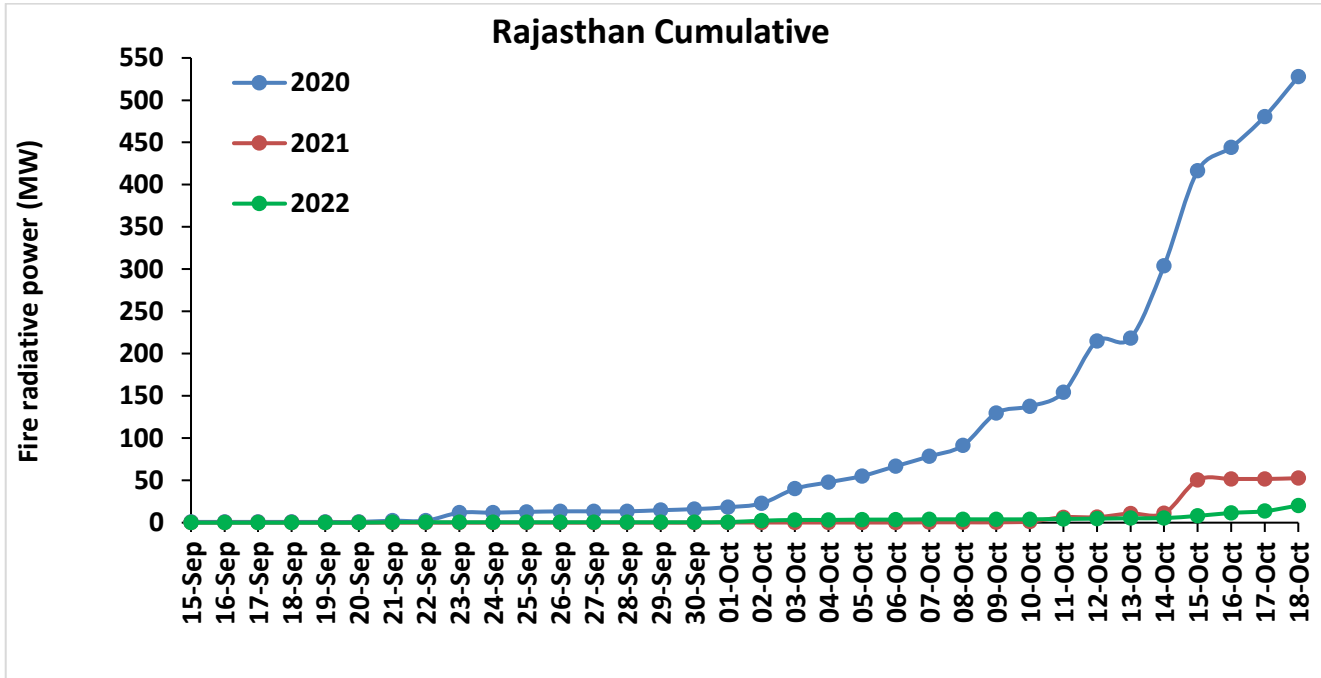
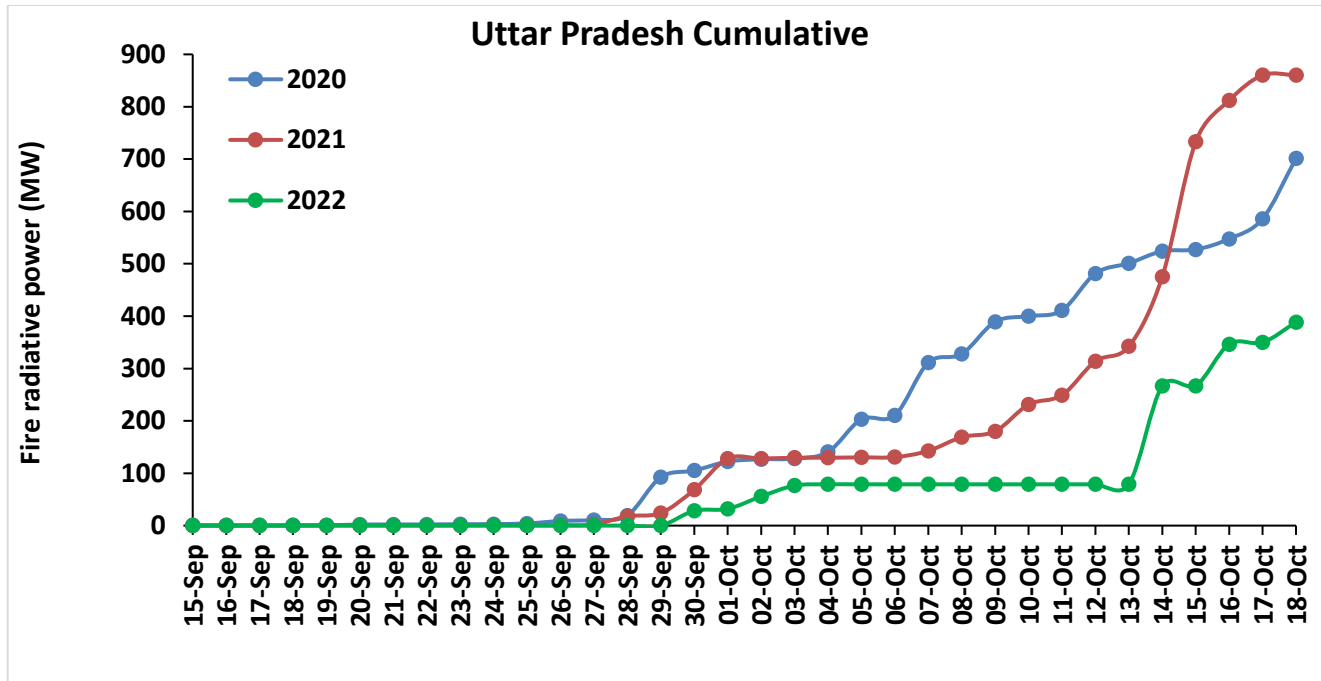


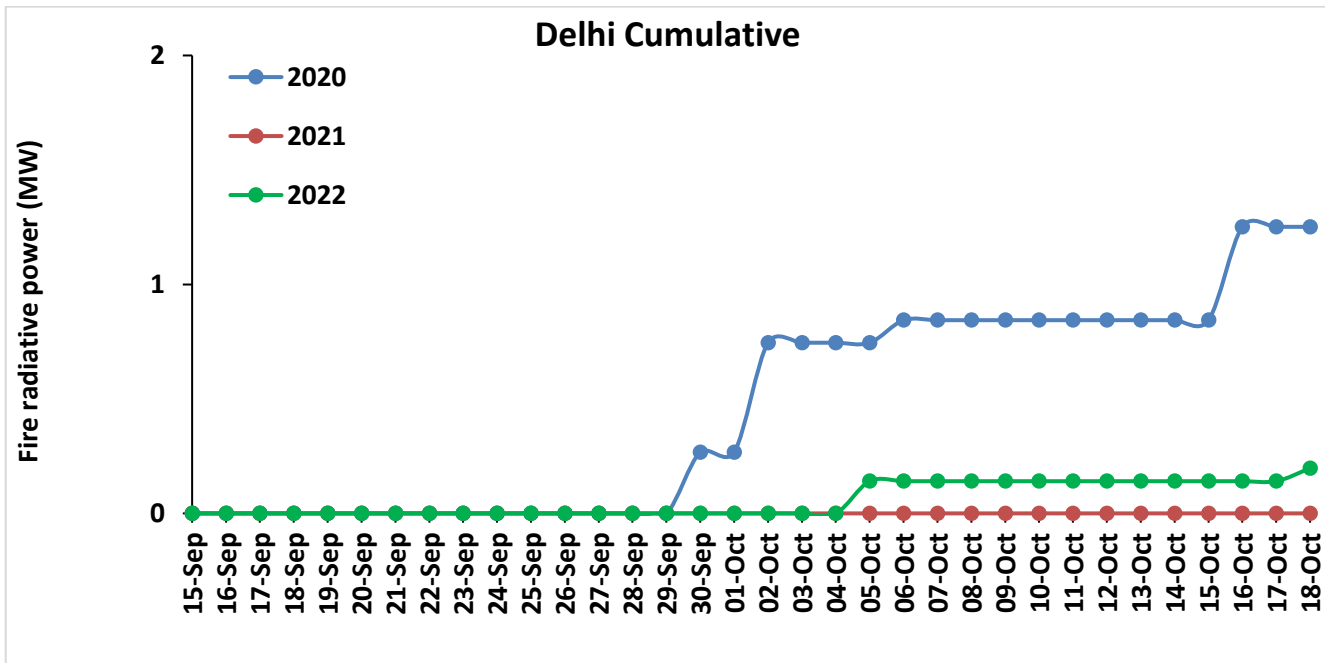
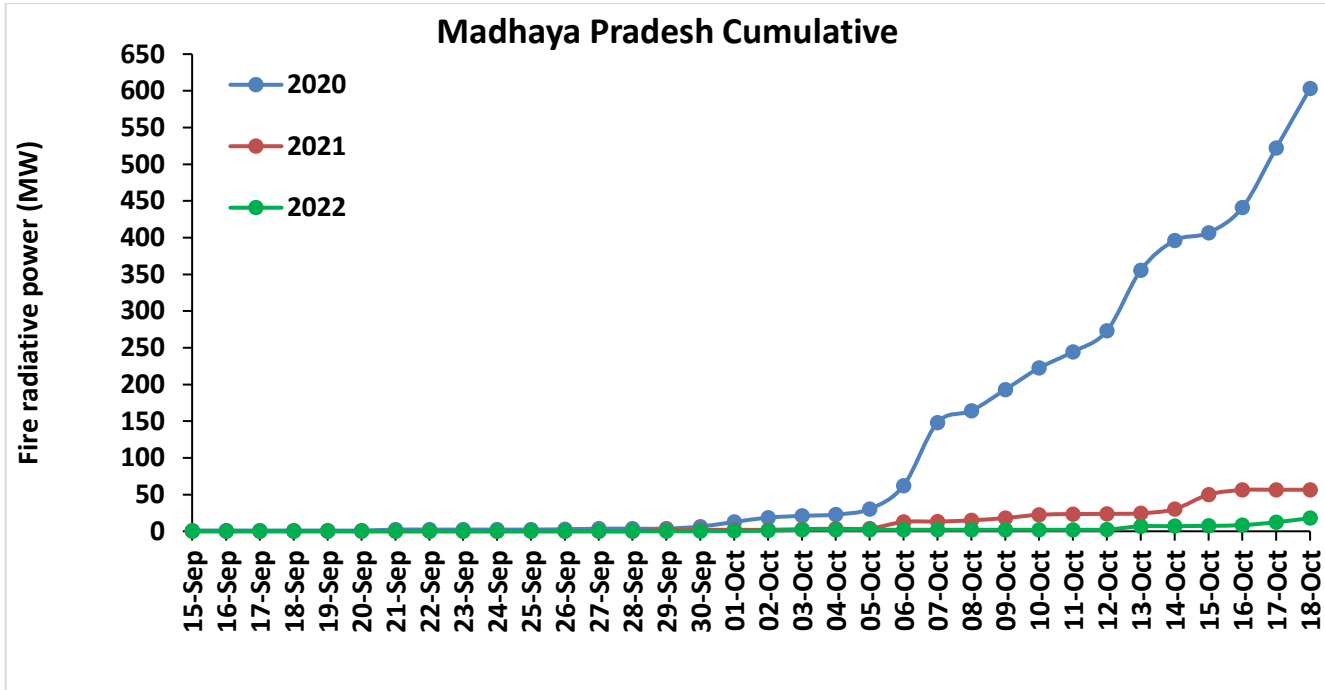




Comparison of residue burning fire power in current year (2022) with previous years (2021 and 2020) for the study States

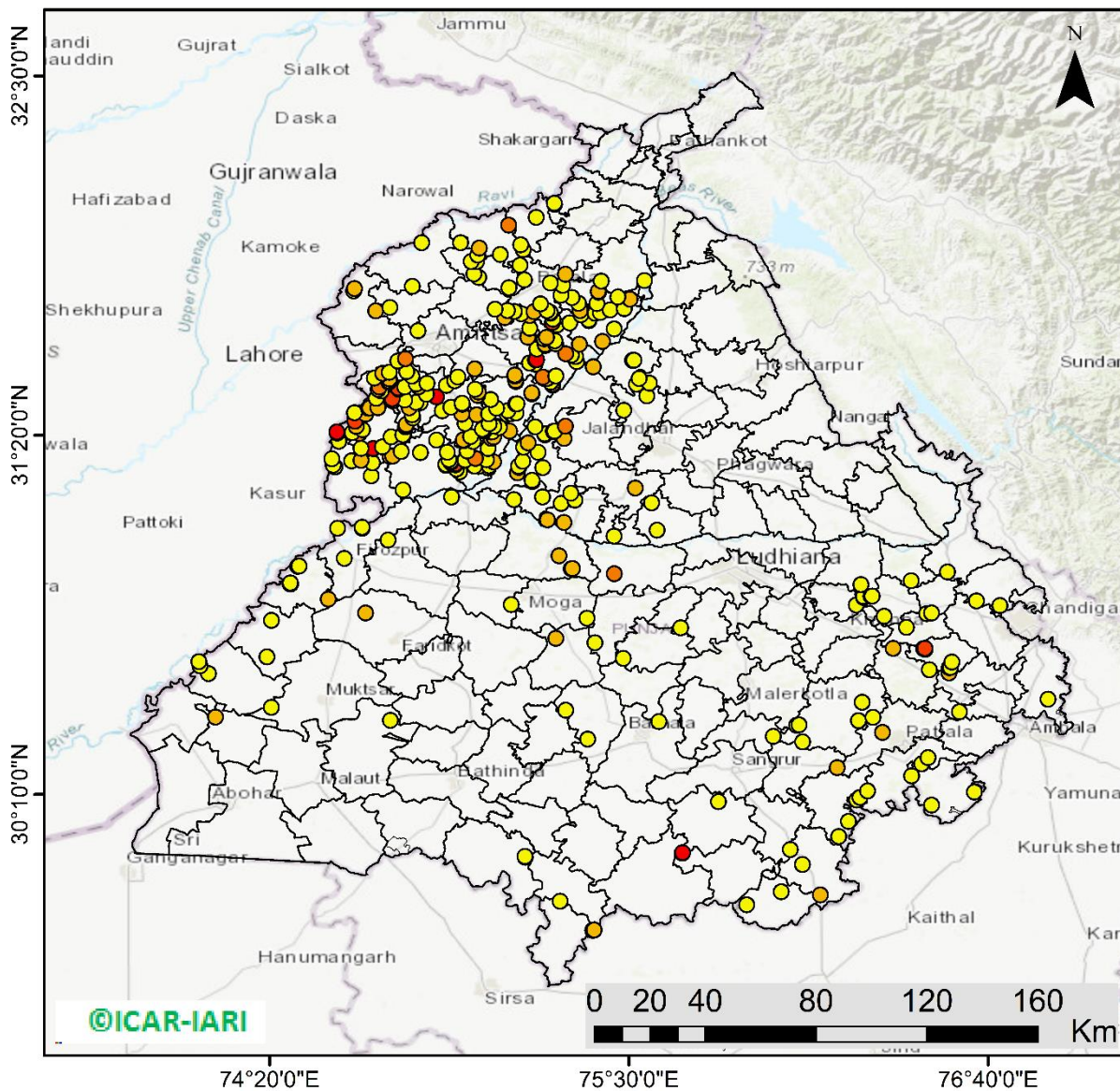






Punjab

RICE RESIDUE BURNING IN PUNJAB



342 burning events detected in Punjab during (18th Oct 2022)

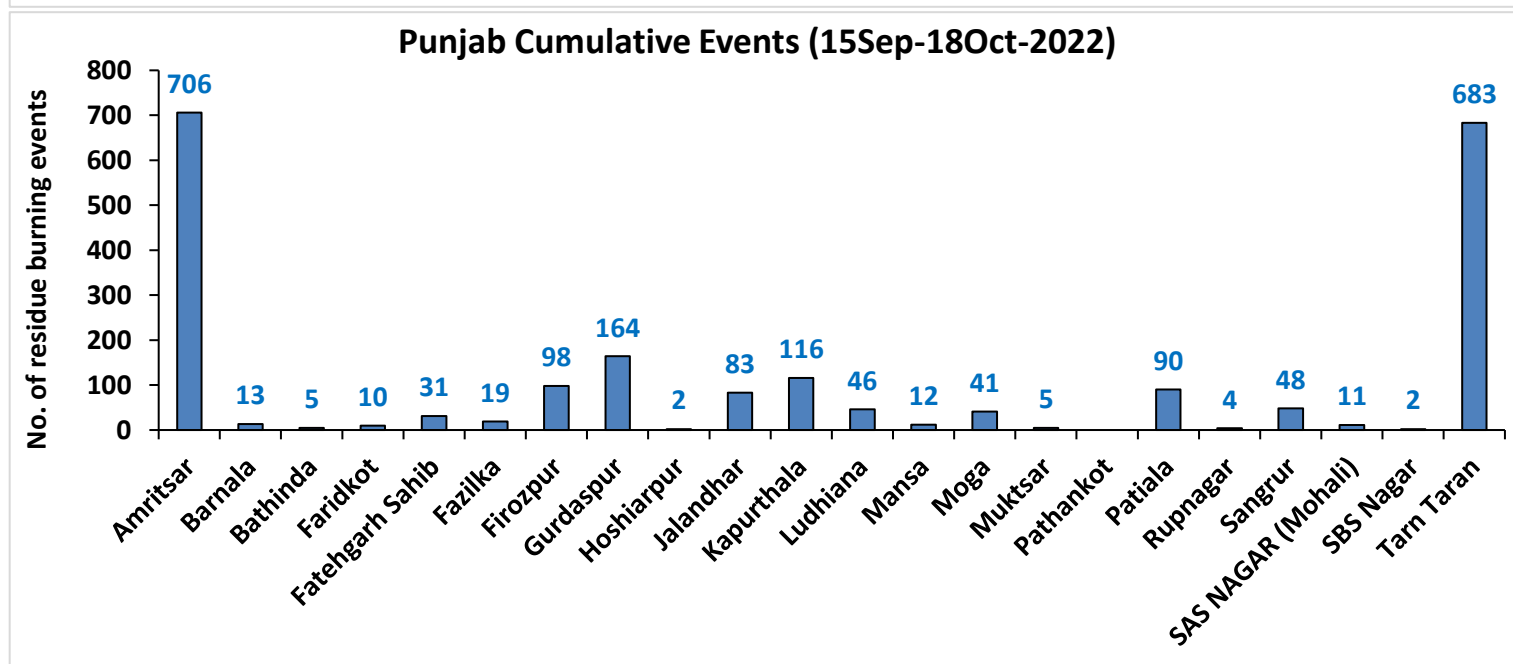
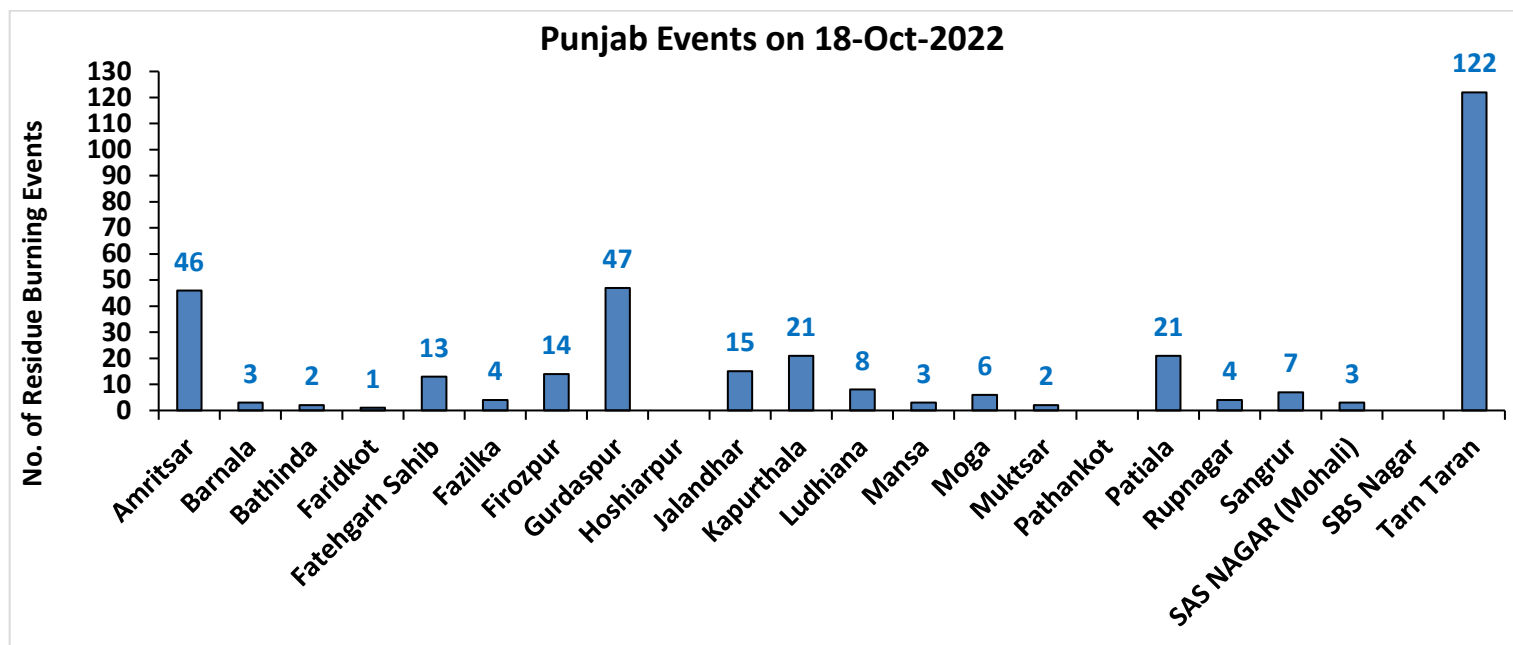
Fire Intensity (W/m²)

- 0 - 5
- 6 - 10
- 11 - 15
- 16 - 20
- >20



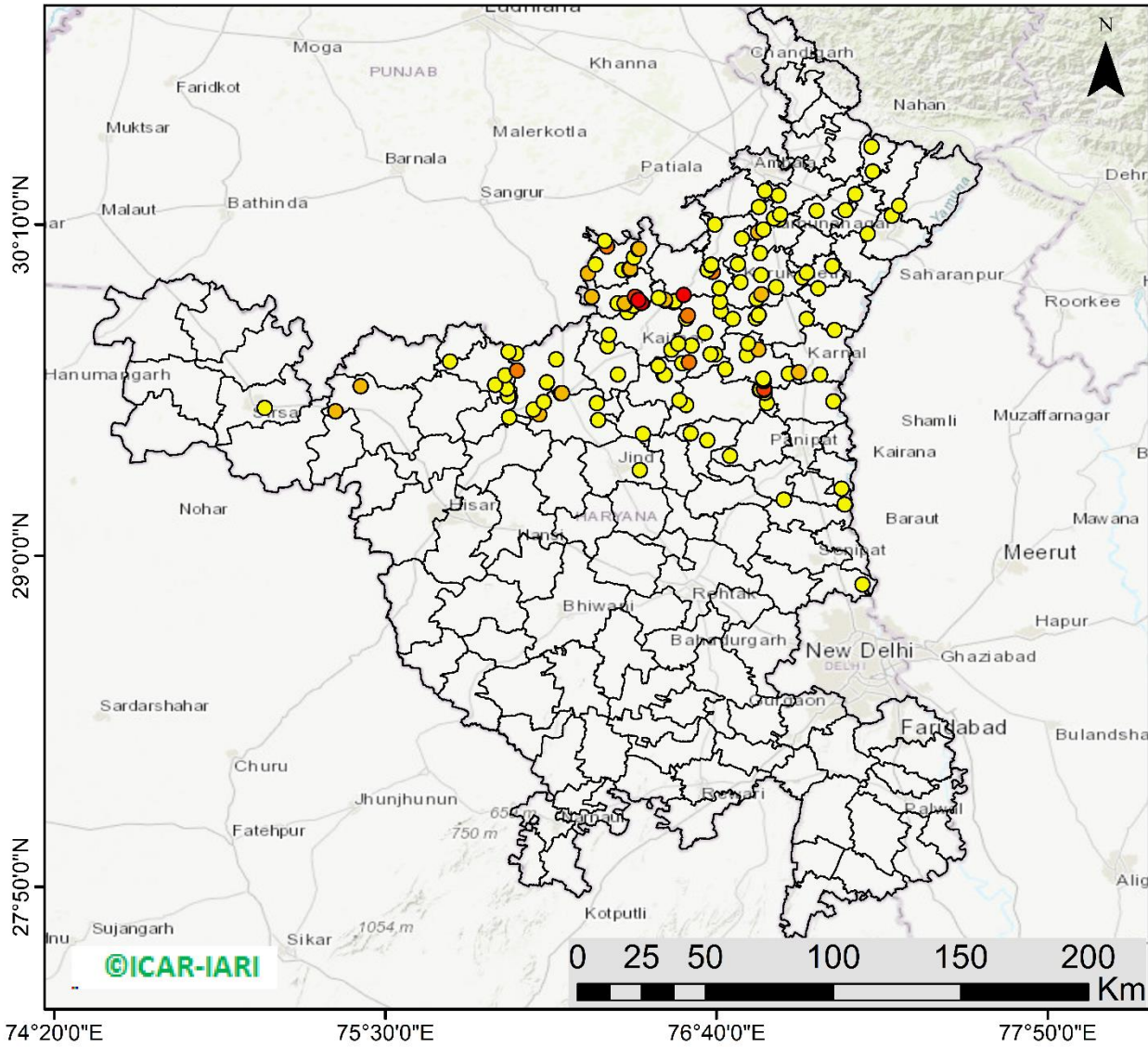
<http://geoportal.icar.gov.in:8080/geoexplorer/composer/>

District-wise cumulative number of residues burning events in Punjab (15Sep- 18Oct-2022)



Haryana

RICE RESIDUE BURNING IN HARYANA



134 burning events detected in Haryana on (18th Oct 2022)

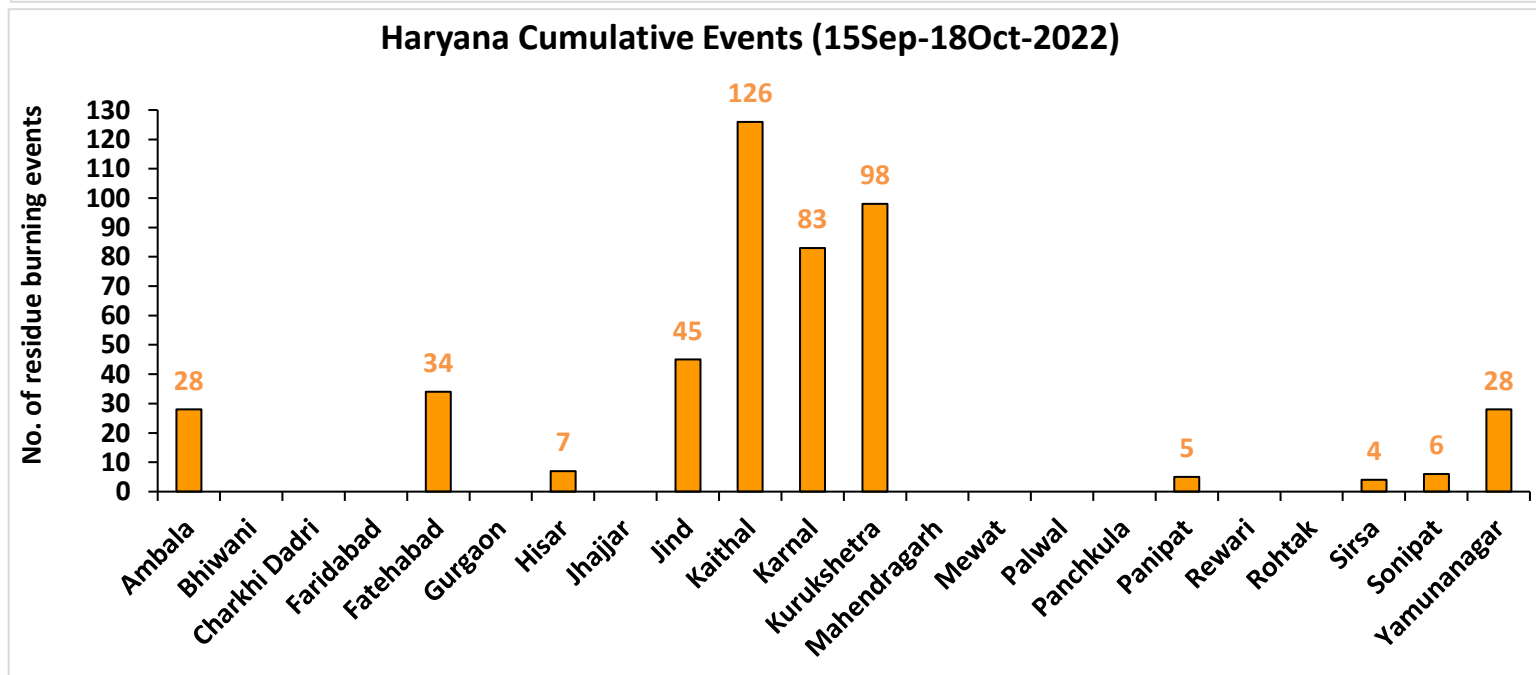
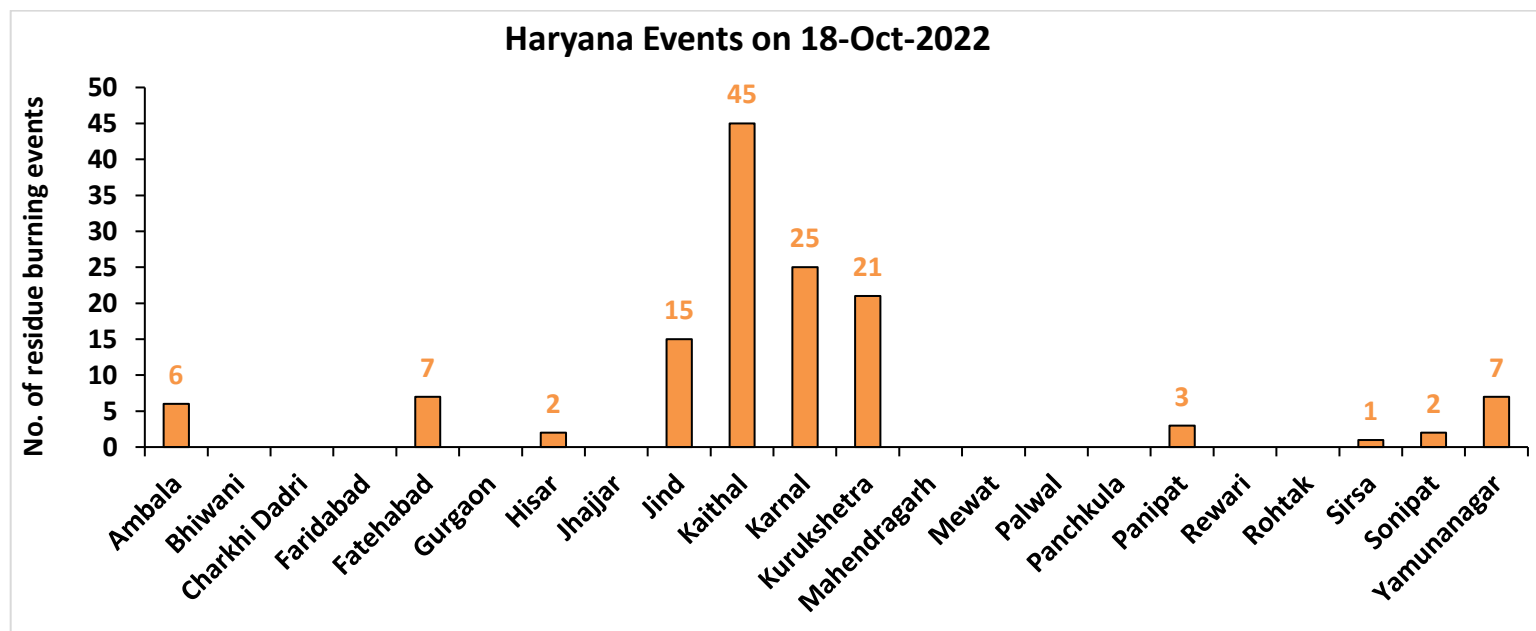
Fire Intensity (W/m²)

- 0 - 5
- 6 - 10
- 11 - 15
- 16 - 20
- >20



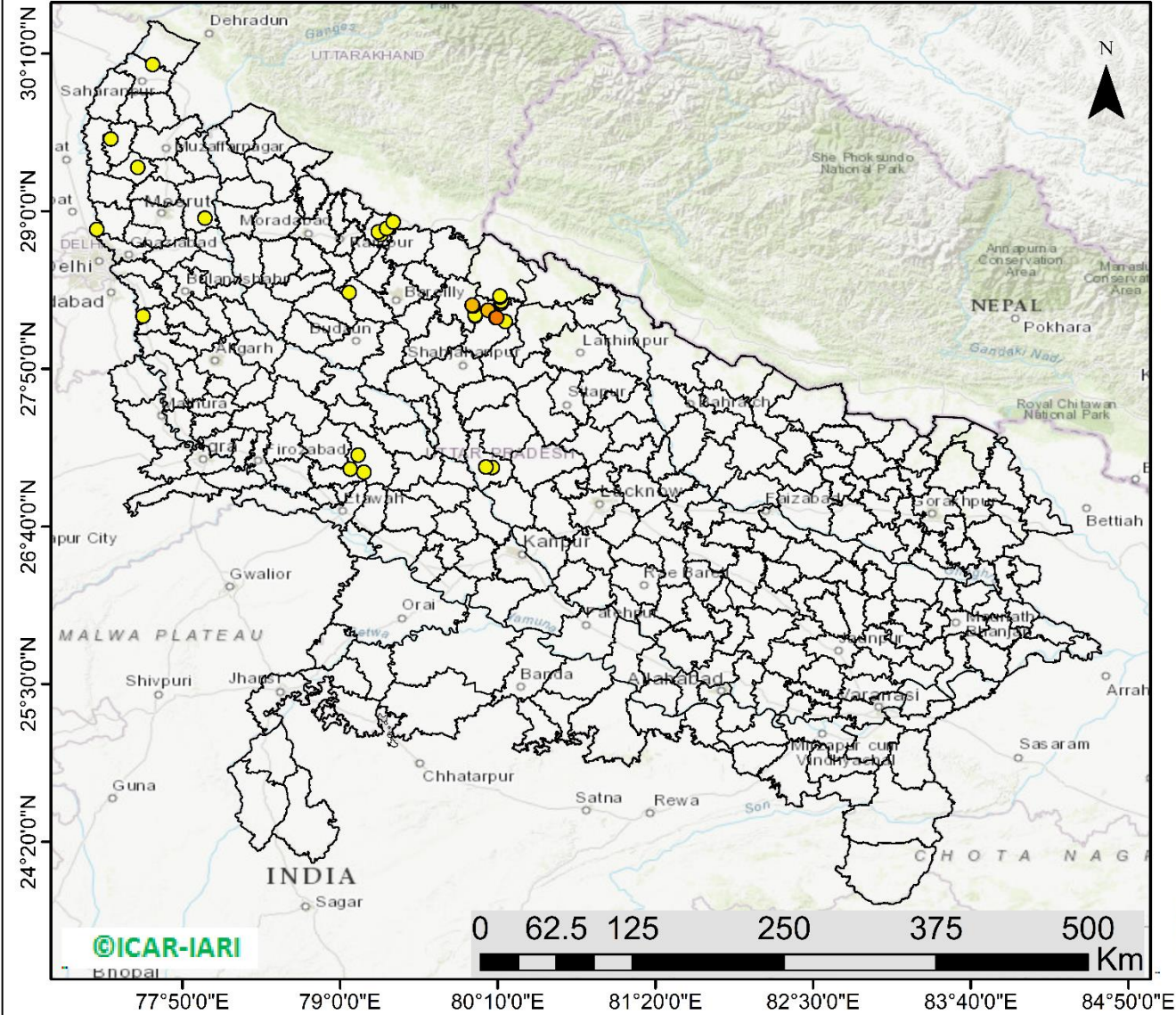
<http://geoportal.icar.gov.in:8080/geoexplorer/composer/>

District-wise cumulative number of residues burning events in Haryana (15Sep- 18Oct-2022)



Uttar Pradesh

RICE RESIDUE BURNING IN UTTAR PRADESH



30 burning events detected in Uttar Pradesh on (18th Oct 2022)

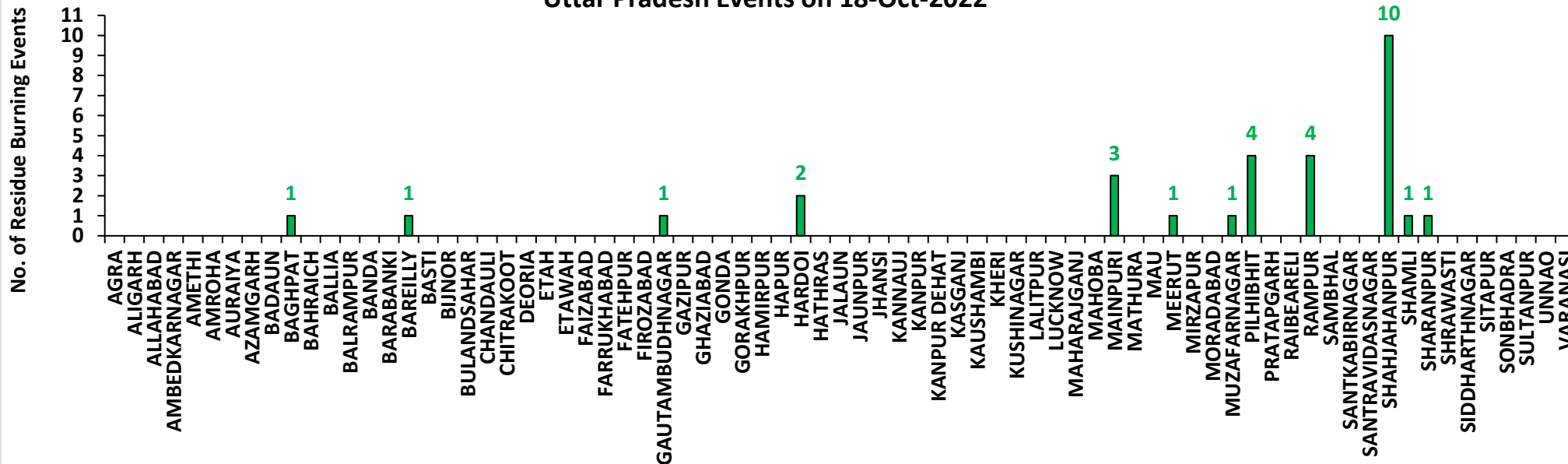
Fire Intensity (W/m2)

- 0 - 5
- 6 - 10
- 11 - 15
- 16 - 20
- >20

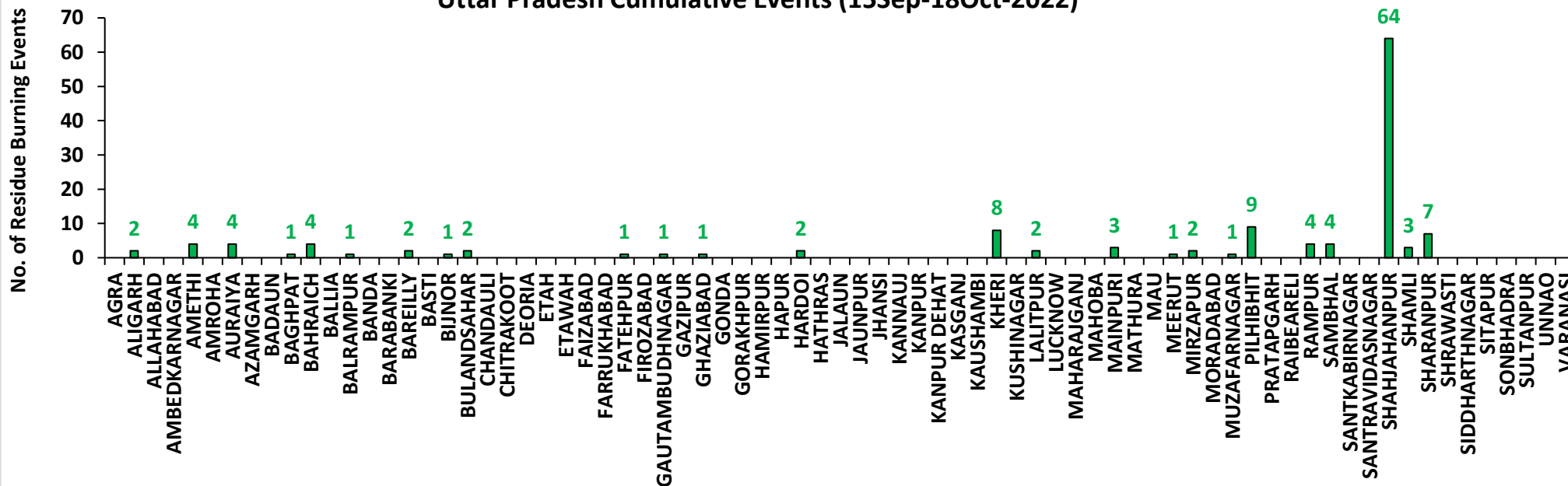
<http://geoportal.icar.gov.in:8080/geoexplorer/composer/>

District-wise cumulative number of residues burning events in Uttar Pradesh (15Sep- 18Oct -2022)

Uttar Pradesh Events on 18-Oct-2022

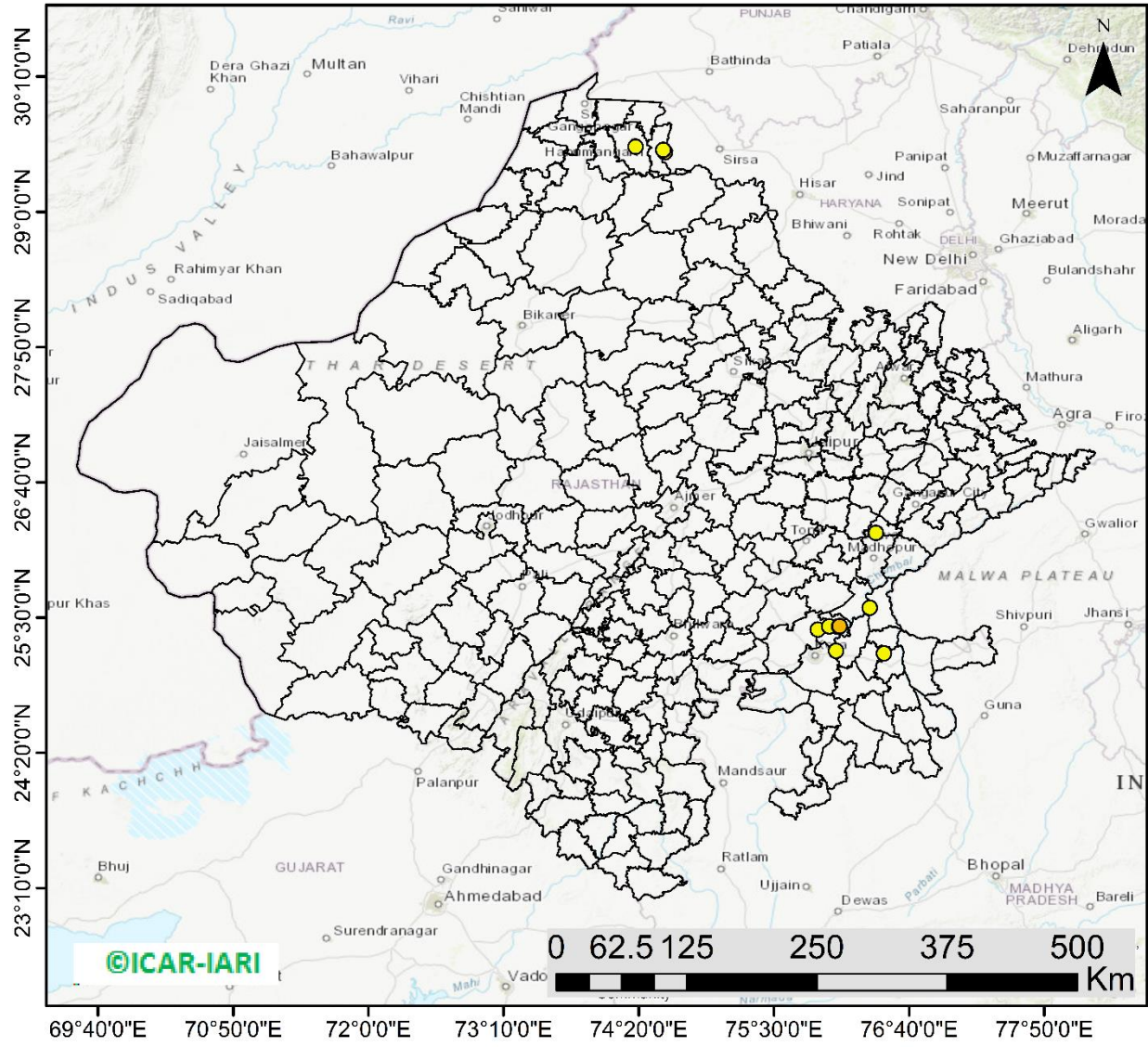


Uttar Pradesh Cumulative Events (15Sep-18Oct-2022)



Rajasthan

RICE RESIDUE BURNING IN RAJASTHAN



12 burning events detected in Rajasthan on (18th Oct 2022)

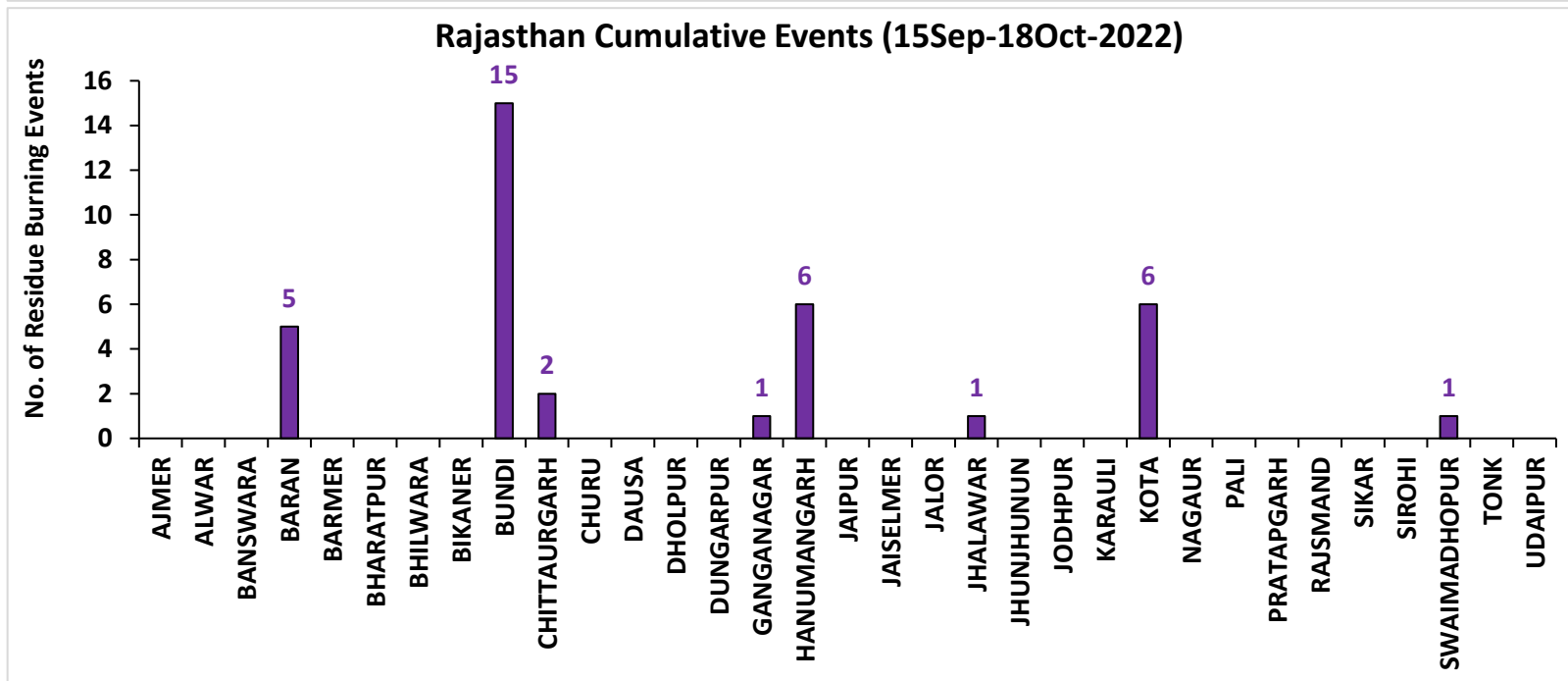
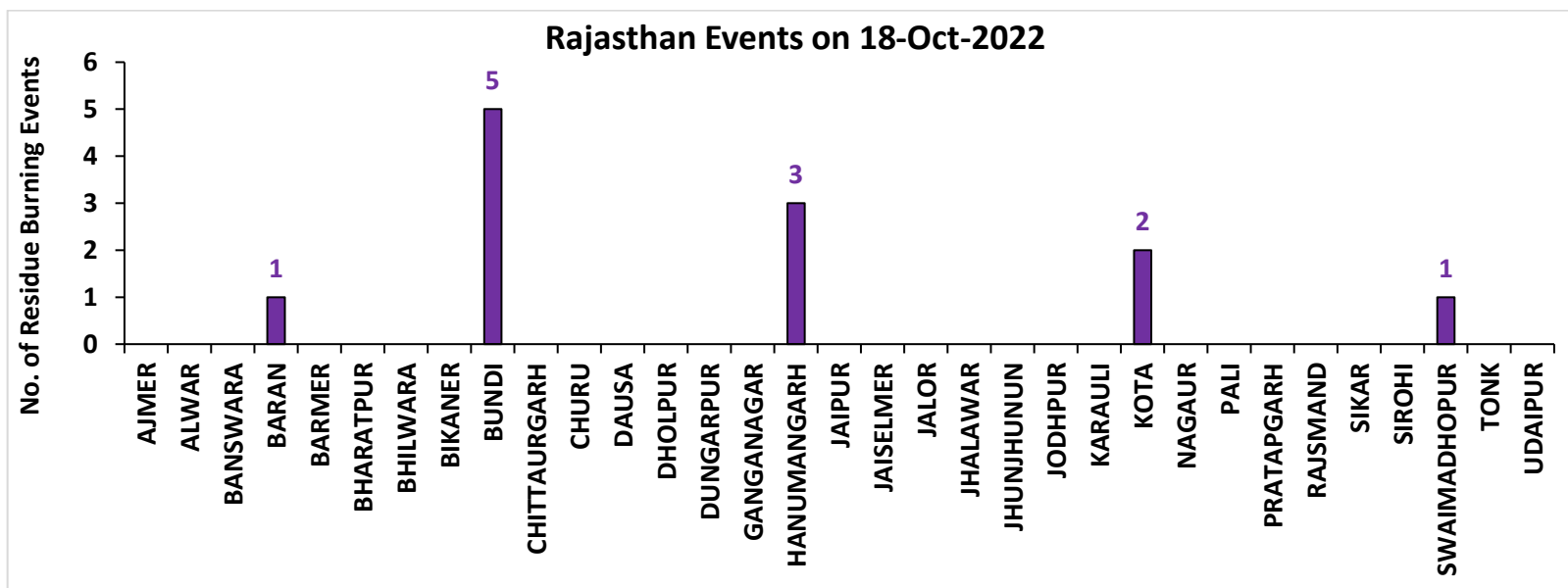
Fire Intensity (W/m²)

- 0 - 5
- 6 - 10
- 11 - 15
- 16 - 20
- >20



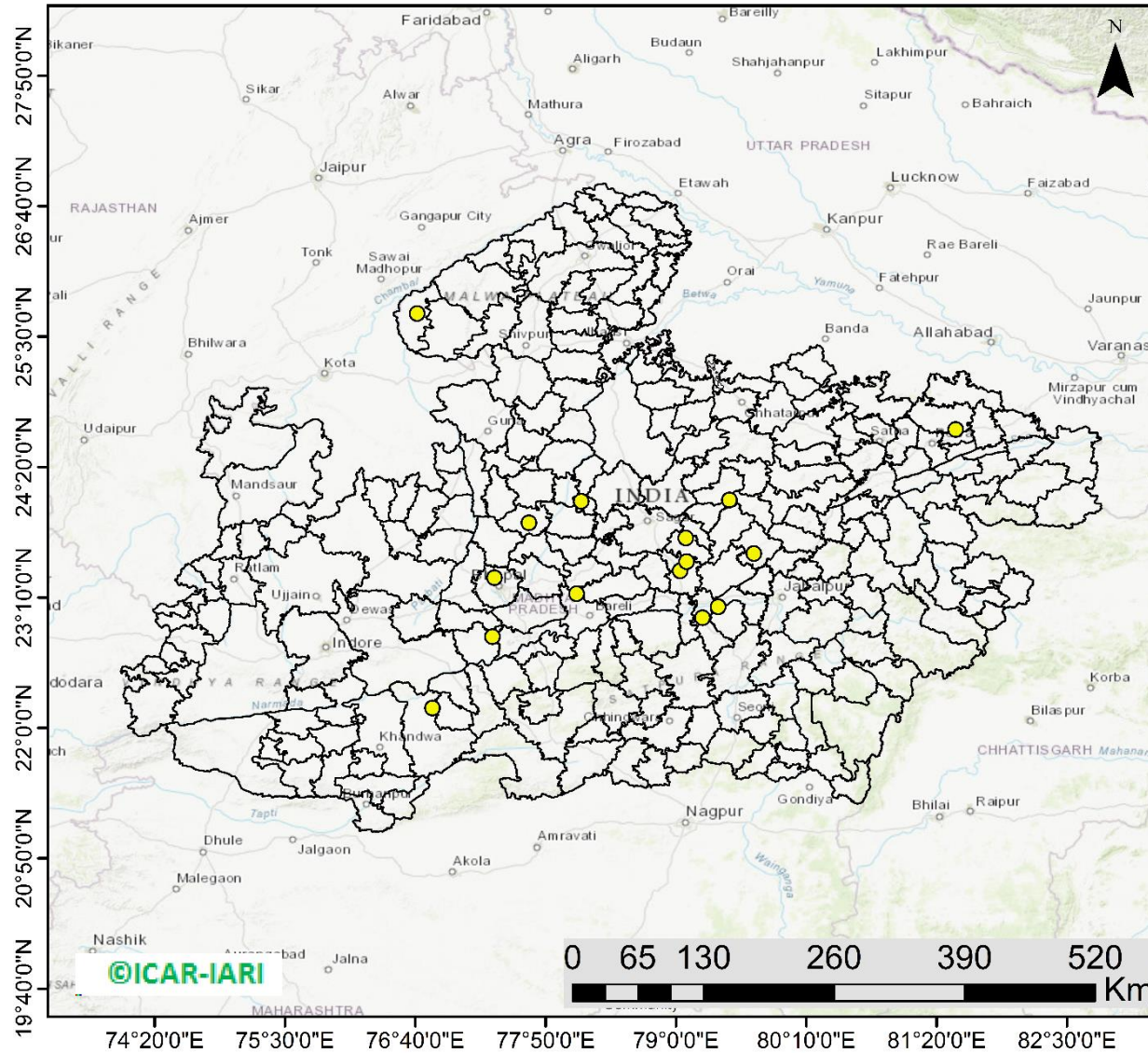
<http://geoportal.icar.gov.in:8080/geoexplorer/composer/>

District-wise cumulative number of residues burning events in Rajasthan (15Sep- 18Oct -2022)



Madhya Pradesh

RICE RESIDUE BURNING IN MADHYA PRADESH



15 burning events detected in MP on (18th Oct 2022)

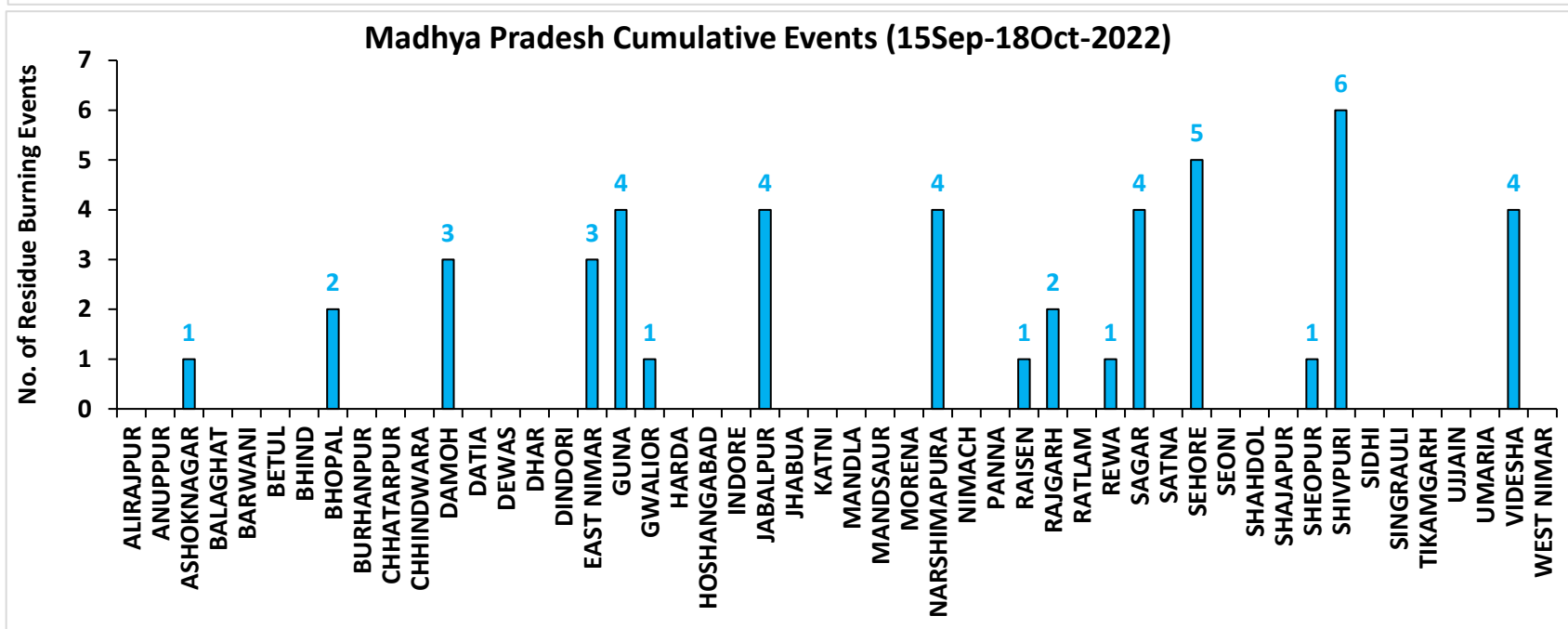
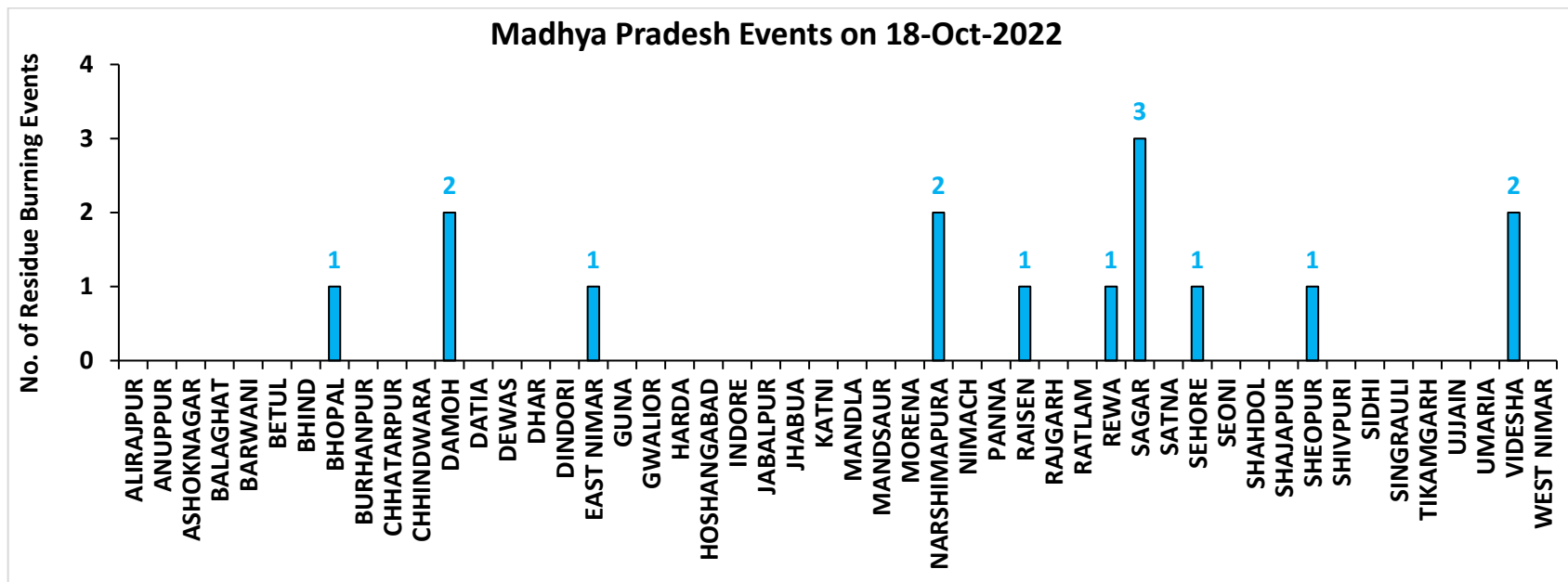
Fire Intensity (W/m²)

- 0 - 5
- 6 - 10
- 11 - 15
- 16 - 20
- >20



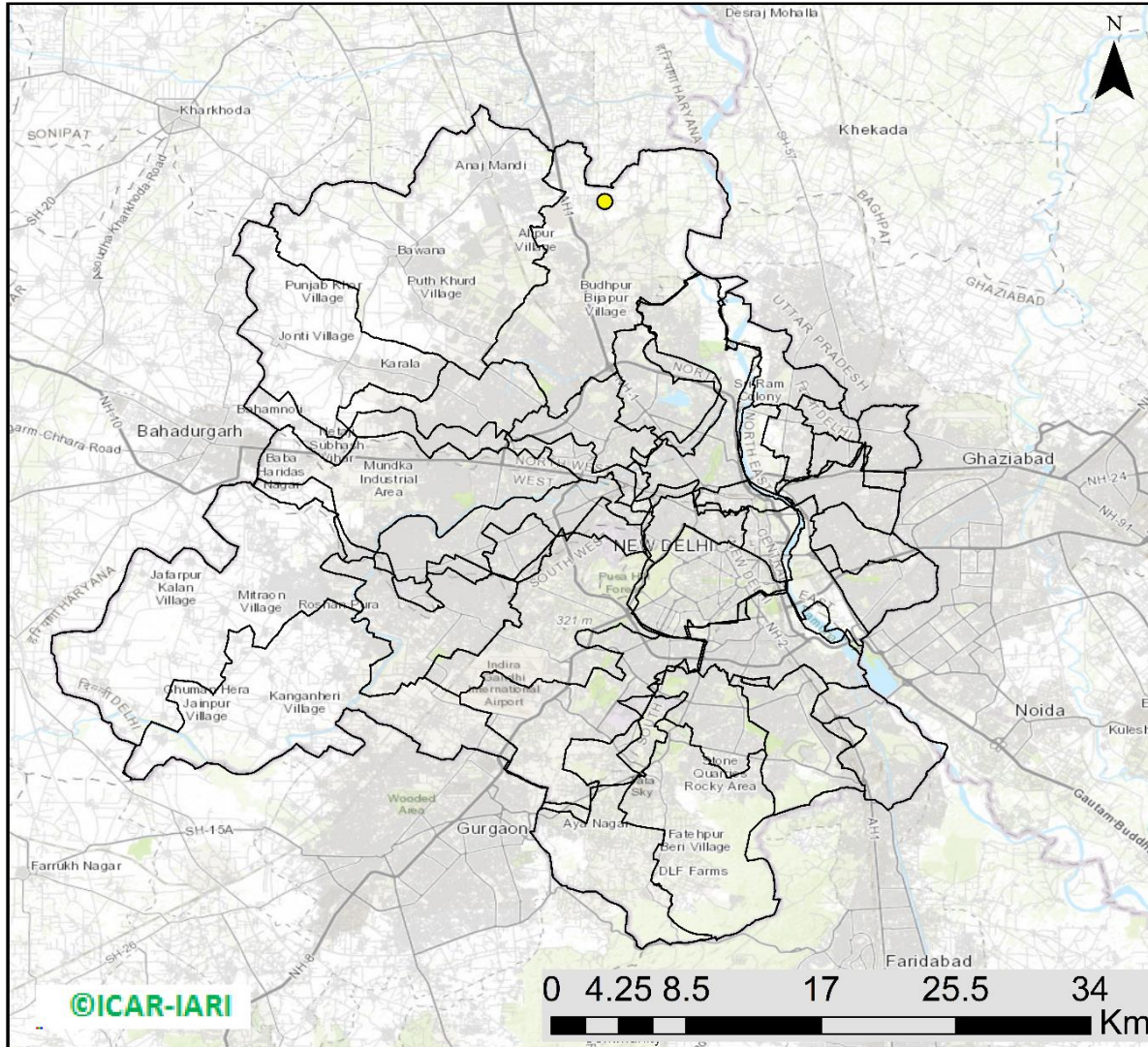
<http://geoportal.icar.gov.in:8080/geoexplorer/composer/>

District-wise cumulative number of residues burning events in Madhya Pradesh (15Sep- 18Oct -2022)



Delhi

RICE RESIDUE BURNING IN DELHI



01 burning events
detected in Haryana on
(18th Oct 2022)

Fire Intensity (W/m²)

- 0 - 5
- 6 - 10
- 11 - 15
- 16 - 20
- >20

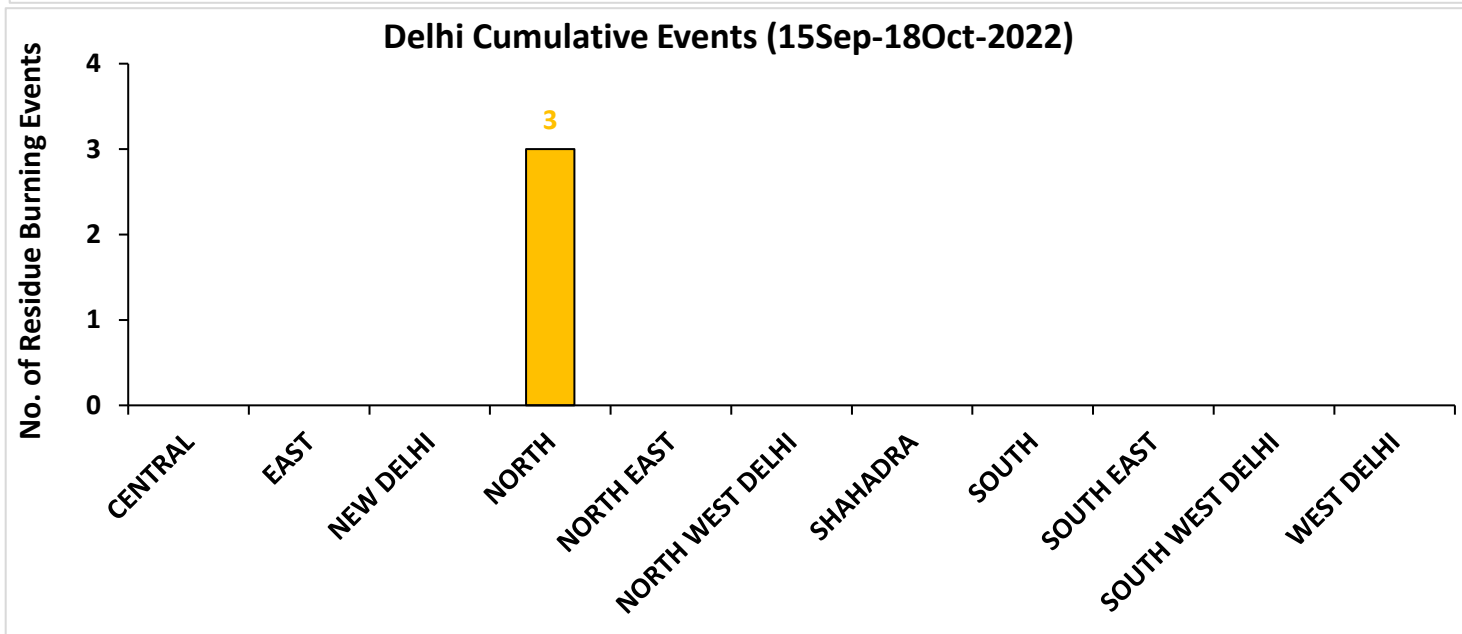
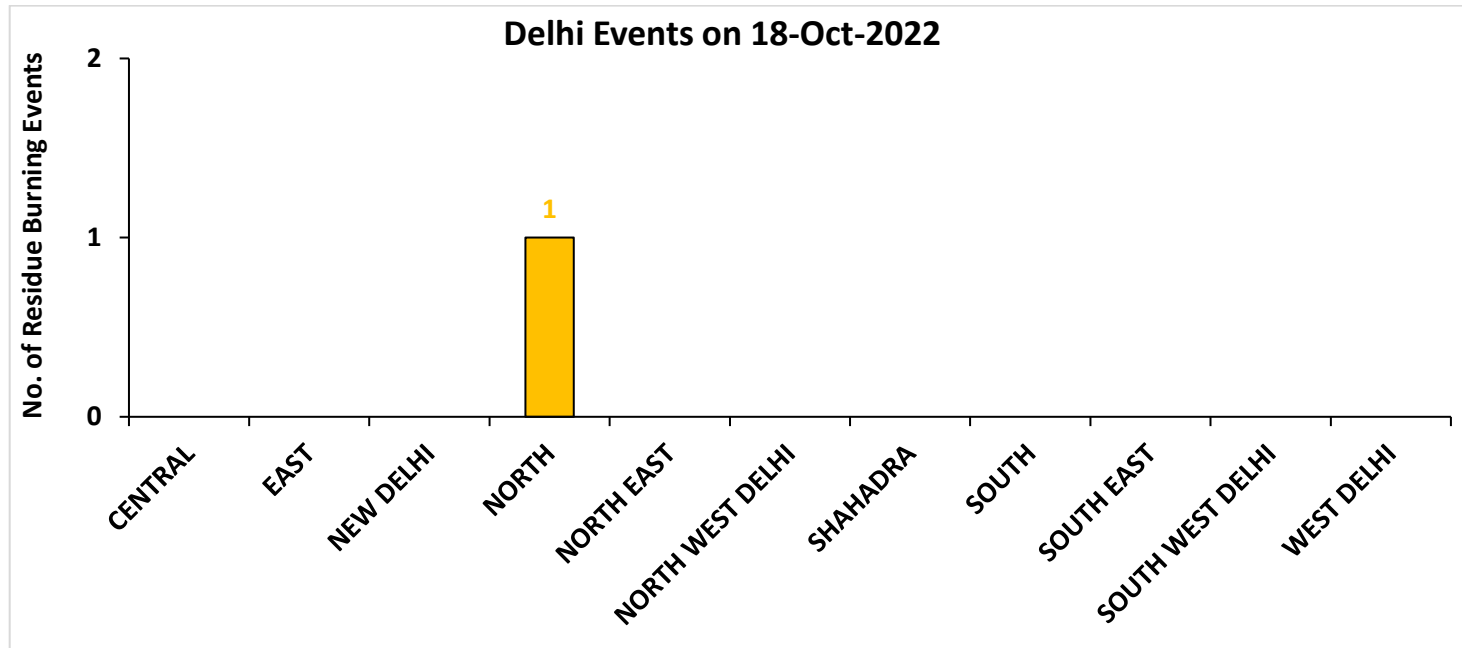
©ICAR-IARI

0 4.25 8.5 17 25.5 34 Km



<http://geoportal.icar.gov.in:8080/geoexplorer/composer/>

District-wise cumulative number of residues burning events in Delhi (15Sep- 18Oct -2022)



District-wise cumulative number of residues burning events detected in 2020 ,2021 and 2022
(Period: 15 September-18 October)

(a) Punjab

District	15 Sep-18 Oct 2022		
	2020	2021	2022
Amritsar	1969	606	706
Barnala	27	15	13
Bathinda	85	9	5
Faridkot	291	77	10
Fatehgarh Sahib	190	101	31
Fazilka	67	34	19
Firozpur	609	94	98
Gurdaspur	528	143	164
Hoshiarpur	65	11	2
Jalandhar	125	78	83
Kapurthala	303	100	116
Ludhiana	189	151	46
Mansa	62	2	12
Moga	90	41	41
Muktsar	47	22	5
Pathankot	3	0	0
Patiala	644	256	90
Rupnagar	44	16	4
Sangrur	165	45	48
SAS NAGAR (Mohali)	50	27	11
SBS Nagar	16	9	2
Tarn Taran	1860	609	683
Total	7429	2446	2189

(b) Haryana

District	15 Sep-18 Oct 2022		
	2020	2021	2022
AMBALA	123	54	28
BHIWANI	0	0	0
CHARKHI DADRI	0	0	0
FARIDABAD	0	1	0
FATEHABAD	62	50	34
GURGAON	0	0	0
HISAR	9	1	7
JHAJJAR	1	0	0
JIND	33	30	45
KAITHAL	204	249	126
KARNAL	313	343	83
KURUKSHETRA	238	205	98
MAHENDRAGARH	0	0	0
MEWAT	0	0	0
PALWAL	19	25	0
PANCHKULA	0	0	0
PANIPAT	9	15	5
REWARI	0	0	0
ROHTAK	1	0	0
SIRSA	11	4	4
SONIPAT	11	5	6
YAMUNANAGAR	57	45	28
Total	1091	1027	464

(c) Uttar Pradesh

District	15 Sep-18 Oct 2022										
	2020	2021	2022	GAUTAMBUDHNAGAR	2	7	1	MUZAFARNAGAR	3	2	1
AGRA	2	0	0	GAZIPUR	0	0	0	PILHIBHIT	8	108	9
ALIGARH	34	21	2	GHAZIABAD	3	2	1	PRATAPGARH	1	0	0
ALLAHABAD	0	1	0	GONDA	0	0	0	RAIBEARELI	1	0	0
AMBEDKARNAGAR	0	0	0	GORAKHPUR	1	0	0	RAMPUR	33	50	4
AMETHI	0	1	4	HAMIRPUR	1	0	0	SAMBHAL	7	7	4
AMROHA	1	0	0	HAPUR	3	1	0	SANTKABIRNAGAR	0	0	0
AURAIYA	17	6	4	HARDOI	11	6	2	SANTRAVIDASNAGAR	0	0	0
AZAMGARH	0	0	0	HATHRAS	0	0	0	SHAHJAHANPUR	40	181	64
BADAUN	1	1	0	JALAUN	0	0	0	SHAMLI	19	11	3
BAGHPAT	3	1	1	JAUNPUR	0	0	0	SHARANPUR	31	17	7
BAHRAICH	5	2	4	JHANSI	10	6	0	SHRAWASTI	4	0	0
BALLIA	0	0	0	KANNAUJ	3	1	0	SIDDHARTHANAGAR	0	0	0
BALRAMPUR	1	1	1	KANPUR	2	7	0	SITAPUR	13	9	0
BANDA	0	0	0	KANPUR DEHAT	7	1	0	SONBHADRA	0	0	0
BARABANKI	12	20	0	KASGANJ	1	2	0	SULTANPUR	0	0	0
BAREILLY	15	15	2	KAUSHAMBI	9	3	0	UNNAO	5	0	0
BASTI	3	1	0	KHERI	40	54	8	VARANASI	0	0	0
BIJNOR	5	3	1	KUSHINAGAR	0	0	0	Total	455	620	134
BULANDSAHAR	10	2	2	LALITPUR	0	1	2				
CHANDAULI	0	0	0	LUCKNOW	2	0	0				
CHITRAKOOT	0	0	0	MAHARAJGANJ	0	0	0				
DEORIA	0	0	0	MAHOBA	3	0	0				
ETAH	6	6	0	MAINPURI	8	7	3				
ETAWAH	2	7	0	MATHURA	22	27	0				
FAIZABAD	1	0	0	MAU	0	0	0				
FARRUKHABAD	0	0	0	MEERUT	11	4	1				
FATEHPUR	18	6	1	MIRZAPUR	6	5	2				
FIROZABAD	4	4	0	MORADABAD	5	3	0				

(d) Delhi

District	15 Sep-18 Oct 2022		
	2020	2021	2022
CENTRAL	0	0	0
EAST	0	0	0
NEW DELHI	0	0	0
NORTH	2	0	3
NORTH EAST	0	0	0
NORTH WEST DELHI	1	0	0
SHAHADRA	0	0	0
SOUTH	1	0	0
SOUTH EAST	0	0	0
SOUTH WEST DELHI	0	0	0
WEST DELHI	0	0	0
Total	4	0	3

(e) Rajasthan

District	15 Sep-18 Oct 2022		
	2020	2021	2022
AJMER	0	0	0
ALWAR	1	0	0
BANSWARA	0	0	0
BARAN	88	0	5
BARMER	2	0	0
BHARATPUR	1	0	0
BHILWARA	2	0	0
BIKANER	1	0	0
BUNDI	10	0	15
CHITTAURGARH	0	2	2
CHURU	0	0	0
DAUSA	0	0	0
DHOLPUR	0	0	0
DUNGARPUR	0	0	0
GANGANAGAR	3	0	1
HANUMANGARH	121	26	6
JAIPUR	1	0	0
JAISELMER	2	0	0
JALOR	0	0	0
JHALAWAR	1	0	1
JHUNJHUNUN	1	0	0
JODHPUR	1	0	0
KARAULI	1	0	0
KOTA	27	1	6
NAGAUR	0	0	0
PALI	1	0	0
PRATAPGARH	4	0	0
RAJSMAND	0	0	0
SIKAR	0	0	0
SIROHI	1	0	0
SWAIMADHOPUR	7	0	1
TONK	1	0	0
UDAIPUR	0	0	0
Total	277	29	37

(f) Madhya Pradesh

District	15 Sep-18 Oct 2022						
	2020	2021	2022	PANNA			
ALIRAJPUR	0	0	0	RAISEN	13	1	1
ANUPPUR	0	0	0	RAJGARH	7	1	3
ASHOKNAGAR	16	1	1	RATLAM	0	0	0
BALAGHAT	0	0	0	REWA	4	0	1
BARWANI	0	0	0	SAGAR	14	6	4
BETUL	1	0	0	SATNA	10	6	0
BHIND	9	1	0	SEHORE	7	3	5
BHOPAL	6	5	2	SEONI	27	5	0
BURHANPUR	0	0	0	SHAHDOL	0	0	0
CHHATARPUR	4	0	0	SHAJAPUR	5	0	0
CHHINDWARA	4	3	0	SHEOPUR	15	0	1
DAMOH	19	4	3	SHIVPURI	9	0	6
DATIA	71	8	0	SIDHI	0	0	0
DEWAS	3	0	0	SINGRAULI	0	0	0
DHAR	20	0	0	TIKAMGARH	1	0	0
DINDORI	0	0	0	UJJAIN	5	0	0
EAST NIMAR	2	1	3	UMARIA	0	0	0
GUNA	16	1	4	VIDESHA	60	8	4
GWALIOR	44	0	1	WEST NIMAR	6	0	0
HARDA	8	9	0	Total	472	84	46
HOSHANGABAD	26	8	0				
INDORE	2	0	0				
JABALPUR	7	4	3				
JHABUA	0	0	0				
KATNI	2	0	0				
MANDLA	1	0	0				
MANDSAUR	3	0	0				
MORENA	17	5	0				
NARSHIMAPURA	5	4	4				
NIMACH	0	0	0				

State-wise and date-wise number of paddy residue burning events detected in 2020, 2021 and 2022
(Period: 15 September - 18 October 2022)

Number of Paddy Residue Burning Events Detected

	Punjab			Haryana			Uttar Pradesh			Delhi			Rajasthan			Madhya Pradesh		
	2020	2021	2022	2020	2021	2022	2020	2021	2022	2020	2021	2022	2020	2021	2022	2020	2021	2022
15-Sep	5	0	14	2	0	0	1	0	0	0	0	0	1	0	0	2	0	0
16-Sep	0	2	0	1	0	0	0	0	0	0	0	0	0	0	0	0	0	0
17-Sep	5	0	1	3	0	0	0	0	0	0	0	0	0	0	0	0	0	0
18-Sep	17	9	7	0	0	1	0	1	0	0	0	0	0	0	0	0	0	0
19-Sep	30	5	18	2	0	0	0	1	0	0	0	0	0	0	0	0	0	0
20-Sep	67	8	10	6	0	0	2	0	0	0	0	0	0	0	0	0	0	0
21-Sep	54	0	56	2	0	0	1	0	0	0	0	0	1	0	1	2	0	0
22-Sep	34	0	30	1	0	0	1	0	0	0	0	0	0	0	0	0	0	0
23-Sep	49	0	3	0	0	0	1	0	0	0	0	0	1	0	0	0	0	0
24-Sep	78	5	0	0	0	0	1	1	0	0	0	0	0	0	0	0	0	0
25-Sep	184	11	0	11	0	0	5	0	0	0	0	0	1	0	0	0	0	0
26-Sep	190	19	0	5	0	0	8	0	0	0	0	0	1	0	0	2	0	0
27-Sep	78	37	0	8	0	0	4	1	0	0	0	0	0	0	0	1	0	0
28-Sep	55	28	0	6	1	0	1	6	0	0	0	0	0	0	0	1	1	0
29-Sep	63	64	0	9	4	0	6	10	0	0	0	0	3	0	0	0	4	0
30-Sep	116	27	8	22	2	0	13	13	10	1	0	0	1	0	0	5	0	0
01-Oct	165	13	45	15	4	1	7	13	3	0	0	0	4	1	1	13	0	1
02-Oct	141	0	83	30	2	7	12	0	36	1	0	0	7	0	3	12	0	1
03-Oct	110	9	75	8	6	8	4	3	29	0	0	0	9	0	2	5	1	5
04-Oct	162	23	65	29	2	7	8	0	2	0	0	0	15	0	0	4	2	0
05-Oct	161	18	130	17	3	24	14	2	0	0	0	2	14	0	1	13	1	0
06-Oct	171	42	85	30	0	26	12	1	0	1	0	0	16	0	0	37	1	0
07-Oct	197	72	62	32	11	6	41	13	0	0	0	0	14	1	1	31	1	0
08-Oct	95	108	19	29	27	0	25	11	0	0	0	0	11	0	0	17	2	0

09-Oct	121	114	3	20	39	1	15	20	0	0	0	0	12	0	0	15	4	0
10-Oct	232	150	4	33	95	2	9	54	0	0	0	0	14	1	0	18	10	0
11-Oct	377	64	45	90	51	0	23	28	0	0	0	0	21	7	1	32	2	0
12-Oct	388	97	104	69	51	4	46	23	0	0	0	0	24	1	2	44	1	1
13-Oct	266	132	120	47	91	15	36	42	0	0	0	0	7	5	2	21	2	7
14-Oct	605	229	82	69	98	30	9	68	11	0	0	0	16	1	1	15	11	1
15-Oct	449	660	169	106	363	36	15	149	0	0	0	0	9	8	2	8	27	2
16-Oct	654	429	206	80	176	76	21	121	6	1	0	0	12	2	4	23	13	2
17-Oct	1172	14	403	143	0	86	38	39	7	0	0	0	26	0	4	63	1	11
18-Oct	938	57	342	166	1	134	76	0	30	0	0	1	37	2	12	88	0	15
Total	7429	2446	2189	1091	1027	464	455	620	134	4	0	3	277	29	37	472	84	46

Details of residue burning events in Punjab on 18-Oct-2022

S. No.	District	Tehsil / Block	Satellite	Latitude	Longitude	ACQ_TIME	Day / Night	Fire Power (W/m2)
1	AMRITSAR	AJNALA	S-NPP	31.81640	74.79710	13:23:32	D	2.30
2	AMRITSAR	AJNALA	S-NPP	31.95800	74.82730	13:23:32	D	3.00
3	AMRITSAR	AJNALA	S-NPP	31.95820	74.95380	13:23:32	D	1.10
4	AMRITSAR	ATTARI	S-NPP	31.57340	74.75010	13:23:32	D	2.50
5	AMRITSAR	ATTARI	S-NPP	31.58110	74.77470	13:23:32	D	12.20
6	AMRITSAR	CHOGAWAN	S-NPP	31.73650	74.67800	13:23:32	D	7.80
7	AMRITSAR	CHOGAWAN	S-NPP	31.80180	74.60640	13:23:32	D	2.20
8	AMRITSAR	CHOGAWAN	S-NPP	31.80930	74.60910	13:23:32	D	5.50
9	AMRITSAR	HARSHA CHHINA	S-NPP	31.74770	74.72400	13:23:32	D	2.80
10	AMRITSAR	JANDIALA GURU	S-NPP	31.52170	74.94500	13:23:32	D	3.00
11	AMRITSAR	JANDIALA GURU	S-NPP	31.54830	74.99990	13:23:32	D	5.50
12	AMRITSAR	MAJITHA	S-NPP	31.71500	75.09730	13:23:32	D	7.40
13	AMRITSAR	MAJITHA	S-NPP	31.73810	75.10570	13:23:32	D	4.00
14	AMRITSAR	MAJITHA	S-NPP	31.74190	75.06590	13:23:32	D	1.90
15	AMRITSAR	RAYYA	S-NPP	31.50480	75.24600	13:23:32	D	2.20
16	AMRITSAR	RAYYA	S-NPP	31.50710	75.13350	13:23:32	D	6.40
17	AMRITSAR	RAYYA	S-NPP	31.51050	75.13270	13:23:32	D	6.40
18	AMRITSAR	RAYYA	S-NPP	31.51680	75.23470	13:23:32	D	5.40
19	AMRITSAR	RAYYA	S-NPP	31.52140	75.22080	13:23:32	D	12.10
20	AMRITSAR	RAYYA	S-NPP	31.52490	75.13080	13:23:32	D	6.80
21	AMRITSAR	RAYYA	S-NPP	31.52490	75.26300	13:23:32	D	2.30
22	AMRITSAR	RAYYA	S-NPP	31.52820	75.13000	13:23:32	D	6.80
23	AMRITSAR	RAYYA	S-NPP	31.56330	75.19540	13:23:32	D	4.30
24	AMRITSAR	RAYYA	S-NPP	31.56730	75.17730	13:23:32	D	4.20
25	AMRITSAR	RAYYA	S-NPP	31.57180	75.33090	13:23:32	D	2.60
26	AMRITSAR	RAYYA	S-NPP	31.57740	75.19660	13:23:32	D	22.50
27	AMRITSAR	RAYYA	S-NPP	31.57810	75.20070	13:23:32	D	25.00
28	AMRITSAR	RAYYA	S-NPP	31.58840	75.32720	13:23:32	D	2.40
29	AMRITSAR	RAYYA	S-NPP	31.59310	75.31330	13:23:32	D	3.40
30	AMRITSAR	RAYYA	S-NPP	31.59700	75.29530	13:23:32	D	10.10

31	AMRITSAR	RAYYA	S-NPP	31.62430	75.22910	13:23:32	D	6.00
32	AMRITSAR	RAYYA	S-NPP	31.62760	75.22830	13:23:32	D	6.00
33	AMRITSAR	RAYYA	S-NPP	31.62850	75.33970	13:23:32	D	9.40
34	AMRITSAR	RAYYA	S-NPP	31.62970	75.26230	13:23:32	D	2.90
35	AMRITSAR	RAYYA	S-NPP	31.63970	75.26000	13:23:32	D	4.70
36	AMRITSAR	RAYYA	S-NPP	31.64590	75.22500	13:23:32	D	4.40
37	AMRITSAR	RAYYA	S-NPP	31.65060	75.23250	13:23:32	D	5.10
38	AMRITSAR	RAYYA	S-NPP	31.69080	75.26650	13:23:32	D	2.20
39	AMRITSAR	TARSIKKA	S-NPP	31.61290	75.20160	13:23:32	D	1.20
40	AMRITSAR	TARSIKKA	S-NPP	31.65110	75.17220	13:23:32	D	5.40
41	AMRITSAR	TARSIKKA	S-NPP	31.67990	75.17860	13:23:32	D	2.50
42	AMRITSAR	TARSIKKA	S-NPP	31.72130	75.17790	13:23:32	D	8.80
43	AMRITSAR	TARSIKKA	S-NPP	31.72730	75.15070	13:23:32	D	2.80
44	AMRITSAR	TARSIKKA	S-NPP	31.73390	75.12770	13:23:32	D	6.10
45	AMRITSAR	TARSIKKA	S-NPP	31.73490	75.12800	13:23:32	D	3.40
46	AMRITSAR	VERKA	S-NPP	31.67190	74.81540	13:23:32	D	3.80
47	BARNALA	BARNALA	S-NPP	30.40250	75.59750	13:23:32	D	3.20
48	BARNALA	SEHNA	S-NPP	30.34570	75.36630	13:23:32	D	3.30
49	BARNALA	SEHNA	S-NPP	30.43940	75.29490	13:23:32	D	1.90
50	BATHINDA	TALWANDI SABO	S-NPP	29.96150	75.16370	13:23:32	D	3.00
51	BATHINDA	TALWANDI SABO	S-NPP	29.96490	75.16300	13:23:32	D	3.00
52	FARIDKOT	FARIDKOT	S-NPP	30.75520	74.64540	13:23:32	D	5.40
53	FATEHGARH SAHIB	BASSI PATHANAN	S-NPP	30.64030	76.35810	13:23:32	D	5.60
54	FATEHGARH SAHIB	BASSI PATHANAN	S-NPP	30.70860	76.40170	13:23:32	D	2.60
55	FATEHGARH SAHIB	KHAMANON	S-NPP	30.74450	76.32900	13:23:32	D	4.80
56	FATEHGARH SAHIB	KHAMANON	S-NPP	30.80950	76.28630	13:23:32	D	2.30
57	FATEHGARH SAHIB	KHAMANON	S-NPP	30.81010	76.29030	13:23:32	D	3.30
58	FATEHGARH SAHIB	KHERA	S-NPP	30.56060	76.53970	13:23:32	D	6.20
59	FATEHGARH SAHIB	KHERA	S-NPP	30.57100	76.47570	13:23:32	D	4.60
60	FATEHGARH SAHIB	KHERA	S-NPP	30.57770	76.54030	13:23:32	D	6.50
61	FATEHGARH SAHIB	KHERA	S-NPP	30.57830	76.54430	13:23:32	D	3.00
62	FATEHGARH SAHIB	KHERA	S-NPP	30.59610	76.54880	13:23:32	D	2.10
63	FATEHGARH SAHIB	KHERA	S-NPP	30.63710	76.46190	13:23:32	D	2.30

64	FATEHGARH SAHIB	KHERA	S-NPP	30.63980	76.45720	13:23:32	D	16.00
65	FATEHGARH SAHIB	KHERA	S-NPP	30.64040	76.46120	13:23:32	D	16.00
66	FAZILKA	ARNIWALA SHEIKH SUBANPUR	S-NPP	30.41740	74.15770	13:23:32	D	7.00
67	FAZILKA	JALALABAD	S-NPP	30.55830	74.13520	13:23:32	D	2.50
68	FAZILKA	JALALABAD	S-NPP	30.58320	74.10750	13:23:32	D	2.20
69	FAZILKA	JALALABAD	S-NPP	30.59710	74.10420	13:23:32	D	3.80
70	FIROZPUR	FIROZPUR	S-NPP	30.93280	74.57600	13:23:32	D	2.40
71	FIROZPUR	FIROZPUR	S-NPP	31.03040	74.63470	13:23:32	D	18.90
72	FIROZPUR	FIROZPUR	S-NPP	31.03080	74.55430	13:23:32	D	1.80
73	FIROZPUR	FIROZPUR	S-NPP	31.03380	74.63390	13:23:32	D	3.60
74	FIROZPUR	GHALL KHURD	S-NPP	30.99230	74.71820	13:23:32	D	2.80
75	FIROZPUR	GURUHAR SAHAI	S-NPP	30.61270	74.32510	13:23:32	D	2.10
76	FIROZPUR	GURUHAR SAHAI	S-NPP	30.73150	74.33980	13:23:32	D	1.40
77	FIROZPUR	MAKHU	S-NPP	31.13210	74.92470	13:23:32	D	3.50
78	FIROZPUR	MAMDOT	S-NPP	30.80050	74.52390	13:23:32	D	8.40
79	FIROZPUR	MAMDOT	S-NPP	30.84940	74.40170	13:23:32	D	2.90
80	FIROZPUR	MAMDOT	S-NPP	30.85040	74.39960	13:23:32	D	6.80
81	FIROZPUR	MAMDOT	S-NPP	30.85290	74.40090	13:23:32	D	2.90
82	FIROZPUR	MAMDOT	S-NPP	30.90690	74.42470	13:23:32	D	4.00
83	FIROZPUR	MAMDOT	S-NPP	30.90760	74.42900	13:23:32	D	4.00
84	GURDASPUR	BATALA	S-NPP	31.69880	75.25180	13:23:32	D	18.20
85	GURDASPUR	BATALA	S-NPP	31.72880	75.24510	13:23:32	D	4.10
86	GURDASPUR	BATALA	S-NPP	31.73220	75.24430	13:23:32	D	4.10
87	GURDASPUR	BATALA	S-NPP	31.73410	75.19230	13:23:32	D	9.20
88	GURDASPUR	BATALA	S-NPP	31.73750	75.23450	13:23:32	D	2.60
89	GURDASPUR	BATALA	S-NPP	31.75930	75.21300	13:23:32	D	2.80
90	GURDASPUR	BATALA	S-NPP	31.82690	75.24510	13:23:32	D	4.80
91	GURDASPUR	BATALA	S-NPP	31.83740	75.16100	13:23:32	D	2.30
92	GURDASPUR	BATALA	S-NPP	31.88500	75.14670	13:23:32	D	2.50
93	GURDASPUR	DERA BABA NANAK	S-NPP	31.91790	75.00950	13:23:32	D	1.20
94	GURDASPUR	DERA BABA NANAK	S-NPP	31.91960	75.08270	13:23:32	D	1.90
95	GURDASPUR	DERA BABA NANAK	S-NPP	31.93520	75.15690	13:23:32	D	2.40
96	GURDASPUR	DERA BABA NANAK	S-NPP	31.94040	75.01430	13:23:32	D	6.20

97	GURDASPUR	DERA BABA NANAK	S-NPP	32.01520	75.10990	13:23:32	D	13.50
98	GURDASPUR	DHARIWAL	S-NPP	31.85560	75.29440	13:23:32	D	7.10
99	GURDASPUR	FATEHGARH CHURIAN	S-NPP	31.81180	75.11060	13:23:32	D	3.80
100	GURDASPUR	FATEHGARH CHURIAN	S-NPP	31.84550	75.01290	13:23:32	D	2.40
101	GURDASPUR	FATEHGARH CHURIAN	S-NPP	31.85690	74.99730	13:23:32	D	3.70
102	GURDASPUR	FATEHGARH CHURIAN	S-NPP	31.89650	75.00570	13:23:32	D	3.00
103	GURDASPUR	FATEHGARH CHURIAN	S-NPP	31.89710	74.98820	13:23:32	D	4.50
104	GURDASPUR	GURDASPUR	S-NPP	32.08290	75.25890	13:23:32	D	4.70
105	GURDASPUR	GURDASPUR	S-NPP	32.08620	75.25810	13:23:32	D	4.70
106	GURDASPUR	KAHNUWAN	S-NPP	31.83310	75.41060	13:23:32	D	4.10
107	GURDASPUR	KAHNUWAN	S-NPP	31.83510	75.55060	13:23:32	D	3.40
108	GURDASPUR	KALANAUR	S-NPP	31.95120	75.14900	13:23:32	D	2.90
109	GURDASPUR	KALANAUR	S-NPP	32.04020	75.19910	13:23:32	D	3.30
110	GURDASPUR	QADIAN	S-NPP	31.76040	75.39640	13:23:32	D	3.90
111	GURDASPUR	QADIAN	S-NPP	31.76100	75.33650	13:23:32	D	4.50
112	GURDASPUR	QADIAN	S-NPP	31.77430	75.50410	13:23:32	D	6.60
113	GURDASPUR	QADIAN	S-NPP	31.77970	75.31570	13:23:32	D	5.00
114	GURDASPUR	QADIAN	S-NPP	31.78160	75.46420	13:23:32	D	3.70
115	GURDASPUR	QADIAN	S-NPP	31.78760	75.27960	13:23:32	D	4.30
116	GURDASPUR	QADIAN	S-NPP	31.79720	75.40150	13:23:32	D	2.70
117	GURDASPUR	QADIAN	S-NPP	31.80050	75.40080	13:23:32	D	5.60
118	GURDASPUR	QADIAN	S-NPP	31.81960	75.28530	13:23:32	D	3.90
119	GURDASPUR	SRI HARGOBINDPUR	S-NPP	31.63720	75.41460	13:23:32	D	5.70
120	GURDASPUR	SRI HARGOBINDPUR	S-NPP	31.67780	75.45250	13:23:32	D	2.30
121	GURDASPUR	SRI HARGOBINDPUR	S-NPP	31.69760	75.30780	13:23:32	D	2.40
122	GURDASPUR	SRI HARGOBINDPUR	S-NPP	31.70440	75.37050	13:23:32	D	2.70
123	GURDASPUR	SRI HARGOBINDPUR	S-NPP	31.70770	75.36970	13:23:32	D	5.00
124	GURDASPUR	SRI HARGOBINDPUR	S-NPP	31.70950	75.25370	13:23:32	D	4.10
125	GURDASPUR	SRI HARGOBINDPUR	S-NPP	31.72430	75.34470	13:23:32	D	2.00
126	GURDASPUR	SRI HARGOBINDPUR	S-NPP	31.72840	75.39080	13:23:32	D	4.90
127	GURDASPUR	SRI HARGOBINDPUR	S-NPP	31.73110	75.40720	13:23:32	D	2.40
128	GURDASPUR	SRI HARGOBINDPUR	S-NPP	31.73770	75.34170	13:23:32	D	6.90
129	GURDASPUR	SRI HARGOBINDPUR	S-NPP	31.73970	75.43940	13:23:32	D	2.10

130	GURDASPUR	SRI HARGOBINDPUR	S-NPP	31.74370	75.48540	13:23:32	D	4.00
131	JALANDHAR	BHOGPUR	S-NPP	31.50180	75.56670	13:23:32	D	3.30
132	JALANDHAR	JALANDHAR WEST	S-NPP	31.41390	75.48350	13:23:32	D	2.60
133	JALANDHAR	JALANDHAR WEST	S-NPP	31.46040	75.55820	13:23:32	D	2.20
134	JALANDHAR	JALANDHAR WEST	S-NPP	31.49850	75.52500	13:23:32	D	2.40
135	JALANDHAR	LOHIAN	S-NPP	31.12380	75.12660	13:23:32	D	4.00
136	JALANDHAR	LOHIAN	S-NPP	31.13230	75.21970	13:23:32	D	3.10
137	JALANDHAR	LOHIAN	S-NPP	31.14410	75.31160	13:23:32	D	2.30
138	JALANDHAR	MEHATPUR	S-NPP	31.00490	75.45170	13:23:32	D	2.90
139	JALANDHAR	NAKODAR	S-NPP	31.16120	75.52110	13:23:32	D	6.20
140	JALANDHAR	NUR MAHAL	S-NPP	31.02430	75.59190	13:23:32	D	3.60
141	JALANDHAR	NUR MAHAL	S-NPP	31.11300	75.57380	13:23:32	D	4.50
142	JALANDHAR	SHAHKOT	S-NPP	31.04920	75.28930	13:23:32	D	6.70
143	JALANDHAR	SHAHKOT	S-NPP	31.05770	75.23580	13:23:32	D	7.60
144	JALANDHAR	SHAHKOT	S-NPP	31.11110	75.28030	13:23:32	D	3.00
145	JALANDHAR	SHAHKOT	S-NPP	31.12200	75.32500	13:23:32	D	3.20
146	KAPURTHALA	KAPURTHALA	S-NPP	31.32230	75.28970	13:23:32	D	5.30
147	KAPURTHALA	KAPURTHALA	S-NPP	31.36220	75.29420	13:23:32	D	11.90
148	KAPURTHALA	NADALA	S-NPP	31.51710	75.53360	13:23:32	D	5.00
149	KAPURTHALA	NADALA	S-NPP	31.55500	75.38470	13:23:32	D	6.90
150	KAPURTHALA	NADALA	S-NPP	31.57560	75.51220	13:23:32	D	2.00
151	KAPURTHALA	NADALA	S-NPP	31.57630	75.51630	13:23:32	D	2.50
152	KAPURTHALA	SULTANPUR LODHI	S-NPP	31.18250	75.18690	13:23:32	D	4.50
153	KAPURTHALA	SULTANPUR LODHI	S-NPP	31.18590	75.18610	13:23:32	D	4.50
154	KAPURTHALA	SULTANPUR LODHI	S-NPP	31.21050	75.13820	13:23:32	D	8.20
155	KAPURTHALA	SULTANPUR LODHI	S-NPP	31.22770	75.22060	13:23:32	D	2.40
156	KAPURTHALA	SULTANPUR LODHI	S-NPP	31.22860	75.14280	13:23:32	D	4.00
157	KAPURTHALA	SULTANPUR LODHI	S-NPP	31.23200	75.14200	13:23:32	D	4.00
158	KAPURTHALA	SULTANPUR LODHI	S-NPP	31.24820	75.15570	13:23:32	D	1.60
159	KAPURTHALA	SULTANPUR LODHI	S-NPP	31.27720	75.20520	13:23:32	D	3.00
160	KAPURTHALA	SULTANPUR LODHI	S-NPP	31.29380	75.15840	13:23:32	D	4.10
161	KAPURTHALA	SULTANPUR LODHI	S-NPP	31.30750	75.17310	13:23:32	D	5.60
162	KAPURTHALA	SULTANPUR LODHI	S-NPP	31.33390	75.22750	13:23:32	D	3.60

163	KAPURTHALA	SULTANPUR LODHI	S-NPP	31.33720	75.22680	13:23:32	D	3.60
164	KAPURTHALA	SULTANPUR LODHI	S-NPP	31.34530	75.25500	13:23:32	D	4.70
165	KAPURTHALA	SULTANPUR LODHI	S-NPP	31.34600	75.25920	13:23:32	D	5.00
166	KAPURTHALA	SULTANPUR LODHI	S-NPP	31.35980	75.19590	13:23:32	D	2.90
167	LUDHIANA	JAGRAON	S-NPP	30.65860	75.39000	13:23:32	D	4.30
168	LUDHIANA	MACHHIWARA	S-NPP	30.80900	76.26150	13:23:32	D	4.00
169	LUDHIANA	MACHHIWARA	S-NPP	30.84770	76.25350	13:23:32	D	3.50
170	LUDHIANA	PAKHOWAL	S-NPP	30.70740	75.66830	13:23:32	D	2.30
171	LUDHIANA	RAIKOT	S-NPP	30.60790	75.48220	13:23:32	D	4.20
172	LUDHIANA	SAMRALA	S-NPP	30.78140	76.23830	13:23:32	D	2.60
173	LUDHIANA	SAMRALA	S-NPP	30.80570	76.26220	13:23:32	D	4.00
174	LUDHIANA	SIDHWAN BET	S-NPP	30.88280	75.45260	13:23:32	D	11.80
175	MANSA	SARDULGARH	S-NPP	29.72470	75.38300	13:23:32	D	5.70
176	MANSA	SARDULGARH	S-NPP	29.72540	75.38710	13:23:32	D	5.70
177	MANSA	SARDULGARH	S-NPP	29.81890	75.27670	13:23:32	D	3.80
178	MOGA	KOT ISE KHAN AT DHARAMKOT	S-NPP	30.89890	75.31270	13:23:32	D	7.50
179	MOGA	KOT ISE KHAN AT DHARAMKOT	S-NPP	30.89960	75.31680	13:23:32	D	7.50
180	MOGA	KOT ISE KHAN AT DHARAMKOT	S-NPP	30.94100	75.27330	13:23:32	D	9.40
181	MOGA	MOGA-1	S-NPP	30.73850	75.36420	13:23:32	D	2.50
182	MOGA	MOGA-2	S-NPP	30.78230	75.11830	13:23:32	D	2.50
183	MOGA	NIHAL SINGH	S-NPP	30.67300	75.26280	13:23:32	D	7.40
184	MUKTSAR	KOT BHAI AT GIDDERBAHA	S-NPP	30.40670	74.72580	13:23:32	D	2.90
185	MUKTSAR	MUKTSAR	S-NPP	30.44910	74.33920	13:23:32	D	2.30
186	PATIALA	BHUNARHERI	S-NPP	30.13130	76.48290	13:23:32	D	4.70
187	PATIALA	BHUNARHERI	S-NPP	30.17370	76.62220	13:23:32	D	2.60
188	PATIALA	BHUNARHERI	S-NPP	30.22600	76.41810	13:23:32	D	2.70
189	PATIALA	NABHA	S-NPP	30.33680	76.06440	13:23:32	D	3.60
190	PATIALA	NABHA	S-NPP	30.39050	76.04490	13:23:32	D	2.70
191	PATIALA	NABHA	S-NPP	30.39180	76.05290	13:23:32	D	3.80
192	PATIALA	NABHA	S-NPP	30.40550	76.24540	13:23:32	D	2.80
193	PATIALA	NABHA	S-NPP	30.41640	76.29270	13:23:32	D	2.00
194	PATIALA	NABHA	S-NPP	30.46550	76.25750	13:23:32	D	3.30
195	PATIALA	PATIALA	S-NPP	30.36760	76.32340	13:23:32	D	7.80

196	PATIALA	PATRAN	S-NPP	29.83950	76.12190	13:23:32	D	7.90
197	PATIALA	PATRAN	S-NPP	29.93850	76.06370	13:23:32	D	3.00
198	PATIALA	PATRAN	S-NPP	29.98710	76.02420	13:23:32	D	2.30
199	PATIALA	SAMANA	S-NPP	30.02950	76.18160	13:23:32	D	3.30
200	PATIALA	SAMANA	S-NPP	30.07820	76.21320	13:23:32	D	2.90
201	PATIALA	SAMANA	S-NPP	30.14760	76.24000	13:23:32	D	1.70
202	PATIALA	SAMANA	S-NPP	30.15610	76.25070	13:23:32	D	2.40
203	PATIALA	SANAUR	S-NPP	30.17710	76.27520	13:23:32	D	1.70
204	PATIALA	SANAUR	S-NPP	30.26530	76.45110	13:23:32	D	3.30
205	PATIALA	SANAUR	S-NPP	30.28560	76.47160	13:23:32	D	4.40
206	PATIALA	SHAMBU KALAN	S-NPP	30.43420	76.57360	13:23:32	D	4.30
207	RUPNAGAR	CHAMKAUR SAHIB	S-NPP	30.85980	76.41670	13:23:32	D	2.80
208	RUPNAGAR	MORINDA	S-NPP	30.75290	76.46680	13:23:32	D	2.10
209	RUPNAGAR	MORINDA	S-NPP	30.75540	76.48280	13:23:32	D	3.90
210	RUPNAGAR	RUPNAGAR	S-NPP	30.88840	76.53480	13:23:32	D	3.60
211	SANGRUR	ANDANA	S-NPP	29.80750	75.88250	13:23:32	D	3.30
212	SANGRUR	ANDANA	S-NPP	29.84990	75.99470	13:23:32	D	4.60
213	SANGRUR	BHAWANIGARH	S-NPP	30.25270	76.17670	13:23:32	D	9.30
214	SANGRUR	DHURI	S-NPP	30.35430	75.96910	13:23:32	D	2.40
215	SANGRUR	LEHRA GAGA	S-NPP	29.97530	75.67410	13:23:32	D	17.30
216	SANGRUR	LEHRA GAGA	S-NPP	29.97680	75.67440	13:23:32	D	25.80
217	SANGRUR	SUNAM	S-NPP	30.14250	75.79090	13:23:32	D	4.80
218	SAS NAGAR (MOHALI)	DERABASSI	S-NPP	30.47520	76.86110	13:23:32	D	1.80
219	SAS NAGAR (MOHALI)	KHARAR	S-NPP	30.79470	76.62850	13:23:32	D	3.20
220	SAS NAGAR (MOHALI)	MAJRI	S-NPP	30.77960	76.70470	13:23:32	D	1.90
221	TARN TARAN	BHIKHIWIND	S-NPP	31.24330	74.66770	13:23:32	D	2.50
222	TARN TARAN	BHIKHIWIND	S-NPP	31.26360	74.72500	13:23:32	D	9.60
223	TARN TARAN	BHIKHIWIND	S-NPP	31.26500	74.73350	13:23:32	D	8.80
224	TARN TARAN	BHIKHIWIND	S-NPP	31.28950	74.67030	13:23:32	D	38.00
225	TARN TARAN	BHIKHIWIND	S-NPP	31.28980	74.63030	13:23:32	D	1.60
226	TARN TARAN	BHIKHIWIND	S-NPP	31.29460	74.70020	13:23:32	D	2.00
227	TARN TARAN	BHIKHIWIND	S-NPP	31.32740	74.72800	13:23:32	D	3.10
228	TARN TARAN	BHIKHIWIND	S-NPP	31.33380	74.76630	13:23:32	D	2.80

229	TARN TARAN	BHIKHIWIND	S-NPP	31.33800	74.62480	13:23:32	D	12.50
230	TARN TARAN	BHIKHIWIND	S-NPP	31.33990	74.55310	13:23:32	D	32.40
231	TARN TARAN	BHIKHIWIND	S-NPP	31.34110	74.60180	13:23:32	D	3.10
232	TARN TARAN	BHIKHIWIND	S-NPP	31.34330	74.55230	13:23:32	D	32.40
233	TARN TARAN	BHIKHIWIND	S-NPP	31.35040	74.63520	13:23:32	D	2.30
234	TARN TARAN	BHIKHIWIND	S-NPP	31.36000	74.77450	13:23:32	D	7.50
235	TARN TARAN	BHIKHIWIND	S-NPP	31.36100	74.61500	13:23:32	D	6.60
236	TARN TARAN	BHIKHIWIND	S-NPP	31.36410	74.77800	13:23:32	D	5.80
237	TARN TARAN	BHIKHIWIND	S-NPP	31.36750	74.77720	13:23:32	D	5.80
238	TARN TARAN	BHIKHIWIND	S-NPP	31.37800	74.61110	13:23:32	D	19.70
239	TARN TARAN	BHIKHIWIND	S-NPP	31.40140	74.64570	13:23:32	D	9.70
240	TARN TARAN	BHIKHIWIND	S-NPP	31.40580	74.60920	13:23:32	D	2.40
241	TARN TARAN	BHIKHIWIND	S-NPP	31.42050	74.65460	13:23:32	D	2.80
242	TARN TARAN	BHIKHIWIND	S-NPP	31.42120	74.65890	13:23:32	D	5.30
243	TARN TARAN	CHOHLA SAHIB	S-NPP	31.21410	74.95070	13:23:32	D	2.80
244	TARN TARAN	CHOHLA SAHIB	S-NPP	31.22610	75.04370	13:23:32	D	8.50
245	TARN TARAN	CHOHLA SAHIB	S-NPP	31.23130	75.01220	13:23:32	D	6.80
246	TARN TARAN	CHOHLA SAHIB	S-NPP	31.23260	74.99880	13:23:32	D	1.60
247	TARN TARAN	CHOHLA SAHIB	S-NPP	31.23350	75.04640	13:23:32	D	3.30
248	TARN TARAN	CHOHLA SAHIB	S-NPP	31.23960	74.93620	13:23:32	D	19.60
249	TARN TARAN	CHOHLA SAHIB	S-NPP	31.24640	75.06090	13:23:32	D	7.20
250	TARN TARAN	CHOHLA SAHIB	S-NPP	31.24760	74.92130	13:23:32	D	3.30
251	TARN TARAN	CHOHLA SAHIB	S-NPP	31.25190	74.96830	13:23:32	D	1.80
252	TARN TARAN	CHOHLA SAHIB	S-NPP	31.25300	75.03770	13:23:32	D	4.70
253	TARN TARAN	CHOHLA SAHIB	S-NPP	31.25360	74.91550	13:23:32	D	4.50
254	TARN TARAN	CHOHLA SAHIB	S-NPP	31.25750	75.00190	13:23:32	D	12.10
255	TARN TARAN	CHOHLA SAHIB	S-NPP	31.27750	74.91080	13:23:32	D	2.40
256	TARN TARAN	CHOHLA SAHIB	S-NPP	31.28130	74.97540	13:23:32	D	2.80
257	TARN TARAN	CHOHLA SAHIB	S-NPP	31.28920	75.04310	13:23:32	D	3.90
258	TARN TARAN	CHOHLA SAHIB	S-NPP	31.31250	74.99450	13:23:32	D	4.60
259	TARN TARAN	CHOHLA SAHIB	S-NPP	31.31430	74.96350	13:23:32	D	6.10
260	TARN TARAN	CHOHLA SAHIB	S-NPP	31.31760	74.96280	13:23:32	D	6.10
261	TARN TARAN	CHOHLA SAHIB	S-NPP	31.32230	75.05310	13:23:32	D	5.30

262	TARN TARAN	CHOHLA SAHIB	S-NPP	31.32700	75.06070	13:23:32	D	6.40
263	TARN TARAN	CHOHLA SAHIB	S-NPP	31.34310	75.05270	13:23:32	D	3.00
264	TARN TARAN	CHOHLA SAHIB	S-NPP	31.34380	75.05690	13:23:32	D	3.00
265	TARN TARAN	CHOHLA SAHIB	S-NPP	31.34610	75.11270	13:23:32	D	8.60
266	TARN TARAN	CHOHLA SAHIB	S-NPP	31.35800	75.07970	13:23:32	D	5.00
267	TARN TARAN	CHOHLA SAHIB	S-NPP	31.36200	75.06150	13:23:32	D	3.10
268	TARN TARAN	CHOHLA SAHIB	S-NPP	31.36990	75.04670	13:23:32	D	4.20
269	TARN TARAN	GANDIWIND TATLA	S-NPP	31.42220	74.68520	13:23:32	D	8.90
270	TARN TARAN	GANDIWIND TATLA	S-NPP	31.44430	74.73320	13:23:32	D	4.30
271	TARN TARAN	GANDIWIND TATLA	S-NPP	31.45100	74.73160	13:23:32	D	15.30
272	TARN TARAN	GANDIWIND TATLA	S-NPP	31.45250	74.67980	13:23:32	D	3.70
273	TARN TARAN	GANDIWIND TATLA	S-NPP	31.47640	74.69640	13:23:32	D	2.60
274	TARN TARAN	GANDIWIND TATLA	S-NPP	31.48170	74.68630	13:23:32	D	5.60
275	TARN TARAN	GANDIWIND TATLA	S-NPP	31.48230	74.75240	13:23:32	D	17.60
276	TARN TARAN	GANDIWIND TATLA	S-NPP	31.48570	74.75160	13:23:32	D	17.60
277	TARN TARAN	GANDIWIND TATLA	S-NPP	31.48920	74.68910	13:23:32	D	13.60
278	TARN TARAN	GANDIWIND TATLA	S-NPP	31.50510	74.72070	13:23:32	D	12.70
279	TARN TARAN	GANDIWIND TATLA	S-NPP	31.50840	74.72000	13:23:32	D	12.70
280	TARN TARAN	GANDIWIND TATLA	S-NPP	31.51590	74.72270	13:23:32	D	9.70
281	TARN TARAN	GANDIWIND TATLA	S-NPP	31.51820	74.67350	13:23:32	D	2.80
282	TARN TARAN	GANDIWIND TATLA	S-NPP	31.52470	74.79550	13:23:32	D	4.20
283	TARN TARAN	GANDIWIND TATLA	S-NPP	31.53330	74.70100	13:23:32	D	5.50
284	TARN TARAN	GANDIWIND TATLA	S-NPP	31.53690	74.72230	13:23:32	D	3.60
285	TARN TARAN	GANDIWIND TATLA	S-NPP	31.53940	74.77900	13:23:32	D	4.20
286	TARN TARAN	KHADUR SAHIB	S-NPP	31.40040	75.10480	13:23:32	D	2.70
287	TARN TARAN	KHADUR SAHIB	S-NPP	31.40200	75.04460	13:23:32	D	3.80
288	TARN TARAN	KHADUR SAHIB	S-NPP	31.40250	75.11730	13:23:32	D	3.20
289	TARN TARAN	KHADUR SAHIB	S-NPP	31.40520	75.13390	13:23:32	D	4.00
290	TARN TARAN	KHADUR SAHIB	S-NPP	31.41240	75.10720	13:23:32	D	4.20
291	TARN TARAN	KHADUR SAHIB	S-NPP	31.42030	75.07080	13:23:32	D	3.40
292	TARN TARAN	KHADUR SAHIB	S-NPP	31.43400	75.13260	13:23:32	D	5.10
293	TARN TARAN	KHADUR SAHIB	S-NPP	31.43470	75.13680	13:23:32	D	4.20
294	TARN TARAN	KHADUR SAHIB	S-NPP	31.44840	75.05150	13:23:32	D	1.70

295	TARN TARAN	KHADUR SAHIB	S-NPP	31.46710	75.18560	13:23:32	D	5.40
296	TARN TARAN	KHADUR SAHIB	S-NPP	31.47040	75.18490	13:23:32	D	5.40
297	TARN TARAN	KHADUR SAHIB	S-NPP	31.49540	75.25240	13:23:32	D	5.20
298	TARN TARAN	KHADUR SAHIB	S-NPP	31.49880	75.25160	13:23:32	D	6.30
299	TARN TARAN	NAUSHERA PANNUAN	S-NPP	31.32860	74.98650	13:23:32	D	2.80
300	TARN TARAN	NAUSHERA PANNUAN	S-NPP	31.34630	75.03030	13:23:32	D	2.30
301	TARN TARAN	NAUSHERA PANNUAN	S-NPP	31.34970	75.02950	13:23:32	D	2.30
302	TARN TARAN	NAUSHERA PANNUAN	S-NPP	31.35240	75.02460	13:23:32	D	1.60
303	TARN TARAN	NAUSHERA PANNUAN	S-NPP	31.37090	74.96810	13:23:32	D	4.00
304	TARN TARAN	NAUSHERA PANNUAN	S-NPP	31.39900	75.00620	13:23:32	D	7.40
305	TARN TARAN	NAUSHERA PANNUAN	S-NPP	31.40140	74.95780	13:23:32	D	5.70
306	TARN TARAN	NAUSHERA PANNUAN	S-NPP	31.42340	74.92230	13:23:32	D	2.60
307	TARN TARAN	PATTI	S-NPP	31.15500	74.76670	13:23:32	D	3.70
308	TARN TARAN	PATTI	S-NPP	31.22280	74.94000	13:23:32	D	3.30
309	TARN TARAN	PATTI	S-NPP	31.23470	74.90670	13:23:32	D	1.50
310	TARN TARAN	PATTI	S-NPP	31.23620	74.93700	13:23:32	D	19.60
311	TARN TARAN	PATTI	S-NPP	31.23810	74.90590	13:23:32	D	2.40
312	TARN TARAN	PATTI	S-NPP	31.24420	74.92200	13:23:32	D	2.40
313	TARN TARAN	PATTI	S-NPP	31.27670	74.82330	13:23:32	D	3.40
314	TARN TARAN	PATTI	S-NPP	31.28020	74.76090	13:23:32	D	2.90
315	TARN TARAN	PATTI	S-NPP	31.31700	74.87550	13:23:32	D	4.80
316	TARN TARAN	TARN TARAN	S-NPP	31.38860	74.79880	13:23:32	D	3.50
317	TARN TARAN	TARN TARAN	S-NPP	31.39880	74.79650	13:23:32	D	2.40
318	TARN TARAN	TARN TARAN	S-NPP	31.41170	74.89440	13:23:32	D	2.50
319	TARN TARAN	TARN TARAN	S-NPP	31.42170	74.78680	13:23:32	D	5.50
320	TARN TARAN	TARN TARAN	S-NPP	31.43310	74.95930	13:23:32	D	4.30
321	TARN TARAN	TARN TARAN	S-NPP	31.43640	74.95860	13:23:32	D	3.90
322	TARN TARAN	TARN TARAN	S-NPP	31.43820	74.82260	13:23:32	D	2.00
323	TARN TARAN	TARN TARAN	S-NPP	31.43940	74.80910	13:23:32	D	4.40
324	TARN TARAN	TARN TARAN	S-NPP	31.44730	74.77220	13:23:32	D	1.50
325	TARN TARAN	TARN TARAN	S-NPP	31.45740	74.87520	13:23:32	D	28.10
326	TARN TARAN	TARN TARAN	S-NPP	31.46230	75.00930	13:23:32	D	6.20
327	TARN TARAN	TARN TARAN	S-NPP	31.46600	74.84260	13:23:32	D	3.90

328	TARN TARAN	TARN TARAN	S-NPP	31.47300	75.01120	13:23:32	D	5.30
329	TARN TARAN	TARN TARAN	S-NPP	31.48170	75.00050	13:23:32	D	4.60
330	TARN TARAN	TARN TARAN	S-NPP	31.48930	74.77280	13:23:32	D	3.30
331	TARN TARAN	TARN TARAN	S-NPP	31.48970	74.81670	13:23:32	D	5.80
332	TARN TARAN	TARN TARAN	S-NPP	31.49450	74.90750	13:23:32	D	2.30
333	TARN TARAN	TARN TARAN	S-NPP	31.49910	74.81020	13:23:32	D	3.70
334	TARN TARAN	TARN TARAN	S-NPP	31.50140	74.84470	13:23:32	D	2.90
335	TARN TARAN	TARN TARAN	S-NPP	31.50950	74.93470	13:23:32	D	1.70
336	TARN TARAN	VALTOHA	S-NPP	31.20090	74.66330	13:23:32	D	4.40
337	TARN TARAN	VALTOHA	S-NPP	31.22960	74.54610	13:23:32	D	4.10
338	TARN TARAN	VALTOHA	S-NPP	31.23560	74.54030	13:23:32	D	3.10
339	TARN TARAN	VALTOHA	S-NPP	31.24930	74.59960	13:23:32	D	3.40
340	TARN TARAN	VALTOHA	S-NPP	31.25100	74.63040	13:23:32	D	5.60
341	TARN TARAN	VALTOHA	S-NPP	31.25610	74.53560	13:23:32	D	2.60
342	TARN TARAN	VALTOHA	S-NPP	31.31290	74.55820	13:23:32	D	2.10

Details of residue burning events in Haryana on 18-Oct-2022

S. No.	District	Tehsil / Block	Satellite	Latitude	Longitude	ACQ_TIME	Day / Night	Fire Power (W/m2)
1	AMBALA	AMBALA-II	S-NPP	30.16600	76.66070	13:23:32	D	2.60
2	AMBALA	AMBALA-II	S-NPP	30.22760	76.81620	13:23:32	D	1.10
3	AMBALA	AMBALA-II	S-NPP	30.26900	76.88560	13:23:32	D	4.60
4	AMBALA	AMBALA-II	S-NPP	30.28460	76.83750	13:23:32	D	2.30
5	AMBALA	BARARA	S-NPP	30.21460	77.01950	13:23:32	D	1.90
6	AMBALA	SAHA	S-NPP	30.20170	76.89110	13:23:32	D	1.80
7	FATEHABAD	BHATTU KALAN	S-NPP	29.50810	75.32490	13:23:32	D	9.10
8	FATEHABAD	FATEHABAD	S-NPP	29.59630	75.41330	13:23:32	D	7.50
9	FATEHABAD	TOHANA	S-NPP	29.58730	75.92780	13:23:32	D	3.10
10	FATEHABAD	TOHANA	S-NPP	29.60140	75.88710	13:23:32	D	1.70
11	FATEHABAD	TOHANA	S-NPP	29.63470	75.92190	13:23:32	D	2.90
12	FATEHABAD	TOHANA	S-NPP	29.68350	75.72760	13:23:32	D	3.30
13	FATEHABAD	TOHANA	S-NPP	29.71750	75.93460	13:23:32	D	2.20
14	HISAR	UKLANA	S-NPP	29.48680	75.93610	13:23:32	D	2.00
15	HISAR	UKLANA	S-NPP	29.56210	75.93260	13:23:32	D	3.30
16	JIND	ALEWA	S-NPP	29.42810	76.40810	13:23:32	D	2.40
17	JIND	JIND	S-NPP	29.30080	76.39670	13:23:32	D	1.60
18	JIND	NARWANA	S-NPP	29.49720	76.04240	13:23:32	D	6.10
19	JIND	NARWANA	S-NPP	29.51460	76.02200	13:23:32	D	2.40
20	JIND	NARWANA	S-NPP	29.54110	76.05810	13:23:32	D	1.20
21	JIND	NARWANA	S-NPP	29.61030	76.06900	13:23:32	D	2.90
22	JIND	NARWANA	S-NPP	29.65190	75.96430	13:23:32	D	14.60
23	JIND	NARWANA	S-NPP	29.69130	76.10180	13:23:32	D	3.10
24	JIND	NARWANA	S-NPP	29.71140	75.96100	13:23:32	D	4.80
25	JIND	SAFIDON	S-NPP	29.40580	76.63430	13:23:32	D	2.80
26	JIND	SAFIDON	S-NPP	29.43070	76.57590	13:23:32	D	3.00
27	JIND	UCHANA	S-NPP	29.47730	76.24970	13:23:32	D	3.50
28	JIND	UCHANA	S-NPP	29.53700	76.24570	13:23:32	D	1.70
29	JIND	UCHANA	S-NPP	29.57150	76.11820	13:23:32	D	9.80
30	JIND	UCHANA	S-NPP	29.57210	76.12230	13:23:32	D	5.50

31	KAITHAL	GUHLA	S-NPP	29.99360	76.21400	13:23:32	D	5.80
32	KAITHAL	GUHLA	S-NPP	30.00610	76.33550	13:23:32	D	1.30
33	KAITHAL	GUHLA	S-NPP	30.00990	76.35950	13:23:32	D	3.80
34	KAITHAL	GUHLA	S-NPP	30.01050	76.36350	13:23:32	D	6.50
35	KAITHAL	GUHLA	S-NPP	30.02520	76.24050	13:23:32	D	2.20
36	KAITHAL	GUHLA	S-NPP	30.05010	76.37580	13:23:32	D	3.40
37	KAITHAL	GUHLA	S-NPP	30.07980	76.39020	13:23:32	D	5.40
38	KAITHAL	GUHLA	S-NPP	30.08040	76.39420	13:23:32	D	5.40
39	KAITHAL	GUHLA	S-NPP	30.08910	76.28130	13:23:32	D	14.80
40	KAITHAL	GUHLA	S-NPP	30.10830	76.27310	13:23:32	D	3.10
41	KAITHAL	KAITHAL	S-NPP	29.77790	76.28760	13:23:32	D	1.90
42	KAITHAL	KAITHAL	S-NPP	29.85690	76.35370	13:23:32	D	4.50
43	KAITHAL	KAITHAL	S-NPP	29.89260	76.51510	13:23:32	D	2.50
44	KAITHAL	KAITHAL	S-NPP	29.89320	76.51900	13:23:32	D	7.90
45	KAITHAL	KAITHAL	S-NPP	29.89600	76.51890	13:23:32	D	4.80
46	KAITHAL	KAITHAL	S-NPP	29.89760	76.48570	13:23:32	D	9.60
47	KAITHAL	KAITHAL	S-NPP	29.90090	76.48500	13:23:32	D	9.60
48	KAITHAL	KAITHAL	S-NPP	29.90770	76.46300	13:23:32	D	2.70
49	KAITHAL	KALAYAT	S-NPP	29.63800	76.31960	13:23:32	D	1.20
50	KAITHAL	KALAYAT	S-NPP	29.73740	76.28280	13:23:32	D	2.80
51	KAITHAL	PUNDRI	S-NPP	29.70860	76.66290	13:23:32	D	2.70
52	KAITHAL	PUNDRI	S-NPP	29.70940	76.64640	13:23:32	D	3.20
53	KAITHAL	PUNDRI	S-NPP	29.72520	76.50780	13:23:32	D	1.20
54	KAITHAL	PUNDRI	S-NPP	29.73970	76.57860	13:23:32	D	1.30
55	KAITHAL	PUNDRI	S-NPP	29.74610	76.53220	13:23:32	D	2.80
56	KAITHAL	PUNDRI	S-NPP	29.78490	76.62670	13:23:32	D	1.90
57	KAITHAL	PUNDRI	S-NPP	29.83480	76.55990	13:23:32	D	1.60
58	KAITHAL	PUNDRI	S-NPP	29.84600	76.56580	13:23:32	D	14.70
59	KAITHAL	PUNDRI	S-NPP	29.86070	76.68170	13:23:32	D	3.60
60	KAITHAL	PUNDRI	S-NPP	29.89440	76.67880	13:23:32	D	3.40
61	KAITHAL	RAJOUND	S-NPP	29.63610	76.48060	13:23:32	D	4.10
62	KAITHAL	RAJOUND	S-NPP	29.63680	76.48460	13:23:32	D	4.10
63	KAITHAL	RAJOUND	S-NPP	29.66740	76.46180	13:23:32	D	1.40

64	KAITHAL	RAJOUND	S-NPP	29.67720	76.54600	13:23:32	D	1.50
65	KAITHAL	RAJOUND	S-NPP	29.68100	76.56980	13:23:32	D	11.60
66	KAITHAL	SIWAN	S-NPP	29.87990	76.37400	13:23:32	D	2.90
67	KAITHAL	SIWAN	S-NPP	29.88540	76.34400	13:23:32	D	22.00
68	KAITHAL	SIWAN	S-NPP	29.88820	76.31870	13:23:32	D	3.40
69	KAITHAL	SIWAN	S-NPP	29.88870	76.34330	13:23:32	D	6.60
70	KAITHAL	SIWAN	S-NPP	29.90830	76.38050	13:23:32	D	16.40
71	KAITHAL	SIWAN	S-NPP	29.90900	76.38450	13:23:32	D	7.20
72	KAITHAL	SIWAN	S-NPP	29.91130	76.22700	13:23:32	D	9.60
73	KAITHAL	SIWAN	S-NPP	29.91160	76.37980	13:23:32	D	16.40
74	KAITHAL	SIWAN	AQUA	29.89000	76.40200	13:02:34	D	42.10
75	KAITHAL	SIWAN	AQUA	29.90000	76.39200	13:02:34	D	27.00
76	KARNAL	ASSANDH	S-NPP	29.53010	76.55980	13:23:32	D	2.30
77	KARNAL	ASSANDH	S-NPP	29.53720	76.84450	13:23:32	D	2.80
78	KARNAL	ASSANDH	S-NPP	29.54680	76.53590	13:23:32	D	4.90
79	KARNAL	CHIRAO	S-NPP	29.57350	76.83710	13:23:32	D	1.70
80	KARNAL	CHIRAO	S-NPP	29.58340	76.83510	13:23:32	D	4.90
81	KARNAL	CHIRAO	S-NPP	29.58430	76.81860	13:23:32	D	3.20
82	KARNAL	CHIRAO	S-NPP	29.58490	76.82260	13:23:32	D	3.20
83	KARNAL	CHIRAO	S-NPP	29.58670	76.83440	13:23:32	D	16.80
84	KARNAL	CHIRAO	S-NPP	29.61380	76.83300	13:23:32	D	2.60
85	KARNAL	CHIRAO	S-NPP	29.61960	76.83190	13:23:32	D	3.60
86	KARNAL	CHIRAO	S-NPP	29.62290	76.83130	13:23:32	D	3.60
87	KARNAL	CHIRAO	S-NPP	29.64040	76.92140	13:23:32	D	2.90
88	KARNAL	CHIRAO	S-NPP	29.64590	76.95700	13:23:32	D	7.50
89	KARNAL	CHIRAO	S-NPP	29.65660	76.69770	13:23:32	D	3.50
90	KARNAL	CHIRAO	S-NPP	29.70600	76.77350	13:23:32	D	3.40
91	KARNAL	CHIRAO	S-NPP	29.72560	76.81480	13:23:32	D	6.40
92	KARNAL	CHIRAO	S-NPP	29.74710	76.77770	13:23:32	D	1.70
93	KARNAL	GHARAUNDA	S-NPP	29.54320	77.07910	13:23:32	D	4.20
94	KARNAL	INDRI	S-NPP	29.94120	77.02500	13:23:32	D	4.00
95	KARNAL	KARNAL	S-NPP	29.63770	77.03190	13:23:32	D	2.10
96	KARNAL	KARNAL	S-NPP	29.79420	77.08230	13:23:32	D	1.70

97	KARNAL	NILOKHERI	S-NPP	29.83330	76.72420	13:23:32	D	2.80
98	KARNAL	NILOKHERI	S-NPP	29.83360	76.98460	13:23:32	D	3.20
99	KARNAL	NILOKHERI	S-NPP	29.83570	76.80550	13:23:32	D	2.30
100	KARNAL	NILOKHERI	S-NPP	29.84750	76.81530	13:23:32	D	2.40
101	KURUKSHETRA	ISMAILABAD	S-NPP	30.02220	76.64880	13:23:32	D	1.60
102	KURUKSHETRA	ISMAILABAD	S-NPP	30.02470	76.64840	13:23:32	D	2.40
103	KURUKSHETRA	ISMAILABAD	S-NPP	30.11660	76.75660	13:23:32	D	3.70
104	KURUKSHETRA	LADWA	S-NPP	29.99610	76.98560	13:23:32	D	2.20
105	KURUKSHETRA	LADWA	S-NPP	30.02000	77.07480	13:23:32	D	3.60
106	KURUKSHETRA	PEHOWA	S-NPP	29.91820	76.55120	13:23:32	D	27.50
107	KURUKSHETRA	PEHOWA	S-NPP	29.94150	76.67770	13:23:32	D	1.50
108	KURUKSHETRA	PEHOWA	S-NPP	29.99910	76.65350	13:23:32	D	12.70
109	KURUKSHETRA	PEHOWA	S-NPP	30.00650	76.63560	13:23:32	D	3.10
110	KURUKSHETRA	SHAHBAD	S-NPP	30.06520	76.82030	13:23:32	D	0.80
111	KURUKSHETRA	SHAHBAD	S-NPP	30.13900	76.81340	13:23:32	D	5.80
112	KURUKSHETRA	SHAHBAD	S-NPP	30.14870	76.83190	13:23:32	D	4.80
113	KURUKSHETRA	SHAHBAD	S-NPP	30.18400	76.88660	13:23:32	D	4.30
114	KURUKSHETRA	SHAHBAD	S-NPP	30.18820	76.86930	13:23:32	D	4.50
115	KURUKSHETRA	THANESAR	S-NPP	29.90420	76.80780	13:23:32	D	1.40
116	KURUKSHETRA	THANESAR	S-NPP	29.92050	76.82480	13:23:32	D	8.10
117	KURUKSHETRA	THANESAR	S-NPP	29.94560	76.87700	13:23:32	D	3.00
118	KURUKSHETRA	THANESAR	S-NPP	29.96320	76.75110	13:23:32	D	3.50
119	KURUKSHETRA	THANESAR	S-NPP	29.97980	76.96850	13:23:32	D	2.50
120	KURUKSHETRA	THANESAR	S-NPP	29.98810	76.82370	13:23:32	D	1.70
121	KURUKSHETRA	THANESAR	S-NPP	30.02660	76.74220	13:23:32	D	2.00
122	PANIPAT	MADLAUDA	S-NPP	29.35100	76.71420	13:23:32	D	2.30
123	PANIPAT	SAMALKHA	S-NPP	29.18000	77.11840	13:23:32	D	2.80
124	PANIPAT	SAMALKHA	S-NPP	29.23540	77.10740	13:23:32	D	1.30
125	SIRSA	SIRSA	S-NPP	29.52000	75.07510	02:13:32	N	0.40
126	SONIPAT	GANAUR	S-NPP	29.19700	76.90410	13:23:32	D	2.60
127	SONIPAT	RAI	S-NPP	28.89840	77.18140	13:23:32	D	1.50
128	YAMUNANAGAR	BILASPUR	S-NPP	30.35280	77.21710	13:23:32	D	1.90
129	YAMUNANAGAR	CHHACHHRAULI	S-NPP	30.23200	77.31040	13:23:32	D	2.30

130	YAMUNANAGAR	JAGADHRI	S-NPP	30.19740	77.28450	13:23:32	D	2.50
131	YAMUNANAGAR	MUSTAFABAD	S-NPP	30.13350	77.19920	13:23:32	D	3.00
132	YAMUNANAGAR	MUSTAFABAD	S-NPP	30.21660	77.12150	13:23:32	D	3.30
133	YAMUNANAGAR	MUSTAFABAD	S-NPP	30.27280	77.15520	13:23:32	D	3.00
134	YAMUNANAGAR	SADHAURA	S-NPP	30.44030	77.21290	13:23:32	D	1.80

Details of residue burning events in Delhi on 18-Oct-2022

S. No.	District	Tehsil / Block	Satellite	Latitude	Longitude	ACQ_TIME	Day / Night	Fire Power (W/m2)
1	NORTH	ALIPUR	S-NPP	28.829	77.1533	02:13:32	N	0.4

Details of residue burning events in Uttar Pradesh on 18-Oct-2022

S. No.	District	Tehsil / Block	Satellite	Latitude	Longitude	ACQ_TIME	Day / Night	Fire Power (W/m ²)
1	BAGHPAT	BAGHPAT	S-NPP	28.86390	77.20040	13:23:32	D	2.20
2	BAREILLY	AONLA	S-NPP	28.39630	79.06730	13:23:32	D	3.30
3	GAUTAMBUDHNAGAR	JEVAR	S-NPP	28.22200	77.54290	13:23:32	D	1.80
4	HARDOI	BILGRAM	S-NPP	27.10200	80.12720	13:23:32	D	1.70
5	HARDOI	BILGRAM	S-NPP	27.10610	80.07950	13:23:32	D	2.40
6	MAINPURI	BHOGAON	S-NPP	27.06740	79.17720	13:23:32	D	1.50
7	MAINPURI	BHOGAON	S-NPP	27.19320	79.13450	13:23:32	D	2.80
8	MAINPURI	KARHAL	S-NPP	27.09060	79.07570	13:23:32	D	2.00
9	MEERUT	MAWANA	S-NPP	28.94730	78.00060	13:23:32	D	5.00
10	MUZAFARNAGAR	BUDHANA	S-NPP	29.32310	77.50360	13:23:32	D	2.20
11	PILHIBHIT	PURANPUR	S-NPP	28.33230	80.19410	13:23:32	D	2.10
12	PILHIBHIT	PURANPUR	S-NPP	28.36300	80.18440	13:23:32	D	3.20
13	PILHIBHIT	PURANPUR	S-NPP	28.37000	80.18330	13:23:32	D	3.40
14	PILHIBHIT	PURANPUR	S-NPP	28.37090	80.18390	13:23:32	D	2.60
15	RAMPUR	BILASPUR	S-NPP	28.82740	79.30450	02:13:32	N	0.90
16	RAMPUR	BILASPUR	S-NPP	28.84450	79.28300	13:23:32	D	2.20
17	RAMPUR	BILASPUR	S-NPP	28.87060	79.34530	02:13:32	N	0.50
18	RAMPUR	BILASPUR	S-NPP	28.91880	79.39370	13:23:32	D	3.00
19	SHAHJAHANPUR	PUWANYA	S-NPP	28.18190	80.22300	13:23:32	D	2.40
20	SHAHJAHANPUR	PUWANYA	S-NPP	28.22290	80.00050	13:23:32	D	4.80
21	SHAHJAHANPUR	PUWANYA	S-NPP	28.22640	79.99990	13:23:32	D	4.80
22	SHAHJAHANPUR	PUWANYA	S-NPP	28.22980	79.99930	13:23:32	D	4.70
23	SHAHJAHANPUR	PUWANYA	S-NPP	28.26580	80.09490	13:23:32	D	5.40
24	SHAHJAHANPUR	PUWANYA	S-NPP	28.29700	79.98430	13:23:32	D	1.80
25	SHAHJAHANPUR	PUWANYA	S-NPP	28.30330	79.97890	13:23:32	D	8.50
26	SHAHJAHANPUR	PUWANYA	S-NPP	28.31780	80.19210	13:23:32	D	3.20
27	SHAHJAHANPUR	PUWANYA	AQUA	28.21100	80.15400	13:02:34	D	13.70
28	SHAHJAHANPUR	PUWANYA	AQUA	28.21100	80.15900	13:02:34	D	13.20
29	SHAMLI	SHAMLI	S-NPP	29.53340	77.30470	13:23:32	D	2.20
30	SHARANPUR	SHARANPUR	S-NPP	30.08420	77.61390	13:23:32	D	2.30

Details of residue burning events in Rajasthan on 18-Oct-2022

S. No.	District	Tehsil / Block	Satellite	Latitude	Longitude	ACQ_TIME	Day / Night	Fire Power (W/m2)
1	BARAN	BARAN	S-NPP	25.19080	76.45010	13:23:32	D	1.60
2	BUNDI	KESHORAIPATAN	S-NPP	25.39630	75.87990	13:23:32	D	4.30
3	BUNDI	KESHORAIPATAN	S-NPP	25.42170	76.05100	13:23:32	D	2.90
4	BUNDI	KESHORAIPATAN	S-NPP	25.42350	75.97780	13:23:32	D	3.00
5	BUNDI	KESHORAIPATAN	S-NPP	25.42370	76.06340	13:23:32	D	8.30
6	BUNDI	KESHORAIPATAN	S-NPP	25.42440	76.06750	13:23:32	D	8.30
7	HANUMANGARH	HANUMANGARH	S-NPP	29.56080	74.30680	13:23:32	D	3.90
8	HANUMANGARH	TIBI	S-NPP	29.51400	74.55960	13:23:32	D	5.80
9	HANUMANGARH	TIBI	S-NPP	29.53320	74.54620	13:23:32	D	4.30
10	KOTA	DIGOD	S-NPP	25.21260	76.03610	13:23:32	D	1.40
11	KOTA	PIPALDA	S-NPP	25.58380	76.32740	13:23:32	D	3.00
12	SWAIMADHOPUR	MALARNA DOONAGAR	S-NPP	26.22920	76.38090	02:13:32	N	0.60

Details of residue burning events in Madhya Pradesh on 18-Oct-2022

S. No.	District	Tehsil / Block	Satellite	Latitude	Longitude	ACQ_TIME	Day / Night	Fire Power (W/m2)
1	BHOPAL	HUZUR	S-NPP	23.34300	77.37580	13:23:32	D	1.90
2	DAMOH	JABERA	S-NPP	23.55890	79.69840	13:23:32	D	3.40
3	DAMOH	PATHARIA	S-NPP	24.03760	79.47880	13:23:32	D	1.20
4	EAST NIMAR	HARSUD	S-NPP	22.17670	76.82110	13:23:32	D	4.60
5	NARSHIMAPURA	GOTECAON	S-NPP	23.08260	79.37870	13:23:32	D	1.30
6	NARSHIMAPURA	NARSIMHAPUR	S-NPP	22.98420	79.23820	13:23:32	D	1.90
7	RAISEN	BARELI	S-NPP	23.20000	78.11060	13:23:32	D	1.90
8	REWA	SIRMAUR	S-NPP	24.66790	81.50440	13:23:32	D	3.40
9	SAGAR	DEVRI	S-NPP	23.40370	79.03730	13:23:32	D	1.40
10	SAGAR	DEVRI	S-NPP	23.48660	79.09610	13:23:32	D	2.90
11	SAGAR	REHLI	S-NPP	23.69860	79.08900	13:23:32	D	3.60
12	SEHORE	NASRULLAHGANJ	S-NPP	22.81470	77.35800	13:23:32	D	4.20
13	SHEOPUR	SHEOPUR	S-NPP	25.70560	76.68400	13:23:32	D	2.30
14	VIDESHA	KORWAI	S-NPP	24.02570	78.15290	13:23:32	D	1.80
15	VIDESHA	NATERAN	S-NPP	23.83340	77.68470	13:23:32	D	2.60

The study used data received from following Satellites at NRSC Ground Station

S. No.	Satellite Name	Sensor	Resolution (meter)	Day / Night Passes
1.	Suomi NPP	VIIRS	375 / 750	Both
2.	Terra	MODIS	1000	Both
3.	Aqua	MODIS	1000	Both

**The rice mask for the Punjab and Haryana were provided by MNCFC, MoA&FW, Govt of India
The kharif crop mask for Delhi, Uttar Pradesh, Rajasthan and Madhya Pradesh were provided by NRSC**

Study Team

ICAR - IARI	Dr V.K. Sehgal	Principal & Nodal Scientist	iaricreams@gmail.com
	Dr Rajkumar Dhakar	Scientist	rajdhakar.iari@gmail.com
	Mr Mohd Jahangir	Lab Assistant (KRISHI)	mjahangir198@gmail.com
ICAR - ATARI	Dr Rajbir Singh	Director ATARI (Zone-I) Ludhiana	rajbirsingh.zpd@gmail.com
	Dr S.K. Singh	Director ATARI (Zone-II) Jodhpur	sushilsinghiipr@yahoo.co.in
	Dr Atar Singh	Director ATARI (Zone-III) Kanpur	zpdicarkanpur@gmail.com
ICAR - IASRI	Dr Rajender Parsad	Director	rajender.parsad@icar.gov.in

GIS Maps of fire events can be visualized online on ICAR KRISHI Geoportal website: <http://geoportal.icar.gov.in:8080/geoexplorer/composer/>

(Part of KRISHI Portal: <https://krishi.icar.gov.in> initiative)

and on IARI CREAMS website (<http://creams.iari.res.in/cms2/index.php>)
