



**Bulletin
No. 32**

**Events Date:
16-Oct-2022**

**Issued on:
16-Oct-2022**



MONITORING PADDY RESIDUE BURNING IN INDIA USING SATELLITE REMOTE SENSING DURING 2022



Prepared by:

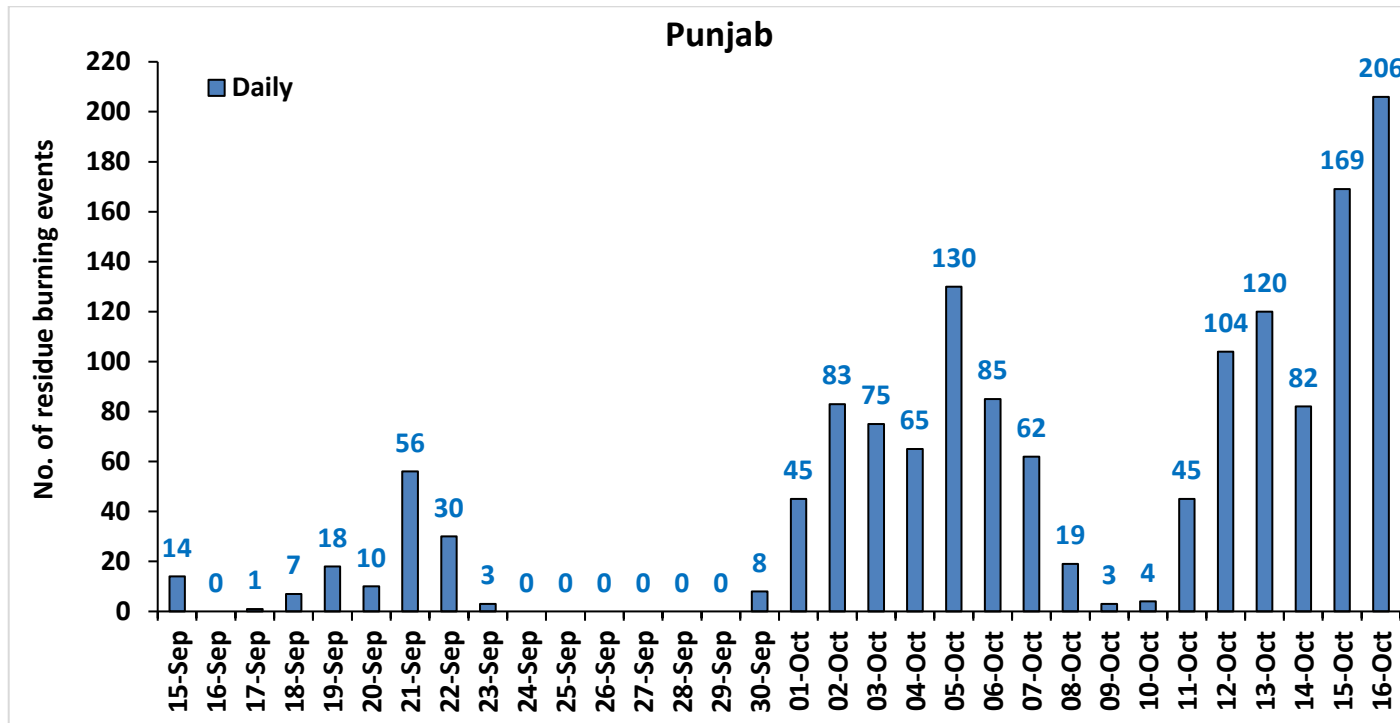
**Consortium for Research on Agroecosystem Monitoring and Modeling from Space (CREAMS) Laboratory,
Division of Agricultural Physics, ICAR – Indian Agricultural Research Institute, New Delhi – 110012**

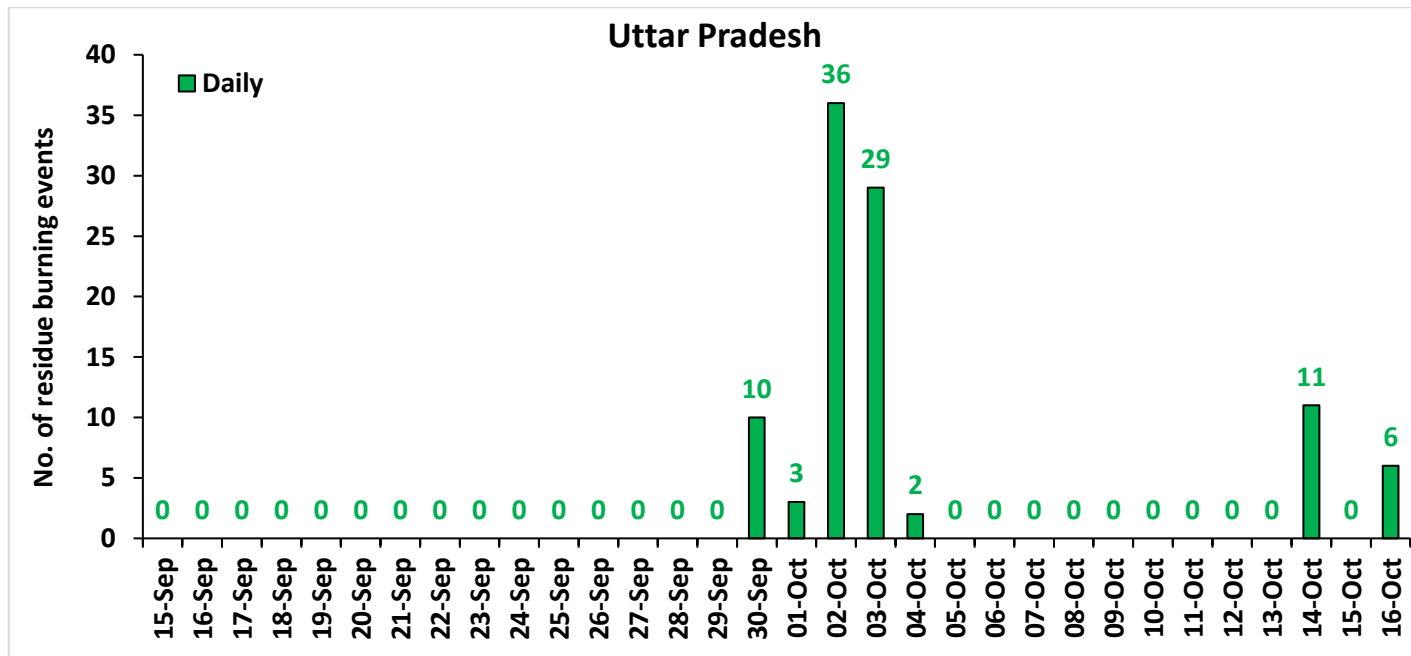
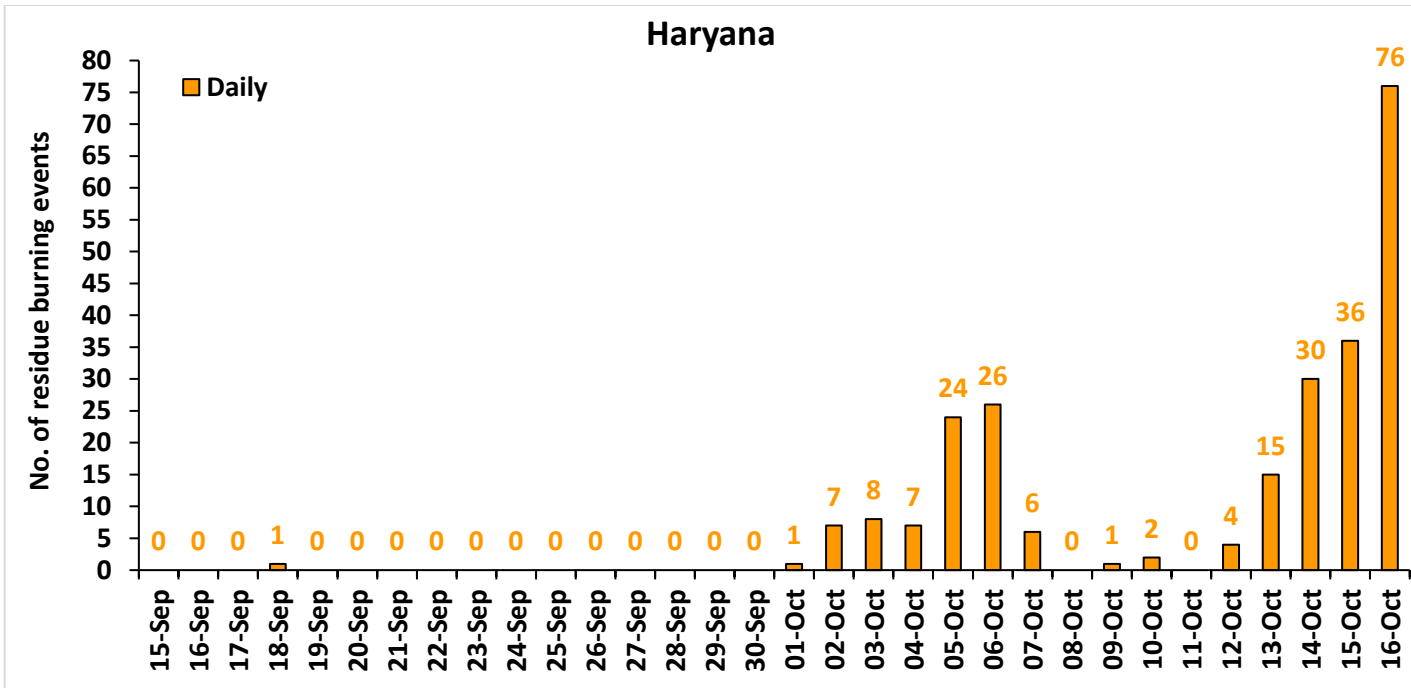
<http://creams.iari.res.in>

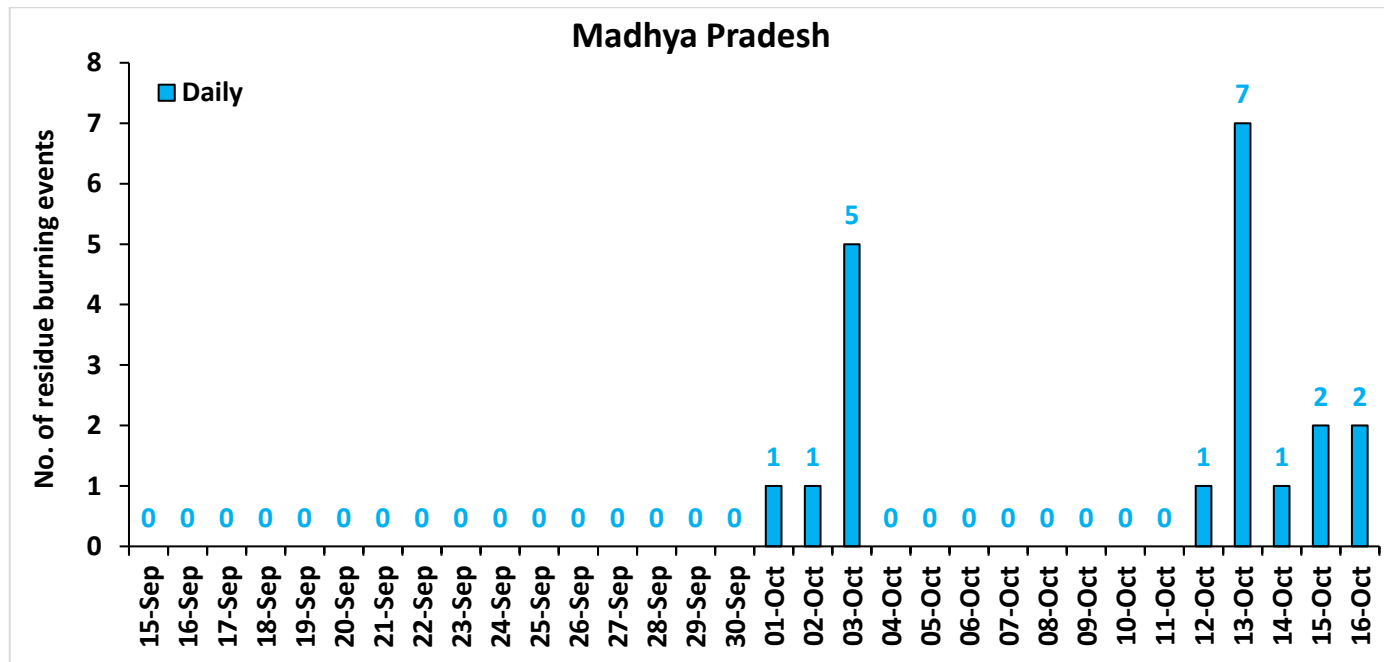
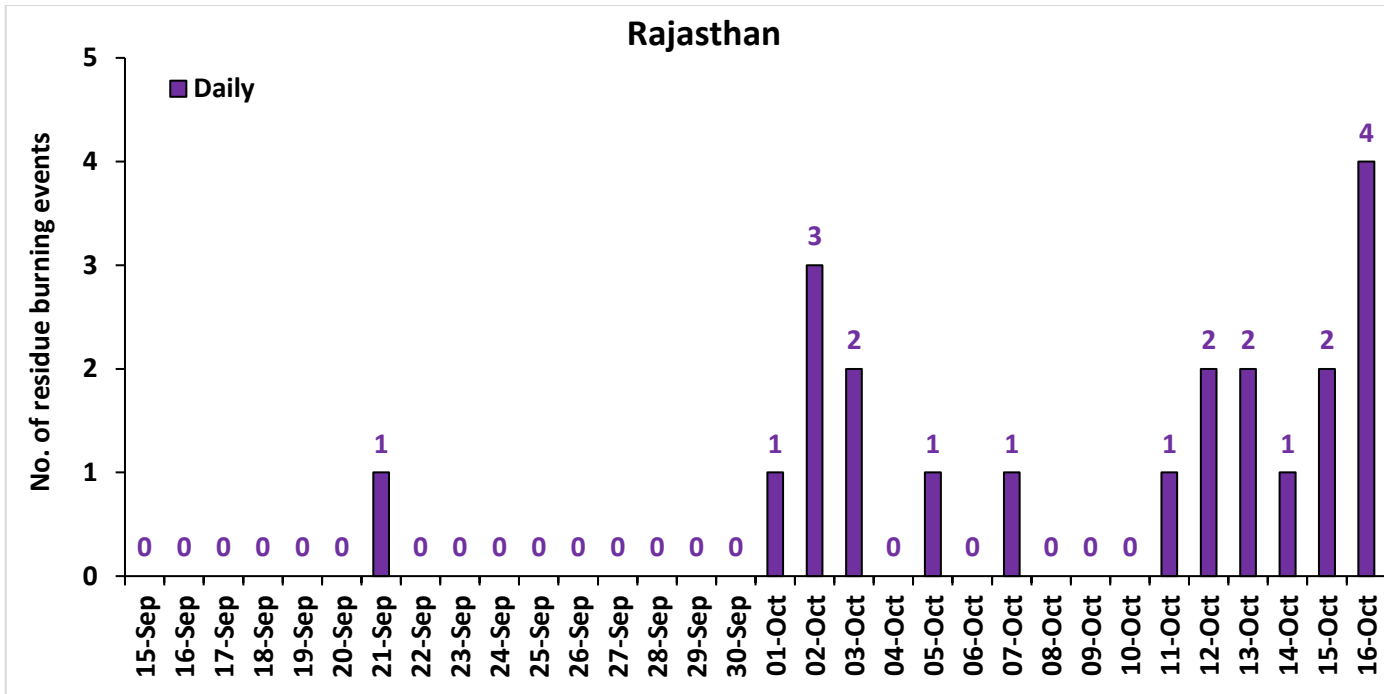
Highlights for 16-Oct-2022

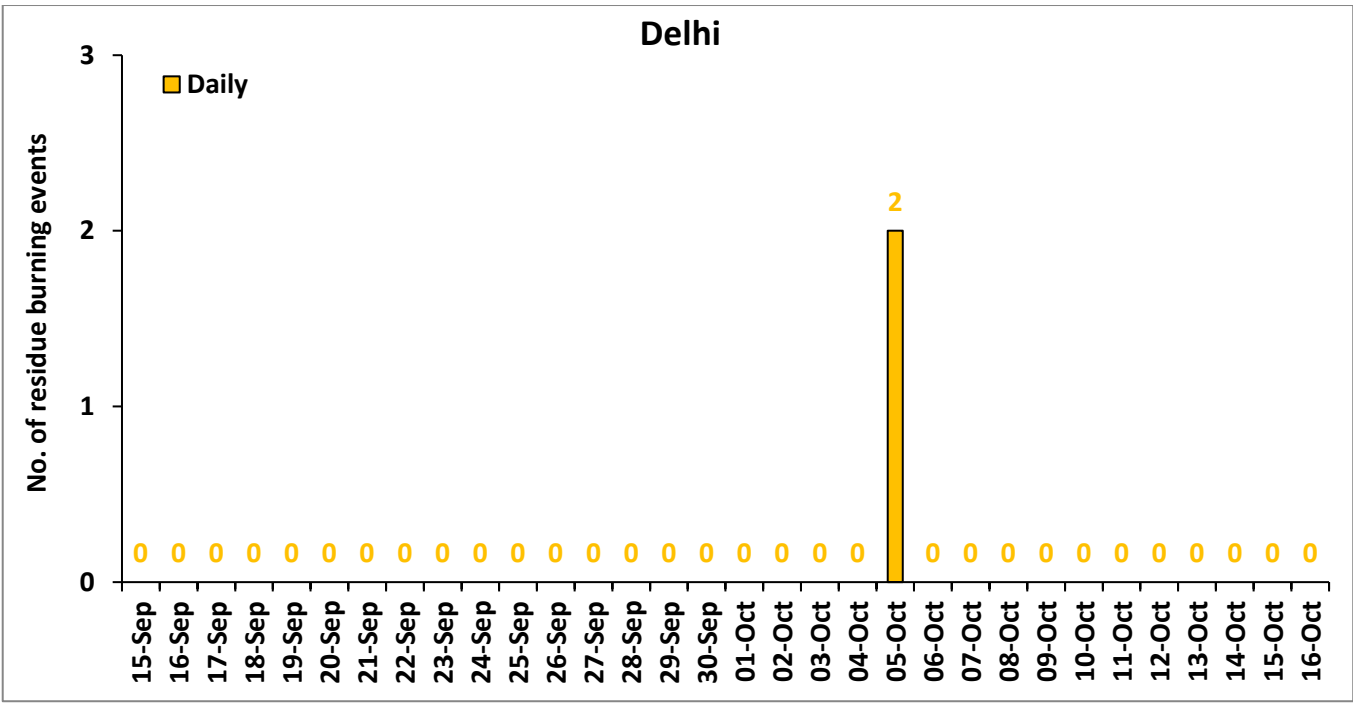
- The active fire events due to rice residue burning were monitored using satellite remote sensing, following the "Standard Protocol for Estimation of Crop Residue Burning Fire Events using Satellite Data".
- Satellites detected **294** residue burning events in the six study States on 16-Oct-2022.
- The state wise events detected on 16-Oct-2022 were **206** in Punjab, **76** in Haryana, **6** in UP, **0** in Delhi, **4** in Rajasthan and **2** in MP.
- Total **1828** burning events were detected in the six states between 15-Sept-2022 and 16-Oct-2022, which are distributed as **1444**, **244**, **97**, **2**, **21** and **20** in Punjab, Haryana, UP, Delhi, Rajasthan and MP, respectively.
- Detection of fire events was hampered by the presence of cloud over eastern Madhya Pradesh.

Temporal distribution of rice residue burning events for the study States in 2022

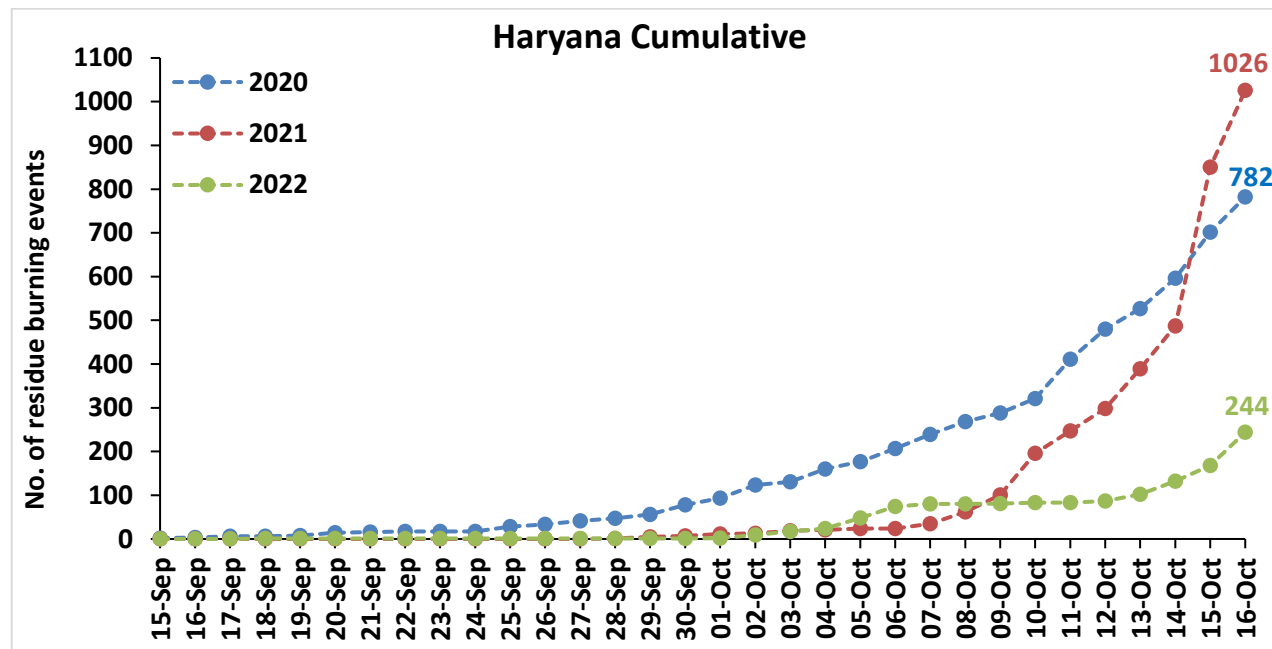
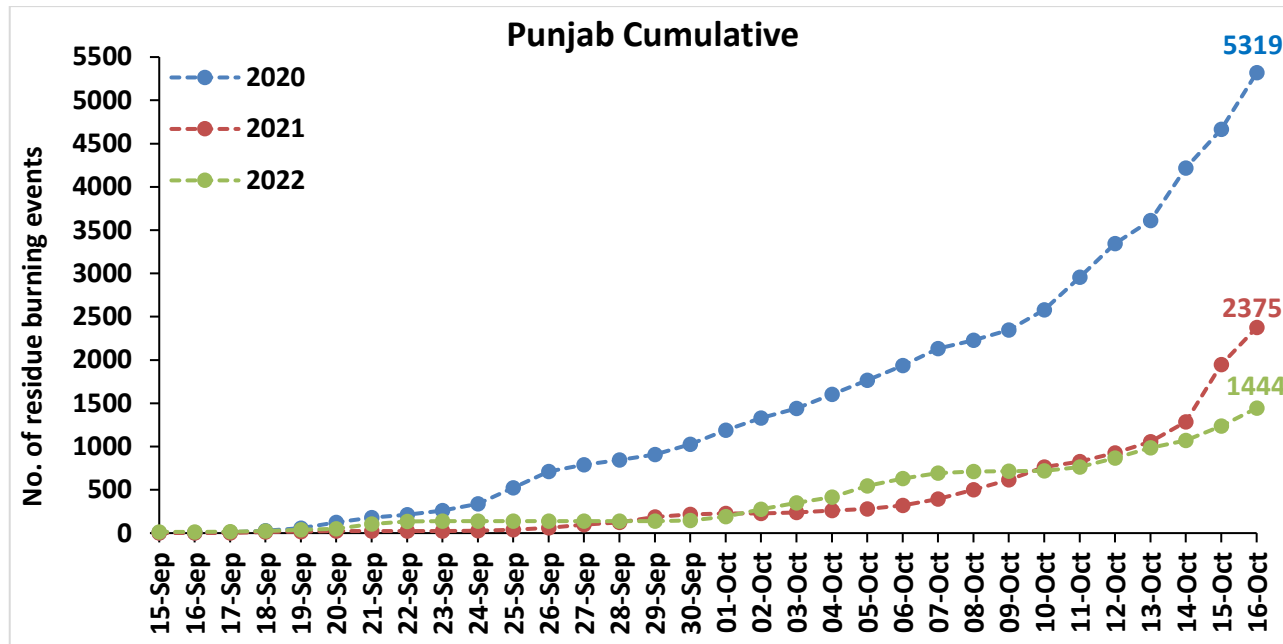


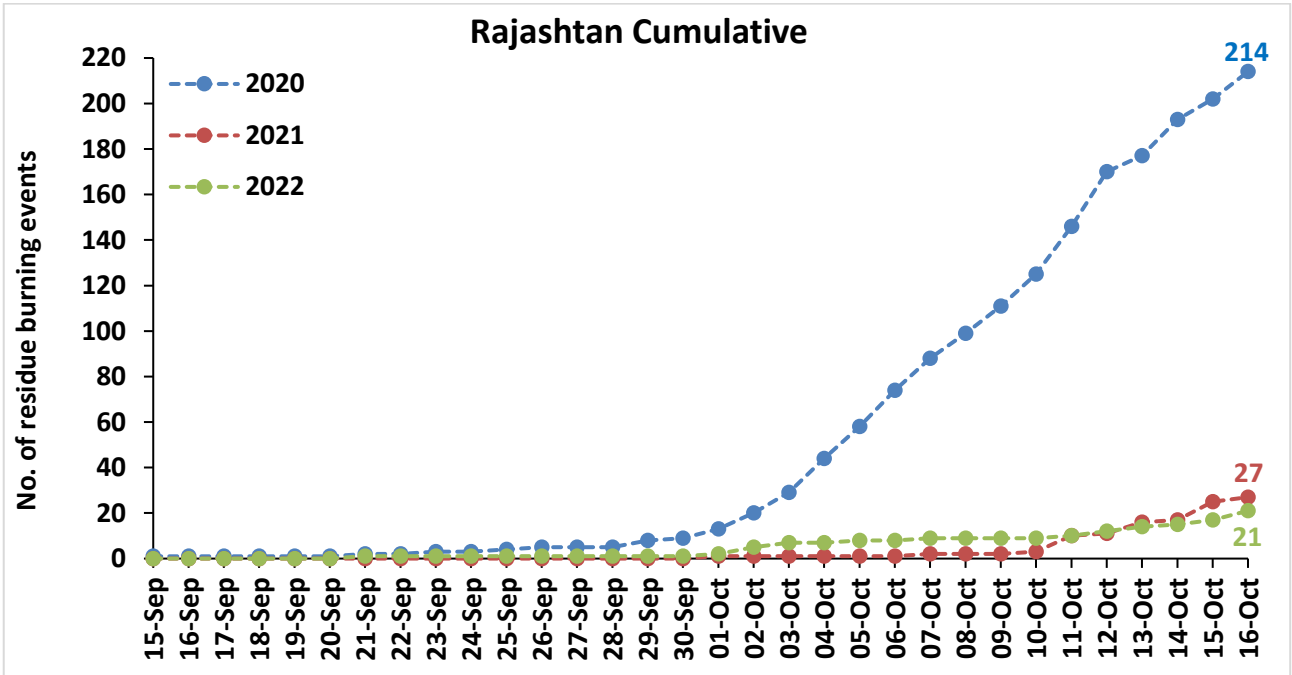
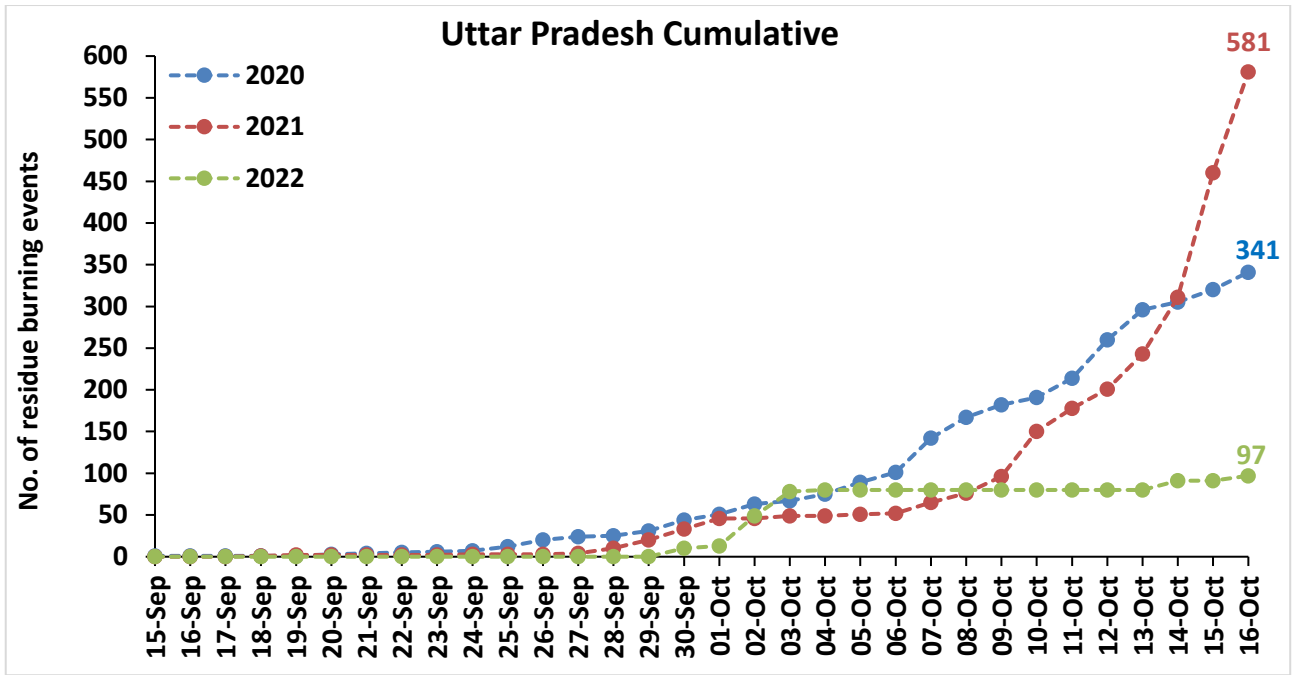


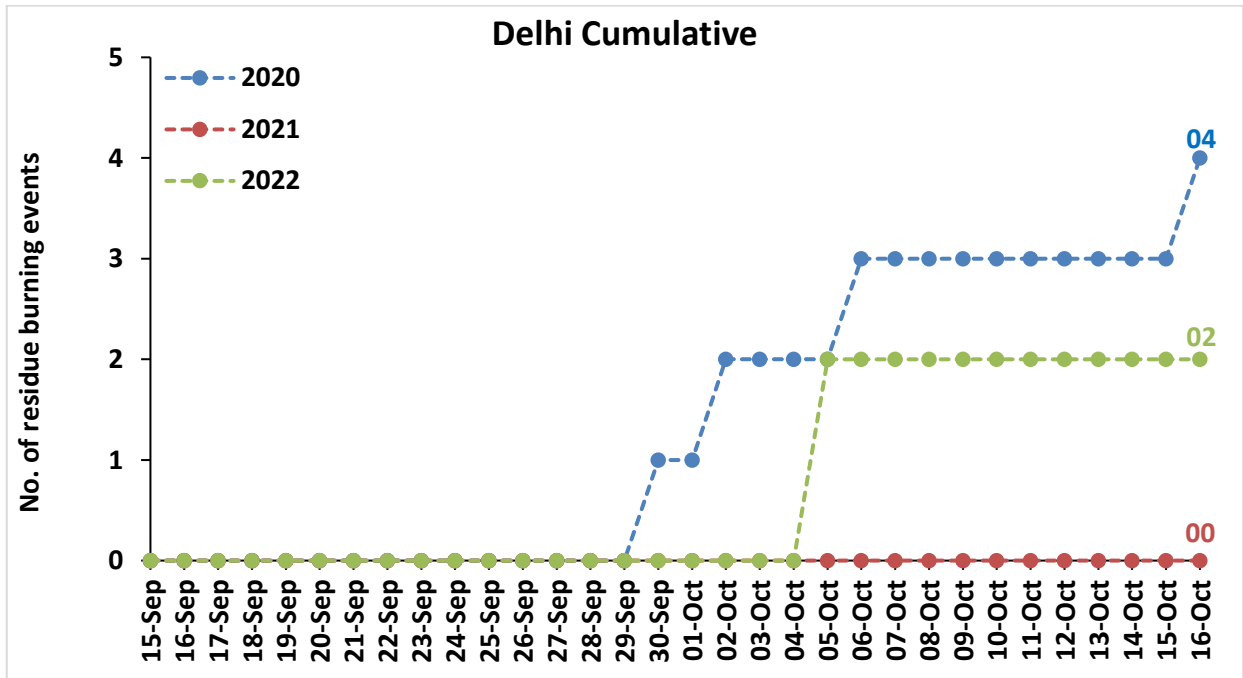
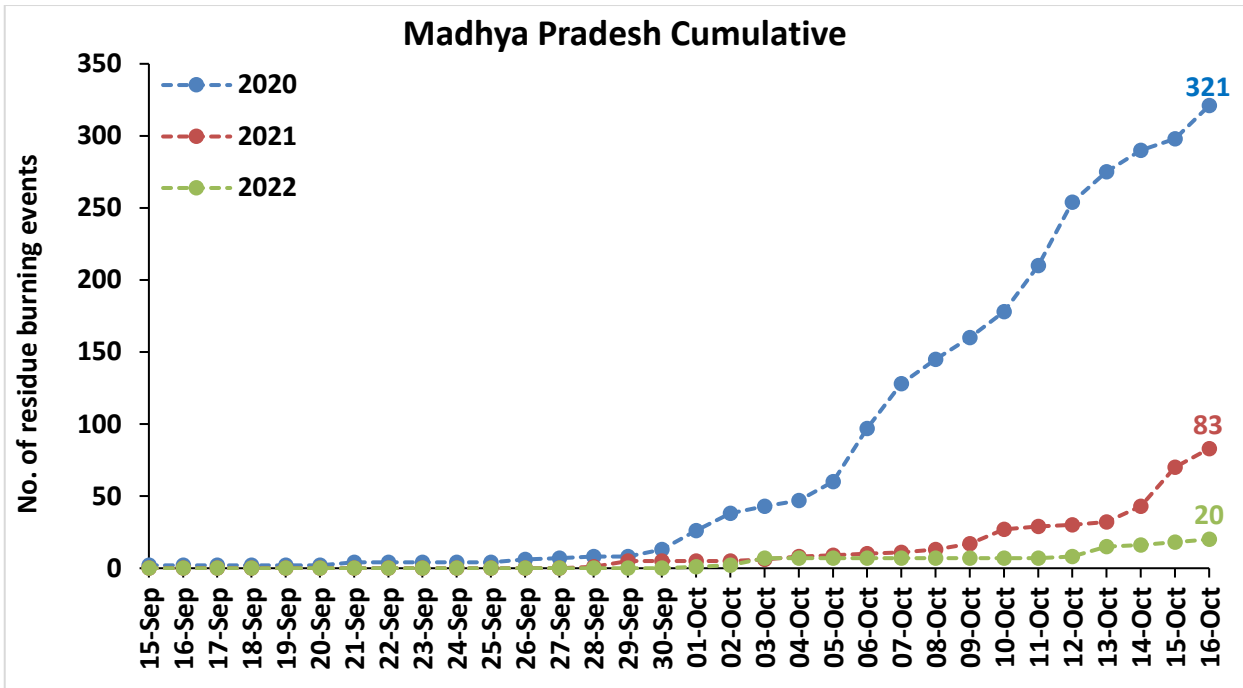




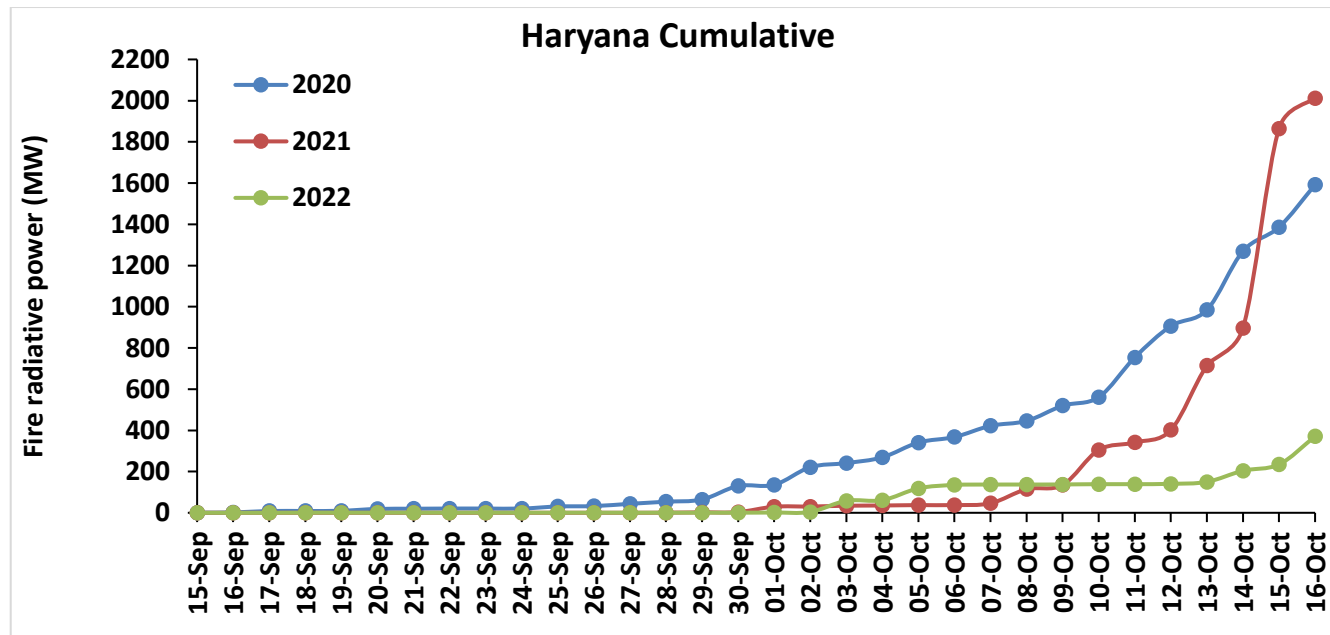
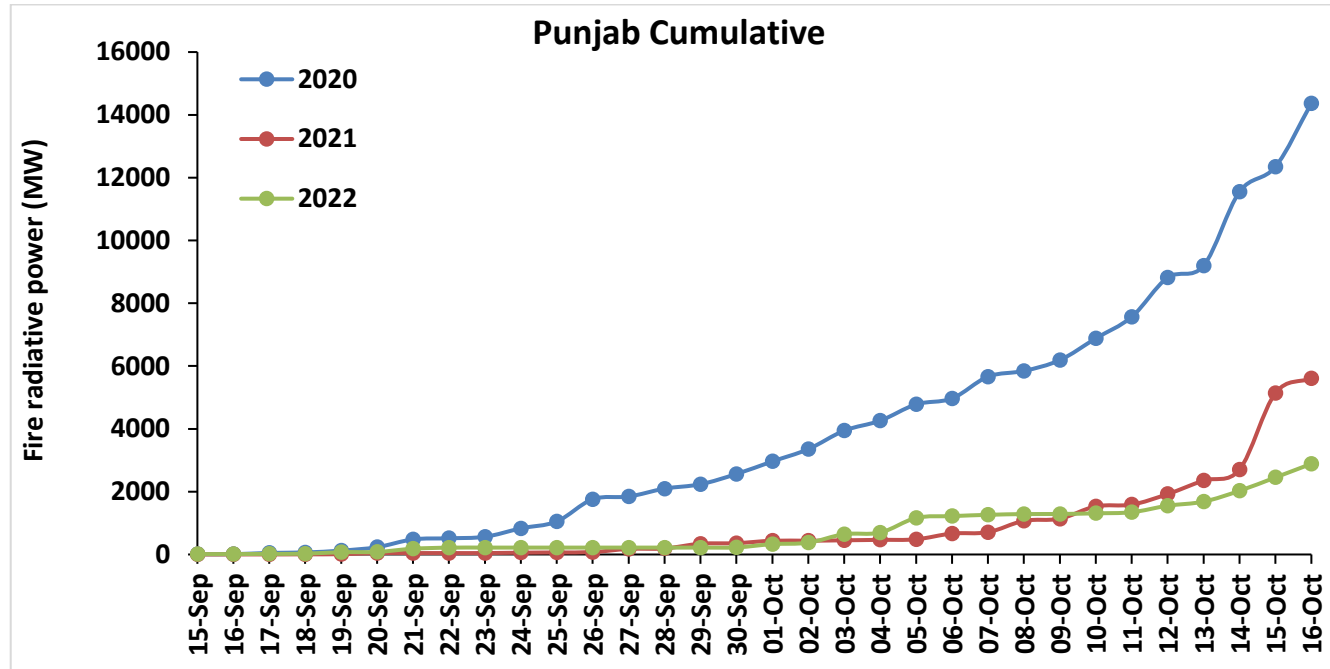
Comparison of residue burning events in current year (2022) with previous years (2020 and 2021) for the study States

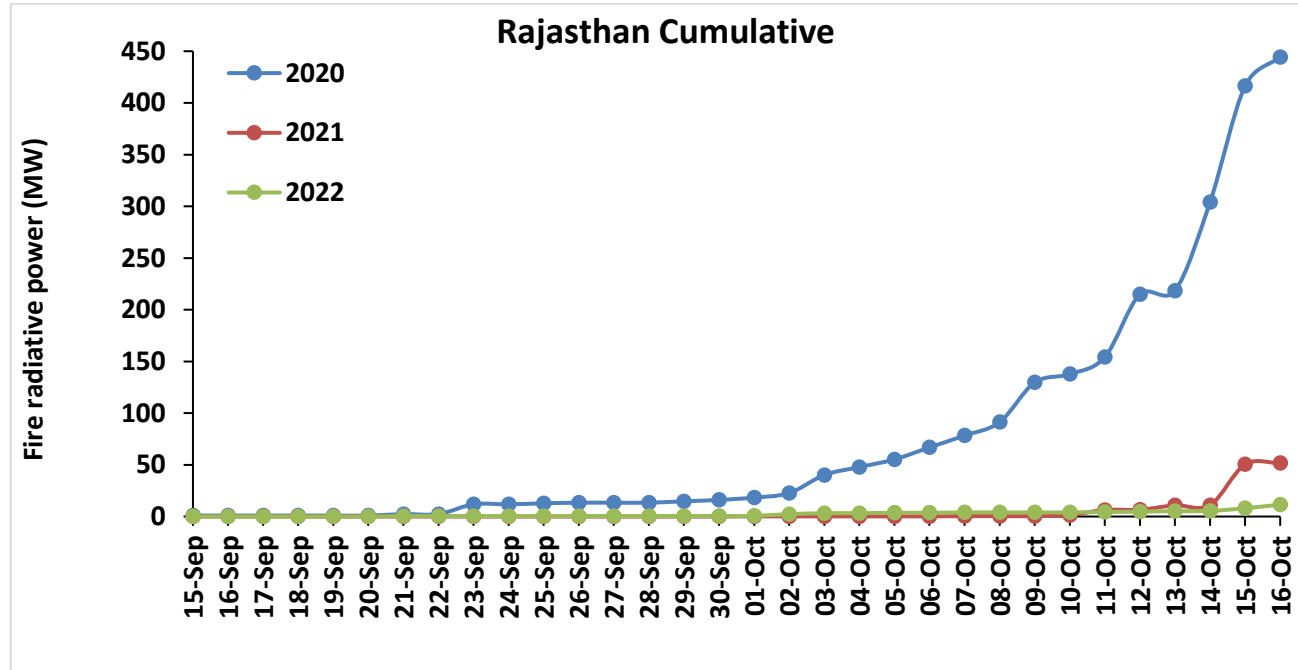
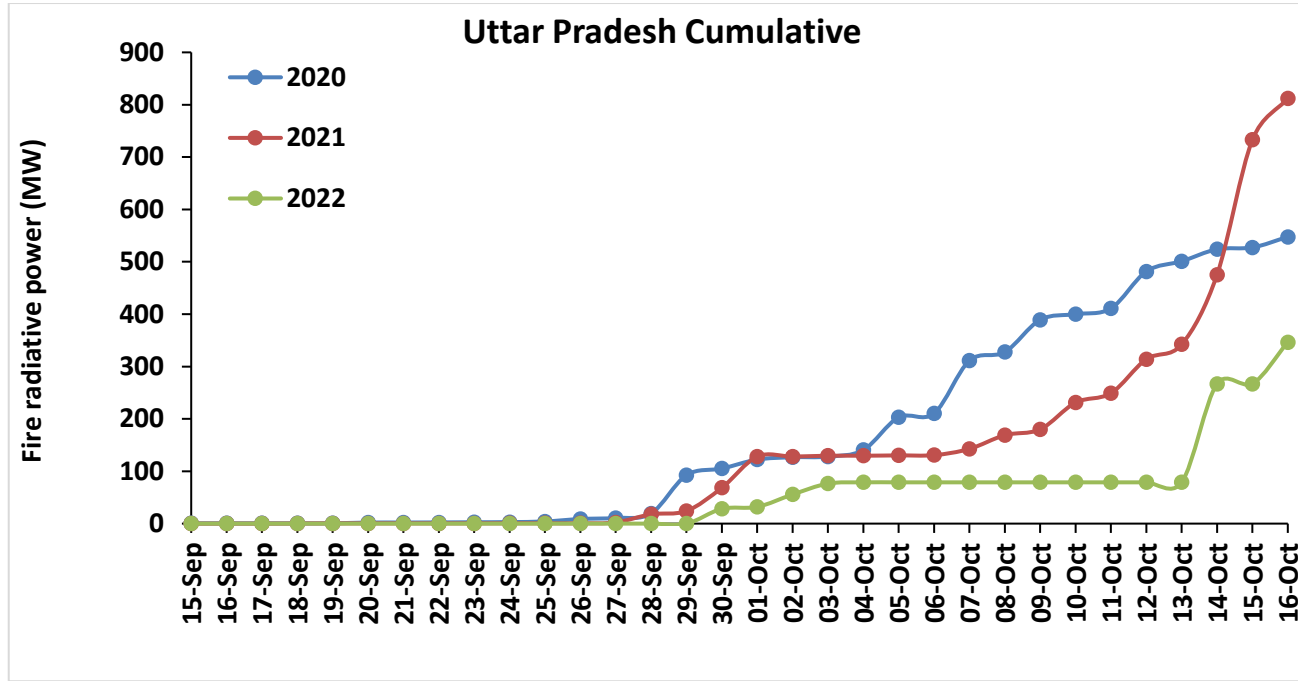


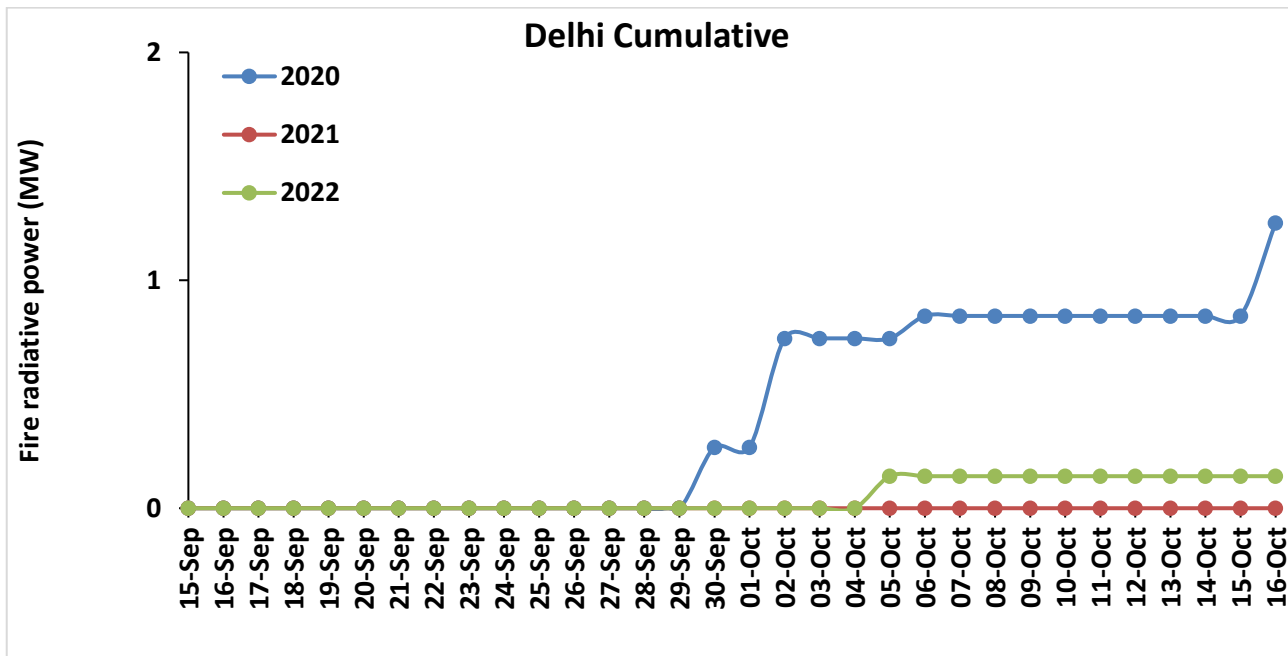
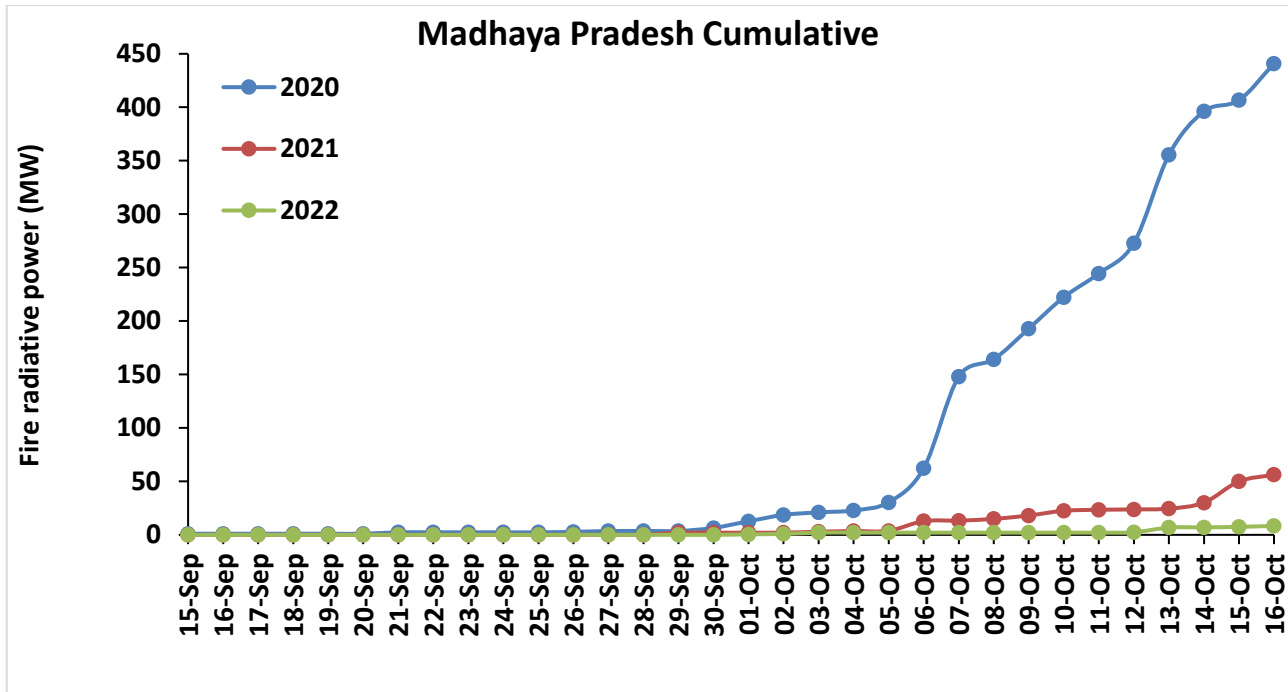




Comparison of residue burning fire power in current year (2022) with previous years (2021 and 2020) for the study States

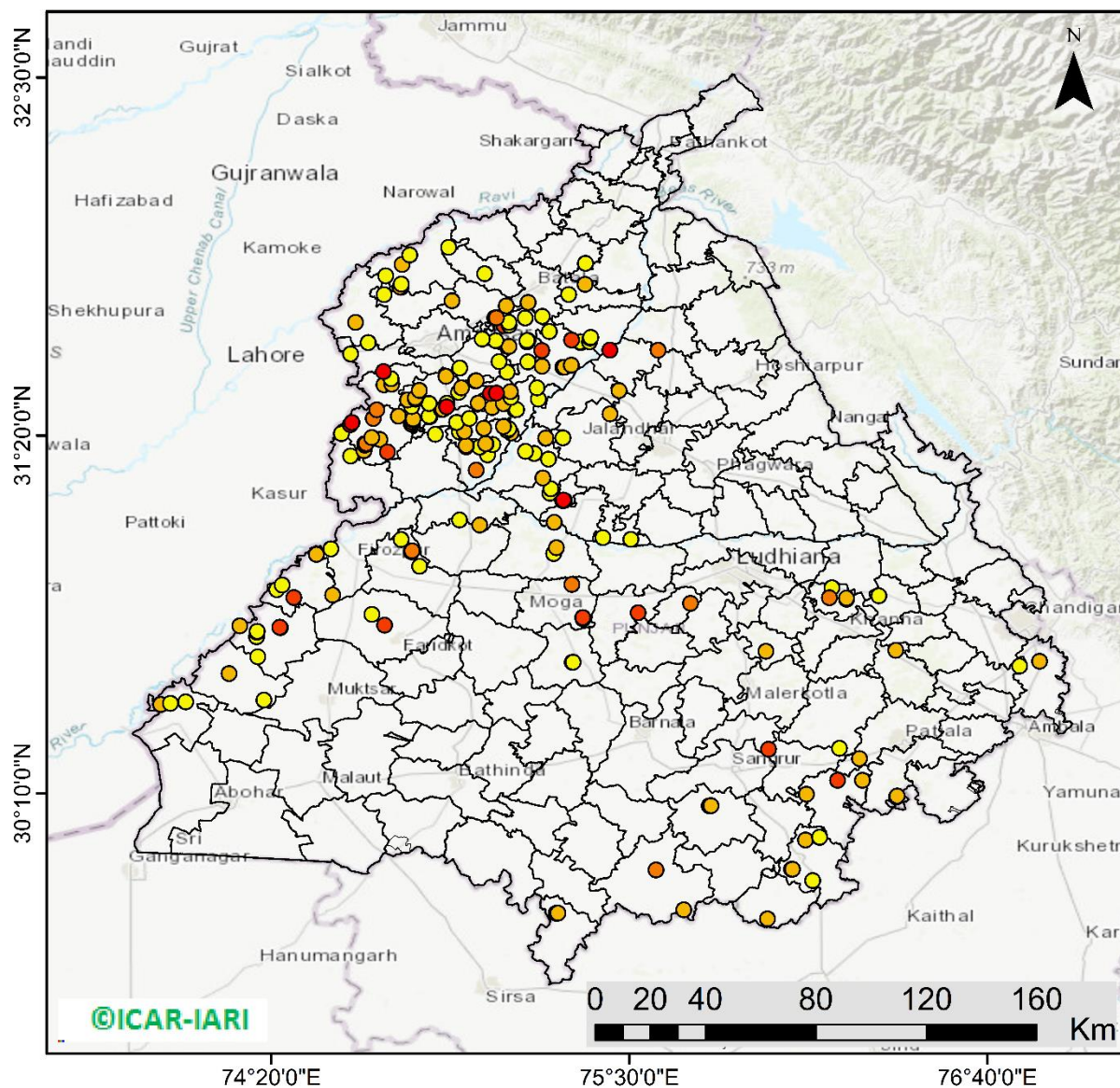






Punjab

RICE RESIDUE BURNING IN PUNJAB



206 burning events detected in Punjab during (16th Oct 2022)

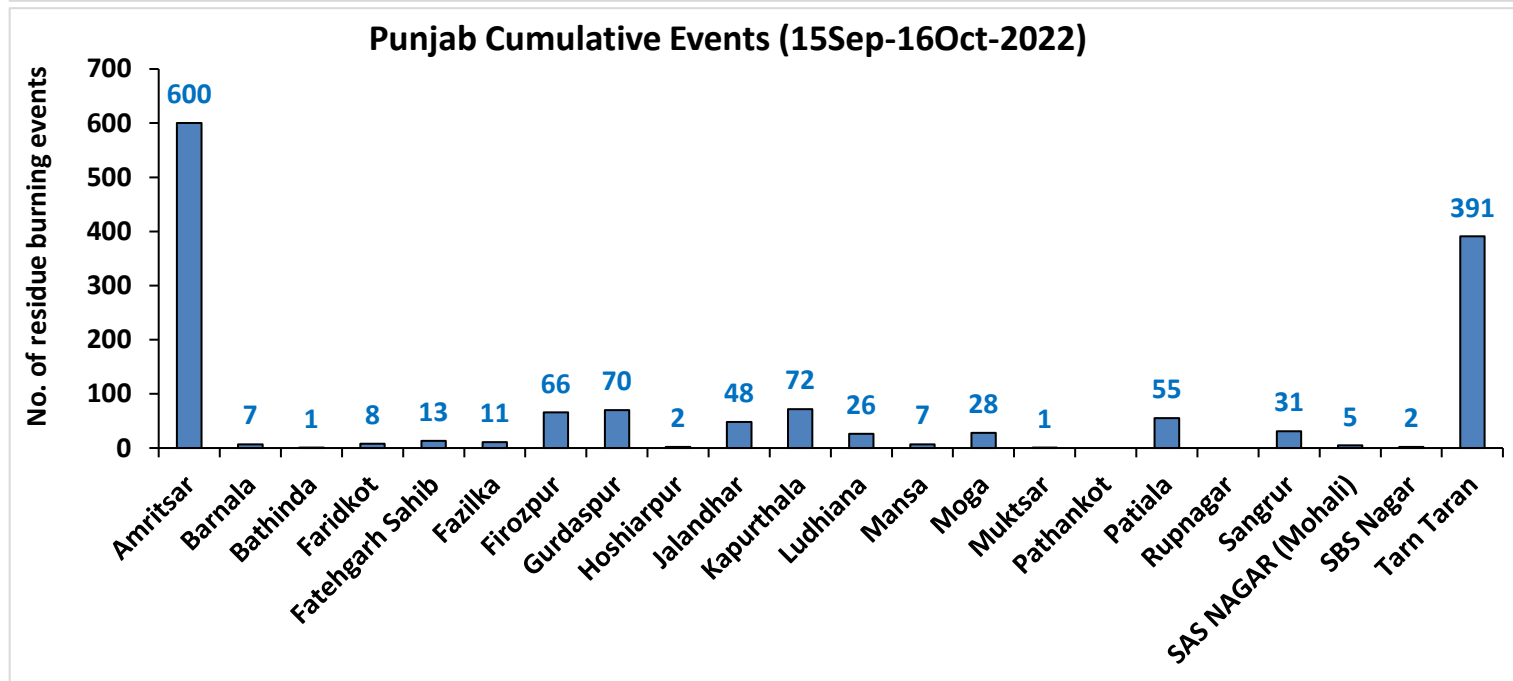
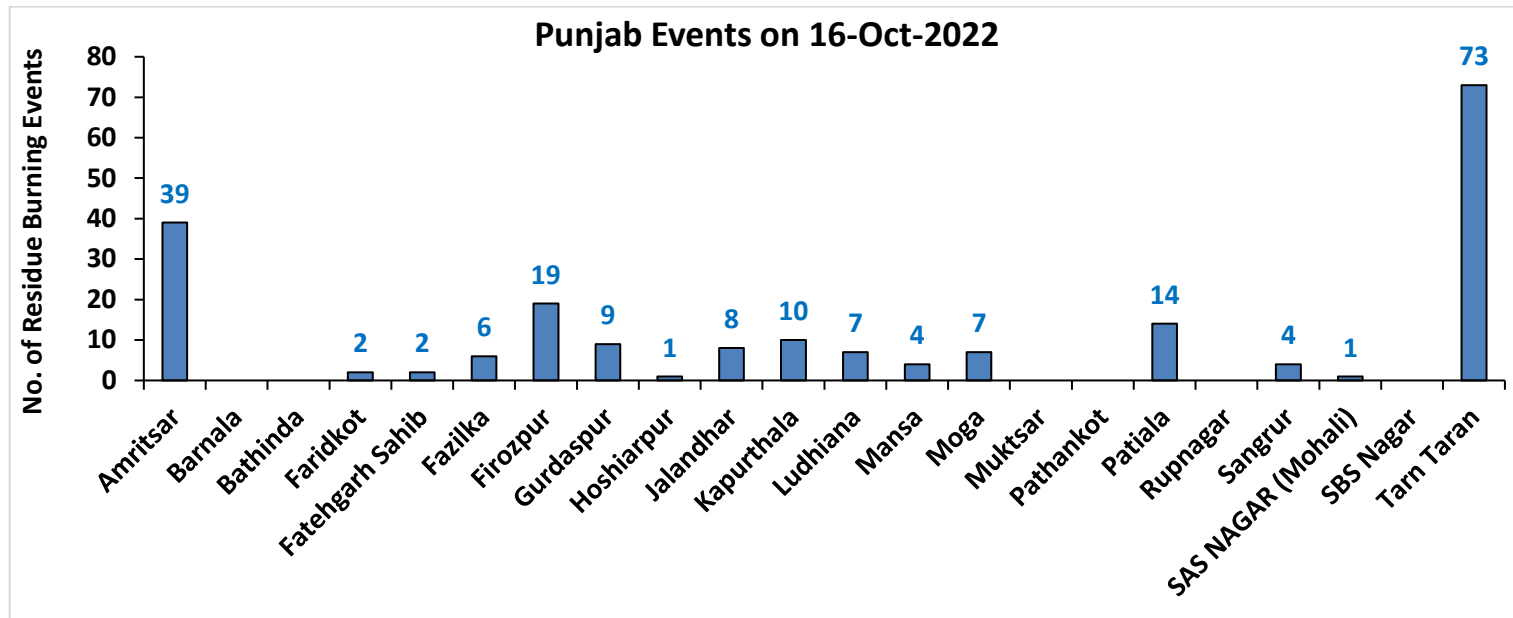
Fire Intensity (W/m²)

- 0 - 5
- 6 - 10
- 11 - 15
- 16 - 20
- >20



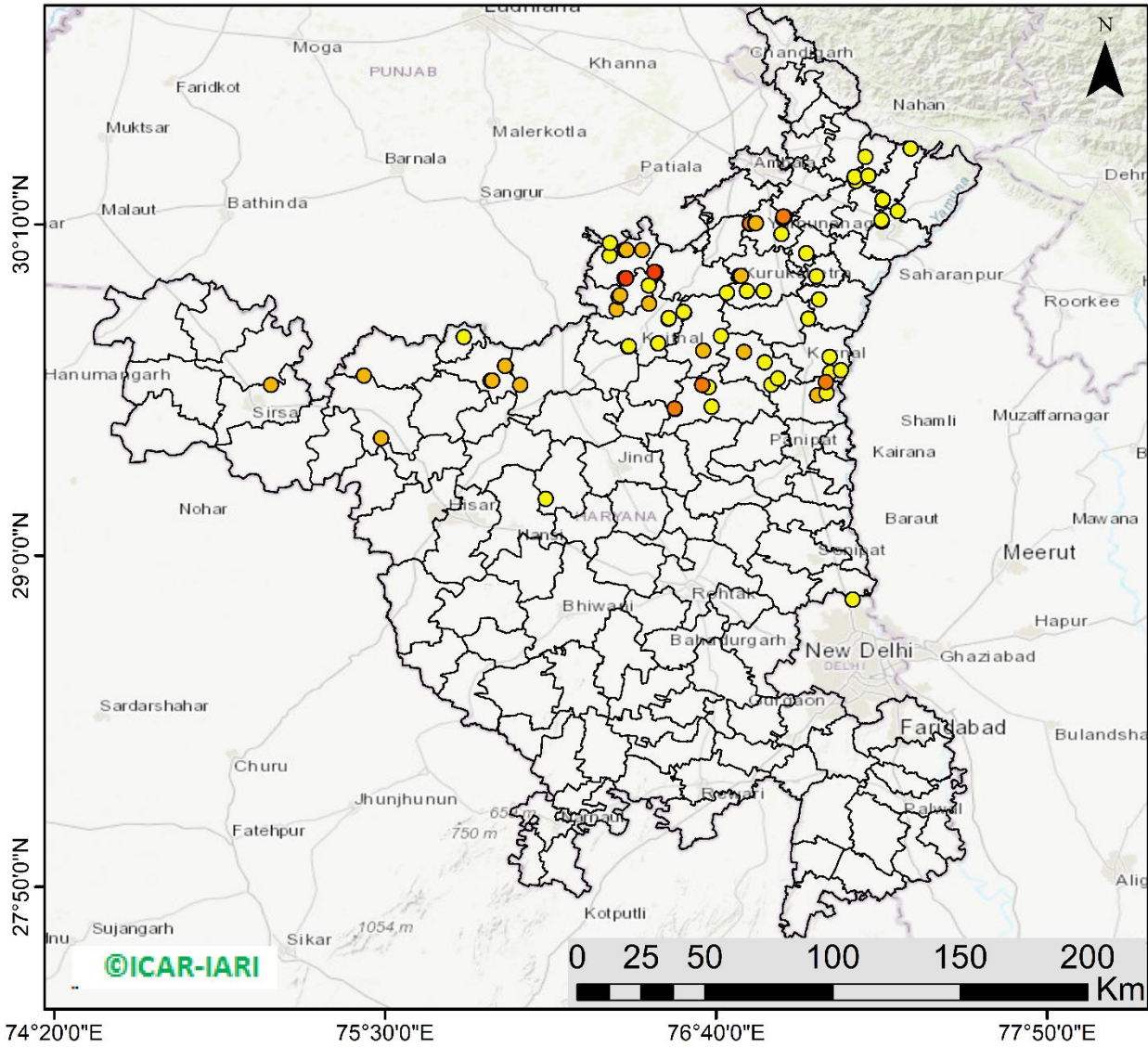
<http://geoportal.icar.gov.in:8080/geoexplorer/composer/>

District-wise cumulative number of residues burning events in Punjab (15Sep- 16Oct-2022)



Haryana

RICE RESIDUE BURNING IN HARYANA



76 burning events detected in Haryana on (16th Oct 2022)

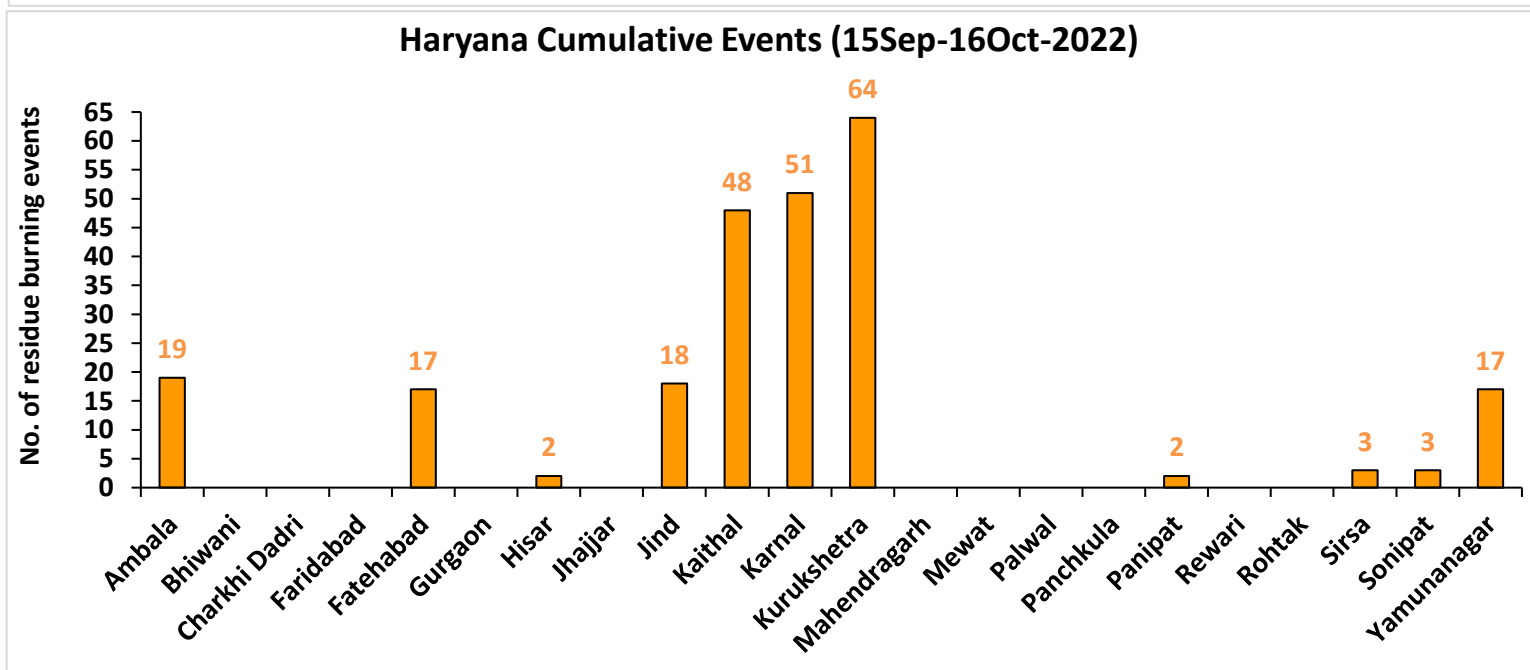
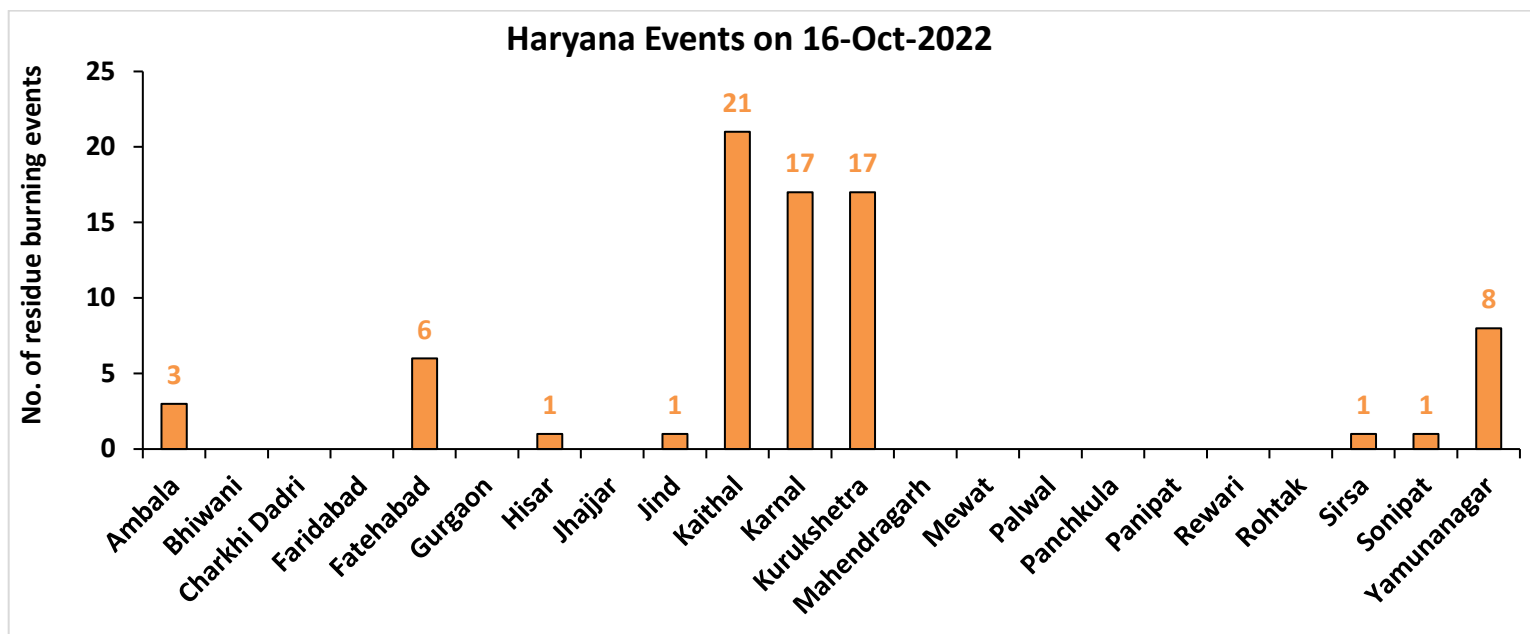
Fire Intensity (W/m²)

- 0 - 5
- 6 - 10
- 11 - 15
- 16 - 20
- >20



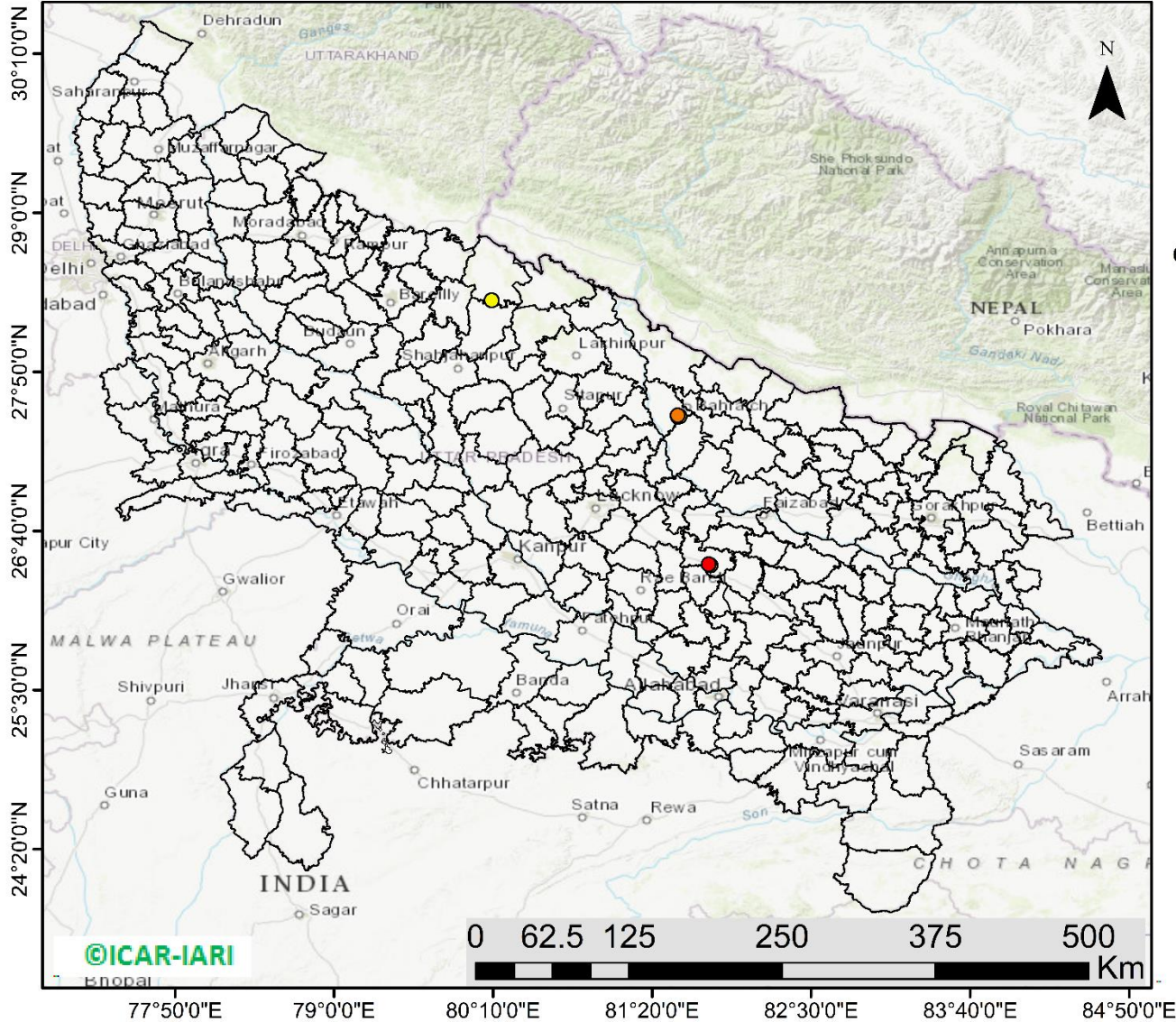
<http://geoportal.icar.gov.in:8080/geoexplorer/composer/>

District-wise cumulative number of residues burning events in Haryana (15Sep- 16Oct-2022)



Uttar Pradesh

RICE RESIDUE BURNING IN UTTAR PRADESH



06 burning events detected in Uttar Pradesh on (16th Oct 2022)

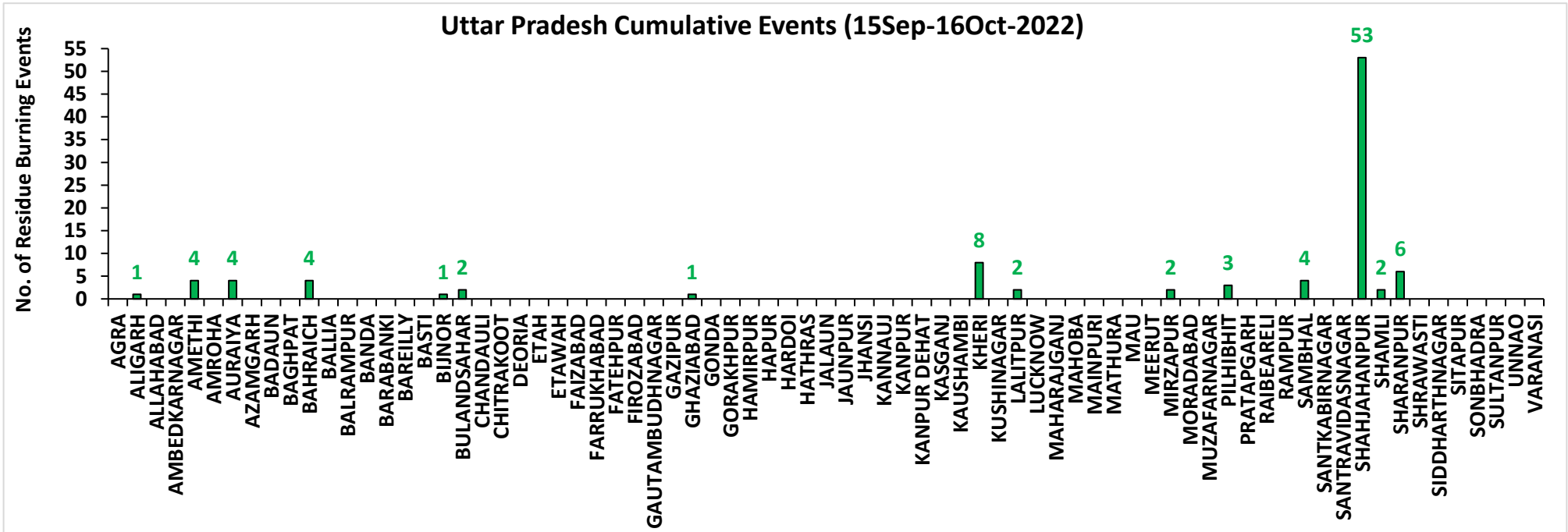
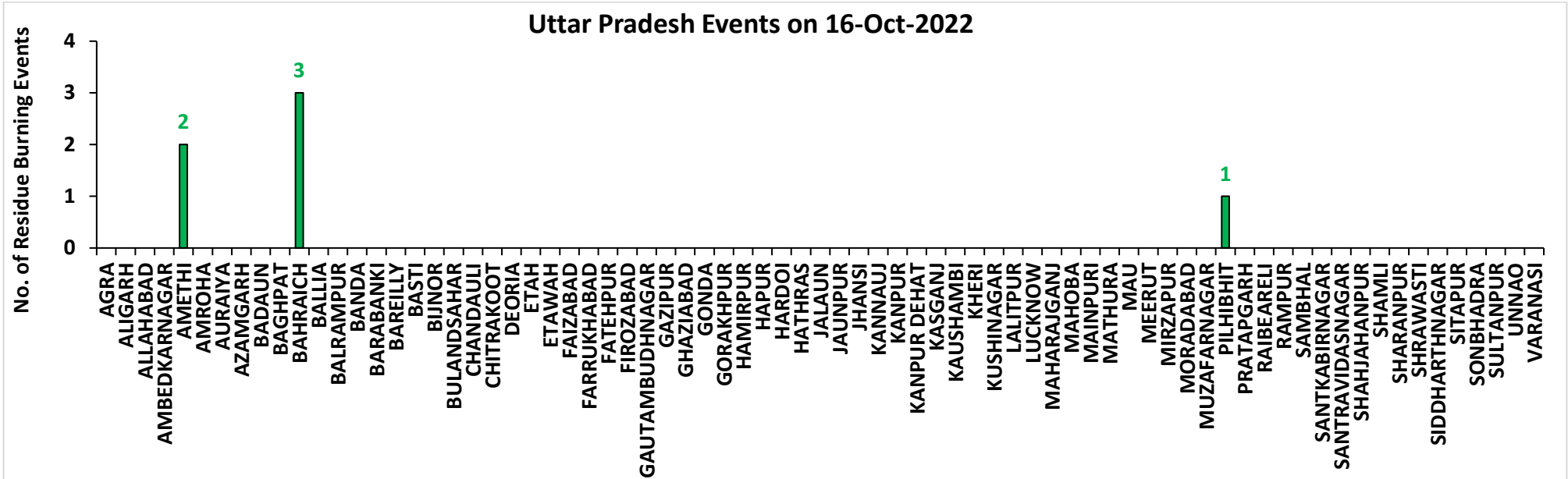
Fire Intensity (W/m2)

- 0 - 5
- 6 - 10
- 11 - 15
- 16 - 20
- >20



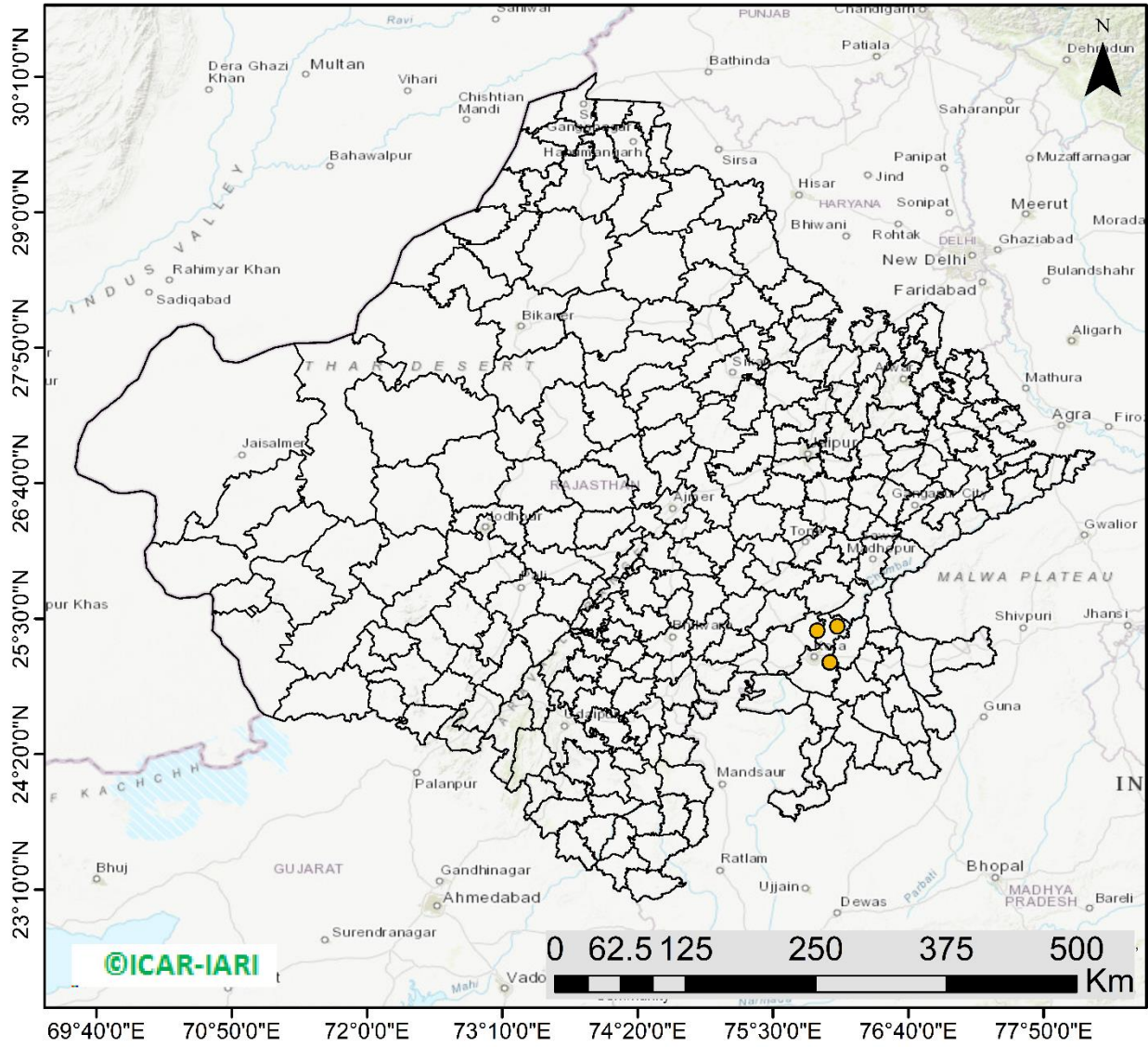
<http://geoportal.icar.gov.in:8080/geoexplorer/composer/>

District-wise cumulative number of residues burning events in Uttar Pradesh (15Sep- 16Oct -2022)



Rajasthan

RICE RESIDUE BURNING IN RAJASTHAN



04 burning events detected in Rajasthan on (16th Oct 2022)

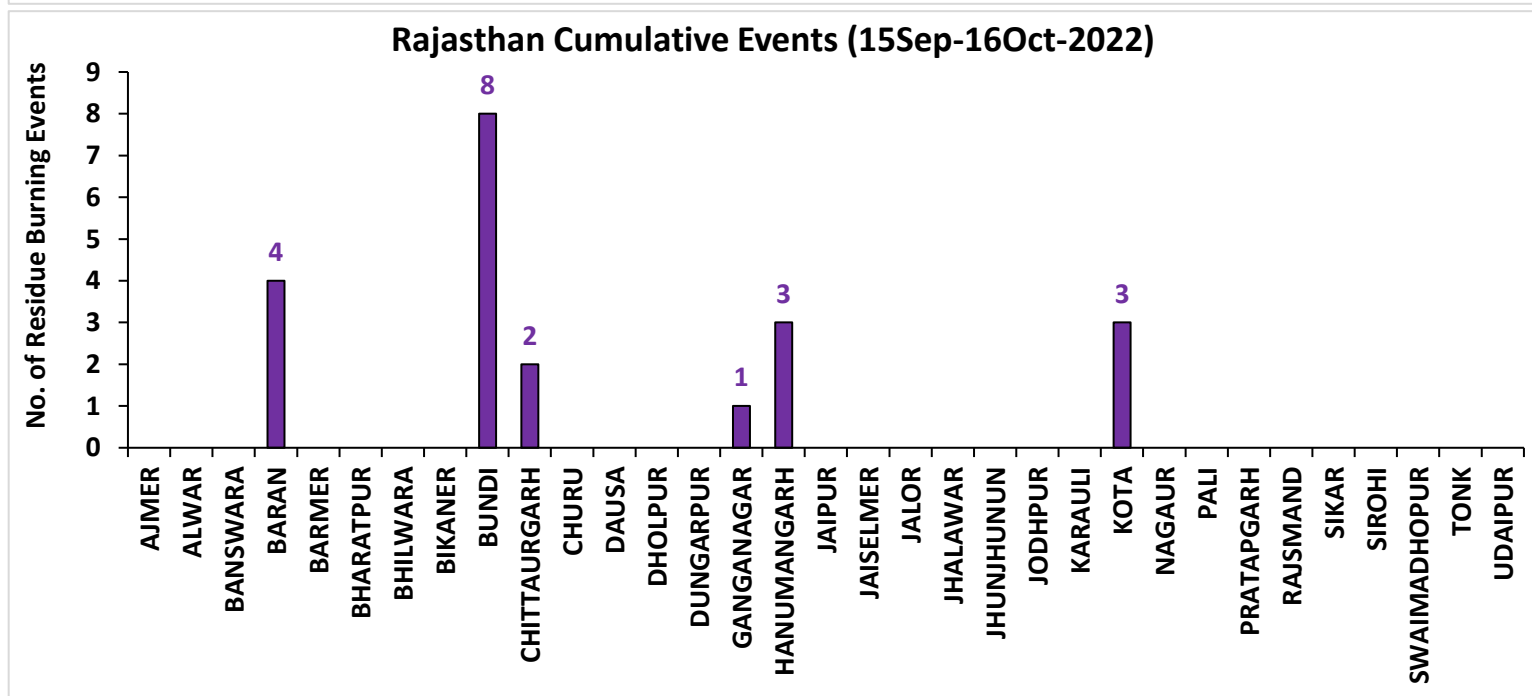
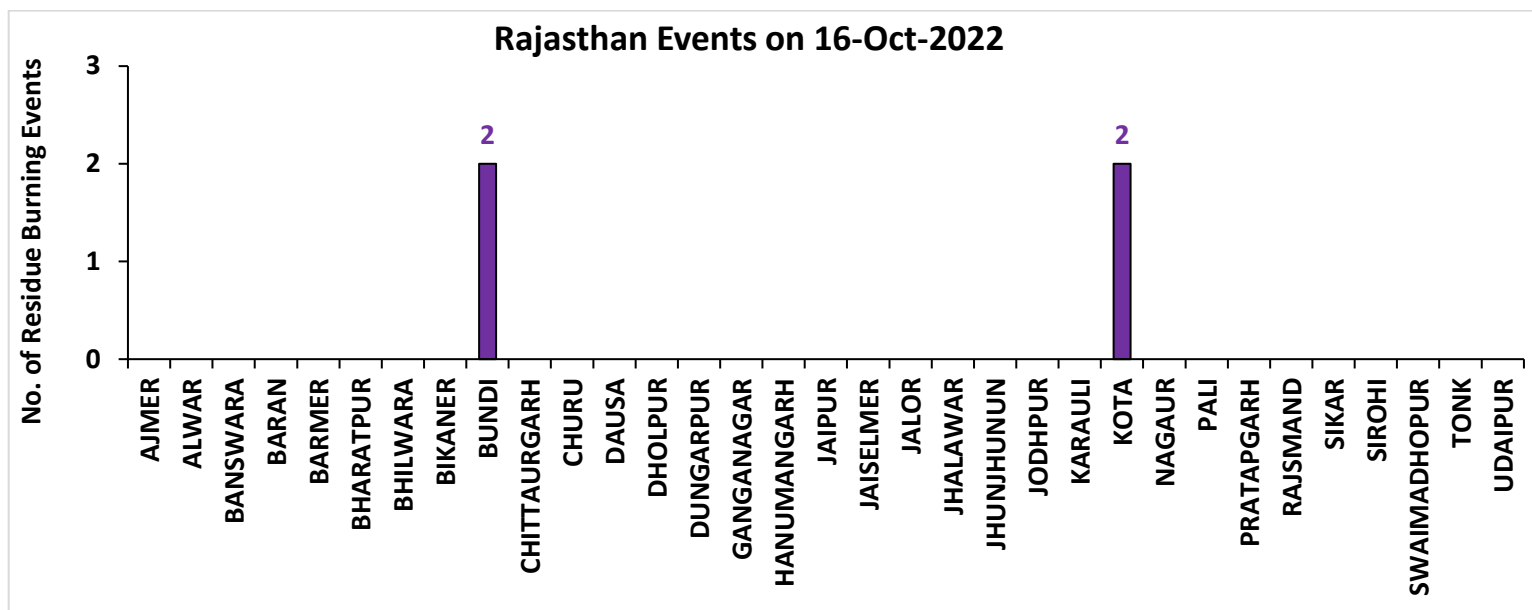
Fire Intensity (W/m²)

- 0 - 5
- 6 - 10
- 11 - 15
- 16 - 20
- >20



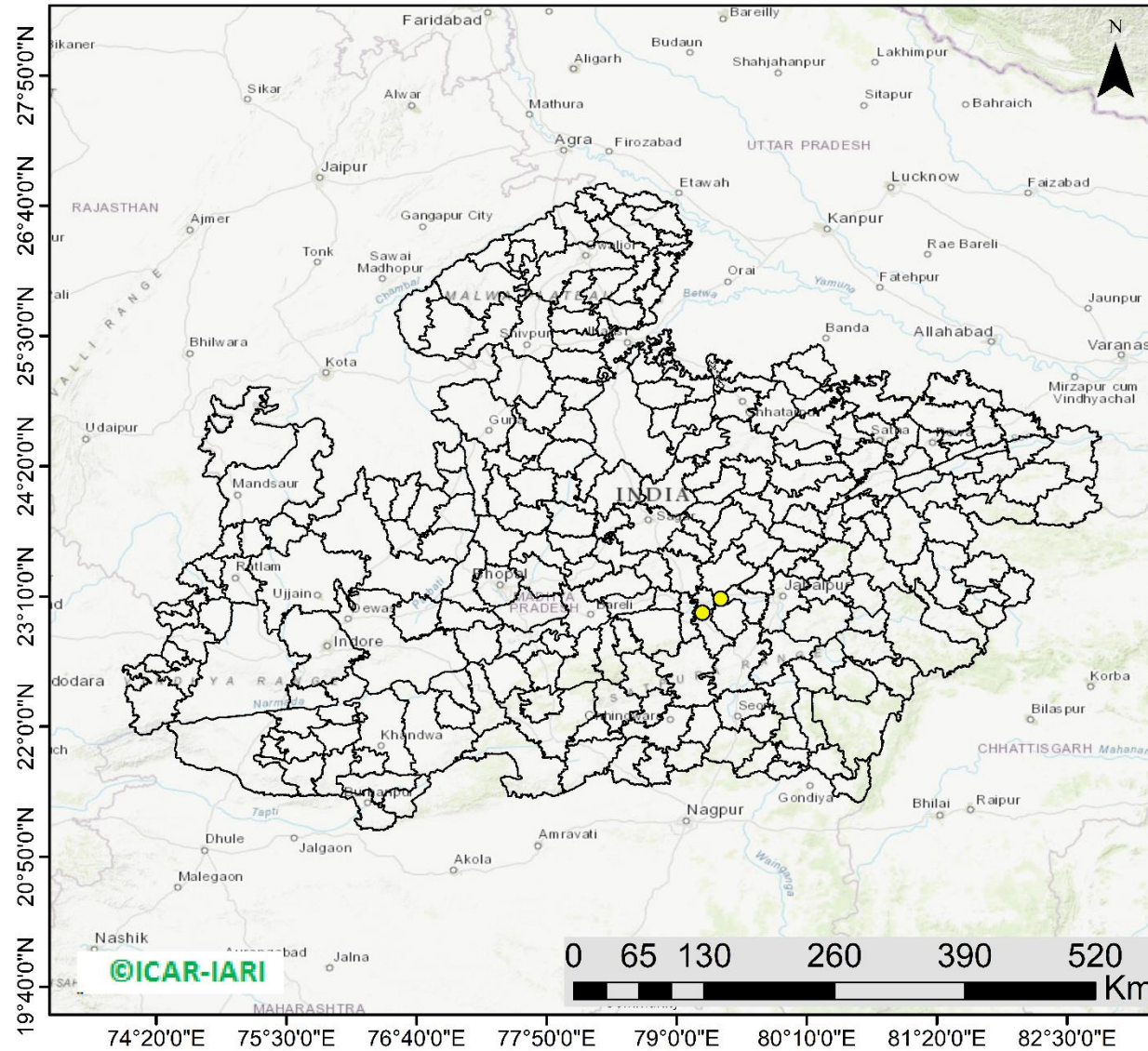
<http://geoportal.icar.gov.in:8080/geoexplorer/composer/>

District-wise cumulative number of residues burning events in Rajasthan (15Sep- 16Oct -2022)



Madhya Pradesh

RICE RESIDUE BURNING IN MADHYA PRADESH



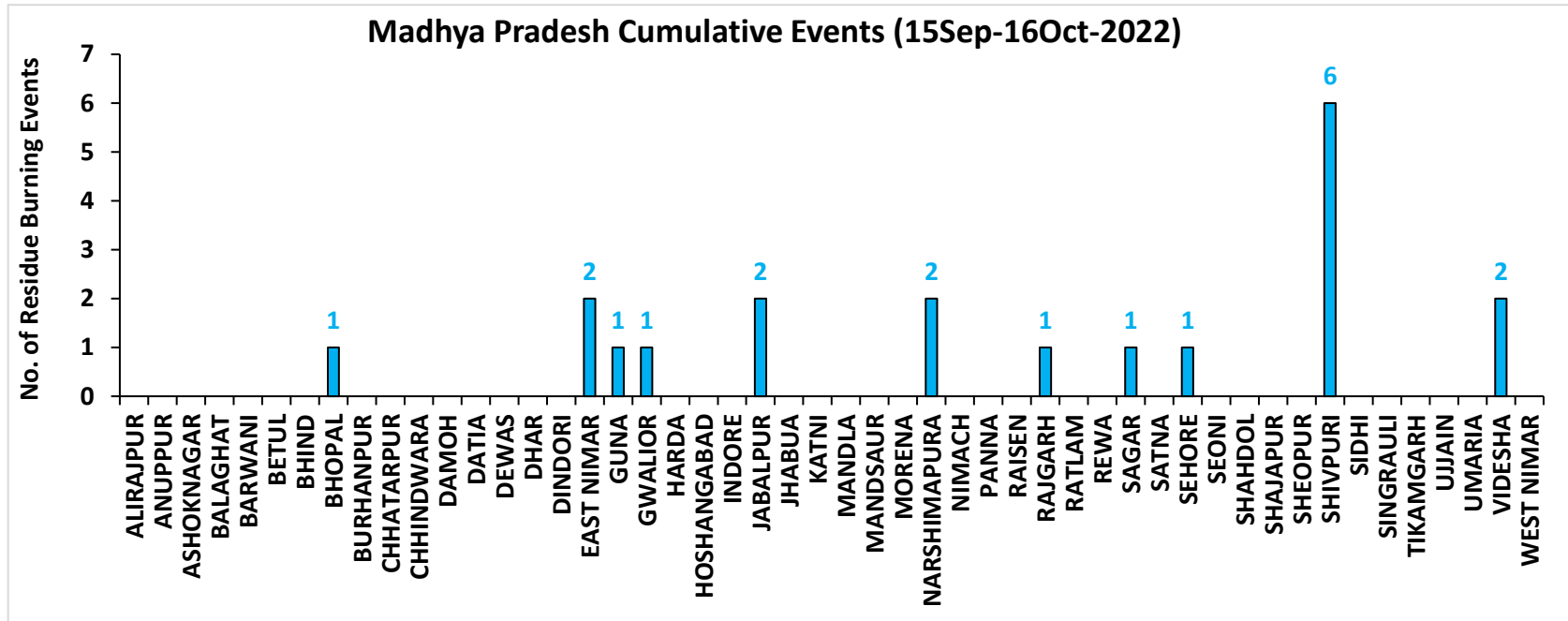
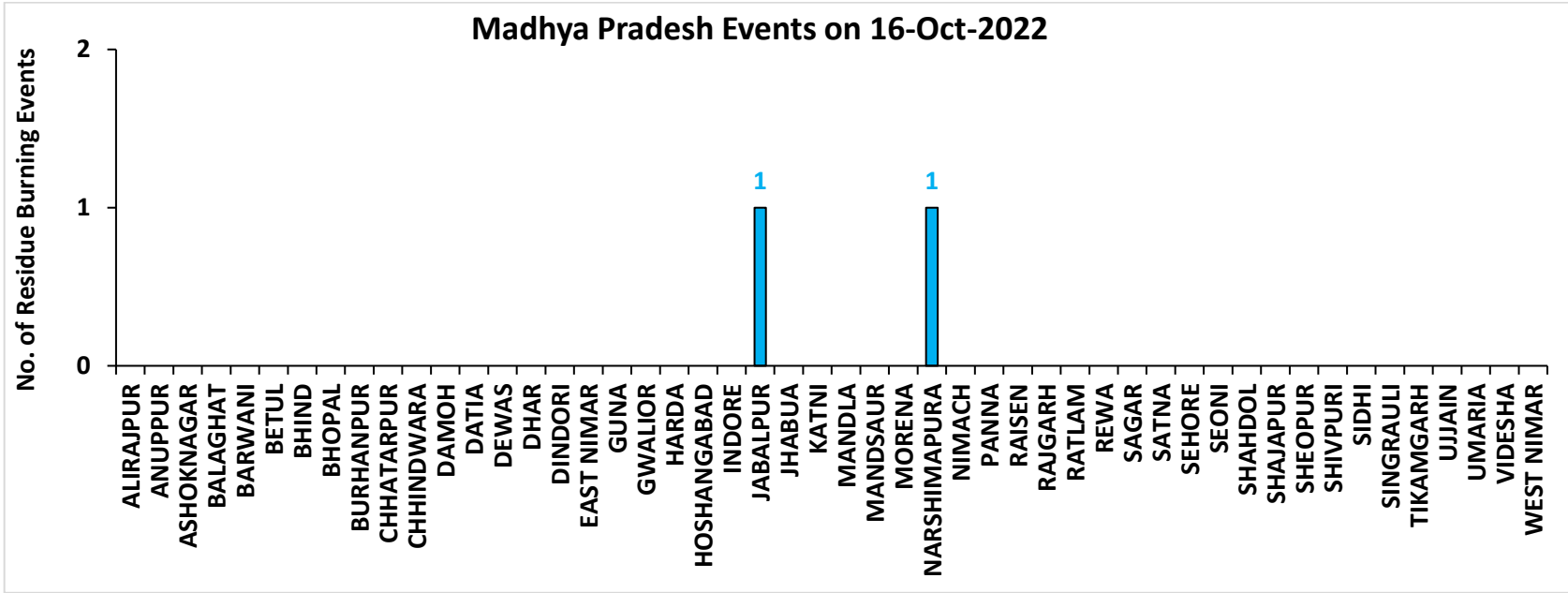
02 burning events detected in MP on (16th Oct 2022)

Fire Intensity (W/m²)

- 0 - 5
- 6 - 10
- 11 - 15
- 16 - 20
- >20

<http://geoportal.icar.gov.in:8080/geoexplorer/composer/>

District-wise cumulative number of residues burning events in Madhya Pradesh (15Sep- 16Oct -2022)



District-wise cumulative number of residues burning events detected in 2020 ,2021 and 2022
(Period: 15 September-16 October)

(a) Punjab

District	15 Sep-16 Oct 2022		
	2020	2021	2022
Amritsar	1781	604	600
Barnala	18	13	7
Bathinda	43	8	1
Faridkot	147	70	8
Fatehgarh Sahib	102	101	13
Fazilka	32	29	11
Firozpur	365	78	66
Gurdaspur	331	143	70
Hoshiarpur	31	11	2
Jalandhar	88	76	48
Kapurthala	182	93	72
Ludhiana	135	148	26
Mansa	36	2	7
Moga	44	39	28
Muktsar	26	21	1
Pathankot	0	0	0
Patiala	470	256	55
Rupnagar	18	16	0
Sangrur	118	45	31
SAS NAGAR (Mohali)	38	27	5
SBS Nagar	11	9	2
Tarn Taran	1303	586	391
Total	5319	2375	1444

(b) Haryana

District	15 Sep-16 Oct 2022		
	2020	2021	2022
AMBALA	93	54	19
BHIWANI	0	0	0
CHARKHI DADRI	0	0	0
FARIDABAD	0	1	0
FATEHABAD	44	49	17
GURGAON	0	0	0
HISAR	6	1	2
JHAJJAR	1	0	0
JIND	22	30	18
KAITHAL	136	249	48
KARNAL	233	343	51
KURUKSHETRA	175	205	64
MAHENDRAGARH	0	0	0
MEWAT	0	0	0
PALWAL	6	25	0
PANCHKULA	0	0	0
PANIPAT	9	15	2
REWARI	0	0	0
ROHTAK	0	0	0
SIRSA	7	4	3
SONIPAT	9	5	3
YAMUNANAGAR	41	45	17
Total	782	1026	244

(c) Uttar Pradesh

District	15 Sep-16 Oct 2022										
	2020	2021	2022	GAUTAMBUDHNAGAR	1	7	0	MUZAFARNAGAR	2	2	0
AGRA	1	0	0	GAZIPUR	0	0	0	PILHIBHIT	8	82	3
ALIGARH	25	21	1	GHAZIABAD	3	2	1	PRATAPGARH	0	0	0
ALLAHABAD	0	1	0	GONDA	0	0	0	RAIBEARELI	1	0	0
AMBEDKARNAGAR	0	0	0	GORAKHPUR	0	0	0	RAMPUR	19	50	0
AMETHI	0	1	4	HAMIRPUR	1	0	0	SAMBHAL	6	7	4
AMROHA	1	0	0	HAPUR	3	1	0	SANTKABIRNAGAR	0	0	0
AURAIYA	16	5	4	HARDOI	6	6	0	SANTRAVIDASNAGAR	0	0	0
AZAMGARH	0	0	0	HATHRAS	0	0	0	SHAHJAHANPUR	37	174	53
BADAUN	0	1	0	JALAUN	0	0	0	SHAMLI	18	11	2
BAGHPAT	2	1	0	JAUNPUR	0	0	0	SHARANPUR	19	17	6
BAHRAICH	2	2	4	JHANSI	8	5	0	SHRAWASTI	2	0	0
BALLIA	0	0	0	KANNAUJ	3	1	0	SIDDHARTHANAGAR	0	0	0
BALRAMPUR	0	1	0	KANPUR	0	7	0	SITAPUR	9	9	0
BANDA	0	0	0	KANPUR DEHAT	4	1	0	SONBHADRA	0	0	0
BARABANKI	11	18	0	KASGANJ	1	2	0	SULTANPUR	0	0	0
BAREILLY	10	15	0	KAUSHAMBI	7	3	0	UNNAO	4	0	0
BASTI	2	1	0	KHERI	32	52	8	VARANASI	0	0	0
BIJNOR	4	3	1	KUSHINAGAR	0	0	0	Total	341	581	97
BULANDSAHAR	6	2	2	LALITPUR	0	1	2				
CHANDAULI	0	0	0	LUCKNOW	2	0	0				
CHITRAKOOT	0	0	0	MAHARAJGANJ	0	0	0				
DEORIA	0	0	0	MAHOBA	1	0	0				
ETAH	4	6	0	MAINPURI	5	7	0				
ETAWAH	2	7	0	MATHURA	14	27	0				
FAIZABAD	1	0	0	MAU	0	0	0				
FARRUKHABAD	0	0	0	MEERUT	11	4	0				
FATEHPUR	14	6	0	MIRZAPUR	5	5	2				
FIROZABAD	4	4	0	MORADABAD	4	3	0				

(d) Delhi

District	15 Sep-16 Oct 2022		
	2020	2021	2022
CENTRAL	0	0	0
EAST	0	0	0
NEW DELHI	0	0	0
NORTH	2	0	2
NORTH EAST	0	0	0
NORTH WEST DELHI	1	0	0
SHAHADRA	0	0	0
SOUTH	1	0	0
SOUTH EAST	0	0	0
SOUTH WEST DELHI	0	0	0
WEST DELHI	0	0	0
Total	4	0	2

(e) Rajasthan

District	15 Sep-16 Oct 2022		
	2020	2021	2022
AJMER	0	0	0
ALWAR	1	0	0
BANSWARA	0	0	0
BARAN	81	0	4
BARMER	2	0	0
BHARATPUR	0	0	0
BHILWARA	2	0	0
BIKANER	1	0	0
BUNDI	4	0	8
CHITTAURGARH	0	2	2
CHURU	0	0	0
DAUSA	0	0	0
DHOLPUR	0	0	0
DUNGARPUR	0	0	0
GANGANAGAR	2	0	1
HANUMANGARH	83	24	3
JAIPUR	1	0	0
JAISELMER	2	0	0
JALOR	0	0	0
JHALAWAR	1	0	0
JHUNJHUNUN	1	0	0
JODHPUR	1	0	0
KARAULI	1	0	0
KOTA	23	1	3
NAGAUR	0	0	0
PALI	1	0	0
PRATAPGARH	0	0	0
RAJSMAND	0	0	0
SIKAR	0	0	0
SIROHI	1	0	0
SWAIMADHOPUR	5	0	0
TONK	1	0	0
UDAIPUR	0	0	0
Total	214	27	21

(f) Madhya Pradesh

District	15 Sep-16 Oct 2022						
	2020	2021	2022				
				PANNA	2	0	0
ALIRAJPUR	0	0	0	RAISEN	11	1	0
ANUPPUR	0	0	0	RAJGARH	7	1	2
ASHOKNAGAR	10	0	0	RATLAM	0	0	0
BALAGHAT	0	0	0	REWA	3	0	0
BARWANI	0	0	0	SAGAR	13	6	1
BETUL	0	0	0	SATNA	3	6	0
BHIND	3	1	0	SEHORE	5	3	1
BHOPAL	6	5	1	SEONI	9	5	0
BURHANPUR	0	0	0	SHAHDOL	0	0	0
CHHATARPUR	4	0	0	SHAJAPUR	5	0	0
CHHINDWARA	1	3	0	SHEOPUR	11	0	0
DAMOH	16	4	0	SHIVPURI	5	0	6
DATIA	37	8	0	SIDHI	0	0	0
DEWAS	3	0	0	SINGRAULI	0	0	0
DHAR	20	0	0	TIKAMGARH	1	0	0
DINDORI	0	0	0	UJJAIN	5	0	0
EAST NIMAR	2	1	2	UMARIA	0	0	0
GUNA	15	1	1	VIDESHA	53	8	2
GWALIOR	23	0	1	WEST NIMAR	2	0	0
HARDA	8	9	0	Total	321	83	20
HOSHANGABAD	9	8	0				
INDORE	2	0	0				
JABALPUR	7	4	1				
JHABUA	0	0	0				
KATNI	0	0	0				
MANDLA	0	0	0				
MANDSAUR	3	0	0				
MORENA	14	5	0				
NARSHIMAPURA	3	4	2				
NIMACH	0	0	0				

State-wise and date-wise number of paddy residue burning events detected in 2020, 2021 and 2022
(Period: 15 September - 16 October 2022)

Number of Paddy Residue Burning Events Detected

	Punjab			Haryana			Uttar Pradesh			Delhi			Rajasthan			Madhya Pradesh		
	2020	2021	2022	2020	2021	2022	2020	2021	2022	2020	2021	2022	2020	2021	2022	2020	2021	2022
15-Sep	5	0	14	2	0	0	1	0	0	0	0	0	1	0	0	2	0	0
16-Sep	0	2	0	1	0	0	0	0	0	0	0	0	0	0	0	0	0	0
17-Sep	5	0	1	3	0	0	0	0	0	0	0	0	0	0	0	0	0	0
18-Sep	17	9	7	0	0	1	0	1	0	0	0	0	0	0	0	0	0	0
19-Sep	30	5	18	2	0	0	0	1	0	0	0	0	0	0	0	0	0	0
20-Sep	67	8	10	6	0	0	2	0	0	0	0	0	0	0	0	0	0	0
21-Sep	54	0	56	2	0	0	1	0	0	0	0	0	1	0	1	2	0	0
22-Sep	34	0	30	1	0	0	1	0	0	0	0	0	0	0	0	0	0	0
23-Sep	49	0	3	0	0	0	1	0	0	0	0	0	1	0	0	0	0	0
24-Sep	78	5	0	0	0	0	1	1	0	0	0	0	0	0	0	0	0	0
25-Sep	184	11	0	11	0	0	5	0	0	0	0	0	1	0	0	0	0	0
26-Sep	190	19	0	5	0	0	8	0	0	0	0	0	1	0	0	2	0	0
27-Sep	78	37	0	8	0	0	4	1	0	0	0	0	0	0	0	1	0	0
28-Sep	55	28	0	6	1	0	1	6	0	0	0	0	0	0	0	1	1	0
29-Sep	63	64	0	9	4	0	6	10	0	0	0	0	3	0	0	0	4	0
30-Sep	116	27	8	22	2	0	13	13	10	1	0	0	1	0	0	5	0	0
01-Oct	165	13	45	15	4	1	7	13	3	0	0	0	4	1	1	13	0	1
02-Oct	141	0	83	30	2	7	12	0	36	1	0	0	7	0	3	12	0	1
03-Oct	110	9	75	8	6	8	4	3	29	0	0	0	9	0	2	5	1	5
04-Oct	162	23	65	29	2	7	8	0	2	0	0	0	15	0	0	4	2	0
05-Oct	161	18	130	17	3	24	14	2	0	0	0	2	14	0	1	13	1	0
06-Oct	171	42	85	30	0	26	12	1	0	1	0	0	16	0	0	37	1	0
07-Oct	197	72	62	32	11	6	41	13	0	0	0	0	14	1	1	31	1	0
08-Oct	95	108	19	29	27	0	25	11	0	0	0	0	11	0	0	17	2	0

09-Oct	121	114	3	20	39	1	15	20	0	0	0	0	12	0	0	15	4	0
10-Oct	232	150	4	33	95	2	9	54	0	0	0	0	14	1	0	18	10	0
11-Oct	377	64	45	90	51	0	23	28	0	0	0	0	21	7	1	32	2	0
12-Oct	388	97	104	69	51	4	46	23	0	0	0	0	24	1	2	44	1	1
13-Oct	266	132	120	47	91	15	36	42	0	0	0	0	7	5	2	21	2	7
14-Oct	605	229	82	69	98	30	9	68	11	0	0	0	16	1	1	15	11	1
15-Oct	449	660	169	106	363	36	15	149	0	0	0	0	9	8	2	8	27	2
16-Oct	654	429	206	80	176	76	21	121	6	1	0	0	12	2	4	23	13	2
Total	5319	2375	1444	782	1026	244	341	581	97	4	0	2	214	27	21	321	83	20

Details of residue burning events in Punjab on 16-Oct-2022

S. No.	District	Tehsil / Block	Satellite	Latitude	Longitude	ACQ_TIME	Day / Night	Fire Power (W/m2)
1	AMRITSAR	AJNALA	S-NPP	31.81540	74.75600	14:00:40	D	5.80
2	AMRITSAR	AJNALA	S-NPP	31.81670	74.75310	14:00:40	D	14.00
3	AMRITSAR	AJNALA	S-NPP	31.82620	74.75720	14:00:40	D	3.90
4	AMRITSAR	AJNALA	S-NPP	31.85330	74.70620	14:00:40	D	1.90
5	AMRITSAR	AJNALA	S-NPP	31.89030	74.75990	14:00:40	D	8.40
6	AMRITSAR	AJNALA	S-NPP	31.92090	74.78480	14:00:40	D	4.00
7	AMRITSAR	AJNALA	S-NPP	31.94600	74.91110	14:00:40	D	3.40
8	AMRITSAR	ATTARI	S-NPP	31.59860	74.59180	14:00:40	D	3.00
9	AMRITSAR	CHOGAWAN	S-NPP	31.63560	74.64920	14:00:40	D	3.90
10	AMRITSAR	CHOGAWAN	S-NPP	31.70160	74.60780	14:00:40	D	6.40
11	AMRITSAR	HARSHA CHHINA	S-NPP	31.79180	74.70090	14:00:40	D	3.90
12	AMRITSAR	JANDIALA GURU	S-NPP	31.53890	75.10170	14:00:40	D	1.80
13	AMRITSAR	JANDIALA GURU	S-NPP	31.55250	74.94760	14:00:40	D	4.20
14	AMRITSAR	JANDIALA GURU	S-NPP	31.57350	75.07550	14:00:40	D	1.50
15	AMRITSAR	JANDIALA GURU	S-NPP	31.64720	75.02050	14:00:40	D	4.00
16	AMRITSAR	MAJITHA	S-NPP	31.70140	75.10740	14:00:40	D	2.00
17	AMRITSAR	MAJITHA	S-NPP	31.71570	75.06150	14:00:40	D	9.50
18	AMRITSAR	MAJITHA	S-NPP	31.71620	75.06690	14:00:40	D	10.30
19	AMRITSAR	MAJITHA	S-NPP	31.75540	75.09930	14:00:40	D	8.80

20	AMRITSAR	MAJITHA	S-NPP	31.77170	74.92210	14:00:40	D	5.90
21	AMRITSAR	RAYYA	S-NPP	31.55500	75.28350	14:00:40	D	5.60
22	AMRITSAR	RAYYA	S-NPP	31.55550	75.28910	14:00:40	D	5.60
23	AMRITSAR	RAYYA	S-NPP	31.55840	75.21570	14:00:40	D	9.30
24	AMRITSAR	RAYYA	S-NPP	31.56210	75.31090	14:00:40	D	5.10
25	AMRITSAR	RAYYA	S-NPP	31.60970	75.21510	14:00:40	D	18.80
26	AMRITSAR	RAYYA	S-NPP	31.63540	75.34190	14:00:40	D	11.60
27	AMRITSAR	RAYYA	S-NPP	31.63800	75.33970	14:00:40	D	2.40
28	AMRITSAR	RAYYA	S-NPP	31.67150	75.23930	14:00:40	D	4.40
29	AMRITSAR	RAYYA	AQUA	31.64400	75.31200	13:15:21	D	16.10
30	AMRITSAR	TARSIKKA	S-NPP	31.57280	75.16940	14:00:40	D	3.10
31	AMRITSAR	TARSIKKA	S-NPP	31.62240	75.10590	14:00:40	D	7.30
32	AMRITSAR	TARSIKKA	S-NPP	31.62290	75.10800	14:00:40	D	7.30
33	AMRITSAR	TARSIKKA	S-NPP	31.63780	75.16710	14:00:40	D	3.30
34	AMRITSAR	TARSIKKA	S-NPP	31.64190	75.06500	14:00:40	D	4.00
35	AMRITSAR	TARSIKKA	S-NPP	31.64200	75.17000	14:00:40	D	9.40
36	AMRITSAR	TARSIKKA	S-NPP	31.64240	75.16660	14:00:40	D	3.30
37	AMRITSAR	TARSIKKA	S-NPP	31.69070	75.09210	14:00:40	D	17.50
38	AMRITSAR	TARSIKKA	S-NPP	31.69220	75.10850	14:00:40	D	2.70
39	AMRITSAR	TARSIKKA	S-NPP	31.71570	75.16110	14:00:40	D	2.30
40	FARIDKOT	FARIDKOT	S-NPP	30.71430	74.70280	14:00:40	D	16.80
41	FARIDKOT	FARIDKOT	S-NPP	30.74960	74.66140	14:00:40	D	3.30
42	FATEHGARH SAHIB	BASSI PATHANAN	S-NPP	30.63240	76.36840	14:00:40	D	5.10
43	FATEHGARH SAHIB	KHAMANON	S-NPP	30.81000	76.31350	14:00:40	D	4.20
44	FAZILKA	FAZILKA	S-NPP	30.45620	73.97210	14:00:40	D	3.30
45	FAZILKA	FAZILKA	S-NPP	30.45620	73.97340	14:00:40	D	6.30
46	FAZILKA	FAZILKA	S-NPP	30.45940	74.00490	14:00:40	D	3.10
47	FAZILKA	FAZILKA	S-NPP	30.46440	74.05470	14:00:40	D	1.90
48	FAZILKA	JALALABAD	S-NPP	30.47010	74.30950	14:00:40	D	3.30
49	FAZILKA	JALALABAD	S-NPP	30.55660	74.19580	14:00:40	D	6.00
50	FIROZPUR	FIROZPUR	S-NPP	30.96290	74.52760	14:00:40	D	3.80
51	FIROZPUR	GHALL KHURD	S-NPP	30.90650	74.81670	14:00:40	D	2.60
52	FIROZPUR	GHALL KHURD	S-NPP	30.95370	74.79020	14:00:40	D	12.30

53	FIROZPUR	GHALL KHURD	S-NPP	30.95650	74.79220	14:00:40	D	10.20
54	FIROZPUR	GHALL KHURD	S-NPP	30.99380	74.75660	14:00:40	D	4.40
55	FIROZPUR	GURUHAR SAHAI	S-NPP	30.61140	74.28910	14:00:40	D	4.00
56	FIROZPUR	GURUHAR SAHAI	S-NPP	30.67650	74.28530	14:00:40	D	2.50
57	FIROZPUR	GURUHAR SAHAI	S-NPP	30.69150	74.28630	14:00:40	D	6.60
58	FIROZPUR	GURUHAR SAHAI	S-NPP	30.69430	74.28770	14:00:40	D	4.60
59	FIROZPUR	GURUHAR SAHAI	S-NPP	30.70650	74.36300	14:00:40	D	13.50
60	FIROZPUR	GURUHAR SAHAI	S-NPP	30.70750	74.36110	14:00:40	D	15.20
61	FIROZPUR	GURUHAR SAHAI	S-NPP	30.71230	74.23110	14:00:40	D	7.00
62	FIROZPUR	MAKHU	S-NPP	31.04080	75.01260	14:00:40	D	5.50
63	FIROZPUR	MAKHU	S-NPP	31.05740	74.94680	14:00:40	D	3.60
64	FIROZPUR	MAMDOT	S-NPP	30.80450	74.40670	14:00:40	D	17.20
65	FIROZPUR	MAMDOT	S-NPP	30.81290	74.53340	14:00:40	D	5.30
66	FIROZPUR	MAMDOT	S-NPP	30.83030	74.35120	14:00:40	D	3.40
67	FIROZPUR	MAMDOT	S-NPP	30.84520	74.36860	14:00:40	D	1.90
68	FIROZPUR	MAMDOT	S-NPP	30.94500	74.48020	14:00:40	D	5.10
69	GURDASPUR	BATALA	S-NPP	31.72080	75.21650	14:00:40	D	2.70
70	GURDASPUR	BATALA	S-NPP	31.76640	75.17040	14:00:40	D	8.40
71	GURDASPUR	DHARIWAL	S-NPP	31.89380	75.35730	14:00:40	D	3.20
72	GURDASPUR	FATEHGARH CHURIAN	S-NPP	31.86000	75.02880	14:00:40	D	1.60
73	GURDASPUR	QADIAN	S-NPP	31.79220	75.30280	14:00:40	D	2.60
74	GURDASPUR	QADIAN	S-NPP	31.82530	75.35620	14:00:40	D	5.10
75	GURDASPUR	SRI HARGOBINDPUR	S-NPP	31.63800	75.37020	14:00:40	D	3.40
76	GURDASPUR	SRI HARGOBINDPUR	S-NPP	31.65020	75.37250	14:00:40	D	3.30
77	GURDASPUR	SRI HARGOBINDPUR	S-NPP	31.65250	75.37420	14:00:40	D	4.60
78	HOSHIARPUR	TANDA	S-NPP	31.61070	75.59410	14:00:40	D	13.30
79	JALANDHAR	JALANDHAR WEST	S-NPP	31.47930	75.46650	14:00:40	D	7.90
80	JALANDHAR	LOHIAN	S-NPP	31.12070	75.28280	14:00:40	D	10.20
81	JALANDHAR	LOHIAN	S-NPP	31.12110	75.28820	14:00:40	D	17.00
82	JALANDHAR	LOHIAN	S-NPP	31.12220	75.28540	14:00:40	D	24.20
83	JALANDHAR	LOHIAN	S-NPP	31.14480	75.24110	14:00:40	D	4.00
84	JALANDHAR	MEHATPUR	S-NPP	30.99420	75.50520	14:00:40	D	4.40
85	JALANDHAR	MEHATPUR	S-NPP	30.99990	75.41410	14:00:40	D	4.90

86	JALANDHAR	SHAHKOT	S-NPP	31.04960	75.25540	14:00:40	D	7.80
87	KAPURTHALA	KAPURTHALA	S-NPP	31.32510	75.28390	14:00:40	D	2.50
88	KAPURTHALA	KAPURTHALA	S-NPP	31.40320	75.43730	14:00:40	D	9.90
89	KAPURTHALA	NADALA	S-NPP	31.61100	75.43670	14:00:40	D	22.50
90	KAPURTHALA	SULTANPUR LODHI	S-NPP	31.15910	75.24490	14:00:40	D	4.90
91	KAPURTHALA	SULTANPUR LODHI	S-NPP	31.19390	75.21860	14:00:40	D	6.80
92	KAPURTHALA	SULTANPUR LODHI	S-NPP	31.25540	75.23660	14:00:40	D	4.30
93	KAPURTHALA	SULTANPUR LODHI	S-NPP	31.27440	75.19020	14:00:40	D	4.90
94	KAPURTHALA	SULTANPUR LODHI	S-NPP	31.28110	75.16180	14:00:40	D	3.70
95	KAPURTHALA	SULTANPUR LODHI	S-NPP	31.32340	75.22720	14:00:40	D	10.70
96	KAPURTHALA	SULTANPUR LODHI	S-NPP	31.32450	75.22830	14:00:40	D	8.70
97	LUDHIANA	JAGRAON	AQUA	30.75500	75.52900	13:15:21	D	19.50
98	LUDHIANA	MALOD	S-NPP	30.62920	75.94540	14:00:40	D	5.20
99	LUDHIANA	SAMRALA	S-NPP	30.79910	76.20830	12:21:06	D	8.50
100	LUDHIANA	SAMRALA	S-NPP	30.80270	76.20780	12:21:06	D	7.40
101	LUDHIANA	SAMRALA	S-NPP	30.83620	76.16060	14:00:40	D	4.50
102	LUDHIANA	SAMRALA	AQUA	30.80400	76.15200	13:15:21	D	14.10
103	LUDHIANA	SUDHAR	S-NPP	30.78560	75.69940	14:00:40	D	10.20
104	MANSA	BUDHLADA	S-NPP	29.78640	75.67770	14:00:40	D	7.80
105	MANSA	BUDHLADA	S-NPP	29.91660	75.58710	14:00:40	D	11.90
106	MANSA	SARDULGARH	S-NPP	29.77550	75.26210	14:00:40	D	8.80
107	MANSA	SARDULGARH	S-NPP	29.77600	75.26730	14:00:40	D	8.80
108	MOGA	KOT ISE KHAN AT DHARAMKOT	S-NPP	30.94770	75.25370	14:00:40	D	2.80
109	MOGA	KOT ISE KHAN AT DHARAMKOT	S-NPP	30.96710	75.26240	14:00:40	D	5.20
110	MOGA	MOGA-1	S-NPP	30.73490	75.34920	14:00:40	D	5.90
111	MOGA	MOGA-1	S-NPP	30.73950	75.34860	14:00:40	D	15.90
112	MOGA	MOGA-1	S-NPP	30.84720	75.31270	14:00:40	D	13.10
113	MOGA	NIHAL SINGH	S-NPP	30.59320	75.31430	14:00:40	D	6.00
114	MOGA	NIHAL SINGH	S-NPP	30.59370	75.31670	14:00:40	D	4.80
115	PATIALA	NABHA	S-NPP	30.31310	76.18520	14:00:40	D	4.40
116	PATIALA	PATIALA	S-NPP	30.27970	76.25010	14:00:40	D	7.50
117	PATIALA	PATRAN	S-NPP	29.88180	76.09760	14:00:40	D	4.30
118	PATIALA	PATRAN	S-NPP	29.91880	76.02850	14:00:40	D	2.80

119	PATIALA	PATRAN	S-NPP	29.91880	76.03160	14:00:40	D	5.60
120	PATIALA	PATRAN	S-NPP	30.01420	76.07390	14:00:40	D	6.30
121	PATIALA	PATRAN	S-NPP	30.02280	76.11990	14:00:40	D	8.10
122	PATIALA	PATRAN	S-NPP	30.02330	76.12040	14:00:40	D	4.50
123	PATIALA	RAJPURA	S-NPP	30.58100	76.77190	14:00:40	D	4.70
124	PATIALA	SAMANA	S-NPP	30.16330	76.07730	14:00:40	D	8.40
125	PATIALA	SAMANA	S-NPP	30.20860	76.25970	14:00:40	D	6.70
126	PATIALA	SAMANA	AQUA	30.20900	76.17900	13:15:21	D	18.00
127	PATIALA	SANAUR	S-NPP	30.15440	76.37080	14:00:40	D	8.10
128	PATIALA	SANAUR	S-NPP	30.15740	76.37290	14:00:40	D	7.30
129	SANGRUR	ANDANA	S-NPP	29.75730	75.95010	14:00:40	D	8.40
130	SANGRUR	BHAWANIGARH	AQUA	30.31000	75.95400	13:15:21	D	15.80
131	SANGRUR	SUNAM	S-NPP	30.12550	75.76060	14:00:40	D	4.90
132	SANGRUR	SUNAM	S-NPP	30.12600	75.76630	14:00:40	D	7.00
133	SAS NAGAR (MOHALI)	DERABASSI	S-NPP	30.59660	76.83710	14:00:40	D	6.80
134	TARN TARAN	BHIKHIWIND	S-NPP	31.28310	74.63530	14:00:40	D	8.60
135	TARN TARAN	BHIKHIWIND	S-NPP	31.30140	74.63810	14:00:40	D	7.00
136	TARN TARAN	BHIKHIWIND	S-NPP	31.30580	74.63750	14:00:40	D	7.00
137	TARN TARAN	BHIKHIWIND	S-NPP	31.30630	74.64260	14:00:40	D	10.40
138	TARN TARAN	BHIKHIWIND	S-NPP	31.31960	74.68720	14:00:40	D	5.20
139	TARN TARAN	BHIKHIWIND	S-NPP	31.32600	74.66060	14:00:40	D	6.70
140	TARN TARAN	BHIKHIWIND	S-NPP	31.33890	74.56190	14:00:40	D	3.90
141	TARN TARAN	BHIKHIWIND	S-NPP	31.38820	74.66550	14:00:40	D	12.30
142	TARN TARAN	BHIKHIWIND	S-NPP	31.39590	74.74760	14:00:40	D	8.50
143	TARN TARAN	BHIKHIWIND	AQUA	31.27900	74.71200	13:15:21	D	19.90
144	TARN TARAN	BHIKHIWIND	AQUA	31.36800	74.59100	13:15:21	D	21.10
145	TARN TARAN	BHIKHIWIND	AQUA	31.37500	74.59600	13:15:21	D	21.20
146	TARN TARAN	CHOHLA SAHIB	S-NPP	31.22000	75.00100	14:00:40	D	11.70
147	TARN TARAN	CHOHLA SAHIB	S-NPP	31.26940	75.03800	14:00:40	D	4.10
148	TARN TARAN	CHOHLA SAHIB	S-NPP	31.29470	75.01330	14:00:40	D	3.70
149	TARN TARAN	CHOHLA SAHIB	S-NPP	31.29500	75.01180	14:00:40	D	4.60
150	TARN TARAN	CHOHLA SAHIB	S-NPP	31.29570	74.96880	14:00:40	D	9.10
151	TARN TARAN	CHOHLA SAHIB	S-NPP	31.29970	74.96980	14:00:40	D	10.40

152	TARN TARAN	CHOHLA SAHIB	S-NPP	31.30020	74.96820	14:00:40	D	9.10
153	TARN TARAN	CHOHLA SAHIB	S-NPP	31.30340	75.05400	14:00:40	D	4.60
154	TARN TARAN	CHOHLA SAHIB	S-NPP	31.30340	75.05550	14:00:40	D	4.10
155	TARN TARAN	CHOHLA SAHIB	S-NPP	31.30580	75.03350	14:00:40	D	6.20
156	TARN TARAN	CHOHLA SAHIB	S-NPP	31.30600	75.03200	14:00:40	D	7.00
157	TARN TARAN	CHOHLA SAHIB	S-NPP	31.34120	75.11480	14:00:40	D	6.70
158	TARN TARAN	CHOHLA SAHIB	S-NPP	31.34930	75.10280	14:00:40	D	11.60
159	TARN TARAN	CHOHLA SAHIB	S-NPP	31.35440	75.10760	14:00:40	D	3.30
160	TARN TARAN	CHOHLA SAHIB	S-NPP	31.36210	75.09030	14:00:40	D	5.90
161	TARN TARAN	GANDIWIND TATLA	S-NPP	31.41640	74.67740	14:00:40	D	13.00
162	TARN TARAN	GANDIWIND TATLA	S-NPP	31.49770	74.70030	14:00:40	D	6.50
163	TARN TARAN	GANDIWIND TATLA	S-NPP	31.50010	74.72600	14:00:40	D	7.60
164	TARN TARAN	GANDIWIND TATLA	S-NPP	31.51800	74.72380	14:00:40	D	4.00
165	TARN TARAN	GANDIWIND TATLA	AQUA	31.54100	74.69900	13:15:21	D	25.00
166	TARN TARAN	KHADUR SAHIB	S-NPP	31.41650	75.12750	14:00:40	D	4.10
167	TARN TARAN	KHADUR SAHIB	S-NPP	31.41680	75.13050	14:00:40	D	6.50
168	TARN TARAN	KHADUR SAHIB	S-NPP	31.41700	75.13290	14:00:40	D	4.10
169	TARN TARAN	KHADUR SAHIB	S-NPP	31.42380	75.05310	14:00:40	D	7.60
170	TARN TARAN	KHADUR SAHIB	S-NPP	31.43630	75.08980	14:00:40	D	7.70
171	TARN TARAN	KHADUR SAHIB	S-NPP	31.45120	75.20380	14:00:40	D	4.50
172	TARN TARAN	KHADUR SAHIB	S-NPP	31.45710	75.11460	14:00:40	D	3.60
173	TARN TARAN	KHADUR SAHIB	S-NPP	31.47540	75.11240	14:00:40	D	8.70
174	TARN TARAN	KHADUR SAHIB	S-NPP	31.48810	75.19920	14:00:40	D	4.90
175	TARN TARAN	KHADUR SAHIB	AQUA	31.47000	75.04800	13:15:21	D	27.30
176	TARN TARAN	KHADUR SAHIB	AQUA	31.47100	75.06700	13:15:21	D	31.80
177	TARN TARAN	NAUSHERA PANNUAN	S-NPP	31.34410	74.94670	14:00:40	D	3.10
178	TARN TARAN	NAUSHERA PANNUAN	S-NPP	31.34560	74.96260	14:00:40	D	6.30
179	TARN TARAN	NAUSHERA PANNUAN	S-NPP	31.35610	75.02590	14:00:40	D	6.10
180	TARN TARAN	NAUSHERA PANNUAN	S-NPP	31.37530	74.93750	14:00:40	D	5.00
181	TARN TARAN	NAUSHERA PANNUAN	S-NPP	31.38840	74.97880	14:00:40	D	3.60
182	TARN TARAN	PATTI	S-NPP	31.33670	74.86790	14:00:40	D	2.80
183	TARN TARAN	TARN TARAN	S-NPP	31.37020	74.79000	14:00:40	D	4.80
184	TARN TARAN	TARN TARAN	S-NPP	31.37520	74.79460	14:00:40	D	4.80

185	TARN TARAN	TARN TARAN	S-NPP	31.37720	74.79180	14:00:40	D	11.10
186	TARN TARAN	TARN TARAN	S-NPP	31.38420	74.79350	14:00:40	D	6.00
187	TARN TARAN	TARN TARAN	S-NPP	31.38670	74.79590	14:00:40	D	7.50
188	TARN TARAN	TARN TARAN	S-NPP	31.39430	74.85020	14:00:40	D	7.50
189	TARN TARAN	TARN TARAN	S-NPP	31.39590	74.84740	14:00:40	D	3.60
190	TARN TARAN	TARN TARAN	S-NPP	31.41780	74.88710	14:00:40	D	7.00
191	TARN TARAN	TARN TARAN	S-NPP	31.41830	74.89230	14:00:40	D	9.90
192	TARN TARAN	TARN TARAN	S-NPP	31.42710	74.79080	14:00:40	D	2.40
193	TARN TARAN	TARN TARAN	S-NPP	31.43700	74.84750	14:00:40	D	4.10
194	TARN TARAN	TARN TARAN	S-NPP	31.43790	74.90590	14:00:40	D	3.60
195	TARN TARAN	TARN TARAN	S-NPP	31.43810	75.00800	14:00:40	D	7.70
196	TARN TARAN	TARN TARAN	S-NPP	31.44860	74.77760	14:00:40	D	6.80
197	TARN TARAN	TARN TARAN	S-NPP	31.45100	74.80350	14:00:40	D	5.50
198	TARN TARAN	TARN TARAN	S-NPP	31.45550	74.80300	14:00:40	D	5.50
199	TARN TARAN	TARN TARAN	S-NPP	31.47350	74.94430	14:00:40	D	4.30
200	TARN TARAN	TARN TARAN	S-NPP	31.47950	74.81580	14:00:40	D	7.10
201	TARN TARAN	TARN TARAN	S-NPP	31.48820	74.95320	14:00:40	D	8.00
202	TARN TARAN	TARN TARAN	S-NPP	31.51090	74.99900	14:00:40	D	6.70
203	TARN TARAN	TARN TARAN	S-NPP	31.51140	75.00130	14:00:40	D	5.40
204	TARN TARAN	TARN TARAN	S-NPP	31.52540	74.90260	14:00:40	D	5.40
205	TARN TARAN	TARN TARAN	AQUA	31.42600	74.90500	13:15:21	D	25.30
206	TARN TARAN	VALTOHA	S-NPP	31.26560	74.59160	14:00:40	D	3.30

Details of residue burning events in Haryana on 16-Oct-2022

S. No.	District	Tehsil / Block	Satellite	Latitude	Longitude	ACQ_TIME	Day / Night	Fire Power (W/m2)
1	AMBALA	BARARA	S-NPP	30.31880	77.16000	14:00:40	D	4.20
2	AMBALA	NARAINGARH	S-NPP	30.33390	77.15500	14:00:40	D	2.30
3	AMBALA	SAHA	S-NPP	30.19440	76.90420	14:00:40	D	10.20
4	FATEHABAD	FATEHABAD	S-NPP	29.41350	75.48620	14:00:40	D	6.50
5	FATEHABAD	FATEHABAD	S-NPP	29.63380	75.42530	14:00:40	D	9.30
6	FATEHABAD	JAKHAL	S-NPP	29.76960	75.77740	14:00:40	D	4.20
7	FATEHABAD	TOHANA	S-NPP	29.61570	75.87190	14:00:40	D	5.90
8	FATEHABAD	TOHANA	S-NPP	29.61620	75.87750	14:00:40	D	9.60
9	FATEHABAD	TOHANA	S-NPP	29.66800	75.92290	14:00:40	D	5.40
10	HISAR	HANSI-I	S-NPP	29.19950	76.06620	14:00:40	D	3.90
11	JIND	NARWANA	S-NPP	29.60140	75.97670	14:00:40	D	8.80
12	KAITHAL	GUHLA	S-NPP	30.05690	76.29150	14:00:40	D	4.40
13	KAITHAL	GUHLA	S-NPP	30.07620	76.34470	14:00:40	D	7.60
14	KAITHAL	GUHLA	S-NPP	30.07660	76.40670	14:00:40	D	5.70
15	KAITHAL	GUHLA	S-NPP	30.07680	76.35090	14:00:40	D	7.40
16	KAITHAL	GUHLA	S-NPP	30.10110	76.29270	14:00:40	D	3.40
17	KAITHAL	GUHLA	AQUA	29.97700	76.34400	13:15:21	D	15.60
18	KAITHAL	GUHLA	AQUA	29.97700	76.34900	13:15:21	D	19.70
19	KAITHAL	KAITHAL	S-NPP	29.73550	76.35670	14:00:40	D	2.30
20	KAITHAL	KAITHAL	S-NPP	29.73770	76.35890	14:00:40	D	4.60
21	KAITHAL	KAITHAL	S-NPP	29.74720	76.46250	14:00:40	D	3.70
22	KAITHAL	KAITHAL	S-NPP	29.83380	76.49870	14:00:40	D	4.40
23	KAITHAL	KAITHAL	S-NPP	29.83670	76.50010	14:00:40	D	4.10
24	KAITHAL	KAITHAL	S-NPP	29.85640	76.55440	14:00:40	D	4.10
25	KAITHAL	KAITHAL	S-NPP	29.85810	76.55260	14:00:40	D	4.20
26	KAITHAL	KAITHAL	S-NPP	29.88720	76.43050	14:00:40	D	6.40
27	KAITHAL	PUNDRI	S-NPP	29.72200	76.62180	14:00:40	D	9.70
28	KAITHAL	PUNDRI	S-NPP	29.77320	76.68420	14:00:40	D	4.30
29	KAITHAL	SIWAN	S-NPP	29.86730	76.31570	14:00:40	D	6.90
30	KAITHAL	SIWAN	S-NPP	29.91200	76.32300	14:00:40	D	5.60

31	KAITHAL	SIWAN	S-NPP	29.91740	76.32850	14:00:40	D	5.60
32	KAITHAL	SIWAN	S-NPP	29.95120	76.42960	14:00:40	D	4.10
33	KARNAL	ASSANDH	S-NPP	29.51600	76.52170	14:00:40	D	9.80
34	KARNAL	ASSANDH	S-NPP	29.51810	76.52070	14:00:40	D	13.60
35	KARNAL	ASSANDH	S-NPP	29.52400	76.65160	14:00:40	D	3.10
36	KARNAL	ASSANDH	S-NPP	29.59340	76.64050	12:21:06	D	4.10
37	KARNAL	ASSANDH	S-NPP	29.60060	76.61790	14:00:40	D	10.90
38	KARNAL	CHIRAO	S-NPP	29.60170	76.86150	14:00:40	D	4.00
39	KARNAL	CHIRAO	S-NPP	29.62380	76.88530	14:00:40	D	4.70
40	KARNAL	CHIRAO	S-NPP	29.68060	76.83850	14:00:40	D	3.40
41	KARNAL	CHIRAO	S-NPP	29.71770	76.76530	12:21:06	D	5.80
42	KARNAL	GHARAUNDA	S-NPP	29.56450	77.02390	14:00:40	D	5.10
43	KARNAL	GHARAUNDA	S-NPP	29.57220	77.05650	14:00:40	D	3.40
44	KARNAL	GHARAUNDA	AQUA	29.61100	77.05400	13:15:21	D	13.60
45	KARNAL	INDRI	S-NPP	29.90230	77.02920	14:00:40	D	2.40
46	KARNAL	KARNAL	S-NPP	29.64460	77.06900	14:00:40	D	4.20
47	KARNAL	KARNAL	S-NPP	29.65290	77.10690	14:00:40	D	3.30
48	KARNAL	KARNAL	S-NPP	29.69940	77.06710	14:00:40	D	3.60
49	KARNAL	NILOKHERI	S-NPP	29.83430	76.99210	14:00:40	D	4.30
50	KURUKSHETRA	BABAIN	S-NPP	30.06500	76.98480	14:00:40	D	4.60
51	KURUKSHETRA	ISMAILABAD	S-NPP	30.16830	76.78530	14:00:40	D	8.30
52	KURUKSHETRA	ISMAILABAD	S-NPP	30.16910	76.78740	14:00:40	D	13.20
53	KURUKSHETRA	ISMAILABAD	S-NPP	30.16990	76.80490	14:00:40	D	8.80
54	KURUKSHETRA	LADWA	S-NPP	29.98330	77.02070	14:00:40	D	1.70
55	KURUKSHETRA	PEHOWA	AQUA	29.99800	76.45400	13:15:21	D	19.40
56	KURUKSHETRA	PEHOWA	AQUA	29.99900	76.44900	13:15:21	D	15.10
57	KURUKSHETRA	SHAHBAD	S-NPP	30.13290	76.89730	14:00:40	D	3.40
58	KURUKSHETRA	SHAHBAD	S-NPP	30.17080	76.80700	14:00:40	D	5.80
59	KURUKSHETRA	SHAHBAD	S-NPP	30.18780	76.90280	14:00:40	D	11.00
60	KURUKSHETRA	SHAHBAD	S-NPP	30.19330	76.90890	14:00:40	D	7.60
61	KURUKSHETRA	THANESAR	S-NPP	29.92590	76.70470	14:00:40	D	4.80
62	KURUKSHETRA	THANESAR	S-NPP	29.93190	76.77550	14:00:40	D	3.60
63	KURUKSHETRA	THANESAR	S-NPP	29.93190	76.83440	14:00:40	D	2.90

64	KURUKSHETRA	THANESAR	S-NPP	29.98460	76.74810	14:00:40	D	8.80
65	KURUKSHETRA	THANESAR	S-NPP	29.98500	76.75030	14:00:40	D	8.30
66	KURUKSHETRA	THANESAR	S-NPP	29.98510	76.75460	14:00:40	D	8.80
67	SIRSA	SIRSA	S-NPP	29.60130	75.09770	14:00:40	D	5.40
68	SONIPAT	RAI	S-NPP	28.84490	77.14850	02:50:40	N	0.40
69	YAMUNANAGAR	BILASPUR	S-NPP	30.25230	77.25460	02:50:40	N	0.40
70	YAMUNANAGAR	BILASPUR	S-NPP	30.25380	77.25440	02:50:40	N	0.60
71	YAMUNANAGAR	BILASPUR	S-NPP	30.33770	77.20350	14:00:40	D	3.00
72	YAMUNANAGAR	BILASPUR	S-NPP	30.43360	77.35220	14:00:40	D	3.10
73	YAMUNANAGAR	JAGADHRI	S-NPP	30.17710	77.25070	14:00:40	D	1.80
74	YAMUNANAGAR	JAGADHRI	S-NPP	30.18230	77.25020	14:00:40	D	1.80
75	YAMUNANAGAR	JAGADHRI	S-NPP	30.21290	77.30710	14:00:40	D	1.00
76	YAMUNANAGAR	SADHAURA	S-NPP	30.40420	77.19320	14:00:40	D	2.40

Details of residue burning events in Uttar Pradesh on 16-Oct-2022

S. No.	District	Tehsil / Block	Satellite	Latitude	Longitude	ACQ_TIME	Day / Night	Fire Power (W/m ²)
1	AMETHI	MUSAFIRKHANA	AQUA	26.41400	81.76300	13:15:21	D	8.20
2	AMETHI	MUSAFIRKHANA	AQUA	26.42100	81.74900	13:15:21	D	23.80
3	BAHRAICH	MAHASI	AQUA	27.50400	81.52300	13:15:21	D	31.70
4	BAHRAICH	MAHASI	AQUA	27.50600	81.53500	13:15:21	D	4.90
5	BAHRAICH	MAHASI	AQUA	27.51400	81.52100	13:15:21	D	10.30
6	PILHIBHIT	PURANPUR	S-NPP	28.35780	80.15650	14:00:40	D	4.00

Details of residue burning events in Rajasthan on 16-Oct-2022

S. No.	District	Tehsil / Block	Satellite	Latitude	Longitude	ACQ_TIME	Day / Night	Fire Power (W/m ²)
1	BUNDI	KESHORAIPATAN	S-NPP	25.39540	75.88160	14:00:40	D	6.30
2	BUNDI	KESHORAIPATAN	S-NPP	25.43220	76.05510	14:00:40	D	5.80
3	KOTA	LADPURA	S-NPP	25.12090	75.98900	14:00:40	D	7.40
4	KOTA	LADPURA	S-NPP	25.12310	75.99160	14:00:40	D	5.40

Details of residue burning events in Madhya Pradesh on 16-Oct-2022

S. No.	District	Tehsil / Block	Satellite	Latitude	Longitude	ACQ_TIME	Day / Night	Fire Power (W/m ²)
1	JABALPUR	SAHPURA	S-NPP	23.14400	79.39540	14:00:40	D	3.80
2	NARSHIMAPURA	NARSIMHAPUR	S-NPP	23.01810	79.23070	14:00:40	D	2.40

The study used data received from following Satellites at NRSC Ground Station

S. No.	Satellite Name	Sensor	Resolution (meter)	Day / Night Passes
1.	Suomi NPP	VIIRS	375 / 750	Both
2.	Terra	MODIS	1000	Both
3.	Aqua	MODIS	1000	Both

**The rice mask for the Punjab and Haryana were provided by MNCFC, MoA&FW, Govt of India
The kharif crop mask for Delhi, Uttar Pradesh, Rajasthan and Madhya Pradesh were provided by NRSC**

Study Team

ICAR - IARI	Dr V.K. Sehgal	Principal & Nodal Scientist	iaricreams@gmail.com
	Dr Rajkumar Dhakar	Scientist	rajdhakar.iari@gmail.com
	Mr Mohd Jahangir	Lab Assistant (KRISHI)	mjahangir198@gmail.com
ICAR - ATARI	Dr Rajbir Singh	Director ATARI (Zone-I) Ludhiana	rajbirsingh.zpd@gmail.com
	Dr S.K. Singh	Director ATARI (Zone-II) Jodhpur	sushilsinghiipr@yahoo.co.in
	Dr Atar Singh	Director ATARI (Zone-III) Kanpur	zpdicarkanpur@gmail.com
ICAR - IASRI	Dr Rajender Parsad	Director	rajender.parsad@icar.gov.in

GIS Maps of fire events can be visualized online on ICAR KRISHI Geoportal website: <http://geoportal.icar.gov.in:8080/geoexplorer/composer/>

(Part of KRISHI Portal: <https://krishi.icar.gov.in> initiative)

and on IARI CREAMS website (<http://creams.iari.res.in/cms2/index.php>)
