



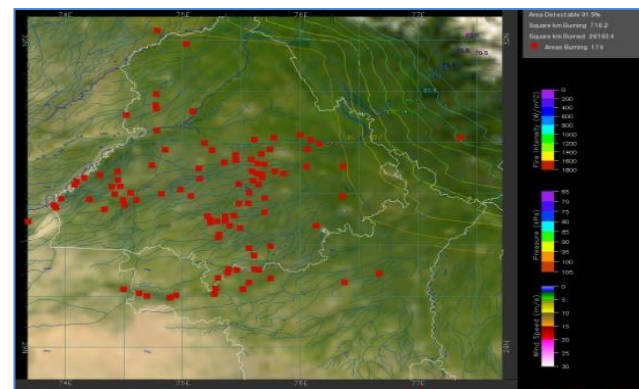
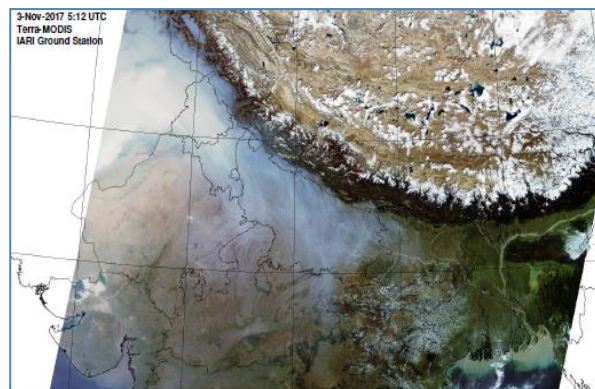
**Bulletin
No. 29**

**Events Date:
13-Oct-2021**

**Issued on:
13-Oct-2021**



MONITORING PADDY RESIDUE BURNING IN INDIA USING SATELLITE REMOTE SENSING DURING 2021



Prepared by:

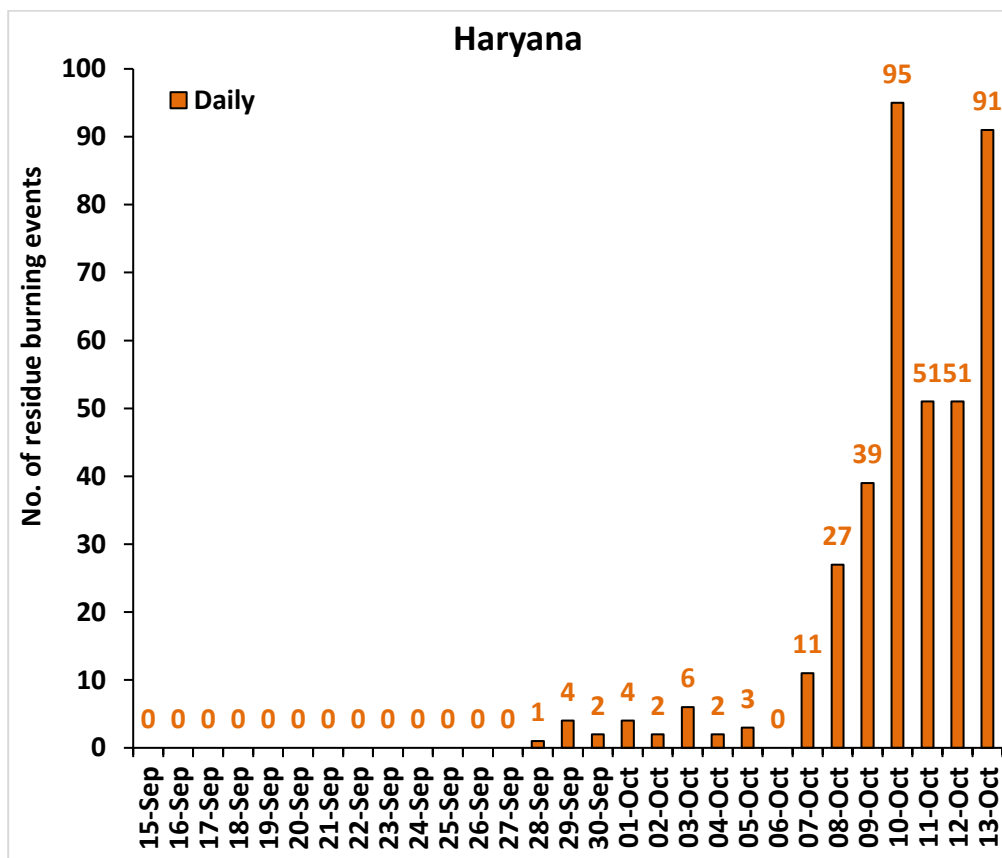
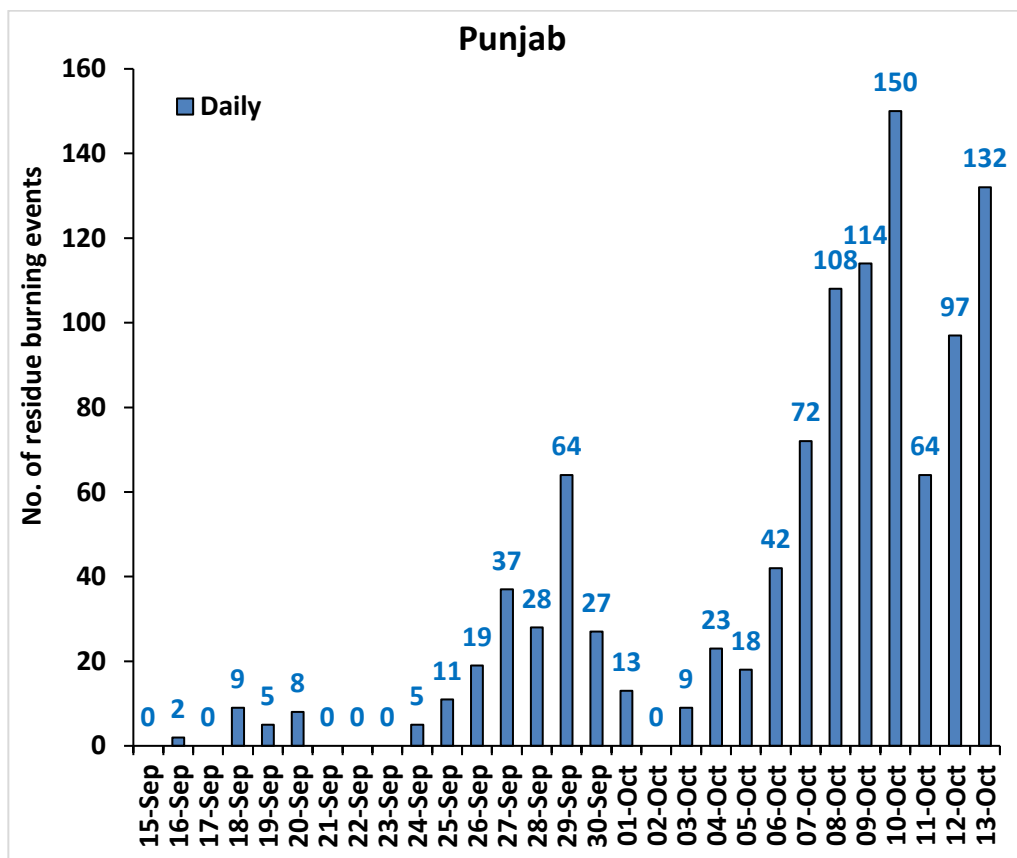
**Consortium for Research on Agroecosystem Monitoring and Modeling from Space (CREAMS) Laboratory,
Division of Agricultural Physics, ICAR – Indian Agricultural Research Institute, New Delhi – 110012**

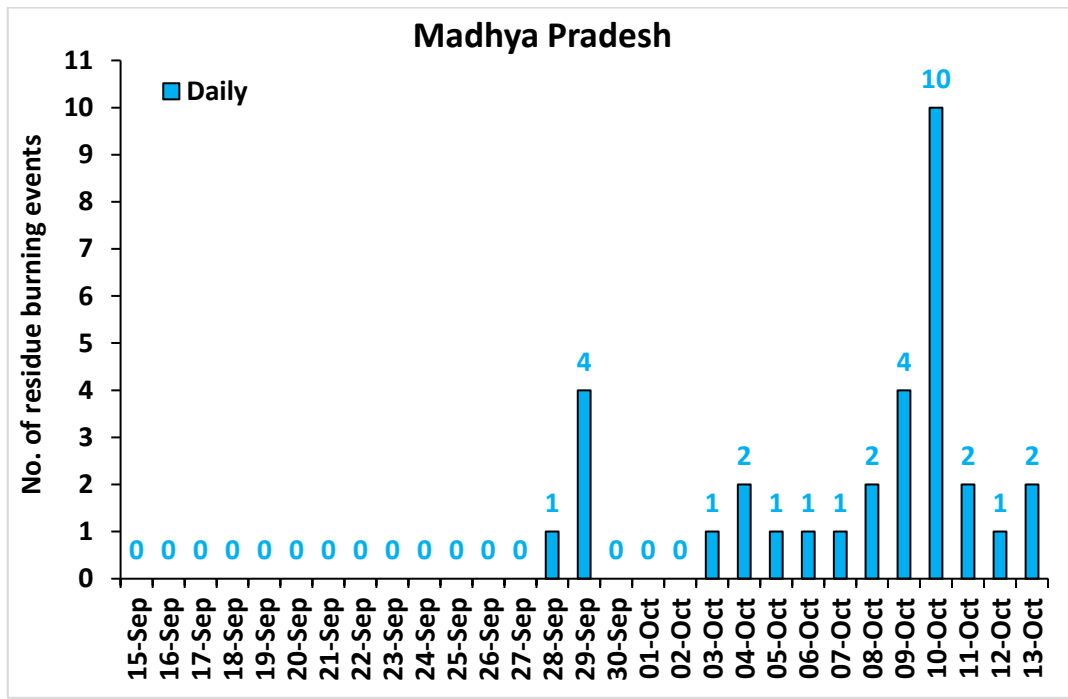
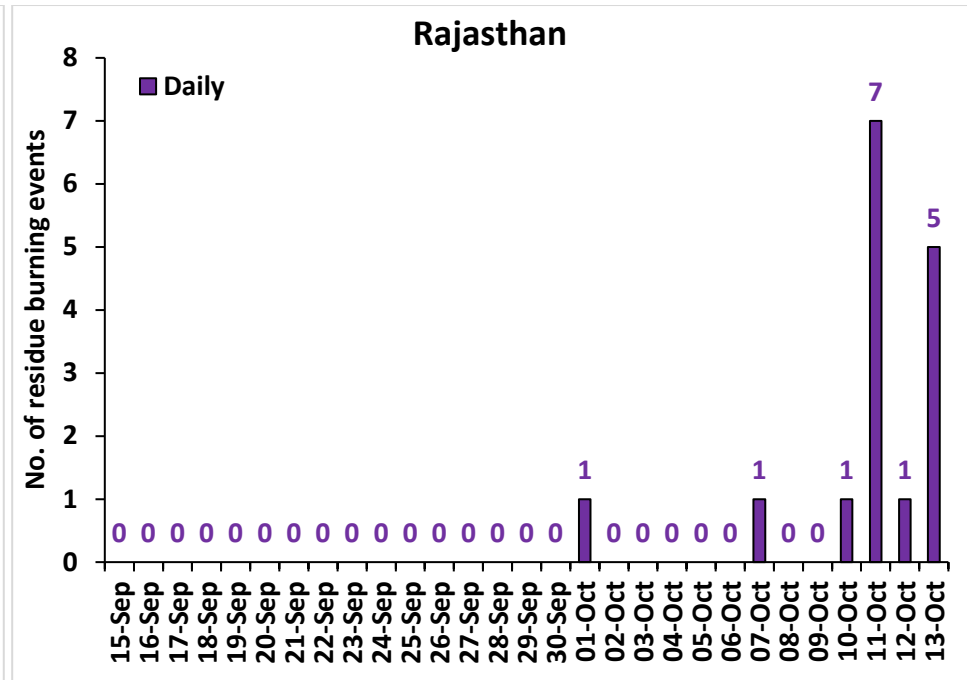
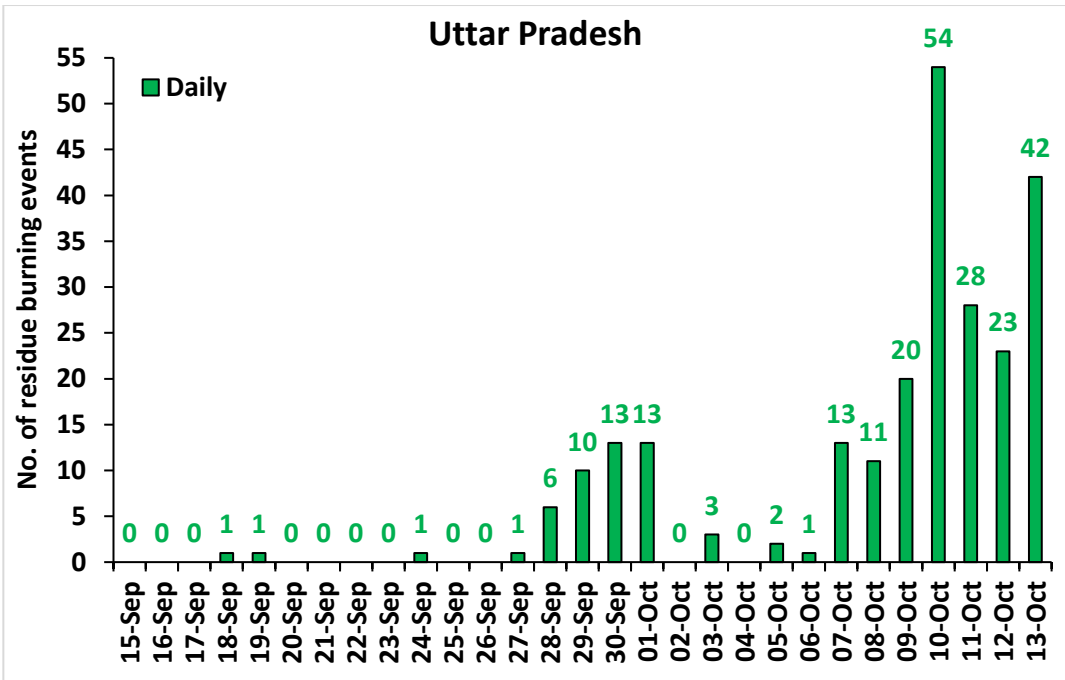
<http://creams.iari.res.in>

Highlights for 13-October-2021

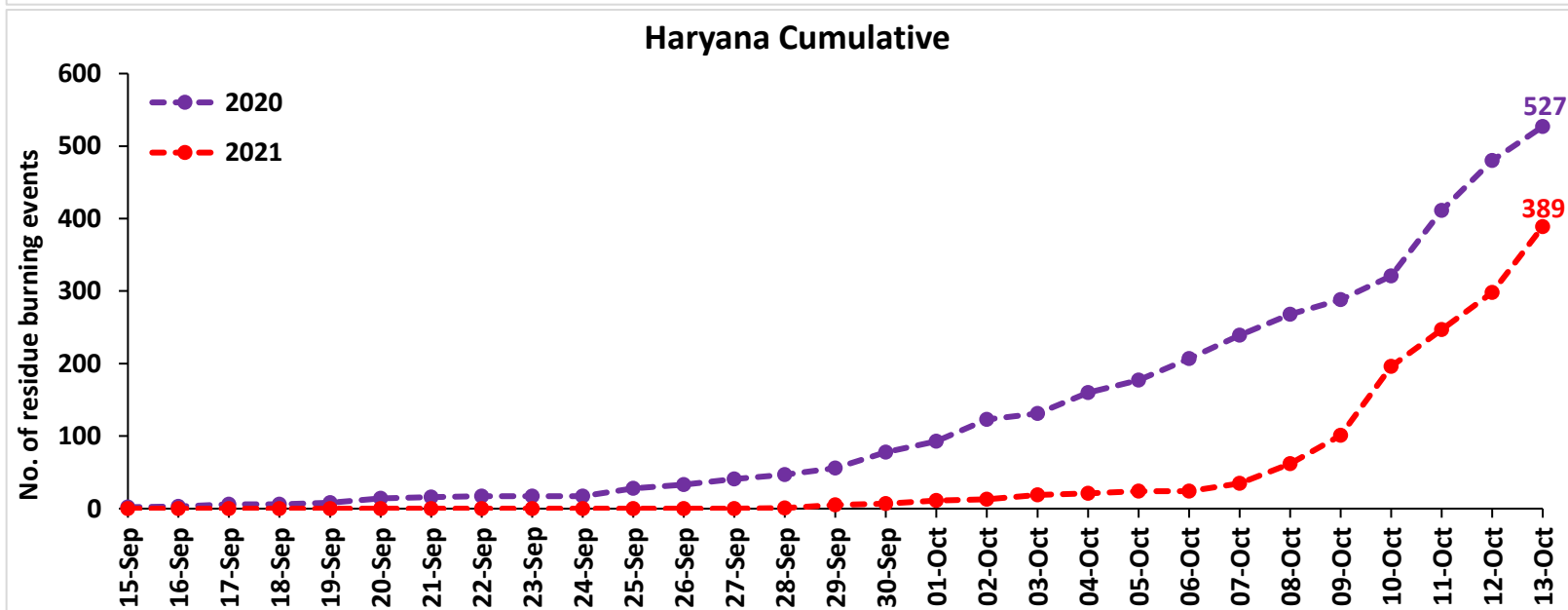
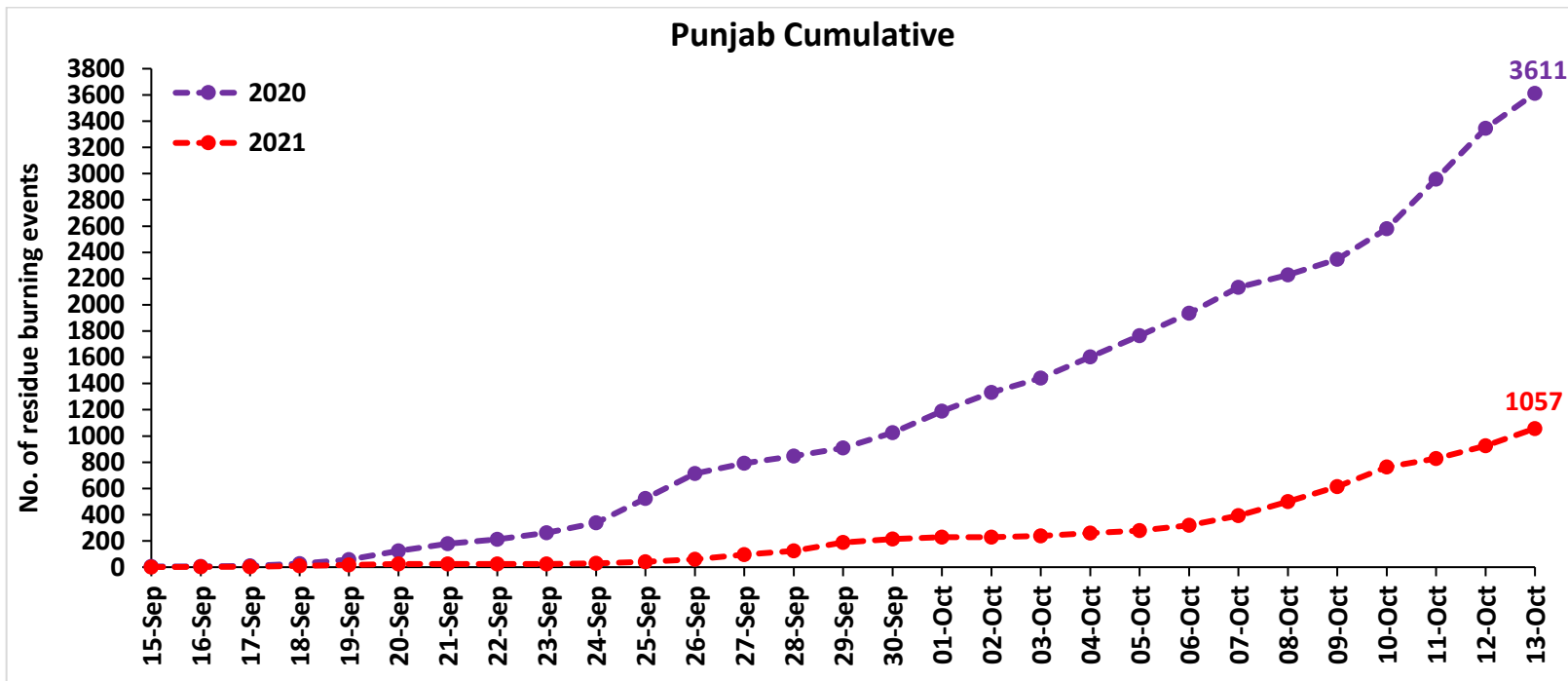
- The active fire events due to rice residue burning were monitored using satellite remote sensing, following the new "Standard Protocol for Estimation of Crop Residue Burning Fire Events using Satellite Data".
- Satellites detected **272** residue burning events in the six study States on 13-Oct-2021.
- The state wise events detected on 13-Oct-2021 were **132** in Punjab, **91** in Haryana, **42** in UP, **0** in Delhi, **5** in Rajasthan and **2** in MP.
- Detection of burning events by satellites was hampered due to scattered clouds over eastern Uttar Pradesh.

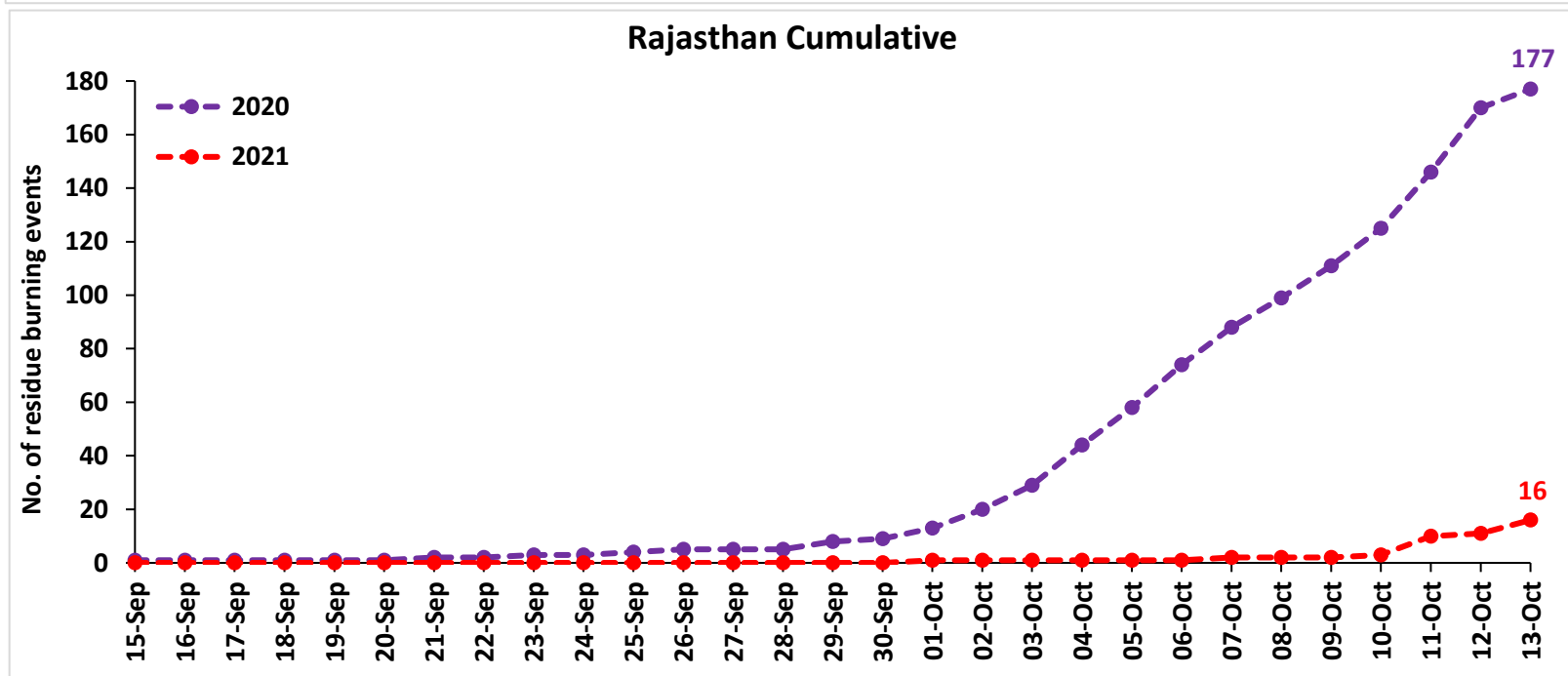
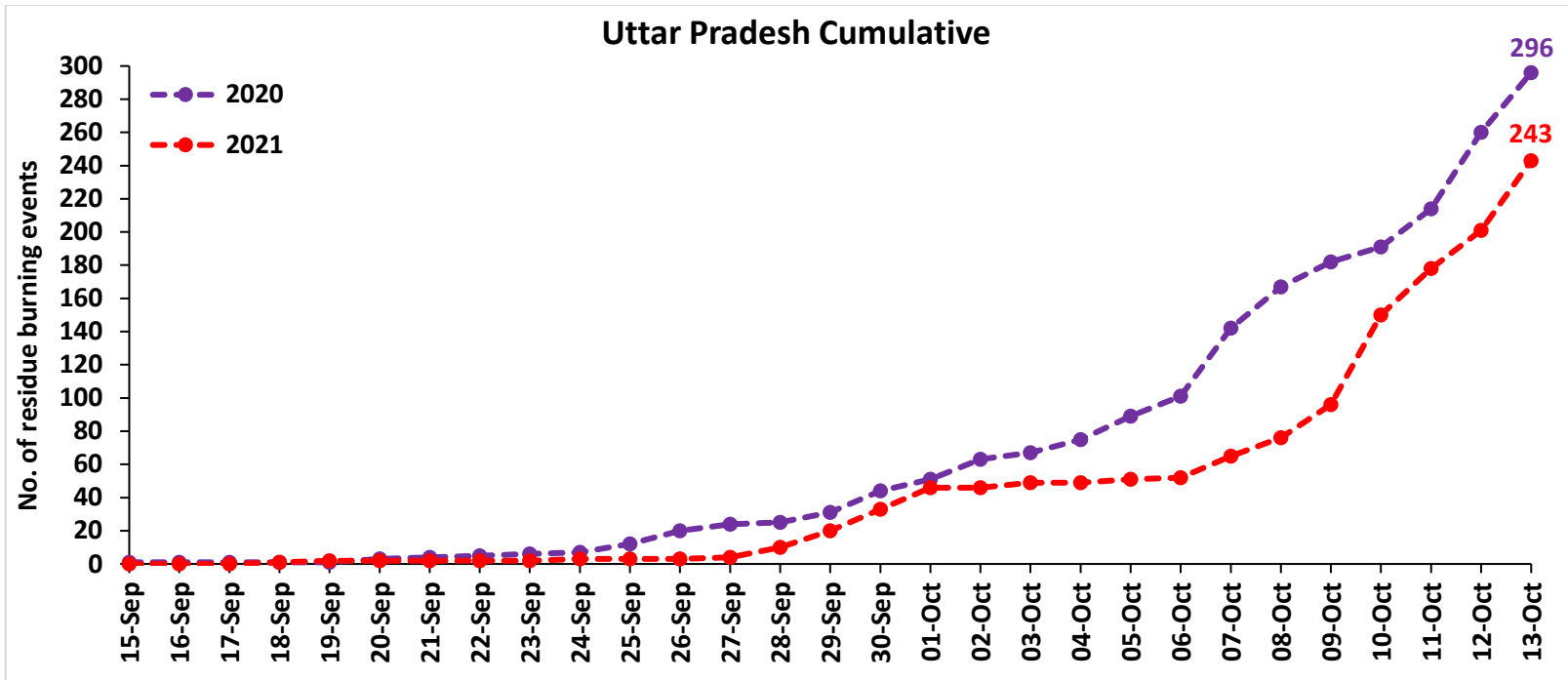
Temporal distribution of rice residue burning events for the study States in 2021

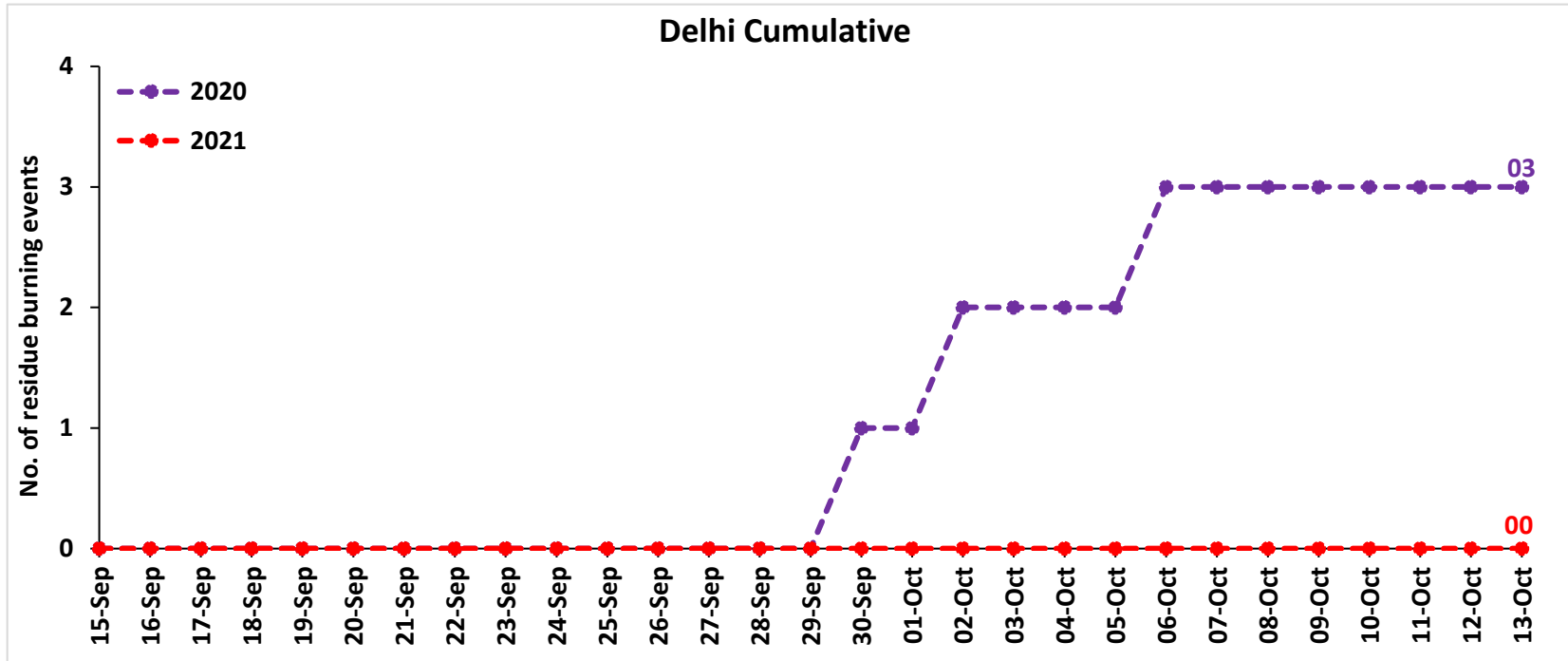
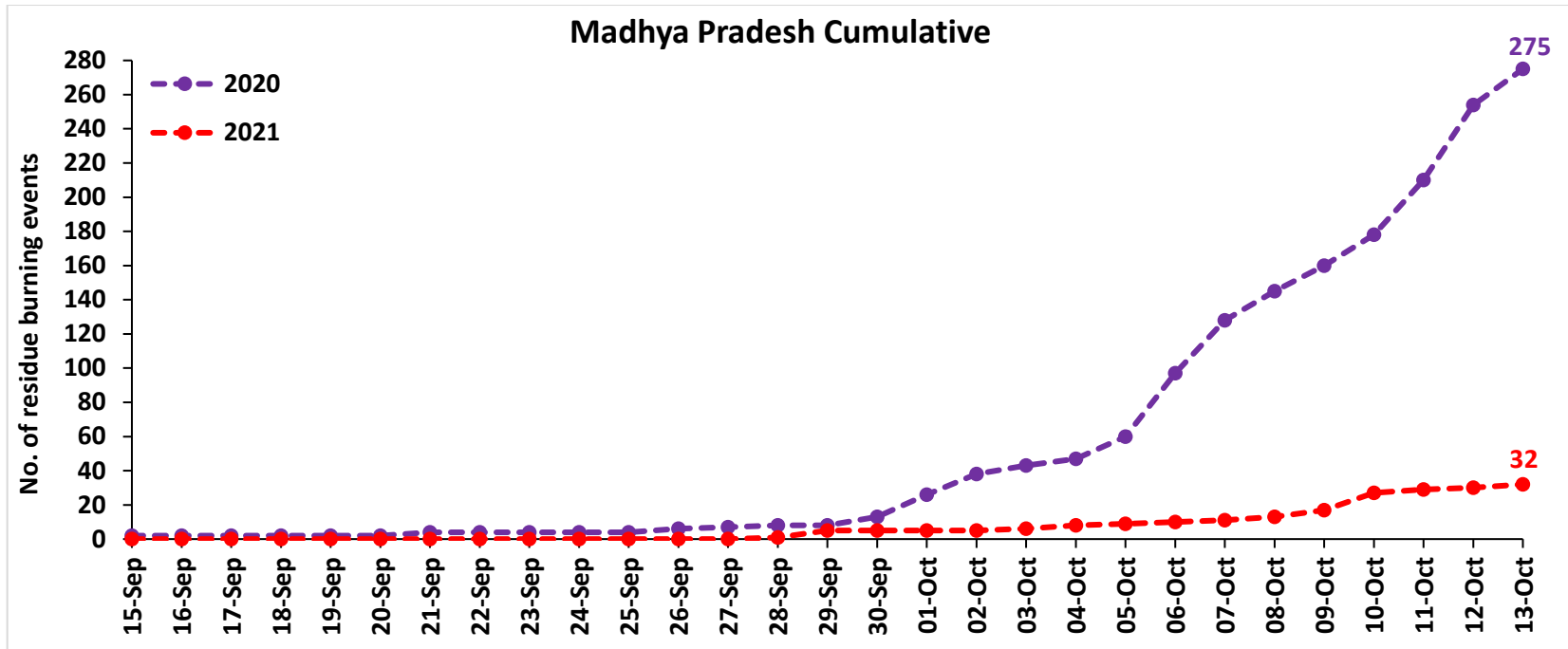




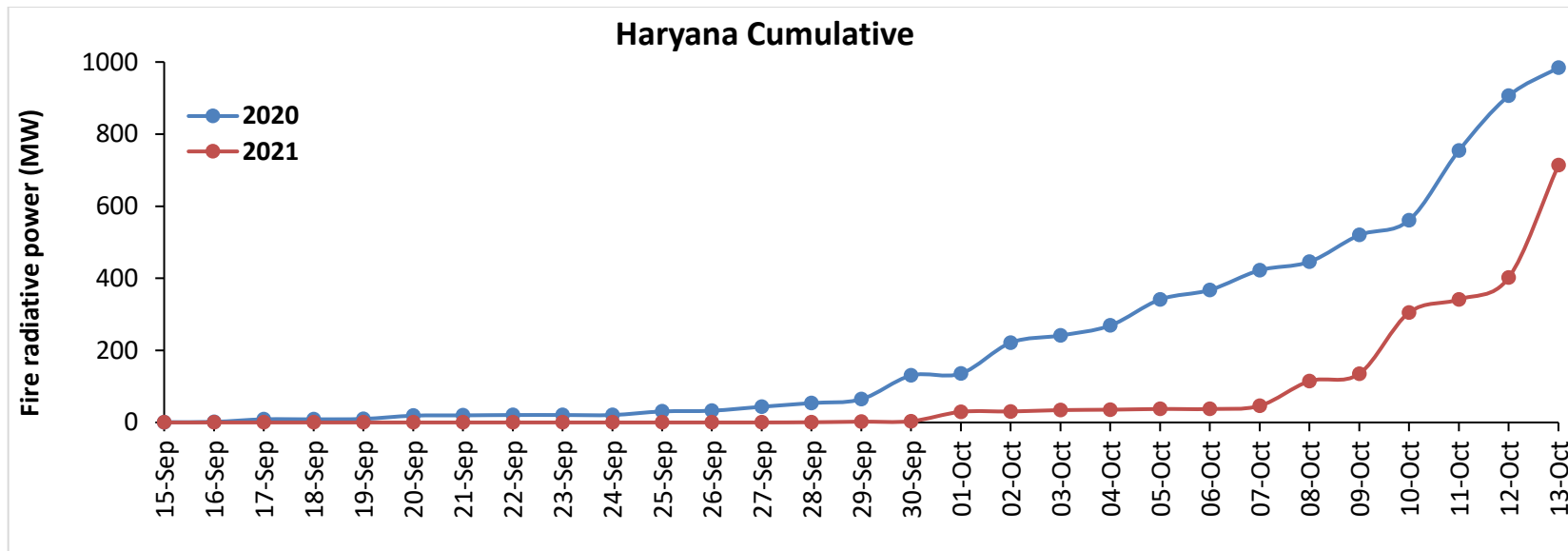
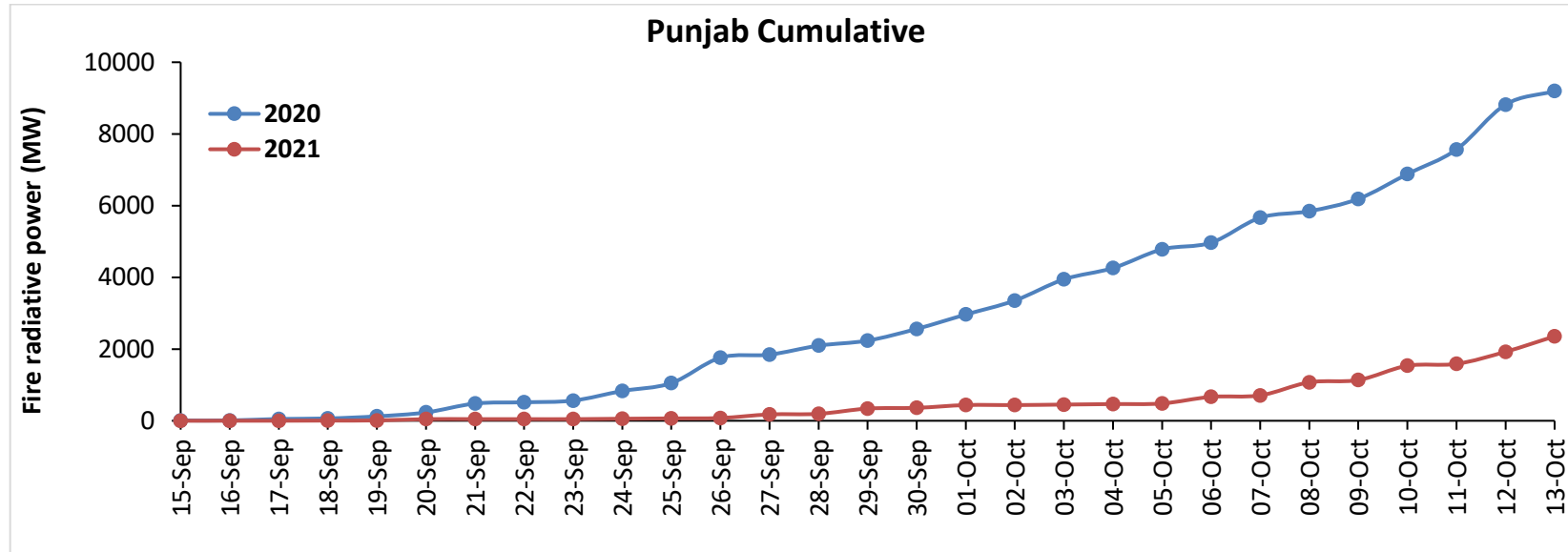
Comparison of residue burning events in current year (2021) with previous year (2020) for the study States



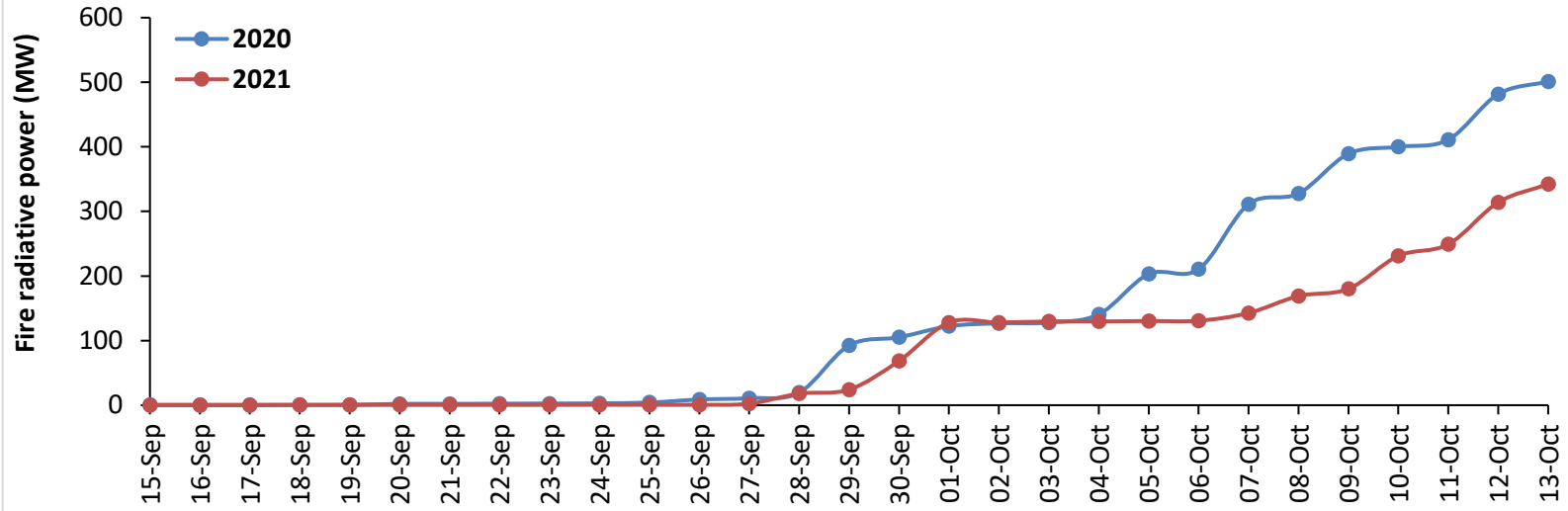




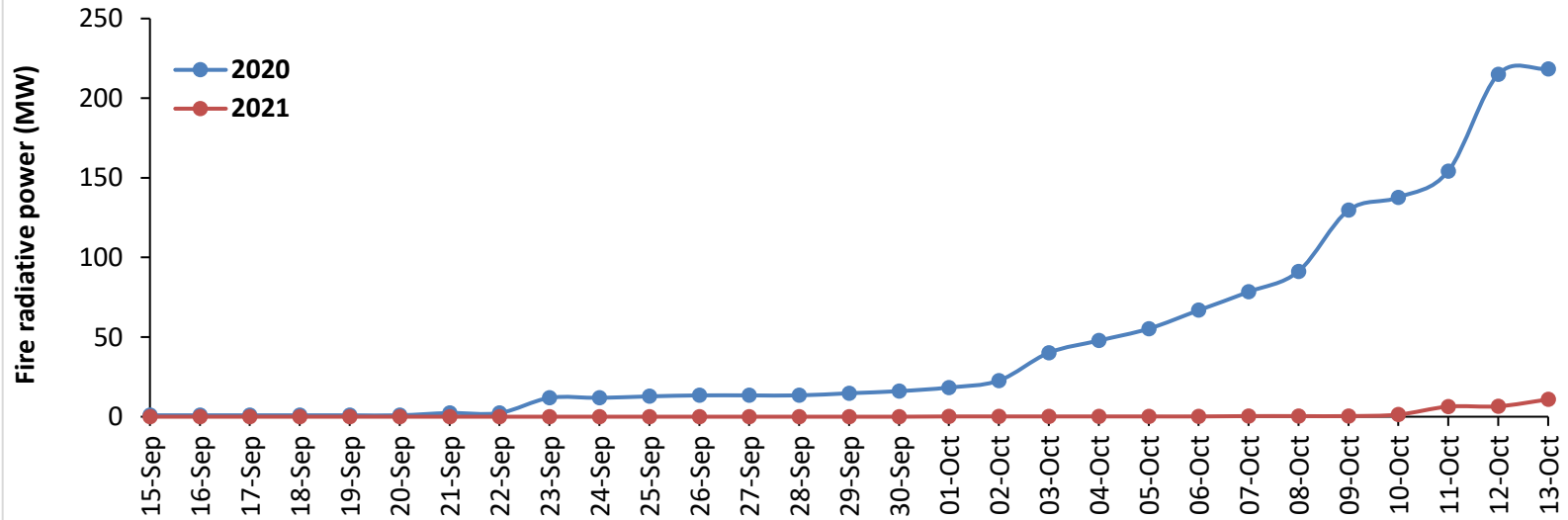
Comparison of residue burning fire power in current year (2021) with previous year (2020) for the study States

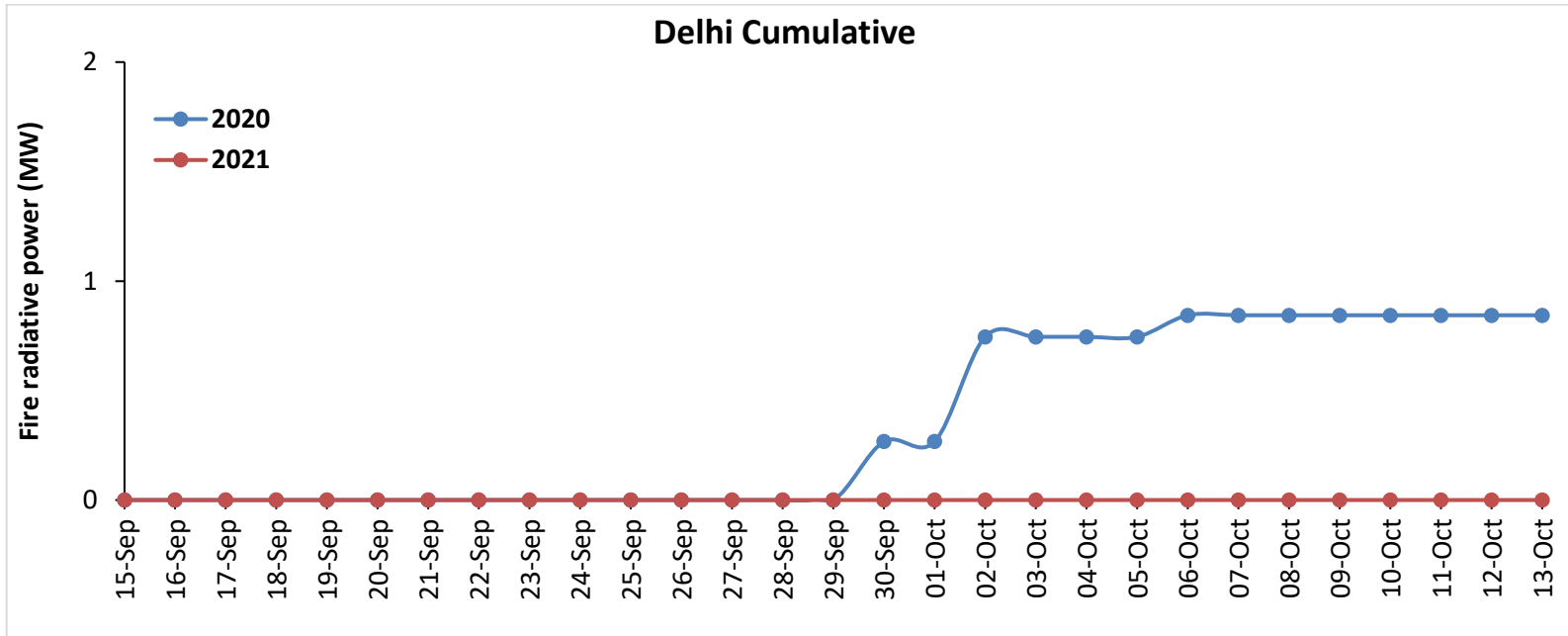
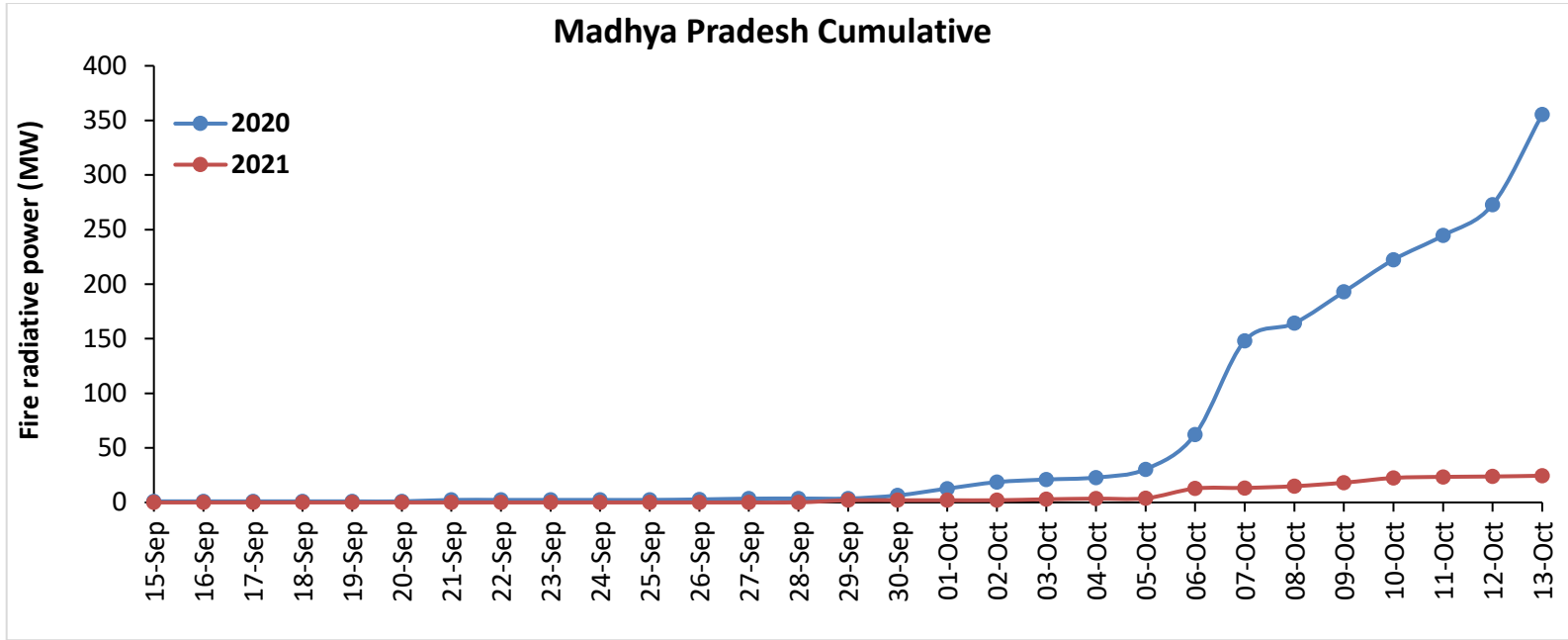


Uttar Pradesh Cumulative



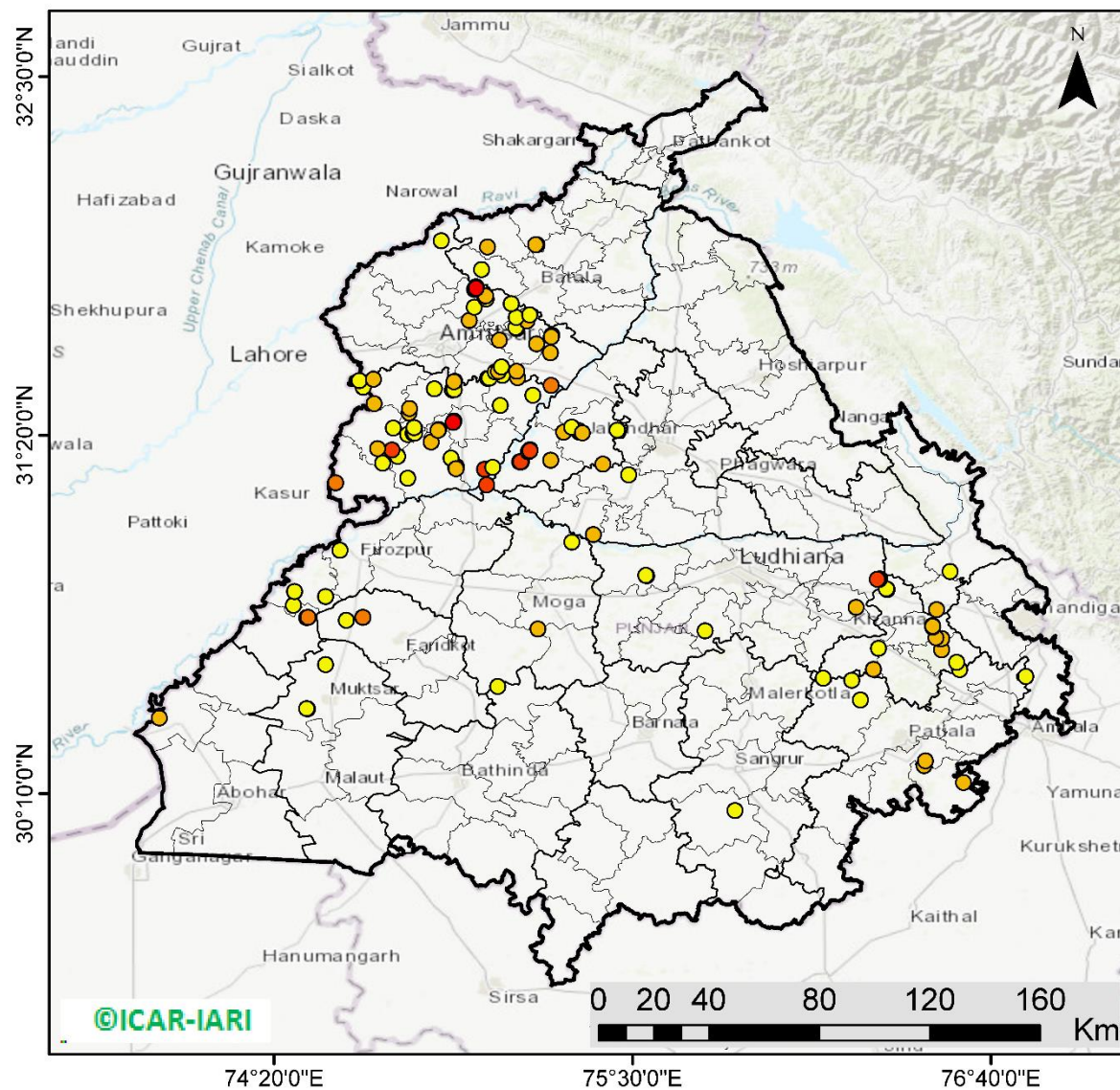
Rajasthan Cumulative





Punjab

RICE RESIDUE BURNING IN PUNJAB



132 burning events detected in Punjab on 13th October 2021

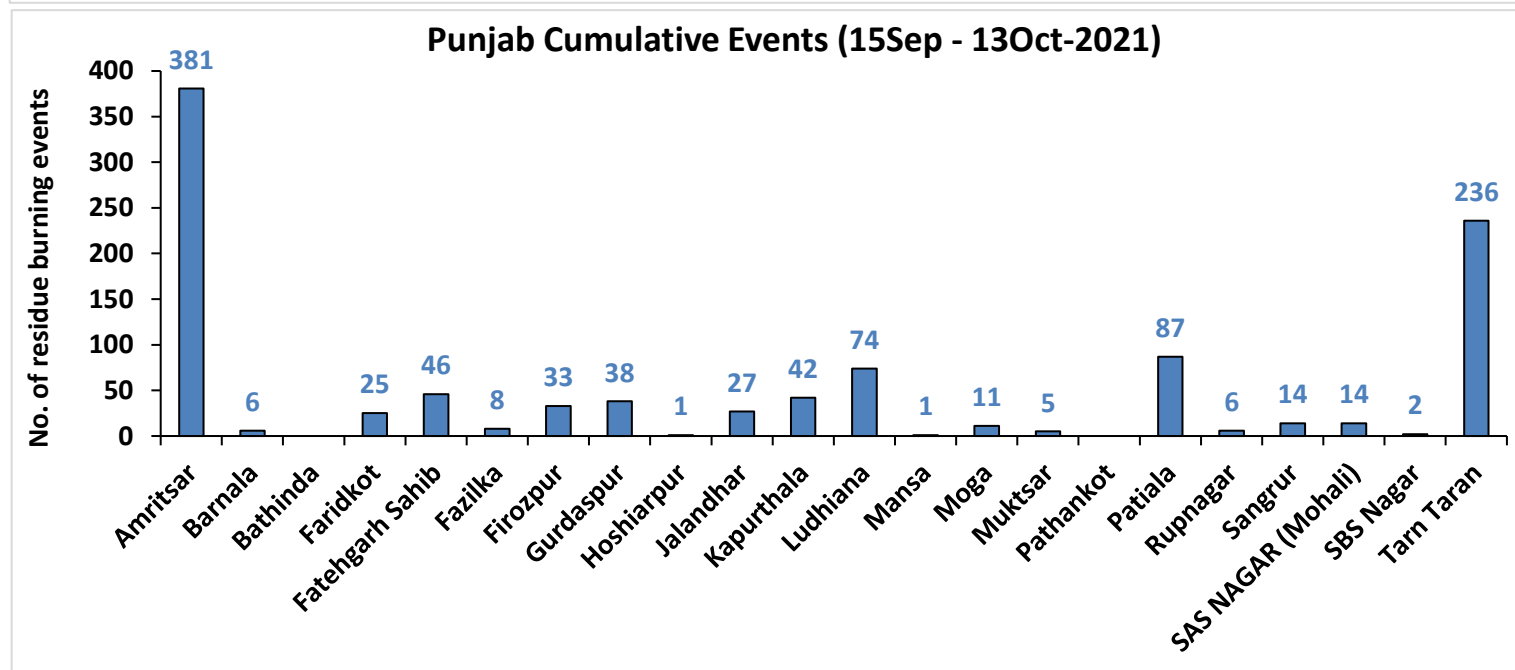
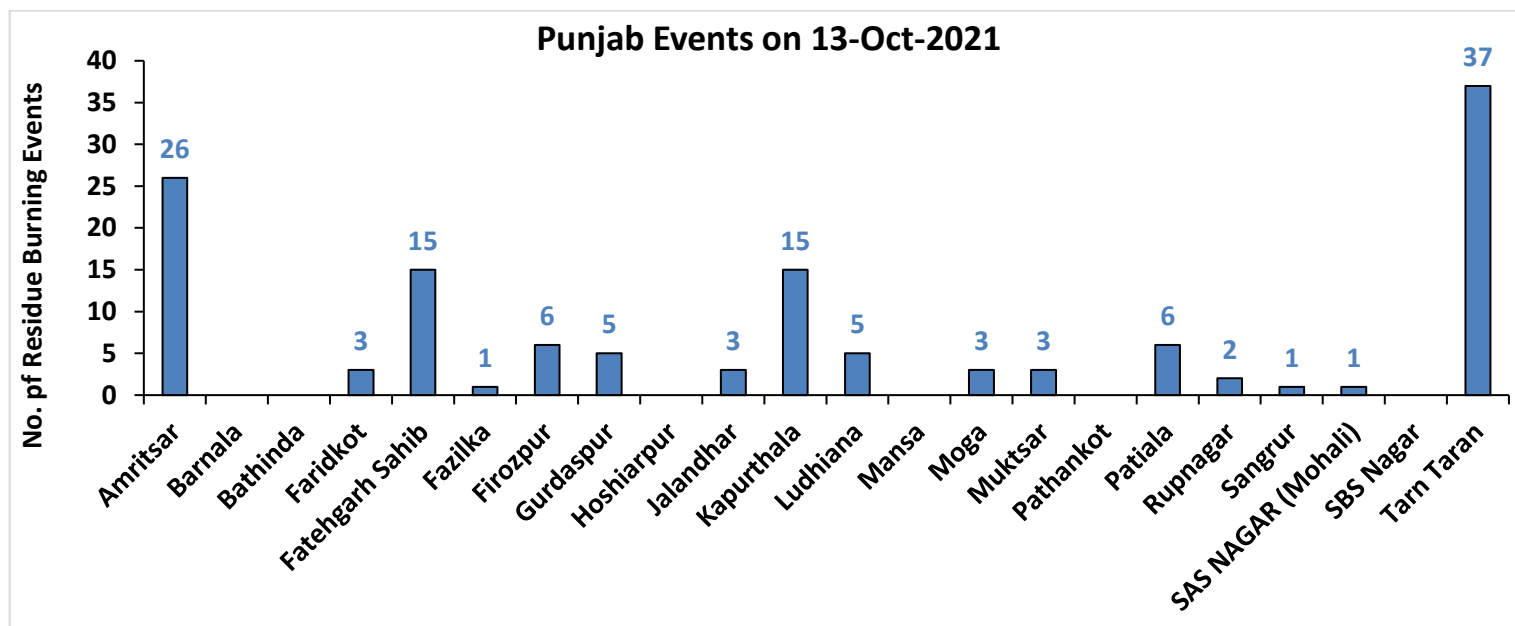
Fire Intensity (W/m²)

- 0 - 5
- 6 - 10
- 11 - 15
- 16 - 20
- >20



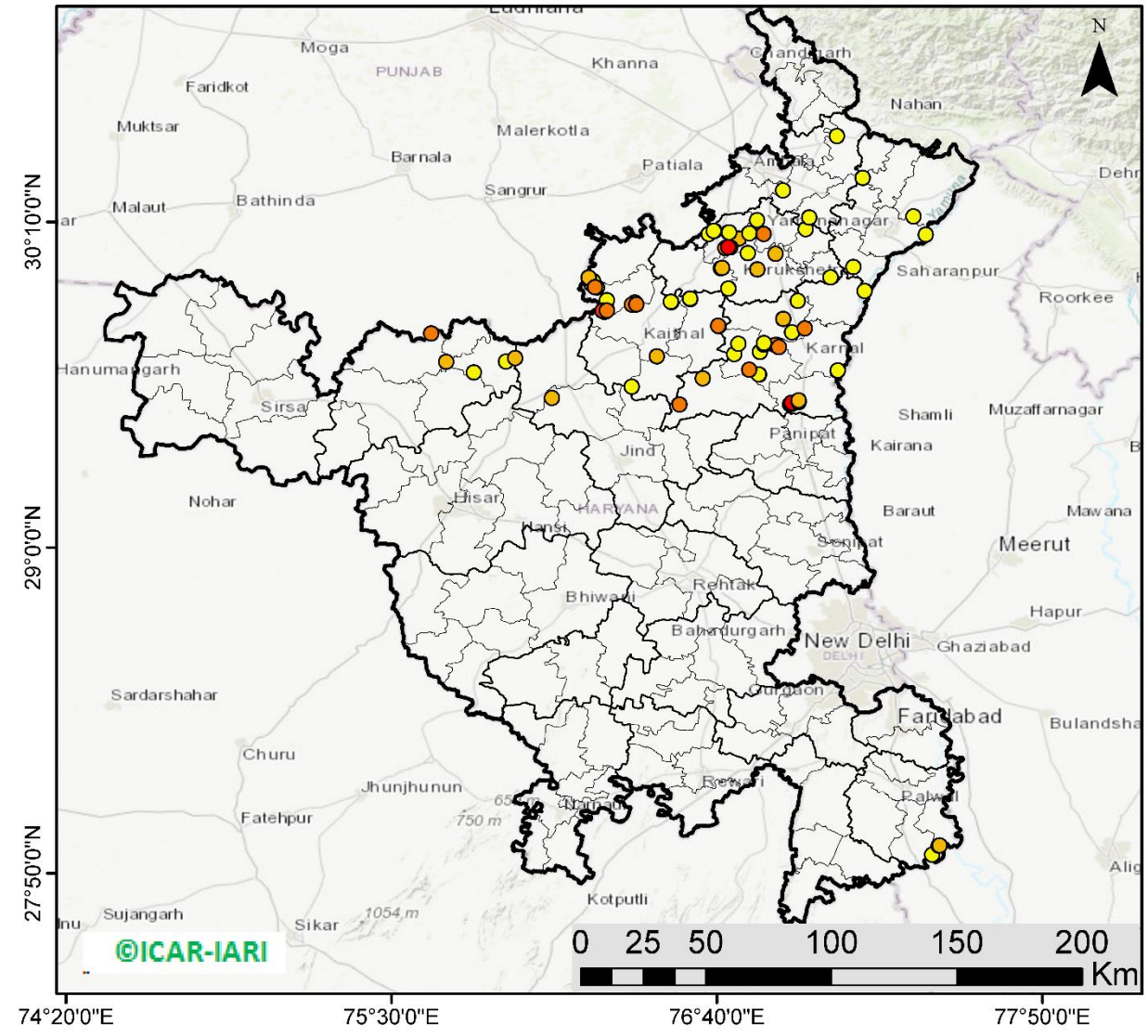
<http://geoportal.icar.gov.in:8080/geoexplorer/composer/>

District-wise cumulative number of residues burning events in Punjab (15Sep - 13Oct-2021)



Haryana

RICE RESIDUE BURNING IN HARYANA



91 burning events detected in Haryana on **13th October 2021**

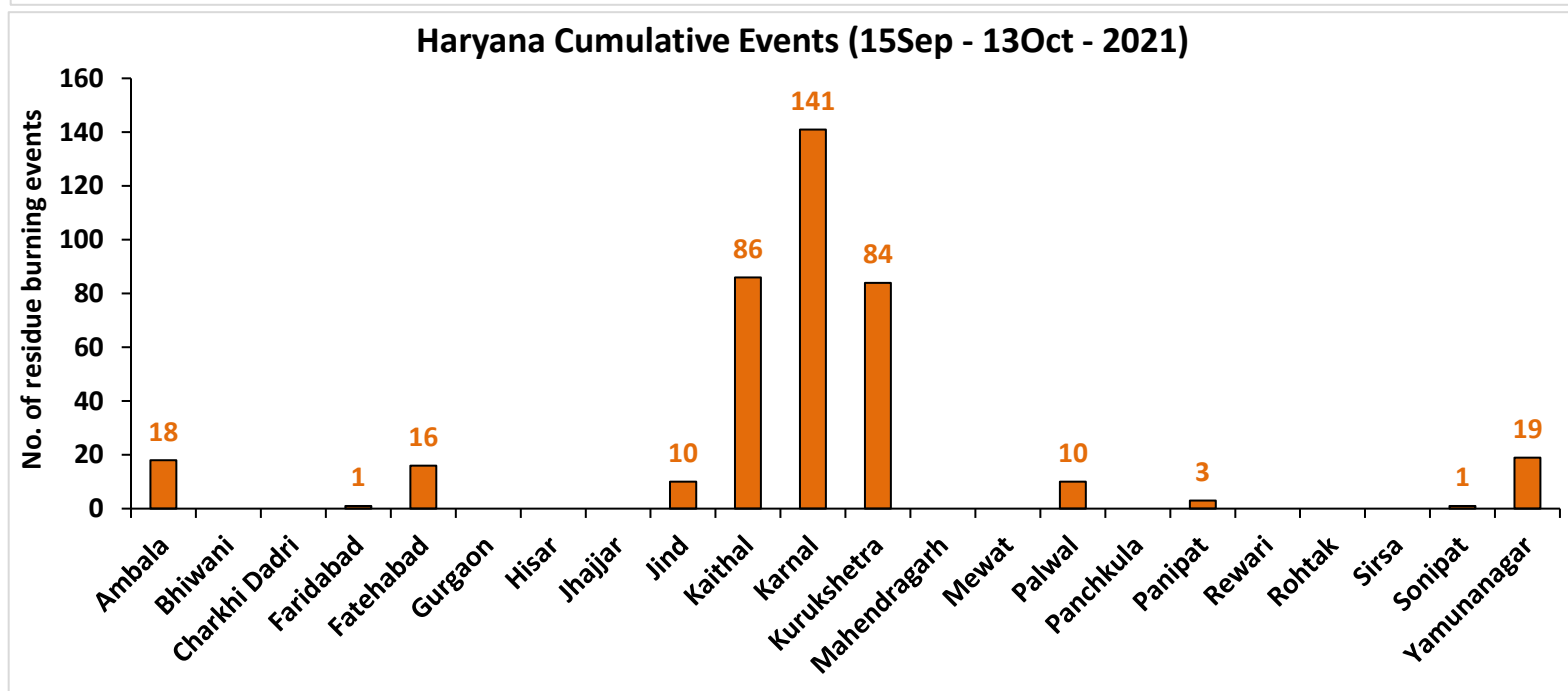
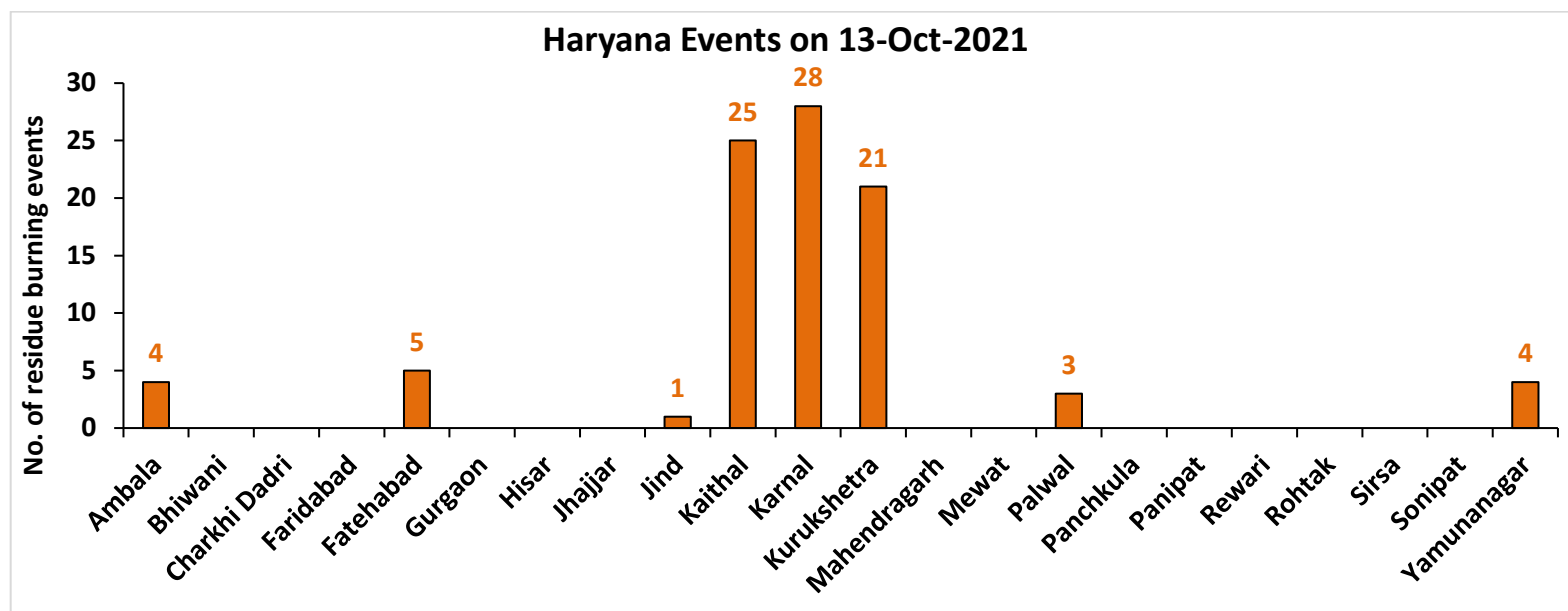
Fire Intensity (W/m²)

- 0 - 5
- 6 - 10
- 11 - 15
- 16 - 20
- >20



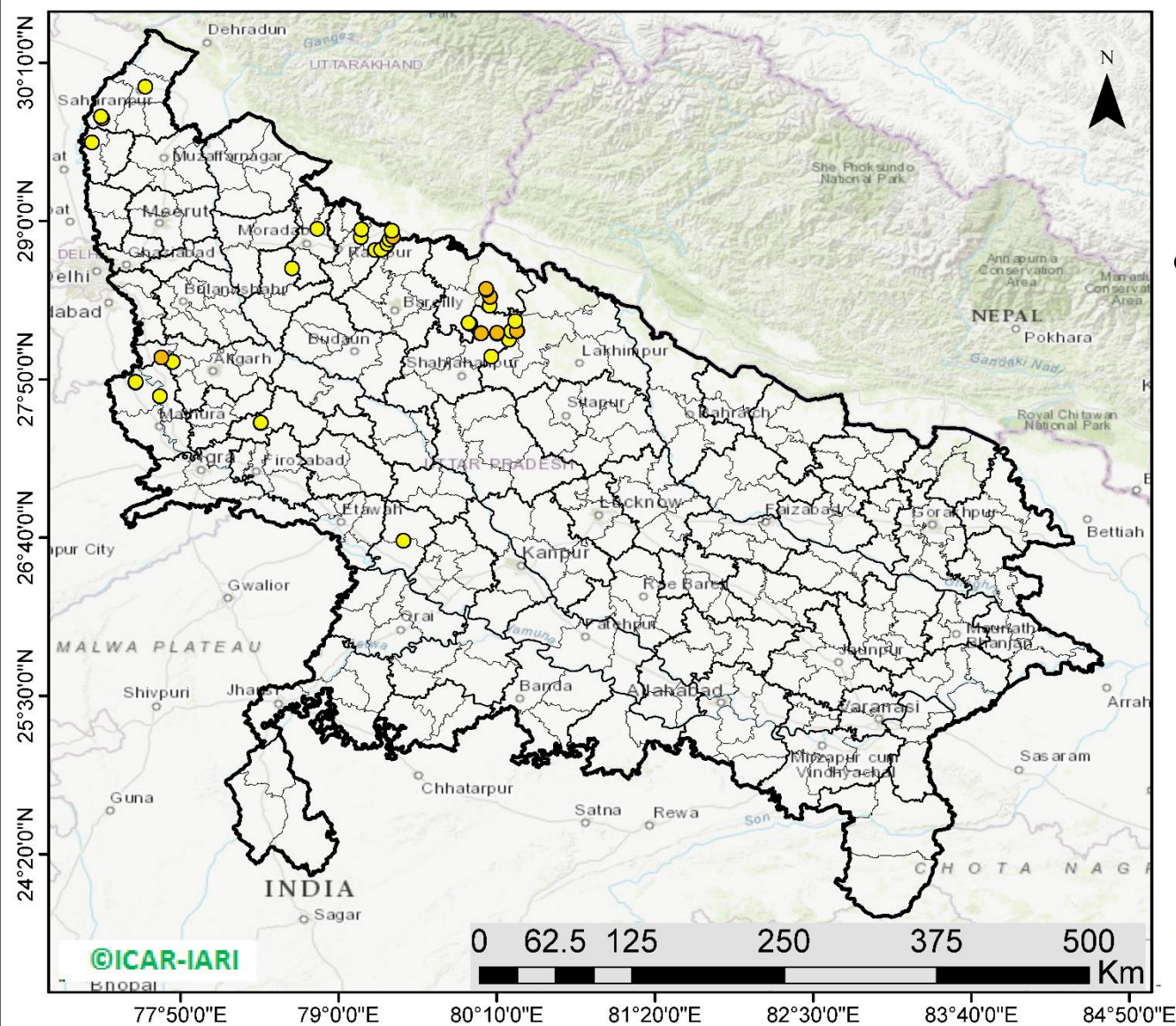
<http://geoportal.icar.gov.in:8080/geoexplorer/composer/>

District-wise cumulative number of residues burning events in Haryana (15Sep - 13Oct-2021)



Uttar Pradesh

RICE RESIDUE BURNING IN UTTAR PRADESH



42 burning events detected in Uttar Pradesh on 13th October 2021

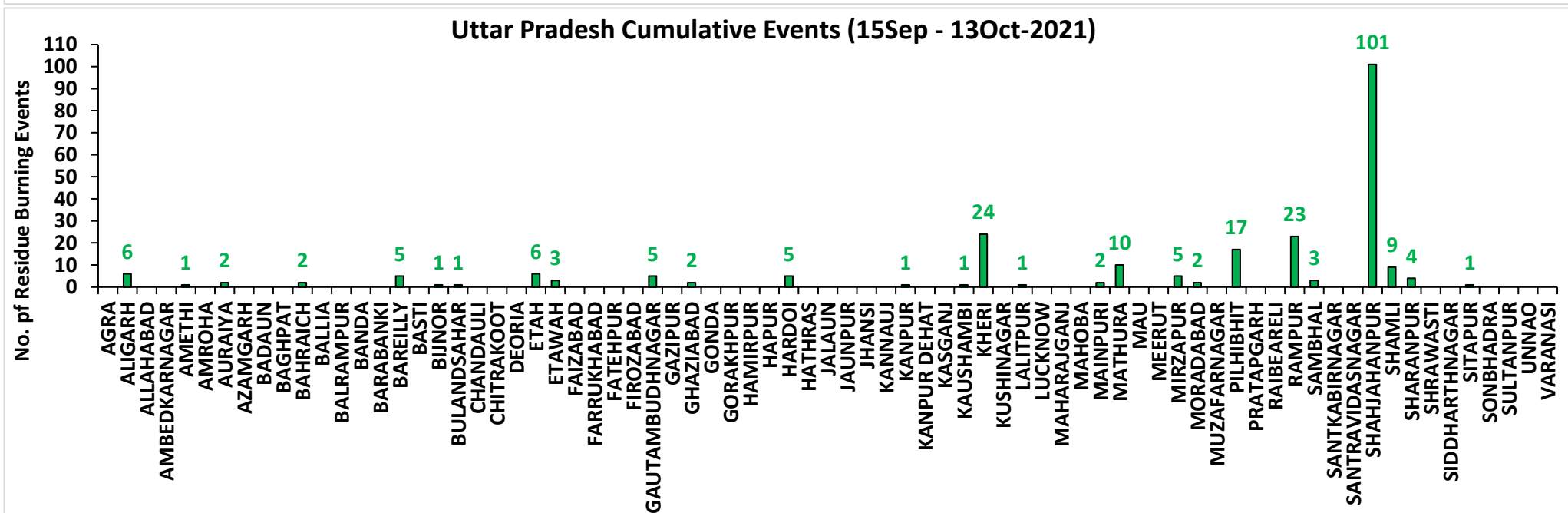
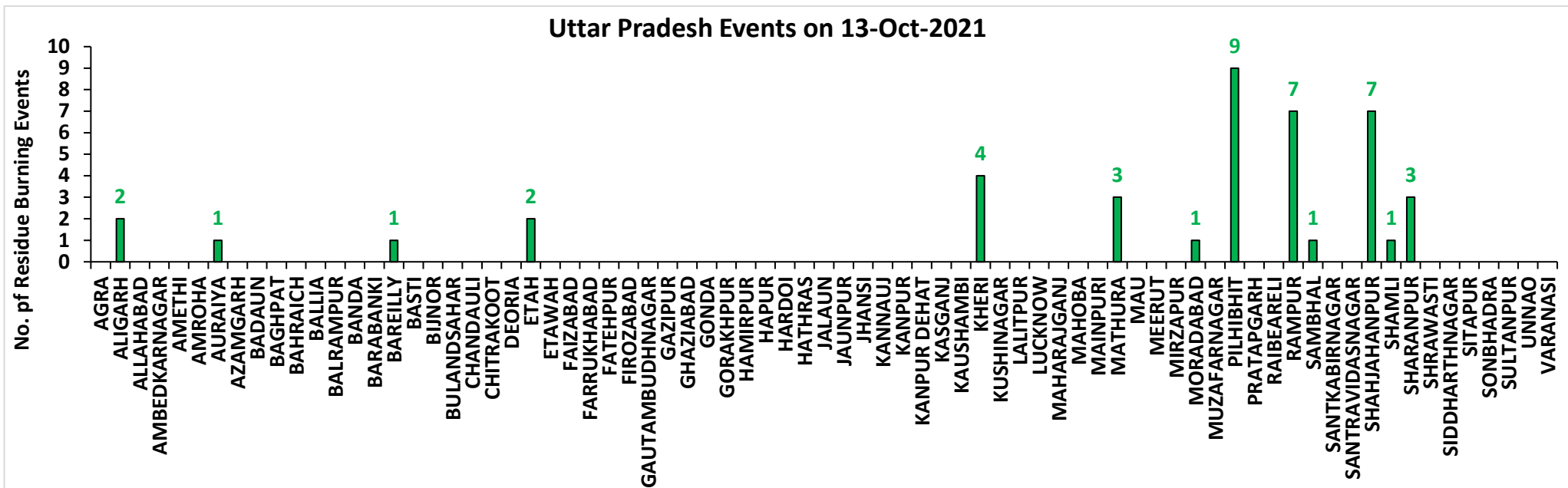
Fire Intensity (W/m^2)

- 0 - 5
- 6 - 10
- 11 - 15
- 16 - 20
- >20



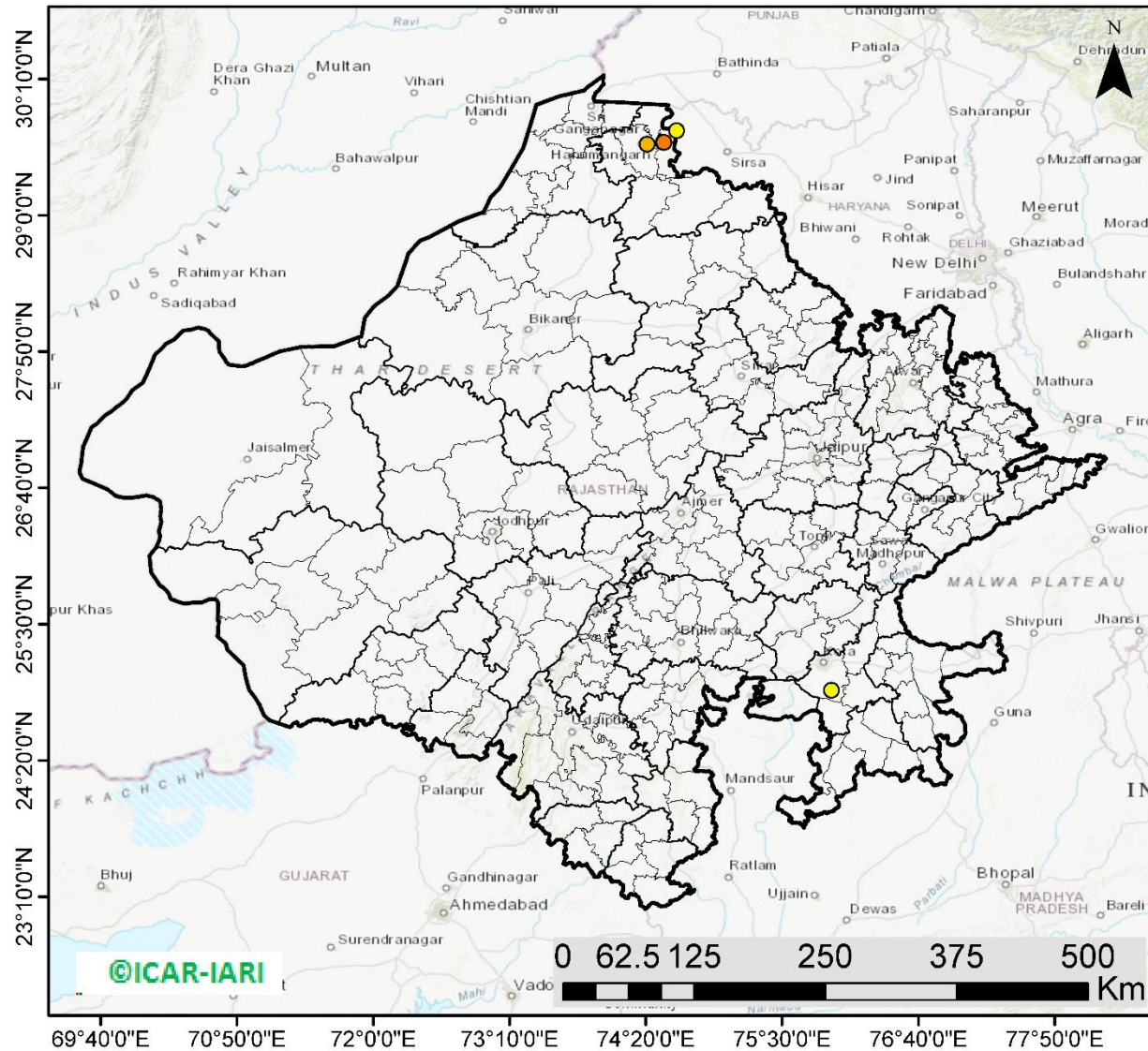
<http://geoportal.icar.gov.in:8080/geoexplorer/composer/>

District-wise cumulative number of residues burning events in Uttar Pradesh (15 Sep - 13 Oct-2021)



Rajasthan

RICE RESIDUE BURNING IN RAJASTHAN



05 burning events detected in Rajasthan on 13th October 2021

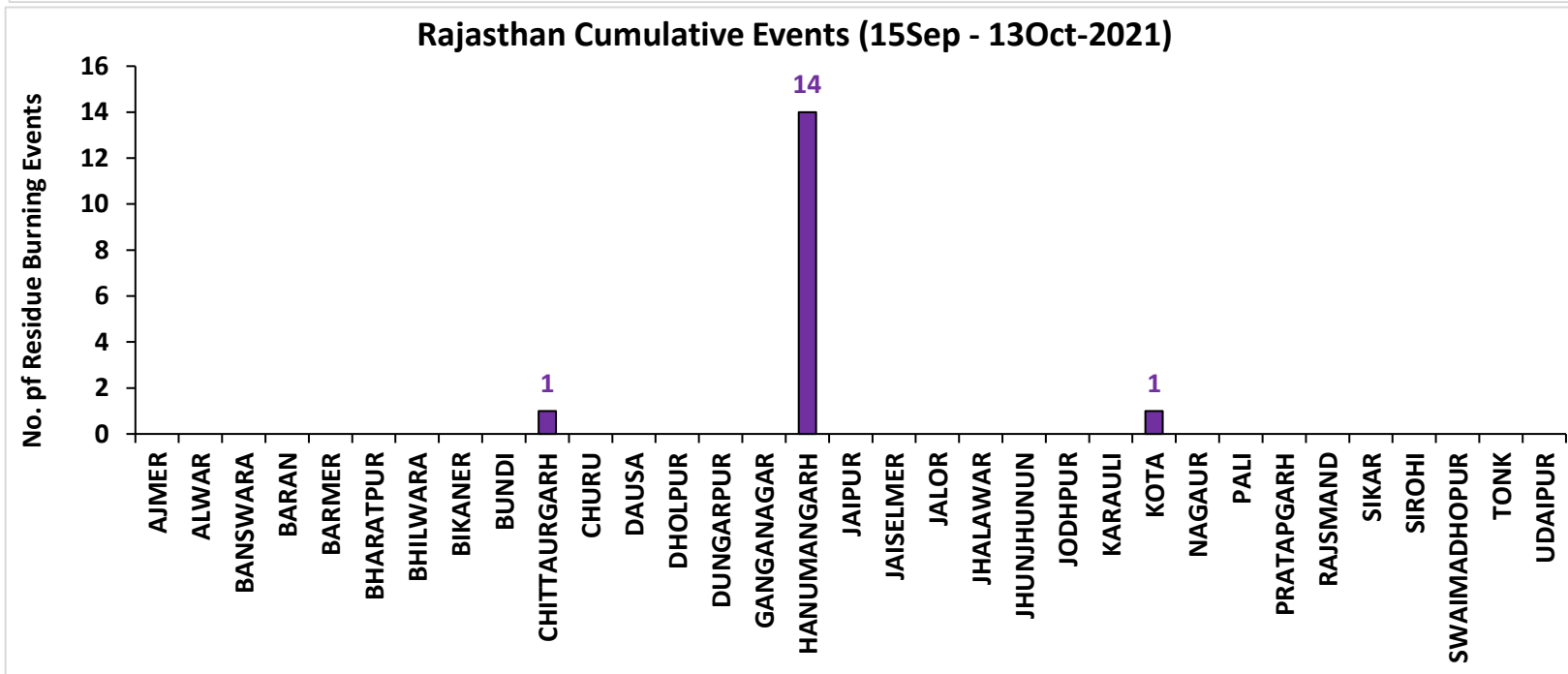
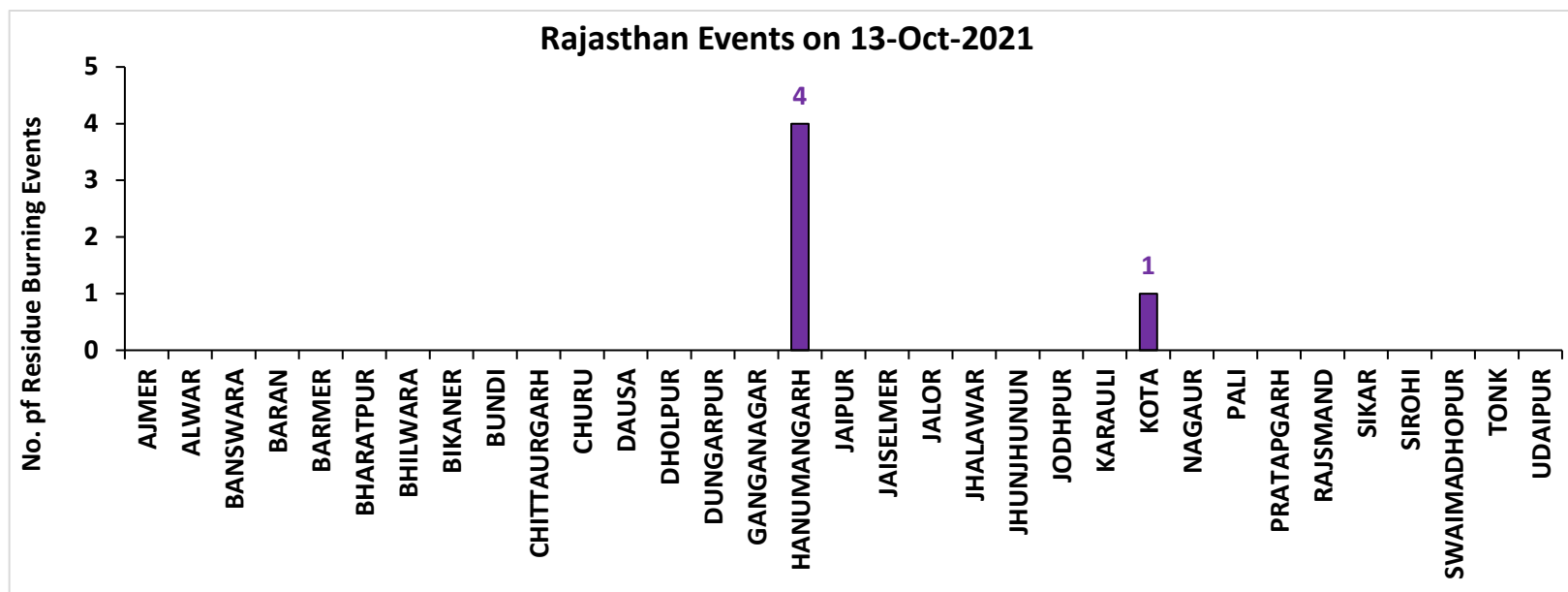
Fire Intensity (W/m²)

- 0 - 5
- 6 - 10
- 11 - 15
- 16 - 20
- >20



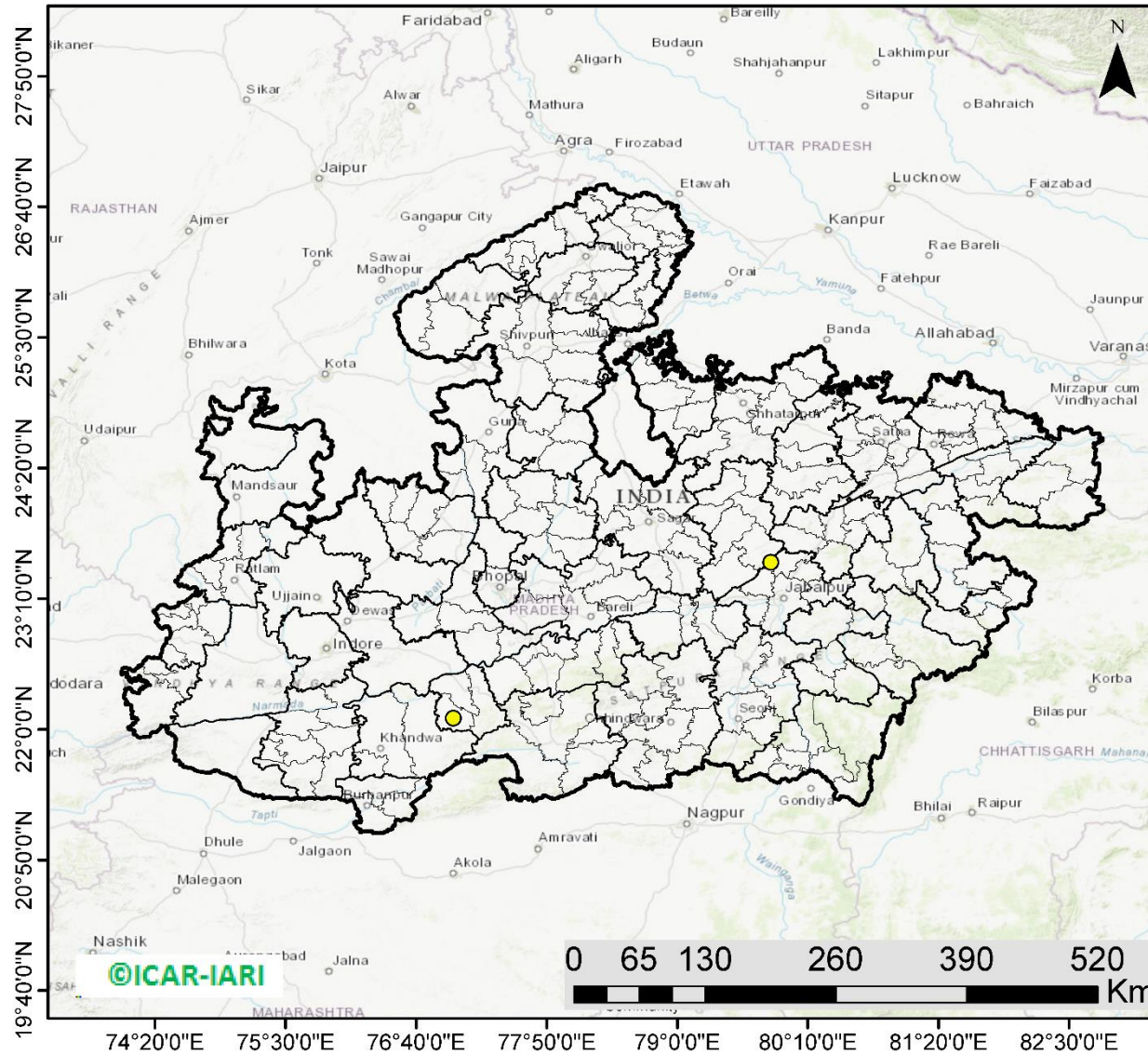
<http://geoportal.icar.gov.in:8080/geoexplorer/composer/>

District-wise cumulative number of residues burning events in Rajasthan (15 Sep - 13 Oct-2021)



Madhya Pradesh

RICE RESIDUE BURNING IN MADHYA PRADESH



02 burning events detected in MP on 13th October 2021

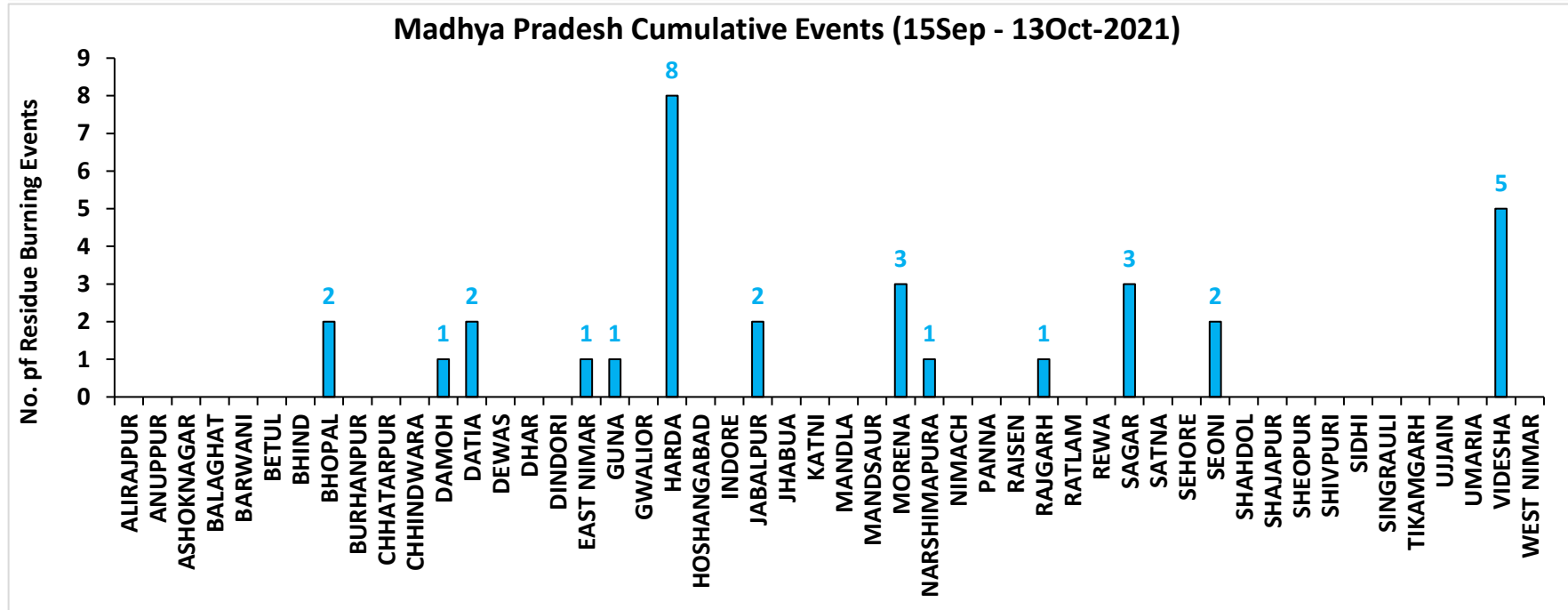
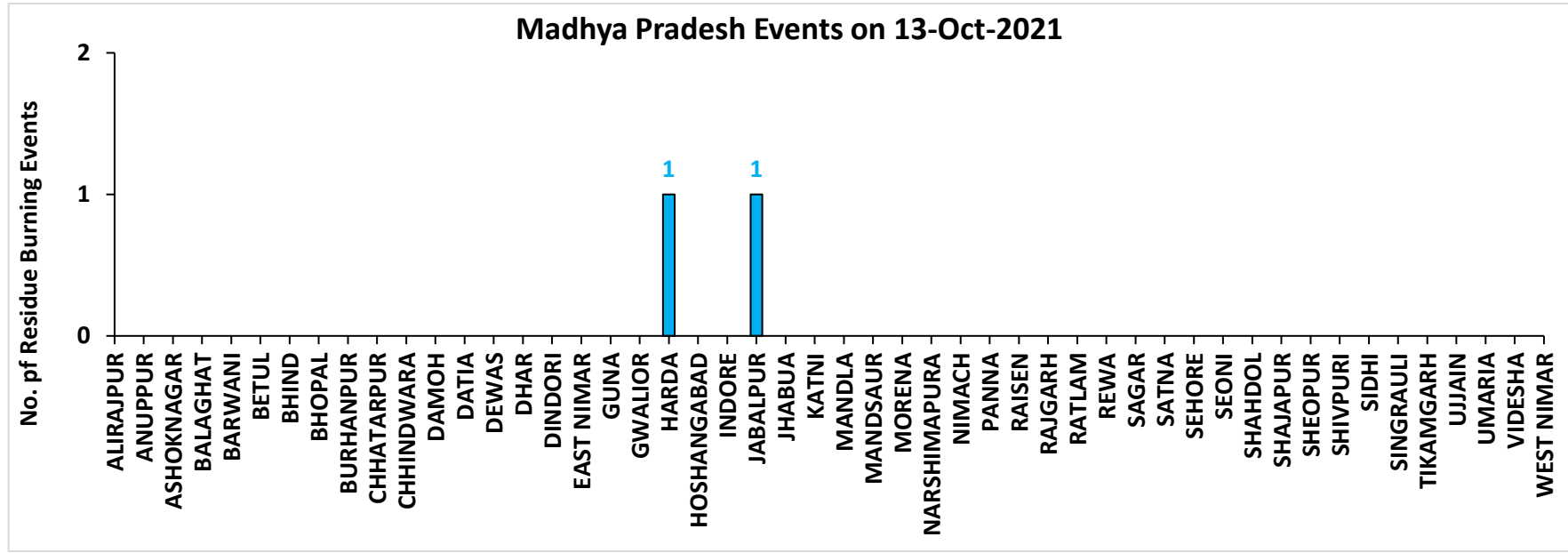
Fire Intensity (W/m²)

- 0 - 5
- 6 - 10
- 11 - 15
- 16 - 20
- >20



<http://geoportal.icar.gov.in:8080/geoexplorer/composer/>

District-wise cumulative number of residues burning events in Madhya Pradesh (15 Sep - 13 Oct-2021)



District-wise cumulative number of residues burning events detected in 2020 and 2021
(Period: 15 September - 13 October)

(a) Punjab

District	15 Sep – 13 Oct	
	2020	2021
AMRITSAR	1532	381
BARNALA	11	6
BATHINDA	24	0
FARIDKOT	55	25
FATEHGARH SAHIB	59	46
FAZILKA	12	8
FIROZPUR	153	33
GURDASPUR	200	38
HOSHIARPUR	11	1
JALANDHAR	52	27
KAPURTHALA	81	42
LUDHIANA	95	74
MANSA	19	1
MOGA	27	11
MUKTSAR	9	5
PATHANKOT	0	0
PATIALA	291	87
RUPNAGAR	11	6
SANGRUR	89	14
SAS NAGAR (MOHALI)	22	14
SBS NAGAR	9	2
TARN TARAN	849	236
Total	3611	1057

(b) Haryana

District	15 Sep – 13 Oct	
	2020	2021
AMBALA	72	18
BHIWANI	0	0
CHARKHI DADRI	0	0
FARIDABAD	0	1
FATEHABAD	33	16
GURGAON	0	0
HISAR	6	0
JHAJJAR	1	0
JIND	15	10
KAITHAL	86	86
KARNAL	154	141
KURUKSHETRA	99	84
MAHENDRAGARH	0	0
MEWAT	0	0
PALWAL	5	10
PANCHKULA	0	0
PANIPAT	7	3
REWARI	0	0
ROHTAK	0	0
SIRSA	6	0
SONIPAT	8	1
YAMUNANAGAR	35	19
Total	527	389

(c) Uttar Pradesh

District	15 Sep – 13 Oct							
	2020	2021	GAUTAMBUDHNAGAR	1	5	MUZAFARNAGAR	2	0
AGRA	1	0	GAZIPUR	0	0	PILHIBHIT	4	17
ALIGARH	21	6	GHAZIABAD	1	2	PRATAPGARH	0	0
ALLAHABAD	0	0	GONDA	0	0	RAIBEARELI	1	0
AMBEDKARNAGAR	0	0	GORAKHPUR	0	0	RAMPUR	14	23
AMETHI	0	1	HAMIRPUR	1	0	SAMBHAL	6	3
AMROHA	1	0	HAPUR	3	0	SANTKABIRNAGAR	0	0
AURAIYA	15	2	HARDOI	4	5	SANTRAVIDASNAGAR	0	0
AZAMGARH	0	0	HATHRAS	0	0	SHAHJAHANPUR	35	101
BADAUN	0	0	JALAUN	0	0	SHAMLI	18	9
BAGHPAT	2	0	JAUNPUR	0	0	SHARANPUR	18	4
BAHRAICH	2	2	JHANSI	6	0	SHRAWASTI	1	0
BALLIA	0	0	KANNAUJ	3	0	SIDDHARTHANAGAR	0	0
BALRAMPUR	0	0	KANPUR	0	1	SITAPUR	8	1
BANDA	0	0	KANPUR DEHAT	3	0	SONBHADRA	0	0
BARABANKI	10	0	KASGANJ	1	0	SULTANPUR	0	0
BAREILLY	10	5	KAUSHAMBI	7	1	UNNAO	2	0
BASTI	2	0	KHERI	29	24	VARANASI	0	0
BIJNOR	3	1	KUSHINAGAR	0	0	Total	296	243
BULANDSAHAR	6	1	LALITPUR	0	1			
CHANDAULI	0	0	LUCKNOW	2	0			
CHITRAKOOT	0	0	MAHARAJGANJ	0	0			
DEORIA	0	0	MAHOBAB	1	0			
ETAH	4	6	MAINPURI	4	2			
ETAWAH	2	3	MATHURA	7	10			
FAIZABAD	1	0	MAU	0	0			
FARRUKHABAD	0	0	MEERUT	9	0			
FATEHPUR	14	0	MIRZAPUR	5	5			
FIROZABAD	4	0	MORADABAD	2	2			

(d) Delhi

District	15 Sep – 13 Oct	
	2020	2021
CENTRAL	0	0
EAST	0	0
NEW DELHI	0	0
NORTH	2	0
NORTH EAST	0	0
NORTH WEST DELHI	0	0
SHAHADRA	0	0
SOUTH	1	0
SOUTH EAST	0	0
SOUTH WEST DELHI	0	0
WEST DELHI	0	0
Total	3	0

(e) Rajasthan

District	15 Sep – 13 Oct	
	2020	2021
AJMER	0	0
ALWAR	1	0
BANSWARA	0	0
BARAN	78	0
BARMER	2	0
BHARATPUR	0	0
BHILWARA	2	0
BIKANER	0	0
BUNDI	4	0
CHITTAURGARH	0	1
CHURU	0	0
DAUSA	0	0
DHOLPUR	0	0
DUNGARPUR	0	0
GANGANAGAR	2	0
HANUMANGARH	55	14
JAIPUR	0	0
JAISELMER	2	0
JALOR	0	0
JHALAWAR	1	0
JHUNJHUNUN	1	0
JODHPUR	1	0
KARALI	1	0
KOTA	21	1
NAGAUR	0	0
PALI	1	0
PRATAPGARH	0	0
RAJSMAND	0	0
SIKAR	0	0
SIROHI	1	0
SWAIMADHOPUR	3	0
TONK	1	0
UDAIPUR	0	0
Total	177	16

(f) Madhya Pradesh

District	15 Sep – 13 Oct				
	2020	2021			
			PANNA	2	0
ALIRAJPUR	0	0	RAISEN	10	0
ANUPPUR	0	0	RAJGARH	7	1
ASHOKNAGAR	9	0	RATLAM	0	0
BALAGHAT	0	0	REWA	3	0
BARWANI	0	0	SAGAR	13	3
BETUL	0	0	SATNA	3	0
BHIND	2	0	SEHORE	5	0
BHOPAL	4	2	SEONI	6	2
BURHANPUR	0	0	SHAHDOL	0	0
CHHATARPUR	4	0	SHAJAPUR	5	0
CHHINDWARA	0	0	SHEOPUR	6	0
DAMOH	14	1	SHIVPURI	4	0
DATIA	23	2	SIDHI	0	0
DEWAS	3	0	SINGRAULI	0	0
DHAR	19	0	TIKAMGARH	1	0
DINDORI	0	0	UJJAIN	5	0
EAST NIMAR	2	1	UMARIA	0	0
GUNA	13	1	VIDESHA	50	5
GWALIOR	21	0	WEST NIMAR	2	0
HARDA	8	8	Total	275	32
HOSHANGABAD	9	0			
INDORE	2	0			
JABALPUR	6	2			
JHABUA	0	0			
KATNI	0	0			
MANDLA	0	0			
MANDSAUR	3	0			
MORENA	10	3			
NARSHIMAPURA	1	1			
NIMACH	0	0			

State-wise and date-wise number of paddy residue burning events detected in 2020 and 2021

(Period: 15 September – 13 October)

Number of Paddy Residue Burning Events Detected

	Punjab		Haryana		Uttar Pradesh		Delhi		Rajasthan		Madhya Pradesh	
	2020	2021	2020	2021	2020	2021	2020	2021	2020	2021	2020	2021
15-Sep	5	0	2	0	1	0	0	0	1	0	2	0
16-Sep	0	2	1	0	0	0	0	0	0	0	0	0
17-Sep	5	0	3	0	0	0	0	0	0	0	0	0
18-Sep	17	9	0	0	0	1	0	0	0	0	0	0
19-Sep	30	5	2	0	0	1	0	0	0	0	0	0
20-Sep	67	8	6	0	2	0	0	0	0	0	0	0
21-Sep	54	0	2	0	1	0	0	0	1	0	2	0
22-Sep	34	0	1	0	1	0	0	0	0	0	0	0
23-Sep	49	0	0	0	1	0	0	0	1	0	0	0
24-Sep	78	5	0	0	1	1	0	0	0	0	0	0
25-Sep	184	11	11	0	5	0	0	0	1	0	0	0
26-Sep	190	19	5	0	8	0	0	0	1	0	2	0
27-Sep	78	37	8	0	4	1	0	0	0	0	1	0
28-Sep	55	28	6	1	1	6	0	0	0	0	1	1
29-Sep	63	64	9	4	6	10	0	0	3	0	0	4
30-Sep	116	27	22	2	13	13	1	0	1	0	5	0
01-Oct	165	13	15	4	7	13	0	0	4	1	13	0
02-Oct	141	0	30	2	12	0	1	0	7	0	12	0
03-Oct	110	9	8	6	4	3	0	0	9	0	5	1
04-Oct	162	23	29	2	8	0	0	0	15	0	4	2
05-Oct	161	18	17	3	14	2	0	0	14	0	13	1
06-Oct	171	42	30	0	12	1	1	0	16	0	37	1
07-Oct	197	72	32	11	41	13	0	0	14	1	31	1
08-Oct	95	108	29	27	25	11	0	0	11	0	17	2
09-Oct	121	114	20	39	15	20	0	0	12	0	15	4
10-Oct	232	150	33	95	9	54	0	0	14	1	18	1
11-Oct	377	64	90	51	23	28	0	0	21	7	32	2
12-Oct	388	97	69	51	46	23	0	0	24	1	44	1
13-Oct	266	132	47	91	36	42	0	0	7	5	21	2
Total	3611	1057	527	389	296	243	3	0	177	16	275	23

Details of residue burning events in Punjab on 13-Oct-2021

S. No.	District	Tehsil / Block	Satellite	Latitude	Longitude	ACQ_DATE	ACQ_TIME	Day / Night	Fire Power (W/m2)
1	AMRITSAR	AJNALA	S-NPP	31.96610	74.87710	10/13/2021	14:00:18	D	3.80
2	AMRITSAR	ATTARI	S-NPP	31.51040	74.61070	10/13/2021	14:00:18	D	2.40
3	AMRITSAR	JANDIALA GURU	S-NPP	31.52750	75.07650	10/13/2021	14:00:18	D	4.60
4	AMRITSAR	JANDIALA GURU	S-NPP	31.53910	75.05310	10/13/2021	14:00:18	D	3.70
5	AMRITSAR	JANDIALA GURU	S-NPP	31.54020	75.06400	10/13/2021	14:00:18	D	9.10
6	AMRITSAR	JANDIALA GURU	S-NPP	31.55490	75.07320	10/13/2021	14:00:18	D	2.00
7	AMRITSAR	JANDIALA GURU	AQUA	31.54100	75.12300	10/13/2021	13:56:38	D	6.50
8	AMRITSAR	MAJITHA	S-NPP	31.75000	74.98510	10/13/2021	14:00:18	D	4.20
9	AMRITSAR	MAJITHA	S-NPP	31.77680	75.02330	10/13/2021	14:00:18	D	4.90
10	AMRITSAR	MAJITHA	S-NPP	31.78550	75.01920	10/13/2021	14:00:18	D	4.90
11	AMRITSAR	MAJITHA	S-NPP	31.78590	75.02220	10/13/2021	14:00:18	D	6.10
12	AMRITSAR	MAJITHA	S-NPP	31.81550	74.99120	10/13/2021	14:00:18	D	13.50
13	AMRITSAR	MAJITHA	AQUA	31.80800	74.98600	10/13/2021	13:56:38	D	16.90
14	AMRITSAR	MAJITHA	AQUA	31.81100	74.99100	10/13/2021	13:56:38	D	23.30
15	AMRITSAR	RAYYA	S-NPP	31.60160	75.23330	10/13/2021	14:00:18	D	5.20
16	AMRITSAR	RAYYA	S-NPP	31.65810	75.23780	10/13/2021	14:00:18	D	15.00
17	AMRITSAR	RAYYA	AQUA	31.52000	75.12600	10/13/2021	13:56:38	D	9.10
18	AMRITSAR	RAYYA	AQUA	31.65300	75.23600	10/13/2021	13:56:38	D	8.80
19	AMRITSAR	TARSIKKA	S-NPP	31.64240	75.06700	10/13/2021	14:00:18	D	10.00
20	AMRITSAR	TARSIKKA	S-NPP	31.68010	75.12330	10/13/2021	14:00:18	D	2.10
21	AMRITSAR	TARSIKKA	S-NPP	31.68360	75.11990	10/13/2021	14:00:18	D	2.90
22	AMRITSAR	TARSIKKA	S-NPP	31.70540	75.15630	10/13/2021	14:00:18	D	7.60
23	AMRITSAR	TARSIKKA	S-NPP	31.71620	75.12150	10/13/2021	14:00:18	D	3.80
24	AMRITSAR	TARSIKKA	S-NPP	31.72480	75.16510	10/13/2021	14:00:18	D	3.80
25	AMRITSAR	TARSIKKA	AQUA	31.63000	75.18800	10/13/2021	13:56:38	D	8.40
26	AMRITSAR	VERKA	S-NPP	31.70700	74.96850	10/13/2021	14:00:18	D	5.80
27	FARIDKOT	FARIDKOT	S-NPP	30.73020	74.56860	10/13/2021	14:00:18	D	2.30
28	FARIDKOT	FARIDKOT	S-NPP	30.74000	74.62230	10/13/2021	14:00:18	D	3.40
29	FARIDKOT	FARIDKOT	AQUA	30.74000	74.62300	10/13/2021	13:56:38	D	14.60

30	FATEHGARH SAHIB	AMLOH	S-NPP	30.57070	76.28430	10/13/2021	14:00:18	D	5.10
31	FATEHGARH SAHIB	AMLOH	S-NPP	30.63880	76.30030	10/13/2021	14:00:18	D	4.70
32	FATEHGARH SAHIB	BASSI PATHANAN	S-NPP	30.70830	76.47720	10/13/2021	14:00:18	D	3.00
33	FATEHGARH SAHIB	BASSI PATHANAN	S-NPP	30.71330	76.47670	10/13/2021	14:00:18	D	3.00
34	FATEHGARH SAHIB	BASSI PATHANAN	AQUA	30.71100	76.47700	10/13/2021	13:56:38	D	8.50
35	FATEHGARH SAHIB	KHAMANON	S-NPP	30.83080	76.32890	10/13/2021	14:00:18	D	5.00
36	FATEHGARH SAHIB	KHAMANON	S-NPP	30.83260	76.32690	10/13/2021	14:00:18	D	4.30
37	FATEHGARH SAHIB	KHAMANON	S-NPP	30.86540	76.30430	10/13/2021	14:00:18	D	3.80
38	FATEHGARH SAHIB	KHAMANON	AQUA	30.86300	76.30300	10/13/2021	13:56:38	D	16.50
39	FATEHGARH SAHIB	KHERA	S-NPP	30.56970	76.56480	10/13/2021	14:00:18	D	4.40
40	FATEHGARH SAHIB	KHERA	S-NPP	30.59400	76.55560	10/13/2021	14:00:18	D	3.80
41	FATEHGARH SAHIB	KHERA	S-NPP	30.63460	76.50600	10/13/2021	14:00:18	D	6.90
42	FATEHGARH SAHIB	KHERA	S-NPP	30.67040	76.50070	10/13/2021	14:00:18	D	6.80
43	FATEHGARH SAHIB	KHERA	S-NPP	30.67100	76.50710	10/13/2021	14:00:18	D	6.80
44	FATEHGARH SAHIB	KHERA	S-NPP	30.67430	76.48740	10/13/2021	14:00:18	D	6.70
45	FAZILKA	FAZILKA	S-NPP	30.41280	73.96000	10/13/2021	14:00:18	D	9.30
46	FIROZPUR	FIROZPUR	S-NPP	30.95860	74.54790	10/13/2021	14:00:18	D	3.50
47	FIROZPUR	GURUHAR SAHAI	S-NPP	30.73940	74.43910	10/13/2021	14:00:18	D	14.10
48	FIROZPUR	GURUHAR SAHAI	S-NPP	30.73990	74.44390	10/13/2021	14:00:18	D	14.10
49	FIROZPUR	MAMDOT	S-NPP	30.77960	74.39610	10/13/2021	14:00:18	D	4.50
50	FIROZPUR	MAMDOT	S-NPP	30.80740	74.50060	10/13/2021	14:00:18	D	2.70
51	FIROZPUR	MAMDOT	S-NPP	30.82400	74.40010	10/13/2021	14:00:18	D	4.60
52	GURDASPUR	BATALA	S-NPP	31.76120	75.10500	10/13/2021	14:00:18	D	3.10
53	GURDASPUR	DERA BABA NANAK	AQUA	31.94600	75.02800	10/13/2021	13:56:38	D	8.30
54	GURDASPUR	FATEHGARH CHURIAN	S-NPP	31.87210	75.00880	10/13/2021	14:00:18	D	2.70
55	GURDASPUR	KALANAUR	S-NPP	31.95320	75.18900	10/13/2021	14:00:18	D	3.60
56	GURDASPUR	KALANAUR	AQUA	31.95300	75.18500	10/13/2021	13:56:38	D	9.40
57	JALANDHAR	NAKODAR	S-NPP	31.20410	75.48760	10/13/2021	14:00:18	D	3.60
58	JALANDHAR	NAKODAR	S-NPP	31.23890	75.40360	10/13/2021	14:00:18	D	7.70
59	JALANDHAR	SHAHKOT	S-NPP	31.00980	75.37250	10/13/2021	14:00:18	D	6.50
60	KAPURTHALA	KAPURTHALA	S-NPP	31.34260	75.32640	10/13/2021	14:00:18	D	27.30
61	KAPURTHALA	KAPURTHALA	S-NPP	31.34720	75.32590	10/13/2021	14:00:18	D	15.00
62	KAPURTHALA	KAPURTHALA	S-NPP	31.34920	75.45060	10/13/2021	14:00:18	D	3.40

63	KAPURTHALA	KAPURTHALA	S-NPP	31.35910	75.30200	10/13/2021	14:00:18	D	4.20
64	KAPURTHALA	KAPURTHALA	AQUA	31.33900	75.32300	10/13/2021	13:56:38	D	78.00
65	KAPURTHALA	KAPURTHALA	AQUA	31.34100	75.33700	10/13/2021	13:56:38	D	6.60
66	KAPURTHALA	SULTANPUR LODHI	S-NPP	31.17170	75.02500	10/13/2021	14:00:18	D	18.10
67	KAPURTHALA	SULTANPUR LODHI	S-NPP	31.24600	75.13250	10/13/2021	14:00:18	D	9.90
68	KAPURTHALA	SULTANPUR LODHI	S-NPP	31.24650	75.13790	10/13/2021	14:00:18	D	9.90
69	KAPURTHALA	SULTANPUR LODHI	S-NPP	31.24660	75.13540	10/13/2021	14:00:18	D	16.10
70	KAPURTHALA	SULTANPUR LODHI	S-NPP	31.25130	75.23400	10/13/2021	14:00:18	D	8.50
71	KAPURTHALA	SULTANPUR LODHI	S-NPP	31.28600	75.16600	10/13/2021	14:00:18	D	1.70
72	KAPURTHALA	SULTANPUR LODHI	S-NPP	31.34260	75.27590	10/13/2021	14:00:18	D	7.50
73	KAPURTHALA	SULTANPUR LODHI	AQUA	31.27900	75.16100	10/13/2021	13:56:38	D	12.30
74	KAPURTHALA	SULTANPUR LODHI	AQUA	31.28300	75.16600	10/13/2021	13:56:38	D	16.60
75	LUDHIANA	MACHHIWARA	AQUA	30.86400	76.29700	10/13/2021	13:56:38	D	20.00
76	LUDHIANA	PAKHOWAL	S-NPP	30.69610	75.73660	10/13/2021	14:00:18	D	2.70
77	LUDHIANA	SAMRALA	S-NPP	30.77270	76.22820	10/13/2021	14:00:18	D	5.30
78	LUDHIANA	SIDHWAN BET	S-NPP	30.87500	75.54630	10/13/2021	14:00:18	D	6.50
79	LUDHIANA	SIDHWAN BET	S-NPP	30.87660	75.54320	10/13/2021	14:00:18	D	4.20
80	MOGA	BAGHA PURANA	S-NPP	30.51540	75.06170	10/13/2021	14:00:18	D	3.70
81	MOGA	KOT ISE KHAN AT DHARAMKOT	S-NPP	30.98480	75.30300	10/13/2021	14:00:18	D	2.70
82	MOGA	MOGA-1	S-NPP	30.70250	75.19190	10/13/2021	14:00:18	D	9.10
83	MUKTSAR	MUKTSAR	S-NPP	30.44210	74.44230	10/13/2021	14:00:18	D	4.00
84	MUKTSAR	MUKTSAR	S-NPP	30.44300	74.43910	10/13/2021	14:00:18	D	2.30
85	MUKTSAR	MUKTSAR	S-NPP	30.58610	74.50120	10/13/2021	14:00:18	D	4.70
86	PATIALA	BHUNARHERI	S-NPP	30.20260	76.57780	10/13/2021	14:00:18	D	8.80
87	PATIALA	BHUNARHERI	S-NPP	30.25770	76.44900	10/13/2021	14:00:18	D	8.70
88	PATIALA	NABHA	S-NPP	30.47120	76.24170	10/13/2021	14:00:18	D	4.90
89	PATIALA	NABHA	S-NPP	30.53520	76.21370	10/13/2021	14:00:18	D	1.90
90	PATIALA	NABHA	S-NPP	30.54190	76.12080	10/13/2021	14:00:18	D	4.50
91	PATIALA	SANAUR	S-NPP	30.27300	76.45370	10/13/2021	14:00:18	D	8.80
92	RUPNAGAR	MORINDA	S-NPP	30.76510	76.48980	10/13/2021	14:00:18	D	6.60
93	RUPNAGAR	RUPNAGAR	S-NPP	30.88940	76.53340	10/13/2021	14:00:18	D	3.90
94	SANGRUR	SUNAM	S-NPP	30.11140	75.83330	10/13/2021	14:00:18	D	3.80
95	SAS NAGAR (MOHALI)	DERABASSI	S-NPP	30.54770	76.77990	10/13/2021	14:00:18	D	3.90

96	TARN TARAN	BHIKHIWIND	S-NPP	31.24180	74.68650	10/13/2021	14:00:18	D	2.70
97	TARN TARAN	BHIKHIWIND	S-NPP	31.26440	74.73540	10/13/2021	14:00:18	D	4.10
98	TARN TARAN	BHIKHIWIND	S-NPP	31.28530	74.71730	10/13/2021	14:00:18	D	16.10
99	TARN TARAN	BHIKHIWIND	S-NPP	31.28970	74.67020	10/13/2021	14:00:18	D	7.60
100	TARN TARAN	BHIKHIWIND	S-NPP	31.33550	74.76830	10/13/2021	14:00:18	D	4.90
101	TARN TARAN	BHIKHIWIND	S-NPP	31.33950	74.78610	10/13/2021	14:00:18	D	3.90
102	TARN TARAN	BHIKHIWIND	S-NPP	31.34000	74.79130	10/13/2021	14:00:18	D	4.20
103	TARN TARAN	BHIKHIWIND	S-NPP	31.35610	74.72130	10/13/2021	14:00:18	D	1.90
104	TARN TARAN	CHOHLA SAHIB	S-NPP	31.22170	75.01880	10/13/2021	14:00:18	D	16.10
105	TARN TARAN	CHOHLA SAHIB	S-NPP	31.22880	75.04500	10/13/2021	14:00:18	D	3.80
106	TARN TARAN	CHOHLA SAHIB	S-NPP	31.25800	74.90960	10/13/2021	14:00:18	D	3.10
107	TARN TARAN	GANDIWIND TATLA	S-NPP	31.48920	74.62370	10/13/2021	14:00:18	D	4.40
108	TARN TARAN	GANDIWIND TATLA	S-NPP	31.51490	74.65670	10/13/2021	14:00:18	D	8.80
109	TARN TARAN	GANDIWIND TATLA	AQUA	31.43600	74.65900	10/13/2021	13:56:38	D	8.90
110	TARN TARAN	KHADUR SAHIB	S-NPP	31.42990	75.06940	10/13/2021	14:00:18	D	4.30
111	TARN TARAN	KHADUR SAHIB	S-NPP	31.46310	75.17550	10/13/2021	14:00:18	D	3.70
112	TARN TARAN	KHADUR SAHIB	S-NPP	31.49540	75.23560	10/13/2021	14:00:18	D	11.70
113	TARN TARAN	NAUSHERA PANNUAN	S-NPP	31.37910	74.91890	10/13/2021	14:00:18	D	6.70
114	TARN TARAN	NAUSHERA PANNUAN	AQUA	31.37500	74.91700	10/13/2021	13:56:38	D	21.90
115	TARN TARAN	PATTI	S-NPP	31.19300	74.76840	10/13/2021	14:00:18	D	3.80
116	TARN TARAN	PATTI	S-NPP	31.23110	74.92670	10/13/2021	14:00:18	D	4.80
117	TARN TARAN	PATTI	S-NPP	31.23190	74.92350	10/13/2021	14:00:18	D	3.90
118	TARN TARAN	PATTI	S-NPP	31.31120	74.84480	10/13/2021	14:00:18	D	5.60
119	TARN TARAN	PATTI	S-NPP	31.35170	74.86900	10/13/2021	14:00:18	D	3.80
120	TARN TARAN	PATTI	AQUA	31.22400	74.92600	10/13/2021	13:56:38	D	9.70
121	TARN TARAN	PATTI	AQUA	31.34900	74.86700	10/13/2021	13:56:38	D	8.50
122	TARN TARAN	TARN TARAN	S-NPP	31.35800	74.78900	10/13/2021	14:00:18	D	4.80
123	TARN TARAN	TARN TARAN	S-NPP	31.40630	74.77250	10/13/2021	14:00:18	D	5.30
124	TARN TARAN	TARN TARAN	S-NPP	31.48020	74.91410	10/13/2021	14:00:18	D	3.90
125	TARN TARAN	TARN TARAN	S-NPP	31.48070	74.91940	10/13/2021	14:00:18	D	3.90
126	TARN TARAN	TARN TARAN	S-NPP	31.48390	74.85490	10/13/2021	14:00:18	D	3.90
127	TARN TARAN	TARN TARAN	S-NPP	31.50840	74.92130	10/13/2021	14:00:18	D	4.70
128	TARN TARAN	TARN TARAN	S-NPP	31.51840	75.02830	10/13/2021	14:00:18	D	4.60

129	TARN TARAN	TARN TARAN	S-NPP	31.51890	75.03370	10/13/2021	14:00:18	D	4.60
130	TARN TARAN	TARN TARAN	AQUA	31.42000	74.77400	10/13/2021	13:56:38	D	8.00
131	TARN TARAN	TARN TARAN	AQUA	31.50700	74.91900	10/13/2021	13:56:38	D	6.90
132	TARN TARAN	VALTOHA	AQUA	31.17800	74.53400	10/13/2021	13:56:38	D	11.60

Details of residue burning events in Haryana on 13-Oct-2021

S. No.	District	Tehsil / Block	Satellite	Latitude	Longitude	ACQ_DATE	ACQ_TIME	Day / Night	Fire Power (W/m2)
1	AMBALA	AMBALA-II	S-NPP	30.12280	76.63790	10/13/2021	14:00:18	D	3.40
2	AMBALA	BARARA	S-NPP	30.18250	76.99790	10/13/2021	14:00:18	D	2.70
3	AMBALA	NARAINGARH	S-NPP	30.47380	77.09710	10/13/2021	14:00:18	D	1.10
4	AMBALA	SAHA	S-NPP	30.27910	76.90400	10/13/2021	12:20:44	D	4.50
5	FATEHABAD	RATIA	S-NPP	29.76650	75.64280	10/13/2021	14:00:18	D	10.80
6	FATEHABAD	TOHANA	S-NPP	29.62730	75.79600	10/13/2021	14:00:18	D	4.00
7	FATEHABAD	TOHANA	S-NPP	29.66520	75.69610	10/13/2021	14:00:18	D	7.40
8	FATEHABAD	TOHANA	S-NPP	29.66610	75.91100	10/13/2021	14:00:18	D	2.70
9	FATEHABAD	TOHANA	S-NPP	29.67870	75.94410	10/13/2021	14:00:18	D	7.90
10	JIND	UCHANA	S-NPP	29.53610	76.07590	10/13/2021	14:00:18	D	6.10
11	KAITHAL	KAITHAL	S-NPP	29.87900	76.50360	10/13/2021	14:00:18	D	4.40
12	KAITHAL	KAITHAL	S-NPP	29.88050	76.50250	10/13/2021	14:00:18	D	4.20
13	KAITHAL	PUNDRI	S-NPP	29.79310	76.67320	10/13/2021	14:00:18	D	6.10
14	KAITHAL	PUNDRI	S-NPP	29.79410	76.67150	10/13/2021	14:00:18	D	10.10
15	KAITHAL	PUNDRI	S-NPP	29.89000	76.57180	10/13/2021	14:00:18	D	4.50
16	KAITHAL	PUNDRI	S-NPP	29.89110	76.57080	10/13/2021	14:00:18	D	4.60
17	KAITHAL	RAJOUND	S-NPP	29.57630	76.36190	10/13/2021	14:00:18	D	2.40
18	KAITHAL	RAJOUND	S-NPP	29.68470	76.45180	10/13/2021	14:00:18	D	8.10
19	KAITHAL	SIWAN	S-NPP	29.84720	76.26010	10/13/2021	14:00:18	D	7.20
20	KAITHAL	SIWAN	S-NPP	29.85260	76.26560	10/13/2021	14:00:18	D	16.20
21	KAITHAL	SIWAN	S-NPP	29.85320	76.27160	10/13/2021	14:00:18	D	16.20
22	KAITHAL	SIWAN	S-NPP	29.87460	76.37230	10/13/2021	14:00:18	D	7.10
23	KAITHAL	SIWAN	S-NPP	29.87710	76.37310	10/13/2021	14:00:18	D	6.40

24	KAITHAL	SIWAN	S-NPP	29.88570	76.27290	10/13/2021	14:00:18	D	4.80
25	KAITHAL	SIWAN	S-NPP	29.93130	76.23740	10/13/2021	14:00:18	D	4.00
26	KAITHAL	SIWAN	S-NPP	29.94420	76.21780	10/13/2021	14:00:18	D	6.30
27	KAITHAL	SIWAN	S-NPP	29.95430	76.22280	10/13/2021	14:00:18	D	5.00
28	KAITHAL	SIWAN	S-NPP	29.96290	76.20970	10/13/2021	14:00:18	D	11.30
29	KAITHAL	SIWAN	S-NPP	29.96670	76.20730	10/13/2021	14:00:18	D	8.90
30	KAITHAL	SIWAN	AQUA	29.84400	76.26500	10/13/2021	13:56:38	D	25.20
31	KAITHAL	SIWAN	AQUA	29.84800	76.25700	10/13/2021	13:56:38	D	17.10
32	KAITHAL	SIWAN	AQUA	29.84900	76.27300	10/13/2021	13:56:38	D	10.60
33	KAITHAL	SIWAN	AQUA	29.87000	76.36300	10/13/2021	13:56:38	D	13.50
34	KAITHAL	SIWAN	AQUA	29.87100	76.37800	10/13/2021	13:56:38	D	11.50
35	KAITHAL	SIWAN	AQUA	29.93200	76.23000	10/13/2021	13:56:38	D	13.10
36	KARNAL	ASSANDH	S-NPP	29.60630	76.61670	10/13/2021	12:20:44	D	8.50
37	KARNAL	ASSANDH	AQUA	29.51200	76.53300	10/13/2021	13:56:38	D	11.30
38	KARNAL	CHIRAO	S-NPP	29.61930	76.81840	10/13/2021	14:00:18	D	6.10
39	KARNAL	CHIRAO	S-NPP	29.61980	76.81690	10/13/2021	14:00:18	D	2.30
40	KARNAL	CHIRAO	S-NPP	29.63700	76.78260	10/13/2021	14:00:18	D	14.80
41	KARNAL	CHIRAO	S-NPP	29.69290	76.72900	10/13/2021	14:00:18	D	3.50
42	KARNAL	CHIRAO	S-NPP	29.70060	76.82130	10/13/2021	14:00:18	D	2.80
43	KARNAL	CHIRAO	S-NPP	29.72680	76.83590	10/13/2021	14:00:18	D	5.00
44	KARNAL	CHIRAO	S-NPP	29.72930	76.74450	10/13/2021	14:00:18	D	3.50
45	KARNAL	CHIRAO	S-NPP	29.73180	76.83530	10/13/2021	14:00:18	D	5.00
46	KARNAL	GHARAUNDA	S-NPP	29.51320	76.92970	10/13/2021	14:00:18	D	6.40
47	KARNAL	GHARAUNDA	S-NPP	29.51340	76.93440	10/13/2021	14:00:18	D	13.20
48	KARNAL	GHARAUNDA	S-NPP	29.51840	76.93390	10/13/2021	14:00:18	D	13.20
49	KARNAL	GHARAUNDA	S-NPP	29.51880	76.93570	10/13/2021	14:00:18	D	27.70
50	KARNAL	GHARAUNDA	S-NPP	29.52050	76.96010	10/13/2021	14:00:18	D	4.80
51	KARNAL	GHARAUNDA	S-NPP	29.52710	76.96050	10/13/2021	12:20:44	D	5.70
52	KARNAL	INDRI	S-NPP	29.91850	77.19700	10/13/2021	14:00:18	D	1.50
53	KARNAL	KARNAL	S-NPP	29.63280	77.09950	10/13/2021	14:00:18	D	3.00
54	KARNAL	KARNAL	S-NPP	29.63410	77.10050	10/13/2021	14:00:18	D	2.90
55	KARNAL	KARNAL	S-NPP	29.72500	76.87550	10/13/2021	14:00:18	D	7.90
56	KARNAL	KARNAL	S-NPP	29.72560	76.88200	10/13/2021	14:00:18	D	7.00

57	KARNAL	KARNAL	S-NPP	29.72570	76.87770	10/13/2021	14:00:18	D	12.90
58	KARNAL	KARNAL	S-NPP	29.78450	76.98210	10/13/2021	14:00:18	D	12.90
59	KARNAL	KARNAL	AQUA	29.71600	76.87200	10/13/2021	13:56:38	D	60.70
60	KARNAL	KARNAL	AQUA	29.71800	76.88900	10/13/2021	13:56:38	D	13.00
61	KARNAL	NILOKHERI	S-NPP	29.77060	76.93680	10/13/2021	14:00:18	D	3.60
62	KARNAL	NILOKHERI	S-NPP	29.81850	76.90530	10/13/2021	14:00:18	D	5.50
63	KARNAL	NILOKHERI	S-NPP	29.88310	76.95690	10/13/2021	14:00:18	D	3.20
64	KURUKSHETRA	BABAIN	S-NPP	30.14070	76.98530	10/13/2021	14:00:18	D	2.40
65	KURUKSHETRA	ISMAILABAD	S-NPP	30.10670	76.74600	10/13/2021	14:00:18	D	10.00
66	KURUKSHETRA	ISMAILABAD	S-NPP	30.12860	76.70870	10/13/2021	14:00:18	D	5.40
67	KURUKSHETRA	ISMAILABAD	S-NPP	30.12880	76.71100	10/13/2021	14:00:18	D	2.90
68	KURUKSHETRA	ISMAILABAD	S-NPP	30.13410	76.65840	10/13/2021	14:00:18	D	3.60
69	KURUKSHETRA	ISMAILABAD	S-NPP	30.13430	76.65600	10/13/2021	14:00:18	D	4.70
70	KURUKSHETRA	ISMAILABAD	AQUA	30.07300	76.69800	10/13/2021	13:56:38	D	13.80
71	KURUKSHETRA	ISMAILABAD	AQUA	30.07500	76.71500	10/13/2021	13:56:38	D	16.00
72	KURUKSHETRA	ISMAILABAD	AQUA	30.07600	76.70800	10/13/2021	13:56:38	D	25.80
73	KURUKSHETRA	LADWA	S-NPP	29.96750	77.07460	10/13/2021	14:00:18	D	2.40
74	KURUKSHETRA	PEHOWA	S-NPP	30.00010	76.68080	10/13/2021	14:00:18	D	6.90
75	KURUKSHETRA	PEHOWA	S-NPP	30.00140	76.68560	10/13/2021	14:00:18	D	8.10
76	KURUKSHETRA	SHAHBAD	S-NPP	30.12360	76.83440	10/13/2021	14:00:18	D	11.90
77	KURUKSHETRA	SHAHBAD	S-NPP	30.12510	76.78340	10/13/2021	14:00:18	D	3.10
78	KURUKSHETRA	SHAHBAD	S-NPP	30.17300	76.81130	10/13/2021	12:20:44	D	2.80
79	KURUKSHETRA	SHAHBAD	AQUA	30.12300	76.83500	10/13/2021	13:56:38	D	12.30
80	KURUKSHETRA	THANESAR	S-NPP	29.92720	76.70880	10/13/2021	14:00:18	D	3.70
81	KURUKSHETRA	THANESAR	S-NPP	29.92740	76.70800	10/13/2021	14:00:18	D	2.60
82	KURUKSHETRA	THANESAR	S-NPP	29.99640	76.81170	10/13/2021	14:00:18	D	7.20
83	KURUKSHETRA	THANESAR	S-NPP	30.05210	76.87730	10/13/2021	14:00:18	D	5.60
84	KURUKSHETRA	THANESAR	S-NPP	30.05410	76.77780	10/13/2021	14:00:18	D	2.80
85	PALWAL	HODAL	S-NPP	27.89900	77.43870	10/13/2021	14:00:18	D	2.80
86	PALWAL	HODAL	S-NPP	27.93170	77.46210	10/13/2021	14:00:18	D	6.60
87	PALWAL	HODAL	S-NPP	27.93200	77.46540	10/13/2021	14:00:18	D	8.90
88	YAMUNANAGAR	CHHACHHRAULI	S-NPP	30.18610	77.37150	10/13/2021	14:00:18	D	1.30
89	YAMUNANAGAR	JAGADHRI	S-NPP	30.12100	77.41570	10/13/2021	14:00:18	D	3.70

90	YAMUNANAGAR	RADAUR	S-NPP	30.00500	77.15670	10/13/2021	14:00:18	D	3.40
91	YAMUNANAGAR	SADHAURA	S-NPP	30.32440	77.18950	10/13/2021	14:00:18	D	2.10

Details of residue burning events in Uttar Pradesh on 13-Oct-2021

S. No.	District	Tehsil / Block	Satellite	Latitude	Longitude	ACQ_DATE	ACQ_TIME	Day / Night	Fire Power (W/m2)
1	ALIGARH	KHAIR	S-NPP	27.96300	77.77770	10/13/2021	01:10:44	N	1.30
2	ALIGARH	KHAIR	S-NPP	27.99510	77.69370	10/13/2021	14:00:18	D	6.10
3	AURAIYA	BIDHUNA	S-NPP	26.64350	79.47890	10/13/2021	02:51:01	N	1.60
4	BAREILLY	BAHERI	S-NPP	28.88340	79.40170	10/13/2021	12:20:44	D	9.90
5	ETAH	JALESAR	S-NPP	27.51040	78.42590	10/13/2021	14:00:18	D	3.90
6	ETAH	JALESAR	S-NPP	27.51350	78.42690	10/13/2021	14:00:18	D	3.90
7	KHERI	GOLA	S-NPP	28.18980	80.31750	10/13/2021	14:00:18	D	6.20
8	KHERI	GOLA	S-NPP	28.19070	80.31460	10/13/2021	14:00:18	D	8.50
9	KHERI	MOHMADI	S-NPP	28.00010	80.12630	10/13/2021	14:00:18	D	4.40
10	KHERI	MOHMADI	S-NPP	28.12500	80.25650	10/13/2021	14:00:18	D	2.50
11	MATHURA	CHHATA	S-NPP	27.70860	77.68240	10/13/2021	14:00:18	D	1.50
12	MATHURA	CHHATA	S-NPP	27.80960	77.50390	10/13/2021	14:00:18	D	1.90
13	MATHURA	CHHATA	S-NPP	27.81470	77.50340	10/13/2021	14:00:18	D	4.50
14	MORADABAD	MORADABAD	S-NPP	28.94280	78.84320	10/13/2021	14:00:18	D	2.50
15	PILHIBHIT	BISALPUR	S-NPP	28.24030	79.97240	10/13/2021	14:00:18	D	5.70
16	PILHIBHIT	BISALPUR	S-NPP	28.24560	79.96230	10/13/2021	14:00:18	D	4.30
17	PILHIBHIT	BISALPUR	S-NPP	28.24820	79.96010	10/13/2021	14:00:18	D	3.50
18	PILHIBHIT	PURANPUR	S-NPP	28.37480	80.11410	10/13/2021	14:00:18	D	2.40
19	PILHIBHIT	PURANPUR	S-NPP	28.43950	80.11730	10/13/2021	12:20:44	D	8.00
20	PILHIBHIT	PURANPUR	S-NPP	28.44160	80.11760	10/13/2021	12:20:44	D	9.40
21	PILHIBHIT	PURANPUR	S-NPP	28.49370	80.09000	10/13/2021	14:00:18	D	5.80
22	PILHIBHIT	PURANPUR	S-NPP	28.49590	80.09030	10/13/2021	14:00:18	D	12.60
23	PILHIBHIT	PURANPUR	S-NPP	28.49970	80.08950	10/13/2021	14:00:18	D	5.80
24	RAMPUR	BILASPUR	S-NPP	28.78560	79.27030	10/13/2021	14:00:18	D	2.80
25	RAMPUR	BILASPUR	S-NPP	28.78870	79.31490	10/13/2021	14:00:18	D	3.50

26	RAMPUR	BILASPUR	S-NPP	28.83250	79.36090	10/13/2021	14:00:18	D	4.10
27	RAMPUR	BILASPUR	S-NPP	28.86300	79.37640	10/13/2021	14:00:18	D	4.20
28	RAMPUR	BILASPUR	S-NPP	28.92800	79.39370	10/13/2021	14:00:18	D	2.70
29	RAMPUR	SUAR	S-NPP	28.88090	79.16500	10/13/2021	12:20:44	D	2.10
30	RAMPUR	SUAR	S-NPP	28.93790	79.16960	10/13/2021	12:20:44	D	4.50
31	SAMBHAL	SAMBHAL	S-NPP	28.65210	78.65720	10/13/2021	14:00:18	D	3.10
32	SHAHJAHANPUR	PUWANYA	S-NPP	28.16950	80.17000	10/13/2021	14:00:18	D	8.80
33	SHAHJAHANPUR	PUWANYA	S-NPP	28.17090	80.04930	10/13/2021	14:00:18	D	6.90
34	SHAHJAHANPUR	PUWANYA	S-NPP	28.17330	80.16770	10/13/2021	14:00:18	D	8.80
35	SHAHJAHANPUR	PUWANYA	S-NPP	28.17380	80.05090	10/13/2021	14:00:18	D	5.30
36	SHAHJAHANPUR	PUWANYA	S-NPP	28.17550	80.16950	10/13/2021	14:00:18	D	8.80
37	SHAHJAHANPUR	PUWANYA	S-NPP	28.18820	80.27410	10/13/2021	14:00:18	D	2.40
38	SHAHJAHANPUR	PUWANYA	S-NPP	28.26300	80.30390	10/13/2021	14:00:18	D	3.90
39	SHAMLI	KAIRANA	S-NPP	29.57950	77.18100	10/13/2021	14:00:18	D	3.00
40	SHARANPUR	NAKUR	S-NPP	29.75570	77.25640	10/13/2021	14:00:18	D	3.50
41	SHARANPUR	NAKUR	S-NPP	29.77050	77.24790	10/13/2021	14:00:18	D	4.20
42	SHARANPUR	SHARANPUR	S-NPP	29.99100	77.57460	10/13/2021	14:00:18	D	2.10

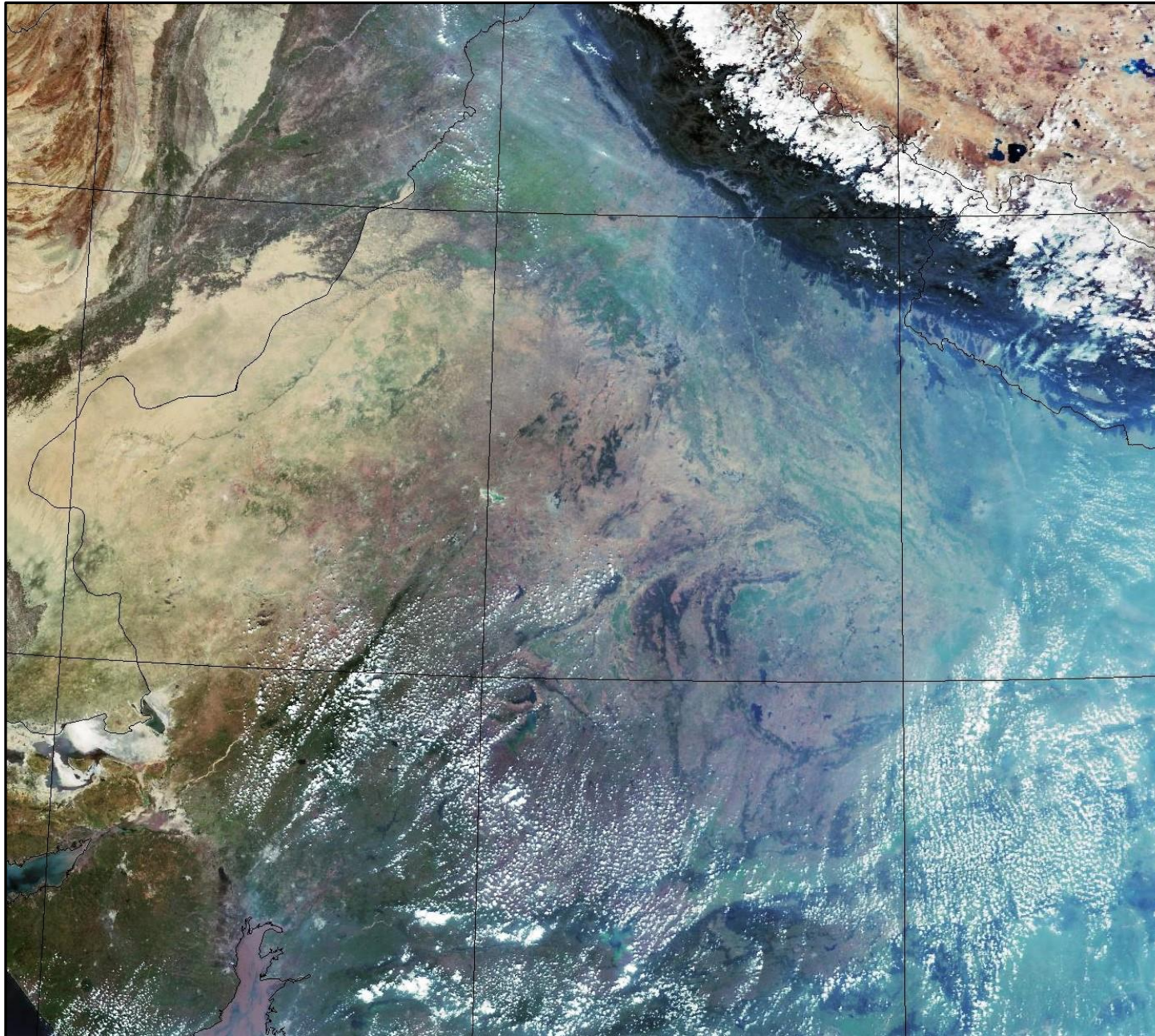
Details of residue burning events in Rajasthan on 13-Oct-2021

S. No.	District	Tehsil / Block	Satellite	Latitude	Longitude	ACQ_DATE	ACQ_TIME	Day / Night	Fire Power (W/m2)
1	HANUMANGARH	HANUMANGARH	S-NPP	29.60820	74.34580	10/13/2021	14:00:18	D	8.30
2	HANUMANGARH	TIBI	S-NPP	29.62220	74.48430	10/13/2021	14:00:18	D	6.70
3	HANUMANGARH	TIBI	S-NPP	29.62270	74.48900	10/13/2021	14:00:18	D	12.40
4	HANUMANGARH	TIBI	S-NPP	29.72210	74.59760	10/13/2021	14:00:18	D	2.80
5	KOTA	LADPURA	S-NPP	24.93250	75.92340	10/13/2021	02:51:01	N	0.50

Details of residue burning events in Madhya Pradesh on 13-Oct-2021

S. No.	District	Tehsil / Block	Satellite	Latitude	Longitude	ACQ_DATE	ACQ_TIME	Day / Night	Fire Power (W/m2)
1	HARDA	KHIRKIYAN	S-NPP	22.09650	76.99950	10/13/2021	14:00:18	D	2.70
2	JABALPUR	MAJHOULI	S-NPP	23.48930	79.83520	10/13/2021	14:00:18	D	2.40

SNPP (VIIRS) Satellite image (TCC) of North and Central India Acquired on 13-Oct-2021 at 13:58:28 IST by IARI Ground Station



The study used data received from following Satellites at NRSC Ground Station

S. No.	Satellite Name	Sensor	Resolution (meter)	Day / Night Passes
1.	Suomi NPP	VIIRS	375 / 750	Both
2.	Terra	MODIS	1000	Both
3.	Aqua	MODIS	1000	Both

**The rice mask for the Punjab and Haryana were provided by MNCFC, MoA&FW, Govt of India
The kharif crop mask for Delhi, Uttar Pradesh, Rajasthan and Madhya Pradesh were provided by NRSC**

Study Team

ICAR – HQ	Dr S.K. Chaudhari	DDG (AG. ENGG.)	ddgengg@icar.org.in
	Dr S. Bhasker	ADG (NRM)	adgagroandaf@gmail.com
	Dr K.K. Singh	ADG (AG. ENGG.)	kanchansingh044@gmail.com
ICAR - IARI	Dr V.K. Sehgal	Professor & Nodal Scientist	iaricreams@gmail.com
	Dr Rajkumar Dhakar	Scientist	raidhakar.iari@gmail.com
	Mr Mohd Jahangir	Lab Assistant (KRISHI)	mjahangir198@gmail.com
ICAR - ATARI	Dr Rajbir Singh	Director ATARI (Zone-I) Ludhiana	rajbirsingh.zpd@gmail.com
	Dr S.K. Singh	Director ATARI (Zone-II) Jodhpur	sushilsinghiipr@yahoo.co.in
	Dr Atar Singh	Director ATARI (Zone-III) Kanpur	zpdicarkanpur@gmail.com
ICAR - IASRI	Dr Rajender Parsad	Director	rajender.parsad@icar.gov.in

GIS Maps of fire events can be visualized online on ICAR KRISHI Geoportal website: <http://geoportal.icar.gov.in:8080/geoexplorer/composer/>
(Part of KRISHI Portal: <https://krishi.icar.gov.in> initiative)
