



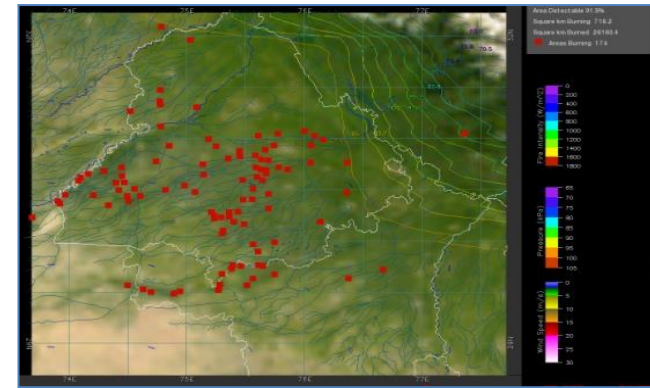
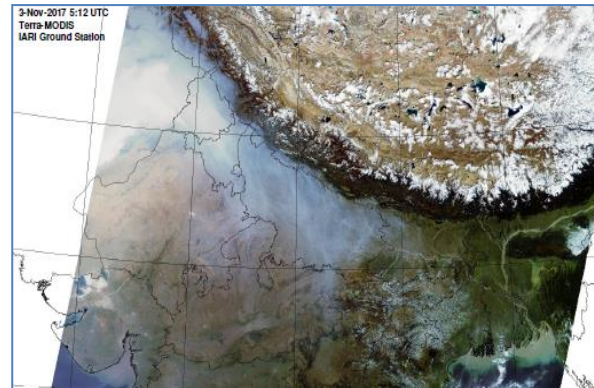
**Bulletin  
No. 59**

**Events Date:  
28-Nov-2020**

**Issued on:  
29-Nov-2020**



# **MONITORING PADDY RESIDUE BURNING IN NORTH INDIA USING SATELLITE REMOTE SENSING DURING 2020**



**Prepared by:**

**Consortium for Research on Agroecosystem Monitoring and Modeling from Space (CREAMS) Laboratory,  
Division of Agricultural Physics, ICAR – Indian Agricultural Research Institute, New Delhi – 110012**

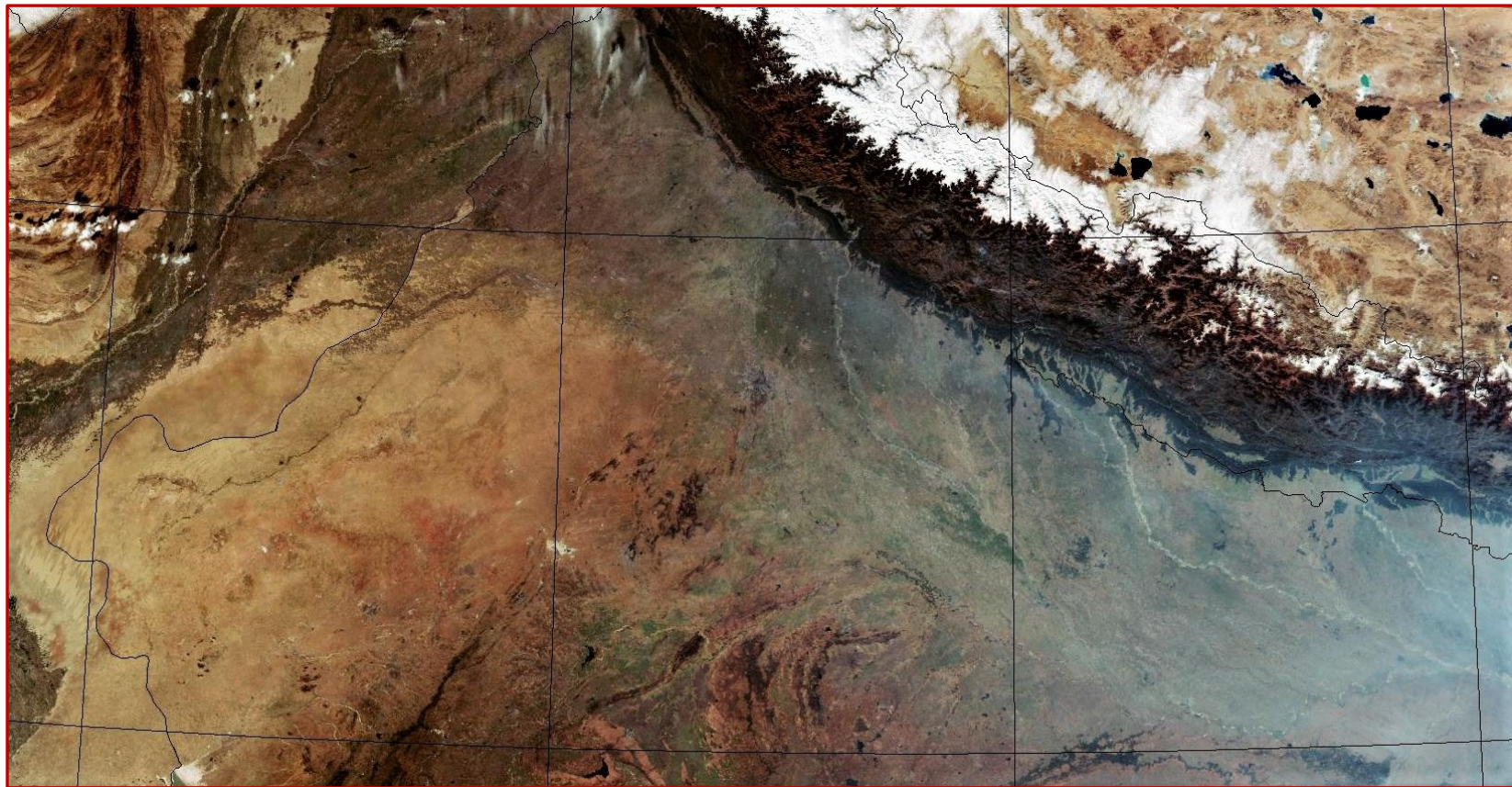
**<http://creams.iari.res.in>**



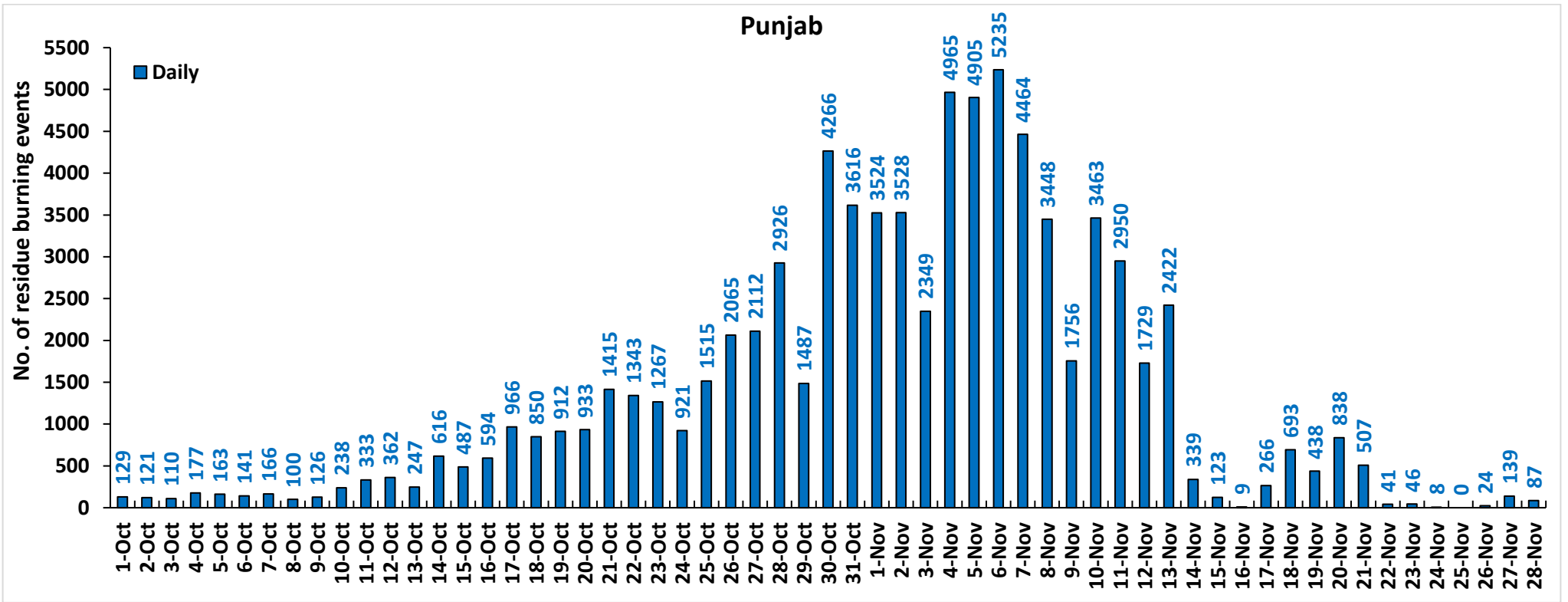
### Highlights for 28-November-2020

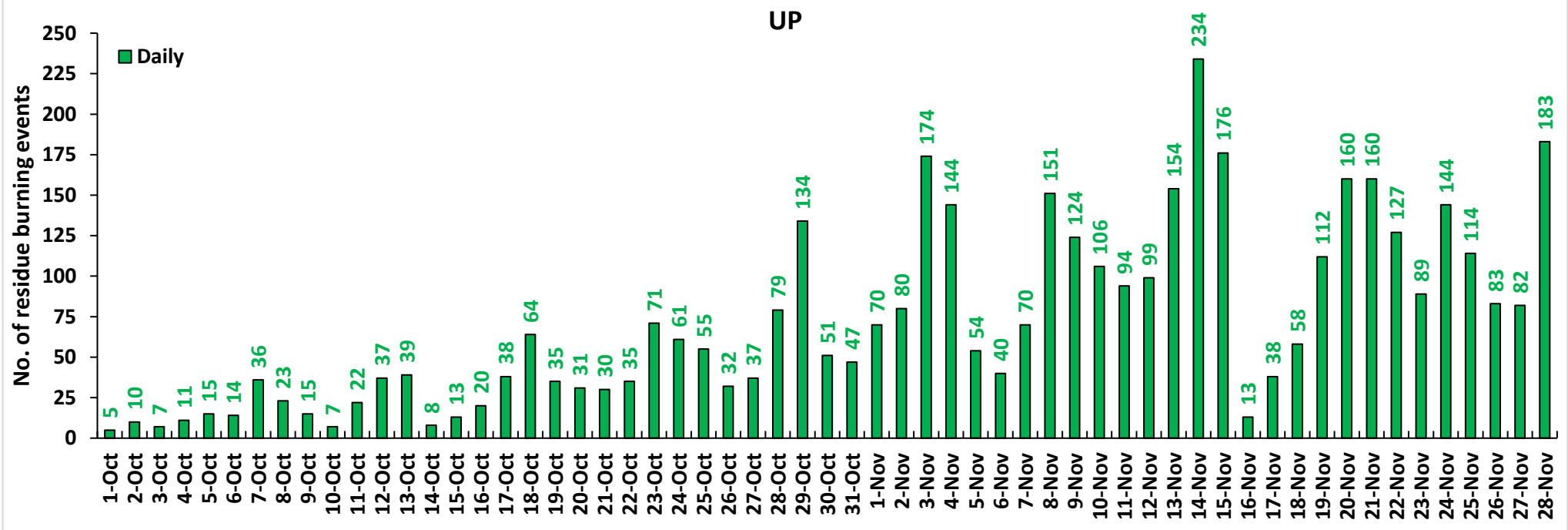
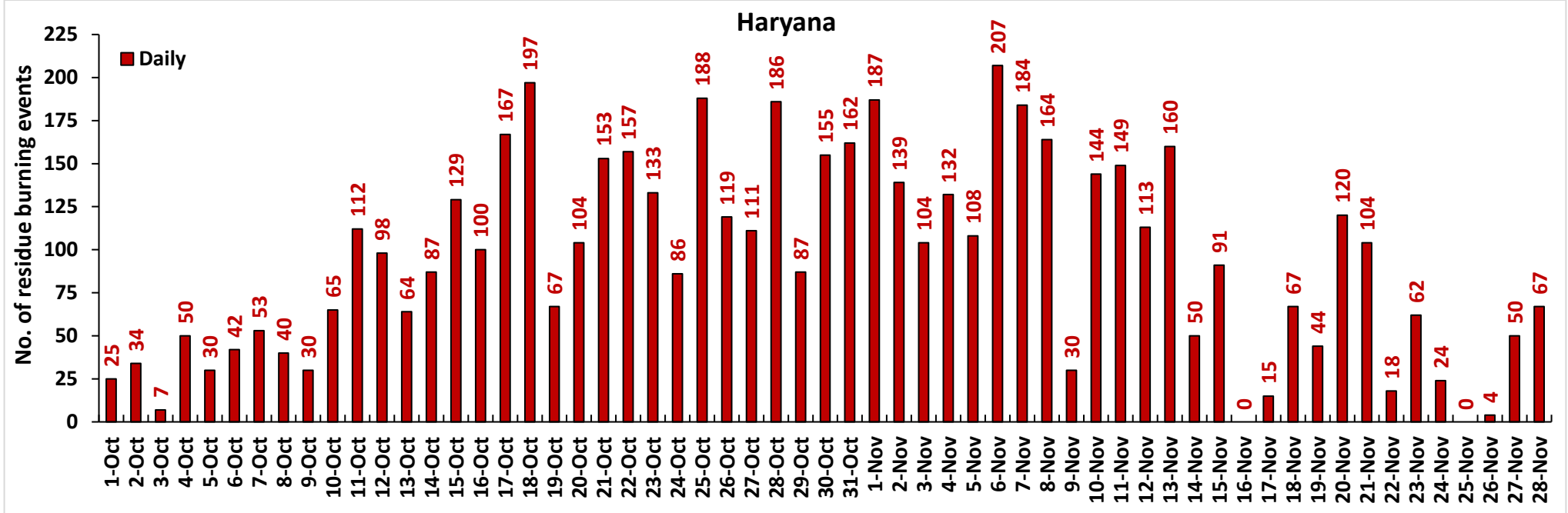
- Satellites detected **337** residue burning events in the three study States on **28-Nov-2020**.
- The state wise events detected on **28-Nov-2020** were **87** in Punjab, **67** in Haryana and **183** in UP.
- The number of events has increased from **271** on **27-Nov-2020** to **337** on **28-Nov-2020** in the three states.
- Muktsar in Punjab, Sirsa in Haryana and Chandauli in UP reported the highest number of events on **28-Nov-2020**.
- Total **88790** burning events were detected in the three States between **01-Oct-2020** and **28-Nov-2020**, which are distributed as **79000**, **5575** and **4215** in Punjab, Haryana and UP, respectively.
- In Haryana the cumulative number of burning events between **01-Oct** and **28-Nov 2020** were lower than in **2019**, while in Punjab and UP the cumulative number of events were more than in **2019**.

[SNPP \(VIIRS\) Satellite image of North India Acquired on 28-Nov-2020 at 13:42 IST by IARI Ground Station](#)



**Temporal distribution of residue burning events for the three study States in 2020**

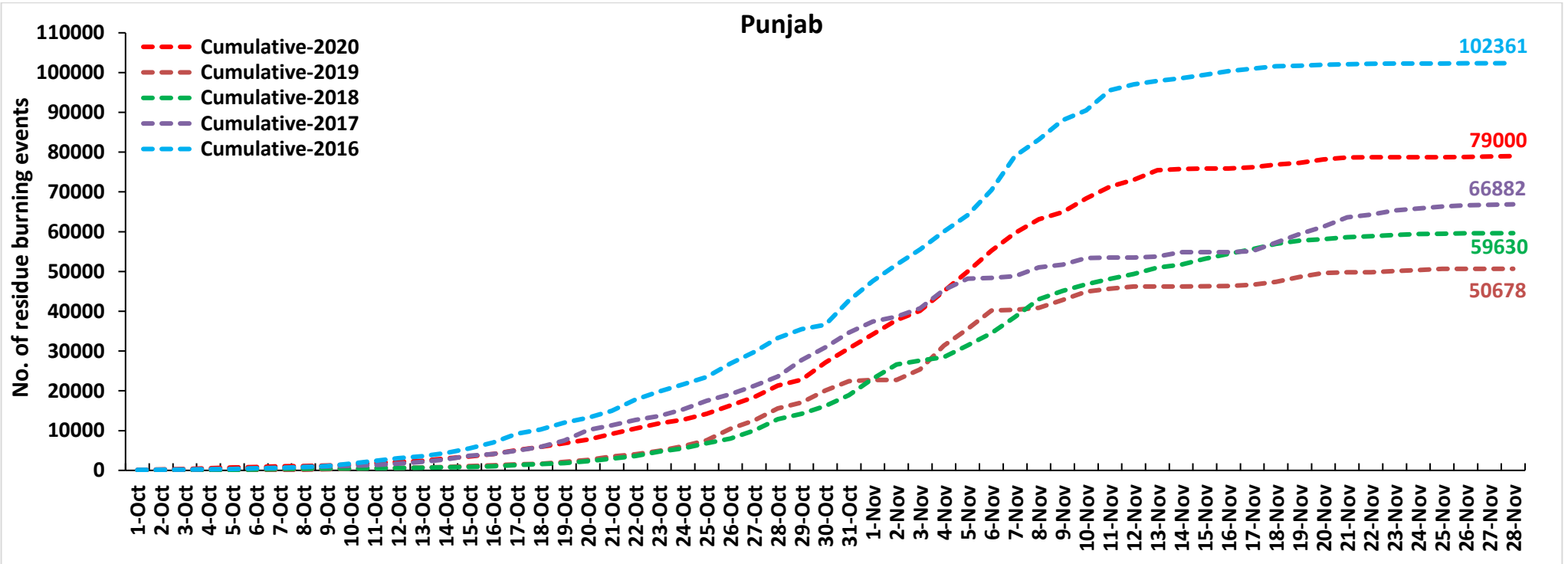




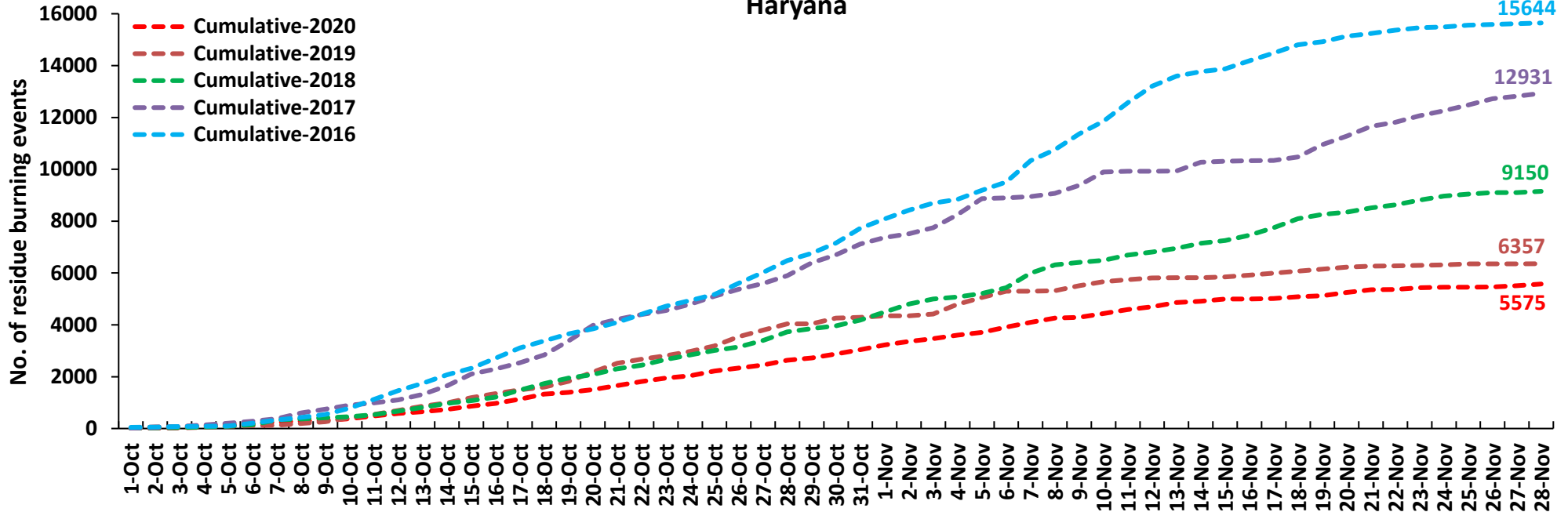
**Comparison of residue burning events in current year (2020) with previous years (2019, 2018, 2017 & 2016) for the three study States**

**(01-Oct to 28-Nov)**

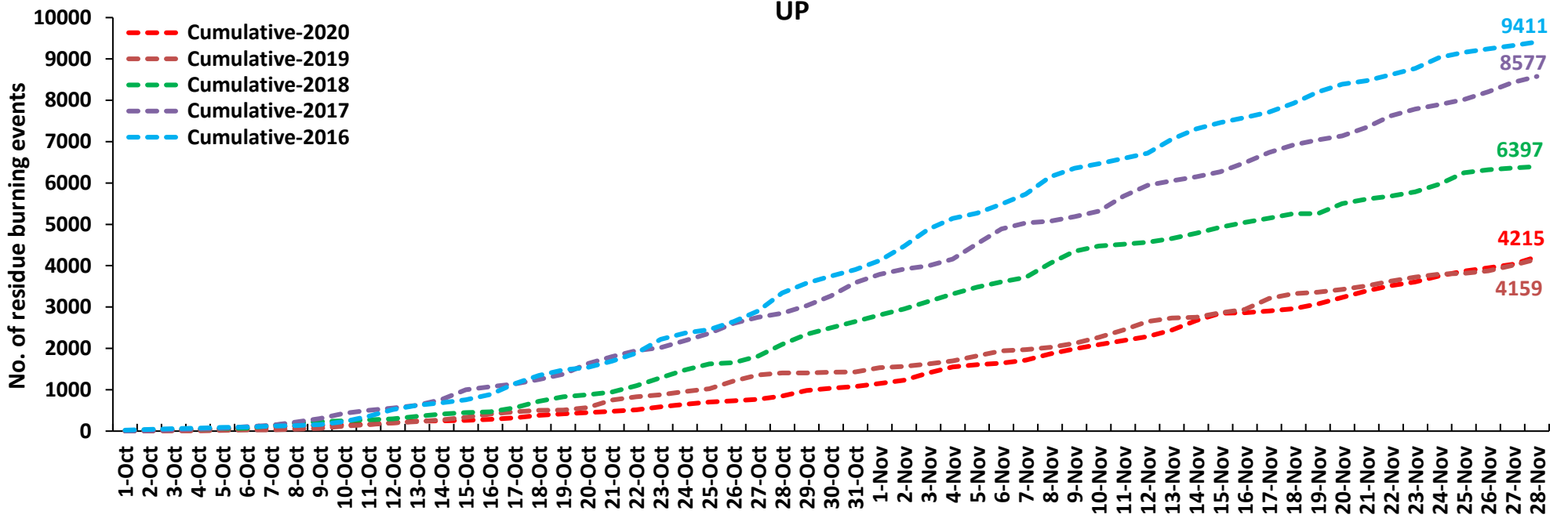
**Punjab**



### Haryana

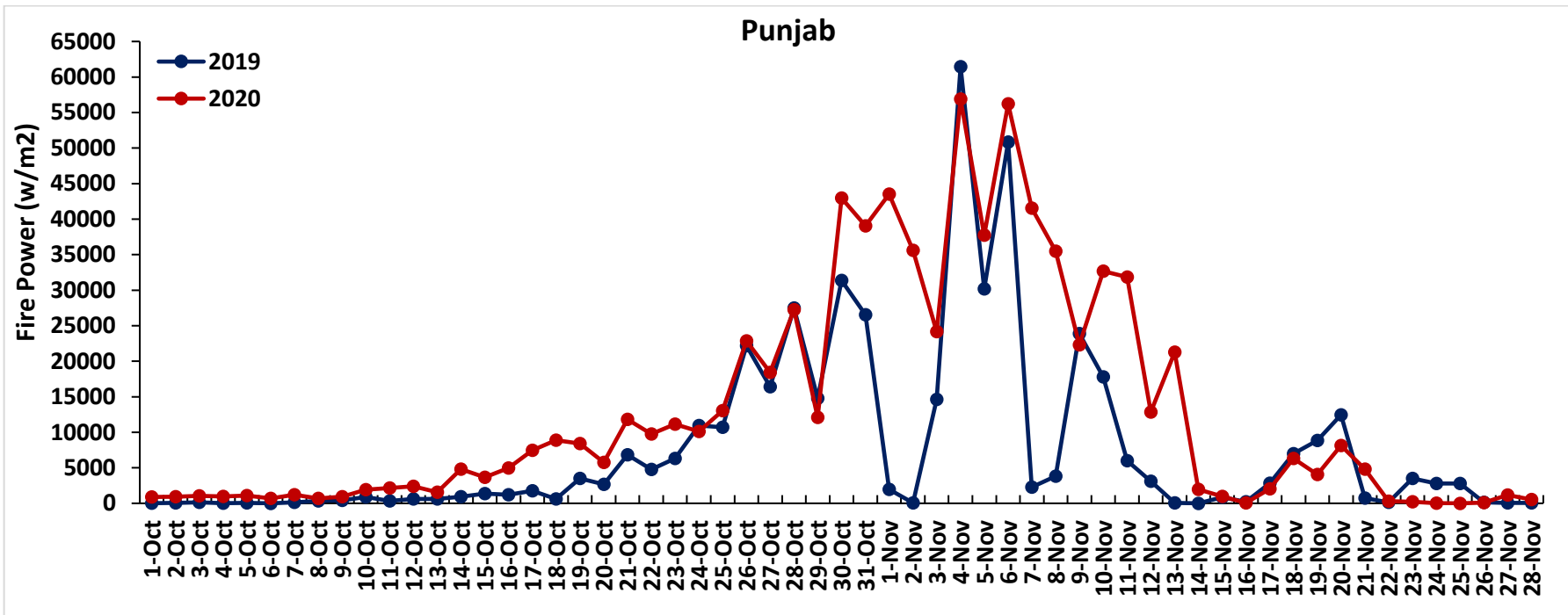


### UP

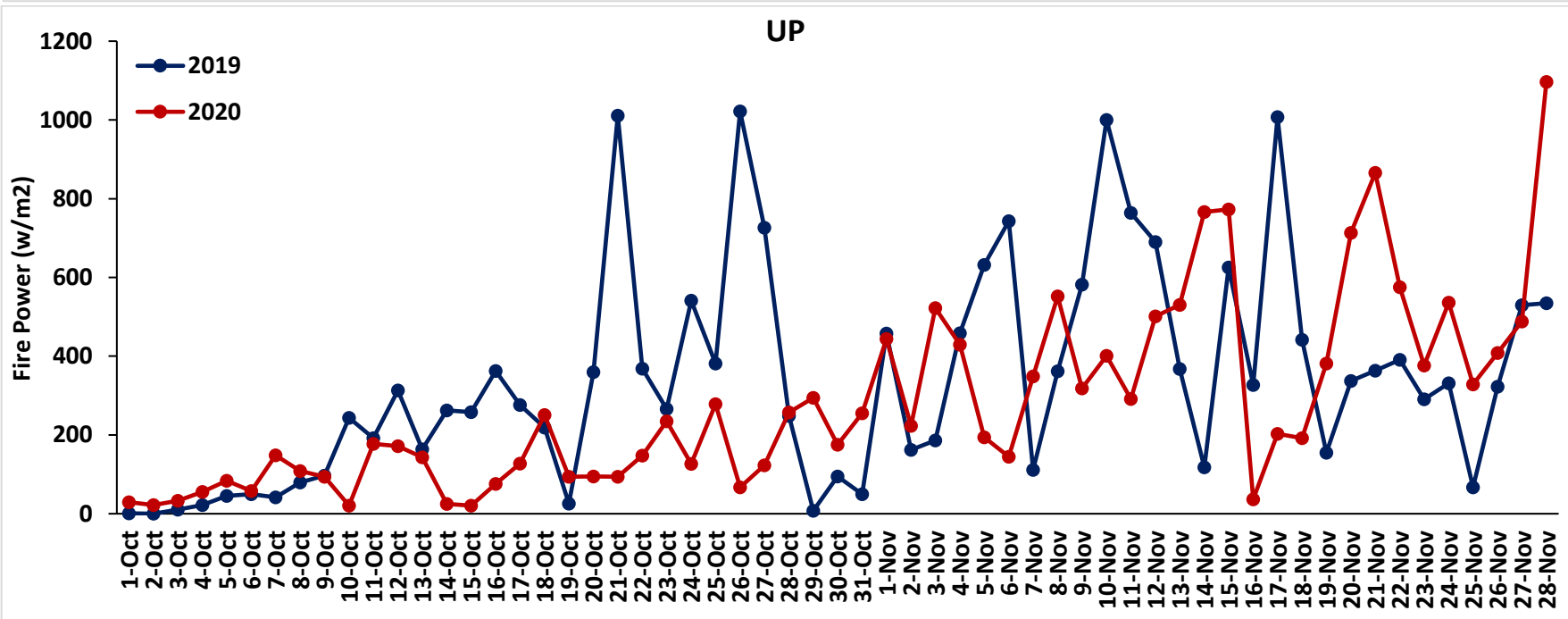
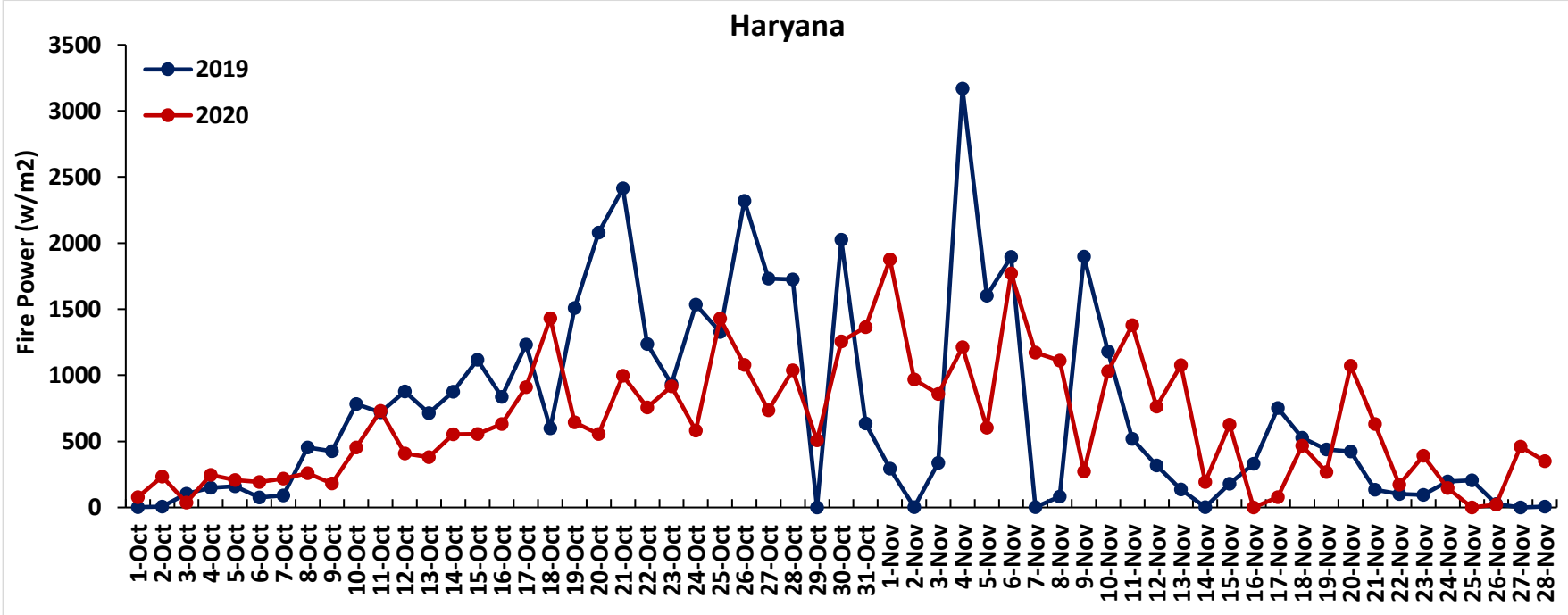


**Comparison of Fire Intensity of residue burning events in current year (2020) with previous year (2019)**  
**For the three study States**

**(01-Oct to 28-Nov)**

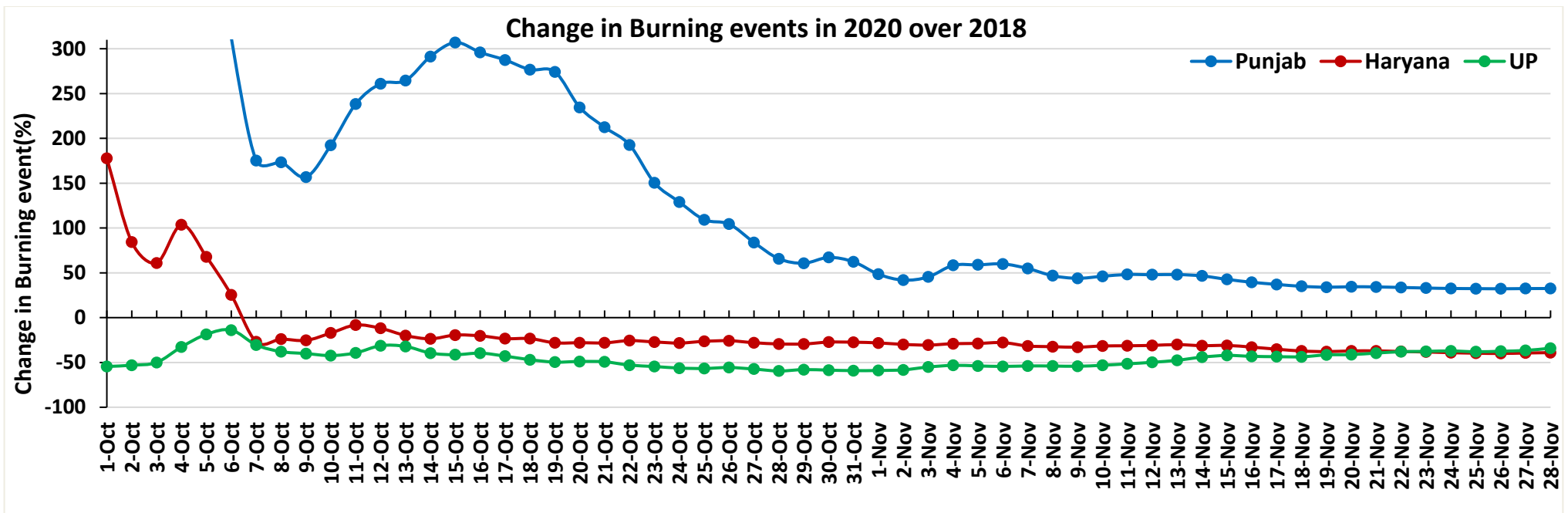
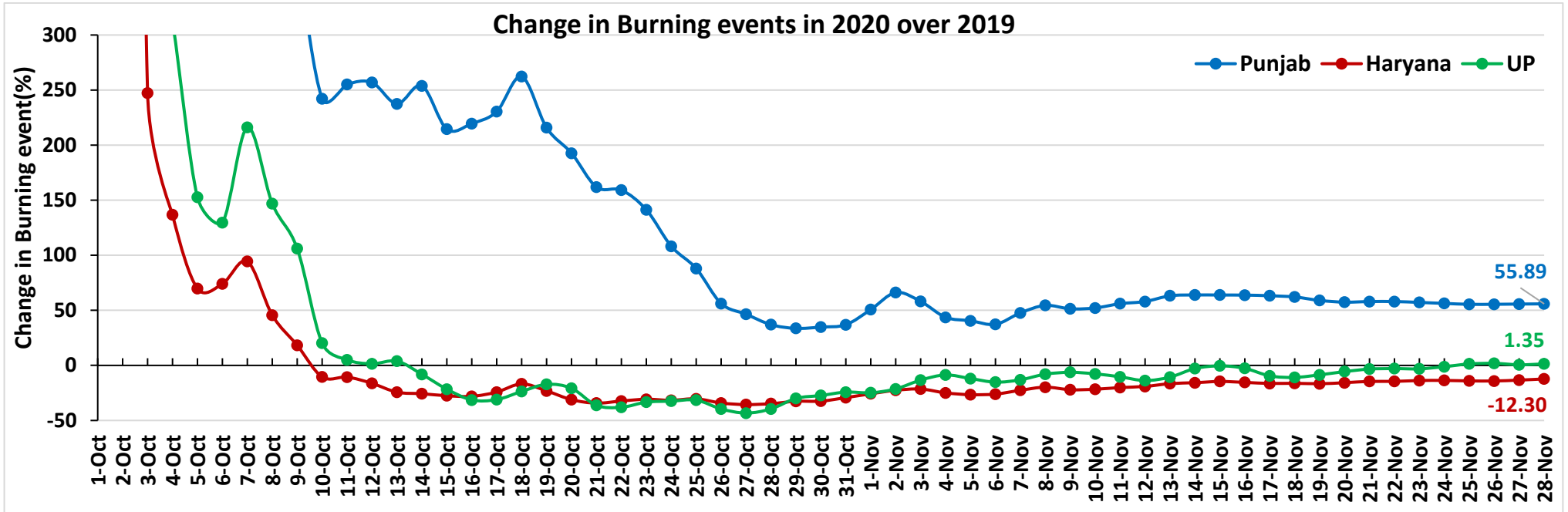




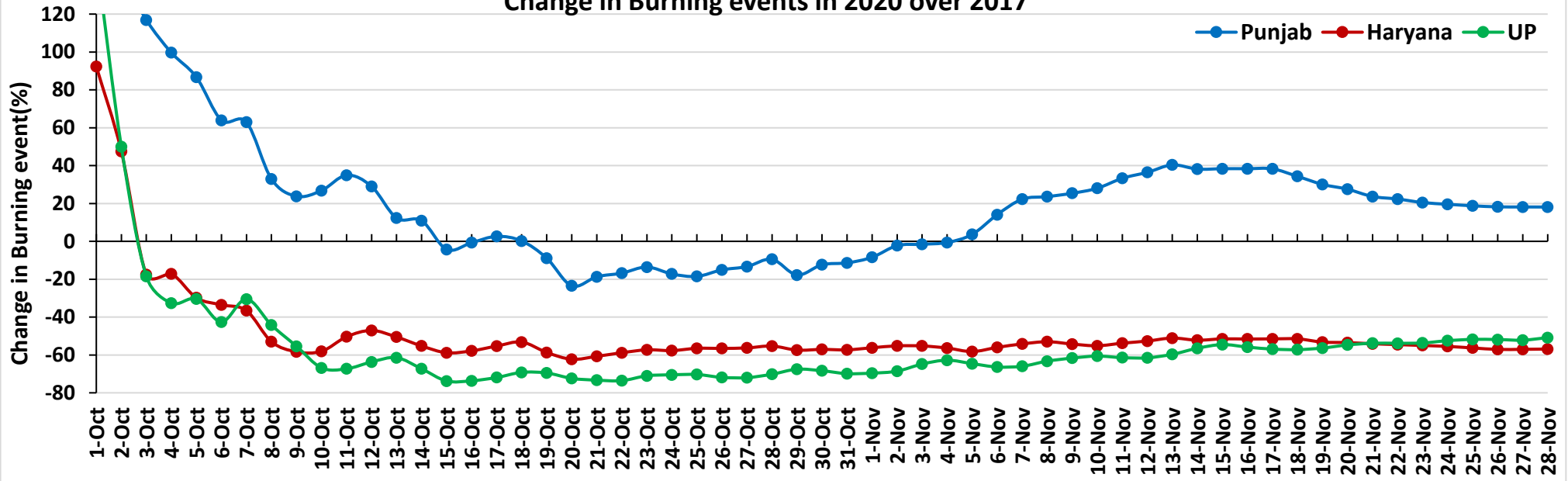




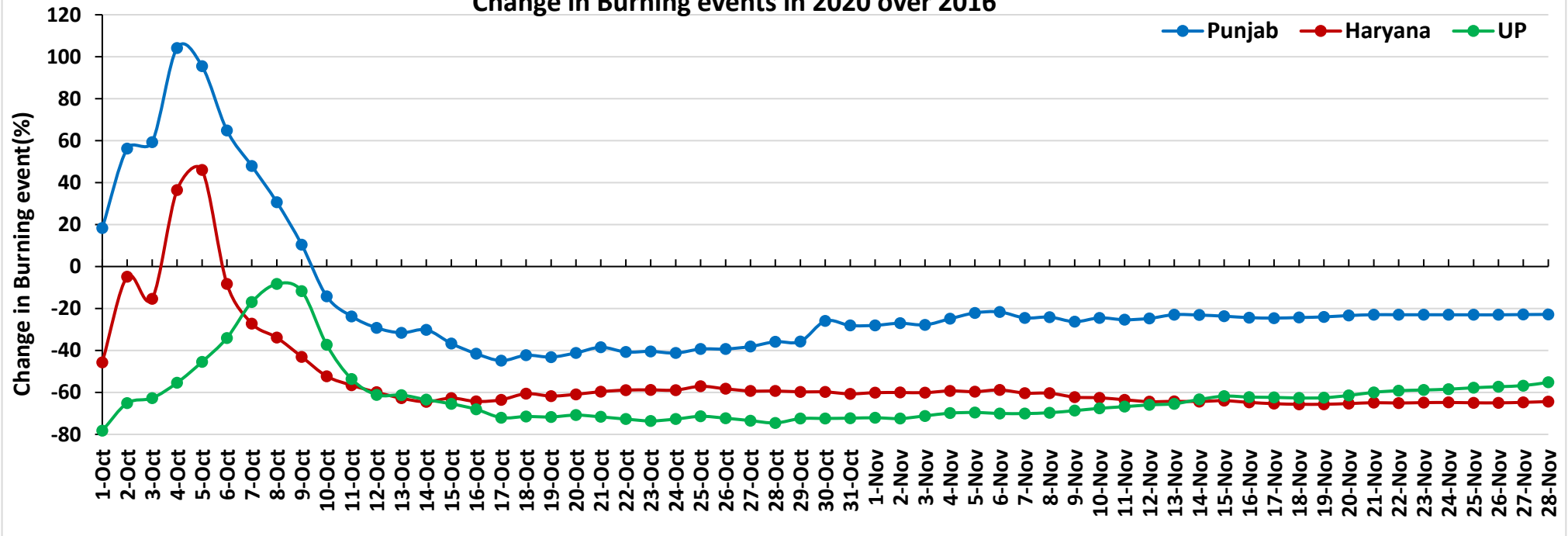
**Percent Change in Burning events in 2020 over 2019, 2018, 2017 and 2016 (Daily Cumulative)**



Change in Burning events in 2020 over 2017

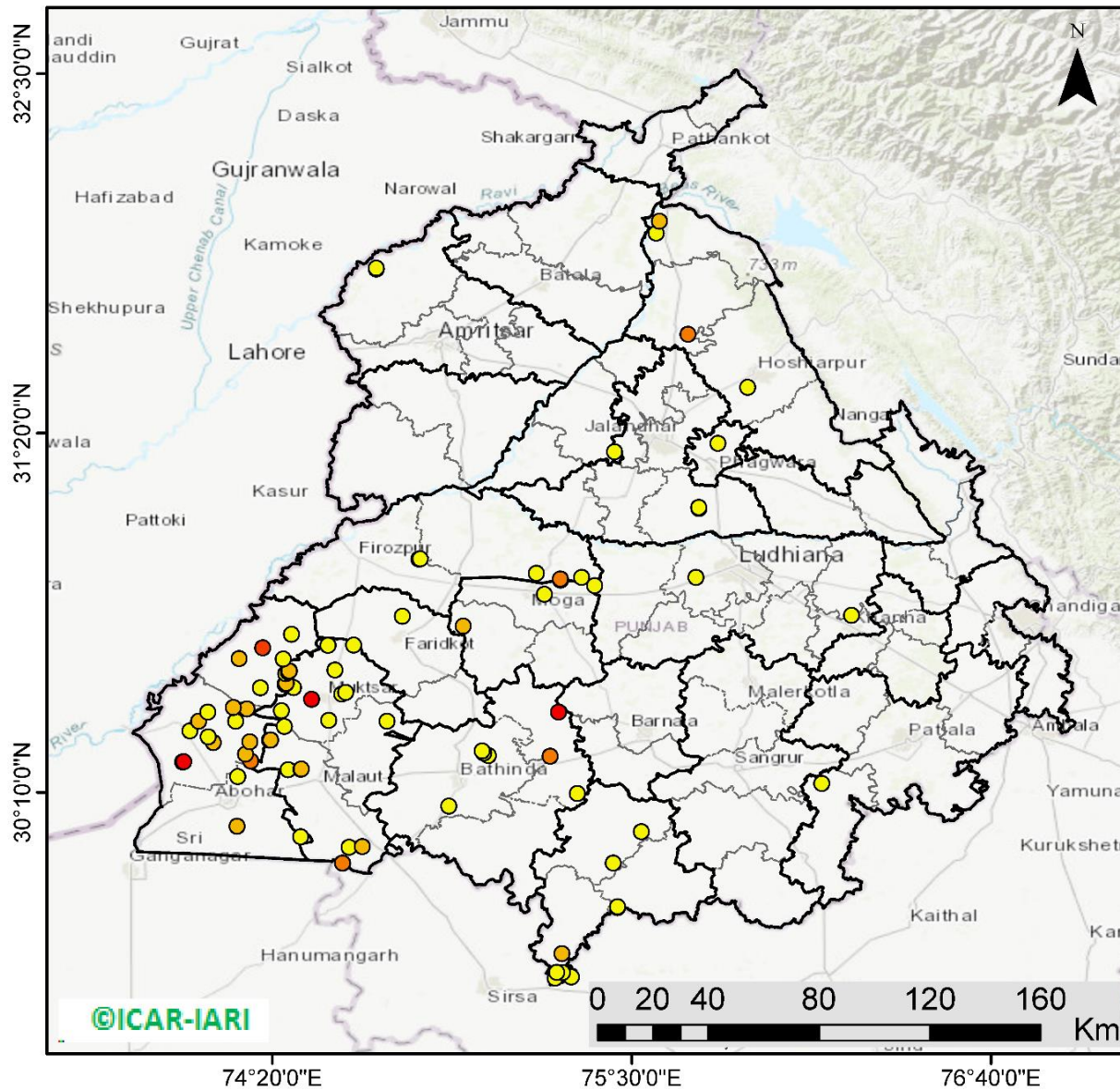


Change in Burning events in 2020 over 2016



(a) Punjab

RICE RESIDUE BURNING IN PUNJAB



**87** burning events detected in Punjab on 28th November 2020

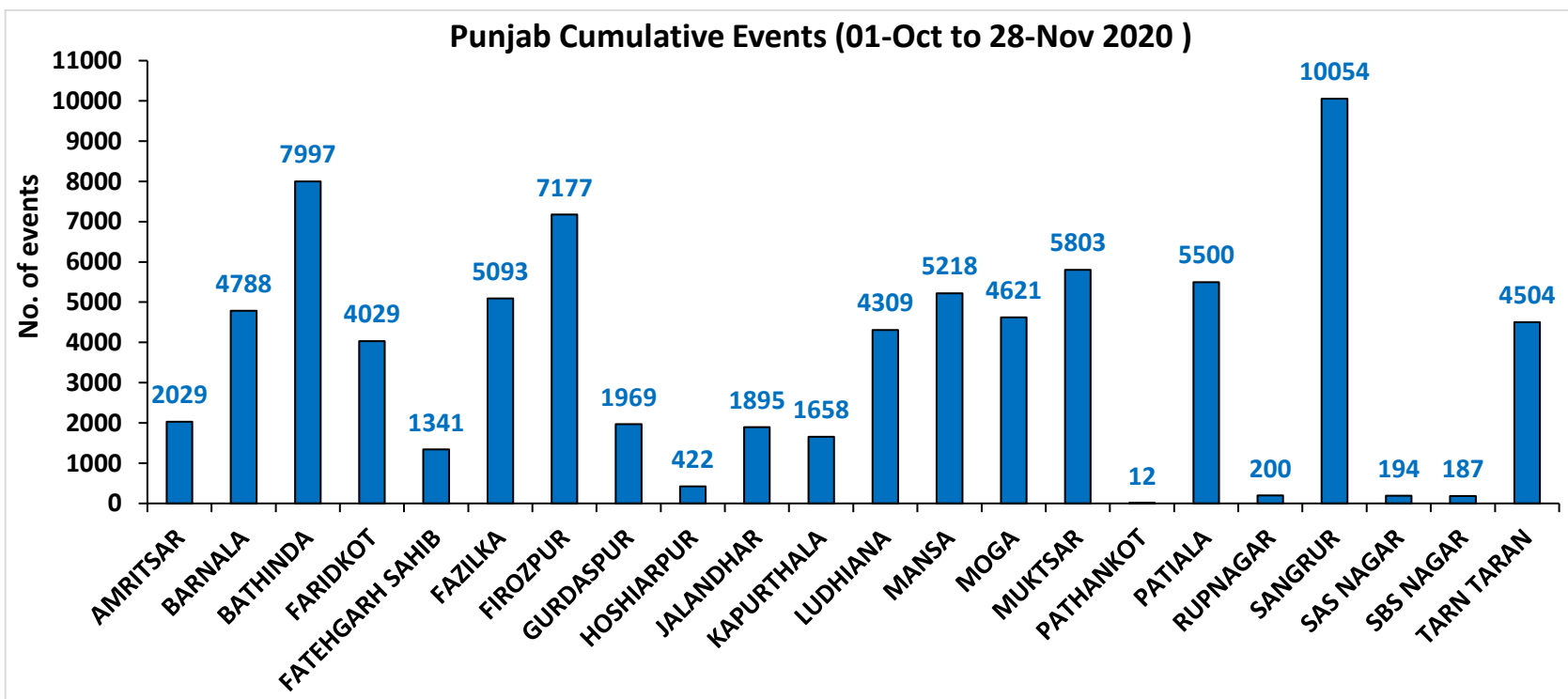
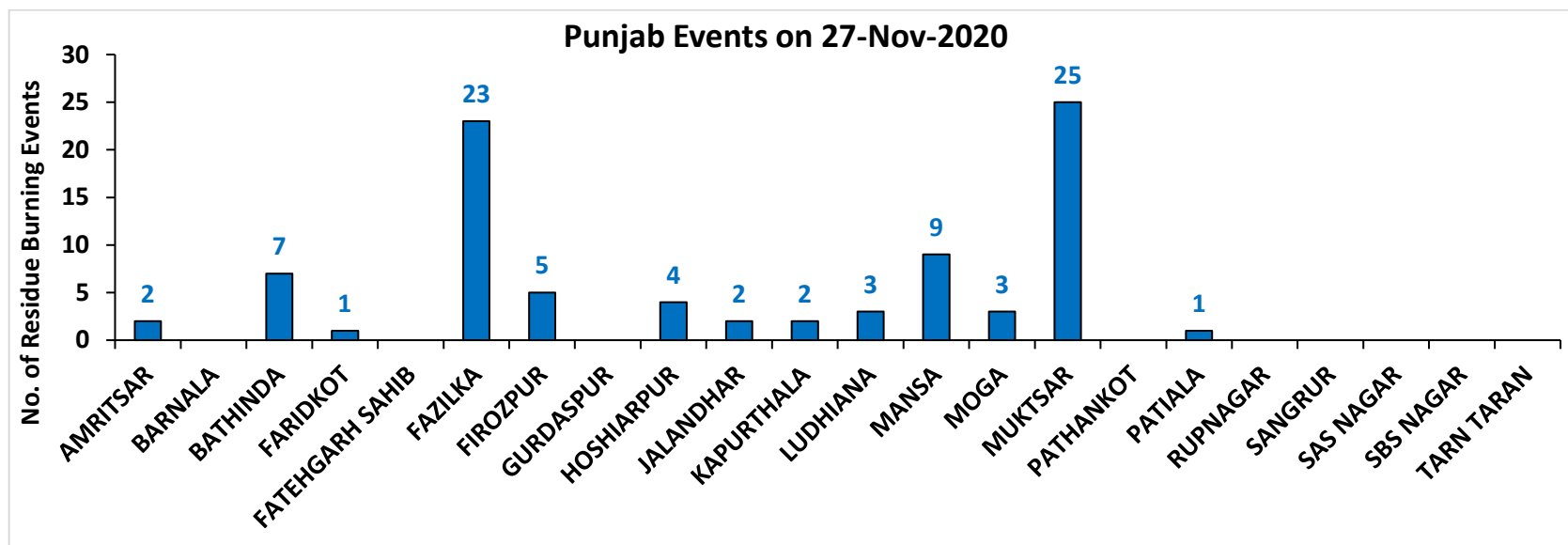
Fire Intensity (W/m<sup>2</sup>)

- 0 - 5
- 6 - 10
- 11 - 15
- 16 - 20
- >20



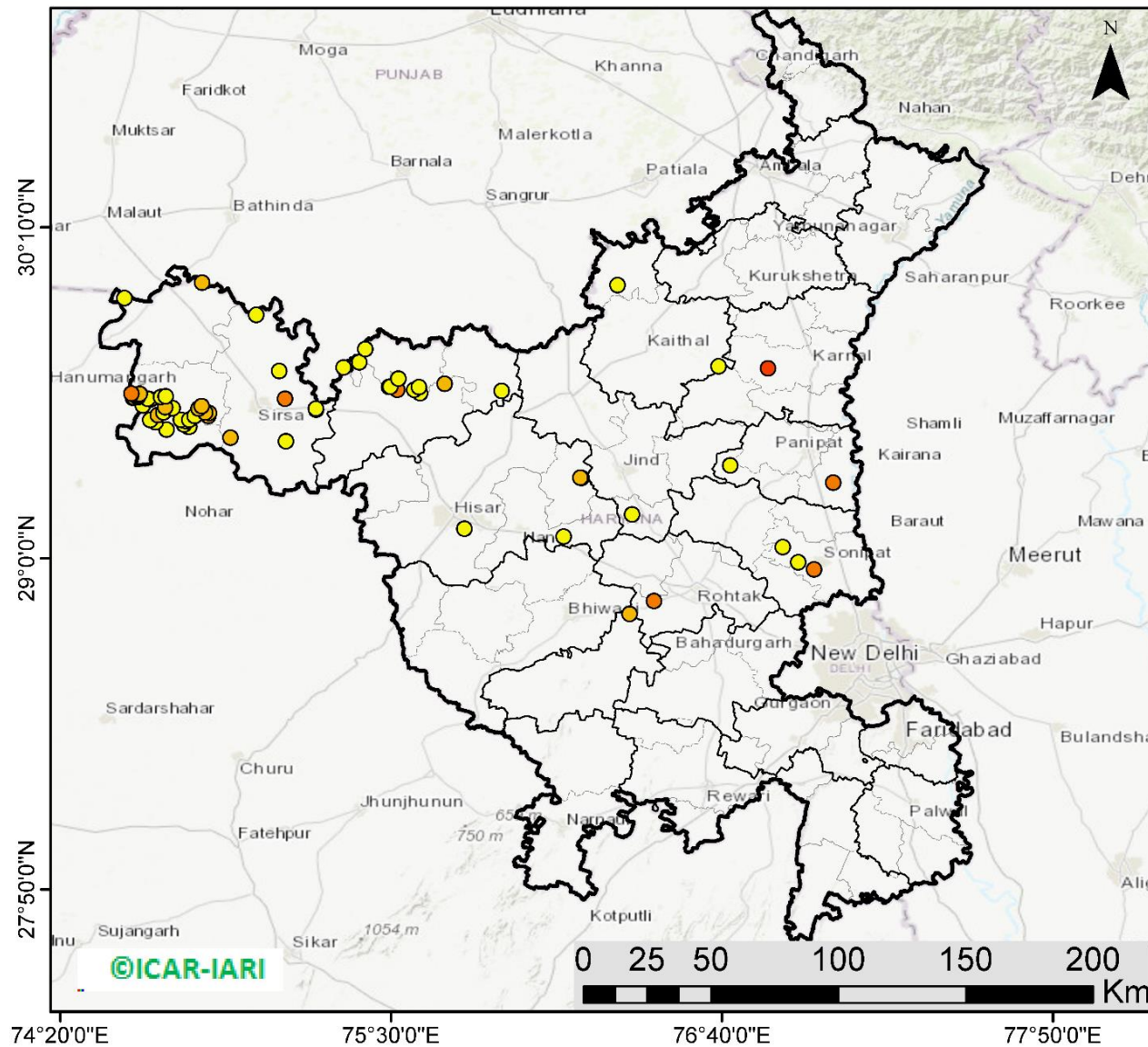
<http://geoportal.icar.gov.in:8080/geoexplorer/composer/>

### District-wise number of residue burning events in Punjab (01-Oct to 28-Nov 2020)



(b) Haryana

RICE RESIDUE BURNING IN HARYANA



67 burning events detected in Haryana on 28th November 2020

Fire Intensity (W/m<sup>2</sup>)

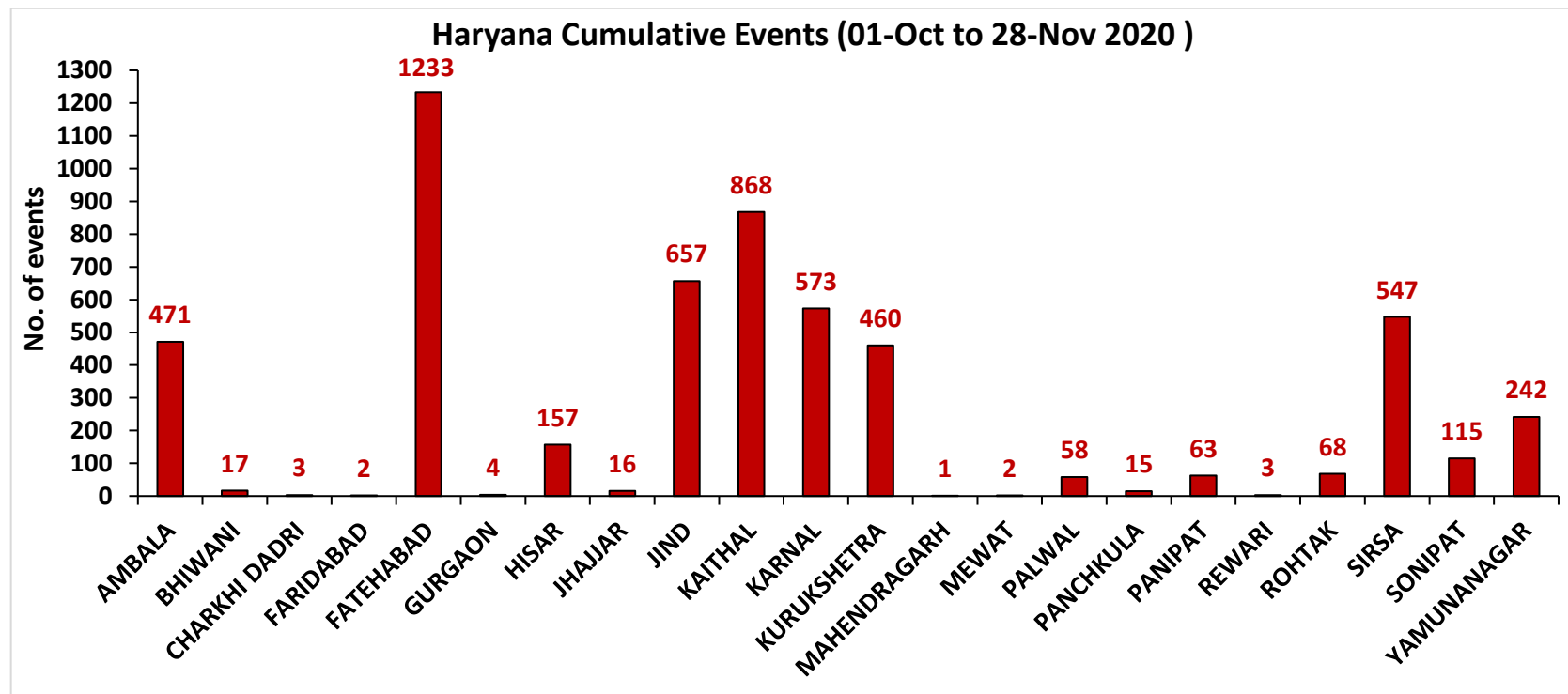
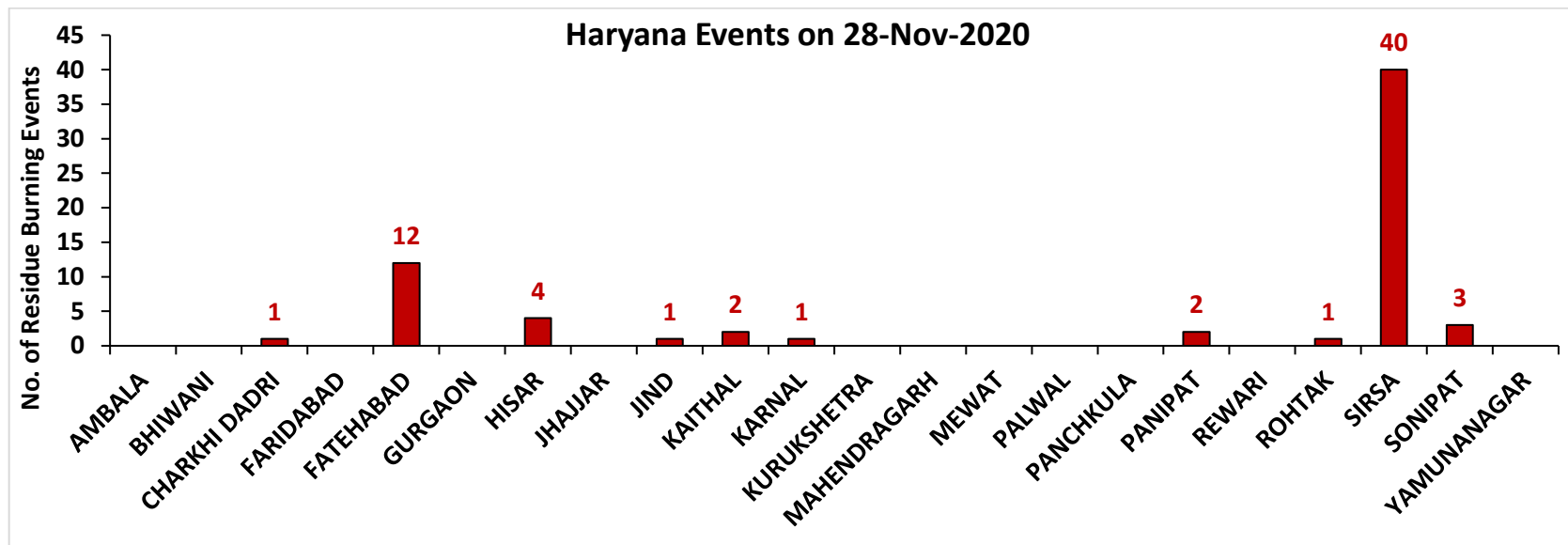
- 0 - 5
- 6 - 10
- 11 - 15
- 16 - 20
- >20



<http://geoportal.icar.gov.in:8080/geoexplorer/composer/>

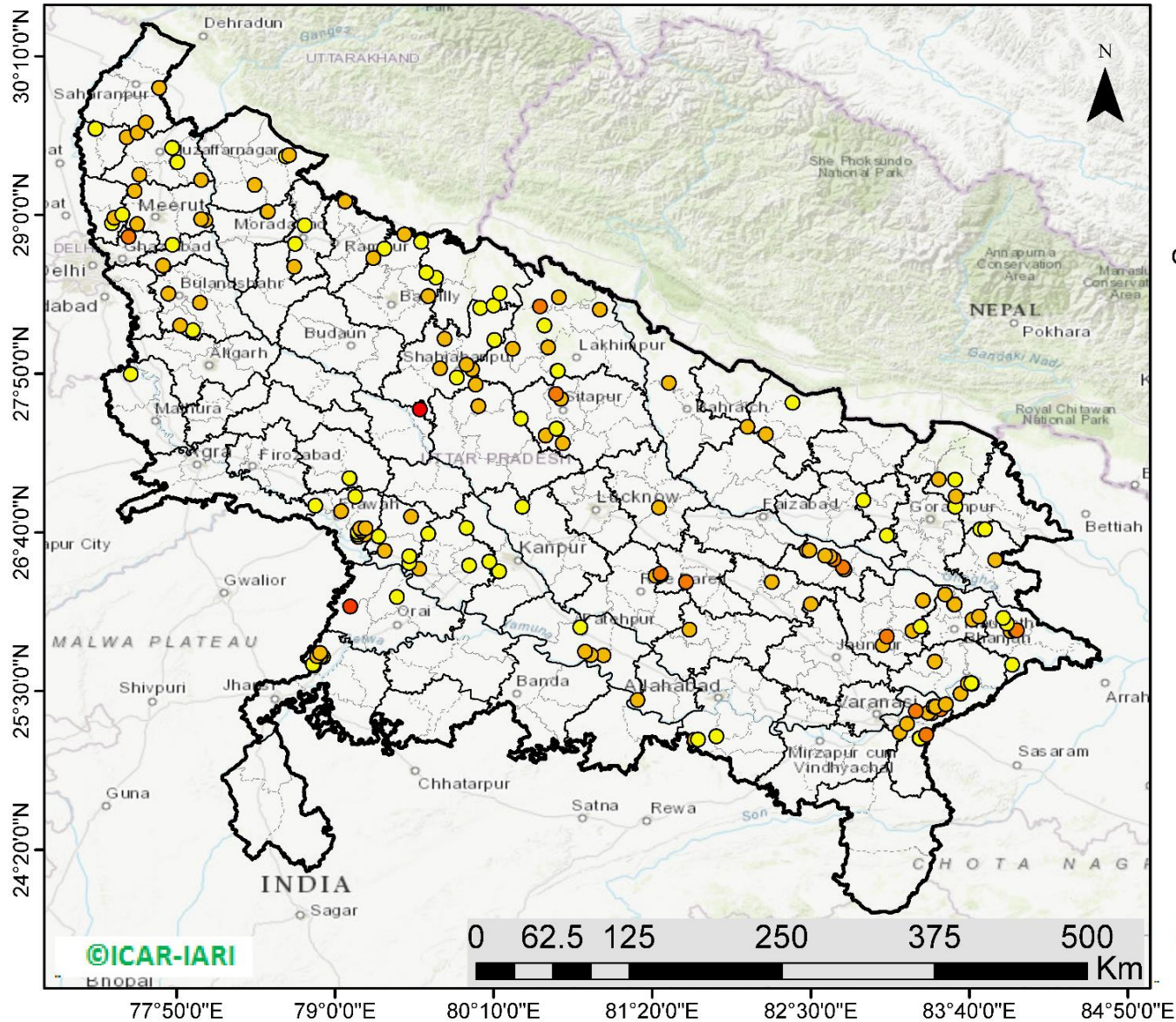


### District-wise number of residue burning events in Haryana (01-Oct to 28-Nov 2020)



(c) Uttar Pradesh

RICE RESIDUE BURNING IN UTTAR PRADESH



**183** burning events detected in Uttar Pradesh on 28th November 2020

Fire Intensity (W/m<sup>2</sup>)

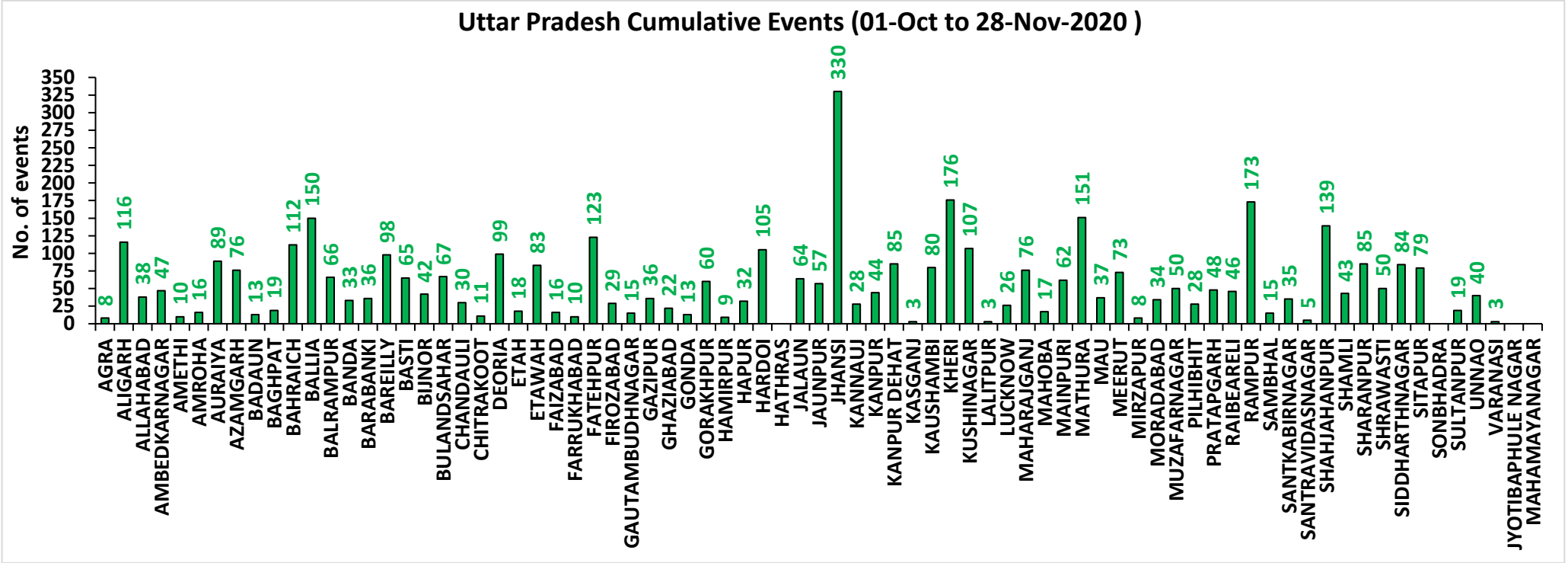
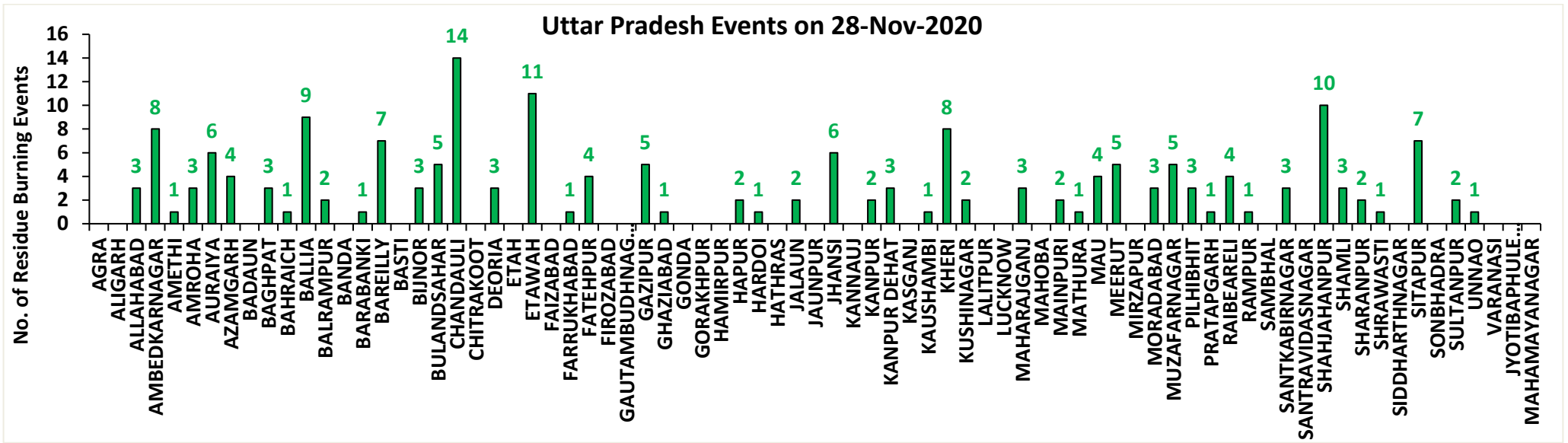
- 0 - 5
- 6 - 10
- 11 - 15
- 16 - 20
- >20

©ICAR-IARI



<http://geoportal.icar.gov.in:8080/geoexplorer/composer/>

## District-wise number of residue burning events in Uttar Pradesh (01-Oct to 28-Nov 2020)



**State-wise and date-wise number of residue burning events detected in 2016, 2017, 2018, 2019 and 2020**  
**(Period: 01-October to 28-November)**

Date	Punjab					Haryana					UP					Total				
	2020	2019	2018	2017	2016	2020	2019	2018	2017	2016	2020	2019	2018	2017	2016	2020	2019	2018	2017	2016
01-Oct	129	3	16	54	109	25	1	9	13	46	5	1	11	2	23	159	5	36	69	178
02-Oct	121	20	9	50	51	34	2	23	27	16	10	0	21	8	20	165	22	53	85	87
03-Oct	110	37	4	62	66	07	16	9	40	16	07	3	12	17	16	124	56	25	119	98
04-Oct	177	3	32	103	37	50	30	16	60	7	11	4	5	22	15	238	37	53	185	59
05-Oct	163	16	56	106	95	30	37	30	68	15	15	11	10	20	14	208	64	96	194	124
06-Oct	141	0	87	138	152	42	22	63	75	105	14	8	13	39	6	197	30	163	252	263
07-Oct	166	27	162	105	171	53	16	180	97	126	36	4	69	33	24	255	47	411	235	321
08-Oct	100	59	39	215	166	40	69	40	218	94	23	18	54	76	14	163	146	133	509	274
09-Oct	126	93	75	163	270	30	70	47	148	121	15	17	32	88	22	171	180	154	399	413
10-Oct	238	172	23	164	597	65	157	37	151	242	07	53	21	126	74	310	382	81	441	913
11-Oct	333	78	30	177	652	112	126	78	87	336	22	38	24	74	128	467	242	132	338	1116
12-Oct	362	99	67	342	694	98	154	133	123	338	37	42	22	51	164	497	295	222	516	1196
13-Oct	247	108	62	470	467	64	159	147	207	284	39	33	61	69	102	350	300	270	746	853
14-Oct	616	141	112	582	812	87	133	153	333	328	08	39	57	137	60	711	313	322	1052	1200
15-Oct	487	262	90	943	1215	129	203	110	458	248	13	63	35	237	76	629	528	235	1638	1539
16-Oct	594	168	174	465	1478	100	148	138	186	385	20	77	20	71	125	714	393	332	722	1988
17-Oct	966	250	272	807	2173	167	152	268	244	399	38	53	94	69	261	1171	455	634	1120	2833
18-Oct	850	100	263	970	1065	197	103	255	306	270	64	39	163	108	204	1111	242	681	1384	1539
19-Oct	912	529	254	1591	1762	67	220	208	541	276	35	3	108	128	132	1014	752	570	2260	2170
20-Oct	933	490	496	2653	1175	104	360	141	597	188	31	62	49	255	62	1068	912	686	3505	1425
21-Oct	1415	852	618	1139	1726	153	339	217	233	257	30	185	66	168	152	1598	1376	901	1540	2135
22-Oct	1343	555	656	1356	2837	157	158	134	186	309	35	78	149	151	194	1535	791	939	1693	3340
23-Oct	1267	827	1113	994	2040	133	131	232	155	313	71	48	193	72	331	1471	1006	1538	1221	2684
24-Oct	921	1220	844	1714	1836	86	165	166	244	221	61	79	192	171	152	1068	1464	1202	2129	2209
25-Oct	1515	1463	1247	2104	1813	188	212	182	303	229	55	67	142	175	83	1758	1742	1571	2582	2125
26-Oct	2065	2861	1173	1715	3390	119	366	132	276	434	32	189	33	240	195	2216	3416	1338	2231	4019
27-Oct	2112	2135	2040	2069	2904	111	249	252	224	417	37	145	154	145	255	2260	2529	2446	2438	3576
28-Oct	2926	3007	2864	2318	3493	186	238	330	292	458	79	45	290	99	435	3191	3290	3484	2709	4386
29-Oct	1487	1504	1321	4184	2258	87	0	124	502	278	134	1	243	180	237	1708	1505	1688	4866	2773
30-Oct	4266	3017	2008	3152	1076	155	222	103	307	395	51	19	158	238	175	4472	3258	2269	3697	1646
31-Oct	3616	2325	2715	3743	6132	162	36	229	413	575	47	4	148	321	153	3825	2365	3092	4477	6860
01-Nov	3524	293	4140	2736	4843	187	50	306	250	362	70	105	161	199	223	3781	448	4607	3185	5428
02-Nov	3528	6	3550	1246	4183	139	2	306	145	332	80	33	142	131	345	3747	41	3998	1522	4860



03-Nov	2349	2646	972	2109	3806	104	68	202	240	375	174	56	181	75	409	2627	2770	1355	2424	4490
04-Nov	4965	6001	882	4603	4477	132	383	77	499	146	144	75	183	168	265	5241	6459	1142	5270	4888
05-Nov	4905	4199	2989	2876	4137	108	253	129	625	345	54	124	163	367	125	5067	4576	3281	3868	4607
06-Nov	5235	4642	3071	171	6303	207	243	222	26	322	40	118	130	357	215	5482	5003	3423	554	6840
07-Nov	4464	189	4033	420	8575	184	2	568	46	821	70	33	108	149	244	4718	224	4709	615	9640
08-Nov	3448	462	4450	2256	4129	164	16	313	128	432	151	54	338	43	419	3763	532	5101	2427	4980
09-Nov	1756	2003	2083	675	4857	30	199	96	311	608	124	96	294	107	205	1910	2298	2473	1093	5670
10-Nov	3463	2046	1675	1642	2468	144	151	85	509	484	106	147	125	131	109	3713	2344	1885	2282	3061
11-Nov	2950	783	1364	103	5040	149	78	196	29	716	94	174	45	358	129	3193	1035	1605	490	5885
12-Nov	1729	520	1256	33	1477	113	68	122	3	634	99	210	45	269	129	1941	798	1423	305	2240
13-Nov	2422	10	1563	237	885	160	16	146	7	389	154	79	94	109	338	2736	105	1803	353	1612
14-Nov	339	0	765	1101	692	50	1	189	340	171	234	22	128	95	247	623	23	1082	1536	1110
15-Nov	123	92	1480	5	871	91	29	107	40	107	176	111	146	123	154	390	232	1733	168	1132
16-Nov	9	23	1250	8	911	0	59	204	17	318	13	79	112	218	123	22	161	1566	243	1352
17-Nov	266	332	1132	217	638	15	85	289	12	299	38	265	103	249	130	319	682	1524	478	1067
18-Nov	693	740	1400	2147	568	67	70	356	139	312	58	113	111	180	217	818	923	1867	2466	1097
19-Nov	438	1221	752	2200	168	44	82	159	471	125	112	39	3	122	273	594	1342	914	2793	566
20-Nov	838	1007	385	1857	240	120	74	88	325	204	160	64	243	101	183	1118	1145	716	2283	627
21-Nov	507	151	480	2310	112	104	37	161	378	115	160	84	107	205	86	771	272	748	2893	313
22-Nov	41	21	287	719	99	18	19	122	154	118	127	116	72	281	148	186	156	481	1154	365
23-Nov	46	286	317	1033	54	62	14	180	259	97	89	100	106	163	151	197	400	603	1455	302
24-Nov	8	293	229	507	21	24	23	152	192	36	144	72	186	105	265	176	388	567	804	322
25-Nov	0	266	72	443	33	0	31	81	219	68	114	18	272	124	123	114	315	425	786	224
26-Nov	24	8	95	334	27	4	9	57	240	25	83	62	73	186	85	111	79	225	760	137
27-Nov	139	13	1	151	22	50	0	2	99	34	82	132	42	227	80	271	145	45	477	136
28-Nov	87	4	35	95	13	67	1	49	114	23	183	150	35	145	87	337	155	119	354	123
<b>Total</b>	<b>79000</b>	<b>50678</b>	<b>59630</b>	<b>66882</b>	<b>102361</b>	<b>5575</b>	<b>6357</b>	<b>9150</b>	<b>12931</b>	<b>15644</b>	<b>4215</b>	<b>4159</b>	<b>6397</b>	<b>8577</b>	<b>9411</b>	<b>88790</b>	<b>61194</b>	<b>75177</b>	<b>88390</b>	<b>127416</b>



**District-wise and date-wise cumulative number of residue burning events detected in 2016, 2017, 2018, 2019 and 2020  
(Period: 01-Oct to 28-Nov)**

**(a) Punjab**

Districts	01-Oct to 28-Nov				
	2016	2017	2018	2019	2020
AMRITSAR	2170	1355	1397	1410	2029
BARNALA	5701	3425	3279	2964	4788
BATHINDA	8846	5762	6344	5309	7997
FARIDKOT	4629	3472	3057	2317	4029
FATEHGARH SAHIB	2461	1642	863	827	1341
FAZILKA	0	0	0	2775	5093
FIROZPUR	13641	9925	9983	4635	7177
GURDASPUR	2218	1591	1171	1478	1969
HOSHIARPUR	903	497	198	311	422
JALANDHAR	4660	2119	1393	1515	1895
KAPURTHALA	3136	1626	750	1353	1658
LUDHIANA	9546	4744	3041	2273	4309
MANSA	5651	4490	4316	3568	5218
MOGA	6393	2773	2730	2150	4621
MUKTSAR	7037	5432	5781	3713	5803
PATHANKOT	0	0	0	6	12
PATIALA	6544	5034	4215	3853	5500
RUPNAGAR	719	328	87	119	200
SANGRUR	11862	8428	7780	6363	10054
SAS NAGAR	117	107	104	150	194
SBS NAGAR	1614	825	394	265	187
TARN TARAN	4513	3307	2747	3324	4504
<b>Total</b>	<b>102361</b>	<b>66882</b>	<b>59630</b>	<b>50678</b>	<b>79000</b>

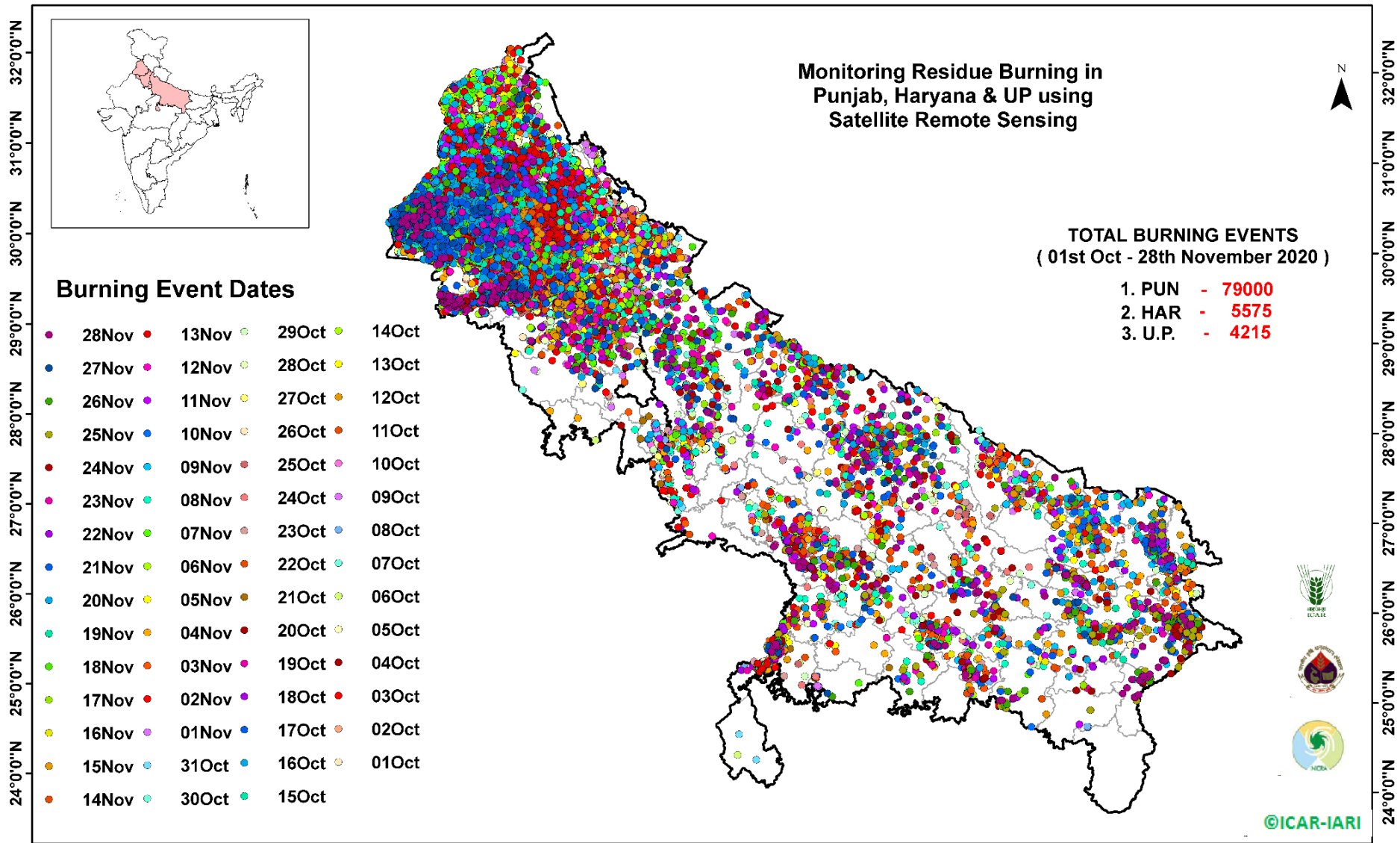
**(b) Haryana**

Districts	01-Oct to 28-Nov				
	2016	2017	2018	2019	2020
AMBALA	534	502	330	339	471
BHIWANI	90	47	22	11	17
CHARKHI DADRI	0	0	0	0	3
FARIDABAD	288	343	187	10	2
FATEHABAD	4831	3722	2544	1203	1233
GURGAON	0	0	0	4	4
HISAR	413	192	211	116	157
JHAJJAR	39	19	30	4	16
JIND	859	943	886	579	657
KAITHAL	1748	1512	1292	1258	868
KARNAL	1639	1512	855	1083	573
KURUKSHETRA	1078	1148	680	738	460
MAHENDRAGARH	0	0	0	2	1
MEWAT	0	0	0	3	2
PALWAL	0	0	0	188	58
PANCHKULA	0	0	3	21	15
PANIPAT	102	108	60	40	63
REWARI	0	0	0	3	3
ROHTAK	103	94	49	23	68
SIRSA	3577	2382	1758	449	547
SONIPAT	97	86	43	33	115
YAMUNANAGAR	246	321	200	250	242
<b>Total</b>	<b>15644</b>	<b>12931</b>	<b>9150</b>	<b>6357</b>	<b>5575</b>

**(C)**  
**Uttar Pradesh**

Districts	01-Oct to 28-Nov																
	2016	2017	2018	2019	2020	GAUTAMBUDHNAGAR	31	46	12	20	15	MUZAFARNAGAR	153	184	63	38	50
AGRA	0	0	0	4	8	GAZIPUR	16	21	27	15	36	PILHIBHIT	958	745	436	368	28
ALIGARH	58	82	93	90	116	GHAZIABAD	90	66	43	17	22	PRATAPGARH	46	63	43	25	48
ALLAHABAD	6	18	20	21	38	GONDA	48	39	22	12	13	RAIBEARELI	117	149	73	34	46
AMBEDKARNAGAR	77	71	28	14	47	GORAKHPUR	66	115	141	19	60	RAMPUR	627	654	226	318	173
AMETHI	0	0	0	15	10	HAMIRPUR	0	0	1	41	9	SAMBHAL	0	0	0	10	15
AMROHA	0	0	0	10	16	HAPUR	0	0	0	17	32	SANTKABIRNAGAR	56	65	54	14	35
AURAIYA	285	251	70	59	89	HARDOI	257	209	113	92	105	SANTRAVIDASNAGAR	0	0	0	1	5
AZAMGARH	38	55	36	7	76	HATHRAS	0	0	0	1	0	SHAHJAHANPUR	1156	711	389	373	139
BADAUN	13	11	14	22	13	JALAUN	0	0	0	132	64	SHAMLI	0	0	0	26	43
BAGHPAT	0	0	0	14	19	JAUNPUR	25	42	26	17	57	SHARANPUR	129	160	76	68	85
BAHRAICH	81	42	60	49	112	JHANSI	0	0	2	254	330	SHRAWASTI	37	32	37	22	50
BALLIA	19	48	31	26	150	KANNAUJ	35	20	8	10	28	SIDDHARTHANAGAR	262	188	476	55	84
BALRAMPUR	37	27	45	9	66	KANPUR	20	14	13	11	44	SITAPUR	138	85	48	53	79
BANDA	2	23	12	23	33	KANPUR DEHAT	72	75	29	51	85	SONBHADRA	16	16	13	0	0
BARABANKI	222	168	175	60	36	KASGANJ	0	0	0	6	3	SULTANPUR	80	82	63	22	19
BAREILLY	262	236	120	117	98	KAUSHAMBI	34	54	53	23	80	UNNAO	68	59	41	39	40
BASTI	146	187	126	30	65	KHERI	496	347	229	201	176	VARANASI	2	0	0	0	3
BIJNOR	71	71	21	17	42	KUSHINAGAR	66	156	172	46	107	JYOTIBAPHULE NAGAR	12	20	9	0	0
BULANDSAHAR	36	38	25	28	67	LALITPUR	0	0	0	7	3	MAHAMAYANAGAR	4	2	8	0	0
CHANDAULI	18	22	3	1	30	LUCKNOW	64	30	26	24	26	<b>Total</b>	<b>9411</b>	<b>8577</b>	<b>6397</b>	<b>4159</b>	<b>4215</b>
CHITRAKOOT	0	0	0	7	11	MAHARAJGANJ	722	1029	1072	293	76						
DEORIA	62	86	80	9	99	MAHOBA	0	0	0	9	17						
ETAH	24	33	28	5	18	MAINPURI	97	96	60	48	62						
ETAWAH	188	145	70	57	83	MATHURA	1462	1083	1049	464	151						
FAIZABAD	18	16	10	7	16	MAU	15	23	22	12	37						
FARRUKHABAD	0	0	0	9	10	MEERUT	99	115	28	38	73						
FATEHPUR	82	69	92	64	123	MIRZAPUR	5	21	9	4	8						
FIROZABAD	23	18	11	17	29	MORADABAD	62	44	15	18	34						

**Map of Cumulative Burning Events (01-Oct to 28-Nov 2020)**



(<http://geoportal.icar.gov.in:8080/geoexplorer/composer/>)

**Details of residue burning events in Punjab on 28-Nov-2020**

S. No.	District	Tehsil / Block	Satellite	Latitude	Longitude	Time (IST)	Day / Night	Fire Power (W/m <sup>2</sup> )
1	AMRITSAR	AJNALA	S-NPP	31.86520	74.67134	13:42:00	D	1.90
2	AMRITSAR	AJNALA	S-NPP	31.86867	74.67072	13:42:00	D	3.40
3	BATHINDA	BATHINDA	S-NPP	30.12269	74.90637	13:42:00	D	4.70
4	BATHINDA	BATHINDA	S-NPP	30.28624	75.03503	13:42:00	D	2.40
5	BATHINDA	BATHINDA	S-NPP	30.29488	75.02003	13:42:00	D	3.50
6	BATHINDA	BATHINDA	S-NPP	30.30122	75.01444	13:42:00	D	3.20
7	BATHINDA	RAMPURA PHUL	S-NPP	30.16307	75.32334	13:42:00	D	4.30
8	BATHINDA	RAMPURA PHUL	S-NPP	30.28408	75.23492	13:42:00	D	13.40
9	BATHINDA	RAMPURA PHUL	S-NPP	30.42774	75.26265	13:42:00	D	24.70
10	FARIDKOT	FARIDKOT	S-NPP	30.73888	74.75587	13:42:00	D	2.20
11	FAZILKA	ABOHAR	S-NPP	30.02275	74.42540	13:42:00	D	4.70
12	FAZILKA	ABOHAR	S-NPP	30.05709	74.21876	13:42:00	D	8.00
13	FAZILKA	ABOHAR	S-NPP	30.21787	74.22101	13:42:00	D	2.90
14	FAZILKA	FAZILKA	S-NPP	30.26562	74.04192	13:42:00	D	24.20
15	FAZILKA	FAZILKA	S-NPP	30.26620	74.04606	13:42:00	D	24.20
16	FAZILKA	FAZILKA	S-NPP	30.26872	74.26311	13:42:00	D	14.90
17	FAZILKA	FAZILKA	S-NPP	30.29067	74.24624	13:42:00	D	6.30
18	FAZILKA	FAZILKA	S-NPP	30.32845	74.14133	13:42:00	D	5.30
19	FAZILKA	FAZILKA	S-NPP	30.33100	74.26076	13:42:00	D	5.20
20	FAZILKA	FAZILKA	S-NPP	30.34697	74.12513	13:42:00	D	3.20
21	FAZILKA	FAZILKA	S-NPP	30.36642	74.06615	13:42:00	D	4.80
22	FAZILKA	FAZILKA	S-NPP	30.39744	74.21429	13:42:00	D	2.40
23	FAZILKA	FAZILKA	S-NPP	30.39803	74.09441	13:42:00	D	5.60
24	FAZILKA	FAZILKA	S-NPP	30.42731	74.12400	13:42:00	D	2.20
25	FAZILKA	FAZILKA	S-NPP	30.43777	74.25078	13:42:00	D	5.30
26	FAZILKA	FAZILKA	S-NPP	30.44217	74.20698	13:42:00	D	6.10
27	FAZILKA	JALALABAD	S-NPP	30.50627	74.29436	13:42:00	D	2.60
28	FAZILKA	JALALABAD	S-NPP	30.51730	74.37465	13:42:00	D	4.10
29	FAZILKA	JALALABAD	S-NPP	30.52127	74.37827	13:42:00	D	8.40
30	FAZILKA	JALALABAD	S-NPP	30.59989	74.36902	13:42:00	D	1.40
31	FAZILKA	JALALABAD	S-NPP	30.60112	74.22583	13:42:00	D	5.70

32	FAZILKA	JALALABAD	S-NPP	30.63593	74.30168	13:42:00	D	15.30
33	FAZILKA	JALALABAD	S-NPP	30.68020	74.39533	13:42:00	D	1.80
34	FIROZPUR	FIROZPUR	S-NPP	30.92426	74.80923	13:42:00	D	2.30
35	FIROZPUR	FIROZPUR	S-NPP	30.92485	74.81364	13:42:00	D	2.30
36	FIROZPUR	ZIRA	S-NPP	30.85945	75.26852	13:42:00	D	11.00
37	FIROZPUR	ZIRA	S-NPP	30.86481	75.33767	13:42:00	D	2.30
38	FIROZPUR	ZIRA	S-NPP	30.87801	75.19099	13:42:00	D	2.00
39	HOSHIARPUR	DASUYA	S-NPP	31.65379	75.68255	13:42:00	D	13.20
40	HOSHIARPUR	HOSHIARPUR	S-NPP	31.48152	75.87680	13:42:00	D	3.90
41	HOSHIARPUR	MUKERIAN	S-NPP	31.98199	75.57965	13:42:00	D	2.60
42	HOSHIARPUR	MUKERIAN	S-NPP	32.02059	75.58978	13:42:00	D	6.30
43	JALANDHAR	PHILLAUR	S-NPP	31.08830	75.71875	13:42:00	D	4.30
44	JALANDHAR	PHILLAUR	S-NPP	31.09189	75.71815	13:42:00	D	2.90
45	KAPURTHALA	KAPURTHALA	S-NPP	31.27256	75.44431	13:42:00	D	1.80
46	KAPURTHALA	PHAGWARA	S-NPP	31.29967	75.78023	13:42:00	D	1.50
47	LUDHIANA	JAGRAON	S-NPP	30.83780	75.37983	13:42:00	D	2.30
48	LUDHIANA	LUDHIANA WEST	S-NPP	30.86478	75.70897	13:42:00	D	3.50
49	LUDHIANA	SAMRALA	S-NPP	30.74142	76.21374	13:42:00	D	2.70
50	MANSA	BUDHLADA	S-NPP	29.79238	75.45450	13:42:00	D	3.70
51	MANSA	BUDHLADA	S-NPP	29.79589	75.45390	13:42:00	D	4.00
52	MANSA	MANSA	S-NPP	29.93743	75.44006	13:42:00	D	4.30
53	MANSA	MANSA	S-NPP	30.03933	75.53111	13:42:00	D	4.40
54	MANSA	SARDULGARH	S-NPP	29.56435	75.25128	13:42:00	D	3.50
55	MANSA	SARDULGARH	S-NPP	29.56787	75.30454	13:42:00	D	3.60
56	MANSA	SARDULGARH	S-NPP	29.58175	75.27520	13:42:00	D	2.80
57	MANSA	SARDULGARH	S-NPP	29.58288	75.25706	13:42:00	D	2.70
58	MANSA	SARDULGARH	NOAA-19	29.64314	75.27400	17:51:00	N	8.00
59	MOGA	BAGHA PURANA	S-NPP	30.70648	74.95309	13:42:00	D	5.30
60	MOGA	MOGA	S-NPP	30.80968	75.21667	13:42:00	D	1.70
61	MOGA	MOGA	S-NPP	30.85593	75.26911	13:42:00	D	11.00
62	MUKTSAR	GIDDARBAHA	S-NPP	30.39800	74.70582	13:42:00	D	4.20
63	MUKTSAR	MALAUT	S-NPP	29.93696	74.56157	13:42:00	D	10.50
64	MUKTSAR	MALAUT	S-NPP	29.93732	74.56102	13:42:00	D	10.20
65	MUKTSAR	MALAUT	S-NPP	29.98865	74.58263	13:42:00	D	3.30



66	MUKTSAR	MALAUT	S-NPP	29.99101	74.62562	13:42:00	D	6.30
67	MUKTSAR	MALAUT	S-NPP	30.24019	74.38445	13:42:00	D	3.70
68	MUKTSAR	MALAUT	S-NPP	30.24218	74.42584	13:42:00	D	7.70
69	MUKTSAR	MALAUT	S-NPP	30.24252	74.42722	13:42:00	D	9.60
70	MUKTSAR	MALAUT	S-NPP	30.33618	74.32394	13:42:00	D	6.30
71	MUKTSAR	MALAUT	S-NPP	30.33620	74.32436	13:42:00	D	9.40
72	MUKTSAR	MALAUT	S-NPP	30.33676	74.32813	13:42:00	D	6.50
73	MUKTSAR	MUKTSAR	S-NPP	30.38099	74.37238	13:42:00	D	2.70
74	MUKTSAR	MUKTSAR	S-NPP	30.40061	74.51659	13:42:00	D	3.70
75	MUKTSAR	MUKTSAR	S-NPP	30.43194	74.36315	13:42:00	D	4.10
76	MUKTSAR	MUKTSAR	AQUA	30.46900	74.46100	13:05:00	D	38.20
77	MUKTSAR	MUKTSAR	S-NPP	30.48644	74.55910	13:42:00	D	2.00
78	MUKTSAR	MUKTSAR	S-NPP	30.49158	74.57134	13:42:00	D	2.90
79	MUKTSAR	MUKTSAR	S-NPP	30.50717	74.40255	13:42:00	D	3.80
80	MUKTSAR	MUKTSAR	S-NPP	30.55246	74.37698	13:42:00	D	1.90
81	MUKTSAR	MUKTSAR	S-NPP	30.55703	74.38483	13:42:00	D	8.20
82	MUKTSAR	MUKTSAR	S-NPP	30.56080	74.38917	13:42:00	D	4.20
83	MUKTSAR	MUKTSAR	S-NPP	30.56102	74.38847	13:42:00	D	8.20
84	MUKTSAR	MUKTSAR	S-NPP	30.56387	74.53644	13:42:00	D	3.50
85	MUKTSAR	MUKTSAR	S-NPP	30.64405	74.51400	13:42:00	D	1.30
86	MUKTSAR	MUKTSAR	S-NPP	30.64484	74.59750	13:42:00	D	2.20
87	PATIALA	SAMANA	S-NPP	30.19586	76.11732	13:42:00	D	3.80

**Details of residue burning events in Haryana on 28-Nov-2020**

S. No.	District	Tehsil / Block	Satellite	Latitude	Longitude	Time (IST)	Day / Night	Fire Power (W/m <sup>2</sup> )
1	CHARKHI DADRI	DADRI	NOAA-19	28.80321	76.34164	17:51:00	N	6.00
2	FATEHABAD	FATEHABAD	S-NPP	29.58187	75.60251	13:42:00	D	1.70
3	FATEHABAD	FATEHABAD	S-NPP	29.60352	75.49335	13:42:00	D	2.30
4	FATEHABAD	FATEHABAD	S-NPP	29.60410	75.49783	13:42:00	D	2.30
5	FATEHABAD	FATEHABAD	S-NPP	29.61474	75.68948	13:42:00	D	6.40
6	FATEHABAD	FATEHABAD	S-NPP	29.63282	75.52605	13:42:00	D	4.00
7	FATEHABAD	FATEHABAD	S-NPP	29.67203	75.33270	13:42:00	D	4.20
8	FATEHABAD	RATIA	S-NPP	29.59301	75.52257	13:42:00	D	14.50
9	FATEHABAD	RATIA	S-NPP	29.59360	75.58212	13:42:00	D	3.50
10	FATEHABAD	RATIA	S-NPP	29.60298	75.59896	13:42:00	D	2.70
11	FATEHABAD	RATIA	S-NPP	29.69009	75.38853	13:42:00	D	2.50
12	FATEHABAD	RATIA	S-NPP	29.73641	75.40919	13:42:00	D	3.40
13	FATEHABAD	TOHANA	S-NPP	29.58969	75.89027	13:42:00	D	1.30
14	HISAR	HANSI	S-NPP	29.07598	76.10859	13:42:00	D	3.80
15	HISAR	HISAR	S-NPP	29.10357	75.75871	13:42:00	D	2.60
16	HISAR	NARNAUND	S-NPP	29.28307	76.17178	13:42:00	D	6.40
17	HISAR	NARNAUND	S-NPP	29.28350	76.16829	13:42:00	D	6.80
18	JIND	JULANA	S-NPP	29.15400	76.35017	13:42:00	D	3.10
19	KAITHAL	GUHLA	S-NPP	29.96262	76.29889	13:42:00	D	4.30
20	KAITHAL	KAITHAL	S-NPP	29.67613	76.65538	13:42:00	D	2.50
21	KARNAL	KARNAL	TERRA	29.66900	76.82900	22:25:00	N	19.60
22	PANIPAT	ISRANA	S-NPP	29.32699	76.69609	13:42:00	D	2.00
23	PANIPAT	SAMALKHA	NOAA-19	29.26584	77.05987	17:51:00	N	11.00
24	ROHTAK	ROHTAK	S-NPP	28.84888	76.42740	13:42:00	D	13.10
25	SIRSA	DABWALI	S-NPP	29.91631	74.56046	13:42:00	D	3.20
26	SIRSA	DABWALI	S-NPP	29.97130	74.83410	13:42:00	D	8.00
27	SIRSA	ELLENABAD	S-NPP	29.45267	74.70875	13:42:00	D	2.30
28	SIRSA	ELLENABAD	S-NPP	29.46298	74.78468	13:42:00	D	5.40
29	SIRSA	ELLENABAD	S-NPP	29.46355	74.78892	13:42:00	D	3.70
30	SIRSA	ELLENABAD	S-NPP	29.47150	74.77020	13:42:00	D	4.50
31	SIRSA	ELLENABAD	S-NPP	29.47871	74.66968	13:42:00	D	2.40

32	SIRSA	ELLENABAD	S-NPP	29.48289	74.77685	13:42:00	D	3.80
33	SIRSA	ELLENABAD	S-NPP	29.48662	74.65108	13:42:00	D	3.80
34	SIRSA	ELLENABAD	S-NPP	29.48742	74.75874	13:42:00	D	1.90
35	SIRSA	ELLENABAD	S-NPP	29.48803	74.78894	13:42:00	D	3.70
36	SIRSA	ELLENABAD	S-NPP	29.50428	74.67805	13:42:00	D	8.70
37	SIRSA	ELLENABAD	S-NPP	29.51398	74.69788	13:42:00	D	4.40
38	SIRSA	RANIA	S-NPP	29.50068	74.85621	13:42:00	D	6.30
39	SIRSA	RANIA	S-NPP	29.50117	74.80832	13:42:00	D	4.90
40	SIRSA	RANIA	S-NPP	29.51153	74.85866	13:42:00	D	8.00
41	SIRSA	RANIA	S-NPP	29.51321	74.84530	13:42:00	D	5.60
42	SIRSA	RANIA	S-NPP	29.52742	74.82106	13:42:00	D	9.30
43	SIRSA	RANIA	S-NPP	29.52886	74.72980	13:42:00	D	1.70
44	SIRSA	RANIA	S-NPP	29.53176	74.70390	13:42:00	D	9.40
45	SIRSA	RANIA	S-NPP	29.53600	74.83260	13:42:00	D	5.50
46	SIRSA	RANIA	S-NPP	29.53851	74.62517	13:42:00	D	1.90
47	SIRSA	RANIA	S-NPP	29.55953	74.65154	13:42:00	D	6.20
48	SIRSA	RANIA	S-NPP	29.56178	74.64253	13:42:00	D	1.70
49	SIRSA	RANIA	S-NPP	29.56508	74.59035	13:42:00	D	7.70
50	SIRSA	RANIA	S-NPP	29.56566	74.59454	13:42:00	D	7.70
51	SIRSA	RANIA	S-NPP	29.56739	74.60712	13:42:00	D	1.70
52	SIRSA	RANIA	S-NPP	29.56810	74.68881	13:42:00	D	3.50
53	SIRSA	RANIA	S-NPP	29.57040	74.70570	13:42:00	D	4.70
54	SIRSA	RANIA	S-NPP	29.57079	74.60652	13:42:00	D	1.70
55	SIRSA	RANIA	S-NPP	29.57476	74.61011	13:42:00	D	2.80
56	SIRSA	RANIA	S-NPP	29.57874	74.61369	13:42:00	D	9.80
57	SIRSA	RANIA	NOAA-19	29.58025	74.58488	17:51:00	N	13.00
58	SIRSA	SIRSA	S-NPP	29.41185	75.12967	13:42:00	D	2.00
59	SIRSA	SIRSA	S-NPP	29.42425	74.93418	13:42:00	D	5.20
60	SIRSA	SIRSA	S-NPP	29.52329	75.23595	13:42:00	D	3.80
61	SIRSA	SIRSA	S-NPP	29.52676	75.23535	13:42:00	D	3.80
62	SIRSA	SIRSA	S-NPP	29.56187	75.12684	13:42:00	D	11.50
63	SIRSA	SIRSA	S-NPP	29.65965	75.10623	13:42:00	D	3.00
64	SIRSA	SIRSA	S-NPP	29.85731	75.02480	13:42:00	D	4.10
65	SONIPAT	SONIPAT	NOAA-19	28.96042	76.99193	17:51:00	N	12.00

66	SONIPAT	SONIPAT	S-NPP	28.98517	76.93552	13:42:00	D	3.80
67	SONIPAT	SONIPAT	S-NPP	29.03899	76.88113	13:42:00	D	2.40

**Details of residue burning events in Uttar Pradesh on 28-Nov-2020**

<b>S. No.</b>	<b>District</b>	<b>Tehsil / Block</b>	<b>Satellite</b>	<b>Latitude</b>	<b>Longitude</b>	<b>Time (IST)</b>	<b>Day / Night</b>	<b>Fire Power (W/m2)</b>
1	ALLAHABAD	BARA	NOAA-19	25.14258	81.64589	17:51:00	N	7.00
2	ALLAHABAD	BARA	S-NPP	25.14436	81.67112	00:42:00	N	0.50
3	ALLAHABAD	BARA	S-NPP	25.16743	81.80496	02:24:00	N	0.40
4	AMBEDKARNAGAR	AKBARPUR	S-NPP	26.46772	82.66946	13:42:00	D	9.90
5	AMBEDKARNAGAR	AKBARPUR	S-NPP	26.46943	82.66902	13:42:00	D	10.70
6	AMBEDKARNAGAR	AKBARPUR	NOAA-19	26.53496	82.47088	17:51:00	N	6.00
7	AMBEDKARNAGAR	AKBARPUR	NOAA-19	26.53496	82.49029	17:51:00	N	7.00
8	AMBEDKARNAGAR	JALALPUR	S-NPP	26.39420	82.74686	13:42:00	D	5.10
9	AMBEDKARNAGAR	JALALPUR	S-NPP	26.40863	82.73531	13:42:00	D	10.60
10	AMBEDKARNAGAR	TANDA	NOAA-19	26.49005	82.64074	17:51:00	N	8.50
11	AMBEDKARNAGAR	TANDA	NOAA-19	26.49454	82.60676	17:51:00	N	7.00
12	AMETHI	GAURIGANJ	NOAA-19	26.30140	81.58280	17:51:00	N	14.50
13	AMROHA	AMROHA	S-NPP	29.02488	78.50153	13:42:00	D	3.50
14	AMROHA	AMROHA	S-NPP	29.02507	78.50531	13:42:00	D	6.70
15	AMROHA	AMROHA	S-NPP	29.02531	78.50558	13:42:00	D	5.50
16	AURAIYA	AURAIYA	S-NPP	26.44028	79.54468	13:42:00	D	2.40
17	AURAIYA	AURAIYA	S-NPP	26.49189	79.54647	13:42:00	D	4.30
18	AURAIYA	AURAIYA	NOAA-19	26.53047	79.36501	17:51:00	N	8.00
19	AURAIYA	AURAIYA	S-NPP	26.63704	79.32137	13:42:00	D	3.40
20	AURAIYA	BIDHUNA	S-NPP	26.65658	79.68687	13:42:00	D	4.40
21	AURAIYA	BIDHUNA	NOAA-19	26.78200	79.55913	17:51:00	N	8.00
22	AZAMGARH	AZAMGARH	NOAA-19	25.94208	83.24735	17:51:00	N	7.00
23	AZAMGARH	LALGANJ	S-NPP	25.83722	83.02974	13:42:00	D	7.70
24	AZAMGARH	LALGANJ	NOAA-19	25.90015	83.05970	17:51:00	N	11.67
25	AZAMGARH	SAGRI	NOAA-19	26.16666	83.32500	17:51:00	N	9.00
26	BAGHPAT	BAGHPAT	S-NPP	28.94011	77.35916	13:42:00	D	2.40
27	BAGHPAT	BAGHPAT	NOAA-19	28.97838	77.37531	17:51:00	N	7.00
28	BAGHPAT	BAGHPAT	S-NPP	29.00343	77.43576	13:42:00	D	4.40
29	BAHRAICH	NANPARA	NOAA-19	27.76566	81.45662	17:51:00	N	7.50
30	BALLIA	BALLIA	S-NPP	25.69391	83.98206	13:42:00	D	1.30



31	BALLIA	BELTHARA ROAD	AQUA	26.02600	83.69000	13:00:00	D	7.00
32	BALLIA	BELTHARA ROAD	S-NPP	26.03741	83.91616	13:42:00	D	2.30
33	BALLIA	BELTHARA ROAD	S-NPP	26.03769	83.91678	13:42:00	D	3.30
34	BALLIA	BELTHARA ROAD	AQUA	26.04700	83.73800	13:00:00	D	5.60
35	BALLIA	RASRA	S-NPP	25.99559	83.94364	13:42:00	D	3.30
36	BALLIA	SIKANDARPUR	AQUA	25.94000	83.97100	13:00:00	D	5.90
37	BALLIA	SIKANDARPUR	AQUA	25.94500	84.00500	13:00:00	D	13.10
38	BALLIA	SIKANDARPUR	AQUA	25.94700	84.01600	13:00:00	D	14.50
39	BALRAMPUR	BALRAMPUR	NOAA-19	27.38836	82.17000	17:51:00	N	7.00
40	BALRAMPUR	TULSIPUR	S-NPP	27.61996	82.36628	13:42:00	D	1.80
41	BARABANKI	NAWABGANJ	NOAA-19	26.84937	81.38383	17:51:00	N	7.00
42	BAREILLY	BAHERI	S-NPP	28.75246	79.36404	13:42:00	D	4.50
43	BAREILLY	BAHERI	S-NPP	28.80264	79.63416	02:24:00	N	0.70
44	BAREILLY	BAHERI	NOAA-19	28.85711	79.51060	17:51:00	N	8.00
45	BAREILLY	MIRGANJ	S-NPP	28.68391	79.28291	13:42:00	D	5.10
46	BAREILLY	MIRGANJ	S-NPP	28.68408	79.28188	13:42:00	D	7.80
47	BAREILLY	NAWABGANJ	NOAA-19	28.40346	79.68531	17:51:00	N	8.00
48	BAREILLY	NAWABGANJ	S-NPP	28.57591	79.67139	13:42:00	D	3.00
49	BIJNOR	AFZALGARH	S-NPP	29.43019	78.63857	13:42:00	D	1.60
50	BIJNOR	AFZALGARH	S-NPP	29.44114	78.66251	13:42:00	D	6.00
51	BIJNOR	CHANDPUR	NOAA-19	29.22093	78.40899	17:51:00	N	9.00
52	BULANSAHAR	KHURJA	S-NPP	28.14881	77.95516	13:42:00	D	4.80
53	BULANSAHAR	KHURJA	S-NPP	28.15269	77.95460	13:42:00	D	4.80
54	BULANSAHAR	KHURJA	NOAA-19	28.18786	77.86061	17:51:00	N	6.00
55	BULANSAHAR	SHIKARPUR	NOAA-19	28.35405	78.00619	17:51:00	N	6.00
56	BULANSAHAR	SIKANDARABAD	NOAA-19	28.42143	77.77325	17:51:00	N	6.00
57	CHANDAULI	CHAKIA	S-NPP	25.14833	83.30434	13:42:00	D	2.90
58	CHANDAULI	CHANDAULI	S-NPP	25.15315	83.30234	13:42:00	D	5.30
59	CHANDAULI	CHANDAULI	S-NPP	25.15324	83.30037	13:42:00	D	4.10
60	CHANDAULI	CHANDAULI	S-NPP	25.15354	83.30382	13:42:00	D	2.90
61	CHANDAULI	CHANDAULI	NOAA-19	25.17851	83.34926	17:51:00	N	14.50
62	CHANDAULI	CHANDAULI	NOAA-19	25.19647	83.15515	17:51:00	N	7.50
63	CHANDAULI	CHANDAULI	NOAA-19	25.33571	83.38809	17:51:00	N	8.00

64	CHANDAULI	CHANDAULI	NOAA-19	25.34021	83.36382	17:51:00	N	6.00
65	CHANDAULI	CHANDAULI	NOAA-19	25.36715	83.45603	17:51:00	N	12.00
66	CHANDAULI	SHAKALDIHA	NOAA-19	25.25936	83.20853	17:51:00	N	8.00
67	CHANDAULI	SHAKALDIHA	AQUA	25.35200	83.27400	13:00:00	D	10.60
68	CHANDAULI	SHAKALDIHA	NOAA-19	25.38512	83.40264	17:51:00	N	8.00
69	CHANDAULI	SHAKALDIHA	S-NPP	25.38585	83.41875	13:42:00	D	6.20
70	CHANDAULI	SHAKALDIHA	S-NPP	25.40284	83.49236	13:42:00	D	5.10
71	DEORIA	DEORIA	NOAA-19	26.46310	83.85882	17:51:00	N	6.00
72	DEORIA	DEORIA	S-NPP	26.68902	83.74684	13:42:00	D	2.90
73	DEORIA	DEORIA	S-NPP	26.68984	83.78219	02:24:00	N	0.60
74	ETAWAH	BHARTHNA	S-NPP	26.64888	79.22008	13:42:00	D	4.10
75	ETAWAH	BHARTHNA	S-NPP	26.65050	79.21999	13:42:00	D	5.10
76	ETAWAH	BHARTHNA	S-NPP	26.65133	79.16628	13:42:00	D	4.80
77	ETAWAH	BHARTHNA	S-NPP	26.66812	79.16809	13:42:00	D	2.60
78	ETAWAH	BHARTHNA	NOAA-19	26.67869	79.19516	17:51:00	N	7.50
79	ETAWAH	BHARTHNA	S-NPP	26.69492	79.18498	13:42:00	D	6.40
80	ETAWAH	BHARTHNA	NOAA-19	26.69666	79.22428	17:51:00	N	9.50
81	ETAWAH	CHAKARNAGAR	NOAA-19	26.63378	79.17090	17:51:00	N	6.00
82	ETAWAH	ETAWAH	NOAA-19	26.82243	79.04472	17:51:00	N	6.00
83	ETAWAH	ETAWAH	S-NPP	26.92981	79.14920	13:42:00	D	3.70
84	ETAWAH	JASWANTNAGAR	S-NPP	26.86353	78.85487	13:42:00	D	2.90
85	FARRUKHABAD	AMRITPUR	NOAA-19	27.57102	79.62384	17:51:00	N	30.33
86	FATEHPUR	FATEHPUR	NOAA-19	25.76241	80.97618	17:51:00	N	6.00
87	FATEHPUR	FATEHPUR	NOAA-19	25.76391	80.88236	17:51:00	N	8.00
88	FATEHPUR	FATEHPUR	NOAA-19	25.78936	80.84030	17:51:00	N	10.00
89	FATEHPUR	FATEHPUR	S-NPP	25.96881	80.80510	13:42:00	D	4.30
90	GAZIPUR	JAKHANIA	NOAA-19	25.71750	83.41235	17:51:00	N	6.00
91	GAZIPUR	ZAMANIA	AQUA	25.48000	83.60200	13:00:00	D	7.70
92	GAZIPUR	ZAMANIA	S-NPP	25.55243	83.68599	13:42:00	D	6.10
93	GAZIPUR	ZAMANIA	NOAA-19	25.55580	83.65500	17:51:00	N	9.00
94	GAZIPUR	ZAMANIA	S-NPP	25.55747	83.68179	13:42:00	D	4.30
95	GHAZIABAD	MODINAGAR	NOAA-19	28.84064	77.48208	17:51:00	N	10.33
96	HAPUR	HAPUR	NOAA-19	28.62804	77.73443	17:51:00	N	9.67

97	HAPUR	HAPUR	S-NPP	28.78166	77.80428	13:42:00	D	2.60
98	HARDOI	SHAHABAD	NOAA-19	27.59498	80.05413	17:51:00	N	10.00
99	JALAUN	KALPI	S-NPP	26.19125	79.45467	13:42:00	D	2.40
100	JALAUN	KONCH	NOAA-19	26.12174	79.11266	17:51:00	N	18.33
101	JHANSI	MOTH	S-NPP	25.68560	78.84542	13:42:00	D	13.10
102	JHANSI	MOTH	S-NPP	25.69682	78.83817	13:42:00	D	3.30
103	JHANSI	MOTH	S-NPP	25.74982	78.91096	13:42:00	D	1.90
104	JHANSI	MOTH	NOAA-19	25.75343	78.89428	17:51:00	N	10.00
105	JHANSI	MOTH	NOAA-19	25.75642	78.86678	17:51:00	N	8.00
106	JHANSI	MOTH	NOAA-19	25.78038	78.88943	17:51:00	N	8.00
107	KANPUR	KANPUR NAGAR	S-NPP	26.37970	80.20723	13:42:00	D	4.10
108	KANPUR	KANPUR NAGAR	S-NPP	26.45242	80.13428	13:42:00	D	2.50
109	KANPUR DEHAT	AKBARPUR	S-NPP	26.42388	79.98676	13:42:00	D	2.20
110	KANPUR DEHAT	RASULABAD	S-NPP	26.70011	79.96764	13:42:00	D	3.00
111	KANPUR DEHAT	SIKANDRA	S-NPP	26.39758	79.61899	13:42:00	D	5.40
112	KAUSHAMBI	MANJHANPUR	S-NPP	25.43508	81.22523	13:42:00	D	5.80
113	KHERI	GOLA	S-NPP	28.18655	80.54086	02:24:00	N	0.60
114	KHERI	LAKHIMPUR	S-NPP	27.85419	80.63650	13:42:00	D	1.80
115	KHERI	LAKHIMPUR	S-NPP	27.85458	80.63838	13:42:00	D	2.70
116	KHERI	LAKHIMPUR	NOAA-19	28.02617	80.56854	17:51:00	N	7.00
117	KHERI	MOHMADI	NOAA-19	28.01718	80.30648	17:51:00	N	7.00
118	KHERI	NIGHASAN	AQUA	28.30400	80.94900	13:00:00	D	9.30
119	KHERI	PALIA KALAN	AQUA	28.32800	80.50800	13:00:00	D	14.70
120	KHERI	PALIA KALAN	NOAA-19	28.39448	80.64618	17:51:00	N	7.00
121	KUSHINAGAR	HATA	S-NPP	26.85468	83.56105	02:24:00	N	0.70
122	KUSHINAGAR	HATA	S-NPP	26.85564	83.56178	02:24:00	N	0.70
123	MAHARAJGANJ	MAHARAJGANJ	NOAA-19	26.93022	83.56764	17:51:00	N	10.00
124	MAHARAJGANJ	MAHARAJGANJ	S-NPP	27.05486	83.56235	00:42:00	N	0.50
125	MAHARAJGANJ	MAHARAJGANJ	NOAA-19	27.05599	83.44147	17:51:00	N	10.00
126	MAINPURI	KARHAL	S-NPP	27.06433	79.10751	13:42:00	D	3.60
127	MAINPURI	KARHAL	S-NPP	27.06549	79.10635	13:42:00	D	4.50
128	MATHURA	CHHATA	S-NPP	27.83043	77.49713	13:42:00	D	2.40
129	MAU	GHOSI	S-NPP	26.13578	83.55504	13:42:00	D	7.40

130	MAU	GHOSI	S-NPP	26.13609	83.55874	13:42:00	D	8.30
131	MAU	GHOSI	AQUA	26.21100	83.48900	13:00:00	D	5.90
132	MAU	MUHAMMADABAD	S-NPP	25.97341	83.30858	13:42:00	D	1.90
133	MEERUT	MAWANA	TERRA	28.96100	78.04600	11:30:00	D	9.90
134	MEERUT	MAWANA	NOAA-19	28.96940	78.01590	17:51:00	N	6.67
135	MEERUT	MAWANA	NOAA-19	29.25686	78.01590	17:51:00	N	8.00
136	MEERUT	MEERUT	NOAA-19	28.93347	77.54517	17:51:00	N	6.00
137	MEERUT	SARDHANA	NOAA-19	29.17601	77.52575	17:51:00	N	10.00
138	MORADABAD	BILARI	NOAA-19	28.61906	78.70016	17:51:00	N	8.00
139	MORADABAD	BILARI	S-NPP	28.78826	78.70674	13:42:00	D	4.20
140	MORADABAD	MORADABAD	S-NPP	28.92398	78.77785	13:42:00	D	1.70
141	MUZAFARNAGAR	BUDHANA	S-NPP	29.29661	77.56019	13:42:00	D	5.90
142	MUZAFARNAGAR	JANSATH	S-NPP	29.38797	77.83815	13:42:00	D	2.00
143	MUZAFARNAGAR	JANSATH	S-NPP	29.38861	77.84026	13:42:00	D	3.30
144	MUZAFARNAGAR	MUZAFFARNAGAR	S-NPP	29.49461	77.80269	13:42:00	D	3.30
145	MUZAFARNAGAR	MUZAFFARNAGAR	TERRA	29.60400	77.54700	11:30:00	D	9.30
146	PILHIBHIT	PILHIBHIT	S-NPP	28.53977	79.74230	02:24:00	N	0.60
147	PILHIBHIT	PURANPUR	S-NPP	28.33459	80.16656	02:24:00	N	1.50
148	PILHIBHIT	PURANPUR	S-NPP	28.42439	80.21205	02:24:00	N	0.50
149	PRATAPGARH	LALGANJ	NOAA-19	25.95106	81.60706	17:51:00	N	7.00
150	RAIBEARELI	MAHARAJGANG	NOAA-19	26.34632	81.35956	17:51:00	N	7.00
151	RAIBEARELI	MAHARAJGANG	S-NPP	26.43023	81.33559	02:24:00	N	0.30
152	RAIBEARELI	TILOI	S-NPP	26.35485	81.39865	13:42:00	D	4.40
153	RAIBEARELI	TILOI	NOAA-19	26.36428	81.39353	17:51:00	N	12.00
154	RAMPUR	SUAR	NOAA-19	29.09965	79.07384	17:51:00	N	7.00
155	SANTKABIRNAGAR	GHANGHATA	S-NPP	26.64310	83.06044	13:42:00	D	3.90
156	SANTKABIRNAGAR	KHALILABAD	S-NPP	26.90194	82.88760	13:42:00	D	1.80
157	SANTKABIRNAGAR	KHALILABAD	S-NPP	26.90313	82.88808	13:42:00	D	2.60
158	SHAHJAHANPUR	PUWANYA	S-NPP	28.01741	80.00400	02:24:00	N	0.30
159	SHAHJAHANPUR	PUWANYA	S-NPP	28.07830	80.17217	02:24:00	N	1.00
160	SHAHJAHANPUR	PUWANYA	S-NPP	28.08064	80.17239	02:24:00	N	0.90
161	SHAHJAHANPUR	PUWANYA	S-NPP	28.31667	80.06821	02:24:00	N	0.70
162	SHAHJAHANPUR	SHAHJAHANPUR	NOAA-19	27.75218	80.03472	17:51:00	N	7.00

163	SHAHJAHANPUR	SHAHJAHANPUR	S-NPP	27.80423	79.89592	13:42:00	D	4.50
164	SHAHJAHANPUR	SHAHJAHANPUR	NOAA-19	27.86447	80.00883	17:51:00	N	7.33
165	SHAHJAHANPUR	SHAHJAHANPUR	NOAA-19	27.87345	79.77266	17:51:00	N	7.00
166	SHAHJAHANPUR	SHAHJAHANPUR	NOAA-19	27.90040	79.96677	17:51:00	N	8.00
167	SHAHJAHANPUR	TILHAR	NOAA-19	28.08905	79.80663	17:51:00	N	7.00
168	SHAMLI	KAIRANA	S-NPP	29.63292	77.23698	13:42:00	D	5.30
169	SHAMLI	KAIRANA	S-NPP	29.63445	77.23866	13:42:00	D	3.90
170	SHAMLI	SHAMLI	NOAA-19	29.57127	77.46752	17:51:00	N	8.00
171	SHARANPUR	DEOBAND	NOAA-19	29.67907	77.60825	17:51:00	N	7.00
172	SHARANPUR	SHARANPUR	S-NPP	29.93581	77.70658	13:42:00	D	6.20
173	SHRAWASTI	IKAUNA	NOAA-19	27.44226	82.03412	17:51:00	N	7.00
174	SITAPUR	MISRIK	NOAA-19	27.32099	80.67530	17:51:00	N	6.00
175	SITAPUR	MISRIK	S-NPP	27.37866	80.55111	13:42:00	D	6.30
176	SITAPUR	MISRIK	S-NPP	27.42797	80.63190	13:42:00	D	3.30
177	SITAPUR	MISRIK	S-NPP	27.42862	80.62840	13:42:00	D	3.40
178	SITAPUR	MISRIK	S-NPP	27.50232	80.36685	13:42:00	D	3.70
179	SITAPUR	SITAPUR	AQUA	27.64800	80.66200	13:00:00	D	9.50
180	SITAPUR	SITAPUR	NOAA-19	27.68481	80.62677	17:51:00	N	11.00
181	SULTANPUR	JAISINGHPUR	NOAA-19	26.30140	82.21368	17:51:00	N	7.00
182	SULTANPUR	KADIRPUR	NOAA-19	26.13971	82.50000	17:51:00	N	7.00
183	UNNAO	SAFIPUR	S-NPP	26.85517	80.37775	02:24:00	N	0.40

**The study used images received from following Satellites at IARI Satellite Ground Station**

S. No.	Satellite Name	Sensor	Resolution (meter)	Day / Night Passes
1.	Suomi NPP	VIIRS	375 / 750	Both
2.	Terra	MODIS	1000	Both
3.	Aqua	MODIS	1000	Both
4.	NOAA – 18	AVHRR	1000	Night
5.	NOAA – 19	AVHRR	1000	Night
6.	Metop - 1	AVHRR	1000	Night
7.	Metop - 2	AVHRR	1000	Night

**Study Team**

ICAR – HQ	Dr K. Alagusundaram	DDG (AG. ENGG.)	<a href="mailto:ddgengg@icar.org.in">ddgengg@icar.org.in</a>
	Dr S. Bhasker	ADG (NRM)	<a href="mailto:adgagroandaf@gmail.com">adgagroandaf@gmail.com</a>
	Dr K.K. Singh	ADG (AG. ENGG.)	<a href="mailto:kanchansingh044@gmail.com">kanchansingh044@gmail.com</a>
ICAR - IARI	<b>Dr V.K. Sehgal</b>	<b>Professor &amp; Nodal Scientist</b>	<a href="mailto:iaricreams@gmail.com">iaricreams@gmail.com</a>
	Dr Rajkumar Dhakar	Scientist	<a href="mailto:raidhakar.iari@gmail.com">raidhakar.iari@gmail.com</a>
	Mr Rakeswer Verma	Chief Technical Officer	<a href="mailto:rakeshwar.verma@icar.gov.in">rakeshwar.verma@icar.gov.in</a>
	Mr Mohd Jahangir	Lab Assistant (KRISHI)	<a href="mailto:mjahangir198@gmail.com">mjahangir198@gmail.com</a>
ICAR - ATARI	Dr Rajbir Singh	Director ATARI (Zone-I) Ludhiana	<a href="mailto:rajbirsingh.zpd@gmail.com">rajbirsingh.zpd@gmail.com</a>
	Dr S.K. Singh	Director ATARI (Zone-II) Jodhpur	<a href="mailto:sushilsinghiipr@yahoo.co.in">sushilsinghiipr@yahoo.co.in</a>
	Dr Atar Singh	Director ATARI (Zone-III) Kanpur	<a href="mailto:zpdicarkanpur@gmail.com">zpdicarkanpur@gmail.com</a>
ICAR - IASRI	Dr Rajender Parsad	Director IASRI	<a href="mailto:rajender.parsad@icar.gov.in">rajender.parsad@icar.gov.in</a>

Softcopy of this report and latest statistics can be seen on <http://creams.iari.res.in>

GIS Maps of fire events can be visualized online on ICAR KRISHI Geoportal website: <http://geoportal.icar.gov.in:8080/geoexplorer/composer/>

(Part of KRISHI Portal: <https://krishi.icar.gov.in> initiative)

\*\*\*