



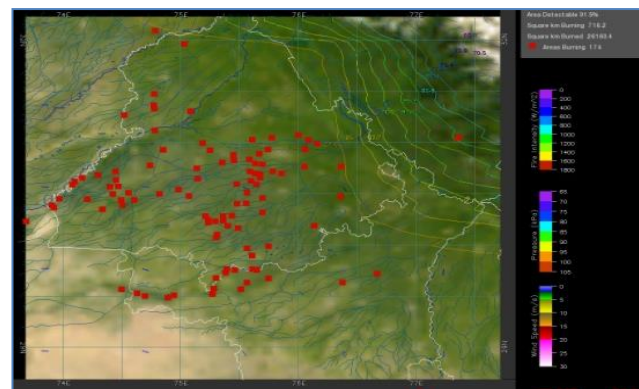
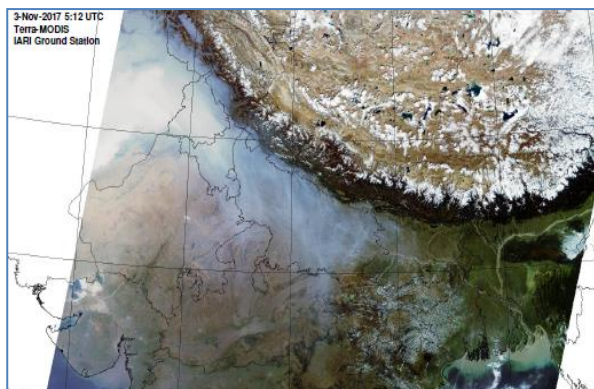
**Bulletin
No. 24**

**Events Date:
24-Oct-2020**

**Issued on:
25-Oct-2020**



MONITORING PADDY RESIDUE BURNING IN NORTH INDIA USING SATELLITE REMOTE SENSING DURING 2020



Prepared by:

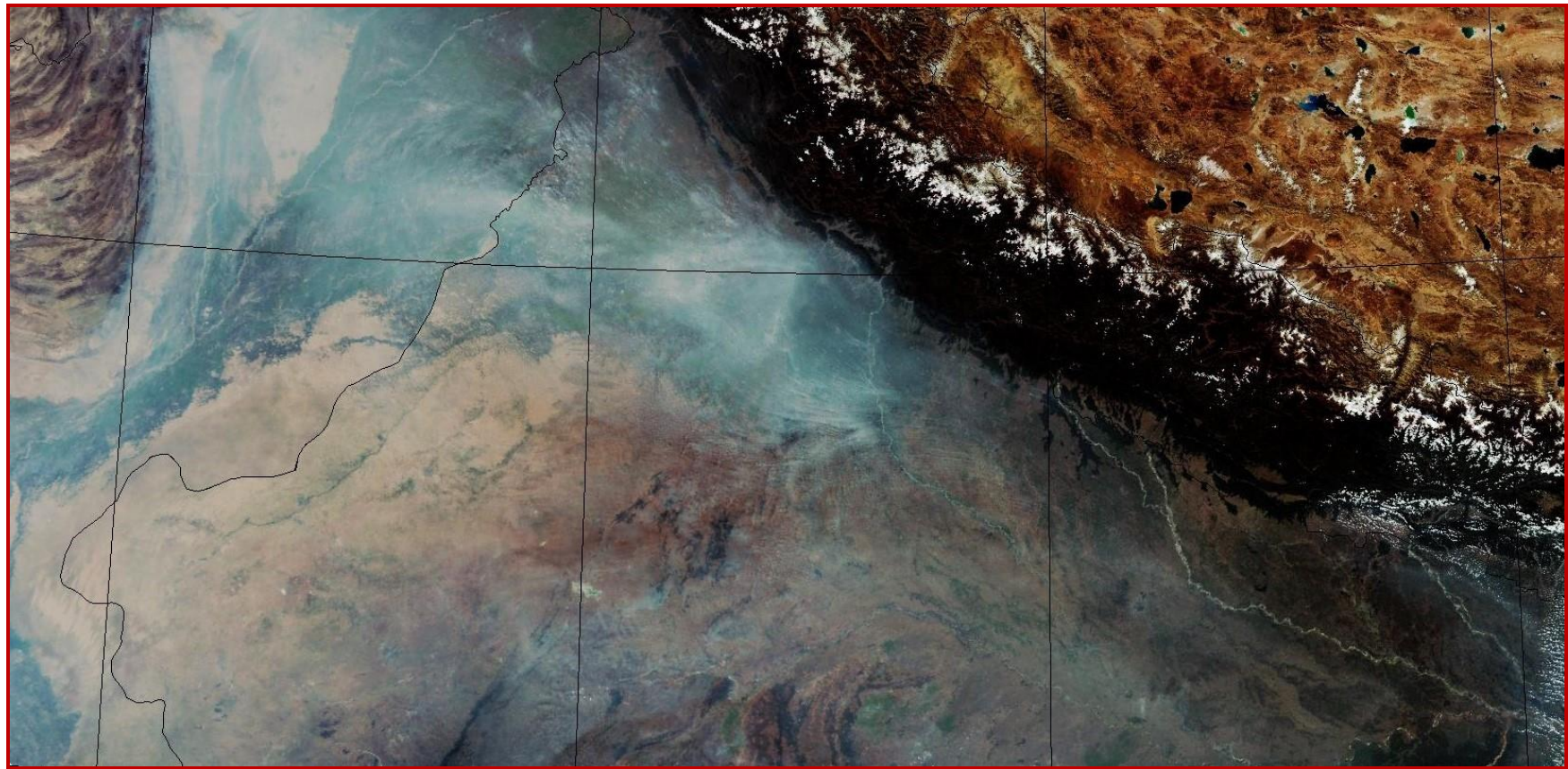
**Consortium for Research on Agroecosystem Monitoring and Modeling from Space (CREAMS) Laboratory,
Division of Agricultural Physics, ICAR – Indian Agricultural Research Institute, New Delhi – 110012**

<http://creams.iari.res.in>

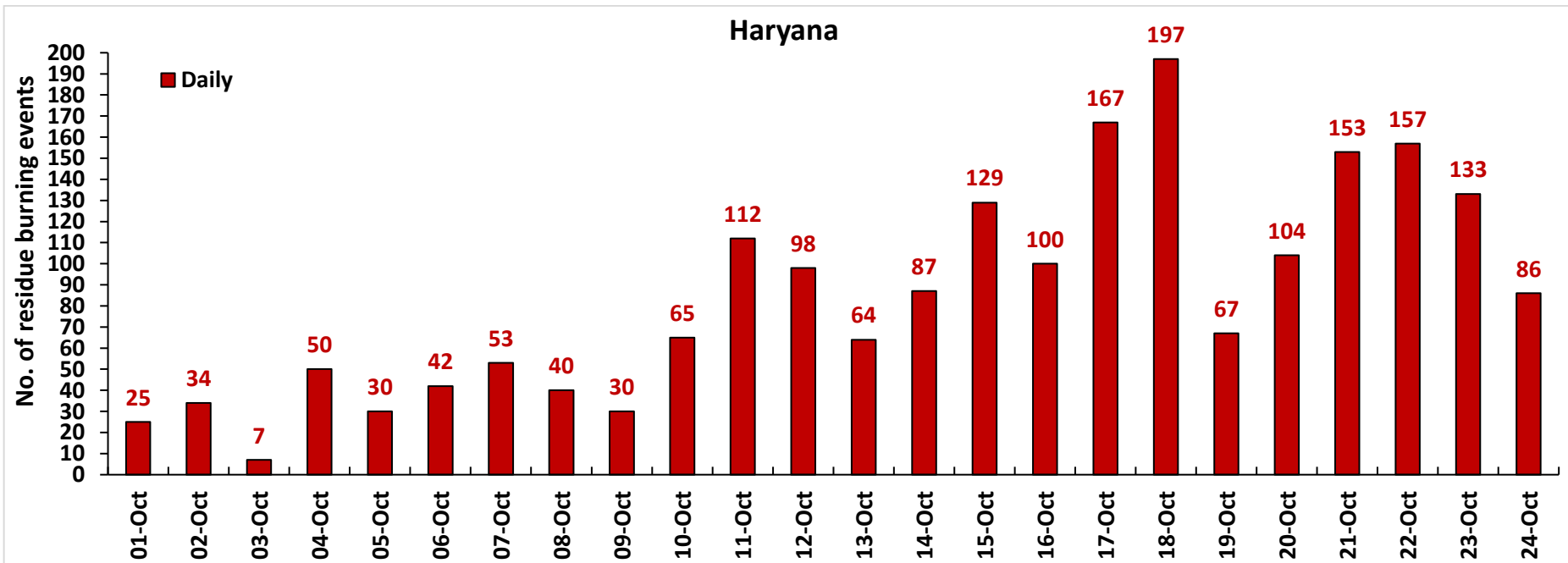
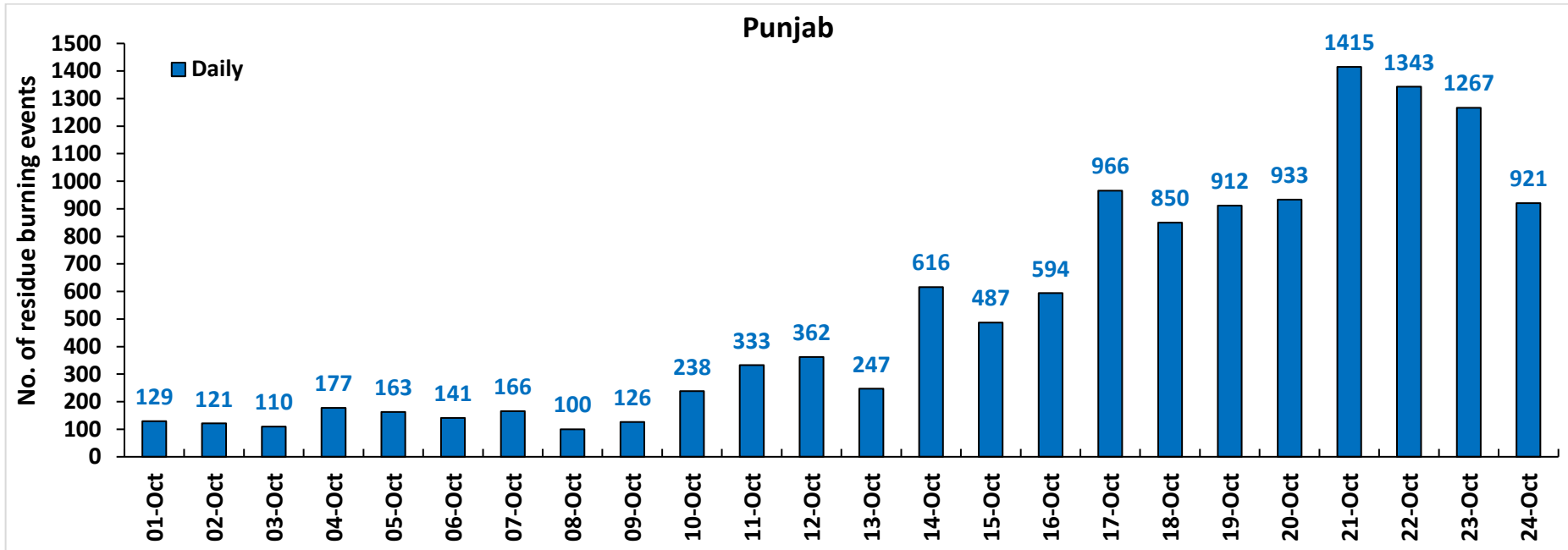
Highlights for 24-October-2020

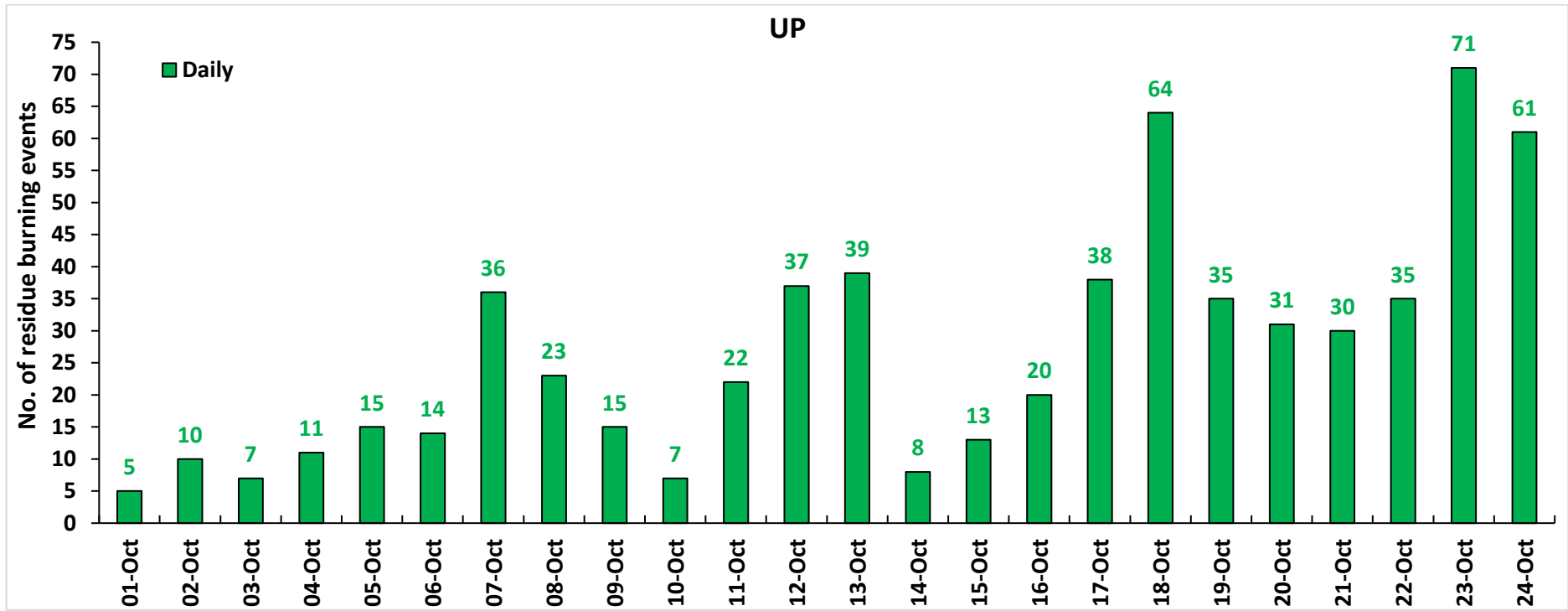
- Satellites detected **1068** residue burning events in the three study States on **24-Oct-2020**.
- The state wise events detected on **24-Oct-2020** were **921** in Punjab, **86** in Haryana and **61** in UP.
- The number of events has decreased from **1471** on **23-Oct-2020** to **1068** on **24-Oct-2020** in the three states.
- Ferozpur in Punjab, Ambala in Haryana and Mathura in UP reported the highest number of events on **24-Oct-2020**.
- Total **15394** burning events were detected in the three States between **01-Oct-2020** and **24-Oct-2020**, which are distributed as **12717**, **2030** and **647** in Punjab, Haryana and UP, respectively.
- In Haryana and UP, the cumulative number of burning events between **1-Oct** and **24-Oct 2020** were lower than in **2019**, while in Punjab the cumulative number of events were more than in **2019**.

S-NPP (VIIRS) Satellite image of North India Acquired on 24-Oct-2020 at 13:00 by IARI Ground Station



Temporal distribution of residue burning events for the three study States in 2020

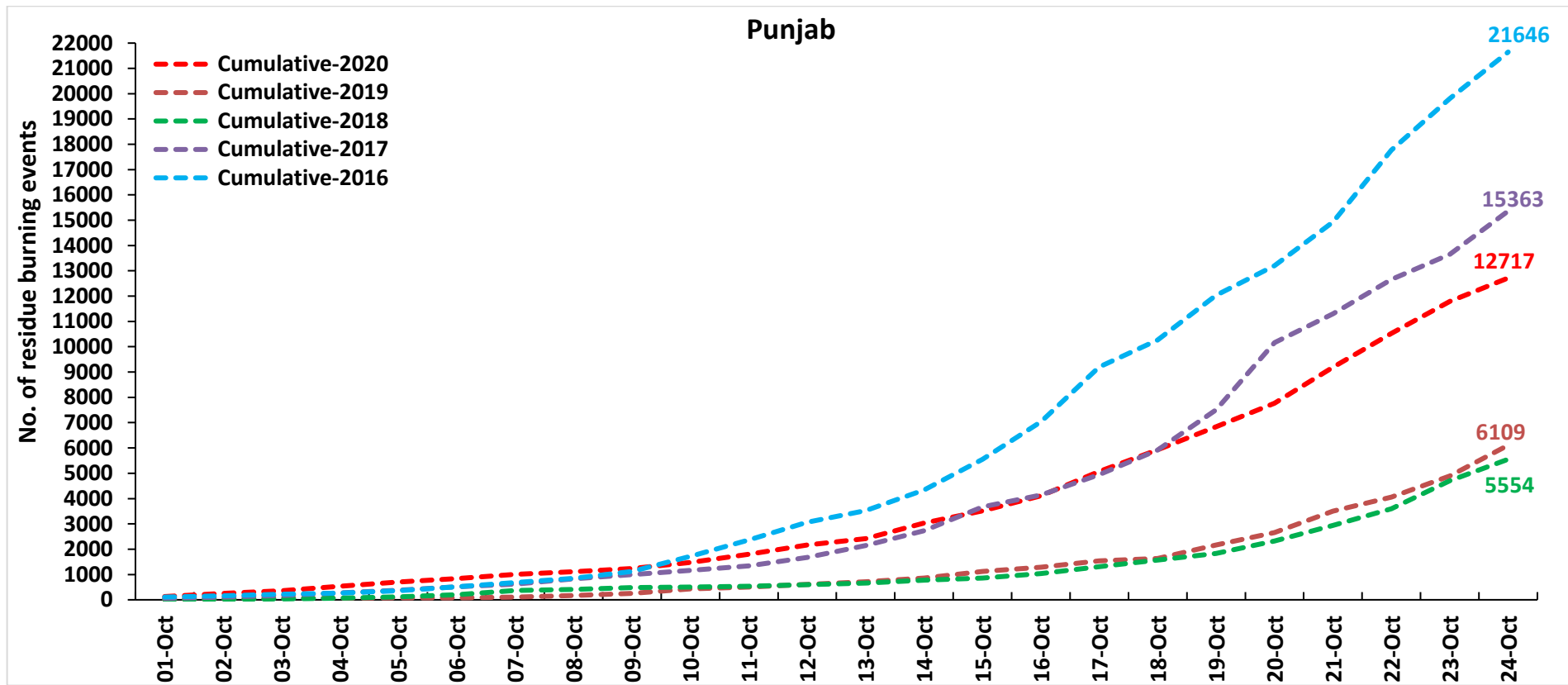




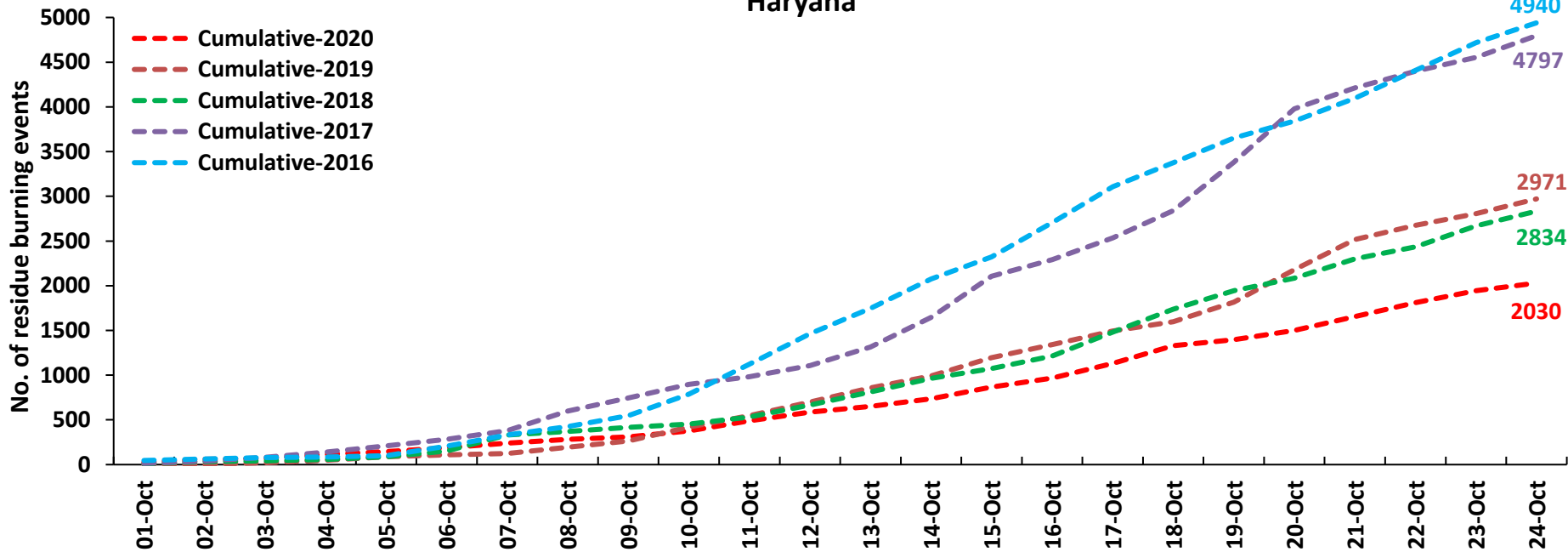
Comparison of residue burning events in current year (2020) with previous years (2019, 2018, 2017 & 2016) for the three study States

(01-Oct to 24-Oct)

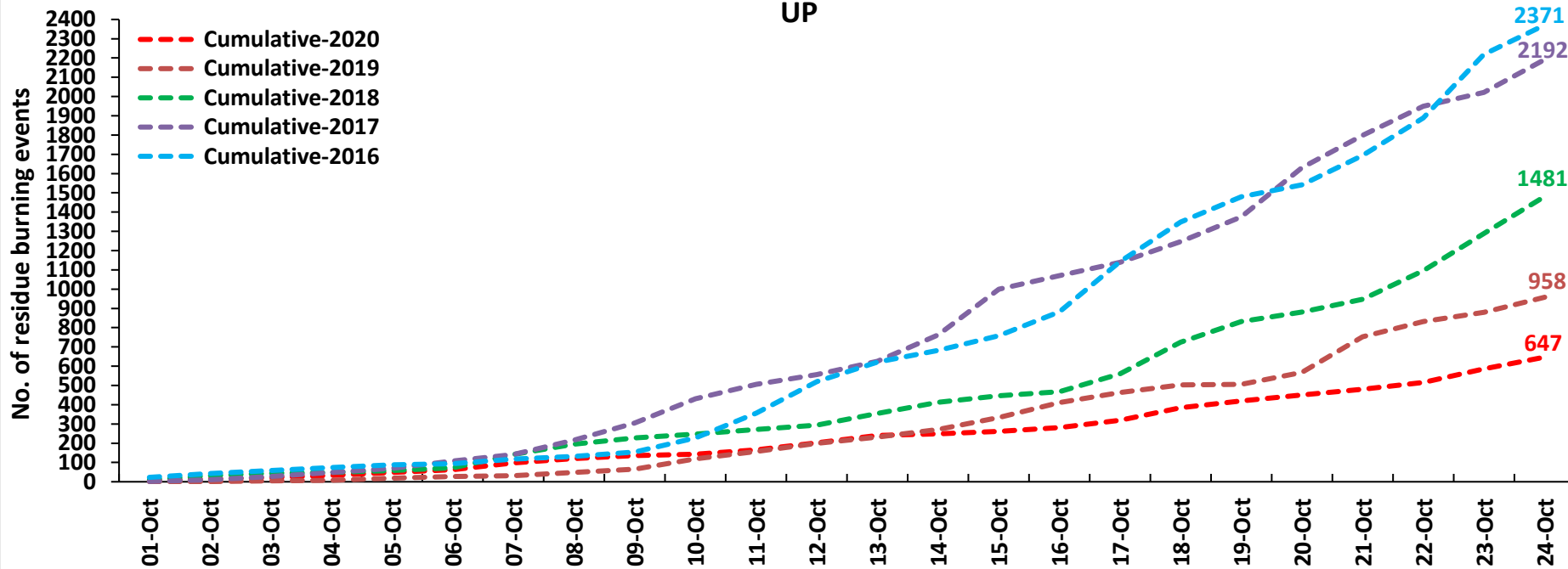
Punjab



Haryana

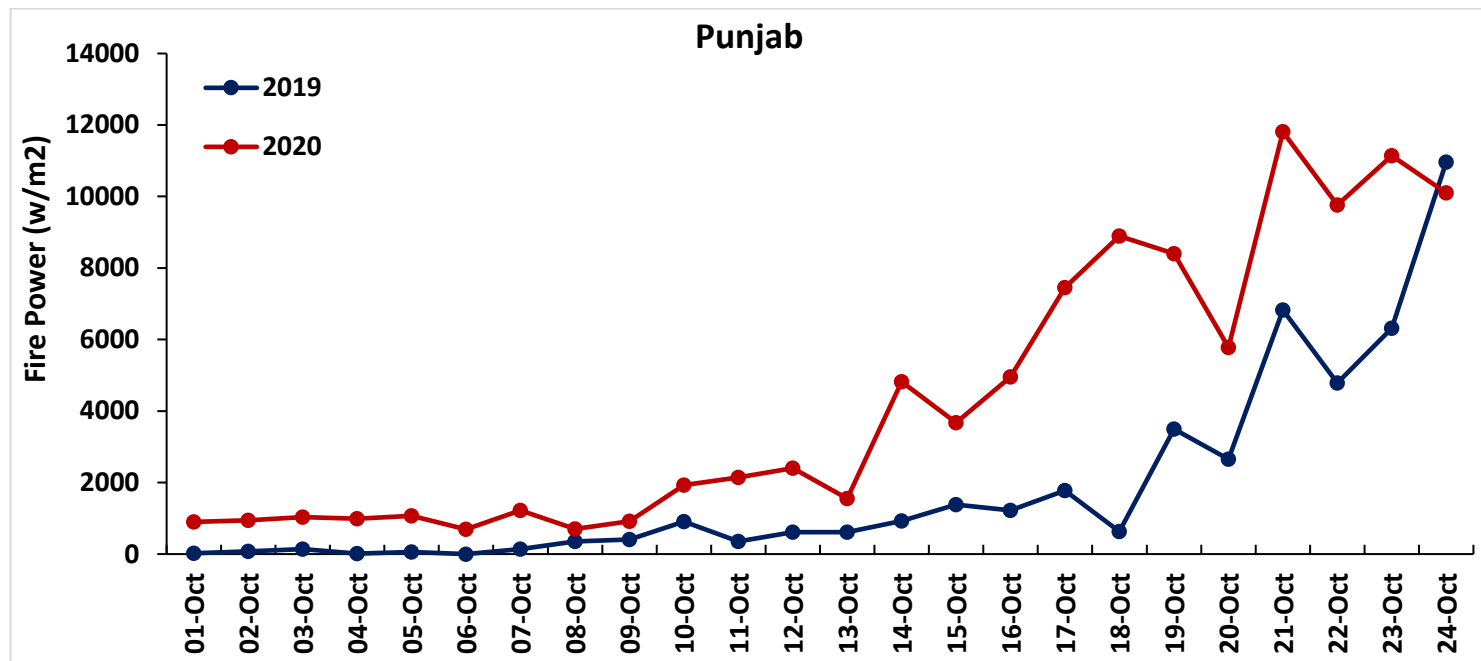


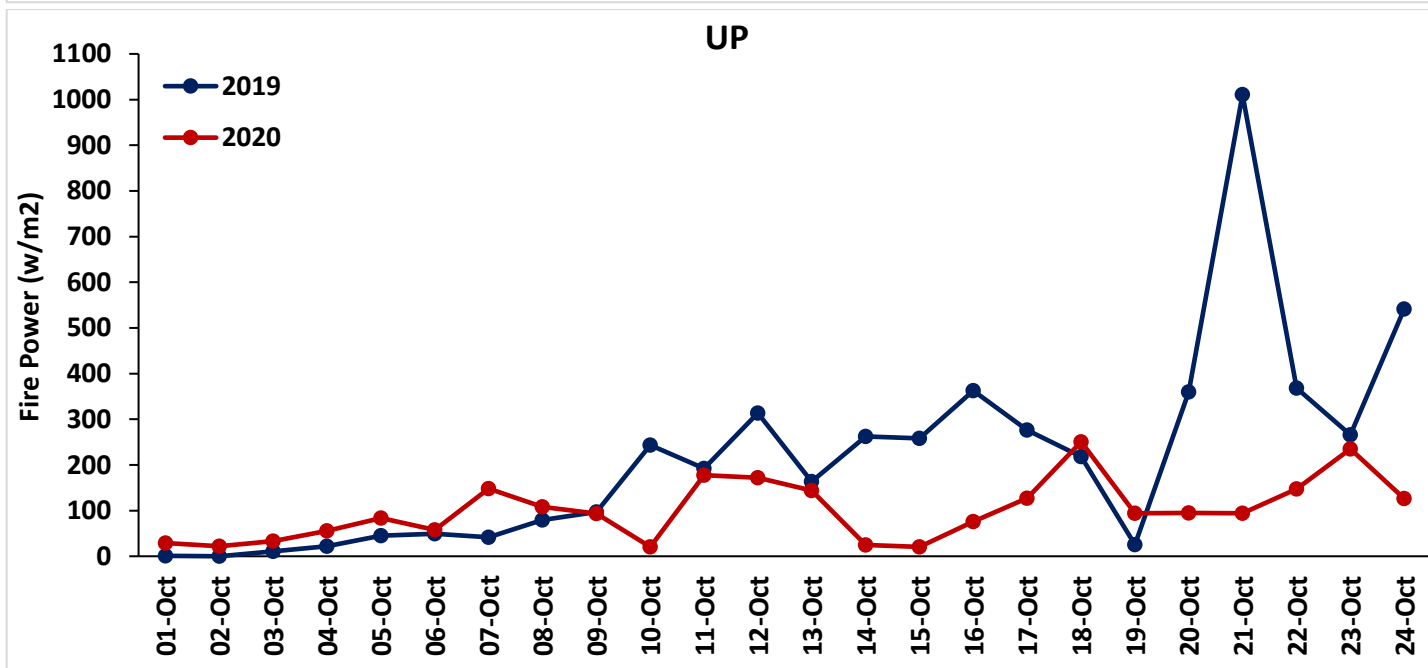
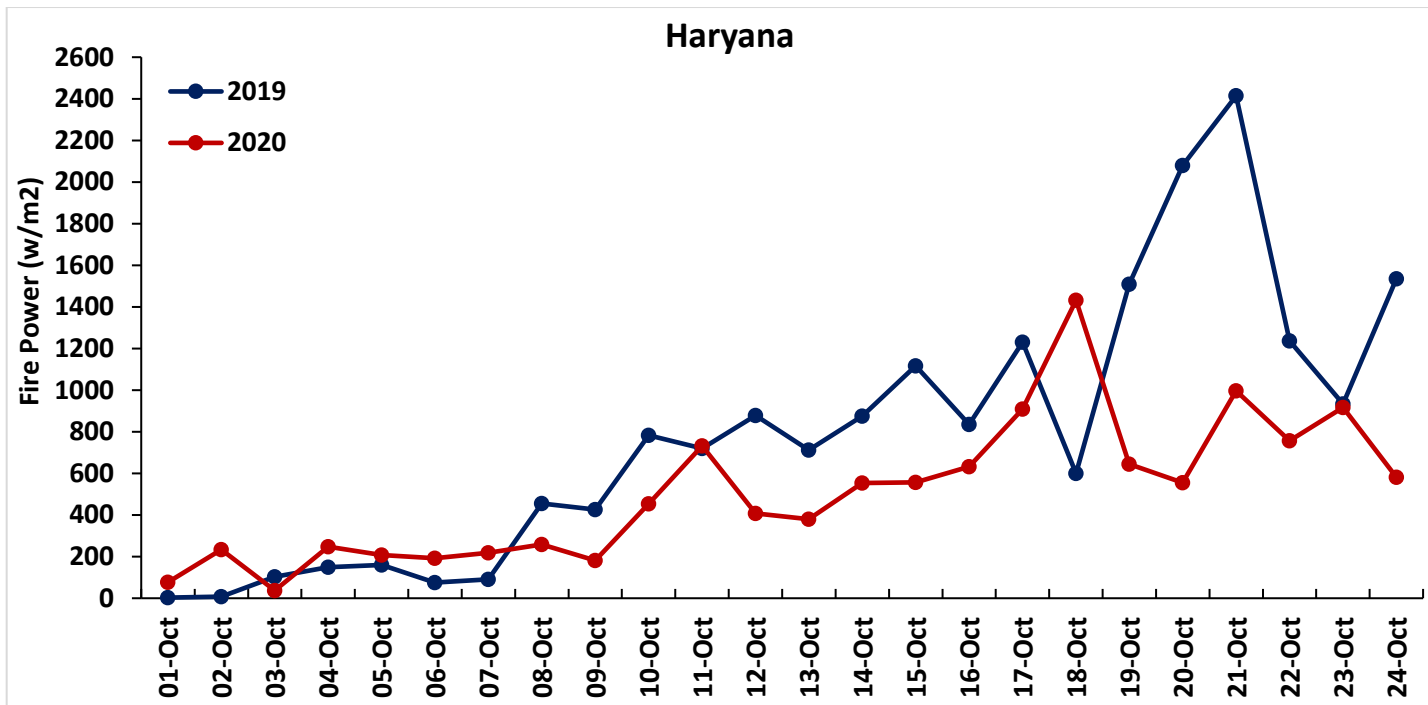
UP



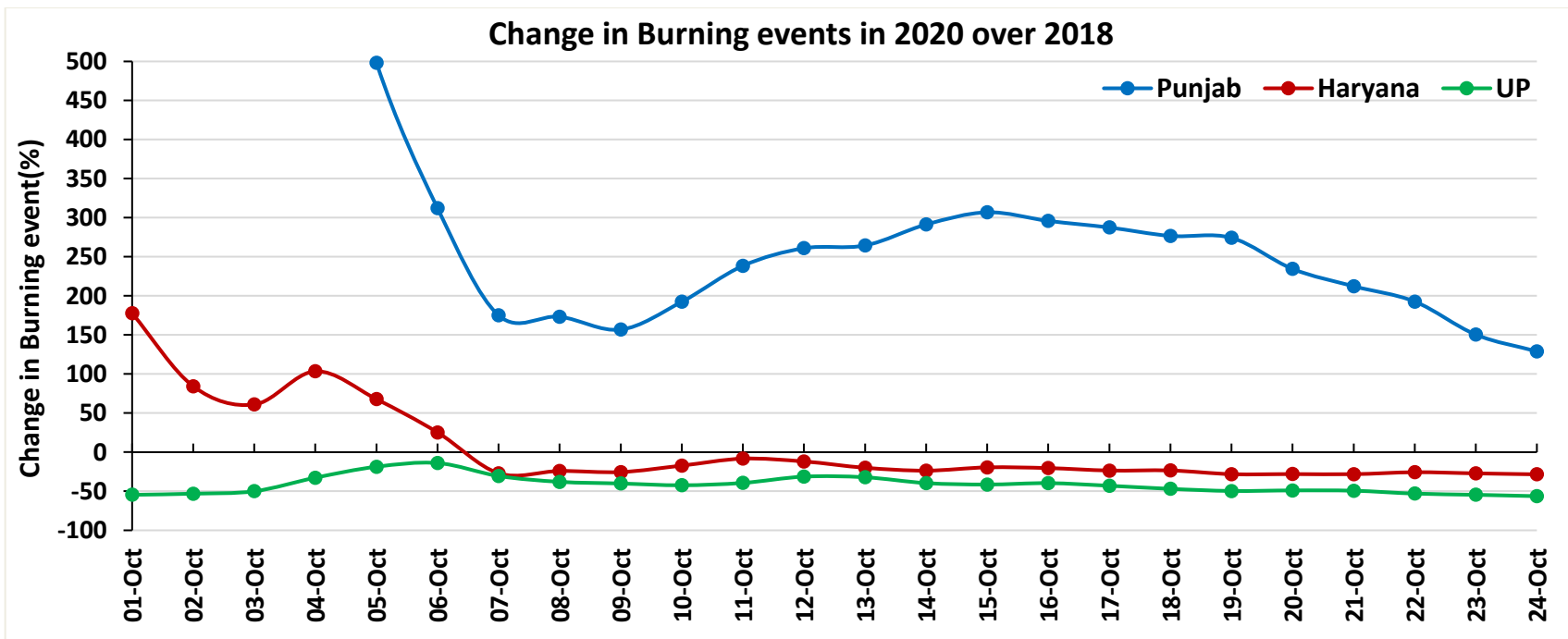
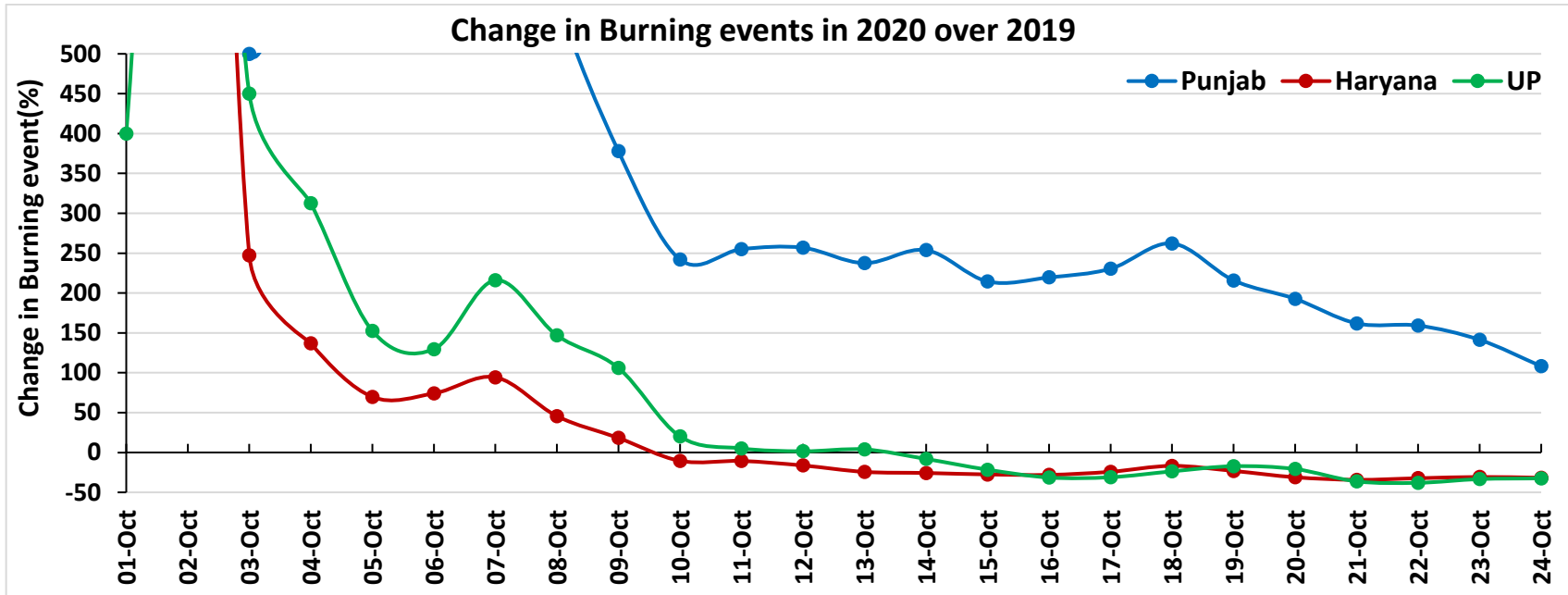
Comparison of Fire Intensity of residue burning events in current year (2020) with previous year (2019)
For the three study States

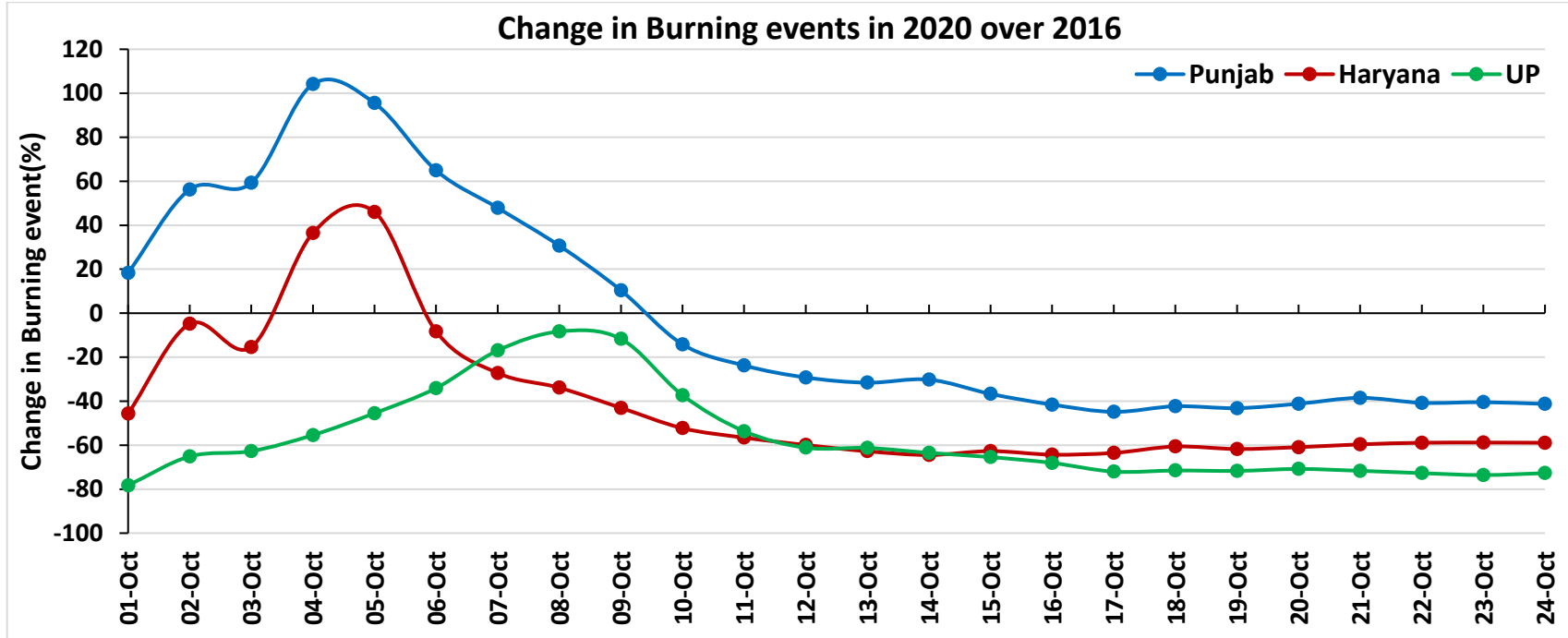
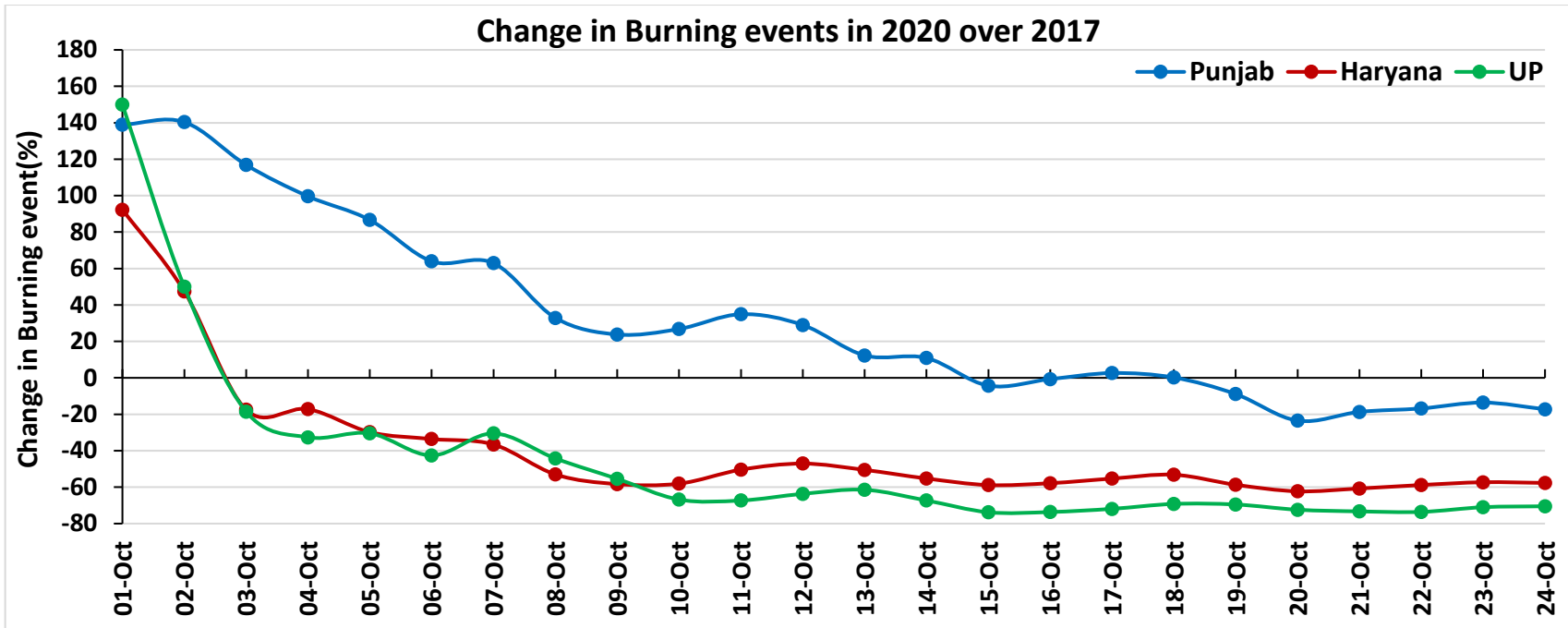
(01-Oct to 24-Oct)





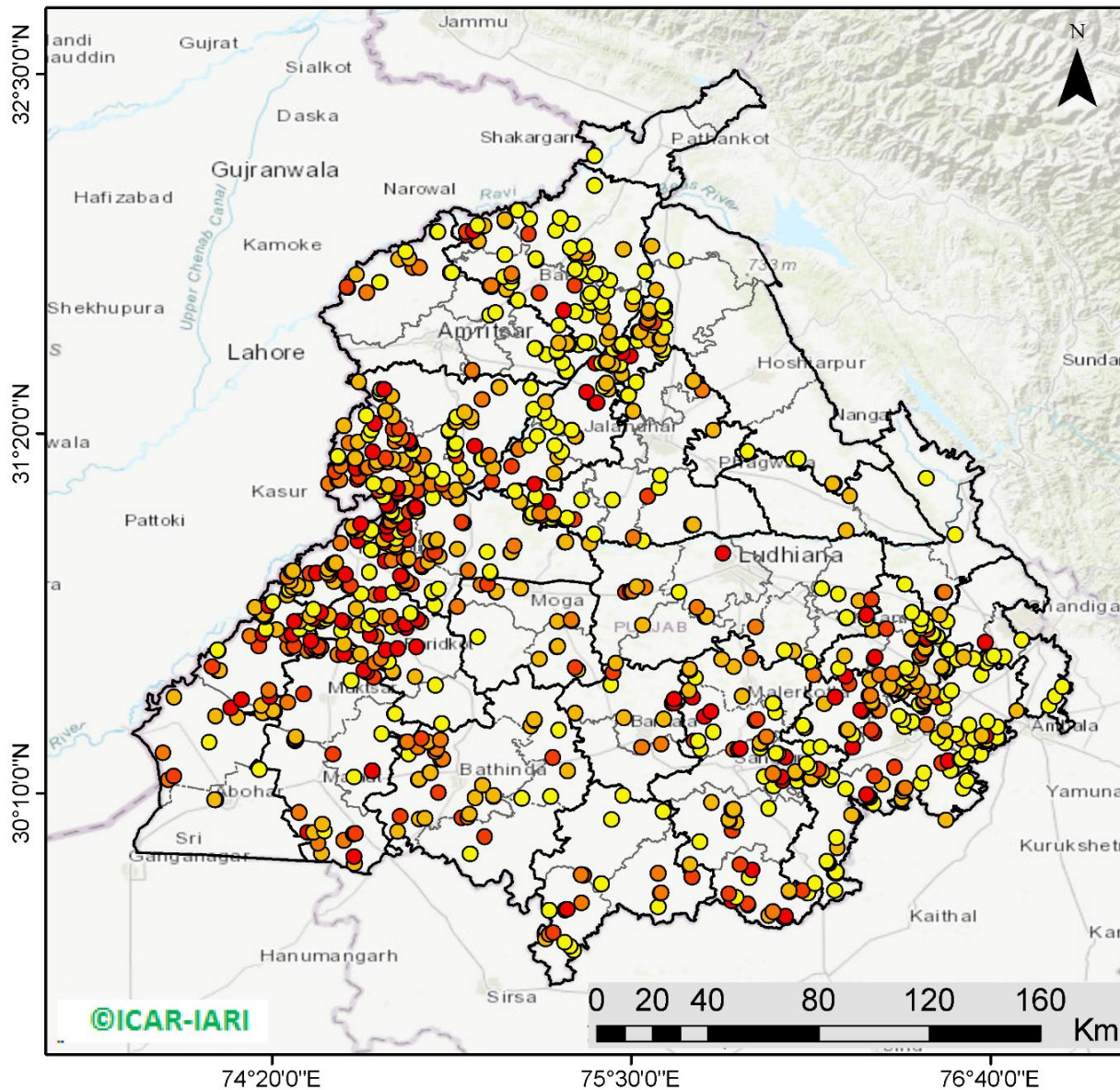
Percent Change in Burning events in 2020 over 2019, 2018, 2017 and 2016 (Daily Cumulative)





(a) Punjab

RICE RESIDUE BURNING IN PUNJAB



921 burning events detected in Punjab on 24th October 2020

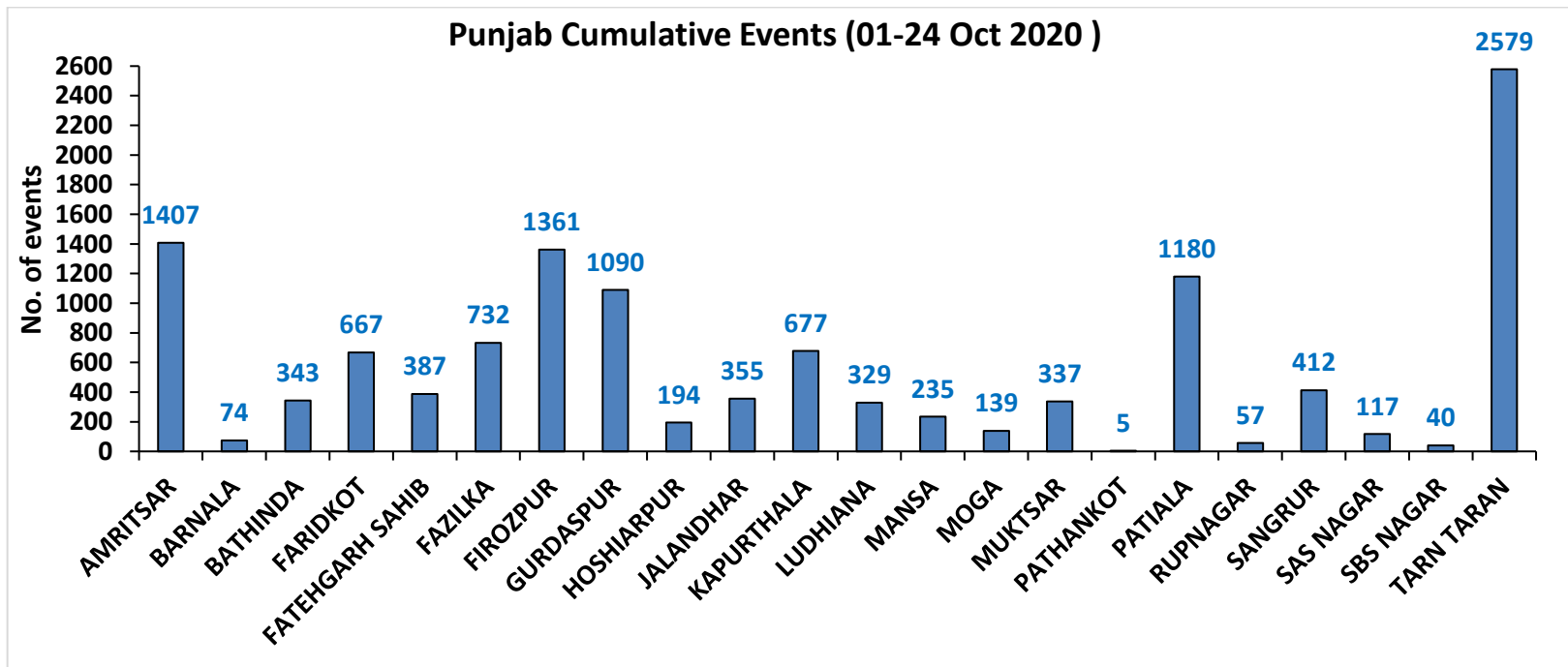
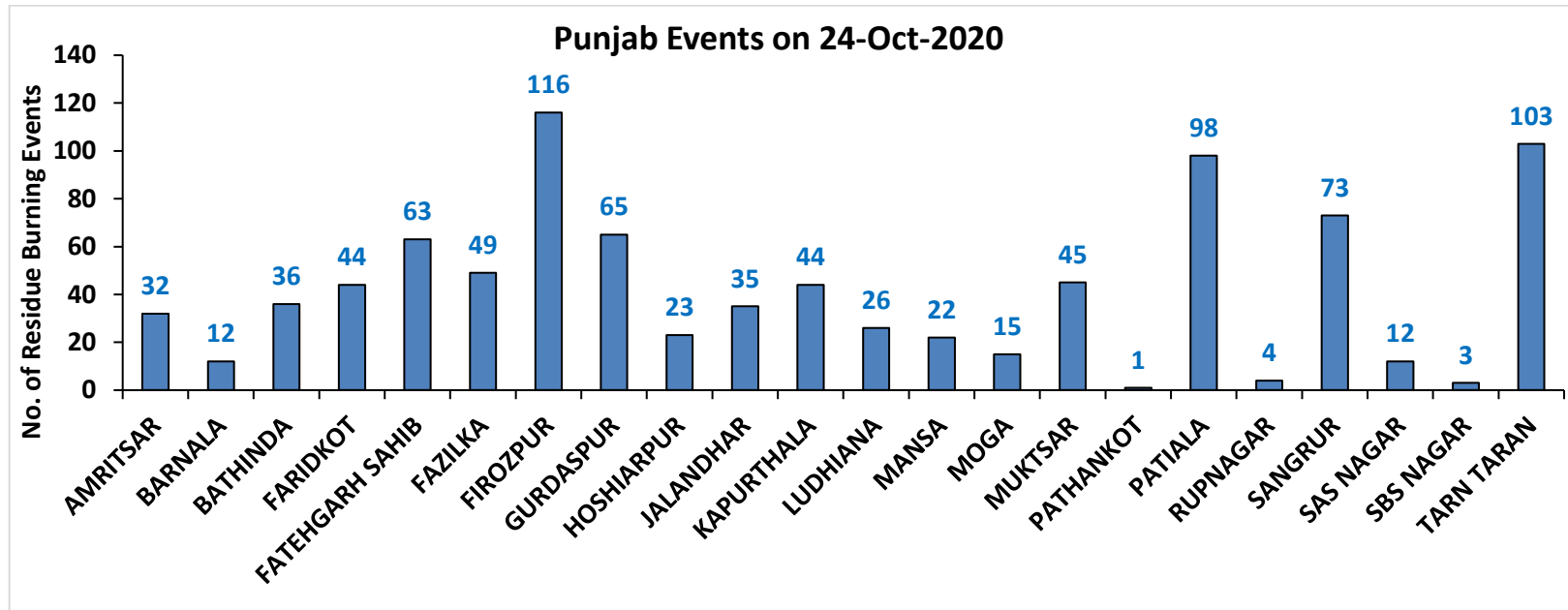
Fire Intensity (W/m²)

- 0 - 5
- 6 - 10
- 11 - 15
- 16 - 20
- >20



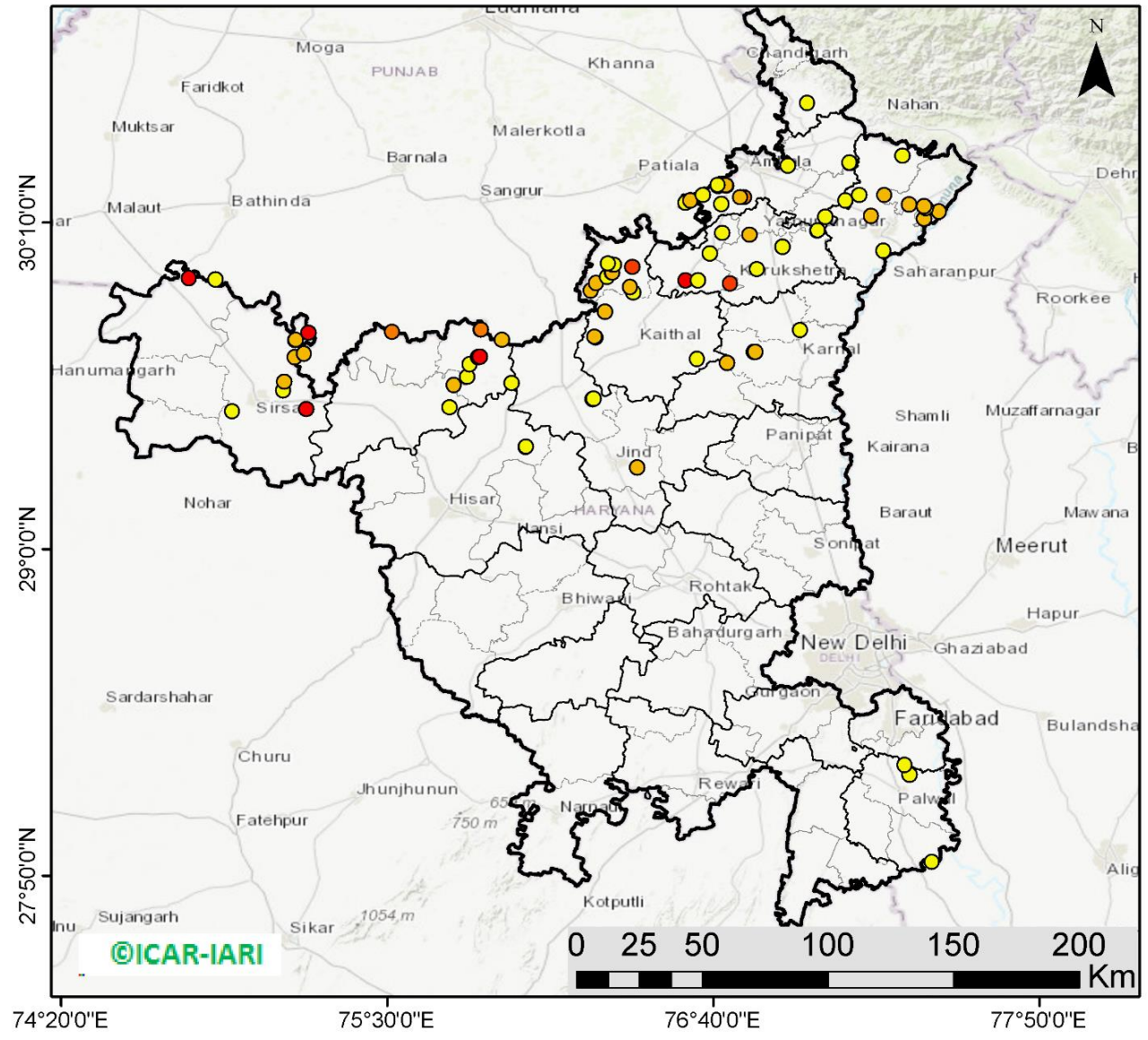
<http://geoportal.icar.gov.in:8080/geoexplorer/composer/>

District-wise number of residue burning events in Punjab (01-24 Oct 2020)



(b) Haryana

RICE RESIDUE BURNING IN HARYANA



86 burning events detected in Haryana on 24th October 2020

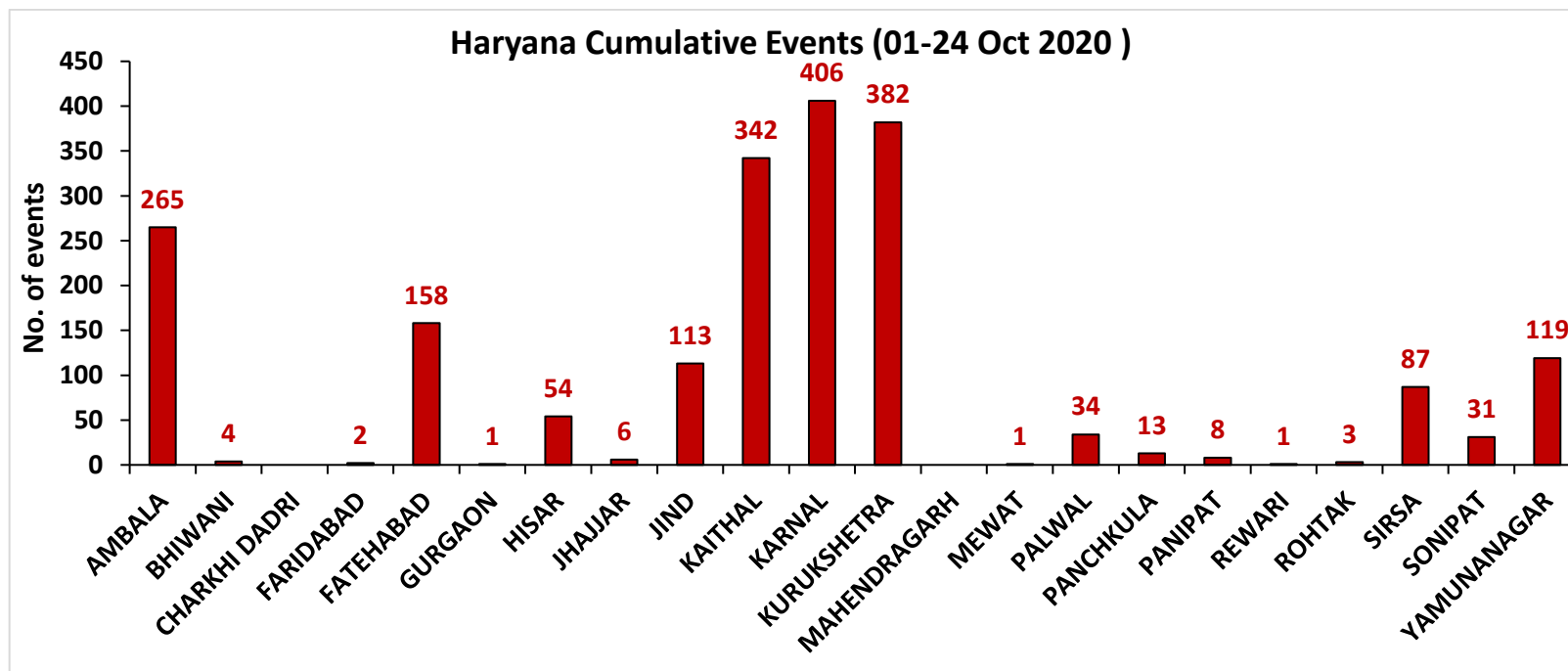
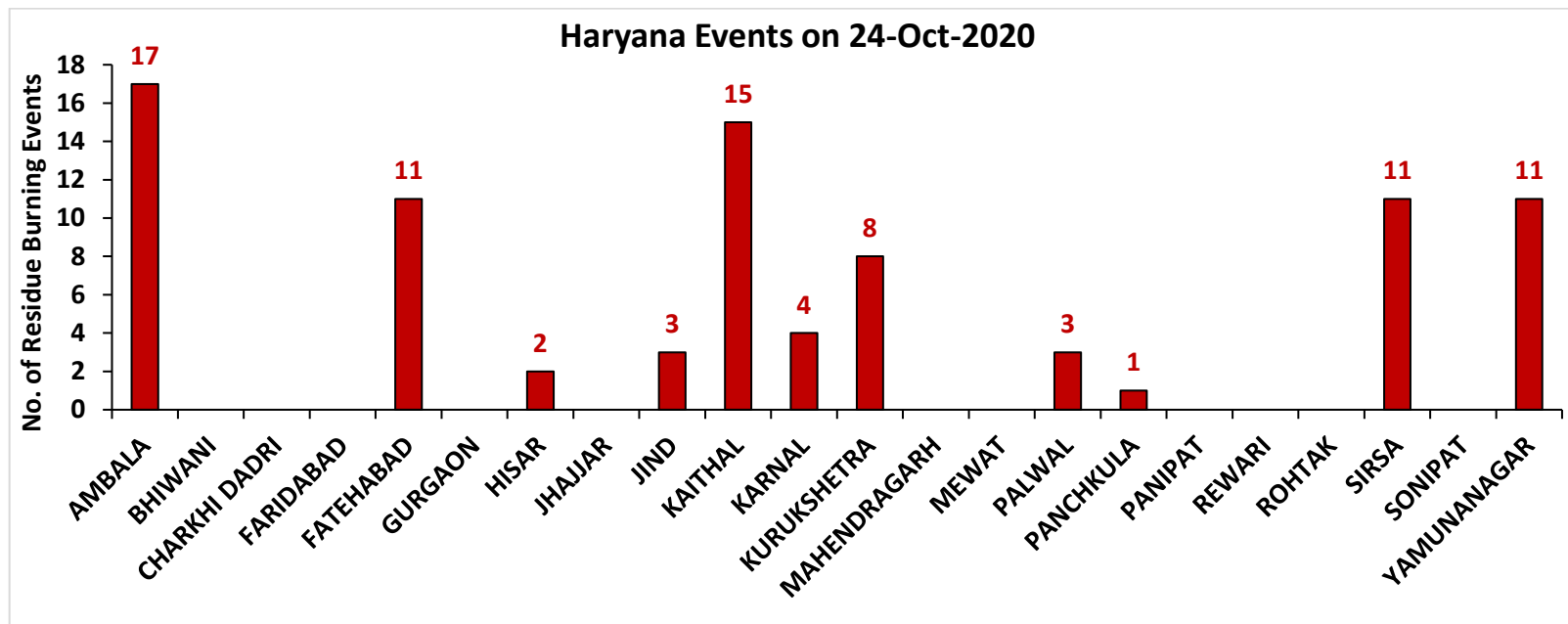
Fire Intensity (W/m²)

- 0 - 5
- 6 - 10
- 11 - 15
- 16 - 20
- >20



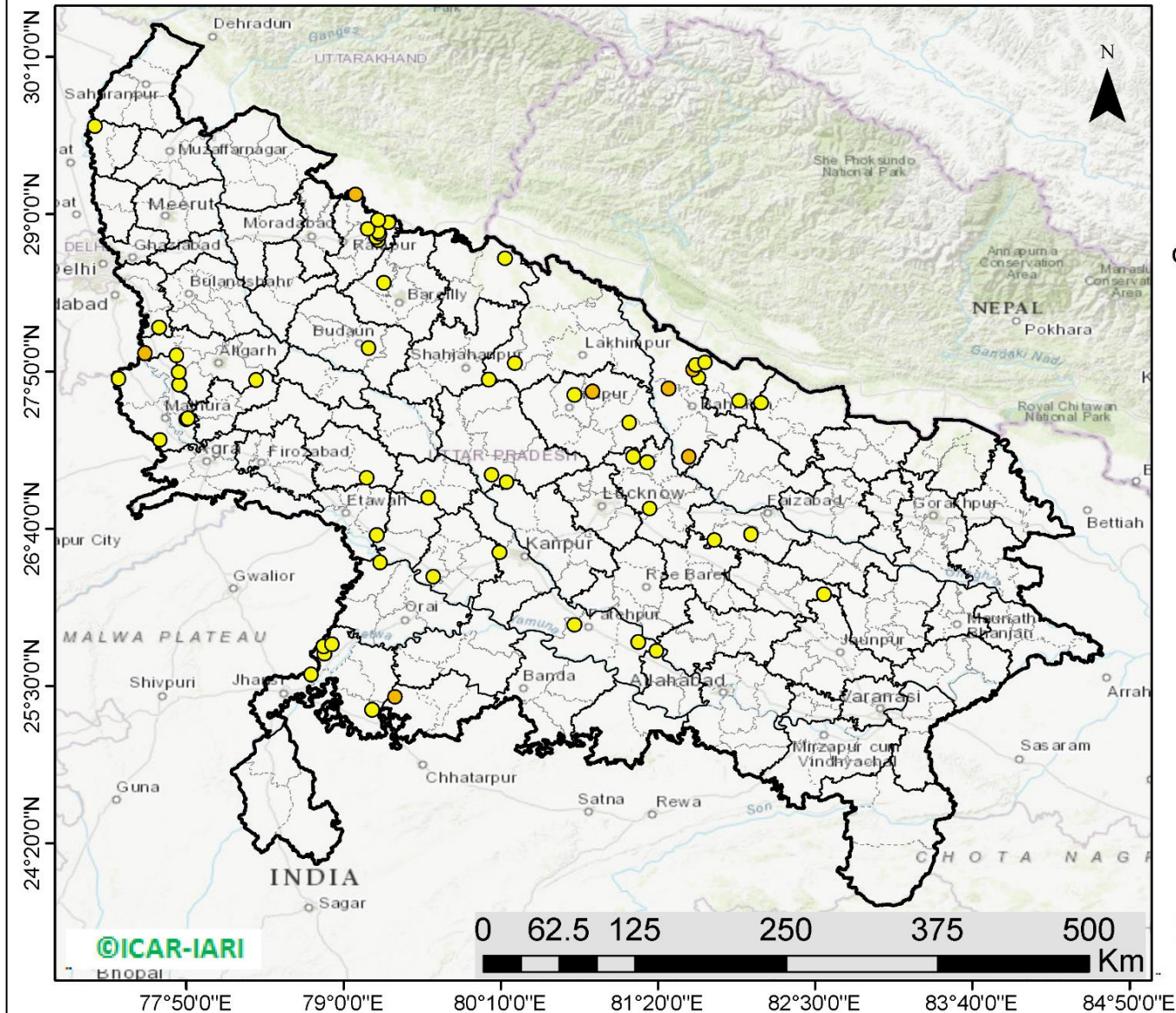
<http://geoportal.icar.gov.in:8080/geoexplorer/composer/>

District-wise number of residue burning events in Haryana (01-24 Oct 2020)



(c) Uttar Pradesh

RICE RESIDUE BURNING IN UTTAR PRADESH



61 burning events detected in Uttar Pradesh on 24th October 2020

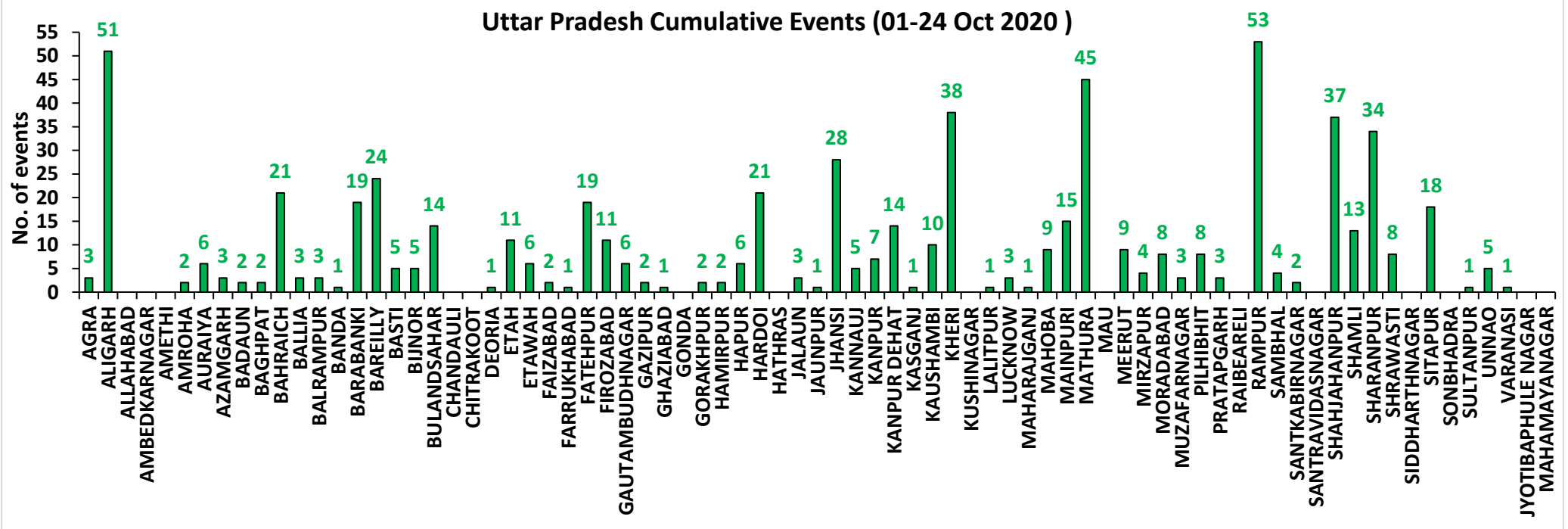
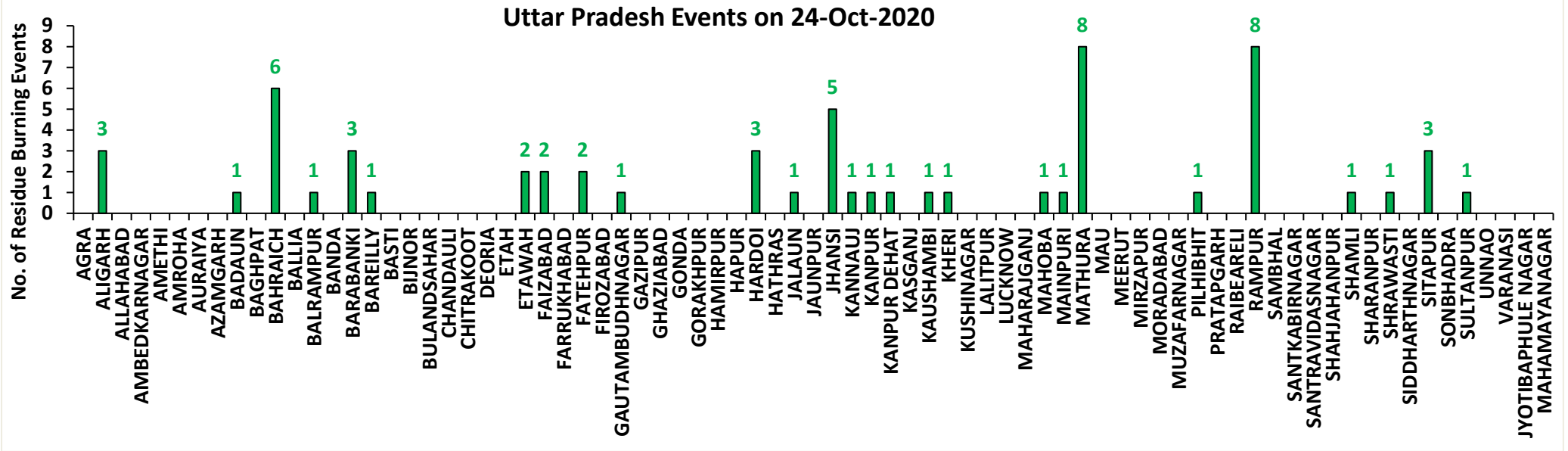
Fire Intensity (W/m²)

- 0 - 5
- 6 - 10
- 11 - 15
- 16 - 20
- >20



<http://geoportal.icar.gov.in:8080/geoexplorer/composer/>

District-wise number of residue burning events in Uttar Pradesh (01-24 Oct 2020)



State-wise and date-wise number of residue burning events detected in 2016, 2017, 2018, 2019 and 2020
(Period: 01-24 October)

Date	Punjab					Haryana					UP					Total				
	2020	2019	2018	2017	2016	2020	2019	2018	2017	2016	2020	2019	2018	2017	2016	2020	2019	2018	2017	2016
01-Oct	129	3	16	54	109	25	1	9	13	46	5	1	11	2	23	159	5	36	69	178
02-Oct	121	20	9	50	51	34	2	23	27	16	10	0	21	8	20	165	22	53	85	87
03-Oct	110	37	4	62	66	07	16	9	40	16	07	3	12	17	16	124	56	25	119	98
04-Oct	177	3	32	103	37	50	30	16	60	7	11	4	5	22	15	238	37	53	185	59
05-Oct	163	16	56	106	95	30	37	30	68	15	15	11	10	20	14	208	64	96	194	124
06-Oct	141	0	87	138	152	42	22	63	75	105	14	8	13	39	6	197	30	163	252	263
07-Oct	166	27	162	105	171	53	16	180	97	126	36	4	69	33	24	255	47	411	235	321
08-Oct	100	59	39	215	166	40	69	40	218	94	23	18	54	76	14	163	146	133	509	274
09-Oct	126	93	75	163	270	30	70	47	148	121	15	17	32	88	22	171	180	154	399	413
10-Oct	238	172	23	164	597	65	157	37	151	242	07	53	21	126	74	310	382	81	441	913
11-Oct	333	78	30	177	652	112	126	78	87	336	22	38	24	74	128	467	242	132	338	1116
12-Oct	362	99	67	342	694	98	154	133	123	338	37	42	22	51	164	497	295	222	516	1196
13-Oct	247	108	62	470	467	64	159	147	207	284	39	33	61	69	102	350	300	270	746	853
14-Oct	616	141	112	582	812	87	133	153	333	328	08	39	57	137	60	711	313	322	1052	1200
15-Oct	487	262	90	943	1215	129	203	110	458	248	13	63	35	237	76	629	528	235	1638	1539
16-Oct	594	168	174	465	1478	100	148	138	186	385	20	77	20	71	125	714	393	332	722	1988
17-Oct	966	250	272	807	2173	167	152	268	244	399	38	53	94	69	261	1171	455	634	1120	2833
18-Oct	850	100	263	970	1065	197	103	255	306	270	64	39	163	108	204	1111	242	681	1384	1539
19-Oct	912	529	254	1591	1762	67	220	208	541	276	35	3	108	128	132	1014	752	570	2260	2170
20-Oct	933	490	496	2653	1175	104	360	141	597	188	31	62	49	255	62	1068	912	686	3505	1425
21-Oct	1415	852	618	1139	1726	153	339	217	233	257	30	185	66	168	152	1598	1376	901	1540	2135
22-Oct	1343	555	656	1356	2837	157	158	134	186	309	35	78	149	151	194	1535	791	939	1693	3340
23-Oct	1267	827	1113	994	2040	133	131	232	155	313	71	48	193	72	331	1471	1006	1538	1221	2684
24-Oct	921	1220	844	1714	1836	86	165	166	244	221	61	79	192	171	152	1068	1464	1202	2129	2209
Total	12717	6109	5554	15363	21646	2030	2971	2834	4797	4940	647	958	1481	2192	2371	15394	10038	9869	22352	28957

District-wise and date-wise cumulative number of residue burning events detected in 2016, 2017, 2018, 2019 and 2020
(Period: 01-24 October)

(a) Punjab

Districts	01-24 Oct				
	2016	2017	2018	2019	2020
AMRITSAR	1118	917	740	665	1407
BARNALA	126	81	43	35	74
BATHINDA	1490	1158	314	127	343
FARIDKOT	1459	1459	326	254	667
FATEHGARH SAHIB	1244	676	143	160	387
FAZILKA	0	0	0	218	732
FIROZPUR	2429	2128	675	604	1361
GURDASPUR	1027	683	251	474	1090
HOSHIARPUR	273	156	11	68	194
JALANDHAR	1424	656	134	265	355
KAPURTHALA	1325	472	46	283	677
LUDHIANA	1184	868	144	113	329
MANSA	460	426	240	196	235
MOGA	378	222	66	82	139
MUKTSAR	1905	1110	372	249	337
PATHANKOT	0	0	0	1	5
PATIALA	1856	1551	719	725	1180
RUPNAGAR	301	80	4	11	57
SANGRUR	643	538	250	266	412
SAS NAGAR	95	89	71	73	117
SBS NAGAR	504	278	56	61	40
TARN TARAN	2405	1815	949	1179	2579
Total	21646	15363	5554	6109	12717

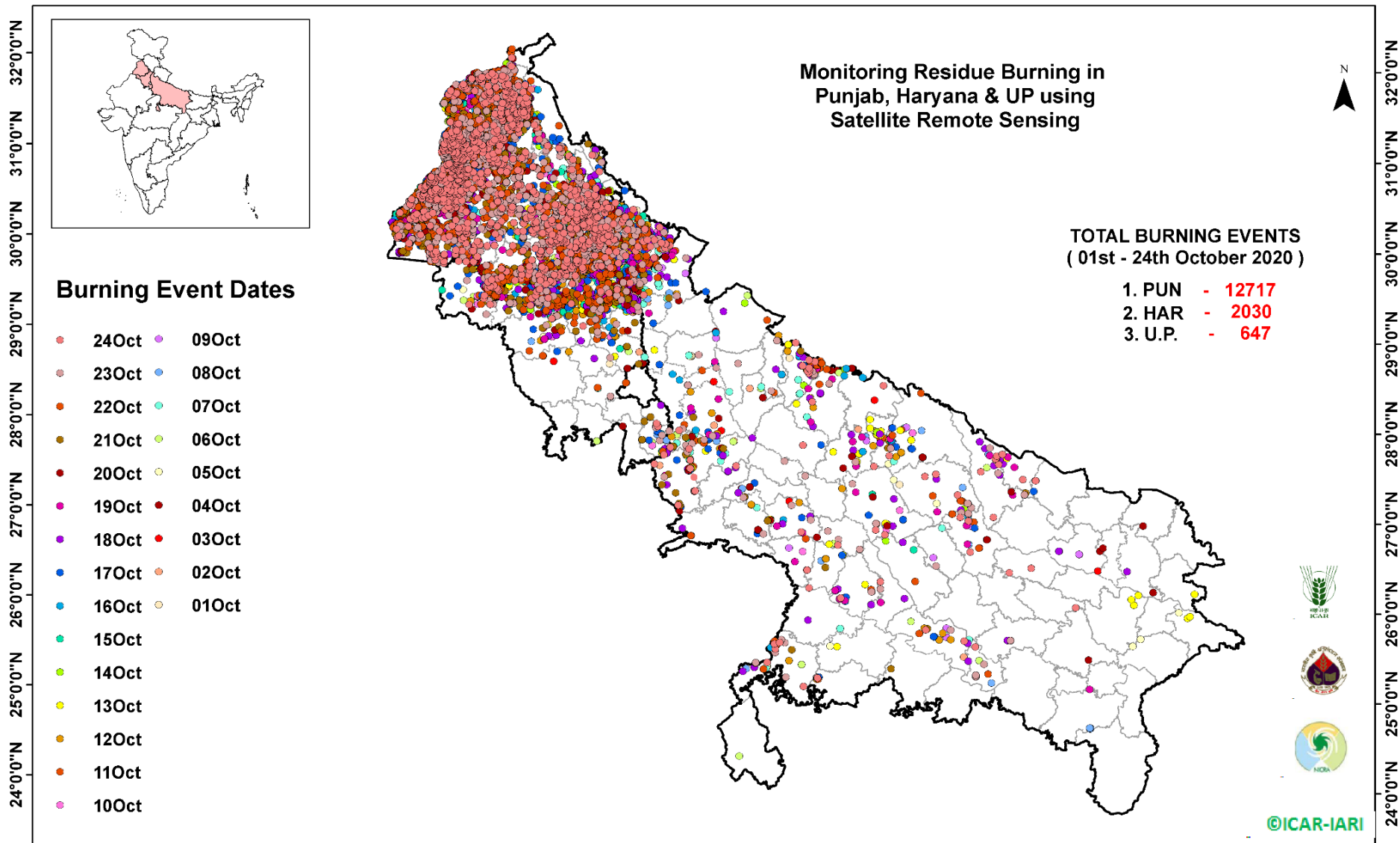
(b) Haryana

Districts	01-24 Oct				
	2016	2017	2018	2019	2020
AMBALA	367	337	130	188	265
BHIWANI	4	3	4	0	4
CHARKHI DADRI	0	0	0	0	0
FARIDABAD	64	126	101	4	2
FATEHABAD	430	480	231	257	158
GURGAON	0	0	0	1	1
HISAR	45	43	31	34	54
JHAJJAR	5	4	6	2	6
JIND	177	229	153	128	113
KAITHAL	1299	1018	783	711	342
KARNAL	1242	1179	615	709	406
KURUKSHETRA	933	989	562	592	382
MAHENDRAGARH	0	0	0	1	0
MEWAT	0	0	0	0	1
PALWAL	0	0	0	123	34
PANCHKULA	0	0	3	18	13
PANIPAT	32	40	36	10	8
REWARI	0	0	0	1	1
ROHTAK	7	4	1	1	3
SIRSA	181	132	93	66	87
SONIPAT	16	21	15	4	31
YAMUNANAGAR	138	192	70	121	119
Total	4940	4797	2834	2971	2030

(C)
Uttar Pradesh

Districts	01-24 Oct																
	2016	2017	2018	2019	2020	GAUTAMBUDHNAGAR	4	5	6	1	6	MUZAFARNAGAR	60	63	20	10	3
AGRA	0	0	0	0	3	GAZIPUR	2	0	0	1	2	PILHIBHIT	449	396	214	187	8
ALIGARH	14	27	31	32	51	GHAZIABAD	13	6	6	6	1	PRATAPGARH	0	0	2	0	3
ALLAHABAD	0	0	4	0	0	GONDA	1	2	1	2	0	RAIBARELI	3	1	0	1	0
AMBEDKARNAGAR	0	4	1	0	0	GORAKHPUR	0	4	8	0	2	RAMPUR	424	361	122	147	53
AMETHI	0	0	0	2	0	HAMIRPUR	0	0	1	0	2	SAMBHAL	0	0	0	2	4
AMROHA	0	0	0	0	2	HAPUR	0	0	0	3	6	SANTKABIRNAGAR	0	1	1	0	2
AURAIYA	67	67	17	2	6	HARDOI	42	26	19	4	21	SANTRAVIDASNAGAR	0	0	0	0	0
AZAMGARH	0	0	1	0	3	HATHRAS	0	0	0	0	0	SHAHJAHANPUR	568	479	162	129	37
BADAUN	0	1	3	0	2	JALAUN	0	0	0	1	3	SHAMLI	0	0	0	15	13
BAGHPAT	0	0	0	3	2	JAUNPUR	1	0	3	0	1	SHARANPUR	29	49	22	22	34
BAHRAICH	6	7	13	1	21	JHANSI	0	0	2	3	28	SHRAWASTI	2	6	3	1	8
BALLIA	0	0	0	1	3	KANNAUJ	1	2	2	1	5	SIDDHARTHANAGAR	2	2	5	3	0
BALRAMPUR	0	0	4	1	3	KANPUR	1	3	0	0	7	SITAPUR	40	20	11	5	18
BANDA	1	1	3	6	1	KANPUR DEHAT	0	1	0	0	14	SONBHADRA	6	1	7	0	0
BARABANKI	81	50	84	20	19	KASGANJ	0	0	0	0	1	SULTANPUR	2	0	0	0	1
BAREILLY	122	79	53	49	24	KAUSHAMBI	0	5	10	1	10	UNNAO	8	4	6	4	5
BASTI	0	2	0	0	5	KHERI	185	129	99	63	38	VARANASI	0	0	0	0	1
BIJNOR	7	6	1	1	5	KUSHINAGAR	0	1	1	0	0	JYOTIBAPHULE NAGAR	4	1	1	0	0
BULANDSAHAR	5	9	7	6	14	LALITPUR	0	0	0	1	1	MAHAMAYANAGAR	0	1	2	0	0
CHANDAULI	1	0	0	0	0	LUCKNOW	13	6	2	7	3	Total	2371	2192	1481	958	647
CHITRAKOOT	0	0	0	0	0	MAHARAJGANJ	10	39	53	2	1						
DEORIA	1	1	3	0	1	MAHOBA	0	0	0	0	9						
ETAH	3	12	14	0	11	MAINPURI	3	10	10	4	15						
ETAWAH	6	11	6	1	6	MATHURA	130	251	394	186	45						
FAIZABAD	1	1	3	1	2	MAU	1	0	2	0	0						
FARRUKHABAD	0	0	0	2	1	MEERUT	20	14	4	5	9						
FATEHPUR	15	8	17	5	19	MIRZAPUR	0	3	4	3	4						
FIROZABAD	4	2	3	2	11	MORADABAD	13	12	8	3	8						

Map of Cumulative Burning Events (01-24 Oct 2020)



Details of residue burning events in Punjab on 24-Oct-2020

S. No.	District	Tehsil / Block	Satellite	Longitude	Latitude	Time (IST)	Day / Night	Fire Power (W/m²)
1	AMRITSAR	AJNALA	AQUA	74.64100	31.79100	14:10:00	D	11.10
2	AMRITSAR	AJNALA	S-NPP	74.58092	31.80619	13:00:00	D	16.70
3	AMRITSAR	AJNALA	S-NPP	74.57806	31.80823	13:00:00	D	20.00
4	AMRITSAR	AJNALA	S-NPP	74.68674	31.82318	13:00:00	D	3.70
5	AMRITSAR	AJNALA	S-NPP	74.68299	31.82380	13:00:00	D	1.90
6	AMRITSAR	AJNALA	S-NPP	74.60762	31.84906	13:00:00	D	6.00
7	AMRITSAR	AJNALA	S-NPP	74.91264	31.85496	13:00:00	D	3.40
8	AMRITSAR	AJNALA	S-NPP	74.91802	31.85614	13:00:00	D	3.40
9	AMRITSAR	AJNALA	AQUA	74.79100	31.87200	14:10:00	D	12.90
10	AMRITSAR	AJNALA	AQUA	74.81200	31.87300	14:10:00	D	12.30
11	AMRITSAR	AJNALA	S-NPP	74.74612	31.89942	13:00:00	D	6.10
12	AMRITSAR	AJNALA	S-NPP	74.78030	31.90220	13:00:00	D	5.70
13	AMRITSAR	AJNALA	S-NPP	74.76804	31.92355	13:00:00	D	2.50
14	AMRITSAR	AJNALA	S-NPP	74.86980	31.98899	13:00:00	D	3.30
15	AMRITSAR	AJNALA	S-NPP	74.87270	31.98901	13:00:00	D	4.90
16	AMRITSAR	AMRITSAR I	AQUA	74.98500	31.53900	14:10:00	D	11.30
17	AMRITSAR	AMRITSAR I	S-NPP	75.04111	31.71643	13:00:00	D	3.00
18	AMRITSAR	AMRITSAR I	S-NPP	75.06100	31.72560	13:00:00	D	3.10
19	AMRITSAR	BABA BAKALA	S-NPP	75.28780	31.53477	13:00:00	D	4.30
20	AMRITSAR	BABA BAKALA	S-NPP	75.28988	31.53722	13:00:00	D	2.70
21	AMRITSAR	BABA BAKALA	S-NPP	75.27691	31.56262	13:00:00	D	4.20
22	AMRITSAR	BABA BAKALA	S-NPP	75.22482	31.58895	13:00:00	D	2.60
23	AMRITSAR	BABA BAKALA	S-NPP	75.26131	31.59687	13:00:00	D	3.60
24	AMRITSAR	BABA BAKALA	S-NPP	75.26000	31.60129	13:00:00	D	3.60
25	AMRITSAR	BABA BAKALA	S-NPP	75.19077	31.60991	13:00:00	D	2.50
26	AMRITSAR	BABA BAKALA	S-NPP	75.18764	31.61016	13:00:00	D	3.10
27	AMRITSAR	BABA BAKALA	S-NPP	75.33112	31.62134	13:00:00	D	4.80
28	AMRITSAR	BABA BAKALA	S-NPP	75.29759	31.62350	13:00:00	D	7.30
29	AMRITSAR	BABA BAKALA	S-NPP	75.29112	31.62680	13:00:00	D	7.50
30	AMRITSAR	BABA BAKALA	S-NPP	75.26575	31.62751	13:00:00	D	5.80

31	AMRITSAR	BABA BAKALA	S-NPP	75.35040	31.63017	13:00:00	D	3.50
32	AMRITSAR	BABA BAKALA	S-NPP	75.26569	31.68392	13:00:00	D	4.60
33	BARNALA	BARNALA	S-NPP	75.53410	30.31547	13:00:00	D	11.00
34	BARNALA	BARNALA	S-NPP	75.60577	30.40715	13:00:00	D	6.20
35	BARNALA	BARNALA	S-NPP	75.47628	30.41212	13:00:00	D	7.40
36	BARNALA	BARNALA	S-NPP	75.31847	30.42534	13:00:00	D	7.90
37	BARNALA	BARNALA	S-NPP	75.31899	30.42587	13:00:00	D	6.70
38	BARNALA	BARNALA	AQUA	75.63300	30.45800	14:10:00	D	26.20
39	BARNALA	BARNALA	AQUA	75.64000	30.45800	14:10:00	D	28.10
40	BARNALA	BARNALA	AQUA	75.63900	30.47100	14:10:00	D	20.30
41	BARNALA	BARNALA	S-NPP	75.43391	30.51783	13:00:00	D	4.00
42	BARNALA	BARNALA	AQUA	75.44100	30.55700	14:10:00	D	16.20
43	BARNALA	BARNALA	S-NPP	75.45023	30.58817	13:00:00	D	5.50
44	BARNALA	TAPPA	S-NPP	75.59831	30.32467	13:00:00	D	10.20
45	BATHINDA	BATHINDA	S-NPP	74.74303	30.04093	13:00:00	D	8.40
46	BATHINDA	BATHINDA	S-NPP	74.81256	30.08145	13:00:00	D	5.10
47	BATHINDA	BATHINDA	S-NPP	74.83009	30.08533	13:00:00	D	9.90
48	BATHINDA	BATHINDA	AQUA	74.75000	30.09100	14:10:00	D	17.70
49	BATHINDA	BATHINDA	S-NPP	74.97424	30.09737	13:00:00	D	5.60
50	BATHINDA	BATHINDA	S-NPP	74.99332	30.15227	13:00:00	D	5.60
51	BATHINDA	BATHINDA	S-NPP	75.05260	30.15575	13:00:00	D	6.50
52	BATHINDA	BATHINDA	S-NPP	75.05309	30.15904	13:00:00	D	6.10
53	BATHINDA	BATHINDA	AQUA	74.87400	30.16800	14:10:00	D	17.10
54	BATHINDA	BATHINDA	S-NPP	75.01795	30.19230	13:00:00	D	7.50
55	BATHINDA	BATHINDA	S-NPP	74.80939	30.21017	13:00:00	D	5.90
56	BATHINDA	BATHINDA	S-NPP	74.81076	30.21081	13:00:00	D	5.10
57	BATHINDA	BATHINDA	S-NPP	74.84586	30.23337	13:00:00	D	6.80
58	BATHINDA	BATHINDA	S-NPP	74.84732	30.23375	13:00:00	D	6.80
59	BATHINDA	BATHINDA	S-NPP	74.88245	30.27633	13:00:00	D	7.20
60	BATHINDA	BATHINDA	S-NPP	74.88820	30.27762	13:00:00	D	10.60
61	BATHINDA	BATHINDA	S-NPP	74.77893	30.29305	13:00:00	D	5.00
62	BATHINDA	BATHINDA	AQUA	74.86500	30.30000	14:10:00	D	12.80
63	BATHINDA	BATHINDA	AQUA	74.86900	30.30900	14:10:00	D	15.00

64	BATHINDA	BATHINDA	AQUA	74.80800	30.31500	14:10:00	D	12.20
65	BATHINDA	BATHINDA	S-NPP	74.84165	30.33173	13:00:00	D	3.80
66	BATHINDA	BATHINDA	S-NPP	74.84122	30.33276	13:00:00	D	8.00
67	BATHINDA	BATHINDA	AQUA	74.88100	30.33800	14:10:00	D	12.20
68	BATHINDA	BATHINDA	S-NPP	74.81982	30.34283	13:00:00	D	17.30
69	BATHINDA	RAMPURA PHUL	S-NPP	75.14542	30.14981	13:00:00	D	4.70
70	BATHINDA	RAMPURA PHUL	S-NPP	75.23814	30.15549	13:00:00	D	4.20
71	BATHINDA	RAMPURA PHUL	S-NPP	75.29408	30.23888	13:00:00	D	8.60
72	BATHINDA	RAMPURA PHUL	AQUA	75.24600	30.28200	14:10:00	D	16.00
73	BATHINDA	RAMPURA PHUL	S-NPP	75.26569	30.37091	13:00:00	D	3.90
74	BATHINDA	RAMPURA PHUL	S-NPP	75.17426	30.38482	13:00:00	D	7.00
75	BATHINDA	RAMPURA PHUL	S-NPP	75.18681	30.40209	13:00:00	D	7.00
76	BATHINDA	RAMPURA PHUL	S-NPP	75.18537	30.40529	13:00:00	D	5.60
77	BATHINDA	TALWANDI SABO	S-NPP	74.97684	29.96884	13:00:00	D	4.80
78	BATHINDA	TALWANDI SABO	AQUA	75.02500	30.02600	14:10:00	D	17.00
79	BATHINDA	TALWANDI SABO	AQUA	74.95000	30.08600	14:10:00	D	19.20
80	BATHINDA	TALWANDI SABO	AQUA	74.97000	30.08700	14:10:00	D	14.70
81	FARIDKOT	FARIDKOT	S-NPP	74.79942	30.54348	13:00:00	D	5.10
82	FARIDKOT	FARIDKOT	S-NPP	74.72774	30.55707	13:00:00	D	3.60
83	FARIDKOT	FARIDKOT	S-NPP	74.72636	30.56173	13:00:00	D	6.70
84	FARIDKOT	FARIDKOT	S-NPP	74.66872	30.58865	13:00:00	D	10.80
85	FARIDKOT	FARIDKOT	S-NPP	74.71089	30.59307	13:00:00	D	4.20
86	FARIDKOT	FARIDKOT	AQUA	74.68700	30.60500	14:10:00	D	14.00
87	FARIDKOT	FARIDKOT	AQUA	74.70400	30.63100	14:10:00	D	47.30
88	FARIDKOT	FARIDKOT	AQUA	74.72400	30.63300	14:10:00	D	55.40
89	FARIDKOT	FARIDKOT	AQUA	74.74300	30.63500	14:10:00	D	22.90
90	FARIDKOT	FARIDKOT	AQUA	74.80300	30.64100	14:10:00	D	26.20
91	FARIDKOT	FARIDKOT	S-NPP	74.67213	30.67398	13:00:00	D	11.10
92	FARIDKOT	FARIDKOT	AQUA	74.65300	30.67900	14:10:00	D	26.20
93	FARIDKOT	FARIDKOT	S-NPP	74.55943	30.69369	13:00:00	D	2.20
94	FARIDKOT	FARIDKOT	AQUA	74.77000	30.70300	14:10:00	D	30.30
95	FARIDKOT	FARIDKOT	S-NPP	74.72454	30.70555	13:00:00	D	2.50
96	FARIDKOT	FARIDKOT	S-NPP	74.61741	30.71158	13:00:00	D	11.30

97	FARIDKOT	FARIDKOT	S-NPP	74.61668	30.71180	13:00:00	D	6.60
98	FARIDKOT	FARIDKOT	AQUA	74.74800	30.71300	14:10:00	D	50.00
99	FARIDKOT	FARIDKOT	S-NPP	74.64801	30.71338	13:00:00	D	3.60
100	FARIDKOT	FARIDKOT	AQUA	74.76800	30.71500	14:10:00	D	36.20
101	FARIDKOT	FARIDKOT	AQUA	74.56900	30.72000	14:10:00	D	36.80
102	FARIDKOT	FARIDKOT	S-NPP	74.81766	30.72131	13:00:00	D	11.10
103	FARIDKOT	FARIDKOT	S-NPP	74.49366	30.72385	13:00:00	D	11.10
104	FARIDKOT	FARIDKOT	AQUA	74.56100	30.72600	14:10:00	D	20.30
105	FARIDKOT	FARIDKOT	AQUA	74.66600	30.73000	14:10:00	D	15.70
106	FARIDKOT	FARIDKOT	AQUA	74.48300	30.73100	14:10:00	D	22.00
107	FARIDKOT	FARIDKOT	AQUA	74.80700	30.73100	14:10:00	D	22.50
108	FARIDKOT	FARIDKOT	S-NPP	74.51004	30.73258	13:00:00	D	3.90
109	FARIDKOT	FARIDKOT	S-NPP	74.69753	30.73426	13:00:00	D	18.40
110	FARIDKOT	FARIDKOT	S-NPP	74.69655	30.73499	13:00:00	D	10.60
111	FARIDKOT	FARIDKOT	AQUA	74.71800	30.74000	14:10:00	D	11.60
112	FARIDKOT	FARIDKOT	S-NPP	74.65771	30.74108	13:00:00	D	3.00
113	FARIDKOT	FARIDKOT	S-NPP	74.51315	30.74332	13:00:00	D	7.30
114	FARIDKOT	FARIDKOT	S-NPP	74.51908	30.74466	13:00:00	D	7.30
115	FARIDKOT	FARIDKOT	S-NPP	74.78526	30.74864	13:00:00	D	3.60
116	FARIDKOT	FARIDKOT	S-NPP	74.78401	30.74992	13:00:00	D	3.40
117	FARIDKOT	FARIDKOT	S-NPP	74.49113	30.75342	13:00:00	D	34.00
118	FARIDKOT	FARIDKOT	S-NPP	74.60723	30.76454	13:00:00	D	6.30
119	FARIDKOT	FARIDKOT	AQUA	74.66900	30.80900	14:10:00	D	13.50
120	FARIDKOT	FARIDKOT	AQUA	74.68900	30.81100	14:10:00	D	33.30
121	FARIDKOT	FARIDKOT	S-NPP	74.62387	30.81307	13:00:00	D	4.10
122	FARIDKOT	FARIDKOT	S-NPP	74.72775	30.81631	13:00:00	D	3.50
123	FARIDKOT	JAITO	S-NPP	74.88500	30.39212	13:00:00	D	3.90
124	FARIDKOT	JAITO	S-NPP	74.86434	30.51692	13:00:00	D	2.80
125	FATEHGARH SAHIB	ALMOH	S-NPP	76.30627	30.54915	13:00:00	D	10.40
126	FATEHGARH SAHIB	ALMOH	S-NPP	76.09315	30.54933	13:00:00	D	11.80
127	FATEHGARH SAHIB	ALMOH	S-NPP	76.17406	30.57101	13:00:00	D	4.70
128	FATEHGARH SAHIB	ALMOH	AQUA	76.28800	30.60100	14:10:00	D	18.70
129	FATEHGARH SAHIB	ALMOH	AQUA	76.29200	30.60700	14:10:00	D	24.80

130	FATEHGARH SAHIB	ALMOH	S-NPP	76.19324	30.61139	13:00:00	D	7.90
131	FATEHGARH SAHIB	ALMOH	AQUA	76.32800	30.70000	14:10:00	D	18.10
132	FATEHGARH SAHIB	BASSI PATHANAN	S-NPP	76.41270	30.66589	13:00:00	D	3.90
133	FATEHGARH SAHIB	BASSI PATHANAN	S-NPP	76.45679	30.66605	13:00:00	D	7.00
134	FATEHGARH SAHIB	BASSI PATHANAN	S-NPP	76.41055	30.66796	13:00:00	D	11.80
135	FATEHGARH SAHIB	BASSI PATHANAN	AQUA	76.46200	30.66900	14:10:00	D	39.10
136	FATEHGARH SAHIB	BASSI PATHANAN	S-NPP	76.41152	30.67012	13:00:00	D	9.10
137	FATEHGARH SAHIB	BASSI PATHANAN	S-NPP	76.49369	30.67365	13:00:00	D	3.50
138	FATEHGARH SAHIB	BASSI PATHANAN	S-NPP	76.47753	30.67924	13:00:00	D	4.00
139	FATEHGARH SAHIB	BASSI PATHANAN	S-NPP	76.47520	30.68170	13:00:00	D	7.00
140	FATEHGARH SAHIB	BASSI PATHANAN	S-NPP	76.47980	30.68267	13:00:00	D	7.00
141	FATEHGARH SAHIB	BASSI PATHANAN	S-NPP	76.47636	30.68345	13:00:00	D	5.00
142	FATEHGARH SAHIB	BASSI PATHANAN	S-NPP	76.46133	30.69662	13:00:00	D	15.40
143	FATEHGARH SAHIB	BASSI PATHANAN	S-NPP	76.44054	30.70116	13:00:00	D	4.00
144	FATEHGARH SAHIB	BASSI PATHANAN	S-NPP	76.45782	30.70926	13:00:00	D	3.50
145	FATEHGARH SAHIB	BASSI PATHANAN	S-NPP	76.43819	30.70961	13:00:00	D	2.50
146	FATEHGARH SAHIB	BASSI PATHANAN	S-NPP	76.52669	30.72373	13:00:00	D	2.30
147	FATEHGARH SAHIB	BASSI PATHANAN	S-NPP	76.44158	30.73265	13:00:00	D	3.50
148	FATEHGARH SAHIB	BASSI PATHANAN	S-NPP	76.50140	30.74511	13:00:00	D	5.50
149	FATEHGARH SAHIB	BASSI PATHANAN	S-NPP	76.41144	30.75317	13:00:00	D	3.40
150	FATEHGARH SAHIB	FATEHGARH SAHIB	S-NPP	76.44237	30.45344	13:00:00	D	3.40
151	FATEHGARH SAHIB	FATEHGARH SAHIB	S-NPP	76.43481	30.45378	13:00:00	D	4.90
152	FATEHGARH SAHIB	FATEHGARH SAHIB	S-NPP	76.44936	30.46385	13:00:00	D	7.10
153	FATEHGARH SAHIB	FATEHGARH SAHIB	S-NPP	76.45403	30.46481	13:00:00	D	7.10
154	FATEHGARH SAHIB	FATEHGARH SAHIB	S-NPP	76.45110	30.46622	13:00:00	D	14.70
155	FATEHGARH SAHIB	FATEHGARH SAHIB	S-NPP	76.46272	30.47765	13:00:00	D	6.00
156	FATEHGARH SAHIB	FATEHGARH SAHIB	AQUA	76.49500	30.47800	14:10:00	D	31.90
157	FATEHGARH SAHIB	FATEHGARH SAHIB	S-NPP	76.47777	30.49427	13:00:00	D	5.10
158	FATEHGARH SAHIB	FATEHGARH SAHIB	S-NPP	76.37866	30.49588	13:00:00	D	6.30
159	FATEHGARH SAHIB	FATEHGARH SAHIB	S-NPP	76.44641	30.50112	13:00:00	D	10.70
160	FATEHGARH SAHIB	FATEHGARH SAHIB	S-NPP	76.36690	30.50243	13:00:00	D	2.60
161	FATEHGARH SAHIB	FATEHGARH SAHIB	S-NPP	76.36572	30.50669	13:00:00	D	3.70
162	FATEHGARH SAHIB	FATEHGARH SAHIB	S-NPP	76.35043	30.50799	13:00:00	D	14.90

163	FATEHGARH SAHIB	FATEHGARH SAHIB	S-NPP	76.41843	30.51321	13:00:00	D	6.20
164	FATEHGARH SAHIB	FATEHGARH SAHIB	S-NPP	76.33392	30.51357	13:00:00	D	8.00
165	FATEHGARH SAHIB	FATEHGARH SAHIB	S-NPP	76.33863	30.51455	13:00:00	D	7.30
166	FATEHGARH SAHIB	FATEHGARH SAHIB	S-NPP	76.40089	30.52303	13:00:00	D	13.20
167	FATEHGARH SAHIB	FATEHGARH SAHIB	S-NPP	76.39972	30.52728	13:00:00	D	13.20
168	FATEHGARH SAHIB	FATEHGARH SAHIB	S-NPP	76.42889	30.52885	13:00:00	D	7.70
169	FATEHGARH SAHIB	FATEHGARH SAHIB	S-NPP	76.38213	30.53710	13:00:00	D	3.90
170	FATEHGARH SAHIB	FATEHGARH SAHIB	S-NPP	76.40318	30.55044	13:00:00	D	2.30
171	FATEHGARH SAHIB	FATEHGARH SAHIB	S-NPP	76.40479	30.55213	13:00:00	D	2.90
172	FATEHGARH SAHIB	FATEHGARH SAHIB	S-NPP	76.35273	30.55352	13:00:00	D	18.30
173	FATEHGARH SAHIB	FATEHGARH SAHIB	S-NPP	76.34984	30.55391	13:00:00	D	11.20
174	FATEHGARH SAHIB	FATEHGARH SAHIB	TERRA	76.41000	30.56400	10:55:00	D	6.80
175	FATEHGARH SAHIB	FATEHGARH SAHIB	S-NPP	76.52147	30.56591	13:00:00	D	3.30
176	FATEHGARH SAHIB	FATEHGARH SAHIB	S-NPP	76.52030	30.57012	13:00:00	D	3.30
177	FATEHGARH SAHIB	FATEHGARH SAHIB	S-NPP	76.39426	30.57236	13:00:00	D	3.10
178	FATEHGARH SAHIB	FATEHGARH SAHIB	S-NPP	76.50992	30.57244	13:00:00	D	5.30
179	FATEHGARH SAHIB	FATEHGARH SAHIB	S-NPP	76.51122	30.57478	13:00:00	D	9.20
180	FATEHGARH SAHIB	FATEHGARH SAHIB	S-NPP	76.50875	30.57666	13:00:00	D	5.30
181	FATEHGARH SAHIB	FATEHGARH SAHIB	S-NPP	76.43959	30.60435	13:00:00	D	9.50
182	FATEHGARH SAHIB	FATEHGARH SAHIB	S-NPP	76.43724	30.61281	13:00:00	D	4.10
183	FATEHGARH SAHIB	FATEHGARH SAHIB	AQUA	76.44500	30.62000	14:10:00	D	17.20
184	FATEHGARH SAHIB	FATEHGARH SAHIB	S-NPP	76.45573	30.63456	13:00:00	D	6.90
185	FATEHGARH SAHIB	FATEHGARH SAHIB	S-NPP	76.45456	30.63879	13:00:00	D	6.90
186	FATEHGARH SAHIB	KHAMANOH	AQUA	76.28000	30.79400	14:10:00	D	17.30
187	FATEHGARH SAHIB	KHAMANOH	S-NPP	76.38764	30.84421	13:00:00	D	4.40
188	FAZILKA	ABOHAR	S-NPP	74.15310	30.14584	14:36:00	D	8.80
189	FAZILKA	ABOHAR	S-NPP	74.14838	30.14633	14:36:00	D	9.90
190	FAZILKA	FAZILKA	AQUA	73.99800	30.20900	14:10:00	D	12.60
191	FAZILKA	FAZILKA	S-NPP	74.01524	30.22120	13:00:00	D	19.40
192	FAZILKA	FAZILKA	AQUA	73.98100	30.29700	14:10:00	D	12.10
193	FAZILKA	FAZILKA	S-NPP	74.13087	30.33138	13:00:00	D	4.70
194	FAZILKA	FAZILKA	S-NPP	74.22310	30.41283	14:36:00	D	8.40
195	FAZILKA	FAZILKA	S-NPP	74.15117	30.41543	13:00:00	D	6.80

196	FAZILKA	FAZILKA	AQUA	74.20100	30.44300	14:10:00	D	38.00
197	FAZILKA	FAZILKA	S-NPP	74.01698	30.47800	13:00:00	D	5.70
198	FAZILKA	JALALABAD	S-NPP	74.30053	30.44983	13:00:00	D	5.90
199	FAZILKA	JALALABAD	AQUA	74.23400	30.47000	14:10:00	D	25.00
200	FAZILKA	JALALABAD	AQUA	74.32600	30.47900	14:10:00	D	22.90
201	FAZILKA	JALALABAD	S-NPP	74.32446	30.50125	13:00:00	D	14.90
202	FAZILKA	JALALABAD	S-NPP	74.15847	30.56276	13:00:00	D	9.00
203	FAZILKA	JALALABAD	S-NPP	74.16472	30.56418	13:00:00	D	9.00
204	FAZILKA	JALALABAD	AQUA	74.14000	30.57600	14:10:00	D	19.90
205	FAZILKA	JALALABAD	S-NPP	74.15829	30.62952	13:00:00	D	2.20
206	FAZILKA	JALALABAD	AQUA	74.45000	30.63000	14:10:00	D	13.10
207	FAZILKA	JALALABAD	S-NPP	74.15754	30.63160	13:00:00	D	4.80
208	FAZILKA	JALALABAD	AQUA	74.46900	30.63200	14:10:00	D	27.00
209	FAZILKA	JALALABAD	AQUA	74.39200	30.63700	14:10:00	D	24.70
210	FAZILKA	JALALABAD	AQUA	74.46300	30.63800	14:10:00	D	30.20
211	FAZILKA	JALALABAD	TERRA	74.47600	30.64100	10:55:00	D	10.30
212	FAZILKA	JALALABAD	AQUA	74.38600	30.64200	14:10:00	D	13.20
213	FAZILKA	JALALABAD	AQUA	74.40500	30.64400	14:10:00	D	18.90
214	FAZILKA	JALALABAD	AQUA	74.29100	30.64500	14:10:00	D	17.20
215	FAZILKA	JALALABAD	AQUA	74.46000	30.66100	14:10:00	D	34.10
216	FAZILKA	JALALABAD	S-NPP	74.26297	30.67633	13:00:00	D	10.30
217	FAZILKA	JALALABAD	AQUA	74.38200	30.67800	14:10:00	D	19.70
218	FAZILKA	JALALABAD	AQUA	74.40000	30.68000	14:10:00	D	28.70
219	FAZILKA	JALALABAD	AQUA	74.30500	30.68200	14:10:00	D	22.80
220	FAZILKA	JALALABAD	S-NPP	74.34831	30.69582	13:00:00	D	5.60
221	FAZILKA	JALALABAD	S-NPP	74.42488	30.69811	13:00:00	D	4.00
222	FAZILKA	JALALABAD	S-NPP	74.31509	30.69841	13:00:00	D	4.80
223	FAZILKA	JALALABAD	S-NPP	74.45795	30.71573	13:00:00	D	3.30
224	FAZILKA	JALALABAD	S-NPP	74.42380	30.72310	13:00:00	D	6.20
225	FAZILKA	JALALABAD	AQUA	74.40700	30.72400	14:10:00	D	23.70
226	FAZILKA	JALALABAD	AQUA	74.47000	30.73400	14:10:00	D	21.80
227	FAZILKA	JALALABAD	AQUA	74.31000	30.73900	14:10:00	D	21.10
228	FAZILKA	JALALABAD	S-NPP	74.45686	30.74066	13:00:00	D	5.50

229	FAZILKA	JALALABAD	S-NPP	74.31438	30.74395	13:00:00	D	10.60
230	FAZILKA	JALALABAD	S-NPP	74.30534	30.74466	13:00:00	D	4.50
231	FAZILKA	JALALABAD	S-NPP	74.31140	30.74607	13:00:00	D	13.30
232	FAZILKA	JALALABAD	S-NPP	74.30685	30.74733	13:00:00	D	5.50
233	FAZILKA	JALALABAD	S-NPP	74.46909	30.76353	13:00:00	D	4.50
234	FAZILKA	JALALABAD	S-NPP	74.27853	30.76899	13:00:00	D	6.30
235	FAZILKA	JALALABAD	AQUA	74.32400	30.77600	14:10:00	D	27.10
236	FAZILKA	JALALABAD	S-NPP	74.33777	30.78766	13:00:00	D	4.50
237	FIROZPUR	FIROZPUR	S-NPP	74.86069	30.77713	13:00:00	D	3.90
238	FIROZPUR	FIROZPUR	S-NPP	74.38311	30.80814	13:00:00	D	7.10
239	FIROZPUR	FIROZPUR	S-NPP	74.85551	30.81523	13:00:00	D	8.70
240	FIROZPUR	FIROZPUR	S-NPP	74.85415	30.81984	13:00:00	D	4.50
241	FIROZPUR	FIROZPUR	AQUA	74.38800	30.82400	14:10:00	D	25.20
242	FIROZPUR	FIROZPUR	S-NPP	74.39086	30.82505	13:00:00	D	3.90
243	FIROZPUR	FIROZPUR	AQUA	74.44500	30.82900	14:10:00	D	12.80
244	FIROZPUR	FIROZPUR	S-NPP	74.87535	30.82946	13:00:00	D	2.40
245	FIROZPUR	FIROZPUR	S-NPP	74.41479	30.83047	13:00:00	D	7.30
246	FIROZPUR	FIROZPUR	S-NPP	74.40143	30.83248	13:00:00	D	8.30
247	FIROZPUR	FIROZPUR	S-NPP	74.44601	30.83252	13:00:00	D	5.20
248	FIROZPUR	FIROZPUR	AQUA	74.38700	30.83600	14:10:00	D	56.30
249	FIROZPUR	FIROZPUR	S-NPP	74.58266	30.83850	13:00:00	D	27.50
250	FIROZPUR	FIROZPUR	S-NPP	74.58850	30.83982	13:00:00	D	19.10
251	FIROZPUR	FIROZPUR	S-NPP	74.41795	30.84126	13:00:00	D	5.30
252	FIROZPUR	FIROZPUR	AQUA	74.78500	30.84500	14:10:00	D	18.40
253	FIROZPUR	FIROZPUR	AQUA	74.76000	30.84600	14:10:00	D	13.80
254	FIROZPUR	FIROZPUR	S-NPP	74.76959	30.85124	13:00:00	D	11.20
255	FIROZPUR	FIROZPUR	S-NPP	74.53468	30.85260	13:00:00	D	5.40
256	FIROZPUR	FIROZPUR	AQUA	74.76400	30.85500	14:10:00	D	21.60
257	FIROZPUR	FIROZPUR	S-NPP	74.77098	30.85547	13:00:00	D	10.40
258	FIROZPUR	FIROZPUR	S-NPP	74.39433	30.85608	13:00:00	D	5.20
259	FIROZPUR	FIROZPUR	S-NPP	74.38408	30.86889	13:00:00	D	13.20
260	FIROZPUR	FIROZPUR	S-NPP	74.75407	30.87146	13:00:00	D	23.10
261	FIROZPUR	FIROZPUR	S-NPP	74.75140	30.87177	13:00:00	D	23.80

262	FIROZPUR	FIROZPUR	S-NPP	74.52181	30.87469	13:00:00	D	16.90
263	FIROZPUR	FIROZPUR	S-NPP	74.57153	30.87587	13:00:00	D	38.20
264	FIROZPUR	FIROZPUR	AQUA	74.45800	30.87900	14:10:00	D	16.60
265	FIROZPUR	FIROZPUR	AQUA	74.47800	30.88100	14:10:00	D	24.20
266	FIROZPUR	FIROZPUR	S-NPP	74.51313	30.88274	13:00:00	D	7.10
267	FIROZPUR	FIROZPUR	S-NPP	74.64986	30.88352	13:00:00	D	3.70
268	FIROZPUR	FIROZPUR	S-NPP	74.39605	30.88602	13:00:00	D	9.50
269	FIROZPUR	FIROZPUR	S-NPP	74.39774	30.88705	13:00:00	D	15.40
270	FIROZPUR	FIROZPUR	S-NPP	74.40202	30.88739	13:00:00	D	8.00
271	FIROZPUR	FIROZPUR	S-NPP	74.51620	30.89342	13:00:00	D	5.40
272	FIROZPUR	FIROZPUR	S-NPP	74.82111	30.90223	13:00:00	D	15.20
273	FIROZPUR	FIROZPUR	S-NPP	74.81975	30.90684	13:00:00	D	15.20
274	FIROZPUR	FIROZPUR	AQUA	74.53200	30.91000	14:10:00	D	16.10
275	FIROZPUR	FIROZPUR	S-NPP	74.53924	30.91387	13:00:00	D	8.50
276	FIROZPUR	FIROZPUR	S-NPP	74.54136	30.91399	13:00:00	D	5.40
277	FIROZPUR	FIROZPUR	AQUA	74.71100	30.91500	14:10:00	D	64.00
278	FIROZPUR	FIROZPUR	S-NPP	74.84096	30.91648	13:00:00	D	5.40
279	FIROZPUR	FIROZPUR	AQUA	74.70300	30.92000	14:10:00	D	41.70
280	FIROZPUR	FIROZPUR	AQUA	74.77100	30.92100	14:10:00	D	14.00
281	FIROZPUR	FIROZPUR	AQUA	74.72300	30.92200	14:10:00	D	12.30
282	FIROZPUR	FIROZPUR	AQUA	74.76300	30.92600	14:10:00	D	15.70
283	FIROZPUR	FIROZPUR	S-NPP	74.77755	30.92689	13:00:00	D	5.10
284	FIROZPUR	FIROZPUR	S-NPP	74.65934	30.95496	13:00:00	D	8.30
285	FIROZPUR	FIROZPUR	S-NPP	74.65693	30.95564	13:00:00	D	3.90
286	FIROZPUR	FIROZPUR	S-NPP	74.73669	30.96211	13:00:00	D	13.10
287	FIROZPUR	FIROZPUR	S-NPP	74.74241	30.96337	13:00:00	D	13.10
288	FIROZPUR	FIROZPUR	S-NPP	74.73975	30.96455	13:00:00	D	17.20
289	FIROZPUR	FIROZPUR	S-NPP	74.72252	30.96885	13:00:00	D	6.50
290	FIROZPUR	FIROZPUR	S-NPP	74.71993	30.96992	13:00:00	D	3.60
291	FIROZPUR	FIROZPUR	S-NPP	74.73392	30.97135	13:00:00	D	6.40
292	FIROZPUR	FIROZPUR	S-NPP	74.55755	30.97786	13:00:00	D	10.60
293	FIROZPUR	FIROZPUR	S-NPP	74.69868	30.97992	13:00:00	D	21.90
294	FIROZPUR	FIROZPUR	AQUA	74.61400	30.98600	14:10:00	D	28.60

295	FIROZPUR	FIROZPUR	AQUA	74.77500	30.98900	14:10:00	D	19.60
296	FIROZPUR	FIROZPUR	S-NPP	74.69593	30.98918	13:00:00	D	6.50
297	FIROZPUR	FIROZPUR	S-NPP	74.73724	30.99354	13:00:00	D	2.80
298	FIROZPUR	FIROZPUR	AQUA	74.71200	31.00700	14:10:00	D	25.80
299	FIROZPUR	FIROZPUR	S-NPP	74.64750	31.00796	13:00:00	D	4.00
300	FIROZPUR	FIROZPUR	S-NPP	74.74879	31.01581	13:00:00	D	3.60
301	FIROZPUR	FIROZPUR	S-NPP	74.60151	31.01751	13:00:00	D	4.50
302	FIROZPUR	FIROZPUR	S-NPP	74.65622	31.01980	13:00:00	D	3.40
303	FIROZPUR	FIROZPUR	S-NPP	74.61310	31.02009	13:00:00	D	12.30
304	FIROZPUR	FIROZPUR	S-NPP	74.76445	31.02422	13:00:00	D	17.80
305	FIROZPUR	FIROZPUR	S-NPP	74.59872	31.02680	13:00:00	D	10.20
306	FIROZPUR	FIROZPUR	S-NPP	74.59480	31.03131	13:00:00	D	5.90
307	FIROZPUR	FIROZPUR	AQUA	74.70900	31.03200	14:10:00	D	23.50
308	FIROZPUR	FIROZPUR	AQUA	74.72300	31.03700	14:10:00	D	82.00
309	FIROZPUR	FIROZPUR	AQUA	74.62200	31.04000	14:10:00	D	24.90
310	FIROZPUR	FIROZPUR	AQUA	74.76400	31.04000	14:10:00	D	34.10
311	FIROZPUR	FIROZPUR	S-NPP	74.71506	31.04765	13:00:00	D	11.60
312	FIROZPUR	FIROZPUR	S-NPP	74.72076	31.04892	13:00:00	D	11.60
313	FIROZPUR	FIROZPUR	S-NPP	74.74074	31.06316	13:00:00	D	7.70
314	FIROZPUR	FIROZPUR	S-NPP	74.73785	31.06394	13:00:00	D	4.70
315	FIROZPUR	FIROZPUR	S-NPP	74.74214	31.06983	13:00:00	D	4.70
316	FIROZPUR	FIROZPUR	S-NPP	74.71954	31.07323	13:00:00	D	5.80
317	FIROZPUR	FIROZPUR	AQUA	74.77900	31.07900	14:10:00	D	19.60
318	FIROZPUR	FIROZPUR	S-NPP	74.72383	31.07908	13:00:00	D	3.20
319	FIROZPUR	FIROZPUR	S-NPP	74.80550	31.07931	13:00:00	D	3.80
320	FIROZPUR	FIROZPUR	AQUA	74.80000	31.08100	14:10:00	D	51.70
321	FIROZPUR	FIROZPUR	S-NPP	74.79883	31.09062	13:00:00	D	15.70
322	FIROZPUR	FIROZPUR	S-NPP	74.80447	31.09185	13:00:00	D	15.70
323	FIROZPUR	FIROZPUR	AQUA	74.79800	31.09300	14:10:00	D	22.10
324	FIROZPUR	FIROZPUR	S-NPP	74.80141	31.09308	13:00:00	D	26.20
325	FIROZPUR	FIROZPUR	AQUA	74.75600	31.10100	14:10:00	D	58.90
326	FIROZPUR	ZIRA	S-NPP	75.04371	30.88129	13:00:00	D	3.30
327	FIROZPUR	ZIRA	S-NPP	75.04239	30.88584	13:00:00	D	3.30

328	FIROZPUR	ZIRA	S-NPP	74.97071	30.88953	13:00:00	D	14.10
329	FIROZPUR	ZIRA	S-NPP	74.87754	30.93443	13:00:00	D	5.10
330	FIROZPUR	ZIRA	AQUA	74.85000	30.94100	14:10:00	D	17.90
331	FIROZPUR	ZIRA	AQUA	74.86300	30.94700	14:10:00	D	18.40
332	FIROZPUR	ZIRA	S-NPP	75.10879	30.94713	13:00:00	D	5.70
333	FIROZPUR	ZIRA	S-NPP	75.11105	30.94906	13:00:00	D	5.10
334	FIROZPUR	ZIRA	S-NPP	75.03255	30.94947	13:00:00	D	4.90
335	FIROZPUR	ZIRA	S-NPP	74.93622	30.95721	13:00:00	D	5.40
336	FIROZPUR	ZIRA	S-NPP	75.11975	30.96884	13:00:00	D	10.40
337	FIROZPUR	ZIRA	S-NPP	75.28445	30.98160	13:00:00	D	3.20
338	FIROZPUR	ZIRA	S-NPP	75.28699	30.98197	13:00:00	D	5.10
339	FIROZPUR	ZIRA	S-NPP	74.85136	30.98239	13:00:00	D	5.70
340	FIROZPUR	ZIRA	S-NPP	74.84841	30.98427	13:00:00	D	7.30
341	FIROZPUR	ZIRA	S-NPP	74.86820	30.98609	13:00:00	D	3.30
342	FIROZPUR	ZIRA	S-NPP	74.87079	30.98933	13:00:00	D	6.50
343	FIROZPUR	ZIRA	AQUA	74.95500	31.04300	14:10:00	D	14.40
344	FIROZPUR	ZIRA	AQUA	74.95000	31.04500	14:10:00	D	19.60
345	FIROZPUR	ZIRA	S-NPP	75.17276	31.06200	13:00:00	D	4.90
346	FIROZPUR	ZIRA	S-NPP	75.17837	31.07278	13:00:00	D	8.70
347	FIROZPUR	ZIRA	S-NPP	74.93497	31.12316	13:00:00	D	6.30
348	FIROZPUR	ZIRA	S-NPP	74.94048	31.12440	13:00:00	D	6.30
349	FIROZPUR	ZIRA	S-NPP	74.85752	31.12524	13:00:00	D	4.70
350	FIROZPUR	ZIRA	S-NPP	74.93698	31.12564	13:00:00	D	8.70
351	FIROZPUR	ZIRA	AQUA	74.90900	31.14500	14:10:00	D	12.90
352	FIROZPUR	ZIRA	S-NPP	74.93238	31.15169	13:00:00	D	6.60
353	GURDASPUR	BATALA	S-NPP	75.36196	31.62798	13:00:00	D	4.00
354	GURDASPUR	BATALA	S-NPP	75.42318	31.64114	13:00:00	D	5.10
355	GURDASPUR	BATALA	S-NPP	75.42963	31.66372	13:00:00	D	7.40
356	GURDASPUR	BATALA	S-NPP	75.41051	31.71075	13:00:00	D	8.50
357	GURDASPUR	BATALA	S-NPP	75.35442	31.71724	13:00:00	D	4.10
358	GURDASPUR	BATALA	S-NPP	75.31847	31.72816	13:00:00	D	4.40
359	GURDASPUR	BATALA	AQUA	75.28200	31.73300	14:10:00	D	38.70
360	GURDASPUR	BATALA	S-NPP	75.40531	31.74684	13:00:00	D	4.80

361	GURDASPUR	BATALA	S-NPP	75.50496	31.75433	13:00:00	D	6.60
362	GURDASPUR	BATALA	S-NPP	75.37252	31.75679	13:00:00	D	2.50
363	GURDASPUR	BATALA	S-NPP	75.36961	31.75781	13:00:00	D	2.60
364	GURDASPUR	BATALA	S-NPP	75.40144	31.75996	13:00:00	D	1.90
365	GURDASPUR	BATALA	S-NPP	75.13352	31.76526	13:00:00	D	3.20
366	GURDASPUR	BATALA	S-NPP	75.36102	31.77758	13:00:00	D	3.70
367	GURDASPUR	BATALA	S-NPP	75.50860	31.77820	13:00:00	D	3.50
368	GURDASPUR	BATALA	S-NPP	75.36864	31.78857	13:00:00	D	4.00
369	GURDASPUR	BATALA	AQUA	75.20200	31.79000	14:10:00	D	18.00
370	GURDASPUR	BATALA	S-NPP	75.42056	31.79528	13:00:00	D	5.00
371	GURDASPUR	BATALA	S-NPP	75.09534	31.79950	13:00:00	D	5.70
372	GURDASPUR	BATALA	S-NPP	75.04609	31.80823	13:00:00	D	3.70
373	GURDASPUR	BATALA	S-NPP	75.04108	31.81146	13:00:00	D	8.70
374	GURDASPUR	BATALA	S-NPP	75.04638	31.81260	13:00:00	D	11.70
375	GURDASPUR	BATALA	S-NPP	75.04478	31.81268	13:00:00	D	14.90
376	GURDASPUR	BATALA	AQUA	75.31800	31.81400	14:10:00	D	15.40
377	GURDASPUR	BATALA	S-NPP	75.11111	31.82181	13:00:00	D	4.70
378	GURDASPUR	BATALA	S-NPP	75.10930	31.82229	13:00:00	D	3.20
379	GURDASPUR	BATALA	S-NPP	75.08696	31.84100	13:00:00	D	3.70
380	GURDASPUR	BATALA	S-NPP	75.11454	31.84236	13:00:00	D	8.60
381	GURDASPUR	BATALA	S-NPP	75.11190	31.85123	13:00:00	D	10.90
382	GURDASPUR	BATALA	S-NPP	75.09052	31.91407	13:00:00	D	3.30
383	GURDASPUR	DERA BABA NANAK	S-NPP	74.99950	31.95546	13:00:00	D	7.60
384	GURDASPUR	DERA BABA NANAK	S-NPP	75.00479	31.95663	13:00:00	D	7.60
385	GURDASPUR	DERA BABA NANAK	AQUA	74.96700	31.97700	14:10:00	D	31.50
386	GURDASPUR	DERA BABA NANAK	AQUA	74.96600	31.98900	14:10:00	D	19.10
387	GURDASPUR	DERA BABA NANAK	AQUA	74.98700	31.99100	14:10:00	D	20.10
388	GURDASPUR	DERA BABA NANAK	S-NPP	75.01790	32.00687	13:00:00	D	9.70
389	GURDASPUR	DERA BABA NANAK	S-NPP	75.02026	32.00778	13:00:00	D	19.30
390	GURDASPUR	DERA BABA NANAK	S-NPP	75.02318	32.00801	13:00:00	D	9.70
391	GURDASPUR	DERA BABA NANAK	S-NPP	75.00314	32.00869	13:00:00	D	2.30
392	GURDASPUR	DERA BABA NANAK	S-NPP	75.09148	32.02280	13:00:00	D	4.90
393	GURDASPUR	DERA BABA NANAK	S-NPP	75.09364	32.02417	13:00:00	D	8.10

394	GURDASPUR	DERA BABA NANAK	S-NPP	75.09016	32.02723	13:00:00	D	5.70
395	GURDASPUR	GURDASPUR	S-NPP	75.43179	31.83020	13:00:00	D	4.90
396	GURDASPUR	GURDASPUR	S-NPP	75.36333	31.84329	13:00:00	D	3.20
397	GURDASPUR	GURDASPUR	S-NPP	75.39883	31.85093	13:00:00	D	4.50
398	GURDASPUR	GURDASPUR	S-NPP	75.38235	31.85203	13:00:00	D	3.30
399	GURDASPUR	GURDASPUR	S-NPP	75.33533	31.85830	13:00:00	D	4.60
400	GURDASPUR	GURDASPUR	S-NPP	75.54530	31.85931	13:00:00	D	4.60
401	GURDASPUR	GURDASPUR	S-NPP	75.31857	31.86629	13:00:00	D	2.20
402	GURDASPUR	GURDASPUR	S-NPP	75.19263	31.89718	13:00:00	D	2.60
403	GURDASPUR	GURDASPUR	S-NPP	75.19133	31.90159	13:00:00	D	2.90
404	GURDASPUR	GURDASPUR	S-NPP	75.35930	31.90548	13:00:00	D	3.20
405	GURDASPUR	GURDASPUR	S-NPP	75.31856	31.91522	13:00:00	D	5.60
406	GURDASPUR	GURDASPUR	S-NPP	75.35036	31.91748	13:00:00	D	14.40
407	GURDASPUR	GURDASPUR	S-NPP	75.32236	31.92070	13:00:00	D	6.20
408	GURDASPUR	GURDASPUR	S-NPP	75.47478	31.93060	13:00:00	D	5.30
409	GURDASPUR	GURDASPUR	S-NPP	75.30191	31.93492	13:00:00	D	4.20
410	GURDASPUR	GURDASPUR	S-NPP	75.34898	31.94043	13:00:00	D	1.50
411	GURDASPUR	GURDASPUR	AQUA	75.16700	31.98100	14:10:00	D	16.30
412	GURDASPUR	GURDASPUR	S-NPP	75.25480	31.99267	13:00:00	D	4.50
413	GURDASPUR	GURDASPUR	S-NPP	75.30836	32.01369	13:00:00	D	2.90
414	GURDASPUR	GURDASPUR	S-NPP	75.17214	32.03083	13:00:00	D	2.30
415	GURDASPUR	GURDASPUR	S-NPP	75.26997	32.03330	13:00:00	D	2.30
416	GURDASPUR	GURDASPUR	S-NPP	75.13385	32.05665	13:00:00	D	4.20
417	GURDASPUR	GURDASPUR	S-NPP	75.38091	32.13874	13:00:00	D	3.10
418	HOSHIARPUR	DASUYA	S-NPP	75.59047	31.61700	13:00:00	D	8.60
419	HOSHIARPUR	DASUYA	S-NPP	75.59411	31.64084	13:00:00	D	8.40
420	HOSHIARPUR	DASUYA	S-NPP	75.59908	31.64192	13:00:00	D	8.40
421	HOSHIARPUR	DASUYA	S-NPP	75.52407	31.66275	13:00:00	D	6.70
422	HOSHIARPUR	DASUYA	S-NPP	75.52908	31.66382	13:00:00	D	6.70
423	HOSHIARPUR	DASUYA	S-NPP	75.61014	31.67652	13:00:00	D	2.60
424	HOSHIARPUR	DASUYA	AQUA	75.55000	31.69100	14:10:00	D	33.30
425	HOSHIARPUR	DASUYA	AQUA	75.57400	31.69300	14:10:00	D	17.60
426	HOSHIARPUR	DASUYA	S-NPP	75.55743	31.70102	13:00:00	D	8.80

427	HOSHIARPUR	DASUYA	S-NPP	75.55521	31.70169	13:00:00	D	13.70
428	HOSHIARPUR	DASUYA	S-NPP	75.55608	31.72380	13:00:00	D	2.10
429	HOSHIARPUR	DASUYA	S-NPP	75.60818	31.72589	13:00:00	D	4.80
430	HOSHIARPUR	DASUYA	S-NPP	75.55853	31.73355	13:00:00	D	8.70
431	HOSHIARPUR	DASUYA	S-NPP	75.60810	31.74427	13:00:00	D	4.60
432	HOSHIARPUR	DASUYA	S-NPP	75.60191	31.74753	13:00:00	D	3.20
433	HOSHIARPUR	DASUYA	S-NPP	75.58183	31.79839	13:00:00	D	6.90
434	HOSHIARPUR	GARHSHANKAR	S-NPP	76.15611	31.16671	13:00:00	D	6.90
435	HOSHIARPUR	GARHSHANKAR	S-NPP	76.15858	31.17048	13:00:00	D	17.00
436	HOSHIARPUR	GARHSHANKAR	S-NPP	76.15491	31.17096	13:00:00	D	6.90
437	HOSHIARPUR	GARHSHANKAR	S-NPP	76.04181	31.25089	13:00:00	D	4.00
438	HOSHIARPUR	GARHSHANKAR	S-NPP	76.04320	31.25254	13:00:00	D	4.60
439	HOSHIARPUR	MUKERIAN	S-NPP	75.64513	31.89445	13:00:00	D	2.50
440	HOSHIARPUR	MUKERIAN	S-NPP	75.56661	31.94132	13:00:00	D	8.50
441	JALANDHAR	JALANDHAR II	S-NPP	75.50726	31.40699	13:00:00	D	5.70
442	JALANDHAR	JALANDHAR II	S-NPP	75.48812	31.45408	13:00:00	D	2.50
443	JALANDHAR	JALANDHAR II	S-NPP	75.49054	31.45705	13:00:00	D	4.70
444	JALANDHAR	JALANDHAR II	AQUA	75.73100	31.47300	14:10:00	D	14.70
445	JALANDHAR	JALANDHAR II	S-NPP	75.70029	31.50298	13:00:00	D	3.80
446	JALANDHAR	JALANDHAR II	S-NPP	75.70225	31.50411	13:00:00	D	8.20
447	JALANDHAR	JALANDHAR II	S-NPP	75.59924	31.60506	13:00:00	D	4.00
448	JALANDHAR	JALANDHAR II	S-NPP	75.60423	31.60615	13:00:00	D	3.90
449	JALANDHAR	NAKODAR	S-NPP	75.53886	30.98441	13:00:00	D	4.90
450	JALANDHAR	NAKODAR	S-NPP	75.50803	30.99653	13:00:00	D	10.60
451	JALANDHAR	NAKODAR	S-NPP	75.43916	31.11903	01:42:00	N	4.60
452	JALANDHAR	NAKODAR	S-NPP	75.59071	31.15899	13:00:00	D	3.90
453	JALANDHAR	NAKODAR	S-NPP	75.59571	31.19734	13:00:00	D	3.20
454	JALANDHAR	PHILLAUR	S-NPP	75.69636	31.03685	13:00:00	D	5.00
455	JALANDHAR	PHILLAUR	S-NPP	75.70137	31.03792	13:00:00	D	7.60
456	JALANDHAR	PHILLAUR	S-NPP	75.55357	31.12958	13:00:00	D	19.50
457	JALANDHAR	SHAHKOT	S-NPP	75.38038	31.00737	13:00:00	D	3.80
458	JALANDHAR	SHAHKOT	S-NPP	75.28332	31.05255	13:00:00	D	16.20
459	JALANDHAR	SHAHKOT	S-NPP	75.28860	31.05370	13:00:00	D	16.20

460	JALANDHAR	SHAHKOT	S-NPP	75.31631	31.05497	13:00:00	D	16.30
461	JALANDHAR	SHAHKOT	S-NPP	75.24222	31.05792	13:00:00	D	4.60
462	JALANDHAR	SHAHKOT	S-NPP	75.29259	31.05931	13:00:00	D	4.90
463	JALANDHAR	SHAHKOT	AQUA	75.20500	31.06700	14:10:00	D	22.10
464	JALANDHAR	SHAHKOT	AQUA	75.21000	31.06700	14:10:00	D	27.70
465	JALANDHAR	SHAHKOT	S-NPP	75.24756	31.06907	13:00:00	D	9.20
466	JALANDHAR	SHAHKOT	S-NPP	75.20106	31.07304	13:00:00	D	15.00
467	JALANDHAR	SHAHKOT	S-NPP	75.18084	31.07330	13:00:00	D	4.20
468	JALANDHAR	SHAHKOT	S-NPP	75.20359	31.07342	13:00:00	D	12.80
469	JALANDHAR	SHAHKOT	S-NPP	75.24891	31.07365	13:00:00	D	5.20
470	JALANDHAR	SHAHKOT	S-NPP	75.13836	31.11183	13:00:00	D	6.40
471	JALANDHAR	SHAHKOT	S-NPP	75.22916	31.11267	13:00:00	D	25.00
472	JALANDHAR	SHAHKOT	S-NPP	75.33988	31.11803	13:00:00	D	3.70
473	JALANDHAR	SHAHKOT	S-NPP	75.19062	31.12807	13:00:00	D	2.80
474	JALANDHAR	SHAHKOT	S-NPP	75.12238	31.14667	13:00:00	D	3.90
475	JALANDHAR	SHAHKOT	AQUA	75.18600	31.16900	14:10:00	D	25.70
476	KAPURTHALA	BHOLATH	S-NPP	75.51571	31.49978	13:00:00	D	4.40
477	KAPURTHALA	BHOLATH	S-NPP	75.47004	31.52711	13:00:00	D	7.90
478	KAPURTHALA	BHOLATH	S-NPP	75.46237	31.55338	13:00:00	D	5.60
479	KAPURTHALA	BHOLATH	S-NPP	75.43723	31.55565	13:00:00	D	6.20
480	KAPURTHALA	BHOLATH	S-NPP	75.46386	31.55686	13:00:00	D	3.00
481	KAPURTHALA	BHOLATH	S-NPP	75.43945	31.55780	13:00:00	D	9.00
482	KAPURTHALA	BHOLATH	S-NPP	75.40285	31.56210	13:00:00	D	4.40
483	KAPURTHALA	BHOLATH	S-NPP	75.41816	31.56546	13:00:00	D	3.70
484	KAPURTHALA	BHOLATH	S-NPP	75.42325	31.56658	13:00:00	D	6.60
485	KAPURTHALA	BHOLATH	AQUA	75.49700	31.58400	14:10:00	D	39.20
486	KAPURTHALA	BHOLATH	S-NPP	75.60069	31.59206	13:00:00	D	3.60
487	KAPURTHALA	BHOLATH	AQUA	75.47200	31.59500	14:10:00	D	25.70
488	KAPURTHALA	BHOLATH	AQUA	75.56500	31.60300	14:10:00	D	75.60
489	KAPURTHALA	BHOLATH	S-NPP	75.44349	31.60828	13:00:00	D	2.40
490	KAPURTHALA	BHOLATH	S-NPP	75.46248	31.61704	13:00:00	D	5.70
491	KAPURTHALA	BHOLATH	S-NPP	75.46120	31.62142	13:00:00	D	13.00
492	KAPURTHALA	BHOLATH	S-NPP	75.47131	31.62361	13:00:00	D	5.00

493	KAPURTHALA	BHOLATH	S-NPP	75.52166	31.63447	13:00:00	D	2.30
494	KAPURTHALA	BHOLATH	S-NPP	75.55797	31.63767	13:00:00	D	5.40
495	KAPURTHALA	KAPURTHALA	S-NPP	75.27426	31.27472	13:00:00	D	4.70
496	KAPURTHALA	KAPURTHALA	S-NPP	75.25194	31.29358	13:00:00	D	3.90
497	KAPURTHALA	KAPURTHALA	S-NPP	75.32143	31.32267	13:00:00	D	5.80
498	KAPURTHALA	KAPURTHALA	S-NPP	75.31834	31.32351	13:00:00	D	7.40
499	KAPURTHALA	KAPURTHALA	S-NPP	75.30666	31.34454	13:00:00	D	2.00
500	KAPURTHALA	KAPURTHALA	S-NPP	75.25964	31.35315	13:00:00	D	2.60
501	KAPURTHALA	KAPURTHALA	S-NPP	75.23209	31.37083	13:00:00	D	4.80
502	KAPURTHALA	KAPURTHALA	S-NPP	75.21571	31.40101	13:00:00	D	3.60
503	KAPURTHALA	KAPURTHALA	AQUA	75.38300	31.43100	14:10:00	D	18.20
504	KAPURTHALA	KAPURTHALA	AQUA	75.38900	31.43300	14:10:00	D	24.50
505	KAPURTHALA	KAPURTHALA	AQUA	75.35600	31.46700	14:10:00	D	29.60
506	KAPURTHALA	KAPURTHALA	S-NPP	75.42556	31.47548	13:00:00	D	6.10
507	KAPURTHALA	KAPURTHALA	S-NPP	75.41148	31.48644	13:00:00	D	4.70
508	KAPURTHALA	KAPURTHALA	S-NPP	75.41914	31.49745	13:00:00	D	5.60
509	KAPURTHALA	KAPURTHALA	AQUA	75.38400	31.56100	14:10:00	D	33.60
510	KAPURTHALA	PHAGWARA	S-NPP	75.87817	31.27636	13:00:00	D	4.60
511	KAPURTHALA	PHAGWARA	S-NPP	75.76726	31.34377	13:00:00	D	6.80
512	KAPURTHALA	SULTANPUR LODHI	S-NPP	75.04720	31.17722	13:00:00	D	20.00
513	KAPURTHALA	SULTANPUR LODHI	S-NPP	75.25039	31.20309	13:00:00	D	9.40
514	KAPURTHALA	SULTANPUR LODHI	AQUA	75.11300	31.22600	14:10:00	D	17.70
515	KAPURTHALA	SULTANPUR LODHI	S-NPP	75.26240	31.25794	13:00:00	D	7.50
516	KAPURTHALA	SULTANPUR LODHI	S-NPP	75.13386	31.28263	13:00:00	D	13.60
517	KAPURTHALA	SULTANPUR LODHI	S-NPP	75.13644	31.28297	13:00:00	D	10.60
518	KAPURTHALA	SULTANPUR LODHI	S-NPP	75.16981	31.29539	13:00:00	D	3.20
519	KAPURTHALA	SULTANPUR LODHI	S-NPP	75.19508	31.32477	13:00:00	D	3.10
520	LUDHIANA	JAGRAON	S-NPP	75.53709	30.71112	13:00:00	D	6.60
521	LUDHIANA	JAGRAON	AQUA	75.48200	30.81900	14:10:00	D	15.40
522	LUDHIANA	JAGRAON	AQUA	75.49700	30.82100	14:10:00	D	23.50
523	LUDHIANA	JAGRAON	AQUA	75.50400	30.82100	14:10:00	D	14.80
524	LUDHIANA	JAGRAON	S-NPP	75.54567	30.83359	13:00:00	D	15.00
525	LUDHIANA	JAGRAON	S-NPP	75.51732	30.83681	13:00:00	D	9.20

526	LUDHIANA	JAGRAON	S-NPP	75.36494	30.97517	13:00:00	D	7.20
527	LUDHIANA	KHANNA	S-NPP	76.28413	30.69516	13:00:00	D	5.90
528	LUDHIANA	KHANNA	S-NPP	76.26398	30.73153	13:00:00	D	3.60
529	LUDHIANA	LUDHIANA EAST	S-NPP	75.74358	30.73929	13:00:00	D	6.50
530	LUDHIANA	LUDHIANA EAST	S-NPP	75.74075	30.74028	13:00:00	D	2.90
531	LUDHIANA	LUDHIANA EAST	S-NPP	75.74580	30.74135	13:00:00	D	5.40
532	LUDHIANA	LUDHIANA WEST	S-NPP	75.71341	30.77000	13:00:00	D	10.10
533	LUDHIANA	LUDHIANA WEST	S-NPP	75.65641	30.81841	13:00:00	D	1.90
534	LUDHIANA	LUDHIANA WEST	S-NPP	75.79880	30.94413	13:00:00	D	32.30
535	LUDHIANA	PAYAL	S-NPP	76.07971	30.59249	13:00:00	D	3.80
536	LUDHIANA	PAYAL	S-NPP	76.08102	30.59252	13:00:00	D	3.50
537	LUDHIANA	PAYAL	S-NPP	76.02864	30.62735	13:00:00	D	5.60
538	LUDHIANA	PAYAL	S-NPP	75.99685	30.62974	13:00:00	D	4.30
539	LUDHIANA	PAYAL	S-NPP	75.90439	30.70568	13:00:00	D	10.90
540	LUDHIANA	SAMRALA	S-NPP	76.19747	30.73578	13:00:00	D	2.30
541	LUDHIANA	SAMRALA	S-NPP	76.19894	30.73686	13:00:00	D	3.80
542	LUDHIANA	SAMRALA	AQUA	76.26400	30.74500	14:10:00	D	20.10
543	LUDHIANA	SAMRALA	S-NPP	76.23918	30.79064	13:00:00	D	6.00
544	LUDHIANA	SAMRALA	S-NPP	76.17262	30.81282	13:00:00	D	5.00
545	LUDHIANA	SAMRALA	S-NPP	76.11916	30.82992	13:00:00	D	4.70
546	MANSA	BUDHLADA	S-NPP	75.58795	29.79690	13:00:00	D	2.60
547	MANSA	BUDHLADA	S-NPP	75.68234	29.84107	13:00:00	D	56.80
548	MANSA	BUDHLADA	S-NPP	75.59454	29.84166	13:00:00	D	11.80
549	MANSA	BUDHLADA	S-NPP	75.59779	29.84209	13:00:00	D	11.10
550	MANSA	BUDHLADA	S-NPP	75.40292	29.87195	13:00:00	D	4.20
551	MANSA	BUDHLADA	AQUA	75.69800	29.89400	14:10:00	D	15.30
552	MANSA	BUDHLADA	S-NPP	75.58736	29.90710	13:00:00	D	10.20
553	MANSA	MANSA	AQUA	75.34600	29.90000	14:10:00	D	18.50
554	MANSA	MANSA	AQUA	75.33800	29.90200	14:10:00	D	13.00
555	MANSA	MANSA	S-NPP	75.43581	30.07977	13:00:00	D	4.20
556	MANSA	MANSA	S-NPP	75.60339	30.10668	13:00:00	D	3.60
557	MANSA	MANSA	S-NPP	75.47359	30.15894	13:00:00	D	2.00
558	MANSA	SARDULGARH	S-NPP	75.31223	29.65678	13:00:00	D	2.30

559	MANSA	SARDULGARH	S-NPP	75.30269	29.66938	13:00:00	D	3.40
560	MANSA	SARDULGARH	S-NPP	75.28446	29.68197	13:00:00	D	4.10
561	MANSA	SARDULGARH	S-NPP	75.22187	29.69263	13:00:00	D	6.90
562	MANSA	SARDULGARH	AQUA	75.23400	29.70800	14:10:00	D	14.20
563	MANSA	SARDULGARH	AQUA	75.24700	29.71300	14:10:00	D	16.00
564	MANSA	SARDULGARH	S-NPP	75.23374	29.78609	13:00:00	D	3.90
565	MANSA	SARDULGARH	S-NPP	75.28652	29.78802	13:00:00	D	33.30
566	MANSA	SARDULGARH	S-NPP	75.29206	29.78926	13:00:00	D	33.30
567	MANSA	SARDULGARH	S-NPP	75.33920	29.80945	13:00:00	D	13.40
568	MOGA	BAGHA PURANA	S-NPP	75.00270	30.67231	13:00:00	D	3.00
569	MOGA	BAGHA PURANA	S-NPP	74.93520	30.77176	13:00:00	D	10.30
570	MOGA	MOGA	S-NPP	75.26138	30.72393	13:00:00	D	5.70
571	MOGA	MOGA	S-NPP	75.30686	30.72424	13:00:00	D	2.80
572	MOGA	MOGA	S-NPP	75.30556	30.72874	13:00:00	D	15.00
573	MOGA	MOGA	S-NPP	75.06245	30.81763	13:00:00	D	6.80
574	MOGA	MOGA	S-NPP	75.06311	30.81912	13:00:00	D	9.00
575	MOGA	MOGA	S-NPP	75.14015	30.83020	13:00:00	D	6.50
576	MOGA	MOGA	AQUA	75.01300	30.84200	14:10:00	D	14.70
577	MOGA	MOGA	AQUA	75.03400	30.84400	14:10:00	D	18.20
578	MOGA	NIHAL SINGH WALA	S-NPP	75.32680	30.56573	13:00:00	D	3.70
579	MOGA	NIHAL SINGH WALA	S-NPP	75.31885	30.57357	13:00:00	D	17.50
580	MOGA	NIHAL SINGH WALA	S-NPP	75.20176	30.60081	13:00:00	D	6.50
581	MOGA	NIHAL SINGH WALA	S-NPP	75.25896	30.64208	13:00:00	D	5.70
582	MOGA	NIHAL SINGH WALA	S-NPP	75.26209	30.64249	13:00:00	D	9.10
583	MUKTSAR	GIDDARBAHA	S-NPP	74.59972	30.21791	13:00:00	D	3.00
584	MUKTSAR	GIDDARBAHA	AQUA	74.66000	30.23900	14:10:00	D	27.10
585	MUKTSAR	GIDDARBAHA	AQUA	74.53200	30.29300	14:10:00	D	15.60
586	MUKTSAR	GIDDARBAHA	S-NPP	74.76768	30.33105	13:00:00	D	13.30
587	MUKTSAR	GIDDARBAHA	S-NPP	74.77350	30.33237	13:00:00	D	13.30
588	MUKTSAR	GIDDARBAHA	S-NPP	74.69098	30.35875	13:00:00	D	4.70
589	MUKTSAR	GIDDARBAHA	S-NPP	74.73225	30.42283	13:00:00	D	3.90
590	MUKTSAR	GIDDARBAHA	S-NPP	74.73429	30.42326	13:00:00	D	3.70
591	MUKTSAR	MALAUT	S-NPP	74.60113	29.93806	13:00:00	D	7.00

592	MUKTSAR	MALAUT	AQUA	74.60000	29.96000	14:10:00	D	20.20
593	MUKTSAR	MALAUT	S-NPP	74.49453	29.96976	13:00:00	D	5.70
594	MUKTSAR	MALAUT	TERRA	74.48400	30.00400	10:55:00	D	10.60
595	MUKTSAR	MALAUT	AQUA	74.56700	30.01300	14:10:00	D	11.90
596	MUKTSAR	MALAUT	S-NPP	74.59873	30.03390	13:00:00	D	18.20
597	MUKTSAR	MALAUT	S-NPP	74.60477	30.03524	13:00:00	D	18.20
598	MUKTSAR	MALAUT	AQUA	74.45000	30.03800	14:10:00	D	34.80
599	MUKTSAR	MALAUT	AQUA	74.46900	30.03900	14:10:00	D	10.00
600	MUKTSAR	MALAUT	S-NPP	74.50530	30.04355	13:00:00	D	4.60
601	MUKTSAR	MALAUT	S-NPP	74.49797	30.06522	13:00:00	D	6.50
602	MUKTSAR	MALAUT	S-NPP	74.42117	30.10399	13:00:00	D	11.20
603	MUKTSAR	MALAUT	S-NPP	74.29314	30.24333	13:00:00	D	4.40
604	MUKTSAR	MALAUT	S-NPP	74.41012	30.33628	13:00:00	D	13.10
605	MUKTSAR	MALAUT	S-NPP	74.40752	30.33847	13:00:00	D	20.30
606	MUKTSAR	MALAUT	S-NPP	74.41361	30.33987	13:00:00	D	25.00
607	MUKTSAR	MALAUT	S-NPP	74.40869	30.34105	13:00:00	D	17.40
608	MUKTSAR	MALAUT	S-NPP	74.41338	30.34719	13:00:00	D	17.40
609	MUKTSAR	MALAUT	S-NPP	74.41079	30.34941	13:00:00	D	5.90
610	MUKTSAR	MUKTSAR	S-NPP	74.30770	30.42590	13:00:00	D	11.90
611	MUKTSAR	MUKTSAR	S-NPP	74.30256	30.42690	13:00:00	D	5.60
612	MUKTSAR	MUKTSAR	S-NPP	74.34095	30.43040	13:00:00	D	5.60
613	MUKTSAR	MUKTSAR	S-NPP	74.33839	30.43299	13:00:00	D	9.50
614	MUKTSAR	MUKTSAR	AQUA	74.38400	30.46000	14:10:00	D	10.70
615	MUKTSAR	MUKTSAR	AQUA	74.43700	30.48900	14:10:00	D	17.60
616	MUKTSAR	MUKTSAR	S-NPP	74.59174	30.53138	13:00:00	D	4.60
617	MUKTSAR	MUKTSAR	S-NPP	74.66370	30.54263	13:00:00	D	18.70
618	MUKTSAR	MUKTSAR	AQUA	74.64100	30.55800	14:10:00	D	48.10
619	MUKTSAR	MUKTSAR	AQUA	74.63300	30.56400	14:10:00	D	40.00
620	MUKTSAR	MUKTSAR	S-NPP	74.59303	30.61181	13:00:00	D	5.70
621	MUKTSAR	MUKTSAR	AQUA	74.54800	30.61600	14:10:00	D	14.20
622	MUKTSAR	MUKTSAR	S-NPP	74.62041	30.61740	13:00:00	D	5.70
623	MUKTSAR	MUKTSAR	AQUA	74.56800	30.61800	14:10:00	D	27.20
624	MUKTSAR	MUKTSAR	TERRA	74.48500	30.63000	10:55:00	D	12.70

625	MUKTSAR	MUKTSAR	TERRA	74.49300	30.64000	10:55:00	D	17.70
626	MUKTSAR	MUKTSAR	TERRA	74.48600	30.64200	10:55:00	D	16.00
627	MUKTSAR	MUKTSAR	S-NPP	74.56672	30.65029	13:00:00	D	8.00
628	PATHANKOT	PATHANKOT	S-NPP	75.38152	32.23510	13:00:00	D	2.90
629	PATIALA	NABHA	S-NPP	76.08115	30.31410	13:00:00	D	2.60
630	PATIALA	NABHA	AQUA	76.21800	30.31500	14:10:00	D	20.40
631	PATIALA	NABHA	S-NPP	76.21844	30.35698	13:00:00	D	4.60
632	PATIALA	NABHA	S-NPP	76.19918	30.37117	13:00:00	D	3.80
633	PATIALA	NABHA	S-NPP	76.20401	30.37218	13:00:00	D	6.60
634	PATIALA	NABHA	S-NPP	76.06581	30.37920	13:00:00	D	6.50
635	PATIALA	NABHA	S-NPP	76.06287	30.37923	13:00:00	D	5.70
636	PATIALA	NABHA	S-NPP	76.05846	30.38682	13:00:00	D	4.30
637	PATIALA	NABHA	S-NPP	76.25089	30.43265	13:00:00	D	2.50
638	PATIALA	NABHA	S-NPP	76.30338	30.43378	13:00:00	D	9.10
639	PATIALA	NABHA	S-NPP	76.30560	30.43525	13:00:00	D	13.90
640	PATIALA	NABHA	S-NPP	76.24493	30.43592	13:00:00	D	29.70
641	PATIALA	NABHA	S-NPP	76.12691	30.45649	13:00:00	D	6.70
642	PATIALA	NABHA	S-NPP	76.28425	30.45790	13:00:00	D	2.80
643	PATIALA	NABHA	S-NPP	76.28306	30.46218	13:00:00	D	5.20
644	PATIALA	NABHA	AQUA	76.16300	30.47800	14:10:00	D	23.80
645	PATIALA	NABHA	S-NPP	76.27236	30.48259	13:00:00	D	13.90
646	PATIALA	NABHA	S-NPP	76.27711	30.48359	13:00:00	D	14.30
647	PATIALA	NABHA	AQUA	76.20800	30.52200	14:10:00	D	19.90
648	PATIALA	NABHA	S-NPP	76.27551	30.53353	13:00:00	D	6.90
649	PATIALA	NABHA	AQUA	76.19700	30.54500	14:10:00	D	24.20
650	PATIALA	PATIALA	S-NPP	76.52113	30.07808	13:00:00	D	5.20
651	PATIALA	PATIALA	S-NPP	76.37962	30.14454	13:00:00	D	6.30
652	PATIALA	PATIALA	S-NPP	76.37843	30.14883	13:00:00	D	6.30
653	PATIALA	PATIALA	S-NPP	76.38203	30.17225	13:00:00	D	3.40
654	PATIALA	PATIALA	S-NPP	76.38440	30.18181	13:00:00	D	10.10
655	PATIALA	PATIALA	S-NPP	76.57759	30.18182	13:00:00	D	5.00
656	PATIALA	PATIALA	S-NPP	76.38914	30.18281	13:00:00	D	10.10
657	PATIALA	PATIALA	S-NPP	76.31535	30.19462	13:00:00	D	9.70

658	PATIALA	PATIALA	S-NPP	76.43994	30.19795	13:00:00	D	3.40
659	PATIALA	PATIALA	S-NPP	76.59028	30.20686	13:00:00	D	3.00
660	PATIALA	PATIALA	S-NPP	76.28935	30.22179	13:00:00	D	16.10
661	PATIALA	PATIALA	S-NPP	76.45055	30.23170	13:00:00	D	3.80
662	PATIALA	PATIALA	S-NPP	76.53702	30.24057	13:00:00	D	2.20
663	PATIALA	PATIALA	AQUA	76.35600	30.25100	14:10:00	D	16.10
664	PATIALA	PATIALA	AQUA	76.50900	30.26400	14:10:00	D	17.70
665	PATIALA	PATIALA	AQUA	76.52900	30.27200	14:10:00	D	20.20
666	PATIALA	PATIALA	S-NPP	76.56780	30.27637	13:00:00	D	4.60
667	PATIALA	PATIALA	S-NPP	76.57241	30.27735	13:00:00	D	4.60
668	PATIALA	PATIALA	S-NPP	76.49473	30.34621	13:00:00	D	2.80
669	PATIALA	PATIALA	AQUA	76.28800	30.36200	14:10:00	D	30.30
670	PATIALA	PATIALA	AQUA	76.28000	30.37100	14:10:00	D	18.50
671	PATIALA	PATIALA	S-NPP	76.38740	30.38352	13:00:00	D	4.30
672	PATIALA	PATIALA	S-NPP	76.45997	30.38977	13:00:00	D	13.40
673	PATIALA	PATIALA	S-NPP	76.41321	30.39795	13:00:00	D	1.90
674	PATIALA	PATIALA	S-NPP	76.38151	30.40483	13:00:00	D	3.60
675	PATIALA	PATIALA	S-NPP	76.36853	30.41566	13:00:00	D	2.20
676	PATIALA	PATIALA	S-NPP	76.51447	30.44147	13:00:00	D	2.70
677	PATIALA	PATIALA	AQUA	76.44600	30.44600	14:10:00	D	27.80
678	PATIALA	RAJPURA	S-NPP	76.63667	30.29089	13:00:00	D	4.00
679	PATIALA	RAJPURA	S-NPP	76.59081	30.29909	13:00:00	D	4.80
680	PATIALA	RAJPURA	S-NPP	76.51915	30.32886	13:00:00	D	3.70
681	PATIALA	RAJPURA	S-NPP	76.64459	30.33260	13:00:00	D	8.70
682	PATIALA	RAJPURA	S-NPP	76.65372	30.33450	13:00:00	D	14.40
683	PATIALA	RAJPURA	S-NPP	76.65713	30.33965	13:00:00	D	4.90
684	PATIALA	RAJPURA	S-NPP	76.57462	30.34036	13:00:00	D	6.30
685	PATIALA	RAJPURA	S-NPP	76.69463	30.34299	13:00:00	D	3.80
686	PATIALA	RAJPURA	S-NPP	76.61253	30.34375	13:00:00	D	2.90
687	PATIALA	RAJPURA	S-NPP	76.68895	30.34625	13:00:00	D	1.70
688	PATIALA	RAJPURA	AQUA	76.65300	30.35200	14:10:00	D	20.40
689	PATIALA	RAJPURA	S-NPP	76.63884	30.35364	13:00:00	D	5.80
690	PATIALA	RAJPURA	S-NPP	76.55498	30.35862	13:00:00	D	3.70

691	PATIALA	RAJPURA	S-NPP	76.51793	30.36889	13:00:00	D	4.80
692	PATIALA	RAJPURA	S-NPP	76.51921	30.37088	13:00:00	D	6.20
693	PATIALA	RAJPURA	S-NPP	76.68884	30.38167	13:00:00	D	3.20
694	PATIALA	RAJPURA	S-NPP	76.59744	30.38742	13:00:00	D	3.50
695	PATIALA	RAJPURA	S-NPP	76.65669	30.39990	13:00:00	D	2.40
696	PATIALA	RAJPURA	S-NPP	76.52397	30.48612	13:00:00	D	2.00
697	PATIALA	RAJPURA	S-NPP	76.54004	30.49844	13:00:00	D	2.90
698	PATIALA	RAJPURA	S-NPP	76.63699	30.54982	13:00:00	D	1.60
699	PATIALA	RAJPURA	S-NPP	76.65047	30.58800	13:00:00	D	4.30
700	PATIALA	RAJPURA	S-NPP	76.65498	30.58893	13:00:00	D	4.30
701	PATIALA	RAJPURA	S-NPP	76.55819	30.59809	13:00:00	D	2.80
702	PATIALA	RAJPURA	S-NPP	76.61293	30.60243	13:00:00	D	2.60
703	PATIALA	RAJPURA	S-NPP	76.57984	30.60710	13:00:00	D	6.10
704	PATIALA	SAMANA	S-NPP	76.16065	29.84998	13:00:00	D	2.50
705	PATIALA	SAMANA	S-NPP	76.09645	29.87325	13:00:00	D	2.90
706	PATIALA	SAMANA	S-NPP	76.16589	29.90655	13:00:00	D	4.90
707	PATIALA	SAMANA	S-NPP	76.15975	29.90987	13:00:00	D	4.90
708	PATIALA	SAMANA	S-NPP	76.16467	29.91092	13:00:00	D	4.90
709	PATIALA	SAMANA	S-NPP	76.14142	29.93833	13:00:00	D	5.80
710	PATIALA	SAMANA	S-NPP	76.14021	29.94269	13:00:00	D	5.80
711	PATIALA	SAMANA	S-NPP	76.13568	29.94575	13:00:00	D	2.50
712	PATIALA	SAMANA	S-NPP	76.17031	29.99013	13:00:00	D	8.40
713	PATIALA	SAMANA	S-NPP	76.16679	30.02163	13:00:00	D	4.20
714	PATIALA	SAMANA	S-NPP	76.22116	30.09254	13:00:00	D	9.30
715	PATIALA	SAMANA	S-NPP	76.21512	30.09583	13:00:00	D	9.30
716	PATIALA	SAMANA	S-NPP	76.28647	30.13390	13:00:00	D	3.20
717	PATIALA	SAMANA	AQUA	76.27400	30.15300	14:10:00	D	39.80
718	PATIALA	SAMANA	S-NPP	76.26966	30.15773	13:00:00	D	2.80
719	PATIALA	SAMANA	AQUA	76.26500	30.16200	14:10:00	D	26.90
720	PATIALA	SAMANA	S-NPP	76.19714	30.17911	13:00:00	D	4.20
721	PATIALA	SAMANA	S-NPP	76.14434	30.20914	13:00:00	D	4.40
722	PATIALA	SAMANA	S-NPP	76.08678	30.21068	13:00:00	D	9.70
723	PATIALA	SAMANA	S-NPP	76.08064	30.21398	13:00:00	D	9.70

724	PATIALA	SAMANA	S-NPP	76.08557	30.21503	13:00:00	D	9.70
725	PATIALA	SAMANA	S-NPP	76.15170	30.21990	13:00:00	D	3.80
726	PATIALA	SAMANA	S-NPP	76.12122	30.23640	13:00:00	D	5.40
727	RUPNAGAR	ANANDPUR SAHIB	S-NPP	76.45753	31.18781	13:00:00	D	3.30
728	RUPNAGAR	CHAMKOR SAHIB	S-NPP	76.51196	30.81680	13:00:00	D	5.90
729	RUPNAGAR	CHAMKOR SAHIB	S-NPP	76.51652	30.81776	13:00:00	D	10.80
730	RUPNAGAR	RUPNAGAR	S-NPP	76.55204	31.00591	13:00:00	D	2.20
731	SANGRUR	DHURI	AQUA	75.83200	30.30800	14:10:00	D	13.00
732	SANGRUR	DHURI	S-NPP	75.72592	30.30835	13:00:00	D	3.90
733	SANGRUR	DHURI	AQUA	75.85500	30.31000	14:10:00	D	22.80
734	SANGRUR	DHURI	S-NPP	75.91879	30.31190	13:00:00	D	5.00
735	SANGRUR	DHURI	S-NPP	75.92011	30.32611	13:00:00	D	4.00
736	SANGRUR	DHURI	S-NPP	75.91888	30.33049	13:00:00	D	8.80
737	SANGRUR	DHURI	AQUA	75.70500	30.33500	14:10:00	D	18.00
738	SANGRUR	DHURI	S-NPP	75.71607	30.33606	13:00:00	D	2.10
739	SANGRUR	DHURI	S-NPP	75.93857	30.34700	13:00:00	D	6.60
740	SANGRUR	DHURI	S-NPP	75.94022	30.34891	13:00:00	D	11.40
741	SANGRUR	DHURI	S-NPP	75.76739	30.36593	13:00:00	D	4.00
742	SANGRUR	DHURI	AQUA	75.90300	30.40200	14:10:00	D	21.40
743	SANGRUR	DHURI	AQUA	75.90800	30.40600	14:10:00	D	18.00
744	SANGRUR	DHURI	AQUA	75.73700	30.41500	14:10:00	D	35.80
745	SANGRUR	DHURI	AQUA	75.76000	30.41700	14:10:00	D	54.90
746	SANGRUR	DHURI	S-NPP	75.96866	30.42757	13:00:00	D	3.30
747	SANGRUR	DHURI	AQUA	75.75900	30.43000	14:10:00	D	30.00
748	SANGRUR	DHURI	S-NPP	75.96307	30.45700	13:00:00	D	7.30
749	SANGRUR	DHURI	S-NPP	75.96005	30.45809	13:00:00	D	4.70
750	SANGRUR	DHURI	AQUA	75.69900	30.47700	14:10:00	D	24.00
751	SANGRUR	DHURI	S-NPP	75.68883	30.50046	13:00:00	D	5.20
752	SANGRUR	DHURI	S-NPP	75.70919	30.53993	13:00:00	D	4.40
753	SANGRUR	MALERKOTLA	S-NPP	75.86111	30.48131	13:00:00	D	7.20
754	SANGRUR	MALERKOTLA	S-NPP	75.69144	30.56420	13:00:00	D	7.50
755	SANGRUR	MALERKOTLA	S-NPP	75.69019	30.56862	13:00:00	D	7.50
756	SANGRUR	MALERKOTLA	S-NPP	75.83315	30.57613	13:00:00	D	9.30

757	SANGRUR	MALERKOTLA	S-NPP	75.79430	30.60033	13:00:00	D	5.40
758	SANGRUR	MALERKOTLA	S-NPP	75.88815	30.60651	13:00:00	D	10.70
759	SANGRUR	MOONAK	AQUA	75.99500	29.76500	14:10:00	D	18.50
760	SANGRUR	MOONAK	AQUA	76.00200	29.76700	14:10:00	D	32.10
761	SANGRUR	MOONAK	S-NPP	75.94727	29.76925	13:00:00	D	5.10
762	SANGRUR	MOONAK	S-NPP	75.96008	29.78135	13:00:00	D	13.10
763	SANGRUR	MOONAK	S-NPP	75.88035	29.80327	13:00:00	D	5.70
764	SANGRUR	MOONAK	S-NPP	75.87910	29.80771	13:00:00	D	19.90
765	SANGRUR	MOONAK	AQUA	75.82600	29.81600	14:10:00	D	44.80
766	SANGRUR	MOONAK	S-NPP	75.84081	29.82771	13:00:00	D	2.90
767	SANGRUR	MOONAK	AQUA	75.81800	29.84000	14:10:00	D	15.40
768	SANGRUR	MOONAK	S-NPP	76.07383	29.84051	13:00:00	D	2.60
769	SANGRUR	MOONAK	S-NPP	76.01382	29.84621	13:00:00	D	5.50
770	SANGRUR	MOONAK	AQUA	76.05600	29.85000	14:10:00	D	17.50
771	SANGRUR	MOONAK	S-NPP	76.01260	29.85061	13:00:00	D	5.50
772	SANGRUR	MOONAK	S-NPP	75.88239	29.89306	13:00:00	D	2.30
773	SANGRUR	MOONAK	S-NPP	75.89394	29.91664	13:00:00	D	24.40
774	SANGRUR	MOONAK	AQUA	75.85300	29.93400	14:10:00	D	16.10
775	SANGRUR	SANGRUR	S-NPP	75.96145	30.18856	13:00:00	D	3.00
776	SANGRUR	SANGRUR	S-NPP	76.04112	30.20557	13:00:00	D	3.10
777	SANGRUR	SANGRUR	AQUA	75.99100	30.20600	14:10:00	D	24.50
778	SANGRUR	SANGRUR	AQUA	75.98900	30.21900	14:10:00	D	27.50
779	SANGRUR	SANGRUR	S-NPP	75.93150	30.21938	13:00:00	D	4.90
780	SANGRUR	SANGRUR	S-NPP	75.96161	30.22575	13:00:00	D	3.60
781	SANGRUR	SANGRUR	S-NPP	75.96039	30.23013	13:00:00	D	10.90
782	SANGRUR	SANGRUR	S-NPP	76.03381	30.23175	13:00:00	D	10.70
783	SANGRUR	SANGRUR	S-NPP	76.03259	30.23611	13:00:00	D	8.30
784	SANGRUR	SANGRUR	AQUA	76.10800	30.24300	14:10:00	D	18.40
785	SANGRUR	SANGRUR	S-NPP	76.08076	30.25088	13:00:00	D	3.10
786	SANGRUR	SANGRUR	S-NPP	76.06993	30.26100	13:00:00	D	3.60
787	SANGRUR	SANGRUR	AQUA	76.00100	30.28300	14:10:00	D	21.90
788	SANGRUR	SANGRUR	AQUA	75.97600	30.29400	14:10:00	D	13.90
789	SANGRUR	SANGRUR	S-NPP	75.97116	30.29523	13:00:00	D	3.00

790	SANGRUR	SANGRUR	AQUA	75.84800	30.30800	14:10:00	D	20.50
791	SANGRUR	SANGRUR	S-NPP	76.11662	30.31707	13:00:00	D	4.70
792	SANGRUR	SUNAM	S-NPP	75.69164	29.93433	13:00:00	D	6.20
793	SANGRUR	SUNAM	S-NPP	75.72294	30.00830	13:00:00	D	3.90
794	SANGRUR	SUNAM	S-NPP	75.82755	30.04508	13:00:00	D	17.90
795	SANGRUR	SUNAM	S-NPP	75.84179	30.07161	13:00:00	D	5.60
796	SANGRUR	SUNAM	S-NPP	75.81883	30.07610	13:00:00	D	13.20
797	SANGRUR	SUNAM	S-NPP	75.81758	30.08053	13:00:00	D	7.00
798	SANGRUR	SUNAM	S-NPP	75.83057	30.11144	13:00:00	D	6.10
799	SANGRUR	SUNAM	S-NPP	75.83569	30.11252	13:00:00	D	6.10
800	SANGRUR	SUNAM	S-NPP	75.82718	30.11285	13:00:00	D	6.20
801	SANGRUR	SUNAM	S-NPP	75.83228	30.11396	13:00:00	D	8.60
802	SANGRUR	SUNAM	S-NPP	75.94722	30.11739	13:00:00	D	3.50
803	SANGRUR	SUNAM	S-NPP	75.76081	30.13606	13:00:00	D	6.50
804	SAS NAGAR	DERABASSI	S-NPP	76.75253	30.43327	13:00:00	D	6.20
805	SAS NAGAR	DERABASSI	S-NPP	76.85615	30.45048	13:00:00	D	2.70
806	SAS NAGAR	DERABASSI	S-NPP	76.87593	30.48084	13:00:00	D	3.10
807	SAS NAGAR	DERABASSI	S-NPP	76.90007	30.51200	13:00:00	D	1.60
808	SAS NAGAR	KHARAR	S-NPP	76.52490	30.63115	13:00:00	D	3.40
809	SAS NAGAR	KHARAR	S-NPP	76.52948	30.63210	13:00:00	D	3.40
810	SAS NAGAR	KHARAR	AQUA	76.64900	30.65600	14:10:00	D	21.20
811	SAS NAGAR	MOHALI	S-NPP	76.66511	30.60425	13:00:00	D	2.80
812	SAS NAGAR	MOHALI	S-NPP	76.70228	30.60744	13:00:00	D	7.40
813	SAS NAGAR	MOHALI	S-NPP	76.71127	30.60927	13:00:00	D	2.90
814	SAS NAGAR	MOHALI	S-NPP	76.67751	30.61119	13:00:00	D	1.00
815	SAS NAGAR	MOHALI	S-NPP	76.76877	30.66427	13:00:00	D	1.50
816	SBS NAGAR	BALACHAUR	S-NPP	76.20945	31.13165	13:00:00	D	5.30
817	SBS NAGAR	SBS NAGAR	S-NPP	76.19823	31.01942	13:00:00	D	7.60
818	SBS NAGAR	SBS NAGAR	S-NPP	76.02626	31.25217	13:00:00	D	3.20
819	TARN TARAN	KHADOOR SAHIB	S-NPP	74.96709	31.19327	13:00:00	D	5.40
820	TARN TARAN	KHADOOR SAHIB	S-NPP	75.05154	31.22145	13:00:00	D	6.60
821	TARN TARAN	KHADOOR SAHIB	S-NPP	75.01376	31.25167	13:00:00	D	3.80
822	TARN TARAN	KHADOOR SAHIB	S-NPP	75.01691	31.25174	13:00:00	D	2.90

823	TARN TARAN	KHADOOR SAHIB	S-NPP	75.03725	31.26110	13:00:00	D	14.30
824	TARN TARAN	KHADOOR SAHIB	AQUA	74.93200	31.26200	14:10:00	D	16.50
825	TARN TARAN	KHADOOR SAHIB	S-NPP	75.03960	31.26207	13:00:00	D	13.60
826	TARN TARAN	KHADOOR SAHIB	S-NPP	74.92710	31.28000	13:00:00	D	4.00
827	TARN TARAN	KHADOOR SAHIB	AQUA	74.99200	31.29200	14:10:00	D	23.00
828	TARN TARAN	KHADOOR SAHIB	AQUA	74.92700	31.29900	14:10:00	D	15.20
829	TARN TARAN	KHADOOR SAHIB	S-NPP	74.93269	31.30057	13:00:00	D	2.60
830	TARN TARAN	KHADOOR SAHIB	S-NPP	74.90822	31.33907	01:42:00	N	3.20
831	TARN TARAN	KHADOOR SAHIB	S-NPP	74.90881	31.34377	01:42:00	N	0.90
832	TARN TARAN	KHADOOR SAHIB	S-NPP	74.92777	31.37046	13:00:00	D	10.00
833	TARN TARAN	KHADOOR SAHIB	S-NPP	74.93325	31.37168	13:00:00	D	10.00
834	TARN TARAN	KHADOOR SAHIB	S-NPP	74.97952	31.37234	13:00:00	D	8.00
835	TARN TARAN	KHADOOR SAHIB	S-NPP	74.93468	31.38647	13:00:00	D	2.00
836	TARN TARAN	KHADOOR SAHIB	S-NPP	74.98091	31.38708	13:00:00	D	9.60
837	TARN TARAN	KHADOOR SAHIB	S-NPP	74.95924	31.40154	13:00:00	D	5.80
838	TARN TARAN	KHADOOR SAHIB	S-NPP	75.18414	31.41299	13:00:00	D	4.10
839	TARN TARAN	KHADOOR SAHIB	S-NPP	75.22234	31.43565	13:00:00	D	5.30
840	TARN TARAN	KHADOOR SAHIB	S-NPP	75.01628	31.44287	13:00:00	D	10.50
841	TARN TARAN	KHADOOR SAHIB	S-NPP	74.72327	31.45462	13:00:00	D	6.20
842	TARN TARAN	KHADOOR SAHIB	S-NPP	74.68549	31.46085	13:00:00	D	4.40
843	TARN TARAN	KHADOOR SAHIB	S-NPP	74.68411	31.46543	13:00:00	D	4.40
844	TARN TARAN	KHADOOR SAHIB	S-NPP	74.68697	31.47583	13:00:00	D	3.90
845	TARN TARAN	KHADOOR SAHIB	AQUA	74.69800	31.47600	14:10:00	D	26.20
846	TARN TARAN	KHADOOR SAHIB	AQUA	74.71800	31.47800	14:10:00	D	100.90
847	TARN TARAN	KHADOOR SAHIB	S-NPP	75.17513	31.48219	13:00:00	D	3.60
848	TARN TARAN	KHADOOR SAHIB	S-NPP	75.07023	31.48375	13:00:00	D	9.60
849	TARN TARAN	KHADOOR SAHIB	S-NPP	75.07278	31.48382	13:00:00	D	9.70
850	TARN TARAN	KHADOOR SAHIB	AQUA	74.70400	31.48400	14:10:00	D	71.40
851	TARN TARAN	KHADOOR SAHIB	AQUA	74.72400	31.48600	14:10:00	D	51.10
852	TARN TARAN	KHADOOR SAHIB	S-NPP	74.61643	31.50122	13:00:00	D	5.90
853	TARN TARAN	PATTI	AQUA	74.71600	31.09700	14:10:00	D	28.20
854	TARN TARAN	PATTI	AQUA	74.70800	31.10200	14:10:00	D	33.60
855	TARN TARAN	PATTI	S-NPP	74.69456	31.12798	13:00:00	D	5.00

856	TARN TARAN	PATTI	AQUA	74.74400	31.14200	14:10:00	D	20.80
857	TARN TARAN	PATTI	AQUA	74.80500	31.14800	14:10:00	D	18.40
858	TARN TARAN	PATTI	AQUA	74.68200	31.14900	14:10:00	D	18.30
859	TARN TARAN	PATTI	S-NPP	74.77110	31.15481	13:00:00	D	5.30
860	TARN TARAN	PATTI	AQUA	74.74200	31.15500	14:10:00	D	44.70
861	TARN TARAN	PATTI	S-NPP	74.69058	31.16152	13:00:00	D	3.70
862	TARN TARAN	PATTI	S-NPP	74.71471	31.16193	13:00:00	D	27.50
863	TARN TARAN	PATTI	S-NPP	74.71334	31.16654	13:00:00	D	8.20
864	TARN TARAN	PATTI	S-NPP	74.85089	31.16761	13:00:00	D	11.70
865	TARN TARAN	PATTI	AQUA	74.88600	31.16800	14:10:00	D	15.20
866	TARN TARAN	PATTI	AQUA	74.51900	31.17000	14:10:00	D	13.50
867	TARN TARAN	PATTI	S-NPP	74.66364	31.17032	13:00:00	D	2.50
868	TARN TARAN	PATTI	S-NPP	74.54791	31.18050	13:00:00	D	14.40
869	TARN TARAN	PATTI	S-NPP	74.55371	31.18181	13:00:00	D	14.40
870	TARN TARAN	PATTI	AQUA	74.61200	31.18300	14:10:00	D	26.30
871	TARN TARAN	PATTI	S-NPP	74.88712	31.18533	13:00:00	D	2.20
872	TARN TARAN	PATTI	S-NPP	74.80615	31.18971	13:00:00	D	5.10
873	TARN TARAN	PATTI	AQUA	74.61600	31.19200	14:10:00	D	19.10
874	TARN TARAN	PATTI	S-NPP	74.53954	31.20837	13:00:00	D	15.40
875	TARN TARAN	PATTI	S-NPP	74.85361	31.21020	13:00:00	D	2.90
876	TARN TARAN	PATTI	S-NPP	74.85549	31.21240	13:00:00	D	3.00
877	TARN TARAN	PATTI	S-NPP	74.79248	31.21593	13:00:00	D	6.90
878	TARN TARAN	PATTI	AQUA	74.60700	31.21900	14:10:00	D	29.70
879	TARN TARAN	PATTI	S-NPP	74.64014	31.22100	13:00:00	D	15.70
880	TARN TARAN	PATTI	S-NPP	74.94456	31.22101	13:00:00	D	4.20
881	TARN TARAN	PATTI	S-NPP	74.64584	31.22228	13:00:00	D	14.20
882	TARN TARAN	PATTI	S-NPP	74.55848	31.22746	13:00:00	D	12.10
883	TARN TARAN	PATTI	S-NPP	74.67296	31.23326	13:00:00	D	11.90
884	TARN TARAN	PATTI	AQUA	74.76800	31.23400	14:10:00	D	17.50
885	TARN TARAN	PATTI	S-NPP	74.70700	31.24084	13:00:00	D	9.10
886	TARN TARAN	PATTI	S-NPP	74.71266	31.24211	13:00:00	D	10.30
887	TARN TARAN	PATTI	S-NPP	74.67590	31.24374	13:00:00	D	7.10
888	TARN TARAN	PATTI	S-NPP	74.74788	31.24506	13:00:00	D	7.70

889	TARN TARAN	PATTI	S-NPP	74.75352	31.24631	13:00:00	D	7.70
890	TARN TARAN	PATTI	S-NPP	74.75915	31.24757	13:00:00	D	8.50
891	TARN TARAN	PATTI	S-NPP	74.72823	31.25047	13:00:00	D	5.70
892	TARN TARAN	PATTI	S-NPP	74.60612	31.25286	13:00:00	D	4.70
893	TARN TARAN	PATTI	AQUA	74.70400	31.25300	14:10:00	D	17.50
894	TARN TARAN	PATTI	S-NPP	74.60452	31.25361	13:00:00	D	5.10
895	TARN TARAN	PATTI	S-NPP	74.55008	31.25527	13:00:00	D	5.70
896	TARN TARAN	PATTI	S-NPP	74.54866	31.25570	13:00:00	D	11.00
897	TARN TARAN	PATTI	S-NPP	74.54868	31.25991	13:00:00	D	4.40
898	TARN TARAN	PATTI	S-NPP	74.82066	31.26125	13:00:00	D	8.10
899	TARN TARAN	PATTI	S-NPP	74.82623	31.26248	13:00:00	D	12.40
900	TARN TARAN	PATTI	AQUA	74.66100	31.27400	14:10:00	D	31.00
901	TARN TARAN	PATTI	S-NPP	74.79153	31.27915	13:00:00	D	4.60
902	TARN TARAN	PATTI	S-NPP	74.78394	31.29934	13:00:00	D	5.30
903	TARN TARAN	PATTI	S-NPP	74.58357	31.30316	13:00:00	D	12.50
904	TARN TARAN	PATTI	S-NPP	74.78259	31.30391	13:00:00	D	3.80
905	TARN TARAN	PATTI	S-NPP	74.61356	31.30499	13:00:00	D	7.90
906	TARN TARAN	PATTI	S-NPP	74.73367	31.30752	13:00:00	D	10.40
907	TARN TARAN	PATTI	AQUA	74.77900	31.31000	14:10:00	D	21.70
908	TARN TARAN	PATTI	AQUA	74.62900	31.31300	14:10:00	D	54.20
909	TARN TARAN	PATTI	S-NPP	74.75478	31.31716	13:00:00	D	10.40
910	TARN TARAN	PATTI	S-NPP	74.73383	31.32711	13:00:00	D	3.30
911	TARN TARAN	PATTI	S-NPP	74.64928	31.32777	13:00:00	D	4.00
912	TARN TARAN	PATTI	AQUA	74.62600	31.33700	14:10:00	D	61.70
913	TARN TARAN	PATTI	S-NPP	74.65649	31.34410	13:00:00	D	2.00
914	TARN TARAN	PATTI	AQUA	74.72700	31.34700	14:10:00	D	19.20
915	TARN TARAN	PATTI	AQUA	74.74700	31.34900	14:10:00	D	15.10
916	TARN TARAN	PATTI	S-NPP	74.56688	31.35863	13:00:00	D	6.60
917	TARN TARAN	PATTI	S-NPP	74.66798	31.36627	13:00:00	D	20.30
918	TARN TARAN	PATTI	S-NPP	74.72724	31.38914	13:00:00	D	5.10
919	TARN TARAN	PATTI	S-NPP	74.63988	31.39182	13:00:00	D	3.00
920	TARN TARAN	PATTI	S-NPP	74.70195	31.40587	13:00:00	D	3.80
921	TARN TARAN	PATTI	S-NPP	74.70348	31.40833	13:00:00	D	5.70

Details of residue burning events in Haryana on 24-Oct-2020

S. No.	District	Tehsil / Block	Satellite	Longitude	Latitude	Time (IST)	Day / Night	Fire Power (W/m ²)
1	AMBALA	AMBALA	S-NPP	76.69455	30.23303	13:00:00	D	3.70
2	AMBALA	AMBALA	S-NPP	76.56715	30.23784	13:00:00	D	3.40
3	AMBALA	AMBALA	S-NPP	76.58449	30.24589	13:00:00	D	6.60
4	AMBALA	AMBALA	TERRA	76.77500	30.25600	10:55:00	D	10.10
5	AMBALA	AMBALA	TERRA	76.76300	30.25700	10:55:00	D	7.20
6	AMBALA	AMBALA	S-NPP	76.62821	30.26381	13:00:00	D	3.90
7	AMBALA	AMBALA	S-NPP	76.68336	30.29627	13:00:00	D	6.80
8	AMBALA	AMBALA	S-NPP	76.71172	30.29780	13:00:00	D	13.70
9	AMBALA	AMBALA	S-NPP	76.71031	30.29835	13:00:00	D	9.70
10	AMBALA	AMBALA	S-NPP	76.68222	30.30047	13:00:00	D	3.80
11	AMBALA	AMBALA	S-NPP	76.93240	30.37024	13:00:00	D	2.30
12	AMBALA	BARARA	S-NPP	77.03947	30.13654	13:00:00	D	3.10
13	AMBALA	BARARA	S-NPP	77.03960	30.13772	13:00:00	D	3.10
14	AMBALA	BARARA	S-NPP	77.06778	30.18711	13:00:00	D	2.90
15	AMBALA	NARAYANGARH	S-NPP	77.15341	30.37910	13:00:00	D	2.20
16	AMBALA	NARAYANGARH	S-NPP	77.15770	30.37995	13:00:00	D	3.60
17	AMBALA	NARAYANGARH	S-NPP	77.15351	30.38126	13:00:00	D	3.00
18	FATEHABAD	FATEHABAD	S-NPP	75.72251	29.50628	13:00:00	D	4.00
19	FATEHABAD	FATEHABAD	S-NPP	75.73775	29.58569	13:00:00	D	5.70
20	FATEHABAD	FATEHABAD	S-NPP	75.78525	29.61499	13:00:00	D	3.70
21	FATEHABAD	RATIA	AQUA	75.51700	29.77500	14:10:00	D	13.70
22	FATEHABAD	TOHANA	S-NPP	75.94523	29.59278	13:00:00	D	2.70
23	FATEHABAD	TOHANA	S-NPP	75.79488	29.65978	13:00:00	D	3.20
24	FATEHABAD	TOHANA	AQUA	75.82500	29.68500	14:10:00	D	26.70
25	FATEHABAD	TOHANA	AQUA	75.83100	29.68800	14:10:00	D	24.00
26	FATEHABAD	TOHANA	S-NPP	75.91009	29.74722	13:00:00	D	7.30
27	FATEHABAD	TOHANA	S-NPP	75.83452	29.78297	13:00:00	D	6.50
28	FATEHABAD	TOHANA	S-NPP	75.83652	29.78428	13:00:00	D	10.10
29	HISAR	HISAR	S-NPP	75.99485	29.36401	13:00:00	D	1.60
30	HISAR	HISAR	S-NPP	75.99673	29.36529	13:00:00	D	3.00

31	JIND	JIND	S-NPP	76.39443	29.29198	13:00:00	D	5.60
32	JIND	NARWANA	S-NPP	76.23492	29.53650	13:00:00	D	5.00
33	JIND	NARWANA	S-NPP	76.23748	29.53819	13:00:00	D	4.50
34	KAITHAL	GUHLA	S-NPP	76.37944	29.91521	13:00:00	D	5.00
35	KAITHAL	GUHLA	S-NPP	76.22850	29.92442	13:00:00	D	6.10
36	KAITHAL	GUHLA	S-NPP	76.24689	29.95125	13:00:00	D	6.70
37	KAITHAL	GUHLA	S-NPP	76.28702	29.97338	13:00:00	D	4.90
38	KAITHAL	GUHLA	S-NPP	76.30399	29.98605	13:00:00	D	6.50
39	KAITHAL	GUHLA	S-NPP	76.30511	29.98687	13:00:00	D	6.10
40	KAITHAL	GUHLA	AQUA	76.37700	30.00800	14:10:00	D	17.70
41	KAITHAL	GUHLA	S-NPP	76.30762	30.01483	13:00:00	D	3.90
42	KAITHAL	GUHLA	S-NPP	76.31243	30.01585	13:00:00	D	3.90
43	KAITHAL	GUHLA	S-NPP	76.29077	30.02039	13:00:00	D	2.60
44	KAITHAL	KAITHAL	S-NPP	76.60851	29.67968	13:00:00	D	4.50
45	KAITHAL	KAITHAL	S-NPP	76.24571	29.75458	13:00:00	D	3.20
46	KAITHAL	KAITHAL	S-NPP	76.24158	29.75783	13:00:00	D	6.80
47	KAITHAL	KAITHAL	S-NPP	76.27868	29.84851	13:00:00	D	5.10
48	KAITHAL	KAITHAL	S-NPP	76.36874	29.93574	13:00:00	D	7.10
49	KARNAL	KARNAL	S-NPP	76.71560	29.66603	13:00:00	D	7.70
50	KARNAL	KARNAL	S-NPP	76.81216	29.70406	13:00:00	D	5.50
51	KARNAL	KARNAL	S-NPP	76.81673	29.70501	13:00:00	D	5.50
52	KARNAL	KARNAL	S-NPP	76.97697	29.78223	13:00:00	D	4.80
53	KURUKSHETRA	PEHOWA	AQUA	76.72600	29.94900	14:10:00	D	19.90
54	KURUKSHETRA	PEHOWA	S-NPP	76.56736	29.95952	13:00:00	D	23.80
55	KURUKSHETRA	PEHOWA	S-NPP	76.61152	29.95984	13:00:00	D	3.70
56	KURUKSHETRA	PEHOWA	S-NPP	76.65440	30.05682	13:00:00	D	3.30
57	KURUKSHETRA	PEHOWA	S-NPP	76.69789	30.12838	13:00:00	D	2.70
58	KURUKSHETRA	THANESAR	S-NPP	76.82306	29.99983	13:00:00	D	3.10
59	KURUKSHETRA	THANESAR	S-NPP	76.91483	30.08059	13:00:00	D	3.40
60	KURUKSHETRA	THANESAR	S-NPP	76.79552	30.12204	13:00:00	D	6.80
61	PALWAL	HODAL	S-NPP	77.44824	27.88337	13:00:00	D	2.30
62	PALWAL	PALWAL	S-NPP	77.36823	28.19484	13:00:00	D	4.90
63	PALWAL	PALWAL	S-NPP	77.35110	28.22979	13:00:00	D	2.60
64	PANCHKULA	PANCHKULA	S-NPP	77.00263	30.59430	01:42:00	N	0.40

65	SIRSA	DABWALI	S-NPP	74.88605	29.96354	13:00:00	D	4.50
66	SIRSA	DABWALI	S-NPP	74.79133	29.96750	13:00:00	D	24.20
67	SIRSA	SIRSA	S-NPP	74.94588	29.49160	13:00:00	D	2.70
68	SIRSA	SIRSA	AQUA	75.21000	29.49900	14:10:00	D	22.80
69	SIRSA	SIRSA	S-NPP	75.12781	29.56717	13:00:00	D	2.50
70	SIRSA	SIRSA	S-NPP	75.13127	29.59764	13:00:00	D	5.90
71	SIRSA	SIRSA	S-NPP	75.16976	29.68604	13:00:00	D	9.60
72	SIRSA	SIRSA	S-NPP	75.20234	29.69815	13:00:00	D	9.00
73	SIRSA	SIRSA	S-NPP	75.17080	29.74536	13:00:00	D	5.60
74	SIRSA	SIRSA	S-NPP	75.17297	29.74797	13:00:00	D	9.90
75	SIRSA	SIRSA	AQUA	75.21900	29.77300	14:10:00	D	23.60
76	YAMUNANAGAR	CHHACHHRAULII	S-NPP	77.41966	30.17852	13:00:00	D	7.70
77	YAMUNANAGAR	CHHACHHRAULII	S-NPP	77.47359	30.20629	13:00:00	D	6.60
78	YAMUNANAGAR	CHHACHHRAULII	S-NPP	77.42670	30.21822	13:00:00	D	2.70
79	YAMUNANAGAR	CHHACHHRAULII	S-NPP	77.42060	30.22496	13:00:00	D	5.40
80	YAMUNANAGAR	JAGADHRI	S-NPP	77.27597	30.06614	13:00:00	D	2.80
81	YAMUNANAGAR	JAGADHRI	S-NPP	77.23032	30.19022	13:00:00	D	7.10
82	YAMUNANAGAR	JAGADHRI	S-NPP	77.36635	30.23094	13:00:00	D	5.20
83	YAMUNANAGAR	JAGADHRI	S-NPP	77.13898	30.24496	13:00:00	D	3.20
84	YAMUNANAGAR	JAGADHRI	S-NPP	77.18829	30.26352	13:00:00	D	4.60
85	YAMUNANAGAR	JAGADHRI	S-NPP	77.27775	30.26433	13:00:00	D	5.90
86	YAMUNANAGAR	JAGADHRI	S-NPP	77.34287	30.40413	13:00:00	D	3.60

Details of residue burning events in Uttar Pradesh on 24-Oct-2020

S. No.	District	Tehsil / Block	Satellite	Longitude	Latitude	Time (IST)	Day / Night	Fire Power (W/m ²)
1	ALIGARH	KHAIR	S-NPP	77.76255	27.95276	01:42:00	N	0.90
2	ALIGARH	KHAIR	S-NPP	77.52698	27.96875	13:00:00	D	7.80
3	ALIGARH	KOL	S-NPP	78.35178	27.76874	13:00:00	D	3.70
4	BADAUN	BADAUN	S-NPP	79.18813	28.00677	01:42:00	N	0.70
5	BAHRAICH	KAISARGANJ	TERRA	81.56400	27.19900	11:00:00	D	8.00
6	BAHRAICH	MAHASI	S-NPP	81.41265	27.70687	12:54:00	D	7.20
7	BAHRAICH	NANPARA	S-NPP	81.63705	27.78424	01:42:00	N	1.00
8	BAHRAICH	NANPARA	METOP-1	81.59736	27.84650	20:52:00	N	7.00
9	BAHRAICH	NANPARA	S-NPP	81.61406	27.87921	01:42:00	N	1.00
10	BAHRAICH	NANPARA	S-NPP	81.68493	27.89820	01:42:00	N	0.90
11	BALRAMPUR	BALRAMPUR	S-NPP	82.09803	27.59831	01:42:00	N	1.80
12	BARABANKI	FATEHPUR	S-NPP	81.25386	27.15849	01:42:00	N	0.60
13	BARABANKI	FATEHPUR	S-NPP	81.14919	27.20156	01:42:00	N	0.50
14	BARABANKI	NAWABGANJ	S-NPP	81.27255	26.81403	01:42:00	N	0.40
15	BAREILLY	MIRGANJ	S-NPP	79.30142	28.49019	01:42:00	N	0.90
16	ETAWAH	BHARTHNA	S-NPP	79.24619	26.61892	01:42:00	N	0.50
17	ETAWAH	BHARTHNA	S-NPP	79.24944	26.61905	01:42:00	N	0.30
18	FAIZABAD	BIKAPUR	S-NPP	82.02694	26.62656	12:54:00	D	1.70
19	FAIZABAD	MILKIPUR	S-NPP	81.75415	26.57967	12:54:00	D	3.90
20	FATEHPUR	FATEHPUR	S-NPP	80.71510	25.95232	12:54:00	D	1.90
21	FATEHPUR	KHAGA	S-NPP	81.18848	25.82377	12:54:00	D	1.20
22	GAUTAMBUDHNAGAR	JEVAR	S-NPP	77.63229	28.15683	13:00:00	D	2.10
23	HARDOI	BILGRAM	S-NPP	80.21155	27.01170	01:42:00	N	0.70
24	HARDOI	BILGRAM	S-NPP	80.09928	27.06501	12:54:00	D	2.80
25	HARDOI	SHAHABAD	S-NPP	80.07773	27.77264	01:42:00	N	0.50
26	JALAUN	MADHOGARH	S-NPP	79.27333	26.41780	12:54:00	D	2.40
27	JHANSI	MAURANIPUR	S-NPP	79.21272	25.32179	01:42:00	N	0.50
28	JHANSI	MOTH	S-NPP	78.85960	25.73768	01:42:00	N	0.50
29	JHANSI	MOTH	S-NPP	78.85094	25.79295	01:42:00	N	0.60
30	JHANSI	MOTH	S-NPP	78.91425	25.80940	01:42:00	N	1.10

31	JHANSI	TAHRAULI	S-NPP	78.76179	25.58522	12:54:00	D	3.40
32	KANNAUJ	TIRWA	S-NPP	79.62944	26.89765	01:42:00	N	1.40
33	KANPUR	KANPUR NAGAR	S-NPP	80.15682	26.48810	12:54:00	D	3.70
34	KANPUR DEHAT	SIKANDRA	S-NPP	79.66609	26.30882	01:42:00	N	0.80
35	KAUSHAMBI	SIRATHU	S-NPP	81.32376	25.75781	12:54:00	D	4.00
36	KHERI	MOHMADI	S-NPP	80.27193	27.89116	01:42:00	N	0.80
37	MAHOBAB	KULPAHAR	TERRA	79.38400	25.41600	11:00:00	D	7.80
38	MAINPURI	BHOGAON	S-NPP	79.17165	27.04241	01:42:00	N	1.80
39	MATHURA	CHHATA	S-NPP	77.33237	27.77876	01:42:00	N	0.40
40	MATHURA	MAHABAN	S-NPP	77.83496	27.47985	01:42:00	N	0.70
41	MATHURA	MAHABAN	S-NPP	77.84070	27.48299	01:42:00	N	1.00
42	MATHURA	MAHABAN	S-NPP	77.84644	27.48612	01:42:00	N	1.00
43	MATHURA	MAT	S-NPP	77.78425	27.73547	01:42:00	N	1.30
44	MATHURA	MAT	S-NPP	77.77903	27.73612	01:42:00	N	1.30
45	MATHURA	MAT	S-NPP	77.77876	27.82772	01:42:00	N	0.50
46	MATHURA	MATHURA	S-NPP	77.63842	27.32394	01:42:00	N	1.30
47	PILHIBHIT	PURANPUR	S-NPP	80.19756	28.67110	01:42:00	N	0.50
48	RAMPUR	BILASPUR	S-NPP	79.25650	28.80580	13:00:00	D	2.80
49	RAMPUR	BILASPUR	S-NPP	79.24333	28.82813	01:42:00	N	0.40
50	RAMPUR	BILASPUR	S-NPP	79.27081	28.85009	01:42:00	N	0.40
51	RAMPUR	BILASPUR	S-NPP	79.25936	28.86623	01:42:00	N	2.80
52	RAMPUR	BILASPUR	S-NPP	79.17927	28.88883	01:42:00	N	0.40
53	RAMPUR	BILASPUR	S-NPP	79.33237	28.93698	13:00:00	D	3.00
54	RAMPUR	BILASPUR	S-NPP	79.25749	28.95559	01:42:00	N	0.90
55	RAMPUR	SUAR	S-NPP	79.08794	29.14356	13:00:00	D	5.90
56	SHAMLI	KAIRANA	S-NPP	77.15509	29.65173	13:00:00	D	2.70
57	SHRAWASTI	IKAUNA	S-NPP	81.93714	27.61306	01:42:00	N	0.80
58	SITAPUR	LAHARPUR	TERRA	80.84900	27.68300	11:00:00	D	5.10
59	SITAPUR	MAHMUDABAD	S-NPP	81.12056	27.45188	01:42:00	N	0.60
60	SITAPUR	SITAPUR	S-NPP	80.71464	27.65757	12:54:00	D	3.60
61	SULTANPUR	KADIRPUR	S-NPP	82.56681	26.17816	12:54:00	D	2.20

The study used images received from following Satellites at IARI Satellite Ground Station

S. No.	Satellite Name	Sensor	Resolution (meter)	Day / Night Passes
1.	Suomi NPP	VIIRS	375 / 750	Both
2.	Terra	MODIS	1000	Both
3.	Aqua	MODIS	1000	Both
4.	NOAA – 18	AVHRR	1000	Night
5.	NOAA – 19	AVHRR	1000	Night
6.	Metop - 1	AVHRR	1000	Night
7.	Metop - 2	AVHRR	1000	Night

Study Team

ICAR – HQ	Dr K. Alagusundaram	DDG (AG. ENGG.)	ddgengg@icar.org.in
	Dr S. Bhasker	ADG (NRM)	adgagroandaf@gmail.com
	Dr K.K. Singh	ADG (AG. ENGG)	kanchansingh044@gmail.com
ICAR - IARI	Dr V.K. Sehgal	Professor & Nodal Scientist	iaricreams@gmail.com
	Dr Rajkumar Dhakar	Scientist	raidhakar.iari@gmail.com
	Mr Rakeswer Verma	Chief Technical Officer	rakeshwar.verma@icar.gov.in
	Mr Mohd Jahangir	Lab Assistant (KRISHI)	mjahangir198@gmail.com
ICAR - ATARI	Dr Rajbir Singh	Director ATARI (Zone-I) Ludhiana	rajbirsingh.zpd@gmail.com
	Dr S.K. Singh	Director ATARI (Zone-II) Jodhpur	sushilsinghiipr@yahoo.co.in
	Dr Atar Singh	Director ATARI (Zone-III) Kanpur	zpdicarkanpur@gmail.com
ICAR - IASRI	Dr Rajender Parsad	Director IASRI	rajender.parsad@icar.gov.in

Softcopy of this report and latest statistics can be seen on <http://creams.iari.res.in>

GIS Maps of fire events can be visualized online on ICAR KRISHI Geoportal website: <http://geoportal.icar.gov.in:8080/geoexplorer/composer/>

(Part of KRISHI Portal: <https://krishi.icar.gov.in> initiative)
