

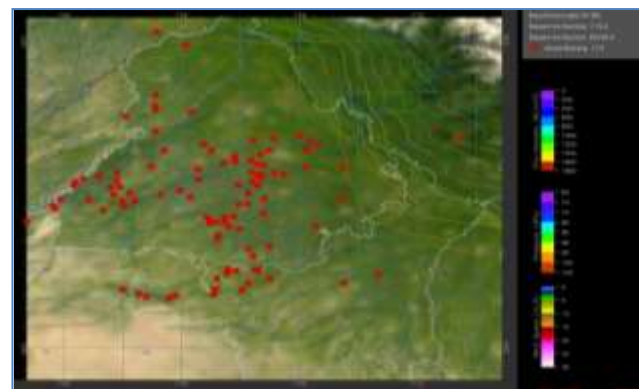
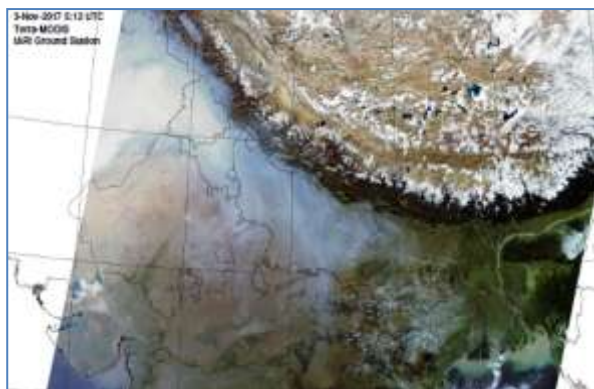


MONITORING PADDY RESIDUE BURNING IN NORTH INDIA USING SATELLITE REMOTE SENSING DURING 2020

**Bulletin
No. 19**

**Events Date:
19-Oct-2020**

**Issued on:
20-Oct-2020**



Prepared by:

**Consortium for Research on Agroecosystem Monitoring and Modeling from Space (CREAMS) Laboratory,
Division of Agricultural Physics, ICAR – Indian Agricultural Research Institute, New Delhi – 110012**

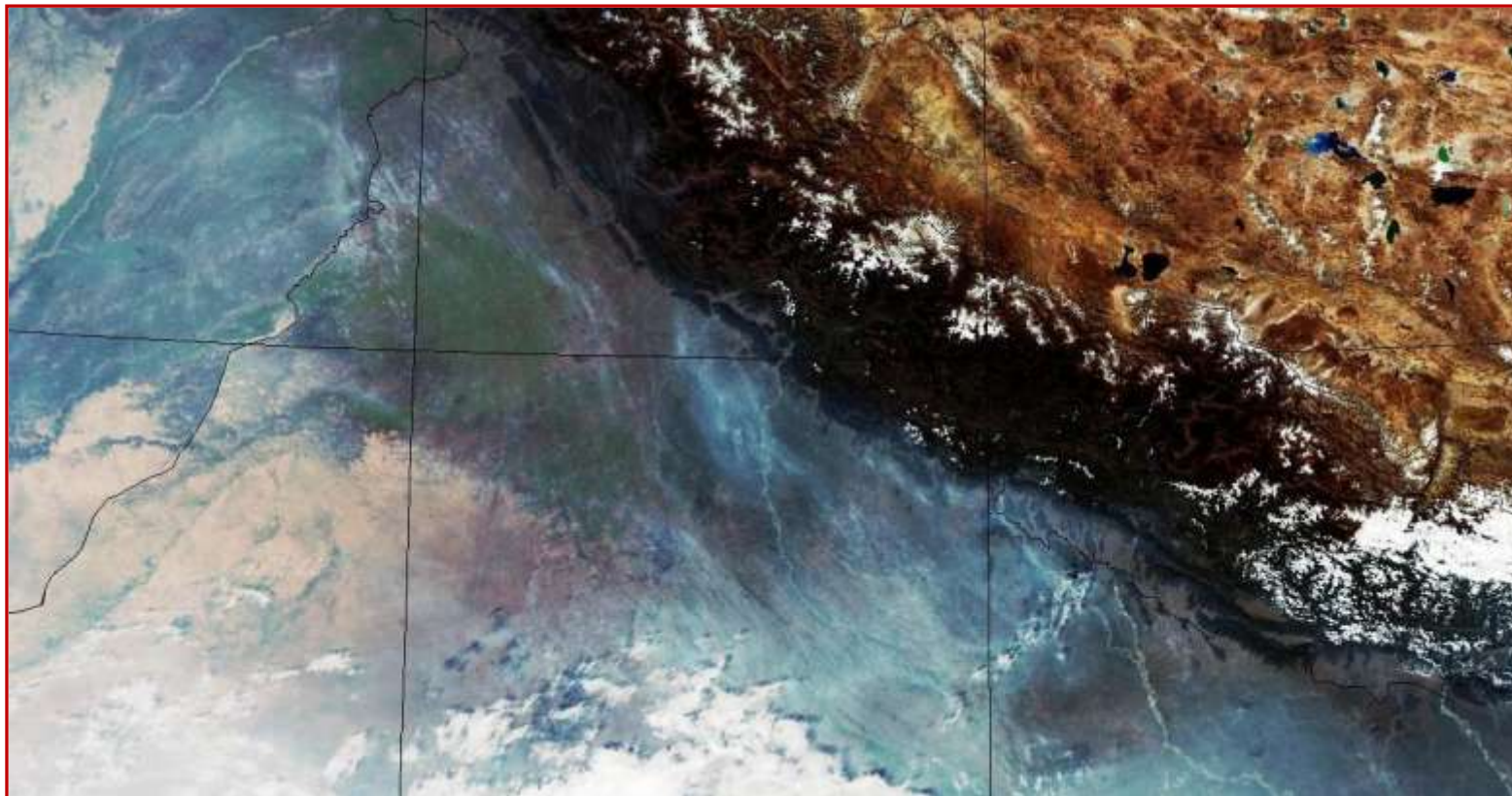
<http://creams.iari.res.in>



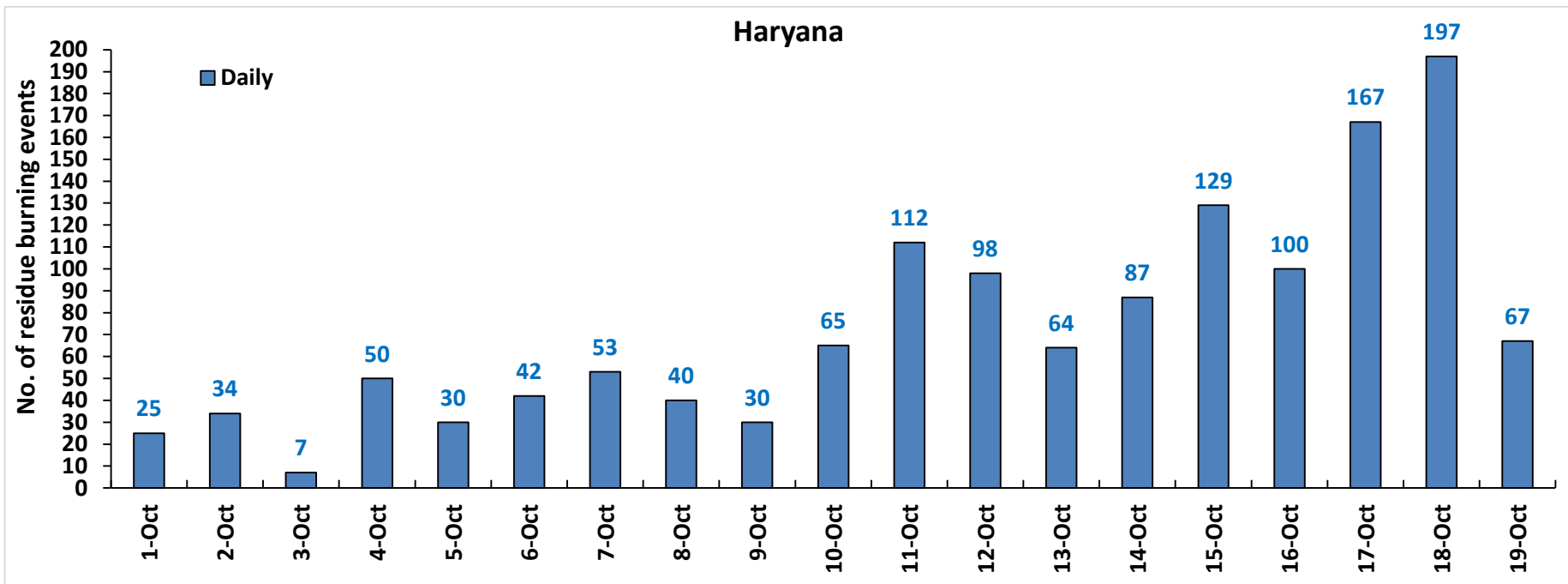
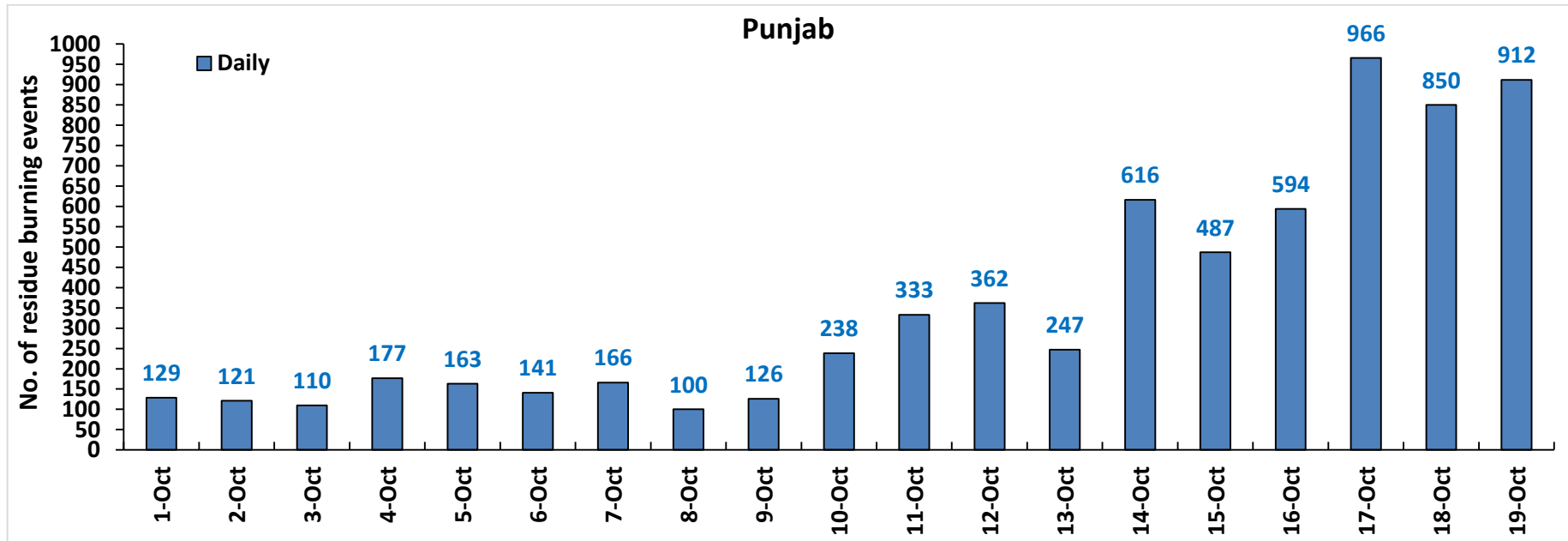
Highlights for 19-October-2020

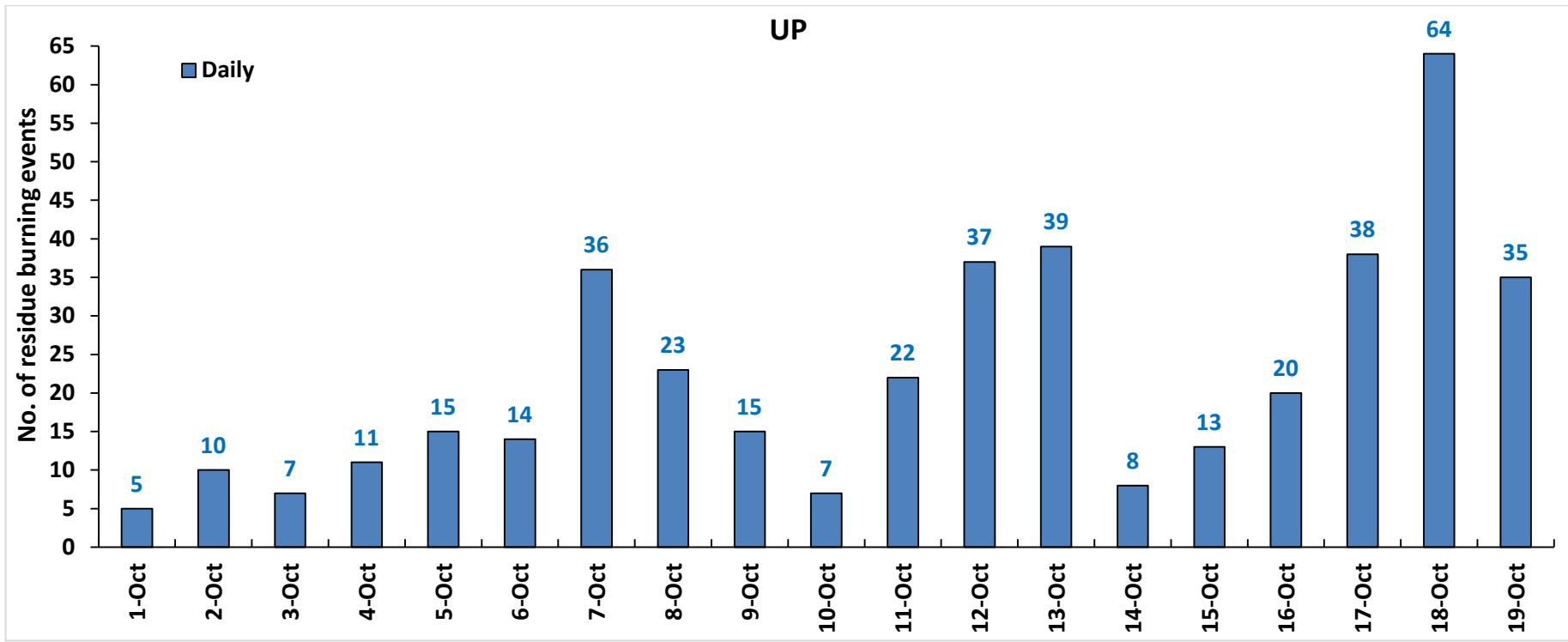
- Satellites detected **1014** residue burning events in the three study States on 19-Oct-2020.
- The state wise events detected on **19-Oct-2020** were **912** in Punjab, **67** in Haryana and **35** in UP.
- The number of events has decreased from **1111** on **18-Oct-2020** to **1014** on **19-Oct-2020** in the three states.
- Tarn Taran in Punjab, Kurukshetra in Haryana and Kanpur Dehat in UP reported the highest number of events on **19-Oct-2020**.
- Total **8654** burning events were detected in the three States between **01-Oct-2020** and **19-Oct-2020**, which are distributed as **6838**, **1397** and **419** in Punjab, Haryana and UP, respectively.
- In Haryana and UP, the cumulative number of burning events between **1-Oct** and **19-Oct 2020** were lower than in **2019**, while in Punjab the cumulative number of events were more than in **2019**.

S-NPP (VIIRS) Satellite image of North India Acquired on 19-Oct-2020 at 12:48 by IARI Ground Station



Temporal distribution of residue burning events for the three study States in 2020

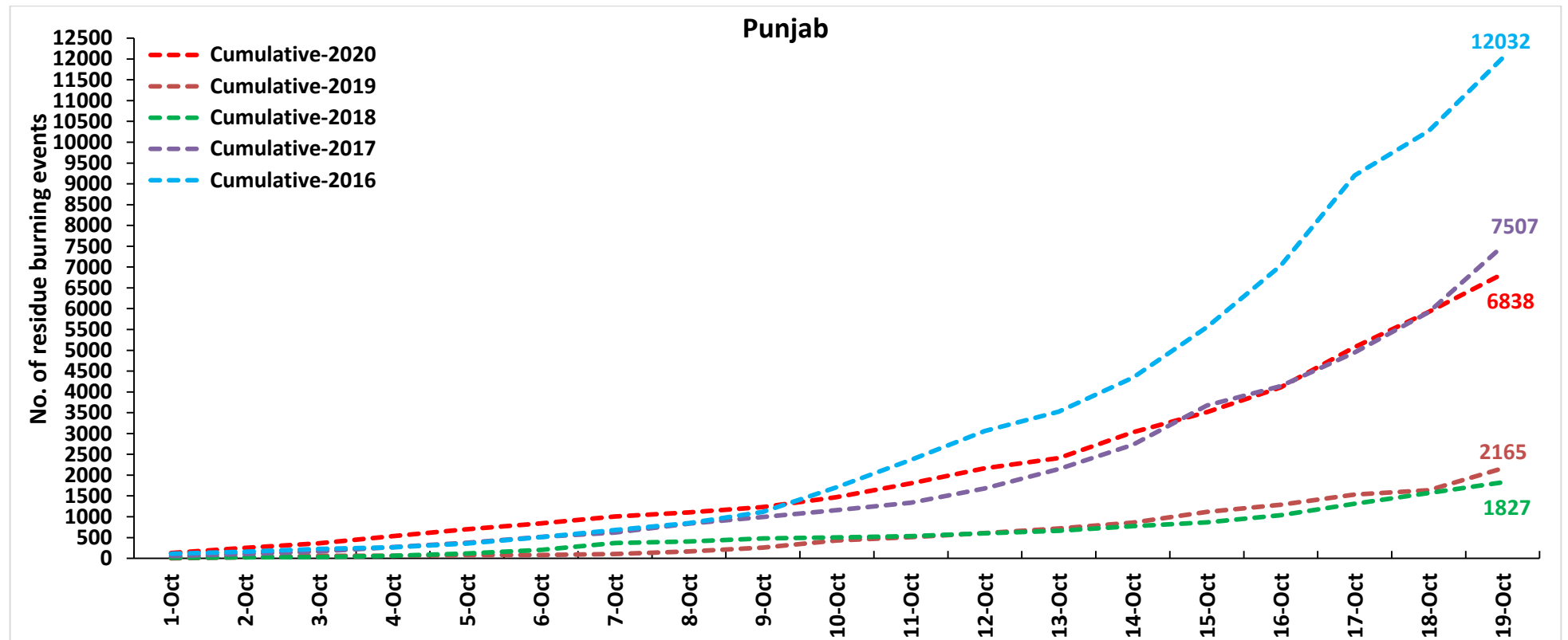


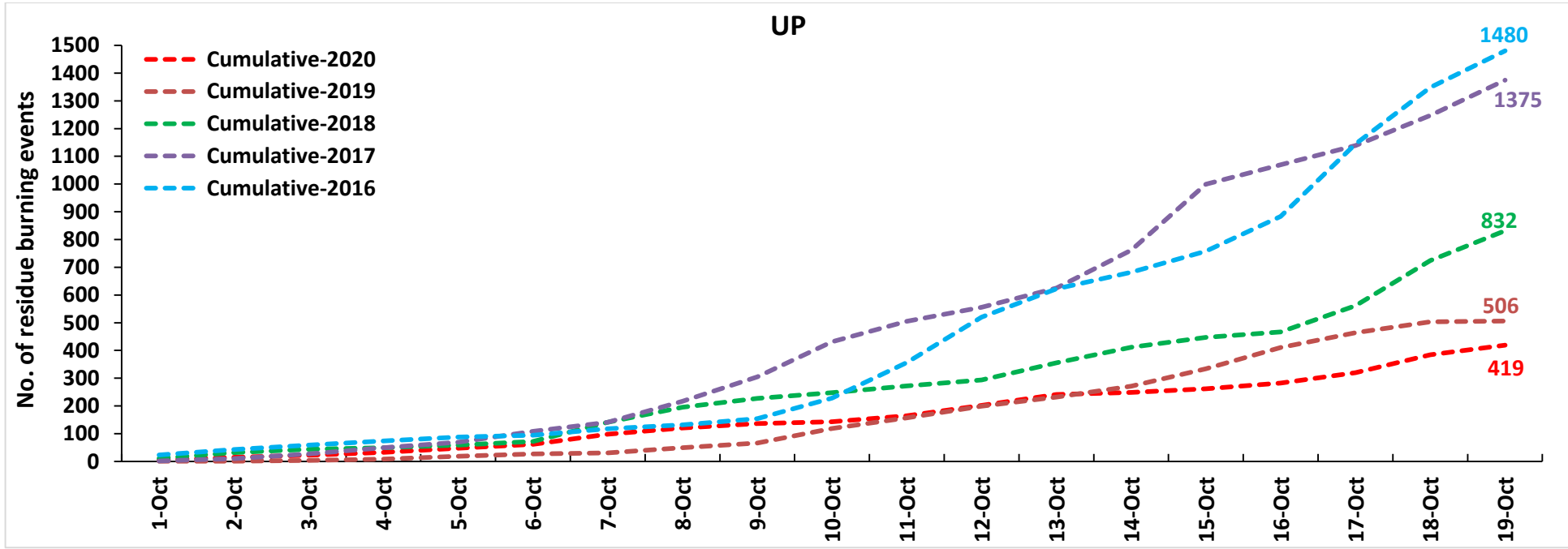
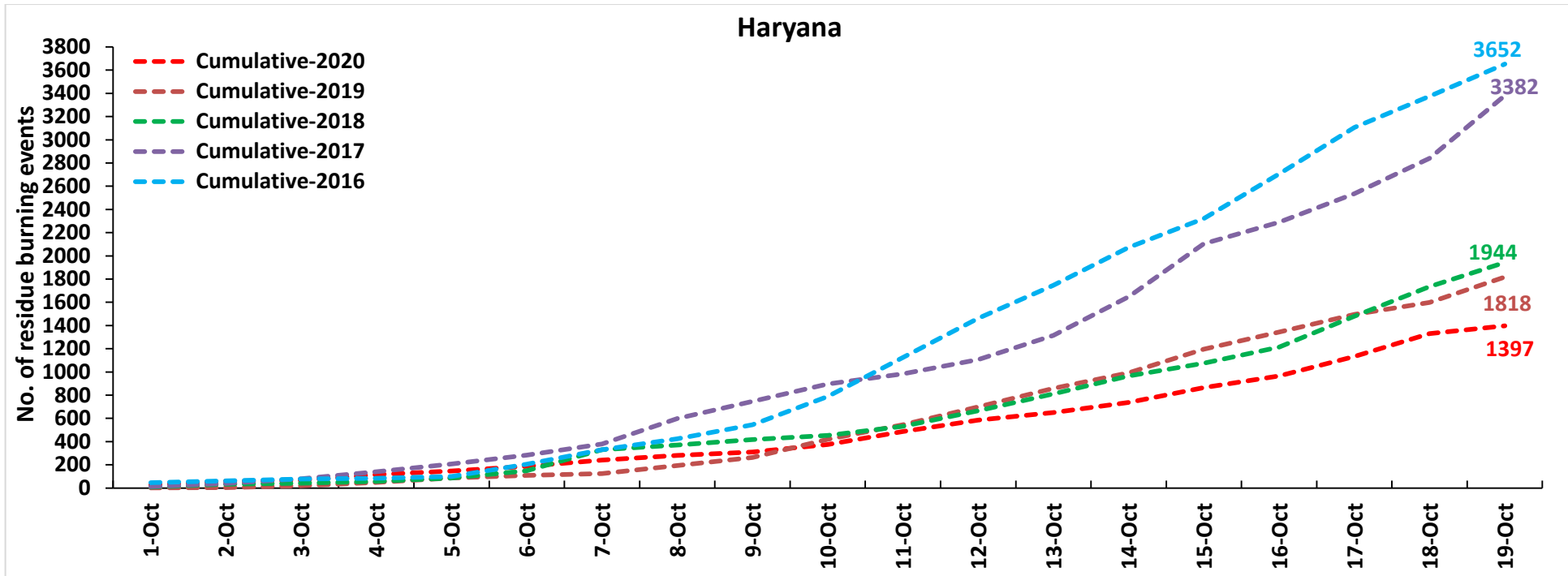


Comparison of residue burning events in current year (2020) with previous years (2019, 2018, 2017 & 2016) for the three study States

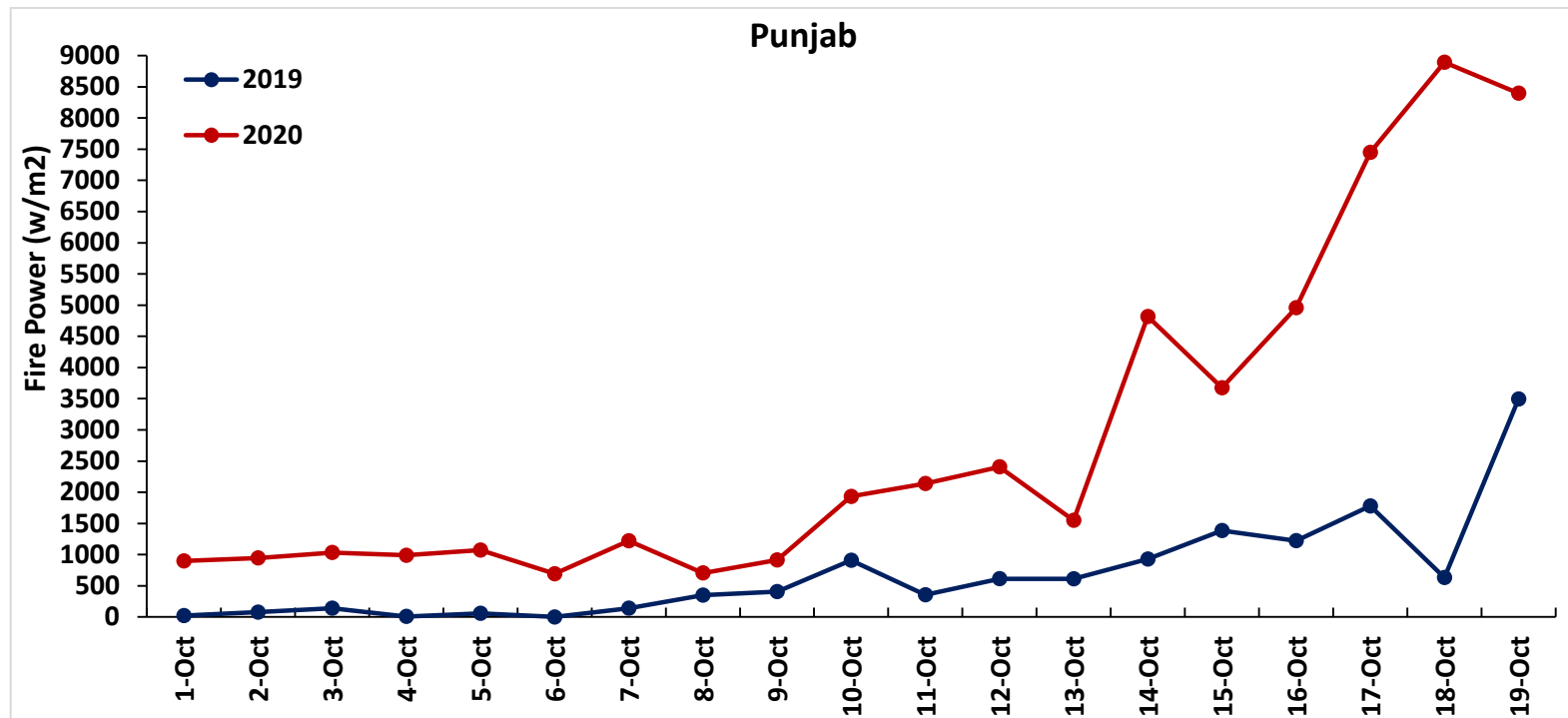
(01-Oct to 19-Oct)

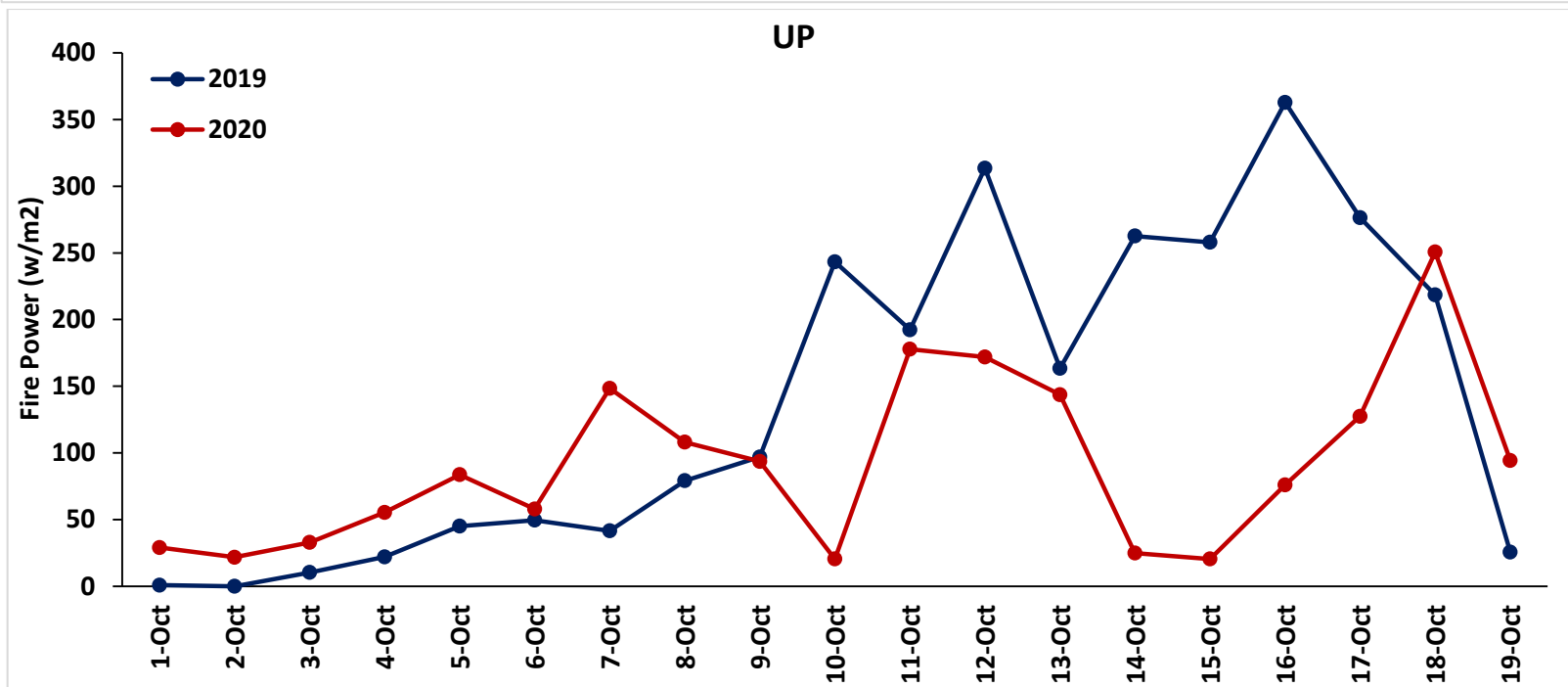
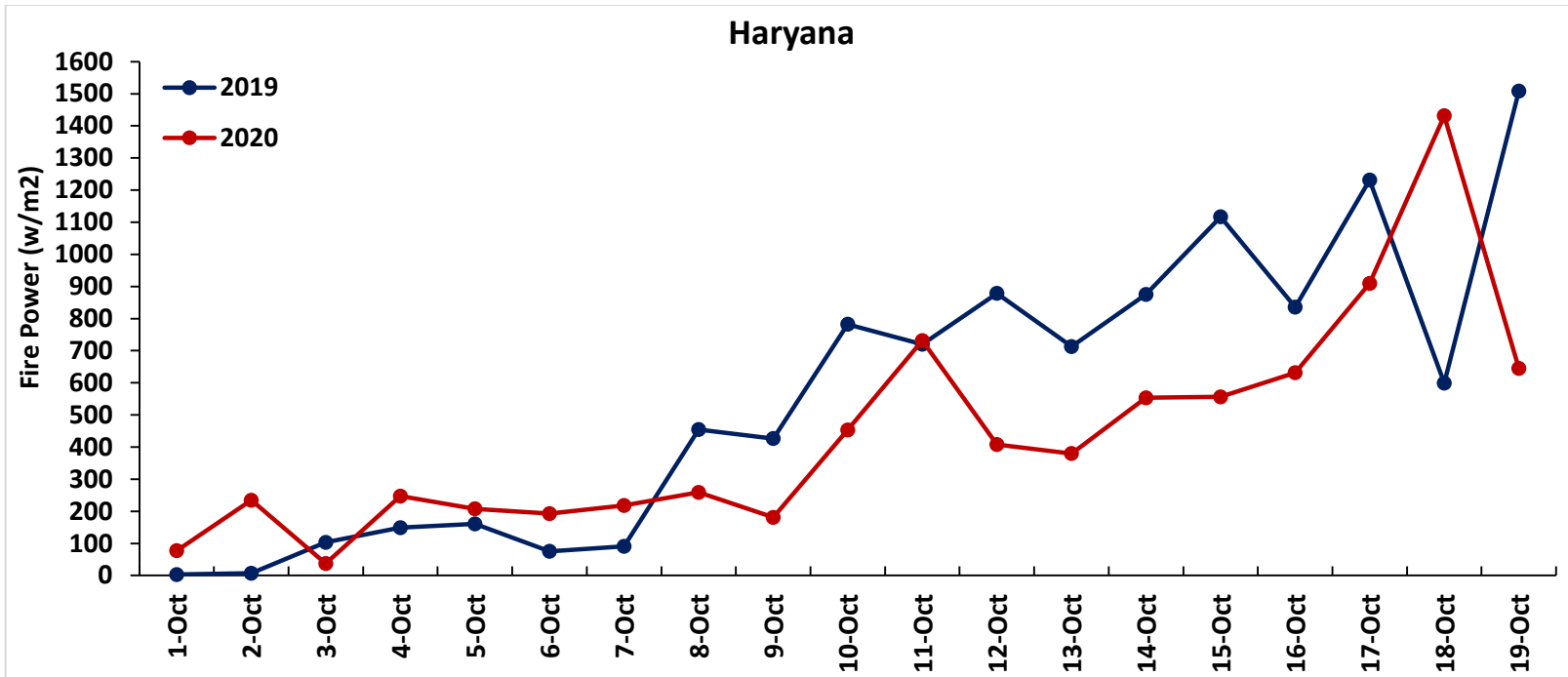
Punjab



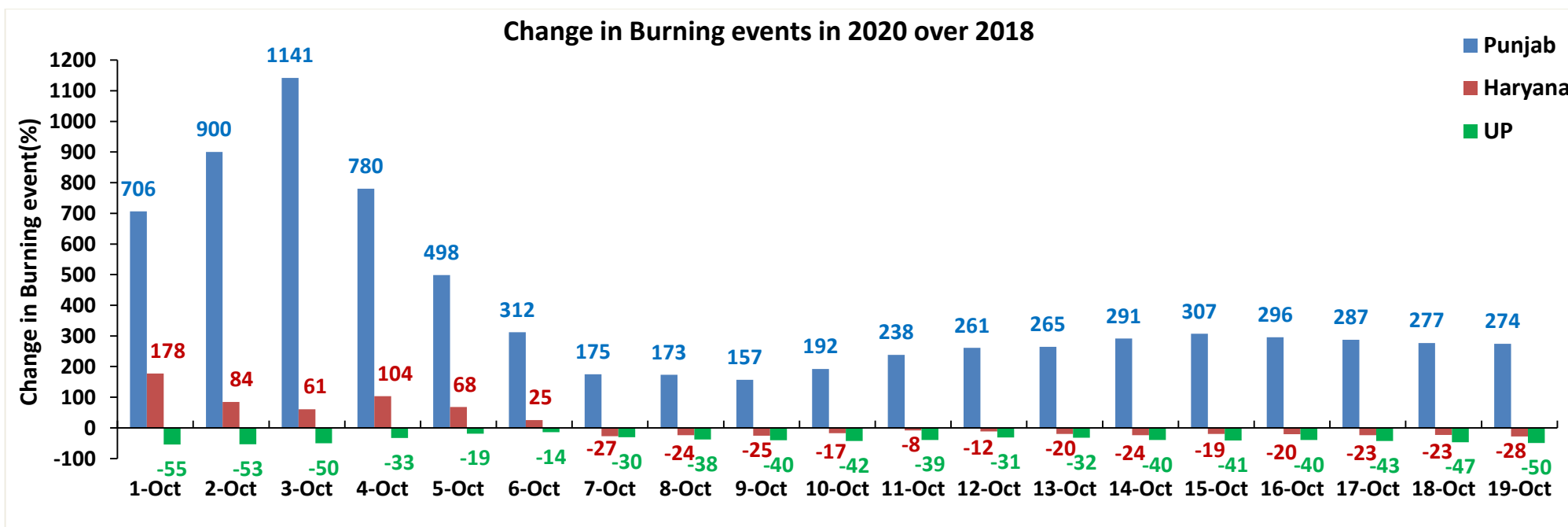
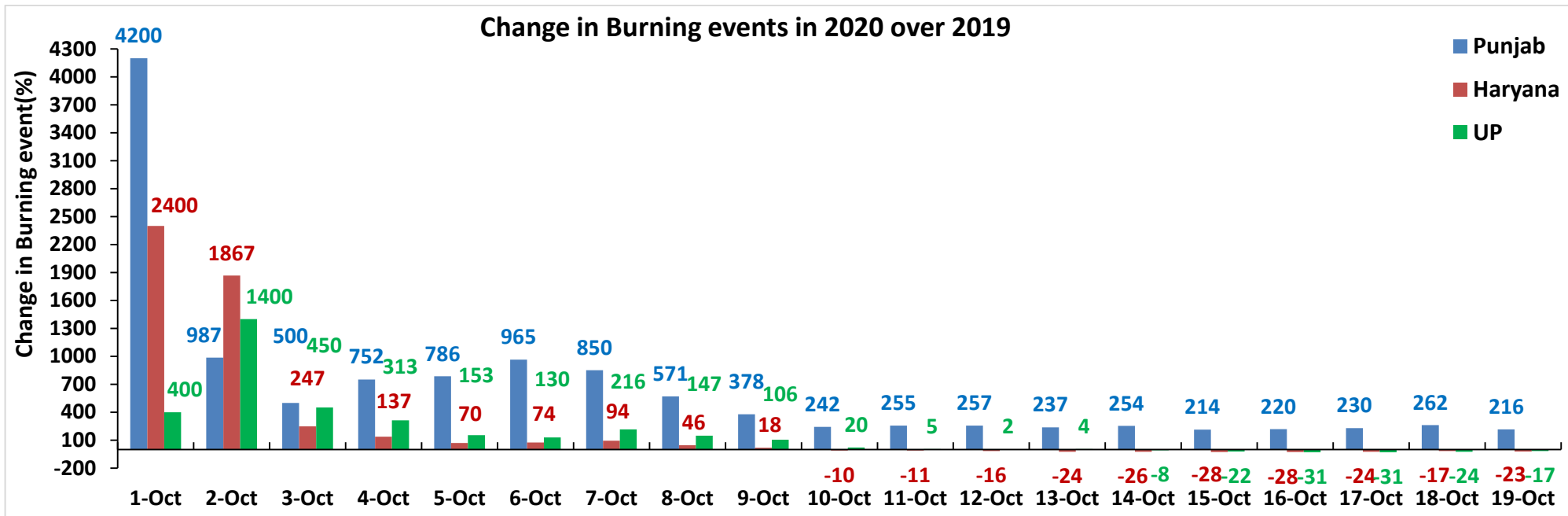


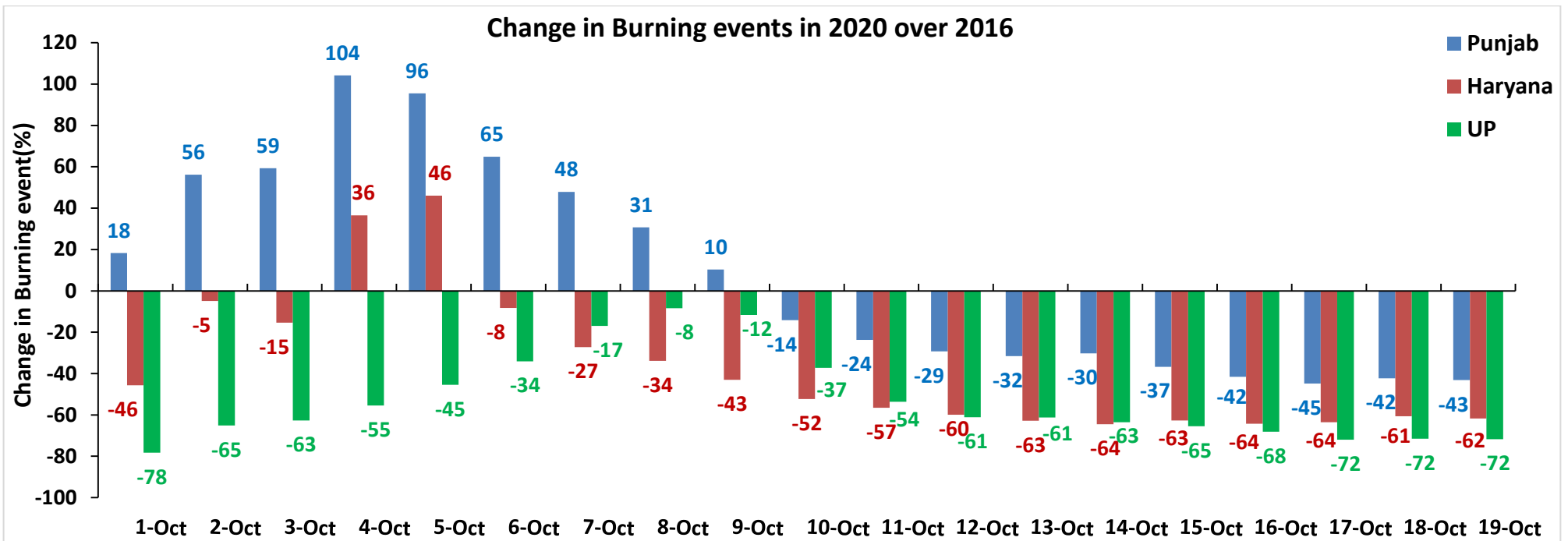
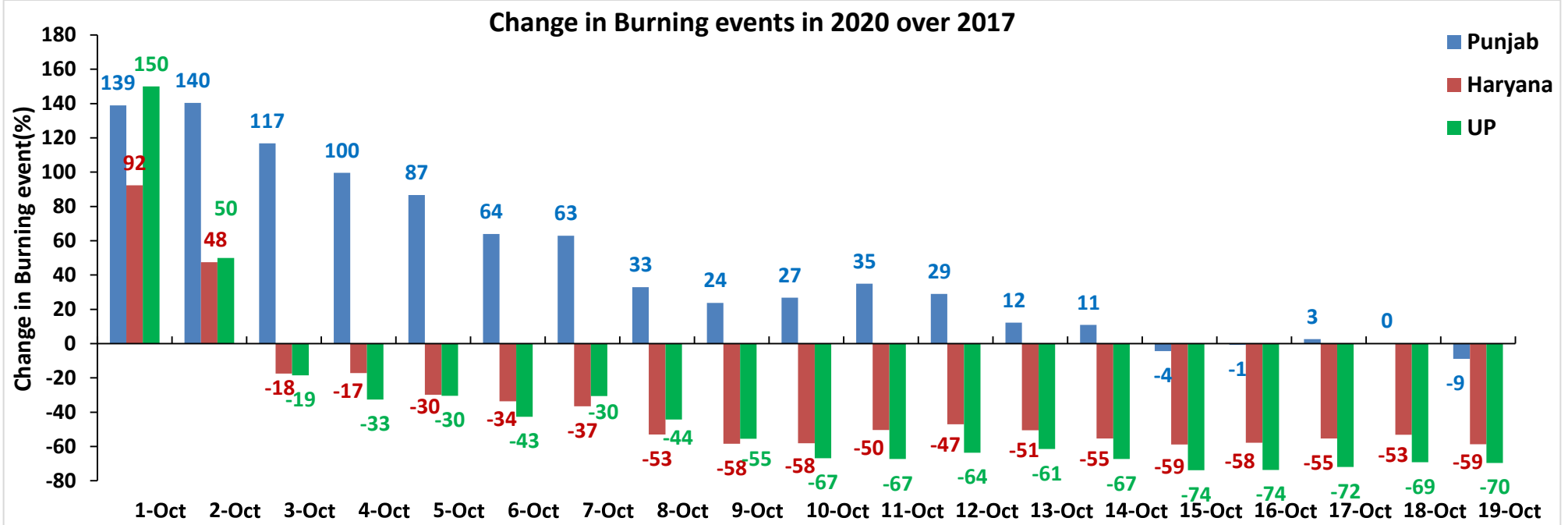
Comparison of Fire Intensity of residue burning events in current year (2020) with previous year (2019)
For the three study States
(01-Oct to 19-Oct)



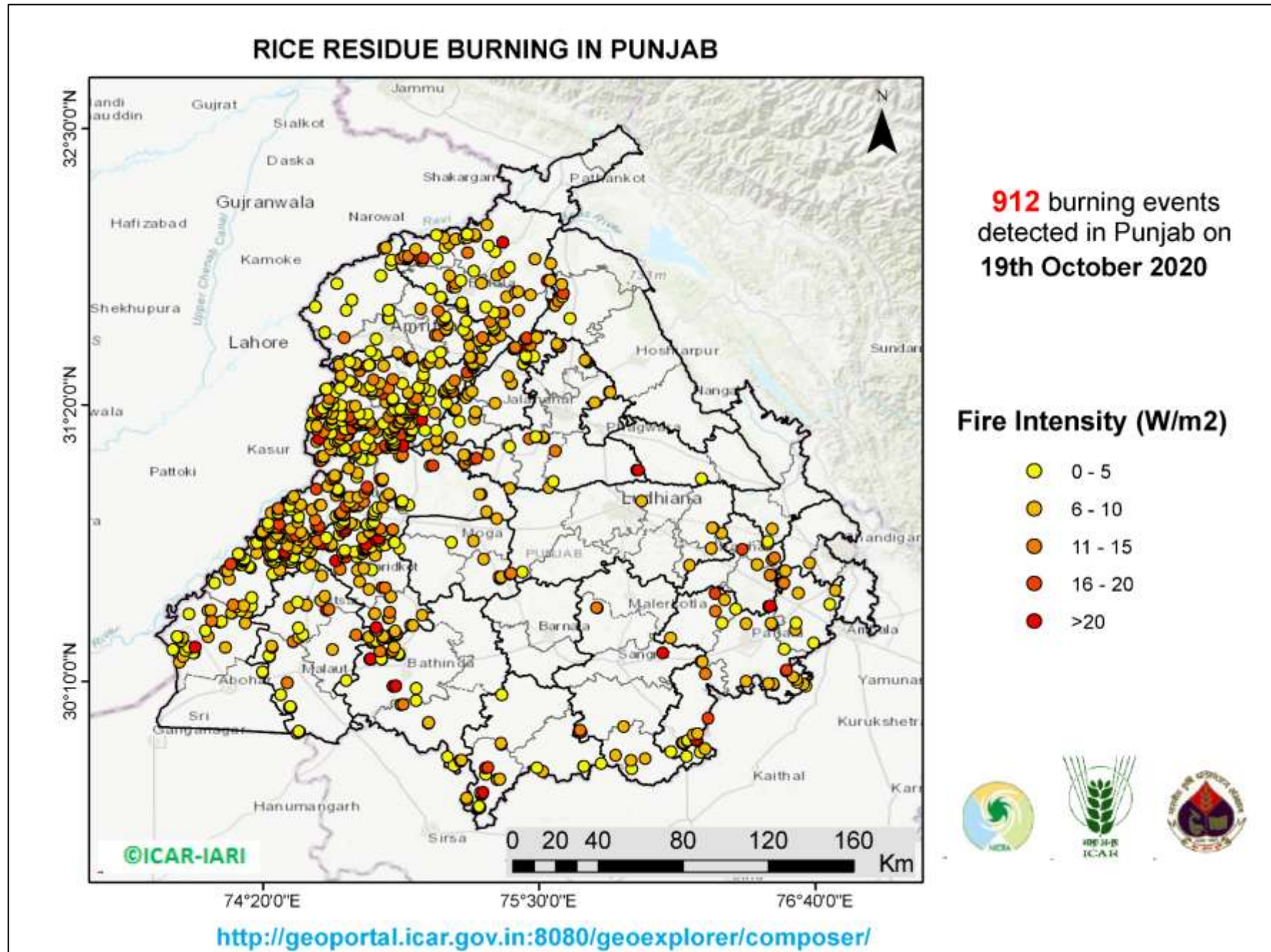


Percent Change in Burning events in 2020 over 2019, 2018, 2017 and 2016 (Daily Cumulative)

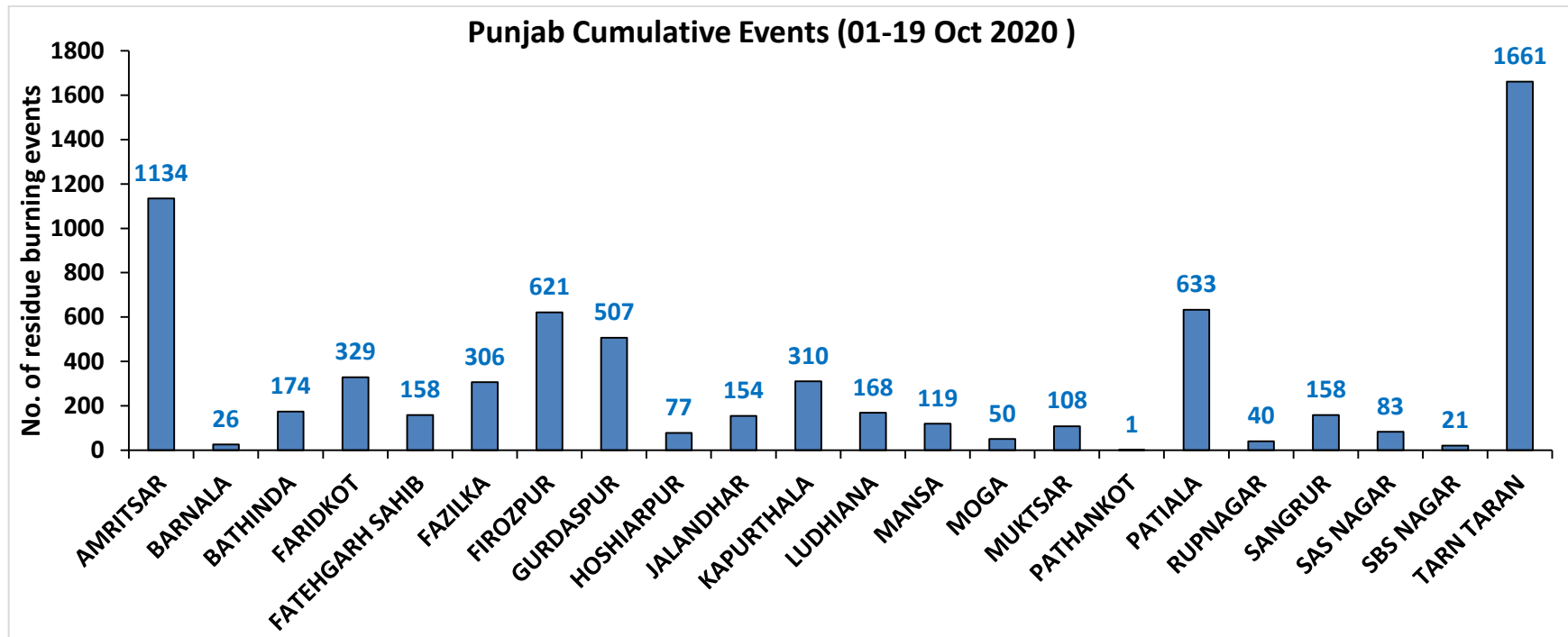
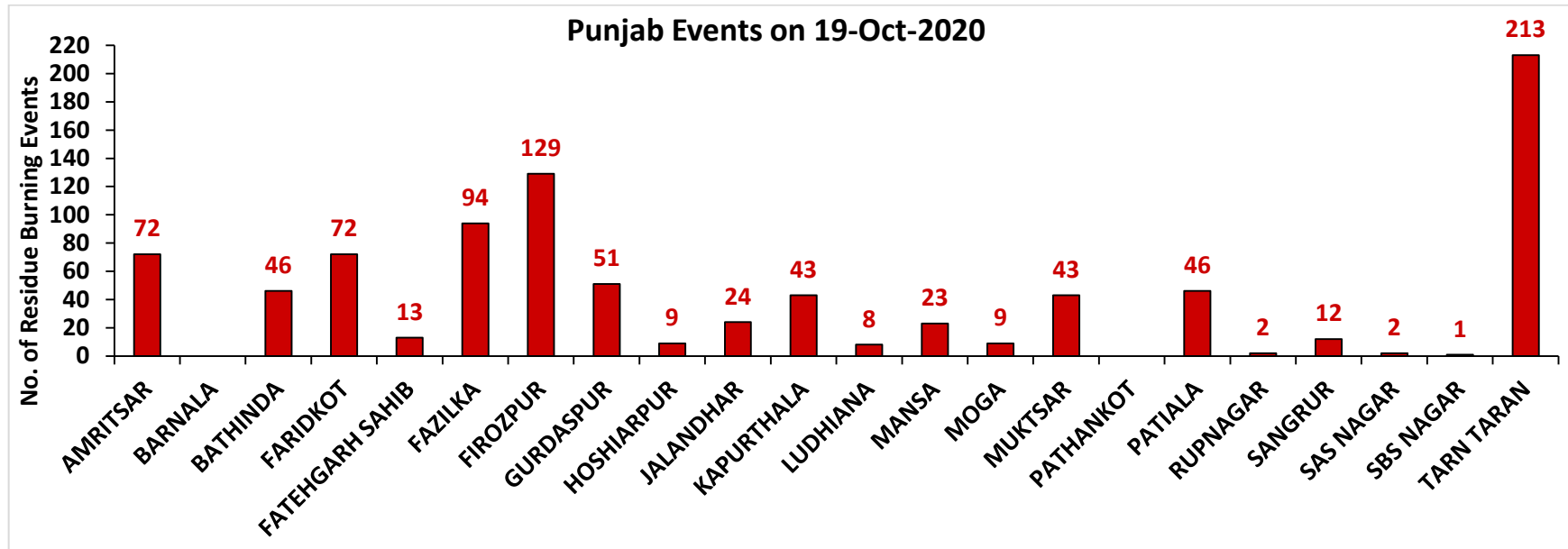




(a) Punjab

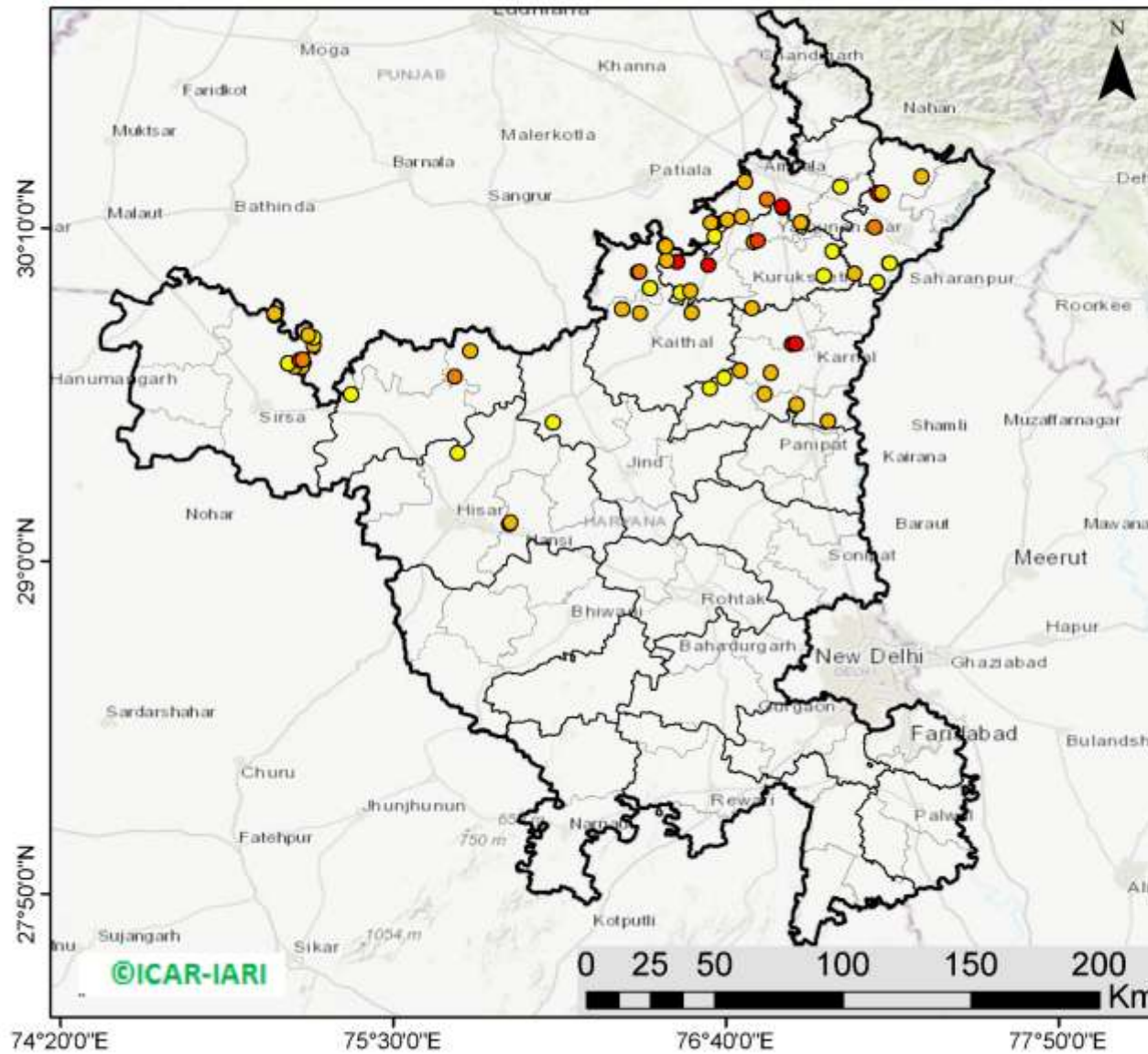


District-wise number of residue burning events in Punjab (01-19 Oct 2020)



(b) Haryana

RICE RESIDUE BURNING IN HARYANA



67 burning events detected in Haryana on 19th October 2020

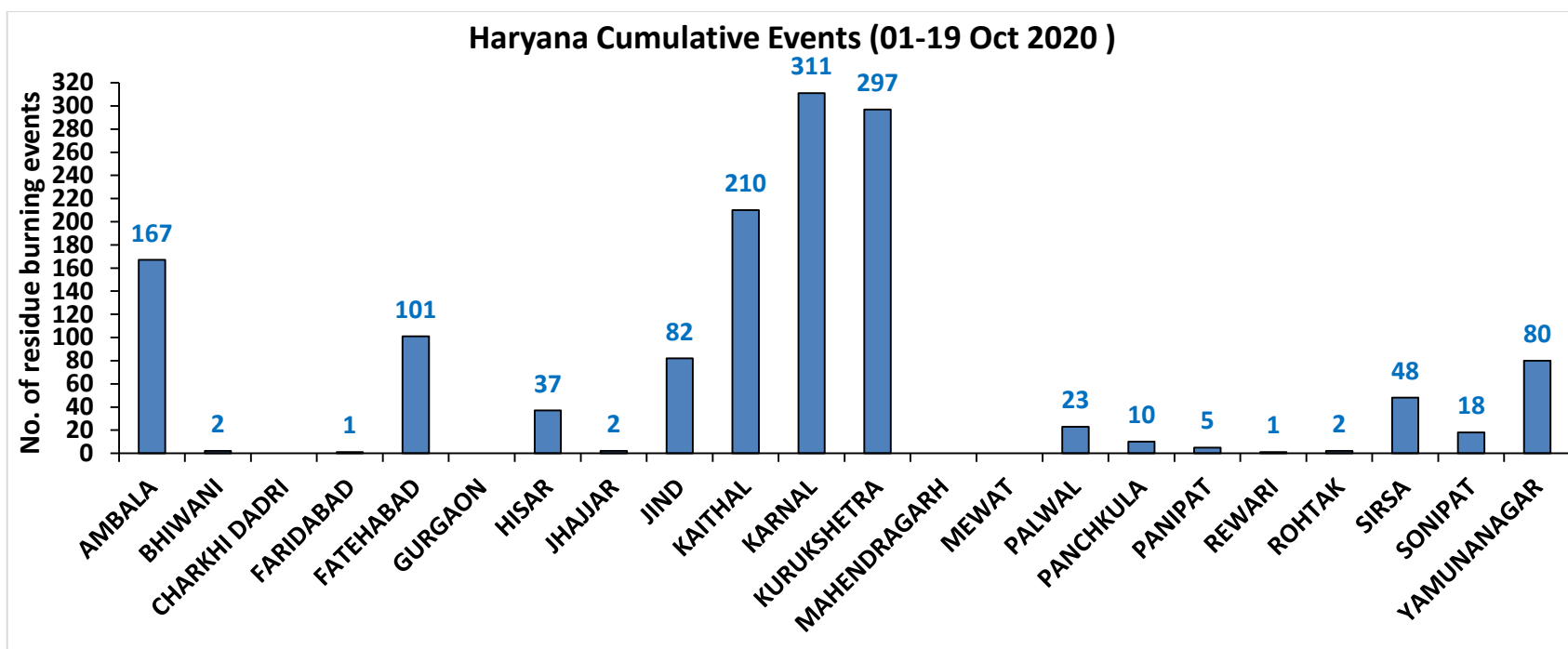
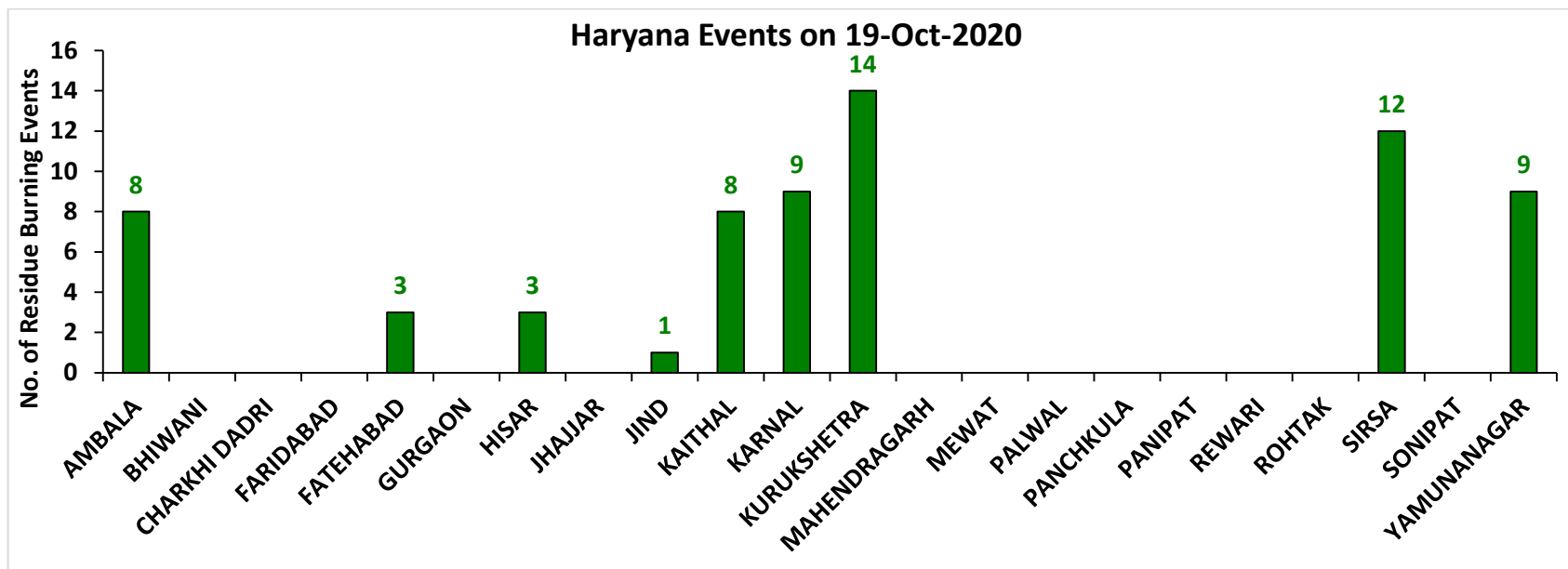
Fire Intensity (W/m²)

- 0 - 5
- 6 - 10
- 11 - 15
- 16 - 20
- >20



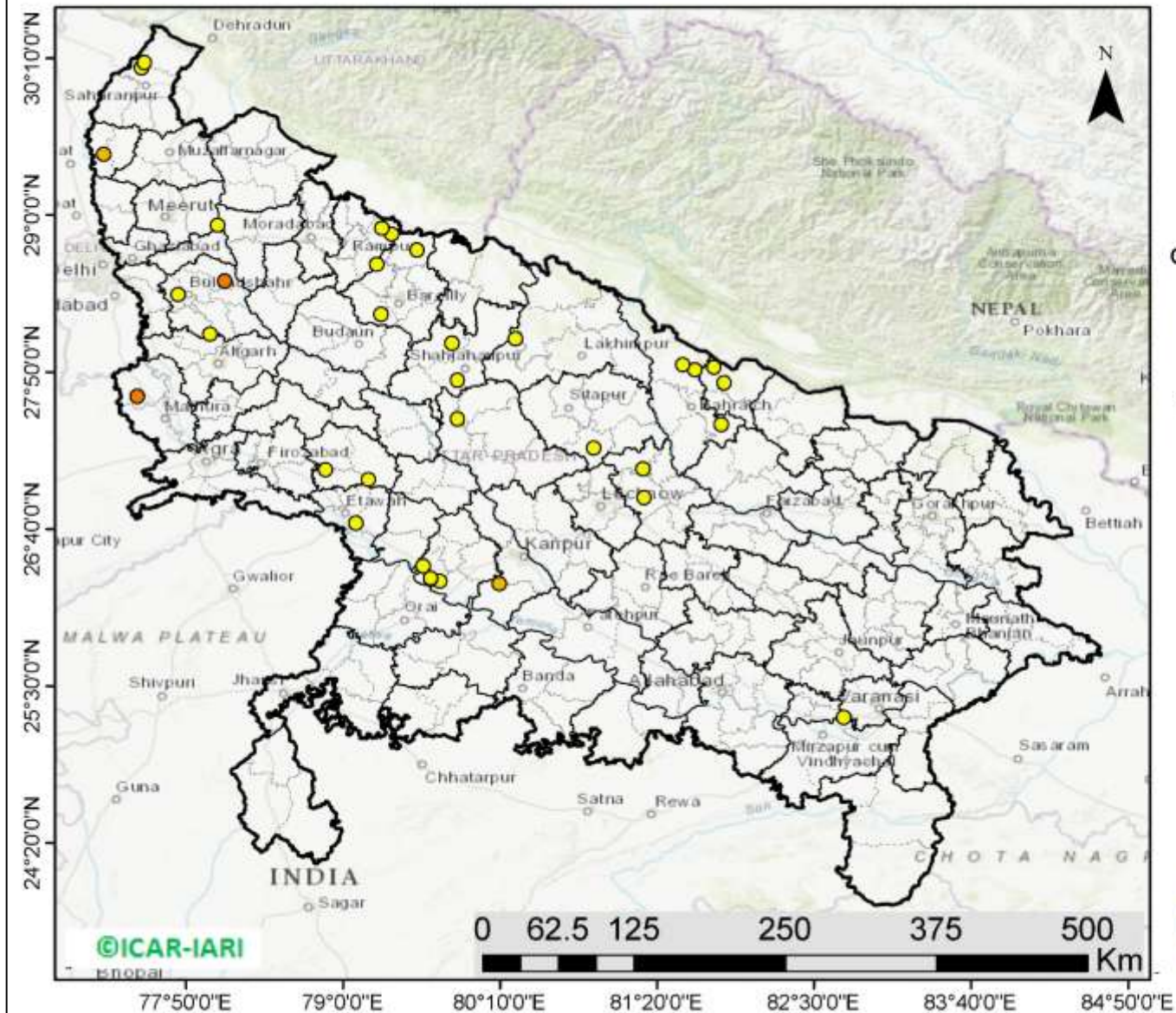
<http://geoportal.icar.gov.in:8080/geoexplorer/composer/>

District-wise number of residue burning events in Haryana (01-19 Oct 2020)



(c) Uttar Pradesh

RICE RESIDUE BURNING IN UTTAR PRADESH



35 burning events detected in Uttar Pradesh on 19th October 2020

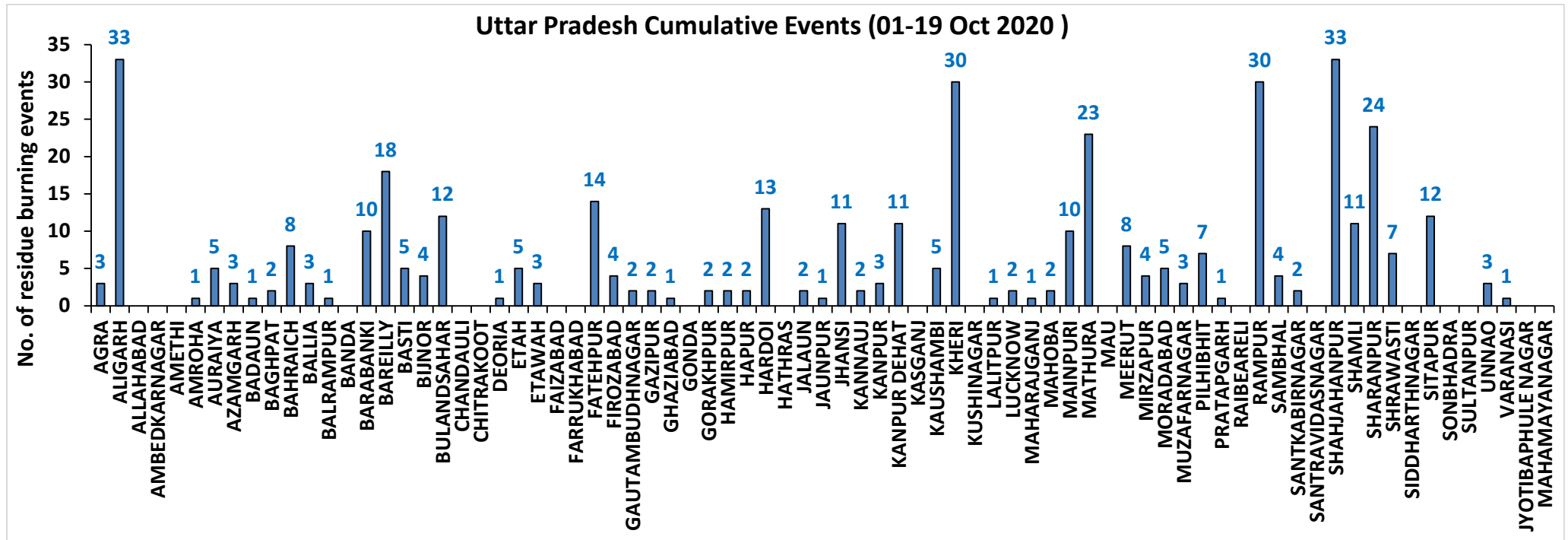
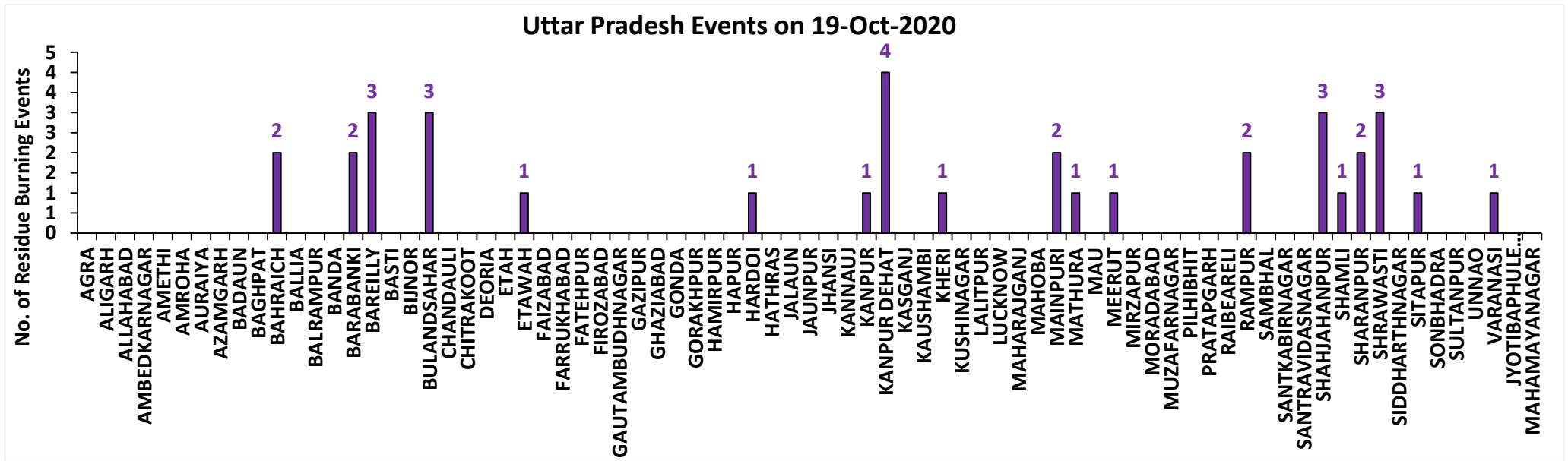
Fire Intensity (W/m²)

- 0 - 5
- 6 - 10
- 11 - 15
- 16 - 20
- >20



<http://geoportal.icar.gov.in:8080/geoexplorer/composer/>

District-wise number of residue burning events in Uttar Pradesh (01-19 Oct 2020)



State-wise and date-wise number of residue burning events detected in 2016, 2017, 2018, 2019 and 2020
(Period: 01-19 October)

Date	Punjab					Haryana					UP					Total				
	2020	2019	2018	2017	2016	2020	2019	2018	2017	2016	2020	2019	2018	2017	2016	2020	2019	2018	2017	2016
01-Oct	129	3	16	54	109	25	1	9	13	46	5	1	11	2	23	159	5	36	69	178
02-Oct	121	20	9	50	51	34	2	23	27	16	10	0	21	8	20	165	22	53	85	87
03-Oct	110	37	4	62	66	07	16	9	40	16	07	3	12	17	16	124	56	25	119	98
04-Oct	177	3	32	103	37	50	30	16	60	7	11	4	5	22	15	238	37	53	185	59
05-Oct	163	16	56	106	95	30	37	30	68	15	15	11	10	20	14	208	64	96	194	124
06-Oct	141	0	87	138	152	42	22	63	75	105	14	8	13	39	6	197	30	163	252	263
07-Oct	166	27	162	105	171	53	16	180	97	126	36	4	69	33	24	255	47	411	235	321
08-Oct	100	59	39	215	166	40	69	40	218	94	23	18	54	76	14	163	146	133	509	274
09-Oct	126	93	75	163	270	30	70	47	148	121	15	17	32	88	22	171	180	154	399	413
10-Oct	238	172	23	164	597	65	157	37	151	242	07	53	21	126	74	310	382	81	441	913
11-Oct	333	78	30	177	652	112	126	78	87	336	22	38	24	74	128	467	242	132	338	1116
12-Oct	362	99	67	342	694	98	154	133	123	338	37	42	22	51	164	497	295	222	516	1196
13-Oct	247	108	62	470	467	64	159	147	207	284	39	33	61	69	102	350	300	270	746	853
14-Oct	616	141	112	582	812	87	133	153	333	328	08	39	57	137	60	711	313	322	1052	1200
15-Oct	487	262	90	943	1215	129	203	110	458	248	13	63	35	237	76	629	528	235	1638	1539
16-Oct	594	168	174	465	1478	100	148	138	186	385	20	77	20	71	125	714	393	332	722	1988
17-Oct	966	250	272	807	2173	167	152	268	244	399	38	53	94	69	261	1171	455	634	1120	2833
18-Oct	850	100	263	970	1065	197	103	255	306	270	64	39	163	108	204	1111	242	681	1384	1539
19-Oct	912	529	254	1591	1762	67	220	208	541	276	35	3	108	128	132	1014	752	570	2260	2170
Total	6838	2165	1827	7507	12032	1397	1818	1944	3382	3652	419	506	832	1375	1480	8654	4489	4603	12264	17164

**District-wise and date-wise cumulative number of residue burning events detected in 2016, 2017, 2018, 2019 and 2020
(Period: 01-19 October)**

(a) Punjab

Districts	01-19 Oct				
	2016	2017	2018	2019	2020
AMRITSAR	929	638	511	443	1134
BARNALA	33	26	12	9	26
BATHINDA	743	560	53	26	174
FARIDKOT	938	945	71	87	329
FATEHGARH SAHIB	664	298	38	38	158
FAZILKA	0	0	0	68	306
FIROZPUR	1324	986	137	143	621
GURDASPUR	556	248	78	137	507
HOSHIARPUR	110	48	4	14	77
JALANDHAR	764	313	22	93	154
KAPURTHALA	675	165	8	71	310
LUDHIANA	568	471	47	27	168
MANSA	146	154	43	58	119
MOGA	172	115	11	22	50
MUKTSAR	1028	402	50	38	108
PATHANKOT	0	0	0	0	1
PATIALA	988	801	246	284	633
RUPNAGAR	146	28	1	3	40
SANGRUR	233	223	91	56	158
SAS NAGAR	71	57	45	30	83
SBS NAGAR	230	115	21	32	21
TARN TARAN	1714	914	338	486	1661
Total	12032	7507	1827	2165	6838

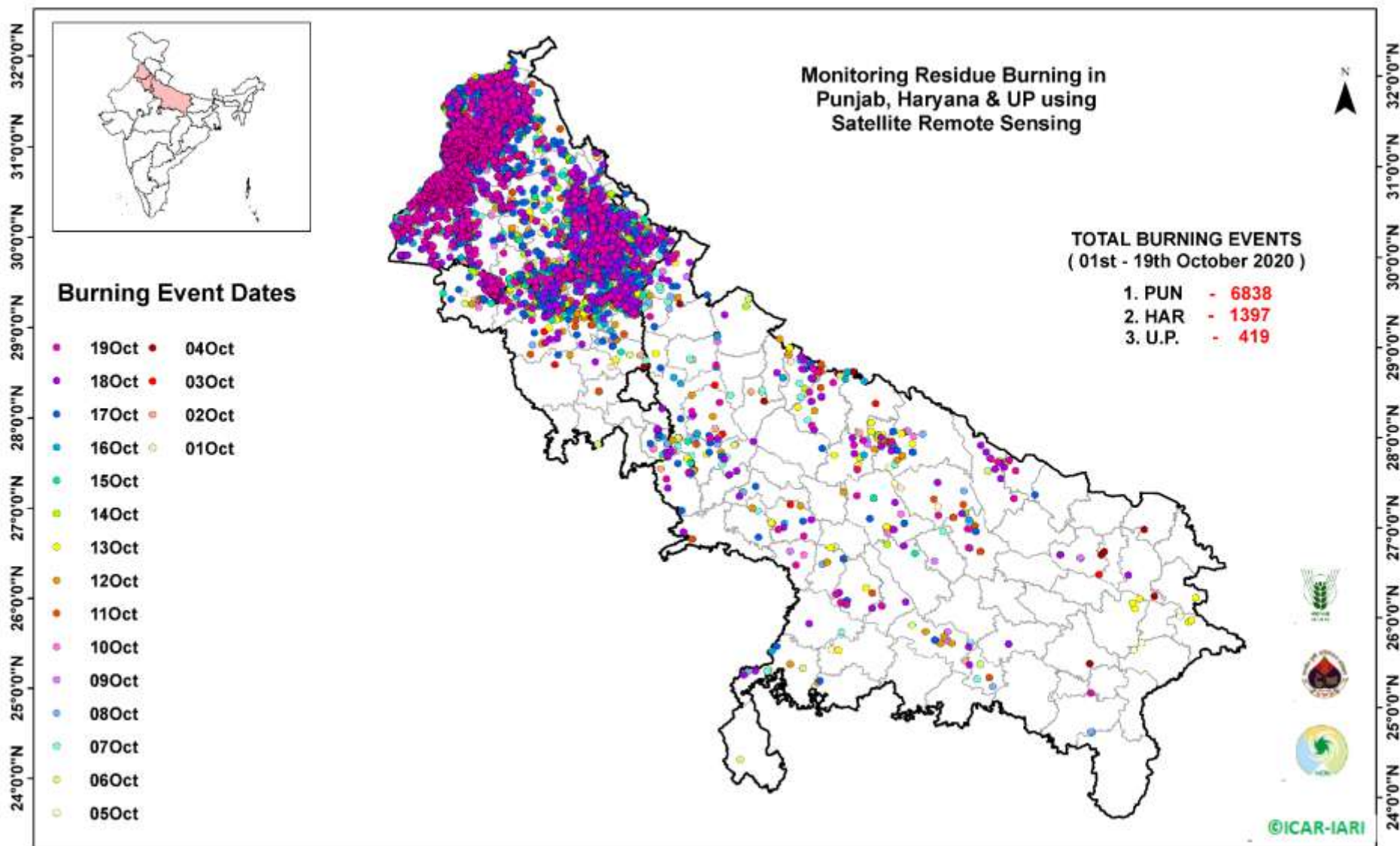
(b) Haryana

Districts	01-19 Oct				
	2016	2017	2018	2019	2020
AMBALA	240	209	60	92	167
BHIWANI	1	2	3	0	2
CHARKHI DADRI	0	0	0	0	0
FARIDABAD	29	71	64	1	1
FATEHABAD	205	239	101	134	101
GURGAON	0	0	0	0	0
HISAR	29	27	13	18	37
JHAJJAR	4	1	5	2	2
JIND	113	147	77	73	82
KAITHAL	963	733	563	478	210
KARNAL	1090	962	530	472	311
KURUKSHETRA	750	735	411	399	297
MAHENDRAGARH	0	0	0	1	0
MEWAT	0	0	0	0	0
PALWAL	0	0	0	50	23
PANCHKULA	0	0	3	13	10
PANIPAT	28	37	33	6	5
REWARI	0	0	0	1	1
ROHTAK	3	3	0	0	2
SIRSA	108	73	24	16	48
SONIPAT	8	17	11	1	18
YAMUNANAGAR	81	126	46	61	80
Total	3652	3382	1944	1818	1397

(C)
Uttar Pradesh

Districts	01-19 Oct																
	2016	2017	2018	2019	2020	GAUTAMBUDHNAGAR	3	4	4	0	2	MUZAFARNAGAR	43	44	18	5	3
AGRA	0	0	0	0	3	GAZIPUR	0	0	0	1	2	PILHIBHIT	301	252	129	133	7
ALIGARH	8	14	16	19	33	GHAZIABAD	8	5	3	2	1	PRATAPGARH	0	0	2	0	1
ALLAHABAD	0	0	3	0	0	GONDA	0	0	0	0	0	RAIBEARELI	0	0	0	0	0
AMBEDKARNAGAR	0	1	0	0	0	GORAKHPUR	0	2	4	0	2	RAMPUR	279	211	67	85	30
AMETHI	0	0	0	0	0	HAMIRPUR	0	0	1	0	2	SAMBHAL	0	0	0	2	4
AMROHA	0	0	0	0	1	HAPUR	0	0	0	2	2	SANTKABIRNAGAR	0	0	0	0	2
AURAIYA	47	50	17	1	5	HARDOI	16	13	7	1	13	SANTRAVIDASNAGAR	0	0	0	0	0
AZAMGARH	0	0	0	0	3	HATHRAS	0	0	0	0	0	SHAHJAHANPUR	378	374	98	70	33
BADAUN	0	1	0	0	1	JALAUN	0	0	0	0	2	SHAMLI	0	0	0	9	11
BAGHPAT	0	0	0	2	2	JAUNPUR	1	0	3	0	1	SHARANPUR	22	28	13	8	24
BAHRAICH	0	2	6	0	8	JHANSI	0	0	2	2	11	SHRAWASTI	0	3	2	1	7
BALLIA	0	0	0	1	3	KANNAUJ	0	1	2	1	2	SIDDHARTHANAGAR	1	1	1	0	0
BALRAMPUR	0	0	1	0	1	KANPUR	1	3	0	0	3	SITAPUR	24	10	9	3	12
BANDA	1	0	1	0	0	KANPUR DEHAT	0	1	0	0	11	SONBHADRA	4	1	7	0	0
BARABANKI	45	27	62	5	10	KASGANJ	0	0	0	0	0	SULTANPUR	0	0	0	0	0
BAREILLY	78	53	17	28	18	KAUSHAMBI	0	4	9	1	5	UNNAO	3	3	3	3	3
BASTI	0	0	0	0	5	KHERI	128	105	61	50	30	VARANASI	0	0	0	0	1
BIJNOR	3	1	1	0	4	KUSHINAGAR	0	1	0	0	0	JYOTIBAPHULE NAGAR	1	0	1	0	0
BULANDSAHAR	3	6	7	4	12	LALITPUR	0	0	0	0	1	MAHAMAYANAGAR	0	0	1	0	0
CHANDAULI	0	0	0	0	0	LUCKNOW	6	5	0	1	2	Total	1480	1375	832	506	419
CHITRAKOOT	0	0	0	0	0	MAHARAJGANJ	3	21	15	1	1						
DEORIA	0	0	0	0	1	MAHOBA	0	0	0	0	2						
ETAH	0	9	11	0	5	MAINPURI	0	6	4	3	10						
ETAWAH	3	10	2	0	3	MATHURA	36	75	197	50	23						
FAIZABAD	1	1	0	0	0	MAU	1	0	2	0	0						
FARRUKHABAD	0	0	0	1	0	MEERUT	14	9	3	4	8						
FATEHPUR	5	5	10	1	14	MIRZAPUR	0	2	4	3	4						
FIROZABAD	3	1	1	1	4	MORADABAD	10	10	5	2	5						

Map of Cumulative Burning Events (01-19 Oct 2020)



[\(http://geoportal.icar.gov.in:8080/geoexplorer/composer/\)](http://geoportal.icar.gov.in:8080/geoexplorer/composer/)

Details of residue burning events in Punjab on 19-Oct-2020

S. No.	District	Tehsil / Block	Satellite	Longitude	Latitude	Time (IST)	Day / Night	Fire Power (W/m²)
1	AMRITSAR	AJNALA	S-NPP	74.59564	31.63664	12:54:00	D	3.70
2	AMRITSAR	AJNALA	S-NPP	74.59597	31.64001	12:54:00	D	3.60
3	AMRITSAR	AJNALA	S-NPP	74.68685	31.73354	12:54:00	D	1.00
4	AMRITSAR	AJNALA	S-NPP	74.55674	31.74578	12:54:00	D	1.40
5	AMRITSAR	AJNALA	S-NPP	74.55488	31.74825	12:54:00	D	1.20
6	AMRITSAR	AJNALA	S-NPP	74.70977	31.77626	12:54:00	D	1.70
7	AMRITSAR	AJNALA	S-NPP	74.64609	31.84510	12:54:00	D	4.10
8	AMRITSAR	AJNALA	S-NPP	74.83154	31.87811	12:54:00	D	2.70
9	AMRITSAR	AJNALA	S-NPP	74.87532	31.92520	12:54:00	D	2.40
10	AMRITSAR	AJNALA	S-NPP	74.87746	31.94458	14:30:00	D	4.00
11	AMRITSAR	AJNALA	S-NPP	74.91708	31.95031	12:54:00	D	13.60
12	AMRITSAR	AJNALA	S-NPP	74.91682	31.95055	12:54:00	D	10.60
13	AMRITSAR	AJNALA	S-NPP	74.94270	31.95065	14:30:00	D	10.30
14	AMRITSAR	AJNALA	S-NPP	74.94047	31.95358	14:30:00	D	14.20
15	AMRITSAR	AJNALA	S-NPP	74.94250	31.95774	14:30:00	D	10.30
16	AMRITSAR	AJNALA	S-NPP	74.95045	31.95803	14:30:00	D	19.70
17	AMRITSAR	AJNALA	S-NPP	74.93229	31.96043	14:30:00	D	6.60
18	AMRITSAR	AJNALA	S-NPP	74.94817	31.96091	14:30:00	D	14.20
19	AMRITSAR	AJNALA	AQUA	74.84300	31.99500	13:50:00	D	16.70
20	AMRITSAR	AJNALA	AQUA	74.85400	31.99700	13:50:00	D	6.50
21	AMRITSAR	AMRITSAR I	S-NPP	74.95072	31.52445	14:30:00	D	5.20
22	AMRITSAR	AMRITSAR I	AQUA	74.96600	31.53200	13:50:00	D	8.40
23	AMRITSAR	AMRITSAR I	S-NPP	75.04607	31.53488	12:54:00	D	4.20
24	AMRITSAR	AMRITSAR I	S-NPP	75.08211	31.55435	12:54:00	D	3.50
25	AMRITSAR	AMRITSAR I	AQUA	75.11400	31.67200	13:50:00	D	8.20
26	AMRITSAR	AMRITSAR I	AQUA	75.09900	31.68900	13:50:00	D	12.70
27	AMRITSAR	AMRITSAR I	AQUA	75.09300	31.69300	13:50:00	D	13.40
28	AMRITSAR	AMRITSAR I	S-NPP	75.10558	31.70060	14:30:00	D	3.80
29	AMRITSAR	AMRITSAR I	S-NPP	75.10345	31.70321	14:30:00	D	3.90
30	AMRITSAR	AMRITSAR I	AQUA	75.07400	31.72900	13:50:00	D	13.90

31	AMRITSAR	AMRITSAR I	AQUA	75.00100	31.73900	13:50:00	D	6.50
32	AMRITSAR	AMRITSAR I	S-NPP	75.08439	31.78836	14:30:00	D	3.90
33	AMRITSAR	AMRITSAR II	AQUA	74.94300	31.52900	13:50:00	D	8.60
34	AMRITSAR	AMRITSAR II	AQUA	74.95500	31.53100	13:50:00	D	19.70
35	AMRITSAR	AMRITSAR II	AQUA	74.90400	31.55300	13:50:00	D	6.20
36	AMRITSAR	AMRITSAR II	S-NPP	74.81161	31.61073	12:54:00	D	3.00
37	AMRITSAR	AMRITSAR II	AQUA	74.67700	31.61700	13:50:00	D	12.00
38	AMRITSAR	AMRITSAR II	S-NPP	74.86355	31.69719	12:54:00	D	2.90
39	AMRITSAR	AMRITSAR II	S-NPP	74.86688	31.69797	12:54:00	D	2.90
40	AMRITSAR	AMRITSAR II	S-NPP	74.86481	31.73316	12:54:00	D	1.90
41	AMRITSAR	BABA BAKALA	S-NPP	75.22646	31.49338	14:30:00	D	12.40
42	AMRITSAR	BABA BAKALA	AQUA	75.22700	31.50300	13:50:00	D	14.90
43	AMRITSAR	BABA BAKALA	S-NPP	75.23174	31.50573	14:30:00	D	3.80
44	AMRITSAR	BABA BAKALA	S-NPP	75.22189	31.50840	12:54:00	D	5.60
45	AMRITSAR	BABA BAKALA	AQUA	75.25300	31.52900	13:50:00	D	9.50
46	AMRITSAR	BABA BAKALA	S-NPP	75.20648	31.53359	14:30:00	D	5.10
47	AMRITSAR	BABA BAKALA	S-NPP	75.21464	31.53387	14:30:00	D	5.10
48	AMRITSAR	BABA BAKALA	S-NPP	75.20866	31.53595	14:30:00	D	7.70
49	AMRITSAR	BABA BAKALA	S-NPP	75.26292	31.57494	12:54:00	D	9.70
50	AMRITSAR	BABA BAKALA	S-NPP	75.26250	31.57564	12:54:00	D	6.20
51	AMRITSAR	BABA BAKALA	S-NPP	75.27276	31.58101	14:30:00	D	2.60
52	AMRITSAR	BABA BAKALA	AQUA	75.20800	31.58200	13:50:00	D	9.80
53	AMRITSAR	BABA BAKALA	S-NPP	75.24744	31.60179	14:30:00	D	8.90
54	AMRITSAR	BABA BAKALA	S-NPP	75.24723	31.60446	14:30:00	D	10.00
55	AMRITSAR	BABA BAKALA	S-NPP	75.28841	31.60555	14:30:00	D	4.00
56	AMRITSAR	BABA BAKALA	S-NPP	75.29314	31.60872	12:54:00	D	4.10
57	AMRITSAR	BABA BAKALA	S-NPP	75.28835	31.61031	14:30:00	D	4.50
58	AMRITSAR	BABA BAKALA	AQUA	75.31200	31.61400	13:50:00	D	7.60
59	AMRITSAR	BABA BAKALA	AQUA	75.26200	31.61700	13:50:00	D	12.00
60	AMRITSAR	BABA BAKALA	S-NPP	75.33770	31.62633	14:30:00	D	9.70
61	AMRITSAR	BABA BAKALA	AQUA	75.06200	31.62700	13:50:00	D	13.30
62	AMRITSAR	BABA BAKALA	AQUA	75.07300	31.62800	13:50:00	D	10.30
63	AMRITSAR	BABA BAKALA	S-NPP	75.19756	31.62887	14:30:00	D	5.50

64	AMRITSAR	BABA BAKALA	S-NPP	75.19714	31.63181	14:30:00	D	8.20
65	AMRITSAR	BABA BAKALA	AQUA	75.31100	31.64800	13:50:00	D	22.60
66	AMRITSAR	BABA BAKALA	S-NPP	75.18065	31.64981	14:30:00	D	4.80
67	AMRITSAR	BABA BAKALA	S-NPP	75.10716	31.65063	14:30:00	D	6.10
68	AMRITSAR	BABA BAKALA	S-NPP	75.10765	31.65436	14:30:00	D	5.50
69	AMRITSAR	BABA BAKALA	S-NPP	75.30194	31.66755	12:54:00	D	2.80
70	AMRITSAR	BABA BAKALA	S-NPP	75.19253	31.68511	12:54:00	D	3.00
71	AMRITSAR	BABA BAKALA	S-NPP	75.17724	31.74595	14:30:00	D	10.10
72	AMRITSAR	BABA BAKALA	S-NPP	75.17493	31.74817	14:30:00	D	10.60
73	BATHINDA	BATHINDA	S-NPP	74.98217	30.13609	12:54:00	D	3.10
74	BATHINDA	BATHINDA	AQUA	74.88400	30.14600	13:50:00	D	20.10
75	BATHINDA	BATHINDA	AQUA	74.89500	30.14700	13:50:00	D	30.50
76	BATHINDA	BATHINDA	S-NPP	74.78616	30.25971	12:54:00	D	10.90
77	BATHINDA	BATHINDA	S-NPP	74.78529	30.26017	12:54:00	D	8.70
78	BATHINDA	BATHINDA	S-NPP	74.83591	30.26040	12:54:00	D	3.30
79	BATHINDA	BATHINDA	S-NPP	74.78976	30.26055	12:54:00	D	18.70
80	BATHINDA	BATHINDA	S-NPP	74.78887	30.26103	12:54:00	D	20.40
81	BATHINDA	BATHINDA	S-NPP	74.83490	30.26116	12:54:00	D	3.00
82	BATHINDA	BATHINDA	AQUA	74.89100	30.26600	13:50:00	D	56.40
83	BATHINDA	BATHINDA	S-NPP	74.91051	30.27783	12:54:00	D	2.90
84	BATHINDA	BATHINDA	S-NPP	74.90929	30.27907	12:54:00	D	2.80
85	BATHINDA	BATHINDA	S-NPP	74.90894	30.28291	12:54:00	D	2.90
86	BATHINDA	BATHINDA	S-NPP	74.90773	30.28414	12:54:00	D	2.80
87	BATHINDA	BATHINDA	S-NPP	74.87724	30.28886	14:30:00	D	8.70
88	BATHINDA	BATHINDA	S-NPP	74.82902	30.29258	12:54:00	D	15.00
89	BATHINDA	BATHINDA	S-NPP	74.88165	30.29437	14:30:00	D	14.20
90	BATHINDA	BATHINDA	AQUA	74.88800	30.31100	13:50:00	D	6.20
91	BATHINDA	BATHINDA	AQUA	74.79500	30.32800	13:50:00	D	10.90
92	BATHINDA	BATHINDA	AQUA	74.79400	30.33700	13:50:00	D	6.20
93	BATHINDA	BATHINDA	S-NPP	74.81118	30.33757	12:54:00	D	2.70
94	BATHINDA	BATHINDA	S-NPP	74.83968	30.34429	12:54:00	D	1.60
95	BATHINDA	BATHINDA	S-NPP	74.85677	30.34944	14:30:00	D	7.90
96	BATHINDA	BATHINDA	S-NPP	74.84088	30.35500	14:30:00	D	3.50

97	BATHINDA	BATHINDA	S-NPP	74.85587	30.35553	14:30:00	D	13.10
98	BATHINDA	BATHINDA	S-NPP	74.84151	30.35581	14:30:00	D	5.70
99	BATHINDA	BATHINDA	AQUA	74.89100	30.35900	13:50:00	D	6.60
100	BATHINDA	BATHINDA	S-NPP	74.89474	30.36269	12:54:00	D	7.70
101	BATHINDA	BATHINDA	AQUA	74.72700	30.36300	13:50:00	D	13.70
102	BATHINDA	BATHINDA	S-NPP	74.89828	30.36351	12:54:00	D	7.70
103	BATHINDA	BATHINDA	S-NPP	74.89317	30.36776	12:54:00	D	7.70
104	BATHINDA	BATHINDA	S-NPP	74.89671	30.36859	12:54:00	D	7.70
105	BATHINDA	BATHINDA	S-NPP	74.89260	30.37786	14:30:00	D	8.90
106	BATHINDA	BATHINDA	S-NPP	74.89326	30.37898	14:30:00	D	6.80
107	BATHINDA	BATHINDA	S-NPP	74.81630	30.38246	12:54:00	D	2.80
108	BATHINDA	BATHINDA	S-NPP	74.81524	30.38257	12:54:00	D	2.70
109	BATHINDA	TALWANDI SABO	S-NPP	75.14008	29.80983	12:54:00	D	1.90
110	BATHINDA	TALWANDI SABO	S-NPP	75.16834	29.82736	12:54:00	D	5.80
111	BATHINDA	TALWANDI SABO	S-NPP	75.16681	29.83241	12:54:00	D	7.50
112	BATHINDA	TALWANDI SABO	S-NPP	75.17374	29.83405	12:54:00	D	7.20
113	BATHINDA	TALWANDI SABO	S-NPP	75.11375	29.84705	12:54:00	D	2.10
114	BATHINDA	TALWANDI SABO	S-NPP	75.03268	29.99023	14:30:00	D	4.80
115	BATHINDA	TALWANDI SABO	S-NPP	75.03301	29.99242	14:30:00	D	9.30
116	BATHINDA	TALWANDI SABO	AQUA	74.91600	30.06700	13:50:00	D	7.70
117	BATHINDA	TALWANDI SABO	AQUA	74.92700	30.06900	13:50:00	D	11.10
118	BATHINDA	TALWANDI SABO	S-NPP	74.98181	30.08541	12:54:00	D	2.00
119	FARIDKOT	FARIDKOT	AQUA	74.78300	30.55400	13:50:00	D	6.00
120	FARIDKOT	FARIDKOT	AQUA	74.83800	30.56100	13:50:00	D	17.10
121	FARIDKOT	FARIDKOT	AQUA	74.84900	30.56200	13:50:00	D	14.30
122	FARIDKOT	FARIDKOT	AQUA	74.74300	30.58600	13:50:00	D	6.70
123	FARIDKOT	FARIDKOT	S-NPP	74.73347	30.63506	14:30:00	D	5.20
124	FARIDKOT	FARIDKOT	S-NPP	74.79318	30.63739	14:30:00	D	4.30
125	FARIDKOT	FARIDKOT	AQUA	74.66000	30.64000	13:50:00	D	11.20
126	FARIDKOT	FARIDKOT	AQUA	74.76100	30.64300	13:50:00	D	6.10
127	FARIDKOT	FARIDKOT	AQUA	74.64200	30.67500	13:50:00	D	39.10
128	FARIDKOT	FARIDKOT	AQUA	74.67400	30.68900	13:50:00	D	6.70
129	FARIDKOT	FARIDKOT	AQUA	74.68500	30.69000	13:50:00	D	15.90

130	FARIDKOT	FARIDKOT	S-NPP	74.73133	30.69073	14:30:00	D	3.40
131	FARIDKOT	FARIDKOT	AQUA	74.80800	30.69700	13:50:00	D	6.90
132	FARIDKOT	FARIDKOT	S-NPP	74.75031	30.70372	14:30:00	D	8.50
133	FARIDKOT	FARIDKOT	S-NPP	74.75317	30.70561	14:30:00	D	6.80
134	FARIDKOT	FARIDKOT	AQUA	74.67100	30.70700	13:50:00	D	8.30
135	FARIDKOT	FARIDKOT	AQUA	74.68200	30.70800	13:50:00	D	37.10
136	FARIDKOT	FARIDKOT	S-NPP	74.52946	30.71093	12:54:00	D	6.10
137	FARIDKOT	FARIDKOT	S-NPP	74.72214	30.71304	12:54:00	D	3.30
138	FARIDKOT	FARIDKOT	S-NPP	74.53590	30.71634	14:30:00	D	4.50
139	FARIDKOT	FARIDKOT	S-NPP	74.67820	30.71893	12:54:00	D	1.10
140	FARIDKOT	FARIDKOT	AQUA	74.75900	30.71900	13:50:00	D	32.70
141	FARIDKOT	FARIDKOT	S-NPP	74.51894	30.71946	12:54:00	D	2.00
142	FARIDKOT	FARIDKOT	AQUA	74.77000	30.72000	13:50:00	D	46.80
143	FARIDKOT	FARIDKOT	S-NPP	74.47655	30.72546	12:54:00	D	5.70
144	FARIDKOT	FARIDKOT	S-NPP	74.47746	30.72619	12:54:00	D	5.30
145	FARIDKOT	FARIDKOT	AQUA	74.75700	30.72800	13:50:00	D	15.60
146	FARIDKOT	FARIDKOT	S-NPP	74.91048	30.72816	12:54:00	D	1.70
147	FARIDKOT	FARIDKOT	AQUA	74.76800	30.72900	13:50:00	D	13.20
148	FARIDKOT	FARIDKOT	S-NPP	74.47491	30.73059	12:54:00	D	5.70
149	FARIDKOT	FARIDKOT	S-NPP	74.47582	30.73132	12:54:00	D	5.30
150	FARIDKOT	FARIDKOT	S-NPP	74.77158	30.73245	14:30:00	D	10.90
151	FARIDKOT	FARIDKOT	AQUA	74.52600	30.73300	13:50:00	D	9.20
152	FARIDKOT	FARIDKOT	S-NPP	74.79116	30.73496	12:54:00	D	1.90
153	FARIDKOT	FARIDKOT	S-NPP	74.61840	30.73755	12:54:00	D	11.90
154	FARIDKOT	FARIDKOT	S-NPP	74.62201	30.73841	12:54:00	D	20.00
155	FARIDKOT	FARIDKOT	S-NPP	74.83479	30.73993	12:54:00	D	6.30
156	FARIDKOT	FARIDKOT	S-NPP	74.84882	30.74327	12:54:00	D	2.40
157	FARIDKOT	FARIDKOT	AQUA	74.62400	30.74500	13:50:00	D	7.10
158	FARIDKOT	FARIDKOT	AQUA	74.77100	30.74500	13:50:00	D	20.10
159	FARIDKOT	FARIDKOT	S-NPP	74.58828	30.74688	12:54:00	D	8.00
160	FARIDKOT	FARIDKOT	AQUA	74.56800	30.74700	13:50:00	D	6.80
161	FARIDKOT	FARIDKOT	AQUA	74.57900	30.74900	13:50:00	D	24.00
162	FARIDKOT	FARIDKOT	S-NPP	74.54246	30.75253	12:54:00	D	1.50

163	FARIDKOT	FARIDKOT	S-NPP	74.54355	30.75282	12:54:00	D	1.80
164	FARIDKOT	FARIDKOT	S-NPP	74.50652	30.75485	12:54:00	D	5.30
165	FARIDKOT	FARIDKOT	S-NPP	74.56206	30.75861	14:30:00	D	14.40
166	FARIDKOT	FARIDKOT	S-NPP	74.56319	30.75891	14:30:00	D	11.50
167	FARIDKOT	FARIDKOT	AQUA	74.81400	30.76000	13:50:00	D	22.70
168	FARIDKOT	FARIDKOT	AQUA	74.82500	30.76200	13:50:00	D	10.40
169	FARIDKOT	FARIDKOT	AQUA	74.81200	30.76900	13:50:00	D	61.10
170	FARIDKOT	FARIDKOT	AQUA	74.75500	30.77200	13:50:00	D	8.50
171	FARIDKOT	FARIDKOT	S-NPP	74.60219	30.77249	12:54:00	D	3.30
172	FARIDKOT	FARIDKOT	S-NPP	74.65733	30.78502	12:54:00	D	5.10
173	FARIDKOT	FARIDKOT	S-NPP	74.65591	30.78546	12:54:00	D	4.30
174	FARIDKOT	FARIDKOT	S-NPP	74.78316	30.79429	14:30:00	D	9.20
175	FARIDKOT	FARIDKOT	AQUA	74.67100	30.79800	13:50:00	D	39.40
176	FARIDKOT	FARIDKOT	AQUA	74.68200	30.80000	13:50:00	D	5.20
177	FARIDKOT	FARIDKOT	AQUA	74.68100	30.80900	13:50:00	D	23.30
178	FARIDKOT	FARIDKOT	AQUA	74.69200	30.81000	13:50:00	D	56.10
179	FARIDKOT	FARIDKOT	AQUA	74.66000	30.82400	13:50:00	D	9.70
180	FARIDKOT	FARIDKOT	AQUA	74.65900	30.83300	13:50:00	D	54.20
181	FARIDKOT	JAITO	AQUA	74.95800	30.40200	13:50:00	D	11.80
182	FARIDKOT	JAITO	AQUA	74.96900	30.40300	13:50:00	D	7.30
183	FARIDKOT	JAITO	S-NPP	74.86440	30.43247	12:54:00	D	7.50
184	FARIDKOT	JAITO	S-NPP	74.86793	30.43331	12:54:00	D	7.50
185	FARIDKOT	JAITO	AQUA	75.00700	30.44600	13:50:00	D	9.80
186	FARIDKOT	JAITO	S-NPP	74.80499	30.45016	14:30:00	D	7.90
187	FARIDKOT	JAITO	S-NPP	74.80672	30.45159	14:30:00	D	5.80
188	FARIDKOT	JAITO	AQUA	74.86900	30.45700	13:50:00	D	11.30
189	FARIDKOT	JAITO	S-NPP	74.87126	30.52280	12:54:00	D	8.80
190	FARIDKOT	JAITO	S-NPP	74.87476	30.52364	12:54:00	D	9.50
191	FATEHGARH SAHIB	BASSI PATHANAN	AQUA	76.48500	30.67800	13:50:00	D	13.10
192	FATEHGARH SAHIB	BASSI PATHANAN	S-NPP	76.49269	30.68750	12:54:00	D	13.10
193	FATEHGARH SAHIB	BASSI PATHANAN	S-NPP	76.46371	30.74483	12:54:00	D	6.80
194	FATEHGARH SAHIB	FATEHGARH SAHIB	AQUA	76.46900	30.48200	13:50:00	D	33.30
195	FATEHGARH SAHIB	FATEHGARH SAHIB	AQUA	76.47500	30.48400	13:50:00	D	21.30

196	FATEHGARH SAHIB	FATEHGARH SAHIB	AQUA	76.52100	30.58000	13:50:00	D	22.60
197	FATEHGARH SAHIB	FATEHGARH SAHIB	AQUA	76.52600	30.58100	13:50:00	D	24.20
198	FATEHGARH SAHIB	FATEHGARH SAHIB	AQUA	76.53400	30.58100	13:50:00	D	14.60
199	FATEHGARH SAHIB	FATEHGARH SAHIB	S-NPP	76.48045	30.61385	12:54:00	D	2.40
200	FATEHGARH SAHIB	FATEHGARH SAHIB	AQUA	76.47500	30.61500	13:50:00	D	11.30
201	FATEHGARH SAHIB	FATEHGARH SAHIB	AQUA	76.42100	30.66000	13:50:00	D	9.30
202	FATEHGARH SAHIB	KHAMANO	AQUA	76.35900	30.72400	13:50:00	D	16.10
203	FATEHGARH SAHIB	KHAMANO	S-NPP	76.27081	30.79190	12:54:00	D	9.40
204	FAZILKA	ABOHAR	S-NPP	74.33404	30.20143	12:54:00	D	4.20
205	FAZILKA	ABOHAR	S-NPP	74.33239	30.20667	12:54:00	D	4.20
206	FAZILKA	FAZILKA	S-NPP	73.98201	30.24849	12:54:00	D	6.40
207	FAZILKA	FAZILKA	S-NPP	73.99757	30.27153	14:30:00	D	8.20
208	FAZILKA	FAZILKA	S-NPP	74.04285	30.28619	12:54:00	D	4.50
209	FAZILKA	FAZILKA	S-NPP	74.04032	30.28717	12:54:00	D	2.50
210	FAZILKA	FAZILKA	S-NPP	74.00751	30.29627	12:54:00	D	3.60
211	FAZILKA	FAZILKA	S-NPP	73.95462	30.30046	12:54:00	D	2.40
212	FAZILKA	FAZILKA	AQUA	74.03600	30.30900	13:50:00	D	14.30
213	FAZILKA	FAZILKA	AQUA	74.17600	30.30900	13:50:00	D	6.40
214	FAZILKA	FAZILKA	S-NPP	74.01998	30.31083	12:54:00	D	4.10
215	FAZILKA	FAZILKA	AQUA	74.04700	30.31100	13:50:00	D	22.60
216	FAZILKA	FAZILKA	S-NPP	73.98595	30.33691	12:54:00	D	3.80
217	FAZILKA	FAZILKA	S-NPP	73.98992	30.33789	12:54:00	D	3.80
218	FAZILKA	FAZILKA	AQUA	73.99600	30.35000	13:50:00	D	6.00
219	FAZILKA	FAZILKA	S-NPP	73.97363	30.35070	14:30:00	D	4.50
220	FAZILKA	FAZILKA	S-NPP	73.97196	30.35481	14:30:00	D	2.70
221	FAZILKA	FAZILKA	AQUA	74.10300	30.35500	13:50:00	D	8.70
222	FAZILKA	FAZILKA	S-NPP	74.09147	30.38019	14:30:00	D	4.50
223	FAZILKA	FAZILKA	AQUA	74.26000	30.41300	13:50:00	D	8.10
224	FAZILKA	FAZILKA	S-NPP	74.15082	30.41655	14:30:00	D	4.40
225	FAZILKA	FAZILKA	S-NPP	74.15762	30.41686	14:30:00	D	8.30
226	FAZILKA	FAZILKA	S-NPP	74.15865	30.41874	12:54:00	D	1.90
227	FAZILKA	FAZILKA	AQUA	74.11700	30.42200	13:50:00	D	12.80
228	FAZILKA	FAZILKA	S-NPP	74.02180	30.44966	12:54:00	D	2.60

229	FAZILKA	FAZILKA	S-NPP	74.20396	30.45282	14:30:00	D	6.00
230	FAZILKA	FAZILKA	S-NPP	74.20145	30.45482	14:30:00	D	6.60
231	FAZILKA	FAZILKA	AQUA	74.10300	30.46500	13:50:00	D	9.30
232	FAZILKA	FAZILKA	AQUA	74.11400	30.46600	13:50:00	D	6.20
233	FAZILKA	JALALABAD	S-NPP	74.26606	30.45570	14:30:00	D	6.30
234	FAZILKA	JALALABAD	S-NPP	74.24246	30.46328	14:30:00	D	4.60
235	FAZILKA	JALALABAD	S-NPP	74.22340	30.48085	14:30:00	D	3.20
236	FAZILKA	JALALABAD	S-NPP	74.28568	30.48382	14:30:00	D	3.30
237	FAZILKA	JALALABAD	AQUA	74.25200	30.48500	13:50:00	D	8.90
238	FAZILKA	JALALABAD	AQUA	74.20800	30.48800	13:50:00	D	11.90
239	FAZILKA	JALALABAD	S-NPP	74.28666	30.51974	12:54:00	D	4.20
240	FAZILKA	JALALABAD	AQUA	74.13000	30.58000	13:50:00	D	5.00
241	FAZILKA	JALALABAD	AQUA	74.19200	30.59700	13:50:00	D	6.90
242	FAZILKA	JALALABAD	S-NPP	74.37627	30.61860	12:54:00	D	3.40
243	FAZILKA	JALALABAD	AQUA	74.17500	30.63200	13:50:00	D	14.80
244	FAZILKA	JALALABAD	AQUA	74.18600	30.63300	13:50:00	D	6.60
245	FAZILKA	JALALABAD	AQUA	74.39400	30.63300	13:50:00	D	85.60
246	FAZILKA	JALALABAD	AQUA	74.40500	30.63500	13:50:00	D	9.90
247	FAZILKA	JALALABAD	AQUA	74.28200	30.64600	13:50:00	D	10.50
248	FAZILKA	JALALABAD	S-NPP	74.27502	30.65127	14:30:00	D	3.90
249	FAZILKA	JALALABAD	AQUA	74.23600	30.65900	13:50:00	D	11.20
250	FAZILKA	JALALABAD	AQUA	74.24600	30.66000	13:50:00	D	5.00
251	FAZILKA	JALALABAD	AQUA	74.19700	30.66100	13:50:00	D	18.40
252	FAZILKA	JALALABAD	AQUA	74.44300	30.66800	13:50:00	D	13.90
253	FAZILKA	JALALABAD	S-NPP	74.38307	30.66876	14:30:00	D	8.00
254	FAZILKA	JALALABAD	S-NPP	74.37999	30.66899	14:30:00	D	4.80
255	FAZILKA	JALALABAD	AQUA	74.45400	30.66900	13:50:00	D	9.00
256	FAZILKA	JALALABAD	S-NPP	74.24979	30.66992	12:54:00	D	6.70
257	FAZILKA	JALALABAD	S-NPP	74.24620	30.67119	12:54:00	D	3.20
258	FAZILKA	JALALABAD	S-NPP	74.24999	30.67209	12:54:00	D	3.20
259	FAZILKA	JALALABAD	AQUA	74.36400	30.67600	13:50:00	D	7.80
260	FAZILKA	JALALABAD	S-NPP	74.25608	30.67666	14:30:00	D	4.60
261	FAZILKA	JALALABAD	AQUA	74.37500	30.67700	13:50:00	D	5.50

262	FAZILKA	JALALABAD	S-NPP	74.45213	30.68140	12:54:00	D	4.90
263	FAZILKA	JALALABAD	S-NPP	74.25578	30.68345	14:30:00	D	4.80
264	FAZILKA	JALALABAD	S-NPP	74.46523	30.69008	12:54:00	D	4.50
265	FAZILKA	JALALABAD	S-NPP	74.40120	30.69143	12:54:00	D	3.90
266	FAZILKA	JALALABAD	S-NPP	74.36443	30.69379	12:54:00	D	9.20
267	FAZILKA	JALALABAD	S-NPP	74.36815	30.69468	12:54:00	D	9.20
268	FAZILKA	JALALABAD	S-NPP	74.42343	30.69674	12:54:00	D	4.40
269	FAZILKA	JALALABAD	S-NPP	74.23787	30.69741	14:30:00	D	6.50
270	FAZILKA	JALALABAD	S-NPP	74.36222	30.69751	12:54:00	D	4.00
271	FAZILKA	JALALABAD	S-NPP	74.42714	30.69762	12:54:00	D	4.40
272	FAZILKA	JALALABAD	S-NPP	74.36594	30.69843	12:54:00	D	5.40
273	FAZILKA	JALALABAD	S-NPP	74.37707	30.70115	12:54:00	D	1.80
274	FAZILKA	JALALABAD	S-NPP	74.37767	30.70251	12:54:00	D	1.70
275	FAZILKA	JALALABAD	S-NPP	74.23061	30.70456	12:54:00	D	1.60
276	FAZILKA	JALALABAD	S-NPP	74.42820	30.70517	14:30:00	D	4.60
277	FAZILKA	JALALABAD	S-NPP	74.30745	30.70710	14:30:00	D	8.60
278	FAZILKA	JALALABAD	S-NPP	74.42792	30.71202	14:30:00	D	27.90
279	FAZILKA	JALALABAD	S-NPP	74.45132	30.73039	12:54:00	D	4.50
280	FAZILKA	JALALABAD	S-NPP	74.45213	30.73125	12:54:00	D	4.20
281	FAZILKA	JALALABAD	AQUA	74.43600	30.73900	13:50:00	D	5.60
282	FAZILKA	JALALABAD	S-NPP	74.35282	30.73983	12:54:00	D	5.30
283	FAZILKA	JALALABAD	AQUA	74.35700	30.74800	13:50:00	D	11.50
284	FAZILKA	JALALABAD	S-NPP	74.29765	30.74881	12:54:00	D	1.40
285	FAZILKA	JALALABAD	AQUA	74.36800	30.74900	13:50:00	D	26.30
286	FAZILKA	JALALABAD	S-NPP	74.36768	30.75151	14:30:00	D	8.20
287	FAZILKA	JALALABAD	S-NPP	74.30888	30.75152	12:54:00	D	2.50
288	FAZILKA	JALALABAD	S-NPP	74.41087	30.77051	12:54:00	D	1.60
289	FAZILKA	JALALABAD	AQUA	74.39700	30.77200	13:50:00	D	9.30
290	FAZILKA	JALALABAD	S-NPP	74.38911	30.77638	12:54:00	D	3.50
291	FAZILKA	JALALABAD	S-NPP	74.32680	30.78370	12:54:00	D	3.60
292	FAZILKA	JALALABAD	S-NPP	74.33051	30.78460	12:54:00	D	12.30
293	FAZILKA	JALALABAD	S-NPP	74.39609	30.78615	14:30:00	D	11.50
294	FAZILKA	JALALABAD	S-NPP	74.39457	30.78679	14:30:00	D	7.10

295	FAZILKA	JALALABAD	S-NPP	74.32887	30.78977	12:54:00	D	3.10
296	FAZILKA	JALALABAD	S-NPP	74.33195	30.79011	14:30:00	D	5.40
297	FAZILKA	JALALABAD	S-NPP	74.33033	30.79112	14:30:00	D	12.70
298	FIROZPUR	FIROZPUR	S-NPP	74.88702	30.75236	12:54:00	D	4.10
299	FIROZPUR	FIROZPUR	S-NPP	74.89049	30.75318	12:54:00	D	4.70
300	FIROZPUR	FIROZPUR	S-NPP	74.48344	30.76585	12:54:00	D	1.50
301	FIROZPUR	FIROZPUR	AQUA	74.82300	30.77100	13:50:00	D	23.90
302	FIROZPUR	FIROZPUR	S-NPP	74.49113	30.77875	12:54:00	D	10.30
303	FIROZPUR	FIROZPUR	AQUA	74.45100	30.77900	13:50:00	D	11.20
304	FIROZPUR	FIROZPUR	AQUA	74.46200	30.78000	13:50:00	D	5.70
305	FIROZPUR	FIROZPUR	AQUA	74.47300	30.78200	13:50:00	D	16.90
306	FIROZPUR	FIROZPUR	AQUA	74.50500	30.78600	13:50:00	D	5.40
307	FIROZPUR	FIROZPUR	AQUA	74.78500	30.79400	13:50:00	D	8.50
308	FIROZPUR	FIROZPUR	S-NPP	74.78415	30.79586	14:30:00	D	7.00
309	FIROZPUR	FIROZPUR	S-NPP	74.49356	30.79589	12:54:00	D	10.00
310	FIROZPUR	FIROZPUR	S-NPP	74.33167	30.79693	14:30:00	D	5.40
311	FIROZPUR	FIROZPUR	AQUA	74.83000	30.80000	13:50:00	D	7.80
312	FIROZPUR	FIROZPUR	S-NPP	74.84184	30.80108	12:54:00	D	2.40
313	FIROZPUR	FIROZPUR	S-NPP	74.88135	30.80477	14:30:00	D	7.80
314	FIROZPUR	FIROZPUR	S-NPP	74.88228	30.80691	14:30:00	D	13.30
315	FIROZPUR	FIROZPUR	S-NPP	74.56724	30.80721	14:30:00	D	17.60
316	FIROZPUR	FIROZPUR	S-NPP	74.56857	30.80755	14:30:00	D	18.50
317	FIROZPUR	FIROZPUR	AQUA	74.82800	30.80900	13:50:00	D	10.90
318	FIROZPUR	FIROZPUR	S-NPP	74.45097	30.80960	14:30:00	D	9.30
319	FIROZPUR	FIROZPUR	AQUA	74.56100	30.81100	13:50:00	D	125.70
320	FIROZPUR	FIROZPUR	S-NPP	74.40044	30.81446	14:30:00	D	19.80
321	FIROZPUR	FIROZPUR	AQUA	74.38200	30.81600	13:50:00	D	12.80
322	FIROZPUR	FIROZPUR	AQUA	74.39300	30.81700	13:50:00	D	12.40
323	FIROZPUR	FIROZPUR	S-NPP	74.35744	30.81957	14:30:00	D	8.20
324	FIROZPUR	FIROZPUR	AQUA	74.56000	30.82000	13:50:00	D	19.60
325	FIROZPUR	FIROZPUR	AQUA	74.57100	30.82100	13:50:00	D	15.70
326	FIROZPUR	FIROZPUR	AQUA	74.79100	30.82300	13:50:00	D	10.70
327	FIROZPUR	FIROZPUR	S-NPP	74.77998	30.82615	12:54:00	D	6.70

328	FIROZPUR	FIROZPUR	S-NPP	74.72176	30.82697	14:30:00	D	4.80
329	FIROZPUR	FIROZPUR	AQUA	74.40300	30.82800	13:50:00	D	16.70
330	FIROZPUR	FIROZPUR	S-NPP	74.77419	30.82893	14:30:00	D	4.50
331	FIROZPUR	FIROZPUR	S-NPP	74.79399	30.82950	12:54:00	D	3.40
332	FIROZPUR	FIROZPUR	S-NPP	74.67159	30.83291	12:54:00	D	9.50
333	FIROZPUR	FIROZPUR	S-NPP	74.35682	30.83323	14:30:00	D	4.10
334	FIROZPUR	FIROZPUR	S-NPP	74.70657	30.83336	14:30:00	D	7.30
335	FIROZPUR	FIROZPUR	S-NPP	74.67516	30.83376	12:54:00	D	14.30
336	FIROZPUR	FIROZPUR	AQUA	74.67000	30.83400	13:50:00	D	7.90
337	FIROZPUR	FIROZPUR	S-NPP	74.48050	30.83690	12:54:00	D	10.60
338	FIROZPUR	FIROZPUR	S-NPP	74.80291	30.83705	12:54:00	D	2.40
339	FIROZPUR	FIROZPUR	S-NPP	74.48133	30.83766	12:54:00	D	9.40
340	FIROZPUR	FIROZPUR	S-NPP	74.67551	30.84475	12:54:00	D	2.40
341	FIROZPUR	FIROZPUR	AQUA	74.55500	30.84800	13:50:00	D	11.10
342	FIROZPUR	FIROZPUR	S-NPP	74.48213	30.85993	12:54:00	D	2.30
343	FIROZPUR	FIROZPUR	S-NPP	74.48578	30.86081	12:54:00	D	2.30
344	FIROZPUR	FIROZPUR	S-NPP	74.64325	30.86424	14:30:00	D	3.50
345	FIROZPUR	FIROZPUR	S-NPP	74.67619	30.86671	12:54:00	D	8.10
346	FIROZPUR	FIROZPUR	AQUA	74.80000	30.87000	13:50:00	D	15.60
347	FIROZPUR	FIROZPUR	AQUA	74.81100	30.87100	13:50:00	D	4.20
348	FIROZPUR	FIROZPUR	S-NPP	74.65776	30.87169	14:30:00	D	22.20
349	FIROZPUR	FIROZPUR	AQUA	74.40000	30.87200	13:50:00	D	6.70
350	FIROZPUR	FIROZPUR	S-NPP	74.67260	30.87221	14:30:00	D	13.10
351	FIROZPUR	FIROZPUR	S-NPP	74.66032	30.87331	14:30:00	D	21.00
352	FIROZPUR	FIROZPUR	S-NPP	74.66775	30.87361	14:30:00	D	21.00
353	FIROZPUR	FIROZPUR	S-NPP	74.67516	30.87391	14:30:00	D	13.00
354	FIROZPUR	FIROZPUR	S-NPP	74.80230	30.87478	12:54:00	D	6.60
355	FIROZPUR	FIROZPUR	S-NPP	74.37016	30.87716	12:54:00	D	6.30
356	FIROZPUR	FIROZPUR	S-NPP	74.39757	30.87821	12:54:00	D	4.50
357	FIROZPUR	FIROZPUR	S-NPP	74.66486	30.87890	14:30:00	D	13.10
358	FIROZPUR	FIROZPUR	S-NPP	74.80611	30.88648	12:54:00	D	1.80
359	FIROZPUR	FIROZPUR	S-NPP	74.54245	30.89100	12:54:00	D	5.30
360	FIROZPUR	FIROZPUR	S-NPP	74.43018	30.89105	14:30:00	D	5.40

361	FIROZPUR	FIROZPUR	S-NPP	74.43307	30.89137	14:30:00	D	6.20
362	FIROZPUR	FIROZPUR	S-NPP	74.45253	30.89141	12:54:00	D	2.50
363	FIROZPUR	FIROZPUR	S-NPP	74.39632	30.89452	12:54:00	D	7.00
364	FIROZPUR	FIROZPUR	S-NPP	74.40001	30.89540	12:54:00	D	11.60
365	FIROZPUR	FIROZPUR	S-NPP	74.82039	30.90064	12:54:00	D	1.80
366	FIROZPUR	FIROZPUR	S-NPP	74.47639	30.90265	12:54:00	D	5.30
367	FIROZPUR	FIROZPUR	AQUA	74.69200	30.90300	13:50:00	D	11.60
368	FIROZPUR	FIROZPUR	AQUA	74.83900	30.90300	13:50:00	D	6.60
369	FIROZPUR	FIROZPUR	S-NPP	74.48003	30.90352	12:54:00	D	5.30
370	FIROZPUR	FIROZPUR	S-NPP	74.71783	30.90590	12:54:00	D	5.00
371	FIROZPUR	FIROZPUR	S-NPP	74.44762	30.90679	12:54:00	D	4.20
372	FIROZPUR	FIROZPUR	AQUA	74.72500	30.90700	13:50:00	D	8.90
373	FIROZPUR	FIROZPUR	AQUA	74.68500	30.90800	13:50:00	D	19.00
374	FIROZPUR	FIROZPUR	S-NPP	74.73828	30.90939	14:30:00	D	7.30
375	FIROZPUR	FIROZPUR	S-NPP	74.57518	30.90982	12:54:00	D	9.50
376	FIROZPUR	FIROZPUR	S-NPP	74.57877	30.91069	12:54:00	D	9.50
377	FIROZPUR	FIROZPUR	S-NPP	74.74094	30.91148	14:30:00	D	6.70
378	FIROZPUR	FIROZPUR	AQUA	74.49300	30.91200	13:50:00	D	9.30
379	FIROZPUR	FIROZPUR	AQUA	74.71800	30.91300	13:50:00	D	12.00
380	FIROZPUR	FIROZPUR	S-NPP	74.70093	30.92358	12:54:00	D	4.20
381	FIROZPUR	FIROZPUR	S-NPP	74.76027	30.92416	14:30:00	D	10.60
382	FIROZPUR	FIROZPUR	S-NPP	74.45403	30.93588	12:54:00	D	2.00
383	FIROZPUR	FIROZPUR	S-NPP	74.45767	30.93675	12:54:00	D	4.40
384	FIROZPUR	FIROZPUR	S-NPP	74.69939	30.94283	14:30:00	D	7.90
385	FIROZPUR	FIROZPUR	AQUA	74.73500	30.94300	13:50:00	D	8.70
386	FIROZPUR	FIROZPUR	AQUA	74.46500	30.94600	13:50:00	D	7.60
387	FIROZPUR	FIROZPUR	AQUA	74.64400	30.95000	13:50:00	D	7.80
388	FIROZPUR	FIROZPUR	S-NPP	74.76474	30.96049	12:54:00	D	12.50
389	FIROZPUR	FIROZPUR	S-NPP	74.65311	30.96659	12:54:00	D	8.10
390	FIROZPUR	FIROZPUR	AQUA	74.65100	30.97000	13:50:00	D	8.60
391	FIROZPUR	FIROZPUR	S-NPP	74.65505	30.97250	12:54:00	D	6.10
392	FIROZPUR	FIROZPUR	S-NPP	74.64989	30.97672	12:54:00	D	2.80
393	FIROZPUR	FIROZPUR	AQUA	74.56000	30.97700	13:50:00	D	15.20

394	FIROZPUR	FIROZPUR	AQUA	74.77500	30.97700	13:50:00	D	9.70
395	FIROZPUR	FIROZPUR	AQUA	74.77400	30.98600	13:50:00	D	15.70
396	FIROZPUR	FIROZPUR	AQUA	74.60700	30.99100	13:50:00	D	7.60
397	FIROZPUR	FIROZPUR	AQUA	74.62400	31.02100	13:50:00	D	7.30
398	FIROZPUR	FIROZPUR	AQUA	74.63500	31.02300	13:50:00	D	18.90
399	FIROZPUR	FIROZPUR	S-NPP	74.73009	31.02978	12:54:00	D	1.40
400	FIROZPUR	FIROZPUR	S-NPP	74.64333	31.03009	14:30:00	D	10.10
401	FIROZPUR	FIROZPUR	S-NPP	74.63770	31.03481	12:54:00	D	7.70
402	FIROZPUR	FIROZPUR	AQUA	74.73400	31.04500	13:50:00	D	5.70
403	FIROZPUR	FIROZPUR	S-NPP	74.69639	31.06507	12:54:00	D	9.00
404	FIROZPUR	FIROZPUR	S-NPP	74.77184	31.09912	12:54:00	D	6.10
405	FIROZPUR	FIROZPUR	S-NPP	74.78917	31.10321	12:54:00	D	3.00
406	FIROZPUR	FIROZPUR	S-NPP	74.75128	31.10507	12:54:00	D	3.00
407	FIROZPUR	ZIRA	AQUA	75.32100	30.85300	13:50:00	D	8.80
408	FIROZPUR	ZIRA	S-NPP	75.27912	30.88167	12:54:00	D	8.20
409	FIROZPUR	ZIRA	S-NPP	74.95086	30.90978	12:54:00	D	3.90
410	FIROZPUR	ZIRA	AQUA	74.91800	30.91300	13:50:00	D	8.40
411	FIROZPUR	ZIRA	AQUA	74.91600	30.92300	13:50:00	D	23.60
412	FIROZPUR	ZIRA	S-NPP	74.92280	30.92600	14:30:00	D	3.90
413	FIROZPUR	ZIRA	S-NPP	74.85056	30.94148	14:30:00	D	5.30
414	FIROZPUR	ZIRA	AQUA	74.87100	30.95100	13:50:00	D	24.40
415	FIROZPUR	ZIRA	S-NPP	75.25468	30.95448	12:54:00	D	12.10
416	FIROZPUR	ZIRA	AQUA	75.24900	30.95500	13:50:00	D	5.80
417	FIROZPUR	ZIRA	S-NPP	74.86531	30.95608	14:30:00	D	9.90
418	FIROZPUR	ZIRA	AQUA	74.83800	31.01300	13:50:00	D	12.80
419	FIROZPUR	ZIRA	AQUA	74.83000	31.01900	13:50:00	D	20.30
420	FIROZPUR	ZIRA	AQUA	74.84100	31.02100	13:50:00	D	5.30
421	FIROZPUR	ZIRA	S-NPP	75.04103	31.07598	14:30:00	D	5.70
422	FIROZPUR	ZIRA	AQUA	75.05200	31.07600	13:50:00	D	18.70
423	FIROZPUR	ZIRA	AQUA	74.91700	31.11600	13:50:00	D	12.30
424	FIROZPUR	ZIRA	AQUA	74.91000	31.12000	13:50:00	D	5.70
425	FIROZPUR	ZIRA	AQUA	74.92200	31.12200	13:50:00	D	14.50
426	FIROZPUR	ZIRA	S-NPP	74.88789	31.15314	12:54:00	D	1.50

427	GURDASPUR	BATALA	AQUA	75.31000	31.65700	13:50:00	D	4.70
428	GURDASPUR	BATALA	S-NPP	75.35238	31.67914	12:54:00	D	8.90
429	GURDASPUR	BATALA	AQUA	75.29300	31.68400	13:50:00	D	11.30
430	GURDASPUR	BATALA	AQUA	75.34800	31.72000	13:50:00	D	22.00
431	GURDASPUR	BATALA	AQUA	75.34200	31.72300	13:50:00	D	12.30
432	GURDASPUR	BATALA	S-NPP	75.31016	31.72304	12:54:00	D	4.30
433	GURDASPUR	BATALA	AQUA	75.41400	31.73200	13:50:00	D	7.70
434	GURDASPUR	BATALA	S-NPP	75.27589	31.74599	12:54:00	D	4.60
435	GURDASPUR	BATALA	S-NPP	75.17461	31.76394	12:54:00	D	3.70
436	GURDASPUR	BATALA	S-NPP	75.36382	31.78970	14:30:00	D	5.80
437	GURDASPUR	BATALA	AQUA	75.41300	31.81000	13:50:00	D	6.00
438	GURDASPUR	BATALA	S-NPP	75.04346	31.82242	12:54:00	D	4.90
439	GURDASPUR	BATALA	AQUA	75.13500	31.82900	13:50:00	D	11.80
440	GURDASPUR	BATALA	AQUA	75.14700	31.83000	13:50:00	D	6.90
441	GURDASPUR	BATALA	S-NPP	75.25605	31.84592	12:54:00	D	5.70
442	GURDASPUR	BATALA	S-NPP	75.14668	31.84639	12:54:00	D	10.40
443	GURDASPUR	BATALA	S-NPP	75.17078	31.85714	12:54:00	D	4.70
444	GURDASPUR	BATALA	S-NPP	75.12126	31.87832	12:54:00	D	5.10
445	GURDASPUR	BATALA	S-NPP	75.00475	31.93951	12:54:00	D	7.40
446	GURDASPUR	DERA BABA NANAK	S-NPP	74.94072	31.94649	14:30:00	D	3.90
447	GURDASPUR	DERA BABA NANAK	S-NPP	75.06868	31.95024	14:30:00	D	3.80
448	GURDASPUR	DERA BABA NANAK	AQUA	75.00000	31.95100	13:50:00	D	16.50
449	GURDASPUR	DERA BABA NANAK	AQUA	75.01200	31.95300	13:50:00	D	19.30
450	GURDASPUR	DERA BABA NANAK	S-NPP	74.97909	31.99029	14:30:00	D	5.50
451	GURDASPUR	DERA BABA NANAK	S-NPP	75.10368	31.99865	12:54:00	D	4.90
452	GURDASPUR	DERA BABA NANAK	S-NPP	75.10335	31.99959	12:54:00	D	4.40
453	GURDASPUR	DERA BABA NANAK	S-NPP	75.11945	32.01374	12:54:00	D	8.00
454	GURDASPUR	DERA BABA NANAK	AQUA	75.09900	32.03700	13:50:00	D	6.70
455	GURDASPUR	DERA BABA NANAK	S-NPP	75.06575	32.05015	14:30:00	D	2.30
456	GURDASPUR	GURDASPUR	AQUA	75.46500	31.79700	13:50:00	D	6.60
457	GURDASPUR	GURDASPUR	AQUA	75.40100	31.80800	13:50:00	D	7.60
458	GURDASPUR	GURDASPUR	AQUA	75.53600	31.85800	13:50:00	D	23.40
459	GURDASPUR	GURDASPUR	AQUA	75.54800	31.85900	13:50:00	D	5.60

460	GURDASPUR	GURDASPUR	AQUA	75.32100	31.88100	13:50:00	D	7.20
461	GURDASPUR	GURDASPUR	AQUA	75.35500	31.89500	13:50:00	D	11.70
462	GURDASPUR	GURDASPUR	S-NPP	75.22460	31.89755	12:54:00	D	4.90
463	GURDASPUR	GURDASPUR	S-NPP	75.37554	31.91449	12:54:00	D	4.90
464	GURDASPUR	GURDASPUR	S-NPP	75.48175	31.94775	12:54:00	D	6.00
465	GURDASPUR	GURDASPUR	S-NPP	75.48320	31.94919	12:54:00	D	5.20
466	GURDASPUR	GURDASPUR	S-NPP	75.19843	31.97548	14:30:00	D	10.40
467	GURDASPUR	GURDASPUR	S-NPP	75.31322	31.97991	12:54:00	D	4.60
468	GURDASPUR	GURDASPUR	S-NPP	75.28541	32.00422	12:54:00	D	3.60
469	GURDASPUR	GURDASPUR	AQUA	75.34700	32.01900	13:50:00	D	29.60
470	GURDASPUR	GURDASPUR	AQUA	75.14800	32.03300	13:50:00	D	7.60
471	GURDASPUR	GURDASPUR	AQUA	75.18400	32.03800	13:50:00	D	7.80
472	GURDASPUR	GURDASPUR	AQUA	75.19600	32.03900	13:50:00	D	7.90
473	GURDASPUR	GURDASPUR	AQUA	75.23200	32.04400	13:50:00	D	9.80
474	GURDASPUR	GURDASPUR	S-NPP	75.19585	32.05224	12:54:00	D	5.90
475	GURDASPUR	GURDASPUR	AQUA	75.23000	32.05300	13:50:00	D	9.20
476	GURDASPUR	GURDASPUR	S-NPP	75.19628	32.05450	14:30:00	D	4.30
477	GURDASPUR	GURDASPUR	AQUA	75.28000	32.09200	13:50:00	D	7.50
478	HOSHIARPUR	DASUYA	S-NPP	75.63059	31.69724	12:54:00	D	2.30
479	HOSHIARPUR	DASUYA	S-NPP	75.56624	31.75216	12:54:00	D	7.00
480	HOSHIARPUR	DASUYA	S-NPP	75.56754	31.75368	12:54:00	D	8.60
481	HOSHIARPUR	DASUYA	AQUA	75.58200	31.77100	13:50:00	D	10.80
482	HOSHIARPUR	DASUYA	S-NPP	75.59991	31.79035	12:54:00	D	4.00
483	HOSHIARPUR	DASUYA	AQUA	75.60200	31.80300	13:50:00	D	15.60
484	HOSHIARPUR	DASUYA	AQUA	75.59600	31.84200	13:50:00	D	8.90
485	HOSHIARPUR	HOSHIARPUR	S-NPP	75.80187	31.38695	12:54:00	D	6.20
486	HOSHIARPUR	MUKERIAN	AQUA	75.54900	31.92900	13:50:00	D	7.70
487	JALANDHAR	JALANDHAR I	AQUA	75.73400	31.34200	13:50:00	D	6.30
488	JALANDHAR	JALANDHAR I	S-NPP	75.79751	31.38643	12:54:00	D	3.90
489	JALANDHAR	JALANDHAR II	S-NPP	75.70424	31.51316	14:30:00	D	6.40
490	JALANDHAR	JALANDHAR II	S-NPP	75.69852	31.51995	14:30:00	D	4.70
491	JALANDHAR	JALANDHAR II	S-NPP	75.69373	31.52225	12:54:00	D	5.10
492	JALANDHAR	NAKODAR	S-NPP	75.54128	30.98503	12:54:00	D	6.30

493	JALANDHAR	NAKODAR	AQUA	75.56800	31.13900	13:50:00	D	14.00
494	JALANDHAR	NAKODAR	S-NPP	75.37728	31.15711	12:54:00	D	4.90
495	JALANDHAR	NAKODAR	S-NPP	75.45896	31.18943	14:30:00	D	10.50
496	JALANDHAR	NAKODAR	AQUA	75.52200	31.19200	13:50:00	D	6.40
497	JALANDHAR	NAKODAR	AQUA	75.51600	31.19500	13:50:00	D	9.60
498	JALANDHAR	NAKODAR	S-NPP	75.48934	31.19723	12:54:00	D	5.80
499	JALANDHAR	NAKODAR	S-NPP	75.48684	31.19834	12:54:00	D	4.30
500	JALANDHAR	PHILLAUR	S-NPP	75.56057	31.01016	12:54:00	D	4.80
501	JALANDHAR	PHILLAUR	AQUA	75.91300	31.05800	13:50:00	D	29.60
502	JALANDHAR	PHILLAUR	AQUA	75.91800	31.05800	13:50:00	D	35.40
503	JALANDHAR	SHAHKOT	S-NPP	75.18412	31.08562	12:54:00	D	11.30
504	JALANDHAR	SHAHKOT	S-NPP	75.18741	31.08638	12:54:00	D	11.30
505	JALANDHAR	SHAHKOT	S-NPP	75.20091	31.10526	12:54:00	D	9.90
506	JALANDHAR	SHAHKOT	AQUA	75.22300	31.10700	13:50:00	D	13.60
507	JALANDHAR	SHAHKOT	AQUA	75.23500	31.10800	13:50:00	D	15.40
508	JALANDHAR	SHAHKOT	S-NPP	75.18893	31.12082	14:30:00	D	8.20
509	JALANDHAR	SHAHKOT	S-NPP	75.18249	31.12308	14:30:00	D	9.10
510	JALANDHAR	SHAHKOT	S-NPP	75.28587	31.12435	14:30:00	D	5.80
511	KAPURTHALA	BHOLATH	S-NPP	75.44723	31.52720	14:30:00	D	4.70
512	KAPURTHALA	BHOLATH	S-NPP	75.44991	31.52826	14:30:00	D	14.10
513	KAPURTHALA	BHOLATH	S-NPP	75.44704	31.53446	14:30:00	D	4.70
514	KAPURTHALA	BHOLATH	S-NPP	75.47706	31.53684	12:54:00	D	3.10
515	KAPURTHALA	BHOLATH	S-NPP	75.44299	31.53917	12:54:00	D	4.50
516	KAPURTHALA	BHOLATH	S-NPP	75.39358	31.56883	12:54:00	D	14.70
517	KAPURTHALA	BHOLATH	S-NPP	75.39985	31.57027	12:54:00	D	14.70
518	KAPURTHALA	BHOLATH	S-NPP	75.39208	31.57362	12:54:00	D	14.70
519	KAPURTHALA	BHOLATH	S-NPP	75.39835	31.57506	12:54:00	D	14.70
520	KAPURTHALA	BHOLATH	AQUA	75.57700	31.57800	13:50:00	D	8.50
521	KAPURTHALA	BHOLATH	AQUA	75.58900	31.57900	13:50:00	D	9.70
522	KAPURTHALA	BHOLATH	S-NPP	75.58214	31.58157	12:54:00	D	5.30
523	KAPURTHALA	BHOLATH	AQUA	75.45200	31.58200	13:50:00	D	20.90
524	KAPURTHALA	BHOLATH	AQUA	75.46400	31.58400	13:50:00	D	12.50
525	KAPURTHALA	BHOLATH	S-NPP	75.57570	31.59000	14:30:00	D	6.40

526	KAPURTHALA	BHOLATH	S-NPP	75.44746	31.60965	14:30:00	D	13.10
527	KAPURTHALA	BHOLATH	S-NPP	75.44726	31.61532	14:30:00	D	16.60
528	KAPURTHALA	BHOLATH	S-NPP	75.49210	31.61697	12:54:00	D	5.40
529	KAPURTHALA	BHOLATH	S-NPP	75.49097	31.61907	12:54:00	D	5.20
530	KAPURTHALA	KAPURTHALA	AQUA	75.31500	31.34000	13:50:00	D	5.80
531	KAPURTHALA	KAPURTHALA	S-NPP	75.20178	31.37777	12:54:00	D	8.70
532	KAPURTHALA	KAPURTHALA	AQUA	75.21700	31.39000	13:50:00	D	10.00
533	KAPURTHALA	KAPURTHALA	S-NPP	75.38293	31.42182	14:30:00	D	14.00
534	KAPURTHALA	KAPURTHALA	S-NPP	75.38328	31.42385	14:30:00	D	9.10
535	KAPURTHALA	KAPURTHALA	AQUA	75.36900	31.45200	13:50:00	D	7.40
536	KAPURTHALA	KAPURTHALA	S-NPP	75.43316	31.50607	12:54:00	D	5.50
537	KAPURTHALA	KAPURTHALA	S-NPP	75.43406	31.50901	12:54:00	D	4.30
538	KAPURTHALA	SULTANPUR LODHI	AQUA	75.06900	31.15000	13:50:00	D	7.60
539	KAPURTHALA	SULTANPUR LODHI	S-NPP	75.02937	31.16480	12:54:00	D	5.10
540	KAPURTHALA	SULTANPUR LODHI	S-NPP	75.06788	31.17905	12:54:00	D	4.90
541	KAPURTHALA	SULTANPUR LODHI	S-NPP	75.06634	31.18398	12:54:00	D	6.20
542	KAPURTHALA	SULTANPUR LODHI	S-NPP	75.12427	31.19213	12:54:00	D	15.00
543	KAPURTHALA	SULTANPUR LODHI	S-NPP	75.12756	31.19290	12:54:00	D	7.30
544	KAPURTHALA	SULTANPUR LODHI	S-NPP	75.13086	31.19366	12:54:00	D	7.30
545	KAPURTHALA	SULTANPUR LODHI	S-NPP	75.06631	31.22571	12:54:00	D	3.10
546	KAPURTHALA	SULTANPUR LODHI	S-NPP	75.16217	31.26407	12:54:00	D	2.90
547	KAPURTHALA	SULTANPUR LODHI	S-NPP	75.22884	31.27445	12:54:00	D	6.30
548	KAPURTHALA	SULTANPUR LODHI	S-NPP	75.23280	31.29962	14:30:00	D	8.90
549	KAPURTHALA	SULTANPUR LODHI	S-NPP	75.23045	31.30187	14:30:00	D	5.70
550	KAPURTHALA	SULTANPUR LODHI	AQUA	75.14100	31.30900	13:50:00	D	5.80
551	KAPURTHALA	SULTANPUR LODHI	S-NPP	75.14354	31.31084	14:30:00	D	5.40
552	KAPURTHALA	SULTANPUR LODHI	S-NPP	75.14912	31.31381	14:30:00	D	8.40
553	KAPURTHALA	SULTANPUR LODHI	S-NPP	75.19185	31.36499	12:54:00	D	8.60
554	LUDHIANA	JAGRAON	S-NPP	75.42996	30.62803	12:54:00	D	6.70
555	LUDHIANA	JAGRAON	S-NPP	75.43019	30.62846	12:54:00	D	4.90
556	LUDHIANA	JAGRAON	AQUA	75.37600	30.98100	13:50:00	D	5.60
557	LUDHIANA	KHANNA	AQUA	76.13500	30.65700	13:50:00	D	7.30
558	LUDHIANA	KHANNA	AQUA	76.22700	30.72800	13:50:00	D	5.90

559	LUDHIANA	LUDHIANA EAST	AQUA	75.93400	30.92700	13:50:00	D	6.00
560	LUDHIANA	SAMRALA	S-NPP	76.23347	30.81339	12:54:00	D	6.00
561	LUDHIANA	SAMRALA	S-NPP	76.23269	30.81417	12:54:00	D	8.00
562	MANSA	BUDHLADA	AQUA	75.51500	29.78600	13:50:00	D	10.00
563	MANSA	BUDHLADA	S-NPP	75.49087	29.80071	14:30:00	D	4.60
564	MANSA	BUDHLADA	S-NPP	75.68803	29.80755	12:54:00	D	6.30
565	MANSA	BUDHLADA	S-NPP	75.68948	29.80775	12:54:00	D	4.50
566	MANSA	MANSA	S-NPP	75.34102	29.90009	12:54:00	D	3.20
567	MANSA	MANSA	S-NPP	75.33951	29.90510	12:54:00	D	5.70
568	MANSA	MANSA	S-NPP	75.34295	30.11021	12:54:00	D	4.70
569	MANSA	SARDULGARH	S-NPP	75.24201	29.62986	12:54:00	D	13.60
570	MANSA	SARDULGARH	S-NPP	75.24549	29.63068	12:54:00	D	19.20
571	MANSA	SARDULGARH	S-NPP	75.24981	29.63513	14:30:00	D	4.20
572	MANSA	SARDULGARH	S-NPP	75.24798	29.63860	14:30:00	D	2.60
573	MANSA	SARDULGARH	AQUA	75.19500	29.66400	13:50:00	D	7.30
574	MANSA	SARDULGARH	AQUA	75.19400	29.67300	13:50:00	D	6.70
575	MANSA	SARDULGARH	S-NPP	75.25446	29.68683	12:54:00	D	3.80
576	MANSA	SARDULGARH	S-NPP	75.25792	29.68763	12:54:00	D	4.30
577	MANSA	SARDULGARH	AQUA	75.25900	29.69100	13:50:00	D	16.70
578	MANSA	SARDULGARH	AQUA	75.25300	29.69600	13:50:00	D	8.60
579	MANSA	SARDULGARH	AQUA	75.26400	29.69700	13:50:00	D	20.10
580	MANSA	SARDULGARH	AQUA	75.32300	29.75200	13:50:00	D	7.30
581	MANSA	SARDULGARH	AQUA	75.33400	29.75400	13:50:00	D	10.00
582	MANSA	SARDULGARH	S-NPP	75.27364	29.77484	14:30:00	D	3.60
583	MANSA	SARDULGARH	AQUA	75.27400	29.80000	13:50:00	D	21.40
584	MANSA	SARDULGARH	AQUA	75.28500	29.80200	13:50:00	D	20.00
585	MOGA	MOGA	S-NPP	75.13001	30.75241	12:54:00	D	2.90
586	MOGA	MOGA	AQUA	75.22400	30.75900	13:50:00	D	9.20
587	MOGA	NIHAL SINGH WALA	AQUA	75.33400	30.59900	13:50:00	D	20.10
588	MOGA	NIHAL SINGH WALA	S-NPP	75.33611	30.60402	14:30:00	D	6.20
589	MOGA	NIHAL SINGH WALA	S-NPP	75.33228	30.60691	14:30:00	D	6.00
590	MOGA	NIHAL SINGH WALA	S-NPP	75.34036	30.60717	14:30:00	D	9.10
591	MOGA	NIHAL SINGH WALA	S-NPP	75.37613	30.61991	14:30:00	D	12.00

592	MOGA	NIHAL SINGH WALA	S-NPP	75.38042	30.62284	14:30:00	D	11.20
593	MOGA	NIHAL SINGH WALA	AQUA	75.26700	30.68200	13:50:00	D	8.40
594	MUKTSAR	GIDDARBAHA	S-NPP	74.68573	30.16990	12:54:00	D	4.30
595	MUKTSAR	GIDDARBAHA	S-NPP	74.62884	30.29993	12:54:00	D	7.80
596	MUKTSAR	GIDDARBAHA	S-NPP	74.78111	30.35287	14:30:00	D	6.30
597	MUKTSAR	GIDDARBAHA	S-NPP	74.78181	30.35335	14:30:00	D	7.80
598	MUKTSAR	GIDDARBAHA	AQUA	74.62800	30.36000	13:50:00	D	70.80
599	MUKTSAR	GIDDARBAHA	AQUA	74.63900	30.36100	13:50:00	D	62.40
600	MUKTSAR	GIDDARBAHA	S-NPP	74.80969	30.38184	14:30:00	D	9.10
601	MUKTSAR	GIDDARBAHA	S-NPP	74.81048	30.38248	14:30:00	D	7.40
602	MUKTSAR	GIDDARBAHA	AQUA	74.81200	30.39300	13:50:00	D	27.90
603	MUKTSAR	GIDDARBAHA	AQUA	74.61300	30.46900	13:50:00	D	10.30
604	MUKTSAR	MALAUT	AQUA	74.47800	29.94600	13:50:00	D	7.00
605	MUKTSAR	MALAUT	S-NPP	74.48556	29.95226	12:54:00	D	15.70
606	MUKTSAR	MALAUT	S-NPP	74.48935	29.95316	12:54:00	D	17.10
607	MUKTSAR	MALAUT	S-NPP	74.48582	29.95604	12:54:00	D	3.40
608	MUKTSAR	MALAUT	S-NPP	74.44717	30.05357	12:54:00	D	3.40
609	MUKTSAR	MALAUT	S-NPP	74.45097	30.05447	12:54:00	D	4.60
610	MUKTSAR	MALAUT	S-NPP	74.44547	30.05602	12:54:00	D	5.90
611	MUKTSAR	MALAUT	S-NPP	74.44926	30.05694	12:54:00	D	10.80
612	MUKTSAR	MALAUT	S-NPP	74.44932	30.05970	12:54:00	D	3.80
613	MUKTSAR	MALAUT	S-NPP	74.41029	30.10940	14:30:00	D	4.20
614	MUKTSAR	MALAUT	S-NPP	74.43703	30.16075	12:54:00	D	11.60
615	MUKTSAR	MALAUT	S-NPP	74.36028	30.27240	12:54:00	D	2.40
616	MUKTSAR	MALAUT	S-NPP	74.35989	30.27519	12:54:00	D	3.00
617	MUKTSAR	MALAUT	S-NPP	74.37312	30.30926	12:54:00	D	1.90
618	MUKTSAR	MALAUT	S-NPP	74.37148	30.31448	12:54:00	D	7.20
619	MUKTSAR	MALAUT	S-NPP	74.46252	30.33282	14:30:00	D	11.60
620	MUKTSAR	MUKTSAR	S-NPP	74.46152	30.33417	14:30:00	D	14.70
621	MUKTSAR	MUKTSAR	AQUA	74.48600	30.35000	13:50:00	D	8.80
622	MUKTSAR	MUKTSAR	S-NPP	74.50402	30.36213	14:30:00	D	7.70
623	MUKTSAR	MUKTSAR	S-NPP	74.50298	30.36324	14:30:00	D	3.90
624	MUKTSAR	MUKTSAR	S-NPP	74.48423	30.39180	12:54:00	D	2.20

625	MUKTSAR	MUKTSAR	AQUA	74.60200	30.46700	13:50:00	D	22.40
626	MUKTSAR	MUKTSAR	S-NPP	74.44777	30.47768	14:30:00	D	6.80
627	MUKTSAR	MUKTSAR	S-NPP	74.44546	30.47830	14:30:00	D	9.30
628	MUKTSAR	MUKTSAR	S-NPP	74.51900	30.48780	14:30:00	D	5.90
629	MUKTSAR	MUKTSAR	S-NPP	74.51667	30.48800	14:30:00	D	7.90
630	MUKTSAR	MUKTSAR	S-NPP	74.47918	30.50093	12:54:00	D	3.80
631	MUKTSAR	MUKTSAR	S-NPP	74.57967	30.50817	12:54:00	D	6.50
632	MUKTSAR	MUKTSAR	S-NPP	74.59482	30.52564	14:30:00	D	6.70
633	MUKTSAR	MUKTSAR	AQUA	74.58200	30.61200	13:50:00	D	9.20
634	MUKTSAR	MUKTSAR	S-NPP	74.51295	30.64689	14:30:00	D	5.00
635	MUKTSAR	MUKTSAR	S-NPP	74.54588	30.65458	14:30:00	D	4.90
636	MUKTSAR	MUKTSAR	AQUA	74.53300	30.66100	13:50:00	D	5.10
637	PATIALA	NABHA	S-NPP	76.05592	30.34887	12:54:00	D	5.50
638	PATIALA	NABHA	S-NPP	76.27198	30.41310	12:54:00	D	2.40
639	PATIALA	NABHA	S-NPP	76.24500	30.46205	12:54:00	D	11.90
640	PATIALA	NABHA	S-NPP	76.28425	30.51054	12:54:00	D	7.50
641	PATIALA	NABHA	AQUA	76.24400	30.53700	13:50:00	D	16.50
642	PATIALA	PATIALA	S-NPP	76.62513	30.14709	12:54:00	D	3.40
643	PATIALA	PATIALA	S-NPP	76.49018	30.15151	12:54:00	D	7.90
644	PATIALA	PATIALA	AQUA	76.61700	30.15500	13:50:00	D	7.20
645	PATIALA	PATIALA	S-NPP	76.48883	30.15617	12:54:00	D	7.40
646	PATIALA	PATIALA	S-NPP	76.47015	30.15697	12:54:00	D	5.50
647	PATIALA	PATIALA	S-NPP	76.59011	30.16390	12:54:00	D	3.30
648	PATIALA	PATIALA	S-NPP	76.37478	30.16567	12:54:00	D	6.40
649	PATIALA	PATIALA	S-NPP	76.58740	30.17315	12:54:00	D	5.70
650	PATIALA	PATIALA	S-NPP	76.57199	30.18452	12:54:00	D	5.40
651	PATIALA	PATIALA	S-NPP	76.54416	30.20973	12:54:00	D	16.10
652	PATIALA	PATIALA	S-NPP	76.54545	30.21321	12:54:00	D	16.40
653	PATIALA	PATIALA	S-NPP	76.18443	30.24882	12:54:00	D	6.90
654	PATIALA	PATIALA	S-NPP	76.19041	30.25015	12:54:00	D	6.90
655	PATIALA	PATIALA	S-NPP	76.53562	30.30160	12:54:00	D	2.30
656	PATIALA	PATIALA	S-NPP	76.48463	30.40491	12:54:00	D	6.70
657	PATIALA	PATIALA	AQUA	76.37500	30.41000	13:50:00	D	8.20

658	PATIALA	PATIALA	AQUA	76.48000	30.41200	13:50:00	D	7.00
659	PATIALA	PATIALA	S-NPP	76.32957	30.47089	12:54:00	D	4.70
660	PATIALA	RAJPURA	S-NPP	76.65985	30.32893	12:54:00	D	4.30
661	PATIALA	RAJPURA	AQUA	76.58200	30.38400	13:50:00	D	9.80
662	PATIALA	RAJPURA	S-NPP	76.58516	30.41234	12:54:00	D	3.60
663	PATIALA	RAJPURA	S-NPP	76.72789	30.49228	12:54:00	D	4.40
664	PATIALA	RAJPURA	S-NPP	76.59499	30.53939	12:54:00	D	5.80
665	PATIALA	RAJPURA	S-NPP	76.75124	30.54939	12:54:00	D	7.40
666	PATIALA	SAMANA	S-NPP	76.12160	29.84870	12:54:00	D	4.80
667	PATIALA	SAMANA	S-NPP	76.18117	29.86727	12:54:00	D	4.90
668	PATIALA	SAMANA	S-NPP	76.05638	29.86979	12:54:00	D	2.20
669	PATIALA	SAMANA	AQUA	76.20100	29.88100	13:50:00	D	8.70
670	PATIALA	SAMANA	S-NPP	76.11220	29.90273	12:54:00	D	7.00
671	PATIALA	SAMANA	S-NPP	76.10957	29.90523	12:54:00	D	16.80
672	PATIALA	SAMANA	S-NPP	76.10468	29.90615	12:54:00	D	7.00
673	PATIALA	SAMANA	S-NPP	76.11079	29.90751	12:54:00	D	7.00
674	PATIALA	SAMANA	S-NPP	76.12646	29.91421	12:54:00	D	4.60
675	PATIALA	SAMANA	TERRA	76.16500	29.91500	10:40:00	D	41.10
676	PATIALA	SAMANA	S-NPP	76.12772	29.91637	12:54:00	D	3.60
677	PATIALA	SAMANA	AQUA	76.16300	29.91900	13:50:00	D	27.80
678	PATIALA	SAMANA	AQUA	76.17600	29.92000	13:50:00	D	173.30
679	PATIALA	SAMANA	S-NPP	76.15125	29.94026	12:54:00	D	5.20
680	PATIALA	SAMANA	S-NPP	76.16943	29.94440	12:54:00	D	5.20
681	PATIALA	SAMANA	S-NPP	76.21439	30.01032	12:54:00	D	18.60
682	PATIALA	SAMANA	AQUA	76.20200	30.19700	13:50:00	D	10.30
683	RUPNAGAR	CHAMKOR SAHIB	S-NPP	76.46664	30.75527	12:54:00	D	3.70
684	RUPNAGAR	CHAMKOR SAHIB	S-NPP	76.48413	30.80980	12:54:00	D	5.70
685	SANGRUR	DHURI	S-NPP	75.74618	30.47497	12:54:00	D	8.40
686	SANGRUR	DHURI	S-NPP	75.74410	30.47655	12:54:00	D	14.70
687	SANGRUR	MOONAK	S-NPP	75.89147	29.79635	12:54:00	D	4.30
688	SANGRUR	MOONAK	S-NPP	75.76212	29.81896	12:54:00	D	4.80
689	SANGRUR	MOONAK	AQUA	75.88800	29.83300	13:50:00	D	7.30
690	SANGRUR	MOONAK	AQUA	75.94800	29.84000	13:50:00	D	7.50

691	SANGRUR	MOONAK	AQUA	75.82400	29.85400	13:50:00	D	6.10
692	SANGRUR	MOONAK	S-NPP	75.85747	29.97445	14:30:00	D	4.20
693	SANGRUR	MOONAK	S-NPP	75.85806	29.97478	14:30:00	D	8.00
694	SANGRUR	SANGRUR	S-NPP	76.02289	30.28689	12:54:00	D	31.40
695	SANGRUR	SUNAM	AQUA	75.67600	29.95100	13:50:00	D	16.80
696	SANGRUR	SUNAM	AQUA	75.67400	29.96000	13:50:00	D	12.00
697	SAS NAGAR	KHARAR	AQUA	76.53900	30.63300	13:50:00	D	7.20
698	SAS NAGAR	MOHALI	AQUA	76.64200	30.66500	13:50:00	D	9.30
699	SBS NAGAR	SBS NAGAR	S-NPP	76.18620	31.02247	12:54:00	D	3.50
700	TARN TARAN	KHADOOR SAHIB	S-NPP	74.95274	31.19881	12:54:00	D	3.50
701	TARN TARAN	KHADOOR SAHIB	S-NPP	74.95118	31.20377	12:54:00	D	1.90
702	TARN TARAN	KHADOOR SAHIB	S-NPP	74.95705	31.22190	14:30:00	D	8.20
703	TARN TARAN	KHADOOR SAHIB	S-NPP	75.01675	31.22459	12:54:00	D	2.90
704	TARN TARAN	KHADOOR SAHIB	S-NPP	74.95602	31.22624	14:30:00	D	7.50
705	TARN TARAN	KHADOOR SAHIB	S-NPP	74.96385	31.22649	14:30:00	D	8.80
706	TARN TARAN	KHADOOR SAHIB	S-NPP	74.96517	31.22835	12:54:00	D	4.30
707	TARN TARAN	KHADOOR SAHIB	S-NPP	74.95500	31.25450	14:30:00	D	9.80
708	TARN TARAN	KHADOOR SAHIB	S-NPP	74.93064	31.25747	12:54:00	D	3.30
709	TARN TARAN	KHADOOR SAHIB	AQUA	74.90300	31.25900	13:50:00	D	27.00
710	TARN TARAN	KHADOOR SAHIB	AQUA	74.91400	31.26100	13:50:00	D	9.20
711	TARN TARAN	KHADOOR SAHIB	AQUA	74.99400	31.27100	13:50:00	D	9.80
712	TARN TARAN	KHADOOR SAHIB	AQUA	75.00600	31.27200	13:50:00	D	21.60
713	TARN TARAN	KHADOOR SAHIB	S-NPP	74.92014	31.27416	12:54:00	D	9.40
714	TARN TARAN	KHADOOR SAHIB	S-NPP	74.91763	31.27571	12:54:00	D	6.00
715	TARN TARAN	KHADOOR SAHIB	S-NPP	74.92102	31.27650	12:54:00	D	7.40
716	TARN TARAN	KHADOOR SAHIB	S-NPP	74.95227	31.28716	12:54:00	D	2.80
717	TARN TARAN	KHADOOR SAHIB	S-NPP	74.94984	31.28849	12:54:00	D	3.00
718	TARN TARAN	KHADOOR SAHIB	S-NPP	74.94916	31.29705	12:54:00	D	3.00
719	TARN TARAN	KHADOOR SAHIB	S-NPP	74.95251	31.29785	12:54:00	D	3.00
720	TARN TARAN	KHADOOR SAHIB	AQUA	75.06000	31.29800	13:50:00	D	9.70
721	TARN TARAN	KHADOOR SAHIB	S-NPP	74.94424	31.30119	12:54:00	D	4.30
722	TARN TARAN	KHADOOR SAHIB	S-NPP	74.93260	31.30374	12:54:00	D	6.00
723	TARN TARAN	KHADOOR SAHIB	S-NPP	75.01091	31.30643	12:54:00	D	2.00

724	TARN TARAN	KHADOOR SAHIB	S-NPP	74.93286	31.31444	12:54:00	D	2.00
725	TARN TARAN	KHADOOR SAHIB	S-NPP	74.95795	31.31507	12:54:00	D	2.30
726	TARN TARAN	KHADOOR SAHIB	AQUA	74.96800	31.32000	13:50:00	D	29.50
727	TARN TARAN	KHADOOR SAHIB	S-NPP	74.96851	31.33877	12:54:00	D	1.20
728	TARN TARAN	KHADOOR SAHIB	S-NPP	75.10862	31.34014	12:54:00	D	1.70
729	TARN TARAN	KHADOOR SAHIB	S-NPP	75.03843	31.35521	12:54:00	D	4.70
730	TARN TARAN	KHADOOR SAHIB	S-NPP	74.97388	31.35593	12:54:00	D	6.40
731	TARN TARAN	KHADOOR SAHIB	AQUA	74.98500	31.36100	13:50:00	D	12.80
732	TARN TARAN	KHADOOR SAHIB	AQUA	74.84100	31.38100	13:50:00	D	16.80
733	TARN TARAN	KHADOOR SAHIB	S-NPP	74.79389	31.38111	12:54:00	D	4.00
734	TARN TARAN	KHADOOR SAHIB	S-NPP	74.94800	31.38276	14:30:00	D	12.00
735	TARN TARAN	KHADOOR SAHIB	AQUA	75.09900	31.38500	13:50:00	D	10.90
736	TARN TARAN	KHADOOR SAHIB	S-NPP	74.94785	31.38546	14:30:00	D	9.30
737	TARN TARAN	KHADOOR SAHIB	AQUA	75.11000	31.38600	13:50:00	D	46.50
738	TARN TARAN	KHADOOR SAHIB	S-NPP	75.13041	31.38803	14:30:00	D	13.60
739	TARN TARAN	KHADOOR SAHIB	S-NPP	75.13004	31.39178	14:30:00	D	7.80
740	TARN TARAN	KHADOOR SAHIB	S-NPP	74.79417	31.39187	12:54:00	D	1.90
741	TARN TARAN	KHADOOR SAHIB	S-NPP	75.13821	31.39206	14:30:00	D	10.10
742	TARN TARAN	KHADOOR SAHIB	S-NPP	75.04088	31.39269	12:54:00	D	4.10
743	TARN TARAN	KHADOOR SAHIB	AQUA	74.82100	31.39400	13:50:00	D	12.70
744	TARN TARAN	KHADOOR SAHIB	S-NPP	74.76364	31.39533	12:54:00	D	2.80
745	TARN TARAN	KHADOOR SAHIB	S-NPP	74.79259	31.39685	12:54:00	D	2.50
746	TARN TARAN	KHADOOR SAHIB	AQUA	74.76200	31.39700	13:50:00	D	8.30
747	TARN TARAN	KHADOOR SAHIB	S-NPP	75.10574	31.39808	14:30:00	D	4.60
748	TARN TARAN	KHADOOR SAHIB	S-NPP	74.86370	31.40306	12:54:00	D	11.20
749	TARN TARAN	KHADOOR SAHIB	AQUA	75.11900	31.40600	13:50:00	D	16.30
750	TARN TARAN	KHADOOR SAHIB	S-NPP	75.01357	31.40690	12:54:00	D	2.00
751	TARN TARAN	KHADOOR SAHIB	S-NPP	74.99212	31.40708	12:54:00	D	3.10
752	TARN TARAN	KHADOOR SAHIB	S-NPP	74.98990	31.40724	12:54:00	D	3.10
753	TARN TARAN	KHADOOR SAHIB	AQUA	75.13000	31.40800	13:50:00	D	5.90
754	TARN TARAN	KHADOOR SAHIB	S-NPP	74.78786	31.41178	12:54:00	D	2.20
755	TARN TARAN	KHADOOR SAHIB	S-NPP	75.12658	31.41780	12:54:00	D	4.70
756	TARN TARAN	KHADOOR SAHIB	S-NPP	74.92277	31.42239	12:54:00	D	4.00

757	TARN TARAN	KHADOOR SAHIB	AQUA	74.82700	31.42400	13:50:00	D	6.10
758	TARN TARAN	KHADOOR SAHIB	S-NPP	74.69960	31.43385	12:54:00	D	1.20
759	TARN TARAN	KHADOOR SAHIB	AQUA	75.14300	31.43400	13:50:00	D	10.90
760	TARN TARAN	KHADOOR SAHIB	AQUA	74.80100	31.43900	13:50:00	D	11.60
761	TARN TARAN	KHADOOR SAHIB	AQUA	74.88200	31.44000	13:50:00	D	12.20
762	TARN TARAN	KHADOOR SAHIB	AQUA	75.01000	31.44700	13:50:00	D	8.60
763	TARN TARAN	KHADOOR SAHIB	S-NPP	75.19851	31.45526	12:54:00	D	4.80
764	TARN TARAN	KHADOOR SAHIB	S-NPP	75.19679	31.45562	12:54:00	D	5.80
765	TARN TARAN	KHADOOR SAHIB	AQUA	74.66600	31.45600	13:50:00	D	5.90
766	TARN TARAN	KHADOOR SAHIB	S-NPP	75.01141	31.45917	12:54:00	D	3.50
767	TARN TARAN	KHADOOR SAHIB	AQUA	75.19700	31.47000	13:50:00	D	19.80
768	TARN TARAN	KHADOOR SAHIB	AQUA	74.74300	31.47600	13:50:00	D	10.80
769	TARN TARAN	KHADOOR SAHIB	S-NPP	75.22405	31.49112	14:30:00	D	8.60
770	TARN TARAN	KHADOOR SAHIB	S-NPP	75.01715	31.49738	12:54:00	D	2.20
771	TARN TARAN	KHADOOR SAHIB	AQUA	74.84300	31.49800	13:50:00	D	5.90
772	TARN TARAN	KHADOOR SAHIB	AQUA	74.77300	31.49900	13:50:00	D	16.20
773	TARN TARAN	KHADOOR SAHIB	AQUA	74.78500	31.50000	13:50:00	D	28.30
774	TARN TARAN	KHADOOR SAHIB	S-NPP	74.78245	31.50170	14:30:00	D	4.70
775	TARN TARAN	KHADOOR SAHIB	S-NPP	74.72705	31.50205	14:30:00	D	8.80
776	TARN TARAN	KHADOOR SAHIB	AQUA	74.65700	31.50300	13:50:00	D	9.00
777	TARN TARAN	KHADOOR SAHIB	S-NPP	74.72099	31.50675	14:30:00	D	14.30
778	TARN TARAN	KHADOOR SAHIB	S-NPP	74.72681	31.50904	14:30:00	D	8.80
779	TARN TARAN	KHADOOR SAHIB	AQUA	75.02900	31.51100	13:50:00	D	15.20
780	TARN TARAN	KHADOOR SAHIB	S-NPP	75.08131	31.51228	12:54:00	D	6.40
781	TARN TARAN	KHADOOR SAHIB	AQUA	75.04000	31.51300	13:50:00	D	8.60
782	TARN TARAN	KHADOOR SAHIB	S-NPP	74.69962	31.51656	12:54:00	D	1.40
783	TARN TARAN	KHADOOR SAHIB	S-NPP	74.81158	31.54482	14:30:00	D	4.90
784	TARN TARAN	KHADOOR SAHIB	S-NPP	74.78902	31.55897	12:54:00	D	2.90
785	TARN TARAN	PATTI	S-NPP	74.57611	31.09646	12:54:00	D	6.20
786	TARN TARAN	PATTI	S-NPP	74.57967	31.09730	12:54:00	D	6.20
787	TARN TARAN	PATTI	S-NPP	74.57851	31.09845	12:54:00	D	12.40
788	TARN TARAN	PATTI	AQUA	74.57900	31.11600	13:50:00	D	11.30
789	TARN TARAN	PATTI	AQUA	74.59000	31.11700	13:50:00	D	8.90

790	TARN TARAN	PATTI	AQUA	74.72500	31.12500	13:50:00	D	8.50
791	TARN TARAN	PATTI	S-NPP	74.72620	31.13401	12:54:00	D	1.30
792	TARN TARAN	PATTI	S-NPP	74.70911	31.14072	12:54:00	D	5.20
793	TARN TARAN	PATTI	S-NPP	74.66973	31.14086	14:30:00	D	17.60
794	TARN TARAN	PATTI	AQUA	74.70000	31.14100	13:50:00	D	5.60
795	TARN TARAN	PATTI	S-NPP	74.66746	31.14158	12:54:00	D	4.10
796	TARN TARAN	PATTI	S-NPP	74.67097	31.14242	12:54:00	D	4.10
797	TARN TARAN	PATTI	AQUA	74.80200	31.14500	13:50:00	D	13.50
798	TARN TARAN	PATTI	AQUA	74.81300	31.14600	13:50:00	D	13.80
799	TARN TARAN	PATTI	S-NPP	74.66587	31.14662	12:54:00	D	4.00
800	TARN TARAN	PATTI	S-NPP	74.62056	31.14666	12:54:00	D	9.50
801	TARN TARAN	PATTI	S-NPP	74.67988	31.14997	12:54:00	D	4.60
802	TARN TARAN	PATTI	AQUA	74.85900	31.15200	13:50:00	D	8.00
803	TARN TARAN	PATTI	AQUA	74.73200	31.15500	13:50:00	D	10.20
804	TARN TARAN	PATTI	S-NPP	74.78890	31.15981	12:54:00	D	5.90
805	TARN TARAN	PATTI	AQUA	74.92700	31.16000	13:50:00	D	26.80
806	TARN TARAN	PATTI	S-NPP	74.85106	31.16151	14:30:00	D	18.70
807	TARN TARAN	PATTI	S-NPP	74.87589	31.16450	12:54:00	D	3.50
808	TARN TARAN	PATTI	S-NPP	74.89158	31.16467	12:54:00	D	8.70
809	TARN TARAN	PATTI	S-NPP	74.76501	31.16488	12:54:00	D	1.50
810	TARN TARAN	PATTI	S-NPP	74.87930	31.16531	12:54:00	D	3.50
811	TARN TARAN	PATTI	S-NPP	74.87634	31.16648	12:54:00	D	4.20
812	TARN TARAN	PATTI	S-NPP	74.87976	31.16728	12:54:00	D	4.20
813	TARN TARAN	PATTI	S-NPP	74.88950	31.16775	12:54:00	D	17.90
814	TARN TARAN	PATTI	AQUA	74.61500	31.16800	13:50:00	D	7.60
815	TARN TARAN	PATTI	S-NPP	74.88659	31.16886	12:54:00	D	9.50
816	TARN TARAN	PATTI	S-NPP	74.89001	31.16965	12:54:00	D	8.70
817	TARN TARAN	PATTI	AQUA	74.56200	31.17800	13:50:00	D	7.90
818	TARN TARAN	PATTI	S-NPP	74.64072	31.17859	12:54:00	D	4.80
819	TARN TARAN	PATTI	AQUA	74.65200	31.18000	13:50:00	D	8.40
820	TARN TARAN	PATTI	S-NPP	74.88825	31.18349	12:54:00	D	1.20
821	TARN TARAN	PATTI	S-NPP	74.65925	31.18825	14:30:00	D	6.70
822	TARN TARAN	PATTI	AQUA	74.57100	31.18900	13:50:00	D	23.80

823	TARN TARAN	PATTI	S-NPP	74.66022	31.18927	14:30:00	D	7.30
824	TARN TARAN	PATTI	S-NPP	74.78304	31.19068	12:54:00	D	1.80
825	TARN TARAN	PATTI	S-NPP	74.87844	31.19185	12:54:00	D	1.20
826	TARN TARAN	PATTI	AQUA	74.68200	31.20300	13:50:00	D	16.80
827	TARN TARAN	PATTI	AQUA	74.69400	31.20400	13:50:00	D	5.80
828	TARN TARAN	PATTI	S-NPP	74.68855	31.20610	12:54:00	D	13.10
829	TARN TARAN	PATTI	AQUA	74.86600	31.20700	13:50:00	D	7.80
830	TARN TARAN	PATTI	AQUA	74.91800	31.20700	13:50:00	D	19.00
831	TARN TARAN	PATTI	AQUA	74.65900	31.20900	13:50:00	D	17.00
832	TARN TARAN	PATTI	S-NPP	74.62086	31.21299	12:54:00	D	1.60
833	TARN TARAN	PATTI	S-NPP	74.87745	31.21834	12:54:00	D	2.20
834	TARN TARAN	PATTI	AQUA	74.58900	31.21900	13:50:00	D	10.90
835	TARN TARAN	PATTI	S-NPP	74.81458	31.21960	12:54:00	D	7.50
836	TARN TARAN	PATTI	S-NPP	74.88606	31.22571	12:54:00	D	2.80
837	TARN TARAN	PATTI	AQUA	74.80400	31.22800	13:50:00	D	12.70
838	TARN TARAN	PATTI	S-NPP	74.55825	31.23055	12:54:00	D	18.90
839	TARN TARAN	PATTI	AQUA	74.67800	31.23100	13:50:00	D	7.20
840	TARN TARAN	PATTI	S-NPP	74.86932	31.23246	12:54:00	D	2.40
841	TARN TARAN	PATTI	AQUA	74.70000	31.23300	13:50:00	D	17.10
842	TARN TARAN	PATTI	S-NPP	74.68228	31.23321	12:54:00	D	1.80
843	TARN TARAN	PATTI	AQUA	74.71100	31.23500	13:50:00	D	15.70
844	TARN TARAN	PATTI	S-NPP	74.88975	31.23725	12:54:00	D	4.50
845	TARN TARAN	PATTI	S-NPP	74.89314	31.23804	12:54:00	D	4.50
846	TARN TARAN	PATTI	S-NPP	74.88818	31.24222	12:54:00	D	6.40
847	TARN TARAN	PATTI	S-NPP	74.53922	31.24233	12:54:00	D	2.90
848	TARN TARAN	PATTI	S-NPP	74.89158	31.24301	12:54:00	D	6.40
849	TARN TARAN	PATTI	AQUA	74.56200	31.24400	13:50:00	D	7.40
850	TARN TARAN	PATTI	AQUA	74.74300	31.24800	13:50:00	D	21.00
851	TARN TARAN	PATTI	S-NPP	74.74821	31.24904	12:54:00	D	0.70
852	TARN TARAN	PATTI	AQUA	74.61700	31.25100	13:50:00	D	11.40
853	TARN TARAN	PATTI	AQUA	74.76600	31.25100	13:50:00	D	8.40
854	TARN TARAN	PATTI	AQUA	74.77700	31.25300	13:50:00	D	6.20
855	TARN TARAN	PATTI	AQUA	74.78800	31.25400	13:50:00	D	7.90

856	TARN TARAN	PATTI	S-NPP	74.84212	31.25546	12:54:00	D	1.30
857	TARN TARAN	PATTI	AQUA	74.73000	31.25600	13:50:00	D	13.10
858	TARN TARAN	PATTI	S-NPP	74.73468	31.25657	12:54:00	D	7.10
859	TARN TARAN	PATTI	S-NPP	74.62640	31.25670	14:30:00	D	3.30
860	TARN TARAN	PATTI	S-NPP	74.75195	31.26070	12:54:00	D	3.70
861	TARN TARAN	PATTI	AQUA	74.76400	31.26100	13:50:00	D	31.60
862	TARN TARAN	PATTI	S-NPP	74.73309	31.26157	12:54:00	D	6.30
863	TARN TARAN	PATTI	S-NPP	74.78473	31.26256	14:30:00	D	6.70
864	TARN TARAN	PATTI	S-NPP	74.66768	31.26755	12:54:00	D	4.40
865	TARN TARAN	PATTI	S-NPP	74.74534	31.26988	12:54:00	D	3.60
866	TARN TARAN	PATTI	S-NPP	74.75225	31.27153	12:54:00	D	4.90
867	TARN TARAN	PATTI	S-NPP	74.70592	31.27184	14:30:00	D	9.10
868	TARN TARAN	PATTI	S-NPP	74.71348	31.27208	14:30:00	D	9.10
869	TARN TARAN	PATTI	S-NPP	74.62432	31.27347	12:54:00	D	4.40
870	TARN TARAN	PATTI	S-NPP	74.70835	31.27373	14:30:00	D	15.30
871	TARN TARAN	PATTI	S-NPP	74.62309	31.27612	14:30:00	D	5.10
872	TARN TARAN	PATTI	S-NPP	74.62565	31.27754	14:30:00	D	6.00
873	TARN TARAN	PATTI	S-NPP	74.86650	31.28268	12:54:00	D	10.90
874	TARN TARAN	PATTI	AQUA	74.68500	31.28500	13:50:00	D	6.90
875	TARN TARAN	PATTI	AQUA	74.69600	31.28600	13:50:00	D	16.60
876	TARN TARAN	PATTI	S-NPP	74.66476	31.28847	12:54:00	D	2.00
877	TARN TARAN	PATTI	S-NPP	74.77509	31.29308	12:54:00	D	1.30
878	TARN TARAN	PATTI	S-NPP	74.74088	31.29571	12:54:00	D	2.70
879	TARN TARAN	PATTI	AQUA	74.62600	31.29600	13:50:00	D	5.90
880	TARN TARAN	PATTI	S-NPP	74.58300	31.29622	12:54:00	D	2.30
881	TARN TARAN	PATTI	AQUA	74.55800	31.29700	13:50:00	D	6.60
882	TARN TARAN	PATTI	S-NPP	74.54660	31.30005	12:54:00	D	2.80
883	TARN TARAN	PATTI	S-NPP	74.60065	31.30037	12:54:00	D	6.20
884	TARN TARAN	PATTI	S-NPP	74.58493	31.30209	12:54:00	D	2.00
885	TARN TARAN	PATTI	S-NPP	74.58347	31.30354	12:54:00	D	2.10
886	TARN TARAN	PATTI	AQUA	74.55600	31.30600	13:50:00	D	51.10
887	TARN TARAN	PATTI	S-NPP	74.88065	31.30740	12:54:00	D	4.90
888	TARN TARAN	PATTI	AQUA	74.56700	31.30800	13:50:00	D	17.90

889	TARN TARAN	PATTI	S-NPP	74.90630	31.30928	14:30:00	D	5.70
890	TARN TARAN	PATTI	S-NPP	74.90363	31.31329	14:30:00	D	6.80
891	TARN TARAN	PATTI	S-NPP	74.88923	31.31476	12:54:00	D	1.80
892	TARN TARAN	PATTI	S-NPP	74.91447	31.31540	12:54:00	D	1.70
893	TARN TARAN	PATTI	S-NPP	74.58716	31.31888	12:54:00	D	2.50
894	TARN TARAN	PATTI	S-NPP	74.70895	31.32584	12:54:00	D	7.70
895	TARN TARAN	PATTI	AQUA	74.72400	31.32800	13:50:00	D	5.70
896	TARN TARAN	PATTI	S-NPP	74.63284	31.32957	12:54:00	D	2.50
897	TARN TARAN	PATTI	S-NPP	74.66242	31.33109	12:54:00	D	3.50
898	TARN TARAN	PATTI	S-NPP	74.63127	31.33136	12:54:00	D	2.50
899	TARN TARAN	PATTI	S-NPP	74.61057	31.33721	12:54:00	D	4.10
900	TARN TARAN	PATTI	S-NPP	74.60899	31.34224	12:54:00	D	4.00
901	TARN TARAN	PATTI	S-NPP	74.85454	31.34390	12:54:00	D	5.30
902	TARN TARAN	PATTI	AQUA	74.88200	31.34800	13:50:00	D	6.00
903	TARN TARAN	PATTI	AQUA	74.88000	31.35700	13:50:00	D	6.00
904	TARN TARAN	PATTI	S-NPP	74.62708	31.35979	14:30:00	D	6.20
905	TARN TARAN	PATTI	S-NPP	74.61468	31.35985	12:54:00	D	15.00
906	TARN TARAN	PATTI	S-NPP	74.88194	31.36097	12:54:00	D	1.80
907	TARN TARAN	PATTI	S-NPP	74.64321	31.38825	12:54:00	D	1.80
908	TARN TARAN	PATTI	S-NPP	74.59837	31.39924	12:54:00	D	3.60
909	TARN TARAN	PATTI	S-NPP	74.60186	31.40007	12:54:00	D	3.60
910	TARN TARAN	PATTI	S-NPP	74.66089	31.40322	12:54:00	D	0.90
911	TARN TARAN	PATTI	S-NPP	74.72826	31.41376	12:54:00	D	2.00
912	TARN TARAN	PATTI	AQUA	74.71100	31.42800	13:50:00	D	15.40

Details of residue burning events in Haryana on 19-Oct-2020

S. No.	District	Tehsil / Block	Satellite	Longitude	Latitude	Time (IST)	Day / Night	Fire Power (W/m ²)
1	AMBALA	AMBALA	S-NPP	76.62781	30.13785	12:54:00	D	2.20
2	AMBALA	AMBALA	AQUA	76.61300	30.18500	13:50:00	D	6.50
3	AMBALA	AMBALA	S-NPP	76.67079	30.19655	12:54:00	D	9.70
4	AMBALA	AMBALA	S-NPP	76.72117	30.20768	12:54:00	D	5.50
5	AMBALA	AMBALA	S-NPP	76.86469	30.23927	12:54:00	D	32.10
6	AMBALA	AMBALA	AQUA	76.81000	30.26700	13:50:00	D	10.70
7	AMBALA	AMBALA	AQUA	76.73300	30.33000	13:50:00	D	10.00
8	AMBALA	BARARA	S-NPP	77.06707	30.31214	12:54:00	D	4.30
9	FATEHABAD	FATEHABAD	S-NPP	75.35280	29.58485	01:36:00	N	1.10
10	FATEHABAD	TOHANA	S-NPP	75.71646	29.64595	14:30:00	D	10.20
11	FATEHABAD	TOHANA	S-NPP	75.77036	29.73619	14:30:00	D	5.50
12	HISAR	HANSI	AQUA	75.90700	29.13100	13:50:00	D	17.00
13	HISAR	HANSI	AQUA	75.91200	29.13600	13:50:00	D	8.80
14	HISAR	HISAR	S-NPP	75.72533	29.37800	12:54:00	D	1.50
15	JIND	NARWANA	S-NPP	76.06043	29.48569	12:54:00	D	3.60
16	KAITHAL	GUHLA	S-NPP	76.40093	29.95679	12:54:00	D	3.90
17	KAITHAL	GUHLA	AQUA	76.35800	30.01200	13:50:00	D	6.80
18	KAITHAL	GUHLA	AQUA	76.36400	30.01300	13:50:00	D	11.90
19	KAITHAL	GUHLA	S-NPP	76.45153	30.10290	12:54:00	D	4.20
20	KAITHAL	GUHLA	S-NPP	76.45486	30.10382	12:54:00	D	7.50
21	KAITHAL	KAITHAL	S-NPP	76.36602	29.86860	12:54:00	D	6.30
22	KAITHAL	KAITHAL	S-NPP	76.54714	29.86974	12:54:00	D	5.10
23	KAITHAL	KAITHAL	AQUA	76.30200	29.88300	13:50:00	D	10.00
24	KARNAL	ASSANDH	S-NPP	76.60942	29.60487	12:54:00	D	3.90
25	KARNAL	ASSANDH	S-NPP	76.66040	29.64111	12:54:00	D	3.00
26	KARNAL	GHARAUNDA	AQUA	77.02400	29.49100	13:50:00	D	6.90
27	KARNAL	GHARAUNDA	AQUA	76.91500	29.54800	13:50:00	D	8.60
28	KARNAL	GHARAUNDA	AQUA	76.80200	29.58600	13:50:00	D	10.00
29	KARNAL	KARNAL	AQUA	76.82400	29.66100	13:50:00	D	7.50
30	KARNAL	KARNAL	AQUA	76.71600	29.66800	13:50:00	D	7.00

31	KARNAL	NILOKHERI	AQUA	76.89800	29.76000	13:50:00	D	24.60
32	KARNAL	NILOKHERI	AQUA	76.91100	29.76100	13:50:00	D	33.50
33	KURUKSHETRA	PEHOWA	S-NPP	76.50731	29.94039	12:54:00	D	4.20
34	KURUKSHETRA	PEHOWA	S-NPP	76.54199	29.94811	12:54:00	D	6.30
35	KURUKSHETRA	PEHOWA	S-NPP	76.60518	30.03781	12:54:00	D	21.70
36	KURUKSHETRA	PEHOWA	AQUA	76.49500	30.04800	13:50:00	D	21.00
37	KURUKSHETRA	PEHOWA	S-NPP	76.45943	30.05488	12:54:00	D	8.50
38	KURUKSHETRA	SHAHABAD	AQUA	76.76400	30.12000	13:50:00	D	9.10
39	KURUKSHETRA	SHAHABAD	S-NPP	76.93192	30.18648	12:54:00	D	8.60
40	KURUKSHETRA	SHAHABAD	S-NPP	76.92889	30.18715	12:54:00	D	5.50
41	KURUKSHETRA	SHAHABAD	S-NPP	76.86339	30.24382	12:54:00	D	32.10
42	KURUKSHETRA	THANESAR	AQUA	76.75800	29.88600	13:50:00	D	7.90
43	KURUKSHETRA	THANESAR	S-NPP	77.00866	29.99798	12:54:00	D	3.80
44	KURUKSHETRA	THANESAR	S-NPP	77.00945	29.99971	12:54:00	D	2.80
45	KURUKSHETRA	THANESAR	S-NPP	77.04058	30.08678	12:54:00	D	3.80
46	KURUKSHETRA	THANESAR	AQUA	76.77700	30.12200	13:50:00	D	17.50
47	SIRSA	SIRSA	S-NPP	75.17637	29.67859	14:30:00	D	6.80
48	SIRSA	SIRSA	S-NPP	75.17815	29.68181	14:30:00	D	8.10
49	SIRSA	SIRSA	AQUA	75.15300	29.68300	13:50:00	D	6.80
50	SIRSA	SIRSA	S-NPP	75.13150	29.69391	14:30:00	D	3.10
51	SIRSA	SIRSA	AQUA	75.17200	29.70500	13:50:00	D	16.00
52	SIRSA	SIRSA	AQUA	75.18300	29.70600	13:50:00	D	12.90
53	SIRSA	SIRSA	S-NPP	75.22104	29.75698	12:54:00	D	6.40
54	SIRSA	SIRSA	S-NPP	75.22025	29.78380	12:54:00	D	2.30
55	SIRSA	SIRSA	S-NPP	75.20274	29.79316	14:30:00	D	7.90
56	SIRSA	SIRSA	S-NPP	75.08438	29.86042	14:30:00	D	6.40
57	SIRSA	SIRSA	S-NPP	75.08680	29.86351	14:30:00	D	15.90
58	SIRSA	SIRSA	S-NPP	75.08405	29.86747	14:30:00	D	6.20
59	YAMUNANAGAR	JAGADHRI	S-NPP	77.19730	29.97797	12:54:00	D	2.70
60	YAMUNANAGAR	JAGADHRI	AQUA	77.11800	30.00800	13:50:00	D	8.00
61	YAMUNANAGAR	JAGADHRI	S-NPP	77.23854	30.04400	12:54:00	D	2.50
62	YAMUNANAGAR	JAGADHRI	S-NPP	77.23996	30.04423	12:54:00	D	4.40
63	YAMUNANAGAR	JAGADHRI	AQUA	77.18700	30.16900	13:50:00	D	12.00

64	YAMUNANAGAR	JAGADHRI	AQUA	77.20600	30.28400	13:50:00	D	32.20
65	YAMUNANAGAR	JAGADHRI	AQUA	77.20000	30.29000	13:50:00	D	26.00
66	YAMUNANAGAR	JAGADHRI	AQUA	77.21400	30.29100	13:50:00	D	8.10
67	YAMUNANAGAR	JAGADHRI	AQUA	77.35200	30.34800	13:50:00	D	8.00

Details of residue burning events in Uttar Pradesh on 19-Oct-2020

S. No.	District	Tehsil / Block	Satellite	Longitude	Latitude	Time (IST)	Day / Night	Fire Power (W/m2)
1	BAHRAICH	BAHRAICH	S-NPP	81.80983	27.44277	01:36:00	N	0.70
2	BAHRAICH	NANPARA	S-NPP	81.52603	27.88634	01:36:00	N	0.50
3	BARABANKI	FATEHPUR	S-NPP	81.22905	27.11053	01:36:00	N	0.50
4	BARABANKI	NAWABGANJ	S-NPP	81.23787	26.90115	12:48:00	D	4.30
5	BAREILLY	AONLA	S-NPP	79.28246	28.26346	12:48:00	D	2.40
6	BAREILLY	BAHERI	S-NPP	79.55105	28.74130	12:54:00	D	2.90
7	BAREILLY	MIRGANJ	S-NPP	79.25011	28.63402	12:54:00	D	3.00
8	BULANSAHAR	KHURJA	S-NPP	78.01100	28.11295	12:48:00	D	4.80
9	BULANSAHAR	SIKANDARABAD	S-NPP	77.77475	28.40663	12:54:00	D	2.50
10	BULANSAHAR	SIYANA	S-NPP	78.12193	28.50936	12:54:00	D	10.90
11	ETAWAH	BHARTHNA	S-NPP	79.09579	26.70989	01:36:00	N	0.50
12	HARDOI	SIWAIJPUR	S-NPP	79.85046	27.48535	01:36:00	N	0.50
13	KANPUR	GHATAMPUR	S-NPP	80.16098	26.25725	12:48:00	D	7.70
14	KANPUR DEHAT	SIKANDRA	S-NPP	79.71777	26.27868	01:36:00	N	1.10
15	KANPUR DEHAT	SIKANDRA	S-NPP	79.65183	26.29463	01:36:00	N	1.10
16	KANPUR DEHAT	SIKANDRA	S-NPP	79.65243	26.29831	01:36:00	N	1.10
17	KANPUR DEHAT	SIKANDRA	S-NPP	79.59489	26.39037	01:36:00	N	3.30
18	KHERI	MOHMADI	S-NPP	80.28130	28.07863	01:36:00	N	0.70
19	MAINPURI	BHOGAON	S-NPP	79.18872	27.03230	01:36:00	N	0.70
20	MAINPURI	MAINPURI	S-NPP	78.87033	27.10505	12:48:00	D	2.60
21	MATHURA	CHHATA	AQUA	77.47000	27.65300	13:50:00	D	12.50
22	MEERUT	MAWANA	S-NPP	78.06754	28.92197	12:54:00	D	4.60
23	RAMPUR	BILASPUR	S-NPP	79.35975	28.85841	01:36:00	N	1.10
24	RAMPUR	BILASPUR	S-NPP	79.28966	28.89961	01:36:00	N	0.80
25	SHAHJAHANPUR	PUWANYA	S-NPP	79.92658	28.09776	01:36:00	N	0.30

26	SHAHJAHANPUR	SHAHJAHANPUR	S-NPP	79.85222	27.77401	12:48:00	D	3.50
27	SHAHJAHANPUR	TILHAR	S-NPP	79.81030	28.04800	12:48:00	D	3.30
28	SHAMLI	KAIRANA	S-NPP	77.22229	29.44983	12:54:00	D	5.70
29	SHARANPUR	BEHAT	S-NPP	77.52351	30.13436	12:54:00	D	3.10
30	SHARANPUR	SHARANPUR	S-NPP	77.50197	30.09478	01:36:00	N	0.50
31	SHRAWASTI	BHINGA	S-NPP	81.83427	27.75304	12:48:00	D	2.10
32	SHRAWASTI	BHINGA	S-NPP	81.61507	27.84932	01:36:00	N	0.40
33	SHRAWASTI	BHINGA	S-NPP	81.75639	27.86826	01:36:00	N	1.40
34	SITAPUR	SIDHAULI	S-NPP	80.86377	27.26563	01:36:00	N	0.40
35	VARANASI	VARANASI	S-NPP	82.72171	25.26505	12:48:00	D	2.80

The study used images received from following Satellites at IARI Satellite Ground Station

S. No.	Satellite Name	Sensor	Resolution (meter)	Day / Night Passes
1.	Suomi NPP	VIIRS	375 / 750	Both
2.	Terra	MODIS	1000	Both
3.	Aqua	MODIS	1000	Both
4.	NOAA – 18	AVHRR	1000	Night
5.	NOAA – 19	AVHRR	1000	Night
6.	Metop - 1	AVHRR	1000	Night
7.	Metop - 2	AVHRR	1000	Night

Study Team

ICAR – HQ	Dr K. Alagusundaram	DDG (AG. ENGG.)	ddgengg@icar.org.in
	Dr S. Bhasker	ADG (NRM)	adgagroandaf@gmail.com
	Dr K.K. Singh	ADG (AG. ENGG)	kanchansingh044@gmail.com
ICAR - IARI	Dr V.K. Sehgal	Professor & Nodal Scientist	iaricreams@gmail.com
	Dr Rajkumar Dhakar	Scientist	raidhakar.iari@gmail.com
	Mr Rakeswer Verma	Chief Technical Officer	rakeshwar.verma@icar.gov.in
	Mr Mohd Jahangir	Lab Assistant (KRISHI)	mjahangir198@gmail.com
ICAR - ATARI	Dr Rajbir Singh	Director ATARI (Zone-I) Ludhiana	rajbirsingh.zpd@gmail.com
	Dr S.K. Singh	Director ATARI (Zone-II) Jodhpur	sushilsinghiipr@yahoo.co.in
	Dr Atar Singh	Director ATARI (Zone-III) Kanpur	zpdicarkanpur@gmail.com
ICAR - IASRI	Dr Rajender Parsad	Director IASRI	rajender.parsad@icar.gov.in

Softcopy of this report and latest statistics can be seen on <http://creams.iari.res.in>

GIS Maps of fire events can be visualized online on ICAR KRISHI Geoportal website: <http://geoportal.icar.gov.in:8080/geoexplorer/composer/>

(Part of KRISHI Portal: <https://krishi.icar.gov.in> initiative)
