

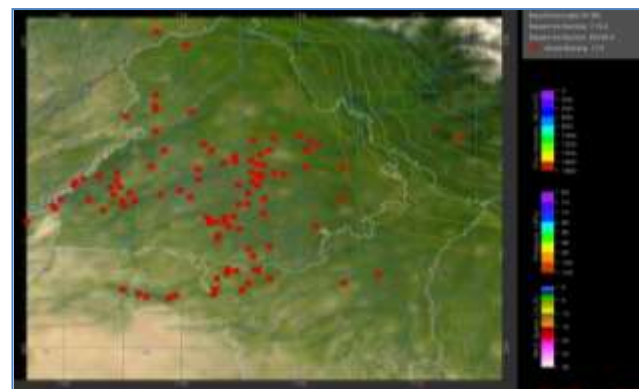


# MONITORING PADDY RESIDUE BURNING IN NORTH INDIA USING SATELLITE REMOTE SENSING DURING 2020

**Bulletin  
No. 13**

**Events Date:  
13-Oct-2020**

**Issued on:  
14-Oct-2020**



**Prepared by:**

**Consortium for Research on Agroecosystem Monitoring and Modeling from Space (CREAMS) Laboratory,  
Division of Agricultural Physics, ICAR – Indian Agricultural Research Institute, New Delhi – 110012**

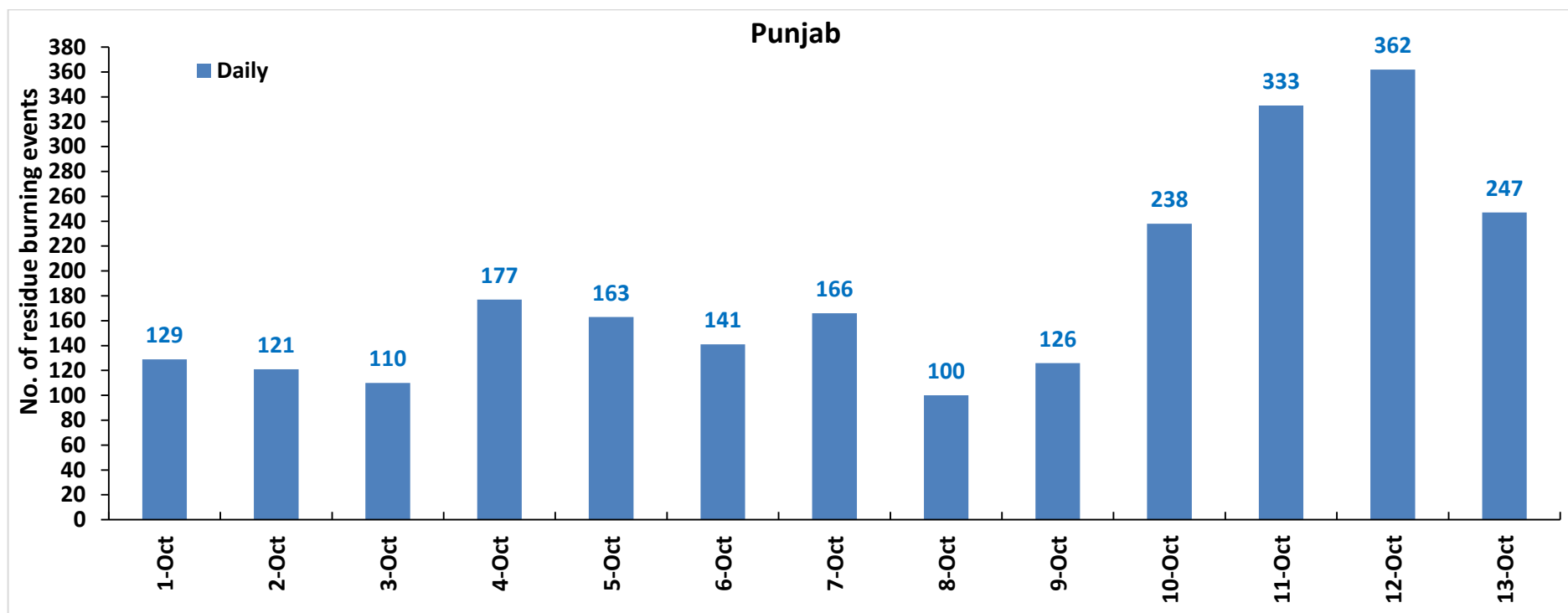
<http://creams.iari.res.in>



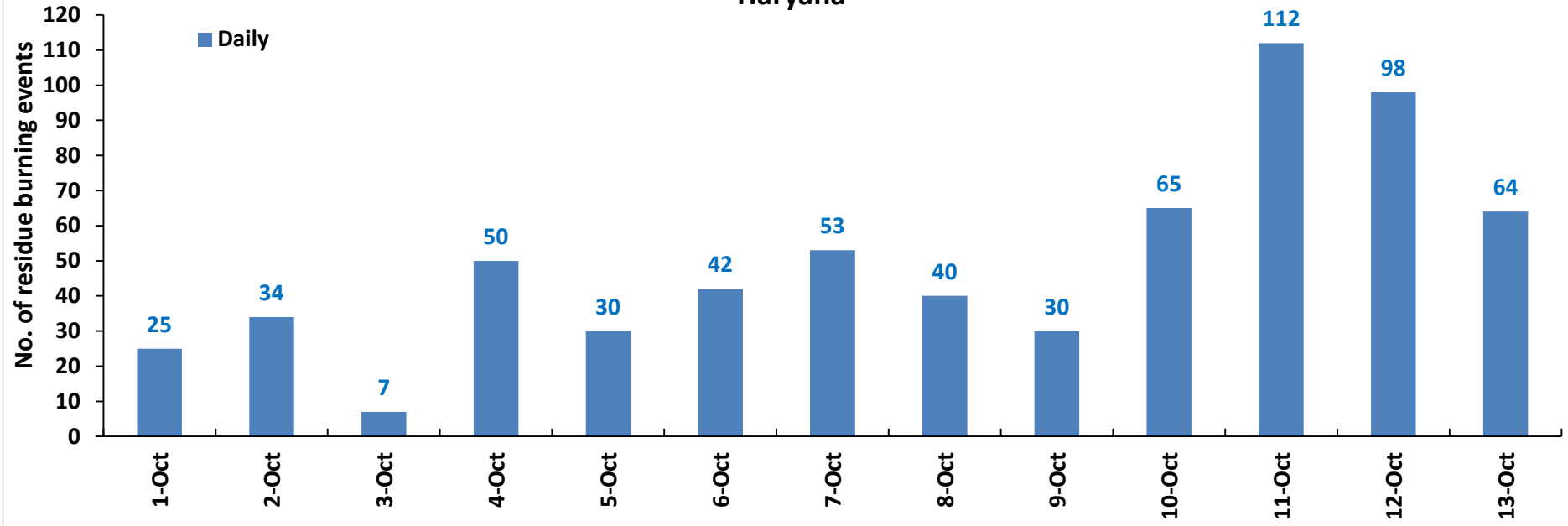
## Highlights for 13-October-2020

- Satellites detected **350** residue burning events in the three study States on **13-Oct-2020**.
- The state wise events detected on **13-Oct-2020** were **247** in Punjab, **64** in Haryana and **39** in UP.
- The number of events has decreased from **497** on **12-Oct-2020** to **350** on **13-Oct-2020** in the three states.
- Total **3304** burning events were detected in the three States between **01-Oct-2020** and **13-Oct-2020**, which are distributed as **2413**, **650** and **241** in Punjab, Haryana and UP, respectively.
- Amritsar, Tarn Taran and Patiala in Punjab; Kurukshetra, Karnal and Ambala in Haryana; and Shahjhanpur, Kheri and Aligarh in UP were the top three districts with burning events during **1-Oct to 13-Oct 2020**
- In Punjab and UP, the cumulative number of burning events between **1-Oct** and **13-Oct 2020** were higher than in **2019**.

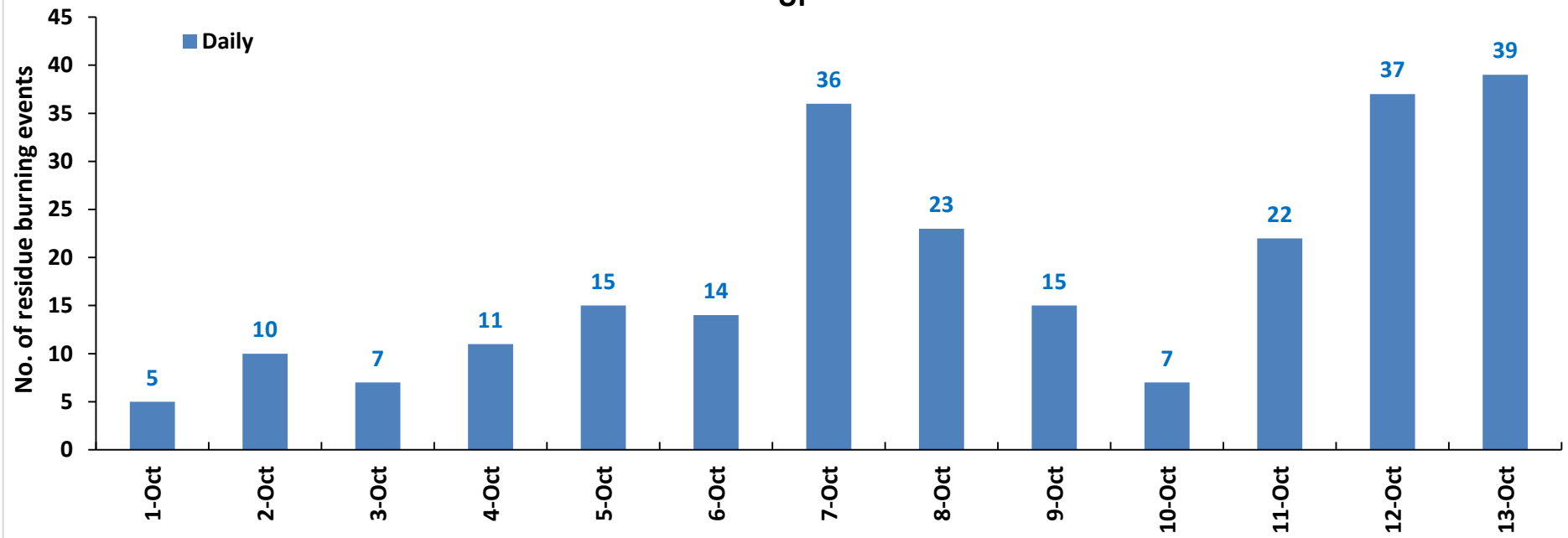
### Temporal distribution of residue burning events for the three study States in 2020



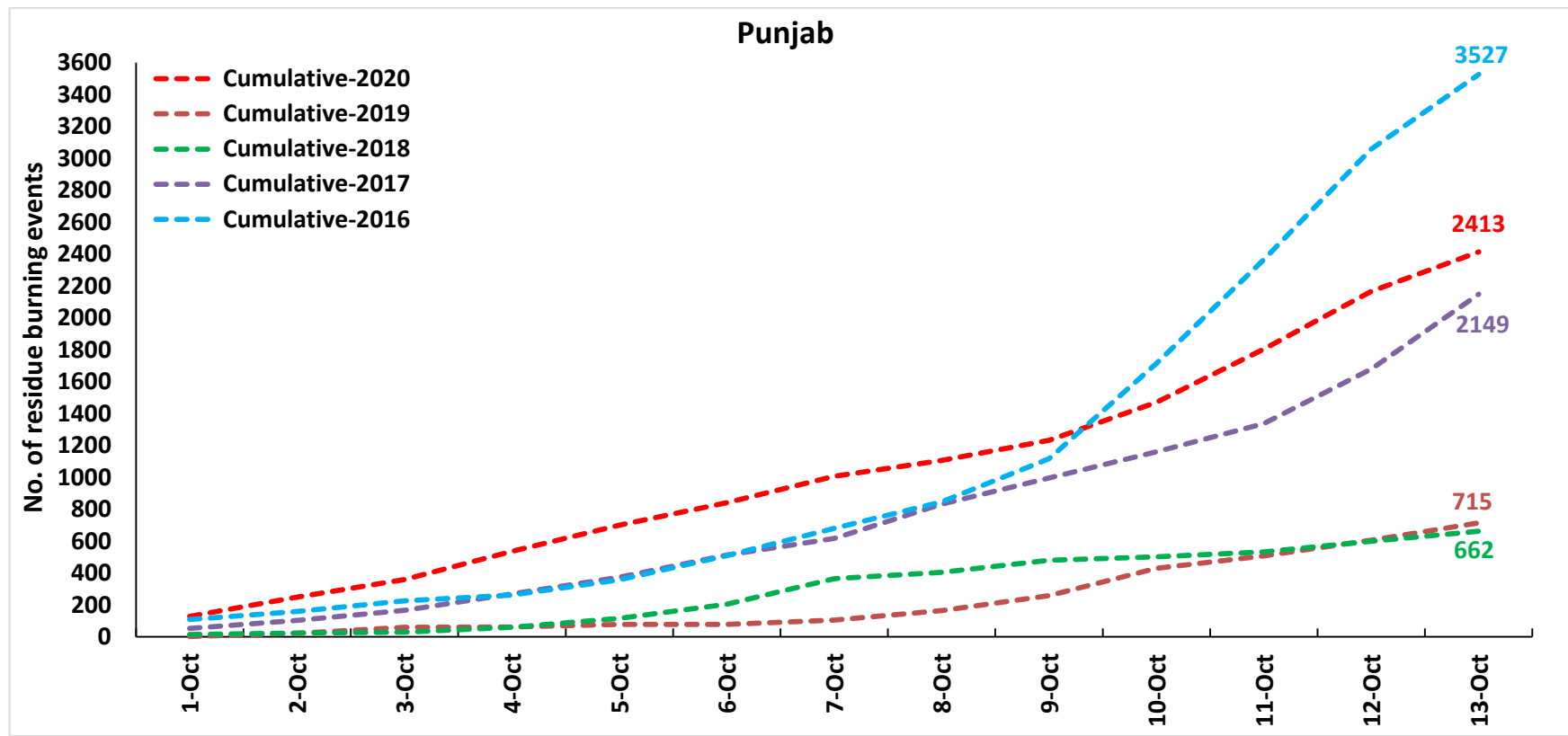
### Haryana

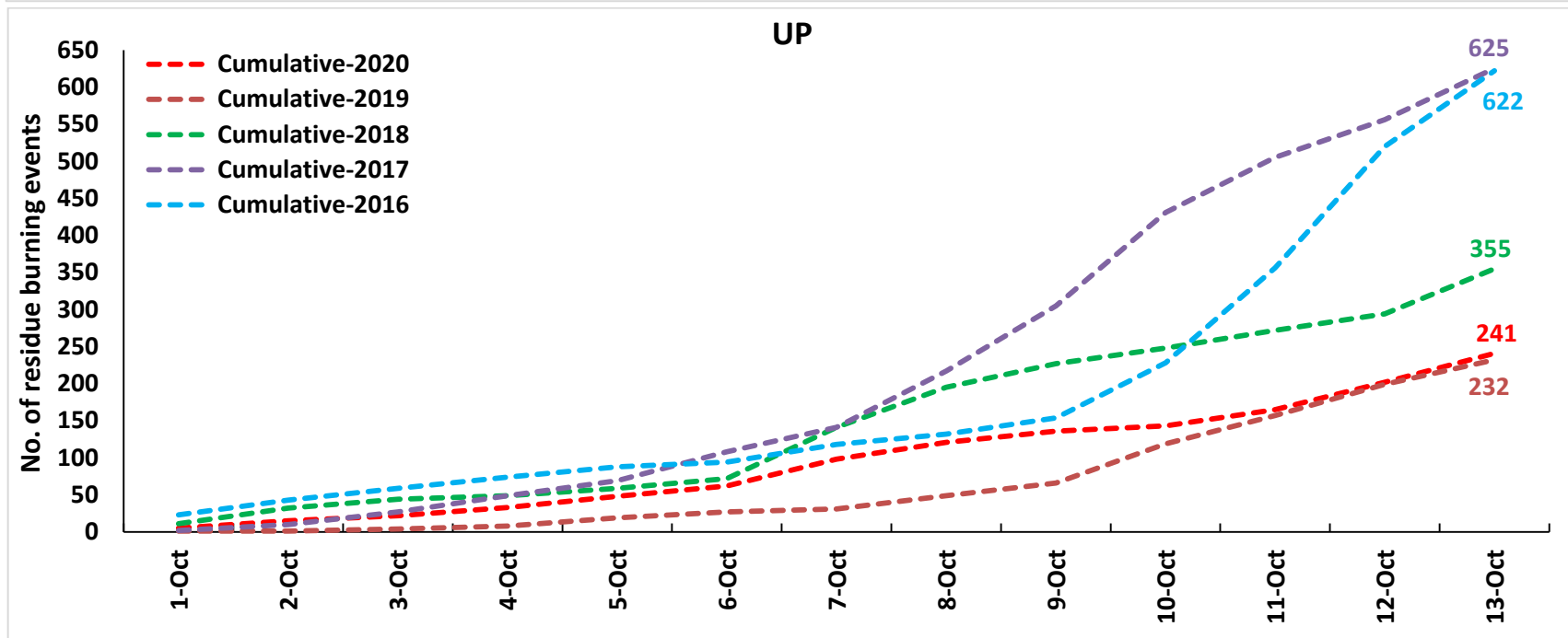
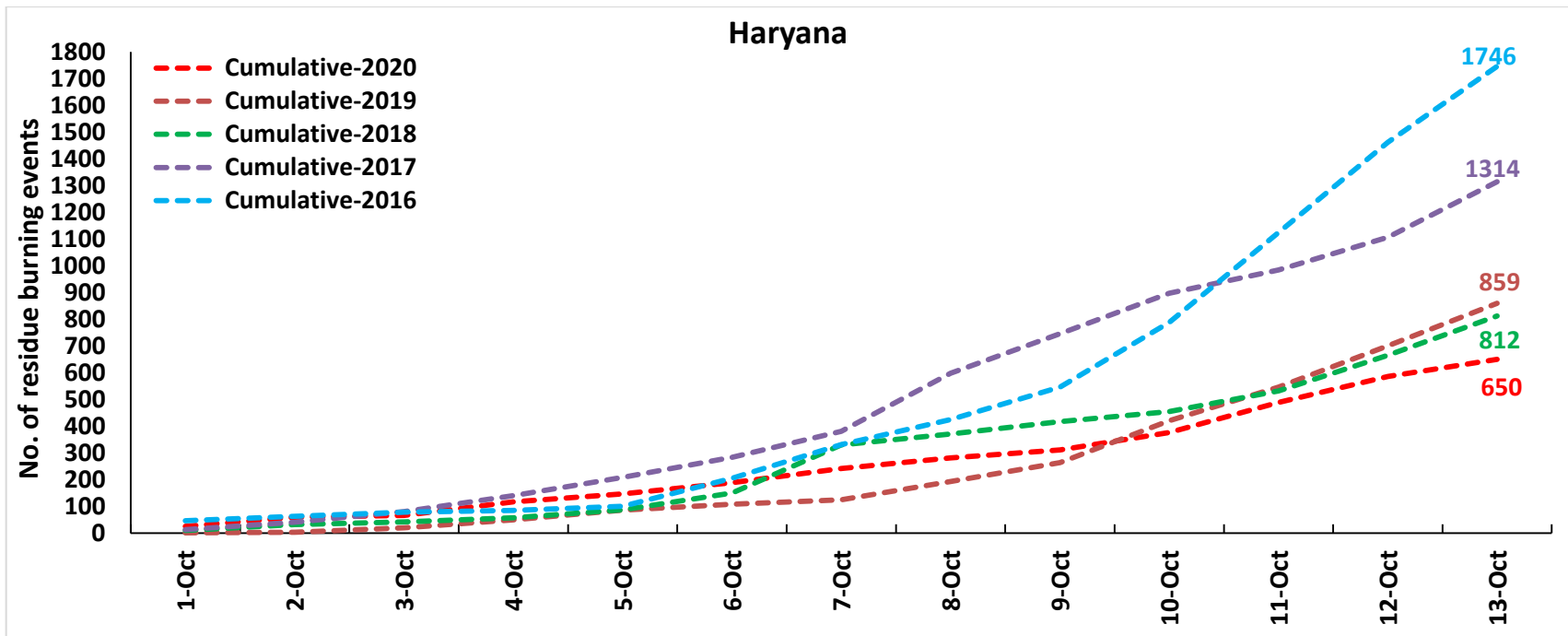


### UP

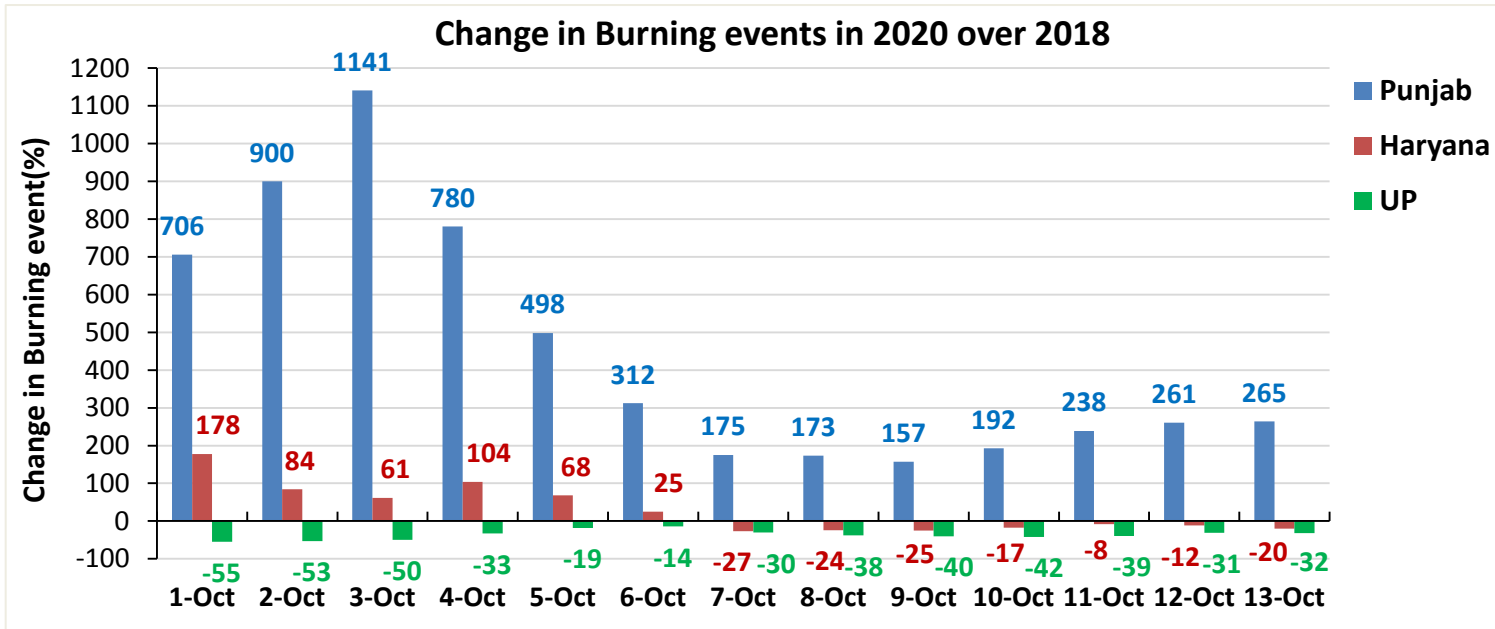
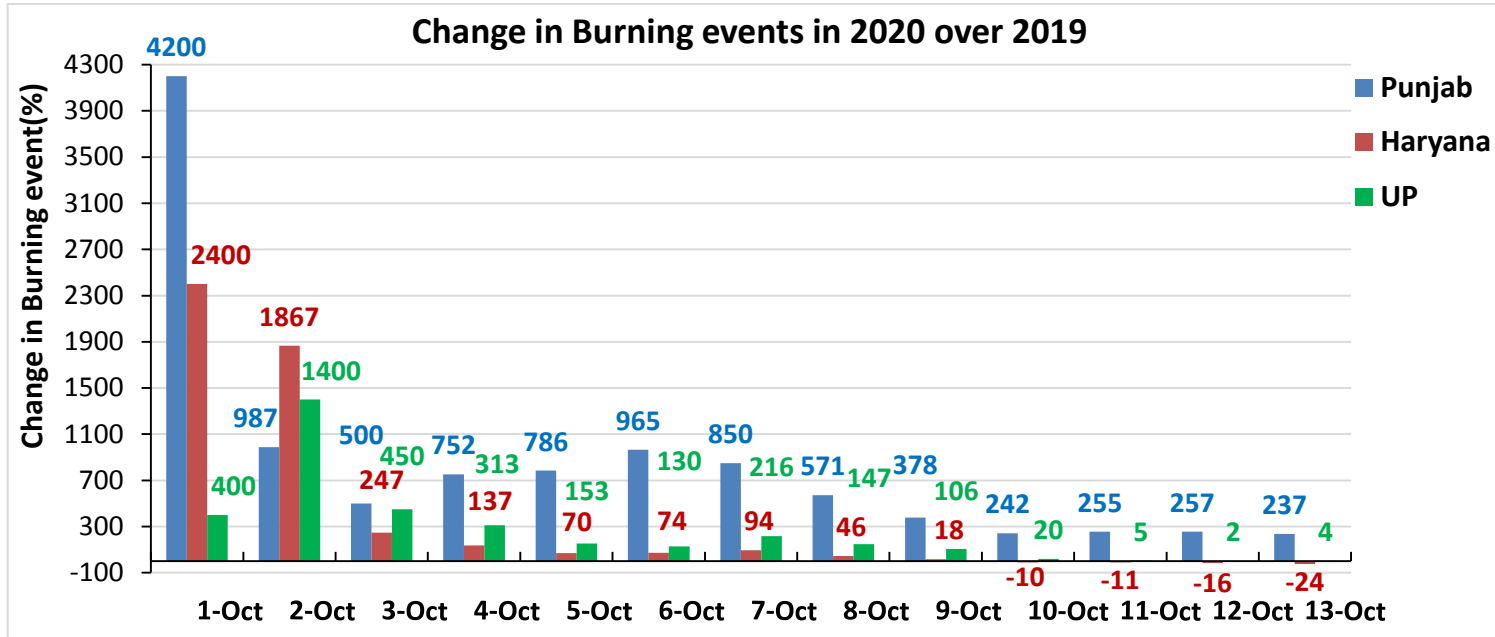


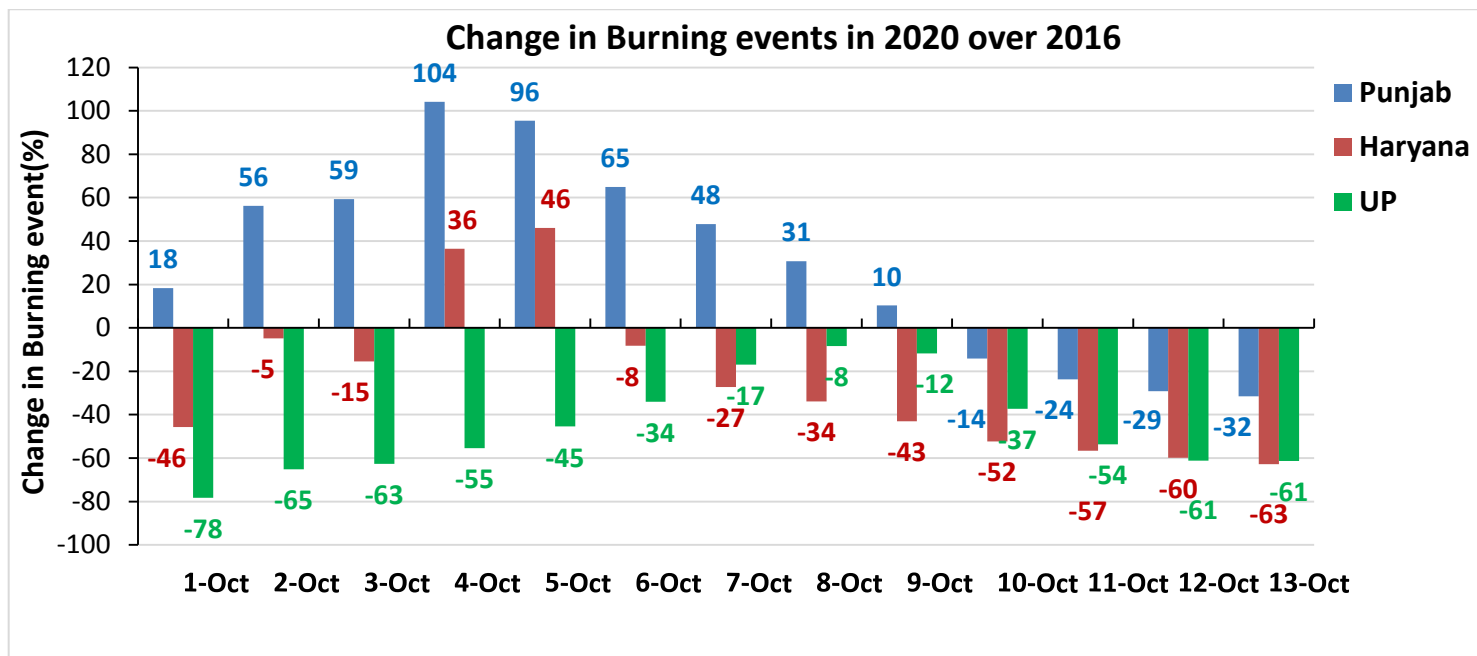
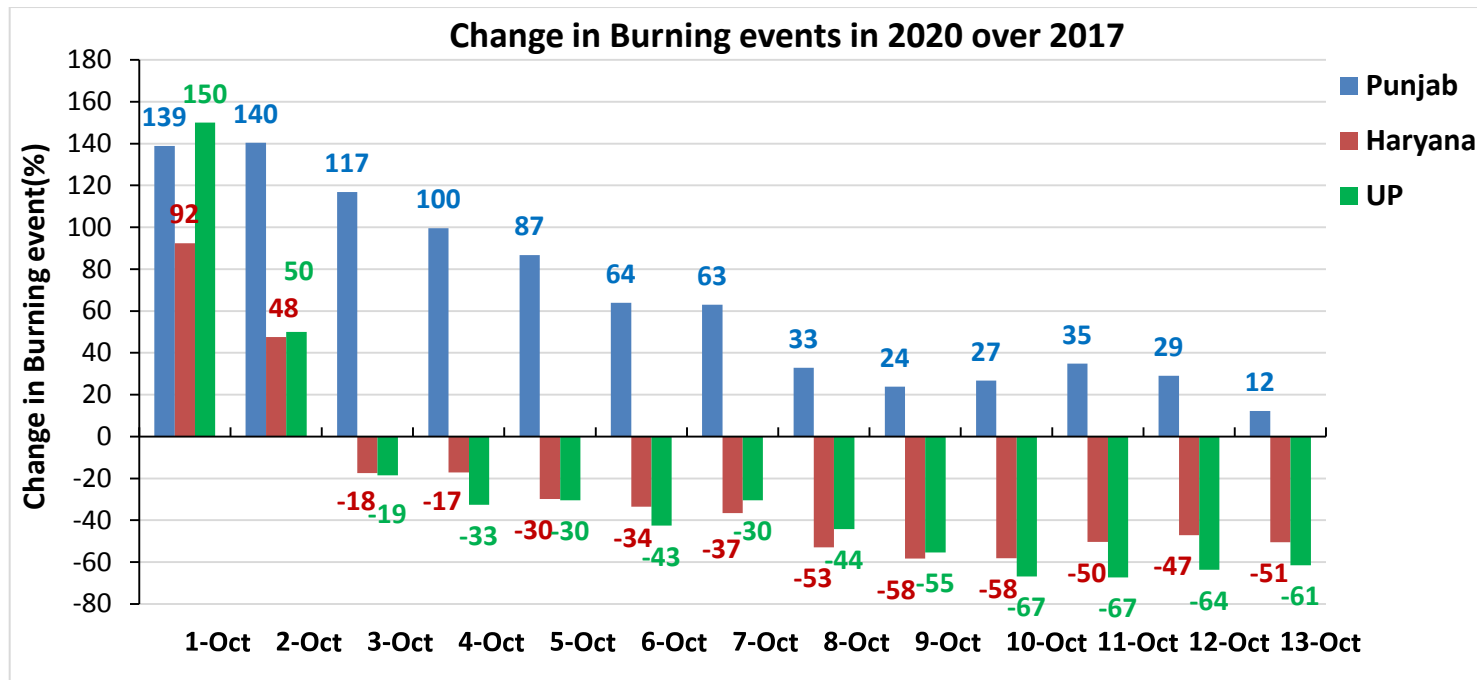
**Comparison of residue burning events in current year (2020) with previous years (2019, 2018, 2017 & 2016) for the three study States**  
**(01-Oct to 13-Oct)**



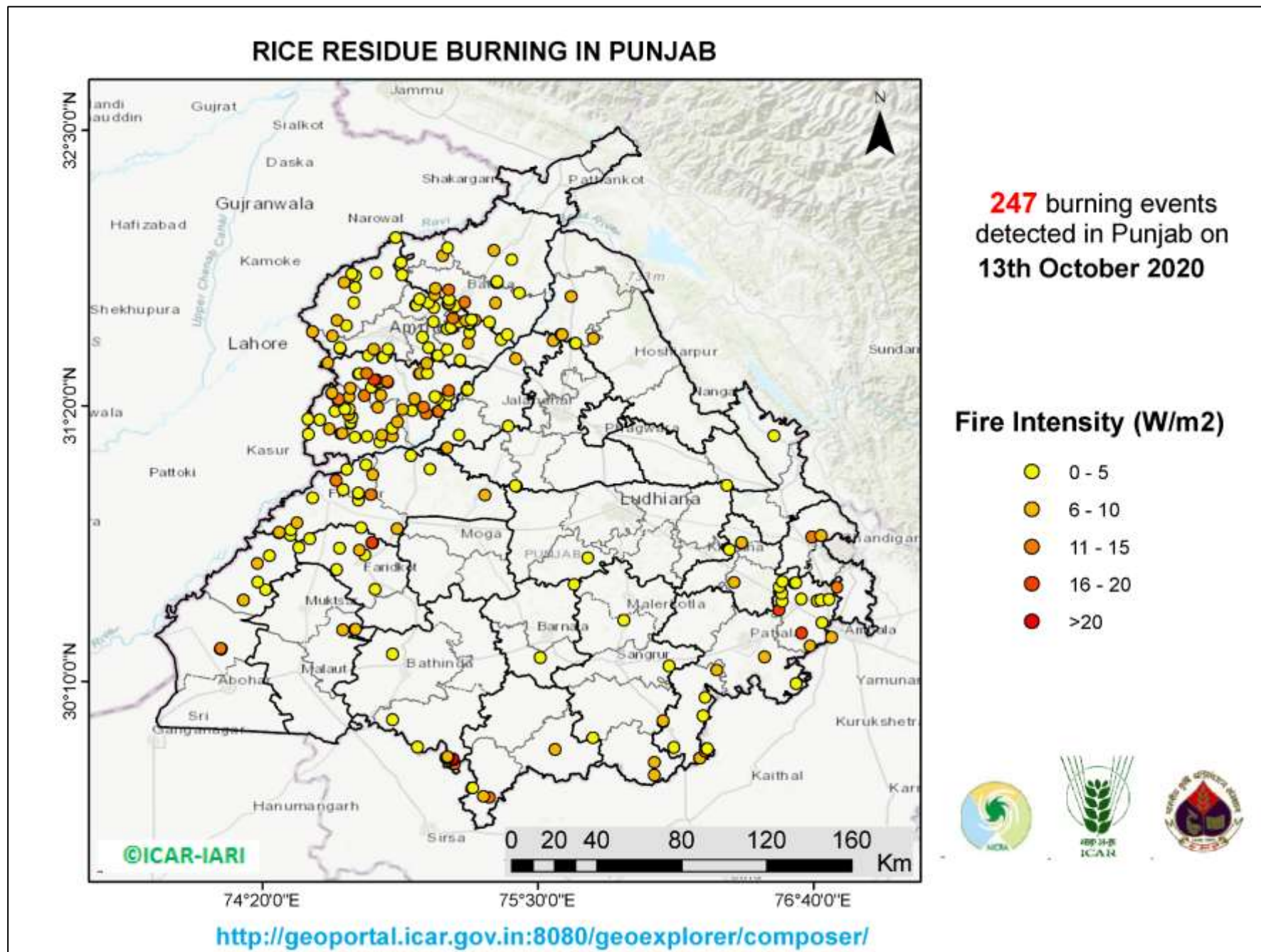


**Percent Change in Burning events in 2020 over 2019, 2018, 2017 and 2016 (Daily Cumulative)**



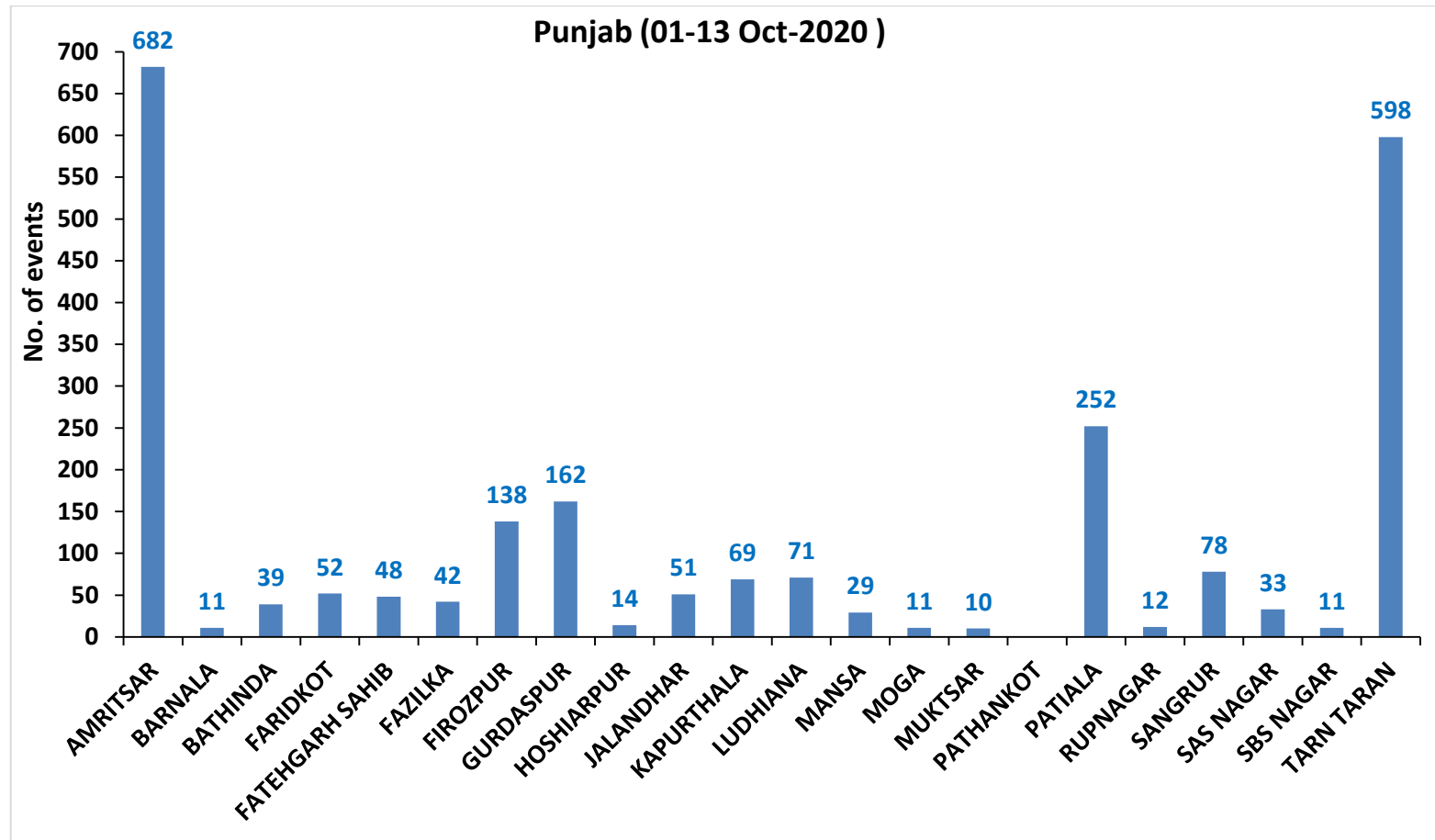


(a) Punjab



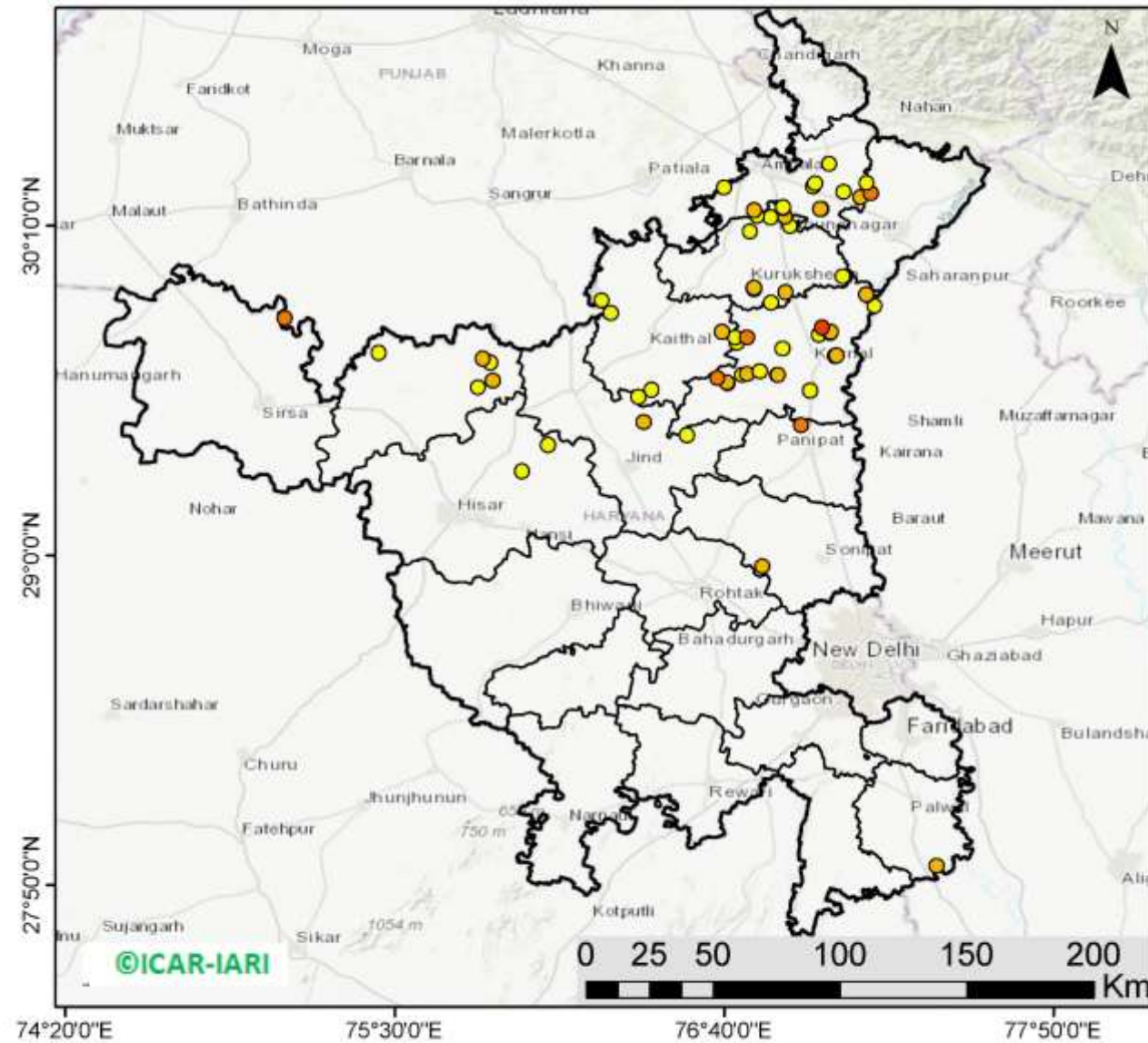


**District-wise cumulative number of residue burning events in Punjab (01-13 Oct-2020)**



(b) Haryana

RICE RESIDUE BURNING IN HARYANA



**64** burning events detected in Haryana on 13th October 2020

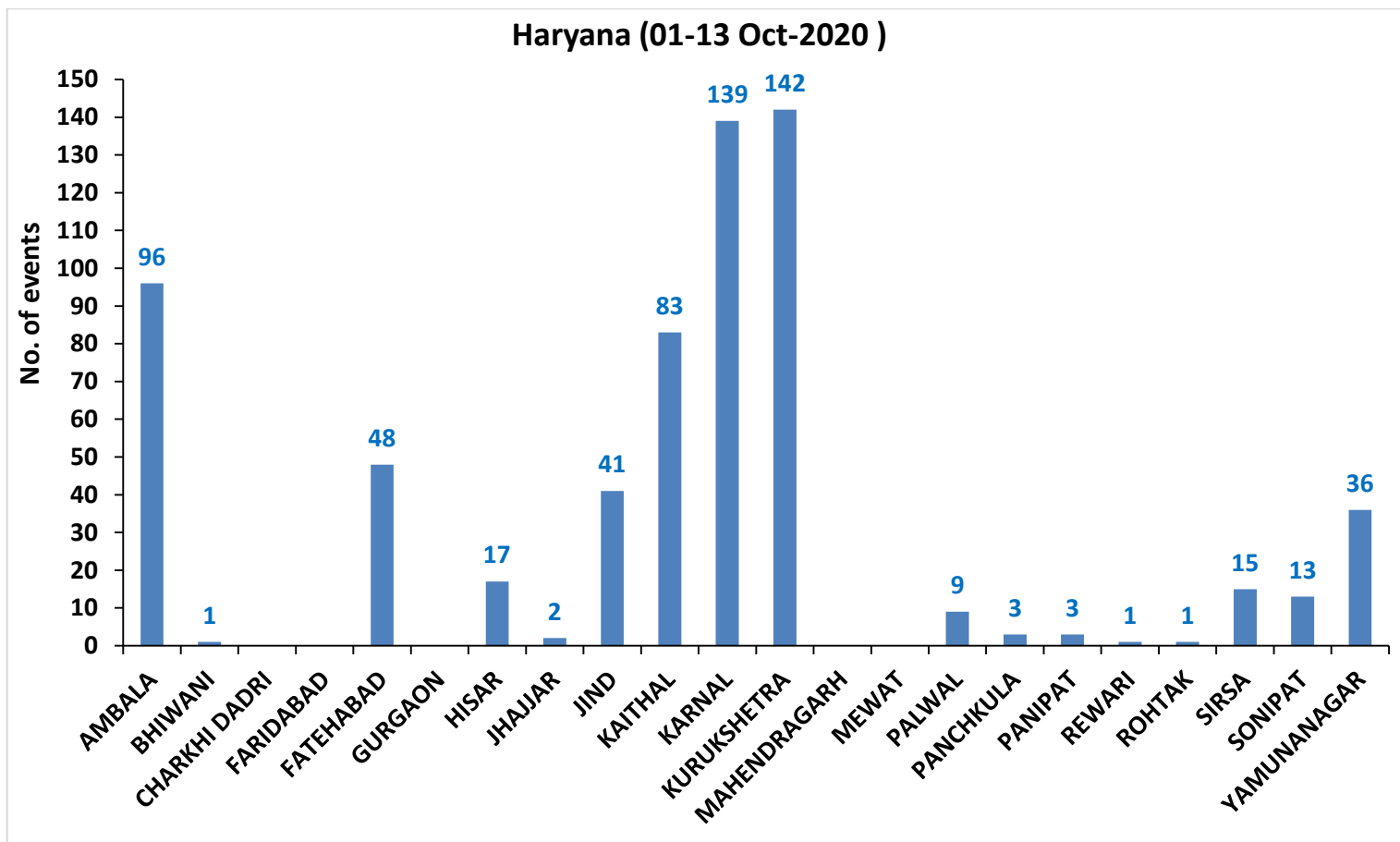
Fire Intensity (W/m<sup>2</sup>)

- 0 - 5
- 6 - 10
- 11 - 15
- 16 - 20
- >20



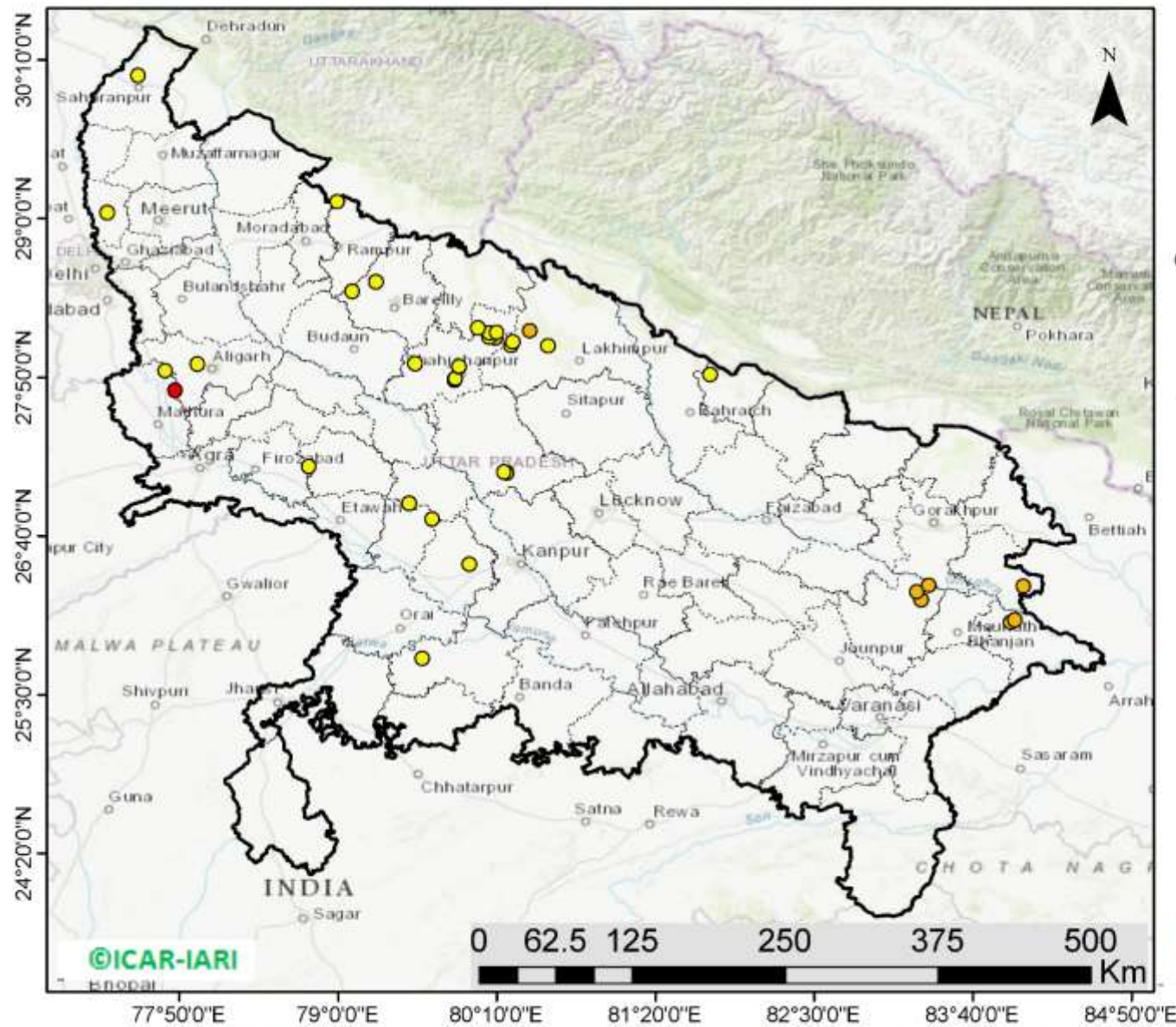
<http://geoportal.icar.gov.in:8080/geoexplorer/composer/>

**District-wise cumulative number of residue burning events in Haryana (01-13 Oct-2020)**



(c) Uttar Pradesh

RICE RESIDUE BURNING IN UTTAR PRADESH



**39** burning events detected in Uttar Pradesh on 13th October 2020

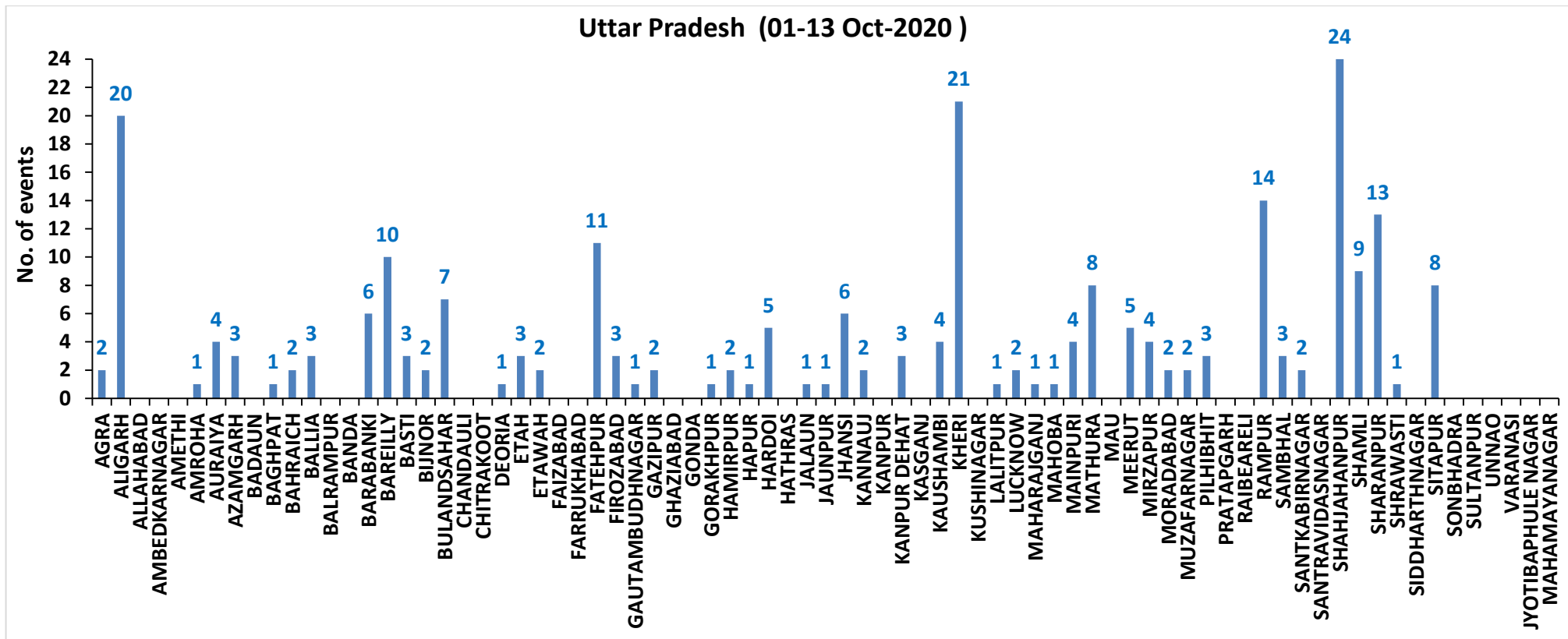
Fire Intensity (W/m<sup>2</sup>)

- 0 - 5
- 6 - 10
- 11 - 15
- 16 - 20
- >20



<http://geoportal.icar.gov.in:8080/geoexplorer/composer/>

## District-wise cumulative number of residue burning events in Uttar Pradesh (01-13 Oct-2020)



**State-wise and date-wise number of residue burning events detected in 2016, 2017, 2018, 2019 and 2020**  
**(Period: 01-13 October)**

Date	Punjab					Haryana					UP					Total				
	2020	2019	2018	2017	2016	2020	2019	2018	2017	2016	2020	2019	2018	2017	2016	2020	2019	2018	2017	2016
01-Oct	129	3	16	54	109	25	1	9	13	46	5	1	11	2	23	159	5	36	69	178
02-Oct	121	20	9	50	51	34	2	23	27	16	10	0	21	8	20	165	22	53	85	87
03-Oct	110	37	4	62	66	07	16	9	40	16	07	3	12	17	16	124	56	25	119	98
04-Oct	177	3	32	103	37	50	30	16	60	7	11	4	5	22	15	238	37	53	185	59
05-Oct	163	16	56	106	95	30	37	30	68	15	15	11	10	20	14	208	64	96	194	124
06-Oct	141	0	87	138	152	42	22	63	75	105	14	8	13	39	6	197	30	163	252	263
07-Oct	166	27	162	105	171	53	16	180	97	126	36	4	69	33	24	255	47	411	235	321
08-Oct	100	59	39	215	166	40	69	40	218	94	23	18	54	76	14	163	146	133	509	274
09-Oct	126	93	75	163	270	30	70	47	148	121	15	17	32	88	22	171	180	154	399	413
10-Oct	238	172	23	164	597	65	157	37	151	242	07	53	21	126	74	310	382	81	441	913
11-Oct	333	78	30	177	652	112	126	78	87	336	22	38	24	74	128	467	242	132	338	1116
12-Oct	362	99	67	342	694	98	154	133	123	338	37	42	22	51	164	497	295	222	516	1196
13-Oct	247	108	62	470	467	64	159	147	207	284	39	33	61	69	102	350	300	270	746	853
<b>Total</b>	<b>2413</b>	<b>715</b>	<b>662</b>	<b>2149</b>	<b>3527</b>	<b>650</b>	<b>859</b>	<b>812</b>	<b>1314</b>	<b>1746</b>	<b>241</b>	<b>232</b>	<b>355</b>	<b>625</b>	<b>622</b>	<b>3304</b>	<b>1806</b>	<b>1829</b>	<b>4088</b>	<b>5895</b>

**District-wise and date wise cumulative number of residue burning events detected in 2016, 2017, 2018, 2019 and 2020**  
**(Period: 01-13 October)**

**(a) Punjab**

Districts	01-13 Oct				
	2016	2017	2018	2019	2020
AMRITSAR	609	379	315	244	682
BARNALA	11	6	1	2	11
BATHINDA	172	98	12	4	39
FARIDKOT	227	305	5	13	52
FATEHGARH SAHIB	213	70	11	6	48
FAZILKA	0	0	0	14	42
FIROZPUR	265	245	33	30	138
GURDASPUR	147	48	26	22	162
HOSHIARPUR	31	5	3	6	14
JALANDHAR	227	89	1	28	51
KAPURTHALA	187	29	2	20	69
LUDHIANA	162	128	22	7	71
MANSA	17	33	4	15	29
MOGA	53	27	0	10	11
MUKTSAR	226	37	3	6	10
PATHANKOT	0	0	0	0	0
PATIALA	304	250	65	90	252
RUPNAGAR	31	3	0	1	12
SANGRUR	56	93	34	30	78
SAS NAGAR	29	32	20	9	33
SBS NAGAR	40	21	8	15	11
TARN TARAN	520	251	97	143	598
<b>Total</b>	<b>3527</b>	<b>2149</b>	<b>662</b>	<b>715</b>	<b>2413</b>

**(b) Haryana**

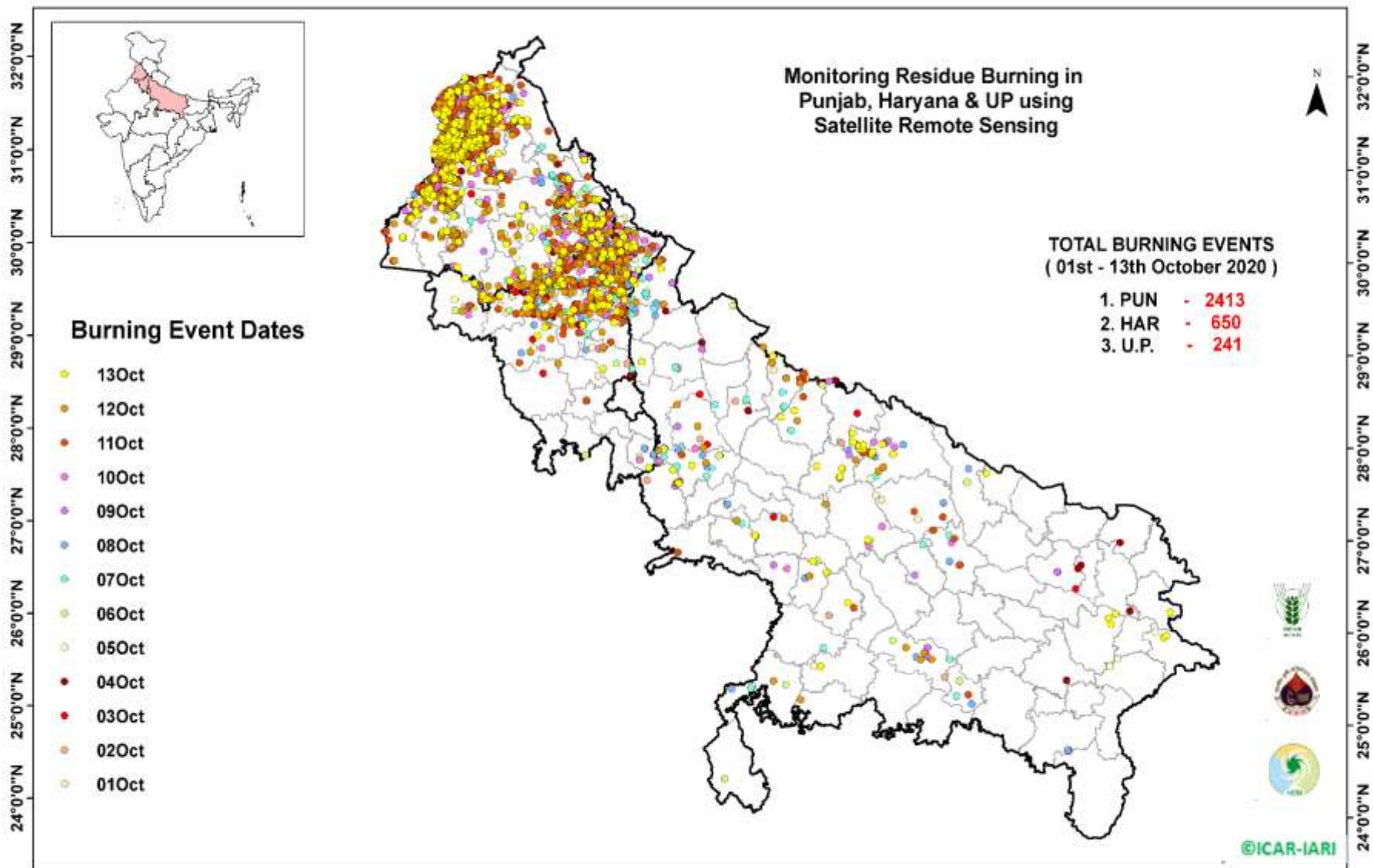
Districts	01-13 Oct				
	2016	2017	2018	2019	2020
AMBALA	107	98	38	29	96
BHIWANI	0	2	2	0	1
CHARKHI DADRI	0	0	0	0	0
FARIDABAD	4	13	23	1	0
FATEHABAD	51	52	25	49	48
GURGAON	0	0	0	0	0
HISAR	13	12	8	12	17
JHAJJAR	4	0	3	1	2
JIND	37	65	38	36	41
KAITHAL	479	277	174	198	83
KARNAL	617	435	264	279	139
KURUKSHETRA	351	285	169	197	142
MAHENDRAGARH	0	0	0	1	0
MEWAT	0	0	0	0	0
PALWAL	0	0	0	10	9
PANCHKULA	0	0	3	5	3
PANIPAT	15	20	30	6	3
REWARI	0	0	0	0	1
ROHTAK	1	1	0	0	1
SIRSA	29	12	7	6	15
SONIPAT	3	8	8	1	13
YAMUNANAGAR	35	34	20	28	36
<b>Total</b>	<b>1746</b>	<b>1314</b>	<b>812</b>	<b>859</b>	<b>650</b>

**(C)**  
**Uttar Pradesh**

Districts	01-13 Oct																
	2016	2017	2018	2019	2020	GAUTAMBUDHNAGAR	1	0	2	0	1	MUZAFARNAGAR	12	28	10	4	2
AGRA	0	0	0	0	2	GAZIPUR	0	0	0	0	2	PILHIBHIT	105	100	43	60	3
ALIGARH	0	8	8	10	20	GHAZIABAD	5	1	2	1	0	PRATAPGARH	0	0	0	0	0
ALLAHABAD	0	0	3	0	0	GONDA	0	0	0	0	0	RAIBEARELI	0	0	0	0	0
AMBEDKARNAGAR	0	1	0	0	0	GORAKHPUR	0	2	3	0	1	RAMPUR	136	87	31	19	14
AMETHI	0	0	0	0	0	HAMIRPUR	0	0	1	0	2	SAMBHAL	0	0	0	1	3
AMROHA	0	0	0	0	1	HAPUR	0	0	0	2	1	SANTKABIRNAGAR	0	0	0	0	2
AURAIYA	34	31	14	0	4	HARDOI	5	2	2	0	5	SANTRAVIDASNAGAR	0	0	0	0	0
AZAMGARH	0	0	0	0	3	HATHRAS	0	0	0	0	0	SHAHJAHANPUR	179	217	74	32	24
BADAUN	0	0	0	0	0	JALAUN	0	0	0	0	1	SHAMLI	0	0	0	8	9
BAGHPAT	0	0	0	2	1	JAUNPUR	0	0	2	0	1	SHARANPUR	9	9	7	4	13
BAHRAICH	0	0	2	0	2	JHANSI	0	0	0	2	6	SHRAWASTI	0	0	0	0	1
BALLIA	0	0	0	1	3	KANNAUJ	0	0	1	0	2	SIDDHARTHANAGAR	1	0	0	0	0
BALRAMPUR	0	0	0	0	0	KANPUR	0	0	0	0	0	SITAPUR	12	4	3	2	8
BANDA	0	0	1	0	0	KANPUR DEHAT	0	1	0	0	3	SONBHADRA	3	1	4	0	0
BARABANKI	10	13	33	1	6	KASGANJ	0	0	0	0	0	SULTANPUR	0	0	0	0	0
BAREILLY	32	16	7	11	10	KAUSHAMBI	0	2	6	0	4	UNNAO	3	0	1	3	0
BASTI	0	0	0	0	3	KHERI	57	62	24	34	21	VARANASI	0	0	0	0	0
BIJNOR	1	0	1	0	2	KUSHINAGAR	0	1	0	0	0	JYOTIBAPHULE NAGAR	0	0	1	0	0
BULANDSAHAR	0	2	4	3	7	LALITPUR	0	0	0	0	1	MAHAMAYANAGAR	0	0	1	0	0
CHANDAULI	0	0	0	0	0	LUCKNOW	2	4	0	1	2	<b>Total</b>	<b>622</b>	<b>625</b>	<b>355</b>	<b>232</b>	<b>241</b>
CHITRAKOOT	0	0	0	0	0	MAHARAJGANJ	0	1	3	0	1						
DEORIA	0	0	0	0	1	MAHOBA	0	0	0	0	1						
ETAH	0	1	6	0	3	MAINPURI	0	2	4	1	4						
ETAWAH	0	2	1	0	2	MATHURA	8	15	46	21	8						
FAIZABAD	0	1	0	0	0	MAU	1	0	0	0	0						
FARRUKHABAD	0	0	0	0	0	MEERUT	4	4	0	4	5						
FATEHPUR	1	3	2	0	11	MIRZAPUR	0	1	1	3	4						
FIROZABAD	0	0	0	0	3	MORADABAD	1	3	1	2	2						



### Map of Cumulative Burning Events (01-13 Oct 2020)



**Details of residue burning events in Punjab on 13-Oct-2020**

<b>S. No.</b>	<b>District</b>	<b>Tehsil / Block</b>	<b>Satellite</b>	<b>Longitude</b>	<b>Latitude</b>	<b>Time (IST)</b>	<b>Day / Night</b>	<b>Fire Power (W/m2)</b>
1	AMRITSAR	AJNALA	S-NPP	74.69096	31.67258	13:06:00	D	2.60
2	AMRITSAR	AJNALA	S-NPP	74.65064	31.69517	13:06:00	D	5.50
3	AMRITSAR	AJNALA	S-NPP	74.72186	31.77091	13:06:00	D	1.90
4	AMRITSAR	AJNALA	S-NPP	74.72791	31.83380	13:06:00	D	3.00
5	AMRITSAR	AJNALA	S-NPP	74.68036	31.85464	13:06:00	D	8.70
6	AMRITSAR	AJNALA	S-NPP	74.72986	31.88266	13:06:00	D	2.70
7	AMRITSAR	AJNALA	S-NPP	74.71280	31.89228	13:06:00	D	3.10
8	AMRITSAR	AJNALA	S-NPP	74.81612	31.89633	13:06:00	D	2.60
9	AMRITSAR	AJNALA	S-NPP	74.89795	32.04455	13:06:00	D	4.30
10	AMRITSAR	AMRITSAR I	S-NPP	75.07401	31.54545	13:06:00	D	3.60
11	AMRITSAR	AMRITSAR I	S-NPP	75.07838	31.54634	13:06:00	D	3.30
12	AMRITSAR	AMRITSAR I	S-NPP	75.03798	31.57808	13:06:00	D	1.80
13	AMRITSAR	AMRITSAR I	S-NPP	75.01109	31.62463	13:06:00	D	3.20
14	AMRITSAR	AMRITSAR I	S-NPP	75.11666	31.65935	13:06:00	D	1.90
15	AMRITSAR	AMRITSAR I	S-NPP	75.05898	31.68835	13:06:00	D	1.70
16	AMRITSAR	AMRITSAR I	S-NPP	75.14279	31.74894	13:06:00	D	4.80
17	AMRITSAR	AMRITSAR I	S-NPP	75.06042	31.74922	13:06:00	D	3.70
18	AMRITSAR	AMRITSAR I	S-NPP	74.98364	31.75944	13:06:00	D	3.20
19	AMRITSAR	AMRITSAR I	S-NPP	74.98804	31.76034	13:06:00	D	3.20
20	AMRITSAR	AMRITSAR I	S-NPP	75.03615	31.77018	13:06:00	D	2.20
21	AMRITSAR	AMRITSAR I	S-NPP	74.99982	31.78441	13:06:00	D	2.40
22	AMRITSAR	AMRITSAR I	S-NPP	75.00018	31.78560	13:06:00	D	4.40
23	AMRITSAR	AMRITSAR I	S-NPP	75.06405	31.80177	13:06:00	D	6.90
24	AMRITSAR	AMRITSAR II	S-NPP	74.61255	31.51480	13:06:00	D	8.10
25	AMRITSAR	AMRITSAR II	S-NPP	74.84293	31.53700	13:06:00	D	2.40
26	AMRITSAR	AMRITSAR II	S-NPP	74.84633	31.53805	13:06:00	D	3.80
27	AMRITSAR	AMRITSAR II	S-NPP	74.86616	31.57265	13:06:00	D	3.80
28	AMRITSAR	AMRITSAR II	S-NPP	74.80424	31.57288	13:06:00	D	8.50
29	AMRITSAR	AMRITSAR II	S-NPP	74.66397	31.57455	13:06:00	D	4.90
30	AMRITSAR	AMRITSAR II	S-NPP	74.66279	31.57873	13:06:00	D	4.90

31	AMRITSAR	AMRITSAR II	S-NPP	74.63061	31.62885	13:06:00	D	10.00
32	AMRITSAR	AMRITSAR II	S-NPP	74.54710	31.64687	13:06:00	D	8.90
33	AMRITSAR	BABA BAKALA	S-NPP	75.17113	31.52653	13:06:00	D	4.20
34	AMRITSAR	BABA BAKALA	S-NPP	75.11740	31.57163	13:06:00	D	2.70
35	AMRITSAR	BABA BAKALA	S-NPP	75.20586	31.59822	13:06:00	D	7.40
36	AMRITSAR	BABA BAKALA	S-NPP	75.34547	31.61362	13:06:00	D	3.10
37	AMRITSAR	BABA BAKALA	S-NPP	75.21182	31.64447	13:06:00	D	4.00
38	AMRITSAR	BABA BAKALA	S-NPP	75.13828	31.66377	13:06:00	D	4.70
39	AMRITSAR	BABA BAKALA	S-NPP	75.13284	31.66697	13:06:00	D	3.20
40	AMRITSAR	BABA BAKALA	S-NPP	75.21136	31.67871	13:06:00	D	3.60
41	AMRITSAR	BABA BAKALA	S-NPP	75.21024	31.68277	13:06:00	D	3.60
42	AMRITSAR	BABA BAKALA	S-NPP	75.16824	31.68710	13:06:00	D	5.00
43	AMRITSAR	BABA BAKALA	TERRA	75.19600	31.69300	11:15:00	D	5.80
44	AMRITSAR	BABA BAKALA	S-NPP	75.14099	31.70308	13:06:00	D	11.40
45	BARNALA	BARNALA	S-NPP	75.65368	30.57658	13:06:00	D	3.00
46	BARNALA	TAPPA	S-NPP	75.51035	30.26806	13:06:00	D	3.60
47	BATHINDA	BATHINDA	S-NPP	74.88573	30.28281	13:06:00	D	3.30
48	BATHINDA	TALWANDI SABO	S-NPP	75.14188	29.81600	13:06:00	D	10.40
49	BATHINDA	TALWANDI SABO	S-NPP	75.14648	29.81694	13:06:00	D	10.40
50	BATHINDA	TALWANDI SABO	S-NPP	75.12808	29.83104	13:06:00	D	5.80
51	BATHINDA	TALWANDI SABO	S-NPP	75.14190	29.83387	13:06:00	D	6.90
52	BATHINDA	TALWANDI SABO	S-NPP	75.14075	29.83810	13:06:00	D	43.50
53	BATHINDA	TALWANDI SABO	S-NPP	75.11155	29.84272	13:06:00	D	17.40
54	BATHINDA	TALWANDI SABO	S-NPP	75.11616	29.84369	13:06:00	D	6.10
55	BATHINDA	TALWANDI SABO	S-NPP	75.12077	29.84467	13:06:00	D	6.10
56	BATHINDA	TALWANDI SABO	S-NPP	75.11884	29.84703	13:06:00	D	8.60
57	BATHINDA	TALWANDI SABO	S-NPP	74.99093	29.88932	13:06:00	D	3.00
58	BATHINDA	TALWANDI SABO	S-NPP	74.88458	30.00462	13:06:00	D	4.00
59	FARIDKOT	FARIDKOT	S-NPP	74.81131	30.55614	13:06:00	D	2.80
60	FARIDKOT	FARIDKOT	S-NPP	74.64962	30.64025	13:06:00	D	2.80
61	FARIDKOT	FARIDKOT	S-NPP	74.76736	30.70122	13:06:00	D	3.40
62	FARIDKOT	FARIDKOT	NOAA-19	74.74503	30.72111	18:27:00	N	6.00
63	FARIDKOT	FARIDKOT	S-NPP	74.66150	30.73007	13:06:00	D	3.50

64	FARIDKOT	FARIDKOT	S-NPP	74.48818	30.73391	13:06:00	D	3.00
65	FARIDKOT	FARIDKOT	S-NPP	74.79751	30.75233	13:06:00	D	12.10
66	FARIDKOT	FARIDKOT	S-NPP	74.80216	30.75329	13:06:00	D	15.90
67	FARIDKOT	FARIDKOT	S-NPP	74.79846	30.75486	13:06:00	D	17.80
68	FARIDKOT	FARIDKOT	S-NPP	74.53392	30.77095	13:06:00	D	4.00
69	FATEHGARH SAHIB	FATEHGARH SAHIB	S-NPP	76.52229	30.56523	13:06:00	D	3.10
70	FATEHGARH SAHIB	FATEHGARH SAHIB	S-NPP	76.32993	30.58451	13:06:00	D	10.00
71	FATEHGARH SAHIB	FATEHGARH SAHIB	S-NPP	76.53435	30.58794	13:06:00	D	3.20
72	FATEHGARH SAHIB	KHAMANO	S-NPP	76.31005	30.72312	13:06:00	D	1.30
73	FATEHGARH SAHIB	KHAMANO	S-NPP	76.36103	30.75227	13:06:00	D	5.60
74	FATEHGARH SAHIB	KHAMANO	S-NPP	76.36284	30.75381	13:06:00	D	7.00
75	FAZILKA	FAZILKA	S-NPP	74.15916	30.30087	13:06:00	D	4.80
76	FAZILKA	FAZILKA	S-NPP	74.15600	30.30348	13:06:00	D	8.90
77	FAZILKA	FAZILKA	S-NPP	74.16113	30.30456	13:06:00	D	8.90
78	FAZILKA	FAZILKA	S-NPP	74.15791	30.30529	13:06:00	D	12.40
79	FAZILKA	JALALABAD	S-NPP	74.25423	30.51094	13:06:00	D	7.70
80	FAZILKA	JALALABAD	S-NPP	74.34800	30.55392	13:06:00	D	4.10
81	FAZILKA	JALALABAD	S-NPP	74.31432	30.58682	13:06:00	D	2.50
82	FAZILKA	JALALABAD	S-NPP	74.31318	30.66515	13:06:00	D	8.70
83	FAZILKA	JALALABAD	S-NPP	74.36385	30.69813	13:06:00	D	2.20
84	FAZILKA	JALALABAD	S-NPP	74.40424	30.79391	13:06:00	D	4.10
85	FIROZPUR	FIROZPUR	S-NPP	74.45297	30.78582	13:06:00	D	4.90
86	FIROZPUR	FIROZPUR	S-NPP	74.40518	30.79784	13:06:00	D	6.80
87	FIROZPUR	FIROZPUR	S-NPP	74.45373	30.80829	13:06:00	D	3.60
88	FIROZPUR	FIROZPUR	S-NPP	74.90427	30.81296	13:06:00	D	6.20
89	FIROZPUR	FIROZPUR	S-NPP	74.75168	30.81670	13:06:00	D	3.40
90	FIROZPUR	FIROZPUR	S-NPP	74.48147	30.83706	13:06:00	D	5.20
91	FIROZPUR	FIROZPUR	S-NPP	74.74064	30.93240	13:06:00	D	1.30
92	FIROZPUR	FIROZPUR	S-NPP	74.54646	30.94263	13:06:00	D	1.40
93	FIROZPUR	FIROZPUR	S-NPP	74.79272	30.95663	13:06:00	D	11.80
94	FIROZPUR	FIROZPUR	S-NPP	74.74036	30.96156	13:06:00	D	5.00
95	FIROZPUR	FIROZPUR	S-NPP	74.74162	30.96392	13:06:00	D	3.60
96	FIROZPUR	FIROZPUR	S-NPP	74.67621	30.97930	13:06:00	D	3.90

97	FIROZPUR	FIROZPUR	S-NPP	74.64554	31.01776	13:06:00	D	11.20
98	FIROZPUR	FIROZPUR	S-NPP	74.80122	31.04138	13:06:00	D	5.70
99	FIROZPUR	FIROZPUR	S-NPP	74.69213	31.06334	13:06:00	D	2.60
100	FIROZPUR	FIROZPUR	S-NPP	74.77162	31.08211	13:06:00	D	3.00
101	FIROZPUR	ZIRA	S-NPP	75.27519	30.95534	13:06:00	D	6.70
102	FIROZPUR	ZIRA	S-NPP	75.04355	31.06541	13:06:00	D	4.00
103	FIROZPUR	ZIRA	S-NPP	74.96251	31.12258	13:06:00	D	4.80
104	GURDASPUR	BATALA	S-NPP	75.37054	31.63569	13:06:00	D	2.30
105	GURDASPUR	BATALA	S-NPP	75.29447	31.68711	13:06:00	D	4.00
106	GURDASPUR	BATALA	S-NPP	75.23361	31.69610	13:06:00	D	9.70
107	GURDASPUR	BATALA	S-NPP	75.21968	31.69756	13:06:00	D	2.20
108	GURDASPUR	BATALA	S-NPP	75.15026	31.75477	13:06:00	D	2.90
109	GURDASPUR	BATALA	S-NPP	75.11988	31.76574	13:06:00	D	6.30
110	GURDASPUR	BATALA	S-NPP	75.12420	31.76663	13:06:00	D	6.30
111	GURDASPUR	BATALA	S-NPP	75.32171	31.76864	13:06:00	D	5.30
112	GURDASPUR	BATALA	S-NPP	75.19086	31.77170	13:06:00	D	11.70
113	GURDASPUR	BATALA	S-NPP	75.12398	31.78379	13:06:00	D	3.00
114	GURDASPUR	BATALA	S-NPP	75.42065	31.81009	13:06:00	D	2.50
115	GURDASPUR	BATALA	S-NPP	75.12241	31.82410	13:06:00	D	11.50
116	GURDASPUR	BATALA	S-NPP	75.06611	31.82964	13:06:00	D	7.10
117	GURDASPUR	BATALA	S-NPP	74.92517	31.88726	13:06:00	D	2.70
118	GURDASPUR	DERA BABA NANAK	S-NPP	74.92086	31.93988	13:06:00	D	4.70
119	GURDASPUR	DERA BABA NANAK	S-NPP	75.09689	31.96754	13:06:00	D	5.20
120	GURDASPUR	DERA BABA NANAK	S-NPP	75.11897	32.00209	13:06:00	D	3.00
121	GURDASPUR	GURDASPUR	S-NPP	75.32525	31.85336	13:06:00	D	4.80
122	GURDASPUR	GURDASPUR	S-NPP	75.32462	31.85426	13:06:00	D	4.10
123	GURDASPUR	GURDASPUR	S-NPP	75.32833	31.85824	13:06:00	D	2.30
124	GURDASPUR	GURDASPUR	S-NPP	75.32771	31.85912	13:06:00	D	2.80
125	GURDASPUR	GURDASPUR	S-NPP	75.39068	31.95143	13:06:00	D	3.70
126	GURDASPUR	GURDASPUR	S-NPP	75.31445	31.99088	13:06:00	D	9.00
127	HOSHIARPUR	DASUYA	NOAA-19	75.73503	31.61943	18:27:00	N	6.00
128	HOSHIARPUR	DASUYA	S-NPP	75.59815	31.63500	13:06:00	D	7.20
129	HOSHIARPUR	DASUYA	S-NPP	75.60225	31.63583	13:06:00	D	7.20

130	HOSHIARPUR	DASUYA	S-NPP	75.64069	31.79476	13:06:00	D	5.90
131	JALANDHAR	JALANDHAR II	S-NPP	75.65907	31.59591	13:06:00	D	3.40
132	JALANDHAR	JALANDHAR II	S-NPP	75.66015	31.59724	13:06:00	D	2.70
133	JALANDHAR	NAKODAR	S-NPP	75.41099	30.99137	13:06:00	D	5.30
134	JALANDHAR	NAKODAR	S-NPP	75.40559	30.99458	13:06:00	D	4.00
135	JALANDHAR	SHAHKOT	S-NPP	75.11269	31.15395	13:06:00	D	4.30
136	JALANDHAR	SHAHKOT	S-NPP	75.11354	31.15437	13:06:00	D	6.20
137	JALANDHAR	SHAHKOT	S-NPP	75.11710	31.15485	13:06:00	D	5.70
138	KAPURTHALA	BHOLATH	NOAA-19	75.56517	31.61045	18:27:00	N	6.00
139	KAPURTHALA	KAPURTHALA	S-NPP	75.37592	31.24769	13:06:00	D	2.70
140	KAPURTHALA	KAPURTHALA	S-NPP	75.19931	31.40062	13:06:00	D	4.00
141	KAPURTHALA	KAPURTHALA	S-NPP	75.20363	31.40151	13:06:00	D	4.00
142	KAPURTHALA	KAPURTHALA	S-NPP	75.40582	31.53281	13:06:00	D	9.90
143	KAPURTHALA	SULTANPUR LODHI	S-NPP	75.16792	31.20921	13:06:00	D	4.40
144	LUDHIANA	RAIKOT	S-NPP	75.71216	30.68908	13:06:00	D	3.50
145	MANSA	BUDHLADA	S-NPP	75.57336	29.87804	13:06:00	D	5.10
146	MANSA	BUDHLADA	S-NPP	75.73238	29.92761	13:06:00	D	4.00
147	MANSA	SARDULGARH	S-NPP	75.29404	29.67548	13:06:00	D	12.20
148	MANSA	SARDULGARH	S-NPP	75.26907	29.67916	13:06:00	D	5.20
149	MANSA	SARDULGARH	S-NPP	75.22582	29.71472	13:06:00	D	3.20
150	MUKTSAR	GIDDARBAHA	TERRA	74.67400	30.38500	11:15:00	D	5.40
151	MUKTSAR	GIDDARBAHA	S-NPP	74.72432	30.38605	13:06:00	D	4.90
152	MUKTSAR	GIDDARBAHA	S-NPP	74.72907	30.38704	13:06:00	D	6.40
153	PATIALA	PATIALA	S-NPP	76.59303	30.15802	13:06:00	D	2.40
154	PATIALA	PATIALA	S-NPP	76.45973	30.26996	13:06:00	D	7.70
155	PATIALA	RAJPURA	S-NPP	76.65199	30.31569	13:06:00	D	8.80
156	PATIALA	RAJPURA	S-NPP	76.74255	30.35341	13:06:00	D	7.10
157	PATIALA	RAJPURA	TERRA	76.61600	30.37200	11:15:00	D	19.80
158	PATIALA	RAJPURA	S-NPP	76.70213	30.41420	13:06:00	D	3.50
159	PATIALA	RAJPURA	S-NPP	76.51995	30.46780	13:06:00	D	17.90
160	PATIALA	RAJPURA	S-NPP	76.53373	30.50714	13:06:00	D	3.60
161	PATIALA	RAJPURA	S-NPP	76.68183	30.50774	13:06:00	D	6.10
162	PATIALA	RAJPURA	S-NPP	76.69859	30.51102	13:06:00	D	3.20

163	PATIALA	RAJPURA	S-NPP	76.73299	30.51372	13:06:00	D	2.80
164	PATIALA	RAJPURA	S-NPP	76.61507	30.51491	13:06:00	D	3.50
165	PATIALA	RAJPURA	S-NPP	76.53143	30.53923	13:06:00	D	4.20
166	PATIALA	RAJPURA	S-NPP	76.58588	30.58214	13:06:00	D	4.80
167	PATIALA	RAJPURA	S-NPP	76.58926	30.58253	13:06:00	D	11.20
168	PATIALA	RAJPURA	S-NPP	76.59153	30.58322	13:06:00	D	4.80
169	PATIALA	SAMANA	S-NPP	76.18478	29.84136	13:06:00	D	9.50
170	PATIALA	SAMANA	S-NPP	76.18594	29.84151	13:06:00	D	7.40
171	PATIALA	SAMANA	S-NPP	76.20789	29.87111	13:06:00	D	12.30
172	PATIALA	SAMANA	S-NPP	76.21385	29.88069	13:06:00	D	4.90
173	PATIALA	SAMANA	S-NPP	76.21786	29.88149	13:06:00	D	4.90
174	PATIALA	SAMANA	S-NPP	76.07594	29.88685	13:06:00	D	3.80
175	PATIALA	SAMANA	S-NPP	76.03074	29.99586	13:06:00	D	3.20
176	PATIALA	SAMANA	S-NPP	76.02969	29.99987	13:06:00	D	7.40
177	PATIALA	SAMANA	S-NPP	76.19884	30.02076	13:06:00	D	3.10
178	PATIALA	SAMANA	S-NPP	76.20821	30.09818	13:06:00	D	4.50
179	PATIALA	SAMANA	S-NPP	76.25793	30.21352	13:06:00	D	6.40
180	RUPNAGAR	ANANDPUR SAHIB	S-NPP	76.49987	31.20524	13:06:00	D	2.60
181	SANGRUR	DHURI	S-NPP	75.86415	30.42522	13:06:00	D	2.60
182	SANGRUR	MOONAK	S-NPP	75.99271	29.76967	13:06:00	D	5.60
183	SANGRUR	MOONAK	S-NPP	75.99304	29.82362	13:06:00	D	5.80
184	SANGRUR	SANGRUR	S-NPP	76.05532	30.23180	13:06:00	D	3.10
185	SAS NAGAR	DERABASSI	S-NPP	76.76662	30.56444	13:06:00	D	10.50
186	SAS NAGAR	KHARAR	S-NPP	76.66030	30.77868	13:06:00	D	13.50
187	SAS NAGAR	KHARAR	TERRA	76.69900	30.78400	11:15:00	D	7.50
188	SBS NAGAR	BALACHAUR	S-NPP	76.29977	30.99597	13:06:00	D	4.90
189	TARN TARAN	KHADOOR SAHIB	S-NPP	74.90527	31.26470	13:06:00	D	5.50
190	TARN TARAN	KHADOOR SAHIB	S-NPP	75.02799	31.29898	13:06:00	D	11.70
191	TARN TARAN	KHADOOR SAHIB	S-NPP	75.07650	31.30901	13:06:00	D	10.30
192	TARN TARAN	KHADOOR SAHIB	S-NPP	75.08087	31.30992	13:06:00	D	10.30
193	TARN TARAN	KHADOOR SAHIB	S-NPP	74.96770	31.31278	13:06:00	D	4.70
194	TARN TARAN	KHADOOR SAHIB	S-NPP	74.92843	31.31787	13:06:00	D	9.60
195	TARN TARAN	KHADOOR SAHIB	S-NPP	74.82214	31.32591	13:06:00	D	9.70

196	TARN TARAN	KHADOOR SAHIB	S-NPP	75.01550	31.32699	13:06:00	D	14.30
197	TARN TARAN	KHADOOR SAHIB	S-NPP	75.11034	31.33772	13:06:00	D	3.60
198	TARN TARAN	KHADOOR SAHIB	S-NPP	74.97811	31.36312	13:06:00	D	5.70
199	TARN TARAN	KHADOOR SAHIB	S-NPP	75.07982	31.36699	13:06:00	D	3.00
200	TARN TARAN	KHADOOR SAHIB	S-NPP	75.06436	31.37246	13:06:00	D	2.70
201	TARN TARAN	KHADOOR SAHIB	S-NPP	74.83646	31.37750	13:06:00	D	5.70
202	TARN TARAN	KHADOOR SAHIB	S-NPP	75.12201	31.37916	13:06:00	D	3.90
203	TARN TARAN	KHADOOR SAHIB	S-NPP	75.12224	31.39757	13:06:00	D	11.20
204	TARN TARAN	KHADOOR SAHIB	S-NPP	74.79549	31.41286	13:06:00	D	2.30
205	TARN TARAN	KHADOOR SAHIB	S-NPP	74.86202	31.43138	13:06:00	D	7.50
206	TARN TARAN	KHADOOR SAHIB	S-NPP	74.86422	31.43168	13:06:00	D	13.60
207	TARN TARAN	KHADOOR SAHIB	TERRA	74.82600	31.43200	11:15:00	D	14.10
208	TARN TARAN	KHADOOR SAHIB	S-NPP	74.82816	31.43304	13:06:00	D	8.50
209	TARN TARAN	KHADOOR SAHIB	S-NPP	74.86086	31.43554	13:06:00	D	86.50
210	TARN TARAN	KHADOOR SAHIB	S-NPP	74.86305	31.43583	13:06:00	D	13.60
211	TARN TARAN	KHADOOR SAHIB	TERRA	74.81700	31.44300	11:15:00	D	8.00
212	TARN TARAN	KHADOOR SAHIB	TERRA	74.80600	31.44400	11:15:00	D	15.90
213	TARN TARAN	KHADOOR SAHIB	S-NPP	74.74144	31.46787	13:06:00	D	4.70
214	TARN TARAN	KHADOOR SAHIB	S-NPP	74.99783	31.46874	13:06:00	D	9.30
215	TARN TARAN	KHADOOR SAHIB	S-NPP	74.74600	31.46882	13:06:00	D	4.70
216	TARN TARAN	KHADOOR SAHIB	S-NPP	75.00225	31.46967	13:06:00	D	9.30
217	TARN TARAN	KHADOOR SAHIB	S-NPP	74.77451	31.47034	13:06:00	D	12.60
218	TARN TARAN	KHADOOR SAHIB	S-NPP	75.03242	31.47035	13:06:00	D	3.60
219	TARN TARAN	KHADOOR SAHIB	TERRA	75.03100	31.51400	11:15:00	D	8.70
220	TARN TARAN	KHADOOR SAHIB	S-NPP	75.17227	31.52245	13:06:00	D	4.10
221	TARN TARAN	KHADOOR SAHIB	S-NPP	74.78300	31.54638	13:06:00	D	3.50
222	TARN TARAN	PATTI	S-NPP	74.83184	31.17918	13:06:00	D	1.70
223	TARN TARAN	PATTI	S-NPP	74.72549	31.20029	13:06:00	D	3.80
224	TARN TARAN	PATTI	S-NPP	74.77840	31.20260	13:06:00	D	2.00
225	TARN TARAN	PATTI	TERRA	74.88300	31.20300	11:15:00	D	9.20
226	TARN TARAN	PATTI	TERRA	74.84100	31.20900	11:15:00	D	7.40
227	TARN TARAN	PATTI	S-NPP	74.52898	31.21259	13:06:00	D	1.70
228	TARN TARAN	PATTI	S-NPP	74.66746	31.21481	13:06:00	D	5.50



229	TARN TARAN	PATTI	S-NPP	74.67210	31.21579	13:06:00	D	6.60
230	TARN TARAN	PATTI	S-NPP	74.61718	31.23559	13:06:00	D	7.20
231	TARN TARAN	PATTI	S-NPP	74.88403	31.23820	13:06:00	D	3.40
232	TARN TARAN	PATTI	S-NPP	74.70892	31.25920	13:06:00	D	2.90
233	TARN TARAN	PATTI	S-NPP	74.70773	31.26341	13:06:00	D	4.40
234	TARN TARAN	PATTI	S-NPP	74.57784	31.27403	13:06:00	D	3.50
235	TARN TARAN	PATTI	S-NPP	74.52724	31.27673	13:06:00	D	4.40
236	TARN TARAN	PATTI	S-NPP	74.71261	31.28490	13:06:00	D	3.40
237	TARN TARAN	PATTI	S-NPP	74.69986	31.29556	13:06:00	D	6.20
238	TARN TARAN	PATTI	S-NPP	74.64186	31.31005	13:06:00	D	2.80
239	TARN TARAN	PATTI	S-NPP	74.70316	31.31853	13:06:00	D	3.70
240	TARN TARAN	PATTI	S-NPP	74.68352	31.31884	13:06:00	D	4.00
241	TARN TARAN	PATTI	S-NPP	74.65433	31.35285	13:06:00	D	2.70
242	TARN TARAN	PATTI	S-NPP	74.65658	31.36224	13:06:00	D	11.50
243	TARN TARAN	PATTI	S-NPP	74.70276	31.37185	13:06:00	D	6.00
244	TARN TARAN	PATTI	TERRA	74.76600	31.37600	11:15:00	D	10.30
245	TARN TARAN	PATTI	S-NPP	74.62807	31.38611	13:06:00	D	4.10
246	TARN TARAN	PATTI	S-NPP	74.62965	31.38788	13:06:00	D	5.30
247	TARN TARAN	PATTI	NOAA-19	74.70621	31.40832	18:27:00	N	6.00

**Details of residue burning events in Haryana on 13-Oct-2020**

S. No.	District	Tehsil / Block	Satellite	Longitude	Latitude	Time (IST)	Day / Night	Fire Power (W/m <sup>2</sup> )
1	AMBALA	AMBALA	S-NPP	76.77246	30.22151	13:06:00	D	7.90
2	AMBALA	AMBALA	S-NPP	76.87531	30.22938	13:06:00	D	2.90
3	AMBALA	AMBALA	S-NPP	76.87433	30.23320	13:06:00	D	4.50
4	AMBALA	AMBALA	S-NPP	76.66724	30.30244	13:06:00	D	3.90
5	AMBALA	AMBALA	S-NPP	76.98242	30.30586	13:06:00	D	2.10
6	AMBALA	AMBALA	S-NPP	76.98876	30.31699	13:06:00	D	3.40
7	AMBALA	BARARA	S-NPP	77.01080	30.22630	13:06:00	D	5.30
8	AMBALA	BARARA	S-NPP	77.00799	30.22714	13:06:00	D	7.50
9	AMBALA	BARARA	S-NPP	77.08944	30.28652	13:06:00	D	3.30
10	AMBALA	BARARA	S-NPP	77.17134	30.31791	13:06:00	D	4.40
11	AMBALA	NARAYANGARH	S-NPP	77.03941	30.38638	13:06:00	D	4.90
12	FATEHABAD	FATEHABAD	S-NPP	75.79451	29.59428	13:06:00	D	4.70
13	FATEHABAD	RATIA	S-NPP	75.44358	29.71705	01:48:00	N	0.40
14	FATEHABAD	TOHANA	S-NPP	75.84658	29.61773	13:06:00	D	5.40
15	FATEHABAD	TOHANA	S-NPP	75.83913	29.68313	13:06:00	D	3.30
16	FATEHABAD	TOHANA	NOAA-19	75.81267	29.69703	18:27:00	N	7.00
17	HISAR	HANSI	S-NPP	75.95108	29.29738	13:06:00	D	3.30
18	HISAR	HISAR	S-NPP	76.04198	29.39070	13:06:00	D	3.40
19	JIND	JIND	S-NPP	76.38093	29.47156	13:06:00	D	5.60
20	JIND	SAFIDON	S-NPP	76.53382	29.42595	13:06:00	D	4.40
21	KAITHAL	GUHLA	S-NPP	76.23380	29.90141	13:06:00	D	2.60
22	KAITHAL	KAITHAL	S-NPP	76.36230	29.56106	13:06:00	D	2.00
23	KAITHAL	KAITHAL	S-NPP	76.40982	29.58724	13:06:00	D	2.70
24	KAITHAL	KAITHAL	S-NPP	76.65865	29.79075	13:06:00	D	5.30
25	KAITHAL	KAITHAL	S-NPP	76.26518	29.85705	13:06:00	D	2.90
26	KARNAL	ASSANDH	S-NPP	76.67943	29.60859	13:06:00	D	4.30
27	KARNAL	ASSANDH	S-NPP	76.67658	29.61126	13:06:00	D	8.90
28	KARNAL	ASSANDH	TERRA	76.64300	29.62700	11:15:00	D	13.00
29	KARNAL	ASSANDH	S-NPP	76.72987	29.63816	13:06:00	D	3.00
30	KARNAL	GHARAUNDA	S-NPP	76.97038	29.58347	13:06:00	D	4.90

31	KARNAL	INDRI	S-NPP	77.19965	29.88249	13:06:00	D	3.00
32	KARNAL	INDRI	S-NPP	77.17311	29.92109	13:06:00	D	10.40
33	KARNAL	INDRI	S-NPP	77.17026	29.92307	13:06:00	D	8.00
34	KARNAL	KARNAL	S-NPP	76.85461	29.63829	13:06:00	D	8.60
35	KARNAL	KARNAL	S-NPP	76.85686	29.63848	13:06:00	D	9.50
36	KARNAL	KARNAL	S-NPP	76.74696	29.64153	13:06:00	D	6.20
37	KARNAL	KARNAL	S-NPP	76.79237	29.65045	13:06:00	D	4.40
38	KARNAL	KARNAL	S-NPP	77.05869	29.70641	13:06:00	D	7.30
39	KARNAL	KARNAL	S-NPP	77.06416	29.70746	13:06:00	D	7.30
40	KARNAL	KARNAL	S-NPP	76.87249	29.73092	13:06:00	D	5.00
41	KARNAL	KARNAL	S-NPP	76.71054	29.75183	13:06:00	D	5.00
42	KARNAL	KARNAL	S-NPP	76.70561	29.77128	13:06:00	D	4.40
43	KARNAL	KARNAL	S-NPP	76.74738	29.77128	13:06:00	D	10.10
44	KARNAL	KARNAL	S-NPP	77.00286	29.78074	13:06:00	D	3.80
45	KARNAL	KARNAL	S-NPP	77.04125	29.78823	13:06:00	D	7.00
46	KARNAL	KARNAL	S-NPP	77.04311	29.79154	13:06:00	D	6.50
47	KARNAL	KARNAL	S-NPP	77.01360	29.80691	13:06:00	D	15.40
48	KARNAL	NILOKHERI	S-NPP	76.83252	29.89357	13:06:00	D	3.90
49	KURUKSHETRA	SHAHABAD	S-NPP	76.75881	30.14632	13:06:00	D	1.80
50	KURUKSHETRA	SHAHABAD	S-NPP	76.89986	30.16531	13:06:00	D	3.70
51	KURUKSHETRA	SHAHABAD	S-NPP	76.83132	30.19671	13:06:00	D	3.20
52	KURUKSHETRA	SHAHABAD	TERRA	76.88200	30.19900	11:15:00	D	5.30
53	KURUKSHETRA	SHAHABAD	S-NPP	76.78293	30.20338	13:06:00	D	4.70
54	KURUKSHETRA	THANESAR	TERRA	76.88500	29.93100	11:15:00	D	7.00
55	KURUKSHETRA	THANESAR	S-NPP	76.77291	29.94279	13:06:00	D	7.70
56	KURUKSHETRA	THANESAR	S-NPP	76.77068	29.94600	13:06:00	D	14.20
57	KURUKSHETRA	THANESAR	S-NPP	76.77193	29.94665	13:06:00	D	7.70
58	KURUKSHETRA	THANESAR	S-NPP	77.08649	29.98651	13:06:00	D	3.40
59	PALWAL	HODAL	NOAA-19	77.41899	27.90040	18:27:00	N	6.50
60	PANIPAT	PANIPAT	S-NPP	76.93942	29.46024	13:06:00	D	13.80
61	SIRSA	SIRSA	S-NPP	75.11076	29.84091	13:06:00	D	13.30
62	SONIPAT	KHARKHODA	NOAA-19	76.80267	28.96042	18:27:00	N	8.00
63	YAMUNANAGAR	JAGADHRI	TERRA	77.14900	30.26800	11:15:00	D	5.70
64	YAMUNANAGAR	JAGADHRI	TERRA	77.18500	30.28100	11:15:00	D	11.00

**Details of residue burning events in Uttar Pradesh on 13-Oct-2020**

S. No.	District	Tehsil / Block	Satellite	Longitude	Latitude	Time (IST)	Day / Night	Fire Power (W/m <sup>2</sup> )
1	ALIGARH	GABHANA	S-NPP	77.96712	27.93103	01:48:00	N	1.10
2	ALIGARH	IGLAS	METOP-1	77.80237	27.73871	21:19:00	N	31.00
3	AURAIYA	BIDHUNA	S-NPP	79.69264	26.78873	01:48:00	N	0.40
4	AZAMGARH	SAGRI	METOP-2	83.28617	26.19360	20:05:00	N	6.00
5	AZAMGARH	SAGRI	METOP-2	83.25706	26.25649	20:05:00	N	6.00
6	AZAMGARH	SAGRI	METOP-2	83.34441	26.30140	20:05:00	N	6.00
7	BAGHPAT	BAGHPAT	S-NPP	77.30367	29.04251	01:48:00	N	0.70
8	BALLIA	SIKANDARPUR	METOP-2	83.94617	26.03191	20:05:00	N	7.00
9	BALLIA	SIKANDARPUR	METOP-2	83.97529	26.04987	20:05:00	N	6.00
10	BAREILLY	AONLA	S-NPP	79.10446	28.46517	01:48:00	N	0.70
11	BAREILLY	MIRGANJ	S-NPP	79.27943	28.53529	13:06:00	D	2.50
12	DEORIA	BHATPAR RANI	METOP-2	84.03999	26.29541	20:05:00	N	7.33
13	HAMIRPUR	SARILA	S-NPP	79.62090	25.76498	13:00:00	D	1.30
14	HARDOI	BILGRAM	S-NPP	80.24009	27.13113	13:06:00	D	1.70
15	HARDOI	BILGRAM	S-NPP	80.22086	27.13856	13:06:00	D	4.40
16	KANNAUJ	TIRWA	S-NPP	79.52193	26.90567	01:48:00	N	0.70
17	KANPUR DEHAT	AKBARPUR	S-NPP	79.96540	26.45620	13:06:00	D	2.70
18	KHERI	GOLA	S-NPP	80.54400	28.06306	13:06:00	D	4.20
19	KHERI	GOLA	S-NPP	80.40958	28.17411	13:06:00	D	6.90
20	KHERI	MOHMADI	S-NPP	80.27154	28.06676	13:06:00	D	1.90
21	KHERI	MOHMADI	S-NPP	80.28411	28.09298	13:06:00	D	3.40
22	MAINPURI	MAINPURI	S-NPP	78.78587	27.17977	01:48:00	N	0.80
23	MATHURA	MAT	S-NPP	77.72942	27.88082	01:48:00	N	0.90
24	RAMPUR	TANDA	S-NPP	78.99483	29.12399	13:06:00	D	3.20
25	SHAHJAHANPUR	PUWANYA	TERRA	80.15700	28.11900	22:15:00	N	7.60
26	SHAHJAHANPUR	PUWANYA	S-NPP	80.11171	28.12639	01:48:00	N	3.30
27	SHAHJAHANPUR	PUWANYA	S-NPP	80.11356	28.15680	01:48:00	N	0.70
28	SHAHJAHANPUR	PUWANYA	S-NPP	80.16714	28.16232	01:48:00	N	1.20
29	SHAHJAHANPUR	PUWANYA	S-NPP	80.02824	28.19697	01:48:00	N	0.50
30	SHAHJAHANPUR	PUWANYA	S-NPP	80.03019	28.29450	01:48:00	N	0.30
31	SHAHJAHANPUR	SHAHJAHANPUR	S-NPP	79.85735	27.80900	13:06:00	D	4.00

32	SHAHJAHANPUR	SHAHJAHANPUR	S-NPP	79.85658	27.81247	13:06:00	D	2.10
33	SHAHJAHANPUR	SHAHJAHANPUR	S-NPP	79.85583	27.81594	13:06:00	D	2.10
34	SHAHJAHANPUR	SHAHJAHANPUR	S-NPP	79.86301	27.82438	13:06:00	D	3.40
35	SHAHJAHANPUR	SHAHJAHANPUR	S-NPP	79.89042	27.90900	13:06:00	D	5.20
36	SHAHJAHANPUR	SHAHJAHANPUR	S-NPP	79.88967	27.91246	13:06:00	D	3.80
37	SHAHJAHANPUR	TILHAR	S-NPP	79.56703	27.93409	01:48:00	N	0.80
38	SHARANPUR	SHARANPUR	S-NPP	77.53178	30.05226	01:48:00	N	1.40
39	SHRAWASTI	BHINGA	S-NPP	81.73547	27.85062	01:48:00	N	0.40

**The study used images received from following Satellites at IARI Satellite Ground Station**

S. No.	Satellite Name	Sensor	Resolution (meter)	Day / Night Passes
1.	Suomi NPP	VIIRS	375 / 750	Both
2.	Terra	MODIS	1000	Both
3.	Aqua	MODIS	1000	Both
4.	NOAA – 18	AVHRR	1000	Night
5.	NOAA – 19	AVHRR	1000	Night
6.	Metop - 1	AVHRR	1000	Night
7.	Metop - 2	AVHRR	1000	Night

**Study Team**

ICAR – HQ	Dr K. Alagusundaram	DDG (AG. ENGG.)	<a href="mailto:ddgengg@icar.org.in">ddgengg@icar.org.in</a>
	Dr S. Bhasker	ADG (NRM)	<a href="mailto:adgagroandaf@gmail.com">adgagroandaf@gmail.com</a>
	Dr K.K. Singh	ADG (AG. ENGG)	<a href="mailto:kanchansingh044@gmail.com">kanchansingh044@gmail.com</a>
ICAR - IARI	<b>Dr V.K. Sehgal</b>	<b>Professor &amp; Nodal Scientist</b>	<a href="mailto:iaricreams@gmail.com">iaricreams@gmail.com</a>
	Dr Rajkumar Dhakar	Scientist	<a href="mailto:raidhakar.iari@gmail.com">raidhakar.iari@gmail.com</a>
	Mr Rakeswer Verma	Chief Technical Officer	<a href="mailto:rakeshwar.verma@icar.gov.in">rakeshwar.verma@icar.gov.in</a>
	Mr Mohd Jahangir	Lab Assistant (KRISHI)	<a href="mailto:mjahangir198@gmail.com">mjahangir198@gmail.com</a>
ICAR - ATARI	Dr Rajbir Singh	Director ATARI (Zone-I) Ludhiana	<a href="mailto:rajbirsingh.zpd@gmail.com">rajbirsingh.zpd@gmail.com</a>
	Dr S.K. Singh	Director ATARI (Zone-II) Jodhpur	<a href="mailto:sushilsinghiipr@yahoo.co.in">sushilsinghiipr@yahoo.co.in</a>
	Dr Atar Singh	Director ATARI (Zone-III) Kanpur	<a href="mailto:zpdicarkanpur@gmail.com">zpdicarkanpur@gmail.com</a>
ICAR - IASRI	Dr Rajender Parsad	Director IASRI	<a href="mailto:rajender.parsad@icar.gov.in">rajender.parsad@icar.gov.in</a>

Softcopy of this report and latest statistics can be seen on <http://creams.iari.res.in>

GIS Maps of fire events can be visualized online on ICAR KRISHI Geoportal website: <http://geoportal.icar.gov.in:8080/geoexplorer/composer/>

(Part of KRISHI Portal: <https://krishi.icar.gov.in> initiative)

\*\*\*