



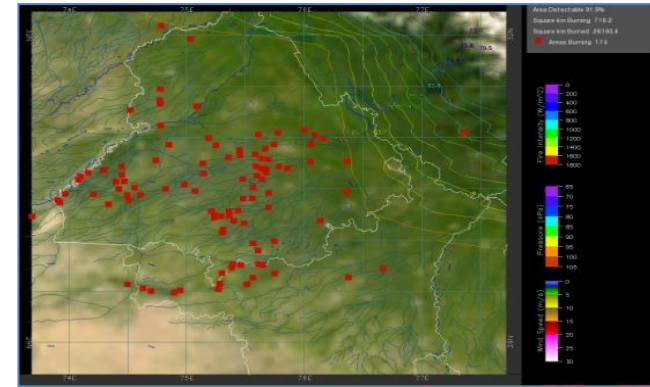
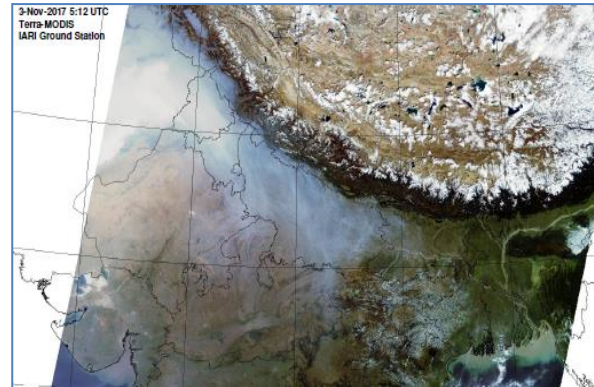
Bulletin No. 56

Events Date:
25-Nov-2019

Issued on:
26-Nov-2019



MONITORING PADDY RESIDUE BURNING IN NORTH INDIA USING SATELLITE REMOTE SENSING DURING 2019



Prepared by:

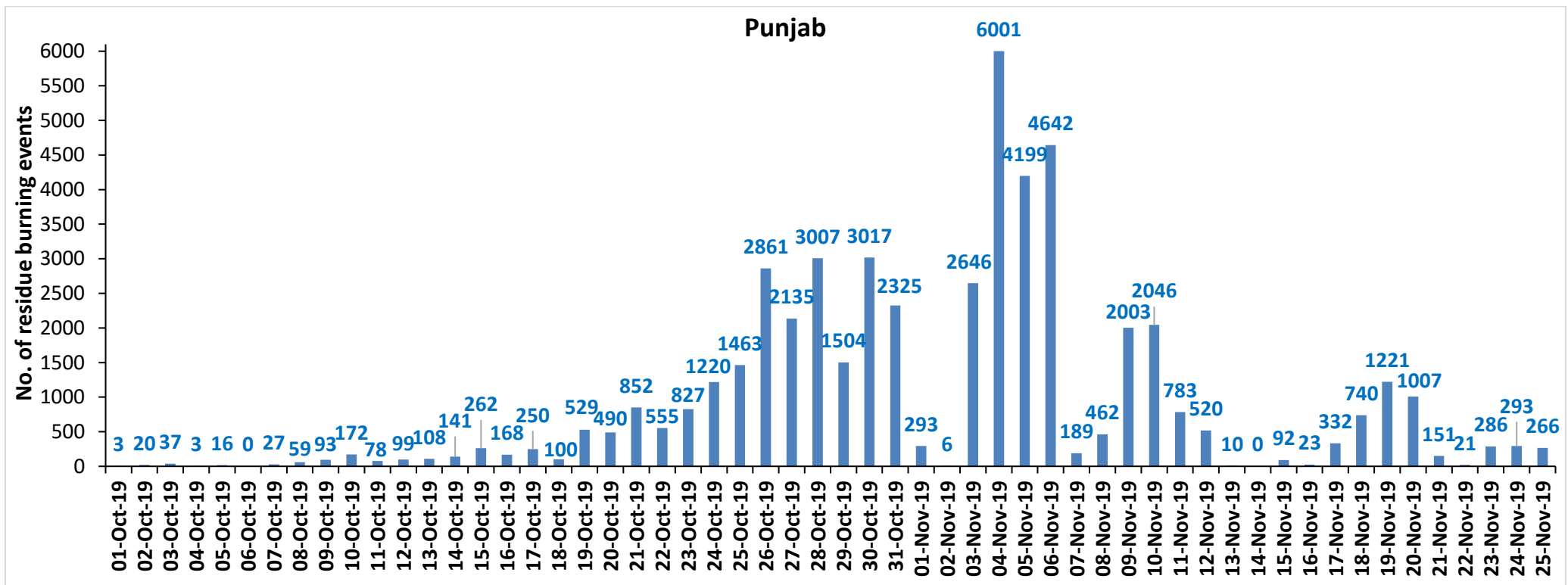
Consortium for Research on Agroecosystem Monitoring and Modeling from Space (CREAMS) Laboratory,
Division of Agricultural Physics, ICAR – Indian Agricultural Research Institute, New Delhi – 110012

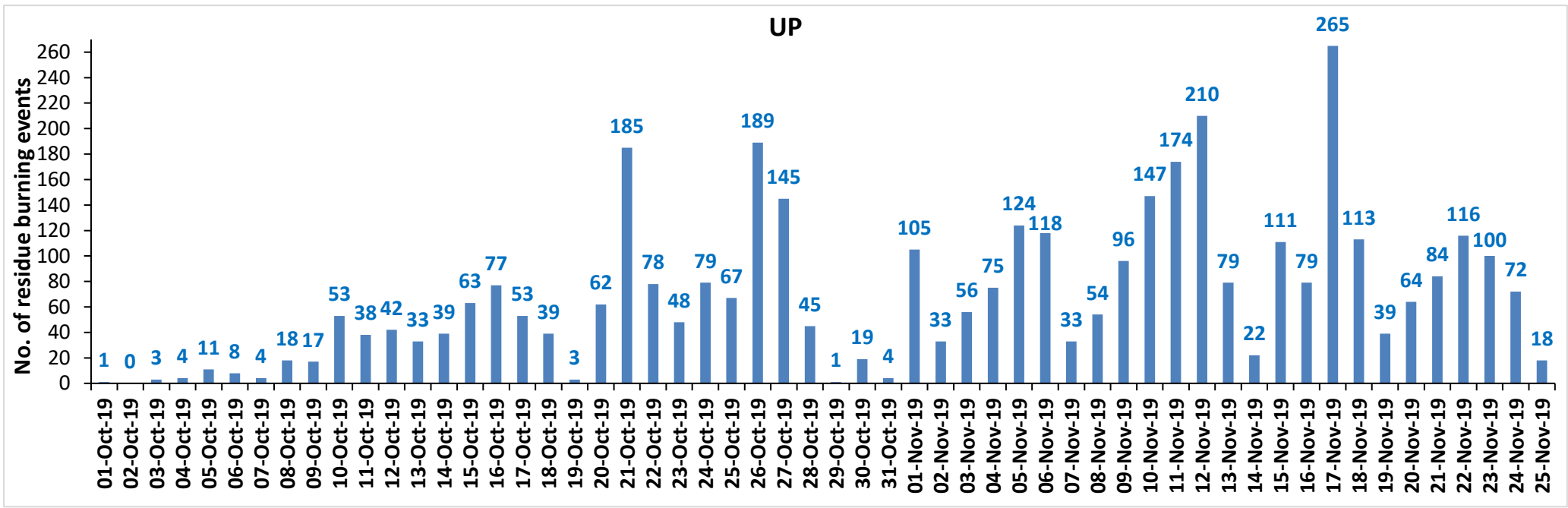
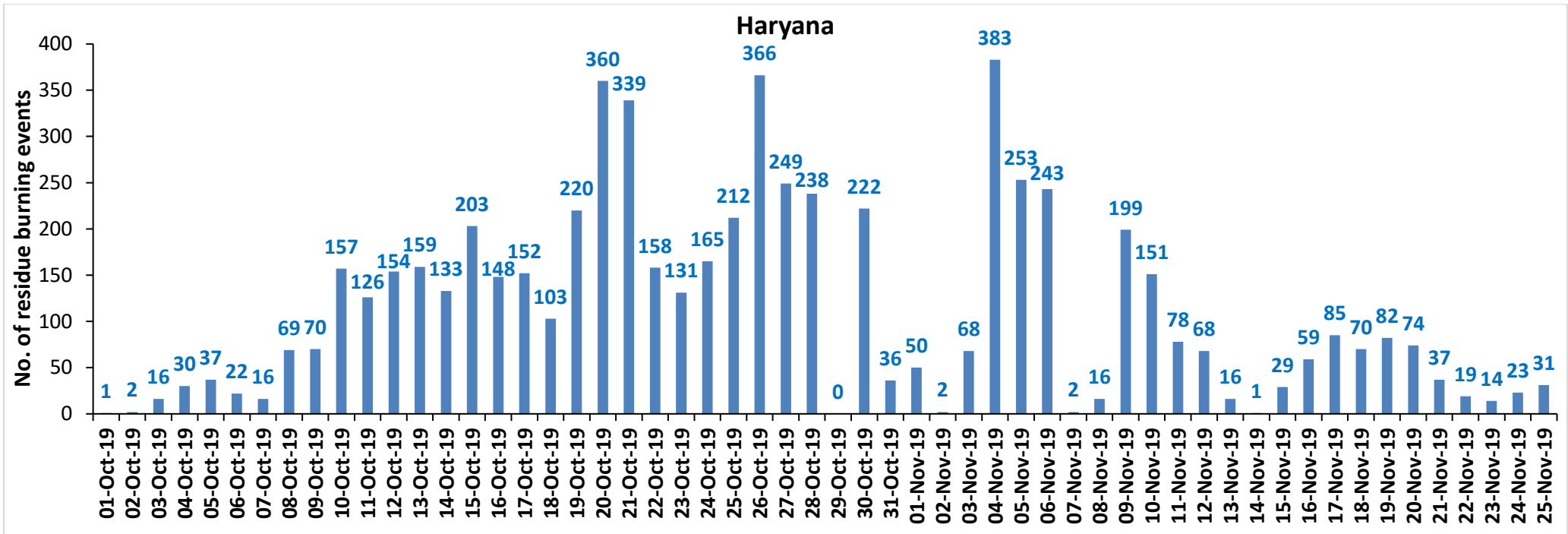
<http://creams.iari.res.in>

Highlights for 25-November-2019

- Satellites detected **315** residue burning events in the three study States on **25-Nov-2019**.
- The burning events detected on **25-Nov-2019** are **266, 31** and **18** in Punjab, Haryana and UP, respectively.
- The number of events has decreased from **388** on **24-Nov-2019** to **315** on **25-Nov-2019** in the three states.
- Total **60815** burning events were detected in the three States between **01-Oct-2019** and **25-Nov-2019**, which are distributed as **50653, 6347** and **3815** in Punjab, Haryana and UP, respectively.
- Overall, the total burning events recorded in the three states are **18.7%** less than in 2018 till date. UP recorded **38.9%** reduction, Haryana recorded **29.8%** reduction, and Punjab recorded **14.9%** reduction, respectively, in the current season than in 2018.

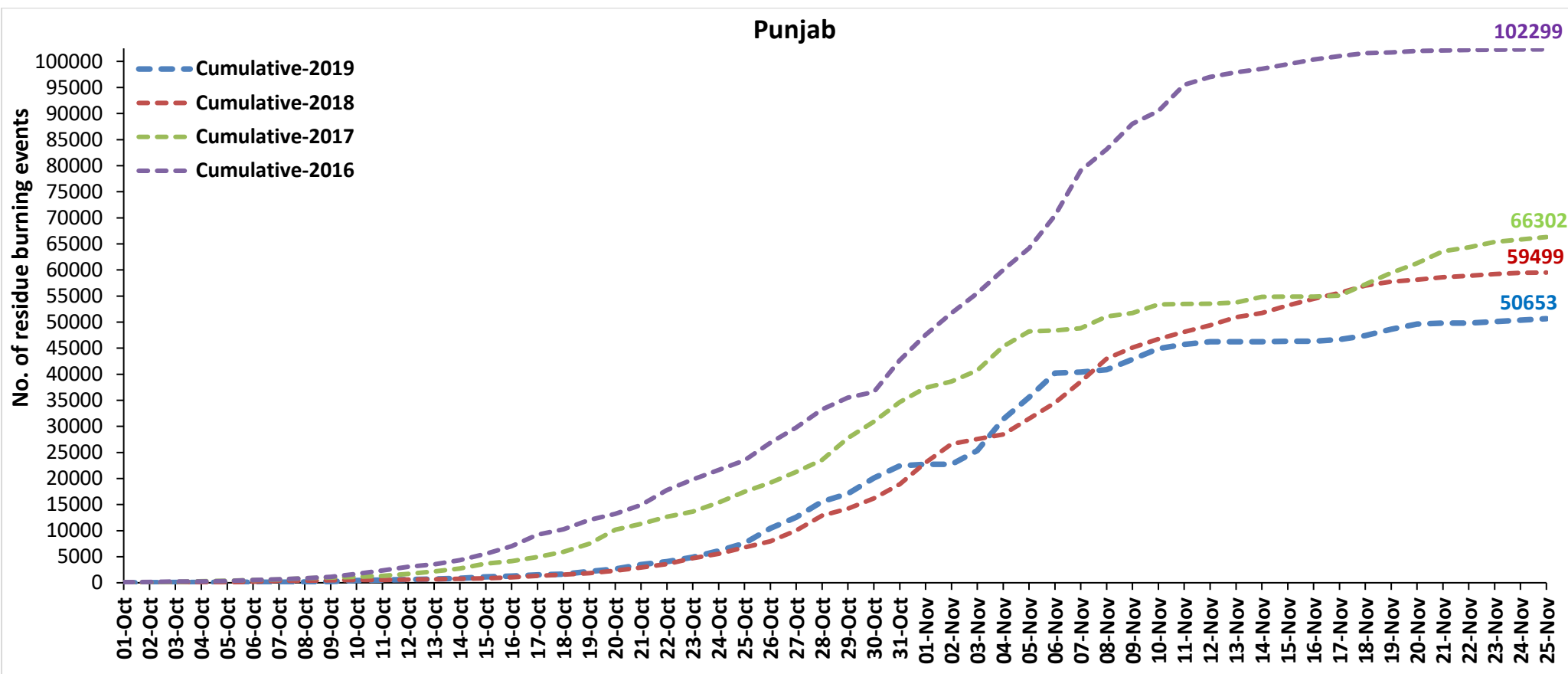
Temporal distribution of residue burning events for the three study States in 2019



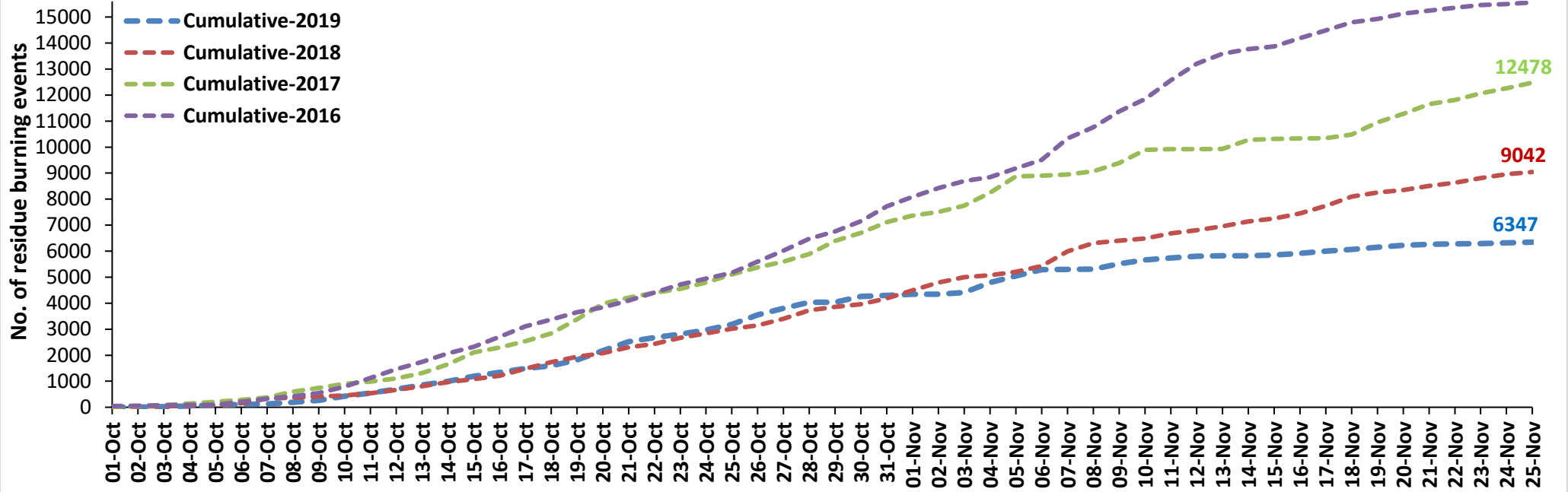


Comparison of residue burning events in current year (2019) with previous years (2018, 2017 & 2016) for the three study States
(01-Oct to 25-Nov)

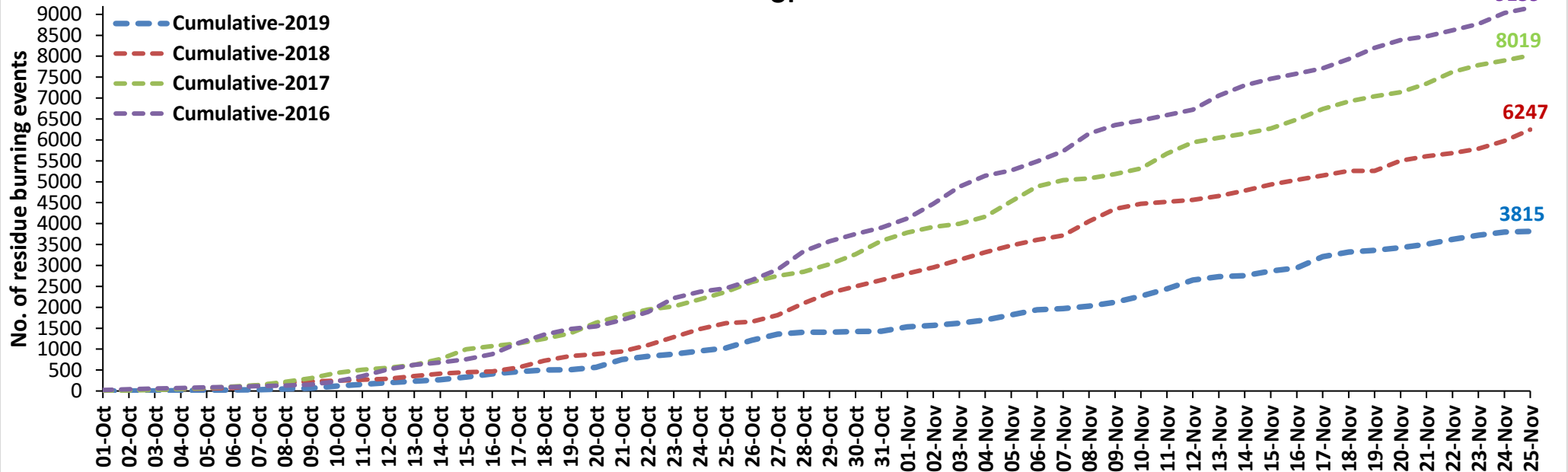
Punjab



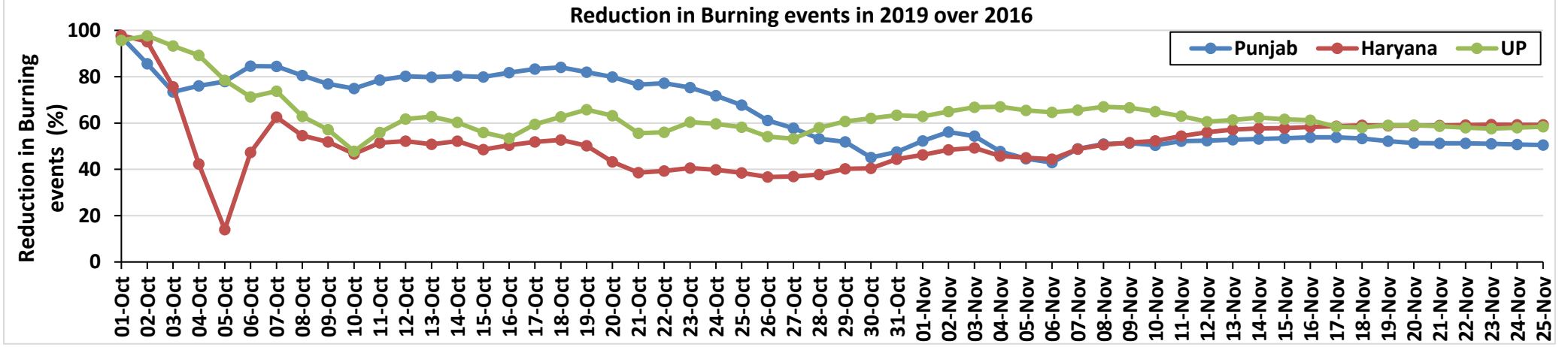
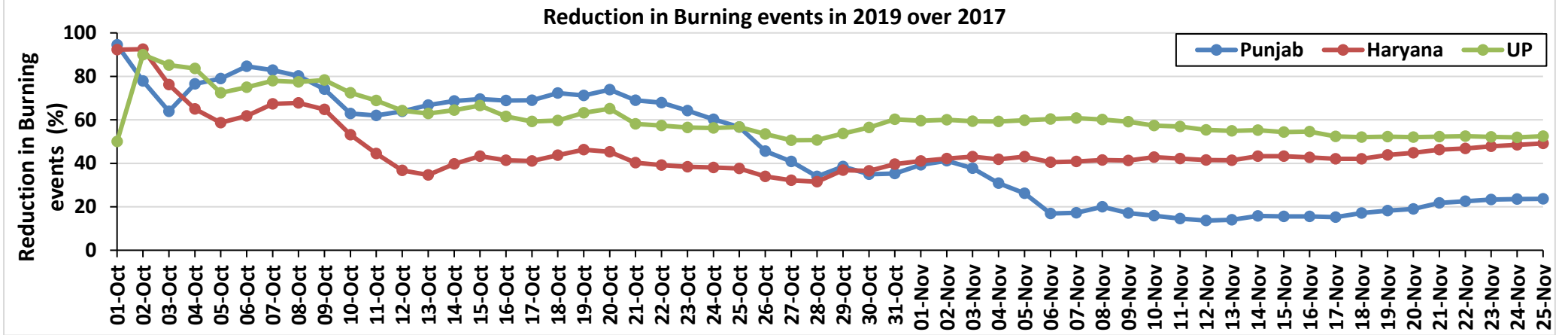
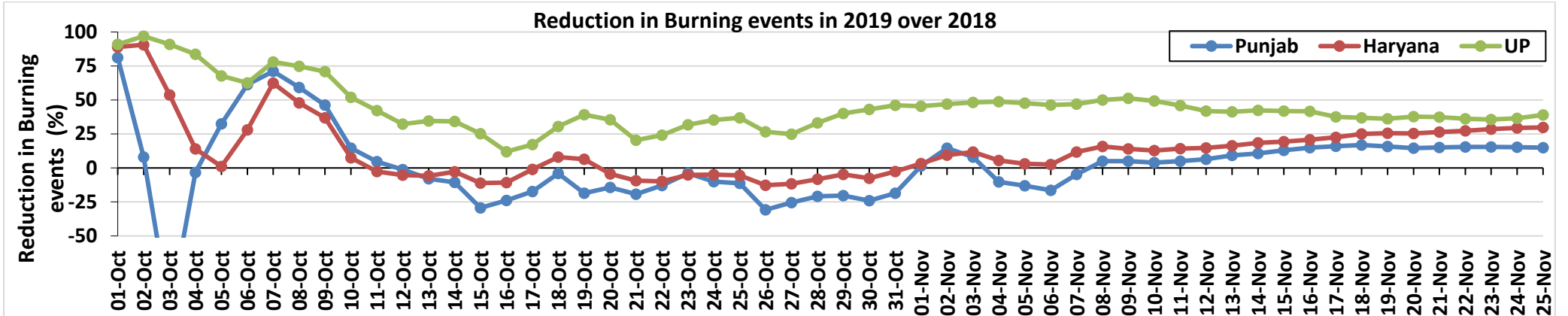
Haryana



UP

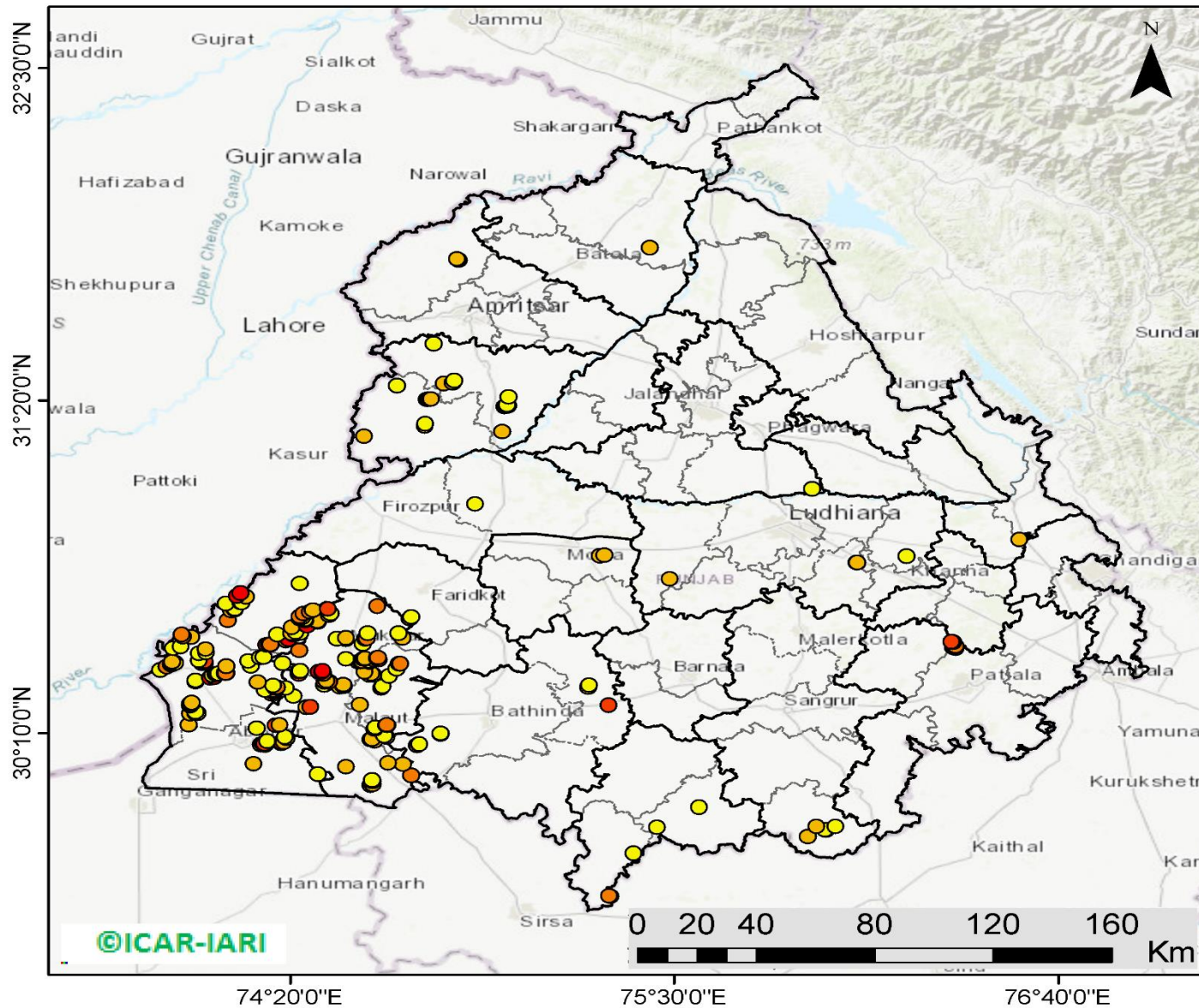


Percent Reduction in Burning events in 2019 over 2018, 2017 and 2016 (Daily Cumulative)



(a) Punjab

RICE RESIDUE BURNING IN PUNJAB



266 burning events detected in Punjab on 25th November 2019

Fire Intensity (W/m²)

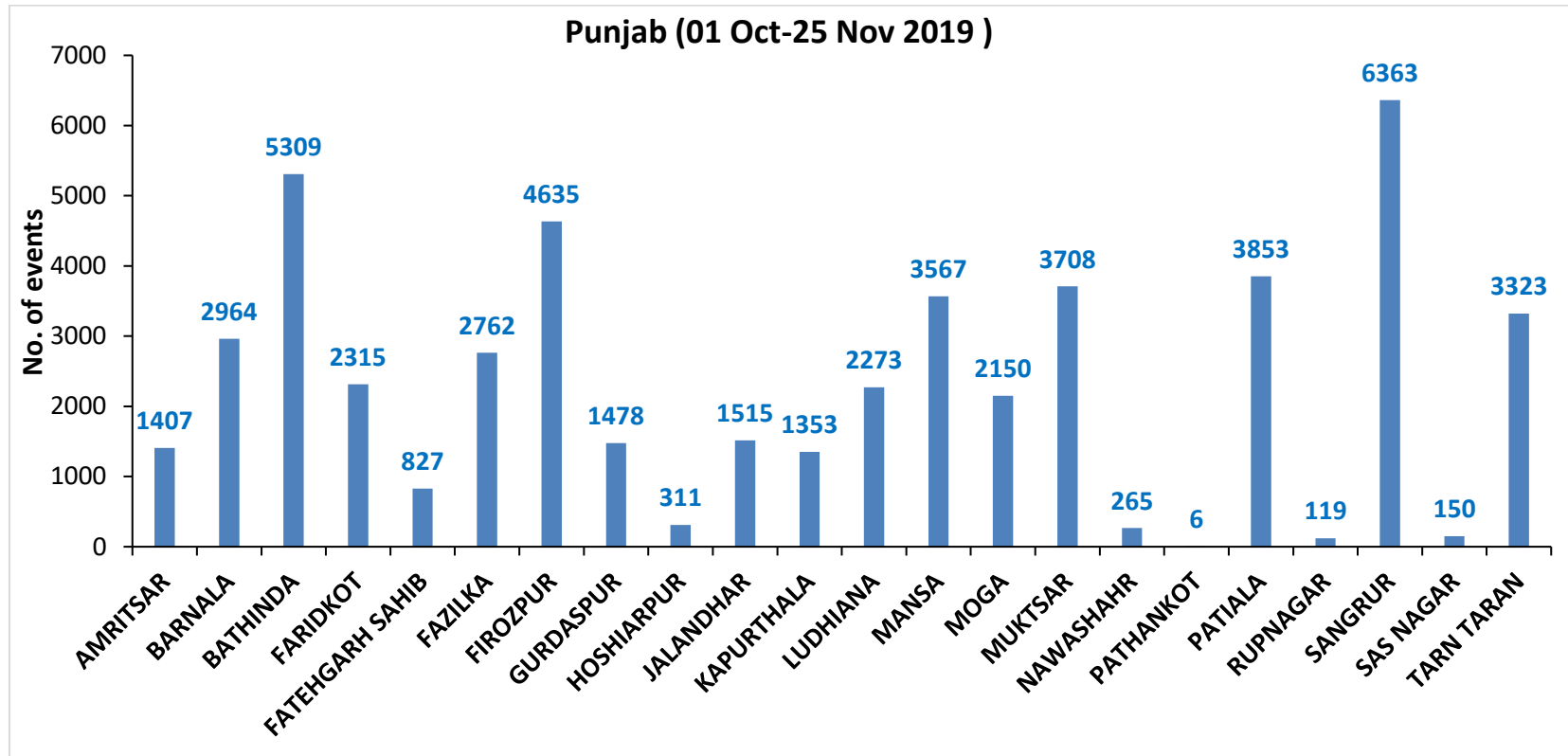
-  0 - 5
-  6 - 10
-  11 - 15
-  16 - 20
-  >20

©ICAR-IARI



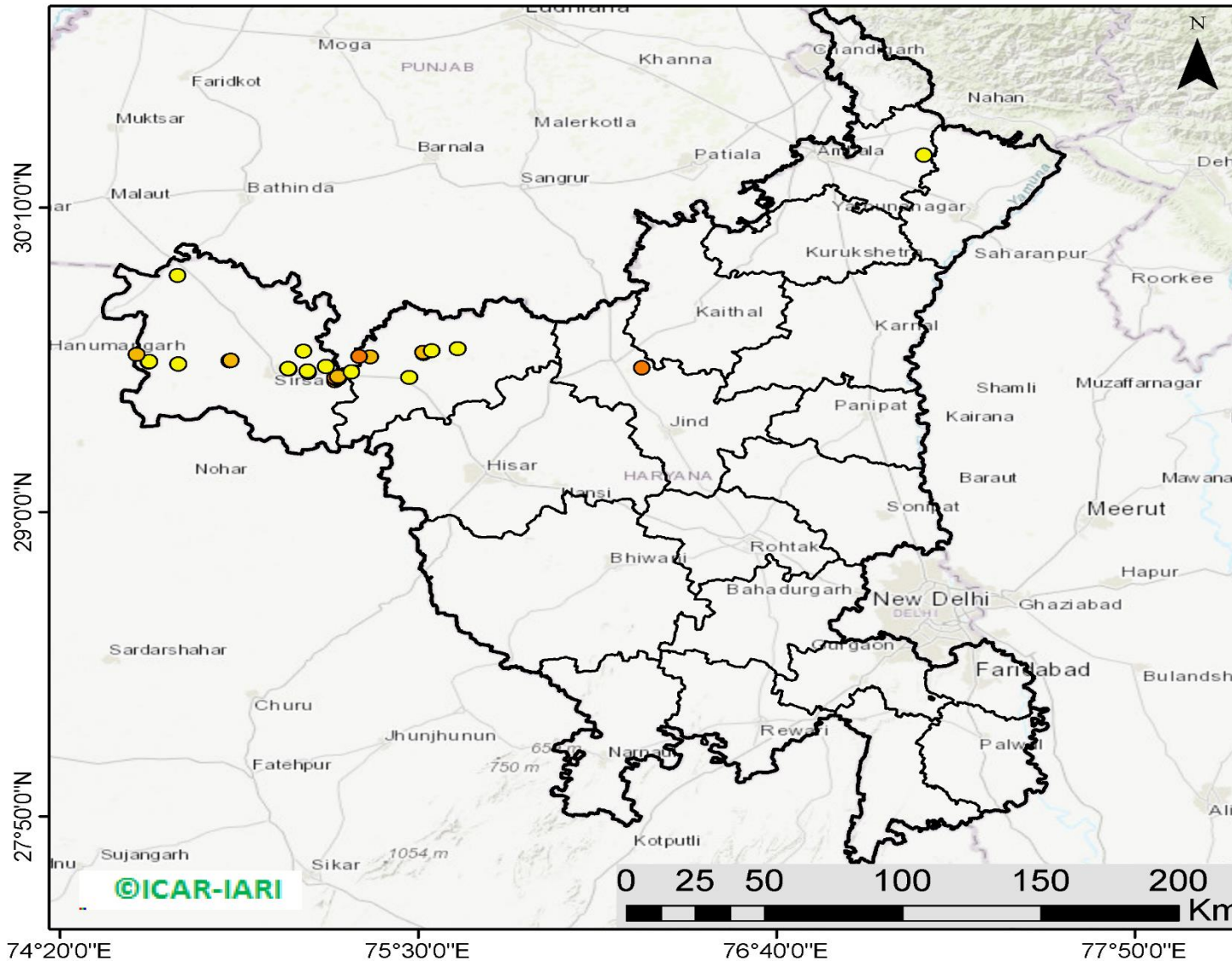
<http://geoportal.icar.gov.in:8080/geoexplorer/composer/>

District-wise cumulative number of residues burning events in Punjab (01 Oct to 25-Nov 2019)



(b) Haryana

RICE RESIDUE BURNING IN HARYANA



31 burning events detected in Haryana on 25th November 2019

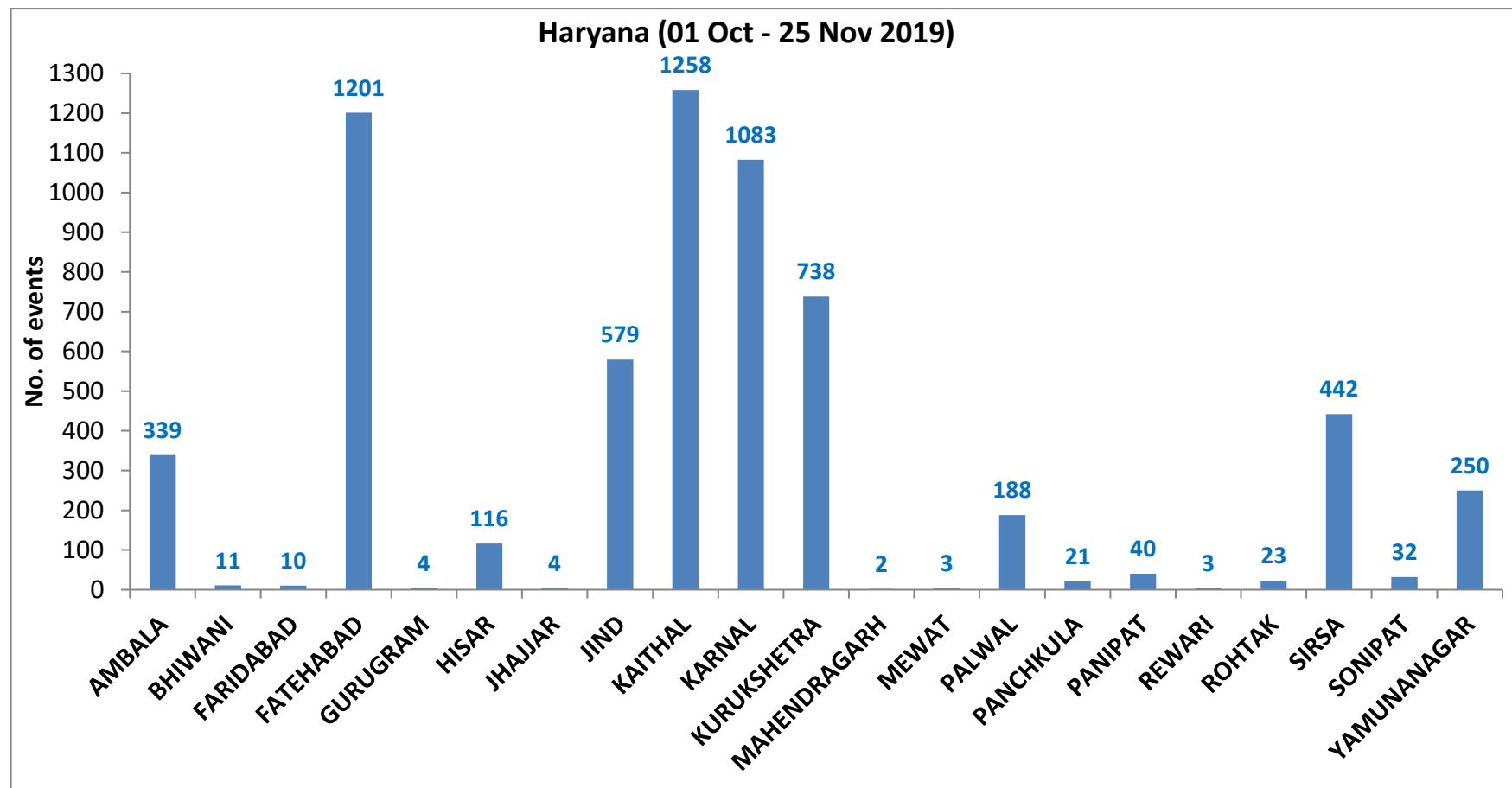
Fire Intensity (W/m²)

- 0 - 5
- 6 - 10
- 11 - 15
- 16 - 20
- >20



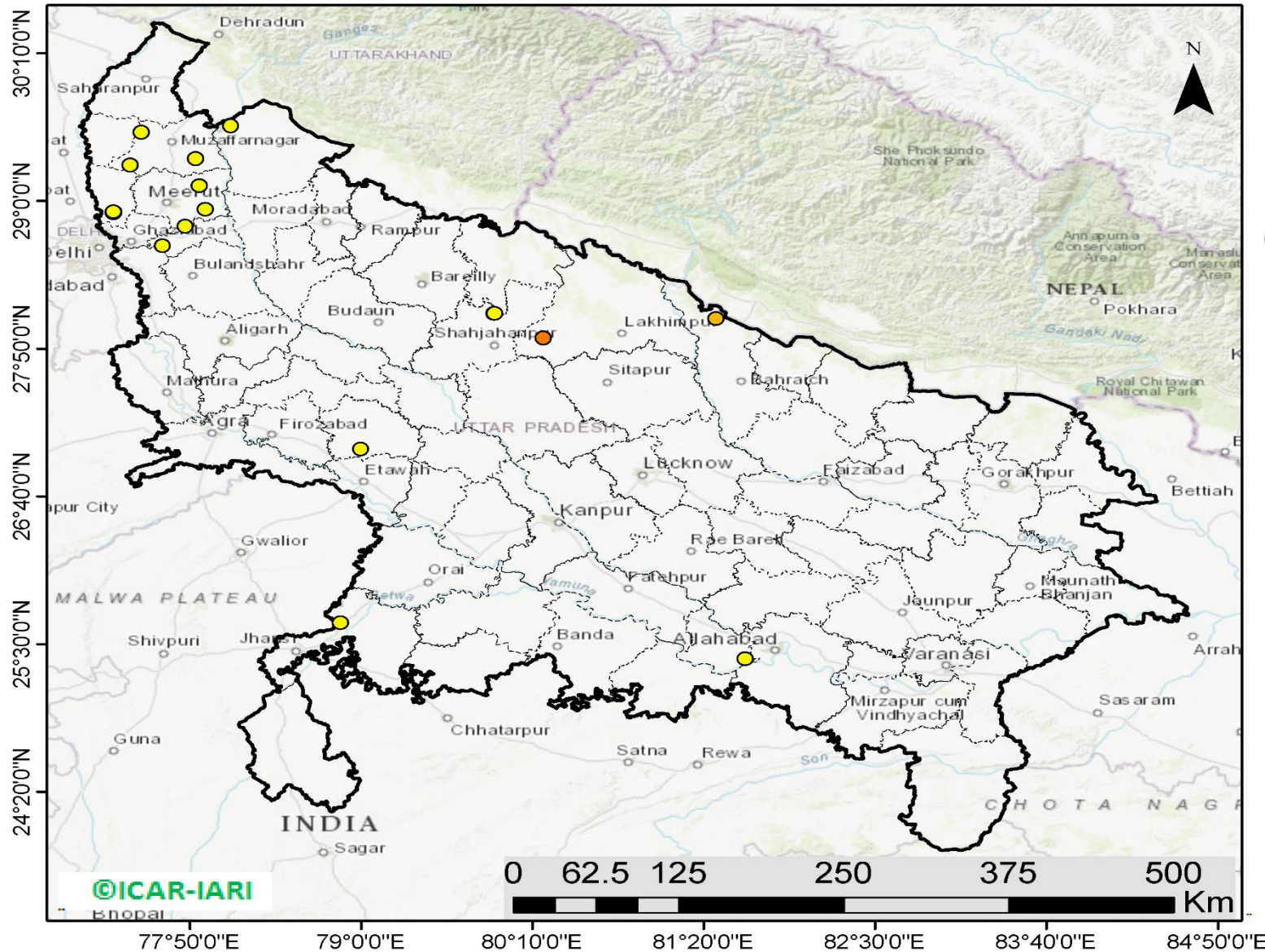
<http://geoportal.icar.gov.in:8080/geoexplorer/composer/>

District-wise cumulative number of residues burning events in Haryana (01 Oct to 25-Nov 2019)



(c) UP

RICE RESIDUE BURNING IN UTTAR PRADESH



18 burning events detected in Uttar Pradesh on 25th November 2019

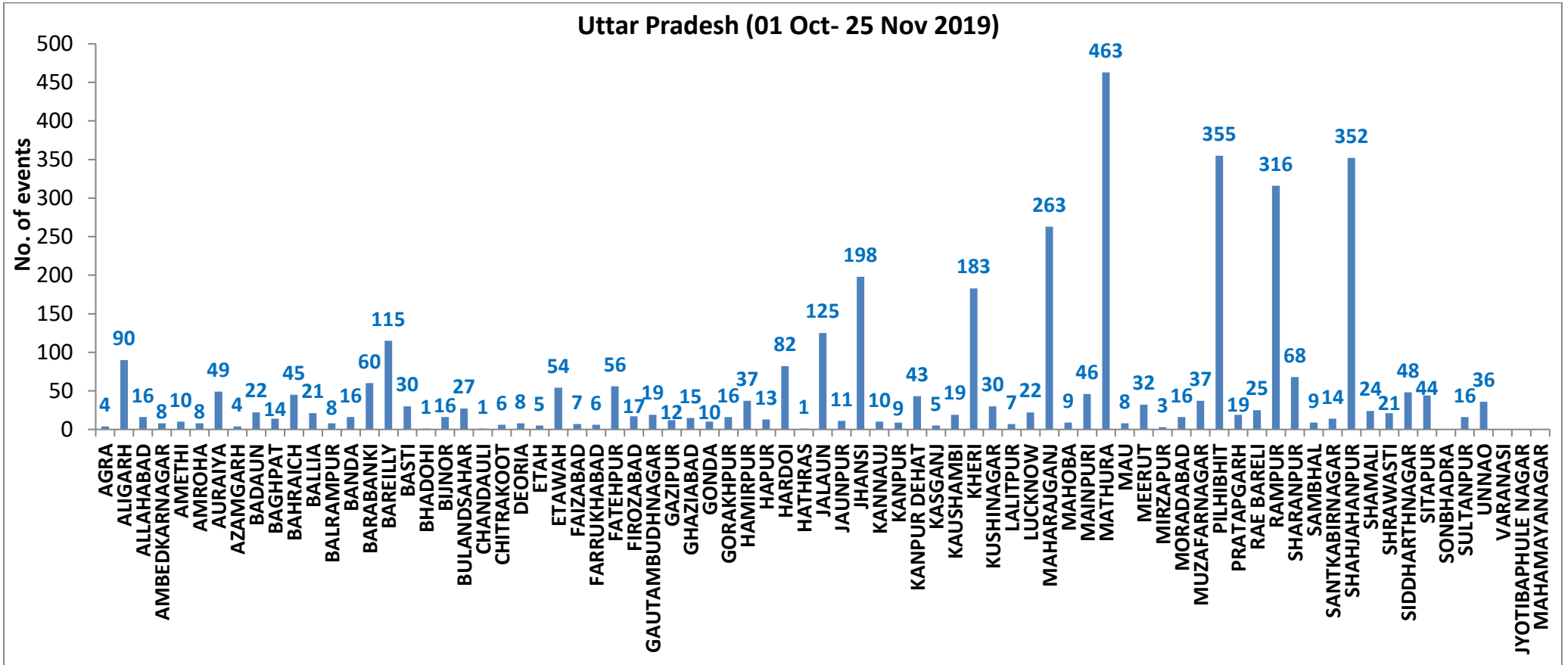
Fire Intensity (W/m²)

- 0 - 5
- 6 - 10
- 11 - 15
- 16 - 20
- >20



<http://geoportal.icar.gov.in:8080/geoexplorer/composer/>

District-wise cumulative number of residues burning events in Uttar Pradesh (01 Oct to 25-Nov 2019)



State-wise, date-wise and district-wise number of residues burning events detected in 2016, 2017, 2018 and 2019
(Period: 01-Oct to 25-Nov)

Date	Punjab				Haryana				UP				Total			
	2019	2018	2017	2016	2019	2018	2017	2016	2019	2018	2017	2016	2019	2018	2017	2016
01-Oct	3	16	54	109	1	9	13	46	1	11	2	23	5	36	69	178
02-Oct	20	9	50	51	2	23	27	16	0	21	8	20	23	53	85	87
03-Oct	37	4	62	66	16	9	40	16	3	12	17	16	56	25	119	98
04-Oct	3	32	103	37	30	16	60	7	4	5	22	15	37	53	185	59
05-Oct	16	56	106	95	37	30	68	15	11	10	20	14	64	96	194	124
06-Oct	0	87	138	152	22	63	75	105	8	13	39	6	30	163	252	263
07-Oct	27	162	105	171	16	180	97	126	4	69	33	24	47	411	235	321
08-Oct	59	39	215	166	69	40	218	94	18	54	76	14	146	133	509	274
09-Oct	93	75	163	270	70	47	148	121	17	32	88	22	180	154	399	413
10-Oct	172	23	164	597	157	37	151	242	53	21	126	74	382	81	441	913
11-Oct	78	30	177	652	126	78	87	336	38	24	74	128	242	131	338	1116
12-Oct	99	67	342	694	154	133	123	338	42	22	51	164	295	222	516	1196
13-Oct	108	62	470	467	159	147	207	284	33	61	69	102	300	270	746	853
14-Oct	141	112	582	812	133	153	333	328	39	57	137	60	313	322	1052	1200
15-Oct	262	90	943	1215	203	110	458	248	63	35	237	76	528	235	1638	1539
16-Oct	168	174	465	1478	148	138	186	385	77	20	71	125	393	332	722	1988
17-Oct	250	272	807	2173	152	268	244	399	53	94	69	261	455	634	1120	2833
18-Oct	100	263	970	1065	103	255	306	270	39	163	108	204	242	681	1384	1539
19-Oct	529	254	1591	1762	220	208	541	276	3	108	128	132	752	570	2260	2170
20-Oct	490	496	2653	1175	360	141	597	188	62	49	255	62	912	686	3505	1425
21-Oct	852	618	1139	1726	339	217	233	257	185	66	168	152	1376	901	1540	2135
22-Oct	555	656	1356	2837	158	134	186	309	78	149	151	194	791	939	1693	3340
23-Oct	827	1113	994	2040	131	232	155	313	48	193	72	331	1006	1538	1221	2684
24-Oct	1220	844	1714	1836	165	166	244	221	79	192	171	152	1464	1202	2129	2209
25-Oct	1463	1247	2104	1813	212	182	303	229	67	142	175	83	1742	1571	2582	2125
26-Oct	2861	1173	1715	3390	366	132	276	434	189	33	240	195	3416	1338	2231	4019
27-Oct	2135	2040	2069	2904	249	252	224	417	145	154	145	255	2529	2446	2438	3576
28-Oct	3007	2864	2318	3493	238	330	292	458	45	290	99	435	3290	3484	2709	4386
29-Oct	1504	1321	4184	2258	0	124	502	278	1	243	180	237	1505	1688	4866	2773
30-Oct	3017	2008	3152	1076	222	103	307	395	19	158	238	175	3258	2269	3697	1646
31-Oct	2325	2715	3743	6132	36	229	413	575	4	148	321	153	2365	3092	4477	6860
01-Nov	293	4140	2736	4843	50	306	250	362	105	161	199	223	448	4607	3185	5428
02-Nov	6	3550	1246	4183	2	306	145	332	33	142	131	345	41	3998	1522	4860

03-Nov	2646	972	2109	3806	68	202	240	275	56	181	75	409	2770	1355	2424	4490
04-Nov	6001	882	4603	4477	383	77	499	146	75	183	168	265	6459	1142	5270	4888
05-Nov	4199	2989	2876	4137	253	129	625	345	124	163	367	125	4576	3281	3868	4607
06-Nov	4642	3071	171	6303	243	222	26	322	118	130	357	215	5003	3423	554	6840
07-Nov	189	4033	420	8575	2	568	46	821	33	108	149	244	224	4709	615	9640
08-Nov	462	4450	2256	4129	16	313	128	432	54	338	43	419	532	5101	2427	4980
09-Nov	2003	2083	675	4857	199	199	311	608	96	294	107	205	2298	2473	1093	5670
10-Nov	2046	1675	1642	2468	151	85	509	484	147	125	131	109	2344	1885	2282	3061
11-Nov	783	1364	103	5040	78	196	29	716	174	45	358	129	1035	1605	490	5885
12-Nov	520	1256	33	1477	68	122	3	634	210	45	269	129	798	1423	305	2240
13-Nov	10	1563	237	885	16	146	7	389	79	94	109	338	105	1803	353	1612
14-Nov	0	765	1101	692	1	189	340	171	22	128	95	247	23	1082	1536	1110
15-Nov	92	1480	5	871	29	107	40	107	111	146	123	154	232	1733	168	1132
16-Nov	23	1250	8	911	59	204	17	318	79	112	218	123	161	1566	243	1352
17-Nov	332	1132	217	638	85	289	12	299	265	103	249	130	682	1524	478	1067
18-Nov	740	1400	2147	568	70	356	139	312	113	111	180	217	923	1867	2466	1097
19-Nov	1221	752	2200	168	82	159	471	125	39	3	122	273	1342	914	2793	566
20-Nov	1007	385	1857	240	74	88	325	204	64	243	101	183	1145	716	2283	627
21-Nov	151	480	2310	112	37	161	378	115	84	107	205	86	272	748	2893	313
22-Nov	21	287	719	99	19	122	154	118	116	72	281	148	156	481	1154	365
23-Nov	283	317	1033	54	14	180	259	97	100	106	163	151	400	603	1455	302
24-Nov	293	229	507	21	23	152	192	36	72	186	105	265	388	567	804	322
25-Nov	266	72	443	33	31	81	219	68	18	272	124	123	315	425	786	224
Total	50653	59499	66302	102299	6347	9042	12478	15562	3815	6247	8019	9159	60815	74788	86799	127020

(a) Punjab

Districts	01Oct-25 Nov			
	2016	2017	2018	2019
AMRITSAR	2170	1345	1372	1407
BARNALA	5698	3396	3275	2964
BATHINDA	8841	5698	6339	5309
FARIDKOT	4628	3454	3055	2315
FATEHGARH SAHIB	2461	1640	858	827
FAZILKA	0	0	0	2762
FIROZPUR	13627	9798	9967	4635
GURDASPUR	2215	1583	1167	1478
HOSHIARPUR	901	490	198	311
JALANDHAR	4660	2107	1385	1515
KAPURTHALA	3136	1622	750	1353
LUDHIANA	9539	4676	3019	2273
MANSA	5644	4475	4307	3567
MOGA	6393	2709	2728	2150
MUKTSAR	7029	5325	5769	3708
NAWASHAHR (SBS Nagar)	1611	819	387	265
PATHANKOT	0	0	0	6
PATIALA	6543	5029	4213	3853
RUPNAGAR	717	326	86	119
SANGRUR	11862	8423	7780	6363
SAS NAGAR	115	107	104	150
TARN TARAN	4509	3280	2740	3323
Total	102299	66302	59499	50653

(b) Haryana

Districts	01Oct-25 Nov			
	2016	2017	2018	2019
AMBALA	534	498	329	339
BHIWANI	85	39	20	11
FARIDABAD	288	341	185	10
FATEHABAD	4825	3657	2508	1201
GURUGRAM	0	0	0	4
HISAR	404	182	207	116
JHAJJAR	36	19	29	4
JIND	858	940	880	579
KAITHAL	1748	1512	1291	1258
KARNAL	1635	1506	851	1083
KURUKSHETRA	1078	1147	680	738
MAHENDRAGARH	0	0	0	2
MEWAT	0	0	0	3
PALWAL	0	0	0	188
PANCHKULA	0	0	3	21
PANIPAT	93	99	60	40
REWARI	0	0	0	3
ROHTAK	97	83	39	23
SIRSA	3545	2073	1722	442
SONIPAT	92	71	41	32
YAMUNANAGAR	244	311	197	250
Total	15562	12478	9042	6347

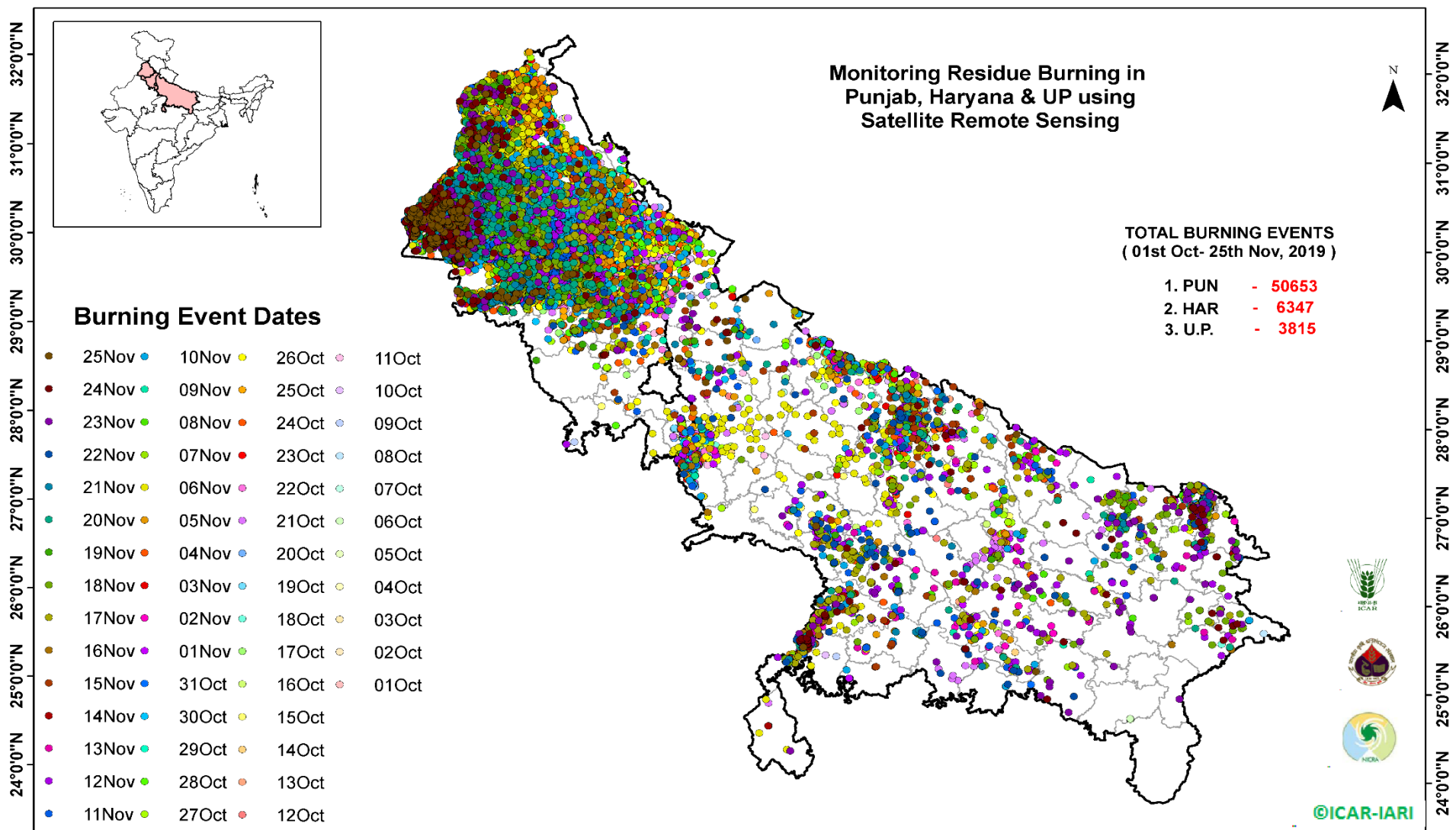
(c) Uttar Pradesh

Districts	01Oct-25 Nov			
	2016	2017	2018	2019
AGRA	0	0	0	4
ALIGARH	55	80	93	90
ALLAHABAD	6	15	19	16
AMBEDKARNAGAR	74	55	28	8
AMETHI	0	0	0	10
AMROHA	0	0	0	8
AURAIYA	266	220	70	49
AZAMGARH	38	45	35	4
BADAUN	12	8	13	22
BAGHPAT	0	0	0	14
BAHRAICH	81	40	60	45
BALLIA	19	40	26	21
BALRAMPUR	37	27	44	8
BANDA	2	18	11	16
BARABANKI	220	167	175	60
BAREILLY	257	224	117	115
BASTI	145	186	125	30
BHADOHI	0	0	0	1
BIJNOR	62	59	18	16
BULANDSAHAR	32	34	20	27
CHANDAULI	15	10	2	1
CHITRAKOOT	0	0	0	6
DEORIA	62	77	71	8
ETAH	22	31	28	5
ETAWAH	175	124	69	54
FAIZABAD	15	15	10	7
FARRUKHABAD	0	0	0	6
FATEHPUR	70	56	88	56
FIROZABAD	23	18	11	17

GAUTAMBUDHNAGAR	28	42	12	19
GAZIPUR	16	14	23	12
GHAZIABAD	88	55	37	15
GONDA	48	34	21	10
GORAKHPUR	66	112	139	16
HAMIRPUR	0	0	1	37
HAPUR	0	0	0	13
HARDOI	254	202	112	82
HATHRAS	0	0	0	1
JALAUN	0	0	0	125
JAUNPUR	24	33	26	11
JHANSI	0	0	2	198
KANNAUJ	35	18	8	10
KANPUR	20	10	13	9
KANPUR DEHAT	68	68	29	43
KASGANJ	0	0	0	5
KAUSHAMBI	33	48	51	19
KHERI	458	302	217	183
KUSHINAGAR	63	145	165	30
LALITPUR	0	0	0	7
LUCKNOW	62	30	26	22
MAHARAJGANJ	707	1011	1047	263
MAHOBA	0	0	0	9
MAINPURI	92	92	60	46
MATHURA	1458	1083	1049	463
MAU	13	18	19	8
MEERUT	90	92	22	32
MIRZAPUR	5	14	9	3
MORADABAD	53	39	15	16
MUZAFARNAGAR	142	154	58	37
PILHIBHIT	949	730	434	355
PRATAPGARH	44	52	43	19

RAE BARELI	113	109	68	25
RAMPUR	623	638	224	316
SHARANPUR	114	139	71	68
SAMBHAL	0	0	0	9
SANTKABIRNAGAR	56	63	53	14
SHAHJAHANPUR	1147	690	384	352
SHAMALI	0	0	0	24
SHRAWASTI	37	31	36	21
SIDDHARTHANAGAR	257	185	471	48
SITAPUR	136	78	44	44
SONBHADRA	16	14	12	0
SULTANPUR	75	52	58	16
UNNAO	65	55	41	36
VARANASI	2	0	0	0
JYOTIBAPHULE NAGAR	12	16	6	0
MAHAMAYANAGAR	2	2	8	0
Total	9159	8019	6247	3815

Map of Cumulative Burning Events (01 Oct – 25 Nov 2019)



<http://geoportal.icar.gov.in:8080/geoexplorer/composer/>

Details of residue burning events in Punjab on 25-Nov-2019

S. No.	District	Tehsil / Block	Satellite	Longitude	Latitude	Time (IST)	Day / Night	Fire Power (W/m2)
1	AMRITSAR	AJNALA	AQUA	74.84500	31.82500	14:00:00	D	7.00
2	AMRITSAR	AJNALA	S-NPP	74.84336	31.82612	14:00:00	D	4.90
3	AMRITSAR	AJNALA	S-NPP	74.84097	31.82915	14:00:00	D	5.60
4	BATHINDA	BATHINDA	AQUA	74.71900	30.12400	14:00:00	D	7.60
5	BATHINDA	BATHINDA	S-NPP	74.72447	30.12775	14:00:00	D	3.80
6	BATHINDA	BATHINDA	S-NPP	74.72575	30.12803	14:00:00	D	3.00
7	BATHINDA	BATHINDA	AQUA	74.79000	30.16300	14:00:00	D	7.00
8	BATHINDA	BATHINDA	S-NPP	74.78990	30.16530	14:00:00	D	3.50
9	BATHINDA	RAMPURA PHUL	S-NPP	75.30019	30.26460	14:00:00	D	16.30
10	BATHINDA	RAMPURA PHUL	AQUA	75.23800	30.32700	14:00:00	D	8.60
11	BATHINDA	RAMPURA PHUL	S-NPP	75.24138	30.33349	14:00:00	D	3.40
12	FARIDKOT	FARIDKOT	AQUA	74.69600	30.56800	14:00:00	D	13.80
13	FARIDKOT	FARIDKOT	S-NPP	74.70161	30.57366	14:00:00	D	2.90
14	FATEHGARH SAHIB	FATEHGARH SAHIB	AQUA	76.35500	30.46400	14:00:00	D	8.00
15	FATEHGARH SAHIB	FATEHGARH SAHIB	S-NPP	76.35024	30.46840	14:00:00	D	17.00
16	FATEHGARH SAHIB	FATEHGARH SAHIB	S-NPP	76.34760	30.47106	14:00:00	D	12.50
17	FATEHGARH SAHIB	FATEHGARH SAHIB	S-NPP	76.35371	30.47156	14:00:00	D	12.50
18	FATEHGARH SAHIB	FATEHGARH SAHIB	S-NPP	76.34597	30.48561	14:00:00	D	12.70
19	FATEHGARH SAHIB	FATEHGARH SAHIB	S-NPP	76.34201	30.48724	14:00:00	D	16.50
20	FAZILKA	ABOHAR	S-NPP	74.41753	30.02193	14:00:00	D	3.10
21	FAZILKA	ABOHAR	S-NPP	74.22321	30.05799	14:00:00	D	8.80
22	FAZILKA	ABOHAR	S-NPP	74.25639	30.12500	14:00:00	D	13.30
23	FAZILKA	ABOHAR	AQUA	74.24500	30.12600	14:00:00	D	8.70
24	FAZILKA	ABOHAR	AQUA	74.25700	30.12700	14:00:00	D	14.00
25	FAZILKA	ABOHAR	AQUA	74.25100	30.12900	14:00:00	D	11.10
26	FAZILKA	ABOHAR	S-NPP	74.25584	30.12925	14:00:00	D	15.20
27	FAZILKA	ABOHAR	S-NPP	74.30649	30.13012	14:00:00	D	5.40
28	FAZILKA	ABOHAR	AQUA	74.30500	30.13300	14:00:00	D	12.10
29	FAZILKA	ABOHAR	S-NPP	74.30592	30.13438	14:00:00	D	23.90
30	FAZILKA	ABOHAR	S-NPP	74.31507	30.13532	14:00:00	D	7.70

31	FAZILKA	ABOHAR	S-NPP	74.26379	30.13868	14:00:00	D	4.60
32	FAZILKA	ABOHAR	AQUA	74.32200	30.14800	14:00:00	D	9.20
33	FAZILKA	ABOHAR	S-NPP	74.31741	30.15285	14:00:00	D	3.90
34	FAZILKA	ABOHAR	S-NPP	74.23162	30.18201	14:00:00	D	3.60
35	FAZILKA	ABOHAR	S-NPP	74.29485	30.19262	14:00:00	D	25.10
36	FAZILKA	ABOHAR	AQUA	74.29000	30.19300	14:00:00	D	19.90
37	FAZILKA	ABOHAR	AQUA	74.30200	30.19400	14:00:00	D	8.70
38	FAZILKA	FAZILKA	S-NPP	74.02570	30.19533	14:00:00	D	7.40
39	FAZILKA	FAZILKA	S-NPP	74.02949	30.23401	14:00:00	D	6.00
40	FAZILKA	FAZILKA	AQUA	74.04600	30.23600	14:00:00	D	8.70
41	FAZILKA	FAZILKA	S-NPP	74.05162	30.23635	14:00:00	D	5.00
42	FAZILKA	FAZILKA	S-NPP	74.04662	30.24008	14:00:00	D	3.90
43	FAZILKA	FAZILKA	AQUA	74.02900	30.26300	14:00:00	D	7.00
44	FAZILKA	FAZILKA	S-NPP	74.03004	30.26818	14:00:00	D	7.80
45	FAZILKA	FAZILKA	S-NPP	74.03386	30.26854	14:00:00	D	12.00
46	FAZILKA	FAZILKA	S-NPP	74.03446	30.26863	14:00:00	D	6.90
47	FAZILKA	FAZILKA	S-NPP	74.03390	30.27283	14:00:00	D	6.90
48	FAZILKA	FAZILKA	AQUA	74.27700	30.30300	14:00:00	D	13.40
49	FAZILKA	FAZILKA	AQUA	74.28900	30.30500	14:00:00	D	12.80
50	FAZILKA	FAZILKA	S-NPP	74.28025	30.31048	14:00:00	D	5.10
51	FAZILKA	FAZILKA	S-NPP	74.29861	30.31231	14:00:00	D	6.90
52	FAZILKA	FAZILKA	AQUA	74.27600	30.31300	14:00:00	D	29.40
53	FAZILKA	FAZILKA	AQUA	74.28800	30.31400	14:00:00	D	22.20
54	FAZILKA	FAZILKA	S-NPP	74.27969	30.31475	14:00:00	D	5.10
55	FAZILKA	FAZILKA	S-NPP	74.28428	30.31521	14:00:00	D	9.40
56	FAZILKA	FAZILKA	AQUA	74.28200	30.31600	14:00:00	D	14.60
57	FAZILKA	FAZILKA	S-NPP	74.25623	30.31671	14:00:00	D	4.70
58	FAZILKA	FAZILKA	S-NPP	74.28774	30.32420	14:00:00	D	3.60
59	FAZILKA	FAZILKA	S-NPP	74.29232	30.32466	14:00:00	D	3.80
60	FAZILKA	FAZILKA	AQUA	74.29200	30.32700	14:00:00	D	11.00
61	FAZILKA	FAZILKA	S-NPP	74.28203	30.33227	14:00:00	D	4.90
62	FAZILKA	FAZILKA	S-NPP	74.23401	30.34465	14:00:00	D	5.60
63	FAZILKA	FAZILKA	AQUA	74.04600	30.34600	14:00:00	D	10.10

64	FAZILKA	FAZILKA	S-NPP	74.04652	30.34660	14:00:00	D	4.70
65	FAZILKA	FAZILKA	S-NPP	74.04597	30.35080	14:00:00	D	4.70
66	FAZILKA	FAZILKA	AQUA	74.09100	30.36100	14:00:00	D	44.40
67	FAZILKA	FAZILKA	AQUA	74.10300	30.36300	14:00:00	D	38.40
68	FAZILKA	FAZILKA	S-NPP	74.09788	30.36911	14:00:00	D	1.90
69	FAZILKA	FAZILKA	AQUA	74.11400	30.37400	14:00:00	D	23.20
70	FAZILKA	FAZILKA	S-NPP	74.10754	30.37425	14:00:00	D	4.50
71	FAZILKA	FAZILKA	S-NPP	74.11077	30.37477	14:00:00	D	4.00
72	FAZILKA	FAZILKA	S-NPP	74.11654	30.37515	14:00:00	D	9.20
73	FAZILKA	FAZILKA	S-NPP	74.11526	30.37524	14:00:00	D	4.00
74	FAZILKA	FAZILKA	S-NPP	74.13456	30.37694	14:00:00	D	8.10
75	FAZILKA	FAZILKA	S-NPP	74.13908	30.37739	14:00:00	D	10.10
76	FAZILKA	FAZILKA	S-NPP	74.13776	30.37762	14:00:00	D	13.70
77	FAZILKA	FAZILKA	S-NPP	73.93900	30.38705	14:00:00	D	2.90
78	FAZILKA	FAZILKA	AQUA	73.95900	30.39900	14:00:00	D	13.70
79	FAZILKA	FAZILKA	AQUA	73.97000	30.40000	14:00:00	D	57.10
80	FAZILKA	FAZILKA	AQUA	73.98200	30.40100	14:00:00	D	81.50
81	FAZILKA	FAZILKA	AQUA	74.13900	30.40100	14:00:00	D	6.50
82	FAZILKA	FAZILKA	S-NPP	74.21397	30.40204	14:00:00	D	2.60
83	FAZILKA	FAZILKA	S-NPP	73.97200	30.40743	14:00:00	D	33.40
84	FAZILKA	FAZILKA	S-NPP	73.97642	30.40789	14:00:00	D	33.40
85	FAZILKA	FAZILKA	S-NPP	73.98084	30.40834	14:00:00	D	56.40
86	FAZILKA	FAZILKA	AQUA	73.96900	30.40900	14:00:00	D	64.30
87	FAZILKA	FAZILKA	S-NPP	73.97143	30.41162	14:00:00	D	7.50
88	FAZILKA	FAZILKA	AQUA	74.06500	30.41200	14:00:00	D	6.80
89	FAZILKA	FAZILKA	S-NPP	73.97585	30.41208	14:00:00	D	7.50
90	FAZILKA	FAZILKA	S-NPP	73.98027	30.41254	14:00:00	D	6.20
91	FAZILKA	FAZILKA	S-NPP	73.98471	30.41299	14:00:00	D	6.20
92	FAZILKA	FAZILKA	AQUA	74.07600	30.41300	14:00:00	D	13.70
93	FAZILKA	FAZILKA	S-NPP	73.97529	30.41627	14:00:00	D	7.50
94	FAZILKA	FAZILKA	S-NPP	74.07436	30.41797	14:00:00	D	16.00
95	FAZILKA	FAZILKA	S-NPP	74.20718	30.41859	14:00:00	D	2.70
96	FAZILKA	FAZILKA	S-NPP	74.05590	30.42034	14:00:00	D	4.80

97	FAZILKA	FAZILKA	S-NPP	74.24261	30.43079	14:00:00	D	3.30
98	FAZILKA	FAZILKA	S-NPP	74.25176	30.43172	14:00:00	D	3.10
99	FAZILKA	FAZILKA	S-NPP	74.05698	30.44609	14:00:00	D	4.20
100	FAZILKA	FAZILKA	S-NPP	74.07939	30.44843	14:00:00	D	4.00
101	FAZILKA	FAZILKA	S-NPP	74.07770	30.46109	14:00:00	D	7.50
102	FAZILKA	FAZILKA	S-NPP	73.97796	30.46335	14:00:00	D	2.70
103	FAZILKA	FAZILKA	S-NPP	74.00127	30.47003	14:00:00	D	2.20
104	FAZILKA	FAZILKA	S-NPP	74.03300	30.50308	14:00:00	D	7.30
105	FAZILKA	FAZILKA	AQUA	74.00700	30.50500	14:00:00	D	12.90
106	FAZILKA	FAZILKA	S-NPP	74.00449	30.51297	14:00:00	D	11.70
107	FAZILKA	JALALABAD	AQUA	74.26100	30.47500	14:00:00	D	16.80
108	FAZILKA	JALALABAD	AQUA	74.27400	30.47600	14:00:00	D	24.90
109	FAZILKA	JALALABAD	S-NPP	74.26917	30.47674	14:00:00	D	38.80
110	FAZILKA	JALALABAD	S-NPP	74.27379	30.47722	14:00:00	D	12.10
111	FAZILKA	JALALABAD	AQUA	74.32100	30.49200	14:00:00	D	14.20
112	FAZILKA	JALALABAD	S-NPP	74.32761	30.49580	14:00:00	D	28.70
113	FAZILKA	JALALABAD	S-NPP	74.29472	30.51204	14:00:00	D	2.50
114	FAZILKA	JALALABAD	S-NPP	74.34176	30.51232	14:00:00	D	6.60
115	FAZILKA	JALALABAD	S-NPP	74.34643	30.51277	14:00:00	D	18.10
116	FAZILKA	JALALABAD	S-NPP	74.34399	30.51490	14:00:00	D	25.80
117	FAZILKA	JALALABAD	S-NPP	74.33653	30.51616	14:00:00	D	6.60
118	FAZILKA	JALALABAD	S-NPP	74.36455	30.51890	14:00:00	D	2.70
119	FAZILKA	JALALABAD	S-NPP	74.34995	30.52182	14:00:00	D	3.40
120	FAZILKA	JALALABAD	S-NPP	74.33838	30.53807	14:00:00	D	6.00
121	FAZILKA	JALALABAD	S-NPP	74.38516	30.54271	14:00:00	D	37.50
122	FAZILKA	JALALABAD	S-NPP	74.14400	30.56160	14:00:00	D	14.90
123	FAZILKA	JALALABAD	S-NPP	74.36305	30.56665	14:00:00	D	7.90
124	FAZILKA	JALALABAD	S-NPP	74.36718	30.57143	14:00:00	D	8.90
125	FAZILKA	JALALABAD	S-NPP	74.37186	30.57190	14:00:00	D	8.90
126	FAZILKA	JALALABAD	S-NPP	74.36193	30.57526	14:00:00	D	10.70
127	FAZILKA	JALALABAD	AQUA	74.15500	30.59600	14:00:00	D	8.40
128	FAZILKA	JALALABAD	AQUA	74.16700	30.59800	14:00:00	D	14.30
129	FAZILKA	JALALABAD	S-NPP	74.16305	30.60144	14:00:00	D	2.80

130	FAZILKA	JALALABAD	S-NPP	74.16628	30.60268	14:00:00	D	4.30
131	FAZILKA	JALALABAD	S-NPP	74.13741	30.62041	14:00:00	D	4.50
132	FAZILKA	JALALABAD	S-NPP	74.18310	30.62498	14:00:00	D	4.70
133	FAZILKA	JALALABAD	S-NPP	74.18768	30.62544	14:00:00	D	4.70
134	FAZILKA	JALALABAD	S-NPP	74.19920	30.64387	14:00:00	D	8.60
135	FAZILKA	JALALABAD	AQUA	74.17200	30.64700	14:00:00	D	29.30
136	FAZILKA	JALALABAD	AQUA	74.18200	30.65800	14:00:00	D	43.80
137	FAZILKA	JALALABAD	S-NPP	74.36261	30.69079	14:00:00	D	4.30
138	FIROZPUR	ZIRA	S-NPP	74.89564	30.97007	14:00:00	D	3.00
139	GURDASPUR	GURDASPUR	AQUA	75.42600	31.87000	14:00:00	D	7.10
140	JALANDHAR	PHILLAUR	S-NPP	75.91885	31.02267	14:00:00	D	3.50
141	LUDHIANA	JAGRAON	S-NPP	75.48656	30.70764	14:00:00	D	5.50
142	LUDHIANA	PAYAL	S-NPP	76.05399	30.76460	14:00:00	D	6.80
143	LUDHIANA	PAYAL	S-NPP	76.05604	30.76481	14:00:00	D	8.10
144	LUDHIANA	SAMRALA	S-NPP	76.20504	30.78788	14:00:00	D	2.80
145	MANSA	BUDHLADA	S-NPP	75.44745	29.83492	14:00:00	D	4.30
146	MANSA	BUDHLADA	S-NPP	75.57630	29.90715	14:00:00	D	4.00
147	MANSA	SARDULGARH	AQUA	75.30500	29.59300	13:55:00	D	7.60
148	MANSA	SARDULGARH	S-NPP	75.30269	29.59505	14:00:00	D	11.00
149	MANSA	SARDULGARH	S-NPP	75.37698	29.74515	14:00:00	D	1.80
150	MOGA	MOGA	AQUA	75.27400	30.78900	14:00:00	D	9.90
151	MOGA	MOGA	AQUA	75.28800	30.79000	14:00:00	D	7.50
152	MUKTSAR	GIDDARBAHA	AQUA	74.57700	30.13700	14:00:00	D	55.70
153	MUKTSAR	GIDDARBAHA	AQUA	74.59000	30.13900	14:00:00	D	8.30
154	MUKTSAR	GIDDARBAHA	S-NPP	74.57814	30.14444	14:00:00	D	8.40
155	MUKTSAR	GIDDARBAHA	S-NPP	74.58289	30.14491	14:00:00	D	8.40
156	MUKTSAR	GIDDARBAHA	AQUA	74.62500	30.15300	14:00:00	D	7.70
157	MUKTSAR	GIDDARBAHA	S-NPP	74.61983	30.15737	14:00:00	D	4.00
158	MUKTSAR	GIDDARBAHA	AQUA	74.59000	30.18000	14:00:00	D	11.60
159	MUKTSAR	GIDDARBAHA	S-NPP	74.59211	30.18537	14:00:00	D	3.90
160	MUKTSAR	GIDDARBAHA	S-NPP	74.62492	30.19311	14:00:00	D	5.30
161	MUKTSAR	GIDDARBAHA	S-NPP	74.62972	30.19359	14:00:00	D	6.90
162	MUKTSAR	GIDDARBAHA	AQUA	74.62600	30.19400	14:00:00	D	12.90

163	MUKTSAR	GIDDARBAHA	S-NPP	74.54492	30.26547	14:00:00	D	8.70
164	MUKTSAR	GIDDARBAHA	AQUA	74.61100	30.32400	14:00:00	D	27.30
165	MUKTSAR	GIDDARBAHA	AQUA	74.48400	30.32900	14:00:00	D	9.60
166	MUKTSAR	GIDDARBAHA	S-NPP	74.61395	30.32968	14:00:00	D	5.00
167	MUKTSAR	GIDDARBAHA	S-NPP	74.61520	30.33031	14:00:00	D	4.50
168	MUKTSAR	GIDDARBAHA	S-NPP	74.63477	30.36751	14:00:00	D	2.60
169	MUKTSAR	GIDDARBAHA	AQUA	74.57300	30.37100	14:00:00	D	14.90
170	MUKTSAR	GIDDARBAHA	AQUA	74.58500	30.37200	14:00:00	D	5.80
171	MUKTSAR	GIDDARBAHA	S-NPP	74.58028	30.37533	14:00:00	D	5.60
172	MUKTSAR	GIDDARBAHA	S-NPP	74.65611	30.39172	14:00:00	D	4.70
173	MUKTSAR	GIDDARBAHA	S-NPP	74.66358	30.41017	14:00:00	D	10.30
174	MUKTSAR	GIDDARBAHA	S-NPP	74.66843	30.41065	14:00:00	D	10.30
175	MUKTSAR	MALAUT	AQUA	74.57700	29.98400	14:00:00	D	6.00
176	MUKTSAR	MALAUT	AQUA	74.58300	29.98600	14:00:00	D	8.00
177	MUKTSAR	MALAUT	S-NPP	74.58337	29.99743	14:00:00	D	8.60
178	MUKTSAR	MALAUT	S-NPP	74.58282	30.00176	14:00:00	D	3.50
179	MUKTSAR	MALAUT	S-NPP	74.70110	30.01844	14:00:00	D	13.80
180	MUKTSAR	MALAUT	S-NPP	74.50360	30.04804	14:00:00	D	5.60
181	MUKTSAR	MALAUT	S-NPP	74.67508	30.05648	14:00:00	D	6.80
182	MUKTSAR	MALAUT	S-NPP	74.63101	30.06088	14:00:00	D	5.90
183	MUKTSAR	MALAUT	AQUA	74.38300	30.25700	14:00:00	D	5.90
184	MUKTSAR	MALAUT	AQUA	74.39500	30.25900	14:00:00	D	17.20
185	MUKTSAR	MALAUT	S-NPP	74.34297	30.29505	14:00:00	D	2.00
186	MUKTSAR	MALAUT	S-NPP	74.32053	30.32316	14:00:00	D	3.80
187	MUKTSAR	MALAUT	S-NPP	74.43683	30.33477	14:00:00	D	1.90
188	MUKTSAR	MALAUT	AQUA	74.35900	30.37500	14:00:00	D	15.90
189	MUKTSAR	MUKTSAR	AQUA	74.49600	30.33000	14:00:00	D	23.20
190	MUKTSAR	MUKTSAR	S-NPP	74.49441	30.33171	14:00:00	D	9.60
191	MUKTSAR	MUKTSAR	S-NPP	74.49385	30.33604	14:00:00	D	9.60
192	MUKTSAR	MUKTSAR	S-NPP	74.44978	30.34478	14:00:00	D	8.90
193	MUKTSAR	MUKTSAR	AQUA	74.43800	30.34500	14:00:00	D	11.50
194	MUKTSAR	MUKTSAR	AQUA	74.45100	30.34600	14:00:00	D	18.70
195	MUKTSAR	MUKTSAR	S-NPP	74.44452	30.34862	14:00:00	D	8.50

196	MUKTSAR	MUKTSAR	AQUA	74.43400	30.37400	14:00:00	D	11.20
197	MUKTSAR	MUKTSAR	S-NPP	74.42597	30.38166	14:00:00	D	8.20
198	MUKTSAR	MUKTSAR	AQUA	74.42000	30.38200	14:00:00	D	22.80
199	MUKTSAR	MUKTSAR	S-NPP	74.56006	30.38211	14:00:00	D	9.20
200	MUKTSAR	MUKTSAR	S-NPP	74.43065	30.38214	14:00:00	D	8.20
201	MUKTSAR	MUKTSAR	S-NPP	74.35954	30.38354	14:00:00	D	5.00
202	MUKTSAR	MUKTSAR	AQUA	74.43200	30.38400	14:00:00	D	31.30
203	MUKTSAR	MUKTSAR	S-NPP	74.36417	30.38403	14:00:00	D	5.00
204	MUKTSAR	MUKTSAR	S-NPP	74.31042	30.41162	14:00:00	D	3.10
205	MUKTSAR	MUKTSAR	S-NPP	74.57528	30.41445	14:00:00	D	9.80
206	MUKTSAR	MUKTSAR	S-NPP	74.54607	30.41586	14:00:00	D	9.20
207	MUKTSAR	MUKTSAR	AQUA	74.54000	30.41600	14:00:00	D	11.60
208	MUKTSAR	MUKTSAR	S-NPP	74.54768	30.41728	14:00:00	D	8.20
209	MUKTSAR	MUKTSAR	AQUA	74.55200	30.41800	14:00:00	D	7.50
210	MUKTSAR	MUKTSAR	S-NPP	74.57472	30.41880	14:00:00	D	3.90
211	MUKTSAR	MUKTSAR	AQUA	74.59000	30.42200	14:00:00	D	12.10
212	MUKTSAR	MUKTSAR	AQUA	74.60200	30.42400	14:00:00	D	18.60
213	MUKTSAR	MUKTSAR	S-NPP	74.55926	30.42601	14:00:00	D	8.20
214	MUKTSAR	MUKTSAR	S-NPP	74.50312	30.42615	14:00:00	D	5.00
215	MUKTSAR	MUKTSAR	S-NPP	74.55611	30.42688	14:00:00	D	5.40
216	MUKTSAR	MUKTSAR	S-NPP	74.56088	30.42735	14:00:00	D	5.40
217	MUKTSAR	MUKTSAR	S-NPP	74.59757	30.42996	14:00:00	D	9.50
218	MUKTSAR	MUKTSAR	S-NPP	74.59929	30.43104	14:00:00	D	13.60
219	MUKTSAR	MUKTSAR	S-NPP	74.36106	30.45575	14:00:00	D	13.80
220	MUKTSAR	MUKTSAR	S-NPP	74.55416	30.47948	14:00:00	D	3.20
221	MUKTSAR	MUKTSAR	S-NPP	74.50367	30.49639	14:00:00	D	1.80
222	MUKTSAR	MUKTSAR	S-NPP	74.47462	30.49782	14:00:00	D	3.60
223	MUKTSAR	MUKTSAR	S-NPP	74.56152	30.49783	14:00:00	D	9.40
224	MUKTSAR	MUKTSAR	S-NPP	74.56630	30.49831	14:00:00	D	13.50
225	MUKTSAR	MUKTSAR	S-NPP	74.67372	30.50020	14:00:00	D	9.10
226	MUKTSAR	MUKTSAR	S-NPP	74.50311	30.50072	14:00:00	D	7.30
227	MUKTSAR	MUKTSAR	S-NPP	74.56890	30.51620	14:00:00	D	3.90
228	MUKTSAR	MUKTSAR	S-NPP	74.66178	30.51674	14:00:00	D	2.70

229	MUKTSAR	MUKTSAR	AQUA	74.41700	30.55500	14:00:00	D	25.90
230	MUKTSAR	MUKTSAR	S-NPP	74.41640	30.55891	14:00:00	D	5.30
231	MUKTSAR	MUKTSAR	S-NPP	74.37822	30.55946	14:00:00	D	4.70
232	MUKTSAR	MUKTSAR	S-NPP	74.37766	30.56376	14:00:00	D	4.70
233	MUKTSAR	MUKTSAR	AQUA	74.45100	30.57900	14:00:00	D	6.40
234	MUKTSAR	MUKTSAR	S-NPP	74.45615	30.58476	14:00:00	D	2.40
235	MUKTSAR	MUKTSAR	S-NPP	74.37488	30.58529	14:00:00	D	11.00
236	MUKTSAR	MUKTSAR	S-NPP	74.39310	30.59150	14:00:00	D	15.00
237	MUKTSAR	MUKTSAR	S-NPP	74.40195	30.59677	14:00:00	D	7.70
238	MUKTSAR	MUKTSAR	S-NPP	74.44918	30.60158	14:00:00	D	17.90
239	MUKTSAR	MUKTSAR	S-NPP	74.59812	30.61222	14:00:00	D	11.00
240	PATIALA	PATIALA	AQUA	76.34700	30.46600	14:00:00	D	10.20
241	RUPNAGAR	CHAMKOR SAHIB	S-NPP	76.54870	30.84462	14:00:00	D	7.30
242	SANGRUR	MOONAK	AQUA	75.90600	29.80200	14:00:00	D	8.40
243	SANGRUR	MOONAK	S-NPP	75.96011	29.82491	14:00:00	D	4.00
244	SANGRUR	MOONAK	S-NPP	75.95682	29.82580	14:00:00	D	4.30
245	SANGRUR	MOONAK	S-NPP	75.93256	29.83788	14:00:00	D	7.60
246	SANGRUR	MOONAK	S-NPP	75.98982	29.83824	14:00:00	D	3.80
247	TARN TARAN	KHADOOR SAHIB	S-NPP	74.97646	31.22419	14:00:00	D	5.50
248	TARN TARAN	KHADOOR SAHIB	AQUA	74.98400	31.31200	14:00:00	D	9.70
249	TARN TARAN	KHADOOR SAHIB	S-NPP	74.99207	31.31222	14:00:00	D	3.50
250	TARN TARAN	KHADOOR SAHIB	S-NPP	74.98932	31.31367	14:00:00	D	5.30
251	TARN TARAN	KHADOOR SAHIB	AQUA	74.98900	31.31400	14:00:00	D	17.50
252	TARN TARAN	KHADOOR SAHIB	S-NPP	74.99457	31.31415	14:00:00	D	5.30
253	TARN TARAN	KHADOOR SAHIB	S-NPP	74.99152	31.31673	14:00:00	D	3.50
254	TARN TARAN	KHADOOR SAHIB	S-NPP	74.99590	31.34620	14:00:00	D	4.50
255	TARN TARAN	KHADOOR SAHIB	AQUA	74.80000	31.39300	14:00:00	D	8.70
256	TARN TARAN	KHADOOR SAHIB	AQUA	74.82700	31.39600	14:00:00	D	5.70
257	TARN TARAN	KHADOOR SAHIB	S-NPP	74.83118	31.40327	14:00:00	D	1.60
258	TARN TARAN	KHADOOR SAHIB	S-NPP	74.76868	31.53300	14:00:00	D	2.60
259	TARN TARAN	PATTI	S-NPP	74.55817	31.20737	14:00:00	D	5.50
260	TARN TARAN	PATTI	AQUA	74.74200	31.24500	14:00:00	D	6.60
261	TARN TARAN	PATTI	S-NPP	74.74442	31.25210	14:00:00	D	2.60

262	TARN TARAN	PATTI	AQUA	74.74900	31.33600	14:00:00	D	19.40
263	TARN TARAN	PATTI	S-NPP	74.75153	31.33698	14:00:00	D	6.90
264	TARN TARAN	PATTI	S-NPP	74.75662	31.33746	14:00:00	D	9.10
265	TARN TARAN	PATTI	AQUA	74.76200	31.33800	14:00:00	D	7.70
266	TARN TARAN	PATTI	S-NPP	74.65842	31.38630	14:00:00	D	2.50

Details of residue burning events in Haryana on 25-Nov-2019

S. No.	District	Tehsil / Block	Satellite	Longitude	Latitude	Time (IST)	Day / Night	Fire Power (W/m ²)
1	AMBALA	NARAYANGARH	S-NPP	77.14601	30.36892	14:00:00	D	3.60
2	FATEHABAD	FATEHABAD	S-NPP	75.46986	29.51528	02:42:00	N	1.50
3	FATEHABAD	FATEHABAD	S-NPP	75.34435	29.59452	14:00:00	D	9.10
4	FATEHABAD	FATEHABAD	S-NPP	75.30782	29.59555	14:00:00	D	11.00
5	FATEHABAD	RATIA	S-NPP	75.51710	29.60643	14:00:00	D	9.10
6	FATEHABAD	RATIA	AQUA	75.52000	29.60800	13:55:00	D	7.20
7	FATEHABAD	RATIA	S-NPP	75.51656	29.61099	14:00:00	D	9.10
8	FATEHABAD	RATIA	S-NPP	75.54504	29.61811	02:42:00	N	0.90
9	FATEHABAD	RATIA	S-NPP	75.62785	29.62616	14:00:00	D	4.20
10	JIND	NARWANA	AQUA	76.22800	29.55300	13:55:00	D	10.30
11	SIRSA	DABWALI	S-NPP	74.71704	29.90581	02:42:00	N	0.60
12	SIRSA	RANIA	S-NPP	74.71834	29.56790	14:00:00	D	3.10
13	SIRSA	RANIA	S-NPP	74.62223	29.57543	14:00:00	D	5.10
14	SIRSA	RANIA	S-NPP	74.62469	29.57732	14:00:00	D	3.90
15	SIRSA	RANIA	S-NPP	74.88618	29.58067	14:00:00	D	4.60
16	SIRSA	RANIA	S-NPP	74.89102	29.58116	14:00:00	D	6.40
17	SIRSA	RANIA	S-NPP	74.58347	29.60379	14:00:00	D	7.70
18	SIRSA	SIRSA	AQUA	75.23000	29.50300	13:55:00	D	13.80
19	SIRSA	SIRSA	S-NPP	75.23417	29.50955	14:00:00	D	10.60
20	SIRSA	SIRSA	S-NPP	75.23923	29.51005	14:00:00	D	12.70
21	SIRSA	SIRSA	AQUA	75.23700	29.51300	13:55:00	D	24.20
22	SIRSA	SIRSA	AQUA	75.22900	29.51400	13:55:00	D	13.80
23	SIRSA	SIRSA	AQUA	75.24200	29.51500	13:55:00	D	11.80
24	SIRSA	SIRSA	S-NPP	75.23814	29.51901	14:00:00	D	5.30
25	SIRSA	SIRSA	S-NPP	75.14229	29.53599	02:42:00	N	1.40
26	SIRSA	SIRSA	S-NPP	75.28223	29.53704	14:00:00	D	3.20
27	SIRSA	SIRSA	S-NPP	75.13881	29.54036	02:42:00	N	1.00
28	SIRSA	SIRSA	S-NPP	75.07786	29.54917	02:42:00	N	2.50
29	SIRSA	SIRSA	S-NPP	75.07703	29.55015	02:42:00	N	2.10
30	SIRSA	SIRSA	S-NPP	75.19918	29.55784	14:00:00	D	4.20

31	SIRSA	SIRSA	S-NPP	75.12609	29.61585	02:42:00	N	1.30
----	-------	-------	-------	----------	----------	----------	---	------

Details of residue burning events in Uttar Pradesh on 24-Nov-2019

S. No.	District	Tehsil / Block	Satellite	Longitude	Latitude	Time (IST)	Day / Night	Fire Power (W/m ²)
1	BAGHPAT	BAGHPAT	AQUA	77.31200	28.90400	13:55:00	D	9.00
2	BAGHPAT	BAGHPAT	S-NPP	77.31428	28.90919	14:00:00	D	3.20
3	BAGHPAT	BAGHPAT	S-NPP	77.31375	28.91425	14:00:00	D	3.20
4	BAHRAICH	NANPARA	S-NPP	81.41719	28.06916	14:00:00	D	5.90
5	BIJNOR	BIJNOR	S-NPP	78.11129	29.59458	14:00:00	D	3.30
6	HAPUR	HAPUR	S-NPP	77.64651	28.64587	12:18:00	D	4.60
7	JHANSI	MOTH	S-NPP	78.85818	25.66568	14:00:00	D	2.50
8	KAUSHAMBI	CHAIL	S-NPP	81.61568	25.38211	14:00:00	D	3.00
9	KHERI	MOHMADI	METOP-1	80.23854	27.91837	21:02:00	N	12.00
10	MAINPURI	KARHAL	S-NPP	78.99746	27.03763	02:42:00	N	0.40
11	MEERUT	MAWANA	S-NPP	77.93849	28.93422	14:00:00	D	2.40
12	MEERUT	MAWANA	S-NPP	77.89764	29.12041	14:00:00	D	2.30
13	MEERUT	MEERUT	S-NPP	77.80183	28.80031	12:18:00	D	4.40
14	MUZAFARNAGAR	BUDHANA	S-NPP	77.42639	29.28212	02:42:00	N	0.50
15	MUZAFARNAGAR	JANSATH	S-NPP	77.87077	29.33449	14:00:00	D	1.40
16	MUZAFARNAGAR	MUZAFFARNAGAR	S-NPP	77.50268	29.54261	14:00:00	D	2.40
17	PILHIBHIT	BISALPUR	S-NPP	79.90605	28.11053	14:00:00	D	3.00
18	PILHIBHIT	BISALPUR	S-NPP	79.90681	28.11175	14:00:00	D	3.70

The study used images received from following Satellites at IARI Satellite Ground Station

S. No.	Satellite Name	Sensor	Resolution (meter)	Day / Night Passes
1.	Suomi NPP	VIIRS	375 / 1000	Both
2.	Terra	MODIS	1000	Both
3.	Aqua	MODIS	1000	Both
4.	NOAA – 18	AVHRR	1000	Night
5.	NOAA – 19	AVHRR	1000	Night
6.	Metop - 1	AVHRR	1000	Night
7.	Metop - 2	AVHRR	1000	Night

Study Team

ICAR – HQ	Dr K. Alagusundaram	DDG (AG. ENGG.)	ddgengg@icar.org.in
	Dr S. Bhasker	ADG (NRM)	adgagroandaf@gmail.com
	Dr K.K. Singh	ADG (AG. ENGG)	kanchansingh044@gmail.com
ICAR - IARI	Dr V.K. Sehgal	Professor & Nodal Scientist	iaricreams@gmail.com
	Dr Rajkumar Dhakar	Scientist	raidhakar.iari@gmail.com
	Mr Rakeswer Verma	Chief Technical Officer	rakeshwar.verma@icar.gov.in
	Mr Mohd Jahangir	Lab Assistant (KRISHI)	mjahangir198@gmail.com
ICAR - ATARI	Dr Rajbir Singh	Director ATARI (Zone-I) Ludhiana	rajbirsingh.zpd@gmail.com
	Dr S.K. Singh	Director ATARI (Zone-II) Jodhpur	sushilsinghiipr@yahoo.co.in
	Dr Atar Singh	Director ATARI (Zone-III) Kanpur	zpdicarkanpur@gmail.com
ICAR - IASRI	Dr Rajender Parsad	Principal Scientist	rajender.parsad@icar.gov.in

GIS Maps of fire events can be visualized online on ICAR KRISHI Geoportal website: <http://geoportal.icar.gov.in:8080/geoexplorer/composer/>
(Part of KRISHI Portal: <https://krishi.icar.gov.in> initiative)
