



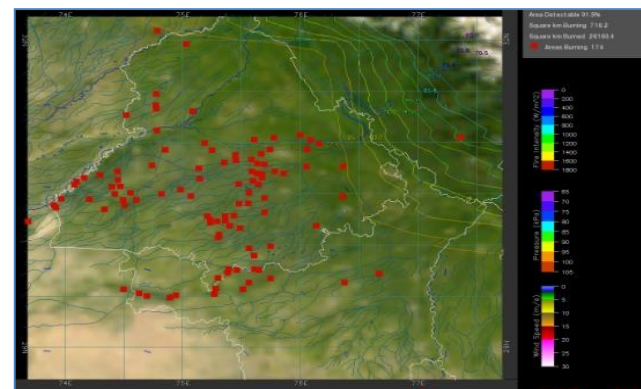
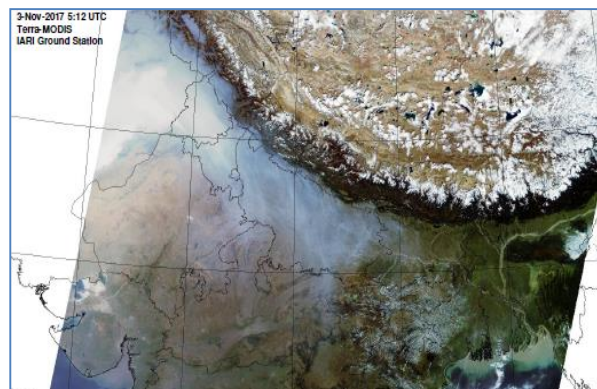
**Bulletin  
No. 43**

**Events Date:  
12-Nov-2019**

**Issued on:  
13-Nov-2019**



# **MONITORING PADDY RESIDUE BURNING IN NORTH INDIA USING SATELLITE REMOTE SENSING DURING 2019**



**Prepared by:**

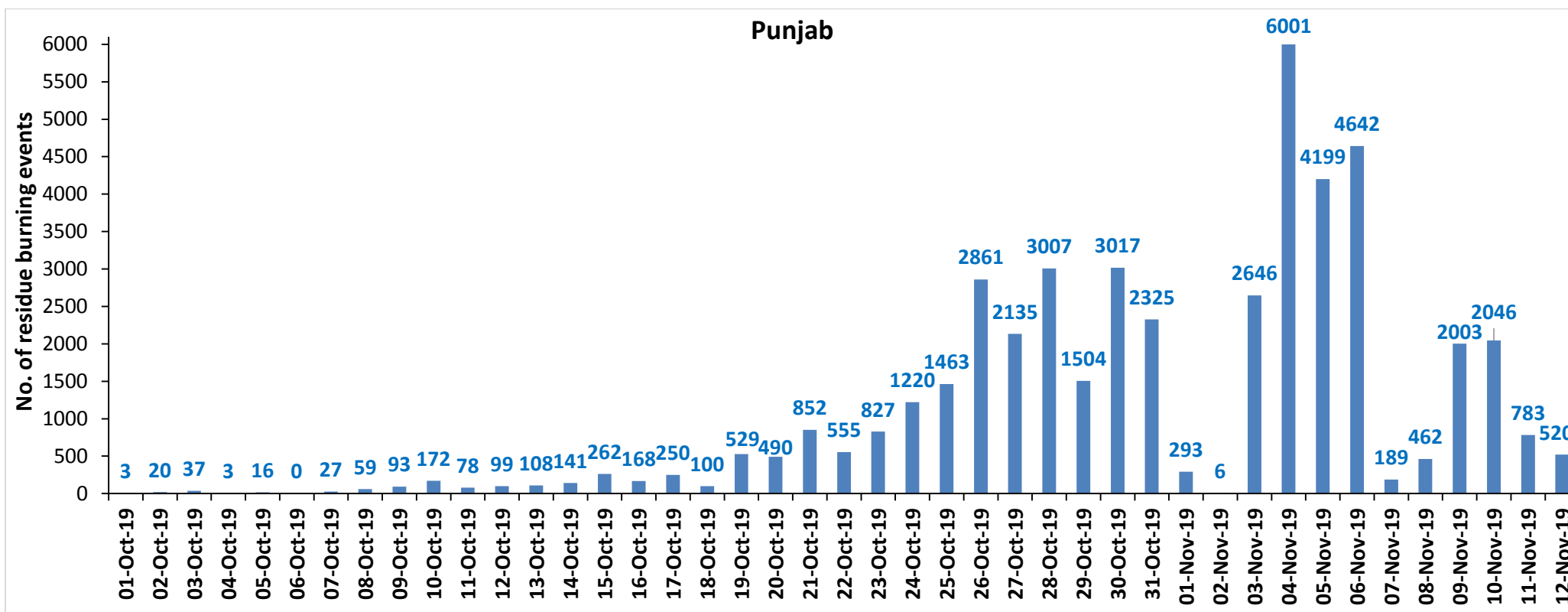
**Consortium for Research on Agroecosystem Monitoring and Modeling from Space (CREAMS) Laboratory,  
Division of Agricultural Physics, ICAR – Indian Agricultural Research Institute, New Delhi – 110012**

**<http://creams.iari.res.in>**

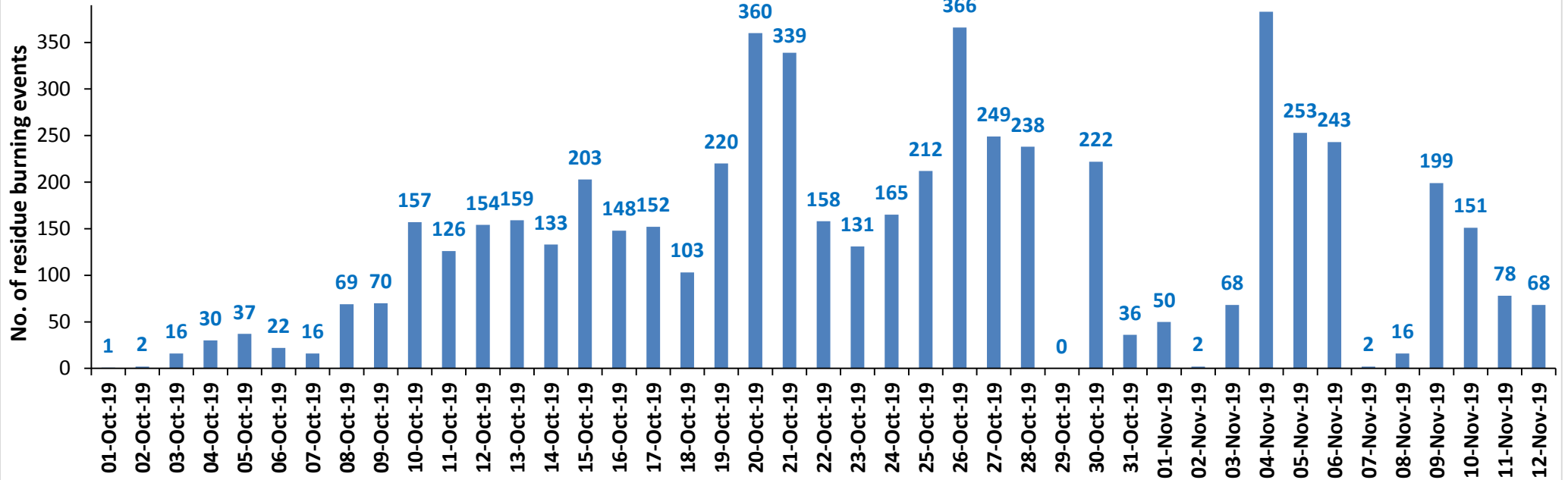
## Highlights for 12-November-2019

- Satellites detected **798** residue burning events in the three study States on **12-Nov-2019**.
- The burning events detected on **12-Nov-2019** are **520**, **68** and **210** in Punjab, Haryana and UP, respectively.
- The number of events has decreased from **1035** on **11-Nov-2019** to **798** on **12-Nov-2019** in the three states.
- Total **54671** burning events were detected in the three States between **01-Oct-2019** and **12-Nov-2019**, which are distributed as **46211**, **5807** and **2653** in Punjab, Haryana and UP, respectively.
- Overall, the total burning events recorded in the three states are **10%** less than in 2018 till date. UP recorded **41.9%** reduction, Haryana recorded **14.7%** reduction, and Punjab recorded **6.4%** reduction, respectively, in the current season than in 2018.

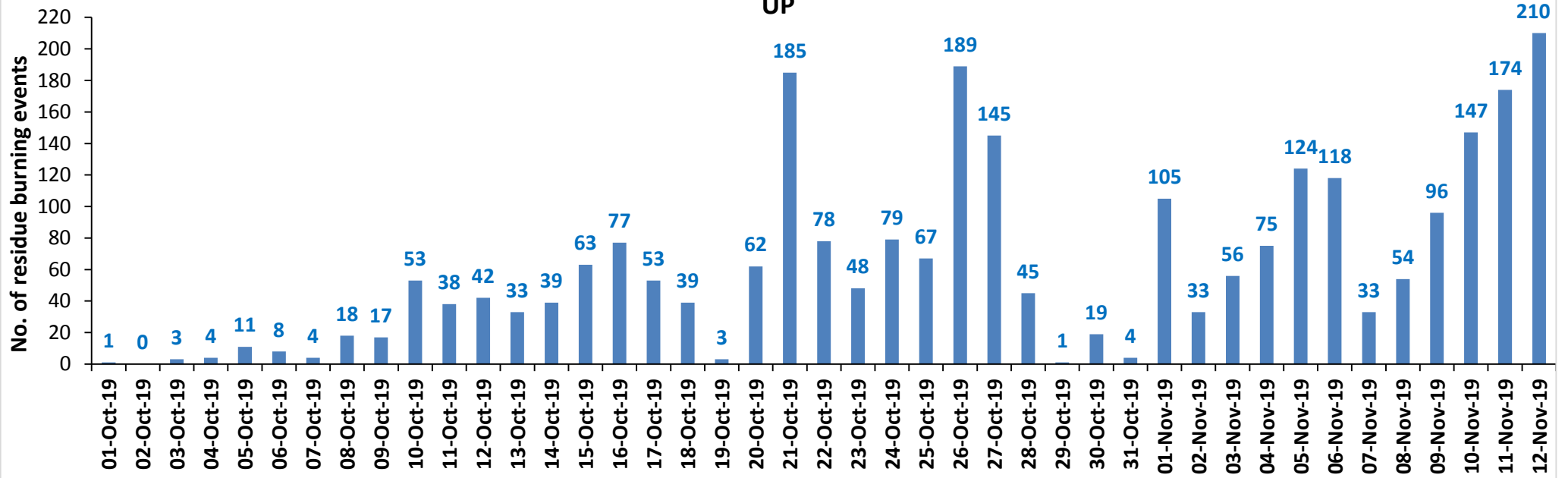
### Temporal distribution of residue burning events for the three study States in 2019



### Haryana

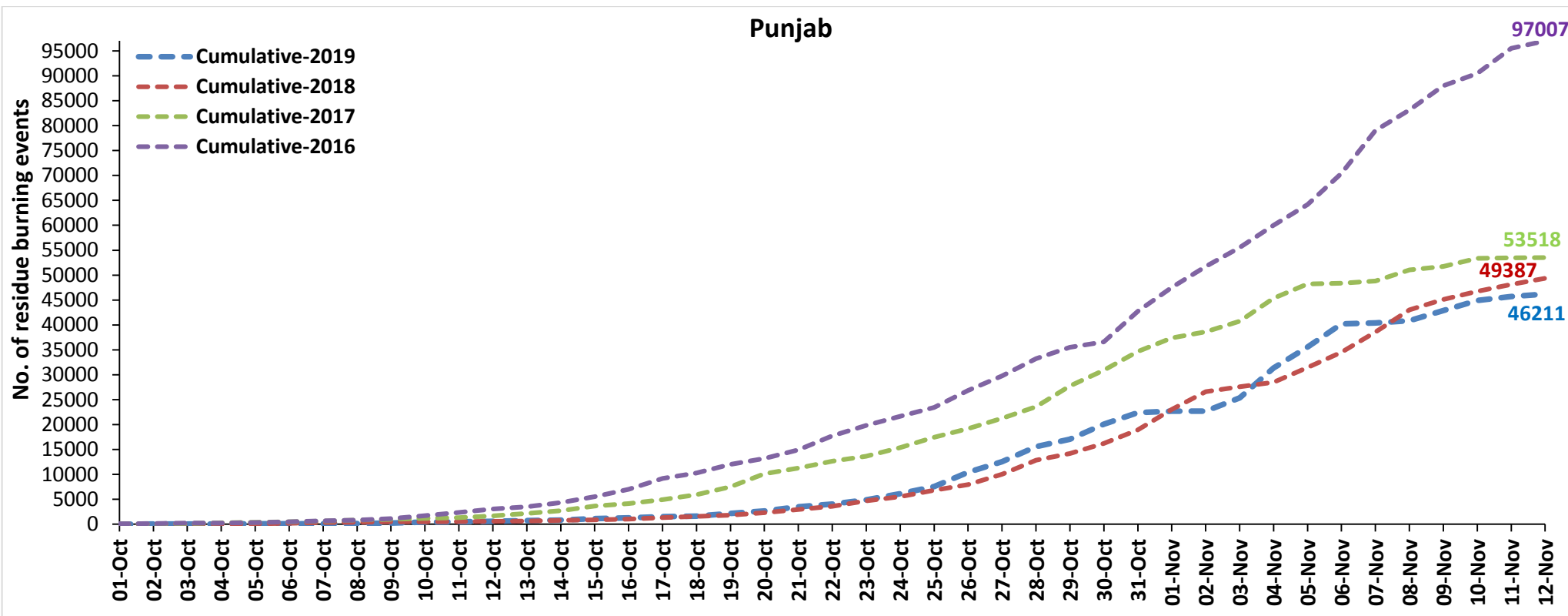


### UP

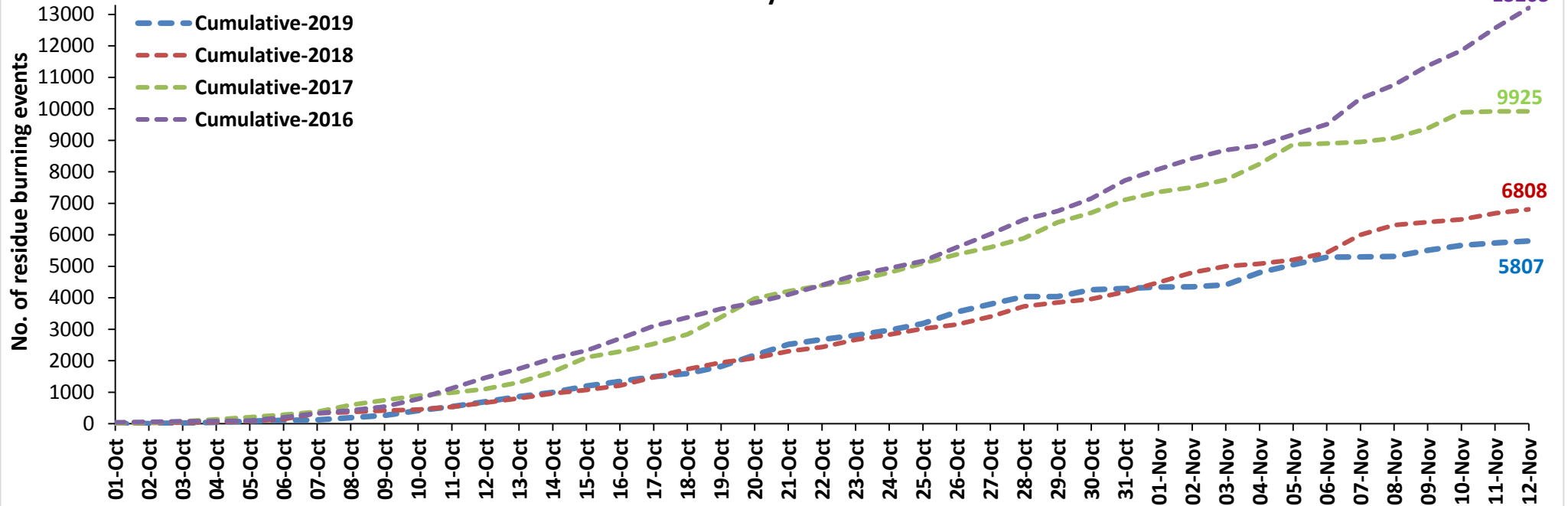


**Comparison of residue burning events in current year (2019) with previous years (2018, 2017 & 2016) for the three study States**  
**(01-Oct to 12-Nov)**

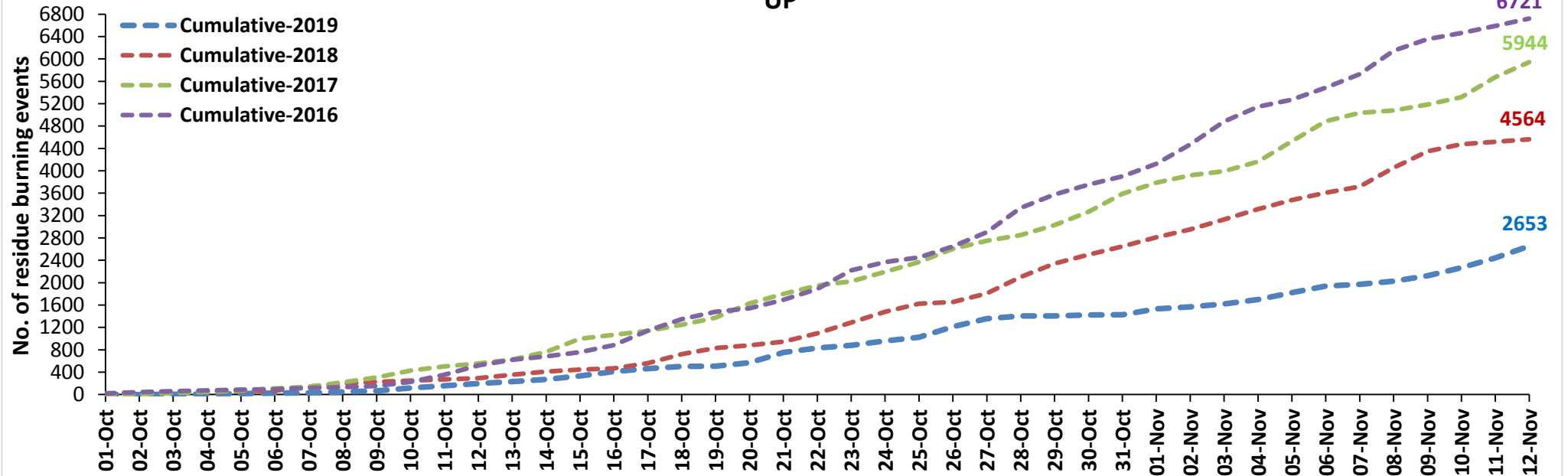
**Punjab**



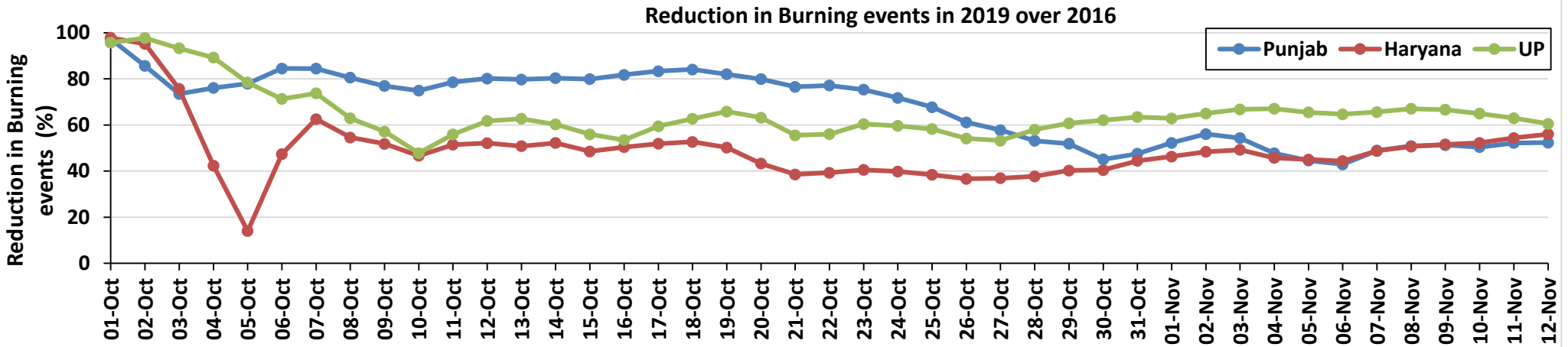
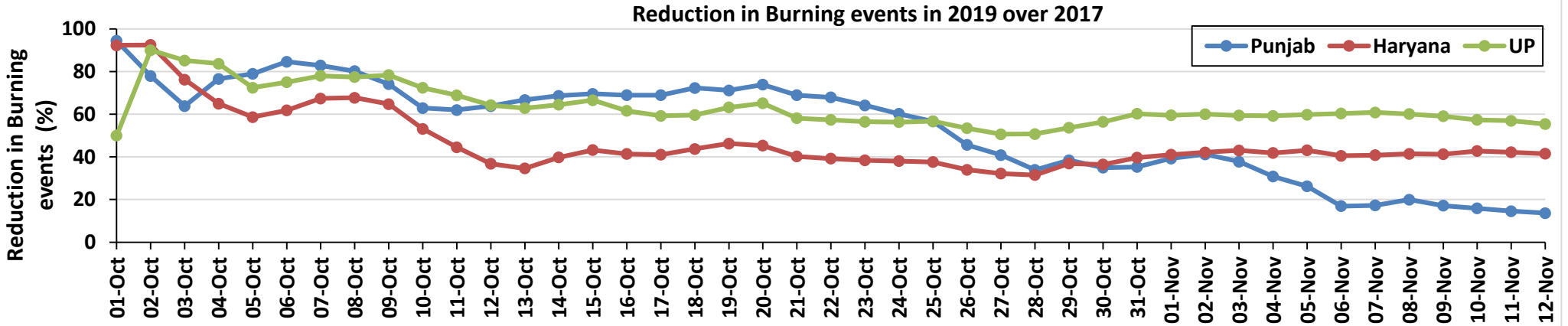
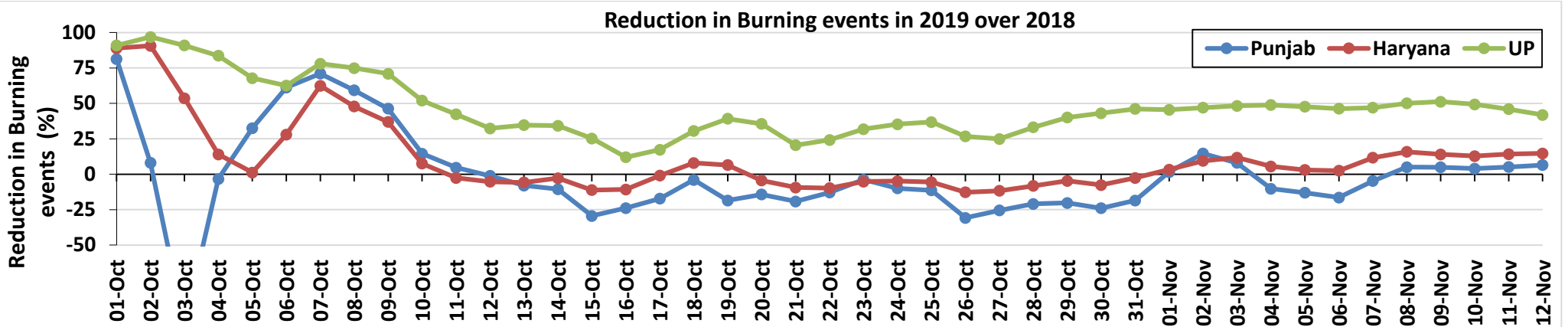
### Haryana



### UP



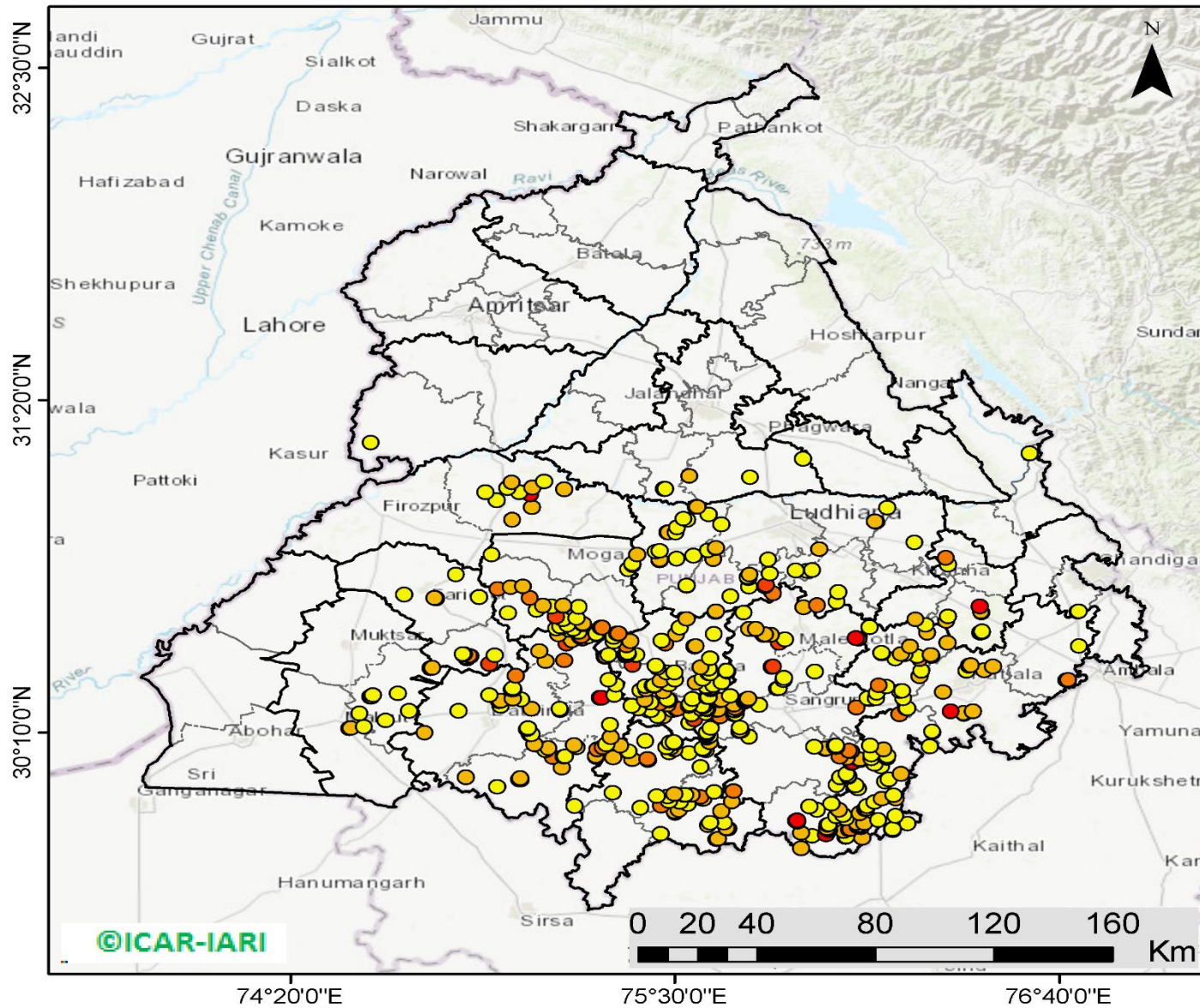
## Percent Reduction in Burning events in 2019 over 2018, 2017 and 2016 (Daily Cumulative)





(a) Punjab

RICE RESIDUE BURNING IN PUNJAB



**520** burning events detected in Punjab on 12th November 2019

Fire Intensity (W/m<sup>2</sup>)

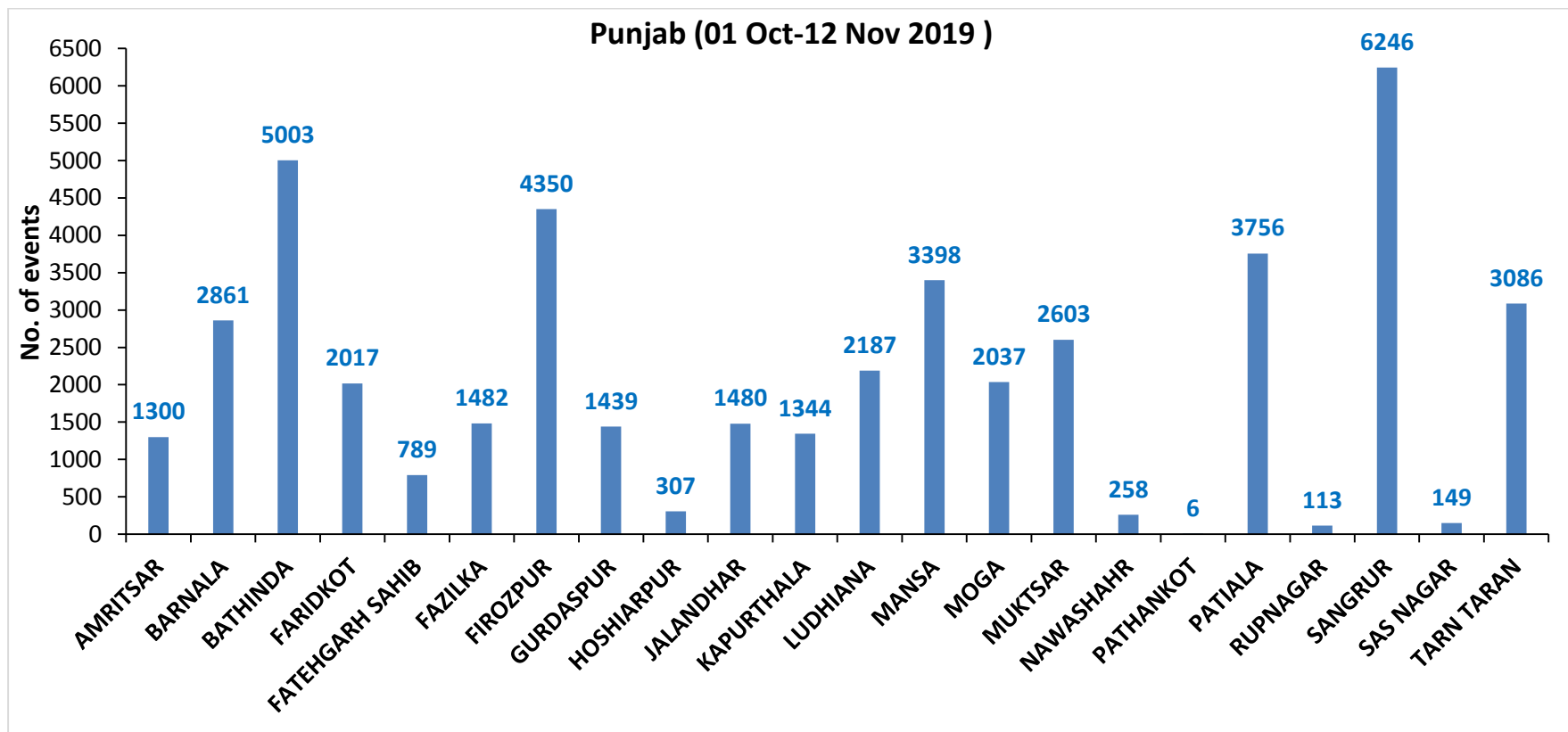
- 0 - 5
- 6 - 10
- 11 - 15
- 16 - 20
- >20

©ICAR-IARI



<http://geoportal.icar.gov.in:8080/geoexplorer/composer/>

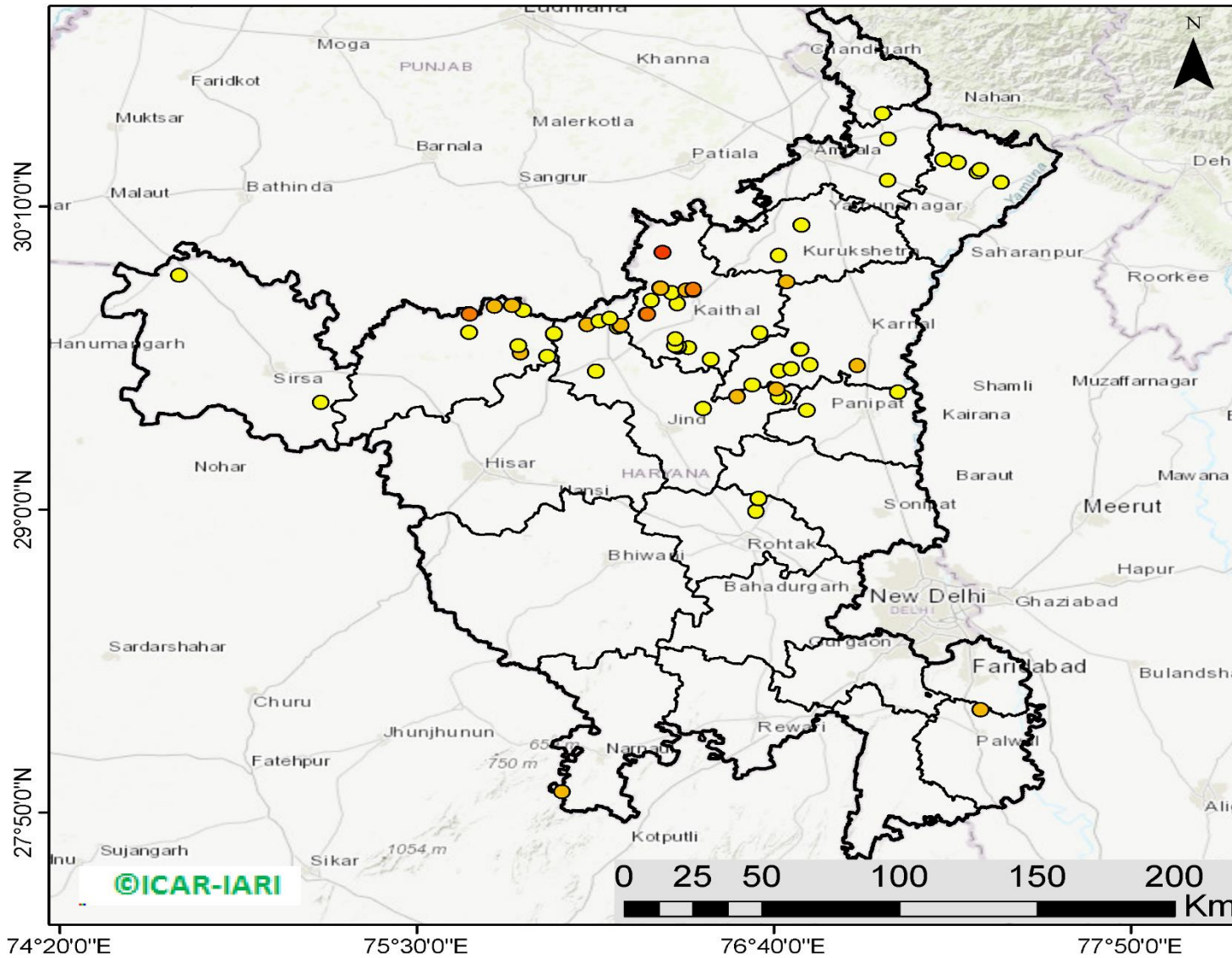
**District-wise cumulative number of residues burning events in Punjab (01 Oct to 12-Nov 2019)**





(b) Haryana

**RICE RESIDUE BURNING IN HARYANA**



**68** burning events  
detected in Haryana on  
12th November 2019

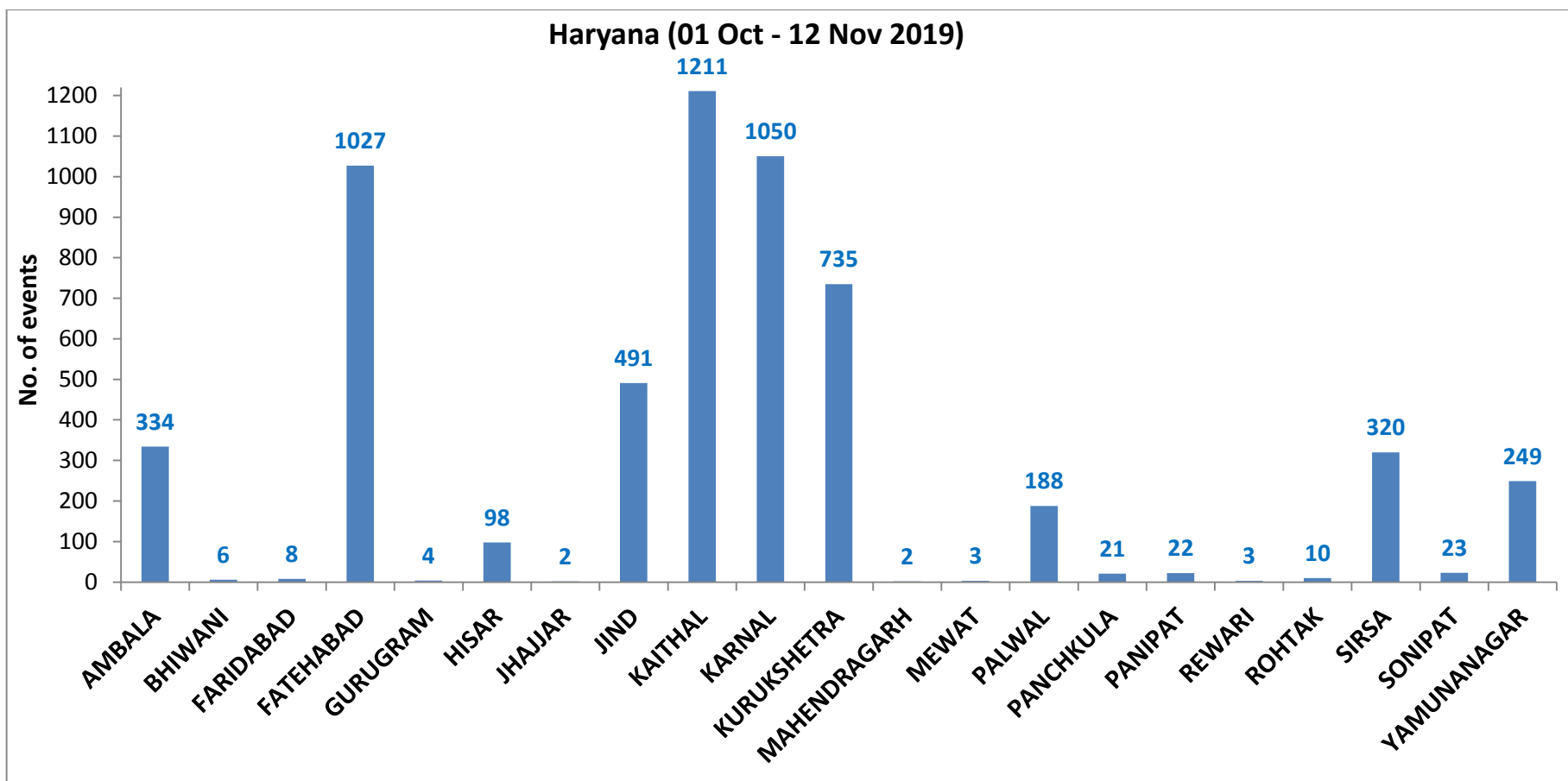
**Fire Intensity (W/m<sup>2</sup>)**

-  0 - 5
-  6 - 10
-  11 - 15
-  16 - 20
-  >20



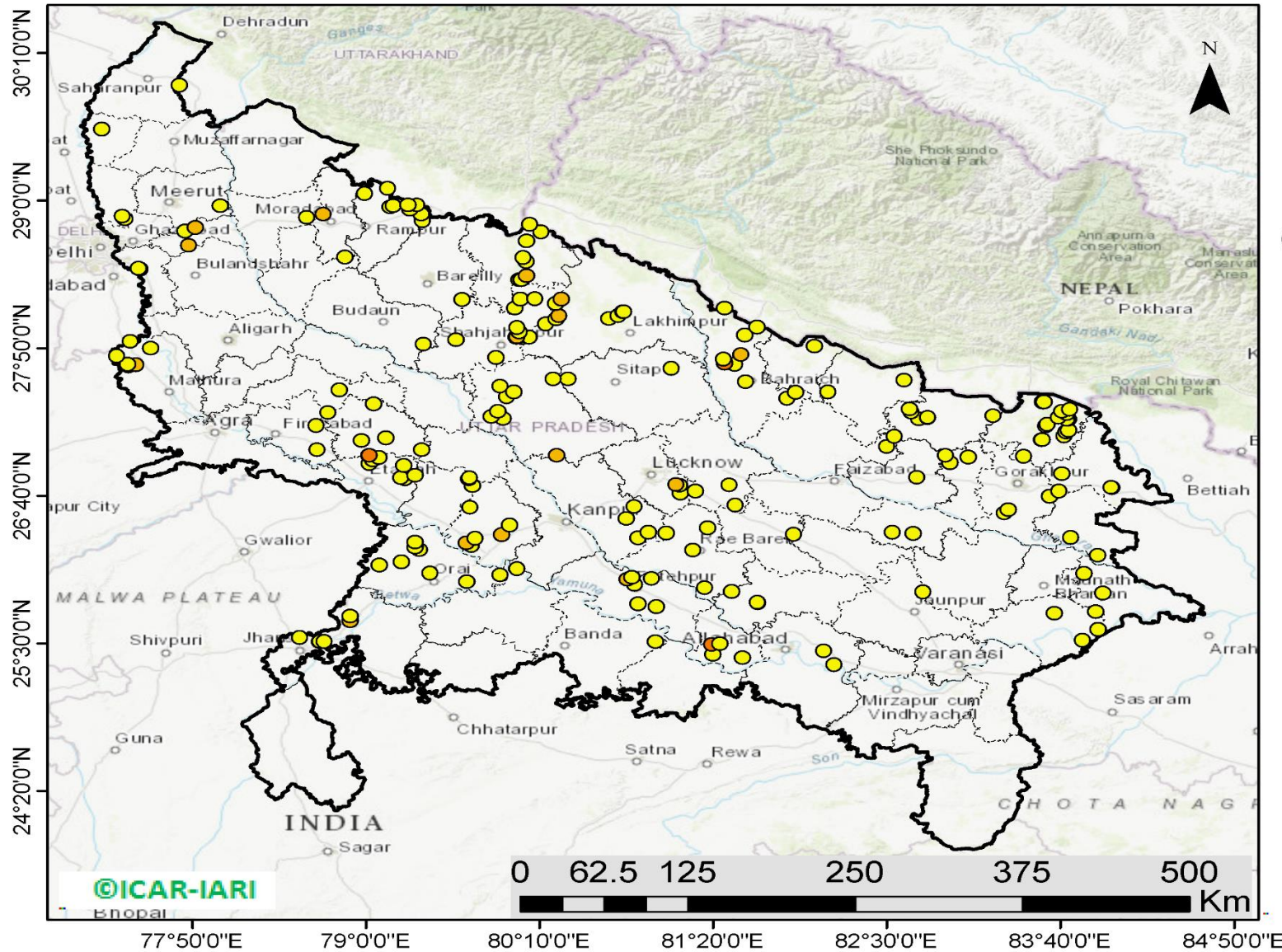
<http://geoportal.icar.gov.in:8080/geoexplorer/composer/>

**District-wise cumulative number of residues burning events in Haryana (01 Oct to 12-Nov 2019)**



(c) UP

### RICE RESIDUE BURNING IN UTTAR PRADESH



**210** burning events detected in Uttar Pradesh on 12th November 2019

#### Fire Intensity (W/m<sup>2</sup>)

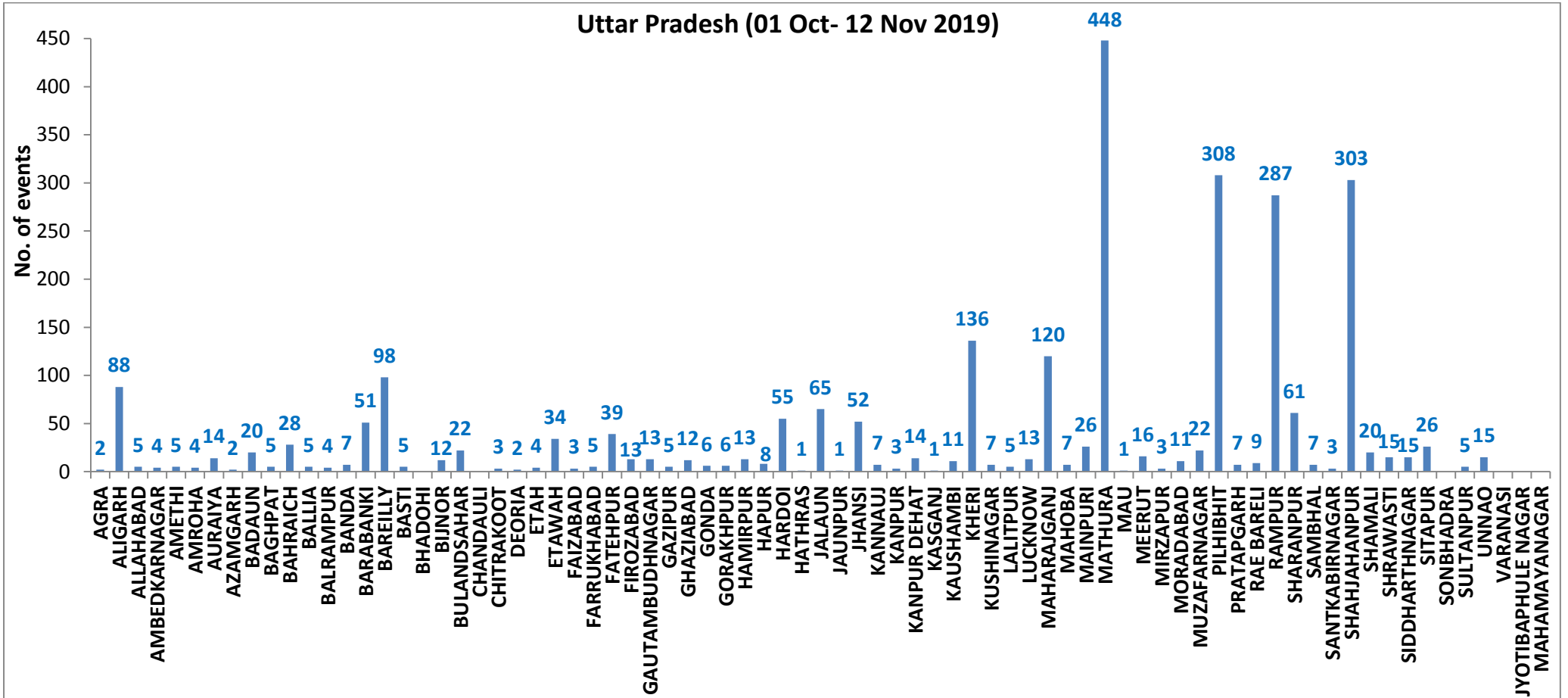
- 0 - 5
- 6 - 10
- 11 - 15
- 16 - 20
- >20



<http://geoportal.icar.gov.in:8080/geoexplorer/composer/>



**District-wise cumulative number of residues burning events in Uttar Pradesh (01 Oct to 12-Nov 2019)**



**State-wise, date-wise and district-wise number of residues burning events detected in 2016, 2017, 2018 and 2019**  
**(Period: 01-Oct to 12-Nov)**

Date	Punjab				Haryana				UP				Total			
	2019	2018	2017	2016	2019	2018	2017	2016	2019	2018	2017	2016	2019	2018	2017	2016
01-Oct	3	16	54	109	1	9	13	46	1	11	2	23	5	36	69	178
02-Oct	20	9	50	51	2	23	27	16	0	21	8	20	23	53	85	87
03-Oct	37	4	62	66	16	9	40	16	3	12	17	16	56	25	119	98
04-Oct	3	32	103	37	30	16	60	7	4	5	22	15	37	53	185	59
05-Oct	16	56	106	95	37	30	68	15	11	10	20	14	64	96	194	124
06-Oct	0	87	138	152	22	63	75	105	8	13	39	6	30	163	252	263
07-Oct	27	162	105	171	16	180	97	126	4	69	33	24	47	411	235	321
08-Oct	59	39	215	166	69	40	218	94	18	54	76	14	146	133	509	274
09-Oct	93	75	163	270	70	47	148	121	17	32	88	22	180	154	399	413
10-Oct	172	23	164	597	157	37	151	242	53	21	126	74	382	81	441	913
11-Oct	78	30	177	652	126	78	87	336	38	24	74	128	242	131	338	1116
12-Oct	99	67	342	694	154	133	123	338	42	22	51	164	295	222	516	1196
13-Oct	108	62	470	467	159	147	207	284	33	61	69	102	300	270	746	853
14-Oct	141	112	582	812	133	153	333	328	39	57	137	60	313	322	1052	1200
15-Oct	262	90	943	1215	203	110	458	248	63	35	237	76	528	235	1638	1539
16-Oct	168	174	465	1478	148	138	186	385	77	20	71	125	393	332	722	1988
17-Oct	250	272	807	2173	152	268	244	399	53	94	69	261	455	634	1120	2833
18-Oct	100	263	970	1065	103	255	306	270	39	163	108	204	242	681	1384	1539
19-Oct	529	254	1591	1762	220	208	541	276	3	108	128	132	752	570	2260	2170
20-Oct	490	496	2653	1175	360	141	597	188	62	49	255	62	912	686	3505	1425
21-Oct	852	618	1139	1726	339	217	233	257	185	66	168	152	1376	901	1540	2135
22-Oct	555	656	1356	2837	158	134	186	309	78	149	151	194	791	939	1693	3340
23-Oct	827	1113	994	2040	131	232	155	313	48	193	72	331	1006	1538	1221	2684
24-Oct	1220	844	1714	1836	165	166	244	221	79	192	171	152	1464	1202	2129	2209
25-Oct	1463	1247	2104	1813	212	182	303	229	67	142	175	83	1742	1571	2582	2125
26-Oct	2861	1173	1715	3390	366	132	276	434	189	33	240	195	3416	1338	2231	4019
27-Oct	2135	2040	2069	2904	249	252	224	417	145	154	145	255	2529	2446	2438	3576
28-Oct	3007	2864	2318	3493	238	330	292	458	45	290	99	435	3290	3484	2709	4386
29-Oct	1504	1321	4184	2258	0	124	502	278	1	243	180	237	1505	1688	4866	2773
30-Oct	3017	2008	3152	1076	222	103	307	395	19	158	238	175	3258	2269	3697	1646
31-Oct	2325	2715	3743	6132	36	229	413	575	4	148	321	153	2365	3092	4477	6860
01-Nov	293	4140	2736	4843	50	306	250	362	105	161	199	223	448	4607	3185	5428
02-Nov	6	3550	1246	4183	2	306	145	332	33	142	131	345	41	3998	1522	4860



<b>03-Nov</b>	2646	972	2109	3806	68	202	240	275	56	181	75	409	2770	1355	2424	4490
<b>04-Nov</b>	6001	882	4603	4477	383	77	499	146	75	183	168	265	6459	1142	5270	4888
<b>05-Nov</b>	4199	2989	2876	4137	253	129	625	345	124	163	367	125	4576	3281	3868	4607
<b>06-Nov</b>	4642	3071	171	6303	243	222	26	322	118	130	357	215	5003	3423	554	6840
<b>07-Nov</b>	189	4033	420	8575	2	568	46	821	33	108	149	244	224	4709	615	9640
<b>08-Nov</b>	462	4450	2256	4129	16	313	128	432	54	338	43	419	532	5101	2427	4980
<b>09-Nov</b>	2003	2083	675	4857	199	199	311	608	96	294	107	205	2298	2473	1093	5670
<b>10-Nov</b>	2046	1675	1642	2468	151	85	509	484	147	125	131	109	2344	1885	2282	3061
<b>11-Nov</b>	783	1364	103	5040	78	196	29	716	174	45	358	129	1035	1605	490	5885
<b>12-Nov</b>	520	1256	33	1477	68	122	3	634	210	45	269	129	798	1423	305	2240
<b>Total</b>	<b>46211</b>	<b>49387</b>	<b>53518</b>	<b>97007</b>	<b>5807</b>	<b>6808</b>	<b>9925</b>	<b>13203</b>	<b>2653</b>	<b>4564</b>	<b>5944</b>	<b>6721</b>	<b>54671</b>	<b>60759</b>	<b>69387</b>	<b>116931</b>

**(a) Punjab**

Districts	01Oct-12 Nov			
	2016	2017	2018	2019
AMRITSAR	1967	1205	1116	1300
BARNALA	5525	2574	2535	2861
BATHINDA	8441	4623	5178	5003
FARIDKOT	4505	2844	2577	2017
FATEHGARH SAHIB	2433	1592	788	789
FAZILKA	0	0	0	1482
FIROZPUR	12107	5451	7744	4350
GURDASPUR	2103	1504	1086	1439
HOSHIARPUR	884	466	187	307
JALANDHAR	4569	1962	1245	1480
KAPURTHALA	3107	1523	705	1344
LUDHIANA	8964	3865	2069	2187
MANSA	5266	3857	3623	3398
MOGA	6275	1912	2192	2037
MUKTSAR	6212	3352	4615	2603
NAWASHAHR (SBS Nagar)	1560	755	333	258
PATHANKOT	0	0	0	6
PATIALA	6491	4953	3925	3756
RUPNAGAR	705	317	74	113
SANGRUR	11725	8045	6893	6246
SAS NAGAR	114	107	104	149
TARN TARAN	4054	2611	2398	3086
<b>Total</b>	<b>97007</b>	<b>53518</b>	<b>49387</b>	<b>46211</b>

**(b) Haryana**

Districts	01Oct-12 Nov			
	2016	2017	2018	2019
AMBALA	527	489	317	334
BHIWANI	45	22	13	6
FARIDABAD	272	340	181	8
FATEHABAD	4113	2725	1739	1027
GURUGRAM	0	0	0	4
HISAR	300	153	117	98
JHAJJAR	22	12	12	2
JIND	783	840	596	491
KAITHAL	1718	1468	1208	1211
KARNAL	1609	1472	814	1050
KURUKSHETRA	1070	1140	677	735
MAHENDRAGARH	0	0	0	2
MEWAT	0	0	0	3
PALWAL	0	0	0	188
PANCHKULA	0	0	3	21
PANIPAT	68	66	50	22
REWARI	0	0	0	3
ROHTAK	60	48	10	10
SIRSA	2319	797	873	320
SONIPAT	61	50	24	23
YAMUNANAGAR	236	303	174	249
<b>Total</b>	<b>13203</b>	<b>9925</b>	<b>6808</b>	<b>5807</b>

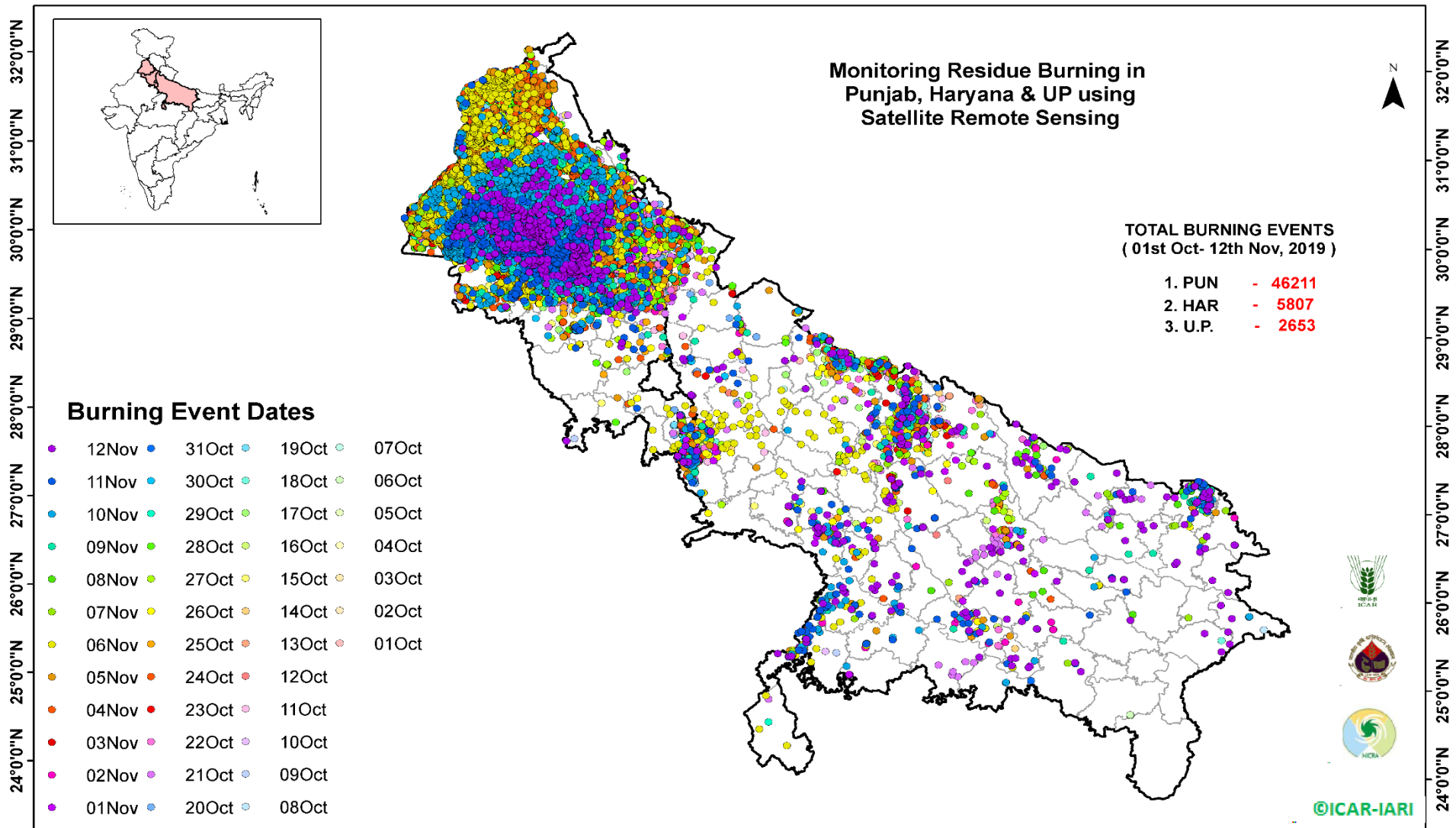
(c) Uttar Pradesh

Districts	01Oct-12 Nov			
	2016	2017	2018	2019
AGRA	0	0	0	2
ALIGARH	40	73	87	88
ALLAHABAD	1	7	7	5
AMBEDKARNAGAR	40	23	8	4
AMETHI	0	0	0	5
AMROHA	0	0	0	4
AURAIYA	150	108	38	14
AZAMGARH	14	18	13	2
BADAUN	6	6	9	20
BAGHPAT	0	0	0	5
BAHRAICH	50	35	56	28
BALLIA	3	13	8	5
BALRAMPUR	18	24	31	4
BANDA	1	2	7	7
BARABANKI	188	137	160	51
BAREILLY	224	187	113	98
BASTI	77	159	68	5
BHADOHI	0	0	0	0
BIJNOR	35	26	6	12
BULANDSAHAR	12	25	11	22
CHANDAULI	2	0	0	0
CHITRAKOOT	0	0	0	3
DEORIA	26	34	36	2
ETAH	12	26	21	4
ETAWAH	45	63	28	34
FAIZABAD	10	5	6	3
FARRUKHABAD	0	0	0	5
FATEHPUR	39	30	53	39
FIROZABAD	19	15	9	13

GAUTAMBUDHNAGAR	18	33	11	13
GAZIPUR	11	6	2	5
GHAZIABAD	49	30	17	12
GONDA	35	30	16	6
GORAKHPUR	33	52	48	6
HAMIRPUR	0	0	1	13
HAPUR	0	0	0	8
HARDOI	212	171	104	55
HATHRAS	0	0	0	1
JALAUN	0	0	0	65
JAUNPUR	7	5	11	1
JHANSI	0	0	2	52
KANNAUJ	7	12	4	7
KANPUR	5	5	8	3
KANPUR DEHAT	13	31	11	14
KASGANJ	0	0	0	1
KAUSHAMBI	13	26	27	11
KHERI	363	218	167	136
KUSHINAGAR	17	37	50	7
LALITPUR	0	0	0	5
LUCKNOW	48	29	24	13
MAHARAJGANJ	219	530	556	120
MAHOBA	0	0	0	7
MAINPURI	42	67	34	26
MATHURA	1376	1078	1043	448
MAU	6	5	8	1
MEERUT	42	38	11	16
MIRZAPUR	0	9	5	3
MORADABAD	34	23	11	11
MUZAFARNAGAR	95	90	26	22
PILHIBHIT	876	667	406	308
PRATAPGARH	12	25	13	7

RAE BARELI	30	27	24	9
RAMPUR	606	597	217	287
SHARANPUR	70	85	46	61
SAMBHAL	0	0	0	7
SANTKABIRNAGAR	33	50	37	3
SHAHJAHANPUR	1093	667	345	303
SHAMALI	0	0	0	20
SHRAWASTI	26	29	33	15
SIDDHARTHANAGAR	144	141	380	15
SITAPUR	93	53	33	26
SONBHADRA	12	9	8	0
SULTANPUR	21	14	12	5
UNNAO	39	28	30	15
VARANASI	0	0	0	0
JYOTIBAPHULE NAGAR	7	9	3	0
MAHAMAYANAGAR	2	2	5	0
<b>Total</b>	<b>6721</b>	<b>5944</b>	<b>4564</b>	<b>2653</b>

## Map of Cumulative Burning Events (01 Oct – 12 Nov 2019)



<http://geoportal.icar.gov.in:8080/geoexplorer/composer/>

### Details of residue burning events in Punjab on 12-Nov-2019

S. No.	District	Tehsil / Block	Satellite	Longitude	Latitude	Time (IST)	Day / Night	Fire Power (W/m2)
1	BARNALA	BARNALA	S-NPP	75.48183	30.33455	13:06:00	D	2.90
2	BARNALA	BARNALA	TERRA	75.56400	30.34000	11:15:00	D	10.00
3	BARNALA	BARNALA	S-NPP	75.64203	30.34099	13:06:00	D	2.80
4	BARNALA	BARNALA	S-NPP	75.45612	30.34767	13:06:00	D	5.10
5	BARNALA	BARNALA	S-NPP	75.50024	30.35247	13:06:00	D	3.10
6	BARNALA	BARNALA	S-NPP	75.58462	30.35519	13:06:00	D	3.40
7	BARNALA	BARNALA	S-NPP	75.60251	30.37358	13:06:00	D	3.60
8	BARNALA	BARNALA	S-NPP	75.60674	30.37446	13:06:00	D	3.60
9	BARNALA	BARNALA	S-NPP	75.47536	30.37761	13:06:00	D	3.20
10	BARNALA	BARNALA	S-NPP	75.49794	30.37792	13:06:00	D	4.00
11	BARNALA	BARNALA	S-NPP	75.65843	30.38081	13:06:00	D	3.20
12	BARNALA	BARNALA	S-NPP	75.65757	30.38261	13:06:00	D	4.80
13	BARNALA	BARNALA	S-NPP	75.60239	30.39073	13:06:00	D	2.20
14	BARNALA	BARNALA	S-NPP	75.57902	30.39454	13:06:00	D	5.80
15	BARNALA	BARNALA	S-NPP	75.37222	30.40425	13:06:00	D	16.50
16	BARNALA	BARNALA	S-NPP	75.60641	30.42587	13:06:00	D	2.20
17	BARNALA	BARNALA	S-NPP	75.29172	30.43229	13:06:00	D	6.90
18	BARNALA	BARNALA	S-NPP	75.35083	30.43585	13:06:00	D	6.00
19	BARNALA	BARNALA	S-NPP	75.38184	30.43659	13:06:00	D	1.20
20	BARNALA	BARNALA	S-NPP	75.38239	30.43806	13:06:00	D	1.70
21	BARNALA	BARNALA	S-NPP	75.29936	30.43824	13:06:00	D	4.70
22	BARNALA	BARNALA	S-NPP	75.34972	30.43997	13:06:00	D	4.60
23	BARNALA	BARNALA	S-NPP	75.35408	30.44087	13:06:00	D	4.60
24	BARNALA	BARNALA	S-NPP	75.35844	30.44178	13:06:00	D	4.70
25	BARNALA	BARNALA	S-NPP	75.35732	30.44590	13:06:00	D	4.70
26	BARNALA	BARNALA	S-NPP	75.56050	30.46633	13:06:00	D	16.30
27	BARNALA	BARNALA	S-NPP	75.55935	30.46786	13:06:00	D	8.20
28	BARNALA	BARNALA	S-NPP	75.56361	30.46871	13:06:00	D	8.20
29	BARNALA	BARNALA	S-NPP	75.35500	30.47151	13:06:00	D	11.70
30	BARNALA	BARNALA	S-NPP	75.47179	30.47819	13:06:00	D	11.10



31	BARNALA	BARNALA	S-NPP	75.31448	30.48495	13:06:00	D	1.80
32	BARNALA	BARNALA	S-NPP	75.36471	30.48654	13:06:00	D	5.10
33	BARNALA	BARNALA	S-NPP	75.45989	30.48870	13:06:00	D	4.90
34	BARNALA	BARNALA	S-NPP	75.31436	30.50235	13:06:00	D	1.90
35	BARNALA	BARNALA	S-NPP	75.50371	30.51059	13:06:00	D	5.30
36	BARNALA	BARNALA	S-NPP	75.61938	30.51272	13:06:00	D	2.40
37	BARNALA	BARNALA	S-NPP	75.32525	30.51326	13:06:00	D	6.90
38	BARNALA	BARNALA	S-NPP	75.32962	30.51415	13:06:00	D	13.60
39	BARNALA	BARNALA	S-NPP	75.51527	30.53445	13:06:00	D	4.60
40	BARNALA	BARNALA	TERRA	75.53600	30.56500	11:15:00	D	6.50
41	BARNALA	BARNALA	S-NPP	75.62261	30.58863	13:06:00	D	7.50
42	BARNALA	BARNALA	S-NPP	75.62503	30.59074	13:06:00	D	6.40
43	BARNALA	TAPPA	S-NPP	75.54456	30.19867	13:06:00	D	3.30
44	BARNALA	TAPPA	S-NPP	75.55953	30.21034	13:06:00	D	19.70
45	BARNALA	TAPPA	S-NPP	75.46560	30.22165	13:06:00	D	5.60
46	BARNALA	TAPPA	S-NPP	75.44781	30.22355	13:06:00	D	1.40
47	BARNALA	TAPPA	S-NPP	75.54977	30.22994	13:06:00	D	4.30
48	BARNALA	TAPPA	S-NPP	75.59362	30.23446	13:06:00	D	3.90
49	BARNALA	TAPPA	S-NPP	75.68066	30.24338	13:06:00	D	3.60
50	BARNALA	TAPPA	S-NPP	75.41945	30.24376	13:06:00	D	6.70
51	BARNALA	TAPPA	S-NPP	75.62659	30.24539	13:06:00	D	5.40
52	BARNALA	TAPPA	S-NPP	75.42815	30.24556	13:06:00	D	3.10
53	BARNALA	TAPPA	S-NPP	75.49206	30.24575	13:06:00	D	2.40
54	BARNALA	TAPPA	S-NPP	75.63083	30.24624	13:06:00	D	5.40
55	BARNALA	TAPPA	S-NPP	75.50497	30.24842	13:06:00	D	10.60
56	BARNALA	TAPPA	S-NPP	75.59888	30.24842	13:06:00	D	4.40
57	BARNALA	TAPPA	S-NPP	75.58071	30.24909	13:06:00	D	6.00
58	BARNALA	TAPPA	S-NPP	75.68801	30.24914	13:06:00	D	5.40
59	BARNALA	TAPPA	S-NPP	75.50927	30.24931	13:06:00	D	11.30
60	BARNALA	TAPPA	S-NPP	75.38998	30.25074	13:06:00	D	2.00
61	BARNALA	TAPPA	S-NPP	75.59351	30.25165	13:06:00	D	4.40
62	BARNALA	TAPPA	S-NPP	75.68271	30.25235	13:06:00	D	13.20
63	BARNALA	TAPPA	S-NPP	75.58706	30.25896	13:06:00	D	1.60

64	BARNALA	TAPPA	S-NPP	75.36913	30.25953	13:06:00	D	3.00
65	BARNALA	TAPPA	S-NPP	75.58311	30.26023	13:06:00	D	1.60
66	BARNALA	TAPPA	S-NPP	75.54249	30.26048	13:06:00	D	4.50
67	BARNALA	TAPPA	S-NPP	75.47791	30.26450	13:06:00	D	7.70
68	BARNALA	TAPPA	S-NPP	75.67945	30.26454	13:06:00	D	7.30
69	BARNALA	TAPPA	S-NPP	75.54567	30.26546	13:06:00	D	4.50
70	BARNALA	TAPPA	S-NPP	75.45409	30.26828	13:06:00	D	11.60
71	BARNALA	TAPPA	S-NPP	75.42586	30.27117	13:06:00	D	2.60
72	BARNALA	TAPPA	S-NPP	75.71203	30.27531	13:06:00	D	2.00
73	BARNALA	TAPPA	S-NPP	75.71197	30.27819	13:06:00	D	1.90
74	BARNALA	TAPPA	S-NPP	75.48324	30.27858	13:06:00	D	4.90
75	BARNALA	TAPPA	S-NPP	75.71615	30.27905	13:06:00	D	9.30
76	BARNALA	TAPPA	S-NPP	75.63609	30.27974	13:06:00	D	5.70
77	BARNALA	TAPPA	S-NPP	75.71515	30.28020	13:06:00	D	3.70
78	BARNALA	TAPPA	S-NPP	75.64032	30.28061	13:06:00	D	5.70
79	BARNALA	TAPPA	S-NPP	75.40948	30.28086	13:06:00	D	5.50
80	BARNALA	TAPPA	S-NPP	75.71935	30.28103	13:06:00	D	3.70
81	BARNALA	TAPPA	S-NPP	75.47782	30.28181	13:06:00	D	2.00
82	BARNALA	TAPPA	S-NPP	75.55413	30.28445	13:06:00	D	1.60
83	BARNALA	TAPPA	S-NPP	75.59784	30.28909	13:06:00	D	3.10
84	BARNALA	TAPPA	S-NPP	75.60209	30.28996	13:06:00	D	3.10
85	BARNALA	TAPPA	S-NPP	75.46576	30.30967	13:06:00	D	10.00
86	BARNALA	TAPPA	S-NPP	75.39619	30.31295	13:06:00	D	3.10
87	BARNALA	TAPPA	S-NPP	75.41363	30.31647	13:06:00	D	5.80
88	BARNALA	TAPPA	S-NPP	75.60828	30.31701	13:06:00	D	16.10
89	BARNALA	TAPPA	S-NPP	75.60719	30.32108	13:06:00	D	16.10
90	BARNALA	TAPPA	S-NPP	75.61143	30.32194	13:06:00	D	16.10
91	BARNALA	TAPPA	S-NPP	75.59761	30.32344	13:06:00	D	2.80
92	BARNALA	TAPPA	S-NPP	75.59653	30.32751	13:06:00	D	2.80
93	BARNALA	TAPPA	S-NPP	75.41029	30.32882	13:06:00	D	1.50
94	BARNALA	TAPPA	S-NPP	75.43313	30.32908	13:06:00	D	5.00
95	BARNALA	TAPPA	S-NPP	75.43746	30.32995	13:06:00	D	5.00
96	BARNALA	TAPPA	S-NPP	75.43349	30.32996	13:06:00	D	4.80

97	BARNALA	TAPPA	S-NPP	75.43782	30.33086	13:06:00	D	4.80
98	BARNALA	TAPPA	S-NPP	75.61774	30.33180	13:06:00	D	1.40
99	BARNALA	TAPPA	S-NPP	75.32224	30.33298	13:06:00	D	4.30
100	BARNALA	TAPPA	S-NPP	75.44830	30.39371	13:06:00	D	5.10
101	BARNALA	TAPPA	S-NPP	75.44176	30.40103	13:06:00	D	4.00
102	BATHINDA	BATHINDA	S-NPP	75.10825	30.10472	13:06:00	D	4.70
103	BATHINDA	BATHINDA	S-NPP	75.07402	30.12433	13:06:00	D	6.10
104	BATHINDA	BATHINDA	S-NPP	75.06087	30.16019	13:06:00	D	2.50
105	BATHINDA	BATHINDA	S-NPP	75.06544	30.16115	13:06:00	D	3.80
106	BATHINDA	BATHINDA	TERRA	74.74100	30.16500	11:15:00	D	6.10
107	BATHINDA	BATHINDA	S-NPP	75.05172	30.17607	13:06:00	D	4.20
108	BATHINDA	BATHINDA	S-NPP	75.05513	30.18124	13:06:00	D	4.20
109	BATHINDA	BATHINDA	S-NPP	74.84419	30.24183	13:06:00	D	3.00
110	BATHINDA	BATHINDA	S-NPP	75.15255	30.24577	13:06:00	D	3.60
111	BATHINDA	BATHINDA	S-NPP	75.15141	30.24995	13:06:00	D	2.40
112	BATHINDA	BATHINDA	S-NPP	75.06526	30.25002	13:06:00	D	6.80
113	BATHINDA	BATHINDA	S-NPP	74.97178	30.25975	13:06:00	D	3.10
114	BATHINDA	BATHINDA	S-NPP	74.96716	30.27665	13:06:00	D	7.00
115	BATHINDA	BATHINDA	S-NPP	74.97176	30.27761	13:06:00	D	7.00
116	BATHINDA	BATHINDA	S-NPP	75.03362	30.28165	13:06:00	D	2.30
117	BATHINDA	BATHINDA	S-NPP	75.00847	30.28529	13:06:00	D	9.00
118	BATHINDA	BATHINDA	S-NPP	74.93714	30.29720	13:06:00	D	2.60
119	BATHINDA	BATHINDA	S-NPP	75.00497	30.31573	13:06:00	D	3.80
120	BATHINDA	BATHINDA	S-NPP	75.00954	30.31668	13:06:00	D	3.80
121	BATHINDA	BATHINDA	S-NPP	75.00839	30.32089	13:06:00	D	2.50
122	BATHINDA	BATHINDA	S-NPP	75.01674	30.36593	13:06:00	D	11.60
123	BATHINDA	RAMPURA PHUL	S-NPP	75.29256	30.12522	13:06:00	D	4.70
124	BATHINDA	RAMPURA PHUL	S-NPP	75.30468	30.14966	13:06:00	D	7.40
125	BATHINDA	RAMPURA PHUL	S-NPP	75.30337	30.19340	13:06:00	D	3.70
126	BATHINDA	RAMPURA PHUL	S-NPP	75.27312	30.28800	13:06:00	D	14.40
127	BATHINDA	RAMPURA PHUL	S-NPP	75.27753	30.28890	13:06:00	D	21.60
128	BATHINDA	RAMPURA PHUL	S-NPP	75.31731	30.29697	13:06:00	D	3.70
129	BATHINDA	RAMPURA PHUL	S-NPP	75.29905	30.35004	13:06:00	D	3.60

130	BATHINDA	RAMPURA PHUL	S-NPP	75.10828	30.41612	13:06:00	D	5.70
131	BATHINDA	RAMPURA PHUL	S-NPP	75.16435	30.41896	13:06:00	D	14.30
132	BATHINDA	RAMPURA PHUL	S-NPP	75.28732	30.43137	13:06:00	D	6.90
133	BATHINDA	RAMPURA PHUL	S-NPP	75.08900	30.45187	13:06:00	D	8.70
134	BATHINDA	RAMPURA PHUL	S-NPP	75.17189	30.47768	13:06:00	D	19.90
135	BATHINDA	RAMPURA PHUL	S-NPP	75.18744	30.48962	13:06:00	D	5.40
136	BATHINDA	RAMPURA PHUL	S-NPP	75.21852	30.49595	13:06:00	D	19.00
137	BATHINDA	RAMPURA PHUL	S-NPP	75.21181	30.50335	13:06:00	D	11.20
138	BATHINDA	RAMPURA PHUL	S-NPP	75.23508	30.50369	13:06:00	D	2.90
139	BATHINDA	RAMPURA PHUL	S-NPP	75.21625	30.50425	13:06:00	D	11.20
140	BATHINDA	RAMPURA PHUL	S-NPP	75.26597	30.50996	13:06:00	D	3.60
141	BATHINDA	RAMPURA PHUL	S-NPP	75.14587	30.51140	13:06:00	D	5.70
142	BATHINDA	RAMPURA PHUL	S-NPP	75.26216	30.51380	13:06:00	D	3.20
143	BATHINDA	RAMPURA PHUL	S-NPP	75.17919	30.52714	13:06:00	D	2.40
144	BATHINDA	RAMPURA PHUL	S-NPP	75.14019	30.53221	13:06:00	D	3.30
145	BATHINDA	RAMPURA PHUL	S-NPP	75.15801	30.53592	13:06:00	D	16.10
146	BATHINDA	RAMPURA PHUL	S-NPP	75.15243	30.53915	13:06:00	D	4.90
147	BATHINDA	RAMPURA PHUL	S-NPP	75.17467	30.54376	13:06:00	D	2.50
148	BATHINDA	RAMPURA PHUL	S-NPP	75.16012	30.56269	13:06:00	D	2.10
149	BATHINDA	RAMPURA PHUL	S-NPP	75.13888	30.57150	13:06:00	D	18.00
150	BATHINDA	TALWANDI SABO	S-NPP	74.96133	29.97409	13:06:00	D	2.80
151	BATHINDA	TALWANDI SABO	S-NPP	75.02740	30.00124	13:06:00	D	8.90
152	BATHINDA	TALWANDI SABO	S-NPP	75.03201	30.00219	13:06:00	D	8.90
153	BATHINDA	TALWANDI SABO	S-NPP	75.03085	30.00642	13:06:00	D	7.20
154	BATHINDA	TALWANDI SABO	S-NPP	74.86541	30.00897	13:06:00	D	7.50
155	BATHINDA	TALWANDI SABO	S-NPP	75.15668	30.04119	13:06:00	D	7.90
156	BATHINDA	TALWANDI SABO	S-NPP	75.12985	30.07813	13:06:00	D	10.80
157	BATHINDA	TALWANDI SABO	S-NPP	75.26263	30.07938	13:06:00	D	4.30
158	BATHINDA	TALWANDI SABO	S-NPP	75.26025	30.07995	13:06:00	D	6.30
159	BATHINDA	TALWANDI SABO	S-NPP	75.16270	30.08056	13:06:00	D	5.00
160	BATHINDA	TALWANDI SABO	S-NPP	75.16721	30.08150	13:06:00	D	5.00
161	BATHINDA	TALWANDI SABO	S-NPP	75.11620	30.11081	13:06:00	D	5.30
162	BATHINDA	TALWANDI SABO	S-NPP	75.28146	30.11412	13:06:00	D	12.00

163	BATHINDA	TALWANDI SABO	S-NPP	75.20094	30.11507	13:06:00	D	2.90
164	BATHINDA	TALWANDI SABO	S-NPP	75.19416	30.12250	13:06:00	D	5.10
165	FARIDKOT	FARIDKOT	S-NPP	74.77492	30.63771	13:06:00	D	9.00
166	FARIDKOT	FARIDKOT	S-NPP	74.77091	30.63873	13:06:00	D	5.80
167	FARIDKOT	FARIDKOT	S-NPP	74.90565	30.64235	13:06:00	D	3.40
168	FARIDKOT	FARIDKOT	S-NPP	74.67836	30.65058	13:06:00	D	3.90
169	FARIDKOT	FARIDKOT	S-NPP	74.83672	30.71968	13:06:00	D	3.80
170	FARIDKOT	JAITO	S-NPP	74.75953	30.39269	13:06:00	D	6.80
171	FARIDKOT	JAITO	S-NPP	74.93763	30.40727	13:06:00	D	17.30
172	FARIDKOT	JAITO	S-NPP	74.86942	30.42443	13:06:00	D	10.10
173	FARIDKOT	JAITO	S-NPP	74.86824	30.42866	13:06:00	D	6.40
174	FARIDKOT	JAITO	S-NPP	74.87923	30.43300	13:06:00	D	3.50
175	FARIDKOT	JAITO	S-NPP	74.87634	30.43481	13:06:00	D	10.50
176	FARIDKOT	JAITO	S-NPP	74.95364	30.43733	13:06:00	D	5.00
177	FARIDKOT	JAITO	S-NPP	74.85840	30.43753	13:06:00	D	3.10
178	FARIDKOT	JAITO	S-NPP	74.86007	30.44041	13:06:00	D	8.10
179	FARIDKOT	JAITO	S-NPP	74.85723	30.44176	13:06:00	D	3.10
180	FATEHGARH SAHIB	FATEHGARH SAHIB	S-NPP	76.42716	30.51695	13:06:00	D	4.30
181	FATEHGARH SAHIB	FATEHGARH SAHIB	S-NPP	76.43289	30.51806	13:06:00	D	8.70
182	FATEHGARH SAHIB	FATEHGARH SAHIB	S-NPP	76.43188	30.52195	13:06:00	D	3.10
183	FATEHGARH SAHIB	FATEHGARH SAHIB	S-NPP	76.32356	30.55671	13:06:00	D	8.10
184	FATEHGARH SAHIB	FATEHGARH SAHIB	TERRA	76.32900	30.57400	11:15:00	D	4.50
185	FATEHGARH SAHIB	FATEHGARH SAHIB	S-NPP	76.43095	30.58600	13:06:00	D	3.70
186	FATEHGARH SAHIB	FATEHGARH SAHIB	S-NPP	76.42994	30.58988	13:06:00	D	5.20
187	FATEHGARH SAHIB	FATEHGARH SAHIB	S-NPP	76.42490	30.60927	13:06:00	D	24.90
188	FATEHGARH SAHIB	KHAMANOH	S-NPP	76.32874	30.75635	13:06:00	D	4.50
189	FATEHGARH SAHIB	KHAMANOH	S-NPP	76.32267	30.77967	13:06:00	D	10.90
190	FIROZPUR	ZIRA	S-NPP	75.00675	30.91272	13:06:00	D	8.40
191	FIROZPUR	ZIRA	S-NPP	75.06557	30.95574	13:06:00	D	8.10
192	FIROZPUR	ZIRA	S-NPP	74.95908	30.98205	13:06:00	D	2.00
193	FIROZPUR	ZIRA	S-NPP	75.06187	31.00312	13:06:00	D	24.20
194	FIROZPUR	ZIRA	S-NPP	75.02728	31.00919	13:06:00	D	4.50
195	FIROZPUR	ZIRA	S-NPP	74.92532	31.01002	13:06:00	D	3.60



196	FIROZPUR	ZIRA	S-NPP	75.16440	31.01971	13:06:00	D	8.10
197	FIROZPUR	ZIRA	S-NPP	74.99261	31.02415	13:06:00	D	3.20
198	FIROZPUR	ZIRA	S-NPP	75.06715	31.02664	13:06:00	D	7.10
199	FIROZPUR	ZIRA	S-NPP	75.00587	31.04449	13:06:00	D	8.20
200	FIROZPUR	ZIRA	S-NPP	75.10344	31.04735	13:06:00	D	4.70
201	JALANDHAR	NAKODAR	S-NPP	75.46785	31.02144	13:06:00	D	4.30
202	JALANDHAR	NAKODAR	S-NPP	75.47207	31.02230	13:06:00	D	4.30
203	JALANDHAR	PHILLAUR	S-NPP	75.72816	31.06190	13:06:00	D	3.10
204	JALANDHAR	PHILLAUR	S-NPP	75.54410	31.06681	13:06:00	D	6.50
205	JALANDHAR	PHILLAUR	S-NPP	75.88918	31.12786	13:06:00	D	3.60
206	LUDHIANA	JAGRAON	S-NPP	75.45357	30.77129	13:06:00	D	10.50
207	LUDHIANA	JAGRAON	S-NPP	75.45347	30.77328	13:06:00	D	7.70
208	LUDHIANA	JAGRAON	S-NPP	75.50569	30.77746	13:06:00	D	4.10
209	LUDHIANA	JAGRAON	S-NPP	75.55637	30.78760	13:06:00	D	2.70
210	LUDHIANA	JAGRAON	S-NPP	75.44150	30.80090	13:06:00	D	1.80
211	LUDHIANA	JAGRAON	S-NPP	75.45425	30.80352	13:06:00	D	2.80
212	LUDHIANA	JAGRAON	S-NPP	75.60036	30.80490	13:06:00	D	2.40
213	LUDHIANA	JAGRAON	S-NPP	75.62486	30.81290	13:06:00	D	10.40
214	LUDHIANA	JAGRAON	S-NPP	75.47704	30.86818	13:06:00	D	9.40
215	LUDHIANA	JAGRAON	S-NPP	75.48127	30.86903	13:06:00	D	9.30
216	LUDHIANA	JAGRAON	S-NPP	75.50352	30.86923	13:06:00	D	2.30
217	LUDHIANA	JAGRAON	S-NPP	75.50756	30.88713	13:06:00	D	2.50
218	LUDHIANA	JAGRAON	S-NPP	75.53674	30.91336	13:06:00	D	2.90
219	LUDHIANA	JAGRAON	S-NPP	75.52724	30.91567	13:06:00	D	2.40
220	LUDHIANA	JAGRAON	S-NPP	75.60240	30.93107	13:06:00	D	2.10
221	LUDHIANA	JAGRAON	S-NPP	75.56452	30.95736	13:06:00	D	8.10
222	LUDHIANA	JAGRAON	S-NPP	75.56870	30.95821	13:06:00	D	8.10
223	LUDHIANA	LUDHIANA EAST	S-NPP	75.78751	30.72380	13:06:00	D	2.20
224	LUDHIANA	LUDHIANA EAST	S-NPP	75.90067	30.73361	13:06:00	D	1.80
225	LUDHIANA	LUDHIANA EAST	S-NPP	75.86613	30.73516	13:06:00	D	2.20
226	LUDHIANA	LUDHIANA EAST	S-NPP	75.91683	30.73681	13:06:00	D	2.40
227	LUDHIANA	LUDHIANA EAST	TERRA	75.93800	30.81000	11:15:00	D	6.20
228	LUDHIANA	LUDHIANA EAST	S-NPP	76.10991	30.90527	13:06:00	D	5.90

229	LUDHIANA	LUDHIANA EAST	S-NPP	76.10719	30.90675	13:06:00	D	5.90
230	LUDHIANA	LUDHIANA WEST	S-NPP	75.78318	30.77379	13:06:00	D	4.60
231	LUDHIANA	LUDHIANA WEST	S-NPP	75.62434	30.81392	13:06:00	D	8.80
232	LUDHIANA	LUDHIANA WEST	S-NPP	75.64164	30.89696	13:06:00	D	1.80
233	LUDHIANA	PAYAL	S-NPP	75.93142	30.61368	13:06:00	D	10.50
234	LUDHIANA	PAYAL	S-NPP	75.99185	30.62569	13:06:00	D	3.40
235	LUDHIANA	PAYAL	S-NPP	75.99547	30.65979	13:06:00	D	3.30
236	LUDHIANA	RAIKOT	S-NPP	75.66923	30.64504	13:06:00	D	2.80
237	LUDHIANA	RAIKOT	S-NPP	75.72607	30.67774	13:06:00	D	3.80
238	LUDHIANA	RAIKOT	S-NPP	75.77357	30.67882	13:06:00	D	3.00
239	LUDHIANA	RAIKOT	S-NPP	75.53624	30.68088	13:06:00	D	3.70
240	LUDHIANA	RAIKOT	S-NPP	75.53524	30.68208	13:06:00	D	1.90
241	LUDHIANA	RAIKOT	S-NPP	75.77660	30.68365	13:06:00	D	18.80
242	LUDHIANA	RAIKOT	S-NPP	75.72266	30.70669	13:06:00	D	2.20
243	LUDHIANA	RAIKOT	S-NPP	75.72159	30.71071	13:06:00	D	1.90
244	LUDHIANA	RAIKOT	TERRA	75.72700	30.72100	11:15:00	D	6.40
245	LUDHIANA	RAIKOT	TERRA	75.61700	30.77500	11:15:00	D	8.30
246	LUDHIANA	SAMRALA	S-NPP	76.22728	30.83377	13:06:00	D	3.80
247	LUDHIANA	SAMRALA	S-NPP	76.14372	30.95527	13:06:00	D	4.90
248	MANSA	BUDHLADA	S-NPP	75.62597	29.79073	13:06:00	D	7.20
249	MANSA	BUDHLADA	S-NPP	75.63028	29.79160	13:06:00	D	7.20
250	MANSA	BUDHLADA	S-NPP	75.45689	29.80932	13:06:00	D	3.60
251	MANSA	BUDHLADA	S-NPP	75.65703	29.82726	13:06:00	D	5.10
252	MANSA	BUDHLADA	S-NPP	75.66132	29.82812	13:06:00	D	6.50
253	MANSA	BUDHLADA	S-NPP	75.65747	29.82906	13:06:00	D	7.40
254	MANSA	BUDHLADA	S-NPP	75.60052	29.83897	13:06:00	D	6.00
255	MANSA	BUDHLADA	S-NPP	75.64780	29.84869	13:06:00	D	2.70
256	MANSA	BUDHLADA	S-NPP	75.60695	29.84897	13:06:00	D	4.80
257	MANSA	BUDHLADA	S-NPP	75.50166	29.88401	13:06:00	D	7.40
258	MANSA	BUDHLADA	S-NPP	75.50056	29.88814	13:06:00	D	7.40
259	MANSA	BUDHLADA	S-NPP	75.64120	29.89059	13:06:00	D	6.00
260	MANSA	BUDHLADA	S-NPP	75.51254	29.89491	13:06:00	D	8.60
261	MANSA	BUDHLADA	S-NPP	75.45859	29.91017	13:06:00	D	11.10

262	MANSA	BUDHLADA	S-NPP	75.53969	29.91343	13:06:00	D	3.60
263	MANSA	BUDHLADA	S-NPP	75.54027	29.91405	13:06:00	D	2.70
264	MANSA	BUDHLADA	S-NPP	75.51530	29.92192	13:06:00	D	4.30
265	MANSA	BUDHLADA	S-NPP	75.48260	29.92388	13:06:00	D	4.60
266	MANSA	BUDHLADA	S-NPP	75.58508	29.93120	13:06:00	D	4.60
267	MANSA	BUDHLADA	S-NPP	75.58555	29.93211	13:06:00	D	5.20
268	MANSA	BUDHLADA	S-NPP	75.57906	29.93944	13:06:00	D	11.00
269	MANSA	BUDHLADA	S-NPP	75.47821	29.94042	13:06:00	D	5.00
270	MANSA	BUDHLADA	S-NPP	75.52716	29.94613	13:06:00	D	2.90
271	MANSA	BUDHLADA	S-NPP	75.54992	29.94646	13:06:00	D	8.00
272	MANSA	BUDHLADA	S-NPP	75.53149	29.94702	13:06:00	D	4.80
273	MANSA	BUDHLADA	S-NPP	75.49889	29.94902	13:06:00	D	5.40
274	MANSA	BUDHLADA	S-NPP	75.61984	29.95649	13:06:00	D	3.70
275	MANSA	MANSA	S-NPP	75.39596	29.90154	13:06:00	D	4.30
276	MANSA	MANSA	S-NPP	75.19578	29.90861	13:06:00	D	3.40
277	MANSA	MANSA	S-NPP	75.44537	29.94240	13:06:00	D	3.70
278	MANSA	MANSA	S-NPP	75.31152	29.95446	13:06:00	D	2.70
279	MANSA	MANSA	S-NPP	75.57931	30.04482	13:06:00	D	2.40
280	MANSA	MANSA	S-NPP	75.41753	30.06812	13:06:00	D	11.40
281	MANSA	MANSA	S-NPP	75.37024	30.07158	13:06:00	D	5.80
282	MANSA	MANSA	S-NPP	75.41642	30.07225	13:06:00	D	11.40
283	MANSA	MANSA	S-NPP	75.31266	30.07740	13:06:00	D	5.40
284	MANSA	MANSA	S-NPP	75.26150	30.08355	13:06:00	D	5.10
285	MANSA	MANSA	S-NPP	75.54356	30.09377	13:06:00	D	4.10
286	MANSA	MANSA	S-NPP	75.48401	30.09470	13:06:00	D	3.30
287	MANSA	MANSA	S-NPP	75.35798	30.09972	13:06:00	D	2.80
288	MANSA	MANSA	S-NPP	75.36006	30.09976	13:06:00	D	2.40
289	MANSA	MANSA	S-NPP	75.59509	30.10423	13:06:00	D	3.60
290	MANSA	MANSA	S-NPP	75.26478	30.10626	13:06:00	D	11.10
291	MANSA	MANSA	S-NPP	75.49915	30.10645	13:06:00	D	7.00
292	MANSA	MANSA	S-NPP	75.58544	30.10659	13:06:00	D	4.30
293	MANSA	MANSA	S-NPP	75.58436	30.11069	13:06:00	D	3.30
294	MANSA	MANSA	S-NPP	75.48827	30.11293	13:06:00	D	3.40

295	MANSA	MANSA	S-NPP	75.47411	30.11442	13:06:00	D	2.10
296	MANSA	MANSA	S-NPP	75.33575	30.12099	13:06:00	D	5.60
297	MANSA	MANSA	S-NPP	75.49960	30.12880	13:06:00	D	2.80
298	MANSA	MANSA	S-NPP	75.48554	30.13023	13:06:00	D	2.70
299	MANSA	MANSA	S-NPP	75.49686	30.13201	13:06:00	D	2.10
300	MANSA	MANSA	S-NPP	75.60565	30.13223	13:06:00	D	7.50
301	MANSA	MANSA	S-NPP	75.41041	30.13644	13:06:00	D	2.80
302	MOGA	BAGHA PURANA	S-NPP	74.99371	30.58521	13:06:00	D	3.40
303	MOGA	BAGHA PURANA	S-NPP	75.08163	30.59486	13:06:00	D	2.70
304	MOGA	BAGHA PURANA	S-NPP	75.12518	30.60840	13:06:00	D	1.10
305	MOGA	BAGHA PURANA	S-NPP	75.16094	30.61110	13:06:00	D	5.00
306	MOGA	BAGHA PURANA	S-NPP	75.16187	30.61169	13:06:00	D	5.70
307	MOGA	BAGHA PURANA	S-NPP	75.10060	30.61205	13:06:00	D	6.80
308	MOGA	BAGHA PURANA	S-NPP	75.06010	30.63886	13:06:00	D	11.00
309	MOGA	BAGHA PURANA	S-NPP	74.96162	30.67028	13:06:00	D	10.20
310	MOGA	BAGHA PURANA	S-NPP	75.00236	30.67551	13:06:00	D	5.20
311	MOGA	BAGHA PURANA	S-NPP	75.03963	30.67873	13:06:00	D	8.20
312	MOGA	MOGA	S-NPP	75.35822	30.73917	13:06:00	D	2.40
313	MOGA	MOGA	S-NPP	75.37212	30.75493	13:06:00	D	5.80
314	MOGA	MOGA	S-NPP	75.37223	30.75642	13:06:00	D	10.80
315	MOGA	MOGA	S-NPP	75.37102	30.75902	13:06:00	D	4.30
316	MOGA	MOGA	S-NPP	75.38593	30.78947	13:06:00	D	5.90
317	MOGA	MOGA	S-NPP	74.94438	30.79009	13:06:00	D	4.10
318	MOGA	NIHAL SINGH WALA	S-NPP	75.20916	30.52023	13:06:00	D	4.50
319	MOGA	NIHAL SINGH WALA	S-NPP	75.19250	30.52991	13:06:00	D	2.90
320	MOGA	NIHAL SINGH WALA	S-NPP	75.27525	30.53399	13:06:00	D	5.10
321	MOGA	NIHAL SINGH WALA	S-NPP	75.27962	30.53490	13:06:00	D	10.20
322	MOGA	NIHAL SINGH WALA	S-NPP	75.22120	30.54463	13:06:00	D	2.80
323	MOGA	NIHAL SINGH WALA	S-NPP	75.22008	30.54877	13:06:00	D	8.70
324	MOGA	NIHAL SINGH WALA	S-NPP	75.20117	30.56675	13:06:00	D	4.80
325	MOGA	NIHAL SINGH WALA	S-NPP	75.20867	30.60765	13:06:00	D	2.40
326	MUKTSAR	GIDDARBAHA	S-NPP	74.62217	30.20845	13:06:00	D	3.60
327	MUKTSAR	GIDDARBAHA	S-NPP	74.54350	30.23302	13:06:00	D	4.70

328	MUKTSAR	GIDDARBAHA	S-NPP	74.69415	30.24187	13:06:00	D	1.90
329	MUKTSAR	GIDDARBAHA	S-NPP	74.57582	30.29041	13:06:00	D	4.80
330	MUKTSAR	GIDDARBAHA	S-NPP	74.58064	30.29144	13:06:00	D	4.80
331	MUKTSAR	GIDDARBAHA	S-NPP	74.58427	30.29679	13:06:00	D	3.70
332	MUKTSAR	GIDDARBAHA	S-NPP	74.65871	30.30353	13:06:00	D	1.80
333	MUKTSAR	GIDDARBAHA	S-NPP	74.76424	30.39367	13:06:00	D	6.80
334	MUKTSAR	MALAUT	S-NPP	74.51163	30.18035	13:06:00	D	6.10
335	MUKTSAR	MALAUT	S-NPP	74.51651	30.18139	13:06:00	D	6.10
336	MUKTSAR	MALAUT	S-NPP	74.55677	30.18539	13:06:00	D	3.90
337	PATIALA	NABHA	S-NPP	76.18330	30.31012	13:06:00	D	4.60
338	PATIALA	NABHA	S-NPP	76.19121	30.31169	13:06:00	D	3.30
339	PATIALA	NABHA	S-NPP	76.14140	30.32677	13:06:00	D	4.50
340	PATIALA	NABHA	S-NPP	76.11942	30.33076	13:06:00	D	13.20
341	PATIALA	NABHA	S-NPP	76.24300	30.36335	13:06:00	D	7.00
342	PATIALA	NABHA	S-NPP	76.24833	30.38307	13:06:00	D	3.20
343	PATIALA	NABHA	S-NPP	76.24399	30.42354	13:06:00	D	10.20
344	PATIALA	NABHA	S-NPP	76.17004	30.42544	13:06:00	D	1.60
345	PATIALA	NABHA	S-NPP	76.23504	30.43417	13:06:00	D	3.00
346	PATIALA	NABHA	S-NPP	76.27814	30.43444	13:06:00	D	8.20
347	PATIALA	NABHA	S-NPP	76.27711	30.43837	13:06:00	D	8.20
348	PATIALA	NABHA	S-NPP	76.19659	30.43898	13:06:00	D	3.90
349	PATIALA	NABHA	S-NPP	76.18668	30.44117	13:06:00	D	7.50
350	PATIALA	NABHA	S-NPP	76.12818	30.44208	13:06:00	D	4.00
351	PATIALA	NABHA	S-NPP	76.12714	30.44603	13:06:00	D	2.60
352	PATIALA	NABHA	S-NPP	76.21402	30.46723	13:06:00	D	7.40
353	PATIALA	NABHA	S-NPP	76.32722	30.48114	13:06:00	D	6.40
354	PATIALA	NABHA	S-NPP	76.26669	30.51664	13:06:00	D	9.40
355	PATIALA	NABHA	S-NPP	76.09103	30.53557	13:06:00	D	3.90
356	PATIALA	NABHA	S-NPP	76.25954	30.54406	13:06:00	D	4.70
357	PATIALA	NABHA	S-NPP	76.22997	30.56297	13:06:00	D	6.80
358	PATIALA	PATIALA	S-NPP	76.28091	30.16901	13:06:00	D	4.30
359	PATIALA	PATIALA	S-NPP	76.37687	30.23123	13:06:00	D	3.40
360	PATIALA	PATIALA	S-NPP	76.37585	30.23515	13:06:00	D	6.00

361	PATIALA	PATIALA	S-NPP	76.33781	30.24000	13:06:00	D	20.50
362	PATIALA	PATIALA	S-NPP	76.40488	30.24087	13:06:00	D	8.60
363	PATIALA	PATIALA	S-NPP	76.20197	30.25055	13:06:00	D	3.50
364	PATIALA	PATIALA	S-NPP	76.20593	30.25133	13:06:00	D	3.50
365	PATIALA	PATIALA	S-NPP	76.31316	30.30699	13:06:00	D	5.80
366	PATIALA	PATIALA	S-NPP	76.38520	30.38290	13:06:00	D	3.20
367	PATIALA	PATIALA	S-NPP	76.43915	30.38523	13:06:00	D	5.20
368	PATIALA	PATIALA	S-NPP	76.46584	30.39860	13:06:00	D	9.10
369	PATIALA	PATIALA	S-NPP	76.39273	30.40076	13:06:00	D	4.50
370	PATIALA	PATIALA	S-NPP	76.39851	30.40188	13:06:00	D	5.50
371	PATIALA	RAJPURA	S-NPP	76.68810	30.34886	13:06:00	D	5.10
372	PATIALA	RAJPURA	S-NPP	76.69369	30.34993	13:06:00	D	13.30
373	PATIALA	RAJPURA	S-NPP	76.72614	30.46901	13:06:00	D	2.70
374	PATIALA	SAMANA	S-NPP	76.16022	29.82201	13:06:00	D	4.00
375	PATIALA	SAMANA	S-NPP	76.15918	29.82601	13:06:00	D	4.00
376	PATIALA	SAMANA	S-NPP	76.16035	29.82624	13:06:00	D	2.80
377	PATIALA	SAMANA	TERRA	76.20700	29.84500	11:15:00	D	3.20
378	PATIALA	SAMANA	S-NPP	76.07409	29.84675	13:06:00	D	7.00
379	PATIALA	SAMANA	S-NPP	76.16907	29.87414	13:06:00	D	2.80
380	PATIALA	SAMANA	S-NPP	76.06061	29.88202	13:06:00	D	8.80
381	PATIALA	SAMANA	S-NPP	76.07782	29.89807	13:06:00	D	4.10
382	PATIALA	SAMANA	S-NPP	76.08189	29.89887	13:06:00	D	6.00
383	PATIALA	SAMANA	S-NPP	76.08386	29.90767	13:06:00	D	1.60
384	PATIALA	SAMANA	S-NPP	76.10639	29.92094	13:06:00	D	1.80
385	PATIALA	SAMANA	S-NPP	76.17061	29.93308	13:06:00	D	6.40
386	PATIALA	SAMANA	S-NPP	76.12853	29.93382	13:06:00	D	6.90
387	PATIALA	SAMANA	S-NPP	76.17075	29.93396	13:06:00	D	5.90
388	PATIALA	SAMANA	S-NPP	76.16366	29.94510	13:06:00	D	4.00
389	PATIALA	SAMANA	S-NPP	76.05537	29.96960	13:06:00	D	4.80
390	PATIALA	SAMANA	S-NPP	76.04814	29.98080	13:06:00	D	2.30
391	PATIALA	SAMANA	S-NPP	76.13816	29.99447	13:06:00	D	3.70
392	PATIALA	SAMANA	S-NPP	76.14919	30.00084	13:06:00	D	4.30
393	PATIALA	SAMANA	S-NPP	76.18613	30.02067	13:06:00	D	6.40



394	PATIALA	SAMANA	S-NPP	76.12473	30.04643	13:06:00	D	2.30
395	PATIALA	SAMANA	S-NPP	76.10553	30.05515	13:06:00	D	4.90
396	PATIALA	SAMANA	S-NPP	76.09631	30.07427	13:06:00	D	2.00
397	PATIALA	SAMANA	S-NPP	76.14259	30.07514	13:06:00	D	4.80
398	PATIALA	SAMANA	S-NPP	76.14156	30.07912	13:06:00	D	6.50
399	PATIALA	SAMANA	S-NPP	76.14453	30.08389	13:06:00	D	2.70
400	PATIALA	SAMANA	S-NPP	76.09721	30.08703	13:06:00	D	4.60
401	PATIALA	SAMANA	S-NPP	76.13430	30.10695	13:06:00	D	6.40
402	PATIALA	SAMANA	S-NPP	76.27351	30.11783	13:06:00	D	2.10
403	PATIALA	SAMANA	S-NPP	76.09293	30.11971	13:06:00	D	3.50
404	PATIALA	SAMANA	S-NPP	76.28275	30.16702	13:06:00	D	5.60
405	PATIALA	SAMANA	S-NPP	76.18230	30.23007	13:06:00	D	12.80
406	RUPNAGAR	RUPNAGAR	S-NPP	76.57631	31.14601	13:06:00	D	3.20
407	SANGRUR	DHURI	S-NPP	75.72346	30.28483	13:06:00	D	3.90
408	SANGRUR	DHURI	S-NPP	75.72247	30.28592	13:06:00	D	5.50
409	SANGRUR	DHURI	S-NPP	75.66770	30.29479	13:06:00	D	5.00
410	SANGRUR	DHURI	S-NPP	75.81069	30.31969	13:06:00	D	2.10
411	SANGRUR	DHURI	S-NPP	75.81483	30.32053	13:06:00	D	2.10
412	SANGRUR	DHURI	S-NPP	75.82907	30.34887	13:06:00	D	2.60
413	SANGRUR	DHURI	S-NPP	75.83105	30.35774	13:06:00	D	2.70
414	SANGRUR	DHURI	S-NPP	75.92426	30.38066	13:06:00	D	2.90
415	SANGRUR	DHURI	S-NPP	75.79450	30.39705	13:06:00	D	9.80
416	SANGRUR	DHURI	S-NPP	75.79865	30.39788	13:06:00	D	17.70
417	SANGRUR	DHURI	S-NPP	75.72495	30.52995	13:06:00	D	5.20
418	SANGRUR	MALERKOTLA	S-NPP	75.81593	30.48084	13:06:00	D	16.60
419	SANGRUR	MALERKOTLA	S-NPP	75.83435	30.49297	13:06:00	D	3.30
420	SANGRUR	MALERKOTLA	TERRA	76.05900	30.49600	11:15:00	D	10.60
421	SANGRUR	MALERKOTLA	TERRA	76.04900	30.49700	11:15:00	D	34.20
422	SANGRUR	MALERKOTLA	S-NPP	75.78672	30.50887	13:06:00	D	5.30
423	SANGRUR	MALERKOTLA	S-NPP	75.76970	30.50937	13:06:00	D	10.30
424	SANGRUR	MALERKOTLA	S-NPP	75.76912	30.50961	13:06:00	D	5.60
425	SANGRUR	MALERKOTLA	S-NPP	75.79086	30.50969	13:06:00	D	5.30
426	SANGRUR	MALERKOTLA	S-NPP	75.77325	30.51043	13:06:00	D	5.60

427	SANGRUR	MALERKOTLA	S-NPP	75.74261	30.52930	13:06:00	D	10.70
428	SANGRUR	MALERKOTLA	S-NPP	75.74675	30.53014	13:06:00	D	7.10
429	SANGRUR	MALERKOTLA	S-NPP	75.70988	30.58639	13:06:00	D	2.50
430	SANGRUR	MALERKOTLA	S-NPP	75.89088	30.60561	13:06:00	D	6.20
431	SANGRUR	MALERKOTLA	TERRA	75.79900	30.65500	11:15:00	D	11.80
432	SANGRUR	MOONAK	S-NPP	75.88300	29.75890	13:06:00	D	5.30
433	SANGRUR	MOONAK	S-NPP	76.06894	29.79568	13:06:00	D	9.80
434	SANGRUR	MOONAK	S-NPP	76.01819	29.79742	13:06:00	D	0.90
435	SANGRUR	MOONAK	S-NPP	76.02073	29.79887	13:06:00	D	2.40
436	SANGRUR	MOONAK	S-NPP	75.91699	29.80237	13:06:00	D	2.10
437	SANGRUR	MOONAK	S-NPP	75.95944	29.80671	13:06:00	D	27.10
438	SANGRUR	MOONAK	S-NPP	75.88362	29.81268	13:06:00	D	7.30
439	SANGRUR	MOONAK	TERRA	76.01300	29.81900	11:15:00	D	5.60
440	SANGRUR	MOONAK	S-NPP	75.96864	29.82132	13:06:00	D	3.50
441	SANGRUR	MOONAK	S-NPP	75.96347	29.82452	13:06:00	D	5.60
442	SANGRUR	MOONAK	S-NPP	76.02827	29.82487	13:06:00	D	12.40
443	SANGRUR	MOONAK	S-NPP	76.03235	29.82569	13:06:00	D	14.60
444	SANGRUR	MOONAK	S-NPP	75.96242	29.82856	13:06:00	D	5.60
445	SANGRUR	MOONAK	S-NPP	76.06499	29.83227	13:06:00	D	3.80
446	SANGRUR	MOONAK	S-NPP	76.05580	29.83464	13:06:00	D	4.40
447	SANGRUR	MOONAK	S-NPP	76.05989	29.83546	13:06:00	D	4.40
448	SANGRUR	MOONAK	S-NPP	76.05476	29.83866	13:06:00	D	4.40
449	SANGRUR	MOONAK	S-NPP	76.05884	29.83947	13:06:00	D	4.40
450	SANGRUR	MOONAK	S-NPP	75.96338	29.84149	13:06:00	D	2.00
451	SANGRUR	MOONAK	S-NPP	75.96750	29.84231	13:06:00	D	3.90
452	SANGRUR	MOONAK	S-NPP	76.05266	29.84668	13:06:00	D	5.10
453	SANGRUR	MOONAK	S-NPP	75.87296	29.85320	13:06:00	D	2.70
454	SANGRUR	MOONAK	S-NPP	75.86772	29.85642	13:06:00	D	28.90
455	SANGRUR	MOONAK	S-NPP	75.87189	29.85725	13:06:00	D	28.90
456	SANGRUR	MOONAK	S-NPP	76.11767	29.85969	13:06:00	D	4.20
457	SANGRUR	MOONAK	S-NPP	76.01778	29.86506	13:06:00	D	5.00
458	SANGRUR	MOONAK	S-NPP	75.99000	29.87224	13:06:00	D	4.20
459	SANGRUR	MOONAK	S-NPP	76.01053	29.87631	13:06:00	D	1.60

460	SANGRUR	MOONAK	S-NPP	75.93279	29.89412	13:06:00	D	2.50
461	SANGRUR	MOONAK	S-NPP	75.99707	29.89480	13:06:00	D	8.00
462	SANGRUR	MOONAK	S-NPP	75.90790	29.90608	13:06:00	D	4.20
463	SANGRUR	MOONAK	S-NPP	75.97493	29.91541	13:06:00	D	2.70
464	SANGRUR	SANGRUR	S-NPP	75.59837	30.14924	13:06:00	D	6.10
465	SANGRUR	SANGRUR	S-NPP	75.60018	30.15268	13:06:00	D	6.80
466	SANGRUR	SANGRUR	S-NPP	75.60445	30.15353	13:06:00	D	5.50
467	SANGRUR	SANGRUR	S-NPP	75.60581	30.15509	13:06:00	D	3.70
468	SANGRUR	SANGRUR	S-NPP	75.59619	30.15743	13:06:00	D	4.20
469	SANGRUR	SANGRUR	S-NPP	75.59937	30.16239	13:06:00	D	4.50
470	SANGRUR	SANGRUR	S-NPP	75.59828	30.16648	13:06:00	D	4.50
471	SANGRUR	SANGRUR	S-NPP	75.69587	30.16935	13:06:00	D	6.00
472	SANGRUR	SANGRUR	S-NPP	75.70010	30.17021	13:06:00	D	8.70
473	SANGRUR	SANGRUR	S-NPP	75.69792	30.17215	13:06:00	D	6.90
474	SANGRUR	SANGRUR	S-NPP	75.60780	30.18136	13:06:00	D	4.40
475	SANGRUR	SANGRUR	S-NPP	75.69685	30.18241	13:06:00	D	1.90
476	SANGRUR	SANGRUR	S-NPP	75.63312	30.22093	13:06:00	D	13.10
477	SANGRUR	SANGRUR	S-NPP	75.63735	30.22178	13:06:00	D	13.10
478	SANGRUR	SANGRUR	S-NPP	75.67969	30.23034	13:06:00	D	2.90
479	SANGRUR	SANGRUR	S-NPP	75.68390	30.23119	13:06:00	D	4.00
480	SANGRUR	SANGRUR	S-NPP	76.05092	30.25439	13:06:00	D	10.10
481	SANGRUR	SANGRUR	S-NPP	75.75513	30.26259	13:06:00	D	2.90
482	SANGRUR	SANGRUR	S-NPP	76.08986	30.28315	13:06:00	D	10.50
483	SANGRUR	SANGRUR	S-NPP	76.09386	30.28395	13:06:00	D	15.00
484	SANGRUR	SANGRUR	S-NPP	76.08482	30.28632	13:06:00	D	3.30
485	SANGRUR	SANGRUR	S-NPP	76.10985	30.28715	13:06:00	D	1.40
486	SANGRUR	SANGRUR	S-NPP	76.19344	30.28721	13:06:00	D	1.80
487	SANGRUR	SANGRUR	S-NPP	76.11369	30.30461	13:06:00	D	1.80
488	SANGRUR	SUNAM	S-NPP	75.67317	29.92293	13:06:00	D	6.20
489	SANGRUR	SUNAM	S-NPP	75.67751	29.95970	13:06:00	D	10.70
490	SANGRUR	SUNAM	S-NPP	75.99196	29.98230	13:06:00	D	2.50
491	SANGRUR	SUNAM	S-NPP	76.00240	30.00903	13:06:00	D	2.60
492	SANGRUR	SUNAM	S-NPP	76.00201	30.00962	13:06:00	D	3.10

493	SANGRUR	SUNAM	S-NPP	76.02757	30.01043	13:06:00	D	2.10
494	SANGRUR	SUNAM	S-NPP	76.02684	30.01401	13:06:00	D	5.30
495	SANGRUR	SUNAM	S-NPP	76.02651	30.01444	13:06:00	D	3.30
496	SANGRUR	SUNAM	S-NPP	76.02070	30.02119	13:06:00	D	1.90
497	SANGRUR	SUNAM	S-NPP	76.03671	30.05814	13:06:00	D	24.00
498	SANGRUR	SUNAM	S-NPP	76.04076	30.05895	13:06:00	D	22.00
499	SANGRUR	SUNAM	S-NPP	76.06402	30.06782	13:06:00	D	6.80
500	SANGRUR	SUNAM	S-NPP	76.05892	30.07100	13:06:00	D	4.60
501	SANGRUR	SUNAM	S-NPP	76.06297	30.07181	13:06:00	D	6.60
502	SANGRUR	SUNAM	S-NPP	76.02334	30.07652	13:06:00	D	5.20
503	SANGRUR	SUNAM	S-NPP	76.00089	30.08047	13:06:00	D	11.50
504	SANGRUR	SUNAM	S-NPP	76.03029	30.09895	13:06:00	D	10.20
505	SANGRUR	SUNAM	S-NPP	76.03435	30.09975	13:06:00	D	10.20
506	SANGRUR	SUNAM	S-NPP	76.02924	30.10294	13:06:00	D	10.20
507	SANGRUR	SUNAM	S-NPP	75.95529	30.10908	13:06:00	D	6.20
508	SANGRUR	SUNAM	S-NPP	75.95461	30.10928	13:06:00	D	4.50
509	SANGRUR	SUNAM	S-NPP	75.95871	30.11009	13:06:00	D	7.40
510	SANGRUR	SUNAM	S-NPP	75.92346	30.11529	13:06:00	D	3.10
511	SANGRUR	SUNAM	S-NPP	75.98792	30.11572	13:06:00	D	4.40
512	SANGRUR	SUNAM	S-NPP	75.98734	30.11573	13:06:00	D	3.50
513	SANGRUR	SUNAM	S-NPP	75.99142	30.11653	13:06:00	D	5.00
514	SANGRUR	SUNAM	S-NPP	75.98627	30.11973	13:06:00	D	3.50
515	SANGRUR	SUNAM	S-NPP	75.98686	30.11973	13:06:00	D	4.40
516	SANGRUR	SUNAM	S-NPP	75.99035	30.12053	13:06:00	D	5.00
517	SANGRUR	SUNAM	S-NPP	75.72549	30.15197	13:06:00	D	3.90
518	SAS NAGAR	MOHALI	S-NPP	76.72212	30.58973	13:06:00	D	4.30
519	SAS NAGAR	MOHALI	S-NPP	76.72500	30.59108	13:06:00	D	3.50
520	TARN TARAN	PATTI	S-NPP	74.57838	31.18308	13:06:00	D	4.30

**Details of residue burning events in Haryana on 12-Nov-2019**

<b>S. No.</b>	<b>District</b>	<b>Tehsil / Block</b>	<b>Satellite</b>	<b>Longitude</b>	<b>Latitude</b>	<b>Time (IST)</b>	<b>Day / Night</b>	<b>Fire Power (W/m<sup>2</sup>)</b>
1	AMBALA	BARARA	S-NPP	77.03943	30.26676	13:06:00	D	2.40
2	AMBALA	NARAYANGARH	S-NPP	77.04052	30.42593	13:06:00	D	3.60
3	FATEHABAD	RATIA	S-NPP	75.67105	29.68201	13:06:00	D	3.40
4	FATEHABAD	RATIA	S-NPP	75.67233	29.75252	13:06:00	D	13.90
5	FATEHABAD	TOHANA	S-NPP	75.92667	29.58963	13:06:00	D	2.30
6	FATEHABAD	TOHANA	S-NPP	75.83945	29.60201	13:06:00	D	7.50
7	FATEHABAD	TOHANA	S-NPP	75.83195	29.63056	13:06:00	D	4.50
8	FATEHABAD	TOHANA	S-NPP	75.94823	29.67502	13:06:00	D	4.60
9	FATEHABAD	TOHANA	S-NPP	75.84722	29.76680	13:06:00	D	1.40
10	FATEHABAD	TOHANA	S-NPP	75.75436	29.78220	13:06:00	D	6.00
11	FATEHABAD	TOHANA	S-NPP	75.81142	29.78521	13:06:00	D	9.50
12	JIND	NARWANA	S-NPP	76.08474	29.53359	13:06:00	D	2.90
13	JIND	NARWANA	S-NPP	75.94803	29.67811	13:06:00	D	4.70
14	JIND	NARWANA	S-NPP	76.15665	29.70336	13:06:00	D	5.00
15	JIND	NARWANA	S-NPP	76.16372	29.70895	13:06:00	D	6.70
16	JIND	NARWANA	S-NPP	76.16777	29.70974	13:06:00	D	6.70
17	JIND	NARWANA	S-NPP	76.05613	29.71280	13:06:00	D	5.10
18	JIND	NARWANA	S-NPP	76.09589	29.72506	13:06:00	D	3.40
19	JIND	NARWANA	S-NPP	76.13142	29.73642	13:06:00	D	2.30
20	JIND	SAFIDON	S-NPP	76.43472	29.38868	13:06:00	D	2.80
21	JIND	SAFIDON	S-NPP	76.70007	29.43247	13:06:00	D	1.50
22	JIND	SAFIDON	S-NPP	76.68186	29.43302	13:06:00	D	4.60
23	JIND	SAFIDON	S-NPP	76.54737	29.43563	13:06:00	D	5.30
24	JIND	SAFIDON	S-NPP	76.67394	29.46430	13:06:00	D	5.20
25	KAITHAL	GUHLA	S-NPP	76.30264	29.98961	13:06:00	D	15.70
26	KAITHAL	KAITHAL	S-NPP	76.46062	29.57916	13:06:00	D	2.50
27	KAITHAL	KAITHAL	S-NPP	76.38749	29.62287	13:06:00	D	2.80
28	KAITHAL	KAITHAL	S-NPP	76.35381	29.62461	13:06:00	D	2.40
29	KAITHAL	KAITHAL	S-NPP	76.34882	29.62780	13:06:00	D	3.40
30	KAITHAL	KAITHAL	S-NPP	76.35278	29.62857	13:06:00	D	2.40

31	KAITHAL	KAITHAL	S-NPP	76.34382	29.63099	13:06:00	D	3.00
32	KAITHAL	KAITHAL	S-NPP	76.34541	29.65703	13:06:00	D	2.40
33	KAITHAL	KAITHAL	S-NPP	76.62086	29.68060	13:06:00	D	4.90
34	KAITHAL	KAITHAL	S-NPP	76.25013	29.75185	13:06:00	D	8.90
35	KAITHAL	KAITHAL	S-NPP	76.25413	29.75265	13:06:00	D	10.10
36	KAITHAL	KAITHAL	S-NPP	76.35214	29.79302	13:06:00	D	2.70
37	KAITHAL	KAITHAL	S-NPP	76.26575	29.80509	13:06:00	D	3.80
38	KAITHAL	KAITHAL	S-NPP	76.33303	29.83496	13:06:00	D	2.30
39	KAITHAL	KAITHAL	S-NPP	76.38029	29.84419	13:06:00	D	6.20
40	KAITHAL	KAITHAL	S-NPP	76.40384	29.84465	13:06:00	D	12.20
41	KAITHAL	KAITHAL	S-NPP	76.40283	29.84859	13:06:00	D	12.20
42	KAITHAL	KAITHAL	S-NPP	76.29521	29.85252	13:06:00	D	5.00
43	KAITHAL	KAITHAL	S-NPP	76.29601	29.85357	13:06:00	D	9.70
44	KAITHAL	KAITHAL	TERRA	76.70800	29.87700	11:15:00	D	7.30
45	KARNAL	ASSANDH	TERRA	76.59600	29.47900	11:15:00	D	4.70
46	KARNAL	ASSANDH	S-NPP	76.68407	29.53423	13:06:00	D	1.90
47	KARNAL	ASSANDH	S-NPP	76.72408	29.54205	13:06:00	D	3.30
48	KARNAL	ASSANDH	S-NPP	76.75102	29.61610	13:06:00	D	3.50
49	KARNAL	ASSANDH	S-NPP	76.75287	29.61694	13:06:00	D	5.00
50	KARNAL	GHARAUNDA	S-NPP	77.07149	29.45226	13:06:00	D	3.40
51	KARNAL	GHARAUNDA	S-NPP	76.93906	29.55558	13:06:00	D	5.90
52	KARNAL	GHARAUNDA	S-NPP	76.78558	29.55811	13:06:00	D	3.20
53	KURUKSHETRA	PEHOWA	S-NPP	76.68269	29.97937	13:06:00	D	2.90
54	KURUKSHETRA	THANESAR	S-NPP	76.75727	30.09538	13:06:00	D	3.20
55	MAHENDRAGARH	NARNAUL	TERRA	75.97500	27.91300	11:15:00	D	7.20
56	PALWAL	PALWAL	TERRA	77.34200	28.22900	11:15:00	D	5.80
57	PANCHKULA	PANCHKULA	S-NPP	77.02119	30.52501	13:06:00	D	3.10
58	PANIPAT	PANIPAT	S-NPP	76.77377	29.38233	13:06:00	D	4.30
59	ROHTAK	ROHTAK	S-NPP	76.60778	28.99416	13:06:00	D	3.00
60	ROHTAK	ROHTAK	S-NPP	76.61639	29.04147	13:06:00	D	1.60
61	ROHTAK	ROHTAK	S-NPP	76.61599	29.04248	13:06:00	D	2.10
62	SIRSA	DABWALI	S-NPP	74.72337	29.90094	01:48:00	N	1.10
63	SIRSA	SIRSA	S-NPP	75.18609	29.41320	13:06:00	D	3.90

64	YAMUNANAGAR	CHHACHHRAULII	S-NPP	77.40925	30.25905	13:06:00	D	2.30
65	YAMUNANAGAR	JAGADHRI	S-NPP	77.33140	30.29879	13:06:00	D	2.00
66	YAMUNANAGAR	JAGADHRI	S-NPP	77.33998	30.30822	13:06:00	D	2.00
67	YAMUNANAGAR	JAGADHRI	S-NPP	77.26698	30.33743	13:06:00	D	4.10
68	YAMUNANAGAR	JAGADHRI	S-NPP	77.22015	30.34823	13:06:00	D	2.50



**Details of residue burning events in Uttar Pradesh on 12-Nov-2019**

S. No.	District	Tehsil / Block	Satellite	Longitude	Latitude	Time (IST)	Day / Night	Fire Power (W/m <sup>2</sup> )
1	ALIGARH	KHAIR	S-NPP	77.71648	28.05400	01:48:00	N	0.20
2	ALLAHABAD	HADIYA	S-NPP	82.14589	25.33163	13:00:00	D	3.00
3	ALLAHABAD	HADIYA	S-NPP	82.07737	25.43823	13:00:00	D	2.50
4	AMBEDKARNAGAR	AKBARPUR	S-NPP	82.53773	26.37837	13:00:00	D	2.00
5	AMBEDKARNAGAR	JALALPUR	S-NPP	82.67785	26.37004	13:00:00	D	2.70
6	AMROHA	AMROHA	S-NPP	78.60264	28.86790	13:06:00	D	1.70
7	AURAIYA	BIDHUNA	S-NPP	79.68925	26.80013	13:06:00	D	5.80
8	AURAIYA	BIDHUNA	S-NPP	79.69665	26.80875	13:06:00	D	3.00
9	BADAUN	DATAGANJ	S-NPP	79.38667	27.86452	13:06:00	D	2.80
10	BAGHPAT	BAGHPAT	S-NPP	77.38010	28.85246	13:06:00	D	3.90
11	BAGHPAT	BAGHPAT	S-NPP	77.36286	28.87706	13:06:00	D	4.30
12	BAHRAICH	BAHRAICH	S-NPP	81.83073	27.43719	13:06:00	D	2.50
13	BAHRAICH	BAHRAICH	S-NPP	81.88635	27.48632	13:06:00	D	1.60
14	BAHRAICH	MAHASI	S-NPP	81.55026	27.56860	13:06:00	D	4.20
15	BAHRAICH	MAHASI	S-NPP	81.47786	27.70698	13:06:00	D	2.30
16	BAHRAICH	MAHASI	S-NPP	81.41087	27.71521	13:06:00	D	13.50
17	BAHRAICH	MAHASI	S-NPP	81.40414	27.74851	13:06:00	D	2.50
18	BAHRAICH	NANPARA	S-NPP	81.52009	27.78085	13:06:00	D	8.60
19	BAHRAICH	NANPARA	S-NPP	81.54672	27.93704	01:48:00	N	0.60
20	BAHRAICH	NANPARA	S-NPP	81.62727	28.00115	13:06:00	D	1.40
21	BAHRAICH	NANPARA	S-NPP	81.41063	28.14734	13:06:00	D	1.90
22	BAHRAICH	NANPARA	S-NPP	81.41035	28.14916	13:06:00	D	2.30
23	BALLIA	BELTHARA ROAD	S-NPP	83.82538	26.05137	13:00:00	D	2.20
24	BALLIA	RASRA	S-NPP	83.95216	25.89797	13:00:00	D	2.80
25	BALRAMPUR	BALRAMPUR	S-NPP	82.10625	27.48713	13:06:00	D	2.10
26	BALRAMPUR	TULSIPUR	S-NPP	82.61655	27.57902	13:06:00	D	2.20
27	BANDA	BABERU	S-NPP	80.94597	25.51142	13:00:00	D	4.00
28	BARABANKI	HADARGARH	S-NPP	81.48142	26.59495	13:06:00	D	2.80
29	BARABANKI	RAMSANEHIGHAT	S-NPP	81.44244	26.75046	13:06:00	D	2.10
30	BAREILLY	FARIDPUR	S-NPP	79.64449	28.21844	13:06:00	D	2.60

31	BASTI	BASTI	S-NPP	82.70162	26.81053	13:06:00	D	1.50
32	BASTI	RUDHAULI	S-NPP	82.92484	26.92871	13:06:00	D	4.70
33	BASTI	RUDHAULI	S-NPP	82.89453	26.98507	13:06:00	D	1.50
34	DEORIA	BARHAJ	S-NPP	83.73483	26.33841	13:00:00	D	1.70
35	DEORIA	SALEMPUR	S-NPP	83.91485	26.19615	13:00:00	D	3.30
36	ETAH	ETAH	S-NPP	78.81919	27.50427	13:06:00	D	3.70
37	ETAWAH	BHARTHNA	S-NPP	79.26450	26.79928	13:06:00	D	4.20
38	ETAWAH	BHARTHNA	S-NPP	79.23500	26.80968	13:06:00	D	2.20
39	ETAWAH	BHARTHNA	S-NPP	79.32866	26.82808	01:48:00	N	0.40
40	ETAWAH	BHARTHNA	S-NPP	79.25234	26.90612	13:06:00	D	3.50
41	ETAWAH	SAIFAI	S-NPP	79.02167	26.92118	13:06:00	D	3.00
42	ETAWAH	SAIFAI	S-NPP	79.04442	26.95163	13:06:00	D	2.20
43	ETAWAH	SAIFAI	S-NPP	79.08445	26.97004	13:06:00	D	3.50
44	FATEHPUR	BINKI	S-NPP	80.75486	26.00513	13:00:00	D	6.80
45	FATEHPUR	FATEHPUR	S-NPP	80.94997	25.78937	13:00:00	D	1.80
46	FATEHPUR	FATEHPUR	S-NPP	80.82710	25.81414	13:00:00	D	3.20
47	FATEHPUR	FATEHPUR	S-NPP	80.80526	25.96489	13:00:00	D	2.00
48	FATEHPUR	FATEHPUR	S-NPP	80.91974	26.01176	13:00:00	D	3.40
49	FATEHPUR	FATEHPUR	S-NPP	80.78587	26.02098	13:00:00	D	1.70
50	FIROZABAD	JASRANA	S-NPP	78.66545	27.22203	13:06:00	D	2.60
51	FIROZABAD	SIKOHABAD	S-NPP	78.67117	27.02961	13:06:00	D	4.80
52	GAUTAMBUDHNAGAR	GAUTAMBUDHNAGAR	S-NPP	77.48466	28.45909	13:06:00	D	3.80
53	GAUTAMBUDHNAGAR	GAUTAMBUDHNAGAR	TERRA	77.47000	28.46600	11:15:00	D	4.50
54	GAZIPUR	GAZIPUR	S-NPP	83.62431	25.73796	13:00:00	D	1.40
55	GAZIPUR	MUHAMMADBAD	S-NPP	83.91974	25.60882	13:00:00	D	2.70
56	GAZIPUR	MUHAMMADBAD	S-NPP	83.90267	25.74832	13:00:00	D	1.20
57	GAZIPUR	ZAMANIA	S-NPP	83.81609	25.52611	13:00:00	D	3.60
58	GONDA	MANKAPUR	S-NPP	82.50001	27.05146	01:48:00	N	0.30
59	GONDA	MANKAPUR	S-NPP	82.50073	27.05484	01:48:00	N	0.50
60	GORAKHPUR	BANSGAON	S-NPP	83.29150	26.53025	13:00:00	D	2.20
61	GORAKHPUR	BANSGAON	S-NPP	83.31483	26.55412	13:00:00	D	3.60
62	GORAKHPUR	CHAURI CHAURA	S-NPP	83.59288	26.66274	13:00:00	D	1.70
63	HAPUR	HAPUR	S-NPP	77.80743	28.64522	13:06:00	D	6.50

64	HAPUR	HAPUR	S-NPP	77.78330	28.75797	13:06:00	D	3.10
65	HAPUR	HAPUR	S-NPP	77.85175	28.78638	13:06:00	D	5.10
66	HARDOI	HARDOI	S-NPP	79.94648	27.45066	13:06:00	D	4.60
67	HARDOI	HARDOI	S-NPP	79.99284	27.48818	13:06:00	D	3.40
68	HARDOI	HARDOI	S-NPP	80.25771	27.59064	13:06:00	D	2.80
69	HARDOI	SHAHABAD	S-NPP	79.90244	27.53369	13:06:00	D	1.50
70	HARDOI	SIWAIJPUR	S-NPP	79.92018	27.27586	13:06:00	D	1.60
71	HARDOI	SIWAIJPUR	S-NPP	79.84019	27.29090	13:06:00	D	4.50
72	HARDOI	SIWAIJPUR	S-NPP	79.88496	27.33474	13:06:00	D	3.30
73	JALAUN	JALAUN	S-NPP	79.35930	26.23875	13:06:00	D	3.90
74	JALAUN	KALPI	S-NPP	79.67577	25.98596	13:00:00	D	4.60
75	JALAUN	KALPI	S-NPP	79.90147	26.03983	13:00:00	D	2.20
76	JALAUN	KONCH	S-NPP	79.08949	26.11939	13:00:00	D	2.10
77	JALAUN	KONCH	S-NPP	79.23690	26.14549	13:00:00	D	4.10
78	JALAUN	KONCH	S-NPP	79.23858	26.14565	13:06:00	D	4.50
79	JALAUN	MADHOGARH	S-NPP	79.33051	26.25989	13:06:00	D	2.40
80	JALAUN	MADHOGARH	S-NPP	79.32792	26.30062	13:06:00	D	3.30
81	JALAUN	URAI	S-NPP	79.42911	26.05559	13:00:00	D	3.80
82	JAUNPUR	SHHGANJ	S-NPP	82.74503	25.90627	13:00:00	D	2.10
83	JHANSI	JHANSI	S-NPP	78.68607	25.51348	13:00:00	D	4.50
84	JHANSI	JHANSI	S-NPP	78.69115	25.51443	13:00:00	D	4.50
85	JHANSI	JHANSI	S-NPP	78.71998	25.51675	13:00:00	D	3.70
86	JHANSI	JHANSI	S-NPP	78.55598	25.54836	13:00:00	D	2.50
87	JHANSI	MOTH	S-NPP	78.89214	25.67645	13:00:00	D	7.10
88	JHANSI	MOTH	S-NPP	78.89381	25.71539	13:00:00	D	3.60
89	KANPUR	GHATAMPUR	S-NPP	80.01504	26.09199	13:00:00	D	2.50
90	KANPUR DEHAT	AKBARPUR	S-NPP	79.91047	26.36092	13:06:00	D	5.30
91	KANPUR DEHAT	AKBARPUR	S-NPP	79.96397	26.43505	13:06:00	D	2.10
92	KANPUR DEHAT	BHOGANIPUR	S-NPP	79.70816	26.27073	13:06:00	D	3.50
93	KANPUR DEHAT	DERAPUR	S-NPP	79.69949	26.57313	01:48:00	N	0.60
94	KANPUR DEHAT	RASULABAD	S-NPP	79.71425	26.74361	13:06:00	D	2.20
95	KANPUR DEHAT	SIKANDRA	S-NPP	79.67506	26.29440	13:06:00	D	5.10
96	KANPUR DEHAT	SIKANDRA	S-NPP	79.73265	26.33020	13:06:00	D	3.30

97	KAUSHAMBI	CHAIL	S-NPP	81.52885	25.38725	13:00:00	D	2.00
98	KAUSHAMBI	MANJHANPUR	S-NPP	81.33031	25.41052	13:00:00	D	4.10
99	KAUSHAMBI	MANJHANPUR	S-NPP	81.32373	25.49033	13:00:00	D	12.60
100	KAUSHAMBI	MANJHANPUR	S-NPP	81.37656	25.49552	13:00:00	D	1.90
101	KHERI	GOLA	S-NPP	80.31158	28.22007	13:06:00	D	7.50
102	KHERI	LAKHIMPUR	S-NPP	80.63319	28.06701	13:06:00	D	1.90
103	KHERI	LAKHIMPUR	S-NPP	80.69654	28.08798	13:06:00	D	4.20
104	KHERI	LAKHIMPUR	S-NPP	80.72762	28.12099	13:06:00	D	1.90
105	KHERI	LAKHIMPUR	S-NPP	80.73169	28.12167	13:06:00	D	3.90
106	KHERI	MOHMADI	S-NPP	80.05041	27.91736	13:06:00	D	1.90
107	KHERI	MOHMADI	S-NPP	80.09795	27.92183	13:06:00	D	2.40
108	KHERI	MOHMADI	S-NPP	80.20813	28.02396	13:06:00	D	3.30
109	KHERI	MOHMADI	S-NPP	80.27788	28.06397	13:06:00	D	2.40
110	KHERI	MOHMADI	S-NPP	80.29532	28.08759	13:06:00	D	10.00
111	KUSHINAGAR	HATA	S-NPP	83.65742	26.70284	13:00:00	D	2.20
112	KUSHINAGAR	HATA	S-NPP	83.67728	26.83845	01:48:00	N	0.70
113	KUSHINAGAR	KASAYA	S-NPP	84.01364	26.73044	13:00:00	D	4.00
114	KUSHINAGAR	KASAYA	S-NPP	84.00912	26.73322	13:00:00	D	4.00
115	LUCKNOW	MOHANLAL GANJ	S-NPP	81.11224	26.68924	13:06:00	D	2.70
116	LUCKNOW	MOHANLAL GANJ	S-NPP	81.21252	26.70476	13:06:00	D	0.90
117	LUCKNOW	MOHANLAL GANJ	S-NPP	81.10462	26.74721	13:06:00	D	2.60
118	LUCKNOW	MOHANLAL GANJ	S-NPP	81.08241	26.75402	13:06:00	D	5.80
119	MAHARAJGANJ	MAHARAJGANJ	S-NPP	83.42020	26.97872	13:06:00	D	2.50
120	MAHARAJGANJ	MAHARAJGANJ	S-NPP	83.54064	27.10812	13:06:00	D	2.00
121	MAHARAJGANJ	MAHARAJGANJ	S-NPP	83.54455	27.10869	13:06:00	D	3.50
122	MAHARAJGANJ	MAHARAJGANJ	S-NPP	83.56905	27.22018	13:06:00	D	5.40
123	MAHARAJGANJ	MAHARAJGANJ	S-NPP	83.57897	27.23186	13:06:00	D	2.90
124	MAHARAJGANJ	NAUTANWA	AQUA	83.54500	27.40800	12:50:00	D	16.40
125	MAHARAJGANJ	NAUTANWA	S-NPP	83.55080	27.40982	13:06:00	D	6.80
126	MAHARAJGANJ	NAUTANWA	S-NPP	83.55472	27.41039	13:06:00	D	4.50
127	MAHARAJGANJ	NICHLAUL	S-NPP	83.69137	27.14028	13:06:00	D	1.50
128	MAHARAJGANJ	NICHLAUL	S-NPP	83.70558	27.17308	13:06:00	D	3.50
129	MAHARAJGANJ	NICHLAUL	S-NPP	83.71949	27.18535	13:06:00	D	3.10

130	MAHARAJGANJ	NICHLAUL	S-NPP	83.72106	27.26956	13:06:00	D	4.40
131	MAHARAJGANJ	NICHLAUL	S-NPP	83.70867	27.27118	13:06:00	D	1.70
132	MAHARAJGANJ	NICHLAUL	S-NPP	83.65344	27.28707	13:06:00	D	2.20
133	MAHARAJGANJ	NICHLAUL	S-NPP	83.70916	27.31458	13:06:00	D	3.10
134	MAHARAJGANJ	NICHLAUL	S-NPP	83.67742	27.33393	13:06:00	D	1.60
135	MAHARAJGANJ	NICHLAUL	S-NPP	83.73132	27.34854	13:06:00	D	2.90
136	MAINPURI	BHOGAON	S-NPP	79.37505	27.02878	13:06:00	D	3.30
137	MAINPURI	BHOGAON	S-NPP	79.13199	27.12524	13:06:00	D	2.10
138	MAINPURI	BHOGAON	S-NPP	79.05142	27.39230	13:06:00	D	4.30
139	MAINPURI	KARHAL	S-NPP	79.02002	26.98489	13:06:00	D	10.80
140	MAINPURI	KARHAL	S-NPP	79.02216	26.98533	13:06:00	D	11.10
141	MAINPURI	KARHAL	S-NPP	78.97018	27.10367	01:48:00	N	0.50
142	MAINPURI	MAINPURI	S-NPP	78.74574	27.32239	13:06:00	D	3.10
143	MATHURA	CHHATA	S-NPP	77.40497	27.69459	13:06:00	D	5.90
144	MATHURA	CHHATA	S-NPP	77.39754	27.70129	13:06:00	D	4.00
145	MATHURA	CHHATA	S-NPP	77.45477	27.70418	13:06:00	D	8.90
146	MATHURA	CHHATA	S-NPP	77.39661	27.70517	13:06:00	D	4.00
147	MATHURA	CHHATA	S-NPP	77.32566	27.77260	13:06:00	D	5.00
148	MATHURA	CHHATA	S-NPP	77.55341	27.83270	13:06:00	D	2.90
149	MATHURA	CHHATA	S-NPP	77.41752	27.88733	13:06:00	D	4.30
150	MEERUT	MAWANA	S-NPP	78.01974	28.95730	13:06:00	D	4.60
151	MORADABAD	BILARI	S-NPP	78.85838	28.55256	13:06:00	D	4.80
152	MORADABAD	MORADABAD	TERRA	78.71400	28.89200	11:15:00	D	6.40
153	PILHIBHIT	PURANPUR	S-NPP	80.04441	28.37461	13:06:00	D	4.60
154	PILHIBHIT	PURANPUR	S-NPP	80.07734	28.40507	13:06:00	D	6.30
155	PILHIBHIT	PURANPUR	S-NPP	80.07120	28.43657	01:48:00	N	0.30
156	PILHIBHIT	PURANPUR	S-NPP	80.08495	28.44472	01:48:00	N	0.30
157	PILHIBHIT	PURANPUR	S-NPP	80.07576	28.51741	13:06:00	D	1.80
158	PILHIBHIT	PURANPUR	S-NPP	80.05569	28.54944	13:06:00	D	2.10
159	PILHIBHIT	PURANPUR	S-NPP	80.07761	28.67843	01:48:00	N	0.60
160	PILHIBHIT	PURANPUR	S-NPP	80.17531	28.75187	13:06:00	D	2.10
161	PILHIBHIT	PURANPUR	S-NPP	80.10174	28.81269	13:06:00	D	2.60
162	PRATAPGARH	KUNDA	S-NPP	81.63247	25.82116	13:00:00	D	1.40

163	PRATAPGARH	KUNDA	S-NPP	81.63181	25.82451	13:00:00	D	3.10
164	PRATAPGARH	KUNDA	S-NPP	81.45615	25.91157	13:00:00	D	1.40
165	RAIBEARELI	MAHARAJGANG	S-NPP	81.29552	26.41424	13:00:00	D	2.90
166	RAIBEARELI	RAEBARELI	S-NPP	81.19759	26.23645	13:00:00	D	2.70
167	RAIBEARELI	UNCHA HAR	S-NPP	81.27753	25.93801	13:00:00	D	4.30
168	RAMPUR	BILASPUR	S-NPP	79.38103	28.84043	13:06:00	D	2.20
169	RAMPUR	BILASPUR	S-NPP	79.37107	28.89307	13:06:00	D	2.20
170	RAMPUR	BILASPUR	S-NPP	79.29354	28.93020	13:06:00	D	1.90
171	RAMPUR	BILASPUR	S-NPP	79.34140	28.96392	13:06:00	D	2.10
172	RAMPUR	BILASPUR	S-NPP	79.28123	28.96435	13:06:00	D	2.10
173	RAMPUR	SUAR	S-NPP	79.16145	28.94808	01:48:00	N	0.60
174	RAMPUR	SUAR	S-NPP	79.18486	28.95851	13:06:00	D	1.80
175	RAMPUR	SUAR	S-NPP	79.14674	29.09686	13:06:00	D	2.60
176	RAMPUR	TANDA	S-NPP	78.99155	29.05459	13:06:00	D	3.70
177	SANTKABIRNAGAR	MEHDAWAL	S-NPP	83.04723	26.97429	13:06:00	D	2.80
178	SHAHJAHANPUR	PUWANYA	S-NPP	80.01520	27.91990	13:06:00	D	3.50
179	SHAHJAHANPUR	PUWANYA	S-NPP	80.01019	27.92261	13:06:00	D	3.50
180	SHAHJAHANPUR	PUWANYA	S-NPP	80.01445	27.92334	13:06:00	D	6.50
181	SHAHJAHANPUR	PUWANYA	S-NPP	80.02837	27.96143	13:06:00	D	3.00
182	SHAHJAHANPUR	PUWANYA	S-NPP	80.01593	27.99854	13:06:00	D	4.10
183	SHAHJAHANPUR	PUWANYA	S-NPP	79.99907	28.14911	13:06:00	D	3.00
184	SHAHJAHANPUR	PUWANYA	S-NPP	80.27451	28.18556	01:48:00	N	0.50
185	SHAHJAHANPUR	PUWANYA	S-NPP	80.03606	28.22306	13:06:00	D	2.70
186	SHAHJAHANPUR	PUWANYA	S-NPP	80.13643	28.22584	13:06:00	D	3.40
187	SHAHJAHANPUR	PUWANYA	S-NPP	80.23708	28.28919	01:48:00	N	0.20
188	SHAHJAHANPUR	PUWANYA	S-NPP	80.02746	28.37171	13:06:00	D	5.70
189	SHAHJAHANPUR	SHAHJAHANPUR	S-NPP	79.87394	27.76059	13:06:00	D	5.00
190	SHAHJAHANPUR	TILHAR	S-NPP	79.60562	27.89920	13:06:00	D	2.30
191	SHAMLI	KAIRANA	S-NPP	77.22551	29.56571	13:06:00	D	3.20
192	SHARANPUR	SHARANPUR	TERRA	77.74700	29.91200	11:15:00	D	3.10
193	SHRAWASTI	BHINGA	S-NPP	82.01213	27.84829	13:06:00	D	2.30
194	SIDDHARTH NAGAR	DOMARIYAGANJ	S-NPP	82.55112	27.13764	01:48:00	N	0.60
195	SIDDHARTH NAGAR	ITWA	S-NPP	82.71387	27.27208	13:06:00	D	1.90

196	SIDDHARTHANAGAR	ITWA	S-NPP	82.77572	27.28145	13:06:00	D	1.80
197	SIDDHARTHANAGAR	ITWA	S-NPP	82.77509	27.28475	13:06:00	D	1.80
198	SIDDHARTHANAGAR	ITWA	S-NPP	82.66393	27.32563	13:06:00	D	1.90
199	SIDDHARTHANAGAR	ITWA	S-NPP	82.65118	27.35087	13:06:00	D	2.50
200	SIDDHARTHANAGAR	NAUGARH	S-NPP	83.21498	27.29695	13:06:00	D	3.10
201	SITAPUR	LAHARPUR	S-NPP	81.05247	27.67408	13:06:00	D	2.70
202	SITAPUR	MISRIK	S-NPP	80.35793	27.58986	13:06:00	D	2.80
203	SULTANPUR	SULTANPUR	S-NPP	81.87508	26.36307	13:00:00	D	0.90
204	UNNAO	BIGHAPUR	S-NPP	80.82635	26.33270	13:00:00	D	2.80
205	UNNAO	PURWA	S-NPP	81.01691	26.37163	13:00:00	D	3.00
206	UNNAO	PURWA	S-NPP	80.89729	26.37977	13:00:00	D	3.20
207	UNNAO	PURWA	S-NPP	80.74870	26.48507	13:06:00	D	1.80
208	UNNAO	PURWA	S-NPP	80.80166	26.58121	13:06:00	D	3.00
209	UNNAO	SAFIPUR	S-NPP	80.28033	26.98494	13:06:00	D	2.10
210	UNNAO	SAFIPUR	S-NPP	80.28083	26.98685	13:06:00	D	5.70



**The study used images received from following Satellites at IARI Satellite Ground Station**

S. No.	Satellite Name	Sensor	Resolution (meter)	Day / Night Passes
1.	Suomi NPP	VIIRS	375 / 1000	Both
2.	Terra	MODIS	1000	Both
3.	Aqua	MODIS	1000	Both
4.	NOAA – 18	AVHRR	1000	Night
5.	NOAA – 19	AVHRR	1000	Night
6.	Metop - 1	AVHRR	1000	Night
7.	Metop - 2	AVHRR	1000	Night

**Study Team**

ICAR – HQ	Dr K. Alagusundaram	DDG (AG. ENGG.)	<a href="mailto:ddgengg@icar.org.in">ddgengg@icar.org.in</a>
	Dr S. Bhasker	ADG (NRM)	<a href="mailto:adgagroandaf@gmail.com">adgagroandaf@gmail.com</a>
	Dr K.K. Singh	ADG (AG. ENGG)	<a href="mailto:kanchansingh044@gmail.com">kanchansingh044@gmail.com</a>
ICAR - IARI	Dr V.K. Sehgal	Professor & Nodal Scientist	<a href="mailto:iaricreams@gmail.com">iaricreams@gmail.com</a>
	Dr Rajkumar Dhakar	Scientist	<a href="mailto:raidhakar.iari@gmail.com">raidhakar.iari@gmail.com</a>
	Mr Rakeswer Verma	Chief Technical Officer	<a href="mailto:rakeshwar.verma@icar.gov.in">rakeshwar.verma@icar.gov.in</a>
	Mr Mohd Jahangir	Lab Assistant (KRISHI)	<a href="mailto:mjahangir198@gmail.com">mjahangir198@gmail.com</a>
ICAR - ATARI	Dr Rajbir Singh	Director ATARI (Zone-I) Ludhiana	<a href="mailto:rajbirsingh.zpd@gmail.com">rajbirsingh.zpd@gmail.com</a>
	Dr S.K. Singh	Director ATARI (Zone-II) Jodhpur	<a href="mailto:sushilsinghiipr@yahoo.co.in">sushilsinghiipr@yahoo.co.in</a>
	Dr Atar Singh	Director ATARI (Zone-III) Kanpur	<a href="mailto:zpdicarkanpur@gmail.com">zpdicarkanpur@gmail.com</a>
ICAR - IASRI	Dr Rajender Parsad	Principal Scientist	<a href="mailto:rajender.parsad@icar.gov.in">rajender.parsad@icar.gov.in</a>

GIS Maps of fire events can be visualized online on ICAR KRISHI Geoportal website: <http://geoportal.icar.gov.in:8080/geoexplorer/composer/>  
(Part of KRISHI Portal: <https://krishi.icar.gov.in> initiative)

\*\*\*