



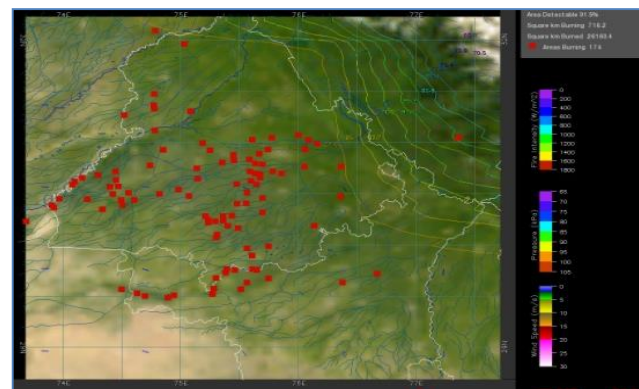
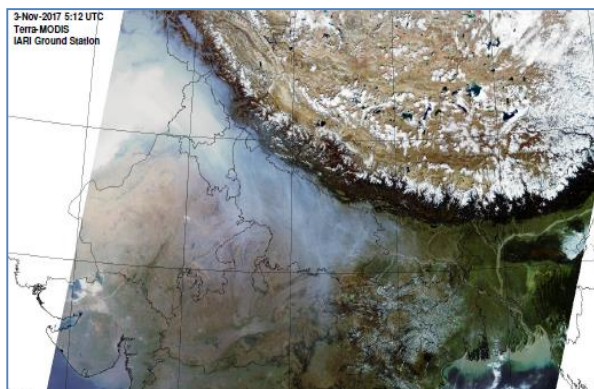
**Bulletin
No. 24**

**Events Date:
24-Oct-2019**

**Issued on:
25-Oct-2019**



MONITORING PADDY RESIDUE BURNING IN NORTH INDIA USING SATELLITE REMOTE SENSING DURING 2019



Prepared by:

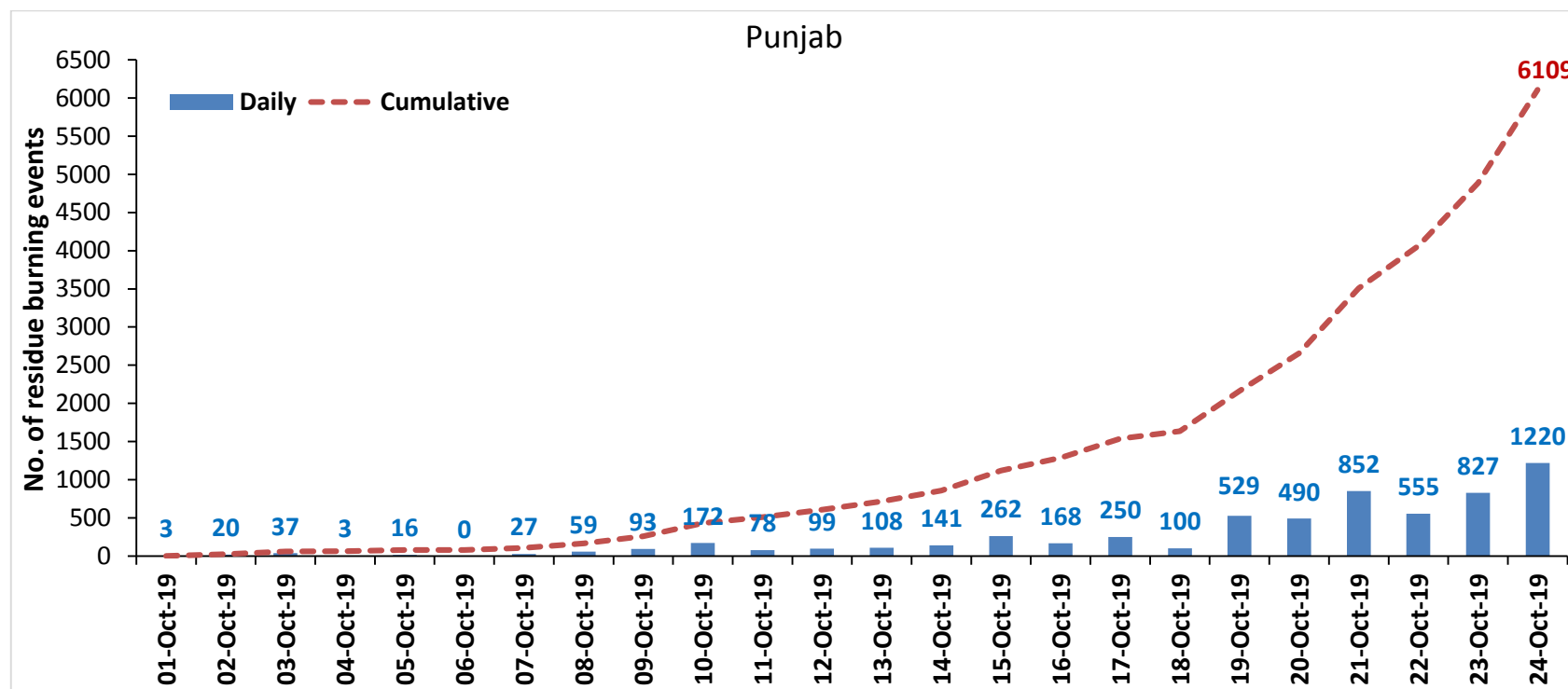
**Consortium for Research on Agroecosystem Monitoring and Modeling from Space (CREAMS) Laboratory,
Division of Agricultural Physics, ICAR – Indian Agricultural Research Institute, New Delhi – 110012**

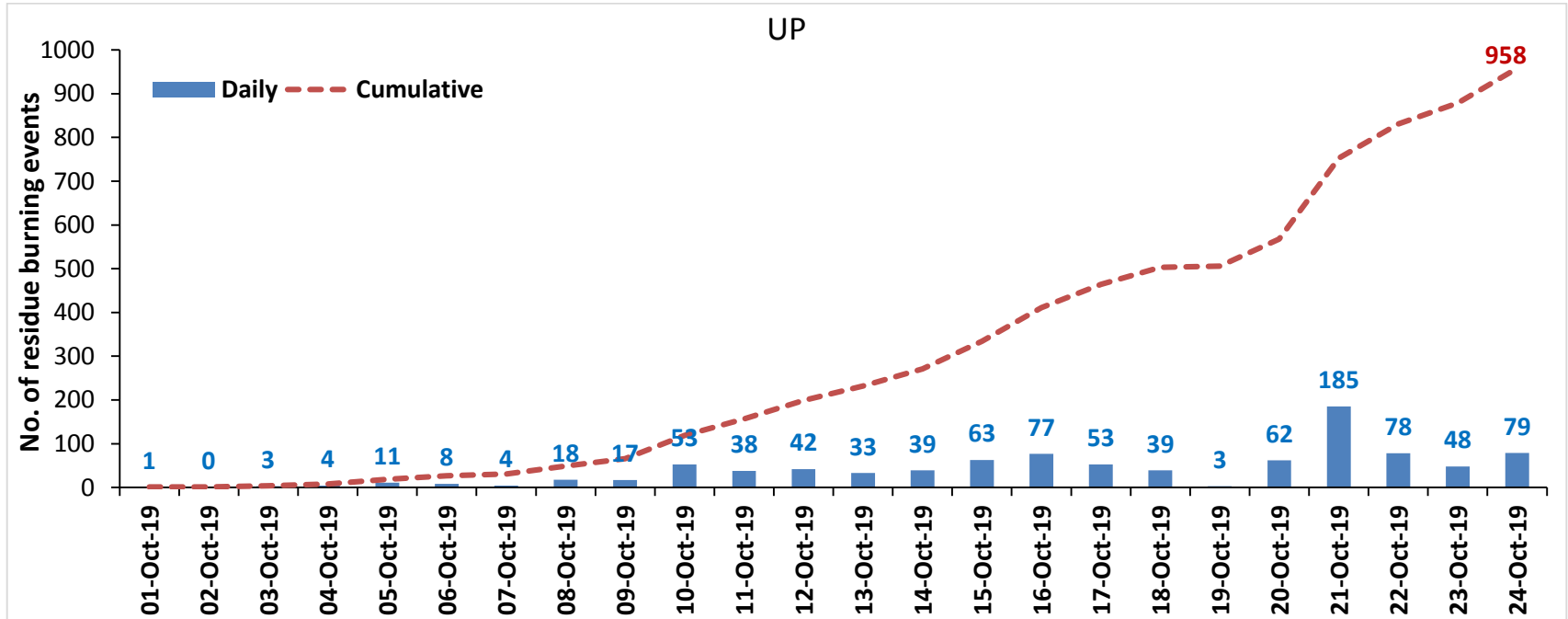
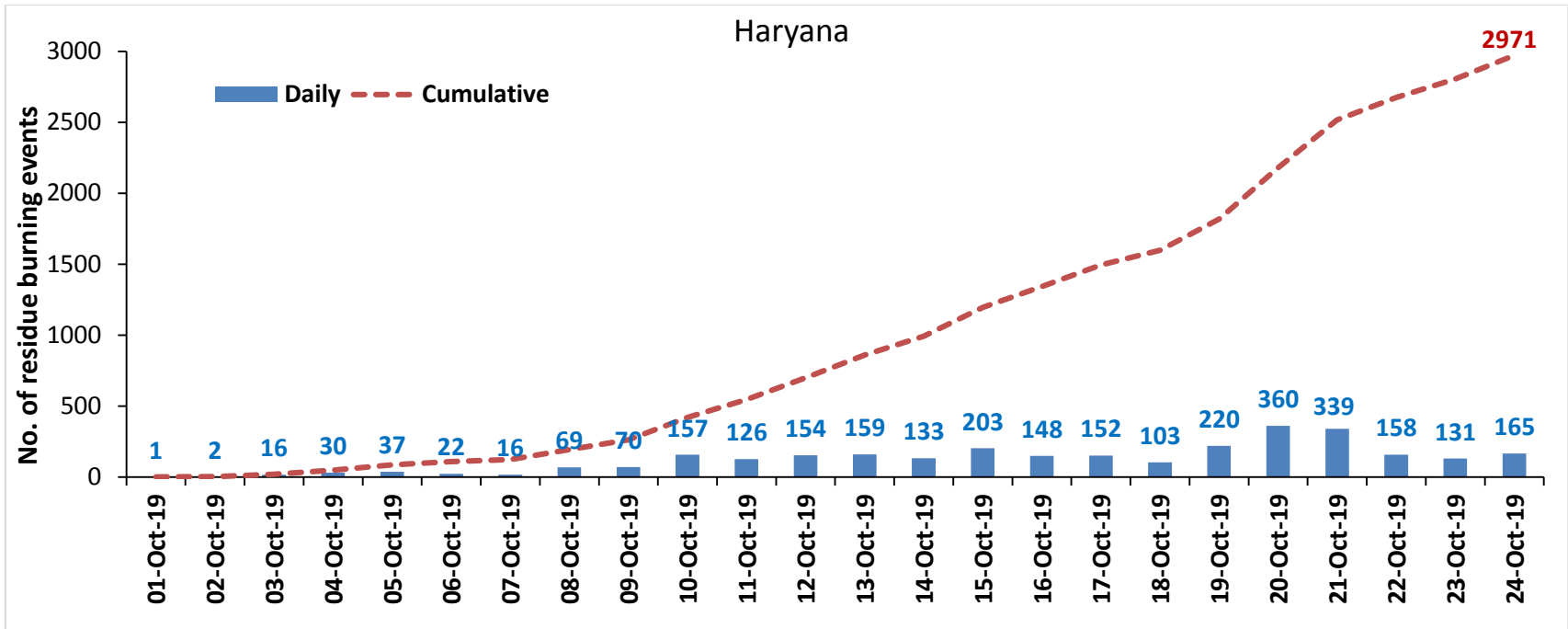
<http://creams.iari.res.in>

Highlights for 24-October-2019

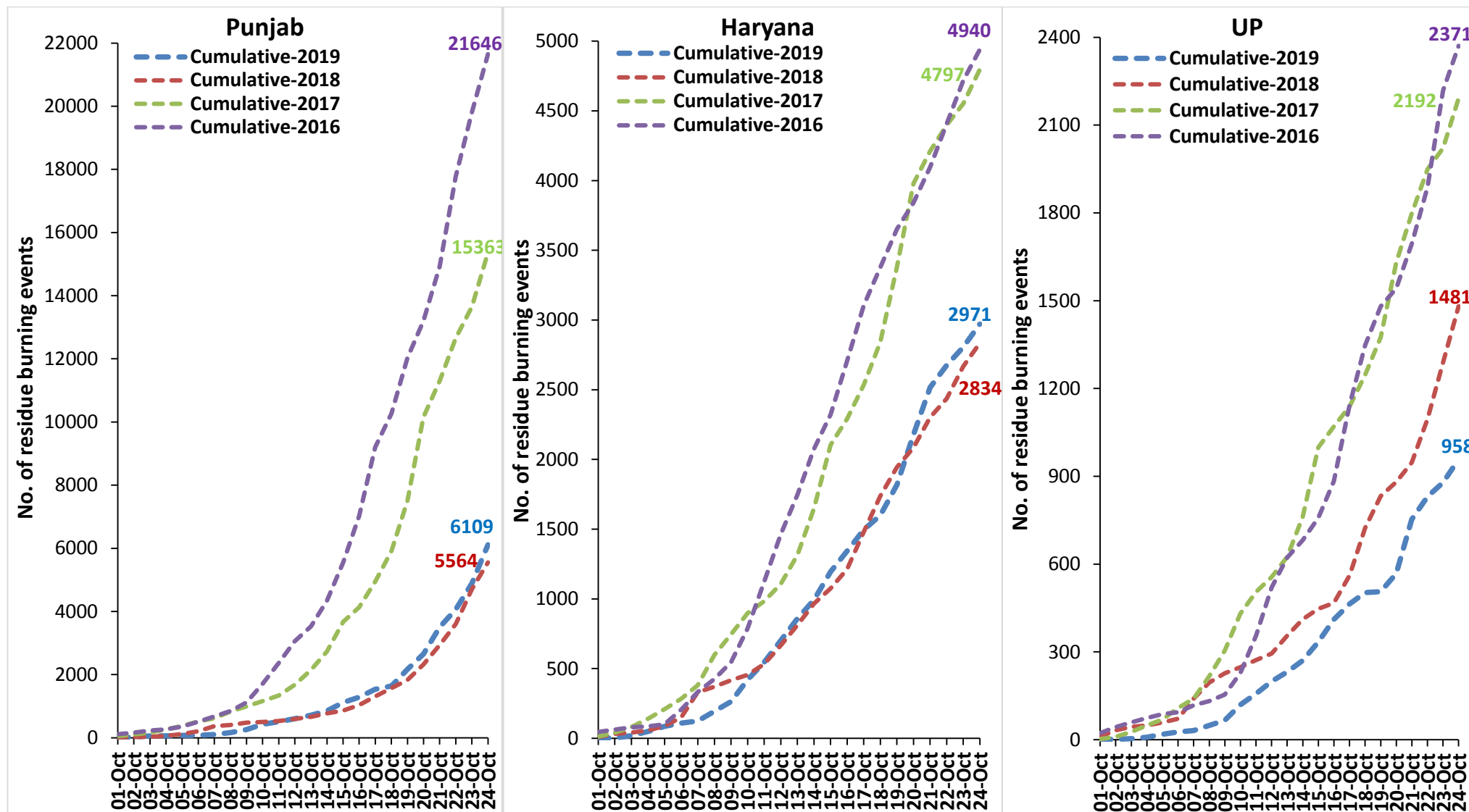
- Satellites detected **1464** residue burning events in the three study States on 24-Oct-2019.
- The burning events detected on **24-Oct-2019** are **1220**, **165** and **79** in Punjab, Haryana and UP, respectively.
- The number of events has increased from **1006** on **23-Oct-2019** to **1464** on **24-Oct-2019** in the three states.
- Total **10038** burning events were detected in the three States between **01-Oct-2019** and **24-Oct-2019**, which are distributed as **6109**, **2971** and **958** in Punjab, Haryana and UP, respectively.
- Overall, the total burning events recorded in the three states are **1.7%** more than in 2018 till date. UP recorded **35.3%** reduction while Punjab and Haryana recorded **9.8%** and **4.8%** increase, respectively, in the current season than in 2018.

Temporal distribution of residue burning events for the three study States in 2019

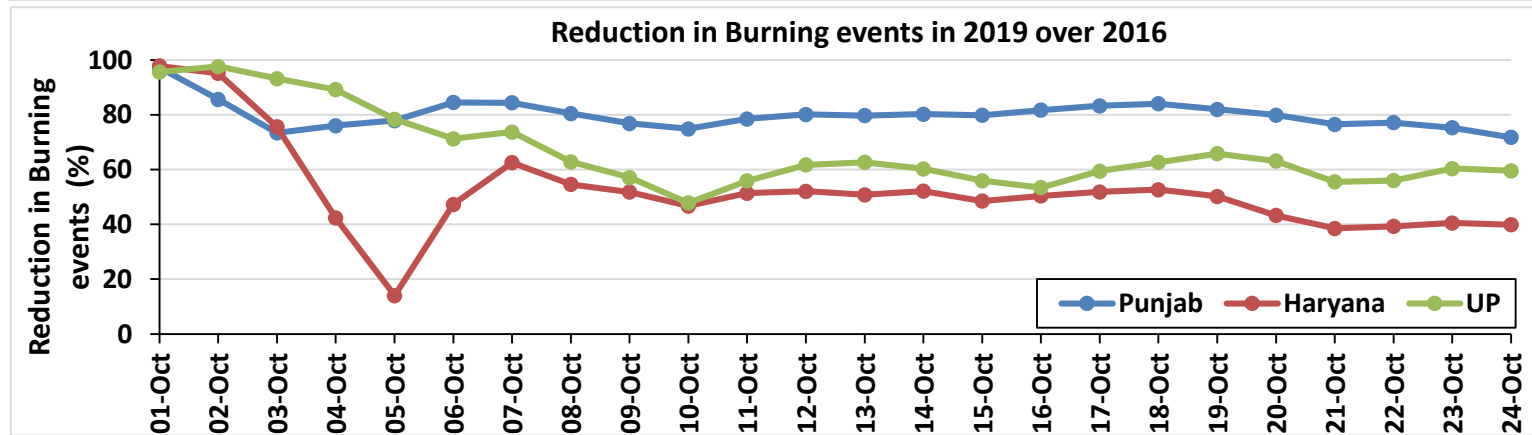
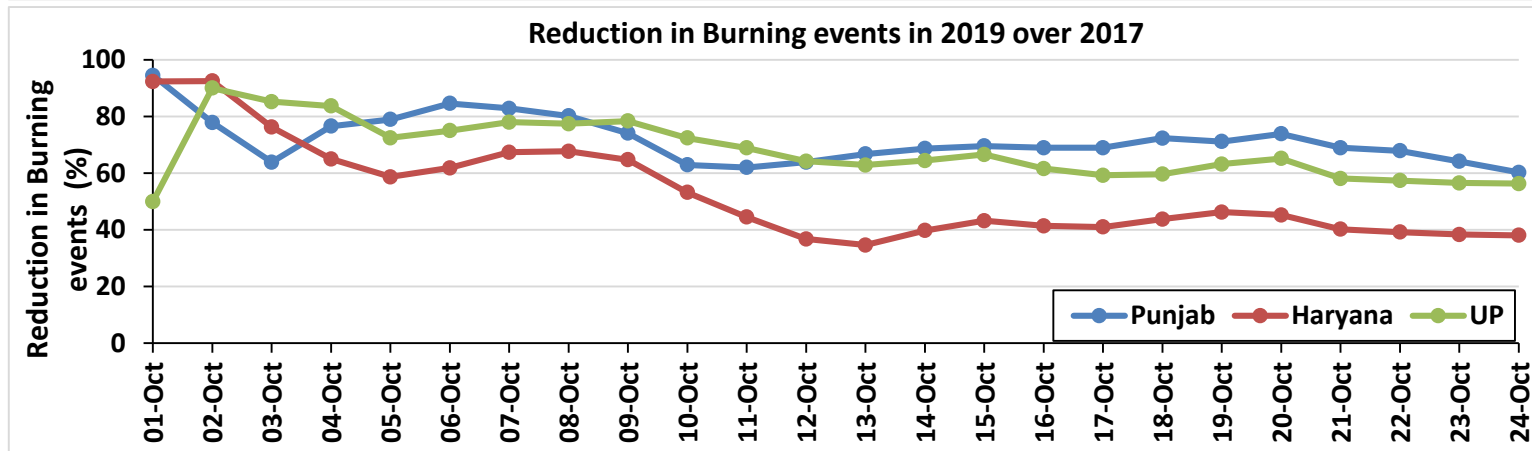
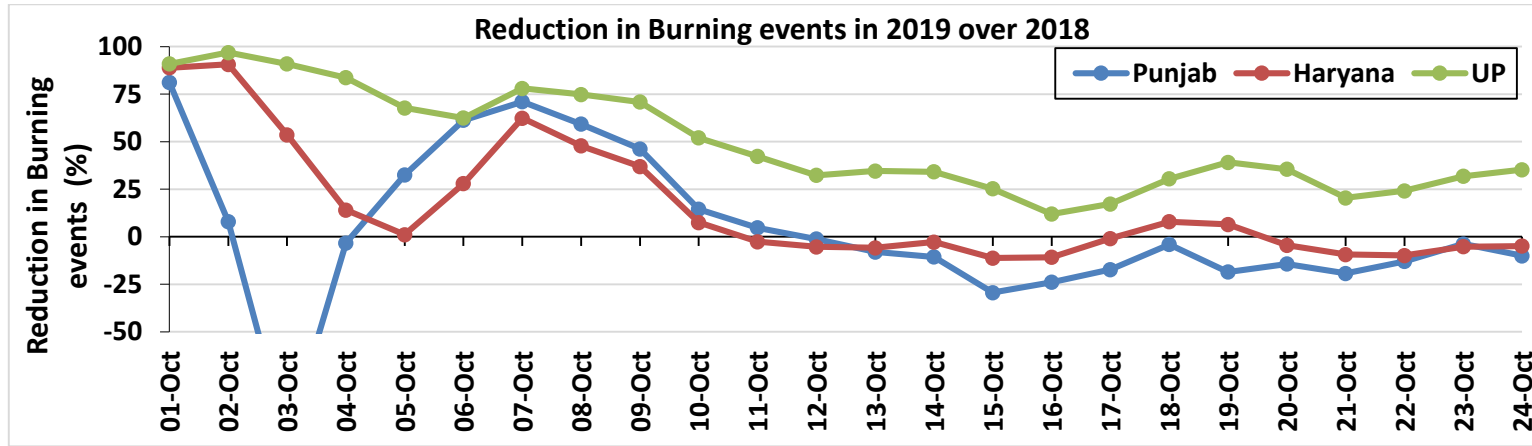




**Comparison of residue burning events in current year (2019) with previous years (2018, 2017 & 2016) for the three study States
(01-Oct to 24-Oct)**

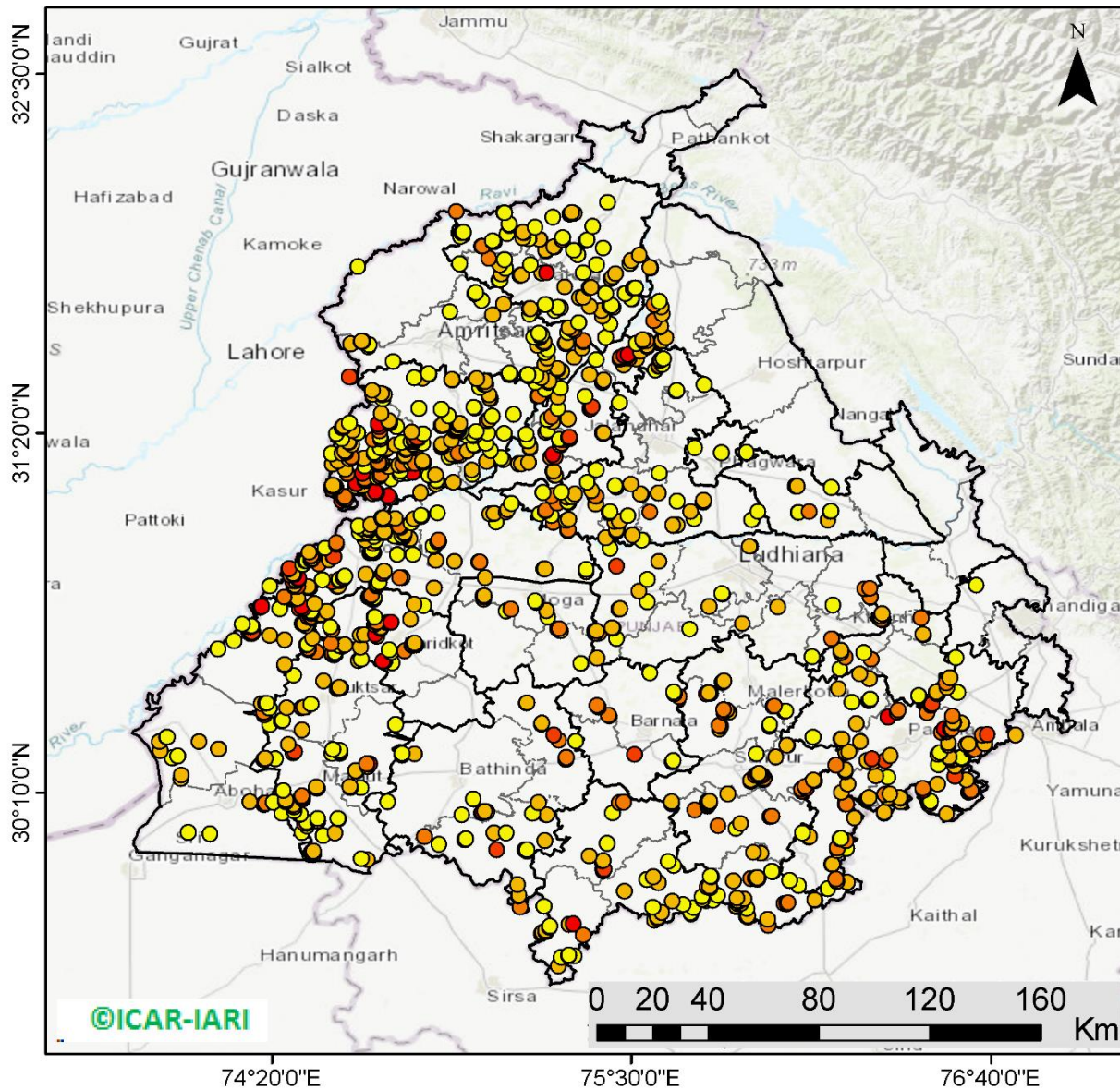


Percent Reduction in Burning events in 2019 over 2018, 2017 and 2016 (Daily Cumulative)



(a) Punjab

RICE RESIDUE BURNING IN PUNJAB



1220 burning events detected in Punjab on 24th October 2019

Fire Intensity (W/m²)

- 0 - 5
- 6 - 10
- 11 - 15
- 16 - 20
- >20



<http://geoportal.icar.gov.in:8080/geoexplorer/composer/>

Details of residue burning events in Punjab on 24-Oct-2019

S. No.	District	Tehsil / Block	Satellite	Longitude	Latitude	Time (IST)	Day / Night	Fire Power (W/m2)
1	AMRITSAR	AJNALA	S-NPP	74.62404	31.63124	14:00:00	D	6.00
2	AMRITSAR	AJNALA	AQUA	74.62500	31.63200	14:00:00	D	8.60
3	AMRITSAR	AJNALA	S-NPP	74.61295	31.87434	14:00:00	D	4.20
4	AMRITSAR	AMRITSAR I	S-NPP	75.05008	31.71688	14:00:00	D	6.10
5	AMRITSAR	AMRITSAR I	S-NPP	75.08609	31.75258	14:00:00	D	5.20
6	AMRITSAR	AMRITSAR I	S-NPP	75.01400	31.76449	14:00:00	D	3.80
7	AMRITSAR	AMRITSAR I	AQUA	74.99200	31.78600	14:00:00	D	7.40
8	AMRITSAR	AMRITSAR I	S-NPP	74.99467	31.79025	14:00:00	D	2.60
9	AMRITSAR	AMRITSAR II	AQUA	74.58900	31.51600	14:00:00	D	11.90
10	AMRITSAR	AMRITSAR II	S-NPP	74.58546	31.51651	14:00:00	D	15.90
11	AMRITSAR	AMRITSAR II	S-NPP	74.72746	31.56597	14:00:00	D	3.30
12	AMRITSAR	AMRITSAR II	AQUA	74.64700	31.61500	14:00:00	D	7.60
13	AMRITSAR	AMRITSAR II	S-NPP	74.65103	31.62034	14:00:00	D	2.10
14	AMRITSAR	AMRITSAR II	S-NPP	74.58936	31.62347	14:00:00	D	5.50
15	AMRITSAR	AMRITSAR II	S-NPP	74.62909	31.63172	14:00:00	D	5.90
16	AMRITSAR	AMRITSAR II	S-NPP	74.91120	31.72774	14:00:00	D	4.00
17	AMRITSAR	BABA BAKALA	AQUA	75.23100	31.49900	14:00:00	D	13.00
18	AMRITSAR	BABA BAKALA	S-NPP	75.23306	31.50306	14:00:00	D	5.20
19	AMRITSAR	BABA BAKALA	AQUA	75.20900	31.51400	14:00:00	D	7.80
20	AMRITSAR	BABA BAKALA	S-NPP	75.16521	31.51987	14:00:00	D	3.70
21	AMRITSAR	BABA BAKALA	AQUA	75.16600	31.52000	14:00:00	D	9.60
22	AMRITSAR	BABA BAKALA	S-NPP	75.19065	31.52179	14:00:00	D	6.10
23	AMRITSAR	BABA BAKALA	S-NPP	75.19228	31.52242	14:00:00	D	3.40
24	AMRITSAR	BABA BAKALA	S-NPP	75.10317	31.52332	14:00:00	D	8.90
25	AMRITSAR	BABA BAKALA	S-NPP	75.10496	31.52337	14:00:00	D	6.80
26	AMRITSAR	BABA BAKALA	S-NPP	75.10853	31.52379	14:00:00	D	8.90
27	AMRITSAR	BABA BAKALA	S-NPP	75.16299	31.52399	14:00:00	D	6.20
28	AMRITSAR	BABA BAKALA	S-NPP	75.16466	31.52443	14:00:00	D	3.80
29	AMRITSAR	BABA BAKALA	S-NPP	75.10441	31.52792	14:00:00	D	3.00
30	AMRITSAR	BABA BAKALA	S-NPP	75.27354	31.53468	14:00:00	D	5.60

31	AMRITSAR	BABA BAKALA	AQUA	75.26300	31.54100	14:00:00	D	11.50
32	AMRITSAR	BABA BAKALA	S-NPP	75.25993	31.54176	14:00:00	D	12.10
33	AMRITSAR	BABA BAKALA	S-NPP	75.26148	31.54284	14:00:00	D	9.20
34	AMRITSAR	BABA BAKALA	S-NPP	75.21943	31.55674	14:00:00	D	5.40
35	AMRITSAR	BABA BAKALA	S-NPP	75.22815	31.57606	14:00:00	D	8.50
36	AMRITSAR	BABA BAKALA	AQUA	75.31500	31.57800	14:00:00	D	6.60
37	AMRITSAR	BABA BAKALA	S-NPP	75.22048	31.59391	14:00:00	D	3.20
38	AMRITSAR	BABA BAKALA	S-NPP	75.23032	31.60410	14:00:00	D	4.50
39	AMRITSAR	BABA BAKALA	S-NPP	75.34116	31.60954	14:00:00	D	6.40
40	AMRITSAR	BABA BAKALA	S-NPP	75.19539	31.61941	14:00:00	D	5.10
41	AMRITSAR	BABA BAKALA	AQUA	75.28600	31.62500	14:00:00	D	7.10
42	AMRITSAR	BABA BAKALA	S-NPP	75.21666	31.62603	14:00:00	D	5.30
43	AMRITSAR	BABA BAKALA	AQUA	75.21400	31.62700	14:00:00	D	11.30
44	AMRITSAR	BABA BAKALA	S-NPP	75.28855	31.62806	14:00:00	D	5.10
45	AMRITSAR	BABA BAKALA	S-NPP	75.21378	31.63013	14:00:00	D	5.30
46	AMRITSAR	BABA BAKALA	S-NPP	75.21611	31.63062	14:00:00	D	5.30
47	AMRITSAR	BABA BAKALA	AQUA	75.34400	31.63100	14:00:00	D	9.40
48	AMRITSAR	BABA BAKALA	S-NPP	75.34396	31.63316	14:00:00	D	13.70
49	AMRITSAR	BABA BAKALA	S-NPP	75.20357	31.64335	14:00:00	D	4.00
50	AMRITSAR	BABA BAKALA	S-NPP	75.18427	31.64608	14:00:00	D	3.20
51	AMRITSAR	BABA BAKALA	S-NPP	75.20611	31.64801	14:00:00	D	4.30
52	AMRITSAR	BABA BAKALA	S-NPP	75.21101	31.65307	14:00:00	D	3.30
53	AMRITSAR	BABA BAKALA	S-NPP	75.19953	31.65669	14:00:00	D	4.80
54	AMRITSAR	BABA BAKALA	S-NPP	75.29355	31.66033	14:00:00	D	5.00
55	AMRITSAR	BABA BAKALA	AQUA	75.30900	31.66900	14:00:00	D	11.50
56	AMRITSAR	BABA BAKALA	S-NPP	75.29744	31.67466	14:00:00	D	8.70
57	AMRITSAR	BABA BAKALA	S-NPP	75.17002	31.71887	14:00:00	D	3.60
58	AMRITSAR	BABA BAKALA	S-NPP	75.17029	31.73691	14:00:00	D	8.00
59	AMRITSAR	BABA BAKALA	S-NPP	75.17328	31.73770	14:00:00	D	6.80
60	BARNALA	BARNALA	AQUA	75.42800	30.41500	14:00:00	D	7.00
61	BARNALA	BARNALA	S-NPP	75.42628	30.41746	14:00:00	D	14.20
62	BARNALA	BARNALA	AQUA	75.39500	30.44200	14:00:00	D	8.80
63	BARNALA	BARNALA	S-NPP	75.39027	30.44650	14:00:00	D	4.20

64	BARNALA	BARNALA	AQUA	75.38900	30.44900	14:00:00	D	12.80
65	BARNALA	BARNALA	AQUA	75.65600	30.47800	14:00:00	D	10.50
66	BARNALA	BARNALA	AQUA	75.64000	30.48700	14:00:00	D	18.60
67	BARNALA	BARNALA	S-NPP	75.63818	30.49305	14:00:00	D	3.40
68	BARNALA	BARNALA	S-NPP	75.56086	30.55436	14:00:00	D	3.60
69	BARNALA	TAPPA	AQUA	75.63300	30.26600	14:00:00	D	12.50
70	BARNALA	TAPPA	S-NPP	75.63593	30.27109	14:00:00	D	3.10
71	BARNALA	TAPPA	AQUA	75.51000	30.29000	14:00:00	D	16.20
72	BARNALA	TAPPA	S-NPP	75.32033	30.33346	14:00:00	D	2.60
73	BATHINDA	BATHINDA	S-NPP	74.95010	30.09390	14:00:00	D	3.30
74	BATHINDA	BATHINDA	S-NPP	75.01505	30.10031	14:00:00	D	3.70
75	BATHINDA	BATHINDA	AQUA	75.01700	30.10200	14:00:00	D	20.10
76	BATHINDA	BATHINDA	AQUA	75.03000	30.10400	14:00:00	D	7.00
77	BATHINDA	BATHINDA	S-NPP	75.02454	30.10575	14:00:00	D	8.10
78	BATHINDA	BATHINDA	S-NPP	74.70981	30.13682	14:00:00	D	3.80
79	BATHINDA	BATHINDA	S-NPP	74.98747	30.14575	14:00:00	D	4.20
80	BATHINDA	BATHINDA	S-NPP	74.75597	30.28757	14:00:00	D	4.20
81	BATHINDA	BATHINDA	AQUA	74.79800	30.29100	14:00:00	D	5.70
82	BATHINDA	BATHINDA	S-NPP	74.75542	30.29196	14:00:00	D	4.20
83	BATHINDA	RAMPURA PHUL	AQUA	75.19900	30.13400	14:00:00	D	7.90
84	BATHINDA	RAMPURA PHUL	AQUA	75.28800	30.27500	14:00:00	D	24.70
85	BATHINDA	RAMPURA PHUL	S-NPP	75.28954	30.28008	14:00:00	D	11.50
86	BATHINDA	RAMPURA PHUL	AQUA	75.26500	30.33500	14:00:00	D	11.30
87	BATHINDA	RAMPURA PHUL	S-NPP	75.24873	30.35411	14:00:00	D	16.70
88	BATHINDA	RAMPURA PHUL	AQUA	75.20900	30.38900	14:00:00	D	9.30
89	BATHINDA	RAMPURA PHUL	S-NPP	75.20974	30.39283	14:00:00	D	9.60
90	BATHINDA	RAMPURA PHUL	S-NPP	75.15990	30.45655	14:00:00	D	14.40
91	BATHINDA	RAMPURA PHUL	S-NPP	75.16168	30.45791	14:00:00	D	8.70
92	BATHINDA	TALWANDI SABO	S-NPP	75.13903	29.79359	14:00:00	D	13.60
93	BATHINDA	TALWANDI SABO	S-NPP	75.13463	29.82931	14:00:00	D	4.20
94	BATHINDA	TALWANDI SABO	S-NPP	75.13605	29.83171	14:00:00	D	5.90
95	BATHINDA	TALWANDI SABO	S-NPP	75.13166	29.86745	14:00:00	D	5.40
96	BATHINDA	TALWANDI SABO	AQUA	75.16100	29.97700	14:00:00	D	13.90

97	BATHINDA	TALWANDI SABO	S-NPP	75.15610	29.98088	14:00:00	D	4.20
98	BATHINDA	TALWANDI SABO	S-NPP	75.06386	29.98100	14:00:00	D	17.50
99	BATHINDA	TALWANDI SABO	S-NPP	75.16119	29.98137	14:00:00	D	4.20
100	BATHINDA	TALWANDI SABO	S-NPP	74.87563	29.99821	14:00:00	D	3.10
101	BATHINDA	TALWANDI SABO	S-NPP	75.21989	30.00975	14:00:00	D	8.10
102	BATHINDA	TALWANDI SABO	S-NPP	74.96011	30.01417	14:00:00	D	4.40
103	BATHINDA	TALWANDI SABO	S-NPP	74.96336	30.01601	14:00:00	D	3.60
104	BATHINDA	TALWANDI SABO	S-NPP	74.82915	30.02403	14:00:00	D	10.50
105	BATHINDA	TALWANDI SABO	AQUA	75.05400	30.03500	14:00:00	D	6.70
106	BATHINDA	TALWANDI SABO	S-NPP	75.09453	30.03577	14:00:00	D	3.00
107	BATHINDA	TALWANDI SABO	S-NPP	75.22197	30.09317	14:00:00	D	4.10
108	BATHINDA	TALWANDI SABO	S-NPP	75.22713	30.09366	14:00:00	D	6.00
109	BATHINDA	TALWANDI SABO	S-NPP	75.17972	30.09823	14:00:00	D	4.70
110	FARIDKOT	FARIDKOT	S-NPP	74.72482	30.58645	14:00:00	D	4.20
111	FARIDKOT	FARIDKOT	S-NPP	74.69921	30.59283	14:00:00	D	25.50
112	FARIDKOT	FARIDKOT	AQUA	74.69300	30.59300	14:00:00	D	21.40
113	FARIDKOT	FARIDKOT	S-NPP	74.72044	30.62163	14:00:00	D	4.50
114	FARIDKOT	FARIDKOT	S-NPP	74.76477	30.62606	14:00:00	D	11.50
115	FARIDKOT	FARIDKOT	S-NPP	74.71441	30.62993	14:00:00	D	2.90
116	FARIDKOT	FARIDKOT	S-NPP	74.62082	30.63834	14:00:00	D	5.90
117	FARIDKOT	FARIDKOT	AQUA	74.78900	30.64500	14:00:00	D	42.40
118	FARIDKOT	FARIDKOT	AQUA	74.80200	30.64600	14:00:00	D	19.30
119	FARIDKOT	FARIDKOT	AQUA	74.79600	30.64700	14:00:00	D	38.40
120	FARIDKOT	FARIDKOT	S-NPP	74.79356	30.65030	14:00:00	D	7.50
121	FARIDKOT	FARIDKOT	S-NPP	74.79678	30.65162	14:00:00	D	8.30
122	FARIDKOT	FARIDKOT	AQUA	74.67400	30.67300	14:00:00	D	6.90
123	FARIDKOT	FARIDKOT	AQUA	74.62100	30.67700	14:00:00	D	8.10
124	FARIDKOT	FARIDKOT	AQUA	74.63400	30.67800	14:00:00	D	7.20
125	FARIDKOT	FARIDKOT	S-NPP	74.67004	30.67857	14:00:00	D	23.60
126	FARIDKOT	FARIDKOT	AQUA	74.52800	30.69500	14:00:00	D	10.60
127	FARIDKOT	FARIDKOT	S-NPP	74.68743	30.69805	14:00:00	D	7.70
128	FARIDKOT	FARIDKOT	S-NPP	74.68687	30.70244	14:00:00	D	7.70
129	FARIDKOT	FARIDKOT	S-NPP	74.52433	30.70391	14:00:00	D	2.00

130	FARIDKOT	FARIDKOT	AQUA	74.66700	30.71200	14:00:00	D	16.90
131	FARIDKOT	FARIDKOT	AQUA	74.70600	30.71700	14:00:00	D	15.90
132	FARIDKOT	FARIDKOT	AQUA	74.71900	30.71800	14:00:00	D	21.60
133	FARIDKOT	FARIDKOT	S-NPP	74.66993	30.71854	14:00:00	D	5.50
134	FARIDKOT	FARIDKOT	S-NPP	74.71475	30.71856	14:00:00	D	23.30
135	FARIDKOT	FARIDKOT	S-NPP	74.67485	30.71903	14:00:00	D	12.20
136	FARIDKOT	FARIDKOT	S-NPP	74.71970	30.71905	14:00:00	D	23.30
137	FARIDKOT	FARIDKOT	S-NPP	74.78357	30.72985	14:00:00	D	5.50
138	FARIDKOT	FARIDKOT	S-NPP	74.66484	30.73593	14:00:00	D	3.90
139	FARIDKOT	FARIDKOT	S-NPP	74.66772	30.73610	14:00:00	D	3.70
140	FARIDKOT	FARIDKOT	AQUA	74.49000	30.74200	14:00:00	D	22.30
141	FARIDKOT	FARIDKOT	S-NPP	74.48684	30.74538	14:00:00	D	5.90
142	FARIDKOT	FARIDKOT	S-NPP	74.49163	30.74585	14:00:00	D	5.90
143	FARIDKOT	FARIDKOT	AQUA	74.51300	30.75500	14:00:00	D	8.80
144	FARIDKOT	FARIDKOT	AQUA	74.79600	30.77800	14:00:00	D	6.00
145	FARIDKOT	FARIDKOT	AQUA	74.66200	30.79200	14:00:00	D	12.70
146	FARIDKOT	FARIDKOT	S-NPP	74.66741	30.79395	14:00:00	D	4.70
147	FARIDKOT	FARIDKOT	S-NPP	74.66685	30.79835	14:00:00	D	4.70
148	FARIDKOT	FARIDKOT	AQUA	74.64800	30.80100	14:00:00	D	23.50
149	FARIDKOT	FARIDKOT	S-NPP	74.65157	30.80129	14:00:00	D	7.60
150	FARIDKOT	FARIDKOT	S-NPP	74.65592	30.80616	14:00:00	D	11.60
151	FATEHGARH SAHIB	ALMOH	S-NPP	76.24136	30.55033	12:18:00	D	6.10
152	FATEHGARH SAHIB	ALMOH	S-NPP	76.17731	30.56666	14:00:00	D	3.30
153	FATEHGARH SAHIB	ALMOH	AQUA	76.27800	30.59900	14:00:00	D	10.50
154	FATEHGARH SAHIB	ALMOH	S-NPP	76.19454	30.60596	14:00:00	D	14.30
155	FATEHGARH SAHIB	ALMOH	S-NPP	76.25392	30.62083	14:00:00	D	4.90
156	FATEHGARH SAHIB	ALMOH	AQUA	76.18000	30.62100	14:00:00	D	8.70
157	FATEHGARH SAHIB	ALMOH	S-NPP	76.17979	30.62896	14:00:00	D	6.60
158	FATEHGARH SAHIB	BASSI PATHANAN	S-NPP	76.44686	30.67686	14:00:00	D	6.20
159	FATEHGARH SAHIB	BASSI PATHANAN	S-NPP	76.44653	30.67951	14:00:00	D	6.90
160	FATEHGARH SAHIB	BASSI PATHANAN	S-NPP	76.44067	30.73332	14:00:00	D	11.00
161	FATEHGARH SAHIB	FATEHGARH SAHIB	S-NPP	76.43487	30.47880	14:00:00	D	3.20
162	FATEHGARH SAHIB	FATEHGARH SAHIB	S-NPP	76.43291	30.48133	14:00:00	D	3.00

163	FATEHGARH SAHIB	FATEHGARH SAHIB	AQUA	76.49300	30.48700	14:00:00	D	13.80
164	FATEHGARH SAHIB	FATEHGARH SAHIB	S-NPP	76.49032	30.48866	14:00:00	D	9.00
165	FATEHGARH SAHIB	FATEHGARH SAHIB	S-NPP	76.48845	30.49084	14:00:00	D	17.20
166	FATEHGARH SAHIB	FATEHGARH SAHIB	S-NPP	76.48980	30.49356	14:00:00	D	9.00
167	FATEHGARH SAHIB	KHAMANO	AQUA	76.31700	30.72800	14:00:00	D	10.30
168	FATEHGARH SAHIB	KHAMANO	AQUA	76.31100	30.72900	14:00:00	D	11.50
169	FATEHGARH SAHIB	KHAMANO	AQUA	76.30900	30.74000	14:00:00	D	8.20
170	FATEHGARH SAHIB	KHAMANO	S-NPP	76.31384	30.74708	14:00:00	D	5.90
171	FATEHGARH SAHIB	KHAMANO	S-NPP	76.27460	30.80062	14:00:00	D	10.50
172	FAZILKA	ABOHAR	S-NPP	74.13434	30.03204	14:00:00	D	3.10
173	FAZILKA	ABOHAR	S-NPP	74.06185	30.03707	14:00:00	D	3.80
174	FAZILKA	ABOHAR	S-NPP	74.36643	30.09837	14:00:00	D	2.40
175	FAZILKA	ABOHAR	AQUA	74.30700	30.12800	14:00:00	D	10.70
176	FAZILKA	ABOHAR	S-NPP	74.31091	30.13165	14:00:00	D	11.60
177	FAZILKA	ABOHAR	AQUA	74.31300	30.13200	14:00:00	D	10.60
178	FAZILKA	ABOHAR	S-NPP	74.33839	30.13449	14:00:00	D	4.30
179	FAZILKA	ABOHAR	AQUA	74.26300	30.13600	14:00:00	D	6.00
180	FAZILKA	FAZILKA	AQUA	74.03900	30.21100	14:00:00	D	5.20
181	FAZILKA	FAZILKA	S-NPP	74.03970	30.22270	14:00:00	D	7.50
182	FAZILKA	FAZILKA	S-NPP	74.01070	30.27972	14:00:00	D	3.70
183	FAZILKA	FAZILKA	S-NPP	74.02784	30.28574	14:00:00	D	2.30
184	FAZILKA	FAZILKA	S-NPP	73.97206	30.30121	14:00:00	D	9.20
185	FAZILKA	FAZILKA	AQUA	74.16200	30.30700	14:00:00	D	14.80
186	FAZILKA	FAZILKA	S-NPP	74.16084	30.30794	14:00:00	D	5.30
187	FAZILKA	FAZILKA	S-NPP	73.96812	30.33052	14:00:00	D	6.10
188	FAZILKA	FAZILKA	S-NPP	74.09850	30.33149	14:00:00	D	8.00
189	FAZILKA	FAZILKA	S-NPP	73.99288	30.34591	14:00:00	D	2.10
190	FAZILKA	FAZILKA	S-NPP	73.99339	30.34611	14:00:00	D	2.90
191	FAZILKA	JALALABAD	S-NPP	74.29967	30.45446	14:00:00	D	9.90
192	FAZILKA	JALALABAD	S-NPP	74.31350	30.45587	14:00:00	D	3.20
193	FAZILKA	JALALABAD	S-NPP	74.31813	30.45635	14:00:00	D	4.20
194	FAZILKA	JALALABAD	S-NPP	74.45151	30.63077	14:00:00	D	11.10
195	FAZILKA	JALALABAD	S-NPP	74.15878	30.63199	14:00:00	D	2.00

196	FAZILKA	JALALABAD	S-NPP	74.45095	30.63510	14:00:00	D	11.10
197	FAZILKA	JALALABAD	AQUA	74.44700	30.64600	14:00:00	D	12.30
198	FAZILKA	JALALABAD	S-NPP	74.44926	30.64808	14:00:00	D	3.30
199	FAZILKA	JALALABAD	S-NPP	74.21101	30.65891	14:00:00	D	2.90
200	FAZILKA	JALALABAD	S-NPP	74.37553	30.66260	14:00:00	D	5.40
201	FAZILKA	JALALABAD	S-NPP	74.46604	30.66729	14:00:00	D	9.40
202	FAZILKA	JALALABAD	S-NPP	74.32639	30.67506	14:00:00	D	7.00
203	FAZILKA	JALALABAD	S-NPP	74.26419	30.68171	14:00:00	D	19.60
204	FAZILKA	JALALABAD	S-NPP	74.26882	30.68219	14:00:00	D	19.60
205	FAZILKA	JALALABAD	AQUA	74.26000	30.68500	14:00:00	D	44.50
206	FAZILKA	JALALABAD	S-NPP	74.26363	30.68599	14:00:00	D	19.60
207	FAZILKA	JALALABAD	AQUA	74.27200	30.68600	14:00:00	D	33.30
208	FAZILKA	JALALABAD	S-NPP	74.26826	30.68647	14:00:00	D	19.60
209	FAZILKA	JALALABAD	S-NPP	74.26604	30.70360	14:00:00	D	6.70
210	FAZILKA	JALALABAD	AQUA	74.25700	30.70400	14:00:00	D	17.00
211	FAZILKA	JALALABAD	S-NPP	74.26256	30.70600	14:00:00	D	4.70
212	FAZILKA	JALALABAD	AQUA	74.26900	30.70600	14:00:00	D	11.00
213	FAZILKA	JALALABAD	S-NPP	74.26720	30.70645	14:00:00	D	4.70
214	FAZILKA	JALALABAD	AQUA	74.44500	30.70700	14:00:00	D	7.50
215	FAZILKA	JALALABAD	S-NPP	74.23823	30.71227	14:00:00	D	3.10
216	FAZILKA	JALALABAD	S-NPP	74.43610	30.71250	14:00:00	D	9.90
217	FAZILKA	JALALABAD	S-NPP	74.43291	30.71383	14:00:00	D	6.40
218	FAZILKA	JALALABAD	S-NPP	74.43767	30.71429	14:00:00	D	6.40
219	FAZILKA	JALALABAD	S-NPP	74.46403	30.73438	14:00:00	D	5.10
220	FAZILKA	JALALABAD	AQUA	74.45200	30.73700	14:00:00	D	16.00
221	FAZILKA	JALALABAD	S-NPP	74.45870	30.73825	14:00:00	D	10.20
222	FAZILKA	JALALABAD	S-NPP	74.46347	30.73871	14:00:00	D	10.20
223	FAZILKA	JALALABAD	S-NPP	74.45336	30.74212	14:00:00	D	51.50
224	FAZILKA	JALALABAD	AQUA	74.46300	30.74900	14:00:00	D	16.50
225	FAZILKA	JALALABAD	S-NPP	74.46180	30.75172	14:00:00	D	13.30
226	FAZILKA	JALALABAD	S-NPP	74.46124	30.75606	14:00:00	D	4.10
227	FAZILKA	JALALABAD	S-NPP	74.35933	30.76346	14:00:00	D	3.20
228	FAZILKA	JALALABAD	AQUA	74.42300	30.76400	14:00:00	D	17.30

229	FAZILKA	JALALABAD	AQUA	74.43500	30.76500	14:00:00	D	23.20
230	FAZILKA	JALALABAD	AQUA	74.29600	30.76800	14:00:00	D	32.20
231	FAZILKA	JALALABAD	S-NPP	74.43038	30.77056	14:00:00	D	35.70
232	FAZILKA	JALALABAD	S-NPP	74.30130	30.77069	14:00:00	D	27.00
233	FAZILKA	JALALABAD	S-NPP	74.39851	30.79364	14:00:00	D	3.60
234	FAZILKA	JALALABAD	S-NPP	74.40325	30.79412	14:00:00	D	6.00
235	FIROZPUR	FIROZPUR	S-NPP	74.82593	30.77345	14:00:00	D	4.40
236	FIROZPUR	FIROZPUR	S-NPP	74.47278	30.77917	14:00:00	D	5.90
237	FIROZPUR	FIROZPUR	AQUA	74.41100	30.79500	14:00:00	D	9.20
238	FIROZPUR	FIROZPUR	S-NPP	74.41750	30.79557	14:00:00	D	7.10
239	FIROZPUR	FIROZPUR	S-NPP	74.37373	30.79987	14:00:00	D	10.10
240	FIROZPUR	FIROZPUR	AQUA	74.45600	30.83000	14:00:00	D	11.60
241	FIROZPUR	FIROZPUR	S-NPP	74.85955	30.83060	14:00:00	D	5.10
242	FIROZPUR	FIROZPUR	AQUA	74.40500	30.83400	14:00:00	D	30.20
243	FIROZPUR	FIROZPUR	S-NPP	74.45220	30.83498	14:00:00	D	6.70
244	FIROZPUR	FIROZPUR	AQUA	74.41700	30.83500	14:00:00	D	18.10
245	FIROZPUR	FIROZPUR	S-NPP	74.54491	30.83505	14:00:00	D	5.80
246	FIROZPUR	FIROZPUR	S-NPP	74.54852	30.83528	14:00:00	D	10.20
247	FIROZPUR	FIROZPUR	S-NPP	74.54975	30.83552	14:00:00	D	5.80
248	FIROZPUR	FIROZPUR	S-NPP	74.32706	30.83592	14:00:00	D	3.50
249	FIROZPUR	FIROZPUR	AQUA	74.67400	30.83600	14:00:00	D	12.40
250	FIROZPUR	FIROZPUR	S-NPP	74.40810	30.83948	14:00:00	D	7.90
251	FIROZPUR	FIROZPUR	S-NPP	74.67266	30.84271	14:00:00	D	6.40
252	FIROZPUR	FIROZPUR	S-NPP	74.67609	30.84377	14:00:00	D	7.10
253	FIROZPUR	FIROZPUR	S-NPP	74.68198	30.84803	14:00:00	D	3.10
254	FIROZPUR	FIROZPUR	AQUA	74.53000	30.84900	14:00:00	D	15.80
255	FIROZPUR	FIROZPUR	S-NPP	74.40641	30.85246	14:00:00	D	4.60
256	FIROZPUR	FIROZPUR	S-NPP	74.41117	30.85292	14:00:00	D	4.60
257	FIROZPUR	FIROZPUR	AQUA	74.40100	30.85300	14:00:00	D	15.70
258	FIROZPUR	FIROZPUR	S-NPP	74.55236	30.85344	14:00:00	D	4.40
259	FIROZPUR	FIROZPUR	AQUA	74.41400	30.85500	14:00:00	D	48.00
260	FIROZPUR	FIROZPUR	S-NPP	74.49802	30.85701	14:00:00	D	3.70
261	FIROZPUR	FIROZPUR	S-NPP	74.41061	30.85725	14:00:00	D	5.10

262	FIROZPUR	FIROZPUR	S-NPP	74.55180	30.85780	14:00:00	D	4.40
263	FIROZPUR	FIROZPUR	S-NPP	74.42014	30.85819	14:00:00	D	23.70
264	FIROZPUR	FIROZPUR	S-NPP	74.41958	30.86252	14:00:00	D	23.70
265	FIROZPUR	FIROZPUR	AQUA	74.56600	30.86300	14:00:00	D	28.20
266	FIROZPUR	FIROZPUR	S-NPP	74.75536	30.86386	14:00:00	D	2.40
267	FIROZPUR	FIROZPUR	AQUA	74.74900	30.86400	14:00:00	D	12.40
268	FIROZPUR	FIROZPUR	S-NPP	74.57014	30.86842	14:00:00	D	4.00
269	FIROZPUR	FIROZPUR	AQUA	74.39800	30.87300	14:00:00	D	21.80
270	FIROZPUR	FIROZPUR	AQUA	74.39300	30.87400	14:00:00	D	10.40
271	FIROZPUR	FIROZPUR	S-NPP	74.40361	30.87409	14:00:00	D	5.90
272	FIROZPUR	FIROZPUR	AQUA	74.40500	30.87500	14:00:00	D	16.50
273	FIROZPUR	FIROZPUR	S-NPP	74.63864	30.87504	14:00:00	D	5.90
274	FIROZPUR	FIROZPUR	AQUA	74.69400	30.87800	14:00:00	D	38.20
275	FIROZPUR	FIROZPUR	S-NPP	74.40306	30.87842	14:00:00	D	5.90
276	FIROZPUR	FIROZPUR	S-NPP	74.69730	30.88514	14:00:00	D	5.80
277	FIROZPUR	FIROZPUR	AQUA	74.38900	30.89300	14:00:00	D	13.70
278	FIROZPUR	FIROZPUR	S-NPP	74.39130	30.89477	14:00:00	D	17.90
279	FIROZPUR	FIROZPUR	S-NPP	74.43311	30.90777	14:00:00	D	4.40
280	FIROZPUR	FIROZPUR	S-NPP	74.48648	30.90874	14:00:00	D	12.20
281	FIROZPUR	FIROZPUR	S-NPP	74.44156	30.91742	14:00:00	D	4.70
282	FIROZPUR	FIROZPUR	S-NPP	74.44635	30.91790	14:00:00	D	4.10
283	FIROZPUR	FIROZPUR	S-NPP	74.51917	30.92085	14:00:00	D	5.50
284	FIROZPUR	FIROZPUR	AQUA	74.46100	30.92100	14:00:00	D	13.60
285	FIROZPUR	FIROZPUR	S-NPP	74.46500	30.92419	14:00:00	D	8.20
286	FIROZPUR	FIROZPUR	S-NPP	74.46663	30.92528	14:00:00	D	6.80
287	FIROZPUR	FIROZPUR	S-NPP	74.53260	30.93105	14:00:00	D	22.60
288	FIROZPUR	FIROZPUR	S-NPP	74.53436	30.93169	14:00:00	D	19.10
289	FIROZPUR	FIROZPUR	S-NPP	74.46390	30.93288	14:00:00	D	16.70
290	FIROZPUR	FIROZPUR	S-NPP	74.46069	30.93351	14:00:00	D	10.20
291	FIROZPUR	FIROZPUR	S-NPP	74.74088	30.93852	14:00:00	D	2.20
292	FIROZPUR	FIROZPUR	S-NPP	74.79153	30.93902	14:00:00	D	4.60
293	FIROZPUR	FIROZPUR	AQUA	74.65200	30.94400	14:00:00	D	14.20
294	FIROZPUR	FIROZPUR	AQUA	74.66500	30.94500	14:00:00	D	7.90

295	FIROZPUR	FIROZPUR	S-NPP	74.45419	30.94609	14:00:00	D	7.50
296	FIROZPUR	FIROZPUR	S-NPP	74.65634	30.94761	14:00:00	D	8.60
297	FIROZPUR	FIROZPUR	S-NPP	74.65927	30.94825	14:00:00	D	11.50
298	FIROZPUR	FIROZPUR	S-NPP	74.65578	30.95201	14:00:00	D	5.80
299	FIROZPUR	FIROZPUR	S-NPP	74.65873	30.95265	14:00:00	D	3.60
300	FIROZPUR	FIROZPUR	S-NPP	74.50618	30.95992	14:00:00	D	1.40
301	FIROZPUR	FIROZPUR	AQUA	74.54300	30.97100	14:00:00	D	14.10
302	FIROZPUR	FIROZPUR	S-NPP	74.66287	30.97494	14:00:00	D	14.50
303	FIROZPUR	FIROZPUR	S-NPP	74.54336	30.97677	14:00:00	D	10.50
304	FIROZPUR	FIROZPUR	S-NPP	74.67168	30.98470	14:00:00	D	2.50
305	FIROZPUR	FIROZPUR	S-NPP	74.63647	30.98577	14:00:00	D	6.20
306	FIROZPUR	FIROZPUR	AQUA	74.77700	30.98900	14:00:00	D	9.30
307	FIROZPUR	FIROZPUR	S-NPP	74.78214	30.99073	14:00:00	D	5.50
308	FIROZPUR	FIROZPUR	AQUA	74.74900	30.99600	14:00:00	D	23.70
309	FIROZPUR	FIROZPUR	AQUA	74.76200	30.99700	14:00:00	D	8.40
310	FIROZPUR	FIROZPUR	S-NPP	74.66505	30.99743	14:00:00	D	4.70
311	FIROZPUR	FIROZPUR	S-NPP	74.73030	30.99924	14:00:00	D	1.90
312	FIROZPUR	FIROZPUR	S-NPP	74.75534	31.00164	14:00:00	D	2.60
313	FIROZPUR	FIROZPUR	S-NPP	74.62383	31.00678	14:00:00	D	6.20
314	FIROZPUR	FIROZPUR	S-NPP	74.76485	31.00703	14:00:00	D	5.40
315	FIROZPUR	FIROZPUR	S-NPP	74.64356	31.00871	14:00:00	D	8.60
316	FIROZPUR	FIROZPUR	AQUA	74.68700	31.01000	14:00:00	D	28.90
317	FIROZPUR	FIROZPUR	S-NPP	74.61835	31.01069	14:00:00	D	1.80
318	FIROZPUR	FIROZPUR	AQUA	74.70000	31.01100	14:00:00	D	12.90
319	FIROZPUR	FIROZPUR	S-NPP	74.66833	31.01112	14:00:00	D	4.00
320	FIROZPUR	FIROZPUR	S-NPP	74.76430	31.01146	14:00:00	D	5.40
321	FIROZPUR	FIROZPUR	S-NPP	74.64301	31.01311	14:00:00	D	7.10
322	FIROZPUR	FIROZPUR	S-NPP	74.69317	31.01354	14:00:00	D	9.20
323	FIROZPUR	FIROZPUR	S-NPP	74.69814	31.01402	14:00:00	D	9.20
324	FIROZPUR	FIROZPUR	S-NPP	74.64685	31.02239	14:00:00	D	5.10
325	FIROZPUR	FIROZPUR	S-NPP	74.62654	31.02484	14:00:00	D	3.50
326	FIROZPUR	FIROZPUR	S-NPP	74.64629	31.02679	14:00:00	D	5.10
327	FIROZPUR	FIROZPUR	AQUA	74.75000	31.02700	14:00:00	D	9.20

328	FIROZPUR	FIROZPUR	S-NPP	74.74644	31.03214	14:00:00	D	12.80
329	FIROZPUR	FIROZPUR	S-NPP	74.61558	31.03265	14:00:00	D	4.60
330	FIROZPUR	FIROZPUR	S-NPP	74.65509	31.03657	14:00:00	D	5.30
331	FIROZPUR	FIROZPUR	S-NPP	74.78611	31.04050	14:00:00	D	5.00
332	FIROZPUR	FIROZPUR	AQUA	74.69400	31.05100	14:00:00	D	8.40
333	FIROZPUR	FIROZPUR	S-NPP	74.70602	31.05374	14:00:00	D	3.70
334	FIROZPUR	FIROZPUR	S-NPP	74.79456	31.05480	14:00:00	D	9.00
335	FIROZPUR	FIROZPUR	S-NPP	74.70810	31.05522	14:00:00	D	3.10
336	FIROZPUR	FIROZPUR	AQUA	74.73300	31.05600	14:00:00	D	6.00
337	FIROZPUR	FIROZPUR	S-NPP	74.69050	31.05677	14:00:00	D	5.10
338	FIROZPUR	FIROZPUR	S-NPP	74.69548	31.05723	14:00:00	D	5.10
339	FIROZPUR	ZIRA	S-NPP	75.02600	30.86488	14:00:00	D	8.50
340	FIROZPUR	ZIRA	AQUA	75.35500	30.88300	14:00:00	D	6.50
341	FIROZPUR	ZIRA	S-NPP	75.35458	30.89178	14:00:00	D	4.80
342	FIROZPUR	ZIRA	S-NPP	75.21557	30.89252	14:00:00	D	4.80
343	FIROZPUR	ZIRA	S-NPP	75.21883	30.89269	14:00:00	D	5.50
344	FIROZPUR	ZIRA	S-NPP	75.00603	30.91444	14:00:00	D	6.50
345	FIROZPUR	ZIRA	AQUA	75.00900	30.91500	14:00:00	D	12.00
346	FIROZPUR	ZIRA	AQUA	74.92700	30.91600	14:00:00	D	8.50
347	FIROZPUR	ZIRA	S-NPP	74.86553	30.91922	14:00:00	D	5.90
348	FIROZPUR	ZIRA	S-NPP	74.85999	30.96375	14:00:00	D	6.20
349	FIROZPUR	ZIRA	S-NPP	74.85683	30.96624	14:00:00	D	4.30
350	FIROZPUR	ZIRA	AQUA	74.87200	30.98000	14:00:00	D	17.00
351	FIROZPUR	ZIRA	S-NPP	74.87553	30.98149	14:00:00	D	13.50
352	FIROZPUR	ZIRA	S-NPP	74.87498	30.98595	14:00:00	D	13.50
353	FIROZPUR	ZIRA	AQUA	75.29400	31.01700	14:00:00	D	14.70
354	FIROZPUR	ZIRA	S-NPP	75.06111	31.04420	14:00:00	D	3.80
355	FIROZPUR	ZIRA	S-NPP	74.81929	31.06174	14:00:00	D	5.10
356	FIROZPUR	ZIRA	S-NPP	74.82192	31.06443	14:00:00	D	5.80
357	FIROZPUR	ZIRA	S-NPP	74.81874	31.06618	14:00:00	D	4.20
358	FIROZPUR	ZIRA	S-NPP	75.04736	31.07028	14:00:00	D	8.30
359	FIROZPUR	ZIRA	S-NPP	75.05257	31.07078	14:00:00	D	8.30
360	FIROZPUR	ZIRA	AQUA	75.04100	31.07100	14:00:00	D	9.20

361	FIROZPUR	ZIRA	AQUA	75.05500	31.07200	14:00:00	D	7.10
362	FIROZPUR	ZIRA	S-NPP	74.87231	31.07356	14:00:00	D	3.90
363	FIROZPUR	ZIRA	AQUA	75.09500	31.07700	14:00:00	D	10.50
364	FIROZPUR	ZIRA	S-NPP	75.09875	31.08434	14:00:00	D	7.80
365	FIROZPUR	ZIRA	S-NPP	75.11040	31.10431	14:00:00	D	3.00
366	GURDASPUR	BATALA	S-NPP	75.41605	31.64447	14:00:00	D	4.60
367	GURDASPUR	BATALA	S-NPP	75.31518	31.66689	14:00:00	D	10.40
368	GURDASPUR	BATALA	S-NPP	75.43163	31.68645	14:00:00	D	3.90
369	GURDASPUR	BATALA	S-NPP	75.32910	31.69147	14:00:00	D	3.80
370	GURDASPUR	BATALA	S-NPP	75.40578	31.71235	14:00:00	D	6.50
371	GURDASPUR	BATALA	S-NPP	75.40360	31.73093	14:00:00	D	5.20
372	GURDASPUR	BATALA	S-NPP	75.25165	31.73106	14:00:00	D	4.90
373	GURDASPUR	BATALA	S-NPP	75.26978	31.74088	14:00:00	D	3.20
374	GURDASPUR	BATALA	S-NPP	75.26158	31.74130	14:00:00	D	2.00
375	GURDASPUR	BATALA	AQUA	75.44000	31.74200	14:00:00	D	7.30
376	GURDASPUR	BATALA	AQUA	75.36500	31.74500	14:00:00	D	8.20
377	GURDASPUR	BATALA	S-NPP	75.43017	31.74743	14:00:00	D	6.70
378	GURDASPUR	BATALA	S-NPP	75.43582	31.74795	14:00:00	D	4.70
379	GURDASPUR	BATALA	S-NPP	75.22398	31.75087	14:00:00	D	3.00
380	GURDASPUR	BATALA	S-NPP	75.22145	31.75150	14:00:00	D	5.00
381	GURDASPUR	BATALA	S-NPP	75.50237	31.76816	14:00:00	D	6.90
382	GURDASPUR	BATALA	S-NPP	75.49925	31.76986	14:00:00	D	3.30
383	GURDASPUR	BATALA	AQUA	75.33200	31.77300	14:00:00	D	9.00
384	GURDASPUR	BATALA	S-NPP	75.34435	31.77535	14:00:00	D	9.00
385	GURDASPUR	BATALA	S-NPP	75.41695	31.78635	14:00:00	D	5.00
386	GURDASPUR	BATALA	S-NPP	75.47991	31.78709	14:00:00	D	4.80
387	GURDASPUR	BATALA	AQUA	75.50600	31.80300	14:00:00	D	10.30
388	GURDASPUR	BATALA	S-NPP	75.51284	31.80409	14:00:00	D	4.10
389	GURDASPUR	BATALA	AQUA	75.36400	31.80500	14:00:00	D	8.50
390	GURDASPUR	BATALA	S-NPP	75.36913	31.80563	14:00:00	D	8.00
391	GURDASPUR	BATALA	S-NPP	75.28424	31.80742	14:00:00	D	6.90
392	GURDASPUR	BATALA	S-NPP	75.07131	31.82958	14:00:00	D	4.90
393	GURDASPUR	BATALA	S-NPP	75.07425	31.83022	14:00:00	D	3.30

394	GURDASPUR	BATALA	AQUA	75.13900	31.84400	14:00:00	D	9.20
395	GURDASPUR	BATALA	S-NPP	75.14072	31.84535	14:00:00	D	3.00
396	GURDASPUR	BATALA	S-NPP	75.14381	31.84553	14:00:00	D	5.60
397	GURDASPUR	BATALA	S-NPP	75.07994	31.84884	14:00:00	D	4.70
398	GURDASPUR	BATALA	S-NPP	75.07745	31.84894	14:00:00	D	5.50
399	GURDASPUR	BATALA	AQUA	75.21000	31.85200	14:00:00	D	7.40
400	GURDASPUR	BATALA	AQUA	75.22500	31.85300	14:00:00	D	28.30
401	GURDASPUR	BATALA	S-NPP	75.09150	31.86864	14:00:00	D	2.70
402	GURDASPUR	BATALA	S-NPP	75.17275	31.88052	14:00:00	D	3.60
403	GURDASPUR	BATALA	S-NPP	75.07359	31.88088	14:00:00	D	7.20
404	GURDASPUR	BATALA	S-NPP	74.94318	31.88276	14:00:00	D	2.30
405	GURDASPUR	BATALA	S-NPP	75.08820	31.89605	14:00:00	D	4.40
406	GURDASPUR	BATALA	S-NPP	75.03846	31.90072	14:00:00	D	10.20
407	GURDASPUR	BATALA	S-NPP	75.01421	31.94009	14:00:00	D	8.20
408	GURDASPUR	BATALA	S-NPP	75.01737	31.94018	14:00:00	D	12.00
409	GURDASPUR	DERA BABA NANAK	S-NPP	75.05090	31.95253	14:00:00	D	4.00
410	GURDASPUR	DERA BABA NANAK	S-NPP	75.05402	31.95286	14:00:00	D	4.00
411	GURDASPUR	DERA BABA NANAK	AQUA	75.05300	31.95400	14:00:00	D	6.40
412	GURDASPUR	DERA BABA NANAK	S-NPP	75.05035	31.95709	14:00:00	D	4.00
413	GURDASPUR	DERA BABA NANAK	S-NPP	74.94549	31.97067	14:00:00	D	3.70
414	GURDASPUR	DERA BABA NANAK	S-NPP	75.09708	31.97971	14:00:00	D	4.70
415	GURDASPUR	DERA BABA NANAK	AQUA	74.94900	31.98400	14:00:00	D	9.00
416	GURDASPUR	DERA BABA NANAK	S-NPP	74.95450	31.98524	14:00:00	D	4.20
417	GURDASPUR	DERA BABA NANAK	S-NPP	75.10471	32.00815	14:00:00	D	4.10
418	GURDASPUR	DERA BABA NANAK	S-NPP	75.10416	32.01273	14:00:00	D	4.40
419	GURDASPUR	DERA BABA NANAK	S-NPP	75.08772	32.04809	14:00:00	D	4.10
420	GURDASPUR	DERA BABA NANAK	S-NPP	75.08883	32.04833	14:00:00	D	2.30
421	GURDASPUR	DERA BABA NANAK	AQUA	74.93300	32.05200	14:00:00	D	11.40
422	GURDASPUR	GURDASPUR	AQUA	75.43400	31.83400	14:00:00	D	10.00
423	GURDASPUR	GURDASPUR	S-NPP	75.43924	31.84008	14:00:00	D	9.30
424	GURDASPUR	GURDASPUR	S-NPP	75.44952	31.85043	14:00:00	D	6.60
425	GURDASPUR	GURDASPUR	S-NPP	75.34425	31.85350	14:00:00	D	4.60
426	GURDASPUR	GURDASPUR	S-NPP	75.56337	31.87015	14:00:00	D	4.20

427	GURDASPUR	GURDASPUR	S-NPP	75.56115	31.87176	14:00:00	D	5.30
428	GURDASPUR	GURDASPUR	S-NPP	75.38654	31.88057	14:00:00	D	4.90
429	GURDASPUR	GURDASPUR	S-NPP	75.49550	31.88518	14:00:00	D	5.00
430	GURDASPUR	GURDASPUR	AQUA	75.50000	31.89400	14:00:00	D	8.40
431	GURDASPUR	GURDASPUR	S-NPP	75.52729	31.91157	14:00:00	D	5.60
432	GURDASPUR	GURDASPUR	S-NPP	75.32589	31.91278	14:00:00	D	4.80
433	GURDASPUR	GURDASPUR	AQUA	75.22300	31.92300	14:00:00	D	8.30
434	GURDASPUR	GURDASPUR	S-NPP	75.31304	31.92568	14:00:00	D	4.20
435	GURDASPUR	GURDASPUR	S-NPP	75.22290	31.92686	14:00:00	D	6.20
436	GURDASPUR	GURDASPUR	S-NPP	75.40884	31.93425	14:00:00	D	3.90
437	GURDASPUR	GURDASPUR	AQUA	75.25000	31.93600	14:00:00	D	13.30
438	GURDASPUR	GURDASPUR	S-NPP	75.24952	31.93861	14:00:00	D	6.00
439	GURDASPUR	GURDASPUR	S-NPP	75.35468	31.95757	14:00:00	D	3.00
440	GURDASPUR	GURDASPUR	AQUA	75.27600	31.96000	14:00:00	D	10.30
441	GURDASPUR	GURDASPUR	S-NPP	75.35713	31.96040	14:00:00	D	2.50
442	GURDASPUR	GURDASPUR	S-NPP	75.20469	31.96135	14:00:00	D	3.60
443	GURDASPUR	GURDASPUR	S-NPP	75.20205	31.96217	14:00:00	D	6.30
444	GURDASPUR	GURDASPUR	S-NPP	75.16550	31.96259	14:00:00	D	2.30
445	GURDASPUR	GURDASPUR	S-NPP	75.16846	31.96367	14:00:00	D	3.20
446	GURDASPUR	GURDASPUR	S-NPP	75.14847	31.96573	14:00:00	D	5.90
447	GURDASPUR	GURDASPUR	S-NPP	75.27689	31.96759	14:00:00	D	5.00
448	GURDASPUR	GURDASPUR	S-NPP	75.15176	31.98457	14:00:00	D	4.20
449	GURDASPUR	GURDASPUR	AQUA	75.14900	31.98500	14:00:00	D	9.50
450	GURDASPUR	GURDASPUR	S-NPP	75.18868	32.00179	14:00:00	D	5.00
451	GURDASPUR	GURDASPUR	S-NPP	75.37482	32.00418	14:00:00	D	4.10
452	GURDASPUR	GURDASPUR	S-NPP	75.24639	32.03494	14:00:00	D	3.90
453	GURDASPUR	GURDASPUR	AQUA	75.30100	32.04400	14:00:00	D	19.20
454	GURDASPUR	GURDASPUR	S-NPP	75.30742	32.04514	14:00:00	D	17.50
455	GURDASPUR	GURDASPUR	AQUA	75.31500	32.04600	14:00:00	D	8.40
456	GURDASPUR	GURDASPUR	S-NPP	75.30688	32.04977	14:00:00	D	6.20
457	GURDASPUR	GURDASPUR	S-NPP	75.42253	32.08140	14:00:00	D	3.30
458	HOSHIARPUR	DASUYA	S-NPP	75.59580	31.63237	14:00:00	D	7.10
459	HOSHIARPUR	DASUYA	S-NPP	75.60156	31.63288	14:00:00	D	7.10

460	HOSHIARPUR	DASUYA	S-NPP	75.61199	31.64330	14:00:00	D	5.50
461	HOSHIARPUR	DASUYA	S-NPP	75.59442	31.67683	14:00:00	D	6.80
462	HOSHIARPUR	DASUYA	S-NPP	75.59617	31.67985	14:00:00	D	7.60
463	HOSHIARPUR	DASUYA	AQUA	75.57200	31.69800	14:00:00	D	13.80
464	HOSHIARPUR	DASUYA	S-NPP	75.60109	31.72012	14:00:00	D	5.20
465	HOSHIARPUR	DASUYA	S-NPP	75.59838	31.74363	14:00:00	D	9.10
466	HOSHIARPUR	DASUYA	S-NPP	75.57419	31.75097	14:00:00	D	10.10
467	HOSHIARPUR	DASUYA	S-NPP	75.59043	31.76192	14:00:00	D	2.90
468	HOSHIARPUR	GARHSHANKAR	S-NPP	76.14915	31.15655	14:00:00	D	4.60
469	JALANDHAR	JALANDHAR I	S-NPP	75.64491	31.46921	14:00:00	D	5.20
470	JALANDHAR	JALANDHAR I	S-NPP	75.64667	31.47239	14:00:00	D	3.70
471	JALANDHAR	JALANDHAR II	S-NPP	75.46191	31.43181	14:00:00	D	3.70
472	JALANDHAR	JALANDHAR II	S-NPP	75.73612	31.49124	14:00:00	D	4.30
473	JALANDHAR	JALANDHAR II	S-NPP	75.57888	31.53928	14:00:00	D	2.80
474	JALANDHAR	JALANDHAR II	S-NPP	75.58926	31.54968	14:00:00	D	2.60
475	JALANDHAR	JALANDHAR II	AQUA	75.59100	31.55000	14:00:00	D	12.60
476	JALANDHAR	JALANDHAR II	S-NPP	75.60020	31.55542	14:00:00	D	4.20
477	JALANDHAR	JALANDHAR II	S-NPP	75.59858	31.56949	14:00:00	D	4.60
478	JALANDHAR	JALANDHAR II	S-NPP	75.59704	31.57084	14:00:00	D	8.30
479	JALANDHAR	JALANDHAR II	S-NPP	75.60380	31.57471	14:00:00	D	4.60
480	JALANDHAR	NAKODAR	S-NPP	75.53465	30.98635	14:00:00	D	4.90
481	JALANDHAR	NAKODAR	S-NPP	75.41637	30.99417	14:00:00	D	6.00
482	JALANDHAR	NAKODAR	S-NPP	75.50467	31.00235	14:00:00	D	9.70
483	JALANDHAR	NAKODAR	AQUA	75.45200	31.01400	14:00:00	D	14.80
484	JALANDHAR	NAKODAR	S-NPP	75.45548	31.01994	14:00:00	D	5.10
485	JALANDHAR	NAKODAR	S-NPP	75.45219	31.02084	14:00:00	D	8.90
486	JALANDHAR	NAKODAR	AQUA	75.44700	31.04500	14:00:00	D	8.80
487	JALANDHAR	NAKODAR	AQUA	75.46100	31.04700	14:00:00	D	9.80
488	JALANDHAR	NAKODAR	S-NPP	75.48925	31.06502	14:00:00	D	3.50
489	JALANDHAR	NAKODAR	AQUA	75.42800	31.07400	14:00:00	D	13.10
490	JALANDHAR	NAKODAR	S-NPP	75.43172	31.07852	14:00:00	D	4.90
491	JALANDHAR	NAKODAR	S-NPP	75.38515	31.12881	14:00:00	D	9.10
492	JALANDHAR	NAKODAR	S-NPP	75.38124	31.12978	14:00:00	D	6.00

493	JALANDHAR	NAKODAR	AQUA	75.38400	31.13000	14:00:00	D	14.60
494	JALANDHAR	NAKODAR	S-NPP	75.53186	31.13459	14:00:00	D	5.90
495	JALANDHAR	NAKODAR	S-NPP	75.52998	31.13678	14:00:00	D	5.70
496	JALANDHAR	NAKODAR	AQUA	75.45200	31.15900	14:00:00	D	7.10
497	JALANDHAR	NAKODAR	S-NPP	75.44814	31.16239	14:00:00	D	2.60
498	JALANDHAR	NAKODAR	S-NPP	75.49823	31.16685	14:00:00	D	6.60
499	JALANDHAR	NAKODAR	S-NPP	75.35775	31.17290	14:00:00	D	2.70
500	JALANDHAR	NAKODAR	S-NPP	75.59058	31.20333	14:00:00	D	2.50
501	JALANDHAR	NAKODAR	S-NPP	75.38632	31.21279	14:00:00	D	2.20
502	JALANDHAR	PHILLAUR	S-NPP	75.63693	31.03339	14:00:00	D	3.90
503	JALANDHAR	PHILLAUR	S-NPP	75.64826	31.03444	14:00:00	D	5.20
504	JALANDHAR	PHILLAUR	S-NPP	75.63445	31.03544	14:00:00	D	5.90
505	JALANDHAR	PHILLAUR	AQUA	75.89400	31.05100	14:00:00	D	7.60
506	JALANDHAR	PHILLAUR	S-NPP	75.89090	31.05184	14:00:00	D	4.10
507	JALANDHAR	PHILLAUR	S-NPP	75.70354	31.05376	14:00:00	D	2.70
508	JALANDHAR	PHILLAUR	S-NPP	75.56131	31.07615	14:00:00	D	11.70
509	JALANDHAR	PHILLAUR	S-NPP	75.91174	31.07773	14:00:00	D	2.90
510	JALANDHAR	PHILLAUR	S-NPP	75.69271	31.07834	14:00:00	D	7.00
511	JALANDHAR	PHILLAUR	AQUA	75.73300	31.10900	14:00:00	D	10.60
512	JALANDHAR	PHILLAUR	S-NPP	75.64848	31.11229	14:00:00	D	3.60
513	JALANDHAR	PHILLAUR	S-NPP	75.73482	31.11530	14:00:00	D	5.80
514	JALANDHAR	PHILLAUR	S-NPP	75.58807	31.13981	14:00:00	D	6.00
515	JALANDHAR	SHAHKOT	S-NPP	75.29532	31.01974	14:00:00	D	10.70
516	JALANDHAR	SHAHKOT	AQUA	75.24700	31.04300	14:00:00	D	10.60
517	JALANDHAR	SHAHKOT	AQUA	75.28900	31.04800	14:00:00	D	7.30
518	JALANDHAR	SHAHKOT	S-NPP	75.29689	31.05227	14:00:00	D	5.50
519	JALANDHAR	SHAHKOT	S-NPP	75.24081	31.06559	14:00:00	D	1.80
520	JALANDHAR	SHAHKOT	S-NPP	75.20226	31.07121	14:00:00	D	3.80
521	JALANDHAR	SHAHKOT	AQUA	75.22100	31.08000	14:00:00	D	29.30
522	JALANDHAR	SHAHKOT	S-NPP	75.22256	31.08233	14:00:00	D	10.10
523	JALANDHAR	SHAHKOT	S-NPP	75.38449	31.10214	14:00:00	D	6.20
524	JALANDHAR	SHAHKOT	AQUA	75.25900	31.10600	14:00:00	D	13.20
525	JALANDHAR	SHAHKOT	S-NPP	75.29578	31.10774	14:00:00	D	4.40

526	JALANDHAR	SHAHKOT	S-NPP	75.29356	31.11144	14:00:00	D	4.10
527	JALANDHAR	SHAHKOT	S-NPP	75.29190	31.12519	14:00:00	D	6.50
528	JALANDHAR	SHAHKOT	S-NPP	75.29360	31.12606	14:00:00	D	5.60
529	JALANDHAR	SHAHKOT	S-NPP	75.30818	31.12664	14:00:00	D	4.20
530	JALANDHAR	SHAHKOT	S-NPP	75.24216	31.12998	14:00:00	D	14.70
531	JALANDHAR	SHAHKOT	S-NPP	75.31795	31.13678	14:00:00	D	8.50
532	JALANDHAR	SHAHKOT	S-NPP	75.21362	31.14124	14:00:00	D	3.40
533	JALANDHAR	SHAHKOT	S-NPP	75.27342	31.14205	14:00:00	D	3.00
534	JALANDHAR	SHAHKOT	S-NPP	75.37203	31.14626	14:00:00	D	10.00
535	KAPURTHALA	BHOLATH	S-NPP	75.47398	31.55332	14:00:00	D	6.10
536	KAPURTHALA	BHOLATH	S-NPP	75.59285	31.56897	14:00:00	D	4.20
537	KAPURTHALA	BHOLATH	S-NPP	75.38521	31.57139	14:00:00	D	4.10
538	KAPURTHALA	BHOLATH	AQUA	75.46300	31.57300	14:00:00	D	27.50
539	KAPURTHALA	BHOLATH	S-NPP	75.51593	31.57336	14:00:00	D	5.20
540	KAPURTHALA	BHOLATH	S-NPP	75.46439	31.57361	14:00:00	D	11.10
541	KAPURTHALA	BHOLATH	AQUA	75.47700	31.57500	14:00:00	D	27.80
542	KAPURTHALA	BHOLATH	AQUA	75.49200	31.57600	14:00:00	D	18.90
543	KAPURTHALA	BHOLATH	S-NPP	75.46384	31.57827	14:00:00	D	11.10
544	KAPURTHALA	BHOLATH	S-NPP	75.48647	31.58024	14:00:00	D	5.20
545	KAPURTHALA	BHOLATH	S-NPP	75.48025	31.58440	14:00:00	D	15.40
546	KAPURTHALA	BHOLATH	S-NPP	75.48592	31.58490	14:00:00	D	8.40
547	KAPURTHALA	BHOLATH	AQUA	75.47600	31.58500	14:00:00	D	47.20
548	KAPURTHALA	BHOLATH	S-NPP	75.49158	31.58539	14:00:00	D	8.40
549	KAPURTHALA	BHOLATH	AQUA	75.49000	31.58700	14:00:00	D	22.80
550	KAPURTHALA	BHOLATH	S-NPP	75.53030	31.59820	14:00:00	D	6.60
551	KAPURTHALA	BHOLATH	S-NPP	75.55150	31.61425	14:00:00	D	8.00
552	KAPURTHALA	BHOLATH	S-NPP	75.55096	31.61893	14:00:00	D	7.10
553	KAPURTHALA	BHOLATH	S-NPP	75.51562	31.62524	14:00:00	D	5.00
554	KAPURTHALA	BHOLATH	S-NPP	75.53790	31.63195	14:00:00	D	22.10
555	KAPURTHALA	BHOLATH	S-NPP	75.54932	31.63297	14:00:00	D	11.50
556	KAPURTHALA	BHOLATH	S-NPP	75.53735	31.63663	14:00:00	D	6.50
557	KAPURTHALA	KAPURTHALA	S-NPP	75.26914	31.29423	14:00:00	D	2.60
558	KAPURTHALA	KAPURTHALA	AQUA	75.27400	31.30000	14:00:00	D	12.30

559	KAPURTHALA	KAPURTHALA	AQUA	75.27300	31.31100	14:00:00	D	9.30
560	KAPURTHALA	KAPURTHALA	AQUA	75.28700	31.31200	14:00:00	D	11.30
561	KAPURTHALA	KAPURTHALA	S-NPP	75.26697	31.31257	14:00:00	D	4.40
562	KAPURTHALA	KAPURTHALA	AQUA	75.30100	31.31400	14:00:00	D	23.70
563	KAPURTHALA	KAPURTHALA	S-NPP	75.29633	31.31895	14:00:00	D	19.20
564	KAPURTHALA	KAPURTHALA	S-NPP	75.29913	31.32023	14:00:00	D	17.20
565	KAPURTHALA	KAPURTHALA	S-NPP	75.40909	31.33052	14:00:00	D	7.90
566	KAPURTHALA	KAPURTHALA	S-NPP	75.40586	31.33313	14:00:00	D	6.60
567	KAPURTHALA	KAPURTHALA	S-NPP	75.41142	31.33361	14:00:00	D	6.60
568	KAPURTHALA	KAPURTHALA	S-NPP	75.24607	31.37012	14:00:00	D	7.90
569	KAPURTHALA	KAPURTHALA	S-NPP	75.22868	31.37779	14:00:00	D	4.80
570	KAPURTHALA	KAPURTHALA	S-NPP	75.29465	31.37917	14:00:00	D	6.00
571	KAPURTHALA	KAPURTHALA	AQUA	75.24100	31.38700	14:00:00	D	13.90
572	KAPURTHALA	KAPURTHALA	AQUA	75.36700	31.41200	14:00:00	D	25.70
573	KAPURTHALA	KAPURTHALA	S-NPP	75.26293	31.41339	14:00:00	D	4.20
574	KAPURTHALA	KAPURTHALA	S-NPP	75.36786	31.41847	14:00:00	D	10.10
575	KAPURTHALA	KAPURTHALA	S-NPP	75.37338	31.41898	14:00:00	D	19.00
576	KAPURTHALA	KAPURTHALA	S-NPP	75.26163	31.44999	14:00:00	D	5.30
577	KAPURTHALA	KAPURTHALA	S-NPP	75.35020	31.45316	14:00:00	D	3.70
578	KAPURTHALA	KAPURTHALA	S-NPP	75.26929	31.47853	14:00:00	D	3.40
579	KAPURTHALA	KAPURTHALA	AQUA	75.40600	31.49800	14:00:00	D	11.90
580	KAPURTHALA	KAPURTHALA	S-NPP	75.40591	31.50486	14:00:00	D	6.20
581	KAPURTHALA	KAPURTHALA	S-NPP	75.41149	31.50536	14:00:00	D	8.60
582	KAPURTHALA	KAPURTHALA	S-NPP	75.36418	31.52445	14:00:00	D	5.90
583	KAPURTHALA	PHAGWARA	S-NPP	75.79201	31.26905	14:00:00	D	3.20
584	KAPURTHALA	PHAGWARA	S-NPP	75.87465	31.27176	14:00:00	D	3.60
585	KAPURTHALA	PHAGWARA	S-NPP	75.70579	31.28646	14:00:00	D	4.00
586	KAPURTHALA	SULTANPUR LODHI	S-NPP	75.25071	31.19547	14:00:00	D	5.20
587	KAPURTHALA	SULTANPUR LODHI	AQUA	75.25400	31.19600	14:00:00	D	8.00
588	KAPURTHALA	SULTANPUR LODHI	S-NPP	75.24653	31.20887	14:00:00	D	3.90
589	KAPURTHALA	SULTANPUR LODHI	S-NPP	75.24907	31.20919	14:00:00	D	6.80
590	KAPURTHALA	SULTANPUR LODHI	AQUA	75.13500	31.23400	14:00:00	D	9.80
591	KAPURTHALA	SULTANPUR LODHI	AQUA	75.14300	31.23400	14:00:00	D	6.70

592	KAPURTHALA	SULTANPUR LODHI	S-NPP	75.16676	31.23864	14:00:00	D	6.20
593	KAPURTHALA	SULTANPUR LODHI	AQUA	75.08400	31.24800	14:00:00	D	7.80
594	KAPURTHALA	SULTANPUR LODHI	AQUA	75.23800	31.25500	14:00:00	D	14.50
595	KAPURTHALA	SULTANPUR LODHI	AQUA	75.25200	31.25600	14:00:00	D	18.30
596	KAPURTHALA	SULTANPUR LODHI	S-NPP	75.24532	31.26426	14:00:00	D	20.20
597	KAPURTHALA	SULTANPUR LODHI	S-NPP	75.17198	31.28518	14:00:00	D	6.00
598	KAPURTHALA	SULTANPUR LODHI	S-NPP	75.17144	31.28974	14:00:00	D	6.00
599	KAPURTHALA	SULTANPUR LODHI	S-NPP	75.16087	31.30706	14:00:00	D	2.50
600	KAPURTHALA	SULTANPUR LODHI	S-NPP	75.16387	31.30745	14:00:00	D	4.20
601	KAPURTHALA	SULTANPUR LODHI	S-NPP	75.15810	31.32984	14:00:00	D	2.80
602	KAPURTHALA	SULTANPUR LODHI	S-NPP	75.22279	31.33563	14:00:00	D	13.70
603	KAPURTHALA	SULTANPUR LODHI	S-NPP	75.22765	31.34068	14:00:00	D	4.70
604	LUDHIANA	JAGRAON	S-NPP	75.45274	30.66502	14:00:00	D	4.60
605	LUDHIANA	JAGRAON	S-NPP	75.39039	30.68238	14:00:00	D	18.90
606	LUDHIANA	JAGRAON	S-NPP	75.39578	30.68290	14:00:00	D	14.80
607	LUDHIANA	JAGRAON	AQUA	75.38300	30.68300	14:00:00	D	13.60
608	LUDHIANA	JAGRAON	S-NPP	75.38102	30.69035	14:00:00	D	7.70
609	LUDHIANA	JAGRAON	S-NPP	75.38641	30.69083	14:00:00	D	8.10
610	LUDHIANA	JAGRAON	AQUA	75.43800	30.70000	14:00:00	D	10.90
611	LUDHIANA	JAGRAON	S-NPP	75.44014	30.70023	14:00:00	D	4.40
612	LUDHIANA	JAGRAON	S-NPP	75.43752	30.70079	14:00:00	D	6.60
613	LUDHIANA	JAGRAON	S-NPP	75.46030	30.76254	14:00:00	D	10.80
614	LUDHIANA	JAGRAON	AQUA	75.46400	30.76300	14:00:00	D	8.10
615	LUDHIANA	JAGRAON	S-NPP	75.55228	30.78503	14:00:00	D	4.70
616	LUDHIANA	JAGRAON	S-NPP	75.52583	30.82003	14:00:00	D	5.80
617	LUDHIANA	JAGRAON	S-NPP	75.55261	30.85873	14:00:00	D	3.90
618	LUDHIANA	JAGRAON	S-NPP	75.45271	30.90100	14:00:00	D	16.80
619	LUDHIANA	JAGRAON	AQUA	75.58900	30.91700	14:00:00	D	9.70
620	LUDHIANA	JAGRAON	S-NPP	75.43172	30.95829	14:00:00	D	3.90
621	LUDHIANA	KHANNA	S-NPP	76.08686	30.60794	02:42:00	N	1.10
622	LUDHIANA	KHANNA	S-NPP	76.15149	30.66526	14:00:00	D	2.80
623	LUDHIANA	KHANNA	AQUA	76.15100	30.66600	14:00:00	D	12.70
624	LUDHIANA	LUDHIANA EAST	AQUA	75.86100	30.71500	14:00:00	D	7.20

625	LUDHIANA	LUDHIANA EAST	S-NPP	75.88602	30.96483	14:00:00	D	7.70
626	LUDHIANA	LUDHIANA EAST	S-NPP	75.88313	30.96490	14:00:00	D	8.60
627	LUDHIANA	LUDHIANA WEST	S-NPP	75.75278	30.77015	14:00:00	D	7.10
628	LUDHIANA	LUDHIANA WEST	AQUA	75.79500	30.81000	14:00:00	D	17.50
629	LUDHIANA	LUDHIANA WEST	S-NPP	75.79424	30.81184	14:00:00	D	4.40
630	LUDHIANA	PAYAL	AQUA	75.97500	30.77000	14:00:00	D	9.20
631	LUDHIANA	RAIKOT	S-NPP	75.68970	30.69626	14:00:00	D	2.80
632	LUDHIANA	SAMRALA	S-NPP	76.15456	30.77596	14:00:00	D	2.90
633	LUDHIANA	SAMRALA	AQUA	76.25800	30.82700	14:00:00	D	10.80
634	LUDHIANA	SAMRALA	AQUA	76.27400	30.82900	14:00:00	D	10.60
635	MANSA	BUDHLADA	S-NPP	75.57532	29.75238	14:00:00	D	2.10
636	MANSA	BUDHLADA	S-NPP	75.57632	29.75251	14:00:00	D	5.50
637	MANSA	BUDHLADA	S-NPP	75.58549	29.75793	14:00:00	D	8.70
638	MANSA	BUDHLADA	S-NPP	75.58648	29.75814	14:00:00	D	5.60
639	MANSA	BUDHLADA	S-NPP	75.58494	29.76252	14:00:00	D	5.20
640	MANSA	BUDHLADA	S-NPP	75.58594	29.76272	14:00:00	D	5.60
641	MANSA	BUDHLADA	S-NPP	75.69393	29.77321	14:00:00	D	7.30
642	MANSA	BUDHLADA	S-NPP	75.69256	29.77690	14:00:00	D	7.80
643	MANSA	BUDHLADA	S-NPP	75.59942	29.77776	14:00:00	D	8.60
644	MANSA	BUDHLADA	S-NPP	75.69339	29.77783	14:00:00	D	4.70
645	MANSA	BUDHLADA	S-NPP	75.70182	29.79175	14:00:00	D	4.70
646	MANSA	BUDHLADA	S-NPP	75.57036	29.79364	14:00:00	D	4.10
647	MANSA	BUDHLADA	S-NPP	75.66751	29.80262	14:00:00	D	3.00
648	MANSA	BUDHLADA	S-NPP	75.63334	29.81344	14:00:00	D	6.40
649	MANSA	BUDHLADA	AQUA	75.73100	29.81900	14:00:00	D	7.20
650	MANSA	BUDHLADA	S-NPP	75.73084	29.82716	14:00:00	D	3.20
651	MANSA	BUDHLADA	S-NPP	75.47801	29.84501	14:00:00	D	6.00
652	MANSA	BUDHLADA	S-NPP	75.75505	29.85755	14:00:00	D	9.40
653	MANSA	BUDHLADA	AQUA	75.74700	29.86000	14:00:00	D	10.80
654	MANSA	BUDHLADA	S-NPP	75.75450	29.86219	14:00:00	D	8.20
655	MANSA	BUDHLADA	AQUA	75.58800	29.87400	14:00:00	D	8.00
656	MANSA	BUDHLADA	S-NPP	75.55108	29.88399	14:00:00	D	3.00
657	MANSA	BUDHLADA	AQUA	75.57100	29.89300	14:00:00	D	6.80

658	MANSA	BUDHLADA	S-NPP	75.75908	29.89350	14:00:00	D	3.60
659	MANSA	BUDHLADA	S-NPP	75.75624	29.89522	14:00:00	D	2.60
660	MANSA	BUDHLADA	S-NPP	75.63855	29.92928	14:00:00	D	4.60
661	MANSA	BUDHLADA	S-NPP	75.62061	29.94158	14:00:00	D	2.60
662	MANSA	MANSA	AQUA	75.40900	29.91300	14:00:00	D	12.60
663	MANSA	MANSA	S-NPP	75.40746	29.91671	14:00:00	D	8.20
664	MANSA	MANSA	S-NPP	75.41270	29.91721	14:00:00	D	15.30
665	MANSA	MANSA	AQUA	75.40500	29.94400	14:00:00	D	10.70
666	MANSA	MANSA	S-NPP	75.40943	29.94450	14:00:00	D	5.30
667	MANSA	MANSA	S-NPP	75.36263	29.95926	14:00:00	D	5.30
668	MANSA	MANSA	S-NPP	75.42142	30.00149	14:00:00	D	1.70
669	MANSA	MANSA	S-NPP	75.43857	30.09977	14:00:00	D	3.50
670	MANSA	MANSA	AQUA	75.46100	30.13300	14:00:00	D	13.20
671	MANSA	MANSA	AQUA	75.47500	30.13500	14:00:00	D	11.00
672	MANSA	SARDULGARH	AQUA	75.26400	29.60300	14:00:00	D	7.00
673	MANSA	SARDULGARH	S-NPP	75.27341	29.63182	14:00:00	D	4.00
674	MANSA	SARDULGARH	S-NPP	75.31446	29.63565	14:00:00	D	4.40
675	MANSA	SARDULGARH	S-NPP	75.29695	29.63701	14:00:00	D	3.00
676	MANSA	SARDULGARH	S-NPP	75.29848	29.63871	14:00:00	D	3.10
677	MANSA	SARDULGARH	AQUA	75.34400	29.70300	14:00:00	D	12.20
678	MANSA	SARDULGARH	AQUA	75.20900	29.70800	14:00:00	D	13.80
679	MANSA	SARDULGARH	S-NPP	75.21198	29.71215	14:00:00	D	7.60
680	MANSA	SARDULGARH	S-NPP	75.22214	29.71316	14:00:00	D	6.80
681	MANSA	SARDULGARH	S-NPP	75.22159	29.71765	14:00:00	D	6.80
682	MANSA	SARDULGARH	S-NPP	75.23418	29.73025	14:00:00	D	5.60
683	MANSA	SARDULGARH	S-NPP	75.23521	29.73263	14:00:00	D	4.60
684	MANSA	SARDULGARH	AQUA	75.29800	29.73900	14:00:00	D	7.00
685	MANSA	SARDULGARH	AQUA	75.31100	29.74000	14:00:00	D	23.50
686	MANSA	SARDULGARH	S-NPP	75.21571	29.79659	14:00:00	D	3.70
687	MOGA	BAGHA PURANA	S-NPP	75.09444	30.75573	14:00:00	D	2.80
688	MOGA	MOGA	S-NPP	75.22945	30.73651	14:00:00	D	4.40
689	MOGA	MOGA	AQUA	75.22500	30.75700	14:00:00	D	7.00
690	MOGA	MOGA	S-NPP	75.10950	30.76174	14:00:00	D	14.40

691	MOGA	MOGA	AQUA	75.19300	30.78400	14:00:00	D	8.30
692	MOGA	MOGA	S-NPP	75.18853	30.78882	14:00:00	D	2.10
693	MOGA	MOGA	AQUA	75.02100	30.79300	14:00:00	D	12.60
694	MOGA	MOGA	S-NPP	75.02332	30.80101	14:00:00	D	9.00
695	MOGA	MOGA	AQUA	75.01900	30.80400	14:00:00	D	21.70
696	MOGA	MOGA	S-NPP	75.02277	30.80551	14:00:00	D	9.00
697	MOGA	NIHAL SINGH WALA	S-NPP	75.33807	30.58454	14:00:00	D	6.90
698	MOGA	NIHAL SINGH WALA	S-NPP	75.33686	30.58495	14:00:00	D	5.00
699	MOGA	NIHAL SINGH WALA	S-NPP	75.39005	30.60343	14:00:00	D	5.60
700	MOGA	NIHAL SINGH WALA	S-NPP	75.38891	30.60349	14:00:00	D	5.50
701	MOGA	NIHAL SINGH WALA	AQUA	75.27000	30.69100	14:00:00	D	6.30
702	MOGA	NIHAL SINGH WALA	S-NPP	75.26402	30.69795	14:00:00	D	18.60
703	MOGA	NIHAL SINGH WALA	S-NPP	75.26093	30.69804	14:00:00	D	6.90
704	MOGA	NIHAL SINGH WALA	S-NPP	75.26624	30.69852	14:00:00	D	10.30
705	MUKTSAR	GIDDARBAHA	S-NPP	74.62158	30.18096	14:00:00	D	1.80
706	MUKTSAR	GIDDARBAHA	S-NPP	74.58768	30.18189	14:00:00	D	9.30
707	MUKTSAR	GIDDARBAHA	S-NPP	74.58713	30.18623	14:00:00	D	9.30
708	MUKTSAR	GIDDARBAHA	AQUA	74.60800	30.23600	14:00:00	D	24.80
709	MUKTSAR	GIDDARBAHA	S-NPP	74.60597	30.23730	14:00:00	D	8.50
710	MUKTSAR	GIDDARBAHA	AQUA	74.64400	30.25100	14:00:00	D	8.70
711	MUKTSAR	GIDDARBAHA	S-NPP	74.64687	30.25898	14:00:00	D	21.00
712	MUKTSAR	GIDDARBAHA	S-NPP	74.65166	30.25946	14:00:00	D	21.00
713	MUKTSAR	GIDDARBAHA	AQUA	74.64200	30.26000	14:00:00	D	11.80
714	MUKTSAR	GIDDARBAHA	AQUA	74.55400	30.29200	14:00:00	D	9.10
715	MUKTSAR	GIDDARBAHA	S-NPP	74.52834	30.29243	14:00:00	D	4.00
716	MUKTSAR	GIDDARBAHA	S-NPP	74.55473	30.29809	14:00:00	D	4.80
717	MUKTSAR	GIDDARBAHA	S-NPP	74.55152	30.29906	14:00:00	D	5.40
718	MUKTSAR	GIDDARBAHA	S-NPP	74.55418	30.30242	14:00:00	D	4.10
719	MUKTSAR	GIDDARBAHA	S-NPP	74.53140	30.30588	14:00:00	D	3.10
720	MUKTSAR	GIDDARBAHA	S-NPP	74.73540	30.38772	14:00:00	D	2.30
721	MUKTSAR	MALAUT	S-NPP	74.64257	29.94811	14:00:00	D	8.10
722	MUKTSAR	MALAUT	S-NPP	74.62305	29.95053	14:00:00	D	2.80
723	MUKTSAR	MALAUT	AQUA	74.45700	29.96400	14:00:00	D	11.20

724	MUKTSAR	MALAUT	AQUA	74.46900	29.96500	14:00:00	D	13.40
725	MUKTSAR	MALAUT	AQUA	74.46300	29.96700	14:00:00	D	30.00
726	MUKTSAR	MALAUT	S-NPP	74.46474	29.97099	14:00:00	D	7.70
727	MUKTSAR	MALAUT	S-NPP	74.46347	29.97339	14:00:00	D	10.30
728	MUKTSAR	MALAUT	S-NPP	74.46810	29.97388	14:00:00	D	11.70
729	MUKTSAR	MALAUT	S-NPP	74.46418	29.97529	14:00:00	D	6.50
730	MUKTSAR	MALAUT	S-NPP	74.46882	29.97574	14:00:00	D	7.60
731	MUKTSAR	MALAUT	S-NPP	74.49993	30.02678	14:00:00	D	2.60
732	MUKTSAR	MALAUT	AQUA	74.53900	30.03500	14:00:00	D	8.30
733	MUKTSAR	MALAUT	S-NPP	74.43261	30.03734	14:00:00	D	3.60
734	MUKTSAR	MALAUT	S-NPP	74.44891	30.05642	14:00:00	D	3.30
735	MUKTSAR	MALAUT	S-NPP	74.44780	30.06501	14:00:00	D	10.30
736	MUKTSAR	MALAUT	AQUA	74.44000	30.06600	14:00:00	D	17.90
737	MUKTSAR	MALAUT	AQUA	74.45200	30.06700	14:00:00	D	24.80
738	MUKTSAR	MALAUT	S-NPP	74.44725	30.06931	14:00:00	D	4.90
739	MUKTSAR	MALAUT	S-NPP	74.48447	30.07318	14:00:00	D	9.70
740	MUKTSAR	MALAUT	S-NPP	74.48221	30.07505	14:00:00	D	6.70
741	MUKTSAR	MALAUT	S-NPP	74.55006	30.07999	14:00:00	D	2.50
742	MUKTSAR	MALAUT	S-NPP	74.54790	30.08143	14:00:00	D	2.40
743	MUKTSAR	MALAUT	S-NPP	74.48335	30.08179	14:00:00	D	2.60
744	MUKTSAR	MALAUT	AQUA	74.42300	30.09400	14:00:00	D	14.20
745	MUKTSAR	MALAUT	S-NPP	74.42760	30.09580	14:00:00	D	2.80
746	MUKTSAR	MALAUT	S-NPP	74.40739	30.10682	14:00:00	D	2.60
747	MUKTSAR	MALAUT	AQUA	74.40600	30.12100	14:00:00	D	11.20
748	MUKTSAR	MALAUT	S-NPP	74.40459	30.12825	14:00:00	D	6.70
749	MUKTSAR	MALAUT	AQUA	74.37900	30.13700	14:00:00	D	7.70
750	MUKTSAR	MALAUT	S-NPP	74.37923	30.14302	14:00:00	D	7.90
751	MUKTSAR	MALAUT	AQUA	74.43400	30.14600	14:00:00	D	20.00
752	MUKTSAR	MALAUT	S-NPP	74.42963	30.15256	14:00:00	D	9.30
753	MUKTSAR	MALAUT	S-NPP	74.43428	30.15303	14:00:00	D	9.30
754	MUKTSAR	MALAUT	AQUA	74.43200	30.15600	14:00:00	D	12.00
755	MUKTSAR	MALAUT	S-NPP	74.37072	30.17251	14:00:00	D	4.30
756	MUKTSAR	MALAUT	S-NPP	74.47814	30.17936	14:00:00	D	7.50

757	MUKTSAR	MALAUT	S-NPP	74.48283	30.17985	14:00:00	D	18.90
758	MUKTSAR	MALAUT	AQUA	74.47800	30.18100	14:00:00	D	11.90
759	MUKTSAR	MALAUT	S-NPP	74.47906	30.18104	14:00:00	D	23.20
760	MUKTSAR	MALAUT	S-NPP	74.47758	30.18367	14:00:00	D	7.50
761	MUKTSAR	MALAUT	AQUA	74.30800	30.27300	14:00:00	D	7.30
762	MUKTSAR	MALAUT	S-NPP	74.30828	30.27535	14:00:00	D	5.10
763	MUKTSAR	MALAUT	S-NPP	74.34409	30.27620	14:00:00	D	3.00
764	MUKTSAR	MALAUT	S-NPP	74.31131	30.27709	14:00:00	D	6.00
765	MUKTSAR	MALAUT	AQUA	74.40300	30.29400	14:00:00	D	14.90
766	MUKTSAR	MALAUT	S-NPP	74.40853	30.29823	14:00:00	D	19.10
767	MUKTSAR	MALAUT	AQUA	74.38700	30.32200	14:00:00	D	7.80
768	MUKTSAR	MALAUT	S-NPP	74.32713	30.38783	14:00:00	D	2.20
769	MUKTSAR	MUKTSAR	S-NPP	74.43230	30.37037	14:00:00	D	5.10
770	MUKTSAR	MUKTSAR	S-NPP	74.36314	30.40006	14:00:00	D	4.60
771	MUKTSAR	MUKTSAR	S-NPP	74.36780	30.40052	14:00:00	D	4.60
772	MUKTSAR	MUKTSAR	AQUA	74.30900	30.41700	14:00:00	D	14.90
773	MUKTSAR	MUKTSAR	S-NPP	74.30817	30.42497	14:00:00	D	17.10
774	MUKTSAR	MUKTSAR	AQUA	74.30800	30.42600	14:00:00	D	10.90
775	MUKTSAR	MUKTSAR	S-NPP	74.32500	30.43969	14:00:00	D	2.50
776	MUKTSAR	MUKTSAR	AQUA	74.43000	30.44100	14:00:00	D	15.80
777	MUKTSAR	MUKTSAR	S-NPP	74.38139	30.44104	14:00:00	D	7.00
778	MUKTSAR	MUKTSAR	AQUA	74.44200	30.44200	14:00:00	D	10.00
779	MUKTSAR	MUKTSAR	S-NPP	74.43822	30.44237	14:00:00	D	7.40
780	MUKTSAR	MUKTSAR	S-NPP	74.46067	30.45337	14:00:00	D	4.40
781	MUKTSAR	MUKTSAR	AQUA	74.54600	30.50400	14:00:00	D	9.70
782	MUKTSAR	MUKTSAR	AQUA	74.55800	30.50600	14:00:00	D	5.80
783	MUKTSAR	MUKTSAR	S-NPP	74.55019	30.50632	14:00:00	D	5.70
784	MUKTSAR	MUKTSAR	S-NPP	74.55496	30.50680	14:00:00	D	5.70
785	MUKTSAR	MUKTSAR	S-NPP	74.55298	30.50786	14:00:00	D	9.20
786	MUKTSAR	MUKTSAR	S-NPP	74.50182	30.52929	14:00:00	D	5.90
787	MUKTSAR	MUKTSAR	S-NPP	74.40382	30.54588	14:00:00	D	4.00
788	MUKTSAR	MUKTSAR	S-NPP	74.37590	30.57796	14:00:00	D	8.20
789	MUKTSAR	MUKTSAR	S-NPP	74.37534	30.58226	14:00:00	D	8.20

790	MUKTSAR	MUKTSAR	AQUA	74.61500	30.59400	14:00:00	D	8.70
791	MUKTSAR	MUKTSAR	S-NPP	74.62442	30.59870	14:00:00	D	3.10
792	MUKTSAR	MUKTSAR	AQUA	74.53500	30.61400	14:00:00	D	25.80
793	MUKTSAR	MUKTSAR	AQUA	74.52800	30.61600	14:00:00	D	10.10
794	MUKTSAR	MUKTSAR	S-NPP	74.53428	30.61607	14:00:00	D	10.40
795	MUKTSAR	MUKTSAR	S-NPP	74.53071	30.61647	14:00:00	D	17.00
796	MUKTSAR	MUKTSAR	S-NPP	74.53906	30.61656	14:00:00	D	13.60
797	MUKTSAR	MUKTSAR	AQUA	74.54100	30.61700	14:00:00	D	17.70
798	MUKTSAR	MUKTSAR	S-NPP	74.54031	30.61739	14:00:00	D	15.80
799	MUKTSAR	MUKTSAR	S-NPP	74.53851	30.62091	14:00:00	D	10.90
800	MUKTSAR	MUKTSAR	S-NPP	74.53976	30.62174	14:00:00	D	5.00
801	MUKTSAR	MUKTSAR	S-NPP	74.47639	30.62442	14:00:00	D	12.40
802	MUKTSAR	MUKTSAR	S-NPP	74.56159	30.64147	14:00:00	D	13.90
803	MUKTSAR	MUKTSAR	S-NPP	74.55138	30.64489	14:00:00	D	2.20
804	MUKTSAR	MUKTSAR	S-NPP	74.57067	30.64676	14:00:00	D	7.20
805	MUKTSAR	MUKTSAR	S-NPP	74.52623	30.65125	14:00:00	D	11.40
806	NAWASHAHR	NAWASHAHR	S-NPP	76.13832	31.04960	14:00:00	D	5.70
807	NAWASHAHR	NAWASHAHR	S-NPP	76.04210	31.07463	14:00:00	D	5.20
808	NAWASHAHR	NAWASHAHR	S-NPP	76.04399	31.07525	14:00:00	D	3.80
809	NAWASHAHR	NAWASHAHR	S-NPP	76.07822	31.07762	14:00:00	D	10.20
810	NAWASHAHR	NAWASHAHR	S-NPP	76.14547	31.07829	14:00:00	D	2.20
811	NAWASHAHR	NAWASHAHR	S-NPP	76.14716	31.07959	14:00:00	D	3.80
812	NAWASHAHR	NAWASHAHR	S-NPP	76.03252	31.16093	14:00:00	D	9.70
813	NAWASHAHR	NAWASHAHR	S-NPP	76.03853	31.16146	14:00:00	D	9.70
814	PATIALA	NABHA	S-NPP	76.20554	30.29901	14:00:00	D	5.50
815	PATIALA	NABHA	S-NPP	76.24419	30.33155	14:00:00	D	7.40
816	PATIALA	NABHA	S-NPP	76.18044	30.33965	14:00:00	D	9.70
817	PATIALA	NABHA	S-NPP	76.18285	30.34057	14:00:00	D	9.50
818	PATIALA	NABHA	S-NPP	76.09000	30.34647	14:00:00	D	2.90
819	PATIALA	NABHA	S-NPP	76.23096	30.39077	12:18:00	D	7.80
820	PATIALA	NABHA	S-NPP	76.21539	30.45906	14:00:00	D	4.50
821	PATIALA	NABHA	AQUA	76.27100	30.46400	14:00:00	D	9.60
822	PATIALA	NABHA	S-NPP	76.27338	30.46807	14:00:00	D	5.10

823	PATIALA	NABHA	S-NPP	76.27509	30.46934	14:00:00	D	3.10
824	PATIALA	NABHA	S-NPP	76.17223	30.50316	14:00:00	D	7.60
825	PATIALA	NABHA	S-NPP	76.27202	30.53621	14:00:00	D	7.60
826	PATIALA	PATIALA	S-NPP	76.52331	30.09670	12:18:00	D	6.20
827	PATIALA	PATIALA	S-NPP	76.32181	30.09742	14:00:00	D	5.30
828	PATIALA	PATIALA	S-NPP	76.32128	30.10224	14:00:00	D	5.30
829	PATIALA	PATIALA	S-NPP	76.46566	30.12961	14:00:00	D	3.80
830	PATIALA	PATIALA	AQUA	76.47000	30.13100	14:00:00	D	19.10
831	PATIALA	PATIALA	S-NPP	76.37247	30.13605	14:00:00	D	6.70
832	PATIALA	PATIALA	S-NPP	76.47050	30.13758	12:18:00	D	4.20
833	PATIALA	PATIALA	S-NPP	76.37459	30.14898	14:00:00	D	6.80
834	PATIALA	PATIALA	S-NPP	76.33160	30.15026	14:00:00	D	5.20
835	PATIALA	PATIALA	S-NPP	76.37087	30.15056	14:00:00	D	8.00
836	PATIALA	PATIALA	AQUA	76.32300	30.16000	14:00:00	D	10.30
837	PATIALA	PATIALA	AQUA	76.33900	30.16200	14:00:00	D	8.70
838	PATIALA	PATIALA	AQUA	76.59500	30.16700	14:00:00	D	9.20
839	PATIALA	PATIALA	S-NPP	76.59903	30.17098	14:00:00	D	6.60
840	PATIALA	PATIALA	S-NPP	76.60530	30.17153	14:00:00	D	9.10
841	PATIALA	PATIALA	S-NPP	76.60275	30.17276	14:00:00	D	14.80
842	PATIALA	PATIALA	AQUA	76.44800	30.17300	14:00:00	D	33.50
843	PATIALA	PATIALA	S-NPP	76.44530	30.17939	14:00:00	D	13.60
844	PATIALA	PATIALA	S-NPP	76.49349	30.19329	14:00:00	D	9.70
845	PATIALA	PATIALA	S-NPP	76.58646	30.20607	14:00:00	D	6.00
846	PATIALA	PATIALA	S-NPP	76.33197	30.21557	12:18:00	D	5.00
847	PATIALA	PATIALA	AQUA	76.55000	30.21900	14:00:00	D	16.60
848	PATIALA	PATIALA	S-NPP	76.29340	30.22000	14:00:00	D	6.90
849	PATIALA	PATIALA	S-NPP	76.19511	30.23543	14:00:00	D	8.00
850	PATIALA	PATIALA	S-NPP	76.19413	30.23993	14:00:00	D	5.60
851	PATIALA	PATIALA	S-NPP	76.19457	30.24022	14:00:00	D	7.20
852	PATIALA	PATIALA	S-NPP	76.54981	30.25241	14:00:00	D	6.40
853	PATIALA	PATIALA	S-NPP	76.49641	30.25656	12:18:00	D	3.50
854	PATIALA	PATIALA	AQUA	76.27100	30.26600	14:00:00	D	21.70
855	PATIALA	PATIALA	AQUA	76.28600	30.26800	14:00:00	D	12.80

856	PATIALA	PATIALA	AQUA	76.26400	30.27000	14:00:00	D	9.10
857	PATIALA	PATIALA	S-NPP	76.32407	30.27035	14:00:00	D	15.10
858	PATIALA	PATIALA	S-NPP	76.54108	30.27372	14:00:00	D	5.30
859	PATIALA	PATIALA	S-NPP	76.54093	30.27634	14:00:00	D	8.10
860	PATIALA	PATIALA	S-NPP	76.28067	30.27640	14:00:00	D	19.40
861	PATIALA	PATIALA	S-NPP	76.55131	30.27677	12:18:00	D	6.00
862	PATIALA	PATIALA	AQUA	76.57400	30.27700	14:00:00	D	12.40
863	PATIALA	PATIALA	S-NPP	76.53271	30.27908	12:18:00	D	7.60
864	PATIALA	PATIALA	S-NPP	76.57220	30.27912	14:00:00	D	6.00
865	PATIALA	PATIALA	S-NPP	76.57186	30.28119	14:00:00	D	4.70
866	PATIALA	PATIALA	S-NPP	76.53108	30.28219	12:18:00	D	5.60
867	PATIALA	PATIALA	S-NPP	76.34068	30.28640	14:00:00	D	5.80
868	PATIALA	PATIALA	S-NPP	76.49532	30.28966	14:00:00	D	6.00
869	PATIALA	PATIALA	S-NPP	76.50101	30.29507	14:00:00	D	3.20
870	PATIALA	PATIALA	AQUA	76.50700	30.36200	14:00:00	D	10.60
871	PATIALA	PATIALA	AQUA	76.33300	30.41100	14:00:00	D	21.60
872	PATIALA	PATIALA	AQUA	76.46000	30.42500	14:00:00	D	14.60
873	PATIALA	PATIALA	AQUA	76.36300	30.42600	14:00:00	D	19.40
874	PATIALA	PATIALA	S-NPP	76.36517	30.43337	14:00:00	D	12.10
875	PATIALA	PATIALA	AQUA	76.47300	30.44900	14:00:00	D	28.40
876	PATIALA	PATIALA	S-NPP	76.47530	30.45280	14:00:00	D	17.40
877	PATIALA	RAJPURA	AQUA	76.60400	30.30300	14:00:00	D	21.70
878	PATIALA	RAJPURA	S-NPP	76.60751	30.30396	14:00:00	D	5.70
879	PATIALA	RAJPURA	AQUA	76.61300	30.30600	14:00:00	D	14.70
880	PATIALA	RAJPURA	AQUA	76.52900	30.32000	14:00:00	D	10.10
881	PATIALA	RAJPURA	S-NPP	76.58661	30.32152	12:18:00	D	5.60
882	PATIALA	RAJPURA	S-NPP	76.59451	30.32383	12:18:00	D	6.90
883	PATIALA	RAJPURA	S-NPP	76.64688	30.32388	12:18:00	D	8.40
884	PATIALA	RAJPURA	S-NPP	76.52897	30.32705	14:00:00	D	6.90
885	PATIALA	RAJPURA	S-NPP	76.74789	30.35343	12:18:00	D	5.80
886	PATIALA	RAJPURA	AQUA	76.63900	30.35400	14:00:00	D	12.90
887	PATIALA	RAJPURA	AQUA	76.65600	30.35500	14:00:00	D	16.20
888	PATIALA	RAJPURA	AQUA	76.52300	30.36400	14:00:00	D	11.70

889	PATIALA	RAJPURA	S-NPP	76.51797	30.37057	14:00:00	D	22.00
890	PATIALA	RAJPURA	S-NPP	76.53671	30.37222	14:00:00	D	18.60
891	PATIALA	RAJPURA	S-NPP	76.51554	30.37228	14:00:00	D	20.50
892	PATIALA	RAJPURA	S-NPP	76.53432	30.37381	14:00:00	D	11.40
893	PATIALA	RAJPURA	S-NPP	76.54060	30.37432	14:00:00	D	11.40
894	PATIALA	RAJPURA	S-NPP	76.57276	30.39026	14:00:00	D	4.20
895	PATIALA	RAJPURA	S-NPP	76.57040	30.39161	14:00:00	D	5.20
896	PATIALA	RAJPURA	S-NPP	76.54713	30.39294	14:00:00	D	3.90
897	PATIALA	RAJPURA	S-NPP	76.54472	30.39445	14:00:00	D	6.90
898	PATIALA	RAJPURA	S-NPP	76.54259	30.41407	14:00:00	D	10.50
899	PATIALA	RAJPURA	S-NPP	76.55937	30.49222	12:18:00	D	4.90
900	PATIALA	RAJPURA	S-NPP	76.52445	30.50864	14:00:00	D	9.80
901	PATIALA	RAJPURA	AQUA	76.52100	30.52300	14:00:00	D	10.30
902	PATIALA	RAJPURA	S-NPP	76.53384	30.53914	14:00:00	D	5.40
903	PATIALA	RAJPURA	S-NPP	76.55222	30.60520	14:00:00	D	4.70
904	PATIALA	SAMANA	S-NPP	76.13850	29.85470	14:00:00	D	4.90
905	PATIALA	SAMANA	S-NPP	76.20113	29.87471	14:00:00	D	6.30
906	PATIALA	SAMANA	AQUA	76.16600	29.87900	14:00:00	D	11.60
907	PATIALA	SAMANA	S-NPP	76.16444	29.88586	14:00:00	D	11.60
908	PATIALA	SAMANA	S-NPP	76.15054	29.93275	14:00:00	D	6.10
909	PATIALA	SAMANA	S-NPP	76.15325	29.93295	14:00:00	D	7.40
910	PATIALA	SAMANA	S-NPP	76.16910	29.97770	14:00:00	D	9.20
911	PATIALA	SAMANA	S-NPP	76.19797	29.98510	14:00:00	D	3.90
912	PATIALA	SAMANA	AQUA	76.16800	29.98600	14:00:00	D	19.00
913	PATIALA	SAMANA	S-NPP	76.16802	29.98724	14:00:00	D	12.50
914	PATIALA	SAMANA	AQUA	76.19600	30.01000	14:00:00	D	14.30
915	PATIALA	SAMANA	S-NPP	76.17655	30.01693	14:00:00	D	6.90
916	PATIALA	SAMANA	S-NPP	76.18052	30.01741	14:00:00	D	4.50
917	PATIALA	SAMANA	S-NPP	76.07578	30.02205	14:00:00	D	4.10
918	PATIALA	SAMANA	S-NPP	76.07950	30.02319	14:00:00	D	8.10
919	PATIALA	SAMANA	S-NPP	76.05471	30.03540	14:00:00	D	2.40
920	PATIALA	SAMANA	AQUA	76.22400	30.08300	14:00:00	D	9.40
921	PATIALA	SAMANA	S-NPP	76.19505	30.12904	14:00:00	D	10.60

922	PATIALA	SAMANA	S-NPP	76.19765	30.12996	14:00:00	D	13.40
923	PATIALA	SAMANA	AQUA	76.26300	30.14200	14:00:00	D	9.70
924	PATIALA	SAMANA	S-NPP	76.26799	30.14608	14:00:00	D	2.40
925	PATIALA	SAMANA	S-NPP	76.27090	30.14999	14:00:00	D	6.30
926	PATIALA	SAMANA	AQUA	76.18200	30.16600	14:00:00	D	8.20
927	PATIALA	SAMANA	AQUA	76.06700	30.17900	14:00:00	D	17.10
928	PATIALA	SAMANA	S-NPP	76.06412	30.18505	14:00:00	D	12.30
929	PATIALA	SAMANA	AQUA	76.20300	30.19300	14:00:00	D	9.10
930	PATIALA	SAMANA	AQUA	76.09400	30.20300	14:00:00	D	11.20
931	PATIALA	SAMANA	S-NPP	76.09116	30.20669	14:00:00	D	6.30
932	SANGRUR	DHURI	AQUA	75.78600	30.37300	14:00:00	D	7.50
933	SANGRUR	DHURI	AQUA	75.94900	30.38100	14:00:00	D	7.20
934	SANGRUR	DHURI	S-NPP	75.78909	30.38185	14:00:00	D	6.60
935	SANGRUR	DHURI	AQUA	75.78500	30.38400	14:00:00	D	12.80
936	SANGRUR	DHURI	S-NPP	75.94997	30.38693	14:00:00	D	4.30
937	SANGRUR	DHURI	AQUA	75.80200	30.42500	14:00:00	D	27.80
938	SANGRUR	DHURI	AQUA	75.81600	30.42600	14:00:00	D	7.90
939	SANGRUR	DHURI	S-NPP	75.99784	30.42956	14:00:00	D	5.90
940	SANGRUR	DHURI	S-NPP	75.99575	30.43015	14:00:00	D	4.60
941	SANGRUR	DHURI	S-NPP	76.00158	30.43064	14:00:00	D	4.60
942	SANGRUR	DHURI	S-NPP	75.80628	30.43079	14:00:00	D	15.00
943	SANGRUR	DHURI	S-NPP	75.80384	30.43262	14:00:00	D	9.30
944	SANGRUR	DHURI	S-NPP	75.80951	30.43312	14:00:00	D	13.90
945	SANGRUR	DHURI	AQUA	75.80000	30.43500	14:00:00	D	10.60
946	SANGRUR	DHURI	S-NPP	75.96090	30.44530	14:00:00	D	7.00
947	SANGRUR	DHURI	S-NPP	75.96451	30.44661	14:00:00	D	13.00
948	SANGRUR	DHURI	AQUA	75.74300	30.48700	14:00:00	D	18.50
949	SANGRUR	DHURI	AQUA	75.75700	30.48900	14:00:00	D	9.90
950	SANGRUR	DHURI	S-NPP	75.75158	30.48943	14:00:00	D	9.50
951	SANGRUR	MALERKOTLA	AQUA	75.79600	30.52500	14:00:00	D	7.30
952	SANGRUR	MALERKOTLA	S-NPP	75.79874	30.52694	14:00:00	D	8.70
953	SANGRUR	MALERKOTLA	S-NPP	75.80136	30.52873	14:00:00	D	6.10
954	SANGRUR	MOONAK	S-NPP	75.94450	29.73556	14:00:00	D	12.50

955	SANGRUR	MOONAK	S-NPP	75.94234	29.75433	14:00:00	D	6.30
956	SANGRUR	MOONAK	S-NPP	75.87904	29.76264	14:00:00	D	5.50
957	SANGRUR	MOONAK	AQUA	75.87400	29.76600	14:00:00	D	17.70
958	SANGRUR	MOONAK	S-NPP	75.87850	29.76731	14:00:00	D	6.90
959	SANGRUR	MOONAK	S-NPP	75.87534	29.78851	14:00:00	D	4.50
960	SANGRUR	MOONAK	S-NPP	75.84076	29.79488	14:00:00	D	6.30
961	SANGRUR	MOONAK	S-NPP	75.84133	29.79681	14:00:00	D	6.20
962	SANGRUR	MOONAK	S-NPP	76.00465	29.80463	14:00:00	D	10.50
963	SANGRUR	MOONAK	S-NPP	75.84523	29.80470	14:00:00	D	5.80
964	SANGRUR	MOONAK	S-NPP	75.85638	29.80570	14:00:00	D	7.60
965	SANGRUR	MOONAK	AQUA	75.99600	29.80600	14:00:00	D	12.30
966	SANGRUR	MOONAK	S-NPP	76.00491	29.80768	14:00:00	D	17.30
967	SANGRUR	MOONAK	AQUA	76.01000	29.80800	14:00:00	D	13.10
968	SANGRUR	MOONAK	AQUA	75.84800	29.81100	14:00:00	D	11.00
969	SANGRUR	MOONAK	S-NPP	75.84415	29.81403	14:00:00	D	7.80
970	SANGRUR	MOONAK	S-NPP	75.74345	29.81427	14:00:00	D	2.50
971	SANGRUR	MOONAK	S-NPP	75.76546	29.81629	14:00:00	D	1.70
972	SANGRUR	MOONAK	S-NPP	76.09656	29.81633	14:00:00	D	12.80
973	SANGRUR	MOONAK	S-NPP	76.09589	29.81739	14:00:00	D	7.40
974	SANGRUR	MOONAK	S-NPP	75.86591	29.82072	14:00:00	D	7.90
975	SANGRUR	MOONAK	S-NPP	75.84305	29.82336	14:00:00	D	8.80
976	SANGRUR	MOONAK	S-NPP	75.78040	29.83174	14:00:00	D	2.70
977	SANGRUR	MOONAK	S-NPP	76.04394	29.86535	14:00:00	D	5.00
978	SANGRUR	MOONAK	AQUA	75.83100	29.88000	14:00:00	D	8.80
979	SANGRUR	MOONAK	S-NPP	76.01314	29.88161	14:00:00	D	2.70
980	SANGRUR	MOONAK	S-NPP	75.90940	29.88622	14:00:00	D	9.80
981	SANGRUR	MOONAK	AQUA	75.88800	29.88700	14:00:00	D	11.80
982	SANGRUR	MOONAK	AQUA	75.90300	29.88800	14:00:00	D	11.10
983	SANGRUR	MOONAK	S-NPP	75.91207	29.88815	14:00:00	D	13.90
984	SANGRUR	MOONAK	S-NPP	75.90887	29.89091	14:00:00	D	9.80
985	SANGRUR	MOONAK	S-NPP	75.95812	29.90979	14:00:00	D	4.60
986	SANGRUR	MOONAK	S-NPP	75.95517	29.91090	14:00:00	D	3.60
987	SANGRUR	MOONAK	S-NPP	75.91975	29.96945	14:00:00	D	6.00

988	SANGRUR	MOONAK	S-NPP	75.89662	29.97206	14:00:00	D	9.90
989	SANGRUR	SANGRUR	S-NPP	76.05409	30.16976	14:00:00	D	15.80
990	SANGRUR	SANGRUR	AQUA	76.05200	30.17700	14:00:00	D	11.20
991	SANGRUR	SANGRUR	S-NPP	75.88783	30.20236	14:00:00	D	5.80
992	SANGRUR	SANGRUR	S-NPP	75.88686	30.20411	14:00:00	D	10.10
993	SANGRUR	SANGRUR	AQUA	75.92700	30.20700	14:00:00	D	14.10
994	SANGRUR	SANGRUR	S-NPP	75.88730	30.20706	14:00:00	D	5.80
995	SANGRUR	SANGRUR	S-NPP	75.92719	30.21077	14:00:00	D	26.30
996	SANGRUR	SANGRUR	S-NPP	75.92628	30.21227	14:00:00	D	13.30
997	SANGRUR	SANGRUR	S-NPP	75.93201	30.21276	14:00:00	D	14.00
998	SANGRUR	SANGRUR	S-NPP	75.92039	30.21966	14:00:00	D	8.30
999	SANGRUR	SANGRUR	AQUA	75.90300	30.22100	14:00:00	D	16.80
1000	SANGRUR	SANGRUR	S-NPP	75.91945	30.22119	14:00:00	D	9.00
1001	SANGRUR	SANGRUR	S-NPP	75.92518	30.22169	14:00:00	D	9.00
1002	SANGRUR	SANGRUR	AQUA	75.91800	30.22300	14:00:00	D	22.10
1003	SANGRUR	SANGRUR	S-NPP	75.91318	30.22540	14:00:00	D	4.80
1004	SANGRUR	SANGRUR	AQUA	75.91000	30.22600	14:00:00	D	29.80
1005	SANGRUR	SANGRUR	S-NPP	75.91360	30.22854	14:00:00	D	6.00
1006	SANGRUR	SANGRUR	AQUA	76.16400	30.25500	14:00:00	D	11.50
1007	SANGRUR	SANGRUR	AQUA	75.96900	30.28200	14:00:00	D	7.50
1008	SANGRUR	SANGRUR	S-NPP	75.90559	30.29132	14:00:00	D	3.60
1009	SANGRUR	SANGRUR	AQUA	76.19700	30.29600	14:00:00	D	7.80
1010	SANGRUR	SANGRUR	S-NPP	76.00710	30.31972	14:00:00	D	6.80
1011	SANGRUR	SANGRUR	S-NPP	76.00444	30.31997	14:00:00	D	6.80
1012	SANGRUR	SUNAM	S-NPP	75.83996	30.04952	14:00:00	D	4.00
1013	SANGRUR	SUNAM	S-NPP	75.78239	30.05839	14:00:00	D	11.50
1014	SANGRUR	SUNAM	S-NPP	75.85521	30.06511	14:00:00	D	5.70
1015	SANGRUR	SUNAM	AQUA	75.95000	30.08700	14:00:00	D	7.90
1016	SANGRUR	SUNAM	S-NPP	75.94993	30.08806	14:00:00	D	11.00
1017	SANGRUR	SUNAM	S-NPP	75.95564	30.08858	14:00:00	D	11.00
1018	SANGRUR	SUNAM	S-NPP	75.70600	30.11022	14:00:00	D	13.70
1019	SANGRUR	SUNAM	AQUA	75.74800	30.12300	14:00:00	D	10.20
1020	SANGRUR	SUNAM	S-NPP	75.74874	30.12815	14:00:00	D	7.20

1021	SANGRUR	SUNAM	AQUA	75.63100	30.13100	14:00:00	D	22.00
1022	SANGRUR	SUNAM	AQUA	75.74600	30.13300	14:00:00	D	21.70
1023	SANGRUR	SUNAM	S-NPP	75.75375	30.13332	14:00:00	D	8.20
1024	SANGRUR	SUNAM	S-NPP	75.63070	30.13613	14:00:00	D	5.70
1025	SANGRUR	SUNAM	S-NPP	75.74764	30.13747	14:00:00	D	11.00
1026	SANGRUR	SUNAM	S-NPP	75.75322	30.13797	14:00:00	D	8.20
1027	SANGRUR	SUNAM	S-NPP	75.81254	30.16225	14:00:00	D	9.90
1028	SAS NAGAR	KHARAR	S-NPP	76.61909	30.83895	14:00:00	D	4.20
1029	TARN TARAN	KHADOOR SAHIB	S-NPP	74.98448	31.19919	14:00:00	D	4.60
1030	TARN TARAN	KHADOOR SAHIB	S-NPP	74.98279	31.21269	14:00:00	D	9.00
1031	TARN TARAN	KHADOOR SAHIB	AQUA	75.03000	31.24200	14:00:00	D	7.90
1032	TARN TARAN	KHADOOR SAHIB	S-NPP	75.07883	31.25352	14:00:00	D	3.10
1033	TARN TARAN	KHADOOR SAHIB	S-NPP	74.90920	31.25579	14:00:00	D	3.00
1034	TARN TARAN	KHADOOR SAHIB	AQUA	74.93000	31.26100	14:00:00	D	8.50
1035	TARN TARAN	KHADOOR SAHIB	AQUA	74.94400	31.26300	14:00:00	D	8.50
1036	TARN TARAN	KHADOOR SAHIB	S-NPP	74.91845	31.26574	14:00:00	D	8.10
1037	TARN TARAN	KHADOOR SAHIB	S-NPP	74.93919	31.26773	14:00:00	D	10.50
1038	TARN TARAN	KHADOOR SAHIB	AQUA	74.96900	31.27600	14:00:00	D	7.30
1039	TARN TARAN	KHADOOR SAHIB	S-NPP	75.04375	31.27769	14:00:00	D	3.90
1040	TARN TARAN	KHADOOR SAHIB	S-NPP	74.99104	31.29195	14:00:00	D	4.50
1041	TARN TARAN	KHADOOR SAHIB	S-NPP	74.98850	31.29523	14:00:00	D	2.80
1042	TARN TARAN	KHADOOR SAHIB	S-NPP	75.02726	31.29976	14:00:00	D	4.80
1043	TARN TARAN	KHADOOR SAHIB	AQUA	74.91700	31.31000	14:00:00	D	6.60
1044	TARN TARAN	KHADOOR SAHIB	S-NPP	74.98715	31.32350	14:00:00	D	6.70
1045	TARN TARAN	KHADOOR SAHIB	S-NPP	74.99239	31.32399	14:00:00	D	10.90
1046	TARN TARAN	KHADOOR SAHIB	S-NPP	74.96566	31.32609	14:00:00	D	3.40
1047	TARN TARAN	KHADOOR SAHIB	S-NPP	74.98660	31.32801	14:00:00	D	3.10
1048	TARN TARAN	KHADOOR SAHIB	S-NPP	74.82371	31.33100	14:00:00	D	4.30
1049	TARN TARAN	KHADOOR SAHIB	S-NPP	75.03391	31.33235	14:00:00	D	4.60
1050	TARN TARAN	KHADOOR SAHIB	S-NPP	75.08746	31.33266	14:00:00	D	4.40
1051	TARN TARAN	KHADOOR SAHIB	S-NPP	74.99598	31.33800	14:00:00	D	4.00
1052	TARN TARAN	KHADOOR SAHIB	S-NPP	74.94834	31.33814	14:00:00	D	4.10
1053	TARN TARAN	KHADOOR SAHIB	AQUA	74.92600	31.34100	14:00:00	D	14.70

1054	TARN TARAN	KHADOOR SAHIB	AQUA	74.94000	31.34300	14:00:00	D	21.90
1055	TARN TARAN	KHADOOR SAHIB	S-NPP	74.93160	31.34567	14:00:00	D	5.70
1056	TARN TARAN	KHADOOR SAHIB	S-NPP	74.93680	31.34616	14:00:00	D	18.40
1057	TARN TARAN	KHADOOR SAHIB	S-NPP	74.93625	31.35065	14:00:00	D	8.00
1058	TARN TARAN	KHADOOR SAHIB	S-NPP	74.94035	31.36014	14:00:00	D	5.90
1059	TARN TARAN	KHADOOR SAHIB	AQUA	74.93600	31.36300	14:00:00	D	11.40
1060	TARN TARAN	KHADOOR SAHIB	S-NPP	74.93980	31.36464	14:00:00	D	5.90
1061	TARN TARAN	KHADOOR SAHIB	S-NPP	74.94501	31.36513	14:00:00	D	6.40
1062	TARN TARAN	KHADOOR SAHIB	AQUA	75.03200	31.37400	14:00:00	D	10.60
1063	TARN TARAN	KHADOOR SAHIB	S-NPP	75.03894	31.37856	14:00:00	D	5.90
1064	TARN TARAN	KHADOOR SAHIB	S-NPP	75.04842	31.38862	14:00:00	D	2.10
1065	TARN TARAN	KHADOOR SAHIB	S-NPP	74.90759	31.39080	14:00:00	D	3.00
1066	TARN TARAN	KHADOOR SAHIB	S-NPP	75.11756	31.39514	14:00:00	D	2.60
1067	TARN TARAN	KHADOOR SAHIB	S-NPP	74.88403	31.41135	14:00:00	D	4.20
1068	TARN TARAN	KHADOOR SAHIB	S-NPP	74.81067	31.41365	14:00:00	D	4.00
1069	TARN TARAN	KHADOOR SAHIB	S-NPP	74.99187	31.41521	14:00:00	D	3.70
1070	TARN TARAN	KHADOOR SAHIB	S-NPP	74.98907	31.41636	14:00:00	D	3.70
1071	TARN TARAN	KHADOOR SAHIB	S-NPP	74.69353	31.44311	14:00:00	D	3.80
1072	TARN TARAN	KHADOOR SAHIB	S-NPP	75.04440	31.44425	14:00:00	D	2.90
1073	TARN TARAN	KHADOOR SAHIB	AQUA	75.04100	31.44600	14:00:00	D	7.40
1074	TARN TARAN	KHADOOR SAHIB	AQUA	75.19600	31.45300	14:00:00	D	27.90
1075	TARN TARAN	KHADOOR SAHIB	S-NPP	75.20055	31.45380	14:00:00	D	11.10
1076	TARN TARAN	KHADOOR SAHIB	AQUA	74.69200	31.45700	14:00:00	D	14.50
1077	TARN TARAN	KHADOOR SAHIB	AQUA	75.04000	31.45700	14:00:00	D	7.90
1078	TARN TARAN	KHADOOR SAHIB	S-NPP	74.66103	31.45791	14:00:00	D	5.80
1079	TARN TARAN	KHADOOR SAHIB	AQUA	74.69800	31.45800	14:00:00	D	8.80
1080	TARN TARAN	KHADOOR SAHIB	S-NPP	74.69131	31.46086	14:00:00	D	9.70
1081	TARN TARAN	KHADOOR SAHIB	S-NPP	74.65938	31.47119	14:00:00	D	7.10
1082	TARN TARAN	KHADOOR SAHIB	S-NPP	75.22003	31.47407	14:00:00	D	4.80
1083	TARN TARAN	KHADOOR SAHIB	S-NPP	75.00766	31.48204	14:00:00	D	3.70
1084	TARN TARAN	KHADOOR SAHIB	S-NPP	75.02243	31.49259	14:00:00	D	3.50
1085	TARN TARAN	KHADOOR SAHIB	S-NPP	75.02773	31.49309	14:00:00	D	5.70
1086	TARN TARAN	KHADOOR SAHIB	S-NPP	75.18959	31.49904	14:00:00	D	4.00

1087	TARN TARAN	KHADOOR SAHIB	S-NPP	75.02662	31.50214	14:00:00	D	6.80
1088	TARN TARAN	KHADOOR SAHIB	S-NPP	74.91980	31.50560	14:00:00	D	4.20
1089	TARN TARAN	KHADOOR SAHIB	S-NPP	74.91772	31.50675	14:00:00	D	8.60
1090	TARN TARAN	KHADOOR SAHIB	AQUA	74.99800	31.51100	14:00:00	D	6.20
1091	TARN TARAN	KHADOOR SAHIB	S-NPP	74.82253	31.51170	14:00:00	D	5.20
1092	TARN TARAN	KHADOOR SAHIB	S-NPP	74.79618	31.51380	14:00:00	D	3.90
1093	TARN TARAN	KHADOOR SAHIB	AQUA	74.84400	31.52500	14:00:00	D	9.10
1094	TARN TARAN	KHADOOR SAHIB	S-NPP	74.84151	31.52703	14:00:00	D	3.50
1095	TARN TARAN	PATTI	AQUA	74.56000	31.11600	14:00:00	D	15.50
1096	TARN TARAN	PATTI	AQUA	74.57300	31.11800	14:00:00	D	42.70
1097	TARN TARAN	PATTI	S-NPP	74.56706	31.12062	14:00:00	D	45.10
1098	TARN TARAN	PATTI	S-NPP	74.57198	31.12111	14:00:00	D	15.20
1099	TARN TARAN	PATTI	S-NPP	74.57690	31.12159	14:00:00	D	15.20
1100	TARN TARAN	PATTI	AQUA	74.71600	31.12400	14:00:00	D	13.40
1101	TARN TARAN	PATTI	AQUA	74.57100	31.12700	14:00:00	D	13.70
1102	TARN TARAN	PATTI	S-NPP	74.71156	31.13031	14:00:00	D	24.50
1103	TARN TARAN	PATTI	AQUA	74.66100	31.13800	14:00:00	D	10.80
1104	TARN TARAN	PATTI	AQUA	74.67400	31.14000	14:00:00	D	12.00
1105	TARN TARAN	PATTI	S-NPP	74.81754	31.14057	14:00:00	D	8.40
1106	TARN TARAN	PATTI	S-NPP	74.66935	31.14406	14:00:00	D	33.20
1107	TARN TARAN	PATTI	AQUA	74.52800	31.15200	14:00:00	D	14.00
1108	TARN TARAN	PATTI	S-NPP	74.53941	31.15793	14:00:00	D	7.80
1109	TARN TARAN	PATTI	S-NPP	74.54243	31.15809	14:00:00	D	6.50
1110	TARN TARAN	PATTI	S-NPP	74.52904	31.16138	14:00:00	D	31.40
1111	TARN TARAN	PATTI	S-NPP	74.62384	31.16143	14:00:00	D	7.20
1112	TARN TARAN	PATTI	S-NPP	74.53395	31.16185	14:00:00	D	31.40
1113	TARN TARAN	PATTI	AQUA	74.52600	31.16200	14:00:00	D	61.50
1114	TARN TARAN	PATTI	AQUA	74.60500	31.16200	14:00:00	D	7.40
1115	TARN TARAN	PATTI	S-NPP	74.62674	31.16214	14:00:00	D	6.20
1116	TARN TARAN	PATTI	AQUA	74.53200	31.16500	14:00:00	D	8.80
1117	TARN TARAN	PATTI	S-NPP	74.86578	31.16780	14:00:00	D	7.10
1118	TARN TARAN	PATTI	S-NPP	74.60783	31.16883	14:00:00	D	22.50
1119	TARN TARAN	PATTI	S-NPP	74.92223	31.17329	14:00:00	D	6.90

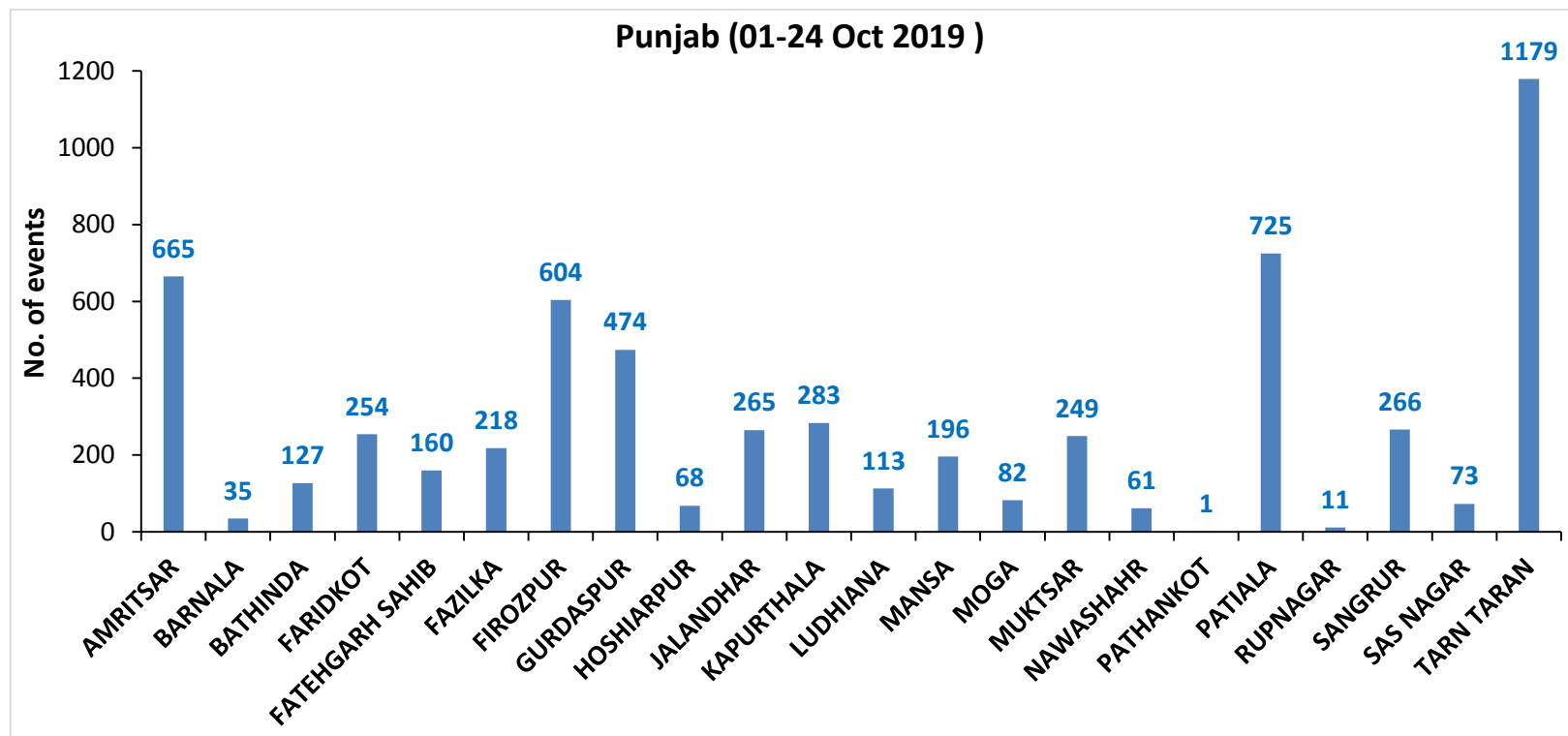
1120	TARN TARAN	PATTI	AQUA	74.63500	31.17700	14:00:00	D	10.30
1121	TARN TARAN	PATTI	S-NPP	74.86976	31.17723	14:00:00	D	3.70
1122	TARN TARAN	PATTI	S-NPP	74.86665	31.17938	14:00:00	D	3.30
1123	TARN TARAN	PATTI	S-NPP	74.63651	31.18044	14:00:00	D	10.90
1124	TARN TARAN	PATTI	S-NPP	74.72219	31.18403	14:00:00	D	2.60
1125	TARN TARAN	PATTI	S-NPP	74.63593	31.18485	14:00:00	D	10.90
1126	TARN TARAN	PATTI	S-NPP	74.67587	31.18863	14:00:00	D	3.40
1127	TARN TARAN	PATTI	AQUA	74.68500	31.19300	14:00:00	D	10.50
1128	TARN TARAN	PATTI	S-NPP	74.84386	31.19535	14:00:00	D	3.70
1129	TARN TARAN	PATTI	S-NPP	74.86434	31.19725	14:00:00	D	6.60
1130	TARN TARAN	PATTI	S-NPP	74.68972	31.19888	14:00:00	D	11.30
1131	TARN TARAN	PATTI	AQUA	74.57900	31.20000	14:00:00	D	7.10
1132	TARN TARAN	PATTI	S-NPP	74.75066	31.20016	14:00:00	D	1.90
1133	TARN TARAN	PATTI	S-NPP	74.57863	31.20163	14:00:00	D	11.80
1134	TARN TARAN	PATTI	S-NPP	74.62874	31.20199	14:00:00	D	32.40
1135	TARN TARAN	PATTI	S-NPP	74.77090	31.20206	14:00:00	D	4.30
1136	TARN TARAN	PATTI	S-NPP	74.77596	31.20254	14:00:00	D	3.80
1137	TARN TARAN	PATTI	S-NPP	74.79118	31.20396	14:00:00	D	7.30
1138	TARN TARAN	PATTI	AQUA	74.79000	31.20500	14:00:00	D	21.10
1139	TARN TARAN	PATTI	S-NPP	74.74954	31.20903	14:00:00	D	4.50
1140	TARN TARAN	PATTI	S-NPP	74.57203	31.21432	14:00:00	D	5.40
1141	TARN TARAN	PATTI	S-NPP	74.71203	31.22340	14:00:00	D	5.30
1142	TARN TARAN	PATTI	S-NPP	74.63588	31.22499	14:00:00	D	1.60
1143	TARN TARAN	PATTI	AQUA	74.74600	31.23000	14:00:00	D	7.90
1144	TARN TARAN	PATTI	AQUA	74.67900	31.23200	14:00:00	D	37.90
1145	TARN TARAN	PATTI	AQUA	74.75900	31.23200	14:00:00	D	12.10
1146	TARN TARAN	PATTI	S-NPP	74.52990	31.23238	14:00:00	D	8.10
1147	TARN TARAN	PATTI	AQUA	74.69200	31.23400	14:00:00	D	8.90
1148	TARN TARAN	PATTI	S-NPP	74.68525	31.23425	14:00:00	D	2.50
1149	TARN TARAN	PATTI	S-NPP	74.78730	31.23511	14:00:00	D	3.00
1150	TARN TARAN	PATTI	AQUA	74.79900	31.23600	14:00:00	D	10.10
1151	TARN TARAN	PATTI	S-NPP	74.67968	31.23818	14:00:00	D	11.20
1152	TARN TARAN	PATTI	S-NPP	74.82297	31.23852	14:00:00	D	2.50

1153	TARN TARAN	PATTI	AQUA	74.82500	31.23900	14:00:00	D	13.30
1154	TARN TARAN	PATTI	S-NPP	74.82240	31.24297	14:00:00	D	8.00
1155	TARN TARAN	PATTI	S-NPP	74.54845	31.24310	14:00:00	D	5.30
1156	TARN TARAN	PATTI	S-NPP	74.62757	31.25094	14:00:00	D	6.60
1157	TARN TARAN	PATTI	AQUA	74.58400	31.25100	14:00:00	D	10.00
1158	TARN TARAN	PATTI	S-NPP	74.63254	31.25143	14:00:00	D	6.60
1159	TARN TARAN	PATTI	S-NPP	74.59344	31.25565	14:00:00	D	13.10
1160	TARN TARAN	PATTI	S-NPP	74.59172	31.25629	14:00:00	D	10.70
1161	TARN TARAN	PATTI	S-NPP	74.76366	31.25982	14:00:00	D	4.10
1162	TARN TARAN	PATTI	AQUA	74.76700	31.26300	14:00:00	D	8.60
1163	TARN TARAN	PATTI	S-NPP	74.67323	31.26304	14:00:00	D	12.90
1164	TARN TARAN	PATTI	S-NPP	74.67133	31.26420	14:00:00	D	7.50
1165	TARN TARAN	PATTI	S-NPP	74.52696	31.26719	14:00:00	D	4.60
1166	TARN TARAN	PATTI	S-NPP	74.66579	31.26812	14:00:00	D	7.50
1167	TARN TARAN	PATTI	AQUA	74.56200	31.26900	14:00:00	D	9.20
1168	TARN TARAN	PATTI	AQUA	74.57500	31.27100	14:00:00	D	18.60
1169	TARN TARAN	PATTI	S-NPP	74.66708	31.27141	14:00:00	D	3.70
1170	TARN TARAN	PATTI	S-NPP	74.57081	31.27577	14:00:00	D	8.30
1171	TARN TARAN	PATTI	S-NPP	74.76804	31.28074	14:00:00	D	8.30
1172	TARN TARAN	PATTI	S-NPP	74.70483	31.28097	14:00:00	D	6.70
1173	TARN TARAN	PATTI	S-NPP	74.77106	31.28304	14:00:00	D	7.60
1174	TARN TARAN	PATTI	S-NPP	74.70620	31.28400	14:00:00	D	9.40
1175	TARN TARAN	PATTI	S-NPP	74.68550	31.28655	14:00:00	D	2.70
1176	TARN TARAN	PATTI	AQUA	74.88500	31.28700	14:00:00	D	17.40
1177	TARN TARAN	PATTI	AQUA	74.80400	31.28800	14:00:00	D	17.80
1178	TARN TARAN	PATTI	S-NPP	74.88589	31.29153	14:00:00	D	7.70
1179	TARN TARAN	PATTI	S-NPP	74.79748	31.29246	14:00:00	D	10.00
1180	TARN TARAN	PATTI	S-NPP	74.80258	31.29293	14:00:00	D	10.00
1181	TARN TARAN	PATTI	S-NPP	74.88361	31.29412	14:00:00	D	10.50
1182	TARN TARAN	PATTI	S-NPP	74.73539	31.29569	14:00:00	D	5.10
1183	TARN TARAN	PATTI	S-NPP	74.59334	31.29571	14:00:00	D	7.70
1184	TARN TARAN	PATTI	S-NPP	74.88534	31.29601	14:00:00	D	7.70
1185	TARN TARAN	PATTI	S-NPP	74.79181	31.29645	14:00:00	D	6.50

1186	TARN TARAN	PATTI	S-NPP	74.82248	31.29928	14:00:00	D	2.20
1187	TARN TARAN	PATTI	AQUA	74.58300	31.30200	14:00:00	D	7.90
1188	TARN TARAN	PATTI	S-NPP	74.75508	31.30203	14:00:00	D	4.80
1189	TARN TARAN	PATTI	S-NPP	74.58228	31.30356	14:00:00	D	6.90
1190	TARN TARAN	PATTI	S-NPP	74.78558	31.30487	14:00:00	D	4.60
1191	TARN TARAN	PATTI	AQUA	74.79600	31.30600	14:00:00	D	22.90
1192	TARN TARAN	PATTI	S-NPP	74.79523	31.31028	14:00:00	D	13.80
1193	TARN TARAN	PATTI	S-NPP	74.66208	31.31119	14:00:00	D	10.10
1194	TARN TARAN	PATTI	S-NPP	74.68718	31.31358	14:00:00	D	13.70
1195	TARN TARAN	PATTI	AQUA	74.68700	31.31400	14:00:00	D	15.00
1196	TARN TARAN	PATTI	S-NPP	74.79469	31.31474	14:00:00	D	13.80
1197	TARN TARAN	PATTI	S-NPP	74.56081	31.31484	14:00:00	D	3.30
1198	TARN TARAN	PATTI	S-NPP	74.80489	31.31569	14:00:00	D	6.00
1199	TARN TARAN	PATTI	S-NPP	74.81001	31.31617	14:00:00	D	6.00
1200	TARN TARAN	PATTI	AQUA	74.80700	31.31800	14:00:00	D	18.30
1201	TARN TARAN	PATTI	S-NPP	74.68607	31.32243	14:00:00	D	4.80
1202	TARN TARAN	PATTI	S-NPP	74.54374	31.33096	14:00:00	D	2.60
1203	TARN TARAN	PATTI	S-NPP	74.61375	31.33334	14:00:00	D	4.20
1204	TARN TARAN	PATTI	S-NPP	74.78680	31.33653	14:00:00	D	7.90
1205	TARN TARAN	PATTI	S-NPP	74.68384	31.34014	14:00:00	D	11.10
1206	TARN TARAN	PATTI	S-NPP	74.59767	31.34069	14:00:00	D	6.30
1207	TARN TARAN	PATTI	AQUA	74.56200	31.35000	14:00:00	D	8.90
1208	TARN TARAN	PATTI	S-NPP	74.56622	31.35095	14:00:00	D	7.40
1209	TARN TARAN	PATTI	AQUA	74.68100	31.35400	14:00:00	D	24.10
1210	TARN TARAN	PATTI	S-NPP	74.73829	31.35438	14:00:00	D	3.40
1211	TARN TARAN	PATTI	S-NPP	74.56567	31.35535	14:00:00	D	7.40
1212	TARN TARAN	PATTI	AQUA	74.88300	31.35700	14:00:00	D	8.00
1213	TARN TARAN	PATTI	S-NPP	74.88787	31.35970	14:00:00	D	7.20
1214	TARN TARAN	PATTI	S-NPP	74.68607	31.36276	14:00:00	D	54.50
1215	TARN TARAN	PATTI	AQUA	74.67900	31.36400	14:00:00	D	25.70
1216	TARN TARAN	PATTI	S-NPP	74.71635	31.36572	14:00:00	D	9.50
1217	TARN TARAN	PATTI	S-NPP	74.58442	31.36612	14:00:00	D	3.70
1218	TARN TARAN	PATTI	S-NPP	74.71580	31.37016	14:00:00	D	9.50

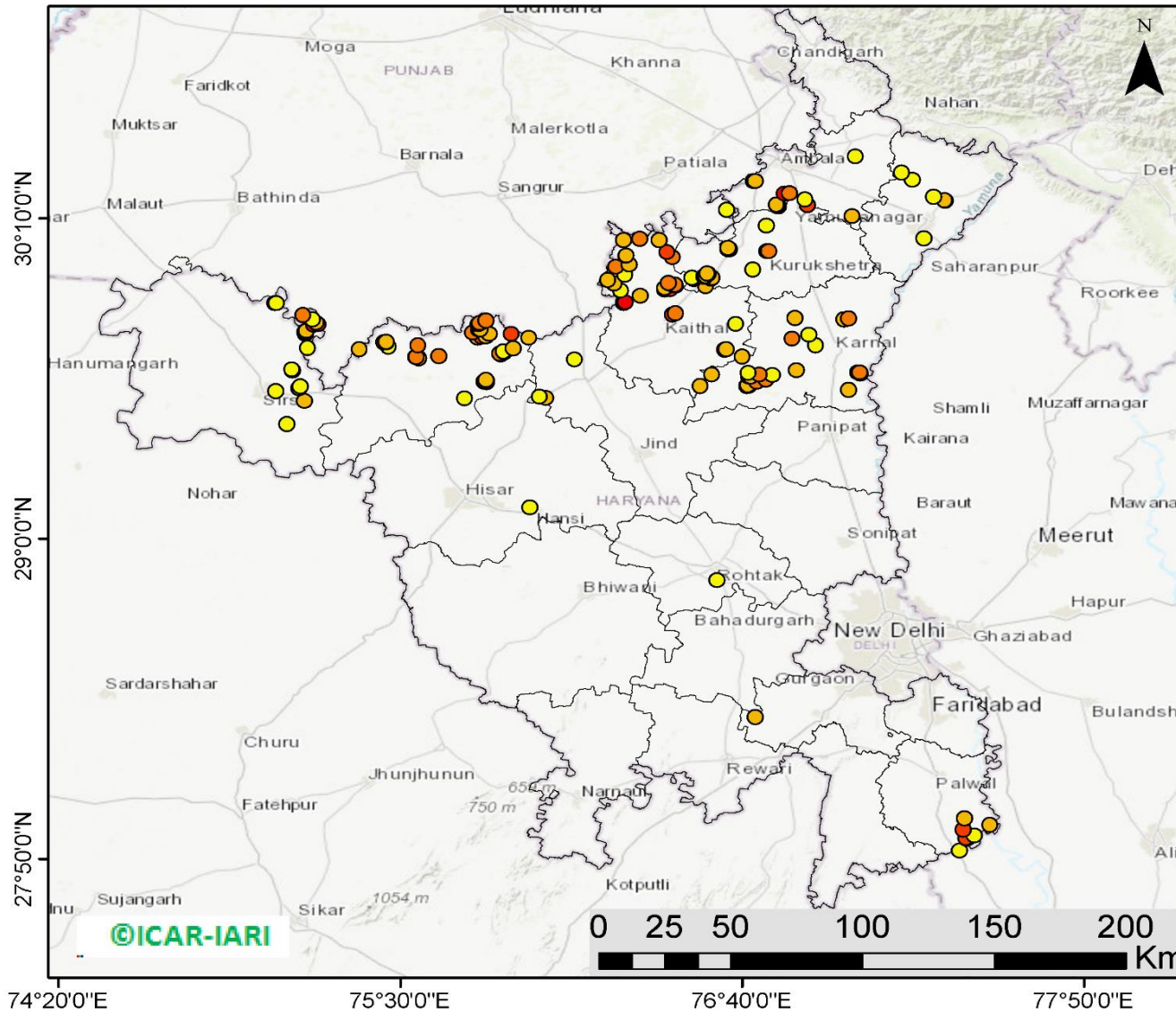
1219	TARN TARAN	PATTI	S-NPP	74.71259	31.37309	14:00:00	D	7.00
1220	TARN TARAN	PATTI	S-NPP	74.68901	31.39783	14:00:00	D	5.80

District-wise cumulative number of residue burning events in Punjab (01 to 24-Oct 2019)



(b) Haryana

RICE RESIDUE BURNING IN HARYANA



165 burning events
detected in Haryana on
24th October 2019

Fire Intensity (W/m²)

-  0 - 5
-  6 - 10
-  11 - 15
-  16 - 20
-  >20



<http://geoportal.icar.gov.in:8080/geoexplorer/composer/>

Details of residue burning events in Haryana on 24-Oct-2019

S. No.	District	Tehsil / Block	Satellite	Longitude	Latitude	Time (IST)	Day / Night	Fire Power (W/m2)
1	AMBALA	AMBALA	S-NPP	76.61264	30.19836	14:00:00	D	3.60
2	AMBALA	AMBALA	S-NPP	76.88912	30.21607	14:00:00	D	18.70
3	AMBALA	AMBALA	S-NPP	76.78410	30.21755	14:00:00	D	7.70
4	AMBALA	AMBALA	S-NPP	76.88046	30.23553	14:00:00	D	2.30
5	AMBALA	AMBALA	S-NPP	76.81919	30.25559	14:00:00	D	12.00
6	AMBALA	AMBALA	AQUA	76.81100	30.25700	14:00:00	D	22.40
7	AMBALA	AMBALA	AQUA	76.82800	30.25800	14:00:00	D	12.00
8	AMBALA	AMBALA	S-NPP	76.71041	30.30131	14:00:00	D	7.20
9	AMBALA	AMBALA	S-NPP	76.70393	30.30195	14:00:00	D	5.80
10	AMBALA	AMBALA	AQUA	76.70400	30.30200	14:00:00	D	18.90
11	AMBALA	AMBALA	S-NPP	76.71033	30.30247	14:00:00	D	5.80
12	AMBALA	BARARA	S-NPP	77.04237	30.17393	14:00:00	D	7.00
13	AMBALA	NARAYANGARH	S-NPP	77.05364	30.39124	14:00:00	D	2.00
14	FATEHABAD	FATEHABAD	S-NPP	75.71931	29.51155	14:00:00	D	3.80
15	FATEHABAD	RATIA	AQUA	75.56300	29.65700	14:00:00	D	9.40
16	FATEHABAD	RATIA	S-NPP	75.55260	29.66246	14:00:00	D	20.50
17	FATEHABAD	RATIA	S-NPP	75.55466	29.66248	14:00:00	D	14.00
18	FATEHABAD	RATIA	AQUA	75.63200	29.66500	14:00:00	D	12.00
19	FATEHABAD	RATIA	S-NPP	75.36005	29.69019	14:00:00	D	7.60
20	FATEHABAD	RATIA	S-NPP	75.45923	29.69968	14:00:00	D	3.80
21	FATEHABAD	RATIA	S-NPP	75.56040	29.70466	14:00:00	D	12.80
22	FATEHABAD	RATIA	AQUA	75.45200	29.71500	14:00:00	D	22.10
23	FATEHABAD	RATIA	AQUA	75.44300	29.71600	14:00:00	D	22.20
24	FATEHABAD	RATIA	S-NPP	75.45177	29.71737	14:00:00	D	8.00
25	FATEHABAD	TOHANA	AQUA	75.79500	29.57000	14:00:00	D	21.30
26	FATEHABAD	TOHANA	AQUA	75.78500	29.57300	14:00:00	D	14.70
27	FATEHABAD	TOHANA	S-NPP	75.79235	29.57331	14:00:00	D	10.60
28	FATEHABAD	TOHANA	S-NPP	75.79445	29.57483	14:00:00	D	15.80
29	FATEHABAD	TOHANA	S-NPP	75.79180	29.57795	14:00:00	D	8.00
30	FATEHABAD	TOHANA	S-NPP	75.84209	29.67187	14:00:00	D	9.00

31	FATEHABAD	TOHANA	S-NPP	75.83876	29.67412	14:00:00	D	11.40
32	FATEHABAD	TOHANA	S-NPP	75.85486	29.68025	14:00:00	D	4.50
33	FATEHABAD	TOHANA	S-NPP	75.85210	29.68224	14:00:00	D	3.10
34	FATEHABAD	TOHANA	AQUA	75.88500	29.69300	14:00:00	D	7.60
35	FATEHABAD	TOHANA	S-NPP	75.81617	29.72381	14:00:00	D	66.60
36	FATEHABAD	TOHANA	AQUA	75.93800	29.73100	14:00:00	D	7.60
37	FATEHABAD	TOHANA	AQUA	75.76400	29.73200	14:00:00	D	9.10
38	FATEHABAD	TOHANA	AQUA	75.77800	29.73400	14:00:00	D	16.00
39	FATEHABAD	TOHANA	AQUA	75.79200	29.73600	14:00:00	D	8.10
40	FATEHABAD	TOHANA	AQUA	75.87800	29.74500	14:00:00	D	16.70
41	FATEHABAD	TOHANA	S-NPP	75.80240	29.74604	14:00:00	D	6.70
42	FATEHABAD	TOHANA	S-NPP	75.74632	29.75015	14:00:00	D	13.10
43	FATEHABAD	TOHANA	S-NPP	75.76718	29.76151	14:00:00	D	3.80
44	FATEHABAD	TOHANA	S-NPP	75.77267	29.76203	14:00:00	D	5.60
45	FATEHABAD	TOHANA	AQUA	75.76500	29.78100	14:00:00	D	21.10
46	FATEHABAD	TOHANA	S-NPP	75.76928	29.78378	14:00:00	D	4.90
47	FATEHABAD	TOHANA	S-NPP	75.76999	29.78524	14:00:00	D	11.50
48	FATEHABAD	TOHANA	AQUA	75.79200	29.79400	14:00:00	D	11.40
49	GURGAON	PATAUDI	S-NPP	76.71096	28.35048	14:00:00	D	5.30
50	HISAR	HANSI	S-NPP	75.94154	29.11289	14:00:00	D	4.90
51	JIND	NARWANA	AQUA	75.99700	29.51200	14:00:00	D	7.60
52	JIND	NARWANA	S-NPP	75.97499	29.51639	14:00:00	D	3.40
53	JIND	NARWANA	S-NPP	76.09483	29.65271	14:00:00	D	4.80
54	KAITHAL	GUHLA	S-NPP	76.25147	29.90339	14:00:00	D	4.30
55	KAITHAL	GUHLA	S-NPP	76.40198	29.90715	14:00:00	D	2.60
56	KAITHAL	GUHLA	S-NPP	76.42011	29.90876	14:00:00	D	15.50
57	KAITHAL	GUHLA	S-NPP	76.40144	29.91199	14:00:00	D	7.50
58	KAITHAL	GUHLA	AQUA	76.43900	29.92000	14:00:00	D	10.70
59	KAITHAL	GUHLA	AQUA	76.43200	29.92300	14:00:00	D	11.30
60	KAITHAL	GUHLA	S-NPP	76.43672	29.92491	14:00:00	D	13.00
61	KAITHAL	GUHLA	S-NPP	76.22800	29.92979	14:00:00	D	2.60
62	KAITHAL	GUHLA	S-NPP	76.23055	29.93049	14:00:00	D	6.10
63	KAITHAL	GUHLA	AQUA	76.41500	29.93200	14:00:00	D	10.10

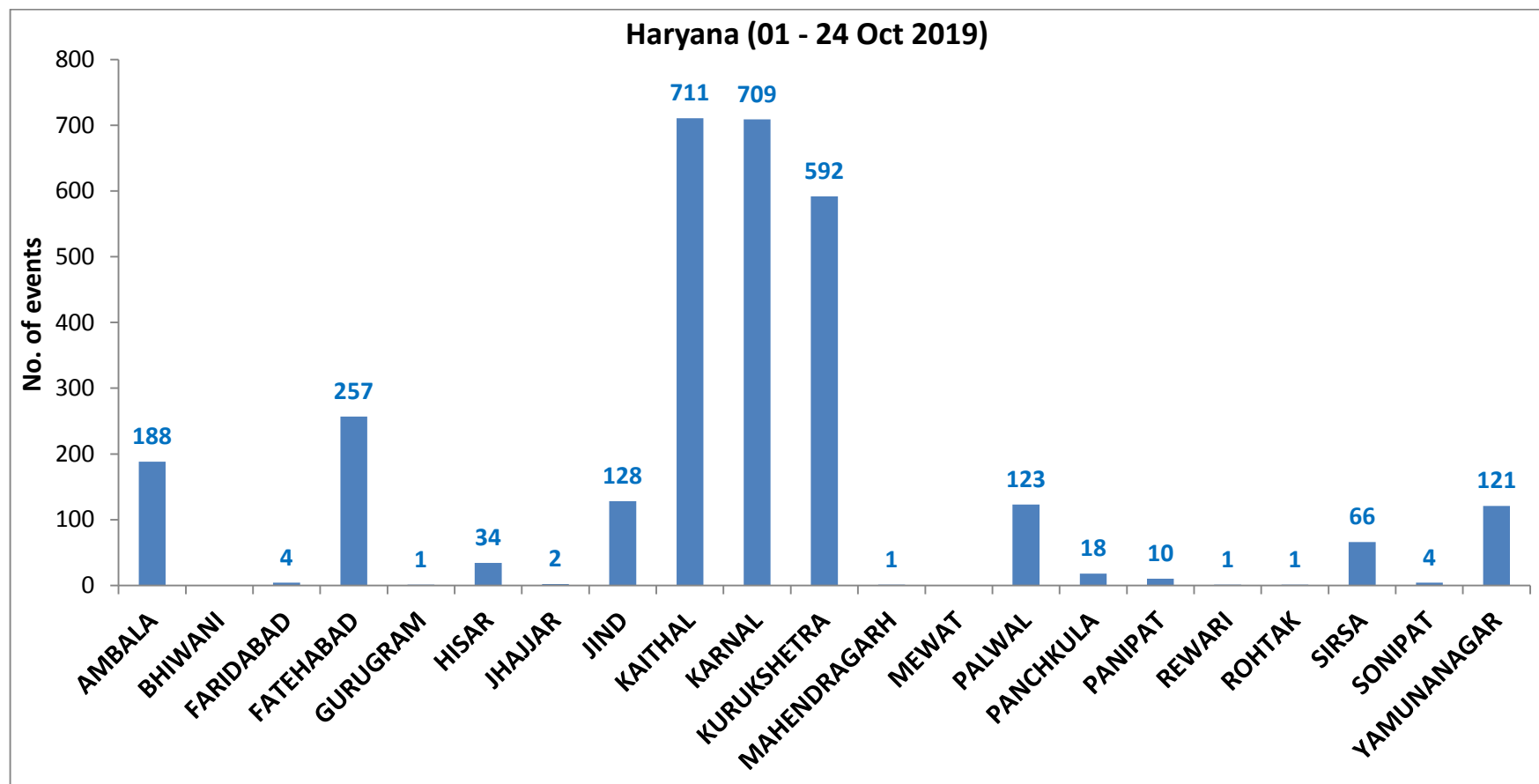
64	KAITHAL	GUHLA	S-NPP	76.20868	29.94261	14:00:00	D	5.80
65	KAITHAL	GUHLA	S-NPP	76.26624	29.96211	14:00:00	D	2.90
66	KAITHAL	GUHLA	AQUA	76.23500	29.99000	14:00:00	D	13.80
67	KAITHAL	GUHLA	S-NPP	76.28034	29.99729	14:00:00	D	5.80
68	KAITHAL	GUHLA	S-NPP	76.26891	30.02971	14:00:00	D	4.80
69	KAITHAL	GUHLA	S-NPP	76.27068	30.03037	14:00:00	D	5.40
70	KAITHAL	GUHLA	AQUA	76.41000	30.04400	14:00:00	D	19.00
71	KAITHAL	GUHLA	S-NPP	76.26245	30.08735	14:00:00	D	5.10
72	KAITHAL	GUHLA	S-NPP	76.38384	30.08819	14:00:00	D	5.40
73	KAITHAL	GUHLA	AQUA	76.31700	30.09300	14:00:00	D	14.10
74	KAITHAL	KAITHAL	AQUA	76.52400	29.55700	14:00:00	D	8.60
75	KAITHAL	KAITHAL	S-NPP	76.60744	29.68842	14:00:00	D	5.90
76	KAITHAL	KAITHAL	AQUA	76.61200	29.69000	14:00:00	D	9.30
77	KAITHAL	KAITHAL	S-NPP	76.64471	29.78262	14:00:00	D	3.00
78	KAITHAL	KAITHAL	AQUA	76.42800	29.81700	14:00:00	D	19.20
79	KAITHAL	KAITHAL	AQUA	76.43800	29.82100	14:00:00	D	11.00
80	KAITHAL	KAITHAL	AQUA	76.26100	29.85700	14:00:00	D	21.60
81	KAITHAL	KAITHAL	S-NPP	76.26221	29.86081	14:00:00	D	22.60
82	KAITHAL	KAITHAL	S-NPP	76.26814	29.86133	14:00:00	D	22.60
83	KAITHAL	KAITHAL	AQUA	76.31900	29.88500	14:00:00	D	8.20
84	KARNAL	ASSANDH	S-NPP	76.68201	29.55711	14:00:00	D	5.40
85	KARNAL	ASSANDH	S-NPP	76.68821	29.55767	14:00:00	D	5.40
86	KARNAL	ASSANDH	S-NPP	76.68560	29.55928	14:00:00	D	9.40
87	KARNAL	ASSANDH	S-NPP	76.71565	29.57171	14:00:00	D	11.80
88	KARNAL	ASSANDH	AQUA	76.74700	29.58000	14:00:00	D	12.60
89	KARNAL	ASSANDH	S-NPP	76.68861	29.58921	14:00:00	D	4.00
90	KARNAL	ASSANDH	S-NPP	76.69482	29.58975	14:00:00	D	5.90
91	KARNAL	ASSANDH	S-NPP	76.76998	29.59619	14:00:00	D	5.00
92	KARNAL	ASSANDH	S-NPP	76.72551	29.59734	14:00:00	D	10.90
93	KARNAL	ASSANDH	S-NPP	76.56316	29.59800	14:00:00	D	5.60
94	KARNAL	ASSANDH	S-NPP	76.68700	29.60392	14:00:00	D	3.20
95	KARNAL	ASSANDH	S-NPP	76.66642	29.66382	14:00:00	D	6.60
96	KARNAL	GHARAUNDA	S-NPP	77.02998	29.54289	14:00:00	D	5.90

97	KARNAL	GHARAUNDA	AQUA	77.06900	29.60100	14:00:00	D	9.70
98	KARNAL	GHARAUNDA	S-NPP	77.06091	29.60555	14:00:00	D	8.20
99	KARNAL	GHARAUNDA	S-NPP	77.06747	29.60609	14:00:00	D	10.70
100	KARNAL	KARNAL	S-NPP	76.85125	29.61311	14:00:00	D	9.30
101	KARNAL	KARNAL	S-NPP	76.91792	29.70391	12:18:00	D	5.00
102	KARNAL	KARNAL	S-NPP	76.83756	29.72809	14:00:00	D	10.20
103	KARNAL	KARNAL	S-NPP	76.89422	29.74298	14:00:00	D	3.70
104	KARNAL	KARNAL	S-NPP	77.01725	29.79852	14:00:00	D	6.40
105	KARNAL	KARNAL	S-NPP	77.01295	29.79865	14:00:00	D	9.30
106	KARNAL	KARNAL	AQUA	77.03000	29.80200	14:00:00	D	10.90
107	KARNAL	NILOKHERI	S-NPP	76.84636	29.80458	14:00:00	D	6.70
108	KURUKSHETRA	PEHOWA	S-NPP	76.54236	29.91954	14:00:00	D	7.20
109	KURUKSHETRA	PEHOWA	S-NPP	76.50215	29.94609	12:18:00	D	8.60
110	KURUKSHETRA	PEHOWA	S-NPP	76.49992	29.94728	12:18:00	D	11.60
111	KURUKSHETRA	PEHOWA	S-NPP	76.56181	29.94806	14:00:00	D	7.50
112	KURUKSHETRA	PEHOWA	S-NPP	76.49561	29.94981	14:00:00	D	3.40
113	KURUKSHETRA	PEHOWA	S-NPP	76.56388	29.95101	14:00:00	D	8.60
114	KURUKSHETRA	PEHOWA	S-NPP	76.53867	29.95368	14:00:00	D	11.90
115	KURUKSHETRA	PEHOWA	S-NPP	76.53602	29.95578	14:00:00	D	9.30
116	KURUKSHETRA	PEHOWA	S-NPP	76.54218	29.95629	14:00:00	D	9.30
117	KURUKSHETRA	PEHOWA	S-NPP	76.54994	29.96455	14:00:00	D	4.70
118	KURUKSHETRA	PEHOWA	S-NPP	76.54729	29.96657	14:00:00	D	7.10
119	KURUKSHETRA	PEHOWA	S-NPP	76.70285	29.98081	12:18:00	D	3.10
120	KURUKSHETRA	PEHOWA	S-NPP	76.42934	30.02515	14:00:00	D	13.10
121	KURUKSHETRA	PEHOWA	S-NPP	76.62430	30.05423	14:00:00	D	8.70
122	KURUKSHETRA	PEHOWA	AQUA	76.61800	30.05500	14:00:00	D	12.50
123	KURUKSHETRA	PEHOWA	S-NPP	76.61919	30.05673	14:00:00	D	10.80
124	KURUKSHETRA	PEHOWA	S-NPP	76.61749	30.05863	14:00:00	D	8.70
125	KURUKSHETRA	PEHOWA	S-NPP	76.74938	30.13924	14:00:00	D	4.00
126	KURUKSHETRA	SHAHABAD	AQUA	76.78900	30.21000	14:00:00	D	9.20
127	KURUKSHETRA	SHAHABAD	S-NPP	76.78464	30.21258	14:00:00	D	7.70
128	KURUKSHETRA	THANESAR	AQUA	76.75100	30.04600	14:00:00	D	12.80
129	KURUKSHETRA	THANESAR	AQUA	76.75700	30.04700	14:00:00	D	14.40

130	PALWAL	HODAL	S-NPP	77.40710	27.86415	14:00:00	D	5.00
131	PALWAL	HODAL	S-NPP	77.43332	27.90613	14:00:00	D	7.10
132	PALWAL	HODAL	S-NPP	77.43534	27.90728	14:00:00	D	11.90
133	PALWAL	HODAL	AQUA	77.43000	27.90900	13:55:00	D	15.60
134	PALWAL	HODAL	S-NPP	77.45838	27.91838	14:00:00	D	3.10
135	PALWAL	HODAL	AQUA	77.42000	27.94100	13:55:00	D	18.10
136	PALWAL	HODAL	S-NPP	77.51231	27.95864	14:00:00	D	5.10
137	PALWAL	HODAL	S-NPP	77.42533	27.98169	14:00:00	D	7.90
138	ROHTAK	ROHTAK	S-NPP	76.57947	28.84912	14:00:00	D	2.60
139	SIRSA	SIRSA	S-NPP	75.11239	29.41718	14:00:00	D	2.70
140	SIRSA	SIRSA	AQUA	75.17300	29.50100	14:00:00	D	8.40
141	SIRSA	SIRSA	S-NPP	75.07450	29.53815	14:00:00	D	2.80
142	SIRSA	SIRSA	AQUA	75.15300	29.54900	14:00:00	D	8.40
143	SIRSA	SIRSA	S-NPP	75.15817	29.55529	14:00:00	D	3.10
144	SIRSA	SIRSA	S-NPP	75.13097	29.61122	14:00:00	D	5.30
145	SIRSA	SIRSA	S-NPP	75.13216	29.61400	14:00:00	D	6.70
146	SIRSA	SIRSA	S-NPP	75.13042	29.61567	14:00:00	D	3.70
147	SIRSA	SIRSA	AQUA	75.18400	29.69500	14:00:00	D	8.50
148	SIRSA	SIRSA	S-NPP	75.18320	29.69571	14:00:00	D	5.00
149	SIRSA	SIRSA	AQUA	75.17600	29.74500	14:00:00	D	9.40
150	SIRSA	SIRSA	S-NPP	75.17489	29.75184	14:00:00	D	8.80
151	SIRSA	SIRSA	AQUA	75.17500	29.75500	14:00:00	D	23.50
152	SIRSA	SIRSA	S-NPP	75.17941	29.75681	14:00:00	D	6.20
153	SIRSA	SIRSA	AQUA	75.20400	29.77900	14:00:00	D	21.90
154	SIRSA	SIRSA	AQUA	75.21800	29.78000	14:00:00	D	18.30
155	SIRSA	SIRSA	S-NPP	75.21172	29.78711	14:00:00	D	5.10
156	SIRSA	SIRSA	S-NPP	75.19988	29.79958	14:00:00	D	4.30
157	SIRSA	SIRSA	S-NPP	75.16720	29.81448	14:00:00	D	10.60
158	SIRSA	SIRSA	S-NPP	75.07178	29.85716	14:00:00	D	3.40
159	SIRSA	SIRSA	S-NPP	75.07679	29.85765	14:00:00	D	4.40
160	YAMUNANAGAR	CHHACHHRAULII	S-NPP	77.35859	30.23098	14:00:00	D	4.00
161	YAMUNANAGAR	CHHACHHRAULII	S-NPP	77.35664	30.23232	14:00:00	D	5.10
162	YAMUNANAGAR	CHHACHHRAULII	S-NPP	77.32012	30.24506	14:00:00	D	4.00

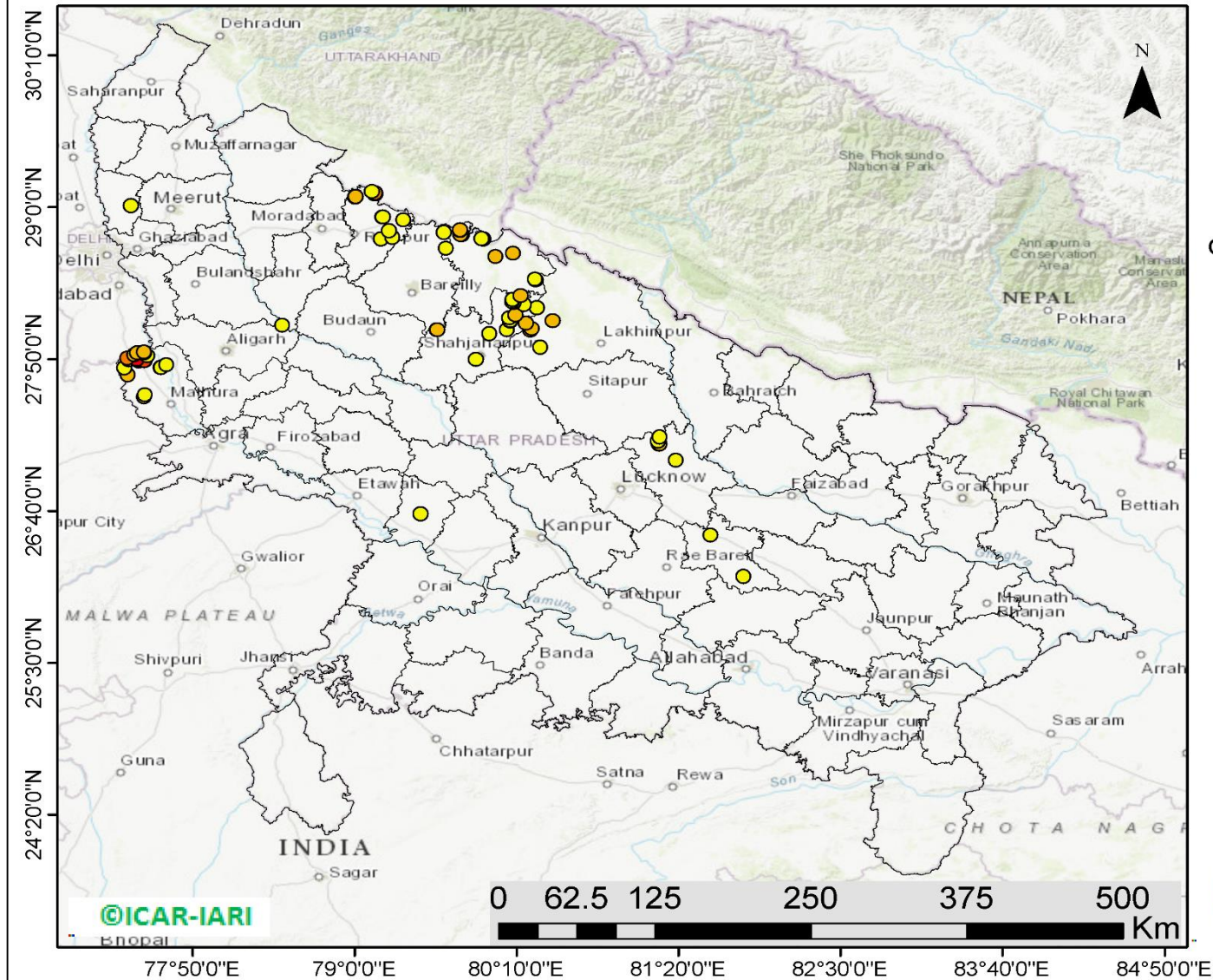
163	YAMUNANAGAR	JAGADHRI	S-NPP	77.28600	30.09328	14:00:00	D	1.90
164	YAMUNANAGAR	JAGADHRI	S-NPP	77.24746	30.30643	14:00:00	D	2.90
165	YAMUNANAGAR	JAGADHRI	S-NPP	77.20991	30.33422	14:00:00	D	1.30

District-wise cumulative number of residue burning events in Haryana (01 to 24-Oct 2019)



(c) UP

RICE RESIDUE BURNING IN UTTAR PRADESH



79 burning events detected in Uttar Pradesh on 24th October 2019

Fire Intensity (W/m²)

- 0 - 5
- 6 - 10
- 11 - 15
- 16 - 20
- >20



<http://geoportal.icar.gov.in:8080/geoexplorer/composer/>

Details of residue burning events in Uttar Pradesh on 24-Oct-2019

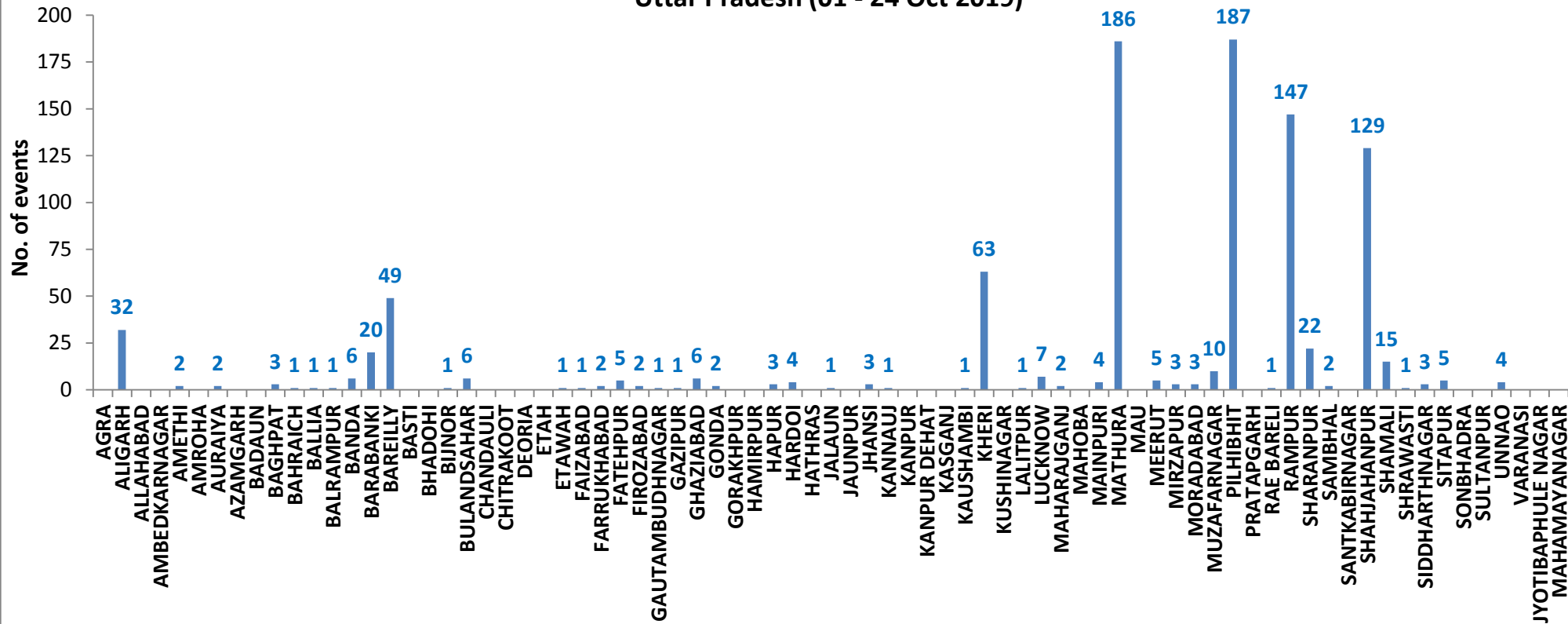
S. No.	District	Tehsil / Block	Satellite	Longitude	Latitude	Time (IST)	Day / Night	Fire Power (W/m ²)
1	ALIGARH	ATRAULI	S-NPP	78.47838	28.09187	14:00:00	D	3.00
2	AMETHI	AMETHI	S-NPP	81.80035	26.16194	01:06:00	N	0.40
3	AMETHI	MUSAFIRKHANA	S-NPP	81.56532	26.48104	02:42:00	N	1.20
4	AURAIYA	BIDHUNA	S-NPP	79.47524	26.64257	01:06:00	N	0.80
5	BAGHPAT	BAGHPAT	S-NPP	77.38985	29.01146	02:42:00	N	0.50
6	BARABANKI	FATEHPUR	S-NPP	81.19167	27.18066	12:18:00	D	5.10
7	BARABANKI	FATEHPUR	S-NPP	81.19668	27.18192	12:18:00	D	5.10
8	BARABANKI	FATEHPUR	S-NPP	81.18434	27.20440	12:18:00	D	3.50
9	BARABANKI	FATEHPUR	S-NPP	81.19903	27.23588	14:00:00	D	3.50
10	BARABANKI	RAMNAGAR	S-NPP	81.31425	27.05648	12:18:00	D	4.80
11	BAREILLY	BAHERI	S-NPP	79.64241	28.80616	12:18:00	D	3.70
12	BAREILLY	BAHERI	S-NPP	79.64157	28.80771	12:18:00	D	4.30
13	KHERI	GOLA	S-NPP	80.33861	27.92438	14:00:00	D	2.00
14	KHERI	GOLA	S-NPP	80.42583	28.12620	14:00:00	D	5.20
15	KHERI	GOLA	S-NPP	80.42671	28.12756	14:00:00	D	6.70
16	KHERI	GOLA	S-NPP	80.31290	28.22930	14:00:00	D	3.20
17	KHERI	MOHMADI	S-NPP	80.26579	28.05510	14:00:00	D	7.20
18	KHERI	MOHMADI	S-NPP	80.27472	28.06772	14:00:00	D	7.20
19	MATHURA	CHHATA	S-NPP	77.36583	27.71379	14:00:00	D	6.10
20	MATHURA	CHHATA	S-NPP	77.34076	27.76713	14:00:00	D	3.70
21	MATHURA	CHHATA	S-NPP	77.60194	27.76973	14:00:00	D	1.90
22	MATHURA	CHHATA	S-NPP	77.60526	27.77002	14:00:00	D	1.90
23	MATHURA	CHHATA	S-NPP	77.64376	27.78875	14:00:00	D	3.10
24	MATHURA	CHHATA	S-NPP	77.44614	27.81716	14:00:00	D	4.70
25	MATHURA	CHHATA	S-NPP	77.48408	27.81993	14:00:00	D	16.00
26	MATHURA	CHHATA	S-NPP	77.49062	27.82048	14:00:00	D	16.00
27	MATHURA	CHHATA	S-NPP	77.48526	27.82072	14:00:00	D	18.70
28	MATHURA	CHHATA	S-NPP	77.37206	27.82565	14:00:00	D	5.20
29	MATHURA	CHHATA	AQUA	77.42400	27.82800	13:55:00	D	27.20
30	MATHURA	CHHATA	AQUA	77.43100	27.82900	13:55:00	D	27.00
31	MATHURA	CHHATA	S-NPP	77.43028	27.83063	14:00:00	D	31.80

32	MATHURA	CHHATA	S-NPP	77.36402	27.84013	14:00:00	D	13.20
33	MATHURA	CHHATA	S-NPP	77.50494	27.85738	14:00:00	D	3.10
34	MATHURA	CHHATA	S-NPP	77.41359	27.86472	14:00:00	D	7.10
35	MATHURA	CHHATA	AQUA	77.48500	27.88000	13:55:00	D	11.00
36	MATHURA	CHHATA	S-NPP	77.43148	27.88152	14:00:00	D	10.00
37	MATHURA	CHHATA	S-NPP	77.48372	27.88613	14:00:00	D	8.00
38	MATHURA	MATHURA	S-NPP	77.48315	27.54248	14:00:00	D	5.50
39	MATHURA	MATHURA	S-NPP	77.48803	27.55815	14:00:00	D	4.10
40	PILHIBHIT	PILHIBHIT	S-NPP	79.65855	28.68225	12:18:00	D	3.40
41	PILHIBHIT	PILHIBHIT	S-NPP	79.92538	28.75611	12:18:00	D	6.40
42	PILHIBHIT	PILHIBHIT	S-NPP	79.91574	28.75769	12:18:00	D	3.20
43	PILHIBHIT	PILHIBHIT	TERRA	79.77600	28.79100	10:45:00	D	11.70
44	PILHIBHIT	PILHIBHIT	TERRA	79.76400	28.79200	10:45:00	D	6.70
45	PILHIBHIT	PILHIBHIT	S-NPP	79.76041	28.82352	12:18:00	D	5.00
46	PILHIBHIT	PILHIBHIT	S-NPP	79.75916	28.82571	12:18:00	D	7.30
47	PILHIBHIT	PURANPUR	S-NPP	80.30270	28.44106	12:18:00	D	4.10
48	PILHIBHIT	PURANPUR	S-NPP	80.30116	28.44588	12:18:00	D	3.60
49	PILHIBHIT	PURANPUR	METOP-2	80.01530	28.61906	20:49:00	N	7.00
50	PILHIBHIT	PURANPUR	S-NPP	80.14252	28.64441	14:00:00	D	6.00
51	RAMPUR	BILASPUR	S-NPP	79.27383	28.76684	14:00:00	D	3.60
52	RAMPUR	BILASPUR	S-NPP	79.24810	28.81871	14:00:00	D	2.20
53	RAMPUR	BILASPUR	S-NPP	79.35182	28.90062	14:00:00	D	2.40
54	RAMPUR	BILASPUR	S-NPP	79.35139	28.90177	14:00:00	D	2.50
55	RAMPUR	BILASPUR	S-NPP	79.20227	28.92411	12:18:00	D	4.70
56	RAMPUR	MILAK	S-NPP	79.19175	28.75519	14:00:00	D	4.50
57	RAMPUR	SUAR	S-NPP	79.19957	28.92282	12:18:00	D	5.40
58	RAMPUR	SUAR	AQUA	79.14400	29.10400	13:55:00	D	29.20
59	RAMPUR	SUAR	AQUA	79.15100	29.10500	13:55:00	D	24.90
60	RAMPUR	SUAR	S-NPP	79.14883	29.10740	14:00:00	D	10.60
61	RAMPUR	SUAR	S-NPP	79.15060	29.10967	14:00:00	D	10.10
62	RAMPUR	SUAR	S-NPP	79.12359	29.11922	14:00:00	D	4.80
63	RAMPUR	TANDA	S-NPP	79.00430	29.07968	14:00:00	D	5.50
64	RAMPUR	TANDA	S-NPP	79.00583	29.08286	14:00:00	D	5.40
65	SHAHJAHANPUR	PUWANYA	S-NPP	79.97199	28.02970	14:00:00	D	3.60

66	SHAHJAHANPUR	PUWANYA	S-NPP	80.09601	28.05606	12:18:00	D	3.40
67	SHAHJAHANPUR	PUWANYA	S-NPP	80.23206	28.10698	14:00:00	D	6.10
68	SHAHJAHANPUR	PUWANYA	S-NPP	80.11824	28.12301	14:00:00	D	5.30
69	SHAHJAHANPUR	PUWANYA	S-NPP	80.11855	28.12626	14:00:00	D	5.00
70	SHAHJAHANPUR	PUWANYA	S-NPP	80.11464	28.14759	12:18:00	D	3.30
71	SHAHJAHANPUR	PUWANYA	S-NPP	80.15887	28.17077	14:00:00	D	6.50
72	SHAHJAHANPUR	PUWANYA	S-NPP	80.22121	28.25195	12:18:00	D	4.50
73	SHAHJAHANPUR	PUWANYA	S-NPP	80.14555	28.26882	14:00:00	D	4.30
74	SHAHJAHANPUR	PUWANYA	S-NPP	80.13534	28.27413	14:00:00	D	4.30
75	SHAHJAHANPUR	PUWANYA	S-NPP	80.13880	28.29232	14:00:00	D	3.20
76	SHAHJAHANPUR	PUWANYA	S-NPP	80.19572	28.32018	14:00:00	D	5.20
77	SHAHJAHANPUR	SHAHJAHANPUR	S-NPP	79.87336	27.83040	14:00:00	D	2.80
78	SHAHJAHANPUR	TILHAR	S-NPP	79.59104	28.05574	14:00:00	D	4.30
79	SHAHJAHANPUR	TILHAR	S-NPP	79.59552	28.05607	14:00:00	D	6.60

District-wise cumulative number of residue burning events in Uttar Pradesh (01 to 24-Oct 2019)

Uttar Pradesh (01 - 24 Oct 2019)



State-wise, date-wise and district-wise number of residue burning events detected in 2016, 2017, 2018 and 2019
(Period: 01-Oct to 24-Oct)

Date	Punjab				Haryana				UP				Total			
	2019	2018	2017	2016	2019	2018	2017	2016	2019	2018	2017	2016	2019	2018	2017	2016
01-Oct	3	16	54	109	1	9	13	46	1	11	2	23	5	36	69	178
02-Oct	20	9	50	51	2	23	27	16	0	21	8	20	23	53	85	87
03-Oct	37	4	62	66	16	9	40	16	3	12	17	16	56	25	119	98
04-Oct	3	32	103	37	30	16	60	7	4	5	22	15	37	53	185	59
05-Oct	16	56	106	95	37	30	68	15	11	10	20	14	64	96	194	124
06-Oct	0	87	138	152	22	63	75	105	8	13	39	6	30	163	252	263
07-Oct	27	162	105	171	16	180	97	126	4	69	33	24	47	411	235	321
08-Oct	59	39	215	166	69	40	218	94	18	54	76	14	146	133	509	274
09-Oct	93	75	163	270	70	47	148	121	17	32	88	22	180	154	399	413
10-Oct	172	23	164	597	157	37	151	242	53	21	126	74	382	81	441	913
11-Oct	78	30	177	652	126	78	87	336	38	24	74	128	242	131	338	1116
12-Oct	99	67	342	694	154	133	123	338	42	22	51	164	295	222	516	1196
13-Oct	108	62	470	467	159	147	207	284	33	61	69	102	300	270	746	853
14-Oct	141	112	582	812	133	153	333	328	39	57	137	60	313	322	1052	1200
15-Oct	262	90	943	1215	203	110	458	248	63	35	237	76	528	235	1638	1539
16-Oct	168	174	465	1478	148	138	186	385	77	20	71	125	393	332	722	1988
17-Oct	250	272	807	2173	152	268	244	399	53	94	69	261	455	634	1120	2833
18-Oct	100	263	970	1065	103	255	306	270	39	163	108	204	242	681	1384	1539
19-Oct	529	254	1591	1762	220	208	541	276	3	108	128	132	752	570	2260	2170
20-Oct	490	496	2653	1175	360	141	597	188	62	49	255	62	912	686	3505	1425
21-Oct	852	618	1139	1726	339	217	233	257	185	66	168	152	1376	901	1540	2135
22-Oct	555	656	1356	2837	158	134	186	309	78	149	151	194	791	939	1693	3340
23-Oct	827	1113	994	2040	131	232	155	313	48	193	72	331	1006	1538	1221	2684
24-Oct	1220	844	1714	1836	165	166	244	221	79	192	171	152	1464	1202	2129	2209
Total	6109	5554	15363	21646	2971	2834	4797	4940	958	1481	2192	2371	10038	9869	22352	28957

(a) Punjab

Districts	01-24 Oct			
	2016	2017	2018	2019
AMRITSAR	1118	917	740	665
BARNALA	126	81	43	35
BATHINDA	1490	1158	314	127
FARIDKOT	1459	1459	326	254
FATEHGARH SAHIB	1244	676	143	160
FAZILKA	0	0	0	218
FIROZPUR	2429	2128	675	604
GURDASPUR	1027	683	251	474
HOSHIARPUR	273	156	11	68
JALANDHAR	1424	656	134	265
KAPURTHALA	1325	472	46	283
LUDHIANA	1184	868	144	113
MANSA	460	426	240	196
MOGA	378	222	66	82
MUKTSAR	1905	1110	372	249
NAWASHAHR (SBS Nagar)	504	278	56	61
PATHANKOT	0	0	0	1
PATIALA	1856	1551	719	725
RUPNAGAR	301	80	4	11
SANGRUR	643	538	250	266
SAS NAGAR	95	89	71	73
TARN TARAN	2405	1815	949	1179
Total	21646	15363	5554	6109

(b) Haryana

Districts	01-24 Oct			
	2016	2017	2018	2019
AMBALA	367	337	130	188
BHIWANI	4	3	4	0
FARIDABAD	64	126	101	4
FATEHABAD	430	480	231	257
GURUGRAM	0	0	0	1
HISAR	45	43	31	34
JHAJJAR	5	4	6	2
JIND	177	229	153	128
KAITHAL	1299	1018	783	711
KARNAL	1242	1179	615	709
KURUKSHETRA	933	989	562	592
MAHENDRAGARH	0	0	0	1
MEWAT	0	0	0	0
PALWAL	0	0	0	123
PANCHKULA	0	0	3	18
PANIPAT	32	40	36	10
REWARI	0	0	0	1
ROHTAK	7	4	1	1
SIRSA	181	132	93	66
SONIPAT	16	21	15	4
YAMUNANAGAR	138	192	70	121
Total	4940	4797	2834	2971

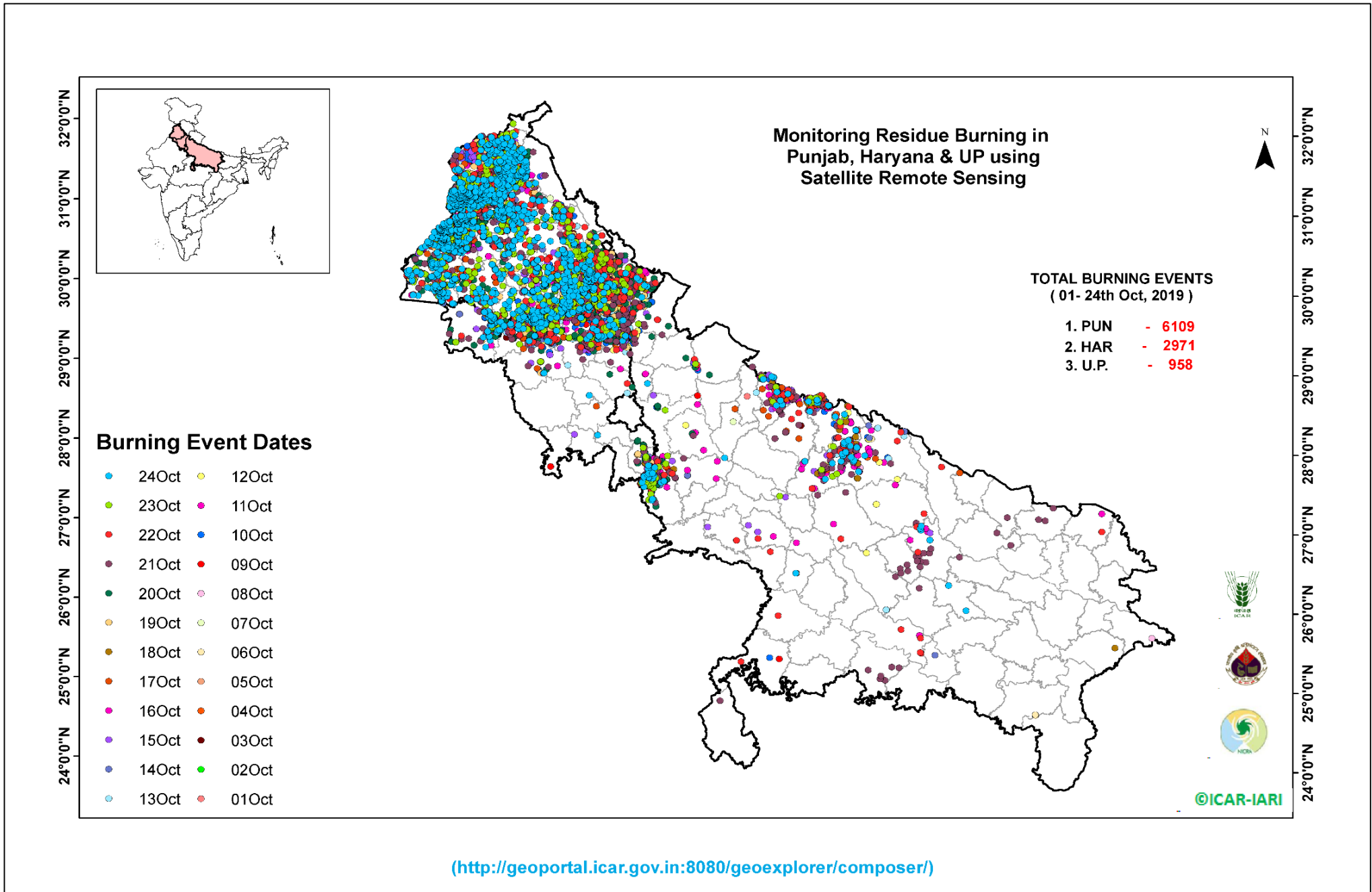
(c) Uttar Pradesh

Districts	01-24 Oct			
	2016	2017	2018	2019
AGRA	0	0	0	0
ALIGARH	14	27	31	32
ALLAHABAD	0	0	4	0
AMBEDKARNAGAR	0	4	1	0
AMETHI	0	0	0	2
AMROHA	0	0	0	0
AURAIYA	67	67	17	2
AZAMGARH	0	0	1	0
BADAUN	0	1	3	0
BAGHPAT	0	0	0	3
BAHRAICH	6	7	13	1
BALLIA	0	0	0	1
BALRAMPUR	0	0	4	1
BANDA	1	1	3	6
BARABANKI	81	50	84	20
BAREILLY	122	79	53	49
BASTI	0	2	0	0
BHADOHI	0	0	0	0
BIJNOR	7	6	1	1
BULANDSAHAR	5	9	7	6
CHANDALI	1	0	0	0
CHITRAKOOT	0	0	0	0
DEORIA	1	1	3	0
ETAH	3	12	14	0
ETAWAH	6	11	6	1
FAIZABAD	1	1	3	1
FARRUKHABAD	0	0	0	2
FATEHPUR	15	8	17	5
FIROZABAD	4	2	3	2

GAUTAMBUDHNAGAR	4	5	6	1
GAZIPUR	2	0	0	1
GHAZIABAD	13	6	6	6
GONDA	1	2	1	2
GORAKHPUR	0	4	8	0
HAMIRPUR	0	0	1	0
HAPUR	0	0	0	3
HARDOI	42	26	19	4
HATHRAS	0	0	0	0
JALAUN	0	0	0	1
JAUNPUR	1	0	3	0
JHANSI	0	0	2	3
KANNAUJ	1	2	2	1
KANPUR	1	3	0	0
KANPUR DEHAT	0	1	0	0
KASGANJ	0	0	0	0
KAUSHAMBI	0	5	10	1
KHERI	185	129	99	63
KUSHINAGAR	0	1	1	0
LALITPUR	0	0	0	1
LUCKNOW	13	6	2	7
MAHARAJGANJ	10	39	53	2
MAHOBA	0	0	0	0
MAINPURI	3	10	10	4
MATHURA	130	251	394	186
MAU	1	0	2	0
MEERUT	20	14	4	5
MIRZAPUR	0	3	4	3
MORADABAD	13	12	8	3
MUZAFARNAGAR	60	63	20	10
PILHIBHIT	449	396	214	187
PRATAPGARH	0	0	2	0

RAE BARELI	3	1	0	1
RAMPUR	424	361	122	147
SHARANPUR	29	49	22	22
SAMBHAL	0	0	0	2
SANTKABIRNAGAR	0	1	1	0
SHAHJAHANPUR	568	479	162	129
SHAMALI	0	0	0	15
SHRAWASTI	2	6	3	1
SIDDHARTHANAGAR	2	2	5	3
SITAPUR	40	20	11	5
SONBHADRA	6	1	7	0
SULTANPUR	2	0	0	0
UNNAO	8	4	6	4
VARANASI	0	0	0	0
JYOTIBAPHULE NAGAR	4	1	1	0
MAHAMAYANAGAR	0	1	2	0
Total	2371	2192	1481	958

Map of Cumulative Burning Events (01 – 24 Oct 2019)



The study used images received from following Satellites at IARI Satellite Ground Station

S. No.	Satellite Name	Sensor	Resolution (meter)	Day / Night Passes
1.	Suomi NPP	VIIRS	375 / 1000	Both
2.	Terra	MODIS	1000	Both
3.	Aqua	MODIS	1000	Both
4.	NOAA – 18	AVHRR	1000	Night
5.	NOAA – 19	AVHRR	1000	Night
6.	Metop - 1	AVHRR	1000	Night
7.	Metop - 2	AVHRR	1000	Night

Study Team

ICAR – HQ	Dr K. Alagusundaram	DDG (AG. ENGG.)	ddgengg@icar.org.in
	Dr S. Bhasker	ADG (NRM)	adgagroandaf@gmail.com
	Dr K.K. Singh	ADG (AG. ENGG.)	kanchansingh044@gmail.com
ICAR - IARI	Dr V.K. Sehgal	Professor & Nodal Scientist	iaricreams@gmail.com
	Dr Rajkumar Dhakar	Scientist	raidhakar.iari@gmail.com
	Mr Rakeswer Verma	Chief Technical Officer	rakeshwar.verma@icar.gov.in
	Mr Mohd Jahangir	Lab Assistant (KRISHI)	mjahangir198@gmail.com
ICAR - ATARI	Dr Rajbir Singh	Director ATARI (Zone-I) Ludhiana	rajbirsingh.zpd@gmail.com
	Dr S.K. Singh	Director ATARI (Zone-II) Jodhpur	sushilsinghiipr@yahoo.co.in
	Dr Atar Singh	Director ATARI (Zone-III) Kanpur	zpdicarkanpur@gmail.com
ICAR - IASRI	Dr Rajender Parsad	Principal Scientist	rajender.parsad@icar.gov.in

GIS Maps of fire events can be visualized online on ICAR KRISHI Geoportal website: <http://geoportal.icar.gov.in:8080/geoexplorer/composer/>
(Part of KRISHI Portal: <https://krishi.icar.gov.in> initiative)
