



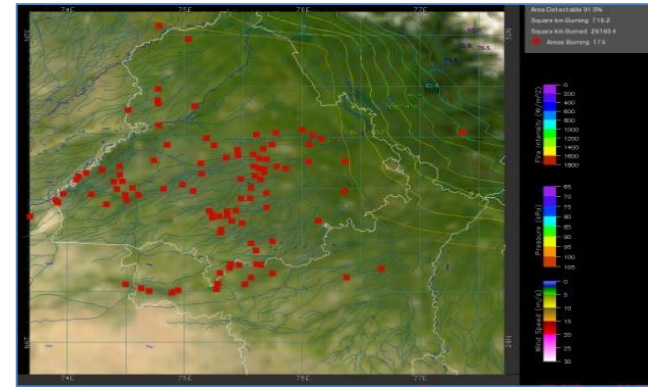
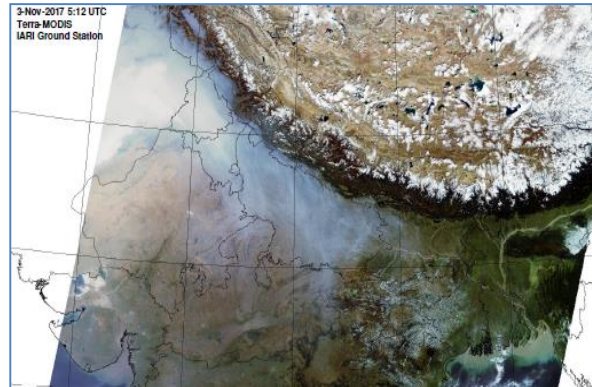
**Bulletin
No. 23**

**Events Date:
23-Oct-2019**

**Issued on:
24-Oct-2019**



MONITORING PADDY RESIDUE BURNING IN NORTH INDIA USING SATELLITE REMOTE SENSING DURING 2019



Prepared by:

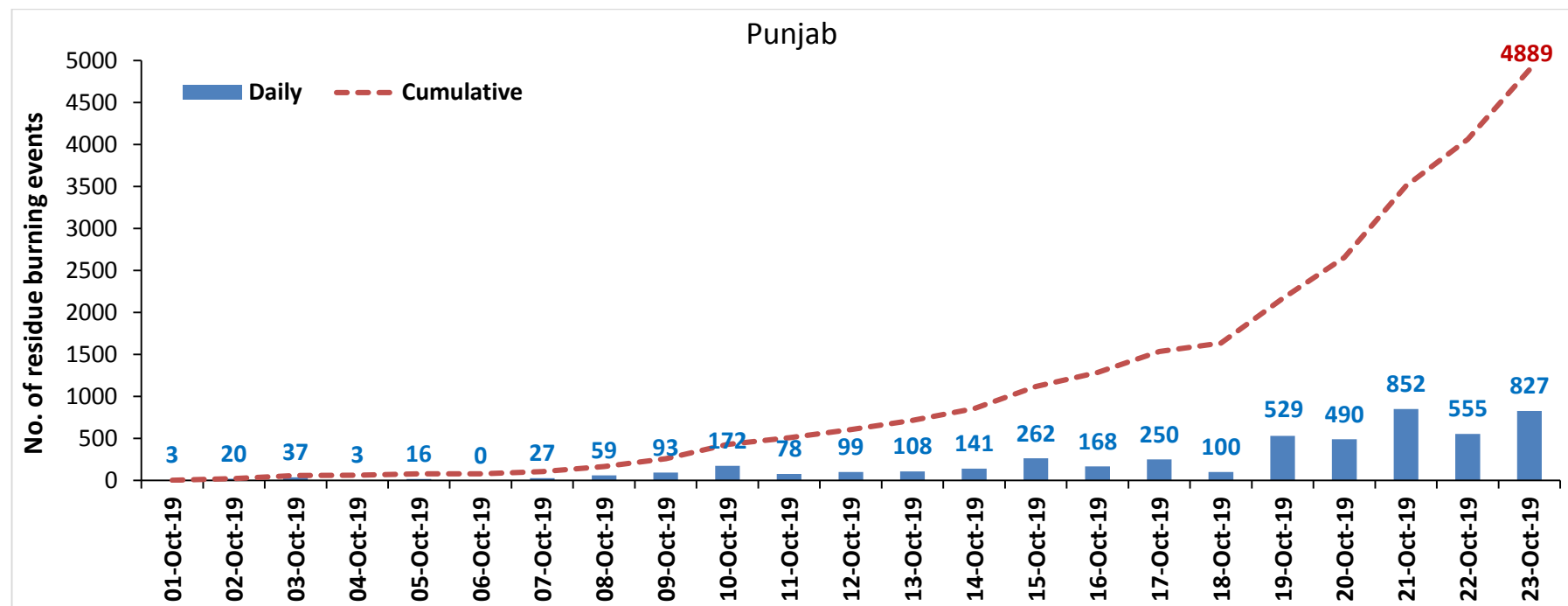
**Consortium for Research on Agroecosystem Monitoring and Modeling from Space (CREAMS) Laboratory,
Division of Agricultural Physics, ICAR – Indian Agricultural Research Institute, New Delhi – 110012**

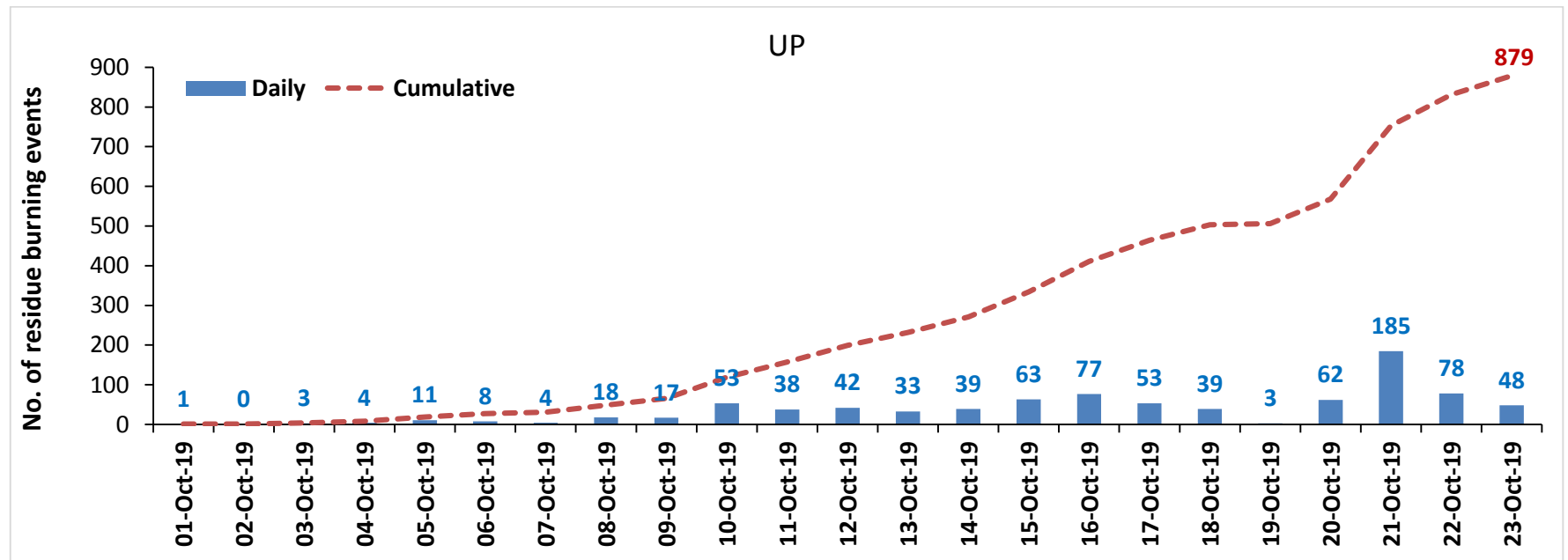
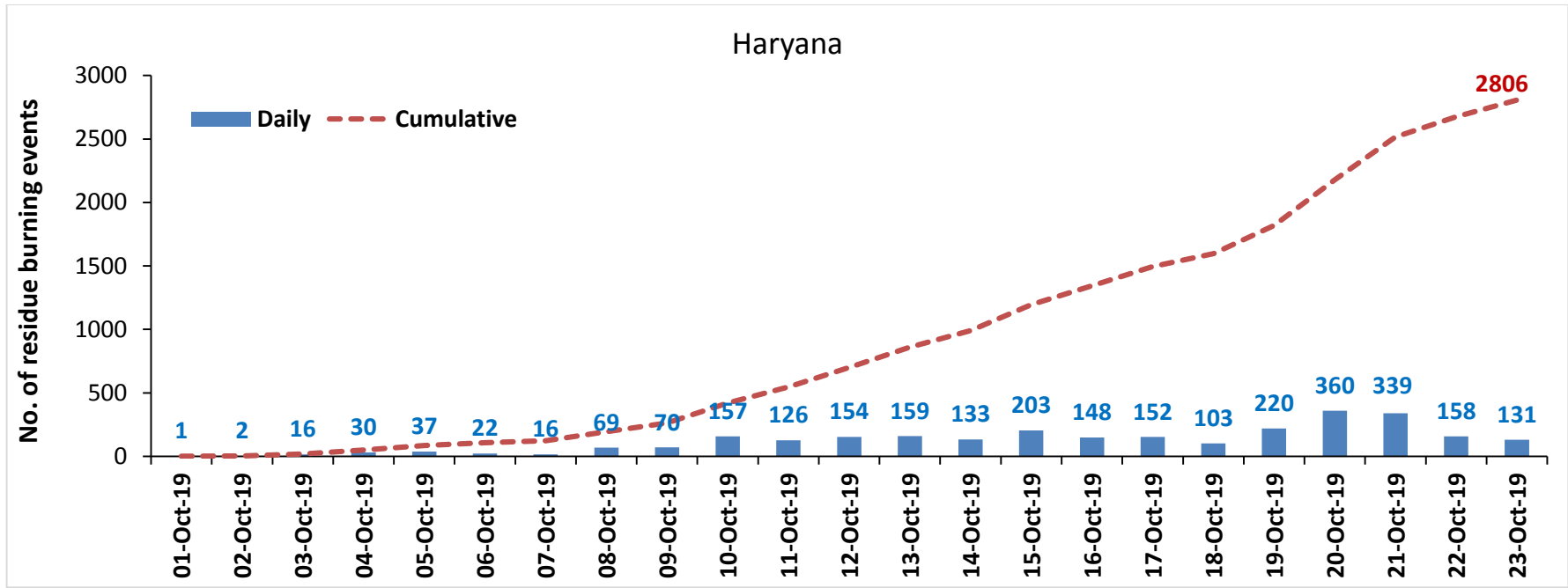
<http://creams.iari.res.in>

Highlights for 23-October-2019

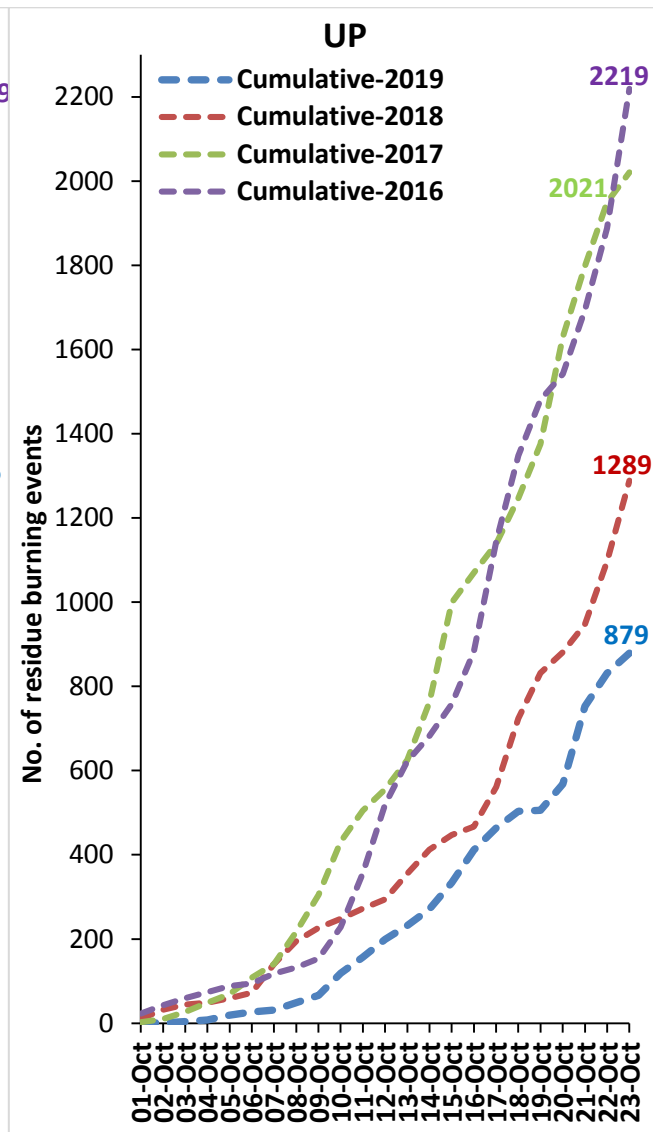
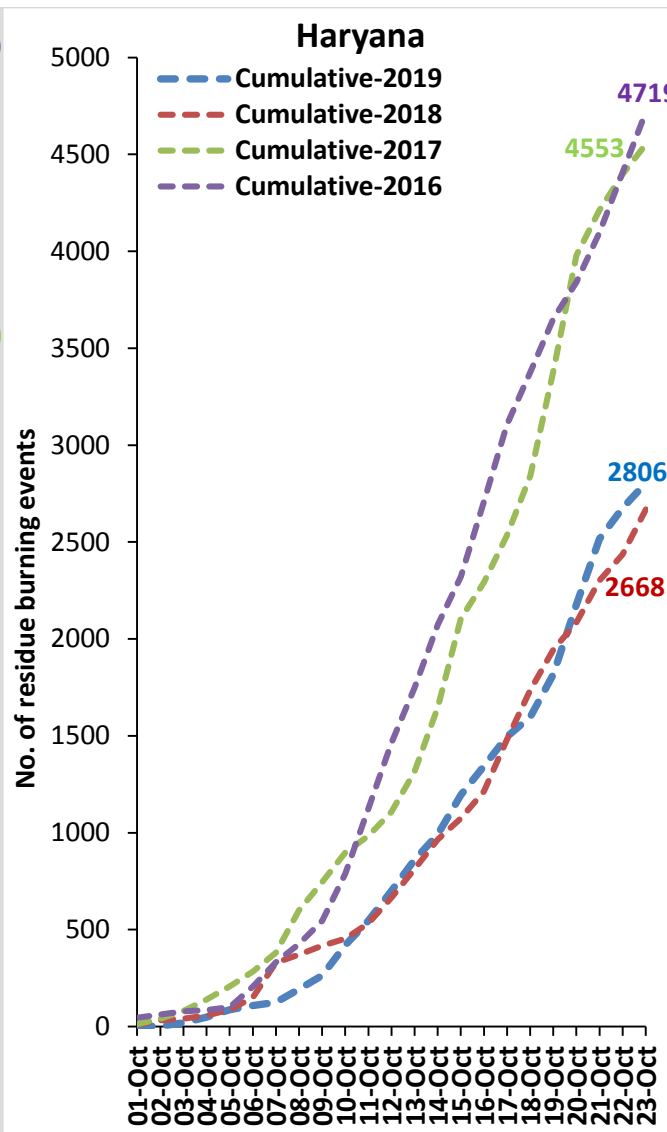
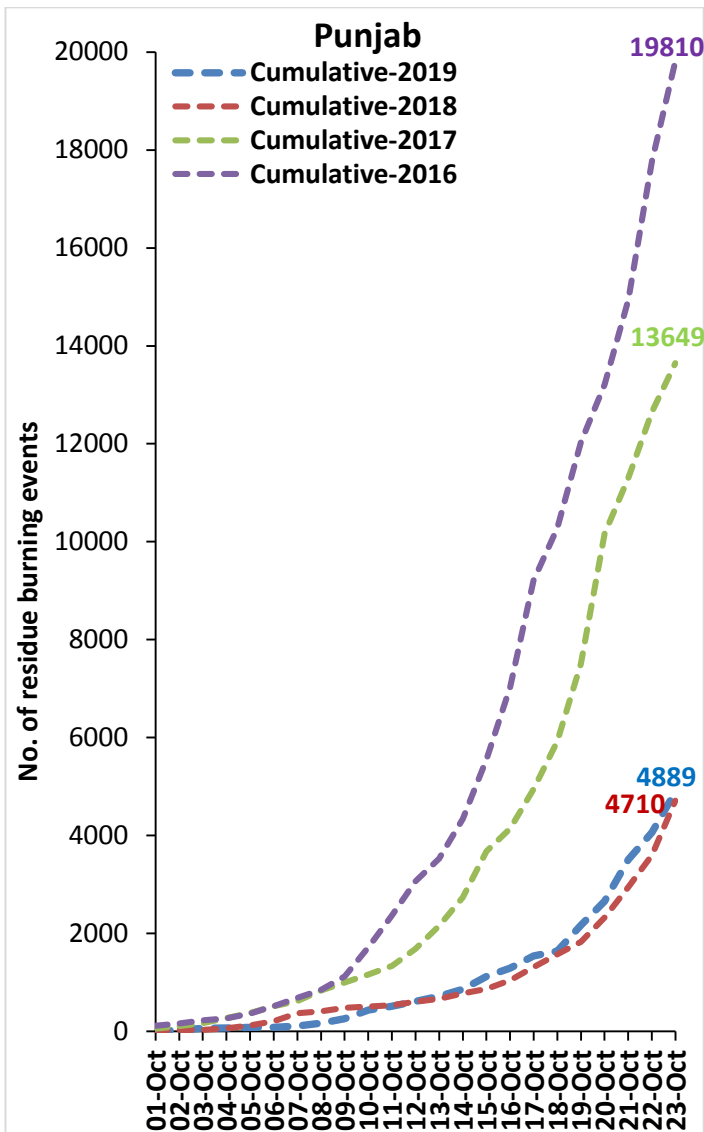
- Satellites detected **1006** residue burning events in the three study States on 23-Oct-2019.
- The burning events detected on **23-Oct-2019** are **827**, **131** and **48** in Punjab, Haryana and UP, respectively.
- The number of events has increased from **791** on **22-Oct-2019** to **1006** on **23-Oct-2019** in the three states.
- Total **8574** burning events were detected in the three States between **01-Oct-2019** and **23-Oct-2019**, which are distributed as **4889**, **2806** and **879** in Punjab, Haryana and UP, respectively.
- Overall, the total burning events recorded in the three states are **1.1%** more than in 2018 till date. UP recorded **31.8%** reduction while Punjab and Haryana recorded **3.8%** and **5.2%** increase, respectively, in the current season than in 2018.

Temporal distribution of residue burning events for the three study States in 2019

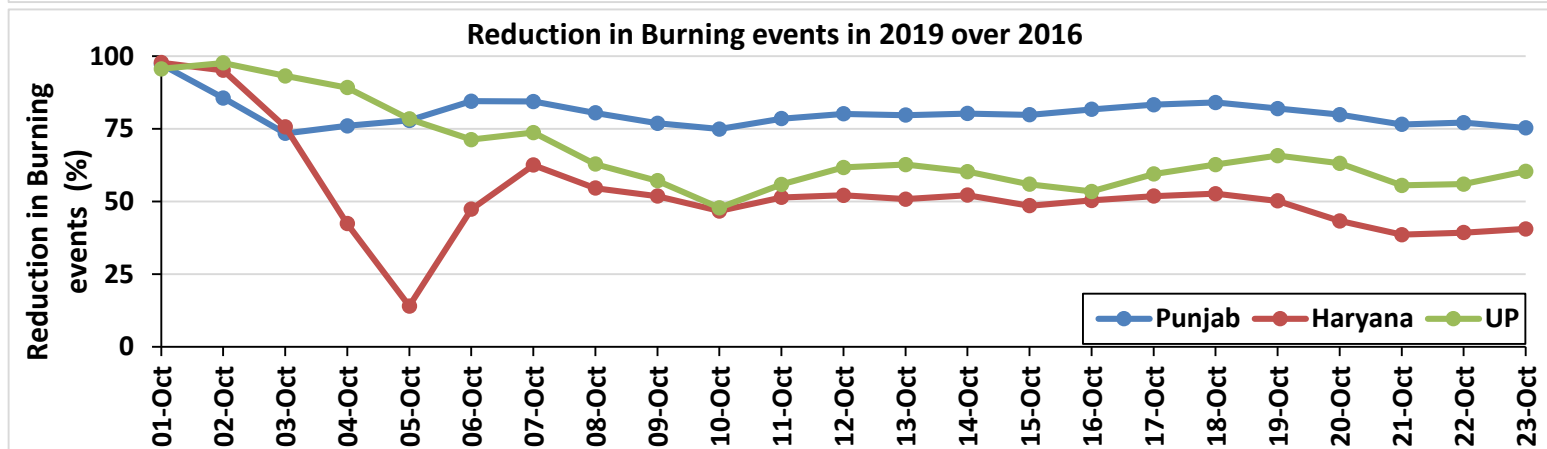
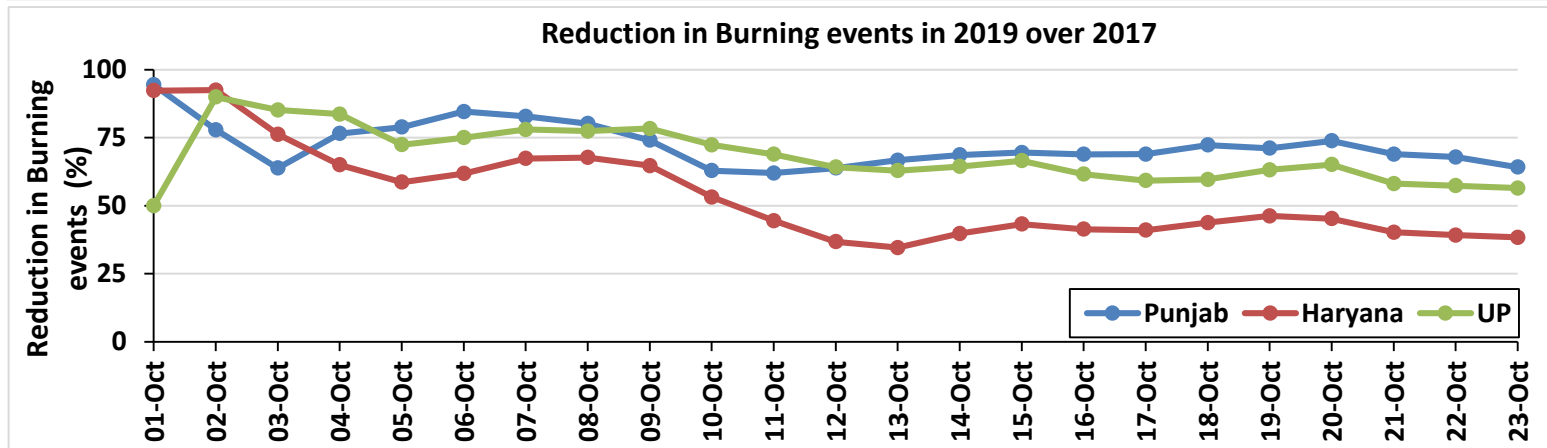
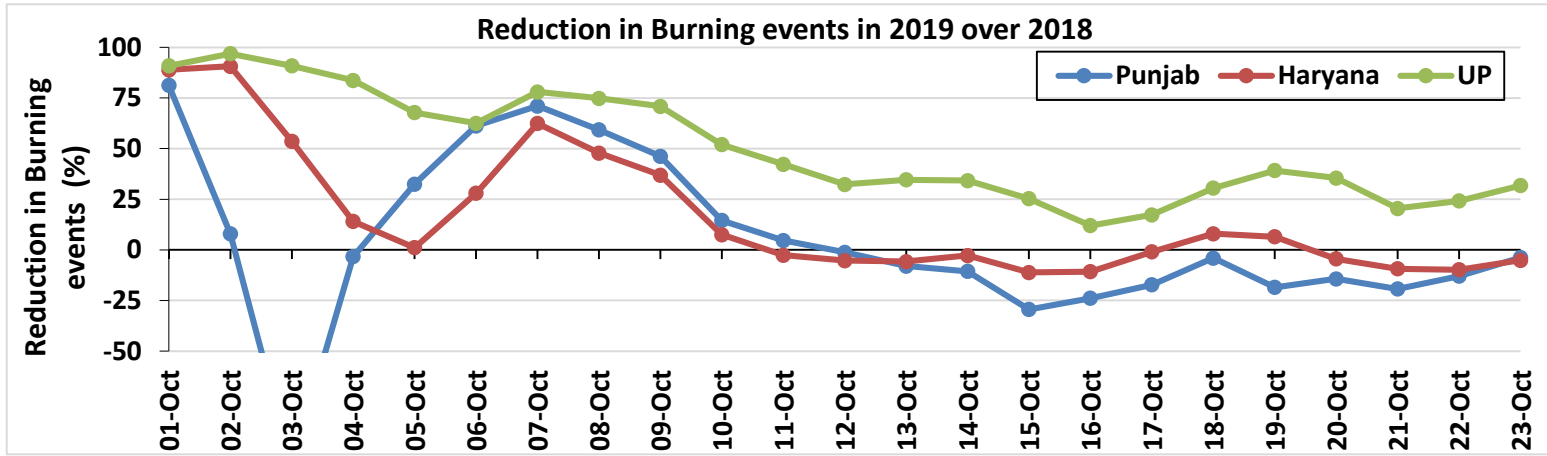




**Comparison of residue burning events in current year (2019) with previous years (2018, 2017 & 2016) for the three study States
(01-Oct to 23-Oct)**

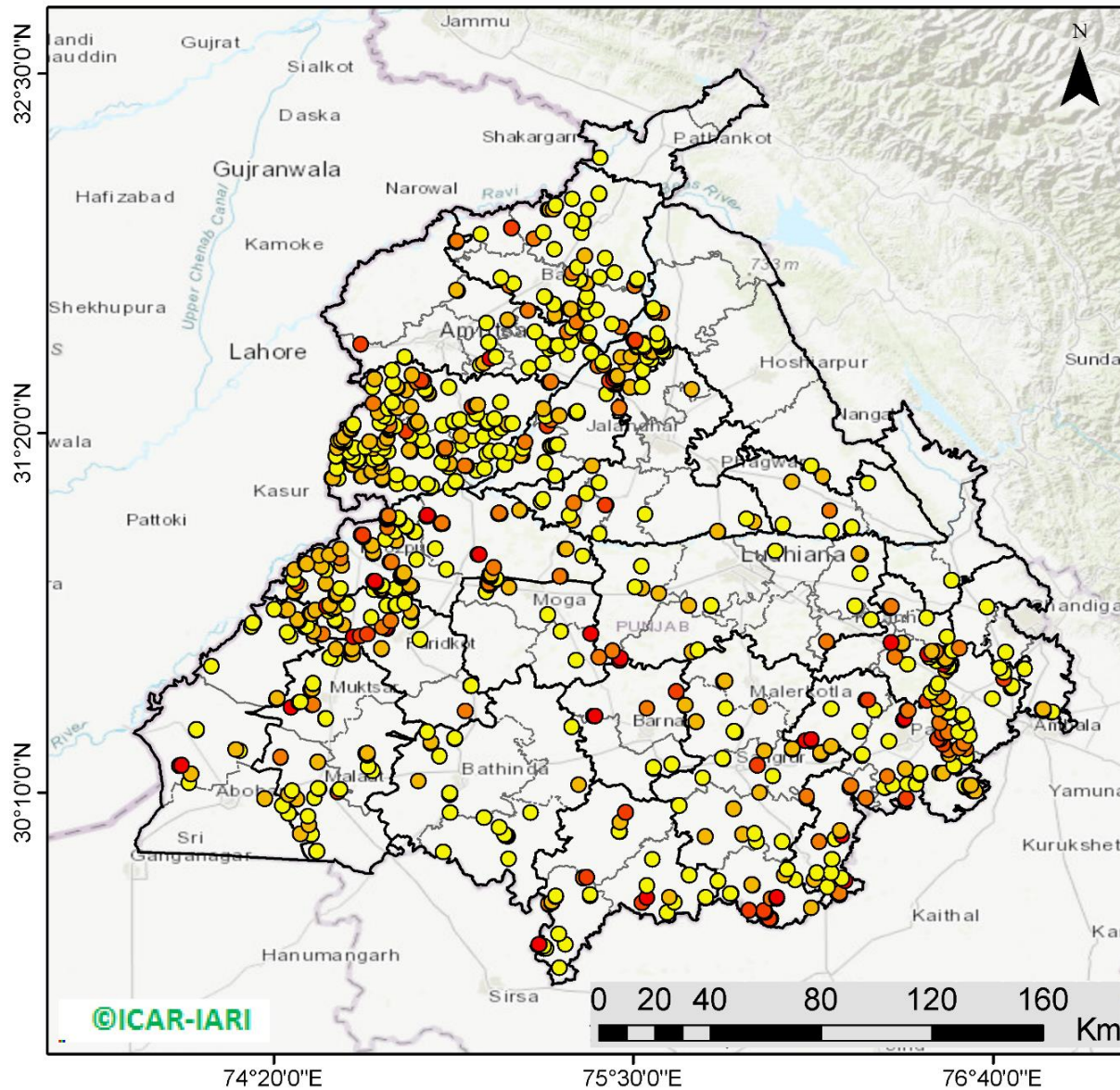


Percent Reduction in Burning events in 2019 over 2018, 2017 and 2016 (Daily Cumulative)



(a) Punjab

RICE RESIDUE BURNING IN PUNJAB



827 burning events detected in Punjab on 23rd October 2019

Fire Intensity (W/m²)

- 0 - 5
- 6 - 10
- 11 - 15
- 16 - 20
- >20

©ICAR-IARI



<http://geoportal.icar.gov.in:8080/geoexplorer/composer/>

Details of residue burning events in Punjab on 23-Oct-2019

S. No.	District	Tehsil / Block	Satellite	Longitude	Latitude	Time (IST)	Day / Night	Fire Power (W/m2)
1	AMRITSAR	AJNALA	S-NPP	74.92732	31.79636	14:18:00	D	6.00
2	AMRITSAR	AJNALA	AQUA	74.92700	31.95100	13:15:00	D	23.00
3	AMRITSAR	AJNALA	S-NPP	74.92367	31.95527	14:18:00	D	8.00
4	AMRITSAR	AJNALA	S-NPP	74.92881	31.95556	14:18:00	D	11.00
5	AMRITSAR	AMRITSAR I	S-NPP	75.00399	31.55340	14:18:00	D	2.00
6	AMRITSAR	AMRITSAR I	S-NPP	75.01383	31.56001	14:18:00	D	7.00
7	AMRITSAR	AMRITSAR I	AQUA	75.03500	31.57400	13:15:00	D	24.00
8	AMRITSAR	AMRITSAR I	S-NPP	75.05376	31.58044	14:18:00	D	5.00
9	AMRITSAR	AMRITSAR I	S-NPP	75.03052	31.62796	12:42:00	D	3.00
10	AMRITSAR	AMRITSAR I	S-NPP	75.09380	31.69898	14:18:00	D	8.00
11	AMRITSAR	AMRITSAR I	S-NPP	75.09345	31.70080	14:18:00	D	6.00
12	AMRITSAR	AMRITSAR I	S-NPP	74.93156	31.79435	14:18:00	D	5.00
13	AMRITSAR	AMRITSAR II	S-NPP	74.76027	31.57785	14:18:00	D	6.00
14	AMRITSAR	AMRITSAR II	S-NPP	74.75927	31.58063	14:18:00	D	5.00
15	AMRITSAR	AMRITSAR II	AQUA	74.61600	31.62200	13:15:00	D	16.00
16	AMRITSAR	AMRITSAR II	S-NPP	75.02499	31.68941	12:42:00	D	3.00
17	AMRITSAR	BABA BAKALA	S-NPP	75.22996	31.49841	14:18:00	D	13.00
18	AMRITSAR	BABA BAKALA	S-NPP	75.22705	31.49903	14:18:00	D	8.00
19	AMRITSAR	BABA BAKALA	S-NPP	75.23234	31.49931	14:18:00	D	11.00
20	AMRITSAR	BABA BAKALA	S-NPP	75.16068	31.54414	14:18:00	D	5.00
21	AMRITSAR	BABA BAKALA	S-NPP	75.20769	31.55844	12:42:00	D	2.00
22	AMRITSAR	BABA BAKALA	S-NPP	75.20796	31.55998	12:42:00	D	2.00
23	AMRITSAR	BABA BAKALA	S-NPP	75.28657	31.58768	14:18:00	D	2.00
24	AMRITSAR	BABA BAKALA	S-NPP	75.36217	31.59306	12:42:00	D	4.00
25	AMRITSAR	BABA BAKALA	S-NPP	75.36293	31.59368	12:42:00	D	3.00
26	AMRITSAR	BABA BAKALA	S-NPP	75.22744	31.60731	12:42:00	D	5.00
27	AMRITSAR	BABA BAKALA	S-NPP	75.24054	31.61571	14:18:00	D	3.00
28	AMRITSAR	BABA BAKALA	S-NPP	75.25249	31.61650	14:18:00	D	5.00
29	AMRITSAR	BABA BAKALA	S-NPP	75.25645	31.61664	14:18:00	D	5.00
30	AMRITSAR	BABA BAKALA	S-NPP	75.20926	31.62643	14:18:00	D	4.00
31	AMRITSAR	BABA BAKALA	S-NPP	75.29970	31.63122	14:18:00	D	3.00
32	AMRITSAR	BABA BAKALA	S-NPP	75.18042	31.66141	14:18:00	D	4.00
33	AMRITSAR	BABA BAKALA	AQUA	75.28600	31.66200	13:15:00	D	13.00
34	AMRITSAR	BABA BAKALA	S-NPP	75.30223	31.67426	14:18:00	D	2.00
35	AMRITSAR	BABA BAKALA	AQUA	75.15800	31.73000	13:15:00	D	13.00

36	BARNALA	BARNALA	S-NPP	75.37109	30.41447	14:18:00	D	19.00
37	BARNALA	BARNALA	S-NPP	75.37630	30.41478	14:18:00	D	23.00
38	BARNALA	BARNALA	TERRA	75.54400	30.44000	11:40:00	D	11.00
39	BARNALA	BARNALA	AQUA	75.64000	30.49500	13:15:00	D	16.00
40	BARNALA	BARNALA	AQUA	75.45600	30.59400	13:15:00	D	23.00
41	BARNALA	TAPPA	S-NPP	75.56466	30.24583	12:42:00	D	4.00
42	BARNALA	TAPPA	S-NPP	75.56514	30.24855	12:42:00	D	4.00
43	BARNALA	TAPPA	S-NPP	75.62486	30.25815	14:18:00	D	4.00
44	BATHINDA	BATHINDA	S-NPP	75.01630	30.08477	12:42:00	D	3.00
45	BATHINDA	BATHINDA	S-NPP	74.90553	30.10052	14:18:00	D	2.00
46	BATHINDA	BATHINDA	TERRA	74.90400	30.16000	11:40:00	D	15.00
47	BATHINDA	BATHINDA	S-NPP	74.90434	30.16541	12:42:00	D	4.00
48	BATHINDA	BATHINDA	S-NPP	74.80289	30.20402	12:42:00	D	8.00
49	BATHINDA	BATHINDA	S-NPP	74.87122	30.28594	12:42:00	D	5.00
50	BATHINDA	BATHINDA	S-NPP	74.84409	30.32557	14:18:00	D	5.00
51	BATHINDA	BATHINDA	S-NPP	74.84412	30.32913	14:18:00	D	6.00
52	BATHINDA	BATHINDA	S-NPP	74.92129	30.33967	14:18:00	D	3.00
53	BATHINDA	BATHINDA	S-NPP	74.92073	30.34249	14:18:00	D	2.00
54	BATHINDA	BATHINDA	S-NPP	74.83179	30.36383	14:18:00	D	5.00
55	BATHINDA	RAMPURA PHUL	S-NPP	75.32389	30.19123	14:18:00	D	8.00
56	BATHINDA	RAMPURA PHUL	S-NPP	75.30077	30.37997	14:18:00	D	4.00
57	BATHINDA	TALWANDI SABO	S-NPP	75.09602	29.95033	14:18:00	D	5.00
58	BATHINDA	TALWANDI SABO	S-NPP	74.88427	29.97267	14:18:00	D	3.00
59	BATHINDA	TALWANDI SABO	S-NPP	75.09236	30.02516	14:18:00	D	3.00
60	BATHINDA	TALWANDI SABO	S-NPP	75.08543	30.02736	14:18:00	D	4.00
61	BATHINDA	TALWANDI SABO	S-NPP	75.08202	30.03053	14:18:00	D	4.00
62	BATHINDA	TALWANDI SABO	S-NPP	75.06537	30.05317	12:42:00	D	5.00
63	BATHINDA	TALWANDI SABO	S-NPP	75.16669	30.10160	14:18:00	D	4.00
64	FARIDKOT	FARIDKOT	S-NPP	74.68470	30.63327	14:18:00	D	6.00
65	FARIDKOT	FARIDKOT	S-NPP	74.68309	30.63402	14:18:00	D	6.00
66	FARIDKOT	FARIDKOT	S-NPP	74.80777	30.66425	14:18:00	D	5.00
67	FARIDKOT	FARIDKOT	AQUA	74.59200	30.67100	13:15:00	D	30.00
68	FARIDKOT	FARIDKOT	AQUA	74.61500	30.67500	13:15:00	D	18.00
69	FARIDKOT	FARIDKOT	S-NPP	74.48754	30.67940	14:18:00	D	11.00
70	FARIDKOT	FARIDKOT	S-NPP	74.49216	30.67970	14:18:00	D	14.00
71	FARIDKOT	FARIDKOT	AQUA	74.63700	30.68000	13:15:00	D	16.00
72	FARIDKOT	FARIDKOT	TERRA	74.70200	30.69800	11:40:00	D	20.00
73	FARIDKOT	FARIDKOT	TERRA	74.69600	30.70000	11:40:00	D	28.00
74	FARIDKOT	FARIDKOT	TERRA	74.68600	30.70200	11:40:00	D	11.00

75	FARIDKOT	FARIDKOT	S-NPP	74.55968	30.70974	12:42:00	D	6.00
76	FARIDKOT	FARIDKOT	S-NPP	74.77923	30.72161	14:18:00	D	7.00
77	FARIDKOT	FARIDKOT	S-NPP	74.53361	30.72274	14:18:00	D	6.00
78	FARIDKOT	FARIDKOT	AQUA	74.71300	30.72300	13:15:00	D	14.00
79	FARIDKOT	FARIDKOT	S-NPP	74.53563	30.72330	14:18:00	D	9.00
80	FARIDKOT	FARIDKOT	S-NPP	74.77715	30.72540	14:18:00	D	5.00
81	FARIDKOT	FARIDKOT	S-NPP	74.53315	30.72854	14:18:00	D	5.00
82	FARIDKOT	FARIDKOT	S-NPP	74.65100	30.73564	14:18:00	D	3.00
83	FARIDKOT	FARIDKOT	S-NPP	74.78193	30.75134	14:18:00	D	5.00
84	FARIDKOT	FARIDKOT	S-NPP	74.77975	30.75510	14:18:00	D	6.00
85	FARIDKOT	FARIDKOT	S-NPP	74.51218	30.75638	14:18:00	D	2.00
86	FARIDKOT	FARIDKOT	S-NPP	74.52573	30.76305	14:18:00	D	4.00
87	FARIDKOT	FARIDKOT	S-NPP	74.53040	30.76335	14:18:00	D	4.00
88	FARIDKOT	FARIDKOT	S-NPP	74.53466	30.76945	14:18:00	D	9.00
89	FARIDKOT	FARIDKOT	S-NPP	74.70084	30.77393	14:18:00	D	4.00
90	FARIDKOT	FARIDKOT	S-NPP	74.72856	30.77410	12:42:00	D	4.00
91	FARIDKOT	FARIDKOT	S-NPP	74.73151	30.77476	12:42:00	D	5.00
92	FARIDKOT	FARIDKOT	S-NPP	74.57172	30.77762	14:18:00	D	5.00
93	FARIDKOT	FARIDKOT	S-NPP	74.75819	30.78334	14:18:00	D	2.00
94	FARIDKOT	FARIDKOT	S-NPP	74.68314	30.82067	12:42:00	D	4.00
95	FARIDKOT	FARIDKOT	S-NPP	74.66016	30.82359	14:18:00	D	5.00
96	FARIDKOT	FARIDKOT	S-NPP	74.65865	30.82419	14:18:00	D	4.00
97	FARIDKOT	JAITO	TERRA	74.95500	30.43000	11:40:00	D	13.00
98	FARIDKOT	JAITO	S-NPP	74.97325	30.51413	12:42:00	D	5.00
99	FARIDKOT	JAITO	S-NPP	74.97382	30.51450	12:42:00	D	5.00
100	FATEHGARH SAHIB	BASSI PATHANAN	S-NPP	76.51691	30.67151	14:18:00	D	3.00
101	FATEHGARH SAHIB	BASSI PATHANAN	S-NPP	76.45207	30.73309	14:18:00	D	3.00
102	FATEHGARH SAHIB	FATEHGARH SAHIB	AQUA	76.45200	30.46500	13:15:00	D	18.00
103	FATEHGARH SAHIB	FATEHGARH SAHIB	S-NPP	76.48566	30.46898	14:18:00	D	6.00
104	FATEHGARH SAHIB	FATEHGARH SAHIB	S-NPP	76.46535	30.49104	12:42:00	D	3.00
105	FATEHGARH SAHIB	FATEHGARH SAHIB	S-NPP	76.48325	30.50743	12:42:00	D	4.00
106	FATEHGARH SAHIB	FATEHGARH SAHIB	S-NPP	76.48823	30.52055	12:42:00	D	4.00
107	FATEHGARH SAHIB	FATEHGARH SAHIB	S-NPP	76.51484	30.56143	14:18:00	D	6.00
108	FATEHGARH SAHIB	FATEHGARH SAHIB	AQUA	76.52500	30.57300	13:15:00	D	9.00
109	FATEHGARH SAHIB	FATEHGARH SAHIB	S-NPP	76.52094	30.57605	12:42:00	D	4.00
110	FATEHGARH SAHIB	FATEHGARH SAHIB	S-NPP	76.50758	30.58054	14:18:00	D	33.00
111	FATEHGARH SAHIB	FATEHGARH SAHIB	S-NPP	76.38951	30.58235	12:42:00	D	4.00
112	FATEHGARH SAHIB	FATEHGARH SAHIB	S-NPP	76.48234	30.59224	14:18:00	D	3.00
113	FATEHGARH SAHIB	FATEHGARH SAHIB	S-NPP	76.51557	30.59247	12:42:00	D	2.00

114	FATEHGARH SAHIB	FATEHGARH SAHIB	S-NPP	76.50882	30.59971	14:18:00	D	6.00
115	FATEHGARH SAHIB	FATEHGARH SAHIB	S-NPP	76.51497	30.59999	14:18:00	D	8.00
116	FATEHGARH SAHIB	FATEHGARH SAHIB	S-NPP	76.51255	30.60026	14:18:00	D	8.00
117	FATEHGARH SAHIB	FATEHGARH SAHIB	S-NPP	76.46101	30.60627	12:42:00	D	2.00
118	FATEHGARH SAHIB	FATEHGARH SAHIB	AQUA	76.34800	30.60800	13:15:00	D	15.00
119	FATEHGARH SAHIB	FATEHGARH SAHIB	S-NPP	76.47207	30.61497	12:42:00	D	4.00
120	FATEHGARH SAHIB	FATEHGARH SAHIB	AQUA	76.45500	30.61700	13:15:00	D	21.00
121	FATEHGARH SAHIB	FATEHGARH SAHIB	S-NPP	76.47665	30.62418	14:18:00	D	14.00
122	FATEHGARH SAHIB	FATEHGARH SAHIB	S-NPP	76.48048	30.62454	14:18:00	D	15.00
123	FATEHGARH SAHIB	FATEHGARH SAHIB	S-NPP	76.46848	30.62594	12:42:00	D	6.00
124	FATEHGARH SAHIB	FATEHGARH SAHIB	S-NPP	76.37204	30.64949	12:42:00	D	6.00
125	FATEHGARH SAHIB	FATEHGARH SAHIB	S-NPP	76.37164	30.65177	12:42:00	D	6.00
126	FATEHGARH SAHIB	FATEHGARH SAHIB	AQUA	76.33600	30.65300	13:15:00	D	37.00
127	FATEHGARH SAHIB	KHAMANOH	AQUA	76.33100	30.76700	13:15:00	D	10.00
128	FATEHGARH SAHIB	KHAMANOH	AQUA	76.33600	30.77100	13:15:00	D	14.00
129	FAZILKA	ABOHAR	S-NPP	74.36175	30.12469	14:18:00	D	4.00
130	FAZILKA	ABOHAR	S-NPP	74.30491	30.14700	12:42:00	D	7.00
131	FAZILKA	FAZILKA	S-NPP	74.05921	30.19761	12:42:00	D	4.00
132	FAZILKA	FAZILKA	S-NPP	74.06509	30.22657	14:18:00	D	6.00
133	FAZILKA	FAZILKA	TERRA	74.02800	30.25400	11:40:00	D	27.00
134	FAZILKA	FAZILKA	TERRA	74.03500	30.25600	11:40:00	D	28.00
135	FAZILKA	FAZILKA	S-NPP	74.22493	30.30193	14:18:00	D	3.00
136	FAZILKA	FAZILKA	S-NPP	74.21123	30.30673	14:18:00	D	7.00
137	FAZILKA	FAZILKA	S-NPP	74.08373	30.36927	14:18:00	D	2.00
138	FAZILKA	FAZILKA	S-NPP	74.08294	30.37183	14:18:00	D	3.00
139	FAZILKA	JALALABAD	S-NPP	74.34352	30.46853	12:42:00	D	4.00
140	FAZILKA	JALALABAD	S-NPP	74.34506	30.47214	12:42:00	D	6.00
141	FAZILKA	JALALABAD	S-NPP	74.13270	30.57624	14:18:00	D	3.00
142	FAZILKA	JALALABAD	S-NPP	74.46484	30.67212	14:18:00	D	8.00
143	FAZILKA	JALALABAD	S-NPP	74.38626	30.67279	14:18:00	D	2.00
144	FAZILKA	JALALABAD	S-NPP	74.37762	30.68567	12:42:00	D	3.00
145	FAZILKA	JALALABAD	S-NPP	74.46349	30.68945	14:18:00	D	10.00
146	FAZILKA	JALALABAD	S-NPP	74.43537	30.70321	12:42:00	D	3.00
147	FAZILKA	JALALABAD	S-NPP	74.26082	30.70467	14:18:00	D	6.00
148	FAZILKA	JALALABAD	S-NPP	74.44156	30.70556	14:18:00	D	3.00
149	FAZILKA	JALALABAD	S-NPP	74.26292	30.70612	14:18:00	D	5.00
150	FAZILKA	JALALABAD	S-NPP	74.26891	30.71671	14:18:00	D	3.00
151	FAZILKA	JALALABAD	S-NPP	74.26648	30.71782	14:18:00	D	2.00
152	FAZILKA	JALALABAD	S-NPP	74.41367	30.72206	12:42:00	D	10.00

153	FAZILKA	JALALABAD	S-NPP	74.41152	30.72812	12:42:00	D	8.00
154	FAZILKA	JALALABAD	S-NPP	74.45220	30.74681	14:18:00	D	10.00
155	FAZILKA	JALALABAD	S-NPP	74.45682	30.74710	14:18:00	D	10.00
156	FAZILKA	JALALABAD	S-NPP	74.36804	30.75883	14:18:00	D	3.00
157	FAZILKA	JALALABAD	S-NPP	74.46983	30.75953	14:18:00	D	8.00
158	FAZILKA	JALALABAD	TERRA	74.37800	30.76100	11:40:00	D	10.00
159	FAZILKA	JALALABAD	S-NPP	74.33567	30.76251	14:18:00	D	4.00
160	FIROZPUR	FIROZPUR	S-NPP	74.50446	30.77296	12:42:00	D	23.00
161	FIROZPUR	FIROZPUR	S-NPP	74.51543	30.77590	12:42:00	D	6.00
162	FIROZPUR	FIROZPUR	S-NPP	74.53665	30.80457	14:18:00	D	10.00
163	FIROZPUR	FIROZPUR	S-NPP	74.54134	30.80487	14:18:00	D	21.00
164	FIROZPUR	FIROZPUR	S-NPP	74.53622	30.81037	14:18:00	D	6.00
165	FIROZPUR	FIROZPUR	S-NPP	74.53750	30.81054	14:18:00	D	8.00
166	FIROZPUR	FIROZPUR	S-NPP	74.54089	30.81068	14:18:00	D	9.00
167	FIROZPUR	FIROZPUR	S-NPP	74.40170	30.81403	14:18:00	D	8.00
168	FIROZPUR	FIROZPUR	S-NPP	74.40022	30.81878	14:18:00	D	9.00
169	FIROZPUR	FIROZPUR	S-NPP	74.68105	30.82665	12:42:00	D	6.00
170	FIROZPUR	FIROZPUR	S-NPP	74.72737	30.82749	14:18:00	D	3.00
171	FIROZPUR	FIROZPUR	S-NPP	74.54948	30.82935	12:42:00	D	4.00
172	FIROZPUR	FIROZPUR	S-NPP	74.78286	30.83419	12:42:00	D	8.00
173	FIROZPUR	FIROZPUR	AQUA	74.67700	30.83500	13:15:00	D	23.00
174	FIROZPUR	FIROZPUR	S-NPP	74.68800	30.83698	14:18:00	D	6.00
175	FIROZPUR	FIROZPUR	S-NPP	74.68647	30.83776	14:18:00	D	5.00
176	FIROZPUR	FIROZPUR	S-NPP	74.41829	30.83822	14:18:00	D	7.00
177	FIROZPUR	FIROZPUR	S-NPP	74.77550	30.83873	12:42:00	D	6.00
178	FIROZPUR	FIROZPUR	S-NPP	74.50294	30.84309	12:42:00	D	5.00
179	FIROZPUR	FIROZPUR	S-NPP	74.50287	30.84504	12:42:00	D	7.00
180	FIROZPUR	FIROZPUR	AQUA	74.40900	30.84700	13:15:00	D	19.00
181	FIROZPUR	FIROZPUR	S-NPP	74.66315	30.84726	14:18:00	D	13.00
182	FIROZPUR	FIROZPUR	S-NPP	74.66171	30.84789	14:18:00	D	15.00
183	FIROZPUR	FIROZPUR	S-NPP	74.66648	30.84821	14:18:00	D	15.00
184	FIROZPUR	FIROZPUR	S-NPP	74.65791	30.85283	14:18:00	D	14.00
185	FIROZPUR	FIROZPUR	S-NPP	74.66268	30.85311	14:18:00	D	36.00
186	FIROZPUR	FIROZPUR	S-NPP	74.39804	30.86013	14:18:00	D	5.00
187	FIROZPUR	FIROZPUR	S-NPP	74.74921	30.86424	12:42:00	D	5.00
188	FIROZPUR	FIROZPUR	S-NPP	74.74715	30.87019	12:42:00	D	10.00
189	FIROZPUR	FIROZPUR	S-NPP	74.75323	30.87033	14:18:00	D	5.00
190	FIROZPUR	FIROZPUR	S-NPP	74.75278	30.87621	14:18:00	D	5.00
191	FIROZPUR	FIROZPUR	S-NPP	74.75475	30.87835	12:42:00	D	5.00

192	FIROZPUR	FIROZPUR	S-NPP	74.75562	30.87891	12:42:00	D	8.00
193	FIROZPUR	FIROZPUR	S-NPP	74.40041	30.88924	14:18:00	D	8.00
194	FIROZPUR	FIROZPUR	S-NPP	74.50303	30.89004	14:18:00	D	2.00
195	FIROZPUR	FIROZPUR	S-NPP	74.89423	30.89062	14:18:00	D	4.00
196	FIROZPUR	FIROZPUR	S-NPP	74.48812	30.90073	14:18:00	D	6.00
197	FIROZPUR	FIROZPUR	S-NPP	74.55379	30.90496	14:18:00	D	6.00
198	FIROZPUR	FIROZPUR	S-NPP	74.43616	30.90909	14:18:00	D	6.00
199	FIROZPUR	FIROZPUR	S-NPP	74.44070	30.90927	14:18:00	D	9.00
200	FIROZPUR	FIROZPUR	S-NPP	74.44080	30.90936	14:18:00	D	8.00
201	FIROZPUR	FIROZPUR	S-NPP	74.71112	30.91496	14:18:00	D	15.00
202	FIROZPUR	FIROZPUR	S-NPP	74.71593	30.91526	14:18:00	D	12.00
203	FIROZPUR	FIROZPUR	S-NPP	74.79697	30.92214	12:42:00	D	3.00
204	FIROZPUR	FIROZPUR	S-NPP	74.79786	30.92237	12:42:00	D	2.00
205	FIROZPUR	FIROZPUR	TERRA	74.54900	30.92600	11:40:00	D	12.00
206	FIROZPUR	FIROZPUR	S-NPP	74.48093	30.93502	14:18:00	D	8.00
207	FIROZPUR	FIROZPUR	S-NPP	74.48083	30.93519	14:18:00	D	7.00
208	FIROZPUR	FIROZPUR	S-NPP	74.51374	30.93700	14:18:00	D	7.00
209	FIROZPUR	FIROZPUR	S-NPP	74.51358	30.93737	14:18:00	D	6.00
210	FIROZPUR	FIROZPUR	S-NPP	74.65609	30.94088	14:18:00	D	8.00
211	FIROZPUR	FIROZPUR	S-NPP	74.65606	30.94546	14:18:00	D	9.00
212	FIROZPUR	FIROZPUR	S-NPP	74.55006	30.95671	14:18:00	D	9.00
213	FIROZPUR	FIROZPUR	S-NPP	74.65047	30.96779	12:42:00	D	8.00
214	FIROZPUR	FIROZPUR	S-NPP	74.65353	30.96849	12:42:00	D	9.00
215	FIROZPUR	FIROZPUR	S-NPP	74.73049	30.98527	14:18:00	D	6.00
216	FIROZPUR	FIROZPUR	S-NPP	74.69620	30.98908	14:18:00	D	5.00
217	FIROZPUR	FIROZPUR	S-NPP	74.62334	30.99636	14:18:00	D	6.00
218	FIROZPUR	FIROZPUR	S-NPP	74.61811	31.00191	14:18:00	D	11.00
219	FIROZPUR	FIROZPUR	S-NPP	74.62289	31.00221	14:18:00	D	17.00
220	FIROZPUR	FIROZPUR	S-NPP	74.78715	31.01238	14:18:00	D	5.00
221	FIROZPUR	FIROZPUR	S-NPP	74.79205	31.01268	14:18:00	D	5.00
222	FIROZPUR	FIROZPUR	S-NPP	74.72832	31.01467	14:18:00	D	4.00
223	FIROZPUR	FIROZPUR	AQUA	74.70400	31.02700	13:15:00	D	15.00
224	FIROZPUR	FIROZPUR	S-NPP	74.76633	31.02886	14:18:00	D	4.00
225	FIROZPUR	FIROZPUR	S-NPP	74.76279	31.03292	14:18:00	D	3.00
226	FIROZPUR	FIROZPUR	S-NPP	74.74030	31.05089	14:18:00	D	2.00
227	FIROZPUR	FIROZPUR	S-NPP	74.70168	31.05308	12:42:00	D	6.00
228	FIROZPUR	FIROZPUR	S-NPP	74.70108	31.05427	14:18:00	D	6.00
229	FIROZPUR	FIROZPUR	S-NPP	74.70695	31.05448	12:42:00	D	11.00
230	FIROZPUR	FIROZPUR	S-NPP	74.74154	31.05537	14:18:00	D	7.00

231	FIROZPUR	FIROZPUR	S-NPP	74.73988	31.05677	14:18:00	D	3.00
232	FIROZPUR	FIROZPUR	S-NPP	74.70222	31.05899	14:18:00	D	5.00
233	FIROZPUR	FIROZPUR	S-NPP	74.70706	31.05927	14:18:00	D	5.00
234	FIROZPUR	FIROZPUR	S-NPP	74.70548	31.06046	14:18:00	D	17.00
235	FIROZPUR	FIROZPUR	S-NPP	74.70177	31.06486	14:18:00	D	6.00
236	FIROZPUR	FIROZPUR	S-NPP	74.70662	31.06515	14:18:00	D	11.00
237	FIROZPUR	ZIRA	AQUA	75.03800	30.86800	13:15:00	D	19.00
238	FIROZPUR	ZIRA	S-NPP	75.26542	30.86814	14:18:00	D	13.00
239	FIROZPUR	ZIRA	AQUA	75.03300	30.86900	13:15:00	D	21.00
240	FIROZPUR	ZIRA	S-NPP	75.26229	30.86945	14:18:00	D	13.00
241	FIROZPUR	ZIRA	S-NPP	75.03836	30.87409	12:42:00	D	10.00
242	FIROZPUR	ZIRA	S-NPP	75.03465	30.87530	12:42:00	D	6.00
243	FIROZPUR	ZIRA	S-NPP	75.03971	30.87665	12:42:00	D	6.00
244	FIROZPUR	ZIRA	AQUA	75.04700	30.89700	13:15:00	D	14.00
245	FIROZPUR	ZIRA	S-NPP	75.33666	30.93451	14:18:00	D	4.00
246	FIROZPUR	ZIRA	S-NPP	74.99583	30.93856	14:18:00	D	22.00
247	FIROZPUR	ZIRA	S-NPP	75.00086	30.93887	14:18:00	D	25.00
248	FIROZPUR	ZIRA	S-NPP	75.28259	30.95577	14:18:00	D	18.00
249	FIROZPUR	ZIRA	S-NPP	75.27842	30.95630	14:18:00	D	10.00
250	FIROZPUR	ZIRA	S-NPP	75.28365	30.95658	14:18:00	D	10.00
251	FIROZPUR	ZIRA	S-NPP	74.85860	30.95795	12:42:00	D	4.00
252	FIROZPUR	ZIRA	S-NPP	74.87594	31.03926	14:18:00	D	8.00
253	FIROZPUR	ZIRA	S-NPP	74.88091	31.03953	14:18:00	D	8.00
254	FIROZPUR	ZIRA	S-NPP	74.87894	31.04181	14:18:00	D	13.00
255	FIROZPUR	ZIRA	S-NPP	74.83021	31.06137	12:42:00	D	7.00
256	FIROZPUR	ZIRA	S-NPP	74.83539	31.06275	12:42:00	D	7.00
257	FIROZPUR	ZIRA	AQUA	74.83100	31.06600	13:15:00	D	22.00
258	FIROZPUR	ZIRA	S-NPP	75.06334	31.07115	14:18:00	D	6.00
259	FIROZPUR	ZIRA	S-NPP	75.06843	31.07147	14:18:00	D	6.00
260	FIROZPUR	ZIRA	S-NPP	75.06517	31.07370	14:18:00	D	13.00
261	FIROZPUR	ZIRA	S-NPP	75.13453	31.08155	14:18:00	D	9.00
262	FIROZPUR	ZIRA	S-NPP	75.13130	31.08339	14:18:00	D	6.00
263	FIROZPUR	ZIRA	S-NPP	74.90759	31.15445	14:18:00	D	3.00
264	GURDASPUR	BATALA	S-NPP	75.34253	31.64977	12:42:00	D	4.00
265	GURDASPUR	BATALA	AQUA	75.35100	31.65000	13:15:00	D	13.00
266	GURDASPUR	BATALA	S-NPP	75.35728	31.65883	14:18:00	D	5.00
267	GURDASPUR	BATALA	S-NPP	75.45977	31.67665	14:18:00	D	12.00
268	GURDASPUR	BATALA	S-NPP	75.43165	31.68749	14:18:00	D	5.00
269	GURDASPUR	BATALA	AQUA	75.31800	31.69300	13:15:00	D	12.00

270	GURDASPUR	BATALA	S-NPP	75.24605	31.71394	14:18:00	D	7.00
271	GURDASPUR	BATALA	S-NPP	75.24594	31.71485	14:18:00	D	7.00
272	GURDASPUR	BATALA	S-NPP	75.35044	31.71878	12:42:00	D	5.00
273	GURDASPUR	BATALA	S-NPP	75.34911	31.71935	12:42:00	D	5.00
274	GURDASPUR	BATALA	S-NPP	75.35329	31.72010	14:18:00	D	4.00
275	GURDASPUR	BATALA	S-NPP	75.35332	31.72036	14:18:00	D	4.00
276	GURDASPUR	BATALA	S-NPP	75.38132	31.73305	12:42:00	D	3.00
277	GURDASPUR	BATALA	S-NPP	75.29283	31.73565	14:18:00	D	4.00
278	GURDASPUR	BATALA	S-NPP	75.29820	31.73594	14:18:00	D	7.00
279	GURDASPUR	BATALA	S-NPP	75.24350	31.75140	14:18:00	D	4.00
280	GURDASPUR	BATALA	S-NPP	75.34605	31.76082	12:42:00	D	2.00
281	GURDASPUR	BATALA	S-NPP	75.21310	31.77533	12:42:00	D	3.00
282	GURDASPUR	BATALA	S-NPP	75.21160	31.77545	12:42:00	D	3.00
283	GURDASPUR	BATALA	S-NPP	75.34970	31.77552	14:18:00	D	2.00
284	GURDASPUR	BATALA	TERRA	75.09900	31.81000	11:40:00	D	11.00
285	GURDASPUR	BATALA	S-NPP	75.11187	31.81711	14:18:00	D	3.00
286	GURDASPUR	BATALA	S-NPP	75.34309	31.81794	14:18:00	D	4.00
287	GURDASPUR	BATALA	S-NPP	75.34852	31.81822	14:18:00	D	5.00
288	GURDASPUR	BATALA	S-NPP	75.34703	31.81843	14:18:00	D	7.00
289	GURDASPUR	BATALA	S-NPP	75.32603	31.82937	14:18:00	D	4.00
290	GURDASPUR	BATALA	S-NPP	75.32460	31.82945	14:18:00	D	5.00
291	GURDASPUR	BATALA	S-NPP	75.29865	31.83411	14:18:00	D	4.00
292	GURDASPUR	BATALA	S-NPP	75.07040	31.83754	12:42:00	D	2.00
293	GURDASPUR	DERA BABA NANAK	S-NPP	75.00503	31.97795	14:18:00	D	2.00
294	GURDASPUR	DERA BABA NANAK	AQUA	75.10500	31.99900	13:15:00	D	18.00
295	GURDASPUR	GURDASPUR	AQUA	75.50400	31.81000	13:15:00	D	12.00
296	GURDASPUR	GURDASPUR	S-NPP	75.51173	31.82761	14:18:00	D	4.00
297	GURDASPUR	GURDASPUR	S-NPP	75.51309	31.83258	14:18:00	D	4.00
298	GURDASPUR	GURDASPUR	S-NPP	75.39079	31.83883	14:18:00	D	4.00
299	GURDASPUR	GURDASPUR	AQUA	75.30300	31.85200	13:15:00	D	12.00
300	GURDASPUR	GURDASPUR	S-NPP	75.43926	31.85366	14:18:00	D	3.00
301	GURDASPUR	GURDASPUR	S-NPP	75.31901	31.87118	12:42:00	D	2.00
302	GURDASPUR	GURDASPUR	S-NPP	75.40868	31.90149	14:18:00	D	2.00
303	GURDASPUR	GURDASPUR	S-NPP	75.34192	31.90785	12:42:00	D	8.00
304	GURDASPUR	GURDASPUR	S-NPP	75.24394	31.92920	14:18:00	D	4.00
305	GURDASPUR	GURDASPUR	AQUA	75.17800	31.96400	13:15:00	D	15.00
306	GURDASPUR	GURDASPUR	S-NPP	75.20816	31.98372	12:42:00	D	2.00
307	GURDASPUR	GURDASPUR	S-NPP	75.33102	31.98478	12:42:00	D	4.00
308	GURDASPUR	GURDASPUR	S-NPP	75.34024	32.01455	14:18:00	D	4.00

309	GURDASPUR	GURDASPUR	S-NPP	75.33861	32.01485	14:18:00	D	4.00
310	GURDASPUR	GURDASPUR	S-NPP	75.30138	32.02493	14:18:00	D	2.00
311	GURDASPUR	GURDASPUR	S-NPP	75.22357	32.05775	14:18:00	D	5.00
312	GURDASPUR	GURDASPUR	S-NPP	75.22894	32.05804	14:18:00	D	7.00
313	GURDASPUR	GURDASPUR	S-NPP	75.35394	32.05836	14:18:00	D	3.00
314	GURDASPUR	GURDASPUR	S-NPP	75.23969	32.05860	14:18:00	D	9.00
315	GURDASPUR	GURDASPUR	S-NPP	75.24964	32.07138	14:18:00	D	4.00
316	GURDASPUR	GURDASPUR	S-NPP	75.30258	32.09262	14:18:00	D	4.00
317	GURDASPUR	GURDASPUR	S-NPP	75.38961	32.10924	14:18:00	D	3.00
318	GURDASPUR	GURDASPUR	S-NPP	75.38927	32.10958	14:18:00	D	3.00
319	HOSHIARPUR	DASUYA	AQUA	75.58900	31.61500	13:15:00	D	16.00
320	HOSHIARPUR	DASUYA	S-NPP	75.59174	31.61517	14:18:00	D	3.00
321	HOSHIARPUR	DASUYA	S-NPP	75.58972	31.61706	14:18:00	D	5.00
322	HOSHIARPUR	DASUYA	S-NPP	75.59529	31.61736	14:18:00	D	7.00
323	HOSHIARPUR	DASUYA	TERRA	75.59700	31.62100	11:40:00	D	13.00
324	HOSHIARPUR	DASUYA	S-NPP	75.59135	31.62137	14:18:00	D	10.00
325	HOSHIARPUR	DASUYA	S-NPP	75.59128	31.62166	12:42:00	D	7.00
326	HOSHIARPUR	DASUYA	S-NPP	75.58936	31.62326	14:18:00	D	5.00
327	HOSHIARPUR	DASUYA	S-NPP	75.59492	31.62357	14:18:00	D	7.00
328	HOSHIARPUR	DASUYA	S-NPP	75.58934	31.62726	12:42:00	D	4.00
329	HOSHIARPUR	DASUYA	S-NPP	75.57823	31.63051	12:42:00	D	4.00
330	HOSHIARPUR	DASUYA	S-NPP	75.57822	31.65594	12:42:00	D	4.00
331	HOSHIARPUR	DASUYA	AQUA	75.59200	31.72200	13:15:00	D	13.00
332	HOSHIARPUR	DASUYA	S-NPP	75.56839	31.72491	14:18:00	D	12.00
333	HOSHIARPUR	DASUYA	S-NPP	75.56800	31.72594	14:18:00	D	12.00
334	HOSHIARPUR	DASUYA	S-NPP	75.56030	31.73667	12:42:00	D	3.00
335	HOSHIARPUR	DASUYA	S-NPP	75.56489	31.73784	12:42:00	D	3.00
336	HOSHIARPUR	GARHSHANKAR	AQUA	76.11500	31.19200	13:15:00	D	10.00
337	JALANDHAR	JALANDHAR II	AQUA	75.45400	31.41500	13:15:00	D	11.00
338	JALANDHAR	JALANDHAR II	S-NPP	75.69067	31.47453	14:18:00	D	6.00
339	JALANDHAR	JALANDHAR II	S-NPP	75.52770	31.48333	12:42:00	D	2.00
340	JALANDHAR	JALANDHAR II	S-NPP	75.52978	31.53844	12:42:00	D	3.00
341	JALANDHAR	JALANDHAR II	S-NPP	75.60403	31.59709	14:18:00	D	4.00
342	JALANDHAR	NAKODAR	S-NPP	75.41204	31.09827	14:18:00	D	14.00
343	JALANDHAR	NAKODAR	S-NPP	75.40907	31.09842	14:18:00	D	16.00
344	JALANDHAR	NAKODAR	S-NPP	75.38879	31.17232	12:42:00	D	3.00
345	JALANDHAR	NAKODAR	S-NPP	75.36600	31.22742	12:42:00	D	6.00
346	JALANDHAR	PHILLAUR	S-NPP	75.77479	31.01282	14:18:00	D	5.00
347	JALANDHAR	PHILLAUR	S-NPP	75.77306	31.01501	14:18:00	D	6.00

348	JALANDHAR	PHILLAUR	S-NPP	75.89192	31.04388	14:18:00	D	6.00
349	JALANDHAR	PHILLAUR	S-NPP	75.86669	31.05488	12:42:00	D	4.00
350	JALANDHAR	PHILLAUR	S-NPP	75.53832	31.06860	14:18:00	D	3.00
351	JALANDHAR	SHAHKOT	S-NPP	75.38986	31.00648	12:42:00	D	4.00
352	JALANDHAR	SHAHKOT	S-NPP	75.30364	31.04910	14:18:00	D	9.00
353	JALANDHAR	SHAHKOT	S-NPP	75.29190	31.06672	14:18:00	D	5.00
354	JALANDHAR	SHAHKOT	AQUA	75.30700	31.10700	13:15:00	D	12.00
355	JALANDHAR	SHAHKOT	S-NPP	75.20199	31.11155	14:18:00	D	4.00
356	JALANDHAR	SHAHKOT	S-NPP	75.20678	31.11789	14:18:00	D	2.00
357	JALANDHAR	SHAHKOT	S-NPP	75.34775	31.13799	14:18:00	D	4.00
358	KAPURTHALA	BHOLATH	S-NPP	75.49002	31.48244	14:18:00	D	6.00
359	KAPURTHALA	BHOLATH	S-NPP	75.44915	31.51848	12:42:00	D	8.00
360	KAPURTHALA	BHOLATH	S-NPP	75.47726	31.55517	14:18:00	D	9.00
361	KAPURTHALA	BHOLATH	S-NPP	75.40018	31.56339	14:18:00	D	4.00
362	KAPURTHALA	BHOLATH	S-NPP	75.55891	31.57055	12:42:00	D	4.00
363	KAPURTHALA	BHOLATH	S-NPP	75.45924	31.57893	14:18:00	D	8.00
364	KAPURTHALA	BHOLATH	S-NPP	75.54580	31.57938	12:42:00	D	3.00
365	KAPURTHALA	BHOLATH	S-NPP	75.49215	31.58071	14:18:00	D	6.00
366	KAPURTHALA	BHOLATH	S-NPP	75.56512	31.59523	14:18:00	D	8.00
367	KAPURTHALA	BHOLATH	AQUA	75.55400	31.59600	13:15:00	D	15.00
368	KAPURTHALA	BHOLATH	S-NPP	75.56310	31.59695	14:18:00	D	10.00
369	KAPURTHALA	BHOLATH	S-NPP	75.59637	31.59875	14:18:00	D	5.00
370	KAPURTHALA	BHOLATH	S-NPP	75.53619	31.61245	14:18:00	D	4.00
371	KAPURTHALA	BHOLATH	S-NPP	75.51220	31.61278	14:18:00	D	4.00
372	KAPURTHALA	BHOLATH	S-NPP	75.51368	31.61754	14:18:00	D	4.00
373	KAPURTHALA	BHOLATH	S-NPP	75.53220	31.61871	12:42:00	D	5.00
374	KAPURTHALA	BHOLATH	S-NPP	75.50553	31.63099	14:18:00	D	9.00
375	KAPURTHALA	BHOLATH	S-NPP	75.50141	31.63551	14:18:00	D	15.00
376	KAPURTHALA	BHOLATH	S-NPP	75.50693	31.63579	14:18:00	D	17.00
377	KAPURTHALA	KAPURTHALA	S-NPP	75.25430	31.29560	12:42:00	D	5.00
378	KAPURTHALA	KAPURTHALA	TERRA	75.23200	31.37700	11:40:00	D	12.00
379	KAPURTHALA	KAPURTHALA	S-NPP	75.21651	31.38799	14:18:00	D	2.00
380	KAPURTHALA	KAPURTHALA	S-NPP	75.25771	31.39017	14:18:00	D	11.00
381	KAPURTHALA	KAPURTHALA	S-NPP	75.25874	31.39021	14:18:00	D	9.00
382	KAPURTHALA	KAPURTHALA	S-NPP	75.32033	31.39848	12:42:00	D	3.00
383	KAPURTHALA	KAPURTHALA	AQUA	75.31400	31.40000	13:15:00	D	15.00
384	KAPURTHALA	KAPURTHALA	S-NPP	75.31834	31.40418	12:42:00	D	3.00
385	KAPURTHALA	KAPURTHALA	S-NPP	75.20957	31.41198	14:18:00	D	8.00
386	KAPURTHALA	KAPURTHALA	S-NPP	75.41311	31.45986	12:42:00	D	2.00

387	KAPURTHALA	KAPURTHALA	S-NPP	75.43764	31.49139	14:18:00	D	4.00
388	KAPURTHALA	KAPURTHALA	S-NPP	75.44032	31.49204	14:18:00	D	6.00
389	KAPURTHALA	KAPURTHALA	S-NPP	75.44266	31.49781	14:18:00	D	14.00
390	KAPURTHALA	KAPURTHALA	S-NPP	75.43991	31.49819	14:18:00	D	6.00
391	KAPURTHALA	KAPURTHALA	S-NPP	75.44535	31.49849	14:18:00	D	13.00
392	KAPURTHALA	KAPURTHALA	AQUA	75.42300	31.50300	13:15:00	D	17.00
393	KAPURTHALA	KAPURTHALA	AQUA	75.44300	31.50600	13:15:00	D	33.00
394	KAPURTHALA	KAPURTHALA	S-NPP	75.43846	31.50835	12:42:00	D	6.00
395	KAPURTHALA	KAPURTHALA	S-NPP	75.43701	31.50922	12:42:00	D	6.00
396	KAPURTHALA	KAPURTHALA	AQUA	75.43600	31.51100	13:15:00	D	23.00
397	KAPURTHALA	KAPURTHALA	S-NPP	75.44588	31.51647	12:42:00	D	8.00
398	KAPURTHALA	KAPURTHALA	S-NPP	75.44446	31.51728	12:42:00	D	6.00
399	KAPURTHALA	KAPURTHALA	AQUA	75.38500	31.55000	13:15:00	D	13.00
400	KAPURTHALA	KAPURTHALA	AQUA	75.40400	31.55400	13:15:00	D	11.00
401	KAPURTHALA	SULTANPUR LODHI	S-NPP	75.24759	31.19387	14:18:00	D	3.00
402	KAPURTHALA	SULTANPUR LODHI	S-NPP	75.08339	31.23185	12:42:00	D	4.00
403	KAPURTHALA	SULTANPUR LODHI	S-NPP	75.08337	31.23319	14:18:00	D	3.00
404	KAPURTHALA	SULTANPUR LODHI	S-NPP	75.21402	31.23816	12:42:00	D	2.00
405	KAPURTHALA	SULTANPUR LODHI	S-NPP	75.13322	31.26028	14:18:00	D	6.00
406	KAPURTHALA	SULTANPUR LODHI	S-NPP	75.13838	31.26058	14:18:00	D	10.00
407	KAPURTHALA	SULTANPUR LODHI	S-NPP	75.13528	31.26181	14:18:00	D	9.00
408	KAPURTHALA	SULTANPUR LODHI	S-NPP	75.09633	31.27019	14:18:00	D	4.00
409	KAPURTHALA	SULTANPUR LODHI	S-NPP	75.14192	31.28502	14:18:00	D	3.00
410	KAPURTHALA	SULTANPUR LODHI	S-NPP	75.23051	31.29031	14:18:00	D	8.00
411	KAPURTHALA	SULTANPUR LODHI	S-NPP	75.23269	31.29125	14:18:00	D	7.00
412	KAPURTHALA	SULTANPUR LODHI	S-NPP	75.23972	31.29179	12:42:00	D	3.00
413	KAPURTHALA	SULTANPUR LODHI	S-NPP	75.24944	31.29433	12:42:00	D	6.00
414	KAPURTHALA	SULTANPUR LODHI	AQUA	75.15000	31.30400	13:15:00	D	14.00
415	KAPURTHALA	SULTANPUR LODHI	AQUA	75.22100	31.35700	13:15:00	D	20.00
416	LUDHIANA	JAGRAON	AQUA	75.45800	30.60300	13:15:00	D	22.00
417	LUDHIANA	JAGRAON	S-NPP	75.43329	30.62655	14:18:00	D	15.00
418	LUDHIANA	JAGRAON	S-NPP	75.58366	30.81277	14:18:00	D	6.00
419	LUDHIANA	JAGRAON	S-NPP	75.52840	30.82827	14:18:00	D	8.00
420	LUDHIANA	JAGRAON	S-NPP	75.50645	30.83321	14:18:00	D	4.00
421	LUDHIANA	JAGRAON	S-NPP	75.52610	30.90202	14:18:00	D	4.00
422	LUDHIANA	KHANNA	S-NPP	76.12727	30.65589	12:42:00	D	14.00
423	LUDHIANA	KHANNA	S-NPP	76.27101	30.72797	12:42:00	D	2.00
424	LUDHIANA	LUDHIANA EAST	S-NPP	75.96029	30.95044	12:42:00	D	3.00
425	LUDHIANA	LUDHIANA WEST	S-NPP	75.75172	30.77180	14:18:00	D	4.00

426	LUDHIANA	LUDHIANA WEST	S-NPP	75.75242	30.77394	14:18:00	D	4.00
427	LUDHIANA	LUDHIANA WEST	S-NPP	75.67944	30.77439	14:18:00	D	8.00
428	LUDHIANA	RAIKOT	S-NPP	75.68954	30.62403	12:42:00	D	6.00
429	LUDHIANA	RAIKOT	S-NPP	75.70892	30.62971	14:18:00	D	3.00
430	LUDHIANA	SAMRALA	S-NPP	76.21941	30.77157	12:42:00	D	3.00
431	LUDHIANA	SAMRALA	S-NPP	76.23553	30.87831	14:18:00	D	3.00
432	LUDHIANA	SAMRALA	S-NPP	76.23600	30.93789	14:18:00	D	14.00
433	LUDHIANA	SAMRALA	S-NPP	76.23218	30.94223	14:18:00	D	9.00
434	MANSA	BUDHLADA	S-NPP	75.60974	29.77724	14:18:00	D	3.00
435	MANSA	BUDHLADA	AQUA	75.52800	29.80800	13:15:00	D	20.00
436	MANSA	BUDHLADA	S-NPP	75.63406	29.80941	14:18:00	D	5.00
437	MANSA	BUDHLADA	S-NPP	75.73489	29.82263	12:42:00	D	5.00
438	MANSA	BUDHLADA	AQUA	75.54500	29.82500	13:15:00	D	32.00
439	MANSA	BUDHLADA	S-NPP	75.73484	29.82574	12:42:00	D	5.00
440	MANSA	BUDHLADA	S-NPP	75.61691	29.82682	14:18:00	D	6.00
441	MANSA	BUDHLADA	S-NPP	75.54468	29.86510	12:42:00	D	2.00
442	MANSA	BUDHLADA	S-NPP	75.68161	29.89889	14:18:00	D	3.00
443	MANSA	BUDHLADA	S-NPP	75.56179	29.94885	12:42:00	D	4.00
444	MANSA	MANSA	AQUA	75.34800	29.89100	13:15:00	D	20.00
445	MANSA	MANSA	S-NPP	75.45606	30.03894	14:18:00	D	5.00
446	MANSA	MANSA	S-NPP	75.45316	30.03985	14:18:00	D	3.00
447	MANSA	MANSA	S-NPP	75.45617	30.07053	14:18:00	D	10.00
448	MANSA	MANSA	AQUA	75.47500	30.10300	13:15:00	D	18.00
449	MANSA	SARDULGARH	S-NPP	75.26047	29.59775	14:18:00	D	3.00
450	MANSA	SARDULGARH	S-NPP	75.21068	29.66083	14:18:00	D	5.00
451	MANSA	SARDULGARH	S-NPP	75.21564	29.66114	14:18:00	D	5.00
452	MANSA	SARDULGARH	S-NPP	75.21022	29.66680	14:18:00	D	5.00
453	MANSA	SARDULGARH	S-NPP	75.27954	29.67374	12:42:00	D	5.00
454	MANSA	SARDULGARH	AQUA	75.19400	29.67400	13:15:00	D	42.00
455	MANSA	SARDULGARH	S-NPP	75.25850	29.70711	12:42:00	D	3.00
456	MANSA	SARDULGARH	S-NPP	75.22614	29.80243	14:18:00	D	10.00
457	MANSA	SARDULGARH	S-NPP	75.22575	29.80549	14:18:00	D	15.00
458	MANSA	SARDULGARH	S-NPP	75.23569	29.80906	14:18:00	D	6.00
459	MANSA	SARDULGARH	S-NPP	75.23531	29.81206	14:18:00	D	7.00
460	MANSA	SARDULGARH	S-NPP	75.24940	29.82800	14:18:00	D	5.00
461	MANSA	SARDULGARH	S-NPP	75.24899	29.83091	14:18:00	D	5.00
462	MANSA	SARDULGARH	S-NPP	75.36092	29.83140	14:18:00	D	6.00
463	MANSA	SARDULGARH	S-NPP	75.36076	29.83520	14:18:00	D	4.00
464	MANSA	SARDULGARH	TERRA	75.33800	29.89000	11:40:00	D	12.00

465	MOGA	MOGA	S-NPP	75.22200	30.74429	14:18:00	D	2.00
466	MOGA	MOGA	S-NPP	75.02277	30.81727	14:18:00	D	5.00
467	MOGA	MOGA	S-NPP	75.09754	30.83204	12:42:00	D	6.00
468	MOGA	MOGA	S-NPP	75.03328	30.83881	14:18:00	D	11.00
469	MOGA	MOGA	S-NPP	75.03114	30.84177	14:18:00	D	23.00
470	MOGA	MOGA	S-NPP	75.03616	30.84208	14:18:00	D	26.00
471	MOGA	MOGA	S-NPP	75.02782	30.84451	14:18:00	D	11.00
472	MOGA	MOGA	S-NPP	75.03284	30.84479	14:18:00	D	11.00
473	MOGA	MOGA	S-NPP	75.05719	30.85815	14:18:00	D	3.00
474	MOGA	MOGA	S-NPP	75.05506	30.86127	14:18:00	D	4.00
475	MOGA	NIHAL SINGH WALA	S-NPP	75.31451	30.59533	14:18:00	D	3.00
476	MOGA	NIHAL SINGH WALA	AQUA	75.38900	30.60600	13:15:00	D	13.00
477	MOGA	NIHAL SINGH WALA	AQUA	75.36200	30.68200	13:15:00	D	35.00
478	MOGA	NIHAL SINGH WALA	S-NPP	75.26543	30.68980	12:42:00	D	3.00
479	MUKTSAR	GIDDARBAHA	S-NPP	74.65525	30.23695	14:18:00	D	4.00
480	MUKTSAR	GIDDARBAHA	S-NPP	74.64003	30.25057	12:42:00	D	2.00
481	MUKTSAR	GIDDARBAHA	S-NPP	74.63715	30.28836	14:18:00	D	11.00
482	MUKTSAR	GIDDARBAHA	S-NPP	74.63219	30.29289	14:18:00	D	8.00
483	MUKTSAR	GIDDARBAHA	S-NPP	74.63686	30.29317	14:18:00	D	8.00
484	MUKTSAR	GIDDARBAHA	S-NPP	74.63669	30.29417	14:18:00	D	8.00
485	MUKTSAR	MALAUT	S-NPP	74.47262	29.97425	14:18:00	D	3.00
486	MUKTSAR	MALAUT	S-NPP	74.47357	29.97564	14:18:00	D	4.00
487	MUKTSAR	MALAUT	S-NPP	74.45547	30.03095	12:42:00	D	5.00
488	MUKTSAR	MALAUT	S-NPP	74.42004	30.03214	12:42:00	D	8.00
489	MUKTSAR	MALAUT	S-NPP	74.44850	30.06052	14:18:00	D	6.00
490	MUKTSAR	MALAUT	S-NPP	74.44602	30.08989	14:18:00	D	2.00
491	MUKTSAR	MALAUT	S-NPP	74.38177	30.09859	12:42:00	D	3.00
492	MUKTSAR	MALAUT	S-NPP	74.40973	30.14514	14:18:00	D	6.00
493	MUKTSAR	MALAUT	S-NPP	74.46674	30.15053	12:42:00	D	3.00
494	MUKTSAR	MALAUT	S-NPP	74.38136	30.16048	14:18:00	D	7.00
495	MUKTSAR	MALAUT	AQUA	74.54200	30.16800	13:15:00	D	18.00
496	MUKTSAR	MALAUT	S-NPP	74.39392	30.17285	14:18:00	D	4.00
497	MUKTSAR	MALAUT	S-NPP	74.54739	30.17617	12:42:00	D	5.00
498	MUKTSAR	MALAUT	S-NPP	74.47996	30.17875	14:18:00	D	7.00
499	MUKTSAR	MALAUT	S-NPP	74.47879	30.17941	14:18:00	D	5.00
500	MUKTSAR	MALAUT	S-NPP	74.47638	30.26603	14:18:00	D	6.00
501	MUKTSAR	MALAUT	S-NPP	74.35681	30.28096	14:18:00	D	13.00
502	MUKTSAR	MALAUT	S-NPP	74.35657	30.28173	14:18:00	D	15.00
503	MUKTSAR	MUKTSAR	S-NPP	74.50201	30.40676	14:18:00	D	3.00

504	MUKTSAR	MUKTSAR	S-NPP	74.50303	30.40721	14:18:00	D	4.00
505	MUKTSAR	MUKTSAR	TERRA	74.39000	30.44300	11:40:00	D	22.00
506	MUKTSAR	MUKTSAR	S-NPP	74.45792	30.45072	14:18:00	D	8.00
507	MUKTSAR	MUKTSAR	S-NPP	74.46252	30.45102	14:18:00	D	11.00
508	MUKTSAR	MUKTSAR	S-NPP	74.41589	30.45954	14:18:00	D	5.00
509	MUKTSAR	MUKTSAR	S-NPP	74.42044	30.45984	14:18:00	D	5.00
510	MUKTSAR	MUKTSAR	S-NPP	74.45392	30.50257	14:18:00	D	10.00
511	MUKTSAR	MUKTSAR	S-NPP	74.45373	30.50272	14:18:00	D	9.00
512	MUKTSAR	MUKTSAR	S-NPP	74.45851	30.50288	14:18:00	D	11.00
513	MUKTSAR	MUKTSAR	S-NPP	74.45833	30.50300	14:18:00	D	10.00
514	MUKTSAR	MUKTSAR	S-NPP	74.46180	30.52049	14:18:00	D	4.00
515	MUKTSAR	MUKTSAR	S-NPP	74.46156	30.52058	14:18:00	D	5.00
516	MUKTSAR	MUKTSAR	S-NPP	74.53106	30.60069	14:18:00	D	2.00
517	MUKTSAR	MUKTSAR	S-NPP	74.51530	30.60533	14:18:00	D	3.00
518	MUKTSAR	MUKTSAR	S-NPP	74.51665	30.60564	14:18:00	D	3.00
519	MUKTSAR	MUKTSAR	S-NPP	74.58622	30.61565	14:18:00	D	6.00
520	MUKTSAR	MUKTSAR	S-NPP	74.58478	30.61578	14:18:00	D	5.00
521	MUKTSAR	MUKTSAR	S-NPP	74.58945	30.61609	14:18:00	D	7.00
522	MUKTSAR	MUKTSAR	S-NPP	74.58488	30.63309	14:18:00	D	5.00
523	MUKTSAR	MUKTSAR	S-NPP	74.53609	30.63315	12:42:00	D	8.00
524	MUKTSAR	MUKTSAR	S-NPP	74.58817	30.63353	14:18:00	D	8.00
525	NAWASHAHR	BALACHAUR	S-NPP	76.26049	31.16975	12:42:00	D	2.00
526	NAWASHAHR	NAWASHAHR	S-NPP	76.14215	31.01632	14:18:00	D	4.00
527	NAWASHAHR	NAWASHAHR	S-NPP	76.20701	31.02614	14:18:00	D	4.00
528	NAWASHAHR	NAWASHAHR	S-NPP	76.20916	31.02765	14:18:00	D	5.00
529	NAWASHAHR	NAWASHAHR	S-NPP	75.98540	31.03656	12:42:00	D	4.00
530	NAWASHAHR	NAWASHAHR	AQUA	76.13700	31.08100	13:15:00	D	15.00
531	NAWASHAHR	NAWASHAHR	AQUA	76.01400	31.17400	13:15:00	D	10.00
532	NAWASHAHR	NAWASHAHR	S-NPP	76.07829	31.22723	12:42:00	D	3.00
533	PATHANKOT	PATHANKOT	S-NPP	75.39319	32.22689	14:18:00	D	2.00
534	PATIALA	NABHA	S-NPP	76.14129	30.31607	14:18:00	D	6.00
535	PATIALA	NABHA	AQUA	76.07400	30.33200	13:15:00	D	40.00
536	PATIALA	NABHA	AQUA	76.05900	30.33400	13:15:00	D	37.00
537	PATIALA	NABHA	AQUA	76.07700	30.33800	13:15:00	D	28.00
538	PATIALA	NABHA	S-NPP	76.23557	30.36573	12:42:00	D	2.00
539	PATIALA	NABHA	S-NPP	76.28282	30.43304	14:18:00	D	3.00
540	PATIALA	NABHA	S-NPP	76.14139	30.43857	14:18:00	D	2.00
541	PATIALA	NABHA	TERRA	76.25500	30.46700	11:40:00	D	13.00
542	PATIALA	NABHA	TERRA	76.26000	30.46700	11:40:00	D	20.00

543	PATIALA	PATIALA	S-NPP	76.38428	30.14640	14:18:00	D	17.00
544	PATIALA	PATIALA	S-NPP	76.60116	30.17047	14:18:00	D	6.00
545	PATIALA	PATIALA	S-NPP	76.60729	30.17079	14:18:00	D	7.00
546	PATIALA	PATIALA	S-NPP	76.31676	30.18129	14:18:00	D	4.00
547	PATIALA	PATIALA	S-NPP	76.31299	30.18234	14:18:00	D	4.00
548	PATIALA	PATIALA	S-NPP	76.57648	30.18266	12:42:00	D	3.00
549	PATIALA	PATIALA	S-NPP	76.57469	30.18817	12:42:00	D	4.00
550	PATIALA	PATIALA	S-NPP	76.59042	30.18900	14:18:00	D	7.00
551	PATIALA	PATIALA	S-NPP	76.59392	30.18961	14:18:00	D	8.00
552	PATIALA	PATIALA	S-NPP	76.34221	30.19017	14:18:00	D	5.00
553	PATIALA	PATIALA	S-NPP	76.38981	30.19247	14:18:00	D	3.00
554	PATIALA	PATIALA	S-NPP	76.41746	30.19318	14:18:00	D	4.00
555	PATIALA	PATIALA	AQUA	76.32400	30.21900	13:15:00	D	12.00
556	PATIALA	PATIALA	S-NPP	76.43145	30.22417	12:42:00	D	4.00
557	PATIALA	PATIALA	S-NPP	76.43113	30.22619	12:42:00	D	7.00
558	PATIALA	PATIALA	S-NPP	76.49381	30.22962	14:18:00	D	9.00
559	PATIALA	PATIALA	S-NPP	76.42963	30.22971	12:42:00	D	4.00
560	PATIALA	PATIALA	S-NPP	76.50219	30.23020	14:18:00	D	11.00
561	PATIALA	PATIALA	S-NPP	76.50594	30.23029	14:18:00	D	10.00
562	PATIALA	PATIALA	S-NPP	76.38263	30.24393	12:42:00	D	7.00
563	PATIALA	PATIALA	S-NPP	76.54029	30.25102	12:42:00	D	4.00
564	PATIALA	PATIALA	S-NPP	76.53964	30.25369	12:42:00	D	3.00
565	PATIALA	PATIALA	S-NPP	76.58154	30.28211	12:42:00	D	4.00
566	PATIALA	PATIALA	S-NPP	76.24162	30.28732	14:18:00	D	6.00
567	PATIALA	PATIALA	S-NPP	76.24239	30.28931	14:18:00	D	5.00
568	PATIALA	PATIALA	S-NPP	76.52305	30.28953	14:18:00	D	6.00
569	PATIALA	PATIALA	S-NPP	76.52428	30.28985	14:18:00	D	7.00
570	PATIALA	PATIALA	AQUA	76.52300	30.30500	13:15:00	D	12.00
571	PATIALA	PATIALA	TERRA	76.50500	30.32300	11:40:00	D	18.00
572	PATIALA	PATIALA	S-NPP	76.32852	30.33199	14:18:00	D	3.00
573	PATIALA	PATIALA	TERRA	76.49300	30.33900	11:40:00	D	19.00
574	PATIALA	PATIALA	TERRA	76.48700	30.34000	11:40:00	D	16.00
575	PATIALA	PATIALA	AQUA	76.50200	30.35900	13:15:00	D	17.00
576	PATIALA	PATIALA	AQUA	76.49400	30.39300	13:15:00	D	14.00
577	PATIALA	PATIALA	AQUA	76.37600	30.40300	13:15:00	D	23.00
578	PATIALA	PATIALA	AQUA	76.38000	30.40700	13:15:00	D	28.00
579	PATIALA	PATIALA	S-NPP	76.51884	30.42524	14:18:00	D	5.00
580	PATIALA	PATIALA	S-NPP	76.52245	30.42591	14:18:00	D	5.00
581	PATIALA	PATIALA	S-NPP	76.38852	30.43157	14:18:00	D	8.00

582	PATIALA	PATIALA	S-NPP	76.39070	30.43198	14:18:00	D	12.00
583	PATIALA	PATIALA	S-NPP	76.49127	30.43719	14:18:00	D	6.00
584	PATIALA	RAJPURA	TERRA	76.57900	30.30800	11:40:00	D	14.00
585	PATIALA	RAJPURA	AQUA	76.55800	30.31100	13:15:00	D	11.00
586	PATIALA	RAJPURA	AQUA	76.57200	30.32600	13:15:00	D	13.00
587	PATIALA	RAJPURA	S-NPP	76.58826	30.35133	14:18:00	D	3.00
588	PATIALA	RAJPURA	AQUA	76.52000	30.36200	13:15:00	D	15.00
589	PATIALA	RAJPURA	S-NPP	76.55472	30.36444	12:42:00	D	4.00
590	PATIALA	RAJPURA	S-NPP	76.58090	30.39261	12:42:00	D	2.00
591	PATIALA	RAJPURA	S-NPP	76.56250	30.41430	14:18:00	D	3.00
592	PATIALA	RAJPURA	S-NPP	76.56773	30.41893	12:42:00	D	1.00
593	PATIALA	RAJPURA	S-NPP	76.52258	30.45794	12:42:00	D	4.00
594	PATIALA	RAJPURA	S-NPP	76.52161	30.46081	12:42:00	D	4.00
595	PATIALA	RAJPURA	S-NPP	76.66483	30.47130	14:18:00	D	3.00
596	PATIALA	RAJPURA	AQUA	76.50300	30.47500	13:15:00	D	13.00
597	PATIALA	RAJPURA	S-NPP	76.72575	30.50703	14:18:00	D	4.00
598	PATIALA	RAJPURA	S-NPP	76.72498	30.50912	12:42:00	D	5.00
599	PATIALA	RAJPURA	S-NPP	76.72913	30.51016	12:42:00	D	5.00
600	PATIALA	RAJPURA	S-NPP	76.72469	30.51073	12:42:00	D	4.00
601	PATIALA	RAJPURA	S-NPP	76.72885	30.51175	12:42:00	D	4.00
602	PATIALA	RAJPURA	AQUA	76.70100	30.53600	13:15:00	D	16.00
603	PATIALA	RAJPURA	S-NPP	76.70087	30.55584	12:42:00	D	2.00
604	PATIALA	RAJPURA	S-NPP	76.68866	30.56979	14:18:00	D	5.00
605	PATIALA	RAJPURA	AQUA	76.55800	30.63600	13:15:00	D	11.00
606	PATIALA	SAMANA	S-NPP	76.16988	29.83409	12:42:00	D	4.00
607	PATIALA	SAMANA	S-NPP	76.16340	29.83861	12:42:00	D	7.00
608	PATIALA	SAMANA	S-NPP	76.16691	29.83953	12:42:00	D	12.00
609	PATIALA	SAMANA	S-NPP	76.16802	29.83976	12:42:00	D	11.00
610	PATIALA	SAMANA	S-NPP	76.12990	29.86082	12:42:00	D	4.00
611	PATIALA	SAMANA	AQUA	76.18800	29.88100	13:15:00	D	21.00
612	PATIALA	SAMANA	S-NPP	76.08604	29.88388	14:18:00	D	6.00
613	PATIALA	SAMANA	S-NPP	76.02633	29.88390	12:42:00	D	3.00
614	PATIALA	SAMANA	S-NPP	76.17736	29.88868	14:18:00	D	3.00
615	PATIALA	SAMANA	S-NPP	76.14172	29.90580	14:18:00	D	5.00
616	PATIALA	SAMANA	S-NPP	76.09521	29.90671	12:42:00	D	3.00
617	PATIALA	SAMANA	S-NPP	75.99904	29.91693	14:18:00	D	2.00
618	PATIALA	SAMANA	S-NPP	76.14463	29.95029	14:18:00	D	2.00
619	PATIALA	SAMANA	S-NPP	76.10246	30.00692	12:42:00	D	11.00
620	PATIALA	SAMANA	S-NPP	76.15414	30.01702	14:18:00	D	3.00

621	PATIALA	SAMANA	AQUA	76.17700	30.02800	13:15:00	D	28.00
622	PATIALA	SAMANA	S-NPP	76.17047	30.04234	12:42:00	D	6.00
623	PATIALA	SAMANA	S-NPP	76.17095	30.04354	12:42:00	D	8.00
624	PATIALA	SAMANA	S-NPP	76.06300	30.14827	14:18:00	D	13.00
625	PATIALA	SAMANA	AQUA	76.25400	30.14900	13:15:00	D	14.00
626	PATIALA	SAMANA	AQUA	76.20200	30.18300	13:15:00	D	12.00
627	PATIALA	SAMANA	AQUA	76.20500	30.18800	13:15:00	D	12.00
628	RUPNAGAR	CHAMKOR SAHIB	S-NPP	76.53134	30.85581	12:42:00	D	3.00
629	SANGRUR	DHURI	S-NPP	75.83157	30.36220	14:18:00	D	5.00
630	SANGRUR	DHURI	S-NPP	75.82734	30.36563	14:18:00	D	5.00
631	SANGRUR	DHURI	S-NPP	75.70383	30.39645	14:18:00	D	6.00
632	SANGRUR	DHURI	S-NPP	75.80018	30.43907	14:18:00	D	3.00
633	SANGRUR	DHURI	S-NPP	75.91175	30.44524	14:18:00	D	9.00
634	SANGRUR	DHURI	S-NPP	75.66751	30.45020	14:18:00	D	6.00
635	SANGRUR	MALERKOTLA	S-NPP	75.79223	30.52759	12:42:00	D	8.00
636	SANGRUR	MALERKOTLA	S-NPP	75.79693	30.52880	12:42:00	D	8.00
637	SANGRUR	MOONAK	S-NPP	75.94017	29.75636	12:42:00	D	15.00
638	SANGRUR	MOONAK	S-NPP	75.94493	29.75759	12:42:00	D	13.00
639	SANGRUR	MOONAK	S-NPP	75.94064	29.75803	12:42:00	D	19.00
640	SANGRUR	MOONAK	S-NPP	75.92226	29.77826	14:18:00	D	9.00
641	SANGRUR	MOONAK	S-NPP	75.92777	29.77860	14:18:00	D	15.00
642	SANGRUR	MOONAK	S-NPP	75.92360	29.78266	14:18:00	D	16.00
643	SANGRUR	MOONAK	AQUA	75.87600	29.78400	13:15:00	D	20.00
644	SANGRUR	MOONAK	S-NPP	76.07690	29.79175	12:42:00	D	8.00
645	SANGRUR	MOONAK	AQUA	75.94700	29.82200	13:15:00	D	14.00
646	SANGRUR	MOONAK	S-NPP	75.96551	29.82256	14:18:00	D	12.00
647	SANGRUR	MOONAK	S-NPP	75.96404	29.82473	12:42:00	D	4.00
648	SANGRUR	MOONAK	AQUA	75.96600	29.82600	13:15:00	D	49.00
649	SANGRUR	MOONAK	S-NPP	75.81584	29.83823	14:18:00	D	3.00
650	SANGRUR	MOONAK	S-NPP	75.81533	29.83877	14:18:00	D	3.00
651	SANGRUR	MOONAK	S-NPP	75.88538	29.86687	14:18:00	D	10.00
652	SANGRUR	MOONAK	S-NPP	75.88481	29.86785	14:18:00	D	6.00
653	SANGRUR	MOONAK	S-NPP	75.77477	29.87945	14:18:00	D	3.00
654	SANGRUR	MOONAK	S-NPP	75.99159	29.89853	12:42:00	D	5.00
655	SANGRUR	MOONAK	S-NPP	75.99060	29.89964	12:42:00	D	6.00
656	SANGRUR	SANGRUR	S-NPP	75.72543	30.21451	14:18:00	D	5.00
657	SANGRUR	SANGRUR	S-NPP	75.95224	30.22044	12:42:00	D	4.00
658	SANGRUR	SANGRUR	AQUA	75.90300	30.25500	13:15:00	D	16.00
659	SANGRUR	SANGRUR	S-NPP	75.79158	30.27618	12:42:00	D	4.00

660	SANGRUR	SANGRUR	S-NPP	75.79002	30.27796	12:42:00	D	4.00
661	SANGRUR	SANGRUR	S-NPP	76.10826	30.28901	14:18:00	D	7.00
662	SANGRUR	SANGRUR	S-NPP	76.10738	30.29255	14:18:00	D	8.00
663	SANGRUR	SANGRUR	S-NPP	76.10786	30.29533	14:18:00	D	6.00
664	SANGRUR	SANGRUR	S-NPP	75.92471	30.30089	14:18:00	D	6.00
665	SANGRUR	SANGRUR	S-NPP	76.01487	30.30619	14:18:00	D	2.00
666	SANGRUR	SANGRUR	S-NPP	76.01513	30.30951	14:18:00	D	7.00
667	SANGRUR	SANGRUR	S-NPP	76.14078	30.31348	14:18:00	D	2.00
668	SANGRUR	SUNAM	S-NPP	75.98234	30.00731	12:42:00	D	4.00
669	SANGRUR	SUNAM	S-NPP	75.89998	30.00947	14:18:00	D	4.00
670	SANGRUR	SUNAM	S-NPP	75.73362	30.02445	12:42:00	D	7.00
671	SANGRUR	SUNAM	S-NPP	75.85416	30.03186	14:18:00	D	6.00
672	SANGRUR	SUNAM	S-NPP	75.89278	30.03407	14:18:00	D	3.00
673	SANGRUR	SUNAM	S-NPP	75.82492	30.11413	12:42:00	D	6.00
674	SANGRUR	SUNAM	S-NPP	75.64886	30.12469	14:18:00	D	4.00
675	SANGRUR	SUNAM	S-NPP	76.06258	30.15456	14:18:00	D	13.00
676	SANGRUR	SUNAM	S-NPP	75.91012	30.16690	12:42:00	D	7.00
677	SAS NAGAR	DERABASSI	S-NPP	76.85660	30.42669	12:42:00	D	3.00
678	SAS NAGAR	DERABASSI	S-NPP	76.86071	30.42770	12:42:00	D	3.00
679	SAS NAGAR	DERABASSI	S-NPP	76.82836	30.43145	12:42:00	D	5.00
680	SAS NAGAR	DERABASSI	S-NPP	76.82660	30.43685	12:42:00	D	5.00
681	SAS NAGAR	DERABASSI	S-NPP	76.82903	30.43720	12:42:00	D	6.00
682	SAS NAGAR	DERABASSI	S-NPP	76.76898	30.56693	12:42:00	D	4.00
683	SAS NAGAR	KHARAR	S-NPP	76.53566	30.62743	14:18:00	D	4.00
684	SAS NAGAR	KHARAR	S-NPP	76.64628	30.76868	14:18:00	D	3.00
685	SAS NAGAR	MOHALI	S-NPP	76.70719	30.62157	14:18:00	D	4.00
686	TARN TARAN	KHADOOR SAHIB	S-NPP	74.99269	31.20990	14:18:00	D	3.00
687	TARN TARAN	KHADOOR SAHIB	S-NPP	75.01767	31.21735	14:18:00	D	4.00
688	TARN TARAN	KHADOOR SAHIB	AQUA	74.96000	31.22500	13:15:00	D	18.00
689	TARN TARAN	KHADOOR SAHIB	AQUA	74.95400	31.22600	13:15:00	D	15.00
690	TARN TARAN	KHADOOR SAHIB	S-NPP	75.02442	31.26587	14:18:00	D	3.00
691	TARN TARAN	KHADOOR SAHIB	S-NPP	75.06490	31.27434	14:18:00	D	7.00
692	TARN TARAN	KHADOOR SAHIB	S-NPP	75.03601	31.27461	14:18:00	D	3.00
693	TARN TARAN	KHADOOR SAHIB	S-NPP	75.06680	31.27628	14:18:00	D	5.00
694	TARN TARAN	KHADOOR SAHIB	S-NPP	74.90346	31.28205	12:42:00	D	3.00
695	TARN TARAN	KHADOOR SAHIB	S-NPP	74.94800	31.29376	14:18:00	D	4.00
696	TARN TARAN	KHADOOR SAHIB	S-NPP	74.97718	31.30802	12:42:00	D	4.00
697	TARN TARAN	KHADOOR SAHIB	S-NPP	75.01219	31.32143	14:18:00	D	4.00
698	TARN TARAN	KHADOOR SAHIB	S-NPP	74.94081	31.32332	14:18:00	D	6.00

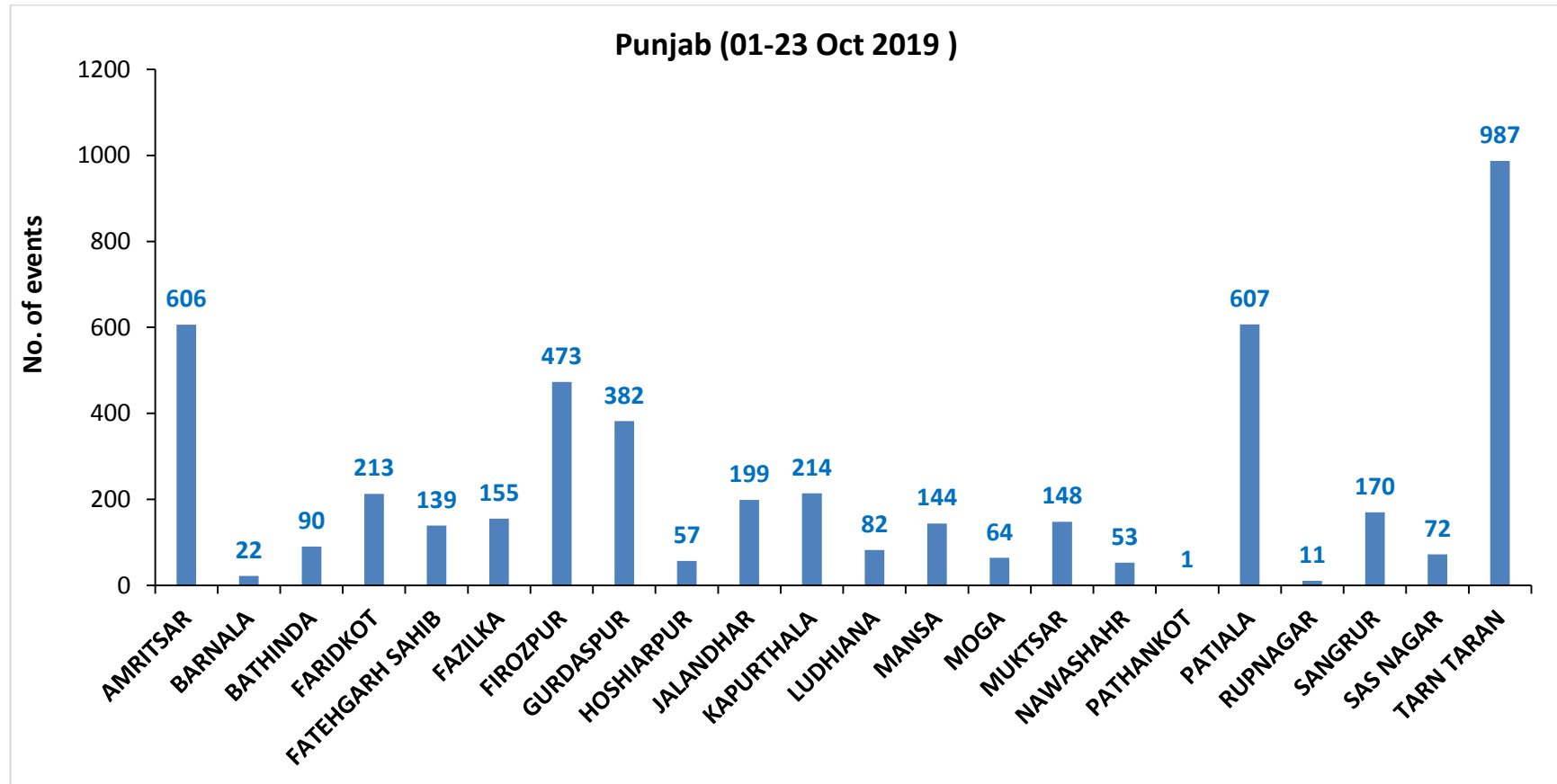
699	TARN TARAN	KHADOOR SAHIB	S-NPP	75.05511	31.33499	12:42:00	D	5.00
700	TARN TARAN	KHADOOR SAHIB	S-NPP	75.07194	31.34899	14:18:00	D	5.00
701	TARN TARAN	KHADOOR SAHIB	S-NPP	74.80864	31.35400	14:18:00	D	4.00
702	TARN TARAN	KHADOOR SAHIB	S-NPP	75.09171	31.36223	14:18:00	D	9.00
703	TARN TARAN	KHADOOR SAHIB	S-NPP	75.09254	31.36329	14:18:00	D	8.00
704	TARN TARAN	KHADOOR SAHIB	S-NPP	75.10803	31.36410	14:18:00	D	2.00
705	TARN TARAN	KHADOOR SAHIB	S-NPP	75.02970	31.36460	14:18:00	D	4.00
706	TARN TARAN	KHADOOR SAHIB	S-NPP	74.79287	31.36502	14:18:00	D	2.00
707	TARN TARAN	KHADOOR SAHIB	S-NPP	75.02526	31.36576	14:18:00	D	6.00
708	TARN TARAN	KHADOOR SAHIB	S-NPP	75.03040	31.36603	14:18:00	D	8.00
709	TARN TARAN	KHADOOR SAHIB	S-NPP	74.91732	31.36984	14:18:00	D	4.00
710	TARN TARAN	KHADOOR SAHIB	S-NPP	74.79980	31.36987	12:42:00	D	6.00
711	TARN TARAN	KHADOOR SAHIB	S-NPP	75.02927	31.37060	14:18:00	D	4.00
712	TARN TARAN	KHADOOR SAHIB	S-NPP	74.80153	31.37112	12:42:00	D	6.00
713	TARN TARAN	KHADOOR SAHIB	S-NPP	74.91778	31.37195	14:18:00	D	4.00
714	TARN TARAN	KHADOOR SAHIB	S-NPP	74.93708	31.37704	14:18:00	D	4.00
715	TARN TARAN	KHADOOR SAHIB	S-NPP	75.04935	31.37783	14:18:00	D	4.00
716	TARN TARAN	KHADOOR SAHIB	S-NPP	75.05003	31.37914	14:18:00	D	4.00
717	TARN TARAN	KHADOOR SAHIB	S-NPP	74.98318	31.38153	14:18:00	D	3.00
718	TARN TARAN	KHADOOR SAHIB	S-NPP	74.99172	31.39634	12:42:00	D	3.00
719	TARN TARAN	KHADOOR SAHIB	S-NPP	74.77905	31.41773	14:18:00	D	7.00
720	TARN TARAN	KHADOOR SAHIB	AQUA	74.97700	31.41800	13:15:00	D	16.00
721	TARN TARAN	KHADOOR SAHIB	S-NPP	74.99038	31.42401	14:18:00	D	7.00
722	TARN TARAN	KHADOOR SAHIB	S-NPP	74.99549	31.42430	14:18:00	D	10.00
723	TARN TARAN	KHADOOR SAHIB	TERRA	74.65700	31.42800	11:40:00	D	12.00
724	TARN TARAN	KHADOOR SAHIB	S-NPP	74.71867	31.43193	14:18:00	D	2.00
725	TARN TARAN	KHADOOR SAHIB	S-NPP	75.06931	31.43338	12:42:00	D	3.00
726	TARN TARAN	KHADOOR SAHIB	S-NPP	74.83786	31.46015	14:18:00	D	8.00
727	TARN TARAN	KHADOOR SAHIB	S-NPP	74.83576	31.46282	14:18:00	D	7.00
728	TARN TARAN	KHADOOR SAHIB	S-NPP	74.82698	31.47148	14:18:00	D	4.00
729	TARN TARAN	KHADOOR SAHIB	S-NPP	74.76531	31.47240	12:42:00	D	6.00
730	TARN TARAN	KHADOOR SAHIB	S-NPP	74.82494	31.47408	14:18:00	D	3.00
731	TARN TARAN	KHADOOR SAHIB	S-NPP	74.73190	31.47806	14:18:00	D	3.00
732	TARN TARAN	KHADOOR SAHIB	S-NPP	74.73494	31.48037	14:18:00	D	6.00
733	TARN TARAN	KHADOOR SAHIB	S-NPP	74.65478	31.48151	12:42:00	D	4.00
734	TARN TARAN	KHADOOR SAHIB	S-NPP	74.90182	31.48158	14:18:00	D	4.00
735	TARN TARAN	KHADOOR SAHIB	S-NPP	74.73145	31.48396	14:18:00	D	9.00
736	TARN TARAN	KHADOOR SAHIB	S-NPP	74.72075	31.49521	14:18:00	D	4.00
737	TARN TARAN	KHADOOR SAHIB	AQUA	74.79900	31.49800	13:15:00	D	14.00

738	TARN TARAN	KHADOOR SAHIB	AQUA	74.82100	31.50200	13:15:00	D	12.00
739	TARN TARAN	KHADOOR SAHIB	AQUA	74.81300	31.50400	13:15:00	D	20.00
740	TARN TARAN	KHADOOR SAHIB	S-NPP	74.66065	31.50945	14:18:00	D	6.00
741	TARN TARAN	KHADOOR SAHIB	S-NPP	74.78329	31.52260	14:18:00	D	6.00
742	TARN TARAN	KHADOOR SAHIB	S-NPP	74.71774	31.53654	14:18:00	D	4.00
743	TARN TARAN	PATTI	S-NPP	74.84565	31.16186	12:42:00	D	4.00
744	TARN TARAN	PATTI	S-NPP	74.73331	31.16725	14:18:00	D	3.00
745	TARN TARAN	PATTI	S-NPP	74.83179	31.16760	14:18:00	D	3.00
746	TARN TARAN	PATTI	S-NPP	74.77735	31.16998	12:42:00	D	3.00
747	TARN TARAN	PATTI	S-NPP	74.92611	31.17353	14:18:00	D	4.00
748	TARN TARAN	PATTI	S-NPP	74.92428	31.17604	14:18:00	D	2.00
749	TARN TARAN	PATTI	S-NPP	74.68650	31.18012	14:18:00	D	8.00
750	TARN TARAN	PATTI	S-NPP	74.54406	31.18572	12:42:00	D	3.00
751	TARN TARAN	PATTI	S-NPP	74.68603	31.18599	14:18:00	D	8.00
752	TARN TARAN	PATTI	S-NPP	74.52300	31.18709	12:42:00	D	7.00
753	TARN TARAN	PATTI	S-NPP	74.52587	31.18736	12:42:00	D	7.00
754	TARN TARAN	PATTI	S-NPP	74.61737	31.19247	12:42:00	D	12.00
755	TARN TARAN	PATTI	S-NPP	74.62016	31.19312	12:42:00	D	9.00
756	TARN TARAN	PATTI	S-NPP	74.73380	31.19715	12:42:00	D	4.00
757	TARN TARAN	PATTI	S-NPP	74.64982	31.20739	12:42:00	D	4.00
758	TARN TARAN	PATTI	S-NPP	74.65220	31.20834	12:42:00	D	6.00
759	TARN TARAN	PATTI	S-NPP	74.53887	31.21811	14:18:00	D	3.00
760	TARN TARAN	PATTI	S-NPP	74.68327	31.22123	14:18:00	D	6.00
761	TARN TARAN	PATTI	S-NPP	74.90079	31.22250	14:18:00	D	5.00
762	TARN TARAN	PATTI	S-NPP	74.58714	31.23178	14:18:00	D	7.00
763	TARN TARAN	PATTI	S-NPP	74.58560	31.23280	14:18:00	D	5.00
764	TARN TARAN	PATTI	S-NPP	74.59040	31.23310	14:18:00	D	7.00
765	TARN TARAN	PATTI	S-NPP	74.89993	31.23440	14:18:00	D	5.00
766	TARN TARAN	PATTI	S-NPP	74.90495	31.23470	14:18:00	D	9.00
767	TARN TARAN	PATTI	S-NPP	74.67397	31.23670	14:18:00	D	5.00
768	TARN TARAN	PATTI	S-NPP	74.67711	31.23856	14:18:00	D	7.00
769	TARN TARAN	PATTI	S-NPP	74.87952	31.23914	14:18:00	D	4.00
770	TARN TARAN	PATTI	AQUA	74.60100	31.24600	13:15:00	D	21.00
771	TARN TARAN	PATTI	AQUA	74.60700	31.24700	13:15:00	D	17.00
772	TARN TARAN	PATTI	S-NPP	74.60379	31.24733	12:42:00	D	4.00
773	TARN TARAN	PATTI	S-NPP	74.65850	31.24761	14:18:00	D	4.00
774	TARN TARAN	PATTI	S-NPP	74.67645	31.25372	12:42:00	D	3.00
775	TARN TARAN	PATTI	S-NPP	74.67260	31.25432	14:18:00	D	4.00
776	TARN TARAN	PATTI	S-NPP	74.58870	31.25648	14:18:00	D	3.00

777	TARN TARAN	PATTI	S-NPP	74.53716	31.25820	14:18:00	D	4.00
778	TARN TARAN	PATTI	S-NPP	74.53580	31.25890	14:18:00	D	3.00
779	TARN TARAN	PATTI	S-NPP	74.57927	31.27242	14:18:00	D	2.00
780	TARN TARAN	PATTI	S-NPP	74.70533	31.27392	14:18:00	D	3.00
781	TARN TARAN	PATTI	S-NPP	74.77754	31.27449	14:18:00	D	6.00
782	TARN TARAN	PATTI	S-NPP	74.82876	31.27507	14:18:00	D	4.00
783	TARN TARAN	PATTI	S-NPP	74.89199	31.27574	14:18:00	D	4.00
784	TARN TARAN	PATTI	S-NPP	74.82689	31.27762	14:18:00	D	4.00
785	TARN TARAN	PATTI	S-NPP	74.77396	31.27789	14:18:00	D	7.00
786	TARN TARAN	PATTI	S-NPP	74.65585	31.28283	14:18:00	D	6.00
787	TARN TARAN	PATTI	S-NPP	74.88963	31.28284	12:42:00	D	11.00
788	TARN TARAN	PATTI	S-NPP	74.88615	31.28383	12:42:00	D	7.00
789	TARN TARAN	PATTI	S-NPP	74.68987	31.28484	14:18:00	D	4.00
790	TARN TARAN	PATTI	S-NPP	74.89124	31.28519	12:42:00	D	12.00
791	TARN TARAN	PATTI	S-NPP	74.59753	31.28526	14:18:00	D	5.00
792	TARN TARAN	PATTI	TERRA	74.54100	31.28600	11:40:00	D	10.00
793	TARN TARAN	PATTI	S-NPP	74.63125	31.28727	14:18:00	D	5.00
794	TARN TARAN	PATTI	S-NPP	74.66382	31.29545	12:42:00	D	4.00
795	TARN TARAN	PATTI	S-NPP	74.55788	31.30046	14:18:00	D	6.00
796	TARN TARAN	PATTI	S-NPP	74.56266	31.30076	14:18:00	D	6.00
797	TARN TARAN	PATTI	S-NPP	74.69344	31.30278	14:18:00	D	6.00
798	TARN TARAN	PATTI	S-NPP	74.64439	31.30573	14:18:00	D	6.00
799	TARN TARAN	PATTI	S-NPP	74.55743	31.30630	14:18:00	D	6.00
800	TARN TARAN	PATTI	S-NPP	74.56223	31.30660	14:18:00	D	6.00
801	TARN TARAN	PATTI	S-NPP	74.56178	31.30685	12:42:00	D	4.00
802	TARN TARAN	PATTI	S-NPP	74.56458	31.30839	12:42:00	D	4.00
803	TARN TARAN	PATTI	S-NPP	74.54375	31.30852	12:42:00	D	9.00
804	TARN TARAN	PATTI	S-NPP	74.81628	31.31006	14:18:00	D	4.00
805	TARN TARAN	PATTI	S-NPP	74.55222	31.31185	14:18:00	D	6.00
806	TARN TARAN	PATTI	S-NPP	74.70232	31.31513	14:18:00	D	6.00
807	TARN TARAN	PATTI	S-NPP	74.56134	31.31828	14:18:00	D	6.00
808	TARN TARAN	PATTI	S-NPP	74.77624	31.32524	12:42:00	D	3.00
809	TARN TARAN	PATTI	TERRA	74.76400	31.33800	11:40:00	D	16.00
810	TARN TARAN	PATTI	S-NPP	74.71056	31.34265	14:18:00	D	4.00
811	TARN TARAN	PATTI	S-NPP	74.58354	31.34316	14:18:00	D	4.00
812	TARN TARAN	PATTI	S-NPP	74.70993	31.34518	14:18:00	D	8.00
813	TARN TARAN	PATTI	S-NPP	74.58351	31.34728	14:18:00	D	7.00
814	TARN TARAN	PATTI	S-NPP	74.71011	31.34854	14:18:00	D	4.00
815	TARN TARAN	PATTI	S-NPP	74.72925	31.35553	14:18:00	D	4.00

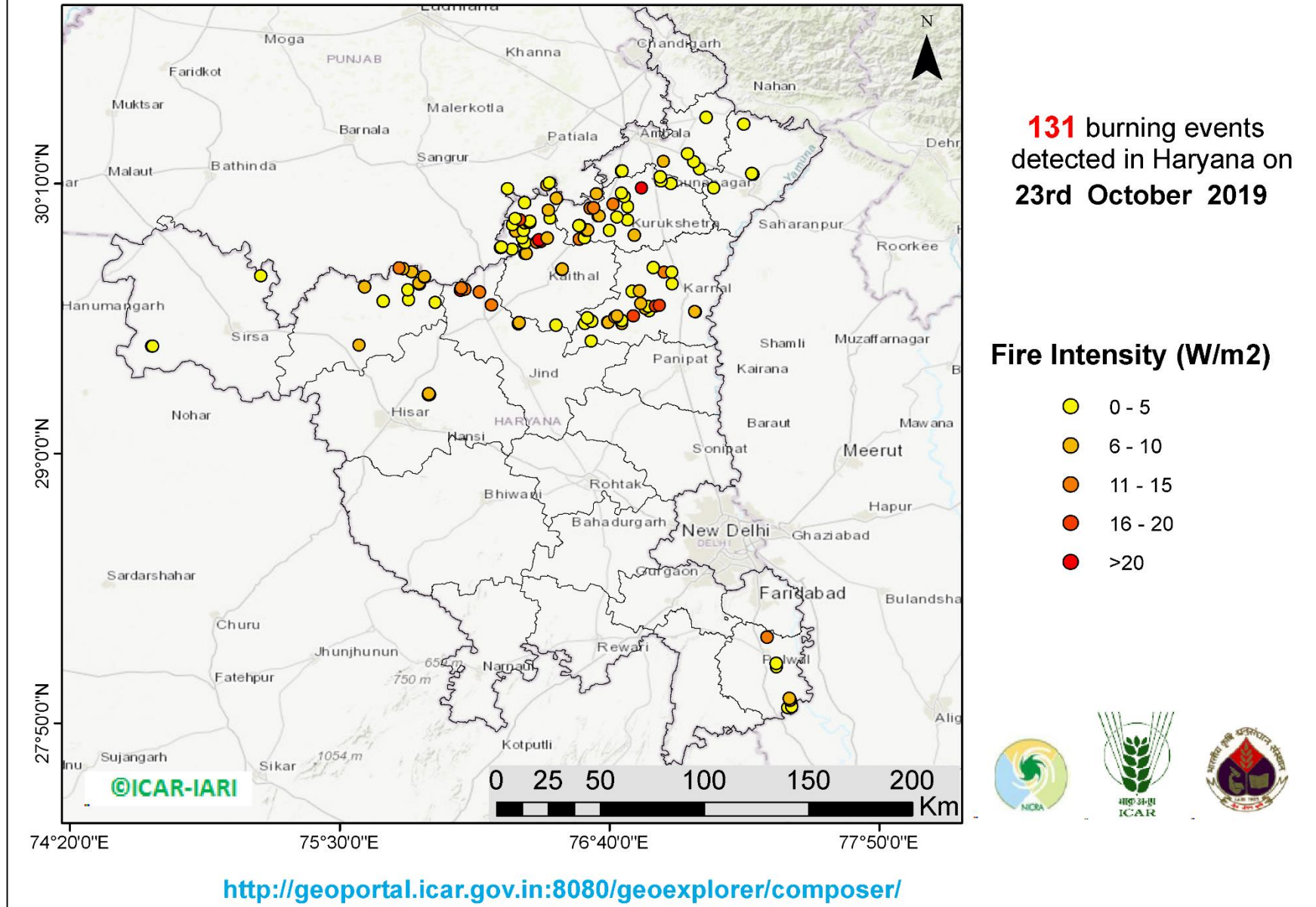
816	TARN TARAN	PATTI	S-NPP	74.70448	31.35806	12:42:00	D	8.00
817	TARN TARAN	PATTI	S-NPP	74.88182	31.35932	12:42:00	D	3.00
818	TARN TARAN	PATTI	S-NPP	74.70967	31.35946	12:42:00	D	11.00
819	TARN TARAN	PATTI	S-NPP	74.59226	31.35953	14:18:00	D	3.00
820	TARN TARAN	PATTI	S-NPP	74.59188	31.36132	14:18:00	D	2.00
821	TARN TARAN	PATTI	S-NPP	74.67896	31.36689	14:18:00	D	3.00
822	TARN TARAN	PATTI	S-NPP	74.70652	31.38438	12:42:00	D	3.00
823	TARN TARAN	PATTI	S-NPP	74.69233	31.38893	14:18:00	D	3.00
824	TARN TARAN	PATTI	S-NPP	74.67216	31.40105	12:42:00	D	6.00
825	TARN TARAN	PATTI	S-NPP	74.70526	31.41336	14:18:00	D	4.00
826	TARN TARAN	PATTI	S-NPP	74.72977	31.41482	14:18:00	D	6.00
827	TARN TARAN	PATTI	S-NPP	74.73470	31.41511	14:18:00	D	9.00

District-wise cumulative number of residue burning events in Punjab (01 to 23-Oct 2019)



(b) Haryana

RICE RESIDUE BURNING IN HARYANA



Details of residue burning events in Haryana on 23-Oct-2019

S. No.	District	Tehsil / Block	Satellite	Longitude	Latitude	Time (IST)	Day / Night	Fire Power (W/m2)
1	AMBALA	AMBALA	S-NPP	76.60989	30.12164	12:42:00	D	6.00
2	AMBALA	AMBALA	S-NPP	76.71893	30.22103	14:18:00	D	6.00
3	AMBALA	AMBALA	S-NPP	76.72239	30.22241	14:18:00	D	5.00
4	AMBALA	AMBALA	S-NPP	76.90040	30.26343	12:42:00	D	6.00
5	AMBALA	AMBALA	S-NPP	77.00482	30.29506	12:42:00	D	3.00
6	AMBALA	BARARA	S-NPP	77.05583	30.23135	12:42:00	D	3.00
7	AMBALA	BARARA	S-NPP	77.03068	30.26176	14:18:00	D	5.00
8	AMBALA	NARAYANGARH	S-NPP	77.08401	30.45329	12:42:00	D	4.00
9	FATEHABAD	FATEHABAD	S-NPP	75.58465	29.46856	14:18:00	D	8.00
10	FATEHABAD	RATIA	S-NPP	75.60800	29.72054	12:42:00	D	7.00
11	FATEHABAD	TOHANA	S-NPP	75.91396	29.65291	14:18:00	D	4.00
12	FATEHABAD	TOHANA	S-NPP	75.68868	29.65898	14:18:00	D	2.00
13	FATEHABAD	TOHANA	S-NPP	75.79849	29.66548	12:42:00	D	4.00
14	FATEHABAD	TOHANA	S-NPP	75.79536	29.70841	14:18:00	D	4.00
15	FATEHABAD	TOHANA	S-NPP	75.84428	29.73144	12:42:00	D	5.00
16	FATEHABAD	TOHANA	S-NPP	75.84447	29.73370	12:42:00	D	7.00
17	FATEHABAD	TOHANA	S-NPP	75.84426	29.73472	14:18:00	D	5.00
18	FATEHABAD	TOHANA	S-NPP	75.84252	29.73604	14:18:00	D	7.00
19	FATEHABAD	TOHANA	S-NPP	75.86555	29.76202	12:42:00	D	5.00
20	FATEHABAD	TOHANA	S-NPP	75.86575	29.76409	12:42:00	D	6.00
21	FATEHABAD	TOHANA	S-NPP	75.81068	29.78547	12:42:00	D	6.00
22	FATEHABAD	TOHANA	S-NPP	75.77448	29.79914	14:18:00	D	8.00
23	FATEHABAD	TOHANA	S-NPP	75.75728	29.80319	12:42:00	D	12.00
24	HISAR	HANSI	S-NPP	75.88568	29.25284	14:18:00	D	8.00
25	HISAR	HANSI	S-NPP	75.88306	29.25357	14:18:00	D	7.00
26	HISAR	HANSI	S-NPP	75.88847	29.25391	14:18:00	D	7.00
27	HISAR	HANSI	S-NPP	75.88525	29.25902	14:18:00	D	8.00
28	JIND	NARWANA	S-NPP	76.15672	29.64121	12:42:00	D	13.00
29	JIND	NARWANA	AQUA	76.10400	29.69900	13:15:00	D	14.00
30	JIND	NARWANA	AQUA	76.02200	29.70700	13:15:00	D	34.00

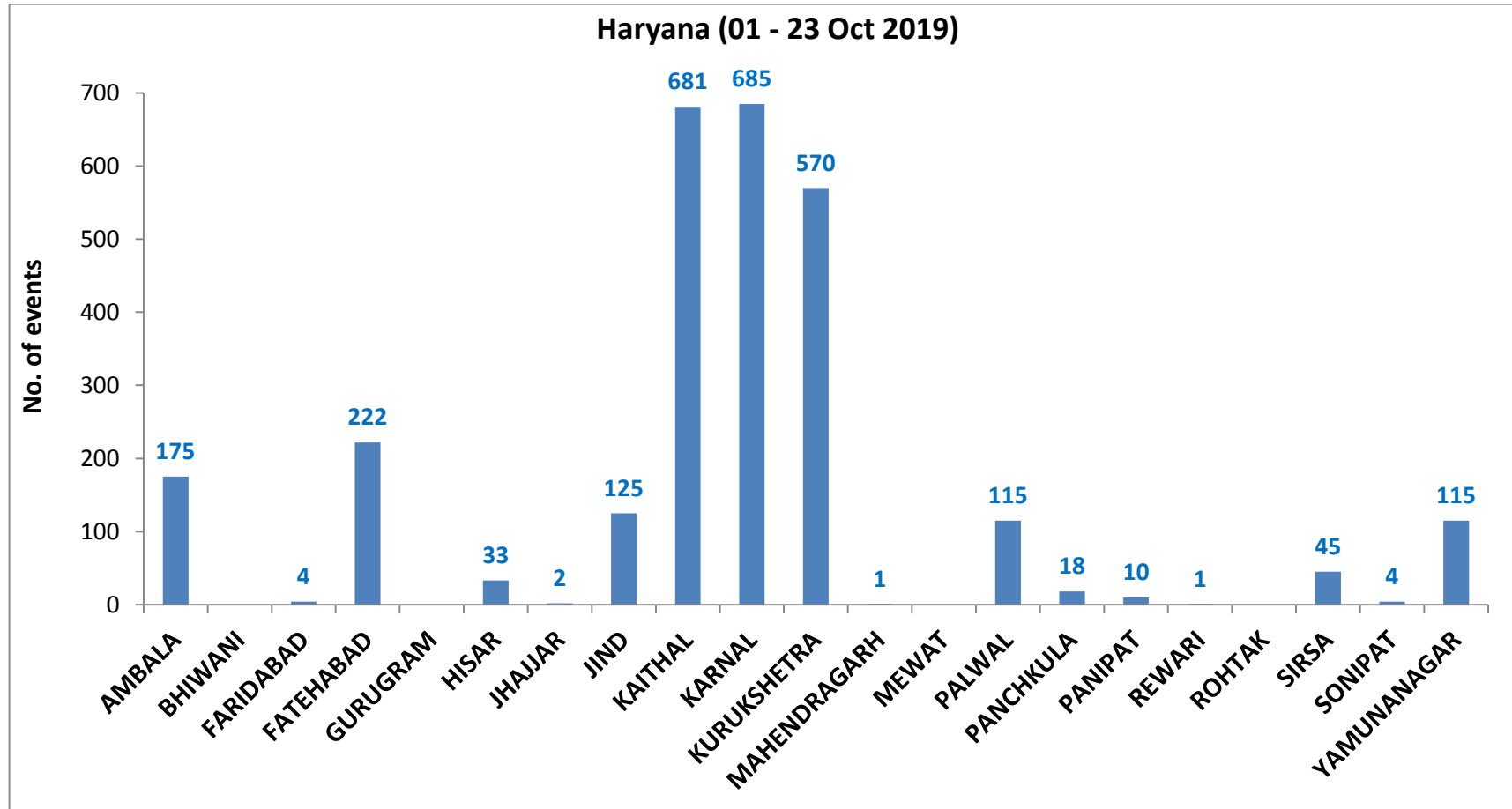
31	JIND	NARWANA	AQUA	76.04100	29.71100	13:15:00	D	12.00
32	JIND	NARWANA	TERRA	76.02600	29.71500	11:40:00	D	14.00
33	KAITHAL	GUHLA	S-NPP	76.19531	29.88968	12:42:00	D	4.00
34	KAITHAL	GUHLA	AQUA	76.19800	29.89100	13:15:00	D	13.00
35	KAITHAL	GUHLA	S-NPP	76.19930	29.89280	14:18:00	D	4.00
36	KAITHAL	GUHLA	AQUA	76.37000	29.91600	13:15:00	D	23.00
37	KAITHAL	GUHLA	S-NPP	76.39685	29.93205	14:18:00	D	9.00
38	KAITHAL	GUHLA	S-NPP	76.29063	29.93284	14:18:00	D	5.00
39	KAITHAL	GUHLA	S-NPP	76.26084	29.96103	12:42:00	D	9.00
40	KAITHAL	GUHLA	S-NPP	76.26102	29.96155	12:42:00	D	9.00
41	KAITHAL	GUHLA	S-NPP	76.29453	29.96497	14:18:00	D	4.00
42	KAITHAL	GUHLA	S-NPP	76.24728	29.98851	12:42:00	D	2.00
43	KAITHAL	GUHLA	S-NPP	76.29883	29.99552	12:42:00	D	7.00
44	KAITHAL	GUHLA	S-NPP	76.32186	29.99845	14:18:00	D	4.00
45	KAITHAL	GUHLA	S-NPP	76.31830	30.00010	14:18:00	D	6.00
46	KAITHAL	GUHLA	S-NPP	76.32148	30.00483	14:18:00	D	5.00
47	KAITHAL	GUHLA	AQUA	76.27700	30.01100	13:15:00	D	16.00
48	KAITHAL	GUHLA	S-NPP	76.25806	30.01559	12:42:00	D	2.00
49	KAITHAL	GUHLA	S-NPP	76.40971	30.01626	14:18:00	D	4.00
50	KAITHAL	GUHLA	S-NPP	76.40137	30.05166	12:42:00	D	9.00
51	KAITHAL	GUHLA	S-NPP	76.29916	30.08440	14:18:00	D	5.00
52	KAITHAL	GUHLA	S-NPP	76.43724	30.10272	12:42:00	D	7.00
53	KAITHAL	GUHLA	S-NPP	76.22491	30.14439	14:18:00	D	5.00
54	KAITHAL	GUHLA	S-NPP	76.39545	30.15983	14:18:00	D	7.00
55	KAITHAL	GUHLA	S-NPP	76.40636	30.16993	12:42:00	D	3.00
56	KAITHAL	KAITHAL	S-NPP	76.43451	29.55537	14:18:00	D	3.00
57	KAITHAL	KAITHAL	S-NPP	76.27264	29.56108	14:18:00	D	6.00
58	KAITHAL	KAITHAL	S-NPP	76.27610	29.56552	14:18:00	D	8.00
59	KAITHAL	KAITHAL	S-NPP	76.46085	29.79676	12:42:00	D	6.00
60	KAITHAL	KAITHAL	S-NPP	76.46111	29.79775	12:42:00	D	7.00
61	KAITHAL	KAITHAL	S-NPP	76.30093	29.86315	14:18:00	D	9.00
62	KAITHAL	KAITHAL	S-NPP	76.30677	29.86344	14:18:00	D	10.00
63	KAITHAL	KAITHAL	S-NPP	76.24617	29.88280	14:18:00	D	3.00

64	KAITHAL	KAITHAL	S-NPP	76.29736	29.90935	12:42:00	D	4.00
65	KAITHAL	KAITHAL	S-NPP	76.30188	29.91049	12:42:00	D	4.00
66	KAITHAL	KAITHAL	AQUA	76.35200	29.91200	13:15:00	D	12.00
67	KAITHAL	KAITHAL	AQUA	76.36100	29.92300	13:15:00	D	32.00
68	KARNAL	ASSANDH	S-NPP	76.58797	29.48624	14:18:00	D	4.00
69	KARNAL	ASSANDH	S-NPP	76.55923	29.56226	14:18:00	D	4.00
70	KARNAL	ASSANDH	S-NPP	76.71993	29.56304	12:42:00	D	6.00
71	KARNAL	ASSANDH	S-NPP	76.65842	29.56746	14:18:00	D	8.00
72	KARNAL	ASSANDH	S-NPP	76.66186	29.56785	14:18:00	D	8.00
73	KARNAL	ASSANDH	S-NPP	76.58917	29.57253	12:42:00	D	5.00
74	KARNAL	ASSANDH	S-NPP	76.72076	29.57521	12:42:00	D	4.00
75	KARNAL	ASSANDH	S-NPP	76.57050	29.58598	12:42:00	D	2.00
76	KARNAL	ASSANDH	S-NPP	76.57063	29.58706	12:42:00	D	3.00
77	KARNAL	ASSANDH	S-NPP	76.69376	29.58867	14:18:00	D	6.00
78	KARNAL	ASSANDH	S-NPP	76.69115	29.58895	14:18:00	D	8.00
79	KARNAL	ASSANDH	S-NPP	76.70064	29.59414	12:42:00	D	6.00
80	KARNAL	ASSANDH	AQUA	76.76900	29.59500	13:15:00	D	17.00
81	KARNAL	KARNAL	S-NPP	77.03847	29.61166	14:18:00	D	10.00
82	KARNAL	KARNAL	S-NPP	77.03525	29.61402	14:18:00	D	7.00
83	KARNAL	KARNAL	S-NPP	76.83826	29.61662	14:18:00	D	5.00
84	KARNAL	KARNAL	S-NPP	76.82159	29.62760	14:18:00	D	9.00
85	KARNAL	KARNAL	S-NPP	76.83369	29.63476	14:18:00	D	5.00
86	KARNAL	KARNAL	AQUA	76.86500	29.63700	13:15:00	D	18.00
87	KARNAL	KARNAL	AQUA	76.88200	29.64000	13:15:00	D	17.00
88	KARNAL	KARNAL	AQUA	76.80200	29.64800	13:15:00	D	10.00
89	KARNAL	KARNAL	S-NPP	76.76452	29.70162	12:42:00	D	2.00
90	KARNAL	KARNAL	S-NPP	76.79628	29.70355	12:42:00	D	6.00
91	KARNAL	KARNAL	S-NPP	76.93763	29.73265	12:42:00	D	2.00
92	KARNAL	NILOKHERI	AQUA	76.90400	29.78300	13:15:00	D	14.00
93	KARNAL	NILOKHERI	S-NPP	76.93687	29.78367	14:18:00	D	5.00
94	KARNAL	NILOKHERI	S-NPP	76.85638	29.80456	14:18:00	D	4.00
95	KURUKSHETRA	PEHOWA	S-NPP	76.53527	29.92628	14:18:00	D	11.00
96	KURUKSHETRA	PEHOWA	S-NPP	76.55864	29.93307	12:42:00	D	4.00

97	KURUKSHETRA	PEHOWA	S-NPP	76.56712	29.96514	12:42:00	D	10.00
98	KURUKSHETRA	PEHOWA	S-NPP	76.66756	29.96547	14:18:00	D	5.00
99	KURUKSHETRA	PEHOWA	S-NPP	76.57146	29.96623	12:42:00	D	10.00
100	KURUKSHETRA	PEHOWA	S-NPP	76.53787	29.98464	14:18:00	D	4.00
101	KURUKSHETRA	PEHOWA	S-NPP	76.53456	29.98500	14:18:00	D	4.00
102	KURUKSHETRA	PEHOWA	S-NPP	76.69789	30.02158	12:42:00	D	4.00
103	KURUKSHETRA	PEHOWA	S-NPP	76.61777	30.02551	12:42:00	D	5.00
104	KURUKSHETRA	PEHOWA	S-NPP	76.62210	30.02657	12:42:00	D	6.00
105	KURUKSHETRA	PEHOWA	AQUA	76.58400	30.06100	13:15:00	D	11.00
106	KURUKSHETRA	PEHOWA	AQUA	76.59700	30.06200	13:15:00	D	12.00
107	KURUKSHETRA	PEHOWA	AQUA	76.68200	30.07800	13:15:00	D	12.00
108	KURUKSHETRA	PEHOWA	S-NPP	76.73058	30.11195	14:18:00	D	4.00
109	KURUKSHETRA	PEHOWA	S-NPP	76.71947	30.12514	12:42:00	D	3.00
110	KURUKSHETRA	SHAHABAD	AQUA	76.80600	30.14800	13:15:00	D	21.00
111	KURUKSHETRA	SHAHABAD	S-NPP	76.93166	30.16601	12:42:00	D	2.00
112	KURUKSHETRA	SHAHABAD	S-NPP	76.88960	30.17825	14:18:00	D	3.00
113	KURUKSHETRA	SHAHABAD	S-NPP	76.88654	30.19575	12:42:00	D	2.00
114	KURUKSHETRA	THANESAR	S-NPP	76.77452	29.94470	14:18:00	D	7.00
115	KURUKSHETRA	THANESAR	S-NPP	76.74593	30.00872	14:18:00	D	5.00
116	KURUKSHETRA	THANESAR	S-NPP	76.74561	30.06690	14:18:00	D	4.00
117	PALWAL	HODAL	S-NPP	77.43736	27.90049	12:36:00	D	5.00
118	PALWAL	HODAL	S-NPP	77.45432	27.90459	12:36:00	D	2.00
119	PALWAL	HODAL	AQUA	77.44700	27.93300	13:15:00	D	12.00
120	PALWAL	HODAL	S-NPP	77.44326	27.94058	14:18:00	D	8.00
121	PALWAL	PALWAL	S-NPP	77.38869	28.07837	12:36:00	D	4.00
122	PALWAL	PALWAL	S-NPP	77.38751	28.09187	14:18:00	D	4.00
123	PALWAL	PALWAL	AQUA	77.34700	28.20500	13:15:00	D	15.00
124	SIRSA	ELLENABAD	S-NPP	74.68729	29.46385	14:18:00	D	6.00
125	SIRSA	ELLENABAD	S-NPP	74.68726	29.46397	14:18:00	D	3.00
126	SIRSA	ELLENABAD	S-NPP	74.69186	29.46430	14:18:00	D	3.00
127	SIRSA	SIRSA	S-NPP	75.15868	29.76816	14:18:00	D	4.00
128	YAMUNANAGAR	JAGADHRI	S-NPP	77.11767	30.14799	12:42:00	D	4.00
129	YAMUNANAGAR	JAGADHRI	S-NPP	77.28615	30.20748	12:42:00	D	5.00

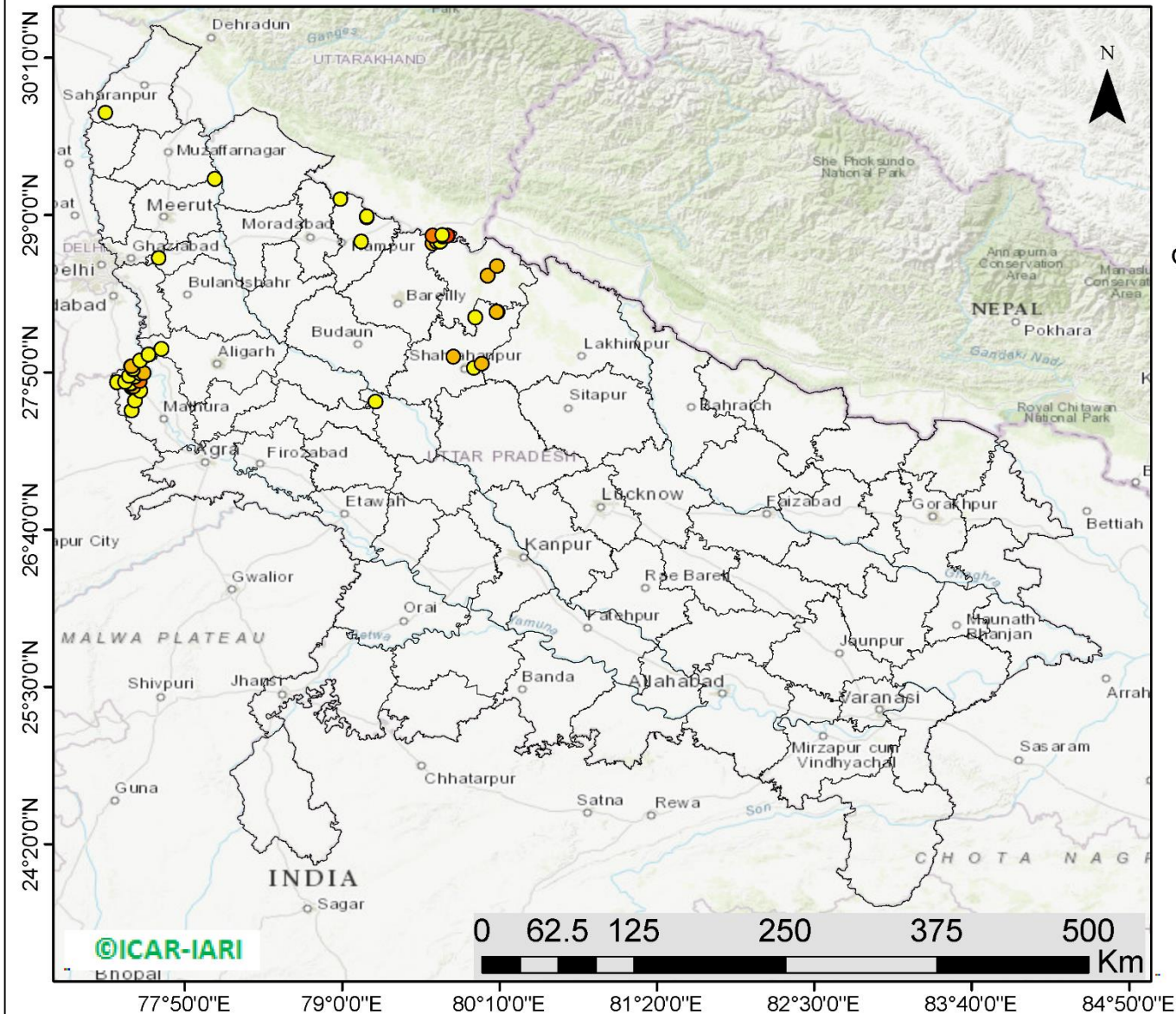
130	YAMUNANAGAR	JAGADHRI	S-NPP	77.28174	30.21053	12:42:00	D	2.00
131	YAMUNANAGAR	JAGADHRI	S-NPP	77.24728	30.42292	12:42:00	D	2.00

District-wise cumulative number of residue burning events in Haryana (01 to 23-Oct 2019)



(c) UP

RICE RESIDUE BURNING IN UTTAR PRADESH



48 burning events detected in Uttar Pradesh on **23rd October 2019**

Fire Intensity (W/m²)

- 0 - 5
- 6 - 10
- 11 - 15
- 16 - 20
- >20



<http://geoportal.icar.gov.in:8080/geoexplorer/composer/>

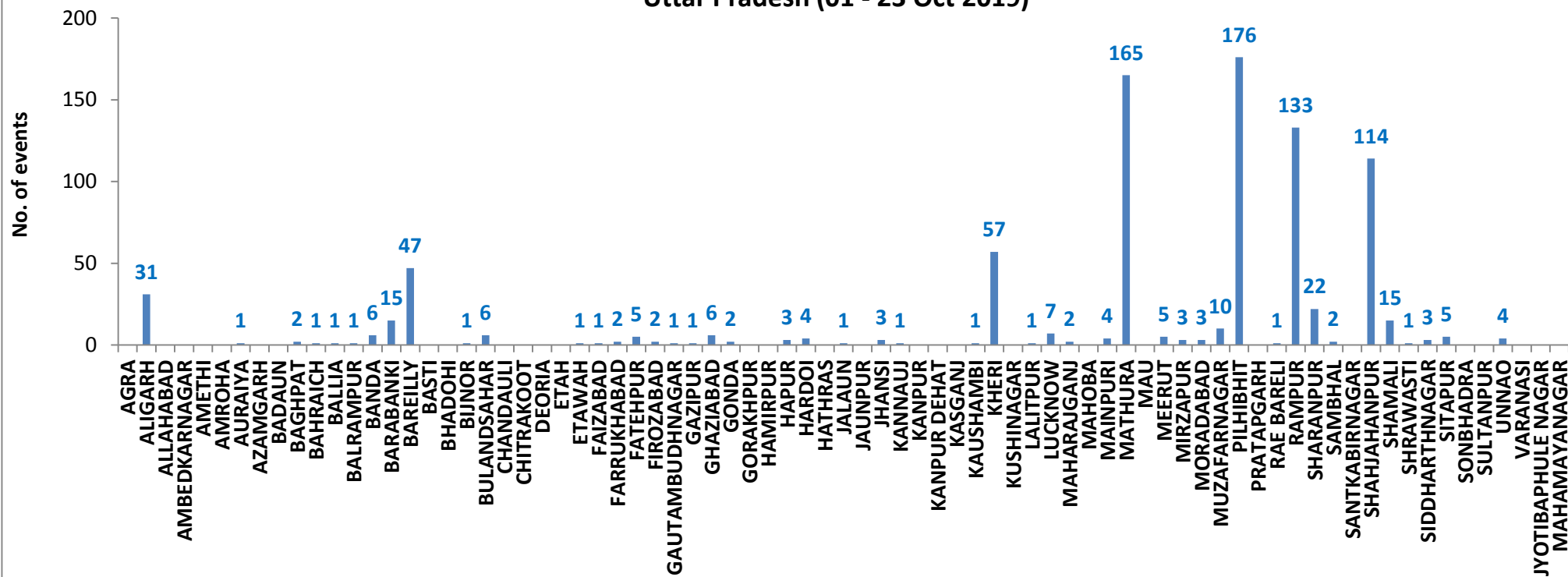
Details of residue burning events in Uttar Pradesh on 23-Oct-2019

S. No.	District	Tehsil / Block	Satellite	Longitude	Latitude	Time (IST)	Day / Night	Fire Power (W/m ²)
1	ALIGARH	KHAIR	S-NPP	77.56699	27.96525	12:36:00	D	1.00
2	ALIGARH	KHAIR	S-NPP	77.56612	27.96690	12:36:00	D	1.00
3	ALIGARH	KHAIR	S-NPP	77.66118	28.00592	12:36:00	D	2.00
4	BAREILLY	BAHERI	AQUA	79.67100	28.79000	13:15:00	D	8.00
5	BAREILLY	BAHERI	AQUA	79.67000	28.84900	13:15:00	D	11.00
6	FARRUKHABAD	KARIMGANJ	S-NPP	79.24699	27.61386	12:36:00	D	2.00
7	GAUTAMBUDHNAGAR	JEVAR	S-NPP	77.68615	28.10812	01:24:00	N	0.00
8	HAPUR	HAPUR	S-NPP	77.64203	28.68105	01:24:00	N	1.00
9	MATHURA	CHHATA	S-NPP	77.46316	27.62069	12:36:00	D	2.00
10	MATHURA	CHHATA	S-NPP	77.50202	27.69592	14:18:00	D	3.00
11	MATHURA	CHHATA	AQUA	77.44000	27.72300	13:15:00	D	16.00
12	MATHURA	CHHATA	AQUA	77.44600	27.72400	13:15:00	D	13.00
13	MATHURA	CHHATA	S-NPP	77.45473	27.72682	14:18:00	D	10.00
14	MATHURA	CHHATA	S-NPP	77.43700	27.74918	14:18:00	D	5.00
15	MATHURA	CHHATA	S-NPP	77.43385	27.75237	14:18:00	D	3.00
16	MATHURA	CHHATA	S-NPP	77.33093	27.75974	14:18:00	D	2.00
17	MATHURA	CHHATA	S-NPP	77.39151	27.76248	12:36:00	D	5.00
18	MATHURA	CHHATA	AQUA	77.49800	27.76900	13:15:00	D	13.00
19	MATHURA	CHHATA	S-NPP	77.45998	27.79718	14:18:00	D	2.00
20	MATHURA	CHHATA	S-NPP	77.42002	27.80519	12:36:00	D	1.00
21	MATHURA	CHHATA	S-NPP	77.50083	27.82463	12:36:00	D	5.00
22	MATHURA	CHHATA	S-NPP	77.52996	27.82776	14:18:00	D	6.00
23	MATHURA	CHHATA	S-NPP	77.45231	27.85063	12:36:00	D	6.00
24	MATHURA	CHHATA	S-NPP	77.45089	27.85422	12:36:00	D	5.00
25	MATHURA	CHHATA	S-NPP	77.43552	27.87626	12:36:00	D	7.00
26	MATHURA	CHHATA	S-NPP	77.43977	27.87730	12:36:00	D	10.00
27	MATHURA	CHHATA	S-NPP	77.50320	27.92232	12:36:00	D	4.00
28	MATHURA	MATHURA	S-NPP	77.43858	27.54903	12:36:00	D	1.00
29	MUZAFARNAGAR	JANSATH	S-NPP	78.05587	29.26660	12:42:00	D	2.00
30	PILHIBHIT	BISALPUR	S-NPP	79.98720	28.24098	12:36:00	D	3.00
31	PILHIBHIT	PILHIBHIT	S-NPP	79.70203	28.80174	12:36:00	D	5.00

32	PILHIBHIT	PILHIBHIT	S-NPP	79.72749	28.80226	12:36:00	D	2.00
33	PILHIBHIT	PILHIBHIT	AQUA	79.74600	28.84200	13:15:00	D	9.00
34	PILHIBHIT	PILHIBHIT	AQUA	79.78100	28.84800	13:15:00	D	20.00
35	PILHIBHIT	PILHIBHIT	S-NPP	79.74363	28.84929	12:36:00	D	4.00
36	PILHIBHIT	PURANPUR	AQUA	80.08000	28.55100	13:15:00	D	6.00
37	PILHIBHIT	PURANPUR	AQUA	80.14900	28.62100	13:15:00	D	9.00
38	RAMPUR	MILAK	S-NPP	79.14346	28.80248	12:36:00	D	2.00
39	RAMPUR	SUAR	S-NPP	79.18362	28.98125	14:18:00	D	4.00
40	RAMPUR	SUAR	S-NPP	79.18314	28.98827	14:18:00	D	8.00
41	RAMPUR	SUAR	S-NPP	79.18330	28.98862	14:18:00	D	5.00
42	RAMPUR	TANDA	S-NPP	78.98696	29.11604	12:36:00	D	3.00
43	SHAHJAHANPUR	PUWANYA	AQUA	80.15000	28.28000	13:15:00	D	8.00
44	SHAHJAHANPUR	PUWANYA	AQUA	80.14400	28.28300	13:15:00	D	7.00
45	SHAHJAHANPUR	SHAHJAHANPUR	S-NPP	79.97771	27.86471	12:36:00	D	4.00
46	SHAHJAHANPUR	SHAHJAHANPUR	AQUA	80.03400	27.89500	13:15:00	D	8.00
47	SHAHJAHANPUR	SHAHJAHANPUR	AQUA	79.82600	27.95000	13:15:00	D	8.00
48	SHARANPUR	NAKUR	S-NPP	77.24464	29.75869	14:18:00	D	4.00

District-wise cumulative number of residue burning events in Uttar Pradesh (01 to 23-Oct 2019)

Uttar Pradesh (01 - 23 Oct 2019)



State-wise, date-wise and district-wise number of residue burning events detected in 2016, 2017, 2018 and 2019
(Period: 01-Oct to 23-Oct)

Date	Punjab				Haryana				UP				Total			
	2019	2018	2017	2016	2019	2018	2017	2016	2019	2018	2017	2016	2019	2018	2017	2016
01-Oct	3	16	54	109	1	9	13	46	1	11	2	23	5	36	69	178
02-Oct	20	9	50	51	2	23	27	16	0	21	8	20	23	53	85	87
03-Oct	37	4	62	66	16	9	40	16	3	12	17	16	56	25	119	98
04-Oct	3	32	103	37	30	16	60	7	4	5	22	15	37	53	185	59
05-Oct	16	56	106	95	37	30	68	15	11	10	20	14	64	96	194	124
06-Oct	0	87	138	152	22	63	75	105	8	13	39	6	30	163	252	263
07-Oct	27	162	105	171	16	180	97	126	4	69	33	24	47	411	235	321
08-Oct	59	39	215	166	69	40	218	94	18	54	76	14	146	133	509	274
09-Oct	93	75	163	270	70	47	148	121	17	32	88	22	180	154	399	413
10-Oct	172	23	164	597	157	37	151	242	53	21	126	74	382	81	441	913
11-Oct	78	30	177	652	126	78	87	336	38	24	74	128	242	131	338	1116
12-Oct	99	67	342	694	154	133	123	338	42	22	51	164	295	222	516	1196
13-Oct	108	62	470	467	159	147	207	284	33	61	69	102	300	270	746	853
14-Oct	141	112	582	812	133	153	333	328	39	57	137	60	313	322	1052	1200
15-Oct	262	90	943	1215	203	110	458	248	63	35	237	76	528	235	1638	1539
16-Oct	168	174	465	1478	148	138	186	385	77	20	71	125	393	332	722	1988
17-Oct	250	272	807	2173	152	268	244	399	53	94	69	261	455	634	1120	2833
18-Oct	100	263	970	1065	103	255	306	270	39	163	108	204	242	681	1384	1539
19-Oct	529	254	1591	1762	220	208	541	276	3	108	128	132	752	570	2260	2170
20-Oct	490	496	2653	1175	360	141	597	188	62	49	255	62	912	686	3505	1425
21-Oct	852	618	1139	1726	339	217	233	257	185	66	168	152	1376	901	1540	2135
22-Oct	555	656	1356	2837	158	134	186	309	78	149	151	194	791	939	1693	3340
23-Oct	827	1113	994	2040	131	232	155	313	48	193	72	331	1006	1538	1221	2684
Total	4889	4710	13649	19810	2806	2668	4553	4719	879	1289	2021	2219	8574	8667	20223	26748

(a) Punjab

Districts	01-23 Oct			
	2016	2017	2018	2019
AMRITSAR	1095	870	704	606
BARNALA	96	59	39	22
BATHINDA	1293	1042	236	90
FARIDKOT	1364	1397	281	213
FATEHGARH SAHIB	1148	566	133	139
FAZILKA	0	0	0	155
FIROZPUR	2241	1921	575	473
GURDASPUR	973	591	207	382
HOSHIARPUR	245	138	8	57
JALANDHAR	1325	572	113	199
KAPURTHALA	1221	396	34	214
LUDHIANA	1064	765	124	82
MANSA	344	349	176	144
MOGA	316	199	45	64
MUKTSAR	1713	945	283	148
NAWASHAHR (SBS Nagar)	469	235	49	53
PATHANKOT	0	0	0	1
PATIALA	1705	1357	615	607
RUPNAGAR	280	69	4	11
SANGRUR	515	444	188	170
SAS NAGAR	92	79	64	72
TARN TARAN	2311	1655	832	987
Total	19810	13649	4710	4889

(b) Haryana

Districts	01-23 Oct			
	2016	2017	2018	2019
AMBALA	354	317	112	175
BHIWANI	4	3	4	0
FARIDABAD	56	116	92	4
FATEHABAD	366	440	207	222
GURUGRAM	0	0	0	0
HISAR	43	42	29	33
JHAJJAR	5	4	5	2
JIND	165	217	132	125
KAITHAL	1255	971	750	681
KARNAL	1222	1126	604	685
KURUKSHETRA	920	955	544	570
MAHENDRAGARH	0	0	0	1
MEWAT	0	0	0	0
PALWAL	0	0	0	115
PANCHKULA	0	0	3	18
PANIPAT	32	40	35	10
REWARI	0	0	0	1
ROHTAK	6	4	1	0
SIRSA	150	119	70	45
SONIPAT	15	20	13	4
YAMUNANAGAR	126	179	67	115
Total	4719	4553	2668	2806

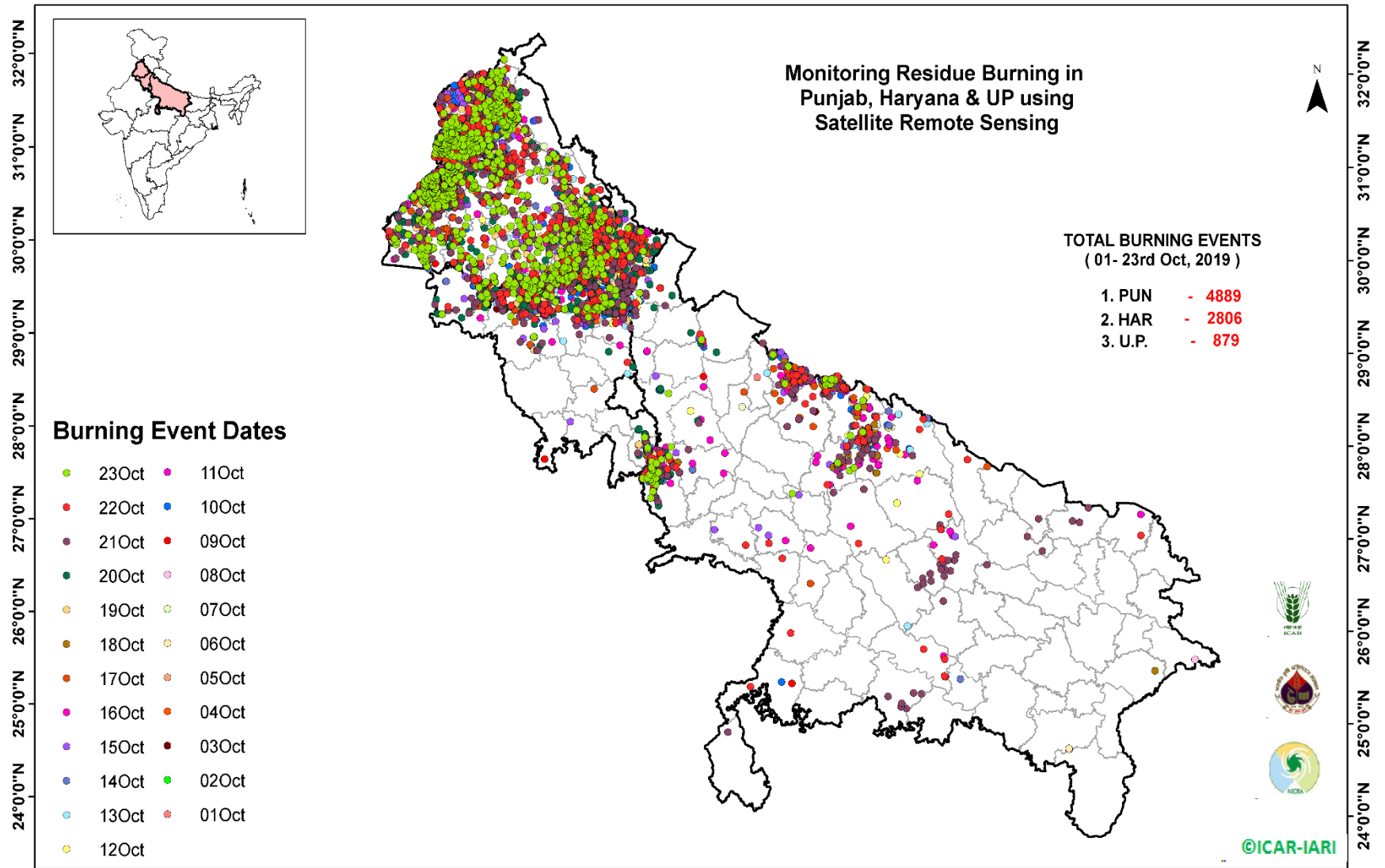
(c) Uttar Pradesh

Districts	01-23 Oct			
	2016	2017	2018	2019
AGRA	0	0	0	0
ALIGARH	10	21	30	31
ALLAHABAD	0	0	4	0
AMBEDKARNAGAR	0	4	0	0
AMETHI	0	0	0	0
AMROHA	0	0	0	0
AURAIYA	63	61	17	1
AZAMGARH	0	0	0	0
BADAUN	0	1	1	0
BAGHPAT	0	0	0	2
BAHRAICH	4	7	11	1
BALLIA	0	0	0	1
BALRAMPUR	0	0	2	1
BANDA	1	1	1	6
BARABANKI	77	43	72	15
BAREILLY	113	74	44	47
BASTI	0	1	0	0
BHADOHI	0	0	0	0
BIJNOR	7	4	1	1
BULANDSAHAR	5	9	7	6
CHANDAULI	0	0	0	0
CHITRAKOOT	0	0	0	0
DEORIA	0	1	2	0
ETAH	3	12	14	0
ETAWAH	5	10	5	1
FAIZABAD	1	1	3	1
FARRUKHABAD	0	0	0	2
FATEHPUR	13	8	15	5
FIROZABAD	4	2	3	2

GAUTAMBUDHNAGAR	4	5	6	1
GAZIPUR	0	0	0	1
GHAZIABAD	13	6	6	6
GONDA	0	0	0	2
GORAKHPUR	0	4	6	0
HAMIRPUR	0	0	1	0
HAPUR	0	0	0	3
HARDOI	37	25	13	4
HATHRAS	0	0	0	0
JALAUN	0	0	0	1
JAUNPUR	1	0	3	0
JHANSI	0	0	2	3
KANNAUJ	1	1	2	1
KANPUR	1	3	0	0
KANPUR DEHAT	0	1	0	0
KASGANJ	0	0	0	0
KAUSHAMBI	0	5	10	1
KHERI	176	129	83	57
KUSHINAGAR	0	1	0	0
LALITPUR	0	0	0	1
LUCKNOW	13	6	1	7
MAHARAJGANJ	6	38	38	2
MAHOBA	0	0	0	0
MAINPURI	3	9	9	4
MATHURA	118	190	360	165
MAU	1	0	2	0
MEERUT	20	14	4	5
MIRZAPUR	0	3	4	3
MORADABAD	13	12	7	3
MUZAFARNAGAR	58	56	20	10
PILHIBHIT	422	373	188	176
PRATAPGARH	0	0	2	0

RAE BARELI	2	1	0	1
RAMPUR	398	336	98	133
SHARANPUR	27	43	20	22
SAMBHAL	0	0	0	2
SANTKABIRNAGAR	0	1	0	0
SHAHJAHANPUR	540	467	145	114
SHAMALI	0	0	0	15
SHRAWASTI	2	5	2	1
SIDDHARTHANAGAR	1	2	1	3
SITAPUR	39	19	10	5
SONBHADRA	6	1	7	0
SULTANPUR	1	0	0	0
UNNAO	7	4	4	4
VARANASI	0	0	0	0
JYOTIBAPHULE NAGAR	3	0	1	0
MAHAMAYANAGAR	0	1	2	0
Total	2219	2021	1289	879

Map of Cumulative Burning Events (01 – 23 Oct 2019)



(<http://geoportal.icar.gov.in:8080/geoexplorer/composer/>)

The study used images received from following Satellites at IARI Satellite Ground Station

S. No.	Satellite Name	Sensor	Resolution (meter)	Day / Night Passes
1.	Suomi NPP	VIIRS	375 / 1000	Both
2.	Terra	MODIS	1000	Both
3.	Aqua	MODIS	1000	Both
4.	NOAA – 18	AVHRR	1000	Night
5.	NOAA – 19	AVHRR	1000	Night
6.	Metop - 1	AVHRR	1000	Night
7.	Metop - 2	AVHRR	1000	Night

Study Team

ICAR – HQ	Dr K. Alagusundaram	DDG (AG. ENGG.)	ddgengg@icar.org.in
	Dr S. Bhasker	ADG (NRM)	adgagroandaf@gmail.com
	Dr K.K. Singh	ADG (AG. ENGG.)	kanchansingh044@gmail.com
ICAR - IARI	Dr V.K. Sehgal	Professor & Nodal Scientist	iaricreams@gmail.com
	Dr Rajkumar Dhakar	Scientist	raidhakar.iari@gmail.com
	Mr Rakeswer Verma	Chief Technical Officer	rakeshwar.verma@icar.gov.in
	Mr Mohd Jahangir	Lab Assistant (KRISHI)	mjahangir198@gmail.com
ICAR - ATARI	Dr Rajbir Singh	Director ATARI (Zone-I) Ludhiana	rajbirsingh.zpd@gmail.com
	Dr S.K. Singh	Director ATARI (Zone-II) Jodhpur	sushilsinghiipr@yahoo.co.in
	Dr Atar Singh	Director ATARI (Zone-III) Kanpur	zpdicarkanpur@gmail.com
ICAR - IASRI	Dr Rajender Parsad	Principal Scientist	rajender.parsad@icar.gov.in

GIS Maps of fire events can be visualized online on ICAR KRISHI Geoportal website: <http://geoportal.icar.gov.in:8080/geoexplorer/composer/>
(Part of KRISHI Portal: <https://krishi.icar.gov.in> initiative)
