



**Bulletin
No. 22**

**Events Date:
22-Oct-2019**

**Issued on:
23-Oct-2019**



MONITORING PADDY RESIDUE BURNING IN NORTH INDIA USING SATELLITE REMOTE SENSING DURING 2019



Prepared by:

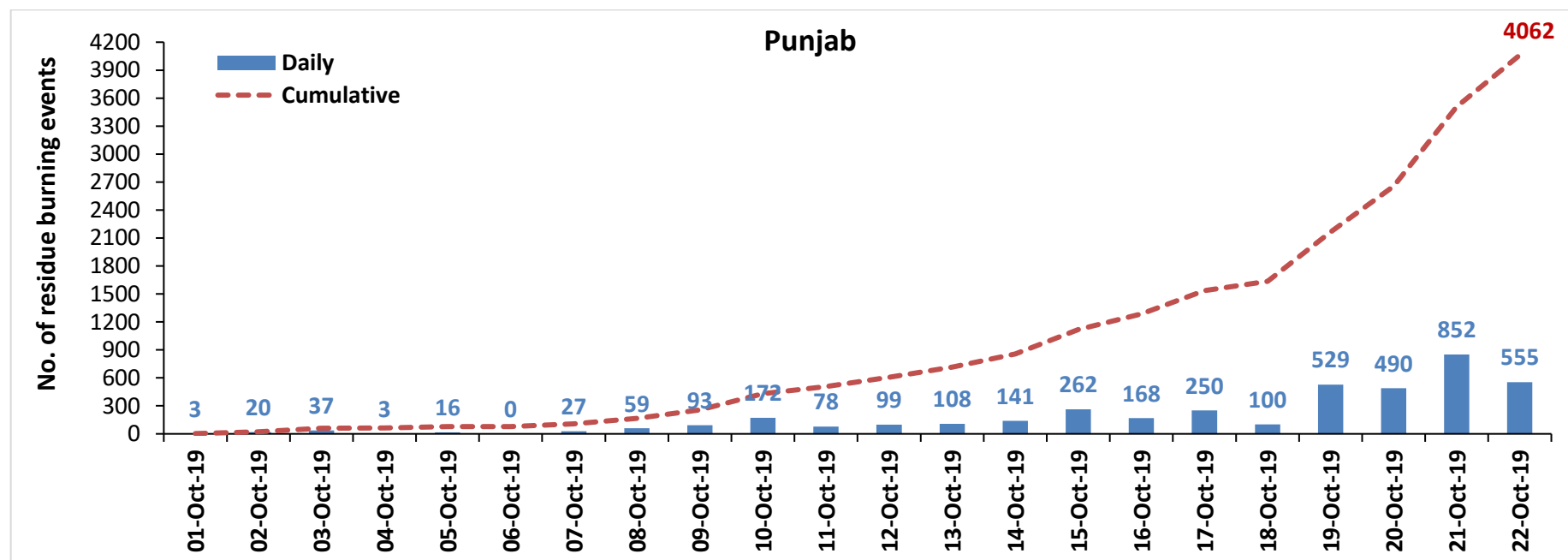
**Consortium for Research on Agroecosystem Monitoring and Modeling from Space (CREAMS) Laboratory,
Division of Agricultural Physics, ICAR – Indian Agricultural Research Institute, New Delhi – 110012**

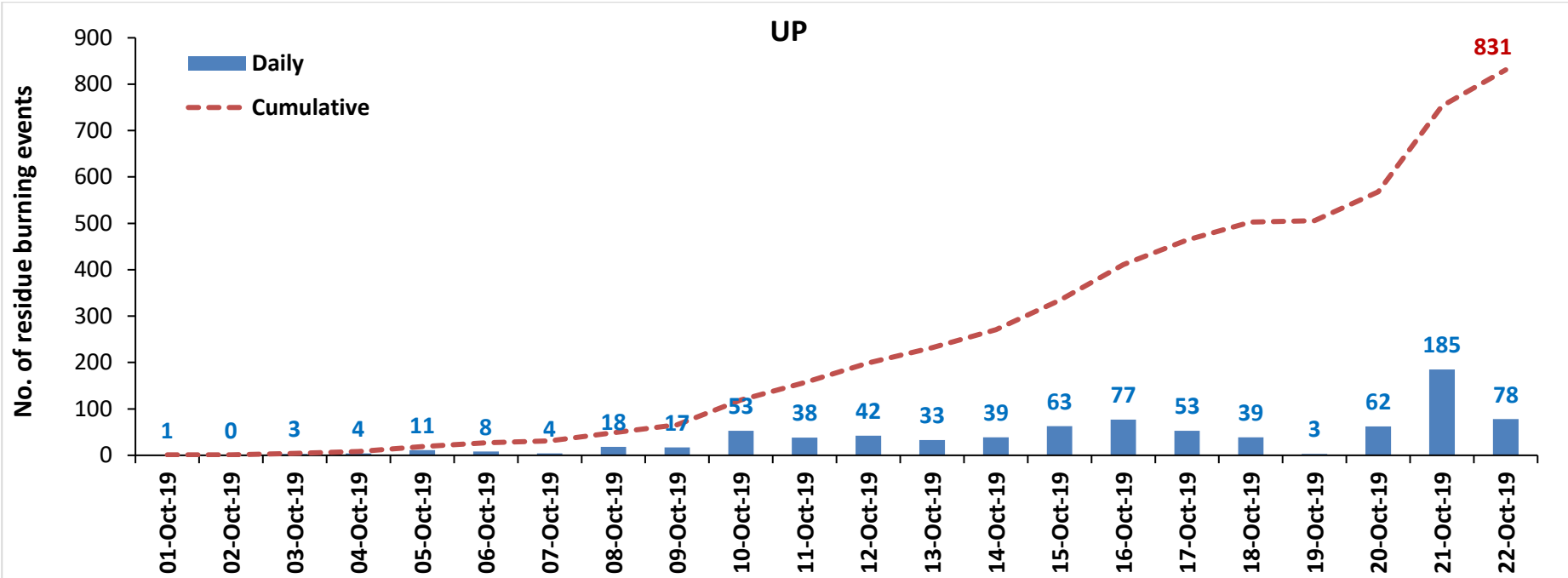
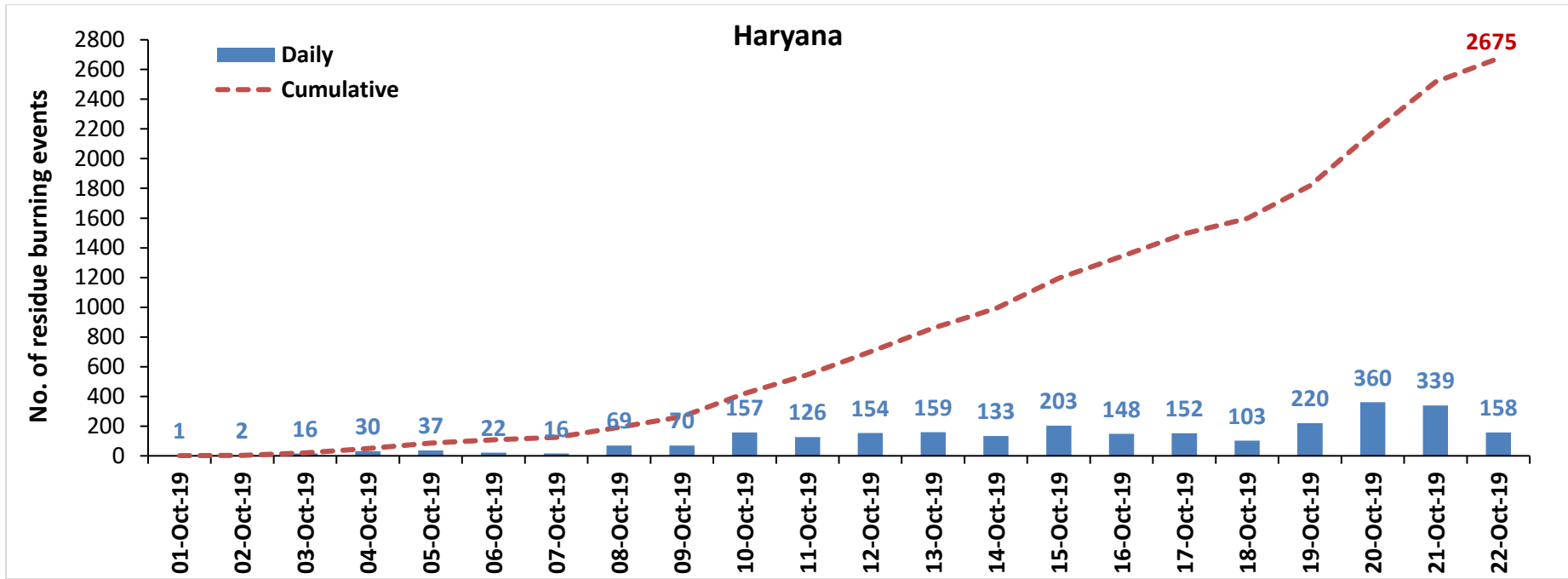
<http://creams.iari.res.in>

Highlights for 22-October-2019

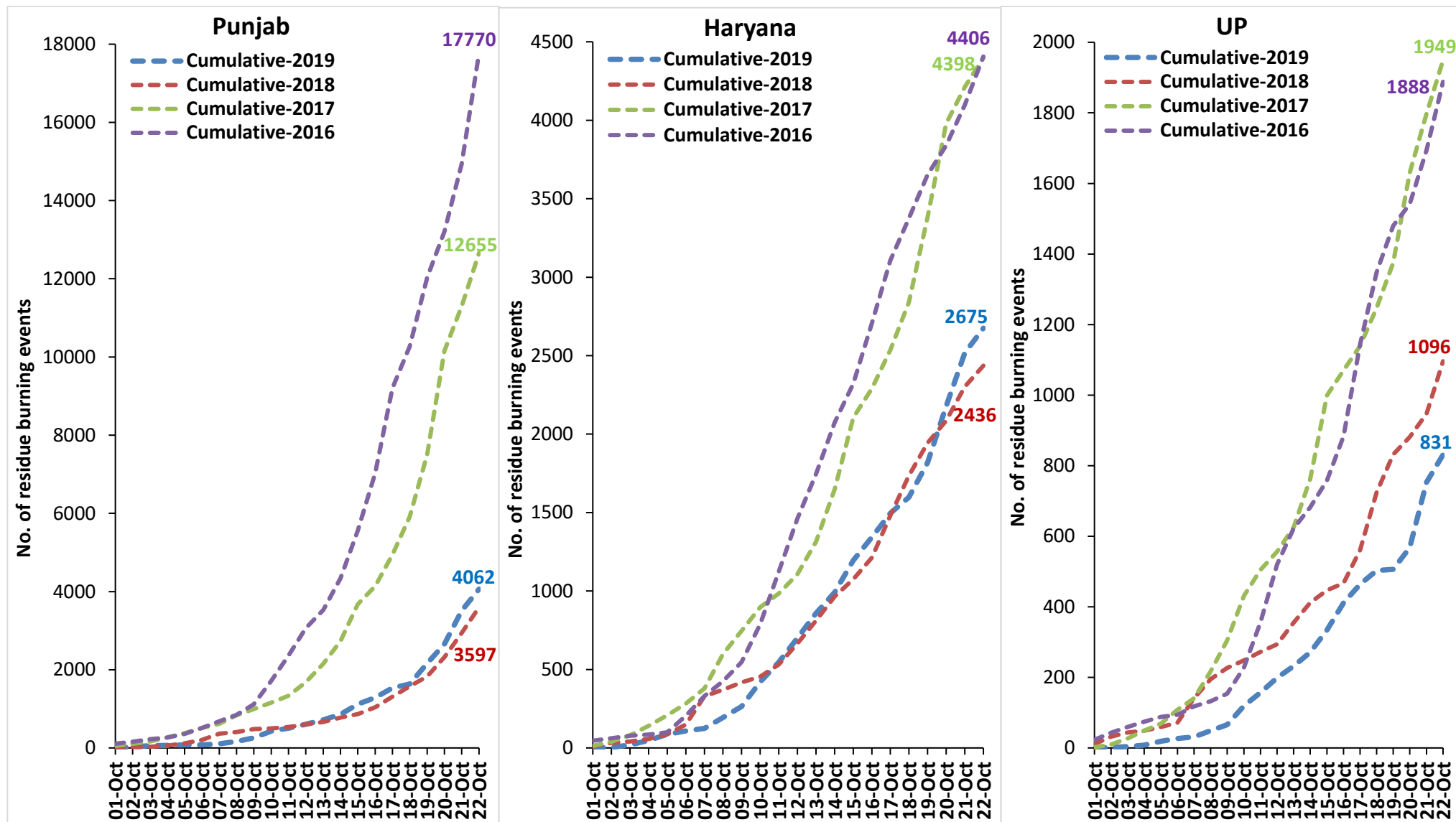
- Satellites detected **791** residue burning events in the three study States on 22-Oct-2019.
- The burning events detected on **22-Oct-2019** are **555**, **158** and **78** in Punjab, Haryana and UP, respectively.
- The number of events has decreased from **1376** on **21-Oct-2019** to **791** on **22-Oct-2019** in the three states.
- Total **7568** burning events were detected in the three States between **01-Oct-2019** and **22-Oct-2019**, which are distributed as **4062**, **2675** and **831** in Punjab, Haryana and UP, respectively.
- Overall, the total burning events recorded in the three states are **6.1%** more than in 2018 till date. UP recorded **24.1%** reduction while Punjab and Haryana recorded **12.9%** and **9.8%** increase, respectively, in the current season than in 2018.

Temporal distribution of residue burning events for the three study States in 2019

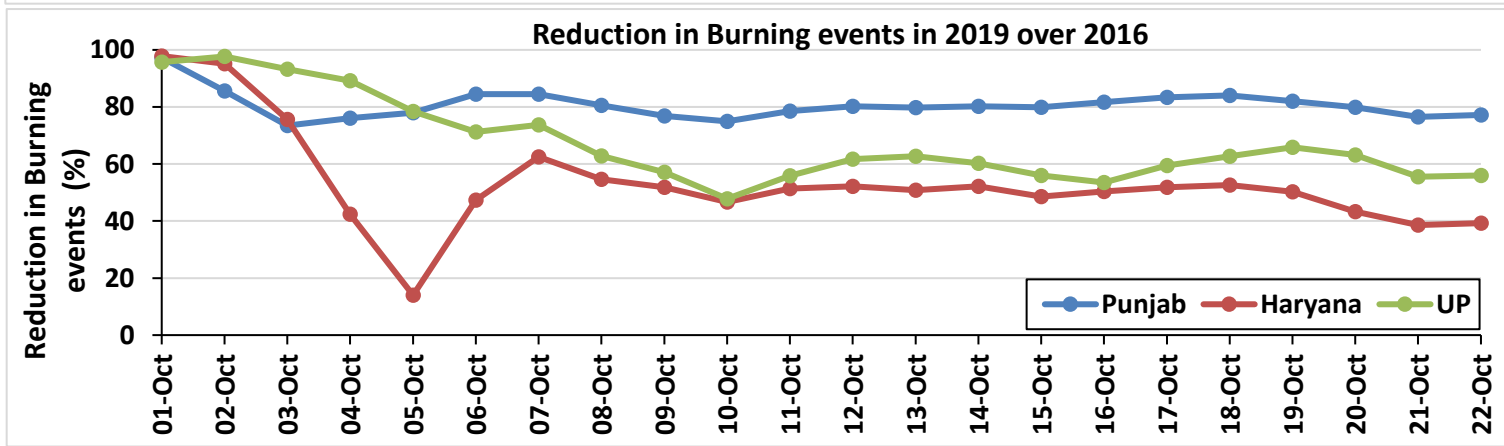
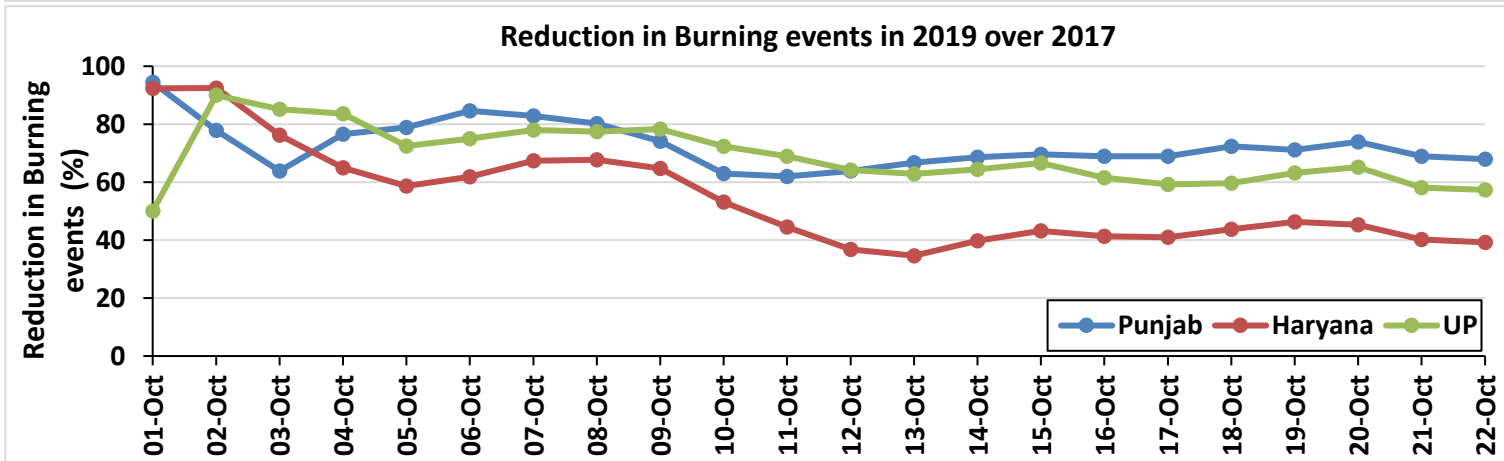
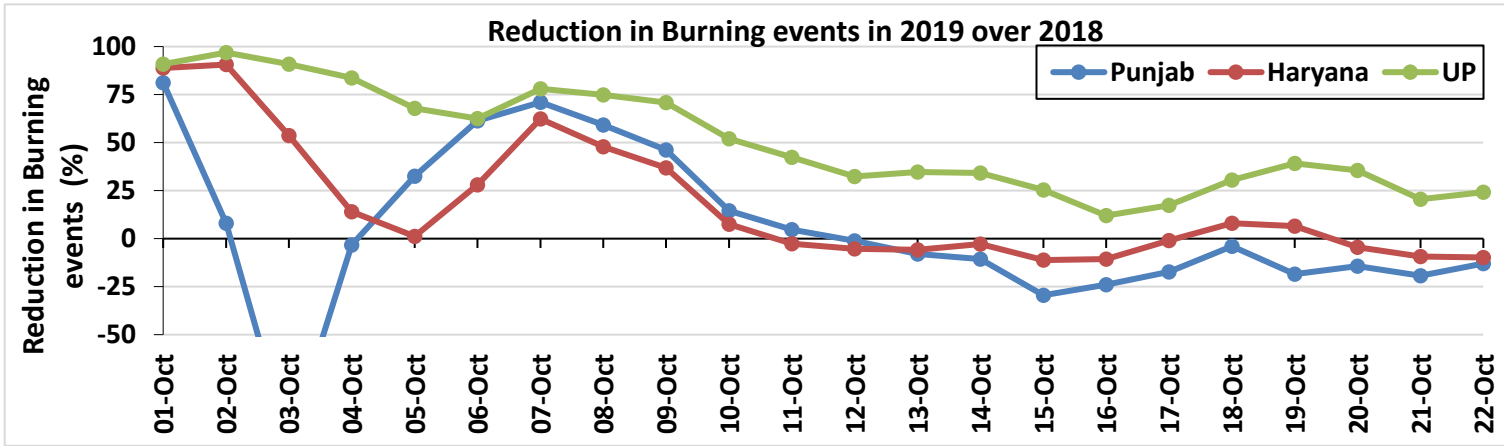




Comparison of residue burning events in current year (2019) with previous years (2018, 2017 & 2016) for the three study States (01-Oct to 22-Oct)

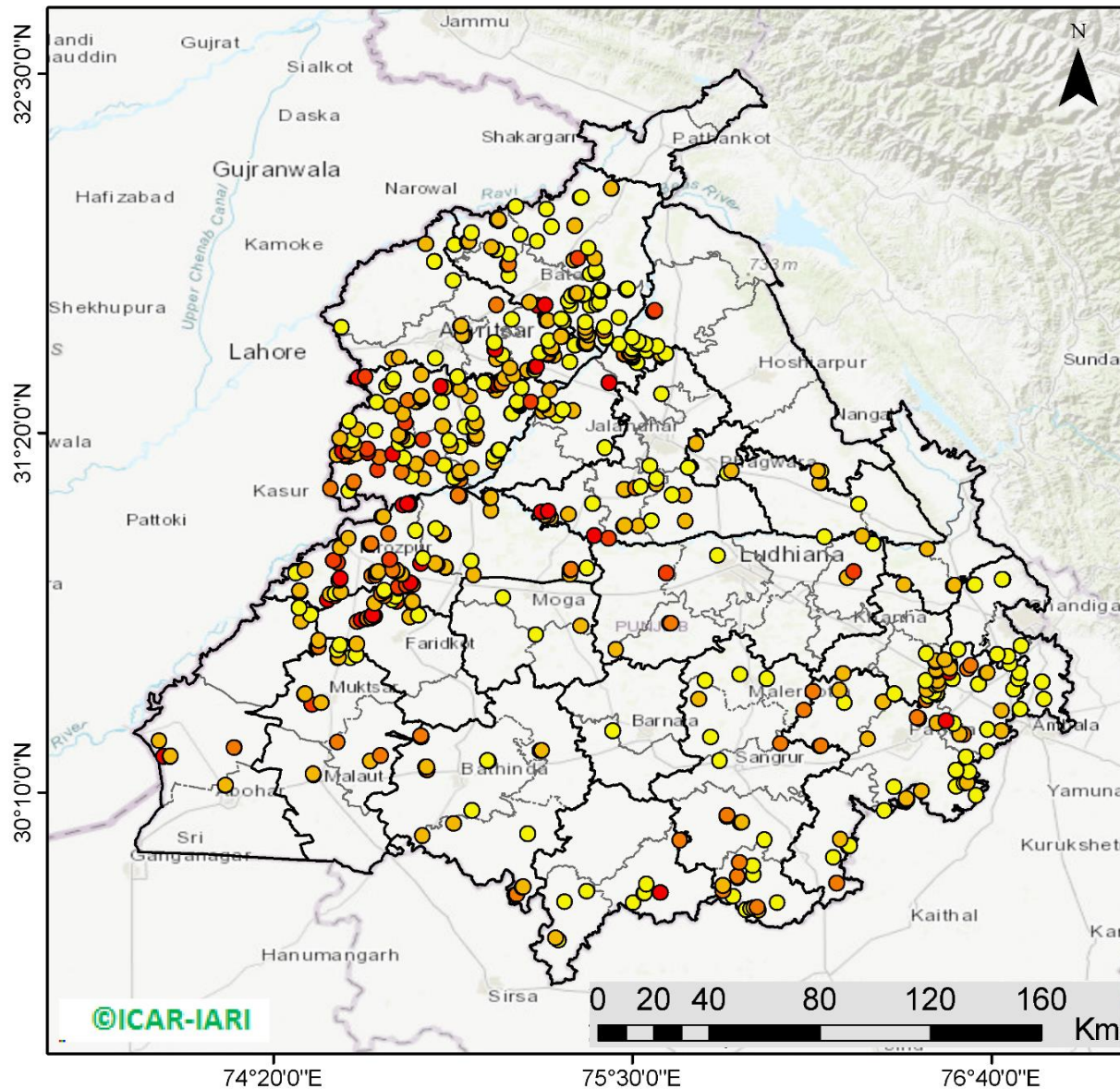


Percent Reduction in Burning events in 2019 over 2018, 2017 and 2016 (Daily Cumulative)



(a) Punjab

RICE RESIDUE BURNING IN PUNJAB



555 burning events detected in Punjab on 22nd October 2019

Fire Intensity (W/m²)

- 0 - 5
- 6 - 10
- 11 - 15
- 16 - 20
- >20



<http://geoportal.icar.gov.in:8080/geoexplorer/composer/>

Details of residue burning events in Punjab on 22-Oct-2019

S. No.	District	Tehsil / Block	Satellite	Longitude	Latitude	Time (IST)	Day / Night	Fire Power (W/m2)
1	AMRITSAR	AJNALA	S-NPP	74.55523	31.67595	13:00:00	D	2.90
2	AMRITSAR	AJNALA	S-NPP	74.91790	31.82745	13:00:00	D	3.20
3	AMRITSAR	AJNALA	S-NPP	74.85866	31.89087	13:00:00	D	4.90
4	AMRITSAR	AJNALA	S-NPP	74.85757	31.89090	13:00:00	D	2.80
5	AMRITSAR	AJNALA	S-NPP	74.92184	31.94342	13:00:00	D	2.40
6	AMRITSAR	AJNALA	S-NPP	74.82926	31.94683	13:00:00	D	9.90
7	AMRITSAR	AMRITSAR I	S-NPP	75.10138	31.54394	13:00:00	D	7.70
8	AMRITSAR	AMRITSAR I	S-NPP	75.05898	31.57267	13:00:00	D	5.90
9	AMRITSAR	AMRITSAR I	S-NPP	75.07758	31.58623	13:00:00	D	4.40
10	AMRITSAR	AMRITSAR I	S-NPP	75.05233	31.60439	13:00:00	D	34.60
11	AMRITSAR	AMRITSAR I	S-NPP	75.05500	31.60509	13:00:00	D	30.20
12	AMRITSAR	AMRITSAR I	S-NPP	75.05103	31.62790	13:00:00	D	4.20
13	AMRITSAR	AMRITSAR I	S-NPP	75.10785	31.70203	13:00:00	D	3.50
14	AMRITSAR	AMRITSAR I	AQUA	75.05900	31.74900	14:10:00	D	13.80
15	AMRITSAR	AMRITSAR II	AQUA	74.61100	31.51400	14:10:00	D	21.90
16	AMRITSAR	AMRITSAR II	TERRA	74.72100	31.57200	10:55:00	D	8.60
17	AMRITSAR	AMRITSAR II	S-NPP	74.86015	31.57580	13:00:00	D	4.50
18	AMRITSAR	AMRITSAR II	S-NPP	74.74216	31.57844	13:00:00	D	7.70
19	AMRITSAR	AMRITSAR II	S-NPP	74.95360	31.64932	13:00:00	D	5.80
20	AMRITSAR	AMRITSAR II	S-NPP	74.94688	31.65263	13:00:00	D	5.80
21	AMRITSAR	AMRITSAR II	S-NPP	74.94183	31.68018	13:00:00	D	6.90
22	AMRITSAR	AMRITSAR II	S-NPP	74.94421	31.68073	13:00:00	D	7.30
23	AMRITSAR	BABA BAKALA	S-NPP	75.11324	31.52280	13:00:00	D	6.60
24	AMRITSAR	BABA BAKALA	S-NPP	75.15933	31.53775	13:00:00	D	6.40
25	AMRITSAR	BABA BAKALA	S-NPP	75.18162	31.53794	13:00:00	D	3.20
26	AMRITSAR	BABA BAKALA	S-NPP	75.18425	31.54798	13:00:00	D	11.40
27	AMRITSAR	BABA BAKALA	S-NPP	75.18948	31.54913	13:00:00	D	24.30
28	AMRITSAR	BABA BAKALA	S-NPP	75.29592	31.56315	13:00:00	D	3.20
29	AMRITSAR	BABA BAKALA	S-NPP	75.24548	31.58499	13:00:00	D	6.40
30	AMRITSAR	BABA BAKALA	S-NPP	75.22858	31.58601	13:00:00	D	2.70

31	AMRITSAR	BABA BAKALA	S-NPP	75.22729	31.59044	13:00:00	D	12.10
32	AMRITSAR	BABA BAKALA	S-NPP	75.19862	31.59362	13:00:00	D	4.10
33	AMRITSAR	BABA BAKALA	S-NPP	75.23898	31.60710	13:00:00	D	3.40
34	AMRITSAR	BABA BAKALA	S-NPP	75.23247	31.61039	13:00:00	D	4.70
35	AMRITSAR	BABA BAKALA	S-NPP	75.23766	31.61152	13:00:00	D	6.70
36	AMRITSAR	BABA BAKALA	S-NPP	75.31260	31.61836	13:00:00	D	3.20
37	AMRITSAR	BABA BAKALA	S-NPP	75.35488	31.62284	13:00:00	D	6.20
38	AMRITSAR	BABA BAKALA	S-NPP	75.34335	31.62502	13:00:00	D	11.70
39	AMRITSAR	BABA BAKALA	S-NPP	75.34847	31.62613	13:00:00	D	11.70
40	AMRITSAR	BABA BAKALA	S-NPP	75.35359	31.62723	13:00:00	D	6.60
41	AMRITSAR	BABA BAKALA	S-NPP	75.22802	31.63403	13:00:00	D	3.10
42	AMRITSAR	BABA BAKALA	S-NPP	75.27129	31.64694	13:00:00	D	6.70
43	AMRITSAR	BABA BAKALA	S-NPP	75.26810	31.64762	13:00:00	D	6.00
44	BARNALA	TAPPA	S-NPP	75.43644	30.36634	13:00:00	D	1.80
45	BATHINDA	BATHINDA	S-NPP	74.97920	30.10813	13:00:00	D	5.00
46	BATHINDA	BATHINDA	S-NPP	74.83175	30.24072	13:00:00	D	10.10
47	BATHINDA	BATHINDA	S-NPP	74.83432	30.24091	13:00:00	D	10.70
48	BATHINDA	BATHINDA	S-NPP	74.82903	30.25004	13:00:00	D	9.40
49	BATHINDA	BATHINDA	S-NPP	74.83159	30.25023	13:00:00	D	7.10
50	BATHINDA	BATHINDA	S-NPP	75.03218	30.26941	13:00:00	D	4.10
51	BATHINDA	BATHINDA	S-NPP	75.02906	30.27047	13:00:00	D	3.90
52	BATHINDA	BATHINDA	S-NPP	74.81328	30.34575	13:00:00	D	4.40
53	BATHINDA	BATHINDA	S-NPP	74.81245	30.34655	13:00:00	D	15.50
54	BATHINDA	BATHINDA	S-NPP	74.81191	30.35041	13:00:00	D	15.00
55	BATHINDA	RAMPURA PHUL	S-NPP	75.20018	30.30114	13:00:00	D	4.90
56	BATHINDA	RAMPURA PHUL	S-NPP	75.20567	30.30234	13:00:00	D	7.60
57	BATHINDA	TALWANDI SABO	S-NPP	75.11893	29.83412	13:00:00	D	9.30
58	BATHINDA	TALWANDI SABO	S-NPP	75.12457	29.83536	13:00:00	D	13.80
59	BATHINDA	TALWANDI SABO	S-NPP	75.14179	29.85877	13:00:00	D	9.70
60	BATHINDA	TALWANDI SABO	S-NPP	75.14452	29.86078	13:00:00	D	7.00
61	BATHINDA	TALWANDI SABO	S-NPP	74.81865	30.02752	13:00:00	D	5.90
62	BATHINDA	TALWANDI SABO	S-NPP	75.15945	30.03331	13:00:00	D	2.40
63	BATHINDA	TALWANDI SABO	S-NPP	74.91870	30.06497	13:00:00	D	6.70

64	FARIDKOT	FARIDKOT	S-NPP	74.60497	30.64848	13:00:00	D	5.70
65	FARIDKOT	FARIDKOT	AQUA	74.60600	30.72100	14:10:00	D	13.60
66	FARIDKOT	FARIDKOT	AQUA	74.61900	30.72700	14:10:00	D	27.00
67	FARIDKOT	FARIDKOT	S-NPP	74.63663	30.73027	13:00:00	D	7.80
68	FARIDKOT	FARIDKOT	S-NPP	74.64030	30.73187	13:00:00	D	13.60
69	FARIDKOT	FARIDKOT	S-NPP	74.65405	30.73413	13:00:00	D	9.50
70	FARIDKOT	FARIDKOT	S-NPP	74.65189	30.73452	13:00:00	D	8.60
71	FARIDKOT	FARIDKOT	S-NPP	74.77597	30.73642	13:00:00	D	7.80
72	FARIDKOT	FARIDKOT	AQUA	74.66300	30.73900	14:10:00	D	32.50
73	FARIDKOT	FARIDKOT	S-NPP	74.80441	30.74272	13:00:00	D	2.90
74	FARIDKOT	FARIDKOT	AQUA	74.65700	30.74300	14:10:00	D	23.00
75	FARIDKOT	FARIDKOT	S-NPP	74.66259	30.78163	13:00:00	D	7.20
76	FARIDKOT	FARIDKOT	S-NPP	74.78388	30.78428	13:00:00	D	4.40
77	FARIDKOT	FARIDKOT	S-NPP	74.78503	30.78763	13:00:00	D	6.80
78	FARIDKOT	FARIDKOT	S-NPP	74.73424	30.78788	13:00:00	D	18.20
79	FARIDKOT	FARIDKOT	S-NPP	74.72142	30.78993	13:00:00	D	3.10
80	FARIDKOT	FARIDKOT	S-NPP	74.73013	30.80177	13:00:00	D	4.40
81	FARIDKOT	FARIDKOT	S-NPP	74.69297	30.80332	13:00:00	D	11.40
82	FARIDKOT	FARIDKOT	S-NPP	74.68448	30.81131	13:00:00	D	10.30
83	FARIDKOT	FARIDKOT	S-NPP	74.69458	30.81851	13:00:00	D	9.40
84	FARIDKOT	FARIDKOT	S-NPP	74.69320	30.82315	13:00:00	D	2.40
85	FATEHGARH SAHIB	ALMOH	S-NPP	76.18452	30.55219	13:00:00	D	5.30
86	FATEHGARH SAHIB	FATEHGARH SAHIB	S-NPP	76.45460	30.46593	13:00:00	D	14.40
87	FATEHGARH SAHIB	FATEHGARH SAHIB	S-NPP	76.46220	30.47917	13:00:00	D	4.20
88	FATEHGARH SAHIB	FATEHGARH SAHIB	S-NPP	76.46037	30.48054	13:00:00	D	3.20
89	FATEHGARH SAHIB	FATEHGARH SAHIB	S-NPP	76.48987	30.48504	13:00:00	D	8.60
90	FATEHGARH SAHIB	FATEHGARH SAHIB	S-NPP	76.48814	30.48623	13:00:00	D	14.30
91	FATEHGARH SAHIB	FATEHGARH SAHIB	S-NPP	76.35156	30.48718	13:00:00	D	3.80
92	FATEHGARH SAHIB	FATEHGARH SAHIB	S-NPP	76.48412	30.48829	13:00:00	D	5.00
93	FATEHGARH SAHIB	FATEHGARH SAHIB	S-NPP	76.48872	30.48926	13:00:00	D	5.00
94	FATEHGARH SAHIB	FATEHGARH SAHIB	S-NPP	76.47835	30.49154	13:00:00	D	2.20
95	FATEHGARH SAHIB	FATEHGARH SAHIB	S-NPP	76.45639	30.50032	13:00:00	D	5.10
96	FATEHGARH SAHIB	FATEHGARH SAHIB	S-NPP	76.48637	30.51557	13:00:00	D	3.00

97	FATEHGARH SAHIB	FATEHGARH SAHIB	S-NPP	76.49209	30.53016	13:00:00	D	5.70
98	FATEHGARH SAHIB	FATEHGARH SAHIB	S-NPP	76.45285	30.53090	13:00:00	D	3.10
99	FATEHGARH SAHIB	FATEHGARH SAHIB	S-NPP	76.52879	30.55563	13:00:00	D	22.50
100	FATEHGARH SAHIB	FATEHGARH SAHIB	S-NPP	76.48856	30.56065	13:00:00	D	8.20
101	FATEHGARH SAHIB	FATEHGARH SAHIB	S-NPP	76.48740	30.56487	13:00:00	D	8.20
102	FATEHGARH SAHIB	FATEHGARH SAHIB	S-NPP	76.52988	30.56920	13:00:00	D	7.50
103	FATEHGARH SAHIB	FATEHGARH SAHIB	S-NPP	76.48660	30.58943	13:00:00	D	6.40
104	FATEHGARH SAHIB	FATEHGARH SAHIB	S-NPP	76.48501	30.59111	13:00:00	D	15.60
105	FATEHGARH SAHIB	FATEHGARH SAHIB	S-NPP	76.48546	30.59364	13:00:00	D	6.40
106	FATEHGARH SAHIB	FATEHGARH SAHIB	TERRA	76.51400	30.59700	10:55:00	D	8.10
107	FATEHGARH SAHIB	FATEHGARH SAHIB	S-NPP	76.45433	30.61831	13:00:00	D	3.40
108	FATEHGARH SAHIB	KHAMANOH	S-NPP	76.38246	30.84023	13:00:00	D	8.60
109	FAZILKA	ABOHAR	S-NPP	74.17793	30.18923	13:00:00	D	4.90
110	FAZILKA	ABOHAR	S-NPP	74.17761	30.19071	13:00:00	D	5.60
111	FAZILKA	FAZILKA	AQUA	73.96100	30.28100	14:10:00	D	50.40
112	FAZILKA	FAZILKA	AQUA	73.97800	30.28300	14:10:00	D	22.40
113	FAZILKA	FAZILKA	S-NPP	73.99792	30.28439	13:00:00	D	5.50
114	FAZILKA	FAZILKA	S-NPP	73.99944	30.28494	13:00:00	D	6.60
115	FAZILKA	FAZILKA	S-NPP	74.20854	30.31132	13:00:00	D	10.60
116	FAZILKA	FAZILKA	S-NPP	74.20642	30.31209	13:00:00	D	13.40
117	FAZILKA	FAZILKA	S-NPP	73.96239	30.33363	13:00:00	D	10.00
118	FAZILKA	JALALABAD	S-NPP	74.47552	30.63920	13:00:00	D	7.50
119	FAZILKA	JALALABAD	S-NPP	74.48146	30.64055	13:00:00	D	10.30
120	FAZILKA	JALALABAD	S-NPP	74.42332	30.72242	13:00:00	D	8.10
121	FAZILKA	JALALABAD	S-NPP	74.45483	30.74468	13:00:00	D	3.30
122	FAZILKA	JALALABAD	S-NPP	74.41659	30.76622	13:00:00	D	5.00
123	FIROZPUR	FIROZPUR	S-NPP	74.51007	30.79221	13:00:00	D	39.10
124	FIROZPUR	FIROZPUR	AQUA	74.53100	30.80400	14:10:00	D	15.80
125	FIROZPUR	FIROZPUR	S-NPP	74.51764	30.80889	13:00:00	D	5.30
126	FIROZPUR	FIROZPUR	S-NPP	74.53526	30.81282	13:00:00	D	4.30
127	FIROZPUR	FIROZPUR	S-NPP	74.55286	30.81673	13:00:00	D	5.30
128	FIROZPUR	FIROZPUR	S-NPP	74.42030	30.81733	13:00:00	D	7.20
129	FIROZPUR	FIROZPUR	S-NPP	74.41865	30.82096	13:00:00	D	5.20

130	FIROZPUR	FIROZPUR	S-NPP	74.74039	30.82872	13:00:00	D	7.40
131	FIROZPUR	FIROZPUR	S-NPP	74.73901	30.83335	13:00:00	D	17.20
132	FIROZPUR	FIROZPUR	AQUA	74.76600	30.83900	14:10:00	D	19.60
133	FIROZPUR	FIROZPUR	AQUA	74.78600	30.84100	14:10:00	D	13.70
134	FIROZPUR	FIROZPUR	AQUA	74.77900	30.84600	14:10:00	D	20.60
135	FIROZPUR	FIROZPUR	S-NPP	74.54687	30.85516	13:00:00	D	14.50
136	FIROZPUR	FIROZPUR	S-NPP	74.55132	30.86115	13:00:00	D	33.00
137	FIROZPUR	FIROZPUR	AQUA	74.65400	30.87100	14:10:00	D	14.00
138	FIROZPUR	FIROZPUR	S-NPP	74.66649	30.87161	13:00:00	D	11.00
139	FIROZPUR	FIROZPUR	S-NPP	74.75084	30.87534	13:00:00	D	12.70
140	FIROZPUR	FIROZPUR	S-NPP	74.74958	30.87635	13:00:00	D	8.50
141	FIROZPUR	FIROZPUR	S-NPP	74.40765	30.87878	13:00:00	D	4.00
142	FIROZPUR	FIROZPUR	S-NPP	74.66849	30.88269	13:00:00	D	7.90
143	FIROZPUR	FIROZPUR	S-NPP	74.67422	30.88398	13:00:00	D	7.90
144	FIROZPUR	FIROZPUR	S-NPP	74.72957	30.88544	13:00:00	D	4.50
145	FIROZPUR	FIROZPUR	S-NPP	74.73529	30.88670	13:00:00	D	6.80
146	FIROZPUR	FIROZPUR	S-NPP	74.73410	30.88763	13:00:00	D	9.70
147	FIROZPUR	FIROZPUR	S-NPP	74.72134	30.88968	13:00:00	D	14.40
148	FIROZPUR	FIROZPUR	S-NPP	74.43593	30.89014	13:00:00	D	9.10
149	FIROZPUR	FIROZPUR	AQUA	74.81200	30.91000	14:10:00	D	24.20
150	FIROZPUR	FIROZPUR	AQUA	74.54400	30.91400	14:10:00	D	19.80
151	FIROZPUR	FIROZPUR	AQUA	74.52900	30.92000	14:10:00	D	19.50
152	FIROZPUR	FIROZPUR	S-NPP	74.71176	30.92204	13:00:00	D	15.30
153	FIROZPUR	FIROZPUR	S-NPP	74.81921	30.92642	13:00:00	D	4.80
154	FIROZPUR	FIROZPUR	S-NPP	74.55034	30.96133	13:00:00	D	7.80
155	FIROZPUR	FIROZPUR	S-NPP	74.64799	30.97203	13:00:00	D	16.00
156	FIROZPUR	FIROZPUR	S-NPP	74.64552	30.97301	13:00:00	D	10.40
157	FIROZPUR	FIROZPUR	S-NPP	74.65125	30.97431	13:00:00	D	10.40
158	FIROZPUR	FIROZPUR	S-NPP	74.57821	30.99247	13:00:00	D	5.80
159	FIROZPUR	FIROZPUR	S-NPP	74.70855	31.00699	13:00:00	D	14.20
160	FIROZPUR	FIROZPUR	S-NPP	74.79600	31.01684	13:00:00	D	2.90
161	FIROZPUR	FIROZPUR	S-NPP	74.68636	31.06108	13:00:00	D	4.40
162	FIROZPUR	FIROZPUR	S-NPP	74.69206	31.06234	13:00:00	D	5.60

163	FIROZPUR	FIROZPUR	AQUA	74.75500	31.09900	14:10:00	D	27.40
164	FIROZPUR	FIROZPUR	AQUA	74.77500	31.10100	14:10:00	D	15.60
165	FIROZPUR	FIROZPUR	AQUA	74.77000	31.10400	14:10:00	D	32.80
166	FIROZPUR	ZIRA	S-NPP	74.98441	30.87310	13:00:00	D	5.90
167	FIROZPUR	ZIRA	S-NPP	75.29715	30.87465	13:00:00	D	5.50
168	FIROZPUR	ZIRA	S-NPP	75.29854	30.88922	13:00:00	D	8.30
169	FIROZPUR	ZIRA	S-NPP	75.30129	30.89040	13:00:00	D	13.90
170	FIROZPUR	ZIRA	S-NPP	75.35264	30.89609	13:00:00	D	3.40
171	FIROZPUR	ZIRA	S-NPP	74.89457	30.89709	13:00:00	D	14.30
172	FIROZPUR	ZIRA	S-NPP	74.89291	30.89899	13:00:00	D	7.40
173	FIROZPUR	ZIRA	S-NPP	74.86655	30.90770	13:00:00	D	29.60
174	FIROZPUR	ZIRA	S-NPP	74.86114	30.90929	13:00:00	D	95.50
175	FIROZPUR	ZIRA	S-NPP	74.85961	30.91102	13:00:00	D	8.20
176	FIROZPUR	ZIRA	S-NPP	74.97595	30.91773	13:00:00	D	1.90
177	FIROZPUR	ZIRA	S-NPP	74.88545	31.00454	13:00:00	D	5.10
178	FIROZPUR	ZIRA	S-NPP	74.88231	31.00699	13:00:00	D	5.40
179	FIROZPUR	ZIRA	S-NPP	74.88409	31.00911	13:00:00	D	5.10
180	FIROZPUR	ZIRA	S-NPP	74.86193	31.02374	13:00:00	D	4.70
181	FIROZPUR	ZIRA	S-NPP	75.04179	31.08146	13:00:00	D	7.50
182	FIROZPUR	ZIRA	S-NPP	75.03522	31.12333	13:00:00	D	5.30
183	FIROZPUR	ZIRA	S-NPP	75.04064	31.12452	13:00:00	D	6.00
184	FIROZPUR	ZIRA	AQUA	74.93900	31.12900	14:10:00	D	12.60
185	FIROZPUR	ZIRA	AQUA	74.93400	31.13100	14:10:00	D	15.00
186	GURDASPUR	BATALA	S-NPP	75.41469	31.64042	13:00:00	D	3.60
187	GURDASPUR	BATALA	S-NPP	75.41343	31.64480	13:00:00	D	3.60
188	GURDASPUR	BATALA	S-NPP	75.35737	31.65138	13:00:00	D	6.80
189	GURDASPUR	BATALA	S-NPP	75.34627	31.66022	13:00:00	D	7.30
190	GURDASPUR	BATALA	S-NPP	75.34840	31.66345	13:00:00	D	5.60
191	GURDASPUR	BATALA	S-NPP	75.40701	31.66667	13:00:00	D	13.80
192	GURDASPUR	BATALA	S-NPP	75.34753	31.67452	13:00:00	D	5.20
193	GURDASPUR	BATALA	S-NPP	75.40952	31.67650	13:00:00	D	2.20
194	GURDASPUR	BATALA	S-NPP	75.34750	31.69319	13:00:00	D	4.50
195	GURDASPUR	BATALA	S-NPP	75.27576	31.69621	13:00:00	D	4.00

196	GURDASPUR	BATALA	S-NPP	75.22018	31.69817	13:00:00	D	6.70
197	GURDASPUR	BATALA	S-NPP	75.22536	31.69930	13:00:00	D	8.20
198	GURDASPUR	BATALA	S-NPP	75.26801	31.70389	13:00:00	D	3.50
199	GURDASPUR	BATALA	S-NPP	75.45633	31.70768	13:00:00	D	3.70
200	GURDASPUR	BATALA	S-NPP	75.29876	31.74798	13:00:00	D	4.50
201	GURDASPUR	BATALA	AQUA	75.19300	31.74800	14:10:00	D	32.80
202	GURDASPUR	BATALA	S-NPP	75.36390	31.74801	13:00:00	D	2.10
203	GURDASPUR	BATALA	AQUA	75.21600	31.75000	14:10:00	D	35.80
204	GURDASPUR	BATALA	S-NPP	75.38421	31.75238	13:00:00	D	4.20
205	GURDASPUR	BATALA	S-NPP	75.16638	31.75867	13:00:00	D	5.20
206	GURDASPUR	BATALA	S-NPP	75.39306	31.75893	13:00:00	D	3.80
207	GURDASPUR	BATALA	S-NPP	75.29156	31.76284	13:00:00	D	4.40
208	GURDASPUR	BATALA	S-NPP	75.30302	31.77939	13:00:00	D	3.60
209	GURDASPUR	BATALA	S-NPP	75.34000	31.78286	13:00:00	D	3.30
210	GURDASPUR	BATALA	S-NPP	75.34212	31.78523	13:00:00	D	3.00
211	GURDASPUR	BATALA	S-NPP	75.31705	31.78715	13:00:00	D	6.40
212	GURDASPUR	BATALA	S-NPP	75.32215	31.78826	13:00:00	D	7.60
213	GURDASPUR	BATALA	S-NPP	75.40199	31.79184	13:00:00	D	4.40
214	GURDASPUR	BATALA	S-NPP	75.39924	31.79274	13:00:00	D	3.00
215	GURDASPUR	BATALA	S-NPP	75.39568	31.79510	13:00:00	D	4.40
216	GURDASPUR	BATALA	S-NPP	75.48357	31.79680	13:00:00	D	4.10
217	GURDASPUR	BATALA	S-NPP	75.39796	31.79710	13:00:00	D	3.00
218	GURDASPUR	BATALA	S-NPP	75.09922	31.84394	13:00:00	D	3.40
219	GURDASPUR	BATALA	S-NPP	75.09390	31.88053	13:00:00	D	9.70
220	GURDASPUR	BATALA	S-NPP	75.09913	31.88168	13:00:00	D	11.30
221	GURDASPUR	DERA BABA NANAK	S-NPP	75.10036	31.91494	13:00:00	D	2.60
222	GURDASPUR	DERA BABA NANAK	S-NPP	75.05669	31.92597	13:00:00	D	3.90
223	GURDASPUR	DERA BABA NANAK	S-NPP	75.06193	31.92713	13:00:00	D	3.90
224	GURDASPUR	DERA BABA NANAK	S-NPP	75.04388	31.93573	13:00:00	D	6.60
225	GURDASPUR	DERA BABA NANAK	S-NPP	75.04227	31.93694	13:00:00	D	5.80
226	GURDASPUR	DERA BABA NANAK	S-NPP	74.96436	31.95283	13:00:00	D	4.50
227	GURDASPUR	DERA BABA NANAK	S-NPP	74.96966	31.95401	13:00:00	D	6.30
228	GURDASPUR	DERA BABA NANAK	S-NPP	74.97754	31.98420	13:00:00	D	3.70

229	GURDASPUR	DERA BABA NANAK	S-NPP	75.06687	32.02258	13:00:00	D	5.70
230	GURDASPUR	DERA BABA NANAK	S-NPP	75.06033	32.02587	13:00:00	D	5.70
231	GURDASPUR	DERA BABA NANAK	S-NPP	75.06555	32.02700	13:00:00	D	5.70
232	GURDASPUR	GURDASPUR	S-NPP	75.47977	31.79966	13:00:00	D	4.00
233	GURDASPUR	GURDASPUR	S-NPP	75.48475	31.80075	13:00:00	D	4.00
234	GURDASPUR	GURDASPUR	S-NPP	75.36385	31.84855	13:00:00	D	4.30
235	GURDASPUR	GURDASPUR	S-NPP	75.38408	31.85291	13:00:00	D	4.80
236	GURDASPUR	GURDASPUR	S-NPP	75.38151	31.86163	13:00:00	D	2.10
237	GURDASPUR	GURDASPUR	S-NPP	75.30927	31.89499	13:00:00	D	6.00
238	GURDASPUR	GURDASPUR	S-NPP	75.37761	31.90069	13:00:00	D	5.50
239	GURDASPUR	GURDASPUR	AQUA	75.32300	31.90100	14:10:00	D	18.00
240	GURDASPUR	GURDASPUR	S-NPP	75.35726	31.93336	13:00:00	D	3.80
241	GURDASPUR	GURDASPUR	S-NPP	75.19168	31.95602	13:00:00	D	2.20
242	GURDASPUR	GURDASPUR	S-NPP	75.13609	31.97657	13:00:00	D	4.10
243	GURDASPUR	GURDASPUR	S-NPP	75.23766	32.00357	13:00:00	D	2.90
244	GURDASPUR	GURDASPUR	S-NPP	75.31277	32.00607	13:00:00	D	6.40
245	GURDASPUR	GURDASPUR	S-NPP	75.22071	32.06052	13:00:00	D	4.60
246	GURDASPUR	GURDASPUR	S-NPP	75.12010	32.06695	13:00:00	D	3.90
247	GURDASPUR	GURDASPUR	S-NPP	75.12184	32.06919	13:00:00	D	4.50
248	GURDASPUR	GURDASPUR	S-NPP	75.33092	32.09672	13:00:00	D	4.90
249	GURDASPUR	GURDASPUR	S-NPP	75.33363	32.09867	13:00:00	D	2.50
250	GURDASPUR	GURDASPUR	S-NPP	75.43323	32.12843	13:00:00	D	4.40
251	GURDASPUR	GURDASPUR	S-NPP	75.43122	32.12866	13:00:00	D	5.80
252	HOSHIARPUR	DASUYA	S-NPP	75.58142	31.61637	13:00:00	D	1.80
253	HOSHIARPUR	DASUYA	S-NPP	75.49901	31.64469	13:00:00	D	3.30
254	HOSHIARPUR	DASUYA	AQUA	75.56800	31.72700	14:10:00	D	16.20
255	HOSHIARPUR	DASUYA	AQUA	75.57300	31.73100	14:10:00	D	19.50
256	HOSHIARPUR	GARHSHANKAR	S-NPP	76.11362	31.20859	13:00:00	D	3.80
257	HOSHIARPUR	GARHSHANKAR	S-NPP	76.10300	31.21084	13:00:00	D	5.40
258	JALANDHAR	JALANDHAR I	S-NPP	75.68062	31.22142	13:00:00	D	2.90
259	JALANDHAR	JALANDHAR I	S-NPP	75.55645	31.22709	13:00:00	D	2.20
260	JALANDHAR	JALANDHAR II	S-NPP	75.59496	31.45957	13:00:00	D	4.30
261	JALANDHAR	JALANDHAR II	S-NPP	75.60781	31.59025	13:00:00	D	4.40

262	JALANDHAR	NAKODAR	S-NPP	75.42198	30.99259	13:00:00	D	19.00
263	JALANDHAR	NAKODAR	S-NPP	75.47118	31.03136	13:00:00	D	5.50
264	JALANDHAR	NAKODAR	S-NPP	75.47440	31.03357	13:00:00	D	6.30
265	JALANDHAR	NAKODAR	S-NPP	75.47636	31.14897	13:00:00	D	8.90
266	JALANDHAR	NAKODAR	S-NPP	75.47327	31.15055	13:00:00	D	5.80
267	JALANDHAR	NAKODAR	AQUA	75.51100	31.15600	14:10:00	D	13.80
268	JALANDHAR	NAKODAR	S-NPP	75.52737	31.16017	13:00:00	D	4.00
269	JALANDHAR	NAKODAR	S-NPP	75.57925	31.16689	13:00:00	D	7.40
270	JALANDHAR	NAKODAR	S-NPP	75.57925	31.18551	13:00:00	D	4.60
271	JALANDHAR	PHILLAUR	S-NPP	75.52001	31.03242	13:00:00	D	5.40
272	JALANDHAR	PHILLAUR	S-NPP	75.67216	31.04629	13:00:00	D	7.90
273	JALANDHAR	PHILLAUR	S-NPP	75.56256	31.04829	13:00:00	D	3.40
274	JALANDHAR	PHILLAUR	S-NPP	75.66714	31.13149	13:00:00	D	6.00
275	JALANDHAR	PHILLAUR	S-NPP	75.62952	31.13268	13:00:00	D	3.30
276	JALANDHAR	SHAHKOT	AQUA	75.37700	31.00100	14:10:00	D	22.30
277	JALANDHAR	SHAHKOT	S-NPP	75.23446	31.05669	13:00:00	D	5.10
278	JALANDHAR	SHAHKOT	S-NPP	75.22652	31.06448	13:00:00	D	11.20
279	JALANDHAR	SHAHKOT	S-NPP	75.21457	31.06665	13:00:00	D	9.30
280	JALANDHAR	SHAHKOT	S-NPP	75.29260	31.06932	13:00:00	D	7.40
281	JALANDHAR	SHAHKOT	AQUA	75.21200	31.07600	14:10:00	D	48.60
282	JALANDHAR	SHAHKOT	AQUA	75.20400	31.07700	14:10:00	D	26.70
283	JALANDHAR	SHAHKOT	AQUA	75.22600	31.07900	14:10:00	D	40.10
284	JALANDHAR	SHAHKOT	S-NPP	75.37120	31.10522	13:00:00	D	2.50
285	KAPURTHALA	BHOLATH	S-NPP	75.51551	31.56131	13:00:00	D	2.50
286	KAPURTHALA	BHOLATH	S-NPP	75.50037	31.57659	13:00:00	D	12.40
287	KAPURTHALA	BHOLATH	TERRA	75.49900	31.57900	10:55:00	D	16.40
288	KAPURTHALA	BHOLATH	S-NPP	75.49910	31.58095	13:00:00	D	12.40
289	KAPURTHALA	BHOLATH	S-NPP	75.59418	31.58274	13:00:00	D	7.60
290	KAPURTHALA	BHOLATH	S-NPP	75.50043	31.58478	13:00:00	D	14.20
291	KAPURTHALA	BHOLATH	S-NPP	75.49783	31.58532	13:00:00	D	9.90
292	KAPURTHALA	BHOLATH	S-NPP	75.50286	31.58638	13:00:00	D	8.30
293	KAPURTHALA	BHOLATH	S-NPP	75.59293	31.58708	13:00:00	D	7.80
294	KAPURTHALA	BHOLATH	S-NPP	75.47279	31.58800	13:00:00	D	7.10

295	KAPURTHALA	BHOLATH	S-NPP	75.47781	31.58910	13:00:00	D	7.10
296	KAPURTHALA	BHOLATH	S-NPP	75.47514	31.58976	13:00:00	D	10.30
297	KAPURTHALA	BHOLATH	S-NPP	75.49289	31.59240	13:00:00	D	13.00
298	KAPURTHALA	BHOLATH	S-NPP	75.49025	31.59297	13:00:00	D	5.30
299	KAPURTHALA	BHOLATH	AQUA	75.50100	31.59300	14:10:00	D	41.20
300	KAPURTHALA	BHOLATH	S-NPP	75.49529	31.59403	13:00:00	D	5.30
301	KAPURTHALA	BHOLATH	S-NPP	75.54916	31.60009	13:00:00	D	3.50
302	KAPURTHALA	BHOLATH	S-NPP	75.54669	31.60031	13:00:00	D	2.30
303	KAPURTHALA	BHOLATH	S-NPP	75.50038	31.60331	13:00:00	D	4.30
304	KAPURTHALA	BHOLATH	S-NPP	75.49911	31.60767	13:00:00	D	4.30
305	KAPURTHALA	BHOLATH	S-NPP	75.45758	31.62182	13:00:00	D	4.20
306	KAPURTHALA	BHOLATH	S-NPP	75.54285	31.62182	13:00:00	D	4.60
307	KAPURTHALA	BHOLATH	S-NPP	75.51535	31.62509	13:00:00	D	3.80
308	KAPURTHALA	BHOLATH	S-NPP	75.51909	31.63053	13:00:00	D	3.80
309	KAPURTHALA	KAPURTHALA	S-NPP	75.41149	31.28654	13:00:00	D	4.20
310	KAPURTHALA	KAPURTHALA	S-NPP	75.25673	31.39130	13:00:00	D	2.20
311	KAPURTHALA	KAPURTHALA	S-NPP	75.20829	31.40444	13:00:00	D	8.20
312	KAPURTHALA	KAPURTHALA	S-NPP	75.30746	31.40700	13:00:00	D	7.70
313	KAPURTHALA	KAPURTHALA	S-NPP	75.22929	31.40897	13:00:00	D	5.40
314	KAPURTHALA	KAPURTHALA	S-NPP	75.27370	31.40912	13:00:00	D	4.10
315	KAPURTHALA	KAPURTHALA	S-NPP	75.21183	31.42491	13:00:00	D	6.50
316	KAPURTHALA	KAPURTHALA	S-NPP	75.20697	31.42780	13:00:00	D	6.10
317	KAPURTHALA	KAPURTHALA	S-NPP	75.21053	31.42936	13:00:00	D	2.20
318	KAPURTHALA	KAPURTHALA	AQUA	75.42400	31.49700	14:10:00	D	20.60
319	KAPURTHALA	PHAGWARA	S-NPP	75.70647	31.29611	13:00:00	D	6.30
320	KAPURTHALA	PHAGWARA	S-NPP	75.70729	31.29988	13:00:00	D	5.60
321	LUDHIANA	JAGRAON	S-NPP	75.44621	30.63080	13:00:00	D	6.50
322	LUDHIANA	JAGRAON	AQUA	75.61000	30.87900	14:10:00	D	18.40
323	LUDHIANA	LUDHIANA EAST	S-NPP	76.12382	30.99585	13:00:00	D	2.90
324	LUDHIANA	LUDHIANA WEST	S-NPP	75.77557	30.93532	13:00:00	D	1.60
325	LUDHIANA	RAIKOT	S-NPP	75.61993	30.71545	13:00:00	D	7.20
326	LUDHIANA	RAIKOT	S-NPP	75.62504	30.71654	13:00:00	D	10.80
327	LUDHIANA	SAMRALA	S-NPP	76.19765	30.86454	13:00:00	D	6.10

328	LUDHIANA	SAMRALA	S-NPP	76.21894	30.88415	13:00:00	D	15.60
329	LUDHIANA	SAMRALA	S-NPP	76.28285	30.97390	13:00:00	D	3.10
330	LUDHIANA	SAMRALA	S-NPP	76.24735	30.99956	13:00:00	D	5.40
331	MANSA	BUDHLADA	S-NPP	75.50361	29.80783	13:00:00	D	4.10
332	MANSA	BUDHLADA	S-NPP	75.53763	29.83886	13:00:00	D	4.30
333	MANSA	BUDHLADA	S-NPP	75.54010	29.83967	13:00:00	D	4.10
334	MANSA	BUDHLADA	S-NPP	75.59061	29.84092	13:00:00	D	20.60
335	MANSA	BUDHLADA	S-NPP	75.54600	29.86948	13:00:00	D	2.50
336	MANSA	BUDHLADA	S-NPP	75.65392	30.01205	13:00:00	D	11.40
337	MANSA	SARDULGARH	S-NPP	75.25907	29.68630	13:00:00	D	3.90
338	MANSA	SARDULGARH	S-NPP	75.25087	29.69427	13:00:00	D	8.40
339	MANSA	SARDULGARH	S-NPP	75.28009	29.81087	13:00:00	D	4.60
340	MANSA	SARDULGARH	S-NPP	75.23866	29.81146	13:00:00	D	60.80
341	MANSA	SARDULGARH	S-NPP	75.35190	29.84616	13:00:00	D	2.50
342	MOGA	BAGHA PURANA	S-NPP	75.18616	30.67886	13:00:00	D	4.40
343	MOGA	MOGA	S-NPP	75.33213	30.70623	13:00:00	D	5.40
344	MOGA	MOGA	S-NPP	75.07892	30.79839	13:00:00	D	3.90
345	MUKTSAR	GIDDARBAHA	S-NPP	74.64910	30.26955	13:00:00	D	9.70
346	MUKTSAR	GIDDARBAHA	S-NPP	74.68175	30.28684	13:00:00	D	12.70
347	MUKTSAR	GIDDARBAHA	S-NPP	74.54210	30.33047	13:00:00	D	11.00
348	MUKTSAR	MALAUT	S-NPP	74.46493	30.22320	13:00:00	D	6.50
349	MUKTSAR	MALAUT	S-NPP	74.46352	30.22796	13:00:00	D	6.50
350	MUKTSAR	MUKTSAR	S-NPP	74.45933	30.45146	13:00:00	D	17.20
351	MUKTSAR	MUKTSAR	S-NPP	74.48931	30.45819	13:00:00	D	9.70
352	MUKTSAR	MUKTSAR	S-NPP	74.43455	30.48505	13:00:00	D	5.40
353	MUKTSAR	MUKTSAR	S-NPP	74.43595	30.48668	13:00:00	D	6.70
354	MUKTSAR	MUKTSAR	S-NPP	74.58313	30.60410	13:00:00	D	3.50
355	MUKTSAR	MUKTSAR	S-NPP	74.54288	30.60430	13:00:00	D	5.50
356	MUKTSAR	MUKTSAR	S-NPP	74.54494	30.60563	13:00:00	D	8.00
357	MUKTSAR	MUKTSAR	S-NPP	74.60300	30.61307	13:00:00	D	4.20
358	MUKTSAR	MUKTSAR	S-NPP	74.54179	30.62913	13:00:00	D	2.90
359	MUKTSAR	MUKTSAR	S-NPP	74.54941	30.64589	13:00:00	D	4.60
360	MUKTSAR	MUKTSAR	S-NPP	74.48181	30.66073	13:00:00	D	7.50

361	NAWASHAHR	BALACHAUR	S-NPP	76.23512	31.10246	13:00:00	D	4.00
362	NAWASHAHR	NAWASHAHR	S-NPP	76.11143	31.17078	13:00:00	D	5.80
363	NAWASHAHR	NAWASHAHR	S-NPP	76.10909	31.17158	13:00:00	D	6.50
364	NAWASHAHR	NAWASHAHR	S-NPP	75.80942	31.20326	13:00:00	D	2.80
365	NAWASHAHR	NAWASHAHR	S-NPP	75.82288	31.21067	13:00:00	D	5.20
366	PATIALA	NABHA	S-NPP	76.05736	30.43383	13:00:00	D	12.30
367	PATIALA	NABHA	S-NPP	76.18919	30.45731	13:00:00	D	3.70
368	PATIALA	NABHA	S-NPP	76.31399	30.46117	13:00:00	D	7.80
369	PATIALA	NABHA	S-NPP	76.08668	30.49500	13:00:00	D	14.70
370	PATIALA	NABHA	S-NPP	76.17242	30.49927	13:00:00	D	6.90
371	PATIALA	PATIALA	S-NPP	76.31820	30.10896	13:00:00	D	2.90
372	PATIALA	PATIALA	S-NPP	76.39088	30.14286	13:00:00	D	3.30
373	PATIALA	PATIALA	S-NPP	76.38971	30.14714	13:00:00	D	6.40
374	PATIALA	PATIALA	S-NPP	76.61701	30.15728	13:00:00	D	3.10
375	PATIALA	PATIALA	S-NPP	76.43794	30.17092	13:00:00	D	5.20
376	PATIALA	PATIALA	S-NPP	76.34953	30.18394	13:00:00	D	4.40
377	PATIALA	PATIALA	S-NPP	76.55200	30.18600	13:00:00	D	2.20
378	PATIALA	PATIALA	S-NPP	76.57851	30.19605	13:00:00	D	3.20
379	PATIALA	PATIALA	S-NPP	76.58770	30.19799	13:00:00	D	5.30
380	PATIALA	PATIALA	S-NPP	76.59229	30.23466	13:00:00	D	2.20
381	PATIALA	PATIALA	S-NPP	76.55198	30.23969	13:00:00	D	2.70
382	PATIALA	PATIALA	S-NPP	76.58419	30.28203	13:00:00	D	2.70
383	PATIALA	PATIALA	S-NPP	76.26537	30.34058	13:00:00	D	8.30
384	PATIALA	PATIALA	S-NPP	76.48946	30.39264	13:00:00	D	5.50
385	PATIALA	PATIALA	S-NPP	76.43142	30.40732	13:00:00	D	12.70
386	PATIALA	PATIALA	S-NPP	76.42559	30.41059	13:00:00	D	11.50
387	PATIALA	RAJPURA	S-NPP	76.65165	30.30027	13:00:00	D	4.00
388	PATIALA	RAJPURA	TERRA	76.57500	30.35500	10:55:00	D	14.20
389	PATIALA	RAJPURA	TERRA	76.56300	30.35700	10:55:00	D	6.40
390	PATIALA	RAJPURA	S-NPP	76.69836	30.36672	13:00:00	D	5.90
391	PATIALA	RAJPURA	S-NPP	76.65420	30.37088	13:00:00	D	2.90
392	PATIALA	RAJPURA	S-NPP	76.54362	30.39067	13:00:00	D	1.70
393	PATIALA	RAJPURA	AQUA	76.51800	30.39900	14:10:00	D	32.50

394	PATIALA	RAJPURA	TERRA	76.69800	30.43200	10:55:00	D	6.40
395	PATIALA	RAJPURA	S-NPP	76.73821	30.50208	13:00:00	D	3.30
396	PATIALA	RAJPURA	TERRA	76.49500	30.51800	10:55:00	D	9.90
397	PATIALA	RAJPURA	S-NPP	76.62434	30.51850	13:00:00	D	1.90
398	PATIALA	RAJPURA	S-NPP	76.53915	30.53554	13:00:00	D	2.80
399	PATIALA	RAJPURA	S-NPP	76.64931	30.55409	13:00:00	D	7.90
400	PATIALA	RAJPURA	S-NPP	76.65382	30.55504	13:00:00	D	7.90
401	PATIALA	RAJPURA	TERRA	76.58900	30.56800	10:55:00	D	12.20
402	PATIALA	RAJPURA	S-NPP	76.59943	30.57914	13:00:00	D	10.70
403	PATIALA	RAJPURA	S-NPP	76.55738	30.63105	13:00:00	D	3.50
404	PATIALA	SAMANA	S-NPP	76.16444	29.87173	13:00:00	D	12.60
405	PATIALA	SAMANA	S-NPP	76.15352	29.95560	13:00:00	D	3.00
406	PATIALA	SAMANA	S-NPP	76.20013	29.99290	13:00:00	D	4.20
407	PATIALA	SAMANA	S-NPP	76.20214	29.99308	13:00:00	D	8.30
408	PATIALA	SAMANA	S-NPP	76.20502	29.99391	13:00:00	D	4.20
409	PATIALA	SAMANA	S-NPP	76.17548	30.01495	13:00:00	D	5.60
410	RUPNAGAR	CHAMKOR SAHIB	S-NPP	76.54258	30.83829	13:00:00	D	9.20
411	RUPNAGAR	CHAMKOR SAHIB	S-NPP	76.54709	30.83924	13:00:00	D	9.30
412	RUPNAGAR	CHAMKOR SAHIB	S-NPP	76.45811	30.95695	13:00:00	D	7.90
413	SANGRUR	DHURI	S-NPP	75.75456	30.34544	13:00:00	D	3.00
414	SANGRUR	DHURI	S-NPP	75.71598	30.47006	13:00:00	D	6.60
415	SANGRUR	MALERKOTLA	S-NPP	75.73652	30.53055	13:00:00	D	3.50
416	SANGRUR	MALERKOTLA	S-NPP	75.93675	30.53602	13:00:00	D	4.80
417	SANGRUR	MALERKOTLA	S-NPP	75.84860	30.54966	13:00:00	D	3.40
418	SANGRUR	MOONAK	TERRA	75.90900	29.78500	10:55:00	D	7.80
419	SANGRUR	MOONAK	S-NPP	75.86903	29.78633	13:00:00	D	3.40
420	SANGRUR	MOONAK	S-NPP	75.88441	29.78960	13:00:00	D	3.60
421	SANGRUR	MOONAK	S-NPP	75.89465	29.79177	13:00:00	D	6.40
422	SANGRUR	MOONAK	S-NPP	75.90487	29.79394	13:00:00	D	11.20
423	SANGRUR	MOONAK	S-NPP	75.97092	29.80792	13:00:00	D	4.20
424	SANGRUR	MOONAK	S-NPP	75.82646	29.83001	13:00:00	D	3.20
425	SANGRUR	MOONAK	S-NPP	75.79447	29.84669	13:00:00	D	12.20
426	SANGRUR	MOONAK	S-NPP	75.79466	29.86561	13:00:00	D	5.90

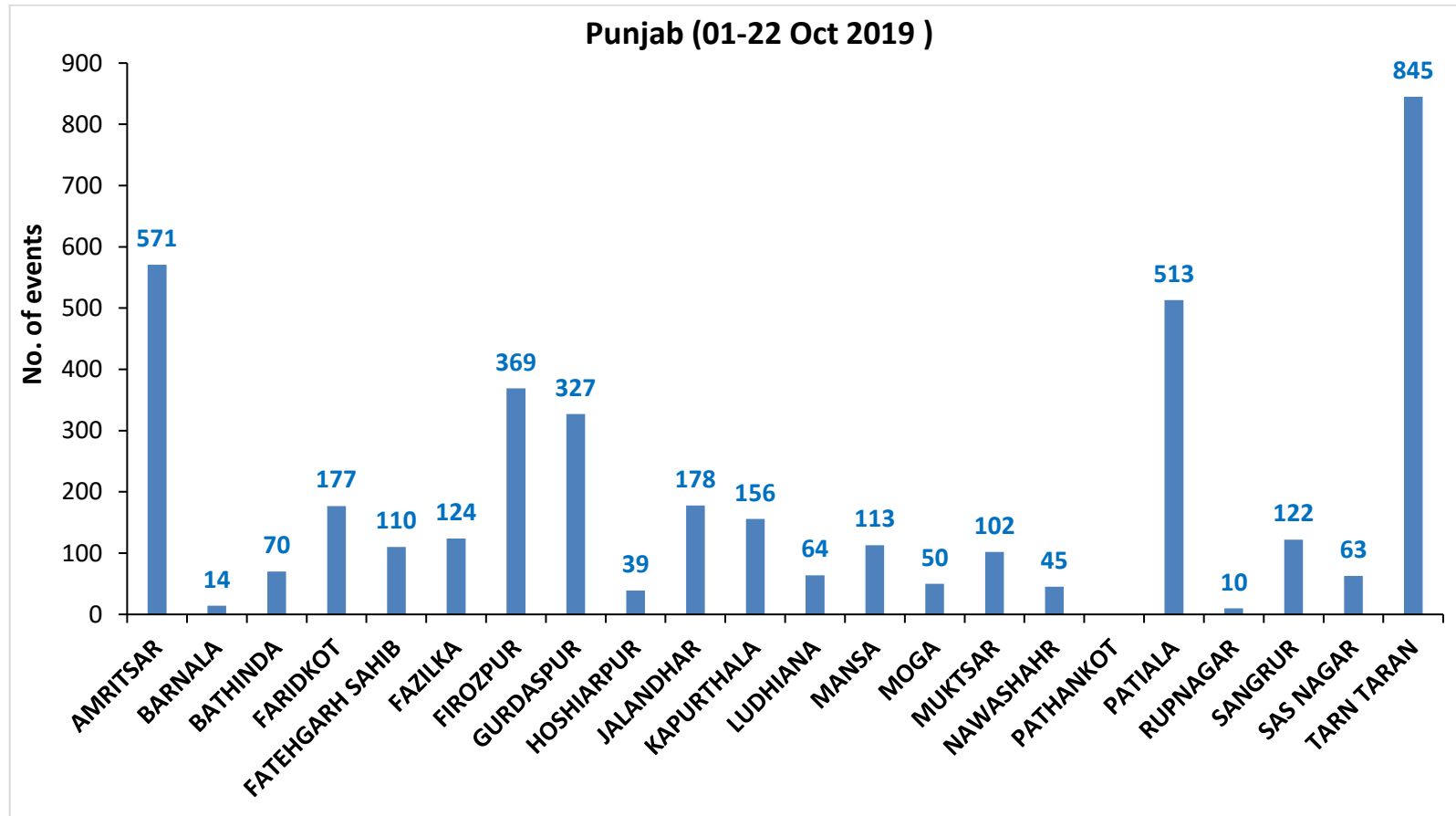
427	SANGRUR	MOONAK	S-NPP	75.84236	29.88990	13:00:00	D	6.90
428	SANGRUR	MOONAK	S-NPP	75.84112	29.89433	13:00:00	D	13.00
429	SANGRUR	MOONAK	S-NPP	75.89346	29.90075	13:00:00	D	3.70
430	SANGRUR	MOONAK	S-NPP	75.89112	29.92834	13:00:00	D	3.60
431	SANGRUR	MOONAK	S-NPP	75.84720	29.93982	13:00:00	D	12.60
432	SANGRUR	SANGRUR	S-NPP	75.78431	30.26970	13:00:00	D	3.40
433	SANGRUR	SANGRUR	S-NPP	76.10892	30.31627	13:00:00	D	11.50
434	SANGRUR	SANGRUR	S-NPP	76.11378	30.31731	13:00:00	D	11.50
435	SANGRUR	SANGRUR	S-NPP	75.98138	30.32586	13:00:00	D	10.40
436	SANGRUR	SUNAM	S-NPP	75.92884	30.01346	13:00:00	D	2.10
437	SANGRUR	SUNAM	S-NPP	75.85114	30.06884	13:00:00	D	4.00
438	SANGRUR	SUNAM	S-NPP	75.85622	30.06993	13:00:00	D	6.10
439	SANGRUR	SUNAM	S-NPP	75.80803	30.08772	13:00:00	D	14.10
440	SANGRUR	SUNAM	S-NPP	75.80678	30.09215	13:00:00	D	14.10
441	SAS NAGAR	DERABASSI	S-NPP	76.75990	30.43662	13:00:00	D	2.80
442	SAS NAGAR	DERABASSI	S-NPP	76.83621	30.46967	13:00:00	D	1.90
443	SAS NAGAR	DERABASSI	S-NPP	76.83044	30.52534	13:00:00	D	4.20
444	SAS NAGAR	DERABASSI	S-NPP	76.75260	30.53577	13:00:00	D	1.90
445	SAS NAGAR	DERABASSI	S-NPP	76.75795	30.55473	13:00:00	D	1.30
446	SAS NAGAR	KHARAR	S-NPP	76.60916	30.83906	13:00:00	D	1.40
447	SAS NAGAR	KHARAR	S-NPP	76.61233	30.84058	13:00:00	D	2.10
448	SAS NAGAR	KHARAR	S-NPP	76.70306	30.85879	13:00:00	D	2.50
449	SAS NAGAR	KHARAR	S-NPP	76.70200	30.85880	13:00:00	D	2.50
450	SAS NAGAR	MOHALI	S-NPP	76.72664	30.58337	13:00:00	D	3.30
451	SAS NAGAR	MOHALI	S-NPP	76.71986	30.60833	13:00:00	D	2.50
452	SAS NAGAR	MOHALI	S-NPP	76.68511	30.61440	13:00:00	D	2.20
453	SAS NAGAR	MOHALI	S-NPP	76.76211	30.64326	13:00:00	D	2.30
454	TARN TARAN	KHADOOR SAHIB	S-NPP	74.97504	31.21963	13:00:00	D	8.60
455	TARN TARAN	KHADOOR SAHIB	S-NPP	75.04960	31.24078	13:00:00	D	5.80
456	TARN TARAN	KHADOOR SAHIB	S-NPP	75.04971	31.25997	13:00:00	D	3.50
457	TARN TARAN	KHADOOR SAHIB	S-NPP	75.06478	31.27771	13:00:00	D	3.80
458	TARN TARAN	KHADOOR SAHIB	S-NPP	75.06724	31.27813	13:00:00	D	5.00
459	TARN TARAN	KHADOOR SAHIB	S-NPP	74.94051	31.28850	13:00:00	D	3.20

460	TARN TARAN	KHADOOR SAHIB	S-NPP	74.91048	31.29149	13:00:00	D	5.70
461	TARN TARAN	KHADOOR SAHIB	AQUA	74.98900	31.31500	14:10:00	D	12.40
462	TARN TARAN	KHADOOR SAHIB	S-NPP	74.98820	31.32310	13:00:00	D	6.10
463	TARN TARAN	KHADOOR SAHIB	S-NPP	74.99362	31.32429	13:00:00	D	6.10
464	TARN TARAN	KHADOOR SAHIB	S-NPP	74.95577	31.35445	13:00:00	D	4.40
465	TARN TARAN	KHADOOR SAHIB	S-NPP	74.98427	31.35585	13:00:00	D	3.10
466	TARN TARAN	KHADOOR SAHIB	S-NPP	74.99133	31.36622	13:00:00	D	10.10
467	TARN TARAN	KHADOOR SAHIB	S-NPP	74.99243	31.36722	13:00:00	D	9.30
468	TARN TARAN	KHADOOR SAHIB	S-NPP	74.75455	31.39568	13:00:00	D	7.00
469	TARN TARAN	KHADOOR SAHIB	S-NPP	75.10780	31.39705	13:00:00	D	5.50
470	TARN TARAN	KHADOOR SAHIB	S-NPP	75.10922	31.39729	13:00:00	D	3.20
471	TARN TARAN	KHADOOR SAHIB	S-NPP	74.98198	31.39775	13:00:00	D	2.90
472	TARN TARAN	KHADOOR SAHIB	S-NPP	75.13437	31.42199	13:00:00	D	11.70
473	TARN TARAN	KHADOOR SAHIB	S-NPP	75.13305	31.42645	13:00:00	D	11.70
474	TARN TARAN	KHADOOR SAHIB	S-NPP	75.21224	31.42893	13:00:00	D	6.10
475	TARN TARAN	KHADOOR SAHIB	S-NPP	75.12645	31.42975	13:00:00	D	3.70
476	TARN TARAN	KHADOOR SAHIB	S-NPP	74.87886	31.43273	13:00:00	D	3.40
477	TARN TARAN	KHADOOR SAHIB	S-NPP	74.66933	31.43325	13:00:00	D	3.40
478	TARN TARAN	KHADOOR SAHIB	S-NPP	74.79998	31.43350	13:00:00	D	5.80
479	TARN TARAN	KHADOOR SAHIB	S-NPP	74.79635	31.43400	13:00:00	D	8.40
480	TARN TARAN	KHADOOR SAHIB	S-NPP	75.12512	31.43421	13:00:00	D	3.70
481	TARN TARAN	KHADOOR SAHIB	S-NPP	75.16999	31.43461	13:00:00	D	17.00
482	TARN TARAN	KHADOOR SAHIB	AQUA	74.77100	31.43900	14:10:00	D	11.90
483	TARN TARAN	KHADOOR SAHIB	S-NPP	74.81711	31.44337	13:00:00	D	4.50
484	TARN TARAN	KHADOOR SAHIB	S-NPP	74.81575	31.44792	13:00:00	D	8.40
485	TARN TARAN	KHADOOR SAHIB	S-NPP	74.81245	31.45085	13:00:00	D	15.60
486	TARN TARAN	KHADOOR SAHIB	S-NPP	74.81438	31.45246	13:00:00	D	8.40
487	TARN TARAN	KHADOOR SAHIB	S-NPP	74.97138	31.45298	13:00:00	D	7.50
488	TARN TARAN	KHADOOR SAHIB	S-NPP	75.05737	31.47174	13:00:00	D	5.80
489	TARN TARAN	KHADOOR SAHIB	S-NPP	75.23161	31.47180	13:00:00	D	5.60
490	TARN TARAN	KHADOOR SAHIB	S-NPP	74.93939	31.47451	13:00:00	D	8.10
491	TARN TARAN	KHADOOR SAHIB	S-NPP	74.94167	31.47530	13:00:00	D	5.70
492	TARN TARAN	KHADOOR SAHIB	S-NPP	75.13972	31.48015	13:00:00	D	4.70

493	TARN TARAN	KHADOOR SAHIB	S-NPP	74.87968	31.48041	13:00:00	D	9.30
494	TARN TARAN	KHADOOR SAHIB	S-NPP	74.89059	31.48285	13:00:00	D	8.80
495	TARN TARAN	KHADOOR SAHIB	S-NPP	74.70181	31.48443	13:00:00	D	4.80
496	TARN TARAN	KHADOOR SAHIB	S-NPP	74.87834	31.48494	13:00:00	D	21.30
497	TARN TARAN	KHADOOR SAHIB	AQUA	75.04200	31.48900	14:10:00	D	26.70
498	TARN TARAN	KHADOOR SAHIB	AQUA	75.05900	31.49100	14:10:00	D	48.80
499	TARN TARAN	KHADOOR SAHIB	AQUA	75.06400	31.49100	14:10:00	D	40.20
500	TARN TARAN	KHADOOR SAHIB	S-NPP	75.07340	31.49427	13:00:00	D	7.90
501	TARN TARAN	KHADOOR SAHIB	S-NPP	75.07610	31.49550	13:00:00	D	13.00
502	TARN TARAN	KHADOOR SAHIB	S-NPP	75.01884	31.49705	13:00:00	D	2.80
503	TARN TARAN	KHADOOR SAHIB	S-NPP	74.72140	31.49851	13:00:00	D	7.00
504	TARN TARAN	KHADOOR SAHIB	S-NPP	74.72422	31.50886	13:00:00	D	3.20
505	TARN TARAN	KHADOOR SAHIB	S-NPP	75.08539	31.51113	13:00:00	D	5.90
506	TARN TARAN	KHADOOR SAHIB	AQUA	74.63200	31.51600	14:10:00	D	15.60
507	TARN TARAN	KHADOOR SAHIB	S-NPP	74.93278	31.51627	13:00:00	D	4.80
508	TARN TARAN	KHADOOR SAHIB	S-NPP	74.81415	31.52382	13:00:00	D	6.80
509	TARN TARAN	PATTI	S-NPP	74.57881	31.14674	13:00:00	D	3.80
510	TARN TARAN	PATTI	AQUA	74.52000	31.15400	14:10:00	D	14.00
511	TARN TARAN	PATTI	S-NPP	74.59361	31.17144	13:00:00	D	16.90
512	TARN TARAN	PATTI	S-NPP	74.59485	31.17497	13:00:00	D	14.50
513	TARN TARAN	PATTI	S-NPP	74.93937	31.18280	13:00:00	D	13.20
514	TARN TARAN	PATTI	S-NPP	74.82071	31.18563	13:00:00	D	9.60
515	TARN TARAN	PATTI	S-NPP	74.92021	31.18823	13:00:00	D	4.90
516	TARN TARAN	PATTI	S-NPP	74.78317	31.19196	13:00:00	D	4.20
517	TARN TARAN	PATTI	S-NPP	74.93946	31.20215	13:00:00	D	11.90
518	TARN TARAN	PATTI	AQUA	74.75000	31.20600	14:10:00	D	12.30
519	TARN TARAN	PATTI	S-NPP	74.93813	31.20669	13:00:00	D	5.60
520	TARN TARAN	PATTI	S-NPP	74.67215	31.21386	13:00:00	D	19.30
521	TARN TARAN	PATTI	S-NPP	74.88815	31.22842	13:00:00	D	3.90
522	TARN TARAN	PATTI	S-NPP	74.79842	31.23251	13:00:00	D	5.40
523	TARN TARAN	PATTI	AQUA	74.84800	31.25200	14:10:00	D	13.90
524	TARN TARAN	PATTI	S-NPP	74.75680	31.25244	13:00:00	D	4.70
525	TARN TARAN	PATTI	S-NPP	74.67817	31.25446	13:00:00	D	13.60

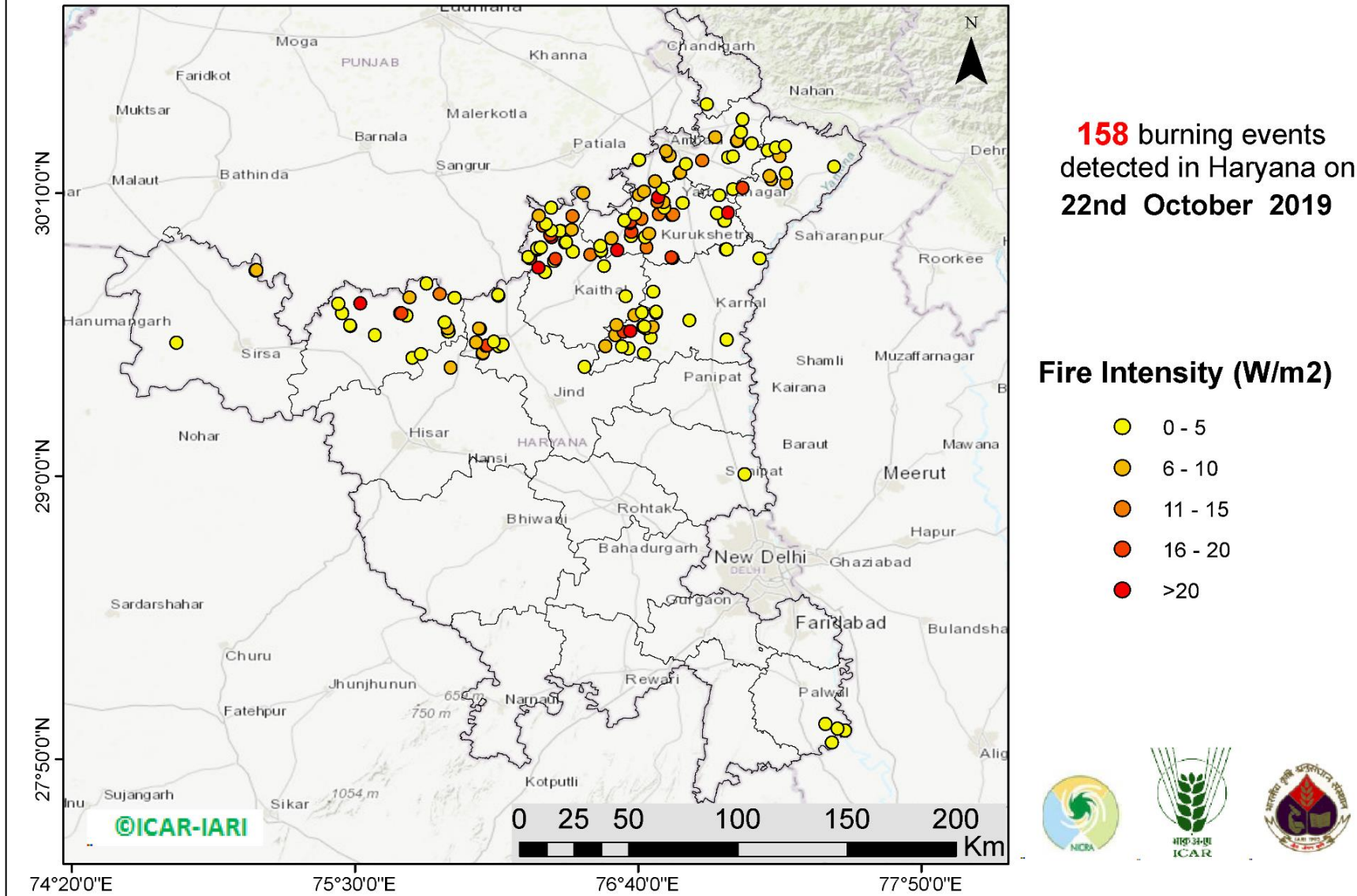
526	TARN TARAN	PATTI	S-NPP	74.58012	31.25724	13:00:00	D	13.00
527	TARN TARAN	PATTI	S-NPP	74.56724	31.25931	13:00:00	D	10.50
528	TARN TARAN	PATTI	S-NPP	74.54145	31.26347	13:00:00	D	5.50
529	TARN TARAN	PATTI	S-NPP	74.56585	31.26394	13:00:00	D	15.90
530	TARN TARAN	PATTI	S-NPP	74.54033	31.26415	13:00:00	D	7.00
531	TARN TARAN	PATTI	AQUA	74.72200	31.26500	14:10:00	D	24.90
532	TARN TARAN	PATTI	S-NPP	74.60161	31.26693	13:00:00	D	5.50
533	TARN TARAN	PATTI	AQUA	74.64000	31.27000	14:10:00	D	24.90
534	TARN TARAN	PATTI	AQUA	74.55800	31.27400	14:10:00	D	23.90
535	TARN TARAN	PATTI	AQUA	74.57800	31.27600	14:10:00	D	13.30
536	TARN TARAN	PATTI	S-NPP	74.63873	31.28166	13:00:00	D	17.20
537	TARN TARAN	PATTI	S-NPP	74.59776	31.29696	13:00:00	D	6.60
538	TARN TARAN	PATTI	S-NPP	74.74311	31.29819	13:00:00	D	4.10
539	TARN TARAN	PATTI	S-NPP	74.58221	31.30822	13:00:00	D	4.60
540	TARN TARAN	PATTI	S-NPP	74.76971	31.30891	13:00:00	D	5.90
541	TARN TARAN	PATTI	S-NPP	74.58792	31.30951	13:00:00	D	4.60
542	TARN TARAN	PATTI	S-NPP	74.90508	31.30961	13:00:00	D	5.00
543	TARN TARAN	PATTI	S-NPP	74.76793	31.31102	13:00:00	D	4.50
544	TARN TARAN	PATTI	AQUA	74.82000	31.31200	14:10:00	D	15.20
545	TARN TARAN	PATTI	S-NPP	74.54945	31.31563	13:00:00	D	6.20
546	TARN TARAN	PATTI	AQUA	74.75100	31.32000	14:10:00	D	13.70
547	TARN TARAN	PATTI	S-NPP	74.74574	31.32551	13:00:00	D	6.40
548	TARN TARAN	PATTI	S-NPP	74.74046	31.32685	13:00:00	D	5.50
549	TARN TARAN	PATTI	S-NPP	74.66322	31.34118	13:00:00	D	2.80
550	TARN TARAN	PATTI	S-NPP	74.60809	31.34356	13:00:00	D	5.10
551	TARN TARAN	PATTI	S-NPP	74.88401	31.35661	13:00:00	D	5.40
552	TARN TARAN	PATTI	S-NPP	74.76272	31.36830	13:00:00	D	17.70
553	TARN TARAN	PATTI	S-NPP	74.58129	31.37200	13:00:00	D	3.50
554	TARN TARAN	PATTI	S-NPP	74.71537	31.41923	13:00:00	D	7.20
555	TARN TARAN	PATTI	S-NPP	74.71706	31.42150	13:00:00	D	5.30

District-wise cumulative number of residue burning events in Punjab (01 to 22-Oct 2019)



(b) Haryana

RICE RESIDUE BURNING IN HARYANA



<http://geoportal.icar.gov.in:8080/geoexplorer/composer/>



Details of residue burning events in Haryana on 22-Oct-2019

S. No.	District	Tehsil / Block	Satellite	Longitude	Latitude	Time (IST)	Day / Night	Fire Power (W/m2)
1	AMBALA	AMBALA	S-NPP	76.73682	30.21597	13:00:00	D	5.60
2	AMBALA	AMBALA	S-NPP	76.84090	30.25093	13:00:00	D	7.60
3	AMBALA	AMBALA	S-NPP	76.86410	30.28647	13:00:00	D	2.40
4	AMBALA	AMBALA	S-NPP	76.93028	30.30007	13:00:00	D	10.40
5	AMBALA	AMBALA	S-NPP	76.66795	30.30279	13:00:00	D	4.40
6	AMBALA	AMBALA	S-NPP	76.66985	30.30398	13:00:00	D	3.90
7	AMBALA	AMBALA	S-NPP	76.78935	30.31948	13:00:00	D	2.50
8	AMBALA	AMBALA	S-NPP	76.79829	30.32130	13:00:00	D	5.60
9	AMBALA	AMBALA	S-NPP	76.78150	30.33988	13:00:00	D	5.60
10	AMBALA	BARARA	S-NPP	77.05795	30.18221	13:00:00	D	1.90
11	AMBALA	BARARA	S-NPP	77.03721	30.31329	13:00:00	D	4.20
12	AMBALA	BARARA	TERRA	77.05700	30.31800	10:55:00	D	4.80
13	AMBALA	NARAYANGARH	S-NPP	77.13498	30.37206	13:00:00	D	1.80
14	AMBALA	NARAYANGARH	S-NPP	77.07368	30.38129	13:00:00	D	8.30
15	AMBALA	NARAYANGARH	S-NPP	77.07799	30.38216	13:00:00	D	8.30
16	AMBALA	NARAYANGARH	S-NPP	77.07509	30.38353	13:00:00	D	9.40
17	AMBALA	NARAYANGARH	TERRA	76.98300	30.39600	10:55:00	D	5.80
18	AMBALA	NARAYANGARH	S-NPP	77.08892	30.41663	13:00:00	D	1.80
19	AMBALA	NARAYANGARH	S-NPP	77.09720	30.47006	13:00:00	D	4.50
20	FATEHABAD	FATEHABAD	S-NPP	75.73659	29.48645	13:00:00	D	4.30
21	FATEHABAD	FATEHABAD	S-NPP	75.58286	29.58166	13:00:00	D	3.40
22	FATEHABAD	RATIA	S-NPP	75.48106	29.61755	13:00:00	D	5.50
23	FATEHABAD	RATIA	S-NPP	75.47913	29.62078	13:00:00	D	4.90
24	FATEHABAD	RATIA	S-NPP	75.44737	29.67188	13:00:00	D	4.00
25	FATEHABAD	RATIA	S-NPP	75.43028	29.71172	13:00:00	D	2.50
26	FATEHABAD	RATIA	S-NPP	75.52214	29.71218	13:00:00	D	45.70
27	FATEHABAD	TOHANA	S-NPP	75.88355	29.59381	13:00:00	D	3.00
28	FATEHABAD	TOHANA	S-NPP	75.88562	29.59510	13:00:00	D	3.10
29	FATEHABAD	TOHANA	S-NPP	75.88192	29.60846	13:00:00	D	8.30
30	FATEHABAD	TOHANA	S-NPP	75.86936	29.63406	13:00:00	D	3.90

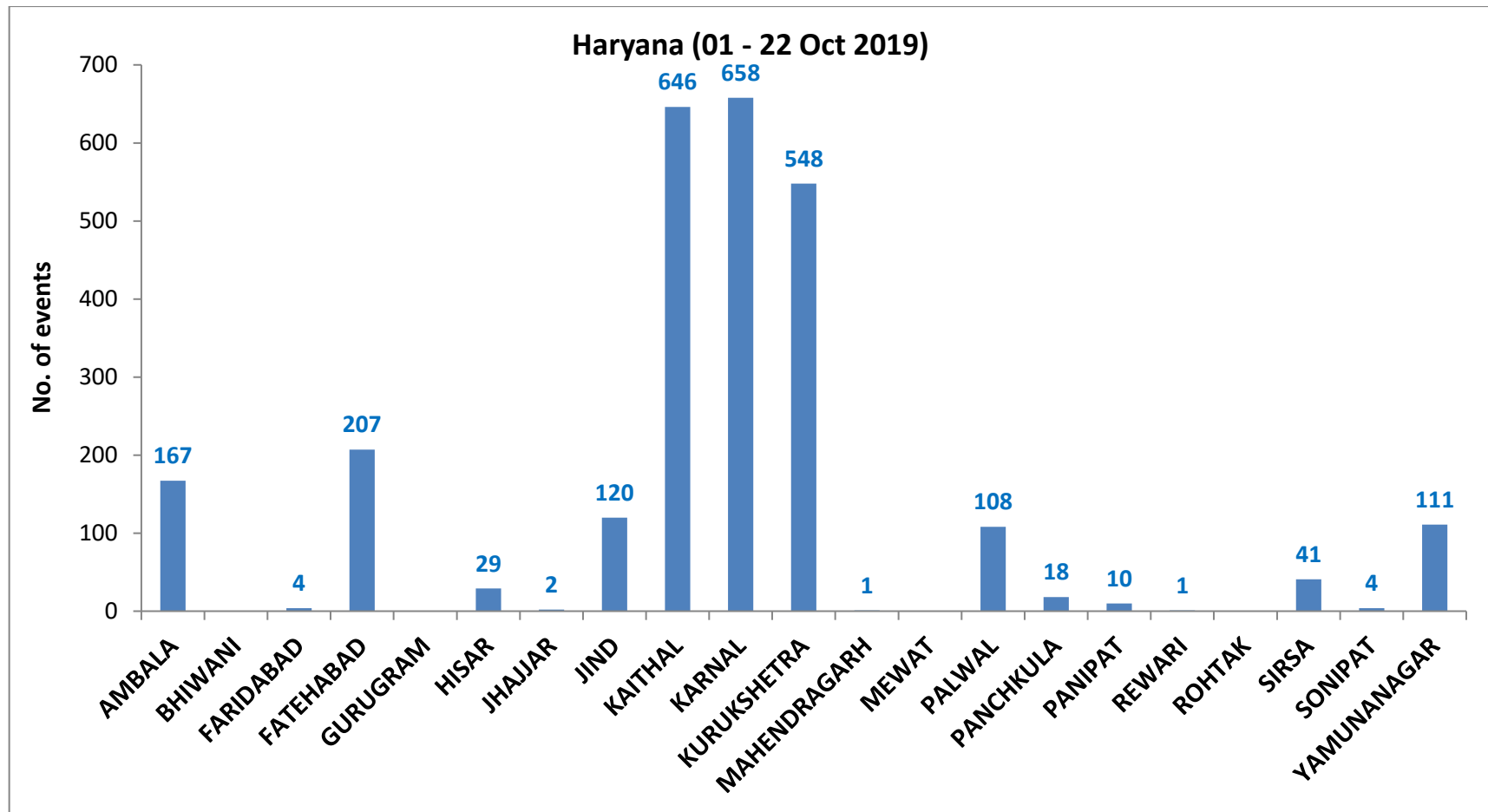
31	FATEHABAD	TOHANA	S-NPP	75.71112	29.66229	13:00:00	D	2.50
32	FATEHABAD	TOHANA	S-NPP	75.68629	29.67115	13:00:00	D	15.20
33	FATEHABAD	TOHANA	S-NPP	75.69156	29.67231	13:00:00	D	15.20
34	FATEHABAD	TOHANA	AQUA	75.87100	29.71300	14:10:00	D	59.50
35	FATEHABAD	TOHANA	AQUA	75.89400	29.71500	14:10:00	D	54.00
36	FATEHABAD	TOHANA	S-NPP	75.91074	29.73416	13:00:00	D	3.40
37	FATEHABAD	TOHANA	S-NPP	75.72374	29.73640	13:00:00	D	7.00
38	FATEHABAD	TOHANA	TERRA	75.84800	29.75100	10:55:00	D	10.50
39	FATEHABAD	TOHANA	S-NPP	75.79577	29.79437	13:00:00	D	3.90
40	HISAR	HISAR	S-NPP	75.89394	29.44830	13:00:00	D	8.40
41	HISAR	HISAR	S-NPP	75.77090	29.50342	13:00:00	D	4.90
42	JIND	JIND	S-NPP	76.44574	29.45087	13:00:00	D	2.70
43	JIND	NARWANA	S-NPP	76.02499	29.50430	13:00:00	D	5.20
44	JIND	NARWANA	S-NPP	76.02682	29.50691	13:00:00	D	8.00
45	JIND	NARWANA	S-NPP	76.09377	29.53545	13:00:00	D	3.90
46	JIND	NARWANA	S-NPP	76.03974	29.53783	13:00:00	D	12.60
47	JIND	NARWANA	S-NPP	76.04482	29.53891	13:00:00	D	15.10
48	JIND	NARWANA	S-NPP	76.10760	29.54309	13:00:00	D	3.90
49	JIND	NARWANA	S-NPP	75.99816	29.55232	13:00:00	D	7.80
50	JIND	NARWANA	S-NPP	76.07262	29.55424	13:00:00	D	4.30
51	JIND	NARWANA	S-NPP	76.01511	29.60744	13:00:00	D	9.80
52	JIND	NARWANA	S-NPP	76.01169	29.60844	13:00:00	D	5.70
53	JIND	NARWANA	S-NPP	76.09179	29.74212	13:00:00	D	8.30
54	JIND	NARWANA	S-NPP	76.08949	29.74474	13:00:00	D	13.50
55	JIND	NARWANA	S-NPP	76.09058	29.74651	13:00:00	D	3.80
56	KAITHAL	GUHLA	AQUA	76.22000	29.89700	14:10:00	D	19.80
57	KAITHAL	GUHLA	S-NPP	76.21439	29.90407	13:00:00	D	4.80
58	KAITHAL	GUHLA	S-NPP	76.39729	29.92479	13:00:00	D	1.30
59	KAITHAL	GUHLA	S-NPP	76.25217	29.93505	13:00:00	D	5.00
60	KAITHAL	GUHLA	S-NPP	76.25099	29.93938	13:00:00	D	5.00
61	KAITHAL	GUHLA	S-NPP	76.26553	29.94245	13:00:00	D	3.40
62	KAITHAL	GUHLA	S-NPP	76.36646	29.96373	13:00:00	D	2.40
63	KAITHAL	GUHLA	S-NPP	76.37123	29.96473	13:00:00	D	3.50

64	KAITHAL	GUHLA	AQUA	76.31000	29.98600	14:10:00	D	25.00
65	KAITHAL	GUHLA	AQUA	76.30400	29.99300	14:10:00	D	19.50
66	KAITHAL	GUHLA	S-NPP	76.34867	30.01002	13:00:00	D	3.70
67	KAITHAL	GUHLA	S-NPP	76.34541	30.01009	13:00:00	D	1.60
68	KAITHAL	GUHLA	S-NPP	76.30959	30.01153	13:00:00	D	2.20
69	KAITHAL	GUHLA	S-NPP	76.39275	30.01462	13:00:00	D	5.20
70	KAITHAL	GUHLA	S-NPP	76.27364	30.03126	13:00:00	D	12.50
71	KAITHAL	GUHLA	S-NPP	76.28690	30.03864	13:00:00	D	2.80
72	KAITHAL	GUHLA	TERRA	76.39500	30.07200	10:55:00	D	12.50
73	KAITHAL	GUHLA	S-NPP	76.25690	30.07339	13:00:00	D	5.20
74	KAITHAL	GUHLA	S-NPP	76.30863	30.10697	13:00:00	D	1.70
75	KAITHAL	GUHLA	S-NPP	76.43910	30.16665	13:00:00	D	5.20
76	KAITHAL	KAITHAL	S-NPP	76.61553	29.74142	13:00:00	D	2.00
77	KAITHAL	KAITHAL	S-NPP	76.28145	29.84112	13:00:00	D	3.70
78	KAITHAL	KAITHAL	S-NPP	76.25607	29.85870	13:00:00	D	26.00
79	KAITHAL	KAITHAL	S-NPP	76.52690	29.86556	13:00:00	D	3.30
80	KAITHAL	KAITHAL	S-NPP	76.32027	29.88584	13:00:00	D	5.00
81	KAITHAL	KAITHAL	AQUA	76.32700	29.89600	14:10:00	D	16.30
82	KARNAL	ASSANDH	S-NPP	76.69083	29.50637	13:00:00	D	3.00
83	KARNAL	ASSANDH	S-NPP	76.62763	29.52585	13:00:00	D	1.80
84	KARNAL	ASSANDH	S-NPP	76.60073	29.53371	13:00:00	D	2.40
85	KARNAL	ASSANDH	TERRA	76.53200	29.53600	10:55:00	D	8.20
86	KARNAL	ASSANDH	S-NPP	76.71850	29.57203	13:00:00	D	3.30
87	KARNAL	ASSANDH	S-NPP	76.57273	29.58213	13:00:00	D	7.20
88	KARNAL	ASSANDH	AQUA	76.60700	29.59500	14:10:00	D	17.00
89	KARNAL	ASSANDH	AQUA	76.63300	29.59700	14:10:00	D	39.90
90	KARNAL	ASSANDH	S-NPP	76.69894	29.60835	13:00:00	D	3.30
91	KARNAL	ASSANDH	S-NPP	76.72668	29.61408	13:00:00	D	6.10
92	KARNAL	ASSANDH	S-NPP	76.68737	29.61493	13:00:00	D	4.00
93	KARNAL	ASSANDH	S-NPP	76.69201	29.61588	13:00:00	D	4.00
94	KARNAL	ASSANDH	TERRA	76.57700	29.62200	10:55:00	D	6.20
95	KARNAL	ASSANDH	S-NPP	76.65141	29.66342	13:00:00	D	5.60
96	KARNAL	ASSANDH	S-NPP	76.68273	29.67449	13:00:00	D	2.70

97	KARNAL	GHARAUNDA	S-NPP	77.03090	29.56298	13:00:00	D	2.30
98	KARNAL	INDRI	S-NPP	77.16663	29.89730	13:00:00	D	3.50
99	KARNAL	INDRI	S-NPP	77.02808	29.93449	13:00:00	D	2.40
100	KARNAL	INDRI	S-NPP	77.03011	29.93543	13:00:00	D	4.30
101	KARNAL	KARNAL	S-NPP	76.87860	29.64098	13:00:00	D	3.90
102	KARNAL	KARNAL	S-NPP	76.74146	29.67338	13:00:00	D	4.00
103	KARNAL	KARNAL	S-NPP	76.74033	29.67762	13:00:00	D	4.00
104	KARNAL	KARNAL	S-NPP	76.72782	29.75993	13:00:00	D	4.20
105	KARNAL	NILOKHERI	S-NPP	76.80715	29.89861	13:00:00	D	14.90
106	KURUKSHETRA	PEHOWA	S-NPP	76.46939	29.91227	13:00:00	D	11.70
107	KURUKSHETRA	PEHOWA	S-NPP	76.51412	29.93055	13:00:00	D	1.80
108	KURUKSHETRA	PEHOWA	AQUA	76.58000	29.93200	14:10:00	D	28.20
109	KURUKSHETRA	PEHOWA	S-NPP	76.70188	29.94241	13:00:00	D	13.70
110	KURUKSHETRA	PEHOWA	S-NPP	76.51054	29.94887	13:00:00	D	1.80
111	KURUKSHETRA	PEHOWA	TERRA	76.55600	29.98100	10:55:00	D	6.90
112	KURUKSHETRA	PEHOWA	S-NPP	76.69498	29.98554	13:00:00	D	4.80
113	KURUKSHETRA	PEHOWA	S-NPP	76.63705	29.98905	13:00:00	D	3.10
114	KURUKSHETRA	PEHOWA	AQUA	76.63800	30.00600	14:10:00	D	17.00
115	KURUKSHETRA	PEHOWA	S-NPP	76.63244	30.04172	13:00:00	D	2.10
116	KURUKSHETRA	PEHOWA	AQUA	76.63400	30.04800	14:10:00	D	19.30
117	KURUKSHETRA	PEHOWA	S-NPP	76.60938	30.05484	13:00:00	D	4.30
118	KURUKSHETRA	PEHOWA	S-NPP	76.68063	30.06057	13:00:00	D	12.70
119	KURUKSHETRA	PEHOWA	S-NPP	76.65261	30.07995	13:00:00	D	1.70
120	KURUKSHETRA	PEHOWA	TERRA	76.74600	30.13100	10:55:00	D	12.10
121	KURUKSHETRA	PEHOWA	AQUA	76.74900	30.14900	14:10:00	D	47.70
122	KURUKSHETRA	PEHOWA	S-NPP	76.66970	30.15923	13:00:00	D	6.20
123	KURUKSHETRA	PEHOWA	S-NPP	76.69020	30.17234	13:00:00	D	7.50
124	KURUKSHETRA	SHAHABAD	TERRA	76.77100	30.12800	10:55:00	D	6.80
125	KURUKSHETRA	SHAHABAD	S-NPP	76.76829	30.18394	13:00:00	D	4.90
126	KURUKSHETRA	SHAHABAD	S-NPP	76.83645	30.25001	13:00:00	D	6.10
127	KURUKSHETRA	THANESAR	S-NPP	76.80423	29.90144	13:00:00	D	18.80
128	KURUKSHETRA	THANESAR	S-NPP	76.71146	30.00020	13:00:00	D	5.10
129	KURUKSHETRA	THANESAR	S-NPP	77.02212	30.05172	13:00:00	D	3.10

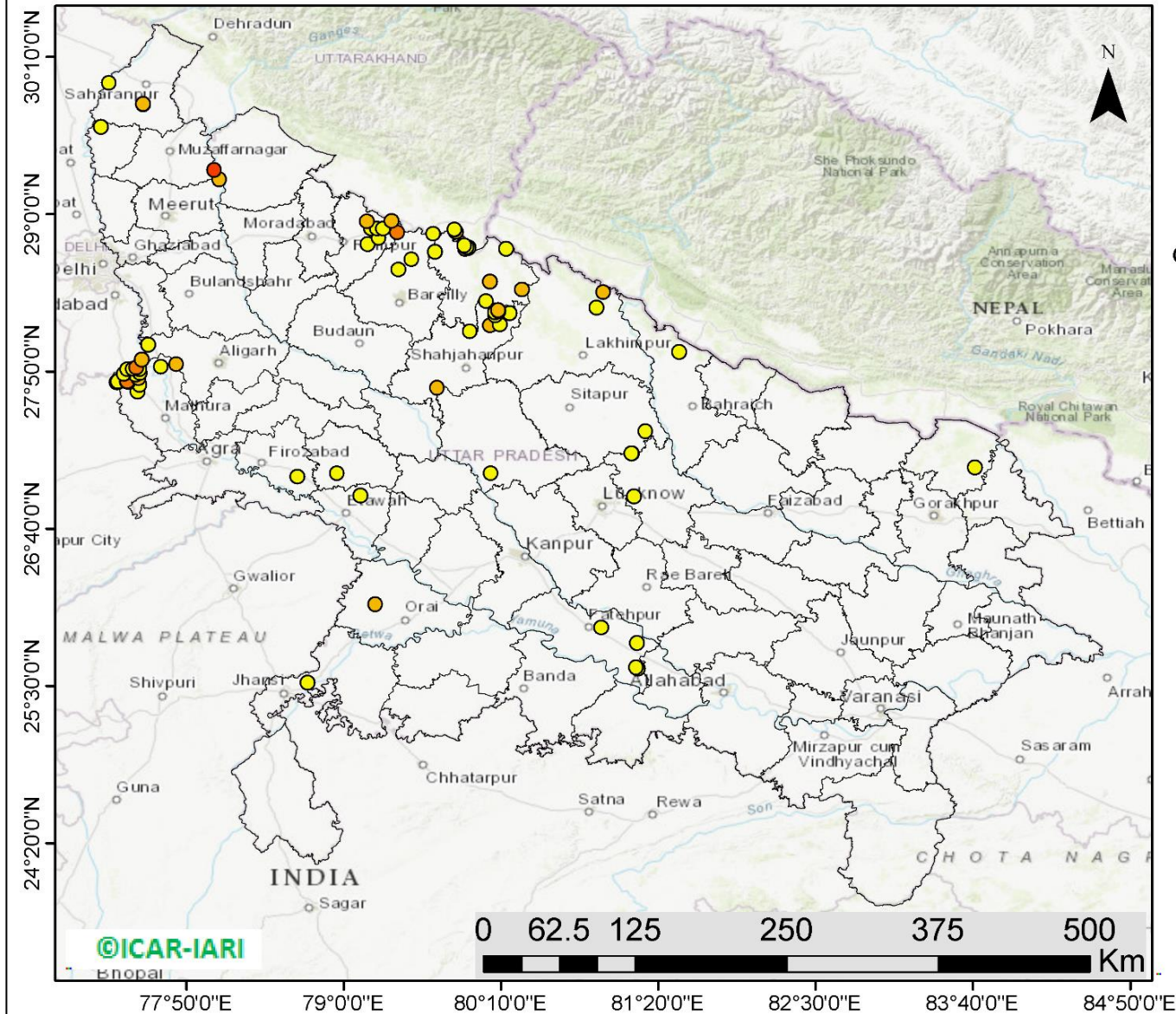
130	KURUKSHETRA	THANESAR	S-NPP	77.02281	30.05197	13:00:00	D	3.00
131	KURUKSHETRA	THANESAR	S-NPP	76.80535	30.07733	13:00:00	D	9.30
132	KURUKSHETRA	THANESAR	S-NPP	76.80985	30.07825	13:00:00	D	10.10
133	KURUKSHETRA	THANESAR	S-NPP	76.75233	30.07973	13:00:00	D	14.20
134	KURUKSHETRA	THANESAR	S-NPP	76.99094	30.08468	13:00:00	D	3.80
135	KURUKSHETRA	THANESAR	S-NPP	77.03693	30.08541	13:00:00	D	21.50
136	KURUKSHETRA	THANESAR	S-NPP	76.77375	30.10623	13:00:00	D	3.80
137	KURUKSHETRA	THANESAR	S-NPP	76.85021	30.12592	13:00:00	D	2.70
138	KURUKSHETRA	THANESAR	S-NPP	77.00030	30.15721	13:00:00	D	1.40
139	PALWAL	HODAL	S-NPP	77.46475	27.90152	13:00:00	D	2.90
140	PALWAL	HODAL	S-NPP	77.51717	27.95185	13:00:00	D	1.20
141	PALWAL	HODAL	S-NPP	77.48742	27.95916	13:00:00	D	3.00
142	PALWAL	HODAL	S-NPP	77.43684	27.97818	13:00:00	D	2.20
143	PANCHKULA	PANCHKULA	S-NPP	76.94898	30.53212	13:00:00	D	2.00
144	PANIPAT	PANIPAT	S-NPP	76.94279	29.42634	01:42:00	N	0.30
145	SIRSA	RANIA	S-NPP	74.76392	29.54970	13:00:00	D	3.40
146	SIRSA	SIRSA	S-NPP	75.09092	29.84769	13:00:00	D	3.10
147	SIRSA	SIRSA	S-NPP	75.09381	29.84938	13:00:00	D	6.10
148	SONIPAT	SONIPAT	S-NPP	77.10483	29.00807	13:00:00	D	1.80
149	YAMUNANAGAR	CHHACHHRAULII	S-NPP	77.47357	30.27572	13:00:00	D	4.50
150	YAMUNANAGAR	JAGADHRI	TERRA	77.09700	30.18800	10:55:00	D	18.50
151	YAMUNANAGAR	JAGADHRI	TERRA	77.27600	30.20900	10:55:00	D	7.10
152	YAMUNANAGAR	JAGADHRI	S-NPP	77.21456	30.22304	13:00:00	D	5.10
153	YAMUNANAGAR	JAGADHRI	TERRA	77.20800	30.23700	10:55:00	D	6.30
154	YAMUNANAGAR	JAGADHRI	S-NPP	77.27480	30.24820	13:00:00	D	2.00
155	YAMUNANAGAR	JAGADHRI	S-NPP	77.24790	30.31771	13:00:00	D	6.10
156	YAMUNANAGAR	JAGADHRI	S-NPP	77.20119	30.34248	13:00:00	D	3.20
157	YAMUNANAGAR	JAGADHRI	S-NPP	77.23399	30.35344	13:00:00	D	4.20
158	YAMUNANAGAR	JAGADHRI	S-NPP	77.27193	30.36114	13:00:00	D	3.50

District-wise cumulative number of residue burning events in Haryana (01 to 22-Oct 2019)



(c) UP

RICE RESIDUE BURNING IN UTTAR PRADESH



78 burning events detected in Uttar Pradesh on 22nd October 2019

Fire Intensity (W/m²)

- 0 - 5
- 6 - 10
- 11 - 15
- 16 - 20
- >20



<http://geoportal.icar.gov.in:8080/geoexplorer/composer/>

Details of residue burning events in Uttar Pradesh on 22-Oct-2019

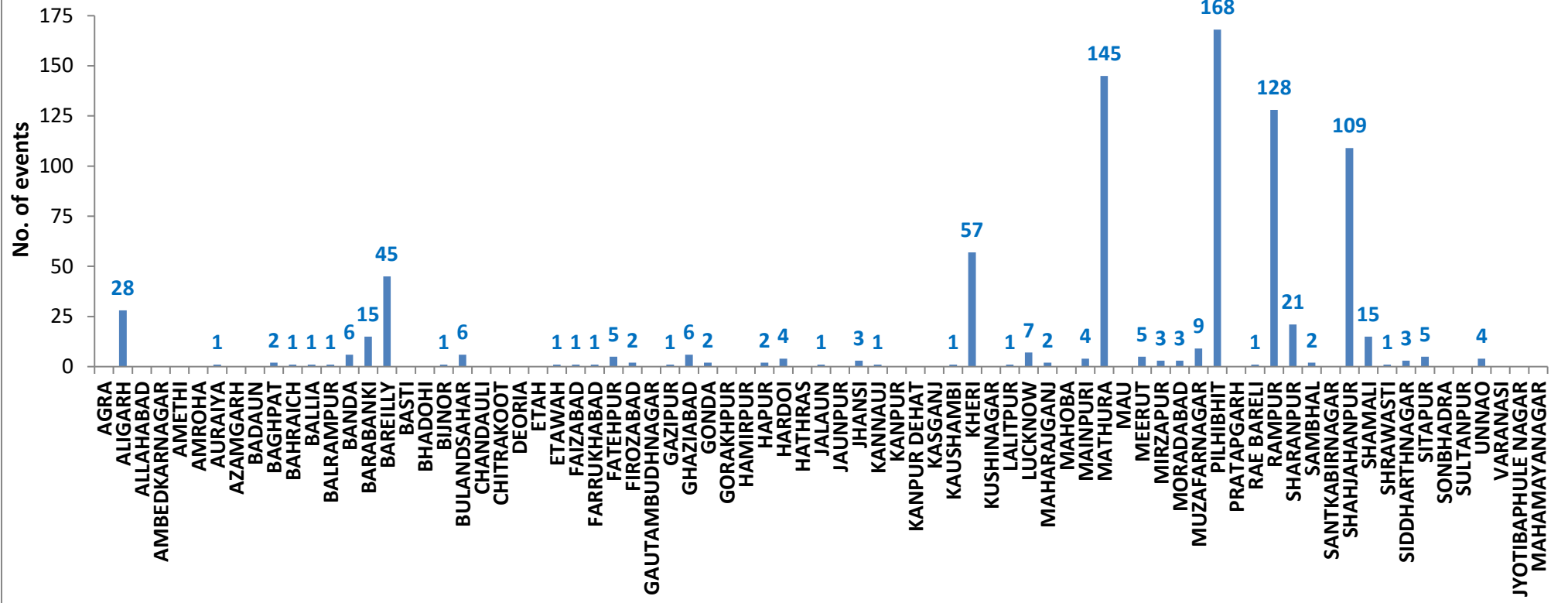
S. No.	District	Tehsil / Block	Satellite	Longitude	Latitude	Time (IST)	Day / Night	Fire Power (W/m ²)
1	ALIGARH	KHAIR	S-NPP	77.54868	28.03181	13:00:00	D	4.00
2	BAHRAICH	NANPARA	S-NPP	81.48742	27.97728	13:00:00	D	2.00
3	BARABANKI	FATEHPUR	S-NPP	81.13720	27.22649	13:00:00	D	3.00
4	BARABANKI	FATEHPUR	S-NPP	81.13577	27.22706	13:00:00	D	2.40
5	BARABANKI	NAWABGANJ	S-NPP	81.15208	26.90557	13:00:00	D	4.10
6	BAREILLY	BAHERI	S-NPP	79.50367	28.66371	13:00:00	D	3.70
7	BAREILLY	BAHERI	S-NPP	79.66408	28.85349	13:00:00	D	3.60
8	BAREILLY	BAHERI	S-NPP	79.39725	28.86222	13:00:00	D	12.20
9	BAREILLY	BAREILY	S-NPP	79.40385	28.58668	13:00:00	D	3.40
10	ETAWAH	ETAWAH	S-NPP	79.12232	26.91247	13:00:00	D	4.70
11	FATEHPUR	FATEHPUR	S-NPP	80.90981	25.93121	12:54:00	D	2.60
12	FATEHPUR	KHAGA	S-NPP	81.18159	25.63042	12:54:00	D	2.70
13	FATEHPUR	KHAGA	S-NPP	81.17007	25.63957	12:54:00	D	4.10
14	FATEHPUR	KHAGA	S-NPP	81.17577	25.82043	12:54:00	D	3.60
15	FIROZABAD	SIKOHABAD	S-NPP	78.65540	27.05340	13:00:00	D	1.20
16	HARDOI	BILGRAM	TERRA	80.09200	27.07800	11:00:00	D	4.60
17	JALAUN	KONCH	S-NPP	79.23441	26.10662	12:54:00	D	7.50
18	JHANSI	JHANSI	S-NPP	78.73266	25.52373	12:54:00	D	2.80
19	KHERI	NIGHASAN	S-NPP	80.87598	28.30646	13:00:00	D	2.00
20	KHERI	NIGHASAN	S-NPP	80.92638	28.42032	13:00:00	D	7.90
21	MAHARAJGANJ	NICHLAUL	S-NPP	83.68402	27.12265	12:54:00	D	4.90
22	MAINPURI	KARHAL	S-NPP	78.94986	27.07719	13:00:00	D	2.50
23	MATHURA	CHHATA	S-NPP	77.47058	27.68428	13:00:00	D	3.30
24	MATHURA	CHHATA	S-NPP	77.48563	27.73618	13:00:00	D	4.00
25	MATHURA	CHHATA	S-NPP	77.31614	27.75283	13:00:00	D	3.20
26	MATHURA	CHHATA	S-NPP	77.32527	27.75470	13:00:00	D	4.10
27	MATHURA	CHHATA	S-NPP	77.40562	27.75774	13:00:00	D	3.80
28	MATHURA	CHHATA	S-NPP	77.32417	27.75896	13:00:00	D	4.30
29	MATHURA	CHHATA	S-NPP	77.39101	27.75921	13:00:00	D	6.40
30	MATHURA	CHHATA	S-NPP	77.39552	27.76013	13:00:00	D	10.90

31	MATHURA	CHHATA	S-NPP	77.47530	27.78087	13:00:00	D	7.30
32	MATHURA	CHHATA	S-NPP	77.45883	27.80861	13:00:00	D	3.40
33	MATHURA	CHHATA	S-NPP	77.37238	27.81345	13:00:00	D	3.70
34	MATHURA	CHHATA	S-NPP	77.36872	27.81506	13:00:00	D	3.10
35	MATHURA	CHHATA	S-NPP	77.48901	27.81912	13:00:00	D	4.10
36	MATHURA	CHHATA	S-NPP	77.39381	27.84702	13:00:00	D	4.30
37	MATHURA	CHHATA	S-NPP	77.48594	27.84951	13:00:00	D	2.30
38	MATHURA	CHHATA	S-NPP	77.43529	27.85112	13:00:00	D	1.60
39	MATHURA	CHHATA	S-NPP	77.46102	27.86085	13:00:00	D	12.80
40	MATHURA	CHHATA	S-NPP	77.50146	27.92222	13:00:00	D	6.40
41	MATHURA	MAT	TERRA	77.64400	27.86600	11:00:00	D	4.80
42	MATHURA	MAT	S-NPP	77.75717	27.88586	13:00:00	D	7.60
43	MUZAFARNAGAR	JANSATH	TERRA	78.07800	29.25900	10:55:00	D	8.90
44	MUZAFARNAGAR	JANSATH	S-NPP	78.04087	29.32770	13:00:00	D	15.40
45	PILHIBHIT	BISALPUR	S-NPP	79.93613	28.12931	13:00:00	D	3.70
46	PILHIBHIT	PILHIBHIT	S-NPP	79.67773	28.72019	13:00:00	D	4.70
47	PILHIBHIT	PILHIBHIT	S-NPP	79.90215	28.74392	13:00:00	D	3.00
48	PILHIBHIT	PILHIBHIT	S-NPP	79.92320	28.75058	13:00:00	D	4.80
49	PILHIBHIT	PILHIBHIT	S-NPP	79.92574	28.75196	13:00:00	D	4.70
50	PILHIBHIT	PILHIBHIT	S-NPP	79.91174	28.75606	13:00:00	D	4.40
51	PILHIBHIT	PILHIBHIT	S-NPP	79.89368	28.76794	13:00:00	D	4.00
52	PILHIBHIT	PILHIBHIT	S-NPP	79.83189	28.86541	13:00:00	D	7.80
53	PILHIBHIT	PILHIBHIT	S-NPP	79.82269	28.88278	13:00:00	D	3.10
54	PILHIBHIT	PILHIBHIT	S-NPP	79.82183	28.88643	13:00:00	D	3.10
55	PILHIBHIT	PURANPUR	S-NPP	80.32150	28.44021	13:00:00	D	8.00
56	PILHIBHIT	PURANPUR	S-NPP	80.08595	28.49872	13:00:00	D	5.20
57	PILHIBHIT	PURANPUR	S-NPP	80.20398	28.74177	13:00:00	D	2.40
58	RAMPUR	BILASPUR	S-NPP	79.25984	28.82504	13:00:00	D	4.40
59	RAMPUR	BILASPUR	S-NPP	79.20364	28.89246	13:00:00	D	4.60
60	RAMPUR	BILASPUR	S-NPP	79.24735	28.89282	13:00:00	D	3.90
61	RAMPUR	BILASPUR	S-NPP	79.29084	28.89316	13:00:00	D	3.50
62	RAMPUR	BILASPUR	S-NPP	79.35347	28.94785	13:00:00	D	7.00
63	RAMPUR	MILAK	S-NPP	79.17778	28.77818	13:00:00	D	4.80
64	RAMPUR	SUAR	S-NPP	79.17188	28.94420	13:00:00	D	5.10

65	SHAHJAHANPUR	JALALABAD	S-NPP	79.69204	27.71352	13:00:00	D	9.00
66	SHAHJAHANPUR	PUWANYA	S-NPP	80.08386	28.17551	13:00:00	D	5.30
67	SHAHJAHANPUR	PUWANYA	S-NPP	80.15820	28.18147	13:00:00	D	3.30
68	SHAHJAHANPUR	PUWANYA	S-NPP	80.12421	28.24989	13:00:00	D	2.50
69	SHAHJAHANPUR	PUWANYA	S-NPP	80.23077	28.26569	13:00:00	D	3.50
70	SHAHJAHANPUR	PUWANYA	S-NPP	80.12402	28.27260	13:00:00	D	2.20
71	SHAHJAHANPUR	PUWANYA	S-NPP	80.14732	28.28065	13:00:00	D	7.90
72	SHAHJAHANPUR	PUWANYA	S-NPP	80.14565	28.28791	13:00:00	D	5.30
73	SHAHJAHANPUR	PUWANYA	S-NPP	80.05689	28.35433	13:00:00	D	2.50
74	SHAMLI	KAIRANA	S-NPP	77.19958	29.64573	13:00:00	D	2.50
75	SHARANPUR	NAKUR	S-NPP	77.25981	29.97236	13:00:00	D	2.80
76	SHARANPUR	RAMPUR MANIHARRAN	S-NPP	77.51315	29.81585	13:00:00	D	5.90
77	SHARANPUR	RAMPUR MANIHARRAN	S-NPP	77.51234	29.81661	13:00:00	D	6.30
78	SITAPUR	MAHMUDABAD	S-NPP	81.23765	27.38948	13:00:00	D	2.10

District-wise cumulative number of residue burning events in Uttar Pradesh (01 to 22-Oct 2019)

Uttar Pradesh (01 - 22 Oct 2019)



State-wise, date-wise and district-wise number of residue burning events detected in 2016, 2017, 2018 and 2019
(Period: 01-Oct to 22-Oct)

Date	Punjab				Haryana				UP				Total			
	2019	2018	2017	2016	2019	2018	2017	2016	2019	2018	2017	2016	2019	2018	2017	2016
01-Oct	3	16	54	109	1	9	13	46	1	11	2	23	5	36	69	178
02-Oct	20	9	50	51	2	23	27	16	0	21	8	20	23	53	85	87
03-Oct	37	4	62	66	16	9	40	16	3	12	17	16	56	25	119	98
04-Oct	3	32	103	37	30	16	60	7	4	5	22	15	37	53	185	59
05-Oct	16	56	106	95	37	30	68	15	11	10	20	14	64	96	194	124
06-Oct	0	87	138	152	22	63	75	105	8	13	39	6	30	163	252	263
07-Oct	27	162	105	171	16	180	97	126	4	69	33	24	47	411	235	321
08-Oct	59	39	215	166	69	40	218	94	18	54	76	14	146	133	509	274
09-Oct	93	75	163	270	70	47	148	121	17	32	88	22	180	154	399	413
10-Oct	172	23	164	597	157	37	151	242	53	21	126	74	382	81	441	913
11-Oct	78	30	177	652	126	78	87	336	38	24	74	128	242	131	338	1116
12-Oct	99	67	342	694	154	133	123	338	42	22	51	164	295	222	516	1196
13-Oct	108	62	470	467	159	147	207	284	33	61	69	102	300	270	746	853
14-Oct	141	112	582	812	133	153	333	328	39	57	137	60	313	322	1052	1200
15-Oct	262	90	943	1215	203	110	458	248	63	35	237	76	528	235	1638	1539
16-Oct	168	174	465	1478	148	138	186	385	77	20	71	125	393	332	722	1988
17-Oct	250	272	807	2173	152	268	244	399	53	94	69	261	455	634	1120	2833
18-Oct	100	263	970	1065	103	255	306	270	39	163	108	204	242	681	1384	1539
19-Oct	529	254	1591	1762	220	208	541	276	3	108	128	132	752	570	2260	2170
20-Oct	490	496	2653	1175	360	141	597	188	62	49	255	62	912	686	3505	1425
21-Oct	852	618	1139	1726	339	217	233	257	185	66	168	152	1376	901	1540	2135
22-Oct	555	656	1356	2837	158	134	186	309	78	149	151	194	791	939	1693	3340
Total	4062	3597	12655	17770	2675	2436	4398	4406	831	1096	1949	1888	7568	7129	19002	24064

(a) Punjab

Districts	01-22 Oct			
	2016	2017	2018	2019
AMRITSAR	1054	856	651	571
BARNALA	70	49	30	14
BATHINDA	1162	984	155	70
FARIDKOT	1271	1335	219	177
FATEHGARH SAHIB	1013	515	101	110
FAZILKA	0	0	0	124
FIROZPUR	2032	1765	416	369
GURDASPUR	847	535	154	327
HOSHIARPUR	216	116	4	39
JALANDHAR	1171	520	74	178
KAPURTHALA	1079	336	22	156
LUDHIANA	918	726	88	64
MANSA	276	296	116	113
MOGA	283	189	28	50
MUKTSAR	1551	863	189	102
NAWASHAHR (SBS Nagar)	406	218	39	45
PATHANKOT	0	0	0	0
PATIALA	1493	1239	459	513
RUPNAGAR	249	57	1	10
SANGRUR	408	367	147	122
SAS NAGAR	85	76	50	63
TARN TARAN	2186	1613	654	845
Total	17770	12655	3597	4062

(b) Haryana

Districts	01-22 Oct			
	2016	2017	2018	2019
AMBALA	317	299	83	167
BHIWANI	4	2	3	0
FARIDABAD	48	111	83	4
FATEHABAD	307	410	180	207
GURUGRAM	0	0	0	0
HISAR	36	36	22	29
JHAJJAR	4	4	5	2
JIND	149	202	113	120
KAITHAL	1178	948	695	646
KARNAL	1192	1106	581	658
KURUKSHETRA	879	936	508	548
MAHENDRAGARH	0	0	0	1
MEWAT	0	0	0	0
PALWAL	0	0	0	108
PANCHKULA	0	0	3	18
PANIPAT	31	40	33	10
REWARI	0	0	0	1
ROHTAK	3	4	0	0
SIRSA	137	115	55	41
SONIPAT	13	20	12	4
YAMUNANAGAR	108	165	60	111
Total	4406	4398	2436	2675

(c) Uttar Pradesh

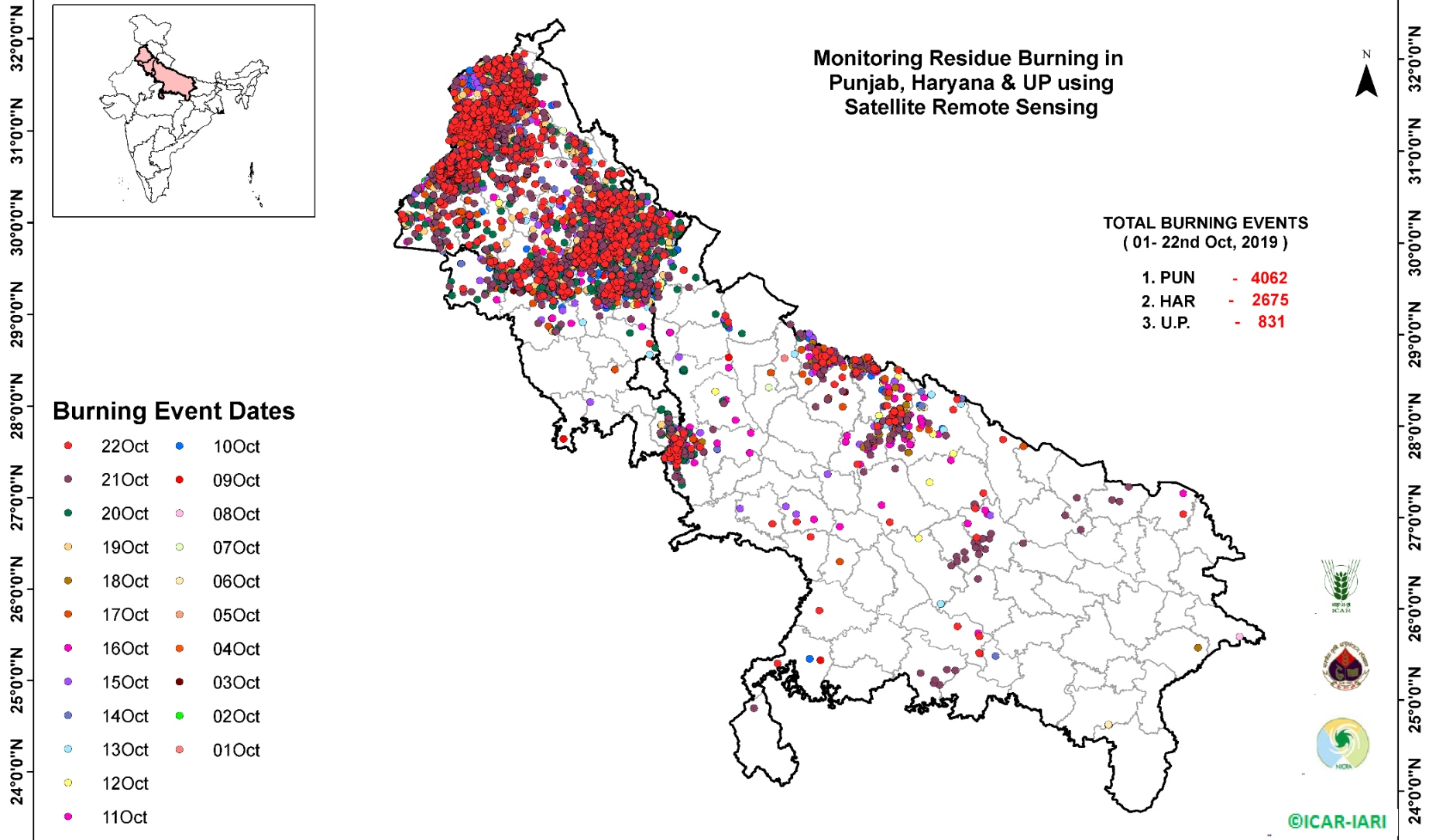
Districts	01-22 Oct			
	2016	2017	2018	2019
AGRA	0	0	0	0
ALIGARH	10	21	21	28
ALLAHABAD	0	0	4	0
AMBEDKARNAGAR	0	4	0	0
AMETHI	0	0	0	0
AMROHA	0	0	0	0
AURAIYA	61	57	17	1
AZAMGARH	0	0	0	0
BADAUN	0	1	1	0
BAGHPAT	0	0	0	2
BAHRAICH	0	7	7	1
BALLIA	0	0	0	1
BALRAMPUR	0	0	2	1
BANDA	1	1	1	6
BARABANKI	58	41	64	15
BAREILLY	94	72	39	45
BASTI	0	1	0	0
BHADOHI	0	0	0	0
BIJNOR	6	4	1	1
BULANDSAHAR	3	9	7	6
CHANDAULI	0	0	0	0
CHITRAKOOT	0	0	0	0
DEORIA	0	1	0	0
ETAH	0	12	12	0
ETAWAH	4	10	3	1
FAIZABAD	1	1	1	1
FARRUKHABAD	0	0	0	1
FATEHPUR	7	8	11	5
FIROZABAD	4	2	1	2

GAUTAMBUDHNAGAR	4	5	5	0
GAZIPUR	0	0	0	1
GHAZIABAD	11	6	4	6
GONDA	0	0	0	2
GORAKHPUR	0	4	5	0
HAMIRPUR	0	0	1	0
HAPUR	0	0	0	2
HARDOI	28	25	9	4
HATHRAS	0	0	0	0
JALAUN	0	0	0	1
JAUNPUR	1	0	3	0
JHANSI	0	0	2	3
KANNAUJ	1	1	2	1
KANPUR	1	3	0	0
KANPUR DEHAT	0	1	0	0
KASGANJ	0	0	0	0
KAUSHAMBI	0	5	9	1
KHERI	150	128	73	57
KUSHINAGAR	0	1	0	0
LALITPUR	0	0	0	1
LUCKNOW	9	6	1	7
MAHARAJGANJ	4	38	28	2
MAHOBA	0	0	0	0
MAINPURI	0	9	7	4
MATHURA	93	166	291	145
MAU	1	0	2	0
MEERUT	19	14	4	5
MIRZAPUR	0	3	4	3
MORADABAD	13	12	7	3
MUZAFARNAGAR	51	55	19	9
PILHIBHIT	362	365	164	168
PRATAPGARH	0	0	2	0

RAE BARELI	1	1	0	1
RAMPUR	353	316	88	128
SHARANPUR	24	40	17	21
SAMBHAL	0	0	0	2
SANTKABIRNAGAR	0	1	0	0
SHAHJAHANPUR	468	460	132	109
SHAMALI	0	0	0	15
SHRAWASTI	0	5	2	1
SIDDHARTHANAGAR	1	2	1	3
SITAPUR	31	19	9	5
SONBHADRA	6	1	7	0
SULTANPUR	0	0	0	0
UNNAO	4	4	4	4
VARANASI	0	0	0	0
JYOTIBAPHULE NAGAR	3	0	1	0
MAHAMAYANAGAR	0	1	1	0
Total	1888	1949	1096	831

Map of Cumulative Burning Events (01 – 22 Oct 2019)

Monitoring Residue Burning in Punjab, Haryana & UP using Satellite Remote Sensing



(<http://geoportal.icar.gov.in:8080/geoexplorer/composer/>)

The study used images received from following Satellites at IARI Satellite Ground Station

S. No.	Satellite Name	Sensor	Resolution (meter)	Day / Night Passes
1.	Suomi NPP	VIIRS	375 / 1000	Both
2.	Terra	MODIS	1000	Both
3.	Aqua	MODIS	1000	Both
4.	NOAA – 18	AVHRR	1000	Night
5.	NOAA – 19	AVHRR	1000	Night
6.	Metop - 1	AVHRR	1000	Night
7.	Metop - 2	AVHRR	1000	Night

Study Team

ICAR – HQ	Dr K. Alagusundaram	DDG (AG. ENGG.)	ddgengg@icar.org.in
	Dr S. Bhasker	ADG (NRM)	adgagroandaf@gmail.com
	Dr K.K. Singh	ADG (AG. ENGG.)	kanchansingh044@gmail.com
ICAR - IARI	Dr V.K. Sehgal	Professor & Nodal Scientist	iaricreams@gmail.com
	Dr Rajkumar Dhakar	Scientist	raidhakar.iari@gmail.com
	Mr Rakeswer Verma	Chief Technical Officer	rakeshwar.verma@icar.gov.in
	Mr Mohd Jahangir	Lab Assistant (KRISHI)	mjahangir198@gmail.com
ICAR - ATARI	Dr Rajbir Singh	Director ATARI (Zone-I) Ludhiana	rajbirsingh.zpd@gmail.com
	Dr S.K. Singh	Director ATARI (Zone-II) Jodhpur	sushilsinghiipr@yahoo.co.in
	Dr Atar Singh	Director ATARI (Zone-III) Kanpur	zpdicarkanpur@gmail.com
ICAR - IASRI	Dr Rajender Parsad	Principal Scientist	rajender.parsad@icar.gov.in

GIS Maps of fire events can be visualized online on ICAR KRISHI Geoportal website: <http://geoportal.icar.gov.in:8080/geoexplorer/composer/>
(Part of KRISHI Portal: <https://krishi.icar.gov.in> initiative)
