



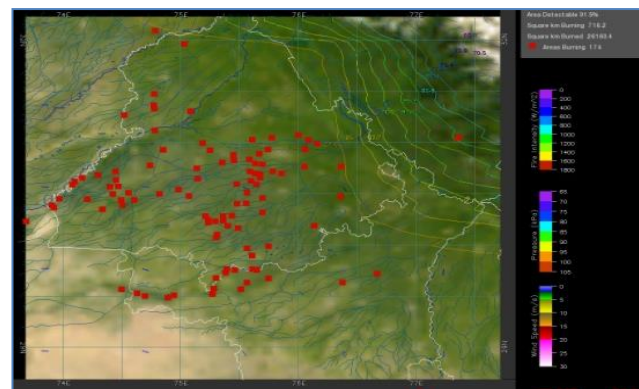
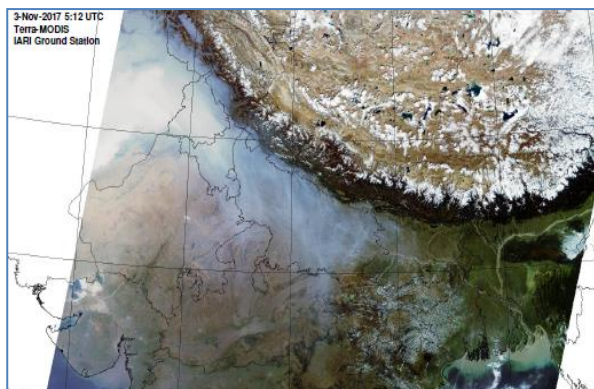
Bulletin No. 16

Events Date:
16-Oct-2019

Issued on:
17-Oct-2019



MONITORING PADDY RESIDUE BURNING IN NORTH INDIA USING SATELLITE REMOTE SENSING DURING 2019



Prepared by:

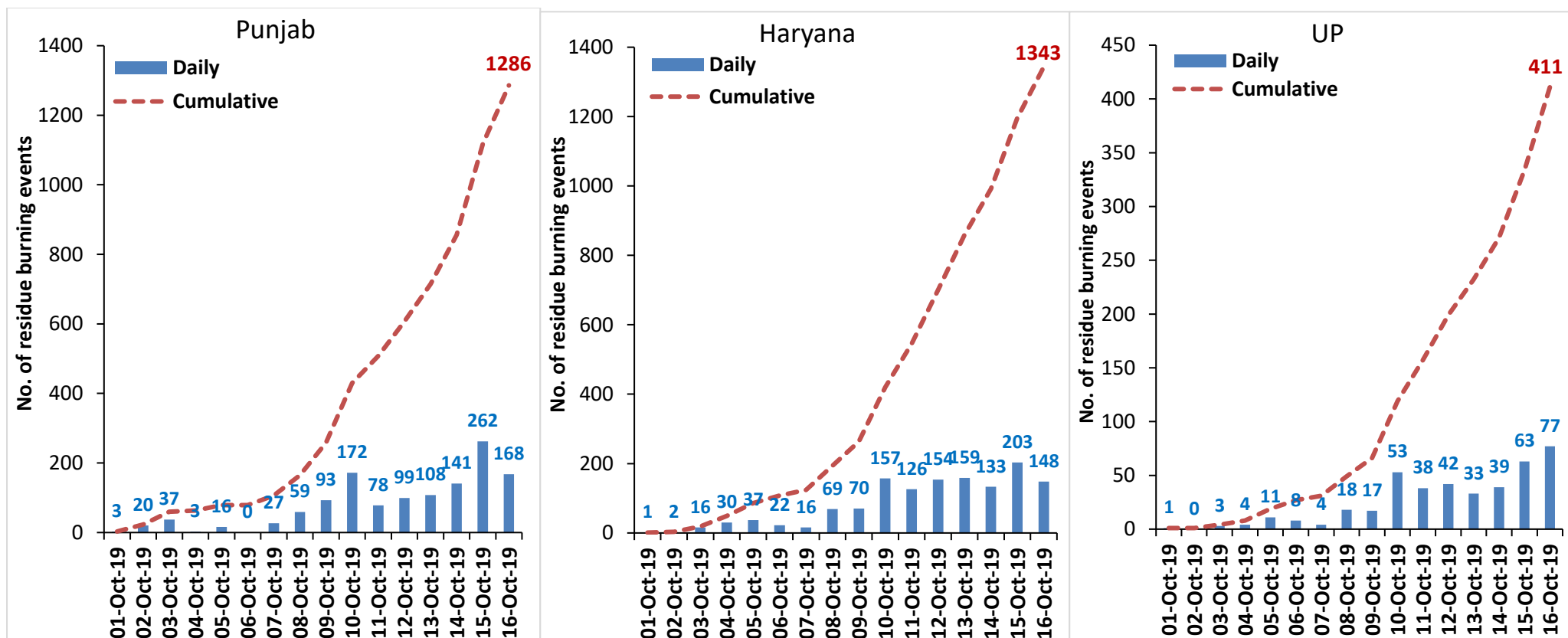
Consortium for Research on Agroecosystem Monitoring and Modeling from Space (CREAMS) Laboratory,
Division of Agricultural Physics, ICAR – Indian Agricultural Research Institute, New Delhi – 110012

<http://creams.iari.res.in>

Highlights for 16-October-2019

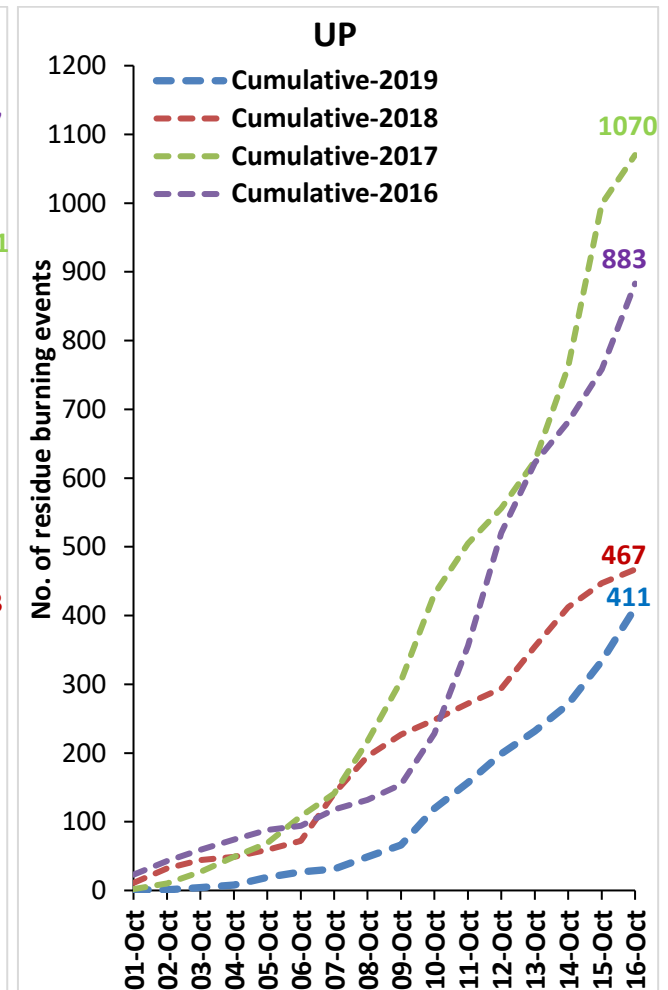
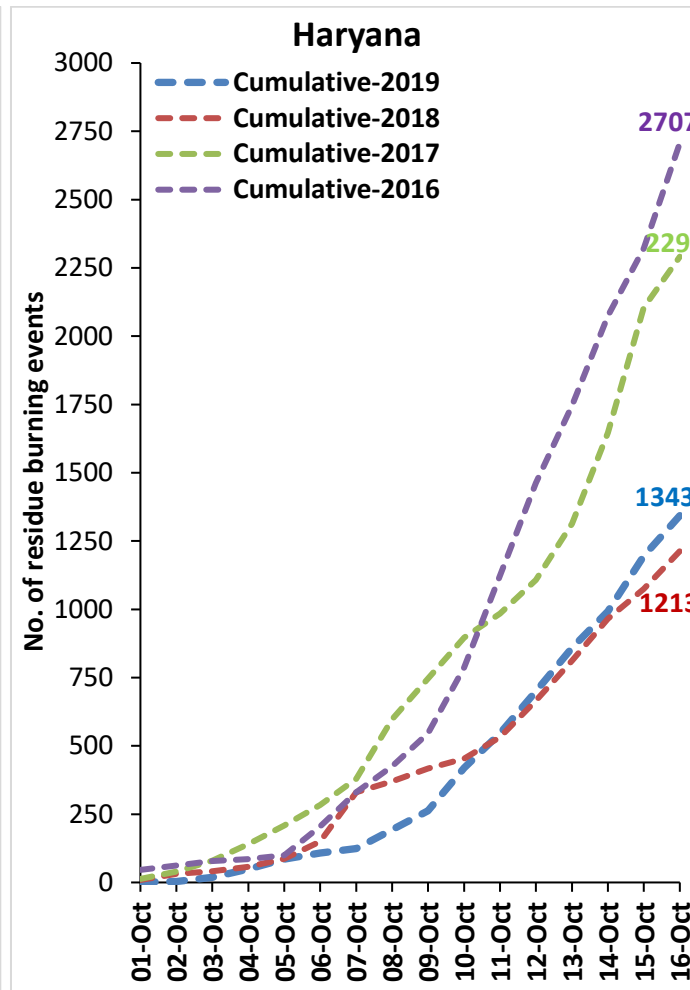
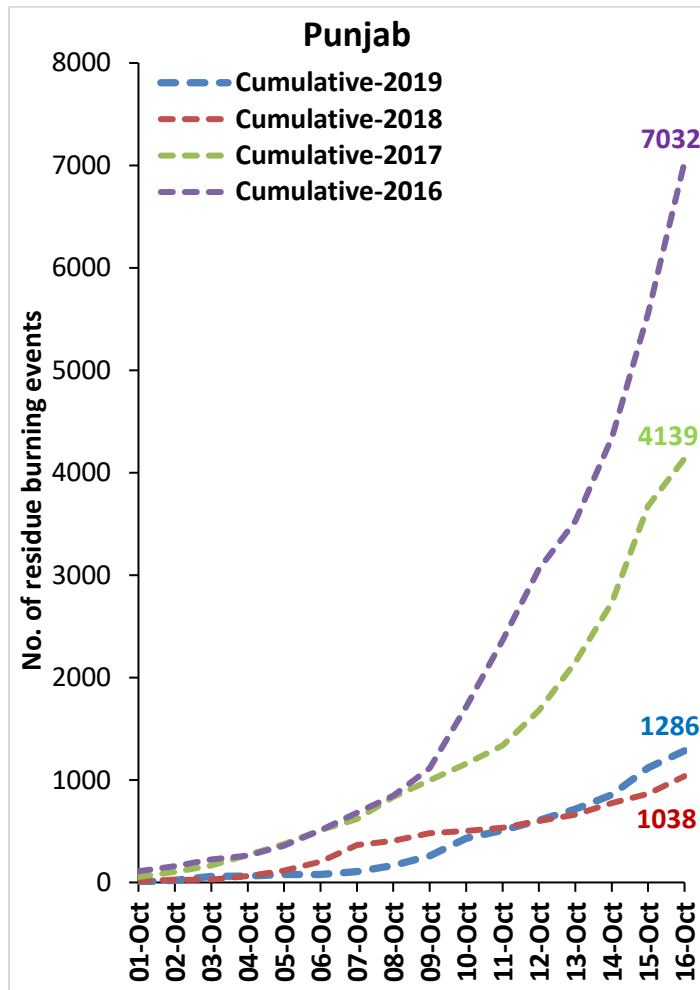
- Satellites detected **393** residue burning events in the three study States on 16-Oct-2019.
- The burning events detected on **16-Oct-2019** are **168**, **148** and **77** in Punjab, Haryana and UP, respectively.
- The number of events has decreased from **528** on **15-Oct-2019** to **393** on **16-Oct-2019** in the three states.
- Total **3040** burning events were detected in the three States between **01-Oct-2019** and **16-Oct-2019**, which are distributed as **1286**, **1343** and **411** in Punjab, Haryana and UP, respectively.
- Overall, the total burning events recorded in the three states are **11.8%** more than in 2018 till date. UP recorded **13.6%** reduction while Punjab and Haryana recorded **23.9%** and **10.7%** increase, respectively, in the current season than in 2018.

Temporal distribution of residue burning events for the three study States in 2019

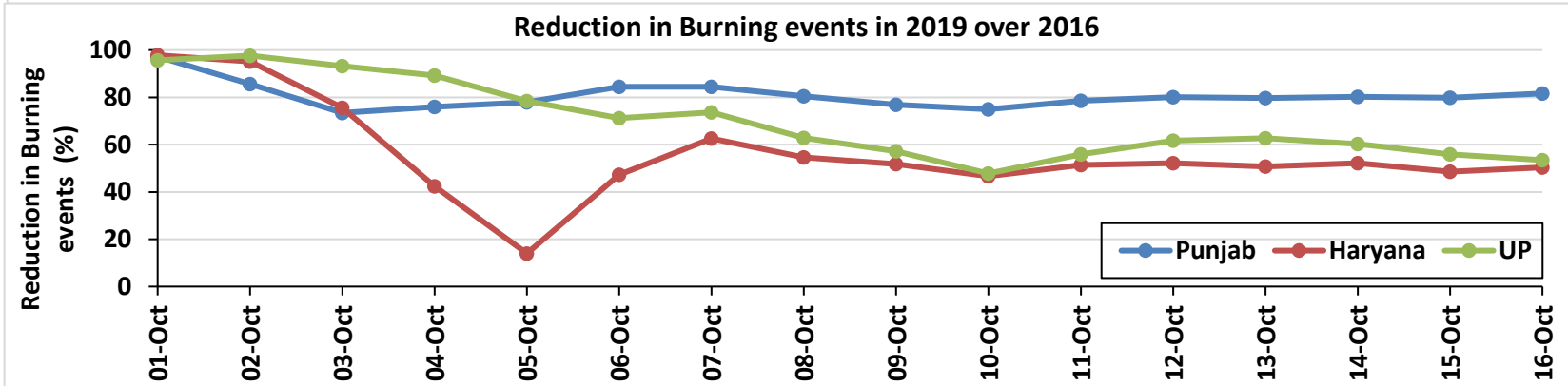
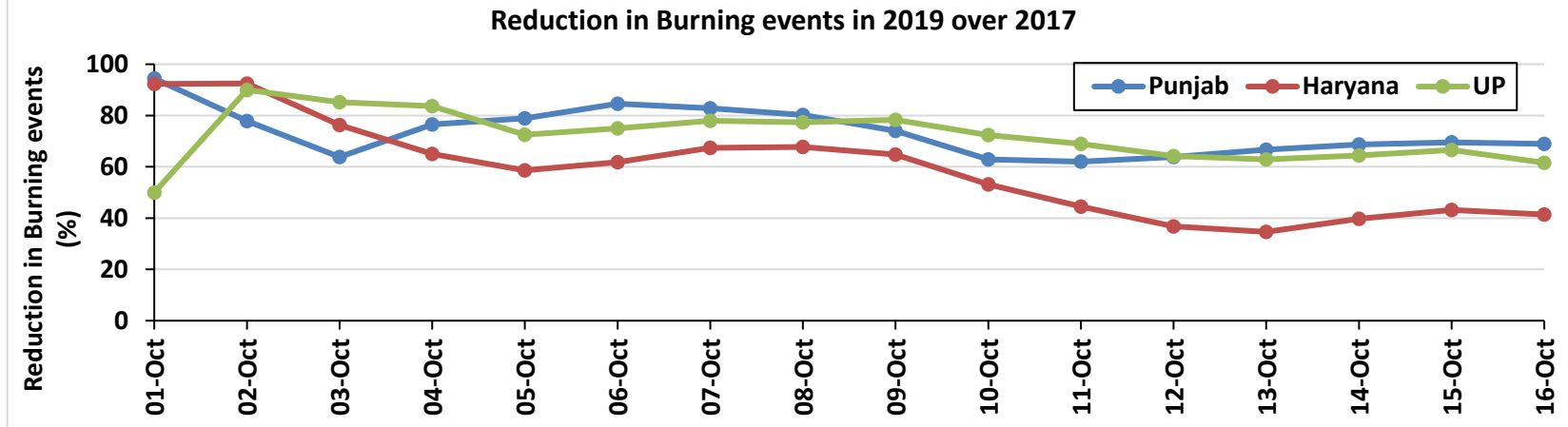
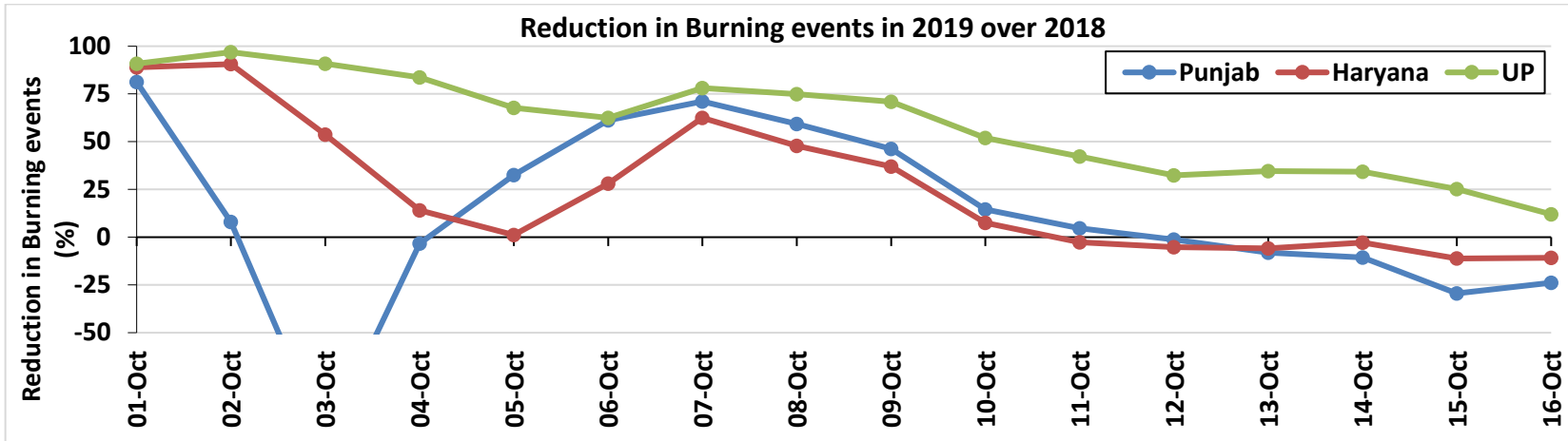


Comparison of residue burning events in current year (2019) with previous years (2018, 2017 & 2016) for the three study States

(01-Oct to 16-Oct)

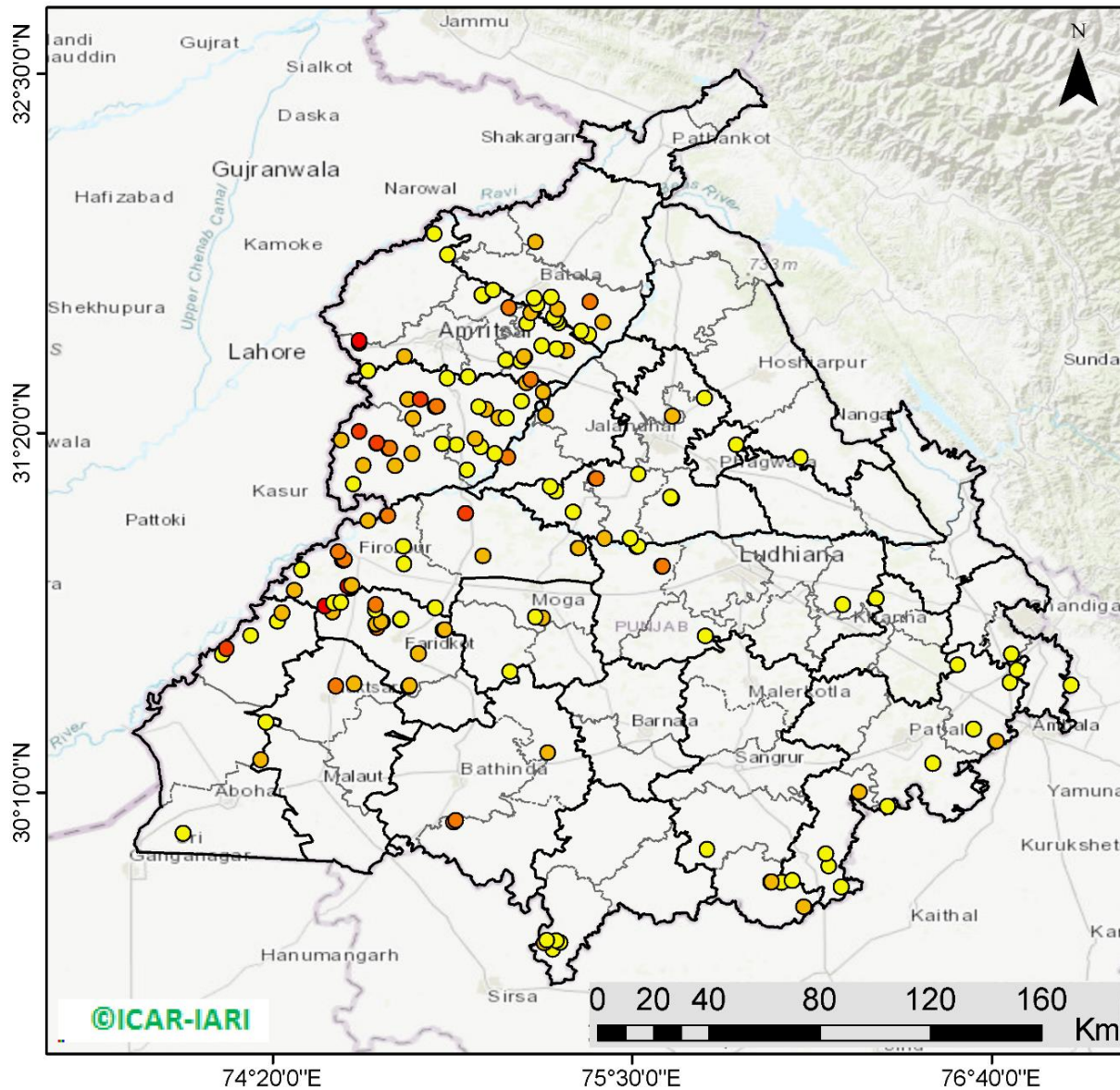


Percent Reduction in Burning events in 2019 over 2018, 2017 and 2016 (Daily Cumulative)



(a) Punjab

RICE RESIDUE BURNING IN PUNJAB



168 burning events detected in Punjab on 16th October 2019

Fire Intensity (W/m²)

- 0 - 5
- 6 - 10
- 11 - 15
- 16 - 20
- >20

©ICAR-IARI



<http://geoportal.icar.gov.in:8080/geoexplorer/composer/>

Details of residue burning events in Punjab on 16-Oct-2019

S. No.	District	Tehsil / Block	Satellite	Longitude	Latitude	Time (IST)	Day / Night	Fire Power (W/m2)
1	AMRITSAR	AJNALA	AQUA	74.61500	31.62600	13:10:00	D	25.50
2	AMRITSAR	AJNALA	S-NPP	74.61480	31.63433	13:12:00	D	25.70
3	AMRITSAR	AJNALA	S-NPP	74.85892	31.97917	13:12:00	D	3.80
4	AMRITSAR	AMRITSAR I	S-NPP	74.96872	31.51645	13:12:00	D	4.50
5	AMRITSAR	AMRITSAR I	S-NPP	75.09002	31.57013	13:12:00	D	3.80
6	AMRITSAR	AMRITSAR I	S-NPP	75.09982	31.74042	13:12:00	D	12.00
7	AMRITSAR	AMRITSAR I	S-NPP	75.01558	31.77968	13:12:00	D	4.20
8	AMRITSAR	AMRITSAR I	S-NPP	75.01267	31.78194	13:12:00	D	3.90
9	AMRITSAR	AMRITSAR I	S-NPP	75.04865	31.79685	13:12:00	D	3.30
10	AMRITSAR	AMRITSAR II	S-NPP	74.76203	31.58221	13:12:00	D	6.40
11	AMRITSAR	BABA BAKALA	S-NPP	75.13927	31.56484	13:12:00	D	3.10
12	AMRITSAR	BABA BAKALA	S-NPP	75.15253	31.57918	13:12:00	D	2.00
13	AMRITSAR	BABA BAKALA	S-NPP	75.14943	31.58171	13:12:00	D	7.00
14	AMRITSAR	BABA BAKALA	S-NPP	75.28490	31.60014	13:12:00	D	7.00
15	AMRITSAR	BABA BAKALA	S-NPP	75.28732	31.60064	13:12:00	D	7.00
16	AMRITSAR	BABA BAKALA	S-NPP	75.25546	31.60620	13:12:00	D	2.50
17	AMRITSAR	BABA BAKALA	S-NPP	75.20796	31.61667	13:12:00	D	5.00
18	AMRITSAR	BABA BAKALA	S-NPP	75.15849	31.68869	13:12:00	D	3.10
19	AMRITSAR	BABA BAKALA	S-NPP	75.26176	31.68968	13:12:00	D	3.80
20	AMRITSAR	BABA BAKALA	S-NPP	75.17212	31.72280	13:12:00	D	5.20
21	BATHINDA	RAMPURA PHUL	S-NPP	75.22645	30.29524	13:12:00	D	7.30
22	BATHINDA	TALWANDI SABO	TERRA	74.92100	30.07000	11:35:00	D	10.80
23	BATHINDA	TALWANDI SABO	TERRA	74.92800	30.07600	11:35:00	D	10.30
24	FARIDKOT	FARIDKOT	S-NPP	74.77547	30.51103	13:12:00	D	8.70
25	FARIDKOT	FARIDKOT	S-NPP	74.77849	30.51409	13:12:00	D	5.40
26	FARIDKOT	FARIDKOT	S-NPP	74.80608	30.61777	13:12:00	D	6.90
27	FARIDKOT	FARIDKOT	S-NPP	74.88617	30.69421	13:12:00	D	5.10
28	FARIDKOT	FARIDKOT	S-NPP	74.89185	30.69533	13:12:00	D	6.60
29	FARIDKOT	FARIDKOT	S-NPP	74.67248	30.70145	13:12:00	D	12.60
30	FARIDKOT	FARIDKOT	S-NPP	74.66772	30.71114	13:12:00	D	6.30

31	FARIDKOT	FARIDKOT	S-NPP	74.66940	30.71317	13:12:00	D	7.20
32	FARIDKOT	FARIDKOT	S-NPP	74.68993	30.71971	13:12:00	D	14.60
33	FARIDKOT	FARIDKOT	S-NPP	74.68584	30.72047	13:12:00	D	7.30
34	FARIDKOT	FARIDKOT	S-NPP	74.74878	30.72739	13:12:00	D	6.90
35	FARIDKOT	FARIDKOT	S-NPP	74.75064	30.72894	13:12:00	D	4.40
36	FARIDKOT	FARIDKOT	S-NPP	74.52698	30.75324	13:12:00	D	6.60
37	FARIDKOT	FARIDKOT	S-NPP	74.66708	30.76035	13:12:00	D	4.30
38	FARIDKOT	FARIDKOT	S-NPP	74.66879	30.77711	13:12:00	D	11.90
39	FARIDKOT	FARIDKOT	S-NPP	74.53152	30.78311	13:12:00	D	2.70
40	FARIDKOT	FARIDKOT	S-NPP	74.55618	30.78381	13:12:00	D	4.00
41	FATEHGARH SAHIB	KHAMANOH	S-NPP	76.29198	30.79578	13:12:00	D	3.20
42	FAZILKA	ABOHAR	S-NPP	74.04247	30.03438	13:12:00	D	3.20
43	FAZILKA	FAZILKA	TERRA	74.29500	30.27300	11:35:00	D	7.00
44	FAZILKA	FAZILKA	S-NPP	74.31161	30.39484	13:12:00	D	3.00
45	FAZILKA	JALALABAD	S-NPP	74.17123	30.61533	13:12:00	D	2.80
46	FAZILKA	JALALABAD	S-NPP	74.18392	30.63408	13:12:00	D	15.70
47	FAZILKA	JALALABAD	S-NPP	74.26358	30.67557	13:12:00	D	2.70
48	FAZILKA	JALALABAD	S-NPP	74.34945	30.72216	13:12:00	D	4.10
49	FAZILKA	JALALABAD	S-NPP	74.36325	30.74999	13:12:00	D	8.80
50	FIROZPUR	FIROZPUR	S-NPP	74.85918	30.76569	13:12:00	D	2.30
51	FIROZPUR	FIROZPUR	S-NPP	74.86130	30.76656	13:12:00	D	3.30
52	FIROZPUR	FIROZPUR	TERRA	74.51600	30.77000	11:35:00	D	58.50
53	FIROZPUR	FIROZPUR	TERRA	74.50300	30.77300	11:35:00	D	34.80
54	FIROZPUR	FIROZPUR	S-NPP	74.40452	30.82218	13:12:00	D	8.30
55	FIROZPUR	FIROZPUR	AQUA	74.57700	30.83600	13:10:00	D	20.50
56	FIROZPUR	FIROZPUR	S-NPP	74.59026	30.83853	13:12:00	D	6.70
57	FIROZPUR	FIROZPUR	S-NPP	74.42861	30.88931	13:12:00	D	2.80
58	FIROZPUR	FIROZPUR	S-NPP	74.42815	30.89055	13:12:00	D	2.50
59	FIROZPUR	FIROZPUR	S-NPP	74.76062	30.90906	13:12:00	D	4.90
60	FIROZPUR	FIROZPUR	S-NPP	74.56269	30.91960	13:12:00	D	31.30
61	FIROZPUR	FIROZPUR	S-NPP	74.55996	30.92124	13:12:00	D	30.00
62	FIROZPUR	FIROZPUR	S-NPP	74.56580	30.92242	13:12:00	D	14.30
63	FIROZPUR	FIROZPUR	S-NPP	74.54686	30.94748	13:12:00	D	10.20
64	FIROZPUR	FIROZPUR	S-NPP	74.75783	30.96552	13:12:00	D	3.50

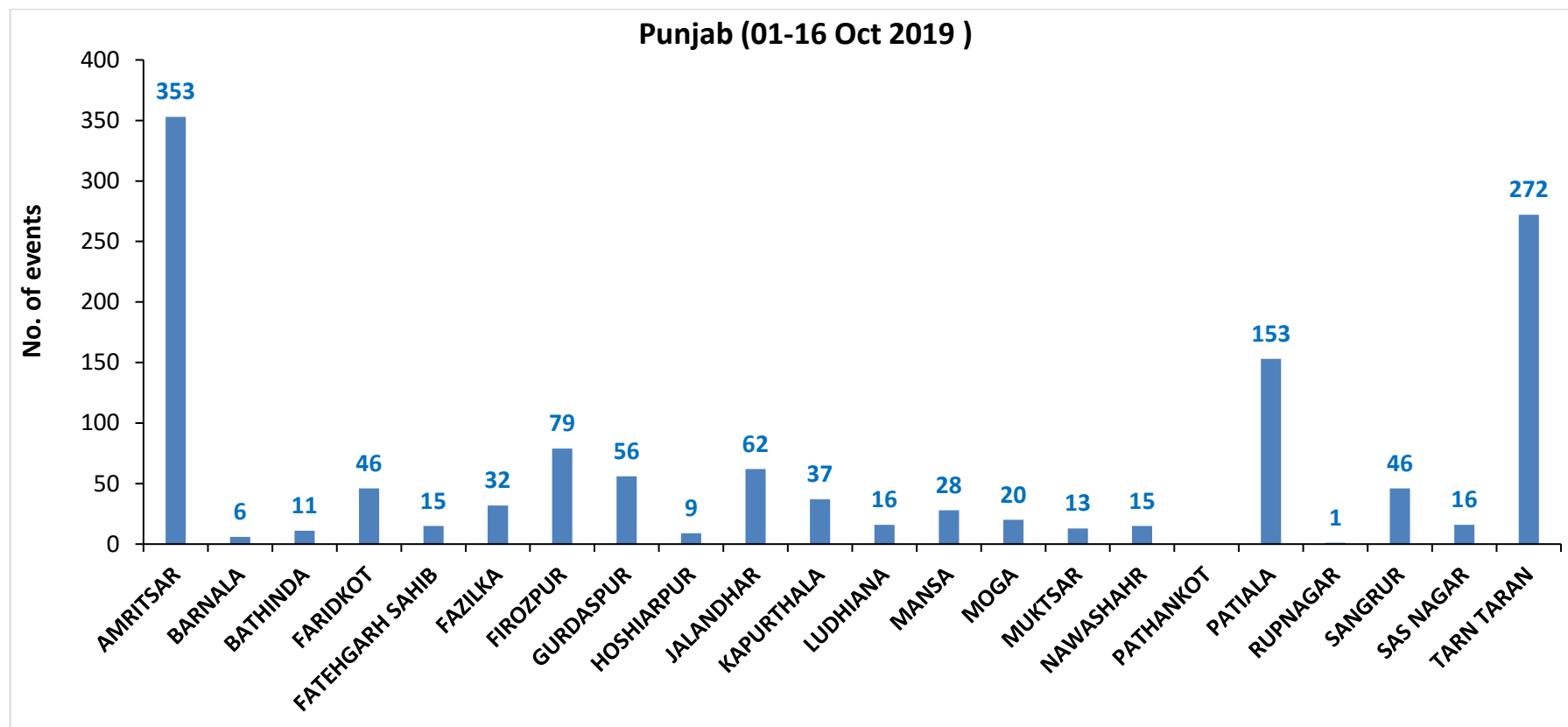
65	FIROZPUR	FIROZPUR	S-NPP	74.64281	31.04842	13:12:00	D	7.60
66	FIROZPUR	FIROZPUR	S-NPP	74.70528	31.06456	13:12:00	D	8.00
67	FIROZPUR	FIROZPUR	S-NPP	74.70905	31.06506	13:12:00	D	11.70
68	FIROZPUR	ZIRA	S-NPP	75.01508	30.93447	13:12:00	D	7.60
69	FIROZPUR	ZIRA	S-NPP	75.32440	30.95877	13:12:00	D	6.10
70	FIROZPUR	ZIRA	S-NPP	75.32562	30.95987	13:12:00	D	5.80
71	FIROZPUR	ZIRA	S-NPP	74.95894	31.07299	13:12:00	D	18.80
72	GURDASPUR	BATALA	S-NPP	75.35023	31.64789	13:12:00	D	6.90
73	GURDASPUR	BATALA	S-NPP	75.35980	31.65362	13:12:00	D	2.50
74	GURDASPUR	BATALA	S-NPP	75.33492	31.66447	13:12:00	D	4.20
75	GURDASPUR	BATALA	S-NPP	75.40462	31.69326	13:12:00	D	6.10
76	GURDASPUR	BATALA	S-NPP	75.25353	31.69987	13:12:00	D	3.30
77	GURDASPUR	BATALA	S-NPP	75.24532	31.71007	13:12:00	D	1.90
78	GURDASPUR	BATALA	S-NPP	75.25835	31.73547	13:12:00	D	7.20
79	GURDASPUR	BATALA	S-NPP	75.19302	31.75038	13:12:00	D	3.00
80	GURDASPUR	BATALA	S-NPP	75.36284	31.75938	13:12:00	D	14.00
81	GURDASPUR	BATALA	S-NPP	75.18184	31.77180	13:12:00	D	2.90
82	GURDASPUR	BATALA	S-NPP	75.23708	31.77445	13:12:00	D	3.00
83	GURDASPUR	DERA BABA NANAK	S-NPP	74.90179	31.91343	13:12:00	D	3.70
84	GURDASPUR	GURDASPUR	S-NPP	75.18651	31.95246	13:12:00	D	5.70
85	HOSHIARPUR	GARHSHANKAR	S-NPP	76.04574	31.25484	13:12:00	D	3.10
86	JALANDHAR	JALANDHAR I	S-NPP	75.73434	31.44624	13:12:00	D	2.90
87	JALANDHAR	JALANDHAR II	S-NPP	75.63100	31.38844	13:12:00	D	7.50
88	JALANDHAR	NAKODAR	S-NPP	75.41138	30.99135	13:12:00	D	5.10
89	JALANDHAR	NAKODAR	S-NPP	75.49454	30.99166	13:12:00	D	2.20
90	JALANDHAR	NAKODAR	S-NPP	75.52131	31.19957	13:12:00	D	2.50
91	JALANDHAR	PHILLAUR	S-NPP	75.62817	31.12265	13:12:00	D	5.60
92	JALANDHAR	PHILLAUR	S-NPP	75.62502	31.12538	13:12:00	D	3.30
93	JALANDHAR	SHAHKOT	S-NPP	75.30825	31.07675	13:12:00	D	3.40
94	JALANDHAR	SHAHKOT	S-NPP	75.25127	31.14482	13:12:00	D	4.20
95	JALANDHAR	SHAHKOT	S-NPP	75.38132	31.18507	13:12:00	D	7.00
96	JALANDHAR	SHAHKOT	S-NPP	75.38419	31.18548	13:12:00	D	10.60
97	KAPURTHALA	KAPURTHALA	S-NPP	75.21947	31.39219	13:12:00	D	8.90
98	KAPURTHALA	PHAGWARA	S-NPP	75.83894	31.29543	13:12:00	D	2.40

99	KAPURTHALA	SULTANPUR LODHI	S-NPP	75.23344	31.16018	13:12:00	D	1.70
100	KAPURTHALA	SULTANPUR LODHI	S-NPP	75.09810	31.25496	13:12:00	D	12.20
101	LUDHIANA	JAGRAON	S-NPP	75.59614	30.90143	13:12:00	D	11.50
102	LUDHIANA	JAGRAON	S-NPP	75.59878	30.90192	13:12:00	D	11.70
103	LUDHIANA	JAGRAON	S-NPP	75.51427	30.96395	13:12:00	D	3.60
104	LUDHIANA	JAGRAON	S-NPP	75.51954	30.96494	13:12:00	D	3.60
105	LUDHIANA	RAIKOT	S-NPP	75.73792	30.67453	13:12:00	D	4.30
106	LUDHIANA	SAMRALA	S-NPP	76.18378	30.77608	13:12:00	D	2.50
107	MANSA	SARDULGARH	S-NPP	75.24297	29.65845	13:12:00	D	2.60
108	MANSA	SARDULGARH	S-NPP	75.21460	29.67728	13:12:00	D	9.20
109	MANSA	SARDULGARH	S-NPP	75.26711	29.67936	13:12:00	D	4.90
110	MANSA	SARDULGARH	S-NPP	75.25396	29.68491	13:12:00	D	1.70
111	MANSA	SARDULGARH	S-NPP	75.22390	29.68720	13:12:00	D	3.60
112	MOGA	BAGHA PURANA	S-NPP	75.10330	30.55810	13:12:00	D	4.00
113	MOGA	MOGA	S-NPP	75.20991	30.73332	13:12:00	D	9.50
114	MOGA	MOGA	S-NPP	75.18605	30.73666	13:12:00	D	4.00
115	MUKTSAR	MUKTSAR	S-NPP	74.53955	30.51174	13:12:00	D	13.50
116	MUKTSAR	MUKTSAR	S-NPP	74.59885	30.51942	13:12:00	D	6.00
117	PATIALA	PATIALA	S-NPP	76.32827	30.12169	13:12:00	D	4.80
118	PATIALA	PATIALA	S-NPP	76.47569	30.26128	13:12:00	D	4.20
119	PATIALA	RAJPURA	S-NPP	76.67955	30.33176	13:12:00	D	6.20
120	PATIALA	RAJPURA	S-NPP	76.68189	30.33336	13:12:00	D	9.70
121	PATIALA	RAJPURA	S-NPP	76.60790	30.37213	13:12:00	D	3.20
122	PATIALA	RAJPURA	S-NPP	76.72674	30.52478	13:12:00	D	3.40
123	PATIALA	RAJPURA	S-NPP	76.74879	30.56378	13:12:00	D	2.90
124	PATIALA	RAJPURA	S-NPP	76.55647	30.58084	13:12:00	D	3.30
125	PATIALA	SAMANA	S-NPP	76.17835	29.86037	13:12:00	D	2.90
126	PATIALA	SAMANA	S-NPP	76.01903	29.88105	13:12:00	D	2.60
127	PATIALA	SAMANA	S-NPP	76.13796	29.92716	13:12:00	D	2.90
128	PATIALA	SAMANA	S-NPP	76.12809	29.96767	13:12:00	D	3.40
129	PATIALA	SAMANA	S-NPP	76.23634	30.16789	13:12:00	D	6.70
130	SANGRUR	MOONAK	S-NPP	76.05617	29.79499	13:12:00	D	9.20
131	SANGRUR	MOONAK	S-NPP	75.98533	29.87507	13:12:00	D	3.80
132	SANGRUR	MOONAK	S-NPP	75.95022	29.87611	13:12:00	D	9.30

133	SANGRUR	MOONAK	S-NPP	75.95261	29.87661	13:12:00	D	6.10
134	SANGRUR	SUNAM	S-NPP	75.74410	29.98167	13:12:00	D	2.90
135	SAS NAGAR	DERABASSI	S-NPP	76.92414	30.51591	13:12:00	D	2.70
136	SAS NAGAR	MOHALI	S-NPP	76.73137	30.61622	13:12:00	D	3.90
137	TARN TARAN	KHADOOR SAHIB	S-NPP	74.96458	31.21281	13:12:00	D	3.80
138	TARN TARAN	KHADOOR SAHIB	S-NPP	75.05496	31.26648	13:12:00	D	3.90
139	TARN TARAN	KHADOOR SAHIB	S-NPP	75.00855	31.28942	13:12:00	D	4.30
140	TARN TARAN	KHADOOR SAHIB	S-NPP	74.93156	31.29460	13:12:00	D	4.80
141	TARN TARAN	KHADOOR SAHIB	S-NPP	74.99056	31.31392	13:12:00	D	5.90
142	TARN TARAN	KHADOOR SAHIB	S-NPP	74.78909	31.38079	13:12:00	D	6.40
143	TARN TARAN	KHADOOR SAHIB	S-NPP	75.06846	31.38276	13:12:00	D	8.30
144	TARN TARAN	KHADOOR SAHIB	S-NPP	75.09126	31.38321	13:12:00	D	3.70
145	TARN TARAN	KHADOOR SAHIB	S-NPP	75.02673	31.41052	13:12:00	D	6.40
146	TARN TARAN	KHADOOR SAHIB	S-NPP	75.00177	31.41768	13:12:00	D	3.90
147	TARN TARAN	KHADOOR SAHIB	S-NPP	74.86166	31.41887	13:12:00	D	4.90
148	TARN TARAN	KHADOOR SAHIB	S-NPP	74.86725	31.41994	13:12:00	D	5.60
149	TARN TARAN	KHADOOR SAHIB	S-NPP	74.86574	31.42040	13:12:00	D	10.70
150	TARN TARAN	KHADOOR SAHIB	S-NPP	75.14023	31.43621	13:12:00	D	3.80
151	TARN TARAN	KHADOOR SAHIB	S-NPP	74.77159	31.44217	13:12:00	D	6.50
152	TARN TARAN	KHADOOR SAHIB	S-NPP	74.81297	31.44220	13:12:00	D	17.90
153	TARN TARAN	KHADOOR SAHIB	S-NPP	75.21183	31.46560	13:12:00	D	7.30
154	TARN TARAN	KHADOOR SAHIB	S-NPP	75.15685	31.49714	13:12:00	D	6.80
155	TARN TARAN	KHADOOR SAHIB	S-NPP	75.17107	31.50779	13:12:00	D	10.20
156	TARN TARAN	KHADOOR SAHIB	S-NPP	74.90037	31.51131	13:12:00	D	2.70
157	TARN TARAN	KHADOOR SAHIB	S-NPP	74.64354	31.53487	13:12:00	D	4.00
158	TARN TARAN	PATTI	S-NPP	74.59482	31.16799	13:12:00	D	4.60
159	TARN TARAN	PATTI	S-NPP	74.73028	31.22732	13:12:00	D	9.40
160	TARN TARAN	PATTI	S-NPP	74.62772	31.22762	13:12:00	D	6.80
161	TARN TARAN	PATTI	S-NPP	74.78565	31.26645	13:12:00	D	6.40
162	TARN TARAN	PATTI	S-NPP	74.70928	31.28412	13:12:00	D	15.00
163	TARN TARAN	PATTI	S-NPP	74.71302	31.28496	13:12:00	D	11.00
164	TARN TARAN	PATTI	S-NPP	74.88390	31.29748	13:12:00	D	2.90
165	TARN TARAN	PATTI	AQUA	74.67200	31.29900	13:10:00	D	19.10
166	TARN TARAN	PATTI	S-NPP	74.67267	31.30136	13:12:00	D	15.10

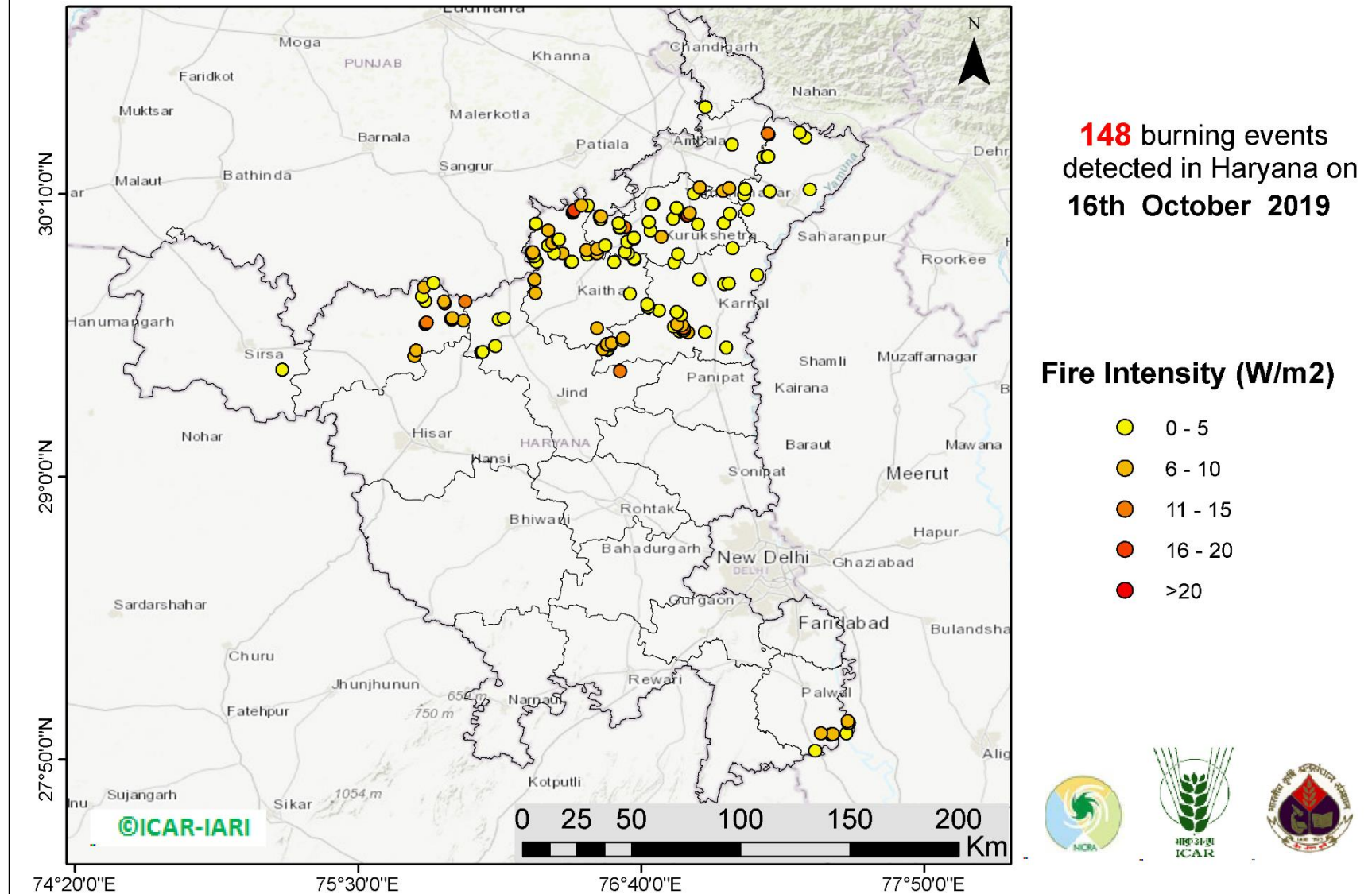
167	TARN TARAN	PATTI	TERRA	74.55700	31.31000	11:35:00	D	6.70
168	TARN TARAN	PATTI	S-NPP	74.61446	31.33879	13:12:00	D	19.10

District-wise cumulative number of residue burning events in Punjab (01 to 16-Oct 2019)



(b) Haryana

RICE RESIDUE BURNING IN HARYANA



<http://geoportal.icar.gov.in:8080/geoexplorer/composer/>

Details of residue burning events in Haryana on 16-Oct-2019

S. No.	District	Tehsil / Block	Satellite	Longitude	Latitude	Time (IST)	Day / Night	Fire Power (W/m2)
1	AMBALA	BARARA	S-NPP	77.00340	30.17742	13:12:00	D	5.10
2	AMBALA	BARARA	S-NPP	77.09637	30.18398	13:12:00	D	2.50
3	AMBALA	BARARA	S-NPP	77.02951	30.18950	13:12:00	D	5.10
4	AMBALA	BARARA	S-NPP	77.17325	30.31685	13:12:00	D	4.00
5	AMBALA	BARARA	S-NPP	77.17175	30.31735	13:12:00	D	4.60
6	AMBALA	NARAYANGARH	S-NPP	77.04144	30.37023	13:12:00	D	2.30
7	FATEHABAD	FATEHABAD	S-NPP	75.73164	29.49629	13:12:00	D	5.60
8	FATEHABAD	FATEHABAD	S-NPP	75.74011	29.52020	13:12:00	D	8.90
9	FATEHABAD	TOHANA	S-NPP	75.77842	29.62861	13:12:00	D	4.10
10	FATEHABAD	TOHANA	S-NPP	75.77971	29.63034	13:12:00	D	5.00
11	FATEHABAD	TOHANA	TERRA	75.78300	29.63600	11:35:00	D	11.60
12	FATEHABAD	TOHANA	S-NPP	75.93581	29.64366	13:12:00	D	7.40
13	FATEHABAD	TOHANA	S-NPP	75.88605	29.64616	13:12:00	D	4.40
14	FATEHABAD	TOHANA	S-NPP	75.88362	29.64877	13:12:00	D	5.70
15	FATEHABAD	TOHANA	S-NPP	75.88793	29.65351	13:12:00	D	6.90
16	FATEHABAD	TOHANA	AQUA	75.85800	29.71500	13:10:00	D	15.90
17	FATEHABAD	TOHANA	S-NPP	75.85474	29.72169	13:12:00	D	7.50
18	FATEHABAD	TOHANA	S-NPP	75.94191	29.72236	13:12:00	D	10.90
19	FATEHABAD	TOHANA	S-NPP	75.77729	29.72291	13:12:00	D	5.00
20	FATEHABAD	TOHANA	S-NPP	75.76417	29.74329	13:12:00	D	4.60
21	FATEHABAD	TOHANA	S-NPP	75.77168	29.78014	13:12:00	D	6.20
22	FATEHABAD	TOHANA	S-NPP	75.81101	29.79936	13:12:00	D	3.30
23	JIND	NARWANA	S-NPP	76.00838	29.51276	13:12:00	D	4.80
24	JIND	NARWANA	S-NPP	76.01357	29.51373	13:12:00	D	4.80
25	JIND	NARWANA	S-NPP	76.06674	29.53922	13:12:00	D	4.30
26	JIND	NARWANA	S-NPP	76.08078	29.64723	13:12:00	D	1.30
27	JIND	NARWANA	S-NPP	76.10037	29.65474	13:12:00	D	4.80
28	JIND	SAFIDON	S-NPP	76.57979	29.43450	13:12:00	D	11.30
29	KAITHAL	GUHLA	S-NPP	76.23515	29.88625	13:12:00	D	2.40
30	KAITHAL	GUHLA	S-NPP	76.22478	29.90735	13:12:00	D	3.80

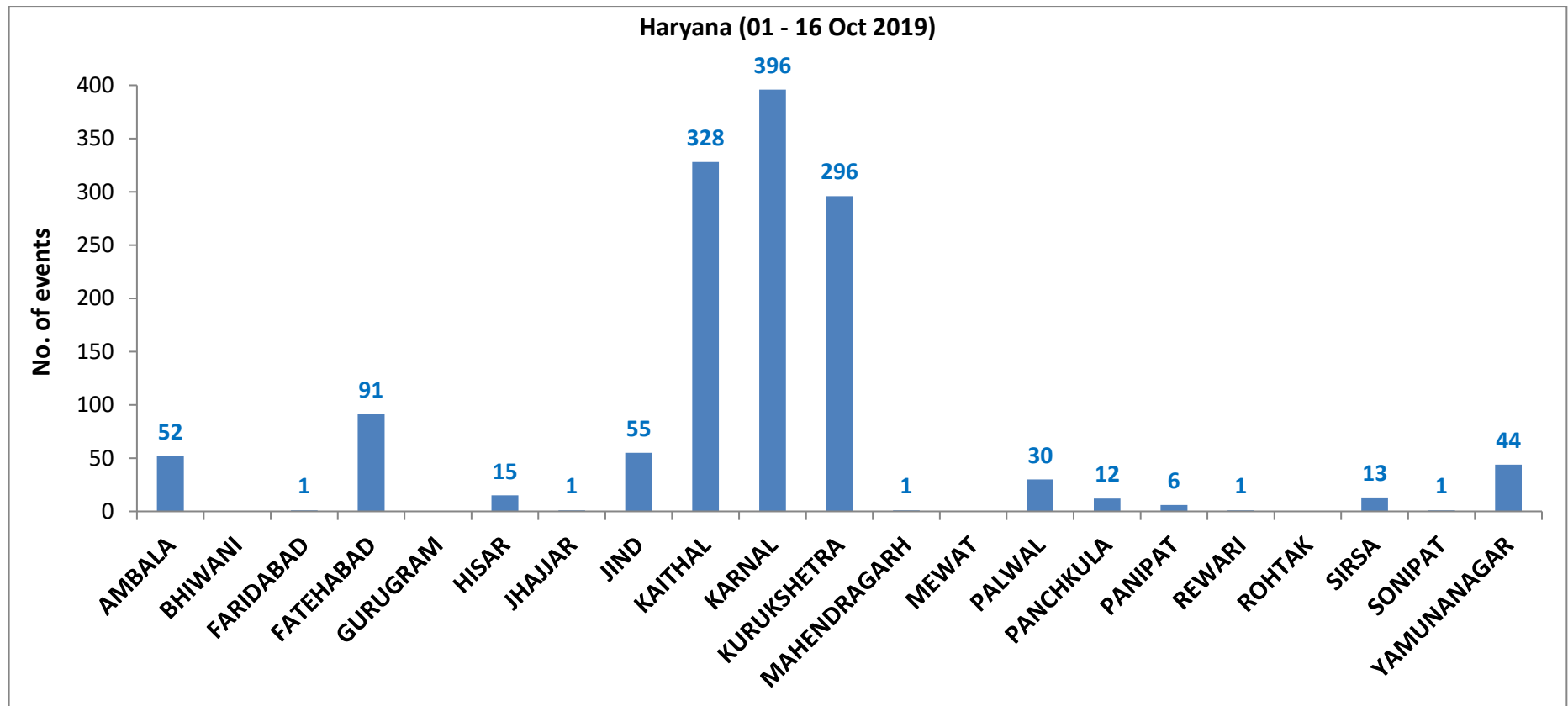
31	KAITHAL	GUHLA	S-NPP	76.34133	29.92105	13:12:00	D	7.80
32	KAITHAL	GUHLA	S-NPP	76.21796	29.92299	13:12:00	D	17.50
33	KAITHAL	GUHLA	S-NPP	76.21529	29.92478	13:12:00	D	7.40
34	KAITHAL	GUHLA	S-NPP	76.22032	29.92570	13:12:00	D	7.40
35	KAITHAL	GUHLA	S-NPP	76.28346	29.95441	13:12:00	D	2.90
36	KAITHAL	GUHLA	S-NPP	76.30159	29.96543	13:12:00	D	5.30
37	KAITHAL	GUHLA	S-NPP	76.32465	29.97734	13:12:00	D	3.00
38	KAITHAL	GUHLA	S-NPP	76.32961	29.97826	13:12:00	D	4.50
39	KAITHAL	GUHLA	S-NPP	76.28423	30.01566	13:12:00	D	6.00
40	KAITHAL	GUHLA	S-NPP	76.23129	30.04036	13:12:00	D	7.10
41	KAITHAL	GUHLA	S-NPP	76.23314	30.04302	13:12:00	D	4.80
42	KAITHAL	GUHLA	AQUA	76.38400	30.09000	13:10:00	D	18.90
43	KAITHAL	GUHLA	AQUA	76.38800	30.09200	13:10:00	D	19.40
44	KAITHAL	GUHLA	S-NPP	76.39040	30.09895	13:12:00	D	19.70
45	KAITHAL	GUHLA	S-NPP	76.44743	30.11704	13:12:00	D	2.00
46	KAITHAL	GUHLA	S-NPP	76.42123	30.11979	13:12:00	D	5.10
47	KAITHAL	KAITHAL	S-NPP	76.50872	29.52703	13:12:00	D	8.60
48	KAITHAL	KAITHAL	S-NPP	76.48526	29.61247	13:12:00	D	7.40
49	KAITHAL	KAITHAL	S-NPP	76.69513	29.69968	13:12:00	D	3.50
50	KAITHAL	KAITHAL	S-NPP	76.62180	29.75407	13:12:00	D	2.70
51	KAITHAL	KAITHAL	S-NPP	76.23254	29.75722	13:12:00	D	7.80
52	KAITHAL	KAITHAL	S-NPP	76.22696	29.81182	13:12:00	D	5.40
53	KAITHAL	KAITHAL	S-NPP	76.22923	29.81420	13:12:00	D	5.50
54	KAITHAL	KAITHAL	S-NPP	76.55504	29.88452	13:12:00	D	4.90
55	KAITHAL	KAITHAL	S-NPP	76.37578	29.88549	13:12:00	D	11.40
56	KAITHAL	KAITHAL	S-NPP	76.38071	29.88640	13:12:00	D	2.90
57	KAITHAL	KAITHAL	S-NPP	76.63808	29.89609	13:12:00	D	4.40
58	KAITHAL	KAITHAL	S-NPP	76.64105	29.89633	13:12:00	D	1.60
59	KAITHAL	KAITHAL	S-NPP	76.63723	29.89969	13:12:00	D	4.40
60	KAITHAL	KAITHAL	S-NPP	76.44616	29.91365	13:12:00	D	3.60
61	KAITHAL	KAITHAL	S-NPP	76.30975	29.92291	13:12:00	D	3.10
62	KAITHAL	KAITHAL	S-NPP	76.44090	29.93544	13:12:00	D	7.90
63	KARNAL	ASSANDH	S-NPP	76.53013	29.52332	13:12:00	D	3.80
64	KARNAL	ASSANDH	S-NPP	76.52927	29.52695	13:12:00	D	3.80

65	KARNAL	ASSANDH	S-NPP	76.53786	29.54237	13:12:00	D	7.90
66	KARNAL	ASSANDH	S-NPP	76.54050	29.54418	13:12:00	D	7.20
67	KARNAL	ASSANDH	S-NPP	76.52491	29.54515	13:12:00	D	4.60
68	KARNAL	ASSANDH	S-NPP	76.52982	29.54604	13:12:00	D	4.60
69	KARNAL	ASSANDH	S-NPP	76.52634	29.54782	13:12:00	D	9.10
70	KARNAL	ASSANDH	S-NPP	76.54592	29.55147	13:12:00	D	5.60
71	KARNAL	ASSANDH	S-NPP	76.58900	29.56325	13:12:00	D	3.40
72	KARNAL	ASSANDH	S-NPP	76.59213	29.57140	13:12:00	D	5.30
73	KARNAL	GHARAUNDA	S-NPP	77.01756	29.53305	13:12:00	D	3.20
74	KARNAL	GHARAUNDA	S-NPP	76.86075	29.59418	13:12:00	D	5.80
75	KARNAL	GHARAUNDA	S-NPP	76.92957	29.59529	13:12:00	D	4.60
76	KARNAL	INDRI	S-NPP	77.14445	29.83285	13:12:00	D	2.00
77	KARNAL	INDRI	S-NPP	77.04418	29.94213	13:12:00	D	3.90
78	KARNAL	KARNAL	S-NPP	76.82657	29.59952	13:12:00	D	2.90
79	KARNAL	KARNAL	S-NPP	76.84082	29.60213	13:12:00	D	4.10
80	KARNAL	KARNAL	S-NPP	76.84396	29.60239	13:12:00	D	9.60
81	KARNAL	KARNAL	S-NPP	76.84557	29.60300	13:12:00	D	7.00
82	KARNAL	KARNAL	S-NPP	76.84389	29.61017	13:12:00	D	3.40
83	KARNAL	KARNAL	S-NPP	76.84305	29.61376	13:12:00	D	10.70
84	KARNAL	KARNAL	S-NPP	76.80244	29.61757	13:12:00	D	4.90
85	KARNAL	KARNAL	S-NPP	76.83576	29.62364	13:12:00	D	8.00
86	KARNAL	KARNAL	S-NPP	76.81506	29.62735	13:12:00	D	7.90
87	KARNAL	KARNAL	S-NPP	76.83147	29.66613	01:54:00	N	1.10
88	KARNAL	KARNAL	S-NPP	76.81272	29.67931	13:12:00	D	1.80
89	KARNAL	KARNAL	S-NPP	76.74156	29.68526	13:12:00	D	3.30
90	KARNAL	KARNAL	S-NPP	76.69257	29.71049	13:12:00	D	3.60
91	KARNAL	KARNAL	S-NPP	77.00870	29.79388	13:12:00	D	3.90
92	KARNAL	KARNAL	S-NPP	77.02734	29.79722	13:12:00	D	4.50
93	KARNAL	NILOKHERI	S-NPP	76.90658	29.81271	13:12:00	D	3.60
94	KARNAL	NILOKHERI	S-NPP	76.80437	29.88074	13:12:00	D	2.90
95	KURUKSHETRA	PEHOWA	S-NPP	76.48044	29.91993	13:12:00	D	7.20
96	KURUKSHETRA	PEHOWA	S-NPP	76.48532	29.92083	13:12:00	D	7.90
97	KURUKSHETRA	PEHOWA	S-NPP	76.61192	29.92138	13:12:00	D	2.40
98	KURUKSHETRA	PEHOWA	S-NPP	76.60055	29.92682	13:12:00	D	3.60

99	KURUKSHETRA	PEHOWA	S-NPP	76.48586	29.93985	13:12:00	D	7.80
100	KURUKSHETRA	PEHOWA	S-NPP	76.51826	29.95330	13:12:00	D	3.60
101	KURUKSHETRA	PEHOWA	S-NPP	76.61038	29.96999	13:12:00	D	3.70
102	KURUKSHETRA	PEHOWA	S-NPP	76.63758	29.98241	13:12:00	D	7.10
103	KURUKSHETRA	PEHOWA	S-NPP	76.63671	29.98601	13:12:00	D	3.80
104	KURUKSHETRA	PEHOWA	S-NPP	76.70679	30.01393	13:12:00	D	3.40
105	KURUKSHETRA	PEHOWA	S-NPP	76.57906	30.02426	13:12:00	D	2.40
106	KURUKSHETRA	PEHOWA	S-NPP	76.59837	30.02779	13:12:00	D	10.10
107	KURUKSHETRA	PEHOWA	S-NPP	76.57819	30.02786	13:12:00	D	2.40
108	KURUKSHETRA	PEHOWA	S-NPP	76.57388	30.04589	13:12:00	D	2.80
109	KURUKSHETRA	PEHOWA	S-NPP	76.49903	30.06243	13:12:00	D	2.90
110	KURUKSHETRA	PEHOWA	S-NPP	76.49641	30.07327	13:12:00	D	3.90
111	KURUKSHETRA	PEHOWA	S-NPP	76.50129	30.07416	13:12:00	D	5.90
112	KURUKSHETRA	PEHOWA	S-NPP	76.71543	30.12388	13:12:00	D	4.70
113	KURUKSHETRA	PEHOWA	S-NPP	76.71237	30.12437	13:12:00	D	4.90
114	KURUKSHETRA	SHAHABAD	S-NPP	76.88448	30.16695	13:12:00	D	3.80
115	KURUKSHETRA	SHAHABAD	S-NPP	76.90752	30.19332	13:12:00	D	6.40
116	KURUKSHETRA	THANESAR	S-NPP	76.82046	29.91718	13:12:00	D	4.70
117	KURUKSHETRA	THANESAR	S-NPP	76.75109	29.98787	13:12:00	D	5.50
118	KURUKSHETRA	THANESAR	S-NPP	76.90113	30.04073	13:12:00	D	3.20
119	KURUKSHETRA	THANESAR	S-NPP	77.00720	30.04477	13:12:00	D	3.90
120	KURUKSHETRA	THANESAR	S-NPP	76.69827	30.04979	13:12:00	D	2.40
121	KURUKSHETRA	THANESAR	S-NPP	76.79890	30.06434	13:12:00	D	4.50
122	KURUKSHETRA	THANESAR	AQUA	76.85500	30.07800	13:10:00	D	12.40
123	KURUKSHETRA	THANESAR	S-NPP	76.85939	30.07901	13:12:00	D	15.90
124	KURUKSHETRA	THANESAR	S-NPP	77.03316	30.08450	13:12:00	D	4.90
125	KURUKSHETRA	THANESAR	S-NPP	76.86710	30.08783	13:12:00	D	7.00
126	KURUKSHETRA	THANESAR	S-NPP	76.81324	30.10786	13:12:00	D	1.90
127	PALWAL	HODAL	S-NPP	77.38445	27.86918	13:12:00	D	2.40
128	PALWAL	HODAL	AQUA	77.44900	27.93600	13:10:00	D	18.90
129	PALWAL	HODAL	S-NPP	77.45151	27.93708	13:12:00	D	5.40
130	PALWAL	HODAL	S-NPP	77.45614	27.93790	13:12:00	D	5.40
131	PALWAL	HODAL	S-NPP	77.40722	27.94039	13:12:00	D	6.80
132	PALWAL	HODAL	S-NPP	77.51323	27.94060	13:12:00	D	3.50

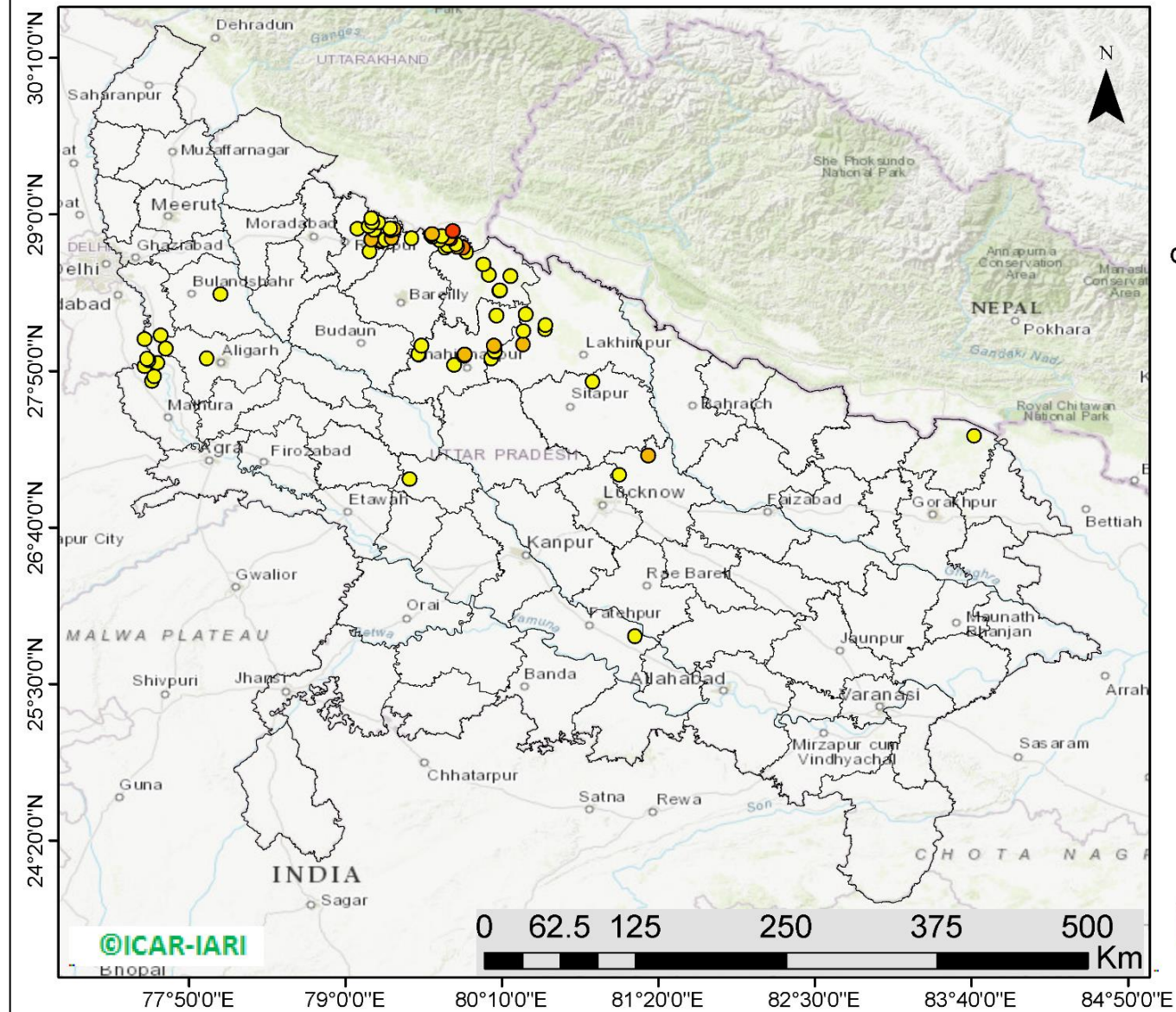
133	PALWAL	HODAL	S-NPP	77.52286	27.98305	13:12:00	D	2.80
134	PALWAL	HODAL	S-NPP	77.52013	27.98384	13:12:00	D	3.20
135	PALWAL	PALWAL	S-NPP	77.51853	27.99096	13:12:00	D	6.40
136	PANCHKULA	PANCHKULA	S-NPP	76.93175	30.52464	13:12:00	D	2.20
137	SIRSA	SIRSA	S-NPP	75.18842	29.44146	13:12:00	D	3.20
138	YAMUNANAGAR	JAGADHRI	S-NPP	77.10616	30.10132	13:12:00	D	3.90
139	YAMUNANAGAR	JAGADHRI	S-NPP	77.09212	30.16122	13:12:00	D	2.60
140	YAMUNANAGAR	JAGADHRI	S-NPP	77.19833	30.17631	13:12:00	D	1.50
141	YAMUNANAGAR	JAGADHRI	S-NPP	77.36171	30.18321	13:12:00	D	3.30
142	YAMUNANAGAR	JAGADHRI	S-NPP	77.09555	30.18750	13:12:00	D	2.50
143	YAMUNANAGAR	JAGADHRI	S-NPP	77.18691	30.31929	13:12:00	D	2.40
144	YAMUNANAGAR	JAGADHRI	S-NPP	77.18999	30.32053	13:12:00	D	2.50
145	YAMUNANAGAR	JAGADHRI	S-NPP	77.34281	30.39783	13:12:00	D	1.80
146	YAMUNANAGAR	JAGADHRI	AQUA	77.19400	30.41100	13:10:00	D	18.20
147	YAMUNANAGAR	JAGADHRI	AQUA	77.18800	30.41500	13:10:00	D	10.80
148	YAMUNANAGAR	JAGADHRI	S-NPP	77.31922	30.41907	13:12:00	D	3.00

District-wise cumulative number of residue burning events in Haryana (01 to 16-Oct 2019)



(c) UP

RICE RESIDUE BURNING IN UTTAR PRADESH



77 burning events detected in Uttar Pradesh on 16th October 2019

Fire Intensity (W/m²)

- 0 - 5
- 6 - 10
- 11 - 15
- 16 - 20
- >20



<http://geoportal.icar.gov.in:8080/geoplorer/composer/>

Details of residue burning events in Uttar Pradesh on 16-Oct-2019

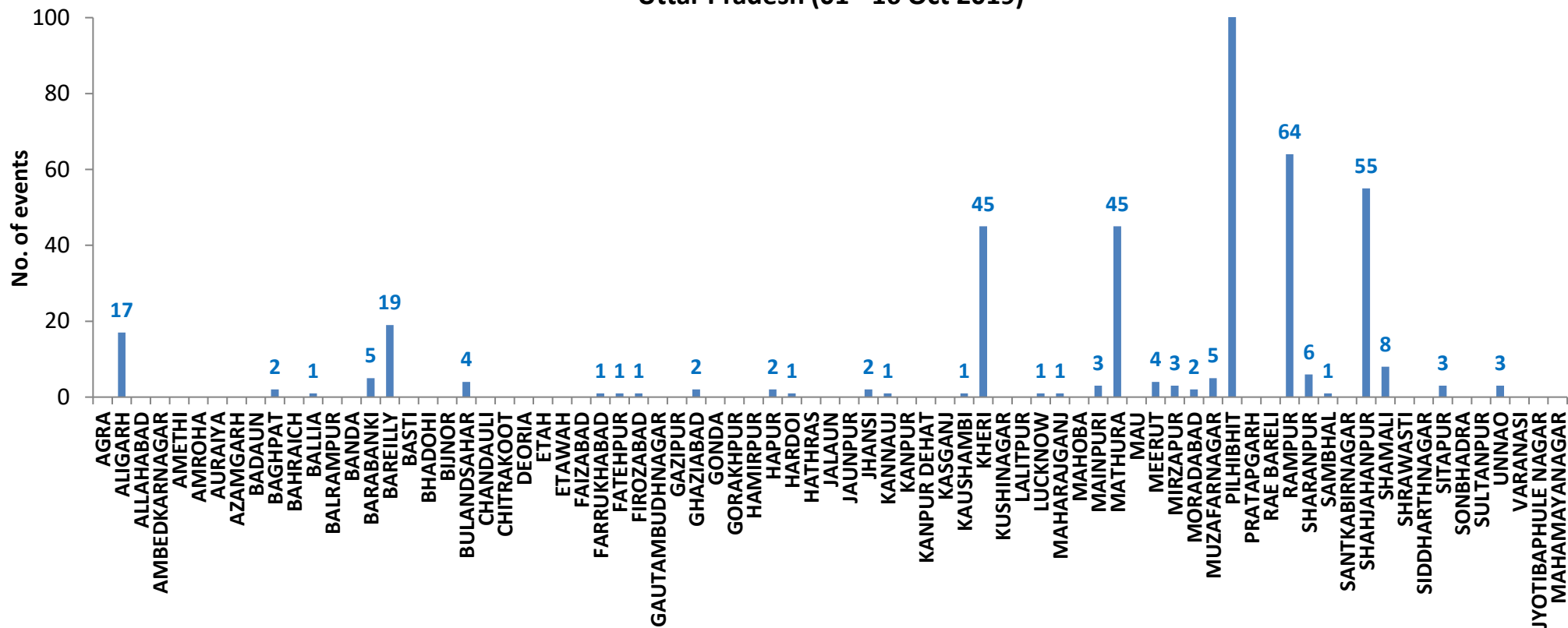
S. No.	District	Tehsil / Block	Satellite	Longitude	Latitude	Time (IST)	Day / Night	Fire Power (W/m ²)
1	ALIGARH	GABHANA	S-NPP	77.96536	27.92908	13:12:00	D	3.00
2	ALIGARH	KHAIR	S-NPP	77.65890	28.00141	13:12:00	D	2.50
3	ALIGARH	KHAIR	S-NPP	77.50092	28.06931	13:12:00	D	2.00
4	ALIGARH	KHAIR	S-NPP	77.62308	28.09814	13:12:00	D	1.90
5	BARABANKI	FATEHPUR	S-NPP	81.04433	27.05960	13:12:00	D	2.90
6	BARABANKI	FATEHPUR	AQUA	81.25700	27.20500	13:10:00	D	9.50
7	BAREILLY	BAHERI	S-NPP	79.49461	28.82288	13:12:00	D	2.50
8	BAREILLY	BAHERI	S-NPP	79.65318	28.83458	13:12:00	D	2.20
9	BAREILLY	BAHERI	AQUA	79.64000	28.84800	13:10:00	D	9.20
10	BAREILLY	BAHERI	S-NPP	79.64510	28.85388	13:12:00	D	8.40
11	BULANDSAHAR	ANUP SHAHR	S-NPP	78.06774	28.40479	13:12:00	D	1.50
12	FATEHPUR	KHAGA	S-NPP	81.16071	25.85557	13:12:00	D	2.00
13	HARDOI	BILGRAM	S-NPP	79.98882	27.26387	01:54:00	N	0.30
14	KANNAUJ	CHHIBRAMAU	S-NPP	79.47927	27.02742	13:12:00	D	2.00
15	KHERI	GOLA	S-NPP	80.32691	28.13072	13:12:00	D	3.80
16	KHERI	GOLA	S-NPP	80.48955	28.14280	13:12:00	D	3.50
17	KHERI	GOLA	S-NPP	80.49170	28.17344	13:12:00	D	3.20
18	KHERI	GOLA	S-NPP	80.34264	28.25500	13:12:00	D	3.70
19	KHERI	MOHMADI	S-NPP	80.08766	27.92736	13:12:00	D	4.60
20	KHERI	MOHMADI	S-NPP	80.32619	28.03220	13:12:00	D	5.40
21	MAHARAJGANJ	NICHLAUL	S-NPP	83.68883	27.34972	13:12:00	D	4.40
22	MATHURA	CHHATA	S-NPP	77.56005	27.76088	13:12:00	D	4.90
23	MATHURA	CHHATA	S-NPP	77.57403	27.79039	13:12:00	D	4.00
24	MATHURA	CHHATA	S-NPP	77.50077	27.86786	13:12:00	D	2.10
25	MATHURA	CHHATA	S-NPP	77.52183	27.92359	13:12:00	D	2.70
26	MATHURA	MAT	S-NPP	77.59572	27.89238	13:12:00	D	1.00
27	MATHURA	MAT	S-NPP	77.53426	27.91098	13:12:00	D	4.40
28	PILHIBHIT	PILHIBHIT	S-NPP	79.90160	28.72133	13:12:00	D	3.90
29	PILHIBHIT	PILHIBHIT	S-NPP	79.74409	28.75106	13:12:00	D	3.60
30	PILHIBHIT	PILHIBHIT	S-NPP	79.87508	28.75132	13:12:00	D	11.90
31	PILHIBHIT	PILHIBHIT	S-NPP	79.83276	28.75830	13:12:00	D	5.90

32	PILHIBHIT	PILHIBHIT	S-NPP	79.76124	28.76749	13:12:00	D	1.10
33	PILHIBHIT	PILHIBHIT	S-NPP	79.82474	28.77757	13:12:00	D	4.60
34	PILHIBHIT	PILHIBHIT	S-NPP	79.70380	28.80837	13:12:00	D	2.50
35	PILHIBHIT	PILHIBHIT	TERRA	79.78500	28.81800	11:35:00	D	24.70
36	PILHIBHIT	PILHIBHIT	S-NPP	79.76534	28.82849	13:12:00	D	8.50
37	PILHIBHIT	PILHIBHIT	S-NPP	79.76932	28.82913	13:12:00	D	6.10
38	PILHIBHIT	PILHIBHIT	S-NPP	79.71823	28.83811	13:12:00	D	4.20
39	PILHIBHIT	PILHIBHIT	S-NPP	79.80155	28.87192	13:12:00	D	2.30
40	PILHIBHIT	PILHIBHIT	S-NPP	79.80088	28.87523	13:12:00	D	15.90
41	PILHIBHIT	PURANPUR	S-NPP	80.14680	28.43093	13:12:00	D	3.70
42	PILHIBHIT	PURANPUR	S-NPP	80.15007	28.43486	13:12:00	D	2.20
43	PILHIBHIT	PURANPUR	S-NPP	80.23042	28.53953	13:12:00	D	1.90
44	PILHIBHIT	PURANPUR	S-NPP	80.07004	28.55144	13:12:00	D	3.50
45	PILHIBHIT	PURANPUR	S-NPP	80.02663	28.62557	13:12:00	D	2.30
46	RAMPUR	BILASPUR	AQUA	79.26200	28.80100	13:10:00	D	10.70
47	RAMPUR	BILASPUR	S-NPP	79.26572	28.80315	13:12:00	D	6.00
48	RAMPUR	BILASPUR	S-NPP	79.26502	28.80649	13:12:00	D	6.00
49	RAMPUR	BILASPUR	S-NPP	79.29736	28.81173	13:12:00	D	4.60
50	RAMPUR	BILASPUR	S-NPP	79.19343	28.81366	13:12:00	D	6.90
51	RAMPUR	BILASPUR	S-NPP	79.34438	28.82624	13:12:00	D	5.80
52	RAMPUR	BILASPUR	S-NPP	79.33864	28.87892	13:12:00	D	2.70
53	RAMPUR	BILASPUR	S-NPP	79.21250	28.88258	13:12:00	D	3.20
54	RAMPUR	BILASPUR	AQUA	79.35300	28.88500	13:10:00	D	12.10
55	RAMPUR	BILASPUR	AQUA	79.36100	28.89000	13:10:00	D	10.70
56	RAMPUR	BILASPUR	S-NPP	79.35670	28.89220	13:12:00	D	2.90
57	RAMPUR	BILASPUR	S-NPP	79.36073	28.89285	13:12:00	D	5.30
58	RAMPUR	BILASPUR	S-NPP	79.33112	28.89495	13:12:00	D	2.20
59	RAMPUR	BILASPUR	S-NPP	79.24251	28.94056	13:12:00	D	2.50
60	RAMPUR	MILAK	S-NPP	79.18183	28.72364	13:12:00	D	2.70
61	RAMPUR	RAMPUR	S-NPP	79.08901	28.89017	13:12:00	D	1.70
62	RAMPUR	SUAR	S-NPP	79.17302	28.91078	13:12:00	D	4.10
63	RAMPUR	SUAR	S-NPP	79.20063	28.94061	13:12:00	D	3.50
64	RAMPUR	SUAR	S-NPP	79.19430	28.97072	13:12:00	D	4.50
65	SHAHJAHANPUR	PUWANYA	S-NPP	80.11375	27.97936	13:12:00	D	2.30

66	SHAHJAHANPUR	PUWANYA	S-NPP	80.11398	27.98166	13:12:00	D	3.00
67	SHAHJAHANPUR	PUWANYA	S-NPP	80.11063	28.01873	13:12:00	D	3.40
68	SHAHJAHANPUR	PUWANYA	S-NPP	80.10604	28.02142	13:12:00	D	8.50
69	SHAHJAHANPUR	PUWANYA	S-NPP	80.12572	28.24825	13:12:00	D	3.20
70	SHAHJAHANPUR	SHAHJAHANPUR	S-NPP	79.80877	27.87604	13:12:00	D	1.60
71	SHAHJAHANPUR	SHAHJAHANPUR	AQUA	79.88400	27.94800	13:10:00	D	11.90
72	SHAHJAHANPUR	SHAHJAHANPUR	AQUA	79.89200	27.95400	13:10:00	D	8.10
73	SHAHJAHANPUR	SHAHJAHANPUR	S-NPP	79.88742	27.95575	13:12:00	D	5.40
74	SHAHJAHANPUR	TILHAR	S-NPP	79.54637	27.95579	13:12:00	D	3.20
75	SHAHJAHANPUR	TILHAR	S-NPP	79.54568	27.95913	13:12:00	D	2.50
76	SHAHJAHANPUR	TILHAR	S-NPP	79.56605	28.02285	13:12:00	D	3.50
77	SITAPUR	LAHARPUR	S-NPP	80.84501	27.75383	13:12:00	D	1.70

District-wise cumulative number of residue burning events in Uttar Pradesh (01 to 16-Oct 2019)

Uttar Pradesh (01 - 16 Oct 2019)



State-wise, date-wise and district-wise number of residue burning events detected in 2016, 2017, 2018 and 2019
(Period: 01-Oct to 16-Oct)

Date	Punjab				Haryana				UP				Total			
	2019	2018	2017	2016	2019	2018	2017	2016	2019	2018	2017	2016	2019	2018	2017	2016
01-Oct	3	16	54	109	1	9	13	46	1	11	2	23	5	36	69	178
02-Oct	20	9	50	51	2	23	27	16	0	21	8	20	23	53	85	87
03-Oct	37	4	62	66	16	9	40	16	3	12	17	16	56	25	119	98
04-Oct	3	32	103	37	30	16	60	7	4	5	22	15	37	53	185	59
05-Oct	16	56	106	95	37	30	68	15	11	10	20	14	64	96	194	124
06-Oct	0	87	138	152	22	63	75	105	8	13	39	6	30	163	252	263
07-Oct	27	162	105	171	16	180	97	126	4	69	33	24	47	411	235	321
08-Oct	59	39	215	166	69	40	218	94	18	54	76	14	146	133	509	274
09-Oct	93	75	163	270	70	47	148	121	17	32	88	22	180	154	399	413
10-Oct	172	23	164	597	157	37	151	242	53	21	126	74	382	81	441	913
11-Oct	78	30	177	652	126	78	87	336	38	24	74	128	242	131	338	1116
12-Oct	99	67	342	694	154	133	123	338	42	22	51	164	295	222	516	1196
13-Oct	108	62	470	467	159	147	207	284	33	61	69	102	300	270	746	853
14-Oct	141	112	582	812	133	153	333	328	39	57	137	60	313	322	1052	1200
15-Oct	262	90	943	1215	203	110	458	248	63	35	237	76	528	235	1638	1539
16-Oct	168	174	465	1478	148	138	186	385	77	20	71	125	393	332	722	1988
Total	1286	1038	4139	7032	1343	1213	2291	2707	411	467	1070	883	3040	2718	7500	10622

(a) Punjab

Districts	01-16 Oct			
	2016	2017	2018	2019
AMRITSAR	761	501	400	353
BARNALA	21	13	3	6
BATHINDA	372	276	20	11
FARIDKOT	534	577	30	46
FATEHGARH SAHIB	387	146	14	15
FAZILKA	0	0	0	32
FIROZPUR	719	480	73	79
GURDASPUR	310	113	46	56
HOSHIARPUR	53	18	3	9
JALANDHAR	463	161	5	62
KAPURTHALA	375	56	6	37
LUDHIANA	343	272	23	16
MANSA	52	66	12	28
MOGA	99	56	2	20
MUKTSAR	564	154	14	13
NAWASHAHR (SBS Nagar)	107	44	13	15
PATHANKOT	0	0	0	0
PATIALA	577	506	113	153
RUPNAGAR	83	5	0	1
SANGRUR	129	155	52	46
SAS NAGAR	43	45	26	16
TARN TARAN	1040	495	183	272
Total	7032	4139	1038	1286

(b) Haryana

Districts	01-16 Oct			
	2016	2017	2018	2019
AMBALA	163	158	42	52
BHIWANI	1	2	2	0
FARIDABAD	14	34	33	1
FATEHABAD	109	99	54	91
GURUGRAM	0	0	0	0
HISAR	17	17	9	15
JHAJJAR	4	0	3	1
JIND	72	105	49	55
KAITHAL	732	502	319	328
KARNAL	897	727	375	396
KURUKSHETRA	562	511	249	296
MAHENDRAGARH	0	0	0	1
MEWAT	0	0	0	0
PALWAL	0	0	0	30
PANCHKULA	0	0	3	12
PANIPAT	24	31	32	6
REWARI	0	0	0	1
ROHTAK	1	1	0	0
SIRSA	57	18	8	13
SONIPAT	6	12	8	1
YAMUNANAGAR	48	74	27	44
Total	2707	2291	1213	1343

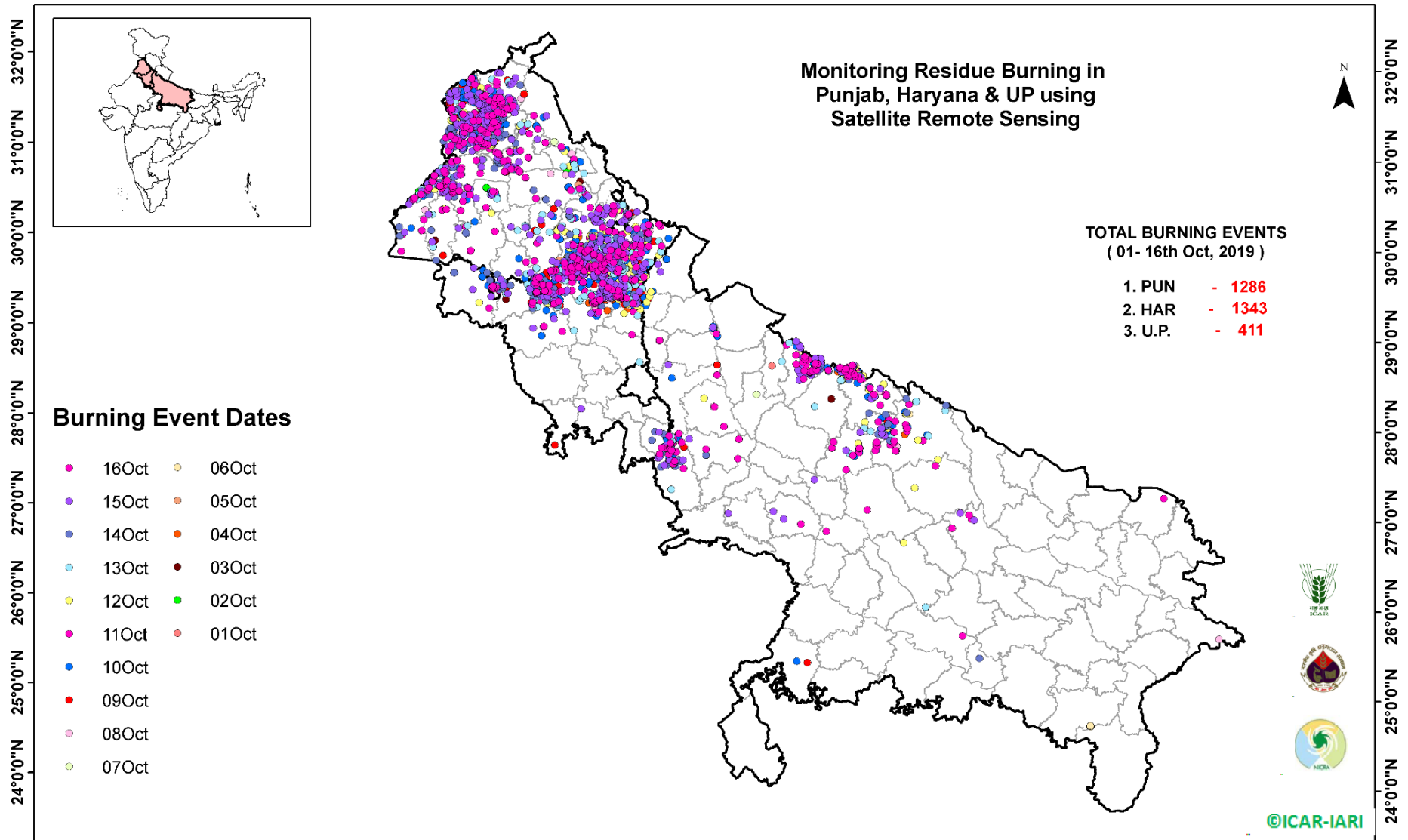
(c) Uttar Pradesh

Districts	01-16 Oct			
	2016	2017	2018	2019
AGRA	0	0	0	0
ALIGARH	2	12	10	17
ALLAHABAD	0	0	3	0
AMBEDKARNAGAR	0	1	0	0
AMETHI	0	0	0	0
AMROHA	0	0	0	0
AURAIYA	41	39	15	0
AZAMGARH	0	0	0	0
BADAUN	0	1	0	0
BAGHPAT	0	0	0	2
BAHRAICH	0	2	2	0
BALLIA	0	0	0	1
BALRAMPUR	0	0	0	0
BANDA	0	0	1	0
BARABANKI	15	23	42	5
BAREILLY	47	31	7	19
BASTI	0	0	0	0
BHADOHI	0	0	0	0
BIJNOR	1	0	1	0
BULANDSAHAR	0	6	5	4
CHANDAULI	0	0	0	0
CHITRAKOOT	0	0	0	0
DEORIA	0	0	0	0
ETAH	0	4	8	0
ETAWAH	1	4	1	0
FAIZABAD	0	1	0	0
FARRUKHABAD	0	0	0	1
FATEHPUR	2	4	5	1
FIROZABAD	3	0	0	1

GAUTAMBUDHNAGAR	1	3	2	0
GAZIPUR	0	0	0	0
GHAZIABAD	6	2	2	2
GONDA	0	0	0	0
GORAKHPUR	0	2	4	0
HAMIRPUR	0	0	1	0
HAPUR	0	0	0	2
HARDOI	6	8	2	1
HATHRAS	0	0	0	0
JALAUN	0	0	0	0
JAUNPUR	0	0	2	0
JHANSI	0	0	0	2
KANNAUJ	0	0	1	1
KANPUR	0	3	0	0
KANPUR DEHAT	0	1	0	0
KASGANJ	0	0	0	0
KAUSHAMBI	0	4	9	1
KHERI	80	91	35	45
KUSHINAGAR	0	1	0	0
LALITPUR	0	0	0	0
LUCKNOW	2	5	0	1
MAHARAJGANJ	0	9	6	1
MAHOBA	0	0	0	0
MAINPURI	0	3	4	3
MATHURA	12	32	75	45
MAU	1	0	0	0
MEERUT	10	8	0	4
MIRZAPUR	0	2	3	3
MORADABAD	3	8	3	2
MUZAFARNAGAR	22	43	11	5
PILHIBHIT	165	194	66	102
PRATAPGARH	0	0	2	0

RAE BARELI	0	0	0	0
RAMPUR	191	164	33	64
SHARANPUR	11	19	9	6
SAMBHAL	0	0	0	1
SANTKABIRNAGAR	0	0	0	0
SHAHJAHANPUR	242	327	82	55
SHAMALI	0	0	0	8
SHRAWASTI	0	3	0	0
SIDDHARTHANAGAR	1	0	0	0
SITAPUR	12	8	6	3
SONBHADRA	3	1	4	0
SULTANPUR	0	0	0	0
UNNAO	3	1	3	3
VARANASI	0	0	0	0
JYOTIBAPHULE NAGAR	0	0	1	0
MAHAMAYANAGAR	0	0	1	0
Total	883	1070	467	411

Map of Cumulative Burning Events (01 – 16 Oct 2019)



(<http://geoportal.icar.gov.in:8080/geoexplorer/composer/>)

The study used images received from following Satellites at IARI Satellite Ground Station

S. No.	Satellite Name	Sensor	Resolution (meter)	Day / Night Passes
1.	Suomi NPP	VIIRS	375 / 1000	Both
2.	Terra	MODIS	1000	Both
3.	Aqua	MODIS	1000	Both
4.	NOAA – 18	AVHRR	1000	Night
5.	NOAA – 19	AVHRR	1000	Night
6.	Metop - 1	AVHRR	1000	Night
7.	Metop - 2	AVHRR	1000	Night

Study Team

ICAR – HQ	Dr K. Alagusundaram	DDG (AG. ENGG.)	ddgengg@icar.org.in
	Dr S. Bhasker	ADG (NRM)	adgagroandaf@gmail.com
	Dr K.K. Singh	ADG (AG. ENGG)	kanchansingh044@gmail.com
ICAR - IARI	Dr V.K. Sehgal	Professor & Nodal Scientist	iaricreams@gmail.com
	Dr Rajkumar Dhakar	Scientist	raidhakar.iari@gmail.com
	Mr Rakeswer Verma	Chief Technical Officer	rakeshwar.verma@icar.gov.in
	Mr Mohd Jahangir	Lab Assistant (KRISHI)	mjahangir198@gmail.com
ICAR - ATARI	Dr Rajbir Singh	Director ATARI (Zone-I) Ludhiana	rajbirsingh.zpd@gmail.com
	Dr S.K. Singh	Director ATARI (Zone-II) Jodhpur	sushilsinghiipr@yahoo.co.in
	Dr Atar Singh	Director ATARI (Zone-III) Kanpur	zpdicarkanpur@gmail.com
ICAR - IASRI	Dr Rajender Parsad	Principal Scientist	rajender.parsad@icar.gov.in

GIS Maps of fire events can be visualized online on ICAR KRISHI Geoportal website: <http://geoportal.icar.gov.in:8080/geoexplorer/composer/>
(Part of KRISHI Portal: <https://krishi.icar.gov.in> initiative)
