



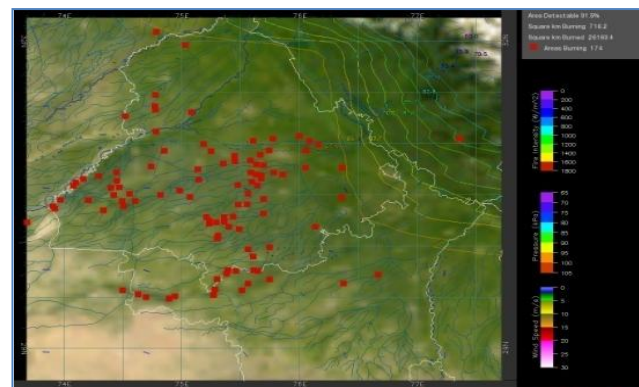
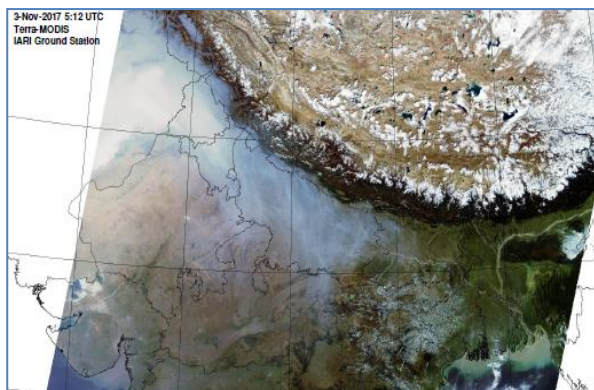
**Bulletin
No. 55**

**Events Date:
25-Nov-2018**

**Issued on:
26-Nov-2018**



MONITORING PADDY RESIDUE BURNING IN NORTH INDIA USING SATELLITE REMOTE SENSING DURING 2018



Prepared by:

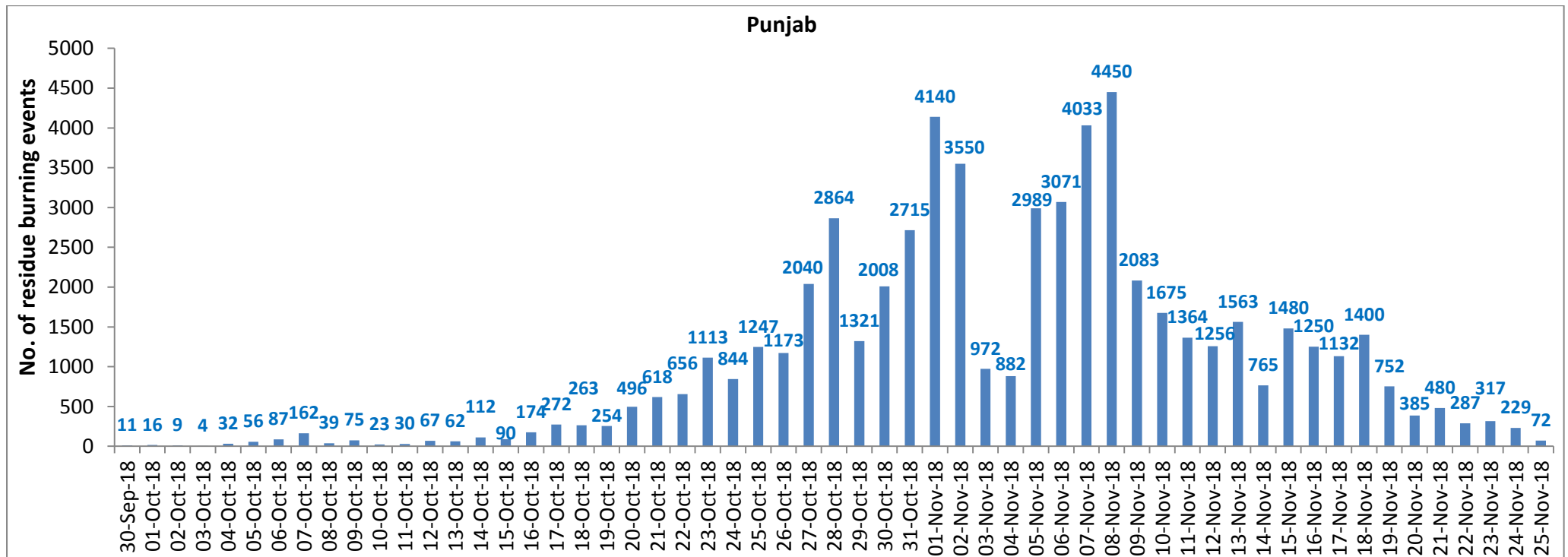
**Consortium for Research on Agroecosystem Monitoring and Modeling from Space (CREAMS) Laboratory,
Division of Agricultural Physics, ICAR – Indian Agricultural Research Institute, New Delhi – 110012**

<http://creams.iari.res.in>

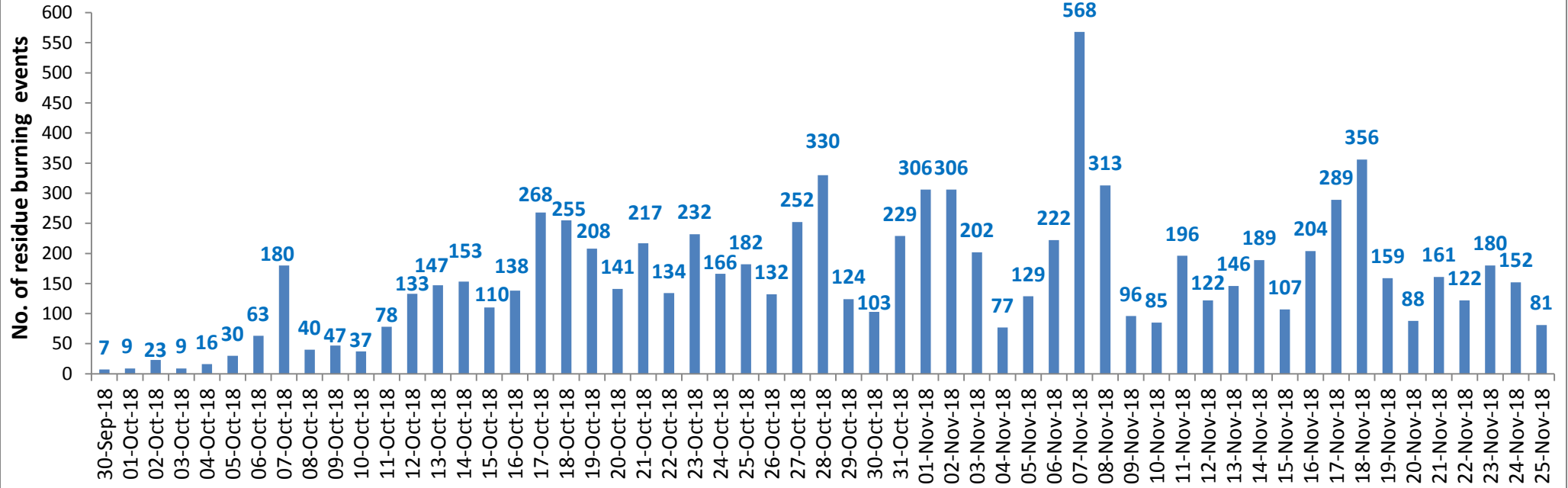
Highlights for 25-November-2018

- Satellites detected **425** residue burning events in the three States (Punjab, Haryana & UP) on **25-Nov-2018**.
- The burning events detected on **25-Nov-2018** are **72**, **81** and **272** in Punjab, Haryana, and UP, respectively.
- The number of events has decreased from **567** on **24-Nov-2018** to **425** on **25-Nov-2018** in the three States.
- Total **74819** burning events were detected in the three States between **30-Sept-2018** and **25-Nov-2018**, which are distributed as **59510**, **9049** and **6260** in Punjab, Haryana and UP, respectively.
- Till **25-Nov-2018**, the burning events in the current year are about **86.2%** of the events detected in 2017 and about **58.9%** of the events detected in 2016.
- Overall, about **14%** and **41%** reduction in burning events are observed in current year (2018) till date as compared to that in 2017 and 2016, respectively.

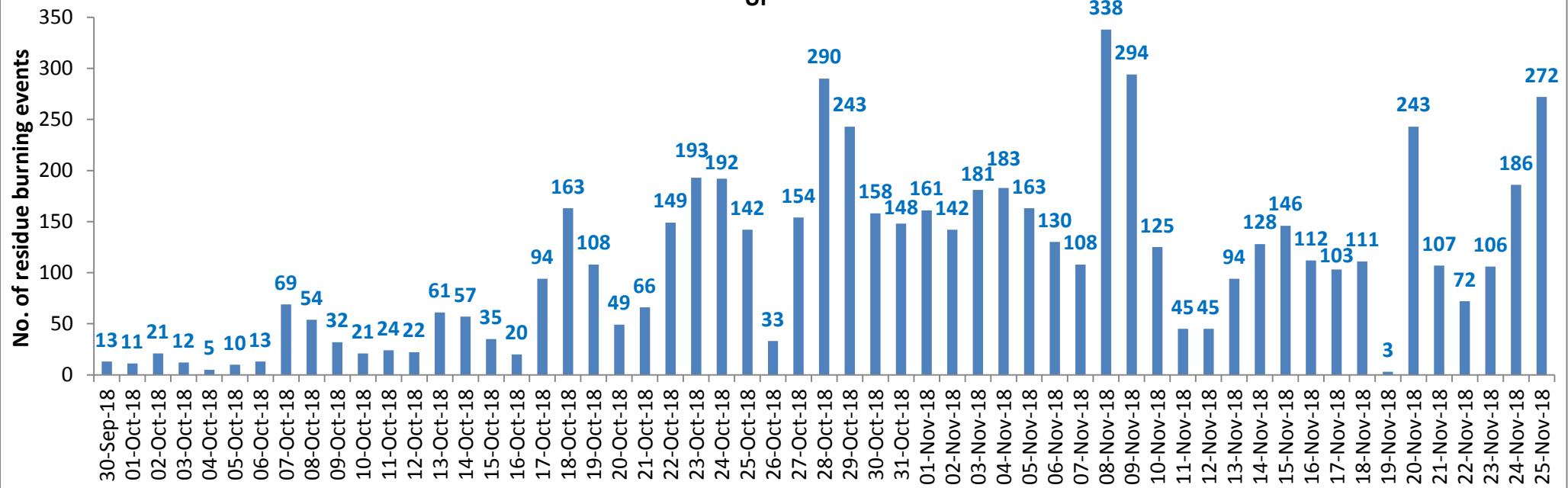
Temporal distribution of residue burning events for the three study States



Haryana

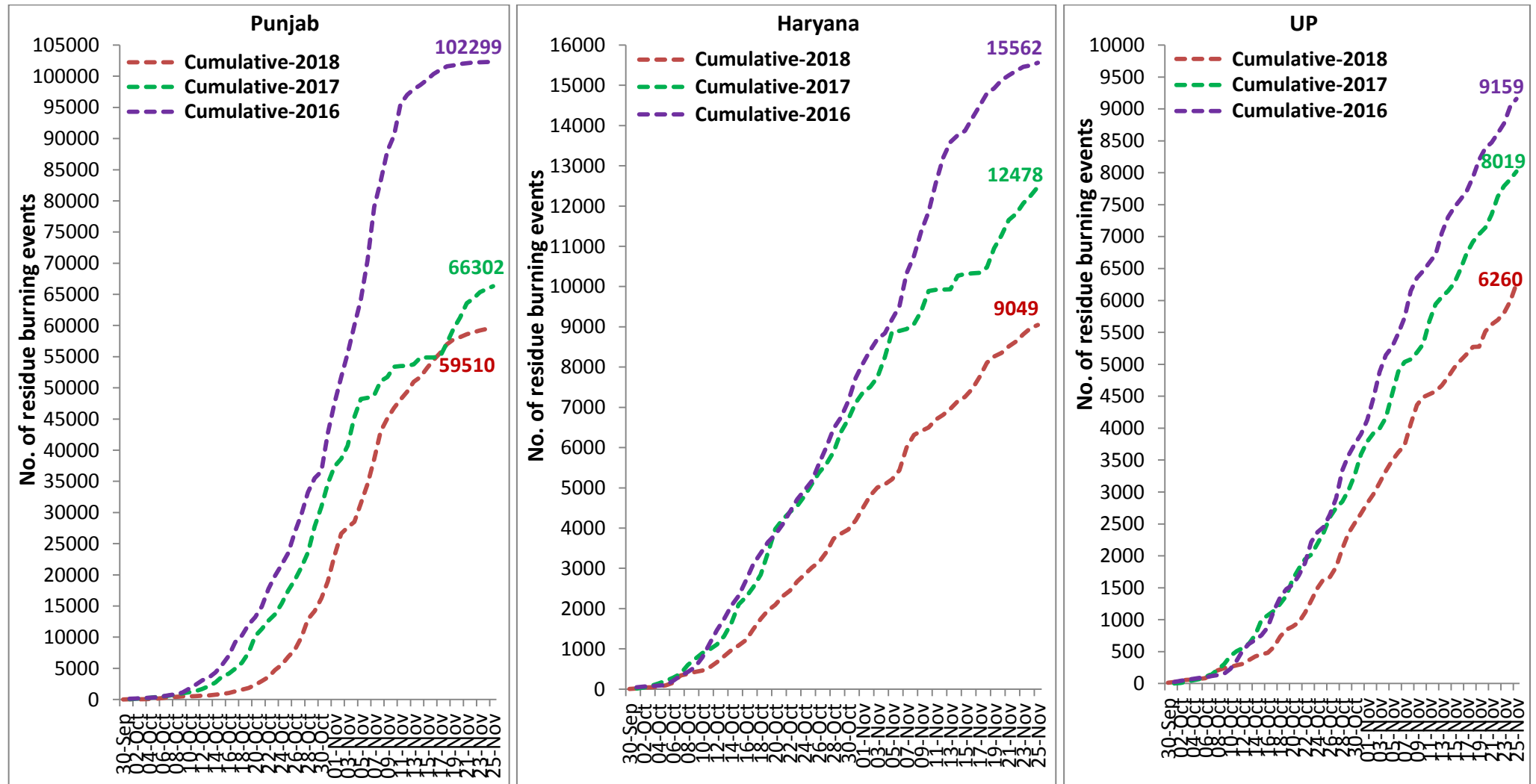


UP

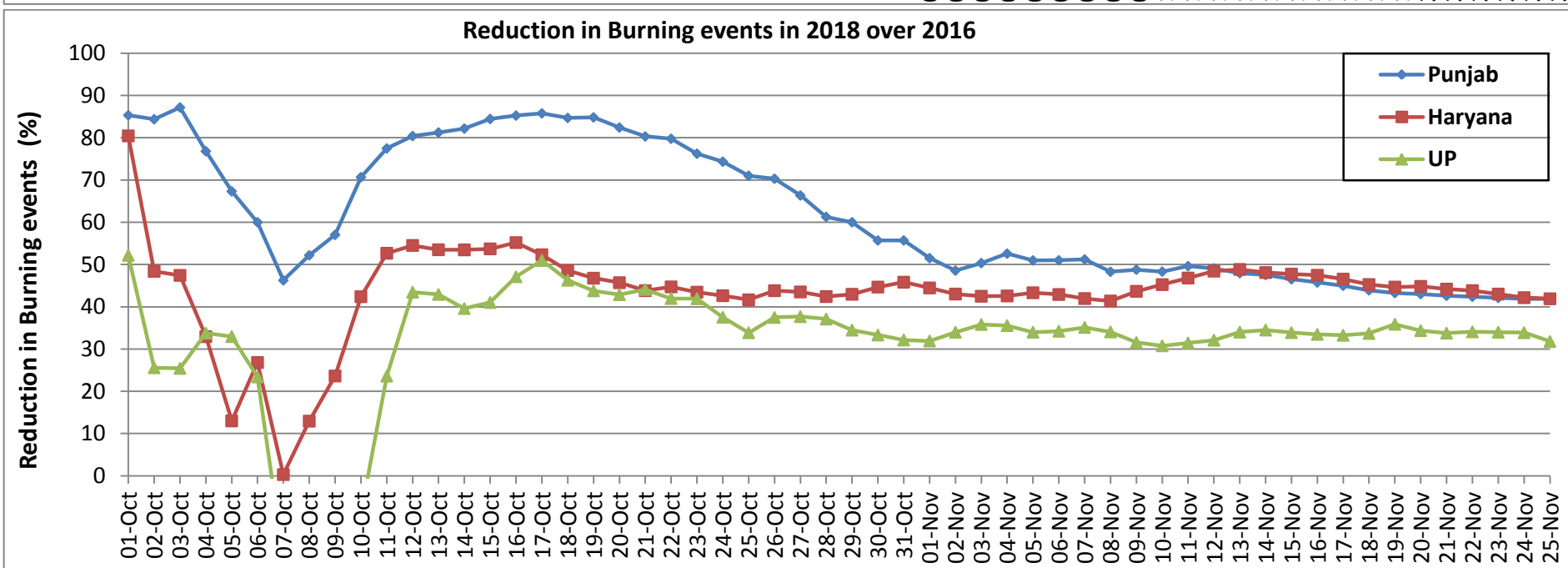
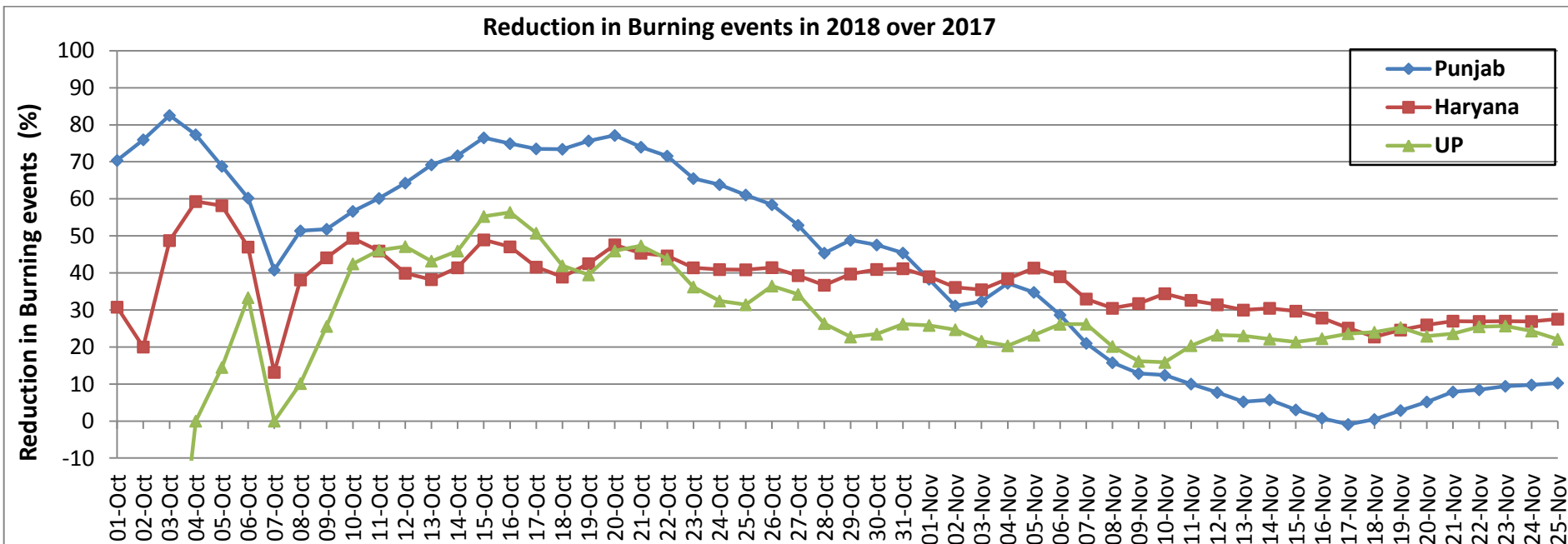


Comparison of residue burning events in current year (2018) with previous years (2017& 2016) for the three study States

(30-Sep to 25-Nov)

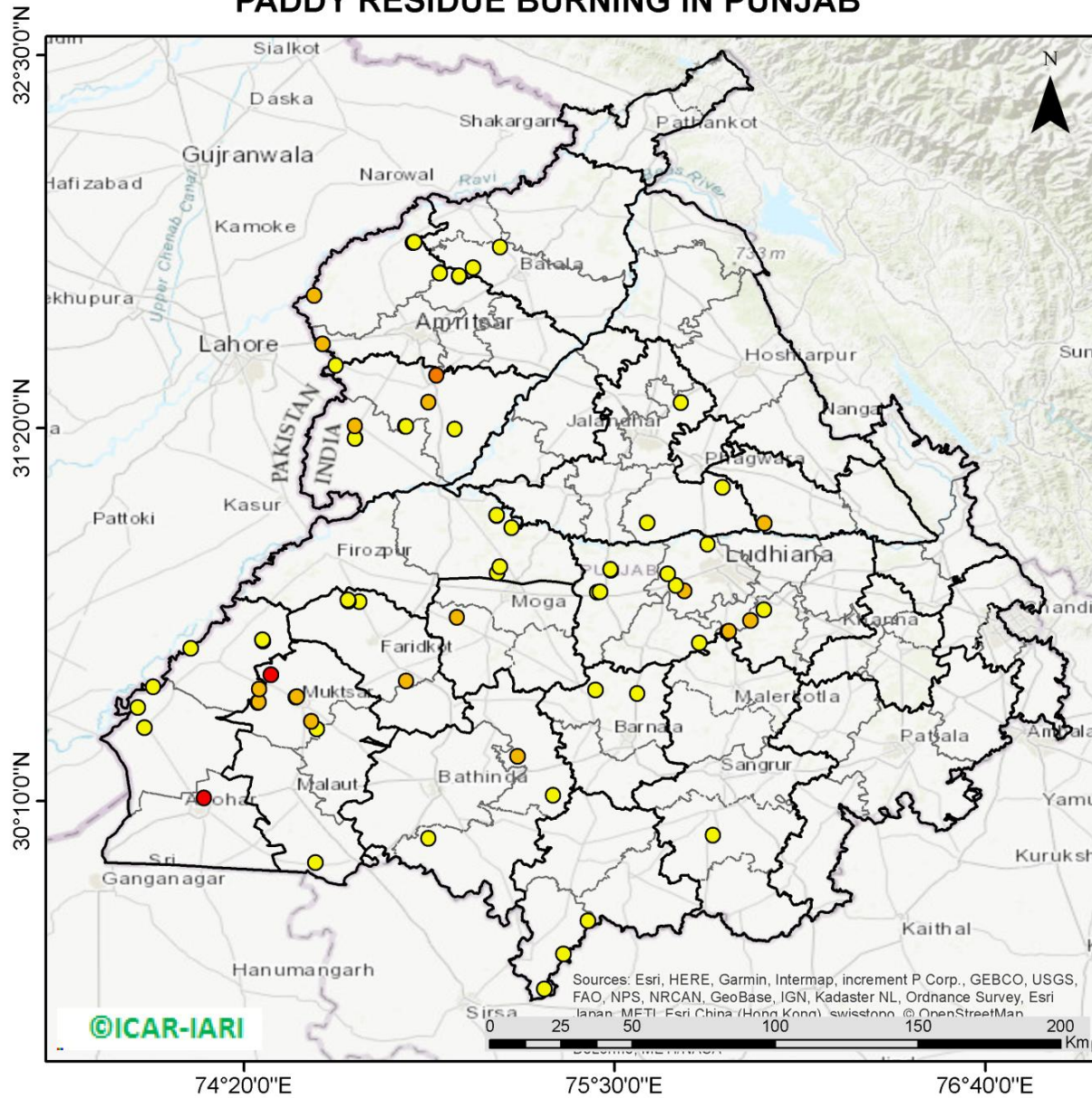


Percent Reduction in Burning events in 2018 over 2017 and 2016 (Daily Cumulative)



(a) Punjab

PADDY RESIDUE BURNING IN PUNJAB



72 burning events detected in Punjab on 25th November, 2018

Fire Intensity (W/m²)

- 0 - 5
- 6 - 10
- 11 - 15
- 16 - 20
- >20

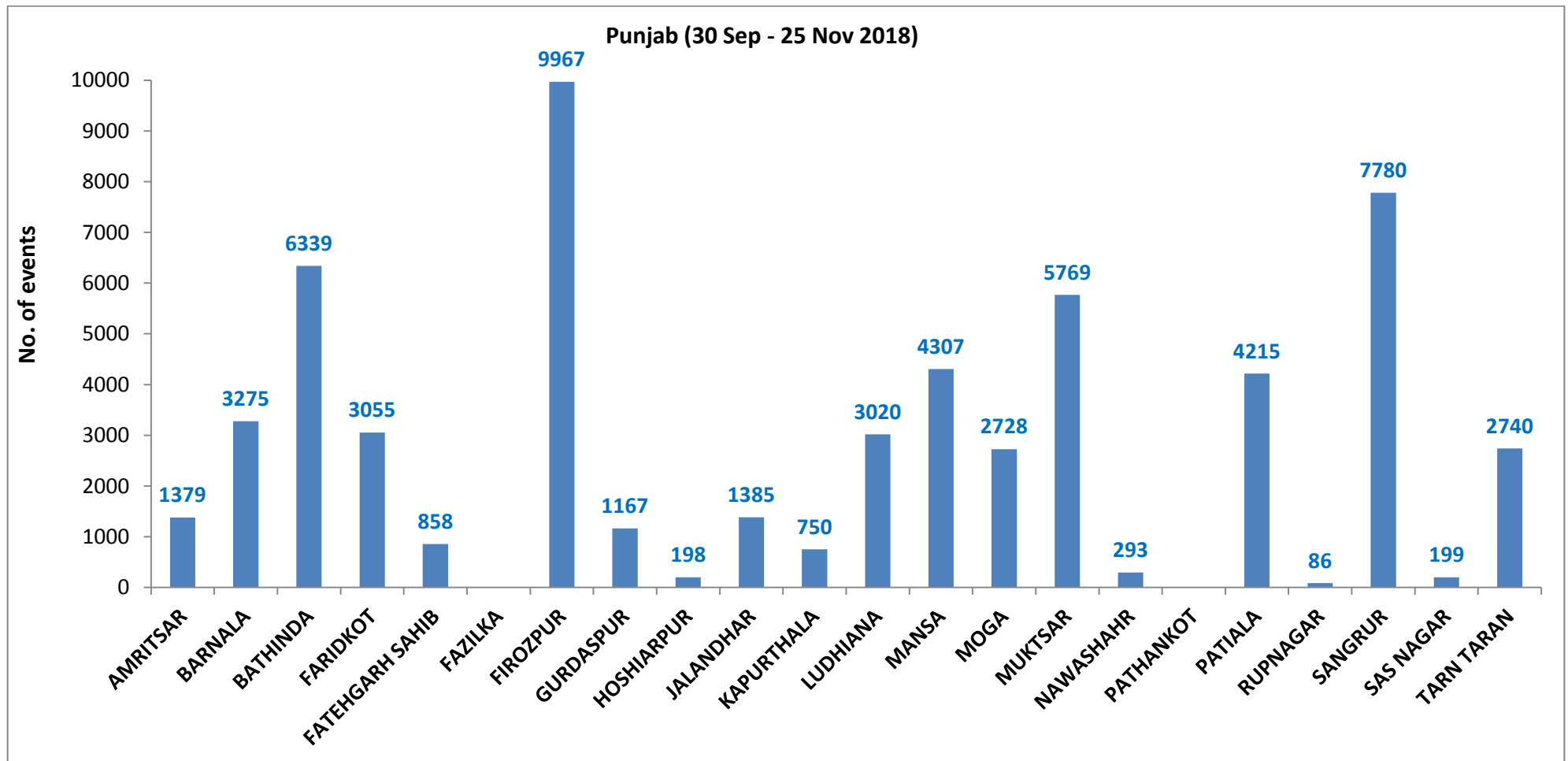


ICAR-IARI

Sources: Esri, HERE, Garmin, Intermap, increment P Corp., GEBCO, USGS, FAO, NPS, NRCAN, GeoBase, IGN, Kadaster NL, Ordnance Survey, Esri Japan, METI, Esri China (Hong Kong), swisstopo, OpenStreetMap

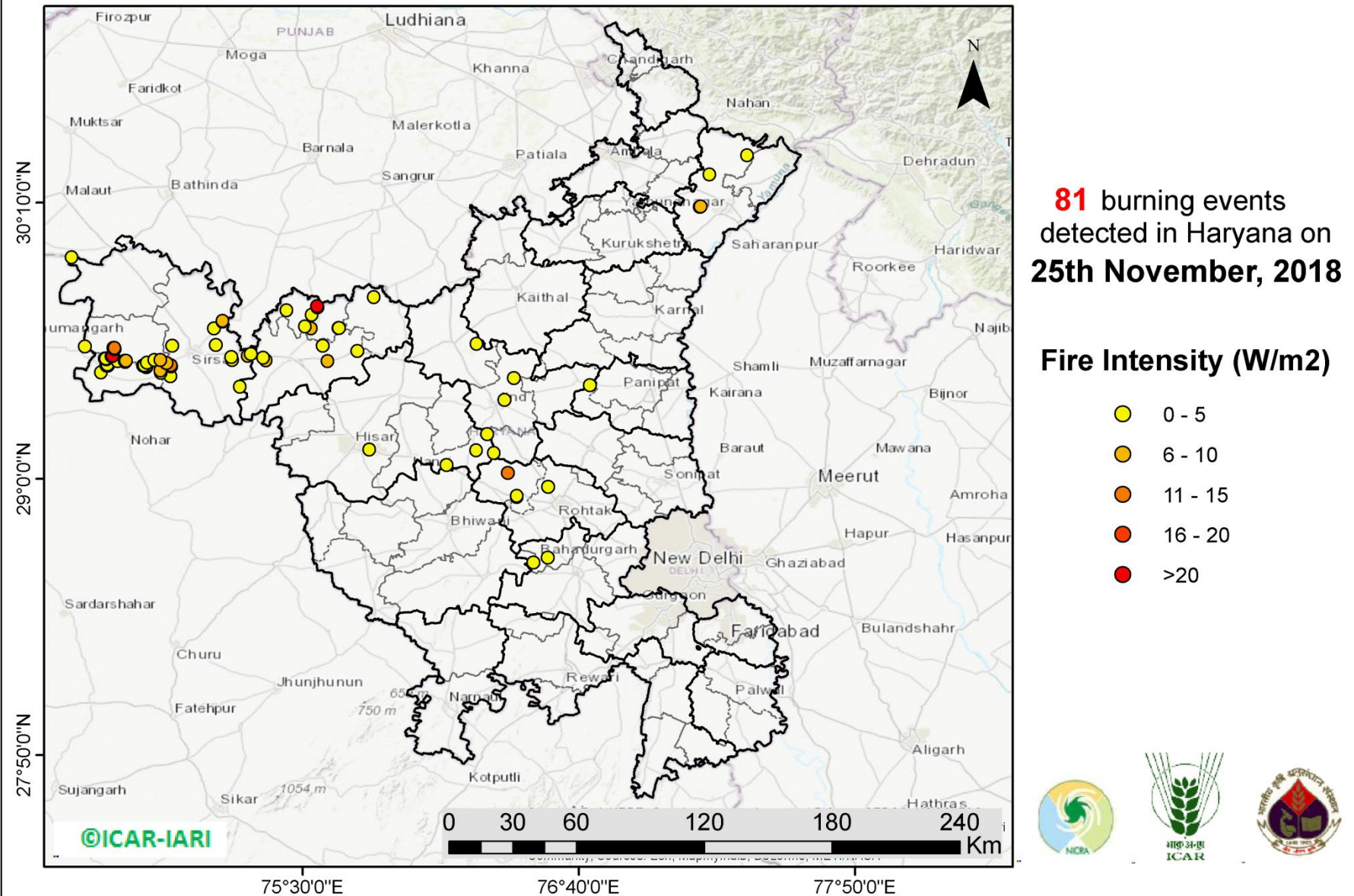
<http://geoportal.icar.gov.in:8080/geoexplorer/composer/>

District-wise cumulative number of residue burning events in Punjab (30-Sep-2018 to 25-Nov-2018)



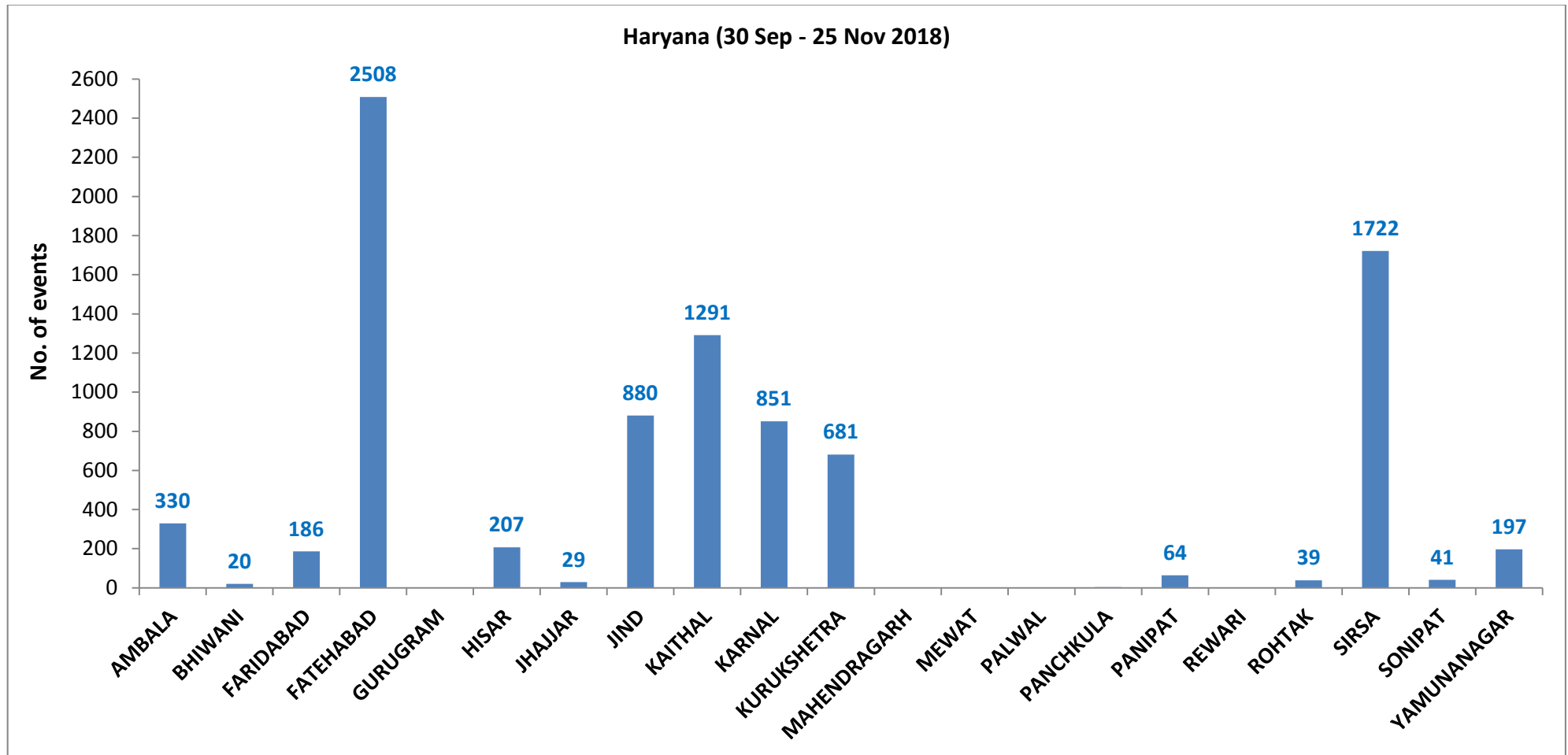
(b) Haryana

PADDY RESIDUE BURNING IN HARYANA



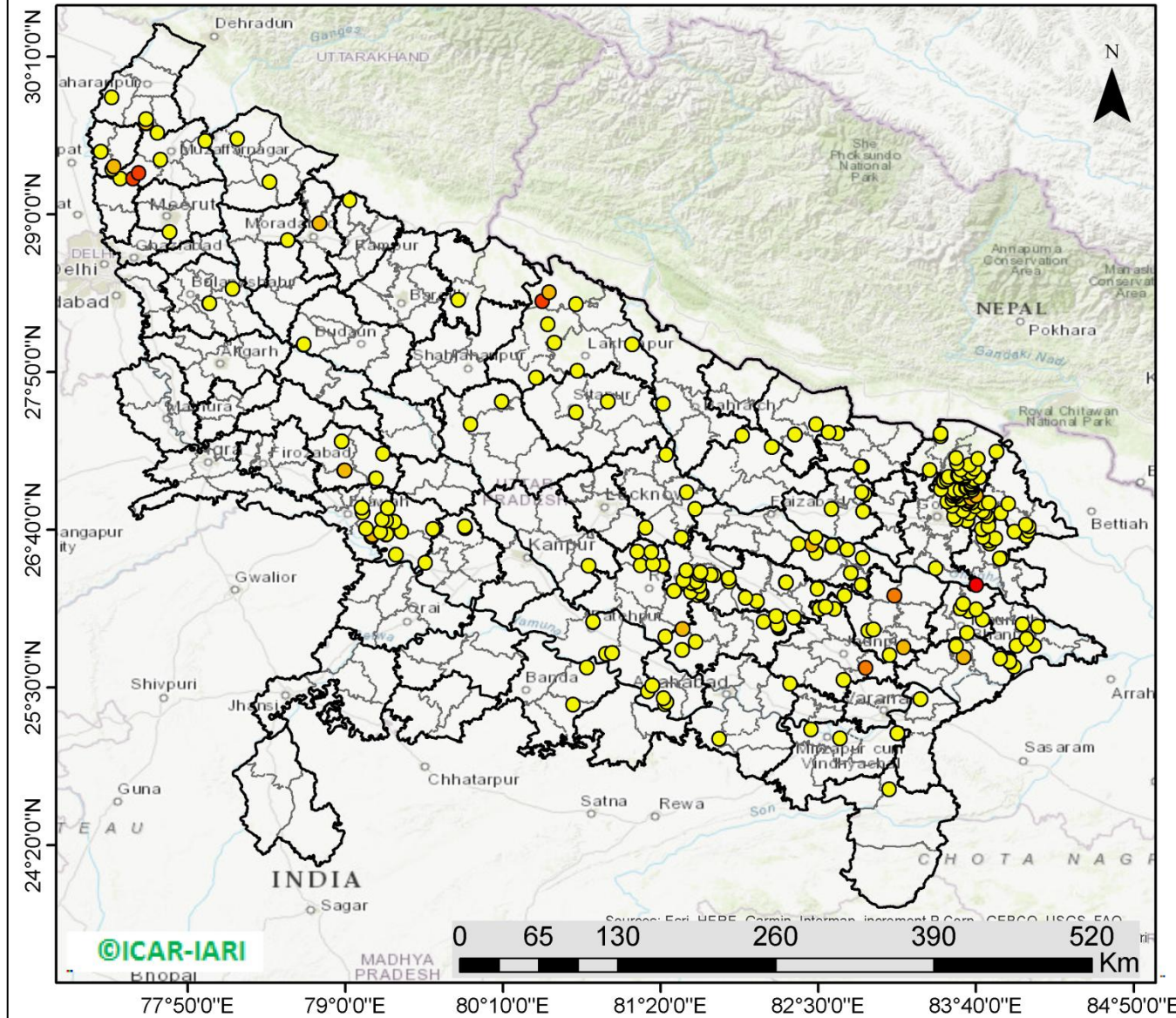
<http://geoportal.icar.gov.in:8080/geoexplorer/composer/>

District-wise cumulative number of residue burning events in Haryana (30-Sep-2018 to 25-Nov-2018)



(c) Uttar Pradesh

PADDY RESIDUE BURNING IN UTTAR PRADESH



272 burning events detected in Uttar Pradesh on **25th Nov, 2018**

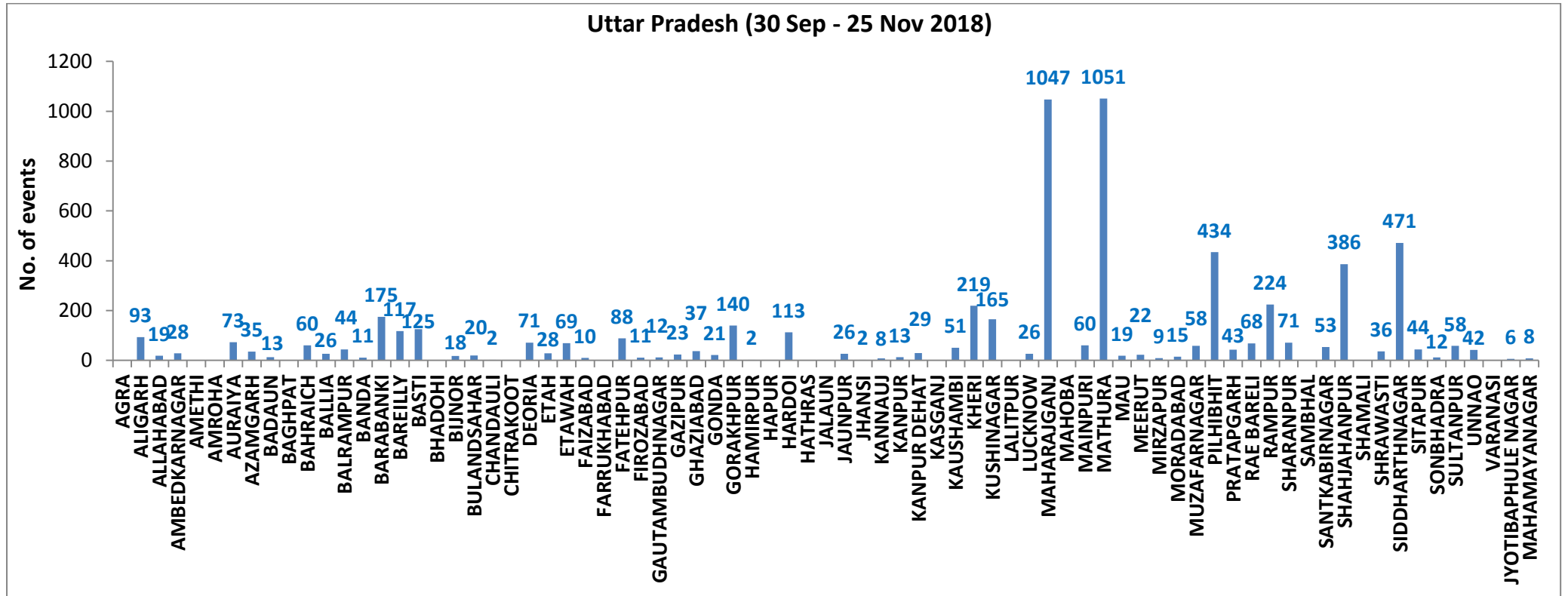
Fire Intensity (W/m²)

- 0 - 5
- 6 - 10
- 11 - 15
- 16 - 20
- >20



<http://geoportal.icar.gov.in:8080/geoexplorer/composer/>

District-wise cumulative number of residue burning events in Uttar Pradesh (30-Sep-2018 to 25-Nov-2018)



State wise, date wise and district-wise number of residue burning events detected in 2016, 2017 and 2018
(Period: 30-Sep to 25-Nov)

Date	Punjab			Haryana			UP			Total		
	2016	2017	2018	2016	2017	2018	2016	2017	2018	2016	2017	2018
30-Sep	--	--	11	--	---	7	--	---	13	--	---	31
1-Oct	109	54	16	46	13	9	23	2	11	178	69	36
2-Oct	51	50	9	16	27	23	20	8	21	87	85	53
3-Oct	66	62	4	16	40	9	16	17	12	98	119	25
4-Oct	37	103	32	7	60	16	15	22	5	59	185	53
5-Oct	95	106	56	15	68	30	14	20	10	124	194	96
6-Oct	152	138	87	105	75	65	6	39	13	263	252	165
7-Oct	171	105	162	126	97	180	24	31	69	321	233	411
8-Oct	166	215	39	94	218	40	14	75	54	274	508	133
9-Oct	270	163	75	121	148	47	22	87	32	413	398	154
10-Oct	597	164	23	242	151	37	74	126	21	913	441	81
11-Oct	652	177	30	336	87	78	128	74	24	1116	338	132
12-Oct	694	342	67	338	123	133	164	51	22	1196	516	222
13-Oct	467	470	62	284	207	147	102	69	61	853	746	270
14-Oct	812	582	112	328	333	153	60	137	57	1200	1052	322
15-Oct	1215	943	90	248	458	110	76	237	35	1539	1638	235
16-Oct	1478	465	174	385	186	138	125	71	20	1988	722	332
17-Oct	2173	807	272	399	244	268	261	69	94	2833	1120	634
18-Oct	1065	970	263	270	306	255	204	108	163	1539	1384	681
19-Oct	1762	1591	254	276	541	208	132	128	108	2170	2260	570
20-Oct	1175	2653	496	188	597	141	62	255	49	1425	3505	686
21-Oct	1726	1139	618	257	233	217	152	168	66	2135	1540	901
22-Oct	2837	1356	656	309	186	134	194	151	149	3340	1693	939
23-Oct	2040	994	1113	313	155	232	331	72	193	2684	1221	1538
24-Oct	1836	1714	844	221	244	166	152	171	192	2209	2129	1202
25-Oct	1813	2104	1247	229	303	182	83	175	142	2125	2582	1571
26-Oct	3390	1715	1173	434	276	132	195	240	33	4019	2231	1338

27-Oct	2904	2069	2040	417	224	252	255	145	154	3576	2438	2446
28-Oct	3493	2318	2864	458	292	330	435	99	290	4386	2709	3484
29-Oct	2258	4184	1321	278	502	124	237	180	243	2773	4866	1688
30-Oct	1076	3152	2008	395	307	103	175	238	158	1646	3697	2269
31-Oct	6132	3743	2715	575	413	229	153	321	148	6860	4447	3092
01-Nov	4843	2736	4140	362	250	306	223	199	161	5628	3185	4607
02-Nov	4183	1246	3550	332	145	306	345	131	142	4860	1522	3998
03-Nov	3806	2109	972	275	240	202	409	75	181	4409	2424	1355
04-Nov	4477	4603	882	146	499	77	265	168	183	4888	5270	1142
05-Nov	4137	2876	2989	345	625	129	125	367	163	4607	3868	3281
06-Nov	6303	171	3071	322	26	222	215	357	130	6840	327	3423
07-Nov	8575	420	4033	821	46	568	244	149	108	9640	615	4709
08-Nov	4129	2256	4450	432	128	313	419	43	338	4874	2427	5101
09-Nov	4857	675	2083	608	311	96	205	107	294	5670	1093	2473
10-Nov	2468	1642	1675	484	509	85	109	131	125	3061	2282	1885
11-Nov	5040	103	1364	716	29	196	129	358	45	5885	490	1605
12-Nov	1477	33	1256	634	3	122	129	269	45	2240	305	1423
13-Nov	885	237	1563	389	7	146	338	109	94	1612	353	1803
14-Nov	692	1101	765	171	340	189	247	95	128	1110	1536	1082
15-Nov	871	5	1480	107	40	107	154	123	146	1132	168	1733
16-Nov	911	8	1250	318	17	204	123	218	112	1352	243	1566
17-Nov	638	217	1132	299	12	289	130	249	103	1067	478	1524
18-Nov	568	2147	1400	312	139	356	217	180	111	1097	2466	1867
19-Nov	168	2200	752	125	471	159	273	122	3	566	2793	914
20-Nov	240	1857	385	204	325	88	183	101	243	627	2283	716
21-Nov	112	2310	480	115	378	161	86	205	107	313	2893	748
22-Nov	99	719	287	118	154	122	148	281	72	365	1154	481
23-Nov	54	1033	317	97	259	180	151	163	106	302	1455	603
24-Nov	21	507	229	36	192	152	265	105	186	322	794	567
25-Nov	33	443	72	68	219	81	123	124	272	224	786	425
Total	102299	66302	59510	15562	12478	9049	9159	8019	6260	127020	86799	74819

(a) Punjab

Districts	01 Oct - 25Nov		
	2016	2017	2018
AMRITSAR	2170	1345	1379
BARNALA	5698	3396	3275
BATHINDA	8841	5698	6339
FARIDKOT	4628	3454	3055
FATEHGARH SAHIB	2461	1640	858
FAZILKA	0	0	0
FIROZPUR	13627	9798	9967
GURDASPUR	2215	1583	1167
HOSHIARPUR	901	490	198
JALANDHAR	4660	2107	1385
KAPURTHALA	3136	1622	750
LUDHIANA	9539	4676	3020
MANSA	5644	4475	4307
MOGA	6393	2709	2728
MUKTSAR	7029	5325	5769
NAWASHAHR (SBS Nagar)	1363	682	293
PATHANKOT	0	0	0
PATIALA	6543	5029	4215
RUPNAGAR	717	326	86
SANGRUR	11862	8423	7780
SAS NAGAR	363	244	199
TARN TARAN	4509	3280	2740
Total	102299	66302	59510

(b) Haryana

Districts	01 Oct - 25Nov		
	2016	2017	2018
AMBALA	534	498	330
BHIWANI	85	39	20
FARIDABAD	288	341	186
FATEHABAD	4825	3657	2508
GURUGRAM	0	0	0
HISAR	404	182	207
JHAJJAR	36	19	29
JIND	858	940	880
KAITHAL	1748	1512	1291
KARNAL	1635	1506	851
KURUKSHETRA	1078	1147	681
MAHENDRAGARH	0	0	0
MEWAT	0	0	0
PALWAL	0	0	0
PANCHKULA	0	0	3
PANIPAT	93	99	64
REWARI	0	0	0
ROHTAK	97	83	39
SIRSA	3545	2073	1722
SONIPAT	92	71	41
YAMUNANAGAR	244	311	197
Total	15562	12478	9049

(c) Uttar Pradesh				FATEHPUR	70	56	88	MUZAFARNAGAR	142	154	58
				FIROZABAD	23	18	11	PILHIBHIT	949	730	434
Distrites	01 Oct - 25Nov			GAUTAMBUDH				PRATAPGARH	44	52	43
	2016	2017	2018	NAGAR	28	42	12	RAE BARELI	113	109	68
AGRA	0	0	0	GAZIPUR	16	14	23	RAMPUR	623	638	224
ALIGARH	55	80	93	GHAZIABAD	88	55	37	SHARANPUR	114	139	71
ALLAHABAD	6	15	19	GONDA	48	34	21	SAMBHAL	0	0	0
AMBEDKAR				GORAKHPUR	66	112	140	SANTKABIR			
NAGAR	74	55	28	HAMIRPUR	0	0	2	NAGAR	56	63	53
AMETHI	0	0	0	HAPUR	0	0	0	SHAHJAHANPUR	1147	690	386
AMROHA	0	0	0	HARDOI	254	202	113	SHAMALI	0	0	0
AURAIYA	266	220	73	HATHRAS	0	0	0	SHRAWASTI	37	31	36
AZAMGARH	38	45	35	JALAUN	0	0	0	SIDDHARTH			
BADAUN	12	8	13	JAUNPUR	24	33	26	NAGAR	257	185	471
BAGHPAT	0	0	0	JHANSI	0	0	2	SITAPUR	136	78	44
BAHRAICH	81	40	60	KANNAUJ	35	18	8	SONBHADRA	16	14	12
BALLIA	19	40	26	KANPUR	20	10	13	SULTANPUR	75	52	58
BALRAMPUR	37	27	44	KANPUR DEHAT	68	68	29	UNNAO	65	55	42
BANDA	2	18	11	KASGANJ	0	0	0	VARANASI	2	0	0
BARABANKI	220	167	175	KAUSHAMBI	33	48	51	JYOTIBAPHULE			
BAREILLY	257	224	117	KHERI	458	302	219	NAGAR	12	16	6
BASTI	145	186	125	KUSHINAGAR	63	145	165	MAHAMAYA			
BHADOHI	0	0	0	LALITPUR	0	0	0	NAGAR	2	2	8
BIJNOR	62	59	18	LUCKNOW	62	30	26	Total	9159	8019	6260
BULANDSAHAR	32	34	20	MAHARAJGANJ	707	1011	1047				
CHANDAULI	15	10	2	MAHOBA	0	0	0				
CHITRAKOOT	0	0	0	MAINPURI	92	92	60				
DEORIA	62	77	71	MATHURA	1458	1083	1051				
ETAH	22	31	28	MAU	13	18	19				
ETAWAH	175	124	69	MEERUT	90	92	22				
FAIZABAD	15	15	10	MIRZAPUR	5	14	9				
FARRUKHABAD	0	0	0	MORADABAD	53	39	15				

Details of residue burning events in Punjab on 25-Nov-2018

Event S. No.	District	Tehsil/Block	Satellite	Longitude	Latitude	Time (IST)	Day/Night	Fire Power (W/m²)
1	AMRITSAR	AJNALA	S-NPP	74.55339	31.74883	13:06:00	D	8.30
2	AMRITSAR	AJNALA	S-NPP	74.86382	31.91461	13:06:00	D	4.20
3	AMRITSAR	AJNALA	S-NPP	74.86819	31.91552	13:06:00	D	4.20
4	AMRITSAR	AMRITSAR I	S-NPP	75.01058	31.80748	13:06:00	D	2.60
5	AMRITSAR	AMRITSAR I	S-NPP	75.01087	31.80985	13:06:00	D	2.40
6	AMRITSAR	AMRITSAR I	S-NPP	74.94894	31.81852	13:06:00	D	2.30
7	AMRITSAR	AMRITSAR II	S-NPP	74.62241	31.53051	13:06:00	D	4.90
8	AMRITSAR	AMRITSAR II	S-NPP	74.57940	31.59686	13:06:00	D	5.10
9	BARNALA	BARNALA	S-NPP	75.57156	30.50363	13:06:00	D	2.20
10	BARNALA	BARNALA	S-NPP	75.43880	30.51505	13:06:00	D	2.20
11	BATHINDA	RAMPURA PHUL	S-NPP	75.30557	30.18549	13:06:00	D	2.80
12	BATHINDA	RAMPURA PHUL	S-NPP	75.19430	30.30708	13:06:00	D	8.30
13	BATHINDA	TALWANDI SABO	S-NPP	74.91288	30.05083	13:06:00	D	0.60
14	FARIDKOT	FARIDKOT	S-NPP	74.84358	30.54202	13:06:00	D	7.00
15	FARIDKOT	FARIDKOT	S-NPP	74.69566	30.79058	13:06:00	D	0.70
16	FARIDKOT	FARIDKOT	S-NPP	74.66071	30.79218	13:06:00	D	12.70
17	FARIDKOT	FARIDKOT	S-NPP	74.65953	30.79642	13:06:00	D	4.30
18	FATEHGARH SAHIB	FATEHGARH SAHIB	S-NPP	76.35308	30.46708	13:06:00	D	52.60
19	FIROZPUR	ABOHAR	AQUA-1	74.20726	30.17654	14:25:00	D	49.35
20	FIROZPUR	FAZILKA	S-NPP	74.01865	30.39672	13:06:00	D	1.40
21	FIROZPUR	FAZILKA	S-NPP	73.99780	30.45929	13:06:00	D	2.30
22	FIROZPUR	FAZILKA	S-NPP	74.04731	30.52378	13:06:00	D	2.90
23	FIROZPUR	JALALABAD	S-NPP	74.16499	30.64496	13:06:00	D	3.50

24	FIROZPUR	JALALABAD	S-NPP	74.39180	30.66696	13:06:00	D	4.80
25	FIROZPUR	JALALABAD	S-NPP	74.39057	30.67127	13:06:00	D	4.80
26	FIROZPUR	ZIRA	S-NPP	75.12894	30.88111	13:06:00	D	4.80
27	FIROZPUR	ZIRA	S-NPP	75.13754	30.90030	13:06:00	D	3.90
28	FIROZPUR	ZIRA	S-NPP	75.17534	31.02231	13:06:00	D	4.30
29	FIROZPUR	ZIRA	S-NPP	75.12807	31.06035	13:06:00	D	4.90
30	FIROZPUR	ZIRA	S-NPP	75.12859	31.06130	13:06:00	D	2.30
31	GURDASPUR	BATALA	S-NPP	75.05362	31.83595	13:06:00	D	2.10
32	GURDASPUR	BATALA	S-NPP	75.13923	31.90061	13:06:00	D	4.40
33	JALANDHAR	JALANDHAR I	S-NPP	75.70934	31.41306	13:06:00	D	1.60
34	JALANDHAR	PHILLAUR	S-NPP	75.60243	31.03728	13:06:00	D	2.60
35	JALANDHAR	PHILLAUR	S-NPP	75.83921	31.14820	13:06:00	D	1.20
36	LUDHIANA	JAGRAON	S-NPP	75.44509	30.81969	13:06:00	D	2.00
37	LUDHIANA	JAGRAON	S-NPP	75.45355	30.82142	13:06:00	D	3.60
38	LUDHIANA	JAGRAON	S-NPP	75.48874	30.88837	13:06:00	D	3.20
39	LUDHIANA	JAGRAON	S-NPP	75.48765	30.89241	13:06:00	D	2.10
40	LUDHIANA	LUDHIANA EAST	S-NPP	75.85612	30.69681	13:06:00	D	8.60
41	LUDHIANA	LUDHIANA EAST	S-NPP	75.86017	30.69763	13:06:00	D	10.00
42	LUDHIANA	LUDHIANA WEST	S-NPP	75.71938	30.82482	13:06:00	D	6.80
43	LUDHIANA	LUDHIANA WEST	S-NPP	75.69350	30.84074	13:06:00	D	2.80
44	LUDHIANA	LUDHIANA WEST	S-NPP	75.66683	30.87768	13:06:00	D	4.40
45	LUDHIANA	LUDHIANA WEST	S-NPP	75.79227	30.96998	13:06:00	D	2.20
46	LUDHIANA	PAYAL	S-NPP	75.92725	30.73196	13:06:00	D	5.20
47	LUDHIANA	PAYAL	S-NPP	75.96888	30.76519	13:06:00	D	3.20
48	MANSA	SARDULGARH	S-NPP	75.27852	29.57893	13:06:00	D	1.70

49	MANSA	SARDULGARH	S-NPP	75.33900	29.68848	13:06:00	D	1.90
50	MANSA	SARDULGARH	S-NPP	75.41536	29.79170	13:06:00	D	3.60
51	MOGA	BAGHA PURANA	S-NPP	75.00254	30.74111	13:06:00	D	5.20
52	MUKTSAR	MALAUT	S-NPP	74.55659	29.97507	13:06:00	D	2.40
53	MUKTSAR	MUKTSAR	S-NPP	74.56198	30.39252	13:06:00	D	3.10
54	MUKTSAR	MUKTSAR	S-NPP	74.54523	30.41626	13:06:00	D	5.80
55	MUKTSAR	MUKTSAR	S-NPP	74.37634	30.47573	13:06:00	D	8.20
56	MUKTSAR	MUKTSAR	S-NPP	74.37917	30.47720	13:06:00	D	8.20
57	MUKTSAR	MUKTSAR	S-NPP	74.49520	30.49220	13:06:00	D	5.50
58	MUKTSAR	MUKTSAR	S-NPP	74.49835	30.49290	13:06:00	D	6.60
59	MUKTSAR	MUKTSAR	S-NPP	74.38006	30.51786	13:06:00	D	8.90
60	MUKTSAR	MUKTSAR	AQUA-1	74.38120	30.56282	14:25:00	D	57.10
61	MUKTSAR	MUKTSAR	AQUA-1	74.41701	30.56282	14:25:00	D	44.26
62	NAWASHAHR	NAWASHAHR	S-NPP	75.97128	31.03577	13:06:00	D	6.50
63	SANGRUR	MALERKOTLA	S-NPP	75.76688	30.66196	13:06:00	D	4.90
64	SANGRUR	SUNAM	S-NPP	75.80914	30.05981	13:06:00	D	3.50
65	TARN TARAN	KHADOOR SAHIB	S-NPP	74.99582	31.33141	13:06:00	D	1.70
66	TARN TARAN	KHADOOR SAHIB	S-NPP	74.84008	31.33910	13:06:00	D	3.20
67	TARN TARAN	KHADOOR SAHIB	S-NPP	74.91292	31.41558	13:06:00	D	7.60
68	TARN TARAN	KHADOOR SAHIB	S-NPP	74.93808	31.49973	13:06:00	D	11.50
69	TARN TARAN	PATTI	S-NPP	74.68314	31.30148	13:06:00	D	4.00
70	TARN TARAN	PATTI	S-NPP	74.68153	31.30199	13:06:00	D	2.80
71	TARN TARAN	PATTI	S-NPP	74.84344	31.33955	13:06:00	D	3.20
72	TARN TARAN	PATTI	S-NPP	74.68172	31.34109	13:06:00	D	5.50

Details of residue burning events in Haryana on 25-Nov-2018

Event S. No.	District	Tehsil/Block	Satellite	Longitude	Latitude	Time (IST)	Day/Night	Fire Power (W/m²)
1	FATEHABAD	FATEHABAD	S-NPP	75.23439	29.39070	13:06:00	D	4.50
2	FATEHABAD	FATEHABAD	NOAA-18	75.60387	29.49832	20:30:00	N	9.00
3	FATEHABAD	FATEHABAD	S-NPP	75.34452	29.50106	13:06:00	D	7.60
4	FATEHABAD	FATEHABAD	S-NPP	75.33222	29.51178	13:06:00	D	2.30
5	FATEHABAD	FATEHABAD	S-NPP	75.72962	29.54127	13:06:00	D	2.60
6	FATEHABAD	FATEHABAD	S-NPP	75.58351	29.56332	13:06:00	D	4.30
7	FATEHABAD	FATEHABAD	S-NPP	75.50891	29.64419	13:06:00	D	2.60
8	FATEHABAD	RATIA	S-NPP	75.53398	29.63627	13:06:00	D	7.60
9	FATEHABAD	RATIA	S-NPP	75.65025	29.63751	13:06:00	D	2.40
10	FATEHABAD	RATIA	S-NPP	75.65162	29.63880	13:06:00	D	1.90
11	FATEHABAD	RATIA	AQUA-1	75.51861	29.68397	14:25:00	D	75.50
12	FATEHABAD	RATIA	S-NPP	75.53716	29.69352	13:06:00	D	3.30
13	FATEHABAD	RATIA	S-NPP	75.43198	29.71197	13:06:00	D	3.80
14	FATEHABAD	RATIA	S-NPP	75.56153	29.72575	13:06:00	D	39.00
15	FATEHABAD	RATIA	S-NPP	75.56043	29.72987	13:06:00	D	39.00
16	FATEHABAD	TOHANA	S-NPP	75.80073	29.76795	13:06:00	D	3.80
17	HISAR	HANSI	S-NPP	76.10625	29.05923	13:06:00	D	3.50
18	HISAR	HANSI	S-NPP	76.30694	29.10964	01:48:00	N	0.70
19	HISAR	HANSI	S-NPP	76.23264	29.12141	13:06:00	D	2.30
20	HISAR	HANSI	S-NPP	76.27890	29.18958	13:06:00	D	3.30
21	HISAR	HISAR	S-NPP	75.78025	29.12521	01:48:00	N	1.60
22	JHAJJAR	BERI	S-NPP	76.47353	28.64796	13:06:00	D	3.80
23	JHAJJAR	BERI	S-NPP	76.53524	28.66852	13:06:00	D	3.00
24	JIND	JIND	S-NPP	76.35155	29.33432	13:06:00	D	3.90
25	JIND	JIND	S-NPP	76.39145	29.42616	13:06:00	D	3.60
26	JIND	NARWANA	S-NPP	76.23338	29.57190	13:06:00	D	4.30
27	JIND	SAFIDON	S-NPP	76.71333	29.39690	01:48:00	N	2.20
28	JIND	SAFIDON	S-NPP	76.71215	29.39704	01:48:00	N	2.30

29	ROHTAK	MAHAM	S-NPP	76.40496	28.92445	13:06:00	D	1.40
30	ROHTAK	MAHAM	S-NPP	76.40395	28.92844	13:06:00	D	2.70
31	ROHTAK	MAHAM	TERRA-1	76.36613	29.02670	11:13:00	D	12.71
32	ROHTAK	ROHTAK	S-NPP	76.53549	28.96649	01:48:00	N	1.40
33	SIRSA	DABWALI	S-NPP	74.52388	29.93629	13:06:00	D	4.50
34	SIRSA	ELLENABAD	S-NPP	74.64812	29.45034	13:06:00	D	2.10
35	SIRSA	ELLENABAD	S-NPP	74.83887	29.47287	13:06:00	D	2.50
36	SIRSA	ELLENABAD	S-NPP	74.83565	29.47659	13:06:00	D	7.00
37	SIRSA	ELLENABAD	S-NPP	74.83769	29.47718	13:06:00	D	2.50
38	SIRSA	ELLENABAD	S-NPP	74.67159	29.47840	13:06:00	D	4.60
39	SIRSA	ELLENABAD	S-NPP	74.67649	29.47943	13:06:00	D	4.60
40	SIRSA	ELLENABAD	S-NPP	74.82970	29.47989	13:06:00	D	3.40
41	SIRSA	ELLENABAD	S-NPP	74.67039	29.48275	13:06:00	D	4.80
42	SIRSA	ELLENABAD	S-NPP	74.67529	29.48379	13:06:00	D	4.80
43	SIRSA	ELLENABAD	S-NPP	74.74934	29.49485	13:06:00	D	3.90
44	SIRSA	ELLENABAD	S-NPP	74.71791	29.49739	13:06:00	D	4.20
45	SIRSA	ELLENABAD	S-NPP	74.74815	29.49919	13:06:00	D	5.80
46	SIRSA	ELLENABAD	S-NPP	74.75299	29.50021	13:06:00	D	5.80
47	SIRSA	ELLENABAD	S-NPP	74.66935	29.50555	13:06:00	D	4.60
48	SIRSA	ELLENABAD	S-NPP	74.66325	29.50887	13:06:00	D	3.10
49	SIRSA	ELLENABAD	S-NPP	74.66814	29.50989	13:06:00	D	3.10
50	SIRSA	ELLENABAD	S-NPP	74.69132	29.51935	13:06:00	D	37.00
51	SIRSA	ELLENABAD	S-NPP	74.69619	29.52037	13:06:00	D	37.00
52	SIRSA	RANIA	S-NPP	74.82491	29.47887	13:06:00	D	3.40
53	SIRSA	RANIA	S-NPP	74.84171	29.49156	13:06:00	D	2.90
54	SIRSA	RANIA	S-NPP	74.87390	29.50293	13:06:00	D	2.50
55	SIRSA	RANIA	S-NPP	74.89883	29.50366	13:06:00	D	5.40
56	SIRSA	RANIA	S-NPP	74.70365	29.54947	13:06:00	D	13.60
57	SIRSA	RANIA	S-NPP	74.70566	29.54968	13:06:00	D	5.30
58	SIRSA	RANIA	S-NPP	74.69963	29.55298	13:06:00	D	10.30
59	SIRSA	RANIA	S-NPP	74.70246	29.55380	13:06:00	D	15.60

60	SIRSA	RANIA	S-NPP	74.70448	29.55402	13:06:00	D	14.80
61	SIRSA	RANIA	S-NPP	74.57879	29.55941	13:06:00	D	2.20
62	SIRSA	SIRSA	S-NPP	74.93977	29.43475	13:06:00	D	3.30
63	SIRSA	SIRSA	S-NPP	74.90074	29.44930	13:06:00	D	3.90
64	SIRSA	SIRSA	S-NPP	74.89843	29.45790	13:06:00	D	5.90
65	SIRSA	SIRSA	S-NPP	74.94350	29.47630	13:06:00	D	10.60
66	SIRSA	SIRSA	S-NPP	74.94234	29.48059	13:06:00	D	10.60
67	SIRSA	SIRSA	S-NPP	74.92236	29.49050	13:06:00	D	7.80
68	SIRSA	SIRSA	S-NPP	74.92464	29.49053	13:06:00	D	7.70
69	SIRSA	SIRSA	S-NPP	75.20109	29.50250	13:06:00	D	3.00
70	SIRSA	SIRSA	S-NPP	75.19769	29.51517	13:06:00	D	2.70
71	SIRSA	SIRSA	S-NPP	75.26812	29.52074	13:06:00	D	6.00
72	SIRSA	SIRSA	S-NPP	75.28052	29.52772	13:06:00	D	3.80
73	SIRSA	SIRSA	S-NPP	74.94742	29.56368	13:06:00	D	1.20
74	SIRSA	SIRSA	S-NPP	75.13314	29.56640	13:06:00	D	4.80
75	SIRSA	SIRSA	S-NPP	75.12408	29.63600	13:06:00	D	2.70
76	SIRSA	SIRSA	S-NPP	75.16141	29.66439	13:06:00	D	6.90
77	SIRSA	SIRSA	S-NPP	75.16028	29.66861	13:06:00	D	6.40
78	YAMUNANAGAR	JAGADHRI	S-NPP	77.17714	30.15010	13:06:00	D	7.10
79	YAMUNANAGAR	JAGADHRI	S-NPP	77.17947	30.15162	13:06:00	D	7.20
80	YAMUNANAGAR	JAGADHRI	S-NPP	77.21774	30.28715	13:06:00	D	3.00
81	YAMUNANAGAR	JAGADHRI	S-NPP	77.37745	30.36802	13:06:00	D	1.80

Details of residue burning events in Uttar Pradesh on 25-Nov-2018

Event S. No.	District	Tehsil/Block	Satellite	Longitude	Latitude	Time (IST)	Day/Night	Fire Power (W/m²)
1	ALLAHABAD	BARA	S-NPP	81.76523	25.12007	13:00:00	D	2.80
2	ALLAHABAD	HADIYA	S-NPP	82.29151	25.52656	13:06:00	D	2.70
3	AMBEDKARNAGAR	AKBARPUR	S-NPP	82.48296	26.49519	13:06:00	D	1.70
4	AMBEDKARNAGAR	AKBARPUR	S-NPP	82.45234	26.55444	13:06:00	D	7.10
5	AMBEDKARNAGAR	AKBARPUR	S-NPP	82.35168	26.56267	13:06:00	D	3.70
6	AMBEDKARNAGAR	ALAPUR	S-NPP	82.82996	26.45667	13:06:00	D	2.10
7	AMBEDKARNAGAR	JALALPUR	S-NPP	82.81985	26.25883	13:06:00	D	2.50
8	AMBEDKARNAGAR	JALALPUR	S-NPP	82.73987	26.34793	13:06:00	D	2.10
9	AMBEDKARNAGAR	TANDA	S-NPP	82.71531	26.52067	13:06:00	D	2.20
10	AMBEDKARNAGAR	TANDA	S-NPP	82.60022	26.54665	13:06:00	D	1.70
11	AMBEDKARNAGAR	TANDA	S-NPP	82.60344	26.55054	13:06:00	D	3.00
12	AMBEDKARNAGAR	TANDA	S-NPP	82.48150	26.60976	13:06:00	D	2.90
13	AURAIYA	AURAIYA	S-NPP	79.37356	26.48254	13:06:00	D	1.70
14	AURAIYA	AURAIYA	S-NPP	79.30168	26.63164	13:06:00	D	3.10
15	AURAIYA	AURAIYA	S-NPP	79.30550	26.63605	13:06:00	D	3.10
16	AURAIYA	BIDHUNA	S-NPP	79.41626	26.65219	13:06:00	D	2.70
17	AURAIYA	BIDHUNA	S-NPP	79.64941	26.67304	13:06:00	D	2.20
18	AURAIYA	BIDHUNA	S-NPP	79.36145	26.72757	01:48:00	N	0.50
19	AZAMGARH	LALGANJ	S-NPP	83.02650	25.73840	13:06:00	D	1.80
20	AZAMGARH	MEHNAGAR	S-NPP	83.13363	25.79537	13:06:00	D	8.00
21	AZAMGARH	NIZAMABAD	S-NPP	82.90827	25.93022	13:06:00	D	1.60
22	AZAMGARH	NIZAMABAD	S-NPP	83.06277	26.18045	13:06:00	D	12.60
23	AZAMGARH	PHULPUR	S-NPP	82.87069	25.92108	13:06:00	D	2.20
24	AZAMGARH	PHULPUR	S-NPP	82.69307	26.17846	13:06:00	D	3.30
25	BADAUN	SAHASWAN	S-NPP	78.69206	28.03600	13:06:00	D	2.70
26	BADAUN	SAHASWAN	S-NPP	78.69511	28.03687	13:06:00	D	4.30
27	BAHRAICH	MAHASI	S-NPP	81.35348	27.59846	13:06:00	D	1.90
28	BALLIA	BALLIA	S-NPP	83.94934	25.65582	13:00:00	D	3.70

29	BALLIA	BALLIA	S-NPP	84.09790	25.80954	13:06:00	D	2.10
30	BALLIA	BALLIA	S-NPP	84.04130	25.85943	13:06:00	D	2.30
31	BALLIA	BANSDIH	S-NPP	84.12472	25.95207	13:06:00	D	2.80
32	BALLIA	RASRA	S-NPP	83.96629	25.81095	13:06:00	D	1.90
33	BALLIA	SIKANDARPUR	S-NPP	84.01038	25.96626	13:06:00	D	2.40
34	BALRAMPUR	TULSIPUR	S-NPP	82.48476	27.44663	13:06:00	D	5.00
35	BALRAMPUR	UTRAULA	S-NPP	82.32784	27.37158	13:06:00	D	2.30
36	BANDA	ATARRA	S-NPP	80.68656	25.37197	13:06:00	D	2.30
37	BANDA	BABERU	S-NPP	80.78606	25.64875	13:06:00	D	3.40
38	BARABANKI	H AidARGARH	S-NPP	81.48404	26.60804	13:06:00	D	1.20
39	BARABANKI	H AidARGARH	S-NPP	81.22360	26.68142	13:06:00	D	2.40
40	BARABANKI	RAMNAGAR	S-NPP	81.37508	27.22104	13:06:00	D	3.20
41	BARABANKI	SIRAULI GAUSPUR	S-NPP	81.52801	26.94436	13:06:00	D	1.80
42	BASTI	BASTI	S-NPP	82.83276	26.80219	13:06:00	D	2.40
43	BASTI	BASTI	S-NPP	82.75728	26.81931	01:48:00	N	0.30
44	BASTI	HARRAIYA	S-NPP	82.59962	26.82101	13:06:00	D	1.80
45	BASTI	RUDHAULI	S-NPP	82.84404	26.93274	13:06:00	D	3.30
46	BASTI	RUDHAULI	S-NPP	82.82230	26.94303	13:06:00	D	2.40
47	BIJNOR	DHAMPUR	S-NPP	78.43707	29.23830	13:06:00	D	2.80
48	BIJNOR	NAJIBABAD	S-NPP	78.20191	29.56025	13:06:00	D	2.30
49	BULANSAHAR	SHIKARPUR	S-NPP	77.99123	28.34222	13:06:00	D	2.60
50	BULANSAHAR	SHIKARPUR	S-NPP	77.99406	28.34251	13:06:00	D	2.50
51	BULANSAHAR	SIYANA	S-NPP	78.16547	28.44792	13:06:00	D	2.80
52	CHANDAULI	SHAKALDIHA	S-NPP	83.25424	25.41443	13:00:00	D	4.70
53	DEORIA	BARHAJ	S-NPP	83.66876	26.25688	13:06:00	D	46.90
54	DEORIA	DEORIA	S-NPP	83.84510	26.45223	13:06:00	D	2.20
55	DEORIA	DEORIA	S-NPP	83.86070	26.45450	13:06:00	D	1.10
56	DEORIA	DEORIA	S-NPP	83.84451	26.45556	13:06:00	D	2.20
57	DEORIA	DEORIA	S-NPP	83.76868	26.56610	13:06:00	D	4.50
58	DEORIA	DEORIA	S-NPP	83.76481	26.58859	13:06:00	D	1.50
59	DEORIA	DEORIA	S-NPP	83.80655	26.60144	13:06:00	D	1.80

60	DEORIA	DEORIA	S-NPP	83.81046	26.60201	13:06:00	D	1.80
61	DEORIA	DEORIA	S-NPP	83.72048	26.61287	13:06:00	D	3.20
62	DEORIA	DEORIA	S-NPP	83.95001	26.65287	13:06:00	D	1.50
63	DEORIA	DEORIA	S-NPP	83.71425	26.66995	13:06:00	D	6.00
64	DEORIA	DEORIA	S-NPP	83.70975	26.67270	13:06:00	D	3.30
65	DEORIA	DEORIA	S-NPP	83.75825	26.69555	13:06:00	D	3.80
66	ETAWAH	BHARTHNA	S-NPP	79.25923	26.65013	13:06:00	D	2.90
67	ETAWAH	BHARTHNA	S-NPP	79.15201	26.67591	13:06:00	D	3.20
68	ETAWAH	BHARTHNA	S-NPP	79.29938	26.73672	13:06:00	D	3.40
69	ETAWAH	BHARTHNA	S-NPP	79.27399	26.74333	13:06:00	D	1.70
70	ETAWAH	BHARTHNA	S-NPP	79.31274	26.82829	13:06:00	D	1.40
71	ETAWAH	CHAKARNAGAR	S-NPP	79.19431	26.61604	13:06:00	D	2.30
72	ETAWAH	CHAKARNAGAR	S-NPP	79.20125	26.62852	13:06:00	D	7.90
73	ETAWAH	ETAWAH	S-NPP	79.12729	26.79564	13:06:00	D	1.50
74	ETAWAH	ETAWAH	S-NPP	79.12076	26.83197	13:06:00	D	2.20
75	FAIZABAD	RUDAULI	S-NPP	81.58822	26.82125	13:06:00	D	1.90
76	FATEHPUR	FATEHPUR	S-NPP	80.92780	25.74955	13:06:00	D	2.70
77	FATEHPUR	FATEHPUR	S-NPP	80.97275	25.75706	13:06:00	D	2.20
78	FATEHPUR	FATEHPUR	S-NPP	80.83526	25.98310	13:06:00	D	2.70
79	FATEHPUR	FATEHPUR	S-NPP	80.83456	25.98651	13:06:00	D	2.70
80	GAZIPUR	GAZIPUR	S-NPP	83.57500	25.72286	13:06:00	D	6.30
81	GAZIPUR	GAZIPUR	S-NPP	83.51665	25.80521	13:06:00	D	2.40
82	GAZIPUR	GAZIPUR	S-NPP	83.52048	25.80578	13:06:00	D	3.50
83	GAZIPUR	MUHAMMADBAD	S-NPP	83.91584	25.68843	13:00:00	D	1.50
84	GAZIPUR	MUHAMMADBAD	S-NPP	83.91525	25.69176	13:00:00	D	2.90
85	GAZIPUR	MUHAMMADBAD	S-NPP	83.84766	25.71593	13:00:00	D	1.20
86	GONDA	GONDA	S-NPP	82.15410	27.28070	13:06:00	D	3.90
87	GONDA	GONDA	S-NPP	81.93725	27.36533	13:06:00	D	4.70
88	GORAKHPUR	CHAURI CHAURA	S-NPP	83.59942	26.73384	13:06:00	D	4.40
89	GORAKHPUR	CHAURI CHAURA	S-NPP	83.60330	26.73441	13:06:00	D	4.40
90	GORAKHPUR	CHAURI CHAURA	S-NPP	83.59882	26.73716	13:06:00	D	4.40

91	GORAKHPUR	CHAURI CHAURA	S-NPP	83.52201	26.74292	13:06:00	D	4.00
92	GORAKHPUR	GOLA	S-NPP	83.36887	26.38223	13:06:00	D	2.10
93	GORAKHPUR	GORAKHPUR	S-NPP	83.50578	26.76721	13:06:00	D	2.20
94	GORAKHPUR	GORAKHPUR	S-NPP	83.57031	26.80729	13:06:00	D	3.70
95	GORAKHPUR	GORAKHPUR	S-NPP	83.49194	26.84349	13:06:00	D	4.10
96	GORAKHPUR	GORAKHPUR	S-NPP	83.45431	26.87442	13:06:00	D	2.60
97	GORAKHPUR	GORAKHPUR	S-NPP	83.51140	26.88959	13:06:00	D	4.20
98	GORAKHPUR	GORAKHPUR	S-NPP	83.49135	26.89006	13:06:00	D	2.00
99	HARDOI	HARDOI	S-NPP	79.92725	27.44592	13:06:00	D	1.90
100	HARDOI	SHAHABAD	S-NPP	80.15721	27.61551	13:06:00	D	2.80
101	JAUNPUR	KIRAKAT	S-NPP	82.85206	25.64439	13:06:00	D	11.30
102	JAUNPUR	MARIAHU	S-NPP	82.68772	25.55788	13:06:00	D	1.50
103	JAUNPUR	SHHGANJ	S-NPP	82.51012	26.08223	13:06:00	D	2.20
104	JAUNPUR	SHHGANJ	S-NPP	82.62004	26.08288	13:06:00	D	2.50
105	JAUNPUR	SHHGANJ	S-NPP	82.55488	26.09598	13:06:00	D	2.40
106	JYOTIBAPHULE NAGAR	AMROHA	S-NPP	78.57359	28.80807	13:06:00	D	3.60
107	KANPUR DEHAT	RASULABAD	S-NPP	79.88673	26.67764	13:06:00	D	2.00
108	KANPUR DEHAT	RASULABAD	S-NPP	79.88374	26.69163	13:06:00	D	3.00
109	KANPUR DEHAT	SIKANDRA	S-NPP	79.59299	26.42361	13:06:00	D	5.00
110	KAUSHAMBI	MANJHANPUR	S-NPP	81.36462	25.37703	13:06:00	D	2.50
111	KAUSHAMBI	MANJHANPUR	S-NPP	81.37791	25.39316	13:06:00	D	2.60
112	KAUSHAMBI	MANJHANPUR	S-NPP	81.35590	25.42093	13:06:00	D	1.60
113	KAUSHAMBI	MANJHANPUR	S-NPP	81.23828	25.47154	13:06:00	D	2.10
114	KAUSHAMBI	MANJHANPUR	S-NPP	81.27105	25.51538	13:06:00	D	1.70
115	KHERI	DHAURAHRA	S-NPP	81.12183	28.03831	13:06:00	D	2.50
116	KHERI	GOLA	S-NPP	80.49748	28.18762	13:06:00	D	3.50
117	KHERI	LAKHIMPUR	S-NPP	80.71626	27.84235	13:06:00	D	1.30
118	KHERI	LAKHIMPUR	S-NPP	80.54626	28.05230	13:06:00	D	2.40
119	KHERI	MOHMADI	S-NPP	80.41235	27.79128	13:06:00	D	2.70
120	KHERI	MOHMADI	S-NPP	80.41169	27.79132	13:06:00	D	1.50
121	KHERI	PALIA KALAN	S-NPP	80.70820	28.33486	13:06:00	D	3.90

122	KHERI	PALIA KALAN	S-NPP	80.45851	28.35658	13:06:00	D	15.30
123	KHERI	PALIA KALAN	S-NPP	80.50800	28.42423	13:06:00	D	6.20
124	KUSHINAGAR	HATA	S-NPP	83.74963	26.76599	13:06:00	D	1.20
125	KUSHINAGAR	HATA	S-NPP	83.61733	26.79029	13:06:00	D	2.00
126	KUSHINAGAR	HATA	S-NPP	83.73287	26.79338	13:06:00	D	3.90
127	KUSHINAGAR	HATA	S-NPP	83.71877	26.80499	13:06:00	D	2.40
128	KUSHINAGAR	HATA	S-NPP	83.66413	26.84143	13:06:00	D	3.80
129	KUSHINAGAR	HATA	S-NPP	83.90616	26.85933	13:06:00	D	3.90
130	KUSHINAGAR	HATA	S-NPP	83.60474	26.86004	13:06:00	D	1.50
131	KUSHINAGAR	HATA	S-NPP	83.72425	26.86382	13:06:00	D	1.70
132	KUSHINAGAR	HATA	S-NPP	83.76006	26.86560	13:06:00	D	4.30
133	KUSHINAGAR	HATA	S-NPP	83.63534	26.86792	13:06:00	D	1.90
134	KUSHINAGAR	HATA	S-NPP	83.61344	26.87836	13:06:00	D	2.80
135	KUSHINAGAR	HATA	S-NPP	83.60895	26.88111	13:06:00	D	8.30
136	KUSHINAGAR	HATA	S-NPP	83.60847	26.88328	13:06:00	D	9.80
137	KUSHINAGAR	HATA	S-NPP	83.55991	26.88644	13:06:00	D	4.30
138	KUSHINAGAR	HATA	S-NPP	83.63339	26.90053	13:06:00	D	7.50
139	KUSHINAGAR	HATA	S-NPP	83.67006	26.91949	13:06:00	D	7.70
140	KUSHINAGAR	KASAYA	S-NPP	84.04424	26.62182	13:06:00	D	2.30
141	KUSHINAGAR	KASAYA	S-NPP	84.06004	26.69264	13:06:00	D	2.10
142	KUSHINAGAR	KASAYA	S-NPP	84.03796	26.70319	13:06:00	D	3.50
143	KUSHINAGAR	KASAYA	S-NPP	83.85414	26.78799	13:06:00	D	2.40
144	KUSHINAGAR	PADRAUNA	S-NPP	83.81826	27.24469	13:06:00	D	2.20
145	KUSHINAGAR	TAMKUHI RAJ	S-NPP	84.05746	26.66141	13:06:00	D	1.90
146	MAHARAJGANJ	MAHARAJGANJ	S-NPP	83.55482	26.89251	13:06:00	D	2.30
147	MAHARAJGANJ	MAHARAJGANJ	S-NPP	83.52664	26.91566	13:06:00	D	8.20
148	MAHARAJGANJ	MAHARAJGANJ	S-NPP	83.49820	26.91831	13:06:00	D	2.30
149	MAHARAJGANJ	MAHARAJGANJ	S-NPP	83.51645	26.92779	13:06:00	D	2.10
150	MAHARAJGANJ	MAHARAJGANJ	S-NPP	83.51076	26.93718	13:06:00	D	4.10
151	MAHARAJGANJ	MAHARAJGANJ	S-NPP	83.48889	26.94759	13:06:00	D	5.10
152	MAHARAJGANJ	MAHARAJGANJ	S-NPP	83.61269	26.94867	13:06:00	D	3.00

153	MAHARAJGANJ	MAHARAJGANJ	S-NPP	83.52062	26.94884	13:06:00	D	2.60
154	MAHARAJGANJ	MAHARAJGANJ	S-NPP	83.58357	26.95465	13:06:00	D	3.10
155	MAHARAJGANJ	MAHARAJGANJ	S-NPP	83.58747	26.95522	13:06:00	D	3.10
156	MAHARAJGANJ	MAHARAJGANJ	S-NPP	83.50654	26.96040	13:06:00	D	2.00
157	MAHARAJGANJ	MAHARAJGANJ	S-NPP	83.63822	26.96263	13:06:00	D	2.30
158	MAHARAJGANJ	MAHARAJGANJ	S-NPP	83.55387	26.96394	13:06:00	D	2.30
159	MAHARAJGANJ	MAHARAJGANJ	S-NPP	83.40599	26.96548	13:06:00	D	3.70
160	MAHARAJGANJ	MAHARAJGANJ	S-NPP	83.59498	26.98019	13:06:00	D	4.00
161	MAHARAJGANJ	MAHARAJGANJ	S-NPP	83.59888	26.98076	13:06:00	D	4.00
162	MAHARAJGANJ	MAHARAJGANJ	S-NPP	83.63072	26.98200	13:06:00	D	3.80
163	MAHARAJGANJ	MAHARAJGANJ	S-NPP	83.63463	26.98257	13:06:00	D	2.80
164	MAHARAJGANJ	MAHARAJGANJ	S-NPP	83.63590	26.99895	13:06:00	D	3.20
165	MAHARAJGANJ	MAHARAJGANJ	S-NPP	83.63020	27.00836	13:06:00	D	3.40
166	MAHARAJGANJ	MAHARAJGANJ	S-NPP	83.42742	27.02308	13:06:00	D	3.20
167	MAHARAJGANJ	MAHARAJGANJ	S-NPP	83.63893	27.02668	13:06:00	D	2.00
168	MAHARAJGANJ	MAHARAJGANJ	S-NPP	83.43071	27.02696	13:06:00	D	2.30
169	MAHARAJGANJ	MAHARAJGANJ	S-NPP	83.65279	27.03893	13:06:00	D	1.90
170	MAHARAJGANJ	MAHARAJGANJ	S-NPP	83.45223	27.04034	13:06:00	D	1.60
171	MAHARAJGANJ	MAHARAJGANJ	S-NPP	83.57550	27.04474	13:06:00	D	3.00
172	MAHARAJGANJ	MAHARAJGANJ	S-NPP	83.56198	27.05300	13:06:00	D	2.10
173	MAHARAJGANJ	MAHARAJGANJ	S-NPP	83.56588	27.05357	13:06:00	D	2.40
174	MAHARAJGANJ	MAHARAJGANJ	S-NPP	83.69408	27.05515	13:06:00	D	2.10
175	MAHARAJGANJ	MAHARAJGANJ	S-NPP	83.57310	27.05803	13:06:00	D	2.00
176	MAHARAJGANJ	MAHARAJGANJ	S-NPP	83.46479	27.05921	13:06:00	D	1.60
177	MAHARAJGANJ	MAHARAJGANJ	S-NPP	83.56468	27.06021	13:06:00	D	1.70
178	MAHARAJGANJ	MAHARAJGANJ	S-NPP	83.58752	27.06696	13:06:00	D	3.60
179	MAHARAJGANJ	MAHARAJGANJ	S-NPP	83.53496	27.06951	13:06:00	D	1.90
180	MAHARAJGANJ	MAHARAJGANJ	S-NPP	83.54276	27.07065	13:06:00	D	2.10
181	MAHARAJGANJ	MAHARAJGANJ	S-NPP	83.60015	27.08586	13:06:00	D	3.40
182	MAHARAJGANJ	MAHARAJGANJ	S-NPP	83.63145	27.09043	13:06:00	D	2.50
183	MAHARAJGANJ	MAHARAJGANJ	S-NPP	83.55515	27.11220	13:06:00	D	1.40

184	MAHARAJGANJ	MAHARAJGANJ	S-NPP	83.65873	27.11697	13:06:00	D	1.40
185	MAHARAJGANJ	MAHARAJGANJ	S-NPP	83.61745	27.14512	13:06:00	D	2.80
186	MAHARAJGANJ	MAHARAJGANJ	S-NPP	83.52658	27.15918	13:06:00	D	3.20
187	MAHARAJGANJ	MAHARAJGANJ	S-NPP	83.68146	27.19197	13:06:00	D	1.30
188	MAHARAJGANJ	MAHARAJGANJ	S-NPP	83.52026	27.19839	13:06:00	D	2.30
189	MAHARAJGANJ	NAUTANWA	S-NPP	83.40295	27.35733	13:06:00	D	2.10
190	MAHARAJGANJ	NAUTANWA	S-NPP	83.40322	27.37781	13:06:00	D	2.30
191	MAHARAJGANJ	PHARENDA	S-NPP	83.32376	27.10899	13:06:00	D	1.30
192	MAINPURI	BHOGAON	S-NPP	79.22562	27.04553	13:06:00	D	3.30
193	MAINPURI	BHOGAON	S-NPP	79.22683	27.04660	13:06:00	D	3.30
194	MAINPURI	BHOGAON	S-NPP	79.27898	27.22811	13:06:00	D	2.20
195	MAINPURI	MAINPURI	S-NPP	78.99107	27.10538	13:06:00	D	5.60
196	MAINPURI	MAINPURI	S-NPP	78.99277	27.10594	13:06:00	D	5.20
197	MAINPURI	MAINPURI	S-NPP	78.97314	27.31905	01:48:00	N	0.60
198	MAU	GHOSI	S-NPP	83.55275	26.08472	13:06:00	D	2.90
199	MAU	MADHUBAN	S-NPP	83.61142	26.06618	13:06:00	D	3.30
200	MAU	MADHUBAN	S-NPP	83.66866	26.07800	13:06:00	D	3.20
201	MAU	MADHUBAN	S-NPP	83.57047	26.11795	13:06:00	D	2.20
202	MAU	MAU	S-NPP	83.60150	25.90276	13:06:00	D	2.40
203	MAU	MAU	S-NPP	83.71825	26.00115	13:06:00	D	1.20
204	MEERUT	MEERUT	S-NPP	77.69810	28.86826	13:06:00	D	2.90
205	MIRZAPUR	CHUNAR	S-NPP	83.08531	25.16201	13:00:00	D	1.90
206	MIRZAPUR	MIRZAPUR	S-NPP	82.66292	25.12389	13:00:00	D	4.30
207	MIRZAPUR	MIRZAPUR	S-NPP	82.44562	25.19118	13:00:00	D	2.60
208	MORADABAD	MORADABAD	S-NPP	78.80909	28.93351	13:06:00	D	5.50
209	MUZAFARNAGAR	BUDHANA	S-NPP	77.33442	29.26394	13:06:00	D	4.90
210	MUZAFARNAGAR	BUDHANA	TERRA-1	77.43021	29.26475	11:13:00	D	18.53
211	MUZAFARNAGAR	BUDHANA	TERRA-1	77.47114	29.30518	11:13:00	D	19.70
212	MUZAFARNAGAR	JANSATH	S-NPP	77.96340	29.54244	13:06:00	D	3.30
213	MUZAFARNAGAR	KAIRANA	S-NPP	77.27554	29.33399	13:06:00	D	2.80
214	MUZAFARNAGAR	KAIRANA	S-NPP	77.28781	29.35218	13:06:00	D	7.40

215	MUZAFARNAGAR	KAIRANA	S-NPP	77.19070	29.46306	13:06:00	D	2.60
216	MUZAFARNAGAR	MUZAFFARNAGAR	S-NPP	77.63084	29.40529	13:06:00	D	2.60
217	MUZAFARNAGAR	MUZAFFARNAGAR	S-NPP	77.61004	29.60433	13:06:00	D	2.30
218	PILHIBHIT	BISALPUR	S-NPP	79.83536	28.36674	13:06:00	D	3.20
219	PRATAPGARH	PRATAPGARH	S-NPP	81.59360	25.83847	13:06:00	D	2.60
220	PRATAPGARH	PRATAPGARH	S-NPP	81.49387	25.93404	13:06:00	D	7.90
221	PRATAPGARH	KUNDA	S-NPP	81.49094	25.77877	13:06:00	D	1.60
222	PRATAPGARH	PATTI	S-NPP	82.20816	25.94037	13:06:00	D	4.20
223	PRATAPGARH	PATTI	S-NPP	82.20689	25.94699	13:06:00	D	2.50
224	PRATAPGARH	PATTI	S-NPP	82.20048	25.95965	13:06:00	D	1.80
225	PRATAPGARH	PATTI	S-NPP	82.09561	25.98754	13:06:00	D	2.80
226	PRATAPGARH	PATTI	S-NPP	82.31998	26.01933	13:06:00	D	2.50
227	PRATAPGARH	PATTI	S-NPP	82.18775	26.02831	13:06:00	D	1.00
228	RAIBEARELI	MAHARAJGANG	S-NPP	81.34923	26.40019	13:06:00	D	1.60
229	RAIBEARELI	MAHARAJGANG	S-NPP	81.18426	26.40219	13:06:00	D	1.90
230	RAIBEARELI	MAHARAJGANG	S-NPP	81.27676	26.41271	13:06:00	D	1.30
231	RAIBEARELI	MAHARAJGANG	S-NPP	81.27687	26.41400	13:06:00	D	2.60
232	RAIBEARELI	MAHARAJGANG	S-NPP	81.26331	26.50199	13:06:00	D	1.80
233	RAIBEARELI	MAHARAJGANG	S-NPP	81.15924	26.50646	13:06:00	D	2.80
234	RAIBEARELI	SALON	S-NPP	81.60764	26.18341	13:06:00	D	3.40
235	RAIBEARELI	SALON	S-NPP	81.55845	26.20651	13:06:00	D	3.60
236	RAIBEARELI	TILOI	S-NPP	81.43053	26.21351	13:06:00	D	1.60
237	RAIBEARELI	TILOI	S-NPP	81.57005	26.27234	13:06:00	D	3.60
238	RAIBEARELI	TILOI	S-NPP	81.57391	26.27296	13:06:00	D	3.60
239	RAIBEARELI	TILOI	S-NPP	81.56151	26.27441	13:06:00	D	2.50
240	RAIBEARELI	TILOI	S-NPP	81.50096	26.29221	13:06:00	D	2.70
241	RAIBEARELI	TILOI	S-NPP	81.52364	26.36628	13:06:00	D	0.80
242	RAIBEARELI	UNCHAHR	S-NPP	81.36962	25.87481	13:06:00	D	2.80
243	RAMPUR	SUAR	S-NPP	79.03286	29.10490	13:06:00	D	2.20
244	SHARANPUR	NAKUR	S-NPP	77.27181	29.86413	13:06:00	D	2.40
245	SHARANPUR	RAMPUR MANIHARRAN	S-NPP	77.52058	29.67358	13:06:00	D	6.60

246	SHARANPUR	RAMPUR MANIHARRAN	S-NPP	77.52325	29.67358	13:06:00	D	12.00
247	SHARANPUR	RAMPUR MANIHARRAN	S-NPP	77.52573	29.67457	13:06:00	D	6.60
248	SHARANPUR	RAMPUR MANIHARRAN	S-NPP	77.52365	29.70530	13:06:00	D	3.70
249	SIDDHARTHANAGAR	BANSI	S-NPP	82.82676	27.13309	13:06:00	D	1.70
250	SIDDHARTHANAGAR	BANSI	S-NPP	82.81455	27.13465	13:06:00	D	3.30
251	SIDDHARTHANAGAR	ITWA	S-NPP	82.64108	27.37927	13:06:00	D	3.00
252	SIDDHARTHANAGAR	ITWA	S-NPP	82.57597	27.38583	13:06:00	D	2.80
253	SITAPUR	LAHARPUR	S-NPP	80.94147	27.61594	13:06:00	D	2.10
254	SITAPUR	SITAPUR	S-NPP	80.70644	27.53530	13:06:00	D	2.50
255	SONBHADRA	REBUTSHGANJ	S-NPP	83.02589	24.74670	13:00:00	D	3.70
256	SULTANPUR	AMETHI	S-NPP	82.04457	26.13852	01:48:00	N	0.90
257	SULTANPUR	AMETHI	S-NPP	81.96237	26.16282	13:06:00	D	2.70
258	SULTANPUR	AMETHI	S-NPP	81.83866	26.28230	13:06:00	D	4.00
259	SULTANPUR	GAURIGANJ	S-NPP	81.63844	26.19183	13:06:00	D	1.50
260	SULTANPUR	GAURIGANJ	S-NPP	81.62466	26.19995	13:06:00	D	3.00
261	SULTANPUR	GAURIGANJ	S-NPP	81.61853	26.25262	13:06:00	D	1.70
262	SULTANPUR	GAURIGANJ	S-NPP	81.60014	26.28411	13:06:00	D	2.30
263	SULTANPUR	GAURIGANJ	S-NPP	81.83771	26.30857	13:06:00	D	2.10
264	SULTANPUR	GAURIGANJ	S-NPP	81.63940	26.33176	13:06:00	D	2.70
265	SULTANPUR	GAURIGANJ	S-NPP	81.72830	26.33225	13:06:00	D	2.50
266	SULTANPUR	GAURIGANJ	S-NPP	81.70741	26.33578	13:06:00	D	4.60
267	SULTANPUR	GAURIGANJ	S-NPP	81.61776	26.33862	13:06:00	D	2.30
268	SULTANPUR	GAURIGANJ	S-NPP	81.62691	26.35386	13:06:00	D	1.80
269	SULTANPUR	JAISINGHPUR	S-NPP	82.25911	26.27686	13:06:00	D	4.30
270	SULTANPUR	JAISINGHPUR	S-NPP	82.26296	26.27746	13:06:00	D	4.30
271	SULTANPUR	KADIRPUR	S-NPP	82.49413	26.22912	13:06:00	D	1.90
272	UNNAO	BIGHAPUR	S-NPP	80.79906	26.40119	13:06:00	D	2.40

The study used images received from following Satellites at IARI Satellite Ground Station

S. No.	Satellite Name	Sensor	Resolution (meter)	Day / Night Passes
1.	Suomi NPP	VIIRS	375 / 1000	Both
2.	Terra	MODIS	1000	Both
3.	Aqua	MODIS	1000	Both
4.	NOAA – 18	AVHRR	1000	Night
5.	NOAA – 19	AVHRR	1000	Night
6.	Metop - 1	AVHRR	1000	Night
7.	Metop - 2	AVHRR	1000	Night

Study Team

ICAR – HQ	Dr K. Alagusundaram	DDG (Agril. Engg.)	ddgengg@icar.org.in
	Dr S. Bhaskar	ADG (NRM)	adgagroandaf@gmail.com
ICAR - IARI	Dr V.K. Sehgal	Professor & Nodal Scientist	iaricreams@gmail.com yk.sehgal@icar.gov.in
	Dr Rajkumar Dhakar	Scientist	rajdhakar.iari@gmail.com
	Shri Rakeshwar Verma	Chief Technical Officer	rakeshwar.verma@icar.gov.in
	Mr Aakash Chhabra	SRF (NICRA)	aakash.chhabra7489@gmail.com
ICAR - ATARI	Dr Rajbir Singh	Director ATARI (Zone-1)	rajbirsingh.zpd@gmail.com
	Dr U.S. Gautam	Director ATARI (Zone-IV)	zpdicarkanpur@gmail.com
ICAR - IASRI	Dr RajenderParsad	Principal Scientist	rajender.parsad@icar.gov.in

GIS Maps of fire events can be visualized online on ICAR KRISHI & CREAMS Geoportal

websites:<http://geoportal.icar.gov.in:8080/geoexplorer/composer/>

<http://creams.iari.res.in:8080/geoexplorer/composer/>
