



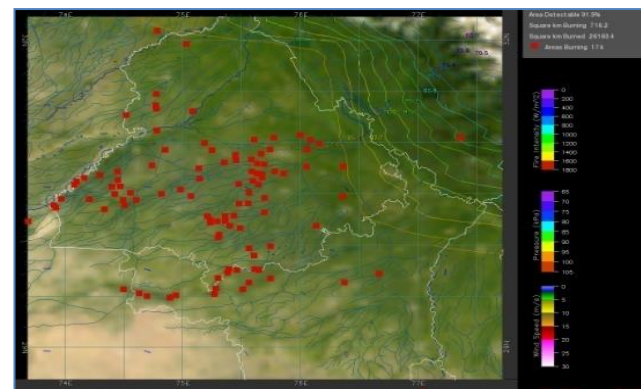
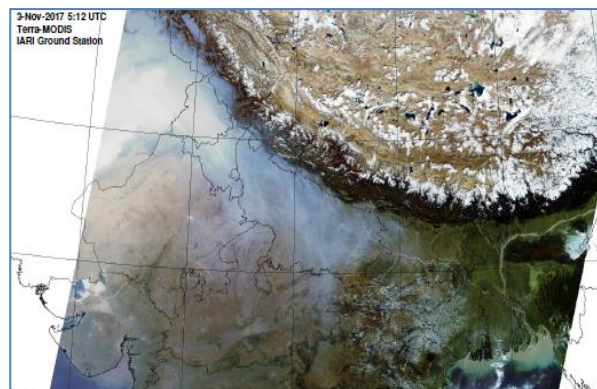
**Bulletin
No. 54**

**Events Date:
24-Nov-2018**

**Issued on:
25-Nov-2018**



MONITORING PADDY RESIDUE BURNING IN NORTH INDIA USING SATELLITE REMOTE SENSING DURING 2018



Prepared by:

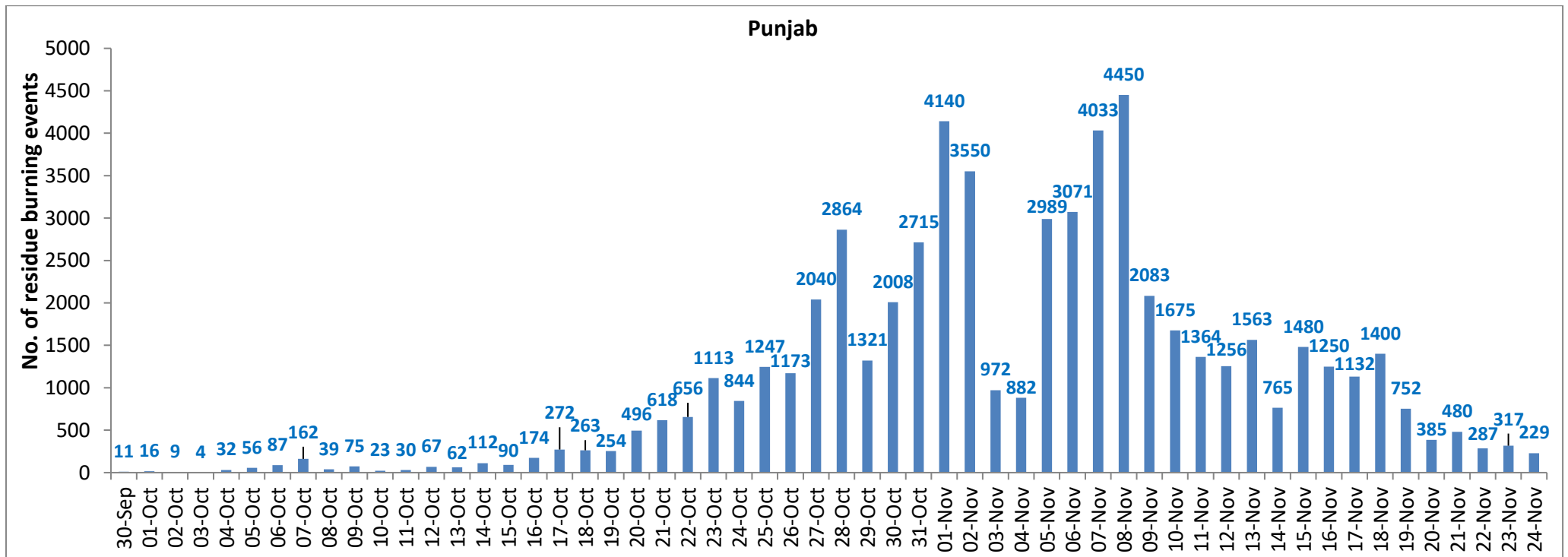
**Consortium for Research on Agroecosystem Monitoring and Modeling from Space (CREAMS) Laboratory,
Division of Agricultural Physics, ICAR – Indian Agricultural Research Institute, New Delhi – 110012**

<http://creams.iari.res.in>

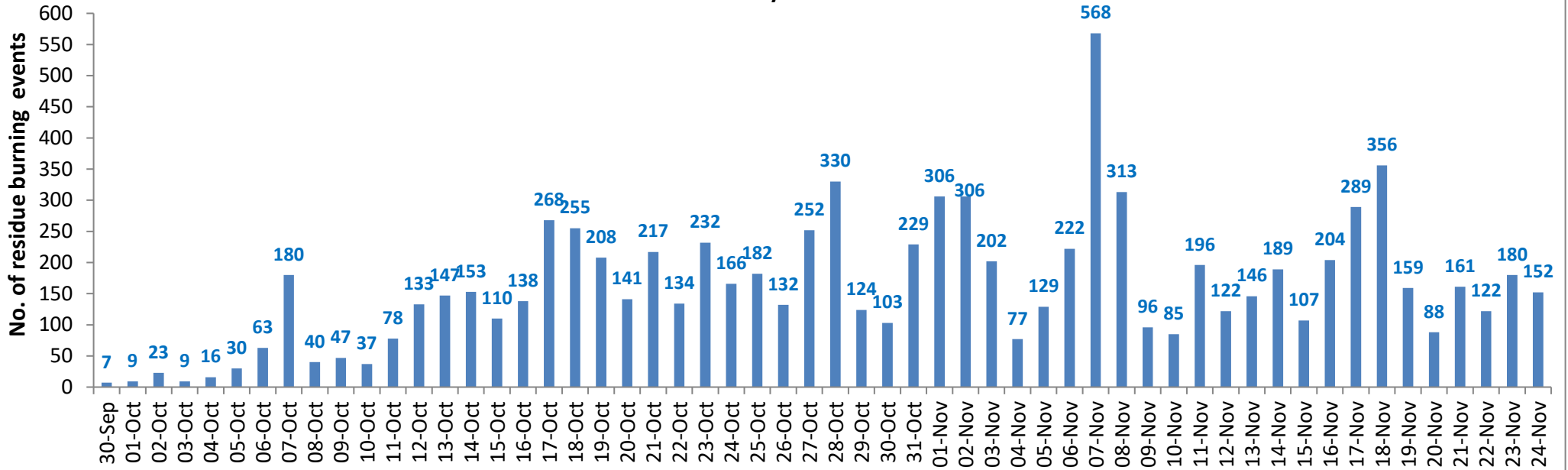
Highlights for 24-November-2018

- Satellites detected **567** residue burning events in the three States (Punjab, Haryana & UP) on **24-Nov-2018**.
- The burning events detected on **24-Nov-2018** are **229**, **152** and **186** in Punjab, Haryana, and UP, respectively.
- The number of events has decreased from **603** on **23-Nov-2018** to **567** on **24-Nov-2018** in the three States.
- Total **74394** burning events were detected in the three States between **30-Sept-2018** and **24-Nov-2018**, which are distributed as **59438**, **8968** and **5988** in Punjab, Haryana and UP, respectively.
- Till **24-Nov-2018**, the burning events in the current year are about **86.5%** of the events detected in 2017 and about **58.7%** of the events detected in 2016.
- Overall, about **13%** and **41%** reduction in burning events are observed in current year (2018) till date as compared to that in 2017 and 2016, respectively.

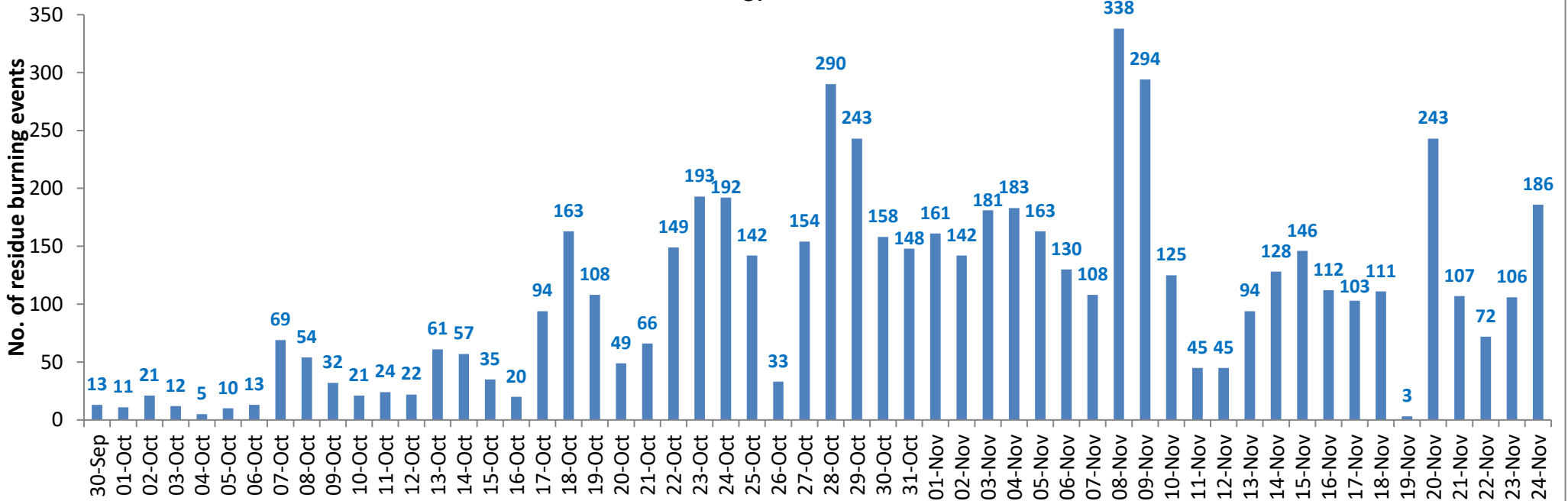
Temporal distribution of residue burning events for the three study States



Haryana

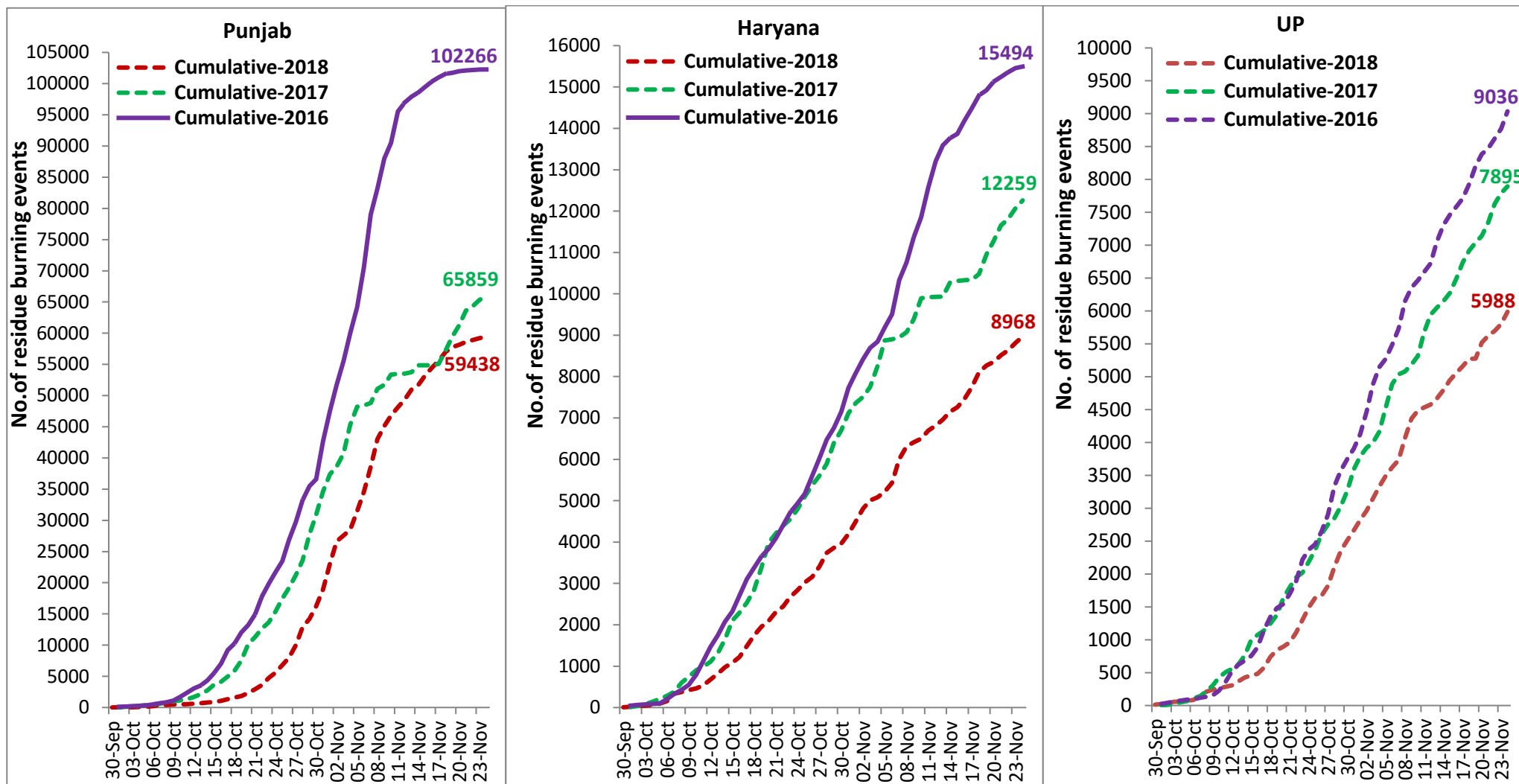


UP

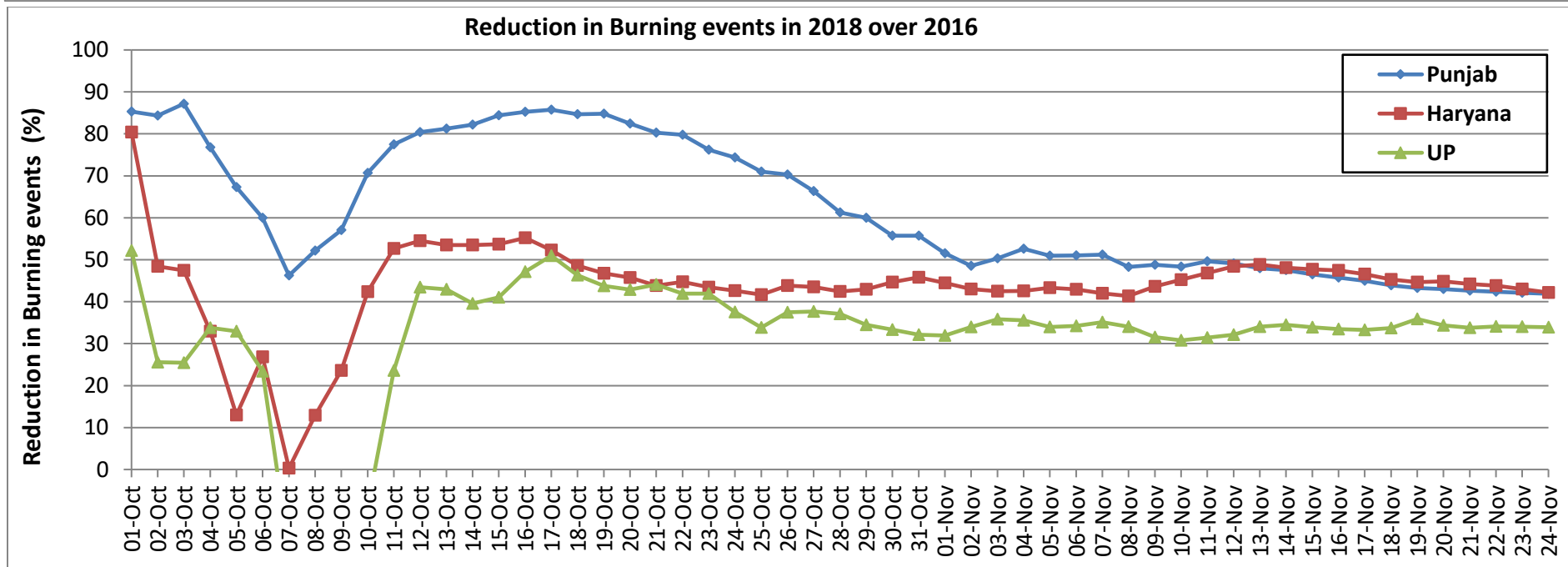
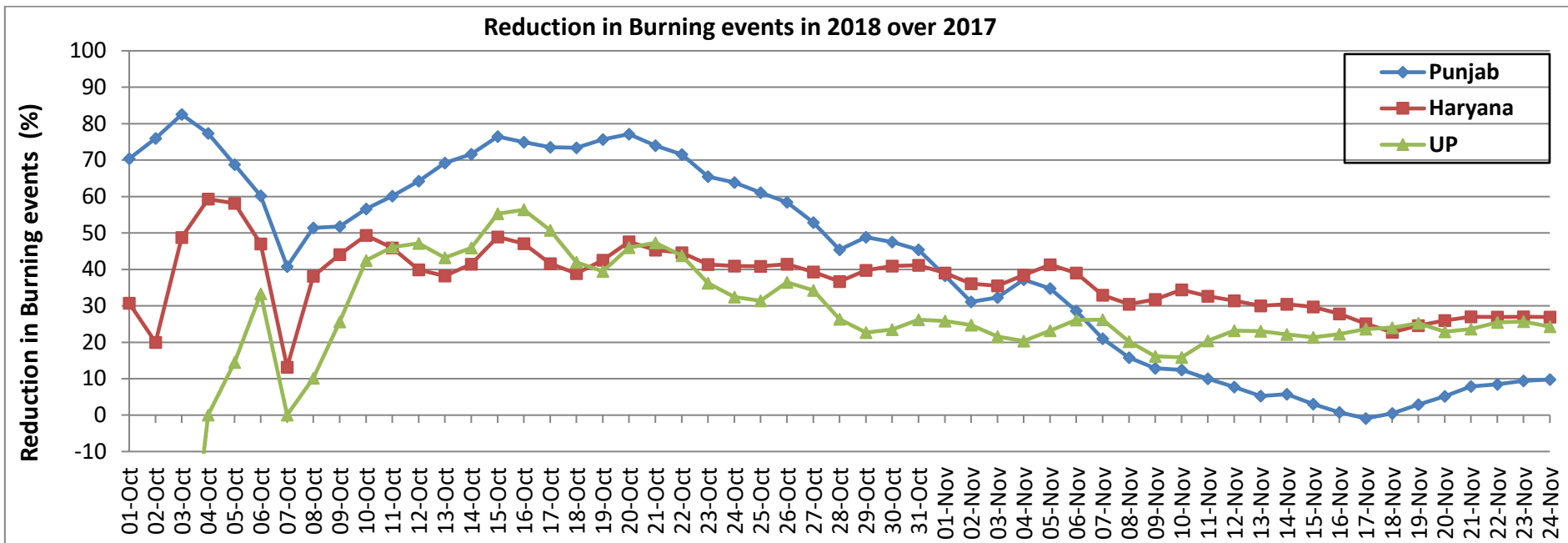


Comparison of residue burning events in current year (2018) with previous years (2017& 2016) for the three study States

(30-Sep to 24-Nov)

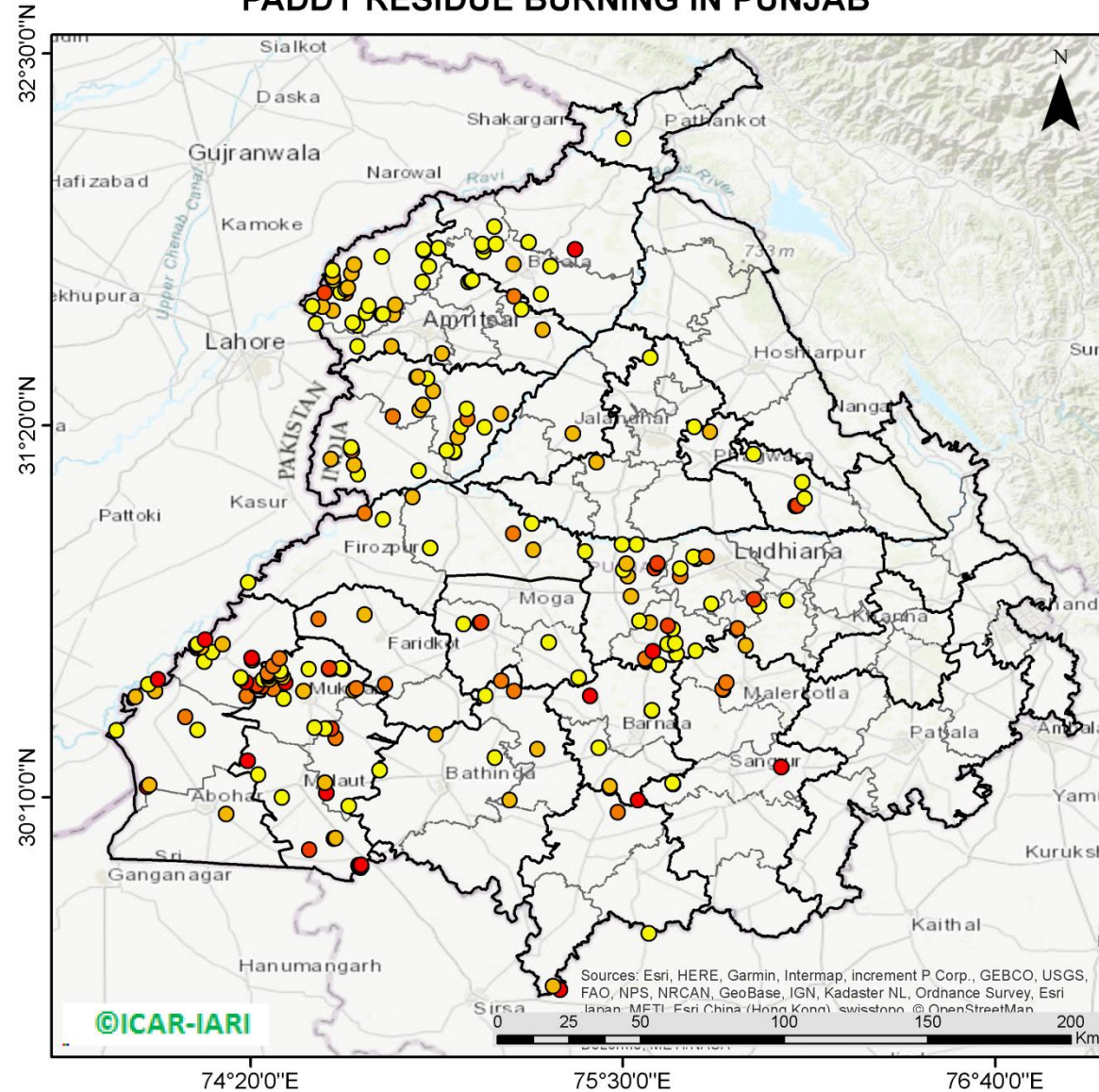


Percent Reduction in Burning events in 2018 over 2017 and 2016 (Daily Cumulative)



(a) Punjab

PADDY RESIDUE BURNING IN PUNJAB



229 burning events detected in Punjab on 24th November, 2018

Fire Intensity (W/m²)

- 0 - 5
- 6 - 10
- 11 - 15
- 16 - 20
- >20



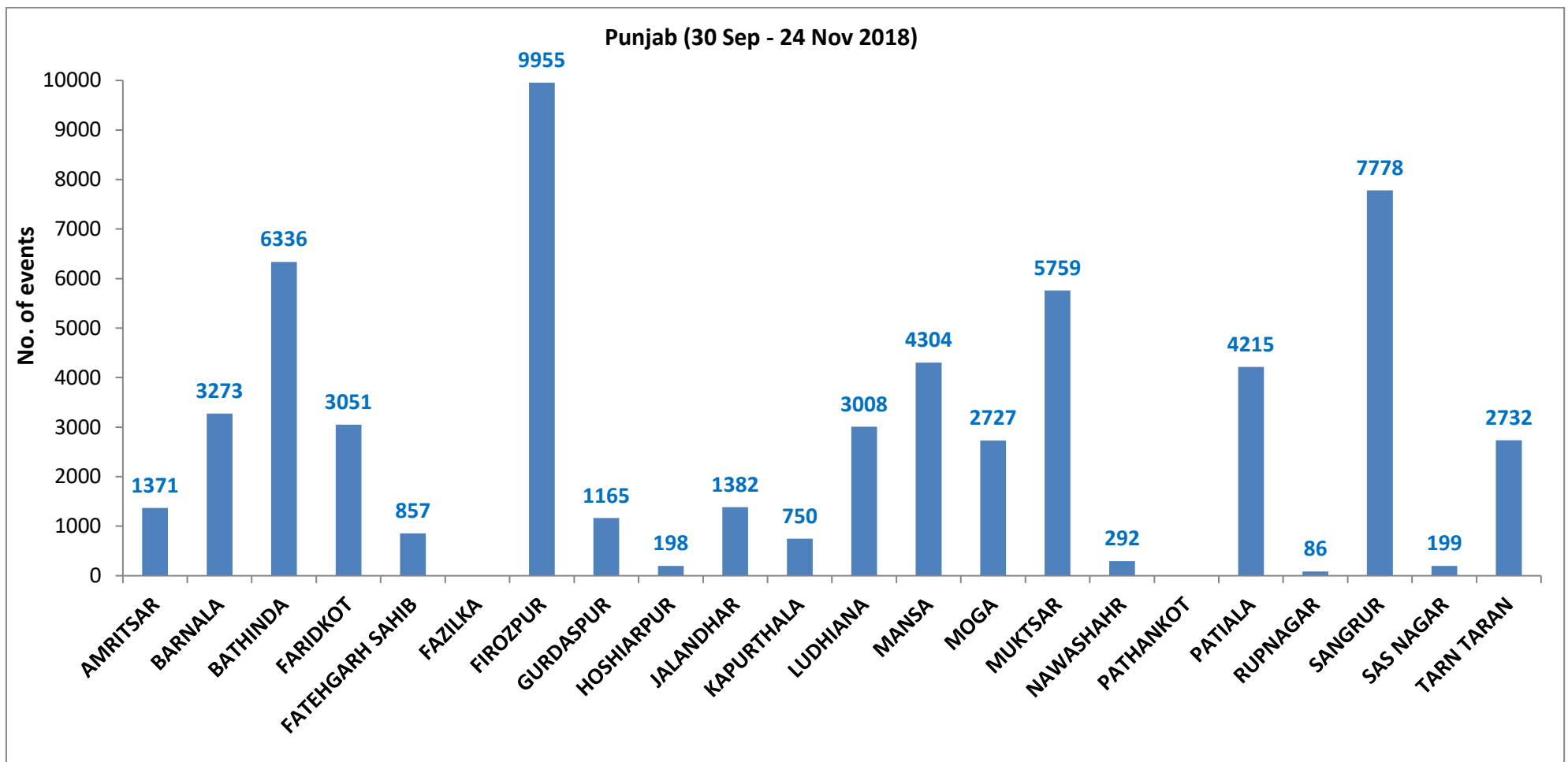
Sources: Esri, HERE, Garmin, Intermap, increment P Corp., GEBCO, USGS, FAO, NPS, NRCAN, GeoBase, IGN, Kadaster NL, Ordnance Survey, Esri Japan, METI, Esri China (Hong Kong), swisstopo, OpenStreetMap



74°20'0"E 75°30'0"E 76°40'0"E

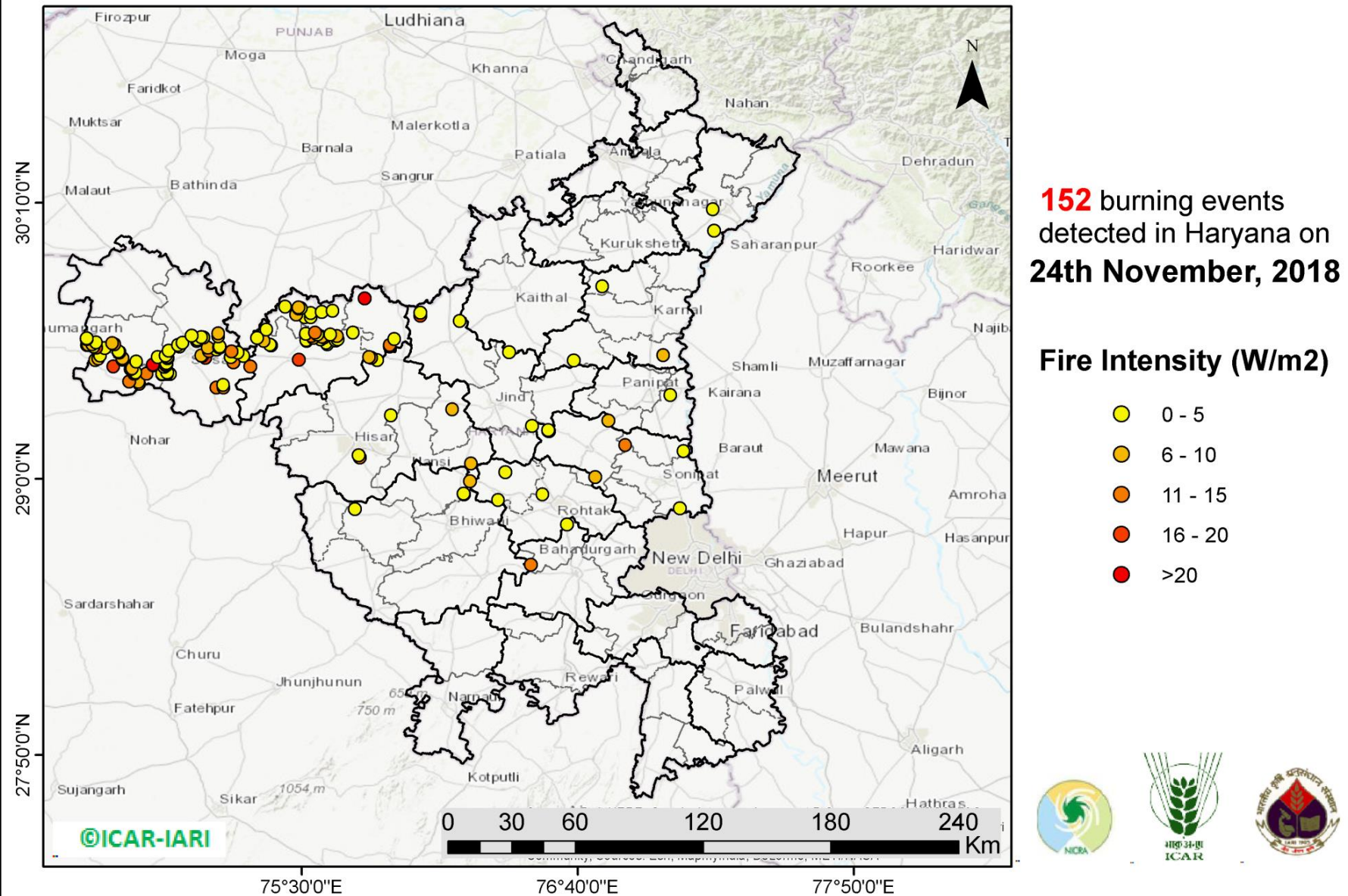
<http://geoportal.icar.gov.in:8080/geoexplorer/composer/>

District-wise cumulative number of residue burning events in Punjab (30-Sep-2018 to 24-Nov-2018)



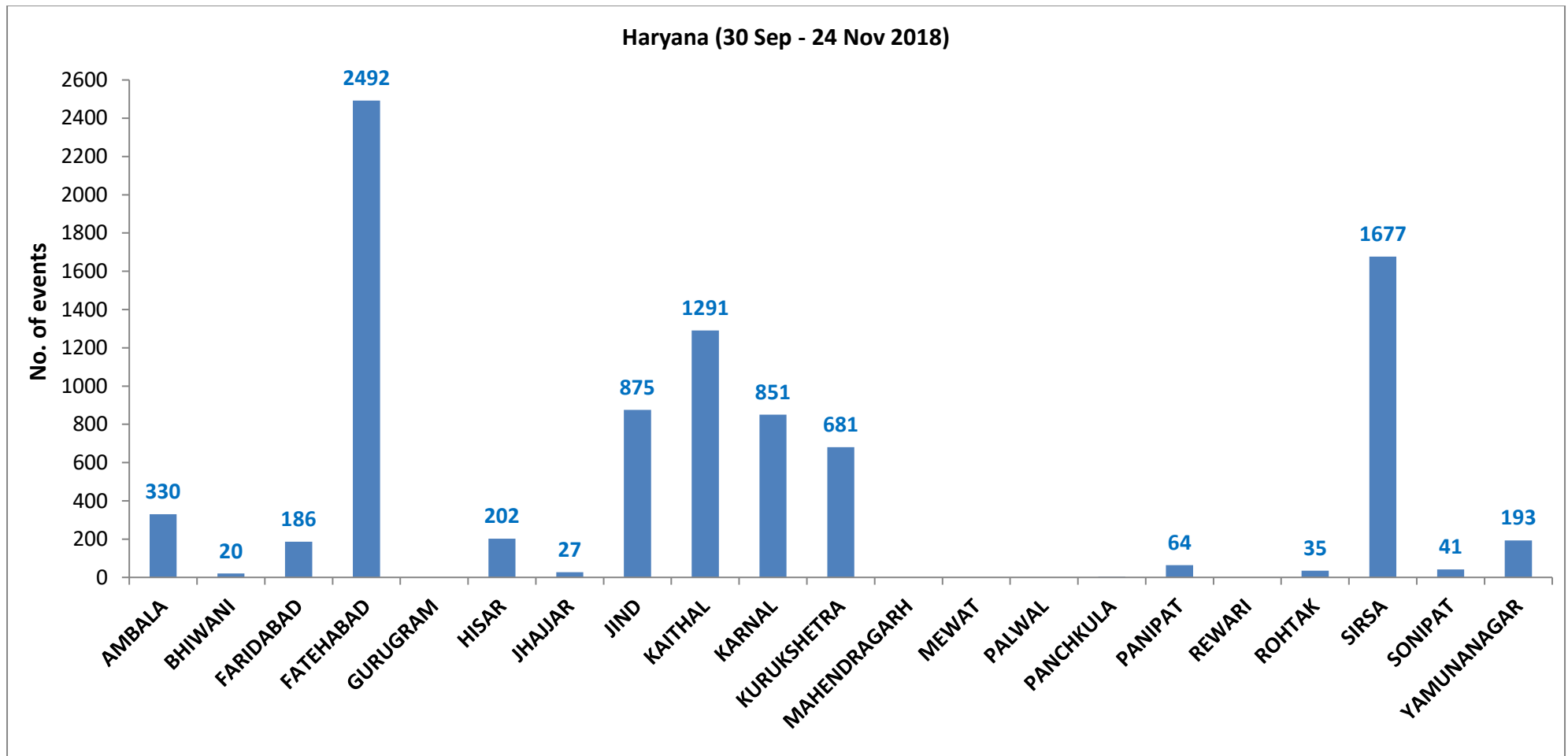
(b) Haryana

PADDY RESIDUE BURNING IN HARYANA



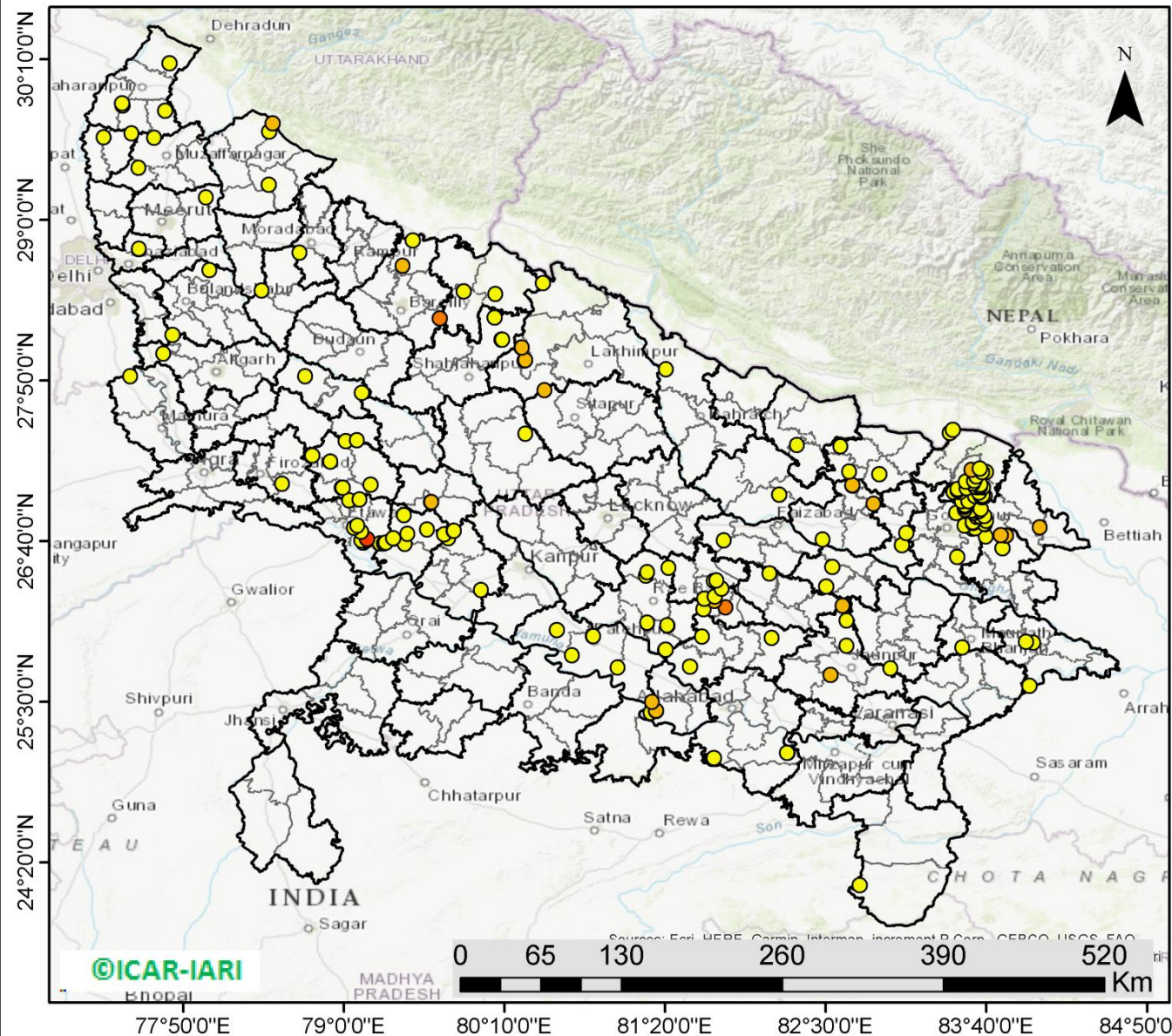
<http://geoportal.icar.gov.in:8080/geoexplorer/composer/>

District-wise cumulative number of residue burning events in Haryana (30-Sep-2018 to 24-Nov-2018)



(c) Uttar Pradesh

PADDY RESIDUE BURNING IN UTTAR PRADESH



186 burning events detected in Uttar Pradesh on **24th Nov, 2018**

Fire Intensity (W/m²)

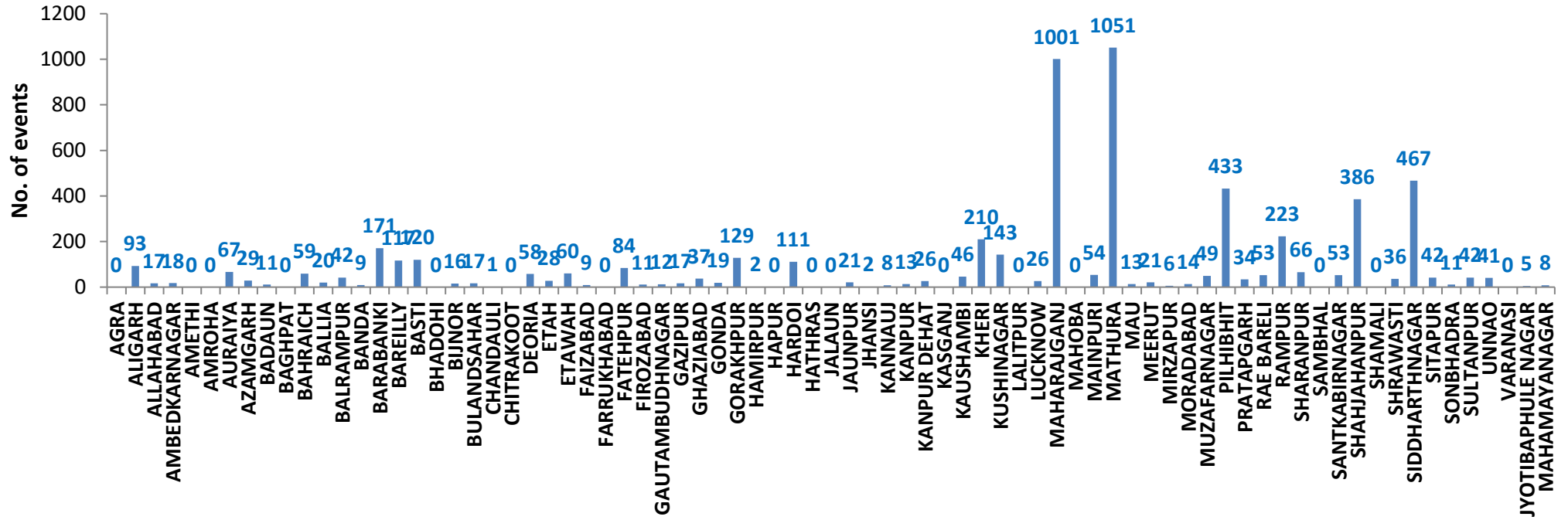
- 0 - 5
- 6 - 10
- 11 - 15
- 16 - 20
- >20



<http://geoportal.icar.gov.in:8080/geoexplorer/composer/>

District-wise cumulative number of residue burning events in Uttar Pradesh (30-Sep-2018 to 24-Nov-2018)

Uttar Pradesh (30 Sep - 24 Nov 2018)



State wise, date wise and district-wise number of residue burning events detected in 2016, 2017 and 2018
(Period: 30-Sep to 24-Nov)

Date	Punjab			Haryana			UP			Total		
	2016	2017	2018	2016	2017	2018	2016	2017	2018	2016	2017	2018
30-Sep	--	--	11	--	---	7	--	---	13	--	---	31
1-Oct	109	54	16	46	13	9	23	2	11	178	69	36
2-Oct	51	50	9	16	27	23	20	8	21	87	85	53
3-Oct	66	62	4	16	40	9	16	17	12	98	119	25
4-Oct	37	103	32	7	60	16	15	22	5	59	185	53
5-Oct	95	106	56	15	68	30	14	20	10	124	194	96
6-Oct	152	138	87	105	75	65	6	39	13	263	252	165
7-Oct	171	105	162	126	97	180	24	31	69	321	233	411
8-Oct	166	215	39	94	218	40	14	75	54	274	508	133
9-Oct	270	163	75	121	148	47	22	87	32	413	398	154
10-Oct	597	164	23	242	151	37	74	126	21	913	441	81
11-Oct	652	177	30	336	87	78	128	74	24	1116	338	132
12-Oct	694	342	67	338	123	133	164	51	22	1196	516	222
13-Oct	467	470	62	284	207	147	102	69	61	853	746	270
14-Oct	812	582	112	328	333	153	60	137	57	1200	1052	322
15-Oct	1215	943	90	248	458	110	76	237	35	1539	1638	235
16-Oct	1478	465	174	385	186	138	125	71	20	1988	722	332
17-Oct	2173	807	272	399	244	268	261	69	94	2833	1120	634
18-Oct	1065	970	263	270	306	255	204	108	163	1539	1384	681
19-Oct	1762	1591	254	276	541	208	132	128	108	2170	2260	570
20-Oct	1175	2653	496	188	597	141	62	255	49	1425	3505	686
21-Oct	1726	1139	618	257	233	217	152	168	66	2135	1540	901
22-Oct	2837	1356	656	309	186	134	194	151	149	3340	1693	939
23-Oct	2040	994	1113	313	155	232	331	72	193	2684	1221	1538
24-Oct	1836	1714	844	221	244	166	152	171	192	2209	2129	1202
25-Oct	1813	2104	1247	229	303	182	83	175	142	2125	2582	1571
26-Oct	3390	1715	1173	434	276	132	195	240	33	4019	2231	1338

27-Oct	2904	2069	2040	417	224	252	255	145	154	3576	2438	2446
28-Oct	3493	2318	2864	458	292	330	435	99	290	4386	2709	3484
29-Oct	2258	4184	1321	278	502	124	237	180	243	2773	4866	1688
30-Oct	1076	3152	2008	395	307	103	175	238	158	1646	3697	2269
31-Oct	6132	3743	2715	575	413	229	153	321	148	6860	4447	3092
01-Nov	4843	2736	4140	362	250	306	223	199	161	5628	3185	4607
02-Nov	4183	1246	3550	332	145	306	345	131	142	4860	1522	3998
03-Nov	3806	2109	972	275	240	202	409	75	181	4409	2424	1355
04-Nov	4477	4603	882	146	499	77	265	168	183	4888	5270	1142
05-Nov	4137	2876	2989	345	625	129	125	367	163	4607	3868	3281
06-Nov	6303	171	3071	322	26	222	215	357	130	6840	327	3423
07-Nov	8575	420	4033	821	46	568	244	149	108	9640	615	4709
08-Nov	4129	2256	4450	432	128	313	419	43	338	4874	2427	5101
09-Nov	4857	675	2083	608	311	96	205	107	294	5670	1093	2473
10-Nov	2468	1642	1675	484	509	85	109	131	125	3061	2282	1885
11-Nov	5040	103	1364	716	29	196	129	358	45	5885	490	1605
12-Nov	1477	33	1256	634	3	122	129	269	45	2240	305	1423
13-Nov	885	237	1563	389	7	146	338	109	94	1612	353	1803
14-Nov	692	1101	765	171	340	189	247	95	128	1110	1536	1082
15-Nov	871	5	1480	107	40	107	154	123	146	1132	168	1733
16-Nov	911	8	1250	318	17	204	123	218	112	1352	243	1566
17-Nov	638	217	1132	299	12	289	130	249	103	1067	478	1524
18-Nov	568	2147	1400	312	139	356	217	180	111	1097	2466	1867
19-Nov	168	2200	752	125	471	159	273	122	3	566	2793	914
20-Nov	240	1857	385	204	325	88	183	101	243	627	2283	716
21-Nov	112	2310	480	115	378	161	86	205	107	313	2893	748
22-Nov	99	719	287	118	154	122	148	281	72	365	1154	481
23-Nov	54	1033	317	97	259	180	151	163	106	302	1455	603
24-Nov	21	507	229	36	192	152	265	105	186	322	794	567
Total	102266	65859	59438	15494	12259	8968	9036	7895	5988	126796	86013	74394

(a) Punjab

Districts	01 Oct - 24Nov		
	2016	2017	2018
AMRITSAR	2170	1340	1371
BARNALA	5697	3371	3273
BATHINDA	8838	5623	6336
FARIDKOT	4626	3447	3051
FATEHGARH SAHIB	2461	1638	857
FAZILKA	0	0	0
FIROZPUR	13608	9706	9955
GURDASPUR	2215	1581	1165
HOSHIARPUR	900	489	198
JALANDHAR	4660	2101	1382
KAPURTHALA	3134	1616	750
LUDHIANA	9535	4611	3008
MANSA	5640	4459	4304
MOGA	6393	2658	2727
MUKTSAR	7025	5270	5759
NAWASHAHR (SBS Nagar)	1362	678	292
PATHANKOT	0	0	0
PATIALA	6539	5029	4215
RUPNAGAR	717	326	86
SANGRUR	11860	8412	7778
SAS NAGAR	362	107	199
TARN TARAN	4503	3260	2732
Total	102266	65859	59438

(b) Haryana

Districts	01 Oct - 24Nov		
	2016	2017	2018
AMBALA	532	498	330
BHIWANI	85	37	20
FARIDABAD	288	341	186
FATEHABAD	4814	3615	2492
GURUGRAM	0	0	0
HISAR	400	178	202
JHAJJAR	34	18	27
JIND	858	939	875
KAITHAL	1748	1512	1291
KARNAL	1628	1506	851
KURUKSHETRA	1078	1147	681
MAHENDRAGARH	0	0	0
MEWAT	0	0	0
PALWAL	0	0	0
PANCHKULA	0	0	3
PANIPAT	92	94	64
REWARI	0	0	0
ROHTAK	96	74	35
SIRSA	3510	1921	1677
SONIPAT	87	69	41
YAMUNANAGAR	244	310	193
Total	15494	12259	8968

(c) Uttar Pradesh				FATEHPUR	70	55	84	MUZAFARNAGAR	140	149	49
Distritcs	01 Oct - 24Nov			FIROZABAD	23	18	11	PILHIBHIT	945	729	433
	2016	2017	2018	GAUTAMBUDH NAGAR	27	42	12	PRATAPGARH	43	52	34
AGRA	0	0	0	GAZIPUR	15	14	17	RAE BARELI	111	97	53
ALIGARH	55	80	93	GHAZIABAD	85	51	37	RAMPUR	622	632	223
ALLAHABAD	5	15	17	GONDA	47	34	19	SHARANPUR	111	131	66
AMBEDKAR NAGAR	71	54	18	GORAKHPUR	66	112	129	SAMBHAL	0	0	0
AMETHI	0	0	0	HAMIRPUR	0	0	2	SANTKABIR NAGAR	55	63	53
AMROHA	0	0	0	HAPUR	0	0	0	SHAHJAHANPUR	1145	685	386
AURAIYA	255	213	67	HARDOI	250	200	111	SHAMALI	0	0	0
AZAMGARH	37	43	29	HATHRAS	0	0	0	SHRAWASTI	37	31	36
BADAUN	12	7	11	JALAUN	0	0	0	SIDDHARTH NAGAR	255	184	467
BAGHPAT	0	0	0	JAUNPUR	21	29	21	SITAPUR	131	74	42
BAHRAICH	78	40	59	JHANSI	0	0	2	SONBHADRA	15	14	11
BALLIA	19	40	20	KANNAUJ	34	18	8	SULTANPUR	73	48	42
BALRAMPUR	36	27	42	KANPUR	17	9	13	UNNAO	64	54	41
BANDA	2	17	9	KANPUR DEHAT	67	66	26	VARANASI	2	0	0
BARABANKI	219	166	171	KASGANJ	0	0	0	JYOTIBAPHULE NAGAR	12	14	5
BAREILLY	255	224	117	KAUSHAMBI	32	46	46	MAHAMAYA NAGAR	2	2	8
BASTI	144	186	120	KHERI	452	293	210	Total	9036	7895	5988
BHADOHI	0	0	0	KUSHINAGAR	60	142	143				
BIJNOR	62	56	16	LALITPUR	0	0	0				
BULANDSAHAR	31	31	17	LUCKNOW	62	30	26				
CHANDAULI	12	10	1	MAHARAJGANJ	682	1000	1001				
CHITRAKOOT	0	0	0	MAHOBA	0	0	0				
DEORIA	61	75	58	MAINPURI	91	90	54				
ETAH	21	31	28	MATHURA	1455	1083	1051				
ETAWAH	169	120	60	MAU	13	18	13				
FAIZABAD	14	14	9	MEERUT	88	88	21				
FARRUKHABAD	0	0	0	MIRZAPUR	5	13	6				
				MORADABAD	53	36	14				

Details of residue burning events in Punjab on 24-Nov-2018

Event S. No.	District	Tehsil/Block	Satellite	Longitude	Latitude	Time (IST)	Day/Night	Fire Power (W/m²)
1	AMRITSAR	AJNALA	S-NPP	74.66811	31.64764	13:24:00	D	2.00
2	AMRITSAR	AJNALA	S-NPP	74.53770	31.65378	13:24:00	D	2.10
3	AMRITSAR	AJNALA	S-NPP	74.65298	31.65562	13:24:00	D	2.50
4	AMRITSAR	AJNALA	S-NPP	74.74435	31.68147	13:24:00	D	4.90
5	AMRITSAR	AJNALA	S-NPP	74.74860	31.68218	13:24:00	D	4.90
6	AMRITSAR	AJNALA	S-NPP	74.69447	31.68714	13:24:00	D	3.50
7	AMRITSAR	AJNALA	AQUA-1	74.59095	31.69470	13:41:00	D	6.59
8	AMRITSAR	AJNALA	S-NPP	74.55778	31.70640	13:24:00	D	5.40
9	AMRITSAR	AJNALA	S-NPP	74.54412	31.70760	13:24:00	D	50.20
10	AMRITSAR	AJNALA	S-NPP	74.52615	31.70806	13:24:00	D	2.20
11	AMRITSAR	AJNALA	S-NPP	74.70338	31.71007	13:24:00	D	4.00
12	AMRITSAR	AJNALA	AQUA-1	74.78535	31.71266	13:41:00	D	6.83
13	AMRITSAR	AJNALA	AQUA-1	74.62983	31.74949	13:41:00	D	14.71
14	AMRITSAR	AJNALA	AQUA-1	74.56366	31.75009	13:41:00	D	18.04
15	AMRITSAR	AJNALA	S-NPP	74.61421	31.75112	13:24:00	D	1.20
16	AMRITSAR	AJNALA	S-NPP	74.62974	31.76076	13:24:00	D	4.30
17	AMRITSAR	AJNALA	S-NPP	74.63750	31.76557	13:24:00	D	5.20
18	AMRITSAR	AJNALA	S-NPP	74.87124	31.78373	13:24:00	D	3.40
19	AMRITSAR	AJNALA	S-NPP	74.59200	31.78953	13:24:00	D	2.90
20	AMRITSAR	AJNALA	S-NPP	74.58616	31.79880	13:24:00	D	6.00
21	AMRITSAR	AJNALA	S-NPP	74.59044	31.79953	13:24:00	D	6.00
22	AMRITSAR	AJNALA	AQUA-1	74.64893	31.80998	13:41:00	D	8.66
23	AMRITSAR	AJNALA	S-NPP	74.59003	31.82055	13:24:00	D	4.20
24	AMRITSAR	AJNALA	S-NPP	74.89080	31.83228	13:24:00	D	3.90
25	AMRITSAR	AJNALA	AQUA-1	74.65745	31.83843	13:41:00	D	6.68
26	AMRITSAR	AJNALA	S-NPP	74.74377	31.86401	13:24:00	D	3.70
27	AMRITSAR	AJNALA	S-NPP	74.87560	31.88258	13:24:00	D	5.80
28	AMRITSAR	AJNALA	S-NPP	74.87483	31.88593	13:24:00	D	2.70
29	AMRITSAR	AMRITSAR I	S-NPP	75.01522	31.78334	13:24:00	D	3.10

30	AMRITSAR	AMRITSAR I	S-NPP	75.02284	31.78808	13:24:00	D	3.40
31	AMRITSAR	AMRITSAR I	S-NPP	75.02702	31.78877	13:24:00	D	2.90
32	AMRITSAR	AMRITSAR II	AQUA-1	74.93371	31.55995	13:41:00	D	9.42
33	AMRITSAR	AMRITSAR II	S-NPP	74.66866	31.58132	13:24:00	D	2.00
34	AMRITSAR	AMRITSAR II	S-NPP	74.77467	31.58152	13:24:00	D	8.80
35	AMRITSAR	AMRITSAR II	AQUA-1	74.78023	31.68122	13:41:00	D	8.61
36	AMRITSAR	BABA BAKALA	AQUA-1	75.24918	31.63331	13:41:00	D	8.53
37	AMRITSAR	BABA BAKALA	S-NPP	75.18078	31.69831	13:24:00	D	3.10
38	AMRITSAR	BABA BAKALA	AQUA-1	75.15880	31.73961	13:41:00	D	10.17
39	BARNALA	BARNALA	S-NPP	75.59088	30.43919	13:24:00	D	1.50
40	BARNALA	BARNALA	S-NPP	75.59093	30.44047	13:24:00	D	1.10
41	BARNALA	BARNALA	S-NPP	75.39789	30.48493	13:24:00	D	27.60
42	BARNALA	BARNALA	S-NPP	75.61132	30.58385	13:24:00	D	3.80
43	BARNALA	TAPPA	AQUA-1	75.54760	30.15858	13:41:00	D	45.60
44	BARNALA	TAPPA	S-NPP	75.45868	30.19685	13:24:00	D	11.60
45	BARNALA	TAPPA	S-NPP	75.45794	30.20021	13:24:00	D	11.60
46	BARNALA	TAPPA	S-NPP	75.45885	30.20116	13:24:00	D	5.60
47	BARNALA	TAPPA	S-NPP	75.42462	30.32181	13:24:00	D	1.50
48	BATHINDA	BATHINDA	S-NPP	74.64052	30.14044	13:24:00	D	3.70
49	BATHINDA	BATHINDA	S-NPP	74.73734	30.25182	13:24:00	D	4.40
50	BATHINDA	BATHINDA	AQUA-1	75.09912	30.29183	13:41:00	D	4.39
51	BATHINDA	BATHINDA	AQUA-1	74.91324	30.36519	13:41:00	D	9.12
52	BATHINDA	RAMPURA PHUL	S-NPP	75.14478	30.15901	13:24:00	D	6.50
53	BATHINDA	RAMPURA PHUL	S-NPP	75.23195	30.31762	13:24:00	D	5.90
54	BATHINDA	RAMPURA PHUL	S-NPP	75.06976	30.48705	13:24:00	D	1.60
55	BATHINDA	RAMPURA PHUL	AQUA-1	75.15880	30.49994	13:41:00	D	11.99
56	FARIDKOT	FARIDKOT	S-NPP	74.75468	30.52098	13:24:00	D	14.60
57	FARIDKOT	FARIDKOT	AQUA-1	74.54661	30.72601	13:41:00	D	11.41
58	FARIDKOT	FARIDKOT	AQUA-1	74.68985	30.74099	13:41:00	D	7.31
59	FIROZPUR	ABOHAR	AQUA-1	74.25535	30.11456	13:41:00	D	8.10
60	FIROZPUR	ABOHAR	S-NPP	74.35688	30.23761	13:24:00	D	1.90

61	FIROZPUR	FAZILKA	S-NPP	74.00681	30.20112	13:24:00	D	36.00
62	FIROZPUR	FAZILKA	S-NPP	74.01507	30.20623	13:24:00	D	8.30
63	FIROZPUR	FAZILKA	S-NPP	73.91162	30.37669	13:24:00	D	2.80
64	FIROZPUR	FAZILKA	AQUA-1	74.16634	30.37866	13:41:00	D	4.90
65	FIROZPUR	FAZILKA	S-NPP	74.12771	30.41882	13:24:00	D	12.10
66	FIROZPUR	FAZILKA	AQUA-1	73.97194	30.48197	13:41:00	D	7.83
67	FIROZPUR	FAZILKA	AQUA-1	74.03333	30.49994	13:41:00	D	5.48
68	FIROZPUR	FAZILKA	S-NPP	74.01211	30.52206	13:24:00	D	4.70
69	FIROZPUR	FAZILKA	AQUA-1	74.04185	30.53737	13:41:00	D	40.10
70	FIROZPUR	FIROZPUR	S-NPP	74.32469	30.84145	13:24:00	D	4.80
71	FIROZPUR	FIROZPUR	S-NPP	74.74756	31.03976	13:24:00	D	1.90
72	FIROZPUR	FIROZPUR	AQUA-1	74.69071	31.05914	13:41:00	D	10.19
73	FIROZPUR	JALALABAD	S-NPP	74.32049	30.48509	13:24:00	D	10.40
74	FIROZPUR	JALALABAD	S-NPP	74.36855	30.51494	13:24:00	D	15.10
75	FIROZPUR	JALALABAD	S-NPP	74.35017	30.51534	13:24:00	D	3.50
76	FIROZPUR	JALALABAD	S-NPP	74.35378	30.51955	13:24:00	D	18.80
77	FIROZPUR	JALALABAD	AQUA-1	74.31811	30.52838	13:41:00	D	30.43
78	FIROZPUR	JALALABAD	S-NPP	74.37257	30.53712	13:24:00	D	2.40
79	FIROZPUR	JALALABAD	AQUA-1	74.38973	30.53737	13:41:00	D	8.24
80	FIROZPUR	JALALABAD	S-NPP	74.30332	30.53955	13:24:00	D	1.70
81	FIROZPUR	JALALABAD	S-NPP	74.30252	30.54299	13:24:00	D	1.70
82	FIROZPUR	JALALABAD	S-NPP	74.18695	30.59255	13:24:00	D	4.80
83	FIROZPUR	JALALABAD	AQUA-1	74.33720	30.59785	13:41:00	D	10.06
84	FIROZPUR	JALALABAD	S-NPP	74.33179	30.60336	13:24:00	D	121.30
85	FIROZPUR	JALALABAD	S-NPP	74.33619	30.60412	13:24:00	D	33.40
86	FIROZPUR	JALALABAD	S-NPP	74.21245	30.62218	13:24:00	D	2.70
87	FIROZPUR	JALALABAD	AQUA-1	74.16463	30.63518	13:41:00	D	23.77
88	FIROZPUR	JALALABAD	S-NPP	74.17648	30.63757	13:24:00	D	7.30
89	FIROZPUR	JALALABAD	S-NPP	74.17738	30.63838	13:24:00	D	9.70
90	FIROZPUR	JALALABAD	S-NPP	74.16241	30.64295	13:24:00	D	23.80
91	FIROZPUR	JALALABAD	S-NPP	74.16606	30.64720	13:24:00	D	4.30

92	FIROZPUR	JALALABAD	AQUA-1	74.24512	30.64816	13:41:00	D	6.84
93	FIROZPUR	JALALABAD	S-NPP	74.19034	30.66227	13:24:00	D	27.40
94	FIROZPUR	ZIRA	S-NPP	75.21863	30.94356	13:24:00	D	5.20
95	FIROZPUR	ZIRA	S-NPP	74.89536	30.94898	13:24:00	D	4.30
96	FIROZPUR	ZIRA	AQUA-1	75.15573	30.99491	13:41:00	D	10.65
97	FIROZPUR	ZIRA	S-NPP	75.21323	31.02609	13:24:00	D	4.00
98	FIROZPUR	ZIRA	AQUA-1	74.83992	31.10929	13:41:00	D	6.41
99	GURDASPUR	BATALA	S-NPP	75.24318	31.74661	13:24:00	D	4.70
100	GURDASPUR	BATALA	S-NPP	75.27190	31.83259	13:24:00	D	2.20
101	GURDASPUR	BATALA	AQUA-1	75.15710	31.83992	13:41:00	D	8.90
102	GURDASPUR	BATALA	S-NPP	75.06357	31.87910	13:24:00	D	2.10
103	GURDASPUR	BATALA	S-NPP	74.92190	31.89029	13:24:00	D	4.10
104	GURDASPUR	BATALA	S-NPP	75.06397	31.89650	13:24:00	D	1.70
105	GURDASPUR	BATALA	S-NPP	75.05829	31.90250	13:24:00	D	2.40
106	GURDASPUR	BATALA	S-NPP	75.10154	31.90272	13:24:00	D	1.40
107	GURDASPUR	DERA BABA NANAK	S-NPP	75.09782	31.95752	13:24:00	D	1.70
108	GURDASPUR	GURDASPUR	S-NPP	75.34988	31.88669	13:24:00	D	25.00
109	GURDASPUR	GURDASPUR	S-NPP	75.20367	31.90917	13:24:00	D	2.50
110	GURDASPUR	PATHANKOT	S-NPP	75.50131	32.23338	13:24:00	D	3.60
111	JALANDHAR	JALANDHAR II	S-NPP	75.58466	31.54696	13:24:00	D	2.70
112	JALANDHAR	NAKODAR	S-NPP	75.41730	31.21796	13:24:00	D	6.20
113	KAPURTHALA	KAPURTHALA	AQUA-1	75.34297	31.30842	13:41:00	D	8.11
114	KAPURTHALA	PHAGWARA	S-NPP	75.77391	31.31345	13:24:00	D	6.60
115	KAPURTHALA	PHAGWARA	S-NPP	75.72402	31.32949	13:24:00	D	2.50
116	LUDHIANA	JAGRAON	AQUA-1	75.52543	30.79788	13:41:00	D	9.18
117	LUDHIANA	JAGRAON	AQUA-1	75.51520	30.86076	13:41:00	D	7.20
118	LUDHIANA	JAGRAON	S-NPP	75.50163	30.88134	13:24:00	D	2.40
119	LUDHIANA	JAGRAON	AQUA-1	75.59876	30.88621	13:41:00	D	15.35
120	LUDHIANA	JAGRAON	S-NPP	75.60827	30.89878	13:24:00	D	18.10
121	LUDHIANA	JAGRAON	S-NPP	75.51030	30.90003	13:24:00	D	9.00
122	LUDHIANA	JAGRAON	S-NPP	75.60754	30.90211	13:24:00	D	18.10

123	LUDHIANA	JAGRAON	S-NPP	75.38245	30.93794	13:24:00	D	2.60
124	LUDHIANA	JAGRAON	S-NPP	75.49714	30.96006	13:24:00	D	2.20
125	LUDHIANA	JAGRAON	S-NPP	75.54381	30.96072	13:24:00	D	2.00
126	LUDHIANA	LUDHIANA EAST	AQUA-1	75.85966	30.69757	13:41:00	D	11.59
127	LUDHIANA	LUDHIANA EAST	S-NPP	75.92597	30.76725	13:24:00	D	4.50
128	LUDHIANA	LUDHIANA EAST	AQUA-1	75.91082	30.78740	13:41:00	D	15.94
129	LUDHIANA	LUDHIANA EAST	S-NPP	75.99654	30.88327	02:06:00	N	0.20
130	LUDHIANA	LUDHIANA WEST	S-NPP	75.77743	30.77431	13:24:00	D	2.10
131	LUDHIANA	LUDHIANA WEST	S-NPP	75.67980	30.86050	13:24:00	D	13.00
132	LUDHIANA	LUDHIANA WEST	S-NPP	75.67883	30.88445	13:24:00	D	2.00
133	LUDHIANA	LUDHIANA WEST	S-NPP	75.73154	30.91537	13:24:00	D	3.20
134	LUDHIANA	LUDHIANA WEST	S-NPP	75.73081	30.91869	13:24:00	D	3.40
135	LUDHIANA	LUDHIANA WEST	S-NPP	75.72194	30.92069	13:24:00	D	3.30
136	LUDHIANA	LUDHIANA WEST	AQUA-1	75.76246	30.92215	13:41:00	D	11.17
137	LUDHIANA	PAYAL	AQUA-1	75.88524	30.64367	13:41:00	D	7.23
138	LUDHIANA	PAYAL	S-NPP	76.01429	30.78478	13:24:00	D	1.50
139	LUDHIANA	RAIKOT	S-NPP	75.56936	30.60117	13:24:00	D	13.10
140	LUDHIANA	RAIKOT	S-NPP	75.66763	30.61718	13:24:00	D	1.90
141	LUDHIANA	RAIKOT	AQUA-1	75.59364	30.62570	13:41:00	D	29.08
142	LUDHIANA	RAIKOT	S-NPP	75.72885	30.62712	13:24:00	D	2.10
143	LUDHIANA	RAIKOT	S-NPP	75.64886	30.64517	13:24:00	D	1.30
144	LUDHIANA	RAIKOT	S-NPP	75.63995	30.64718	13:24:00	D	5.00
145	LUDHIANA	RAIKOT	S-NPP	75.66450	30.65115	13:24:00	D	2.40
146	LUDHIANA	RAIKOT	S-NPP	75.65504	30.69598	13:24:00	D	4.30
147	LUDHIANA	RAIKOT	AQUA-1	75.64139	30.70505	13:41:00	D	15.71
148	LUDHIANA	RAIKOT	AQUA-1	75.58341	30.71553	13:41:00	D	7.64
149	LUDHIANA	RAIKOT	S-NPP	75.55215	30.72062	13:24:00	D	1.40
150	MANSA	BUDHLADA	S-NPP	75.58054	29.74047	13:24:00	D	4.10
151	MANSA	MANSA	S-NPP	75.48372	30.12109	13:24:00	D	12.70
152	MANSA	SARDULGARH	AQUA-1	75.30375	29.56419	13:41:00	D	26.54
153	MANSA	SARDULGARH	S-NPP	75.28098	29.57483	13:24:00	D	6.00

154	MOGA	BAGHA PURANA	AQUA-1	75.11787	30.53250	13:41:00	D	13.53
155	MOGA	BAGHA PURANA	S-NPP	75.00009	30.71040	13:24:00	D	1.90
156	MOGA	BAGHA PURANA	S-NPP	75.05133	30.71550	13:24:00	D	16.00
157	MOGA	BAGHA PURANA	S-NPP	75.05553	30.71620	13:24:00	D	16.00
158	MOGA	NIHAL SINGH WALA	S-NPP	75.36021	30.54253	13:24:00	D	3.30
159	MOGA	NIHAL SINGH WALA	S-NPP	75.26747	30.65304	13:24:00	D	1.10
160	MUKTSAR	GIDDARBAHA	S-NPP	74.56942	30.18029	13:24:00	D	22.00
161	MUKTSAR	GIDDARBAHA	AQUA-1	74.56537	30.21248	13:41:00	D	7.15
162	MUKTSAR	GIDDARBAHA	AQUA-1	74.59862	30.35396	13:41:00	D	11.29
163	MUKTSAR	GIDDARBAHA	AQUA-1	74.58583	30.38316	13:41:00	D	18.58
164	MUKTSAR	MALAUT	S-NPP	74.67716	29.94682	13:24:00	D	48.40
165	MUKTSAR	MALAUT	S-NPP	74.67205	29.94951	13:24:00	D	13.90
166	MUKTSAR	MALAUT	S-NPP	74.68073	29.95098	13:24:00	D	45.10
167	MUKTSAR	MALAUT	S-NPP	74.67129	29.95294	13:24:00	D	13.90
168	MUKTSAR	MALAUT	S-NPP	74.67562	29.95368	13:24:00	D	45.10
169	MUKTSAR	MALAUT	S-NPP	74.67995	29.95442	13:24:00	D	45.10
170	MUKTSAR	MALAUT	S-NPP	74.51617	30.00334	13:24:00	D	15.70
171	MUKTSAR	MALAUT	S-NPP	74.59440	30.03821	13:24:00	D	5.40
172	MUKTSAR	MALAUT	S-NPP	74.59874	30.03896	13:24:00	D	5.40
173	MUKTSAR	MALAUT	S-NPP	74.43158	30.16707	13:24:00	D	4.60
174	MUKTSAR	MALAUT	S-NPP	74.32369	30.28215	13:24:00	D	31.20
175	MUKTSAR	MUKTSAR	S-NPP	74.56583	30.38328	13:24:00	D	2.50
176	MUKTSAR	MUKTSAR	S-NPP	74.53387	30.38486	13:24:00	D	3.40
177	MUKTSAR	MUKTSAR	S-NPP	74.43663	30.47666	13:24:00	D	4.30
178	MUKTSAR	MUKTSAR	AQUA-1	74.49886	30.49994	13:41:00	D	6.49
179	MUKTSAR	MUKTSAR	S-NPP	74.65594	30.50399	13:24:00	D	7.50
180	MUKTSAR	MUKTSAR	AQUA-1	74.40337	30.50742	13:41:00	D	12.00
181	MUKTSAR	MUKTSAR	AQUA-1	74.66427	30.50892	13:41:00	D	13.27
182	MUKTSAR	MUKTSAR	AQUA-1	74.44259	30.52689	13:41:00	D	20.08
183	MUKTSAR	MUKTSAR	S-NPP	74.43475	30.54422	13:24:00	D	6.70
184	MUKTSAR	MUKTSAR	S-NPP	74.38856	30.54702	13:24:00	D	3.30

185	MUKTSAR	MUKTSAR	S-NPP	74.38777	30.55046	13:24:00	D	3.30
186	MUKTSAR	MUKTSAR	AQUA-1	74.42724	30.55384	13:41:00	D	5.14
187	MUKTSAR	MUKTSAR	S-NPP	74.38618	30.55734	13:24:00	D	12.60
188	MUKTSAR	MUKTSAR	S-NPP	74.42564	30.56409	13:24:00	D	5.00
189	MUKTSAR	MUKTSAR	S-NPP	74.51527	30.56870	13:24:00	D	2.50
190	MUKTSAR	MUKTSAR	S-NPP	74.57838	30.56879	13:24:00	D	7.10
191	MUKTSAR	MUKTSAR	S-NPP	74.62316	30.56932	13:24:00	D	6.00
192	MUKTSAR	MUKTSAR	AQUA-1	74.58498	30.57105	13:41:00	D	19.49
193	MUKTSAR	MUKTSAR	S-NPP	74.61807	30.57200	13:24:00	D	2.40
194	MUKTSAR	MUKTSAR	S-NPP	74.57759	30.57221	13:24:00	D	15.60
195	MUKTSAR	MUKTSAR	AQUA-1	74.40337	30.57929	13:41:00	D	10.46
196	MUKTSAR	MUKTSAR	AQUA-1	74.42270	30.60225	13:41:00	D	13.00
197	NAWASHAHR	NAWASHAHR	S-NPP	76.04072	31.08067	13:24:00	D	7.10
198	NAWASHAHR	NAWASHAHR	AQUA-1	76.04724	31.08235	13:41:00	D	17.15
199	NAWASHAHR	NAWASHAHR	S-NPP	76.06882	31.10564	13:24:00	D	3.80
200	NAWASHAHR	NAWASHAHR	S-NPP	76.06227	31.15587	13:24:00	D	2.00
201	NAWASHAHR	NAWASHAHR	S-NPP	75.90977	31.24347	13:24:00	D	4.70
202	SANGRUR	MALERKOTLA	S-NPP	75.81371	30.50444	13:24:00	D	11.30
203	SANGRUR	MALERKOTLA	S-NPP	75.81299	30.50776	13:24:00	D	11.30
204	SANGRUR	MALERKOTLA	AQUA-1	75.82385	30.52689	13:41:00	D	10.34
205	SANGRUR	SANGRUR	S-NPP	75.65622	30.20831	13:24:00	D	1.90
206	SANGRUR	SANGRUR	S-NPP	75.65549	30.21165	13:24:00	D	1.90
207	SANGRUR	SANGRUR	AQUA-1	75.99560	30.26188	13:41:00	D	20.92
208	TARN TARAN	KHADOOR SAHIB	S-NPP	74.97060	31.24919	13:24:00	D	3.90
209	TARN TARAN	KHADOOR SAHIB	S-NPP	74.96983	31.25255	13:24:00	D	3.90
210	TARN TARAN	KHADOOR SAHIB	S-NPP	74.94727	31.25577	13:24:00	D	2.50
211	TARN TARAN	KHADOOR SAHIB	S-NPP	74.98177	31.29642	13:24:00	D	7.30
212	TARN TARAN	KHADOOR SAHIB	S-NPP	75.06612	31.32778	13:24:00	D	3.00
213	TARN TARAN	KHADOOR SAHIB	S-NPP	74.99232	31.33048	13:24:00	D	5.00
214	TARN TARAN	KHADOOR SAHIB	S-NPP	75.01297	31.35484	13:24:00	D	10.80
215	TARN TARAN	KHADOOR SAHIB	AQUA-1	75.11617	31.36981	13:41:00	D	9.00

216	TARN TARAN	KHADOOR SAHIB	S-NPP	74.86259	31.38212	13:24:00	D	7.40
217	TARN TARAN	KHADOOR SAHIB	S-NPP	75.01037	31.38577	13:24:00	D	1.90
218	TARN TARAN	KHADOOR SAHIB	AQUA-1	74.87232	31.39825	13:41:00	D	7.04
219	TARN TARAN	KHADOOR SAHIB	AQUA-1	74.90472	31.44167	13:41:00	D	7.27
220	TARN TARAN	KHADOOR SAHIB	S-NPP	74.88477	31.48041	13:24:00	D	2.40
221	TARN TARAN	KHADOOR SAHIB	S-NPP	74.85290	31.48558	13:24:00	D	3.80
222	TARN TARAN	KHADOOR SAHIB	S-NPP	74.85712	31.48629	13:24:00	D	5.20
223	TARN TARAN	PATTI	S-NPP	74.66904	31.18076	13:24:00	D	2.10
224	TARN TARAN	PATTI	S-NPP	74.86085	31.19226	13:24:00	D	1.80
225	TARN TARAN	PATTI	AQUA-1	74.65745	31.20961	13:41:00	D	6.40
226	TARN TARAN	PATTI	AQUA-1	74.58413	31.22907	13:41:00	D	9.41
227	TARN TARAN	PATTI	AQUA-1	74.65029	31.25542	13:41:00	D	11.03
228	TARN TARAN	PATTI	S-NPP	74.64635	31.26488	13:24:00	D	3.70
229	TARN TARAN	PATTI	S-NPP	74.77935	31.36121	13:24:00	D	11.40

Details of residue burning events in Haryana on 24-Nov-2018

Event S. No.	District	Tehsil/Block	Satellite	Longitude	Latitude	Time (IST)	Day/Night	Fire Power (W/m²)
1	BHIWANI	BAWANI_KHERA	S-NPP	76.18445	28.93539	13:24:00	D	4.50
2	BHIWANI	BAWANI_KHERA	S-NPP	76.18375	28.93872	13:24:00	D	4.50
3	BHIWANI	BAWANI_KHERA	S-NPP	76.21017	28.99118	13:24:00	D	7.10
4	BHIWANI	BHIWANI	S-NPP	76.05878	28.77373	13:24:00	D	6.70
5	BHIWANI	TOSHAM	S-NPP	75.72353	28.87370	13:24:00	D	1.40
6	FATEHABAD	FATEHABAD	AQUA-1	75.28158	29.47586	13:41:00	D	12.98
7	FATEHABAD	FATEHABAD	AQUA-1	75.48621	29.50430	13:41:00	D	15.02
8	FATEHABAD	FATEHABAD	S-NPP	75.78487	29.51511	13:24:00	D	9.30
9	FATEHABAD	FATEHABAD	S-NPP	75.36953	29.56515	13:24:00	D	2.50
10	FATEHABAD	FATEHABAD	S-NPP	75.36464	29.56783	13:24:00	D	4.80
11	FATEHABAD	FATEHABAD	S-NPP	75.60803	29.56934	13:24:00	D	4.00
12	FATEHABAD	FATEHABAD	S-NPP	75.60268	29.57616	13:24:00	D	3.50
13	FATEHABAD	FATEHABAD	S-NPP	75.52010	29.58331	13:24:00	D	18.10
14	FATEHABAD	FATEHABAD	S-NPP	75.33940	29.58461	13:24:00	D	9.20
15	FATEHABAD	FATEHABAD	S-NPP	75.64299	29.58633	13:24:00	D	3.20
16	FATEHABAD	FATEHABAD	S-NPP	75.51938	29.58667	13:24:00	D	4.40
17	FATEHABAD	FATEHABAD	S-NPP	75.57850	29.58953	13:24:00	D	1.70
18	FATEHABAD	FATEHABAD	S-NPP	75.65047	29.59104	13:24:00	D	2.20
19	FATEHABAD	FATEHABAD	S-NPP	75.31071	29.59732	13:24:00	D	3.00
20	FATEHABAD	FATEHABAD	S-NPP	75.64759	29.60445	13:24:00	D	9.30
21	FATEHABAD	FATEHABAD	S-NPP	75.71645	29.61927	13:24:00	D	1.80
22	FATEHABAD	FATEHABAD	S-NPP	75.35067	29.63196	13:24:00	D	1.60
23	FATEHABAD	RATIA	AQUA-1	75.54760	29.59713	13:41:00	D	7.87
24	FATEHABAD	RATIA	S-NPP	75.59351	29.59897	13:24:00	D	26.70
25	FATEHABAD	RATIA	S-NPP	75.58456	29.60097	13:24:00	D	8.10
26	FATEHABAD	RATIA	S-NPP	75.54122	29.60422	13:24:00	D	10.50
27	FATEHABAD	RATIA	S-NPP	75.62082	29.61044	13:24:00	D	2.00
28	FATEHABAD	RATIA	S-NPP	75.56520	29.61167	13:24:00	D	1.40

29	FATEHABAD	RATIA	S-NPP	75.51769	29.61425	13:24:00	D	4.30
30	FATEHABAD	RATIA	AQUA-1	75.55476	29.61869	13:41:00	D	10.13
31	FATEHABAD	RATIA	S-NPP	75.51173	29.68387	13:24:00	D	3.90
32	FATEHABAD	RATIA	S-NPP	75.53718	29.68463	13:24:00	D	2.90
33	FATEHABAD	RATIA	AQUA-1	75.47598	29.69595	13:41:00	D	6.69
34	FATEHABAD	RATIA	S-NPP	75.53767	29.70210	13:24:00	D	1.80
35	FATEHABAD	RATIA	S-NPP	75.58366	29.70625	13:24:00	D	4.30
36	FATEHABAD	RATIA	S-NPP	75.62955	29.71036	13:24:00	D	3.00
37	FATEHABAD	RATIA	S-NPP	75.48649	29.72147	13:24:00	D	4.80
38	FATEHABAD	RATIA	S-NPP	75.49474	29.72283	13:24:00	D	4.10
39	FATEHABAD	RATIA	S-NPP	75.48575	29.72483	13:24:00	D	6.20
40	FATEHABAD	RATIA	S-NPP	75.42905	29.72939	13:24:00	D	4.50
41	FATEHABAD	TOHANA	S-NPP	75.87204	29.56050	13:24:00	D	5.70
42	FATEHABAD	TOHANA	AQUA-1	75.87194	29.56659	13:41:00	D	10.46
43	FATEHABAD	TOHANA	S-NPP	75.89072	29.59116	13:24:00	D	1.80
44	FATEHABAD	TOHANA	AQUA-1	75.76553	29.76422	13:41:00	D	23.93
45	HISAR	HANSI	S-NPP	76.21502	29.06490	02:06:00	N	7.10
46	HISAR	HISAR	AQUA-1	75.74371	29.09108	13:41:00	D	10.46
47	HISAR	HISAR	S-NPP	75.73977	29.10069	13:24:00	D	1.60
48	HISAR	HISAR	S-NPP	75.87716	29.26978	13:24:00	D	2.00
49	HISAR	HISAR	S-NPP	75.81693	29.50308	13:24:00	D	4.60
50	HISAR	HISAR	AQUA-1	75.79316	29.51179	13:41:00	D	10.11
51	HISAR	NARNAUND	S-NPP	76.13530	29.29432	13:24:00	D	7.60
52	JHAJJAR	BERI	S-NPP	76.46735	28.63790	13:24:00	D	15.00
53	JIND	JIND	S-NPP	76.47221	29.22440	02:06:00	N	0.70
54	JIND	NARWANA	S-NPP	76.16672	29.66851	13:24:00	D	4.60
55	JIND	NARWANA	AQUA-1	76.00086	29.69056	13:41:00	D	18.18
56	JIND	NARWANA	S-NPP	76.00108	29.70366	13:24:00	D	2.00
57	KAITHAL	KAITHAL	S-NPP	76.37580	29.53624	13:24:00	D	2.50
58	KARNAL	ASSANDH	S-NPP	76.64908	29.50181	13:24:00	D	1.90
59	KARNAL	GHARAUNDA	S-NPP	77.02812	29.52326	13:24:00	D	5.20

60	KARNAL	NILOKHERI	S-NPP	76.77030	29.81527	13:24:00	D	1.80
61	PANIPAT	SAMALKHA	S-NPP	77.00108	29.29204	13:24:00	D	55.80
62	PANIPAT	SAMALKHA	S-NPP	77.05753	29.35518	13:24:00	D	3.40
63	ROHTAK	MAHAM	S-NPP	76.32904	28.91177	13:24:00	D	3.20
64	ROHTAK	MAHAM	S-NPP	76.35948	29.02884	13:24:00	D	4.40
65	ROHTAK	ROHTAK	S-NPP	76.62114	28.80888	13:24:00	D	2.70
66	ROHTAK	ROHTAK	S-NPP	76.51764	28.93496	13:24:00	D	3.20
67	SIRSA	ELLENABAD	AQUA-1	74.81263	29.40250	13:41:00	D	10.61
68	SIRSA	ELLENABAD	S-NPP	74.80572	29.41063	13:24:00	D	4.20
69	SIRSA	ELLENABAD	S-NPP	74.81004	29.41137	13:24:00	D	6.10
70	SIRSA	ELLENABAD	AQUA-1	74.77000	29.41298	13:41:00	D	11.51
71	SIRSA	ELLENABAD	S-NPP	74.78980	29.44522	13:24:00	D	5.70
72	SIRSA	ELLENABAD	AQUA-1	74.84381	29.44570	13:41:00	D	13.45
73	SIRSA	ELLENABAD	S-NPP	74.79411	29.44596	13:24:00	D	6.80
74	SIRSA	ELLENABAD	S-NPP	74.79768	29.45014	13:24:00	D	3.60
75	SIRSA	ELLENABAD	S-NPP	74.77657	29.46434	13:24:00	D	4.40
76	SIRSA	ELLENABAD	AQUA-1	74.78194	29.46837	13:41:00	D	8.57
77	SIRSA	ELLENABAD	AQUA-1	74.70350	29.47586	13:41:00	D	16.23
78	SIRSA	ELLENABAD	AQUA-1	74.62676	29.50281	13:41:00	D	9.29
79	SIRSA	ELLENABAD	S-NPP	74.64029	29.50886	13:24:00	D	5.40
80	SIRSA	ELLENABAD	S-NPP	74.64732	29.52241	13:24:00	D	4.20
81	SIRSA	RANIA	S-NPP	74.87131	29.48064	13:24:00	D	2.60
82	SIRSA	RANIA	S-NPP	74.87054	29.48407	13:24:00	D	39.10
83	SIRSA	RANIA	S-NPP	74.80064	29.49701	13:24:00	D	2.20
84	SIRSA	RANIA	S-NPP	74.74061	29.50456	13:24:00	D	3.50
85	SIRSA	RANIA	AQUA-1	74.74101	29.51029	13:41:00	D	7.63
86	SIRSA	RANIA	S-NPP	74.89019	29.51586	13:24:00	D	4.10
87	SIRSA	RANIA	S-NPP	74.92445	29.52169	13:24:00	D	5.00
88	SIRSA	RANIA	S-NPP	74.72934	29.53477	13:24:00	D	4.60
89	SIRSA	RANIA	S-NPP	74.72552	29.53603	13:24:00	D	29.20
90	SIRSA	RANIA	S-NPP	74.72985	29.53679	13:24:00	D	35.50

91	SIRSA	RANIA	S-NPP	74.72475	29.53946	13:24:00	D	2.20
92	SIRSA	RANIA	S-NPP	74.66724	29.55452	13:24:00	D	3.10
93	SIRSA	RANIA	AQUA-1	74.63102	29.55521	13:41:00	D	16.77
94	SIRSA	RANIA	S-NPP	74.62056	29.56076	13:24:00	D	2.50
95	SIRSA	RANIA	S-NPP	74.59200	29.56658	13:24:00	D	5.80
96	SIRSA	RANIA	S-NPP	74.59637	29.56734	13:24:00	D	6.50
97	SIRSA	RANIA	AQUA-1	74.70861	29.57018	13:41:00	D	10.91
98	SIRSA	RANIA	S-NPP	74.61387	29.57036	13:24:00	D	8.10
99	SIRSA	RANIA	S-NPP	74.69893	29.57430	13:24:00	D	9.00
100	SIRSA	RANIA	S-NPP	74.63055	29.57683	13:24:00	D	2.10
101	SIRSA	RANIA	S-NPP	74.59093	29.59151	13:24:00	D	7.50
102	SIRSA	RANIA	S-NPP	74.59015	29.59496	13:24:00	D	4.60
103	SIRSA	SIRSA	AQUA-1	75.13834	29.38603	13:41:00	D	13.71
104	SIRSA	SIRSA	AQUA-1	75.16903	29.38603	13:41:00	D	13.03
105	SIRSA	SIRSA	S-NPP	75.16694	29.39777	13:24:00	D	2.90
106	SIRSA	SIRSA	S-NPP	74.91021	29.44262	13:24:00	D	9.30
107	SIRSA	SIRSA	S-NPP	74.93667	29.44355	13:24:00	D	4.10
108	SIRSA	SIRSA	S-NPP	74.94095	29.44428	13:24:00	D	4.10
109	SIRSA	SIRSA	AQUA-1	74.92944	29.44442	13:41:00	D	13.13
110	SIRSA	SIRSA	S-NPP	74.90945	29.44605	13:24:00	D	2.20
111	SIRSA	SIRSA	S-NPP	74.93087	29.44967	13:24:00	D	4.60
112	SIRSA	SIRSA	S-NPP	74.91720	29.47431	13:24:00	D	8.50
113	SIRSA	SIRSA	AQUA-1	74.92567	29.48035	13:41:00	D	15.10
114	SIRSA	SIRSA	S-NPP	74.92775	29.48678	13:24:00	D	3.90
115	SIRSA	SIRSA	S-NPP	74.92699	29.49020	13:24:00	D	3.90
116	SIRSA	SIRSA	AQUA-1	75.20996	29.49382	13:41:00	D	14.92
117	SIRSA	SIRSA	AQUA-1	74.93200	29.51029	13:41:00	D	19.20
118	SIRSA	SIRSA	AQUA-1	75.09230	29.51179	13:41:00	D	16.66
119	SIRSA	SIRSA	S-NPP	75.19843	29.51527	13:24:00	D	1.10
120	SIRSA	SIRSA	S-NPP	74.93024	29.51558	13:24:00	D	2.40
121	SIRSA	SIRSA	S-NPP	75.07937	29.51972	13:24:00	D	6.40

122	SIRSA	SIRSA	S-NPP	75.25368	29.52111	13:24:00	D	2.50
123	SIRSA	SIRSA	S-NPP	75.07438	29.52240	13:24:00	D	7.10
124	SIRSA	SIRSA	S-NPP	75.22903	29.53451	13:24:00	D	3.40
125	SIRSA	SIRSA	AQUA-1	75.20280	29.53964	13:41:00	D	11.16
126	SIRSA	SIRSA	AQUA-1	75.10764	29.54173	13:41:00	D	10.08
127	SIRSA	SIRSA	S-NPP	74.93733	29.54211	02:06:00	N	1.10
128	SIRSA	SIRSA	S-NPP	75.13898	29.54745	13:24:00	D	5.00
129	SIRSA	SIRSA	S-NPP	75.10222	29.55534	13:24:00	D	5.30
130	SIRSA	SIRSA	S-NPP	75.15013	29.55637	13:24:00	D	3.40
131	SIRSA	SIRSA	S-NPP	75.15435	29.55708	13:24:00	D	3.40
132	SIRSA	SIRSA	S-NPP	74.98240	29.55986	13:24:00	D	2.50
133	SIRSA	SIRSA	S-NPP	75.15361	29.56047	13:24:00	D	2.90
134	SIRSA	SIRSA	S-NPP	74.97662	29.56596	13:24:00	D	2.80
135	SIRSA	SIRSA	S-NPP	74.99641	29.57637	13:24:00	D	3.60
136	SIRSA	SIRSA	AQUA-1	75.05648	29.58366	13:41:00	D	8.73
137	SIRSA	SIRSA	S-NPP	75.05936	29.59047	13:24:00	D	1.90
138	SIRSA	SIRSA	S-NPP	75.08485	29.59792	13:24:00	D	3.30
139	SIRSA	SIRSA	S-NPP	75.07564	29.59987	13:24:00	D	2.30
140	SIRSA	SIRSA	AQUA-1	75.14686	29.60312	13:41:00	D	6.05
141	SIRSA	SIRSA	S-NPP	75.03452	29.60699	13:24:00	D	4.80
142	SIRSA	SIRSA	S-NPP	75.14660	29.61548	13:24:00	D	6.20
143	SONIPAT	GANAUR	S-NPP	77.11402	29.11786	02:06:00	N	0.40
144	SONIPAT	GANAUR	AQUA-1	76.86747	29.14348	13:41:00	D	10.12
145	SONIPAT	GOHANA	METOP-2	76.73958	29.00873	21:08:00	N	10.00
146	SONIPAT	GOHANA	S-NPP	76.54485	29.20267	02:06:00	N	0.80
147	SONIPAT	GOHANA	S-NPP	76.54091	29.20330	02:06:00	N	1.40
148	SONIPAT	GOHANA	S-NPP	76.54160	29.20660	02:06:00	N	0.40
149	SONIPAT	GOHANA	S-NPP	76.79474	29.24630	13:24:00	D	7.00
150	SONIPAT	SONIPAT	S-NPP	77.09806	28.87576	02:06:00	N	0.50
151	YAMUNANAGAR	JAGADHRI	S-NPP	77.24271	30.05006	13:24:00	D	1.30
152	YAMUNANAGAR	JAGADHRI	S-NPP	77.23687	30.14092	13:24:00	D	0.90

Details of residue burning events in Uttar Pradesh on 24-Nov-2018

Event S. No.	District	Tehsil/Block	Satellite	Longitude	Latitude	Time (IST)	Day/Night	Fire Power (W/m²)
1	ALIGARH	KHAIR	S-NPP	77.68967	28.02938	13:24:00	D	3.60
2	ALLAHABAD	BARA	S-NPP	81.67822	25.08683	13:24:00	D	2.20
3	ALLAHABAD	BARA	S-NPP	81.68661	25.09156	13:24:00	D	4.10
4	ALLAHABAD	MEZA	S-NPP	82.22077	25.12978	13:24:00	D	4.30
5	ALLAHABAD	MEZA	S-NPP	82.21912	25.13078	13:24:00	D	1.90
6	AMBEDKARNAGAR	AKBARPUR	S-NPP	82.50369	26.33725	13:24:00	D	2.70
7	AMBEDKARNAGAR	AKBARPUR	S-NPP	82.54813	26.48042	13:24:00	D	3.50
8	AURAIYA	BIDHUNA	S-NPP	79.44183	26.64773	13:24:00	D	2.50
9	AURAIYA	BIDHUNA	S-NPP	79.35755	26.68858	13:24:00	D	2.60
10	AURAIYA	BIDHUNA	S-NPP	79.46171	26.72049	13:24:00	D	4.30
11	AURAIYA	BIDHUNA	S-NPP	79.60366	26.75080	13:24:00	D	2.50
12	AURAIYA	BIDHUNA	S-NPP	79.43822	26.85630	13:24:00	D	2.40
13	AZAMGARH	LALGANJ	S-NPP	82.97256	25.74376	13:24:00	D	3.20
14	BAHRAICH	NANPARA	S-NPP	81.34099	27.91358	13:24:00	D	2.10
15	BALLIA	BALLIA	S-NPP	83.98097	25.61704	13:24:00	D	3.10
16	BALLIA	RASRA	S-NPP	83.95515	25.93517	13:24:00	D	2.00
17	BALLIA	SIKANDARPUR	S-NPP	84.00911	25.92883	13:24:00	D	4.40
18	BALRAMPUR	UTRAULA	S-NPP	82.29046	27.36526	13:24:00	D	3.30
19	BAREILLY	BAHERI	S-NPP	79.42806	28.66578	13:24:00	D	5.10
20	BAREILLY	BAHERI	S-NPP	79.49867	28.84978	13:24:00	D	4.80
21	BAREILLY	FARIDPUR	S-NPP	79.69629	28.28488	13:24:00	D	10.20
22	BASTI	BHANPUR	S-NPP	82.69452	27.06925	13:24:00	D	3.70
23	BASTI	BHANPUR	S-NPP	82.69396	27.07310	13:24:00	D	6.50
24	BASTI	HARRAIYA	S-NPP	82.47666	26.67866	13:24:00	D	2.60
25	BASTI	RUDHAULI	S-NPP	82.84654	26.93650	13:24:00	D	5.40
26	BIJNOR	DHAMPUR	S-NPP	78.45277	29.25435	13:24:00	D	1.70
27	BIJNOR	NAGINA	S-NPP	78.45596	29.64044	13:24:00	D	3.60
28	BIJNOR	NAGINA	S-NPP	78.48238	29.70110	13:24:00	D	5.30

29	BULANSAHAR	KHURJA	S-NPP	77.75586	28.16494	13:24:00	D	2.90
30	BULANSAHAR	SIYANA	S-NPP	78.02505	28.63502	13:24:00	D	3.80
31	DEORIA	DEORIA	S-NPP	83.78333	26.61434	13:24:00	D	4.20
32	DEORIA	DEORIA	S-NPP	83.80783	26.70752	13:24:00	D	6.70
33	DEORIA	DEORIA	S-NPP	83.80737	26.70829	13:24:00	D	5.80
34	ETAH	KASGANJ	S-NPP	78.72003	27.86480	13:24:00	D	2.30
35	ETAH	PATIALI	S-NPP	79.12884	27.74322	13:24:00	D	2.50
36	ETAWAH	BHARTHNA	S-NPP	79.26328	26.64961	13:24:00	D	3.00
37	ETAWAH	BHARTHNA	S-NPP	79.29143	26.65023	13:24:00	D	1.70
38	ETAWAH	BHARTHNA	S-NPP	79.30267	26.65528	13:24:00	D	4.30
39	ETAWAH	BHARTHNA	S-NPP	79.14095	26.65770	13:24:00	D	2.50
40	ETAWAH	BHARTHNA	S-NPP	79.15879	26.67052	13:24:00	D	4.90
41	ETAWAH	BHARTHNA	S-NPP	79.12623	26.67268	13:24:00	D	2.80
42	ETAWAH	BHARTHNA	AQUA-1	79.16958	26.68210	13:41:00	D	19.44
43	ETAWAH	BHARTHNA	S-NPP	79.12279	26.73716	13:24:00	D	2.70
44	ETAWAH	ETAWAH	S-NPP	79.07409	26.76318	13:24:00	D	1.80
45	ETAWAH	ETAWAH	S-NPP	79.09917	26.78046	13:24:00	D	2.60
46	ETAWAH	SAIFAI	S-NPP	79.03902	26.96407	13:24:00	D	2.30
47	ETAWAH	SAIFAI	S-NPP	79.11388	26.96913	13:24:00	D	2.10
48	FAIZABAD	MILKIPUR	S-NPP	81.75917	26.67304	13:24:00	D	3.20
49	FATEHPUR	BINKI	S-NPP	80.54641	26.02110	13:24:00	D	2.30
50	FATEHPUR	FATEHPUR	S-NPP	80.99017	25.75041	13:24:00	D	3.10
51	FATEHPUR	FATEHPUR	S-NPP	80.65662	25.83810	13:24:00	D	3.60
52	FATEHPUR	FATEHPUR	S-NPP	80.80731	25.97705	13:24:00	D	3.80
53	FATEHPUR	FATEHPUR	S-NPP	80.81156	25.97762	13:24:00	D	3.80
54	FATEHPUR	KHAGA	S-NPP	81.23964	25.49973	13:24:00	D	5.10
55	FIROZABAD	JASRANA	S-NPP	78.67107	27.37650	02:06:00	N	0.30
56	FIROZABAD	SIKOHABAD	S-NPP	78.55276	27.08296	13:24:00	D	1.10
57	GHAZIABAD	MODINAGAR	S-NPP	77.51237	28.78815	13:24:00	D	1.40
58	GHAZIABAD	MODINAGAR	S-NPP	77.51177	28.79088	13:24:00	D	2.00
59	GONDA	TARABGANJ	S-NPP	82.16203	27.00484	13:24:00	D	4.20
60	GORAKHPUR	CHAURI CHAURA	S-NPP	83.45556	26.55349	13:24:00	D	3.20

61	GORAKHPUR	GORAKHPUR	S-NPP	83.56613	26.75884	13:24:00	D	2.30
62	GORAKHPUR	GORAKHPUR	S-NPP	83.58575	26.76110	13:24:00	D	2.60
63	GORAKHPUR	GORAKHPUR	S-NPP	83.50706	26.78119	13:24:00	D	1.60
64	GORAKHPUR	GORAKHPUR	S-NPP	83.56802	26.80022	13:24:00	D	3.40
65	GORAKHPUR	GORAKHPUR	S-NPP	83.56747	26.80425	13:24:00	D	1.40
66	GORAKHPUR	GORAKHPUR	S-NPP	83.44697	26.87227	13:24:00	D	0.90
67	HARDOI	HARDOI	S-NPP	80.31948	27.44856	13:24:00	D	2.40
68	JAUNPUR	JAUNPUR	TERRA-1	82.53406	25.69545	10:30:00	D	7.28
69	JAUNPUR	SHHGANJ	S-NPP	82.65302	25.90729	13:24:00	D	4.70
70	JAUNPUR	SHHGANJ	S-NPP	82.65245	26.09095	13:24:00	D	2.60
71	JYOTIBAPHULE NAGAR	HASANPUR	S-NPP	78.40455	28.48820	13:24:00	D	3.00
72	KANNAUJ	TIRWA	S-NPP	79.63136	26.94981	13:24:00	D	4.40
73	KANNAUJ	TIRWA	S-NPP	79.63540	26.95037	13:24:00	D	5.10
74	KANPUR DEHAT	AKBARPUR	S-NPP	79.99512	26.31109	13:24:00	D	2.90
75	KANPUR DEHAT	RASULABAD	S-NPP	79.75835	26.68896	13:24:00	D	4.50
76	KANPUR DEHAT	RASULABAD	S-NPP	79.72892	26.71597	13:24:00	D	2.30
77	KANPUR DEHAT	RASULABAD	S-NPP	79.79870	26.74313	13:24:00	D	2.60
78	KANPUR DEHAT	RASULABAD	S-NPP	79.79884	26.74338	13:24:00	D	2.40
79	KAUSHAMBI	MANJHANPUR	S-NPP	81.22951	25.41961	13:24:00	D	2.80
80	KAUSHAMBI	MANJHANPUR	S-NPP	81.26747	25.43191	13:24:00	D	6.30
81	KAUSHAMBI	MANJHANPUR	S-NPP	81.26770	25.43509	13:24:00	D	12.90
82	KAUSHAMBI	MANJHANPUR	S-NPP	81.26690	25.43543	13:24:00	D	6.30
83	KHERI	GOLA	S-NPP	80.31404	27.97951	13:24:00	D	3.70
84	KHERI	GOLA	S-NPP	80.31837	27.98009	13:24:00	D	6.20
85	KHERI	MOHMADI	S-NPP	80.45937	27.76211	13:24:00	D	6.10
86	KHERI	MOHMADI	S-NPP	80.29031	28.07362	13:24:00	D	4.00
87	KHERI	MOHMADI	S-NPP	80.29464	28.07420	13:24:00	D	5.40
88	KHERI	PALIA KALAN	S-NPP	80.44559	28.53955	13:24:00	D	2.00
89	KUSHINAGAR	HATA	S-NPP	83.66241	26.69987	13:24:00	D	2.80
90	KUSHINAGAR	HATA	S-NPP	83.77036	26.71173	13:24:00	D	6.90
91	KUSHINAGAR	HATA	S-NPP	83.65811	26.79000	13:24:00	D	4.40
92	KUSHINAGAR	HATA	S-NPP	83.65359	26.79359	13:24:00	D	4.40

93	KUSHINAGAR	HATA	S-NPP	83.66650	26.81522	13:24:00	D	2.60
94	KUSHINAGAR	HATA	S-NPP	83.59795	26.84460	13:24:00	D	1.50
95	KUSHINAGAR	HATA	S-NPP	83.61776	26.84684	13:24:00	D	2.80
96	KUSHINAGAR	HATA	S-NPP	83.65351	26.85088	13:24:00	D	4.10
97	KUSHINAGAR	HATA	S-NPP	83.57432	26.87066	13:24:00	D	4.70
98	KUSHINAGAR	HATA	S-NPP	83.60878	26.88285	13:24:00	D	3.30
99	KUSHINAGAR	HATA	S-NPP	83.57209	26.88683	13:24:00	D	2.40
100	KUSHINAGAR	HATA	S-NPP	83.55972	26.88950	13:24:00	D	2.30
101	KUSHINAGAR	HATA	S-NPP	83.62640	26.90135	13:24:00	D	2.70
102	KUSHINAGAR	TAMKUHI RAJ	S-NPP	84.05451	26.76781	13:24:00	D	5.10
103	MAHARAJGANJ	MAHARAJGANJ	S-NPP	83.51080	26.89691	13:24:00	D	2.00
104	MAHARAJGANJ	MAHARAJGANJ	S-NPP	83.50800	26.91705	13:24:00	D	4.20
105	MAHARAJGANJ	MAHARAJGANJ	S-NPP	83.51025	26.92957	13:24:00	D	3.60
106	MAHARAJGANJ	MAHARAJGANJ	S-NPP	83.49068	26.95599	13:24:00	D	3.60
107	MAHARAJGANJ	MAHARAJGANJ	S-NPP	83.53835	26.95734	13:24:00	D	1.40
108	MAHARAJGANJ	MAHARAJGANJ	S-NPP	83.63522	26.98484	13:24:00	D	4.40
109	MAHARAJGANJ	MAHARAJGANJ	S-NPP	83.58526	26.99558	13:24:00	D	1.80
110	MAHARAJGANJ	MAHARAJGANJ	S-NPP	83.65810	26.99571	13:24:00	D	1.90
111	MAHARAJGANJ	MAHARAJGANJ	S-NPP	83.62557	26.99611	13:24:00	D	9.80
112	MAHARAJGANJ	MAHARAJGANJ	S-NPP	83.63755	26.99748	13:24:00	D	3.70
113	MAHARAJGANJ	MAHARAJGANJ	S-NPP	83.61409	27.01912	13:24:00	D	3.80
114	MAHARAJGANJ	MAHARAJGANJ	S-NPP	83.42946	27.02316	13:24:00	D	2.90
115	MAHARAJGANJ	MAHARAJGANJ	S-NPP	83.47295	27.02397	13:24:00	D	2.40
116	MAHARAJGANJ	MAHARAJGANJ	S-NPP	83.45953	27.03472	13:24:00	D	2.50
117	MAHARAJGANJ	MAHARAJGANJ	S-NPP	83.45786	27.04679	13:24:00	D	3.80
118	MAHARAJGANJ	MAHARAJGANJ	S-NPP	83.52519	27.05032	13:24:00	D	3.00
119	MAHARAJGANJ	MAHARAJGANJ	S-NPP	83.63703	27.05879	13:24:00	D	3.00
120	MAHARAJGANJ	MAHARAJGANJ	S-NPP	83.60052	27.05881	13:24:00	D	3.50
121	MAHARAJGANJ	MAHARAJGANJ	S-NPP	83.64104	27.05923	13:24:00	D	2.00
122	MAHARAJGANJ	MAHARAJGANJ	S-NPP	83.62048	27.06106	13:24:00	D	3.60
123	MAHARAJGANJ	MAHARAJGANJ	S-NPP	83.58802	27.06153	13:24:00	D	1.80
124	MAHARAJGANJ	MAHARAJGANJ	S-NPP	83.61591	27.06467	13:24:00	D	3.10

125	MAHARAJGANJ	MAHARAJGANJ	S-NPP	83.62225	27.07776	13:24:00	D	2.70
126	MAHARAJGANJ	MAHARAJGANJ	S-NPP	83.56822	27.08809	13:24:00	D	2.60
127	MAHARAJGANJ	MAHARAJGANJ	S-NPP	83.51852	27.09879	13:24:00	D	3.50
128	MAHARAJGANJ	MAHARAJGANJ	S-NPP	83.57793	27.10567	13:24:00	D	4.00
129	MAHARAJGANJ	MAHARAJGANJ	S-NPP	83.59512	27.13650	13:24:00	D	3.40
130	MAHARAJGANJ	MAHARAJGANJ	S-NPP	83.66808	27.16938	13:24:00	D	1.90
131	MAHARAJGANJ	MAHARAJGANJ	S-NPP	83.63531	27.16986	13:24:00	D	3.70
132	MAHARAJGANJ	MAHARAJGANJ	S-NPP	83.55995	27.18611	13:24:00	D	6.60
133	MAHARAJGANJ	MAHARAJGANJ	S-NPP	83.61992	27.19293	13:24:00	D	2.20
134	MAHARAJGANJ	NAUTANWA	S-NPP	83.40203	27.45190	13:24:00	D	2.40
135	MAHARAJGANJ	NAUTANWA	S-NPP	83.42293	27.47473	13:24:00	D	2.80
136	MAINPURI	BHOGAON	S-NPP	79.19247	27.07854	13:24:00	D	1.00
137	MAINPURI	BHOGAON	S-NPP	79.09500	27.39884	13:24:00	D	3.40
138	MAINPURI	KARHAL	S-NPP	78.98637	27.05558	13:24:00	D	2.40
139	MAINPURI	KARHAL	S-NPP	78.99030	27.05615	13:24:00	D	3.70
140	MAINPURI	MAINPURI	S-NPP	78.90380	27.24618	13:24:00	D	2.20
141	MAINPURI	MAINPURI	S-NPP	78.77097	27.29041	13:24:00	D	1.40
142	MAINPURI	MAINPURI	S-NPP	79.01174	27.39244	13:24:00	D	1.70
143	MATHURA	CHHATA	S-NPP	77.44952	27.86411	13:24:00	D	2.50
144	MAU	MAU	S-NPP	83.49232	25.89378	13:24:00	D	3.60
145	MEERUT	MAWANA	S-NPP	77.99823	29.16513	13:24:00	D	1.40
146	MORADABAD	SAMBHAL	S-NPP	78.67686	28.76290	13:24:00	D	3.50
147	MUZAFARNAGAR	BUDHANA	S-NPP	77.50732	29.37954	13:24:00	D	1.60
148	MUZAFARNAGAR	KAIRANA	S-NPP	77.25707	29.59909	13:24:00	D	4.90
149	MUZAFARNAGAR	MUZAFFARNAGAR	S-NPP	77.62375	29.59659	13:24:00	D	3.60
150	MUZAFARNAGAR	SHAMLI	S-NPP	77.45852	29.62959	13:24:00	D	2.40
151	PILHIBHIT	BISALPUR	S-NPP	79.87098	28.48208	13:24:00	D	1.50
152	PILHIBHIT	PURANPUR	S-NPP	80.10073	28.46161	13:24:00	D	3.20
153	PRATAPGARH	KASGANJ	S-NPP	81.60184	25.97415	13:24:00	D	1.50
154	PRATAPGARH	KUNDA	S-NPP	81.51279	25.75467	13:24:00	D	2.50
155	PRATAPGARH	PATTI	S-NPP	82.10710	25.96522	13:24:00	D	1.80
156	RAE BARELI	DALMAU	S-NPP	81.20306	26.07313	13:24:00	D	1.30

157	RAE BARELI	DALMAU	S-NPP	81.20342	26.07594	13:24:00	D	2.00
158	RAE BARELI	MAHARAJGANG	S-NPP	81.19400	26.41586	13:24:00	D	2.10
159	RAE BARELI	MAHARAJGANG	S-NPP	81.20342	26.44243	13:24:00	D	1.90
160	RAE BARELI	MAHARAJGANG	S-NPP	81.35905	26.47355	13:24:00	D	3.20
161	RAE BARELI	SALON	S-NPP	81.35123	26.05292	13:24:00	D	5.00
162	RAE BARELI	SALON	S-NPP	81.35067	26.05648	13:24:00	D	5.00
163	RAE BARELI	SALON	S-NPP	81.61103	26.17206	13:24:00	D	3.00
164	RAE BARELI	UNCHA HAR	S-NPP	81.33228	25.87740	13:24:00	D	2.30
165	RAE BARELI	UNCHA HAR	S-NPP	81.33672	25.87797	13:24:00	D	3.40
166	SANTKABIRNAGAR	GHANGHATA	S-NPP	83.05244	26.63920	13:24:00	D	3.40
167	SANTKABIRNAGAR	KHALILABAD	S-NPP	83.08485	26.72658	13:24:00	D	3.00
168	SHAHJAHANPUR	PUWANYA	S-NPP	80.14565	28.12997	13:24:00	D	4.00
169	SHAHJAHANPUR	PUWANYA	S-NPP	80.14994	28.13054	13:24:00	D	4.00
170	SHAHJAHANPUR	PUWANYA	S-NPP	80.09299	28.29098	13:24:00	D	1.20
171	SHARANPUR	BEHAT	S-NPP	77.73324	30.13679	13:24:00	D	1.50
172	SHARANPUR	DEOBAND	S-NPP	77.70049	29.79391	13:24:00	D	4.80
173	SHARANPUR	NAKUR	S-NPP	77.39166	29.82935	13:24:00	D	3.00
174	SHARANPUR	NAKUR	S-NPP	77.38840	29.84584	13:24:00	D	2.40
175	SIDDHARTH NAGAR	BANSI	S-NPP	82.88906	27.15159	13:24:00	D	3.10
176	SIDDHARTH NAGAR	DOMARIYAGANJ	S-NPP	82.67110	27.17340	13:24:00	D	3.20
177	SIDDHARTH NAGAR	ITWA	S-NPP	82.60641	27.35660	13:24:00	D	4.60
178	SULTANPUR	AMETHI	S-NPP	81.77448	26.18549	13:24:00	D	11.20
179	SULTANPUR	GAURIGANJ	S-NPP	81.69096	26.23395	13:24:00	D	7.50
180	SULTANPUR	GAURIGANJ	S-NPP	81.61957	26.24778	13:24:00	D	4.20
181	SULTANPUR	GAURIGANJ	S-NPP	81.69257	26.26437	13:24:00	D	3.00
182	SULTANPUR	GAURIGANJ	S-NPP	81.74538	26.32286	13:24:00	D	4.80
183	SULTANPUR	GAURIGANJ	S-NPP	81.68651	26.37829	13:24:00	D	2.60
184	SULTANPUR	GAURIGANJ	S-NPP	81.70518	26.38065	13:24:00	D	1.70
185	SULTANPUR	KADIRPUR	S-NPP	82.62357	26.19877	13:24:00	D	5.30
186	SULTANPUR	SULTANPUR	S-NPP	82.09132	26.43254	13:24:00	D	2.40

The study used images received from following Satellites at IARI Satellite Ground Station

S. No.	Satellite Name	Sensor	Resolution (meter)	Day / Night Passes
1.	Suomi NPP	VIIRS	375 / 1000	Both
2.	Terra	MODIS	1000	Both
3.	Aqua	MODIS	1000	Both
4.	NOAA – 18	AVHRR	1000	Night
5.	NOAA – 19	AVHRR	1000	Night
6.	Metop - 1	AVHRR	1000	Night
7.	Metop - 2	AVHRR	1000	Night

Study Team

ICAR – HQ	Dr K. Alagusundaram	DDG (Agril. Engg.)	ddgengg@icar.org.in
	Dr S. Bhaskar	ADG (NRM)	adgagroandaf@gmail.com
ICAR - IARI	Dr V.K. Sehgal	Professor & Nodal Scientist	iaricreams@gmail.com vk.sehgal@icar.gov.in
	Dr Rajkumar Dhakar	Scientist	rajdhakar.iari@gmail.com
	Shri Rakeshwar Verma	Chief Technical Officer	rakeshwar.verma@icar.gov.in
	Mr Aakash Chhabra	SRF (NICRA)	aakash.chhabra7489@gmail.com
ICAR - ATARI	Dr Rajbir Singh	Director ATARI (Zone-1)	rajbirsingh.zpd@gmail.com
	Dr U.S. Gautam	Director ATARI (Zone-IV)	zpdicarkanpur@gmail.com
ICAR - IASRI	Dr RajenderParsad	Principal Scientist	rajender.parsad@icar.gov.in

GIS Maps of fire events can be visualized online on ICAR KRISHI & CREAMS Geoportal

websites:<http://geoportal.icar.gov.in:8080/geoexplorer/composer/>

<http://creams.iari.res.in:8080/geoexplorer/composer/>
