

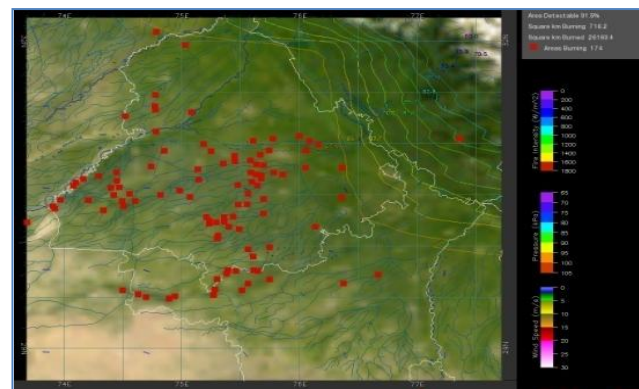
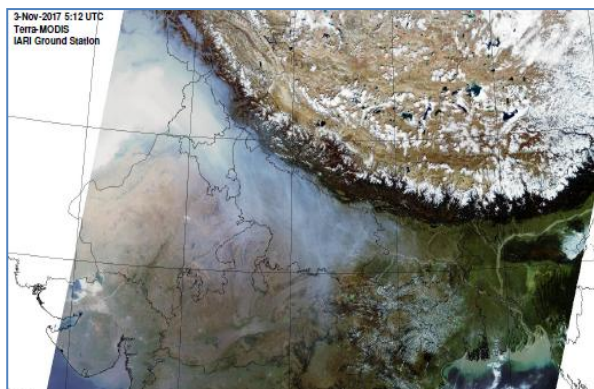


# MONITORING PADDY RESIDUE BURNING IN NORTH INDIA USING SATELLITE REMOTE SENSING DURING 2018

**Bulletin  
No. 54**

**Events Date:  
23-Nov-2018**

**Issued on:  
24-Nov-2018**



**Prepared by:**

**Consortium for Research on Agroecosystem Monitoring and Modeling from Space (CREAMS) Laboratory,  
Division of Agricultural Physics, ICAR – Indian Agricultural Research Institute, New Delhi – 110012**

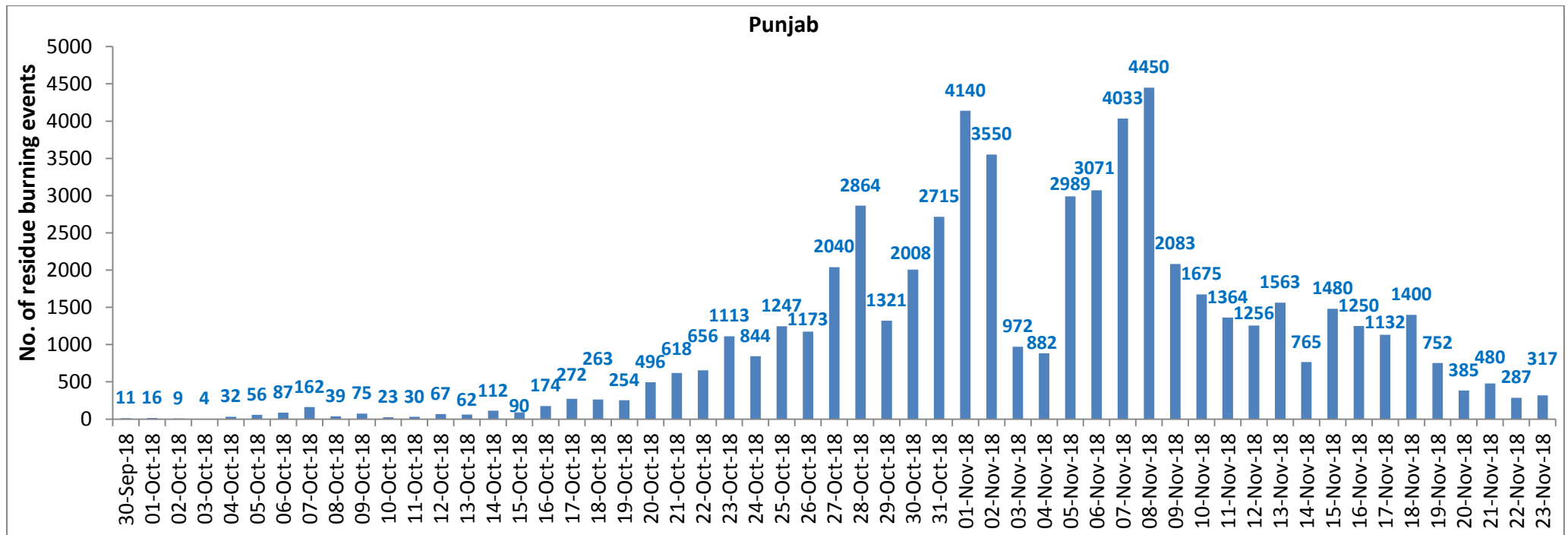
<http://creams.iari.res.in>



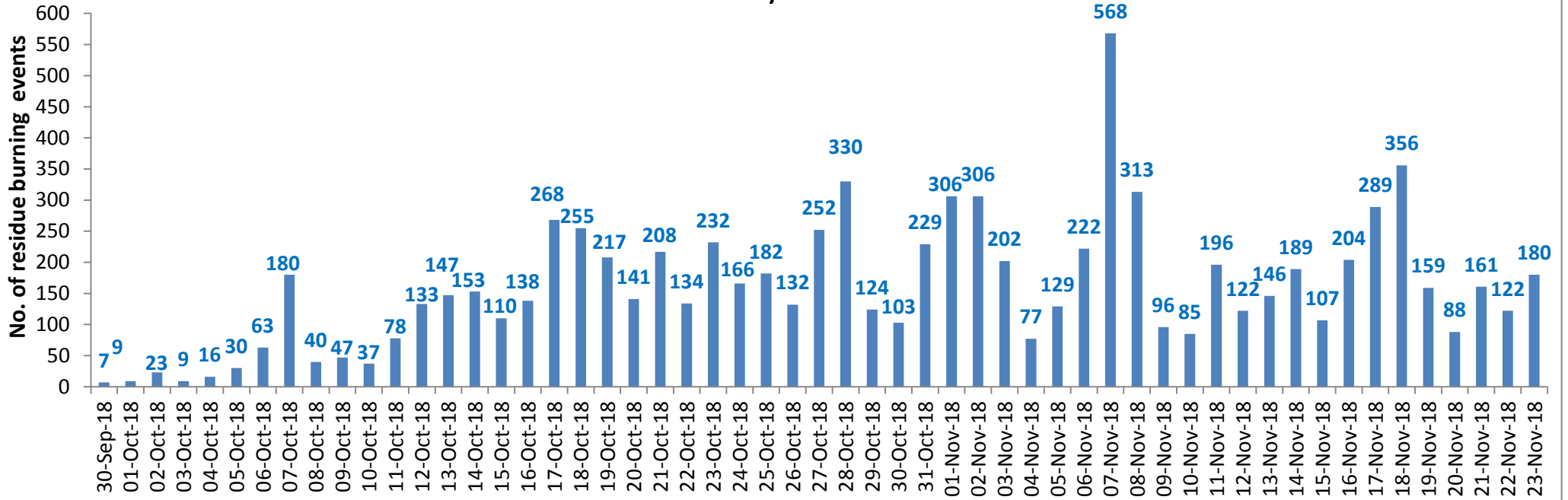
## Highlights for 23-November-2018

- Satellites detected **603** residue burning events in the three States (Punjab, Haryana & UP) on **23-Nov-2018**.
- The burning events detected on **23-Nov-2018** are **317**, **180** and **106** in Punjab, Haryana, and UP, respectively.
- The number of events has increased from **481** on **22-Nov-2018** to **603** on **23-Nov-2018** in the three States.
- Total **73827** burning events were detected in the three States between **30-Sept-2018** and **23-Nov-2018**, which are distributed as **59209**, **8816** and **5802** in Punjab, Haryana and UP, respectively.
- Till **23-Nov-2018**, the burning events in the current year are about **86.6%** of the events detected in 2017 and about **58.4%** of the events detected in 2016.
- Overall, about **14%** and **42%** reduction in burning events are observed in current year (2018) till date as compared to that in 2017 and 2016, respectively.

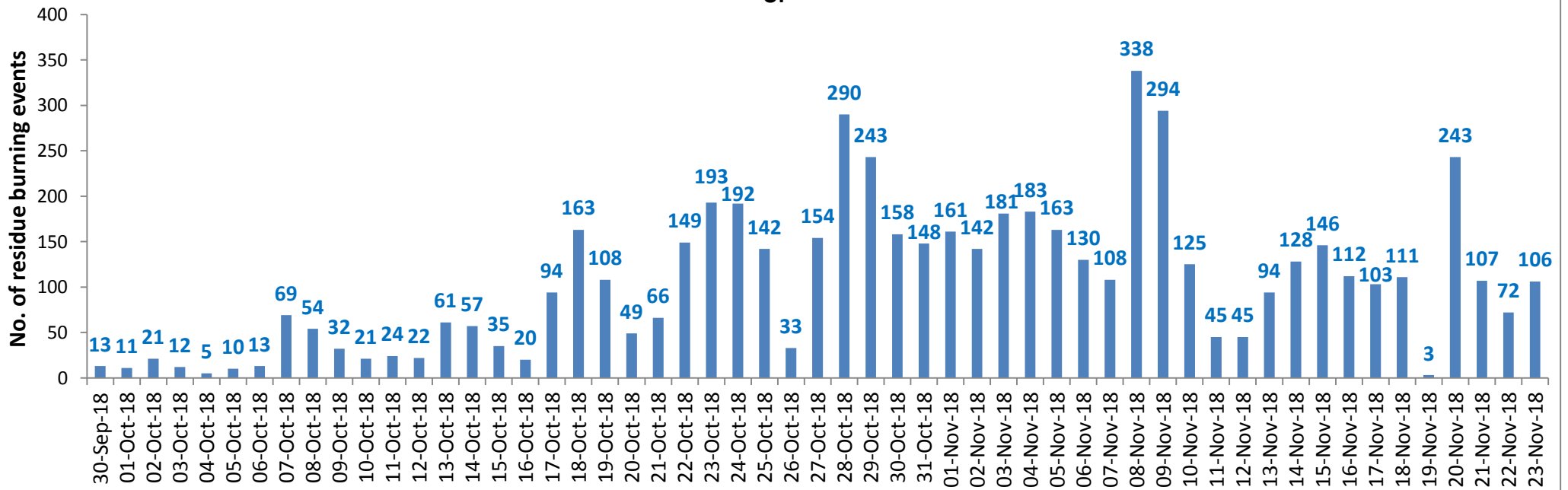
### Temporal distribution of residue burning events for the three study States



### Haryana

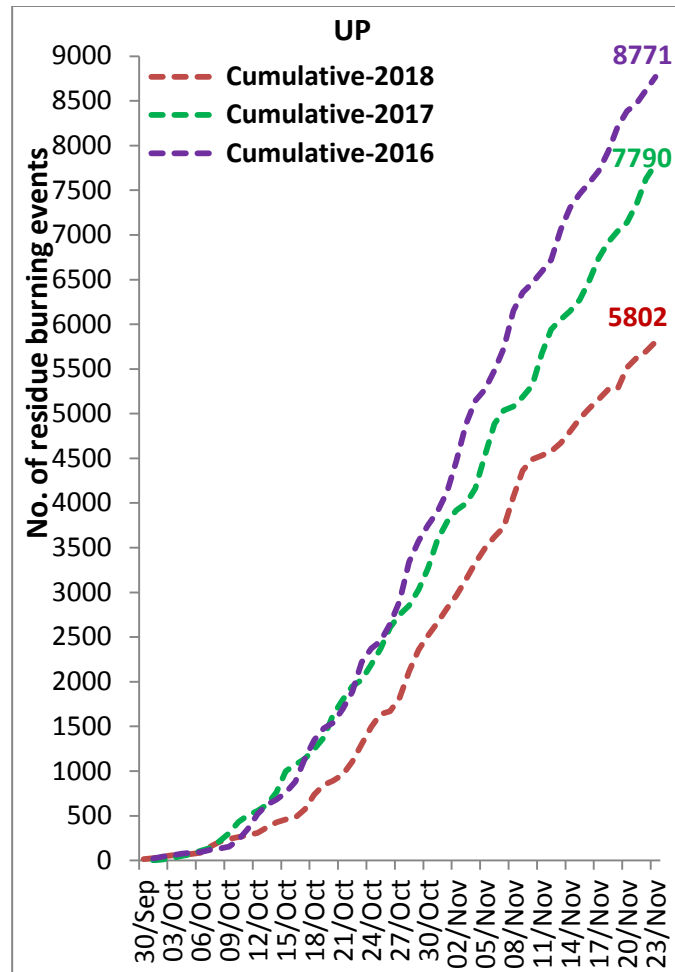
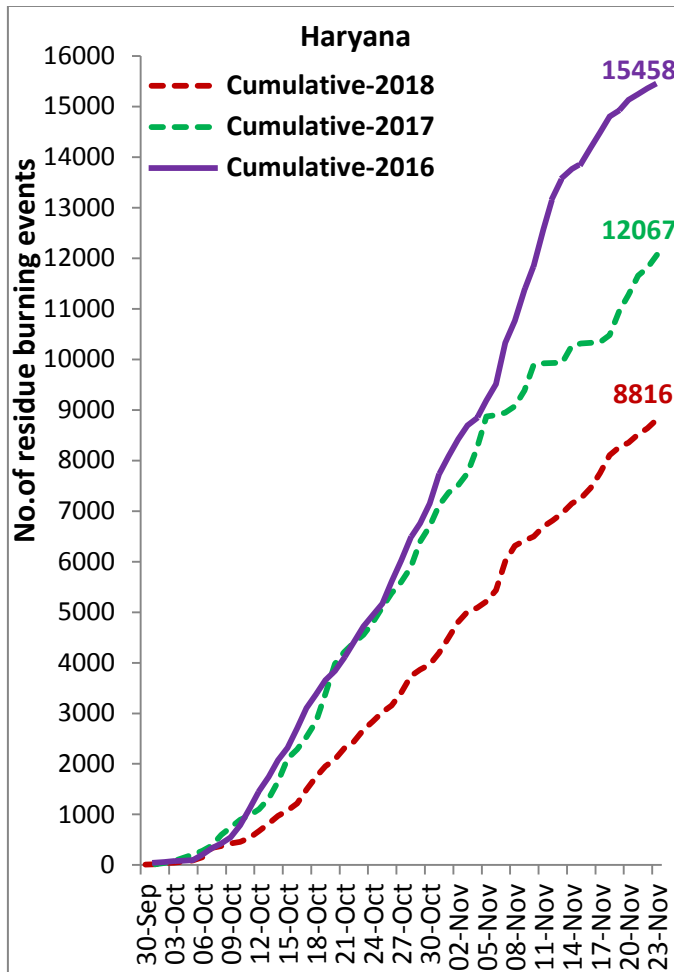
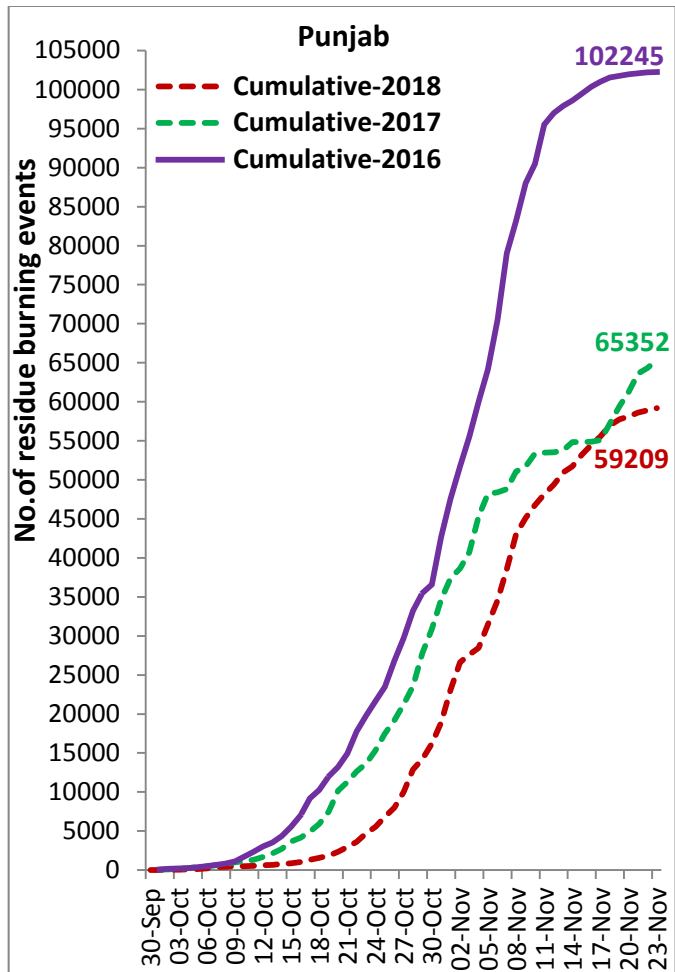


### UP

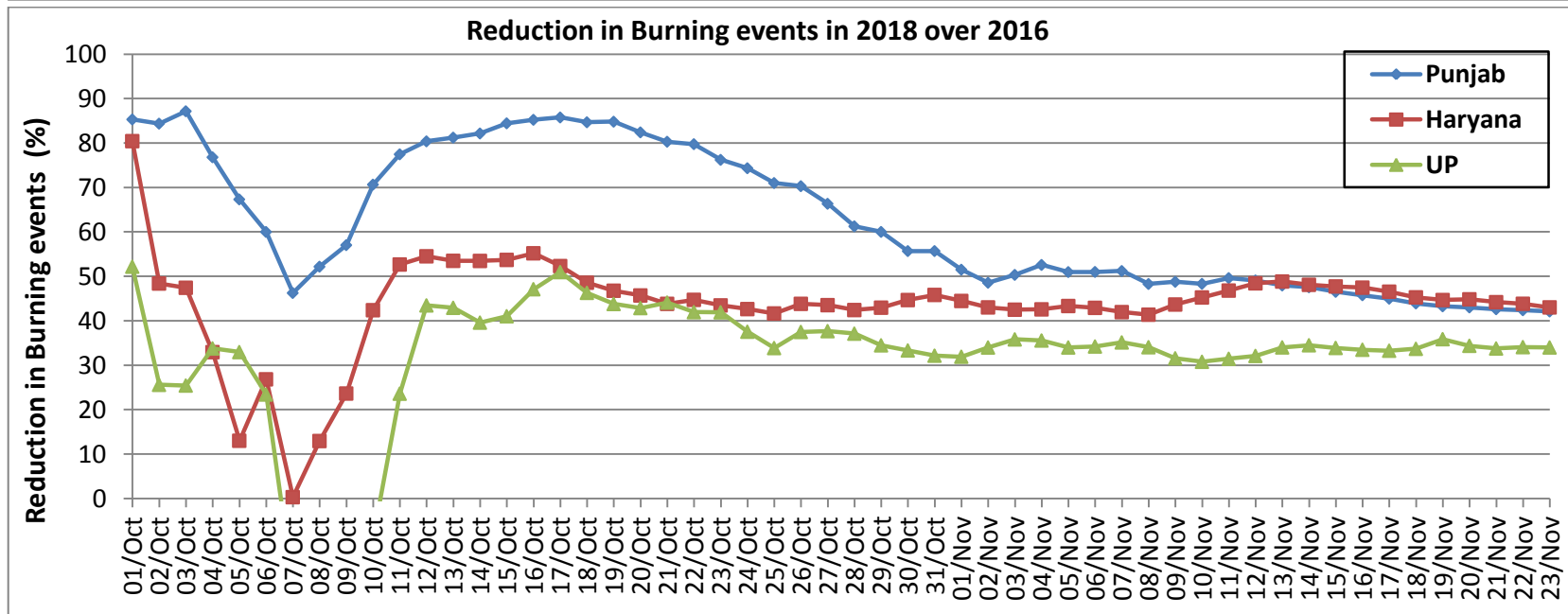
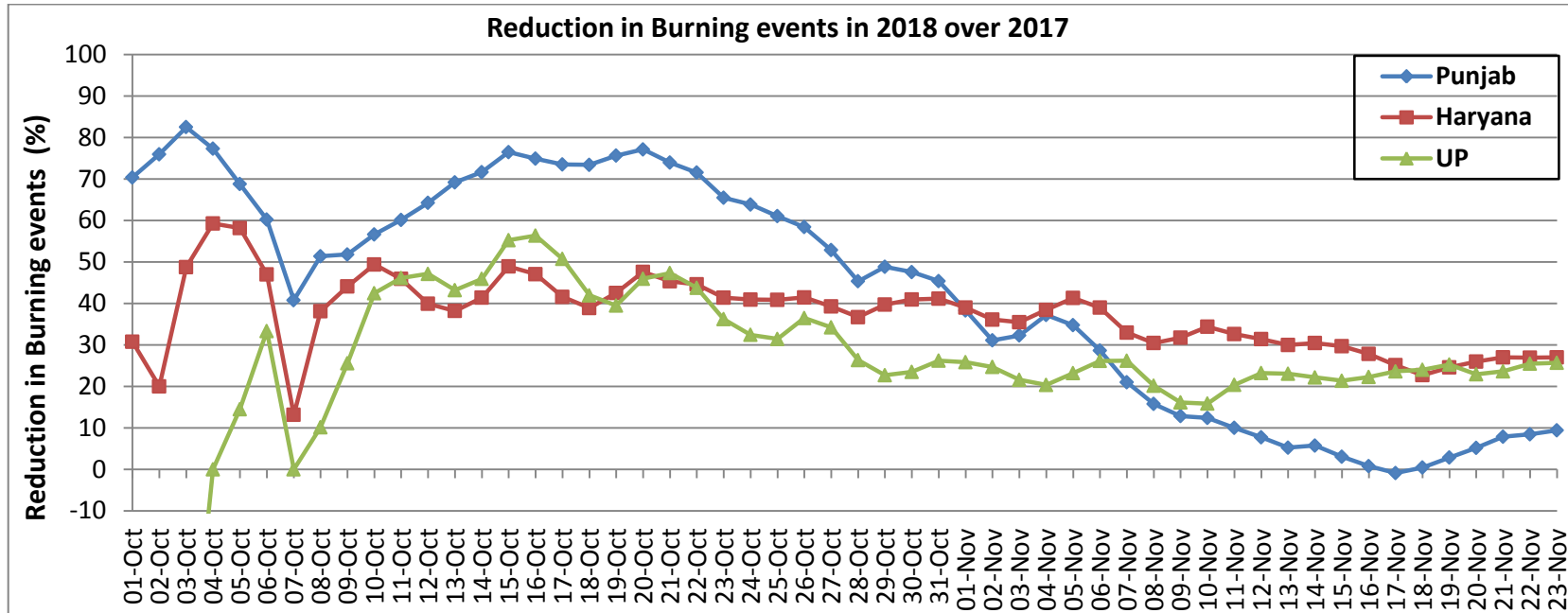


**Comparison of residue burning events in current year (2018) with previous years (2017& 2016) for the three study States**

**(30-Sep to 23-Nov)**



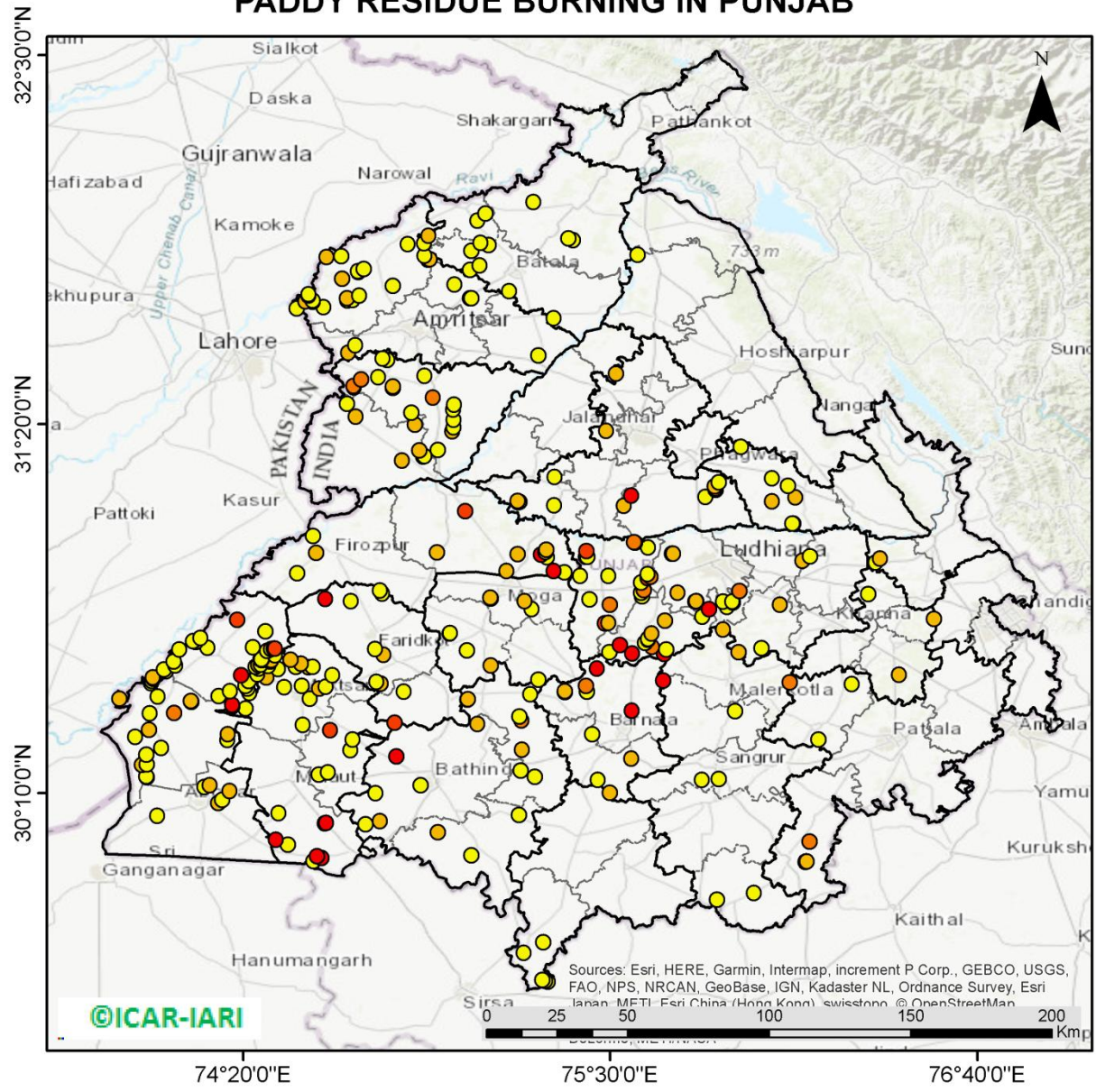
## Percent Reduction in Burning events in 2018 over 2017 and 2016 (Daily Cumulative)





(a) Punjab

PADDY RESIDUE BURNING IN PUNJAB



**317** burning events detected in Punjab on 23rd November, 2018

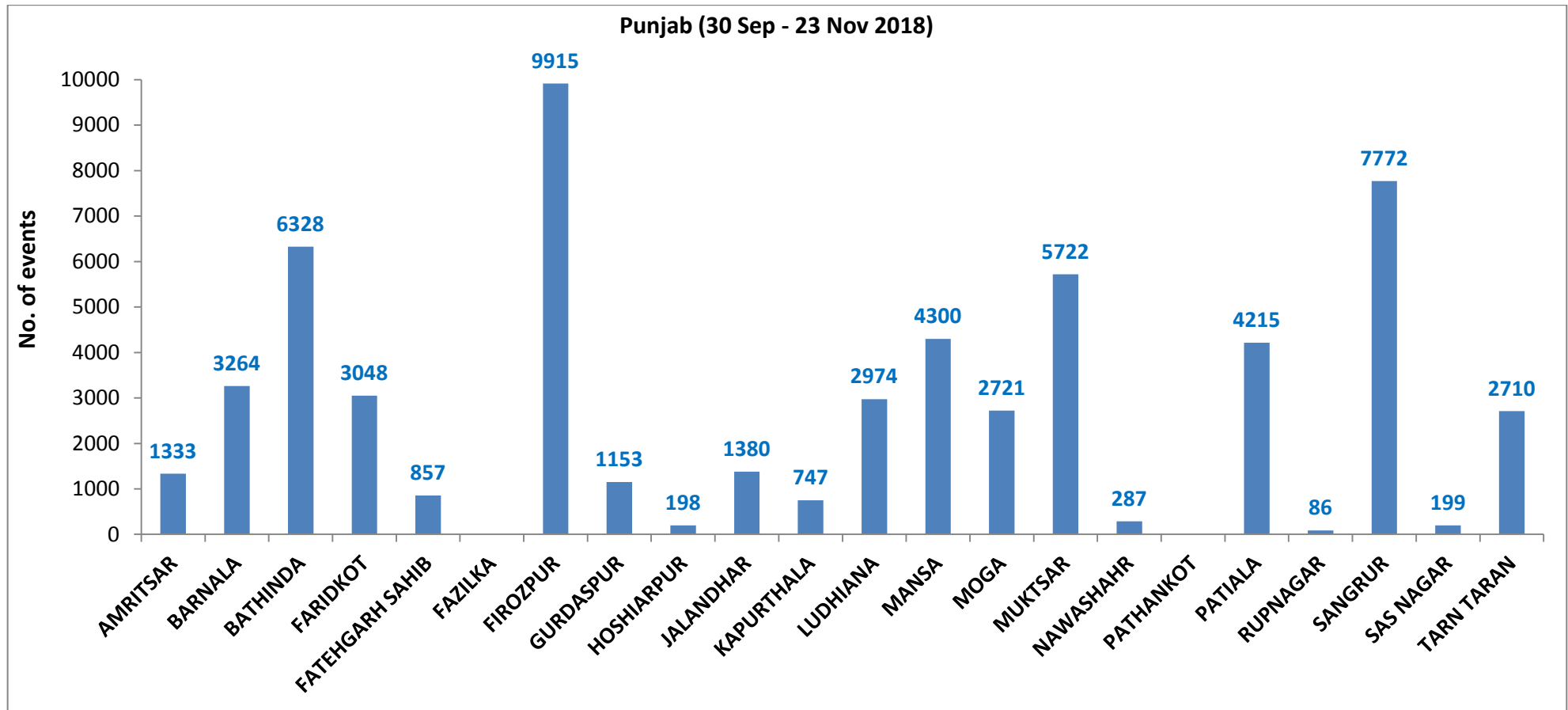
Fire Intensity (W/m<sup>2</sup>)

- 0 - 5
- 6 - 10
- 11 - 15
- 16 - 20
- >20



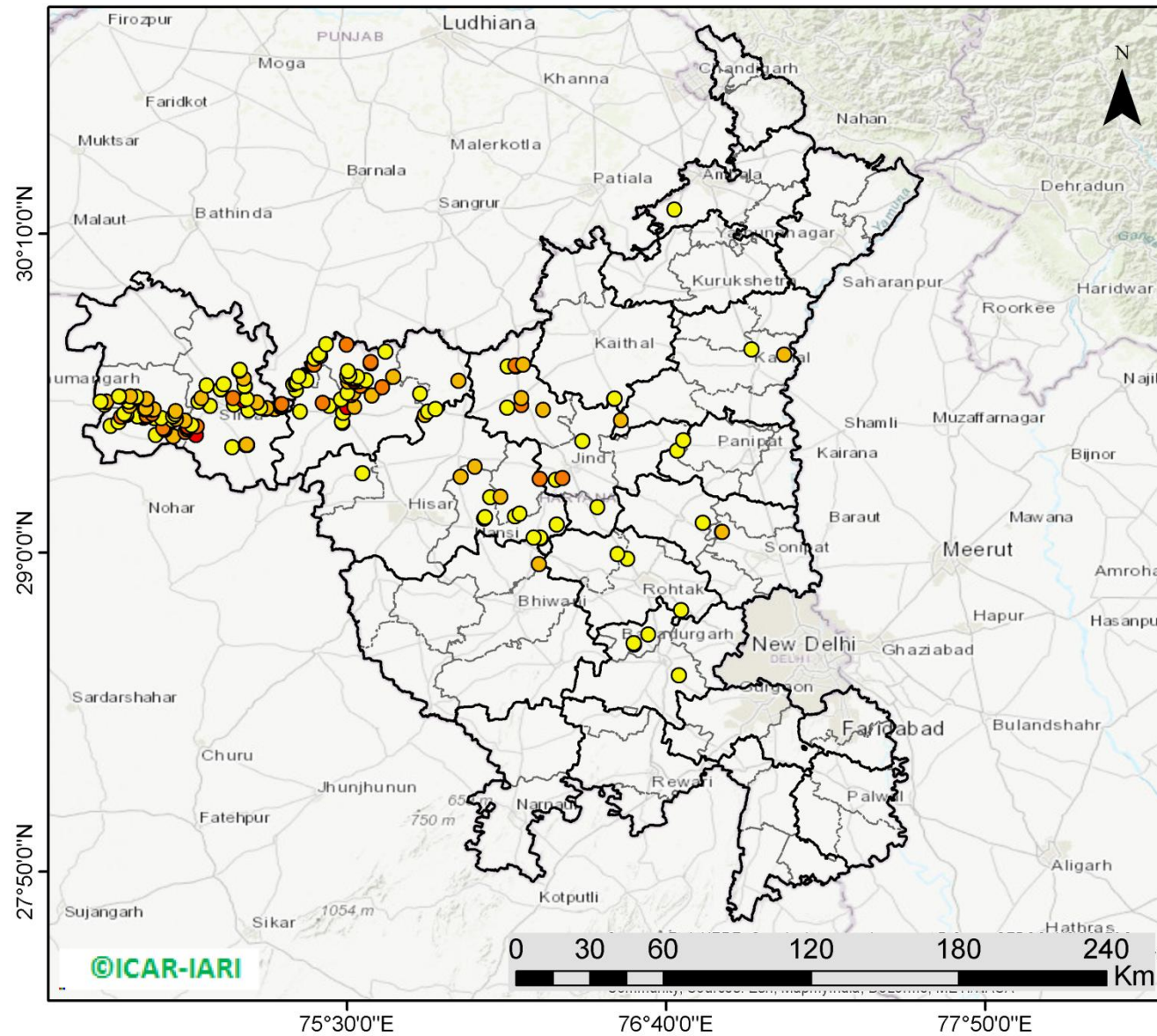
<http://geoportal.icar.gov.in:8080/geoexplorer/composer/>

**District-wise cumulative number of residue burning events in Punjab (30-Sep-2018 to 23-Nov-2018)**



(b) Haryana

PADDY RESIDUE BURNING IN HARYANA



**180** burning events detected in Haryana on **23rd November, 2018**

Fire Intensity (W/m<sup>2</sup>)

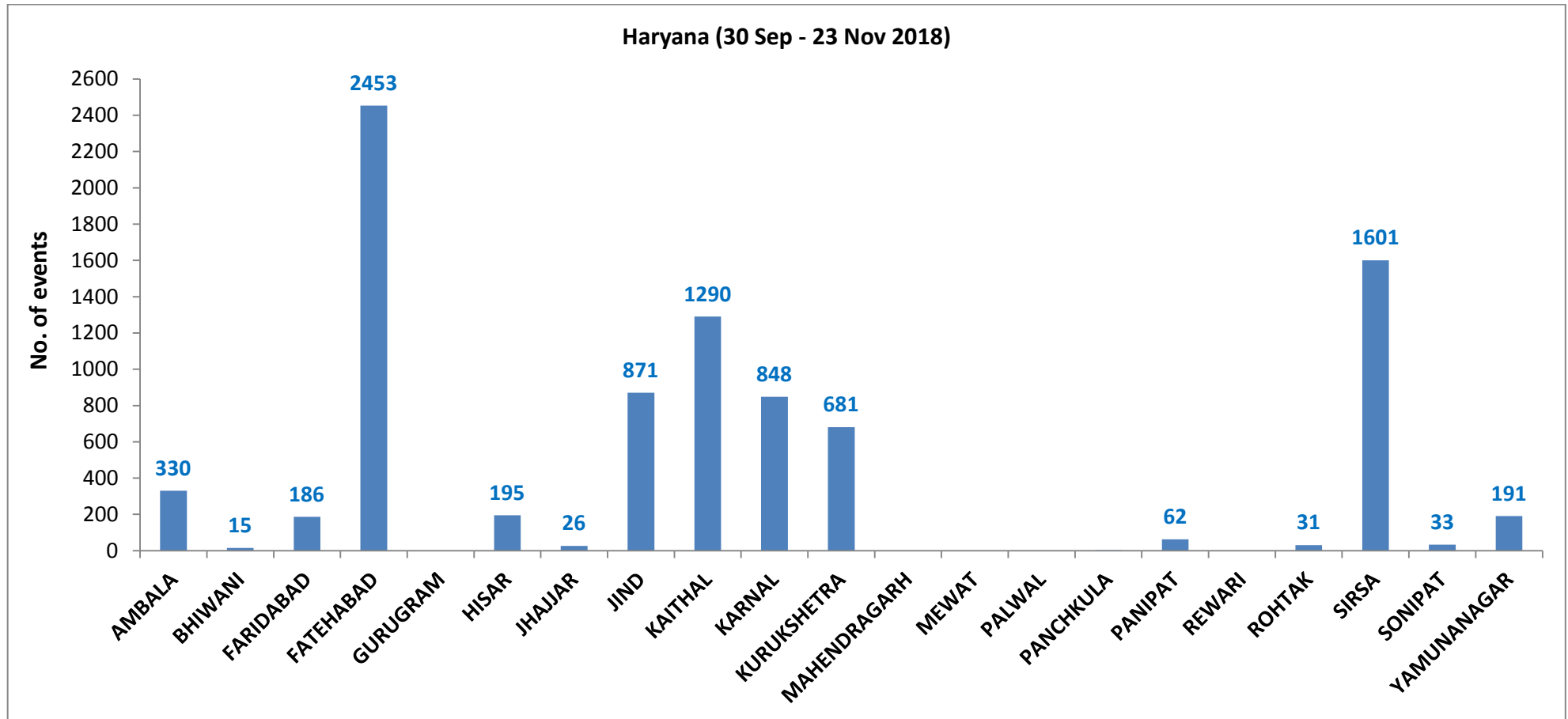
- 0 - 5
- 6 - 10
- 11 - 15
- 16 - 20
- >20



<http://geoportal.icar.gov.in:8080/geoexplorer/composer/>

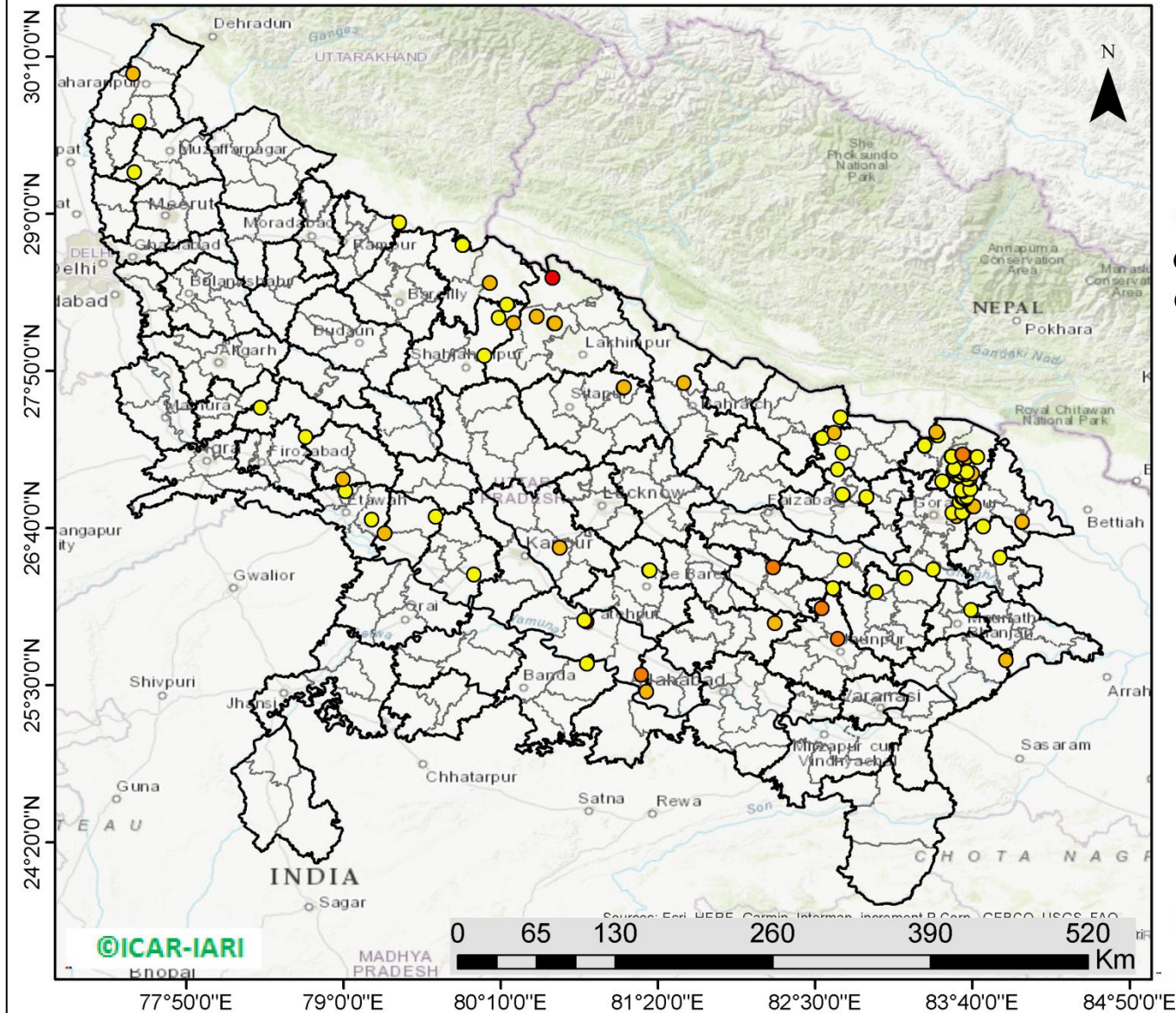


**District-wise cumulative number of residue burning events in Haryana (30-Sep-2018 to 23-Nov-2018)**



(c) Uttar Pradesh

PADDY RESIDUE BURNING IN UTTAR PRADESH



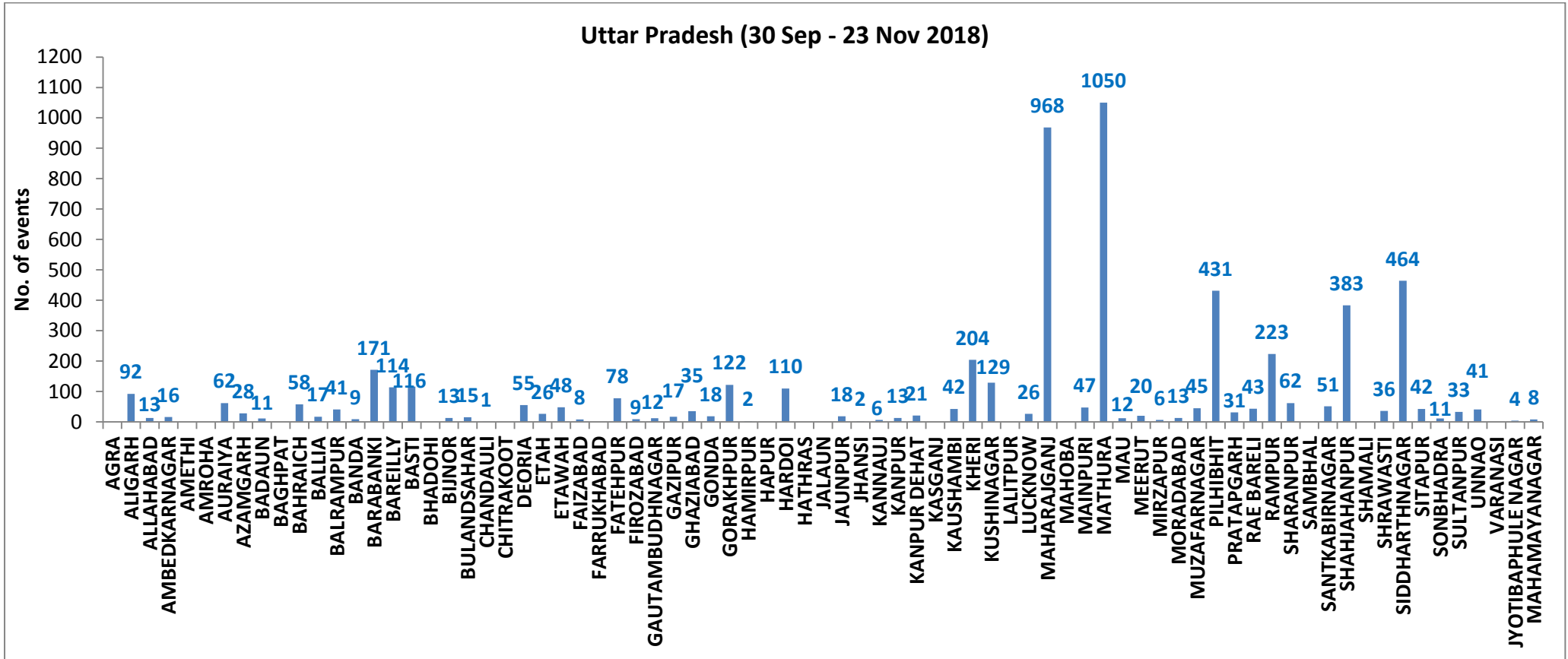
**106** burning events detected in Uttar Pradesh on **23rd Nov, 2018**

Fire Intensity (W/m<sup>2</sup>)

- 0 - 5
- 6 - 10
- 11 - 15
- 16 - 20
- >20

<http://geoportal.icar.gov.in:8080/geoexplorer/composer/>

**District-wise cumulative number of residue burning events in Uttar Pradesh (30-Sep-2018 to 23-Nov-2018)**



**State wise, date wise and district-wise number of residue burning events detected in 2016, 2017 and 2018**  
**(Period: 30-Sep to 23-Nov)**

Date	Punjab			Haryana			UP			Total		
	2016	2017	2018	2016	2017	2018	2016	2017	2018	2016	2017	2018
<b>30-Sep</b>	--	--	11	--	---	7	--	---	13	--	---	31
<b>1-Oct</b>	109	54	16	46	13	9	23	2	11	178	69	36
<b>2-Oct</b>	51	50	9	16	27	23	20	8	21	87	85	53
<b>3-Oct</b>	66	62	4	16	40	9	16	17	12	98	119	25
<b>4-Oct</b>	37	103	32	7	60	16	15	22	5	59	185	53
<b>5-Oct</b>	95	106	56	15	68	30	14	20	10	124	194	96
<b>6-Oct</b>	152	138	87	105	75	65	6	39	13	263	252	165
<b>7-Oct</b>	171	105	162	126	97	180	24	31	69	321	233	411
<b>8-Oct</b>	166	215	39	94	218	40	14	75	54	274	508	133
<b>9-Oct</b>	270	163	75	121	148	47	22	87	32	413	398	154
<b>10-Oct</b>	597	164	23	242	151	37	74	126	21	913	441	81
<b>11-Oct</b>	652	177	30	336	87	78	128	74	24	1116	338	132
<b>12-Oct</b>	694	342	67	338	123	133	164	51	22	1196	516	222
<b>13-Oct</b>	467	470	62	284	207	147	102	69	61	853	746	270
<b>14-Oct</b>	812	582	112	328	333	153	60	137	57	1200	1052	322
<b>15-Oct</b>	1215	943	90	248	458	110	76	237	35	1539	1638	235
<b>16-Oct</b>	1478	465	174	385	186	138	125	71	20	1988	722	332
<b>17-Oct</b>	2173	807	272	399	244	268	261	69	94	2833	1120	634
<b>18-Oct</b>	1065	970	263	270	306	255	204	108	163	1539	1384	681
<b>19-Oct</b>	1762	1591	254	276	541	208	132	128	108	2170	2260	570
<b>20-Oct</b>	1175	2653	496	188	597	141	62	255	49	1425	3505	686
<b>21-Oct</b>	1726	1139	618	257	233	217	152	168	66	2135	1540	901
<b>22-Oct</b>	2837	1356	656	309	186	134	194	151	149	3340	1693	939
<b>23-Oct</b>	2040	994	1113	313	155	232	331	72	193	2684	1221	1538
<b>24-Oct</b>	1836	1714	844	221	244	166	152	171	192	2209	2129	1202
<b>25-Oct</b>	1813	2104	1247	229	303	182	83	175	142	2125	2582	1571



<b>26-Oct</b>	3390	1715	1173	434	276	132	195	240	33	4019	2231	1338
<b>27-Oct</b>	2904	2069	2040	417	224	252	255	145	154	3576	2438	2446
<b>28-Oct</b>	3493	2318	2864	458	292	330	435	99	290	4386	2709	3484
<b>29-Oct</b>	2258	4184	1321	278	502	124	237	180	243	2773	4866	1688
<b>30-Oct</b>	1076	3152	2008	395	307	103	175	238	158	1646	3697	2269
<b>31-Oct</b>	6132	3743	2715	575	413	229	153	321	148	6860	4447	3092
<b>01-Nov</b>	4843	2736	4140	362	250	306	223	199	161	5628	3185	4607
<b>02-Nov</b>	4183	1246	3550	332	145	306	345	131	142	4860	1522	3998
<b>03-Nov</b>	3806	2109	972	275	240	202	409	75	181	4409	2424	1355
<b>04-Nov</b>	4477	4603	882	146	499	77	265	168	183	4888	5270	1142
<b>05-Nov</b>	4137	2876	2989	345	625	129	125	367	163	4607	3868	3281
<b>06-Nov</b>	6303	171	3071	322	26	222	215	357	130	6840	327	3423
<b>07-Nov</b>	8575	420	4033	821	46	568	244	149	108	9640	615	4709
<b>08-Nov</b>	4129	2256	4450	432	128	313	419	43	338	4874	2427	5101
<b>09-Nov</b>	4857	675	2083	608	311	96	205	107	294	5670	1093	2473
<b>10-Nov</b>	2468	1642	1675	484	509	85	109	131	125	3061	2282	1885
<b>11-Nov</b>	5040	103	1364	716	29	196	129	358	45	5885	490	1605
<b>12-Nov</b>	1477	33	1256	634	3	122	129	269	45	2240	305	1423
<b>13-Nov</b>	885	237	1563	389	7	146	338	109	94	1612	353	1803
<b>14-Nov</b>	692	1101	765	171	340	189	247	95	128	1110	1536	1082
<b>15-Nov</b>	871	5	1480	107	40	107	154	123	146	1132	168	1733
<b>16-Nov</b>	911	8	1250	318	17	204	123	218	112	1352	243	1566
<b>17-Nov</b>	638	217	1132	299	12	289	130	249	103	1067	478	1524
<b>18-Nov</b>	568	2147	1400	312	139	356	217	180	111	1097	2466	1867
<b>19-Nov</b>	168	2200	752	125	471	159	273	122	3	566	2793	914
<b>20-Nov</b>	240	1857	385	204	325	88	183	101	243	627	2283	716
<b>21-Nov</b>	112	2310	480	115	378	161	86	205	107	313	2893	748
<b>22-Nov</b>	99	719	287	118	154	122	148	281	72	365	1154	481
<b>23-Nov</b>	54	1033	317	97	259	180	151	163	106	302	1455	603
<b>Total</b>	<b>102245</b>	<b>65352</b>	<b>59209</b>	<b>15458</b>	<b>12067</b>	<b>8816</b>	<b>8771</b>	<b>7790</b>	<b>5802</b>	<b>126474</b>	<b>85209</b>	<b>73827</b>

**(a) Punjab**

Districts	01 Oct - 23Nov		
	2016	2017	2018
AMRITSAR	2170	1340	1333
BARNALA	5697	3343	3264
BATHINDA	8838	5554	6328
FARIDKOT	4626	3439	3048
FATEHGARH SAHIB	2461	1633	857
FAZILKA	0	0	0
FIROZPUR	13608	9591	9915
GURDASPUR	2215	1575	1153
HOSHIARPUR	900	488	198
JALANDHAR	4660	2088	1380
KAPURTHALA	3134	1608	747
LUDHIANA	9535	4539	2974
MANSA	5640	4440	4300
MOGA	6393	2605	2721
MUKTSAR	7025	5198	5722
NAWASHAHR (SBS Nagar)	1362	675	287
PATHANKOT	0	0	0
PATIALA	6539	5028	4215
RUPNAGAR	717	326	86
SANGRUR	11860	8394	7772
SAS NAGAR	362	244	199
TARN TARAN	4503	3244	2710
<b>Total</b>	<b>102245</b>	<b>65352</b>	<b>59209</b>

**(b) Haryana**

Districts	01 Oct - 23Nov		
	2016	2017	2018
AMBALA	531	495	330
BHIWANI	85	35	15
FARIDABAD	288	341	186
FATEHABAD	4808	3554	2453
GURUGRAM	0	0	0
HISAR	396	178	195
JHAJJAR	33	18	26
JIND	854	936	871
KAITHAL	1748	1512	1290
KARNAL	1626	1503	848
KURUKSHETRA	1078	1146	681
MAHENDRAGARH	0	0	0
MEWAT	0	0	0
PALWAL	0	0	0
PANCHKULA	0	0	3
PANIPAT	92	94	62
REWARI	0	0	0
ROHTAK	92	70	31
SIRSA	3497	1807	1601
SONIPAT	87	68	33
YAMUNANAGAR	243	310	191
<b>Total</b>	<b>15458</b>	<b>12067</b>	<b>8816</b>

**(c) Uttar Pradesh**

Distrites	01 Oct - 23Nov			GAUTAMBUDH NAGAR			RAE BARELI		
	2016	2017	2018						
AGRA	0	0	0	25	42	12	96	90	43
ALIGARH	53	80	92	13	14	17	619	628	223
ALLAHABAD	5	13	13	77	51	35	107	125	62
AMBEDKARNAGAR	69	50	16	46	34	18	0	0	0
AMETHI	0	0	0	63	112	122	55	61	51
AMROHA	0	0	0	0	0	2	1141	684	383
AURAIYA	238	211	62	0	0	0	0	0	0
AZAMGARH	37	41	28	244	200	110	32	31	36
BADAUN	7	7	11	0	0	0	246	184	464
BAGHPAT	0	0	0	0	0	0	124	73	42
BAHRAICH	71	40	58	0	0	0	15	14	11
BALLIA	18	37	17	19	25	18	69	44	33
BALRAMPUR	34	27	41	0	0	2	63	54	41
BANDA	2	17	9	33	18	6	2	0	0
BARABANKI	214	166	171	16	9	13	11	13	4
BAREILLY	247	218	114	59	63	21	2	2	8
BASTI	142	184	116	0	0	0	8771	7790	5802
BHADOHI	0	0	0	26	45	42			
BIJNOR	58	54	13	440	275	204			
BULANDSAHAR	29	30	15	53	140	129			
CHANDAULI	11	9	1	0	0	0			
CHITRAKOOT	0	0	0	61	30	26			
DEORIA	61	74	55	646	994	968			
ETAH	18	31	26	0	0	0			
ETAWAH	150	120	48	87	90	47			
FAIZABAD	14	12	8	1454	1083	1050			
FARRUKHABAD	0	0	0	12	18	12			
FATEHPUR	66	53	78	81	83	20			
FIROZABAD	23	18	9	5	13	6			
				50	36	13			
				133	146	45			
				940	723	431			
				39	51	31			

**Details of residue burning events in Punjab on 23-Nov-2018**

<b>Event S. No.</b>	<b>District</b>	<b>Tehsil/Block</b>	<b>Satellite</b>	<b>Longitude</b>	<b>Latitude</b>	<b>Time (IST)</b>	<b>Day/Night</b>	<b>Fire Power (W/m<sup>2</sup>)</b>
1	AMRITSAR	AJNALA	S-NPP	74.50272	31.70022	13:42:00	D	3.00
2	AMRITSAR	AJNALA	S-NPP	74.58870	31.70432	13:42:00	D	3.70
3	AMRITSAR	AJNALA	S-NPP	74.55371	31.72104	13:42:00	D	2.80
4	AMRITSAR	AJNALA	S-NPP	74.53078	31.72159	13:42:00	D	6.10
5	AMRITSAR	AJNALA	S-NPP	74.55309	31.72451	13:42:00	D	4.20
6	AMRITSAR	AJNALA	S-NPP	74.66319	31.72462	13:42:00	D	9.10
7	AMRITSAR	AJNALA	S-NPP	74.68119	31.72695	13:42:00	D	1.40
8	AMRITSAR	AJNALA	S-NPP	74.66194	31.73158	13:42:00	D	7.20
9	AMRITSAR	AJNALA	S-NPP	74.70192	31.74032	13:42:00	D	4.30
10	AMRITSAR	AJNALA	S-NPP	74.54108	31.74065	13:42:00	D	2.50
11	AMRITSAR	AJNALA	S-NPP	74.54047	31.74412	13:42:00	D	2.90
12	AMRITSAR	AJNALA	S-NPP	74.80779	31.77185	13:42:00	D	2.70
13	AMRITSAR	AJNALA	S-NPP	74.64636	31.79358	13:42:00	D	7.40
14	AMRITSAR	AJNALA	S-NPP	74.69895	31.81533	13:42:00	D	3.90
15	AMRITSAR	AJNALA	S-NPP	74.69743	31.81814	13:42:00	D	4.60
16	AMRITSAR	AJNALA	S-NPP	74.71584	31.82463	13:42:00	D	2.30
17	AMRITSAR	AJNALA	S-NPP	74.92107	31.85433	13:42:00	D	4.00
18	AMRITSAR	AJNALA	S-NPP	74.92569	31.85491	13:42:00	D	5.70
19	AMRITSAR	AJNALA	S-NPP	74.59818	31.86279	13:42:00	D	5.50
20	AMRITSAR	AJNALA	S-NPP	74.64385	31.86520	13:42:00	D	3.10
21	AMRITSAR	AJNALA	S-NPP	74.90939	31.86722	13:42:00	D	3.50
22	AMRITSAR	AJNALA	S-NPP	74.85601	31.90346	13:42:00	D	1.70
23	AMRITSAR	AMRITSAR I	S-NPP	75.05322	31.73159	13:42:00	D	3.40
24	AMRITSAR	AMRITSAR I	S-NPP	75.05785	31.73219	13:42:00	D	5.00
25	AMRITSAR	AMRITSAR I	S-NPP	75.00448	31.77548	13:42:00	D	3.30
26	AMRITSAR	AMRITSAR II	S-NPP	74.66646	31.55942	13:42:00	D	7.00
27	AMRITSAR	AMRITSAR II	S-NPP	74.68967	31.58381	13:42:00	D	3.50
28	AMRITSAR	BABA BAKALA	S-NPP	75.27145	31.55157	13:42:00	D	3.10
29	BARNALA	BARNALA	AQUA-1	75.56806	30.42807	12:59:00	D	42.58



30	BARNALA	BARNALA	AQUA-1	75.59876	30.42807	12:59:00	D	122.68
31	BARNALA	BARNALA	S-NPP	75.35590	30.48628	13:42:00	D	7.20
32	BARNALA	BARNALA	S-NPP	75.42599	30.48814	13:42:00	D	4.50
33	BARNALA	BARNALA	S-NPP	75.35529	30.48980	13:42:00	D	7.20
34	BARNALA	BARNALA	S-NPP	75.42301	30.50584	13:42:00	D	11.90
35	BARNALA	BARNALA	S-NPP	75.66776	30.52281	13:42:00	D	28.70
36	BARNALA	BARNALA	S-NPP	75.45784	30.56019	13:42:00	D	34.60
37	BARNALA	TAPPA	S-NPP	75.49879	30.16768	13:42:00	D	5.50
38	BARNALA	TAPPA	S-NPP	75.46111	30.20878	13:42:00	D	5.00
39	BARNALA	TAPPA	S-NPP	75.56746	30.27662	13:42:00	D	7.20
40	BARNALA	TAPPA	S-NPP	75.44276	30.35397	13:42:00	D	4.00
41	BATHINDA	BATHINDA	S-NPP	74.72071	30.06840	13:42:00	D	1.30
42	BATHINDA	BATHINDA	S-NPP	74.76761	30.07825	13:42:00	D	8.90
43	BATHINDA	BATHINDA	S-NPP	74.75362	30.16632	13:42:00	D	1.80
44	BATHINDA	BATHINDA	S-NPP	74.89616	30.19245	13:42:00	D	2.00
45	BATHINDA	BATHINDA	AQUA-1	74.81945	30.28284	12:59:00	D	45.69
46	BATHINDA	BATHINDA	S-NPP	75.07724	30.38553	13:42:00	D	5.10
47	BATHINDA	RAMPURA PHUL	S-NPP	75.25959	30.21890	13:42:00	D	3.70
48	BATHINDA	RAMPURA PHUL	S-NPP	75.21489	30.23815	13:42:00	D	2.30
49	BATHINDA	RAMPURA PHUL	S-NPP	75.21880	30.30356	13:42:00	D	5.20
50	BATHINDA	RAMPURA PHUL	S-NPP	75.21773	30.39652	13:42:00	D	11.00
51	BATHINDA	RAMPURA PHUL	S-NPP	75.21081	30.40997	13:42:00	D	3.60
52	BATHINDA	RAMPURA PHUL	S-NPP	75.04652	30.46444	13:42:00	D	6.00
53	BATHINDA	RAMPURA PHUL	S-NPP	75.24529	30.47903	13:42:00	D	1.80
54	BATHINDA	TALWANDI SABO	S-NPP	75.05782	29.97007	13:42:00	D	4.90
55	BATHINDA	TALWANDI SABO	S-NPP	74.95195	30.04277	13:42:00	D	5.20
56	BATHINDA	TALWANDI SABO	S-NPP	75.20954	30.09782	13:42:00	D	1.00
57	FARIDKOT	FARIDKOT	S-NPP	74.77110	30.51342	13:42:00	D	5.30
58	FARIDKOT	FARIDKOT	S-NPP	74.75676	30.51857	13:42:00	D	2.40
59	FARIDKOT	FARIDKOT	S-NPP	74.77844	30.60428	13:42:00	D	7.80
60	FARIDKOT	FARIDKOT	S-NPP	74.75285	30.62209	13:42:00	D	2.50
61	FARIDKOT	FARIDKOT	S-NPP	74.67485	30.77420	13:42:00	D	4.30

62	FARIDKOT	FARIDKOT	S-NPP	74.59312	30.78096	13:42:00	D	31.00
63	FARIDKOT	FARIDKOT	S-NPP	74.77423	30.79793	13:42:00	D	3.80
64	FARIDKOT	FARIDKOT	S-NPP	74.76799	30.80774	13:42:00	D	2.90
65	FARIDKOT	JAITO	S-NPP	75.04552	30.46339	13:42:00	D	4.30
66	FARIDKOT	JAITO	S-NPP	74.84300	30.48761	13:42:00	D	3.90
67	FATEHGARH SAHIB	BASSI PATHANAN	S-NPP	76.52869	30.71838	13:42:00	D	6.40
68	FATEHGARH SAHIB	FATEHGARH SAHIB	S-NPP	76.41839	30.54094	13:42:00	D	9.10
69	FATEHGARH SAHIB	KHAMANOH	S-NPP	76.32014	30.79656	13:42:00	D	2.10
70	FIROZPUR	ABOHAR	S-NPP	74.43661	30.01924	13:42:00	D	35.00
71	FIROZPUR	ABOHAR	S-NPP	74.05942	30.09551	13:42:00	D	2.20
72	FIROZPUR	ABOHAR	S-NPP	74.25288	30.13637	13:42:00	D	5.60
73	FIROZPUR	ABOHAR	S-NPP	74.26485	30.14539	13:42:00	D	2.80
74	FIROZPUR	ABOHAR	S-NPP	74.28997	30.17314	13:42:00	D	9.40
75	FIROZPUR	ABOHAR	S-NPP	74.21011	30.18651	13:42:00	D	1.80
76	FIROZPUR	ABOHAR	S-NPP	74.22626	30.19221	13:42:00	D	9.30
77	FIROZPUR	FAZILKA	S-NPP	74.02537	30.21683	13:42:00	D	4.20
78	FIROZPUR	FAZILKA	S-NPP	74.02474	30.22020	13:42:00	D	4.20
79	FIROZPUR	FAZILKA	S-NPP	74.00964	30.25613	13:42:00	D	6.80
80	FIROZPUR	FAZILKA	S-NPP	74.02625	30.25844	13:42:00	D	2.70
81	FIROZPUR	FAZILKA	S-NPP	74.02485	30.28937	13:42:00	D	1.80
82	FIROZPUR	FAZILKA	S-NPP	74.07233	30.30983	13:42:00	D	2.50
83	FIROZPUR	FAZILKA	S-NPP	74.28268	30.33551	13:42:00	D	2.40
84	FIROZPUR	FAZILKA	S-NPP	73.98980	30.34423	13:42:00	D	1.60
85	FIROZPUR	FAZILKA	S-NPP	74.28384	30.35308	13:42:00	D	5.40
86	FIROZPUR	FAZILKA	S-NPP	74.03249	30.36743	13:42:00	D	5.40
87	FIROZPUR	FAZILKA	S-NPP	74.03572	30.41981	13:42:00	D	1.40
88	FIROZPUR	FAZILKA	S-NPP	74.11282	30.42014	13:42:00	D	12.20
89	FIROZPUR	FAZILKA	S-NPP	74.29877	30.44234	13:42:00	D	11.00
90	FIROZPUR	FAZILKA	S-NPP	74.29815	30.44574	13:42:00	D	25.90
91	FIROZPUR	FAZILKA	S-NPP	74.16714	30.45548	13:42:00	D	2.20
92	FIROZPUR	FAZILKA	S-NPP	74.16652	30.45887	13:42:00	D	6.70
93	FIROZPUR	FAZILKA	S-NPP	73.93806	30.46553	13:42:00	D	5.60

94	FIROZPUR	FAZILKA	S-NPP	74.06085	30.47215	13:42:00	D	2.10
95	FIROZPUR	FAZILKA	S-NPP	74.04025	30.51434	13:42:00	D	3.60
96	FIROZPUR	FAZILKA	S-NPP	74.04321	30.52167	13:42:00	D	2.10
97	FIROZPUR	FAZILKA	S-NPP	74.04615	30.52902	13:42:00	D	4.50
98	FIROZPUR	FAZILKA	S-NPP	74.04552	30.53240	13:42:00	D	5.90
99	FIROZPUR	FIROZPUR	S-NPP	74.50380	30.86298	13:42:00	D	3.80
100	FIROZPUR	FIROZPUR	S-NPP	74.56366	30.92733	13:42:00	D	6.00
101	FIROZPUR	FIROZPUR	S-NPP	74.55493	30.98091	13:42:00	D	3.60
102	FIROZPUR	JALALABAD	S-NPP	74.25452	30.47430	13:42:00	D	1.20
103	FIROZPUR	JALALABAD	S-NPP	74.35278	30.48409	13:42:00	D	2.50
104	FIROZPUR	JALALABAD	S-NPP	74.29081	30.48967	13:42:00	D	2.30
105	FIROZPUR	JALALABAD	S-NPP	74.34606	30.49715	13:42:00	D	3.20
106	FIROZPUR	JALALABAD	S-NPP	74.33997	30.50679	13:42:00	D	2.00
107	FIROZPUR	JALALABAD	S-NPP	74.35029	30.52216	13:42:00	D	5.00
108	FIROZPUR	JALALABAD	S-NPP	74.32532	30.53970	13:42:00	D	26.70
109	FIROZPUR	JALALABAD	S-NPP	74.37708	30.54325	13:42:00	D	2.30
110	FIROZPUR	JALALABAD	S-NPP	74.08627	30.55253	13:42:00	D	1.80
111	FIROZPUR	JALALABAD	S-NPP	74.08084	30.55873	13:42:00	D	4.30
112	FIROZPUR	JALALABAD	S-NPP	74.37277	30.56713	13:42:00	D	4.40
113	FIROZPUR	JALALABAD	S-NPP	74.11742	30.57067	13:42:00	D	3.10
114	FIROZPUR	JALALABAD	S-NPP	74.11074	30.58364	13:42:00	D	2.60
115	FIROZPUR	JALALABAD	S-NPP	74.40924	30.61717	13:42:00	D	4.60
116	FIROZPUR	JALALABAD	S-NPP	74.12982	30.62099	13:42:00	D	4.90
117	FIROZPUR	JALALABAD	S-NPP	74.42150	30.62232	13:42:00	D	1.30
118	FIROZPUR	JALALABAD	S-NPP	74.43008	30.62347	13:42:00	D	16.30
119	FIROZPUR	JALALABAD	S-NPP	74.43438	30.62405	13:42:00	D	16.30
120	FIROZPUR	JALALABAD	S-NPP	74.21980	30.62639	13:42:00	D	2.10
121	FIROZPUR	JALALABAD	S-NPP	74.36335	30.62848	13:42:00	D	3.10
122	FIROZPUR	JALALABAD	S-NPP	74.18162	30.64551	13:42:00	D	6.20
123	FIROZPUR	JALALABAD	S-NPP	74.17255	30.64774	13:42:00	D	3.20
124	FIROZPUR	JALALABAD	S-NPP	74.17193	30.65113	13:42:00	D	51.50
125	FIROZPUR	JALALABAD	S-NPP	74.17616	30.65171	13:42:00	D	51.50

126	FIROZPUR	JALALABAD	S-NPP	74.19669	30.65803	13:42:00	D	2.80
127	FIROZPUR	JALALABAD	S-NPP	74.40248	30.67926	13:42:00	D	2.30
128	FIROZPUR	JALALABAD	S-NPP	74.31329	30.71534	13:42:00	D	15.90
129	FIROZPUR	ZIRA	S-NPP	75.35437	30.86587	13:42:00	D	1.90
130	FIROZPUR	ZIRA	S-NPP	75.32074	30.86882	13:42:00	D	25.60
131	FIROZPUR	ZIRA	TERRA-1	75.17074	30.86974	11:25:00	D	8.72
132	FIROZPUR	ZIRA	S-NPP	75.29906	30.91302	13:42:00	D	2.60
133	FIROZPUR	ZIRA	AQUA-1	75.27987	30.92065	12:59:00	D	32.51
134	FIROZPUR	ZIRA	S-NPP	75.20489	30.92222	13:42:00	D	5.60
135	FIROZPUR	ZIRA	S-NPP	74.94851	30.92871	13:42:00	D	5.90
136	FIROZPUR	ZIRA	S-NPP	75.29304	30.92974	13:42:00	D	3.20
137	FIROZPUR	ZIRA	S-NPP	75.29646	30.93740	13:42:00	D	7.80
138	FIROZPUR	ZIRA	S-NPP	75.03797	31.05854	13:42:00	D	15.20
139	GURDASPUR	BATALA	S-NPP	75.32066	31.66933	13:42:00	D	3.60
140	GURDASPUR	BATALA	S-NPP	75.17808	31.75487	13:42:00	D	2.40
141	GURDASPUR	BATALA	S-NPP	75.05351	31.82139	13:42:00	D	3.70
142	GURDASPUR	BATALA	S-NPP	75.08433	31.83618	13:42:00	D	2.50
143	GURDASPUR	BATALA	S-NPP	75.05853	31.88247	13:42:00	D	1.40
144	GURDASPUR	BATALA	S-NPP	75.11289	31.90016	13:42:00	D	4.00
145	GURDASPUR	BATALA	S-NPP	75.08762	31.90783	13:42:00	D	3.80
146	GURDASPUR	DERA BABA NANAK	S-NPP	74.90726	31.90647	13:42:00	D	4.70
147	GURDASPUR	DERA BABA NANAK	S-NPP	74.92204	31.92996	13:42:00	D	7.10
148	GURDASPUR	DERA BABA NANAK	S-NPP	75.07720	31.97809	13:42:00	D	3.50
149	GURDASPUR	DERA BABA NANAK	S-NPP	75.10233	31.99933	13:42:00	D	3.40
150	GURDASPUR	GURDASPUR	S-NPP	75.38213	31.91539	13:42:00	D	2.40
151	GURDASPUR	GURDASPUR	S-NPP	75.36648	31.92079	13:42:00	D	1.90
152	GURDASPUR	GURDASPUR	S-NPP	75.25571	32.03667	13:42:00	D	2.90
153	HOSHIARPUR	DASUYA	S-NPP	75.58646	31.86997	13:42:00	D	4.50
154	JALANDHAR	JALANDHAR II	S-NPP	75.48760	31.31276	13:42:00	D	8.10
155	JALANDHAR	PHILLAUR	S-NPP	75.54262	31.07545	13:42:00	D	9.20
156	JALANDHAR	PHILLAUR	S-NPP	75.80305	31.10368	13:42:00	D	4.70
157	JALANDHAR	PHILLAUR	S-NPP	75.56635	31.10765	13:42:00	D	34.90



158	JALANDHAR	PHILLAUR	S-NPP	75.83425	31.12596	13:42:00	D	13.70
159	JALANDHAR	PHILLAUR	S-NPP	75.83366	31.12959	13:42:00	D	13.70
160	JALANDHAR	PHILLAUR	S-NPP	75.83246	31.13684	13:42:00	D	5.80
161	JALANDHAR	PHILLAUR	S-NPP	75.84535	31.14953	13:42:00	D	4.40
162	JALANDHAR	SHAHKOT	S-NPP	75.32150	31.07687	13:42:00	D	3.30
163	JALANDHAR	SHAHKOT	S-NPP	75.20609	31.08743	13:42:00	D	5.00
164	JALANDHAR	SHAHKOT	S-NPP	75.21069	31.08803	13:42:00	D	5.00
165	JALANDHAR	SHAHKOT	S-NPP	75.20548	31.09096	13:42:00	D	5.40
166	JALANDHAR	SHAHKOT	S-NPP	75.32299	31.16668	13:42:00	D	2.80
167	KAPURTHALA	BHOLATH	S-NPP	75.51764	31.49384	13:42:00	D	6.50
168	LUDHIANA	JAGRAON	S-NPP	75.48260	30.70335	13:42:00	D	17.30
169	LUDHIANA	JAGRAON	TERRA-1	75.49474	30.70505	11:25:00	D	9.20
170	LUDHIANA	JAGRAON	S-NPP	75.49902	30.76231	13:42:00	D	10.60
171	LUDHIANA	JAGRAON	S-NPP	75.43411	30.77953	13:42:00	D	2.00
172	LUDHIANA	JAGRAON	S-NPP	75.60017	30.78956	13:42:00	D	2.10
173	LUDHIANA	JAGRAON	S-NPP	75.59838	30.80030	13:42:00	D	1.10
174	LUDHIANA	JAGRAON	S-NPP	75.60665	30.80864	13:42:00	D	10.40
175	LUDHIANA	JAGRAON	S-NPP	75.40384	30.85401	13:42:00	D	3.80
176	LUDHIANA	JAGRAON	S-NPP	75.49451	30.85447	13:42:00	D	2.80
177	LUDHIANA	JAGRAON	S-NPP	75.61910	30.85897	13:42:00	D	2.10
178	LUDHIANA	JAGRAON	S-NPP	75.42223	30.91439	13:42:00	D	3.70
179	LUDHIANA	JAGRAON	S-NPP	75.42690	30.91499	13:42:00	D	3.70
180	LUDHIANA	JAGRAON	S-NPP	75.42390	30.93277	13:42:00	D	16.30
181	LUDHIANA	JAGRAON	S-NPP	75.61967	30.94319	13:42:00	D	4.30
182	LUDHIANA	JAGRAON	S-NPP	75.57806	30.95984	13:42:00	D	8.50
183	LUDHIANA	JAGRAON	S-NPP	75.57478	30.96119	13:42:00	D	10.70
184	LUDHIANA	LUDHIANA EAST	S-NPP	75.79321	30.72433	13:42:00	D	2.90
185	LUDHIANA	LUDHIANA EAST	S-NPP	75.81367	30.74899	13:42:00	D	29.20
186	LUDHIANA	LUDHIANA EAST	S-NPP	75.87165	30.75626	13:42:00	D	3.10
187	LUDHIANA	LUDHIANA EAST	S-NPP	75.88926	30.76955	13:42:00	D	3.50
188	LUDHIANA	LUDHIANA EAST	S-NPP	75.85900	30.77313	13:42:00	D	3.10
189	LUDHIANA	LUDHIANA EAST	S-NPP	75.88866	30.77317	13:42:00	D	3.50

190	LUDHIANA	LUDHIANA EAST	S-NPP	76.11175	30.90119	13:42:00	D	6.40
191	LUDHIANA	LUDHIANA EAST	S-NPP	76.13498	30.91528	13:42:00	D	3.50
192	LUDHIANA	LUDHIANA WEST	S-NPP	75.77048	30.77297	13:42:00	D	5.20
193	LUDHIANA	LUDHIANA WEST	S-NPP	75.77528	30.77358	13:42:00	D	5.20
194	LUDHIANA	LUDHIANA WEST	S-NPP	75.77300	30.77432	13:42:00	D	9.50
195	LUDHIANA	LUDHIANA WEST	S-NPP	75.71491	30.80022	13:42:00	D	8.60
196	LUDHIANA	LUDHIANA WEST	S-NPP	75.91100	30.80592	13:42:00	D	10.40
197	LUDHIANA	LUDHIANA WEST	S-NPP	75.59773	30.83309	13:42:00	D	2.80
198	LUDHIANA	LUDHIANA WEST	S-NPP	75.61964	30.84685	13:42:00	D	18.10
199	LUDHIANA	LUDHIANA WEST	S-NPP	75.62853	30.85164	13:42:00	D	10.20
200	LUDHIANA	LUDHIANA WEST	S-NPP	75.69605	30.92346	13:42:00	D	4.10
201	LUDHIANA	LUDHIANA WEST	S-NPP	75.70084	30.92406	13:42:00	D	6.20
202	LUDHIANA	PAYAL	S-NPP	75.90823	30.61294	13:42:00	D	6.90
203	LUDHIANA	PAYAL	S-NPP	75.98052	30.62554	13:42:00	D	3.40
204	LUDHIANA	PAYAL	S-NPP	75.85873	30.68455	13:42:00	D	9.10
205	LUDHIANA	PAYAL	S-NPP	76.04010	30.76236	13:42:00	D	6.70
206	LUDHIANA	RAIKOT	AQUA-1	75.67038	30.60774	12:59:00	D	36.95
207	LUDHIANA	RAIKOT	TERRA-1	75.56977	30.60923	11:25:00	D	22.07
208	LUDHIANA	RAIKOT	S-NPP	75.49654	30.61229	13:42:00	D	4.30
209	LUDHIANA	RAIKOT	S-NPP	75.67732	30.62080	13:42:00	D	3.10
210	LUDHIANA	RAIKOT	S-NPP	75.63242	30.62971	13:42:00	D	11.10
211	LUDHIANA	RAIKOT	S-NPP	75.53087	30.63488	13:42:00	D	39.10
212	LUDHIANA	RAIKOT	S-NPP	75.61119	30.64159	13:42:00	D	2.60
213	LUDHIANA	RAIKOT	S-NPP	75.62062	30.65157	13:42:00	D	3.30
214	LUDHIANA	RAIKOT	S-NPP	75.62003	30.65515	13:42:00	D	1.50
215	LUDHIANA	RAIKOT	S-NPP	75.63181	30.67122	13:42:00	D	8.60
216	LUDHIANA	RAIKOT	S-NPP	75.67321	30.71296	13:42:00	D	8.90
217	MANSA	SARDULGARH	S-NPP	75.30211	29.57123	13:42:00	D	2.70
218	MANSA	SARDULGARH	S-NPP	75.29265	29.57356	13:42:00	D	2.60
219	MANSA	SARDULGARH	S-NPP	75.28319	29.57589	13:42:00	D	4.70
220	MANSA	SARDULGARH	S-NPP	75.22440	29.66185	13:42:00	D	3.70
221	MANSA	SARDULGARH	S-NPP	75.28677	29.69499	13:42:00	D	3.20

222	MANSA	SARDULGARH	AQUA-1	75.29079	29.72469	12:59:00	D	60.36
223	MOGA	BAGHA PURANA	S-NPP	75.12000	30.57045	13:42:00	D	9.70
224	MOGA	BAGHA PURANA	S-NPP	75.04391	30.61792	13:42:00	D	3.00
225	MOGA	BAGHA PURANA	S-NPP	74.98888	30.67133	13:42:00	D	2.40
226	MOGA	BAGHA PURANA	S-NPP	74.99072	30.67251	13:42:00	D	3.00
227	MOGA	MOGA	S-NPP	75.25058	30.74888	13:42:00	D	2.60
228	MOGA	MOGA	S-NPP	75.22745	30.77470	13:42:00	D	5.30
229	MOGA	MOGA	S-NPP	75.11915	30.78214	13:42:00	D	1.90
230	MOGA	MOGA	S-NPP	75.11855	30.78564	13:42:00	D	5.80
231	MOGA	NIHAL SINGH WALA	S-NPP	75.27124	30.52554	13:42:00	D	2.80
232	MUKTSAR	GIDDARBAHA	S-NPP	74.57206	30.22534	13:42:00	D	3.40
233	MUKTSAR	GIDDARBAHA	S-NPP	74.60150	30.23281	13:42:00	D	3.90
234	MUKTSAR	GIDDARBAHA	S-NPP	74.67303	30.30221	13:42:00	D	4.00
235	MUKTSAR	GIDDARBAHA	S-NPP	74.63760	30.33120	13:42:00	D	155.10
236	MUKTSAR	GIDDARBAHA	S-NPP	74.64191	30.33178	13:42:00	D	155.10
237	MUKTSAR	GIDDARBAHA	S-NPP	74.68085	30.33697	13:42:00	D	1.70
238	MUKTSAR	GIDDARBAHA	S-NPP	74.60933	30.36606	13:42:00	D	16.70
239	MUKTSAR	GIDDARBAHA	S-NPP	74.81413	30.38999	13:42:00	D	19.00
240	MUKTSAR	MALAUT	S-NPP	74.55636	29.95201	13:42:00	D	3.00
241	MUKTSAR	MALAUT	S-NPP	74.58067	29.96234	13:42:00	D	32.50
242	MUKTSAR	MALAUT	S-NPP	74.56757	29.96714	13:42:00	D	32.60
243	MUKTSAR	MALAUT	S-NPP	74.47412	30.00343	13:42:00	D	3.30
244	MUKTSAR	MALAUT	S-NPP	74.59264	30.07205	13:42:00	D	22.40
245	MUKTSAR	MALAUT	S-NPP	74.59691	30.07264	13:42:00	D	22.40
246	MUKTSAR	MALAUT	S-NPP	74.44452	30.10353	13:42:00	D	4.80
247	MUKTSAR	MUKTSAR	S-NPP	74.52273	30.38239	13:42:00	D	3.80
248	MUKTSAR	MUKTSAR	S-NPP	74.33940	30.43396	13:42:00	D	1.90
249	MUKTSAR	MUKTSAR	S-NPP	74.54404	30.46526	13:42:00	D	4.50
250	MUKTSAR	MUKTSAR	S-NPP	74.57365	30.49736	13:42:00	D	8.70
251	MUKTSAR	MUKTSAR	S-NPP	74.46328	30.50242	13:42:00	D	4.10
252	MUKTSAR	MUKTSAR	S-NPP	74.59464	30.50372	13:42:00	D	3.00
253	MUKTSAR	MUKTSAR	S-NPP	74.51976	30.50645	13:42:00	D	1.20

254	MUKTSAR	MUKTSAR	S-NPP	74.40515	30.53308	13:42:00	D	5.90
255	MUKTSAR	MUKTSAR	S-NPP	74.61552	30.54027	13:42:00	D	3.40
256	MUKTSAR	MUKTSAR	S-NPP	74.44431	30.55938	13:42:00	D	4.30
257	MUKTSAR	MUKTSAR	S-NPP	74.38255	30.56148	13:42:00	D	1.50
258	MUKTSAR	MUKTSAR	S-NPP	74.54018	30.56533	13:42:00	D	5.40
259	MUKTSAR	MUKTSAR	S-NPP	74.50016	30.56694	13:42:00	D	1.40
260	MUKTSAR	MUKTSAR	S-NPP	74.55314	30.56707	13:42:00	D	3.50
261	MUKTSAR	MUKTSAR	S-NPP	74.41187	30.56897	13:42:00	D	2.80
262	MUKTSAR	MUKTSAR	S-NPP	74.38071	30.57171	13:42:00	D	5.10
263	MUKTSAR	MUKTSAR	S-NPP	74.38926	30.57288	13:42:00	D	2.10
264	MUKTSAR	MUKTSAR	S-NPP	74.51616	30.57613	13:42:00	D	5.80
265	MUKTSAR	MUKTSAR	S-NPP	74.41798	30.58381	13:42:00	D	7.00
266	MUKTSAR	MUKTSAR	S-NPP	74.39108	30.58712	13:42:00	D	3.90
267	MUKTSAR	MUKTSAR	S-NPP	74.42165	30.58781	13:42:00	D	7.00
268	MUKTSAR	MUKTSAR	S-NPP	74.48297	30.58916	13:42:00	D	6.70
269	MUKTSAR	MUKTSAR	S-NPP	74.38783	30.58982	13:42:00	D	2.30
270	MUKTSAR	MUKTSAR	S-NPP	74.39211	30.59039	13:42:00	D	3.30
271	MUKTSAR	MUKTSAR	S-NPP	74.39046	30.59054	13:42:00	D	3.90
272	MUKTSAR	MUKTSAR	S-NPP	74.43376	30.60296	13:42:00	D	4.80
273	NAWASHAHR	NAWASHAHR	S-NPP	76.08173	31.01884	13:42:00	D	6.70
274	NAWASHAHR	NAWASHAHR	S-NPP	76.07938	31.01932	13:42:00	D	3.30
275	NAWASHAHR	NAWASHAHR	S-NPP	76.01438	31.08908	13:42:00	D	8.30
276	NAWASHAHR	NAWASHAHR	S-NPP	76.08864	31.10193	13:42:00	D	5.60
277	NAWASHAHR	NAWASHAHR	S-NPP	76.06428	31.13883	13:42:00	D	4.00
278	NAWASHAHR	NAWASHAHR	S-NPP	76.01456	31.16273	13:42:00	D	4.10
279	NAWASHAHR	NAWASHAHR	S-NPP	75.91540	31.26198	13:42:00	D	4.80
280	PATIALA	NABHA	S-NPP	76.16148	30.33649	13:42:00	D	3.40
281	PATIALA	NABHA	S-NPP	76.26878	30.51190	13:42:00	D	3.50
282	PATIALA	SAMANA	S-NPP	76.12103	29.94989	13:42:00	D	4.00
283	PATIALA	SAMANA	S-NPP	76.12295	29.95044	13:42:00	D	11.30
284	PATIALA	SAMANA	S-NPP	76.12585	29.95050	13:42:00	D	7.50
285	PATIALA	SAMANA	TERRA-1	76.13387	30.01395	11:25:00	D	13.82



286	RUPNAGAR	CHAMKOR SAHIB	S-NPP	76.34412	30.89566	13:42:00	D	4.90
287	RUPNAGAR	CHAMKOR SAHIB	S-NPP	76.35772	30.90863	13:42:00	D	9.70
288	SANGRUR	DHURI	S-NPP	75.89604	30.42602	13:42:00	D	2.50
289	SANGRUR	MALERKOTLA	S-NPP	76.07085	30.51789	13:42:00	D	10.40
290	SANGRUR	MOONAK	S-NPP	75.83952	29.82994	13:42:00	D	2.60
291	SANGRUR	MOONAK	S-NPP	75.95625	29.85181	13:42:00	D	3.10
292	SANGRUR	SANGRUR	S-NPP	75.79151	30.20883	13:42:00	D	2.30
293	SANGRUR	SANGRUR	S-NPP	75.84416	30.21185	13:42:00	D	2.60
294	TARN TARAN	KHADOOR SAHIB	S-NPP	74.89194	31.25128	13:42:00	D	5.40
295	TARN TARAN	KHADOOR SAHIB	S-NPP	74.95203	31.25193	13:42:00	D	1.90
296	TARN TARAN	KHADOOR SAHIB	S-NPP	74.99751	31.31158	13:42:00	D	7.00
297	TARN TARAN	KHADOOR SAHIB	S-NPP	75.00159	31.32314	13:42:00	D	1.80
298	TARN TARAN	KHADOOR SAHIB	S-NPP	75.00188	31.34829	13:42:00	D	2.70
299	TARN TARAN	KHADOOR SAHIB	S-NPP	74.86784	31.37033	13:42:00	D	4.60
300	TARN TARAN	KHADOOR SAHIB	S-NPP	75.00098	31.38047	13:42:00	D	2.70
301	TARN TARAN	KHADOOR SAHIB	S-NPP	75.00312	31.39511	13:42:00	D	2.10
302	TARN TARAN	KHADOOR SAHIB	TERRA-1	74.93541	31.41772	11:25:00	D	10.43
303	TARN TARAN	KHADOOR SAHIB	S-NPP	74.80891	31.44874	13:42:00	D	5.50
304	TARN TARAN	KHADOOR SAHIB	S-NPP	74.68455	31.45027	13:42:00	D	3.80
305	TARN TARAN	KHADOOR SAHIB	S-NPP	74.80831	31.45223	13:42:00	D	5.50
306	TARN TARAN	KHADOOR SAHIB	S-NPP	74.68393	31.45374	13:42:00	D	11.00
307	TARN TARAN	KHADOOR SAHIB	S-NPP	74.70772	31.47465	13:42:00	D	13.40
308	TARN TARAN	KHADOOR SAHIB	S-NPP	74.76162	31.48177	13:42:00	D	2.10
309	TARN TARAN	KHADOOR SAHIB	S-NPP	74.90892	31.48676	13:42:00	D	3.00
310	TARN TARAN	KHADOOR SAHIB	S-NPP	74.79021	31.53639	13:42:00	D	4.00
311	TARN TARAN	KHADOOR SAHIB	S-NPP	74.77544	31.54161	13:42:00	D	2.20
312	TARN TARAN	PATTI	S-NPP	74.83767	31.21926	13:42:00	D	5.60
313	TARN TARAN	PATTI	S-NPP	74.90466	31.23150	13:42:00	D	2.80
314	TARN TARAN	PATTI	S-NPP	74.90918	31.23208	13:42:00	D	2.80
315	TARN TARAN	PATTI	S-NPP	74.87908	31.33251	13:42:00	D	9.20
316	TARN TARAN	PATTI	S-NPP	74.69083	31.35776	13:42:00	D	8.40
317	TARN TARAN	PATTI	S-NPP	74.66189	31.39761	13:42:00	D	3.10

**Details of residue burning events in Haryana on 23-Nov-2018**

<b>Event S. No.</b>	<b>District</b>	<b>Tehsil/Block</b>	<b>Satellite</b>	<b>Longitude</b>	<b>Latitude</b>	<b>Time (IST)</b>	<b>Day/Night</b>	<b>Fire Power (W/m<sup>2</sup>)</b>
1	AMBALA	AMBALA	S-NPP	76.69603	30.25594	13:42:00	D	4.80
2	BHIWANI	BAWANI_KHERA	S-NPP	76.20096	28.95919	13:42:00	D	6.00
3	FATEHABAD	FATEHABAD	S-NPP	75.48151	29.47631	13:42:00	D	3.50
4	FATEHABAD	FATEHABAD	S-NPP	75.48093	29.47982	13:42:00	D	3.50
5	FATEHABAD	FATEHABAD	S-NPP	75.48460	29.51262	13:42:00	D	3.40
6	FATEHABAD	FATEHABAD	S-NPP	75.32858	29.51715	13:42:00	D	3.30
7	FATEHABAD	FATEHABAD	S-NPP	75.49964	29.53255	13:42:00	D	27.60
8	FATEHABAD	FATEHABAD	METOP-1	75.52714	29.53425	20:53:00	N	6.00
9	FATEHABAD	FATEHABAD	S-NPP	75.43439	29.53832	13:42:00	D	2.10
10	FATEHABAD	FATEHABAD	S-NPP	75.41057	29.54954	13:42:00	D	14.40
11	FATEHABAD	FATEHABAD	S-NPP	75.47733	29.56169	13:42:00	D	3.70
12	FATEHABAD	FATEHABAD	S-NPP	75.59047	29.57615	13:42:00	D	7.70
13	FATEHABAD	FATEHABAD	S-NPP	75.51614	29.57746	13:42:00	D	17.70
14	FATEHABAD	FATEHABAD	S-NPP	75.52401	29.58566	13:42:00	D	5.50
15	FATEHABAD	FATEHABAD	S-NPP	75.50082	29.58628	13:42:00	D	2.10
16	FATEHABAD	FATEHABAD	S-NPP	75.31128	29.59743	13:42:00	D	3.80
17	FATEHABAD	FATEHABAD	S-NPP	75.30328	29.61780	13:42:00	D	1.30
18	FATEHABAD	FATEHABAD	AQUA-1	75.50838	29.61809	12:59:00	D	70.56
19	FATEHABAD	FATEHABAD	S-NPP	75.31155	29.62247	13:42:00	D	3.50
20	FATEHABAD	FATEHABAD	S-NPP	75.31601	29.62306	13:42:00	D	3.60
21	FATEHABAD	FATEHABAD	S-NPP	75.50334	29.62616	13:42:00	D	5.90
22	FATEHABAD	FATEHABAD	S-NPP	75.35107	29.63128	13:42:00	D	3.20
23	FATEHABAD	FATEHABAD	S-NPP	75.51968	29.63909	13:42:00	D	3.30
24	FATEHABAD	FATEHABAD	S-NPP	75.50491	29.64436	13:42:00	D	2.90
25	FATEHABAD	FATEHABAD	S-NPP	75.32240	29.64604	13:42:00	D	4.00
26	FATEHABAD	FATEHABAD	S-NPP	75.49980	29.64729	13:42:00	D	4.00
27	FATEHABAD	FATEHABAD	S-NPP	75.50885	29.64848	13:42:00	D	2.90
28	FATEHABAD	RATIA	TERRA-1	75.62775	29.60611	11:25:00	D	11.56
29	FATEHABAD	RATIA	TERRA-1	75.54760	29.61061	11:25:00	D	11.70

30	FATEHABAD	RATIA	S-NPP	75.56007	29.61913	13:42:00	D	56.30
31	FATEHABAD	RATIA	S-NPP	75.52656	29.62559	13:42:00	D	30.40
32	FATEHABAD	RATIA	S-NPP	75.54469	29.62794	13:42:00	D	2.60
33	FATEHABAD	RATIA	S-NPP	75.52597	29.62911	13:42:00	D	30.40
34	FATEHABAD	RATIA	S-NPP	75.56738	29.63089	13:42:00	D	3.10
35	FATEHABAD	RATIA	S-NPP	75.52933	29.63675	13:42:00	D	7.80
36	FATEHABAD	RATIA	S-NPP	75.66780	29.64388	13:42:00	D	8.50
37	FATEHABAD	RATIA	S-NPP	75.53721	29.64499	13:42:00	D	3.80
38	FATEHABAD	RATIA	S-NPP	75.50268	29.66557	13:42:00	D	1.80
39	FATEHABAD	RATIA	S-NPP	75.37456	29.68858	13:42:00	D	4.30
40	FATEHABAD	RATIA	S-NPP	75.37904	29.68916	13:42:00	D	10.10
41	FATEHABAD	RATIA	S-NPP	75.58607	29.69422	13:42:00	D	4.80
42	FATEHABAD	RATIA	S-NPP	75.58549	29.69775	13:42:00	D	11.50
43	FATEHABAD	RATIA	S-NPP	75.37997	29.71078	13:42:00	D	1.70
44	FATEHABAD	RATIA	S-NPP	75.40121	29.72073	13:42:00	D	10.60
45	FATEHABAD	RATIA	S-NPP	75.39554	29.72716	13:42:00	D	2.90
46	FATEHABAD	RATIA	S-NPP	75.63966	29.73723	13:42:00	D	2.50
47	FATEHABAD	RATIA	TERRA-1	75.49815	29.76182	11:25:00	D	11.64
48	FATEHABAD	RATIA	S-NPP	75.42356	29.76290	13:42:00	D	4.00
49	FATEHABAD	TOHANA	S-NPP	75.79584	29.51654	13:42:00	D	3.20
50	FATEHABAD	TOHANA	S-NPP	75.82243	29.52719	13:42:00	D	3.20
51	FATEHABAD	TOHANA	S-NPP	75.76620	29.58179	13:42:00	D	1.60
52	FATEHABAD	TOHANA	S-NPP	75.90665	29.63059	13:42:00	D	8.60
53	HISAR	ADAMPUR	S-NPP	75.55525	29.29209	13:42:00	D	2.60
54	HISAR	HANSI	S-NPP	76.20667	29.05249	13:42:00	D	3.80
55	HISAR	HANSI	S-NPP	76.20609	29.05609	13:42:00	D	3.80
56	HISAR	HANSI	S-NPP	76.18188	29.05672	13:42:00	D	2.30
57	HISAR	HANSI	S-NPP	76.26617	29.10426	13:42:00	D	4.00
58	HISAR	HANSI	S-NPP	76.00004	29.12676	13:42:00	D	2.50
59	HISAR	HANSI	S-NPP	76.00411	29.13093	13:42:00	D	4.70
60	HISAR	HANSI	S-NPP	76.02209	29.20398	13:42:00	D	2.60
61	HISAR	HANSI	S-NPP	76.06013	29.20506	13:42:00	D	8.30

62	HISAR	HANSI	S-NPP	75.91498	29.27796	13:42:00	D	7.00
63	HISAR	HANSI	S-NPP	75.96735	29.31580	13:42:00	D	8.30
64	HISAR	HISAR	S-NPP	75.78375	29.50411	13:42:00	D	6.30
65	HISAR	NARNAUND	S-NPP	76.11345	29.13376	13:42:00	D	3.70
66	HISAR	NARNAUND	S-NPP	76.13111	29.14332	13:42:00	D	3.10
67	JHAJJAR	BERI	S-NPP	76.54852	28.66537	13:42:00	D	2.90
68	JHAJJAR	BERI	S-NPP	76.54795	28.66903	13:42:00	D	2.90
69	JHAJJAR	BERI	S-NPP	76.60211	28.70189	13:42:00	D	3.80
70	JHAJJAR	JHAJJAR	S-NPP	76.71335	28.55235	13:42:00	D	2.10
71	JIND	JIND	S-NPP	76.26292	29.26712	13:42:00	D	2.90
72	JIND	JIND	S-NPP	76.20383	29.27081	13:42:00	D	13.80
73	JIND	JIND	S-NPP	76.28633	29.27373	13:42:00	D	10.30
74	JIND	JIND	S-NPP	76.36030	29.40918	13:42:00	D	4.30
75	JIND	JIND	S-NPP	76.50086	29.48510	13:42:00	D	6.70
76	JIND	JULANA	S-NPP	76.41486	29.16757	13:42:00	D	3.00
77	JIND	NARWANA	S-NPP	76.21611	29.52432	13:42:00	D	6.60
78	JIND	NARWANA	S-NPP	76.08525	29.53082	13:42:00	D	3.90
79	JIND	NARWANA	S-NPP	76.13710	29.54090	13:42:00	D	12.20
80	JIND	NARWANA	S-NPP	76.13778	29.56680	13:42:00	D	5.50
81	JIND	NARWANA	S-NPP	76.11572	29.68243	13:42:00	D	3.10
82	JIND	NARWANA	S-NPP	76.08645	29.68246	13:42:00	D	2.70
83	JIND	NARWANA	S-NPP	76.11514	29.68605	13:42:00	D	11.50
84	JIND	NARWANA	S-NPP	76.14393	29.68964	13:42:00	D	7.60
85	JIND	SAFIDON	S-NPP	76.72844	29.41290	13:42:00	D	2.50
86	KAITHAL	KAITHAL	S-NPP	76.47555	29.56342	13:42:00	D	2.10
87	KAITHAL	KAITHAL	S-NPP	76.47818	29.56474	13:42:00	D	4.10
88	KARNAL	KARNAL	S-NPP	77.09801	29.72518	13:42:00	D	6.30
89	KARNAL	KARNAL	S-NPP	76.97898	29.74498	13:42:00	D	2.40
90	PANIPAT	ISRANA	S-NPP	76.70635	29.37449	13:42:00	D	4.00
91	ROHTAK	MAHAM	S-NPP	76.48797	28.99530	13:42:00	D	3.40
92	ROHTAK	ROHTAK	S-NPP	76.72026	28.79050	13:42:00	D	2.20
93	ROHTAK	ROHTAK	S-NPP	76.52551	28.97759	13:42:00	D	2.50

94	SIRSA	ELLENABAD	S-NPP	74.86301	29.42649	13:42:00	D	7.70
95	SIRSA	ELLENABAD	S-NPP	74.80086	29.43210	13:42:00	D	2.60
96	SIRSA	ELLENABAD	S-NPP	74.83258	29.45046	13:42:00	D	11.80
97	SIRSA	ELLENABAD	S-NPP	74.83199	29.45389	13:42:00	D	13.20
98	SIRSA	ELLENABAD	S-NPP	74.82711	29.45674	13:42:00	D	13.20
99	SIRSA	ELLENABAD	S-NPP	74.63497	29.46477	13:42:00	D	3.30
100	SIRSA	ELLENABAD	S-NPP	74.66273	29.47902	13:42:00	D	3.60
101	SIRSA	ELLENABAD	S-NPP	74.75549	29.49507	13:42:00	D	15.80
102	SIRSA	ELLENABAD	S-NPP	74.67242	29.49781	13:42:00	D	14.10
103	SIRSA	ELLENABAD	S-NPP	74.75488	29.49849	13:42:00	D	15.80
104	SIRSA	ELLENABAD	S-NPP	74.76765	29.50021	13:42:00	D	10.40
105	SIRSA	ELLENABAD	S-NPP	74.69299	29.50411	13:42:00	D	4.50
106	SIRSA	ELLENABAD	S-NPP	74.69240	29.50753	13:42:00	D	5.50
107	SIRSA	ELLENABAD	S-NPP	74.68333	29.50979	13:42:00	D	3.60
108	SIRSA	RANIA	S-NPP	74.86219	29.48481	13:42:00	D	1.60
109	SIRSA	RANIA	S-NPP	74.87447	29.48996	13:42:00	D	8.00
110	SIRSA	RANIA	S-NPP	74.79504	29.49338	13:42:00	D	2.00
111	SIRSA	RANIA	S-NPP	74.82126	29.49339	13:42:00	D	4.60
112	SIRSA	RANIA	S-NPP	74.73301	29.49904	13:42:00	D	3.20
113	SIRSA	RANIA	S-NPP	74.86407	29.49913	13:42:00	D	2.70
114	SIRSA	RANIA	S-NPP	74.76705	29.50364	13:42:00	D	10.10
115	SIRSA	RANIA	S-NPP	74.87146	29.50715	13:42:00	D	3.50
116	SIRSA	RANIA	S-NPP	74.78777	29.50994	13:42:00	D	10.30
117	SIRSA	RANIA	S-NPP	74.87395	29.51804	13:42:00	D	6.70
118	SIRSA	RANIA	S-NPP	74.78963	29.52423	13:42:00	D	5.20
119	SIRSA	RANIA	S-NPP	74.76458	29.52470	02:24:00	N	2.20
120	SIRSA	RANIA	S-NPP	74.79390	29.52481	13:42:00	D	5.20
121	SIRSA	RANIA	S-NPP	74.76006	29.52551	02:24:00	N	1.40
122	SIRSA	RANIA	S-NPP	74.76284	29.52761	13:42:00	D	7.70
123	SIRSA	RANIA	S-NPP	74.70455	29.53719	13:42:00	D	7.70
124	SIRSA	RANIA	S-NPP	74.61343	29.54200	13:42:00	D	4.60
125	SIRSA	RANIA	S-NPP	74.61266	29.54205	13:42:00	D	4.90

126	SIRSA	RANIA	S-NPP	74.61584	29.55280	13:42:00	D	7.80
127	SIRSA	RANIA	S-NPP	74.62008	29.55337	13:42:00	D	7.50
128	SIRSA	RANIA	S-NPP	74.59835	29.55392	13:42:00	D	1.80
129	SIRSA	RANIA	S-NPP	74.70241	29.55394	13:42:00	D	5.10
130	SIRSA	RANIA	S-NPP	74.70155	29.55429	13:42:00	D	4.40
131	SIRSA	RANIA	S-NPP	74.76627	29.56248	13:42:00	D	9.10
132	SIRSA	RANIA	S-NPP	74.76536	29.56303	13:42:00	D	8.30
133	SIRSA	RANIA	S-NPP	74.73036	29.56819	13:42:00	D	2.40
134	SIRSA	RANIA	S-NPP	74.67330	29.57103	13:42:00	D	11.00
135	SIRSA	RANIA	S-NPP	74.72976	29.57162	13:42:00	D	2.10
136	SIRSA	RANIA	S-NPP	74.70789	29.57218	13:42:00	D	7.00
137	SIRSA	RANIA	S-NPP	74.66423	29.57330	13:42:00	D	4.80
138	SIRSA	SIRSA	S-NPP	75.08060	29.38661	13:42:00	D	1.20
139	SIRSA	SIRSA	S-NPP	75.12910	29.39485	13:42:00	D	3.30
140	SIRSA	SIRSA	S-NPP	75.13345	29.39542	13:42:00	D	3.30
141	SIRSA	SIRSA	S-NPP	75.13216	29.39711	13:42:00	D	7.00
142	SIRSA	SIRSA	S-NPP	74.94572	29.43059	13:42:00	D	21.40
143	SIRSA	SIRSA	S-NPP	74.90836	29.44317	13:42:00	D	13.50
144	SIRSA	SIRSA	S-NPP	74.91576	29.45121	13:42:00	D	3.00
145	SIRSA	SIRSA	S-NPP	74.91885	29.45867	13:42:00	D	18.30
146	SIRSA	SIRSA	S-NPP	74.91825	29.46211	13:42:00	D	18.30
147	SIRSA	SIRSA	S-NPP	74.94896	29.46275	13:42:00	D	12.80
148	SIRSA	SIRSA	S-NPP	74.93055	29.46730	13:42:00	D	3.00
149	SIRSA	SIRSA	S-NPP	74.90633	29.48365	13:42:00	D	5.50
150	SIRSA	SIRSA	S-NPP	75.13938	29.52146	13:42:00	D	1.70
151	SIRSA	SIRSA	S-NPP	75.20141	29.52602	13:42:00	D	6.10
152	SIRSA	SIRSA	S-NPP	75.23283	29.52655	13:42:00	D	5.80
153	SIRSA	SIRSA	S-NPP	75.23724	29.52713	13:42:00	D	5.80
154	SIRSA	SIRSA	S-NPP	75.20522	29.53007	13:42:00	D	5.50
155	SIRSA	SIRSA	S-NPP	75.18363	29.53182	02:24:00	N	0.60
156	SIRSA	SIRSA	S-NPP	75.25874	29.53348	13:42:00	D	3.40
157	SIRSA	SIRSA	S-NPP	75.25816	29.53697	13:42:00	D	3.40



158	SIRSA	SIRSA	S-NPP	74.99841	29.53821	13:42:00	D	2.90
159	SIRSA	SIRSA	S-NPP	75.25755	29.54045	13:42:00	D	10.50
160	SIRSA	SIRSA	S-NPP	75.08654	29.54286	13:42:00	D	3.80
161	SIRSA	SIRSA	S-NPP	75.25695	29.54394	13:42:00	D	10.50
162	SIRSA	SIRSA	S-NPP	75.26138	29.54451	13:42:00	D	10.50
163	SIRSA	SIRSA	S-NPP	75.17028	29.55037	13:42:00	D	8.00
164	SIRSA	SIRSA	S-NPP	74.95588	29.55370	13:42:00	D	2.90
165	SIRSA	SIRSA	S-NPP	75.11970	29.55788	13:42:00	D	21.20
166	SIRSA	SIRSA	S-NPP	75.13223	29.56309	13:42:00	D	1.30
167	SIRSA	SIRSA	S-NPP	74.96706	29.56579	13:42:00	D	5.50
168	SIRSA	SIRSA	S-NPP	75.08237	29.56710	13:42:00	D	11.20
169	SIRSA	SIRSA	S-NPP	75.03787	29.59838	13:42:00	D	4.50
170	SIRSA	SIRSA	S-NPP	75.03660	29.59991	13:42:00	D	3.70
171	SIRSA	SIRSA	S-NPP	75.12527	29.60980	13:42:00	D	2.70
172	SIRSA	SIRSA	S-NPP	75.12389	29.61166	13:42:00	D	1.90
173	SIRSA	SIRSA	S-NPP	74.98647	29.61282	13:42:00	D	4.00
174	SIRSA	SIRSA	S-NPP	75.04796	29.61739	13:42:00	D	3.30
175	SIRSA	SIRSA	S-NPP	75.12051	29.63756	13:42:00	D	5.30
176	SIRSA	SIRSA	S-NPP	75.10559	29.66623	02:24:00	N	0.60
177	SIRSA	SIRSA	S-NPP	75.10645	29.66978	02:24:00	N	0.60
178	SONIPAT	GOHANA	S-NPP	76.79948	29.11064	13:42:00	D	3.10
179	SONIPAT	SONIPAT	S-NPP	76.86961	29.07652	13:42:00	D	5.20
180	SONIPAT	SONIPAT	S-NPP	76.87158	29.07756	13:42:00	D	5.40

**Details of residue burning events in Uttar Pradesh on 23-Nov-2018**

<b>Event S. No.</b>	<b>District</b>	<b>Tehsil/Block</b>	<b>Satellite</b>	<b>Longitude</b>	<b>Latitude</b>	<b>Time (IST)</b>	<b>Day/Night</b>	<b>Fire Power (W/m<sup>2</sup>)</b>
1	AMBEDKARNAGAR	JALALPUR	S-NPP	82.71772	26.43007	13:42:00	D	3.00
2	AURAIYA	AURAIYA	S-NPP	79.30286	26.62736	13:42:00	D	5.10
3	AURAIYA	BIDHUNA	S-NPP	79.68320	26.74993	13:42:00	D	3.50
4	AZAMGARH	BURHANPUR	S-NPP	82.95341	26.19200	13:42:00	D	1.80
5	AZAMGARH	SAGRI	S-NPP	83.16997	26.29510	13:42:00	D	4.30
6	BAHRAICH	NANPARA	S-NPP	81.52736	27.74334	13:42:00	D	5.80
7	BALRAMPUR	TULSIPUR	S-NPP	82.68717	27.48952	13:42:00	D	1.70
8	BANDA	BABERU	S-NPP	80.80494	25.66049	13:42:00	D	3.60
9	BASTI	BHANPUR	S-NPP	82.70425	26.91427	13:42:00	D	3.40
10	BASTI	BHANPUR	S-NPP	82.70206	26.91541	13:42:00	D	2.20
11	BASTI	BHANPUR	S-NPP	82.66813	27.10165	13:42:00	D	2.30
12	DEORIA	DEORIA	S-NPP	83.87081	26.44894	13:42:00	D	3.20
13	DEORIA	DEORIA	S-NPP	83.74436	26.67754	13:42:00	D	2.40
14	ETAH	JALESAR	S-NPP	78.38282	27.56099	13:42:00	D	2.80
15	ETAWAH	BHARTHNA	S-NPP	79.20979	26.72829	13:42:00	D	3.50
16	ETAWAH	SAIFAI	S-NPP	79.01206	26.94076	13:42:00	D	4.70
17	FATEHPUR	FATEHPUR	AQUA-1	80.80152	25.97243	12:59:00	D	22.44
18	FATEHPUR	FATEHPUR	S-NPP	80.78735	25.98255	13:42:00	D	2.80
19	FATEHPUR	KHAGA	S-NPP	81.20933	25.57771	13:42:00	D	11.20
20	GAZIPUR	MUHAMMADBAD	S-NPP	83.91486	25.68770	13:42:00	D	8.60
21	GORAKHPUR	GOLA	S-NPP	83.37666	26.35910	13:42:00	D	3.80
22	GORAKHPUR	GORAKHPUR	S-NPP	83.54880	26.75531	13:42:00	D	6.90
23	GORAKHPUR	GORAKHPUR	S-NPP	83.51788	26.78144	13:42:00	D	3.10
24	JAUNPUR	JAUNPUR	AQUA-1	82.66707	25.84517	12:59:00	D	11.07
25	JAUNPUR	SHHGANJ	AQUA-1	82.54600	26.07124	12:59:00	D	11.81
26	KANPUR DEHAT	AKBARPUR	S-NPP	79.96828	26.32073	13:42:00	D	2.30
27	KAUSHAMBI	MANJHANPUR	S-NPP	81.24870	25.45229	13:42:00	D	6.30

28	KHERI	GOLA	S-NPP	80.56239	28.18560	13:42:00	D	8.90
29	KHERI	GOLA	S-NPP	80.56767	28.18613	13:42:00	D	8.90
30	KHERI	GOLA	S-NPP	80.43166	28.23727	13:42:00	D	8.10
31	KHERI	PALIA KALAN	AQUA-1	80.54914	28.52514	12:59:00	D	28.65
32	KUSHINAGAR	HATA	S-NPP	83.59295	26.78095	13:42:00	D	3.60
33	KUSHINAGAR	HATA	S-NPP	83.59151	26.78177	13:42:00	D	4.10
34	KUSHINAGAR	HATA	S-NPP	83.66577	26.82614	13:42:00	D	4.90
35	KUSHINAGAR	HATA	S-NPP	83.67907	26.82819	12:00:00	D	5.20
36	KUSHINAGAR	HATA	S-NPP	83.57217	26.86246	13:42:00	D	1.70
37	KUSHINAGAR	HATA	S-NPP	83.60943	26.88206	13:42:00	D	4.30
38	KUSHINAGAR	HATA	S-NPP	83.61333	26.88239	13:42:00	D	4.70
39	KUSHINAGAR	HATA	S-NPP	83.61101	26.88338	13:42:00	D	3.90
40	KUSHINAGAR	HATA	S-NPP	83.59049	26.89277	13:42:00	D	2.00
41	KUSHINAGAR	HATA	S-NPP	83.60217	26.89369	13:42:00	D	4.80
42	KUSHINAGAR	HATA	S-NPP	83.62508	26.90098	13:42:00	D	1.80
43	KUSHINAGAR	TAMKUHI RAJ	S-NPP	84.03777	26.71105	13:42:00	D	5.00
44	KUSHINAGAR	TAMKUHI RAJ	S-NPP	84.03739	26.71252	13:42:00	D	5.10
45	MAHARAJGANJ	MAHARAJGANJ	S-NPP	83.59364	26.94246	13:42:00	D	3.60
46	MAHARAJGANJ	MAHARAJGANJ	S-NPP	83.58535	26.94728	13:42:00	D	2.20
47	MAHARAJGANJ	MAHARAJGANJ	S-NPP	83.65126	26.95816	13:42:00	D	1.20
48	MAHARAJGANJ	MAHARAJGANJ	S-NPP	83.44202	27.01341	13:42:00	D	4.30
49	MAHARAJGANJ	MAHARAJGANJ	S-NPP	83.64339	27.02948	13:42:00	D	2.90
50	MAHARAJGANJ	MAHARAJGANJ	S-NPP	83.62991	27.03418	12:00:00	D	4.30
51	MAHARAJGANJ	MAHARAJGANJ	S-NPP	83.56267	27.05052	13:42:00	D	3.40
52	MAHARAJGANJ	MAHARAJGANJ	S-NPP	83.54665	27.05470	13:42:00	D	6.10
53	MAHARAJGANJ	MAHARAJGANJ	S-NPP	83.55052	27.05502	13:42:00	D	10.30
54	MAHARAJGANJ	MAHARAJGANJ	S-NPP	83.56554	27.06174	13:42:00	D	2.10
55	MAHARAJGANJ	MAHARAJGANJ	S-NPP	83.61687	27.06725	12:00:00	D	4.10
56	MAHARAJGANJ	MAHARAJGANJ	S-NPP	83.66734	27.07005	13:42:00	D	5.30
57	MAHARAJGANJ	MAHARAJGANJ	S-NPP	83.58972	27.08163	12:00:00	D	5.40
58	MAHARAJGANJ	MAHARAJGANJ	S-NPP	83.59163	27.08200	12:00:00	D	3.60

59	MAHARAJGANJ	MAHARAJGANJ	S-NPP	83.62650	27.08327	13:42:00	D	3.30
60	MAHARAJGANJ	MAHARAJGANJ	S-NPP	83.62631	27.08404	13:42:00	D	2.50
61	MAHARAJGANJ	MAHARAJGANJ	S-NPP	83.52330	27.09262	13:42:00	D	4.80
62	MAHARAJGANJ	MAHARAJGANJ	S-NPP	83.52322	27.09662	13:42:00	D	6.40
63	MAHARAJGANJ	MAHARAJGANJ	S-NPP	83.53338	27.10986	13:42:00	D	2.80
64	MAHARAJGANJ	MAHARAJGANJ	S-NPP	83.62393	27.19417	13:42:00	D	9.30
65	MAHARAJGANJ	MAHARAJGANJ	S-NPP	83.62283	27.19426	13:42:00	D	5.20
66	MAHARAJGANJ	MAHARAJGANJ	S-NPP	83.62677	27.19456	13:42:00	D	5.20
67	MAHARAJGANJ	MAHARAJGANJ	S-NPP	83.51357	27.19599	13:42:00	D	4.70
68	MAHARAJGANJ	MAHARAJGANJ	S-NPP	83.51228	27.19680	13:42:00	D	2.30
69	MAHARAJGANJ	MAHARAJGANJ	S-NPP	83.51615	27.19710	13:42:00	D	2.30
70	MAHARAJGANJ	MAHARAJGANJ	S-NPP	83.58930	27.21374	13:42:00	D	11.20
71	MAHARAJGANJ	MAHARAJGANJ	S-NPP	83.59323	27.21404	13:42:00	D	11.20
72	MAHARAJGANJ	NAUTANWA	S-NPP	83.40576	27.35413	13:42:00	D	1.70
73	MAHARAJGANJ	NAUTANWA	S-NPP	83.40958	27.35443	13:42:00	D	1.70
74	MAHARAJGANJ	NAUTANWA	S-NPP	83.39827	27.38089	12:00:00	D	5.10
75	MAHARAJGANJ	NICHLAUL	S-NPP	83.70273	27.19475	13:42:00	D	7.30
76	MAHARAJGANJ	NICHLAUL	S-NPP	83.70366	27.19519	13:42:00	D	4.60
77	MAHARAJGANJ	PHARENDA	S-NPP	83.31347	27.27609	13:42:00	D	1.70
78	MAHARAJGANJ	PHARENDA	S-NPP	83.31167	27.27868	13:42:00	D	3.00
79	MAINPURI	KARHAL	S-NPP	78.99586	27.02905	13:42:00	D	7.00
80	MAINPURI	MAINPURI	S-NPP	78.71776	27.34337	13:42:00	D	1.30
81	MAU	MADHUBAN	S-NPP	83.65642	26.06044	13:42:00	D	3.40
82	MUZAFARNAGAR	BUDHANA	S-NPP	77.44954	29.31046	13:42:00	D	2.80
83	PILHIBHIT	PILHIBHIT	S-NPP	79.88544	28.76790	13:42:00	D	6.60
84	PILHIBHIT	PILHIBHIT	S-NPP	79.88386	28.76892	13:42:00	D	5.00
85	PILHIBHIT	PURANPUR	S-NPP	80.08530	28.48633	13:42:00	D	6.70
86	PRATAPGARH	PATTI	S-NPP	82.20127	25.95983	13:42:00	D	6.90
87	RAIBEARELI	RAEBARELI	S-NPP	81.26839	26.35206	13:42:00	D	7.20
88	RAIBEARELI	RAEBARELI	S-NPP	81.27046	26.35421	13:42:00	D	3.70
89	RAMPUR	BILASPUR	S-NPP	79.41522	28.93292	13:42:00	D	3.10

90	RAMPUR	BILASPUR	S-NPP	79.41599	28.93475	13:42:00	D	4.70
91	SANTKABIRNAGAR	KHALILABAD	S-NPP	82.88018	26.89850	13:42:00	D	1.40
92	SHAHJAHANPUR	PUWANYA	S-NPP	80.04315	27.94544	13:42:00	D	4.20
93	SHAHJAHANPUR	PUWANYA	S-NPP	80.26184	28.18871	13:42:00	D	5.90
94	SHAHJAHANPUR	PUWANYA	S-NPP	80.15064	28.22754	13:42:00	D	3.90
95	SHAHJAHANPUR	PUWANYA	S-NPP	80.21147	28.32668	13:42:00	D	2.20
96	SHARANPUR	RAMPUR MANIHARRAN	S-NPP	77.48214	29.68668	13:42:00	D	3.60
97	SHARANPUR	SHARANPUR	S-NPP	77.43813	30.03913	13:42:00	D	7.50
98	SIDDHARTHANAGAR	ITWA	S-NPP	82.70206	27.22575	13:42:00	D	3.40
99	SIDDHARTHANAGAR	ITWA	S-NPP	82.70263	27.22728	13:42:00	D	4.00
100	SIDDHARTHANAGAR	ITWA	S-NPP	82.55064	27.33497	12:00:00	D	4.10
101	SIDDHARTHANAGAR	ITWA	AQUA-1	82.64320	27.37380	12:59:00	D	9.12
102	SITAPUR	LAHARPUR	S-NPP	81.07895	27.70979	13:42:00	D	4.10
103	SITAPUR	LAHARPUR	S-NPP	81.08195	27.71192	13:42:00	D	6.60
104	SULTANPUR	JAISINGHPUR	AQUA-1	82.18790	26.37667	12:59:00	D	12.34
105	SULTANPUR	KADIRPUR	S-NPP	82.63354	26.22129	13:42:00	D	3.30
106	UNNAO	UNNAO	S-NPP	80.60300	26.52039	13:42:00	D	8.10

## The study used images received from following Satellites at IARI Satellite Ground Station

S. No.	Satellite Name	Sensor	Resolution (meter)	Day / Night Passes
1.	Suomi NPP	VIIRS	375 / 1000	Both
2.	Terra	MODIS	1000	Both
3.	Aqua	MODIS	1000	Both
4.	NOAA – 18	AVHRR	1000	Night
5.	NOAA – 19	AVHRR	1000	Night
6.	Metop - 1	AVHRR	1000	Night
7.	Metop - 2	AVHRR	1000	Night

### Study Team

ICAR – HQ	Dr K. Alagusundaram	DDG (Agril. Engg.)	<a href="mailto:ddgengg@icar.org.in">ddgengg@icar.org.in</a>
	Dr S. Bhaskar	ADG (NRM)	<a href="mailto:adgagroandaf@gmail.com">adgagroandaf@gmail.com</a>
ICAR - IARI	Dr V.K. Sehgal	Professor & Nodal Scientist	<a href="mailto:iaricreams@gmail.com">iaricreams@gmail.com</a> <a href="mailto:yk.sehgal@icar.gov.in">yk.sehgal@icar.gov.in</a>
	Dr Rajkumar Dhakar	Scientist	<a href="mailto:rajdhakar.iari@gmail.com">rajdhakar.iari@gmail.com</a>
	Shri Rakeshwar Verma	Chief Technical Officer	<a href="mailto:rakeshwar.verma@icar.gov.in">rakeshwar.verma@icar.gov.in</a>
	Mr Aakash Chhabra	SRF (NICRA)	<a href="mailto:aakash.chhabra7489@gmail.com">aakash.chhabra7489@gmail.com</a>
ICAR - ATARI	Dr Rajbir Singh	Director ATARI (Zone-1)	<a href="mailto:rajbirsingh.zpd@gmail.com">rajbirsingh.zpd@gmail.com</a>
	Dr U.S. Gautam	Director ATARI (Zone-IV)	<a href="mailto:zpdicarkanpur@gmail.com">zpdicarkanpur@gmail.com</a>
ICAR - IASRI	Dr RajenderParsad	Principal Scientist	<a href="mailto:rajender.parsad@icar.gov.in">rajender.parsad@icar.gov.in</a>

GIS Maps of fire events can be visualized online on ICAR KRISHI & CREAMS Geoportal

websites:<http://geoportal.icar.gov.in:8080/geoexplorer/composer/>

<http://creams.iari.res.in:8080/geoexplorer/composer/>

\*\*\*