

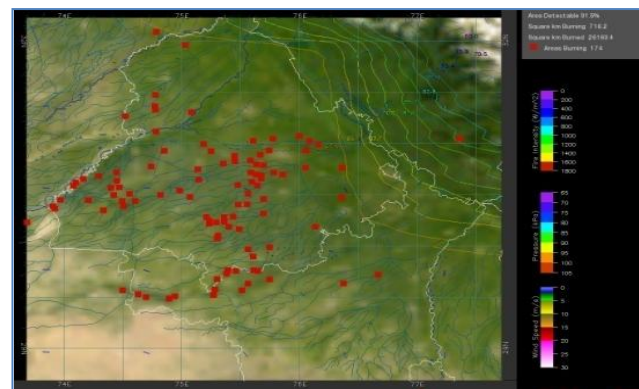
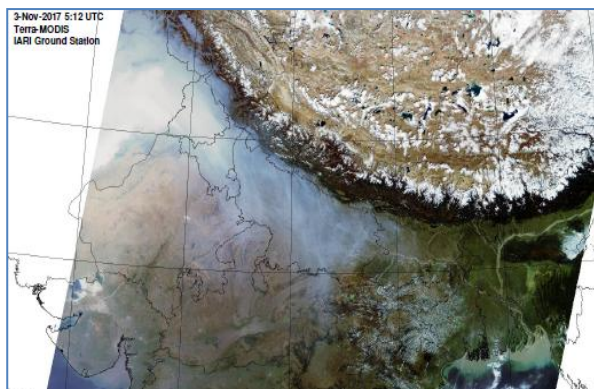


MONITORING PADDY RESIDUE BURNING IN NORTH INDIA USING SATELLITE REMOTE SENSING DURING 2018

**Bulletin
No. 50**

**Events Date:
19-Nov-2018**

**Issued on:
20-Nov-2018**



Prepared by:

**Consortium for Research on Agroecosystem Monitoring and Modeling from Space (CREAMS) Laboratory,
Division of Agricultural Physics, ICAR – Indian Agricultural Research Institute, New Delhi – 110012**

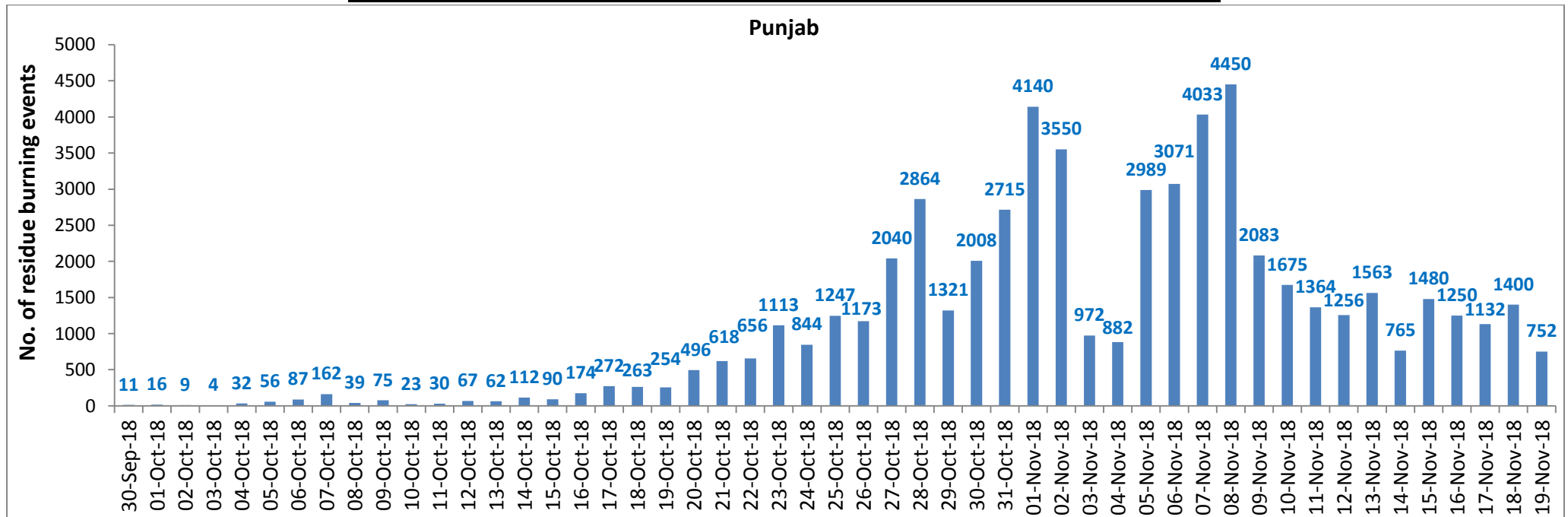
<http://creams.iari.res.in>



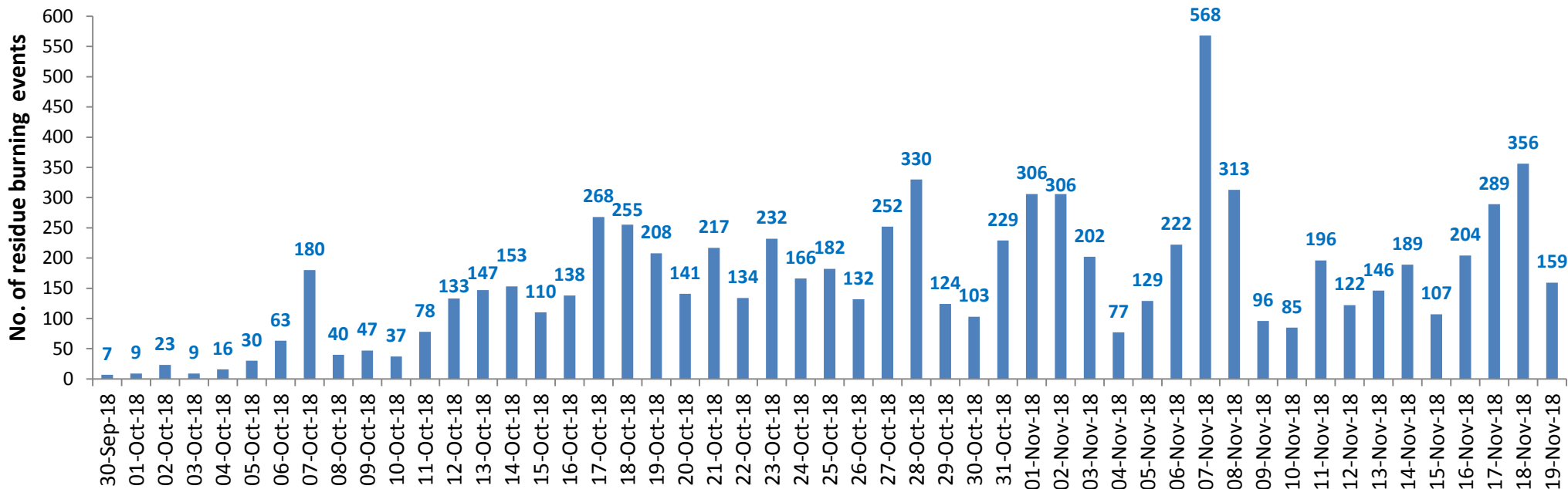
Highlights for 19-November-2018

- Satellites detected **914** residue burning events in the three States (Punjab, Haryana & UP) on **19-Nov-2018**.
- The burning events detected on **19-Nov-2018** are **759**, **159** and **3** in Punjab, Haryana, and UP, respectively.
- The detection of fire events was hampered by presence of thick clouds over central and eastern UP on **19-Nov-2018**.
- The number of events has decreased from **1867** on **18-Nov-2018** to **914** on **19-Nov-2018** in the three States.
- Total **71279** burning events were detected in the three States between **30-Sept-2018** and **19-Nov-2018**, which are distributed as **57740**, **8265** and **5274** in Punjab, Haryana and UP, respectively.
- Till **19-Nov-2018**, the burning events in the current year are about **92.1%** of the events detected in 2017 and about **57.1%** of the events detected in 2016.
- Overall, about **8%** and **43%** reduction in burning events are observed in current year (2018) till date as compared to that in 2017 and 2016, respectively.

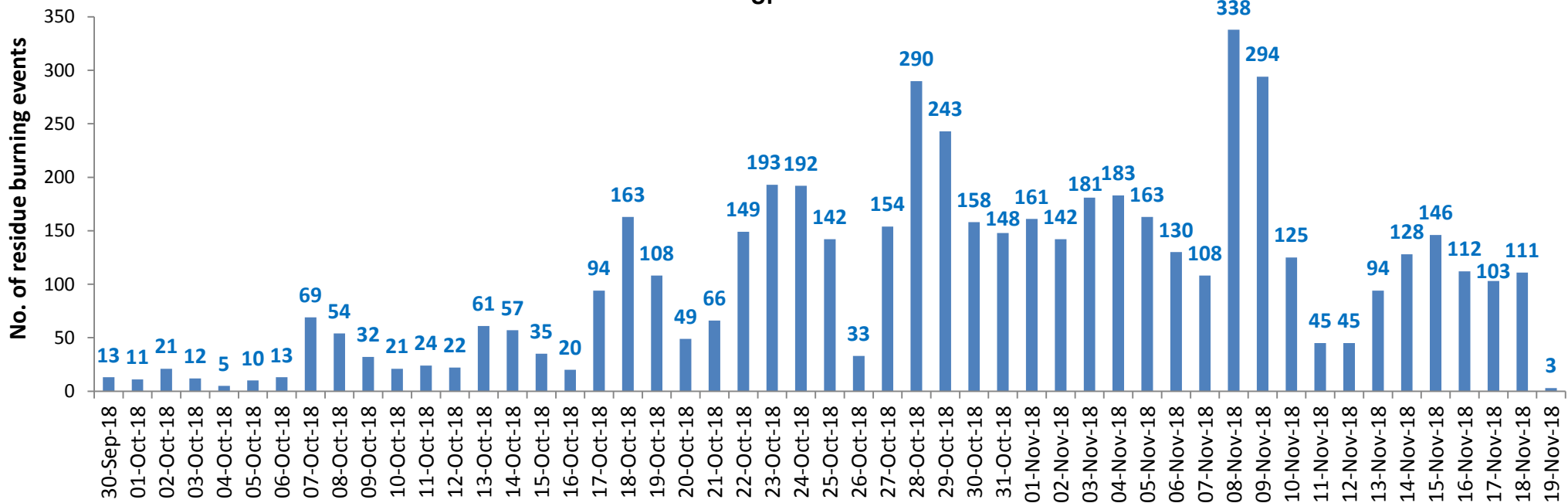
Temporal distribution of residue burning events for the three study States



Haryana

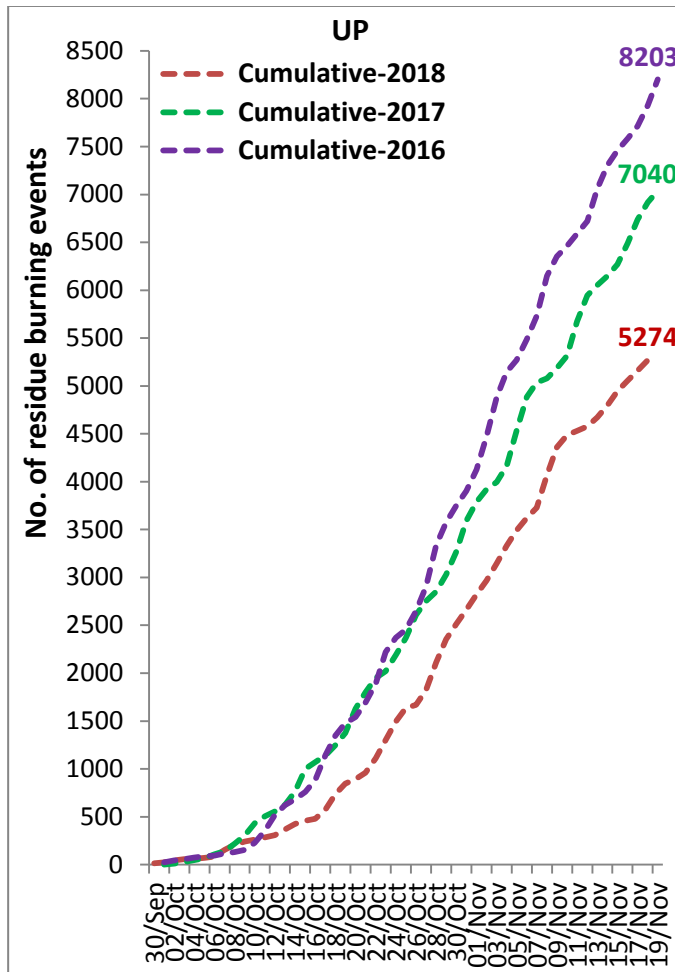
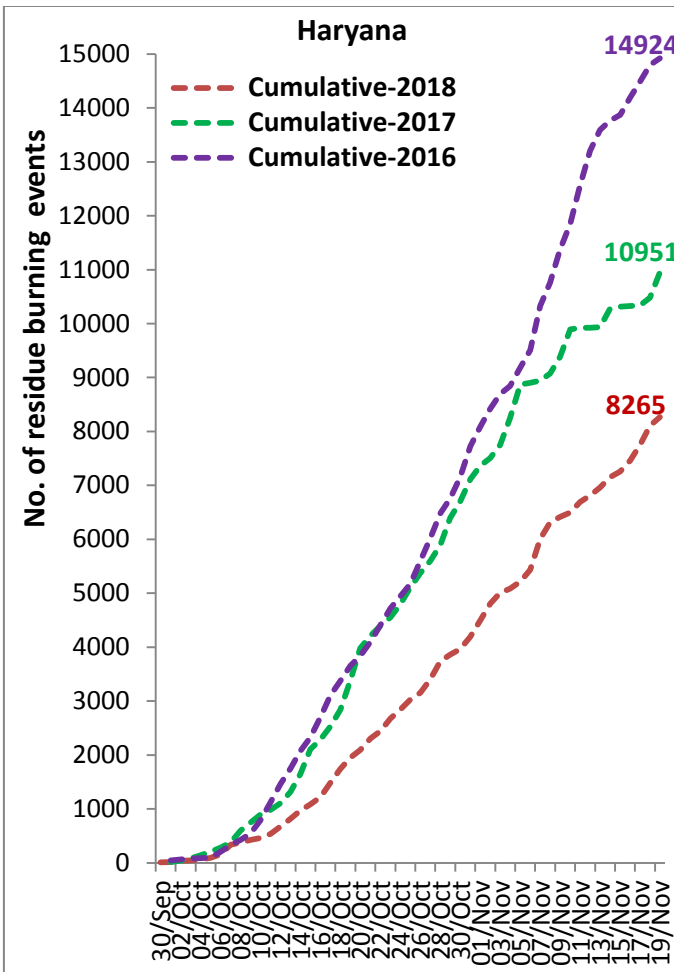
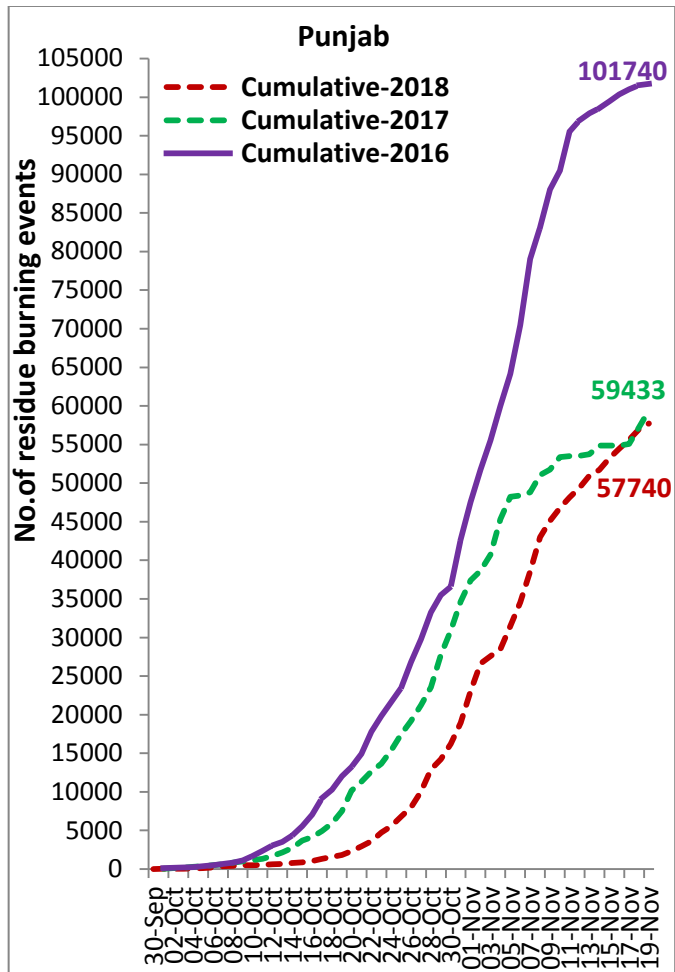


UP

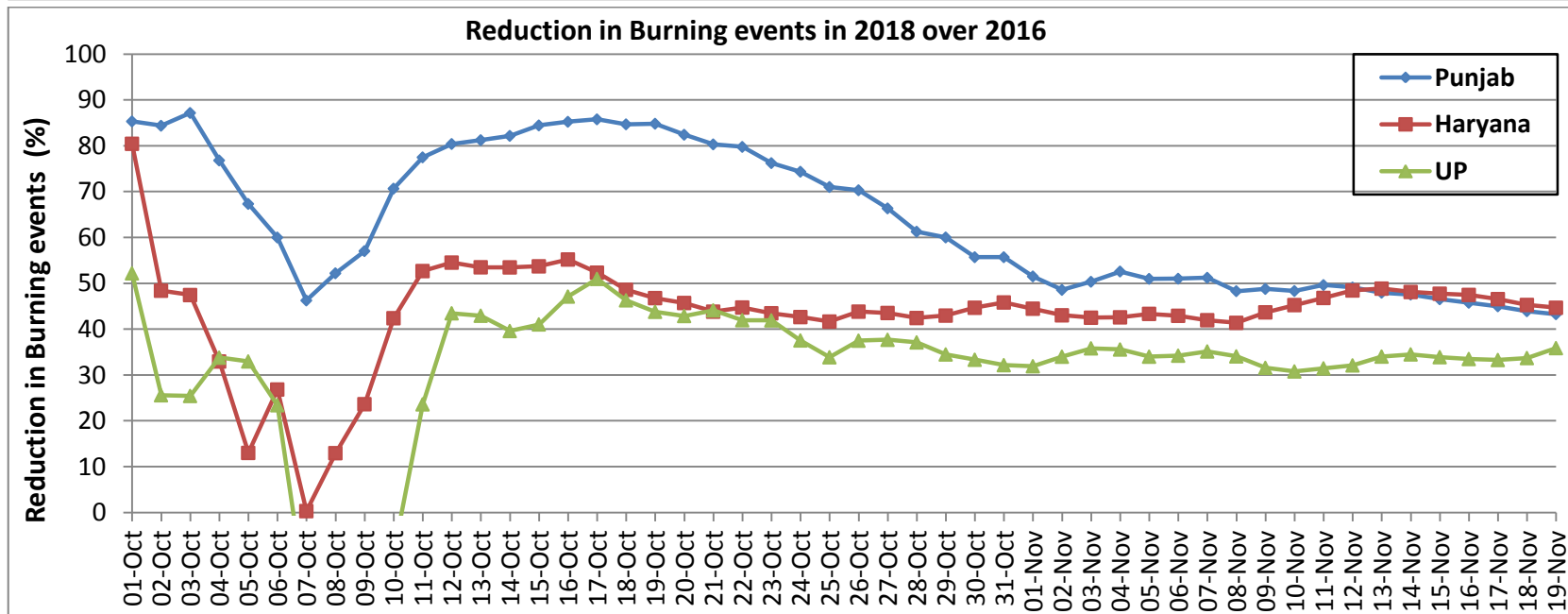
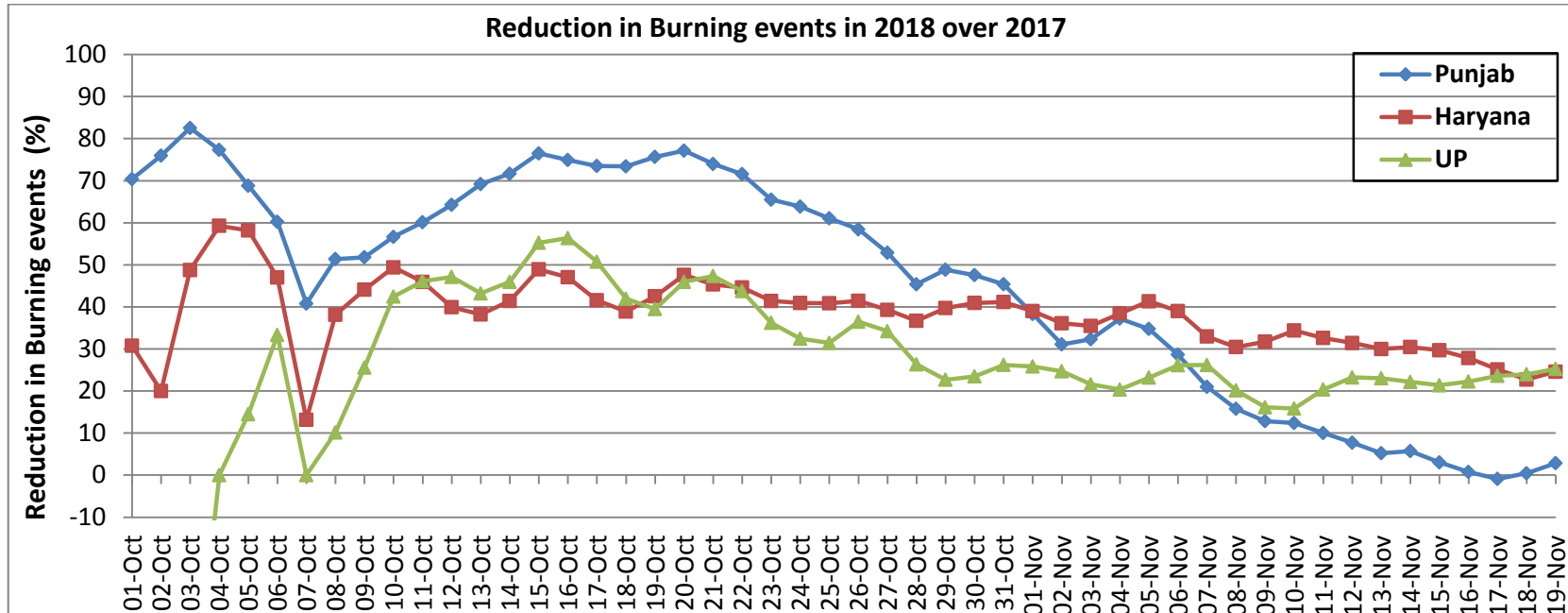


Comparison of residue burning events in current year (2018) with previous years (2017& 2016) for the three study States

(30-Sep to 19-Nov)

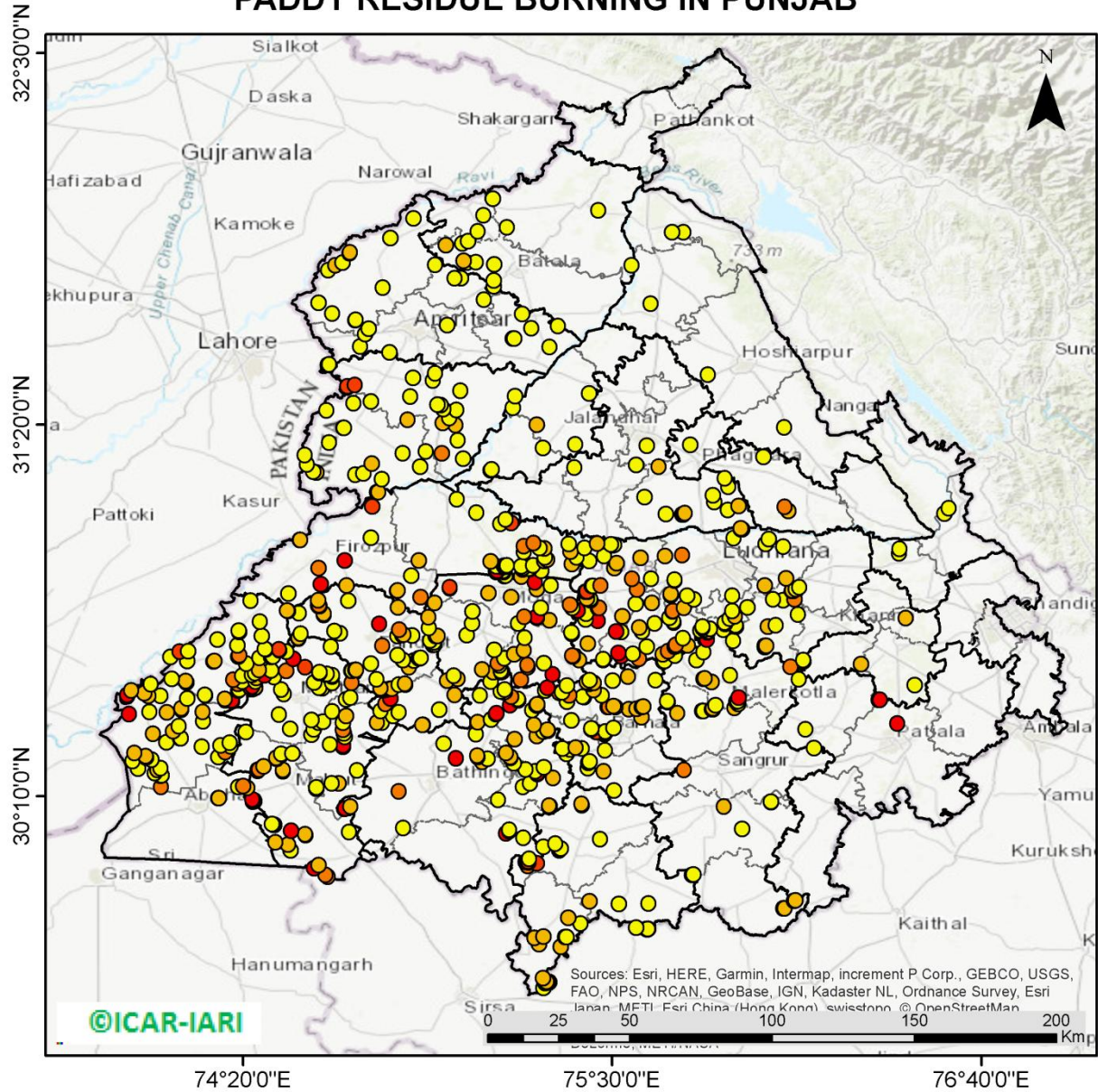


Percent Reduction in Burning events in 2018 over 2017 and 2016 (Daily Cumulative)



(a) Punjab

PADDY RESIDUE BURNING IN PUNJAB



752 burning events detected in Punjab on 19th November, 2018

Fire Intensity (W/m²)

- 0 - 5
- 6 - 10
- 11 - 15
- 16 - 20
- >20

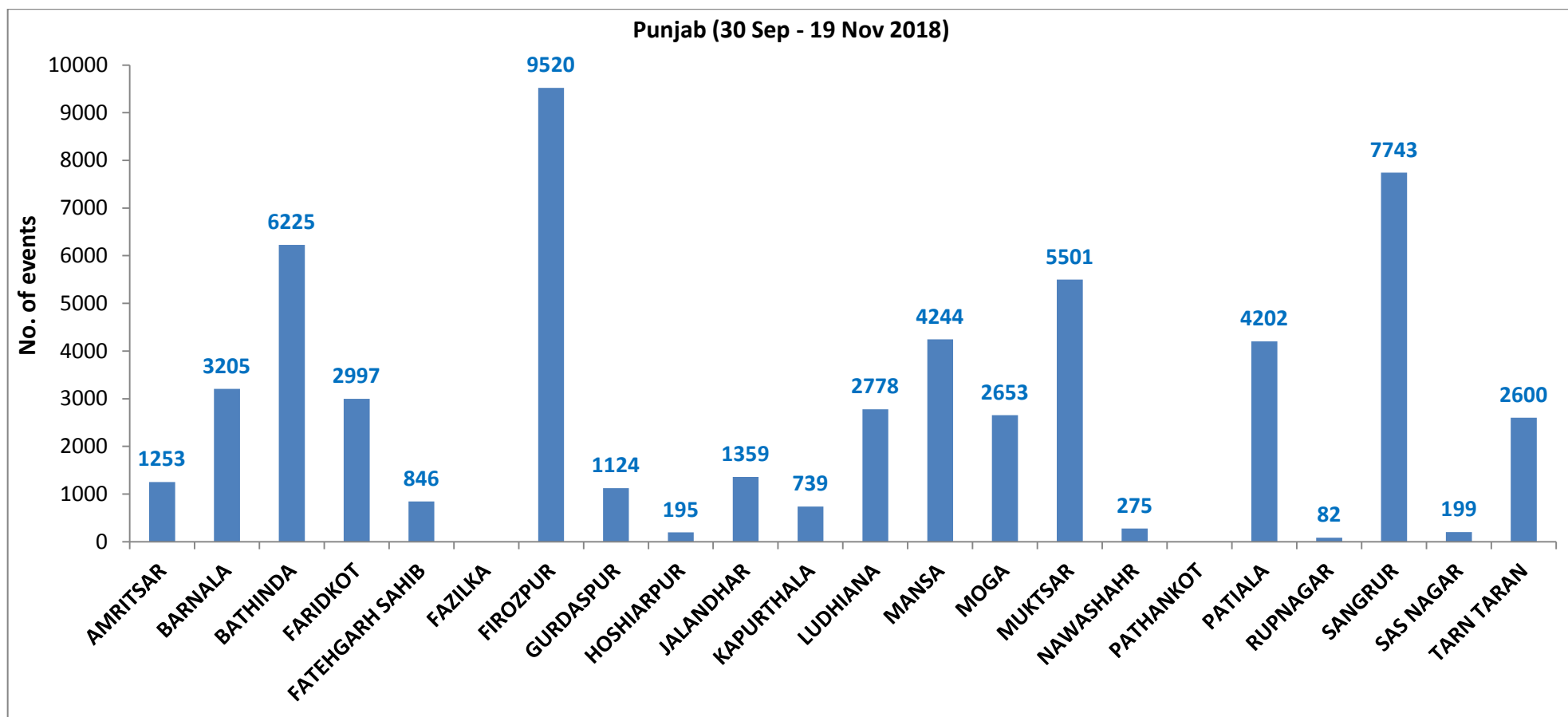
©ICAR-IARI

Sources: Esri, HERE, Garmin, Intermap, increment P Corp., GEBCO, USGS, FAO, NPS, NRCAN, GeoBase, IGN, Kadaster NL, Ordnance Survey, Esri Japan, METI, Esri China (Hong Kong), swisstopo, © OpenStreetMap



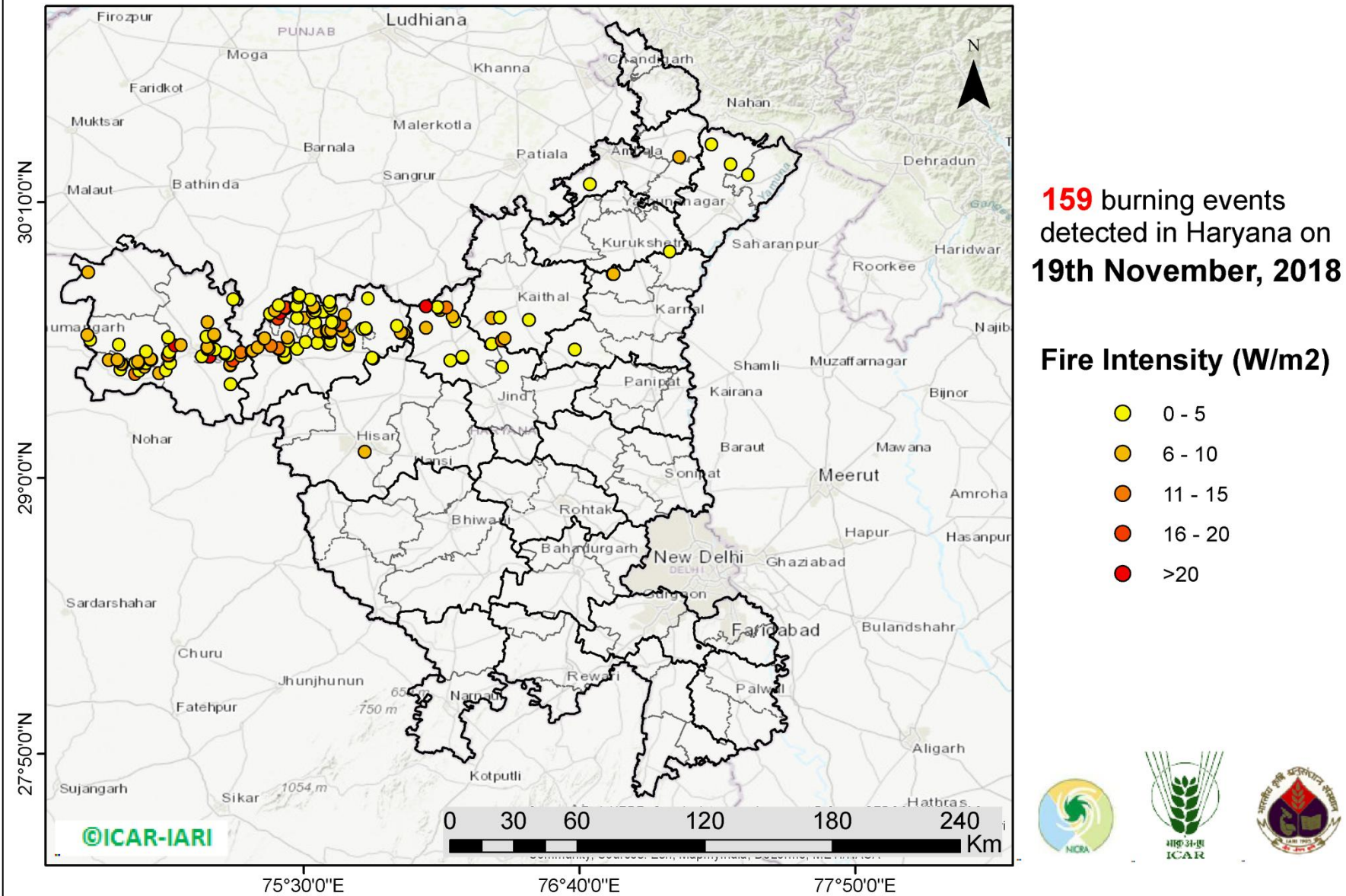
<http://geoportal.icar.gov.in:8080/geoexplorer/composer/>

District-wise cumulative number of residue burning events in Punjab (30-Sep-2018 to 19-Nov-2018)



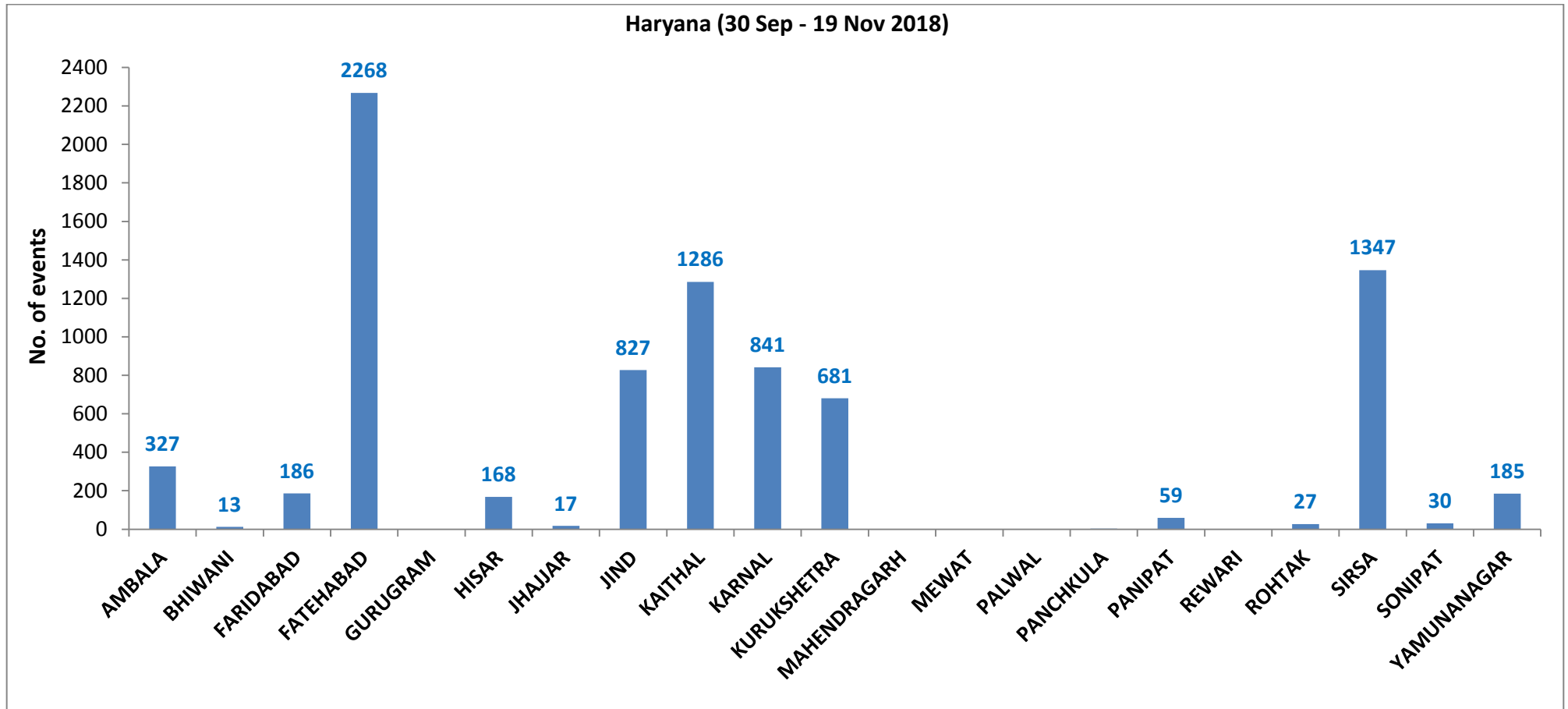
(b) Haryana

PADDY RESIDUE BURNING IN HARYANA



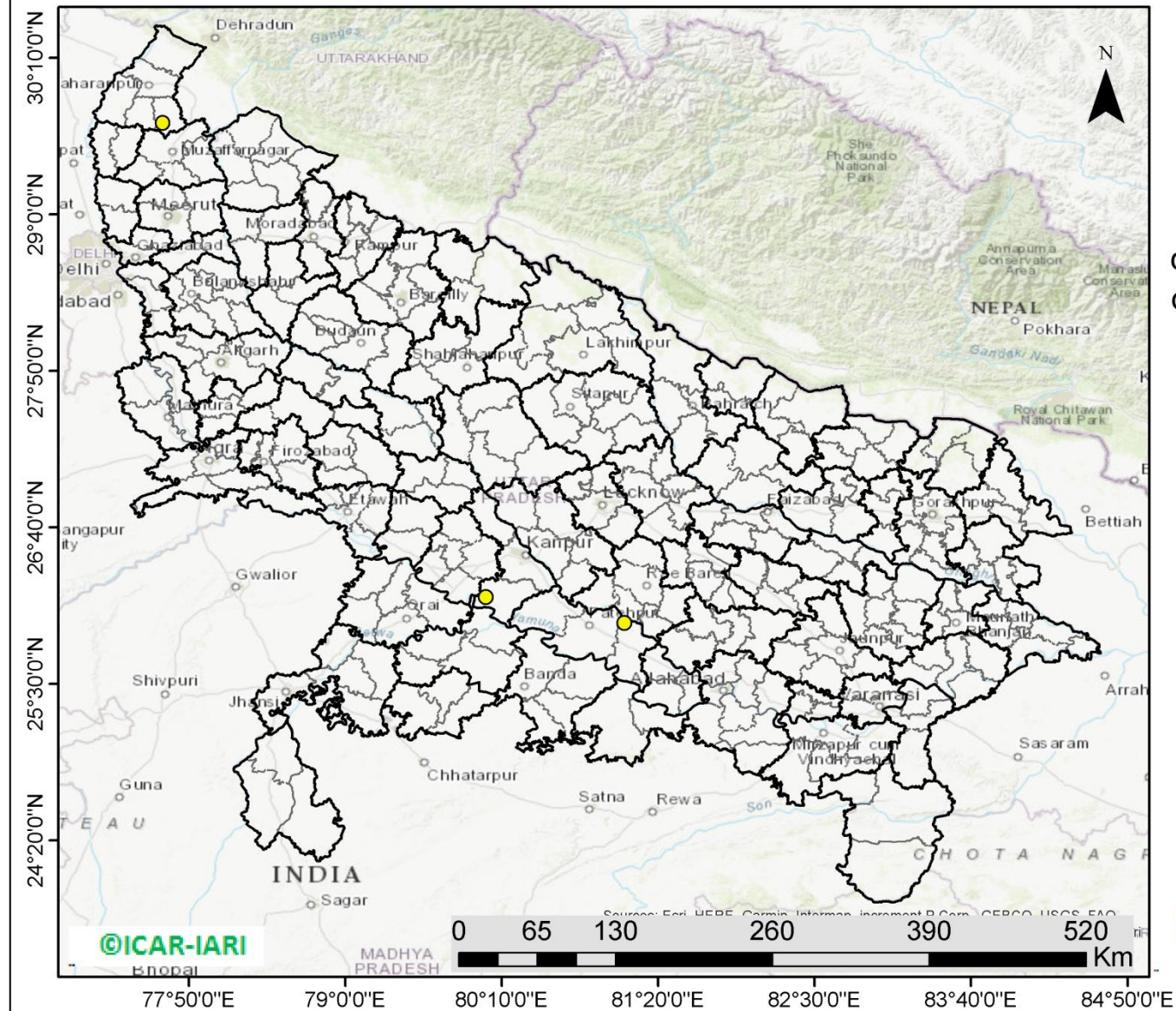
<http://geoportal.icar.gov.in:8080/geoexplorer/composer/>

District-wise cumulative number of residue burning events in Haryana (30-Sep-2018 to 19-Nov-2018)



(c) Uttar Pradesh

PADDY RESIDUE BURNING IN UTTAR PRADESH



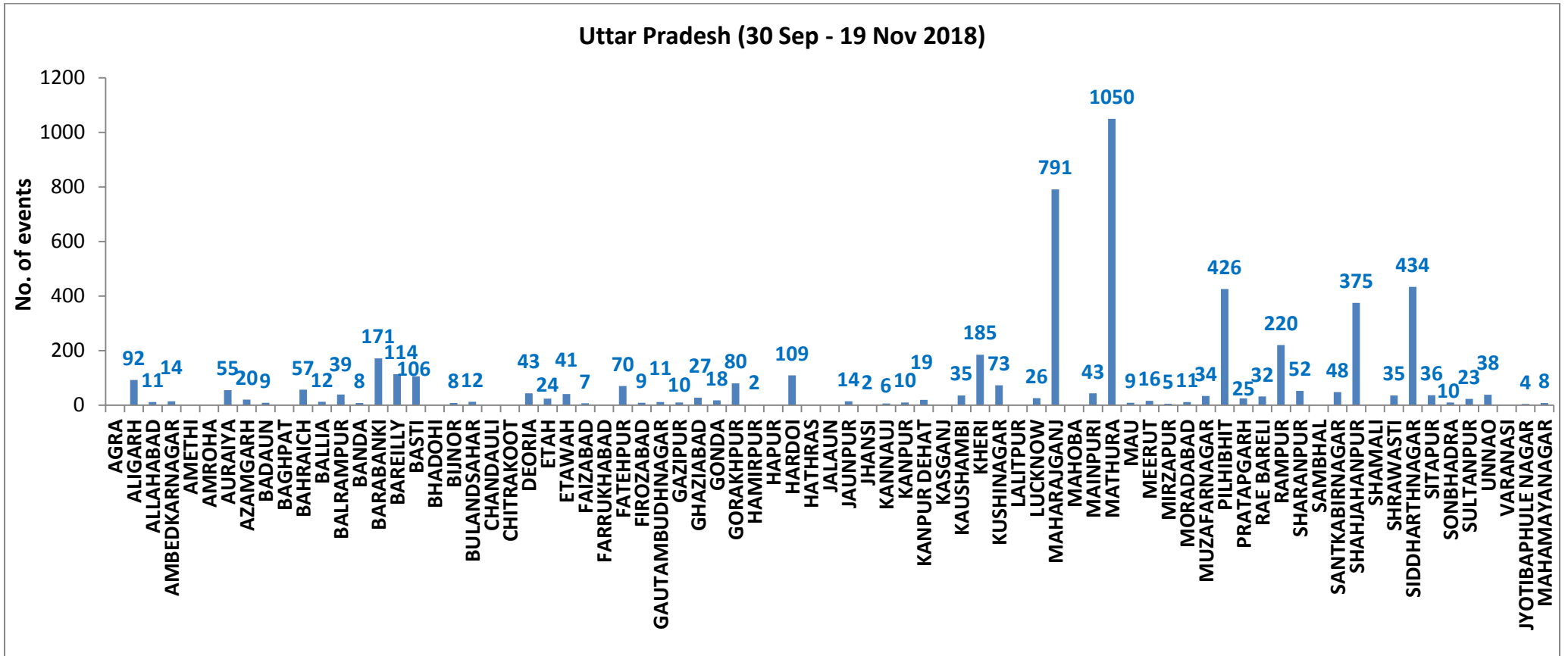
3 burning events detected in Uttar Pradesh on **19th Nov, 2018**

Fire Intensity (W/m²)

- 0 - 5
- 6 - 10
- 11 - 15
- 16 - 20
- >20

<http://geoportal.icar.gov.in:8080/geoexplorer/composer/>

District-wise cumulative number of residue burning events in Uttar Pradesh (30-Sep-2018 to 19-Nov-2018)



State wise, date wise and district-wise number of residue burning events detected in 2016, 2017 and 2018
(Period: 30-Sep to 19-Nov)

Date	Punjab			Haryana			UP			Total		
	2016	2017	2018	2016	2017	2018	2016	2017	2018	2016	2017	2018
30-Sep	--	--	11	--	---	7	--	---	13	--	---	31
1-Oct	109	54	16	46	13	9	23	2	11	178	69	36
2-Oct	51	50	9	16	27	23	20	8	21	87	85	53
3-Oct	66	62	4	16	40	9	16	17	12	98	119	25
4-Oct	37	103	32	7	60	16	15	22	5	59	185	53
5-Oct	95	106	56	15	68	30	14	20	10	124	194	96
6-Oct	152	138	87	105	75	65	6	39	13	263	252	165
7-Oct	171	105	162	126	97	180	24	31	69	321	233	411
8-Oct	166	215	39	94	218	40	14	75	54	274	508	133
9-Oct	270	163	75	121	148	47	22	87	32	413	398	154
10-Oct	597	164	23	242	151	37	74	126	21	913	441	81
11-Oct	652	177	30	336	87	78	128	74	24	1116	338	132
12-Oct	694	342	67	338	123	133	164	51	22	1196	516	222
13-Oct	467	470	62	284	207	147	102	69	61	853	746	270
14-Oct	812	582	112	328	333	153	60	137	57	1200	1052	322
15-Oct	1215	943	90	248	458	110	76	237	35	1539	1638	235
16-Oct	1478	465	174	385	186	138	125	71	20	1988	722	332
17-Oct	2173	807	272	399	244	268	261	69	94	2833	1120	634
18-Oct	1065	970	263	270	306	255	204	108	163	1539	1384	681
19-Oct	1762	1591	254	276	541	208	132	128	108	2170	2260	570
20-Oct	1175	2653	496	188	597	141	62	255	49	1425	3505	686
21-Oct	1726	1139	618	257	233	217	152	168	66	2135	1540	901
22-Oct	2837	1356	656	309	186	134	194	151	149	3340	1693	939
23-Oct	2040	994	1113	313	155	232	331	72	193	2684	1221	1538

24-Oct	1836	1714	844	221	244	166	152	171	192	2209	2129	1202
25-Oct	1813	2104	1247	229	303	182	83	175	142	2125	2582	1571
26-Oct	3390	1715	1173	434	276	132	195	240	33	4019	2231	1338
27-Oct	2904	2069	2040	417	224	252	255	145	154	3576	2438	2446
28-Oct	3493	2318	2864	458	292	330	435	99	290	4386	2709	3484
29-Oct	2258	4184	1321	278	502	124	237	180	243	2773	4866	1688
30-Oct	1076	3152	2008	395	307	103	175	238	158	1646	3697	2269
31-Oct	6132	3743	2715	575	413	229	153	321	148	6860	4447	3092
01-Nov	4843	2736	4140	362	250	306	223	199	161	5628	3185	4607
02-Nov	4183	1246	3550	332	145	306	345	131	142	4860	1522	3998
03-Nov	3806	2109	972	275	240	202	409	75	181	4409	2424	1355
04-Nov	4477	4603	882	146	499	77	265	168	183	4888	5270	1142
05-Nov	4137	2876	2989	345	625	129	125	367	163	4607	3868	3281
06-Nov	6303	171	3071	322	26	222	215	357	130	6840	327	3423
07-Nov	8575	420	4033	821	46	568	244	149	108	9640	615	4709
08-Nov	4129	2256	4450	432	128	313	419	43	338	4874	2427	5101
09-Nov	4857	675	2083	608	311	96	205	107	294	5670	1093	2473
10-Nov	2468	1642	1675	484	509	85	109	131	125	3061	2282	1885
11-Nov	5040	103	1364	716	29	196	129	358	45	5885	490	1605
12-Nov	1477	33	1256	634	3	122	129	269	45	2240	305	1423
13-Nov	885	237	1563	389	7	146	338	109	94	1612	353	1803
14-Nov	692	1101	765	171	340	189	247	95	128	1110	1536	1082
15-Nov	871	5	1480	107	40	107	154	123	146	1132	168	1733
16-Nov	911	8	1250	318	17	204	123	218	112	1352	243	1566
17-Nov	638	217	1132	299	12	289	130	249	103	1067	478	1524
18-Nov	568	2147	1400	312	139	356	217	180	111	1097	2466	1867
19-Nov	168	2200	752	125	471	159	273	122	3	566	2793	914
Total	101740	59433	57740	14924	10951	8265	8203	7040	5274	124867	77424	71279

(a) Punjab

Districts	01 Oct - 19Nov		
	2016	2017	2018
AMRITSAR	2153	1249	1253
BARNALA	5689	2844	3205
BATHINDA	8807	4862	6225
FARIDKOT	4616	3183	2997
FATEHGARH SAHIB	2456	1614	846
FAZILKA	0	0	0
FIROZPUR	13415	8170	9520
GURDASPUR	2206	1510	1124
HOSHIARPUR	899	478	195
JALANDHAR	4653	2003	1359
KAPURTHALA	3133	1545	739
LUDHIANA	9490	4008	2778
MANSA	5603	4199	4244
MOGA	6391	2045	2653
MUKTSAR	6930	4296	5501
NAWASHAHR (SBS Nagar)	1356	657	275
PATHANKOT	0	0	0
PATIALA	6535	5016	4202
RUPNAGAR	713	326	82
SANGRUR	11850	8263	7743
SAS NAGAR	359	243	199
TARN TARAN	4486	2922	2600
Total	101740	59433	57740

(b) Haryana

Districts	01 Oct - 19Nov		
	2016	2017	2018
AMBALA	530	492	327
BHIWANI	74	27	13
FARIDABAD	284	341	186
FATEHABAD	4710	3148	2268
GURUGRAM	0	0	0
HISAR	372	168	168
JHAJJAR	28	16	17
JIND	840	911	827
KAITHAL	1746	1499	1286
KARNAL	1624	1487	841
KURUKSHETRA	1076	1141	681
MAHENDRAGARH	0	0	0
MEWAT	0	0	0
PALWAL	0	0	0
PANCHKULA	0	0	3
PANIPAT	79	78	59
REWARI	0	0	0
ROHTAK	84	53	27
SIRSA	3158	1224	1347
SONIPAT	80	58	30
YAMUNANAGAR	239	308	185
Total	14924	10951	8265

(c) Uttar Pradesh

Distrites	01 Oct - 19Nov			GAUTAMBUDH NAGAR			RAE BARELI				
	2016	2017	2018								
AGRA	0	0	0	NAGAR	20	34	11	RAMPUR	69	53	32
ALIGARH	52	76	92	GAZIPUR	13	8	10	SHARANPUR	614	618	220
ALLAHABAD	5	8	11	GHAZIABAD	65	42	27	SAMBHAL	93	109	52
AMBEDKARNAGAR	66	29	14	GONDA	45	33	18	SANTKABIRNAGAR	0	0	0
AMETHI	0	0	0	GORAKHPUR	56	96	80	SHAHJAHANPUR	53	59	48
AMROHA	0	0	0	HAMIRPUR	0	0	2	SHAMALI	1124	676	375
AURAIYA	207	177	55	HAPUR	0	0	0	SHRAWASTI	0	0	0
AZAMGARH	32	26	20	HARDOI	235	192	109	SHRAWASTI	32	29	35
BADAUN	6	7	9	HATHRAS	0	0	0	SIDDHARTHANAGAR	232	165	434
BAGHPAT	0	0	0	JALAUN	0	0	0	SITAPUR	115	70	36
BAHRAICH	63	39	57	JAUNPUR	15	12	14	SONBHADRA	14	13	10
BALLIA	17	21	12	JHANSI	0	0	2	SULTANPUR	50	24	23
BALRAMPUR	30	27	39	KANNAUJ	28	14	6	UNNAO	59	46	38
BANDA	2	14	8	KANPUR	11	7	10	VARANASI	1	0	0
BARABANKI	212	151	171	KANPUR DEHAT	47	47	19	JYOTIBAPHULE NAGAR	10	13	4
BAREILLY	240	199	114	KASGANJ	0	0	0	MAHAMAYANAGAR	2	2	8
BASTI	135	180	106	KAUSHAMBI	19	36	35	Total	8203	7040	5274
BHADOHI	0	0	0	KHERI	407	256	185				
BIJNOR	49	39	8	KUSHINAGAR	39	89	73				
BULANDSAHAR	24	28	12	LALITPUR	0	0	0				
CHANDAUJI	6	5	0	LUCKNOW	60	30	26				
CHITRAKOOT	0	0	0	MAHARAJGANJ	530	852	791				
DEORIA	52	53	43	MAHOBA	0	0	0				
ETAH	17	28	24	MAINPURI	79	82	43				
ETAWAH	120	96	41	MATHURA	1441	1082	1050				
FAIZABAD	13	10	7	MAU	11	8	9				
FARRUKHABAD	0	0	0	MEERUT	67	68	16				
FATEHPUR	52	36	70	MIRZAPUR	3	12	5				
FIROZABAD	23	18	9	MORADABAD	45	32	11				
				MUZAFARNAGAR	116	120	34				
				PILHIBHIT	925	710	426				
				PRATAPGARH	35	34	25				

Details of residue burning events in Punjab on 19-Nov-2018

Event S. No.	District	Tehsil/Block	Satellite	Longitude	Latitude	Time (IST)	Day/Night	Fire Power (W/m²)
1	AMRITSAR	AJNALA	S-NPP	74.72952	31.63538	13:18:00	D	2.90
2	AMRITSAR	AJNALA	S-NPP	74.68811	31.66139	13:18:00	D	1.30
3	AMRITSAR	AJNALA	S-NPP	74.68961	31.66320	13:18:00	D	3.40
4	AMRITSAR	AJNALA	S-NPP	74.61449	31.68296	13:18:00	D	2.20
5	AMRITSAR	AJNALA	S-NPP	74.57095	31.71610	13:18:00	D	4.60
6	AMRITSAR	AJNALA	S-NPP	74.77432	31.76390	13:18:00	D	3.30
7	AMRITSAR	AJNALA	S-NPP	74.60258	31.81954	13:18:00	D	5.00
8	AMRITSAR	AJNALA	S-NPP	74.62395	31.83458	13:18:00	D	5.80
9	AMRITSAR	AJNALA	S-NPP	74.64706	31.84247	13:18:00	D	3.30
10	AMRITSAR	AJNALA	S-NPP	74.66961	31.87251	13:18:00	D	4.10
11	AMRITSAR	AJNALA	S-NPP	74.67103	31.87458	13:18:00	D	5.20
12	AMRITSAR	AJNALA	S-NPP	74.79868	31.92009	13:18:00	D	1.50
13	AMRITSAR	AJNALA	S-NPP	74.87206	31.98118	13:18:00	D	1.60
14	AMRITSAR	AMRITSAR I	S-NPP	74.97816	31.64687	13:18:00	D	4.00
15	AMRITSAR	AMRITSAR I	S-NPP	75.09462	31.72618	13:18:00	D	2.50
16	AMRITSAR	AMRITSAR I	S-NPP	75.02193	31.79336	13:18:00	D	3.20
17	AMRITSAR	AMRITSAR I	S-NPP	75.00248	31.79356	13:18:00	D	2.20
18	AMRITSAR	AMRITSAR I	S-NPP	74.94009	31.83624	13:18:00	D	3.20
19	AMRITSAR	AMRITSAR II	S-NPP	74.60003	31.52181	13:18:00	D	3.40
20	AMRITSAR	AMRITSAR II	S-NPP	74.60488	31.52268	13:18:00	D	4.20
21	AMRITSAR	AMRITSAR II	S-NPP	74.70354	31.57862	13:18:00	D	4.20
22	AMRITSAR	AMRITSAR II	S-NPP	74.71869	31.61857	13:18:00	D	2.70
23	AMRITSAR	BABA BAKALA	S-NPP	75.30137	31.57751	13:18:00	D	4.00
24	AMRITSAR	BABA BAKALA	S-NPP	75.18522	31.60421	13:18:00	D	3.40
25	AMRITSAR	BABA BAKALA	S-NPP	75.18982	31.60502	13:18:00	D	3.40
26	AMRITSAR	BABA BAKALA	S-NPP	75.24438	31.63646	13:18:00	D	3.60
27	AMRITSAR	BABA BAKALA	S-NPP	75.21567	31.68200	13:18:00	D	2.00
28	BARNALA	BARNALA	S-NPP	75.47530	30.36199	13:18:00	D	3.60

29	BARNALA	BARNALA	S-NPP	75.47906	30.36631	13:18:00	D	2.60
30	BARNALA	BARNALA	S-NPP	75.44991	30.36850	13:18:00	D	15.10
31	BARNALA	BARNALA	S-NPP	75.47823	30.36982	13:18:00	D	2.60
32	BARNALA	BARNALA	S-NPP	75.50402	30.38165	13:18:00	D	3.50
33	BARNALA	BARNALA	S-NPP	75.37088	30.40464	13:18:00	D	2.30
34	BARNALA	BARNALA	S-NPP	75.59221	30.41488	13:18:00	D	8.80
35	BARNALA	BARNALA	S-NPP	75.55312	30.44070	13:18:00	D	6.00
36	BARNALA	BARNALA	S-NPP	75.57661	30.44123	13:18:00	D	6.90
37	BARNALA	BARNALA	S-NPP	75.48526	30.44693	13:18:00	D	3.30
38	BARNALA	BARNALA	S-NPP	75.50890	30.44747	13:18:00	D	2.80
39	BARNALA	BARNALA	S-NPP	75.48982	30.44774	13:18:00	D	10.50
40	BARNALA	BARNALA	S-NPP	75.59392	30.44792	13:18:00	D	6.60
41	BARNALA	BARNALA	S-NPP	75.59844	30.44872	13:18:00	D	6.60
42	BARNALA	BARNALA	S-NPP	75.50352	30.45016	13:18:00	D	5.20
43	BARNALA	BARNALA	S-NPP	75.26229	30.45524	13:18:00	D	8.30
44	BARNALA	BARNALA	S-NPP	75.35673	30.46453	13:18:00	D	3.70
45	BARNALA	BARNALA	S-NPP	75.41119	30.47776	13:18:00	D	4.10
46	BARNALA	BARNALA	S-NPP	75.40742	30.48020	13:18:00	D	4.10
47	BARNALA	BARNALA	S-NPP	75.36355	30.48330	13:18:00	D	11.80
48	BARNALA	BARNALA	S-NPP	75.46704	30.48390	13:18:00	D	2.40
49	BARNALA	BARNALA	S-NPP	75.33253	30.49242	13:18:00	D	14.90
50	BARNALA	BARNALA	S-NPP	75.34177	30.49407	13:18:00	D	2.50
51	BARNALA	BARNALA	S-NPP	75.28751	30.49905	13:18:00	D	4.00
52	BARNALA	BARNALA	S-NPP	75.44080	30.50083	13:18:00	D	5.10
53	BARNALA	BARNALA	S-NPP	75.29512	30.50777	13:18:00	D	20.40
54	BARNALA	BARNALA	S-NPP	75.35607	30.51498	13:18:00	D	3.70
55	BARNALA	BARNALA	S-NPP	75.42668	30.52025	13:18:00	D	15.10
56	BARNALA	BARNALA	S-NPP	75.44042	30.52270	13:18:00	D	6.20
57	BARNALA	BARNALA	S-NPP	75.42044	30.52645	13:18:00	D	7.00
58	BARNALA	BARNALA	S-NPP	75.50060	30.52975	13:18:00	D	4.80
59	BARNALA	BARNALA	S-NPP	75.42879	30.53160	13:18:00	D	2.30

60	BARNALA	BARNALA	S-NPP	75.63681	30.53211	13:18:00	D	2.70
61	BARNALA	BARNALA	S-NPP	75.54977	30.54211	13:18:00	D	8.40
62	BARNALA	BARNALA	S-NPP	75.66061	30.59065	13:18:00	D	4.00
63	BARNALA	BARNALA	S-NPP	75.66510	30.59144	13:18:00	D	4.40
64	BARNALA	BARNALA	S-NPP	75.47126	30.59385	13:18:00	D	9.00
65	BARNALA	BARNALA	S-NPP	75.47183	30.59702	13:18:00	D	2.90
66	BARNALA	TAPPA	S-NPP	75.50571	30.18500	13:18:00	D	2.10
67	BARNALA	TAPPA	S-NPP	75.47256	30.24502	13:18:00	D	8.70
68	BARNALA	TAPPA	S-NPP	75.42243	30.25451	13:18:00	D	4.90
69	BARNALA	TAPPA	S-NPP	75.42464	30.27240	13:18:00	D	14.80
70	BARNALA	TAPPA	S-NPP	75.42841	30.27674	13:18:00	D	2.80
71	BARNALA	TAPPA	S-NPP	75.35552	30.30042	13:18:00	D	5.00
72	BARNALA	TAPPA	S-NPP	75.47769	30.31121	13:18:00	D	4.20
73	BARNALA	TAPPA	S-NPP	75.36690	30.31348	13:18:00	D	3.50
74	BARNALA	TAPPA	S-NPP	75.34210	30.31642	13:18:00	D	1.20
75	BARNALA	TAPPA	S-NPP	75.40466	30.31653	13:18:00	D	4.10
76	BARNALA	TAPPA	S-NPP	75.38456	30.32030	13:18:00	D	5.60
77	BARNALA	TAPPA	S-NPP	75.43365	30.37663	13:18:00	D	1.20
78	BARNALA	TAPPA	S-NPP	75.43436	30.37935	13:18:00	D	1.90
79	BATHINDA	BATHINDA	S-NPP	74.83983	30.06759	13:18:00	D	3.80
80	BATHINDA	BATHINDA	S-NPP	74.65320	30.12715	13:18:00	D	30.90
81	BATHINDA	BATHINDA	S-NPP	74.65566	30.12866	13:18:00	D	28.20
82	BATHINDA	BATHINDA	S-NPP	74.67210	30.13448	13:18:00	D	5.30
83	BATHINDA	BATHINDA	S-NPP	74.82465	30.18174	13:18:00	D	10.70
84	BATHINDA	BATHINDA	S-NPP	75.18767	30.27031	13:18:00	D	2.30
85	BATHINDA	BATHINDA	S-NPP	75.08817	30.27469	13:18:00	D	8.10
86	BATHINDA	BATHINDA	S-NPP	75.10542	30.28523	13:18:00	D	2.90
87	BATHINDA	BATHINDA	S-NPP	75.00598	30.28603	13:18:00	D	28.00
88	BATHINDA	BATHINDA	S-NPP	75.07441	30.29083	13:18:00	D	3.10
89	BATHINDA	BATHINDA	S-NPP	75.07355	30.29440	13:18:00	D	5.30
90	BATHINDA	BATHINDA	S-NPP	74.96682	30.33174	13:18:00	D	1.40

91	BATHINDA	BATHINDA	S-NPP	75.06907	30.36149	13:18:00	D	1.60
92	BATHINDA	BATHINDA	S-NPP	75.07476	30.39971	13:18:00	D	7.90
93	BATHINDA	RAMPURA PHUL	S-NPP	75.30125	30.13343	13:18:00	D	4.80
94	BATHINDA	RAMPURA PHUL	S-NPP	75.30325	30.13582	13:18:00	D	11.00
95	BATHINDA	RAMPURA PHUL	S-NPP	75.30042	30.13697	13:18:00	D	5.70
96	BATHINDA	RAMPURA PHUL	S-NPP	75.13924	30.15601	13:18:00	D	2.70
97	BATHINDA	RAMPURA PHUL	S-NPP	75.21815	30.19617	13:18:00	D	3.40
98	BATHINDA	RAMPURA PHUL	S-NPP	75.23992	30.20746	13:18:00	D	2.30
99	BATHINDA	RAMPURA PHUL	S-NPP	75.31380	30.22428	13:18:00	D	5.40
100	BATHINDA	RAMPURA PHUL	S-NPP	75.26212	30.23728	13:18:00	D	44.00
101	BATHINDA	RAMPURA PHUL	S-NPP	75.26331	30.23956	13:18:00	D	49.40
102	BATHINDA	RAMPURA PHUL	S-NPP	75.25696	30.24581	13:18:00	D	2.70
103	BATHINDA	RAMPURA PHUL	S-NPP	75.22639	30.25137	13:18:00	D	2.70
104	BATHINDA	RAMPURA PHUL	S-NPP	75.28326	30.25796	13:18:00	D	2.70
105	BATHINDA	RAMPURA PHUL	S-NPP	75.17873	30.28724	13:18:00	D	4.60
106	BATHINDA	RAMPURA PHUL	S-NPP	75.17789	30.29079	13:18:00	D	7.40
107	BATHINDA	RAMPURA PHUL	S-NPP	75.16508	30.30334	13:18:00	D	6.20
108	BATHINDA	RAMPURA PHUL	S-NPP	75.19072	30.34639	13:18:00	D	7.10
109	BATHINDA	RAMPURA PHUL	S-NPP	75.26167	30.35555	13:18:00	D	10.00
110	BATHINDA	RAMPURA PHUL	S-NPP	75.28242	30.37037	13:18:00	D	1.20
111	BATHINDA	RAMPURA PHUL	S-NPP	75.29636	30.37288	13:18:00	D	2.90
112	BATHINDA	RAMPURA PHUL	S-NPP	75.29553	30.37642	13:18:00	D	9.10
113	BATHINDA	RAMPURA PHUL	S-NPP	75.25327	30.39095	13:18:00	D	5.20
114	BATHINDA	RAMPURA PHUL	S-NPP	75.11732	30.40732	13:18:00	D	3.70
115	BATHINDA	RAMPURA PHUL	S-NPP	75.13279	30.42491	13:18:00	D	24.80
116	BATHINDA	RAMPURA PHUL	S-NPP	75.13412	30.42697	13:18:00	D	38.80
117	BATHINDA	RAMPURA PHUL	S-NPP	75.24701	30.43779	13:18:00	D	3.40
118	BATHINDA	RAMPURA PHUL	S-NPP	75.26314	30.45170	13:18:00	D	8.30
119	BATHINDA	RAMPURA PHUL	S-NPP	75.25958	30.45350	13:18:00	D	16.30
120	BATHINDA	RAMPURA PHUL	TERRA-1	75.17756	30.45352	11:50:00	D	34.72
121	BATHINDA	RAMPURA PHUL	S-NPP	75.20239	30.46898	13:18:00	D	3.10

122	BATHINDA	RAMPURA PHUL	S-NPP	75.20155	30.47253	13:18:00	D	3.10
123	BATHINDA	RAMPURA PHUL	S-NPP	75.18031	30.47979	13:18:00	D	11.30
124	BATHINDA	RAMPURA PHUL	S-NPP	75.08112	30.48417	13:18:00	D	2.90
125	BATHINDA	RAMPURA PHUL	S-NPP	75.15732	30.49415	13:18:00	D	6.10
126	BATHINDA	RAMPURA PHUL	S-NPP	75.16201	30.49500	13:18:00	D	7.00
127	BATHINDA	RAMPURA PHUL	S-NPP	75.14708	30.49602	13:18:00	D	2.00
128	BATHINDA	RAMPURA PHUL	S-NPP	75.16032	30.50209	13:18:00	D	3.20
129	BATHINDA	RAMPURA PHUL	S-NPP	75.12448	30.55641	13:18:00	D	5.20
130	BATHINDA	RAMPURA PHUL	S-NPP	75.14880	30.55712	13:18:00	D	21.30
131	BATHINDA	RAMPURA PHUL	S-NPP	75.15348	30.55797	13:18:00	D	21.30
132	BATHINDA	RAMPURA PHUL	S-NPP	75.14795	30.56066	13:18:00	D	3.90
133	BATHINDA	RAMPURA PHUL	S-NPP	75.14371	30.57840	13:18:00	D	2.90
134	BATHINDA	TALWANDI SABO	TERRA-1	75.13834	29.82620	11:50:00	D	58.54
135	BATHINDA	TALWANDI SABO	S-NPP	75.23499	29.96256	13:18:00	D	16.90
136	BATHINDA	TALWANDI SABO	S-NPP	75.23801	29.97053	13:18:00	D	2.80
137	BATHINDA	TALWANDI SABO	S-NPP	75.28294	30.00822	13:18:00	D	2.80
138	BATHINDA	TALWANDI SABO	S-NPP	75.21949	30.03566	13:18:00	D	4.70
139	BATHINDA	TALWANDI SABO	TERRA-1	75.16392	30.05078	11:50:00	D	27.37
140	BATHINDA	TALWANDI SABO	S-NPP	75.17503	30.05735	13:18:00	D	4.90
141	BATHINDA	TALWANDI SABO	S-NPP	75.17419	30.06092	13:18:00	D	4.90
142	FARIDKOT	FARIDKOT	S-NPP	74.77892	30.50070	13:18:00	D	5.70
143	FARIDKOT	FARIDKOT	S-NPP	74.78377	30.50159	13:18:00	D	8.40
144	FARIDKOT	FARIDKOT	S-NPP	74.76832	30.50252	13:18:00	D	14.90
145	FARIDKOT	FARIDKOT	S-NPP	74.79833	30.50427	13:18:00	D	4.40
146	FARIDKOT	FARIDKOT	S-NPP	74.80318	30.50516	13:18:00	D	6.50
147	FARIDKOT	FARIDKOT	S-NPP	74.76744	30.50612	13:18:00	D	7.60
148	FARIDKOT	FARIDKOT	S-NPP	74.75558	30.53408	13:18:00	D	3.40
149	FARIDKOT	FARIDKOT	S-NPP	74.85775	30.57142	13:18:00	D	7.20
150	FARIDKOT	FARIDKOT	S-NPP	74.73643	30.58343	13:18:00	D	5.00
151	FARIDKOT	FARIDKOT	S-NPP	74.87266	30.59283	13:18:00	D	2.60
152	FARIDKOT	FARIDKOT	S-NPP	74.83719	30.59394	13:18:00	D	2.20

153	FARIDKOT	FARIDKOT	S-NPP	74.83984	30.59504	13:18:00	D	2.50
154	FARIDKOT	FARIDKOT	S-NPP	74.89102	30.59986	13:18:00	D	4.60
155	FARIDKOT	FARIDKOT	S-NPP	74.88876	30.60033	13:18:00	D	2.80
156	FARIDKOT	FARIDKOT	S-NPP	74.89355	30.60121	13:18:00	D	3.80
157	FARIDKOT	FARIDKOT	S-NPP	74.82104	30.61033	13:18:00	D	2.70
158	FARIDKOT	FARIDKOT	S-NPP	74.77361	30.63919	13:18:00	D	11.00
159	FARIDKOT	FARIDKOT	S-NPP	74.93362	30.64218	13:18:00	D	3.70
160	FARIDKOT	FARIDKOT	S-NPP	74.93839	30.64305	13:18:00	D	3.70
161	FARIDKOT	FARIDKOT	S-NPP	74.93666	30.65020	13:18:00	D	4.60
162	FARIDKOT	FARIDKOT	S-NPP	74.92538	30.65561	13:18:00	D	3.00
163	FARIDKOT	FARIDKOT	S-NPP	74.94189	30.66979	13:18:00	D	7.00
164	FARIDKOT	FARIDKOT	S-NPP	74.82156	30.67043	13:18:00	D	3.30
165	FARIDKOT	FARIDKOT	S-NPP	74.94666	30.67065	13:18:00	D	8.20
166	FARIDKOT	FARIDKOT	S-NPP	74.86662	30.67110	13:18:00	D	4.20
167	FARIDKOT	FARIDKOT	S-NPP	74.83604	30.67305	13:18:00	D	9.80
168	FARIDKOT	FARIDKOT	S-NPP	74.84086	30.67392	13:18:00	D	9.80
169	FARIDKOT	FARIDKOT	S-NPP	74.51505	30.67778	13:18:00	D	4.30
170	FARIDKOT	FARIDKOT	S-NPP	74.63875	30.67801	13:18:00	D	4.20
171	FARIDKOT	FARIDKOT	S-NPP	74.62138	30.68613	13:18:00	D	2.20
172	FARIDKOT	FARIDKOT	S-NPP	74.82687	30.69012	13:18:00	D	10.40
173	FARIDKOT	FARIDKOT	S-NPP	74.76365	30.70866	13:18:00	D	28.40
174	FARIDKOT	FARIDKOT	S-NPP	74.58839	30.73683	13:18:00	D	8.00
175	FARIDKOT	FARIDKOT	S-NPP	74.58751	30.74045	13:18:00	D	8.00
176	FARIDKOT	FARIDKOT	S-NPP	74.50975	30.74142	13:18:00	D	4.00
177	FARIDKOT	FARIDKOT	S-NPP	74.47382	30.74915	13:18:00	D	4.00
178	FARIDKOT	FARIDKOT	S-NPP	74.47134	30.74963	13:18:00	D	5.10
179	FARIDKOT	FARIDKOT	S-NPP	74.82164	30.76053	13:18:00	D	5.90
180	FARIDKOT	FARIDKOT	S-NPP	74.57140	30.76402	13:18:00	D	29.70
181	FARIDKOT	FARIDKOT	S-NPP	74.57365	30.76403	13:18:00	D	34.30
182	FARIDKOT	FARIDKOT	S-NPP	74.57052	30.76764	13:18:00	D	29.70
183	FARIDKOT	FARIDKOT	S-NPP	74.57275	30.76765	13:18:00	D	12.30

184	FARIDKOT	FARIDKOT	S-NPP	74.66470	30.78091	13:18:00	D	4.50
185	FARIDKOT	FARIDKOT	S-NPP	74.56921	30.78214	13:18:00	D	7.10
186	FARIDKOT	FARIDKOT	S-NPP	74.66016	30.82916	13:18:00	D	7.20
187	FARIDKOT	JAITO	S-NPP	74.90237	30.39123	13:18:00	D	4.80
188	FARIDKOT	JAITO	S-NPP	74.89938	30.39135	13:18:00	D	5.40
189	FARIDKOT	JAITO	S-NPP	74.77144	30.39787	13:18:00	D	4.40
190	FARIDKOT	JAITO	S-NPP	74.75594	30.39879	13:18:00	D	6.20
191	FARIDKOT	JAITO	S-NPP	74.80682	30.41944	13:18:00	D	2.20
192	FARIDKOT	JAITO	S-NPP	74.82449	30.43019	13:18:00	D	2.00
193	FARIDKOT	JAITO	S-NPP	74.76756	30.43487	13:18:00	D	3.80
194	FARIDKOT	JAITO	S-NPP	74.95311	30.43864	13:18:00	D	2.90
195	FARIDKOT	JAITO	S-NPP	74.78264	30.45645	13:18:00	D	10.40
196	FARIDKOT	JAITO	TERRA-1	74.79899	30.47449	11:50:00	D	28.88
197	FARIDKOT	JAITO	S-NPP	75.00179	30.48477	13:18:00	D	7.90
198	FARIDKOT	JAITO	S-NPP	74.84581	30.51675	13:18:00	D	13.50
199	FARIDKOT	JAITO	S-NPP	74.82562	30.51681	13:18:00	D	3.10
200	FARIDKOT	JAITO	S-NPP	74.84495	30.52035	13:18:00	D	6.50
201	FARIDKOT	JAITO	S-NPP	74.97783	30.52970	13:18:00	D	6.70
202	FARIDKOT	JAITO	TERRA-1	74.90301	30.54485	11:50:00	D	54.07
203	FATEHGARH SAHIB	BASSI PATHANAN	S-NPP	76.42827	30.72603	13:18:00	D	5.90
204	FATEHGARH SAHIB	FATEHGARH SAHIB	S-NPP	76.45619	30.51660	13:18:00	D	2.70
205	FATEHGARH SAHIB	FATEHGARH SAHIB	S-NPP	76.28669	30.58238	13:18:00	D	8.10
206	FIROZPUR	ABOHAR	S-NPP	74.43493	30.02291	13:18:00	D	5.80
207	FIROZPUR	ABOHAR	S-NPP	74.36378	30.14994	13:18:00	D	20.50
208	FIROZPUR	ABOHAR	S-NPP	74.36889	30.15089	13:18:00	D	20.50
209	FIROZPUR	ABOHAR	S-NPP	74.25377	30.16055	13:18:00	D	16.10
210	FIROZPUR	ABOHAR	S-NPP	74.25611	30.16126	13:18:00	D	9.90
211	FIROZPUR	ABOHAR	S-NPP	74.34477	30.19357	13:18:00	D	7.40
212	FIROZPUR	ABOHAR	S-NPP	74.31739	30.19613	13:18:00	D	4.90
213	FIROZPUR	ABOHAR	S-NPP	74.33273	30.19903	13:18:00	D	14.50
214	FIROZPUR	FAZILKA	S-NPP	74.07292	30.19679	13:18:00	D	15.00

215	FIROZPUR	FAZILKA	S-NPP	74.07260	30.23189	13:18:00	D	3.70
216	FIROZPUR	FAZILKA	S-NPP	74.07504	30.23242	13:18:00	D	2.80
217	FIROZPUR	FAZILKA	S-NPP	74.05405	30.24009	13:18:00	D	3.40
218	FIROZPUR	FAZILKA	S-NPP	74.06270	30.24958	13:18:00	D	8.70
219	FIROZPUR	FAZILKA	S-NPP	74.00098	30.25349	13:18:00	D	2.80
220	FIROZPUR	FAZILKA	S-NPP	74.07226	30.25532	13:18:00	D	4.10
221	FIROZPUR	FAZILKA	S-NPP	73.98383	30.27774	13:18:00	D	3.90
222	FIROZPUR	FAZILKA	S-NPP	74.04379	30.28124	13:18:00	D	3.00
223	FIROZPUR	FAZILKA	S-NPP	74.02518	30.28948	13:18:00	D	6.40
224	FIROZPUR	FAZILKA	S-NPP	74.25400	30.28985	13:18:00	D	4.90
225	FIROZPUR	FAZILKA	S-NPP	74.02423	30.29322	13:18:00	D	6.40
226	FIROZPUR	FAZILKA	S-NPP	73.98878	30.30224	13:18:00	D	9.30
227	FIROZPUR	FAZILKA	S-NPP	74.27692	30.30580	13:18:00	D	14.80
228	FIROZPUR	FAZILKA	S-NPP	74.20266	30.32286	13:18:00	D	4.50
229	FIROZPUR	FAZILKA	S-NPP	74.29377	30.32443	13:18:00	D	4.70
230	FIROZPUR	FAZILKA	S-NPP	74.26117	30.32606	13:18:00	D	3.40
231	FIROZPUR	FAZILKA	S-NPP	74.29103	30.33552	13:18:00	D	2.40
232	FIROZPUR	FAZILKA	S-NPP	74.09029	30.33691	13:18:00	D	3.30
233	FIROZPUR	FAZILKA	S-NPP	74.13366	30.34885	13:18:00	D	4.00
234	FIROZPUR	FAZILKA	S-NPP	74.13634	30.34937	13:18:00	D	3.60
235	FIROZPUR	FAZILKA	S-NPP	74.04791	30.36370	13:18:00	D	9.90
236	FIROZPUR	FAZILKA	S-NPP	74.11155	30.37192	13:18:00	D	7.50
237	FIROZPUR	FAZILKA	S-NPP	74.12959	30.38704	13:18:00	D	3.50
238	FIROZPUR	FAZILKA	S-NPP	74.20722	30.40172	13:18:00	D	2.90
239	FIROZPUR	FAZILKA	TERRA-1	73.97296	30.42538	11:50:00	D	25.72
240	FIROZPUR	FAZILKA	S-NPP	74.09148	30.43052	13:18:00	D	6.60
241	FIROZPUR	FAZILKA	S-NPP	74.03632	30.43192	13:18:00	D	4.60
242	FIROZPUR	FAZILKA	S-NPP	74.20500	30.43232	13:18:00	D	7.00
243	FIROZPUR	FAZILKA	S-NPP	74.13832	30.43927	13:18:00	D	5.90
244	FIROZPUR	FAZILKA	S-NPP	74.13739	30.44298	13:18:00	D	6.00
245	FIROZPUR	FAZILKA	S-NPP	74.15682	30.47378	13:18:00	D	3.00

246	FIROZPUR	FAZILKA	S-NPP	73.96724	30.48139	13:18:00	D	24.60
247	FIROZPUR	FAZILKA	S-NPP	74.07159	30.48166	13:18:00	D	1.90
248	FIROZPUR	FAZILKA	S-NPP	74.03313	30.48216	13:18:00	D	6.30
249	FIROZPUR	FAZILKA	S-NPP	73.96631	30.48514	13:18:00	D	24.60
250	FIROZPUR	FAZILKA	S-NPP	74.01984	30.49137	13:18:00	D	5.60
251	FIROZPUR	FAZILKA	TERRA-1	74.13053	30.49545	11:50:00	D	54.50
252	FIROZPUR	FAZILKA	S-NPP	73.97930	30.49935	13:18:00	D	6.50
253	FIROZPUR	FAZILKA	S-NPP	74.04044	30.51869	13:18:00	D	2.30
254	FIROZPUR	FAZILKA	S-NPP	74.10728	30.53512	13:18:00	D	4.10
255	FIROZPUR	FIROZPUR	S-NPP	74.89406	30.79232	13:18:00	D	10.60
256	FIROZPUR	FIROZPUR	S-NPP	74.47617	30.80285	13:18:00	D	4.00
257	FIROZPUR	FIROZPUR	S-NPP	74.81906	30.81244	13:18:00	D	3.90
258	FIROZPUR	FIROZPUR	S-NPP	74.82076	30.81363	13:18:00	D	5.20
259	FIROZPUR	FIROZPUR	TERRA-1	74.57867	30.83321	11:50:00	D	25.50
260	FIROZPUR	FIROZPUR	S-NPP	74.86484	30.85908	13:18:00	D	2.50
261	FIROZPUR	FIROZPUR	S-NPP	74.57194	30.88410	13:18:00	D	14.30
262	FIROZPUR	FIROZPUR	S-NPP	74.65332	30.90674	13:18:00	D	31.90
263	FIROZPUR	FIROZPUR	S-NPP	74.51237	30.97115	13:18:00	D	7.60
264	FIROZPUR	FIROZPUR	S-NPP	74.51426	30.97186	13:18:00	D	6.30
265	FIROZPUR	FIROZPUR	S-NPP	74.73718	30.97844	13:18:00	D	3.80
266	FIROZPUR	FIROZPUR	S-NPP	74.74106	31.07728	13:18:00	D	16.50
267	FIROZPUR	JALALABAD	S-NPP	74.29877	30.46526	13:18:00	D	20.20
268	FIROZPUR	JALALABAD	S-NPP	74.27650	30.46884	13:18:00	D	6.10
269	FIROZPUR	JALALABAD	S-NPP	74.29785	30.46894	13:18:00	D	20.20
270	FIROZPUR	JALALABAD	S-NPP	74.27559	30.47253	13:18:00	D	6.10
271	FIROZPUR	JALALABAD	S-NPP	74.21362	30.48427	13:18:00	D	3.20
272	FIROZPUR	JALALABAD	S-NPP	74.21172	30.48496	13:18:00	D	2.70
273	FIROZPUR	JALALABAD	S-NPP	74.31694	30.49942	13:18:00	D	4.30
274	FIROZPUR	JALALABAD	S-NPP	74.31990	30.50162	13:18:00	D	1.80
275	FIROZPUR	JALALABAD	S-NPP	74.35758	30.50688	13:18:00	D	31.80
276	FIROZPUR	JALALABAD	S-NPP	74.37146	30.50752	13:18:00	D	7.50

277	FIROZPUR	JALALABAD	S-NPP	74.36265	30.50781	13:18:00	D	31.80
278	FIROZPUR	JALALABAD	S-NPP	74.35538	30.50833	13:18:00	D	23.60
279	FIROZPUR	JALALABAD	S-NPP	74.37276	30.50967	13:18:00	D	7.40
280	FIROZPUR	JALALABAD	S-NPP	74.36173	30.51148	13:18:00	D	31.80
281	FIROZPUR	JALALABAD	S-NPP	74.31535	30.52001	13:18:00	D	12.30
282	FIROZPUR	JALALABAD	S-NPP	74.15336	30.52434	13:18:00	D	6.00
283	FIROZPUR	JALALABAD	S-NPP	74.32967	30.52656	13:18:00	D	2.80
284	FIROZPUR	JALALABAD	S-NPP	74.37198	30.52682	13:18:00	D	2.20
285	FIROZPUR	JALALABAD	S-NPP	74.15244	30.52805	13:18:00	D	6.00
286	FIROZPUR	JALALABAD	S-NPP	74.30153	30.53282	13:18:00	D	10.20
287	FIROZPUR	JALALABAD	S-NPP	74.37431	30.53877	13:18:00	D	6.70
288	FIROZPUR	JALALABAD	S-NPP	74.33019	30.54588	13:18:00	D	3.20
289	FIROZPUR	JALALABAD	S-NPP	74.36148	30.54789	13:18:00	D	4.30
290	FIROZPUR	JALALABAD	S-NPP	74.37068	30.55345	13:18:00	D	3.70
291	FIROZPUR	JALALABAD	S-NPP	74.34228	30.58271	13:18:00	D	3.80
292	FIROZPUR	JALALABAD	S-NPP	74.23913	30.59060	13:18:00	D	4.90
293	FIROZPUR	JALALABAD	S-NPP	74.15549	30.59105	13:18:00	D	4.40
294	FIROZPUR	JALALABAD	S-NPP	74.24127	30.59186	13:18:00	D	7.40
295	FIROZPUR	JALALABAD	S-NPP	74.38503	30.60211	13:18:00	D	3.10
296	FIROZPUR	JALALABAD	S-NPP	74.10344	30.60447	13:18:00	D	3.40
297	FIROZPUR	JALALABAD	S-NPP	74.31758	30.60634	13:18:00	D	11.50
298	FIROZPUR	JALALABAD	S-NPP	74.31978	30.60929	13:18:00	D	11.60
299	FIROZPUR	JALALABAD	S-NPP	74.13171	30.62146	13:18:00	D	17.20
300	FIROZPUR	JALALABAD	S-NPP	74.15843	30.62261	13:18:00	D	4.80
301	FIROZPUR	JALALABAD	S-NPP	74.44765	30.62506	13:18:00	D	18.90
302	FIROZPUR	JALALABAD	S-NPP	74.40479	30.62869	13:18:00	D	4.70
303	FIROZPUR	JALALABAD	S-NPP	74.44674	30.62872	13:18:00	D	18.90
304	FIROZPUR	JALALABAD	S-NPP	74.40151	30.62985	13:18:00	D	2.50
305	FIROZPUR	JALALABAD	S-NPP	74.31447	30.64035	13:18:00	D	2.70
306	FIROZPUR	JALALABAD	S-NPP	74.25124	30.65931	13:18:00	D	3.60
307	FIROZPUR	JALALABAD	S-NPP	74.39158	30.67009	13:18:00	D	2.30

308	FIROZPUR	JALALABAD	S-NPP	74.31965	30.68356	13:18:00	D	2.20
309	FIROZPUR	JALALABAD	S-NPP	74.31873	30.68723	13:18:00	D	3.90
310	FIROZPUR	JALALABAD	S-NPP	74.38575	30.71491	13:18:00	D	4.10
311	FIROZPUR	JALALABAD	S-NPP	74.35616	30.78063	13:18:00	D	3.80
312	FIROZPUR	ZIRA	S-NPP	75.21268	30.85668	13:18:00	D	8.60
313	FIROZPUR	ZIRA	S-NPP	75.15894	30.85819	13:18:00	D	3.90
314	FIROZPUR	ZIRA	S-NPP	75.16361	30.85902	13:18:00	D	3.90
315	FIROZPUR	ZIRA	S-NPP	75.13331	30.87078	13:18:00	D	27.90
316	FIROZPUR	ZIRA	S-NPP	75.15747	30.87148	13:18:00	D	5.50
317	FIROZPUR	ZIRA	S-NPP	75.13798	30.87163	13:18:00	D	29.50
318	FIROZPUR	ZIRA	S-NPP	75.15556	30.87231	13:18:00	D	10.00
319	FIROZPUR	ZIRA	S-NPP	75.13246	30.87432	13:18:00	D	27.90
320	FIROZPUR	ZIRA	S-NPP	75.15662	30.87501	13:18:00	D	4.30
321	FIROZPUR	ZIRA	S-NPP	75.13713	30.87517	13:18:00	D	29.50
322	FIROZPUR	ZIRA	S-NPP	75.27583	30.87519	13:18:00	D	3.00
323	FIROZPUR	ZIRA	S-NPP	75.21690	30.87947	13:18:00	D	5.20
324	FIROZPUR	ZIRA	S-NPP	75.24094	30.88003	13:18:00	D	1.80
325	FIROZPUR	ZIRA	S-NPP	75.23720	30.88225	13:18:00	D	1.30
326	FIROZPUR	ZIRA	S-NPP	75.21606	30.88299	13:18:00	D	5.20
327	FIROZPUR	ZIRA	S-NPP	75.15408	30.88560	13:18:00	D	3.60
328	FIROZPUR	ZIRA	S-NPP	75.16340	30.88729	13:18:00	D	8.60
329	FIROZPUR	ZIRA	S-NPP	75.21153	30.88863	13:18:00	D	2.30
330	FIROZPUR	ZIRA	S-NPP	75.13374	30.88930	13:18:00	D	4.20
331	FIROZPUR	ZIRA	S-NPP	75.15789	30.88998	13:18:00	D	3.20
332	FIROZPUR	ZIRA	S-NPP	75.16255	30.89082	13:18:00	D	4.40
333	FIROZPUR	ZIRA	S-NPP	75.16720	30.89166	13:18:00	D	4.40
334	FIROZPUR	ZIRA	S-NPP	75.24939	30.89179	13:18:00	D	3.60
335	FIROZPUR	ZIRA	S-NPP	75.37155	30.89569	13:18:00	D	7.20
336	FIROZPUR	ZIRA	S-NPP	75.11548	30.90444	13:18:00	D	5.40
337	FIROZPUR	ZIRA	S-NPP	75.28462	30.90546	13:18:00	D	5.20
338	FIROZPUR	ZIRA	S-NPP	74.88787	30.90798	13:18:00	D	7.70

339	FIROZPUR	ZIRA	S-NPP	75.29300	30.91063	13:18:00	D	7.90
340	FIROZPUR	ZIRA	S-NPP	75.28671	30.91682	13:18:00	D	2.30
341	FIROZPUR	ZIRA	S-NPP	75.21995	30.93421	13:18:00	D	2.70
342	FIROZPUR	ZIRA	S-NPP	75.36848	30.93509	13:18:00	D	6.80
343	FIROZPUR	ZIRA	S-NPP	75.28462	30.94573	13:18:00	D	9.10
344	FIROZPUR	ZIRA	S-NPP	75.26995	30.94678	13:18:00	D	2.60
345	FIROZPUR	ZIRA	S-NPP	75.22038	30.95263	13:18:00	D	11.20
346	FIROZPUR	ZIRA	S-NPP	75.25190	30.96189	13:18:00	D	11.70
347	FIROZPUR	ZIRA	S-NPP	75.14699	31.02266	13:18:00	D	4.50
348	FIROZPUR	ZIRA	S-NPP	75.18037	31.02497	13:18:00	D	19.20
349	FIROZPUR	ZIRA	S-NPP	75.16304	31.03656	13:18:00	D	4.60
350	FIROZPUR	ZIRA	S-NPP	75.07057	31.05689	13:18:00	D	3.60
351	FIROZPUR	ZIRA	S-NPP	75.00891	31.09979	13:18:00	D	3.20
352	GURDASPUR	BATALA	S-NPP	75.32811	31.64386	13:18:00	D	2.70
353	GURDASPUR	BATALA	S-NPP	75.12463	31.76782	13:18:00	D	2.00
354	GURDASPUR	BATALA	S-NPP	75.12502	31.78612	13:18:00	D	3.10
355	GURDASPUR	BATALA	S-NPP	75.12695	31.83747	13:18:00	D	2.10
356	GURDASPUR	BATALA	S-NPP	75.04029	31.84332	13:18:00	D	2.50
357	GURDASPUR	BATALA	S-NPP	75.06888	31.84480	13:18:00	D	3.70
358	GURDASPUR	BATALA	S-NPP	75.02932	31.84866	13:18:00	D	7.90
359	GURDASPUR	BATALA	S-NPP	74.97382	31.89729	13:18:00	D	5.10
360	GURDASPUR	BATALA	S-NPP	75.02577	31.90286	13:18:00	D	4.60
361	GURDASPUR	BATALA	S-NPP	75.04344	31.90965	13:18:00	D	4.80
362	GURDASPUR	DERA BABA NANAK	S-NPP	75.07444	31.94066	13:18:00	D	2.90
363	GURDASPUR	DERA BABA NANAK	S-NPP	75.09256	31.99126	13:18:00	D	4.30
364	GURDASPUR	GURDASPUR	S-NPP	75.16727	31.95332	13:18:00	D	2.40
365	GURDASPUR	GURDASPUR	S-NPP	75.45637	32.00723	13:18:00	D	2.20
366	GURDASPUR	GURDASPUR	S-NPP	75.12289	32.04391	13:18:00	D	2.50
367	HOSHIARPUR	DASUYA	S-NPP	75.62113	31.71397	13:18:00	D	2.20
368	HOSHIARPUR	DASUYA	S-NPP	75.56147	31.83427	13:18:00	D	2.20
369	HOSHIARPUR	GARHSHANKAR	S-NPP	76.04406	31.32458	13:18:00	D	2.20

370	HOSHIARPUR	HOSHIARPUR	S-NPP	75.80315	31.49043	13:18:00	D	2.10
371	HOSHIARPUR	MUKERIAN	S-NPP	75.72599	31.93774	13:18:00	D	1.60
372	HOSHIARPUR	MUKERIAN	S-NPP	75.68904	31.93854	13:18:00	D	3.80
373	JALANDHAR	JALANDHAR I	S-NPP	75.60869	31.26775	13:18:00	D	4.10
374	JALANDHAR	NAKODAR	S-NPP	75.57616	31.20804	13:18:00	D	5.00
375	JALANDHAR	PHILLAUR	S-NPP	75.72136	31.05138	13:18:00	D	2.80
376	JALANDHAR	PHILLAUR	S-NPP	75.72580	31.05215	13:18:00	D	2.80
377	JALANDHAR	PHILLAUR	S-NPP	75.66991	31.05327	13:18:00	D	4.30
378	JALANDHAR	PHILLAUR	S-NPP	75.72944	31.05638	13:18:00	D	9.30
379	JALANDHAR	PHILLAUR	S-NPP	75.86526	31.06549	13:18:00	D	4.20
380	JALANDHAR	PHILLAUR	S-NPP	75.89880	31.07841	13:18:00	D	6.60
381	JALANDHAR	PHILLAUR	S-NPP	75.82281	31.09037	13:18:00	D	2.60
382	JALANDHAR	PHILLAUR	S-NPP	75.60255	31.10705	13:18:00	D	2.40
383	JALANDHAR	PHILLAUR	S-NPP	75.81865	31.11251	13:18:00	D	3.30
384	JALANDHAR	PHILLAUR	S-NPP	75.86745	31.13887	13:18:00	D	2.50
385	JALANDHAR	PHILLAUR	S-NPP	75.85666	31.16558	13:18:00	D	4.20
386	JALANDHAR	PHILLAUR	S-NPP	75.64730	31.20251	13:18:00	D	7.90
387	JALANDHAR	SHAHKOT	S-NPP	75.38068	31.19904	13:18:00	D	2.60
388	KAPURTHALA	KAPURTHALA	S-NPP	75.28138	31.26111	13:18:00	D	3.70
389	KAPURTHALA	KAPURTHALA	S-NPP	75.38349	31.27196	13:18:00	D	4.00
390	KAPURTHALA	KAPURTHALA	S-NPP	75.18586	31.38627	13:18:00	D	3.20
391	KAPURTHALA	KAPURTHALA	S-NPP	75.19278	31.42327	13:18:00	D	2.30
392	KAPURTHALA	KAPURTHALA	S-NPP	75.42705	31.43235	13:18:00	D	3.00
393	KAPURTHALA	PHAGWARA	S-NPP	75.74702	31.27011	13:18:00	D	2.70
394	KAPURTHALA	SULTANPUR LODHI	S-NPP	75.11523	31.19102	13:18:00	D	4.70
395	KAPURTHALA	SULTANPUR LODHI	S-NPP	75.11816	31.19296	13:18:00	D	5.00
396	KAPURTHALA	SULTANPUR LODHI	S-NPP	75.26076	31.33391	13:18:00	D	5.50
397	LUDHIANA	JAGRAON	S-NPP	75.42209	30.64655	13:18:00	D	6.70
398	LUDHIANA	JAGRAON	S-NPP	75.51287	30.68443	13:18:00	D	20.40
399	LUDHIANA	JAGRAON	S-NPP	75.45515	30.71790	13:18:00	D	32.00
400	LUDHIANA	JAGRAON	S-NPP	75.41618	30.72188	13:18:00	D	3.00

401	LUDHIANA	JAGRAON	S-NPP	75.53236	30.73166	13:18:00	D	8.40
402	LUDHIANA	JAGRAON	S-NPP	75.41661	30.74021	13:18:00	D	4.10
403	LUDHIANA	JAGRAON	TERRA-1	75.39242	30.74997	11:50:00	D	44.11
404	LUDHIANA	JAGRAON	S-NPP	75.45519	30.75799	13:18:00	D	13.80
405	LUDHIANA	JAGRAON	S-NPP	75.45975	30.75879	13:18:00	D	10.30
406	LUDHIANA	JAGRAON	S-NPP	75.57470	30.77182	13:18:00	D	3.50
407	LUDHIANA	JAGRAON	S-NPP	75.43034	30.78275	13:18:00	D	3.90
408	LUDHIANA	JAGRAON	S-NPP	75.42951	30.78625	13:18:00	D	4.40
409	LUDHIANA	JAGRAON	S-NPP	75.41955	30.78814	13:18:00	D	8.60
410	LUDHIANA	JAGRAON	S-NPP	75.41599	30.80874	13:18:00	D	13.10
411	LUDHIANA	JAGRAON	S-NPP	75.42055	30.80956	13:18:00	D	7.60
412	LUDHIANA	JAGRAON	S-NPP	75.41914	30.80994	13:18:00	D	19.70
413	LUDHIANA	JAGRAON	S-NPP	75.57841	30.81594	13:18:00	D	13.00
414	LUDHIANA	JAGRAON	S-NPP	75.43548	30.82681	13:18:00	D	3.50
415	LUDHIANA	JAGRAON	S-NPP	75.44003	30.82762	13:18:00	D	3.50
416	LUDHIANA	JAGRAON	S-NPP	75.46361	30.82819	13:18:00	D	11.00
417	LUDHIANA	JAGRAON	S-NPP	75.56235	30.84938	13:18:00	D	12.00
418	LUDHIANA	JAGRAON	S-NPP	75.50733	30.88317	13:18:00	D	5.50
419	LUDHIANA	JAGRAON	S-NPP	75.51310	30.89870	13:18:00	D	8.10
420	LUDHIANA	JAGRAON	S-NPP	75.42638	30.90531	13:18:00	D	4.40
421	LUDHIANA	JAGRAON	S-NPP	75.58898	30.91560	13:18:00	D	5.90
422	LUDHIANA	JAGRAON	S-NPP	75.38718	30.91655	13:18:00	D	2.60
423	LUDHIANA	JAGRAON	S-NPP	75.47477	30.92103	13:18:00	D	2.90
424	LUDHIANA	JAGRAON	S-NPP	75.41329	30.94672	13:18:00	D	4.90
425	LUDHIANA	JAGRAON	S-NPP	75.50119	30.95506	13:18:00	D	4.40
426	LUDHIANA	JAGRAON	S-NPP	75.50571	30.95586	13:18:00	D	4.40
427	LUDHIANA	JAGRAON	S-NPP	75.49583	30.95774	13:18:00	D	5.00
428	LUDHIANA	JAGRAON	S-NPP	75.36266	30.95959	13:18:00	D	1.80
429	LUDHIANA	JAGRAON	S-NPP	75.45258	30.96096	13:18:00	D	5.70
430	LUDHIANA	KHANNA	S-NPP	76.08707	30.73762	13:18:00	D	2.00
431	LUDHIANA	KHANNA	S-NPP	76.07606	30.78555	13:18:00	D	11.30

432	LUDHIANA	LUDHIANA EAST	S-NPP	75.85201	30.68966	13:18:00	D	2.50
433	LUDHIANA	LUDHIANA EAST	S-NPP	75.89013	30.70349	13:18:00	D	2.40
434	LUDHIANA	LUDHIANA EAST	S-NPP	75.85685	30.70845	13:18:00	D	2.20
435	LUDHIANA	LUDHIANA EAST	S-NPP	75.85605	30.71190	13:18:00	D	2.20
436	LUDHIANA	LUDHIANA EAST	S-NPP	75.87132	30.72531	13:18:00	D	1.70
437	LUDHIANA	LUDHIANA EAST	S-NPP	75.88815	30.73181	13:18:00	D	9.10
438	LUDHIANA	LUDHIANA EAST	S-NPP	75.87975	30.74828	13:18:00	D	4.30
439	LUDHIANA	LUDHIANA EAST	S-NPP	75.98191	30.82858	13:18:00	D	5.80
440	LUDHIANA	LUDHIANA EAST	S-NPP	76.04073	30.95094	13:18:00	D	4.90
441	LUDHIANA	LUDHIANA EAST	S-NPP	75.98448	30.95905	13:18:00	D	2.80
442	LUDHIANA	LUDHIANA EAST	S-NPP	75.99442	30.97501	13:18:00	D	3.10
443	LUDHIANA	LUDHIANA EAST	S-NPP	75.88450	30.97754	13:18:00	D	4.00
444	LUDHIANA	LUDHIANA EAST	S-NPP	75.90672	31.00480	13:18:00	D	6.60
445	LUDHIANA	LUDHIANA EAST	S-NPP	75.91110	31.00557	13:18:00	D	6.60
446	LUDHIANA	LUDHIANA EAST	S-NPP	75.90592	31.00823	13:18:00	D	5.20
447	LUDHIANA	LUDHIANA WEST	S-NPP	75.69036	30.74793	13:18:00	D	2.80
448	LUDHIANA	LUDHIANA WEST	S-NPP	75.69221	30.74916	13:18:00	D	11.50
449	LUDHIANA	LUDHIANA WEST	S-NPP	75.72710	30.75893	13:18:00	D	6.00
450	LUDHIANA	LUDHIANA WEST	S-NPP	75.75787	30.78595	13:18:00	D	2.30
451	LUDHIANA	LUDHIANA WEST	S-NPP	75.87977	30.79651	13:18:00	D	3.00
452	LUDHIANA	LUDHIANA WEST	S-NPP	75.73685	30.79667	13:18:00	D	2.80
453	LUDHIANA	LUDHIANA WEST	S-NPP	75.68534	30.79847	13:18:00	D	6.60
454	LUDHIANA	LUDHIANA WEST	S-NPP	75.68452	30.80194	13:18:00	D	5.70
455	LUDHIANA	LUDHIANA WEST	S-NPP	75.69795	30.84394	13:18:00	D	7.30
456	LUDHIANA	LUDHIANA WEST	S-NPP	75.69715	30.84740	13:18:00	D	3.60
457	LUDHIANA	LUDHIANA WEST	S-NPP	75.62328	30.84931	13:18:00	D	2.60
458	LUDHIANA	LUDHIANA WEST	S-NPP	75.66685	30.92196	13:18:00	D	6.20
459	LUDHIANA	LUDHIANA WEST	S-NPP	75.72199	30.92435	13:18:00	D	10.80
460	LUDHIANA	PAYAL	S-NPP	76.10520	30.59053	13:18:00	D	2.10
461	LUDHIANA	PAYAL	S-NPP	76.10442	30.59395	13:18:00	D	2.10
462	LUDHIANA	PAYAL	S-NPP	75.98248	30.63581	13:18:00	D	3.70

463	LUDHIANA	PAYAL	S-NPP	75.98169	30.63925	13:18:00	D	3.70
464	LUDHIANA	PAYAL	S-NPP	75.98606	30.64000	13:18:00	D	7.90
465	LUDHIANA	PAYAL	S-NPP	75.99149	30.69967	13:18:00	D	6.60
466	LUDHIANA	PAYAL	S-NPP	75.89093	30.70004	13:18:00	D	2.40
467	LUDHIANA	PAYAL	S-NPP	76.01772	30.70424	13:18:00	D	4.00
468	LUDHIANA	PAYAL	S-NPP	75.92741	30.76007	13:18:00	D	4.10
469	LUDHIANA	PAYAL	S-NPP	76.04044	30.78302	13:18:00	D	3.20
470	LUDHIANA	PAYAL	S-NPP	76.00832	30.78465	13:18:00	D	2.90
471	LUDHIANA	PAYAL	S-NPP	76.06747	30.81134	13:18:00	D	5.30
472	LUDHIANA	PAYAL	S-NPP	76.07182	30.81209	13:18:00	D	5.30
473	LUDHIANA	PAYAL	S-NPP	76.06976	30.81293	13:18:00	D	9.90
474	LUDHIANA	PAYAL	S-NPP	76.04933	30.85091	13:18:00	D	7.10
475	LUDHIANA	RAIKOT	S-NPP	75.58359	30.59894	13:18:00	D	11.20
476	LUDHIANA	RAIKOT	TERRA-1	75.52714	30.60774	11:50:00	D	27.02
477	LUDHIANA	RAIKOT	S-NPP	75.69855	30.60812	13:18:00	D	3.50
478	LUDHIANA	RAIKOT	S-NPP	75.66022	30.61230	13:18:00	D	5.20
479	LUDHIANA	RAIKOT	S-NPP	75.56592	30.61401	13:18:00	D	2.40
480	LUDHIANA	RAIKOT	S-NPP	75.51939	30.61646	13:18:00	D	25.00
481	LUDHIANA	RAIKOT	S-NPP	75.67656	30.62237	13:18:00	D	10.60
482	LUDHIANA	RAIKOT	S-NPP	75.60901	30.63603	13:18:00	D	3.60
483	LUDHIANA	RAIKOT	S-NPP	75.69756	30.63726	13:18:00	D	10.80
484	LUDHIANA	RAIKOT	S-NPP	75.70102	30.63745	13:18:00	D	11.50
485	LUDHIANA	RAIKOT	S-NPP	75.73762	30.64017	13:18:00	D	6.50
486	LUDHIANA	RAIKOT	S-NPP	75.70021	30.64092	13:18:00	D	11.50
487	LUDHIANA	RAIKOT	S-NPP	75.70121	30.64152	13:18:00	D	12.10
488	LUDHIANA	RAIKOT	S-NPP	75.72399	30.66359	13:18:00	D	2.70
489	LUDHIANA	RAIKOT	S-NPP	75.80328	30.68113	13:18:00	D	9.00
490	LUDHIANA	RAIKOT	S-NPP	75.52731	30.68333	13:18:00	D	3.70
491	LUDHIANA	RAIKOT	S-NPP	75.59309	30.68398	13:18:00	D	2.60
492	LUDHIANA	RAIKOT	S-NPP	75.80248	30.68459	13:18:00	D	6.40
493	LUDHIANA	RAIKOT	S-NPP	75.77867	30.68761	13:18:00	D	4.10

494	LUDHIANA	RAIKOT	S-NPP	75.79201	30.68995	13:18:00	D	7.40
495	LUDHIANA	RAIKOT	S-NPP	75.80976	30.69305	13:18:00	D	4.20
496	LUDHIANA	RAIKOT	S-NPP	75.78596	30.69608	13:18:00	D	4.50
497	LUDHIANA	RAIKOT	S-NPP	75.58531	30.69712	13:18:00	D	6.50
498	LUDHIANA	RAIKOT	S-NPP	75.78515	30.69954	13:18:00	D	4.50
499	LUDHIANA	RAIKOT	S-NPP	75.63405	30.70926	13:18:00	D	4.70
500	LUDHIANA	RAIKOT	S-NPP	75.69398	30.71248	13:18:00	D	20.70
501	LUDHIANA	RAIKOT	S-NPP	75.69318	30.71594	13:18:00	D	4.20
502	LUDHIANA	RAIKOT	S-NPP	75.68098	30.72827	13:18:00	D	3.10
503	LUDHIANA	RAIKOT	S-NPP	75.62584	30.77358	13:18:00	D	5.60
504	LUDHIANA	SAMRALA	S-NPP	76.07971	30.81702	13:18:00	D	2.40
505	LUDHIANA	SAMRALA	S-NPP	76.09195	30.82270	13:18:00	D	4.30
506	MANSA	BUDHLADA	S-NPP	75.61025	29.74922	13:18:00	D	5.70
507	MANSA	BUDHLADA	S-NPP	75.60797	29.75001	13:18:00	D	2.20
508	MANSA	BUDHLADA	S-NPP	75.61481	29.75004	13:18:00	D	3.70
509	MANSA	BUDHLADA	S-NPP	75.61254	29.75081	13:18:00	D	3.60
510	MANSA	BUDHLADA	S-NPP	75.57579	29.75403	13:18:00	D	3.20
511	MANSA	BUDHLADA	S-NPP	75.52023	29.82860	13:18:00	D	1.40
512	MANSA	BUDHLADA	S-NPP	75.61515	29.83066	13:18:00	D	1.90
513	MANSA	BUDHLADA	S-NPP	75.42850	29.83679	13:18:00	D	6.90
514	MANSA	MANSA	S-NPP	75.23365	29.94746	13:18:00	D	11.00
515	MANSA	MANSA	S-NPP	75.26102	29.95611	13:18:00	D	15.90
516	MANSA	MANSA	S-NPP	75.23584	29.95900	13:18:00	D	16.90
517	MANSA	MANSA	S-NPP	75.22557	29.96087	13:18:00	D	7.00
518	MANSA	MANSA	S-NPP	75.23029	29.96172	13:18:00	D	16.90
519	MANSA	MANSA	TERRA-1	75.33274	29.99688	11:50:00	D	41.08
520	MANSA	MANSA	S-NPP	75.33305	30.00232	13:18:00	D	2.50
521	MANSA	MANSA	S-NPP	75.33771	30.00315	13:18:00	D	2.50
522	MANSA	MANSA	S-NPP	75.31953	30.01840	13:18:00	D	2.50
523	MANSA	MANSA	S-NPP	75.46120	30.03240	13:18:00	D	2.70
524	MANSA	MANSA	S-NPP	75.46745	30.13537	13:18:00	D	60.00

525	MANSA	MANSA	S-NPP	75.40417	30.13889	13:18:00	D	4.10
526	MANSA	MANSA	S-NPP	75.40334	30.14242	13:18:00	D	5.10
527	MANSA	SARDULGARH	S-NPP	75.28167	29.56466	13:18:00	D	4.40
528	MANSA	SARDULGARH	S-NPP	75.28776	29.58064	13:18:00	D	7.30
529	MANSA	SARDULGARH	S-NPP	75.29248	29.58148	13:18:00	D	7.70
530	MANSA	SARDULGARH	S-NPP	75.28927	29.58220	13:18:00	D	32.30
531	MANSA	SARDULGARH	S-NPP	75.30191	29.58315	13:18:00	D	1.50
532	MANSA	SARDULGARH	S-NPP	75.29868	29.58392	13:18:00	D	3.60
533	MANSA	SARDULGARH	S-NPP	75.28692	29.58422	13:18:00	D	7.90
534	MANSA	SARDULGARH	S-NPP	75.29164	29.58506	13:18:00	D	7.10
535	MANSA	SARDULGARH	S-NPP	75.28122	29.59563	13:18:00	D	6.00
536	MANSA	SARDULGARH	S-NPP	75.33636	29.69477	13:18:00	D	8.40
537	MANSA	SARDULGARH	S-NPP	75.26839	29.70215	13:18:00	D	7.80
538	MANSA	SARDULGARH	S-NPP	75.25395	29.72186	13:18:00	D	7.70
539	MANSA	SARDULGARH	S-NPP	75.35121	29.72462	13:18:00	D	3.20
540	MANSA	SARDULGARH	S-NPP	75.35589	29.72546	13:18:00	D	3.20
541	MANSA	SARDULGARH	S-NPP	75.28222	29.72698	13:18:00	D	5.10
542	MANSA	SARDULGARH	S-NPP	75.39971	29.76666	13:18:00	D	2.70
543	MANSA	SARDULGARH	S-NPP	75.36126	29.78569	13:18:00	D	5.10
544	MOGA	BAGHA PURANA	S-NPP	75.11507	30.52733	13:18:00	D	2.20
545	MOGA	BAGHA PURANA	S-NPP	75.01112	30.53578	13:18:00	D	7.20
546	MOGA	BAGHA PURANA	S-NPP	74.99905	30.54475	13:18:00	D	1.40
547	MOGA	BAGHA PURANA	S-NPP	75.08814	30.56465	13:18:00	D	7.30
548	MOGA	BAGHA PURANA	S-NPP	75.13734	30.58464	13:18:00	D	11.70
549	MOGA	BAGHA PURANA	S-NPP	75.15823	30.59949	13:18:00	D	2.10
550	MOGA	BAGHA PURANA	S-NPP	75.12715	30.62721	13:18:00	D	3.80
551	MOGA	BAGHA PURANA	S-NPP	75.04027	30.67272	13:18:00	D	3.10
552	MOGA	BAGHA PURANA	S-NPP	74.92064	30.69578	13:18:00	D	1.60
553	MOGA	BAGHA PURANA	S-NPP	75.05618	30.70897	13:18:00	D	4.30
554	MOGA	BAGHA PURANA	S-NPP	74.91918	30.72976	13:18:00	D	9.10
555	MOGA	BAGHA PURANA	S-NPP	75.05833	30.74776	13:18:00	D	2.50

556	MOGA	BAGHA PURANA	S-NPP	74.93829	30.77423	13:18:00	D	7.00
557	MOGA	MOGA	S-NPP	75.20277	30.70938	13:18:00	D	3.80
558	MOGA	MOGA	S-NPP	75.30179	30.71975	13:18:00	D	7.70
559	MOGA	MOGA	S-NPP	75.26146	30.72723	13:18:00	D	27.70
560	MOGA	MOGA	S-NPP	75.26062	30.73075	13:18:00	D	27.70
561	MOGA	MOGA	S-NPP	75.22182	30.73119	13:18:00	D	13.20
562	MOGA	MOGA	S-NPP	75.37418	30.75824	13:18:00	D	3.30
563	MOGA	MOGA	S-NPP	75.27325	30.75870	13:18:00	D	4.00
564	MOGA	MOGA	S-NPP	75.36709	30.76796	13:18:00	D	10.40
565	MOGA	MOGA	S-NPP	75.17968	30.79192	13:18:00	D	5.60
566	MOGA	MOGA	S-NPP	75.10835	30.80491	13:18:00	D	5.10
567	MOGA	MOGA	S-NPP	75.26069	30.81750	13:18:00	D	6.40
568	MOGA	MOGA	S-NPP	74.98666	30.82011	13:18:00	D	3.00
569	MOGA	MOGA	S-NPP	74.98581	30.82367	13:18:00	D	19.80
570	MOGA	MOGA	S-NPP	75.30600	30.82927	13:18:00	D	3.50
571	MOGA	MOGA	S-NPP	75.25565	30.83862	13:18:00	D	26.00
572	MOGA	NIHAL SINGH WALA	S-NPP	75.21142	30.53337	13:18:00	D	11.20
573	MOGA	NIHAL SINGH WALA	TERRA-1	75.31227	30.54934	11:50:00	D	30.95
574	MOGA	NIHAL SINGH WALA	S-NPP	75.23286	30.57233	13:18:00	D	6.10
575	MOGA	NIHAL SINGH WALA	S-NPP	75.23117	30.57940	13:18:00	D	12.00
576	MOGA	NIHAL SINGH WALA	S-NPP	75.28308	30.58508	13:18:00	D	2.10
577	MOGA	NIHAL SINGH WALA	S-NPP	75.39620	30.59441	13:18:00	D	8.50
578	MOGA	NIHAL SINGH WALA	S-NPP	75.37453	30.60517	13:18:00	D	10.40
579	MOGA	NIHAL SINGH WALA	S-NPP	75.37370	30.60868	13:18:00	D	10.60
580	MOGA	NIHAL SINGH WALA	S-NPP	75.18929	30.61244	13:18:00	D	6.40
581	MOGA	NIHAL SINGH WALA	S-NPP	75.22025	30.62535	13:18:00	D	6.60
582	MOGA	NIHAL SINGH WALA	S-NPP	75.22301	30.66515	13:18:00	D	2.00
583	MOGA	NIHAL SINGH WALA	S-NPP	75.37168	30.67785	13:18:00	D	5.50
584	MOGA	NIHAL SINGH WALA	S-NPP	75.37085	30.68136	13:18:00	D	4.20
585	MUKTSAR	GIDDARBAHA	S-NPP	74.56490	30.19090	13:18:00	D	1.80
586	MUKTSAR	GIDDARBAHA	S-NPP	74.56400	30.19455	13:18:00	D	4.50

587	MUKTSAR	GIDDARBAHA	S-NPP	74.63371	30.20732	13:18:00	D	5.80
588	MUKTSAR	GIDDARBAHA	S-NPP	74.61296	30.20733	13:18:00	D	2.50
589	MUKTSAR	GIDDARBAHA	S-NPP	74.69316	30.24741	13:18:00	D	2.60
590	MUKTSAR	GIDDARBAHA	S-NPP	74.64909	30.32281	13:18:00	D	11.90
591	MUKTSAR	GIDDARBAHA	S-NPP	74.64819	30.32644	13:18:00	D	30.50
592	MUKTSAR	GIDDARBAHA	S-NPP	74.60835	30.32969	13:18:00	D	2.20
593	MUKTSAR	GIDDARBAHA	S-NPP	74.65423	30.35347	13:18:00	D	2.40
594	MUKTSAR	GIDDARBAHA	S-NPP	74.54891	30.36052	13:18:00	D	2.50
595	MUKTSAR	GIDDARBAHA	S-NPP	74.65157	30.36436	13:18:00	D	2.30
596	MUKTSAR	GIDDARBAHA	S-NPP	74.64893	30.37526	13:18:00	D	11.20
597	MUKTSAR	GIDDARBAHA	S-NPP	74.64855	30.39796	13:18:00	D	3.40
598	MUKTSAR	GIDDARBAHA	S-NPP	74.57075	30.39886	13:18:00	D	3.90
599	MUKTSAR	GIDDARBAHA	S-NPP	74.58566	30.40159	13:18:00	D	2.20
600	MUKTSAR	GIDDARBAHA	S-NPP	74.65891	30.41882	13:18:00	D	5.20
601	MUKTSAR	GIDDARBAHA	S-NPP	74.65855	30.47089	13:18:00	D	5.00
602	MUKTSAR	MALAUT	S-NPP	74.60062	29.91416	13:18:00	D	10.20
603	MUKTSAR	MALAUT	S-NPP	74.59384	29.92056	13:18:00	D	13.40
604	MUKTSAR	MALAUT	S-NPP	74.55750	29.94063	13:18:00	D	23.20
605	MUKTSAR	MALAUT	S-NPP	74.57079	29.95077	13:18:00	D	10.00
606	MUKTSAR	MALAUT	S-NPP	74.48357	29.99735	13:18:00	D	3.50
607	MUKTSAR	MALAUT	S-NPP	74.47401	30.01481	13:18:00	D	5.30
608	MUKTSAR	MALAUT	S-NPP	74.53005	30.04447	13:18:00	D	3.30
609	MUKTSAR	MALAUT	S-NPP	74.52916	30.04814	13:18:00	D	5.40
610	MUKTSAR	MALAUT	S-NPP	74.66840	30.05484	13:18:00	D	3.60
611	MUKTSAR	MALAUT	S-NPP	74.48434	30.05904	13:18:00	D	20.80
612	MUKTSAR	MALAUT	S-NPP	74.43243	30.07641	13:18:00	D	4.50
613	MUKTSAR	MALAUT	S-NPP	74.42948	30.07737	13:18:00	D	3.60
614	MUKTSAR	MALAUT	S-NPP	74.42350	30.08010	13:18:00	D	3.60
615	MUKTSAR	MALAUT	S-NPP	74.36798	30.15458	13:18:00	D	20.50
616	MUKTSAR	MALAUT	S-NPP	74.36197	30.15733	13:18:00	D	20.20
617	MUKTSAR	MALAUT	S-NPP	74.45927	30.24584	13:18:00	D	5.10

618	MUKTSAR	MALAUT	S-NPP	74.37972	30.24642	13:18:00	D	8.00
619	MUKTSAR	MALAUT	S-NPP	74.45837	30.24951	13:18:00	D	5.10
620	MUKTSAR	MALAUT	S-NPP	74.37881	30.25010	13:18:00	D	8.00
621	MUKTSAR	MALAUT	S-NPP	74.38391	30.25105	13:18:00	D	11.60
622	MUKTSAR	MALAUT	S-NPP	74.39732	30.26124	13:18:00	D	5.30
623	MUKTSAR	MALAUT	S-NPP	74.43926	30.28436	13:18:00	D	3.20
624	MUKTSAR	MALAUT	S-NPP	74.43836	30.28803	13:18:00	D	7.60
625	MUKTSAR	MALAUT	S-NPP	74.45674	30.29907	13:18:00	D	6.10
626	MUKTSAR	MALAUT	S-NPP	74.45361	30.30058	13:18:00	D	5.00
627	MUKTSAR	MALAUT	S-NPP	74.48785	30.30095	13:18:00	D	4.80
628	MUKTSAR	MALAUT	S-NPP	74.34171	30.36809	13:18:00	D	4.50
629	MUKTSAR	MUKTSAR	S-NPP	74.55531	30.37696	13:18:00	D	1.70
630	MUKTSAR	MUKTSAR	S-NPP	74.48176	30.37864	13:18:00	D	2.70
631	MUKTSAR	MUKTSAR	S-NPP	74.54816	30.40614	13:18:00	D	4.10
632	MUKTSAR	MUKTSAR	S-NPP	74.44671	30.42371	13:18:00	D	3.30
633	MUKTSAR	MUKTSAR	S-NPP	74.61409	30.43340	13:18:00	D	4.60
634	MUKTSAR	MUKTSAR	S-NPP	74.67239	30.47724	13:18:00	D	2.50
635	MUKTSAR	MUKTSAR	S-NPP	74.46243	30.48786	13:18:00	D	3.20
636	MUKTSAR	MUKTSAR	S-NPP	74.45381	30.50157	13:18:00	D	3.70
637	MUKTSAR	MUKTSAR	S-NPP	74.58289	30.50624	13:18:00	D	3.50
638	MUKTSAR	MUKTSAR	S-NPP	74.57208	30.50805	13:18:00	D	1.90
639	MUKTSAR	MUKTSAR	S-NPP	74.67652	30.52341	13:18:00	D	12.90
640	MUKTSAR	MUKTSAR	S-NPP	74.61483	30.52348	13:18:00	D	4.20
641	MUKTSAR	MUKTSAR	S-NPP	74.55769	30.52442	13:18:00	D	1.70
642	MUKTSAR	MUKTSAR	S-NPP	74.43148	30.54182	13:18:00	D	4.90
643	MUKTSAR	MUKTSAR	S-NPP	74.61531	30.54252	13:18:00	D	2.10
644	MUKTSAR	MUKTSAR	S-NPP	74.61442	30.54615	13:18:00	D	3.80
645	MUKTSAR	MUKTSAR	TERRA-1	74.39996	30.54635	11:50:00	D	47.64
646	MUKTSAR	MUKTSAR	S-NPP	74.59609	30.54975	13:18:00	D	6.10
647	MUKTSAR	MUKTSAR	S-NPP	74.59781	30.55072	13:18:00	D	4.30
648	MUKTSAR	MUKTSAR	S-NPP	74.57456	30.55332	13:18:00	D	9.00

649	MUKTSAR	MUKTSAR	S-NPP	74.57366	30.55695	13:18:00	D	3.60
650	MUKTSAR	MUKTSAR	S-NPP	74.46886	30.56027	13:18:00	D	14.60
651	MUKTSAR	MUKTSAR	S-NPP	74.67564	30.56081	13:18:00	D	3.60
652	MUKTSAR	MUKTSAR	S-NPP	74.67750	30.56138	13:18:00	D	4.10
653	MUKTSAR	MUKTSAR	S-NPP	74.42105	30.56283	13:18:00	D	4.80
654	MUKTSAR	MUKTSAR	S-NPP	74.68730	30.56316	13:18:00	D	5.40
655	MUKTSAR	MUKTSAR	S-NPP	74.69031	30.56354	13:18:00	D	5.90
656	MUKTSAR	MUKTSAR	S-NPP	74.38402	30.56360	13:18:00	D	7.00
657	MUKTSAR	MUKTSAR	S-NPP	74.52867	30.57139	13:18:00	D	16.90
658	MUKTSAR	MUKTSAR	S-NPP	74.49074	30.59865	13:18:00	D	40.10
659	MUKTSAR	MUKTSAR	S-NPP	74.42115	30.60493	13:18:00	D	3.80
660	MUKTSAR	MUKTSAR	S-NPP	74.42618	30.60585	13:18:00	D	3.80
661	MUKTSAR	MUKTSAR	S-NPP	74.46947	30.62143	13:18:00	D	3.60
662	MUKTSAR	MUKTSAR	S-NPP	74.61108	30.63593	13:18:00	D	1.90
663	MUKTSAR	MUKTSAR	S-NPP	74.50869	30.66138	13:18:00	D	7.00
664	MUKTSAR	MUKTSAR	S-NPP	74.50780	30.66502	13:18:00	D	7.00
665	NAWASHAHR	NAWASHAHR	S-NPP	76.05667	31.06283	13:18:00	D	7.40
666	NAWASHAHR	NAWASHAHR	S-NPP	76.04484	31.07500	13:18:00	D	13.60
667	NAWASHAHR	NAWASHAHR	S-NPP	75.97762	31.23259	13:18:00	D	2.70
668	PATIALA	NABHA	S-NPP	76.13833	30.31789	13:18:00	D	1.90
669	PATIALA	NABHA	S-NPP	76.11118	30.37744	13:18:00	D	2.10
670	PATIALA	NABHA	S-NPP	76.09084	30.53463	13:18:00	D	2.30
671	PATIALA	PATIALA	TERRA-1	76.40194	30.39483	11:50:00	D	43.68
672	PATIALA	PATIALA	TERRA-1	76.36613	30.40112	11:50:00	D	56.47
673	PATIALA	PATIALA	S-NPP	76.34276	30.46913	13:18:00	D	47.50
674	PATIALA	PATIALA	S-NPP	76.34704	30.46986	13:18:00	D	34.00
675	RUPNAGAR	ANANDPUR SAHIB	S-NPP	76.55034	31.05514	13:18:00	D	2.50
676	RUPNAGAR	CHAMKOR SAHIB	S-NPP	76.40666	30.92948	13:18:00	D	2.00
677	RUPNAGAR	CHAMKOR SAHIB	S-NPP	76.40785	30.94374	13:18:00	D	4.90
678	RUPNAGAR	RUPNAGAR	S-NPP	76.56416	31.07144	13:18:00	D	1.60
679	SANGRUR	DHURI	S-NPP	75.70644	30.42792	13:18:00	D	7.10

680	SANGRUR	DHURI	S-NPP	75.78406	30.43443	13:18:00	D	2.80
681	SANGRUR	DHURI	S-NPP	75.78759	30.43457	13:18:00	D	5.90
682	SANGRUR	DHURI	S-NPP	75.78851	30.43522	13:18:00	D	2.80
683	SANGRUR	DHURI	S-NPP	75.88696	30.44450	13:18:00	D	9.90
684	SANGRUR	DHURI	S-NPP	75.67509	30.46223	13:18:00	D	4.50
685	SANGRUR	DHURI	S-NPP	75.67429	30.46571	13:18:00	D	2.60
686	SANGRUR	MALERKOTLA	S-NPP	75.81522	30.43994	13:18:00	D	20.70
687	SANGRUR	MALERKOTLA	S-NPP	75.81879	30.43995	13:18:00	D	6.50
688	SANGRUR	MALERKOTLA	S-NPP	75.81799	30.44342	13:18:00	D	6.50
689	SANGRUR	MALERKOTLA	S-NPP	75.82614	30.45268	13:18:00	D	2.20
690	SANGRUR	MALERKOTLA	S-NPP	75.89785	30.45715	13:18:00	D	1.80
691	SANGRUR	MALERKOTLA	S-NPP	75.89259	30.46436	13:18:00	D	24.10
692	SANGRUR	MALERKOTLA	S-NPP	75.89701	30.46513	13:18:00	D	3.00
693	SANGRUR	MALERKOTLA	S-NPP	75.89903	30.47627	13:18:00	D	24.70
694	SANGRUR	MALERKOTLA	S-NPP	75.81375	30.52616	13:18:00	D	6.30
695	SANGRUR	MALERKOTLA	S-NPP	75.78829	30.53616	13:18:00	D	6.80
696	SANGRUR	MALERKOTLA	S-NPP	75.79275	30.53693	13:18:00	D	6.80
697	SANGRUR	MALERKOTLA	S-NPP	75.87345	30.54726	13:18:00	D	3.70
698	SANGRUR	MALERKOTLA	S-NPP	76.06399	30.57280	13:18:00	D	10.10
699	SANGRUR	MALERKOTLA	S-NPP	75.76675	30.59475	13:18:00	D	3.80
700	SANGRUR	MALERKOTLA	S-NPP	75.78864	30.62018	13:18:00	D	4.00
701	SANGRUR	MALERKOTLA	S-NPP	75.88213	30.65431	13:18:00	D	1.90
702	SANGRUR	MALERKOTLA	S-NPP	75.79921	30.65882	13:18:00	D	44.80
703	SANGRUR	MOONAK	S-NPP	76.04156	29.81438	13:18:00	D	2.70
704	SANGRUR	MOONAK	S-NPP	76.04597	29.81514	13:18:00	D	5.90
705	SANGRUR	MOONAK	S-NPP	76.07432	29.83883	13:18:00	D	3.50
706	SANGRUR	MOONAK	S-NPP	76.07871	29.83961	13:18:00	D	5.40
707	SANGRUR	SANGRUR	S-NPP	76.00140	30.14813	13:18:00	D	3.10
708	SANGRUR	SANGRUR	S-NPP	76.00221	30.14970	13:18:00	D	2.10
709	SANGRUR	SANGRUR	S-NPP	75.72663	30.24972	13:18:00	D	14.10
710	SANGRUR	SUNAM	S-NPP	75.75161	29.92014	13:18:00	D	4.10

711	SANGRUR	SUNAM	S-NPP	75.75611	29.92093	13:18:00	D	4.90
712	SANGRUR	SUNAM	S-NPP	75.91032	30.06401	13:18:00	D	1.90
713	SANGRUR	SUNAM	S-NPP	75.85378	30.13441	13:18:00	D	6.30
714	TARN TARAN	KHADOOR SAHIB	S-NPP	75.02872	31.22694	13:18:00	D	4.60
715	TARN TARAN	KHADOOR SAHIB	S-NPP	74.96077	31.24429	13:18:00	D	11.10
716	TARN TARAN	KHADOOR SAHIB	S-NPP	74.91009	31.25003	13:18:00	D	1.50
717	TARN TARAN	KHADOOR SAHIB	S-NPP	75.01147	31.28526	13:18:00	D	1.70
718	TARN TARAN	KHADOOR SAHIB	S-NPP	75.00504	31.33201	13:18:00	D	6.40
719	TARN TARAN	KHADOOR SAHIB	S-NPP	74.96407	31.33941	13:18:00	D	9.20
720	TARN TARAN	KHADOOR SAHIB	S-NPP	74.85319	31.34914	13:18:00	D	8.00
721	TARN TARAN	KHADOOR SAHIB	S-NPP	74.98498	31.35422	13:18:00	D	2.80
722	TARN TARAN	KHADOOR SAHIB	S-NPP	75.00797	31.38041	13:18:00	D	3.30
723	TARN TARAN	KHADOOR SAHIB	S-NPP	74.96514	31.38206	13:18:00	D	1.80
724	TARN TARAN	KHADOOR SAHIB	S-NPP	74.95701	31.39534	13:18:00	D	2.60
725	TARN TARAN	KHADOOR SAHIB	S-NPP	74.94675	31.39717	13:18:00	D	5.00
726	TARN TARAN	KHADOOR SAHIB	S-NPP	74.86176	31.42247	13:18:00	D	2.00
727	TARN TARAN	KHADOOR SAHIB	S-NPP	75.01956	31.43979	13:18:00	D	2.60
728	TARN TARAN	KHADOOR SAHIB	S-NPP	74.66295	31.45104	13:18:00	D	8.20
729	TARN TARAN	KHADOOR SAHIB	S-NPP	74.66207	31.45462	13:18:00	D	15.20
730	TARN TARAN	KHADOOR SAHIB	S-NPP	74.68611	31.45904	13:18:00	D	15.40
731	TARN TARAN	KHADOOR SAHIB	S-NPP	74.93338	31.47226	13:18:00	D	2.30
732	TARN TARAN	KHADOOR SAHIB	S-NPP	74.86976	31.48149	13:18:00	D	2.00
733	TARN TARAN	KHADOOR SAHIB	S-NPP	74.94041	31.49435	13:18:00	D	2.70
734	TARN TARAN	KHADOOR SAHIB	S-NPP	74.79591	31.56072	13:18:00	D	3.20
735	TARN TARAN	PATTI	S-NPP	74.75706	31.12181	13:18:00	D	6.50
736	TARN TARAN	PATTI	S-NPP	74.76030	31.12187	13:18:00	D	6.40
737	TARN TARAN	PATTI	S-NPP	74.77234	31.16196	13:18:00	D	2.80
738	TARN TARAN	PATTI	S-NPP	74.68829	31.17654	13:18:00	D	3.30
739	TARN TARAN	PATTI	S-NPP	74.71244	31.18093	13:18:00	D	3.60
740	TARN TARAN	PATTI	S-NPP	74.56457	31.18408	13:18:00	D	6.50
741	TARN TARAN	PATTI	S-NPP	74.55389	31.18591	13:18:00	D	3.30

742	TARN TARAN	PATTI	S-NPP	74.89204	31.20232	13:18:00	D	2.20
743	TARN TARAN	PATTI	S-NPP	74.53503	31.20895	13:18:00	D	2.70
744	TARN TARAN	PATTI	S-NPP	74.74006	31.21208	13:18:00	D	8.50
745	TARN TARAN	PATTI	S-NPP	74.52791	31.23779	13:18:00	D	2.90
746	TARN TARAN	PATTI	S-NPP	74.83710	31.24440	13:18:00	D	2.20
747	TARN TARAN	PATTI	S-NPP	74.60465	31.27818	13:18:00	D	4.40
748	TARN TARAN	PATTI	S-NPP	74.64918	31.32371	13:18:00	D	4.10
749	TARN TARAN	PATTI	S-NPP	74.65092	31.32439	13:18:00	D	2.50
750	TARN TARAN	PATTI	S-NPP	74.59716	31.37821	13:18:00	D	4.40
751	TARN TARAN	PATTI	S-NPP	74.68242	31.40119	13:18:00	D	4.50
752	TARN TARAN	PATTI	S-NPP	74.73615	31.40720	13:18:00	D	2.00

Details of residue burning events in Haryana on 19-Nov-2018

Event S. No.	District	Tehsil/Block	Satellite	Longitude	Latitude	Time (IST)	Day/Night	Fire Power (W/m²)
1	AMBALA	AMBALA	S-NPP	76.71008	30.24417	02:00:00	N	0.90
2	AMBALA	NARAYANGARH	S-NPP	77.08762	30.35900	13:18:00	D	6.70
3	FATEHABAD	FATEHABAD	S-NPP	75.41659	29.51089	13:18:00	D	4.30
4	FATEHABAD	FATEHABAD	S-NPP	75.42125	29.51173	13:18:00	D	4.30
5	FATEHABAD	FATEHABAD	S-NPP	75.42043	29.51529	13:18:00	D	4.30
6	FATEHABAD	FATEHABAD	S-NPP	75.40996	29.53935	13:18:00	D	4.80
7	FATEHABAD	FATEHABAD	S-NPP	75.41463	29.54019	13:18:00	D	4.80
8	FATEHABAD	FATEHABAD	S-NPP	75.47130	29.54666	13:18:00	D	3.90
9	FATEHABAD	FATEHABAD	S-NPP	75.39345	29.54750	13:18:00	D	14.40
10	FATEHABAD	FATEHABAD	S-NPP	75.39261	29.55106	13:18:00	D	11.60
11	FATEHABAD	FATEHABAD	S-NPP	75.30390	29.55374	13:18:00	D	5.70
12	FATEHABAD	FATEHABAD	S-NPP	75.36118	29.56027	13:18:00	D	11.20
13	FATEHABAD	FATEHABAD	S-NPP	75.68763	29.56333	13:18:00	D	2.40
14	FATEHABAD	FATEHABAD	S-NPP	75.60590	29.56707	13:18:00	D	2.60
15	FATEHABAD	FATEHABAD	S-NPP	75.61049	29.56789	13:18:00	D	2.60
16	FATEHABAD	FATEHABAD	S-NPP	75.55668	29.57300	13:18:00	D	3.50
17	FATEHABAD	FATEHABAD	S-NPP	75.50806	29.57539	13:18:00	D	3.80
18	FATEHABAD	FATEHABAD	S-NPP	75.43430	29.58073	13:18:00	D	2.80
19	FATEHABAD	FATEHABAD	S-NPP	75.61359	29.58098	02:00:00	N	0.80
20	FATEHABAD	FATEHABAD	S-NPP	75.69188	29.58605	13:18:00	D	3.00
21	FATEHABAD	FATEHABAD	S-NPP	75.69106	29.58957	13:18:00	D	7.90
22	FATEHABAD	FATEHABAD	S-NPP	75.33160	29.58993	13:18:00	D	44.90
23	FATEHABAD	FATEHABAD	S-NPP	75.33403	29.59258	13:18:00	D	6.10
24	FATEHABAD	FATEHABAD	S-NPP	75.69025	29.59307	13:18:00	D	7.90
25	FATEHABAD	FATEHABAD	S-NPP	75.43098	29.59493	13:18:00	D	5.50
26	FATEHABAD	FATEHABAD	S-NPP	75.66473	29.62151	13:18:00	D	7.30
27	FATEHABAD	FATEHABAD	S-NPP	75.74736	29.63238	13:18:00	D	2.50
28	FATEHABAD	RATIA	S-NPP	75.60903	29.61536	13:18:00	D	5.00

29	FATEHABAD	RATIA	S-NPP	75.59904	29.61727	13:18:00	D	2.60
30	FATEHABAD	RATIA	S-NPP	75.59823	29.62080	13:18:00	D	2.60
31	FATEHABAD	RATIA	S-NPP	75.56443	29.62219	13:18:00	D	7.80
32	FATEHABAD	RATIA	S-NPP	75.59740	29.62432	13:18:00	D	6.30
33	FATEHABAD	RATIA	S-NPP	75.60200	29.62513	13:18:00	D	8.70
34	FATEHABAD	RATIA	S-NPP	75.61575	29.62755	13:18:00	D	7.20
35	FATEHABAD	RATIA	S-NPP	75.65446	29.64533	13:18:00	D	6.10
36	FATEHABAD	RATIA	S-NPP	75.65523	29.64849	13:18:00	D	15.50
37	FATEHABAD	RATIA	S-NPP	75.65364	29.64885	13:18:00	D	13.10
38	FATEHABAD	RATIA	S-NPP	75.62917	29.65848	13:18:00	D	9.30
39	FATEHABAD	RATIA	S-NPP	75.54798	29.65863	13:18:00	D	5.00
40	FATEHABAD	RATIA	S-NPP	75.61922	29.66037	13:18:00	D	4.10
41	FATEHABAD	RATIA	S-NPP	75.38982	29.67463	13:18:00	D	16.10
42	FATEHABAD	RATIA	NOAA-18	75.50156	29.67798	20:00:00	N	7.00
43	FATEHABAD	RATIA	S-NPP	75.47134	29.67809	13:18:00	D	2.80
44	FATEHABAD	RATIA	S-NPP	75.67363	29.69204	13:18:00	D	6.00
45	FATEHABAD	RATIA	S-NPP	75.35595	29.69454	13:18:00	D	1.60
46	FATEHABAD	RATIA	S-NPP	75.39882	29.69844	13:18:00	D	32.00
47	FATEHABAD	RATIA	S-NPP	75.53815	29.70101	13:18:00	D	6.10
48	FATEHABAD	RATIA	S-NPP	75.58031	29.70480	13:18:00	D	3.20
49	FATEHABAD	RATIA	S-NPP	75.37682	29.70934	13:18:00	D	5.30
50	FATEHABAD	RATIA	S-NPP	75.54570	29.70970	13:18:00	D	3.00
51	FATEHABAD	RATIA	S-NPP	75.61533	29.71833	13:18:00	D	2.00
52	FATEHABAD	RATIA	S-NPP	75.42527	29.71952	13:18:00	D	11.60
53	FATEHABAD	RATIA	S-NPP	75.42262	29.72113	13:18:00	D	22.00
54	FATEHABAD	RATIA	S-NPP	75.42728	29.72195	13:18:00	D	7.70
55	FATEHABAD	RATIA	S-NPP	75.41979	29.72222	13:18:00	D	19.60
56	FATEHABAD	RATIA	S-NPP	75.53781	29.72301	13:18:00	D	7.70
57	FATEHABAD	RATIA	S-NPP	75.54242	29.72382	13:18:00	D	5.90
58	FATEHABAD	RATIA	S-NPP	75.46698	29.72707	13:18:00	D	4.20
59	FATEHABAD	RATIA	S-NPP	75.54160	29.72735	13:18:00	D	5.90

60	FATEHABAD	RATIA	S-NPP	75.46905	29.72930	13:18:00	D	4.30
61	FATEHABAD	RATIA	S-NPP	75.60749	29.73160	13:18:00	D	2.60
62	FATEHABAD	RATIA	S-NPP	75.39321	29.73221	13:18:00	D	2.30
63	FATEHABAD	RATIA	S-NPP	75.60880	29.74649	13:18:00	D	1.20
64	FATEHABAD	RATIA	S-NPP	75.52744	29.75637	13:18:00	D	3.10
65	FATEHABAD	RATIA	S-NPP	75.47722	29.76578	13:18:00	D	7.50
66	FATEHABAD	RATIA	S-NPP	75.48019	29.77368	13:18:00	D	2.40
67	FATEHABAD	TOHANA	S-NPP	75.92036	29.61191	13:18:00	D	6.60
68	FATEHABAD	TOHANA	S-NPP	75.91064	29.61382	13:18:00	D	7.50
69	FATEHABAD	TOHANA	S-NPP	75.90986	29.61731	13:18:00	D	7.50
70	FATEHABAD	TOHANA	S-NPP	75.76173	29.63126	13:18:00	D	2.20
71	FATEHABAD	TOHANA	S-NPP	75.76093	29.63476	13:18:00	D	2.20
72	FATEHABAD	TOHANA	S-NPP	75.89455	29.64363	13:18:00	D	3.80
73	FATEHABAD	TOHANA	S-NPP	75.77105	29.76026	13:18:00	D	4.90
74	HISAR	HISAR	NOAA-18	75.75735	29.11204	20:00:00	N	6.00
75	HISAR	HISAR	S-NPP	75.79379	29.50632	13:18:00	D	4.10
76	HISAR	HISAR	S-NPP	75.78847	29.50903	13:18:00	D	4.10
77	JIND	JIND	S-NPP	76.33832	29.47060	13:18:00	D	2.50
78	JIND	NARWANA	S-NPP	76.11907	29.49731	13:18:00	D	3.20
79	JIND	NARWANA	S-NPP	76.17105	29.50984	13:18:00	D	1.70
80	JIND	NARWANA	S-NPP	76.17027	29.51330	13:18:00	D	3.50
81	JIND	NARWANA	S-NPP	76.29497	29.56868	13:18:00	D	2.70
82	JIND	NARWANA	S-NPP	76.01657	29.63604	13:18:00	D	6.70
83	JIND	NARWANA	S-NPP	76.13838	29.66450	13:18:00	D	2.50
84	JIND	NARWANA	S-NPP	76.12930	29.68447	13:18:00	D	6.60
85	JIND	NARWANA	S-NPP	76.07749	29.71147	13:18:00	D	7.70
86	JIND	NARWANA	S-NPP	76.07072	29.72110	13:18:00	D	3.30
87	JIND	NARWANA	S-NPP	76.07162	29.72245	13:18:00	D	9.70
88	JIND	NARWANA	S-NPP	76.10233	29.72293	13:18:00	D	12.60
89	JIND	NARWANA	S-NPP	76.06552	29.72381	13:18:00	D	3.30
90	JIND	NARWANA	S-NPP	76.01555	29.72701	13:18:00	D	23.70

91	KAITHAL	KAITHAL	S-NPP	76.33675	29.58305	13:18:00	D	12.60
92	KAITHAL	KAITHAL	S-NPP	76.34820	29.59216	13:18:00	D	5.80
93	KAITHAL	KAITHAL	S-NPP	76.45144	29.67028	13:18:00	D	3.70
94	KAITHAL	KAITHAL	S-NPP	76.29407	29.67718	13:18:00	D	6.30
95	KAITHAL	KAITHAL	S-NPP	76.32947	29.67973	13:18:00	D	3.40
96	KARNAL	ASSANDH	S-NPP	76.64651	29.54467	13:18:00	D	2.50
97	KARNAL	NILOKHERI	S-NPP	76.80599	29.86310	13:18:00	D	5.30
98	KARNAL	NILOKHERI	S-NPP	76.81017	29.86381	13:18:00	D	5.10
99	KURUKSHETRA	THANESAR	S-NPP	77.04794	29.95934	13:18:00	D	2.10
100	SIRSA	DABWALI	S-NPP	74.58765	29.87133	13:18:00	D	5.80
101	SIRSA	ELLENABAD	S-NPP	74.78577	29.44074	13:18:00	D	10.70
102	SIRSA	ELLENABAD	METOP-2	74.88766	29.44442	21:12:00	N	6.00
103	SIRSA	ELLENABAD	S-NPP	74.80303	29.45537	13:18:00	D	3.10
104	SIRSA	ELLENABAD	S-NPP	74.72392	29.45999	13:18:00	D	3.50
105	SIRSA	ELLENABAD	NOAA-18	74.82627	29.47137	20:00:00	N	7.00
106	SIRSA	ELLENABAD	S-NPP	74.73132	29.48263	13:18:00	D	6.50
107	SIRSA	ELLENABAD	S-NPP	74.72861	29.48383	13:18:00	D	6.00
108	SIRSA	ELLENABAD	S-NPP	74.79015	29.48738	13:18:00	D	5.30
109	SIRSA	ELLENABAD	S-NPP	74.78686	29.48922	13:18:00	D	2.40
110	SIRSA	ELLENABAD	S-NPP	74.71783	29.49544	13:18:00	D	4.90
111	SIRSA	ELLENABAD	S-NPP	74.67517	29.49898	13:18:00	D	5.20
112	SIRSA	ELLENABAD	S-NPP	74.71107	29.50184	13:18:00	D	8.40
113	SIRSA	RANIA	S-NPP	74.80096	29.48553	13:18:00	D	3.80
114	SIRSA	RANIA	S-NPP	74.83154	29.48728	13:18:00	D	2.40
115	SIRSA	RANIA	S-NPP	74.80172	29.49200	13:18:00	D	5.70
116	SIRSA	RANIA	S-NPP	74.79919	29.49284	13:18:00	D	8.50
117	SIRSA	RANIA	S-NPP	74.85107	29.50123	13:18:00	D	8.90
118	SIRSA	RANIA	S-NPP	74.85361	29.50271	13:18:00	D	15.00
119	SIRSA	RANIA	S-NPP	74.85020	29.50488	13:18:00	D	8.90
120	SIRSA	RANIA	S-NPP	74.92380	29.51859	13:18:00	D	4.50
121	SIRSA	RANIA	S-NPP	74.92869	29.51949	13:18:00	D	5.60

122	SIRSA	RANIA	S-NPP	74.92645	29.51967	13:18:00	D	10.50
123	SIRSA	RANIA	S-NPP	74.83252	29.53587	13:18:00	D	2.00
124	SIRSA	RANIA	S-NPP	74.71694	29.56422	13:18:00	D	4.30
125	SIRSA	RANIA	S-NPP	74.59438	29.58510	13:18:00	D	4.10
126	SIRSA	RANIA	S-NPP	74.58399	29.60627	13:18:00	D	8.10
127	SIRSA	SIRSA	S-NPP	75.19023	29.39831	13:18:00	D	2.20
128	SIRSA	SIRSA	S-NPP	74.91580	29.45704	13:18:00	D	4.40
129	SIRSA	SIRSA	S-NPP	75.18851	29.47683	13:18:00	D	7.70
130	SIRSA	SIRSA	S-NPP	75.18768	29.48043	13:18:00	D	7.70
131	SIRSA	SIRSA	S-NPP	74.93423	29.48697	13:18:00	D	3.30
132	SIRSA	SIRSA	S-NPP	75.19859	29.49740	13:18:00	D	17.20
133	SIRSA	SIRSA	S-NPP	75.10000	29.51329	13:18:00	D	31.60
134	SIRSA	SIRSA	S-NPP	75.06940	29.51528	13:18:00	D	5.00
135	SIRSA	SIRSA	S-NPP	75.23325	29.51865	13:18:00	D	5.20
136	SIRSA	SIRSA	S-NPP	75.18313	29.52081	13:18:00	D	3.60
137	SIRSA	SIRSA	S-NPP	75.16683	29.52740	02:00:00	N	1.30
138	SIRSA	SIRSA	S-NPP	75.16746	29.53089	02:00:00	N	1.30
139	SIRSA	SIRSA	S-NPP	75.23463	29.53384	13:18:00	D	10.80
140	SIRSA	SIRSA	S-NPP	74.93012	29.53493	13:18:00	D	2.70
141	SIRSA	SIRSA	S-NPP	75.27810	29.53793	13:18:00	D	6.60
142	SIRSA	SIRSA	S-NPP	75.28281	29.53878	13:18:00	D	8.80
143	SIRSA	SIRSA	S-NPP	75.12286	29.54371	13:18:00	D	2.40
144	SIRSA	SIRSA	S-NPP	75.09232	29.54574	13:18:00	D	8.00
145	SIRSA	SIRSA	S-NPP	75.09421	29.54637	13:18:00	D	15.60
146	SIRSA	SIRSA	S-NPP	75.09713	29.54660	13:18:00	D	8.00
147	SIRSA	SIRSA	S-NPP	75.09060	29.55295	13:18:00	D	5.80
148	SIRSA	SIRSA	S-NPP	75.09251	29.55358	13:18:00	D	6.40
149	SIRSA	SIRSA	S-NPP	74.95421	29.56209	13:18:00	D	25.40
150	SIRSA	SIRSA	S-NPP	74.97939	29.56294	13:18:00	D	5.50
151	SIRSA	SIRSA	S-NPP	74.92606	29.59481	13:18:00	D	2.20
152	SIRSA	SIRSA	S-NPP	75.08710	29.59771	13:18:00	D	2.90

153	SIRSA	SIRSA	S-NPP	75.12069	29.60382	13:18:00	D	5.80
154	SIRSA	SIRSA	S-NPP	75.11983	29.60741	13:18:00	D	5.80
155	SIRSA	SIRSA	NOAA-18	75.09230	29.66001	20:00:00	N	6.00
156	SIRSA	SIRSA	S-NPP	75.20127	29.75708	13:18:00	D	2.50
157	YAMUNANAGAR	CHHACHHRAULII	S-NPP	77.37874	30.28399	13:18:00	D	1.80
158	YAMUNANAGAR	JAGADHRI	S-NPP	77.30617	30.32737	13:18:00	D	1.90
159	YAMUNANAGAR	JAGADHRI	S-NPP	77.22482	30.41265	13:18:00	D	1.80

Details of residue burning events in Uttar Pradesh on 19-Nov-2018

Event S. No.	District	Tehsil/Block	Satellite	Longitude	Latitude	Time (IST)	Day/Night	Fire Power (W/m ²)
1	FATEHPUR	KHAGA	S-NPP	81.08066	25.95570	02:00:00	N	0.70
2	KANPUR	GHATAMPUR	S-NPP	80.04640	26.14691	02:00:00	N	1.00
3	SHARANPUR	DEOBAND	S-NPP	77.63805	29.68120	13:18:00	D	2.70

The study used images received from following Satellites at IARI Satellite Ground Station

S. No.	Satellite Name	Sensor	Resolution (meter)	Day / Night Passes
1.	Suomi NPP	VIIRS	375 / 1000	Both
2.	Terra	MODIS	1000	Both
3.	Aqua	MODIS	1000	Both
4.	NOAA – 18	AVHRR	1000	Night
5.	NOAA – 19	AVHRR	1000	Night
6.	Metop - 1	AVHRR	1000	Night
7.	Metop - 2	AVHRR	1000	Night

Study Team

ICAR – HQ	Dr K. Alagusundaram	DDG (Agril. Engg.)	ddgengg@icar.org.in
	Dr S. Bhaskar	ADG (NRM)	adgagroandaf@gmail.com
ICAR - IARI	Dr V.K. Sehgal	Professor & Nodal Scientist	iaricreams@gmail.com yk.sehgal@icar.gov.in
	Dr Rajkumar Dhakar	Scientist	rajdhakar.iari@gmail.com
	Shri Rakeshwar Verma	Chief Technical Officer	rakeshwar.verma@icar.gov.in
	Mr Aakash Chhabra	SRF (NICRA)	aakash.chhabra7489@gmail.com
ICAR - ATARI	Dr Rajbir Singh	Director ATARI (Zone-1)	rajbirsingh.zpd@gmail.com
	Dr U.S. Gautam	Director ATARI (Zone-IV)	zpdicarkanpur@gmail.com
ICAR - IASRI	Dr RajenderParsad	Principal Scientist	rajender.parsad@icar.gov.in

GIS Maps of fire events can be visualized online on ICAR KRISHI & CREAMS Geoportal

websites:<http://geoportal.icar.gov.in:8080/geoexplorer/composer/>

<http://creams.iari.res.in:8080/geoexplorer/composer/>
