



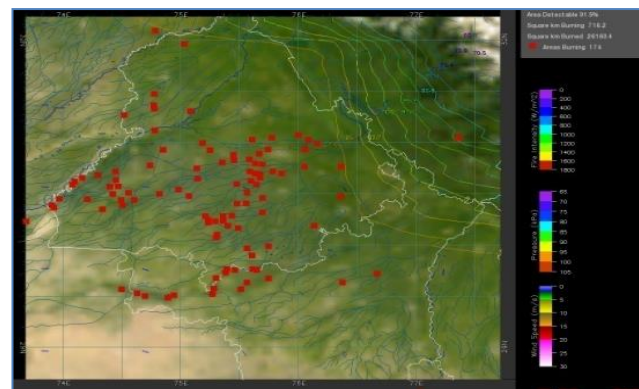
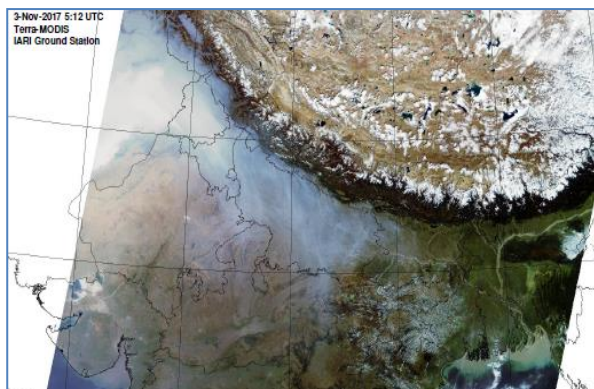
**Bulletin
No. 48**

**Events Date:
17-Nov-2018**

**Issued on:
18-Nov-2018**



MONITORING PADDY RESIDUE BURNING IN NORTH INDIA USING SATELLITE REMOTE SENSING DURING 2018



Prepared by:

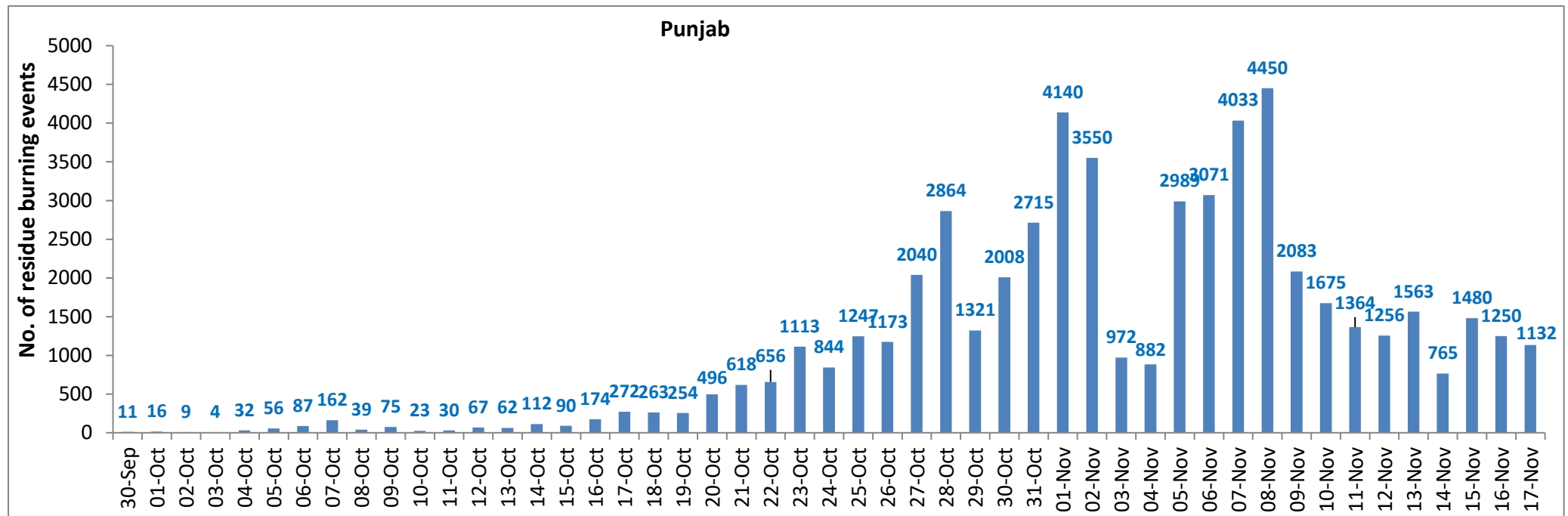
**Consortium for Research on Agroecosystem Monitoring and Modeling from Space (CREAMS) Laboratory,
Division of Agricultural Physics, ICAR – Indian Agricultural Research Institute, New Delhi – 110012**

<http://creams.iari.res.in>

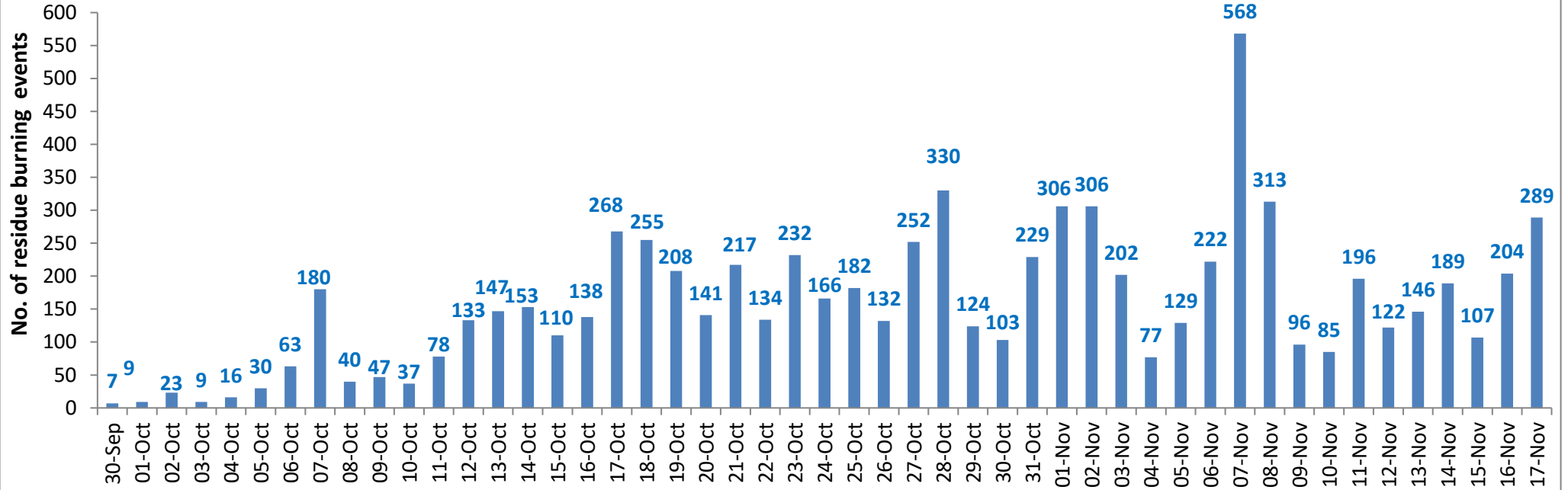
Highlights for 17-November-2018

- Satellites detected **1524** residue burning events in the three States (Punjab, Haryana & UP) on **17-Nov-2018**.
- The burning events detected on **17-Nov-2018** are **1132**, **289** and **103** in Punjab, Haryana, and UP, respectively.
- The number of events has decreased from **1566** on **16-Nov-2018** to **1524** on **17-Nov-2018** in the three States.
- Total **68498** burning events were detected in the three States between **30-Sept-2018** and **17-Nov-2018**, which are distributed as **55588**, **7750** and **5160** in Punjab, Haryana and UP, respectively.
- Till **17-Nov-2018**, the burning events in the current year are about **94.9%** of the events detected in 2017 and about **55.6%** of the events detected in 2016.
- Overall, about **5%** and **45%** reduction in burning events are observed in current year (2018) till date as compared to that in 2017 and 2016, respectively.

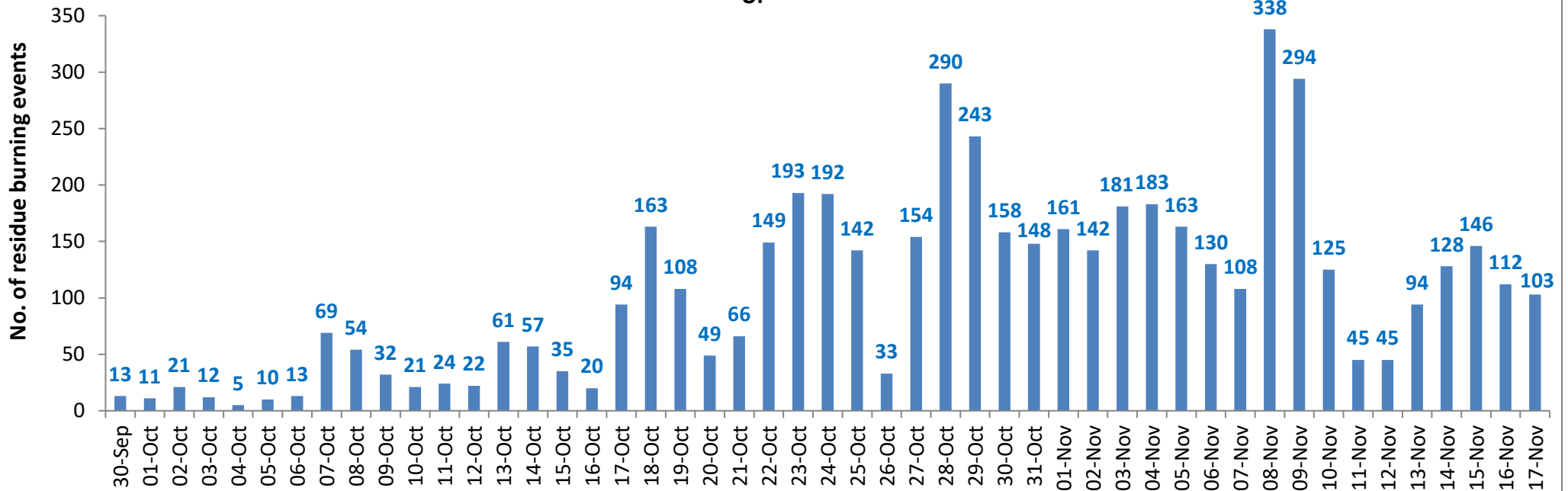
Temporal distribution of residue burning events for the three study States



Haryana

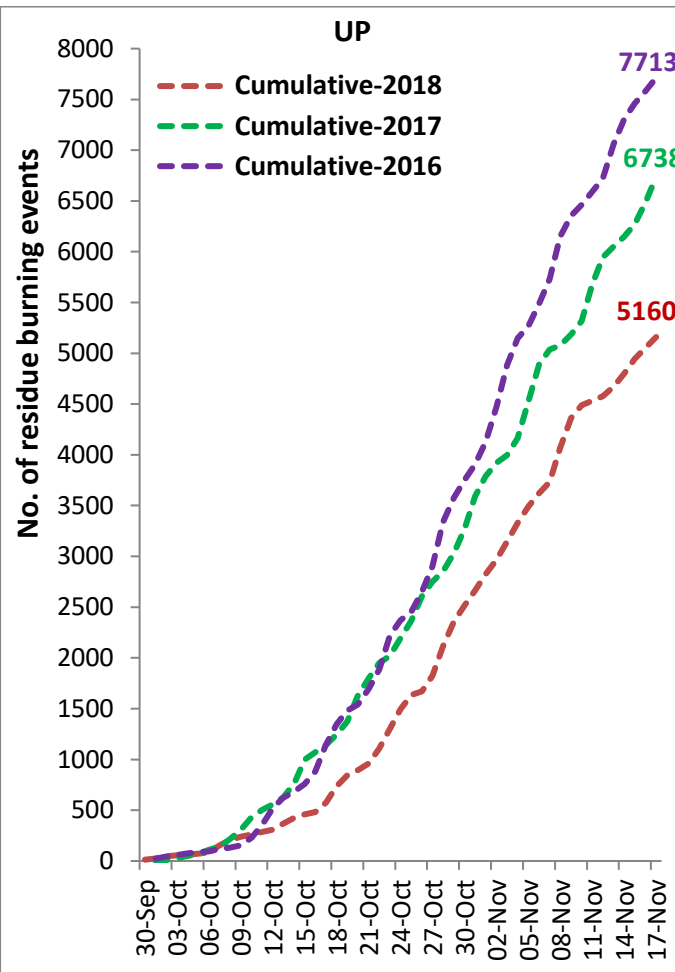
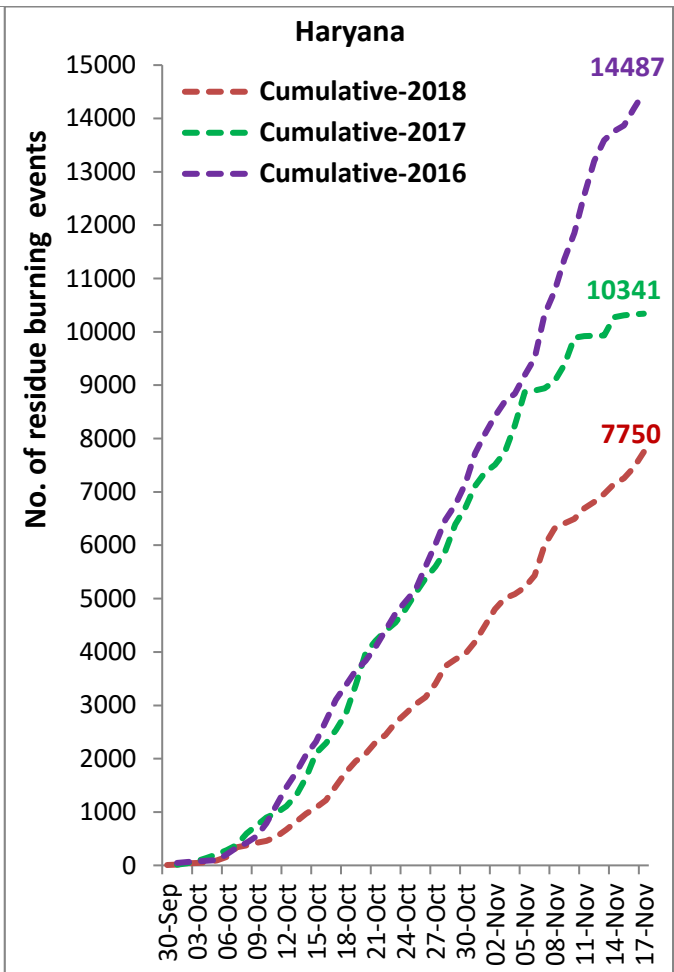
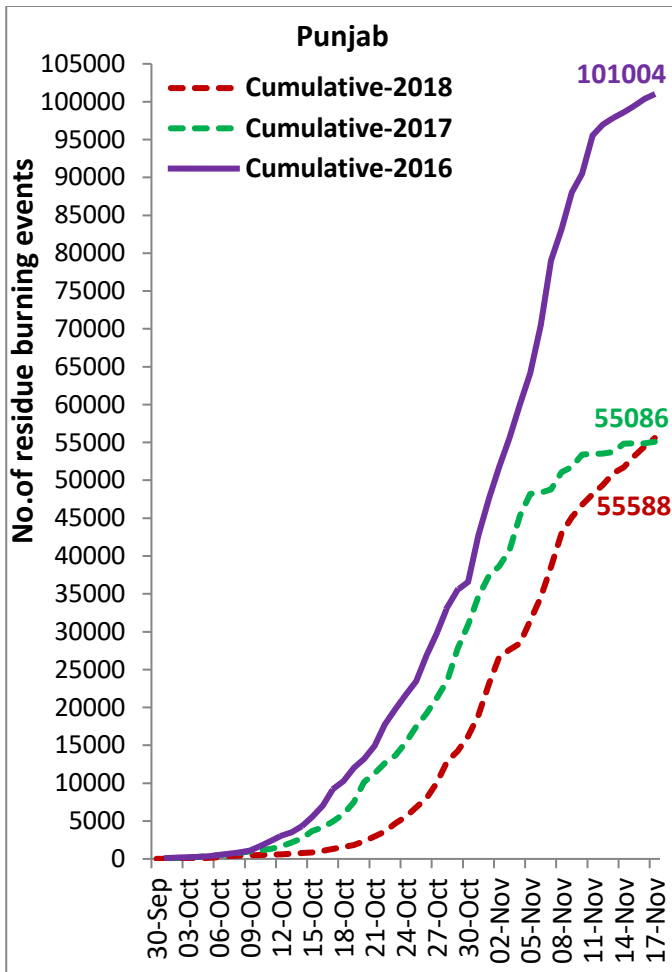


UP

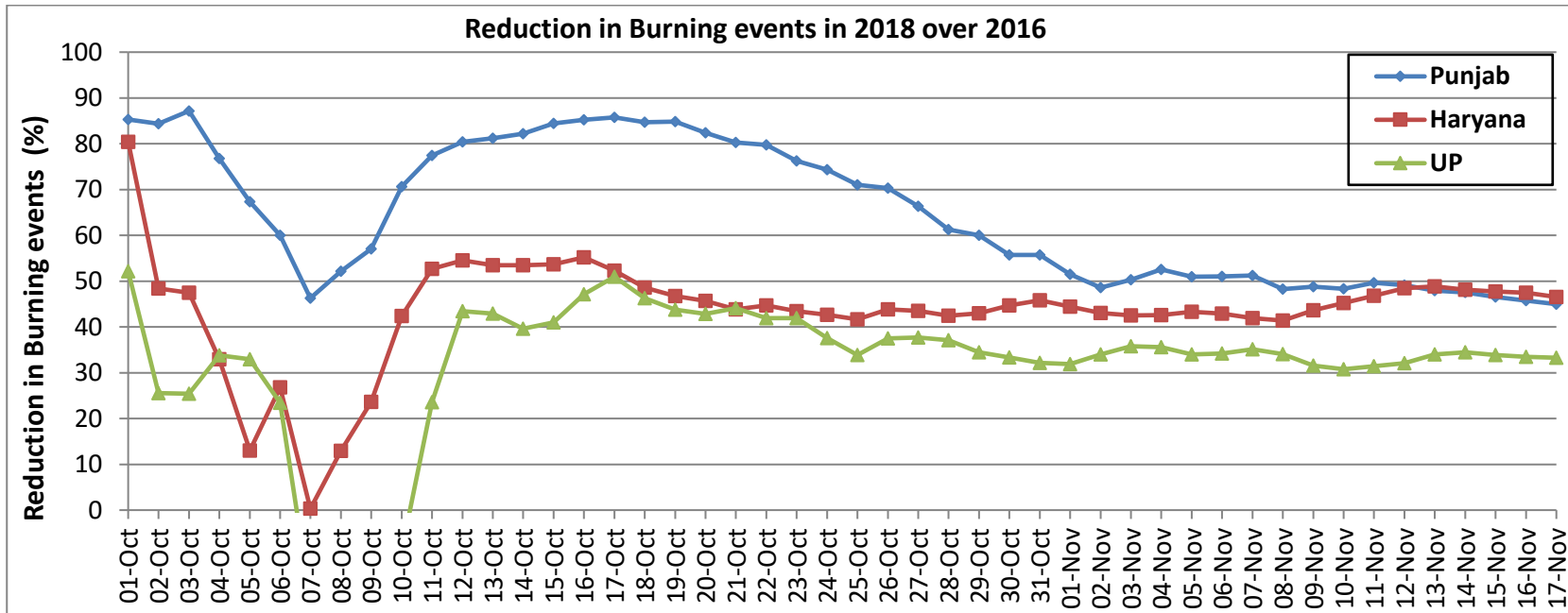
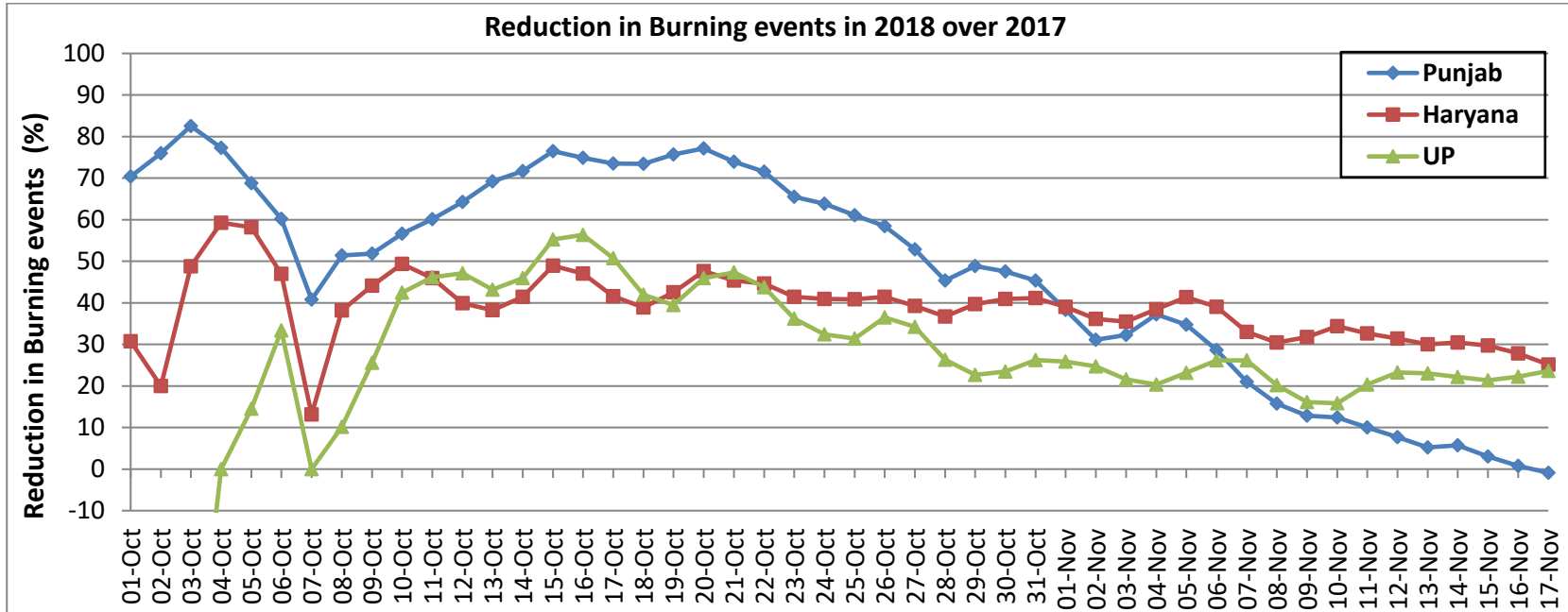


Comparison of residue burning events in current year (2018) with previous years (2017& 2016) for the three study States

(30-Sep to 17-Nov)

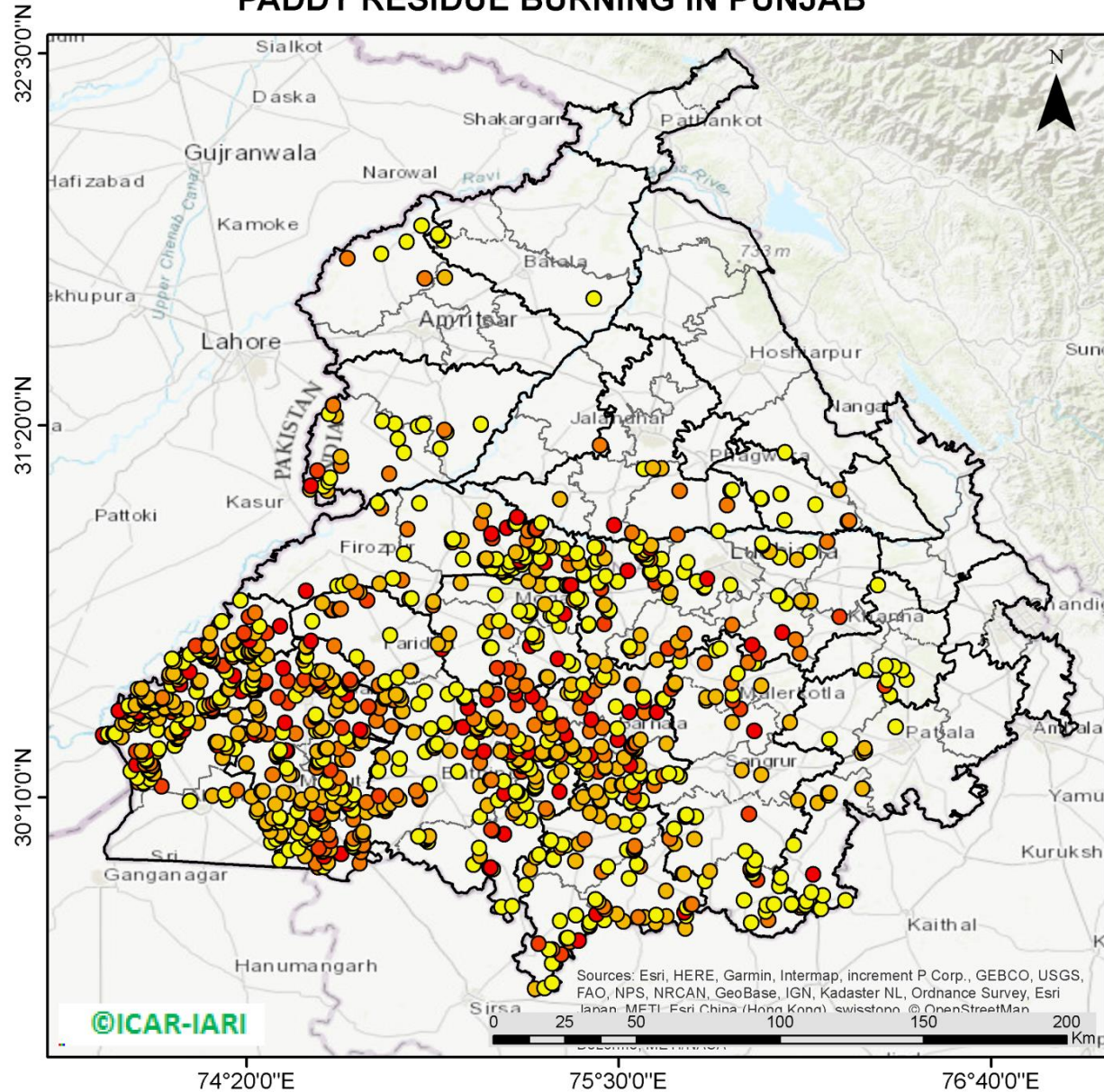


Percent Reduction in Burning events in 2018 over 2017 and 2016 (Daily Cumulative)



(a) Punjab

PADDY RESIDUE BURNING IN PUNJAB



1132 burning events detected in Punjab on 17th November, 2018

Fire Intensity (W/m²)

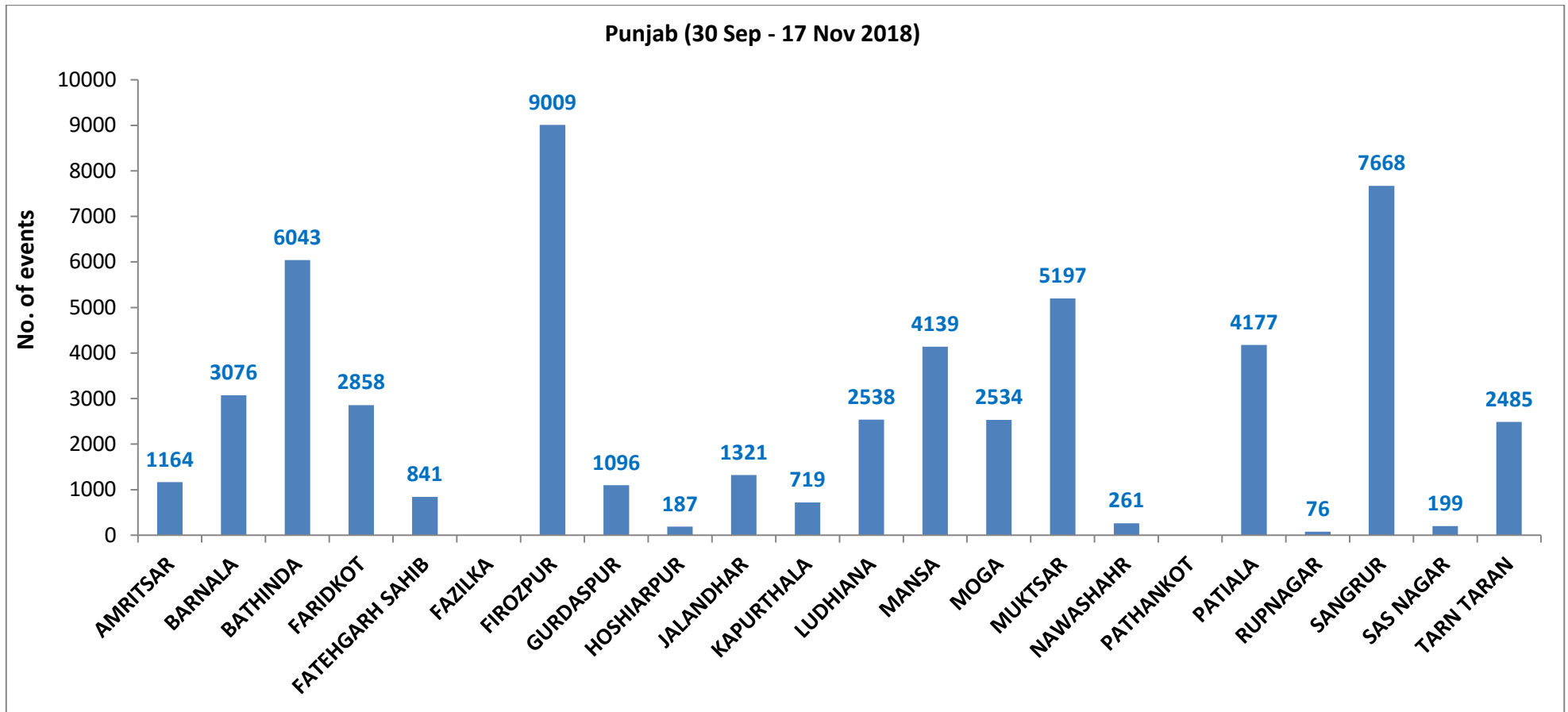
- 0 - 5
- 6 - 10
- 11 - 15
- 16 - 20
- >20



74°20'0"E 75°30'0"E 76°40'0"E

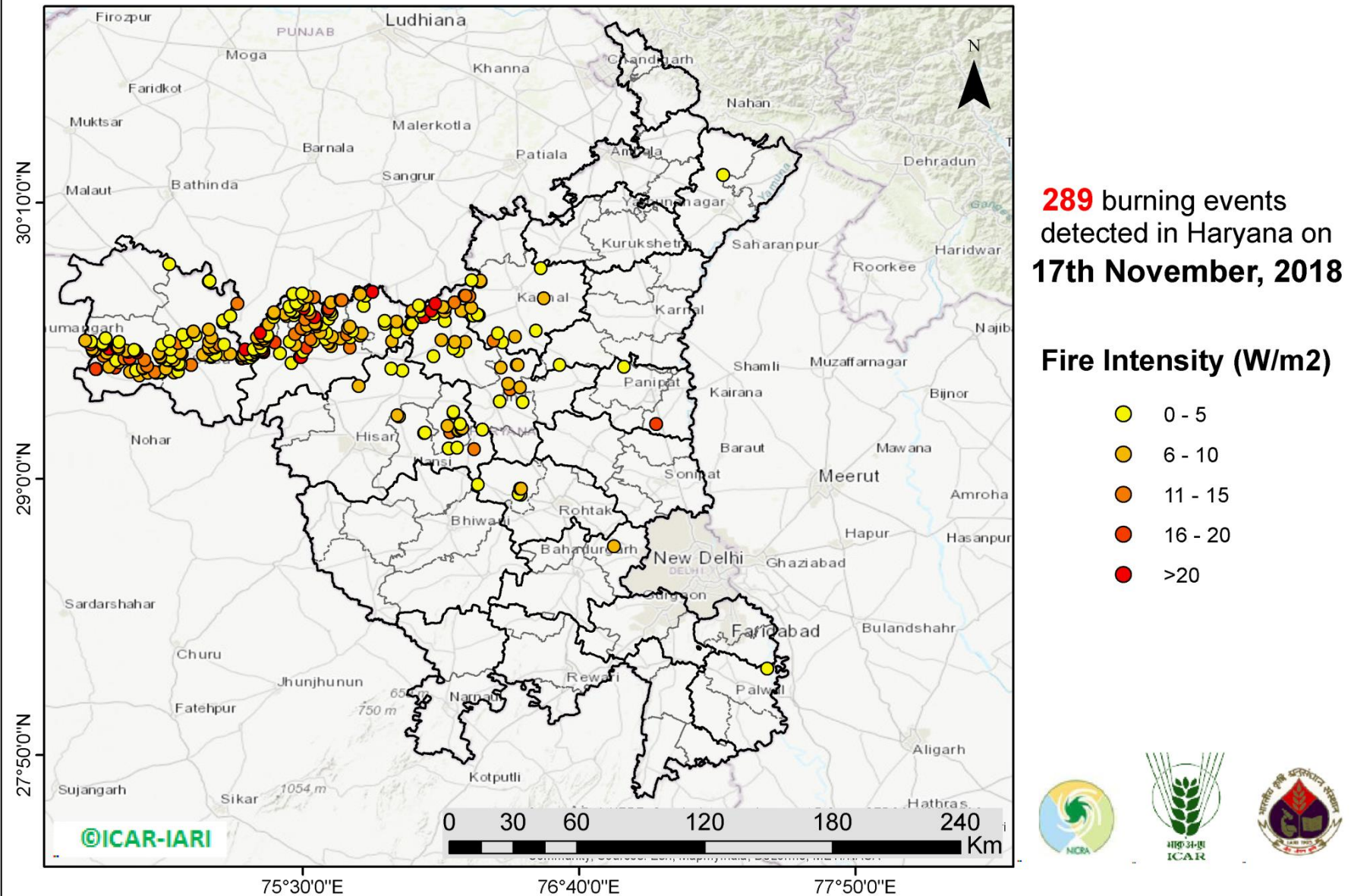
<http://geoportal.icar.gov.in:8080/geoexplorer/composer/>

District-wise cumulative number of residue burning events in Punjab (30-Sep-2018 to 17-Nov-2018)



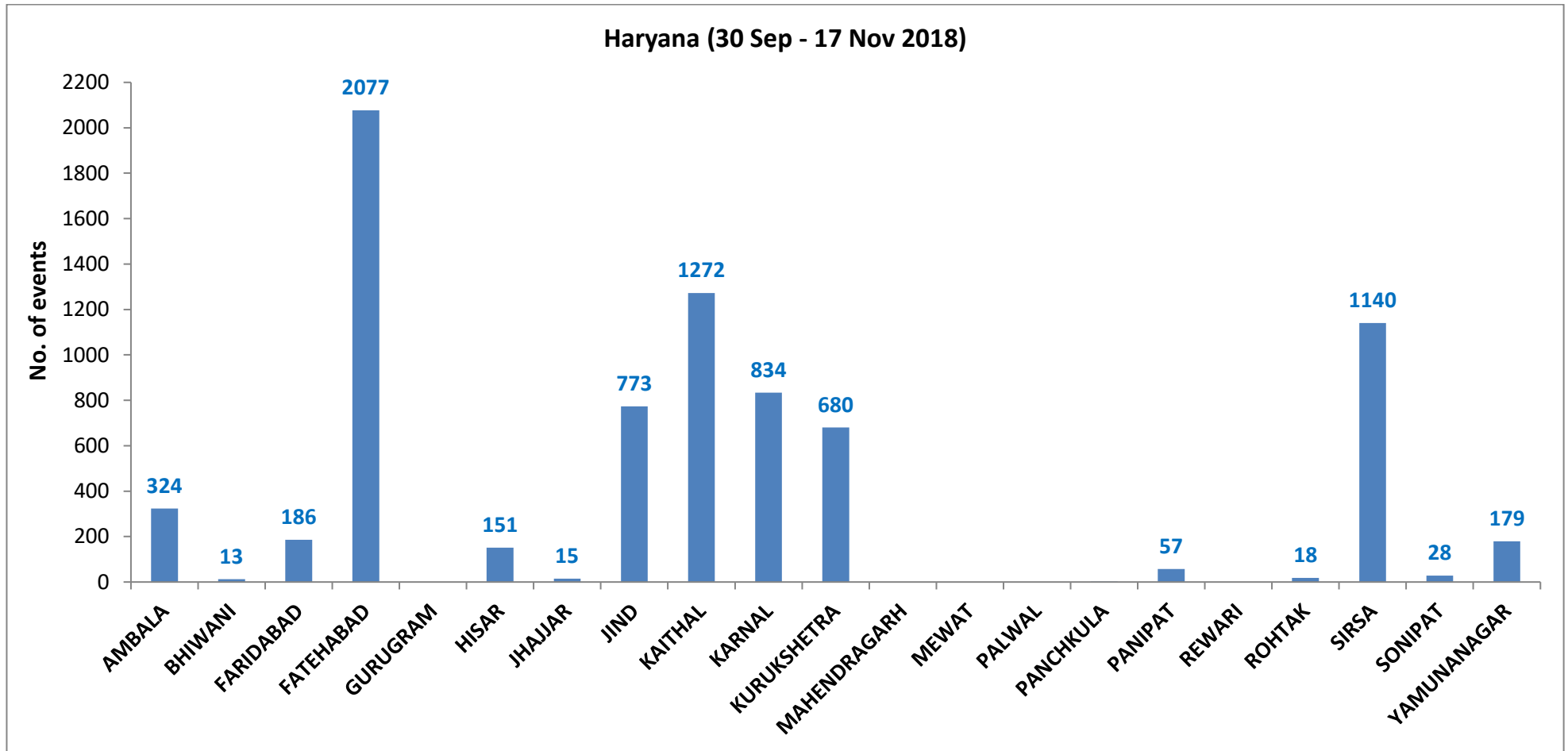
(b) Haryana

PADDY RESIDUE BURNING IN HARYANA



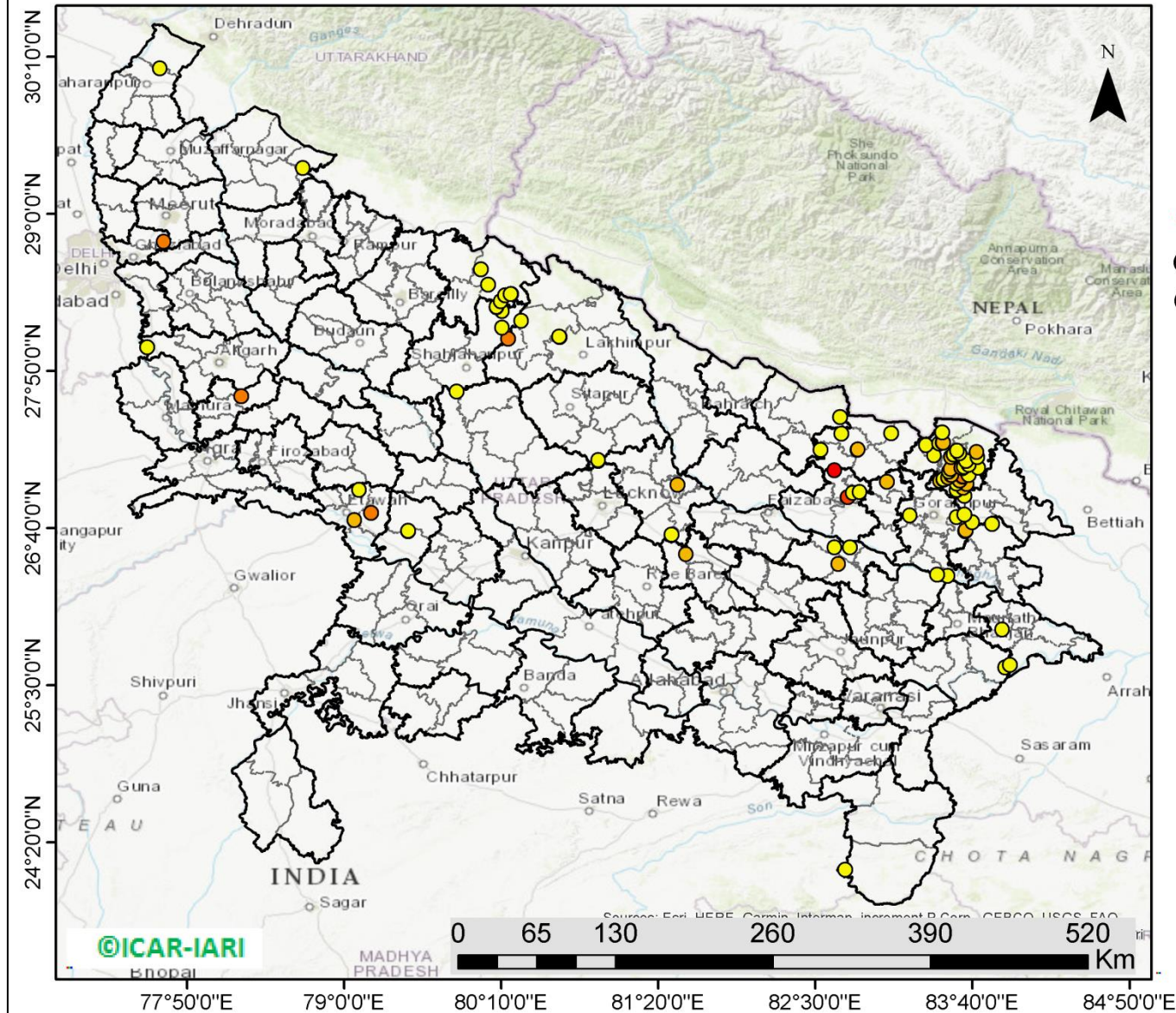
<http://geoportal.icar.gov.in:8080/geoexplorer/composer/>

District-wise cumulative number of residue burning events in Haryana (30-Sep-2018 to 17-Nov-2018)



(c) Uttar Pradesh

PADDY RESIDUE BURNING IN UTTAR PRADESH



103 burning events detected in Uttar Pradesh on **17th Nov, 2018**

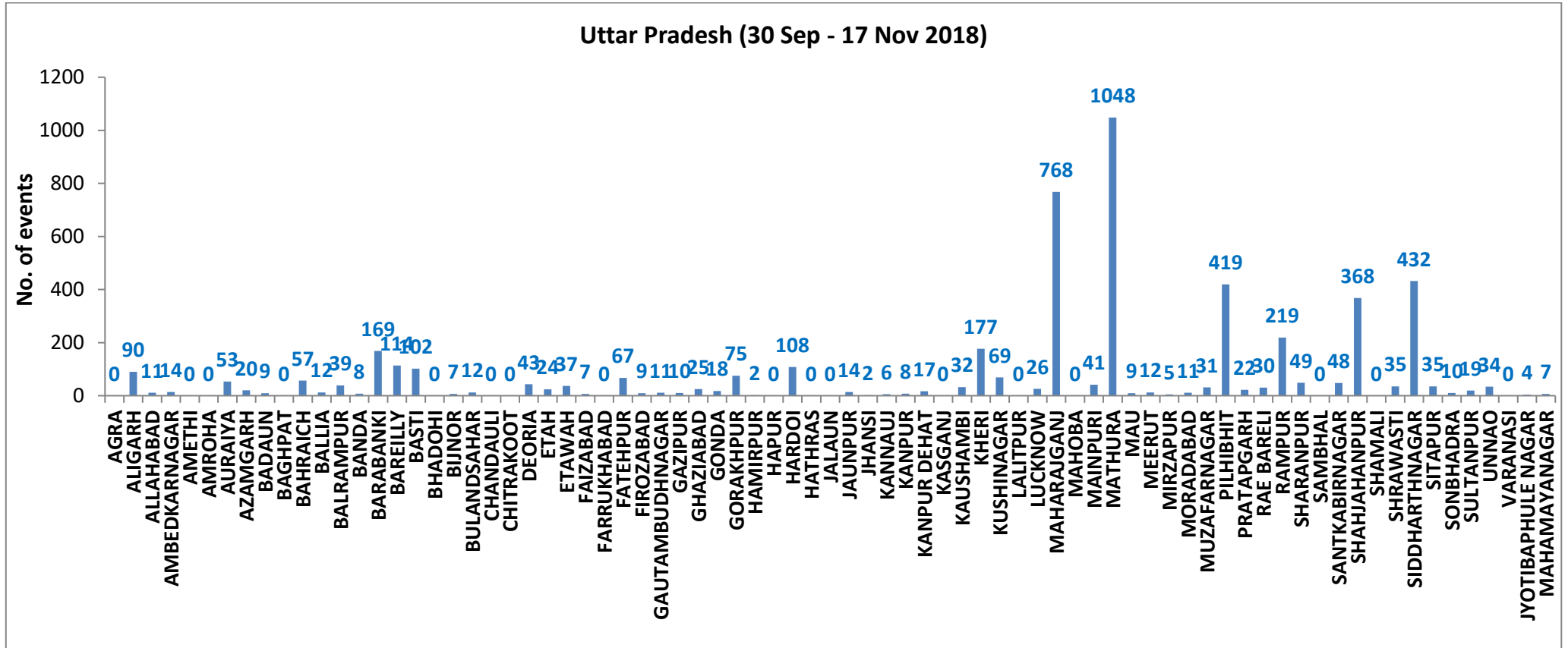
Fire Intensity (W/m²)

- 0 - 5
- 6 - 10
- 11 - 15
- 16 - 20
- >20



<http://geoportal.icar.gov.in:8080/geoexplorer/composer/>

District-wise cumulative number of residue burning events in Uttar Pradesh (30-Sep-2018 to 17-Nov-2018)



State wise, date wise and district-wise number of residue burning events detected in 2016, 2017 and 2018
(Period: 30-Sep to 17-Nov)

Date	Punjab			Haryana			UP			Total		
	2016	2017	2018	2016	2017	2018	2016	2017	2018	2016	2017	2018
30-Sep	--	--	11	--	---	7	--	---	13	--	---	31
1-Oct	109	54	16	46	13	9	23	2	11	178	69	36
2-Oct	51	50	9	16	27	23	20	8	21	87	85	53
3-Oct	66	62	4	16	40	9	16	17	12	98	119	25
4-Oct	37	103	32	7	60	16	15	22	5	59	185	53
5-Oct	95	106	56	15	68	30	14	20	10	124	194	96
6-Oct	152	138	87	105	75	65	6	39	13	263	252	165
7-Oct	171	105	162	126	97	180	24	31	69	321	233	411
8-Oct	166	215	39	94	218	40	14	75	54	274	508	133
9-Oct	270	163	75	121	148	47	22	87	32	413	398	154
10-Oct	597	164	23	242	151	37	74	126	21	913	441	81
11-Oct	652	177	30	336	87	78	128	74	24	1116	338	132
12-Oct	694	342	67	338	123	133	164	51	22	1196	516	222
13-Oct	467	470	62	284	207	147	102	69	61	853	746	270
14-Oct	812	582	112	328	333	153	60	137	57	1200	1052	322
15-Oct	1215	943	90	248	458	110	76	237	35	1539	1638	235
16-Oct	1478	465	174	385	186	138	125	71	20	1988	722	332
17-Oct	2173	807	272	399	244	268	261	69	94	2833	1120	634
18-Oct	1065	970	263	270	306	255	204	108	163	1539	1384	681
19-Oct	1762	1591	254	276	541	208	132	128	108	2170	2260	570
20-Oct	1175	2653	496	188	597	141	62	255	49	1425	3505	686
21-Oct	1726	1139	618	257	233	217	152	168	66	2135	1540	901
22-Oct	2837	1356	656	309	186	134	194	151	149	3340	1693	939
23-Oct	2040	994	1113	313	155	232	331	72	193	2684	1221	1538

24-Oct	1836	1714	844	221	244	166	152	171	192	2209	2129	1202
25-Oct	1813	2104	1247	229	303	182	83	175	142	2125	2582	1571
26-Oct	3390	1715	1173	434	276	132	195	240	33	4019	2231	1338
27-Oct	2904	2069	2040	417	224	252	255	145	154	3576	2438	2446
28-Oct	3493	2318	2864	458	292	330	435	99	290	4386	2709	3484
29-Oct	2258	4184	1321	278	502	124	237	180	243	2773	4866	1688
30-Oct	1076	3152	2008	395	307	103	175	238	158	1646	3697	2269
31-Oct	6132	3743	2715	575	413	229	153	321	148	6860	4447	3092
01-Nov	4843	2736	4140	362	250	306	223	199	161	5628	3185	4607
02-Nov	4183	1246	3550	332	145	306	345	131	142	4860	1522	3998
03-Nov	3806	2109	972	275	240	202	409	75	181	4409	2424	1355
04-Nov	4477	4603	882	146	499	77	265	168	183	4888	5270	1142
05-Nov	4137	2876	2989	345	625	129	125	367	163	4607	3868	3281
06-Nov	6303	171	3071	322	26	222	215	357	130	6840	327	3423
07-Nov	8575	420	4033	821	46	568	244	149	108	9640	615	4709
08-Nov	4129	2256	4450	432	128	313	419	43	338	4874	2427	5101
09-Nov	4857	675	2083	608	311	96	205	107	294	5670	1093	2473
10-Nov	2468	1642	1675	484	509	85	109	131	125	3061	2282	1885
11-Nov	5040	103	1364	716	29	196	129	358	45	5885	490	1605
12-Nov	1477	33	1256	634	3	122	129	269	45	2240	305	1423
13-Nov	885	237	1563	389	7	146	338	109	94	1612	353	1803
14-Nov	692	1101	765	171	340	189	247	95	128	1110	1536	1082
15-Nov	871	5	1480	107	40	107	154	123	146	1132	168	1733
16-Nov	911	8	1250	318	17	204	123	218	112	1352	243	1566
17-Nov	638	217	1132	299	12	289	130	249	103	1067	478	1524
Total	101004	55086	55588	14487	10341	7750	7713	6738	5160	123204	72165	68498

(a) Punjab

Districts	01 Oct - 17Nov		
	2016	2017	2018
AMRITSAR	2118	1206	1164
BARNALA	5674	2790	3076
BATHINDA	8775	4750	6043
FARIDKOT	4598	2865	2858
FATEHGARH SAHIB	2453	1607	841
FAZILKA	0	0	0
FIROZPUR	13202	5801	9009
GURDASPUR	2180	1507	1096
HOSHIARPUR	898	477	187
JALANDHAR	4638	1987	1321
KAPURTHALA	3126	1526	719
LUDHIANA	9396	3978	2538
MANSA	5569	4082	4139
MOGA	6380	1986	2534
MUKTSAR	6805	3444	5197
NAWASHAHR (SBS Nagar)	1348	657	261
PATHANKOT	0	0	0
PATIALA	6530	5006	4177
RUPNAGAR	711	326	76
SANGRUR	11832	8223	7668
SAS NAGAR	359	242	199
TARN TARAN	4412	2626	2485
Total	101004	55086	55588

(b) Haryana

Districts	01 Oct - 17Nov		
	2016	2017	2018
AMBALA	529	490	324
BHIWANI	68	27	13
FARIDABAD	283	341	186
FATEHABAD	4617	2955	2077
GURUGRAM	0	0	0
HISAR	343	161	151
JHAJJAR	27	15	15
JIND	829	898	773
KAITHAL	1742	1491	1272
KARNAL	1624	1484	834
KURUKSHETRA	1076	1141	680
MAHENDRAGARH	0	0	0
MEWAT	0	0	0
PALWAL	0	0	0
PANCHKULA	0	0	3
PANIPAT	77	75	57
REWARI	0	0	0
ROHTAK	75	53	18
SIRSA	2886	848	1140
SONIPAT	72	55	28
YAMUNANAGAR	239	307	179
Total	14487	10341	7750

(c) Uttar Pradesh

Distrites	01 Oct - 17Nov			GAUTAMBUDH NAGAR			RAE BARELI				
	2016	2017	2018								
AGRA	0	0	0	NAGAR	20	34	11	RAMPUR	52	52	30
ALIGARH	50	75	90	GAZIPUR	13	7	10	SHARANPUR	612	610	219
ALLAHABAD	3	8	11	GHAZIABAD	60	40	25	SAMBHAL	79	104	49
AMBEDKARNAGAR	61	26	14	GONDA	43	33	18	SANTKABIRNAGAR	0	0	0
AMETHI	0	0	0	GORAKHPUR	48	83	75	SHAHJAHANPUR	51	58	48
AMROHA	0	0	0	HAMIRPUR	0	0	2	SHAMALI	1119	675	368
AURAIYA	188	155	53	HAPUR	0	0	0	SHRAWASTI	0	0	0
AZAMGARH	26	24	20	HARDOI	228	188	108	SHRAWASTI	32	29	35
BADAUN	6	6	9	HATHRAS	0	0	0	SIDDHARTHANAGAR	221	160	432
BAGHPAT	0	0	0	JALAUN	0	0	0	SITAPUR	106	65	35
BAHRAICH	60	37	57	JAUNPUR	12	10	14	SONBHADRA	14	10	10
BALLIA	10	16	12	JHANSI	0	0	2	SULTANPUR	41	22	19
BALRAMPUR	29	27	39	KANNAUJ	21	14	6	UNNAO	50	43	34
BANDA	1	11	8	KANPUR	9	7	8	VARANASI	1	0	0
BARABANKI	206	149	169	KANPUR DEHAT	30	44	17	JYOTIBAPHULE NAGAR	9	11	4
BAREILLY	236	197	114	KASGANJ	0	0	0	MAHAMAYANAGAR	2	2	7
BASTI	125	177	102	KAUSHAMBI	15	35	32	Total	7713	6738	5160
BHADOHI	0	0	0	KHERI	388	250	177				
BIJNOR	42	37	7	KUSHINAGAR	29	62	69				
BULANDSAHAR	18	28	12	LALITPUR	0	0	0				
CHANDALI	3	2	0	LUCKNOW	57	30	26				
CHITRAKOOT	0	0	0	MAHARAJGANJ	411	729	768				
DEORIA	38	44	43	MAHOBA	0	0	0				
ETAH	16	28	24	MAINPURI	65	81	41				
ETAWAH	89	94	37	MATHURA	1437	1082	1048				
FAIZABAD	12	9	7	MAU	10	7	9				
FARRUKHABAD	0	0	0	MEERUT	56	63	12				
FATEHPUR	44	36	67	MIRZAPUR	3	11	5				
FIROZABAD	23	18	9	MORADABAD	40	31	11				
				MUZAFARNAGAR	105	113	31				
				PILHIBHIT	913	706	419				
				PRATAPGARH	25	33	22				

Details of residue burning events in Punjab on 17-Nov-2018

Event S. No.	District	Tehsil/Block	Satellite	Longitude	Latitude	Time (IST)	Day/Night	Fire Power (W/m²)
1	AMRITSAR	AJNALA	AQUA-1	74.89107	31.79501	13:35:00	D	12.64
2	AMRITSAR	AJNALA	AQUA-1	74.64893	31.85789	13:35:00	D	13.81
3	AMRITSAR	AJNALA	S-NPP	74.75433	31.87289	13:54:00	D	2.50
4	AMRITSAR	AJNALA	S-NPP	74.83555	31.91047	13:54:00	D	2.50
5	AMRITSAR	AJNALA	S-NPP	74.88084	31.96118	13:54:00	D	1.90
6	AMRITSAR	AMRITSAR I	AQUA-1	74.95417	31.79800	13:35:00	D	9.85
7	BARNALA	BARNALA	S-NPP	75.55277	30.31658	13:54:00	D	2.30
8	BARNALA	BARNALA	S-NPP	75.55221	30.32078	13:54:00	D	2.90
9	BARNALA	BARNALA	S-NPP	75.55276	30.32093	13:54:00	D	5.40
10	BARNALA	BARNALA	S-NPP	75.54281	30.32402	13:54:00	D	3.90
11	BARNALA	BARNALA	S-NPP	75.53835	30.32798	13:54:00	D	18.50
12	BARNALA	BARNALA	S-NPP	75.54277	30.32842	13:54:00	D	18.50
13	BARNALA	BARNALA	S-NPP	75.65029	30.33498	13:54:00	D	7.70
14	BARNALA	BARNALA	S-NPP	75.64957	30.33547	13:54:00	D	6.80
15	BARNALA	BARNALA	S-NPP	75.55049	30.33771	13:54:00	D	8.60
16	BARNALA	BARNALA	S-NPP	75.55492	30.33816	13:54:00	D	13.20
17	BARNALA	BARNALA	AQUA-1	75.49644	30.34722	13:35:00	D	25.87
18	BARNALA	BARNALA	AQUA-1	75.56806	30.34722	13:35:00	D	7.75
19	BARNALA	BARNALA	S-NPP	75.49513	30.38298	13:54:00	D	2.00
20	BARNALA	BARNALA	AQUA-1	75.41459	30.41011	13:35:00	D	20.22
21	BARNALA	BARNALA	AQUA-1	75.58136	30.43256	13:35:00	D	12.34
22	BARNALA	BARNALA	S-NPP	75.53397	30.43435	13:54:00	D	36.80
23	BARNALA	BARNALA	S-NPP	75.61881	30.43441	13:54:00	D	36.80
24	BARNALA	BARNALA	S-NPP	75.61990	30.43445	13:54:00	D	41.60
25	BARNALA	BARNALA	AQUA-1	75.37878	30.44828	13:35:00	D	14.57
26	BARNALA	BARNALA	S-NPP	75.49133	30.45127	13:54:00	D	4.80
27	BARNALA	BARNALA	AQUA-1	75.57830	30.46850	13:35:00	D	25.89
28	BARNALA	BARNALA	S-NPP	75.63729	30.47472	13:54:00	D	4.10
29	BARNALA	BARNALA	S-NPP	75.64179	30.47518	13:54:00	D	4.10

30	BARNALA	BARNALA	AQUA-1	75.40265	30.48047	13:35:00	D	31.53
31	BARNALA	BARNALA	S-NPP	75.57729	30.48140	13:54:00	D	3.50
32	BARNALA	BARNALA	AQUA-1	75.36173	30.49245	13:35:00	D	6.05
33	BARNALA	BARNALA	S-NPP	75.33918	30.49451	13:54:00	D	6.30
34	BARNALA	BARNALA	S-NPP	75.35218	30.49591	13:54:00	D	3.60
35	BARNALA	BARNALA	AQUA-1	75.42312	30.50143	13:35:00	D	13.36
36	BARNALA	BARNALA	AQUA-1	75.66322	30.50802	13:35:00	D	15.57
37	BARNALA	BARNALA	S-NPP	75.54047	30.52021	13:54:00	D	12.30
38	BARNALA	BARNALA	S-NPP	75.54491	30.52068	13:54:00	D	12.30
39	BARNALA	BARNALA	S-NPP	75.38850	30.52092	13:54:00	D	2.80
40	BARNALA	BARNALA	AQUA-1	75.44699	30.53437	13:35:00	D	12.68
41	BARNALA	BARNALA	S-NPP	75.48057	30.54379	13:54:00	D	7.10
42	BARNALA	BARNALA	S-NPP	75.45350	30.54528	13:54:00	D	3.10
43	BARNALA	BARNALA	AQUA-1	75.46063	30.58079	13:35:00	D	7.36
44	BARNALA	TAPPA	AQUA-1	75.56977	30.14810	13:35:00	D	10.84
45	BARNALA	TAPPA	S-NPP	75.53861	30.14867	13:54:00	D	2.10
46	BARNALA	TAPPA	S-NPP	75.53805	30.15285	13:54:00	D	4.10
47	BARNALA	TAPPA	S-NPP	75.57326	30.15651	13:54:00	D	3.70
48	BARNALA	TAPPA	AQUA-1	75.54760	30.16756	13:35:00	D	15.34
49	BARNALA	TAPPA	S-NPP	75.48050	30.18491	13:54:00	D	4.10
50	BARNALA	TAPPA	S-NPP	75.54942	30.20075	13:54:00	D	16.30
51	BARNALA	TAPPA	AQUA-1	75.47768	30.20499	13:35:00	D	9.02
52	BARNALA	TAPPA	S-NPP	75.51319	30.20536	13:54:00	D	12.70
53	BARNALA	TAPPA	S-NPP	75.50967	30.20594	13:54:00	D	8.10
54	BARNALA	TAPPA	S-NPP	75.51405	30.20638	13:54:00	D	8.10
55	BARNALA	TAPPA	S-NPP	75.53838	30.21655	13:54:00	D	2.40
56	BARNALA	TAPPA	S-NPP	75.61398	30.22923	13:54:00	D	3.40
57	BARNALA	TAPPA	S-NPP	75.69058	30.23265	13:54:00	D	2.80
58	BARNALA	TAPPA	S-NPP	75.68936	30.23276	13:54:00	D	4.20
59	BARNALA	TAPPA	AQUA-1	75.63968	30.23493	13:35:00	D	13.72
60	BARNALA	TAPPA	S-NPP	75.68046	30.24020	13:54:00	D	2.00
61	BARNALA	TAPPA	S-NPP	75.39890	30.24102	13:54:00	D	3.20

62	BARNALA	TAPPA	S-NPP	75.56734	30.24152	13:54:00	D	4.00
63	BARNALA	TAPPA	S-NPP	75.65746	30.24216	13:54:00	D	4.90
64	BARNALA	TAPPA	AQUA-1	75.43505	30.24841	13:35:00	D	16.85
65	BARNALA	TAPPA	S-NPP	75.40151	30.25393	13:54:00	D	5.50
66	BARNALA	TAPPA	AQUA-1	75.49644	30.25739	13:35:00	D	9.79
67	BARNALA	TAPPA	S-NPP	75.45800	30.25987	13:54:00	D	5.40
68	BARNALA	TAPPA	S-NPP	75.45742	30.26405	13:54:00	D	5.40
69	BARNALA	TAPPA	S-NPP	75.56396	30.26670	13:54:00	D	9.20
70	BARNALA	TAPPA	AQUA-1	75.53566	30.26787	13:35:00	D	30.38
71	BARNALA	TAPPA	S-NPP	75.37162	30.28024	13:54:00	D	2.00
72	BARNALA	TAPPA	S-NPP	75.51590	30.29140	13:54:00	D	5.20
73	BARNALA	TAPPA	S-NPP	75.35217	30.29497	13:54:00	D	1.60
74	BARNALA	TAPPA	S-NPP	75.39098	30.29918	13:54:00	D	8.10
75	BARNALA	TAPPA	AQUA-1	75.41152	30.29961	13:35:00	D	27.69
76	BARNALA	TAPPA	S-NPP	75.39124	30.30035	13:54:00	D	8.40
77	BARNALA	TAPPA	S-NPP	75.45672	30.30204	13:54:00	D	14.50
78	BARNALA	TAPPA	S-NPP	75.35811	30.31800	13:54:00	D	1.80
79	BARNALA	TAPPA	S-NPP	75.35265	30.32586	13:54:00	D	4.20
80	BARNALA	TAPPA	S-NPP	75.44495	30.32694	13:54:00	D	9.10
81	BARNALA	TAPPA	S-NPP	75.35208	30.33000	13:54:00	D	7.30
82	BARNALA	TAPPA	AQUA-1	75.33444	30.36369	13:35:00	D	30.83
83	BARNALA	TAPPA	AQUA-1	75.40947	30.37417	13:35:00	D	10.33
84	BARNALA	TAPPA	AQUA-1	75.44784	30.38540	13:35:00	D	13.34
85	BARNALA	TAPPA	AQUA-1	75.32251	30.39214	13:35:00	D	15.36
86	BATHINDA	BATHINDA	AQUA-1	74.69838	30.05078	13:35:00	D	10.96
87	BATHINDA	BATHINDA	S-NPP	74.69928	30.05873	13:54:00	D	7.40
88	BATHINDA	BATHINDA	S-NPP	75.06542	30.10689	13:54:00	D	2.10
89	BATHINDA	BATHINDA	S-NPP	74.70844	30.12044	13:54:00	D	6.10
90	BATHINDA	BATHINDA	AQUA-1	74.76830	30.12414	13:35:00	D	14.87
91	BATHINDA	BATHINDA	S-NPP	74.66385	30.12564	13:54:00	D	3.50
92	BATHINDA	BATHINDA	S-NPP	74.66545	30.12766	13:54:00	D	3.90
93	BATHINDA	BATHINDA	S-NPP	74.74934	30.12914	13:54:00	D	4.70

94	BATHINDA	BATHINDA	S-NPP	74.74731	30.13060	13:54:00	D	4.30
95	BATHINDA	BATHINDA	S-NPP	74.76720	30.13117	13:54:00	D	5.20
96	BATHINDA	BATHINDA	S-NPP	74.73691	30.13179	13:54:00	D	7.20
97	BATHINDA	BATHINDA	S-NPP	74.76519	30.13252	13:54:00	D	5.10
98	BATHINDA	BATHINDA	S-NPP	74.73484	30.13331	13:54:00	D	6.50
99	BATHINDA	BATHINDA	S-NPP	74.76663	30.13517	13:54:00	D	8.80
100	BATHINDA	BATHINDA	S-NPP	74.76462	30.13652	13:54:00	D	8.70
101	BATHINDA	BATHINDA	AQUA-1	75.08888	30.14211	13:35:00	D	7.97
102	BATHINDA	BATHINDA	S-NPP	74.78139	30.14645	13:54:00	D	5.70
103	BATHINDA	BATHINDA	AQUA-1	74.65063	30.14735	13:35:00	D	23.72
104	BATHINDA	BATHINDA	S-NPP	74.70824	30.15068	13:54:00	D	10.20
105	BATHINDA	BATHINDA	S-NPP	74.65927	30.15744	13:54:00	D	3.50
106	BATHINDA	BATHINDA	S-NPP	74.87608	30.16071	13:54:00	D	21.50
107	BATHINDA	BATHINDA	S-NPP	74.81063	30.16182	13:54:00	D	5.10
108	BATHINDA	BATHINDA	S-NPP	74.87552	30.16473	13:54:00	D	13.80
109	BATHINDA	BATHINDA	AQUA-1	74.80070	30.16756	13:35:00	D	51.10
110	BATHINDA	BATHINDA	S-NPP	74.74754	30.17119	13:54:00	D	18.60
111	BATHINDA	BATHINDA	S-NPP	74.80092	30.17297	13:54:00	D	10.80
112	BATHINDA	BATHINDA	S-NPP	74.86401	30.18801	13:54:00	D	12.00
113	BATHINDA	BATHINDA	AQUA-1	75.06672	30.20349	13:35:00	D	7.64
114	BATHINDA	BATHINDA	S-NPP	74.90621	30.20899	13:54:00	D	3.60
115	BATHINDA	BATHINDA	S-NPP	75.13900	30.21770	13:54:00	D	1.20
116	BATHINDA	BATHINDA	S-NPP	75.09620	30.22140	13:54:00	D	13.30
117	BATHINDA	BATHINDA	S-NPP	75.10036	30.22185	13:54:00	D	12.70
118	BATHINDA	BATHINDA	S-NPP	74.99606	30.24764	13:54:00	D	2.40
119	BATHINDA	BATHINDA	AQUA-1	75.19461	30.24841	13:35:00	D	15.81
120	BATHINDA	BATHINDA	S-NPP	74.74619	30.24932	13:54:00	D	4.30
121	BATHINDA	BATHINDA	S-NPP	74.80920	30.25610	13:54:00	D	1.50
122	BATHINDA	BATHINDA	S-NPP	75.19626	30.26547	13:54:00	D	10.90
123	BATHINDA	BATHINDA	S-NPP	75.19570	30.26958	13:54:00	D	10.90
124	BATHINDA	BATHINDA	S-NPP	75.20835	30.27095	13:54:00	D	3.40
125	BATHINDA	BATHINDA	AQUA-1	75.06501	30.27686	13:35:00	D	12.13

126	BATHINDA	BATHINDA	S-NPP	74.81265	30.28909	13:54:00	D	2.60
127	BATHINDA	BATHINDA	AQUA-1	74.75977	30.29332	13:35:00	D	9.50
128	BATHINDA	BATHINDA	S-NPP	74.89182	30.31000	13:54:00	D	3.10
129	BATHINDA	BATHINDA	AQUA-1	75.03091	30.31129	13:35:00	D	15.84
130	BATHINDA	BATHINDA	AQUA-1	75.07695	30.31129	13:35:00	D	47.59
131	BATHINDA	BATHINDA	AQUA-1	75.12981	30.31279	13:35:00	D	9.33
132	BATHINDA	BATHINDA	S-NPP	74.97000	30.31439	13:54:00	D	5.90
133	BATHINDA	BATHINDA	AQUA-1	74.92177	30.32177	13:35:00	D	10.46
134	BATHINDA	BATHINDA	S-NPP	74.91803	30.32927	13:54:00	D	2.20
135	BATHINDA	BATHINDA	S-NPP	74.92211	30.32972	13:54:00	D	2.20
136	BATHINDA	BATHINDA	S-NPP	74.92973	30.33467	13:54:00	D	2.40
137	BATHINDA	BATHINDA	S-NPP	75.03781	30.33826	13:54:00	D	2.80
138	BATHINDA	BATHINDA	AQUA-1	74.85697	30.37193	13:35:00	D	9.96
139	BATHINDA	BATHINDA	AQUA-1	75.06306	30.37353	13:35:00	D	28.35
140	BATHINDA	BATHINDA	S-NPP	75.08321	30.37973	13:54:00	D	3.50
141	BATHINDA	BATHINDA	S-NPP	75.08260	30.38043	13:54:00	D	2.70
142	BATHINDA	BATHINDA	S-NPP	75.05342	30.38076	13:54:00	D	7.80
143	BATHINDA	BATHINDA	S-NPP	75.05759	30.38120	13:54:00	D	7.80
144	BATHINDA	BATHINDA	AQUA-1	75.12640	30.38465	13:35:00	D	12.21
145	BATHINDA	BATHINDA	S-NPP	75.05701	30.38527	13:54:00	D	7.80
146	BATHINDA	BATHINDA	AQUA-1	75.01172	30.38653	13:35:00	D	20.12
147	BATHINDA	BATHINDA	S-NPP	75.06838	30.39475	13:54:00	D	6.00
148	BATHINDA	BATHINDA	S-NPP	75.06780	30.39883	13:54:00	D	4.60
149	BATHINDA	BATHINDA	AQUA-1	75.10764	30.40561	13:35:00	D	6.02
150	BATHINDA	RAMPURA PHUL	AQUA-1	75.27135	30.13163	13:35:00	D	12.64
151	BATHINDA	RAMPURA PHUL	S-NPP	75.20772	30.14716	13:54:00	D	3.20
152	BATHINDA	RAMPURA PHUL	S-NPP	75.12130	30.15849	13:54:00	D	3.10
153	BATHINDA	RAMPURA PHUL	S-NPP	75.17934	30.17211	13:54:00	D	2.80
154	BATHINDA	RAMPURA PHUL	S-NPP	75.18355	30.17254	13:54:00	D	3.30
155	BATHINDA	RAMPURA PHUL	S-NPP	75.17858	30.17310	13:54:00	D	2.10
156	BATHINDA	RAMPURA PHUL	S-NPP	75.19195	30.17342	13:54:00	D	2.10
157	BATHINDA	RAMPURA PHUL	AQUA-1	75.14004	30.17804	13:35:00	D	21.71

158	BATHINDA	RAMPURA PHUL	AQUA-1	75.18097	30.18403	13:35:00	D	12.76
159	BATHINDA	RAMPURA PHUL	S-NPP	75.17764	30.18440	13:54:00	D	2.30
160	BATHINDA	RAMPURA PHUL	AQUA-1	75.31447	30.18489	13:35:00	D	20.12
161	BATHINDA	RAMPURA PHUL	S-NPP	75.23605	30.19466	13:54:00	D	12.30
162	BATHINDA	RAMPURA PHUL	S-NPP	75.23971	30.19922	13:54:00	D	7.60
163	BATHINDA	RAMPURA PHUL	S-NPP	75.23914	30.20333	13:54:00	D	4.50
164	BATHINDA	RAMPURA PHUL	S-NPP	75.24168	30.21611	13:54:00	D	7.30
165	BATHINDA	RAMPURA PHUL	S-NPP	75.30008	30.23064	13:54:00	D	2.10
166	BATHINDA	RAMPURA PHUL	S-NPP	75.23940	30.23258	13:54:00	D	7.10
167	BATHINDA	RAMPURA PHUL	AQUA-1	75.32080	30.24991	13:35:00	D	8.13
168	BATHINDA	RAMPURA PHUL	S-NPP	75.22329	30.25589	13:54:00	D	4.20
169	BATHINDA	RAMPURA PHUL	S-NPP	75.17353	30.27548	13:54:00	D	3.90
170	BATHINDA	RAMPURA PHUL	S-NPP	75.17337	30.27800	13:54:00	D	4.40
171	BATHINDA	RAMPURA PHUL	S-NPP	75.27991	30.28293	13:54:00	D	4.30
172	BATHINDA	RAMPURA PHUL	S-NPP	75.18503	30.28507	13:54:00	D	3.50
173	BATHINDA	RAMPURA PHUL	S-NPP	75.27935	30.28706	13:54:00	D	4.30
174	BATHINDA	RAMPURA PHUL	S-NPP	75.18488	30.28752	13:54:00	D	5.30
175	BATHINDA	RAMPURA PHUL	AQUA-1	75.31832	30.30108	13:35:00	D	17.70
176	BATHINDA	RAMPURA PHUL	S-NPP	75.15733	30.30129	13:54:00	D	8.90
177	BATHINDA	RAMPURA PHUL	S-NPP	75.24727	30.30234	13:54:00	D	3.50
178	BATHINDA	RAMPURA PHUL	S-NPP	75.25153	30.30278	13:54:00	D	6.30
179	BATHINDA	RAMPURA PHUL	S-NPP	75.26430	30.30411	13:54:00	D	8.00
180	BATHINDA	RAMPURA PHUL	S-NPP	75.29848	30.30765	13:54:00	D	6.00
181	BATHINDA	RAMPURA PHUL	S-NPP	75.25948	30.30779	13:54:00	D	8.00
182	BATHINDA	RAMPURA PHUL	S-NPP	75.30276	30.30809	13:54:00	D	5.60
183	BATHINDA	RAMPURA PHUL	S-NPP	75.14358	30.30815	13:54:00	D	4.70
184	BATHINDA	RAMPURA PHUL	S-NPP	75.30705	30.30853	13:54:00	D	5.60
185	BATHINDA	RAMPURA PHUL	S-NPP	75.16460	30.31037	13:54:00	D	20.50
186	BATHINDA	RAMPURA PHUL	AQUA-1	75.21303	30.31039	13:35:00	D	23.29
187	BATHINDA	RAMPURA PHUL	S-NPP	75.18455	30.32080	13:54:00	D	7.60
188	BATHINDA	RAMPURA PHUL	S-NPP	75.18763	30.32946	13:54:00	D	3.20
189	BATHINDA	RAMPURA PHUL	AQUA-1	75.21166	30.33674	13:35:00	D	9.21

190	BATHINDA	RAMPURA PHUL	S-NPP	75.27627	30.34304	13:54:00	D	2.60
191	BATHINDA	RAMPURA PHUL	S-NPP	75.18478	30.35000	13:54:00	D	2.00
192	BATHINDA	RAMPURA PHUL	AQUA-1	75.29181	30.36519	13:35:00	D	5.45
193	BATHINDA	RAMPURA PHUL	AQUA-1	75.16392	30.37417	13:35:00	D	13.13
194	BATHINDA	RAMPURA PHUL	S-NPP	75.27914	30.38525	13:54:00	D	9.40
195	BATHINDA	RAMPURA PHUL	AQUA-1	75.23554	30.39439	13:35:00	D	14.91
196	BATHINDA	RAMPURA PHUL	S-NPP	75.11272	30.41187	13:54:00	D	9.70
197	BATHINDA	RAMPURA PHUL	S-NPP	75.11214	30.41596	13:54:00	D	9.70
198	BATHINDA	RAMPURA PHUL	AQUA-1	75.27817	30.41909	13:35:00	D	15.29
199	BATHINDA	RAMPURA PHUL	S-NPP	75.26531	30.42788	13:54:00	D	11.40
200	BATHINDA	RAMPURA PHUL	S-NPP	75.28247	30.42967	13:54:00	D	3.60
201	BATHINDA	RAMPURA PHUL	AQUA-1	75.02750	30.44754	13:35:00	D	23.60
202	BATHINDA	RAMPURA PHUL	AQUA-1	75.18233	30.45772	13:35:00	D	18.89
203	BATHINDA	RAMPURA PHUL	AQUA-1	75.25308	30.45951	13:35:00	D	15.54
204	BATHINDA	RAMPURA PHUL	AQUA-1	75.08888	30.47449	13:35:00	D	25.41
205	BATHINDA	RAMPURA PHUL	AQUA-1	75.22872	30.48347	13:35:00	D	23.69
206	BATHINDA	RAMPURA PHUL	TERRA-1	75.02272	30.49006	12:02:00	D	74.58
207	BATHINDA	RAMPURA PHUL	AQUA-1	75.17619	30.49006	13:35:00	D	42.27
208	BATHINDA	RAMPURA PHUL	AQUA-1	75.11787	30.49095	13:35:00	D	19.68
209	BATHINDA	RAMPURA PHUL	S-NPP	75.08422	30.50291	13:54:00	D	5.40
210	BATHINDA	RAMPURA PHUL	S-NPP	75.17231	30.51628	13:54:00	D	8.80
211	BATHINDA	RAMPURA PHUL	AQUA-1	75.16733	30.52539	13:35:00	D	11.48
212	BATHINDA	RAMPURA PHUL	AQUA-1	75.15573	30.57090	13:35:00	D	18.14
213	BATHINDA	TALWANDI SABO	S-NPP	75.13280	29.82272	13:54:00	D	3.50
214	BATHINDA	TALWANDI SABO	S-NPP	75.16577	29.82634	13:54:00	D	2.40
215	BATHINDA	TALWANDI SABO	S-NPP	75.10363	29.94269	13:54:00	D	4.30
216	BATHINDA	TALWANDI SABO	S-NPP	75.09483	29.94584	13:54:00	D	27.10
217	BATHINDA	TALWANDI SABO	S-NPP	75.09895	29.94629	13:54:00	D	27.10
218	BATHINDA	TALWANDI SABO	S-NPP	75.04379	29.95672	13:54:00	D	2.70
219	BATHINDA	TALWANDI SABO	AQUA-1	75.24065	29.97891	13:35:00	D	8.80
220	BATHINDA	TALWANDI SABO	S-NPP	75.06496	29.98369	13:54:00	D	6.80
221	BATHINDA	TALWANDI SABO	S-NPP	75.25001	29.98677	13:54:00	D	2.20

222	BATHINDA	TALWANDI SABO	AQUA-1	75.19802	30.00736	13:35:00	D	75.05
223	BATHINDA	TALWANDI SABO	S-NPP	75.06155	30.00805	13:54:00	D	2.50
224	BATHINDA	TALWANDI SABO	S-NPP	74.90199	30.02736	13:54:00	D	2.50
225	BATHINDA	TALWANDI SABO	S-NPP	74.89357	30.03510	13:54:00	D	3.60
226	BATHINDA	TALWANDI SABO	S-NPP	74.89627	30.03898	13:54:00	D	6.70
227	BATHINDA	TALWANDI SABO	S-NPP	74.89301	30.03912	13:54:00	D	3.60
228	BATHINDA	TALWANDI SABO	S-NPP	74.90049	30.04400	13:54:00	D	5.70
229	BATHINDA	TALWANDI SABO	S-NPP	74.90452	30.04443	13:54:00	D	5.70
230	BATHINDA	TALWANDI SABO	S-NPP	74.87174	30.04501	13:54:00	D	1.90
231	BATHINDA	TALWANDI SABO	AQUA-1	75.14004	30.05228	13:35:00	D	22.95
232	BATHINDA	TALWANDI SABO	S-NPP	75.10417	30.06230	13:54:00	D	8.30
233	BATHINDA	TALWANDI SABO	S-NPP	75.10062	30.06520	13:54:00	D	15.70
234	BATHINDA	TALWANDI SABO	S-NPP	75.22350	30.09472	13:54:00	D	3.20
235	BATHINDA	TALWANDI SABO	S-NPP	75.18823	30.10348	13:54:00	D	2.70
236	BATHINDA	TALWANDI SABO	S-NPP	75.16921	30.11806	13:54:00	D	3.30
237	BATHINDA	TALWANDI SABO	AQUA-1	75.16903	30.11815	13:35:00	D	13.20
238	BATHINDA	TALWANDI SABO	S-NPP	75.27557	30.12107	13:54:00	D	9.50
239	BATHINDA	TALWANDI SABO	S-NPP	75.17645	30.12714	13:54:00	D	5.10
240	FARIDKOT	FARIDKOT	S-NPP	74.80170	30.48934	13:54:00	D	6.30
241	FARIDKOT	FARIDKOT	AQUA-1	74.74783	30.51940	13:35:00	D	12.35
242	FARIDKOT	FARIDKOT	S-NPP	74.76770	30.52647	13:54:00	D	4.30
243	FARIDKOT	FARIDKOT	S-NPP	74.76714	30.53049	13:54:00	D	3.60
244	FARIDKOT	FARIDKOT	S-NPP	74.80643	30.54301	13:54:00	D	3.40
245	FARIDKOT	FARIDKOT	S-NPP	74.84885	30.56412	13:54:00	D	4.30
246	FARIDKOT	FARIDKOT	S-NPP	74.84515	30.56416	13:54:00	D	5.60
247	FARIDKOT	FARIDKOT	AQUA-1	74.70861	30.57180	13:35:00	D	13.61
248	FARIDKOT	FARIDKOT	S-NPP	74.67796	30.60740	13:54:00	D	4.00
249	FARIDKOT	FARIDKOT	AQUA-1	74.94451	30.63219	13:35:00	D	31.14
250	FARIDKOT	FARIDKOT	S-NPP	74.93348	30.64761	13:54:00	D	9.70
251	FARIDKOT	FARIDKOT	S-NPP	74.78365	30.67652	13:54:00	D	3.30
252	FARIDKOT	FARIDKOT	S-NPP	74.53850	30.71892	13:54:00	D	4.10
253	FARIDKOT	FARIDKOT	S-NPP	74.59990	30.75415	13:54:00	D	8.80

254	FARIDKOT	FARIDKOT	S-NPP	74.60587	30.75483	13:54:00	D	11.70
255	FARIDKOT	FARIDKOT	S-NPP	74.59782	30.75560	13:54:00	D	11.00
256	FARIDKOT	FARIDKOT	S-NPP	74.60382	30.75624	13:54:00	D	11.00
257	FARIDKOT	FARIDKOT	S-NPP	74.62383	30.75686	13:54:00	D	4.90
258	FARIDKOT	FARIDKOT	S-NPP	74.62778	30.75880	13:54:00	D	10.30
259	FARIDKOT	FARIDKOT	S-NPP	74.57047	30.77697	13:54:00	D	9.60
260	FARIDKOT	FARIDKOT	AQUA-1	74.71032	30.78590	13:35:00	D	19.98
261	FARIDKOT	FARIDKOT	AQUA-1	74.68815	30.80986	13:35:00	D	6.79
262	FARIDKOT	FARIDKOT	S-NPP	74.67814	30.81303	13:54:00	D	12.00
263	FARIDKOT	JAITO	S-NPP	74.91087	30.38219	13:54:00	D	2.50
264	FARIDKOT	JAITO	AQUA-1	74.96056	30.38877	13:35:00	D	13.38
265	FARIDKOT	JAITO	S-NPP	74.95425	30.39916	13:54:00	D	1.60
266	FARIDKOT	JAITO	S-NPP	75.04469	30.41294	13:54:00	D	10.70
267	FARIDKOT	JAITO	S-NPP	74.81637	30.43745	13:54:00	D	3.40
268	FARIDKOT	JAITO	S-NPP	74.82041	30.43790	13:54:00	D	5.30
269	FARIDKOT	JAITO	AQUA-1	74.75124	30.44754	13:35:00	D	13.28
270	FARIDKOT	JAITO	S-NPP	74.87092	30.45990	13:54:00	D	2.70
271	FARIDKOT	JAITO	S-NPP	74.87189	30.45999	13:54:00	D	2.50
272	FARIDKOT	JAITO	S-NPP	74.79188	30.47195	13:54:00	D	13.60
273	FARIDKOT	JAITO	S-NPP	74.79591	30.47238	13:54:00	D	13.60
274	FARIDKOT	JAITO	S-NPP	74.81615	30.47454	13:54:00	D	6.30
275	FARIDKOT	JAITO	S-NPP	74.76652	30.47739	13:54:00	D	4.40
276	FARIDKOT	JAITO	S-NPP	75.01549	30.47915	13:54:00	D	2.80
277	FARIDKOT	JAITO	S-NPP	75.01424	30.47997	13:54:00	D	5.10
278	FARIDKOT	JAITO	S-NPP	74.76595	30.48140	13:54:00	D	9.00
279	FARIDKOT	JAITO	S-NPP	74.76997	30.48184	13:54:00	D	9.00
280	FARIDKOT	JAITO	S-NPP	75.01907	30.48366	13:54:00	D	5.00
281	FARIDKOT	JAITO	S-NPP	74.81038	30.48619	13:54:00	D	7.00
282	FARIDKOT	JAITO	S-NPP	74.96346	30.49020	13:54:00	D	1.70
283	FARIDKOT	JAITO	S-NPP	74.89127	30.49897	13:54:00	D	1.50
284	FARIDKOT	JAITO	S-NPP	74.99072	30.50547	13:54:00	D	3.80
285	FATEHGARH SAHIB	FATEHGARH SAHIB	S-NPP	76.35110	30.48802	13:54:00	D	4.30

286	FATEHGARH SAHIB	FATEHGARH SAHIB	S-NPP	76.33434	30.51709	13:54:00	D	15.80
287	FATEHGARH SAHIB	FATEHGARH SAHIB	S-NPP	76.34200	30.53568	13:54:00	D	4.40
288	FATEHGARH SAHIB	FATEHGARH SAHIB	S-NPP	76.40232	30.53697	13:54:00	D	2.30
289	FATEHGARH SAHIB	FATEHGARH SAHIB	S-NPP	76.27338	30.56468	13:54:00	D	2.60
290	FATEHGARH SAHIB	FATEHGARH SAHIB	S-NPP	76.38843	30.56701	13:54:00	D	2.60
291	FATEHGARH SAHIB	FATEHGARH SAHIB	S-NPP	76.36182	30.57784	13:54:00	D	1.90
292	FATEHGARH SAHIB	FATEHGARH SAHIB	S-NPP	76.33641	30.57981	13:54:00	D	2.80
293	FATEHGARH SAHIB	KHAMANOH	S-NPP	76.31114	30.83358	13:54:00	D	3.00
294	FIROZPUR	ABOHAR	S-NPP	74.40981	30.02645	13:54:00	D	1.30
295	FIROZPUR	ABOHAR	S-NPP	74.36498	30.12071	13:54:00	D	2.70
296	FIROZPUR	ABOHAR	AQUA-1	74.36790	30.13073	13:35:00	D	7.33
297	FIROZPUR	ABOHAR	S-NPP	74.15451	30.15586	13:54:00	D	4.20
298	FIROZPUR	ABOHAR	S-NPP	74.27337	30.15785	13:54:00	D	4.20
299	FIROZPUR	ABOHAR	S-NPP	74.22568	30.17206	13:54:00	D	5.40
300	FIROZPUR	ABOHAR	S-NPP	74.26487	30.17664	13:54:00	D	3.00
301	FIROZPUR	ABOHAR	AQUA-1	74.30318	30.18890	13:35:00	D	10.31
302	FIROZPUR	FAZILKA	S-NPP	74.06638	30.20157	13:54:00	D	19.00
303	FIROZPUR	FAZILKA	S-NPP	74.00931	30.21063	13:54:00	D	4.10
304	FIROZPUR	FAZILKA	AQUA-1	73.99411	30.21397	13:35:00	D	14.59
305	FIROZPUR	FAZILKA	S-NPP	74.00874	30.21447	13:54:00	D	3.40
306	FIROZPUR	FAZILKA	S-NPP	74.02945	30.22469	13:54:00	D	3.90
307	FIROZPUR	FAZILKA	S-NPP	73.99010	30.22791	13:54:00	D	3.30
308	FIROZPUR	FAZILKA	S-NPP	74.03809	30.24134	13:54:00	D	7.00
309	FIROZPUR	FAZILKA	S-NPP	74.04357	30.24199	13:54:00	D	7.00
310	FIROZPUR	FAZILKA	S-NPP	73.97029	30.24898	13:54:00	D	2.70
311	FIROZPUR	FAZILKA	S-NPP	74.02542	30.25159	13:54:00	D	4.90
312	FIROZPUR	FAZILKA	S-NPP	74.02831	30.25369	13:54:00	D	4.70
313	FIROZPUR	FAZILKA	S-NPP	74.04013	30.26506	13:54:00	D	8.20
314	FIROZPUR	FAZILKA	S-NPP	74.03756	30.26645	13:54:00	D	10.30
315	FIROZPUR	FAZILKA	S-NPP	74.01505	30.26783	13:54:00	D	10.90
316	FIROZPUR	FAZILKA	S-NPP	73.98711	30.26857	13:54:00	D	33.00
317	FIROZPUR	FAZILKA	S-NPP	74.01447	30.27167	13:54:00	D	10.90

318	FIROZPUR	FAZILKA	AQUA-1	74.03057	30.27432	13:35:00	D	14.79
319	FIROZPUR	FAZILKA	S-NPP	74.01820	30.28381	13:54:00	D	3.40
320	FIROZPUR	FAZILKA	S-NPP	74.01762	30.28765	13:54:00	D	3.40
321	FIROZPUR	FAZILKA	AQUA-1	74.25672	30.29183	13:35:00	D	8.48
322	FIROZPUR	FAZILKA	S-NPP	74.00435	30.30177	13:54:00	D	5.50
323	FIROZPUR	FAZILKA	S-NPP	74.00319	30.30945	13:54:00	D	3.50
324	FIROZPUR	FAZILKA	S-NPP	74.01414	30.31071	13:54:00	D	7.50
325	FIROZPUR	FAZILKA	S-NPP	74.05320	30.31129	13:54:00	D	7.30
326	FIROZPUR	FAZILKA	S-NPP	74.01963	30.31134	13:54:00	D	35.40
327	FIROZPUR	FAZILKA	S-NPP	73.98621	30.31140	13:54:00	D	17.00
328	FIROZPUR	FAZILKA	S-NPP	74.00261	30.31329	13:54:00	D	9.40
329	FIROZPUR	FAZILKA	S-NPP	74.29639	30.31912	13:54:00	D	2.90
330	FIROZPUR	FAZILKA	S-NPP	74.05754	30.31962	13:54:00	D	2.90
331	FIROZPUR	FAZILKA	S-NPP	74.26694	30.32375	13:54:00	D	5.30
332	FIROZPUR	FAZILKA	S-NPP	74.27259	30.32438	13:54:00	D	5.30
333	FIROZPUR	FAZILKA	S-NPP	74.10674	30.32921	13:54:00	D	4.60
334	FIROZPUR	FAZILKA	AQUA-1	74.23966	30.33075	13:35:00	D	31.59
335	FIROZPUR	FAZILKA	S-NPP	74.26521	30.33543	13:54:00	D	4.70
336	FIROZPUR	FAZILKA	S-NPP	74.23585	30.34002	13:54:00	D	3.70
337	FIROZPUR	FAZILKA	S-NPP	74.24148	30.34067	13:54:00	D	6.40
338	FIROZPUR	FAZILKA	S-NPP	74.11496	30.34981	13:54:00	D	36.70
339	FIROZPUR	FAZILKA	S-NPP	74.11438	30.35367	13:54:00	D	36.70
340	FIROZPUR	FAZILKA	S-NPP	73.94051	30.35675	13:54:00	D	6.50
341	FIROZPUR	FAZILKA	S-NPP	74.11380	30.35754	13:54:00	D	6.60
342	FIROZPUR	FAZILKA	S-NPP	73.88512	30.35794	13:54:00	D	4.60
343	FIROZPUR	FAZILKA	S-NPP	74.11936	30.35819	13:54:00	D	6.60
344	FIROZPUR	FAZILKA	S-NPP	73.88245	30.36351	13:54:00	D	49.50
345	FIROZPUR	FAZILKA	S-NPP	73.89871	30.36536	13:54:00	D	4.90
346	FIROZPUR	FAZILKA	S-NPP	73.91499	30.36722	13:54:00	D	4.70
347	FIROZPUR	FAZILKA	S-NPP	73.92042	30.36783	13:54:00	D	4.70
348	FIROZPUR	FAZILKA	S-NPP	74.10098	30.36784	13:54:00	D	9.20
349	FIROZPUR	FAZILKA	S-NPP	74.30653	30.36790	13:54:00	D	7.30

350	FIROZPUR	FAZILKA	S-NPP	74.09924	30.36838	13:54:00	D	8.10
351	FIROZPUR	FAZILKA	S-NPP	74.12149	30.37085	13:54:00	D	19.30
352	FIROZPUR	FAZILKA	S-NPP	74.12262	30.37431	13:54:00	D	33.80
353	FIROZPUR	FAZILKA	S-NPP	74.12091	30.37472	13:54:00	D	19.30
354	FIROZPUR	FAZILKA	S-NPP	74.05442	30.37807	13:54:00	D	5.50
355	FIROZPUR	FAZILKA	AQUA-1	74.13564	30.37866	13:35:00	D	28.53
356	FIROZPUR	FAZILKA	S-NPP	74.05259	30.37886	13:54:00	D	3.90
357	FIROZPUR	FAZILKA	S-NPP	74.11591	30.38139	13:54:00	D	3.30
358	FIROZPUR	FAZILKA	S-NPP	74.11534	30.38526	13:54:00	D	3.30
359	FIROZPUR	FAZILKA	S-NPP	73.99403	30.39572	13:54:00	D	2.80
360	FIROZPUR	FAZILKA	S-NPP	73.96056	30.39580	13:54:00	D	8.80
361	FIROZPUR	FAZILKA	S-NPP	73.94360	30.39775	13:54:00	D	8.20
362	FIROZPUR	FAZILKA	S-NPP	74.00444	30.40082	13:54:00	D	3.20
363	FIROZPUR	FAZILKA	S-NPP	74.17950	30.40095	13:54:00	D	8.10
364	FIROZPUR	FAZILKA	S-NPP	74.14533	30.40107	13:54:00	D	22.90
365	FIROZPUR	FAZILKA	S-NPP	73.95394	30.40284	13:54:00	D	6.70
366	FIROZPUR	FAZILKA	S-NPP	74.14976	30.40944	13:54:00	D	4.00
367	FIROZPUR	FAZILKA	S-NPP	74.05843	30.41482	13:54:00	D	5.70
368	FIROZPUR	FAZILKA	S-NPP	74.00212	30.41619	13:54:00	D	8.60
369	FIROZPUR	FAZILKA	S-NPP	74.01254	30.42131	13:54:00	D	5.70
370	FIROZPUR	FAZILKA	S-NPP	73.98448	30.42198	13:54:00	D	14.50
371	FIROZPUR	FAZILKA	S-NPP	73.97293	30.42455	13:54:00	D	4.10
372	FIROZPUR	FAZILKA	S-NPP	74.11894	30.42564	13:54:00	D	2.80
373	FIROZPUR	FAZILKA	S-NPP	73.99431	30.43094	13:54:00	D	4.40
374	FIROZPUR	FAZILKA	AQUA-1	74.09904	30.43464	13:35:00	D	18.58
375	FIROZPUR	FAZILKA	S-NPP	73.99373	30.43478	13:54:00	D	34.80
376	FIROZPUR	FAZILKA	S-NPP	74.03287	30.43541	13:54:00	D	6.10
377	FIROZPUR	FAZILKA	S-NPP	73.94328	30.43672	13:54:00	D	14.30
378	FIROZPUR	FAZILKA	S-NPP	73.94873	30.43736	13:54:00	D	45.70
379	FIROZPUR	FAZILKA	S-NPP	74.22556	30.43774	13:54:00	D	28.70
380	FIROZPUR	FAZILKA	S-NPP	74.03228	30.43926	13:54:00	D	2.20
381	FIROZPUR	FAZILKA	S-NPP	73.93177	30.43927	13:54:00	D	21.00

382	FIROZPUR	FAZILKA	S-NPP	74.20805	30.43972	13:54:00	D	5.30
383	FIROZPUR	FAZILKA	S-NPP	74.04332	30.44053	13:54:00	D	5.60
384	FIROZPUR	FAZILKA	S-NPP	74.11663	30.44113	13:54:00	D	5.00
385	FIROZPUR	FAZILKA	S-NPP	74.22498	30.44164	13:54:00	D	28.70
386	FIROZPUR	FAZILKA	S-NPP	74.13896	30.44369	13:54:00	D	6.20
387	FIROZPUR	FAZILKA	S-NPP	73.97005	30.44375	13:54:00	D	14.30
388	FIROZPUR	FAZILKA	AQUA-1	73.96097	30.44411	13:35:00	D	50.55
389	FIROZPUR	FAZILKA	S-NPP	74.14456	30.44433	13:54:00	D	6.20
390	FIROZPUR	FAZILKA	S-NPP	74.07654	30.44437	13:54:00	D	6.50
391	FIROZPUR	FAZILKA	S-NPP	73.97552	30.44440	13:54:00	D	14.30
392	FIROZPUR	FAZILKA	S-NPP	74.22440	30.44553	13:54:00	D	17.60
393	FIROZPUR	FAZILKA	S-NPP	74.10433	30.44758	13:54:00	D	5.80
394	FIROZPUR	FAZILKA	S-NPP	74.07597	30.44824	13:54:00	D	6.50
395	FIROZPUR	FAZILKA	S-NPP	74.20068	30.45074	13:54:00	D	4.80
396	FIROZPUR	FAZILKA	S-NPP	74.10933	30.45210	13:54:00	D	5.80
397	FIROZPUR	FAZILKA	S-NPP	74.01342	30.45273	13:54:00	D	4.20
398	FIROZPUR	FAZILKA	S-NPP	73.96284	30.45463	13:54:00	D	4.20
399	FIROZPUR	FAZILKA	S-NPP	74.20010	30.45464	13:54:00	D	4.80
400	FIROZPUR	FAZILKA	S-NPP	74.21702	30.45657	13:54:00	D	5.10
401	FIROZPUR	FAZILKA	S-NPP	73.98477	30.45721	13:54:00	D	9.70
402	FIROZPUR	FAZILKA	AQUA-1	74.03503	30.46251	13:35:00	D	9.25
403	FIROZPUR	FAZILKA	S-NPP	74.04538	30.46431	13:54:00	D	2.80
404	FIROZPUR	FAZILKA	S-NPP	74.01720	30.46493	13:54:00	D	5.70
405	FIROZPUR	FAZILKA	S-NPP	74.01480	30.46620	13:54:00	D	8.60
406	FIROZPUR	FAZILKA	S-NPP	74.10145	30.46692	13:54:00	D	6.20
407	FIROZPUR	FAZILKA	S-NPP	74.04480	30.46817	13:54:00	D	2.80
408	FIROZPUR	FAZILKA	S-NPP	74.01604	30.47263	13:54:00	D	6.10
409	FIROZPUR	FAZILKA	S-NPP	74.06638	30.47462	13:54:00	D	5.90
410	FIROZPUR	FAZILKA	S-NPP	74.06405	30.47561	13:54:00	D	3.90
411	FIROZPUR	FAZILKA	S-NPP	74.01305	30.47775	13:54:00	D	8.30
412	FIROZPUR	FAZILKA	S-NPP	74.02649	30.47778	13:54:00	D	9.50
413	FIROZPUR	FAZILKA	S-NPP	74.06580	30.47849	13:54:00	D	5.90

414	FIROZPUR	FAZILKA	S-NPP	74.02411	30.47899	13:54:00	D	9.40
415	FIROZPUR	FAZILKA	S-NPP	74.07690	30.47979	13:54:00	D	4.00
416	FIROZPUR	FAZILKA	S-NPP	74.06902	30.48009	13:54:00	D	12.00
417	FIROZPUR	FAZILKA	S-NPP	73.99853	30.49961	13:54:00	D	5.80
418	FIROZPUR	FAZILKA	S-NPP	73.99186	30.50668	13:54:00	D	5.80
419	FIROZPUR	FAZILKA	S-NPP	74.00288	30.50793	13:54:00	D	8.50
420	FIROZPUR	FAZILKA	S-NPP	74.09721	30.51864	13:54:00	D	3.60
421	FIROZPUR	FAZILKA	AQUA-1	74.08960	30.54485	13:35:00	D	18.04
422	FIROZPUR	FIROZPUR	S-NPP	74.84277	30.78973	13:54:00	D	7.00
423	FIROZPUR	FIROZPUR	S-NPP	74.85101	30.79060	13:54:00	D	3.40
424	FIROZPUR	FIROZPUR	AQUA-1	74.51933	30.81435	13:35:00	D	24.93
425	FIROZPUR	FIROZPUR	S-NPP	74.61744	30.83078	13:54:00	D	4.30
426	FIROZPUR	FIROZPUR	S-NPP	74.63548	30.83277	13:54:00	D	3.80
427	FIROZPUR	FIROZPUR	S-NPP	74.74879	30.83706	13:54:00	D	7.60
428	FIROZPUR	FIROZPUR	S-NPP	74.65744	30.84334	13:54:00	D	8.00
429	FIROZPUR	FIROZPUR	AQUA-1	74.81945	30.84878	13:35:00	D	10.24
430	FIROZPUR	FIROZPUR	S-NPP	74.79198	30.85408	13:54:00	D	4.40
431	FIROZPUR	FIROZPUR	S-NPP	74.82689	30.93159	13:54:00	D	3.90
432	FIROZPUR	FIROZPUR	AQUA-1	74.75465	31.07486	13:35:00	D	12.84
433	FIROZPUR	FIROZPUR	S-NPP	74.74308	31.09117	13:54:00	D	2.90
434	FIROZPUR	FIROZPUR	S-NPP	74.74312	31.09119	13:54:00	D	2.90
435	FIROZPUR	JALALABAD	S-NPP	74.22774	30.46175	13:54:00	D	15.30
436	FIROZPUR	JALALABAD	S-NPP	74.23846	30.46694	13:54:00	D	5.90
437	FIROZPUR	JALALABAD	S-NPP	74.24979	30.46824	13:54:00	D	6.80
438	FIROZPUR	JALALABAD	S-NPP	74.25546	30.46889	13:54:00	D	6.80
439	FIROZPUR	JALALABAD	S-NPP	74.24807	30.47994	13:54:00	D	4.10
440	FIROZPUR	JALALABAD	S-NPP	74.17632	30.49932	13:54:00	D	4.70
441	FIROZPUR	JALALABAD	AQUA-1	74.31470	30.49994	13:35:00	D	47.72
442	FIROZPUR	JALALABAD	S-NPP	74.35284	30.50343	13:54:00	D	7.40
443	FIROZPUR	JALALABAD	S-NPP	74.35473	30.50414	13:54:00	D	8.60
444	FIROZPUR	JALALABAD	S-NPP	74.27301	30.50664	13:54:00	D	5.20
445	FIROZPUR	JALALABAD	S-NPP	74.27666	30.50704	13:54:00	D	10.80

446	FIROZPUR	JALALABAD	S-NPP	74.27869	30.50730	13:54:00	D	8.00
447	FIROZPUR	JALALABAD	S-NPP	74.35227	30.50735	13:54:00	D	7.40
448	FIROZPUR	JALALABAD	S-NPP	74.33388	30.51331	13:54:00	D	2.80
449	FIROZPUR	JALALABAD	S-NPP	74.35303	30.51591	13:54:00	D	4.90
450	FIROZPUR	JALALABAD	S-NPP	74.35054	30.51913	13:54:00	D	7.30
451	FIROZPUR	JALALABAD	S-NPP	74.35246	30.51984	13:54:00	D	4.90
452	FIROZPUR	JALALABAD	S-NPP	74.12516	30.52180	13:54:00	D	44.80
453	FIROZPUR	JALALABAD	S-NPP	74.39034	30.52748	13:54:00	D	9.00
454	FIROZPUR	JALALABAD	S-NPP	74.18134	30.52813	13:54:00	D	35.00
455	FIROZPUR	JALALABAD	S-NPP	74.38976	30.53141	13:54:00	D	17.10
456	FIROZPUR	JALALABAD	S-NPP	74.29033	30.53239	13:54:00	D	10.40
457	FIROZPUR	JALALABAD	S-NPP	74.18641	30.53266	13:54:00	D	6.60
458	FIROZPUR	JALALABAD	S-NPP	74.35400	30.53546	13:54:00	D	3.90
459	FIROZPUR	JALALABAD	S-NPP	74.28403	30.53567	13:54:00	D	3.10
460	FIROZPUR	JALALABAD	S-NPP	74.11724	30.53666	13:54:00	D	6.50
461	FIROZPUR	JALALABAD	S-NPP	74.12168	30.54505	13:54:00	D	5.70
462	FIROZPUR	JALALABAD	S-NPP	74.12728	30.54570	13:54:00	D	6.10
463	FIROZPUR	JALALABAD	S-NPP	74.10992	30.54765	13:54:00	D	3.10
464	FIROZPUR	JALALABAD	S-NPP	74.29374	30.54868	13:54:00	D	44.90
465	FIROZPUR	JALALABAD	S-NPP	74.35744	30.55181	13:54:00	D	8.30
466	FIROZPUR	JALALABAD	S-NPP	74.09201	30.55347	13:54:00	D	6.40
467	FIROZPUR	JALALABAD	S-NPP	74.10316	30.55476	13:54:00	D	5.40
468	FIROZPUR	JALALABAD	S-NPP	74.35686	30.55574	13:54:00	D	8.30
469	FIROZPUR	JALALABAD	S-NPP	74.15361	30.56055	13:54:00	D	31.50
470	FIROZPUR	JALALABAD	S-NPP	74.26859	30.56175	13:54:00	D	2.70
471	FIROZPUR	JALALABAD	S-NPP	74.25431	30.57999	13:54:00	D	6.00
472	FIROZPUR	JALALABAD	S-NPP	74.26001	30.58064	13:54:00	D	15.20
473	FIROZPUR	JALALABAD	S-NPP	74.35803	30.58781	13:54:00	D	9.00
474	FIROZPUR	JALALABAD	S-NPP	74.13521	30.59028	13:54:00	D	2.90
475	FIROZPUR	JALALABAD	S-NPP	74.10298	30.59414	13:54:00	D	4.40
476	FIROZPUR	JALALABAD	S-NPP	74.10598	30.59493	13:54:00	D	7.40
477	FIROZPUR	JALALABAD	S-NPP	74.22301	30.59624	13:54:00	D	14.50

478	FIROZPUR	JALALABAD	S-NPP	74.22627	30.59634	13:54:00	D	7.50
479	FIROZPUR	JALALABAD	S-NPP	74.22000	30.59962	13:54:00	D	9.50
480	FIROZPUR	JALALABAD	S-NPP	74.22242	30.60014	13:54:00	D	9.10
481	FIROZPUR	JALALABAD	S-NPP	74.22569	30.60024	13:54:00	D	7.50
482	FIROZPUR	JALALABAD	S-NPP	74.09921	30.60206	13:54:00	D	4.30
483	FIROZPUR	JALALABAD	S-NPP	74.37941	30.60223	13:54:00	D	2.70
484	FIROZPUR	JALALABAD	S-NPP	74.21617	30.60339	13:54:00	D	4.40
485	FIROZPUR	JALALABAD	S-NPP	74.20426	30.60596	13:54:00	D	32.30
486	FIROZPUR	JALALABAD	S-NPP	74.20748	30.60617	13:54:00	D	51.80
487	FIROZPUR	JALALABAD	S-NPP	74.20993	30.60662	13:54:00	D	25.10
488	FIROZPUR	JALALABAD	AQUA-1	74.28912	30.60774	13:35:00	D	10.92
489	FIROZPUR	JALALABAD	S-NPP	74.33154	30.60875	13:54:00	D	6.10
490	FIROZPUR	JALALABAD	S-NPP	74.33729	30.60940	13:54:00	D	9.90
491	FIROZPUR	JALALABAD	S-NPP	74.20123	30.60944	13:54:00	D	16.40
492	FIROZPUR	JALALABAD	S-NPP	74.20369	30.60986	13:54:00	D	32.30
493	FIROZPUR	JALALABAD	S-NPP	74.20691	30.61006	13:54:00	D	16.40
494	FIROZPUR	JALALABAD	S-NPP	74.21258	30.61069	13:54:00	D	3.80
495	FIROZPUR	JALALABAD	S-NPP	74.39563	30.61208	13:54:00	D	5.70
496	FIROZPUR	JALALABAD	S-NPP	74.33446	30.61212	13:54:00	D	27.40
497	FIROZPUR	JALALABAD	S-NPP	74.33672	30.61333	13:54:00	D	6.70
498	FIROZPUR	JALALABAD	S-NPP	74.28732	30.61494	13:54:00	D	2.70
499	FIROZPUR	JALALABAD	S-NPP	74.28966	30.61588	13:54:00	D	3.10
500	FIROZPUR	JALALABAD	S-NPP	74.15426	30.61609	13:54:00	D	4.20
501	FIROZPUR	JALALABAD	S-NPP	74.34132	30.62185	13:54:00	D	5.40
502	FIROZPUR	JALALABAD	S-NPP	74.31546	30.62201	13:54:00	D	6.80
503	FIROZPUR	JALALABAD	S-NPP	74.34708	30.62251	13:54:00	D	9.70
504	FIROZPUR	JALALABAD	S-NPP	74.31775	30.62311	13:54:00	D	5.00
505	FIROZPUR	JALALABAD	S-NPP	74.22221	30.62365	13:54:00	D	22.20
506	FIROZPUR	JALALABAD	S-NPP	74.33848	30.62453	13:54:00	D	11.20
507	FIROZPUR	JALALABAD	S-NPP	74.34075	30.62577	13:54:00	D	5.40
508	FIROZPUR	JALALABAD	S-NPP	74.35002	30.62579	13:54:00	D	8.20
509	FIROZPUR	JALALABAD	S-NPP	74.22163	30.62755	13:54:00	D	15.50

510	FIROZPUR	JALALABAD	S-NPP	74.19268	30.62829	13:54:00	D	5.70
511	FIROZPUR	JALALABAD	S-NPP	74.18076	30.63092	13:54:00	D	4.40
512	FIROZPUR	JALALABAD	S-NPP	74.36102	30.63099	13:54:00	D	4.20
513	FIROZPUR	JALALABAD	S-NPP	74.36043	30.63492	13:54:00	D	4.30
514	FIROZPUR	JALALABAD	S-NPP	74.20227	30.64125	13:54:00	D	13.40
515	FIROZPUR	JALALABAD	S-NPP	74.17337	30.64196	13:54:00	D	15.60
516	FIROZPUR	JALALABAD	S-NPP	74.21362	30.64252	13:54:00	D	8.70
517	FIROZPUR	JALALABAD	S-NPP	74.36505	30.64342	13:54:00	D	24.50
518	FIROZPUR	JALALABAD	S-NPP	74.37084	30.64406	13:54:00	D	5.40
519	FIROZPUR	JALALABAD	S-NPP	74.27695	30.64563	13:54:00	D	10.90
520	FIROZPUR	JALALABAD	S-NPP	74.29300	30.65538	13:54:00	D	2.60
521	FIROZPUR	JALALABAD	S-NPP	74.29243	30.65930	13:54:00	D	5.40
522	FIROZPUR	JALALABAD	AQUA-1	74.34100	30.65971	13:35:00	D	21.30
523	FIROZPUR	JALALABAD	S-NPP	74.32462	30.67886	13:54:00	D	18.00
524	FIROZPUR	JALALABAD	S-NPP	74.39467	30.68272	13:54:00	D	15.30
525	FIROZPUR	JALALABAD	S-NPP	74.35928	30.68276	13:54:00	D	8.30
526	FIROZPUR	JALALABAD	S-NPP	74.32404	30.68279	13:54:00	D	18.00
527	FIROZPUR	JALALABAD	S-NPP	74.21922	30.68283	13:54:00	D	6.70
528	FIROZPUR	JALALABAD	AQUA-1	74.43747	30.70430	13:35:00	D	41.49
529	FIROZPUR	JALALABAD	S-NPP	74.37379	30.70440	13:54:00	D	3.80
530	FIROZPUR	JALALABAD	S-NPP	74.25249	30.71825	13:54:00	D	3.60
531	FIROZPUR	JALALABAD	S-NPP	74.25455	30.71869	13:54:00	D	3.90
532	FIROZPUR	JALALABAD	AQUA-1	74.34027	30.73350	13:35:00	D	15.81
533	FIROZPUR	JALALABAD	S-NPP	74.35976	30.74596	13:54:00	D	12.30
534	FIROZPUR	JALALABAD	S-NPP	74.31285	30.78472	13:54:00	D	4.60
535	FIROZPUR	ZIRA	S-NPP	75.14838	30.85917	13:54:00	D	3.70
536	FIROZPUR	ZIRA	S-NPP	75.39075	30.86316	13:54:00	D	3.60
537	FIROZPUR	ZIRA	S-NPP	75.39019	30.86734	13:54:00	D	3.20
538	FIROZPUR	ZIRA	S-NPP	75.13324	30.87431	13:54:00	D	9.50
539	FIROZPUR	ZIRA	S-NPP	75.13268	30.87843	13:54:00	D	9.50
540	FIROZPUR	ZIRA	S-NPP	75.15841	30.88116	13:54:00	D	7.50
541	FIROZPUR	ZIRA	S-NPP	75.24158	30.88154	13:54:00	D	5.80

542	FIROZPUR	ZIRA	S-NPP	75.15784	30.88529	13:54:00	D	5.40
543	FIROZPUR	ZIRA	S-NPP	75.16213	30.88575	13:54:00	D	5.40
544	FIROZPUR	ZIRA	S-NPP	75.12727	30.88622	13:54:00	D	4.50
545	FIROZPUR	ZIRA	S-NPP	75.17074	30.88666	13:54:00	D	1.90
546	FIROZPUR	ZIRA	S-NPP	75.13155	30.88667	13:54:00	D	2.70
547	FIROZPUR	ZIRA	S-NPP	75.10109	30.88759	13:54:00	D	1.70
548	FIROZPUR	ZIRA	S-NPP	75.15671	30.89355	13:54:00	D	2.20
549	FIROZPUR	ZIRA	AQUA-1	75.34467	30.89669	13:35:00	D	10.19
550	FIROZPUR	ZIRA	S-NPP	75.19546	30.89768	13:54:00	D	4.40
551	FIROZPUR	ZIRA	AQUA-1	75.37537	30.90268	13:35:00	D	8.63
552	FIROZPUR	ZIRA	AQUA-1	75.26623	30.90418	13:35:00	D	23.59
553	FIROZPUR	ZIRA	S-NPP	75.19002	30.90550	13:54:00	D	22.10
554	FIROZPUR	ZIRA	S-NPP	75.15931	30.90640	13:54:00	D	3.30
555	FIROZPUR	ZIRA	S-NPP	75.18945	30.90963	13:54:00	D	22.10
556	FIROZPUR	ZIRA	S-NPP	75.08066	30.91043	13:54:00	D	4.00
557	FIROZPUR	ZIRA	S-NPP	75.11536	30.91201	13:54:00	D	5.10
558	FIROZPUR	ZIRA	S-NPP	75.08061	30.91263	13:54:00	D	9.40
559	FIROZPUR	ZIRA	AQUA-1	75.09741	30.91316	13:35:00	D	16.91
560	FIROZPUR	ZIRA	S-NPP	75.01159	30.91384	13:54:00	D	2.20
561	FIROZPUR	ZIRA	S-NPP	75.11478	30.91414	13:54:00	D	4.40
562	FIROZPUR	ZIRA	S-NPP	75.08009	30.91454	13:54:00	D	4.00
563	FIROZPUR	ZIRA	S-NPP	75.08434	30.91501	13:54:00	D	8.60
564	FIROZPUR	ZIRA	S-NPP	75.25445	30.91659	13:54:00	D	4.80
565	FIROZPUR	ZIRA	S-NPP	75.20558	30.91977	13:54:00	D	3.70
566	FIROZPUR	ZIRA	S-NPP	75.18301	30.92728	13:54:00	D	2.10
567	FIROZPUR	ZIRA	S-NPP	75.36349	30.93243	13:54:00	D	4.00
568	FIROZPUR	ZIRA	AQUA-1	75.34126	30.93263	13:35:00	D	17.02
569	FIROZPUR	ZIRA	S-NPP	75.19541	30.93274	13:54:00	D	4.40
570	FIROZPUR	ZIRA	S-NPP	75.36790	30.93290	13:54:00	D	4.00
571	FIROZPUR	ZIRA	S-NPP	75.17756	30.93512	13:54:00	D	8.40
572	FIROZPUR	ZIRA	S-NPP	75.32640	30.94604	13:54:00	D	3.00
573	FIROZPUR	ZIRA	S-NPP	75.29011	30.95082	13:54:00	D	1.90

574	FIROZPUR	ZIRA	AQUA-1	75.28158	30.95359	13:35:00	D	9.84
575	FIROZPUR	ZIRA	S-NPP	75.24962	30.95511	13:54:00	D	3.70
576	FIROZPUR	ZIRA	S-NPP	75.23597	30.95792	13:54:00	D	2.50
577	FIROZPUR	ZIRA	S-NPP	75.23540	30.96208	13:54:00	D	2.50
578	FIROZPUR	ZIRA	S-NPP	75.23976	30.96252	13:54:00	D	2.50
579	FIROZPUR	ZIRA	AQUA-1	74.97770	30.96796	13:35:00	D	14.77
580	FIROZPUR	ZIRA	S-NPP	75.00781	30.97164	13:54:00	D	7.20
581	FIROZPUR	ZIRA	AQUA-1	75.21166	30.97455	13:35:00	D	12.25
582	FIROZPUR	ZIRA	S-NPP	74.97713	30.97666	13:54:00	D	2.50
583	FIROZPUR	ZIRA	S-NPP	74.98135	30.97711	13:54:00	D	2.30
584	FIROZPUR	ZIRA	AQUA-1	75.10253	30.98054	13:35:00	D	16.60
585	FIROZPUR	ZIRA	S-NPP	75.09967	30.99396	13:54:00	D	22.90
586	FIROZPUR	ZIRA	S-NPP	75.21668	31.00221	13:54:00	D	14.30
587	FIROZPUR	ZIRA	S-NPP	75.24280	31.00498	13:54:00	D	4.60
588	FIROZPUR	ZIRA	AQUA-1	74.83778	31.00861	13:35:00	D	11.66
589	FIROZPUR	ZIRA	S-NPP	75.23788	31.00867	13:54:00	D	16.90
590	FIROZPUR	ZIRA	S-NPP	75.24223	31.00913	13:54:00	D	16.90
591	FIROZPUR	ZIRA	AQUA-1	75.14857	31.01198	13:35:00	D	26.72
592	FIROZPUR	ZIRA	S-NPP	75.17595	31.02505	13:54:00	D	7.40
593	FIROZPUR	ZIRA	S-NPP	75.17371	31.02706	13:54:00	D	2.50
594	FIROZPUR	ZIRA	S-NPP	75.17803	31.02752	13:54:00	D	2.50
595	FIROZPUR	ZIRA	S-NPP	75.25744	31.02762	13:54:00	D	4.30
596	FIROZPUR	ZIRA	AQUA-1	75.06842	31.02845	13:35:00	D	10.92
597	FIROZPUR	ZIRA	AQUA-1	75.18097	31.04641	13:35:00	D	27.42
598	FIROZPUR	ZIRA	AQUA-1	75.07695	31.06588	13:35:00	D	9.23
599	FIROZPUR	ZIRA	S-NPP	74.87370	31.08908	13:54:00	D	3.60
600	GURDASPUR	BATALA	S-NPP	75.42058	31.73179	13:54:00	D	1.70
601	GURDASPUR	DERA BABA NANAK	S-NPP	74.94894	31.91397	13:54:00	D	2.50
602	GURDASPUR	DERA BABA NANAK	S-NPP	74.93364	31.92913	13:54:00	D	3.10
603	GURDASPUR	DERA BABA NANAK	S-NPP	74.93306	31.93326	13:54:00	D	3.10
604	JALANDHAR	NAKODAR	S-NPP	75.54140	30.99757	13:54:00	D	12.30
605	JALANDHAR	NAKODAR	AQUA-1	75.48621	31.02096	13:35:00	D	20.42

606	JALANDHAR	NAKODAR	S-NPP	75.57819	31.19722	13:54:00	D	2.40
607	JALANDHAR	PHILLAUR	S-NPP	75.56639	30.98293	13:54:00	D	4.90
608	JALANDHAR	PHILLAUR	AQUA-1	75.68317	30.99176	13:35:00	D	12.88
609	JALANDHAR	PHILLAUR	S-NPP	75.81208	31.00286	13:54:00	D	2.40
610	JALANDHAR	PHILLAUR	S-NPP	75.83963	31.08410	13:54:00	D	13.30
611	JALANDHAR	PHILLAUR	AQUA-1	75.69084	31.12876	13:35:00	D	11.09
612	JALANDHAR	PHILLAUR	S-NPP	75.85078	31.13079	13:54:00	D	2.90
613	JALANDHAR	PHILLAUR	S-NPP	75.85553	31.13126	13:54:00	D	2.90
614	JALANDHAR	PHILLAUR	S-NPP	75.61560	31.19661	13:54:00	D	3.70
615	JALANDHAR	PHILLAUR	S-NPP	75.63408	31.19843	13:54:00	D	6.00
616	JALANDHAR	PHILLAUR	S-NPP	75.60582	31.19996	13:54:00	D	7.90
617	JALANDHAR	SHAHKOT	S-NPP	75.31622	31.10268	13:54:00	D	6.30
618	KAPURTHALA	KAPURTHALA	AQUA-1	75.44017	31.27249	13:35:00	D	12.49
619	LUDHIANA	JAGRAON	AQUA-1	75.41971	30.59426	13:35:00	D	7.47
620	LUDHIANA	JAGRAON	AQUA-1	75.40436	30.70655	13:35:00	D	18.66
621	LUDHIANA	JAGRAON	S-NPP	75.40536	30.71076	13:54:00	D	2.40
622	LUDHIANA	JAGRAON	AQUA-1	75.45552	30.71104	13:35:00	D	18.72
623	LUDHIANA	JAGRAON	AQUA-1	75.46745	30.74997	13:35:00	D	12.93
624	LUDHIANA	JAGRAON	S-NPP	75.47168	30.75608	13:54:00	D	2.20
625	LUDHIANA	JAGRAON	S-NPP	75.45161	30.77106	13:54:00	D	5.80
626	LUDHIANA	JAGRAON	S-NPP	75.45606	30.77151	13:54:00	D	5.50
627	LUDHIANA	JAGRAON	AQUA-1	75.44358	30.82183	13:35:00	D	17.38
628	LUDHIANA	JAGRAON	S-NPP	75.43758	30.84191	13:54:00	D	2.70
629	LUDHIANA	JAGRAON	S-NPP	75.43410	30.84205	13:54:00	D	2.20
630	LUDHIANA	JAGRAON	S-NPP	75.49612	30.84386	13:54:00	D	2.30
631	LUDHIANA	JAGRAON	S-NPP	75.49721	30.84408	13:54:00	D	3.50
632	LUDHIANA	JAGRAON	S-NPP	75.45858	30.86153	13:54:00	D	1.40
633	LUDHIANA	JAGRAON	AQUA-1	75.60387	30.86825	13:35:00	D	15.53
634	LUDHIANA	JAGRAON	S-NPP	75.59826	30.87553	13:54:00	D	3.60
635	LUDHIANA	JAGRAON	S-NPP	75.60281	30.87598	13:54:00	D	3.60
636	LUDHIANA	JAGRAON	AQUA-1	75.52714	30.87723	13:35:00	D	48.42
637	LUDHIANA	JAGRAON	S-NPP	75.42560	30.90498	13:54:00	D	4.10

638	LUDHIANA	JAGRAON	S-NPP	75.58865	30.91320	13:54:00	D	4.70
639	LUDHIANA	JAGRAON	S-NPP	75.63483	30.91360	13:54:00	D	4.90
640	LUDHIANA	JAGRAON	S-NPP	75.59776	30.91413	13:54:00	D	10.30
641	LUDHIANA	JAGRAON	S-NPP	75.43338	30.91429	13:54:00	D	2.80
642	LUDHIANA	JAGRAON	S-NPP	75.45570	30.91662	13:54:00	D	5.60
643	LUDHIANA	JAGRAON	S-NPP	75.58809	30.91744	13:54:00	D	4.70
644	LUDHIANA	JAGRAON	S-NPP	75.57277	30.92875	13:54:00	D	11.70
645	LUDHIANA	JAGRAON	S-NPP	75.57732	30.92922	13:54:00	D	11.70
646	LUDHIANA	JAGRAON	S-NPP	75.58643	30.93016	13:54:00	D	3.30
647	LUDHIANA	JAGRAON	S-NPP	75.57222	30.93298	13:54:00	D	11.70
648	LUDHIANA	JAGRAON	S-NPP	75.57676	30.93345	13:54:00	D	11.70
649	LUDHIANA	JAGRAON	S-NPP	75.58475	30.94287	13:54:00	D	2.80
650	LUDHIANA	JAGRAON	S-NPP	75.59785	30.94853	13:54:00	D	26.40
651	LUDHIANA	JAGRAON	AQUA-1	75.43505	30.94909	13:35:00	D	18.57
652	LUDHIANA	JAGRAON	S-NPP	75.42390	30.95161	13:54:00	D	5.50
653	LUDHIANA	JAGRAON	S-NPP	75.42449	30.95166	13:54:00	D	4.40
654	LUDHIANA	JAGRAON	S-NPP	75.55584	30.95273	13:54:00	D	4.90
655	LUDHIANA	JAGRAON	S-NPP	75.60129	30.95748	13:54:00	D	9.10
656	LUDHIANA	KHANNA	S-NPP	76.07308	30.77973	13:54:00	D	4.10
657	LUDHIANA	KHANNA	S-NPP	76.07253	30.78408	13:54:00	D	7.70
658	LUDHIANA	LUDHIANA EAST	AQUA-1	75.85625	30.70805	13:35:00	D	12.23
659	LUDHIANA	LUDHIANA EAST	AQUA-1	76.05918	30.91316	13:35:00	D	9.94
660	LUDHIANA	LUDHIANA EAST	S-NPP	76.00464	30.91977	13:54:00	D	3.50
661	LUDHIANA	LUDHIANA EAST	S-NPP	76.10035	30.93784	13:54:00	D	1.70
662	LUDHIANA	LUDHIANA EAST	S-NPP	75.97304	30.93867	13:54:00	D	5.70
663	LUDHIANA	LUDHIANA EAST	S-NPP	75.95109	30.95845	13:54:00	D	4.00
664	LUDHIANA	LUDHIANA EAST	S-NPP	75.95054	30.96278	13:54:00	D	4.00
665	LUDHIANA	LUDHIANA WEST	S-NPP	75.76660	30.82451	13:54:00	D	8.80
666	LUDHIANA	LUDHIANA WEST	S-NPP	75.77068	30.82925	13:54:00	D	4.60
667	LUDHIANA	LUDHIANA WEST	S-NPP	75.85052	30.83296	13:54:00	D	2.90
668	LUDHIANA	LUDHIANA WEST	AQUA-1	75.61411	30.84130	13:35:00	D	18.90
669	LUDHIANA	LUDHIANA WEST	S-NPP	75.74528	30.84400	13:54:00	D	4.30

670	LUDHIANA	LUDHIANA WEST	S-NPP	75.64647	30.85107	13:54:00	D	4.90
671	LUDHIANA	LUDHIANA WEST	AQUA-1	75.77781	30.85298	13:35:00	D	24.22
672	LUDHIANA	LUDHIANA WEST	S-NPP	75.64592	30.85532	13:54:00	D	4.10
673	LUDHIANA	LUDHIANA WEST	S-NPP	75.70536	30.87320	13:54:00	D	5.50
674	LUDHIANA	LUDHIANA WEST	S-NPP	75.70386	30.87432	13:54:00	D	4.40
675	LUDHIANA	LUDHIANA WEST	S-NPP	75.71526	30.90443	13:54:00	D	4.80
676	LUDHIANA	PAYAL	AQUA-1	76.06771	30.61822	13:35:00	D	10.92
677	LUDHIANA	PAYAL	AQUA-1	75.93896	30.61896	13:35:00	D	16.19
678	LUDHIANA	PAYAL	AQUA-1	75.91722	30.64479	13:35:00	D	23.84
679	LUDHIANA	PAYAL	AQUA-1	76.05406	30.66163	13:35:00	D	10.88
680	LUDHIANA	PAYAL	AQUA-1	76.01314	30.68409	13:35:00	D	26.93
681	LUDHIANA	PAYAL	S-NPP	76.02502	30.77488	13:54:00	D	1.80
682	LUDHIANA	PAYAL	S-NPP	76.00257	30.79896	13:54:00	D	3.60
683	LUDHIANA	PAYAL	S-NPP	75.99889	30.79943	13:54:00	D	2.20
684	LUDHIANA	RAIKOT	AQUA-1	75.62093	30.59875	13:35:00	D	8.32
685	LUDHIANA	RAIKOT	S-NPP	75.69267	30.62541	13:54:00	D	11.10
686	LUDHIANA	RAIKOT	AQUA-1	75.53907	30.62720	13:35:00	D	13.51
687	LUDHIANA	RAIKOT	S-NPP	75.65459	30.63435	13:54:00	D	15.20
688	LUDHIANA	RAIKOT	S-NPP	75.55828	30.63707	13:54:00	D	9.30
689	LUDHIANA	RAIKOT	S-NPP	75.55949	30.63721	13:54:00	D	7.60
690	LUDHIANA	RAIKOT	S-NPP	75.53090	30.63843	13:54:00	D	4.10
691	LUDHIANA	RAIKOT	S-NPP	75.53205	30.63874	13:54:00	D	5.90
692	LUDHIANA	RAIKOT	S-NPP	75.53537	30.63891	13:54:00	D	4.60
693	LUDHIANA	RAIKOT	S-NPP	75.68563	30.65398	13:54:00	D	7.20
694	LUDHIANA	RAIKOT	S-NPP	75.68417	30.65466	13:54:00	D	5.70
695	LUDHIANA	RAIKOT	S-NPP	75.56786	30.67652	13:54:00	D	7.00
696	LUDHIANA	RAIKOT	AQUA-1	75.70619	30.67960	13:35:00	D	11.03
697	LUDHIANA	RAIKOT	S-NPP	75.65836	30.79632	13:54:00	D	4.50
698	LUDHIANA	RAIKOT	S-NPP	75.66124	30.80952	13:54:00	D	10.00
699	LUDHIANA	SAMRALA	S-NPP	76.19209	30.73395	13:54:00	D	17.00
700	LUDHIANA	SAMRALA	S-NPP	76.10207	30.78265	13:54:00	D	5.40
701	LUDHIANA	SAMRALA	AQUA-1	76.15297	30.96856	13:35:00	D	13.68

702	MANSA	BUDHLADA	AQUA-1	75.70824	29.75523	13:35:00	D	9.90
703	MANSA	BUDHLADA	S-NPP	75.61645	29.77238	13:54:00	D	8.00
704	MANSA	BUDHLADA	S-NPP	75.51437	29.77828	13:54:00	D	5.60
705	MANSA	BUDHLADA	S-NPP	75.45358	29.78197	13:54:00	D	4.40
706	MANSA	BUDHLADA	S-NPP	75.57876	29.78951	13:54:00	D	10.00
707	MANSA	BUDHLADA	S-NPP	75.57946	29.79068	13:54:00	D	7.60
708	MANSA	BUDHLADA	AQUA-1	75.56090	29.79117	13:35:00	D	14.96
709	MANSA	BUDHLADA	S-NPP	75.65008	29.79362	13:54:00	D	7.30
710	MANSA	BUDHLADA	S-NPP	75.71149	29.79532	13:54:00	D	3.70
711	MANSA	BUDHLADA	S-NPP	75.61743	29.79795	13:54:00	D	2.20
712	MANSA	BUDHLADA	AQUA-1	75.49474	29.80075	13:35:00	D	6.18
713	MANSA	BUDHLADA	AQUA-1	75.70619	29.80599	13:35:00	D	34.11
714	MANSA	BUDHLADA	AQUA-1	75.45722	29.81572	13:35:00	D	13.35
715	MANSA	BUDHLADA	S-NPP	75.71353	29.82136	13:54:00	D	3.60
716	MANSA	BUDHLADA	S-NPP	75.45220	29.82386	13:54:00	D	12.90
717	MANSA	BUDHLADA	S-NPP	75.72572	29.83114	13:54:00	D	10.10
718	MANSA	BUDHLADA	S-NPP	75.73018	29.83160	13:54:00	D	10.10
719	MANSA	BUDHLADA	AQUA-1	75.43505	29.83968	13:35:00	D	7.24
720	MANSA	BUDHLADA	S-NPP	75.42741	29.84644	13:54:00	D	4.40
721	MANSA	BUDHLADA	S-NPP	75.64816	29.87423	13:54:00	D	6.60
722	MANSA	BUDHLADA	S-NPP	75.53243	29.91344	13:54:00	D	4.20
723	MANSA	BUDHLADA	AQUA-1	75.56636	29.95047	13:35:00	D	11.58
724	MANSA	BUDHLADA	S-NPP	75.55730	29.95837	13:54:00	D	4.10
725	MANSA	BUDHLADA	S-NPP	75.54733	29.99968	13:54:00	D	9.90
726	MANSA	BUDHLADA	S-NPP	75.54376	30.00034	13:54:00	D	9.10
727	MANSA	BUDHLADA	S-NPP	75.54814	30.00078	13:54:00	D	9.10
728	MANSA	BUDHLADA	S-NPP	75.52575	30.00273	13:54:00	D	2.20
729	MANSA	BUDHLADA	S-NPP	75.54677	30.00386	13:54:00	D	9.90
730	MANSA	BUDHLADA	S-NPP	75.55138	30.00959	13:54:00	D	2.20
731	MANSA	BUDHLADA	S-NPP	75.67496	30.02215	13:54:00	D	10.00
732	MANSA	MANSA	S-NPP	75.20736	29.89188	13:54:00	D	4.20
733	MANSA	MANSA	S-NPP	75.44630	29.93396	13:54:00	D	14.40

734	MANSA	MANSA	AQUA-1	75.22190	29.94148	13:35:00	D	7.43
735	MANSA	MANSA	S-NPP	75.46615	29.94871	13:54:00	D	2.30
736	MANSA	MANSA	S-NPP	75.36363	29.96710	13:54:00	D	9.20
737	MANSA	MANSA	S-NPP	75.29414	29.97204	13:54:00	D	6.20
738	MANSA	MANSA	S-NPP	75.29444	29.97473	13:54:00	D	5.00
739	MANSA	MANSA	AQUA-1	75.31867	30.00923	13:35:00	D	14.38
740	MANSA	MANSA	S-NPP	75.55081	30.01376	13:54:00	D	11.50
741	MANSA	MANSA	S-NPP	75.33598	30.01670	13:54:00	D	3.50
742	MANSA	MANSA	S-NPP	75.32265	30.01948	13:54:00	D	2.80
743	MANSA	MANSA	S-NPP	75.37435	30.02074	13:54:00	D	8.40
744	MANSA	MANSA	S-NPP	75.28648	30.03234	13:54:00	D	4.60
745	MANSA	MANSA	AQUA-1	75.39310	30.03551	13:35:00	D	14.33
746	MANSA	MANSA	S-NPP	75.54673	30.07694	13:54:00	D	7.80
747	MANSA	MANSA	S-NPP	75.51937	30.08250	13:54:00	D	4.10
748	MANSA	MANSA	S-NPP	75.48283	30.09127	13:54:00	D	5.90
749	MANSA	MANSA	S-NPP	75.56203	30.09554	13:54:00	D	4.00
750	MANSA	MANSA	S-NPP	75.43797	30.10866	13:54:00	D	6.40
751	MANSA	MANSA	S-NPP	75.41035	30.11844	13:54:00	D	7.70
752	MANSA	MANSA	S-NPP	75.37139	30.14799	13:54:00	D	5.90
753	MANSA	MANSA	S-NPP	75.44476	30.15576	13:54:00	D	1.80
754	MANSA	MANSA	S-NPP	75.43986	30.15946	13:54:00	D	20.50
755	MANSA	MANSA	S-NPP	75.44419	30.15992	13:54:00	D	8.90
756	MANSA	MANSA	AQUA-1	75.38901	30.16756	13:35:00	D	7.78
757	MANSA	MANSA	S-NPP	75.42780	30.18349	13:54:00	D	7.00
758	MANSA	SARDULGARH	S-NPP	75.23808	29.56667	13:54:00	D	7.70
759	MANSA	SARDULGARH	S-NPP	75.26707	29.56976	13:54:00	D	1.70
760	MANSA	SARDULGARH	S-NPP	75.29030	29.58470	13:54:00	D	2.30
761	MANSA	SARDULGARH	S-NPP	75.29013	29.64702	13:54:00	D	2.00
762	MANSA	SARDULGARH	AQUA-1	75.32080	29.67498	13:35:00	D	17.02
763	MANSA	SARDULGARH	AQUA-1	75.29011	29.68996	13:35:00	D	12.74
764	MANSA	SARDULGARH	S-NPP	75.28111	29.69030	13:54:00	D	4.00
765	MANSA	SARDULGARH	S-NPP	75.24911	29.70763	13:54:00	D	17.80

766	MANSA	SARDULGARH	S-NPP	75.34591	29.71391	13:54:00	D	14.70
767	MANSA	SARDULGARH	AQUA-1	75.37310	29.71790	13:35:00	D	33.72
768	MANSA	SARDULGARH	S-NPP	75.33578	29.72534	13:54:00	D	4.60
769	MANSA	SARDULGARH	S-NPP	75.33999	29.72579	13:54:00	D	4.60
770	MANSA	SARDULGARH	S-NPP	75.40794	29.76246	13:54:00	D	4.30
771	MANSA	SARDULGARH	S-NPP	75.40738	29.76660	13:54:00	D	4.30
772	MANSA	SARDULGARH	S-NPP	75.41051	29.77532	13:54:00	D	1.40
773	MANSA	SARDULGARH	S-NPP	75.31602	29.78019	13:54:00	D	2.00
774	MANSA	SARDULGARH	S-NPP	75.36497	29.79787	13:54:00	D	3.70
775	MANSA	SARDULGARH	S-NPP	75.42936	29.80045	13:54:00	D	39.70
776	MOGA	BAGHA PURANA	AQUA-1	75.11787	30.57180	13:35:00	D	16.09
777	MOGA	BAGHA PURANA	S-NPP	75.09629	30.63607	13:54:00	D	4.20
778	MOGA	BAGHA PURANA	S-NPP	75.10052	30.63651	13:54:00	D	4.20
779	MOGA	BAGHA PURANA	S-NPP	74.95477	30.64580	13:54:00	D	7.40
780	MOGA	BAGHA PURANA	S-NPP	74.96684	30.68017	13:54:00	D	6.80
781	MOGA	BAGHA PURANA	S-NPP	75.08046	30.68847	13:54:00	D	3.40
782	MOGA	BAGHA PURANA	AQUA-1	75.14857	30.68858	13:35:00	D	10.50
783	MOGA	BAGHA PURANA	S-NPP	75.09804	30.71778	13:54:00	D	7.00
784	MOGA	BAGHA PURANA	AQUA-1	74.91836	30.76943	13:35:00	D	12.91
785	MOGA	BAGHA PURANA	S-NPP	74.91897	30.78156	13:54:00	D	8.40
786	MOGA	MOGA	S-NPP	75.12352	30.72043	13:54:00	D	2.10
787	MOGA	MOGA	S-NPP	75.28689	30.73728	13:54:00	D	2.00
788	MOGA	MOGA	S-NPP	75.21222	30.73799	13:54:00	D	4.60
789	MOGA	MOGA	S-NPP	75.29559	30.73817	13:54:00	D	2.20
790	MOGA	MOGA	S-NPP	75.33048	30.74174	13:54:00	D	20.90
791	MOGA	MOGA	S-NPP	75.22399	30.74760	13:54:00	D	8.00
792	MOGA	MOGA	S-NPP	75.21912	30.75129	13:54:00	D	2.70
793	MOGA	MOGA	S-NPP	75.18845	30.75228	13:54:00	D	3.50
794	MOGA	MOGA	S-NPP	75.30582	30.76030	13:54:00	D	5.00
795	MOGA	MOGA	S-NPP	75.26874	30.77329	13:54:00	D	8.40
796	MOGA	MOGA	S-NPP	75.37417	30.78006	13:54:00	D	3.10
797	MOGA	MOGA	S-NPP	75.38241	30.78515	13:54:00	D	3.90

798	MOGA	MOGA	S-NPP	75.35985	30.78704	13:54:00	D	12.80
799	MOGA	MOGA	S-NPP	75.36808	30.79213	13:54:00	D	4.80
800	MOGA	MOGA	S-NPP	75.11212	30.80268	13:54:00	D	4.50
801	MOGA	MOGA	S-NPP	75.33610	30.83106	13:54:00	D	6.90
802	MOGA	MOGA	S-NPP	75.25276	30.83220	13:54:00	D	5.30
803	MOGA	MOGA	S-NPP	75.33687	30.83229	13:54:00	D	8.60
804	MOGA	MOGA	S-NPP	75.34925	30.83247	13:54:00	D	44.00
805	MOGA	MOGA	S-NPP	75.34566	30.83317	13:54:00	D	23.60
806	MOGA	MOGA	S-NPP	75.35005	30.83362	13:54:00	D	25.50
807	MOGA	MOGA	S-NPP	75.29196	30.83619	13:54:00	D	1.90
808	MOGA	MOGA	S-NPP	75.00460	30.83985	13:54:00	D	6.60
809	MOGA	MOGA	S-NPP	75.21580	30.84522	13:54:00	D	5.70
810	MOGA	NIHAL SINGH WALA	AQUA-1	75.20996	30.51790	13:35:00	D	11.48
811	MOGA	NIHAL SINGH WALA	AQUA-1	75.35064	30.52015	13:35:00	D	9.71
812	MOGA	NIHAL SINGH WALA	S-NPP	75.27263	30.54349	13:54:00	D	6.50
813	MOGA	NIHAL SINGH WALA	S-NPP	75.27694	30.54394	13:54:00	D	6.50
814	MOGA	NIHAL SINGH WALA	AQUA-1	75.18438	30.56282	13:35:00	D	14.40
815	MOGA	NIHAL SINGH WALA	S-NPP	75.35525	30.58162	13:54:00	D	3.40
816	MOGA	NIHAL SINGH WALA	S-NPP	75.34050	30.59272	13:54:00	D	2.40
817	MOGA	NIHAL SINGH WALA	S-NPP	75.30843	30.60194	13:54:00	D	22.30
818	MOGA	NIHAL SINGH WALA	AQUA-1	75.22190	30.64217	13:35:00	D	20.68
819	MOGA	NIHAL SINGH WALA	S-NPP	75.24125	30.65132	13:54:00	D	3.60
820	MOGA	NIHAL SINGH WALA	AQUA-1	75.23042	30.67062	13:35:00	D	13.05
821	MOGA	NIHAL SINGH WALA	S-NPP	75.24270	30.67245	13:54:00	D	5.80
822	MOGA	NIHAL SINGH WALA	S-NPP	75.22865	30.67936	13:54:00	D	4.30
823	MOGA	NIHAL SINGH WALA	S-NPP	75.31287	30.70516	13:54:00	D	2.80
824	MUKTSAR	GIDDARBAHA	S-NPP	74.60815	30.13972	13:54:00	D	3.80
825	MUKTSAR	GIDDARBAHA	S-NPP	74.60757	30.14368	13:54:00	D	6.10
826	MUKTSAR	GIDDARBAHA	S-NPP	74.64104	30.15947	13:54:00	D	2.60
827	MUKTSAR	GIDDARBAHA	S-NPP	74.62815	30.16610	13:54:00	D	7.20
828	MUKTSAR	GIDDARBAHA	S-NPP	74.66878	30.17465	13:54:00	D	3.60
829	MUKTSAR	GIDDARBAHA	S-NPP	74.60242	30.17935	13:54:00	D	2.80

830	MUKTSAR	GIDDARBAHA	AQUA-1	74.63870	30.19301	13:35:00	D	19.34
831	MUKTSAR	GIDDARBAHA	S-NPP	74.63002	30.19455	13:54:00	D	3.90
832	MUKTSAR	GIDDARBAHA	S-NPP	74.60599	30.19586	13:54:00	D	6.50
833	MUKTSAR	GIDDARBAHA	S-NPP	74.58559	30.21369	13:54:00	D	3.20
834	MUKTSAR	GIDDARBAHA	AQUA-1	74.59436	30.21397	13:35:00	D	19.44
835	MUKTSAR	GIDDARBAHA	S-NPP	74.58293	30.21551	13:54:00	D	4.20
836	MUKTSAR	GIDDARBAHA	AQUA-1	74.62505	30.22895	13:35:00	D	10.35
837	MUKTSAR	GIDDARBAHA	S-NPP	74.58945	30.25245	13:54:00	D	19.80
838	MUKTSAR	GIDDARBAHA	AQUA-1	74.59606	30.25290	13:35:00	D	16.89
839	MUKTSAR	GIDDARBAHA	AQUA-1	74.55173	30.26039	13:35:00	D	10.93
840	MUKTSAR	GIDDARBAHA	S-NPP	74.55618	30.27693	13:54:00	D	4.10
841	MUKTSAR	GIDDARBAHA	S-NPP	74.55560	30.28089	13:54:00	D	4.10
842	MUKTSAR	GIDDARBAHA	S-NPP	74.56145	30.28154	13:54:00	D	4.30
843	MUKTSAR	GIDDARBAHA	S-NPP	74.63247	30.28545	13:54:00	D	6.30
844	MUKTSAR	GIDDARBAHA	AQUA-1	74.64850	30.28546	13:35:00	D	13.35
845	MUKTSAR	GIDDARBAHA	S-NPP	74.57257	30.28682	13:54:00	D	4.10
846	MUKTSAR	GIDDARBAHA	AQUA-1	74.55514	30.31129	13:35:00	D	9.01
847	MUKTSAR	GIDDARBAHA	S-NPP	74.58388	30.31868	13:54:00	D	11.00
848	MUKTSAR	GIDDARBAHA	S-NPP	74.57973	30.31985	13:54:00	D	7.60
849	MUKTSAR	GIDDARBAHA	AQUA-1	74.62164	30.32027	13:35:00	D	10.92
850	MUKTSAR	GIDDARBAHA	S-NPP	74.58558	30.32052	13:54:00	D	7.60
851	MUKTSAR	GIDDARBAHA	S-NPP	74.68322	30.33744	13:54:00	D	3.90
852	MUKTSAR	GIDDARBAHA	S-NPP	74.65831	30.34286	13:54:00	D	6.90
853	MUKTSAR	GIDDARBAHA	S-NPP	74.69016	30.34457	13:54:00	D	4.50
854	MUKTSAR	GIDDARBAHA	S-NPP	74.69399	30.34670	13:54:00	D	7.10
855	MUKTSAR	GIDDARBAHA	S-NPP	74.64473	30.35353	13:54:00	D	2.80
856	MUKTSAR	GIDDARBAHA	AQUA-1	74.69838	30.37417	13:35:00	D	13.79
857	MUKTSAR	GIDDARBAHA	S-NPP	74.68939	30.37865	13:54:00	D	32.60
858	MUKTSAR	GIDDARBAHA	S-NPP	74.58112	30.37884	13:54:00	D	4.60
859	MUKTSAR	GIDDARBAHA	AQUA-1	74.63187	30.38540	13:35:00	D	17.36
860	MUKTSAR	GIDDARBAHA	S-NPP	74.56822	30.38546	13:54:00	D	7.20
861	MUKTSAR	GIDDARBAHA	AQUA-1	74.78791	30.38989	13:35:00	D	13.59

862	MUKTSAR	GIDDARBAHA	S-NPP	74.73980	30.40857	13:54:00	D	13.30
863	MUKTSAR	GIDDARBAHA	S-NPP	74.61290	30.44053	13:54:00	D	9.00
864	MUKTSAR	GIDDARBAHA	S-NPP	74.61382	30.44309	13:54:00	D	6.40
865	MUKTSAR	GIDDARBAHA	S-NPP	74.71555	30.45060	13:54:00	D	19.20
866	MUKTSAR	GIDDARBAHA	S-NPP	74.71423	30.45142	13:54:00	D	17.10
867	MUKTSAR	GIDDARBAHA	S-NPP	74.65926	30.45363	13:54:00	D	5.90
868	MUKTSAR	GIDDARBAHA	S-NPP	74.65868	30.45762	13:54:00	D	5.90
869	MUKTSAR	GIDDARBAHA	S-NPP	74.62070	30.46969	13:54:00	D	5.30
870	MUKTSAR	MALAUT	S-NPP	74.55666	29.94811	13:54:00	D	11.10
871	MUKTSAR	MALAUT	S-NPP	74.57400	29.95007	13:54:00	D	3.60
872	MUKTSAR	MALAUT	AQUA-1	74.55002	29.96095	13:35:00	D	12.68
873	MUKTSAR	MALAUT	AQUA-1	74.68815	29.96095	13:35:00	D	12.82
874	MUKTSAR	MALAUT	AQUA-1	74.58754	29.96245	13:35:00	D	7.69
875	MUKTSAR	MALAUT	S-NPP	74.43693	29.97043	13:54:00	D	4.20
876	MUKTSAR	MALAUT	S-NPP	74.57520	29.98229	13:54:00	D	21.30
877	MUKTSAR	MALAUT	S-NPP	74.51640	29.98357	13:54:00	D	5.90
878	MUKTSAR	MALAUT	AQUA-1	74.50705	29.98880	13:35:00	D	63.56
879	MUKTSAR	MALAUT	AQUA-1	74.62846	29.98939	13:35:00	D	27.20
880	MUKTSAR	MALAUT	S-NPP	74.69181	29.99555	13:54:00	D	11.00
881	MUKTSAR	MALAUT	S-NPP	74.57170	29.99644	13:54:00	D	3.10
882	MUKTSAR	MALAUT	S-NPP	74.57292	29.99808	13:54:00	D	3.00
883	MUKTSAR	MALAUT	S-NPP	74.46575	30.00083	13:54:00	D	4.50
884	MUKTSAR	MALAUT	S-NPP	74.59435	30.00291	13:54:00	D	5.40
885	MUKTSAR	MALAUT	S-NPP	74.56022	30.00464	13:54:00	D	23.10
886	MUKTSAR	MALAUT	S-NPP	74.59555	30.00470	13:54:00	D	7.10
887	MUKTSAR	MALAUT	AQUA-1	74.57560	30.00586	13:35:00	D	10.78
888	MUKTSAR	MALAUT	S-NPP	74.55840	30.00702	13:54:00	D	19.80
889	MUKTSAR	MALAUT	S-NPP	74.49384	30.00792	13:54:00	D	4.80
890	MUKTSAR	MALAUT	S-NPP	74.67193	30.00943	13:54:00	D	5.70
891	MUKTSAR	MALAUT	S-NPP	74.67030	30.01115	13:54:00	D	3.30
892	MUKTSAR	MALAUT	S-NPP	74.66385	30.01448	13:54:00	D	3.30
893	MUKTSAR	MALAUT	S-NPP	74.70071	30.01676	13:54:00	D	12.30

894	MUKTSAR	MALAUT	S-NPP	74.69912	30.01830	13:54:00	D	11.50
895	MUKTSAR	MALAUT	S-NPP	74.66270	30.02242	13:54:00	D	4.20
896	MUKTSAR	MALAUT	S-NPP	74.66857	30.02306	13:54:00	D	4.20
897	MUKTSAR	MALAUT	S-NPP	74.59615	30.03123	13:54:00	D	16.20
898	MUKTSAR	MALAUT	S-NPP	74.51914	30.03472	13:54:00	D	3.10
899	MUKTSAR	MALAUT	S-NPP	74.42574	30.03621	13:54:00	D	4.00
900	MUKTSAR	MALAUT	AQUA-1	74.66768	30.03730	13:35:00	D	10.58
901	MUKTSAR	MALAUT	S-NPP	74.53010	30.03994	13:54:00	D	9.20
902	MUKTSAR	MALAUT	S-NPP	74.44170	30.04598	13:54:00	D	14.40
903	MUKTSAR	MALAUT	S-NPP	74.52318	30.04718	13:54:00	D	6.20
904	MUKTSAR	MALAUT	S-NPP	74.68864	30.04948	13:54:00	D	11.70
905	MUKTSAR	MALAUT	S-NPP	74.44112	30.04990	13:54:00	D	6.90
906	MUKTSAR	MALAUT	AQUA-1	74.59095	30.05078	13:35:00	D	11.55
907	MUKTSAR	MALAUT	S-NPP	74.49269	30.05575	13:54:00	D	3.90
908	MUKTSAR	MALAUT	S-NPP	74.54514	30.05766	13:54:00	D	3.60
909	MUKTSAR	MALAUT	AQUA-1	74.40678	30.05976	13:35:00	D	8.32
910	MUKTSAR	MALAUT	S-NPP	74.50190	30.07279	13:54:00	D	5.70
911	MUKTSAR	MALAUT	S-NPP	74.39349	30.08413	13:54:00	D	6.30
912	MUKTSAR	MALAUT	S-NPP	74.39552	30.08449	13:54:00	D	6.80
913	MUKTSAR	MALAUT	S-NPP	74.57067	30.08462	13:54:00	D	2.70
914	MUKTSAR	MALAUT	S-NPP	74.42398	30.08780	13:54:00	D	3.70
915	MUKTSAR	MALAUT	S-NPP	74.39291	30.08804	13:54:00	D	4.40
916	MUKTSAR	MALAUT	S-NPP	74.39494	30.08841	13:54:00	D	6.80
917	MUKTSAR	MALAUT	S-NPP	74.43915	30.08913	13:54:00	D	4.10
918	MUKTSAR	MALAUT	S-NPP	74.44111	30.08978	13:54:00	D	3.70
919	MUKTSAR	MALAUT	AQUA-1	74.56537	30.09120	13:35:00	D	6.42
920	MUKTSAR	MALAUT	S-NPP	74.46783	30.09227	13:54:00	D	5.50
921	MUKTSAR	MALAUT	S-NPP	74.46400	30.09243	13:54:00	D	4.90
922	MUKTSAR	MALAUT	AQUA-1	74.66871	30.09839	13:35:00	D	10.89
923	MUKTSAR	MALAUT	S-NPP	74.55100	30.09843	13:54:00	D	2.40
924	MUKTSAR	MALAUT	S-NPP	74.43939	30.10155	13:54:00	D	3.50
925	MUKTSAR	MALAUT	S-NPP	74.55447	30.10171	13:54:00	D	6.40

926	MUKTSAR	MALAUT	S-NPP	74.41398	30.10230	13:54:00	D	8.40
927	MUKTSAR	MALAUT	S-NPP	74.43684	30.10483	13:54:00	D	3.80
928	MUKTSAR	MALAUT	S-NPP	74.57131	30.10755	13:54:00	D	4.90
929	MUKTSAR	MALAUT	S-NPP	74.56726	30.10833	13:54:00	D	5.60
930	MUKTSAR	MALAUT	S-NPP	74.55273	30.11355	13:54:00	D	18.40
931	MUKTSAR	MALAUT	S-NPP	74.55452	30.11489	13:54:00	D	16.20
932	MUKTSAR	MALAUT	S-NPP	74.60160	30.11630	13:54:00	D	5.70
933	MUKTSAR	MALAUT	S-NPP	74.49256	30.12296	13:54:00	D	3.10
934	MUKTSAR	MALAUT	AQUA-1	74.42213	30.14510	13:35:00	D	6.51
935	MUKTSAR	MALAUT	AQUA-1	74.50227	30.14810	13:35:00	D	14.74
936	MUKTSAR	MALAUT	AQUA-1	74.53467	30.14959	13:35:00	D	9.35
937	MUKTSAR	MALAUT	S-NPP	74.50528	30.15640	13:54:00	D	5.20
938	MUKTSAR	MALAUT	S-NPP	74.50471	30.16034	13:54:00	D	5.20
939	MUKTSAR	MALAUT	S-NPP	74.56853	30.16751	13:54:00	D	9.30
940	MUKTSAR	MALAUT	AQUA-1	74.34880	30.16906	13:35:00	D	8.95
941	MUKTSAR	MALAUT	S-NPP	74.53773	30.17609	13:54:00	D	5.20
942	MUKTSAR	MALAUT	AQUA-1	74.46476	30.17804	13:35:00	D	9.34
943	MUKTSAR	MALAUT	S-NPP	74.44886	30.18200	13:54:00	D	6.80
944	MUKTSAR	MALAUT	S-NPP	74.38185	30.18563	13:54:00	D	13.60
945	MUKTSAR	MALAUT	S-NPP	74.37852	30.18587	13:54:00	D	3.80
946	MUKTSAR	MALAUT	S-NPP	74.38423	30.18653	13:54:00	D	8.60
947	MUKTSAR	MALAUT	AQUA-1	74.41360	30.23793	13:35:00	D	10.49
948	MUKTSAR	MALAUT	AQUA-1	74.47499	30.23793	13:35:00	D	9.80
949	MUKTSAR	MALAUT	S-NPP	74.46732	30.23894	13:54:00	D	5.10
950	MUKTSAR	MALAUT	TERRA-1	74.45384	30.25110	12:02:00	D	100.26
951	MUKTSAR	MALAUT	S-NPP	74.45867	30.25797	13:54:00	D	3.20
952	MUKTSAR	MALAUT	AQUA-1	74.33175	30.27386	13:35:00	D	7.31
953	MUKTSAR	MALAUT	S-NPP	74.42990	30.29468	13:54:00	D	4.60
954	MUKTSAR	MALAUT	S-NPP	74.43311	30.29836	13:54:00	D	3.60
955	MUKTSAR	MALAUT	AQUA-1	74.42724	30.30231	13:35:00	D	7.73
956	MUKTSAR	MALAUT	S-NPP	74.43772	30.30685	13:54:00	D	3.70
957	MUKTSAR	MALAUT	S-NPP	74.43968	30.30780	13:54:00	D	3.20

958	MUKTSAR	MALAUT	S-NPP	74.45448	30.31268	13:54:00	D	18.30
959	MUKTSAR	MALAUT	S-NPP	74.46026	30.31331	13:54:00	D	18.30
960	MUKTSAR	MALAUT	S-NPP	74.45642	30.31374	13:54:00	D	25.70
961	MUKTSAR	MALAUT	S-NPP	74.43657	30.31472	13:54:00	D	4.60
962	MUKTSAR	MALAUT	S-NPP	74.43855	30.31567	13:54:00	D	2.30
963	MUKTSAR	MALAUT	S-NPP	74.36529	30.36265	13:54:00	D	13.00
964	MUKTSAR	MALAUT	AQUA-1	74.32152	30.36369	13:35:00	D	9.86
965	MUKTSAR	MALAUT	S-NPP	74.39396	30.36589	13:54:00	D	5.90
966	MUKTSAR	MALAUT	S-NPP	74.39970	30.36654	13:54:00	D	12.30
967	MUKTSAR	MALAUT	AQUA-1	74.35626	30.36687	13:35:00	D	20.49
968	MUKTSAR	MUKTSAR	AQUA-1	74.48522	30.36669	13:35:00	D	13.25
969	MUKTSAR	MUKTSAR	S-NPP	74.44584	30.37174	13:54:00	D	4.20
970	MUKTSAR	MUKTSAR	S-NPP	74.55177	30.37557	13:54:00	D	4.70
971	MUKTSAR	MUKTSAR	AQUA-1	74.56366	30.37567	13:35:00	D	6.14
972	MUKTSAR	MUKTSAR	S-NPP	74.37502	30.37572	13:54:00	D	10.60
973	MUKTSAR	MUKTSAR	S-NPP	74.35670	30.38160	13:54:00	D	6.00
974	MUKTSAR	MUKTSAR	AQUA-1	74.45282	30.40112	13:35:00	D	37.51
975	MUKTSAR	MUKTSAR	AQUA-1	74.53524	30.40661	13:35:00	D	12.40
976	MUKTSAR	MUKTSAR	S-NPP	74.55032	30.41767	13:54:00	D	8.80
977	MUKTSAR	MUKTSAR	AQUA-1	74.29764	30.42059	13:35:00	D	8.81
978	MUKTSAR	MUKTSAR	S-NPP	74.55077	30.42378	13:54:00	D	7.00
979	MUKTSAR	MUKTSAR	S-NPP	74.54916	30.42559	13:54:00	D	4.80
980	MUKTSAR	MUKTSAR	S-NPP	74.37196	30.42629	13:54:00	D	6.10
981	MUKTSAR	MUKTSAR	S-NPP	74.36964	30.44199	13:54:00	D	8.70
982	MUKTSAR	MUKTSAR	S-NPP	74.36275	30.44920	13:54:00	D	9.10
983	MUKTSAR	MUKTSAR	AQUA-1	74.46305	30.46400	13:35:00	D	16.16
984	MUKTSAR	MUKTSAR	AQUA-1	74.43065	30.48047	13:35:00	D	16.86
985	MUKTSAR	MUKTSAR	S-NPP	74.48668	30.48709	13:54:00	D	3.50
986	MUKTSAR	MUKTSAR	AQUA-1	74.64552	30.48946	13:35:00	D	45.99
987	MUKTSAR	MUKTSAR	S-NPP	74.58004	30.50156	13:54:00	D	5.60
988	MUKTSAR	MUKTSAR	S-NPP	74.62740	30.50685	13:54:00	D	4.30
989	MUKTSAR	MUKTSAR	S-NPP	74.51947	30.50686	13:54:00	D	9.10

990	MUKTSAR	MUKTSAR	S-NPP	74.56596	30.51613	13:54:00	D	8.60
991	MUKTSAR	MUKTSAR	S-NPP	74.57186	30.51680	13:54:00	D	12.90
992	MUKTSAR	MUKTSAR	S-NPP	74.49963	30.52071	13:54:00	D	5.40
993	MUKTSAR	MUKTSAR	S-NPP	74.65547	30.52213	13:54:00	D	6.30
994	MUKTSAR	MUKTSAR	S-NPP	74.66144	30.52280	13:54:00	D	6.30
995	MUKTSAR	MUKTSAR	S-NPP	74.38699	30.52383	13:54:00	D	3.50
996	MUKTSAR	MUKTSAR	AQUA-1	74.56025	30.52539	13:35:00	D	21.42
997	MUKTSAR	MUKTSAR	S-NPP	74.66086	30.52679	13:54:00	D	7.30
998	MUKTSAR	MUKTSAR	S-NPP	74.60411	30.53049	13:54:00	D	6.40
999	MUKTSAR	MUKTSAR	AQUA-1	74.46232	30.53266	13:35:00	D	15.47
1000	MUKTSAR	MUKTSAR	S-NPP	74.60563	30.53274	13:54:00	D	18.10
1001	MUKTSAR	MUKTSAR	S-NPP	74.60355	30.53447	13:54:00	D	6.40
1002	MUKTSAR	MUKTSAR	S-NPP	74.55132	30.53465	13:54:00	D	2.70
1003	MUKTSAR	MUKTSAR	AQUA-1	74.51421	30.53587	13:35:00	D	18.32
1004	MUKTSAR	MUKTSAR	AQUA-1	74.65745	30.53587	13:35:00	D	17.91
1005	MUKTSAR	MUKTSAR	S-NPP	74.55503	30.53734	13:54:00	D	12.90
1006	MUKTSAR	MUKTSAR	AQUA-1	74.58413	30.55833	13:35:00	D	9.60
1007	MUKTSAR	MUKTSAR	S-NPP	74.55749	30.56181	13:54:00	D	4.70
1008	MUKTSAR	MUKTSAR	S-NPP	74.56931	30.56310	13:54:00	D	6.90
1009	MUKTSAR	MUKTSAR	AQUA-1	74.44771	30.57180	13:35:00	D	33.15
1010	MUKTSAR	MUKTSAR	S-NPP	74.51925	30.57777	13:54:00	D	4.10
1011	MUKTSAR	MUKTSAR	S-NPP	74.51051	30.59694	13:54:00	D	7.70
1012	MUKTSAR	MUKTSAR	S-NPP	74.51466	30.60949	13:54:00	D	4.00
1013	MUKTSAR	MUKTSAR	S-NPP	74.52055	30.61015	13:54:00	D	4.00
1014	MUKTSAR	MUKTSAR	S-NPP	74.52242	30.63859	13:54:00	D	3.20
1015	MUKTSAR	MUKTSAR	S-NPP	74.51987	30.64021	13:54:00	D	7.20
1016	MUKTSAR	MUKTSAR	AQUA-1	74.60800	30.64217	13:35:00	D	13.45
1017	MUKTSAR	MUKTSAR	S-NPP	74.53529	30.65800	13:54:00	D	32.70
1018	NAWASHAHR	NAWASHAHR	S-NPP	76.21930	31.03303	13:54:00	D	9.10
1019	NAWASHAHR	NAWASHAHR	S-NPP	76.21766	31.03382	13:54:00	D	5.30
1020	NAWASHAHR	NAWASHAHR	S-NPP	76.22262	31.03431	13:54:00	D	10.60
1021	NAWASHAHR	NAWASHAHR	S-NPP	76.02029	31.03624	13:54:00	D	3.50

1022	NAWASHAHR	NAWASHAHR	S-NPP	76.11752	31.08553	13:54:00	D	2.50
1023	NAWASHAHR	NAWASHAHR	S-NPP	75.94807	31.10391	13:54:00	D	1.80
1024	NAWASHAHR	NAWASHAHR	S-NPP	75.94608	31.10494	13:54:00	D	3.60
1025	NAWASHAHR	NAWASHAHR	S-NPP	76.00961	31.11898	13:54:00	D	3.10
1026	NAWASHAHR	NAWASHAHR	S-NPP	76.00769	31.11961	13:54:00	D	2.90
1027	NAWASHAHR	NAWASHAHR	S-NPP	76.18990	31.13237	13:54:00	D	7.20
1028	NAWASHAHR	NAWASHAHR	S-NPP	76.19151	31.13292	13:54:00	D	9.00
1029	NAWASHAHR	NAWASHAHR	S-NPP	76.02202	31.24925	13:54:00	D	3.00
1030	PATIALA	NABHA	S-NPP	76.15993	30.34930	13:54:00	D	4.70
1031	PATIALA	NABHA	AQUA-1	76.03701	30.40262	13:35:00	D	5.41
1032	PATIALA	PATIALA	S-NPP	76.26334	30.30644	13:54:00	D	5.20
1033	PATIALA	PATIALA	AQUA-1	76.27234	30.31279	13:35:00	D	9.35
1034	PATIALA	PATIALA	S-NPP	76.27139	30.32052	13:54:00	D	6.50
1035	PATIALA	PATIALA	S-NPP	76.36718	30.38785	13:54:00	D	4.20
1036	PATIALA	SAMANA	S-NPP	76.13332	29.81798	13:54:00	D	1.70
1037	PATIALA	SAMANA	S-NPP	76.21126	29.84356	13:54:00	D	4.10
1038	PATIALA	SAMANA	S-NPP	76.13903	29.85967	13:54:00	D	3.50
1039	PATIALA	SAMANA	S-NPP	76.10448	29.86938	13:54:00	D	2.10
1040	PATIALA	SAMANA	S-NPP	76.00874	29.91632	13:54:00	D	2.50
1041	PATIALA	SAMANA	AQUA-1	76.11034	29.92502	13:35:00	D	48.95
1042	PATIALA	SAMANA	AQUA-1	76.12057	29.98790	13:35:00	D	101.35
1043	PATIALA	SAMANA	S-NPP	76.04837	30.01806	13:54:00	D	1.50
1044	PATIALA	SAMANA	S-NPP	76.12348	30.15008	13:54:00	D	9.70
1045	PATIALA	SAMANA	AQUA-1	76.15638	30.17385	13:35:00	D	7.65
1046	PATIALA	SAMANA	S-NPP	76.15567	30.18051	13:54:00	D	3.90
1047	PATIALA	SAMANA	S-NPP	76.16043	30.18097	13:54:00	D	5.90
1048	PATIALA	SAMANA	AQUA-1	76.26381	30.19451	13:35:00	D	7.02
1049	SANGRUR	DHURI	AQUA-1	75.92446	30.37567	13:35:00	D	33.32
1050	SANGRUR	DHURI	AQUA-1	75.85625	30.40262	13:35:00	D	8.21
1051	SANGRUR	DHURI	S-NPP	75.88091	30.44467	13:54:00	D	19.50
1052	SANGRUR	DHURI	AQUA-1	75.77440	30.47149	13:35:00	D	9.68
1053	SANGRUR	DHURI	S-NPP	75.77470	30.48002	13:54:00	D	6.20

1054	SANGRUR	MALERKOTLA	AQUA-1	75.85711	30.47074	13:35:00	D	15.88
1055	SANGRUR	MALERKOTLA	AQUA-1	75.80339	30.48197	13:35:00	D	7.85
1056	SANGRUR	MALERKOTLA	S-NPP	75.85777	30.48832	13:54:00	D	3.30
1057	SANGRUR	MALERKOTLA	AQUA-1	75.94663	30.51790	13:35:00	D	7.03
1058	SANGRUR	MALERKOTLA	S-NPP	75.67679	30.52169	13:54:00	D	7.50
1059	SANGRUR	MALERKOTLA	AQUA-1	75.85284	30.52539	13:35:00	D	10.81
1060	SANGRUR	MALERKOTLA	S-NPP	75.67624	30.52593	13:54:00	D	7.50
1061	SANGRUR	MALERKOTLA	S-NPP	75.87257	30.55498	13:54:00	D	4.40
1062	SANGRUR	MALERKOTLA	S-NPP	75.92261	30.58792	13:54:00	D	4.40
1063	SANGRUR	MALERKOTLA	AQUA-1	75.77099	30.58827	13:35:00	D	10.20
1064	SANGRUR	MALERKOTLA	AQUA-1	75.90571	30.58977	13:35:00	D	10.13
1065	SANGRUR	MALERKOTLA	S-NPP	75.69202	30.59521	13:54:00	D	2.90
1066	SANGRUR	MALERKOTLA	S-NPP	75.80397	30.62821	13:54:00	D	2.70
1067	SANGRUR	MALERKOTLA	S-NPP	75.81731	30.63391	13:54:00	D	3.10
1068	SANGRUR	MOONAK	S-NPP	75.91448	29.77374	13:54:00	D	3.00
1069	SANGRUR	MOONAK	AQUA-1	75.96880	29.78278	13:35:00	D	11.35
1070	SANGRUR	MOONAK	S-NPP	75.96078	29.80881	13:54:00	D	4.30
1071	SANGRUR	MOONAK	AQUA-1	76.06941	29.82171	13:35:00	D	13.20
1072	SANGRUR	MOONAK	S-NPP	76.07043	29.82895	13:54:00	D	5.60
1073	SANGRUR	MOONAK	S-NPP	75.96410	29.82934	13:54:00	D	1.80
1074	SANGRUR	MOONAK	S-NPP	76.04202	29.83034	13:54:00	D	3.30
1075	SANGRUR	MOONAK	S-NPP	76.08439	29.83040	13:54:00	D	2.50
1076	SANGRUR	MOONAK	S-NPP	75.98709	29.83162	13:54:00	D	1.60
1077	SANGRUR	MOONAK	S-NPP	76.04314	29.83279	13:54:00	D	4.80
1078	SANGRUR	MOONAK	S-NPP	76.08914	29.84166	13:54:00	D	2.00
1079	SANGRUR	MOONAK	S-NPP	75.89271	29.84382	13:54:00	D	2.80
1080	SANGRUR	MOONAK	S-NPP	76.00285	29.88964	13:54:00	D	2.50
1081	SANGRUR	MOONAK	S-NPP	75.77029	29.90427	13:54:00	D	1.20
1082	SANGRUR	MOONAK	AQUA-1	75.93470	29.90855	13:35:00	D	19.64
1083	SANGRUR	MOONAK	S-NPP	75.91968	29.92691	13:54:00	D	4.70
1084	SANGRUR	MOONAK	S-NPP	75.91855	29.92858	13:54:00	D	3.10
1085	SANGRUR	MOONAK	S-NPP	75.91341	29.93927	13:54:00	D	2.80

1086	SANGRUR	MOONAK	S-NPP	75.91285	29.94353	13:54:00	D	12.30
1087	SANGRUR	MOONAK	S-NPP	75.92200	29.94445	13:54:00	D	3.50
1088	SANGRUR	MOONAK	S-NPP	75.92144	29.94872	13:54:00	D	3.50
1089	SANGRUR	SANGRUR	AQUA-1	75.61070	30.20499	13:35:00	D	11.16
1090	SANGRUR	SANGRUR	S-NPP	75.94781	30.23837	13:54:00	D	5.80
1091	SANGRUR	SANGRUR	AQUA-1	75.88524	30.25290	13:35:00	D	7.82
1092	SANGRUR	SUNAM	S-NPP	75.70017	29.92639	13:54:00	D	4.00
1093	SANGRUR	SUNAM	S-NPP	75.70463	29.92685	13:54:00	D	6.10
1094	SANGRUR	SUNAM	S-NPP	75.78518	29.93501	13:54:00	D	6.10
1095	SANGRUR	SUNAM	S-NPP	75.92779	29.97100	13:54:00	D	2.60
1096	SANGRUR	SUNAM	S-NPP	75.89639	29.99808	13:54:00	D	3.60
1097	SANGRUR	SUNAM	S-NPP	75.73641	30.03692	13:54:00	D	5.60
1098	SANGRUR	SUNAM	S-NPP	75.65937	30.03763	13:54:00	D	12.90
1099	SANGRUR	SUNAM	S-NPP	75.67321	30.06894	13:54:00	D	1.80
1100	SANGRUR	SUNAM	S-NPP	75.73637	30.10551	13:54:00	D	2.80
1101	SANGRUR	SUNAM	S-NPP	75.74088	30.10599	13:54:00	D	2.80
1102	SANGRUR	SUNAM	S-NPP	75.70890	30.10690	13:54:00	D	4.40
1103	SANGRUR	SUNAM	S-NPP	75.71338	30.10737	13:54:00	D	4.40
1104	SANGRUR	SUNAM	S-NPP	75.70834	30.11112	13:54:00	D	4.40
1105	SANGRUR	SUNAM	S-NPP	75.71281	30.11160	13:54:00	D	4.40
1106	SANGRUR	SUNAM	AQUA-1	75.90741	30.11516	13:35:00	D	17.90
1107	SANGRUR	SUNAM	AQUA-1	76.06225	30.15768	13:35:00	D	9.41
1108	TARN TARAN	KHADOOR SAHIB	S-NPP	74.93997	31.26009	13:54:00	D	4.60
1109	TARN TARAN	KHADOOR SAHIB	S-NPP	74.95857	31.31199	13:54:00	D	4.00
1110	TARN TARAN	KHADOOR SAHIB	S-NPP	74.95316	31.31974	13:54:00	D	10.10
1111	TARN TARAN	KHADOOR SAHIB	S-NPP	75.06829	31.33634	13:54:00	D	3.40
1112	TARN TARAN	KHADOOR SAHIB	S-NPP	75.06837	31.33810	13:54:00	D	3.80
1113	TARN TARAN	KHADOOR SAHIB	S-NPP	74.79660	31.33915	13:54:00	D	3.20
1114	TARN TARAN	PATTI	AQUA-1	74.58583	31.12876	13:35:00	D	8.52
1115	TARN TARAN	PATTI	S-NPP	74.53180	31.13378	13:54:00	D	7.90
1116	TARN TARAN	PATTI	S-NPP	74.57341	31.14241	13:54:00	D	3.50
1117	TARN TARAN	PATTI	AQUA-1	74.53540	31.14480	13:35:00	D	26.01

1118	TARN TARAN	PATTI	S-NPP	74.58883	31.15632	13:54:00	D	3.20
1119	TARN TARAN	PATTI	S-NPP	74.59519	31.16925	13:54:00	D	1.50
1120	TARN TARAN	PATTI	AQUA-1	74.78023	31.18266	13:35:00	D	14.01
1121	TARN TARAN	PATTI	AQUA-1	74.55514	31.19164	13:35:00	D	16.82
1122	TARN TARAN	PATTI	AQUA-1	74.62846	31.20811	13:35:00	D	14.26
1123	TARN TARAN	PATTI	S-NPP	74.62722	31.23501	13:54:00	D	6.70
1124	TARN TARAN	PATTI	S-NPP	74.82633	31.24810	13:54:00	D	3.70
1125	TARN TARAN	PATTI	S-NPP	74.80750	31.29150	13:54:00	D	3.10
1126	TARN TARAN	PATTI	S-NPP	74.87022	31.33029	13:54:00	D	2.20
1127	TARN TARAN	PATTI	S-NPP	74.88654	31.33613	13:54:00	D	1.70
1128	TARN TARAN	PATTI	S-NPP	74.75738	31.34736	13:54:00	D	4.00
1129	TARN TARAN	PATTI	S-NPP	74.61271	31.36461	13:54:00	D	5.20
1130	TARN TARAN	PATTI	S-NPP	74.59116	31.37042	13:54:00	D	1.40
1131	TARN TARAN	PATTI	S-NPP	74.60399	31.39635	13:54:00	D	3.50
1132	TARN TARAN	PATTI	S-NPP	74.60526	31.39733	13:54:00	D	11.00

Details of residue burning events in Haryana on 17-Nov-2018

Event S. No.	District	Tehsil/Block	Satellite	Longitude	Latitude	Time (IST)	Day/Night	Fire Power (W/m²)
1	FARIDABAD	PALWAL	S-NPP	77.46030	28.19856	02:36:00	N	0.90
2	FATEHABAD	FATEHABAD	S-NPP	75.45164	29.49072	13:54:00	D	4.50
3	FATEHABAD	FATEHABAD	S-NPP	75.27850	29.51373	13:54:00	D	2.40
4	FATEHABAD	FATEHABAD	S-NPP	75.48708	29.51546	13:54:00	D	6.10
5	FATEHABAD	FATEHABAD	S-NPP	75.49133	29.51591	13:54:00	D	22.20
6	FATEHABAD	FATEHABAD	S-NPP	75.40322	29.53153	13:54:00	D	4.50
7	FATEHABAD	FATEHABAD	S-NPP	75.33447	29.53650	13:54:00	D	2.80
8	FATEHABAD	FATEHABAD	S-NPP	75.30058	29.53691	13:54:00	D	2.80
9	FATEHABAD	FATEHABAD	S-NPP	75.50130	29.53799	13:54:00	D	2.50
10	FATEHABAD	FATEHABAD	S-NPP	75.33391	29.54060	13:54:00	D	21.50
11	FATEHABAD	FATEHABAD	S-NPP	75.30833	29.54193	13:54:00	D	1.20
12	FATEHABAD	FATEHABAD	S-NPP	75.30428	29.54464	13:54:00	D	2.50
13	FATEHABAD	FATEHABAD	S-NPP	75.30846	29.54508	13:54:00	D	3.30
14	FATEHABAD	FATEHABAD	S-NPP	75.30778	29.54603	13:54:00	D	2.70
15	FATEHABAD	FATEHABAD	AQUA-1	75.32762	29.54772	13:35:00	D	11.96
16	FATEHABAD	FATEHABAD	S-NPP	75.32401	29.55502	13:54:00	D	2.20
17	FATEHABAD	FATEHABAD	AQUA-1	75.51520	29.55521	13:35:00	D	16.83
18	FATEHABAD	FATEHABAD	AQUA-1	75.69800	29.55581	13:35:00	D	14.30
19	FATEHABAD	FATEHABAD	AQUA-1	75.61922	29.56120	13:35:00	D	6.43
20	FATEHABAD	FATEHABAD	AQUA-1	75.46745	29.56719	13:35:00	D	7.48
21	FATEHABAD	FATEHABAD	S-NPP	75.60967	29.57504	13:54:00	D	8.50
22	FATEHABAD	FATEHABAD	S-NPP	75.31701	29.57508	13:54:00	D	6.50
23	FATEHABAD	FATEHABAD	S-NPP	75.60605	29.57585	13:54:00	D	7.20
24	FATEHABAD	FATEHABAD	S-NPP	75.38044	29.57763	13:54:00	D	15.80
25	FATEHABAD	FATEHABAD	S-NPP	75.44444	29.58017	13:54:00	D	3.80
26	FATEHABAD	FATEHABAD	S-NPP	75.54388	29.58212	13:54:00	D	4.50
27	FATEHABAD	FATEHABAD	S-NPP	75.33678	29.58551	13:54:00	D	7.50
28	FATEHABAD	FATEHABAD	S-NPP	75.34096	29.58595	13:54:00	D	7.50

29	FATEHABAD	FATEHABAD	AQUA-1	75.31227	29.59264	13:35:00	D	9.43
30	FATEHABAD	FATEHABAD	S-NPP	75.33565	29.59372	13:54:00	D	8.00
31	FATEHABAD	FATEHABAD	S-NPP	75.65659	29.59373	13:54:00	D	7.30
32	FATEHABAD	FATEHABAD	S-NPP	75.70040	29.59822	13:54:00	D	1.60
33	FATEHABAD	FATEHABAD	S-NPP	75.30526	29.59878	13:54:00	D	6.90
34	FATEHABAD	FATEHABAD	S-NPP	75.35128	29.60373	13:54:00	D	5.40
35	FATEHABAD	FATEHABAD	S-NPP	75.32559	29.60513	13:54:00	D	7.00
36	FATEHABAD	FATEHABAD	AQUA-1	75.74200	29.60611	13:35:00	D	5.74
37	FATEHABAD	FATEHABAD	S-NPP	75.35072	29.60784	13:54:00	D	2.90
38	FATEHABAD	FATEHABAD	AQUA-1	75.68573	29.61061	13:35:00	D	11.81
39	FATEHABAD	FATEHABAD	S-NPP	75.74722	29.61580	13:54:00	D	6.60
40	FATEHABAD	FATEHABAD	S-NPP	75.31969	29.61698	13:54:00	D	41.70
41	FATEHABAD	FATEHABAD	S-NPP	75.71024	29.62476	13:54:00	D	5.00
42	FATEHABAD	FATEHABAD	S-NPP	75.50648	29.63293	13:54:00	D	7.40
43	FATEHABAD	FATEHABAD	S-NPP	75.51077	29.63339	13:54:00	D	9.40
44	FATEHABAD	FATEHABAD	AQUA-1	75.35491	29.65402	13:35:00	D	9.12
45	FATEHABAD	RATIA	AQUA-1	75.53318	29.58978	13:35:00	D	10.64
46	FATEHABAD	RATIA	S-NPP	75.59512	29.59164	13:54:00	D	4.00
47	FATEHABAD	RATIA	AQUA-1	75.62434	29.60162	13:35:00	D	8.22
48	FATEHABAD	RATIA	S-NPP	75.46600	29.61180	13:54:00	D	14.80
49	FATEHABAD	RATIA	S-NPP	75.60041	29.61756	13:54:00	D	3.50
50	FATEHABAD	RATIA	AQUA-1	75.57318	29.61959	13:35:00	D	9.59
51	FATEHABAD	RATIA	S-NPP	75.49306	29.63570	13:54:00	D	14.10
52	FATEHABAD	RATIA	AQUA-1	75.55783	29.64654	13:35:00	D	11.42
53	FATEHABAD	RATIA	S-NPP	75.51767	29.64676	13:54:00	D	5.10
54	FATEHABAD	RATIA	S-NPP	75.58234	29.65371	13:54:00	D	4.20
55	FATEHABAD	RATIA	S-NPP	75.55584	29.65509	13:54:00	D	5.40
56	FATEHABAD	RATIA	S-NPP	75.55096	29.65878	13:54:00	D	5.40
57	FATEHABAD	RATIA	AQUA-1	75.50838	29.67498	13:35:00	D	10.46
58	FATEHABAD	RATIA	S-NPP	75.60992	29.67785	13:54:00	D	5.00
59	FATEHABAD	RATIA	S-NPP	75.37573	29.68367	13:54:00	D	3.30

60	FATEHABAD	RATIA	S-NPP	75.54760	29.68375	13:54:00	D	21.60
61	FATEHABAD	RATIA	S-NPP	75.54892	29.68489	13:54:00	D	20.20
62	FATEHABAD	RATIA	S-NPP	75.43086	29.68945	13:54:00	D	7.80
63	FATEHABAD	RATIA	S-NPP	75.46070	29.69258	13:54:00	D	3.30
64	FATEHABAD	RATIA	S-NPP	75.62222	29.69664	13:54:00	D	1.80
65	FATEHABAD	RATIA	S-NPP	75.42548	29.69727	13:54:00	D	5.20
66	FATEHABAD	RATIA	S-NPP	75.52937	29.69974	13:54:00	D	15.00
67	FATEHABAD	RATIA	S-NPP	75.37771	29.70060	13:54:00	D	6.40
68	FATEHABAD	RATIA	S-NPP	75.37714	29.70472	13:54:00	D	6.40
69	FATEHABAD	RATIA	S-NPP	75.46326	29.70545	13:54:00	D	2.10
70	FATEHABAD	RATIA	S-NPP	75.61614	29.70873	13:54:00	D	4.10
71	FATEHABAD	RATIA	S-NPP	75.46270	29.70959	13:54:00	D	3.60
72	FATEHABAD	RATIA	S-NPP	75.44931	29.71238	13:54:00	D	3.40
73	FATEHABAD	RATIA	AQUA-1	75.60387	29.71241	13:35:00	D	8.25
74	FATEHABAD	RATIA	S-NPP	75.52281	29.71592	13:54:00	D	4.10
75	FATEHABAD	RATIA	AQUA-1	75.50497	29.71990	13:35:00	D	23.78
76	FATEHABAD	RATIA	S-NPP	75.60573	29.72037	13:54:00	D	17.50
77	FATEHABAD	RATIA	S-NPP	75.61009	29.72082	13:54:00	D	17.50
78	FATEHABAD	RATIA	S-NPP	75.44279	29.72848	13:54:00	D	2.40
79	FATEHABAD	RATIA	S-NPP	75.50276	29.73487	13:54:00	D	9.90
80	FATEHABAD	RATIA	S-NPP	75.47645	29.73628	13:54:00	D	6.80
81	FATEHABAD	RATIA	S-NPP	75.47104	29.74411	13:54:00	D	3.40
82	FATEHABAD	RATIA	AQUA-1	75.61922	29.74535	13:35:00	D	8.48
83	FATEHABAD	RATIA	S-NPP	75.65865	29.75562	13:54:00	D	9.50
84	FATEHABAD	RATIA	S-NPP	75.66305	29.75609	13:54:00	D	12.40
85	FATEHABAD	RATIA	S-NPP	75.50312	29.76441	13:54:00	D	2.10
86	FATEHABAD	RATIA	S-NPP	75.54630	29.76908	13:54:00	D	11.60
87	FATEHABAD	RATIA	AQUA-1	75.51861	29.77080	13:35:00	D	8.19
88	FATEHABAD	RATIA	S-NPP	75.45741	29.78048	13:54:00	D	5.60
89	FATEHABAD	RATIA	S-NPP	75.45787	29.78242	13:54:00	D	5.00
90	FATEHABAD	RATIA	S-NPP	75.49601	29.78471	13:54:00	D	3.70

91	FATEHABAD	TOHANA	S-NPP	75.87703	29.58237	13:54:00	D	6.70
92	FATEHABAD	TOHANA	S-NPP	75.89578	29.62235	13:54:00	D	2.70
93	FATEHABAD	TOHANA	AQUA-1	75.94152	29.63306	13:35:00	D	6.36
94	FATEHABAD	TOHANA	AQUA-1	75.69084	29.63755	13:35:00	D	7.60
95	FATEHABAD	TOHANA	S-NPP	75.69862	29.64484	13:54:00	D	5.20
96	FATEHABAD	TOHANA	S-NPP	75.84573	29.65591	13:54:00	D	4.90
97	FATEHABAD	TOHANA	AQUA-1	75.89547	29.66450	13:35:00	D	6.51
98	FATEHABAD	TOHANA	S-NPP	75.84406	29.66862	13:54:00	D	2.30
99	FATEHABAD	TOHANA	S-NPP	75.75600	29.73166	13:54:00	D	1.70
100	FATEHABAD	TOHANA	S-NPP	75.76373	29.77523	13:54:00	D	3.90
101	FATEHABAD	TOHANA	AQUA-1	75.74200	29.78129	13:35:00	D	6.62
102	FATEHABAD	TOHANA	AQUA-1	75.79316	29.79027	13:35:00	D	29.33
103	HISAR	HANSI	AQUA-1	76.22288	29.12551	13:35:00	D	11.28
104	HISAR	HANSI	S-NPP	76.15156	29.13249	13:54:00	D	3.70
105	HISAR	HANSI	S-NPP	76.01228	29.19492	13:54:00	D	4.00
106	HISAR	HANSI	S-NPP	76.01431	29.19605	13:54:00	D	3.40
107	HISAR	HANSI	AQUA-1	75.90571	29.26475	13:35:00	D	9.10
108	HISAR	HANSI	S-NPP	75.89799	29.26904	13:54:00	D	9.70
109	HISAR	HISAR	S-NPP	75.73537	29.39279	13:54:00	D	5.90
110	HISAR	HISAR	S-NPP	75.92002	29.45895	13:54:00	D	3.50
111	HISAR	HISAR	S-NPP	75.87354	29.46696	13:54:00	D	1.90
112	HISAR	NARNAUND	S-NPP	76.11498	29.12877	13:54:00	D	3.00
113	HISAR	NARNAUND	AQUA-1	76.12057	29.19738	13:35:00	D	12.07
114	HISAR	NARNAUND	S-NPP	76.15408	29.20476	13:54:00	D	3.50
115	HISAR	NARNAUND	S-NPP	76.15587	29.20683	13:54:00	D	5.40
116	HISAR	NARNAUND	S-NPP	76.16911	29.21258	13:54:00	D	3.90
117	HISAR	NARNAUND	S-NPP	76.17140	29.21517	13:54:00	D	5.20
118	HISAR	NARNAUND	AQUA-1	76.11034	29.22433	13:35:00	D	9.68
119	HISAR	NARNAUND	S-NPP	76.16454	29.23190	13:54:00	D	3.50
120	HISAR	NARNAUND	S-NPP	76.13507	29.27889	02:36:00	N	2.90
121	HISAR	NARNAUND	S-NPP	76.13634	29.28334	02:36:00	N	0.70

122	JHAJJAR	BAHADURGARH	S-NPP	76.81307	28.71588	13:54:00	D	7.80
123	JIND	JIND	S-NPP	76.25876	29.20895	13:54:00	D	3.20
124	JIND	JIND	S-NPP	76.42870	29.32459	13:54:00	D	2.10
125	JIND	JIND	S-NPP	76.33188	29.32781	13:54:00	D	2.90
126	JIND	JIND	AQUA-1	76.37465	29.37854	13:35:00	D	11.62
127	JIND	JIND	AQUA-1	76.41728	29.38603	13:35:00	D	5.16
128	JIND	JIND	S-NPP	76.36681	29.40245	13:54:00	D	6.00
129	JIND	JIND	S-NPP	76.33564	29.47076	13:54:00	D	7.80
130	JIND	JIND	S-NPP	76.40203	29.48177	13:54:00	D	6.70
131	JIND	JIND	S-NPP	76.40685	29.48224	13:54:00	D	6.70
132	JIND	JIND	S-NPP	76.34246	29.57767	13:54:00	D	2.60
133	JIND	NARWANA	S-NPP	76.05116	29.51818	13:54:00	D	3.10
134	JIND	NARWANA	S-NPP	76.15585	29.54162	13:54:00	D	3.30
135	JIND	NARWANA	S-NPP	76.13555	29.55268	13:54:00	D	4.30
136	JIND	NARWANA	S-NPP	76.18407	29.57941	13:54:00	D	9.50
137	JIND	NARWANA	S-NPP	76.14149	29.57946	13:54:00	D	8.60
138	JIND	NARWANA	AQUA-1	76.30474	29.58366	13:35:00	D	11.09
139	JIND	NARWANA	S-NPP	76.08420	29.58667	13:54:00	D	5.90
140	JIND	NARWANA	S-NPP	75.95589	29.65432	13:54:00	D	4.30
141	JIND	NARWANA	S-NPP	75.96043	29.65479	13:54:00	D	4.30
142	JIND	NARWANA	S-NPP	76.09843	29.66879	13:54:00	D	1.80
143	JIND	NARWANA	S-NPP	75.99821	29.68463	13:54:00	D	2.70
144	JIND	NARWANA	AQUA-1	76.01143	29.68546	13:35:00	D	22.30
145	JIND	NARWANA	S-NPP	76.05229	29.69890	13:54:00	D	2.80
146	JIND	NARWANA	S-NPP	76.09808	29.70799	13:54:00	D	7.00
147	JIND	NARWANA	S-NPP	75.99487	29.71029	13:54:00	D	3.30
148	JIND	NARWANA	S-NPP	76.04137	29.71081	13:54:00	D	25.70
149	JIND	NARWANA	S-NPP	76.16866	29.71089	13:54:00	D	5.60
150	JIND	NARWANA	S-NPP	75.96230	29.71119	13:54:00	D	5.30
151	JIND	NARWANA	S-NPP	76.10050	29.72568	13:54:00	D	8.30
152	JIND	NARWANA	AQUA-1	76.08987	29.72739	13:35:00	D	8.27

153	JIND	NARWANA	S-NPP	75.99207	29.73167	13:54:00	D	3.80
154	JIND	NARWANA	S-NPP	75.98917	29.73374	13:54:00	D	4.20
155	JIND	NARWANA	AQUA-1	76.05918	29.74086	13:35:00	D	21.69
156	JIND	NARWANA	AQUA-1	76.14103	29.74535	13:35:00	D	11.35
157	JIND	NARWANA	AQUA-1	76.20242	29.77230	13:35:00	D	10.45
158	JIND	NARWANA	S-NPP	76.18179	29.77471	13:54:00	D	4.00
159	JIND	NARWANA	S-NPP	76.18651	29.77518	13:54:00	D	11.10
160	JIND	NARWANA	AQUA-1	76.17889	29.81273	13:35:00	D	98.33
161	JIND	NARWANA	S-NPP	76.21181	29.83921	13:54:00	D	4.10
162	KAITHAL	KAITHAL	AQUA-1	76.39682	29.60162	13:35:00	D	8.09
163	KAITHAL	KAITHAL	S-NPP	76.32312	29.61547	13:54:00	D	2.80
164	KAITHAL	KAITHAL	S-NPP	76.48302	29.62714	13:54:00	D	4.10
165	KAITHAL	KAITHAL	S-NPP	76.21909	29.68970	13:54:00	D	2.80
166	KAITHAL	KAITHAL	AQUA-1	76.24335	29.69145	13:35:00	D	22.16
167	KAITHAL	KAITHAL	S-NPP	76.23746	29.69594	13:54:00	D	3.30
168	KAITHAL	KAITHAL	S-NPP	76.20990	29.72388	13:54:00	D	5.70
169	KAITHAL	KAITHAL	S-NPP	76.51743	29.76408	13:54:00	D	9.00
170	KAITHAL	KAITHAL	S-NPP	76.24618	29.83394	13:54:00	D	8.00
171	KAITHAL	KAITHAL	S-NPP	76.25095	29.83442	13:54:00	D	8.00
172	KAITHAL	KAITHAL	S-NPP	76.25040	29.83877	13:54:00	D	8.00
173	KAITHAL	KAITHAL	S-NPP	76.50424	29.89138	13:54:00	D	1.90
174	KARNAL	ASSANDH	S-NPP	76.58425	29.48178	13:54:00	D	2.20
175	PANIPAT	PANIPAT	S-NPP	76.85645	29.47396	02:36:00	N	1.80
176	PANIPAT	SAMALKHA	AQUA-1	76.99025	29.23331	13:35:00	D	15.66
177	ROHTAK	MAHAM	S-NPP	76.41991	28.93335	13:54:00	D	5.40
178	ROHTAK	MAHAM	S-NPP	76.40991	28.93675	13:54:00	D	2.30
179	ROHTAK	MAHAM	S-NPP	76.41656	28.95942	13:54:00	D	10.80
180	ROHTAK	MAHAM	S-NPP	76.42128	28.95990	13:54:00	D	8.60
181	ROHTAK	MAHAM	S-NPP	76.23954	28.97627	13:54:00	D	2.10
182	SIRSA	DABWALI	S-NPP	74.93504	29.90752	13:54:00	D	3.70
183	SIRSA	ELLENABAD	AQUA-1	74.80922	29.43693	13:35:00	D	7.79

184	SIRSA	ELLENABAD	S-NPP	74.88107	29.44925	13:54:00	D	10.70
185	SIRSA	ELLENABAD	S-NPP	74.84519	29.44930	13:54:00	D	5.60
186	SIRSA	ELLENABAD	S-NPP	74.87460	29.45259	13:54:00	D	10.70
187	SIRSA	ELLENABAD	AQUA-1	74.77000	29.45340	13:35:00	D	6.27
188	SIRSA	ELLENABAD	S-NPP	74.79610	29.45993	13:54:00	D	4.40
189	SIRSA	ELLENABAD	S-NPP	74.62910	29.46418	13:54:00	D	11.60
190	SIRSA	ELLENABAD	S-NPP	74.62531	29.46446	13:54:00	D	15.30
191	SIRSA	ELLENABAD	S-NPP	74.82477	29.46721	13:54:00	D	9.20
192	SIRSA	ELLENABAD	S-NPP	74.82421	29.47119	13:54:00	D	9.20
193	SIRSA	ELLENABAD	AQUA-1	74.70861	29.47137	13:35:00	D	18.89
194	SIRSA	ELLENABAD	S-NPP	74.68018	29.47378	13:54:00	D	9.20
195	SIRSA	ELLENABAD	AQUA-1	74.72396	29.49382	13:35:00	D	9.47
196	SIRSA	ELLENABAD	S-NPP	74.71143	29.50129	13:54:00	D	4.70
197	SIRSA	ELLENABAD	AQUA-1	74.65643	29.51988	13:35:00	D	14.20
198	SIRSA	RANIA	S-NPP	74.84123	29.47717	13:54:00	D	13.30
199	SIRSA	RANIA	S-NPP	74.82976	29.50218	13:54:00	D	14.40
200	SIRSA	RANIA	S-NPP	74.74566	29.50909	13:54:00	D	13.30
201	SIRSA	RANIA	AQUA-1	74.76830	29.51029	13:35:00	D	17.16
202	SIRSA	RANIA	S-NPP	74.90208	29.51250	13:54:00	D	9.20
203	SIRSA	RANIA	S-NPP	74.89941	29.51786	13:54:00	D	9.70
204	SIRSA	RANIA	S-NPP	74.89178	29.52920	13:54:00	D	8.70
205	SIRSA	RANIA	S-NPP	74.67165	29.53298	13:54:00	D	5.40
206	SIRSA	RANIA	S-NPP	74.89120	29.53320	13:54:00	D	8.10
207	SIRSA	RANIA	AQUA-1	74.79996	29.53425	13:35:00	D	32.52
208	SIRSA	RANIA	AQUA-1	74.76147	29.53724	13:35:00	D	22.27
209	SIRSA	RANIA	AQUA-1	74.61482	29.54024	13:35:00	D	13.72
210	SIRSA	RANIA	S-NPP	74.75272	29.54210	13:54:00	D	6.40
211	SIRSA	RANIA	S-NPP	74.79417	29.54270	13:54:00	D	11.40
212	SIRSA	RANIA	S-NPP	74.62341	29.54353	13:54:00	D	5.80
213	SIRSA	RANIA	S-NPP	74.78774	29.54603	13:54:00	D	4.60
214	SIRSA	RANIA	S-NPP	74.62283	29.54747	13:54:00	D	5.80

215	SIRSA	RANIA	S-NPP	74.68091	29.55008	13:54:00	D	27.90
216	SIRSA	RANIA	S-NPP	74.61082	29.55009	13:54:00	D	5.90
217	SIRSA	RANIA	S-NPP	74.72197	29.55071	13:54:00	D	7.70
218	SIRSA	RANIA	S-NPP	74.71503	29.55797	13:54:00	D	4.90
219	SIRSA	RANIA	S-NPP	74.72083	29.55863	13:54:00	D	5.30
220	SIRSA	RANIA	S-NPP	74.90443	29.56716	13:54:00	D	3.70
221	SIRSA	RANIA	S-NPP	74.65501	29.56718	13:54:00	D	37.90
222	SIRSA	RANIA	S-NPP	74.60226	29.56910	13:54:00	D	17.70
223	SIRSA	RANIA	S-NPP	74.65443	29.57112	13:54:00	D	3.50
224	SIRSA	RANIA	S-NPP	74.65841	29.57411	13:54:00	D	8.60
225	SIRSA	RANIA	S-NPP	74.65386	29.57506	13:54:00	D	3.50
226	SIRSA	RANIA	S-NPP	74.72377	29.57909	13:54:00	D	5.00
227	SIRSA	RANIA	S-NPP	74.60626	29.58156	13:54:00	D	3.70
228	SIRSA	RANIA	S-NPP	74.58092	29.58560	13:54:00	D	8.70
229	SIRSA	RANIA	S-NPP	74.66708	29.59511	13:54:00	D	2.30
230	SIRSA	SIRSA	AQUA-1	74.90335	29.44981	13:35:00	D	20.65
231	SIRSA	SIRSA	AQUA-1	74.95587	29.45041	13:35:00	D	7.31
232	SIRSA	SIRSA	S-NPP	74.89877	29.45123	13:54:00	D	4.00
233	SIRSA	SIRSA	S-NPP	74.97356	29.45547	13:54:00	D	2.70
234	SIRSA	SIRSA	S-NPP	74.92074	29.46587	13:54:00	D	7.40
235	SIRSA	SIRSA	AQUA-1	75.02681	29.48215	13:35:00	D	10.77
236	SIRSA	SIRSA	S-NPP	74.97357	29.48400	13:54:00	D	1.80
237	SIRSA	SIRSA	AQUA-1	74.98486	29.48484	13:35:00	D	7.47
238	SIRSA	SIRSA	S-NPP	74.97698	29.48845	13:54:00	D	4.40
239	SIRSA	SIRSA	S-NPP	74.93994	29.50056	13:54:00	D	3.70
240	SIRSA	SIRSA	S-NPP	74.93790	29.50170	13:54:00	D	3.20
241	SIRSA	SIRSA	S-NPP	74.95481	29.50225	13:54:00	D	6.20
242	SIRSA	SIRSA	S-NPP	74.92749	29.50322	13:54:00	D	4.30
243	SIRSA	SIRSA	S-NPP	74.92543	29.50443	13:54:00	D	3.70
244	SIRSA	SIRSA	S-NPP	75.24133	29.50964	13:54:00	D	4.90
245	SIRSA	SIRSA	S-NPP	75.24545	29.51009	13:54:00	D	10.90

246	SIRSA	SIRSA	AQUA-1	75.26396	29.51229	13:35:00	D	14.17
247	SIRSA	SIRSA	S-NPP	74.94420	29.51326	13:54:00	D	5.20
248	SIRSA	SIRSA	S-NPP	74.94514	29.51468	13:54:00	D	5.00
249	SIRSA	SIRSA	S-NPP	75.11184	29.51588	13:54:00	D	2.60
250	SIRSA	SIRSA	S-NPP	75.11127	29.51993	13:54:00	D	2.60
251	SIRSA	SIRSA	S-NPP	75.24375	29.52233	13:54:00	D	5.00
252	SIRSA	SIRSA	S-NPP	75.28981	29.52327	13:54:00	D	3.80
253	SIRSA	SIRSA	S-NPP	75.07779	29.52436	13:54:00	D	6.50
254	SIRSA	SIRSA	S-NPP	75.07800	29.52486	13:54:00	D	6.20
255	SIRSA	SIRSA	S-NPP	75.16823	29.52632	13:54:00	D	5.40
256	SIRSA	SIRSA	S-NPP	75.13132	29.52642	13:54:00	D	1.50
257	SIRSA	SIRSA	S-NPP	75.28510	29.52690	13:54:00	D	8.30
258	SIRSA	SIRSA	S-NPP	75.25145	29.52732	13:54:00	D	5.90
259	SIRSA	SIRSA	S-NPP	75.28926	29.52736	13:54:00	D	8.30
260	SIRSA	SIRSA	S-NPP	75.19276	29.52906	13:54:00	D	9.00
261	SIRSA	SIRSA	S-NPP	75.27313	29.52913	02:36:00	N	0.80
262	SIRSA	SIRSA	AQUA-1	74.98998	29.52976	13:35:00	D	26.25
263	SIRSA	SIRSA	S-NPP	74.98272	29.53505	13:54:00	D	8.10
264	SIRSA	SIRSA	S-NPP	74.94057	29.54675	13:54:00	D	3.10
265	SIRSA	SIRSA	AQUA-1	75.25600	29.54772	13:35:00	D	25.28
266	SIRSA	SIRSA	S-NPP	75.29060	29.54827	13:54:00	D	3.20
267	SIRSA	SIRSA	AQUA-1	75.10594	29.54922	13:35:00	D	5.61
268	SIRSA	SIRSA	S-NPP	75.12735	29.55479	13:54:00	D	28.10
269	SIRSA	SIRSA	S-NPP	75.10239	29.55621	13:54:00	D	5.10
270	SIRSA	SIRSA	S-NPP	75.12677	29.55885	13:54:00	D	8.30
271	SIRSA	SIRSA	AQUA-1	75.14686	29.56719	13:35:00	D	10.98
272	SIRSA	SIRSA	S-NPP	75.16706	29.56731	13:54:00	D	4.50
273	SIRSA	SIRSA	S-NPP	74.97304	29.57479	13:54:00	D	12.20
274	SIRSA	SIRSA	S-NPP	75.00906	29.57879	13:54:00	D	1.80
275	SIRSA	SIRSA	S-NPP	75.10303	29.58093	13:54:00	D	5.60
276	SIRSA	SIRSA	S-NPP	74.93547	29.58283	13:54:00	D	4.40

277	SIRSA	SIRSA	AQUA-1	75.11276	29.59863	13:35:00	D	6.16
278	SIRSA	SIRSA	S-NPP	75.04590	29.60745	13:54:00	D	2.80
279	SIRSA	SIRSA	S-NPP	74.99250	29.60964	13:54:00	D	3.70
280	SIRSA	SIRSA	S-NPP	75.03556	29.62268	13:54:00	D	5.70
281	SIRSA	SIRSA	S-NPP	75.03642	29.62294	13:54:00	D	6.00
282	SIRSA	SIRSA	AQUA-1	75.10253	29.63157	13:35:00	D	6.40
283	SIRSA	SIRSA	S-NPP	75.16333	29.66114	13:54:00	D	2.40
284	SIRSA	SIRSA	S-NPP	75.16219	29.66928	13:54:00	D	2.50
285	SIRSA	SIRSA	S-NPP	75.19283	29.68911	13:54:00	D	2.10
286	SIRSA	SIRSA	S-NPP	75.22325	29.74214	13:54:00	D	10.30
287	SIRSA	SIRSA	S-NPP	75.10182	29.83580	13:54:00	D	3.30
288	SIRSA	SIRSA	S-NPP	75.10592	29.83625	13:54:00	D	3.30
289	YAMUNANAGAR	JAGADHRI	S-NPP	77.27414	30.28441	13:54:00	D	2.30

Details of residue burning events in Uttar Pradesh on 17-Nov-2018

Event S. No.	District	Tehsil/Block	Satellite	Longitude	Latitude	Time (IST)	Day/Night	Fire Power (W/m²)
1	ALIGARH	KHAIR	S-NPP	77.53578	28.01064	13:54:00	D	4.40
2	AMBEDKARNAGAR	JALALPUR	S-NPP	82.66942	26.40110	13:54:00	D	7.20
3	AMBEDKARNAGAR	TANDA	S-NPP	82.64292	26.52232	13:54:00	D	2.30
4	AMBEDKARNAGAR	TANDA	S-NPP	82.75559	26.52349	13:54:00	D	2.70
5	AURAIYA	BIDHUNA	S-NPP	79.47567	26.64466	01:00:00	N	3.00
6	AURAIYA	BIDHUNA	S-NPP	79.47581	26.64623	01:00:00	N	0.90
7	BALLIA	BALLIA	S-NPP	83.94341	25.65134	12:12:00	D	1.70
8	BALLIA	RASRA	S-NPP	83.88923	25.91240	12:12:00	D	1.70
9	BALRAMPUR	TULSIPUR	S-NPP	82.68301	27.49277	12:12:00	D	3.40
10	BARABANKI	H AidARGARH	S-NPP	81.43198	26.61760	13:54:00	D	2.80
11	BARABANKI	H AidARGARH	S-NPP	81.43187	26.61769	13:54:00	D	3.00
12	BARABANKI	SIRAULI GAUSPUR	S-NPP	81.47701	26.98845	13:54:00	D	6.30
13	BASTI	BHANPUR	AQUA-1	82.74040	26.89769	13:35:00	D	16.48
14	BASTI	BHANPUR	S-NPP	82.77782	26.92866	12:12:00	D	1.70
15	BASTI	BHANPUR	AQUA-1	82.64320	27.09532	13:35:00	D	24.86
16	BASTI	RUDHAULI	S-NPP	82.83001	26.93534	12:12:00	D	2.80
17	BIJNOR	AFZALGARH	S-NPP	78.69487	29.34212	13:54:00	D	3.20
18	DEORIA	DEORIA	S-NPP	83.81072	26.69622	12:12:00	D	3.20
19	ETAWAH	BHARTHNA	AQUA-1	79.20027	26.78091	13:35:00	D	10.16
20	ETAWAH	ETAWAH	AQUA-1	79.07750	26.72701	13:35:00	D	6.77
21	ETAWAH	ETAWAH	S-NPP	79.11040	26.94967	13:54:00	D	6.60
22	ETAWAH	ETAWAH	S-NPP	79.11208	26.95016	13:54:00	D	4.50
23	GAZIPUR	MUHAMMADBAD	S-NPP	83.91020	25.63094	12:12:00	D	4.50
24	GAZIPUR	MUHAMMADBAD	S-NPP	83.91113	25.63232	12:12:00	D	4.10
25	GHAZIABAD	MODINAGAR	AQUA-1	77.66042	28.79314	13:35:00	D	10.20
26	GORAKHPUR	CHAURI CHAURA	S-NPP	83.61152	26.64254	13:54:00	D	2.70
27	GORAKHPUR	CHAURI CHAURA	S-NPP	83.61291	26.64755	12:12:00	D	2.90

28	GORAKHPUR	CHAURI CHAURA	S-NPP	83.61746	26.64867	12:12:00	D	2.90
29	GORAKHPUR	CHAURI CHAURA	S-NPP	83.61622	26.64900	12:12:00	D	5.80
30	GORAKHPUR	GOLA	S-NPP	83.48252	26.31091	12:12:00	D	1.60
31	GORAKHPUR	GOLA	S-NPP	83.40280	26.32258	12:12:00	D	3.90
32	GORAKHPUR	GORAKHPUR	S-NPP	83.54953	26.74731	12:12:00	D	4.10
33	GORAKHPUR	GORAKHPUR	S-NPP	83.54851	26.74871	12:12:00	D	3.80
34	GORAKHPUR	SAHJANWA	S-NPP	83.20103	26.75957	01:00:00	N	0.90
35	KHERI	GOLA	S-NPP	80.60044	28.08557	12:12:00	D	3.60
36	KHERI	GOLA	S-NPP	80.59712	28.08912	12:12:00	D	2.10
37	KHERI	GOLA	S-NPP	80.31724	28.20630	13:54:00	D	2.40
38	KUSHINAGAR	HATA	S-NPP	83.66754	26.71000	12:12:00	D	4.20
39	KUSHINAGAR	HATA	S-NPP	83.60632	26.76869	12:12:00	D	2.10
40	KUSHINAGAR	HATA	S-NPP	83.60540	26.90792	12:12:00	D	2.70
41	MAHAMAYANAGAR	SASNI	AQUA-1	78.23680	27.64479	13:35:00	D	10.54
42	MAHARAJGANJ	MAHARAJGANJ	S-NPP	83.54992	26.94844	12:12:00	D	4.30
43	MAHARAJGANJ	MAHARAJGANJ	S-NPP	83.54922	26.94937	12:12:00	D	3.80
44	MAHARAJGANJ	MAHARAJGANJ	S-NPP	83.59801	26.96648	12:12:00	D	4.60
45	MAHARAJGANJ	MAHARAJGANJ	S-NPP	83.59747	26.96710	12:12:00	D	5.50
46	MAHARAJGANJ	MAHARAJGANJ	S-NPP	83.62116	26.99343	13:54:00	D	6.30
47	MAHARAJGANJ	MAHARAJGANJ	S-NPP	83.54995	26.99747	12:12:00	D	4.40
48	MAHARAJGANJ	MAHARAJGANJ	S-NPP	83.42641	27.01647	12:12:00	D	7.20
49	MAHARAJGANJ	MAHARAJGANJ	S-NPP	83.57201	27.02122	12:12:00	D	5.50
50	MAHARAJGANJ	MAHARAJGANJ	S-NPP	83.45129	27.02793	12:12:00	D	3.00
51	MAHARAJGANJ	MAHARAJGANJ	S-NPP	83.45233	27.02892	12:12:00	D	3.80
52	MAHARAJGANJ	MAHARAJGANJ	S-NPP	83.48617	27.04277	12:12:00	D	6.30
53	MAHARAJGANJ	MAHARAJGANJ	S-NPP	83.48728	27.04352	12:12:00	D	7.60
54	MAHARAJGANJ	MAHARAJGANJ	S-NPP	83.59403	27.04991	13:54:00	D	12.00
55	MAHARAJGANJ	MAHARAJGANJ	S-NPP	83.59261	27.05112	13:54:00	D	11.60
56	MAHARAJGANJ	MAHARAJGANJ	S-NPP	83.51007	27.06098	12:12:00	D	3.60
57	MAHARAJGANJ	MAHARAJGANJ	S-NPP	83.63719	27.06143	12:12:00	D	2.60
58	MAHARAJGANJ	MAHARAJGANJ	S-NPP	83.51123	27.06155	12:12:00	D	6.00

59	MAHARAJGANJ	MAHARAJGANJ	S-NPP	83.49243	27.08730	12:12:00	D	4.20
60	MAHARAJGANJ	MAHARAJGANJ	S-NPP	83.50417	27.10405	13:54:00	D	6.50
61	MAHARAJGANJ	MAHARAJGANJ	S-NPP	83.59189	27.11172	12:12:00	D	13.00
62	MAHARAJGANJ	MAHARAJGANJ	S-NPP	83.58355	27.11527	13:54:00	D	10.30
63	MAHARAJGANJ	MAHARAJGANJ	S-NPP	83.60368	27.12069	12:12:00	D	4.40
64	MAHARAJGANJ	MAHARAJGANJ	S-NPP	83.63805	27.13828	13:54:00	D	3.40
65	MAHARAJGANJ	MAHARAJGANJ	S-NPP	83.61862	27.16690	12:12:00	D	2.30
66	MAHARAJGANJ	MAHARAJGANJ	S-NPP	83.50713	27.19483	13:54:00	D	6.20
67	MAHARAJGANJ	MAHARAJGANJ	S-NPP	83.52884	27.21158	12:12:00	D	2.20
68	MAHARAJGANJ	MAHARAJGANJ	S-NPP	83.56928	27.22149	12:12:00	D	2.10
69	MAHARAJGANJ	MAHARAJGANJ	S-NPP	83.55350	27.24199	12:12:00	D	4.70
70	MAHARAJGANJ	NAUTANWA	S-NPP	83.38367	27.20667	12:12:00	D	2.50
71	MAHARAJGANJ	NAUTANWA	S-NPP	83.41865	27.29417	13:54:00	D	3.80
72	MAHARAJGANJ	NAUTANWA	S-NPP	83.44491	27.30105	12:12:00	D	5.20
73	MAHARAJGANJ	NAUTANWA	S-NPP	83.44944	27.30217	12:12:00	D	5.20
74	MAHARAJGANJ	NAUTANWA	S-NPP	83.44143	27.37891	12:12:00	D	1.90
75	MAHARAJGANJ	NICHLAUL	S-NPP	83.70988	27.11637	12:12:00	D	2.90
76	MAHARAJGANJ	NICHLAUL	S-NPP	83.70568	27.19396	12:12:00	D	2.40
77	MAHARAJGANJ	NICHLAUL	S-NPP	83.69800	27.23220	13:54:00	D	5.80
78	MAHARAJGANJ	PHARENDA	S-NPP	83.32234	27.28318	12:12:00	D	2.50
79	PILHIBHIT	PURANPUR	S-NPP	80.16419	28.34981	13:54:00	D	1.90
80	PILHIBHIT	PURANPUR	S-NPP	80.19560	28.39619	13:54:00	D	3.40
81	PILHIBHIT	PURANPUR	S-NPP	80.19453	28.39668	13:54:00	D	4.10
82	PILHIBHIT	PURANPUR	S-NPP	80.23869	28.40513	13:54:00	D	3.20
83	PILHIBHIT	PURANPUR	S-NPP	80.23769	28.40533	13:54:00	D	2.30
84	PILHIBHIT	PURANPUR	S-NPP	80.06870	28.47477	13:54:00	D	2.60
85	PILHIBHIT	PURANPUR	S-NPP	80.01508	28.58699	13:54:00	D	3.30
86	RAIBEARELI	TILOI	S-NPP	81.53788	26.47386	13:54:00	D	5.60
87	SANTKABIRNAGAR	MEHDAWAL	S-NPP	83.03049	27.00942	13:54:00	D	5.20
88	SHAHJAHANPUR	PUWANYA	AQUA-1	80.21832	28.07449	13:35:00	D	14.30
89	SHAHJAHANPUR	PUWANYA	S-NPP	80.17345	28.15641	13:54:00	D	2.50

90	SHAHJAHANPUR	PUWANYA	S-NPP	80.17499	28.27801	13:54:00	D	3.00
91	SHAHJAHANPUR	PUWANYA	S-NPP	80.13288	28.30749	13:54:00	D	4.50
92	SHAHJAHANPUR	PUWANYA	S-NPP	80.13251	28.30905	13:54:00	D	4.40
93	SHAHJAHANPUR	SHAHJAHANPUR	S-NPP	79.83589	27.68076	13:54:00	D	3.20
94	SHARANPUR	SHARANPUR	S-NPP	77.63242	30.07948	13:54:00	D	3.40
95	SIDDHARTHANAGAR	BANSI	S-NPP	82.81293	27.24822	13:54:00	D	4.80
96	SIDDHARTHANAGAR	BANSI	S-NPP	82.81532	27.25186	13:54:00	D	5.60
97	SIDDHARTHANAGAR	DOMARIYAGANJ	S-NPP	82.53696	27.24811	12:12:00	D	6.10
98	SIDDHARTHANAGAR	DOMARIYAGANJ	S-NPP	82.53651	27.24833	12:12:00	D	4.60
99	SIDDHARTHANAGAR	ITWA	S-NPP	82.69233	27.36729	13:54:00	D	4.60
100	SIDDHARTHANAGAR	SHOHRATGARH	S-NPP	83.06374	27.36983	12:12:00	D	1.30
101	SITAPUR	SIDHAULI	S-NPP	80.88699	27.16531	13:54:00	D	2.10
102	SITAPUR	SIDHAULI	S-NPP	80.88648	27.17093	13:54:00	D	4.20
103	SONBHADRA	DUDHI	S-NPP	82.72169	24.12950	01:00:00	N	0.50

The study used images received from following Satellites at IARI Satellite Ground Station

S. No.	Satellite Name	Sensor	Resolution (meter)	Day / Night Passes
1.	Suomi NPP	VIIRS	375 / 1000	Both
2.	Terra	MODIS	1000	Both
3.	Aqua	MODIS	1000	Both
4.	NOAA – 18	AVHRR	1000	Night
5.	NOAA – 19	AVHRR	1000	Night
6.	Metop - 1	AVHRR	1000	Night
7.	Metop - 2	AVHRR	1000	Night

Study Team

ICAR – HQ	Dr K. Alagusundaram	DDG (Agril. Engg.)	ddgengg@icar.org.in
	Dr S. Bhaskar	ADG (NRM)	adgagroandaf@gmail.com
ICAR - IARI	Dr V.K. Sehgal	Professor & Nodal Scientist	iaricreams@gmail.com vk.sehgal@icar.gov.in
	Dr Rajkumar Dhakar	Scientist	rajdhakar.iari@gmail.com
	Shri Rakeshwar Verma	Chief Technical Officer	rakeshwar.verma@icar.gov.in
	Mr Aakash Chhabra	SRF (NICRA)	aakash.chhabra7489@gmail.com
ICAR - ATARI	Dr Rajbir Singh	Director ATARI (Zone-1)	rajbirsingh.zpd@gmail.com
	Dr U.S. Gautam	Director ATARI (Zone-IV)	zpdicarkanpur@gmail.com
ICAR - IASRI	Dr RajenderParsad	Principal Scientist	rajender.parsad@icar.gov.in

GIS Maps of fire events can be visualized online on ICAR KRISHI & CREAMS Geoportal

websites:<http://geoportal.icar.gov.in:8080/geoexplorer/composer/>

<http://creams.iari.res.in:8080/geoexplorer/composer/>
