

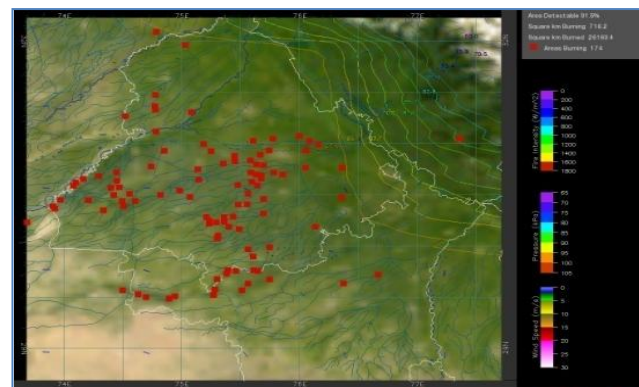
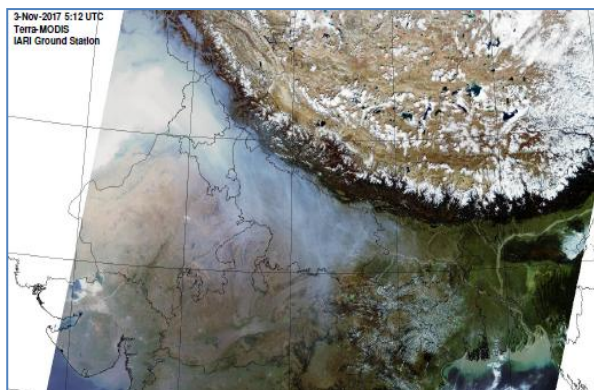


**Bulletin
No. 45**

**Events Date:
14-Nov-2018**

**Issued on:
15-Nov-2018**

MONITORING PADDY RESIDUE BURNING IN NORTH INDIA USING SATELLITE REMOTE SENSING DURING 2018



Prepared by:

**Consortium for Research on Agroecosystem Monitoring and Modeling from Space (CREAMS) Laboratory,
Division of Agricultural Physics, ICAR – Indian Agricultural Research Institute, New Delhi – 110012**

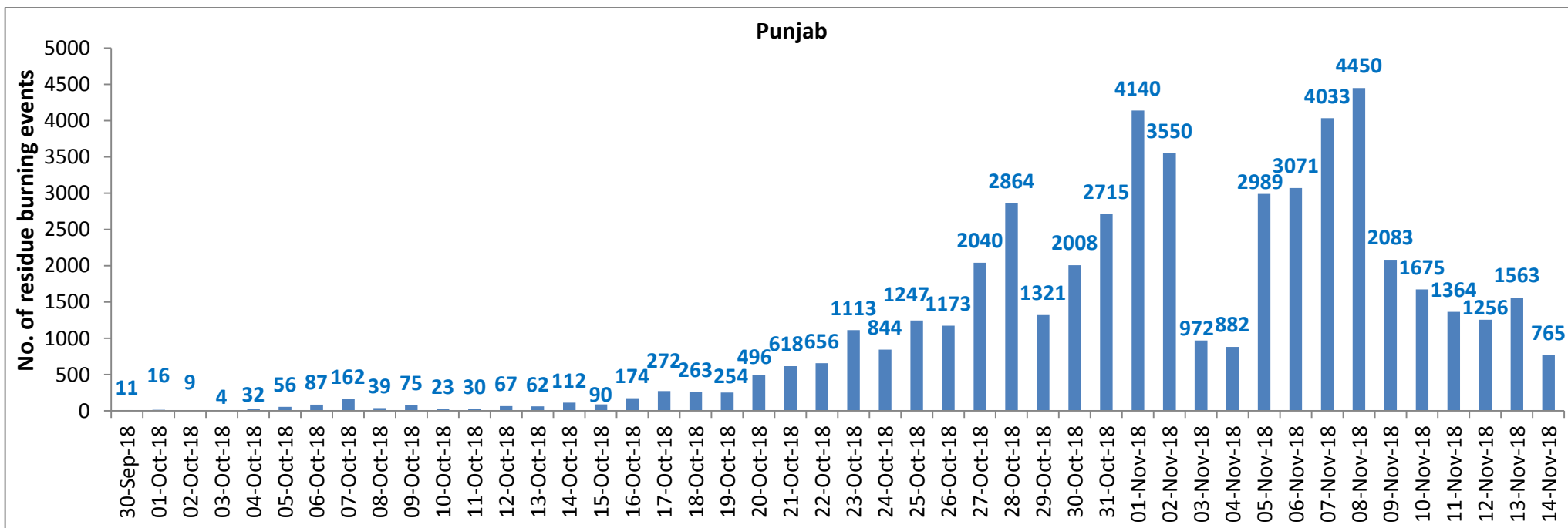
<http://creams.iari.res.in>



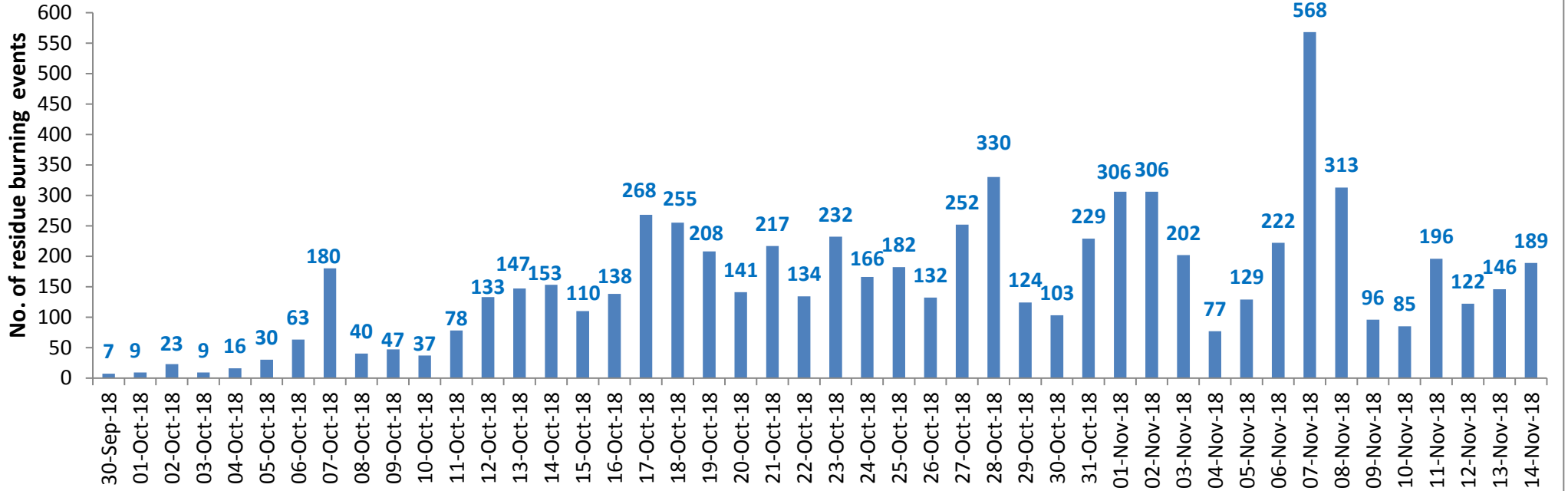
Highlights for 14-November-2018

- Satellites detected **1082** residue burning events in the three States (Punjab, Haryana & UP) on **14-Nov-2018**.
- The burning events detected on **14-Nov-2018** are **765**, **189** and **128** in Punjab, Haryana, and UP, respectively.
- The number of events has decreased from **1803** on **13-Nov-2018** to **1082** on **14-Nov-2018** in the three States.
- Total **63675** burning events were detected in the three States between **30-Sept-2018** and **14-Nov-2018**, which are distributed as **51726**, **7150** and **4799** in Punjab, Haryana and UP, respectively.
- Till **14-Nov-2018**, the burning events in the current year are about **89.3%** of the events detected in 2017 and about **53.2%** of the events detected in 2016.
- Overall, about **11%** and **47%** reduction in burning events are observed in current year (2018) till date as compared to that in 2017 and 2016, respectively.

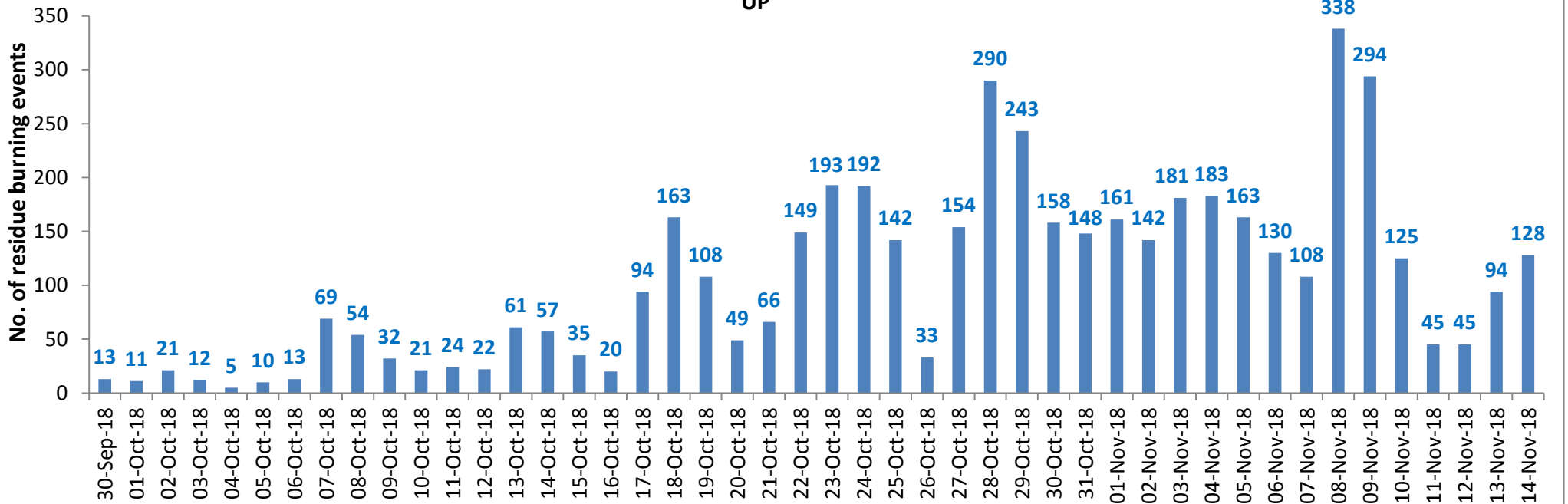
Temporal distribution of residue burning events for the three study States



Haryana

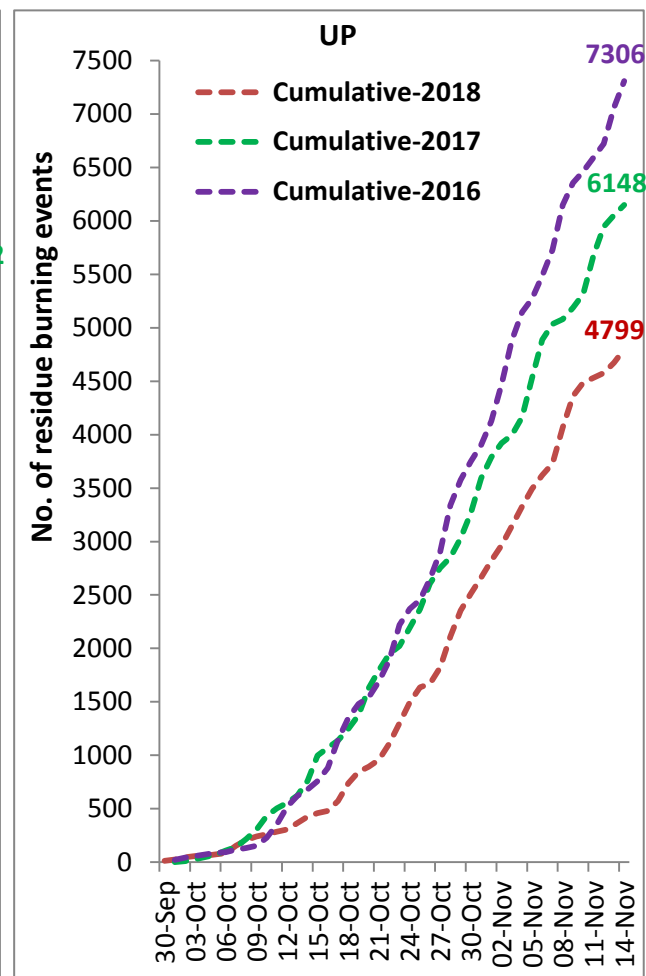
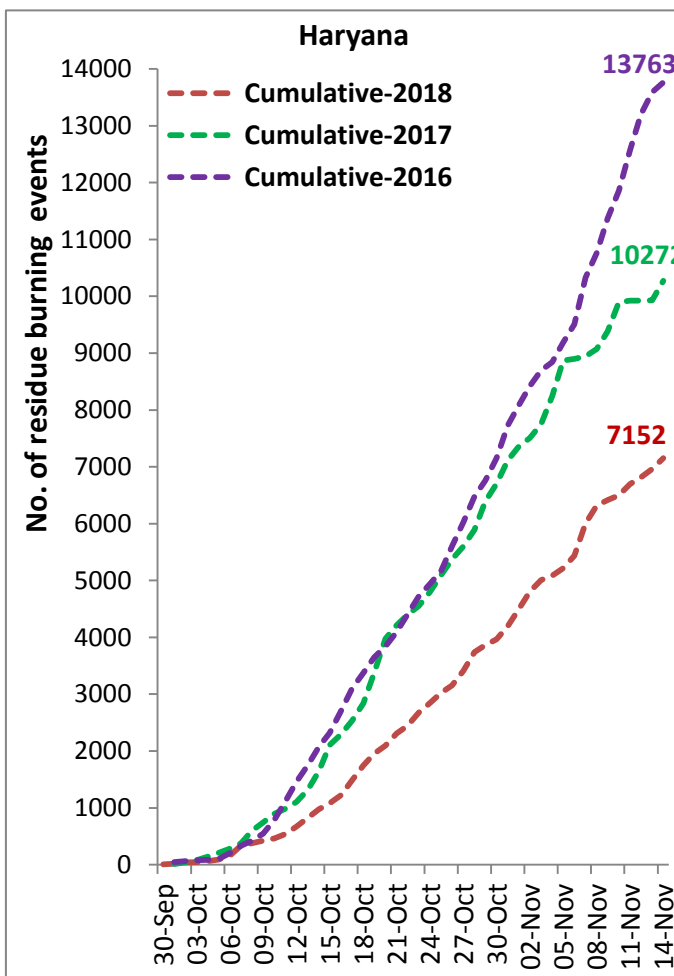
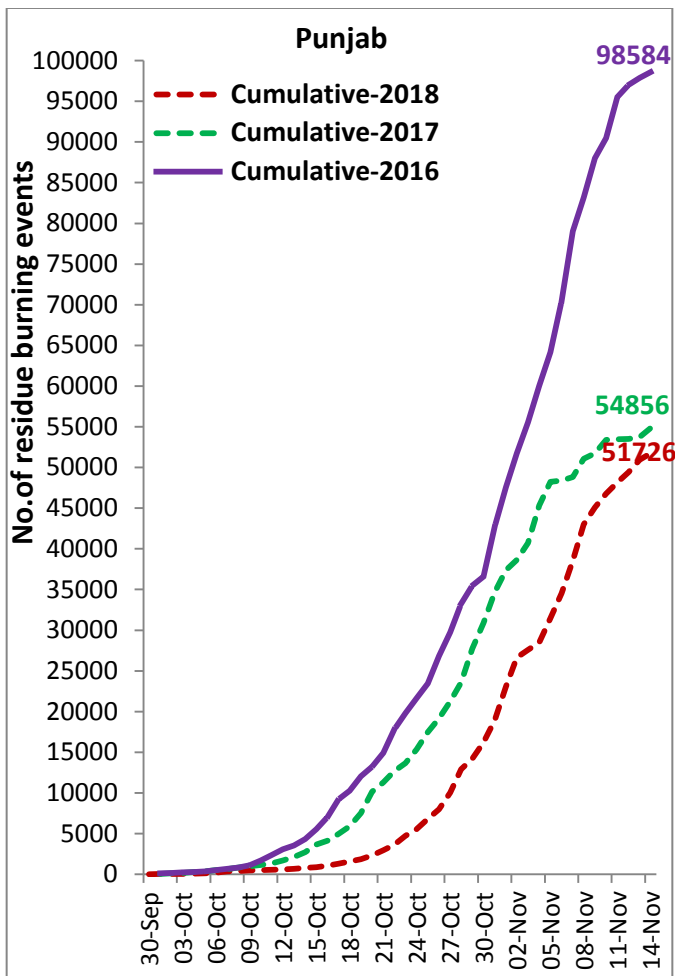


UP

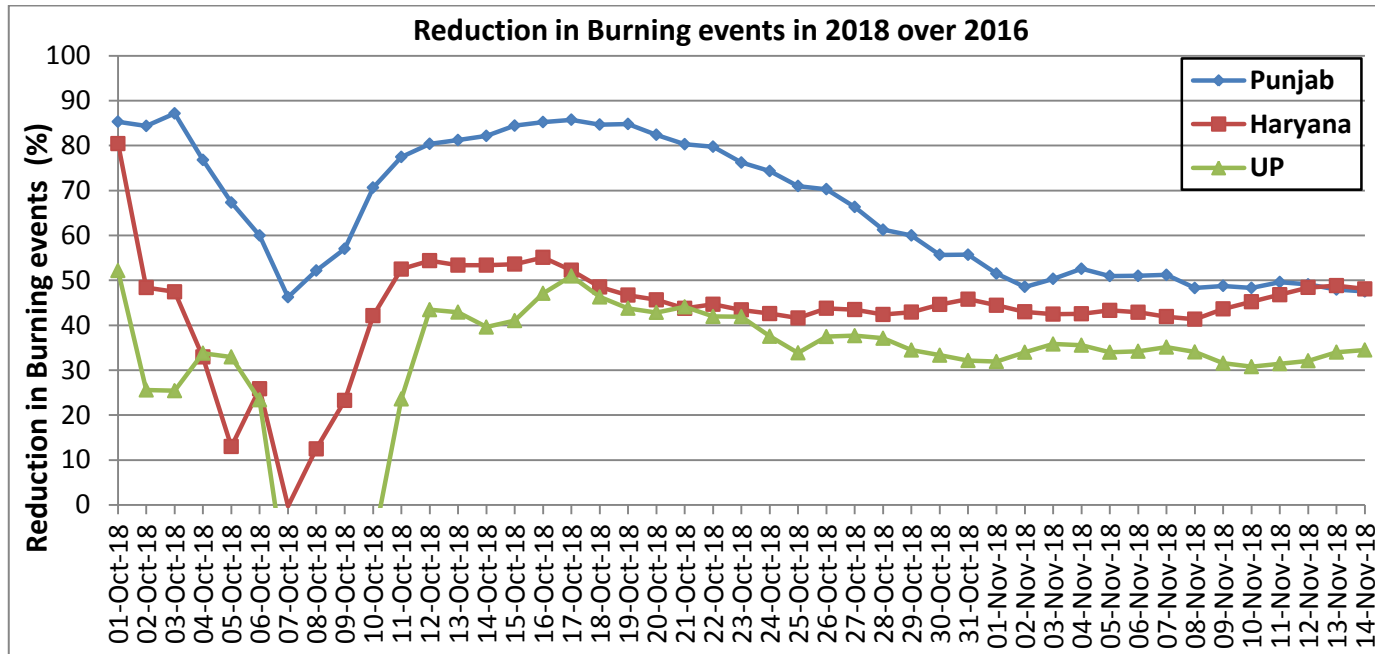
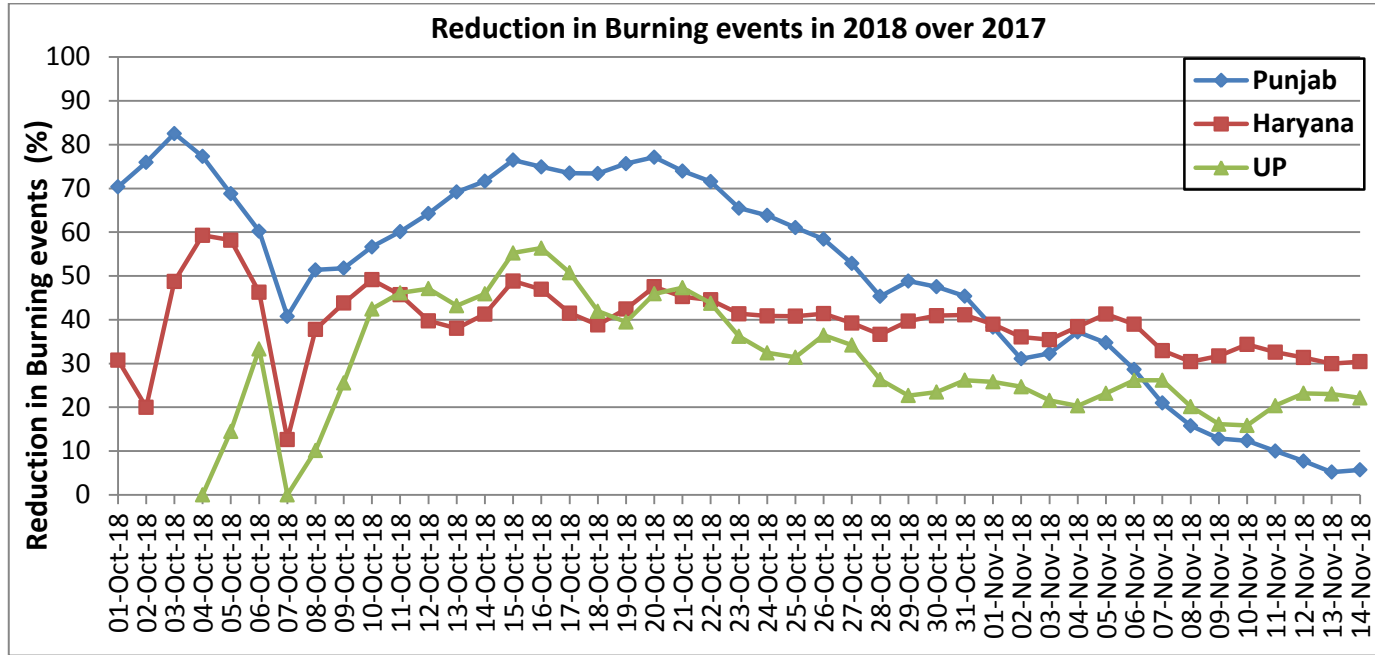


Comparison of residue burning events in current year (2018) with previous years (2017& 2016) for the three study States

(30-Sep to 14-Nov)

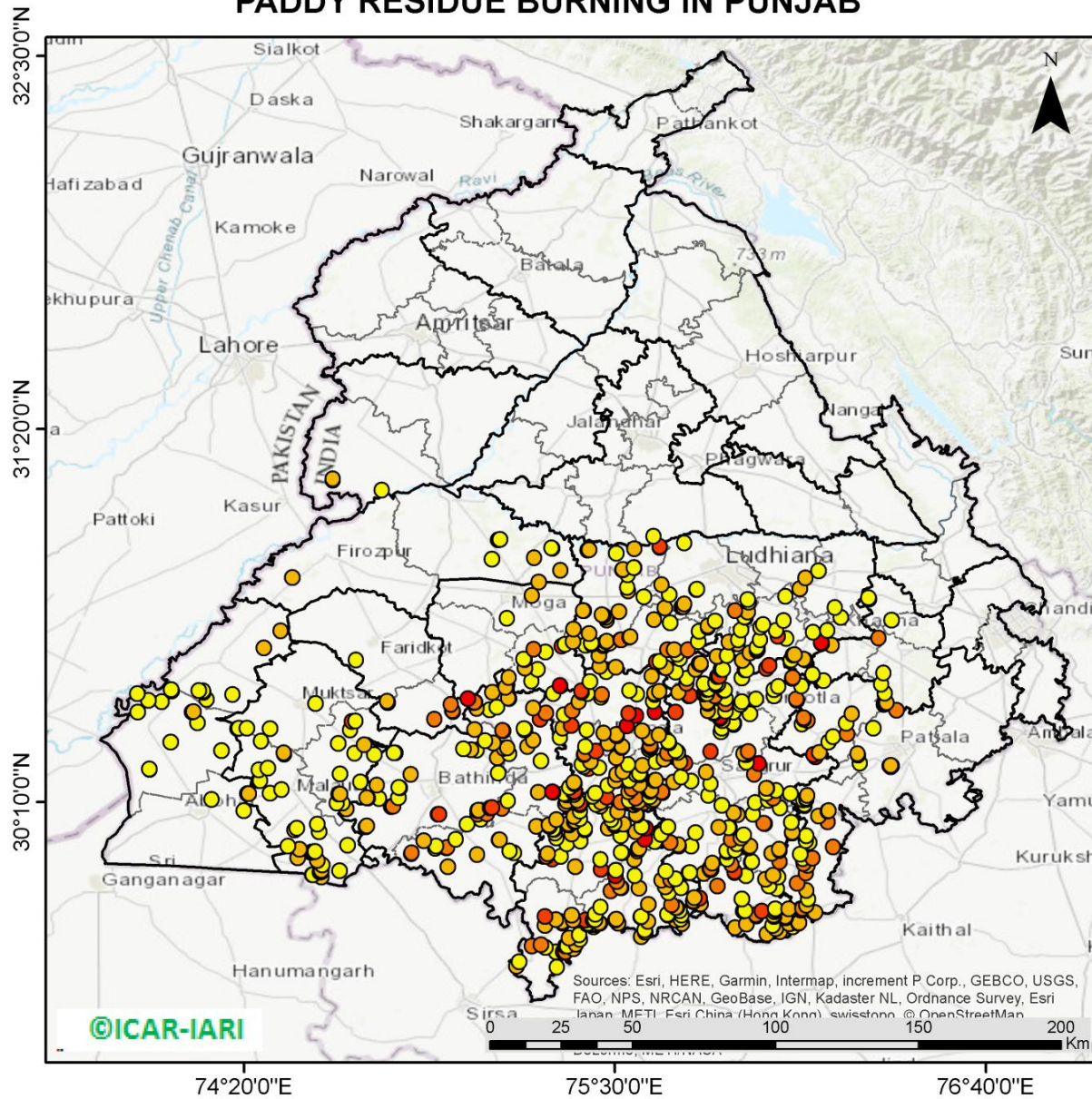


Percent Reduction in Burning events in 2018 over 2017 and 2016 (Daily Cumulative)



(a) Punjab

PADDY RESIDUE BURNING IN PUNJAB



765 burning events detected in Punjab on 14th November, 2018

Fire Intensity (W/m²)

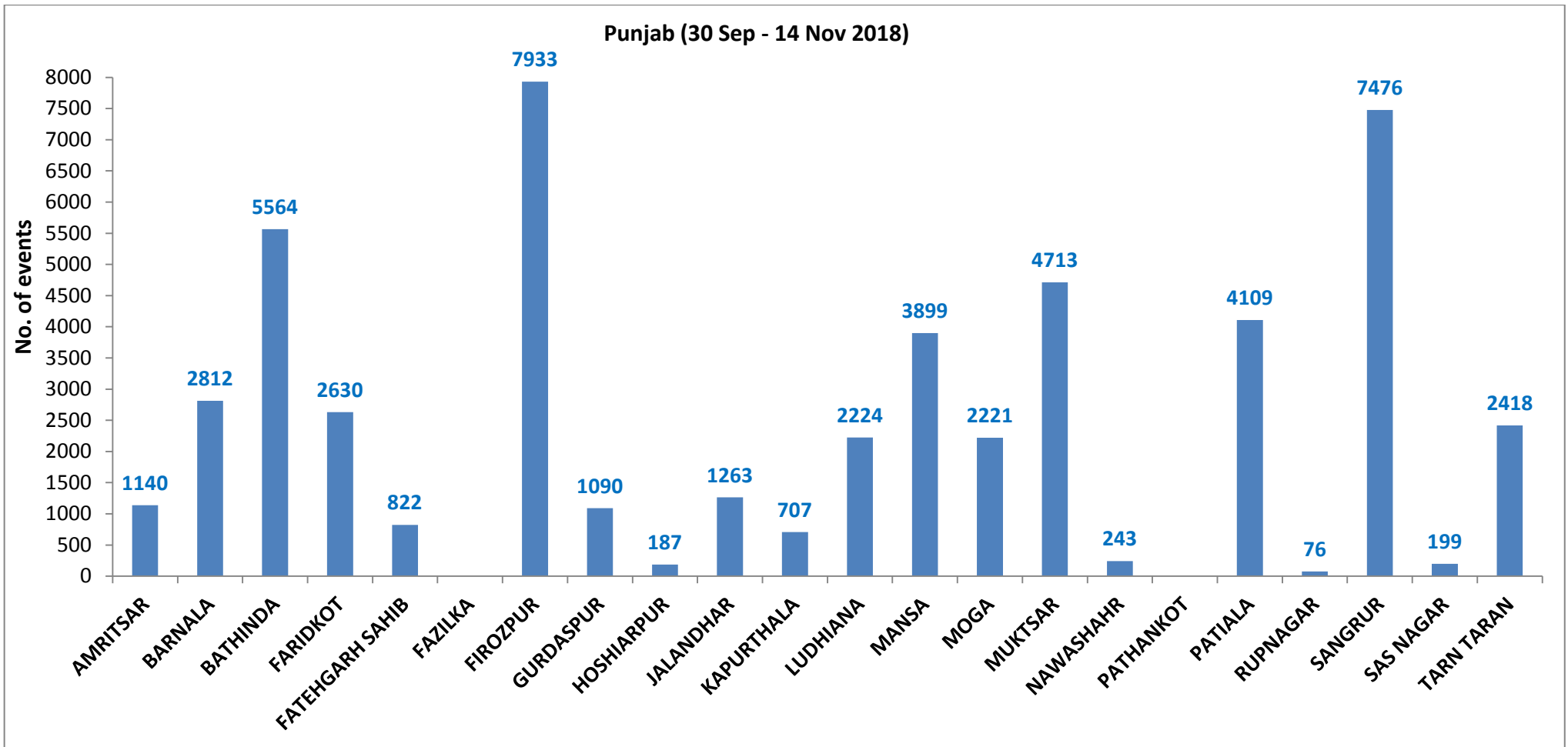
- 0 - 5
- 6 - 10
- 11 - 15
- 16 - 20
- >20



Sources: Esri, HERE, Garmin, Intermap, increment P Corp., GEBCO, USGS, FAO, NPS, NRCAN, GeoBase, IGN, Kadaster NL, Ordnance Survey, Esri Japan, METI, Esri China (Hong Kong), swisstopo, © OpenStreetMap

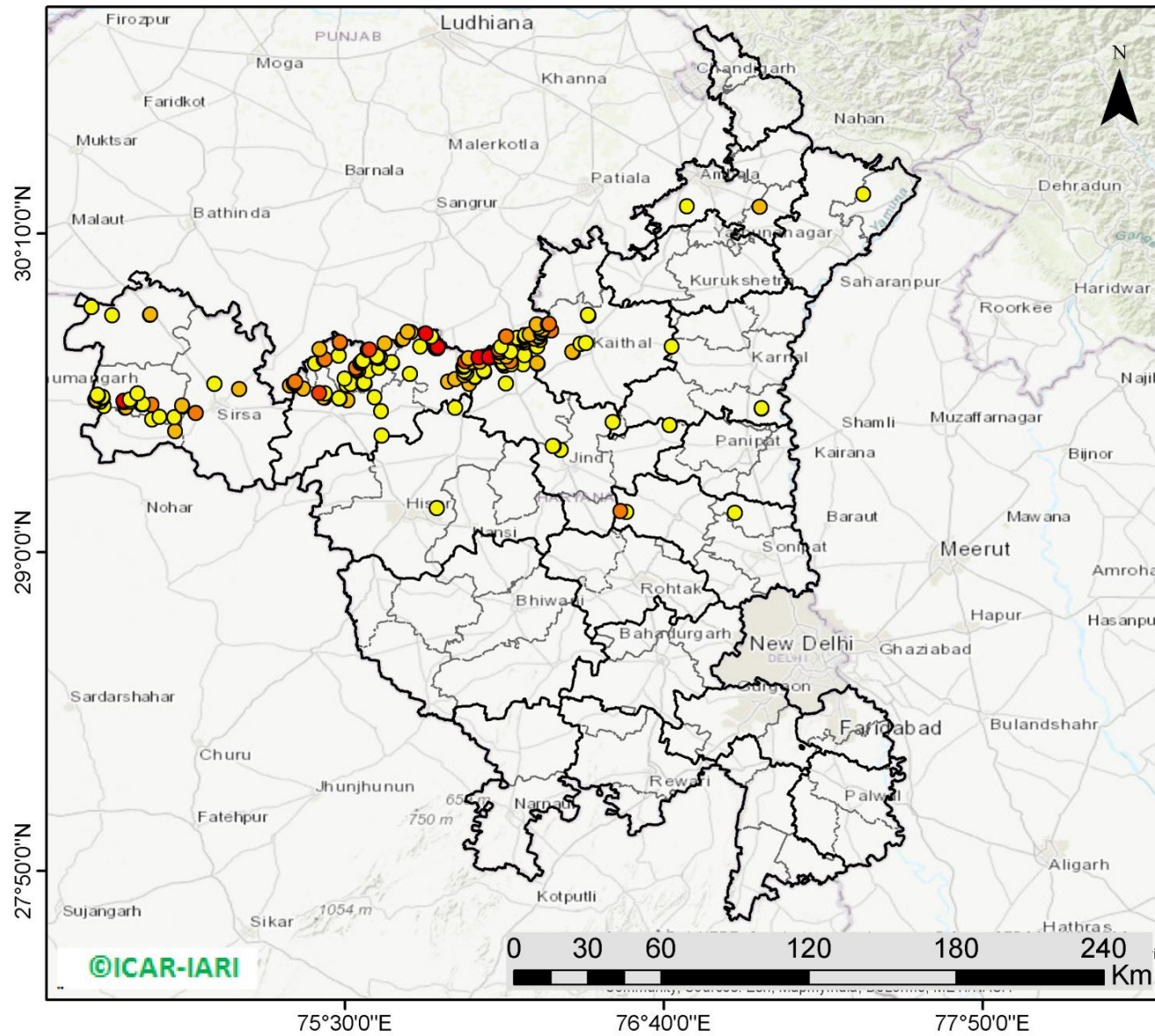
<http://geoportal.icar.gov.in:8080/geoexplorer/composer/>

District-wise cumulative number of residue burning events in Punjab (30-Sep-2018 to 14-Nov-2018)



(b) Haryana

PADDY RESIDUE BURNING IN HARYANA



189 burning events detected in Haryana on 14th November, 2018

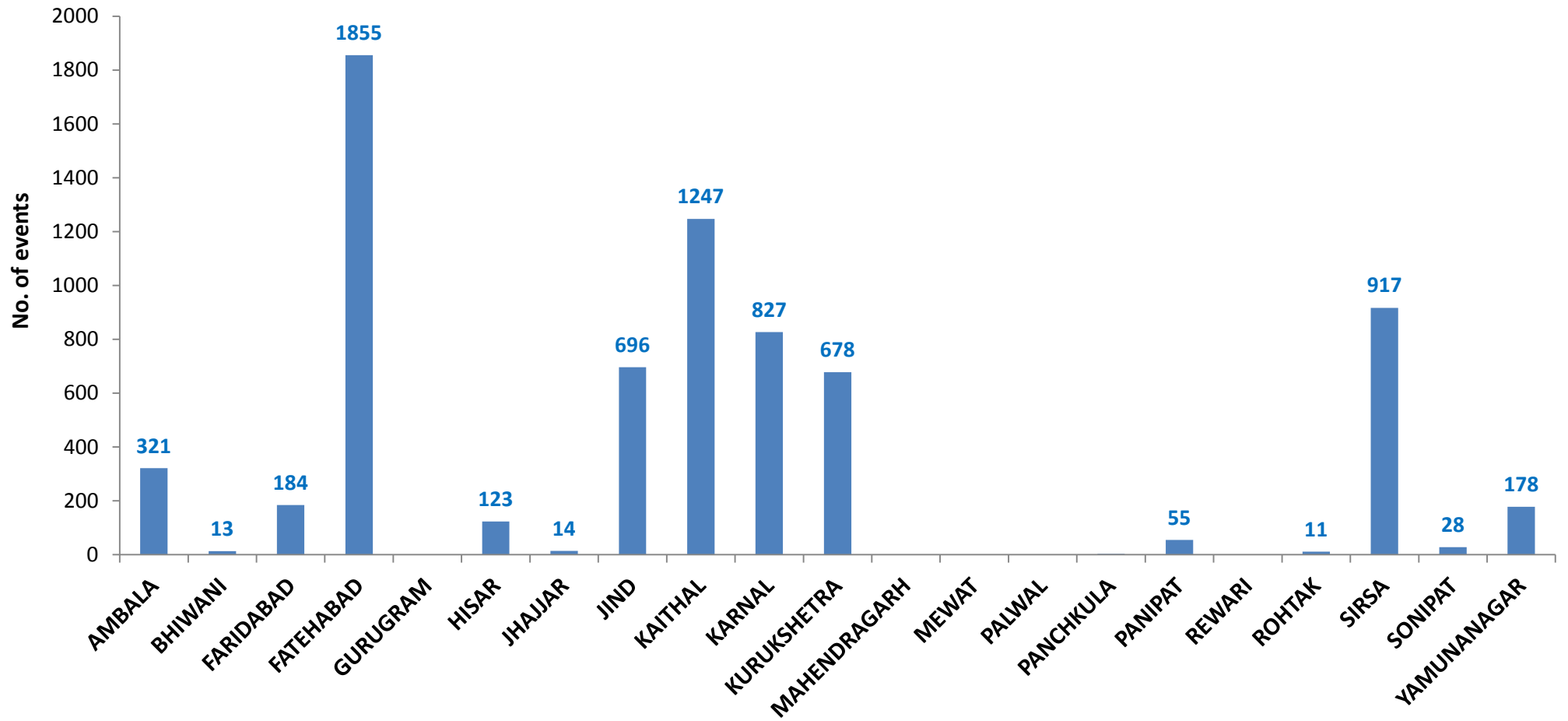
Fire Intensity (W/m²)

- 0 - 5
- 6 - 10
- 11 - 15
- 16 - 20
- >20

<http://geoportal.icar.gov.in:8080/geoexplorer/composer/>

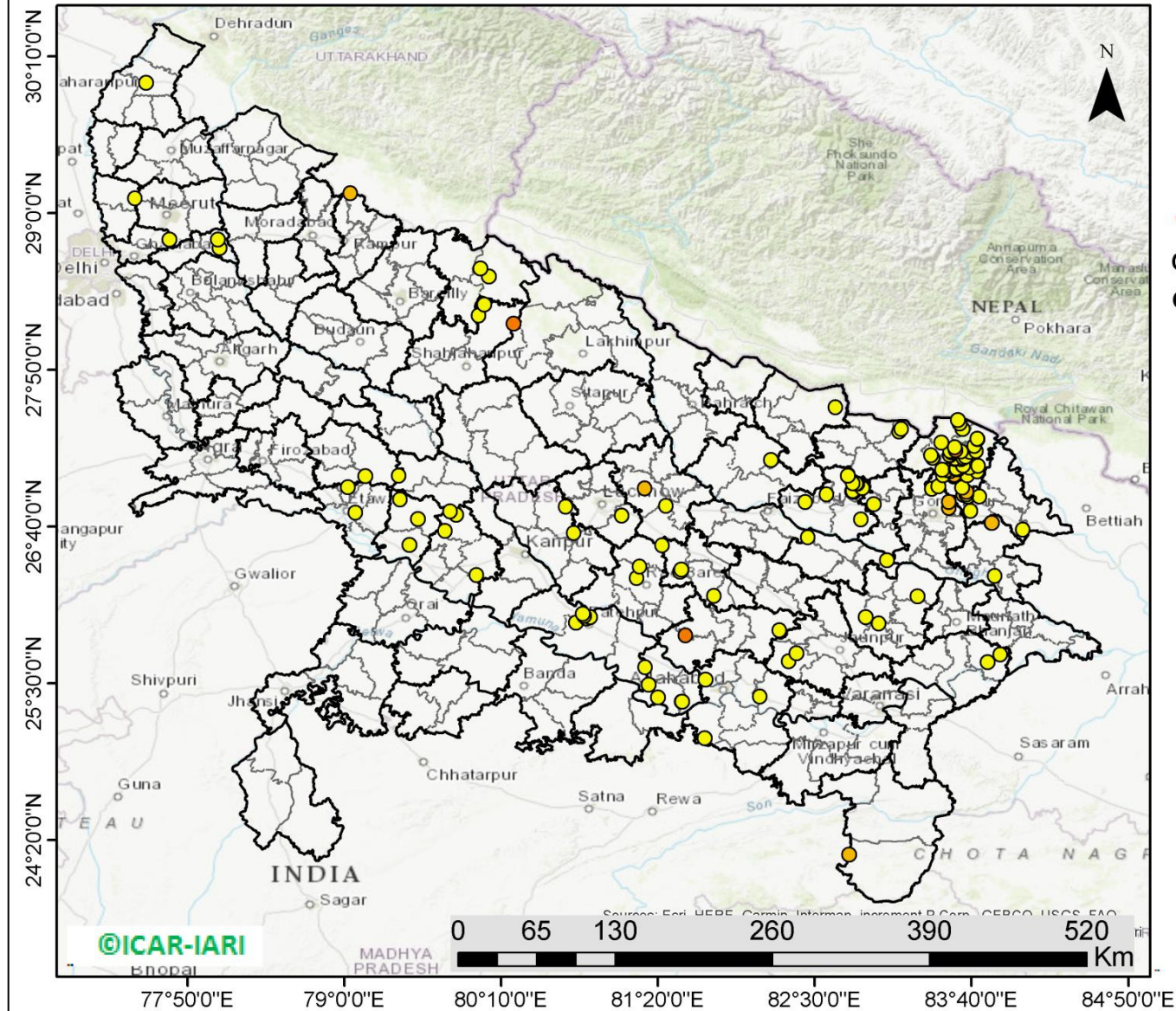
District-wise cumulative number of residue burning events in Haryana (30-Sep-2018 to 14-Nov-2018)

Haryana (30 Sep - 14 Nov 2018)



(c) Uttar Pradesh

PADDY RESIDUE BURNING IN UTTAR PRADESH



128 burning events detected in Uttar Pradesh on **14th Nov, 2018**

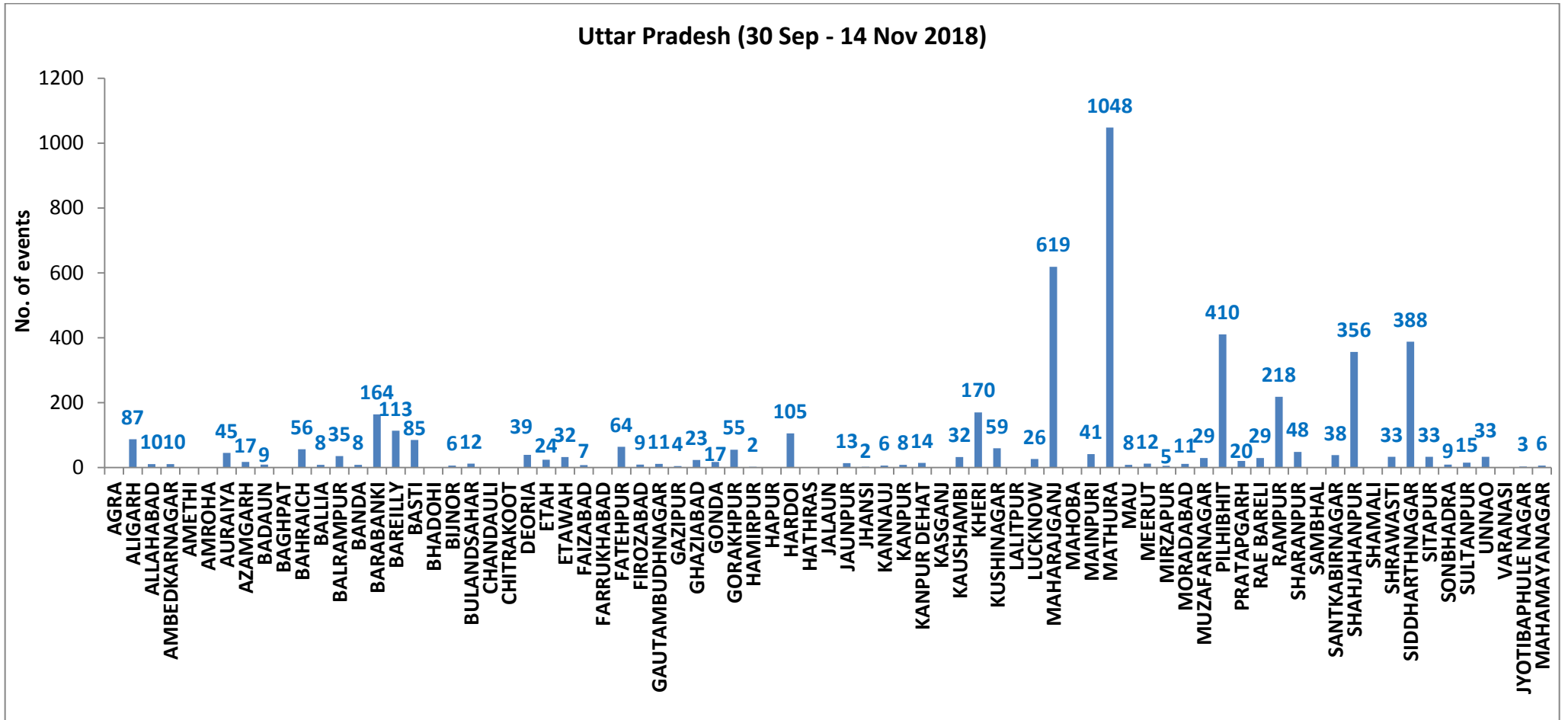
Fire Intensity (W/m²)

- 0 - 5
- 6 - 10
- 11 - 15
- 16 - 20
- >20



<http://geoportal.icar.gov.in:8080/geoexplorer/composer/>

District-wise cumulative number of residue burning events in Uttar Pradesh (30-Sep-2018 to 14-Nov-2018)



State wise, date wise and district-wise number of residue burning events detected in 2016, 2017 and 2018
(Period: 30-Sep to 14-Nov)

Date	Punjab			Haryana			UP			Total		
	2016	2017	2018	2016	2017	2018	2016	2017	2018	2016	2017	2018
30-Sep	--	--	11	--	---	7	--	---	13	--	---	31
1-Oct	109	54	16	46	13	9	23	2	11	178	69	36
2-Oct	51	50	9	16	27	23	20	8	21	87	85	53
3-Oct	66	62	4	16	40	9	16	17	12	98	119	25
4-Oct	37	103	32	7	60	16	15	22	5	59	185	53
5-Oct	95	106	56	15	68	30	14	20	10	124	194	96
6-Oct	152	138	87	105	75	65	6	39	13	263	252	165
7-Oct	171	105	162	126	97	180	24	31	69	321	233	411
8-Oct	166	215	39	94	218	40	14	75	54	274	508	133
9-Oct	270	163	75	121	148	47	22	87	32	413	398	154
10-Oct	597	164	23	242	151	37	74	126	21	913	441	81
11-Oct	652	177	30	336	87	78	128	74	24	1116	338	132
12-Oct	694	342	67	338	123	133	164	51	22	1196	516	222
13-Oct	467	470	62	284	207	147	102	69	61	853	746	270
14-Oct	812	582	112	328	333	153	60	137	57	1200	1052	322
15-Oct	1215	943	90	248	458	110	76	237	35	1539	1638	235
16-Oct	1478	465	174	385	186	138	125	71	20	1988	722	332
17-Oct	2173	807	272	399	244	268	261	69	94	2833	1120	634
18-Oct	1065	970	263	270	306	255	204	108	163	1539	1384	681
19-Oct	1762	1591	254	276	541	208	132	128	108	2170	2260	570
20-Oct	1175	2653	496	188	597	141	62	255	49	1425	3505	686
21-Oct	1726	1139	618	257	233	217	152	168	66	2135	1540	901

22-Oct	2837	1356	656	309	186	134	194	151	149	3340	1693	939
23-Oct	2040	994	1113	313	155	232	331	72	193	2684	1221	1538
24-Oct	1836	1714	844	221	244	166	152	171	192	2209	2129	1202
25-Oct	1813	2104	1247	229	303	182	83	175	142	2125	2582	1571
26-Oct	3390	1715	1173	434	276	132	195	240	33	4019	2231	1338
27-Oct	2904	2069	2040	417	224	252	255	145	154	3576	2438	2446
28-Oct	3493	2318	2864	458	292	330	435	99	290	4386	2709	3484
29-Oct	2258	4184	1321	278	502	124	237	180	243	2773	4866	1688
30-Oct	1076	3152	2008	395	307	103	175	238	158	1646	3697	2269
31-Oct	6132	3743	2715	575	413	229	153	321	148	6860	4447	3092
01-Nov	4843	2736	4140	362	250	306	223	199	161	5628	3185	4607
02-Nov	4183	1246	3550	332	145	306	345	131	142	4860	1522	3998
03-Nov	3806	2109	972	275	240	202	409	75	181	4409	2424	1355
04-Nov	4477	4603	882	146	499	77	265	168	183	4888	5270	1142
05-Nov	4137	2876	2989	345	625	129	125	367	163	4607	3868	3281
06-Nov	6303	171	3071	322	26	222	215	357	130	6840	327	3423
07-Nov	8575	420	4033	821	46	568	244	149	108	9640	615	4709
08-Nov	4129	2256	4450	432	128	313	419	43	338	4874	2427	5101
09-Nov	4857	675	2083	608	311	96	205	107	294	5670	1093	2473
10-Nov	2468	1642	1675	484	509	85	109	131	125	3061	2282	1885
11-Nov	5040	103	1364	716	29	196	129	358	45	5885	490	1605
12-Nov	1477	33	1256	634	3	122	129	269	45	2240	305	1423
13-Nov	885	237	1563	389	7	146	338	109	94	1612	353	1803
14-Nov	692	1101	765	171	340	189	247	95	128	1110	1536	1082
Total	98584	54856	51726	13763	10272	7152	7306	6148	4799	119653	71276	63677

(a) Punjab

Districts	01 Oct - 14Nov		
	2016	2017	2018
AMRITSAR	2028	1205	1140
BARNALA	5595	2790	2812
BATHINDA	8606	4750	5564
FARIDKOT	4541	2862	2630
FATEHGARH SAHIB	2440	1605	822
FAZILKA	0	0	0
FIROZPUR	12515	5606	7933
GURDASPUR	2132	1507	1090
HOSHIARPUR	891	475	187
JALANDHAR	4596	1987	1263
KAPURTHALA	3111	1526	707
LUDHIANA	9121	3978	2224
MANSA	5402	4082	3899
MOGA	6331	1986	2221
MUKTSAR	6420	3433	4713
NAWASHAHR (SBS Nagar)	1326	657	243
PATHANKOT	0	0	0
PATIALA	6524	5004	4109
RUPNAGAR	706	326	76
SANGRUR	11773	8221	7476
SAS NAGAR	359	242	199
TARN TARAN	4167	2614	2418
Total	98584	54856	51726

(b) Haryana

Districts	01 Oct - 14Nov		
	2016	2017	2018
AMBALA	527	489	321
BHIWANI	54	25	13
FARIDABAD	278	341	184
FATEHABAD	4358	2949	1855
GURUGRAM	0	0	0
HISAR	325	160	123
JHAJJAR	22	12	14
JIND	811	889	696
KAITHAL	1732	1484	1247
KARNAL	1616	1479	827
KURUKSHETRA	1074	1141	678
MAHENDRAGARH	0	0	0
MEWAT	0	0	0
PALWAL	0	0	0
PANCHKULA	0	0	3
PANIPAT	70	69	55
REWARI	0	0	0
ROHTAK	72	50	11
SIRSA	2516	827	917
SONIPAT	69	53	28
YAMUNANAGAR	239	304	178
Total	13763	10272	7152

(c) Uttar Pradesh

Distrites	01 Oct - 14Nov			GAUTAMBUDH NAGAR			RAE BARELI		
	2016	2017	2018						
AGRA	0	0	0	20	33	11	43	29	29
ALIGARH	48	73	87	13	7	4	608	601	218
ALLAHABAD	3	8	10	54	33	23	73	93	48
AMBEDKARNAGAR	55	24	10	40	30	17	0	0	0
AMETHI	0	0	0	42	58	55	48	54	38
AMROHA	0	0	0	0	0	2	1116	670	356
AURAIYA	168	118	45	0	0	0	0	0	0
AZAMGARH	24	19	17	225	173	105	30	29	33
BADAUN	6	6	9	0	0	0	185	145	388
BAGHPAT	0	0	0	0	0	0	102	57	33
BAHRAICH	53	35	56	0	0	0	12	9	9
BALLIA	4	15	8	0	0	0	38	15	15
BALRAMPUR	25	24	35	9	6	13	48	30	33
BANDA	1	8	8	0	0	2	1	0	0
BARABANKI	202	137	164	19	12	6	7	10	3
BAREILLY	234	191	113	9	6	13	2	2	6
BASTI	104	166	85	0	0	0	7306	6148	4799
BHADOHI	0	0	0	14	27	32			
BIJNOR	38	30	6	377	230	170			
BULANDSAHAR	15	28	12	21	42	59			
CHANDAULI	2	0	0	0	0	0			
CHITRAKOOT	0	0	0	53	29	26			
DEORIA	33	34	39	297	594	619			
ETAH	16	26	24	0	0	0			
ETAWAH	69	65	32	0	0	0			
FAIZABAD	10	6	7	58	69	41			
FARRUKHABAD	0	0	0	1418	1082	1048			
FATEHPUR	43	32	64	9	5	8			
FIROZABAD	22	15	9	49	48	12			
				2	10	5			
				37	26	11			
				101	96	29			
				905	670	410			
				24	25	20			

Details of residue burning events in Punjab on 14-Nov-2018

Event S. No.	District	Tehsil/Block	Satellite	Longitude	Latitude	Time (IST)	Day/Night	Fire Power (W/m²)
1	BARNALA	BARNALA	S-NPP	75.50345	30.30494	13:12:00	D	5.60
2	BARNALA	BARNALA	S-NPP	75.52025	30.33830	13:12:00	D	6.00
3	BARNALA	BARNALA	S-NPP	75.52254	30.34005	13:12:00	D	5.80
4	BARNALA	BARNALA	S-NPP	75.47822	30.34991	13:12:00	D	6.00
5	BARNALA	BARNALA	S-NPP	75.66892	30.35177	13:12:00	D	4.10
6	BARNALA	BARNALA	S-NPP	75.66798	30.35550	13:12:00	D	4.10
7	BARNALA	BARNALA	S-NPP	75.60733	30.36687	13:12:00	D	8.50
8	BARNALA	BARNALA	S-NPP	75.60980	30.36812	13:12:00	D	9.00
9	BARNALA	BARNALA	S-NPP	75.50549	30.37487	13:12:00	D	8.40
10	BARNALA	BARNALA	S-NPP	75.63792	30.37666	13:12:00	D	6.30
11	BARNALA	BARNALA	S-NPP	75.50455	30.37863	13:12:00	D	8.40
12	BARNALA	BARNALA	S-NPP	75.46437	30.38279	13:12:00	D	6.30
13	BARNALA	BARNALA	S-NPP	75.58497	30.39005	13:12:00	D	5.70
14	BARNALA	BARNALA	S-NPP	75.33631	30.39803	13:12:00	D	8.60
15	BARNALA	BARNALA	S-NPP	75.53703	30.40450	13:12:00	D	20.20
16	BARNALA	BARNALA	S-NPP	75.36244	30.40695	13:12:00	D	19.70
17	BARNALA	BARNALA	S-NPP	75.56749	30.43773	13:12:00	D	20.40
18	BARNALA	BARNALA	S-NPP	75.34009	30.44079	13:12:00	D	3.70
19	BARNALA	BARNALA	S-NPP	75.54351	30.44501	13:12:00	D	16.20
20	BARNALA	BARNALA	S-NPP	75.28197	30.44549	13:12:00	D	12.50
21	BARNALA	BARNALA	S-NPP	75.62543	30.44861	13:12:00	D	27.10
22	BARNALA	BARNALA	S-NPP	75.36517	30.45357	13:12:00	D	13.30
23	BARNALA	BARNALA	S-NPP	75.38638	30.48141	13:12:00	D	6.80
24	BARNALA	BARNALA	S-NPP	75.61974	30.48277	13:12:00	D	4.10
25	BARNALA	BARNALA	S-NPP	75.45603	30.49470	13:12:00	D	4.20
26	BARNALA	BARNALA	S-NPP	75.45947	30.50324	13:12:00	D	13.80
27	BARNALA	BARNALA	S-NPP	75.62556	30.50343	13:12:00	D	3.20
28	BARNALA	BARNALA	S-NPP	75.57021	30.50464	13:12:00	D	4.40
29	BARNALA	BARNALA	S-NPP	75.30653	30.50587	13:12:00	D	3.40

30	BARNALA	BARNALA	S-NPP	75.41385	30.50641	13:12:00	D	2.50
31	BARNALA	BARNALA	S-NPP	75.62462	30.50716	13:12:00	D	8.10
32	BARNALA	BARNALA	S-NPP	75.39583	30.51089	13:12:00	D	16.20
33	BARNALA	BARNALA	S-NPP	75.63939	30.51387	13:12:00	D	5.10
34	BARNALA	BARNALA	S-NPP	75.39487	30.51467	13:12:00	D	16.20
35	BARNALA	BARNALA	S-NPP	75.54535	30.51561	13:12:00	D	4.80
36	BARNALA	BARNALA	S-NPP	75.32883	30.52991	13:12:00	D	18.50
37	BARNALA	BARNALA	S-NPP	75.32671	30.53148	13:12:00	D	35.70
38	BARNALA	BARNALA	S-NPP	75.42133	30.54335	13:12:00	D	3.20
39	BARNALA	BARNALA	S-NPP	75.61677	30.56036	13:12:00	D	8.20
40	BARNALA	BARNALA	S-NPP	75.47288	30.57552	13:12:00	D	2.60
41	BARNALA	BARNALA	S-NPP	75.65730	30.58738	13:12:00	D	5.30
42	BARNALA	BARNALA	S-NPP	75.65915	30.58775	13:12:00	D	5.10
43	BARNALA	BARNALA	S-NPP	75.45219	30.59124	13:12:00	D	5.40
44	BARNALA	TAPPA	S-NPP	75.55936	30.15869	13:12:00	D	11.10
45	BARNALA	TAPPA	S-NPP	75.51826	30.16662	13:12:00	D	10.70
46	BARNALA	TAPPA	S-NPP	75.54494	30.17171	13:12:00	D	4.60
47	BARNALA	TAPPA	S-NPP	75.43803	30.19489	13:12:00	D	3.80
48	BARNALA	TAPPA	S-NPP	75.54368	30.19908	13:12:00	D	9.20
49	BARNALA	TAPPA	S-NPP	75.37181	30.20038	13:12:00	D	15.10
50	BARNALA	TAPPA	S-NPP	75.55244	30.20862	13:12:00	D	13.50
51	BARNALA	TAPPA	S-NPP	75.47728	30.21814	13:12:00	D	2.60
52	BARNALA	TAPPA	S-NPP	75.57714	30.22115	13:12:00	D	6.50
53	BARNALA	TAPPA	S-NPP	75.54362	30.23374	13:12:00	D	1.90
54	BARNALA	TAPPA	S-NPP	75.62386	30.23386	13:12:00	D	6.30
55	BARNALA	TAPPA	S-NPP	75.50443	30.23406	13:12:00	D	4.20
56	BARNALA	TAPPA	S-NPP	75.50123	30.23449	13:12:00	D	5.40
57	BARNALA	TAPPA	S-NPP	75.62913	30.23485	13:12:00	D	6.30
58	BARNALA	TAPPA	S-NPP	75.54585	30.23496	13:12:00	D	2.70
59	BARNALA	TAPPA	S-NPP	75.57793	30.25218	13:12:00	D	4.50
60	BARNALA	TAPPA	S-NPP	75.58022	30.25319	13:12:00	D	7.30
61	BARNALA	TAPPA	S-NPP	75.56640	30.25390	13:12:00	D	8.60

62	BARNALA	TAPPA	S-NPP	75.50507	30.25393	13:12:00	D	5.50
63	BARNALA	TAPPA	S-NPP	75.57700	30.25594	13:12:00	D	4.60
64	BARNALA	TAPPA	S-NPP	75.52544	30.26180	13:12:00	D	5.70
65	BARNALA	TAPPA	S-NPP	75.41602	30.27250	13:12:00	D	12.30
66	BARNALA	TAPPA	S-NPP	75.44928	30.27488	13:12:00	D	4.40
67	BARNALA	TAPPA	S-NPP	75.40333	30.27800	13:12:00	D	6.50
68	BARNALA	TAPPA	S-NPP	75.58727	30.28149	13:12:00	D	8.00
69	BARNALA	TAPPA	S-NPP	75.39601	30.28454	13:12:00	D	4.00
70	BARNALA	TAPPA	S-NPP	75.54202	30.28467	13:12:00	D	2.40
71	BARNALA	TAPPA	S-NPP	75.62852	30.29328	13:12:00	D	3.90
72	BARNALA	TAPPA	S-NPP	75.42204	30.29345	13:12:00	D	9.10
73	BARNALA	TAPPA	S-NPP	75.65388	30.30201	13:12:00	D	6.90
74	BARNALA	TAPPA	S-NPP	75.40251	30.31546	13:12:00	D	7.80
75	BARNALA	TAPPA	S-NPP	75.40456	30.31789	13:12:00	D	13.60
76	BARNALA	TAPPA	S-NPP	75.43919	30.32655	13:12:00	D	19.00
77	BARNALA	TAPPA	S-NPP	75.60770	30.33246	13:12:00	D	4.30
78	BARNALA	TAPPA	S-NPP	75.61204	30.33720	13:12:00	D	5.00
79	BARNALA	TAPPA	S-NPP	75.40759	30.34024	13:12:00	D	2.20
80	BARNALA	TAPPA	S-NPP	75.61110	30.34094	13:12:00	D	14.90
81	BARNALA	TAPPA	S-NPP	75.61016	30.34469	13:12:00	D	14.90
82	BARNALA	TAPPA	S-NPP	75.41134	30.39245	13:12:00	D	3.70
83	BATHINDA	BATHINDA	S-NPP	74.71538	30.08898	13:12:00	D	7.10
84	BATHINDA	BATHINDA	S-NPP	74.71883	30.09182	13:12:00	D	6.70
85	BATHINDA	BATHINDA	S-NPP	75.03416	30.09745	13:12:00	D	4.60
86	BATHINDA	BATHINDA	S-NPP	75.07735	30.11391	13:12:00	D	3.40
87	BATHINDA	BATHINDA	S-NPP	75.06776	30.12827	13:12:00	D	10.40
88	BATHINDA	BATHINDA	S-NPP	74.94259	30.12862	13:12:00	D	11.60
89	BATHINDA	BATHINDA	S-NPP	74.94639	30.12886	13:12:00	D	17.90
90	BATHINDA	BATHINDA	S-NPP	75.09688	30.12982	13:12:00	D	12.40
91	BATHINDA	BATHINDA	S-NPP	75.06825	30.14078	13:12:00	D	10.80
92	BATHINDA	BATHINDA	S-NPP	75.07044	30.14093	13:12:00	D	8.00
93	BATHINDA	BATHINDA	S-NPP	74.65444	30.14533	13:12:00	D	5.60

94	BATHINDA	BATHINDA	S-NPP	74.79524	30.15231	13:12:00	D	15.70
95	BATHINDA	BATHINDA	S-NPP	74.80105	30.15345	13:12:00	D	13.60
96	BATHINDA	BATHINDA	S-NPP	74.75804	30.17797	13:12:00	D	4.40
97	BATHINDA	BATHINDA	S-NPP	74.81818	30.18144	13:12:00	D	4.50
98	BATHINDA	BATHINDA	S-NPP	74.82268	30.21103	13:12:00	D	5.10
99	BATHINDA	BATHINDA	S-NPP	74.81989	30.21290	13:12:00	D	3.70
100	BATHINDA	BATHINDA	S-NPP	74.75107	30.21978	13:12:00	D	5.10
101	BATHINDA	BATHINDA	S-NPP	74.85794	30.25321	13:12:00	D	6.60
102	BATHINDA	BATHINDA	S-NPP	75.13229	30.25826	13:12:00	D	3.40
103	BATHINDA	BATHINDA	S-NPP	75.12923	30.30628	13:12:00	D	9.60
104	BATHINDA	BATHINDA	S-NPP	74.74260	30.31549	13:12:00	D	4.60
105	BATHINDA	BATHINDA	S-NPP	74.80827	30.32035	13:12:00	D	5.30
106	BATHINDA	BATHINDA	S-NPP	74.80423	30.32052	13:12:00	D	5.00
107	BATHINDA	BATHINDA	S-NPP	75.06458	30.33004	13:12:00	D	4.50
108	BATHINDA	BATHINDA	S-NPP	75.04678	30.33065	13:12:00	D	9.30
109	BATHINDA	BATHINDA	S-NPP	75.02232	30.33402	13:12:00	D	4.40
110	BATHINDA	BATHINDA	S-NPP	75.15113	30.33465	13:12:00	D	8.60
111	BATHINDA	BATHINDA	S-NPP	75.16222	30.33679	13:12:00	D	7.20
112	BATHINDA	BATHINDA	S-NPP	75.11747	30.35230	13:12:00	D	8.60
113	BATHINDA	BATHINDA	S-NPP	75.09221	30.35954	13:12:00	D	4.70
114	BATHINDA	RAMPURA PHUL	S-NPP	75.14530	30.14717	13:12:00	D	12.10
115	BATHINDA	RAMPURA PHUL	S-NPP	75.10978	30.14845	13:12:00	D	47.40
116	BATHINDA	RAMPURA PHUL	S-NPP	75.11308	30.14963	13:12:00	D	16.90
117	BATHINDA	RAMPURA PHUL	S-NPP	75.34425	30.16115	13:12:00	D	7.10
118	BATHINDA	RAMPURA PHUL	S-NPP	75.34778	30.16980	13:12:00	D	6.20
119	BATHINDA	RAMPURA PHUL	S-NPP	75.16270	30.17064	13:12:00	D	3.00
120	BATHINDA	RAMPURA PHUL	S-NPP	75.34842	30.18985	13:12:00	D	3.40
121	BATHINDA	RAMPURA PHUL	S-NPP	75.34201	30.19262	13:12:00	D	3.40
122	BATHINDA	RAMPURA PHUL	S-NPP	75.33922	30.19402	13:12:00	D	3.90
123	BATHINDA	RAMPURA PHUL	S-NPP	75.30634	30.19783	13:12:00	D	16.20
124	BATHINDA	RAMPURA PHUL	S-NPP	75.25786	30.19814	13:12:00	D	5.70
125	BATHINDA	RAMPURA PHUL	S-NPP	75.30362	30.19906	13:12:00	D	26.30

126	BATHINDA	RAMPURA PHUL	S-NPP	75.35714	30.21346	13:12:00	D	3.50
127	BATHINDA	RAMPURA PHUL	S-NPP	75.37150	30.22421	13:12:00	D	5.60
128	BATHINDA	RAMPURA PHUL	S-NPP	75.37054	30.22800	13:12:00	D	5.60
129	BATHINDA	RAMPURA PHUL	S-NPP	75.26759	30.29601	13:12:00	D	3.00
130	BATHINDA	RAMPURA PHUL	S-NPP	75.16709	30.31765	13:12:00	D	4.20
131	BATHINDA	RAMPURA PHUL	S-NPP	75.22485	30.34084	13:12:00	D	6.70
132	BATHINDA	RAMPURA PHUL	S-NPP	75.24294	30.36031	13:12:00	D	7.10
133	BATHINDA	RAMPURA PHUL	S-NPP	75.32675	30.36838	13:12:00	D	3.90
134	BATHINDA	RAMPURA PHUL	S-NPP	75.14852	30.39037	13:12:00	D	10.50
135	BATHINDA	RAMPURA PHUL	S-NPP	75.14603	30.39107	13:12:00	D	12.00
136	BATHINDA	RAMPURA PHUL	S-NPP	75.21508	30.39256	13:12:00	D	2.30
137	BATHINDA	RAMPURA PHUL	S-NPP	75.05771	30.39393	13:12:00	D	7.20
138	BATHINDA	RAMPURA PHUL	S-NPP	75.21675	30.39529	13:12:00	D	12.00
139	BATHINDA	RAMPURA PHUL	S-NPP	75.21412	30.39637	13:12:00	D	3.80
140	BATHINDA	RAMPURA PHUL	S-NPP	75.26402	30.42607	13:12:00	D	16.90
141	BATHINDA	RAMPURA PHUL	S-NPP	75.10625	30.45568	13:12:00	D	2.10
142	BATHINDA	RAMPURA PHUL	S-NPP	75.06429	30.45971	13:12:00	D	7.30
143	BATHINDA	RAMPURA PHUL	S-NPP	75.24343	30.46199	13:12:00	D	6.80
144	BATHINDA	RAMPURA PHUL	S-NPP	75.12747	30.46377	13:12:00	D	1.50
145	BATHINDA	RAMPURA PHUL	S-NPP	75.05378	30.47784	13:12:00	D	4.40
146	BATHINDA	RAMPURA PHUL	S-NPP	75.05936	30.47891	13:12:00	D	5.50
147	BATHINDA	RAMPURA PHUL	S-NPP	75.05784	30.47896	13:12:00	D	11.10
148	BATHINDA	RAMPURA PHUL	S-NPP	75.03716	30.49103	13:12:00	D	30.00
149	BATHINDA	RAMPURA PHUL	S-NPP	75.16681	30.49131	13:12:00	D	4.50
150	BATHINDA	RAMPURA PHUL	S-NPP	75.16503	30.49196	13:12:00	D	7.90
151	BATHINDA	RAMPURA PHUL	S-NPP	75.11404	30.51008	13:12:00	D	5.40
152	BATHINDA	RAMPURA PHUL	S-NPP	75.15627	30.52631	13:12:00	D	5.10
153	BATHINDA	RAMPURA PHUL	S-NPP	75.16597	30.55620	13:12:00	D	5.20
154	BATHINDA	TALWANDI SABO	S-NPP	74.97401	29.96445	13:12:00	D	7.80
155	BATHINDA	TALWANDI SABO	S-NPP	75.06570	30.00262	13:12:00	D	7.80
156	BATHINDA	TALWANDI SABO	S-NPP	74.85934	30.00593	13:12:00	D	12.80
157	BATHINDA	TALWANDI SABO	S-NPP	74.86009	30.00790	13:12:00	D	10.20

158	BATHINDA	TALWANDI SABO	S-NPP	75.18196	30.00890	13:12:00	D	3.90
159	BATHINDA	TALWANDI SABO	S-NPP	75.16885	30.01444	13:12:00	D	3.30
160	BATHINDA	TALWANDI SABO	S-NPP	74.93511	30.02230	13:12:00	D	3.40
161	BATHINDA	TALWANDI SABO	S-NPP	74.96949	30.02369	13:12:00	D	7.30
162	BATHINDA	TALWANDI SABO	S-NPP	74.97050	30.02500	13:12:00	D	11.30
163	BATHINDA	TALWANDI SABO	S-NPP	74.93792	30.02971	13:12:00	D	3.70
164	BATHINDA	TALWANDI SABO	S-NPP	74.89748	30.04630	13:12:00	D	6.20
165	BATHINDA	TALWANDI SABO	S-NPP	75.13525	30.04831	13:12:00	D	8.10
166	BATHINDA	TALWANDI SABO	S-NPP	75.13666	30.04865	13:12:00	D	7.60
167	BATHINDA	TALWANDI SABO	S-NPP	74.99870	30.04984	13:12:00	D	4.60
168	BATHINDA	TALWANDI SABO	S-NPP	75.25260	30.09145	13:12:00	D	6.70
169	BATHINDA	TALWANDI SABO	S-NPP	75.10751	30.14853	13:12:00	D	35.60
170	FARIDKOT	FARIDKOT	S-NPP	74.78429	30.47806	13:12:00	D	6.70
171	FARIDKOT	FARIDKOT	S-NPP	74.78328	30.48195	13:12:00	D	6.70
172	FARIDKOT	FARIDKOT	S-NPP	74.68442	30.61166	13:12:00	D	4.40
173	FARIDKOT	JAITO	S-NPP	74.93120	30.42603	13:12:00	D	12.70
174	FARIDKOT	JAITO	S-NPP	74.99040	30.44958	13:12:00	D	11.40
175	FARIDKOT	JAITO	S-NPP	74.98802	30.45306	13:12:00	D	9.30
176	FARIDKOT	JAITO	S-NPP	74.98940	30.45344	13:12:00	D	11.40
177	FARIDKOT	JAITO	S-NPP	74.98309	30.47233	13:12:00	D	10.10
178	FATEHGARH SAHIB	ALMOH	S-NPP	76.15585	30.54690	13:12:00	D	3.00
179	FATEHGARH SAHIB	ALMOH	S-NPP	76.12313	30.56277	13:12:00	D	2.90
180	FATEHGARH SAHIB	ALMOH	S-NPP	76.12068	30.56330	13:12:00	D	3.70
181	FATEHGARH SAHIB	ALMOH	S-NPP	76.12223	30.56642	13:12:00	D	2.90
182	FATEHGARH SAHIB	ALMOH	S-NPP	76.18275	30.65740	13:12:00	D	6.30
183	FATEHGARH SAHIB	ALMOH	S-NPP	76.33057	30.68058	13:12:00	D	12.30
184	FATEHGARH SAHIB	FATEHGARH SAHIB	S-NPP	76.34649	30.47286	13:12:00	D	3.90
185	FATEHGARH SAHIB	FATEHGARH SAHIB	S-NPP	76.35137	30.47375	13:12:00	D	8.50
186	FATEHGARH SAHIB	FATEHGARH SAHIB	S-NPP	76.35536	30.47825	13:12:00	D	5.80
187	FATEHGARH SAHIB	FATEHGARH SAHIB	S-NPP	76.35030	30.50702	13:12:00	D	2.50
188	FATEHGARH SAHIB	FATEHGARH SAHIB	S-NPP	76.33846	30.53499	13:12:00	D	3.70
189	FATEHGARH SAHIB	FATEHGARH SAHIB	S-NPP	76.34519	30.57013	13:12:00	D	2.40

190	FATEHGARH SAHIB	KHAMANOH	S-NPP	76.37028	30.73667	13:12:00	D	3.40
191	FATEHGARH SAHIB	KHAMANOH	S-NPP	76.29852	30.80247	13:12:00	D	2.80
192	FATEHGARH SAHIB	KHAMANOH	S-NPP	76.29764	30.80607	13:12:00	D	2.80
193	FIROZPUR	ABOHAR	S-NPP	74.33078	30.13980	13:12:00	D	3.50
194	FIROZPUR	ABOHAR	S-NPP	74.23057	30.17476	13:12:00	D	3.10
195	FIROZPUR	ABOHAR	S-NPP	74.34265	30.19283	13:12:00	D	4.20
196	FIROZPUR	ABOHAR	S-NPP	74.34673	30.19364	13:12:00	D	6.40
197	FIROZPUR	FAZILKA	S-NPP	74.03573	30.26899	13:12:00	D	5.80
198	FIROZPUR	FAZILKA	S-NPP	74.03368	30.27079	13:12:00	D	4.10
199	FIROZPUR	FAZILKA	S-NPP	74.26131	30.32795	13:12:00	D	2.60
200	FIROZPUR	FAZILKA	S-NPP	74.10137	30.35506	13:12:00	D	2.60
201	FIROZPUR	FAZILKA	S-NPP	74.31185	30.39717	13:12:00	D	4.30
202	FIROZPUR	FAZILKA	S-NPP	74.31592	30.39798	13:12:00	D	4.30
203	FIROZPUR	FAZILKA	S-NPP	74.34135	30.39885	13:12:00	D	3.20
204	FIROZPUR	FAZILKA	S-NPP	74.18626	30.41447	13:12:00	D	2.30
205	FIROZPUR	FAZILKA	S-NPP	73.99747	30.44820	13:12:00	D	4.70
206	FIROZPUR	FAZILKA	S-NPP	74.16903	30.44873	13:12:00	D	9.00
207	FIROZPUR	FAZILKA	S-NPP	74.17316	30.44956	13:12:00	D	9.00
208	FIROZPUR	FAZILKA	S-NPP	74.07299	30.48042	13:12:00	D	4.10
209	FIROZPUR	FAZILKA	S-NPP	74.03200	30.48504	13:12:00	D	3.90
210	FIROZPUR	FAZILKA	S-NPP	73.99591	30.50578	13:12:00	D	2.00
211	FIROZPUR	FAZILKA	S-NPP	74.10368	30.51502	13:12:00	D	2.10
212	FIROZPUR	FAZILKA	S-NPP	74.10261	30.51905	13:12:00	D	3.30
213	FIROZPUR	FIROZPUR	S-NPP	74.48365	30.86898	13:12:00	D	8.10
214	FIROZPUR	JALALABAD	S-NPP	74.21511	30.48762	13:12:00	D	2.20
215	FIROZPUR	JALALABAD	S-NPP	74.29684	30.50392	13:12:00	D	3.80
216	FIROZPUR	JALALABAD	S-NPP	74.20460	30.51086	13:12:00	D	2.30
217	FIROZPUR	JALALABAD	S-NPP	74.20353	30.51487	13:12:00	D	4.00
218	FIROZPUR	JALALABAD	S-NPP	74.19010	30.51644	13:12:00	D	2.70
219	FIROZPUR	JALALABAD	S-NPP	74.39437	30.64915	13:12:00	D	7.90
220	FIROZPUR	JALALABAD	S-NPP	74.44756	30.70290	13:12:00	D	6.50
221	FIROZPUR	ZIRA	S-NPP	75.32909	30.89201	13:12:00	D	5.10

222	FIROZPUR	ZIRA	S-NPP	75.11284	30.92756	13:12:00	D	4.90
223	FIROZPUR	ZIRA	S-NPP	75.24568	30.93141	13:12:00	D	9.40
224	FIROZPUR	ZIRA	S-NPP	75.30325	30.96065	13:12:00	D	5.10
225	FIROZPUR	ZIRA	S-NPP	75.30008	30.96141	13:12:00	D	1.90
226	FIROZPUR	ZIRA	S-NPP	75.13197	30.98702	13:12:00	D	4.10
227	FIROZPUR	ZIRA	S-NPP	75.13743	30.98807	13:12:00	D	4.10
228	JALANDHAR	PHILLAUR	S-NPP	75.62214	30.99825	13:12:00	D	4.00
229	LUDHIANA	JAGRAON	S-NPP	75.44897	30.62604	13:12:00	D	6.30
230	LUDHIANA	JAGRAON	S-NPP	75.41061	30.65741	13:12:00	D	4.10
231	LUDHIANA	JAGRAON	S-NPP	75.40742	30.65759	13:12:00	D	5.00
232	LUDHIANA	JAGRAON	S-NPP	75.42660	30.66050	13:12:00	D	3.80
233	LUDHIANA	JAGRAON	S-NPP	75.42879	30.66159	13:12:00	D	6.30
234	LUDHIANA	JAGRAON	S-NPP	75.42565	30.66425	13:12:00	D	2.70
235	LUDHIANA	JAGRAON	S-NPP	75.47137	30.66955	13:12:00	D	7.60
236	LUDHIANA	JAGRAON	S-NPP	75.47440	30.66971	13:12:00	D	6.00
237	LUDHIANA	JAGRAON	S-NPP	75.51762	30.67411	13:12:00	D	10.80
238	LUDHIANA	JAGRAON	S-NPP	75.51999	30.67470	13:12:00	D	10.60
239	LUDHIANA	JAGRAON	S-NPP	75.41805	30.69430	13:12:00	D	6.30
240	LUDHIANA	JAGRAON	S-NPP	75.36958	30.70871	13:12:00	D	9.30
241	LUDHIANA	JAGRAON	S-NPP	75.47418	30.73641	13:12:00	D	5.40
242	LUDHIANA	JAGRAON	S-NPP	75.47231	30.74390	13:12:00	D	6.10
243	LUDHIANA	JAGRAON	S-NPP	75.46511	30.75039	13:12:00	D	5.10
244	LUDHIANA	JAGRAON	S-NPP	75.45885	30.75314	13:12:00	D	6.10
245	LUDHIANA	JAGRAON	S-NPP	75.51173	30.76306	13:12:00	D	7.30
246	LUDHIANA	JAGRAON	S-NPP	75.40301	30.76508	13:12:00	D	6.00
247	LUDHIANA	JAGRAON	S-NPP	75.39993	30.76566	13:12:00	D	6.20
248	LUDHIANA	JAGRAON	S-NPP	75.59080	30.80897	13:12:00	D	2.80
249	LUDHIANA	JAGRAON	S-NPP	75.54241	30.82705	13:12:00	D	8.60
250	LUDHIANA	JAGRAON	S-NPP	75.53958	30.83823	13:12:00	D	3.00
251	LUDHIANA	JAGRAON	S-NPP	75.54066	30.87745	13:12:00	D	3.10
252	LUDHIANA	JAGRAON	S-NPP	75.52298	30.89390	13:12:00	D	5.60
253	LUDHIANA	JAGRAON	S-NPP	75.52544	30.89410	13:12:00	D	6.30

254	LUDHIANA	JAGRAON	S-NPP	75.56211	30.90092	13:12:00	D	3.20
255	LUDHIANA	JAGRAON	S-NPP	75.55959	30.90093	13:12:00	D	2.00
256	LUDHIANA	JAGRAON	S-NPP	75.50450	30.94504	13:12:00	D	4.10
257	LUDHIANA	JAGRAON	S-NPP	75.41348	30.95523	13:12:00	D	5.10
258	LUDHIANA	JAGRAON	S-NPP	75.41879	30.95623	13:12:00	D	7.60
259	LUDHIANA	JAGRAON	S-NPP	75.56112	30.95963	13:12:00	D	5.40
260	LUDHIANA	JAGRAON	S-NPP	75.64182	30.96318	13:12:00	D	18.30
261	LUDHIANA	JAGRAON	S-NPP	75.64089	30.96689	13:12:00	D	18.30
262	LUDHIANA	KHANNA	S-NPP	76.10066	30.61191	13:12:00	D	9.20
263	LUDHIANA	KHANNA	S-NPP	76.09480	30.61463	13:12:00	D	9.20
264	LUDHIANA	KHANNA	S-NPP	76.15044	30.66287	13:12:00	D	3.40
265	LUDHIANA	KHANNA	S-NPP	76.14954	30.66650	13:12:00	D	27.10
266	LUDHIANA	KHANNA	S-NPP	76.12389	30.69859	13:12:00	D	4.20
267	LUDHIANA	KHANNA	S-NPP	76.16924	30.70323	13:12:00	D	2.70
268	LUDHIANA	LUDHIANA EAST	S-NPP	75.89668	30.70602	13:12:00	D	5.00
269	LUDHIANA	LUDHIANA EAST	S-NPP	75.79338	30.71383	13:12:00	D	3.10
270	LUDHIANA	LUDHIANA EAST	S-NPP	75.79245	30.71752	13:12:00	D	5.50
271	LUDHIANA	LUDHIANA EAST	S-NPP	75.81530	30.73330	13:12:00	D	3.90
272	LUDHIANA	LUDHIANA EAST	S-NPP	75.91064	30.74520	13:12:00	D	8.30
273	LUDHIANA	LUDHIANA EAST	S-NPP	75.90781	30.74644	13:12:00	D	4.50
274	LUDHIANA	LUDHIANA EAST	S-NPP	75.91711	30.76176	13:12:00	D	6.00
275	LUDHIANA	LUDHIANA EAST	S-NPP	75.87896	30.76611	13:12:00	D	10.10
276	LUDHIANA	LUDHIANA EAST	S-NPP	75.91996	30.79297	13:12:00	D	3.10
277	LUDHIANA	LUDHIANA EAST	S-NPP	75.91814	30.80029	13:12:00	D	3.20
278	LUDHIANA	LUDHIANA EAST	S-NPP	76.08235	30.83455	13:12:00	D	5.10
279	LUDHIANA	LUDHIANA EAST	S-NPP	76.09995	30.86814	13:12:00	D	6.10
280	LUDHIANA	LUDHIANA WEST	S-NPP	75.71033	30.77691	13:12:00	D	5.20
281	LUDHIANA	LUDHIANA WEST	S-NPP	75.71548	30.77788	13:12:00	D	5.20
282	LUDHIANA	LUDHIANA WEST	S-NPP	75.71879	30.78623	13:12:00	D	9.90
283	LUDHIANA	LUDHIANA WEST	S-NPP	75.75581	30.83174	13:12:00	D	2.60
284	LUDHIANA	LUDHIANA WEST	S-NPP	75.75799	30.83305	13:12:00	D	4.70
285	LUDHIANA	LUDHIANA WEST	S-NPP	75.64664	30.84680	13:12:00	D	7.90

286	LUDHIANA	LUDHIANA WEST	S-NPP	75.71905	30.97771	13:12:00	D	3.10
287	LUDHIANA	PAYAL	S-NPP	75.90145	30.60947	13:12:00	D	5.20
288	LUDHIANA	PAYAL	S-NPP	76.05399	30.61089	13:12:00	D	3.90
289	LUDHIANA	PAYAL	S-NPP	76.06039	30.62733	13:12:00	D	5.30
290	LUDHIANA	PAYAL	S-NPP	76.06538	30.62826	13:12:00	D	5.30
291	LUDHIANA	PAYAL	S-NPP	75.92498	30.63450	13:12:00	D	7.40
292	LUDHIANA	PAYAL	S-NPP	75.94669	30.64084	13:12:00	D	3.30
293	LUDHIANA	PAYAL	S-NPP	75.94933	30.64295	13:12:00	D	4.50
294	LUDHIANA	PAYAL	S-NPP	75.94994	30.64910	13:12:00	D	3.40
295	LUDHIANA	PAYAL	S-NPP	75.94753	30.65028	13:12:00	D	3.30
296	LUDHIANA	PAYAL	S-NPP	75.88874	30.67380	13:12:00	D	2.50
297	LUDHIANA	PAYAL	S-NPP	75.95721	30.67510	13:12:00	D	2.60
298	LUDHIANA	PAYAL	S-NPP	76.04019	30.67916	13:12:00	D	2.60
299	LUDHIANA	PAYAL	S-NPP	76.01248	30.68543	13:12:00	D	15.40
300	LUDHIANA	PAYAL	S-NPP	76.00798	30.70370	13:12:00	D	4.90
301	LUDHIANA	PAYAL	S-NPP	75.95823	30.71359	13:12:00	D	4.30
302	LUDHIANA	PAYAL	S-NPP	75.96648	30.72277	13:12:00	D	5.00
303	LUDHIANA	PAYAL	S-NPP	76.03172	30.73481	13:12:00	D	3.40
304	LUDHIANA	PAYAL	S-NPP	76.03622	30.81079	13:12:00	D	4.30
305	LUDHIANA	RAIKOT	S-NPP	75.50282	30.58912	13:12:00	D	5.50
306	LUDHIANA	RAIKOT	S-NPP	75.63085	30.60573	13:12:00	D	17.20
307	LUDHIANA	RAIKOT	S-NPP	75.64129	30.60771	13:12:00	D	3.90
308	LUDHIANA	RAIKOT	S-NPP	75.70456	30.61586	13:12:00	D	2.60
309	LUDHIANA	RAIKOT	S-NPP	75.69567	30.62972	13:12:00	D	2.50
310	LUDHIANA	RAIKOT	S-NPP	75.66508	30.64337	13:12:00	D	14.20
311	LUDHIANA	RAIKOT	S-NPP	75.68678	30.64358	13:12:00	D	5.40
312	LUDHIANA	RAIKOT	S-NPP	75.73003	30.64397	13:12:00	D	11.30
313	LUDHIANA	RAIKOT	S-NPP	75.46360	30.65632	13:12:00	D	18.80
314	LUDHIANA	RAIKOT	S-NPP	75.46663	30.65643	13:12:00	D	7.60
315	LUDHIANA	RAIKOT	S-NPP	75.46568	30.66017	13:12:00	D	7.60
316	LUDHIANA	RAIKOT	S-NPP	75.48158	30.66324	13:12:00	D	4.80
317	LUDHIANA	RAIKOT	S-NPP	75.48389	30.66404	13:12:00	D	4.40

318	LUDHIANA	RAIKOT	S-NPP	75.76150	30.66925	13:12:00	D	3.60
319	LUDHIANA	RAIKOT	S-NPP	75.54542	30.68336	13:12:00	D	8.50
320	LUDHIANA	RAIKOT	S-NPP	75.54825	30.68391	13:12:00	D	7.90
321	LUDHIANA	RAIKOT	S-NPP	75.76440	30.70073	13:12:00	D	2.90
322	LUDHIANA	RAIKOT	S-NPP	75.67400	30.72741	13:12:00	D	2.90
323	LUDHIANA	RAIKOT	S-NPP	75.62259	30.73711	13:12:00	D	6.40
324	LUDHIANA	RAIKOT	S-NPP	75.65673	30.77464	13:12:00	D	6.10
325	LUDHIANA	RAIKOT	S-NPP	75.67052	30.81641	13:12:00	D	2.70
326	LUDHIANA	SAMRALA	S-NPP	76.21047	30.74492	13:12:00	D	3.70
327	LUDHIANA	SAMRALA	S-NPP	76.19267	30.77569	13:12:00	D	3.40
328	LUDHIANA	SAMRALA	S-NPP	76.14084	30.89075	13:12:00	D	2.10
329	MANSA	BUDHLADA	S-NPP	75.58206	29.74563	13:12:00	D	5.50
330	MANSA	BUDHLADA	S-NPP	75.59533	29.76005	13:12:00	D	5.60
331	MANSA	BUDHLADA	S-NPP	75.59344	29.76761	13:12:00	D	3.30
332	MANSA	BUDHLADA	S-NPP	75.43250	29.77691	13:12:00	D	3.80
333	MANSA	BUDHLADA	S-NPP	75.43974	29.78401	13:12:00	D	4.00
334	MANSA	BUDHLADA	S-NPP	75.43059	29.78454	13:12:00	D	3.60
335	MANSA	BUDHLADA	S-NPP	75.43604	29.78557	13:12:00	D	3.60
336	MANSA	BUDHLADA	S-NPP	75.71150	29.78602	13:12:00	D	8.60
337	MANSA	BUDHLADA	S-NPP	75.43336	29.78676	13:12:00	D	4.00
338	MANSA	BUDHLADA	S-NPP	75.50955	29.78746	13:12:00	D	5.20
339	MANSA	BUDHLADA	S-NPP	75.45240	29.78865	13:12:00	D	9.50
340	MANSA	BUDHLADA	S-NPP	75.44967	29.78993	13:12:00	D	9.10
341	MANSA	BUDHLADA	S-NPP	75.60387	29.79333	13:12:00	D	6.90
342	MANSA	BUDHLADA	S-NPP	75.50130	29.79784	13:12:00	D	4.00
343	MANSA	BUDHLADA	S-NPP	75.69190	29.79807	13:12:00	D	5.70
344	MANSA	BUDHLADA	S-NPP	75.43050	29.79819	13:12:00	D	3.70
345	MANSA	BUDHLADA	S-NPP	75.43594	29.79925	13:12:00	D	3.70
346	MANSA	BUDHLADA	S-NPP	75.50388	29.80045	13:12:00	D	8.80
347	MANSA	BUDHLADA	S-NPP	75.70779	29.80106	13:12:00	D	2.00
348	MANSA	BUDHLADA	S-NPP	75.58104	29.80745	13:12:00	D	4.90
349	MANSA	BUDHLADA	S-NPP	75.58309	29.80922	13:12:00	D	3.60

350	MANSA	BUDHLADA	S-NPP	75.66600	29.81290	13:12:00	D	3.80
351	MANSA	BUDHLADA	S-NPP	75.71027	29.81333	13:12:00	D	2.90
352	MANSA	BUDHLADA	S-NPP	75.43758	29.81554	13:12:00	D	2.60
353	MANSA	BUDHLADA	S-NPP	75.66507	29.81667	13:12:00	D	3.80
354	MANSA	BUDHLADA	S-NPP	75.70425	29.82729	13:12:00	D	2.60
355	MANSA	BUDHLADA	S-NPP	75.69091	29.83654	13:12:00	D	3.80
356	MANSA	BUDHLADA	S-NPP	75.69620	29.83755	13:12:00	D	3.80
357	MANSA	BUDHLADA	S-NPP	75.69318	29.83766	13:12:00	D	7.40
358	MANSA	BUDHLADA	S-NPP	75.45457	29.83875	13:12:00	D	4.50
359	MANSA	BUDHLADA	S-NPP	75.67754	29.84579	13:12:00	D	11.50
360	MANSA	BUDHLADA	S-NPP	75.60468	29.84763	13:12:00	D	6.70
361	MANSA	BUDHLADA	S-NPP	75.76797	29.84764	13:12:00	D	3.50
362	MANSA	BUDHLADA	S-NPP	75.77077	29.84793	13:12:00	D	6.30
363	MANSA	BUDHLADA	S-NPP	75.74702	29.85515	13:12:00	D	23.30
364	MANSA	BUDHLADA	S-NPP	75.74610	29.85890	13:12:00	D	6.10
365	MANSA	BUDHLADA	S-NPP	75.74950	29.86740	13:12:00	D	7.60
366	MANSA	BUDHLADA	S-NPP	75.66821	29.88340	13:12:00	D	2.40
367	MANSA	BUDHLADA	S-NPP	75.48749	29.88879	13:12:00	D	11.40
368	MANSA	BUDHLADA	S-NPP	75.57550	29.89746	13:12:00	D	8.00
369	MANSA	BUDHLADA	S-NPP	75.51894	29.89869	13:12:00	D	3.70
370	MANSA	BUDHLADA	S-NPP	75.70865	29.89891	13:12:00	D	2.80
371	MANSA	BUDHLADA	S-NPP	75.51604	29.89996	13:12:00	D	6.20
372	MANSA	BUDHLADA	S-NPP	75.65824	29.90121	13:12:00	D	8.60
373	MANSA	BUDHLADA	S-NPP	75.50594	29.91786	13:12:00	D	10.90
374	MANSA	BUDHLADA	S-NPP	75.64732	29.92278	13:12:00	D	5.10
375	MANSA	BUDHLADA	S-NPP	75.56310	29.93680	13:12:00	D	3.80
376	MANSA	BUDHLADA	S-NPP	75.50122	29.93681	13:12:00	D	23.30
377	MANSA	BUDHLADA	S-NPP	75.50282	29.95299	13:12:00	D	4.60
378	MANSA	BUDHLADA	S-NPP	75.56155	29.98793	13:12:00	D	8.00
379	MANSA	BUDHLADA	S-NPP	75.62889	30.04327	13:12:00	D	7.20
380	MANSA	BUDHLADA	S-NPP	75.62579	30.04337	13:12:00	D	4.30
381	MANSA	MANSA	S-NPP	75.45677	29.95612	13:12:00	D	19.70

382	MANSA	MANSA	S-NPP	75.37489	29.96444	13:12:00	D	8.00
383	MANSA	MANSA	S-NPP	75.45457	29.98751	13:12:00	D	4.30
384	MANSA	MANSA	S-NPP	75.30335	29.98821	13:12:00	D	15.50
385	MANSA	MANSA	S-NPP	75.28397	29.99647	13:12:00	D	10.70
386	MANSA	MANSA	S-NPP	75.32985	29.99737	13:12:00	D	4.20
387	MANSA	MANSA	S-NPP	75.28754	30.00519	13:12:00	D	5.80
388	MANSA	MANSA	S-NPP	75.52278	30.00831	13:12:00	D	3.90
389	MANSA	MANSA	S-NPP	75.51984	30.01035	13:12:00	D	3.20
390	MANSA	MANSA	S-NPP	75.57194	30.01359	13:12:00	D	10.10
391	MANSA	MANSA	S-NPP	75.57328	30.02071	13:12:00	D	5.60
392	MANSA	MANSA	S-NPP	75.57539	30.02213	13:12:00	D	5.80
393	MANSA	MANSA	S-NPP	75.34859	30.03699	13:12:00	D	3.90
394	MANSA	MANSA	S-NPP	75.39221	30.04536	13:12:00	D	3.40
395	MANSA	MANSA	TERRA-1	75.59364	30.05078	11:32:00	D	22.07
396	MANSA	MANSA	S-NPP	75.31543	30.05463	13:12:00	D	3.60
397	MANSA	MANSA	S-NPP	75.51831	30.06155	13:12:00	D	4.70
398	MANSA	MANSA	S-NPP	75.36372	30.06783	13:12:00	D	6.60
399	MANSA	MANSA	S-NPP	75.31157	30.06990	13:12:00	D	2.60
400	MANSA	MANSA	S-NPP	75.56545	30.07449	13:12:00	D	8.10
401	MANSA	MANSA	S-NPP	75.40630	30.07991	13:12:00	D	5.80
402	MANSA	MANSA	S-NPP	75.30866	30.08135	13:12:00	D	2.70
403	MANSA	MANSA	S-NPP	75.30688	30.08200	13:12:00	D	4.40
404	MANSA	MANSA	S-NPP	75.40535	30.08370	13:12:00	D	4.00
405	MANSA	MANSA	TERRA-1	75.59705	30.08522	11:32:00	D	22.58
406	MANSA	MANSA	S-NPP	75.47849	30.08566	13:12:00	D	9.10
407	MANSA	MANSA	S-NPP	75.58395	30.08984	13:12:00	D	4.10
408	MANSA	MANSA	S-NPP	75.29304	30.09131	13:12:00	D	5.10
409	MANSA	MANSA	S-NPP	75.49905	30.09351	13:12:00	D	4.70
410	MANSA	MANSA	S-NPP	75.29206	30.09513	13:12:00	D	5.10
411	MANSA	MANSA	S-NPP	75.35509	30.09541	13:12:00	D	5.30
412	MANSA	MANSA	S-NPP	75.35055	30.09725	13:12:00	D	15.70
413	MANSA	MANSA	S-NPP	75.49810	30.09729	13:12:00	D	4.70

414	MANSA	MANSA	S-NPP	75.52586	30.09858	13:12:00	D	8.80
415	MANSA	MANSA	S-NPP	75.35413	30.09922	13:12:00	D	5.30
416	MANSA	MANSA	S-NPP	75.49715	30.10107	13:12:00	D	4.10
417	MANSA	MANSA	S-NPP	75.37143	30.10517	13:12:00	D	17.40
418	MANSA	MANSA	S-NPP	75.37495	30.10725	13:12:00	D	8.70
419	MANSA	MANSA	S-NPP	75.48893	30.11140	13:12:00	D	4.00
420	MANSA	MANSA	S-NPP	75.31658	30.11190	13:12:00	D	8.80
421	MANSA	MANSA	S-NPP	75.39030	30.11422	13:12:00	D	4.60
422	MANSA	MANSA	S-NPP	75.37114	30.12246	13:12:00	D	8.00
423	MANSA	MANSA	S-NPP	75.56921	30.12648	13:12:00	D	5.90
424	MANSA	MANSA	S-NPP	75.48298	30.12818	13:12:00	D	4.70
425	MANSA	MANSA	S-NPP	75.56686	30.12858	13:12:00	D	5.90
426	MANSA	MANSA	S-NPP	75.50882	30.13713	13:12:00	D	6.50
427	MANSA	MANSA	S-NPP	75.39000	30.13805	13:12:00	D	2.40
428	MANSA	MANSA	S-NPP	75.45387	30.15429	13:12:00	D	8.30
429	MANSA	MANSA	S-NPP	75.39065	30.15807	13:12:00	D	18.30
430	MANSA	MANSA	S-NPP	75.44120	30.15980	13:12:00	D	3.70
431	MANSA	MANSA	S-NPP	75.38969	30.16187	13:12:00	D	18.30
432	MANSA	MANSA	S-NPP	75.45641	30.16667	13:12:00	D	7.90
433	MANSA	MANSA	S-NPP	75.38139	30.17222	13:12:00	D	8.40
434	MANSA	MANSA	S-NPP	75.47507	30.18211	13:12:00	D	16.70
435	MANSA	MANSA	S-NPP	75.42915	30.18527	13:12:00	D	4.00
436	MANSA	MANSA	S-NPP	75.37115	30.19017	13:12:00	D	3.90
437	MANSA	MANSA	S-NPP	75.36923	30.19777	13:12:00	D	6.20
438	MANSA	SARDULGARH	S-NPP	75.31683	29.65015	13:12:00	D	2.70
439	MANSA	SARDULGARH	S-NPP	75.19038	29.65392	13:12:00	D	7.70
440	MANSA	SARDULGARH	S-NPP	75.19870	29.66772	13:12:00	D	3.80
441	MANSA	SARDULGARH	S-NPP	75.31392	29.69813	13:12:00	D	2.80
442	MANSA	SARDULGARH	S-NPP	75.33700	29.69856	13:12:00	D	15.80
443	MANSA	SARDULGARH	TERRA-1	75.34467	29.69894	11:32:00	D	12.55
444	MANSA	SARDULGARH	S-NPP	75.36913	29.70877	13:12:00	D	10.00
445	MANSA	SARDULGARH	S-NPP	75.28133	29.71200	13:12:00	D	3.20

446	MANSA	SARDULGARH	S-NPP	75.34421	29.71603	13:12:00	D	3.70
447	MANSA	SARDULGARH	TERRA-1	75.23895	29.71691	11:32:00	D	14.10
448	MANSA	SARDULGARH	S-NPP	75.34972	29.71709	13:12:00	D	3.70
449	MANSA	SARDULGARH	S-NPP	75.26729	29.72141	13:12:00	D	10.20
450	MANSA	SARDULGARH	S-NPP	75.37727	29.72238	13:12:00	D	6.90
451	MANSA	SARDULGARH	S-NPP	75.39087	29.73701	13:12:00	D	3.10
452	MANSA	SARDULGARH	S-NPP	75.35498	29.74219	13:12:00	D	6.20
453	MANSA	SARDULGARH	S-NPP	75.38705	29.75230	13:12:00	D	2.60
454	MANSA	SARDULGARH	S-NPP	75.27921	29.78087	13:12:00	D	5.70
455	MANSA	SARDULGARH	S-NPP	75.41322	29.78526	13:12:00	D	2.20
456	MANSA	SARDULGARH	S-NPP	75.41603	29.78739	13:12:00	D	4.80
457	MANSA	SARDULGARH	S-NPP	75.33545	29.78778	13:12:00	D	9.30
458	MANSA	SARDULGARH	S-NPP	75.33450	29.79160	13:12:00	D	9.30
459	MANSA	SARDULGARH	S-NPP	75.40772	29.79778	13:12:00	D	18.70
460	MANSA	SARDULGARH	S-NPP	75.36748	29.79800	13:12:00	D	9.50
461	MANSA	SARDULGARH	S-NPP	75.31506	29.79990	13:12:00	D	7.40
462	MANSA	SARDULGARH	TERRA-1	75.27987	29.80973	11:32:00	D	19.45
463	MANSA	SARDULGARH	S-NPP	75.36366	29.81329	13:12:00	D	7.50
464	MOGA	MOGA	S-NPP	75.15970	30.74177	13:12:00	D	2.00
465	MOGA	MOGA	S-NPP	75.23872	30.81263	13:12:00	D	7.60
466	MOGA	MOGA	S-NPP	75.25961	30.85490	13:12:00	D	5.60
467	MOGA	NIHAL SINGH WALA	S-NPP	75.23756	30.54604	13:12:00	D	2.00
468	MOGA	NIHAL SINGH WALA	S-NPP	75.25706	30.58165	13:12:00	D	4.60
469	MOGA	NIHAL SINGH WALA	S-NPP	75.21597	30.58574	13:12:00	D	5.30
470	MOGA	NIHAL SINGH WALA	S-NPP	75.21464	30.61339	13:12:00	D	4.90
471	MOGA	NIHAL SINGH WALA	S-NPP	75.21191	30.61485	13:12:00	D	1.70
472	MOGA	NIHAL SINGH WALA	S-NPP	75.28065	30.63620	13:12:00	D	3.60
473	MOGA	NIHAL SINGH WALA	S-NPP	75.24425	30.64504	13:12:00	D	11.20
474	MOGA	NIHAL SINGH WALA	S-NPP	75.33272	30.65421	13:12:00	D	18.90
475	MOGA	NIHAL SINGH WALA	S-NPP	75.34252	30.66006	13:12:00	D	4.20
476	MOGA	NIHAL SINGH WALA	S-NPP	75.36842	30.66900	13:12:00	D	8.80
477	MUKTSAR	GIDDARBAHA	S-NPP	74.64142	30.16351	13:12:00	D	3.30

478	MUKTSAR	GIDDARBAHA	S-NPP	74.62460	30.16438	13:12:00	D	1.90
479	MUKTSAR	GIDDARBAHA	S-NPP	74.72091	30.17899	13:12:00	D	8.70
480	MUKTSAR	GIDDARBAHA	S-NPP	74.71835	30.18024	13:12:00	D	8.20
481	MUKTSAR	GIDDARBAHA	S-NPP	74.62988	30.19151	13:12:00	D	9.70
482	MUKTSAR	GIDDARBAHA	S-NPP	74.63383	30.19230	13:12:00	D	7.00
483	MUKTSAR	GIDDARBAHA	S-NPP	74.69927	30.23014	13:12:00	D	3.10
484	MUKTSAR	GIDDARBAHA	S-NPP	74.63420	30.25455	13:12:00	D	2.20
485	MUKTSAR	GIDDARBAHA	S-NPP	74.68023	30.31957	13:12:00	D	4.40
486	MUKTSAR	GIDDARBAHA	S-NPP	74.71019	30.34611	13:12:00	D	7.80
487	MUKTSAR	GIDDARBAHA	S-NPP	74.62888	30.35074	13:12:00	D	4.00
488	MUKTSAR	GIDDARBAHA	S-NPP	74.66605	30.39299	13:12:00	D	4.40
489	MUKTSAR	GIDDARBAHA	S-NPP	74.67161	30.41884	13:12:00	D	17.00
490	MUKTSAR	GIDDARBAHA	S-NPP	74.68328	30.42117	13:12:00	D	4.50
491	MUKTSAR	MALAUT	S-NPP	74.57508	29.93188	13:12:00	D	6.80
492	MUKTSAR	MALAUT	S-NPP	74.54790	29.93911	13:12:00	D	3.60
493	MUKTSAR	MALAUT	S-NPP	74.54888	29.93958	13:12:00	D	2.90
494	MUKTSAR	MALAUT	S-NPP	74.57185	29.94839	13:12:00	D	6.60
495	MUKTSAR	MALAUT	S-NPP	74.57585	29.94920	13:12:00	D	6.60
496	MUKTSAR	MALAUT	S-NPP	74.63287	29.95151	13:12:00	D	1.50
497	MUKTSAR	MALAUT	S-NPP	74.57482	29.95318	13:12:00	D	6.60
498	MUKTSAR	MALAUT	S-NPP	74.57870	29.97067	13:12:00	D	3.00
499	MUKTSAR	MALAUT	S-NPP	74.56258	29.98417	13:12:00	D	5.80
500	MUKTSAR	MALAUT	S-NPP	74.50121	29.99291	13:12:00	D	6.80
501	MUKTSAR	MALAUT	S-NPP	74.54333	30.00962	13:12:00	D	5.00
502	MUKTSAR	MALAUT	S-NPP	74.54734	30.01042	13:12:00	D	5.20
503	MUKTSAR	MALAUT	S-NPP	74.55135	30.01121	13:12:00	D	5.20
504	MUKTSAR	MALAUT	S-NPP	74.55534	30.01200	13:12:00	D	4.50
505	MUKTSAR	MALAUT	S-NPP	74.50703	30.01921	13:12:00	D	9.60
506	MUKTSAR	MALAUT	S-NPP	74.47057	30.02882	13:12:00	D	3.40
507	MUKTSAR	MALAUT	S-NPP	74.47073	30.02942	13:12:00	D	4.00
508	MUKTSAR	MALAUT	S-NPP	74.65874	30.03237	13:12:00	D	3.30
509	MUKTSAR	MALAUT	S-NPP	74.56879	30.07429	13:12:00	D	3.50

510	MUKTSAR	MALAUT	S-NPP	74.49153	30.07975	13:12:00	D	6.50
511	MUKTSAR	MALAUT	S-NPP	74.49854	30.08534	13:12:00	D	2.60
512	MUKTSAR	MALAUT	S-NPP	74.56258	30.09808	13:12:00	D	4.20
513	MUKTSAR	MALAUT	S-NPP	74.41488	30.19457	13:12:00	D	2.60
514	MUKTSAR	MALAUT	S-NPP	74.45017	30.20577	13:12:00	D	3.00
515	MUKTSAR	MALAUT	S-NPP	74.37926	30.23414	13:12:00	D	4.90
516	MUKTSAR	MALAUT	S-NPP	74.38306	30.23448	13:12:00	D	4.80
517	MUKTSAR	MALAUT	S-NPP	74.37899	30.26773	13:12:00	D	3.50
518	MUKTSAR	MALAUT	S-NPP	74.40730	30.27341	13:12:00	D	3.40
519	MUKTSAR	MALAUT	S-NPP	74.45930	30.31727	13:12:00	D	10.30
520	MUKTSAR	MALAUT	S-NPP	74.45825	30.32124	13:12:00	D	6.20
521	MUKTSAR	MALAUT	S-NPP	74.38632	30.35749	13:12:00	D	4.80
522	MUKTSAR	MUKTSAR	S-NPP	74.41420	30.39660	13:12:00	D	2.50
523	MUKTSAR	MUKTSAR	S-NPP	74.55706	30.47476	13:12:00	D	4.10
524	PATIALA	NABHA	S-NPP	76.14384	30.32267	13:12:00	D	7.70
525	PATIALA	NABHA	S-NPP	76.17249	30.35459	13:12:00	D	1.70
526	PATIALA	NABHA	S-NPP	76.18627	30.37137	13:12:00	D	3.50
527	PATIALA	NABHA	S-NPP	76.23078	30.37967	13:12:00	D	11.10
528	PATIALA	NABHA	S-NPP	76.08819	30.41038	13:12:00	D	2.70
529	PATIALA	NABHA	S-NPP	76.22777	30.41329	13:12:00	D	2.40
530	PATIALA	NABHA	S-NPP	76.10640	30.42137	13:12:00	D	12.20
531	PATIALA	NABHA	S-NPP	76.09460	30.42684	13:12:00	D	3.00
532	PATIALA	NABHA	S-NPP	76.09370	30.43049	13:12:00	D	11.00
533	PATIALA	NABHA	S-NPP	76.24624	30.44324	13:12:00	D	5.10
534	PATIALA	NABHA	S-NPP	76.07192	30.48567	13:12:00	D	8.30
535	PATIALA	NABHA	S-NPP	76.07102	30.48933	13:12:00	D	11.20
536	PATIALA	PATIALA	S-NPP	76.36849	30.27756	13:12:00	D	7.70
537	PATIALA	PATIALA	S-NPP	76.36557	30.28012	13:12:00	D	9.60
538	PATIALA	PATIALA	S-NPP	76.37045	30.28103	13:12:00	D	9.60
539	PATIALA	PATIALA	S-NPP	76.36762	30.28118	13:12:00	D	7.70
540	PATIALA	PATIALA	S-NPP	76.27118	30.28909	13:12:00	D	2.80
541	PATIALA	PATIALA	S-NPP	76.26501	30.31452	13:12:00	D	9.50

542	PATIALA	PATIALA	S-NPP	76.26413	30.31816	13:12:00	D	9.50
543	PATIALA	PATIALA	S-NPP	76.31345	30.39883	13:12:00	D	3.40
544	PATIALA	PATIALA	S-NPP	76.38668	30.45382	13:12:00	D	14.60
545	PATIALA	SAMANA	S-NPP	76.12961	29.82199	13:12:00	D	8.10
546	PATIALA	SAMANA	S-NPP	76.10874	29.86430	13:12:00	D	3.30
547	PATIALA	SAMANA	S-NPP	76.10247	29.89008	13:12:00	D	9.60
548	PATIALA	SAMANA	S-NPP	76.01056	29.89633	13:12:00	D	2.90
549	PATIALA	SAMANA	S-NPP	75.98454	29.90418	13:12:00	D	4.70
550	PATIALA	SAMANA	S-NPP	76.07288	29.91312	13:12:00	D	12.80
551	PATIALA	SAMANA	S-NPP	76.01486	29.93310	13:12:00	D	2.40
552	PATIALA	SAMANA	S-NPP	75.99775	29.93763	13:12:00	D	6.50
553	PATIALA	SAMANA	S-NPP	76.10201	29.94555	13:12:00	D	14.00
554	PATIALA	SAMANA	S-NPP	76.10674	29.96950	13:12:00	D	7.00
555	PATIALA	SAMANA	S-NPP	76.09484	29.97499	13:12:00	D	12.00
556	PATIALA	SAMANA	S-NPP	76.01930	29.98028	13:12:00	D	14.80
557	PATIALA	SAMANA	S-NPP	76.09126	29.98970	13:12:00	D	3.40
558	PATIALA	SAMANA	S-NPP	76.12244	29.99161	13:12:00	D	12.50
559	PATIALA	SAMANA	S-NPP	76.08260	30.00349	13:12:00	D	2.50
560	PATIALA	SAMANA	S-NPP	76.18737	30.02652	13:12:00	D	10.10
561	PATIALA	SAMANA	S-NPP	76.11272	30.04111	13:12:00	D	2.70
562	PATIALA	SAMANA	S-NPP	76.10086	30.04657	13:12:00	D	3.40
563	PATIALA	SAMANA	S-NPP	76.10233	30.06221	13:12:00	D	3.60
564	PATIALA	SAMANA	S-NPP	76.17047	30.10548	13:12:00	D	11.40
565	PATIALA	SAMANA	S-NPP	76.14005	30.12285	13:12:00	D	5.60
566	PATIALA	SAMANA	S-NPP	76.17010	30.13839	13:12:00	D	5.80
567	PATIALA	SAMANA	S-NPP	76.17243	30.14024	13:12:00	D	7.80
568	PATIALA	SAMANA	S-NPP	76.09785	30.15549	13:12:00	D	12.20
569	PATIALA	SAMANA	S-NPP	76.09696	30.15916	13:12:00	D	4.30
570	PATIALA	SAMANA	S-NPP	76.09338	30.17383	13:12:00	D	1.90
571	PATIALA	SAMANA	S-NPP	76.10344	30.17571	13:12:00	D	5.00
572	PATIALA	SAMANA	S-NPP	76.10254	30.17937	13:12:00	D	5.00
573	PATIALA	SAMANA	S-NPP	76.10577	30.18764	13:12:00	D	6.80

574	SANGRUR	DHURI	TERRA-1	75.72154	30.28883	11:32:00	D	15.54
575	SANGRUR	DHURI	S-NPP	75.70564	30.29230	13:12:00	D	7.90
576	SANGRUR	DHURI	S-NPP	75.91349	30.31487	13:12:00	D	6.80
577	SANGRUR	DHURI	S-NPP	75.91057	30.31568	13:12:00	D	7.20
578	SANGRUR	DHURI	S-NPP	75.66589	30.31993	13:12:00	D	14.30
579	SANGRUR	DHURI	S-NPP	75.69821	30.32213	13:12:00	D	4.00
580	SANGRUR	DHURI	S-NPP	75.91895	30.32500	13:12:00	D	10.80
581	SANGRUR	DHURI	S-NPP	75.80058	30.32588	13:12:00	D	19.20
582	SANGRUR	DHURI	S-NPP	75.69113	30.32860	13:12:00	D	4.20
583	SANGRUR	DHURI	S-NPP	75.83411	30.38643	13:12:00	D	3.20
584	SANGRUR	DHURI	S-NPP	75.83650	30.39849	13:12:00	D	2.90
585	SANGRUR	DHURI	S-NPP	75.87366	30.40995	13:12:00	D	4.80
586	SANGRUR	DHURI	S-NPP	75.87572	30.41345	13:12:00	D	5.60
587	SANGRUR	DHURI	S-NPP	75.87274	30.41365	13:12:00	D	3.50
588	SANGRUR	DHURI	S-NPP	75.83837	30.42260	13:12:00	D	8.30
589	SANGRUR	DHURI	S-NPP	75.83140	30.42903	13:12:00	D	32.40
590	SANGRUR	DHURI	S-NPP	75.83048	30.43272	13:12:00	D	32.40
591	SANGRUR	DHURI	S-NPP	75.92424	30.44268	13:12:00	D	4.00
592	SANGRUR	DHURI	S-NPP	75.69099	30.44920	13:12:00	D	16.60
593	SANGRUR	DHURI	S-NPP	75.79320	30.45283	13:12:00	D	5.10
594	SANGRUR	DHURI	S-NPP	75.79282	30.47601	13:12:00	D	8.50
595	SANGRUR	DHURI	S-NPP	75.79189	30.47971	13:12:00	D	8.50
596	SANGRUR	DHURI	S-NPP	75.73278	30.49977	13:12:00	D	27.10
597	SANGRUR	DHURI	S-NPP	75.73523	30.50094	13:12:00	D	16.30
598	SANGRUR	DHURI	S-NPP	75.70042	30.50987	13:12:00	D	5.80
599	SANGRUR	DHURI	S-NPP	75.72598	30.53804	13:12:00	D	12.70
600	SANGRUR	MALERKOTLA	S-NPP	75.81140	30.44462	13:12:00	D	6.20
601	SANGRUR	MALERKOTLA	S-NPP	75.81048	30.44832	13:12:00	D	2.10
602	SANGRUR	MALERKOTLA	S-NPP	75.87473	30.44879	13:12:00	D	4.30
603	SANGRUR	MALERKOTLA	S-NPP	75.84734	30.45137	13:12:00	D	3.30
604	SANGRUR	MALERKOTLA	S-NPP	75.89569	30.47200	13:12:00	D	4.20
605	SANGRUR	MALERKOTLA	S-NPP	75.84696	30.47449	13:12:00	D	11.90

606	SANGRUR	MALERKOTLA	S-NPP	75.89896	30.48032	13:12:00	D	3.60
607	SANGRUR	MALERKOTLA	S-NPP	75.94472	30.48884	13:12:00	D	3.20
608	SANGRUR	MALERKOTLA	S-NPP	75.84841	30.49021	13:12:00	D	4.00
609	SANGRUR	MALERKOTLA	S-NPP	76.00033	30.49916	13:12:00	D	4.40
610	SANGRUR	MALERKOTLA	S-NPP	75.81393	30.49928	13:12:00	D	10.80
611	SANGRUR	MALERKOTLA	S-NPP	75.78027	30.50467	13:12:00	D	19.30
612	SANGRUR	MALERKOTLA	S-NPP	75.78542	30.50562	13:12:00	D	19.30
613	SANGRUR	MALERKOTLA	S-NPP	75.78259	30.50608	13:12:00	D	36.70
614	SANGRUR	MALERKOTLA	S-NPP	75.79057	30.50657	13:12:00	D	4.80
615	SANGRUR	MALERKOTLA	S-NPP	75.84198	30.51606	13:12:00	D	4.20
616	SANGRUR	MALERKOTLA	S-NPP	75.84416	30.51778	13:12:00	D	2.70
617	SANGRUR	MALERKOTLA	S-NPP	76.00085	30.51842	13:12:00	D	2.60
618	SANGRUR	MALERKOTLA	S-NPP	75.79013	30.51914	13:12:00	D	3.20
619	SANGRUR	MALERKOTLA	S-NPP	75.79527	30.52012	13:12:00	D	3.20
620	SANGRUR	MALERKOTLA	S-NPP	76.01415	30.52853	13:12:00	D	4.20
621	SANGRUR	MALERKOTLA	S-NPP	76.08706	30.53047	13:12:00	D	2.60
622	SANGRUR	MALERKOTLA	S-NPP	75.81911	30.53237	13:12:00	D	4.60
623	SANGRUR	MALERKOTLA	S-NPP	75.78038	30.53667	13:12:00	D	2.20
624	SANGRUR	MALERKOTLA	S-NPP	75.82332	30.53703	13:12:00	D	3.70
625	SANGRUR	MALERKOTLA	S-NPP	75.81727	30.53976	13:12:00	D	3.70
626	SANGRUR	MALERKOTLA	S-NPP	75.72746	30.55386	13:12:00	D	4.40
627	SANGRUR	MALERKOTLA	S-NPP	76.05746	30.55425	13:12:00	D	13.70
628	SANGRUR	MALERKOTLA	S-NPP	75.89896	30.55513	13:12:00	D	2.70
629	SANGRUR	MALERKOTLA	S-NPP	76.05988	30.55602	13:12:00	D	11.60
630	SANGRUR	MALERKOTLA	S-NPP	75.82294	30.56015	13:12:00	D	16.90
631	SANGRUR	MALERKOTLA	S-NPP	75.82805	30.56111	13:12:00	D	16.90
632	SANGRUR	MALERKOTLA	S-NPP	75.68983	30.57401	13:12:00	D	3.40
633	SANGRUR	MALERKOTLA	S-NPP	75.90874	30.58006	13:12:00	D	16.50
634	SANGRUR	MALERKOTLA	S-NPP	75.91383	30.58100	13:12:00	D	2.10
635	SANGRUR	MALERKOTLA	S-NPP	75.83372	30.58148	13:12:00	D	8.10
636	SANGRUR	MALERKOTLA	S-NPP	75.75292	30.58189	13:12:00	D	9.00
637	SANGRUR	MALERKOTLA	S-NPP	75.83884	30.58243	13:12:00	D	3.30

638	SANGRUR	MALERKOTLA	S-NPP	75.97634	30.58499	13:12:00	D	15.60
639	SANGRUR	MALERKOTLA	S-NPP	75.98461	30.59419	13:12:00	D	16.00
640	SANGRUR	MALERKOTLA	S-NPP	75.77078	30.59683	13:12:00	D	8.20
641	SANGRUR	MALERKOTLA	S-NPP	75.76472	30.59958	13:12:00	D	3.80
642	SANGRUR	MALERKOTLA	S-NPP	75.76987	30.60053	13:12:00	D	8.20
643	SANGRUR	MALERKOTLA	S-NPP	75.82362	30.62206	13:12:00	D	6.60
644	SANGRUR	MALERKOTLA	S-NPP	75.82145	30.62257	13:12:00	D	6.40
645	SANGRUR	MALERKOTLA	S-NPP	75.85299	30.62470	13:12:00	D	2.80
646	SANGRUR	MALERKOTLA	S-NPP	75.88640	30.66182	13:12:00	D	5.10
647	SANGRUR	MALERKOTLA	S-NPP	75.85823	30.66808	13:12:00	D	9.70
648	SANGRUR	MOONAK	S-NPP	75.97852	29.75449	13:12:00	D	5.30
649	SANGRUR	MOONAK	S-NPP	76.01958	29.76209	13:12:00	D	8.50
650	SANGRUR	MOONAK	S-NPP	76.00661	29.77132	13:12:00	D	8.00
651	SANGRUR	MOONAK	S-NPP	75.87881	29.77462	13:12:00	D	5.40
652	SANGRUR	MOONAK	S-NPP	76.05865	29.77705	13:12:00	D	3.30
653	SANGRUR	MOONAK	S-NPP	75.99590	29.78129	13:12:00	D	2.60
654	SANGRUR	MOONAK	S-NPP	75.91415	29.78522	13:12:00	D	8.60
655	SANGRUR	MOONAK	S-NPP	76.05083	29.78720	13:12:00	D	6.10
656	SANGRUR	MOONAK	S-NPP	76.04785	29.78727	13:12:00	D	6.00
657	SANGRUR	MOONAK	S-NPP	76.07722	29.78819	13:12:00	D	5.90
658	SANGRUR	MOONAK	S-NPP	76.07928	29.78936	13:12:00	D	5.20
659	SANGRUR	MOONAK	S-NPP	76.03826	29.80480	13:12:00	D	7.10
660	SANGRUR	MOONAK	S-NPP	76.03736	29.80850	13:12:00	D	7.10
661	SANGRUR	MOONAK	S-NPP	75.99981	29.80917	13:12:00	D	12.20
662	SANGRUR	MOONAK	S-NPP	75.94572	29.81064	13:12:00	D	13.70
663	SANGRUR	MOONAK	S-NPP	75.99890	29.81288	13:12:00	D	7.10
664	SANGRUR	MOONAK	S-NPP	75.94480	29.81435	13:12:00	D	13.70
665	SANGRUR	MOONAK	S-NPP	76.00129	29.82495	13:12:00	D	5.40
666	SANGRUR	MOONAK	S-NPP	75.90412	29.82617	13:12:00	D	1.80
667	SANGRUR	MOONAK	TERRA-1	75.96198	29.82620	11:32:00	D	16.96
668	SANGRUR	MOONAK	S-NPP	75.90929	29.82714	13:12:00	D	3.80
669	SANGRUR	MOONAK	S-NPP	76.08553	29.82914	13:12:00	D	9.00

670	SANGRUR	MOONAK	S-NPP	76.00550	29.82961	13:12:00	D	3.50
671	SANGRUR	MOONAK	S-NPP	76.08463	29.83283	13:12:00	D	9.00
672	SANGRUR	MOONAK	S-NPP	76.00459	29.83331	13:12:00	D	3.50
673	SANGRUR	MOONAK	S-NPP	76.04723	29.83355	13:12:00	D	9.80
674	SANGRUR	MOONAK	S-NPP	76.08970	29.83377	13:12:00	D	13.90
675	SANGRUR	MOONAK	S-NPP	76.10311	29.84399	13:12:00	D	7.80
676	SANGRUR	MOONAK	S-NPP	75.90014	29.86434	13:12:00	D	2.40
677	SANGRUR	MOONAK	S-NPP	75.76617	29.86665	13:12:00	D	19.60
678	SANGRUR	MOONAK	S-NPP	75.82240	29.90470	13:12:00	D	12.20
679	SANGRUR	MOONAK	S-NPP	75.97398	29.92544	13:12:00	D	6.00
680	SANGRUR	MOONAK	S-NPP	75.91200	29.93710	13:12:00	D	2.80
681	SANGRUR	MOONAK	S-NPP	75.87735	29.94618	13:12:00	D	17.30
682	SANGRUR	MOONAK	S-NPP	75.87643	29.94990	13:12:00	D	17.30
683	SANGRUR	MOONAK	TERRA-1	75.86648	29.97143	11:32:00	D	11.84
684	SANGRUR	MOONAK	S-NPP	75.92863	29.97900	13:12:00	D	4.40
685	SANGRUR	MOONAK	S-NPP	75.93101	29.97977	13:12:00	D	2.50
686	SANGRUR	MOONAK	S-NPP	75.85336	29.98833	13:12:00	D	4.90
687	SANGRUR	SANGRUR	S-NPP	75.56905	30.16449	13:12:00	D	5.10
688	SANGRUR	SANGRUR	S-NPP	75.59121	30.16479	13:12:00	D	11.90
689	SANGRUR	SANGRUR	S-NPP	75.94182	30.16489	13:12:00	D	4.90
690	SANGRUR	SANGRUR	S-NPP	75.56812	30.16825	13:12:00	D	4.80
691	SANGRUR	SANGRUR	S-NPP	75.57343	30.16927	13:12:00	D	5.20
692	SANGRUR	SANGRUR	S-NPP	75.61768	30.16985	13:12:00	D	6.30
693	SANGRUR	SANGRUR	S-NPP	75.98264	30.17248	13:12:00	D	2.90
694	SANGRUR	SANGRUR	S-NPP	75.62203	30.17461	13:12:00	D	6.30
695	SANGRUR	SANGRUR	S-NPP	75.99699	30.17900	13:12:00	D	12.40
696	SANGRUR	SANGRUR	S-NPP	75.56531	30.17954	13:12:00	D	11.30
697	SANGRUR	SANGRUR	S-NPP	75.60864	30.18386	13:12:00	D	3.60
698	SANGRUR	SANGRUR	S-NPP	75.79409	30.18786	13:12:00	D	2.90
699	SANGRUR	SANGRUR	S-NPP	76.05181	30.19300	13:12:00	D	2.20
700	SANGRUR	SANGRUR	S-NPP	75.97720	30.19460	13:12:00	D	2.50
701	SANGRUR	SANGRUR	S-NPP	75.64995	30.19563	13:12:00	D	6.40

702	SANGRUR	SANGRUR	S-NPP	75.64901	30.19937	13:12:00	D	13.60
703	SANGRUR	SANGRUR	S-NPP	75.61018	30.19987	13:12:00	D	8.10
704	SANGRUR	SANGRUR	S-NPP	76.00681	30.20391	13:12:00	D	4.60
705	SANGRUR	SANGRUR	S-NPP	75.61454	30.20462	13:12:00	D	8.10
706	SANGRUR	SANGRUR	S-NPP	75.97866	30.21029	13:12:00	D	4.90
707	SANGRUR	SANGRUR	S-NPP	75.97643	30.21087	13:12:00	D	5.70
708	SANGRUR	SANGRUR	S-NPP	75.80135	30.22427	13:12:00	D	2.60
709	SANGRUR	SANGRUR	S-NPP	75.68546	30.22976	13:12:00	D	5.60
710	SANGRUR	SANGRUR	S-NPP	75.73959	30.23212	13:12:00	D	4.80
711	SANGRUR	SANGRUR	S-NPP	75.70885	30.24587	13:12:00	D	3.80
712	SANGRUR	SANGRUR	S-NPP	75.93919	30.25402	13:12:00	D	10.60
713	SANGRUR	SANGRUR	S-NPP	75.78696	30.26046	13:12:00	D	6.50
714	SANGRUR	SANGRUR	S-NPP	75.95230	30.28732	13:12:00	D	25.10
715	SANGRUR	SANGRUR	S-NPP	75.91386	30.29178	13:12:00	D	3.40
716	SANGRUR	SANGRUR	S-NPP	76.13155	30.30895	13:12:00	D	20.20
717	SANGRUR	SANGRUR	S-NPP	76.12476	30.31534	13:12:00	D	17.30
718	SANGRUR	SANGRUR	S-NPP	75.90455	30.31841	13:12:00	D	6.90
719	SANGRUR	SUNAM	S-NPP	75.67478	29.92399	13:12:00	D	13.40
720	SANGRUR	SUNAM	S-NPP	75.69065	29.92696	13:12:00	D	2.90
721	SANGRUR	SUNAM	S-NPP	75.78001	29.94364	13:12:00	D	6.50
722	SANGRUR	SUNAM	S-NPP	75.73289	29.94579	13:12:00	D	4.90
723	SANGRUR	SUNAM	S-NPP	75.73528	29.94705	13:12:00	D	4.20
724	SANGRUR	SUNAM	S-NPP	75.65977	29.95141	13:12:00	D	1.80
725	SANGRUR	SUNAM	S-NPP	75.80175	29.95508	13:12:00	D	11.40
726	SANGRUR	SUNAM	S-NPP	75.80428	29.95597	13:12:00	D	8.80
727	SANGRUR	SUNAM	S-NPP	75.79814	29.95873	13:12:00	D	14.80
728	SANGRUR	SUNAM	S-NPP	75.80083	29.95881	13:12:00	D	11.40
729	SANGRUR	SUNAM	S-NPP	75.80757	29.97572	13:12:00	D	5.90
730	SANGRUR	SUNAM	S-NPP	75.99387	30.00719	13:12:00	D	6.70
731	SANGRUR	SUNAM	S-NPP	75.85305	30.01163	13:12:00	D	5.00
732	SANGRUR	SUNAM	S-NPP	75.85213	30.01535	13:12:00	D	5.00
733	SANGRUR	SUNAM	S-NPP	76.01842	30.01569	13:12:00	D	4.90

734	SANGRUR	SUNAM	S-NPP	75.87888	30.01650	13:12:00	D	3.30
735	SANGRUR	SUNAM	S-NPP	76.01752	30.01938	13:12:00	D	5.70
736	SANGRUR	SUNAM	S-NPP	75.92008	30.02425	13:12:00	D	5.60
737	SANGRUR	SUNAM	S-NPP	75.91917	30.02796	13:12:00	D	5.60
738	SANGRUR	SUNAM	S-NPP	75.92431	30.02893	13:12:00	D	5.60
739	SANGRUR	SUNAM	S-NPP	75.73967	30.02934	13:12:00	D	1.50
740	SANGRUR	SUNAM	S-NPP	75.70104	30.02994	13:12:00	D	7.30
741	SANGRUR	SUNAM	S-NPP	75.70012	30.03369	13:12:00	D	7.30
742	SANGRUR	SUNAM	S-NPP	75.88464	30.03701	13:12:00	D	3.80
743	SANGRUR	SUNAM	TERRA-1	75.67345	30.04090	11:32:00	D	12.45
744	SANGRUR	SUNAM	S-NPP	75.86549	30.04897	13:12:00	D	10.30
745	SANGRUR	SUNAM	S-NPP	75.89645	30.05474	13:12:00	D	9.10
746	SANGRUR	SUNAM	S-NPP	75.90491	30.06408	13:12:00	D	3.90
747	SANGRUR	SUNAM	S-NPP	75.64536	30.06610	13:12:00	D	3.80
748	SANGRUR	SUNAM	S-NPP	76.05833	30.06941	13:12:00	D	7.40
749	SANGRUR	SUNAM	S-NPP	75.75411	30.07119	13:12:00	D	4.70
750	SANGRUR	SUNAM	S-NPP	76.05743	30.07309	13:12:00	D	5.40
751	SANGRUR	SUNAM	S-NPP	75.86149	30.08707	13:12:00	D	3.20
752	SANGRUR	SUNAM	S-NPP	75.85881	30.08725	13:12:00	D	4.70
753	SANGRUR	SUNAM	S-NPP	75.82597	30.08878	13:12:00	D	6.20
754	SANGRUR	SUNAM	S-NPP	75.66711	30.08988	13:12:00	D	4.40
755	SANGRUR	SUNAM	S-NPP	75.97122	30.09955	13:12:00	D	10.70
756	SANGRUR	SUNAM	S-NPP	75.96835	30.10030	13:12:00	D	11.00
757	SANGRUR	SUNAM	S-NPP	76.05530	30.10346	13:12:00	D	3.80
758	SANGRUR	SUNAM	S-NPP	75.88667	30.12746	13:12:00	D	6.60
759	SANGRUR	SUNAM	S-NPP	75.93467	30.12875	13:12:00	D	2.40
760	SANGRUR	SUNAM	S-NPP	75.87455	30.13294	13:12:00	D	9.50
761	SANGRUR	SUNAM	S-NPP	76.02034	30.14868	13:12:00	D	4.10
762	SANGRUR	SUNAM	S-NPP	75.83624	30.15684	13:12:00	D	3.10
763	TARN TARAN	PATTI	S-NPP	74.76653	31.14322	13:12:00	D	4.90
764	TARN TARAN	PATTI	S-NPP	74.61240	31.17391	13:12:00	D	5.80
765	TARN TARAN	PATTI	S-NPP	74.61138	31.17778	13:12:00	D	6.40

Details of residue burning events in Haryana on 14-Nov-2018

Event S. No.	District	Tehsil/Block	Satellite	Longitude	Latitude	Time (IST)	Day/Night	Fire Power (W/m²)
1	AMBALA	AMBALA	S-NPP	76.75117	30.26830	13:12:00	D	4.60
2	AMBALA	BARARA	S-NPP	77.01714	30.26570	13:12:00	D	7.30
3	FATEHABAD	FATEHABAD	S-NPP	75.63379	29.42800	13:12:00	D	2.60
4	FATEHABAD	FATEHABAD	S-NPP	75.63177	29.51676	13:12:00	D	3.10
5	FATEHABAD	FATEHABAD	S-NPP	75.50852	29.55696	13:12:00	D	8.00
6	FATEHABAD	FATEHABAD	S-NPP	75.47841	29.56325	13:12:00	D	1.90
7	FATEHABAD	FATEHABAD	S-NPP	75.47665	29.56446	13:12:00	D	4.00
8	FATEHABAD	FATEHABAD	S-NPP	75.42456	29.56633	13:12:00	D	5.00
9	FATEHABAD	FATEHABAD	S-NPP	75.60786	29.56780	13:12:00	D	3.90
10	FATEHABAD	FATEHABAD	S-NPP	75.41973	29.56820	13:12:00	D	8.90
11	FATEHABAD	FATEHABAD	S-NPP	75.42625	29.58270	13:12:00	D	4.80
12	FATEHABAD	FATEHABAD	TERRA-1	75.40436	29.58366	11:32:00	D	19.33
13	FATEHABAD	FATEHABAD	S-NPP	75.34696	29.59953	13:12:00	D	9.30
14	FATEHABAD	FATEHABAD	S-NPP	75.29772	29.61022	13:12:00	D	6.00
15	FATEHABAD	FATEHABAD	S-NPP	75.50433	29.61379	13:12:00	D	3.50
16	FATEHABAD	FATEHABAD	S-NPP	75.31345	29.61727	13:12:00	D	3.70
17	FATEHABAD	FATEHABAD	S-NPP	75.31249	29.62112	13:12:00	D	12.00
18	FATEHABAD	FATEHABAD	S-NPP	75.31708	29.62603	13:12:00	D	12.20
19	FATEHABAD	FATEHABAD	S-NPP	75.49863	29.63664	13:12:00	D	4.40
20	FATEHABAD	RATIA	S-NPP	75.52060	29.61692	13:12:00	D	4.90
21	FATEHABAD	RATIA	S-NPP	75.56575	29.61763	13:12:00	D	6.80
22	FATEHABAD	RATIA	S-NPP	75.57114	29.61866	13:12:00	D	14.20
23	FATEHABAD	RATIA	S-NPP	75.57021	29.62246	13:12:00	D	4.70
24	FATEHABAD	RATIA	S-NPP	75.58772	29.66553	13:12:00	D	3.30
25	FATEHABAD	RATIA	S-NPP	75.54810	29.66597	13:12:00	D	7.60
26	FATEHABAD	RATIA	S-NPP	75.54175	29.66874	13:12:00	D	16.10
27	FATEHABAD	RATIA	S-NPP	75.53986	29.67634	13:12:00	D	12.00
28	FATEHABAD	RATIA	S-NPP	75.62435	29.67642	13:12:00	D	3.40

29	FATEHABAD	RATIA	S-NPP	75.39041	29.69282	13:12:00	D	3.90
30	FATEHABAD	RATIA	S-NPP	75.55570	29.69290	13:12:00	D	4.70
31	FATEHABAD	RATIA	S-NPP	75.67056	29.69304	13:12:00	D	3.80
32	FATEHABAD	RATIA	S-NPP	75.55768	29.69559	13:12:00	D	7.30
33	FATEHABAD	RATIA	S-NPP	75.66962	29.69682	13:12:00	D	3.40
34	FATEHABAD	RATIA	S-NPP	75.56213	29.70040	13:12:00	D	5.40
35	FATEHABAD	RATIA	S-NPP	75.56458	29.70257	13:12:00	D	4.50
36	FATEHABAD	RATIA	S-NPP	75.42140	29.70682	13:12:00	D	10.30
37	FATEHABAD	RATIA	S-NPP	75.42687	29.70788	13:12:00	D	12.70
38	FATEHABAD	RATIA	S-NPP	75.62127	29.71147	13:12:00	D	6.90
39	FATEHABAD	RATIA	S-NPP	75.61823	29.71293	13:12:00	D	8.10
40	FATEHABAD	RATIA	S-NPP	75.62357	29.71396	13:12:00	D	8.10
41	FATEHABAD	RATIA	S-NPP	75.61497	29.71425	13:12:00	D	6.90
42	FATEHABAD	RATIA	S-NPP	75.62891	29.71499	13:12:00	D	2.90
43	FATEHABAD	RATIA	S-NPP	75.62033	29.71525	13:12:00	D	6.90
44	FATEHABAD	RATIA	S-NPP	75.61729	29.71671	13:12:00	D	2.90
45	FATEHABAD	RATIA	S-NPP	75.47501	29.72114	13:12:00	D	1.90
46	FATEHABAD	RATIA	S-NPP	75.58299	29.74184	13:12:00	D	5.50
47	FATEHABAD	RATIA	S-NPP	75.58837	29.74286	13:12:00	D	15.40
48	FATEHABAD	RATIA	S-NPP	75.40636	29.74397	13:12:00	D	7.20
49	FATEHABAD	RATIA	S-NPP	75.64436	29.76542	13:12:00	D	8.60
50	FATEHABAD	RATIA	S-NPP	75.48082	29.76611	13:12:00	D	3.80
51	FATEHABAD	RATIA	S-NPP	75.47987	29.76992	13:12:00	D	13.50
52	FATEHABAD	TOHANA	S-NPP	75.95447	29.61725	13:12:00	D	5.50
53	FATEHABAD	TOHANA	S-NPP	75.87626	29.62606	13:12:00	D	8.10
54	FATEHABAD	TOHANA	S-NPP	75.90138	29.63465	13:12:00	D	6.50
55	FATEHABAD	TOHANA	S-NPP	75.93591	29.64886	13:12:00	D	5.70
56	FATEHABAD	TOHANA	S-NPP	75.73576	29.65411	13:12:00	D	3.00
57	FATEHABAD	TOHANA	S-NPP	75.94267	29.65829	13:12:00	D	5.00
58	FATEHABAD	TOHANA	S-NPP	75.92243	29.65914	01:54:00	N	0.30
59	FATEHABAD	TOHANA	S-NPP	75.93744	29.66473	13:12:00	D	3.30

60	FATEHABAD	TOHANA	S-NPP	75.93569	29.66475	13:12:00	D	4.30
61	FATEHABAD	TOHANA	S-NPP	75.93206	29.67966	13:12:00	D	9.30
62	FATEHABAD	TOHANA	S-NPP	75.93784	29.70023	13:12:00	D	18.40
63	FATEHABAD	TOHANA	S-NPP	75.83656	29.74702	13:12:00	D	6.70
64	FATEHABAD	TOHANA	S-NPP	75.83389	29.74714	13:12:00	D	13.30
65	FATEHABAD	TOHANA	S-NPP	75.83043	29.74976	13:12:00	D	30.40
66	FATEHABAD	TOHANA	S-NPP	75.83565	29.75076	13:12:00	D	30.40
67	FATEHABAD	TOHANA	S-NPP	75.83297	29.75088	13:12:00	D	24.50
68	FATEHABAD	TOHANA	S-NPP	75.83820	29.75185	13:12:00	D	24.00
69	FATEHABAD	TOHANA	S-NPP	75.77440	29.75474	13:12:00	D	3.40
70	FATEHABAD	TOHANA	S-NPP	75.71243	29.78226	13:12:00	D	8.60
71	FATEHABAD	TOHANA	S-NPP	75.81510	29.78990	13:12:00	D	2.10
72	FATEHABAD	TOHANA	S-NPP	75.79572	29.80191	13:12:00	D	21.70
73	FATEHABAD	TOHANA	S-NPP	75.73948	29.80702	13:12:00	D	5.50
74	FATEHABAD	TOHANA	S-NPP	75.72800	29.80879	13:12:00	D	6.60
75	HISAR	HISAR	S-NPP	75.83443	29.16194	13:12:00	D	3.20
76	HISAR	HISAR	S-NPP	75.90256	29.52990	13:12:00	D	3.20
77	JIND	JIND	S-NPP	76.28800	29.37516	13:12:00	D	4.40
78	JIND	JIND	S-NPP	76.47849	29.47697	13:12:00	D	1.40
79	JIND	NARWANA	S-NPP	76.26344	29.38989	13:12:00	D	3.50
80	JIND	NARWANA	S-NPP	76.26031	29.39043	13:12:00	D	3.90
81	JIND	NARWANA	S-NPP	76.08825	29.61900	13:12:00	D	2.80
82	JIND	NARWANA	S-NPP	75.97577	29.64069	13:12:00	D	3.90
83	JIND	NARWANA	S-NPP	75.97486	29.64441	13:12:00	D	3.00
84	JIND	NARWANA	S-NPP	76.00817	29.66223	13:12:00	D	5.50
85	JIND	NARWANA	S-NPP	76.00726	29.66594	13:12:00	D	4.00
86	JIND	NARWANA	S-NPP	76.08317	29.68379	13:12:00	D	8.10
87	JIND	NARWANA	S-NPP	75.93632	29.68436	13:12:00	D	4.00
88	JIND	NARWANA	S-NPP	76.08114	29.68460	13:12:00	D	9.50
89	JIND	NARWANA	S-NPP	76.15101	29.68854	13:12:00	D	4.10
90	JIND	NARWANA	S-NPP	76.10656	29.68941	13:12:00	D	2.80

91	JIND	NARWANA	S-NPP	76.07626	29.69026	13:12:00	D	6.50
92	JIND	NARWANA	S-NPP	76.07335	29.69473	13:12:00	D	6.20
93	JIND	NARWANA	S-NPP	76.07845	29.69570	13:12:00	D	4.40
94	JIND	NARWANA	S-NPP	75.96032	29.69668	13:12:00	D	6.30
95	JIND	NARWANA	S-NPP	75.99211	29.69879	13:12:00	D	5.30
96	JIND	NARWANA	S-NPP	76.10386	29.70049	13:12:00	D	13.80
97	JIND	NARWANA	S-NPP	75.95152	29.71058	13:12:00	D	7.90
98	JIND	NARWANA	S-NPP	76.02621	29.71296	13:12:00	D	3.60
99	JIND	NARWANA	S-NPP	75.98849	29.71364	13:12:00	D	23.50
100	JIND	NARWANA	S-NPP	76.03133	29.71392	13:12:00	D	6.70
101	JIND	NARWANA	S-NPP	76.02531	29.71667	13:12:00	D	34.30
102	JIND	NARWANA	S-NPP	76.06797	29.71693	13:12:00	D	6.60
103	JIND	NARWANA	S-NPP	76.08922	29.71705	13:12:00	D	7.40
104	JIND	NARWANA	S-NPP	76.15685	29.72202	13:12:00	D	4.70
105	JIND	NARWANA	S-NPP	76.06436	29.73172	13:12:00	D	4.60
106	JIND	NARWANA	S-NPP	76.06946	29.73267	13:12:00	D	2.20
107	JIND	NARWANA	S-NPP	76.06347	29.73542	13:12:00	D	4.60
108	JIND	NARWANA	S-NPP	76.10594	29.73562	13:12:00	D	1.70
109	JIND	NARWANA	S-NPP	76.06166	29.74282	13:12:00	D	13.20
110	JIND	NARWANA	S-NPP	76.07005	29.75211	13:12:00	D	4.80
111	JIND	NARWANA	S-NPP	76.15625	29.76809	13:12:00	D	5.30
112	JIND	NARWANA	S-NPP	76.14941	29.77452	13:12:00	D	8.30
113	JIND	NARWANA	S-NPP	76.14851	29.77820	13:12:00	D	3.80
114	JIND	NARWANA	S-NPP	76.15861	29.78006	13:12:00	D	4.20
115	JIND	NARWANA	S-NPP	76.19474	29.78288	13:12:00	D	5.10
116	JIND	NARWANA	S-NPP	76.13067	29.78646	13:12:00	D	3.90
117	JIND	NARWANA	S-NPP	76.15682	29.78742	13:12:00	D	3.20
118	JIND	NARWANA	S-NPP	76.20892	29.78933	13:12:00	D	3.70
119	JIND	NARWANA	S-NPP	76.08739	29.79006	13:12:00	D	13.50
120	JIND	NARWANA	S-NPP	76.08943	29.79128	13:12:00	D	11.70
121	JIND	NARWANA	S-NPP	76.16097	29.79203	13:12:00	D	10.70

122	JIND	NARWANA	S-NPP	76.20803	29.79300	13:12:00	D	3.70
123	JIND	NARWANA	S-NPP	76.16008	29.79571	13:12:00	D	4.70
124	JIND	NARWANA	S-NPP	76.17519	29.79848	13:12:00	D	9.00
125	JIND	NARWANA	S-NPP	76.21629	29.80218	13:12:00	D	3.40
126	JIND	NARWANA	S-NPP	76.20769	29.82512	13:12:00	D	3.50
127	JIND	NARWANA	S-NPP	76.20000	29.83519	13:12:00	D	5.10
128	JIND	SAFIDON	S-NPP	76.68903	29.46660	13:12:00	D	3.00
129	JIND	SAFIDON	S-NPP	76.68720	29.46662	13:12:00	D	1.90
130	KAITHAL	KAITHAL	S-NPP	76.20327	29.69044	13:12:00	D	11.30
131	KAITHAL	KAITHAL	S-NPP	76.20239	29.69412	13:12:00	D	5.40
132	KAITHAL	KAITHAL	S-NPP	76.33380	29.73340	13:12:00	D	6.60
133	KAITHAL	KAITHAL	S-NPP	76.33131	29.73552	13:12:00	D	6.20
134	KAITHAL	KAITHAL	S-NPP	76.20185	29.75349	13:12:00	D	3.10
135	KAITHAL	KAITHAL	S-NPP	76.36067	29.76386	13:12:00	D	3.40
136	KAITHAL	KAITHAL	S-NPP	76.38042	29.76752	13:12:00	D	2.00
137	KAITHAL	KAITHAL	S-NPP	76.21159	29.77832	13:12:00	D	7.30
138	KAITHAL	KAITHAL	S-NPP	76.22041	29.80677	13:12:00	D	3.00
139	KAITHAL	KAITHAL	S-NPP	76.25543	29.81318	13:12:00	D	11.90
140	KAITHAL	KAITHAL	S-NPP	76.22364	29.81502	13:12:00	D	6.10
141	KAITHAL	KAITHAL	S-NPP	76.22536	29.81694	13:12:00	D	6.60
142	KAITHAL	KAITHAL	S-NPP	76.24179	29.83535	13:12:00	D	4.60
143	KAITHAL	KAITHAL	S-NPP	76.24678	29.83628	13:12:00	D	11.90
144	KAITHAL	KAITHAL	S-NPP	76.38944	29.86668	13:12:00	D	4.20
145	KAITHAL	KAITHAL	S-NPP	76.38857	29.87032	13:12:00	D	3.90
146	KARNAL	GHARAUNDA	S-NPP	77.02389	29.52659	13:12:00	D	1.90
147	KARNAL	GHARAUNDA	S-NPP	77.02504	29.52816	13:12:00	D	3.40
148	KARNAL	KARNAL	S-NPP	76.69509	29.75354	13:12:00	D	3.40
149	SIRSA	DABWALI	S-NPP	74.64691	29.86921	01:54:00	N	0.70
150	SIRSA	DABWALI	S-NPP	74.78548	29.86959	13:12:00	D	3.80
151	SIRSA	DABWALI	S-NPP	74.78684	29.87186	13:12:00	D	6.00
152	SIRSA	DABWALI	S-NPP	74.57170	29.89795	01:54:00	N	0.60

153	SIRSA	ELLENABAD	METOP- 2	74.87743	29.44442	21:15:00	N	7.00
154	SIRSA	ELLENABAD	S-NPP	74.79404	29.48671	01:54:00	N	0.50
155	SIRSA	ELLENABAD	S-NPP	74.69481	29.53066	13:12:00	D	10.10
156	SIRSA	ELLENABAD	S-NPP	74.69474	29.53094	13:12:00	D	10.00
157	SIRSA	RANIA	S-NPP	74.87422	29.49507	13:12:00	D	3.10
158	SIRSA	RANIA	S-NPP	74.82016	29.49685	13:12:00	D	1.70
159	SIRSA	RANIA	S-NPP	74.69880	29.53144	13:12:00	D	10.10
160	SIRSA	RANIA	S-NPP	74.69873	29.53175	13:12:00	D	10.00
161	SIRSA	RANIA	S-NPP	74.90425	29.53407	13:12:00	D	6.00
162	SIRSA	RANIA	S-NPP	74.61748	29.53639	13:12:00	D	3.40
163	SIRSA	RANIA	S-NPP	74.90325	29.53801	13:12:00	D	6.00
164	SIRSA	RANIA	S-NPP	74.79223	29.54127	13:12:00	D	11.50
165	SIRSA	RANIA	S-NPP	74.75456	29.54228	13:12:00	D	3.60
166	SIRSA	RANIA	S-NPP	74.75436	29.54292	13:12:00	D	4.30
167	SIRSA	RANIA	S-NPP	74.75853	29.54305	13:12:00	D	4.60
168	SIRSA	RANIA	S-NPP	74.75832	29.54371	13:12:00	D	4.50
169	SIRSA	RANIA	S-NPP	74.68964	29.55084	13:12:00	D	23.70
170	SIRSA	RANIA	S-NPP	74.71456	29.55165	13:12:00	D	5.20
171	SIRSA	RANIA	S-NPP	74.60415	29.55246	01:54:00	N	0.50
172	SIRSA	RANIA	S-NPP	74.68861	29.55482	13:12:00	D	23.70
173	SIRSA	RANIA	S-NPP	74.58708	29.55555	13:12:00	D	7.00
174	SIRSA	RANIA	S-NPP	74.59111	29.55636	13:12:00	D	7.00
175	SIRSA	RANIA	S-NPP	74.58604	29.55955	13:12:00	D	7.00
176	SIRSA	RANIA	S-NPP	74.71254	29.55960	13:12:00	D	2.40
177	SIRSA	RANIA	S-NPP	74.59008	29.56036	13:12:00	D	7.00
178	SIRSA	RANIA	S-NPP	74.61428	29.56517	13:12:00	D	4.00
179	SIRSA	RANIA	S-NPP	74.61327	29.56917	13:12:00	D	2.10
180	SIRSA	RANIA	S-NPP	74.59506	29.57396	13:12:00	D	2.70
181	SIRSA	RANIA	S-NPP	74.59403	29.57796	13:12:00	D	2.70
182	SIRSA	RANIA	S-NPP	74.74026	29.58181	13:12:00	D	2.60

183	SIRSA	SIRSA	S-NPP	74.95304	29.51061	13:12:00	D	13.70
184	SIRSA	SIRSA	S-NPP	75.11170	29.59886	13:12:00	D	5.80
185	SIRSA	SIRSA	S-NPP	75.02085	29.61659	13:12:00	D	4.30
186	SONIPAT	GANAUR	S-NPP	76.92556	29.14471	13:12:00	D	3.00
187	SONIPAT	GOHANA	S-NPP	76.52900	29.14774	13:12:00	D	2.50
188	SONIPAT	GOHANA	S-NPP	76.50756	29.15141	13:12:00	D	14.20
189	YAMUNANAGA R	CHHACHHRAULI I	S-NPP	77.39691	30.31236	01:54:00	N	0.70

Details of residue burning events in Uttar Pradesh on 14-Nov-2018

Event S. No.	District	Tehsil/Block	Satellite	Longitude	Latitude	Time (IST)	Day/Night	Fire Power (W/m²)
1	ALLAHABAD	BARA	S-NPP	81.68170	25.09257	13:12:00	D	1.00
2	ALLAHABAD	HADIYA	S-NPP	82.09088	25.40087	13:12:00	D	2.70
3	ALLAHABAD	SORAWN	S-NPP	81.68845	25.52663	13:12:00	D	1.10
4	AMBEDKARNAGAR	ALAPUR	S-NPP	83.03699	26.41525	13:12:00	D	2.10
5	AURAIYA	AURAIYA	S-NPP	79.48527	26.53160	13:12:00	D	3.40
6	AURAIYA	BIDHUNA	S-NPP	79.54671	26.72416	13:12:00	D	2.20
7	AURAIYA	BIDHUNA	S-NPP	79.41398	26.86691	13:12:00	D	1.10
8	AZAMGARH	NIZAMABAD	S-NPP	82.97687	25.94395	13:12:00	D	1.70
9	AZAMGARH	PHULPUR	S-NPP	82.87913	25.99217	13:12:00	D	2.20
10	AZAMGARH	SAGRI	S-NPP	83.26397	26.14767	13:12:00	D	1.80
11	BALRAMPUR	TULSIPUR	S-NPP	82.65473	27.55298	13:12:00	D	2.40
12	BARABANKI	HADARGARH	S-NPP	81.39513	26.82233	13:12:00	D	1.60
13	BARABANKI	NAWABGANJ	S-NPP	81.23644	26.95100	13:12:00	D	6.80
14	BASTI	BASTI	S-NPP	82.84605	26.71949	13:12:00	D	4.10
15	BASTI	BHANPUR	S-NPP	82.77724	26.92922	13:12:00	D	5.50
16	BASTI	BHANPUR	S-NPP	82.78528	26.93035	13:12:00	D	2.30
17	BASTI	HARRAIYA	S-NPP	82.43201	26.84935	13:12:00	D	2.50
18	BASTI	HARRAIYA	S-NPP	82.58868	26.90600	13:12:00	D	2.60
19	BASTI	RUDHAULI	S-NPP	82.79449	26.92474	13:12:00	D	6.30
20	BASTI	RUDHAULI	S-NPP	82.85547	26.95405	13:12:00	D	2.50
21	BASTI	RUDHAULI	S-NPP	82.81803	26.98390	13:12:00	D	4.50
22	BASTI	RUDHAULI	S-NPP	82.80937	26.98616	13:12:00	D	2.80
23	BASTI	RUDHAULI	S-NPP	82.78402	26.98954	13:12:00	D	3.10
24	BASTI	RUDHAULI	S-NPP	82.74529	27.04630	13:12:00	D	1.70
25	DEORIA	BARHAJ	S-NPP	83.84104	26.29911	13:12:00	D	1.80
26	DEORIA	DEORIA	S-NPP	83.81441	26.69454	13:12:00	D	7.10
27	DEORIA	DEORIA	S-NPP	83.81870	26.69511	13:12:00	D	7.10

28	ETAWAH	ETAWAH	S-NPP	79.08346	26.76999	13:12:00	D	2.10
29	FAIZABAD	FAIZSBAD	S-NPP	82.44989	26.58578	13:12:00	D	3.10
30	FATEHPUR	FATEHPUR	S-NPP	80.72475	25.95088	13:12:00	D	2.50
31	FATEHPUR	FATEHPUR	S-NPP	80.80174	25.98339	13:12:00	D	2.40
32	FATEHPUR	FATEHPUR	S-NPP	80.83185	25.99150	13:12:00	D	4.20
33	FATEHPUR	FATEHPUR	S-NPP	80.78257	26.00085	13:12:00	D	1.90
34	FATEHPUR	FATEHPUR	S-NPP	80.77557	26.01681	13:12:00	D	3.30
35	GAZIPUR	MUHAMMADBAD	S-NPP	83.78699	25.65918	13:12:00	D	3.70
36	GAZIPUR	MUHAMMADBAD	S-NPP	83.88024	25.71424	13:12:00	D	1.50
37	GHAZIABAD	GARHMUKTESAR	S-NPP	78.07205	28.74086	13:12:00	D	1.50
38	GHAZIABAD	GARHMUKTESAR	S-NPP	78.05836	28.80297	13:12:00	D	1.30
39	GHAZIABAD	MODINAGAR	S-NPP	77.69927	28.80231	13:12:00	D	1.30
40	GONDA	GONDA	S-NPP	82.17470	27.16382	13:12:00	D	2.10
41	GORAKHPUR	CAMPIERGANJ	S-NPP	83.37265	26.94856	13:12:00	D	1.80
42	GORAKHPUR	GORAKHPUR	S-NPP	83.49805	26.80611	13:12:00	D	5.80
43	GORAKHPUR	GORAKHPUR	S-NPP	83.49953	26.84855	13:12:00	D	6.80
44	JAUNPUR	MACHHALI SAHAR	S-NPP	82.30851	25.66283	13:12:00	D	3.20
45	JAUNPUR	MACHHALI SAHAR	S-NPP	82.36471	25.72560	13:12:00	D	3.20
46	KANNAUJ	CHHIBRAMAU	S-NPP	79.40621	27.04671	01:54:00	N	0.90
47	KANNAUJ	TIRWA	S-NPP	79.78690	26.78080	13:12:00	D	2.30
48	KANPUR DEHAT	AKBARPUR	S-NPP	79.98260	26.30445	13:12:00	D	1.90
49	KANPUR DEHAT	RASULABAD	S-NPP	79.75031	26.63531	13:12:00	D	3.10
50	KANPUR DEHAT	RASULABAD	S-NPP	79.83326	26.75380	13:12:00	D	3.60
51	KAUSHAMBI	CHAIL	S-NPP	81.51053	25.36458	13:12:00	D	3.60
52	KAUSHAMBI	CHAIL	S-NPP	81.51434	25.36516	13:12:00	D	3.60
53	KAUSHAMBI	MANJHANPUR	S-NPP	81.33340	25.39509	13:12:00	D	2.30
54	KAUSHAMBI	MANJHANPUR	S-NPP	81.26469	25.48925	13:12:00	D	1.90
55	KAUSHAMBI	SIRATHU	S-NPP	81.24008	25.62120	13:12:00	D	2.30
56	KUSHINAGAR	HATA	S-NPP	83.66145	26.78222	13:12:00	D	2.50
57	KUSHINAGAR	HATA	S-NPP	83.72620	26.89012	13:12:00	D	3.50
58	KUSHINAGAR	HATA	S-NPP	83.63967	26.89038	13:12:00	D	3.00

59	KUSHINAGAR	HATA	S-NPP	83.72659	26.89127	13:12:00	D	3.70
60	KUSHINAGAR	HATA	S-NPP	83.60713	26.90371	13:12:00	D	8.00
61	KUSHINAGAR	HATA	S-NPP	83.62831	26.90655	13:12:00	D	2.70
62	KUSHINAGAR	HATA	S-NPP	83.62968	26.92441	13:12:00	D	6.20
63	KUSHINAGAR	TAMKUHI RAJ	S-NPP	84.05072	26.64319	13:12:00	D	1.70
64	LACKNOW	MOHANLAL GANJ	S-NPP	81.06461	26.74840	13:12:00	D	1.40
65	MAHARAJGANJ	MAHARAJGANJ	S-NPP	83.59849	26.95556	13:12:00	D	4.30
66	MAHARAJGANJ	MAHARAJGANJ	S-NPP	83.42106	26.96560	13:12:00	D	3.70
67	MAHARAJGANJ	MAHARAJGANJ	S-NPP	83.53801	27.03773	13:12:00	D	3.30
68	MAHARAJGANJ	MAHARAJGANJ	S-NPP	83.63615	27.04744	13:12:00	D	1.70
69	MAHARAJGANJ	MAHARAJGANJ	S-NPP	83.45449	27.04752	13:12:00	D	3.60
70	MAHARAJGANJ	MAHARAJGANJ	S-NPP	83.53993	27.05211	13:12:00	D	6.20
71	MAHARAJGANJ	MAHARAJGANJ	S-NPP	83.70963	27.07862	13:12:00	D	3.40
72	MAHARAJGANJ	MAHARAJGANJ	S-NPP	83.51028	27.08157	13:12:00	D	4.50
73	MAHARAJGANJ	MAHARAJGANJ	S-NPP	83.48801	27.08565	13:12:00	D	5.20
74	MAHARAJGANJ	MAHARAJGANJ	S-NPP	83.44836	27.09090	13:12:00	D	3.70
75	MAHARAJGANJ	MAHARAJGANJ	S-NPP	83.56474	27.09235	13:12:00	D	1.90
76	MAHARAJGANJ	MAHARAJGANJ	S-NPP	83.55087	27.09757	13:12:00	D	3.00
77	MAHARAJGANJ	MAHARAJGANJ	S-NPP	83.55511	27.09813	13:12:00	D	3.00
78	MAHARAJGANJ	MAHARAJGANJ	S-NPP	83.64932	27.10712	13:12:00	D	3.30
79	MAHARAJGANJ	MAHARAJGANJ	S-NPP	83.60321	27.12224	13:12:00	D	3.60
80	MAHARAJGANJ	MAHARAJGANJ	S-NPP	83.54781	27.16784	13:12:00	D	4.50
81	MAHARAJGANJ	MAHARAJGANJ	S-NPP	83.58662	27.16956	13:12:00	D	2.20
82	MAHARAJGANJ	MAHARAJGANJ	S-NPP	83.54665	27.17475	13:12:00	D	3.80
83	MAHARAJGANJ	MAHARAJGANJ	S-NPP	83.60678	27.17937	13:12:00	D	3.00
84	MAHARAJGANJ	MAHARAJGANJ	S-NPP	83.62269	27.18862	13:12:00	D	1.90
85	MAHARAJGANJ	MAHARAJGANJ	S-NPP	83.50916	27.19644	13:12:00	D	3.50
86	MAHARAJGANJ	MAHARAJGANJ	S-NPP	83.50434	27.19933	13:12:00	D	4.60
87	MAHARAJGANJ	MAHARAJGANJ	S-NPP	83.51841	27.21887	13:12:00	D	5.50
88	MAHARAJGANJ	MAHARAJGANJ	S-NPP	83.58705	27.22450	13:12:00	D	2.10
89	MAHARAJGANJ	MAHARAJGANJ	S-NPP	83.50819	27.22809	13:12:00	D	1.90

90	MAHARAJGANJ	MAHARAJGANJ	S-NPP	83.55067	27.23379	13:12:00	D	11.10
91	MAHARAJGANJ	MAHARAJGANJ	S-NPP	83.54237	27.25743	13:12:00	D	3.10
92	MAHARAJGANJ	NAUTANWA	S-NPP	83.36655	27.19843	13:12:00	D	2.90
93	MAHARAJGANJ	NAUTANWA	S-NPP	83.44183	27.29151	13:12:00	D	4.40
94	MAHARAJGANJ	NAUTANWA	S-NPP	83.59880	27.39392	13:12:00	D	3.00
95	MAHARAJGANJ	NAUTANWA	S-NPP	83.57962	27.43551	13:12:00	D	2.50
96	MAHARAJGANJ	NAUTANWA	S-NPP	83.56699	27.45865	13:12:00	D	2.50
97	MAHARAJGANJ	NICHLAUL	S-NPP	83.71731	27.11966	13:12:00	D	1.60
98	MAHARAJGANJ	NICHLAUL	S-NPP	83.65720	27.22319	13:12:00	D	2.10
99	MAHARAJGANJ	NICHLAUL	S-NPP	83.70016	27.22887	13:12:00	D	2.60
100	MAHARAJGANJ	NICHLAUL	S-NPP	83.68951	27.26655	13:12:00	D	2.30
101	MAHARAJGANJ	NICHLAUL	S-NPP	83.71278	27.31671	13:12:00	D	3.80
102	MAHARAJGANJ	NICHLAUL	S-NPP	83.71162	27.31933	13:12:00	D	7.20
103	MAHARAJGANJ	NICHLAUL	S-NPP	83.71220	27.32019	13:12:00	D	3.80
104	MAHARAJGANJ	PHARENDA	S-NPP	83.37843	27.17894	13:12:00	D	1.90
105	MAINPURI	KARHAL	S-NPP	79.02441	26.95984	13:12:00	D	3.60
106	MAINPURI	KARHAL	S-NPP	79.15645	27.04169	13:12:00	D	3.00
107	MEERUT	SARDHANA	S-NPP	77.44305	29.10976	13:12:00	D	1.70
108	PILHIBHIT	PURANPUR	S-NPP	80.07610	28.52918	13:12:00	D	2.40
109	PILHIBHIT	PURANPUR	S-NPP	80.01165	28.58730	13:12:00	D	1.60
110	PRATAPGARH	KUNDA	S-NPP	81.53824	25.85615	13:12:00	D	13.00
111	PRATAPGARH	PATTI	S-NPP	82.23919	25.89626	13:12:00	D	2.60
112	RAIBEARELI	RAEBARELI	S-NPP	81.17490	26.28500	13:12:00	D	2.20
113	RAIBEARELI	RAEBARELI	S-NPP	81.19888	26.36958	13:12:00	D	2.40
114	RAIBEARELI	TILOI	S-NPP	81.49748	26.33060	13:12:00	D	2.40
115	RAIBEARELI	TILOI	S-NPP	81.50655	26.34554	13:12:00	D	4.40
116	RAIBEARELI	TILOI	S-NPP	81.36673	26.52739	13:12:00	D	2.00
117	RAMPUR	SUAR	S-NPP	79.04357	29.14723	13:12:00	D	8.90
118	SANTKABIRNAGAR	KHALILABAD	S-NPP	82.93803	26.83319	13:12:00	D	2.00
119	SHAHJAHANPUR	PUWANYA	S-NPP	80.25822	28.17849	13:12:00	D	14.00
120	SHAHJAHANPUR	PUWANYA	S-NPP	79.99995	28.23632	13:12:00	D	2.70

121	SHAHJAHANPUR	PUWANYA	S-NPP	80.04001	28.32017	13:12:00	D	2.50
122	SHARANPUR	SHARANPUR	S-NPP	77.52335	29.97097	01:54:00	N	0.40
123	SIDDHARTHANAGAR	NAUGARH	S-NPP	83.12866	27.37486	13:12:00	D	3.30
124	SIDDHARTHANAGAR	NAUGARH	S-NPP	83.14649	27.39477	13:12:00	D	4.80
125	SONBHADRA	DUDHI	METOP-2	82.75575	24.22521	21:15:00	N	10.00
126	SULTANPUR	AMETHI	S-NPP	81.75119	26.15217	13:12:00	D	3.50
127	UNNAO	HASANGANJ	S-NPP	80.70812	26.61921	13:12:00	D	2.40
128	UNNAO	HASANGANJ	S-NPP	80.64688	26.81625	13:12:00	D	2.60

The study used images received from following Satellites at IARI Satellite Ground Station

S. No.	Satellite Name	Sensor	Resolution (meter)	Day / Night Passes
1.	Suomi NPP	VIIRS	375 / 1000	Both
2.	Terra	MODIS	1000	Both
3.	Aqua	MODIS	1000	Both
4.	NOAA – 18	AVHRR	1000	Night
5.	NOAA – 19	AVHRR	1000	Night
6.	Metop - 1	AVHRR	1000	Night
7.	Metop - 2	AVHRR	1000	Night

Study Team

ICAR – HQ	Dr K. Alagusundaram	DDG (Agril. Engg.)	ddgengg@icar.org.in
	Dr S. Bhaskar	ADG (NRM)	adgagroandaf@gmail.com
ICAR - IARI	Dr V.K. Sehgal	Professor & Nodal Scientist	iaricreams@gmail.com yk.sehgal@icar.gov.in
	Dr Rajkumar Dhakar	Scientist	rajdhakar.iari@gmail.com
	Shri Rakeshwar Verma	Chief Technical Officer	rakeshwar.verma@icar.gov.in
	Mr Aakash Chhabra	SRF (NICRA)	aakash.chhabra7489@gmail.com
ICAR - ATARI	Dr Rajbir Singh	Director ATARI (Zone-1)	rajbirsingh.zpd@gmail.com
	Dr U.S. Gautam	Director ATARI (Zone-IV)	zpdicarkanpur@gmail.com
ICAR - IASRI	Dr RajenderParsad	Principal Scientist	rajender.parsad@icar.gov.in

GIS Maps of fire events can be visualized online on ICAR KRISHI & CREAMS Geoportal

websites:<http://geoportal.icar.gov.in:8080/geoexplorer/composer/>

<http://creams.iari.res.in:8080/geoexplorer/composer/>
