

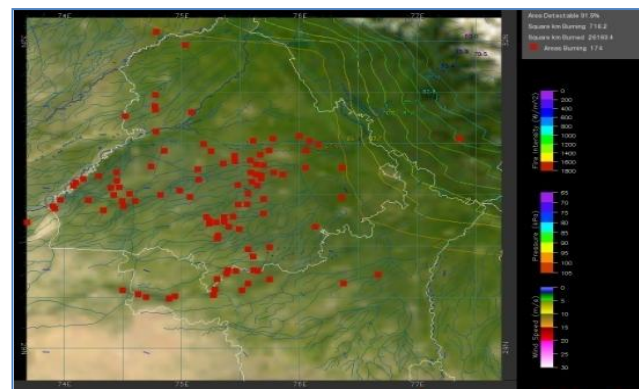
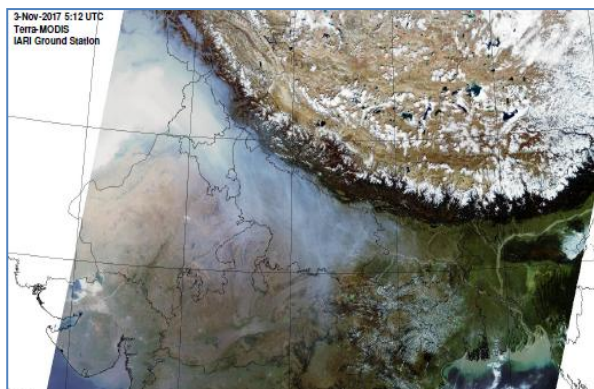


**Bulletin  
No. 43**

**Events Date:  
12-Nov-2018**

**Issued on:  
13-Nov-2018**

# **MONITORING PADDY RESIDUE BURNING IN NORTH INDIA USING SATELLITE REMOTE SENSING DURING 2018**



**Prepared by:**

**Consortium for Research on Agroecosystem Monitoring and Modeling from Space (CREAMS) Laboratory,  
Division of Agricultural Physics, ICAR – Indian Agricultural Research Institute, New Delhi – 110012**

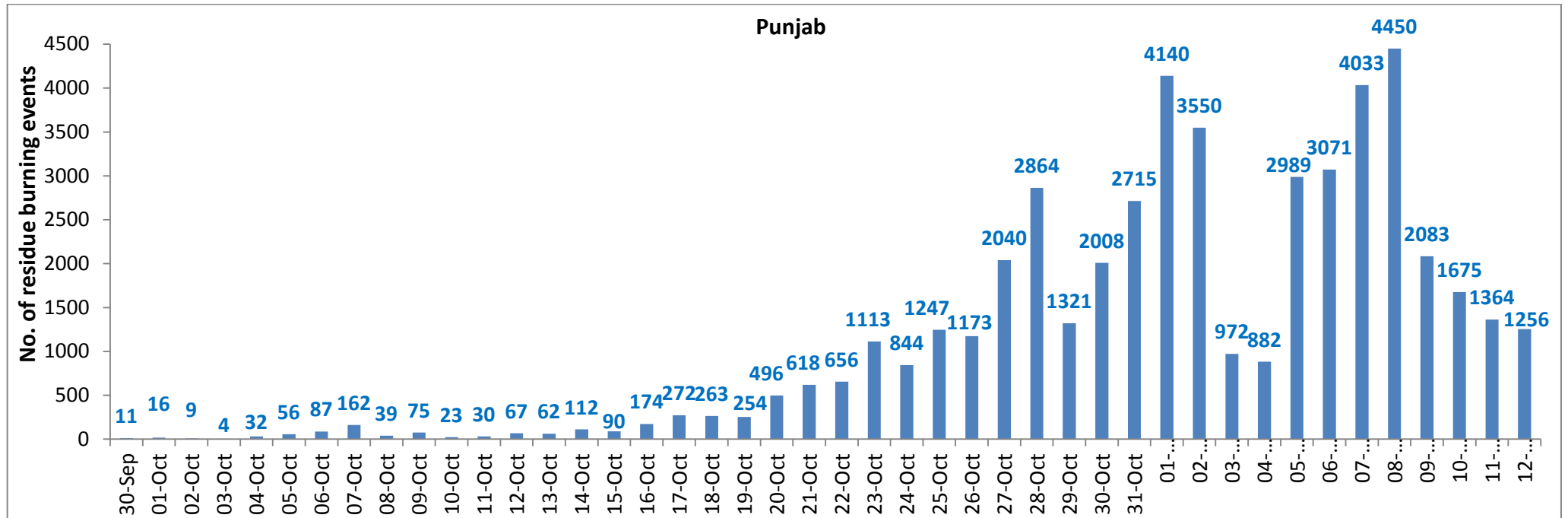
<http://creams.iari.res.in>



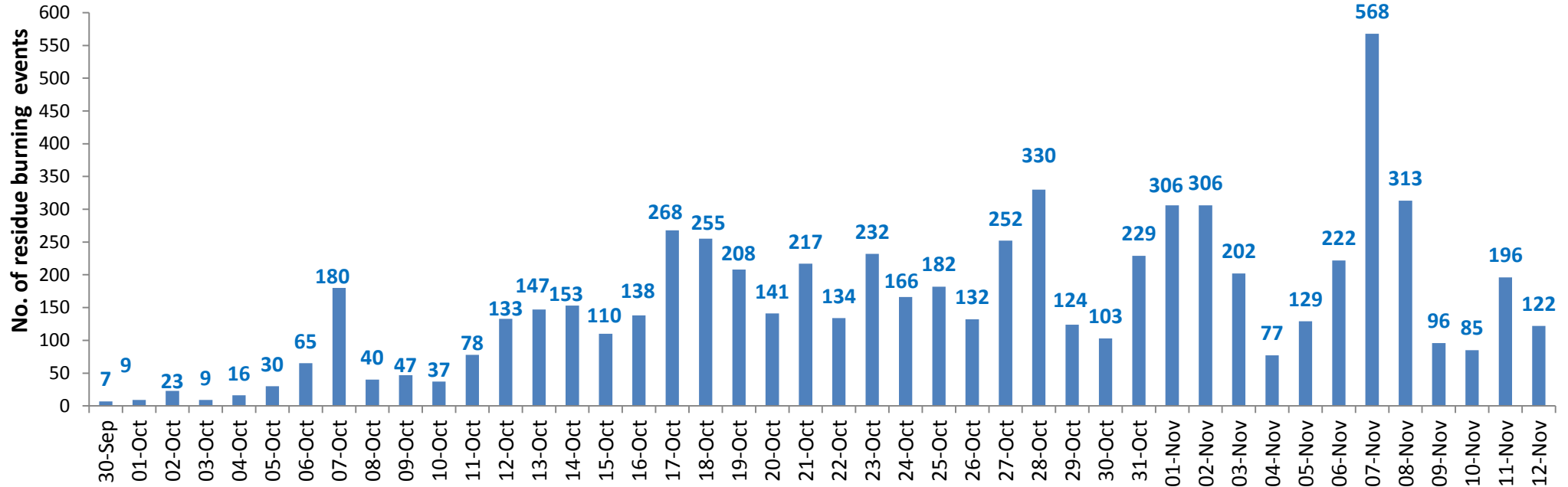
## Highlights for 12-November-2018

- Satellites detected **1423** residue burning events in the three States (Punjab, Haryana & UP) on **12-Nov-2018**.
- The burning events detected on **12-Nov-2018** are **1256**, **122** and **45** in Punjab, Haryana, and UP, respectively.
- The number of events has decreased from **1605** on **11-Nov-2018** to **1423** on **12-Nov-2018** in the three States.
- Total **60792** burning events were detected in the three States between **30-Sept-2018** and **12-Nov-2018**, which are distributed as **49398**, **6817** and **4577** in Punjab, Haryana and UP, respectively.
- Till **12-Nov-2018**, the burning events in the current year are about **87.6%** of the events detected in 2017 and about **52%** of the events detected in 2016.
- Overall, about **13%** and **48%** reduction in burning events are observed in current year (2018) till date as compared to that in 2017 and 2016, respectively.

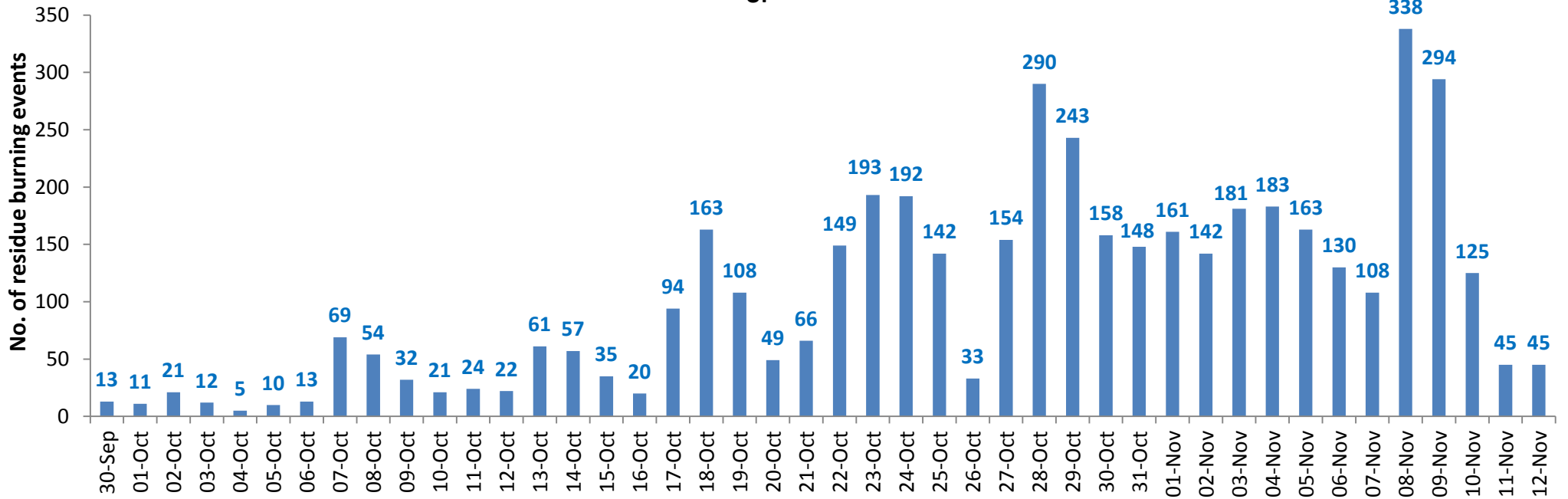
### Temporal distribution of residue burning events for the three study States



### Haryana

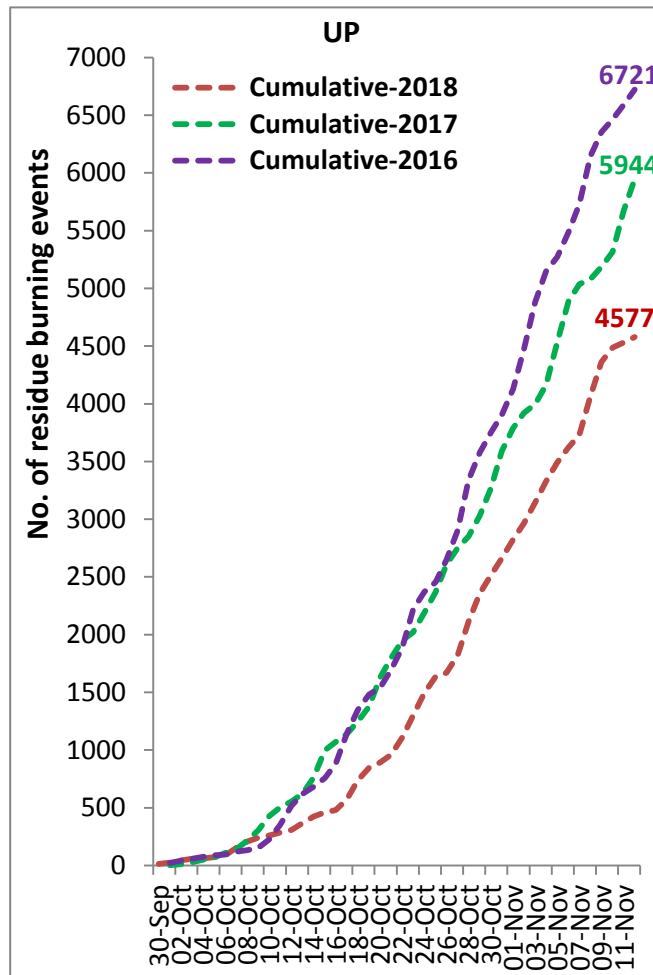
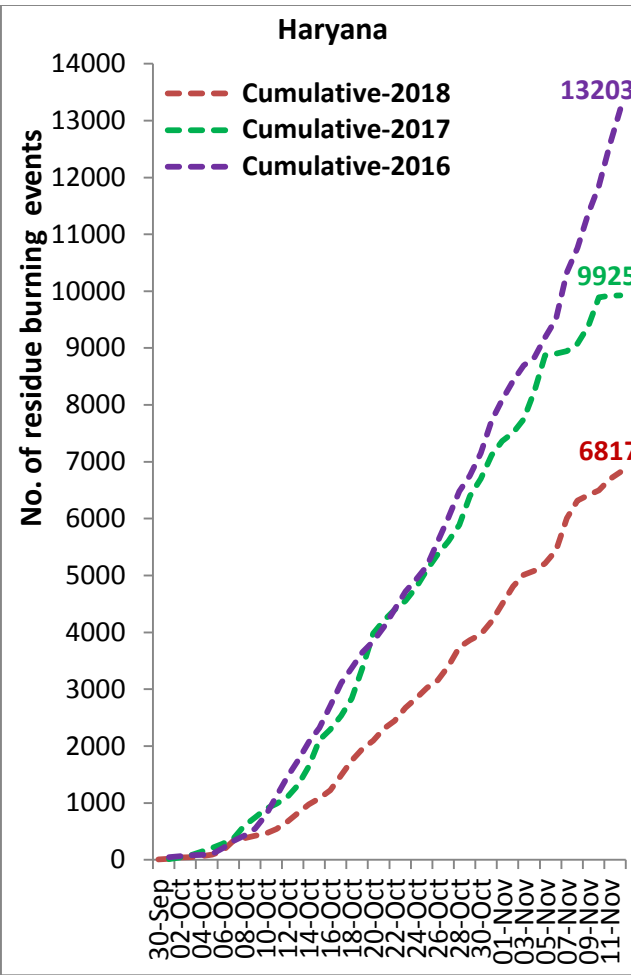
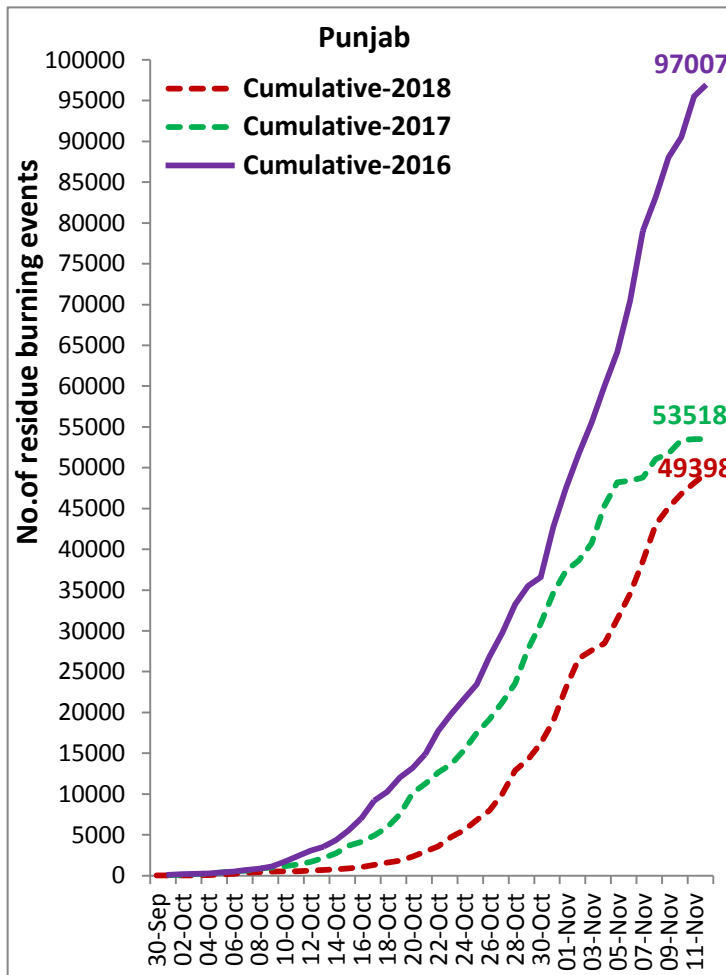


### UP

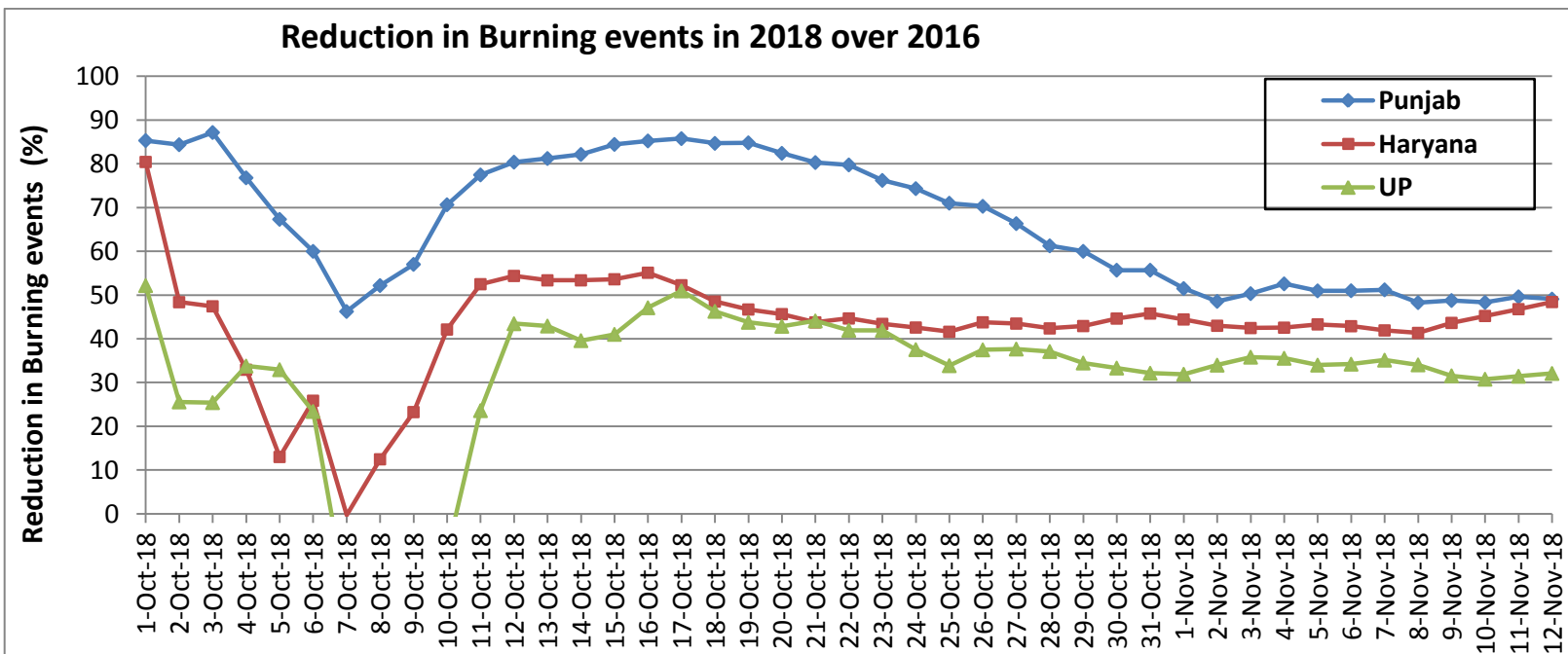
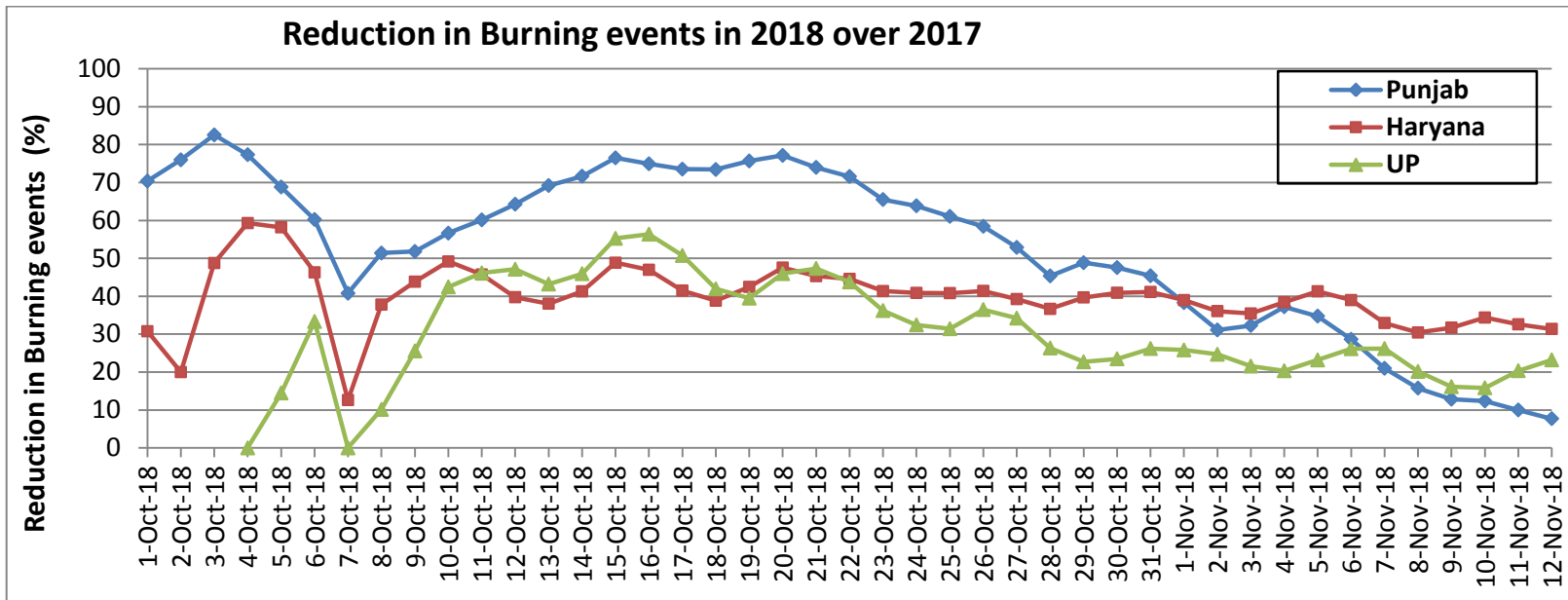


**Comparison of residue burning events in current year (2018) with previous years (2017& 2016) for the three study States**

**(30-Sep to 12-Nov)**

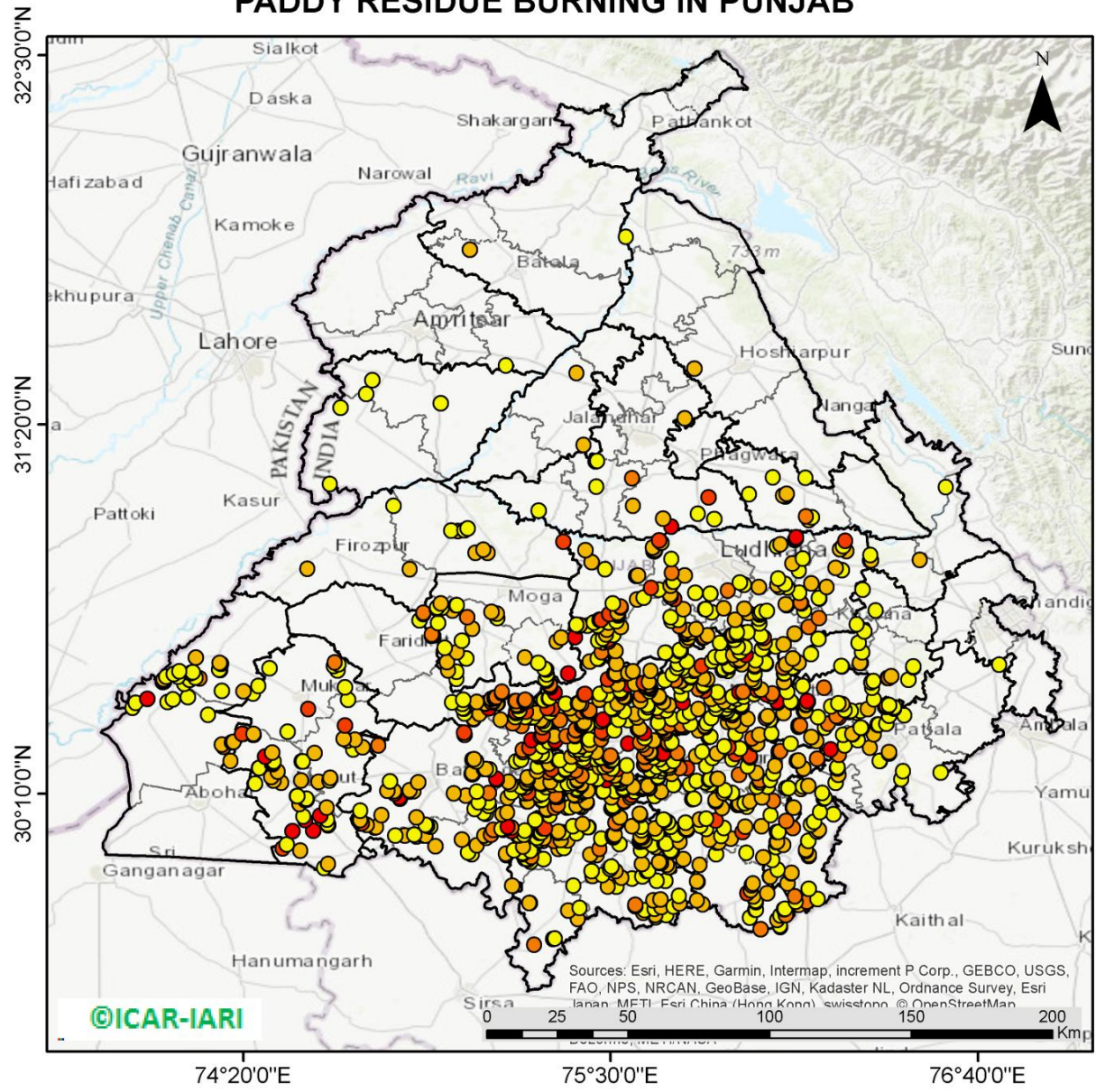


### Percent Reduction in Burning events in 2018 over 2017 and 2016 (Daily Cumulative)



(a) Punjab

PADDY RESIDUE BURNING IN PUNJAB



**1256** burning events detected in Punjab on 12th November, 2018

Fire Intensity (W/m<sup>2</sup>)

- 0 - 5
- 6 - 10
- 11 - 15
- 16 - 20
- >20

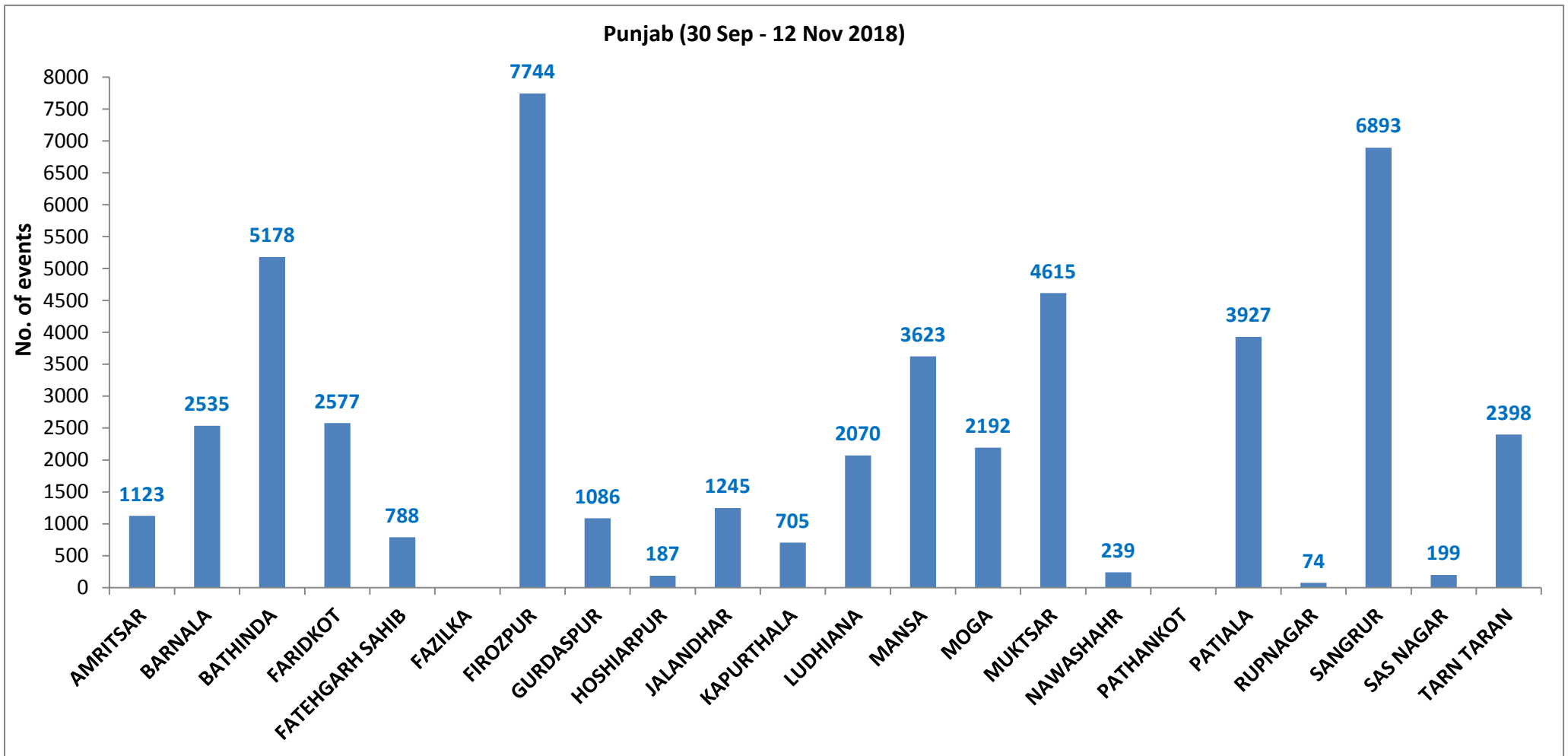
©ICAR-IARI

Sources: Esri, HERE, Garmin, Intermap, increment P Corp., GEBCO, USGS, FAO, NPS, NRCAN, GeoBase, IGN, Kadaster NL, Ordnance Survey, Esri Japan, METI, Esri China (Hong Kong), swisstopo, © OpenStreetMap contributors, Swatch, © Mapbox



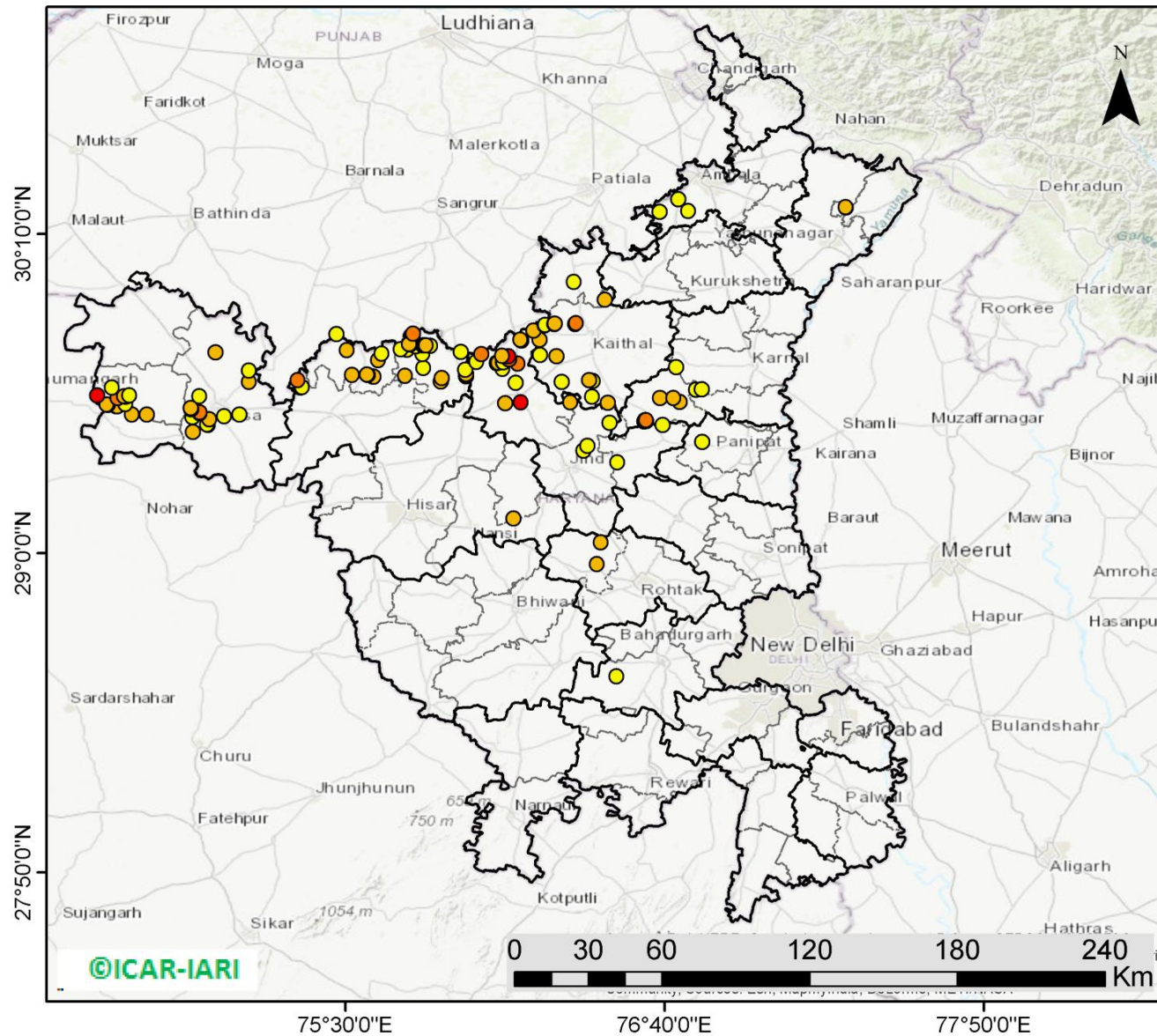
<http://geoportal.icar.gov.in:8080/geoexplorer/composer/>

**District-wise cumulative number of residue burning events in Punjab (30-Sep-2018 to 12-Nov-2018)**



(b) Haryana

PADDY RESIDUE BURNING IN HARYANA



**122** burning events detected in Haryana on 12th November, 2018

Fire Intensity (W/m<sup>2</sup>)

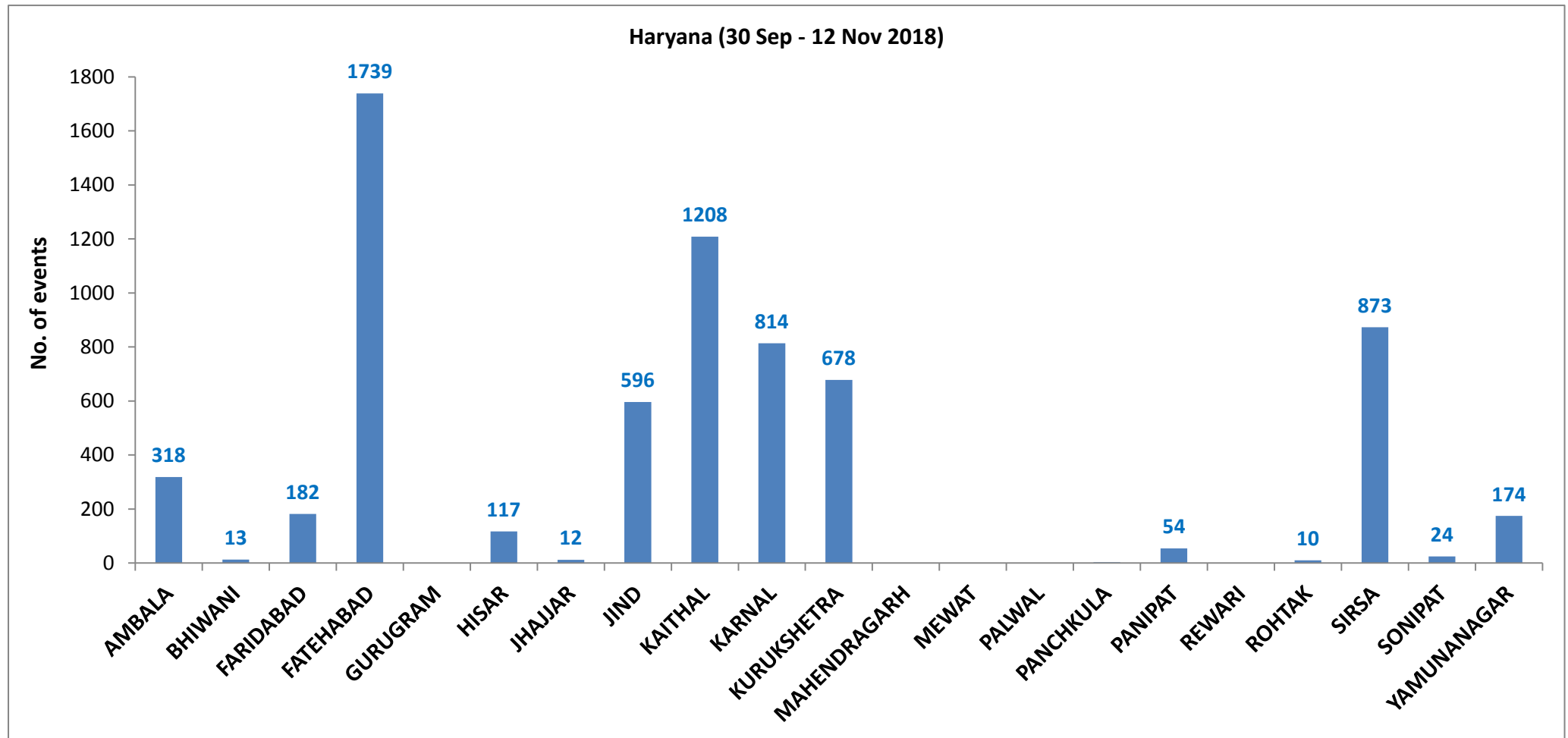
- 0 - 5
- 6 - 10
- 11 - 15
- 16 - 20
- >20



<http://geoportal.icar.gov.in:8080/geoexplorer/composer/>

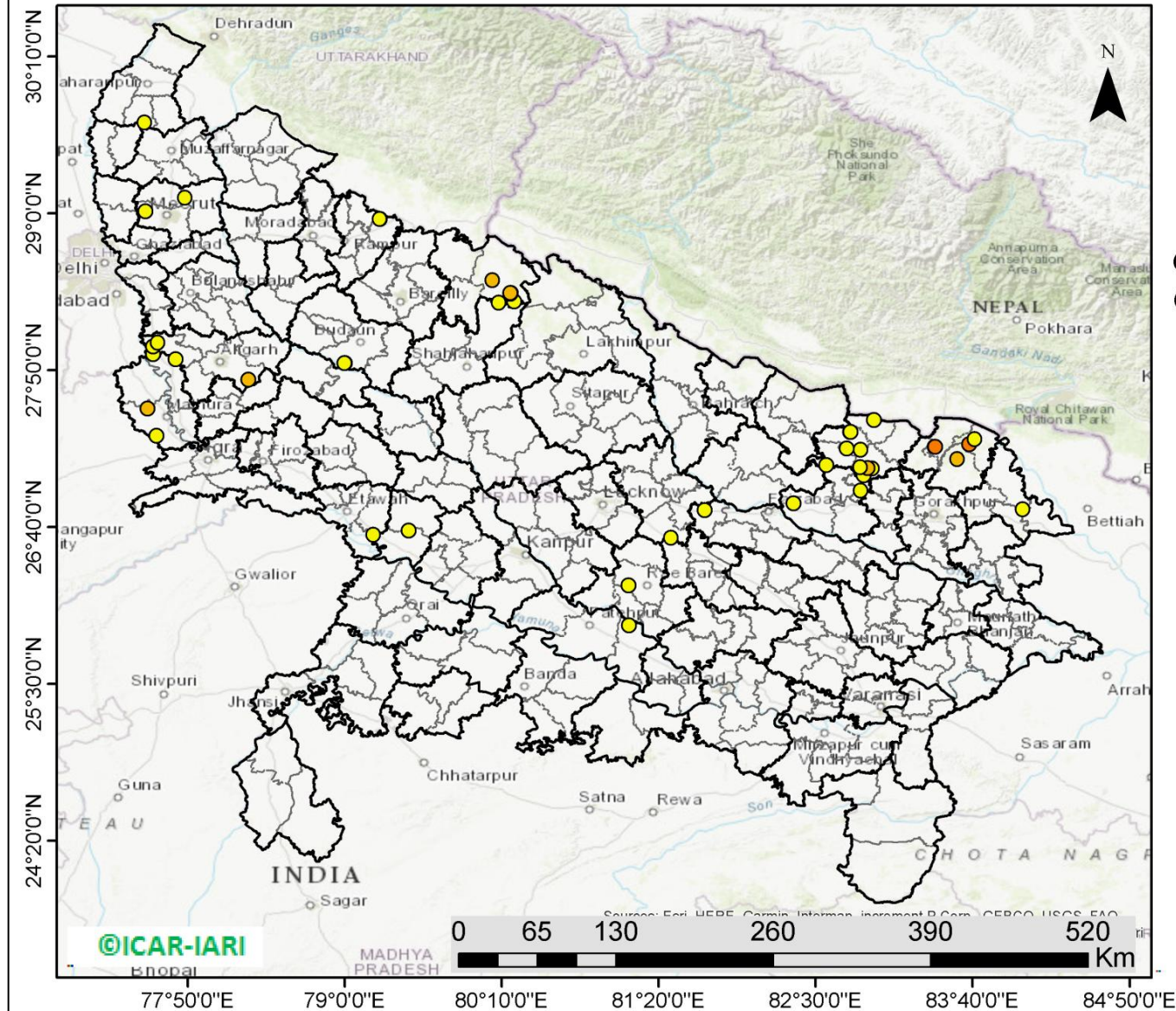


**District-wise cumulative number of residue burning events in Haryana (30-Sep-2018 to 12-Nov-2018)**



(c) Uttar Pradesh

PADDY RESIDUE BURNING IN UTTAR PRADESH



**45** burning events detected in Uttar Pradesh on **12th Nov, 2018**

Fire Intensity (W/m<sup>2</sup>)

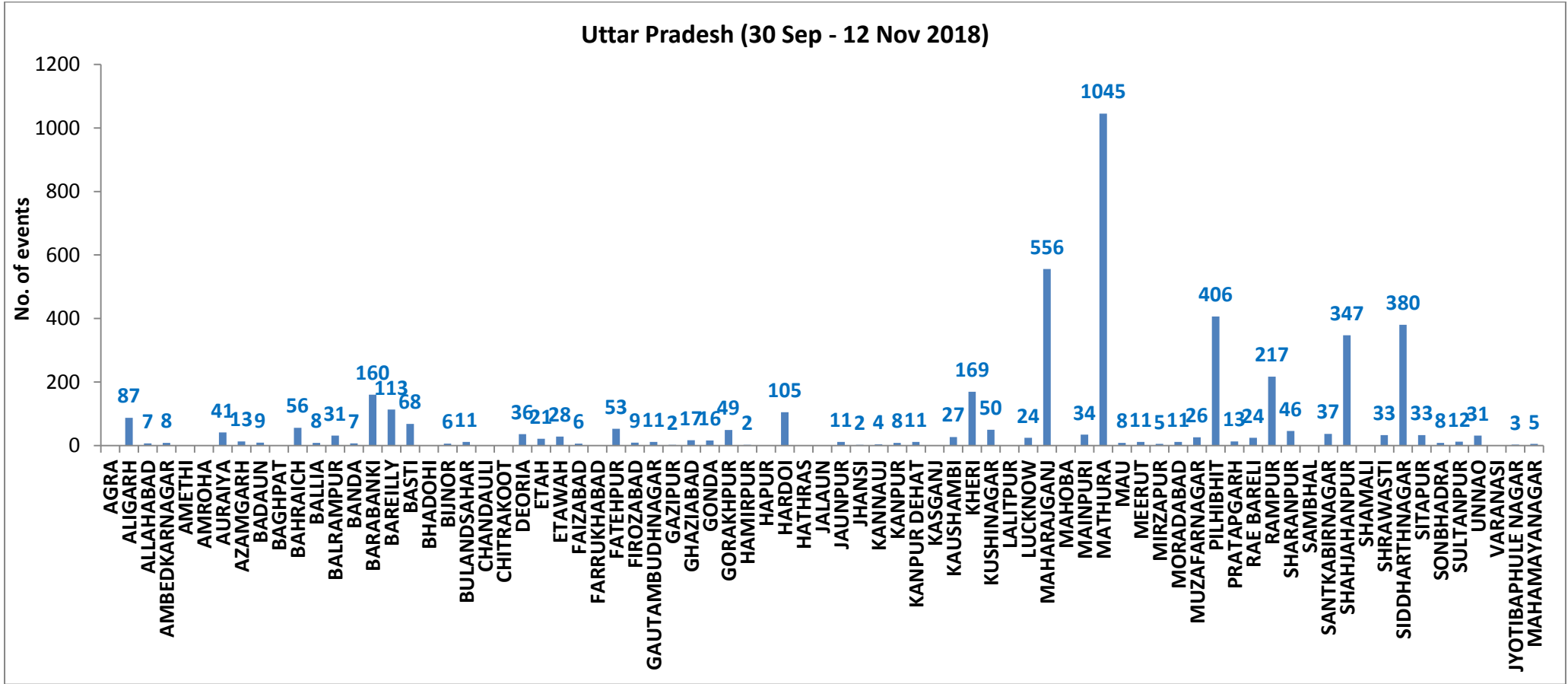
- 0 - 5
- 6 - 10
- 11 - 15
- 16 - 20
- >20

©ICAR-IARI



<http://geoportal.icar.gov.in:8080/geoexplorer/composer/>

**District-wise cumulative number of residue burning events in Uttar Pradesh (30-Sep-2018 to 12-Nov-2018)**



**State wise, date wise and district-wise number of residue burning events detected in 2016, 2017 and 2018**  
**(Period: 30-Sep to 12-Nov)**

Date	Punjab			Haryana			UP			Total		
	2016	2017	2018	2016	2017	2018	2016	2017	2018	2016	2017	2018
<b>30-Sep</b>	--	--	11	--	---	7	--	---	13	--	---	31
<b>1-Oct</b>	109	54	16	46	13	9	23	2	11	178	69	36
<b>2-Oct</b>	51	50	9	16	27	23	20	8	21	87	85	53
<b>3-Oct</b>	66	62	4	16	40	9	16	17	12	98	119	25
<b>4-Oct</b>	37	103	32	7	60	16	15	22	5	59	185	53
<b>5-Oct</b>	95	106	56	15	68	30	14	20	10	124	194	96
<b>6-Oct</b>	152	138	87	105	75	65	6	39	13	263	252	165
<b>7-Oct</b>	171	105	162	126	97	180	24	31	69	321	233	411
<b>8-Oct</b>	166	215	39	94	218	40	14	75	54	274	508	133
<b>9-Oct</b>	270	163	75	121	148	47	22	87	32	413	398	154
<b>10-Oct</b>	597	164	23	242	151	37	74	126	21	913	441	81
<b>11-Oct</b>	652	177	30	336	87	78	128	74	24	1116	338	132
<b>12-Oct</b>	694	342	67	338	123	133	164	51	22	1196	516	222
<b>13-Oct</b>	467	470	62	284	207	147	102	69	61	853	746	270
<b>14-Oct</b>	812	582	112	328	333	153	60	137	57	1200	1052	322
<b>15-Oct</b>	1215	943	90	248	458	110	76	237	35	1539	1638	235
<b>16-Oct</b>	1478	465	174	385	186	138	125	71	20	1988	722	332
<b>17-Oct</b>	2173	807	272	399	244	268	261	69	94	2833	1120	634
<b>18-Oct</b>	1065	970	263	270	306	255	204	108	163	1539	1384	681
<b>19-Oct</b>	1762	1591	254	276	541	208	132	128	108	2170	2260	570
<b>20-Oct</b>	1175	2653	496	188	597	141	62	255	49	1425	3505	686

<b>21-Oct</b>	1726	1139	618	257	233	217	152	168	66	2135	1540	901
<b>22-Oct</b>	2837	1356	656	309	186	134	194	151	149	3340	1693	939
<b>23-Oct</b>	2040	994	1113	313	155	232	331	72	193	2684	1221	1538
<b>24-Oct</b>	1836	1714	844	221	244	166	152	171	192	2209	2129	1202
<b>25-Oct</b>	1813	2104	1247	229	303	182	83	175	142	2125	2582	1571
<b>26-Oct</b>	3390	1715	1173	434	276	132	195	240	33	4019	2231	1338
<b>27-Oct</b>	2904	2069	2040	417	224	252	255	145	154	3576	2438	2446
<b>28-Oct</b>	3493	2318	2864	458	292	330	435	99	290	4386	2709	3484
<b>29-Oct</b>	2258	4184	1321	278	502	124	237	180	243	2773	4866	1688
<b>30-Oct</b>	1076	3152	2008	395	307	103	175	238	158	1646	3697	2269
<b>31-Oct</b>	6132	3743	2715	575	413	229	153	321	148	6860	4447	3092
<b>01-Nov</b>	4843	2736	4140	362	250	306	223	199	161	5628	3185	4607
<b>02-Nov</b>	4183	1246	3550	332	145	306	345	131	142	4860	1522	3998
<b>03-Nov</b>	3806	2109	972	275	240	202	409	75	181	4409	2424	1355
<b>04-Nov</b>	4477	4603	882	146	499	77	265	168	183	4888	5270	1142
<b>05-Nov</b>	4137	2876	2989	345	625	129	125	367	163	4607	3868	3281
<b>06-Nov</b>	6303	171	3071	322	26	222	215	357	130	6840	327	3423
<b>07-Nov</b>	8575	420	4033	821	46	568	244	149	108	9640	615	4709
<b>08-Nov</b>	4129	2256	4450	432	128	313	419	43	338	4874	2427	5101
<b>09-Nov</b>	4857	675	2083	608	311	96	205	107	294	5670	1093	2473
<b>10-Nov</b>	2468	1642	1675	484	509	85	109	131	125	3061	2282	1885
<b>11-Nov</b>	5040	103	1364	716	29	196	129	358	45	5885	490	1605
<b>12-Nov</b>	1477	33	1256	634	3	122	129	269	45	2240	305	1423
<b>Total</b>	<b>97007</b>	<b>53518</b>	<b>49398</b>	<b>13203</b>	<b>9925</b>	<b>6817</b>	<b>6721</b>	<b>5944</b>	<b>4577</b>	<b>116931</b>	<b>69387</b>	<b>60792</b>

**(a) Punjab**

Districts	01 Oct - 12Nov		
	2016	2017	2018
AMRITSAR	1967	1205	1123
BARNALA	5525	2574	2535
BATHINDA	8441	4623	5178
FARIDKOT	4505	2844	2577
FATEHGARH SAHIB	2433	1592	788
FAZILKA	0	0	0
FIROZPUR	12107	5451	7744
GURDASPUR	2103	1504	1086
HOSHIARPUR	884	466	187
JALANDHAR	4569	1962	1245
KAPURTHALA	3107	1523	705
LUDHIANA	8964	3865	2070
MANSA	5266	3857	3623
MOGA	6275	1912	2192
MUKTSAR	6212	3352	4615
NAWASHAHR (SBS Nagar)	1315	620	239
PATHANKOT	0	0	0
PATIALA	6491	4953	3927
RUPNAGAR	705	317	74
SANGRUR	11725	8045	6893
SAS NAGAR	114	107	199
TARN TARAN	4054	2611	2398
<b>Total</b>	<b>97007</b>	<b>53518</b>	<b>49398</b>

**(b) Haryana**

Districts	01 Oct - 12Nov		
	2016	2017	2018
AMBALA	527	489	318
BHIWANI	45	22	13
FARIDABAD	272	340	182
FATEHABAD	4113	2725	1739
GURUGRAM	0	0	0
HISAR	300	153	117
JHAJJAR	22	12	12
JIND	783	840	596
KAITHAL	1718	1468	1208
KARNAL	1609	1472	814
KURUKSHETRA	1070	1140	678
MAHENDRAGARH	0	0	0
MEWAT	0	0	0
PALWAL	0	0	0
PANCHKULA	0	0	3
PANIPAT	68	66	54
REWARI	0	0	0
ROHTAK	60	48	10
SIRSA	2319	797	873
SONIPAT	61	50	24
YAMUNANAGAR	236	303	174
<b>Total</b>	<b>13203</b>	<b>9925</b>	<b>6817</b>

**(c) Uttar Pradesh**

Distrites	01 Oct - 12Nov			GAUTAMBUDH NAGAR			RAE BARELI		
	2016	2017	2018						
AGRA	0	0	0	18	33	11	30	27	24
ALIGARH	40	73	87	11	6	2	606	597	217
ALLAHABAD	1	7	7	49	30	17	70	85	46
AMBEDKARNAGAR	40	23	8	35	30	16	0	0	0
AMETHI	0	0	0	33	52	49	33	50	37
AMROHA	0	0	0	0	0	2	1093	667	347
AURAIYA	150	108	41	212	171	105	0	0	0
AZAMGARH	14	18	13	0	0	0	26	29	33
BADAUN	6	6	9	0	0	0	144	141	380
BAGHPAT	0	0	0	7	5	11	93	53	33
BAHRAICH	50	35	56	0	0	0	12	9	8
BALLIA	3	13	8	7	5	2	21	14	12
BALRAMPUR	18	24	31	7	12	4	39	28	31
BANDA	1	2	7	5	5	8	0	0	0
BARABANKI	188	137	160	13	31	11	6721	5944	4577
BAREILLY	224	187	113	0	0	0			
BASTI	77	159	68	363	218	169			
BHADOHI	0	0	0	17	37	50			
BIJNOR	35	26	6	48	29	24			
BULANDSAHAR	12	25	11	219	530	556			
CHANDAULI	2	0	0	0	0	0			
CHITRAKOOT	0	0	0	42	67	34			
DEORIA	26	34	36	1376	1078	1045			
ETAH	12	26	21	6	5	8			
ETAWAH	45	63	28	42	38	11			
FAIZABAD	10	5	6	0	9	5			
FARRUKHABAD	0	0	0	34	23	11			
FATEHPUR	39	30	53	0	0	0			
FIROZABAD	19	15	9	5	90	26			
				876	667	406			
				12	25	13			

**Details of residue burning events in Punjab on 12-Nov-2018**

<b>Event S. No.</b>	<b>District</b>	<b>Tehsil/Block</b>	<b>Satellite</b>	<b>Longitude</b>	<b>Latitude</b>	<b>Time (IST)</b>	<b>Day/Night</b>	<b>Fire Power (W/m<sup>2</sup>)</b>
1	AMRITSAR	BABA BAKALA	S-NPP	75.16746	31.51985	13:48:00	D	4.20
2	BARNALA	BARNALA	S-NPP	75.55528	30.32544	13:48:00	D	24.30
3	BARNALA	BARNALA	S-NPP	75.47039	30.33895	13:48:00	D	11.80
4	BARNALA	BARNALA	S-NPP	75.67323	30.35856	13:48:00	D	11.10
5	BARNALA	BARNALA	S-NPP	75.60595	30.35863	13:48:00	D	35.80
6	BARNALA	BARNALA	S-NPP	75.47832	30.35931	13:48:00	D	7.00
7	BARNALA	BARNALA	S-NPP	75.47233	30.36248	13:48:00	D	19.30
8	BARNALA	BARNALA	S-NPP	75.67208	30.36628	13:48:00	D	10.80
9	BARNALA	BARNALA	S-NPP	75.51025	30.36696	13:48:00	D	3.60
10	BARNALA	BARNALA	S-NPP	75.58718	30.37208	13:48:00	D	18.30
11	BARNALA	BARNALA	S-NPP	75.59267	30.37272	13:48:00	D	7.70
12	BARNALA	BARNALA	S-NPP	75.66538	30.37336	13:48:00	D	6.30
13	BARNALA	BARNALA	S-NPP	75.66482	30.37721	13:48:00	D	6.50
14	BARNALA	BARNALA	S-NPP	75.65145	30.39135	13:48:00	D	4.00
15	BARNALA	BARNALA	S-NPP	75.47005	30.39538	13:48:00	D	9.00
16	BARNALA	BARNALA	S-NPP	75.55521	30.39956	13:48:00	D	4.20
17	BARNALA	BARNALA	S-NPP	75.33812	30.39958	13:48:00	D	10.50
18	BARNALA	BARNALA	TERRA-1	75.47598	30.40112	11:44:00	D	22.57
19	BARNALA	BARNALA	S-NPP	75.52440	30.40156	13:48:00	D	4.40
20	BARNALA	BARNALA	S-NPP	75.58457	30.40837	13:48:00	D	5.60
21	BARNALA	BARNALA	S-NPP	75.38452	30.41656	13:48:00	D	8.20
22	BARNALA	BARNALA	S-NPP	75.57734	30.41928	13:48:00	D	5.20
23	BARNALA	BARNALA	S-NPP	75.61031	30.42302	13:48:00	D	3.10
24	BARNALA	BARNALA	S-NPP	75.43237	30.42599	13:48:00	D	14.50
25	BARNALA	BARNALA	S-NPP	75.54274	30.42704	13:48:00	D	4.50
26	BARNALA	BARNALA	S-NPP	75.41024	30.42729	13:48:00	D	10.90
27	BARNALA	BARNALA	S-NPP	75.65451	30.42802	13:48:00	D	13.30
28	BARNALA	BARNALA	S-NPP	75.42639	30.42918	13:48:00	D	26.10



29	BARNALA	BARNALA	S-NPP	75.43179	30.42980	13:48:00	D	14.50
30	BARNALA	BARNALA	S-NPP	75.50826	30.43477	13:48:00	D	4.00
31	BARNALA	BARNALA	S-NPP	75.31631	30.43562	13:48:00	D	15.50
32	BARNALA	BARNALA	S-NPP	75.29977	30.43752	13:48:00	D	15.50
33	BARNALA	BARNALA	S-NPP	75.50223	30.43797	13:48:00	D	3.20
34	BARNALA	BARNALA	S-NPP	75.37032	30.43812	13:48:00	D	7.60
35	BARNALA	BARNALA	S-NPP	75.64724	30.43897	13:48:00	D	2.00
36	BARNALA	BARNALA	S-NPP	75.61903	30.43968	13:48:00	D	2.90
37	BARNALA	BARNALA	S-NPP	75.61788	30.44738	13:48:00	D	3.60
38	BARNALA	BARNALA	S-NPP	75.40675	30.45014	13:48:00	D	5.10
39	BARNALA	BARNALA	S-NPP	75.52229	30.45198	13:48:00	D	6.80
40	BARNALA	BARNALA	S-NPP	75.35728	30.45205	13:48:00	D	3.00
41	BARNALA	BARNALA	S-NPP	75.39541	30.45268	13:48:00	D	6.60
42	BARNALA	BARNALA	S-NPP	75.40079	30.45332	13:48:00	D	6.60
43	BARNALA	BARNALA	S-NPP	75.66711	30.45693	13:48:00	D	8.80
44	BARNALA	BARNALA	S-NPP	75.59351	30.46024	13:48:00	D	5.70
45	BARNALA	BARNALA	S-NPP	75.28804	30.46263	13:48:00	D	4.60
46	BARNALA	BARNALA	S-NPP	75.46502	30.46476	13:48:00	D	5.70
47	BARNALA	BARNALA	S-NPP	75.30343	30.46824	13:48:00	D	3.70
48	BARNALA	BARNALA	S-NPP	75.30576	30.46908	13:48:00	D	3.70
49	BARNALA	BARNALA	S-NPP	75.54729	30.47050	13:48:00	D	17.50
50	BARNALA	BARNALA	S-NPP	75.65369	30.47110	13:48:00	D	4.00
51	BARNALA	BARNALA	S-NPP	75.54124	30.47370	13:48:00	D	5.20
52	BARNALA	BARNALA	S-NPP	75.65311	30.47497	13:48:00	D	7.10
53	BARNALA	BARNALA	S-NPP	75.49043	30.47943	13:48:00	D	3.10
54	BARNALA	BARNALA	S-NPP	75.59612	30.48011	13:48:00	D	10.60
55	BARNALA	BARNALA	S-NPP	75.41611	30.48105	13:48:00	D	18.00
56	BARNALA	BARNALA	S-NPP	75.41828	30.48254	13:48:00	D	17.90
57	BARNALA	BARNALA	S-NPP	75.46545	30.48274	13:48:00	D	3.90
58	BARNALA	BARNALA	S-NPP	75.53403	30.48457	13:48:00	D	24.00
59	BARNALA	BARNALA	S-NPP	75.32245	30.48585	13:48:00	D	35.00

60	BARNALA	BARNALA	S-NPP	75.62255	30.49103	13:48:00	D	4.20
61	BARNALA	BARNALA	S-NPP	75.53288	30.49224	13:48:00	D	4.80
62	BARNALA	BARNALA	S-NPP	75.53030	30.49393	13:48:00	D	4.60
63	BARNALA	BARNALA	S-NPP	75.62691	30.49939	13:48:00	D	18.80
64	BARNALA	BARNALA	S-NPP	75.62447	30.50055	13:48:00	D	15.70
65	BARNALA	BARNALA	S-NPP	75.61284	30.50317	13:48:00	D	5.30
66	BARNALA	BARNALA	S-NPP	75.30885	30.50358	13:48:00	D	7.60
67	BARNALA	BARNALA	S-NPP	75.60919	30.50515	13:48:00	D	12.50
68	BARNALA	BARNALA	S-NPP	75.62022	30.50645	13:48:00	D	3.90
69	BARNALA	BARNALA	S-NPP	75.61225	30.50702	13:48:00	D	6.70
70	BARNALA	BARNALA	S-NPP	75.30827	30.50737	13:48:00	D	7.60
71	BARNALA	BARNALA	S-NPP	75.62331	30.50826	13:48:00	D	6.00
72	BARNALA	BARNALA	S-NPP	75.49461	30.50939	13:48:00	D	7.50
73	BARNALA	BARNALA	S-NPP	75.61965	30.51030	13:48:00	D	5.70
74	BARNALA	BARNALA	S-NPP	75.30769	30.51116	13:48:00	D	12.70
75	BARNALA	BARNALA	S-NPP	75.55539	30.51237	13:48:00	D	21.80
76	BARNALA	BARNALA	S-NPP	75.52193	30.51249	13:48:00	D	6.50
77	BARNALA	BARNALA	S-NPP	75.57740	30.51485	13:48:00	D	10.00
78	BARNALA	BARNALA	S-NPP	75.55481	30.51621	13:48:00	D	69.20
79	BARNALA	BARNALA	S-NPP	75.60497	30.51796	13:48:00	D	17.70
80	BARNALA	BARNALA	S-NPP	75.62157	30.51982	13:48:00	D	5.70
81	BARNALA	BARNALA	S-NPP	75.49171	30.52853	13:48:00	D	18.90
82	BARNALA	BARNALA	S-NPP	75.51727	30.54317	13:48:00	D	6.00
83	BARNALA	BARNALA	S-NPP	75.54468	30.54632	13:48:00	D	6.20
84	BARNALA	BARNALA	S-NPP	75.51122	30.54637	13:48:00	D	6.60
85	BARNALA	BARNALA	S-NPP	75.51669	30.54700	13:48:00	D	6.00
86	BARNALA	BARNALA	S-NPP	75.55565	30.54757	13:48:00	D	6.80
87	BARNALA	BARNALA	S-NPP	75.57158	30.55332	13:48:00	D	8.20
88	BARNALA	BARNALA	S-NPP	75.62743	30.55579	13:48:00	D	5.10
89	BARNALA	BARNALA	S-NPP	75.51752	30.57832	13:48:00	D	9.40
90	BARNALA	BARNALA	S-NPP	75.43346	30.58402	13:48:00	D	6.90

91	BARNALA	BARNALA	S-NPP	75.46334	30.59329	13:48:00	D	6.70
92	BARNALA	BARNALA	S-NPP	75.45948	30.59488	13:48:00	D	3.80
93	BARNALA	TAPPA	S-NPP	75.54325	30.14091	13:48:00	D	11.00
94	BARNALA	TAPPA	S-NPP	75.54267	30.14473	13:48:00	D	11.00
95	BARNALA	TAPPA	S-NPP	75.56317	30.15492	13:48:00	D	5.70
96	BARNALA	TAPPA	S-NPP	75.50259	30.15554	13:48:00	D	5.70
97	BARNALA	TAPPA	S-NPP	75.56744	30.16322	13:48:00	D	16.60
98	BARNALA	TAPPA	S-NPP	75.51430	30.17454	13:48:00	D	4.40
99	BARNALA	TAPPA	S-NPP	75.54288	30.17977	13:48:00	D	6.80
100	BARNALA	TAPPA	S-NPP	75.54076	30.18143	13:48:00	D	9.90
101	BARNALA	TAPPA	S-NPP	75.54230	30.18359	13:48:00	D	6.80
102	BARNALA	TAPPA	S-NPP	75.54018	30.18526	13:48:00	D	2.90
103	BARNALA	TAPPA	S-NPP	75.40760	30.19329	13:48:00	D	9.50
104	BARNALA	TAPPA	S-NPP	75.40701	30.19708	13:48:00	D	9.50
105	BARNALA	TAPPA	S-NPP	75.53244	30.19993	13:48:00	D	6.50
106	BARNALA	TAPPA	S-NPP	75.53187	30.20376	13:48:00	D	6.50
107	BARNALA	TAPPA	S-NPP	75.39462	30.20723	13:48:00	D	7.50
108	BARNALA	TAPPA	S-NPP	75.48689	30.21022	13:48:00	D	38.50
109	BARNALA	TAPPA	S-NPP	75.52529	30.21077	13:48:00	D	6.70
110	BARNALA	TAPPA	S-NPP	75.39404	30.21102	13:48:00	D	7.50
111	BARNALA	TAPPA	S-NPP	75.53071	30.21140	13:48:00	D	6.70
112	BARNALA	TAPPA	S-NPP	75.51929	30.21397	13:48:00	D	3.50
113	BARNALA	TAPPA	S-NPP	75.45883	30.21472	13:48:00	D	2.30
114	BARNALA	TAPPA	S-NPP	75.54638	30.21709	13:48:00	D	10.00
115	BARNALA	TAPPA	S-NPP	75.55181	30.21772	13:48:00	D	10.00
116	BARNALA	TAPPA	S-NPP	75.43620	30.21982	13:48:00	D	4.80
117	BARNALA	TAPPA	S-NPP	75.40830	30.22429	13:48:00	D	15.00
118	BARNALA	TAPPA	S-NPP	75.51215	30.22480	13:48:00	D	5.30
119	BARNALA	TAPPA	S-NPP	75.49477	30.23055	13:48:00	D	14.10
120	BARNALA	TAPPA	S-NPP	75.65996	30.23797	13:48:00	D	4.90
121	BARNALA	TAPPA	S-NPP	75.63741	30.23930	13:48:00	D	3.10

122	BARNALA	TAPPA	S-NPP	75.38939	30.24138	13:48:00	D	13.00
123	BARNALA	TAPPA	S-NPP	75.62588	30.24187	13:48:00	D	4.50
124	BARNALA	TAPPA	S-NPP	75.52007	30.24516	13:48:00	D	17.70
125	BARNALA	TAPPA	S-NPP	75.66981	30.24694	13:48:00	D	2.30
126	BARNALA	TAPPA	S-NPP	75.50326	30.24708	13:48:00	D	2.90
127	BARNALA	TAPPA	S-NPP	75.68636	30.24885	13:48:00	D	4.90
128	BARNALA	TAPPA	S-NPP	75.46436	30.25026	13:48:00	D	8.80
129	BARNALA	TAPPA	S-NPP	75.64668	30.25210	13:48:00	D	5.00
130	BARNALA	TAPPA	S-NPP	75.48052	30.25217	13:48:00	D	4.70
131	BARNALA	TAPPA	S-NPP	75.67970	30.25593	13:48:00	D	4.40
132	BARNALA	TAPPA	S-NPP	75.68522	30.25656	13:48:00	D	5.30
133	BARNALA	TAPPA	S-NPP	75.55145	30.25663	13:48:00	D	4.90
134	BARNALA	TAPPA	S-NPP	75.49073	30.25726	13:48:00	D	14.20
135	BARNALA	TAPPA	S-NPP	75.37052	30.25844	13:48:00	D	3.80
136	BARNALA	TAPPA	S-NPP	75.60654	30.25918	13:48:00	D	10.70
137	BARNALA	TAPPA	S-NPP	75.66751	30.26236	13:48:00	D	3.70
138	BARNALA	TAPPA	S-NPP	75.61144	30.26365	13:48:00	D	11.30
139	BARNALA	TAPPA	S-NPP	75.49979	30.26999	13:48:00	D	6.30
140	BARNALA	TAPPA	S-NPP	75.70007	30.27005	13:48:00	D	3.70
141	BARNALA	TAPPA	S-NPP	75.41203	30.27115	13:48:00	D	13.60
142	BARNALA	TAPPA	S-NPP	75.42051	30.27117	13:48:00	D	17.00
143	BARNALA	TAPPA	S-NPP	75.50462	30.27445	13:48:00	D	2.90
144	BARNALA	TAPPA	S-NPP	75.45494	30.27629	13:48:00	D	3.40
145	BARNALA	TAPPA	S-NPP	75.65419	30.27648	13:48:00	D	2.80
146	BARNALA	TAPPA	S-NPP	75.41397	30.27816	13:48:00	D	4.60
147	BARNALA	TAPPA	S-NPP	75.46832	30.28049	13:48:00	D	3.10
148	BARNALA	TAPPA	S-NPP	75.47051	30.28204	13:48:00	D	2.50
149	BARNALA	TAPPA	S-NPP	75.63655	30.28225	13:48:00	D	3.50
150	BARNALA	TAPPA	S-NPP	75.60856	30.28286	13:48:00	D	9.30
151	BARNALA	TAPPA	S-NPP	75.49532	30.28356	13:48:00	D	3.30
152	BARNALA	TAPPA	S-NPP	75.60601	30.28436	13:48:00	D	11.70

153	BARNALA	TAPPA	S-NPP	75.37478	30.28525	13:48:00	D	6.40
154	BARNALA	TAPPA	S-NPP	75.50015	30.28799	13:48:00	D	11.60
155	BARNALA	TAPPA	S-NPP	75.40629	30.29275	13:48:00	D	10.30
156	BARNALA	TAPPA	S-NPP	75.66290	30.29318	13:48:00	D	9.50
157	BARNALA	TAPPA	S-NPP	75.41701	30.29399	13:48:00	D	4.50
158	BARNALA	TAPPA	S-NPP	75.62679	30.29451	13:48:00	D	6.30
159	BARNALA	TAPPA	S-NPP	75.62876	30.29698	13:48:00	D	9.10
160	BARNALA	TAPPA	S-NPP	75.45463	30.29832	13:48:00	D	7.00
161	BARNALA	TAPPA	S-NPP	75.62621	30.29835	13:48:00	D	6.30
162	BARNALA	TAPPA	S-NPP	75.42063	30.30602	13:48:00	D	3.40
163	BARNALA	TAPPA	S-NPP	75.38791	30.30609	13:48:00	D	2.90
164	BARNALA	TAPPA	S-NPP	75.39861	30.30733	13:48:00	D	4.40
165	BARNALA	TAPPA	S-NPP	75.61349	30.30865	13:48:00	D	10.50
166	BARNALA	TAPPA	S-NPP	75.40817	30.31618	13:48:00	D	7.50
167	BARNALA	TAPPA	S-NPP	75.38616	30.31748	13:48:00	D	3.00
168	BARNALA	TAPPA	S-NPP	75.60020	30.32277	13:48:00	D	6.60
169	BARNALA	TAPPA	S-NPP	75.43444	30.32312	13:48:00	D	5.80
170	BARNALA	TAPPA	S-NPP	75.59356	30.32983	13:48:00	D	13.00
171	BARNALA	TAPPA	S-NPP	75.32406	30.33333	13:48:00	D	42.50
172	BARNALA	TAPPA	S-NPP	75.63749	30.33486	13:48:00	D	8.70
173	BARNALA	TAPPA	S-NPP	75.43211	30.33834	13:48:00	D	4.60
174	BARNALA	TAPPA	S-NPP	75.60826	30.34325	13:48:00	D	2.20
175	BARNALA	TAPPA	S-NPP	75.38686	30.34850	13:48:00	D	2.60
176	BARNALA	TAPPA	S-NPP	75.35957	30.34913	13:48:00	D	13.10
177	BARNALA	TAPPA	S-NPP	75.38628	30.35230	13:48:00	D	14.80
178	BARNALA	TAPPA	S-NPP	75.39211	30.36713	13:48:00	D	7.40
179	BARNALA	TAPPA	S-NPP	75.38933	30.36814	13:48:00	D	11.50
180	BARNALA	TAPPA	S-NPP	75.40904	30.38211	13:48:00	D	3.00
181	BARNALA	TAPPA	S-NPP	75.41441	30.38276	13:48:00	D	5.10
182	BARNALA	TAPPA	S-NPP	75.42516	30.38404	13:48:00	D	3.10
183	BARNALA	TAPPA	S-NPP	75.41126	30.38480	13:48:00	D	8.40

184	BARNALA	TAPPA	S-NPP	75.41068	30.38861	13:48:00	D	8.40
185	BARNALA	TAPPA	S-NPP	75.41547	30.39303	13:48:00	D	8.20
186	BARNALA	TAPPA	S-NPP	75.30740	30.42300	13:48:00	D	3.60
187	BATHINDA	BATHINDA	S-NPP	74.75053	30.06054	13:48:00	D	9.00
188	BATHINDA	BATHINDA	S-NPP	74.75549	30.06115	13:48:00	D	7.70
189	BATHINDA	BATHINDA	S-NPP	74.72408	30.06846	13:48:00	D	9.90
190	BATHINDA	BATHINDA	S-NPP	74.70597	30.07263	13:48:00	D	16.70
191	BATHINDA	BATHINDA	S-NPP	74.70811	30.07394	13:48:00	D	16.50
192	BATHINDA	BATHINDA	S-NPP	74.69929	30.08302	13:48:00	D	9.30
193	BATHINDA	BATHINDA	S-NPP	74.70422	30.08361	13:48:00	D	7.50
194	BATHINDA	BATHINDA	S-NPP	74.88272	30.09191	13:48:00	D	6.20
195	BATHINDA	BATHINDA	S-NPP	74.77237	30.09928	13:48:00	D	5.20
196	BATHINDA	BATHINDA	S-NPP	75.10345	30.10382	13:48:00	D	3.30
197	BATHINDA	BATHINDA	S-NPP	75.09774	30.10693	13:48:00	D	3.30
198	BATHINDA	BATHINDA	S-NPP	74.70446	30.11349	13:48:00	D	2.40
199	BATHINDA	BATHINDA	S-NPP	75.06754	30.11921	13:48:00	D	2.60
200	BATHINDA	BATHINDA	S-NPP	75.08002	30.13966	13:48:00	D	3.20
201	BATHINDA	BATHINDA	S-NPP	74.83017	30.15127	13:48:00	D	2.70
202	BATHINDA	BATHINDA	S-NPP	74.82958	30.15496	13:48:00	D	30.70
203	BATHINDA	BATHINDA	S-NPP	75.04004	30.16149	13:48:00	D	5.80
204	BATHINDA	BATHINDA	S-NPP	74.81223	30.16786	13:48:00	D	11.80
205	BATHINDA	BATHINDA	S-NPP	75.00251	30.16837	13:48:00	D	9.50
206	BATHINDA	BATHINDA	S-NPP	75.11198	30.17007	13:48:00	D	14.00
207	BATHINDA	BATHINDA	S-NPP	75.07478	30.17324	13:48:00	D	2.20
208	BATHINDA	BATHINDA	S-NPP	74.86235	30.17400	13:48:00	D	8.40
209	BATHINDA	BATHINDA	S-NPP	74.81107	30.17522	13:48:00	D	8.60
210	BATHINDA	BATHINDA	S-NPP	74.87240	30.17523	13:48:00	D	6.20
211	BATHINDA	BATHINDA	S-NPP	74.79052	30.17644	13:48:00	D	5.30
212	BATHINDA	BATHINDA	S-NPP	74.86176	30.17769	13:48:00	D	8.40
213	BATHINDA	BATHINDA	S-NPP	74.88846	30.20358	13:48:00	D	5.10
214	BATHINDA	BATHINDA	S-NPP	74.79823	30.20614	13:48:00	D	3.70

215	BATHINDA	BATHINDA	S-NPP	75.13720	30.21120	13:48:00	D	8.20
216	BATHINDA	BATHINDA	S-NPP	75.13661	30.21495	13:48:00	D	36.10
217	BATHINDA	BATHINDA	S-NPP	75.06091	30.22858	13:48:00	D	9.40
218	BATHINDA	BATHINDA	S-NPP	75.05811	30.22931	13:48:00	D	10.10
219	BATHINDA	BATHINDA	S-NPP	75.06326	30.22992	13:48:00	D	9.70
220	BATHINDA	BATHINDA	S-NPP	75.06033	30.23232	13:48:00	D	9.40
221	BATHINDA	BATHINDA	S-NPP	75.11372	30.24343	13:48:00	D	3.40
222	BATHINDA	BATHINDA	S-NPP	75.09761	30.24535	13:48:00	D	4.80
223	BATHINDA	BATHINDA	S-NPP	75.10278	30.24596	13:48:00	D	7.20
224	BATHINDA	BATHINDA	S-NPP	75.19985	30.26877	13:48:00	D	3.50
225	BATHINDA	BATHINDA	S-NPP	75.07286	30.26907	13:48:00	D	3.40
226	BATHINDA	BATHINDA	S-NPP	75.06138	30.27531	13:48:00	D	6.90
227	BATHINDA	BATHINDA	S-NPP	75.06653	30.27592	13:48:00	D	7.90
228	BATHINDA	BATHINDA	S-NPP	74.76164	30.32016	13:48:00	D	12.20
229	BATHINDA	BATHINDA	S-NPP	75.03579	30.35275	13:48:00	D	6.70
230	BATHINDA	BATHINDA	S-NPP	75.03462	30.36022	13:48:00	D	15.70
231	BATHINDA	RAMPURA PHUL	S-NPP	75.29749	30.11570	13:48:00	D	11.30
232	BATHINDA	RAMPURA PHUL	S-NPP	75.29691	30.11947	13:48:00	D	8.70
233	BATHINDA	RAMPURA PHUL	S-NPP	75.33262	30.13143	13:48:00	D	12.70
234	BATHINDA	RAMPURA PHUL	S-NPP	75.27985	30.14770	13:48:00	D	2.00
235	BATHINDA	RAMPURA PHUL	S-NPP	75.28177	30.14837	13:48:00	D	3.20
236	BATHINDA	RAMPURA PHUL	S-NPP	75.17244	30.15434	13:48:00	D	7.30
237	BATHINDA	RAMPURA PHUL	S-NPP	75.32671	30.15695	13:48:00	D	5.90
238	BATHINDA	RAMPURA PHUL	S-NPP	75.33199	30.15756	13:48:00	D	5.90
239	BATHINDA	RAMPURA PHUL	S-NPP	75.32858	30.15788	13:48:00	D	17.40
240	BATHINDA	RAMPURA PHUL	S-NPP	75.32612	30.16072	13:48:00	D	11.50
241	BATHINDA	RAMPURA PHUL	S-NPP	75.27225	30.16217	13:48:00	D	7.60
242	BATHINDA	RAMPURA PHUL	S-NPP	75.28219	30.16716	13:48:00	D	4.10
243	BATHINDA	RAMPURA PHUL	S-NPP	75.22859	30.16857	13:48:00	D	3.20
244	BATHINDA	RAMPURA PHUL	S-NPP	75.23905	30.16979	13:48:00	D	16.30
245	BATHINDA	RAMPURA PHUL	S-NPP	75.18571	30.17117	13:48:00	D	2.90

246	BATHINDA	RAMPURA PHUL	S-NPP	75.22046	30.18675	13:48:00	D	3.90
247	BATHINDA	RAMPURA PHUL	S-NPP	75.29507	30.18786	13:48:00	D	3.90
248	BATHINDA	RAMPURA PHUL	S-NPP	75.23090	30.18799	13:48:00	D	7.90
249	BATHINDA	RAMPURA PHUL	S-NPP	75.21464	30.18989	13:48:00	D	3.90
250	BATHINDA	RAMPURA PHUL	S-NPP	75.31561	30.19412	13:48:00	D	10.20
251	BATHINDA	RAMPURA PHUL	S-NPP	75.33675	30.19660	13:48:00	D	2.50
252	BATHINDA	RAMPURA PHUL	S-NPP	75.27754	30.19733	13:48:00	D	4.60
253	BATHINDA	RAMPURA PHUL	S-NPP	75.18163	30.19744	13:48:00	D	5.10
254	BATHINDA	RAMPURA PHUL	S-NPP	75.28281	30.19795	13:48:00	D	4.60
255	BATHINDA	RAMPURA PHUL	S-NPP	75.36327	30.19971	13:48:00	D	3.80
256	BATHINDA	RAMPURA PHUL	S-NPP	75.23440	30.19989	13:48:00	D	8.00
257	BATHINDA	RAMPURA PHUL	S-NPP	75.27697	30.20110	13:48:00	D	9.20
258	BATHINDA	RAMPURA PHUL	S-NPP	75.23382	30.20366	13:48:00	D	7.50
259	BATHINDA	RAMPURA PHUL	S-NPP	75.17526	30.20432	13:48:00	D	8.00
260	BATHINDA	RAMPURA PHUL	S-NPP	75.30857	30.20483	13:48:00	D	7.50
261	BATHINDA	RAMPURA PHUL	S-NPP	75.23789	30.21181	13:48:00	D	5.30
262	BATHINDA	RAMPURA PHUL	S-NPP	75.23673	30.21934	13:48:00	D	8.50
263	BATHINDA	RAMPURA PHUL	S-NPP	75.33742	30.22749	13:48:00	D	2.30
264	BATHINDA	RAMPURA PHUL	S-NPP	75.33684	30.23128	13:48:00	D	4.40
265	BATHINDA	RAMPURA PHUL	S-NPP	75.30395	30.23506	13:48:00	D	11.80
266	BATHINDA	RAMPURA PHUL	S-NPP	75.37400	30.23569	13:48:00	D	10.10
267	BATHINDA	RAMPURA PHUL	S-NPP	75.26590	30.23818	13:48:00	D	8.70
268	BATHINDA	RAMPURA PHUL	S-NPP	75.35690	30.24138	13:48:00	D	3.60
269	BATHINDA	RAMPURA PHUL	S-NPP	75.31335	30.24388	13:48:00	D	19.20
270	BATHINDA	RAMPURA PHUL	S-NPP	75.35632	30.24516	13:48:00	D	3.60
271	BATHINDA	RAMPURA PHUL	S-NPP	75.26884	30.25390	13:48:00	D	3.40
272	BATHINDA	RAMPURA PHUL	S-NPP	75.30273	30.26153	13:48:00	D	5.30
273	BATHINDA	RAMPURA PHUL	S-NPP	75.30517	30.26214	13:48:00	D	5.50
274	BATHINDA	RAMPURA PHUL	S-NPP	75.33337	30.27276	13:48:00	D	3.30
275	BATHINDA	RAMPURA PHUL	S-NPP	75.33868	30.27337	13:48:00	D	3.30
276	BATHINDA	RAMPURA PHUL	S-NPP	75.21499	30.27437	13:48:00	D	3.50



277	BATHINDA	RAMPURA PHUL	S-NPP	75.27223	30.28490	13:48:00	D	6.20
278	BATHINDA	RAMPURA PHUL	S-NPP	75.27751	30.28552	13:48:00	D	10.80
279	BATHINDA	RAMPURA PHUL	S-NPP	75.28808	30.28675	13:48:00	D	4.10
280	BATHINDA	RAMPURA PHUL	S-NPP	75.29337	30.28737	13:48:00	D	4.10
281	BATHINDA	RAMPURA PHUL	S-NPP	75.28162	30.29369	13:48:00	D	2.50
282	BATHINDA	RAMPURA PHUL	S-NPP	75.25994	30.29499	13:48:00	D	4.90
283	BATHINDA	RAMPURA PHUL	S-NPP	75.22198	30.29819	13:48:00	D	13.30
284	BATHINDA	RAMPURA PHUL	S-NPP	75.22082	30.30572	13:48:00	D	10.40
285	BATHINDA	RAMPURA PHUL	S-NPP	75.24123	30.31198	13:48:00	D	17.60
286	BATHINDA	RAMPURA PHUL	S-NPP	75.28342	30.31697	13:48:00	D	4.30
287	BATHINDA	RAMPURA PHUL	S-NPP	75.30283	30.33082	13:48:00	D	4.10
288	BATHINDA	RAMPURA PHUL	S-NPP	75.24828	30.33585	13:48:00	D	34.40
289	BATHINDA	RAMPURA PHUL	S-NPP	75.27877	30.34719	13:48:00	D	18.40
290	BATHINDA	RAMPURA PHUL	S-NPP	75.32173	30.34848	13:48:00	D	5.80
291	BATHINDA	RAMPURA PHUL	S-NPP	75.28347	30.35160	13:48:00	D	18.40
292	BATHINDA	RAMPURA PHUL	S-NPP	75.28195	30.37766	13:48:00	D	11.30
293	BATHINDA	RAMPURA PHUL	S-NPP	75.21686	30.38162	13:48:00	D	11.40
294	BATHINDA	RAMPURA PHUL	S-NPP	75.29140	30.38645	13:48:00	D	3.40
295	BATHINDA	RAMPURA PHUL	S-NPP	75.18884	30.38984	13:48:00	D	11.70
296	BATHINDA	RAMPURA PHUL	S-NPP	75.28434	30.39718	13:48:00	D	2.50
297	BATHINDA	RAMPURA PHUL	S-NPP	75.27845	30.40034	13:48:00	D	8.80
298	BATHINDA	RAMPURA PHUL	S-NPP	75.14986	30.40055	13:48:00	D	8.80
299	BATHINDA	RAMPURA PHUL	S-NPP	75.06494	30.40188	13:48:00	D	3.70
300	BATHINDA	RAMPURA PHUL	S-NPP	75.06435	30.40562	13:48:00	D	5.90
301	BATHINDA	RAMPURA PHUL	S-NPP	75.25025	30.40858	13:48:00	D	4.90
302	BATHINDA	RAMPURA PHUL	S-NPP	75.25553	30.40920	13:48:00	D	4.90
303	BATHINDA	RAMPURA PHUL	S-NPP	75.22857	30.40987	13:48:00	D	4.70
304	BATHINDA	RAMPURA PHUL	S-NPP	75.19643	30.40990	13:48:00	D	2.90
305	BATHINDA	RAMPURA PHUL	S-NPP	75.08331	30.41933	13:48:00	D	5.30
306	BATHINDA	RAMPURA PHUL	S-NPP	75.26437	30.42178	13:48:00	D	9.30
307	BATHINDA	RAMPURA PHUL	S-NPP	75.19993	30.42182	13:48:00	D	15.20

308	BATHINDA	RAMPURA PHUL	S-NPP	75.23151	30.42557	13:48:00	D	18.70
309	BATHINDA	RAMPURA PHUL	S-NPP	75.19935	30.42559	13:48:00	D	15.20
310	BATHINDA	RAMPURA PHUL	S-NPP	75.20928	30.43061	13:48:00	D	2.20
311	BATHINDA	RAMPURA PHUL	S-NPP	75.03324	30.43612	13:48:00	D	7.10
312	BATHINDA	RAMPURA PHUL	S-NPP	75.03051	30.43678	13:48:00	D	4.10
313	BATHINDA	RAMPURA PHUL	S-NPP	75.11216	30.43808	13:48:00	D	33.90
314	BATHINDA	RAMPURA PHUL	S-NPP	75.20170	30.44505	13:48:00	D	6.50
315	BATHINDA	RAMPURA PHUL	TERRA-1	75.20996	30.44604	11:44:00	D	21.31
316	BATHINDA	RAMPURA PHUL	S-NPP	75.20112	30.44882	13:48:00	D	6.50
317	BATHINDA	RAMPURA PHUL	S-NPP	75.02815	30.45171	13:48:00	D	1.30
318	BATHINDA	RAMPURA PHUL	S-NPP	75.09943	30.45181	13:48:00	D	7.30
319	BATHINDA	RAMPURA PHUL	S-NPP	75.10200	30.45271	13:48:00	D	8.00
320	BATHINDA	RAMPURA PHUL	S-NPP	75.14171	30.45313	13:48:00	D	5.80
321	BATHINDA	RAMPURA PHUL	S-NPP	75.13913	30.45319	13:48:00	D	6.00
322	BATHINDA	RAMPURA PHUL	S-NPP	75.12547	30.45498	13:48:00	D	5.30
323	BATHINDA	RAMPURA PHUL	S-NPP	75.12286	30.45513	13:48:00	D	6.40
324	BATHINDA	RAMPURA PHUL	S-NPP	75.22686	30.45576	13:48:00	D	2.50
325	BATHINDA	RAMPURA PHUL	S-NPP	75.07481	30.45717	13:48:00	D	5.30
326	BATHINDA	RAMPURA PHUL	S-NPP	75.12749	30.45950	13:48:00	D	9.70
327	BATHINDA	RAMPURA PHUL	S-NPP	75.22628	30.45953	13:48:00	D	2.50
328	BATHINDA	RAMPURA PHUL	S-NPP	75.19688	30.45986	13:48:00	D	10.30
329	BATHINDA	RAMPURA PHUL	S-NPP	75.19937	30.46012	13:48:00	D	11.20
330	BATHINDA	RAMPURA PHUL	S-NPP	75.23155	30.46016	13:48:00	D	9.30
331	BATHINDA	RAMPURA PHUL	S-NPP	75.23441	30.46034	13:48:00	D	5.50
332	BATHINDA	RAMPURA PHUL	S-NPP	75.22570	30.46330	13:48:00	D	7.80
333	BATHINDA	RAMPURA PHUL	S-NPP	75.22854	30.46351	13:48:00	D	13.40
334	BATHINDA	RAMPURA PHUL	S-NPP	75.12110	30.46639	13:48:00	D	5.20
335	BATHINDA	RAMPURA PHUL	S-NPP	75.13156	30.46761	13:48:00	D	6.60
336	BATHINDA	RAMPURA PHUL	S-NPP	75.13098	30.47136	13:48:00	D	6.60
337	BATHINDA	RAMPURA PHUL	S-NPP	75.13621	30.47198	13:48:00	D	13.10
338	BATHINDA	RAMPURA PHUL	S-NPP	75.15540	30.48570	13:48:00	D	12.40

339	BATHINDA	RAMPURA PHUL	S-NPP	75.15482	30.48946	13:48:00	D	12.40
340	BATHINDA	TALWANDI SABO	S-NPP	75.18635	29.87644	13:48:00	D	5.30
341	BATHINDA	TALWANDI SABO	S-NPP	75.16829	29.97367	13:48:00	D	9.90
342	BATHINDA	TALWANDI SABO	S-NPP	75.05834	29.97563	13:48:00	D	3.90
343	BATHINDA	TALWANDI SABO	S-NPP	75.22059	29.97609	13:48:00	D	18.20
344	BATHINDA	TALWANDI SABO	S-NPP	75.16771	29.97741	13:48:00	D	9.90
345	BATHINDA	TALWANDI SABO	S-NPP	75.22001	29.97984	13:48:00	D	4.90
346	BATHINDA	TALWANDI SABO	S-NPP	75.04700	29.98183	13:48:00	D	1.80
347	BATHINDA	TALWANDI SABO	S-NPP	75.24541	29.98669	13:48:00	D	4.90
348	BATHINDA	TALWANDI SABO	S-NPP	75.19236	29.98799	13:48:00	D	3.60
349	BATHINDA	TALWANDI SABO	S-NPP	75.22229	29.99922	13:48:00	D	6.60
350	BATHINDA	TALWANDI SABO	S-NPP	74.94317	30.00130	13:48:00	D	6.60
351	BATHINDA	TALWANDI SABO	S-NPP	75.07468	30.00416	13:48:00	D	5.30
352	BATHINDA	TALWANDI SABO	S-NPP	75.02753	30.02262	13:48:00	D	8.00
353	BATHINDA	TALWANDI SABO	S-NPP	75.10483	30.02795	13:48:00	D	2.30
354	BATHINDA	TALWANDI SABO	S-NPP	74.88201	30.03163	13:48:00	D	14.50
355	BATHINDA	TALWANDI SABO	S-NPP	74.90710	30.03466	13:48:00	D	2.50
356	BATHINDA	TALWANDI SABO	S-NPP	74.84583	30.03476	13:48:00	D	5.80
357	BATHINDA	TALWANDI SABO	S-NPP	74.81534	30.03480	13:48:00	D	3.10
358	BATHINDA	TALWANDI SABO	S-NPP	75.09853	30.03480	13:48:00	D	5.10
359	BATHINDA	TALWANDI SABO	S-NPP	74.91213	30.03526	13:48:00	D	7.70
360	BATHINDA	TALWANDI SABO	S-NPP	75.20612	30.03547	13:48:00	D	7.40
361	BATHINDA	TALWANDI SABO	S-NPP	75.20346	30.03569	13:48:00	D	4.10
362	BATHINDA	TALWANDI SABO	S-NPP	75.20866	30.03629	13:48:00	D	4.10
363	BATHINDA	TALWANDI SABO	S-NPP	75.11907	30.03723	13:48:00	D	13.80
364	BATHINDA	TALWANDI SABO	S-NPP	75.22688	30.03800	13:48:00	D	3.40
365	BATHINDA	TALWANDI SABO	S-NPP	75.22427	30.03811	13:48:00	D	3.70
366	BATHINDA	TALWANDI SABO	S-NPP	74.87584	30.03840	13:48:00	D	3.70
367	BATHINDA	TALWANDI SABO	S-NPP	75.18556	30.04886	13:48:00	D	23.80
368	BATHINDA	TALWANDI SABO	S-NPP	75.22771	30.04998	13:48:00	D	1.90
369	BATHINDA	TALWANDI SABO	S-NPP	75.15855	30.05331	13:48:00	D	5.00

370	BATHINDA	TALWANDI SABO	S-NPP	75.12703	30.05338	13:48:00	D	10.60
371	BATHINDA	TALWANDI SABO	S-NPP	75.15280	30.05643	13:48:00	D	3.50
372	BATHINDA	TALWANDI SABO	S-NPP	75.18382	30.06010	13:48:00	D	10.50
373	BATHINDA	TALWANDI SABO	S-NPP	75.17289	30.06263	13:48:00	D	29.10
374	BATHINDA	TALWANDI SABO	S-NPP	74.92820	30.06359	13:48:00	D	4.20
375	BATHINDA	TALWANDI SABO	S-NPP	74.91754	30.06606	13:48:00	D	8.00
376	BATHINDA	TALWANDI SABO	S-NPP	74.91192	30.06914	13:48:00	D	4.30
377	BATHINDA	TALWANDI SABO	S-NPP	75.15616	30.10258	13:48:00	D	5.60
378	BATHINDA	TALWANDI SABO	S-NPP	75.17110	30.10819	13:48:00	D	5.30
379	BATHINDA	TALWANDI SABO	S-NPP	75.11327	30.12835	13:48:00	D	2.70
380	BATHINDA	TALWANDI SABO	S-NPP	75.11151	30.13956	13:48:00	D	3.60
381	BATHINDA	TALWANDI SABO	S-NPP	75.23466	30.14265	13:48:00	D	2.70
382	BATHINDA	TALWANDI SABO	S-NPP	75.23791	30.14285	13:48:00	D	5.80
383	FARIDKOT	FARIDKOT	S-NPP	74.93171	30.66632	13:48:00	D	14.00
384	FARIDKOT	FARIDKOT	S-NPP	74.93112	30.67005	13:48:00	D	14.00
385	FARIDKOT	FARIDKOT	S-NPP	74.89262	30.71476	13:48:00	D	3.90
386	FARIDKOT	FARIDKOT	S-NPP	74.90512	30.73525	13:48:00	D	5.20
387	FARIDKOT	JAITO	S-NPP	75.03558	30.42118	13:48:00	D	4.20
388	FARIDKOT	JAITO	S-NPP	74.99603	30.45554	13:48:00	D	2.10
389	FARIDKOT	JAITO	S-NPP	75.03157	30.46353	13:48:00	D	4.50
390	FATEHGARH SAHIB	ALMOH	S-NPP	76.23508	30.56930	13:48:00	D	4.30
391	FATEHGARH SAHIB	ALMOH	S-NPP	76.23302	30.57081	13:48:00	D	4.80
392	FATEHGARH SAHIB	ALMOH	S-NPP	76.13705	30.60894	13:48:00	D	4.20
393	FATEHGARH SAHIB	ALMOH	S-NPP	76.28840	30.64426	02:30:00	N	0.40
394	FATEHGARH SAHIB	ALMOH	S-NPP	76.16026	30.65594	13:48:00	D	2.90
395	FATEHGARH SAHIB	ALMOH	S-NPP	76.30569	30.68035	13:48:00	D	2.20
396	FATEHGARH SAHIB	FATEHGARH SAHIB	S-NPP	76.32858	30.51869	13:48:00	D	7.10
397	FATEHGARH SAHIB	FATEHGARH SAHIB	S-NPP	76.33602	30.52357	13:48:00	D	2.00
398	FATEHGARH SAHIB	FATEHGARH SAHIB	S-NPP	76.44651	30.52734	13:48:00	D	2.90
399	FATEHGARH SAHIB	FATEHGARH SAHIB	S-NPP	76.37981	30.53241	13:48:00	D	6.20
400	FATEHGARH SAHIB	FATEHGARH SAHIB	S-NPP	76.38386	30.53285	13:48:00	D	13.90

401	FATEHGARH SAHIB	FATEHGARH SAHIB	S-NPP	76.39138	30.53775	13:48:00	D	8.70
402	FATEHGARH SAHIB	FATEHGARH SAHIB	S-NPP	76.46174	30.56591	13:48:00	D	4.20
403	FATEHGARH SAHIB	FATEHGARH SAHIB	S-NPP	76.46117	30.56995	13:48:00	D	4.20
404	FATEHGARH SAHIB	FATEHGARH SAHIB	S-NPP	76.29431	30.58003	13:48:00	D	6.00
405	FATEHGARH SAHIB	FATEHGARH SAHIB	S-NPP	76.29236	30.58118	13:48:00	D	5.90
406	FATEHGARH SAHIB	FATEHGARH SAHIB	S-NPP	76.29880	30.61442	13:48:00	D	4.40
407	FATEHGARH SAHIB	KHAMANOH	S-NPP	76.34215	30.74620	13:48:00	D	2.90
408	FATEHGARH SAHIB	KHAMANOH	S-NPP	76.30003	30.81202	13:48:00	D	3.80
409	FIROZPUR	FAZILKA	S-NPP	74.29202	30.27025	13:48:00	D	9.00
410	FIROZPUR	FAZILKA	S-NPP	74.27003	30.31523	13:48:00	D	11.20
411	FIROZPUR	FAZILKA	S-NPP	74.26409	30.32182	13:48:00	D	5.70
412	FIROZPUR	FAZILKA	S-NPP	74.29687	30.32965	13:48:00	D	4.20
413	FIROZPUR	FAZILKA	S-NPP	74.30164	30.33025	13:48:00	D	5.50
414	FIROZPUR	FAZILKA	S-NPP	74.22115	30.41680	13:48:00	D	4.40
415	FIROZPUR	FAZILKA	S-NPP	73.98107	30.43876	02:30:00	N	1.00
416	FIROZPUR	FAZILKA	S-NPP	73.99109	30.45495	13:48:00	D	2.70
417	FIROZPUR	FAZILKA	S-NPP	74.09122	30.45661	13:48:00	D	3.50
418	FIROZPUR	FAZILKA	S-NPP	74.10888	30.46611	13:48:00	D	4.50
419	FIROZPUR	FAZILKA	S-NPP	74.02726	30.46679	13:48:00	D	49.50
420	FIROZPUR	FAZILKA	S-NPP	74.02666	30.47035	13:48:00	D	59.30
421	FIROZPUR	FAZILKA	S-NPP	74.15614	30.47202	13:48:00	D	4.20
422	FIROZPUR	FAZILKA	S-NPP	74.07583	30.52034	13:48:00	D	5.20
423	FIROZPUR	FAZILKA	S-NPP	74.08053	30.52094	13:48:00	D	4.70
424	FIROZPUR	FAZILKA	S-NPP	74.07994	30.52452	13:48:00	D	4.70
425	FIROZPUR	FAZILKA	S-NPP	74.07935	30.52809	13:48:00	D	5.60
426	FIROZPUR	FAZILKA	S-NPP	74.08758	30.53645	13:48:00	D	4.70
427	FIROZPUR	FIROZPUR	S-NPP	74.90453	30.73897	13:48:00	D	10.10
428	FIROZPUR	FIROZPUR	S-NPP	74.86147	30.87624	13:48:00	D	6.80
429	FIROZPUR	FIROZPUR	S-NPP	74.53598	30.87845	13:48:00	D	6.60
430	FIROZPUR	JALALABAD	S-NPP	74.36420	30.48305	13:48:00	D	3.30
431	FIROZPUR	JALALABAD	S-NPP	74.33346	30.49034	13:48:00	D	7.70

432	FIROZPUR	JALALABAD	S-NPP	74.26443	30.49284	13:48:00	D	4.10
433	FIROZPUR	JALALABAD	S-NPP	74.14428	30.51444	13:48:00	D	1.90
434	FIROZPUR	JALALABAD	S-NPP	74.16145	30.52761	13:48:00	D	3.40
435	FIROZPUR	JALALABAD	S-NPP	74.19469	30.53182	13:48:00	D	11.20
436	FIROZPUR	JALALABAD	S-NPP	74.17984	30.53361	13:48:00	D	4.30
437	FIROZPUR	JALALABAD	S-NPP	74.12592	30.53771	13:48:00	D	3.90
438	FIROZPUR	JALALABAD	S-NPP	74.11190	30.54498	13:48:00	D	4.00
439	FIROZPUR	JALALABAD	S-NPP	74.16466	30.54783	13:48:00	D	5.20
440	FIROZPUR	JALALABAD	S-NPP	74.16737	30.55034	13:48:00	D	6.10
441	FIROZPUR	JALALABAD	S-NPP	74.17213	30.55095	13:48:00	D	2.00
442	FIROZPUR	JALALABAD	S-NPP	74.12965	30.55449	13:48:00	D	4.20
443	FIROZPUR	JALALABAD	S-NPP	74.25857	30.55831	13:48:00	D	6.70
444	FIROZPUR	JALALABAD	S-NPP	74.25537	30.55896	13:48:00	D	2.50
445	FIROZPUR	JALALABAD	S-NPP	74.26199	30.57816	13:48:00	D	7.90
446	FIROZPUR	JALALABAD	S-NPP	74.25661	30.58118	13:48:00	D	7.90
447	FIROZPUR	JALALABAD	S-NPP	74.18072	30.59747	13:48:00	D	9.50
448	FIROZPUR	ZIRA	S-NPP	75.07115	30.92765	13:48:00	D	6.40
449	FIROZPUR	ZIRA	S-NPP	75.10876	30.92823	13:48:00	D	5.90
450	FIROZPUR	ZIRA	S-NPP	75.09640	30.93830	13:48:00	D	7.50
451	FIROZPUR	ZIRA	S-NPP	75.34944	30.96401	13:48:00	D	15.10
452	FIROZPUR	ZIRA	S-NPP	75.01450	30.99735	13:48:00	D	6.60
453	FIROZPUR	ZIRA	S-NPP	74.99290	30.99865	13:48:00	D	4.70
454	FIROZPUR	ZIRA	S-NPP	75.03557	30.99979	13:48:00	D	3.70
455	FIROZPUR	ZIRA	S-NPP	75.04553	31.00478	13:48:00	D	4.30
456	FIROZPUR	ZIRA	S-NPP	74.80928	31.07693	13:48:00	D	3.50
457	GURDASPUR	BATALA	S-NPP	75.05282	31.88605	13:48:00	D	5.50
458	HOSHIARPUR	HOSHIARPUR	S-NPP	75.76664	31.51038	13:48:00	D	5.90
459	HOSHIARPUR	MUKERIAN	S-NPP	75.54920	31.92627	13:48:00	D	2.90
460	JALANDHAR	JALANDHAR I	S-NPP	75.73550	31.35281	13:48:00	D	8.10
461	JALANDHAR	NAKODAR	S-NPP	75.45461	31.13782	13:48:00	D	4.30
462	JALANDHAR	NAKODAR	S-NPP	75.56883	31.16388	13:48:00	D	10.30

463	JALANDHAR	NAKODAR	S-NPP	75.45256	31.21748	13:48:00	D	3.30
464	JALANDHAR	NAKODAR	S-NPP	75.45812	31.21813	13:48:00	D	4.40
465	JALANDHAR	PHILLAUR	S-NPP	75.69319	31.01126	13:48:00	D	26.70
466	JALANDHAR	PHILLAUR	S-NPP	75.82948	31.03465	13:48:00	D	3.40
467	JALANDHAR	PHILLAUR	S-NPP	75.66639	31.03590	13:48:00	D	7.10
468	JALANDHAR	PHILLAUR	S-NPP	75.77761	31.05197	13:48:00	D	4.80
469	JALANDHAR	PHILLAUR	S-NPP	75.57169	31.07668	13:48:00	D	6.00
470	JALANDHAR	PHILLAUR	S-NPP	75.81101	31.10342	13:48:00	D	17.50
471	JALANDHAR	SHAHKOT	S-NPP	75.27088	31.06180	13:48:00	D	3.10
472	KAPURTHALA	KAPURTHALA	S-NPP	75.41389	31.26904	13:48:00	D	6.20
473	KAPURTHALA	KAPURTHALA	S-NPP	75.39149	31.49633	13:48:00	D	5.40
474	LUDHIANA	JAGRAON	TERRA-1	75.38696	30.66253	11:44:00	D	21.13
475	LUDHIANA	JAGRAON	S-NPP	75.48820	30.68580	13:48:00	D	9.70
476	LUDHIANA	JAGRAON	S-NPP	75.40072	30.69744	13:48:00	D	26.60
477	LUDHIANA	JAGRAON	S-NPP	75.42526	30.69788	13:48:00	D	2.30
478	LUDHIANA	JAGRAON	S-NPP	75.45854	30.69791	13:48:00	D	3.20
479	LUDHIANA	JAGRAON	S-NPP	75.40295	30.69912	13:48:00	D	6.50
480	LUDHIANA	JAGRAON	S-NPP	75.39152	30.70164	13:48:00	D	3.70
481	LUDHIANA	JAGRAON	S-NPP	75.49361	30.70790	13:48:00	D	3.90
482	LUDHIANA	JAGRAON	S-NPP	75.44588	30.70811	13:48:00	D	3.30
483	LUDHIANA	JAGRAON	S-NPP	75.51767	30.71270	13:48:00	D	5.00
484	LUDHIANA	JAGRAON	S-NPP	75.46444	30.71632	13:48:00	D	18.70
485	LUDHIANA	JAGRAON	S-NPP	75.46992	30.71693	13:48:00	D	18.70
486	LUDHIANA	JAGRAON	S-NPP	75.52374	30.73083	13:48:00	D	5.90
487	LUDHIANA	JAGRAON	S-NPP	75.52316	30.73467	13:48:00	D	7.30
488	LUDHIANA	JAGRAON	S-NPP	75.49504	30.73539	13:48:00	D	19.50
489	LUDHIANA	JAGRAON	S-NPP	75.52257	30.73852	13:48:00	D	7.30
490	LUDHIANA	JAGRAON	S-NPP	75.53129	30.75516	13:48:00	D	29.70
491	LUDHIANA	JAGRAON	S-NPP	75.53071	30.75901	13:48:00	D	11.70
492	LUDHIANA	JAGRAON	S-NPP	75.50689	30.76801	13:48:00	D	5.00
493	LUDHIANA	JAGRAON	S-NPP	75.58379	30.78077	13:48:00	D	6.10

494	LUDHIANA	JAGRAON	S-NPP	75.60549	30.78719	13:48:00	D	2.70
495	LUDHIANA	JAGRAON	S-NPP	75.58123	30.85588	13:48:00	D	6.70
496	LUDHIANA	JAGRAON	S-NPP	75.58681	30.85651	13:48:00	D	6.70
497	LUDHIANA	JAGRAON	S-NPP	75.48229	30.87596	13:48:00	D	4.90
498	LUDHIANA	JAGRAON	S-NPP	75.43970	30.89836	13:48:00	D	5.10
499	LUDHIANA	JAGRAON	S-NPP	75.63575	30.93372	13:48:00	D	6.40
500	LUDHIANA	JAGRAON	S-NPP	75.64140	30.93434	13:48:00	D	5.20
501	LUDHIANA	JAGRAON	S-NPP	75.42034	30.93708	13:48:00	D	7.40
502	LUDHIANA	JAGRAON	S-NPP	75.64307	30.93778	13:48:00	D	15.50
503	LUDHIANA	JAGRAON	S-NPP	75.64082	30.93822	13:48:00	D	5.20
504	LUDHIANA	JAGRAON	S-NPP	75.63629	30.94489	13:48:00	D	3.90
505	LUDHIANA	JAGRAON	S-NPP	75.63403	30.94536	13:48:00	D	5.70
506	LUDHIANA	JAGRAON	S-NPP	75.66049	30.96013	13:48:00	D	9.00
507	LUDHIANA	JAGRAON	S-NPP	75.65368	30.96727	13:48:00	D	16.30
508	LUDHIANA	KHANNA	S-NPP	76.08603	30.67175	13:48:00	D	7.40
509	LUDHIANA	KHANNA	S-NPP	76.12914	30.69464	13:48:00	D	13.30
510	LUDHIANA	KHANNA	S-NPP	76.28271	30.70309	13:48:00	D	4.40
511	LUDHIANA	KHANNA	S-NPP	76.16129	30.72240	13:48:00	D	10.40
512	LUDHIANA	KHANNA	S-NPP	76.11575	30.74565	13:48:00	D	2.90
513	LUDHIANA	KHANNA	S-NPP	76.09947	30.80260	13:48:00	D	2.90
514	LUDHIANA	LUDHIANA EAST	S-NPP	75.89465	30.71679	13:48:00	D	5.40
515	LUDHIANA	LUDHIANA EAST	S-NPP	75.82129	30.74026	13:48:00	D	3.40
516	LUDHIANA	LUDHIANA EAST	S-NPP	75.80023	30.74985	13:48:00	D	5.50
517	LUDHIANA	LUDHIANA EAST	S-NPP	75.80247	30.75000	13:48:00	D	4.30
518	LUDHIANA	LUDHIANA EAST	S-NPP	75.73094	30.75011	13:48:00	D	8.40
519	LUDHIANA	LUDHIANA EAST	S-NPP	75.86018	30.75271	13:48:00	D	6.90
520	LUDHIANA	LUDHIANA EAST	S-NPP	75.81614	30.79928	13:48:00	D	3.20
521	LUDHIANA	LUDHIANA EAST	S-NPP	75.97147	30.82068	13:48:00	D	6.00
522	LUDHIANA	LUDHIANA EAST	S-NPP	76.03298	30.84764	13:48:00	D	3.00
523	LUDHIANA	LUDHIANA EAST	S-NPP	76.09909	30.87284	13:48:00	D	2.50
524	LUDHIANA	LUDHIANA EAST	S-NPP	76.07782	30.89478	13:48:00	D	5.60



525	LUDHIANA	LUDHIANA EAST	S-NPP	76.11176	30.91057	13:48:00	D	3.80
526	LUDHIANA	LUDHIANA EAST	S-NPP	76.02785	30.94976	13:48:00	D	3.20
527	LUDHIANA	LUDHIANA EAST	S-NPP	76.03909	30.95505	13:48:00	D	5.80
528	LUDHIANA	LUDHIANA EAST	S-NPP	76.08532	30.96830	13:48:00	D	13.20
529	LUDHIANA	LUDHIANA EAST	S-NPP	76.09069	30.97294	13:48:00	D	22.40
530	LUDHIANA	LUDHIANA EAST	S-NPP	76.09012	30.97692	13:48:00	D	25.20
531	LUDHIANA	LUDHIANA WEST	S-NPP	75.70314	30.78256	13:48:00	D	17.60
532	LUDHIANA	LUDHIANA WEST	S-NPP	75.69070	30.78905	13:48:00	D	10.00
533	LUDHIANA	LUDHIANA WEST	S-NPP	75.68954	30.79681	13:48:00	D	9.40
534	LUDHIANA	LUDHIANA WEST	S-NPP	75.76937	30.80194	13:48:00	D	4.40
535	LUDHIANA	LUDHIANA WEST	S-NPP	75.87294	30.80964	13:48:00	D	13.30
536	LUDHIANA	LUDHIANA WEST	S-NPP	75.65293	30.81234	13:48:00	D	4.00
537	LUDHIANA	LUDHIANA WEST	S-NPP	75.62937	30.81749	13:48:00	D	16.50
538	LUDHIANA	LUDHIANA WEST	S-NPP	75.69113	30.82465	13:48:00	D	6.40
539	LUDHIANA	LUDHIANA WEST	S-NPP	75.92320	30.82728	13:48:00	D	3.90
540	LUDHIANA	LUDHIANA WEST	S-NPP	75.91045	30.83384	13:48:00	D	3.60
541	LUDHIANA	LUDHIANA WEST	S-NPP	75.69819	30.83741	13:48:00	D	3.70
542	LUDHIANA	LUDHIANA WEST	S-NPP	75.70068	30.83761	13:48:00	D	4.20
543	LUDHIANA	LUDHIANA WEST	S-NPP	75.73554	30.85735	13:48:00	D	5.80
544	LUDHIANA	LUDHIANA WEST	S-NPP	75.69411	30.86461	13:48:00	D	12.50
545	LUDHIANA	LUDHIANA WEST	S-NPP	75.69340	30.90802	13:48:00	D	4.00
546	LUDHIANA	PAYAL	S-NPP	76.07751	30.56620	13:48:00	D	3.40
547	LUDHIANA	PAYAL	S-NPP	76.09925	30.58063	13:48:00	D	7.90
548	LUDHIANA	PAYAL	S-NPP	76.07935	30.59454	13:48:00	D	9.80
549	LUDHIANA	PAYAL	S-NPP	75.93014	30.60596	13:48:00	D	20.70
550	LUDHIANA	PAYAL	S-NPP	75.91115	30.61578	13:48:00	D	1.90
551	LUDHIANA	PAYAL	S-NPP	75.98035	30.62362	13:48:00	D	2.90
552	LUDHIANA	PAYAL	S-NPP	75.92667	30.62951	13:48:00	D	1.40
553	LUDHIANA	PAYAL	S-NPP	75.90310	30.63081	13:48:00	D	4.20
554	LUDHIANA	PAYAL	S-NPP	76.02626	30.63281	13:48:00	D	4.70
555	LUDHIANA	PAYAL	S-NPP	76.04905	30.63939	13:48:00	D	6.10

556	LUDHIANA	PAYAL	S-NPP	75.98907	30.64462	13:48:00	D	5.40
557	LUDHIANA	PAYAL	S-NPP	75.98544	30.65893	13:48:00	D	16.70
558	LUDHIANA	PAYAL	S-NPP	75.98679	30.66039	13:48:00	D	16.80
559	LUDHIANA	PAYAL	S-NPP	75.97849	30.66618	13:48:00	D	2.60
560	LUDHIANA	PAYAL	S-NPP	75.88435	30.66782	13:48:00	D	1.80
561	LUDHIANA	PAYAL	S-NPP	75.89010	30.66845	13:48:00	D	7.40
562	LUDHIANA	PAYAL	S-NPP	75.90160	30.66972	13:48:00	D	8.90
563	LUDHIANA	PAYAL	S-NPP	76.08426	30.67366	13:48:00	D	5.70
564	LUDHIANA	PAYAL	S-NPP	75.90677	30.67428	13:48:00	D	8.90
565	LUDHIANA	PAYAL	S-NPP	75.91830	30.67555	13:48:00	D	4.00
566	LUDHIANA	PAYAL	S-NPP	75.93561	30.67747	13:48:00	D	2.10
567	LUDHIANA	PAYAL	S-NPP	75.90044	30.67756	13:48:00	D	4.10
568	LUDHIANA	PAYAL	S-NPP	75.97271	30.70557	13:48:00	D	3.30
569	LUDHIANA	PAYAL	S-NPP	75.97040	30.72133	13:48:00	D	2.80
570	LUDHIANA	PAYAL	S-NPP	75.97447	30.73380	13:48:00	D	4.70
571	LUDHIANA	PAYAL	S-NPP	75.93852	30.73774	13:48:00	D	6.40
572	LUDHIANA	PAYAL	S-NPP	75.97388	30.73774	13:48:00	D	4.70
573	LUDHIANA	PAYAL	S-NPP	75.97911	30.74235	13:48:00	D	3.50
574	LUDHIANA	PAYAL	S-NPP	75.99657	30.74432	13:48:00	D	2.90
575	LUDHIANA	PAYAL	S-NPP	75.92466	30.75214	13:48:00	D	5.40
576	LUDHIANA	PAYAL	S-NPP	76.05923	30.76348	13:48:00	D	4.20
577	LUDHIANA	PAYAL	S-NPP	76.05685	30.76576	13:48:00	D	5.40
578	LUDHIANA	PAYAL	S-NPP	76.06113	30.81856	13:48:00	D	2.00
579	LUDHIANA	PAYAL	S-NPP	76.03700	30.81992	13:48:00	D	6.00
580	LUDHIANA	PAYAL	S-NPP	76.02998	30.82719	13:48:00	D	9.20
581	LUDHIANA	PAYAL	S-NPP	76.05350	30.82980	13:48:00	D	2.00
582	LUDHIANA	RAIKOT	S-NPP	75.67555	30.61245	13:48:00	D	7.10
583	LUDHIANA	RAIKOT	S-NPP	75.67374	30.61285	13:48:00	D	4.00
584	LUDHIANA	RAIKOT	S-NPP	75.47133	30.61367	13:48:00	D	10.40
585	LUDHIANA	RAIKOT	S-NPP	75.72034	30.61766	13:48:00	D	4.60
586	LUDHIANA	RAIKOT	S-NPP	75.72423	30.61843	13:48:00	D	4.30

587	LUDHIANA	RAIKOT	S-NPP	75.51512	30.61863	13:48:00	D	7.60
588	LUDHIANA	RAIKOT	S-NPP	75.71976	30.62154	13:48:00	D	3.90
589	LUDHIANA	RAIKOT	S-NPP	75.47759	30.64556	13:48:00	D	3.20
590	LUDHIANA	RAIKOT	S-NPP	75.49401	30.64745	13:48:00	D	15.60
591	LUDHIANA	RAIKOT	S-NPP	75.46004	30.65133	13:48:00	D	3.80
592	LUDHIANA	RAIKOT	S-NPP	75.74211	30.65200	13:48:00	D	6.50
593	LUDHIANA	RAIKOT	S-NPP	75.48737	30.65448	13:48:00	D	20.40
594	LUDHIANA	RAIKOT	S-NPP	75.49285	30.65512	13:48:00	D	18.70
595	LUDHIANA	RAIKOT	S-NPP	75.47586	30.65705	13:48:00	D	2.50
596	LUDHIANA	RAIKOT	S-NPP	75.74659	30.66041	13:48:00	D	8.90
597	LUDHIANA	RAIKOT	S-NPP	75.80892	30.66738	13:48:00	D	5.10
598	LUDHIANA	RAIKOT	S-NPP	75.50755	30.66853	13:48:00	D	4.40
599	LUDHIANA	RAIKOT	S-NPP	75.48506	30.66982	13:48:00	D	8.10
600	LUDHIANA	RAIKOT	S-NPP	75.73920	30.67144	13:48:00	D	7.00
601	LUDHIANA	RAIKOT	S-NPP	75.73862	30.67533	13:48:00	D	8.60
602	LUDHIANA	RAIKOT	S-NPP	75.74427	30.67596	13:48:00	D	8.60
603	LUDHIANA	RAIKOT	S-NPP	75.75558	30.67724	13:48:00	D	9.40
604	LUDHIANA	RAIKOT	S-NPP	75.74311	30.68374	13:48:00	D	7.60
605	LUDHIANA	RAIKOT	S-NPP	75.77139	30.68695	13:48:00	D	5.10
606	LUDHIANA	RAIKOT	S-NPP	75.53158	30.69478	13:48:00	D	8.50
607	LUDHIANA	RAIKOT	S-NPP	75.71822	30.69671	13:48:00	D	10.70
608	LUDHIANA	RAIKOT	S-NPP	75.69285	30.71353	13:48:00	D	4.20
609	LUDHIANA	RAIKOT	S-NPP	75.71534	30.71614	13:48:00	D	2.20
610	LUDHIANA	RAIKOT	S-NPP	75.69111	30.72517	13:48:00	D	2.90
611	LUDHIANA	SAMRALA	S-NPP	76.10638	30.76881	13:48:00	D	12.00
612	LUDHIANA	SAMRALA	S-NPP	76.10407	30.77082	13:48:00	D	11.10
613	LUDHIANA	SAMRALA	S-NPP	76.16455	30.78348	13:48:00	D	4.30
614	LUDHIANA	SAMRALA	S-NPP	76.16234	30.78514	13:48:00	D	4.60
615	LUDHIANA	SAMRALA	S-NPP	76.18762	30.82027	13:48:00	D	7.60
616	LUDHIANA	SAMRALA	S-NPP	76.13754	30.83101	13:48:00	D	5.50
617	LUDHIANA	SAMRALA	S-NPP	76.23483	30.87420	13:48:00	D	3.60

618	LUDHIANA	SAMRALA	S-NPP	76.21563	30.88020	13:48:00	D	5.50
619	LUDHIANA	SAMRALA	S-NPP	76.19527	30.88670	02:30:00	N	0.30
620	LUDHIANA	SAMRALA	S-NPP	76.24982	30.93361	13:48:00	D	6.60
621	LUDHIANA	SAMRALA	S-NPP	76.22850	30.93945	13:48:00	D	9.70
622	LUDHIANA	SAMRALA	S-NPP	76.23944	30.94878	13:48:00	D	3.80
623	LUDHIANA	SAMRALA	S-NPP	76.24522	30.96571	13:48:00	D	19.30
624	MANSA	BUDHLADA	S-NPP	75.64428	29.77656	13:48:00	D	3.70
625	MANSA	BUDHLADA	S-NPP	75.67619	29.78411	13:48:00	D	5.00
626	MANSA	BUDHLADA	S-NPP	75.64312	29.78421	13:48:00	D	7.30
627	MANSA	BUDHLADA	S-NPP	75.60364	29.79132	13:48:00	D	9.10
628	MANSA	BUDHLADA	S-NPP	75.60786	29.79958	13:48:00	D	3.80
629	MANSA	BUDHLADA	S-NPP	75.64024	29.80334	13:48:00	D	3.70
630	MANSA	BUDHLADA	S-NPP	75.66130	29.80968	13:48:00	D	5.80
631	MANSA	BUDHLADA	S-NPP	75.69990	29.81024	13:48:00	D	3.20
632	MANSA	BUDHLADA	S-NPP	75.57869	29.81171	13:48:00	D	46.80
633	MANSA	BUDHLADA	S-NPP	75.57810	29.81552	13:48:00	D	11.50
634	MANSA	BUDHLADA	S-NPP	75.72054	29.82045	13:48:00	D	7.00
635	MANSA	BUDHLADA	S-NPP	75.63620	29.83012	13:48:00	D	7.30
636	MANSA	BUDHLADA	S-NPP	75.65785	29.83266	13:48:00	D	8.60
637	MANSA	BUDHLADA	S-NPP	75.71709	29.84350	13:48:00	D	2.30
638	MANSA	BUDHLADA	S-NPP	75.51787	29.87326	13:48:00	D	3.90
639	MANSA	BUDHLADA	S-NPP	75.49061	29.87397	13:48:00	D	6.90
640	MANSA	BUDHLADA	S-NPP	75.67432	29.89122	13:48:00	D	2.80
641	MANSA	BUDHLADA	S-NPP	75.64656	29.89194	13:48:00	D	3.30
642	MANSA	BUDHLADA	S-NPP	75.56859	29.89851	13:48:00	D	2.60
643	MANSA	BUDHLADA	S-NPP	75.53522	29.90239	13:48:00	D	7.00
644	MANSA	BUDHLADA	S-NPP	75.60036	29.90608	13:48:00	D	4.30
645	MANSA	BUDHLADA	S-NPP	75.47417	29.91071	13:48:00	D	3.50
646	MANSA	BUDHLADA	S-NPP	75.61427	29.92327	13:48:00	D	3.30
647	MANSA	BUDHLADA	S-NPP	75.51571	29.92335	13:48:00	D	7.70
648	MANSA	BUDHLADA	S-NPP	75.61967	29.92390	13:48:00	D	3.30

649	MANSA	BUDHLADA	S-NPP	75.49852	29.92906	13:48:00	D	1.90
650	MANSA	BUDHLADA	S-NPP	75.50271	29.93730	13:48:00	D	2.90
651	MANSA	BUDHLADA	S-NPP	75.59999	29.94495	13:48:00	D	5.50
652	MANSA	BUDHLADA	S-NPP	75.59610	29.98910	13:48:00	D	3.80
653	MANSA	BUDHLADA	S-NPP	75.64441	29.99852	13:48:00	D	5.50
654	MANSA	BUDHLADA	S-NPP	75.63235	30.00494	13:48:00	D	4.90
655	MANSA	BUDHLADA	S-NPP	75.67053	30.00932	13:48:00	D	4.80
656	MANSA	BUDHLADA	S-NPP	75.67600	30.00995	13:48:00	D	4.80
657	MANSA	BUDHLADA	S-NPP	75.60289	30.01714	13:48:00	D	8.30
658	MANSA	MANSA	S-NPP	75.38240	29.87677	13:48:00	D	3.50
659	MANSA	MANSA	S-NPP	75.44231	29.90694	13:48:00	D	6.90
660	MANSA	MANSA	S-NPP	75.43999	29.92211	13:48:00	D	3.10
661	MANSA	MANSA	S-NPP	75.24543	29.95228	13:48:00	D	3.80
662	MANSA	MANSA	S-NPP	75.23906	29.95918	13:48:00	D	4.20
663	MANSA	MANSA	S-NPP	75.28652	29.96094	13:48:00	D	3.20
664	MANSA	MANSA	S-NPP	75.22809	29.96170	13:48:00	D	4.00
665	MANSA	MANSA	S-NPP	75.23328	29.96232	13:48:00	D	4.20
666	MANSA	MANSA	S-NPP	75.24831	29.96792	13:48:00	D	13.60
667	MANSA	MANSA	S-NPP	75.45648	29.97304	13:48:00	D	8.10
668	MANSA	MANSA	S-NPP	75.43461	29.97437	13:48:00	D	6.60
669	MANSA	MANSA	S-NPP	75.46424	29.99326	13:48:00	D	11.40
670	MANSA	MANSA	S-NPP	75.33487	29.99348	13:48:00	D	5.30
671	MANSA	MANSA	S-NPP	75.35065	29.99535	13:48:00	D	2.20
672	MANSA	MANSA	S-NPP	75.52731	30.00836	13:48:00	D	5.00
673	MANSA	MANSA	S-NPP	75.59206	30.01588	13:48:00	D	9.70
674	MANSA	MANSA	S-NPP	75.59747	30.01651	13:48:00	D	9.70
675	MANSA	MANSA	S-NPP	75.28304	30.01801	13:48:00	D	6.10
676	MANSA	MANSA	S-NPP	75.32030	30.01864	13:48:00	D	11.60
677	MANSA	MANSA	S-NPP	75.36297	30.01990	13:48:00	D	6.70
678	MANSA	MANSA	S-NPP	75.27200	30.02051	13:48:00	D	2.80
679	MANSA	MANSA	S-NPP	75.60232	30.02096	13:48:00	D	8.30

680	MANSA	MANSA	S-NPP	75.34132	30.02116	13:48:00	D	6.10
681	MANSA	MANSA	S-NPP	75.60774	30.02160	13:48:00	D	8.30
682	MANSA	MANSA	S-NPP	75.47030	30.02492	13:48:00	D	2.00
683	MANSA	MANSA	S-NPP	75.28712	30.02616	13:48:00	D	5.80
684	MANSA	MANSA	S-NPP	75.26562	30.02740	13:48:00	D	3.50
685	MANSA	MANSA	S-NPP	75.60117	30.02862	13:48:00	D	38.30
686	MANSA	MANSA	S-NPP	75.50774	30.02934	13:48:00	D	5.90
687	MANSA	MANSA	S-NPP	75.59518	30.03182	13:48:00	D	5.60
688	MANSA	MANSA	S-NPP	75.50716	30.03314	13:48:00	D	5.90
689	MANSA	MANSA	S-NPP	75.50658	30.03695	13:48:00	D	14.50
690	MANSA	MANSA	S-NPP	75.51194	30.03759	13:48:00	D	6.60
691	MANSA	MANSA	S-NPP	75.39179	30.04261	13:48:00	D	3.40
692	MANSA	MANSA	S-NPP	75.33260	30.04317	13:48:00	D	4.40
693	MANSA	MANSA	S-NPP	75.27377	30.04372	13:48:00	D	4.50
694	MANSA	MANSA	S-NPP	75.27647	30.04417	13:48:00	D	9.60
695	MANSA	MANSA	S-NPP	75.27898	30.04435	13:48:00	D	4.50
696	MANSA	MANSA	S-NPP	75.34597	30.04453	13:48:00	D	3.40
697	MANSA	MANSA	S-NPP	75.34838	30.04508	13:48:00	D	2.60
698	MANSA	MANSA	S-NPP	75.33483	30.04709	13:48:00	D	5.80
699	MANSA	MANSA	S-NPP	75.59771	30.05159	13:48:00	D	2.40
700	MANSA	MANSA	S-NPP	75.28520	30.05669	13:48:00	D	15.50
701	MANSA	MANSA	S-NPP	75.29044	30.05730	13:48:00	D	15.50
702	MANSA	MANSA	S-NPP	75.42965	30.06185	13:48:00	D	7.10
703	MANSA	MANSA	S-NPP	75.42664	30.06224	13:48:00	D	4.50
704	MANSA	MANSA	S-NPP	75.59597	30.06307	13:48:00	D	4.50
705	MANSA	MANSA	S-NPP	75.56833	30.06369	13:48:00	D	10.00
706	MANSA	MANSA	S-NPP	75.38065	30.06392	13:48:00	D	3.90
707	MANSA	MANSA	S-NPP	75.41193	30.07139	13:48:00	D	9.20
708	MANSA	MANSA	S-NPP	75.51750	30.07317	13:48:00	D	6.50
709	MANSA	MANSA	S-NPP	75.51475	30.07546	13:48:00	D	10.40
710	MANSA	MANSA	S-NPP	75.25960	30.08435	13:48:00	D	5.00

711	MANSA	MANSA	S-NPP	75.52860	30.09257	13:48:00	D	6.50
712	MANSA	MANSA	S-NPP	75.30566	30.09747	13:48:00	D	3.20
713	MANSA	MANSA	S-NPP	75.59357	30.10003	13:48:00	D	8.50
714	MANSA	MANSA	S-NPP	75.59299	30.10386	13:48:00	D	8.50
715	MANSA	MANSA	S-NPP	75.50241	30.12059	13:48:00	D	11.70
716	MANSA	MANSA	S-NPP	75.32323	30.12262	13:48:00	D	14.10
717	MANSA	MANSA	S-NPP	75.36078	30.12324	13:48:00	D	12.70
718	MANSA	MANSA	S-NPP	75.37137	30.12449	13:48:00	D	2.50
719	MANSA	MANSA	S-NPP	75.50723	30.12503	13:48:00	D	11.70
720	MANSA	MANSA	S-NPP	75.40914	30.12512	13:48:00	D	3.10
721	MANSA	MANSA	S-NPP	75.51260	30.12566	13:48:00	D	4.30
722	MANSA	MANSA	S-NPP	75.40324	30.12827	13:48:00	D	3.10
723	MANSA	MANSA	S-NPP	75.50665	30.12885	13:48:00	D	4.90
724	MANSA	MANSA	S-NPP	75.39202	30.13081	13:48:00	D	7.20
725	MANSA	MANSA	S-NPP	75.42339	30.13840	13:48:00	D	6.00
726	MANSA	MANSA	S-NPP	75.42281	30.14219	13:48:00	D	8.60
727	MANSA	MANSA	S-NPP	75.39626	30.16108	13:48:00	D	9.00
728	MANSA	MANSA	S-NPP	75.38739	30.16113	13:48:00	D	9.00
729	MANSA	MANSA	S-NPP	75.39803	30.16241	13:48:00	D	5.90
730	MANSA	MANSA	S-NPP	75.38503	30.16366	13:48:00	D	8.80
731	MANSA	MANSA	S-NPP	75.41109	30.17051	13:48:00	D	2.80
732	MANSA	MANSA	S-NPP	75.47599	30.17406	13:48:00	D	3.70
733	MANSA	MANSA	S-NPP	75.41585	30.17492	13:48:00	D	2.80
734	MANSA	MANSA	S-NPP	75.47763	30.17585	13:48:00	D	2.70
735	MANSA	MANSA	S-NPP	75.42653	30.17614	13:48:00	D	5.20
736	MANSA	MANSA	S-NPP	75.39334	30.18005	13:48:00	D	11.00
737	MANSA	MANSA	S-NPP	75.39276	30.18384	13:48:00	D	5.00
738	MANSA	MANSA	S-NPP	75.36443	30.19213	13:48:00	D	4.60
739	MANSA	MANSA	S-NPP	75.38454	30.20219	13:48:00	D	3.00
740	MANSA	SARDULGARH	S-NPP	75.25759	29.68948	13:48:00	D	10.80
741	MANSA	SARDULGARH	S-NPP	75.31792	29.70825	13:48:00	D	4.30

742	MANSA	SARDULGARH	S-NPP	75.32311	29.70888	13:48:00	D	4.30
743	MANSA	SARDULGARH	S-NPP	75.39578	29.77091	13:48:00	D	5.90
744	MANSA	SARDULGARH	S-NPP	75.36494	29.79799	13:48:00	D	8.30
745	MANSA	SARDULGARH	S-NPP	75.40109	29.80615	13:48:00	D	3.40
746	MANSA	SARDULGARH	S-NPP	75.24474	29.82174	13:48:00	D	6.10
747	MANSA	SARDULGARH	S-NPP	75.24211	29.82204	13:48:00	D	5.40
748	MOGA	BAGHA PURANA	S-NPP	75.01071	30.52953	13:48:00	D	5.00
749	MOGA	BAGHA PURANA	S-NPP	75.01009	30.55286	13:48:00	D	3.00
750	MOGA	BAGHA PURANA	S-NPP	74.98308	30.55729	13:48:00	D	8.30
751	MOGA	BAGHA PURANA	S-NPP	74.97897	30.58341	13:48:00	D	5.10
752	MOGA	BAGHA PURANA	S-NPP	75.04055	30.59452	13:48:00	D	3.70
753	MOGA	BAGHA PURANA	S-NPP	75.01108	30.61387	13:48:00	D	7.40
754	MOGA	BAGHA PURANA	S-NPP	74.97192	30.62818	13:48:00	D	2.70
755	MOGA	BAGHA PURANA	S-NPP	75.02657	30.65004	13:48:00	D	3.80
756	MOGA	BAGHA PURANA	S-NPP	75.06027	30.68906	13:48:00	D	6.40
757	MOGA	BAGHA PURANA	S-NPP	74.95164	30.70668	13:48:00	D	3.50
758	MOGA	BAGHA PURANA	S-NPP	75.04398	30.72533	13:48:00	D	13.10
759	MOGA	BAGHA PURANA	S-NPP	74.99819	30.74654	13:48:00	D	9.60
760	MOGA	BAGHA PURANA	S-NPP	74.94980	30.75209	13:48:00	D	3.50
761	MOGA	BAGHA PURANA	S-NPP	74.94678	30.75228	13:48:00	D	6.20
762	MOGA	BAGHA PURANA	S-NPP	74.96233	30.75408	13:48:00	D	2.20
763	MOGA	BAGHA PURANA	S-NPP	74.94921	30.75582	13:48:00	D	3.50
764	MOGA	BAGHA PURANA	S-NPP	75.00855	30.76326	13:48:00	D	2.90
765	MOGA	BAGHA PURANA	S-NPP	75.01146	30.76340	13:48:00	D	3.80
766	MOGA	BAGHA PURANA	S-NPP	74.95998	30.76903	13:48:00	D	6.10
767	MOGA	MOGA	S-NPP	75.14083	30.72150	13:48:00	D	4.10
768	MOGA	MOGA	S-NPP	75.13850	30.73657	13:48:00	D	5.40
769	MOGA	MOGA	S-NPP	75.12151	30.74222	13:48:00	D	8.40
770	MOGA	NIHAL SINGH WALA	S-NPP	75.29468	30.52508	13:48:00	D	2.60
771	MOGA	NIHAL SINGH WALA	S-NPP	75.29409	30.52887	13:48:00	D	2.60
772	MOGA	NIHAL SINGH WALA	S-NPP	75.29710	30.54465	13:48:00	D	4.10



773	MOGA	NIHAL SINGH WALA	TERRA-1	75.36514	30.54635	11:44:00	D	26.29
774	MOGA	NIHAL SINGH WALA	S-NPP	75.29477	30.55981	13:48:00	D	2.50
775	MOGA	NIHAL SINGH WALA	S-NPP	75.28886	30.56297	13:48:00	D	3.50
776	MOGA	NIHAL SINGH WALA	S-NPP	75.26998	30.58000	13:48:00	D	3.80
777	MOGA	NIHAL SINGH WALA	S-NPP	75.22735	30.59728	13:48:00	D	5.40
778	MOGA	NIHAL SINGH WALA	S-NPP	75.32834	30.64764	13:48:00	D	5.50
779	MOGA	NIHAL SINGH WALA	S-NPP	75.34273	30.66095	13:48:00	D	6.40
780	MUKTSAR	GIDDARBAHA	S-NPP	74.59783	30.12276	13:48:00	D	5.60
781	MUKTSAR	GIDDARBAHA	S-NPP	74.57171	30.20486	13:48:00	D	8.80
782	MUKTSAR	GIDDARBAHA	S-NPP	74.60596	30.20905	13:48:00	D	2.70
783	MUKTSAR	GIDDARBAHA	S-NPP	74.60969	30.21695	13:48:00	D	5.70
784	MUKTSAR	GIDDARBAHA	S-NPP	74.51839	30.26848	13:48:00	D	4.10
785	MUKTSAR	GIDDARBAHA	S-NPP	74.52154	30.26916	13:48:00	D	4.80
786	MUKTSAR	GIDDARBAHA	S-NPP	74.55880	30.29565	13:48:00	D	6.60
787	MUKTSAR	GIDDARBAHA	S-NPP	74.68256	30.30691	13:48:00	D	4.90
788	MUKTSAR	GIDDARBAHA	S-NPP	74.71176	30.31417	13:48:00	D	8.60
789	MUKTSAR	GIDDARBAHA	S-NPP	74.66299	30.33442	13:48:00	D	7.50
790	MUKTSAR	GIDDARBAHA	S-NPP	74.68777	30.33744	13:48:00	D	7.40
791	MUKTSAR	GIDDARBAHA	S-NPP	74.65191	30.34053	13:48:00	D	5.40
792	MUKTSAR	GIDDARBAHA	S-NPP	74.65535	30.38205	13:48:00	D	16.20
793	MUKTSAR	GIDDARBAHA	S-NPP	74.66457	30.46465	13:48:00	D	5.00
794	MUKTSAR	MALAUT	S-NPP	74.58914	29.93276	13:48:00	D	4.00
795	MUKTSAR	MALAUT	S-NPP	74.60194	29.94549	13:48:00	D	5.70
796	MUKTSAR	MALAUT	S-NPP	74.51341	29.98657	13:48:00	D	6.50
797	MUKTSAR	MALAUT	S-NPP	74.45817	29.99447	13:48:00	D	15.30
798	MUKTSAR	MALAUT	S-NPP	74.47080	30.00712	13:48:00	D	3.10
799	MUKTSAR	MALAUT	TERRA-1	74.48863	30.04853	11:44:00	D	25.76
800	MUKTSAR	MALAUT	TERRA-1	74.55514	30.05078	11:44:00	D	21.54
801	MUKTSAR	MALAUT	S-NPP	74.60177	30.06752	13:48:00	D	2.80
802	MUKTSAR	MALAUT	S-NPP	74.60405	30.06831	13:48:00	D	4.70
803	MUKTSAR	MALAUT	S-NPP	74.60117	30.07117	13:48:00	D	2.80

804	MUKTSAR	MALAUT	S-NPP	74.52958	30.08467	13:48:00	D	26.60
805	MUKTSAR	MALAUT	S-NPP	74.59883	30.08573	13:48:00	D	4.60
806	MUKTSAR	MALAUT	S-NPP	74.52297	30.09497	13:48:00	D	3.30
807	MUKTSAR	MALAUT	S-NPP	74.57697	30.09791	13:48:00	D	40.80
808	MUKTSAR	MALAUT	S-NPP	74.51165	30.13429	13:48:00	D	8.90
809	MUKTSAR	MALAUT	S-NPP	74.52927	30.14762	13:48:00	D	3.30
810	MUKTSAR	MALAUT	S-NPP	74.53413	30.14823	13:48:00	D	4.50
811	MUKTSAR	MALAUT	S-NPP	74.53354	30.15186	13:48:00	D	4.50
812	MUKTSAR	MALAUT	S-NPP	74.50270	30.15909	13:48:00	D	3.10
813	MUKTSAR	MALAUT	S-NPP	74.50460	30.15960	13:48:00	D	4.20
814	MUKTSAR	MALAUT	S-NPP	74.37049	30.19846	13:48:00	D	4.20
815	MUKTSAR	MALAUT	S-NPP	74.45340	30.20140	13:48:00	D	7.70
816	MUKTSAR	MALAUT	S-NPP	74.51635	30.20918	13:48:00	D	8.90
817	MUKTSAR	MALAUT	S-NPP	74.42754	30.20926	13:48:00	D	9.70
818	MUKTSAR	MALAUT	S-NPP	74.42094	30.21951	13:48:00	D	5.50
819	MUKTSAR	MALAUT	S-NPP	74.44267	30.23701	13:48:00	D	9.20
820	MUKTSAR	MALAUT	S-NPP	74.38200	30.24780	13:48:00	D	6.70
821	MUKTSAR	MALAUT	S-NPP	74.38348	30.24840	13:48:00	D	4.60
822	MUKTSAR	MALAUT	S-NPP	74.42409	30.26053	13:48:00	D	1.70
823	MUKTSAR	MALAUT	S-NPP	74.42564	30.26091	13:48:00	D	3.60
824	MUKTSAR	MALAUT	S-NPP	74.42505	30.26454	13:48:00	D	3.60
825	MUKTSAR	MALAUT	S-NPP	74.42929	30.26875	13:48:00	D	4.90
826	MUKTSAR	MALAUT	S-NPP	74.40223	30.28388	13:48:00	D	30.20
827	MUKTSAR	MALAUT	S-NPP	74.42458	30.29772	13:48:00	D	6.30
828	MUKTSAR	MALAUT	S-NPP	74.36635	30.35318	13:48:00	D	2.70
829	MUKTSAR	MALAUT	S-NPP	74.36330	30.35357	13:48:00	D	4.80
830	MUKTSAR	MALAUT	S-NPP	74.33159	30.35614	13:48:00	D	16.70
831	MUKTSAR	MALAUT	S-NPP	74.32848	30.35668	13:48:00	D	19.20
832	MUKTSAR	MALAUT	S-NPP	74.36576	30.35679	13:48:00	D	5.50
833	MUKTSAR	MUKTSAR	S-NPP	74.47327	30.36299	13:48:00	D	3.60
834	MUKTSAR	MUKTSAR	S-NPP	74.53851	30.43424	13:48:00	D	15.70

835	MUKTSAR	MUKTSAR	S-NPP	74.65594	30.50348	13:48:00	D	3.70
836	MUKTSAR	MUKTSAR	S-NPP	74.37999	30.50715	13:48:00	D	1.70
837	MUKTSAR	MUKTSAR	S-NPP	74.63218	30.55670	13:48:00	D	3.90
838	MUKTSAR	MUKTSAR	S-NPP	74.41541	30.56335	13:48:00	D	4.80
839	MUKTSAR	MUKTSAR	S-NPP	74.61988	30.57014	13:48:00	D	2.70
840	MUKTSAR	MUKTSAR	S-NPP	74.63422	30.57565	13:48:00	D	2.80
841	MUKTSAR	MUKTSAR	S-NPP	74.62309	30.58175	13:48:00	D	11.00
842	NAWASHAHR	NAWASHAHR	S-NPP	76.12888	31.03162	13:48:00	D	7.10
843	NAWASHAHR	NAWASHAHR	S-NPP	76.13972	31.04091	13:48:00	D	4.50
844	NAWASHAHR	NAWASHAHR	S-NPP	76.12115	31.04293	13:48:00	D	12.00
845	NAWASHAHR	NAWASHAHR	S-NPP	76.05510	31.10599	13:48:00	D	4.20
846	NAWASHAHR	NAWASHAHR	S-NPP	76.04858	31.10932	13:48:00	D	7.00
847	NAWASHAHR	NAWASHAHR	S-NPP	75.93980	31.11361	13:48:00	D	1.80
848	NAWASHAHR	NAWASHAHR	S-NPP	76.05992	31.11459	13:48:00	D	5.90
849	NAWASHAHR	NAWASHAHR	S-NPP	76.11945	31.16562	13:48:00	D	4.90
850	NAWASHAHR	NAWASHAHR	S-NPP	76.01614	31.16633	13:48:00	D	4.00
851	PATIALA	NABHA	S-NPP	76.19898	30.30682	13:48:00	D	33.30
852	PATIALA	NABHA	S-NPP	76.07181	30.32468	13:48:00	D	2.80
853	PATIALA	NABHA	S-NPP	76.15332	30.33393	13:48:00	D	6.40
854	PATIALA	NABHA	S-NPP	76.13759	30.34679	13:48:00	D	6.40
855	PATIALA	NABHA	S-NPP	76.23828	30.35358	13:48:00	D	3.50
856	PATIALA	NABHA	S-NPP	76.01217	30.35716	13:48:00	D	4.20
857	PATIALA	NABHA	S-NPP	76.18107	30.37567	13:48:00	D	3.50
858	PATIALA	NABHA	S-NPP	76.09737	30.37857	13:48:00	D	14.10
859	PATIALA	NABHA	S-NPP	76.09679	30.38252	13:48:00	D	14.10
860	PATIALA	NABHA	S-NPP	76.10262	30.38316	13:48:00	D	14.10
861	PATIALA	NABHA	S-NPP	76.19113	30.38887	13:48:00	D	14.10
862	PATIALA	NABHA	S-NPP	76.22428	30.40867	13:48:00	D	19.70
863	PATIALA	NABHA	S-NPP	76.15825	30.40944	13:48:00	D	4.00
864	PATIALA	NABHA	S-NPP	76.21778	30.41200	13:48:00	D	13.80
865	PATIALA	NABHA	S-NPP	76.04977	30.42138	13:48:00	D	8.30

866	PATIALA	NABHA	S-NPP	76.28257	30.42320	13:48:00	D	3.90
867	PATIALA	NABHA	S-NPP	76.25817	30.42455	13:48:00	D	7.80
868	PATIALA	NABHA	S-NPP	76.29395	30.42851	13:48:00	D	2.60
869	PATIALA	NABHA	S-NPP	76.11381	30.42862	13:48:00	D	5.30
870	PATIALA	NABHA	S-NPP	76.26354	30.42921	13:48:00	D	3.90
871	PATIALA	NABHA	S-NPP	76.11965	30.42928	13:48:00	D	5.30
872	PATIALA	NABHA	S-NPP	76.24513	30.43122	13:48:00	D	3.40
873	PATIALA	NABHA	S-NPP	76.31732	30.43515	13:48:00	D	8.80
874	PATIALA	NABHA	S-NPP	76.20138	30.44251	13:48:00	D	3.20
875	PATIALA	NABHA	S-NPP	76.12056	30.44765	13:48:00	D	4.20
876	PATIALA	NABHA	S-NPP	76.12263	30.44973	13:48:00	D	5.30
877	PATIALA	NABHA	S-NPP	76.23633	30.45048	13:48:00	D	8.00
878	PATIALA	NABHA	S-NPP	76.22389	30.45313	13:48:00	D	4.10
879	PATIALA	NABHA	S-NPP	76.12734	30.45833	13:48:00	D	24.40
880	PATIALA	NABHA	S-NPP	76.12469	30.46016	13:48:00	D	25.00
881	PATIALA	NABHA	S-NPP	76.17838	30.50229	13:48:00	D	12.10
882	PATIALA	NABHA	S-NPP	76.33088	30.50265	13:48:00	D	2.40
883	PATIALA	NABHA	S-NPP	76.11188	30.50705	13:48:00	D	1.90
884	PATIALA	PATIALA	S-NPP	76.42443	30.21275	13:48:00	D	2.00
885	PATIALA	PATIALA	S-NPP	76.54887	30.23447	13:48:00	D	3.40
886	PATIALA	PATIALA	S-NPP	76.42905	30.23774	13:48:00	D	4.60
887	PATIALA	PATIALA	S-NPP	76.22096	30.24690	13:48:00	D	3.70
888	PATIALA	PATIALA	S-NPP	76.21938	30.24854	13:48:00	D	5.80
889	PATIALA	PATIALA	S-NPP	76.22039	30.25087	13:48:00	D	3.90
890	PATIALA	PATIALA	S-NPP	76.35626	30.27035	13:48:00	D	2.70
891	PATIALA	PATIALA	S-NPP	76.35489	30.27117	13:48:00	D	3.80
892	PATIALA	PATIALA	S-NPP	76.22543	30.28956	13:48:00	D	12.00
893	PATIALA	PATIALA	S-NPP	76.38504	30.29476	13:48:00	D	8.00
894	PATIALA	PATIALA	S-NPP	76.38446	30.29877	13:48:00	D	8.00
895	PATIALA	PATIALA	S-NPP	76.32463	30.31260	13:48:00	D	8.70
896	PATIALA	PATIALA	S-NPP	76.24503	30.32001	13:48:00	D	3.70

897	PATIALA	PATIALA	S-NPP	76.28484	30.33660	13:48:00	D	2.40
898	PATIALA	PATIALA	S-NPP	76.33683	30.35459	13:48:00	D	8.30
899	PATIALA	PATIALA	S-NPP	76.27009	30.35521	13:48:00	D	8.20
900	PATIALA	PATIALA	S-NPP	76.26797	30.35675	13:48:00	D	7.90
901	PATIALA	PATIALA	S-NPP	76.29755	30.37454	13:48:00	D	4.00
902	PATIALA	PATIALA	S-NPP	76.29546	30.37590	13:48:00	D	4.50
903	PATIALA	PATIALA	S-NPP	76.35082	30.38465	13:48:00	D	6.40
904	PATIALA	PATIALA	S-NPP	76.34782	30.38558	13:48:00	D	3.50
905	PATIALA	PATIALA	S-NPP	76.35181	30.38601	13:48:00	D	3.50
906	PATIALA	PATIALA	S-NPP	76.37592	30.38859	13:48:00	D	4.10
907	PATIALA	PATIALA	S-NPP	76.38454	30.41399	13:48:00	D	3.30
908	PATIALA	PATIALA	S-NPP	76.43365	30.41520	13:48:00	D	2.60
909	PATIALA	PATIALA	S-NPP	76.40188	30.43629	13:48:00	D	2.50
910	PATIALA	PATIALA	S-NPP	76.40131	30.44031	13:48:00	D	2.50
911	PATIALA	PATIALA	S-NPP	76.37249	30.44123	13:48:00	D	14.90
912	PATIALA	PATIALA	S-NPP	76.38055	30.44211	13:48:00	D	3.70
913	PATIALA	PATIALA	S-NPP	76.37193	30.44524	13:48:00	D	14.90
914	PATIALA	PATIALA	S-NPP	76.37595	30.44569	13:48:00	D	14.90
915	PATIALA	PATIALA	S-NPP	76.38401	30.44658	13:48:00	D	3.70
916	PATIALA	PATIALA	S-NPP	76.33635	30.46576	13:48:00	D	1.70
917	PATIALA	SAMANA	S-NPP	76.12317	29.82649	13:48:00	D	13.90
918	PATIALA	SAMANA	S-NPP	76.15704	29.83423	13:48:00	D	3.10
919	PATIALA	SAMANA	S-NPP	76.12891	29.86708	13:48:00	D	3.70
920	PATIALA	SAMANA	S-NPP	76.06261	29.88350	13:48:00	D	9.90
921	PATIALA	SAMANA	S-NPP	76.00541	29.90475	13:48:00	D	4.20
922	PATIALA	SAMANA	S-NPP	76.00751	29.90499	13:48:00	D	7.90
923	PATIALA	SAMANA	S-NPP	76.07314	29.91619	13:48:00	D	5.20
924	PATIALA	SAMANA	S-NPP	76.07512	29.91684	13:48:00	D	8.40
925	PATIALA	SAMANA	S-NPP	76.03094	29.92745	13:48:00	D	4.20
926	PATIALA	SAMANA	S-NPP	76.10291	29.95141	13:48:00	D	100.20
927	PATIALA	SAMANA	S-NPP	76.12935	29.97036	13:48:00	D	8.80

928	PATIALA	SAMANA	S-NPP	76.12878	29.97430	13:48:00	D	8.80
929	PATIALA	SAMANA	S-NPP	76.12131	29.98546	13:48:00	D	5.20
930	PATIALA	SAMANA	S-NPP	76.12073	29.98940	13:48:00	D	5.20
931	PATIALA	SAMANA	S-NPP	76.02628	29.99857	13:48:00	D	2.10
932	PATIALA	SAMANA	S-NPP	76.04852	30.00512	13:48:00	D	8.20
933	PATIALA	SAMANA	S-NPP	76.02737	30.01384	13:48:00	D	5.10
934	PATIALA	SAMANA	S-NPP	76.02968	30.01490	13:48:00	D	9.10
935	PATIALA	SAMANA	S-NPP	76.12824	30.01828	13:48:00	D	3.60
936	PATIALA	SAMANA	S-NPP	76.15678	30.04803	13:48:00	D	5.10
937	PATIALA	SAMANA	S-NPP	76.16199	30.05262	13:48:00	D	5.10
938	PATIALA	SAMANA	S-NPP	76.13594	30.06979	13:48:00	D	1.60
939	PATIALA	SAMANA	S-NPP	76.14636	30.07896	13:48:00	D	4.10
940	PATIALA	SAMANA	S-NPP	76.20807	30.10194	13:48:00	D	4.20
941	PATIALA	SAMANA	S-NPP	76.16557	30.10923	13:48:00	D	2.10
942	PATIALA	SAMANA	S-NPP	76.07931	30.12267	13:48:00	D	8.70
943	PATIALA	SAMANA	S-NPP	76.08117	30.12365	13:48:00	D	8.20
944	PATIALA	SAMANA	S-NPP	76.17731	30.15077	13:48:00	D	2.00
945	PATIALA	SAMANA	S-NPP	76.18084	30.15379	13:48:00	D	3.30
946	PATIALA	SAMANA	S-NPP	76.17271	30.16898	13:48:00	D	3.60
947	PATIALA	SAMANA	S-NPP	76.10589	30.18164	13:48:00	D	6.40
948	PATIALA	SAMANA	S-NPP	76.05855	30.18434	13:48:00	D	4.10
949	PATIALA	SAMANA	S-NPP	76.06432	30.18499	13:48:00	D	4.10
950	PATIALA	SAMANA	S-NPP	76.11053	30.19018	13:48:00	D	2.20
951	PATIALA	SAMANA	S-NPP	76.12792	30.19213	13:48:00	D	7.00
952	PATIALA	SAMANA	S-NPP	76.21551	30.20190	13:48:00	D	3.60
953	PATIALA	SAMANA	S-NPP	76.22382	30.22704	13:48:00	D	7.60
954	RUPNAGAR	CHAMKOR SAHIB	S-NPP	76.32404	30.90452	13:48:00	D	7.30
955	RUPNAGAR	CHAMKOR SAHIB	S-NPP	76.32397	30.90475	13:48:00	D	6.80
956	RUPNAGAR	CHAMKOR SAHIB	S-NPP	76.32812	30.90497	13:48:00	D	7.30
957	RUPNAGAR	CHAMKOR SAHIB	S-NPP	76.32804	30.90518	13:48:00	D	6.80
958	RUPNAGAR	CHAMKOR SAHIB	S-NPP	76.48246	30.90556	13:48:00	D	7.90

959	RUPNAGAR	CHAMKOR SAHIB	S-NPP	76.32577	30.92130	13:48:00	D	1.90
960	RUPNAGAR	RUPNAGAR	S-NPP	76.56568	31.13649	13:48:00	D	3.80
961	SANGRUR	DHURI	S-NPP	75.66841	30.29383	13:48:00	D	30.40
962	SANGRUR	DHURI	S-NPP	75.66593	30.29498	13:48:00	D	39.20
963	SANGRUR	DHURI	S-NPP	75.71320	30.29516	13:48:00	D	12.20
964	SANGRUR	DHURI	S-NPP	75.91070	30.31021	13:48:00	D	4.40
965	SANGRUR	DHURI	S-NPP	75.86147	30.31668	13:48:00	D	3.70
966	SANGRUR	DHURI	S-NPP	75.96079	30.32394	13:48:00	D	9.30
967	SANGRUR	DHURI	S-NPP	75.68398	30.32446	13:48:00	D	11.20
968	SANGRUR	DHURI	S-NPP	75.68341	30.32833	13:48:00	D	11.20
969	SANGRUR	DHURI	S-NPP	75.69449	30.32958	13:48:00	D	5.00
970	SANGRUR	DHURI	S-NPP	75.95015	30.34234	13:48:00	D	11.20
971	SANGRUR	DHURI	S-NPP	75.81116	30.34669	13:48:00	D	4.00
972	SANGRUR	DHURI	S-NPP	75.81679	30.34732	13:48:00	D	4.00
973	SANGRUR	DHURI	S-NPP	75.89597	30.35620	13:48:00	D	2.40
974	SANGRUR	DHURI	S-NPP	75.77962	30.36681	13:48:00	D	5.70
975	SANGRUR	DHURI	S-NPP	75.71032	30.37463	13:48:00	D	9.00
976	SANGRUR	DHURI	S-NPP	75.72701	30.37655	13:48:00	D	6.00
977	SANGRUR	DHURI	S-NPP	75.80091	30.37714	13:48:00	D	5.40
978	SANGRUR	DHURI	S-NPP	75.73259	30.37720	13:48:00	D	6.00
979	SANGRUR	DHURI	S-NPP	75.70973	30.37849	13:48:00	D	9.00
980	SANGRUR	DHURI	S-NPP	75.72086	30.37978	13:48:00	D	14.40
981	SANGRUR	DHURI	S-NPP	75.72644	30.38042	13:48:00	D	6.00
982	SANGRUR	DHURI	S-NPP	75.80033	30.38103	13:48:00	D	5.40
983	SANGRUR	DHURI	S-NPP	75.73201	30.38107	13:48:00	D	6.00
984	SANGRUR	DHURI	S-NPP	75.91527	30.38222	13:48:00	D	8.90
985	SANGRUR	DHURI	S-NPP	75.68639	30.38365	13:48:00	D	12.70
986	SANGRUR	DHURI	S-NPP	75.72586	30.38429	13:48:00	D	11.90
987	SANGRUR	DHURI	S-NPP	75.75376	30.38752	13:48:00	D	3.40
988	SANGRUR	DHURI	S-NPP	75.80480	30.38945	13:48:00	D	3.80
989	SANGRUR	DHURI	S-NPP	75.87315	30.39332	13:48:00	D	6.70

990	SANGRUR	DHURI	S-NPP	75.89018	30.39526	13:48:00	D	8.20
991	SANGRUR	DHURI	S-NPP	75.69460	30.40426	13:48:00	D	3.00
992	SANGRUR	DHURI	S-NPP	75.93522	30.40437	13:48:00	D	5.60
993	SANGRUR	DHURI	S-NPP	75.81939	30.40696	13:48:00	D	2.50
994	SANGRUR	DHURI	S-NPP	75.73298	30.41269	13:48:00	D	4.10
995	SANGRUR	DHURI	S-NPP	75.88731	30.41479	13:48:00	D	41.40
996	SANGRUR	DHURI	S-NPP	75.86913	30.42064	13:48:00	D	4.10
997	SANGRUR	DHURI	S-NPP	75.88616	30.42261	13:48:00	D	3.20
998	SANGRUR	DHURI	S-NPP	75.75417	30.42307	13:48:00	D	2.30
999	SANGRUR	DHURI	S-NPP	75.75153	30.42318	13:48:00	D	2.30
1000	SANGRUR	DHURI	S-NPP	75.86609	30.42398	13:48:00	D	4.50
1001	SANGRUR	DHURI	S-NPP	75.86856	30.42454	13:48:00	D	5.30
1002	SANGRUR	DHURI	S-NPP	75.86799	30.42845	13:48:00	D	5.30
1003	SANGRUR	DHURI	S-NPP	75.87119	30.42851	13:48:00	D	4.30
1004	SANGRUR	DHURI	S-NPP	75.67669	30.43053	13:48:00	D	2.70
1005	SANGRUR	DHURI	S-NPP	75.77841	30.43407	13:48:00	D	7.10
1006	SANGRUR	DHURI	S-NPP	75.86434	30.43570	13:48:00	D	2.80
1007	SANGRUR	DHURI	S-NPP	75.86684	30.43625	13:48:00	D	4.20
1008	SANGRUR	DHURI	S-NPP	75.83540	30.43646	13:48:00	D	2.80
1009	SANGRUR	DHURI	S-NPP	75.91564	30.44135	13:48:00	D	4.90
1010	SANGRUR	DHURI	S-NPP	75.91233	30.44155	13:48:00	D	6.90
1011	SANGRUR	DHURI	S-NPP	75.91506	30.44526	13:48:00	D	4.90
1012	SANGRUR	DHURI	S-NPP	75.68550	30.44724	13:48:00	D	8.20
1013	SANGRUR	DHURI	S-NPP	75.91448	30.44918	13:48:00	D	5.00
1014	SANGRUR	DHURI	S-NPP	75.72951	30.45617	13:48:00	D	31.70
1015	SANGRUR	DHURI	S-NPP	75.92245	30.47395	13:48:00	D	3.20
1016	SANGRUR	DHURI	S-NPP	75.72604	30.47943	13:48:00	D	2.80
1017	SANGRUR	DHURI	S-NPP	75.79849	30.49168	13:48:00	D	18.00
1018	SANGRUR	DHURI	S-NPP	75.78042	30.49752	13:48:00	D	13.20
1019	SANGRUR	DHURI	S-NPP	75.72202	30.50656	13:48:00	D	2.60
1020	SANGRUR	DHURI	S-NPP	75.74158	30.51352	13:48:00	D	2.60



1021	SANGRUR	DHURI	S-NPP	75.72530	30.52271	13:48:00	D	8.60
1022	SANGRUR	DHURI	S-NPP	75.72301	30.52330	13:48:00	D	6.20
1023	SANGRUR	DHURI	S-NPP	75.70564	30.52530	13:48:00	D	11.70
1024	SANGRUR	MALERKOTLA	S-NPP	76.00582	30.40041	13:48:00	D	4.70
1025	SANGRUR	MALERKOTLA	S-NPP	75.99316	30.40697	13:48:00	D	11.00
1026	SANGRUR	MALERKOTLA	S-NPP	75.99834	30.41155	13:48:00	D	8.10
1027	SANGRUR	MALERKOTLA	S-NPP	75.83367	30.44815	13:48:00	D	4.80
1028	SANGRUR	MALERKOTLA	S-NPP	75.87399	30.44867	13:48:00	D	3.30
1029	SANGRUR	MALERKOTLA	S-NPP	76.03078	30.45397	13:48:00	D	37.10
1030	SANGRUR	MALERKOTLA	S-NPP	76.03302	30.45553	13:48:00	D	48.70
1031	SANGRUR	MALERKOTLA	S-NPP	76.07422	30.45626	13:48:00	D	5.40
1032	SANGRUR	MALERKOTLA	S-NPP	75.88422	30.45775	13:48:00	D	4.60
1033	SANGRUR	MALERKOTLA	S-NPP	76.03021	30.45791	13:48:00	D	37.10
1034	SANGRUR	MALERKOTLA	S-NPP	76.07148	30.45841	13:48:00	D	4.80
1035	SANGRUR	MALERKOTLA	S-NPP	75.86088	30.45911	13:48:00	D	9.90
1036	SANGRUR	MALERKOTLA	S-NPP	75.81947	30.46635	13:48:00	D	7.30
1037	SANGRUR	MALERKOTLA	S-NPP	75.90016	30.46748	13:48:00	D	4.90
1038	SANGRUR	MALERKOTLA	S-NPP	75.84720	30.47345	13:48:00	D	7.60
1039	SANGRUR	MALERKOTLA	S-NPP	75.88760	30.47402	13:48:00	D	2.70
1040	SANGRUR	MALERKOTLA	S-NPP	76.00994	30.47569	13:48:00	D	9.00
1041	SANGRUR	MALERKOTLA	TERRA-1	75.99608	30.48047	11:44:00	D	36.18
1042	SANGRUR	MALERKOTLA	S-NPP	75.95628	30.48171	13:48:00	D	1.20
1043	SANGRUR	MALERKOTLA	S-NPP	76.01457	30.48421	13:48:00	D	10.20
1044	SANGRUR	MALERKOTLA	S-NPP	75.90870	30.48833	13:48:00	D	22.30
1045	SANGRUR	MALERKOTLA	S-NPP	75.83924	30.48841	13:48:00	D	2.90
1046	SANGRUR	MALERKOTLA	S-NPP	76.06103	30.48936	13:48:00	D	3.10
1047	SANGRUR	MALERKOTLA	S-NPP	75.92015	30.48962	13:48:00	D	11.50
1048	SANGRUR	MALERKOTLA	S-NPP	75.96606	30.49478	13:48:00	D	17.50
1049	SANGRUR	MALERKOTLA	S-NPP	75.97759	30.49607	13:48:00	D	9.50
1050	SANGRUR	MALERKOTLA	S-NPP	75.79620	30.50725	13:48:00	D	4.90
1051	SANGRUR	MALERKOTLA	S-NPP	75.79562	30.51114	13:48:00	D	4.90

1052	SANGRUR	MALERKOTLA	S-NPP	75.95686	30.51769	13:48:00	D	4.50
1053	SANGRUR	MALERKOTLA	S-NPP	76.05060	30.52029	13:48:00	D	5.10
1054	SANGRUR	MALERKOTLA	S-NPP	75.95628	30.52162	13:48:00	D	4.50
1055	SANGRUR	MALERKOTLA	S-NPP	75.67154	30.52543	13:48:00	D	2.30
1056	SANGRUR	MALERKOTLA	S-NPP	75.80810	30.52877	13:48:00	D	8.90
1057	SANGRUR	MALERKOTLA	S-NPP	75.94938	30.52882	13:48:00	D	8.00
1058	SANGRUR	MALERKOTLA	S-NPP	75.79620	30.53141	13:48:00	D	6.40
1059	SANGRUR	MALERKOTLA	S-NPP	75.75554	30.53481	13:48:00	D	5.30
1060	SANGRUR	MALERKOTLA	S-NPP	75.75496	30.53869	13:48:00	D	3.30
1061	SANGRUR	MALERKOTLA	S-NPP	75.69714	30.54404	13:48:00	D	4.70
1062	SANGRUR	MALERKOTLA	S-NPP	75.95860	30.54584	13:48:00	D	3.60
1063	SANGRUR	MALERKOTLA	S-NPP	76.05062	30.54723	13:48:00	D	2.40
1064	SANGRUR	MALERKOTLA	S-NPP	76.05238	30.54858	13:48:00	D	2.50
1065	SANGRUR	MALERKOTLA	S-NPP	75.76392	30.55550	13:48:00	D	9.30
1066	SANGRUR	MALERKOTLA	S-NPP	75.87343	30.55582	13:48:00	D	2.00
1067	SANGRUR	MALERKOTLA	S-NPP	75.73519	30.55621	13:48:00	D	3.80
1068	SANGRUR	MALERKOTLA	S-NPP	75.85574	30.55783	13:48:00	D	3.90
1069	SANGRUR	MALERKOTLA	S-NPP	75.76897	30.56001	13:48:00	D	9.30
1070	SANGRUR	MALERKOTLA	S-NPP	75.86086	30.56237	13:48:00	D	3.90
1071	SANGRUR	MALERKOTLA	S-NPP	75.72842	30.56334	13:48:00	D	3.10
1072	SANGRUR	MALERKOTLA	S-NPP	76.07982	30.56377	13:48:00	D	6.00
1073	SANGRUR	MALERKOTLA	S-NPP	76.05009	30.56438	13:48:00	D	4.50
1074	SANGRUR	MALERKOTLA	S-NPP	75.71104	30.56531	13:48:00	D	2.30
1075	SANGRUR	MALERKOTLA	S-NPP	76.04772	30.56698	13:48:00	D	11.60
1076	SANGRUR	MALERKOTLA	S-NPP	75.87740	30.56819	13:48:00	D	2.30
1077	SANGRUR	MALERKOTLA	S-NPP	75.95897	30.56926	13:48:00	D	8.30
1078	SANGRUR	MALERKOTLA	S-NPP	75.79041	30.57034	13:48:00	D	16.70
1079	SANGRUR	MALERKOTLA	S-NPP	75.87682	30.57210	13:48:00	D	2.30
1080	SANGRUR	MALERKOTLA	S-NPP	75.95839	30.57319	13:48:00	D	8.30
1081	SANGRUR	MALERKOTLA	S-NPP	76.05825	30.57615	13:48:00	D	8.80
1082	SANGRUR	MALERKOTLA	S-NPP	75.91693	30.57657	13:48:00	D	9.80

1083	SANGRUR	MALERKOTLA	S-NPP	75.99308	30.57701	13:48:00	D	9.70
1084	SANGRUR	MALERKOTLA	S-NPP	75.71490	30.57758	13:48:00	D	2.50
1085	SANGRUR	MALERKOTLA	S-NPP	75.99250	30.58096	13:48:00	D	3.70
1086	SANGRUR	MALERKOTLA	S-NPP	75.74238	30.58467	13:48:00	D	2.20
1087	SANGRUR	MALERKOTLA	S-NPP	75.82267	30.58587	13:48:00	D	3.60
1088	SANGRUR	MALERKOTLA	S-NPP	75.90372	30.58705	13:48:00	D	5.80
1089	SANGRUR	MALERKOTLA	S-NPP	75.96185	30.58955	13:48:00	D	3.00
1090	SANGRUR	MALERKOTLA	S-NPP	75.89740	30.59032	13:48:00	D	5.80
1091	SANGRUR	MALERKOTLA	S-NPP	75.90887	30.59161	13:48:00	D	5.30
1092	SANGRUR	MALERKOTLA	S-NPP	75.85565	30.59754	13:48:00	D	4.60
1093	SANGRUR	MALERKOTLA	S-NPP	75.83231	30.59887	13:48:00	D	3.40
1094	SANGRUR	MALERKOTLA	S-NPP	75.85509	30.60145	13:48:00	D	4.60
1095	SANGRUR	MALERKOTLA	S-NPP	75.70524	30.60408	13:48:00	D	4.30
1096	SANGRUR	MALERKOTLA	S-NPP	75.88937	30.60534	13:48:00	D	9.30
1097	SANGRUR	MALERKOTLA	S-NPP	75.84718	30.64383	13:48:00	D	1.70
1098	SANGRUR	MALERKOTLA	S-NPP	75.89243	30.65277	13:48:00	D	4.80
1099	SANGRUR	MALERKOTLA	S-NPP	75.79813	30.66221	13:48:00	D	12.60
1100	SANGRUR	MOONAK	S-NPP	75.97710	29.73909	13:48:00	D	12.40
1101	SANGRUR	MOONAK	S-NPP	76.03902	29.74612	13:48:00	D	4.20
1102	SANGRUR	MOONAK	S-NPP	76.03845	29.75003	13:48:00	D	4.20
1103	SANGRUR	MOONAK	S-NPP	76.02995	29.76892	13:48:00	D	9.20
1104	SANGRUR	MOONAK	S-NPP	75.94337	29.77477	13:48:00	D	4.00
1105	SANGRUR	MOONAK	S-NPP	76.03954	29.78195	13:48:00	D	4.40
1106	SANGRUR	MOONAK	S-NPP	76.05652	29.78390	13:48:00	D	12.20
1107	SANGRUR	MOONAK	S-NPP	75.95988	29.80043	13:48:00	D	3.00
1108	SANGRUR	MOONAK	S-NPP	75.96236	29.80073	13:48:00	D	3.10
1109	SANGRUR	MOONAK	S-NPP	76.05135	29.80263	13:48:00	D	4.00
1110	SANGRUR	MOONAK	S-NPP	76.05367	29.80347	13:48:00	D	3.30
1111	SANGRUR	MOONAK	S-NPP	76.09571	29.81548	13:48:00	D	6.60
1112	SANGRUR	MOONAK	S-NPP	76.09799	29.81660	13:48:00	D	6.10
1113	SANGRUR	MOONAK	S-NPP	75.79353	29.81710	13:48:00	D	8.30

1114	SANGRUR	MOONAK	S-NPP	75.96206	29.82442	13:48:00	D	3.60
1115	SANGRUR	MOONAK	S-NPP	76.08830	29.82662	13:48:00	D	2.70
1116	SANGRUR	MOONAK	S-NPP	75.96148	29.82831	13:48:00	D	3.00
1117	SANGRUR	MOONAK	S-NPP	75.77473	29.83063	13:48:00	D	7.50
1118	SANGRUR	MOONAK	S-NPP	76.08601	29.84231	13:48:00	D	14.00
1119	SANGRUR	MOONAK	S-NPP	75.95355	29.84325	13:48:00	D	5.50
1120	SANGRUR	MOONAK	S-NPP	75.99802	29.85228	13:48:00	D	7.00
1121	SANGRUR	MOONAK	S-NPP	75.93501	29.85301	13:48:00	D	16.80
1122	SANGRUR	MOONAK	S-NPP	75.94508	29.86208	13:48:00	D	5.20
1123	SANGRUR	MOONAK	S-NPP	75.94838	29.87830	13:48:00	D	6.00
1124	SANGRUR	MOONAK	S-NPP	75.95342	29.88284	13:48:00	D	9.70
1125	SANGRUR	MOONAK	S-NPP	75.77710	29.88976	13:48:00	D	5.70
1126	SANGRUR	MOONAK	S-NPP	75.77462	29.89086	13:48:00	D	7.80
1127	SANGRUR	MOONAK	S-NPP	75.93124	29.97968	13:48:00	D	3.40
1128	SANGRUR	SANGRUR	S-NPP	75.64001	30.16004	13:48:00	D	4.90
1129	SANGRUR	SANGRUR	S-NPP	75.88718	30.16891	13:48:00	D	3.00
1130	SANGRUR	SANGRUR	S-NPP	75.85847	30.16959	13:48:00	D	8.40
1131	SANGRUR	SANGRUR	S-NPP	75.57509	30.17363	13:48:00	D	3.30
1132	SANGRUR	SANGRUR	S-NPP	75.66019	30.17414	13:48:00	D	8.10
1133	SANGRUR	SANGRUR	S-NPP	75.86292	30.17801	13:48:00	D	2.30
1134	SANGRUR	SANGRUR	S-NPP	75.59776	30.18240	13:48:00	D	17.30
1135	SANGRUR	SANGRUR	S-NPP	75.62363	30.18300	13:48:00	D	3.10
1136	SANGRUR	SANGRUR	S-NPP	75.59573	30.18376	13:48:00	D	12.90
1137	SANGRUR	SANGRUR	S-NPP	75.60119	30.18438	13:48:00	D	12.90
1138	SANGRUR	SANGRUR	S-NPP	75.62505	30.18564	13:48:00	D	8.90
1139	SANGRUR	SANGRUR	S-NPP	75.62305	30.18684	13:48:00	D	8.50
1140	SANGRUR	SANGRUR	S-NPP	75.57483	30.18748	13:48:00	D	5.40
1141	SANGRUR	SANGRUR	S-NPP	75.60809	30.18753	13:48:00	D	5.70
1142	SANGRUR	SANGRUR	S-NPP	75.60607	30.18883	13:48:00	D	5.30
1143	SANGRUR	SANGRUR	S-NPP	75.57276	30.18896	13:48:00	D	5.60
1144	SANGRUR	SANGRUR	S-NPP	75.99947	30.18964	13:48:00	D	2.10

1145	SANGRUR	SANGRUR	S-NPP	75.96468	30.18966	13:48:00	D	3.50
1146	SANGRUR	SANGRUR	S-NPP	75.61843	30.19267	13:48:00	D	5.10
1147	SANGRUR	SANGRUR	S-NPP	75.70187	30.19472	13:48:00	D	8.80
1148	SANGRUR	SANGRUR	S-NPP	75.70002	30.19549	13:48:00	D	4.40
1149	SANGRUR	SANGRUR	S-NPP	75.81463	30.19613	13:48:00	D	2.90
1150	SANGRUR	SANGRUR	S-NPP	75.80230	30.20258	13:48:00	D	4.00
1151	SANGRUR	SANGRUR	S-NPP	75.97434	30.20270	13:48:00	D	6.30
1152	SANGRUR	SANGRUR	S-NPP	75.80061	30.20277	13:48:00	D	1.50
1153	SANGRUR	SANGRUR	S-NPP	75.77328	30.20707	13:48:00	D	1.70
1154	SANGRUR	SANGRUR	S-NPP	75.97319	30.21053	13:48:00	D	11.10
1155	SANGRUR	SANGRUR	S-NPP	76.00803	30.21055	13:48:00	D	4.90
1156	SANGRUR	SANGRUR	S-NPP	75.81232	30.21165	13:48:00	D	4.60
1157	SANGRUR	SANGRUR	S-NPP	75.81625	30.21240	13:48:00	D	3.00
1158	SANGRUR	SANGRUR	S-NPP	75.83868	30.21489	13:48:00	D	4.90
1159	SANGRUR	SANGRUR	S-NPP	75.84032	30.21494	13:48:00	D	6.10
1160	SANGRUR	SANGRUR	S-NPP	75.65189	30.21747	13:48:00	D	3.80
1161	SANGRUR	SANGRUR	S-NPP	75.65131	30.22132	13:48:00	D	3.30
1162	SANGRUR	SANGRUR	S-NPP	75.90733	30.22674	13:48:00	D	12.50
1163	SANGRUR	SANGRUR	S-NPP	75.69479	30.23020	13:48:00	D	5.10
1164	SANGRUR	SANGRUR	S-NPP	76.01662	30.23149	13:48:00	D	3.80
1165	SANGRUR	SANGRUR	S-NPP	75.96263	30.23258	13:48:00	D	8.00
1166	SANGRUR	SANGRUR	S-NPP	75.96407	30.23336	13:48:00	D	6.50
1167	SANGRUR	SANGRUR	S-NPP	76.11290	30.24506	13:48:00	D	9.90
1168	SANGRUR	SANGRUR	S-NPP	76.11410	30.24674	13:48:00	D	8.30
1169	SANGRUR	SANGRUR	S-NPP	75.74293	30.24748	13:48:00	D	19.00
1170	SANGRUR	SANGRUR	S-NPP	75.72014	30.24880	13:48:00	D	13.90
1171	SANGRUR	SANGRUR	S-NPP	75.93638	30.25353	13:48:00	D	3.60
1172	SANGRUR	SANGRUR	S-NPP	75.80429	30.25447	13:48:00	D	3.90
1173	SANGRUR	SANGRUR	S-NPP	76.02331	30.25523	13:48:00	D	8.90
1174	SANGRUR	SANGRUR	S-NPP	76.09145	30.27077	13:48:00	D	4.30
1175	SANGRUR	SANGRUR	S-NPP	76.09724	30.27141	13:48:00	D	5.10

1176	SANGRUR	SANGRUR	S-NPP	75.88696	30.27574	13:48:00	D	3.40
1177	SANGRUR	SANGRUR	S-NPP	76.15551	30.27784	13:48:00	D	11.10
1178	SANGRUR	SANGRUR	S-NPP	75.82323	30.28033	13:48:00	D	3.30
1179	SANGRUR	SANGRUR	S-NPP	75.94373	30.28218	13:48:00	D	17.80
1180	SANGRUR	SANGRUR	S-NPP	75.94316	30.28610	13:48:00	D	19.70
1181	SANGRUR	SANGRUR	S-NPP	75.77113	30.28617	13:48:00	D	6.00
1182	SANGRUR	SANGRUR	S-NPP	75.89597	30.29263	13:48:00	D	16.00
1183	SANGRUR	SANGRUR	S-NPP	75.83836	30.29394	13:48:00	D	5.10
1184	SANGRUR	SANGRUR	S-NPP	75.79175	30.30039	13:48:00	D	4.20
1185	SANGRUR	SANGRUR	S-NPP	76.03424	30.30040	13:48:00	D	10.20
1186	SANGRUR	SANGRUR	S-NPP	76.04000	30.30105	13:48:00	D	10.20
1187	SANGRUR	SANGRUR	S-NPP	75.87339	30.31403	13:48:00	D	22.30
1188	SANGRUR	SANGRUR	S-NPP	75.87553	30.31408	13:48:00	D	18.00
1189	SANGRUR	SANGRUR	S-NPP	75.96451	30.32401	13:48:00	D	17.10
1190	SANGRUR	SANGRUR	S-NPP	75.96651	30.32460	13:48:00	D	9.30
1191	SANGRUR	SANGRUR	S-NPP	75.97193	30.35271	13:48:00	D	8.10
1192	SANGRUR	SUNAM	S-NPP	75.68431	29.93533	13:48:00	D	6.10
1193	SANGRUR	SUNAM	S-NPP	75.67770	29.94238	13:48:00	D	9.20
1194	SANGRUR	SUNAM	S-NPP	75.78369	29.94293	13:48:00	D	9.80
1195	SANGRUR	SUNAM	S-NPP	75.65477	29.94750	13:48:00	D	7.20
1196	SANGRUR	SUNAM	S-NPP	75.66020	29.94814	13:48:00	D	7.20
1197	SANGRUR	SUNAM	S-NPP	75.65419	29.95134	13:48:00	D	7.20
1198	SANGRUR	SUNAM	S-NPP	76.01495	29.95748	13:48:00	D	3.60
1199	SANGRUR	SUNAM	S-NPP	75.73069	29.96031	13:48:00	D	5.10
1200	SANGRUR	SUNAM	S-NPP	75.98489	29.96600	13:48:00	D	9.10
1201	SANGRUR	SUNAM	S-NPP	75.83505	29.97643	13:48:00	D	4.40
1202	SANGRUR	SUNAM	S-NPP	75.69380	29.98337	13:48:00	D	20.10
1203	SANGRUR	SUNAM	S-NPP	75.69647	29.98490	13:48:00	D	15.60
1204	SANGRUR	SUNAM	S-NPP	75.68775	29.98657	13:48:00	D	2.50
1205	SANGRUR	SUNAM	S-NPP	75.69042	29.98813	13:48:00	D	2.50
1206	SANGRUR	SUNAM	S-NPP	75.83842	30.01267	13:48:00	D	7.00

1207	SANGRUR	SUNAM	S-NPP	75.84400	30.01329	13:48:00	D	7.00
1208	SANGRUR	SUNAM	S-NPP	75.71986	30.01496	13:48:00	D	6.00
1209	SANGRUR	SUNAM	S-NPP	75.81444	30.02178	13:48:00	D	7.60
1210	SANGRUR	SUNAM	S-NPP	75.88200	30.02546	13:48:00	D	7.90
1211	SANGRUR	SUNAM	S-NPP	75.85228	30.03395	13:48:00	D	4.70
1212	SANGRUR	SUNAM	S-NPP	75.71090	30.03744	13:48:00	D	3.50
1213	SANGRUR	SUNAM	S-NPP	75.64896	30.04199	13:48:00	D	2.50
1214	SANGRUR	SUNAM	S-NPP	75.91901	30.04546	13:48:00	D	18.70
1215	SANGRUR	SUNAM	S-NPP	76.02847	30.04583	13:48:00	D	4.30
1216	SANGRUR	SUNAM	S-NPP	76.03418	30.04646	13:48:00	D	4.30
1217	SANGRUR	SUNAM	S-NPP	75.74220	30.05283	13:48:00	D	3.20
1218	SANGRUR	SUNAM	S-NPP	75.80367	30.05599	13:48:00	D	1.80
1219	SANGRUR	SUNAM	S-NPP	75.73610	30.05604	13:48:00	D	10.80
1220	SANGRUR	SUNAM	S-NPP	75.74162	30.05668	13:48:00	D	9.10
1221	SANGRUR	SUNAM	S-NPP	75.64120	30.05671	13:48:00	D	7.00
1222	SANGRUR	SUNAM	S-NPP	75.86000	30.05852	13:48:00	D	4.50
1223	SANGRUR	SUNAM	S-NPP	76.07887	30.05943	13:48:00	D	13.70
1224	SANGRUR	SUNAM	S-NPP	75.92798	30.06232	13:48:00	D	5.20
1225	SANGRUR	SUNAM	S-NPP	75.69040	30.06248	13:48:00	D	3.40
1226	SANGRUR	SUNAM	S-NPP	75.97949	30.06420	13:48:00	D	6.60
1227	SANGRUR	SUNAM	S-NPP	75.78529	30.06568	13:48:00	D	4.40
1228	SANGRUR	SUNAM	S-NPP	75.73873	30.07598	13:48:00	D	3.60
1229	SANGRUR	SUNAM	S-NPP	75.68261	30.07722	13:48:00	D	4.30
1230	SANGRUR	SUNAM	S-NPP	76.05820	30.08107	13:48:00	D	11.70
1231	SANGRUR	SUNAM	S-NPP	75.83363	30.08311	13:48:00	D	17.10
1232	SANGRUR	SUNAM	S-NPP	75.67050	30.08362	13:48:00	D	3.90
1233	SANGRUR	SUNAM	S-NPP	75.78241	30.08502	13:48:00	D	6.00
1234	SANGRUR	SUNAM	S-NPP	75.66800	30.08505	13:48:00	D	2.40
1235	SANGRUR	SUNAM	S-NPP	75.80462	30.08762	13:48:00	D	3.80
1236	SANGRUR	SUNAM	S-NPP	76.00901	30.09939	13:48:00	D	2.90
1237	SANGRUR	SUNAM	S-NPP	75.85416	30.12167	13:48:00	D	5.70

1238	SANGRUR	SUNAM	S-NPP	75.93360	30.12657	13:48:00	D	3.10
1239	SANGRUR	SUNAM	S-NPP	75.90421	30.13122	13:48:00	D	3.00
1240	SANGRUR	SUNAM	S-NPP	75.90985	30.13186	13:48:00	D	3.00
1241	SANGRUR	SUNAM	S-NPP	75.90927	30.13575	13:48:00	D	9.70
1242	SANGRUR	SUNAM	S-NPP	75.92622	30.13765	13:48:00	D	3.60
1243	SANGRUR	SUNAM	S-NPP	75.83389	30.14308	13:48:00	D	9.90
1244	SANGRUR	SUNAM	S-NPP	75.94263	30.14345	13:48:00	D	7.30
1245	SANGRUR	SUNAM	S-NPP	76.01782	30.14387	13:48:00	D	13.80
1246	SANGRUR	SUNAM	S-NPP	75.83331	30.14696	13:48:00	D	9.90
1247	SANGRUR	SUNAM	S-NPP	75.75913	30.15031	13:48:00	D	3.10
1248	SANGRUR	SUNAM	S-NPP	75.76469	30.15095	13:48:00	D	4.10
1249	SANGRUR	SUNAM	S-NPP	75.98125	30.15572	13:48:00	D	8.40
1250	SANGRUR	SUNAM	S-NPP	75.75222	30.19672	13:48:00	D	2.60
1251	SAS NAGAR	MOHALI	S-NPP	76.73501	30.57467	13:48:00	D	4.60
1252	TARN TARAN	KHADOOR SAHIB	S-NPP	74.96044	31.40096	13:48:00	D	2.00
1253	TARN TARAN	KHADOOR SAHIB	S-NPP	74.72338	31.43007	13:48:00	D	2.00
1254	TARN TARAN	KHADOOR SAHIB	S-NPP	74.74280	31.47415	13:48:00	D	2.20
1255	TARN TARAN	PATTI	S-NPP	74.60782	31.14515	13:48:00	D	3.50
1256	TARN TARAN	PATTI	S-NPP	74.64117	31.38626	13:48:00	D	4.90



**Details of residue burning events in Haryana on 12-Nov-2018**

<b>Event S. No.</b>	<b>District</b>	<b>Tehsil/Block</b>	<b>Satellite</b>	<b>Longitude</b>	<b>Latitude</b>	<b>Time (IST)</b>	<b>Day/Night</b>	<b>Fire Power (W/m<sup>2</sup>)</b>
1	AMBALA	AMBALA	S-NPP	76.64694	30.24921	13:48:00	D	2.30
2	AMBALA	AMBALA	S-NPP	76.75221	30.25222	13:48:00	D	3.70
3	AMBALA	AMBALA	S-NPP	76.71664	30.29406	13:48:00	D	2.00
4	FATEHABAD	FATEHABAD	S-NPP	75.33537	29.60669	13:48:00	D	9.60
5	FATEHABAD	FATEHABAD	S-NPP	75.34055	29.60732	13:48:00	D	4.80
6	FATEHABAD	FATEHABAD	S-NPP	75.32430	29.63251	13:48:00	D	11.30
7	FATEHABAD	RATIA	S-NPP	75.60114	29.64531	13:48:00	D	8.90
8	FATEHABAD	RATIA	S-NPP	75.60251	29.64668	13:48:00	D	7.60
9	FATEHABAD	RATIA	S-NPP	75.58001	29.65173	13:48:00	D	8.10
10	FATEHABAD	RATIA	S-NPP	75.52422	29.65195	13:48:00	D	5.10
11	FATEHABAD	RATIA	S-NPP	75.57803	29.65428	13:48:00	D	6.70
12	FATEHABAD	RATIA	S-NPP	75.61932	29.70561	13:48:00	D	9.80
13	FATEHABAD	RATIA	S-NPP	75.63198	29.73042	13:48:00	D	3.90
14	FATEHABAD	RATIA	S-NPP	75.50507	29.74241	13:48:00	D	7.70
15	FATEHABAD	RATIA	S-NPP	75.46615	29.80232	13:48:00	D	4.60
16	FATEHABAD	TOHANA	S-NPP	75.84792	29.62880	13:48:00	D	10.00
17	FATEHABAD	TOHANA	S-NPP	75.85171	29.64102	13:48:00	D	7.20
18	FATEHABAD	TOHANA	S-NPP	75.94081	29.64741	13:48:00	D	11.60
19	FATEHABAD	TOHANA	S-NPP	75.71725	29.64870	13:48:00	D	7.10
20	FATEHABAD	TOHANA	S-NPP	75.94024	29.65130	13:48:00	D	9.80
21	FATEHABAD	TOHANA	S-NPP	75.93966	29.65518	13:48:00	D	9.80
22	FATEHABAD	TOHANA	S-NPP	75.93737	29.67070	13:48:00	D	2.40
23	FATEHABAD	TOHANA	S-NPP	75.78344	29.67772	13:48:00	D	3.00
24	FATEHABAD	TOHANA	S-NPP	75.78145	29.72840	13:48:00	D	2.90
25	FATEHABAD	TOHANA	S-NPP	75.92065	29.73659	13:48:00	D	3.20
26	FATEHABAD	TOHANA	S-NPP	75.72341	29.74510	13:48:00	D	2.90

27	FATEHABAD	TOHANA	S-NPP	75.70109	29.74638	13:48:00	D	4.10
28	FATEHABAD	TOHANA	S-NPP	75.75497	29.75664	13:48:00	D	5.00
29	FATEHABAD	TOHANA	S-NPP	75.81035	29.75923	13:48:00	D	3.30
30	FATEHABAD	TOHANA	S-NPP	75.78232	29.75986	13:48:00	D	5.90
31	FATEHABAD	TOHANA	S-NPP	75.78780	29.76051	13:48:00	D	9.50
32	FATEHABAD	TOHANA	S-NPP	75.79329	29.76116	13:48:00	D	9.50
33	FATEHABAD	TOHANA	S-NPP	75.73466	29.76342	13:48:00	D	5.90
34	FATEHABAD	TOHANA	S-NPP	75.73141	29.76559	13:48:00	D	5.60
35	FATEHABAD	TOHANA	S-NPP	75.74528	29.80374	13:48:00	D	14.20
36	HISAR	NARNAUND	S-NPP	76.11350	29.12808	13:48:00	D	5.50
37	JHAJJAR	JHAJJAR	S-NPP	76.48960	28.55091	02:30:00	N	1.30
38	JIND	JIND	S-NPP	76.36867	29.37542	13:48:00	D	2.30
39	JIND	JIND	S-NPP	76.38381	29.39326	13:48:00	D	2.70
40	JIND	JIND	S-NPP	76.46467	29.47683	13:48:00	D	4.30
41	JIND	JIND	S-NPP	76.32122	29.55188	13:48:00	D	6.10
42	JIND	NARWANA	S-NPP	76.08317	29.54902	13:48:00	D	5.50
43	JIND	NARWANA	S-NPP	76.14034	29.55156	13:48:00	D	22.10
44	JIND	NARWANA	S-NPP	76.12145	29.62432	13:48:00	D	4.20
45	JIND	NARWANA	S-NPP	76.07375	29.67463	13:48:00	D	3.30
46	JIND	NARWANA	S-NPP	76.12881	29.69294	13:48:00	D	12.40
47	JIND	NARWANA	S-NPP	76.05215	29.69596	13:48:00	D	4.70
48	JIND	NARWANA	S-NPP	76.05336	29.69612	13:48:00	D	12.10
49	JIND	NARWANA	S-NPP	76.05780	29.69658	13:48:00	D	5.90
50	JIND	NARWANA	S-NPP	76.07480	29.69846	13:48:00	D	4.00
51	JIND	NARWANA	S-NPP	76.07597	29.69876	13:48:00	D	2.90
52	JIND	NARWANA	S-NPP	75.97859	29.69926	13:48:00	D	1.40
53	JIND	NARWANA	S-NPP	76.09637	29.70880	13:48:00	D	7.30
54	JIND	NARWANA	S-NPP	76.09753	29.70924	13:48:00	D	10.50
55	JIND	NARWANA	S-NPP	76.09465	29.72055	13:48:00	D	27.00
56	JIND	NARWANA	S-NPP	76.07135	29.72194	13:48:00	D	8.00
57	JIND	NARWANA	S-NPP	75.99566	29.72931	13:48:00	D	10.10

58	JIND	NARWANA	S-NPP	76.14427	29.77800	13:48:00	D	5.90
59	JIND	NARWANA	S-NPP	76.20811	29.78123	13:48:00	D	5.10
60	JIND	NARWANA	S-NPP	76.13798	29.78128	13:48:00	D	7.00
61	JIND	NARWANA	S-NPP	76.18567	29.81476	13:48:00	D	6.50
62	JIND	SAFIDON	S-NPP	76.49350	29.33276	13:48:00	D	2.10
63	JIND	SAFIDON	S-NPP	76.65858	29.46959	13:48:00	D	2.40
64	KAITHAL	GUHLA	S-NPP	76.33354	29.99309	13:48:00	D	3.80
65	KAITHAL	KAITHAL	S-NPP	76.45824	29.55082	13:48:00	D	5.30
66	KAITHAL	KAITHAL	S-NPP	76.40125	29.57288	13:48:00	D	4.20
67	KAITHAL	KAITHAL	S-NPP	76.29031	29.62700	13:48:00	D	4.10
68	KAITHAL	KAITHAL	S-NPP	76.40504	29.62994	13:48:00	D	3.70
69	KAITHAL	KAITHAL	S-NPP	76.39021	29.63386	13:48:00	D	9.90
70	KAITHAL	KAITHAL	S-NPP	76.70748	29.68024	13:48:00	D	2.20
71	KAITHAL	KAITHAL	S-NPP	76.27082	29.72132	13:48:00	D	6.10
72	KAITHAL	KAITHAL	S-NPP	76.21034	29.72535	13:48:00	D	4.50
73	KAITHAL	KAITHAL	S-NPP	76.22753	29.83396	13:48:00	D	3.70
74	KAITHAL	KAITHAL	S-NPP	76.22961	29.83589	13:48:00	D	3.50
75	KAITHAL	KAITHAL	S-NPP	76.26244	29.83777	13:48:00	D	9.20
76	KAITHAL	KAITHAL	S-NPP	76.33974	29.83810	13:48:00	D	12.10
77	KAITHAL	KAITHAL	S-NPP	76.26447	29.83991	13:48:00	D	7.10
78	KAITHAL	KAITHAL	S-NPP	76.34164	29.84072	13:48:00	D	14.00
79	KAITHAL	KAITHAL	S-NPP	76.44749	29.92700	13:48:00	D	6.60
80	KARNAL	ASSANDH	S-NPP	76.59158	29.48273	13:48:00	D	5.50
81	KARNAL	ASSANDH	S-NPP	76.59558	29.48317	13:48:00	D	16.60
82	KARNAL	ASSANDH	S-NPP	76.59957	29.48361	13:48:00	D	16.60
83	KARNAL	ASSANDH	S-NPP	76.59500	29.48719	13:48:00	D	13.70
84	KARNAL	ASSANDH	S-NPP	76.59900	29.48763	13:48:00	D	13.70
85	KARNAL	ASSANDH	S-NPP	76.72063	29.55443	13:48:00	D	6.30
86	KARNAL	ASSANDH	S-NPP	76.64920	29.56743	13:48:00	D	6.10
87	KARNAL	ASSANDH	S-NPP	76.69836	29.56860	13:48:00	D	5.70
88	KARNAL	ASSANDH	S-NPP	76.78135	29.59809	13:48:00	D	1.50

89	KARNAL	GHARAUNDA	S-NPP	76.80191	29.60029	13:48:00	D	1.80
90	PANIPAT	PANIPAT	S-NPP	76.80328	29.40742	13:48:00	D	1.90
91	ROHTAK	MAHAM	S-NPP	76.41858	28.96092	13:48:00	D	8.80
92	ROHTAK	MAHAM	METOP-1	76.43263	29.04017	21:20:00	N	7.00
93	SIRSA	RANIA	S-NPP	74.77290	29.50737	13:48:00	D	5.40
94	SIRSA	RANIA	S-NPP	74.71834	29.50801	13:48:00	D	8.00
95	SIRSA	RANIA	S-NPP	74.93488	29.52741	13:48:00	D	9.10
96	SIRSA	RANIA	S-NPP	74.66206	29.53822	13:48:00	D	10.30
97	SIRSA	RANIA	S-NPP	74.66424	29.53827	13:48:00	D	9.80
98	SIRSA	RANIA	S-NPP	74.63201	29.54195	13:48:00	D	18.70
99	SIRSA	RANIA	S-NPP	74.62661	29.54498	13:48:00	D	6.40
100	SIRSA	RANIA	S-NPP	74.69530	29.54598	13:48:00	D	4.10
101	SIRSA	RANIA	S-NPP	74.66703	29.56846	13:48:00	D	11.50
102	SIRSA	RANIA	S-NPP	74.69604	29.57204	13:48:00	D	7.10
103	SIRSA	RANIA	S-NPP	74.69061	29.57508	13:48:00	D	7.60
104	SIRSA	RANIA	S-NPP	74.71000	29.57747	13:48:00	D	1.80
105	SIRSA	RANIA	S-NPP	74.59197	29.57765	13:48:00	D	33.70
106	SIRSA	RANIA	S-NPP	74.64616	29.60662	13:48:00	D	3.60
107	SIRSA	SIRSA	S-NPP	74.94122	29.44351	13:48:00	D	5.60
108	SIRSA	SIRSA	S-NPP	74.99780	29.46933	13:48:00	D	3.60
109	SIRSA	SIRSA	S-NPP	74.99442	29.47083	13:48:00	D	1.90
110	SIRSA	SIRSA	S-NPP	75.00148	29.49047	13:48:00	D	6.50
111	SIRSA	SIRSA	S-NPP	74.93953	29.49798	13:48:00	D	3.40
112	SIRSA	SIRSA	S-NPP	75.05588	29.50077	13:48:00	D	2.80
113	SIRSA	SIRSA	S-NPP	75.11119	29.50741	13:48:00	D	4.20
114	SIRSA	SIRSA	S-NPP	74.96755	29.51265	13:48:00	D	11.70
115	SIRSA	SIRSA	S-NPP	74.96696	29.51633	13:48:00	D	11.70
116	SIRSA	SIRSA	S-NPP	74.93430	29.53108	13:48:00	D	6.60
117	SIRSA	SIRSA	S-NPP	74.96587	29.57491	13:48:00	D	2.90
118	SIRSA	SIRSA	S-NPP	75.14741	29.62678	13:48:00	D	5.40
119	SIRSA	SIRSA	S-NPP	75.14612	29.66834	13:48:00	D	3.00

120	SIRSA	SIRSA	S-NPP	75.02449	29.73423	13:48:00	D	6.50
121	YAMUNANAGAR	CHHACHHRAULII	S-NPP	77.32889	30.26518	13:48:00	D	4.90
122	YAMUNANAGAR	CHHACHHRAULII	S-NPP	77.32759	30.26563	13:48:00	D	6.60

**Details of residue burning events in Uttar Pradesh on 12-Nov-2018**

<b>Event S. No.</b>	<b>District</b>	<b>Tehsil/Block</b>	<b>Satellite</b>	<b>Longitude</b>	<b>Latitude</b>	<b>Time (IST)</b>	<b>Day/Night</b>	<b>Fire Power (W/m<sup>2</sup>)</b>
1	ALIGARH	KHAIR	S-NPP	77.57449	27.95318	13:48:00	D	2.60
2	ALIGARH	KHAIR	S-NPP	77.57587	28.00845	13:48:00	D	4.30
3	ALIGARH	KHAIR	S-NPP	77.61120	28.03778	13:48:00	D	4.80
4	ALIGARH	KOL	S-NPP	78.28191	27.76322	13:48:00	D	5.30
5	AURAIYA	BIDHUNA	S-NPP	79.47352	26.64194	00:54:00	N	1.20
6	BADAUN	BADAUN	S-NPP	79.00065	27.88707	13:48:00	D	2.90
7	BADAUN	BADAUN	S-NPP	78.99780	27.88717	13:48:00	D	3.10
8	BARABANKI	H AidARGARH	S-NPP	81.42560	26.58820	13:48:00	D	3.80
9	BASTI	HARRAIYA	S-NPP	82.33592	26.84204	13:48:00	D	3.70
10	BASTI	RUDHAULI	S-NPP	82.83634	26.93801	13:48:00	D	4.60
11	ETAWAH	CHAKARNAGAR	S-NPP	79.21310	26.60881	13:48:00	D	3.30
12	FAIZABAD	RUDAULI	S-NPP	81.67492	26.79406	13:48:00	D	3.50
13	FATEHPUR	KHAGA	S-NPP	81.11082	25.93587	13:48:00	D	2.00
14	KUSHINAGAR	TAMKUHI RAJ	S-NPP	84.03984	26.79927	13:48:00	D	3.00
15	MAHARAJGANJ	MAHARAJGANJ	S-NPP	83.55325	27.17165	12:06:00	D	5.30
16	MAHARAJGANJ	NAUTANWA	S-NPP	83.38407	27.26484	13:48:00	D	12.50
17	MAHARAJGANJ	NAUTANWA	S-NPP	83.38886	27.26518	13:48:00	D	12.50
18	MAHARAJGANJ	NICHLAUL	S-NPP	83.64259	27.28307	13:48:00	D	13.60
19	MAHARAJGANJ	NICHLAUL	S-NPP	83.68156	27.32072	12:06:00	D	3.90
20	MATHURA	MAT	S-NPP	77.74116	27.91499	13:48:00	D	4.70
21	MATHURA	MATHURA	S-NPP	77.60048	27.34501	13:48:00	D	2.40
22	MATHURA	MATHURA	S-NPP	77.53247	27.54701	13:48:00	D	5.50
23	MEERUT	MEERUT	S-NPP	77.51837	29.01394	13:48:00	D	3.70
24	MEERUT	SARDHANA	S-NPP	77.81185	29.11772	13:48:00	D	2.70
25	PILHIBHIT	PURANPUR	S-NPP	80.25890	28.34384	13:48:00	D	2.60
26	PILHIBHIT	PURANPUR	S-NPP	80.23177	28.40256	13:48:00	D	6.00
27	PILHIBHIT	PURANPUR	S-NPP	80.23301	28.40666	13:48:00	D	10.80

28	PILHIBHIT	PURANPUR	S-NPP	80.23123	28.40752	13:48:00	D	6.00
29	PILHIBHIT	PURANPUR	S-NPP	80.09838	28.50189	13:48:00	D	6.50
30	RAIBEARELI	RAEBARELI	S-NPP	81.10991	26.23293	13:48:00	D	1.10
31	RAMPUR	BILASPUR	S-NPP	79.26381	28.95737	13:48:00	D	4.10
32	RAMPUR	BILASPUR	S-NPP	79.26126	28.95900	13:48:00	D	4.30
33	SHAHJAHANPUR	PUWANYA	S-NPP	80.14593	28.33403	13:48:00	D	4.00
34	SHARANPUR	RAMPUR MANIHARRAN	S-NPP	77.51019	29.67431	13:48:00	D	3.20
35	SIDDHARTHANAGAR	BANSI	S-NPP	82.85889	27.05038	12:06:00	D	3.50
36	SIDDHARTHANAGAR	BANSI	S-NPP	82.91801	27.10226	13:48:00	D	3.60
37	SIDDHARTHANAGAR	BANSI	S-NPP	82.88640	27.10572	13:48:00	D	6.60
38	SIDDHARTHANAGAR	BANSI	S-NPP	82.83240	27.11324	13:48:00	D	3.80
39	SIDDHARTHANAGAR	BANSI	S-NPP	82.83546	27.24191	13:48:00	D	3.60
40	SIDDHARTHANAGAR	BANSI	S-NPP	82.83517	27.24266	13:48:00	D	4.20
41	SIDDHARTHANAGAR	DOMARIYAGANJ	S-NPP	82.57893	27.12803	13:48:00	D	2.80
42	SIDDHARTHANAGAR	ITWA	S-NPP	82.73212	27.25006	12:06:00	D	2.10
43	SIDDHARTHANAGAR	ITWA	S-NPP	82.75684	27.37396	12:06:00	D	4.70
44	SIDDHARTHANAGAR	ITWA	S-NPP	82.75850	27.37541	12:06:00	D	3.90
45	SIDDHARTHANAGAR	SHOHRATGARH	S-NPP	82.93234	27.46204	12:06:00	D	4.50

## The study used images received from following Satellites at IARI Satellite Ground Station

S. No.	Satellite Name	Sensor	Resolution (meter)	Day / Night Passes
1.	Suomi NPP	VIIRS	375 / 1000	Both
2.	Terra	MODIS	1000	Both
3.	Aqua	MODIS	1000	Both
4.	NOAA – 18	AVHRR	1000	Night
5.	NOAA – 19	AVHRR	1000	Night
6.	Metop - 1	AVHRR	1000	Night
7.	Metop - 2	AVHRR	1000	Night

### Study Team

ICAR – HQ	Dr K. Alagusundaram	DDG (Agril. Engg.)	<a href="mailto:ddgengg@icar.org.in">ddgengg@icar.org.in</a>
	Dr S. Bhaskar	ADG (NRM)	<a href="mailto:adgagroandaf@gmail.com">adgagroandaf@gmail.com</a>
ICAR - IARI	Dr V.K. Sehgal	Professor & Nodal Scientist	<a href="mailto:iaricreams@gmail.com">iaricreams@gmail.com</a> <a href="mailto:yk.sehgal@icar.gov.in">yk.sehgal@icar.gov.in</a>
	Dr Rajkumar Dhakar	Scientist	<a href="mailto:rajdhakar.iari@gmail.com">rajdhakar.iari@gmail.com</a>
	Shri Rakeshwar Verma	Chief Technical Officer	<a href="mailto:rakeshwar.verma@icar.gov.in">rakeshwar.verma@icar.gov.in</a>
	Mr Aakash Chhabra	SRF (NICRA)	<a href="mailto:aakash.chhabra7489@gmail.com">aakash.chhabra7489@gmail.com</a>
ICAR - ATARI	Dr Rajbir Singh	Director ATARI (Zone-1)	<a href="mailto:rajbirsingh.zpd@gmail.com">rajbirsingh.zpd@gmail.com</a>
	Dr U.S. Gautam	Director ATARI (Zone-IV)	<a href="mailto:zpdicarkanpur@gmail.com">zpdicarkanpur@gmail.com</a>
ICAR - IASRI	Dr RajenderParsad	Principal Scientist	<a href="mailto:rajender.parsad@icar.gov.in">rajender.parsad@icar.gov.in</a>

GIS Maps of fire events can be visualized online on ICAR KRISHI & CREAMS Geoportal

websites:<http://geoportal.icar.gov.in:8080/geoexplorer/composer/>

<http://creams.iari.res.in:8080/geoexplorer/composer/>

\*\*\*