



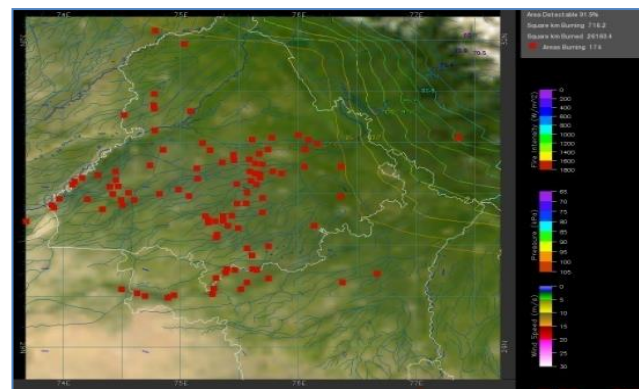
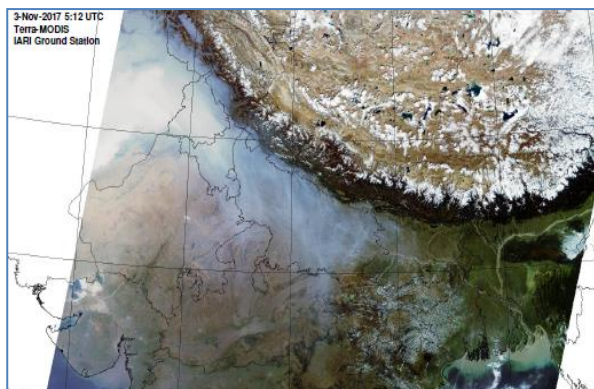
**Bulletin  
No. 42**

**Events Date:  
11-Nov-2018**

**Issued on:  
12-Nov-2018**



# **MONITORING PADDY RESIDUE BURNING IN NORTH INDIA USING SATELLITE REMOTE SENSING DURING 2018**



**Prepared by:**

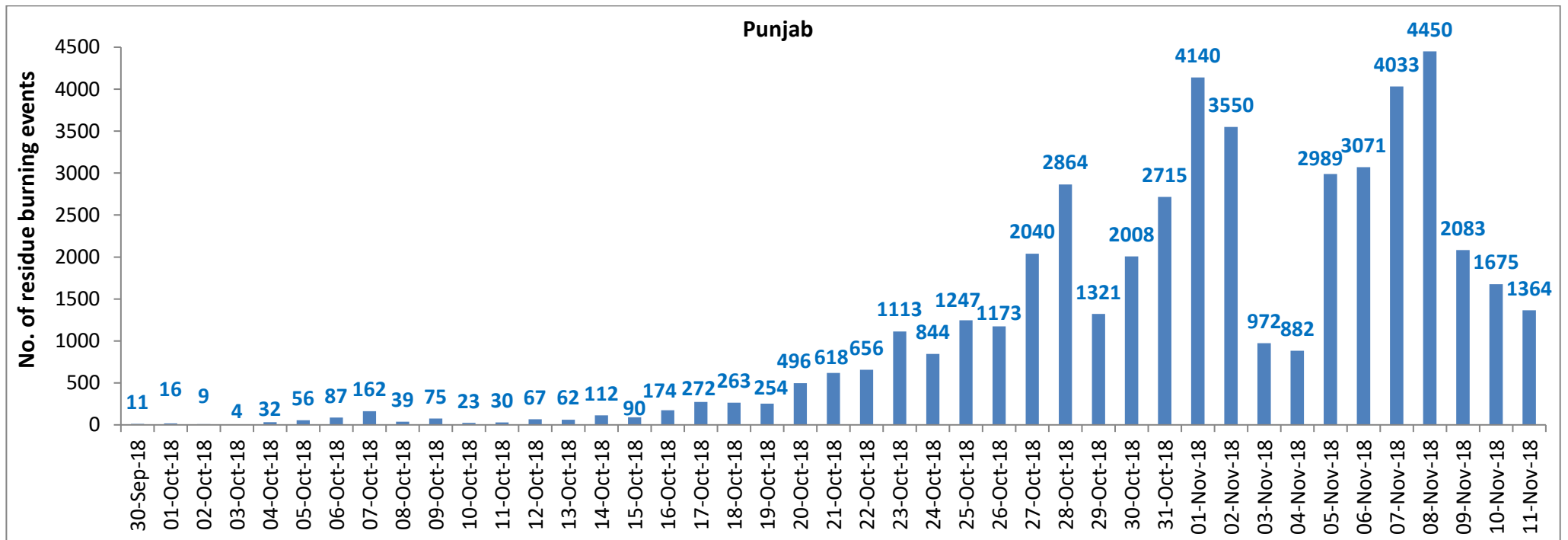
**Consortium for Research on Agroecosystem Monitoring and Modeling from Space (CREAMS) Laboratory,  
Division of Agricultural Physics, ICAR – Indian Agricultural Research Institute, New Delhi – 110012**

**<http://creams.iari.res.in>**

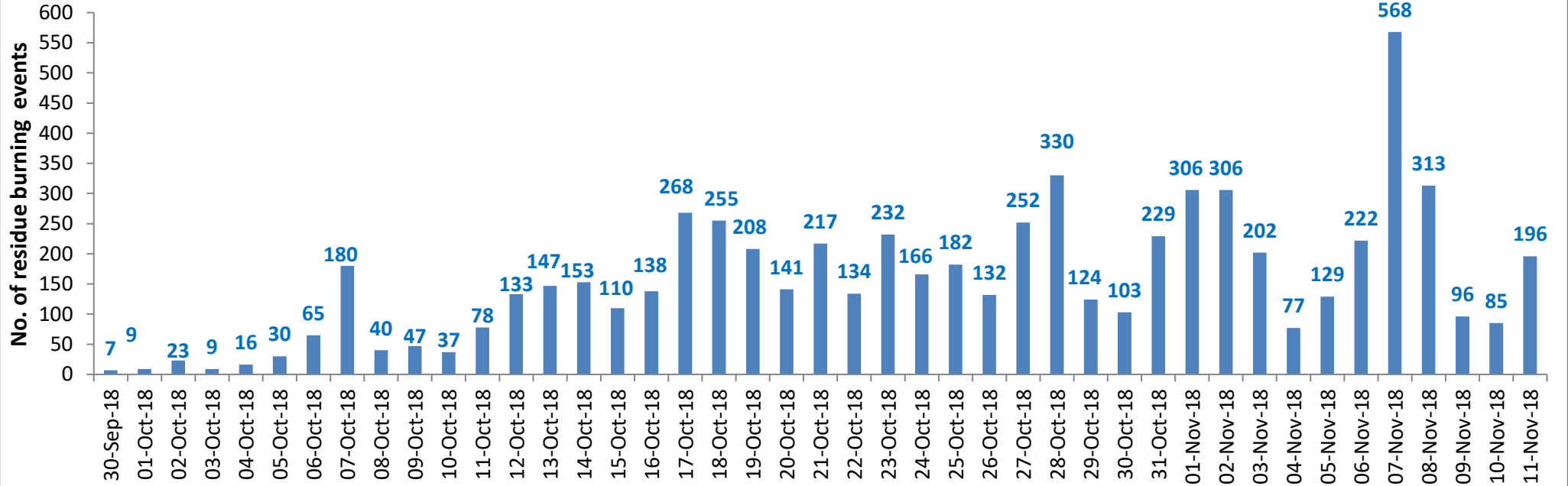
## Highlights for 11-November-2018

- Satellites detected **1605** residue burning events in the three States (Punjab, Haryana & UP) on **11-Nov-2018**.
- The burning events detected on **11-Nov-2018** are **1364**, **196** and **45** in Punjab, Haryana, and UP, respectively.
- The number of events has decreased from **1885** on **10-Nov-2018** to **1605** on **11-Nov-2018** in the three States.
- Total **59369** burning events were detected in the three States between **30-Sept-2018** and **11-Nov-2018**, which are distributed as **48142**, **6695** and **4532** in Punjab, Haryana and UP, respectively.
- Till **11-Nov-2018**, the burning events in the current year are about **85.9%** of the events detected in 2017 and about **51.8%** of the events detected in 2016.
- Overall, about **14%** and **48%** reduction in burning events are observed in current year (2018) till date as compared to that in 2017 and 2016, respectively.

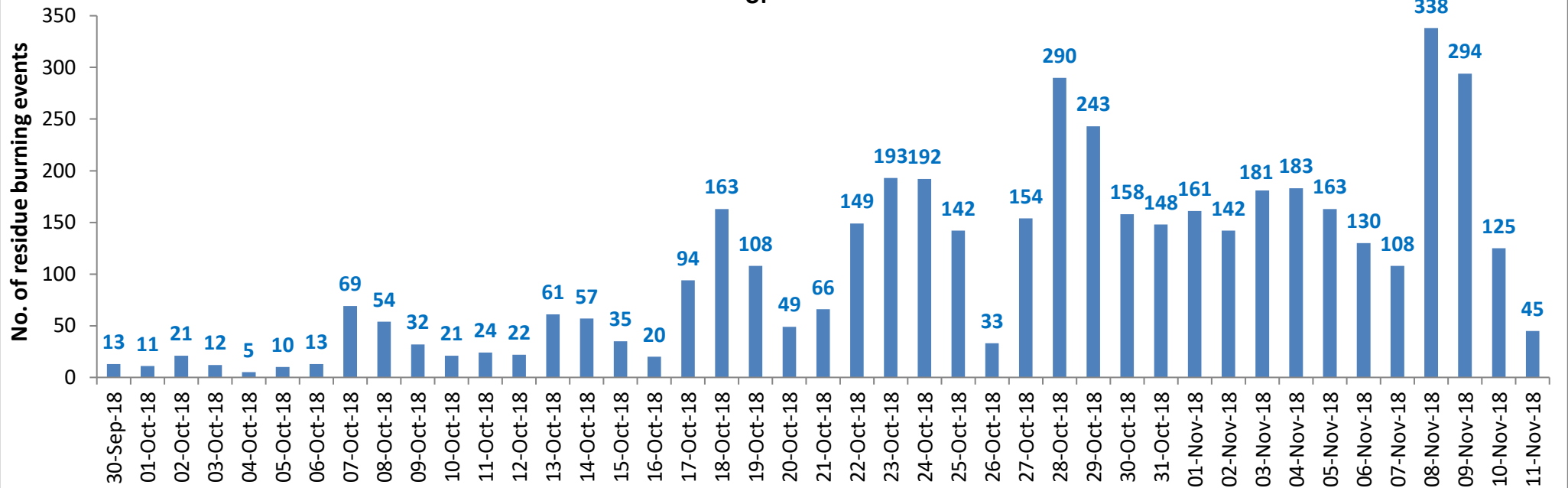
### Temporal distribution of residue burning events for the three study States



### Haryana

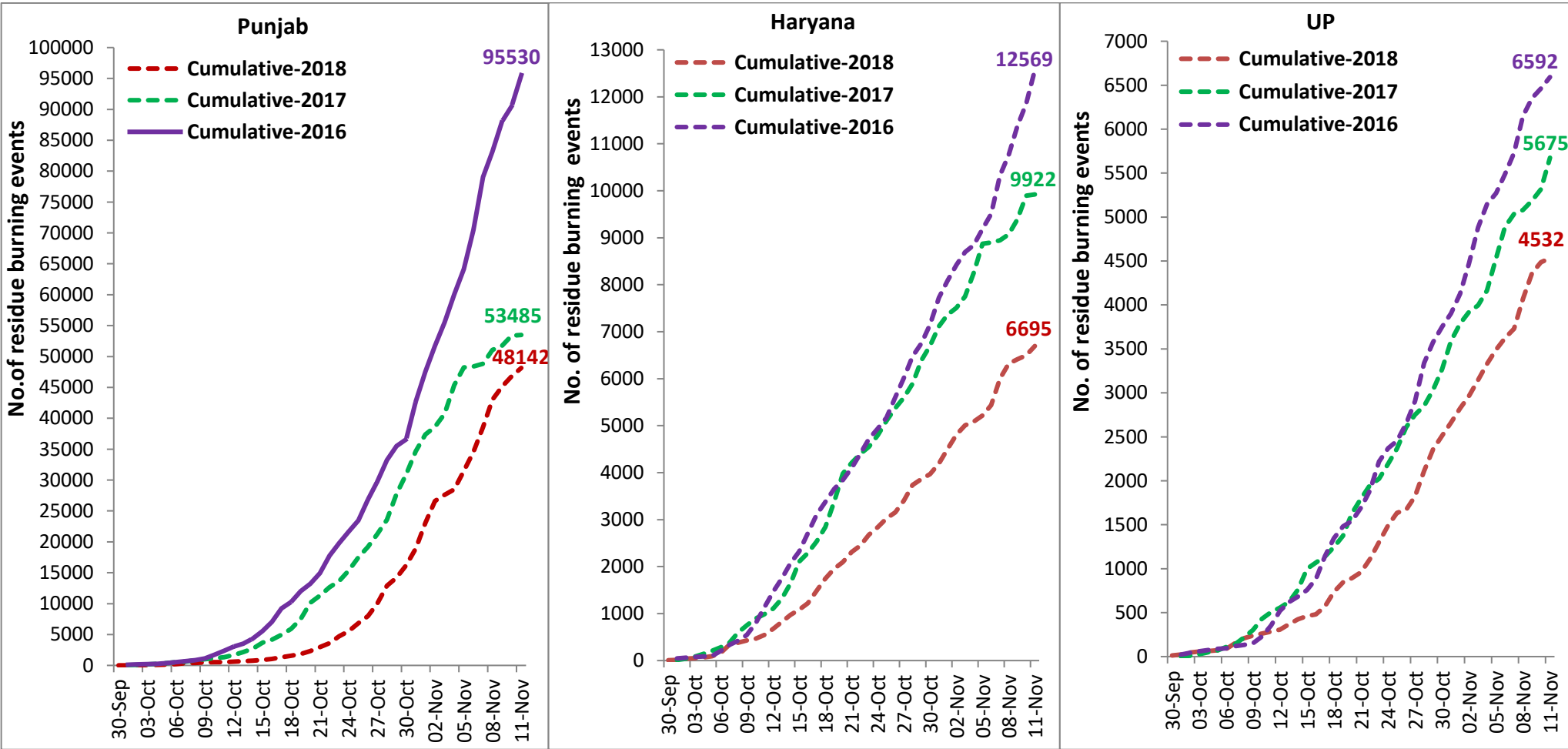


### UP



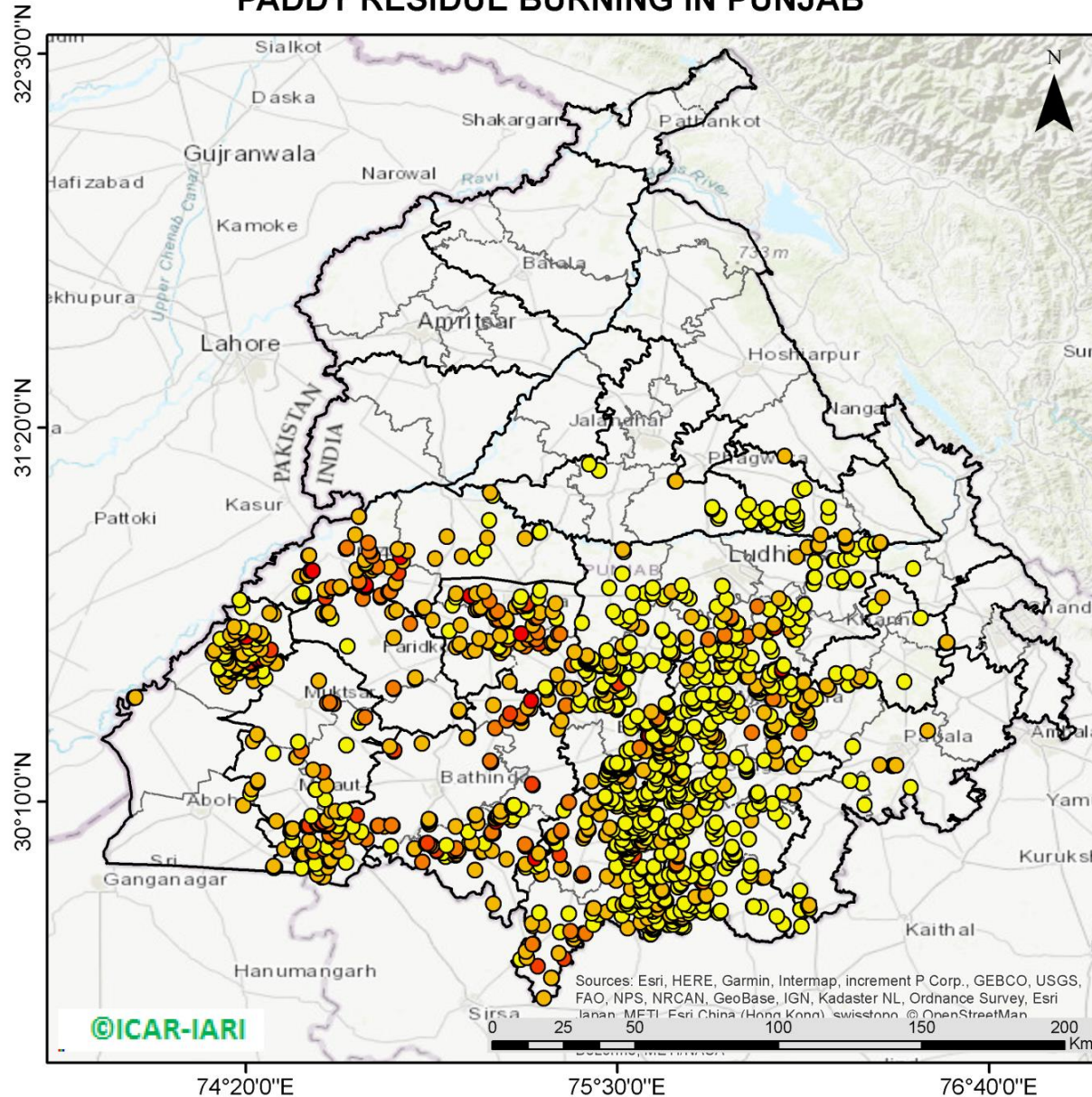
**Comparison of residue burning events in current year (2018) with previous years (2017& 2016) for the three study States**

**(30-Sep to 11-Nov)**



(a) Punjab

PADDY RESIDUE BURNING IN PUNJAB



**1364** burning events detected in Punjab on **11th November, 2018**

Fire Intensity (W/m<sup>2</sup>)

- 0 - 5
- 6 - 10
- 11 - 15
- 16 - 20
- >20



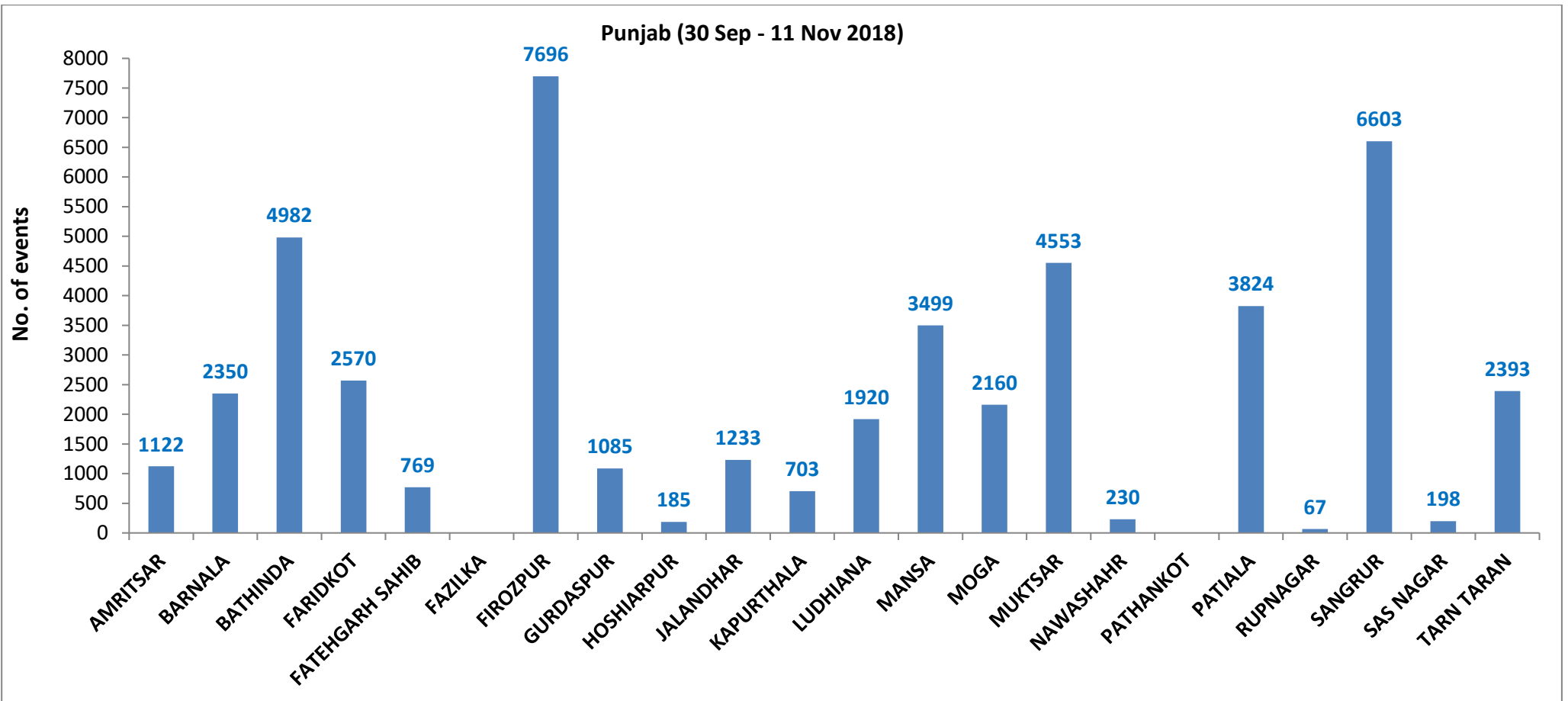
74°20'0"E

75°30'0"E

76°40'0"E

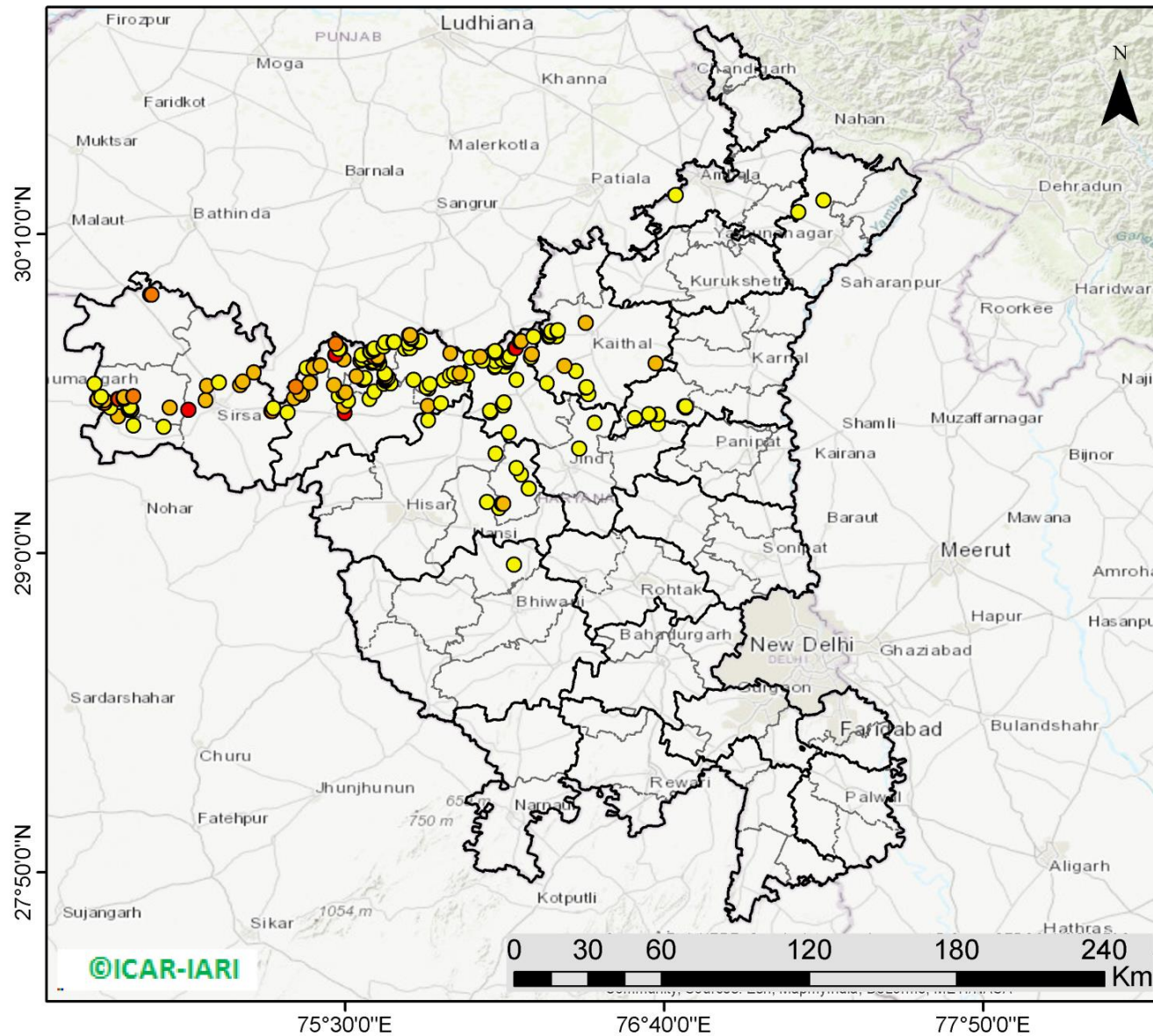
<http://geoportal.icar.gov.in:8080/geoexplorer/composer/>

**District-wise cumulative number of residue burning events in Punjab (30-Sep-2018 to 11-Nov-2018)**



(b) Haryana

PADDY RESIDUE BURNING IN HARYANA



**196** burning events detected in Haryana on **11th November, 2018**

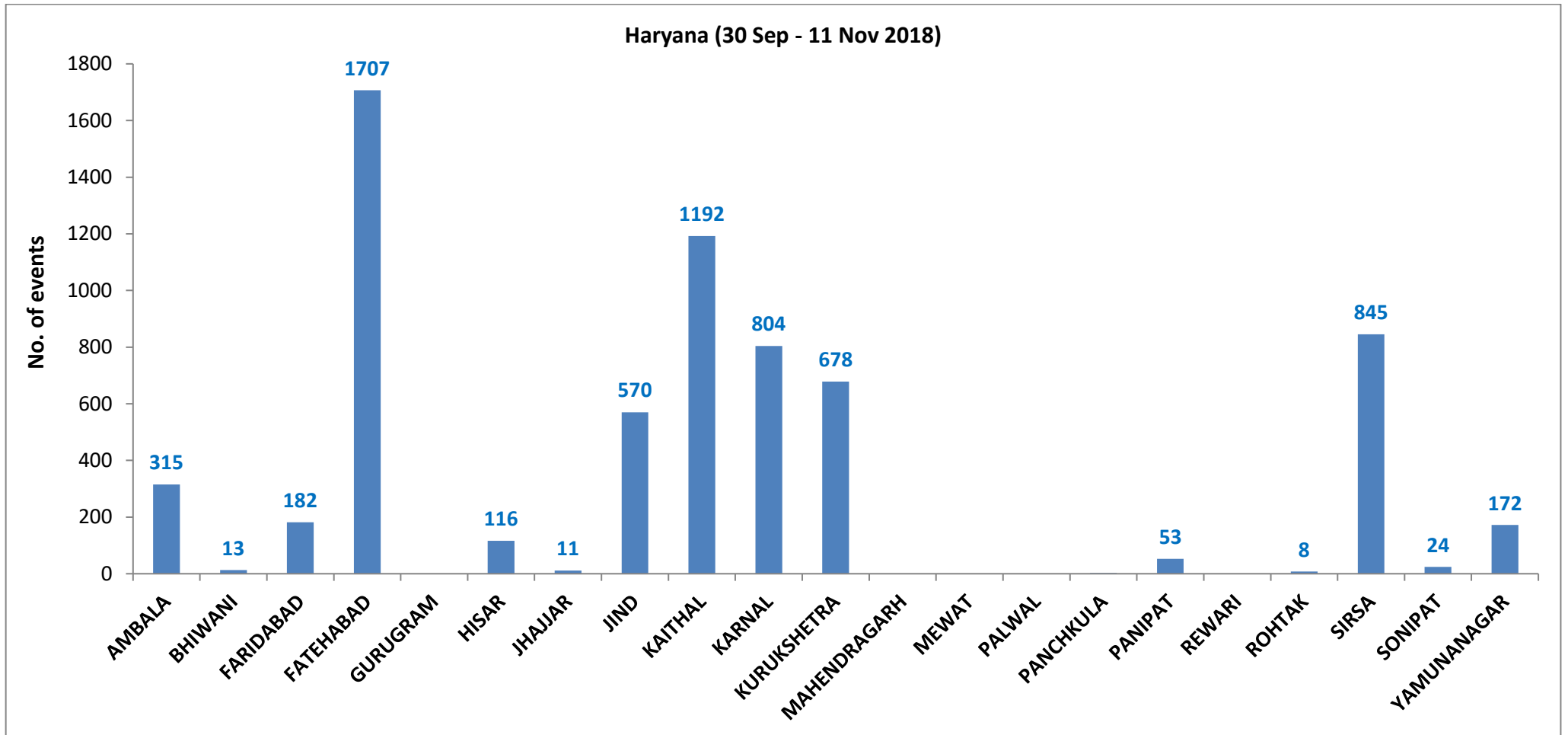
Fire Intensity (W/m<sup>2</sup>)

- 0 - 5
- 6 - 10
- 11 - 15
- 16 - 20
- >20



<http://geoportal.icar.gov.in:8080/geoexplorer/composer/>

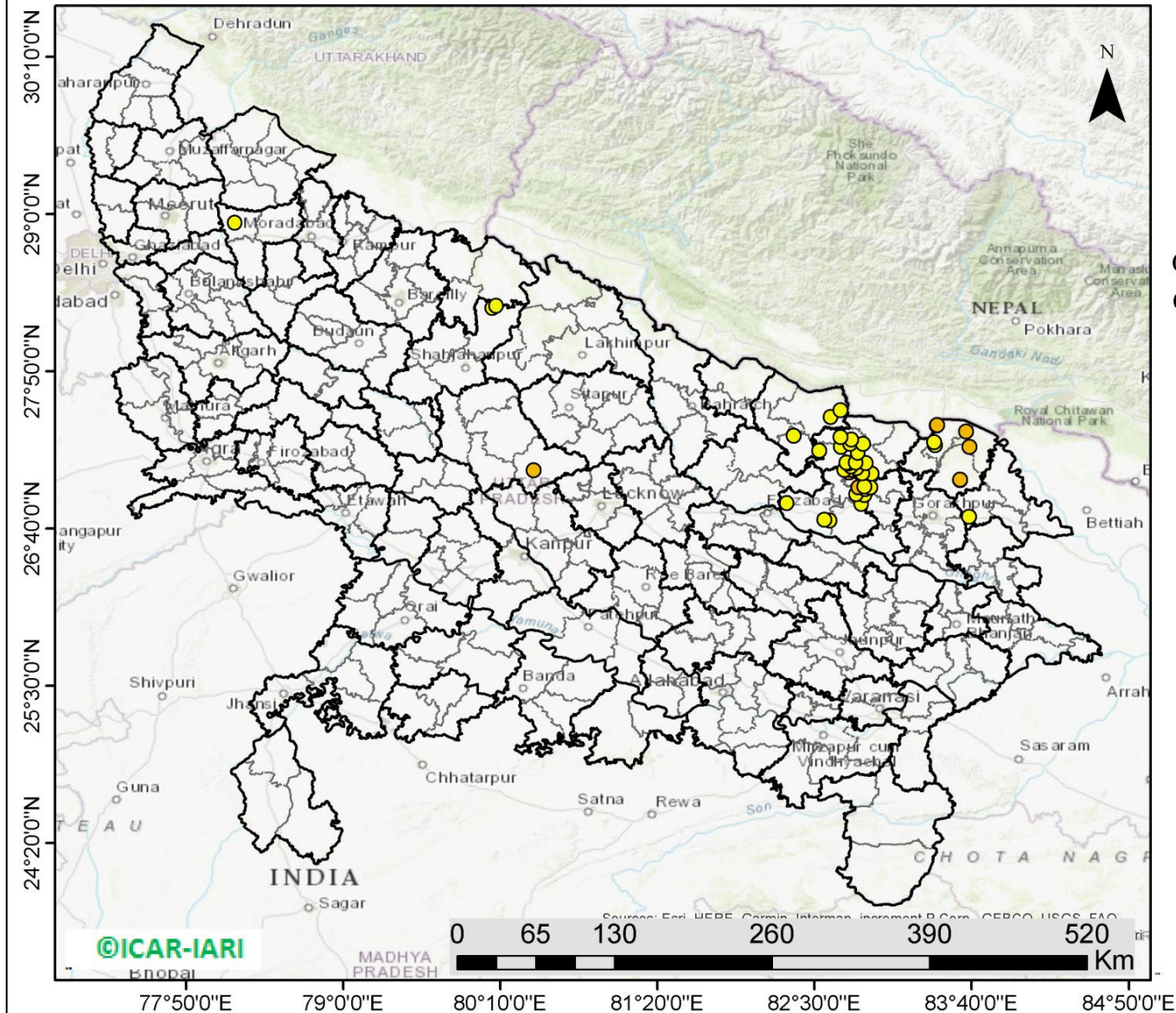
**District-wise cumulative number of residue burning events in Haryana (30-Sep-2018 to 11-Nov-2018)**





(c) Uttar Pradesh

PADDY RESIDUE BURNING IN UTTAR PRADESH



**45** burning events detected in Uttar Pradesh on **11th Nov, 2018**

Fire Intensity (W/m<sup>2</sup>)

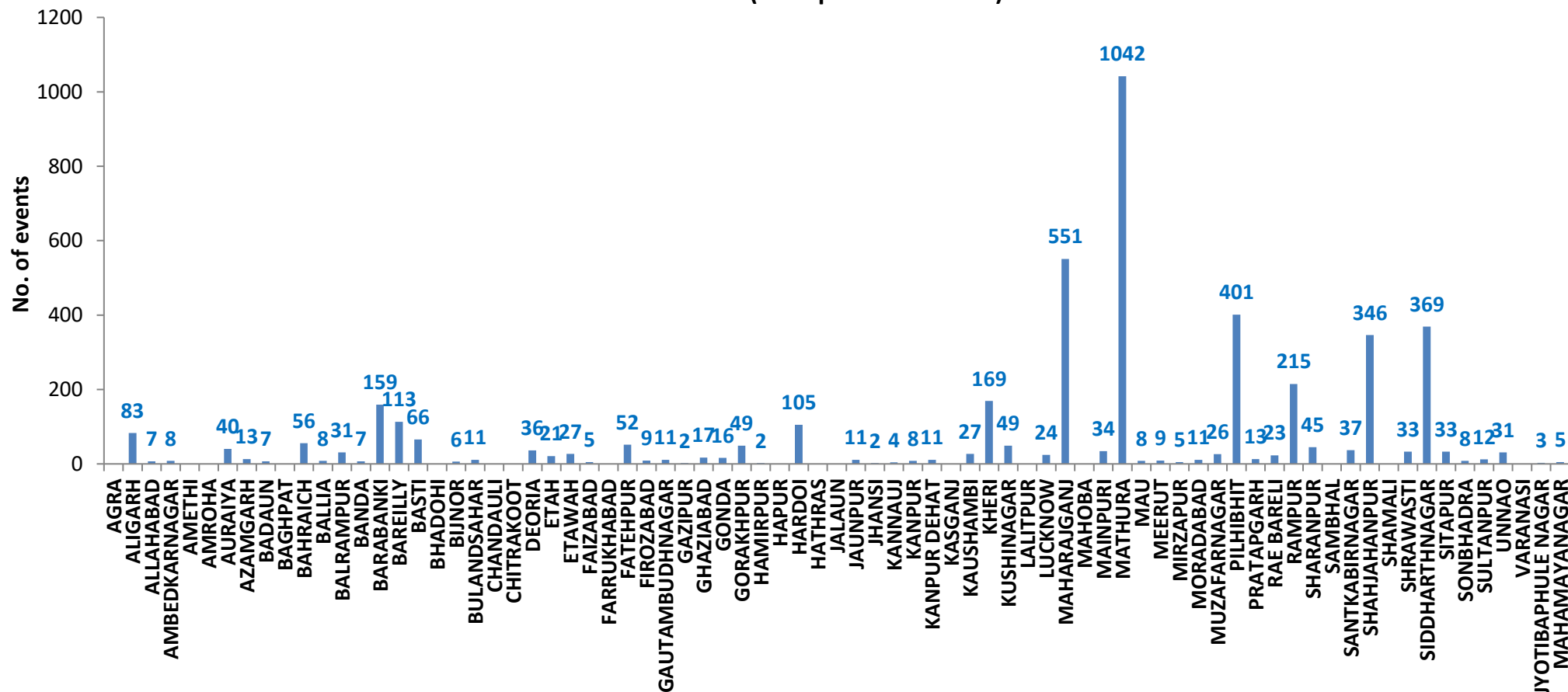
- 0 - 5
- 6 - 10
- 11 - 15
- 16 - 20
- >20



<http://geoportal.icar.gov.in:8080/geoexplorer/composer/>

**District-wise cumulative number of residue burning events in Uttar Pradesh (30-Sep-2018 to 11-Nov-2018)**

**Uttar Pradesh (30 Sep - 11 Nov 2018)**



**State wise, date wise and district-wise number of residue burning events detected in 2016, 2017 and 2018**  
**(Period: 30-Sep to 11-Nov)**

Date	Punjab			Haryana			UP			Total		
	2016	2017	2018	2016	2017	2018	2016	2017	2018	2016	2017	2018
<b>30-Sep</b>	--	--	11	--	---	7	--	---	13	--	---	31
<b>1-Oct</b>	109	54	16	46	13	9	23	2	11	178	69	36
<b>2-Oct</b>	51	50	9	16	27	23	20	8	21	87	85	53
<b>3-Oct</b>	66	62	4	16	40	9	16	17	12	98	119	25
<b>4-Oct</b>	37	103	32	7	60	16	15	22	5	59	185	53
<b>5-Oct</b>	95	106	56	15	68	30	14	20	10	124	194	96
<b>6-Oct</b>	152	138	87	105	75	65	6	39	13	263	252	165
<b>7-Oct</b>	171	105	162	126	97	180	24	31	69	321	233	411
<b>8-Oct</b>	166	215	39	94	218	40	14	75	54	274	508	133
<b>9-Oct</b>	270	163	75	121	148	47	22	87	32	413	398	154
<b>10-Oct</b>	597	164	23	242	151	37	74	126	21	913	441	81
<b>11-Oct</b>	652	177	30	336	87	78	128	74	24	1116	338	132
<b>12-Oct</b>	694	342	67	338	123	133	164	51	22	1196	516	222
<b>13-Oct</b>	467	470	62	284	207	147	102	69	61	853	746	270
<b>14-Oct</b>	812	582	112	328	333	153	60	137	57	1200	1052	322
<b>15-Oct</b>	1215	943	90	248	458	110	76	237	35	1539	1638	235
<b>16-Oct</b>	1478	465	174	385	186	138	125	71	20	1988	722	332
<b>17-Oct</b>	2173	807	272	399	244	268	261	69	94	2833	1120	634
<b>18-Oct</b>	1065	970	263	270	306	255	204	108	163	1539	1384	681
<b>19-Oct</b>	1762	1591	254	276	541	208	132	128	108	2170	2260	570

<b>20-Oct</b>	1175	2653	496	188	597	141	62	255	49	1425	3505	686
<b>21-Oct</b>	1726	1139	618	257	233	217	152	168	66	2135	1540	901
<b>22-Oct</b>	2837	1356	656	309	186	134	194	151	149	3340	1693	939
<b>23-Oct</b>	2040	994	1113	313	155	232	331	72	193	2684	1221	1538
<b>24-Oct</b>	1836	1714	844	221	244	166	152	171	192	2209	2129	1202
<b>25-Oct</b>	1813	2104	1247	229	303	182	83	175	142	2125	2582	1571
<b>26-Oct</b>	3390	1715	1173	434	276	132	195	240	33	4019	2231	1338
<b>27-Oct</b>	2904	2069	2040	417	224	252	255	145	154	3576	2438	2446
<b>28-Oct</b>	3493	2318	2864	458	292	330	435	99	290	4386	2709	3484
<b>29-Oct</b>	2258	4184	1321	278	502	124	237	180	243	2773	4866	1688
<b>30-Oct</b>	1076	3152	2008	395	307	103	175	238	158	1646	3697	2269
<b>31-Oct</b>	6132	3743	2715	575	413	229	153	321	148	6860	4447	3092
<b>01-Nov</b>	4843	2736	4140	362	250	306	223	199	161	5628	3185	4607
<b>02-Nov</b>	4183	1246	3550	332	145	306	345	131	142	4860	1522	3998
<b>03-Nov</b>	3806	2109	972	275	240	202	409	75	181	4409	2424	1355
<b>04-Nov</b>	4477	4603	882	146	499	77	265	168	183	4888	5270	1142
<b>05-Nov</b>	4137	2876	2989	345	625	129	125	367	163	4607	3868	3281
<b>06-Nov</b>	6303	171	3071	322	26	222	215	357	130	6840	327	3423
<b>07-Nov</b>	8575	420	4033	821	46	568	244	149	108	9640	615	4709
<b>08-Nov</b>	4129	2256	4450	432	128	313	419	43	338	4874	2427	5101
<b>09-Nov</b>	4857	675	2083	608	311	96	205	107	294	5670	1093	2473
<b>10-Nov</b>	2468	1642	1675	484	509	85	109	131	125	3061	2282	1885
<b>11-Nov</b>	5040	103	1364	716	29	196	129	358	45	5885	490	1605
<b>Total</b>	<b>95530</b>	<b>53485</b>	<b>48142</b>	<b>12569</b>	<b>9922</b>	<b>6695</b>	<b>6592</b>	<b>5675</b>	<b>4532</b>	<b>114691</b>	<b>69082</b>	<b>59369</b>

**(a) Punjab**

Districts	01 Oct - 11Nov		
	2016	2017	2018
AMRITSAR	1966	1205	1122
BARNALA	5452	2574	2350
BATHINDA	8270	4622	4982
FARIDKOT	4462	2844	2570
FATEHGARH SAHIB	2428	1589	769
FAZILKA	0	0	0
FIROZPUR	11793	5430	7696
GURDASPUR	2103	1501	1085
HOSHIARPUR	880	466	185
JALANDHAR	4528	1962	1233
KAPURTHALA	3100	1523	703
LUDHIANA	8766	3864	1920
MANSA	5063	3857	3499
MOGA	6174	1912	2160
MUKTSAR	6052	3349	4553
NAWASHAHR (SBS Nagar)	1289	619	230
PATHANKOT	0	0	0
PATIALA	6464	4953	3824
RUPNAGAR	705	317	67
SANGRUR	11657	8045	6603
SAS NAGAR	114	107	198
TARN TARAN	4020	2611	2393
<b>Total</b>	<b>95530</b>	<b>53485</b>	<b>48142</b>

**(b) Haryana**

Districts	01 Oct - 11Nov		
	2016	2017	2018
AMBALA	526	489	315
BHIWANI	36	22	13
FARIDABAD	266	339	182
FATEHABAD	3839	2725	1707
GURUGRAM	0	0	0
HISAR	267	153	116
JHAJJAR	18	12	11
JIND	764	840	570
KAITHAL	1708	1468	1192
KARNAL	1594	1471	804
KURUKSHETRA	1065	1140	678
MAHENDRAGARH	0	0	0
MEWAT	0	0	0
PALWAL	0	0	0
PANCHKULA	0	0	3
PANIPAT	67	66	53
REWARI	0	0	0
ROHTAK	53	47	8
SIRSA	2077	797	845
SONIPAT	53	50	24
YAMUNANAGAR	236	303	172
<b>Total</b>	<b>12569</b>	<b>9922</b>	<b>6695</b>

**(c) Uttar Pradesh**

Distrites	01 Oct - 11Nov			GAUTAMBUDH NAGAR			RAE BARELI				
	2016	2017	2018								
AGRA	0	0	0	GAZIPUR	17	33	11	RAMPUR	28	23	23
ALIGARH	40	72	83	GHAZIABAD	11	6	2	SHARANPUR	604	594	215
ALLAHABAD	1	2	7	GONDA	45	29	17	SAMBHAL	70	83	45
AMBEDKARNAGAR	38	16	8	GORAKHPUR	35	29	16	SANTKABIRNAGAR	0	0	0
AMETHI	0	0	0	HAMIRPUR	33	41	49	SHAHJAHANPUR	33	42	37
AMROHA	0	0	0	HAPUR	0	0	2	SHAMALI	1083	665	346
AURAIYA	148	105	40	HARDOI	0	0	0	SHRAWASTI	0	0	0
AZAMGARH	14	8	13	HATHRAS	202	167	105	SHRAWASTI	25	29	33
BADAUN	5	6	7	JALAUN	0	0	0	SIDDHARTHANAGAR	139	103	369
BAGHPAT	0	0	0	JAUNPUR	0	0	0	SITAPUR	92	52	33
BAHRAICH	50	35	56	JHANSI	7	3	11	SONBHADRA	11	9	8
BALLIA	3	9	8	KANNAUJ	0	0	2	SULTANPUR	19	13	12
BALRAMPUR	18	21	31	KANPUR	7	11	4	UNNAO	39	27	31
BANDA	1	2	7	KANPUR DEHAT	4	5	8	VARANASI	0	0	0
BARABANKI	186	135	159	KASGANJ	11	30	11	JYOTIBAPHULE NAGAR	7	9	3
BAREILLY	223	185	113	KAUSHAMBI	0	0	0	MAHAMAYANAGAR	2	2	5
BASTI	73	135	66	KHERI	13	24	27	Total	6592	5675	4532
BHADOHI	0	0	0	KUSHINAGAR	356	214	169				
BIJNOR	35	23	6	LALITPUR	17	25	49				
BULANDSAHAR	11	25	11	LUCKNOW	0	0	0				
CHANDALI	2	0	0	MAHARAJGANJ	46	27	24				
CHITRAKOOT	0	0	0	MAHOBA	213	450	551				
DEORIA	26	31	36	MAINPURI	0	0	0				
ETAH	11	26	21	MATHURA	39	67	34				
ETAWAH	42	62	27	MAU	1344	1078	1042				
FAIZABAD	10	5	5	MEERUT	6	5	8				
FARRUKHABAD	0	0	0	MIRZAPUR	40	34	9				
FATEHPUR	35	30	52	MORADABAD	0	9	5				
FIROZABAD	19	15	9	MUZAFARNAGAR	33	22	11				
				PILHIBHIT	91	88	26				
				PRATAPGARH	867	658	401				
					12	21	13				

**Details of residue burning events in Punjab on 11-Nov-2018**

<b>Event S. No.</b>	<b>District</b>	<b>Tehsil/Block</b>	<b>Satellite</b>	<b>Longitude</b>	<b>Latitude</b>	<b>Time (IST)</b>	<b>Day/Night</b>	<b>Fire Power (W/m<sup>2</sup>)</b>
1	BARNALA	BARNALA	S-NPP	75.56051	30.31812	14:06:00	D	3.30
2	BARNALA	BARNALA	S-NPP	75.52875	30.32583	14:06:00	D	2.70
3	BARNALA	BARNALA	S-NPP	75.54185	30.33202	14:06:00	D	3.40
4	BARNALA	BARNALA	S-NPP	75.57054	30.33465	12:30:00	D	12.20
5	BARNALA	BARNALA	S-NPP	75.65546	30.34116	14:06:00	D	7.10
6	BARNALA	BARNALA	S-NPP	75.65894	30.34143	14:06:00	D	12.20
7	BARNALA	BARNALA	S-NPP	75.63364	30.34972	14:06:00	D	5.80
8	BARNALA	BARNALA	S-NPP	75.63313	30.35484	14:06:00	D	5.80
9	BARNALA	BARNALA	S-NPP	75.65688	30.36194	14:06:00	D	4.30
10	BARNALA	BARNALA	S-NPP	75.66037	30.36222	14:06:00	D	4.30
11	BARNALA	BARNALA	S-NPP	75.66385	30.36250	14:06:00	D	6.40
12	BARNALA	BARNALA	S-NPP	75.66733	30.36278	14:06:00	D	6.40
13	BARNALA	BARNALA	S-NPP	75.65986	30.36734	14:06:00	D	4.30
14	BARNALA	BARNALA	S-NPP	75.59659	30.37247	14:06:00	D	28.40
15	BARNALA	BARNALA	S-NPP	75.60003	30.37276	14:06:00	D	21.40
16	BARNALA	BARNALA	S-NPP	75.61037	30.37361	14:06:00	D	1.90
17	BARNALA	BARNALA	S-NPP	75.65006	30.39436	14:06:00	D	2.40
18	BARNALA	BARNALA	S-NPP	75.54206	30.39631	14:06:00	D	3.00
19	BARNALA	BARNALA	S-NPP	75.63861	30.40381	14:06:00	D	4.10
20	BARNALA	BARNALA	S-NPP	75.64556	30.40434	14:06:00	D	2.70
21	BARNALA	BARNALA	S-NPP	75.63809	30.40893	14:06:00	D	4.10
22	BARNALA	BARNALA	S-NPP	75.58567	30.41000	14:06:00	D	6.10
23	BARNALA	BARNALA	S-NPP	75.58913	30.41027	14:06:00	D	4.70
24	BARNALA	BARNALA	S-NPP	75.63757	30.41405	14:06:00	D	2.80
25	BARNALA	BARNALA	S-NPP	75.57827	30.41457	14:06:00	D	6.50
26	BARNALA	BARNALA	S-NPP	75.58860	30.41538	14:06:00	D	4.70
27	BARNALA	BARNALA	S-NPP	75.59206	30.41565	14:06:00	D	4.70

28	BARNALA	BARNALA	S-NPP	75.53999	30.41669	14:06:00	D	2.90
29	BARNALA	BARNALA	S-NPP	75.32372	30.41963	14:06:00	D	5.30
30	BARNALA	BARNALA	S-NPP	75.62266	30.42321	14:06:00	D	4.70
31	BARNALA	BARNALA	S-NPP	75.62559	30.42860	14:06:00	D	4.70
32	BARNALA	BARNALA	S-NPP	75.62905	30.42887	14:06:00	D	10.20
33	BARNALA	BARNALA	S-NPP	75.56244	30.43389	14:06:00	D	1.50
34	BARNALA	BARNALA	S-NPP	75.60624	30.44770	14:06:00	D	5.70
35	BARNALA	BARNALA	S-NPP	75.49825	30.45435	14:06:00	D	2.50
36	BARNALA	BARNALA	S-NPP	75.50116	30.45972	14:06:00	D	7.10
37	BARNALA	BARNALA	S-NPP	75.65383	30.46185	14:06:00	D	6.40
38	BARNALA	BARNALA	S-NPP	75.49385	30.46424	14:06:00	D	4.70
39	BARNALA	BARNALA	S-NPP	75.49725	30.46452	14:06:00	D	4.70
40	BARNALA	BARNALA	S-NPP	75.33771	30.46581	14:06:00	D	6.90
41	BARNALA	BARNALA	S-NPP	75.34438	30.46633	14:06:00	D	9.10
42	BARNALA	BARNALA	S-NPP	75.33902	30.46657	14:06:00	D	13.40
43	BARNALA	BARNALA	S-NPP	75.65331	30.46699	14:06:00	D	4.00
44	BARNALA	BARNALA	S-NPP	75.65680	30.46727	14:06:00	D	4.00
45	BARNALA	BARNALA	S-NPP	75.46954	30.46734	14:06:00	D	6.20
46	BARNALA	BARNALA	S-NPP	75.37788	30.46894	14:06:00	D	2.60
47	BARNALA	BARNALA	S-NPP	75.42840	30.46902	14:06:00	D	1.50
48	BARNALA	BARNALA	S-NPP	75.44868	30.47071	14:06:00	D	2.20
49	BARNALA	BARNALA	S-NPP	75.65280	30.47211	14:06:00	D	4.00
50	BARNALA	BARNALA	S-NPP	75.46172	30.47692	14:06:00	D	2.10
51	BARNALA	BARNALA	S-NPP	75.46512	30.47720	14:06:00	D	2.90
52	BARNALA	BARNALA	S-NPP	75.38430	30.48568	14:06:00	D	2.60
53	BARNALA	BARNALA	S-NPP	75.53515	30.48620	14:06:00	D	2.70
54	BARNALA	BARNALA	S-NPP	75.28191	30.48674	14:06:00	D	6.30
55	BARNALA	BARNALA	S-NPP	75.53618	30.48828	14:06:00	D	2.80
56	BARNALA	BARNALA	S-NPP	75.46477	30.50123	14:06:00	D	5.30
57	BARNALA	BARNALA	S-NPP	75.51889	30.51061	14:06:00	D	3.30



58	BARNALA	BARNALA	S-NPP	75.51151	30.51516	14:06:00	D	1.70
59	BARNALA	BARNALA	S-NPP	75.44961	30.51538	14:06:00	D	4.00
60	BARNALA	BARNALA	S-NPP	75.33194	30.52119	14:06:00	D	6.70
61	BARNALA	BARNALA	S-NPP	75.45536	30.52606	14:06:00	D	3.00
62	BARNALA	BARNALA	S-NPP	75.49284	30.52906	14:06:00	D	6.30
63	BARNALA	BARNALA	S-NPP	75.45484	30.53114	14:06:00	D	3.00
64	BARNALA	BARNALA	S-NPP	75.50257	30.53497	14:06:00	D	19.70
65	BARNALA	BARNALA	S-NPP	75.50600	30.53525	14:06:00	D	16.70
66	BARNALA	BARNALA	S-NPP	75.53190	30.55273	14:06:00	D	1.80
67	BARNALA	BARNALA	S-NPP	75.53534	30.55301	14:06:00	D	1.80
68	BARNALA	BARNALA	S-NPP	75.47952	30.55874	14:06:00	D	3.50
69	BARNALA	BARNALA	S-NPP	75.41058	30.56329	14:06:00	D	1.60
70	BARNALA	BARNALA	S-NPP	75.48531	30.58259	14:06:00	D	3.60
71	BARNALA	BARNALA	S-NPP	75.48720	30.58500	14:06:00	D	4.20
72	BARNALA	BARNALA	S-NPP	75.47645	30.58923	14:06:00	D	6.00
73	BARNALA	BARNALA	S-NPP	75.44675	30.58986	14:06:00	D	2.80
74	BARNALA	BARNALA	S-NPP	75.44529	30.59173	14:06:00	D	3.30
75	BARNALA	BARNALA	S-NPP	75.44869	30.59202	14:06:00	D	3.30
76	BARNALA	BARNALA	S-NPP	75.47744	30.59223	14:06:00	D	6.80
77	BARNALA	BARNALA	S-NPP	75.46616	30.60161	14:06:00	D	3.90
78	BARNALA	TAPPA	S-NPP	75.54726	30.14165	14:06:00	D	2.50
79	BARNALA	TAPPA	S-NPP	75.53267	30.15068	14:06:00	D	10.40
80	BARNALA	TAPPA	S-NPP	75.54283	30.15153	14:06:00	D	1.70
81	BARNALA	TAPPA	S-NPP	75.49835	30.15292	14:06:00	D	1.30
82	BARNALA	TAPPA	S-NPP	75.55250	30.15746	14:06:00	D	2.10
83	BARNALA	TAPPA	S-NPP	75.49549	30.16106	14:06:00	D	4.10
84	BARNALA	TAPPA	S-NPP	75.49398	30.16276	14:06:00	D	2.60
85	BARNALA	TAPPA	S-NPP	75.49734	30.16304	14:06:00	D	2.60
86	BARNALA	TAPPA	S-NPP	75.54575	30.17008	14:06:00	D	1.20
87	BARNALA	TAPPA	S-NPP	75.48380	30.17546	14:06:00	D	1.70

88	BARNALA	TAPPA	S-NPP	75.54025	30.19014	14:06:00	D	2.00
89	BARNALA	TAPPA	S-NPP	75.52409	30.21445	14:06:00	D	3.60
90	BARNALA	TAPPA	S-NPP	75.52749	30.21473	14:06:00	D	3.70
91	BARNALA	TAPPA	S-NPP	75.49986	30.21760	14:06:00	D	3.20
92	BARNALA	TAPPA	S-NPP	75.53036	30.22008	14:06:00	D	3.70
93	BARNALA	TAPPA	S-NPP	75.61626	30.22186	14:06:00	D	2.80
94	BARNALA	TAPPA	S-NPP	75.53608	30.23079	14:06:00	D	5.40
95	BARNALA	TAPPA	S-NPP	75.41877	30.23134	14:06:00	D	6.40
96	BARNALA	TAPPA	S-NPP	75.46404	30.23509	14:06:00	D	3.50
97	BARNALA	TAPPA	S-NPP	75.62505	30.23802	14:06:00	D	1.90
98	BARNALA	TAPPA	S-NPP	75.46352	30.24015	14:06:00	D	2.60
99	BARNALA	TAPPA	S-NPP	75.68385	30.24276	14:06:00	D	3.40
100	BARNALA	TAPPA	S-NPP	75.50403	30.24351	14:06:00	D	10.00
101	BARNALA	TAPPA	S-NPP	75.62056	30.24795	14:06:00	D	2.20
102	BARNALA	TAPPA	S-NPP	75.69026	30.24845	14:06:00	D	5.30
103	BARNALA	TAPPA	S-NPP	75.51029	30.24915	14:06:00	D	6.40
104	BARNALA	TAPPA	S-NPP	75.46585	30.25056	14:06:00	D	2.20
105	BARNALA	TAPPA	S-NPP	75.48610	30.25224	14:06:00	D	4.00
106	BARNALA	TAPPA	S-NPP	75.68975	30.25358	14:06:00	D	5.30
107	BARNALA	TAPPA	S-NPP	75.70663	30.26012	14:06:00	D	4.00
108	BARNALA	TAPPA	S-NPP	75.47157	30.26124	14:06:00	D	5.80
109	BARNALA	TAPPA	S-NPP	75.59499	30.26129	14:06:00	D	3.30
110	BARNALA	TAPPA	S-NPP	75.48844	30.26266	14:06:00	D	1.80
111	BARNALA	TAPPA	S-NPP	75.47002	30.26491	14:06:00	D	1.60
112	BARNALA	TAPPA	S-NPP	75.58078	30.26526	14:06:00	D	5.50
113	BARNALA	TAPPA	S-NPP	75.66046	30.26669	14:06:00	D	7.00
114	BARNALA	TAPPA	S-NPP	75.49469	30.26830	14:06:00	D	5.40
115	BARNALA	TAPPA	S-NPP	75.49807	30.26859	14:06:00	D	5.40
116	BARNALA	TAPPA	S-NPP	75.50484	30.26916	14:06:00	D	4.40
117	BARNALA	TAPPA	S-NPP	75.53106	30.26964	14:06:00	D	3.80

118	BARNALA	TAPPA	S-NPP	75.65995	30.27181	14:06:00	D	7.00
119	BARNALA	TAPPA	S-NPP	75.50334	30.27261	14:06:00	D	7.70
120	BARNALA	TAPPA	S-NPP	75.50433	30.27423	14:06:00	D	1.70
121	BARNALA	TAPPA	S-NPP	75.52715	30.27446	14:06:00	D	3.80
122	BARNALA	TAPPA	S-NPP	75.47573	30.27557	14:06:00	D	5.70
123	BARNALA	TAPPA	S-NPP	75.52467	30.27595	14:06:00	D	4.10
124	BARNALA	TAPPA	S-NPP	75.64906	30.27607	14:06:00	D	4.80
125	BARNALA	TAPPA	S-NPP	75.52808	30.27624	14:06:00	D	6.80
126	BARNALA	TAPPA	S-NPP	75.47340	30.27672	14:06:00	D	2.40
127	BARNALA	TAPPA	S-NPP	75.47678	30.27701	14:06:00	D	2.40
128	BARNALA	TAPPA	S-NPP	75.48692	30.27787	14:06:00	D	2.00
129	BARNALA	TAPPA	S-NPP	75.64780	30.27860	14:06:00	D	4.70
130	BARNALA	TAPPA	S-NPP	75.51981	30.27901	14:06:00	D	3.40
131	BARNALA	TAPPA	S-NPP	75.52322	30.27928	14:06:00	D	3.40
132	BARNALA	TAPPA	S-NPP	75.52077	30.28074	14:06:00	D	4.10
133	BARNALA	TAPPA	S-NPP	75.52417	30.28103	14:06:00	D	4.10
134	BARNALA	TAPPA	S-NPP	75.48197	30.28116	14:06:00	D	7.20
135	BARNALA	TAPPA	S-NPP	75.48536	30.28143	14:06:00	D	3.70
136	BARNALA	TAPPA	S-NPP	75.48875	30.28169	14:06:00	D	3.70
137	BARNALA	TAPPA	S-NPP	75.49553	30.28223	14:06:00	D	2.60
138	BARNALA	TAPPA	S-NPP	75.62042	30.28400	14:06:00	D	2.00
139	BARNALA	TAPPA	S-NPP	75.52269	30.28436	14:06:00	D	3.40
140	BARNALA	TAPPA	S-NPP	75.48146	30.28623	14:06:00	D	3.20
141	BARNALA	TAPPA	S-NPP	75.49839	30.28757	14:06:00	D	2.90
142	BARNALA	TAPPA	S-NPP	75.63777	30.30878	14:06:00	D	2.90
143	BARNALA	TAPPA	S-NPP	75.63327	30.31874	14:06:00	D	8.40
144	BARNALA	TAPPA	S-NPP	75.63673	30.31902	14:06:00	D	8.40
145	BARNALA	TAPPA	S-NPP	75.58401	30.32513	14:06:00	D	8.40
146	BARNALA	TAPPA	S-NPP	75.58744	30.32541	14:06:00	D	8.40
147	BARNALA	TAPPA	S-NPP	75.63171	30.33409	14:06:00	D	5.60

148	BARNALA	TAPPA	S-NPP	75.63518	30.33437	14:06:00	D	5.60
149	BARNALA	TAPPA	S-NPP	75.63121	30.33921	14:06:00	D	3.50
150	BARNALA	TAPPA	S-NPP	75.31305	30.39343	14:06:00	D	6.60
151	BATHINDA	BATHINDA	S-NPP	74.78719	30.02763	14:06:00	D	4.40
152	BATHINDA	BATHINDA	S-NPP	74.71143	30.05033	14:06:00	D	14.10
153	BATHINDA	BATHINDA	S-NPP	74.69675	30.07336	14:06:00	D	3.00
154	BATHINDA	BATHINDA	S-NPP	74.76813	30.08950	14:06:00	D	6.60
155	BATHINDA	BATHINDA	S-NPP	74.99213	30.08957	14:06:00	D	7.20
156	BATHINDA	BATHINDA	S-NPP	74.74701	30.09082	14:06:00	D	10.20
157	BATHINDA	BATHINDA	S-NPP	74.79244	30.09167	14:06:00	D	11.80
158	BATHINDA	BATHINDA	S-NPP	74.74941	30.09270	14:06:00	D	11.00
159	BATHINDA	BATHINDA	S-NPP	74.78958	30.09435	14:06:00	D	14.60
160	BATHINDA	BATHINDA	S-NPP	74.90961	30.09717	14:06:00	D	7.80
161	BATHINDA	BATHINDA	S-NPP	74.90639	30.10397	14:06:00	D	8.90
162	BATHINDA	BATHINDA	S-NPP	74.90857	30.10694	14:06:00	D	7.20
163	BATHINDA	BATHINDA	S-NPP	74.91204	30.10936	14:06:00	D	8.20
164	BATHINDA	BATHINDA	S-NPP	74.90804	30.11182	14:06:00	D	7.20
165	BATHINDA	BATHINDA	S-NPP	74.68237	30.12432	14:06:00	D	16.80
166	BATHINDA	BATHINDA	S-NPP	75.05192	30.12457	14:06:00	D	3.70
167	BATHINDA	BATHINDA	S-NPP	75.05573	30.12605	14:06:00	D	6.60
168	BATHINDA	BATHINDA	S-NPP	74.64426	30.14044	14:06:00	D	4.50
169	BATHINDA	BATHINDA	S-NPP	75.10252	30.29055	12:30:00	D	5.20
170	BATHINDA	BATHINDA	S-NPP	75.10043	30.29444	12:30:00	D	10.30
171	BATHINDA	BATHINDA	S-NPP	74.79745	30.32328	12:30:00	D	5.00
172	BATHINDA	BATHINDA	S-NPP	74.79916	30.32873	14:06:00	D	15.40
173	BATHINDA	BATHINDA	S-NPP	74.88554	30.34923	12:30:00	D	5.40
174	BATHINDA	BATHINDA	S-NPP	75.03003	30.36541	12:30:00	D	6.50
175	BATHINDA	BATHINDA	S-NPP	75.02734	30.36795	12:30:00	D	6.40
176	BATHINDA	BATHINDA	S-NPP	75.11488	30.39731	14:06:00	D	11.30
177	BATHINDA	RAMPURA PHUL	S-NPP	75.33188	30.14068	12:30:00	D	4.80

178	BATHINDA	RAMPURA PHUL	S-NPP	75.19604	30.14240	14:06:00	D	4.20
179	BATHINDA	RAMPURA PHUL	S-NPP	75.19836	30.14240	14:06:00	D	3.50
180	BATHINDA	RAMPURA PHUL	S-NPP	75.17152	30.15007	14:06:00	D	6.20
181	BATHINDA	RAMPURA PHUL	S-NPP	75.16915	30.15025	14:06:00	D	3.50
182	BATHINDA	RAMPURA PHUL	S-NPP	75.17101	30.15504	14:06:00	D	6.20
183	BATHINDA	RAMPURA PHUL	S-NPP	75.17507	30.15574	14:06:00	D	5.00
184	BATHINDA	RAMPURA PHUL	S-NPP	75.34528	30.16445	14:06:00	D	11.90
185	BATHINDA	RAMPURA PHUL	S-NPP	75.34741	30.16545	14:06:00	D	13.50
186	BATHINDA	RAMPURA PHUL	S-NPP	75.23463	30.21849	12:30:00	D	10.10
187	BATHINDA	RAMPURA PHUL	S-NPP	75.23151	30.22157	12:30:00	D	17.60
188	BATHINDA	RAMPURA PHUL	S-NPP	75.19810	30.41429	14:06:00	D	7.70
189	BATHINDA	RAMPURA PHUL	S-NPP	75.15157	30.42043	14:06:00	D	10.80
190	BATHINDA	RAMPURA PHUL	S-NPP	75.19656	30.42925	14:06:00	D	11.80
191	BATHINDA	RAMPURA PHUL	S-NPP	75.19604	30.43424	14:06:00	D	11.80
192	BATHINDA	RAMPURA PHUL	S-NPP	75.16246	30.44144	14:06:00	D	18.10
193	BATHINDA	RAMPURA PHUL	S-NPP	75.22520	30.45698	14:06:00	D	13.90
194	BATHINDA	RAMPURA PHUL	S-NPP	75.22667	30.45700	14:06:00	D	6.00
195	BATHINDA	RAMPURA PHUL	S-NPP	75.21960	30.46143	14:06:00	D	10.20
196	BATHINDA	RAMPURA PHUL	S-NPP	75.21812	30.46146	14:06:00	D	8.50
197	BATHINDA	RAMPURA PHUL	S-NPP	75.10976	30.46804	12:30:00	D	8.20
198	BATHINDA	RAMPURA PHUL	S-NPP	75.22912	30.48251	14:06:00	D	21.30
199	BATHINDA	RAMPURA PHUL	S-NPP	75.16167	30.54129	12:30:00	D	9.90
200	BATHINDA	TALWANDI SABO	S-NPP	75.10948	29.84827	14:06:00	D	8.10
201	BATHINDA	TALWANDI SABO	S-NPP	75.05276	29.95400	14:06:00	D	9.20
202	BATHINDA	TALWANDI SABO	S-NPP	74.88684	29.97919	14:06:00	D	13.20
203	BATHINDA	TALWANDI SABO	S-NPP	75.15149	29.98726	14:06:00	D	8.00
204	BATHINDA	TALWANDI SABO	S-NPP	75.24195	29.98992	14:06:00	D	28.60
205	BATHINDA	TALWANDI SABO	S-NPP	74.95993	29.99548	14:06:00	D	3.50
206	BATHINDA	TALWANDI SABO	S-NPP	74.99227	29.99978	12:30:00	D	16.50
207	BATHINDA	TALWANDI SABO	S-NPP	74.98637	30.00129	12:30:00	D	8.60

208	BATHINDA	TALWANDI SABO	S-NPP	74.99435	30.00364	12:30:00	D	8.60
209	BATHINDA	TALWANDI SABO	S-NPP	75.25333	30.00595	14:06:00	D	9.70
210	BATHINDA	TALWANDI SABO	S-NPP	74.95074	30.00698	14:06:00	D	3.40
211	BATHINDA	TALWANDI SABO	S-NPP	75.07217	30.01031	14:06:00	D	4.70
212	BATHINDA	TALWANDI SABO	S-NPP	75.07673	30.01230	14:06:00	D	8.00
213	BATHINDA	TALWANDI SABO	S-NPP	74.93304	30.01283	14:06:00	D	21.80
214	BATHINDA	TALWANDI SABO	S-NPP	74.98950	30.01293	14:06:00	D	23.80
215	BATHINDA	TALWANDI SABO	S-NPP	75.10504	30.01333	12:30:00	D	5.90
216	BATHINDA	TALWANDI SABO	S-NPP	74.93346	30.01359	12:30:00	D	8.80
217	BATHINDA	TALWANDI SABO	S-NPP	75.00198	30.01404	14:06:00	D	10.20
218	BATHINDA	TALWANDI SABO	S-NPP	74.98760	30.01495	14:06:00	D	17.70
219	BATHINDA	TALWANDI SABO	S-NPP	74.93104	30.01521	14:06:00	D	19.80
220	BATHINDA	TALWANDI SABO	S-NPP	75.00010	30.01597	14:06:00	D	14.40
221	BATHINDA	TALWANDI SABO	S-NPP	74.86208	30.01929	14:06:00	D	1.60
222	BATHINDA	TALWANDI SABO	S-NPP	74.99331	30.02036	14:06:00	D	14.40
223	BATHINDA	TALWANDI SABO	S-NPP	74.86367	30.02133	14:06:00	D	6.80
224	BATHINDA	TALWANDI SABO	S-NPP	75.21193	30.02750	14:06:00	D	6.30
225	BATHINDA	TALWANDI SABO	S-NPP	75.21040	30.02805	14:06:00	D	11.40
226	BATHINDA	TALWANDI SABO	S-NPP	74.91705	30.02882	14:06:00	D	6.20
227	BATHINDA	TALWANDI SABO	S-NPP	74.96245	30.03029	14:06:00	D	3.10
228	BATHINDA	TALWANDI SABO	S-NPP	75.21141	30.03247	14:06:00	D	6.30
229	BATHINDA	TALWANDI SABO	S-NPP	75.20986	30.03303	14:06:00	D	11.20
230	BATHINDA	TALWANDI SABO	S-NPP	74.91031	30.03319	14:06:00	D	11.10
231	BATHINDA	TALWANDI SABO	S-NPP	75.08217	30.03606	14:06:00	D	3.30
232	BATHINDA	TALWANDI SABO	S-NPP	74.89742	30.03702	14:06:00	D	12.00
233	BATHINDA	TALWANDI SABO	S-NPP	75.03751	30.03704	14:06:00	D	10.90
234	BATHINDA	TALWANDI SABO	S-NPP	74.90359	30.03754	14:06:00	D	15.60
235	BATHINDA	TALWANDI SABO	S-NPP	75.03562	30.03873	14:06:00	D	5.00
236	BATHINDA	TALWANDI SABO	S-NPP	75.04193	30.03925	14:06:00	D	7.80
237	BATHINDA	TALWANDI SABO	S-NPP	75.10268	30.06624	12:30:00	D	6.50

238	BATHINDA	TALWANDI SABO	S-NPP	75.11053	30.06854	12:30:00	D	6.50
239	BATHINDA	TALWANDI SABO	S-NPP	75.10610	30.07089	12:30:00	D	11.30
240	BATHINDA	TALWANDI SABO	S-NPP	75.03194	30.07316	14:06:00	D	3.30
241	BATHINDA	TALWANDI SABO	S-NPP	75.06086	30.10048	14:06:00	D	8.40
242	BATHINDA	TALWANDI SABO	S-NPP	75.11803	30.10541	14:06:00	D	24.30
243	BATHINDA	TALWANDI SABO	S-NPP	75.16927	30.10981	14:06:00	D	5.10
244	BATHINDA	TALWANDI SABO	S-NPP	75.11700	30.11530	14:06:00	D	7.40
245	BATHINDA	TALWANDI SABO	S-NPP	75.15536	30.11862	14:06:00	D	3.20
246	BATHINDA	TALWANDI SABO	S-NPP	75.17465	30.12029	14:06:00	D	2.50
247	BATHINDA	TALWANDI SABO	S-NPP	75.12286	30.12081	14:06:00	D	7.70
248	BATHINDA	TALWANDI SABO	S-NPP	75.12046	30.12132	14:06:00	D	4.70
249	BATHINDA	TALWANDI SABO	S-NPP	75.12925	30.12136	14:06:00	D	7.70
250	BATHINDA	TALWANDI SABO	S-NPP	75.12686	30.12183	14:06:00	D	5.80
251	BATHINDA	TALWANDI SABO	S-NPP	75.13564	30.12192	14:06:00	D	7.40
252	BATHINDA	TALWANDI SABO	S-NPP	75.13326	30.12234	14:06:00	D	5.80
253	BATHINDA	TALWANDI SABO	S-NPP	75.13409	30.13677	14:06:00	D	5.10
254	BATHINDA	TALWANDI SABO	S-NPP	75.13166	30.13720	14:06:00	D	7.40
255	FARIDKOT	FARIDKOT	S-NPP	74.79739	30.51912	12:30:00	D	10.10
256	FARIDKOT	FARIDKOT	S-NPP	74.79560	30.52094	12:30:00	D	10.30
257	FARIDKOT	FARIDKOT	S-NPP	74.86436	30.54896	12:30:00	D	4.20
258	FARIDKOT	FARIDKOT	S-NPP	74.86369	30.55365	12:30:00	D	5.90
259	FARIDKOT	FARIDKOT	S-NPP	74.65133	30.65144	14:06:00	D	4.60
260	FARIDKOT	FARIDKOT	S-NPP	74.79758	30.67848	14:06:00	D	8.50
261	FARIDKOT	FARIDKOT	S-NPP	74.84965	30.72241	14:06:00	D	11.90
262	FARIDKOT	FARIDKOT	S-NPP	74.60242	30.73829	14:06:00	D	3.60
263	FARIDKOT	FARIDKOT	S-NPP	74.57655	30.75072	14:06:00	D	5.70
264	FARIDKOT	FARIDKOT	S-NPP	74.57601	30.75554	14:06:00	D	5.70
265	FARIDKOT	FARIDKOT	S-NPP	74.58813	30.75657	14:06:00	D	7.50
266	FARIDKOT	FARIDKOT	S-NPP	74.59420	30.75709	14:06:00	D	7.60
267	FARIDKOT	FARIDKOT	S-NPP	74.79291	30.75901	14:06:00	D	7.30

268	FARIDKOT	FARIDKOT	S-NPP	74.80488	30.76492	14:06:00	D	6.90
269	FARIDKOT	FARIDKOT	S-NPP	74.70068	30.80040	14:06:00	D	10.90
270	FARIDKOT	FARIDKOT	S-NPP	74.58283	30.80482	14:06:00	D	15.60
271	FARIDKOT	FARIDKOT	S-NPP	74.75644	30.80519	14:06:00	D	12.40
272	FARIDKOT	FARIDKOT	S-NPP	74.75591	30.81007	14:06:00	D	12.40
273	FARIDKOT	JAITO	S-NPP	75.00021	30.44833	12:30:00	D	7.40
274	FARIDKOT	JAITO	S-NPP	75.00374	30.45258	12:30:00	D	9.60
275	FATEHGARH SAHIB	ALMOH	S-NPP	76.29205	30.54745	14:06:00	D	3.00
276	FATEHGARH SAHIB	ALMOH	S-NPP	76.19169	30.55630	14:06:00	D	5.40
277	FATEHGARH SAHIB	ALMOH	S-NPP	76.18690	30.56663	14:06:00	D	2.20
278	FATEHGARH SAHIB	ALMOH	S-NPP	76.22474	30.56941	14:06:00	D	2.40
279	FATEHGARH SAHIB	BASSI PATHANAN	S-NPP	76.45269	30.73984	14:06:00	D	2.60
280	FATEHGARH SAHIB	FATEHGARH SAHIB	S-NPP	76.40166	30.54160	14:06:00	D	2.90
281	FATEHGARH SAHIB	KHAMANOH	S-NPP	76.30788	30.77530	14:06:00	D	3.10
282	FATEHGARH SAHIB	KHAMANOH	S-NPP	76.33249	30.80405	14:06:00	D	9.90
283	FIROZPUR	ABOHAR	S-NPP	74.42060	29.96116	14:06:00	D	5.00
284	FIROZPUR	ABOHAR	S-NPP	74.41833	29.96210	14:06:00	D	8.10
285	FIROZPUR	ABOHAR	S-NPP	74.42410	29.96260	14:06:00	D	8.10
286	FIROZPUR	ABOHAR	S-NPP	74.42007	29.96589	14:06:00	D	7.90
287	FIROZPUR	ABOHAR	S-NPP	74.45283	30.01776	14:06:00	D	8.70
288	FIROZPUR	ABOHAR	S-NPP	74.32384	30.15486	14:06:00	D	5.80
289	FIROZPUR	ABOHAR	S-NPP	74.34637	30.19172	14:06:00	D	4.50
290	FIROZPUR	FAZILKA	S-NPP	73.98032	30.49132	14:06:00	D	7.10
291	FIROZPUR	FAZILKA	S-NPP	73.98584	30.49182	14:06:00	D	5.50
292	FIROZPUR	FIROZPUR	S-NPP	74.88669	30.77166	14:06:00	D	5.00
293	FIROZPUR	FIROZPUR	S-NPP	74.89301	30.77217	14:06:00	D	7.40
294	FIROZPUR	FIROZPUR	S-NPP	74.50330	30.80750	14:06:00	D	16.70
295	FIROZPUR	FIROZPUR	S-NPP	74.50930	30.80803	14:06:00	D	16.70
296	FIROZPUR	FIROZPUR	S-NPP	74.51531	30.80857	14:06:00	D	9.70
297	FIROZPUR	FIROZPUR	S-NPP	74.50257	30.81176	14:06:00	D	7.90



298	FIROZPUR	FIROZPUR	S-NPP	74.50277	30.81230	14:06:00	D	7.30
299	FIROZPUR	FIROZPUR	S-NPP	74.51462	30.81276	14:06:00	D	7.10
300	FIROZPUR	FIROZPUR	S-NPP	74.51479	30.81337	14:06:00	D	4.40
301	FIROZPUR	FIROZPUR	S-NPP	74.51408	30.81756	14:06:00	D	7.10
302	FIROZPUR	FIROZPUR	S-NPP	74.51426	30.81818	14:06:00	D	4.40
303	FIROZPUR	FIROZPUR	S-NPP	74.77979	30.82198	14:06:00	D	9.50
304	FIROZPUR	FIROZPUR	S-NPP	74.78603	30.82252	14:06:00	D	12.10
305	FIROZPUR	FIROZPUR	S-NPP	74.59283	30.82406	14:06:00	D	12.40
306	FIROZPUR	FIROZPUR	S-NPP	74.59286	30.82520	14:06:00	D	10.00
307	FIROZPUR	FIROZPUR	S-NPP	74.58012	30.82788	14:06:00	D	7.50
308	FIROZPUR	FIROZPUR	S-NPP	74.58018	30.82894	14:06:00	D	7.60
309	FIROZPUR	FIROZPUR	S-NPP	74.62890	30.83328	14:06:00	D	5.90
310	FIROZPUR	FIROZPUR	S-NPP	74.60394	30.83472	14:06:00	D	8.00
311	FIROZPUR	FIROZPUR	S-NPP	74.70936	30.83551	14:06:00	D	6.30
312	FIROZPUR	FIROZPUR	S-NPP	74.60397	30.83594	14:06:00	D	10.80
313	FIROZPUR	FIROZPUR	S-NPP	74.62840	30.83674	14:06:00	D	8.70
314	FIROZPUR	FIROZPUR	S-NPP	74.70884	30.84038	14:06:00	D	29.00
315	FIROZPUR	FIROZPUR	S-NPP	74.70849	30.84332	14:06:00	D	22.30
316	FIROZPUR	FIROZPUR	S-NPP	74.80218	30.84860	14:06:00	D	7.90
317	FIROZPUR	FIROZPUR	S-NPP	74.80199	30.85094	14:06:00	D	6.80
318	FIROZPUR	FIROZPUR	S-NPP	74.68884	30.85152	14:06:00	D	7.20
319	FIROZPUR	FIROZPUR	S-NPP	74.68871	30.85331	14:06:00	D	10.20
320	FIROZPUR	FIROZPUR	S-NPP	74.50212	30.86991	14:06:00	D	9.40
321	FIROZPUR	FIROZPUR	S-NPP	74.52626	30.87199	14:06:00	D	6.70
322	FIROZPUR	FIROZPUR	S-NPP	74.52573	30.87680	14:06:00	D	6.70
323	FIROZPUR	FIROZPUR	S-NPP	74.81134	30.88133	14:06:00	D	19.70
324	FIROZPUR	FIROZPUR	S-NPP	74.53676	30.88747	14:06:00	D	23.40
325	FIROZPUR	FIROZPUR	S-NPP	74.54282	30.88800	14:06:00	D	23.40
326	FIROZPUR	FIROZPUR	S-NPP	74.68185	30.88894	12:30:00	D	12.20
327	FIROZPUR	FIROZPUR	S-NPP	74.72852	30.88920	14:06:00	D	5.90

328	FIROZPUR	FIROZPUR	S-NPP	74.67998	30.89111	12:30:00	D	8.30
329	FIROZPUR	FIROZPUR	S-NPP	74.78415	30.89882	14:06:00	D	7.00
330	FIROZPUR	FIROZPUR	S-NPP	74.73367	30.89948	14:06:00	D	5.80
331	FIROZPUR	FIROZPUR	S-NPP	74.74612	30.90053	14:06:00	D	14.50
332	FIROZPUR	FIROZPUR	S-NPP	74.70895	30.90746	12:30:00	D	4.70
333	FIROZPUR	FIROZPUR	S-NPP	74.70823	30.91200	12:30:00	D	4.20
334	FIROZPUR	FIROZPUR	S-NPP	74.82653	30.91722	14:06:00	D	9.20
335	FIROZPUR	FIROZPUR	S-NPP	74.70618	30.92170	14:06:00	D	5.50
336	FIROZPUR	FIROZPUR	S-NPP	74.81866	30.93140	14:06:00	D	27.20
337	FIROZPUR	FIROZPUR	S-NPP	74.72997	30.93360	14:06:00	D	11.10
338	FIROZPUR	FIROZPUR	S-NPP	74.52905	30.93410	14:06:00	D	5.00
339	FIROZPUR	FIROZPUR	S-NPP	74.53146	30.93563	14:06:00	D	5.80
340	FIROZPUR	FIROZPUR	S-NPP	74.72217	30.94768	14:06:00	D	13.50
341	FIROZPUR	FIROZPUR	S-NPP	74.71951	30.94975	14:06:00	D	12.80
342	FIROZPUR	FIROZPUR	S-NPP	74.80976	30.95535	14:06:00	D	5.40
343	FIROZPUR	FIROZPUR	S-NPP	74.64636	30.95568	14:06:00	D	4.10
344	FIROZPUR	FIROZPUR	S-NPP	74.64974	30.95874	14:06:00	D	11.10
345	FIROZPUR	FIROZPUR	S-NPP	74.71685	30.97412	14:06:00	D	14.50
346	FIROZPUR	FIROZPUR	S-NPP	74.67639	31.00020	14:06:00	D	5.30
347	FIROZPUR	FIROZPUR	S-NPP	74.68920	31.05535	14:06:00	D	3.60
348	FIROZPUR	FIROZPUR	S-NPP	74.68718	31.05803	14:06:00	D	6.10
349	FIROZPUR	JALALABAD	S-NPP	74.27243	30.52691	14:06:00	D	6.40
350	FIROZPUR	JALALABAD	S-NPP	74.28234	30.54210	14:06:00	D	8.50
351	FIROZPUR	JALALABAD	S-NPP	74.35823	30.54407	14:06:00	D	7.50
352	FIROZPUR	JALALABAD	S-NPP	74.25824	30.54947	14:06:00	D	4.60
353	FIROZPUR	JALALABAD	S-NPP	74.26921	30.55522	14:06:00	D	5.80
354	FIROZPUR	JALALABAD	S-NPP	74.30853	30.56833	14:06:00	D	4.50
355	FIROZPUR	JALALABAD	S-NPP	74.34337	30.57148	14:06:00	D	7.60
356	FIROZPUR	JALALABAD	S-NPP	74.29066	30.57149	14:06:00	D	11.70
357	FIROZPUR	JALALABAD	S-NPP	74.34920	30.57201	14:06:00	D	7.60

358	FIROZPUR	JALALABAD	S-NPP	74.29012	30.57621	14:06:00	D	11.70
359	FIROZPUR	JALALABAD	S-NPP	74.34866	30.57676	14:06:00	D	7.70
360	FIROZPUR	JALALABAD	S-NPP	74.24699	30.57854	14:06:00	D	4.00
361	FIROZPUR	JALALABAD	S-NPP	74.27805	30.57988	14:06:00	D	2.30
362	FIROZPUR	JALALABAD	S-NPP	74.24873	30.58195	14:06:00	D	11.00
363	FIROZPUR	JALALABAD	S-NPP	74.31272	30.58306	14:06:00	D	9.70
364	FIROZPUR	JALALABAD	S-NPP	74.24644	30.58325	14:06:00	D	4.00
365	FIROZPUR	JALALABAD	S-NPP	74.31056	30.58395	14:06:00	D	9.40
366	FIROZPUR	JALALABAD	S-NPP	74.32800	30.58543	14:06:00	D	2.70
367	FIROZPUR	JALALABAD	S-NPP	74.30421	30.58819	14:06:00	D	5.90
368	FIROZPUR	JALALABAD	S-NPP	74.30585	30.59199	14:06:00	D	5.40
369	FIROZPUR	JALALABAD	S-NPP	74.30367	30.59292	14:06:00	D	6.50
370	FIROZPUR	JALALABAD	S-NPP	74.35234	30.59626	14:06:00	D	10.10
371	FIROZPUR	JALALABAD	S-NPP	74.35023	30.59689	14:06:00	D	18.40
372	FIROZPUR	JALALABAD	S-NPP	74.27942	30.60039	14:06:00	D	6.20
373	FIROZPUR	JALALABAD	S-NPP	74.34597	30.60047	14:06:00	D	28.40
374	FIROZPUR	JALALABAD	S-NPP	74.34385	30.60114	14:06:00	D	18.40
375	FIROZPUR	JALALABAD	S-NPP	74.37464	30.60791	14:06:00	D	34.40
376	FIROZPUR	JALALABAD	S-NPP	74.32746	30.60834	14:06:00	D	2.40
377	FIROZPUR	JALALABAD	S-NPP	74.37254	30.60838	14:06:00	D	28.00
378	FIROZPUR	JALALABAD	S-NPP	74.32529	30.60912	14:06:00	D	3.80
379	FIROZPUR	JALALABAD	S-NPP	74.37410	30.61266	14:06:00	D	34.40
380	FIROZPUR	JALALABAD	S-NPP	74.37199	30.61314	14:06:00	D	28.00
381	FIROZPUR	JALALABAD	S-NPP	74.38584	30.61375	14:06:00	D	4.70
382	FIROZPUR	JALALABAD	S-NPP	74.27201	30.61406	14:06:00	D	5.60
383	FIROZPUR	JALALABAD	S-NPP	74.38373	30.61414	14:06:00	D	25.00
384	FIROZPUR	JALALABAD	S-NPP	74.39757	30.61483	14:06:00	D	8.30
385	FIROZPUR	JALALABAD	S-NPP	74.26569	30.61828	14:06:00	D	4.50
386	FIROZPUR	JALALABAD	S-NPP	74.32948	30.62384	14:06:00	D	15.50
387	FIROZPUR	JALALABAD	S-NPP	74.40616	30.62568	14:06:00	D	7.20

388	FIROZPUR	JALALABAD	S-NPP	74.35282	30.62587	14:06:00	D	3.10
389	FIROZPUR	JALALABAD	S-NPP	74.31730	30.62757	14:06:00	D	5.80
390	FIROZPUR	JALALABAD	S-NPP	74.26460	30.62772	14:06:00	D	3.70
391	FIROZPUR	JALALABAD	S-NPP	74.32311	30.62807	14:06:00	D	5.80
392	FIROZPUR	JALALABAD	S-NPP	74.22948	30.62938	14:06:00	D	6.20
393	FIROZPUR	JALALABAD	S-NPP	74.23415	30.63932	14:06:00	D	7.20
394	FIROZPUR	JALALABAD	S-NPP	74.41044	30.64048	14:06:00	D	19.30
395	FIROZPUR	JALALABAD	S-NPP	74.38048	30.64268	14:06:00	D	6.40
396	FIROZPUR	JALALABAD	S-NPP	74.34481	30.64435	14:06:00	D	2.50
397	FIROZPUR	JALALABAD	S-NPP	74.27347	30.65237	14:06:00	D	5.20
398	FIROZPUR	JALALABAD	S-NPP	74.36713	30.65591	14:06:00	D	6.50
399	FIROZPUR	JALALABAD	S-NPP	74.28396	30.66286	14:06:00	D	16.20
400	FIROZPUR	JALALABAD	S-NPP	74.28976	30.66338	14:06:00	D	11.90
401	FIROZPUR	JALALABAD	S-NPP	74.30137	30.66442	14:06:00	D	5.70
402	FIROZPUR	JALALABAD	S-NPP	74.33630	30.66756	14:06:00	D	9.10
403	FIROZPUR	JALALABAD	S-NPP	74.27132	30.67127	14:06:00	D	6.00
404	FIROZPUR	JALALABAD	S-NPP	74.29449	30.67337	14:06:00	D	8.30
405	FIROZPUR	JALALABAD	S-NPP	74.25345	30.67442	14:06:00	D	3.90
406	FIROZPUR	JALALABAD	S-NPP	74.36501	30.67493	14:06:00	D	4.00
407	FIROZPUR	JALALABAD	S-NPP	74.38848	30.67703	14:06:00	D	4.70
408	FIROZPUR	JALALABAD	S-NPP	74.32885	30.68126	14:06:00	D	13.00
409	FIROZPUR	JALALABAD	S-NPP	74.33469	30.68179	14:06:00	D	31.70
410	FIROZPUR	JALALABAD	S-NPP	74.37566	30.68549	14:06:00	D	7.90
411	FIROZPUR	JALALABAD	S-NPP	74.28708	30.68704	14:06:00	D	3.50
412	FIROZPUR	JALALABAD	S-NPP	74.28436	30.68741	14:06:00	D	5.70
413	FIROZPUR	JALALABAD	S-NPP	74.37512	30.69025	14:06:00	D	7.90
414	FIROZPUR	JALALABAD	S-NPP	74.38100	30.69078	14:06:00	D	6.00
415	FIROZPUR	JALALABAD	S-NPP	74.31559	30.69443	14:06:00	D	5.00
416	FIROZPUR	JALALABAD	S-NPP	74.31290	30.69461	14:06:00	D	5.60
417	FIROZPUR	JALALABAD	S-NPP	74.30344	30.69810	14:06:00	D	9.60

418	FIROZPUR	JALALABAD	S-NPP	74.35647	30.69816	14:06:00	D	12.90
419	FIROZPUR	JALALABAD	S-NPP	74.30072	30.69836	14:06:00	D	7.50
420	FIROZPUR	JALALABAD	S-NPP	74.35970	30.69856	14:06:00	D	8.40
421	FIROZPUR	JALALABAD	S-NPP	74.31982	30.70919	14:06:00	D	3.60
422	FIROZPUR	JALALABAD	S-NPP	74.29603	30.71177	14:06:00	D	6.30
423	FIROZPUR	JALALABAD	S-NPP	74.41916	30.75175	14:06:00	D	6.10
424	FIROZPUR	JALALABAD	S-NPP	74.40680	30.75550	14:06:00	D	6.50
425	FIROZPUR	JALALABAD	S-NPP	74.32178	30.77202	14:06:00	D	2.60
426	FIROZPUR	JALALABAD	S-NPP	74.31268	30.79594	14:06:00	D	3.60
427	FIROZPUR	ZIRA	S-NPP	74.92818	30.92580	14:06:00	D	6.20
428	FIROZPUR	ZIRA	S-NPP	75.05843	30.92664	14:06:00	D	2.30
429	FIROZPUR	ZIRA	S-NPP	75.01192	30.93280	14:06:00	D	5.90
430	FIROZPUR	ZIRA	S-NPP	75.08248	30.94872	14:06:00	D	4.00
431	FIROZPUR	ZIRA	S-NPP	74.83987	30.94958	14:06:00	D	8.60
432	FIROZPUR	ZIRA	S-NPP	75.20953	30.98867	14:06:00	D	6.40
433	FIROZPUR	ZIRA	S-NPP	75.09146	30.98971	14:06:00	D	5.80
434	FIROZPUR	ZIRA	S-NPP	74.96404	30.99437	14:06:00	D	9.10
435	FIROZPUR	ZIRA	S-NPP	75.25489	31.00742	14:06:00	D	3.30
436	FIROZPUR	ZIRA	S-NPP	75.25683	31.00886	14:06:00	D	4.30
437	FIROZPUR	ZIRA	S-NPP	75.09668	31.04530	14:06:00	D	5.00
438	FIROZPUR	ZIRA	S-NPP	75.10741	31.12186	14:06:00	D	3.50
439	JALANDHAR	NAKODAR	S-NPP	75.44266	31.19972	14:06:00	D	2.30
440	JALANDHAR	NAKODAR	S-NPP	75.41086	31.22022	14:06:00	D	2.10
441	JALANDHAR	PHILLAUR	S-NPP	75.92065	31.04179	14:06:00	D	4.20
442	JALANDHAR	PHILLAUR	S-NPP	75.91836	31.04217	14:06:00	D	3.90
443	JALANDHAR	PHILLAUR	S-NPP	75.81646	31.05001	14:06:00	D	4.40
444	JALANDHAR	PHILLAUR	S-NPP	75.81904	31.06071	14:06:00	D	1.30
445	JALANDHAR	PHILLAUR	S-NPP	75.89545	31.07164	14:06:00	D	4.40
446	JALANDHAR	PHILLAUR	S-NPP	75.79880	31.08020	14:06:00	D	2.30
447	JALANDHAR	PHILLAUR	S-NPP	75.79829	31.08541	14:06:00	D	2.30

448	JALANDHAR	PHILLAUR	S-NPP	75.91190	31.09399	14:06:00	D	3.30
449	JALANDHAR	PHILLAUR	S-NPP	75.68056	31.16647	14:06:00	D	4.20
450	JALANDHAR	PHILLAUR	S-NPP	75.68415	31.16674	14:06:00	D	6.30
451	JALANDHAR	SHAHKOT	S-NPP	75.09974	31.13133	14:06:00	D	5.60
452	LUDHIANA	JAGRAON	S-NPP	75.43603	30.59414	14:06:00	D	3.50
453	LUDHIANA	JAGRAON	S-NPP	75.43943	30.59441	14:06:00	D	3.50
454	LUDHIANA	JAGRAON	S-NPP	75.44624	30.59494	14:06:00	D	2.80
455	LUDHIANA	JAGRAON	S-NPP	75.41177	30.59736	14:06:00	D	9.80
456	LUDHIANA	JAGRAON	S-NPP	75.41464	30.60269	14:06:00	D	13.50
457	LUDHIANA	JAGRAON	S-NPP	75.40395	30.60695	14:06:00	D	4.40
458	LUDHIANA	JAGRAON	S-NPP	75.40734	30.60722	14:06:00	D	16.20
459	LUDHIANA	JAGRAON	S-NPP	75.41412	30.60775	14:06:00	D	10.20
460	LUDHIANA	JAGRAON	S-NPP	75.42090	30.60829	14:06:00	D	3.30
461	LUDHIANA	JAGRAON	S-NPP	75.40343	30.61201	14:06:00	D	4.40
462	LUDHIANA	JAGRAON	S-NPP	75.42038	30.61336	14:06:00	D	3.30
463	LUDHIANA	JAGRAON	S-NPP	75.40292	30.61708	14:06:00	D	17.20
464	LUDHIANA	JAGRAON	S-NPP	75.40630	30.61735	14:06:00	D	9.50
465	LUDHIANA	JAGRAON	S-NPP	75.40578	30.62241	14:06:00	D	9.50
466	LUDHIANA	JAGRAON	S-NPP	75.46593	30.63745	14:06:00	D	4.20
467	LUDHIANA	JAGRAON	S-NPP	75.54283	30.72365	14:06:00	D	5.80
468	LUDHIANA	JAGRAON	S-NPP	75.54629	30.72392	14:06:00	D	8.20
469	LUDHIANA	JAGRAON	S-NPP	75.38863	30.72476	12:30:00	D	3.50
470	LUDHIANA	JAGRAON	S-NPP	75.52451	30.73252	14:06:00	D	2.90
471	LUDHIANA	JAGRAON	S-NPP	75.50278	30.74110	14:06:00	D	3.70
472	LUDHIANA	JAGRAON	S-NPP	75.54080	30.74410	14:06:00	D	2.10
473	LUDHIANA	JAGRAON	S-NPP	75.48692	30.76039	14:06:00	D	4.00
474	LUDHIANA	JAGRAON	S-NPP	75.57991	30.77300	14:06:00	D	2.70
475	LUDHIANA	JAGRAON	S-NPP	75.45681	30.79523	02:48:00	N	0.30
476	LUDHIANA	JAGRAON	S-NPP	75.64445	30.79890	14:06:00	D	5.10
477	LUDHIANA	JAGRAON	S-NPP	75.60033	30.81602	14:06:00	D	3.50

478	LUDHIANA	JAGRAON	S-NPP	75.58801	30.81688	14:06:00	D	4.80
479	LUDHIANA	JAGRAON	S-NPP	75.54913	30.81908	14:06:00	D	3.30
480	LUDHIANA	JAGRAON	S-NPP	75.47437	30.83389	14:06:00	D	1.80
481	LUDHIANA	JAGRAON	S-NPP	75.51520	30.87828	14:06:00	D	3.10
482	LUDHIANA	JAGRAON	S-NPP	75.51926	30.94705	12:30:00	D	3.60
483	LUDHIANA	JAGRAON	S-NPP	75.51508	30.95305	12:30:00	D	11.20
484	LUDHIANA	JAGRAON	S-NPP	75.51670	30.95367	12:30:00	D	5.10
485	LUDHIANA	KHANNA	S-NPP	76.07793	30.73744	14:06:00	D	1.90
486	LUDHIANA	KHANNA	S-NPP	76.07835	30.73818	14:06:00	D	2.10
487	LUDHIANA	KHANNA	S-NPP	76.08890	30.78080	14:06:00	D	2.40
488	LUDHIANA	LUDHIANA EAST	S-NPP	75.84335	30.68283	14:06:00	D	2.90
489	LUDHIANA	LUDHIANA EAST	S-NPP	75.83564	30.68747	14:06:00	D	13.50
490	LUDHIANA	LUDHIANA EAST	S-NPP	75.87967	30.72244	14:06:00	D	2.90
491	LUDHIANA	LUDHIANA EAST	S-NPP	75.87889	30.72299	14:06:00	D	3.00
492	LUDHIANA	LUDHIANA EAST	S-NPP	75.82803	30.72878	14:06:00	D	1.20
493	LUDHIANA	LUDHIANA EAST	S-NPP	75.82717	30.72967	14:06:00	D	1.30
494	LUDHIANA	LUDHIANA EAST	S-NPP	75.85921	30.73730	14:06:00	D	11.50
495	LUDHIANA	LUDHIANA EAST	S-NPP	75.85871	30.74250	14:06:00	D	11.50
496	LUDHIANA	LUDHIANA EAST	S-NPP	75.73194	30.74339	14:06:00	D	5.20
497	LUDHIANA	LUDHIANA EAST	S-NPP	75.83598	30.75129	14:06:00	D	5.80
498	LUDHIANA	LUDHIANA EAST	S-NPP	75.94001	30.77494	14:06:00	D	11.80
499	LUDHIANA	LUDHIANA EAST	S-NPP	76.12067	30.91491	14:06:00	D	2.50
500	LUDHIANA	LUDHIANA EAST	S-NPP	76.06229	30.93180	14:06:00	D	7.50
501	LUDHIANA	LUDHIANA EAST	S-NPP	76.09916	30.96016	14:06:00	D	10.20
502	LUDHIANA	LUDHIANA EAST	S-NPP	76.09744	30.96117	14:06:00	D	9.80
503	LUDHIANA	LUDHIANA EAST	S-NPP	76.13145	30.96382	14:06:00	D	2.60
504	LUDHIANA	LUDHIANA EAST	S-NPP	76.12894	30.96763	14:06:00	D	5.20
505	LUDHIANA	LUDHIANA EAST	S-NPP	76.13273	30.96790	14:06:00	D	5.20
506	LUDHIANA	LUDHIANA WEST	S-NPP	75.81180	30.77564	14:06:00	D	4.80
507	LUDHIANA	LUDHIANA WEST	S-NPP	75.84232	30.79899	14:06:00	D	4.30

508	LUDHIANA	LUDHIANA WEST	S-NPP	75.72641	30.80028	14:06:00	D	3.10
509	LUDHIANA	LUDHIANA WEST	S-NPP	75.65049	30.80976	14:06:00	D	2.30
510	LUDHIANA	LUDHIANA WEST	S-NPP	75.71473	30.80977	14:06:00	D	2.70
511	LUDHIANA	LUDHIANA WEST	S-NPP	75.61083	30.81689	14:06:00	D	3.10
512	LUDHIANA	LUDHIANA WEST	S-NPP	75.69595	30.81866	14:06:00	D	2.80
513	LUDHIANA	LUDHIANA WEST	S-NPP	75.67068	30.82180	14:06:00	D	5.20
514	LUDHIANA	LUDHIANA WEST	S-NPP	75.66898	30.82300	14:06:00	D	5.50
515	LUDHIANA	LUDHIANA WEST	S-NPP	75.61098	30.83415	14:06:00	D	3.70
516	LUDHIANA	LUDHIANA WEST	S-NPP	75.82952	30.84022	14:06:00	D	3.60
517	LUDHIANA	LUDHIANA WEST	S-NPP	75.70290	30.84117	14:06:00	D	2.50
518	LUDHIANA	PAYAL	S-NPP	75.91937	30.61505	14:06:00	D	3.20
519	LUDHIANA	PAYAL	S-NPP	75.92110	30.61518	14:06:00	D	3.10
520	LUDHIANA	PAYAL	S-NPP	75.88827	30.63378	14:06:00	D	7.30
521	LUDHIANA	PAYAL	S-NPP	75.98534	30.63614	14:06:00	D	1.40
522	LUDHIANA	PAYAL	S-NPP	75.97849	30.65104	14:06:00	D	3.90
523	LUDHIANA	PAYAL	S-NPP	75.88831	30.67056	14:06:00	D	4.00
524	LUDHIANA	PAYAL	S-NPP	76.05832	30.67288	14:06:00	D	4.90
525	LUDHIANA	PAYAL	S-NPP	76.06204	30.67316	14:06:00	D	4.90
526	LUDHIANA	PAYAL	S-NPP	75.88003	30.68043	14:06:00	D	10.10
527	LUDHIANA	PAYAL	S-NPP	75.88366	30.68071	14:06:00	D	10.10
528	LUDHIANA	PAYAL	S-NPP	75.90908	30.68268	14:06:00	D	11.50
529	LUDHIANA	PAYAL	S-NPP	75.87227	30.68508	14:06:00	D	2.70
530	LUDHIANA	PAYAL	S-NPP	75.95562	30.69682	14:06:00	D	1.30
531	LUDHIANA	PAYAL	S-NPP	75.97030	30.69795	14:06:00	D	1.70
532	LUDHIANA	PAYAL	S-NPP	76.04463	30.69838	14:06:00	D	7.70
533	LUDHIANA	PAYAL	S-NPP	75.94779	30.70148	14:06:00	D	6.00
534	LUDHIANA	PAYAL	S-NPP	75.99138	30.71016	14:06:00	D	21.20
535	LUDHIANA	PAYAL	S-NPP	75.99507	30.71045	14:06:00	D	27.70
536	LUDHIANA	PAYAL	S-NPP	76.06590	30.71063	14:06:00	D	2.80
537	LUDHIANA	PAYAL	S-NPP	75.99038	30.72066	14:06:00	D	5.70



538	LUDHIANA	PAYAL	S-NPP	76.04063	30.73475	14:06:00	D	2.70
539	LUDHIANA	PAYAL	S-NPP	76.04111	30.73525	14:06:00	D	3.10
540	LUDHIANA	PAYAL	S-NPP	76.06097	30.75747	14:06:00	D	2.60
541	LUDHIANA	PAYAL	S-NPP	76.03759	30.76637	14:06:00	D	4.90
542	LUDHIANA	PAYAL	S-NPP	75.97779	30.76722	14:06:00	D	3.00
543	LUDHIANA	PAYAL	S-NPP	76.02446	30.78661	14:06:00	D	3.40
544	LUDHIANA	PAYAL	S-NPP	76.00813	30.80127	14:06:00	D	8.30
545	LUDHIANA	RAIKOT	S-NPP	75.49558	30.58337	14:06:00	D	3.30
546	LUDHIANA	RAIKOT	S-NPP	75.64663	30.59301	14:06:00	D	4.60
547	LUDHIANA	RAIKOT	S-NPP	75.56740	30.59399	14:06:00	D	2.00
548	LUDHIANA	RAIKOT	S-NPP	75.47640	30.60240	14:06:00	D	7.70
549	LUDHIANA	RAIKOT	S-NPP	75.60807	30.60741	14:06:00	D	3.50
550	LUDHIANA	RAIKOT	S-NPP	75.55890	30.60880	14:06:00	D	2.70
551	LUDHIANA	RAIKOT	S-NPP	75.51994	30.61606	14:06:00	D	3.10
552	LUDHIANA	RAIKOT	S-NPP	75.67299	30.62792	14:06:00	D	5.50
553	LUDHIANA	RAIKOT	S-NPP	75.66194	30.63225	14:06:00	D	7.20
554	LUDHIANA	RAIKOT	S-NPP	75.67248	30.63306	14:06:00	D	5.50
555	LUDHIANA	RAIKOT	S-NPP	75.66493	30.63767	14:06:00	D	4.90
556	LUDHIANA	RAIKOT	S-NPP	75.51684	30.64665	14:06:00	D	9.10
557	LUDHIANA	RAIKOT	S-NPP	75.52028	30.64692	14:06:00	D	16.80
558	LUDHIANA	RAIKOT	S-NPP	75.51632	30.65175	14:06:00	D	9.10
559	LUDHIANA	RAIKOT	S-NPP	75.71680	30.65208	14:06:00	D	3.50
560	LUDHIANA	RAIKOT	S-NPP	75.53941	30.66389	14:06:00	D	2.40
561	LUDHIANA	RAIKOT	S-NPP	75.78645	30.67315	14:06:00	D	11.20
562	LUDHIANA	RAIKOT	S-NPP	75.66136	30.67368	14:06:00	D	3.70
563	LUDHIANA	RAIKOT	S-NPP	75.71426	30.67789	14:06:00	D	6.00
564	LUDHIANA	RAIKOT	S-NPP	75.71779	30.67817	14:06:00	D	6.00
565	LUDHIANA	RAIKOT	S-NPP	75.64127	30.69798	14:06:00	D	4.20
566	LUDHIANA	RAIKOT	S-NPP	75.64009	30.70007	14:06:00	D	7.40
567	LUDHIANA	RAIKOT	S-NPP	75.64075	30.70311	14:06:00	D	4.20

568	LUDHIANA	RAIKOT	S-NPP	75.57345	30.70792	14:06:00	D	4.50
569	LUDHIANA	RAIKOT	S-NPP	75.57213	30.71044	14:06:00	D	5.30
570	LUDHIANA	RAIKOT	S-NPP	75.76352	30.72354	14:06:00	D	2.90
571	LUDHIANA	RAIKOT	S-NPP	75.76253	30.72484	14:06:00	D	3.20
572	LUDHIANA	SAMRALA	S-NPP	76.11678	30.84687	14:06:00	D	3.20
573	LUDHIANA	SAMRALA	S-NPP	76.20303	30.85134	14:06:00	D	1.50
574	LUDHIANA	SAMRALA	S-NPP	76.20402	30.85363	14:06:00	D	2.40
575	LUDHIANA	SAMRALA	S-NPP	76.18068	30.85718	14:06:00	D	4.60
576	LUDHIANA	SAMRALA	S-NPP	76.25761	30.85775	14:06:00	D	2.40
577	LUDHIANA	SAMRALA	S-NPP	76.25624	30.86045	14:06:00	D	1.80
578	LUDHIANA	SAMRALA	S-NPP	76.11750	30.86662	14:06:00	D	3.80
579	LUDHIANA	SAMRALA	S-NPP	76.12128	30.86690	14:06:00	D	4.80
580	LUDHIANA	SAMRALA	S-NPP	76.20538	30.86760	14:06:00	D	2.70
581	LUDHIANA	SAMRALA	S-NPP	76.18145	30.91946	14:06:00	D	3.50
582	LUDHIANA	SAMRALA	S-NPP	76.18526	30.91974	14:06:00	D	4.60
583	LUDHIANA	SAMRALA	S-NPP	76.21592	30.92203	14:06:00	D	4.00
584	LUDHIANA	SAMRALA	S-NPP	76.23462	30.92880	14:06:00	D	4.00
585	LUDHIANA	SAMRALA	S-NPP	76.30268	30.95005	14:06:00	D	2.00
586	LUDHIANA	SAMRALA	S-NPP	76.25346	30.95494	14:06:00	D	3.20
587	LUDHIANA	SAMRALA	S-NPP	76.21967	30.96529	14:06:00	D	7.80
588	LUDHIANA	SAMRALA	S-NPP	76.22113	30.96882	14:06:00	D	7.60
589	LUDHIANA	SAMRALA	S-NPP	76.30675	30.96943	14:06:00	D	2.80
590	LUDHIANA	SAMRALA	S-NPP	76.28134	30.97002	14:06:00	D	3.80
591	LUDHIANA	SAMRALA	S-NPP	76.30850	30.97210	14:06:00	D	1.70
592	LUDHIANA	SAMRALA	S-NPP	76.21529	30.98990	14:06:00	D	1.60
593	LUDHIANA	SAMRALA	S-NPP	76.21479	30.99524	14:06:00	D	6.30
594	MANSA	BUDHLADA	S-NPP	75.60333	29.75234	14:06:00	D	3.70
595	MANSA	BUDHLADA	S-NPP	75.60506	29.75453	14:06:00	D	2.90
596	MANSA	BUDHLADA	S-NPP	75.61192	29.76838	14:06:00	D	4.60
597	MANSA	BUDHLADA	S-NPP	75.53178	29.77216	14:06:00	D	6.30

598	MANSA	BUDHLADA	S-NPP	75.60800	29.77319	14:06:00	D	2.40
599	MANSA	BUDHLADA	S-NPP	75.70041	29.77540	14:06:00	D	3.10
600	MANSA	BUDHLADA	S-NPP	75.71069	29.77621	14:06:00	D	3.00
601	MANSA	BUDHLADA	S-NPP	75.60410	29.77800	14:06:00	D	5.10
602	MANSA	BUDHLADA	S-NPP	75.70331	29.78078	14:06:00	D	3.10
603	MANSA	BUDHLADA	S-NPP	75.59005	29.78198	14:06:00	D	3.60
604	MANSA	BUDHLADA	S-NPP	75.65836	29.78234	14:06:00	D	4.90
605	MANSA	BUDHLADA	S-NPP	75.66177	29.78262	14:06:00	D	4.90
606	MANSA	BUDHLADA	S-NPP	75.60357	29.78307	14:06:00	D	5.10
607	MANSA	BUDHLADA	S-NPP	75.61034	29.78362	14:06:00	D	6.30
608	MANSA	BUDHLADA	S-NPP	75.67542	29.78371	14:06:00	D	2.90
609	MANSA	BUDHLADA	S-NPP	75.62335	29.78979	14:06:00	D	4.90
610	MANSA	BUDHLADA	S-NPP	75.62674	29.79006	14:06:00	D	4.90
611	MANSA	BUDHLADA	S-NPP	75.57216	29.79075	14:06:00	D	7.00
612	MANSA	BUDHLADA	S-NPP	75.67438	29.79391	14:06:00	D	2.10
613	MANSA	BUDHLADA	S-NPP	75.69781	29.80094	14:06:00	D	7.90
614	MANSA	BUDHLADA	S-NPP	75.70123	29.80121	14:06:00	D	7.90
615	MANSA	BUDHLADA	S-NPP	75.59473	29.80283	14:06:00	D	5.40
616	MANSA	BUDHLADA	S-NPP	75.70071	29.80632	14:06:00	D	3.90
617	MANSA	BUDHLADA	S-NPP	75.70413	29.80660	14:06:00	D	5.80
618	MANSA	BUDHLADA	S-NPP	75.66599	29.80865	14:06:00	D	6.20
619	MANSA	BUDHLADA	S-NPP	75.66941	29.80893	14:06:00	D	8.30
620	MANSA	BUDHLADA	S-NPP	75.61788	29.80985	14:06:00	D	2.70
621	MANSA	BUDHLADA	S-NPP	75.51422	29.81148	14:06:00	D	3.20
622	MANSA	BUDHLADA	S-NPP	75.66547	29.81375	14:06:00	D	5.40
623	MANSA	BUDHLADA	S-NPP	75.44014	29.81542	14:06:00	D	5.00
624	MANSA	BUDHLADA	S-NPP	75.70310	29.81682	14:06:00	D	5.30
625	MANSA	BUDHLADA	S-NPP	75.72373	29.81850	14:06:00	D	3.40
626	MANSA	BUDHLADA	S-NPP	75.67519	29.81969	14:06:00	D	1.60
627	MANSA	BUDHLADA	S-NPP	75.46609	29.82269	14:06:00	D	5.60

628	MANSA	BUDHLADA	S-NPP	75.61294	29.82482	14:06:00	D	2.50
629	MANSA	BUDHLADA	S-NPP	75.57187	29.82651	14:06:00	D	3.10
630	MANSA	BUDHLADA	S-NPP	75.69865	29.82676	14:06:00	D	4.20
631	MANSA	BUDHLADA	S-NPP	75.72269	29.82873	14:06:00	D	4.40
632	MANSA	BUDHLADA	S-NPP	75.59888	29.82877	14:06:00	D	1.50
633	MANSA	BUDHLADA	S-NPP	75.62598	29.83103	14:06:00	D	5.20
634	MANSA	BUDHLADA	S-NPP	75.58484	29.83271	14:06:00	D	2.20
635	MANSA	BUDHLADA	S-NPP	75.42374	29.83377	14:06:00	D	8.10
636	MANSA	BUDHLADA	S-NPP	75.42486	29.83439	14:06:00	D	6.40
637	MANSA	BUDHLADA	S-NPP	75.54007	29.83915	14:06:00	D	5.00
638	MANSA	BUDHLADA	S-NPP	75.73886	29.84039	14:06:00	D	2.70
639	MANSA	BUDHLADA	S-NPP	75.77000	29.84295	14:06:00	D	3.90
640	MANSA	BUDHLADA	S-NPP	75.48957	29.84406	14:06:00	D	4.60
641	MANSA	BUDHLADA	S-NPP	75.72459	29.84437	14:06:00	D	4.20
642	MANSA	BUDHLADA	S-NPP	75.49059	29.84512	14:06:00	D	3.40
643	MANSA	BUDHLADA	S-NPP	75.51628	29.84617	14:06:00	D	7.60
644	MANSA	BUDHLADA	S-NPP	75.62441	29.84629	14:06:00	D	7.30
645	MANSA	BUDHLADA	S-NPP	75.62780	29.84657	14:06:00	D	7.30
646	MANSA	BUDHLADA	S-NPP	75.71032	29.84834	14:06:00	D	1.60
647	MANSA	BUDHLADA	S-NPP	75.52898	29.84842	14:06:00	D	2.60
648	MANSA	BUDHLADA	S-NPP	75.56783	29.85533	14:06:00	D	6.00
649	MANSA	BUDHLADA	S-NPP	75.57797	29.85614	14:06:00	D	2.10
650	MANSA	BUDHLADA	S-NPP	75.64980	29.85663	14:06:00	D	3.10
651	MANSA	BUDHLADA	S-NPP	75.65322	29.85690	14:06:00	D	3.10
652	MANSA	BUDHLADA	S-NPP	75.56877	29.85693	14:06:00	D	5.50
653	MANSA	BUDHLADA	S-NPP	75.58812	29.85693	14:06:00	D	4.70
654	MANSA	BUDHLADA	S-NPP	75.53030	29.85748	14:06:00	D	2.70
655	MANSA	BUDHLADA	S-NPP	75.57890	29.85779	14:06:00	D	1.90
656	MANSA	BUDHLADA	S-NPP	75.64719	29.85848	14:06:00	D	3.50
657	MANSA	BUDHLADA	S-NPP	75.58904	29.85866	14:06:00	D	3.40

658	MANSA	BUDHLADA	S-NPP	75.65060	29.85877	14:06:00	D	8.20
659	MANSA	BUDHLADA	S-NPP	75.53129	29.85882	14:06:00	D	2.80
660	MANSA	BUDHLADA	S-NPP	75.64928	29.86172	14:06:00	D	3.10
661	MANSA	BUDHLADA	S-NPP	75.74666	29.86687	14:06:00	D	6.60
662	MANSA	BUDHLADA	S-NPP	75.74551	29.86921	14:06:00	D	7.80
663	MANSA	BUDHLADA	S-NPP	75.61710	29.87459	14:06:00	D	1.90
664	MANSA	BUDHLADA	S-NPP	75.57589	29.87643	14:06:00	D	1.80
665	MANSA	BUDHLADA	S-NPP	75.63986	29.88667	14:06:00	D	5.30
666	MANSA	BUDHLADA	S-NPP	75.64326	29.88693	14:06:00	D	5.30
667	MANSA	BUDHLADA	S-NPP	75.56078	29.89056	14:06:00	D	5.30
668	MANSA	BUDHLADA	S-NPP	75.63594	29.89149	14:06:00	D	6.00
669	MANSA	BUDHLADA	S-NPP	75.63934	29.89176	14:06:00	D	5.30
670	MANSA	BUDHLADA	S-NPP	75.54342	29.89426	14:06:00	D	5.50
671	MANSA	BUDHLADA	S-NPP	75.57377	29.89672	14:06:00	D	3.00
672	MANSA	BUDHLADA	S-NPP	75.57715	29.89700	14:06:00	D	4.60
673	MANSA	BUDHLADA	S-NPP	75.69016	29.90097	14:06:00	D	2.90
674	MANSA	BUDHLADA	S-NPP	75.69995	29.90691	14:06:00	D	3.00
675	MANSA	BUDHLADA	S-NPP	75.69943	29.91202	14:06:00	D	3.90
676	MANSA	BUDHLADA	S-NPP	75.76511	29.91729	14:06:00	D	9.10
677	MANSA	BUDHLADA	S-NPP	75.49509	29.92088	14:06:00	D	10.00
678	MANSA	BUDHLADA	S-NPP	75.56779	29.92182	14:06:00	D	4.60
679	MANSA	BUDHLADA	S-NPP	75.60847	29.92518	14:06:00	D	3.40
680	MANSA	BUDHLADA	S-NPP	75.61188	29.92546	14:06:00	D	3.40
681	MANSA	BUDHLADA	S-NPP	75.71510	29.92877	14:06:00	D	7.60
682	MANSA	BUDHLADA	S-NPP	75.61136	29.93055	14:06:00	D	3.40
683	MANSA	BUDHLADA	S-NPP	75.63861	29.93280	14:06:00	D	1.80
684	MANSA	BUDHLADA	S-NPP	75.53255	29.93422	14:06:00	D	4.10
685	MANSA	BUDHLADA	S-NPP	75.56235	29.94183	14:06:00	D	1.20
686	MANSA	BUDHLADA	S-NPP	75.57766	29.95630	14:06:00	D	3.10
687	MANSA	BUDHLADA	S-NPP	75.57771	29.95849	14:06:00	D	3.20

688	MANSA	BUDHLADA	S-NPP	75.58110	29.95877	14:06:00	D	3.20
689	MANSA	BUDHLADA	S-NPP	75.57713	29.96139	14:06:00	D	3.10
690	MANSA	BUDHLADA	S-NPP	75.61507	29.96165	14:06:00	D	0.90
691	MANSA	BUDHLADA	S-NPP	75.61456	29.96431	14:06:00	D	2.00
692	MANSA	BUDHLADA	S-NPP	75.53784	29.97874	14:06:00	D	1.40
693	MANSA	BUDHLADA	S-NPP	75.53342	29.98861	14:06:00	D	2.60
694	MANSA	BUDHLADA	S-NPP	75.54691	29.98969	14:06:00	D	12.80
695	MANSA	BUDHLADA	S-NPP	75.53291	29.99367	14:06:00	D	7.30
696	MANSA	BUDHLADA	S-NPP	75.55265	30.00038	14:06:00	D	16.70
697	MANSA	BUDHLADA	S-NPP	75.63922	30.00097	12:30:00	D	5.80
698	MANSA	BUDHLADA	S-NPP	75.63961	30.00203	12:30:00	D	4.50
699	MANSA	BUDHLADA	S-NPP	75.53524	30.00408	14:06:00	D	4.00
700	MANSA	BUDHLADA	S-NPP	75.66857	30.00971	14:06:00	D	3.50
701	MANSA	BUDHLADA	S-NPP	75.62043	30.04182	14:06:00	D	4.60
702	MANSA	BUDHLADA	S-NPP	75.63750	30.04323	14:06:00	D	5.30
703	MANSA	MANSA	S-NPP	75.46680	29.93377	14:06:00	D	5.30
704	MANSA	MANSA	S-NPP	75.38634	29.93705	14:06:00	D	7.30
705	MANSA	MANSA	S-NPP	75.39291	29.93761	14:06:00	D	12.60
706	MANSA	MANSA	S-NPP	75.26017	29.94120	14:06:00	D	2.80
707	MANSA	MANSA	S-NPP	75.26084	29.94127	14:06:00	D	5.30
708	MANSA	MANSA	S-NPP	75.39201	29.94169	14:06:00	D	12.80
709	MANSA	MANSA	S-NPP	75.33073	29.95700	14:06:00	D	6.80
710	MANSA	MANSA	S-NPP	75.33128	29.95753	14:06:00	D	7.10
711	MANSA	MANSA	S-NPP	75.32366	29.96146	14:06:00	D	6.60
712	MANSA	MANSA	S-NPP	75.49761	29.96186	14:06:00	D	5.70
713	MANSA	MANSA	S-NPP	75.21233	29.96237	14:06:00	D	4.90
714	MANSA	MANSA	S-NPP	75.24457	29.96503	14:06:00	D	4.70
715	MANSA	MANSA	S-NPP	75.49686	29.96527	14:06:00	D	4.00
716	MANSA	MANSA	S-NPP	75.25698	29.97108	14:06:00	D	4.60
717	MANSA	MANSA	S-NPP	75.21127	29.97230	14:06:00	D	6.60

718	MANSA	MANSA	S-NPP	75.31946	30.00147	14:06:00	D	15.40
719	MANSA	MANSA	S-NPP	75.48598	30.00515	14:06:00	D	4.70
720	MANSA	MANSA	S-NPP	75.52355	30.01845	14:06:00	D	1.70
721	MANSA	MANSA	S-NPP	75.54718	30.02040	14:06:00	D	2.90
722	MANSA	MANSA	S-NPP	75.55056	30.02068	14:06:00	D	5.90
723	MANSA	MANSA	S-NPP	75.52302	30.02352	14:06:00	D	1.90
724	MANSA	MANSA	S-NPP	75.53989	30.02491	14:06:00	D	5.00
725	MANSA	MANSA	S-NPP	75.51578	30.02802	14:06:00	D	4.20
726	MANSA	MANSA	S-NPP	75.54615	30.03054	14:06:00	D	8.00
727	MANSA	MANSA	S-NPP	75.55291	30.03110	14:06:00	D	6.80
728	MANSA	MANSA	S-NPP	75.49510	30.03140	14:06:00	D	5.00
729	MANSA	MANSA	S-NPP	75.49846	30.03168	14:06:00	D	5.00
730	MANSA	MANSA	S-NPP	75.51526	30.03309	14:06:00	D	2.70
731	MANSA	MANSA	S-NPP	75.57745	30.03550	12:30:00	D	6.60
732	MANSA	MANSA	S-NPP	75.30787	30.03583	14:06:00	D	5.30
733	MANSA	MANSA	S-NPP	75.30927	30.03592	14:06:00	D	4.80
734	MANSA	MANSA	S-NPP	75.55578	30.03646	14:06:00	D	8.30
735	MANSA	MANSA	S-NPP	75.53497	30.03984	14:06:00	D	2.70
736	MANSA	MANSA	S-NPP	75.59998	30.04012	14:06:00	D	2.30
737	MANSA	MANSA	S-NPP	75.56883	30.04267	14:06:00	D	2.90
738	MANSA	MANSA	S-NPP	75.57561	30.04323	14:06:00	D	6.10
739	MANSA	MANSA	S-NPP	75.57900	30.04352	14:06:00	D	6.10
740	MANSA	MANSA	S-NPP	75.51708	30.04856	14:06:00	D	2.20
741	MANSA	MANSA	S-NPP	75.39373	30.05332	14:06:00	D	5.30
742	MANSA	MANSA	S-NPP	75.58819	30.05454	14:06:00	D	3.10
743	MANSA	MANSA	S-NPP	75.29412	30.05478	14:06:00	D	6.40
744	MANSA	MANSA	S-NPP	75.29919	30.05531	14:06:00	D	7.80
745	MANSA	MANSA	S-NPP	75.30066	30.05535	14:06:00	D	6.40
746	MANSA	MANSA	S-NPP	75.29865	30.06030	14:06:00	D	6.60
747	MANSA	MANSA	S-NPP	75.30013	30.06035	14:06:00	D	6.40

748	MANSA	MANSA	S-NPP	75.39802	30.06325	14:06:00	D	6.50
749	MANSA	MANSA	S-NPP	75.57018	30.06328	14:06:00	D	11.20
750	MANSA	MANSA	S-NPP	75.46519	30.06351	14:06:00	D	2.80
751	MANSA	MANSA	S-NPP	75.57358	30.06357	14:06:00	D	17.50
752	MANSA	MANSA	S-NPP	75.39931	30.06395	14:06:00	D	5.70
753	MANSA	MANSA	S-NPP	75.46637	30.06465	14:06:00	D	8.20
754	MANSA	MANSA	S-NPP	75.56866	30.06652	14:06:00	D	15.50
755	MANSA	MANSA	S-NPP	75.57206	30.06679	14:06:00	D	33.90
756	MANSA	MANSA	S-NPP	75.56969	30.06837	14:06:00	D	6.90
757	MANSA	MANSA	S-NPP	75.57307	30.06865	14:06:00	D	8.70
758	MANSA	MANSA	S-NPP	75.52515	30.06968	14:06:00	D	4.80
759	MANSA	MANSA	S-NPP	75.50331	30.07162	14:06:00	D	2.00
760	MANSA	MANSA	S-NPP	75.54880	30.07171	14:06:00	D	1.20
761	MANSA	MANSA	S-NPP	75.32382	30.07244	14:06:00	D	10.50
762	MANSA	MANSA	S-NPP	75.58173	30.07267	14:06:00	D	2.20
763	MANSA	MANSA	S-NPP	75.52354	30.07322	14:06:00	D	4.20
764	MANSA	MANSA	S-NPP	75.58274	30.07460	14:06:00	D	2.90
765	MANSA	MANSA	S-NPP	75.32331	30.07745	14:06:00	D	10.50
766	MANSA	MANSA	S-NPP	75.40973	30.07941	14:06:00	D	6.90
767	MANSA	MANSA	S-NPP	75.48544	30.08040	14:06:00	D	2.70
768	MANSA	MANSA	S-NPP	75.57388	30.08231	14:06:00	D	1.20
769	MANSA	MANSA	S-NPP	75.40919	30.08444	14:06:00	D	6.90
770	MANSA	MANSA	S-NPP	75.47652	30.08478	14:06:00	D	5.50
771	MANSA	MANSA	S-NPP	75.54281	30.08497	14:06:00	D	3.10
772	MANSA	MANSA	S-NPP	75.54958	30.08551	14:06:00	D	3.80
773	MANSA	MANSA	S-NPP	75.55637	30.08605	14:06:00	D	2.80
774	MANSA	MANSA	S-NPP	75.56944	30.09221	14:06:00	D	3.90
775	MANSA	MANSA	S-NPP	75.60696	30.09519	14:06:00	D	1.60
776	MANSA	MANSA	S-NPP	75.52431	30.09883	14:06:00	D	2.30
777	MANSA	MANSA	S-NPP	75.57178	30.10265	14:06:00	D	1.40



778	MANSA	MANSA	S-NPP	75.40048	30.10403	14:06:00	D	4.70
779	MANSA	MANSA	S-NPP	75.58831	30.10910	14:06:00	D	5.00
780	MANSA	MANSA	S-NPP	75.62094	30.12715	14:06:00	D	2.50
781	MANSA	MANSA	S-NPP	75.62437	30.12743	14:06:00	D	2.50
782	MANSA	MANSA	S-NPP	75.44504	30.12806	14:06:00	D	9.50
783	MANSA	MANSA	S-NPP	75.40763	30.14403	14:06:00	D	3.10
784	MANSA	MANSA	S-NPP	75.40962	30.14542	14:06:00	D	5.30
785	MANSA	MANSA	S-NPP	75.43477	30.16282	14:06:00	D	8.20
786	MANSA	MANSA	S-NPP	75.47475	30.16454	14:06:00	D	1.60
787	MANSA	MANSA	S-NPP	75.43224	30.16629	14:06:00	D	5.70
788	MANSA	MANSA	S-NPP	75.46307	30.17892	14:06:00	D	4.70
789	MANSA	MANSA	S-NPP	75.46001	30.18027	14:06:00	D	14.00
790	MANSA	MANSA	S-NPP	75.46254	30.18397	14:06:00	D	4.70
791	MANSA	SARDULGARH	S-NPP	75.26816	29.55401	14:06:00	D	9.90
792	MANSA	SARDULGARH	S-NPP	75.29390	29.61637	14:06:00	D	5.10
793	MANSA	SARDULGARH	S-NPP	75.29219	29.61693	14:06:00	D	5.10
794	MANSA	SARDULGARH	S-NPP	75.24942	29.65348	14:06:00	D	15.30
795	MANSA	SARDULGARH	S-NPP	75.19582	29.67391	14:06:00	D	4.40
796	MANSA	SARDULGARH	TERRA-1	75.33274	29.67798	11:01:00	D	17.75
797	MANSA	SARDULGARH	S-NPP	75.21437	29.68049	14:06:00	D	8.60
798	MANSA	SARDULGARH	S-NPP	75.31650	29.69428	14:06:00	D	9.50
799	MANSA	SARDULGARH	S-NPP	75.21229	29.70030	14:06:00	D	9.20
800	MANSA	SARDULGARH	S-NPP	75.23571	29.72237	14:06:00	D	12.70
801	MANSA	SARDULGARH	S-NPP	75.23342	29.72265	14:06:00	D	11.60
802	MANSA	SARDULGARH	S-NPP	75.36215	29.73815	14:06:00	D	9.60
803	MANSA	SARDULGARH	S-NPP	75.36426	29.73873	14:06:00	D	7.90
804	MANSA	SARDULGARH	S-NPP	75.36055	29.75315	14:06:00	D	9.10
805	MANSA	SARDULGARH	S-NPP	75.39323	29.75582	14:06:00	D	12.40
806	MANSA	SARDULGARH	S-NPP	75.39981	29.75636	14:06:00	D	12.40
807	MANSA	SARDULGARH	S-NPP	75.32043	29.75992	14:06:00	D	3.50

808	MANSA	SARDULGARH	S-NPP	75.35297	29.76261	14:06:00	D	12.40
809	MANSA	SARDULGARH	S-NPP	75.23431	29.78036	12:30:00	D	7.20
810	MANSA	SARDULGARH	S-NPP	75.26612	29.78049	14:06:00	D	9.70
811	MANSA	SARDULGARH	S-NPP	75.42348	29.78361	14:06:00	D	3.40
812	MANSA	SARDULGARH	S-NPP	75.23175	29.78726	12:30:00	D	8.50
813	MANSA	SARDULGARH	S-NPP	75.34719	29.81760	14:06:00	D	4.80
814	MANSA	SARDULGARH	S-NPP	75.41985	29.81876	14:06:00	D	4.40
815	MANSA	SARDULGARH	S-NPP	75.25546	29.81971	14:06:00	D	4.40
816	MANSA	SARDULGARH	S-NPP	75.25408	29.82022	14:06:00	D	3.70
817	MOGA	BAGHA PURANA	S-NPP	75.13205	30.63039	14:06:00	D	7.00
818	MOGA	BAGHA PURANA	S-NPP	75.03341	30.63706	14:06:00	D	5.90
819	MOGA	BAGHA PURANA	S-NPP	75.05271	30.63871	14:06:00	D	6.80
820	MOGA	BAGHA PURANA	S-NPP	75.14403	30.64145	14:06:00	D	5.70
821	MOGA	BAGHA PURANA	S-NPP	75.12395	30.64477	14:06:00	D	12.60
822	MOGA	BAGHA PURANA	S-NPP	74.99341	30.64859	14:06:00	D	5.50
823	MOGA	BAGHA PURANA	S-NPP	75.12997	30.65030	14:06:00	D	5.80
824	MOGA	BAGHA PURANA	S-NPP	75.12853	30.65067	14:06:00	D	2.70
825	MOGA	BAGHA PURANA	S-NPP	75.00491	30.65595	12:30:00	D	4.90
826	MOGA	BAGHA PURANA	S-NPP	75.00465	30.65866	12:30:00	D	6.50
827	MOGA	BAGHA PURANA	S-NPP	75.09686	30.66271	12:30:00	D	10.70
828	MOGA	BAGHA PURANA	S-NPP	75.09425	30.66727	12:30:00	D	7.40
829	MOGA	BAGHA PURANA	S-NPP	75.15398	30.67247	14:06:00	D	13.40
830	MOGA	BAGHA PURANA	S-NPP	75.15253	30.67268	14:06:00	D	8.70
831	MOGA	BAGHA PURANA	S-NPP	75.15910	30.67319	14:06:00	D	11.40
832	MOGA	BAGHA PURANA	S-NPP	75.06686	30.67586	14:06:00	D	5.70
833	MOGA	BAGHA PURANA	S-NPP	75.15805	30.68318	14:06:00	D	4.30
834	MOGA	BAGHA PURANA	S-NPP	75.13136	30.68607	14:06:00	D	6.80
835	MOGA	BAGHA PURANA	S-NPP	74.97117	30.69920	12:30:00	D	4.20
836	MOGA	BAGHA PURANA	S-NPP	75.00712	30.71733	12:30:00	D	5.30
837	MOGA	BAGHA PURANA	S-NPP	74.91858	30.73330	14:06:00	D	5.70

838	MOGA	BAGHA PURANA	S-NPP	75.11960	30.73536	14:06:00	D	11.70
839	MOGA	BAGHA PURANA	S-NPP	75.10899	30.75452	14:06:00	D	6.00
840	MOGA	BAGHA PURANA	S-NPP	75.05746	30.76520	14:06:00	D	3.70
841	MOGA	BAGHA PURANA	S-NPP	75.05530	30.76534	14:06:00	D	5.60
842	MOGA	BAGHA PURANA	S-NPP	75.06251	30.76819	12:30:00	D	6.30
843	MOGA	BAGHA PURANA	S-NPP	75.07011	30.77044	12:30:00	D	6.30
844	MOGA	BAGHA PURANA	S-NPP	75.07065	30.77368	12:30:00	D	8.00
845	MOGA	BAGHA PURANA	S-NPP	74.98229	30.77946	14:06:00	D	4.70
846	MOGA	MOGA	S-NPP	75.19695	30.69133	14:06:00	D	34.50
847	MOGA	MOGA	S-NPP	75.15282	30.73309	14:06:00	D	7.70
848	MOGA	MOGA	S-NPP	75.12613	30.73590	14:06:00	D	10.40
849	MOGA	MOGA	S-NPP	75.15231	30.73808	14:06:00	D	7.70
850	MOGA	MOGA	S-NPP	75.30895	30.73817	12:30:00	D	6.70
851	MOGA	MOGA	S-NPP	75.30958	30.73921	12:30:00	D	5.00
852	MOGA	MOGA	S-NPP	75.24205	30.74097	12:30:00	D	8.70
853	MOGA	MOGA	S-NPP	75.24239	30.74232	12:30:00	D	15.60
854	MOGA	MOGA	S-NPP	75.24948	30.74315	12:30:00	D	12.00
855	MOGA	MOGA	S-NPP	75.11102	30.75473	14:06:00	D	8.00
856	MOGA	MOGA	S-NPP	75.25697	30.75690	14:06:00	D	9.90
857	MOGA	MOGA	S-NPP	75.21662	30.75859	14:06:00	D	4.30
858	MOGA	MOGA	S-NPP	75.29704	30.76022	14:06:00	D	7.20
859	MOGA	MOGA	S-NPP	75.12154	30.76053	14:06:00	D	17.90
860	MOGA	MOGA	S-NPP	75.12354	30.76082	14:06:00	D	12.00
861	MOGA	MOGA	S-NPP	75.17960	30.77515	14:06:00	D	6.20
862	MOGA	MOGA	S-NPP	75.19945	30.77671	14:06:00	D	4.50
863	MOGA	MOGA	S-NPP	75.20134	30.77752	14:06:00	D	11.40
864	MOGA	MOGA	S-NPP	75.21456	30.77864	14:06:00	D	16.90
865	MOGA	MOGA	S-NPP	75.21219	30.78276	14:06:00	D	13.60
866	MOGA	MOGA	S-NPP	75.21883	30.78328	14:06:00	D	20.60
867	MOGA	MOGA	S-NPP	75.21407	30.78366	14:06:00	D	16.90

868	MOGA	MOGA	S-NPP	75.30617	30.78502	14:06:00	D	8.40
869	MOGA	MOGA	S-NPP	75.19127	30.79121	14:06:00	D	5.60
870	MOGA	MOGA	S-NPP	75.19321	30.79198	14:06:00	D	4.00
871	MOGA	MOGA	S-NPP	75.09821	30.79384	14:06:00	D	10.30
872	MOGA	MOGA	S-NPP	75.25122	30.80353	12:30:00	D	4.10
873	MOGA	MOGA	S-NPP	75.04459	30.80452	14:06:00	D	10.60
874	MOGA	MOGA	S-NPP	74.99253	30.80524	14:06:00	D	2.50
875	MOGA	MOGA	S-NPP	75.19633	30.80677	14:06:00	D	4.60
876	MOGA	MOGA	S-NPP	75.03758	30.80895	14:06:00	D	26.70
877	MOGA	MOGA	S-NPP	75.05650	30.81552	14:06:00	D	5.30
878	MOGA	MOGA	S-NPP	74.99324	30.81585	12:30:00	D	9.40
879	MOGA	MOGA	S-NPP	75.08199	30.82264	14:06:00	D	6.10
880	MOGA	MOGA	S-NPP	75.25726	30.82580	12:30:00	D	4.40
881	MOGA	NIHAL SINGH WALA	S-NPP	75.27715	30.51629	12:30:00	D	4.80
882	MOGA	NIHAL SINGH WALA	S-NPP	75.36592	30.51886	14:06:00	D	8.70
883	MOGA	NIHAL SINGH WALA	S-NPP	75.34531	30.52227	14:06:00	D	8.20
884	MOGA	NIHAL SINGH WALA	S-NPP	75.27771	30.52249	12:30:00	D	10.80
885	MOGA	NIHAL SINGH WALA	S-NPP	75.27456	30.52305	12:30:00	D	4.40
886	MOGA	NIHAL SINGH WALA	S-NPP	75.31239	30.56265	12:30:00	D	5.80
887	MOGA	NIHAL SINGH WALA	S-NPP	75.40032	30.57606	14:06:00	D	1.30
888	MOGA	NIHAL SINGH WALA	S-NPP	75.35611	30.59299	14:06:00	D	10.80
889	MOGA	NIHAL SINGH WALA	S-NPP	75.35820	30.59455	14:06:00	D	14.40
890	MOGA	NIHAL SINGH WALA	S-NPP	75.37579	30.59963	14:06:00	D	4.60
891	MOGA	NIHAL SINGH WALA	S-NPP	75.40057	30.60669	14:06:00	D	4.40
892	MOGA	NIHAL SINGH WALA	S-NPP	75.40005	30.61174	14:06:00	D	4.40
893	MOGA	NIHAL SINGH WALA	S-NPP	75.36542	30.63446	14:06:00	D	9.50
894	MOGA	NIHAL SINGH WALA	S-NPP	75.27633	30.64746	14:06:00	D	7.20
895	MOGA	NIHAL SINGH WALA	S-NPP	75.20907	30.65196	14:06:00	D	12.90
896	MOGA	NIHAL SINGH WALA	S-NPP	75.29529	30.65919	14:06:00	D	27.20
897	MOGA	NIHAL SINGH WALA	S-NPP	75.25359	30.66041	14:06:00	D	16.90

898	MOGA	NIHAL SINGH WALA	S-NPP	75.19354	30.66080	14:06:00	D	7.00
899	MOGA	NIHAL SINGH WALA	S-NPP	75.19489	30.66086	14:06:00	D	5.10
900	MOGA	NIHAL SINGH WALA	S-NPP	75.25484	30.66087	14:06:00	D	19.70
901	MOGA	NIHAL SINGH WALA	S-NPP	75.29357	30.66350	14:06:00	D	6.80
902	MOGA	NIHAL SINGH WALA	S-NPP	75.30026	30.66401	14:06:00	D	6.80
903	MOGA	NIHAL SINGH WALA	S-NPP	75.21887	30.67287	14:06:00	D	11.10
904	MOGA	NIHAL SINGH WALA	S-NPP	75.22021	30.67311	14:06:00	D	10.20
905	MOGA	NIHAL SINGH WALA	S-NPP	75.24003	30.67479	14:06:00	D	8.50
906	MOGA	NIHAL SINGH WALA	S-NPP	75.24537	30.67495	14:06:00	D	13.60
907	MOGA	NIHAL SINGH WALA	S-NPP	75.31269	30.68785	12:30:00	D	11.70
908	MOGA	NIHAL SINGH WALA	S-NPP	75.21867	30.68813	14:06:00	D	9.70
909	MOGA	NIHAL SINGH WALA	S-NPP	75.32011	30.69000	12:30:00	D	11.70
910	MOGA	NIHAL SINGH WALA	S-NPP	75.24992	30.69555	14:06:00	D	10.40
911	MOGA	NIHAL SINGH WALA	S-NPP	75.23521	30.71779	12:30:00	D	6.90
912	MUKTSAR	GIDDARBAHA	S-NPP	74.62902	30.11487	14:06:00	D	4.70
913	MUKTSAR	GIDDARBAHA	S-NPP	74.62687	30.13407	14:06:00	D	3.40
914	MUKTSAR	GIDDARBAHA	S-NPP	74.60252	30.13679	14:06:00	D	5.20
915	MUKTSAR	GIDDARBAHA	S-NPP	74.61443	30.13783	14:06:00	D	5.30
916	MUKTSAR	GIDDARBAHA	S-NPP	74.55108	30.20467	14:06:00	D	8.70
917	MUKTSAR	GIDDARBAHA	S-NPP	74.55307	30.20486	14:06:00	D	3.50
918	MUKTSAR	GIDDARBAHA	S-NPP	74.58559	30.21730	14:06:00	D	8.50
919	MUKTSAR	GIDDARBAHA	S-NPP	74.57481	30.25991	14:06:00	D	13.00
920	MUKTSAR	GIDDARBAHA	S-NPP	74.54408	30.26684	14:06:00	D	8.10
921	MUKTSAR	GIDDARBAHA	S-NPP	74.50638	30.32581	14:06:00	D	10.70
922	MUKTSAR	GIDDARBAHA	S-NPP	74.78451	30.33988	14:06:00	D	7.10
923	MUKTSAR	GIDDARBAHA	S-NPP	74.64873	30.34384	12:30:00	D	4.00
924	MUKTSAR	GIDDARBAHA	S-NPP	74.68818	30.41347	14:06:00	D	4.70
925	MUKTSAR	GIDDARBAHA	S-NPP	74.69449	30.42989	14:06:00	D	2.60
926	MUKTSAR	GIDDARBAHA	S-NPP	74.70667	30.43099	14:06:00	D	11.00
927	MUKTSAR	MALAUT	S-NPP	74.57067	29.93166	14:06:00	D	8.60

928	MUKTSAR	MALAUT	S-NPP	74.57655	29.93218	14:06:00	D	8.60
929	MUKTSAR	MALAUT	S-NPP	74.55786	29.94014	14:06:00	D	7.10
930	MUKTSAR	MALAUT	S-NPP	74.50844	29.95970	14:06:00	D	4.20
931	MUKTSAR	MALAUT	S-NPP	74.56157	29.95976	14:06:00	D	2.30
932	MUKTSAR	MALAUT	S-NPP	74.59099	29.96243	14:06:00	D	7.30
933	MUKTSAR	MALAUT	S-NPP	74.55207	29.97359	14:06:00	D	1.80
934	MUKTSAR	MALAUT	S-NPP	74.64720	29.97682	14:06:00	D	4.70
935	MUKTSAR	MALAUT	S-NPP	74.59473	29.98209	14:06:00	D	4.30
936	MUKTSAR	MALAUT	S-NPP	74.59866	29.98238	14:06:00	D	4.90
937	MUKTSAR	MALAUT	S-NPP	74.59811	29.98716	14:06:00	D	4.90
938	MUKTSAR	MALAUT	S-NPP	74.60010	29.98742	14:06:00	D	7.30
939	MUKTSAR	MALAUT	S-NPP	74.50148	30.00287	14:06:00	D	5.60
940	MUKTSAR	MALAUT	S-NPP	74.50731	30.00339	14:06:00	D	8.10
941	MUKTSAR	MALAUT	S-NPP	74.51315	30.00390	14:06:00	D	8.10
942	MUKTSAR	MALAUT	S-NPP	74.54187	30.01123	14:06:00	D	13.30
943	MUKTSAR	MALAUT	S-NPP	74.54773	30.01174	14:06:00	D	13.30
944	MUKTSAR	MALAUT	S-NPP	74.61912	30.01315	14:06:00	D	3.40
945	MUKTSAR	MALAUT	S-NPP	74.62505	30.01366	14:06:00	D	5.30
946	MUKTSAR	MALAUT	S-NPP	74.57661	30.01910	14:06:00	D	14.30
947	MUKTSAR	MALAUT	S-NPP	74.58789	30.02492	14:06:00	D	4.60
948	MUKTSAR	MALAUT	S-NPP	74.54558	30.03082	14:06:00	D	2.80
949	MUKTSAR	MALAUT	S-NPP	74.62183	30.04242	14:06:00	D	11.40
950	MUKTSAR	MALAUT	S-NPP	74.53223	30.04408	14:06:00	D	5.40
951	MUKTSAR	MALAUT	S-NPP	74.47918	30.04410	14:06:00	D	2.90
952	MUKTSAR	MALAUT	S-NPP	74.68037	30.05731	14:06:00	D	6.70
953	MUKTSAR	MALAUT	S-NPP	74.59596	30.05946	14:06:00	D	10.60
954	MUKTSAR	MALAUT	S-NPP	74.59544	30.06425	14:06:00	D	10.60
955	MUKTSAR	MALAUT	S-NPP	74.63103	30.06746	14:06:00	D	7.90
956	MUKTSAR	MALAUT	S-NPP	74.47315	30.07256	14:06:00	D	5.90
957	MUKTSAR	MALAUT	S-NPP	74.47597	30.07261	14:06:00	D	4.20

958	MUKTSAR	MALAUT	S-NPP	74.61809	30.07597	14:06:00	D	7.80
959	MUKTSAR	MALAUT	S-NPP	74.47489	30.08211	14:06:00	D	8.00
960	MUKTSAR	MALAUT	S-NPP	74.47788	30.08256	14:06:00	D	12.80
961	MUKTSAR	MALAUT	S-NPP	74.48071	30.08265	14:06:00	D	8.00
962	MUKTSAR	MALAUT	S-NPP	74.53645	30.08759	14:06:00	D	3.70
963	MUKTSAR	MALAUT	S-NPP	74.66814	30.08909	14:06:00	D	4.20
964	MUKTSAR	MALAUT	S-NPP	74.62576	30.09037	14:06:00	D	6.20
965	MUKTSAR	MALAUT	S-NPP	74.62243	30.09090	14:06:00	D	2.50
966	MUKTSAR	MALAUT	S-NPP	74.52417	30.09135	14:06:00	D	15.90
967	MUKTSAR	MALAUT	S-NPP	74.58364	30.09163	14:06:00	D	4.50
968	MUKTSAR	MALAUT	S-NPP	74.52692	30.09176	14:06:00	D	23.90
969	MUKTSAR	MALAUT	S-NPP	74.53004	30.09186	14:06:00	D	15.90
970	MUKTSAR	MALAUT	S-NPP	74.58040	30.09188	14:06:00	D	8.00
971	MUKTSAR	MALAUT	S-NPP	74.56218	30.09503	14:06:00	D	10.20
972	MUKTSAR	MALAUT	S-NPP	74.57127	30.09540	14:06:00	D	7.40
973	MUKTSAR	MALAUT	S-NPP	74.56806	30.09557	14:06:00	D	22.80
974	MUKTSAR	MALAUT	S-NPP	74.59496	30.09743	14:06:00	D	9.40
975	MUKTSAR	MALAUT	S-NPP	74.59172	30.09776	14:06:00	D	14.90
976	MUKTSAR	MALAUT	S-NPP	74.55892	30.09916	14:06:00	D	22.20
977	MUKTSAR	MALAUT	S-NPP	74.55576	30.09925	14:06:00	D	10.20
978	MUKTSAR	MALAUT	S-NPP	74.56483	30.09967	14:06:00	D	22.20
979	MUKTSAR	MALAUT	S-NPP	74.56165	30.09980	14:06:00	D	10.20
980	MUKTSAR	MALAUT	S-NPP	74.57019	30.10497	14:06:00	D	16.30
981	MUKTSAR	MALAUT	S-NPP	74.57610	30.10547	14:06:00	D	16.30
982	MUKTSAR	MALAUT	S-NPP	74.42811	30.10699	14:06:00	D	5.70
983	MUKTSAR	MALAUT	S-NPP	74.58741	30.11128	14:06:00	D	9.10
984	MUKTSAR	MALAUT	S-NPP	74.53854	30.12151	14:06:00	D	2.90
985	MUKTSAR	MALAUT	S-NPP	74.58045	30.17353	14:06:00	D	3.90
986	MUKTSAR	MALAUT	S-NPP	74.35050	30.20639	14:06:00	D	7.10
987	MUKTSAR	MALAUT	S-NPP	74.37139	30.22735	14:06:00	D	10.20

988	MUKTSAR	MALAUT	S-NPP	74.37086	30.23208	14:06:00	D	6.70
989	MUKTSAR	MALAUT	S-NPP	74.49084	30.30519	14:06:00	D	6.10
990	MUKTSAR	MALAUT	S-NPP	74.49206	30.30552	14:06:00	D	5.50
991	MUKTSAR	MALAUT	S-NPP	74.41835	30.31813	14:06:00	D	3.40
992	MUKTSAR	MALAUT	S-NPP	74.35541	30.35561	14:06:00	D	5.40
993	MUKTSAR	MUKTSAR	S-NPP	74.49725	30.35394	14:06:00	D	3.40
994	MUKTSAR	MUKTSAR	S-NPP	74.37064	30.37614	14:06:00	D	9.30
995	MUKTSAR	MUKTSAR	S-NPP	74.36834	30.37691	14:06:00	D	9.70
996	MUKTSAR	MUKTSAR	S-NPP	74.60844	30.47186	12:30:00	D	12.30
997	MUKTSAR	MUKTSAR	S-NPP	74.60723	30.47273	12:30:00	D	14.20
998	MUKTSAR	MUKTSAR	S-NPP	74.58924	30.47403	12:30:00	D	14.00
999	MUKTSAR	MUKTSAR	S-NPP	74.58813	30.47482	12:30:00	D	13.90
1000	MUKTSAR	MUKTSAR	S-NPP	74.59749	30.47643	12:30:00	D	14.00
1001	MUKTSAR	MUKTSAR	S-NPP	74.59634	30.47727	12:30:00	D	14.20
1002	MUKTSAR	MUKTSAR	S-NPP	74.56094	30.54457	12:30:00	D	5.50
1003	MUKTSAR	MUKTSAR	S-NPP	74.39277	30.55193	14:06:00	D	3.10
1004	MUKTSAR	MUKTSAR	S-NPP	74.38422	30.57517	14:06:00	D	4.60
1005	MUKTSAR	MUKTSAR	S-NPP	74.42911	30.59847	14:06:00	D	6.30
1006	MUKTSAR	MUKTSAR	S-NPP	74.42709	30.59859	14:06:00	D	6.40
1007	NAWASHAHR	NAWASHAHR	S-NPP	76.13736	31.00032	14:06:00	D	5.30
1008	NAWASHAHR	NAWASHAHR	S-NPP	75.99038	31.03189	14:06:00	D	4.20
1009	NAWASHAHR	NAWASHAHR	S-NPP	76.06203	31.03206	14:06:00	D	2.40
1010	NAWASHAHR	NAWASHAHR	S-NPP	76.04597	31.04148	14:06:00	D	2.70
1011	NAWASHAHR	NAWASHAHR	S-NPP	76.04971	31.04177	14:06:00	D	2.70
1012	NAWASHAHR	NAWASHAHR	S-NPP	75.97271	31.04552	14:06:00	D	4.00
1013	NAWASHAHR	NAWASHAHR	S-NPP	75.97402	31.04653	14:06:00	D	3.80
1014	NAWASHAHR	NAWASHAHR	S-NPP	76.06419	31.04822	14:06:00	D	1.10
1015	NAWASHAHR	NAWASHAHR	S-NPP	76.16297	31.05580	14:06:00	D	2.70
1016	NAWASHAHR	NAWASHAHR	S-NPP	76.06318	31.05880	14:06:00	D	1.10
1017	NAWASHAHR	NAWASHAHR	S-NPP	76.01395	31.06027	14:06:00	D	7.00



1018	NAWASHAHR	NAWASHAHR	S-NPP	76.01218	31.06428	14:06:00	D	4.00
1019	NAWASHAHR	NAWASHAHR	S-NPP	76.01591	31.06454	14:06:00	D	4.00
1020	NAWASHAHR	NAWASHAHR	S-NPP	76.04971	31.06697	14:06:00	D	2.70
1021	NAWASHAHR	NAWASHAHR	S-NPP	75.94402	31.06993	14:06:00	D	3.60
1022	NAWASHAHR	NAWASHAHR	S-NPP	75.96904	31.08236	14:06:00	D	3.70
1023	NAWASHAHR	NAWASHAHR	S-NPP	76.16263	31.08575	14:06:00	D	3.10
1024	NAWASHAHR	NAWASHAHR	S-NPP	76.05148	31.08841	14:06:00	D	1.40
1025	NAWASHAHR	NAWASHAHR	S-NPP	76.07349	31.13804	14:06:00	D	3.40
1026	NAWASHAHR	NAWASHAHR	S-NPP	76.08817	31.14449	14:06:00	D	3.90
1027	NAWASHAHR	NAWASHAHR	S-NPP	76.02507	31.24531	14:06:00	D	5.20
1028	PATIALA	NABHA	S-NPP	76.09060	30.31693	14:06:00	D	3.40
1029	PATIALA	NABHA	S-NPP	76.09112	30.31728	14:06:00	D	3.20
1030	PATIALA	NABHA	S-NPP	76.23891	30.33840	14:06:00	D	1.20
1031	PATIALA	NABHA	S-NPP	76.23919	30.33972	14:06:00	D	3.60
1032	PATIALA	NABHA	S-NPP	75.99224	30.34131	14:06:00	D	7.40
1033	PATIALA	NABHA	S-NPP	76.07108	30.38166	12:30:00	D	10.80
1034	PATIALA	NABHA	S-NPP	76.10376	30.41340	14:06:00	D	2.50
1035	PATIALA	NABHA	S-NPP	76.09216	30.42214	14:06:00	D	4.10
1036	PATIALA	NABHA	S-NPP	76.09587	30.42241	14:06:00	D	4.10
1037	PATIALA	NABHA	S-NPP	76.09165	30.42306	14:06:00	D	4.00
1038	PATIALA	NABHA	S-NPP	76.09536	30.42335	14:06:00	D	4.00
1039	PATIALA	NABHA	S-NPP	76.05097	30.42443	14:06:00	D	3.10
1040	PATIALA	NABHA	S-NPP	76.09114	30.43267	14:06:00	D	2.50
1041	PATIALA	NABHA	S-NPP	76.09485	30.43295	14:06:00	D	2.50
1042	PATIALA	NABHA	S-NPP	76.09438	30.43389	14:06:00	D	5.30
1043	PATIALA	NABHA	S-NPP	76.09753	30.44376	14:06:00	D	6.20
1044	PATIALA	NABHA	S-NPP	76.07056	30.45235	14:06:00	D	3.70
1045	PATIALA	NABHA	S-NPP	76.08335	30.47453	14:06:00	D	4.90
1046	PATIALA	NABHA	S-NPP	76.08284	30.47980	14:06:00	D	6.50
1047	PATIALA	NABHA	S-NPP	76.08655	30.48008	14:06:00	D	6.60

1048	PATIALA	NABHA	S-NPP	76.12322	30.48819	14:06:00	D	1.80
1049	PATIALA	NABHA	S-NPP	76.10731	30.49760	14:06:00	D	9.20
1050	PATIALA	NABHA	S-NPP	76.16556	30.51808	14:06:00	D	9.30
1051	PATIALA	NABHA	S-NPP	76.15657	30.52708	14:06:00	D	7.60
1052	PATIALA	NABHA	S-NPP	76.15707	30.52808	14:06:00	D	7.70
1053	PATIALA	NABHA	S-NPP	76.22447	30.53192	14:06:00	D	3.40
1054	PATIALA	NABHA	S-NPP	76.22488	30.53338	14:06:00	D	4.40
1055	PATIALA	NABHA	S-NPP	76.29283	30.54402	14:06:00	D	2.50
1056	PATIALA	NABHA	S-NPP	76.25389	30.54473	14:06:00	D	5.30
1057	PATIALA	NABHA	S-NPP	76.25426	30.54638	14:06:00	D	5.80
1058	PATIALA	NABHA	S-NPP	76.26430	30.55620	14:06:00	D	5.90
1059	PATIALA	PATIALA	S-NPP	76.42139	30.21114	14:06:00	D	1.30
1060	PATIALA	PATIALA	S-NPP	76.36340	30.27953	14:06:00	D	5.70
1061	PATIALA	PATIALA	S-NPP	76.36724	30.27981	14:06:00	D	5.70
1062	PATIALA	PATIALA	S-NPP	76.37108	30.28009	14:06:00	D	6.90
1063	PATIALA	PATIALA	S-NPP	76.37492	30.28038	14:06:00	D	6.90
1064	PATIALA	PATIALA	S-NPP	76.32471	30.28202	14:06:00	D	5.20
1065	PATIALA	PATIALA	S-NPP	76.47385	30.38779	14:06:00	D	6.00
1066	PATIALA	SAMANA	S-NPP	76.07350	29.88842	12:30:00	D	3.80
1067	PATIALA	SAMANA	S-NPP	76.27685	30.15725	14:06:00	D	3.90
1068	PATIALA	SAMANA	S-NPP	76.05342	30.18787	14:06:00	D	8.70
1069	PATIALA	SAMANA	S-NPP	76.26908	30.22433	14:06:00	D	3.30
1070	PATIALA	SAMANA	S-NPP	76.23042	30.23220	14:06:00	D	2.40
1071	RUPNAGAR	CHAMKOR SAHIB	S-NPP	76.42982	30.89428	14:06:00	D	3.10
1072	RUPNAGAR	CHAMKOR SAHIB	S-NPP	76.32409	30.97329	14:06:00	D	3.60
1073	RUPNAGAR	CHAMKOR SAHIB	S-NPP	76.32799	30.97358	14:06:00	D	5.60
1074	RUPNAGAR	CHAMKOR SAHIB	S-NPP	76.32574	30.97616	14:06:00	D	6.50
1075	SANGRUR	DHURI	S-NPP	75.70086	30.30852	14:06:00	D	3.30
1076	SANGRUR	DHURI	S-NPP	75.66101	30.32093	14:06:00	D	3.80
1077	SANGRUR	DHURI	S-NPP	75.66450	30.32120	14:06:00	D	3.80

1078	SANGRUR	DHURI	S-NPP	75.66049	30.32605	14:06:00	D	3.80
1079	SANGRUR	DHURI	S-NPP	75.69131	30.33366	14:06:00	D	3.20
1080	SANGRUR	DHURI	S-NPP	75.78613	30.34113	14:06:00	D	3.60
1081	SANGRUR	DHURI	S-NPP	75.70424	30.34505	14:06:00	D	2.20
1082	SANGRUR	DHURI	S-NPP	75.71823	30.34616	14:06:00	D	2.80
1083	SANGRUR	DHURI	S-NPP	75.81699	30.35398	14:06:00	D	3.80
1084	SANGRUR	DHURI	S-NPP	75.79397	30.35455	12:30:00	D	6.00
1085	SANGRUR	DHURI	S-NPP	75.79630	30.35528	12:30:00	D	5.50
1086	SANGRUR	DHURI	S-NPP	75.77296	30.36611	14:06:00	D	3.40
1087	SANGRUR	DHURI	S-NPP	75.80482	30.36866	14:06:00	D	5.00
1088	SANGRUR	DHURI	S-NPP	75.81194	30.36922	14:06:00	D	8.10
1089	SANGRUR	DHURI	S-NPP	75.80432	30.37383	14:06:00	D	12.30
1090	SANGRUR	DHURI	S-NPP	75.79671	30.37843	14:06:00	D	8.90
1091	SANGRUR	DHURI	S-NPP	75.92239	30.38323	14:06:00	D	12.00
1092	SANGRUR	DHURI	S-NPP	75.75329	30.38533	14:06:00	D	5.60
1093	SANGRUR	DHURI	S-NPP	75.77448	30.38705	14:06:00	D	2.30
1094	SANGRUR	DHURI	S-NPP	75.98403	30.38810	14:06:00	D	4.70
1095	SANGRUR	DHURI	S-NPP	75.98354	30.39333	14:06:00	D	4.70
1096	SANGRUR	DHURI	S-NPP	75.78812	30.39337	14:06:00	D	3.90
1097	SANGRUR	DHURI	S-NPP	75.78809	30.39443	14:06:00	D	3.60
1098	SANGRUR	DHURI	S-NPP	75.74159	30.39614	14:06:00	D	2.70
1099	SANGRUR	DHURI	S-NPP	75.69566	30.39617	14:06:00	D	3.90
1100	SANGRUR	DHURI	S-NPP	75.74120	30.39993	14:06:00	D	2.00
1101	SANGRUR	DHURI	S-NPP	75.68441	30.40216	14:06:00	D	3.80
1102	SANGRUR	DHURI	S-NPP	75.98980	30.40437	14:06:00	D	9.50
1103	SANGRUR	DHURI	S-NPP	75.68389	30.40730	14:06:00	D	1.50
1104	SANGRUR	DHURI	S-NPP	75.79368	30.40946	14:06:00	D	4.10
1105	SANGRUR	DHURI	S-NPP	75.79361	30.41048	14:06:00	D	4.30
1106	SANGRUR	DHURI	S-NPP	75.88143	30.43282	14:06:00	D	1.50
1107	SANGRUR	DHURI	S-NPP	75.97978	30.43499	14:06:00	D	3.90

1108	SANGRUR	DHURI	S-NPP	75.88763	30.44378	14:06:00	D	4.40
1109	SANGRUR	DHURI	S-NPP	75.89123	30.44405	14:06:00	D	5.80
1110	SANGRUR	DHURI	S-NPP	75.96055	30.44407	14:06:00	D	5.50
1111	SANGRUR	DHURI	S-NPP	75.70132	30.44493	14:06:00	D	4.30
1112	SANGRUR	DHURI	S-NPP	75.85117	30.44621	14:06:00	D	4.90
1113	SANGRUR	DHURI	S-NPP	75.72185	30.45174	14:06:00	D	2.90
1114	SANGRUR	DHURI	S-NPP	75.80322	30.45815	14:06:00	D	3.80
1115	SANGRUR	DHURI	S-NPP	75.73893	30.45829	14:06:00	D	2.70
1116	SANGRUR	DHURI	S-NPP	75.78747	30.47255	14:06:00	D	4.90
1117	SANGRUR	DHURI	S-NPP	75.74091	30.47404	14:06:00	D	2.90
1118	SANGRUR	DHURI	S-NPP	75.74042	30.47920	14:06:00	D	2.90
1119	SANGRUR	DHURI	S-NPP	75.72180	30.48809	14:06:00	D	4.70
1120	SANGRUR	DHURI	S-NPP	75.73237	30.48895	14:06:00	D	3.90
1121	SANGRUR	DHURI	S-NPP	75.78851	30.49871	14:06:00	D	2.70
1122	SANGRUR	DHURI	S-NPP	75.77026	30.50244	14:06:00	D	2.20
1123	SANGRUR	DHURI	S-NPP	75.76912	30.50395	14:06:00	D	2.60
1124	SANGRUR	MALERKOTLA	S-NPP	76.00855	30.40059	14:06:00	D	4.10
1125	SANGRUR	MALERKOTLA	S-NPP	75.99345	30.40466	14:06:00	D	9.50
1126	SANGRUR	MALERKOTLA	S-NPP	76.05057	30.42508	14:06:00	D	3.50
1127	SANGRUR	MALERKOTLA	S-NPP	75.82001	30.43336	14:06:00	D	3.00
1128	SANGRUR	MALERKOTLA	S-NPP	75.80679	30.45843	14:06:00	D	3.80
1129	SANGRUR	MALERKOTLA	S-NPP	76.06585	30.46260	14:06:00	D	5.70
1130	SANGRUR	MALERKOTLA	S-NPP	76.06955	30.46288	14:06:00	D	5.70
1131	SANGRUR	MALERKOTLA	S-NPP	75.85630	30.46754	14:06:00	D	3.80
1132	SANGRUR	MALERKOTLA	S-NPP	75.83075	30.47076	14:06:00	D	3.40
1133	SANGRUR	MALERKOTLA	S-NPP	75.87686	30.47963	14:06:00	D	2.40
1134	SANGRUR	MALERKOTLA	S-NPP	75.83331	30.48142	14:06:00	D	7.30
1135	SANGRUR	MALERKOTLA	S-NPP	75.83689	30.48170	14:06:00	D	8.50
1136	SANGRUR	MALERKOTLA	S-NPP	76.01178	30.48492	14:06:00	D	10.00
1137	SANGRUR	MALERKOTLA	S-NPP	75.98563	30.48816	14:06:00	D	11.30

1138	SANGRUR	MALERKOTLA	S-NPP	75.98929	30.48845	14:06:00	D	12.00
1139	SANGRUR	MALERKOTLA	S-NPP	75.82874	30.49151	14:06:00	D	8.10
1140	SANGRUR	MALERKOTLA	S-NPP	75.84611	30.49813	14:06:00	D	2.70
1141	SANGRUR	MALERKOTLA	S-NPP	76.05125	30.49856	14:06:00	D	4.70
1142	SANGRUR	MALERKOTLA	S-NPP	75.78738	30.50010	14:06:00	D	2.50
1143	SANGRUR	MALERKOTLA	S-NPP	75.80634	30.50015	14:06:00	D	3.50
1144	SANGRUR	MALERKOTLA	S-NPP	75.80989	30.50044	14:06:00	D	3.50
1145	SANGRUR	MALERKOTLA	S-NPP	75.80880	30.50170	14:06:00	D	3.50
1146	SANGRUR	MALERKOTLA	S-NPP	75.83846	30.50275	14:06:00	D	4.70
1147	SANGRUR	MALERKOTLA	S-NPP	75.83743	30.50382	14:06:00	D	4.20
1148	SANGRUR	MALERKOTLA	S-NPP	75.94718	30.50622	14:06:00	D	1.90
1149	SANGRUR	MALERKOTLA	S-NPP	75.93526	30.51579	14:06:00	D	3.50
1150	SANGRUR	MALERKOTLA	S-NPP	75.93890	30.51608	14:06:00	D	3.50
1151	SANGRUR	MALERKOTLA	S-NPP	75.93438	30.51623	14:06:00	D	3.70
1152	SANGRUR	MALERKOTLA	S-NPP	75.93803	30.51650	14:06:00	D	3.70
1153	SANGRUR	MALERKOTLA	S-NPP	75.94617	30.51667	14:06:00	D	6.80
1154	SANGRUR	MALERKOTLA	S-NPP	75.94531	30.51704	14:06:00	D	7.10
1155	SANGRUR	MALERKOTLA	S-NPP	75.94895	30.51730	14:06:00	D	5.30
1156	SANGRUR	MALERKOTLA	S-NPP	76.04115	30.51876	14:06:00	D	3.90
1157	SANGRUR	MALERKOTLA	S-NPP	76.04185	30.51901	14:06:00	D	4.00
1158	SANGRUR	MALERKOTLA	S-NPP	76.04485	30.51902	14:06:00	D	4.80
1159	SANGRUR	MALERKOTLA	S-NPP	76.01851	30.52240	14:06:00	D	4.00
1160	SANGRUR	MALERKOTLA	S-NPP	75.94844	30.52253	14:06:00	D	3.60
1161	SANGRUR	MALERKOTLA	S-NPP	75.96752	30.52365	14:06:00	D	2.30
1162	SANGRUR	MALERKOTLA	S-NPP	75.96666	30.52388	14:06:00	D	1.90
1163	SANGRUR	MALERKOTLA	S-NPP	75.98214	30.52483	14:06:00	D	2.90
1164	SANGRUR	MALERKOTLA	S-NPP	75.98579	30.52512	14:06:00	D	4.80
1165	SANGRUR	MALERKOTLA	S-NPP	75.98496	30.52522	14:06:00	D	4.70
1166	SANGRUR	MALERKOTLA	S-NPP	75.93792	30.52653	14:06:00	D	5.80
1167	SANGRUR	MALERKOTLA	S-NPP	75.93703	30.52695	14:06:00	D	5.90

1168	SANGRUR	MALERKOTLA	S-NPP	76.08033	30.53751	14:06:00	D	5.30
1169	SANGRUR	MALERKOTLA	S-NPP	76.08405	30.53779	14:06:00	D	5.30
1170	SANGRUR	MALERKOTLA	S-NPP	76.08102	30.53803	14:06:00	D	5.90
1171	SANGRUR	MALERKOTLA	S-NPP	76.08473	30.53833	14:06:00	D	5.90
1172	SANGRUR	MALERKOTLA	S-NPP	76.04277	30.54005	14:06:00	D	4.70
1173	SANGRUR	MALERKOTLA	S-NPP	75.72603	30.54229	14:06:00	D	4.20
1174	SANGRUR	MALERKOTLA	S-NPP	75.97195	30.54536	14:06:00	D	6.90
1175	SANGRUR	MALERKOTLA	S-NPP	75.81848	30.54945	14:06:00	D	2.20
1176	SANGRUR	MALERKOTLA	S-NPP	75.71794	30.55205	14:06:00	D	2.20
1177	SANGRUR	MALERKOTLA	S-NPP	75.73916	30.55371	14:06:00	D	4.90
1178	SANGRUR	MALERKOTLA	S-NPP	75.90489	30.55608	14:06:00	D	4.80
1179	SANGRUR	MALERKOTLA	S-NPP	75.90852	30.55635	14:06:00	D	7.80
1180	SANGRUR	MALERKOTLA	S-NPP	75.91215	30.55663	14:06:00	D	7.80
1181	SANGRUR	MALERKOTLA	S-NPP	75.77820	30.55676	14:06:00	D	3.70
1182	SANGRUR	MALERKOTLA	S-NPP	75.85745	30.55768	14:06:00	D	2.80
1183	SANGRUR	MALERKOTLA	S-NPP	75.97775	30.56162	14:06:00	D	4.80
1184	SANGRUR	MALERKOTLA	S-NPP	75.99504	30.57350	14:06:00	D	2.40
1185	SANGRUR	MALERKOTLA	S-NPP	76.01711	30.57518	14:06:00	D	2.50
1186	SANGRUR	MALERKOTLA	S-NPP	75.75484	30.57577	14:06:00	D	2.50
1187	SANGRUR	MALERKOTLA	S-NPP	75.71893	30.57811	14:06:00	D	9.20
1188	SANGRUR	MALERKOTLA	S-NPP	76.01659	30.58043	14:06:00	D	21.10
1189	SANGRUR	MALERKOTLA	S-NPP	75.82925	30.58689	14:06:00	D	5.20
1190	SANGRUR	MALERKOTLA	S-NPP	75.83285	30.58718	14:06:00	D	7.90
1191	SANGRUR	MALERKOTLA	S-NPP	75.88687	30.59144	14:06:00	D	4.10
1192	SANGRUR	MALERKOTLA	S-NPP	76.02295	30.59150	14:06:00	D	4.20
1193	SANGRUR	MALERKOTLA	S-NPP	75.76752	30.59242	14:06:00	D	4.60
1194	SANGRUR	MALERKOTLA	S-NPP	75.90861	30.59315	14:06:00	D	4.70
1195	SANGRUR	MALERKOTLA	S-NPP	75.82825	30.59728	14:06:00	D	6.30
1196	SANGRUR	MALERKOTLA	S-NPP	75.84261	30.59842	14:06:00	D	4.80
1197	SANGRUR	MALERKOTLA	S-NPP	75.82381	30.62373	14:06:00	D	2.90

1198	SANGRUR	MALERKOTLA	S-NPP	75.76250	30.62434	14:06:00	D	3.80
1199	SANGRUR	MALERKOTLA	S-NPP	75.85810	30.62587	14:06:00	D	5.30
1200	SANGRUR	MALERKOTLA	S-NPP	75.85623	30.62615	14:06:00	D	7.60
1201	SANGRUR	MALERKOTLA	S-NPP	75.82330	30.62892	14:06:00	D	2.50
1202	SANGRUR	MALERKOTLA	S-NPP	75.86966	30.63764	14:06:00	D	3.30
1203	SANGRUR	MALERKOTLA	S-NPP	75.81866	30.63903	14:06:00	D	3.60
1204	SANGRUR	MALERKOTLA	S-NPP	75.84024	30.64067	14:06:00	D	3.60
1205	SANGRUR	MALERKOTLA	S-NPP	75.79256	30.64750	14:06:00	D	2.60
1206	SANGRUR	MOONAK	S-NPP	76.07759	29.77841	14:06:00	D	2.40
1207	SANGRUR	MOONAK	S-NPP	76.02263	29.78442	14:06:00	D	2.20
1208	SANGRUR	MOONAK	S-NPP	76.02104	29.78460	14:06:00	D	1.60
1209	SANGRUR	MOONAK	S-NPP	76.00052	29.80925	14:06:00	D	2.30
1210	SANGRUR	MOONAK	S-NPP	75.81776	29.82092	14:06:00	D	2.30
1211	SANGRUR	MOONAK	S-NPP	75.76861	29.82214	14:06:00	D	2.60
1212	SANGRUR	MOONAK	S-NPP	75.82420	29.82663	14:06:00	D	4.40
1213	SANGRUR	MOONAK	S-NPP	76.07462	29.83077	14:06:00	D	3.40
1214	SANGRUR	MOONAK	S-NPP	76.10358	29.83301	14:06:00	D	4.40
1215	SANGRUR	MOONAK	S-NPP	75.95111	29.83680	14:06:00	D	1.50
1216	SANGRUR	MOONAK	S-NPP	75.92575	29.84000	14:06:00	D	5.00
1217	SANGRUR	MOONAK	S-NPP	75.92928	29.84028	14:06:00	D	5.00
1218	SANGRUR	MOONAK	S-NPP	76.09895	29.84321	14:06:00	D	5.50
1219	SANGRUR	MOONAK	S-NPP	76.10259	29.84349	14:06:00	D	5.50
1220	SANGRUR	MOONAK	S-NPP	75.78018	29.87188	14:06:00	D	9.50
1221	SANGRUR	MOONAK	S-NPP	75.77730	29.87461	14:06:00	D	5.00
1222	SANGRUR	MOONAK	S-NPP	75.78078	29.87491	14:06:00	D	8.80
1223	SANGRUR	MOONAK	S-NPP	75.81999	29.89571	14:06:00	D	3.40
1224	SANGRUR	MOONAK	S-NPP	75.89746	29.90174	14:06:00	D	2.00
1225	SANGRUR	MOONAK	S-NPP	75.76858	29.91757	14:06:00	D	14.30
1226	SANGRUR	MOONAK	S-NPP	75.95598	29.92958	12:30:00	D	4.70
1227	SANGRUR	MOONAK	S-NPP	75.96106	29.93077	12:30:00	D	8.10

1228	SANGRUR	MOONAK	S-NPP	75.96307	29.93158	12:30:00	D	8.50
1229	SANGRUR	MOONAK	S-NPP	75.91918	29.93476	14:06:00	D	7.30
1230	SANGRUR	MOONAK	S-NPP	75.91462	29.94485	14:06:00	D	3.20
1231	SANGRUR	MOONAK	S-NPP	75.83839	29.95955	14:06:00	D	2.70
1232	SANGRUR	MOONAK	S-NPP	75.91966	29.96615	14:06:00	D	3.90
1233	SANGRUR	MOONAK	S-NPP	75.85094	29.97619	14:06:00	D	2.80
1234	SANGRUR	MOONAK	S-NPP	75.85085	29.97732	14:06:00	D	1.90
1235	SANGRUR	MOONAK	S-NPP	75.86403	29.98769	14:06:00	D	1.70
1236	SANGRUR	MOONAK	S-NPP	75.86395	29.98873	14:06:00	D	1.50
1237	SANGRUR	SANGRUR	S-NPP	75.57785	30.14418	14:06:00	D	6.10
1238	SANGRUR	SANGRUR	S-NPP	75.95396	30.15895	14:06:00	D	1.90
1239	SANGRUR	SANGRUR	S-NPP	75.58656	30.16030	14:06:00	D	2.40
1240	SANGRUR	SANGRUR	S-NPP	75.58997	30.16059	14:06:00	D	5.10
1241	SANGRUR	SANGRUR	S-NPP	75.98643	30.16151	14:06:00	D	3.20
1242	SANGRUR	SANGRUR	S-NPP	75.94626	30.16359	14:06:00	D	1.40
1243	SANGRUR	SANGRUR	S-NPP	75.58604	30.16539	14:06:00	D	3.10
1244	SANGRUR	SANGRUR	S-NPP	75.66896	30.16715	14:06:00	D	1.90
1245	SANGRUR	SANGRUR	S-NPP	75.67934	30.16801	14:06:00	D	3.70
1246	SANGRUR	SANGRUR	S-NPP	75.58723	30.16817	14:06:00	D	4.40
1247	SANGRUR	SANGRUR	S-NPP	75.68280	30.16830	14:06:00	D	3.70
1248	SANGRUR	SANGRUR	S-NPP	75.60381	30.17459	14:06:00	D	4.30
1249	SANGRUR	SANGRUR	S-NPP	75.58161	30.17529	14:06:00	D	2.40
1250	SANGRUR	SANGRUR	S-NPP	75.56225	30.17649	14:06:00	D	1.20
1251	SANGRUR	SANGRUR	S-NPP	75.58960	30.17862	14:06:00	D	2.60
1252	SANGRUR	SANGRUR	S-NPP	75.67781	30.18338	14:06:00	D	2.10
1253	SANGRUR	SANGRUR	S-NPP	75.94424	30.18442	14:06:00	D	4.30
1254	SANGRUR	SANGRUR	S-NPP	75.69167	30.18454	14:06:00	D	2.30
1255	SANGRUR	SANGRUR	S-NPP	76.04977	30.18758	14:06:00	D	8.70
1256	SANGRUR	SANGRUR	S-NPP	75.79693	30.18809	14:06:00	D	1.80
1257	SANGRUR	SANGRUR	S-NPP	75.58511	30.18855	14:06:00	D	1.40



1258	SANGRUR	SANGRUR	S-NPP	75.72435	30.18903	14:06:00	D	1.80
1259	SANGRUR	SANGRUR	S-NPP	75.93658	30.18904	14:06:00	D	4.70
1260	SANGRUR	SANGRUR	S-NPP	75.79500	30.18923	14:06:00	D	3.20
1261	SANGRUR	SANGRUR	S-NPP	75.69599	30.19202	14:06:00	D	2.80
1262	SANGRUR	SANGRUR	S-NPP	75.63319	30.19230	14:06:00	D	3.00
1263	SANGRUR	SANGRUR	S-NPP	75.93965	30.19454	14:06:00	D	4.30
1264	SANGRUR	SANGRUR	S-NPP	75.59830	30.19472	14:06:00	D	2.00
1265	SANGRUR	SANGRUR	S-NPP	75.94158	30.19502	14:06:00	D	3.90
1266	SANGRUR	SANGRUR	S-NPP	76.01963	30.19573	14:06:00	D	5.00
1267	SANGRUR	SANGRUR	S-NPP	75.76781	30.19607	14:06:00	D	4.30
1268	SANGRUR	SANGRUR	S-NPP	75.83170	30.19617	14:06:00	D	6.80
1269	SANGRUR	SANGRUR	S-NPP	75.82983	30.19708	14:06:00	D	7.60
1270	SANGRUR	SANGRUR	S-NPP	75.76582	30.19740	14:06:00	D	7.40
1271	SANGRUR	SANGRUR	S-NPP	75.63267	30.19742	14:06:00	D	3.00
1272	SANGRUR	SANGRUR	S-NPP	75.69147	30.20201	14:06:00	D	3.80
1273	SANGRUR	SANGRUR	S-NPP	75.75829	30.20201	14:06:00	D	2.30
1274	SANGRUR	SANGRUR	S-NPP	75.84702	30.20360	14:06:00	D	1.70
1275	SANGRUR	SANGRUR	S-NPP	75.74675	30.21149	14:06:00	D	2.90
1276	SANGRUR	SANGRUR	S-NPP	75.79947	30.21558	14:06:00	D	1.50
1277	SANGRUR	SANGRUR	S-NPP	75.62368	30.21731	14:06:00	D	4.50
1278	SANGRUR	SANGRUR	S-NPP	75.75674	30.21746	14:06:00	D	2.90
1279	SANGRUR	SANGRUR	S-NPP	75.76025	30.21773	14:06:00	D	2.90
1280	SANGRUR	SANGRUR	S-NPP	75.83484	30.21832	14:06:00	D	9.40
1281	SANGRUR	SANGRUR	S-NPP	75.68940	30.22252	14:06:00	D	3.60
1282	SANGRUR	SANGRUR	S-NPP	75.78433	30.22481	14:06:00	D	1.70
1283	SANGRUR	SANGRUR	S-NPP	75.65662	30.23541	14:06:00	D	3.40
1284	SANGRUR	SANGRUR	S-NPP	75.80093	30.23651	14:06:00	D	1.10
1285	SANGRUR	SANGRUR	S-NPP	75.70173	30.23902	14:06:00	D	5.30
1286	SANGRUR	SANGRUR	S-NPP	75.82010	30.25887	14:06:00	D	1.50
1287	SANGRUR	SANGRUR	S-NPP	75.90614	30.26046	14:06:00	D	2.40

1288	SANGRUR	SANGRUR	S-NPP	75.90562	30.26565	14:06:00	D	2.90
1289	SANGRUR	SANGRUR	S-NPP	75.90460	30.27605	14:06:00	D	4.10
1290	SANGRUR	SANGRUR	S-NPP	76.05058	30.27704	14:06:00	D	4.10
1291	SANGRUR	SANGRUR	S-NPP	76.05424	30.27732	14:06:00	D	5.30
1292	SANGRUR	SANGRUR	S-NPP	75.90410	30.28125	14:06:00	D	4.10
1293	SANGRUR	SANGRUR	S-NPP	75.99776	30.28634	12:30:00	D	8.60
1294	SANGRUR	SANGRUR	S-NPP	75.99897	30.28860	12:30:00	D	7.80
1295	SANGRUR	SANGRUR	S-NPP	75.79883	30.29361	14:06:00	D	3.10
1296	SANGRUR	SANGRUR	S-NPP	75.79785	30.29518	14:06:00	D	3.20
1297	SANGRUR	SANGRUR	S-NPP	75.82716	30.29594	14:06:00	D	4.90
1298	SANGRUR	SANGRUR	S-NPP	75.96073	30.29629	14:06:00	D	2.10
1299	SANGRUR	SANGRUR	S-NPP	75.82623	30.29732	14:06:00	D	5.40
1300	SANGRUR	SANGRUR	S-NPP	75.79126	30.29820	14:06:00	D	1.50
1301	SANGRUR	SANGRUR	S-NPP	76.07792	30.30034	14:06:00	D	3.30
1302	SANGRUR	SANGRUR	S-NPP	75.87561	30.30625	14:06:00	D	1.20
1303	SANGRUR	SANGRUR	S-NPP	75.99741	30.32589	14:06:00	D	5.30
1304	SANGRUR	SUNAM	S-NPP	75.77104	29.92813	14:06:00	D	3.40
1305	SANGRUR	SUNAM	S-NPP	75.77453	29.92841	14:06:00	D	3.90
1306	SANGRUR	SUNAM	S-NPP	75.73190	29.93530	14:06:00	D	2.90
1307	SANGRUR	SUNAM	S-NPP	75.66200	29.93987	14:06:00	D	1.50
1308	SANGRUR	SUNAM	S-NPP	75.67914	29.94129	14:06:00	D	1.70
1309	SANGRUR	SUNAM	S-NPP	75.70669	29.94356	14:06:00	D	2.00
1310	SANGRUR	SUNAM	S-NPP	75.78344	29.94468	14:06:00	D	1.90
1311	SANGRUR	SUNAM	S-NPP	75.68347	29.96742	14:06:00	D	1.40
1312	SANGRUR	SUNAM	S-NPP	75.68306	29.96963	14:06:00	D	16.10
1313	SANGRUR	SUNAM	S-NPP	75.68650	29.96990	14:06:00	D	13.20
1314	SANGRUR	SUNAM	S-NPP	75.68295	29.97253	14:06:00	D	14.70
1315	SANGRUR	SUNAM	S-NPP	75.68639	29.97282	14:06:00	D	13.40
1316	SANGRUR	SUNAM	S-NPP	75.75255	29.97321	14:06:00	D	3.80
1317	SANGRUR	SUNAM	S-NPP	75.75500	29.98377	14:06:00	D	3.60

1318	SANGRUR	SUNAM	S-NPP	75.75471	29.98552	14:06:00	D	4.50
1319	SANGRUR	SUNAM	S-NPP	75.78907	29.99337	14:06:00	D	2.40
1320	SANGRUR	SUNAM	S-NPP	75.79257	29.99364	14:06:00	D	2.40
1321	SANGRUR	SUNAM	S-NPP	75.69078	29.99602	14:06:00	D	6.50
1322	SANGRUR	SUNAM	S-NPP	75.86643	29.99935	14:06:00	D	3.00
1323	SANGRUR	SUNAM	S-NPP	75.86996	29.99961	14:06:00	D	3.00
1324	SANGRUR	SUNAM	S-NPP	75.69025	30.00113	14:06:00	D	6.50
1325	SANGRUR	SUNAM	S-NPP	75.85178	30.00342	14:06:00	D	2.90
1326	SANGRUR	SUNAM	S-NPP	75.86944	30.00479	14:06:00	D	3.00
1327	SANGRUR	SUNAM	S-NPP	75.86080	30.01975	14:06:00	D	4.60
1328	SANGRUR	SUNAM	S-NPP	75.86031	30.02492	14:06:00	D	4.60
1329	SANGRUR	SUNAM	S-NPP	75.69994	30.04320	14:06:00	D	2.40
1330	SANGRUR	SUNAM	S-NPP	75.70338	30.04348	14:06:00	D	2.40
1331	SANGRUR	SUNAM	S-NPP	75.91147	30.04985	14:06:00	D	2.10
1332	SANGRUR	SUNAM	S-NPP	75.81140	30.05226	14:06:00	D	3.00
1333	SANGRUR	SUNAM	S-NPP	75.79934	30.06687	14:06:00	D	1.80
1334	SANGRUR	SUNAM	S-NPP	75.65209	30.07018	14:06:00	D	4.20
1335	SANGRUR	SUNAM	S-NPP	75.65070	30.07290	14:06:00	D	3.90
1336	SANGRUR	SUNAM	S-NPP	75.69341	30.07364	14:06:00	D	1.70
1337	SANGRUR	SUNAM	S-NPP	75.67480	30.07476	14:06:00	D	2.70
1338	SANGRUR	SUNAM	S-NPP	75.69209	30.07609	14:06:00	D	1.90
1339	SANGRUR	SUNAM	S-NPP	75.69556	30.07636	14:06:00	D	3.20
1340	SANGRUR	SUNAM	S-NPP	75.67565	30.07731	14:06:00	D	4.00
1341	SANGRUR	SUNAM	S-NPP	75.81477	30.08029	14:06:00	D	2.60
1342	SANGRUR	SUNAM	S-NPP	75.86530	30.08268	14:06:00	D	4.90
1343	SANGRUR	SUNAM	S-NPP	75.70144	30.08714	14:06:00	D	5.10
1344	SANGRUR	SUNAM	S-NPP	75.70491	30.08741	14:06:00	D	5.10
1345	SANGRUR	SUNAM	S-NPP	75.80082	30.08778	14:06:00	D	2.60
1346	SANGRUR	SUNAM	S-NPP	75.71880	30.08849	14:06:00	D	1.50
1347	SANGRUR	SUNAM	S-NPP	75.79967	30.08953	14:06:00	D	2.70

1348	SANGRUR	SUNAM	S-NPP	75.72121	30.09902	14:06:00	D	1.80
1349	SANGRUR	SUNAM	S-NPP	75.80918	30.10066	14:06:00	D	3.50
1350	SANGRUR	SUNAM	S-NPP	76.02105	30.10628	14:06:00	D	2.70
1351	SANGRUR	SUNAM	S-NPP	75.68549	30.10655	14:06:00	D	1.60
1352	SANGRUR	SUNAM	S-NPP	75.91914	30.10909	14:06:00	D	6.40
1353	SANGRUR	SUNAM	S-NPP	75.74456	30.11120	14:06:00	D	1.60
1354	SANGRUR	SUNAM	S-NPP	75.99675	30.13075	14:06:00	D	3.60
1355	SANGRUR	SUNAM	S-NPP	75.72455	30.13551	14:06:00	D	7.00
1356	SANGRUR	SUNAM	S-NPP	75.89464	30.13858	14:06:00	D	4.70
1357	SANGRUR	SUNAM	S-NPP	75.77293	30.14457	14:06:00	D	2.70
1358	SANGRUR	SUNAM	S-NPP	75.92625	30.14629	14:06:00	D	1.80
1359	SANGRUR	SUNAM	S-NPP	75.81004	30.16315	14:06:00	D	2.30
1360	SANGRUR	SUNAM	S-NPP	75.77789	30.16574	14:06:00	D	4.90
1361	SANGRUR	SUNAM	S-NPP	75.78140	30.16602	14:06:00	D	4.90
1362	SAS NAGAR	KHARAR	S-NPP	76.53250	30.66251	14:06:00	D	4.10
1363	SAS NAGAR	KHARAR	S-NPP	76.53646	30.66281	14:06:00	D	4.10
1364	SAS NAGAR	KHARAR	S-NPP	76.53517	30.66403	14:06:00	D	7.40

**Details of residue burning events in Haryana on 11-Nov-2018**

<b>Event S. No.</b>	<b>District</b>	<b>Tehsil/Block</b>	<b>Satellite</b>	<b>Longitude</b>	<b>Latitude</b>	<b>Time (IST)</b>	<b>Day/Night</b>	<b>Fire Power (W/m<sup>2</sup>)</b>
1	AMBALA	AMBALA	S-NPP	76.70827	30.31019	14:06:00	D	3.30
2	BHIWANI	BAWANI_KHERA	S-NPP	76.11624	28.95863	14:06:00	D	2.30
3	FATEHABAD	FATEHABAD	S-NPP	75.49726	29.51339	14:06:00	D	22.60
4	FATEHABAD	FATEHABAD	S-NPP	75.28748	29.51521	14:06:00	D	4.50
5	FATEHABAD	FATEHABAD	S-NPP	75.49465	29.53853	14:06:00	D	5.90
6	FATEHABAD	FATEHABAD	S-NPP	75.51038	29.55904	14:06:00	D	2.70
7	FATEHABAD	FATEHABAD	S-NPP	75.58858	29.56541	14:06:00	D	3.80
8	FATEHABAD	FATEHABAD	S-NPP	75.31201	29.56775	14:06:00	D	8.40
9	FATEHABAD	FATEHABAD	S-NPP	75.47527	29.57644	14:06:00	D	4.00
10	FATEHABAD	FATEHABAD	S-NPP	75.34318	29.58045	14:06:00	D	6.40
11	FATEHABAD	FATEHABAD	S-NPP	75.33620	29.58489	14:06:00	D	5.90
12	FATEHABAD	FATEHABAD	S-NPP	75.49400	29.58814	14:06:00	D	7.90
13	FATEHABAD	FATEHABAD	S-NPP	75.50061	29.58870	14:06:00	D	7.90
14	FATEHABAD	FATEHABAD	S-NPP	75.79667	29.60800	14:06:00	D	2.40
15	FATEHABAD	FATEHABAD	S-NPP	75.32069	29.60868	14:06:00	D	18.00
16	FATEHABAD	FATEHABAD	S-NPP	75.31903	29.60906	14:06:00	D	11.70
17	FATEHABAD	FATEHABAD	S-NPP	75.45792	29.61552	14:06:00	D	6.20
18	FATEHABAD	FATEHABAD	S-NPP	75.74886	29.63504	14:06:00	D	2.10
19	FATEHABAD	RATIA	S-NPP	75.60608	29.59238	14:06:00	D	4.30
20	FATEHABAD	RATIA	S-NPP	75.64050	29.62083	14:06:00	D	2.80
21	FATEHABAD	RATIA	S-NPP	75.66419	29.62282	14:06:00	D	4.70
22	FATEHABAD	RATIA	S-NPP	75.37141	29.62318	14:06:00	D	9.40
23	FATEHABAD	RATIA	S-NPP	75.36980	29.62322	14:06:00	D	7.30
24	FATEHABAD	RATIA	S-NPP	75.64625	29.63156	14:06:00	D	19.10
25	FATEHABAD	RATIA	S-NPP	75.56290	29.63469	14:06:00	D	9.00
26	FATEHABAD	RATIA	S-NPP	75.64574	29.63664	14:06:00	D	19.10
27	FATEHABAD	RATIA	S-NPP	75.56274	29.63864	14:06:00	D	5.80
28	FATEHABAD	RATIA	S-NPP	75.56944	29.63917	14:06:00	D	4.30

29	FATEHABAD	RATIA	S-NPP	75.57073	29.64047	14:06:00	D	4.20
30	FATEHABAD	RATIA	S-NPP	75.64523	29.64173	14:06:00	D	5.00
31	FATEHABAD	RATIA	S-NPP	75.65539	29.64259	14:06:00	D	3.20
32	FATEHABAD	RATIA	S-NPP	75.64809	29.64710	14:06:00	D	5.10
33	FATEHABAD	RATIA	S-NPP	75.54139	29.64813	14:06:00	D	5.80
34	FATEHABAD	RATIA	S-NPP	75.64246	29.65518	14:06:00	D	3.90
35	FATEHABAD	RATIA	S-NPP	75.64369	29.65697	14:06:00	D	3.80
36	FATEHABAD	RATIA	S-NPP	75.35748	29.67763	14:06:00	D	4.50
37	FATEHABAD	RATIA	S-NPP	75.38354	29.67982	14:06:00	D	7.20
38	FATEHABAD	RATIA	S-NPP	75.40916	29.68703	14:06:00	D	5.30
39	FATEHABAD	RATIA	S-NPP	75.62475	29.69474	14:06:00	D	3.10
40	FATEHABAD	RATIA	S-NPP	75.59727	29.69760	14:06:00	D	5.60
41	FATEHABAD	RATIA	S-NPP	75.60063	29.69787	14:06:00	D	9.20
42	FATEHABAD	RATIA	S-NPP	75.61411	29.69898	14:06:00	D	2.10
43	FATEHABAD	RATIA	S-NPP	75.60347	29.70322	14:06:00	D	1.80
44	FATEHABAD	RATIA	S-NPP	75.55595	29.70439	14:06:00	D	6.60
45	FATEHABAD	RATIA	S-NPP	75.49327	29.70932	14:06:00	D	8.00
46	FATEHABAD	RATIA	S-NPP	75.61981	29.70969	14:06:00	D	3.90
47	FATEHABAD	RATIA	S-NPP	75.56214	29.71001	14:06:00	D	1.50
48	FATEHABAD	RATIA	S-NPP	75.61591	29.71449	14:06:00	D	9.40
49	FATEHABAD	RATIA	S-NPP	75.61929	29.71477	14:06:00	D	5.90
50	FATEHABAD	RATIA	S-NPP	75.58176	29.71676	14:06:00	D	3.60
51	FATEHABAD	RATIA	S-NPP	75.60192	29.71844	14:06:00	D	7.60
52	FATEHABAD	RATIA	S-NPP	75.60529	29.71872	14:06:00	D	16.40
53	FATEHABAD	RATIA	S-NPP	75.61877	29.71985	14:06:00	D	5.90
54	FATEHABAD	RATIA	S-NPP	75.56059	29.72519	14:06:00	D	2.50
55	FATEHABAD	RATIA	S-NPP	75.46281	29.72597	14:06:00	D	16.00
56	FATEHABAD	RATIA	S-NPP	75.46471	29.72720	14:06:00	D	20.20
57	FATEHABAD	RATIA	S-NPP	75.58977	29.73788	14:06:00	D	3.40
58	FATEHABAD	RATIA	S-NPP	75.59313	29.73816	14:06:00	D	3.40
59	FATEHABAD	RATIA	S-NPP	75.60271	29.74409	14:06:00	D	3.70

60	FATEHABAD	RATIA	S-NPP	75.60608	29.74438	14:06:00	D	3.70
61	FATEHABAD	RATIA	S-NPP	75.48061	29.74769	14:06:00	D	7.00
62	FATEHABAD	RATIA	S-NPP	75.47591	29.74848	14:06:00	D	3.80
63	FATEHABAD	RATIA	S-NPP	75.60556	29.74946	14:06:00	D	3.70
64	FATEHABAD	RATIA	S-NPP	75.63885	29.75742	14:06:00	D	4.00
65	FATEHABAD	RATIA	S-NPP	75.46521	29.76676	14:06:00	D	11.30
66	FATEHABAD	RATIA	S-NPP	75.64579	29.77108	14:06:00	D	2.10
67	FATEHABAD	RATIA	S-NPP	75.67648	29.77351	14:06:00	D	2.90
68	FATEHABAD	RATIA	S-NPP	75.67989	29.77378	14:06:00	D	4.50
69	FATEHABAD	TOHANA	S-NPP	75.80198	29.53925	14:06:00	D	5.30
70	FATEHABAD	TOHANA	S-NPP	75.84984	29.54843	14:06:00	D	3.20
71	FATEHABAD	TOHANA	S-NPP	75.80410	29.60343	14:06:00	D	6.00
72	FATEHABAD	TOHANA	S-NPP	75.80945	29.61938	14:06:00	D	3.30
73	FATEHABAD	TOHANA	S-NPP	75.86045	29.63392	14:06:00	D	3.10
74	FATEHABAD	TOHANA	S-NPP	75.90893	29.64309	14:06:00	D	6.80
75	FATEHABAD	TOHANA	S-NPP	75.91895	29.64912	14:06:00	D	8.30
76	FATEHABAD	TOHANA	S-NPP	75.88335	29.65139	14:06:00	D	1.30
77	FATEHABAD	TOHANA	S-NPP	75.89684	29.65771	14:06:00	D	2.40
78	FATEHABAD	TOHANA	S-NPP	75.91792	29.65946	14:06:00	D	5.30
79	FATEHABAD	TOHANA	S-NPP	75.88483	29.73137	14:06:00	D	7.00
80	FATEHABAD	TOHANA	S-NPP	75.71878	29.74877	14:06:00	D	4.30
81	FATEHABAD	TOHANA	S-NPP	75.73593	29.75021	14:06:00	D	4.30
82	FATEHABAD	TOHANA	S-NPP	75.73235	29.76760	14:06:00	D	1.00
83	FATEHABAD	TOHANA	S-NPP	75.76835	29.77360	14:06:00	D	2.30
84	FATEHABAD	TOHANA	S-NPP	75.77325	29.77597	14:06:00	D	4.30
85	FATEHABAD	TOHANA	S-NPP	75.74113	29.78377	14:06:00	D	3.70
86	FATEHABAD	TOHANA	S-NPP	75.74061	29.78889	14:06:00	D	3.10
87	FATEHABAD	TOHANA	S-NPP	75.73266	29.79858	14:06:00	D	8.30
88	FATEHABAD	TOHANA	S-NPP	75.73610	29.79886	14:06:00	D	8.30
89	HISAR	HANSI	S-NPP	76.01809	29.18801	14:06:00	D	2.30
90	HISAR	HISAR	S-NPP	76.04945	29.36431	14:06:00	D	3.10

91	HISAR	HISAR	S-NPP	75.80370	29.48772	14:06:00	D	2.30
92	HISAR	NARNAUND	S-NPP	76.06292	29.16545	14:06:00	D	2.20
93	HISAR	NARNAUND	S-NPP	76.07195	29.18185	14:06:00	D	2.90
94	HISAR	NARNAUND	S-NPP	76.07550	29.18213	14:06:00	D	5.20
95	HISAR	NARNAUND	S-NPP	76.07905	29.18241	14:06:00	D	5.20
96	HISAR	NARNAUND	S-NPP	76.17071	29.23700	14:06:00	D	2.50
97	HISAR	NARNAUND	S-NPP	76.14328	29.28792	14:06:00	D	2.10
98	HISAR	NARNAUND	S-NPP	76.12637	29.31288	14:06:00	D	3.40
99	JIND	JIND	S-NPP	76.35432	29.38412	14:06:00	D	2.80
100	JIND	JIND	S-NPP	76.41156	29.47786	14:06:00	D	4.10
101	JIND	NARWANA	S-NPP	76.09750	29.44209	14:06:00	D	1.80
102	JIND	NARWANA	S-NPP	76.03006	29.51624	14:06:00	D	3.80
103	JIND	NARWANA	S-NPP	76.02955	29.52144	14:06:00	D	3.80
104	JIND	NARWANA	S-NPP	76.07442	29.54077	14:06:00	D	2.40
105	JIND	NARWANA	S-NPP	76.07800	29.54106	14:06:00	D	2.40
106	JIND	NARWANA	S-NPP	76.08058	29.55178	14:06:00	D	2.20
107	JIND	NARWANA	S-NPP	76.12534	29.63428	14:06:00	D	2.10
108	JIND	NARWANA	S-NPP	75.94711	29.65144	14:06:00	D	3.60
109	JIND	NARWANA	S-NPP	76.04720	29.68136	14:06:00	D	1.00
110	JIND	NARWANA	S-NPP	76.08056	29.68335	14:06:00	D	4.70
111	JIND	NARWANA	S-NPP	76.07955	29.68381	14:06:00	D	2.40
112	JIND	NARWANA	S-NPP	76.08315	29.68408	14:06:00	D	2.40
113	JIND	NARWANA	S-NPP	76.04774	29.68590	14:06:00	D	2.60
114	JIND	NARWANA	S-NPP	76.09245	29.70058	14:06:00	D	4.70
115	JIND	NARWANA	S-NPP	76.04870	29.70248	14:06:00	D	1.70
116	JIND	NARWANA	S-NPP	76.00166	29.70409	14:06:00	D	2.70
117	JIND	NARWANA	S-NPP	76.09193	29.70580	14:06:00	D	4.70
118	JIND	NARWANA	S-NPP	76.07336	29.70964	14:06:00	D	4.10
119	JIND	NARWANA	S-NPP	76.09505	29.71131	14:06:00	D	3.40
120	JIND	NARWANA	S-NPP	75.95742	29.71631	14:06:00	D	3.50
121	JIND	NARWANA	S-NPP	76.17870	29.71773	14:06:00	D	4.70



122	JIND	NARWANA	S-NPP	75.99296	29.71912	14:06:00	D	6.30
123	JIND	NARWANA	S-NPP	76.10176	29.72079	12:24:00	D	4.60
124	JIND	NARWANA	S-NPP	76.04923	29.73404	14:06:00	D	8.60
125	JIND	NARWANA	S-NPP	76.05283	29.73433	14:06:00	D	16.90
126	JIND	NARWANA	S-NPP	76.04874	29.73926	14:06:00	D	1.50
127	JIND	NARWANA	S-NPP	76.12046	29.75020	14:06:00	D	9.70
128	JIND	NARWANA	S-NPP	76.12410	29.75049	14:06:00	D	22.10
129	JIND	NARWANA	S-NPP	76.13788	29.77510	12:30:00	D	8.90
130	JIND	NARWANA	S-NPP	76.14341	29.77631	12:24:00	D	7.60
131	JIND	NARWANA	S-NPP	76.18861	29.79186	14:06:00	D	4.40
132	JIND	SAFIDON	S-NPP	76.64221	29.47423	14:06:00	D	4.20
133	KAITHAL	KAITHAL	S-NPP	76.38804	29.58169	14:06:00	D	3.50
134	KAITHAL	KAITHAL	S-NPP	76.38061	29.60595	14:06:00	D	3.20
135	KAITHAL	KAITHAL	S-NPP	76.38179	29.60795	14:06:00	D	2.00
136	KAITHAL	KAITHAL	S-NPP	76.23684	29.62178	14:06:00	D	4.50
137	KAITHAL	KAITHAL	S-NPP	76.34453	29.66739	14:06:00	D	3.00
138	KAITHAL	KAITHAL	S-NPP	76.30153	29.68535	14:06:00	D	5.50
139	KAITHAL	KAITHAL	S-NPP	76.63409	29.69510	14:06:00	D	5.50
140	KAITHAL	KAITHAL	S-NPP	76.18136	29.72852	14:06:00	D	6.30
141	KAITHAL	KAITHAL	S-NPP	76.24573	29.79196	14:06:00	D	4.00
142	KAITHAL	KAITHAL	S-NPP	76.27168	29.79403	14:06:00	D	2.80
143	KAITHAL	KAITHAL	S-NPP	76.24768	29.79621	14:06:00	D	2.40
144	KAITHAL	KAITHAL	S-NPP	76.25407	29.80733	14:06:00	D	4.00
145	KAITHAL	KAITHAL	S-NPP	76.25163	29.80840	14:06:00	D	8.80
146	KAITHAL	KAITHAL	S-NPP	76.25356	29.81261	14:06:00	D	4.00
147	KAITHAL	KAITHAL	S-NPP	76.27586	29.81427	14:06:00	D	2.70
148	KAITHAL	KAITHAL	S-NPP	76.27711	29.81579	14:06:00	D	2.90
149	KAITHAL	KAITHAL	S-NPP	76.37891	29.84334	14:06:00	D	6.50
150	KARNAL	ASSANDH	S-NPP	76.55882	29.49485	14:06:00	D	4.20
151	KARNAL	ASSANDH	S-NPP	76.64310	29.50687	14:06:00	D	3.00
152	KARNAL	ASSANDH	S-NPP	76.61362	29.50713	14:06:00	D	3.60

153	KARNAL	ASSANDH	S-NPP	76.61164	29.50983	14:06:00	D	2.20
154	KARNAL	ASSANDH	S-NPP	76.74487	29.53289	14:06:00	D	5.90
155	KARNAL	ASSANDH	S-NPP	76.74268	29.53648	14:06:00	D	7.90
156	KARNAL	ASSANDH	S-NPP	76.74043	29.53804	14:06:00	D	3.80
157	KARNAL	ASSANDH	S-NPP	76.74438	29.53832	14:06:00	D	3.80
158	SIRSA	DABWALI	S-NPP	74.78579	29.94582	14:06:00	D	13.10
159	SIRSA	DABWALI	S-NPP	74.79185	29.94635	14:06:00	D	13.10
160	SIRSA	ELLENABAD	S-NPP	74.83465	29.46304	14:06:00	D	4.40
161	SIRSA	ELLENABAD	S-NPP	74.72589	29.46831	14:06:00	D	3.70
162	SIRSA	ELLENABAD	S-NPP	74.66861	29.50194	14:06:00	D	6.70
163	SIRSA	ELLENABAD	S-NPP	74.70764	29.52476	14:06:00	D	8.50
164	SIRSA	RANIA	S-NPP	74.92529	29.52456	14:06:00	D	22.60
165	SIRSA	RANIA	S-NPP	74.71943	29.52582	14:06:00	D	4.20
166	SIRSA	RANIA	S-NPP	74.71300	29.53008	14:06:00	D	4.70
167	SIRSA	RANIA	S-NPP	74.64149	29.53325	14:06:00	D	4.80
168	SIRSA	RANIA	S-NPP	74.85714	29.53325	14:06:00	D	5.40
169	SIRSA	RANIA	S-NPP	74.71248	29.53488	14:06:00	D	4.70
170	SIRSA	RANIA	S-NPP	74.61604	29.55017	14:06:00	D	4.90
171	SIRSA	RANIA	S-NPP	74.61965	29.55088	14:06:00	D	10.60
172	SIRSA	RANIA	S-NPP	74.61497	29.55969	14:06:00	D	4.00
173	SIRSA	RANIA	S-NPP	74.61857	29.56041	14:06:00	D	9.30
174	SIRSA	RANIA	S-NPP	74.59119	29.56228	14:06:00	D	1.90
175	SIRSA	RANIA	S-NPP	74.59473	29.56316	14:06:00	D	5.20
176	SIRSA	RANIA	S-NPP	74.66755	29.56459	14:06:00	D	9.90
177	SIRSA	RANIA	S-NPP	74.67127	29.56496	14:06:00	D	16.20
178	SIRSA	RANIA	S-NPP	74.68893	29.56648	14:06:00	D	5.70
179	SIRSA	RANIA	S-NPP	74.69104	29.56678	14:06:00	D	5.50
180	SIRSA	RANIA	S-NPP	74.68839	29.57127	14:06:00	D	5.70
181	SIRSA	RANIA	S-NPP	74.69051	29.57156	14:06:00	D	5.50
182	SIRSA	RANIA	S-NPP	74.60754	29.57343	14:06:00	D	4.20
183	SIRSA	RANIA	S-NPP	74.72385	29.57432	14:06:00	D	6.60

184	SIRSA	RANIA	S-NPP	74.72590	29.57486	14:06:00	D	10.20
185	SIRSA	RANIA	S-NPP	74.58241	29.61974	14:06:00	D	4.70
186	SIRSA	SIRSA	S-NPP	75.22914	29.52001	14:06:00	D	5.40
187	SIRSA	SIRSA	S-NPP	75.23308	29.52108	14:06:00	D	11.40
188	SIRSA	SIRSA	S-NPP	75.23719	29.53081	02:48:00	N	0.50
189	SIRSA	SIRSA	S-NPP	74.98934	29.55967	14:06:00	D	7.10
190	SIRSA	SIRSA	S-NPP	74.99415	29.61206	14:06:00	D	7.50
191	SIRSA	SIRSA	S-NPP	75.11479	29.61537	14:06:00	D	6.20
192	SIRSA	SIRSA	S-NPP	75.03635	29.62551	14:06:00	D	3.70
193	SIRSA	SIRSA	S-NPP	75.12428	29.62800	14:06:00	D	6.40
194	SIRSA	SIRSA	S-NPP	75.16521	29.66131	14:06:00	D	5.10
195	YAMUNANAGAR	JAGADHRI	S-NPP	77.15687	30.24822	14:06:00	D	3.80
196	YAMUNANAGAR	JAGADHRI	S-NPP	77.24802	30.29126	14:06:00	D	4.90

**Details of residue burning events in Uttar Pradesh on 11-Nov-2018**

<b>Event S. No.</b>	<b>District</b>	<b>Tehsil/Block</b>	<b>Satellite</b>	<b>Longitude</b>	<b>Latitude</b>	<b>Time (IST)</b>	<b>Day/Night</b>	<b>Fire Power (W/m<sup>2</sup>)</b>
1	BALRAMPUR	TULSIPUR	S-NPP	82.62051	27.49568	12:24:00	D	1.70
2	BALRAMPUR	TULSIPUR	S-NPP	82.69356	27.54388	12:24:00	D	2.00
3	BALRAMPUR	UTRAULA	S-NPP	82.34485	27.35586	12:24:00	D	2.40
4	BASTI	BHANPUR	S-NPP	82.75556	27.08254	12:24:00	D	9.40
5	BASTI	HARRAIYA	S-NPP	82.61313	26.72725	12:24:00	D	2.00
6	BASTI	HARRAIYA	S-NPP	82.57162	26.73400	12:24:00	D	2.20
7	BASTI	HARRAIYA	S-NPP	82.29601	26.85733	12:24:00	D	2.70
8	BASTI	RUDHAULI	S-NPP	82.81129	26.92378	12:24:00	D	0.90
9	BASTI	RUDHAULI	S-NPP	82.87730	26.95958	12:24:00	D	3.50
10	BASTI	RUDHAULI	S-NPP	82.82721	26.97371	12:24:00	D	5.80
11	BASTI	RUDHAULI	S-NPP	82.86855	26.97873	12:24:00	D	2.10
12	HARDOI	SANDILA	S-NPP	80.41319	27.09838	14:06:00	D	6.50
13	JYOTIBAPHULE NAGAR	DHANAURA	S-NPP	78.19426	28.93751	14:06:00	D	2.20
14	KUSHINAGAR	HATA	S-NPP	83.64636	26.75433	12:24:00	D	3.90
15	MAHARAJGANJ	MAHARAJGANJ	S-NPP	83.58026	27.02752	12:24:00	D	7.00
16	MAHARAJGANJ	MAHARAJGANJ	S-NPP	83.58211	27.02968	12:24:00	D	6.50
17	MAHARAJGANJ	NAUTANWA	S-NPP	83.39500	27.28672	12:24:00	D	3.70
18	MAHARAJGANJ	NAUTANWA	S-NPP	83.38705	27.30859	12:24:00	D	3.30
19	MAHARAJGANJ	NAUTANWA	S-NPP	83.62551	27.38652	12:24:00	D	8.00
20	MAHARAJGANJ	NAUTANWA	S-NPP	83.40753	27.43259	12:24:00	D	7.30
21	MAHARAJGANJ	NAUTANWA	S-NPP	83.40917	27.43488	12:24:00	D	9.70
22	MAHARAJGANJ	NICHLAUL	S-NPP	83.65229	27.27254	12:24:00	D	7.90
23	SANTKABIRNAGAR	KHALILABAD	S-NPP	82.84740	26.84922	12:24:00	D	1.50
24	SANTKABIRNAGAR	KHALILABAD	S-NPP	82.86883	26.91549	12:24:00	D	0.80
25	SANTKABIRNAGAR	MEHDAWAL	S-NPP	82.91457	26.97307	12:24:00	D	4.30
26	SHAHJAHANPUR	PUWANYA	S-NPP	80.10663	28.30310	14:06:00	D	2.50
27	SHAHJAHANPUR	PUWANYA	S-NPP	80.13502	28.32040	12:24:00	D	2.30
28	SIDDHARTHANAGAR	BANSI	S-NPP	82.92269	27.07412	12:24:00	D	5.00

29	SIDDHARTHANAGAR	BANSI	S-NPP	82.84998	27.07756	12:24:00	D	2.60
30	SIDDHARTHANAGAR	BANSI	S-NPP	82.85321	27.07829	12:24:00	D	2.80
31	SIDDHARTHANAGAR	BANSI	S-NPP	82.76774	27.10118	12:24:00	D	1.60
32	SIDDHARTHANAGAR	BANSI	S-NPP	82.81187	27.11641	12:24:00	D	1.50
33	SIDDHARTHANAGAR	BANSI	S-NPP	82.88044	27.15282	12:24:00	D	2.40
34	SIDDHARTHANAGAR	BANSI	S-NPP	82.80733	27.15759	12:24:00	D	3.50
35	SIDDHARTHANAGAR	BANSI	S-NPP	82.82380	27.22897	12:24:00	D	2.60
36	SIDDHARTHANAGAR	DOMARIYAGANJ	S-NPP	82.72248	27.10159	12:24:00	D	3.00
37	SIDDHARTHANAGAR	DOMARIYAGANJ	S-NPP	82.77064	27.12829	12:24:00	D	2.60
38	SIDDHARTHANAGAR	DOMARIYAGANJ	S-NPP	82.74742	27.14956	12:24:00	D	2.40
39	SIDDHARTHANAGAR	DOMARIYAGANJ	S-NPP	82.73711	27.15650	12:24:00	D	3.80
40	SIDDHARTHANAGAR	DOMARIYAGANJ	S-NPP	82.53498	27.24621	12:24:00	D	2.70
41	SIDDHARTHANAGAR	ITWA	S-NPP	82.69631	27.27242	12:24:00	D	1.80
42	SIDDHARTHANAGAR	ITWA	S-NPP	82.76642	27.29367	12:24:00	D	4.20
43	SIDDHARTHANAGAR	ITWA	S-NPP	82.86172	27.29431	12:24:00	D	1.50
44	SIDDHARTHANAGAR	ITWA	S-NPP	82.77429	27.32707	12:24:00	D	2.40
45	SIDDHARTHANAGAR	ITWA	S-NPP	82.69327	27.34585	12:24:00	D	2.30

## The study used images received from following Satellites at IARI Satellite Ground Station

S. No.	Satellite Name	Sensor	Resolution (meter)	Day / Night Passes
1.	Suomi NPP	VIIRS	375 / 1000	Both
2.	Terra	MODIS	1000	Both
3.	Aqua	MODIS	1000	Both
4.	NOAA – 18	AVHRR	1000	Night
5.	NOAA – 19	AVHRR	1000	Night
6.	Metop - 1	AVHRR	1000	Night
7.	Metop - 2	AVHRR	1000	Night

### Study Team

ICAR – HQ	Dr K. Alagusundaram	DDG (Agril. Engg.)	<a href="mailto:ddgengg@icar.org.in">ddgengg@icar.org.in</a>
	Dr S. Bhaskar	ADG (NRM)	<a href="mailto:adgagroandaf@gmail.com">adgagroandaf@gmail.com</a>
ICAR - IARI	Dr V.K. Sehgal	Professor & Nodal Scientist	<a href="mailto:iaricreams@gmail.com">iaricreams@gmail.com</a> <a href="mailto:yk.sehgal@icar.gov.in">yk.sehgal@icar.gov.in</a>
	Dr Rajkumar Dhakar	Scientist	<a href="mailto:rajdhakar.iari@gmail.com">rajdhakar.iari@gmail.com</a>
	Shri Rakeshwar Verma	Chief Technical Officer	<a href="mailto:rakeshwar.verma@icar.gov.in">rakeshwar.verma@icar.gov.in</a>
	Mr Aakash Chhabra	SRF (NICRA)	<a href="mailto:aakash.chhabra7489@gmail.com">aakash.chhabra7489@gmail.com</a>
ICAR - ATARI	Dr Rajbir Singh	Director ATARI (Zone-1)	<a href="mailto:rajbirsingh.zpd@gmail.com">rajbirsingh.zpd@gmail.com</a>
	Dr U.S. Gautam	Director ATARI (Zone-IV)	<a href="mailto:zpdicarkanpur@gmail.com">zpdicarkanpur@gmail.com</a>
ICAR - IASRI	Dr RajenderParsad	Principal Scientist	<a href="mailto:rajender.parsad@icar.gov.in">rajender.parsad@icar.gov.in</a>

GIS Maps of fire events can be visualized online on ICAR KRISHI & CREAMS Geoportal

websites:<http://geoportal.icar.gov.in:8080/geoexplorer/composer/>

<http://creams.iari.res.in:8080/geoexplorer/composer/>

\*\*\*