



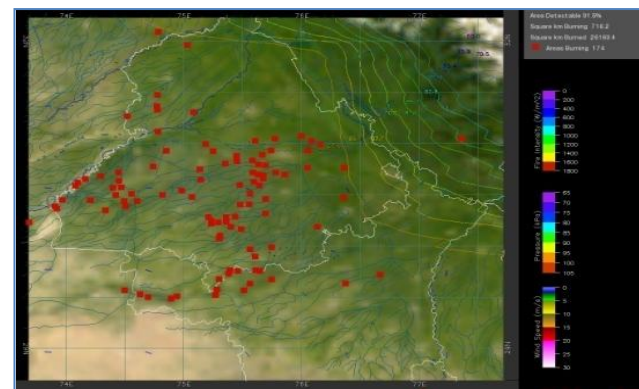
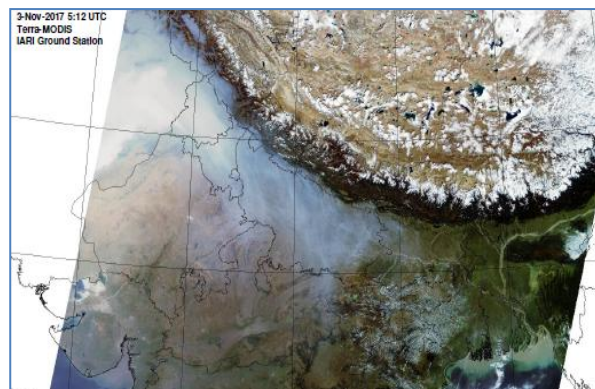
**Bulletin
No. 35**

**Events Date:
04-Nov-2018**

**Issued on:
05-Nov-2018**



MONITORING PADDY RESIDUE BURNING IN NORTH INDIA USING SATELLITE REMOTE SENSING DURING 2018



Prepared by:

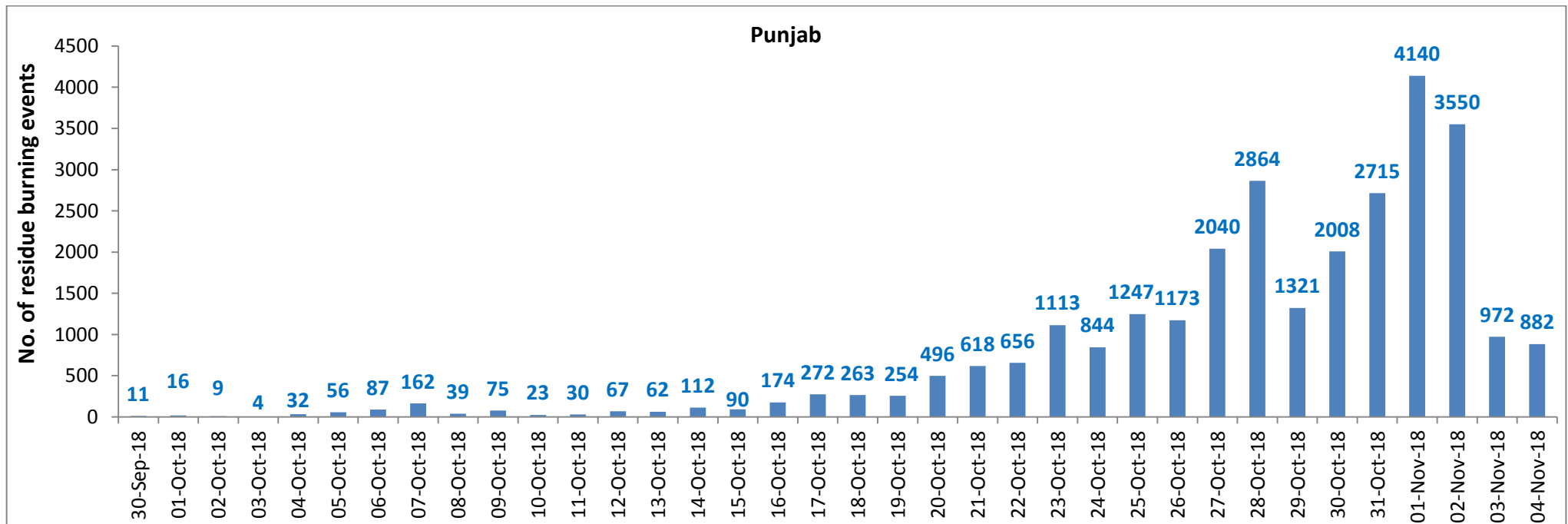
**Consortium for Research on Agroecosystem Monitoring and Modeling from Space (CREAMS) Laboratory,
Division of Agricultural Physics, ICAR – Indian Agricultural Research Institute, New Delhi – 110012**

<http://creams.iari.res.in>

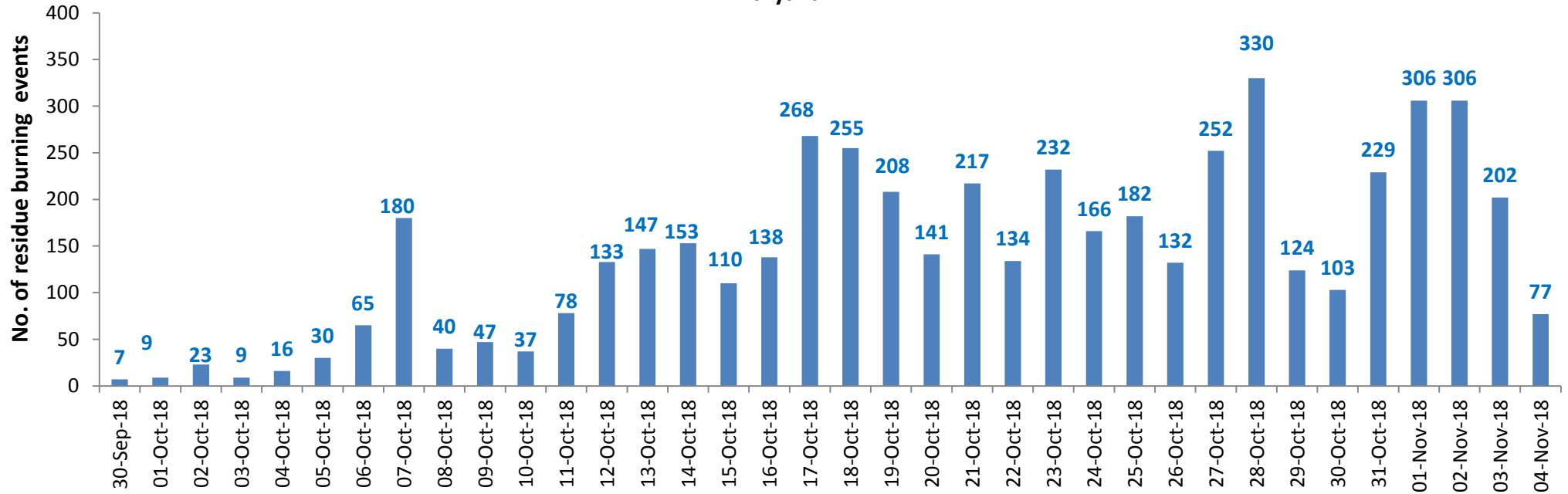
Highlights for 04-November-2018

- Satellites detected **1142** residue burning events in the three States (Punjab, Haryana & UP) on **04-Nov-2018**.
- The detection by satellites was hampered due to clouds in parts of Punjab and Haryana.
- The burning events detected on **04-Nov-2018** are **882**, **77** and **183** in Punjab, Haryana, and UP, respectively.
- The number of events has decreased from **1355** on **03-Nov-2018** to **1142** on **04-Nov-2018** in the three States.
- Total **36892** burning events were detected in the three States between **30-Sept-2018** and **04-Nov-2018**, which are distributed as **28477**, **5086** and **3329** in Punjab, Haryana and UP, respectively.
- Till **04-Nov-2018**, the burning events in the current year are about **64%** of the events detected in 2017 and about **49.8%** of the events detected in 2016.
- Overall, about **36%** and **50%** reduction in burning events are observed in current year (2018) till date as compared to that in 2017 and 2016, respectively.

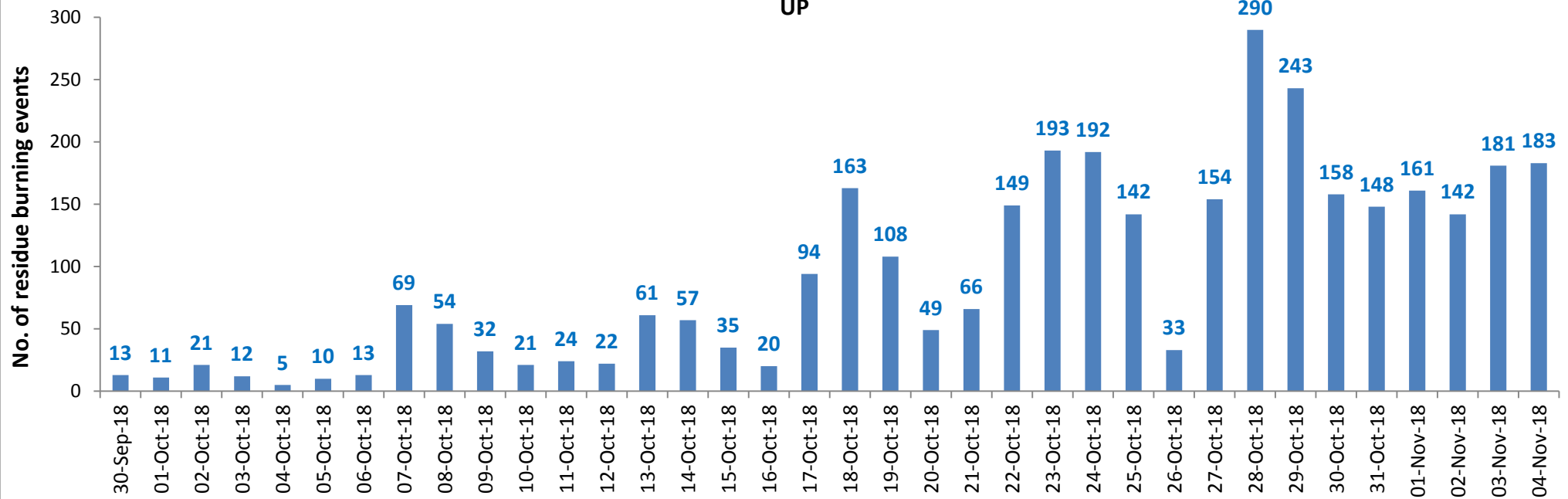
Temporal distribution of residue burning events for the three study States



Haryana

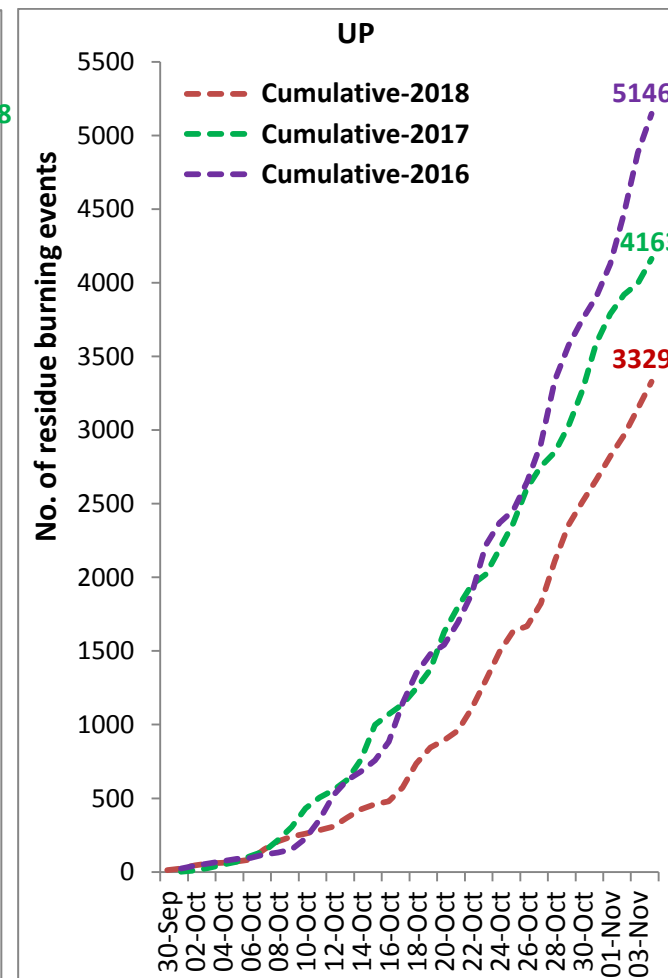
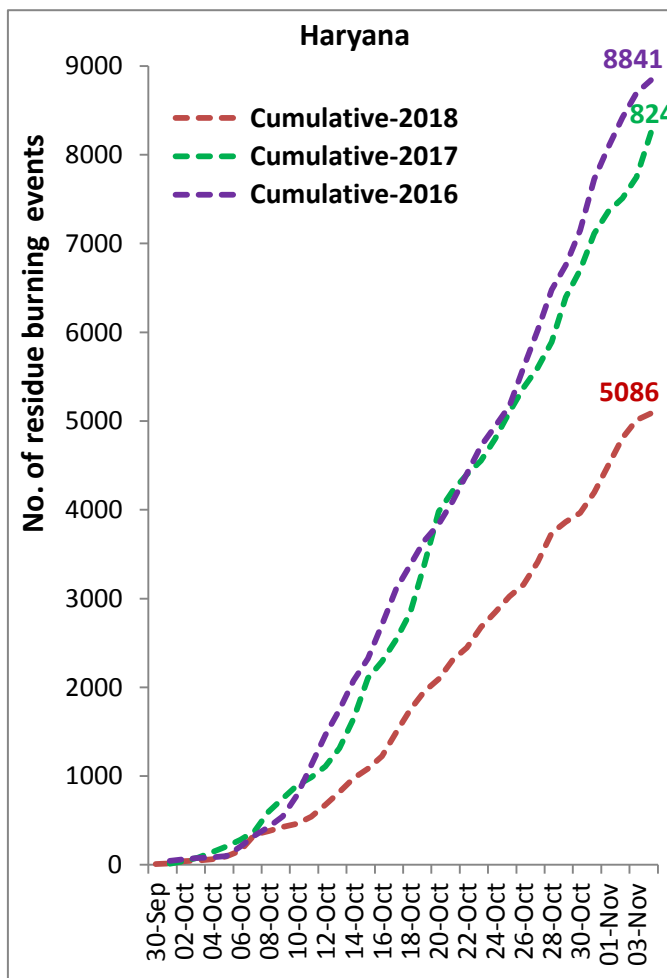
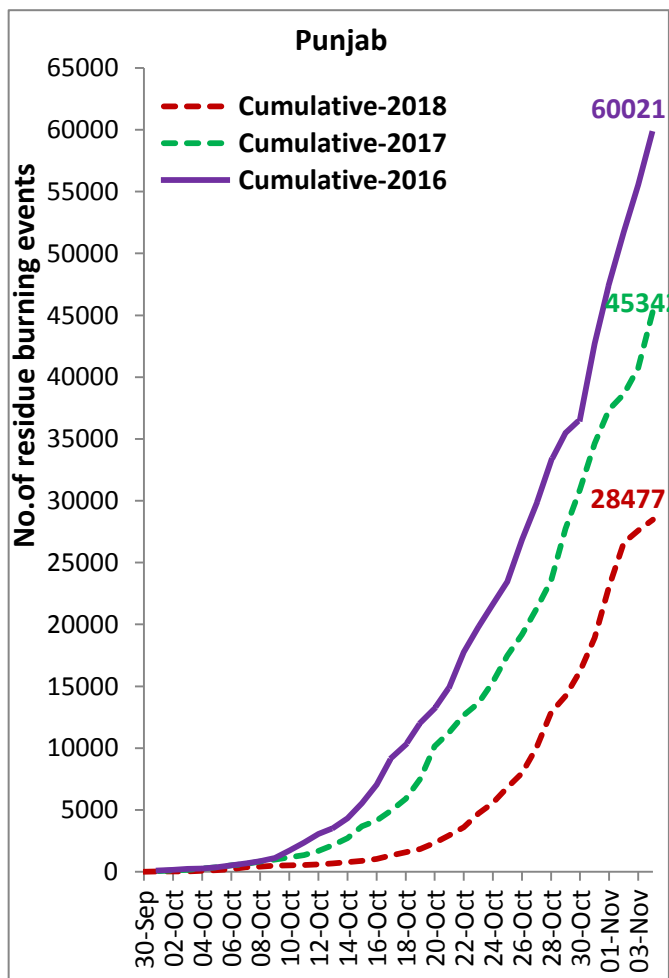


UP



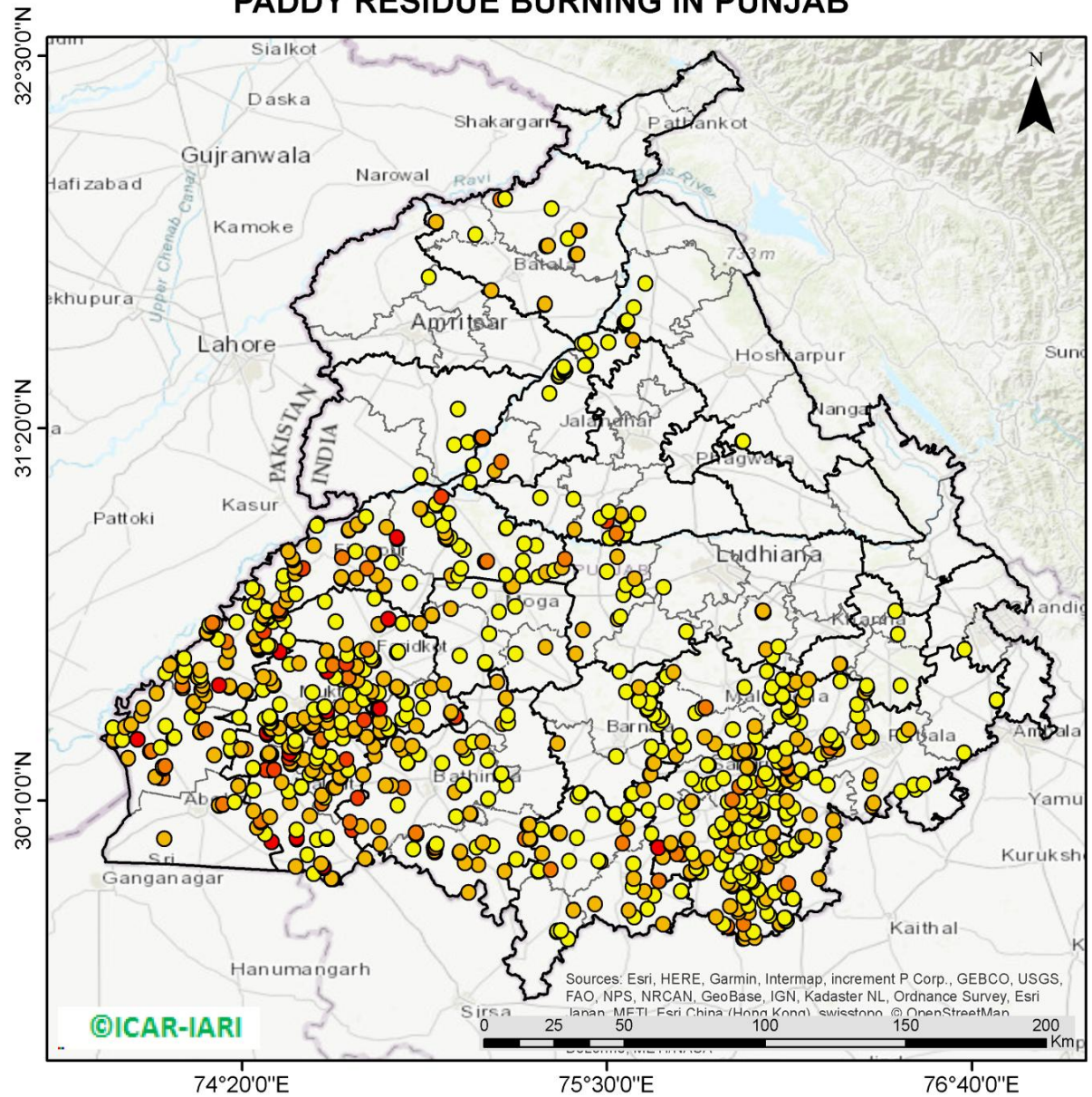
Comparison of residue burning events in current year (2018) with previous years (2017& 2016) for the three study States

(30-Sep to 04-Nov)



(a) Punjab

PADDY RESIDUE BURNING IN PUNJAB



882 burning events detected in Punjab on **4th November, 2018**

Fire Intensity (W/m²)

- 0 - 5
- 6 - 10
- 11 - 15
- 16 - 20
- >20

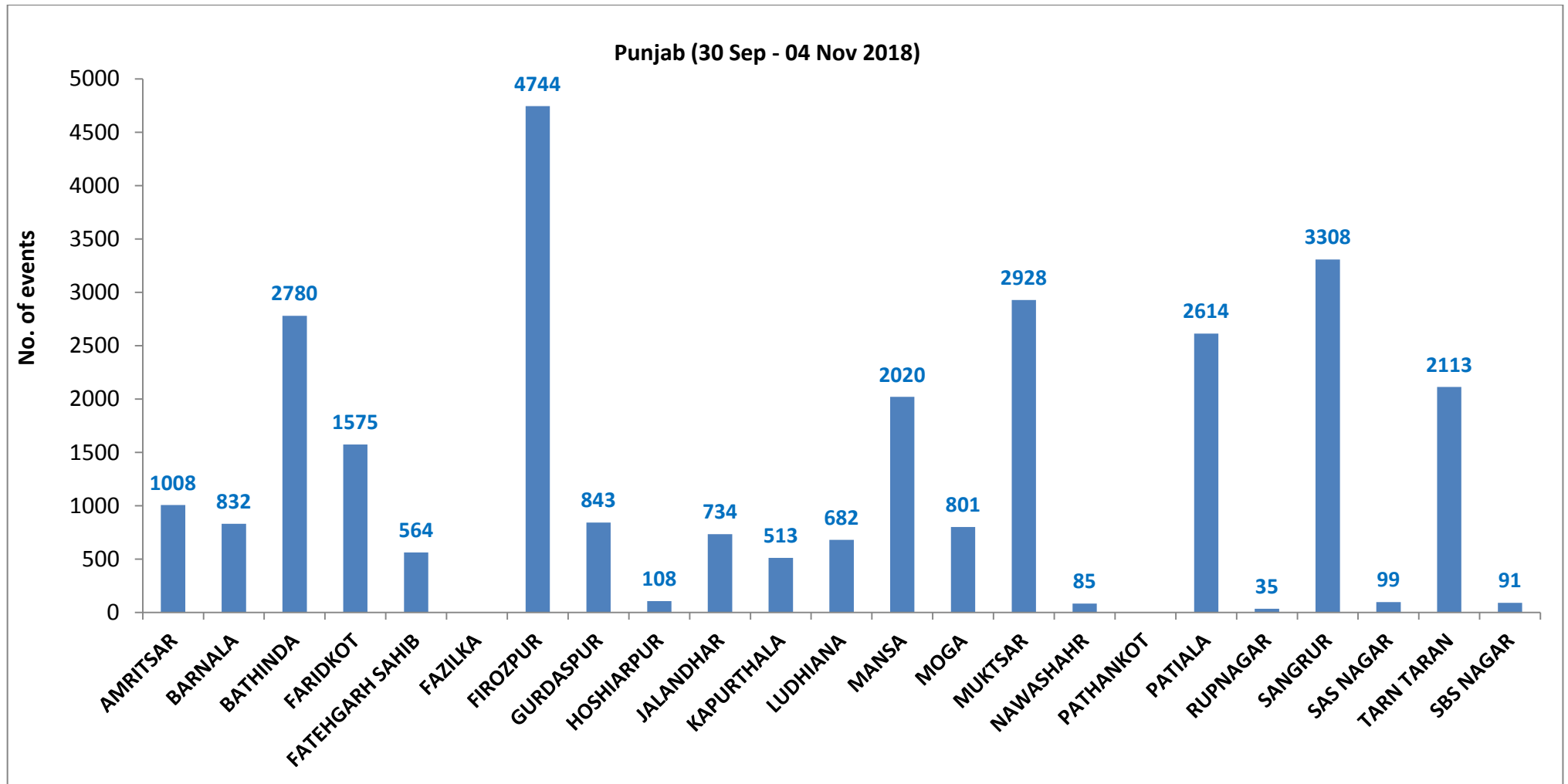


©ICAR-IARI

Sources: Esri, HERE, Garmin, Intermap, increment P Corp., GEBCO, USGS, FAO, NPS, NRCAN, GeoBase, IGN, Kadaster NL, Ordnance Survey, Esri Japan, METI, Esri China (Hong Kong), swisstopo, © OpenStreetMap

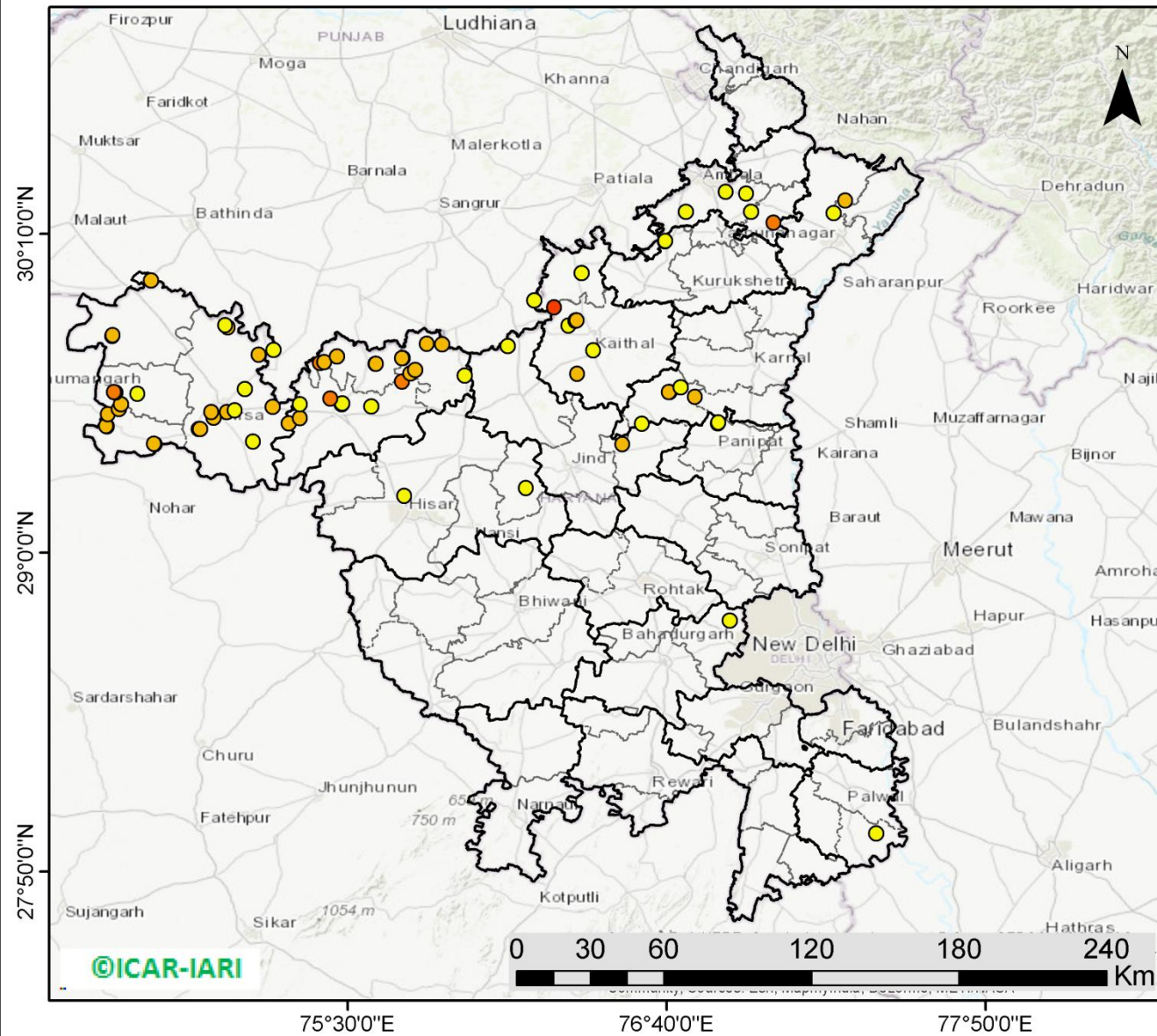
<http://geoportal.icar.gov.in:8080/geoexplorer/composer/>

District-wise cumulative number of residue burning events in Punjab (30-Sep-2018 to 04-Nov-2018)



(b) Haryana

PADDY RESIDUE BURNING IN HARYANA



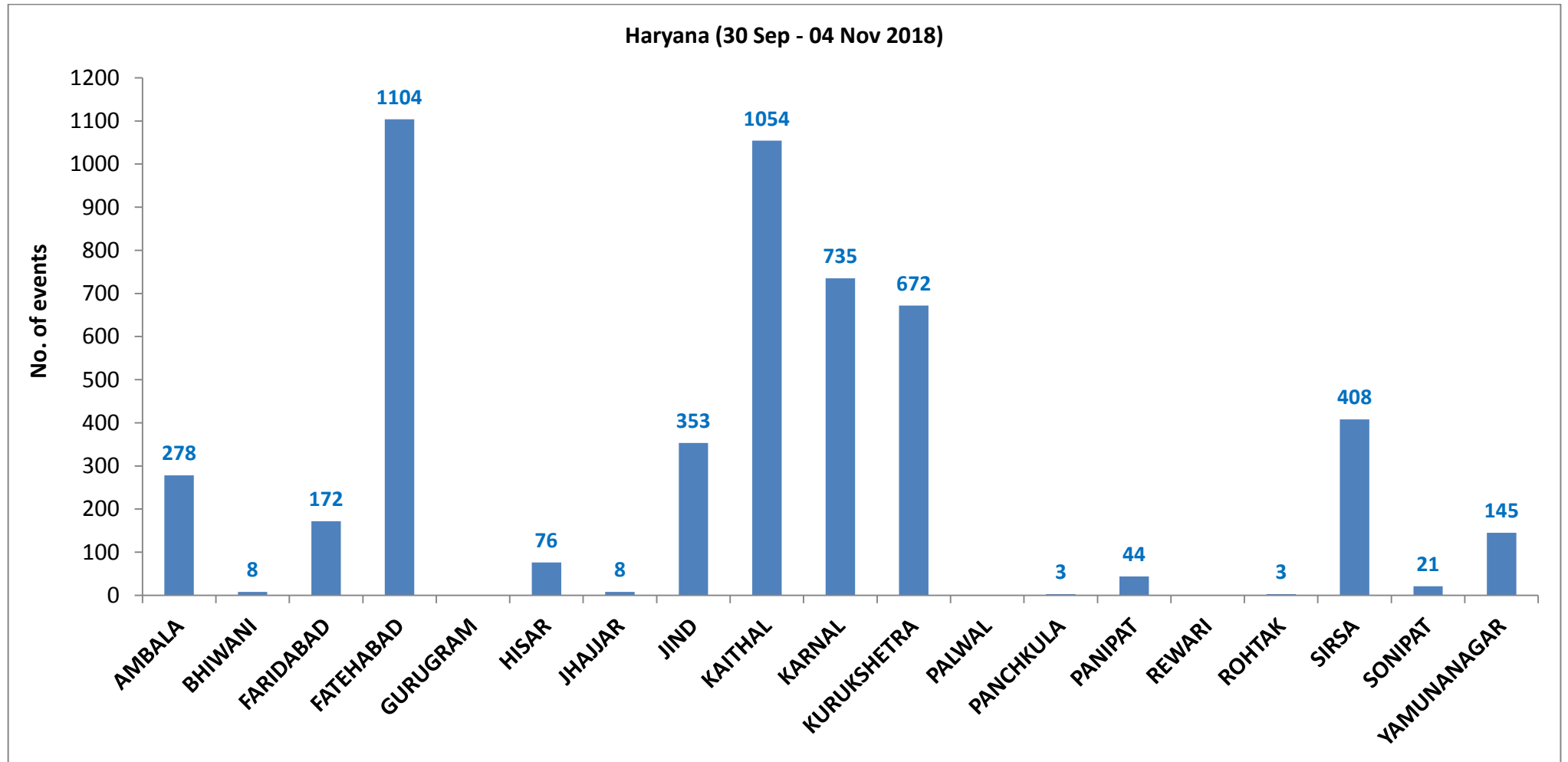
77 burning events detected in Haryana on **4th November, 2018**

Fire Intensity (W/m²)

- 0 - 5
- 6 - 10
- 11 - 15
- 16 - 20
- >20

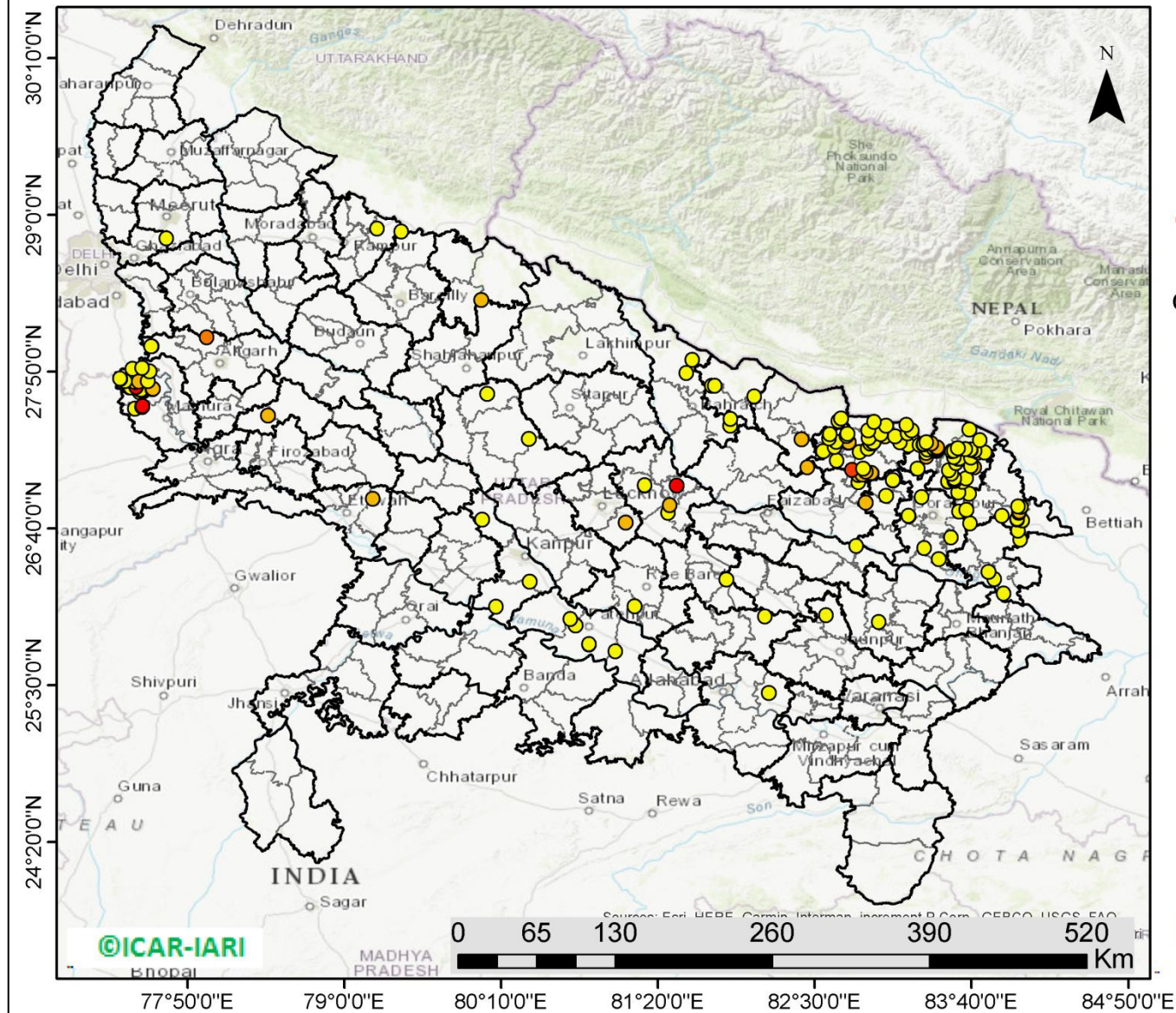
<http://geoportal.icar.gov.in:8080/geoexplorer/composer/>

District-wise cumulative number of residue burning events in Haryana (30-Sep-2018 to 04-Nov-2018)



(c) Uttar Pradesh

PADDY RESIDUE BURNING IN UTTAR PRADESH



183 burning events detected in Uttar Pradesh on **4th Nov, 2018**

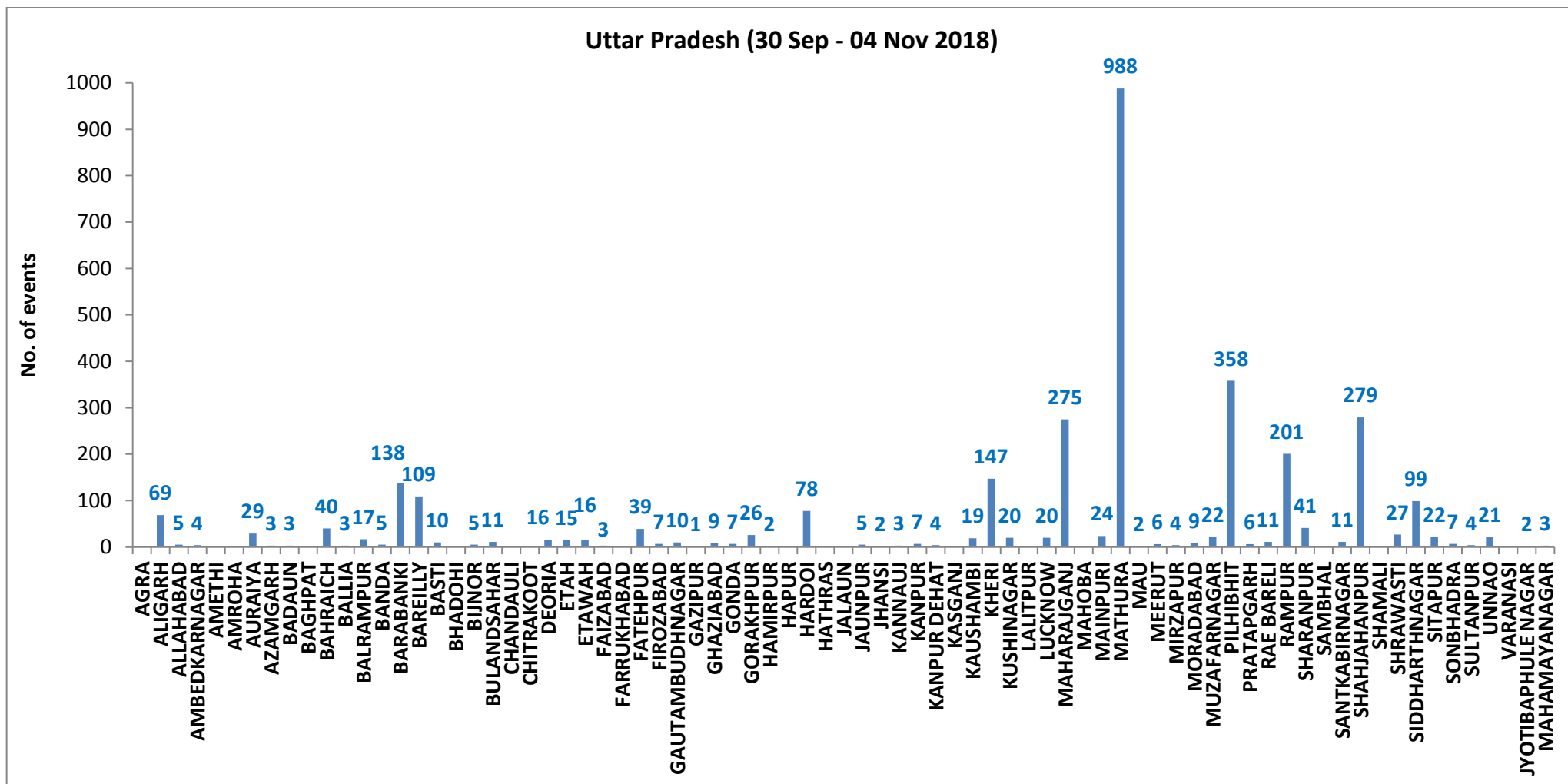
Fire Intensity (W/m²)

- 0 - 5
- 6 - 10
- 11 - 15
- 16 - 20
- >20



<http://geoportal.icar.gov.in:8080/geoexplorer/composer/>

District-wise cumulative number of residue burning events in Uttar Pradesh (30-Sep-2018 to 04-Nov-2018)



State wise, date wise and district-wise number of residue burning events detected in 2016, 2017 and 2018
(Period: 30-Sep to 04-Nov)

Date	Punjab			Haryana			UP			Total		
	2016	2017	2018	2016	2017	2018	2016	2017	2018	2016	2017	2018
30-Sep	--	--	11	--	---	7	--	---	13	--	---	31
1-Oct	109	54	16	46	13	9	23	2	11	178	69	36
2-Oct	51	50	9	16	27	23	20	8	21	87	85	53
3-Oct	66	62	4	16	40	9	16	17	12	98	119	25
4-Oct	37	103	32	7	60	16	15	22	5	59	185	53
5-Oct	95	106	56	15	68	30	14	20	10	124	194	96
6-Oct	152	138	87	105	75	65	6	39	13	263	252	165
7-Oct	171	105	162	126	97	180	24	31	69	321	233	411
8-Oct	166	215	39	94	218	40	14	75	54	274	508	133
9-Oct	270	163	75	121	148	47	22	87	32	413	398	154
10-Oct	597	164	23	242	151	37	74	126	21	913	441	81
11-Oct	652	177	30	336	87	78	128	74	24	1116	338	132
12-Oct	694	342	67	338	123	133	164	51	22	1196	516	222
13-Oct	467	470	62	284	207	147	102	69	61	853	746	270
14-Oct	812	582	112	328	333	153	60	137	57	1200	1052	322
15-Oct	1215	943	90	248	458	110	76	237	35	1539	1638	235
16-Oct	1478	465	174	385	186	138	125	71	20	1988	722	332
17-Oct	2173	807	272	399	244	268	261	69	94	2833	1120	634

18-Oct	1065	970	263	270	306	255	204	108	163	1539	1384	681
19-Oct	1762	1591	254	276	541	208	132	128	108	2170	2260	570
20-Oct	1175	2653	496	188	597	141	62	255	49	1425	3505	686
21-Oct	1726	1139	618	257	233	217	152	168	66	2135	1540	901
22-Oct	2837	1356	656	309	186	134	194	151	149	3340	1693	939
23-Oct	2040	994	1113	313	155	232	331	72	193	2684	1221	1538
24-Oct	1836	1714	844	221	244	166	152	171	192	2209	2129	1202
25-Oct	1813	2104	1247	229	303	182	83	175	142	2125	2582	1571
26-Oct	3390	1715	1173	434	276	132	195	240	33	4019	2231	1338
27-Oct	2904	2069	2040	417	224	252	255	145	154	3576	2438	2446
28-Oct	3493	2318	2864	458	292	330	435	99	290	4386	2709	3484
29-Oct	2258	4184	1321	278	502	124	237	180	243	2773	4866	1688
30-Oct	1076	3152	2008	395	307	103	175	238	158	1646	3697	2269
31-Oct	6132	3743	2715	575	413	229	153	321	148	6860	4447	3092
01-Nov	4843	2736	4140	362	250	306	223	199	161	5628	3185	4607
02-Nov	4183	1246	3550	332	145	306	345	131	142	4860	1522	3998
03-Nov	3806	2109	972	275	240	202	409	75	181	4409	2424	1355
04-Nov	4477	4603	882	146	499	77	265	168	183	4888	5270	1142
Total	60021	45342	28477	8841	8248	5086	5146	4163	3329	74008	57753	36892

(a) Punjab

Districts	01 Oct - 04Nov		
	2016	2017	2018
AMRITSAR	1547	1120	1008
BARNALA	2470	1774	832
BATHINDA	4727	4013	2780
FARIDKOT	2898	2658	1575
FATEHGARH SAHIB	2239	1432	564
FAZILKA	0	0	0
FIROZPUR	5800	4806	4744
GURDASPUR	1806	1240	843
HOSHIARPUR	755	422	108
JALANDHAR	3289	1639	734
KAPURTHALA	2703	1363	513
LUDHIANA	4510	2871	682
MANSA	2452	2849	2020
MOGA	2987	1590	801
MUKTSAR	3921	3153	2928
NAWASHAHR	932	508	85
PATHANKOT	0	0	0
PATIALA	5442	4523	2614
RUPNAGAR	606	259	35
SANGRUR	7531	6347	3308
SAS NAGAR	113	107	99
TARN TARAN	3064	2538	2113
SBS NAGAR	229	130	91
Total	60021	45342	28477

(b) Haryana

Districts	01 Oct - 04Nov		
	2016	2017	2018
AMBALA	510	478	278
BHIWANI	15	11	8
FARIDABAD	208	285	172
FATEHABAD	1882	1872	1104
GURUGRAM	0	0	0
HISAR	128	107	76
JHAJJAR	6	6	8
JIND	543	617	353
KAITHAL	1647	1421	1054
KARNAL	1498	1406	735
KURUKSHETRA	1053	1132	672
PALWAL	0	0	0
PANCHKULA	0	0	3
PANIPAT	57	53	44
REWARI	0	0	0
ROHTAK	27	18	3
SIRSA	1015	533	408
SONIPAT	32	31	21
YAMUNANAGAR	220	278	145
Total	8841	8248	5086

(c) Uttar Pradesh

Distrites	01 Oct - 04Nov			GAUTAMBUDH NAGAR			RAE BARELI		
	2016	2017	2018						
AGRA	0	0	0	12	23	10	13	6	11
ALIGARH	39	66	69	9	1	1	581	556	201
ALLAHABAD	0	1	5	32	15	9	61	71	41
AMBEDKARNAGAR	16	7	4	12	12	7	0	0	0
AMETHI	0	0	0	21	9	26	16	8	11
AMROHA	0	0	0	0	0	2	948	622	279
AURAIYA	102	88	29	0	0	0	0	0	0
AZAMGARH	7	1	3	167	95	78	15	9	27
BADAUN	4	4	3	0	0	0	41	17	99
BAGHPAT	0	0	0	0	0	0	80	34	22
BAHRAICH	36	14	40	0	0	0	8	1	7
BALLIA	1	2	3	0	0	0	14	3	4
BALRAMPUR	6	7	17	2	1	5	26	11	21
BANDA	1	1	5	0	0	2	0	0	0
BARABANKI	155	91	138	2	7	3	0	0	0
BAREILLY	211	154	109	3	4	7	7	3	2
BASTI	28	33	10	4	11	4	0	2	3
BHADOHI	0	0	0	0	0	0	5146	4163	3329
BIJNOR	33	11	5	8	14	19			
BULANDSAHAR	9	14	11	303	182	147			
CHANDAUJI	2	0	0	7	5	20			
CHITRAKOOT	0	0	0	0	0	0			
DEORIA	17	6	16	34	16	20			
ETAH	8	19	15	88	187	275			
ETAWAH	17	36	16	0	0	0			
FAIZABAD	6	2	3	20	39	24			
FARRUKHABAD	0	0	0	945	896	988			
FATEHPUR	31	18	39	2	3	2			
FIROZABAD	11	13	7	35	21	6			
				0	8	4			
				31	19	9			
				81	78	22			
				770	584	358			
				8	2	6			

Details of residue burning events in Punjab on 04-Nov-2018

Event S. No.	District	Tehsil/Block	Satellite	Longitude	Latitude	Time (IST)	Day/Night	Fire Power (W/m²)
1	AMRITSAR	AMRITSAR I	S-NPP	74.93034	31.80834	13:00:00	D	4.30
2	BARNALA	BARNALA	S-NPP	75.52956	30.30561	13:00:00	D	3.30
3	BARNALA	BARNALA	S-NPP	75.64281	30.33463	13:00:00	D	4.80
4	BARNALA	BARNALA	S-NPP	75.66330	30.40671	13:00:00	D	2.40
5	BARNALA	BARNALA	S-NPP	75.62885	30.45101	13:00:00	D	3.50
6	BARNALA	BARNALA	S-NPP	75.63274	30.45653	13:00:00	D	3.50
7	BARNALA	BARNALA	S-NPP	75.63078	30.45740	13:00:00	D	3.70
8	BARNALA	BARNALA	S-NPP	75.63727	30.47294	13:00:00	D	3.90
9	BARNALA	BARNALA	S-NPP	75.60265	30.47949	13:00:00	D	4.10
10	BARNALA	BARNALA	S-NPP	75.56151	30.50826	13:00:00	D	4.10
11	BARNALA	BARNALA	S-NPP	75.64648	30.51721	13:00:00	D	3.90
12	BARNALA	BARNALA	S-NPP	75.60159	30.52162	13:00:00	D	8.00
13	BARNALA	BARNALA	S-NPP	75.54073	30.57140	13:00:00	D	4.30
14	BARNALA	TAPPA	S-NPP	75.41632	30.19023	13:00:00	D	4.80
15	BARNALA	TAPPA	S-NPP	75.41349	30.19036	13:00:00	D	2.60
16	BARNALA	TAPPA	S-NPP	75.63753	30.24775	13:00:00	D	14.10
17	BARNALA	TAPPA	S-NPP	75.63964	30.24905	13:00:00	D	9.10
18	BARNALA	TAPPA	S-NPP	75.64635	30.28355	13:00:00	D	5.30
19	BARNALA	TAPPA	S-NPP	75.65152	30.28468	13:00:00	D	8.50
20	BARNALA	TAPPA	S-NPP	75.34071	30.34606	13:00:00	D	5.30
21	BATHINDA	BATHINDA	S-NPP	74.72604	29.98540	13:00:00	D	8.40
22	BATHINDA	BATHINDA	S-NPP	74.77520	30.03142	13:00:00	D	8.10
23	BATHINDA	BATHINDA	S-NPP	74.68475	30.07559	13:00:00	D	17.40
24	BATHINDA	BATHINDA	S-NPP	74.76972	30.08472	13:00:00	D	8.10
25	BATHINDA	BATHINDA	S-NPP	74.71286	30.08694	13:00:00	D	6.60
26	BATHINDA	BATHINDA	S-NPP	75.01749	30.11569	13:00:00	D	2.20
27	BATHINDA	BATHINDA	S-NPP	75.06535	30.12480	13:00:00	D	4.10
28	BATHINDA	BATHINDA	S-NPP	75.06247	30.12579	13:00:00	D	6.00

29	BATHINDA	BATHINDA	S-NPP	74.83024	30.15304	13:00:00	D	3.60
30	BATHINDA	BATHINDA	S-NPP	75.12016	30.17290	13:00:00	D	4.30
31	BATHINDA	BATHINDA	S-NPP	75.01299	30.19332	13:00:00	D	6.50
32	BATHINDA	BATHINDA	S-NPP	74.84895	30.20778	13:00:00	D	11.20
33	BATHINDA	BATHINDA	S-NPP	74.81027	30.21399	13:00:00	D	7.00
34	BATHINDA	BATHINDA	S-NPP	75.04274	30.21454	13:00:00	D	4.20
35	BATHINDA	BATHINDA	S-NPP	74.79154	30.21478	13:00:00	D	5.60
36	BATHINDA	BATHINDA	S-NPP	75.03991	30.21624	13:00:00	D	5.00
37	BATHINDA	BATHINDA	S-NPP	75.16074	30.24828	13:00:00	D	3.50
38	BATHINDA	BATHINDA	S-NPP	74.71964	30.24858	13:00:00	D	7.20
39	BATHINDA	BATHINDA	S-NPP	75.16257	30.25035	13:00:00	D	2.70
40	BATHINDA	BATHINDA	S-NPP	74.97219	30.28458	13:00:00	D	3.70
41	BATHINDA	BATHINDA	S-NPP	74.86303	30.28518	13:00:00	D	5.30
42	BATHINDA	BATHINDA	S-NPP	74.86185	30.28563	13:00:00	D	5.00
43	BATHINDA	BATHINDA	S-NPP	75.11862	30.29244	13:00:00	D	5.00
44	BATHINDA	BATHINDA	S-NPP	75.05085	30.30190	13:00:00	D	3.30
45	BATHINDA	BATHINDA	S-NPP	74.75751	30.30673	13:00:00	D	5.20
46	BATHINDA	BATHINDA	S-NPP	74.89759	30.31250	13:00:00	D	5.90
47	BATHINDA	BATHINDA	S-NPP	74.89635	30.31320	13:00:00	D	2.60
48	BATHINDA	BATHINDA	S-NPP	74.84394	30.32613	13:00:00	D	7.20
49	BATHINDA	BATHINDA	S-NPP	75.04245	30.32646	13:00:00	D	3.80
50	BATHINDA	BATHINDA	S-NPP	75.03422	30.33439	13:00:00	D	6.60
51	BATHINDA	BATHINDA	S-NPP	74.87687	30.33845	13:00:00	D	6.00
52	BATHINDA	BATHINDA	S-NPP	74.83277	30.34343	13:00:00	D	7.40
53	BATHINDA	BATHINDA	S-NPP	75.07222	30.35048	13:00:00	D	3.40
54	BATHINDA	BATHINDA	S-NPP	75.10133	30.35192	13:00:00	D	5.40
55	BATHINDA	RAMPURA PHUL	S-NPP	75.17863	30.21500	13:00:00	D	4.20
56	BATHINDA	RAMPURA PHUL	S-NPP	75.16600	30.40754	13:00:00	D	7.30
57	BATHINDA	RAMPURA PHUL	S-NPP	75.18239	30.41116	13:00:00	D	4.20
58	BATHINDA	RAMPURA PHUL	S-NPP	75.18127	30.43509	13:00:00	D	3.40
59	BATHINDA	RAMPURA PHUL	S-NPP	75.17567	30.48602	13:00:00	D	6.20

60	BATHINDA	RAMPURA PHUL	S-NPP	75.17767	30.48744	13:00:00	D	6.40
61	BATHINDA	RAMPURA PHUL	S-NPP	75.14896	30.53812	13:00:00	D	6.80
62	BATHINDA	TALWANDI SABO	S-NPP	75.05703	29.87906	13:00:00	D	5.10
63	BATHINDA	TALWANDI SABO	S-NPP	75.17284	29.94537	13:00:00	D	7.30
64	BATHINDA	TALWANDI SABO	S-NPP	75.08947	29.96609	13:00:00	D	6.20
65	BATHINDA	TALWANDI SABO	S-NPP	75.04595	29.97124	13:00:00	D	8.80
66	BATHINDA	TALWANDI SABO	S-NPP	75.20935	29.98274	13:00:00	D	4.00
67	BATHINDA	TALWANDI SABO	S-NPP	75.02840	30.00362	13:00:00	D	10.60
68	BATHINDA	TALWANDI SABO	S-NPP	74.94911	30.00556	13:00:00	D	6.30
69	BATHINDA	TALWANDI SABO	S-NPP	75.02955	30.00702	13:00:00	D	8.80
70	BATHINDA	TALWANDI SABO	S-NPP	74.94777	30.01021	13:00:00	D	6.30
71	BATHINDA	TALWANDI SABO	S-NPP	74.87917	30.01470	13:00:00	D	3.80
72	BATHINDA	TALWANDI SABO	S-NPP	74.94509	30.01951	13:00:00	D	6.90
73	BATHINDA	TALWANDI SABO	S-NPP	74.95081	30.02078	13:00:00	D	11.60
74	BATHINDA	TALWANDI SABO	S-NPP	75.08342	30.02090	13:00:00	D	4.50
75	BATHINDA	TALWANDI SABO	S-NPP	75.13227	30.02445	13:00:00	D	3.30
76	BATHINDA	TALWANDI SABO	S-NPP	74.95384	30.03135	13:00:00	D	2.40
77	BATHINDA	TALWANDI SABO	S-NPP	75.10320	30.03514	13:00:00	D	6.40
78	BATHINDA	TALWANDI SABO	S-NPP	75.25562	30.04633	13:00:00	D	4.50
79	BATHINDA	TALWANDI SABO	S-NPP	75.24153	30.04652	13:00:00	D	6.50
80	BATHINDA	TALWANDI SABO	S-NPP	75.23779	30.04732	13:00:00	D	10.30
81	BATHINDA	TALWANDI SABO	S-NPP	75.25251	30.04898	13:00:00	D	6.60
82	BATHINDA	TALWANDI SABO	S-NPP	74.89002	30.06179	13:00:00	D	12.70
83	BATHINDA	TALWANDI SABO	S-NPP	74.88866	30.06644	13:00:00	D	12.70
84	BATHINDA	TALWANDI SABO	S-NPP	75.24622	30.09127	13:00:00	D	6.00
85	BATHINDA	TALWANDI SABO	S-NPP	75.25169	30.09248	13:00:00	D	6.10
86	FARIDKOT	FARIDKOT	S-NPP	74.75520	30.49579	13:00:00	D	5.90
87	FARIDKOT	FARIDKOT	S-NPP	74.75838	30.49697	13:00:00	D	12.30
88	FARIDKOT	FARIDKOT	S-NPP	74.76097	30.49706	13:00:00	D	5.90
89	FARIDKOT	FARIDKOT	S-NPP	74.75383	30.50044	13:00:00	D	7.70
90	FARIDKOT	FARIDKOT	S-NPP	74.76849	30.50422	13:00:00	D	3.10

91	FARIDKOT	FARIDKOT	S-NPP	74.77110	30.50423	13:00:00	D	4.80
92	FARIDKOT	FARIDKOT	S-NPP	74.74853	30.50962	13:00:00	D	9.90
93	FARIDKOT	FARIDKOT	S-NPP	74.72714	30.51969	13:00:00	D	3.20
94	FARIDKOT	FARIDKOT	S-NPP	74.78625	30.54780	13:00:00	D	6.70
95	FARIDKOT	FARIDKOT	S-NPP	74.72218	30.57808	13:00:00	D	3.80
96	FARIDKOT	FARIDKOT	S-NPP	74.69966	30.58408	13:00:00	D	5.90
97	FARIDKOT	FARIDKOT	S-NPP	74.70068	30.58820	13:00:00	D	6.60
98	FARIDKOT	FARIDKOT	S-NPP	74.66751	30.59580	13:00:00	D	12.30
99	FARIDKOT	FARIDKOT	S-NPP	74.66522	30.59614	13:00:00	D	19.10
100	FARIDKOT	FARIDKOT	S-NPP	74.75441	30.60643	13:00:00	D	4.50
101	FARIDKOT	FARIDKOT	S-NPP	74.74986	30.60892	13:00:00	D	7.20
102	FARIDKOT	FARIDKOT	S-NPP	74.74460	30.61905	13:00:00	D	3.20
103	FARIDKOT	FARIDKOT	S-NPP	74.66991	30.62206	13:00:00	D	2.80
104	FARIDKOT	FARIDKOT	S-NPP	74.82854	30.63105	13:00:00	D	4.80
105	FARIDKOT	FARIDKOT	S-NPP	74.83146	30.63370	13:00:00	D	4.80
106	FARIDKOT	FARIDKOT	S-NPP	74.71471	30.63709	13:00:00	D	5.00
107	FARIDKOT	FARIDKOT	S-NPP	74.73197	30.64096	13:00:00	D	10.70
108	FARIDKOT	FARIDKOT	S-NPP	74.66603	30.65596	13:00:00	D	5.80
109	FARIDKOT	FARIDKOT	S-NPP	74.77000	30.71849	13:00:00	D	4.90
110	FARIDKOT	FARIDKOT	S-NPP	74.76862	30.71929	13:00:00	D	5.10
111	FARIDKOT	FARIDKOT	S-NPP	74.84635	30.72213	13:00:00	D	4.00
112	FARIDKOT	FARIDKOT	S-NPP	74.90130	30.72278	13:00:00	D	6.30
113	FARIDKOT	FARIDKOT	S-NPP	74.63132	30.72791	13:00:00	D	3.50
114	FARIDKOT	FARIDKOT	S-NPP	74.80141	30.73520	13:00:00	D	21.90
115	FARIDKOT	FARIDKOT	S-NPP	74.79996	30.73622	13:00:00	D	21.00
116	FARIDKOT	FARIDKOT	S-NPP	74.59808	30.79092	13:00:00	D	3.90
117	FARIDKOT	FARIDKOT	S-NPP	74.75678	30.80038	13:00:00	D	3.70
118	FARIDKOT	JAITO	S-NPP	74.88909	30.40031	13:00:00	D	8.00
119	FARIDKOT	JAITO	S-NPP	74.78699	30.40872	13:00:00	D	3.40
120	FARIDKOT	JAITO	S-NPP	74.77275	30.41543	13:00:00	D	5.20
121	FARIDKOT	JAITO	S-NPP	74.84425	30.42162	13:00:00	D	2.70

122	FARIDKOT	JAITO	S-NPP	75.01306	30.42746	13:00:00	D	10.40
123	FARIDKOT	JAITO	S-NPP	75.01866	30.42868	13:00:00	D	10.40
124	FARIDKOT	JAITO	S-NPP	75.01573	30.43075	13:00:00	D	16.00
125	FARIDKOT	JAITO	S-NPP	74.85863	30.43472	13:00:00	D	4.00
126	FARIDKOT	JAITO	S-NPP	75.00060	30.44201	13:00:00	D	12.40
127	FARIDKOT	JAITO	S-NPP	75.00211	30.44460	13:00:00	D	9.00
128	FARIDKOT	JAITO	S-NPP	74.76757	30.45394	13:00:00	D	25.30
129	FARIDKOT	JAITO	S-NPP	74.77332	30.45522	13:00:00	D	25.30
130	FARIDKOT	JAITO	S-NPP	74.91260	30.45664	13:00:00	D	3.10
131	FARIDKOT	JAITO	S-NPP	74.86052	30.46965	13:00:00	D	4.00
132	FARIDKOT	JAITO	S-NPP	74.90905	30.50985	13:00:00	D	4.70
133	FARIDKOT	JAITO	S-NPP	74.84258	30.51002	13:00:00	D	2.90
134	FARIDKOT	JAITO	S-NPP	74.84544	30.51174	13:00:00	D	10.80
135	FARIDKOT	JAITO	S-NPP	74.84121	30.51464	13:00:00	D	2.90
136	FARIDKOT	JAITO	S-NPP	74.93587	30.52064	13:00:00	D	7.80
137	FARIDKOT	JAITO	S-NPP	74.82707	30.52140	13:00:00	D	2.80
138	FARIDKOT	JAITO	S-NPP	74.83001	30.52305	13:00:00	D	5.30
139	FARIDKOT	JAITO	S-NPP	74.97755	30.53176	13:00:00	D	5.30
140	FATEHGARH SAHIB	ALMOH	S-NPP	76.10621	30.53815	13:00:00	D	7.60
141	FATEHGARH SAHIB	ALMOH	S-NPP	76.14471	30.54624	13:00:00	D	5.30
142	FATEHGARH SAHIB	ALMOH	S-NPP	76.24721	30.59478	13:00:00	D	5.30
143	FATEHGARH SAHIB	ALMOH	S-NPP	76.24487	30.59523	13:00:00	D	5.70
144	FATEHGARH SAHIB	BASSI PATHANAN	S-NPP	76.43121	30.68851	13:00:00	D	1.40
145	FATEHGARH SAHIB	FATEHGARH SAHIB	S-NPP	76.33325	30.51815	13:00:00	D	4.50
146	FATEHGARH SAHIB	FATEHGARH SAHIB	S-NPP	76.33092	30.52666	13:00:00	D	2.60
147	FATEHGARH SAHIB	FATEHGARH SAHIB	S-NPP	76.43908	30.52716	13:00:00	D	3.50
148	FATEHGARH SAHIB	KHAMANOH	S-NPP	76.42242	30.76100	13:00:00	D	2.30
149	FIROZPUR	ABOHAR	S-NPP	74.08357	30.04783	14:42:00	D	6.40
150	FIROZPUR	ABOHAR	S-NPP	74.36964	30.13482	13:00:00	D	9.00
151	FIROZPUR	ABOHAR	S-NPP	74.25906	30.15086	13:00:00	D	14.20
152	FIROZPUR	ABOHAR	S-NPP	74.25824	30.15217	13:00:00	D	6.70

153	FIROZPUR	ABOHAR	S-NPP	74.27155	30.15367	13:00:00	D	5.00
154	FIROZPUR	ABOHAR	S-NPP	74.27069	30.15506	13:00:00	D	12.10
155	FIROZPUR	ABOHAR	S-NPP	74.30885	30.16205	13:00:00	D	4.10
156	FIROZPUR	ABOHAR	S-NPP	74.31977	30.21256	13:00:00	D	6.10
157	FIROZPUR	FAZILKA	S-NPP	74.06877	30.23816	14:42:00	D	8.10
158	FIROZPUR	FAZILKA	S-NPP	74.07721	30.23845	14:42:00	D	11.30
159	FIROZPUR	FAZILKA	S-NPP	74.05654	30.24055	13:00:00	D	6.60
160	FIROZPUR	FAZILKA	S-NPP	74.05483	30.24124	13:00:00	D	5.10
161	FIROZPUR	FAZILKA	S-NPP	74.08082	30.26803	13:00:00	D	4.70
162	FIROZPUR	FAZILKA	S-NPP	74.07937	30.27288	13:00:00	D	4.70
163	FIROZPUR	FAZILKA	S-NPP	74.08572	30.27435	13:00:00	D	10.40
164	FIROZPUR	FAZILKA	S-NPP	73.96677	30.29907	13:00:00	D	5.10
165	FIROZPUR	FAZILKA	S-NPP	73.96861	30.29957	13:00:00	D	9.10
166	FIROZPUR	FAZILKA	S-NPP	74.24258	30.31033	13:00:00	D	7.60
167	FIROZPUR	FAZILKA	S-NPP	74.03772	30.32047	13:00:00	D	6.40
168	FIROZPUR	FAZILKA	S-NPP	74.04205	30.32192	13:00:00	D	13.60
169	FIROZPUR	FAZILKA	S-NPP	74.29823	30.32304	13:00:00	D	6.80
170	FIROZPUR	FAZILKA	S-NPP	74.29679	30.32782	13:00:00	D	2.50
171	FIROZPUR	FAZILKA	S-NPP	74.07234	30.33419	13:00:00	D	3.10
172	FIROZPUR	FAZILKA	S-NPP	73.92131	30.35201	14:42:00	D	9.10
173	FIROZPUR	FAZILKA	S-NPP	73.92073	30.35747	14:42:00	D	6.20
174	FIROZPUR	FAZILKA	S-NPP	73.94914	30.35764	13:00:00	D	3.70
175	FIROZPUR	FAZILKA	S-NPP	73.99701	30.35827	13:00:00	D	23.10
176	FIROZPUR	FAZILKA	S-NPP	74.11292	30.36332	13:00:00	D	6.90
177	FIROZPUR	FAZILKA	S-NPP	74.11701	30.36528	13:00:00	D	4.90
178	FIROZPUR	FAZILKA	S-NPP	74.29147	30.36752	13:00:00	D	2.80
179	FIROZPUR	FAZILKA	S-NPP	74.19864	30.38181	14:42:00	D	13.50
180	FIROZPUR	FAZILKA	S-NPP	74.19916	30.38206	14:42:00	D	9.80
181	FIROZPUR	FAZILKA	S-NPP	74.21563	30.38975	14:42:00	D	8.20
182	FIROZPUR	FAZILKA	S-NPP	74.21614	30.38991	14:42:00	D	13.20
183	FIROZPUR	FAZILKA	S-NPP	73.91968	30.39547	14:42:00	D	3.90

184	FIROZPUR	FAZILKA	S-NPP	73.95809	30.39621	13:00:00	D	5.50
185	FIROZPUR	FAZILKA	S-NPP	74.08710	30.39986	14:42:00	D	4.00
186	FIROZPUR	FAZILKA	S-NPP	74.08743	30.40073	14:42:00	D	3.70
187	FIROZPUR	FAZILKA	S-NPP	73.97754	30.40311	14:42:00	D	6.90
188	FIROZPUR	FAZILKA	S-NPP	73.97766	30.40458	14:42:00	D	6.20
189	FIROZPUR	FAZILKA	S-NPP	74.17142	30.42932	13:00:00	D	2.80
190	FIROZPUR	FAZILKA	S-NPP	74.01022	30.43476	14:42:00	D	9.70
191	FIROZPUR	FAZILKA	S-NPP	74.01795	30.45688	14:42:00	D	3.80
192	FIROZPUR	FAZILKA	S-NPP	74.01633	30.45737	14:42:00	D	5.40
193	FIROZPUR	FAZILKA	S-NPP	74.19280	30.46238	13:00:00	D	3.70
194	FIROZPUR	FAZILKA	S-NPP	74.19386	30.46520	13:00:00	D	5.70
195	FIROZPUR	FAZILKA	S-NPP	74.17766	30.47659	14:42:00	D	9.60
196	FIROZPUR	FAZILKA	S-NPP	74.17921	30.47699	14:42:00	D	8.60
197	FIROZPUR	FAZILKA	S-NPP	74.05999	30.50385	13:00:00	D	8.20
198	FIROZPUR	FIROZPUR	S-NPP	74.47272	30.79238	13:00:00	D	5.40
199	FIROZPUR	FIROZPUR	S-NPP	74.47890	30.81381	13:00:00	D	6.00
200	FIROZPUR	FIROZPUR	S-NPP	74.50383	30.81444	13:00:00	D	4.40
201	FIROZPUR	FIROZPUR	S-NPP	74.38145	30.82200	13:00:00	D	8.90
202	FIROZPUR	FIROZPUR	S-NPP	74.36522	30.83347	13:00:00	D	3.00
203	FIROZPUR	FIROZPUR	S-NPP	74.78562	30.83837	13:00:00	D	5.90
204	FIROZPUR	FIROZPUR	S-NPP	74.78694	30.84140	13:00:00	D	6.80
205	FIROZPUR	FIROZPUR	S-NPP	74.46317	30.84532	13:00:00	D	4.80
206	FIROZPUR	FIROZPUR	S-NPP	74.86860	30.84944	13:00:00	D	4.00
207	FIROZPUR	FIROZPUR	S-NPP	74.65080	30.86234	13:00:00	D	4.20
208	FIROZPUR	FIROZPUR	S-NPP	74.69944	30.86333	13:00:00	D	6.30
209	FIROZPUR	FIROZPUR	S-NPP	74.64943	30.86698	13:00:00	D	8.60
210	FIROZPUR	FIROZPUR	S-NPP	74.46574	30.87044	13:00:00	D	4.10
211	FIROZPUR	FIROZPUR	S-NPP	74.76342	30.87270	13:00:00	D	7.50
212	FIROZPUR	FIROZPUR	S-NPP	74.50095	30.87850	13:00:00	D	6.90
213	FIROZPUR	FIROZPUR	S-NPP	74.50323	30.87920	13:00:00	D	6.50
214	FIROZPUR	FIROZPUR	S-NPP	74.52386	30.89372	13:00:00	D	11.10

215	FIROZPUR	FIROZPUR	S-NPP	74.52737	30.89450	13:00:00	D	18.40
216	FIROZPUR	FIROZPUR	S-NPP	74.73248	30.89531	13:00:00	D	11.00
217	FIROZPUR	FIROZPUR	S-NPP	74.50122	30.89853	13:00:00	D	8.60
218	FIROZPUR	FIROZPUR	S-NPP	74.81171	30.91284	13:00:00	D	1.70
219	FIROZPUR	FIROZPUR	S-NPP	74.49423	30.92190	13:00:00	D	6.40
220	FIROZPUR	FIROZPUR	S-NPP	74.49283	30.92657	13:00:00	D	6.40
221	FIROZPUR	FIROZPUR	S-NPP	74.65314	30.92799	13:00:00	D	11.20
222	FIROZPUR	FIROZPUR	S-NPP	74.75558	30.93969	13:00:00	D	8.50
223	FIROZPUR	FIROZPUR	S-NPP	74.75264	30.94062	13:00:00	D	7.30
224	FIROZPUR	FIROZPUR	S-NPP	74.69612	30.94756	13:00:00	D	4.00
225	FIROZPUR	FIROZPUR	S-NPP	74.47997	30.94863	13:00:00	D	5.10
226	FIROZPUR	FIROZPUR	S-NPP	74.56162	30.96687	13:00:00	D	6.30
227	FIROZPUR	FIROZPUR	S-NPP	74.67422	31.01355	13:00:00	D	8.20
228	FIROZPUR	FIROZPUR	S-NPP	74.67548	31.01682	13:00:00	D	7.20
229	FIROZPUR	FIROZPUR	S-NPP	74.79416	31.02338	13:00:00	D	5.20
230	FIROZPUR	FIROZPUR	S-NPP	74.57156	31.02979	13:00:00	D	2.80
231	FIROZPUR	FIROZPUR	S-NPP	74.70556	31.03052	13:00:00	D	5.60
232	FIROZPUR	FIROZPUR	S-NPP	74.70120	31.03231	13:00:00	D	8.40
233	FIROZPUR	FIROZPUR	S-NPP	74.72837	31.05532	13:00:00	D	2.30
234	FIROZPUR	JALALABAD	S-NPP	74.21512	30.49833	13:00:00	D	9.80
235	FIROZPUR	JALALABAD	S-NPP	74.34472	30.50925	13:00:00	D	6.40
236	FIROZPUR	JALALABAD	S-NPP	74.34183	30.51220	13:00:00	D	7.00
237	FIROZPUR	JALALABAD	S-NPP	74.20236	30.51408	14:42:00	D	8.90
238	FIROZPUR	JALALABAD	S-NPP	74.20409	30.51461	14:42:00	D	8.40
239	FIROZPUR	JALALABAD	S-NPP	74.14185	30.51960	14:42:00	D	7.50
240	FIROZPUR	JALALABAD	S-NPP	74.14368	30.51981	14:42:00	D	9.80
241	FIROZPUR	JALALABAD	S-NPP	74.29350	30.52146	13:00:00	D	3.00
242	FIROZPUR	JALALABAD	S-NPP	74.29208	30.52623	13:00:00	D	5.70
243	FIROZPUR	JALALABAD	S-NPP	74.14163	30.52693	14:42:00	D	14.60
244	FIROZPUR	JALALABAD	S-NPP	74.20648	30.52708	13:00:00	D	7.10
245	FIROZPUR	JALALABAD	S-NPP	74.25861	30.52877	13:00:00	D	32.10

246	FIROZPUR	JALALABAD	S-NPP	74.20148	30.54349	14:42:00	D	7.50
247	FIROZPUR	JALALABAD	S-NPP	74.19164	30.55442	13:00:00	D	9.50
248	FIROZPUR	JALALABAD	S-NPP	74.14069	30.55625	14:42:00	D	6.20
249	FIROZPUR	JALALABAD	S-NPP	74.20105	30.55819	14:42:00	D	4.40
250	FIROZPUR	JALALABAD	S-NPP	74.08796	30.56694	13:00:00	D	2.70
251	FIROZPUR	JALALABAD	S-NPP	74.15192	30.57620	13:00:00	D	3.90
252	FIROZPUR	JALALABAD	S-NPP	74.19824	30.57639	13:00:00	D	5.80
253	FIROZPUR	JALALABAD	S-NPP	74.15096	30.57779	13:00:00	D	3.20
254	FIROZPUR	JALALABAD	S-NPP	74.10100	30.59228	14:42:00	D	7.70
255	FIROZPUR	JALALABAD	S-NPP	74.28282	30.60048	13:00:00	D	5.50
256	FIROZPUR	JALALABAD	S-NPP	74.28147	30.60288	13:00:00	D	8.70
257	FIROZPUR	JALALABAD	S-NPP	74.14706	30.61282	13:00:00	D	4.20
258	FIROZPUR	JALALABAD	S-NPP	74.45284	30.63227	13:00:00	D	23.80
259	FIROZPUR	JALALABAD	S-NPP	74.45330	30.63354	13:00:00	D	26.30
260	FIROZPUR	JALALABAD	S-NPP	74.29119	30.63565	13:00:00	D	9.70
261	FIROZPUR	JALALABAD	S-NPP	74.38769	30.63908	13:00:00	D	8.90
262	FIROZPUR	JALALABAD	S-NPP	74.38606	30.64217	13:00:00	D	4.80
263	FIROZPUR	JALALABAD	S-NPP	74.38464	30.64690	13:00:00	D	5.50
264	FIROZPUR	JALALABAD	S-NPP	74.41600	30.64902	13:00:00	D	8.60
265	FIROZPUR	JALALABAD	S-NPP	74.42197	30.65039	13:00:00	D	9.40
266	FIROZPUR	JALALABAD	S-NPP	74.41631	30.65048	13:00:00	D	10.80
267	FIROZPUR	JALALABAD	S-NPP	74.38323	30.65163	13:00:00	D	5.50
268	FIROZPUR	JALALABAD	S-NPP	74.42231	30.65181	13:00:00	D	10.80
269	FIROZPUR	JALALABAD	S-NPP	74.41459	30.65375	13:00:00	D	4.10
270	FIROZPUR	JALALABAD	S-NPP	74.28263	30.66419	13:00:00	D	14.00
271	FIROZPUR	JALALABAD	S-NPP	74.48004	30.66869	13:00:00	D	4.90
272	FIROZPUR	JALALABAD	S-NPP	74.25394	30.67295	13:00:00	D	2.50
273	FIROZPUR	JALALABAD	S-NPP	74.37016	30.67393	13:00:00	D	14.10
274	FIROZPUR	JALALABAD	S-NPP	74.37474	30.68002	13:00:00	D	6.90
275	FIROZPUR	JALALABAD	S-NPP	74.22226	30.69125	13:00:00	D	5.10
276	FIROZPUR	JALALABAD	S-NPP	74.21967	30.69390	13:00:00	D	7.60

277	FIROZPUR	JALALABAD	S-NPP	74.22083	30.69602	13:00:00	D	5.10
278	FIROZPUR	JALALABAD	S-NPP	74.40189	30.69625	13:00:00	D	15.50
279	FIROZPUR	JALALABAD	S-NPP	74.23372	30.71245	13:00:00	D	4.40
280	FIROZPUR	JALALABAD	S-NPP	74.22876	30.71307	13:00:00	D	3.30
281	FIROZPUR	JALALABAD	S-NPP	74.23228	30.71721	13:00:00	D	4.40
282	FIROZPUR	JALALABAD	S-NPP	74.22731	30.71784	13:00:00	D	3.30
283	FIROZPUR	JALALABAD	S-NPP	74.38883	30.71852	13:00:00	D	5.00
284	FIROZPUR	JALALABAD	S-NPP	74.23956	30.72057	13:00:00	D	12.40
285	FIROZPUR	JALALABAD	S-NPP	74.24566	30.72193	13:00:00	D	5.60
286	FIROZPUR	JALALABAD	S-NPP	74.23695	30.72338	13:00:00	D	13.30
287	FIROZPUR	JALALABAD	S-NPP	74.31406	30.72588	13:00:00	D	3.50
288	FIROZPUR	JALALABAD	S-NPP	74.43065	30.72788	13:00:00	D	2.00
289	FIROZPUR	JALALABAD	S-NPP	74.46773	30.73115	13:00:00	D	4.10
290	FIROZPUR	JALALABAD	S-NPP	74.40850	30.73802	13:00:00	D	10.60
291	FIROZPUR	JALALABAD	S-NPP	74.41280	30.73850	13:00:00	D	4.10
292	FIROZPUR	JALALABAD	S-NPP	74.41737	30.74459	13:00:00	D	5.90
293	FIROZPUR	JALALABAD	S-NPP	74.39807	30.74520	13:00:00	D	10.70
294	FIROZPUR	JALALABAD	S-NPP	74.41904	30.74540	13:00:00	D	2.60
295	FIROZPUR	JALALABAD	S-NPP	74.39969	30.74612	13:00:00	D	7.30
296	FIROZPUR	JALALABAD	S-NPP	74.44880	30.75201	13:00:00	D	5.60
297	FIROZPUR	JALALABAD	S-NPP	74.45296	30.75276	13:00:00	D	11.40
298	FIROZPUR	JALALABAD	S-NPP	74.41479	30.75953	13:00:00	D	3.10
299	FIROZPUR	JALALABAD	S-NPP	74.45016	30.76217	13:00:00	D	5.00
300	FIROZPUR	JALALABAD	S-NPP	74.45190	30.76274	13:00:00	D	10.80
301	FIROZPUR	JALALABAD	S-NPP	74.41174	30.76344	13:00:00	D	3.40
302	FIROZPUR	JALALABAD	S-NPP	74.45608	30.76352	13:00:00	D	12.70
303	FIROZPUR	JALALABAD	S-NPP	74.44875	30.76686	13:00:00	D	5.00
304	FIROZPUR	JALALABAD	S-NPP	74.45049	30.76743	13:00:00	D	10.80
305	FIROZPUR	JALALABAD	S-NPP	74.35689	30.77614	13:00:00	D	3.80
306	FIROZPUR	JALALABAD	S-NPP	74.37343	30.78494	13:00:00	D	3.00
307	FIROZPUR	ZIRA	S-NPP	75.28072	30.86733	13:00:00	D	3.00

308	FIROZPUR	ZIRA	S-NPP	75.22900	30.87030	13:00:00	D	2.70
309	FIROZPUR	ZIRA	S-NPP	75.00126	30.87228	13:00:00	D	7.80
310	FIROZPUR	ZIRA	S-NPP	75.02449	30.87266	13:00:00	D	3.40
311	FIROZPUR	ZIRA	S-NPP	75.17691	30.87326	13:00:00	D	3.80
312	FIROZPUR	ZIRA	S-NPP	75.30459	30.88208	13:00:00	D	6.00
313	FIROZPUR	ZIRA	S-NPP	75.33092	30.88783	13:00:00	D	3.60
314	FIROZPUR	ZIRA	S-NPP	75.03210	30.89467	13:00:00	D	3.00
315	FIROZPUR	ZIRA	S-NPP	75.35587	30.89801	13:00:00	D	5.60
316	FIROZPUR	ZIRA	S-NPP	75.11025	30.91596	13:00:00	D	11.90
317	FIROZPUR	ZIRA	S-NPP	75.11565	30.91715	13:00:00	D	11.90
318	FIROZPUR	ZIRA	S-NPP	75.23188	30.91865	13:00:00	D	4.40
319	FIROZPUR	ZIRA	S-NPP	75.36509	30.92368	13:00:00	D	11.80
320	FIROZPUR	ZIRA	S-NPP	75.04142	30.95372	13:00:00	D	3.40
321	FIROZPUR	ZIRA	S-NPP	75.02651	30.96492	13:00:00	D	2.70
322	FIROZPUR	ZIRA	S-NPP	75.27190	30.96606	13:00:00	D	2.50
323	FIROZPUR	ZIRA	S-NPP	75.23621	30.97250	13:00:00	D	2.00
324	FIROZPUR	ZIRA	S-NPP	74.99110	30.98616	13:00:00	D	2.50
325	FIROZPUR	ZIRA	S-NPP	74.82880	30.98711	13:00:00	D	31.20
326	FIROZPUR	ZIRA	S-NPP	74.98754	30.98858	13:00:00	D	13.20
327	FIROZPUR	ZIRA	S-NPP	74.98428	30.98951	13:00:00	D	12.00
328	FIROZPUR	ZIRA	S-NPP	74.99300	30.98981	13:00:00	D	13.20
329	FIROZPUR	ZIRA	S-NPP	74.98976	30.99070	13:00:00	D	12.00
330	FIROZPUR	ZIRA	S-NPP	74.99846	30.99103	13:00:00	D	3.70
331	FIROZPUR	ZIRA	S-NPP	74.82745	30.99169	13:00:00	D	31.20
332	FIROZPUR	ZIRA	S-NPP	74.98621	30.99312	13:00:00	D	5.30
333	FIROZPUR	ZIRA	S-NPP	74.98219	31.00674	13:00:00	D	6.20
334	FIROZPUR	ZIRA	S-NPP	75.17652	31.02151	13:00:00	D	3.50
335	FIROZPUR	ZIRA	S-NPP	75.17915	31.02178	13:00:00	D	5.00
336	FIROZPUR	ZIRA	S-NPP	74.97552	31.02943	13:00:00	D	4.10
337	FIROZPUR	ZIRA	S-NPP	74.92902	31.04821	13:00:00	D	3.90
338	FIROZPUR	ZIRA	S-NPP	74.99351	31.06719	13:00:00	D	2.00

339	FIROZPUR	ZIRA	S-NPP	74.90530	31.08049	13:00:00	D	4.20
340	FIROZPUR	ZIRA	S-NPP	74.90166	31.08099	13:00:00	D	5.70
341	FIROZPUR	ZIRA	S-NPP	74.95673	31.09296	13:00:00	D	4.40
342	FIROZPUR	ZIRA	S-NPP	74.95340	31.09611	13:00:00	D	3.70
343	FIROZPUR	ZIRA	S-NPP	74.96991	31.11913	13:00:00	D	19.60
344	GURDASPUR	BATALA	S-NPP	75.30045	31.72065	13:00:00	D	6.20
345	GURDASPUR	BATALA	S-NPP	75.30203	31.72313	13:00:00	D	8.50
346	GURDASPUR	BATALA	S-NPP	75.13008	31.76539	13:00:00	D	8.20
347	GURDASPUR	DERA BABA NANAK	S-NPP	75.07902	31.94107	13:00:00	D	2.40
348	GURDASPUR	DERA BABA NANAK	S-NPP	74.95236	31.98088	13:00:00	D	5.80
349	GURDASPUR	GURDASPUR	S-NPP	75.40047	31.87817	13:00:00	D	9.00
350	GURDASPUR	GURDASPUR	S-NPP	75.40548	31.87926	13:00:00	D	9.90
351	GURDASPUR	GURDASPUR	S-NPP	75.30681	31.90429	13:00:00	D	6.60
352	GURDASPUR	GURDASPUR	S-NPP	75.31189	31.90539	13:00:00	D	5.80
353	GURDASPUR	GURDASPUR	S-NPP	75.37506	31.92822	13:00:00	D	3.20
354	GURDASPUR	GURDASPUR	S-NPP	75.41234	31.95345	13:00:00	D	8.60
355	GURDASPUR	GURDASPUR	S-NPP	75.41008	31.95417	13:00:00	D	6.30
356	GURDASPUR	GURDASPUR	S-NPP	75.32269	32.02189	13:00:00	D	2.30
357	GURDASPUR	GURDASPUR	S-NPP	75.15960	32.05019	13:00:00	D	11.50
358	GURDASPUR	GURDASPUR	S-NPP	75.17502	32.05355	13:00:00	D	4.50
359	HOSHIARPUR	DASUYA	S-NPP	75.58182	31.61046	13:00:00	D	6.10
360	HOSHIARPUR	DASUYA	S-NPP	75.55675	31.66036	13:00:00	D	4.70
361	HOSHIARPUR	DASUYA	S-NPP	75.55549	31.66469	13:00:00	D	4.70
362	HOSHIARPUR	DASUYA	S-NPP	75.55763	31.66480	13:00:00	D	7.60
363	HOSHIARPUR	DASUYA	S-NPP	75.56541	31.66679	13:00:00	D	2.00
364	HOSHIARPUR	DASUYA	S-NPP	75.56133	31.67021	13:00:00	D	2.90
365	HOSHIARPUR	DASUYA	S-NPP	75.56627	31.67129	13:00:00	D	4.10
366	HOSHIARPUR	DASUYA	S-NPP	75.58588	31.71232	13:00:00	D	3.50
367	HOSHIARPUR	DASUYA	S-NPP	75.62300	31.78868	13:00:00	D	1.90
368	HOSHIARPUR	GARHSHANKAR	S-NPP	75.93366	31.29181	13:00:00	D	6.40
369	HOSHIARPUR	GARHSHANKAR	S-NPP	75.93522	31.29333	13:00:00	D	4.30

370	JALANDHAR	NAKODAR	S-NPP	75.51146	30.98801	13:00:00	D	2.40
371	JALANDHAR	NAKODAR	S-NPP	75.50822	30.98968	13:00:00	D	2.10
372	JALANDHAR	NAKODAR	S-NPP	75.55748	30.99779	13:00:00	D	1.40
373	JALANDHAR	NAKODAR	S-NPP	75.53123	31.00409	13:00:00	D	12.10
374	JALANDHAR	NAKODAR	S-NPP	75.49812	31.04370	13:00:00	D	19.30
375	JALANDHAR	NAKODAR	S-NPP	75.47895	31.05361	13:00:00	D	4.50
376	JALANDHAR	NAKODAR	S-NPP	75.50587	31.07343	13:00:00	D	3.90
377	JALANDHAR	NAKODAR	S-NPP	75.39326	31.11168	13:00:00	D	3.50
378	JALANDHAR	PHILLAUR	S-NPP	75.55922	31.00087	13:00:00	D	7.60
379	JALANDHAR	PHILLAUR	S-NPP	75.55621	31.00219	13:00:00	D	3.50
380	JALANDHAR	PHILLAUR	S-NPP	75.56688	31.03055	13:00:00	D	3.00
381	JALANDHAR	PHILLAUR	S-NPP	75.54789	31.05911	13:00:00	D	3.10
382	JALANDHAR	PHILLAUR	S-NPP	75.54664	31.06350	13:00:00	D	6.50
383	JALANDHAR	PHILLAUR	S-NPP	75.59982	31.06563	13:00:00	D	4.20
384	JALANDHAR	SHAHKOT	S-NPP	75.39632	31.01693	13:00:00	D	7.50
385	JALANDHAR	SHAHKOT	S-NPP	75.28645	31.11675	13:00:00	D	2.80
386	KAPURTHALA	BHOLATH	S-NPP	75.43292	31.52941	13:00:00	D	3.10
387	KAPURTHALA	BHOLATH	S-NPP	75.42918	31.53106	13:00:00	D	1.80
388	KAPURTHALA	BHOLATH	S-NPP	75.44805	31.57702	13:00:00	D	3.10
389	KAPURTHALA	BHOLATH	S-NPP	75.42018	31.59889	13:00:00	D	3.60
390	KAPURTHALA	BHOLATH	S-NPP	75.43029	31.60106	13:00:00	D	3.20
391	KAPURTHALA	BHOLATH	S-NPP	75.50455	31.60310	13:00:00	D	3.00
392	KAPURTHALA	KAPURTHALA	S-NPP	75.31664	31.44372	13:00:00	D	2.50
393	KAPURTHALA	KAPURTHALA	S-NPP	75.34490	31.49666	13:00:00	D	2.80
394	KAPURTHALA	KAPURTHALA	S-NPP	75.34647	31.49887	13:00:00	D	2.60
395	KAPURTHALA	KAPURTHALA	S-NPP	75.34903	31.50879	13:00:00	D	2.50
396	KAPURTHALA	KAPURTHALA	S-NPP	75.36435	31.51216	13:00:00	D	2.50
397	KAPURTHALA	KAPURTHALA	S-NPP	75.36665	31.51532	13:00:00	D	3.20
398	KAPURTHALA	KAPURTHALA	S-NPP	75.36179	31.52096	13:00:00	D	3.50
399	KAPURTHALA	KAPURTHALA	S-NPP	75.36050	31.52535	13:00:00	D	3.40
400	KAPURTHALA	SULTANPUR LODHI	S-NPP	75.06087	31.16331	13:00:00	D	2.00

401	KAPURTHALA	SULTANPUR LODHI	S-NPP	75.14131	31.20006	13:00:00	D	8.60
402	KAPURTHALA	SULTANPUR LODHI	S-NPP	75.07066	31.21758	13:00:00	D	4.30
403	KAPURTHALA	SULTANPUR LODHI	S-NPP	75.07320	31.21868	13:00:00	D	2.90
404	KAPURTHALA	SULTANPUR LODHI	S-NPP	75.16133	31.22822	13:00:00	D	10.10
405	KAPURTHALA	SULTANPUR LODHI	S-NPP	75.10301	31.30120	13:00:00	D	3.20
406	LUDHIANA	JAGRAON	S-NPP	75.39749	30.62555	13:00:00	D	11.90
407	LUDHIANA	JAGRAON	S-NPP	75.39979	30.62620	13:00:00	D	7.50
408	LUDHIANA	JAGRAON	S-NPP	75.42250	30.70237	13:00:00	D	6.20
409	LUDHIANA	JAGRAON	S-NPP	75.53425	30.73596	13:00:00	D	8.10
410	LUDHIANA	JAGRAON	S-NPP	75.54329	30.74260	13:00:00	D	3.00
411	LUDHIANA	JAGRAON	S-NPP	75.55309	30.81259	13:00:00	D	3.00
412	LUDHIANA	JAGRAON	S-NPP	75.56084	30.84239	13:00:00	D	2.90
413	LUDHIANA	JAGRAON	S-NPP	75.58768	30.86219	13:00:00	D	5.60
414	LUDHIANA	JAGRAON	S-NPP	75.49931	30.88549	13:00:00	D	2.40
415	LUDHIANA	JAGRAON	S-NPP	75.53320	30.93181	13:00:00	D	5.40
416	LUDHIANA	LUDHIANA WEST	S-NPP	75.59779	30.82698	13:00:00	D	2.40
417	LUDHIANA	LUDHIANA WEST	S-NPP	75.68133	30.83575	13:00:00	D	3.40
418	LUDHIANA	PAYAL	S-NPP	76.03052	30.61784	13:00:00	D	5.00
419	LUDHIANA	PAYAL	S-NPP	76.00864	30.64067	13:00:00	D	8.10
420	LUDHIANA	PAYAL	S-NPP	76.04747	30.64882	13:00:00	D	4.90
421	LUDHIANA	PAYAL	S-NPP	75.99846	30.75760	13:00:00	D	4.90
422	LUDHIANA	PAYAL	S-NPP	76.00010	30.75766	13:00:00	D	7.30
423	LUDHIANA	PAYAL	S-NPP	75.99723	30.76192	13:00:00	D	4.90
424	LUDHIANA	PAYAL	S-NPP	75.99889	30.76197	13:00:00	D	7.30
425	LUDHIANA	RAIKOT	S-NPP	75.75389	30.69688	13:00:00	D	3.30
426	MANSA	BUDHLADA	S-NPP	75.67978	29.78037	13:00:00	D	5.60
427	MANSA	BUDHLADA	S-NPP	75.58656	29.80277	13:00:00	D	3.90
428	MANSA	BUDHLADA	S-NPP	75.56962	29.82297	13:00:00	D	6.00
429	MANSA	BUDHLADA	S-NPP	75.63030	29.82669	13:00:00	D	3.10
430	MANSA	BUDHLADA	S-NPP	75.46190	29.84270	13:00:00	D	5.10
431	MANSA	BUDHLADA	S-NPP	75.65173	29.86943	13:00:00	D	3.30

432	MANSA	BUDHLADA	S-NPP	75.62038	29.88171	13:00:00	D	5.40
433	MANSA	BUDHLADA	S-NPP	75.73646	29.88299	13:00:00	D	2.90
434	MANSA	BUDHLADA	S-NPP	75.58235	29.89738	13:00:00	D	4.60
435	MANSA	BUDHLADA	S-NPP	75.66656	29.91535	13:00:00	D	5.90
436	MANSA	BUDHLADA	S-NPP	75.66509	29.91592	13:00:00	D	14.20
437	MANSA	BUDHLADA	S-NPP	75.58534	29.92219	13:00:00	D	6.00
438	MANSA	BUDHLADA	S-NPP	75.58321	29.96940	13:00:00	D	2.70
439	MANSA	BUDHLADA	S-NPP	75.66349	30.01988	13:00:00	D	30.30
440	MANSA	MANSA	S-NPP	75.27886	29.94462	13:00:00	D	6.30
441	MANSA	MANSA	S-NPP	75.28081	29.94731	13:00:00	D	4.10
442	MANSA	MANSA	S-NPP	75.32050	29.95104	13:00:00	D	11.50
443	MANSA	MANSA	S-NPP	75.47996	29.97579	13:00:00	D	7.90
444	MANSA	MANSA	S-NPP	75.37975	29.97676	13:00:00	D	4.70
445	MANSA	MANSA	S-NPP	75.47332	29.97915	13:00:00	D	4.60
446	MANSA	MANSA	S-NPP	75.29193	30.00091	13:00:00	D	7.00
447	MANSA	MANSA	S-NPP	75.55090	30.03366	13:00:00	D	10.90
448	MANSA	MANSA	S-NPP	75.40482	30.04969	13:00:00	D	1.90
449	MANSA	MANSA	S-NPP	75.34637	30.06507	13:00:00	D	9.00
450	MANSA	MANSA	S-NPP	75.34298	30.06520	13:00:00	D	4.80
451	MANSA	MANSA	S-NPP	75.34840	30.06637	13:00:00	D	5.80
452	MANSA	MANSA	S-NPP	75.29102	30.07695	13:00:00	D	2.50
453	MANSA	MANSA	S-NPP	75.56580	30.07977	13:00:00	D	6.60
454	MANSA	MANSA	S-NPP	75.53599	30.11670	13:00:00	D	4.30
455	MANSA	MANSA	S-NPP	75.53849	30.11673	13:00:00	D	8.60
456	MANSA	MANSA	S-NPP	75.52945	30.12003	13:00:00	D	4.30
457	MANSA	MANSA	S-NPP	75.45546	30.12287	13:00:00	D	3.80
458	MANSA	MANSA	S-NPP	75.52537	30.12345	13:00:00	D	12.20
459	MANSA	MANSA	S-NPP	75.52818	30.12452	13:00:00	D	4.30
460	MANSA	MANSA	S-NPP	75.56898	30.13824	13:00:00	D	4.30
461	MANSA	MANSA	S-NPP	75.40538	30.17903	13:00:00	D	3.10
462	MANSA	SARDULGARH	S-NPP	75.37455	29.73375	13:00:00	D	4.70

463	MANSA	SARDULGARH	S-NPP	75.33929	29.75525	13:00:00	D	2.10
464	MANSA	SARDULGARH	S-NPP	75.34154	29.75828	13:00:00	D	3.60
465	MANSA	SARDULGARH	S-NPP	75.35249	29.76071	13:00:00	D	2.40
466	MANSA	SARDULGARH	S-NPP	75.39279	29.82286	13:00:00	D	5.70
467	MOGA	BAGHA PURANA	S-NPP	75.11183	30.59588	13:00:00	D	7.70
468	MOGA	BAGHA PURANA	S-NPP	75.11051	30.60043	13:00:00	D	4.00
469	MOGA	BAGHA PURANA	S-NPP	75.02840	30.62109	13:00:00	D	4.30
470	MOGA	BAGHA PURANA	S-NPP	75.12276	30.68925	13:00:00	D	4.10
471	MOGA	BAGHA PURANA	S-NPP	74.94193	30.74632	13:00:00	D	4.30
472	MOGA	BAGHA PURANA	S-NPP	74.94004	30.74819	13:00:00	D	6.20
473	MOGA	BAGHA PURANA	S-NPP	75.00030	30.76875	13:00:00	D	5.10
474	MOGA	MOGA	S-NPP	75.15445	30.75890	13:00:00	D	2.20
475	MOGA	MOGA	S-NPP	75.20706	30.77518	13:00:00	D	4.90
476	MOGA	MOGA	S-NPP	75.09300	30.82598	13:00:00	D	2.60
477	MOGA	MOGA	S-NPP	75.19276	30.83841	13:00:00	D	6.20
478	MOGA	MOGA	S-NPP	75.19812	30.83960	13:00:00	D	8.60
479	MOGA	MOGA	S-NPP	75.00987	30.85117	13:00:00	D	2.30
480	MOGA	NIHAL SINGH WALA	S-NPP	75.20701	30.62660	13:00:00	D	4.40
481	MOGA	NIHAL SINGH WALA	S-NPP	75.30351	30.64785	13:00:00	D	7.60
482	MUKTSAR	GIDDARBAHA	S-NPP	74.58860	30.15904	13:00:00	D	13.80
483	MUKTSAR	GIDDARBAHA	S-NPP	74.70374	30.17505	13:00:00	D	16.20
484	MUKTSAR	GIDDARBAHA	S-NPP	74.59635	30.17592	13:00:00	D	3.70
485	MUKTSAR	GIDDARBAHA	S-NPP	74.58760	30.18403	13:00:00	D	6.20
486	MUKTSAR	GIDDARBAHA	S-NPP	74.62505	30.20752	13:00:00	D	17.00
487	MUKTSAR	GIDDARBAHA	S-NPP	74.63097	30.20884	13:00:00	D	9.70
488	MUKTSAR	GIDDARBAHA	S-NPP	74.64767	30.23765	13:00:00	D	7.60
489	MUKTSAR	GIDDARBAHA	S-NPP	74.64574	30.24141	13:00:00	D	23.40
490	MUKTSAR	GIDDARBAHA	S-NPP	74.64629	30.24235	13:00:00	D	7.60
491	MUKTSAR	GIDDARBAHA	S-NPP	74.54847	30.24943	13:00:00	D	4.40
492	MUKTSAR	GIDDARBAHA	S-NPP	74.57230	30.25485	13:00:00	D	9.30
493	MUKTSAR	GIDDARBAHA	S-NPP	74.57825	30.25620	13:00:00	D	9.30

494	MUKTSAR	GIDDARBAHA	S-NPP	74.55761	30.26160	13:00:00	D	7.10
495	MUKTSAR	GIDDARBAHA	S-NPP	74.67102	30.26221	13:00:00	D	5.30
496	MUKTSAR	GIDDARBAHA	S-NPP	74.67162	30.26297	13:00:00	D	3.80
497	MUKTSAR	GIDDARBAHA	S-NPP	74.61108	30.27370	13:00:00	D	6.20
498	MUKTSAR	GIDDARBAHA	S-NPP	74.63332	30.28375	13:00:00	D	4.50
499	MUKTSAR	GIDDARBAHA	S-NPP	74.63922	30.28508	13:00:00	D	6.70
500	MUKTSAR	GIDDARBAHA	S-NPP	74.56852	30.28926	13:00:00	D	8.40
501	MUKTSAR	GIDDARBAHA	S-NPP	74.52850	30.29538	13:00:00	D	6.30
502	MUKTSAR	GIDDARBAHA	S-NPP	74.66725	30.29641	13:00:00	D	19.70
503	MUKTSAR	GIDDARBAHA	S-NPP	74.57168	30.30003	13:00:00	D	3.60
504	MUKTSAR	GIDDARBAHA	S-NPP	74.61459	30.30463	13:00:00	D	4.90
505	MUKTSAR	GIDDARBAHA	S-NPP	74.57796	30.32155	13:00:00	D	3.20
506	MUKTSAR	GIDDARBAHA	S-NPP	74.75511	30.33604	13:00:00	D	7.40
507	MUKTSAR	GIDDARBAHA	S-NPP	74.58740	30.35377	13:00:00	D	10.10
508	MUKTSAR	GIDDARBAHA	S-NPP	74.58424	30.35780	13:00:00	D	16.20
509	MUKTSAR	GIDDARBAHA	S-NPP	74.58601	30.35848	13:00:00	D	10.10
510	MUKTSAR	GIDDARBAHA	S-NPP	74.65177	30.36314	13:00:00	D	3.10
511	MUKTSAR	GIDDARBAHA	S-NPP	74.65372	30.36340	13:00:00	D	2.60
512	MUKTSAR	GIDDARBAHA	S-NPP	74.73386	30.36613	13:00:00	D	6.10
513	MUKTSAR	GIDDARBAHA	S-NPP	74.73168	30.36637	13:00:00	D	8.20
514	MUKTSAR	GIDDARBAHA	S-NPP	74.61688	30.37525	13:00:00	D	3.90
515	MUKTSAR	GIDDARBAHA	S-NPP	74.77882	30.38101	13:00:00	D	2.50
516	MUKTSAR	GIDDARBAHA	S-NPP	74.77746	30.38566	13:00:00	D	8.80
517	MUKTSAR	GIDDARBAHA	S-NPP	74.77518	30.38621	13:00:00	D	9.10
518	MUKTSAR	GIDDARBAHA	S-NPP	74.68856	30.38649	13:00:00	D	6.80
519	MUKTSAR	GIDDARBAHA	S-NPP	74.69440	30.38781	13:00:00	D	6.80
520	MUKTSAR	GIDDARBAHA	S-NPP	74.80526	30.38807	13:00:00	D	7.00
521	MUKTSAR	GIDDARBAHA	S-NPP	74.65660	30.38925	13:00:00	D	8.30
522	MUKTSAR	GIDDARBAHA	S-NPP	74.80051	30.39073	13:00:00	D	3.50
523	MUKTSAR	GIDDARBAHA	S-NPP	74.69302	30.39249	13:00:00	D	6.80
524	MUKTSAR	GIDDARBAHA	S-NPP	74.64969	30.41268	13:00:00	D	4.20

525	MUKTSAR	GIDDARBAHA	S-NPP	74.72240	30.41903	13:00:00	D	16.90
526	MUKTSAR	GIDDARBAHA	S-NPP	74.65109	30.46262	13:00:00	D	7.30
527	MUKTSAR	MALAUT	S-NPP	74.61816	29.92066	13:00:00	D	4.30
528	MUKTSAR	MALAUT	S-NPP	74.62415	29.92202	13:00:00	D	4.30
529	MUKTSAR	MALAUT	S-NPP	74.61953	29.92210	13:00:00	D	6.00
530	MUKTSAR	MALAUT	S-NPP	74.56167	29.93823	13:00:00	D	4.70
531	MUKTSAR	MALAUT	S-NPP	74.59503	29.95591	13:00:00	D	33.50
532	MUKTSAR	MALAUT	S-NPP	74.50337	29.96066	13:00:00	D	5.90
533	MUKTSAR	MALAUT	S-NPP	74.59364	29.96066	13:00:00	D	33.50
534	MUKTSAR	MALAUT	S-NPP	74.58485	29.96881	13:00:00	D	6.40
535	MUKTSAR	MALAUT	S-NPP	74.54202	29.99765	13:00:00	D	5.00
536	MUKTSAR	MALAUT	S-NPP	74.42647	30.03751	13:00:00	D	30.30
537	MUKTSAR	MALAUT	S-NPP	74.57299	30.04528	13:00:00	D	2.90
538	MUKTSAR	MALAUT	S-NPP	74.50851	30.04589	13:00:00	D	36.50
539	MUKTSAR	MALAUT	S-NPP	74.60431	30.04733	13:00:00	D	4.40
540	MUKTSAR	MALAUT	S-NPP	74.50710	30.05065	13:00:00	D	36.50
541	MUKTSAR	MALAUT	S-NPP	74.60291	30.05206	13:00:00	D	4.40
542	MUKTSAR	MALAUT	S-NPP	74.40569	30.06346	13:00:00	D	3.20
543	MUKTSAR	MALAUT	S-NPP	74.50611	30.07582	13:00:00	D	4.70
544	MUKTSAR	MALAUT	S-NPP	74.38012	30.08328	13:00:00	D	5.10
545	MUKTSAR	MALAUT	S-NPP	74.67784	30.09915	13:00:00	D	12.10
546	MUKTSAR	MALAUT	S-NPP	74.39326	30.09930	13:00:00	D	10.90
547	MUKTSAR	MALAUT	S-NPP	74.39185	30.10409	13:00:00	D	10.90
548	MUKTSAR	MALAUT	S-NPP	74.42104	30.11587	13:00:00	D	7.10
549	MUKTSAR	MALAUT	S-NPP	74.54911	30.11973	13:00:00	D	8.30
550	MUKTSAR	MALAUT	S-NPP	74.48550	30.16103	13:00:00	D	8.00
551	MUKTSAR	MALAUT	S-NPP	74.48168	30.19567	13:00:00	D	4.10
552	MUKTSAR	MALAUT	S-NPP	74.36986	30.19846	13:00:00	D	3.10
553	MUKTSAR	MALAUT	S-NPP	74.52230	30.20807	13:00:00	D	4.40
554	MUKTSAR	MALAUT	S-NPP	74.52248	30.20983	13:00:00	D	4.60
555	MUKTSAR	MALAUT	S-NPP	74.45973	30.22414	13:00:00	D	7.00

556	MUKTSAR	MALAUT	S-NPP	74.42284	30.26148	13:00:00	D	12.00
557	MUKTSAR	MALAUT	S-NPP	74.40925	30.26349	13:00:00	D	16.70
558	MUKTSAR	MALAUT	S-NPP	74.43497	30.26422	13:00:00	D	17.10
559	MUKTSAR	MALAUT	S-NPP	74.36980	30.26478	13:00:00	D	4.70
560	MUKTSAR	MALAUT	S-NPP	74.36836	30.26955	13:00:00	D	4.70
561	MUKTSAR	MALAUT	S-NPP	74.48792	30.28122	13:00:00	D	8.10
562	MUKTSAR	MALAUT	S-NPP	74.48650	30.28596	13:00:00	D	8.10
563	MUKTSAR	MALAUT	S-NPP	74.48231	30.30019	13:00:00	D	15.80
564	MUKTSAR	MALAUT	S-NPP	74.41471	30.31044	13:00:00	D	6.10
565	MUKTSAR	MALAUT	S-NPP	74.42552	30.31140	13:00:00	D	9.40
566	MUKTSAR	MALAUT	S-NPP	74.42079	30.31180	13:00:00	D	6.10
567	MUKTSAR	MALAUT	S-NPP	74.49151	30.31236	13:00:00	D	10.20
568	MUKTSAR	MALAUT	S-NPP	74.49596	30.31239	13:00:00	D	3.90
569	MUKTSAR	MALAUT	S-NPP	74.48257	30.31437	13:00:00	D	51.20
570	MUKTSAR	MALAUT	S-NPP	74.41806	30.31477	13:00:00	D	5.40
571	MUKTSAR	MALAUT	S-NPP	74.48409	30.31575	13:00:00	D	43.90
572	MUKTSAR	MALAUT	S-NPP	74.33037	30.32526	13:00:00	D	7.20
573	MUKTSAR	MALAUT	S-NPP	74.34261	30.32805	13:00:00	D	10.50
574	MUKTSAR	MALAUT	S-NPP	74.32894	30.33004	13:00:00	D	7.20
575	MUKTSAR	MUKTSAR	S-NPP	74.50234	30.33408	13:00:00	D	6.90
576	MUKTSAR	MUKTSAR	S-NPP	74.48296	30.33470	13:00:00	D	9.80
577	MUKTSAR	MUKTSAR	S-NPP	74.50391	30.33530	13:00:00	D	14.90
578	MUKTSAR	MUKTSAR	S-NPP	74.48446	30.33605	13:00:00	D	9.00
579	MUKTSAR	MUKTSAR	S-NPP	74.50095	30.33881	13:00:00	D	6.90
580	MUKTSAR	MUKTSAR	S-NPP	74.50272	30.35437	13:00:00	D	2.60
581	MUKTSAR	MUKTSAR	S-NPP	74.45369	30.36853	13:00:00	D	4.40
582	MUKTSAR	MUKTSAR	S-NPP	74.41322	30.37459	13:00:00	D	23.00
583	MUKTSAR	MUKTSAR	S-NPP	74.41180	30.37934	13:00:00	D	23.00
584	MUKTSAR	MUKTSAR	S-NPP	74.42109	30.39157	13:00:00	D	5.70
585	MUKTSAR	MUKTSAR	S-NPP	74.42714	30.39293	13:00:00	D	5.70
586	MUKTSAR	MUKTSAR	S-NPP	74.45266	30.39359	13:00:00	D	7.70

587	MUKTSAR	MUKTSAR	S-NPP	74.55394	30.39618	13:00:00	D	9.30
588	MUKTSAR	MUKTSAR	S-NPP	74.55987	30.39751	13:00:00	D	12.70
589	MUKTSAR	MUKTSAR	S-NPP	74.55114	30.40561	13:00:00	D	8.10
590	MUKTSAR	MUKTSAR	S-NPP	74.50663	30.40569	13:00:00	D	3.80
591	MUKTSAR	MUKTSAR	S-NPP	74.55708	30.40694	13:00:00	D	9.50
592	MUKTSAR	MUKTSAR	S-NPP	74.50523	30.41042	13:00:00	D	3.80
593	MUKTSAR	MUKTSAR	S-NPP	74.42585	30.41098	13:00:00	D	3.40
594	MUKTSAR	MUKTSAR	S-NPP	74.42148	30.41191	13:00:00	D	2.80
595	MUKTSAR	MUKTSAR	S-NPP	74.60578	30.41284	13:00:00	D	6.30
596	MUKTSAR	MUKTSAR	S-NPP	74.49046	30.41720	13:00:00	D	5.60
597	MUKTSAR	MUKTSAR	S-NPP	74.49645	30.41854	13:00:00	D	5.60
598	MUKTSAR	MUKTSAR	S-NPP	74.40509	30.42346	13:00:00	D	4.30
599	MUKTSAR	MUKTSAR	S-NPP	74.42162	30.42522	13:00:00	D	2.90
600	MUKTSAR	MUKTSAR	S-NPP	74.53225	30.42652	13:00:00	D	6.10
601	MUKTSAR	MUKTSAR	S-NPP	74.42326	30.42750	13:00:00	D	5.90
602	MUKTSAR	MUKTSAR	S-NPP	74.32353	30.42817	13:00:00	D	4.20
603	MUKTSAR	MUKTSAR	S-NPP	74.56928	30.42975	13:00:00	D	7.20
604	MUKTSAR	MUKTSAR	S-NPP	74.42021	30.42996	13:00:00	D	2.90
605	MUKTSAR	MUKTSAR	S-NPP	74.60470	30.43763	13:00:00	D	4.90
606	MUKTSAR	MUKTSAR	S-NPP	74.59975	30.44588	13:00:00	D	26.00
607	MUKTSAR	MUKTSAR	S-NPP	74.60192	30.44703	13:00:00	D	40.40
608	MUKTSAR	MUKTSAR	S-NPP	74.60561	30.44722	13:00:00	D	26.00
609	MUKTSAR	MUKTSAR	S-NPP	74.56228	30.45327	13:00:00	D	3.40
610	MUKTSAR	MUKTSAR	S-NPP	74.59561	30.45997	13:00:00	D	5.90
611	MUKTSAR	MUKTSAR	S-NPP	74.59775	30.46111	13:00:00	D	4.60
612	MUKTSAR	MUKTSAR	S-NPP	74.69119	30.46182	13:00:00	D	7.40
613	MUKTSAR	MUKTSAR	S-NPP	74.45384	30.46798	13:00:00	D	4.20
614	MUKTSAR	MUKTSAR	S-NPP	74.72188	30.48350	13:00:00	D	2.70
615	MUKTSAR	MUKTSAR	S-NPP	74.67777	30.49861	13:00:00	D	3.50
616	MUKTSAR	MUKTSAR	S-NPP	74.55674	30.50631	13:00:00	D	4.70
617	MUKTSAR	MUKTSAR	S-NPP	74.39905	30.51523	13:00:00	D	3.00

618	MUKTSAR	MUKTSAR	S-NPP	74.43368	30.52826	13:00:00	D	8.60
619	MUKTSAR	MUKTSAR	S-NPP	74.43540	30.52947	13:00:00	D	18.90
620	MUKTSAR	MUKTSAR	S-NPP	74.43227	30.53299	13:00:00	D	8.60
621	MUKTSAR	MUKTSAR	S-NPP	74.70153	30.54374	13:00:00	D	7.40
622	MUKTSAR	MUKTSAR	S-NPP	74.65097	30.54738	13:00:00	D	3.20
623	MUKTSAR	MUKTSAR	S-NPP	74.42063	30.55054	13:00:00	D	5.60
624	MUKTSAR	MUKTSAR	S-NPP	74.66840	30.55126	13:00:00	D	15.00
625	MUKTSAR	MUKTSAR	S-NPP	74.67421	30.55255	13:00:00	D	15.00
626	MUKTSAR	MUKTSAR	S-NPP	74.63065	30.55283	13:00:00	D	4.20
627	MUKTSAR	MUKTSAR	S-NPP	74.39977	30.55590	13:00:00	D	9.10
628	MUKTSAR	MUKTSAR	S-NPP	74.60392	30.57224	13:00:00	D	43.40
629	MUKTSAR	MUKTSAR	S-NPP	74.60609	30.57232	13:00:00	D	45.30
630	MUKTSAR	MUKTSAR	S-NPP	74.59255	30.58964	13:00:00	D	4.50
631	MUKTSAR	MUKTSAR	S-NPP	74.62315	30.59159	13:00:00	D	10.90
632	MUKTSAR	MUKTSAR	S-NPP	74.48386	30.59513	13:00:00	D	3.80
633	MUKTSAR	MUKTSAR	S-NPP	74.51492	30.59712	13:00:00	D	6.40
634	MUKTSAR	MUKTSAR	S-NPP	74.60342	30.63701	13:00:00	D	7.20
635	PATIALA	NABHA	S-NPP	76.18563	30.31282	13:00:00	D	3.10
636	PATIALA	NABHA	S-NPP	76.20847	30.32219	13:00:00	D	5.80
637	PATIALA	NABHA	S-NPP	76.23721	30.32824	13:00:00	D	6.90
638	PATIALA	NABHA	S-NPP	76.07298	30.33029	13:00:00	D	2.80
639	PATIALA	NABHA	S-NPP	76.21568	30.33281	13:00:00	D	11.80
640	PATIALA	NABHA	S-NPP	76.13257	30.33819	13:00:00	D	9.60
641	PATIALA	NABHA	S-NPP	76.23125	30.34971	13:00:00	D	3.90
642	PATIALA	NABHA	S-NPP	76.23006	30.35400	13:00:00	D	3.90
643	PATIALA	NABHA	S-NPP	76.20371	30.35760	13:00:00	D	5.50
644	PATIALA	NABHA	S-NPP	76.10775	30.35995	13:00:00	D	7.60
645	PATIALA	NABHA	S-NPP	76.21452	30.37348	13:00:00	D	2.40
646	PATIALA	NABHA	S-NPP	76.11875	30.41261	13:00:00	D	1.90
647	PATIALA	NABHA	S-NPP	76.09575	30.42147	13:00:00	D	4.20
648	PATIALA	NABHA	S-NPP	76.05195	30.43058	13:00:00	D	5.00

649	PATIALA	NABHA	S-NPP	76.30039	30.43278	13:00:00	D	2.30
650	PATIALA	NABHA	S-NPP	76.07880	30.44536	13:00:00	D	2.50
651	PATIALA	NABHA	S-NPP	76.08070	30.44590	13:00:00	D	4.30
652	PATIALA	NABHA	S-NPP	76.08730	30.45171	13:00:00	D	6.60
653	PATIALA	NABHA	S-NPP	76.08919	30.45231	13:00:00	D	8.10
654	PATIALA	NABHA	S-NPP	76.30038	30.46890	13:00:00	D	1.90
655	PATIALA	NABHA	S-NPP	76.12666	30.48320	13:00:00	D	9.10
656	PATIALA	NABHA	S-NPP	76.32506	30.50556	13:00:00	D	5.50
657	PATIALA	NABHA	S-NPP	76.32623	30.50764	13:00:00	D	7.30
658	PATIALA	NABHA	S-NPP	76.13510	30.50779	13:00:00	D	4.80
659	PATIALA	NABHA	S-NPP	76.09293	30.53080	13:00:00	D	7.90
660	PATIALA	NABHA	S-NPP	76.24723	30.54057	13:00:00	D	2.70
661	PATIALA	PATIALA	S-NPP	76.34822	30.15042	13:00:00	D	6.20
662	PATIALA	PATIALA	TERRA-1	76.35419	30.16007	10:55:00	D	8.77
663	PATIALA	PATIALA	S-NPP	76.44017	30.19655	13:00:00	D	2.10
664	PATIALA	PATIALA	S-NPP	76.48808	30.20192	13:00:00	D	3.70
665	PATIALA	PATIALA	S-NPP	76.48080	30.21547	13:00:00	D	2.20
666	PATIALA	PATIALA	S-NPP	76.51443	30.21811	13:00:00	D	2.50
667	PATIALA	PATIALA	S-NPP	76.34013	30.22182	13:00:00	D	4.00
668	PATIALA	PATIALA	S-NPP	76.34371	30.24518	13:00:00	D	5.80
669	PATIALA	PATIALA	S-NPP	76.30621	30.35178	13:00:00	D	5.30
670	PATIALA	PATIALA	S-NPP	76.34752	30.36492	13:00:00	D	5.00
671	PATIALA	PATIALA	S-NPP	76.33692	30.36723	13:00:00	D	4.20
672	PATIALA	PATIALA	S-NPP	76.44925	30.37265	13:00:00	D	1.90
673	PATIALA	PATIALA	S-NPP	76.46430	30.38922	13:00:00	D	7.40
674	PATIALA	PATIALA	S-NPP	76.31921	30.39514	13:00:00	D	8.60
675	PATIALA	PATIALA	S-NPP	76.32043	30.39637	13:00:00	D	6.30
676	PATIALA	RAJPURA	S-NPP	76.64271	30.31625	13:00:00	D	4.10
677	PATIALA	RAJPURA	S-NPP	76.74846	30.47805	13:00:00	D	3.10
678	PATIALA	RAJPURA	S-NPP	76.74735	30.47837	13:00:00	D	2.70
679	PATIALA	RAJPURA	S-NPP	76.74733	30.48221	13:00:00	D	3.10

680	PATIALA	RAJPURA	S-NPP	76.74622	30.48253	13:00:00	D	2.00
681	PATIALA	SAMANA	S-NPP	76.09509	29.85967	13:00:00	D	3.90
682	PATIALA	SAMANA	S-NPP	76.06808	29.90026	13:00:00	D	7.30
683	PATIALA	SAMANA	TERRA-1	76.07964	29.90705	10:55:00	D	11.01
684	PATIALA	SAMANA	S-NPP	76.17860	29.92232	13:00:00	D	5.60
685	PATIALA	SAMANA	S-NPP	76.03381	29.99307	13:00:00	D	9.70
686	PATIALA	SAMANA	S-NPP	76.04251	29.99953	13:00:00	D	3.50
687	PATIALA	SAMANA	S-NPP	76.03390	30.01161	13:00:00	D	2.60
688	PATIALA	SAMANA	S-NPP	76.08454	30.01211	13:00:00	D	9.30
689	PATIALA	SAMANA	S-NPP	76.08589	30.01323	13:00:00	D	7.50
690	PATIALA	SAMANA	S-NPP	76.07348	30.01434	13:00:00	D	8.10
691	PATIALA	SAMANA	S-NPP	76.07479	30.01552	13:00:00	D	4.90
692	PATIALA	SAMANA	S-NPP	76.10812	30.02708	13:00:00	D	4.60
693	PATIALA	SAMANA	S-NPP	76.10551	30.03048	13:00:00	D	2.20
694	PATIALA	SAMANA	S-NPP	76.16419	30.04308	13:00:00	D	3.80
695	PATIALA	SAMANA	S-NPP	76.12522	30.05313	13:00:00	D	3.00
696	PATIALA	SAMANA	S-NPP	76.13500	30.05522	13:00:00	D	6.90
697	PATIALA	SAMANA	S-NPP	76.22602	30.06090	13:00:00	D	5.20
698	PATIALA	SAMANA	S-NPP	76.22375	30.10614	13:00:00	D	5.70
699	PATIALA	SAMANA	S-NPP	76.14743	30.12215	13:00:00	D	9.90
700	PATIALA	SAMANA	S-NPP	76.09705	30.14271	13:00:00	D	4.60
701	PATIALA	SAMANA	S-NPP	76.07511	30.16564	13:00:00	D	7.20
702	PATIALA	SAMANA	S-NPP	76.20526	30.21613	13:00:00	D	2.50
703	PATIALA	SAMANA	S-NPP	76.16789	30.24026	13:00:00	D	4.30
704	SANGRUR	DHURI	S-NPP	75.72091	30.30911	13:00:00	D	7.50
705	SANGRUR	DHURI	S-NPP	75.91742	30.31430	13:00:00	D	7.10
706	SANGRUR	DHURI	S-NPP	75.91995	30.31668	13:00:00	D	6.30
707	SANGRUR	DHURI	S-NPP	75.67363	30.32241	13:00:00	D	3.20
708	SANGRUR	DHURI	S-NPP	75.95713	30.32290	13:00:00	D	7.80
709	SANGRUR	DHURI	S-NPP	75.95481	30.32398	13:00:00	D	6.30
710	SANGRUR	DHURI	S-NPP	75.94105	30.32405	13:00:00	D	6.10

711	SANGRUR	DHURI	S-NPP	75.74530	30.33778	13:00:00	D	2.80
712	SANGRUR	DHURI	S-NPP	75.84512	30.34517	13:00:00	D	7.10
713	SANGRUR	DHURI	S-NPP	75.81252	30.36614	13:00:00	D	5.60
714	SANGRUR	DHURI	S-NPP	75.73145	30.36759	13:00:00	D	9.00
715	SANGRUR	DHURI	S-NPP	75.97581	30.36849	13:00:00	D	2.50
716	SANGRUR	DHURI	S-NPP	75.73323	30.37032	13:00:00	D	4.50
717	SANGRUR	DHURI	S-NPP	75.90155	30.38968	13:00:00	D	2.40
718	SANGRUR	DHURI	S-NPP	75.97219	30.40000	13:00:00	D	9.40
719	SANGRUR	DHURI	S-NPP	75.67617	30.41888	13:00:00	D	3.30
720	SANGRUR	DHURI	S-NPP	75.66727	30.43104	13:00:00	D	3.70
721	SANGRUR	DHURI	S-NPP	75.64936	30.43659	13:00:00	D	3.20
722	SANGRUR	DHURI	S-NPP	75.78295	30.44185	13:00:00	D	3.20
723	SANGRUR	DHURI	S-NPP	75.80566	30.45603	13:00:00	D	3.70
724	SANGRUR	MALERKOTLA	S-NPP	75.81570	30.45817	13:00:00	D	12.90
725	SANGRUR	MALERKOTLA	S-NPP	76.08002	30.45934	13:00:00	D	2.80
726	SANGRUR	MALERKOTLA	S-NPP	76.02240	30.48841	13:00:00	D	2.90
727	SANGRUR	MALERKOTLA	S-NPP	76.06257	30.49238	13:00:00	D	3.30
728	SANGRUR	MALERKOTLA	S-NPP	76.02119	30.49274	13:00:00	D	2.90
729	SANGRUR	MALERKOTLA	S-NPP	76.06136	30.49670	13:00:00	D	3.90
730	SANGRUR	MALERKOTLA	S-NPP	75.94026	30.52160	13:00:00	D	3.00
731	SANGRUR	MALERKOTLA	S-NPP	76.02856	30.52181	13:00:00	D	2.30
732	SANGRUR	MALERKOTLA	S-NPP	76.06264	30.54728	13:00:00	D	4.00
733	SANGRUR	MALERKOTLA	S-NPP	75.68994	30.55465	13:00:00	D	4.10
734	SANGRUR	MALERKOTLA	S-NPP	75.71284	30.56888	13:00:00	D	7.50
735	SANGRUR	MALERKOTLA	S-NPP	76.01224	30.57273	13:00:00	D	3.20
736	SANGRUR	MOONAK	S-NPP	75.93626	29.73467	13:00:00	D	4.80
737	SANGRUR	MOONAK	S-NPP	75.94135	29.73575	13:00:00	D	9.10
738	SANGRUR	MOONAK	S-NPP	75.97298	29.73779	13:00:00	D	5.10
739	SANGRUR	MOONAK	S-NPP	75.94271	29.75008	13:00:00	D	5.10
740	SANGRUR	MOONAK	S-NPP	75.96806	29.75544	13:00:00	D	4.10
741	SANGRUR	MOONAK	S-NPP	75.88494	29.77266	13:00:00	D	10.50

742	SANGRUR	MOONAK	S-NPP	76.05233	29.77785	13:00:00	D	4.00
743	SANGRUR	MOONAK	S-NPP	75.93701	29.77925	13:00:00	D	11.40
744	SANGRUR	MOONAK	S-NPP	75.87225	29.77931	13:00:00	D	3.10
745	SANGRUR	MOONAK	S-NPP	76.05364	29.78119	13:00:00	D	10.00
746	SANGRUR	MOONAK	S-NPP	76.07234	29.78989	13:00:00	D	2.30
747	SANGRUR	MOONAK	S-NPP	76.07486	29.79185	13:00:00	D	3.90
748	SANGRUR	MOONAK	S-NPP	76.06992	29.79866	13:00:00	D	7.40
749	SANGRUR	MOONAK	S-NPP	76.06744	29.79957	13:00:00	D	3.90
750	SANGRUR	MOONAK	S-NPP	75.84948	29.80263	13:00:00	D	7.50
751	SANGRUR	MOONAK	S-NPP	76.02016	29.80653	13:00:00	D	3.90
752	SANGRUR	MOONAK	S-NPP	76.01273	29.81425	13:00:00	D	3.30
753	SANGRUR	MOONAK	S-NPP	75.95370	29.81559	13:00:00	D	5.40
754	SANGRUR	MOONAK	S-NPP	75.92085	29.81791	13:00:00	D	7.30
755	SANGRUR	MOONAK	S-NPP	75.91840	29.82675	13:00:00	D	5.80
756	SANGRUR	MOONAK	S-NPP	75.89437	29.83569	13:00:00	D	5.80
757	SANGRUR	MOONAK	S-NPP	75.95261	29.83871	13:00:00	D	4.80
758	SANGRUR	MOONAK	S-NPP	76.00293	29.84940	13:00:00	D	2.80
759	SANGRUR	MOONAK	S-NPP	76.01051	29.86031	13:00:00	D	7.60
760	SANGRUR	MOONAK	S-NPP	75.94018	29.86409	13:00:00	D	8.30
761	SANGRUR	MOONAK	S-NPP	75.93666	29.86526	13:00:00	D	4.00
762	SANGRUR	MOONAK	S-NPP	76.03685	29.87981	13:00:00	D	2.60
763	SANGRUR	MOONAK	S-NPP	75.98331	29.88940	13:00:00	D	4.00
764	SANGRUR	MOONAK	S-NPP	75.90033	29.89949	13:00:00	D	2.90
765	SANGRUR	MOONAK	S-NPP	75.89910	29.90391	13:00:00	D	9.80
766	SANGRUR	MOONAK	S-NPP	75.95087	29.91037	13:00:00	D	3.60
767	SANGRUR	MOONAK	S-NPP	75.88649	29.91056	13:00:00	D	6.90
768	SANGRUR	MOONAK	S-NPP	75.96593	29.91361	13:00:00	D	5.50
769	SANGRUR	MOONAK	S-NPP	75.95969	29.91693	13:00:00	D	3.50
770	SANGRUR	MOONAK	S-NPP	75.93587	29.92582	13:00:00	D	2.90
771	SANGRUR	MOONAK	S-NPP	75.89678	29.93149	13:00:00	D	2.40
772	SANGRUR	MOONAK	S-NPP	75.92591	29.94236	13:00:00	D	1.40

773	SANGRUR	MOONAK	S-NPP	75.79620	29.94292	13:00:00	D	2.80
774	SANGRUR	MOONAK	S-NPP	75.80134	29.94401	13:00:00	D	4.00
775	SANGRUR	MOONAK	S-NPP	75.86532	29.96692	13:00:00	D	3.10
776	SANGRUR	MOONAK	S-NPP	75.86334	29.96877	13:00:00	D	4.20
777	SANGRUR	SANGRUR	S-NPP	76.03948	30.16266	13:00:00	D	3.90
778	SANGRUR	SANGRUR	S-NPP	75.96024	30.16429	13:00:00	D	4.40
779	SANGRUR	SANGRUR	S-NPP	75.68857	30.16440	13:00:00	D	4.20
780	SANGRUR	SANGRUR	S-NPP	75.58249	30.18866	13:00:00	D	3.00
781	SANGRUR	SANGRUR	S-NPP	75.98771	30.19789	13:00:00	D	7.60
782	SANGRUR	SANGRUR	S-NPP	75.61771	30.20099	13:00:00	D	6.80
783	SANGRUR	SANGRUR	S-NPP	75.92670	30.20823	13:00:00	D	4.90
784	SANGRUR	SANGRUR	S-NPP	75.92324	30.21071	13:00:00	D	11.80
785	SANGRUR	SANGRUR	S-NPP	75.79373	30.21538	13:00:00	D	4.20
786	SANGRUR	SANGRUR	S-NPP	75.82539	30.21753	13:00:00	D	3.70
787	SANGRUR	SANGRUR	S-NPP	76.04693	30.21897	13:00:00	D	4.50
788	SANGRUR	SANGRUR	S-NPP	76.04459	30.21906	13:00:00	D	2.90
789	SANGRUR	SANGRUR	S-NPP	76.03098	30.22013	13:00:00	D	1.80
790	SANGRUR	SANGRUR	S-NPP	75.84055	30.22080	13:00:00	D	4.60
791	SANGRUR	SANGRUR	S-NPP	76.10100	30.22169	13:00:00	D	3.30
792	SANGRUR	SANGRUR	S-NPP	75.96187	30.22370	13:00:00	D	2.50
793	SANGRUR	SANGRUR	S-NPP	75.94074	30.22377	13:00:00	D	4.60
794	SANGRUR	SANGRUR	S-NPP	76.07513	30.22968	13:00:00	D	5.50
795	SANGRUR	SANGRUR	S-NPP	76.07777	30.23060	13:00:00	D	5.10
796	SANGRUR	SANGRUR	TERRA-1	75.99950	30.23194	10:55:00	D	11.67
797	SANGRUR	SANGRUR	S-NPP	75.77223	30.23417	13:00:00	D	3.20
798	SANGRUR	SANGRUR	S-NPP	76.01630	30.23543	13:00:00	D	2.20
799	SANGRUR	SANGRUR	S-NPP	75.87334	30.23717	13:00:00	D	2.60
800	SANGRUR	SANGRUR	S-NPP	76.09494	30.24336	13:00:00	D	8.60
801	SANGRUR	SANGRUR	S-NPP	76.09714	30.24362	13:00:00	D	14.40
802	SANGRUR	SANGRUR	S-NPP	76.09983	30.24438	13:00:00	D	8.60
803	SANGRUR	SANGRUR	S-NPP	76.00649	30.25179	13:00:00	D	2.60

804	SANGRUR	SANGRUR	S-NPP	76.12274	30.26287	13:00:00	D	4.20
805	SANGRUR	SANGRUR	S-NPP	76.07527	30.26650	13:00:00	D	6.20
806	SANGRUR	SANGRUR	S-NPP	75.95460	30.26844	13:00:00	D	3.70
807	SANGRUR	SANGRUR	S-NPP	76.07407	30.27084	13:00:00	D	12.60
808	SANGRUR	SANGRUR	S-NPP	75.94839	30.27176	13:00:00	D	6.60
809	SANGRUR	SANGRUR	S-NPP	75.82445	30.27799	13:00:00	D	3.20
810	SANGRUR	SANGRUR	S-NPP	75.82091	30.27934	13:00:00	D	2.40
811	SANGRUR	SANGRUR	S-NPP	76.05943	30.28611	13:00:00	D	5.50
812	SANGRUR	SANGRUR	S-NPP	76.06921	30.28818	13:00:00	D	5.10
813	SANGRUR	SANGRUR	S-NPP	76.04841	30.28837	13:00:00	D	2.60
814	SANGRUR	SANGRUR	S-NPP	76.06799	30.29252	13:00:00	D	5.10
815	SANGRUR	SANGRUR	S-NPP	76.03742	30.30905	13:00:00	D	4.30
816	SANGRUR	SANGRUR	S-NPP	75.97933	30.31846	13:00:00	D	2.10
817	SANGRUR	SANGRUR	S-NPP	75.87881	30.31988	13:00:00	D	3.50
818	SANGRUR	SANGRUR	S-NPP	75.98203	30.32044	13:00:00	D	2.80
819	SANGRUR	SUNAM	S-NPP	75.76870	29.93868	13:00:00	D	7.40
820	SANGRUR	SUNAM	S-NPP	75.76920	29.94190	13:00:00	D	16.00
821	SANGRUR	SUNAM	S-NPP	75.76746	29.94313	13:00:00	D	7.40
822	SANGRUR	SUNAM	S-NPP	75.78731	29.95514	13:00:00	D	3.30
823	SANGRUR	SUNAM	S-NPP	75.78555	29.95651	13:00:00	D	3.10
824	SANGRUR	SUNAM	S-NPP	76.00627	29.95944	13:00:00	D	12.50
825	SANGRUR	SUNAM	S-NPP	76.01127	29.96050	13:00:00	D	9.20
826	SANGRUR	SUNAM	S-NPP	75.95245	29.96198	13:00:00	D	3.30
827	SANGRUR	SUNAM	S-NPP	75.97257	29.96624	13:00:00	D	8.90
828	SANGRUR	SUNAM	S-NPP	75.96006	29.97290	13:00:00	D	5.00
829	SANGRUR	SUNAM	S-NPP	75.78571	29.97538	13:00:00	D	5.90
830	SANGRUR	SUNAM	S-NPP	75.82029	29.98757	13:00:00	D	8.50
831	SANGRUR	SUNAM	S-NPP	75.67752	29.98975	13:00:00	D	7.30
832	SANGRUR	SUNAM	S-NPP	75.88254	29.99634	13:00:00	D	3.20
833	SANGRUR	SUNAM	S-NPP	75.74096	29.99869	13:00:00	D	10.60
834	SANGRUR	SUNAM	S-NPP	75.72419	29.99980	13:00:00	D	11.50

835	SANGRUR	SUNAM	S-NPP	75.77311	30.00090	13:00:00	D	2.40
836	SANGRUR	SUNAM	S-NPP	76.02038	30.01678	13:00:00	D	6.80
837	SANGRUR	SUNAM	TERRA-1	75.89547	30.02383	10:55:00	D	12.56
838	SANGRUR	SUNAM	S-NPP	75.70506	30.02874	13:00:00	D	7.60
839	SANGRUR	SUNAM	S-NPP	75.70380	30.03320	13:00:00	D	7.60
840	SANGRUR	SUNAM	S-NPP	75.90928	30.03478	13:00:00	D	8.00
841	SANGRUR	SUNAM	S-NPP	75.94572	30.03791	13:00:00	D	4.30
842	SANGRUR	SUNAM	S-NPP	75.86513	30.03937	13:00:00	D	3.20
843	SANGRUR	SUNAM	S-NPP	75.75547	30.04417	13:00:00	D	10.60
844	SANGRUR	SUNAM	S-NPP	75.75742	30.04574	13:00:00	D	5.10
845	SANGRUR	SUNAM	S-NPP	75.96954	30.04765	13:00:00	D	4.60
846	SANGRUR	SUNAM	S-NPP	75.99449	30.05297	13:00:00	D	2.70
847	SANGRUR	SUNAM	S-NPP	75.64272	30.06320	13:00:00	D	3.40
848	SANGRUR	SUNAM	S-NPP	76.03303	30.06579	13:00:00	D	8.20
849	SANGRUR	SUNAM	S-NPP	75.85137	30.06917	13:00:00	D	4.30
850	SANGRUR	SUNAM	S-NPP	75.84797	30.07023	13:00:00	D	4.60
851	SANGRUR	SUNAM	S-NPP	75.88179	30.07559	13:00:00	D	5.90
852	SANGRUR	SUNAM	S-NPP	75.87830	30.07685	13:00:00	D	6.20
853	SANGRUR	SUNAM	S-NPP	75.92339	30.07970	13:00:00	D	2.50
854	SANGRUR	SUNAM	S-NPP	75.86832	30.09337	13:00:00	D	3.00
855	SANGRUR	SUNAM	S-NPP	75.97232	30.10193	13:00:00	D	4.20
856	SANGRUR	SUNAM	S-NPP	75.97482	30.10445	13:00:00	D	4.90
857	SANGRUR	SUNAM	S-NPP	76.07885	30.10778	13:00:00	D	4.10
858	SANGRUR	SUNAM	S-NPP	75.75536	30.11116	13:00:00	D	2.80
859	SANGRUR	SUNAM	S-NPP	75.94628	30.11953	13:00:00	D	2.30
860	SANGRUR	SUNAM	S-NPP	75.89748	30.12299	13:00:00	D	8.50
861	SANGRUR	SUNAM	S-NPP	75.99729	30.12588	13:00:00	D	3.80
862	SANGRUR	SUNAM	S-NPP	76.07004	30.12768	13:00:00	D	4.30
863	SANGRUR	SUNAM	S-NPP	76.07278	30.12954	13:00:00	D	3.80
864	SANGRUR	SUNAM	S-NPP	75.99485	30.13462	13:00:00	D	4.70
865	SANGRUR	SUNAM	S-NPP	75.63294	30.13685	13:00:00	D	3.10

866	SANGRUR	SUNAM	S-NPP	75.99363	30.13899	13:00:00	D	4.70
867	SANGRUR	SUNAM	S-NPP	75.97253	30.13910	13:00:00	D	7.30
868	SANGRUR	SUNAM	S-NPP	75.97134	30.14348	13:00:00	D	7.30
869	SANGRUR	SUNAM	S-NPP	75.93893	30.14583	13:00:00	D	2.80
870	SANGRUR	SUNAM	S-NPP	75.75050	30.14771	13:00:00	D	3.10
871	SANGRUR	SUNAM	S-NPP	75.77362	30.16199	13:00:00	D	6.20
872	SANGRUR	SUNAM	S-NPP	75.88637	30.16254	13:00:00	D	3.70
873	SANGRUR	SUNAM	S-NPP	75.77051	30.16347	13:00:00	D	5.50
874	SANGRUR	SUNAM	S-NPP	75.92279	30.16562	13:00:00	D	2.40
875	SANGRUR	SUNAM	S-NPP	75.90024	30.17014	13:00:00	D	10.30
876	SBS NAGAR	KHARAR	S-NPP	76.64391	30.64105	13:00:00	D	3.40
877	TARN TARAN	KHADOOR SAHIB	S-NPP	75.01189	31.28127	13:00:00	D	4.40
878	TARN TARAN	KHADOOR SAHIB	S-NPP	75.05497	31.29070	13:00:00	D	2.70
879	TARN TARAN	KHADOOR SAHIB	S-NPP	75.09634	31.30452	13:00:00	D	10.30
880	TARN TARAN	KHADOOR SAHIB	S-NPP	75.10168	31.30568	13:00:00	D	10.30
881	TARN TARAN	KHADOOR SAHIB	S-NPP	75.02340	31.39398	13:00:00	D	4.20
882	TARN TARAN	PATTI	S-NPP	74.90327	31.18660	13:00:00	D	3.50

Details of residue burning events in Haryana on 04-Nov-2018

Event S. No.	District	Tehsil/Block	Satellite	Longitude	Latitude	Time (IST)	Day/Night	Fire Power (W/m²)
1	AMBALA	AMBALA	S-NPP	76.73647	30.24837	13:00:00	D	3.10
2	AMBALA	AMBALA	S-NPP	76.95789	30.31553	13:00:00	D	2.30
3	AMBALA	AMBALA	S-NPP	76.88219	30.32166	13:00:00	D	3.90
4	AMBALA	BARARA	S-NPP	77.05717	30.20799	13:00:00	D	10.60
5	AMBALA	BARARA	S-NPP	76.97502	30.24894	13:00:00	D	3.30
6	FARIDABAD	HODAL	S-NPP	77.43215	27.97406	13:00:00	D	1.80
7	FATEHABAD	FATEHABAD	S-NPP	75.28294	29.47498	13:00:00	D	9.10
8	FATEHABAD	FATEHABAD	S-NPP	75.32493	29.49393	13:00:00	D	6.50
9	FATEHABAD	FATEHABAD	S-NPP	75.58549	29.53591	13:00:00	D	2.70
10	FATEHABAD	FATEHABAD	S-NPP	75.47697	29.54440	13:00:00	D	4.20
11	FATEHABAD	FATEHABAD	S-NPP	75.32538	29.54482	13:00:00	D	4.50
12	FATEHABAD	FATEHABAD	S-NPP	75.47927	29.54675	13:00:00	D	5.00
13	FATEHABAD	FATEHABAD	S-NPP	75.43663	29.56454	13:00:00	D	12.60
14	FATEHABAD	FATEHABAD	S-NPP	75.69782	29.62666	13:00:00	D	10.10
15	FATEHABAD	RATIA	S-NPP	75.60094	29.69171	13:00:00	D	8.00
16	FATEHABAD	RATIA	S-NPP	75.60373	29.69224	13:00:00	D	6.50
17	FATEHABAD	RATIA	S-NPP	75.39714	29.69504	13:00:00	D	14.40
18	FATEHABAD	RATIA	S-NPP	75.41352	29.69862	13:00:00	D	8.20
19	FATEHABAD	RATIA	S-NPP	75.45985	29.71841	13:00:00	D	5.10
20	FATEHABAD	TOHANA	S-NPP	75.92783	29.64841	13:00:00	D	4.00
21	FATEHABAD	TOHANA	S-NPP	75.72827	29.65707	13:00:00	D	9.70
22	FATEHABAD	TOHANA	S-NPP	75.74667	29.67055	13:00:00	D	5.60
23	FATEHABAD	TOHANA	S-NPP	75.70142	29.71310	13:00:00	D	4.50
24	FATEHABAD	TOHANA	S-NPP	75.69863	29.71312	13:00:00	D	5.60

25	FATEHABAD	TOHANA	S-NPP	75.84400	29.76379	13:00:00	D	5.10
26	FATEHABAD	TOHANA	S-NPP	75.78878	29.76597	13:00:00	D	8.20
27	HISAR	HISAR	S-NPP	75.70628	29.20878	13:00:00	D	3.80
28	HISAR	NARNAUND	S-NPP	76.15164	29.23739	13:00:00	D	4.30
29	JHAJJAR	BAHADURGARH	S-NPP	76.89676	28.75263	01:42:00	N	0.40
30	JIND	NARWANA	S-NPP	76.08459	29.75679	13:00:00	D	4.30
31	JIND	SAFIDON	S-NPP	76.50394	29.39753	13:00:00	D	6.40
32	KAITHAL	GUHLA	S-NPP	76.18145	29.92393	13:00:00	D	4.50
33	KAITHAL	GUHLA	S-NPP	76.35480	30.02377	13:00:00	D	2.40
34	KAITHAL	KAITHAL	S-NPP	76.33911	29.65532	13:00:00	D	7.00
35	KAITHAL	KAITHAL	S-NPP	76.39716	29.74056	13:00:00	D	3.50
36	KAITHAL	KAITHAL	S-NPP	76.30785	29.83126	13:00:00	D	5.00
37	KAITHAL	KAITHAL	S-NPP	76.33321	29.85021	13:00:00	D	4.30
38	KAITHAL	KAITHAL	S-NPP	76.33485	29.85098	13:00:00	D	6.90
39	KAITHAL	KAITHAL	S-NPP	76.33801	29.85121	13:00:00	D	5.10
40	KAITHAL	KAITHAL	S-NPP	76.25556	29.89817	13:00:00	D	16.00
41	KARNAL	ASSANDH	S-NPP	76.57577	29.47254	13:00:00	D	4.30
42	KARNAL	ASSANDH	S-NPP	76.67790	29.58852	13:00:00	D	7.30
43	KARNAL	ASSANDH	S-NPP	76.67416	29.58917	13:00:00	D	8.10
44	KARNAL	ASSANDH	S-NPP	76.71732	29.60553	13:00:00	D	3.90
45	KARNAL	GHARAUNDA	S-NPP	76.77014	29.57165	13:00:00	D	7.20
46	KURUKSHETRA	PEHOWA	S-NPP	76.66080	30.13961	13:00:00	D	2.50
47	KURUKSHETRA	PEHOWA	S-NPP	76.66247	30.14125	13:00:00	D	2.10
48	PANIPAT	PANIPAT	S-NPP	76.85482	29.47381	01:42:00	N	2.00
49	PANIPAT	PANIPAT	S-NPP	76.85542	29.47788	01:42:00	N	2.00
50	SIRSA	DABWALI	S-NPP	74.63764	29.79453	13:00:00	D	8.10

51	SIRSA	DABWALI	S-NPP	74.63922	29.79688	13:00:00	D	5.20
52	SIRSA	DABWALI	S-NPP	74.77893	29.99726	13:00:00	D	8.50
53	SIRSA	ELLENABAD	S-NPP	74.79418	29.39750	13:00:00	D	4.90
54	SIRSA	ELLENABAD	S-NPP	74.79104	29.39996	13:00:00	D	6.30
55	SIRSA	ELLENABAD	S-NPP	74.61816	29.46276	13:00:00	D	6.40
56	SIRSA	ELLENABAD	S-NPP	74.61555	29.46501	13:00:00	D	8.20
57	SIRSA	ELLENABAD	S-NPP	74.62276	29.50753	13:00:00	D	8.40
58	SIRSA	RANIA	S-NPP	74.66251	29.52671	13:00:00	D	6.80
59	SIRSA	RANIA	S-NPP	74.67046	29.54376	13:00:00	D	6.20
60	SIRSA	RANIA	S-NPP	74.72984	29.58240	13:00:00	D	4.10
61	SIRSA	RANIA	S-NPP	74.64910	29.58741	13:00:00	D	8.50
62	SIRSA	RANIA	S-NPP	74.64442	29.58879	13:00:00	D	11.90
63	SIRSA	SIRSA	S-NPP	75.15227	29.40676	13:00:00	D	4.90
64	SIRSA	SIRSA	S-NPP	74.95464	29.45282	13:00:00	D	8.20
65	SIRSA	SIRSA	S-NPP	74.95831	29.45296	13:00:00	D	5.60
66	SIRSA	SIRSA	S-NPP	75.00841	29.49416	13:00:00	D	6.60
67	SIRSA	SIRSA	S-NPP	75.05771	29.51507	13:00:00	D	6.00
68	SIRSA	SIRSA	METOP-2	75.00021	29.51628	21:23:00	N	6.00
69	SIRSA	SIRSA	S-NPP	75.08643	29.52144	13:00:00	D	4.90
70	SIRSA	SIRSA	METOP-2	75.22531	29.53425	21:23:00	N	7.00
71	SIRSA	SIRSA	S-NPP	75.12233	29.59995	13:00:00	D	4.20
72	SIRSA	SIRSA	S-NPP	75.17381	29.72590	13:00:00	D	6.40
73	SIRSA	SIRSA	S-NPP	75.22842	29.74295	13:00:00	D	4.10
74	SIRSA	SIRSA	S-NPP	75.06036	29.82556	13:00:00	D	6.00
75	SIRSA	SIRSA	S-NPP	75.05200	29.83357	13:00:00	D	3.60
76	YAMUNANAGAR	CHHACHHRAULII	S-NPP	77.27721	30.24352	13:00:00	D	2.00
77	YAMUNANAGAR	JAGADHRI	S-NPP	77.31998	30.28932	13:00:00	D	7.30

Details of residue burning events in Uttar Pradesh on 04-Nov-2018

Event S.No.	District	Tehsil/Block	Satellite	Longitude	Latitude	Time (IST)	Day/Night	Fire Power (W/m²)
1	ALIGARH	KHAIR	S-NPP	77.56456	28.02187	13:00:00	D	2.10
2	ALIGARH	KHAIR	S-NPP	77.56363	28.02240	13:00:00	D	3.50
3	ALLAHABAD	HADIYA	S-NPP	82.15965	25.44351	12:54:00	D	2.00
4	AMBEDKARNAGAR	TANDA	S-NPP	82.80916	26.53695	12:54:00	D	3.70
5	AZAMGARH	NIZAMABAD	S-NPP	82.97820	25.96927	12:54:00	D	1.20
6	BAHRAICH	BAHRAICH	S-NPP	81.87022	27.43178	13:00:00	D	2.90
7	BAHRAICH	BAHRAICH	S-NPP	81.87268	27.48191	13:00:00	D	2.10
8	BAHRAICH	NANPARA	S-NPP	81.54400	27.82180	13:00:00	D	1.70
9	BAHRAICH	NANPARA	S-NPP	81.59006	27.92039	13:00:00	D	2.60
10	BALRAMPUR	TULSIPUR	S-NPP	82.67833	27.46483	13:00:00	D	2.90
11	BALRAMPUR	TULSIPUR	S-NPP	82.69496	27.48488	13:00:00	D	2.50
12	BALRAMPUR	UTRAULA	TERRA-1	82.40105	27.33038	10:55:00	D	8.97
13	BARABANKI	H AidARGARH	S-NPP	81.40853	26.78302	13:00:00	D	4.00
14	BARABANKI	NAWABGANJ	S-NPP	81.23575	26.98424	13:00:00	D	3.90
15	BARABANKI	NAWABGANJ	S-NPP	81.23499	26.98776	13:00:00	D	3.10
16	BARABANKI	RAMSANEHIGHAT	S-NPP	81.42104	26.83916	13:00:00	D	7.60
17	BARABANKI	SIR AULI GAUSPUR	S-NPP	81.47245	26.98607	13:00:00	D	21.30
18	BAREILLY	BAHERI	S-NPP	79.42290	28.87678	13:00:00	D	2.30
19	BASTI	RUDHAULI	S-NPP	82.82582	27.01212	13:00:00	D	2.40
20	BULANSAHAR	KHURJA	TERRA-1	77.97760	28.08796	10:55:00	D	11.30
21	DEORIA	BARHAJ	S-NPP	83.83654	26.29131	12:54:00	D	1.70
22	DEORIA	BARHAJ	S-NPP	83.79415	26.34510	12:54:00	D	2.60
23	DEORIA	SALEMPUR	S-NPP	83.90815	26.18363	12:54:00	D	3.10
24	ETAH	JALESAR	TERRA-1	78.43291	27.50855	10:55:00	D	5.69
25	ETAWAH	BHARTHNA	TERRA-1	79.21221	26.88721	10:55:00	D	6.96
26	FATEHPUR	FATEHPUR	S-NPP	80.82116	25.80307	12:54:00	D	1.90
27	FATEHPUR	FATEHPUR	S-NPP	80.82218	25.80582	12:54:00	D	2.90
28	FATEHPUR	FATEHPUR	S-NPP	80.71929	25.94572	12:54:00	D	3.60

29	FATEHPUR	FATEHPUR	S-NPP	80.68281	25.99238	01:42:00	N	0.70
30	FATEHPUR	KHAGA	S-NPP	81.01801	25.75142	12:54:00	D	2.30
31	GHAZIABAD	MODINAGAR	S-NPP	77.67645	28.82439	13:00:00	D	1.80
32	GONDA	MANKAPUR	S-NPP	82.44622	27.12193	13:00:00	D	6.00
33	GORAKHPUR	BANSGAON	S-NPP	83.42352	26.43968	12:54:00	D	2.00
34	GORAKHPUR	BANSGAON	S-NPP	83.31476	26.52031	12:54:00	D	1.80
35	GORAKHPUR	CAMPIERGANJ	S-NPP	83.29738	26.90003	13:00:00	D	1.40
36	GORAKHPUR	CHAURI CHAURA	S-NPP	83.51370	26.59901	12:54:00	D	1.20
37	GORAKHPUR	GORAKHPUR	S-NPP	83.57613	26.79244	12:54:00	D	3.40
38	GORAKHPUR	SAHJANWA	S-NPP	83.20255	26.75669	01:42:00	N	0.90
39	GORAKHPUR	SAHJANWA	S-NPP	83.19930	26.76066	01:42:00	N	1.30
40	HARDOI	HARDOI	S-NPP	80.37273	27.33308	13:00:00	D	1.10
41	HARDOI	SHAHABAD	S-NPP	80.06272	27.66697	13:00:00	D	3.00
42	JAUNPUR	SHHGANJ	S-NPP	82.58604	26.02004	12:54:00	D	2.10
43	KANPUR	BILHAUR	S-NPP	80.02499	26.73352	13:00:00	D	3.10
44	KANPUR	GHATAMPUR	S-NPP	80.12988	26.08345	12:54:00	D	3.30
45	KANPUR	GHATAMPUR	S-NPP	80.37908	26.26972	13:00:00	D	2.40
46	KUSHINAGAR	HATA	S-NPP	83.65756	26.70383	12:54:00	D	3.00
47	KUSHINAGAR	HATA	S-NPP	83.62990	26.80431	12:54:00	D	3.70
48	KUSHINAGAR	HATA	S-NPP	83.64642	26.92577	13:00:00	D	2.30
49	KUSHINAGAR	KASAYA	S-NPP	84.03011	26.58515	12:54:00	D	2.00
50	KUSHINAGAR	KASAYA	S-NPP	84.01362	26.65067	12:54:00	D	2.50
51	KUSHINAGAR	KASAYA	S-NPP	84.00687	26.73099	12:54:00	D	2.80
52	KUSHINAGAR	KASAYA	S-NPP	84.00946	26.73820	12:54:00	D	1.60
53	KUSHINAGAR	KASAYA	S-NPP	83.89378	26.76034	12:54:00	D	2.20
54	KUSHINAGAR	KASAYA	S-NPP	84.02051	26.78344	12:54:00	D	2.90
55	KUSHINAGAR	KASAYA	S-NPP	84.02247	26.79395	12:54:00	D	5.40
56	KUSHINAGAR	PADRAUNA	S-NPP	84.03606	26.82667	12:54:00	D	1.90
57	KUSHINAGAR	PADRAUNA	S-NPP	84.01551	26.83030	12:54:00	D	2.20
58	KUSHINAGAR	TAMKUHI RAJ	S-NPP	84.04732	26.72704	12:54:00	D	3.70
59	LACKNOW	MOHANLAL GANJ	TERRA-1	81.09312	26.70905	10:55:00	D	7.48

60	MAHARAJGANJ	MAHARAJGANJ	S-NPP	83.56816	26.93628	13:00:00	D	4.00
61	MAHARAJGANJ	MAHARAJGANJ	S-NPP	83.60123	27.01323	13:00:00	D	4.70
62	MAHARAJGANJ	MAHARAJGANJ	S-NPP	83.49284	27.01328	13:00:00	D	4.30
63	MAHARAJGANJ	MAHARAJGANJ	S-NPP	83.49218	27.01660	13:00:00	D	4.30
64	MAHARAJGANJ	MAHARAJGANJ	S-NPP	83.53960	27.02064	13:00:00	D	4.30
65	MAHARAJGANJ	MAHARAJGANJ	S-NPP	83.54351	27.02125	13:00:00	D	4.30
66	MAHARAJGANJ	MAHARAJGANJ	S-NPP	83.53896	27.02396	13:00:00	D	4.30
67	MAHARAJGANJ	MAHARAJGANJ	S-NPP	83.54048	27.03718	13:00:00	D	4.50
68	MAHARAJGANJ	MAHARAJGANJ	S-NPP	83.62411	27.04014	13:00:00	D	1.80
69	MAHARAJGANJ	MAHARAJGANJ	S-NPP	83.53983	27.04049	13:00:00	D	4.40
70	MAHARAJGANJ	MAHARAJGANJ	S-NPP	83.51710	27.07450	13:00:00	D	1.40
71	MAHARAJGANJ	MAHARAJGANJ	S-NPP	83.50020	27.09919	13:00:00	D	3.70
72	MAHARAJGANJ	MAHARAJGANJ	S-NPP	83.66237	27.13146	13:00:00	D	2.60
73	MAHARAJGANJ	MAHARAJGANJ	S-NPP	83.55422	27.15445	13:00:00	D	2.20
74	MAHARAJGANJ	MAHARAJGANJ	S-NPP	83.56850	27.18402	13:00:00	D	2.90
75	MAHARAJGANJ	MAHARAJGANJ	S-NPP	83.57564	27.18855	13:00:00	D	2.50
76	MAHARAJGANJ	MAHARAJGANJ	S-NPP	83.66248	27.19536	13:00:00	D	2.80
77	MAHARAJGANJ	MAHARAJGANJ	S-NPP	83.53799	27.19629	13:00:00	D	3.20
78	MAHARAJGANJ	MAHARAJGANJ	S-NPP	83.52135	27.24082	13:00:00	D	4.70
79	MAHARAJGANJ	MAHARAJGANJ	S-NPP	83.53693	27.24328	13:00:00	D	4.90
80	MAHARAJGANJ	MAHARAJGANJ	S-NPP	83.56485	27.26476	13:00:00	D	2.80
81	MAHARAJGANJ	NAUTANWA	S-NPP	83.33055	27.22764	13:00:00	D	5.00
82	MAHARAJGANJ	NAUTANWA	S-NPP	83.40815	27.24340	13:00:00	D	5.00
83	MAHARAJGANJ	NAUTANWA	S-NPP	83.40359	27.24610	13:00:00	D	5.10
84	MAHARAJGANJ	NAUTANWA	S-NPP	83.40749	27.24672	13:00:00	D	5.00
85	MAHARAJGANJ	NAUTANWA	S-NPP	83.34161	27.25338	13:00:00	D	4.30
86	MAHARAJGANJ	NAUTANWA	S-NPP	83.39380	27.25482	13:00:00	D	2.60
87	MAHARAJGANJ	NAUTANWA	S-NPP	83.39315	27.25813	13:00:00	D	2.60
88	MAHARAJGANJ	NAUTANWA	S-NPP	83.38402	27.26353	13:00:00	D	4.00
89	MAHARAJGANJ	NAUTANWA	S-NPP	83.41204	27.26455	13:00:00	D	3.60
90	MAHARAJGANJ	NAUTANWA	S-NPP	83.40748	27.26725	13:00:00	D	3.60

91	MAHARAJGANJ	NAUTANWA	S-NPP	83.41138	27.26787	13:00:00	D	3.60
92	MAHARAJGANJ	NAUTANWA	S-NPP	83.40682	27.27057	13:00:00	D	9.70
93	MAHARAJGANJ	NAUTANWA	S-NPP	83.41073	27.27118	13:00:00	D	8.60
94	MAHARAJGANJ	NAUTANWA	S-NPP	83.64992	27.40336	13:00:00	D	4.10
95	MAHARAJGANJ	NICHLAUL	S-NPP	83.68825	27.12186	13:00:00	D	6.60
96	MAHARAJGANJ	NICHLAUL	S-NPP	83.71949	27.23154	13:00:00	D	3.00
97	MAHARAJGANJ	NICHLAUL	S-NPP	83.76346	27.23157	13:00:00	D	3.10
98	MAHARAJGANJ	NICHLAUL	S-NPP	83.69295	27.24444	13:00:00	D	3.10
99	MAHARAJGANJ	NICHLAUL	S-NPP	83.66380	27.25013	13:00:00	D	2.90
100	MAHARAJGANJ	NICHLAUL	S-NPP	83.65928	27.25283	13:00:00	D	2.30
101	MAHARAJGANJ	NICHLAUL	S-NPP	83.61868	27.25616	13:00:00	D	2.40
102	MAHARAJGANJ	NICHLAUL	S-NPP	83.72948	27.32464	13:00:00	D	4.10
103	MAHARAJGANJ	PHARENDA	S-NPP	83.26434	27.11180	13:00:00	D	2.60
104	MAHARAJGANJ	PHARENDA	S-NPP	83.33154	27.20135	13:00:00	D	6.40
105	MAHARAJGANJ	PHARENDA	S-NPP	83.28208	27.28847	13:00:00	D	3.80
106	MAHARAJGANJ	PHARENDA	S-NPP	83.30954	27.29282	13:00:00	D	5.00
107	MAHARAJGANJ	PHARENDA	S-NPP	83.31281	27.29676	13:00:00	D	2.40
108	MAHARAJGANJ	PHARENDA	S-NPP	83.36897	27.29880	13:00:00	D	6.30
109	MAHARAJGANJ	PHARENDA	S-NPP	83.33108	27.30650	13:00:00	D	4.50
110	MATHURA	CHHATA	S-NPP	77.49734	27.57020	13:00:00	D	6.60
111	MATHURA	CHHATA	S-NPP	77.49595	27.57204	13:00:00	D	27.90
112	MATHURA	CHHATA	S-NPP	77.50043	27.57293	13:00:00	D	27.90
113	MATHURA	CHHATA	S-NPP	77.50074	27.57535	13:00:00	D	95.60
114	MATHURA	CHHATA	S-NPP	77.49937	27.57716	13:00:00	D	27.90
115	MATHURA	CHHATA	S-NPP	77.47991	27.68081	13:00:00	D	3.90
116	MATHURA	CHHATA	S-NPP	77.47840	27.68191	13:00:00	D	4.60
117	MATHURA	CHHATA	S-NPP	77.50523	27.68726	13:00:00	D	2.20
118	MATHURA	CHHATA	S-NPP	77.49564	27.69294	13:00:00	D	4.40
119	MATHURA	CHHATA	S-NPP	77.48011	27.69863	13:00:00	D	3.60
120	MATHURA	CHHATA	S-NPP	77.48457	27.69955	13:00:00	D	4.20
121	MATHURA	CHHATA	S-NPP	77.48904	27.70046	13:00:00	D	4.20

122	MATHURA	CHHATA	S-NPP	77.57204	27.70422	13:00:00	D	7.20
123	MATHURA	CHHATA	S-NPP	77.57644	27.70513	13:00:00	D	5.40
124	MATHURA	CHHATA	TERRA-1	77.39952	27.71516	10:55:00	D	8.34
125	MATHURA	CHHATA	S-NPP	77.40977	27.71539	13:00:00	D	2.90
126	MATHURA	CHHATA	S-NPP	77.45132	27.71940	13:00:00	D	23.70
127	MATHURA	CHHATA	S-NPP	77.44161	27.75744	13:00:00	D	5.00
128	MATHURA	CHHATA	S-NPP	77.46955	27.75863	13:00:00	D	5.30
129	MATHURA	CHHATA	S-NPP	77.36576	27.76185	13:00:00	D	2.70
130	MATHURA	CHHATA	S-NPP	77.53841	27.76365	13:00:00	D	4.00
131	MATHURA	CHHATA	S-NPP	77.33317	27.77746	13:00:00	D	3.20
132	MATHURA	CHHATA	S-NPP	77.33208	27.78172	13:00:00	D	3.20
133	MATHURA	CHHATA	S-NPP	77.54907	27.83509	13:00:00	D	2.20
134	MATHURA	CHHATA	S-NPP	77.42282	27.85373	13:00:00	D	4.70
135	MATHURA	CHHATA	S-NPP	77.49630	27.85971	13:00:00	D	2.80
136	MATHURA	MATHURA	S-NPP	77.44349	27.55905	13:00:00	D	2.60
137	PRATAPGARH	PATTI	S-NPP	82.13003	26.01070	12:54:00	D	2.30
138	RAIBEARELI	DALMAU	S-NPP	81.15913	26.08744	12:54:00	D	2.70
139	RAMPUR	BILASPUR	S-NPP	79.24249	28.89756	13:00:00	D	2.50
140	SANTKABIRNAGAR	KHALILABAD	S-NPP	82.88094	26.86031	13:00:00	D	8.60
141	SANTKABIRNAGAR	MEHDAWAL	S-NPP	83.03124	26.90887	13:00:00	D	2.80
142	SANTKABIRNAGAR	MEHDAWAL	S-NPP	83.08228	27.02240	13:00:00	D	3.10
143	SANTKABIRNAGAR	MEHDAWAL	S-NPP	83.08162	27.02574	13:00:00	D	3.10
144	SHAHJAHANPUR	PUWANYA	TERRA-1	80.01880	28.36644	10:55:00	D	9.13
145	SHRAWASTI	BHINGA	S-NPP	82.05088	27.64491	13:00:00	D	4.60
146	SHRAWASTI	BHINGA	S-NPP	82.05016	27.64832	13:00:00	D	2.10
147	SHRAWASTI	BHINGA	S-NPP	81.73564	27.72778	13:00:00	D	1.20
148	SHRAWASTI	BHINGA	S-NPP	81.75755	27.72797	13:00:00	D	2.10
149	SIDDHARTHANAGAR	BANSI	S-NPP	82.82423	27.06480	13:00:00	D	6.30
150	SIDDHARTHANAGAR	BANSI	TERRA-1	82.85295	27.06837	10:55:00	D	9.45
151	SIDDHARTHANAGAR	BANSI	S-NPP	82.92458	27.07767	13:00:00	D	7.20
152	SIDDHARTHANAGAR	BANSI	S-NPP	82.91992	27.08037	13:00:00	D	7.20

153	SIDDHARTHANAGAR	BANSI	S-NPP	82.88070	27.09129	13:00:00	D	6.20
154	SIDDHARTHANAGAR	BANSI	TERRA-1	82.77962	27.10281	10:55:00	D	15.50
155	SIDDHARTHANAGAR	BANSI	S-NPP	82.86001	27.11215	13:00:00	D	3.70
156	SIDDHARTHANAGAR	BANSI	S-NPP	82.83561	27.23424	13:00:00	D	2.80
157	SIDDHARTHANAGAR	BANSI	S-NPP	82.89651	27.25911	13:00:00	D	1.40
158	SIDDHARTHANAGAR	DOMARIYAGANJ	S-NPP	82.66607	27.17204	13:00:00	D	1.90
159	SIDDHARTHANAGAR	DOMARIYAGANJ	S-NPP	82.56423	27.24282	13:00:00	D	2.20
160	SIDDHARTHANAGAR	DOMARIYAGANJ	S-NPP	82.64955	27.27421	13:00:00	D	3.00
161	SIDDHARTHANAGAR	ITWA	S-NPP	82.75122	27.30465	13:00:00	D	3.00
162	SIDDHARTHANAGAR	ITWA	S-NPP	82.75454	27.30866	13:00:00	D	5.30
163	SIDDHARTHANAGAR	ITWA	S-NPP	82.66280	27.31110	13:00:00	D	1.50
164	SIDDHARTHANAGAR	ITWA	S-NPP	82.60775	27.33790	13:00:00	D	2.50
165	SIDDHARTHANAGAR	ITWA	S-NPP	82.73702	27.35566	13:00:00	D	2.00
166	SIDDHARTHANAGAR	ITWA	S-NPP	82.61433	27.36679	13:00:00	D	2.70
167	SIDDHARTHANAGAR	ITWA	S-NPP	82.74230	27.37038	13:00:00	D	2.50
168	SIDDHARTHANAGAR	NAUGARH	S-NPP	83.19756	27.28534	13:00:00	D	2.60
169	SIDDHARTHANAGAR	NAUGARH	S-NPP	83.13605	27.30821	13:00:00	D	2.30
170	SIDDHARTHANAGAR	NAUGARH	S-NPP	83.09843	27.35373	13:00:00	D	2.90
171	SIDDHARTHANAGAR	NAUGARH	S-NPP	83.19174	27.37549	13:00:00	D	1.90
172	SIDDHARTHANAGAR	NAUGARH	S-NPP	83.21991	27.39712	13:00:00	D	3.10
173	SIDDHARTHANAGAR	NAUGARH	S-NPP	83.18348	27.43824	13:00:00	D	2.80
174	SIDDHARTHANAGAR	SHOHRATGARH	S-NPP	82.91294	27.29976	13:00:00	D	3.50
175	SIDDHARTHANAGAR	SHOHRATGARH	S-NPP	82.93214	27.30632	13:00:00	D	2.80
176	SIDDHARTHANAGAR	SHOHRATGARH	S-NPP	82.93612	27.30696	13:00:00	D	2.80
177	SIDDHARTHANAGAR	SHOHRATGARH	S-NPP	82.90089	27.33924	13:00:00	D	2.40
178	SIDDHARTHANAGAR	SHOHRATGARH	S-NPP	83.02525	27.35233	13:00:00	D	1.90
179	SIDDHARTHANAGAR	SHOHRATGARH	S-NPP	82.99348	27.36790	13:00:00	D	2.70
180	SIDDHARTHANAGAR	SHOHRATGARH	S-NPP	82.89797	27.39571	13:00:00	D	2.70
181	SIDDHARTHANAGAR	SHOHRATGARH	S-NPP	83.03017	27.43084	13:00:00	D	4.80
182	SIDDHARTHANAGAR	SHOHRATGARH	S-NPP	82.94282	27.45813	13:00:00	D	1.80
183	SULTANPUR	AMETHI	S-NPP	81.84141	26.28774	12:54:00	D	1.70

The study used images received from following Satellites at IARI Satellite Ground Station

S. No.	Satellite Name	Sensor	Resolution (meter)	Day / Night Passes
1.	Suomi NPP	VIIRS	375 / 1000	Both
2.	Terra	MODIS	1000	Both
3.	Aqua	MODIS	1000	Both
4.	NOAA – 18	AVHRR	1000	Night
5.	NOAA – 19	AVHRR	1000	Night
6.	Metop - 1	AVHRR	1000	Night
7.	Metop - 2	AVHRR	1000	Night

Study Team

ICAR – HQ	Dr K. Alagusundaram	DDG (Agril. Engg.)	ddgengg@icar.org.in
	Dr S. Bhaskar	ADG (NRM)	adgagroandaf@gmail.com
ICAR - IARI	Dr V.K. Sehgal	Professor & Nodal Scientist	iaricreams@gmail.com yk.sehgal@icar.gov.in
	Dr Rajkumar Dhakar	Scientist	rajdhakar.iari@gmail.com
	Shri Rakeshwar Verma	Chief Technical Officer	rakeshwar.verma@icar.gov.in
	Mr Aakash Chhabra	SRF (NICRA)	aakash.chhabra7489@gmail.com
ICAR - ATARI	Dr Rajbir Singh	Director ATARI (Zone-1)	rajbirsingh.zpd@gmail.com
	Dr U.S. Gautam	Director ATARI (Zone-IV)	zpdicarkanpur@gmail.com
ICAR - IASRI	Dr RajenderParsad	Principal Scientist	rajender.parsad@icar.gov.in

GIS Maps of fire events can be visualized online on ICAR KRISHI & CREAMS Geoportal

websites:<http://geoportal.icar.gov.in:8080/geoexplorer/composer/>

<http://creams.iari.res.in:8080/geoexplorer/composer/>
