



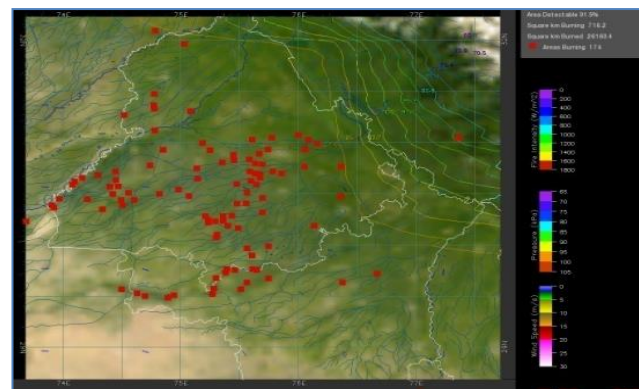
**Bulletin
No. 34**

**Events Date:
03-Nov-2018**

**Issued on:
04-Nov-2018**



MONITORING PADDY RESIDUE BURNING IN NORTH INDIA USING SATELLITE REMOTE SENSING DURING 2018



Prepared by:

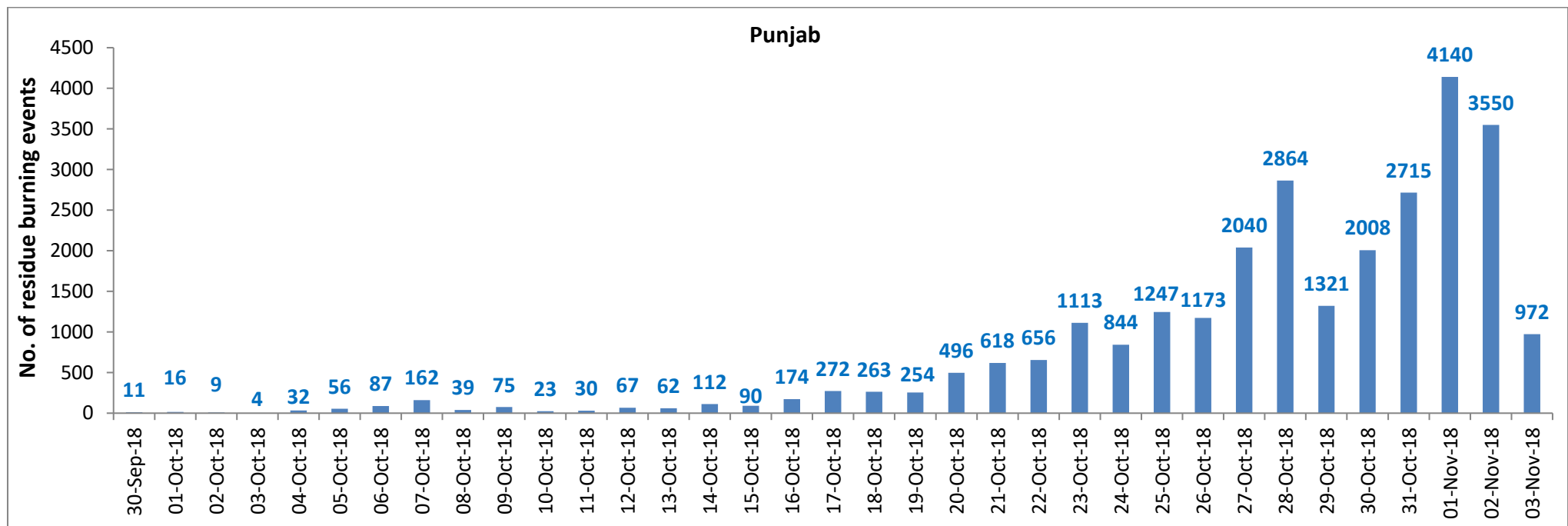
**Consortium for Research on Agroecosystem Monitoring and Modeling from Space (CREAMS) Laboratory,
Division of Agricultural Physics, ICAR – Indian Agricultural Research Institute, New Delhi – 110012**

<http://creams.iari.res.in>

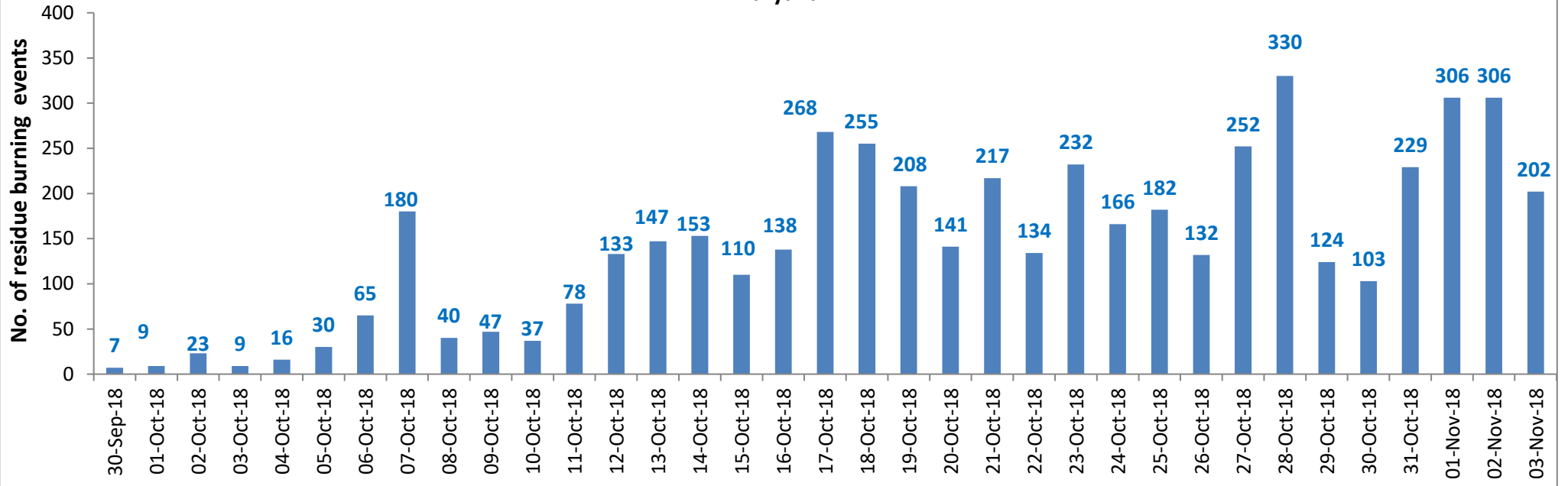
Highlights for 03-November-2018

- Satellites detected **1355** residue burning events in the three States (Punjab, Haryana & UP) on **03-Nov-2018**.
- The detection by satellites was hampered due to clouds in parts of Punjab and Haryana.
- The burning events detected on **03-Nov-2018** are **972**, **202** and **181** in Punjab, Haryana, and UP, respectively.
- The number of events has decreased from **3998** on **02-Nov-2018** to **1355** on **03-Nov-2018** in the three States.
- Total **35750** burning events were detected in the three States between **30-Sept-2018** and **03-Nov-2018**, which are distributed as **27595**, **5009** and **3146** in Punjab, Haryana and UP, respectively.
- Till **03-Nov-2018**, the burning events in the current year are about **68%** of the events detected in 2017 and about **51.7%** of the events detected in 2016.
- Overall, about **32%** and **48%** reduction in burning events are observed in current year (2018) till date as compared to that in 2017 and 2016, respectively.

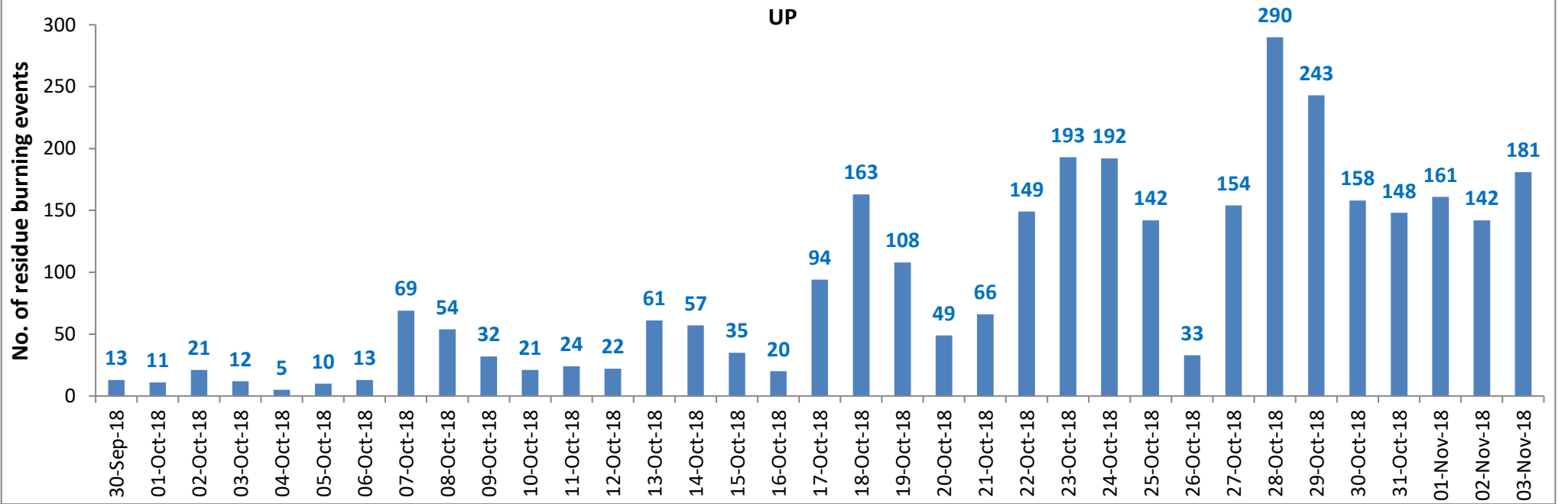
Temporal distribution of residue burning events for the three study States



Haryana

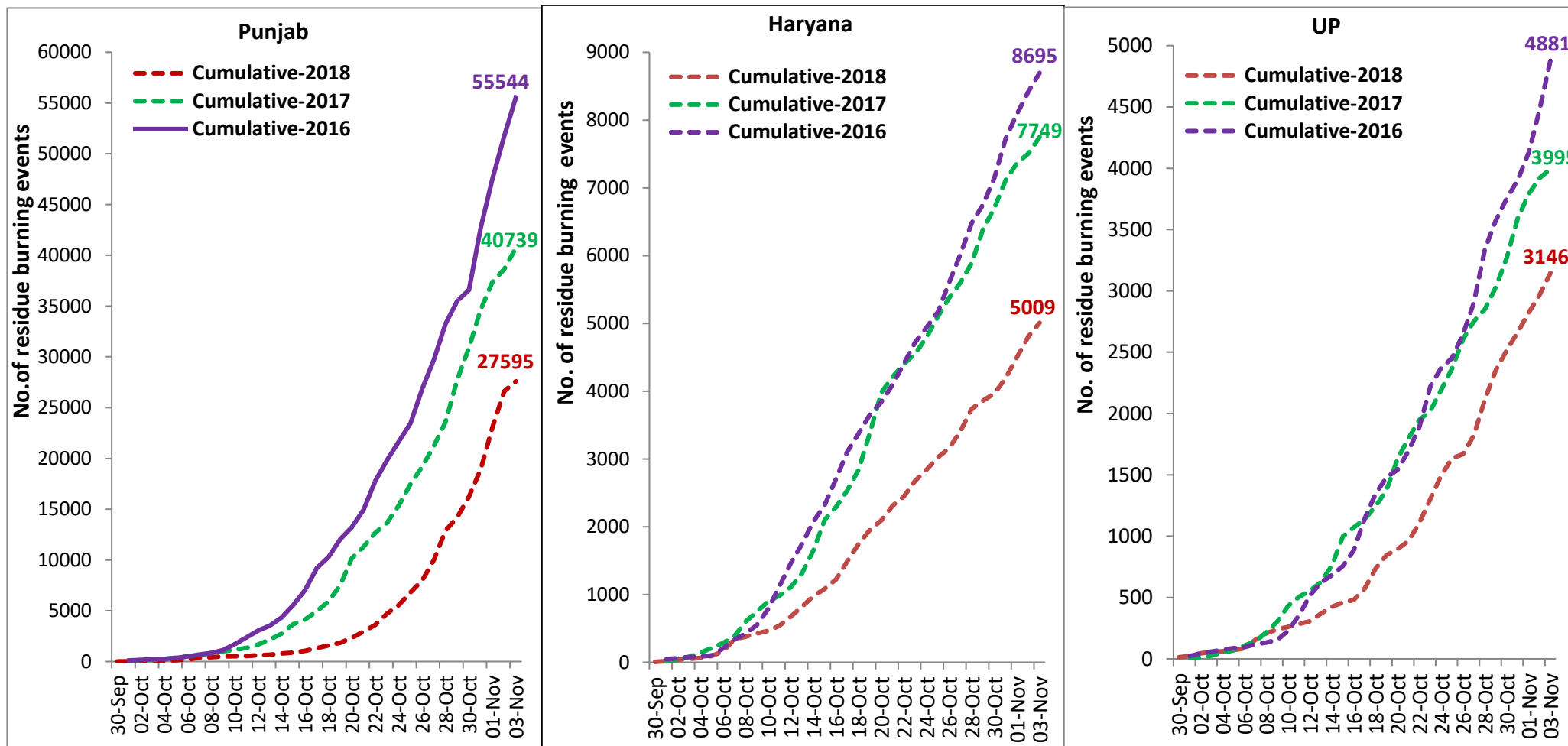


UP



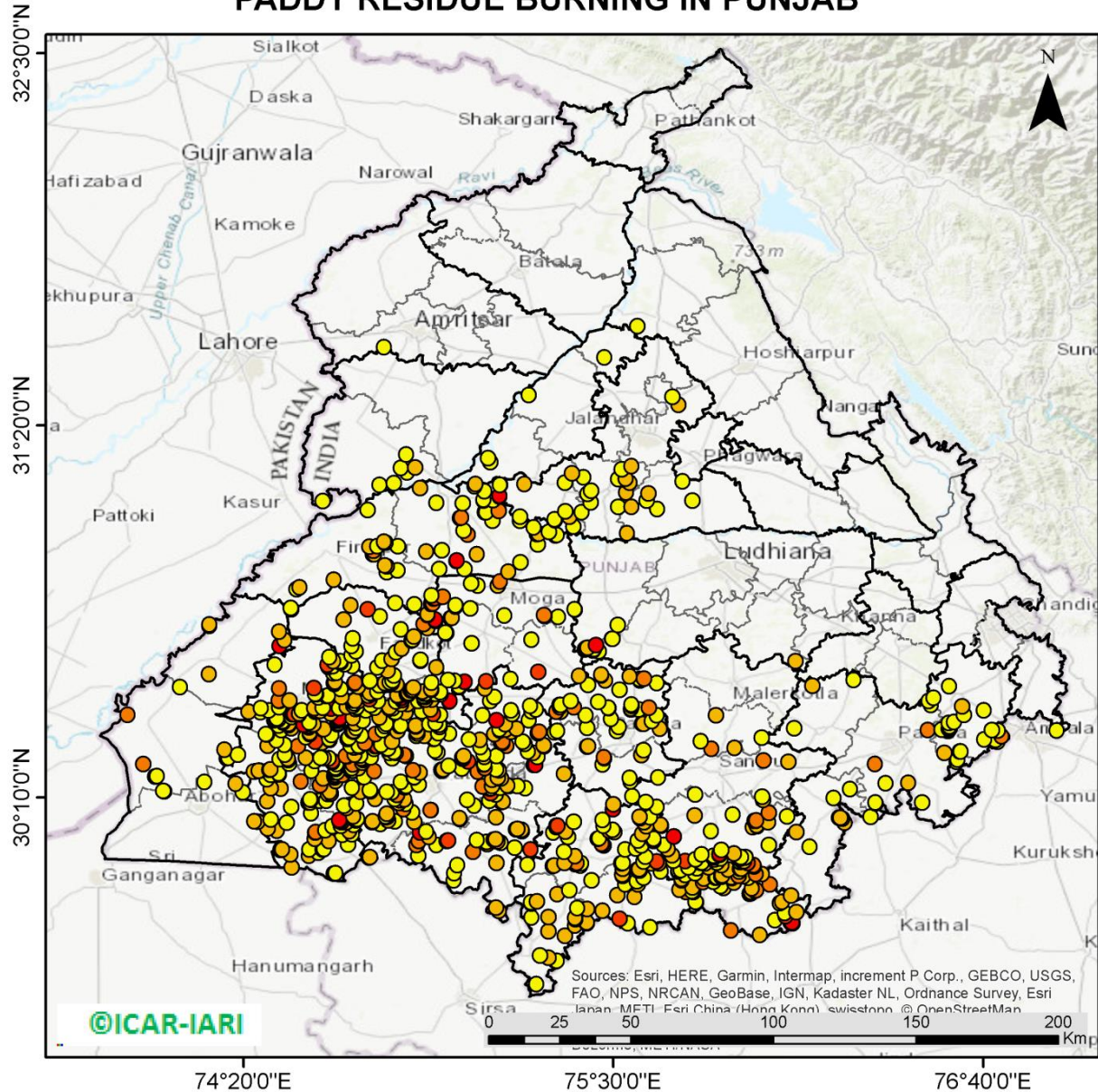
Comparison of residue burning events in current year (2018) with previous years (2017& 2016) for the three study States

(30-Sep to 03-Nov)



(a) Punjab

PADDY RESIDUE BURNING IN PUNJAB



972 burning events detected in Punjab on 3rd November, 2018

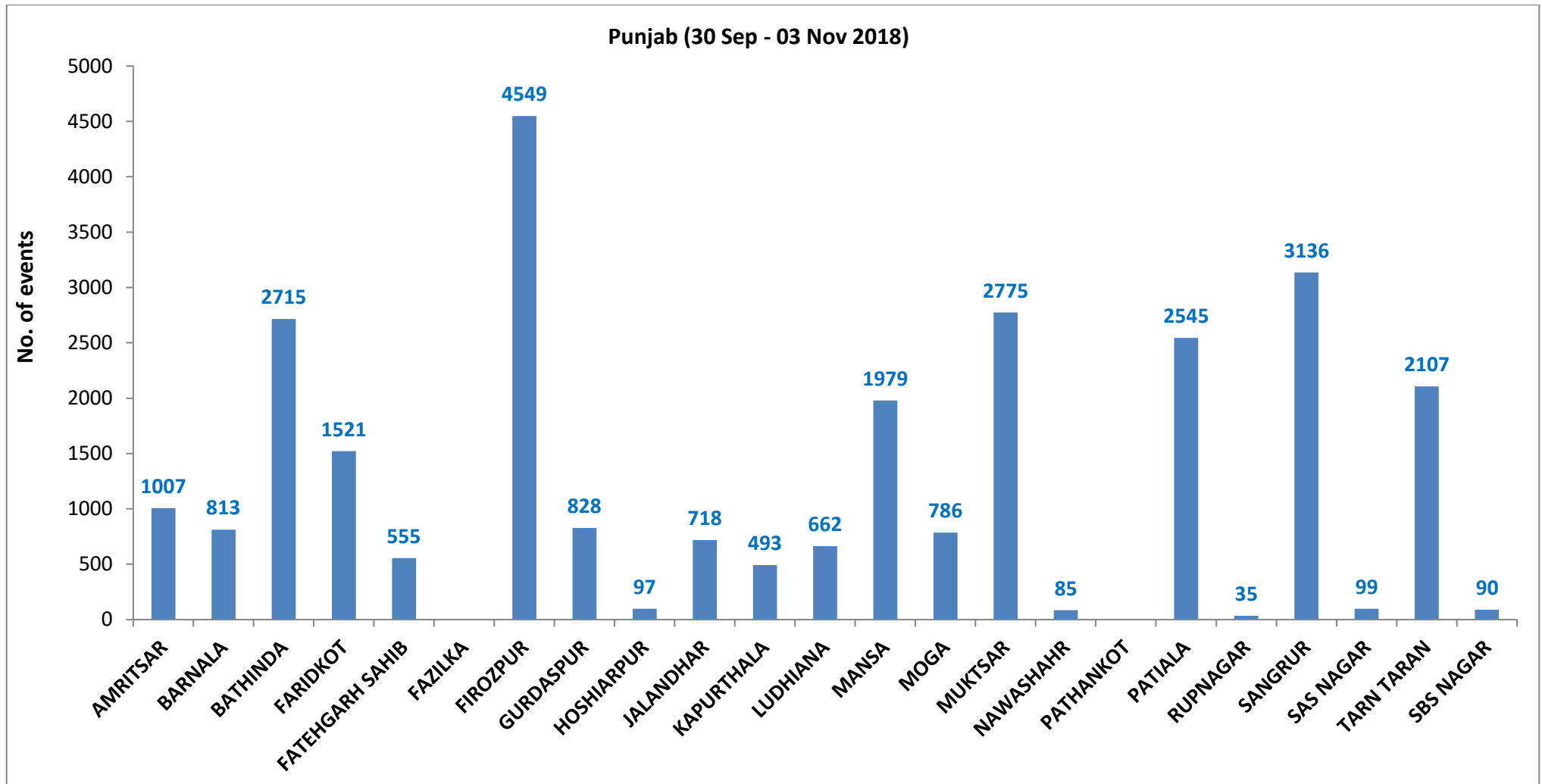
Fire Intensity (W/m²)

- 0 - 5
- 6 - 10
- 11 - 15
- 16 - 20
- >20



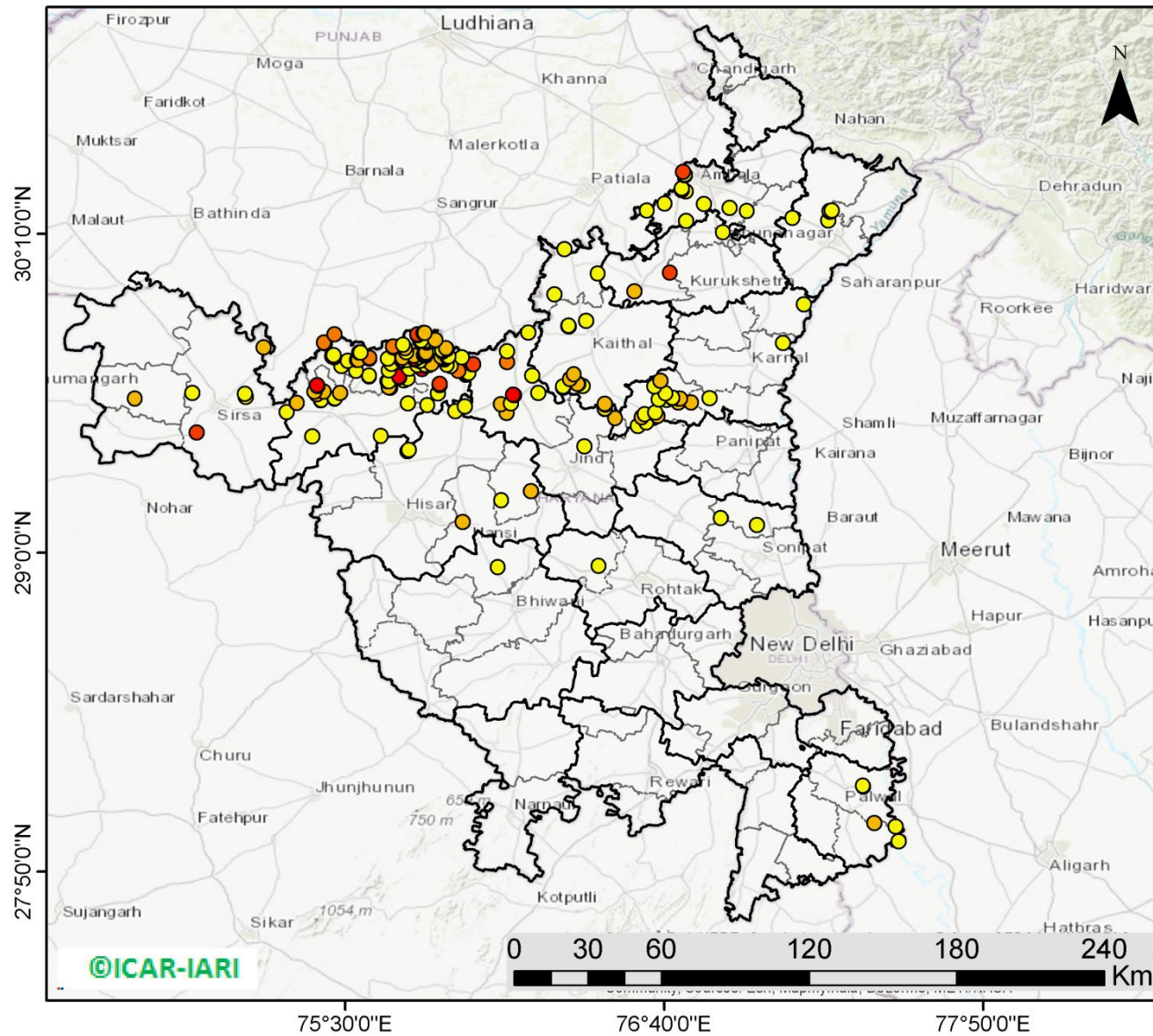
<http://geoportal.icar.gov.in:8080/geoexplorer/composer/>

District-wise cumulative number of residue burning events in Punjab (30-Sep-2018 to 03-Nov-2018)



(b) Haryana

PADDY RESIDUE BURNING IN HARYANA



202 burning events detected in Haryana on 3rd November, 2018

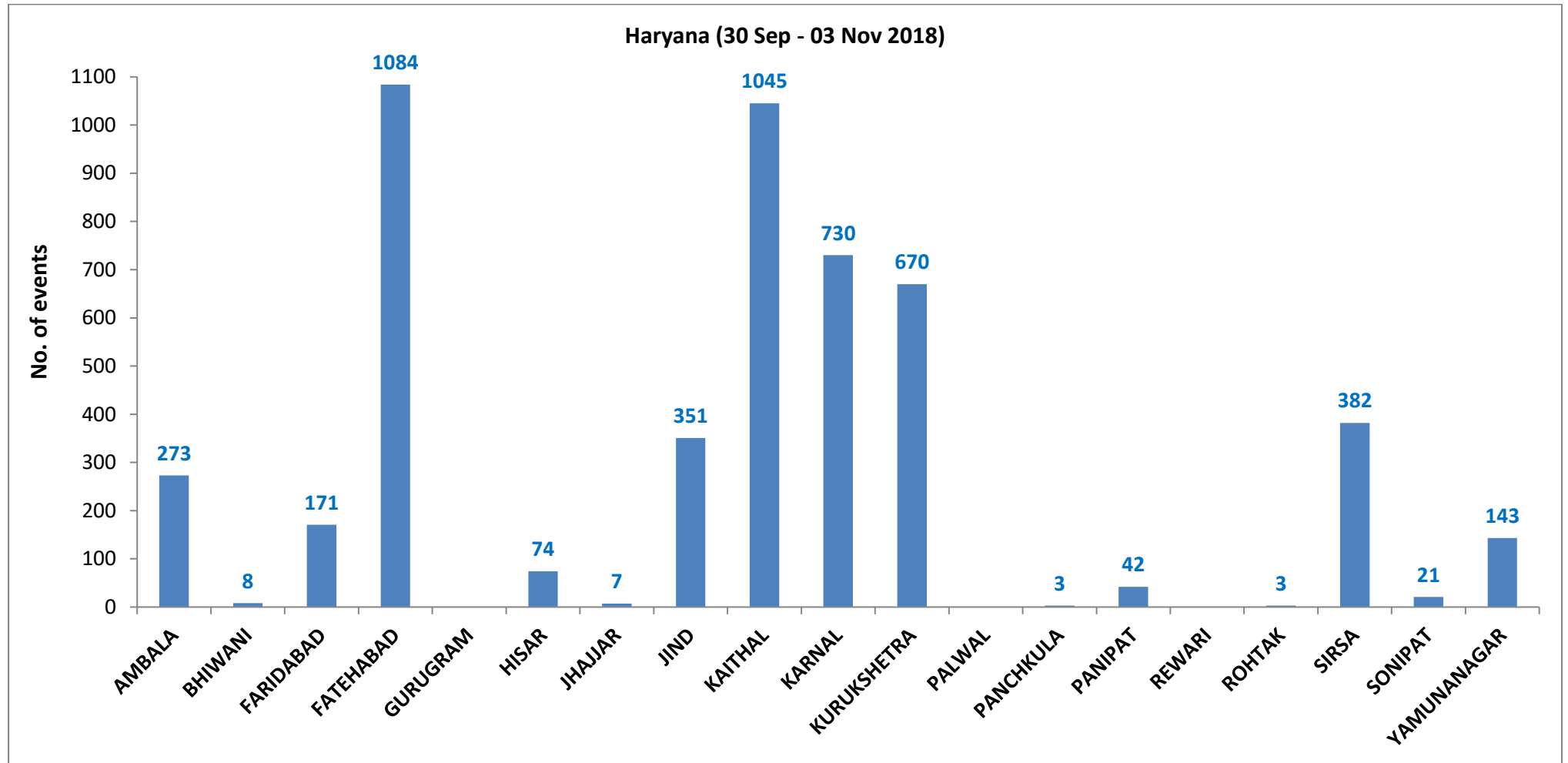
Fire Intensity (W/m²)

- 0 - 5
- 6 - 10
- 11 - 15
- 16 - 20
- >20



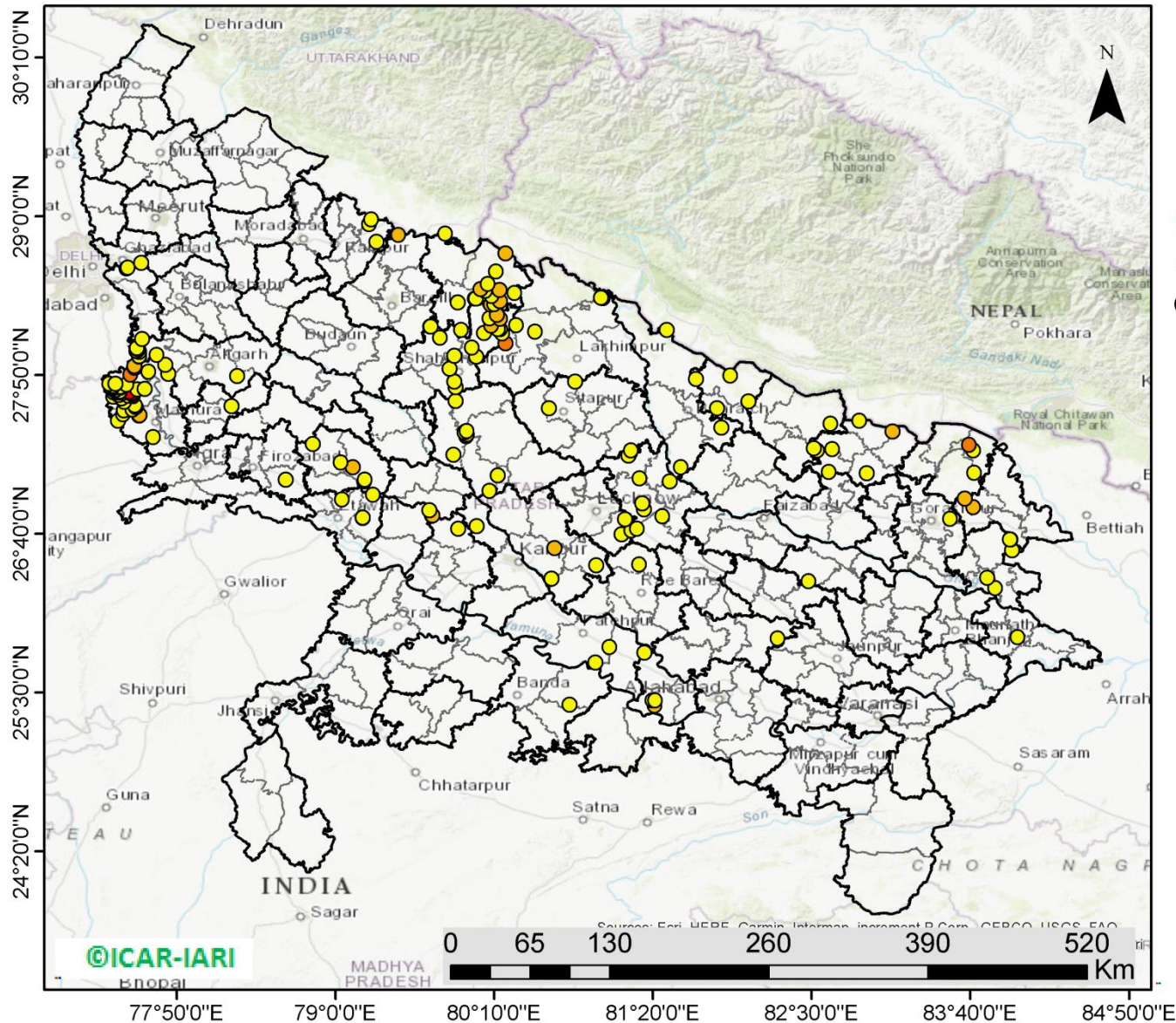
<http://geoportal.icar.gov.in:8080/geoexplorer/composer/>

District-wise cumulative number of residue burning events in Haryana (30-Sep-2018 to 03-Nov-2018)



(c) Uttar Pradesh

PADDY RESIDUE BURNING IN UTTAR PRADESH



181 burning events detected in Uttar Pradesh on **3rd Nov, 2018**

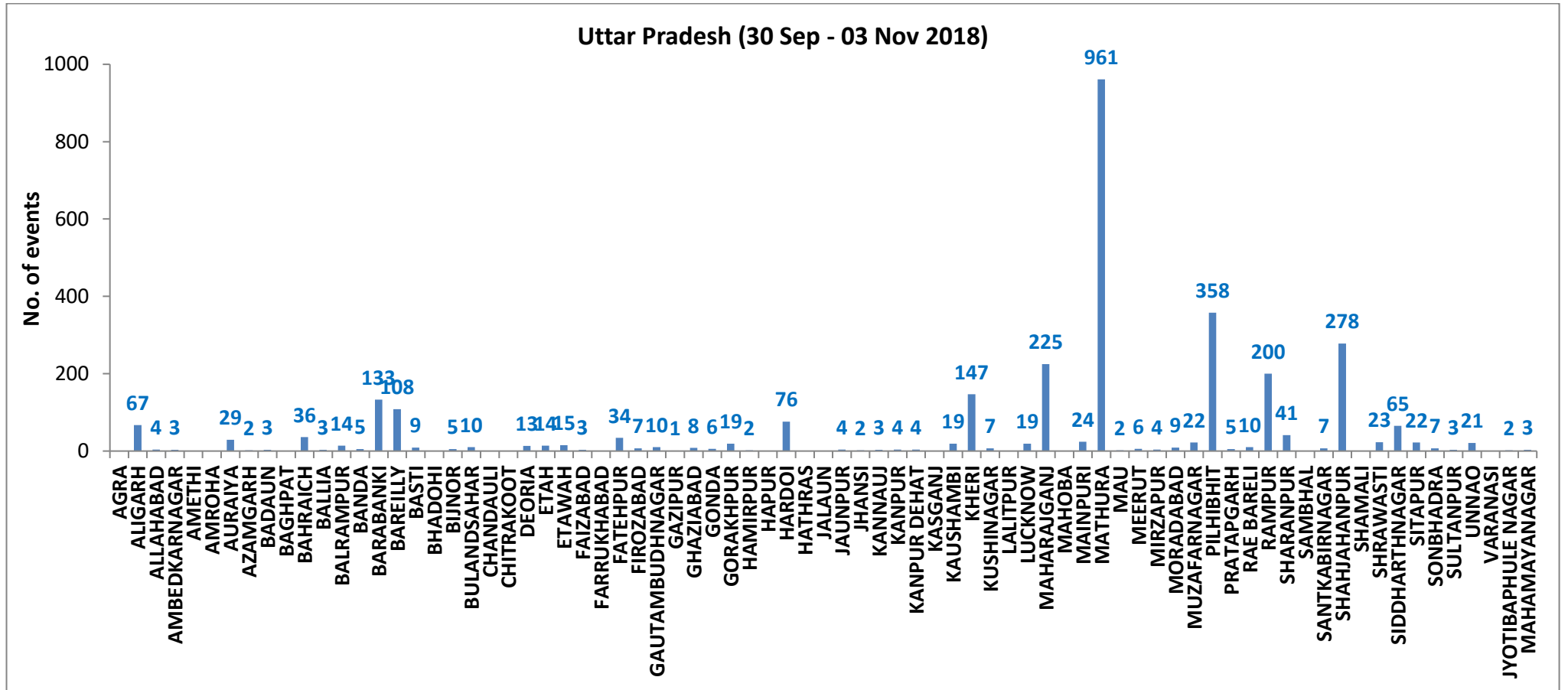
Fire Intensity (W/m²)

- 0 - 5
- 6 - 10
- 11 - 15
- 16 - 20
- >20



<http://geoportal.icar.gov.in:8080/geoexplorer/composer/>

District-wise cumulative number of residue burning events in Uttar Pradesh (30-Sep-2018 to 03-Nov-2018)



State wise, date wise and district-wise number of residue burning events detected in 2016, 2017 and 2018
(Period: 30-Sep to 03-Nov)

Date	Punjab			Haryana			UP			Total		
	2016	2017	2018	2016	2017	2018	2016	2017	2018	2016	2017	2018
30-Sep	--	--	11	--	---	7	--	---	13	--	---	31
1-Oct	109	54	16	46	13	9	23	2	11	178	69	36
2-Oct	51	50	9	16	27	23	20	8	21	87	85	53
3-Oct	66	62	4	16	40	9	16	17	12	98	119	25
4-Oct	37	103	32	7	60	16	15	22	5	59	185	53
5-Oct	95	106	56	15	68	30	14	20	10	124	194	96
6-Oct	152	138	87	105	75	65	6	39	13	263	252	165
7-Oct	171	105	162	126	97	180	24	31	69	321	233	411
8-Oct	166	215	39	94	218	40	14	75	54	274	508	133
9-Oct	270	163	75	121	148	47	22	87	32	413	398	154
10-Oct	597	164	23	242	151	37	74	126	21	913	441	81
11-Oct	652	177	30	336	87	78	128	74	24	1116	338	132
12-Oct	694	342	67	338	123	133	164	51	22	1196	516	222
13-Oct	467	470	62	284	207	147	102	69	61	853	746	270
14-Oct	812	582	112	328	333	153	60	137	57	1200	1052	322
15-Oct	1215	943	90	248	458	110	76	237	35	1539	1638	235
16-Oct	1478	465	174	385	186	138	125	71	20	1988	722	332
17-Oct	2173	807	272	399	244	268	261	69	94	2833	1120	634

18-Oct	1065	970	263	270	306	255	204	108	163	1539	1384	681
19-Oct	1762	1591	254	276	541	208	132	128	108	2170	2260	570
20-Oct	1175	2653	496	188	597	141	62	255	49	1425	3505	686
21-Oct	1726	1139	618	257	233	217	152	168	66	2135	1540	901
22-Oct	2837	1356	656	309	186	134	194	151	149	3340	1693	939
23-Oct	2040	994	1113	313	155	232	331	72	193	2684	1221	1538
24-Oct	1836	1714	844	221	244	166	152	171	192	2209	2129	1202
25-Oct	1813	2104	1247	229	303	182	83	175	142	2125	2582	1571
26-Oct	3390	1715	1173	434	276	132	195	240	33	4019	2231	1338
27-Oct	2904	2069	2040	417	224	252	255	145	154	3576	2438	2446
28-Oct	3493	2318	2864	458	292	330	435	99	290	4386	2709	3484
29-Oct	2258	4184	1321	278	502	124	237	180	243	2773	4866	1688
30-Oct	1076	3152	2008	395	307	103	175	238	158	1646	3697	2269
31-Oct	6132	3743	2715	575	413	229	153	321	148	6860	4447	3092
01-Nov	4843	2736	4140	362	250	306	223	199	161	5628	3185	4607
02-Nov	4183	1246	3550	332	145	306	345	131	142	4860	1522	3998
03-Nov	3806	2109	972	275	240	202	409	75	181	4409	2424	1355
Total	55544	40739	27595	8695	7749	5009	4881	3995	3146	69120	52483	35750

(a) Punjab

Districts	01 Oct - 03Nov		
	2016	2017	2018
AMRITSAR	1525	1080	1007
BARNALA	1998	1422	813
BATHINDA	4453	3611	2715
FARIDKOT	2815	2518	1521
FATEHGARH SAHIB	2190	1349	555
FAZILKA	0	0	0
FIROZPUR	5342	4515	4549
GURDASPUR	1756	1158	828
HOSHIARPUR	734	398	97
JALANDHAR	3109	1470	718
KAPURTHALA	2620	1236	493
LUDHIANA	3969	2419	662
MANSA	2244	2450	1979
MOGA	2510	1234	786
MUKTSAR	3863	3007	2775
NAWASHAHR	886	474	85
PATHANKOT	0	0	0
PATIALA	5113	4140	2545
RUPNAGAR	599	226	35
SANGRUR	6465	5301	3136
SAS NAGAR	113	105	99
TARN TARAN	3013	2498	2107
SBS NAGAR	227	128	90
Total	55544	40739	27595

(b) Haryana

Districts	01 Oct - 03Nov		
	2016	2017	2018
AMBALA	506	471	273
BHIWANI	15	11	8
FARIDABAD	191	282	171
FATEHABAD	1817	1610	1084
GURUGRAM	0	0	0
HISAR	126	93	74
JHAJJAR	6	5	7
JIND	533	518	351
KAITHAL	1643	1377	1045
KARNAL	1487	1394	730
KURUKSHETRA	1046	1126	670
PALWAL	0	0	0
PANCHKULA	0	0	3
PANIPAT	56	51	42
REWARI	0	0	0
ROHTAK	26	14	3
SIRSA	994	491	382
SONIPAT	31	31	21
YAMUNANAGAR	218	275	143
Total	8695	7749	5009

(c) Uttar Pradesh

Distrites	01 Oct - 03Nov			GAUTAMBUDH NAGAR			RAE BARELI				
	2016	2017	2018								
AGRA	0	0	0	NAGAR	12	21	10	13	6	10	
ALIGARH	38	66	67	GAZIPUR	8	0	1	RAMPUR	574	541	200
ALLAHABAD	0	1	4	GHAZIABAD	32	13	8	SHARANPUR	60	71	41
AMBEDKARNAGAR	16	6	3	GONDA	9	12	6	SAMBHAL	0	0	0
AMETHI	0	0	0	GORAKHPUR	21	8	19	SANTKABIRNAGAR	15	5	7
AMROHA	0	0	0	HAMIRPUR	0	0	2	SHAHJAHANPUR	916	616	278
AURAIYA	100	86	29	HAPUR	0	0	0	SHAMALI	0	0	0
AZAMGARH	6	1	2	HARDOI	160	93	76	SHRAWASTI	11	9	23
BADAUN	4	4	3	HATHRAS	0	0	0	SIDDHARTHANAGAR	30	13	65
BAGHPAT	0	0	0	JALAUN	0	0	0	SITAPUR	77	34	22
BAHRAICH	29	13	36	JAUNPUR	2	1	4	SONBHADRA	8	1	7
BALLIA	1	2	3	JHANSI	0	0	2	SULTANPUR	11	3	3
BALRAMPUR	6	5	14	KANNAUJ	1	7	3	UNNAO	22	11	21
BANDA	1	1	5	KANPUR	3	4	4	VARANASI	0	0	0
BARABANKI	149	89	133	KANPUR DEHAT	4	11	4	JYOTIBAPHULE NAGAR	7	3	2
BAREILLY	206	147	108	KASGANJ	0	0	0	MAHAMAYANAGAR	0	2	3
BASTI	23	21	9	KAUSHAMBI	8	14	19	Total	4881	3995	3146
BHADOHI	0	0	0	KHERI	295	178	147				
BIJNOR	33	11	5	KUSHINAGAR	7	3	7				
BULANDSAHAR	9	13	10	LALITPUR	0	0	0				
CHANDAUJI	2	0	0	LUCKNOW	32	16	19				
CHITRAKOOT	0	0	0	MAHARAJGANJ	70	150	225				
DEORIA	14	4	13	MAHOBA	0	0	0				
ETAH	8	18	14	MAINPURI	20	39	24				
ETAWAH	17	29	15	MATHURA	851	869	961				
FAIZABAD	5	2	3	MAU	2	1	2				
FARRUKHABAD	0	0	0	MEERUT	34	21	6				
FATEHPUR	28	16	34	MIRZAPUR	0	8	4				
FIROZABAD	11	12	7	MORADABAD	28	18	9				
				MUZAFARNAGAR	81	78	22				
				PILHIBHIT	744	567	358				
				PRATAPGARH	7	1	5				

Details of residue burning events in Punjab on 03-Nov-2018

Event S. No.	District	Tehsil/Block	Satellite	Longitude	Latitude	Time (IST)	Day/Night	Fire Power (W/m²)
1	AMRITSAR	AMRITSAR II	S-NPP	74.77544	31.57914	13:18:00	D	4.60
2	BARNALA	BARNALA	S-NPP	75.51031	30.37643	13:18:00	D	3.90
3	BARNALA	BARNALA	S-NPP	75.64633	30.38239	13:18:00	D	5.80
4	BARNALA	BARNALA	S-NPP	75.51699	30.38859	13:18:00	D	4.10
5	BARNALA	BARNALA	S-NPP	75.59074	30.39802	13:18:00	D	4.60
6	BARNALA	BARNALA	S-NPP	75.59529	30.39882	13:18:00	D	5.10
7	BARNALA	BARNALA	S-NPP	75.62169	30.40714	13:18:00	D	4.50
8	BARNALA	BARNALA	S-NPP	75.49209	30.41343	13:18:00	D	2.10
9	BARNALA	BARNALA	S-NPP	75.63655	30.42430	13:18:00	D	2.40
10	BARNALA	BARNALA	S-NPP	75.41269	30.42508	13:18:00	D	3.40
11	BARNALA	BARNALA	S-NPP	75.33457	30.43540	13:18:00	D	6.50
12	BARNALA	BARNALA	S-NPP	75.31982	30.43642	13:18:00	D	13.30
13	BARNALA	BARNALA	S-NPP	75.55651	30.44302	13:18:00	D	8.20
14	BARNALA	BARNALA	S-NPP	75.58009	30.44351	13:18:00	D	4.00
15	BARNALA	BARNALA	S-NPP	75.55568	30.44653	13:18:00	D	8.20
16	BARNALA	BARNALA	S-NPP	75.48535	30.44784	13:18:00	D	5.70
17	BARNALA	BARNALA	S-NPP	75.48381	30.44855	13:18:00	D	4.90
18	BARNALA	BARNALA	S-NPP	75.61188	30.44908	13:18:00	D	14.70
19	BARNALA	BARNALA	S-NPP	75.33124	30.44953	13:18:00	D	2.70
20	BARNALA	BARNALA	S-NPP	75.37459	30.44995	13:18:00	D	10.30
21	BARNALA	BARNALA	S-NPP	75.55861	30.45433	13:18:00	D	4.00
22	BARNALA	BARNALA	S-NPP	75.32956	30.45659	13:18:00	D	4.00
23	BARNALA	BARNALA	S-NPP	75.33421	30.45742	13:18:00	D	4.80
24	BARNALA	BARNALA	S-NPP	75.55778	30.45783	13:18:00	D	4.40
25	BARNALA	BARNALA	S-NPP	75.45206	30.46750	13:18:00	D	3.30
26	BARNALA	BARNALA	S-NPP	75.36496	30.47028	13:18:00	D	1.90
27	BARNALA	BARNALA	S-NPP	75.51952	30.50510	13:18:00	D	2.60

28	BARNALA	BARNALA	S-NPP	75.42040	30.52049	13:18:00	D	1.20
29	BARNALA	BARNALA	S-NPP	75.63761	30.52595	13:18:00	D	3.30
30	BARNALA	BARNALA	S-NPP	75.47469	30.53371	13:18:00	D	7.60
31	BARNALA	BARNALA	S-NPP	75.58369	30.53465	13:18:00	D	3.10
32	BARNALA	BARNALA	S-NPP	75.58286	30.53814	13:18:00	D	3.10
33	BARNALA	BARNALA	S-NPP	75.59649	30.54053	13:18:00	D	11.50
34	BARNALA	BARNALA	S-NPP	75.55231	30.54734	13:18:00	D	9.60
35	BARNALA	BARNALA	S-NPP	75.46137	30.54966	13:18:00	D	5.10
36	BARNALA	BARNALA	S-NPP	75.46214	30.55300	13:18:00	D	6.90
37	BARNALA	TAPPA	S-NPP	75.56034	30.17101	13:18:00	D	3.40
38	BARNALA	TAPPA	S-NPP	75.55424	30.21748	13:18:00	D	2.30
39	BARNALA	TAPPA	S-NPP	75.55177	30.22802	13:18:00	D	2.30
40	BARNALA	TAPPA	S-NPP	75.46671	30.27042	13:18:00	D	3.50
41	BARNALA	TAPPA	S-NPP	75.47176	30.28966	13:18:00	D	11.40
42	BARNALA	TAPPA	S-NPP	75.47094	30.29318	13:18:00	D	11.40
43	BARNALA	TAPPA	S-NPP	75.58863	30.29939	13:18:00	D	7.00
44	BARNALA	TAPPA	S-NPP	75.59446	30.31501	13:18:00	D	2.30
45	BARNALA	TAPPA	S-NPP	75.41666	30.32664	13:18:00	D	7.70
46	BARNALA	TAPPA	S-NPP	75.41949	30.32814	13:18:00	D	6.00
47	BARNALA	TAPPA	S-NPP	75.41722	30.38551	13:18:00	D	3.50
48	BATHINDA	BATHINDA	S-NPP	74.72887	29.97820	13:18:00	D	8.80
49	BATHINDA	BATHINDA	S-NPP	74.73053	29.97963	13:18:00	D	8.10
50	BATHINDA	BATHINDA	S-NPP	74.67997	30.08182	13:18:00	D	4.30
51	BATHINDA	BATHINDA	S-NPP	74.76527	30.08381	13:18:00	D	3.30
52	BATHINDA	BATHINDA	S-NPP	74.73795	30.09025	13:18:00	D	6.30
53	BATHINDA	BATHINDA	S-NPP	74.87086	30.09164	13:18:00	D	9.10
54	BATHINDA	BATHINDA	S-NPP	74.80952	30.09186	13:18:00	D	4.00
55	BATHINDA	BATHINDA	S-NPP	74.73934	30.09292	13:18:00	D	6.30
56	BATHINDA	BATHINDA	S-NPP	74.68724	30.09462	13:18:00	D	4.40
57	BATHINDA	BATHINDA	S-NPP	74.78812	30.09555	13:18:00	D	6.50
58	BATHINDA	BATHINDA	S-NPP	75.01561	30.09909	13:18:00	D	5.20

59	BATHINDA	BATHINDA	S-NPP	74.69131	30.09919	13:18:00	D	4.40
60	BATHINDA	BATHINDA	S-NPP	75.01476	30.10269	13:18:00	D	5.20
61	BATHINDA	BATHINDA	S-NPP	74.78275	30.10482	13:18:00	D	3.30
62	BATHINDA	BATHINDA	S-NPP	74.78548	30.10645	13:18:00	D	6.10
63	BATHINDA	BATHINDA	S-NPP	74.78188	30.10845	13:18:00	D	3.30
64	BATHINDA	BATHINDA	S-NPP	74.78503	30.11662	13:18:00	D	6.30
65	BATHINDA	BATHINDA	S-NPP	74.86388	30.12059	13:18:00	D	3.30
66	BATHINDA	BATHINDA	S-NPP	74.92501	30.12745	13:18:00	D	7.80
67	BATHINDA	BATHINDA	S-NPP	74.92313	30.12748	13:18:00	D	10.50
68	BATHINDA	BATHINDA	S-NPP	74.83802	30.13023	13:18:00	D	12.70
69	BATHINDA	BATHINDA	S-NPP	74.65675	30.13472	13:18:00	D	6.30
70	BATHINDA	BATHINDA	S-NPP	75.06065	30.14092	13:18:00	D	4.90
71	BATHINDA	BATHINDA	S-NPP	74.65000	30.14111	13:18:00	D	2.90
72	BATHINDA	BATHINDA	S-NPP	74.84429	30.14651	13:18:00	D	4.60
73	BATHINDA	BATHINDA	S-NPP	74.68974	30.14842	13:18:00	D	3.40
74	BATHINDA	BATHINDA	S-NPP	74.82301	30.15016	13:18:00	D	9.00
75	BATHINDA	BATHINDA	S-NPP	74.82615	30.15830	13:18:00	D	6.90
76	BATHINDA	BATHINDA	S-NPP	75.03796	30.15953	13:18:00	D	1.80
77	BATHINDA	BATHINDA	S-NPP	74.84080	30.16098	13:18:00	D	9.30
78	BATHINDA	BATHINDA	S-NPP	74.80972	30.16285	13:18:00	D	3.80
79	BATHINDA	BATHINDA	S-NPP	74.74815	30.16294	13:18:00	D	5.20
80	BATHINDA	BATHINDA	S-NPP	74.81689	30.17552	13:18:00	D	10.40
81	BATHINDA	BATHINDA	S-NPP	75.12853	30.17611	13:18:00	D	3.20
82	BATHINDA	BATHINDA	S-NPP	75.11258	30.18067	13:18:00	D	15.30
83	BATHINDA	BATHINDA	S-NPP	74.79957	30.18371	13:18:00	D	4.70
84	BATHINDA	BATHINDA	S-NPP	74.78397	30.18465	13:18:00	D	2.90
85	BATHINDA	BATHINDA	S-NPP	75.10917	30.19497	13:18:00	D	4.20
86	BATHINDA	BATHINDA	S-NPP	75.11392	30.19583	13:18:00	D	4.20
87	BATHINDA	BATHINDA	S-NPP	75.14324	30.19743	13:18:00	D	4.80
88	BATHINDA	BATHINDA	S-NPP	74.84183	30.19895	13:18:00	D	14.80
89	BATHINDA	BATHINDA	S-NPP	75.08757	30.20224	13:18:00	D	11.00

90	BATHINDA	BATHINDA	S-NPP	74.84583	30.20345	13:18:00	D	4.70
91	BATHINDA	BATHINDA	S-NPP	75.11697	30.20384	13:18:00	D	5.90
92	BATHINDA	BATHINDA	S-NPP	74.88565	30.20690	13:18:00	D	4.80
93	BATHINDA	BATHINDA	S-NPP	74.82980	30.21542	13:18:00	D	2.50
94	BATHINDA	BATHINDA	S-NPP	75.11745	30.22258	13:18:00	D	6.40
95	BATHINDA	BATHINDA	S-NPP	75.14118	30.22686	13:18:00	D	6.60
96	BATHINDA	BATHINDA	S-NPP	75.14592	30.22771	13:18:00	D	6.60
97	BATHINDA	BATHINDA	S-NPP	75.13558	30.22957	13:18:00	D	6.90
98	BATHINDA	BATHINDA	S-NPP	74.86983	30.23042	13:18:00	D	4.20
99	BATHINDA	BATHINDA	S-NPP	74.87186	30.23078	13:18:00	D	3.40
100	BATHINDA	BATHINDA	S-NPP	74.88867	30.24519	13:18:00	D	8.10
101	BATHINDA	BATHINDA	S-NPP	75.07168	30.24792	13:18:00	D	10.10
102	BATHINDA	BATHINDA	S-NPP	74.74498	30.24894	13:18:00	D	11.70
103	BATHINDA	BATHINDA	S-NPP	74.95803	30.25045	13:18:00	D	10.10
104	BATHINDA	BATHINDA	S-NPP	74.86665	30.25244	13:18:00	D	11.90
105	BATHINDA	BATHINDA	S-NPP	75.13997	30.25269	13:18:00	D	7.70
106	BATHINDA	BATHINDA	S-NPP	74.95717	30.25405	13:18:00	D	8.10
107	BATHINDA	BATHINDA	S-NPP	75.12963	30.25457	13:18:00	D	2.00
108	BATHINDA	BATHINDA	S-NPP	74.96198	30.25493	13:18:00	D	8.10
109	BATHINDA	BATHINDA	S-NPP	75.02128	30.25834	13:18:00	D	4.20
110	BATHINDA	BATHINDA	S-NPP	75.09380	30.25934	13:18:00	D	12.70
111	BATHINDA	BATHINDA	S-NPP	74.97949	30.26566	13:18:00	D	2.90
112	BATHINDA	BATHINDA	S-NPP	75.09124	30.27006	13:18:00	D	7.50
113	BATHINDA	BATHINDA	S-NPP	75.09281	30.27147	13:18:00	D	5.00
114	BATHINDA	BATHINDA	S-NPP	75.04090	30.28065	13:18:00	D	17.90
115	BATHINDA	BATHINDA	S-NPP	75.02399	30.28878	13:18:00	D	8.90
116	BATHINDA	BATHINDA	S-NPP	74.80170	30.28961	13:18:00	D	2.80
117	BATHINDA	BATHINDA	S-NPP	75.02313	30.29236	13:18:00	D	8.90
118	BATHINDA	BATHINDA	S-NPP	75.09246	30.29379	13:18:00	D	7.60
119	BATHINDA	BATHINDA	S-NPP	75.02705	30.29682	13:18:00	D	6.90
120	BATHINDA	BATHINDA	S-NPP	75.13125	30.29712	13:18:00	D	3.10

121	BATHINDA	BATHINDA	S-NPP	74.84560	30.29760	13:18:00	D	3.20
122	BATHINDA	BATHINDA	S-NPP	74.83985	30.30033	13:18:00	D	11.40
123	BATHINDA	BATHINDA	S-NPP	75.08989	30.30451	13:18:00	D	4.50
124	BATHINDA	BATHINDA	S-NPP	74.81284	30.30675	13:18:00	D	9.10
125	BATHINDA	BATHINDA	S-NPP	74.79241	30.30682	13:18:00	D	4.50
126	BATHINDA	BATHINDA	S-NPP	74.94421	30.30799	13:18:00	D	3.60
127	BATHINDA	BATHINDA	S-NPP	74.80708	30.30948	13:18:00	D	4.10
128	BATHINDA	BATHINDA	S-NPP	74.93764	30.31431	13:18:00	D	3.10
129	BATHINDA	BATHINDA	S-NPP	74.74519	30.32000	13:18:00	D	3.50
130	BATHINDA	BATHINDA	S-NPP	74.78611	30.32004	13:18:00	D	2.70
131	BATHINDA	BATHINDA	S-NPP	74.78890	30.32130	13:18:00	D	2.30
132	BATHINDA	BATHINDA	S-NPP	75.08000	30.32509	13:18:00	D	4.40
133	BATHINDA	BATHINDA	S-NPP	75.16312	30.32893	13:18:00	D	12.90
134	BATHINDA	BATHINDA	S-NPP	75.15112	30.33791	13:18:00	D	35.80
135	BATHINDA	BATHINDA	S-NPP	75.14555	30.34063	13:18:00	D	14.90
136	BATHINDA	BATHINDA	S-NPP	75.15027	30.34147	13:18:00	D	14.90
137	BATHINDA	BATHINDA	S-NPP	74.80125	30.34175	13:18:00	D	5.10
138	BATHINDA	BATHINDA	S-NPP	75.07962	30.34738	13:18:00	D	8.10
139	BATHINDA	BATHINDA	S-NPP	75.04455	30.34855	13:18:00	D	4.80
140	BATHINDA	BATHINDA	S-NPP	74.93381	30.35114	13:18:00	D	5.80
141	BATHINDA	BATHINDA	S-NPP	74.93559	30.35149	13:18:00	D	4.00
142	BATHINDA	BATHINDA	S-NPP	74.87814	30.35970	13:18:00	D	3.50
143	BATHINDA	BATHINDA	S-NPP	74.90318	30.36054	13:18:00	D	6.90
144	BATHINDA	BATHINDA	S-NPP	75.12453	30.36660	13:18:00	D	6.90
145	BATHINDA	BATHINDA	S-NPP	74.98190	30.36751	13:18:00	D	2.70
146	BATHINDA	BATHINDA	S-NPP	74.88124	30.36779	13:18:00	D	2.40
147	BATHINDA	BATHINDA	S-NPP	74.94656	30.36852	13:18:00	D	4.00
148	BATHINDA	BATHINDA	S-NPP	74.87950	30.37500	13:18:00	D	8.70
149	BATHINDA	BATHINDA	S-NPP	74.81863	30.37514	13:18:00	D	5.90
150	BATHINDA	BATHINDA	S-NPP	75.14177	30.37711	13:18:00	D	4.50
151	BATHINDA	BATHINDA	S-NPP	75.14091	30.38067	13:18:00	D	4.50

152	BATHINDA	BATHINDA	S-NPP	74.82487	30.39137	13:18:00	D	4.70
153	BATHINDA	RAMPURA PHUL	S-NPP	75.14730	30.15270	13:18:00	D	5.10
154	BATHINDA	RAMPURA PHUL	S-NPP	75.15205	30.15355	13:18:00	D	5.10
155	BATHINDA	RAMPURA PHUL	S-NPP	75.10818	30.15746	13:18:00	D	4.10
156	BATHINDA	RAMPURA PHUL	S-NPP	75.22218	30.19690	13:18:00	D	2.90
157	BATHINDA	RAMPURA PHUL	S-NPP	75.17165	30.20259	13:18:00	D	16.70
158	BATHINDA	RAMPURA PHUL	S-NPP	75.19609	30.20330	13:18:00	D	4.10
159	BATHINDA	RAMPURA PHUL	S-NPP	75.16607	30.20530	13:18:00	D	5.90
160	BATHINDA	RAMPURA PHUL	S-NPP	75.34344	30.24101	13:18:00	D	9.00
161	BATHINDA	RAMPURA PHUL	S-NPP	75.24928	30.26852	13:18:00	D	20.30
162	BATHINDA	RAMPURA PHUL	S-NPP	75.25397	30.26935	13:18:00	D	20.30
163	BATHINDA	RAMPURA PHUL	S-NPP	75.25953	30.29448	13:18:00	D	2.80
164	BATHINDA	RAMPURA PHUL	S-NPP	75.24681	30.30698	13:18:00	D	7.70
165	BATHINDA	RAMPURA PHUL	S-NPP	75.23106	30.31153	13:18:00	D	4.70
166	BATHINDA	RAMPURA PHUL	S-NPP	75.28086	30.32794	13:18:00	D	7.70
167	BATHINDA	RAMPURA PHUL	S-NPP	75.28002	30.33148	13:18:00	D	7.70
168	BATHINDA	RAMPURA PHUL	S-NPP	75.22046	30.33555	13:18:00	D	2.80
169	BATHINDA	RAMPURA PHUL	S-NPP	75.21408	30.34181	13:18:00	D	5.00
170	BATHINDA	RAMPURA PHUL	S-NPP	75.26142	30.36880	13:18:00	D	3.90
171	BATHINDA	RAMPURA PHUL	S-NPP	75.31444	30.37089	13:18:00	D	4.30
172	BATHINDA	RAMPURA PHUL	S-NPP	75.17737	30.37232	13:18:00	D	6.30
173	BATHINDA	RAMPURA PHUL	S-NPP	75.26527	30.37319	13:18:00	D	11.90
174	BATHINDA	RAMPURA PHUL	S-NPP	75.32291	30.37608	13:18:00	D	4.10
175	BATHINDA	RAMPURA PHUL	S-NPP	75.16067	30.38047	13:18:00	D	9.60
176	BATHINDA	RAMPURA PHUL	S-NPP	75.19451	30.38279	13:18:00	D	6.00
177	BATHINDA	RAMPURA PHUL	S-NPP	75.15858	30.39610	13:18:00	D	8.10
178	BATHINDA	RAMPURA PHUL	S-NPP	75.13074	30.40961	13:18:00	D	21.70
179	BATHINDA	RAMPURA PHUL	S-NPP	75.23375	30.40977	13:18:00	D	2.60
180	BATHINDA	RAMPURA PHUL	S-NPP	75.08775	30.42414	13:18:00	D	3.10
181	BATHINDA	RAMPURA PHUL	S-NPP	75.18005	30.42968	13:18:00	D	3.70
182	BATHINDA	RAMPURA PHUL	S-NPP	75.24189	30.43714	13:18:00	D	4.70

183	BATHINDA	RAMPURA PHUL	S-NPP	75.17751	30.44034	13:18:00	D	3.40
184	BATHINDA	RAMPURA PHUL	S-NPP	75.25506	30.44320	13:18:00	D	4.10
185	BATHINDA	RAMPURA PHUL	S-NPP	75.23767	30.45486	13:18:00	D	2.50
186	BATHINDA	RAMPURA PHUL	S-NPP	75.11152	30.46932	13:18:00	D	3.90
187	BATHINDA	RAMPURA PHUL	S-NPP	75.12316	30.48254	13:18:00	D	4.00
188	BATHINDA	RAMPURA PHUL	S-NPP	75.09413	30.50861	13:18:00	D	6.30
189	BATHINDA	RAMPURA PHUL	S-NPP	75.17558	30.53821	13:18:00	D	4.90
190	BATHINDA	TALWANDI SABO	S-NPP	75.13727	29.81246	13:18:00	D	5.70
191	BATHINDA	TALWANDI SABO	S-NPP	75.12992	29.82239	13:18:00	D	7.40
192	BATHINDA	TALWANDI SABO	S-NPP	74.99626	29.90756	13:18:00	D	4.30
193	BATHINDA	TALWANDI SABO	S-NPP	74.99781	29.93012	13:18:00	D	4.10
194	BATHINDA	TALWANDI SABO	S-NPP	75.00713	29.95442	13:18:00	D	3.20
195	BATHINDA	TALWANDI SABO	S-NPP	75.13040	29.96198	13:18:00	D	9.60
196	BATHINDA	TALWANDI SABO	S-NPP	74.88342	29.98464	13:18:00	D	4.90
197	BATHINDA	TALWANDI SABO	S-NPP	75.05713	29.99732	13:18:00	D	12.00
198	BATHINDA	TALWANDI SABO	S-NPP	75.23908	30.00412	13:18:00	D	19.70
199	BATHINDA	TALWANDI SABO	S-NPP	75.18842	30.00986	13:18:00	D	3.80
200	BATHINDA	TALWANDI SABO	S-NPP	74.87852	30.01746	13:18:00	D	11.20
201	BATHINDA	TALWANDI SABO	S-NPP	74.94147	30.01778	13:18:00	D	2.90
202	BATHINDA	TALWANDI SABO	S-NPP	75.10159	30.02033	13:18:00	D	11.00
203	BATHINDA	TALWANDI SABO	S-NPP	75.14536	30.02447	13:18:00	D	4.20
204	BATHINDA	TALWANDI SABO	S-NPP	75.09988	30.02750	13:18:00	D	3.00
205	BATHINDA	TALWANDI SABO	S-NPP	75.13412	30.02992	13:18:00	D	10.10
206	BATHINDA	TALWANDI SABO	S-NPP	74.88567	30.03012	13:18:00	D	13.10
207	BATHINDA	TALWANDI SABO	S-NPP	74.97368	30.03110	13:18:00	D	17.70
208	BATHINDA	TALWANDI SABO	S-NPP	74.97641	30.03180	13:18:00	D	31.80
209	BATHINDA	TALWANDI SABO	S-NPP	74.97850	30.03196	13:18:00	D	17.70
210	BATHINDA	TALWANDI SABO	S-NPP	75.06860	30.03311	13:18:00	D	2.50
211	BATHINDA	TALWANDI SABO	S-NPP	75.12288	30.03537	13:18:00	D	7.80
212	BATHINDA	TALWANDI SABO	S-NPP	75.12766	30.03623	13:18:00	D	7.80
213	BATHINDA	TALWANDI SABO	S-NPP	74.91797	30.04363	13:18:00	D	7.30

214	BATHINDA	TALWANDI SABO	S-NPP	74.88931	30.05725	13:18:00	D	23.50
215	BATHINDA	TALWANDI SABO	S-NPP	74.90878	30.06081	13:18:00	D	4.50
216	BATHINDA	TALWANDI SABO	S-NPP	75.21056	30.06222	13:18:00	D	6.80
217	BATHINDA	TALWANDI SABO	S-NPP	75.20971	30.06579	13:18:00	D	6.80
218	BATHINDA	TALWANDI SABO	S-NPP	75.19466	30.06683	13:18:00	D	10.80
219	BATHINDA	TALWANDI SABO	S-NPP	75.19221	30.06770	13:18:00	D	5.90
220	BATHINDA	TALWANDI SABO	S-NPP	75.19694	30.06857	13:18:00	D	6.70
221	BATHINDA	TALWANDI SABO	S-NPP	75.12901	30.10467	13:18:00	D	6.50
222	FARIDKOT	FARIDKOT	S-NPP	74.75501	30.49931	13:18:00	D	3.60
223	FARIDKOT	FARIDKOT	S-NPP	74.77592	30.51820	13:18:00	D	4.20
224	FARIDKOT	FARIDKOT	S-NPP	74.76040	30.51916	13:18:00	D	2.40
225	FARIDKOT	FARIDKOT	S-NPP	74.78568	30.51997	13:18:00	D	4.30
226	FARIDKOT	FARIDKOT	S-NPP	74.79053	30.52085	13:18:00	D	4.30
227	FARIDKOT	FARIDKOT	S-NPP	74.78966	30.52446	13:18:00	D	7.00
228	FARIDKOT	FARIDKOT	S-NPP	74.79939	30.52622	13:18:00	D	4.60
229	FARIDKOT	FARIDKOT	S-NPP	74.77905	30.52631	13:18:00	D	6.00
230	FARIDKOT	FARIDKOT	S-NPP	74.79366	30.52895	13:18:00	D	4.60
231	FARIDKOT	FARIDKOT	S-NPP	74.72955	30.53175	13:18:00	D	2.30
232	FARIDKOT	FARIDKOT	S-NPP	74.73151	30.53281	13:18:00	D	4.80
233	FARIDKOT	FARIDKOT	S-NPP	74.80251	30.53432	13:18:00	D	4.60
234	FARIDKOT	FARIDKOT	S-NPP	74.80662	30.54982	13:18:00	D	4.50
235	FARIDKOT	FARIDKOT	S-NPP	74.78767	30.56515	13:18:00	D	8.20
236	FARIDKOT	FARIDKOT	S-NPP	74.75494	30.57421	13:18:00	D	4.70
237	FARIDKOT	FARIDKOT	S-NPP	74.94165	30.57471	13:18:00	D	6.70
238	FARIDKOT	FARIDKOT	S-NPP	74.67707	30.57881	13:18:00	D	4.70
239	FARIDKOT	FARIDKOT	S-NPP	74.89149	30.59548	13:18:00	D	5.30
240	FARIDKOT	FARIDKOT	S-NPP	74.77005	30.59583	13:18:00	D	3.30
241	FARIDKOT	FARIDKOT	S-NPP	74.89062	30.59907	13:18:00	D	4.60
242	FARIDKOT	FARIDKOT	S-NPP	74.79923	30.60116	13:18:00	D	6.10
243	FARIDKOT	FARIDKOT	S-NPP	74.67400	30.61231	13:18:00	D	1.80
244	FARIDKOT	FARIDKOT	S-NPP	74.81426	30.62270	13:18:00	D	4.70

245	FARIDKOT	FARIDKOT	S-NPP	74.68822	30.62600	13:18:00	D	3.40
246	FARIDKOT	FARIDKOT	S-NPP	74.83189	30.63341	13:18:00	D	5.80
247	FARIDKOT	FARIDKOT	S-NPP	74.67400	30.64227	13:18:00	D	1.60
248	FARIDKOT	FARIDKOT	S-NPP	74.86315	30.65847	13:18:00	D	5.40
249	FARIDKOT	FARIDKOT	S-NPP	74.86531	30.66193	13:18:00	D	3.40
250	FARIDKOT	FARIDKOT	S-NPP	74.67852	30.66581	13:18:00	D	1.00
251	FARIDKOT	FARIDKOT	S-NPP	74.87017	30.67101	13:18:00	D	8.60
252	FARIDKOT	FARIDKOT	S-NPP	74.82946	30.69354	13:18:00	D	2.20
253	FARIDKOT	FARIDKOT	S-NPP	74.90083	30.71033	13:18:00	D	13.10
254	FARIDKOT	FARIDKOT	S-NPP	74.64873	30.72464	13:18:00	D	7.10
255	FARIDKOT	FARIDKOT	S-NPP	74.76385	30.73420	13:18:00	D	2.30
256	FARIDKOT	FARIDKOT	S-NPP	74.72468	30.75683	13:18:00	D	15.10
257	FARIDKOT	FARIDKOT	S-NPP	74.67054	30.76947	13:18:00	D	7.40
258	FARIDKOT	JAITO	S-NPP	74.95186	30.38823	13:18:00	D	12.50
259	FARIDKOT	JAITO	S-NPP	74.87601	30.38940	13:18:00	D	8.30
260	FARIDKOT	JAITO	S-NPP	74.82973	30.39225	13:18:00	D	4.70
261	FARIDKOT	JAITO	S-NPP	74.87515	30.39301	13:18:00	D	5.40
262	FARIDKOT	JAITO	S-NPP	74.95013	30.39541	13:18:00	D	3.10
263	FARIDKOT	JAITO	S-NPP	74.91952	30.39733	13:18:00	D	3.10
264	FARIDKOT	JAITO	S-NPP	74.78236	30.39871	13:18:00	D	2.90
265	FARIDKOT	JAITO	S-NPP	74.93878	30.40084	13:18:00	D	3.70
266	FARIDKOT	JAITO	S-NPP	74.76241	30.41775	13:18:00	D	5.50
267	FARIDKOT	JAITO	S-NPP	74.95282	30.42587	13:18:00	D	4.10
268	FARIDKOT	JAITO	S-NPP	74.93185	30.42957	13:18:00	D	15.10
269	FARIDKOT	JAITO	S-NPP	74.84530	30.43273	13:18:00	D	6.00
270	FARIDKOT	JAITO	S-NPP	74.80950	30.43380	13:18:00	D	2.20
271	FARIDKOT	JAITO	S-NPP	74.81155	30.43424	13:18:00	D	2.90
272	FARIDKOT	JAITO	S-NPP	74.89461	30.43786	13:18:00	D	2.70
273	FARIDKOT	JAITO	S-NPP	74.92357	30.44308	13:18:00	D	8.30
274	FARIDKOT	JAITO	S-NPP	74.79346	30.44597	13:18:00	D	2.80
275	FARIDKOT	JAITO	S-NPP	74.80319	30.44778	13:18:00	D	2.70

276	FARIDKOT	JAITO	S-NPP	74.74687	30.44870	13:18:00	D	1.60
277	FARIDKOT	JAITO	S-NPP	74.79259	30.44959	13:18:00	D	5.80
278	FARIDKOT	JAITO	S-NPP	74.73443	30.45775	13:18:00	D	2.20
279	FARIDKOT	JAITO	S-NPP	74.85087	30.46034	13:18:00	D	5.80
280	FARIDKOT	JAITO	S-NPP	74.83060	30.46037	13:18:00	D	6.80
281	FARIDKOT	JAITO	S-NPP	74.81341	30.46851	13:18:00	D	2.60
282	FARIDKOT	JAITO	S-NPP	74.98257	30.46863	13:18:00	D	17.90
283	FARIDKOT	JAITO	S-NPP	74.75716	30.46949	13:18:00	D	3.70
284	FARIDKOT	JAITO	S-NPP	74.98427	30.46988	13:18:00	D	21.00
285	FARIDKOT	JAITO	S-NPP	74.88384	30.47017	13:18:00	D	3.00
286	FARIDKOT	JAITO	S-NPP	74.83284	30.47208	13:18:00	D	18.50
287	FARIDKOT	JAITO	S-NPP	74.90313	30.47371	13:18:00	D	8.60
288	FARIDKOT	JAITO	S-NPP	74.92808	30.47454	13:18:00	D	6.10
289	FARIDKOT	JAITO	S-NPP	74.90795	30.47459	13:18:00	D	5.60
290	FARIDKOT	JAITO	S-NPP	74.83109	30.47929	13:18:00	D	22.70
291	FARIDKOT	JAITO	S-NPP	74.90623	30.48178	13:18:00	D	4.10
292	FARIDKOT	JAITO	S-NPP	74.90054	30.48449	13:18:00	D	3.60
293	FARIDKOT	JAITO	S-NPP	74.81963	30.48471	13:18:00	D	7.80
294	FARIDKOT	JAITO	S-NPP	74.81876	30.48832	13:18:00	D	7.80
295	FARIDKOT	JAITO	S-NPP	74.84874	30.49004	13:18:00	D	6.00
296	FARIDKOT	JAITO	S-NPP	74.95430	30.49058	13:18:00	D	7.70
297	FARIDKOT	JAITO	S-NPP	74.85358	30.49093	13:18:00	D	7.10
298	FARIDKOT	JAITO	S-NPP	74.93904	30.49153	13:18:00	D	3.60
299	FARIDKOT	JAITO	S-NPP	74.90363	30.49256	13:18:00	D	7.80
300	FARIDKOT	JAITO	S-NPP	74.90844	30.49344	13:18:00	D	7.80
301	FARIDKOT	JAITO	S-NPP	74.84787	30.49364	13:18:00	D	6.00
302	FARIDKOT	JAITO	S-NPP	74.85271	30.49452	13:18:00	D	7.10
303	FARIDKOT	JAITO	S-NPP	74.95257	30.49774	13:18:00	D	2.00
304	FARIDKOT	JAITO	S-NPP	74.89706	30.49887	13:18:00	D	7.90
305	FARIDKOT	JAITO	S-NPP	74.86065	30.50349	13:18:00	D	7.10
306	FARIDKOT	JAITO	S-NPP	74.92596	30.50413	13:18:00	D	7.50

307	FARIDKOT	JAITO	S-NPP	74.86549	30.50437	13:18:00	D	7.10
308	FARIDKOT	JAITO	S-NPP	74.92510	30.50772	13:18:00	D	7.50
309	FARIDKOT	JAITO	S-NPP	74.86858	30.51245	13:18:00	D	7.00
310	FARIDKOT	JAITO	S-NPP	74.81575	30.52166	13:18:00	D	5.90
311	FARIDKOT	JAITO	S-NPP	74.92558	30.52653	13:18:00	D	2.30
312	FARIDKOT	JAITO	S-NPP	74.97832	30.53606	13:18:00	D	4.10
313	FATEHGARH SAHIB	FATEHGARH SAHIB	S-NPP	76.49493	30.47030	13:18:00	D	2.30
314	FIROZPUR	ABOHAR	S-NPP	74.36616	30.09236	13:18:00	D	6.60
315	FIROZPUR	ABOHAR	S-NPP	74.33035	30.18345	13:18:00	D	4.40
316	FIROZPUR	ABOHAR	S-NPP	74.30759	30.21022	13:18:00	D	5.80
317	FIROZPUR	ABOHAR	S-NPP	74.20889	30.21523	13:18:00	D	3.10
318	FIROZPUR	FAZILKA	S-NPP	74.08166	30.18678	13:18:00	D	3.90
319	FIROZPUR	FAZILKA	S-NPP	74.07877	30.18714	13:18:00	D	4.50
320	FIROZPUR	FAZILKA	S-NPP	74.05368	30.23249	13:18:00	D	6.20
321	FIROZPUR	FAZILKA	S-NPP	74.05896	30.23349	13:18:00	D	4.90
322	FIROZPUR	FAZILKA	S-NPP	74.01591	30.27251	13:18:00	D	11.40
323	FIROZPUR	FAZILKA	S-NPP	74.27947	30.29063	13:18:00	D	8.70
324	FIROZPUR	FAZILKA	S-NPP	74.28462	30.29160	13:18:00	D	4.30
325	FIROZPUR	FAZILKA	S-NPP	74.27305	30.31657	13:18:00	D	6.20
326	FIROZPUR	FAZILKA	S-NPP	73.96740	30.42679	13:18:00	D	10.90
327	FIROZPUR	FAZILKA	S-NPP	74.13294	30.51275	13:18:00	D	3.20
328	FIROZPUR	FIROZPUR	S-NPP	74.48229	30.75745	13:18:00	D	3.10
329	FIROZPUR	FIROZPUR	S-NPP	74.48139	30.76110	13:18:00	D	3.10
330	FIROZPUR	FIROZPUR	S-NPP	74.87073	30.77221	13:18:00	D	2.60
331	FIROZPUR	FIROZPUR	S-NPP	74.81110	30.77656	13:18:00	D	4.80
332	FIROZPUR	FIROZPUR	S-NPP	74.92556	30.80131	13:18:00	D	4.10
333	FIROZPUR	FIROZPUR	S-NPP	74.50031	30.82075	13:18:00	D	3.50
334	FIROZPUR	FIROZPUR	S-NPP	74.50936	30.82625	13:18:00	D	5.20
335	FIROZPUR	FIROZPUR	S-NPP	74.61711	30.85012	13:18:00	D	8.30
336	FIROZPUR	FIROZPUR	S-NPP	74.78452	30.87358	13:18:00	D	4.50
337	FIROZPUR	FIROZPUR	S-NPP	74.81831	30.87981	13:18:00	D	3.10

338	FIROZPUR	FIROZPUR	S-NPP	74.78498	30.89242	13:18:00	D	11.40
339	FIROZPUR	FIROZPUR	S-NPP	74.77927	30.89512	13:18:00	D	5.30
340	FIROZPUR	FIROZPUR	S-NPP	74.74055	30.92933	13:18:00	D	6.80
341	FIROZPUR	FIROZPUR	S-NPP	74.74541	30.93022	13:18:00	D	7.60
342	FIROZPUR	FIROZPUR	S-NPP	74.74277	30.94100	13:18:00	D	10.80
343	FIROZPUR	FIROZPUR	S-NPP	74.72952	30.95362	13:18:00	D	5.40
344	FIROZPUR	FIROZPUR	S-NPP	74.75466	30.95441	13:18:00	D	4.10
345	FIROZPUR	FIROZPUR	S-NPP	74.77711	30.96596	13:18:00	D	8.00
346	FIROZPUR	FIROZPUR	S-NPP	74.78195	30.96683	13:18:00	D	8.00
347	FIROZPUR	FIROZPUR	S-NPP	74.77624	30.96955	13:18:00	D	8.00
348	FIROZPUR	FIROZPUR	S-NPP	74.72434	31.06899	13:18:00	D	4.90
349	FIROZPUR	JALALABAD	S-NPP	74.22295	30.55377	13:18:00	D	8.80
350	FIROZPUR	JALALABAD	S-NPP	74.44580	30.64178	13:18:00	D	39.70
351	FIROZPUR	JALALABAD	S-NPP	74.46225	30.66011	13:18:00	D	7.40
352	FIROZPUR	JALALABAD	S-NPP	74.44500	30.68751	13:18:00	D	6.10
353	FIROZPUR	JALALABAD	S-NPP	74.22525	30.70575	13:18:00	D	7.40
354	FIROZPUR	JALALABAD	S-NPP	74.22433	30.70945	13:18:00	D	8.80
355	FIROZPUR	ZIRA	S-NPP	75.16911	30.87512	13:18:00	D	9.70
356	FIROZPUR	ZIRA	S-NPP	75.02978	30.88341	13:18:00	D	3.40
357	FIROZPUR	ZIRA	S-NPP	74.95033	30.88405	13:18:00	D	3.00
358	FIROZPUR	ZIRA	S-NPP	75.20600	30.90382	13:18:00	D	3.90
359	FIROZPUR	ZIRA	S-NPP	75.00394	30.90848	13:18:00	D	2.20
360	FIROZPUR	ZIRA	S-NPP	75.00536	30.91040	13:18:00	D	32.50
361	FIROZPUR	ZIRA	S-NPP	75.06972	30.92955	13:18:00	D	9.40
362	FIROZPUR	ZIRA	S-NPP	74.90945	30.93758	13:18:00	D	6.10
363	FIROZPUR	ZIRA	S-NPP	74.95795	30.94265	13:18:00	D	3.50
364	FIROZPUR	ZIRA	S-NPP	74.82011	30.95499	13:18:00	D	3.20
365	FIROZPUR	ZIRA	S-NPP	75.26183	30.96064	13:18:00	D	4.10
366	FIROZPUR	ZIRA	S-NPP	75.31762	30.98898	13:18:00	D	7.90
367	FIROZPUR	ZIRA	S-NPP	75.32222	30.98981	13:18:00	D	3.30
368	FIROZPUR	ZIRA	S-NPP	75.04018	30.99085	13:18:00	D	14.60

369	FIROZPUR	ZIRA	S-NPP	75.25889	30.99313	13:18:00	D	7.40
370	FIROZPUR	ZIRA	S-NPP	75.26351	30.99396	13:18:00	D	8.00
371	FIROZPUR	ZIRA	S-NPP	75.29584	30.99973	13:18:00	D	3.20
372	FIROZPUR	ZIRA	S-NPP	75.02730	31.00336	13:18:00	D	2.50
373	FIROZPUR	ZIRA	S-NPP	75.24921	31.01341	13:18:00	D	4.10
374	FIROZPUR	ZIRA	S-NPP	75.11794	31.03424	13:18:00	D	2.30
375	FIROZPUR	ZIRA	S-NPP	75.20534	31.03499	13:18:00	D	2.50
376	FIROZPUR	ZIRA	S-NPP	75.01524	31.04333	13:18:00	D	6.30
377	FIROZPUR	ZIRA	S-NPP	75.01996	31.04419	13:18:00	D	12.70
378	FIROZPUR	ZIRA	S-NPP	75.20453	31.04812	13:18:00	D	1.70
379	FIROZPUR	ZIRA	S-NPP	75.09431	31.06134	13:18:00	D	5.00
380	FIROZPUR	ZIRA	S-NPP	75.09900	31.06219	13:18:00	D	5.00
381	FIROZPUR	ZIRA	S-NPP	75.09345	31.06488	13:18:00	D	60.70
382	FIROZPUR	ZIRA	S-NPP	75.13725	31.06540	13:18:00	D	13.70
383	FIROZPUR	ZIRA	S-NPP	75.09814	31.06572	13:18:00	D	60.70
384	FIROZPUR	ZIRA	S-NPP	75.02380	31.08930	13:18:00	D	5.00
385	FIROZPUR	ZIRA	S-NPP	74.94162	31.09140	02:00:00	N	0.70
386	FIROZPUR	ZIRA	S-NPP	75.09046	31.09754	13:18:00	D	2.50
387	FIROZPUR	ZIRA	S-NPP	75.11941	31.09904	13:18:00	D	2.10
388	FIROZPUR	ZIRA	S-NPP	75.08961	31.10108	13:18:00	D	3.80
389	FIROZPUR	ZIRA	S-NPP	75.09300	31.12750	13:18:00	D	2.70
390	FIROZPUR	ZIRA	S-NPP	74.89022	31.13744	13:18:00	D	6.60
391	FIROZPUR	ZIRA	S-NPP	75.06168	31.14267	13:18:00	D	7.30
392	HOSHIARPUR	DASUYA	S-NPP	75.57552	31.64437	13:18:00	D	2.30
393	JALANDHAR	JALANDHAR I	S-NPP	75.70539	31.39877	13:18:00	D	5.70
394	JALANDHAR	JALANDHAR I	S-NPP	75.68556	31.42403	13:18:00	D	4.60
395	JALANDHAR	NAKODAR	S-NPP	75.54263	30.99594	13:18:00	D	5.50
396	JALANDHAR	NAKODAR	S-NPP	75.51517	31.07856	13:18:00	D	4.20
397	JALANDHAR	NAKODAR	S-NPP	75.42887	31.09214	13:18:00	D	2.90
398	JALANDHAR	NAKODAR	S-NPP	75.41769	31.11926	13:18:00	D	1.60
399	JALANDHAR	NAKODAR	S-NPP	75.53970	31.12277	13:18:00	D	8.30

400	JALANDHAR	NAKODAR	S-NPP	75.42970	31.12867	13:18:00	D	2.90
401	JALANDHAR	NAKODAR	S-NPP	75.55117	31.15376	13:18:00	D	6.00
402	JALANDHAR	NAKODAR	S-NPP	75.34744	31.15419	13:18:00	D	3.60
403	JALANDHAR	NAKODAR	S-NPP	75.52531	31.16369	13:18:00	D	37.60
404	JALANDHAR	NAKODAR	S-NPP	75.51544	31.16558	13:18:00	D	4.30
405	JALANDHAR	NAKODAR	S-NPP	75.53886	31.16607	13:18:00	D	9.40
406	JALANDHAR	NAKODAR	S-NPP	75.40520	31.17163	13:18:00	D	4.90
407	JALANDHAR	NAKODAR	S-NPP	75.36907	31.18349	13:18:00	D	6.10
408	JALANDHAR	NAKODAR	S-NPP	75.52692	31.19655	13:18:00	D	1.70
409	JALANDHAR	NAKODAR	S-NPP	75.55767	31.20552	13:18:00	D	5.10
410	JALANDHAR	PHILLAUR	S-NPP	75.63887	31.07127	13:18:00	D	4.70
411	JALANDHAR	PHILLAUR	S-NPP	75.55750	31.07872	13:18:00	D	7.10
412	JALANDHAR	PHILLAUR	S-NPP	75.74885	31.09766	13:18:00	D	2.50
413	JALANDHAR	PHILLAUR	S-NPP	75.60458	31.09778	13:18:00	D	3.50
414	JALANDHAR	PHILLAUR	S-NPP	75.61046	31.12085	13:18:00	D	8.30
415	JALANDHAR	PHILLAUR	S-NPP	75.71809	31.15787	13:18:00	D	3.00
416	JALANDHAR	SHAHKOT	S-NPP	75.37313	31.01715	13:18:00	D	4.30
417	JALANDHAR	SHAHKOT	S-NPP	75.31593	31.03624	13:18:00	D	9.00
418	JALANDHAR	SHAHKOT	S-NPP	75.31509	31.03975	13:18:00	D	4.50
419	JALANDHAR	SHAHKOT	S-NPP	75.36105	31.04785	13:18:00	D	6.90
420	JALANDHAR	SHAHKOT	S-NPP	75.40057	31.06211	13:18:00	D	2.30
421	JALANDHAR	SHAHKOT	S-NPP	75.34768	31.06376	13:18:00	D	3.00
422	JALANDHAR	SHAHKOT	S-NPP	75.14105	31.11027	13:18:00	D	32.60
423	JALANDHAR	SHAHKOT	S-NPP	75.14020	31.11380	13:18:00	D	32.60
424	JALANDHAR	SHAHKOT	S-NPP	75.14367	31.14649	13:18:00	D	4.10
425	JALANDHAR	SHAHKOT	S-NPP	75.14187	31.14720	13:18:00	D	3.80
426	JALANDHAR	SHAHKOT	S-NPP	75.21881	31.14977	13:18:00	D	5.30
427	KAPURTHALA	BHOLATH	S-NPP	75.47237	31.54703	13:18:00	D	4.00
428	KAPURTHALA	KAPURTHALA	S-NPP	75.23349	31.42851	13:18:00	D	3.00
429	KAPURTHALA	SULTANPUR LODHI	S-NPP	75.06465	31.15059	13:18:00	D	8.10
430	KAPURTHALA	SULTANPUR LODHI	S-NPP	75.11183	31.21804	13:18:00	D	3.80

431	KAPURTHALA	SULTANPUR LODHI	S-NPP	75.10376	31.23132	13:18:00	D	1.70
432	LUDHIANA	JAGRAON	S-NPP	75.45475	30.62481	13:18:00	D	2.10
433	LUDHIANA	JAGRAON	S-NPP	75.43475	30.62859	13:18:00	D	20.90
434	LUDHIANA	JAGRAON	S-NPP	75.41012	30.63157	13:18:00	D	2.50
435	LUDHIANA	JAGRAON	S-NPP	75.43851	30.63291	13:18:00	D	4.70
436	LUDHIANA	JAGRAON	S-NPP	75.41388	30.63589	13:18:00	D	3.20
437	LUDHIANA	JAGRAON	S-NPP	75.41848	30.63670	13:18:00	D	5.20
438	LUDHIANA	JAGRAON	S-NPP	75.44519	30.64505	13:18:00	D	32.70
439	LUDHIANA	JAGRAON	S-NPP	75.51350	30.70748	13:18:00	D	4.20
440	LUDHIANA	PAYAL	S-NPP	76.07443	30.59491	13:18:00	D	7.70
441	LUDHIANA	RAIKOT	S-NPP	75.49524	30.66412	13:18:00	D	3.80
442	LUDHIANA	RAIKOT	S-NPP	75.49760	30.66518	13:18:00	D	5.00
443	MANSA	BUDHLADA	S-NPP	75.61617	29.75962	13:18:00	D	1.70
444	MANSA	BUDHLADA	S-NPP	75.54607	29.77291	13:18:00	D	2.70
445	MANSA	BUDHLADA	S-NPP	75.51887	29.78651	13:18:00	D	17.70
446	MANSA	BUDHLADA	S-NPP	75.46609	29.81216	13:18:00	D	5.30
447	MANSA	BUDHLADA	S-NPP	75.76008	29.83918	13:18:00	D	4.50
448	MANSA	BUDHLADA	S-NPP	75.75880	29.83952	13:18:00	D	3.70
449	MANSA	BUDHLADA	S-NPP	75.56648	29.85590	13:18:00	D	9.80
450	MANSA	BUDHLADA	S-NPP	75.51255	29.86101	13:18:00	D	9.30
451	MANSA	BUDHLADA	S-NPP	75.72938	29.87018	13:18:00	D	10.50
452	MANSA	BUDHLADA	S-NPP	75.75282	29.87069	13:18:00	D	2.50
453	MANSA	BUDHLADA	S-NPP	75.74749	29.87339	13:18:00	D	3.20
454	MANSA	BUDHLADA	S-NPP	75.70882	29.87748	13:18:00	D	6.90
455	MANSA	BUDHLADA	S-NPP	75.74959	29.88469	13:18:00	D	8.30
456	MANSA	BUDHLADA	S-NPP	75.57664	29.89440	13:18:00	D	7.50
457	MANSA	BUDHLADA	S-NPP	75.53822	29.89497	13:18:00	D	1.80
458	MANSA	BUDHLADA	S-NPP	75.57418	29.90497	13:18:00	D	4.60
459	MANSA	BUDHLADA	S-NPP	75.71594	29.90793	13:18:00	D	9.00
460	MANSA	BUDHLADA	S-NPP	75.71513	29.91143	13:18:00	D	7.20
461	MANSA	BUDHLADA	S-NPP	75.59546	29.91604	13:18:00	D	2.90

462	MANSA	BUDHLADA	S-NPP	75.52881	29.92164	13:18:00	D	7.20
463	MANSA	BUDHLADA	S-NPP	75.72630	29.92432	13:18:00	D	5.00
464	MANSA	BUDHLADA	S-NPP	75.52798	29.92517	13:18:00	D	7.20
465	MANSA	BUDHLADA	S-NPP	75.64944	29.93594	13:18:00	D	4.00
466	MANSA	BUDHLADA	S-NPP	75.57765	29.93774	13:18:00	D	7.40
467	MANSA	BUDHLADA	S-NPP	75.58224	29.93856	13:18:00	D	6.00
468	MANSA	BUDHLADA	S-NPP	75.57684	29.94127	13:18:00	D	7.40
469	MANSA	BUDHLADA	S-NPP	75.58142	29.94208	13:18:00	D	6.00
470	MANSA	BUDHLADA	S-NPP	75.52848	29.94363	13:18:00	D	5.90
471	MANSA	BUDHLADA	S-NPP	75.62012	29.95998	13:18:00	D	7.80
472	MANSA	BUDHLADA	S-NPP	75.64375	29.96052	13:18:00	D	12.90
473	MANSA	BUDHLADA	S-NPP	75.52435	29.96127	13:18:00	D	3.00
474	MANSA	BUDHLADA	S-NPP	75.52896	29.96209	13:18:00	D	4.40
475	MANSA	BUDHLADA	S-NPP	75.59483	29.96646	13:18:00	D	4.10
476	MANSA	BUDHLADA	S-NPP	75.63757	29.96673	13:18:00	D	16.10
477	MANSA	BUDHLADA	S-NPP	75.60070	29.98215	13:18:00	D	2.20
478	MANSA	BUDHLADA	S-NPP	75.53829	30.00412	13:18:00	D	3.00
479	MANSA	BUDHLADA	S-NPP	75.67118	30.00555	13:18:00	D	7.00
480	MANSA	BUDHLADA	S-NPP	75.57126	30.00626	13:18:00	D	3.10
481	MANSA	BUDHLADA	S-NPP	75.65883	30.01798	13:18:00	D	4.00
482	MANSA	BUDHLADA	S-NPP	75.62741	30.03074	13:18:00	D	3.70
483	MANSA	BUDHLADA	S-NPP	75.62660	30.03425	13:18:00	D	3.50
484	MANSA	BUDHLADA	S-NPP	75.62723	30.03713	13:18:00	D	2.90
485	MANSA	MANSA	S-NPP	75.43092	29.90770	13:18:00	D	3.30
486	MANSA	MANSA	S-NPP	75.30854	29.95235	13:18:00	D	6.10
487	MANSA	MANSA	S-NPP	75.39605	29.95315	13:18:00	D	3.70
488	MANSA	MANSA	S-NPP	75.31323	29.95319	13:18:00	D	6.10
489	MANSA	MANSA	S-NPP	75.22894	29.95674	13:18:00	D	4.10
490	MANSA	MANSA	S-NPP	75.38040	29.95776	13:18:00	D	4.60
491	MANSA	MANSA	S-NPP	75.39903	29.96107	13:18:00	D	2.90
492	MANSA	MANSA	S-NPP	75.38423	29.96213	13:18:00	D	13.40

493	MANSA	MANSA	S-NPP	75.34519	29.96259	13:18:00	D	5.60
494	MANSA	MANSA	S-NPP	75.37921	29.98342	13:18:00	D	6.00
495	MANSA	MANSA	S-NPP	75.34351	29.99705	13:18:00	D	2.10
496	MANSA	MANSA	S-NPP	75.46971	30.01616	13:18:00	D	9.50
497	MANSA	MANSA	S-NPP	75.58793	30.01651	13:18:00	D	2.00
498	MANSA	MANSA	S-NPP	75.46427	30.01887	13:18:00	D	14.50
499	MANSA	MANSA	S-NPP	75.46345	30.02240	13:18:00	D	14.50
500	MANSA	MANSA	S-NPP	75.57622	30.03164	13:18:00	D	2.90
501	MANSA	MANSA	S-NPP	75.45006	30.03841	13:18:00	D	16.10
502	MANSA	MANSA	S-NPP	75.45469	30.03924	13:18:00	D	2.80
503	MANSA	MANSA	S-NPP	75.35682	30.04384	13:18:00	D	3.00
504	MANSA	MANSA	S-NPP	75.59041	30.05249	13:18:00	D	6.40
505	MANSA	MANSA	S-NPP	75.30973	30.05763	13:18:00	D	2.80
506	MANSA	MANSA	S-NPP	75.50295	30.05890	13:18:00	D	9.50
507	MANSA	MANSA	S-NPP	75.34798	30.06075	13:18:00	D	5.30
508	MANSA	MANSA	S-NPP	75.48748	30.06349	13:18:00	D	10.20
509	MANSA	MANSA	S-NPP	75.49670	30.06513	13:18:00	D	3.60
510	MANSA	MANSA	S-NPP	75.32043	30.07434	13:18:00	D	17.50
511	MANSA	MANSA	S-NPP	75.60376	30.07682	13:18:00	D	7.20
512	MANSA	MANSA	S-NPP	75.31958	30.07789	13:18:00	D	17.50
513	MANSA	MANSA	S-NPP	75.46951	30.07867	13:18:00	D	4.00
514	MANSA	MANSA	S-NPP	75.32426	30.07872	13:18:00	D	17.50
515	MANSA	MANSA	S-NPP	75.59592	30.09006	13:18:00	D	9.90
516	MANSA	MANSA	S-NPP	75.37476	30.09136	13:18:00	D	3.30
517	MANSA	MANSA	S-NPP	75.46537	30.09632	13:18:00	D	0.70
518	MANSA	MANSA	S-NPP	75.58351	30.10250	13:18:00	D	6.00
519	MANSA	MANSA	S-NPP	75.61627	30.10462	13:18:00	D	3.90
520	MANSA	MANSA	S-NPP	75.58270	30.10602	13:18:00	D	8.20
521	MANSA	MANSA	S-NPP	75.49815	30.13056	13:18:00	D	28.70
522	MANSA	MANSA	S-NPP	75.49947	30.14548	13:18:00	D	8.50
523	MANSA	SARDULGARH	S-NPP	75.25679	29.58224	13:18:00	D	2.20

524	MANSA	SARDULGARH	S-NPP	75.31905	29.65306	13:18:00	D	4.00
525	MANSA	SARDULGARH	S-NPP	75.32121	29.65480	13:18:00	D	5.00
526	MANSA	SARDULGARH	S-NPP	75.29430	29.66480	13:18:00	D	5.70
527	MANSA	SARDULGARH	S-NPP	75.26814	29.67123	13:18:00	D	2.10
528	MANSA	SARDULGARH	S-NPP	75.34680	29.73379	13:18:00	D	6.60
529	MANSA	SARDULGARH	S-NPP	75.29468	29.74679	13:18:00	D	5.30
530	MANSA	SARDULGARH	S-NPP	75.37846	29.76539	13:18:00	D	8.10
531	MANSA	SARDULGARH	S-NPP	75.41586	29.77201	13:18:00	D	6.50
532	MANSA	SARDULGARH	S-NPP	75.41503	29.77556	13:18:00	D	6.50
533	MANSA	SARDULGARH	S-NPP	75.38015	29.78554	13:18:00	D	8.40
534	MANSA	SARDULGARH	S-NPP	75.37931	29.78910	13:18:00	D	8.40
535	MANSA	SARDULGARH	S-NPP	75.24174	29.79022	13:18:00	D	3.90
536	MANSA	SARDULGARH	S-NPP	75.29538	29.79247	13:18:00	D	5.60
537	MANSA	SARDULGARH	S-NPP	75.41632	29.81799	13:18:00	D	9.70
538	MANSA	SARDULGARH	S-NPP	75.38667	29.82006	13:18:00	D	3.30
539	MANSA	SARDULGARH	S-NPP	75.24108	29.83483	13:18:00	D	4.80
540	MANSA	SARDULGARH	S-NPP	75.24023	29.83840	13:18:00	D	4.80
541	MANSA	SARDULGARH	S-NPP	75.25917	29.84178	13:18:00	D	5.50
542	MANSA	SARDULGARH	S-NPP	75.32260	29.86422	13:18:00	D	8.70
543	MANSA	SARDULGARH	S-NPP	75.36057	29.87646	13:18:00	D	1.90
544	MOGA	BAGHA PURANA	S-NPP	75.01386	30.51264	13:18:00	D	3.50
545	MOGA	BAGHA PURANA	S-NPP	75.01300	30.51621	13:18:00	D	3.50
546	MOGA	BAGHA PURANA	S-NPP	75.02949	30.53039	13:18:00	D	23.10
547	MOGA	BAGHA PURANA	S-NPP	75.09848	30.53170	13:18:00	D	16.00
548	MOGA	BAGHA PURANA	S-NPP	74.99917	30.53236	13:18:00	D	2.70
549	MOGA	BAGHA PURANA	S-NPP	75.05264	30.65084	13:18:00	D	2.00
550	MOGA	BAGHA PURANA	S-NPP	74.97094	30.68085	13:18:00	D	3.20
551	MOGA	BAGHA PURANA	S-NPP	74.97251	30.68236	13:18:00	D	4.40
552	MOGA	BAGHA PURANA	S-NPP	74.97007	30.68442	13:18:00	D	3.20
553	MOGA	BAGHA PURANA	S-NPP	74.91387	30.69775	13:18:00	D	8.50
554	MOGA	BAGHA PURANA	S-NPP	74.93829	30.72089	13:18:00	D	10.60

555	MOGA	BAGHA PURANA	S-NPP	74.93742	30.72446	13:18:00	D	34.20
556	MOGA	BAGHA PURANA	S-NPP	74.98600	30.72955	13:18:00	D	7.70
557	MOGA	BAGHA PURANA	S-NPP	74.99076	30.73041	13:18:00	D	9.30
558	MOGA	BAGHA PURANA	S-NPP	74.91393	30.73887	13:18:00	D	3.70
559	MOGA	BAGHA PURANA	S-NPP	74.91306	30.74245	13:18:00	D	5.30
560	MOGA	BAGHA PURANA	S-NPP	75.04816	30.75937	13:18:00	D	3.60
561	MOGA	BAGHA PURANA	S-NPP	75.00204	30.76594	13:18:00	D	4.20
562	MOGA	BAGHA PURANA	S-NPP	75.00117	30.76950	13:18:00	D	4.20
563	MOGA	BAGHA PURANA	S-NPP	74.92529	30.77451	13:18:00	D	5.80
564	MOGA	BAGHA PURANA	S-NPP	74.93006	30.77537	13:18:00	D	13.50
565	MOGA	MOGA	S-NPP	75.32589	30.73277	13:18:00	D	1.00
566	MOGA	MOGA	S-NPP	75.28168	30.73599	13:18:00	D	11.00
567	MOGA	MOGA	S-NPP	75.15643	30.73816	13:18:00	D	4.00
568	MOGA	MOGA	S-NPP	75.28084	30.73952	13:18:00	D	11.00
569	MOGA	MOGA	S-NPP	75.37954	30.75634	13:18:00	D	2.60
570	MOGA	MOGA	S-NPP	75.37791	30.75658	13:18:00	D	3.10
571	MOGA	MOGA	S-NPP	74.93293	30.79147	13:18:00	D	8.00
572	MOGA	MOGA	S-NPP	74.93770	30.79234	13:18:00	D	16.40
573	MOGA	MOGA	S-NPP	74.96155	30.79671	13:18:00	D	12.90
574	MOGA	MOGA	S-NPP	75.07185	30.83169	13:18:00	D	4.20
575	MOGA	MOGA	S-NPP	75.13550	30.83214	13:18:00	D	6.00
576	MOGA	MOGA	S-NPP	75.05039	30.83892	13:18:00	D	4.70
577	MOGA	MOGA	S-NPP	75.14230	30.84445	13:18:00	D	10.80
578	MOGA	NIHAL SINGH WALA	S-NPP	75.39160	30.54765	13:18:00	D	5.40
579	MOGA	NIHAL SINGH WALA	S-NPP	75.26277	30.56129	13:18:00	D	15.60
580	MOGA	NIHAL SINGH WALA	S-NPP	75.24103	30.66252	13:18:00	D	4.20
581	MUKTSAR	GIDDARBAHA	S-NPP	74.63486	30.09630	13:18:00	D	32.60
582	MUKTSAR	GIDDARBAHA	S-NPP	74.57291	30.15752	13:18:00	D	5.00
583	MUKTSAR	GIDDARBAHA	S-NPP	74.59384	30.15753	13:18:00	D	2.70
584	MUKTSAR	GIDDARBAHA	S-NPP	74.60703	30.17759	13:18:00	D	13.60
585	MUKTSAR	GIDDARBAHA	S-NPP	74.59937	30.17765	13:18:00	D	8.80

586	MUKTSAR	GIDDARBAHA	S-NPP	74.60938	30.17947	13:18:00	D	16.90
587	MUKTSAR	GIDDARBAHA	S-NPP	74.70158	30.18483	13:18:00	D	5.70
588	MUKTSAR	GIDDARBAHA	S-NPP	74.60526	30.18491	13:18:00	D	8.60
589	MUKTSAR	GIDDARBAHA	S-NPP	74.73212	30.18659	13:18:00	D	2.60
590	MUKTSAR	GIDDARBAHA	S-NPP	74.73124	30.19023	13:18:00	D	2.60
591	MUKTSAR	GIDDARBAHA	S-NPP	74.67484	30.19793	13:18:00	D	3.10
592	MUKTSAR	GIDDARBAHA	S-NPP	74.57402	30.20584	13:18:00	D	12.90
593	MUKTSAR	GIDDARBAHA	S-NPP	74.62305	30.21879	13:18:00	D	5.60
594	MUKTSAR	GIDDARBAHA	S-NPP	74.58456	30.22693	13:18:00	D	6.40
595	MUKTSAR	GIDDARBAHA	S-NPP	74.62038	30.22974	13:18:00	D	10.20
596	MUKTSAR	GIDDARBAHA	S-NPP	74.71314	30.23168	13:18:00	D	4.90
597	MUKTSAR	GIDDARBAHA	S-NPP	74.61949	30.23339	13:18:00	D	10.20
598	MUKTSAR	GIDDARBAHA	S-NPP	74.62357	30.23796	13:18:00	D	4.20
599	MUKTSAR	GIDDARBAHA	S-NPP	74.64436	30.23799	13:18:00	D	12.00
600	MUKTSAR	GIDDARBAHA	S-NPP	74.62180	30.24526	13:18:00	D	4.30
601	MUKTSAR	GIDDARBAHA	S-NPP	74.62677	30.24618	13:18:00	D	4.30
602	MUKTSAR	GIDDARBAHA	S-NPP	74.54736	30.25067	13:18:00	D	2.30
603	MUKTSAR	GIDDARBAHA	S-NPP	74.67236	30.25076	13:18:00	D	4.00
604	MUKTSAR	GIDDARBAHA	S-NPP	74.67731	30.25168	13:18:00	D	4.00
605	MUKTSAR	GIDDARBAHA	S-NPP	74.62411	30.25713	13:18:00	D	2.30
606	MUKTSAR	GIDDARBAHA	S-NPP	74.69621	30.25895	13:18:00	D	5.70
607	MUKTSAR	GIDDARBAHA	S-NPP	74.67553	30.25896	13:18:00	D	4.30
608	MUKTSAR	GIDDARBAHA	S-NPP	74.62321	30.26078	13:18:00	D	4.60
609	MUKTSAR	GIDDARBAHA	S-NPP	74.67782	30.27078	13:18:00	D	10.60
610	MUKTSAR	GIDDARBAHA	S-NPP	74.62553	30.27264	13:18:00	D	3.50
611	MUKTSAR	GIDDARBAHA	S-NPP	74.70747	30.27621	13:18:00	D	7.10
612	MUKTSAR	GIDDARBAHA	S-NPP	74.61378	30.27812	13:18:00	D	3.40
613	MUKTSAR	GIDDARBAHA	S-NPP	74.55785	30.28118	13:18:00	D	2.80
614	MUKTSAR	GIDDARBAHA	S-NPP	74.61289	30.28177	13:18:00	D	17.00
615	MUKTSAR	GIDDARBAHA	S-NPP	74.71065	30.28438	13:18:00	D	11.00
616	MUKTSAR	GIDDARBAHA	S-NPP	74.70977	30.28802	13:18:00	D	11.00

617	MUKTSAR	GIDDARBAHA	S-NPP	74.60275	30.28960	13:18:00	D	2.20
618	MUKTSAR	GIDDARBAHA	S-NPP	74.58691	30.29045	13:18:00	D	7.10
619	MUKTSAR	GIDDARBAHA	S-NPP	74.70393	30.29075	13:18:00	D	6.60
620	MUKTSAR	GIDDARBAHA	S-NPP	74.52922	30.29112	13:18:00	D	5.80
621	MUKTSAR	GIDDARBAHA	S-NPP	74.57606	30.29224	13:18:00	D	4.90
622	MUKTSAR	GIDDARBAHA	S-NPP	74.73441	30.29250	13:18:00	D	3.10
623	MUKTSAR	GIDDARBAHA	S-NPP	74.65825	30.29618	13:18:00	D	12.70
624	MUKTSAR	GIDDARBAHA	S-NPP	74.65586	30.29721	13:18:00	D	11.60
625	MUKTSAR	GIDDARBAHA	S-NPP	74.70217	30.29802	13:18:00	D	2.80
626	MUKTSAR	GIDDARBAHA	S-NPP	74.68297	30.30081	13:18:00	D	6.00
627	MUKTSAR	GIDDARBAHA	S-NPP	74.68261	30.32355	13:18:00	D	8.80
628	MUKTSAR	GIDDARBAHA	S-NPP	74.69741	30.32630	13:18:00	D	3.20
629	MUKTSAR	GIDDARBAHA	S-NPP	74.74834	30.32816	13:18:00	D	15.30
630	MUKTSAR	GIDDARBAHA	S-NPP	74.50429	30.32862	13:18:00	D	10.10
631	MUKTSAR	GIDDARBAHA	S-NPP	74.67095	30.32899	13:18:00	D	2.10
632	MUKTSAR	GIDDARBAHA	S-NPP	74.75324	30.32907	13:18:00	D	15.30
633	MUKTSAR	GIDDARBAHA	S-NPP	74.69652	30.32993	13:18:00	D	3.10
634	MUKTSAR	GIDDARBAHA	S-NPP	74.76794	30.33179	13:18:00	D	3.90
635	MUKTSAR	GIDDARBAHA	S-NPP	74.71534	30.33721	13:18:00	D	13.30
636	MUKTSAR	GIDDARBAHA	S-NPP	74.58031	30.33887	13:18:00	D	9.90
637	MUKTSAR	GIDDARBAHA	S-NPP	74.55854	30.34249	13:18:00	D	15.60
638	MUKTSAR	GIDDARBAHA	S-NPP	74.60432	30.34712	13:18:00	D	4.00
639	MUKTSAR	GIDDARBAHA	S-NPP	74.66070	30.34990	13:18:00	D	4.80
640	MUKTSAR	GIDDARBAHA	S-NPP	74.60343	30.35077	13:18:00	D	3.70
641	MUKTSAR	GIDDARBAHA	S-NPP	74.66475	30.35445	13:18:00	D	3.90
642	MUKTSAR	GIDDARBAHA	S-NPP	74.70425	30.36171	13:18:00	D	5.00
643	MUKTSAR	GIDDARBAHA	S-NPP	74.61071	30.36354	13:18:00	D	2.80
644	MUKTSAR	GIDDARBAHA	S-NPP	74.74936	30.36621	13:18:00	D	11.40
645	MUKTSAR	GIDDARBAHA	S-NPP	74.68098	30.37263	13:18:00	D	6.60
646	MUKTSAR	GIDDARBAHA	S-NPP	74.67515	30.37535	13:18:00	D	6.60
647	MUKTSAR	GIDDARBAHA	S-NPP	74.68008	30.37626	13:18:00	D	6.60

648	MUKTSAR	GIDDARBAHA	S-NPP	74.77207	30.37794	13:18:00	D	4.90
649	MUKTSAR	GIDDARBAHA	S-NPP	74.58045	30.38087	13:18:00	D	5.40
650	MUKTSAR	GIDDARBAHA	S-NPP	74.58544	30.38178	13:18:00	D	5.40
651	MUKTSAR	GIDDARBAHA	S-NPP	74.68819	30.38533	13:18:00	D	3.00
652	MUKTSAR	GIDDARBAHA	S-NPP	74.77923	30.39058	13:18:00	D	3.70
653	MUKTSAR	GIDDARBAHA	S-NPP	74.62843	30.39723	13:18:00	D	5.00
654	MUKTSAR	GIDDARBAHA	S-NPP	74.68464	30.39985	13:18:00	D	9.10
655	MUKTSAR	GIDDARBAHA	S-NPP	74.62999	30.40040	13:18:00	D	6.50
656	MUKTSAR	GIDDARBAHA	S-NPP	74.62821	30.40768	13:18:00	D	7.90
657	MUKTSAR	GIDDARBAHA	S-NPP	74.70840	30.40796	13:18:00	D	4.30
658	MUKTSAR	GIDDARBAHA	S-NPP	74.63228	30.41225	13:18:00	D	6.60
659	MUKTSAR	GIDDARBAHA	S-NPP	74.63634	30.41681	13:18:00	D	22.60
660	MUKTSAR	GIDDARBAHA	S-NPP	74.67760	30.41690	13:18:00	D	8.50
661	MUKTSAR	GIDDARBAHA	S-NPP	74.71835	30.43964	13:18:00	D	4.80
662	MUKTSAR	GIDDARBAHA	S-NPP	74.68621	30.44506	13:18:00	D	3.60
663	MUKTSAR	GIDDARBAHA	S-NPP	74.60852	30.44589	13:18:00	D	27.00
664	MUKTSAR	GIDDARBAHA	S-NPP	74.63418	30.44683	13:18:00	D	1.80
665	MUKTSAR	GIDDARBAHA	S-NPP	74.69025	30.44960	13:18:00	D	4.20
666	MUKTSAR	GIDDARBAHA	S-NPP	74.65890	30.45140	13:18:00	D	5.30
667	MUKTSAR	GIDDARBAHA	S-NPP	74.67863	30.45503	13:18:00	D	5.40
668	MUKTSAR	MALAUT	S-NPP	74.61790	29.92846	13:18:00	D	4.60
669	MUKTSAR	MALAUT	S-NPP	74.62292	29.92938	13:18:00	D	4.60
670	MUKTSAR	MALAUT	S-NPP	74.48470	29.94765	13:18:00	D	5.40
671	MUKTSAR	MALAUT	S-NPP	74.53918	29.98484	13:18:00	D	5.90
672	MUKTSAR	MALAUT	S-NPP	74.47987	29.98919	13:18:00	D	6.70
673	MUKTSAR	MALAUT	S-NPP	74.56851	29.99416	13:18:00	D	3.50
674	MUKTSAR	MALAUT	S-NPP	74.44991	30.00291	13:18:00	D	6.00
675	MUKTSAR	MALAUT	S-NPP	74.45499	30.00386	13:18:00	D	6.30
676	MUKTSAR	MALAUT	S-NPP	74.53974	30.00418	13:18:00	D	3.50
677	MUKTSAR	MALAUT	S-NPP	74.58182	30.00431	13:18:00	D	3.60
678	MUKTSAR	MALAUT	S-NPP	74.58683	30.00524	13:18:00	D	3.60

679	MUKTSAR	MALAUT	S-NPP	74.66187	30.01915	13:18:00	D	4.00
680	MUKTSAR	MALAUT	S-NPP	74.60155	30.03096	13:18:00	D	5.10
681	MUKTSAR	MALAUT	S-NPP	74.55779	30.03824	13:18:00	D	5.40
682	MUKTSAR	MALAUT	S-NPP	74.64391	30.05023	13:18:00	D	4.20
683	MUKTSAR	MALAUT	S-NPP	74.67471	30.05206	13:18:00	D	4.70
684	MUKTSAR	MALAUT	S-NPP	74.55833	30.05753	13:18:00	D	22.80
685	MUKTSAR	MALAUT	S-NPP	74.56011	30.05930	13:18:00	D	12.50
686	MUKTSAR	MALAUT	S-NPP	74.66707	30.06211	13:18:00	D	6.70
687	MUKTSAR	MALAUT	S-NPP	74.43746	30.06317	13:18:00	D	8.20
688	MUKTSAR	MALAUT	S-NPP	74.59023	30.06497	13:18:00	D	3.50
689	MUKTSAR	MALAUT	S-NPP	74.40925	30.06946	13:18:00	D	6.00
690	MUKTSAR	MALAUT	S-NPP	74.61679	30.07585	13:18:00	D	2.50
691	MUKTSAR	MALAUT	S-NPP	74.61346	30.07700	13:18:00	D	4.10
692	MUKTSAR	MALAUT	S-NPP	74.63930	30.07801	13:18:00	D	4.30
693	MUKTSAR	MALAUT	S-NPP	74.46854	30.08828	13:18:00	D	3.60
694	MUKTSAR	MALAUT	S-NPP	74.65745	30.08905	13:18:00	D	8.70
695	MUKTSAR	MALAUT	S-NPP	74.64162	30.08992	13:18:00	D	5.10
696	MUKTSAR	MALAUT	S-NPP	74.37732	30.09057	13:18:00	D	6.60
697	MUKTSAR	MALAUT	S-NPP	74.63575	30.09264	13:18:00	D	32.60
698	MUKTSAR	MALAUT	S-NPP	74.41823	30.09819	13:18:00	D	3.40
699	MUKTSAR	MALAUT	S-NPP	74.67874	30.10828	13:18:00	D	6.60
700	MUKTSAR	MALAUT	S-NPP	74.54579	30.11803	13:18:00	D	3.80
701	MUKTSAR	MALAUT	S-NPP	74.48305	30.13717	13:18:00	D	1.90
702	MUKTSAR	MALAUT	S-NPP	74.53772	30.15106	13:18:00	D	7.40
703	MUKTSAR	MALAUT	S-NPP	74.54276	30.15199	13:18:00	D	7.40
704	MUKTSAR	MALAUT	S-NPP	74.40684	30.15528	13:18:00	D	6.40
705	MUKTSAR	MALAUT	S-NPP	74.54599	30.16025	13:18:00	D	5.40
706	MUKTSAR	MALAUT	S-NPP	74.54287	30.16169	13:18:00	D	4.70
707	MUKTSAR	MALAUT	S-NPP	74.45042	30.19432	13:18:00	D	7.00
708	MUKTSAR	MALAUT	S-NPP	74.41815	30.19600	13:18:00	D	5.70
709	MUKTSAR	MALAUT	S-NPP	74.51343	30.21757	13:18:00	D	12.90

710	MUKTSAR	MALAUT	S-NPP	74.40579	30.22455	13:18:00	D	3.50
711	MUKTSAR	MALAUT	S-NPP	74.41834	30.23843	13:18:00	D	3.30
712	MUKTSAR	MALAUT	S-NPP	74.44466	30.23943	13:18:00	D	7.90
713	MUKTSAR	MALAUT	S-NPP	74.44376	30.24311	13:18:00	D	3.30
714	MUKTSAR	MALAUT	S-NPP	74.36789	30.24843	13:18:00	D	6.10
715	MUKTSAR	MALAUT	S-NPP	74.36494	30.24864	13:18:00	D	7.30
716	MUKTSAR	MALAUT	S-NPP	74.38322	30.25125	13:18:00	D	5.60
717	MUKTSAR	MALAUT	S-NPP	74.38026	30.25154	13:18:00	D	6.30
718	MUKTSAR	MALAUT	S-NPP	74.41472	30.25318	13:18:00	D	3.40
719	MUKTSAR	MALAUT	S-NPP	74.41677	30.25459	13:18:00	D	6.30
720	MUKTSAR	MALAUT	S-NPP	74.47569	30.27340	13:18:00	D	3.10
721	MUKTSAR	MALAUT	S-NPP	74.47298	30.28442	13:18:00	D	9.30
722	MUKTSAR	MALAUT	S-NPP	74.44592	30.28703	13:18:00	D	4.20
723	MUKTSAR	MALAUT	S-NPP	74.47209	30.28810	13:18:00	D	5.80
724	MUKTSAR	MALAUT	S-NPP	74.31454	30.30106	13:18:00	D	3.40
725	MUKTSAR	MALAUT	S-NPP	74.46344	30.30184	13:18:00	D	3.20
726	MUKTSAR	MALAUT	S-NPP	74.40880	30.33014	13:18:00	D	5.50
727	MUKTSAR	MALAUT	S-NPP	74.46127	30.33216	13:18:00	D	3.20
728	MUKTSAR	MUKTSAR	S-NPP	74.43652	30.34680	13:18:00	D	3.50
729	MUKTSAR	MUKTSAR	S-NPP	74.52904	30.35616	13:18:00	D	3.40
730	MUKTSAR	MUKTSAR	S-NPP	74.40571	30.36421	13:18:00	D	3.90
731	MUKTSAR	MUKTSAR	S-NPP	74.40272	30.36533	13:18:00	D	2.10
732	MUKTSAR	MUKTSAR	S-NPP	74.54227	30.36624	13:18:00	D	3.70
733	MUKTSAR	MUKTSAR	S-NPP	74.54138	30.36990	13:18:00	D	8.80
734	MUKTSAR	MUKTSAR	S-NPP	74.45238	30.37854	13:18:00	D	1.90
735	MUKTSAR	MUKTSAR	S-NPP	74.48260	30.38422	13:18:00	D	6.50
736	MUKTSAR	MUKTSAR	S-NPP	74.53954	30.38726	13:18:00	D	6.50
737	MUKTSAR	MUKTSAR	S-NPP	74.54189	30.38909	13:18:00	D	7.40
738	MUKTSAR	MUKTSAR	S-NPP	74.56279	30.38909	13:18:00	D	50.40
739	MUKTSAR	MUKTSAR	S-NPP	74.54365	30.39186	13:18:00	D	6.50
740	MUKTSAR	MUKTSAR	S-NPP	74.44373	30.39228	13:18:00	D	4.50

741	MUKTSAR	MUKTSAR	S-NPP	74.56190	30.39274	13:18:00	D	50.40
742	MUKTSAR	MUKTSAR	S-NPP	74.47488	30.39428	13:18:00	D	8.50
743	MUKTSAR	MUKTSAR	S-NPP	74.52185	30.39542	13:18:00	D	35.10
744	MUKTSAR	MUKTSAR	S-NPP	74.54775	30.39645	13:18:00	D	7.60
745	MUKTSAR	MUKTSAR	S-NPP	74.55274	30.39738	13:18:00	D	7.60
746	MUKTSAR	MUKTSAR	S-NPP	74.47398	30.39795	13:18:00	D	6.00
747	MUKTSAR	MUKTSAR	S-NPP	74.45706	30.40245	13:18:00	D	4.60
748	MUKTSAR	MUKTSAR	S-NPP	74.54097	30.40282	13:18:00	D	4.20
749	MUKTSAR	MUKTSAR	S-NPP	74.45616	30.40612	13:18:00	D	4.60
750	MUKTSAR	MUKTSAR	S-NPP	74.42912	30.40876	13:18:00	D	4.50
751	MUKTSAR	MUKTSAR	S-NPP	74.44427	30.41158	13:18:00	D	8.00
752	MUKTSAR	MUKTSAR	S-NPP	74.43327	30.41337	13:18:00	D	4.00
753	MUKTSAR	MUKTSAR	S-NPP	74.43832	30.41431	13:18:00	D	4.20
754	MUKTSAR	MUKTSAR	S-NPP	74.48457	30.41908	13:18:00	D	2.60
755	MUKTSAR	MUKTSAR	S-NPP	74.48779	30.42734	13:18:00	D	16.40
756	MUKTSAR	MUKTSAR	S-NPP	74.50877	30.42741	13:18:00	D	6.20
757	MUKTSAR	MUKTSAR	S-NPP	74.49281	30.42827	13:18:00	D	16.40
758	MUKTSAR	MUKTSAR	S-NPP	74.60712	30.43040	13:18:00	D	6.30
759	MUKTSAR	MUKTSAR	S-NPP	74.50787	30.43107	13:18:00	D	6.20
760	MUKTSAR	MUKTSAR	S-NPP	74.38548	30.43525	13:18:00	D	4.10
761	MUKTSAR	MUKTSAR	S-NPP	74.34804	30.43602	13:18:00	D	6.30
762	MUKTSAR	MUKTSAR	S-NPP	74.55878	30.43669	13:18:00	D	20.40
763	MUKTSAR	MUKTSAR	S-NPP	74.56377	30.43761	13:18:00	D	20.40
764	MUKTSAR	MUKTSAR	S-NPP	74.57372	30.43946	13:18:00	D	7.20
765	MUKTSAR	MUKTSAR	S-NPP	74.41084	30.43994	13:18:00	D	2.80
766	MUKTSAR	MUKTSAR	S-NPP	74.51610	30.44024	13:18:00	D	3.00
767	MUKTSAR	MUKTSAR	S-NPP	74.38783	30.44722	13:18:00	D	3.10
768	MUKTSAR	MUKTSAR	S-NPP	74.55610	30.44764	13:18:00	D	7.30
769	MUKTSAR	MUKTSAR	S-NPP	74.58189	30.44859	13:18:00	D	4.30
770	MUKTSAR	MUKTSAR	S-NPP	74.44534	30.45015	13:18:00	D	3.10
771	MUKTSAR	MUKTSAR	S-NPP	74.68179	30.46320	13:18:00	D	3.10

772	MUKTSAR	MUKTSAR	S-NPP	74.44585	30.46942	13:18:00	D	13.50
773	MUKTSAR	MUKTSAR	S-NPP	74.69567	30.46955	13:18:00	D	14.80
774	MUKTSAR	MUKTSAR	S-NPP	74.68002	30.47046	13:18:00	D	3.30
775	MUKTSAR	MUKTSAR	S-NPP	74.44351	30.47053	13:18:00	D	14.40
776	MUKTSAR	MUKTSAR	S-NPP	74.47698	30.47129	13:18:00	D	5.10
777	MUKTSAR	MUKTSAR	S-NPP	74.68494	30.47136	13:18:00	D	6.50
778	MUKTSAR	MUKTSAR	S-NPP	74.73003	30.47585	13:18:00	D	15.60
779	MUKTSAR	MUKTSAR	S-NPP	74.56888	30.48049	13:18:00	D	4.00
780	MUKTSAR	MUKTSAR	S-NPP	74.64102	30.48228	13:18:00	D	6.40
781	MUKTSAR	MUKTSAR	S-NPP	74.59374	30.48504	13:18:00	D	6.50
782	MUKTSAR	MUKTSAR	S-NPP	74.59872	30.48594	13:18:00	D	2.70
783	MUKTSAR	MUKTSAR	S-NPP	74.72739	30.48671	13:18:00	D	3.50
784	MUKTSAR	MUKTSAR	S-NPP	74.56121	30.49052	13:18:00	D	4.10
785	MUKTSAR	MUKTSAR	S-NPP	74.73632	30.49212	13:18:00	D	5.10
786	MUKTSAR	MUKTSAR	S-NPP	74.55865	30.49222	13:18:00	D	4.30
787	MUKTSAR	MUKTSAR	S-NPP	74.73053	30.49485	13:18:00	D	5.10
788	MUKTSAR	MUKTSAR	S-NPP	74.63795	30.50709	13:18:00	D	2.70
789	MUKTSAR	MUKTSAR	S-NPP	74.44454	30.50908	13:18:00	D	10.90
790	MUKTSAR	MUKTSAR	S-NPP	74.55418	30.51046	13:18:00	D	16.80
791	MUKTSAR	MUKTSAR	S-NPP	74.69489	30.51484	13:18:00	D	5.70
792	MUKTSAR	MUKTSAR	S-NPP	74.61869	30.52249	13:18:00	D	12.00
793	MUKTSAR	MUKTSAR	S-NPP	74.68239	30.52394	13:18:00	D	5.00
794	MUKTSAR	MUKTSAR	S-NPP	74.61781	30.52613	13:18:00	D	30.60
795	MUKTSAR	MUKTSAR	S-NPP	74.68454	30.52716	13:18:00	D	13.20
796	MUKTSAR	MUKTSAR	S-NPP	74.62186	30.53068	13:18:00	D	5.60
797	MUKTSAR	MUKTSAR	S-NPP	74.61562	30.55612	13:18:00	D	3.30
798	MUKTSAR	MUKTSAR	S-NPP	74.62551	30.55795	13:18:00	D	3.90
799	MUKTSAR	MUKTSAR	S-NPP	74.60037	30.57611	13:18:00	D	4.80
800	MUKTSAR	MUKTSAR	S-NPP	74.60533	30.57702	13:18:00	D	4.80
801	MUKTSAR	MUKTSAR	S-NPP	74.61523	30.57883	13:18:00	D	4.70
802	MUKTSAR	MUKTSAR	S-NPP	74.43146	30.58330	13:18:00	D	4.80

803	MUKTSAR	MUKTSAR	S-NPP	74.59859	30.58338	13:18:00	D	17.00
804	MUKTSAR	MUKTSAR	S-NPP	74.64978	30.58517	13:18:00	D	2.30
805	MUKTSAR	MUKTSAR	S-NPP	74.63815	30.59062	13:18:00	D	4.40
806	MUKTSAR	MUKTSAR	S-NPP	74.63726	30.59425	13:18:00	D	4.40
807	MUKTSAR	MUKTSAR	S-NPP	74.61661	30.59427	13:18:00	D	7.70
808	MUKTSAR	MUKTSAR	S-NPP	74.60314	30.60700	13:18:00	D	2.90
809	PATIALA	NABHA	S-NPP	76.07071	30.38366	13:18:00	D	3.10
810	PATIALA	NABHA	S-NPP	76.12769	30.51684	13:18:00	D	5.60
811	PATIALA	NABHA	S-NPP	76.25857	30.53568	13:18:00	D	3.70
812	PATIALA	PATIALA	S-NPP	76.31112	30.10578	13:18:00	D	2.70
813	PATIALA	PATIALA	S-NPP	76.32853	30.14786	13:18:00	D	4.10
814	PATIALA	PATIALA	S-NPP	76.32775	30.15129	13:18:00	D	4.10
815	PATIALA	PATIALA	S-NPP	76.47489	30.15137	13:18:00	D	2.50
816	PATIALA	PATIALA	S-NPP	76.35963	30.21204	13:18:00	D	2.20
817	PATIALA	PATIALA	S-NPP	76.43060	30.21353	13:18:00	D	9.50
818	PATIALA	PATIALA	S-NPP	76.32534	30.27262	13:18:00	D	12.40
819	PATIALA	PATIALA	S-NPP	76.58417	30.27838	13:18:00	D	3.90
820	PATIALA	PATIALA	S-NPP	76.58689	30.28587	13:18:00	D	3.70
821	PATIALA	PATIALA	S-NPP	76.54421	30.30663	13:18:00	D	5.80
822	PATIALA	PATIALA	S-NPP	76.49269	30.37901	13:18:00	D	12.20
823	PATIALA	RAJPURA	S-NPP	76.59429	30.31175	13:18:00	D	2.20
824	PATIALA	RAJPURA	S-NPP	76.59585	30.31190	13:18:00	D	1.70
825	PATIALA	RAJPURA	S-NPP	76.71173	30.34209	13:18:00	D	4.20
826	PATIALA	RAJPURA	S-NPP	76.70603	30.34814	13:18:00	D	3.30
827	PATIALA	RAJPURA	S-NPP	76.67085	30.34922	13:18:00	D	2.10
828	PATIALA	RAJPURA	S-NPP	76.72555	30.35844	13:18:00	D	10.10
829	PATIALA	RAJPURA	S-NPP	76.55528	30.37545	13:18:00	D	7.40
830	PATIALA	RAJPURA	S-NPP	76.71265	30.37730	13:18:00	D	2.80
831	PATIALA	RAJPURA	S-NPP	76.69507	30.37786	13:18:00	D	4.20
832	PATIALA	RAJPURA	S-NPP	76.55451	30.37884	13:18:00	D	7.40
833	PATIALA	RAJPURA	S-NPP	76.53677	30.37937	13:18:00	D	2.90

834	PATIALA	RAJPURA	S-NPP	76.55801	30.38295	13:18:00	D	2.40
835	PATIALA	RAJPURA	S-NPP	76.56225	30.38366	13:18:00	D	4.70
836	PATIALA	RAJPURA	S-NPP	76.56073	30.39045	13:18:00	D	3.90
837	PATIALA	RAJPURA	S-NPP	76.55845	30.40062	13:18:00	D	2.10
838	PATIALA	RAJPURA	S-NPP	76.57542	30.40346	13:18:00	D	1.60
839	PATIALA	RAJPURA	S-NPP	76.60618	30.42577	13:18:00	D	1.40
840	PATIALA	RAJPURA	S-NPP	76.66872	30.43989	13:18:00	D	1.60
841	PATIALA	RAJPURA	S-NPP	76.60013	30.45287	13:18:00	D	5.20
842	PATIALA	RAJPURA	S-NPP	76.50224	30.45744	13:18:00	D	1.70
843	PATIALA	RAJPURA	S-NPP	76.51043	30.47997	13:18:00	D	3.10
844	PATIALA	RAJPURA	S-NPP	76.55955	30.51636	13:18:00	D	3.20
845	PATIALA	SAMANA	S-NPP	76.06096	29.85935	13:18:00	D	8.90
846	PATIALA	SAMANA	S-NPP	76.11983	30.01195	13:18:00	D	4.00
847	PATIALA	SAMANA	S-NPP	76.22955	30.08823	13:18:00	D	5.60
848	PATIALA	SAMANA	S-NPP	76.22208	30.10122	13:18:00	D	2.30
849	PATIALA	SAMANA	S-NPP	76.21260	30.10317	13:18:00	D	5.60
850	PATIALA	SAMANA	S-NPP	76.21696	30.10392	13:18:00	D	5.60
851	PATIALA	SAMANA	S-NPP	76.19475	30.16590	13:18:00	D	2.10
852	PATIALA	SAMANA	S-NPP	76.24734	30.19280	13:18:00	D	3.80
853	SANGRUR	DHURI	S-NPP	75.80923	30.32011	13:18:00	D	14.30
854	SANGRUR	DHURI	S-NPP	75.77592	30.34322	13:18:00	D	3.20
855	SANGRUR	DHURI	S-NPP	75.96755	30.35501	13:18:00	D	4.80
856	SANGRUR	DHURI	S-NPP	75.82352	30.42457	13:18:00	D	7.30
857	SANGRUR	MOONAK	S-NPP	75.96246	29.73675	13:18:00	D	6.30
858	SANGRUR	MOONAK	S-NPP	75.87107	29.74989	13:18:00	D	10.90
859	SANGRUR	MOONAK	S-NPP	76.06499	29.77254	13:18:00	D	3.00
860	SANGRUR	MOONAK	S-NPP	76.05979	29.77525	13:18:00	D	5.90
861	SANGRUR	MOONAK	S-NPP	76.06420	29.77600	13:18:00	D	24.20
862	SANGRUR	MOONAK	S-NPP	76.00961	29.78189	13:18:00	D	4.80
863	SANGRUR	MOONAK	S-NPP	76.04345	29.79505	13:18:00	D	15.90
864	SANGRUR	MOONAK	S-NPP	76.04108	29.80545	13:18:00	D	4.90

865	SANGRUR	MOONAK	S-NPP	76.07719	29.80817	13:18:00	D	5.90
866	SANGRUR	MOONAK	S-NPP	76.02512	29.83512	13:18:00	D	7.10
867	SANGRUR	MOONAK	S-NPP	76.03317	29.84013	13:18:00	D	9.50
868	SANGRUR	MOONAK	S-NPP	75.93035	29.86563	13:18:00	D	4.30
869	SANGRUR	MOONAK	S-NPP	75.93481	29.86640	13:18:00	D	7.10
870	SANGRUR	MOONAK	S-NPP	75.93401	29.86988	13:18:00	D	6.00
871	SANGRUR	MOONAK	S-NPP	75.93497	29.87026	13:18:00	D	5.80
872	SANGRUR	MOONAK	S-NPP	75.94659	29.87567	13:18:00	D	7.70
873	SANGRUR	MOONAK	S-NPP	75.94754	29.87609	13:18:00	D	13.40
874	SANGRUR	MOONAK	S-NPP	75.95105	29.87644	13:18:00	D	15.50
875	SANGRUR	MOONAK	S-NPP	75.95199	29.87688	13:18:00	D	10.60
876	SANGRUR	MOONAK	S-NPP	75.93705	29.88148	13:18:00	D	6.10
877	SANGRUR	MOONAK	S-NPP	75.84818	29.88391	13:18:00	D	6.20
878	SANGRUR	MOONAK	S-NPP	75.83759	29.88930	13:18:00	D	4.40
879	SANGRUR	MOONAK	S-NPP	75.99400	29.89512	13:18:00	D	10.10
880	SANGRUR	MOONAK	S-NPP	75.88160	29.90067	13:18:00	D	7.90
881	SANGRUR	MOONAK	S-NPP	75.78329	29.90155	13:18:00	D	10.20
882	SANGRUR	MOONAK	S-NPP	75.81560	29.90359	13:18:00	D	2.40
883	SANGRUR	MOONAK	S-NPP	75.78538	29.91282	13:18:00	D	6.20
884	SANGRUR	MOONAK	S-NPP	75.87393	29.91382	13:18:00	D	5.80
885	SANGRUR	MOONAK	S-NPP	75.92464	29.91546	13:18:00	D	4.30
886	SANGRUR	MOONAK	S-NPP	75.82217	29.91564	13:18:00	D	4.40
887	SANGRUR	MOONAK	S-NPP	75.82667	29.91643	13:18:00	D	4.40
888	SANGRUR	MOONAK	S-NPP	75.87312	29.91731	13:18:00	D	5.30
889	SANGRUR	MOONAK	S-NPP	75.84015	29.91879	13:18:00	D	5.40
890	SANGRUR	MOONAK	S-NPP	75.90967	29.92008	13:18:00	D	7.80
891	SANGRUR	MOONAK	S-NPP	75.89548	29.92122	13:18:00	D	10.80
892	SANGRUR	MOONAK	S-NPP	75.84383	29.92306	13:18:00	D	5.40
893	SANGRUR	MOONAK	S-NPP	75.96833	29.92672	13:18:00	D	7.10
894	SANGRUR	MOONAK	S-NPP	75.94976	29.92709	13:18:00	D	11.50
895	SANGRUR	MOONAK	S-NPP	75.89675	29.93592	13:18:00	D	1.80

896	SANGRUR	MOONAK	S-NPP	75.86304	29.94092	13:18:00	D	9.70
897	SANGRUR	MOONAK	S-NPP	75.89962	29.94366	13:18:00	D	8.10
898	SANGRUR	MOONAK	S-NPP	75.90408	29.94443	13:18:00	D	8.10
899	SANGRUR	MOONAK	S-NPP	75.80064	29.94820	13:18:00	D	6.00
900	SANGRUR	MOONAK	S-NPP	75.84109	29.95522	13:18:00	D	6.70
901	SANGRUR	MOONAK	S-NPP	75.92319	29.96221	13:18:00	D	15.30
902	SANGRUR	MOONAK	S-NPP	75.82521	29.96335	13:18:00	D	2.10
903	SANGRUR	MOONAK	S-NPP	75.82649	29.96385	13:18:00	D	2.20
904	SANGRUR	MOONAK	S-NPP	75.89929	29.96530	13:18:00	D	2.50
905	SANGRUR	MOONAK	S-NPP	75.90822	29.96685	13:18:00	D	5.10
906	SANGRUR	MOONAK	S-NPP	75.91267	29.96762	13:18:00	D	5.70
907	SANGRUR	MOONAK	S-NPP	75.81960	29.97352	13:18:00	D	5.60
908	SANGRUR	MOONAK	S-NPP	75.89688	29.97574	13:18:00	D	2.40
909	SANGRUR	MOONAK	S-NPP	75.90134	29.97651	13:18:00	D	3.20
910	SANGRUR	MOONAK	S-NPP	75.89805	29.97653	13:18:00	D	7.50
911	SANGRUR	MOONAK	S-NPP	75.91473	29.97882	13:18:00	D	2.10
912	SANGRUR	MOONAK	S-NPP	75.91586	29.97968	13:18:00	D	3.10
913	SANGRUR	MOONAK	S-NPP	75.90170	29.98080	13:18:00	D	2.60
914	SANGRUR	SANGRUR	S-NPP	75.60258	30.15294	13:18:00	D	3.60
915	SANGRUR	SANGRUR	S-NPP	75.97264	30.15969	13:18:00	D	9.10
916	SANGRUR	SANGRUR	S-NPP	75.97026	30.17008	13:18:00	D	4.70
917	SANGRUR	SANGRUR	S-NPP	75.64164	30.22918	13:18:00	D	3.90
918	SANGRUR	SANGRUR	S-NPP	76.05271	30.27907	13:18:00	D	5.90
919	SANGRUR	SANGRUR	S-NPP	75.97384	30.28338	13:18:00	D	11.70
920	SANGRUR	SANGRUR	S-NPP	75.88293	30.32222	13:18:00	D	5.30
921	SANGRUR	SUNAM	S-NPP	75.75796	29.92986	13:18:00	D	3.80
922	SANGRUR	SUNAM	S-NPP	75.70490	29.93517	13:18:00	D	12.00
923	SANGRUR	SUNAM	S-NPP	75.70557	29.93867	13:18:00	D	3.30
924	SANGRUR	SUNAM	S-NPP	75.71317	29.94025	13:18:00	D	3.20
925	SANGRUR	SUNAM	S-NPP	75.76375	29.94542	13:18:00	D	3.60
926	SANGRUR	SUNAM	S-NPP	75.73644	29.94783	13:18:00	D	2.90

927	SANGRUR	SUNAM	S-NPP	75.94419	29.95140	13:18:00	D	14.80
928	SANGRUR	SUNAM	S-NPP	75.94339	29.95487	13:18:00	D	14.80
929	SANGRUR	SUNAM	S-NPP	75.78975	29.96096	13:18:00	D	2.00
930	SANGRUR	SUNAM	S-NPP	75.77543	29.96205	13:18:00	D	2.60
931	SANGRUR	SUNAM	S-NPP	75.77994	29.96285	13:18:00	D	2.60
932	SANGRUR	SUNAM	S-NPP	75.72707	29.96803	13:18:00	D	18.90
933	SANGRUR	SUNAM	S-NPP	75.68921	29.96860	13:18:00	D	3.30
934	SANGRUR	SUNAM	S-NPP	75.75869	29.97363	13:18:00	D	4.00
935	SANGRUR	SUNAM	S-NPP	75.83752	29.97669	13:18:00	D	2.20
936	SANGRUR	SUNAM	S-NPP	75.81349	29.97970	13:18:00	D	3.60
937	SANGRUR	SUNAM	S-NPP	75.81799	29.98050	13:18:00	D	4.70
938	SANGRUR	SUNAM	S-NPP	75.81718	29.98398	13:18:00	D	4.70
939	SANGRUR	SUNAM	S-NPP	75.68515	29.98612	13:18:00	D	5.90
940	SANGRUR	SUNAM	S-NPP	75.83513	29.98715	13:18:00	D	33.80
941	SANGRUR	SUNAM	S-NPP	75.77880	29.98810	13:18:00	D	2.00
942	SANGRUR	SUNAM	S-NPP	75.83432	29.99064	13:18:00	D	35.30
943	SANGRUR	SUNAM	S-NPP	75.88066	29.99156	13:18:00	D	6.80
944	SANGRUR	SUNAM	S-NPP	75.84087	30.00267	13:18:00	D	3.20
945	SANGRUR	SUNAM	S-NPP	75.99022	30.01803	13:18:00	D	5.00
946	SANGRUR	SUNAM	S-NPP	75.69161	30.04500	13:18:00	D	27.00
947	SANGRUR	SUNAM	S-NPP	75.69029	30.04537	13:18:00	D	23.20
948	SANGRUR	SUNAM	S-NPP	76.07732	30.05837	13:18:00	D	6.70
949	SANGRUR	SUNAM	S-NPP	75.80846	30.06227	13:18:00	D	4.60
950	SANGRUR	SUNAM	S-NPP	75.94044	30.07427	13:18:00	D	7.60
951	SANGRUR	SUNAM	S-NPP	75.95377	30.07657	13:18:00	D	8.00
952	SANGRUR	SUNAM	S-NPP	75.65092	30.07788	13:18:00	D	5.60
953	SANGRUR	SUNAM	S-NPP	75.95296	30.08004	13:18:00	D	8.00
954	SANGRUR	SUNAM	S-NPP	75.65010	30.08139	13:18:00	D	5.50
955	SANGRUR	SUNAM	S-NPP	75.98764	30.08962	13:18:00	D	8.10
956	SANGRUR	SUNAM	S-NPP	75.94626	30.09382	13:18:00	D	5.40
957	SANGRUR	SUNAM	S-NPP	75.94979	30.09391	13:18:00	D	11.60

958	SANGRUR	SUNAM	S-NPP	75.95069	30.09459	13:18:00	D	14.40
959	SANGRUR	SUNAM	S-NPP	76.04789	30.10716	13:18:00	D	2.50
960	SANGRUR	SUNAM	S-NPP	75.75626	30.11105	13:18:00	D	5.20
961	SANGRUR	SUNAM	S-NPP	75.87682	30.11410	13:18:00	D	4.40
962	SANGRUR	SUNAM	S-NPP	75.99099	30.11969	13:18:00	D	12.60
963	SANGRUR	SUNAM	S-NPP	75.63705	30.13747	13:18:00	D	3.40
964	SANGRUR	SUNAM	S-NPP	75.75726	30.17683	13:18:00	D	4.00
965	SAS NAGAR	DERABASSI	S-NPP	76.89926	30.37708	13:18:00	D	3.60
966	TARN TARAN	PATTI	S-NPP	74.58221	31.09607	13:18:00	D	3.80
967	TARN TARAN	PATTI	S-NPP	74.76257	31.14781	13:18:00	D	3.10
968	TARN TARAN	PATTI	S-NPP	74.80675	31.15209	13:18:00	D	1.70
969	TARN TARAN	PATTI	S-NPP	74.84860	31.18574	13:18:00	D	3.20
970	TARN TARAN	PATTI	S-NPP	74.82986	31.20099	13:18:00	D	3.30
971	TARN TARAN	PATTI	S-NPP	74.87465	31.20156	13:18:00	D	7.50
972	TARN TARAN	PATTI	S-NPP	74.84652	31.24212	13:18:00	D	2.40

Details of residue burning events in Haryana on 03-Nov-2018

Event S. No.	District	Tehsil/Block	Satellite	Longitude	Latitude	Time (IST)	Day/Night	Fire Power (W/m²)
1	AMBALA	AMBALA	S-NPP	76.74661	30.21457	13:18:00	D	4.00
2	AMBALA	AMBALA	S-NPP	76.60293	30.25337	13:18:00	D	4.90
3	AMBALA	AMBALA	S-NPP	76.90581	30.26225	13:18:00	D	4.60
4	AMBALA	AMBALA	S-NPP	76.81148	30.27790	13:18:00	D	1.70
5	AMBALA	AMBALA	S-NPP	76.66756	30.27832	13:18:00	D	1.90
6	AMBALA	AMBALA	S-NPP	76.74503	30.32283	13:18:00	D	3.10
7	AMBALA	AMBALA	S-NPP	76.73091	30.32749	13:18:00	D	4.50
8	AMBALA	AMBALA	S-NPP	76.73016	30.33087	13:18:00	D	6.50
9	AMBALA	AMBALA	S-NPP	76.72941	30.33425	13:18:00	D	6.50
10	AMBALA	AMBALA	S-NPP	76.73080	30.33479	13:18:00	D	2.60
11	AMBALA	AMBALA	S-NPP	76.74206	30.38223	13:18:00	D	4.50
12	AMBALA	AMBALA	S-NPP	76.74131	30.38561	13:18:00	D	3.70
13	AMBALA	AMBALA	S-NPP	76.73486	30.39504	13:18:00	D	15.50
14	AMBALA	BARARA	S-NPP	77.13624	30.22679	13:18:00	D	3.50
15	AMBALA	BARARA	S-NPP	76.96808	30.25124	13:18:00	D	3.00
16	BHIWANI	BAWANI_KHERA	S-NPP	76.05810	28.94780	13:18:00	D	3.60
17	FARIDABAD	HODAL	S-NPP	77.52384	27.94531	13:18:00	D	4.50
18	FARIDABAD	PALWAL	S-NPP	77.51282	27.99952	13:18:00	D	2.40
19	FARIDABAD	PALWAL	S-NPP	77.43415	28.01092	13:18:00	D	6.30
20	FARIDABAD	PALWAL	S-NPP	77.39452	28.14472	13:18:00	D	3.30
21	FARIDABAD	PALWAL	S-NPP	77.39380	28.14810	13:18:00	D	3.30
22	FATEHABAD	FATEHABAD	S-NPP	75.37838	29.42703	13:18:00	D	2.60
23	FATEHABAD	FATEHABAD	S-NPP	75.63040	29.42753	13:18:00	D	2.40
24	FATEHABAD	FATEHABAD	S-NPP	75.28548	29.51596	13:18:00	D	3.80
25	FATEHABAD	FATEHABAD	S-NPP	75.72832	29.54687	13:18:00	D	1.70
26	FATEHABAD	FATEHABAD	S-NPP	75.32222	29.54862	13:18:00	D	3.10
27	FATEHABAD	FATEHABAD	S-NPP	75.32365	29.54960	13:18:00	D	6.70
28	FATEHABAD	FATEHABAD	S-NPP	75.40988	29.55788	13:18:00	D	2.00

29	FATEHABAD	FATEHABAD	S-NPP	75.41249	29.56089	13:18:00	D	2.20
30	FATEHABAD	FATEHABAD	S-NPP	75.46009	29.56561	13:18:00	D	7.60
31	FATEHABAD	FATEHABAD	S-NPP	75.46123	29.56721	13:18:00	D	3.70
32	FATEHABAD	FATEHABAD	S-NPP	75.39469	29.58112	13:18:00	D	6.90
33	FATEHABAD	FATEHABAD	S-NPP	75.48120	29.58564	13:18:00	D	6.40
34	FATEHABAD	FATEHABAD	S-NPP	75.42194	29.58975	13:18:00	D	5.20
35	FATEHABAD	FATEHABAD	S-NPP	75.38752	29.59096	13:18:00	D	5.80
36	FATEHABAD	FATEHABAD	S-NPP	75.66264	29.60492	13:18:00	D	6.00
37	FATEHABAD	FATEHABAD	S-NPP	75.65884	29.60660	13:18:00	D	7.20
38	FATEHABAD	FATEHABAD	S-NPP	75.39741	29.61131	13:18:00	D	18.60
39	FATEHABAD	FATEHABAD	S-NPP	75.39658	29.61487	13:18:00	D	23.50
40	FATEHABAD	FATEHABAD	S-NPP	75.71491	29.63129	13:18:00	D	4.20
41	FATEHABAD	FATEHABAD	S-NPP	75.72775	29.63725	13:18:00	D	4.60
42	FATEHABAD	RATIA	S-NPP	75.65397	29.62774	13:18:00	D	4.00
43	FATEHABAD	RATIA	S-NPP	75.65855	29.62856	13:18:00	D	4.60
44	FATEHABAD	RATIA	S-NPP	75.58778	29.64533	13:18:00	D	5.90
45	FATEHABAD	RATIA	S-NPP	75.58696	29.64887	13:18:00	D	3.30
46	FATEHABAD	RATIA	S-NPP	75.53969	29.66626	13:18:00	D	3.30
47	FATEHABAD	RATIA	S-NPP	75.65872	29.66894	13:18:00	D	3.30
48	FATEHABAD	RATIA	S-NPP	75.48477	29.68452	13:18:00	D	3.60
49	FATEHABAD	RATIA	S-NPP	75.66755	29.69248	13:18:00	D	3.30
50	FATEHABAD	RATIA	S-NPP	75.50927	29.70371	13:18:00	D	3.50
51	FATEHABAD	RATIA	S-NPP	75.54243	29.70600	13:18:00	D	7.90
52	FATEHABAD	RATIA	S-NPP	75.54703	29.70683	13:18:00	D	7.10
53	FATEHABAD	RATIA	S-NPP	75.58927	29.71074	13:18:00	D	6.90
54	FATEHABAD	RATIA	S-NPP	75.65586	29.71169	13:18:00	D	3.60
55	FATEHABAD	RATIA	S-NPP	75.58846	29.71427	13:18:00	D	14.40
56	FATEHABAD	RATIA	S-NPP	75.45794	29.71664	13:18:00	D	6.30
57	FATEHABAD	RATIA	S-NPP	75.45246	29.71935	13:18:00	D	4.20
58	FATEHABAD	RATIA	S-NPP	75.45712	29.72019	13:18:00	D	5.00
59	FATEHABAD	RATIA	S-NPP	75.45164	29.72291	13:18:00	D	4.20

60	FATEHABAD	RATIA	S-NPP	75.45628	29.72374	13:18:00	D	5.00
61	FATEHABAD	RATIA	S-NPP	75.55050	29.73322	13:18:00	D	3.60
62	FATEHABAD	RATIA	S-NPP	75.55511	29.73405	13:18:00	D	3.60
63	FATEHABAD	RATIA	S-NPP	75.67509	29.75176	13:18:00	D	10.70
64	FATEHABAD	RATIA	S-NPP	75.67428	29.75528	13:18:00	D	10.70
65	FATEHABAD	RATIA	S-NPP	75.42686	29.76656	13:18:00	D	11.60
66	FATEHABAD	RATIA	S-NPP	75.42136	29.76929	13:18:00	D	12.70
67	FATEHABAD	RATIA	S-NPP	75.45930	29.79986	13:18:00	D	14.60
68	FATEHABAD	TOHANA	S-NPP	75.80045	29.54140	13:18:00	D	4.30
69	FATEHABAD	TOHANA	S-NPP	75.83761	29.58444	13:18:00	D	3.10
70	FATEHABAD	TOHANA	S-NPP	75.84471	29.61482	13:18:00	D	20.00
71	FATEHABAD	TOHANA	S-NPP	75.84390	29.61832	13:18:00	D	20.00
72	FATEHABAD	TOHANA	S-NPP	75.69801	29.64293	13:18:00	D	10.70
73	FATEHABAD	TOHANA	S-NPP	75.69719	29.64645	13:18:00	D	25.60
74	FATEHABAD	TOHANA	S-NPP	75.93980	29.65309	13:18:00	D	2.00
75	FATEHABAD	TOHANA	S-NPP	75.94317	29.65371	13:18:00	D	6.00
76	FATEHABAD	TOHANA	S-NPP	75.94794	29.65816	13:18:00	D	4.90
77	FATEHABAD	TOHANA	S-NPP	75.91349	29.66657	13:18:00	D	14.30
78	FATEHABAD	TOHANA	S-NPP	75.78107	29.67228	13:18:00	D	21.90
79	FATEHABAD	TOHANA	S-NPP	75.73329	29.67480	13:18:00	D	3.40
80	FATEHABAD	TOHANA	S-NPP	75.88629	29.68356	13:18:00	D	4.60
81	FATEHABAD	TOHANA	S-NPP	75.79221	29.68518	13:18:00	D	4.50
82	FATEHABAD	TOHANA	S-NPP	75.76344	29.68741	13:18:00	D	3.30
83	FATEHABAD	TOHANA	S-NPP	75.80577	29.68757	13:18:00	D	7.30
84	FATEHABAD	TOHANA	S-NPP	75.87123	29.68817	13:18:00	D	4.40
85	FATEHABAD	TOHANA	S-NPP	75.79140	29.68869	13:18:00	D	4.50
86	FATEHABAD	TOHANA	S-NPP	75.81400	29.69266	13:18:00	D	9.40
87	FATEHABAD	TOHANA	S-NPP	75.76928	29.70303	13:18:00	D	2.30
88	FATEHABAD	TOHANA	S-NPP	75.70779	29.70321	13:18:00	D	3.50
89	FATEHABAD	TOHANA	S-NPP	75.77380	29.70383	13:18:00	D	3.40
90	FATEHABAD	TOHANA	S-NPP	75.71234	29.70400	13:18:00	D	3.50

91	FATEHABAD	TOHANA	S-NPP	75.72598	29.70640	13:18:00	D	4.90
92	FATEHABAD	TOHANA	S-NPP	75.75405	29.70766	13:18:00	D	24.10
93	FATEHABAD	TOHANA	S-NPP	75.86193	29.70834	13:18:00	D	4.60
94	FATEHABAD	TOHANA	S-NPP	75.75324	29.71117	13:18:00	D	24.10
95	FATEHABAD	TOHANA	S-NPP	75.86113	29.71184	13:18:00	D	11.80
96	FATEHABAD	TOHANA	S-NPP	75.70990	29.71455	13:18:00	D	6.00
97	FATEHABAD	TOHANA	S-NPP	75.86033	29.71533	13:18:00	D	11.80
98	FATEHABAD	TOHANA	S-NPP	75.92548	29.71582	13:18:00	D	1.60
99	FATEHABAD	TOHANA	S-NPP	75.85053	29.71725	13:18:00	D	5.80
100	FATEHABAD	TOHANA	S-NPP	75.87380	29.71768	13:18:00	D	4.80
101	FATEHABAD	TOHANA	S-NPP	75.77056	29.71785	13:18:00	D	4.90
102	FATEHABAD	TOHANA	S-NPP	75.87830	29.71846	13:18:00	D	4.80
103	FATEHABAD	TOHANA	S-NPP	75.75082	29.72169	13:18:00	D	6.30
104	FATEHABAD	TOHANA	S-NPP	75.79318	29.72179	13:18:00	D	4.00
105	FATEHABAD	TOHANA	S-NPP	75.78786	29.72451	13:18:00	D	4.00
106	FATEHABAD	TOHANA	S-NPP	75.79237	29.72530	13:18:00	D	4.00
107	FATEHABAD	TOHANA	S-NPP	75.79076	29.73230	13:18:00	D	4.80
108	FATEHABAD	TOHANA	S-NPP	75.79528	29.73309	13:18:00	D	6.70
109	FATEHABAD	TOHANA	S-NPP	75.72173	29.73447	13:18:00	D	4.80
110	FATEHABAD	TOHANA	S-NPP	75.85551	29.73629	13:18:00	D	1.00
111	FATEHABAD	TOHANA	S-NPP	75.85390	29.74328	13:18:00	D	4.20
112	FATEHABAD	TOHANA	S-NPP	75.87187	29.74639	13:18:00	D	16.40
113	FATEHABAD	TOHANA	S-NPP	75.71848	29.74851	13:18:00	D	9.60
114	FATEHABAD	TOHANA	S-NPP	75.86852	29.74969	13:18:00	D	8.20
115	FATEHABAD	TOHANA	S-NPP	75.71071	29.76174	13:18:00	D	5.00
116	FATEHABAD	TOHANA	S-NPP	75.79835	29.76997	13:18:00	D	20.00
117	FATEHABAD	TOHANA	S-NPP	75.82086	29.77396	13:18:00	D	1.50
118	FATEHABAD	TOHANA	S-NPP	75.79222	29.77617	13:18:00	D	5.00
119	FATEHABAD	TOHANA	S-NPP	75.77335	29.77648	13:18:00	D	3.30
120	FATEHABAD	TOHANA	S-NPP	75.77786	29.77728	13:18:00	D	3.60
121	FATEHABAD	TOHANA	S-NPP	75.82906	29.77904	13:18:00	D	7.90

122	FATEHABAD	TOHANA	S-NPP	75.76398	29.79670	13:18:00	D	16.60
123	FATEHABAD	TOHANA	S-NPP	75.76316	29.80020	13:18:00	D	16.60
124	FATEHABAD	TOHANA	S-NPP	75.78577	29.80417	13:18:00	D	3.90
125	FATEHABAD	TOHANA	S-NPP	75.79028	29.80496	13:18:00	D	5.50
126	HISAR	HANSI	S-NPP	75.92960	29.11379	13:18:00	D	8.20
127	HISAR	HISAR	S-NPP	75.72760	29.37278	13:18:00	D	4.60
128	HISAR	HISAR	S-NPP	75.73135	29.37711	13:18:00	D	2.10
129	HISAR	HISAR	S-NPP	75.90263	29.51940	13:18:00	D	2.40
130	HISAR	HISAR	S-NPP	75.93613	29.53612	13:18:00	D	3.80
131	HISAR	NARNAUND	S-NPP	76.07005	29.19312	13:18:00	D	2.50
132	HISAR	NARNAUND	S-NPP	76.17773	29.22630	13:18:00	D	6.30
133	JIND	JIND	S-NPP	76.37449	29.39024	13:18:00	D	4.10
134	JIND	JIND	S-NPP	76.48700	29.49347	13:18:00	D	6.10
135	JIND	JIND	S-NPP	76.44846	29.52608	13:18:00	D	1.40
136	JIND	JIND	S-NPP	76.44885	29.52790	13:18:00	D	3.10
137	JIND	NARWANA	S-NPP	76.08971	29.51214	13:18:00	D	5.30
138	JIND	NARWANA	S-NPP	76.06855	29.54457	13:18:00	D	7.90
139	JIND	NARWANA	S-NPP	76.10474	29.54722	13:18:00	D	2.80
140	JIND	NARWANA	S-NPP	76.11611	29.57801	13:18:00	D	12.90
141	JIND	NARWANA	S-NPP	76.11260	29.57845	13:18:00	D	21.10
142	JIND	NARWANA	S-NPP	76.20568	29.58617	13:18:00	D	4.90
143	JIND	NARWANA	S-NPP	76.18365	29.64840	13:18:00	D	2.60
144	JIND	NARWANA	S-NPP	75.95130	29.65874	13:18:00	D	2.20
145	JIND	NARWANA	S-NPP	75.96387	29.68995	13:18:00	D	15.30
146	JIND	NARWANA	S-NPP	75.96834	29.69073	13:18:00	D	15.30
147	JIND	NARWANA	S-NPP	76.09116	29.69783	13:18:00	D	10.20
148	JIND	NARWANA	S-NPP	76.09133	29.73748	13:18:00	D	4.00
149	JIND	NARWANA	S-NPP	76.16898	29.80626	13:18:00	D	3.50
150	KAITHAL	GUHLA	S-NPP	76.26514	29.94602	13:18:00	D	2.20
151	KAITHAL	GUHLA	S-NPP	76.42271	30.02290	13:18:00	D	1.90
152	KAITHAL	GUHLA	S-NPP	76.30094	30.11115	13:18:00	D	2.80

153	KAITHAL	KAITHAL	S-NPP	76.45010	29.54236	13:18:00	D	3.80
154	KAITHAL	KAITHAL	S-NPP	76.44934	29.54579	13:18:00	D	8.00
155	KAITHAL	KAITHAL	S-NPP	76.29666	29.60530	13:18:00	D	2.40
156	KAITHAL	KAITHAL	S-NPP	76.29729	29.60717	13:18:00	D	5.80
157	KAITHAL	KAITHAL	S-NPP	76.29589	29.60874	13:18:00	D	2.40
158	KAITHAL	KAITHAL	S-NPP	76.36769	29.61024	13:18:00	D	1.60
159	KAITHAL	KAITHAL	S-NPP	76.35237	29.61834	13:18:00	D	5.60
160	KAITHAL	KAITHAL	S-NPP	76.34860	29.61967	13:18:00	D	5.70
161	KAITHAL	KAITHAL	S-NPP	76.32230	29.63655	13:18:00	D	9.90
162	KAITHAL	KAITHAL	S-NPP	76.33656	29.65331	13:18:00	D	7.30
163	KAITHAL	KAITHAL	S-NPP	76.31779	29.82860	13:18:00	D	2.50
164	KAITHAL	KAITHAL	S-NPP	76.31578	29.82976	13:18:00	D	5.70
165	KAITHAL	KAITHAL	S-NPP	76.31702	29.83204	13:18:00	D	2.50
166	KAITHAL	KAITHAL	S-NPP	76.38029	29.85011	13:18:00	D	4.40
167	KARNAL	ASSANDH	S-NPP	76.56902	29.46483	13:18:00	D	3.40
168	KARNAL	ASSANDH	S-NPP	76.60166	29.47751	13:18:00	D	2.80
169	KARNAL	ASSANDH	S-NPP	76.58432	29.49583	13:18:00	D	7.00
170	KARNAL	ASSANDH	S-NPP	76.64049	29.50183	13:18:00	D	6.80
171	KARNAL	ASSANDH	S-NPP	76.59486	29.50826	13:18:00	D	3.20
172	KARNAL	ASSANDH	S-NPP	76.63321	29.51476	13:18:00	D	4.70
173	KARNAL	ASSANDH	S-NPP	76.71785	29.55024	13:18:00	D	6.50
174	KARNAL	ASSANDH	S-NPP	76.76585	29.55124	13:18:00	D	8.70
175	KARNAL	ASSANDH	S-NPP	76.67594	29.56086	13:18:00	D	2.60
176	KARNAL	ASSANDH	S-NPP	76.64556	29.56175	13:18:00	D	4.50
177	KARNAL	ASSANDH	S-NPP	76.71909	29.56456	13:18:00	D	5.10
178	KARNAL	ASSANDH	S-NPP	76.72332	29.56527	13:18:00	D	5.10
179	KARNAL	ASSANDH	S-NPP	76.69720	29.56705	13:18:00	D	2.50
180	KARNAL	ASSANDH	S-NPP	76.69640	29.56782	13:18:00	D	1.70
181	KARNAL	ASSANDH	S-NPP	76.67151	29.58387	13:18:00	D	2.80
182	KARNAL	ASSANDH	S-NPP	76.63076	29.60876	13:18:00	D	1.90
183	KARNAL	ASSANDH	S-NPP	76.65250	29.63011	13:18:00	D	10.00

184	KARNAL	GHARAUNDA	S-NPP	76.83249	29.56592	13:18:00	D	2.10
185	KARNAL	INDRI	S-NPP	77.17690	29.91066	13:18:00	D	2.50
186	KARNAL	KARNAL	S-NPP	77.10039	29.76860	13:18:00	D	4.40
187	KURUKSHETRA	PEHOWA	S-NPP	76.55634	29.95817	13:18:00	D	5.30
188	KURUKSHETRA	PEHOWA	S-NPP	76.68722	30.02540	13:18:00	D	16.00
189	KURUKSHETRA	SHAHABAD	S-NPP	76.88146	30.17406	13:18:00	D	3.10
190	ROHTAK	MAHAM	S-NPP	76.42667	28.95325	13:18:00	D	4.30
191	SIRSA	RANIA	S-NPP	74.73036	29.56460	13:18:00	D	7.60
192	SIRSA	SIRSA	S-NPP	74.95616	29.44139	13:18:00	D	17.10
193	SIRSA	SIRSA	S-NPP	75.13485	29.57140	13:18:00	D	3.20
194	SIRSA	SIRSA	S-NPP	75.13229	29.58221	13:18:00	D	3.50
195	SIRSA	SIRSA	S-NPP	74.93932	29.58510	13:18:00	D	3.10
196	SIRSA	SIRSA	S-NPP	75.20107	29.75295	13:18:00	D	5.60
197	SONIPAT	GANAUR	S-NPP	77.00533	29.10267	02:00:00	N	0.70
198	SONIPAT	SONIPAT	S-NPP	76.87259	29.12718	13:18:00	D	2.00
199	YAMUNANAGAR	CHHACHHRAULII	S-NPP	77.27923	30.25372	13:18:00	D	3.90
200	YAMUNANAGAR	JAGADHRI	S-NPP	77.26595	30.21695	13:18:00	D	3.20
201	YAMUNANAGAR	JAGADHRI	S-NPP	77.27175	30.24904	13:18:00	D	4.00
202	YAMUNANAGAR	JAGADHRI	S-NPP	77.27103	30.25238	13:18:00	D	4.00

Details of residue burning events in Uttar Pradesh on 03-Nov-2018

Event S.No.	District	Tehsil/Block	Satellite	Longitude	Latitude	Time (IST)	Day/Night	Fire Power (W/m²)
1	ALIGARH	KHAIR	S-NPP	77.55708	27.96821	13:18:00	D	3.70
2	ALIGARH	KHAIR	S-NPP	77.55637	27.97158	13:18:00	D	3.70
3	ALIGARH	KHAIR	S-NPP	77.55660	27.97190	13:18:00	D	4.50
4	ALIGARH	KHAIR	S-NPP	77.68460	27.98210	13:18:00	D	3.20
5	ALIGARH	KHAIR	S-NPP	77.55435	28.00291	13:18:00	D	4.40
6	ALIGARH	KHAIR	S-NPP	77.53593	28.01032	13:18:00	D	10.00
7	ALIGARH	KHAIR	S-NPP	77.55013	28.02314	13:18:00	D	6.20
8	ALIGARH	KHAIR	S-NPP	77.53648	28.02786	13:18:00	D	2.60
9	ALIGARH	KHAIR	S-NPP	77.53986	28.03190	13:18:00	D	4.10
10	ALIGARH	KHAIR	S-NPP	77.57780	28.09827	13:18:00	D	3.20
11	ALIGARH	KOL	S-NPP	78.27820	27.82629	13:18:00	D	2.80
12	AMBEDKARNAGAR	AKBARPUR	S-NPP	82.47953	26.31793	13:18:00	D	4.80
13	AURAIYA	BIDHUNA	S-NPP	79.70877	26.80190	13:18:00	D	2.70
14	AURAIYA	BIDHUNA	S-NPP	79.71262	26.80249	13:18:00	D	5.50
15	AURAIYA	BIDHUNA	S-NPP	79.68979	26.83978	13:18:00	D	1.10
16	BAHRAICH	BAHRAICH	S-NPP	81.83689	27.44661	13:18:00	D	4.60
17	BAHRAICH	KAISARGANJ	S-NPP	81.53807	27.15572	13:18:00	D	4.00
18	BAHRAICH	NANPARA	S-NPP	81.43518	28.16438	13:18:00	D	4.30
19	BALLIA	BALLIA	S-NPP	84.01331	25.90781	13:18:00	D	4.40
20	BALRAMPUR	TULSIPUR	S-NPP	82.63883	27.47639	13:18:00	D	3.90
21	BANDA	BABERU	S-NPP	80.71899	25.41117	13:18:00	D	1.50
22	BARABANKI	FATEHPUR	S-NPP	81.23482	27.07520	13:18:00	D	1.90
23	BARABANKI	FATEHPUR	S-NPP	81.15331	27.24163	13:18:00	D	2.30
24	BARABANKI	H Aidargarh	S-NPP	81.40179	26.79577	13:18:00	D	2.00
25	BARABANKI	NAWABGANJ	S-NPP	81.26575	26.84634	13:18:00	D	2.50
26	BARABANKI	NAWABGANJ	S-NPP	81.25411	26.88964	13:18:00	D	2.30
27	BARABANKI	SIR AULI GAUSPUR	S-NPP	81.45539	27.05029	13:18:00	D	3.70
28	BAREILLY	BAHERI	S-NPP	79.46114	28.86259	13:18:00	D	9.10

29	DEORIA	BARHAJ	S-NPP	83.85097	26.26697	13:18:00	D	2.60
30	DEORIA	BARHAJ	S-NPP	83.79114	26.34396	13:18:00	D	2.30
31	DEORIA	DEORIA	S-NPP	83.97218	26.54671	13:18:00	D	1.80
32	DEORIA	DEORIA	S-NPP	83.96043	26.62558	13:18:00	D	3.20
33	DEORIA	DEORIA	S-NPP	83.95846	26.62578	13:18:00	D	4.90
34	ETAWAH	BHARTHNA	S-NPP	79.20119	26.78191	13:18:00	D	2.70
35	ETAWAH	BHARTHNA	S-NPP	79.20055	26.78522	13:18:00	D	3.00
36	ETAWAH	BHARTHNA	S-NPP	79.27637	26.95240	13:18:00	D	2.40
37	ETAWAH	SAIFAI	S-NPP	79.04772	26.92028	13:18:00	D	2.00
38	FATEHPUR	FATEHPUR	S-NPP	80.90916	25.72223	13:18:00	D	1.70
39	FATEHPUR	FATEHPUR	S-NPP	81.01366	25.83537	13:18:00	D	1.80
40	FATEHPUR	KHAGA	S-NPP	81.26884	25.79452	13:18:00	D	2.40
41	FIROZABAD	SIKOHABAD	S-NPP	78.63469	27.06522	13:18:00	D	2.50
42	GAUTAMBUDHNAGAR	DADRI	S-NPP	77.46513	28.61606	02:00:00	N	0.40
43	GAUTAMBUDHNAGAR	DADRI	S-NPP	77.47359	28.62437	02:00:00	N	0.80
44	GHAZIABAD	HAPUR	S-NPP	77.57278	28.65660	02:00:00	N	0.90
45	GORAKHPUR	GORAKHPUR	S-NPP	83.51775	26.77581	13:18:00	D	3.00
46	HARDOI	BILGRAM	S-NPP	80.13143	26.98374	13:18:00	D	1.10
47	HARDOI	BILGRAM	S-NPP	80.19090	27.09700	13:18:00	D	2.40
48	HARDOI	HARDOI	S-NPP	79.96235	27.38467	13:18:00	D	6.50
49	HARDOI	HARDOI	S-NPP	79.96828	27.39575	13:18:00	D	7.90
50	HARDOI	HARDOI	S-NPP	79.94905	27.41330	13:18:00	D	3.70
51	HARDOI	HARDOI	S-NPP	79.96336	27.42222	13:18:00	D	3.10
52	HARDOI	SHAHABAD	S-NPP	79.88282	27.64371	13:18:00	D	3.70
53	HARDOI	SIWAIJPUR	S-NPP	79.86794	27.24933	13:18:00	D	1.50
54	KANPUR	BILHAUR	S-NPP	80.03644	26.72295	13:18:00	D	3.30
55	KANPUR DEHAT	RASULABAD	S-NPP	79.90157	26.70274	13:18:00	D	2.60
56	KAUSHAMBI	MANJHANPUR	S-NPP	81.34785	25.40465	13:18:00	D	9.00
57	KAUSHAMBI	MANJHANPUR	S-NPP	81.32961	25.44152	13:18:00	D	2.20
58	KAUSHAMBI	MANJHANPUR	S-NPP	81.34923	25.44431	13:18:00	D	1.70
59	KHERI	GOLA	S-NPP	80.46899	28.15152	13:18:00	D	2.00

60	KHERI	GOLA	S-NPP	80.32986	28.19837	13:18:00	D	3.10
61	KHERI	MOHMADI	S-NPP	80.24857	28.06513	13:18:00	D	10.60
62	KHERI	NIGHASAN	S-NPP	80.96351	28.39926	13:18:00	D	2.30
63	KHERI	NIGHASAN	S-NPP	80.95061	28.40094	13:18:00	D	1.70
64	KUSHINAGAR	HATA	S-NPP	83.68868	26.86082	13:18:00	D	5.20
65	KUSHINAGAR	HATA	S-NPP	83.62547	26.92621	13:18:00	D	6.60
66	LACKNOW	MOHANLAL GANJ	S-NPP	81.10400	26.66274	13:18:00	D	3.80
67	LACKNOW	MOHANLAL GANJ	S-NPP	81.17685	26.69167	13:18:00	D	1.70
68	LACKNOW	MOHANLAL GANJ	S-NPP	81.21565	26.70400	13:18:00	D	3.10
69	LACKNOW	MOHANLAL GANJ	S-NPP	81.12969	26.77461	13:18:00	D	2.90
70	MAHAMAYANAGAR	SIKANDRA RAO	S-NPP	78.23586	27.60593	13:18:00	D	1.50
71	MAHARAJGANJ	NICHLAUL	S-NPP	83.69476	27.11428	13:18:00	D	3.90
72	MAHARAJGANJ	NICHLAUL	S-NPP	83.69013	27.27902	13:18:00	D	2.50
73	MAHARAJGANJ	NICHLAUL	S-NPP	83.65840	27.32071	13:18:00	D	10.20
74	MAINPURI	BHOGAON	S-NPP	79.21373	27.05133	13:18:00	D	1.70
75	MAINPURI	BHOGAON	S-NPP	79.21506	27.06515	13:18:00	D	1.50
76	MAINPURI	BHOGAON	S-NPP	79.12571	27.15610	13:18:00	D	5.70
77	MAINPURI	MAINPURI	S-NPP	79.03928	27.19034	13:18:00	D	2.00
78	MAINPURI	MAINPURI	S-NPP	78.83327	27.32724	13:18:00	D	1.90
79	MATHURA	CHHATA	S-NPP	77.44646	27.57479	13:18:00	D	4.70
80	MATHURA	CHHATA	S-NPP	77.50951	27.57828	13:18:00	D	3.30
81	MATHURA	CHHATA	S-NPP	77.53058	27.59928	13:18:00	D	1.90
82	MATHURA	CHHATA	S-NPP	77.52365	27.61214	13:18:00	D	2.80
83	MATHURA	CHHATA	S-NPP	77.44722	27.63820	13:18:00	D	2.40
84	MATHURA	CHHATA	S-NPP	77.42508	27.66256	13:18:00	D	4.30
85	MATHURA	CHHATA	S-NPP	77.36718	27.67396	13:18:00	D	2.20
86	MATHURA	CHHATA	S-NPP	77.51134	27.67695	13:18:00	D	7.50
87	MATHURA	CHHATA	S-NPP	77.48051	27.68232	13:18:00	D	1.30
88	MATHURA	CHHATA	S-NPP	77.40291	27.68694	13:18:00	D	8.10
89	MATHURA	CHHATA	S-NPP	77.40704	27.68762	13:18:00	D	8.10
90	MATHURA	CHHATA	S-NPP	77.50852	27.69048	13:18:00	D	3.70

91	MATHURA	CHHATA	S-NPP	77.50301	27.69656	13:18:00	D	5.50
92	MATHURA	CHHATA	S-NPP	77.50711	27.69724	13:18:00	D	5.50
93	MATHURA	CHHATA	S-NPP	77.50640	27.70063	13:18:00	D	25.40
94	MATHURA	CHHATA	S-NPP	77.43786	27.70327	13:18:00	D	10.00
95	MATHURA	CHHATA	S-NPP	77.36903	27.70589	13:18:00	D	4.00
96	MATHURA	CHHATA	S-NPP	77.39451	27.70661	13:18:00	D	2.40
97	MATHURA	CHHATA	S-NPP	77.48788	27.70806	13:18:00	D	30.40
98	MATHURA	CHHATA	S-NPP	77.41513	27.71002	13:18:00	D	5.20
99	MATHURA	CHHATA	S-NPP	77.41441	27.71342	13:18:00	D	4.60
100	MATHURA	CHHATA	S-NPP	77.37444	27.72084	13:18:00	D	4.80
101	MATHURA	CHHATA	S-NPP	77.37419	27.72388	13:18:00	D	3.80
102	MATHURA	CHHATA	S-NPP	77.38610	27.72628	13:18:00	D	3.70
103	MATHURA	CHHATA	S-NPP	77.54311	27.72768	13:18:00	D	4.50
104	MATHURA	CHHATA	S-NPP	77.59691	27.73305	13:18:00	D	1.30
105	MATHURA	CHHATA	S-NPP	77.36721	27.73676	13:18:00	D	3.60
106	MATHURA	CHHATA	S-NPP	77.42152	27.74237	13:18:00	D	12.20
107	MATHURA	CHHATA	S-NPP	77.42081	27.74576	13:18:00	D	4.40
108	MATHURA	CHHATA	S-NPP	77.36023	27.74963	13:18:00	D	1.70
109	MATHURA	CHHATA	S-NPP	77.36778	27.75442	13:18:00	D	1.40
110	MATHURA	CHHATA	S-NPP	77.46389	27.76349	13:18:00	D	3.10
111	MATHURA	CHHATA	S-NPP	77.33871	27.77063	13:18:00	D	2.00
112	MATHURA	CHHATA	S-NPP	77.38144	27.77075	13:18:00	D	1.80
113	MATHURA	CHHATA	S-NPP	77.49146	27.83457	13:18:00	D	12.60
114	MATHURA	CHHATA	S-NPP	77.52357	27.88589	13:18:00	D	4.80
115	MATHURA	CHHATA	S-NPP	77.52216	27.89265	13:18:00	D	5.70
116	MATHURA	CHHATA	S-NPP	77.52145	27.89602	13:18:00	D	5.70
117	MATHURA	CHHATA	S-NPP	77.52075	27.89940	13:18:00	D	6.60
118	MATHURA	MAT	S-NPP	77.77169	27.84231	13:18:00	D	3.70
119	MATHURA	MAT	S-NPP	77.62619	27.85671	13:18:00	D	2.50
120	MATHURA	MAT	S-NPP	77.74988	27.90944	13:18:00	D	3.20
121	MATHURA	MATHURA	S-NPP	77.65987	27.37897	13:18:00	D	2.20

122	MATHURA	MATHURA	S-NPP	77.40240	27.49767	13:18:00	D	2.10
123	MATHURA	MATHURA	S-NPP	77.55586	27.53704	13:18:00	D	11.20
124	MATHURA	MATHURA	S-NPP	77.55622	27.53706	13:18:00	D	19.90
125	MATHURA	MATHURA	S-NPP	77.55995	27.53771	13:18:00	D	9.40
126	MATHURA	MATHURA	S-NPP	77.43978	27.54559	13:18:00	D	4.70
127	PILHIBHIT	BISALPUR	S-NPP	79.92316	28.16316	13:18:00	D	2.70
128	PILHIBHIT	BISALPUR	S-NPP	79.89758	28.36555	13:18:00	D	4.60
129	PILHIBHIT	PILHIBHIT	S-NPP	79.80774	28.87293	13:18:00	D	2.00
130	PILHIBHIT	PURANPUR	S-NPP	80.14332	28.35150	13:18:00	D	5.10
131	PILHIBHIT	PURANPUR	S-NPP	80.16706	28.35496	13:18:00	D	3.20
132	PILHIBHIT	PURANPUR	S-NPP	80.20758	28.37793	13:18:00	D	7.60
133	PILHIBHIT	PURANPUR	S-NPP	80.02573	28.39451	13:18:00	D	2.50
134	PILHIBHIT	PURANPUR	S-NPP	80.02968	28.39509	13:18:00	D	2.50
135	PILHIBHIT	PURANPUR	S-NPP	80.14770	28.41565	13:18:00	D	2.80
136	PILHIBHIT	PURANPUR	S-NPP	80.31518	28.43637	13:18:00	D	2.60
137	PILHIBHIT	PURANPUR	S-NPP	80.10010	28.45311	13:18:00	D	2.50
138	PILHIBHIT	PURANPUR	S-NPP	80.20501	28.45811	13:18:00	D	9.00
139	PILHIBHIT	PURANPUR	S-NPP	80.06537	28.46510	13:18:00	D	7.50
140	PILHIBHIT	PURANPUR	S-NPP	80.12029	28.50292	13:18:00	D	1.70
141	PILHIBHIT	PURANPUR	S-NPP	80.18099	28.59370	13:18:00	D	1.60
142	PILHIBHIT	PURANPUR	NOAA-18	80.24901	28.72576	19:46:00	N	6.00
143	PRATAPGARH	PATTI	S-NPP	82.24995	25.89952	13:18:00	D	3.50
144	RAIBEARELI	MAHARAJGANG	S-NPP	81.23194	26.44079	13:18:00	D	3.90
145	RAMPUR	BILASPUR	S-NPP	79.30134	28.81147	13:18:00	D	3.20
146	RAMPUR	BILASPUR	S-NPP	79.24842	28.94217	13:18:00	D	4.50
147	RAMPUR	BILASPUR	S-NPP	79.26166	28.97814	13:18:00	D	2.50
148	SHAHJAHANPUR	PUWANYA	S-NPP	80.03497	27.97008	13:18:00	D	1.50
149	SHAHJAHANPUR	PUWANYA	S-NPP	80.00325	28.03631	13:18:00	D	2.80
150	SHAHJAHANPUR	PUWANYA	S-NPP	80.22266	28.13990	13:18:00	D	2.90
151	SHAHJAHANPUR	PUWANYA	S-NPP	80.09277	28.14141	13:18:00	D	2.30
152	SHAHJAHANPUR	PUWANYA	S-NPP	80.20888	28.17071	13:18:00	D	2.70

153	SHAHJAHANPUR	PUWANYA	S-NPP	80.19246	28.17175	13:18:00	D	3.50
154	SHAHJAHANPUR	PUWANYA	S-NPP	80.14350	28.19537	13:18:00	D	8.90
155	SHAHJAHANPUR	PUWANYA	S-NPP	80.20728	28.24559	13:18:00	D	6.60
156	SHAHJAHANPUR	PUWANYA	S-NPP	80.13369	28.24852	13:18:00	D	3.40
157	SHAHJAHANPUR	PUWANYA	S-NPP	80.18573	28.27572	13:18:00	D	7.20
158	SHAHJAHANPUR	SHAHJAHANPUR	S-NPP	79.88384	27.74507	13:18:00	D	2.50
159	SHAHJAHANPUR	SHAHJAHANPUR	S-NPP	79.87253	27.78420	13:18:00	D	3.50
160	SHAHJAHANPUR	SHAHJAHANPUR	S-NPP	79.83862	27.88074	13:18:00	D	1.80
161	SHAHJAHANPUR	SHAHJAHANPUR	S-NPP	79.87341	27.97350	13:18:00	D	2.20
162	SHAHJAHANPUR	TILHAR	S-NPP	79.76884	28.10637	13:18:00	D	1.60
163	SHAHJAHANPUR	TILHAR	S-NPP	79.69665	28.19085	13:18:00	D	3.00
164	SHAHJAHANPUR	TILHAR	S-NPP	79.70055	28.19143	13:18:00	D	2.40
165	SHRAWASTI	BHINGA	S-NPP	82.03648	27.64114	13:18:00	D	4.20
166	SHRAWASTI	BHINGA	S-NPP	81.64923	27.80430	13:18:00	D	3.20
167	SHRAWASTI	BHINGA	S-NPP	81.90195	27.82793	13:18:00	D	2.90
168	SHRAWASTI	IKAUNA	S-NPP	81.80479	27.58868	13:18:00	D	2.00
169	SIDDHARTHANAGAR	BANSI	S-NPP	82.90475	27.11333	13:18:00	D	3.90
170	SIDDHARTHANAGAR	DOMARIYAGANJ	S-NPP	82.62791	27.11983	13:18:00	D	3.70
171	SIDDHARTHANAGAR	DOMARIYAGANJ	S-NPP	82.53906	27.28071	13:18:00	D	3.30
172	SIDDHARTHANAGAR	DOMARIYAGANJ	S-NPP	82.65215	27.28833	13:18:00	D	4.90
173	SIDDHARTHANAGAR	DOMARIYAGANJ	S-NPP	82.51521	27.29523	13:18:00	D	2.10
174	SIDDHARTHANAGAR	NAUGARH	S-NPP	83.09337	27.41979	13:18:00	D	8.20
175	SIDDHARTHANAGAR	SHOHRATGARH	S-NPP	82.85017	27.49622	13:18:00	D	1.90
176	SITAPUR	MAHMUDABAD	S-NPP	81.17165	27.27876	13:18:00	D	2.40
177	SITAPUR	MISRIK	S-NPP	80.56927	27.58775	13:18:00	D	5.00
178	SITAPUR	SITAPUR	S-NPP	80.76278	27.78539	13:18:00	D	3.40
179	UNNAO	PURWA	S-NPP	80.91716	26.43555	13:18:00	D	2.70
180	UNNAO	UNNAO	S-NPP	80.58620	26.33755	13:18:00	D	1.60
181	UNNAO	UNNAO	S-NPP	80.61009	26.56071	13:18:00	D	6.90

The study used images received from following Satellites at IARI Satellite Ground Station

S. No.	Satellite Name	Sensor	Resolution (meter)	Day / Night Passes
1.	Suomi NPP	VIIRS	375 / 1000	Both
2.	Terra	MODIS	1000	Both
3.	Aqua	MODIS	1000	Both
4.	NOAA – 18	AVHRR	1000	Night
5.	NOAA – 19	AVHRR	1000	Night
6.	Metop - 1	AVHRR	1000	Night
7.	Metop - 2	AVHRR	1000	Night

Study Team

ICAR – HQ	Dr K. Alagusundaram	DDG (Agril. Engg.)	ddgengg@icar.org.in
	Dr S. Bhaskar	ADG (NRM)	adgagroandaf@gmail.com
ICAR - IARI	Dr V.K. Sehgal	Professor & Nodal Scientist	iaricreams@gmail.com yk.sehgal@icar.gov.in
	Dr Rajkumar Dhakar	Scientist	rajdhakar.iari@gmail.com
	Shri Rakeshwar Verma	Chief Technical Officer	rakeshwar.verma@icar.gov.in
	Mr Aakash Chhabra	SRF (NICRA)	aakash.chhabra7489@gmail.com
ICAR - ATARI	Dr Rajbir Singh	Director ATARI (Zone-1)	rajbirsingh.zpd@gmail.com
	Dr U.S. Gautam	Director ATARI (Zone-IV)	zpdicarkanpur@gmail.com
ICAR - IASRI	Dr RajenderParsad	Principal Scientist	rajender.parsad@icar.gov.in

GIS Maps of fire events can be visualized online on ICAR KRISHI & CREAMS Geoportal

websites:<http://geoportal.icar.gov.in:8080/geoexplorer/composer/>

<http://creams.iari.res.in:8080/geoexplorer/composer/>
