

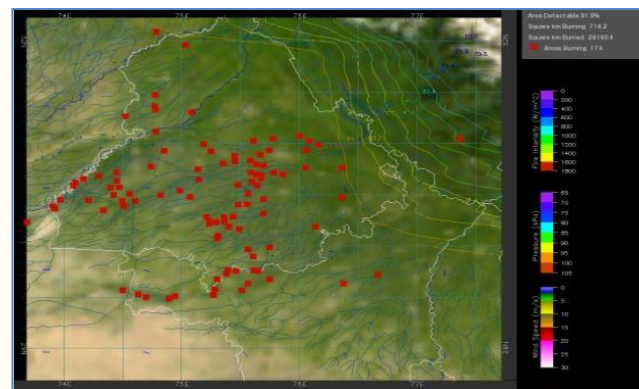
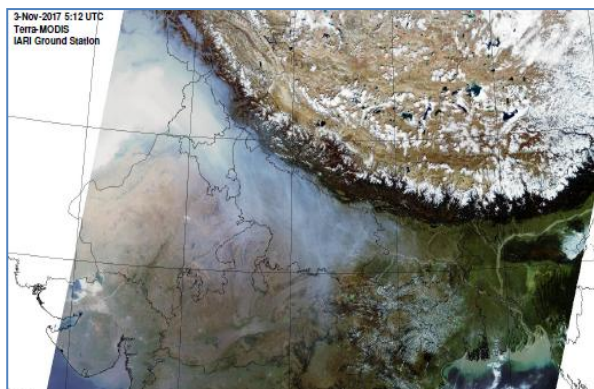


MONITORING PADDY RESIDUE BURNING IN NORTH INDIA USING SATELLITE REMOTE SENSING DURING 2018

**Bulletin
No. 23**

**Events Date:
23-Oct-2018**

**Issued on:
24-Oct-2018**



Prepared by:

**Consortium for Research on Agroecosystem Monitoring and Modeling from Space (CREAMS) Laboratory,
Division of Agricultural Physics, ICAR – Indian Agricultural Research Institute, New Delhi – 110012**

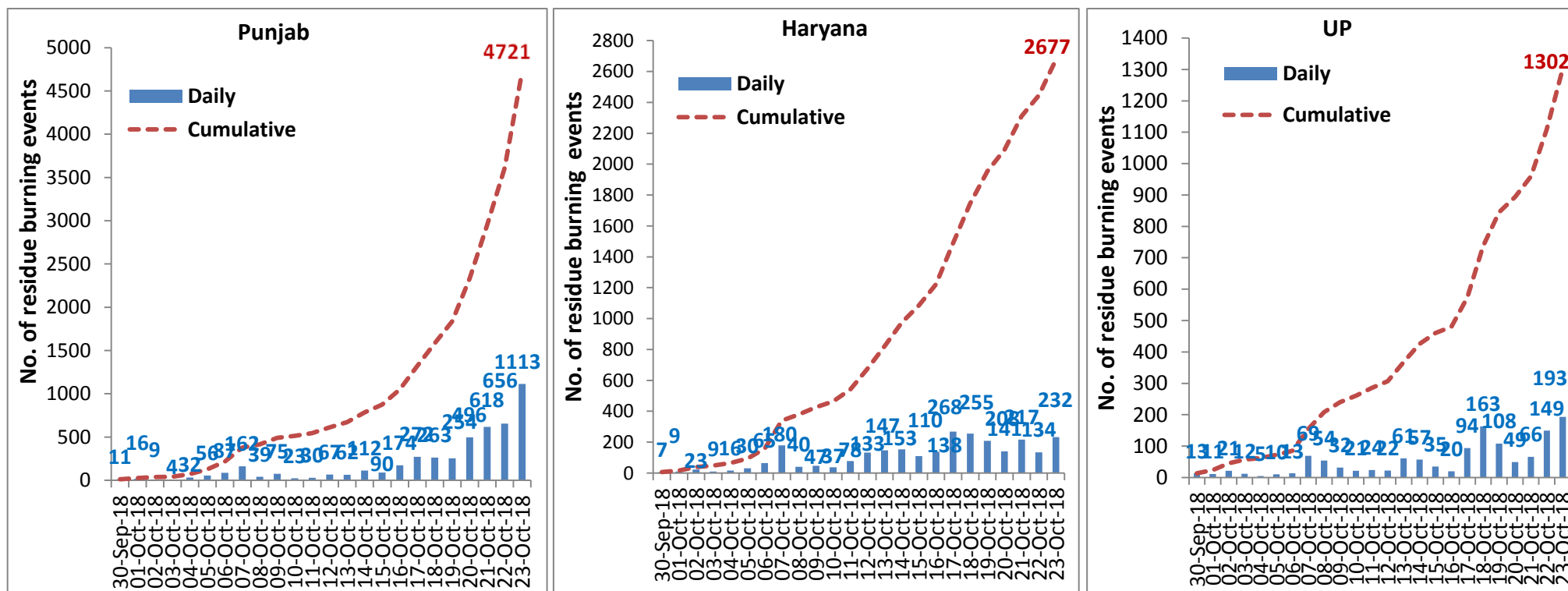
<http://creams.iari.res.in>



Highlights for 23-October-2018

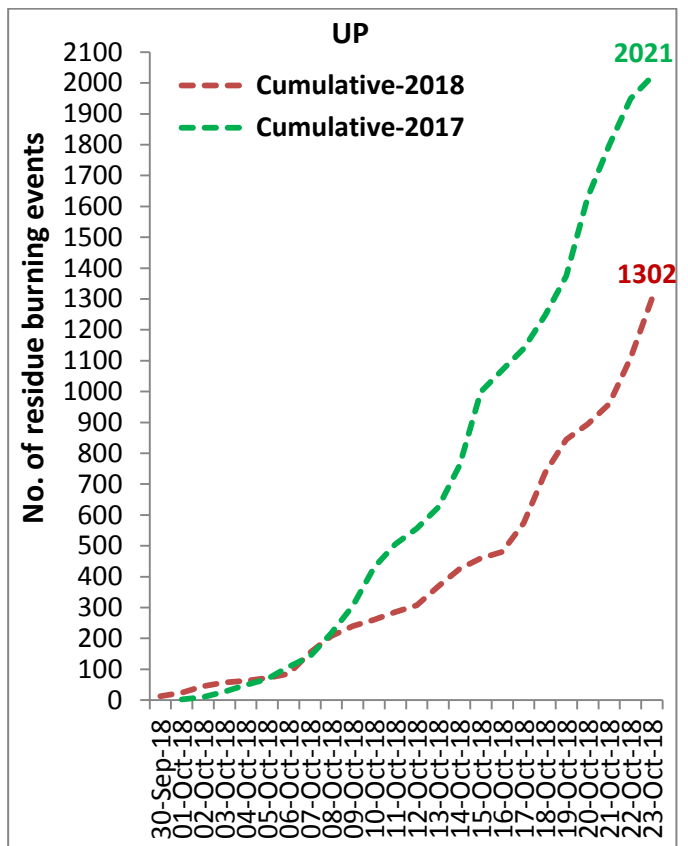
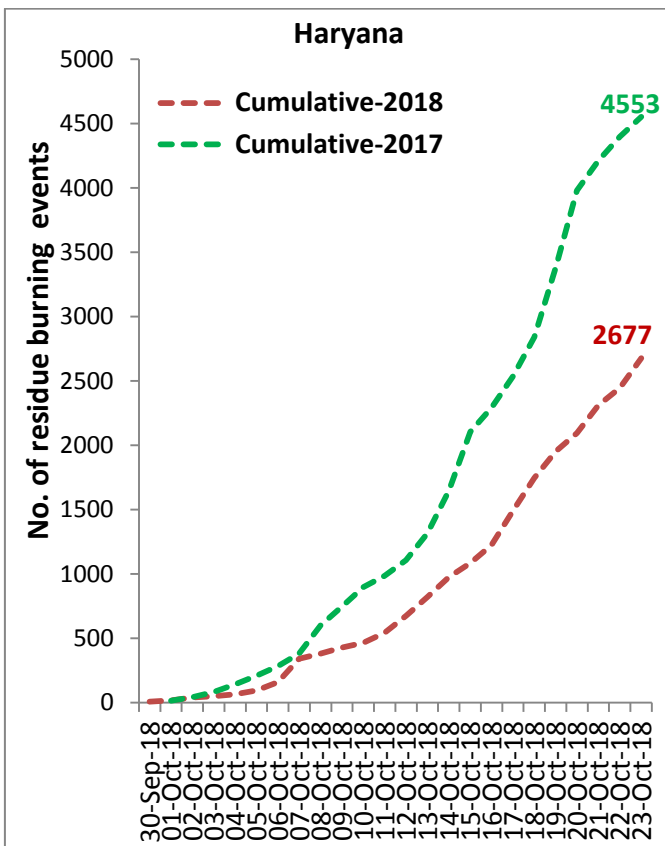
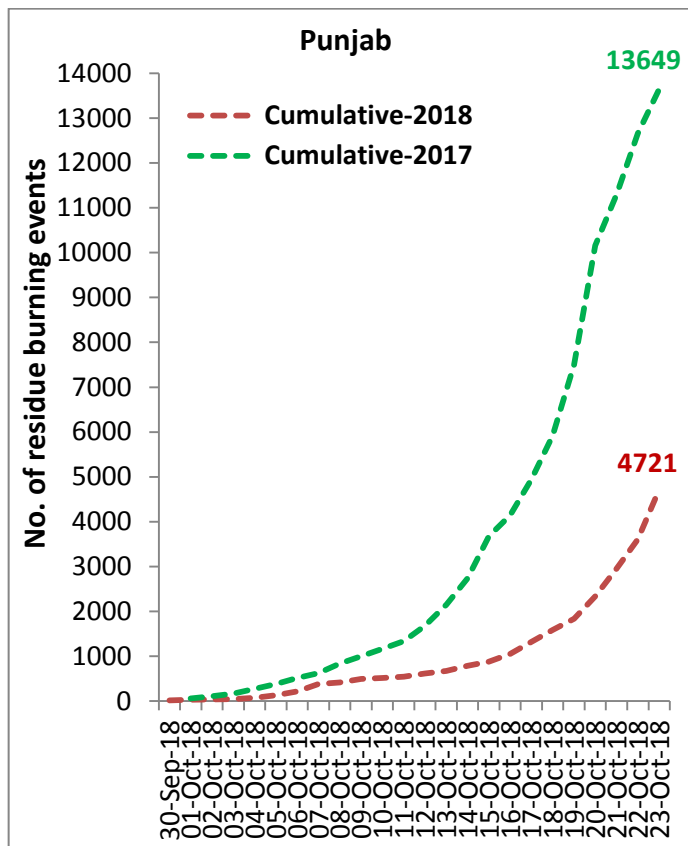
- Satellites detected 1538 residue burning events in the three States (Punjab, Haryana & UP) on 23-Oct-2018.
- The burning events detected on 23-Oct-2018 are 1113, 232 and 193 in Punjab, Haryana, and UP, respectively.
- The number of events increased from 939 on 22-Oct-2018 to 1538 on 23-Oct-2018 in the three States.
- Total 8700 burning events were detected in the three States between 30-Sept-2018 and 23-Oct-2018, which were distributed as 4721, 2677 and 1302 in Punjab, Haryana and UP, respectively.
- Till 23-Oct-2018, the burning events in the current year are about 43% of the events detected in 2017.

Temporal distribution of residue burning events for the three study States



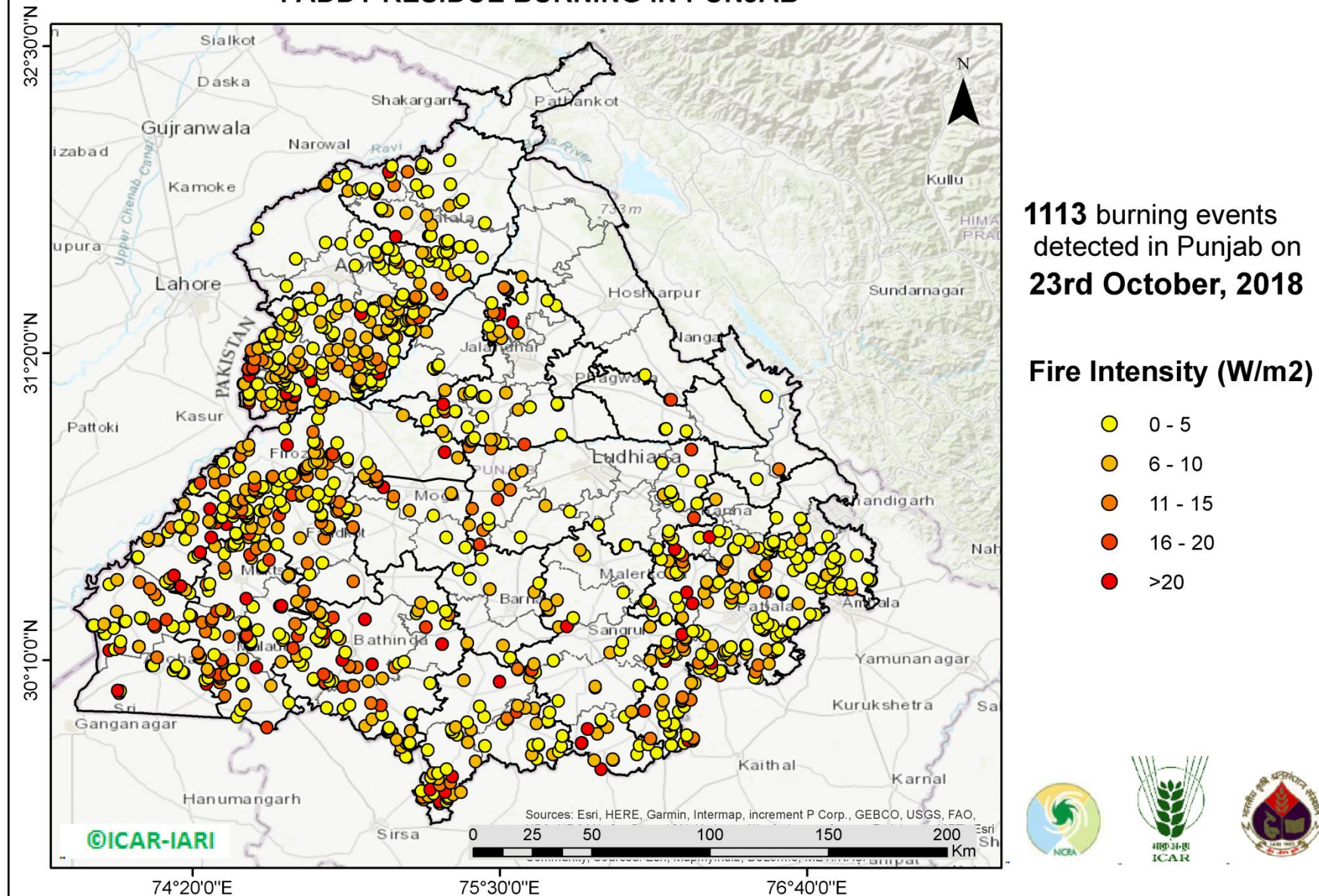
Comparison of residue burning events in current year (2018) with previous year (2017) for the three study States

(30-Sep-2018 to 23-Oct-2018)



(a) Punjab

PADDY RESIDUE BURNING IN PUNJAB



<http://geoportal.icar.gov.in:8080/geoexplorer/composer/>

Details of residue burning events in Punjab on 23-Oct-2018

Event S.No.	District	Tehsil / Block	Satellite	Longitude	Latitude	Time (IST)	Day/Night	Fire Power (W/m²)
1	AMRITSAR	AJNALA	S-NPP	74.72403	31.69194	13:24:00	D	2.70
2	AMRITSAR	AJNALA	S-NPP	74.83817	31.75307	13:24:00	D	4.30
3	AMRITSAR	AJNALA	S-NPP	74.57789	31.80760	13:24:00	D	3.40
4	AMRITSAR	AJNALA	S-NPP	74.92285	31.94972	13:24:00	D	7.50
5	AMRITSAR	AJNALA	S-NPP	74.96079	31.95601	13:24:00	D	1.50
6	AMRITSAR	AJNALA	AQUA-1	74.84023	31.96950	13:41:00	D	8.33
7	AMRITSAR	AJNALA	S-NPP	74.83404	31.97337	13:24:00	D	4.60
8	AMRITSAR	AJNALA	S-NPP	74.83455	31.97376	13:24:00	D	6.30
9	AMRITSAR	AJNALA	S-NPP	74.84225	31.97856	13:24:00	D	10.00
10	AMRITSAR	AJNALA	S-NPP	74.88570	31.99980	13:24:00	D	2.60
11	AMRITSAR	AJNALA	S-NPP	74.91372	32.01146	13:24:00	D	3.40
12	AMRITSAR	AMRITSAR I	S-NPP	74.97481	31.51287	13:24:00	D	3.20
13	AMRITSAR	AMRITSAR I	S-NPP	75.05821	31.53022	13:24:00	D	6.00
14	AMRITSAR	AMRITSAR I	S-NPP	75.06660	31.53161	13:24:00	D	8.20
15	AMRITSAR	AMRITSAR I	S-NPP	75.05727	31.65252	13:24:00	D	3.40
16	AMRITSAR	AMRITSAR I	S-NPP	75.03936	31.67393	13:24:00	D	1.10
17	AMRITSAR	AMRITSAR I	AQUA-1	75.11276	31.67866	13:41:00	D	12.45
18	AMRITSAR	AMRITSAR I	S-NPP	75.10153	31.68763	13:24:00	D	2.60
19	AMRITSAR	AMRITSAR I	S-NPP	75.10468	31.69628	13:24:00	D	1.80
20	AMRITSAR	AMRITSAR I	S-NPP	75.03456	31.69851	13:24:00	D	4.00
21	AMRITSAR	AMRITSAR I	AQUA-1	75.03602	31.70368	13:41:00	D	6.24
22	AMRITSAR	AMRITSAR I	S-NPP	75.02581	31.71795	13:24:00	D	4.80
23	AMRITSAR	AMRITSAR I	S-NPP	75.09369	31.72574	13:24:00	D	2.80
24	AMRITSAR	AMRITSAR I	AQUA-1	75.06979	31.72973	13:41:00	D	11.63
25	AMRITSAR	AMRITSAR I	S-NPP	75.07466	31.73302	13:24:00	D	3.00
26	AMRITSAR	AMRITSAR I	S-NPP	74.89632	31.74874	13:24:00	D	1.90
27	AMRITSAR	AMRITSAR I	S-NPP	74.96886	31.75727	13:24:00	D	2.00
28	AMRITSAR	AMRITSAR I	S-NPP	75.10406	31.77610	13:24:00	D	24.10

29	AMRITSAR	AMRITSAR I	S-NPP	74.99377	31.78229	13:24:00	D	2.40
30	AMRITSAR	AMRITSAR I	S-NPP	74.99422	31.78294	13:24:00	D	2.70
31	AMRITSAR	AMRITSAR II	AQUA-1	74.80786	31.57881	13:41:00	D	7.47
32	AMRITSAR	AMRITSAR II	S-NPP	74.68935	31.58764	13:24:00	D	2.00
33	AMRITSAR	AMRITSAR II	S-NPP	74.94999	31.66693	13:24:00	D	3.40
34	AMRITSAR	BABA BAKALA	S-NPP	75.10814	31.52109	13:24:00	D	3.50
35	AMRITSAR	BABA BAKALA	S-NPP	75.16177	31.53344	13:24:00	D	1.80
36	AMRITSAR	BABA BAKALA	S-NPP	75.12187	31.53728	13:24:00	D	2.00
37	AMRITSAR	BABA BAKALA	S-NPP	75.12605	31.53797	13:24:00	D	2.80
38	AMRITSAR	BABA BAKALA	S-NPP	75.17773	31.53956	13:24:00	D	3.60
39	AMRITSAR	BABA BAKALA	AQUA-1	75.20143	31.54049	13:41:00	D	36.84
40	AMRITSAR	BABA BAKALA	S-NPP	75.17698	31.54291	13:24:00	D	13.60
41	AMRITSAR	BABA BAKALA	S-NPP	75.19785	31.54635	13:24:00	D	1.90
42	AMRITSAR	BABA BAKALA	S-NPP	75.18040	31.54695	13:24:00	D	13.60
43	AMRITSAR	BABA BAKALA	S-NPP	75.13065	31.55612	13:24:00	D	2.50
44	AMRITSAR	BABA BAKALA	S-NPP	75.27697	31.55936	13:24:00	D	16.10
45	AMRITSAR	BABA BAKALA	AQUA-1	75.26112	31.57792	13:41:00	D	11.18
46	AMRITSAR	BABA BAKALA	S-NPP	75.19517	31.59890	13:24:00	D	6.20
47	AMRITSAR	BABA BAKALA	S-NPP	75.31697	31.63289	13:24:00	D	5.20
48	AMRITSAR	BABA BAKALA	S-NPP	75.16380	31.64231	13:24:00	D	5.50
49	AMRITSAR	BABA BAKALA	S-NPP	75.18959	31.64309	13:24:00	D	3.50
50	AMRITSAR	BABA BAKALA	S-NPP	75.09996	31.65609	13:24:00	D	3.00
51	AMRITSAR	BABA BAKALA	S-NPP	75.15928	31.66239	13:24:00	D	3.30
52	AMRITSAR	BABA BAKALA	S-NPP	75.28727	31.66954	13:24:00	D	3.30
53	AMRITSAR	BABA BAKALA	S-NPP	75.25860	31.68216	13:24:00	D	3.90
54	BARNALA	BARNALA	S-NPP	75.67427	30.37681	13:24:00	D	7.50
55	BARNALA	BARNALA	S-NPP	75.62986	30.42490	13:24:00	D	6.80
56	BARNALA	BARNALA	AQUA-1	75.46063	30.43706	13:41:00	D	6.66
57	BARNALA	BARNALA	S-NPP	75.64796	30.45899	13:24:00	D	2.40
58	BARNALA	BARNALA	S-NPP	75.38412	30.47599	13:24:00	D	2.50
59	BARNALA	BARNALA	S-NPP	75.34201	30.51080	13:24:00	D	2.40
60	BARNALA	BARNALA	S-NPP	75.42924	30.55019	13:24:00	D	2.20

61	BARNALA	TAPPA	S-NPP	75.53820	30.17517	13:24:00	D	2.70
62	BARNALA	TAPPA	S-NPP	75.51072	30.22277	13:24:00	D	6.40
63	BATHINDA	BATHINDA	S-NPP	74.83550	30.07836	13:24:00	D	16.80
64	BATHINDA	BATHINDA	S-NPP	74.83473	30.08178	13:24:00	D	16.80
65	BATHINDA	BATHINDA	AQUA-1	75.00021	30.08671	13:41:00	D	9.25
66	BATHINDA	BATHINDA	S-NPP	74.86479	30.08689	13:24:00	D	0.90
67	BATHINDA	BATHINDA	S-NPP	74.85116	30.08812	13:24:00	D	3.20
68	BATHINDA	BATHINDA	S-NPP	74.79214	30.09229	13:24:00	D	2.40
69	BATHINDA	BATHINDA	S-NPP	74.79137	30.09572	13:24:00	D	2.40
70	BATHINDA	BATHINDA	S-NPP	74.84301	30.10448	13:24:00	D	9.20
71	BATHINDA	BATHINDA	AQUA-1	74.82968	30.11216	13:41:00	D	19.45
72	BATHINDA	BATHINDA	AQUA-1	74.95587	30.13911	13:41:00	D	10.27
73	BATHINDA	BATHINDA	S-NPP	74.92838	30.14012	13:24:00	D	2.60
74	BATHINDA	BATHINDA	S-NPP	74.92860	30.14309	13:24:00	D	11.20
75	BATHINDA	BATHINDA	S-NPP	74.74924	30.14780	13:24:00	D	3.60
76	BATHINDA	BATHINDA	S-NPP	75.01434	30.15101	13:24:00	D	20.10
77	BATHINDA	BATHINDA	S-NPP	74.73752	30.16002	13:24:00	D	3.30
78	BATHINDA	BATHINDA	AQUA-1	74.66939	30.16007	13:41:00	D	5.93
79	BATHINDA	BATHINDA	AQUA-1	74.90082	30.16692	13:41:00	D	26.53
80	BATHINDA	BATHINDA	S-NPP	74.76156	30.19257	13:24:00	D	2.30
81	BATHINDA	BATHINDA	S-NPP	74.91213	30.19687	13:24:00	D	2.20
82	BATHINDA	BATHINDA	AQUA-1	74.71373	30.21248	13:41:00	D	19.82
83	BATHINDA	BATHINDA	S-NPP	74.82808	30.23801	13:24:00	D	14.20
84	BATHINDA	BATHINDA	S-NPP	74.81443	30.23921	13:24:00	D	29.30
85	BATHINDA	BATHINDA	S-NPP	74.82730	30.24142	13:24:00	D	14.20
86	BATHINDA	BATHINDA	S-NPP	74.81366	30.24262	13:24:00	D	4.50
87	BATHINDA	BATHINDA	AQUA-1	74.89107	30.24691	13:41:00	D	5.68
88	BATHINDA	BATHINDA	S-NPP	74.80276	30.25139	13:24:00	D	1.10
89	BATHINDA	BATHINDA	S-NPP	74.88145	30.25779	13:24:00	D	3.20
90	BATHINDA	BATHINDA	AQUA-1	74.73078	30.25889	13:41:00	D	17.85
91	BATHINDA	BATHINDA	AQUA-1	74.83196	30.26987	13:41:00	D	21.61
92	BATHINDA	BATHINDA	S-NPP	74.81963	30.27555	13:24:00	D	2.40

93	BATHINDA	BATHINDA	S-NPP	74.82987	30.30919	13:24:00	D	11.40
94	BATHINDA	BATHINDA	S-NPP	74.84549	30.31891	13:24:00	D	3.10
95	BATHINDA	BATHINDA	S-NPP	74.98660	30.32155	13:24:00	D	20.30
96	BATHINDA	BATHINDA	AQUA-1	74.86515	30.32836	13:41:00	D	16.80
97	BATHINDA	BATHINDA	S-NPP	74.82449	30.33306	13:24:00	D	2.80
98	BATHINDA	BATHINDA	S-NPP	74.80539	30.34320	13:24:00	D	5.10
99	BATHINDA	BATHINDA	S-NPP	74.81398	30.34467	13:24:00	D	7.80
100	BATHINDA	BATHINDA	S-NPP	74.81322	30.34808	13:24:00	D	7.80
101	BATHINDA	RAMPURA PHUL	S-NPP	75.11478	30.15373	13:24:00	D	4.60
102	BATHINDA	RAMPURA PHUL	S-NPP	75.13512	30.16064	13:24:00	D	3.10
103	BATHINDA	RAMPURA PHUL	AQUA-1	75.27902	30.22820	13:41:00	D	22.55
104	BATHINDA	RAMPURA PHUL	AQUA-1	75.37537	30.23194	13:41:00	D	6.70
105	BATHINDA	RAMPURA PHUL	AQUA-1	75.21712	30.29243	13:41:00	D	18.57
106	BATHINDA	RAMPURA PHUL	S-NPP	75.29501	30.30661	13:24:00	D	2.60
107	BATHINDA	RAMPURA PHUL	AQUA-1	75.30511	30.33914	13:41:00	D	10.73
108	BATHINDA	RAMPURA PHUL	S-NPP	75.18309	30.34403	13:24:00	D	2.70
109	BATHINDA	RAMPURA PHUL	S-NPP	75.29415	30.35209	13:24:00	D	2.30
110	BATHINDA	RAMPURA PHUL	AQUA-1	75.18779	30.35471	13:41:00	D	7.03
111	BATHINDA	RAMPURA PHUL	S-NPP	75.24297	30.36802	13:24:00	D	2.40
112	BATHINDA	RAMPURA PHUL	S-NPP	75.20003	30.38537	13:24:00	D	8.80
113	BATHINDA	RAMPURA PHUL	S-NPP	75.10123	30.42173	13:24:00	D	51.30
114	BATHINDA	TALWANDI SABO	S-NPP	75.14210	29.80054	13:24:00	D	2.50
115	BATHINDA	TALWANDI SABO	S-NPP	75.12538	29.83649	13:24:00	D	5.60
116	BATHINDA	TALWANDI SABO	S-NPP	75.15844	29.84554	13:24:00	D	8.50
117	BATHINDA	TALWANDI SABO	S-NPP	75.14494	29.84974	13:24:00	D	2.00
118	BATHINDA	TALWANDI SABO	S-NPP	75.14426	29.85021	13:24:00	D	1.60
119	BATHINDA	TALWANDI SABO	S-NPP	75.15338	29.85117	13:24:00	D	2.00
120	BATHINDA	TALWANDI SABO	S-NPP	75.15693	29.85233	13:24:00	D	3.30
121	BATHINDA	TALWANDI SABO	S-NPP	75.10663	29.86436	13:24:00	D	9.00
122	BATHINDA	TALWANDI SABO	S-NPP	75.07369	29.89405	13:24:00	D	3.40
123	BATHINDA	TALWANDI SABO	S-NPP	75.16051	29.89814	13:24:00	D	6.60
124	BATHINDA	TALWANDI SABO	S-NPP	75.07717	29.89817	13:24:00	D	3.70

125	BATHINDA	TALWANDI SABO	S-NPP	75.07567	29.90497	13:24:00	D	5.60
126	BATHINDA	TALWANDI SABO	S-NPP	75.07915	29.90908	13:24:00	D	3.50
127	BATHINDA	TALWANDI SABO	AQUA-1	74.98793	29.91693	13:41:00	D	7.65
128	BATHINDA	TALWANDI SABO	AQUA-1	75.01385	29.94148	13:41:00	D	5.74
129	BATHINDA	TALWANDI SABO	S-NPP	75.05106	29.96042	13:24:00	D	2.70
130	BATHINDA	TALWANDI SABO	S-NPP	75.16048	29.96141	13:24:00	D	2.80
131	BATHINDA	TALWANDI SABO	S-NPP	75.16389	29.96200	13:24:00	D	6.40
132	BATHINDA	TALWANDI SABO	S-NPP	75.16470	29.96213	13:24:00	D	2.80
133	BATHINDA	TALWANDI SABO	S-NPP	75.16396	29.96552	13:24:00	D	2.80
134	BATHINDA	TALWANDI SABO	S-NPP	74.90480	29.98152	13:24:00	D	2.40
135	BATHINDA	TALWANDI SABO	S-NPP	74.84164	29.98498	13:24:00	D	4.00
136	BATHINDA	TALWANDI SABO	AQUA-1	75.04728	29.99508	13:41:00	D	18.65
137	BATHINDA	TALWANDI SABO	S-NPP	74.92818	29.99611	13:24:00	D	4.10
138	BATHINDA	TALWANDI SABO	S-NPP	75.01073	30.00300	13:24:00	D	11.70
139	BATHINDA	TALWANDI SABO	S-NPP	74.90517	30.06542	13:24:00	D	16.10
140	BATHINDA	TALWANDI SABO	AQUA-1	74.94394	30.06875	13:41:00	D	14.64
141	BATHINDA	TALWANDI SABO	S-NPP	75.23478	30.07920	13:24:00	D	3.80
142	BATHINDA	TALWANDI SABO	S-NPP	75.05266	30.09754	13:24:00	D	6.40
143	BATHINDA	TALWANDI SABO	AQUA-1	75.09960	30.13869	13:41:00	D	13.37
144	FARIDKOT	FARIDKOT	S-NPP	74.77757	30.49308	13:24:00	D	3.60
145	FARIDKOT	FARIDKOT	AQUA-1	74.76830	30.53437	13:41:00	D	13.52
146	FARIDKOT	FARIDKOT	S-NPP	74.82562	30.53660	13:24:00	D	3.20
147	FARIDKOT	FARIDKOT	S-NPP	74.65435	30.60595	13:24:00	D	2.60
148	FARIDKOT	FARIDKOT	S-NPP	74.83228	30.62906	13:24:00	D	11.20
149	FARIDKOT	FARIDKOT	AQUA-1	74.73931	30.63019	13:41:00	D	9.77
150	FARIDKOT	FARIDKOT	S-NPP	74.84169	30.66595	13:24:00	D	5.00
151	FARIDKOT	FARIDKOT	AQUA-1	74.58583	30.66613	13:41:00	D	6.76
152	FARIDKOT	FARIDKOT	AQUA-1	74.85185	30.66613	13:41:00	D	11.19
153	FARIDKOT	FARIDKOT	S-NPP	74.84174	30.66868	13:24:00	D	4.60
154	FARIDKOT	FARIDKOT	S-NPP	74.94277	30.66881	13:24:00	D	13.50
155	FARIDKOT	FARIDKOT	S-NPP	74.53683	30.66957	13:24:00	D	3.10
156	FARIDKOT	FARIDKOT	AQUA-1	74.55514	30.67062	13:41:00	D	5.92

157	FARIDKOT	FARIDKOT	AQUA-1	74.65575	30.67062	13:41:00	D	8.25
158	FARIDKOT	FARIDKOT	S-NPP	74.94201	30.67220	13:24:00	D	13.50
159	FARIDKOT	FARIDKOT	S-NPP	74.84951	30.67354	13:24:00	D	5.50
160	FARIDKOT	FARIDKOT	AQUA-1	74.82116	30.68858	13:41:00	D	11.10
161	FARIDKOT	FARIDKOT	S-NPP	74.60326	30.69519	13:24:00	D	5.90
162	FARIDKOT	FARIDKOT	AQUA-1	74.54491	30.70655	13:41:00	D	7.45
163	FARIDKOT	FARIDKOT	S-NPP	74.53610	30.71221	13:24:00	D	2.40
164	FARIDKOT	FARIDKOT	S-NPP	74.48573	30.71431	13:24:00	D	1.90
165	FARIDKOT	FARIDKOT	AQUA-1	74.82116	30.71553	13:41:00	D	6.30
166	FARIDKOT	FARIDKOT	S-NPP	74.53967	30.71637	13:24:00	D	2.30
167	FARIDKOT	FARIDKOT	S-NPP	74.66074	30.71920	13:24:00	D	15.50
168	FARIDKOT	FARIDKOT	S-NPP	74.82088	30.72161	13:24:00	D	2.30
169	FARIDKOT	FARIDKOT	S-NPP	74.90924	30.72247	13:24:00	D	7.00
170	FARIDKOT	FARIDKOT	S-NPP	74.54246	30.72397	13:24:00	D	11.30
171	FARIDKOT	FARIDKOT	S-NPP	74.52860	30.72518	13:24:00	D	17.70
172	FARIDKOT	FARIDKOT	S-NPP	74.54305	30.72631	13:24:00	D	2.40
173	FARIDKOT	FARIDKOT	S-NPP	74.52485	30.72672	13:24:00	D	26.20
174	FARIDKOT	FARIDKOT	S-NPP	74.48837	30.72751	13:24:00	D	20.60
175	FARIDKOT	FARIDKOT	S-NPP	74.88064	30.73172	13:24:00	D	8.80
176	FARIDKOT	FARIDKOT	S-NPP	74.47370	30.73211	13:24:00	D	3.50
177	FARIDKOT	FARIDKOT	AQUA-1	74.59299	30.73260	13:41:00	D	10.90
178	FARIDKOT	FARIDKOT	S-NPP	74.47807	30.73286	13:24:00	D	6.90
179	FARIDKOT	FARIDKOT	S-NPP	74.58952	30.73552	13:24:00	D	2.90
180	FARIDKOT	FARIDKOT	S-NPP	74.88839	30.73655	13:24:00	D	13.80
181	FARIDKOT	FARIDKOT	S-NPP	74.54068	30.73659	13:24:00	D	2.40
182	FARIDKOT	FARIDKOT	S-NPP	74.60814	30.73760	13:24:00	D	5.10
183	FARIDKOT	FARIDKOT	S-NPP	74.61121	30.73919	13:24:00	D	7.50
184	FARIDKOT	FARIDKOT	AQUA-1	74.51933	30.74024	13:41:00	D	11.06
185	FARIDKOT	FARIDKOT	S-NPP	74.67688	30.74675	13:24:00	D	2.00
186	FARIDKOT	FARIDKOT	S-NPP	74.68119	30.74748	13:24:00	D	2.70
187	FARIDKOT	FARIDKOT	S-NPP	74.80539	30.75076	13:24:00	D	7.60
188	FARIDKOT	FARIDKOT	S-NPP	74.79607	30.75271	13:24:00	D	38.80

189	FARIDKOT	FARIDKOT	S-NPP	74.80462	30.75416	13:24:00	D	4.50
190	FARIDKOT	FARIDKOT	S-NPP	74.79101	30.75540	13:24:00	D	2.70
191	FARIDKOT	FARIDKOT	AQUA-1	74.49886	30.76045	13:41:00	D	9.41
192	FARIDKOT	FARIDKOT	S-NPP	74.62432	30.76525	13:24:00	D	4.10
193	FARIDKOT	FARIDKOT	S-NPP	74.66322	30.77194	13:24:00	D	2.50
194	FARIDKOT	FARIDKOT	AQUA-1	74.52615	30.77692	13:41:00	D	14.22
195	FARIDKOT	FARIDKOT	S-NPP	74.55143	30.78829	13:24:00	D	3.30
196	FARIDKOT	FARIDKOT	S-NPP	74.55578	30.78903	13:24:00	D	3.70
197	FARIDKOT	FARIDKOT	S-NPP	74.73914	30.79202	13:24:00	D	10.40
198	FARIDKOT	FARIDKOT	AQUA-1	74.71032	30.79488	13:41:00	D	18.94
199	FARIDKOT	FARIDKOT	S-NPP	74.74696	30.79690	13:24:00	D	5.30
200	FARIDKOT	FARIDKOT	AQUA-1	74.57886	30.80414	13:41:00	D	13.82
201	FARIDKOT	FARIDKOT	S-NPP	74.76685	30.80735	13:24:00	D	8.20
202	FARIDKOT	FARIDKOT	S-NPP	74.65308	30.81631	13:24:00	D	2.30
203	FARIDKOT	FARIDKOT	S-NPP	74.61104	30.82335	13:24:00	D	3.60
204	FARIDKOT	JAITO	AQUA-1	74.75465	30.42807	13:41:00	D	13.05
205	FARIDKOT	JAITO	AQUA-1	74.94223	30.46550	13:41:00	D	12.57
206	FATEHGARH SAHIB	ALMOH	AQUA-1	76.13933	30.54336	13:41:00	D	7.82
207	FATEHGARH SAHIB	ALMOH	S-NPP	76.11239	30.55083	13:24:00	D	1.40
208	FATEHGARH SAHIB	ALMOH	AQUA-1	76.19390	30.56432	13:41:00	D	19.48
209	FATEHGARH SAHIB	ALMOH	S-NPP	76.17881	30.57421	13:24:00	D	2.10
210	FATEHGARH SAHIB	ALMOH	S-NPP	76.18284	30.57486	13:24:00	D	2.10
211	FATEHGARH SAHIB	ALMOH	S-NPP	76.16321	30.58885	13:24:00	D	24.50
212	FATEHGARH SAHIB	ALMOH	S-NPP	76.15076	30.62797	13:24:00	D	2.60
213	FATEHGARH SAHIB	ALMOH	S-NPP	76.15479	30.62861	13:24:00	D	2.60
214	FATEHGARH SAHIB	ALMOH	S-NPP	76.25830	30.63133	13:24:00	D	2.60
215	FATEHGARH SAHIB	ALMOH	AQUA-1	76.29451	30.63468	13:41:00	D	34.72
216	FATEHGARH SAHIB	ALMOH	S-NPP	76.33191	30.65661	13:24:00	D	1.60
217	FATEHGARH SAHIB	FATEHGARH SAHIB	S-NPP	76.47539	30.48267	13:24:00	D	5.70
218	FATEHGARH SAHIB	FATEHGARH SAHIB	S-NPP	76.47470	30.48598	13:24:00	D	5.70
219	FATEHGARH SAHIB	FATEHGARH SAHIB	S-NPP	76.47401	30.48928	13:24:00	D	2.70
220	FATEHGARH SAHIB	FATEHGARH SAHIB	AQUA-1	76.46674	30.49245	13:41:00	D	12.03

221	FATEHGARH SAHIB	FATEHGARH SAHIB	S-NPP	76.48762	30.50413	13:24:00	D	3.00
222	FATEHGARH SAHIB	FATEHGARH SAHIB	S-NPP	76.49093	30.50806	13:24:00	D	3.90
223	FATEHGARH SAHIB	FATEHGARH SAHIB	S-NPP	76.34513	30.51241	13:24:00	D	13.10
224	FATEHGARH SAHIB	FATEHGARH SAHIB	AQUA-1	76.35809	30.53523	13:41:00	D	10.15
225	FATEHGARH SAHIB	FATEHGARH SAHIB	S-NPP	76.36367	30.54267	13:24:00	D	9.70
226	FATEHGARH SAHIB	FATEHGARH SAHIB	S-NPP	76.51321	30.57977	13:24:00	D	1.30
227	FATEHGARH SAHIB	FATEHGARH SAHIB	S-NPP	76.39146	30.58802	13:24:00	D	6.80
228	FATEHGARH SAHIB	FATEHGARH SAHIB	S-NPP	76.52385	30.58825	13:24:00	D	2.10
229	FATEHGARH SAHIB	FATEHGARH SAHIB	S-NPP	76.38676	30.59070	13:24:00	D	2.30
230	FATEHGARH SAHIB	FATEHGARH SAHIB	S-NPP	76.39078	30.59132	13:24:00	D	2.90
231	FATEHGARH SAHIB	FATEHGARH SAHIB	S-NPP	76.48174	30.59191	13:24:00	D	3.90
232	FATEHGARH SAHIB	FATEHGARH SAHIB	AQUA-1	76.45992	30.59725	13:41:00	D	13.42
233	FATEHGARH SAHIB	FATEHGARH SAHIB	S-NPP	76.44400	30.61620	13:24:00	D	2.10
234	FATEHGARH SAHIB	FATEHGARH SAHIB	S-NPP	76.33083	30.62228	13:24:00	D	2.10
235	FATEHGARH SAHIB	FATEHGARH SAHIB	S-NPP	76.40916	30.62438	13:24:00	D	1.90
236	FATEHGARH SAHIB	FATEHGARH SAHIB	S-NPP	76.35810	30.65048	13:24:00	D	2.40
237	FATEHGARH SAHIB	KHAMANOH	AQUA-1	76.31804	30.77752	13:41:00	D	7.68
238	FIROZPUR	ABOHAR	AQUA-1	74.05379	30.04180	13:41:00	D	18.48
239	FIROZPUR	ABOHAR	S-NPP	74.05747	30.04891	13:24:00	D	3.80
240	FIROZPUR	ABOHAR	S-NPP	74.04754	30.05081	13:24:00	D	25.60
241	FIROZPUR	ABOHAR	AQUA-1	74.38427	30.07683	13:41:00	D	22.92
242	FIROZPUR	ABOHAR	AQUA-1	74.29935	30.11815	13:41:00	D	6.63
243	FIROZPUR	ABOHAR	S-NPP	74.29471	30.11953	13:24:00	D	5.20
244	FIROZPUR	ABOHAR	S-NPP	74.28944	30.12223	13:24:00	D	3.30
245	FIROZPUR	ABOHAR	S-NPP	74.29390	30.12301	13:24:00	D	3.30
246	FIROZPUR	ABOHAR	S-NPP	74.26017	30.12802	13:24:00	D	4.10
247	FIROZPUR	ABOHAR	S-NPP	74.26783	30.14027	13:24:00	D	3.00
248	FIROZPUR	ABOHAR	S-NPP	74.27151	30.14454	13:24:00	D	3.00
249	FIROZPUR	ABOHAR	S-NPP	74.17772	30.14610	13:24:00	D	2.20
250	FIROZPUR	ABOHAR	S-NPP	74.18223	30.14689	13:24:00	D	4.90
251	FIROZPUR	ABOHAR	AQUA-1	74.19703	30.17654	13:41:00	D	11.39
252	FIROZPUR	FAZILKA	AQUA-1	74.01593	30.20439	13:41:00	D	37.23

253	FIROZPUR	FAZILKA	S-NPP	74.03739	30.20851	13:24:00	D	2.00
254	FIROZPUR	FAZILKA	AQUA-1	74.05686	30.21337	13:41:00	D	18.42
255	FIROZPUR	FAZILKA	S-NPP	74.12828	30.21740	13:24:00	D	6.40
256	FIROZPUR	FAZILKA	S-NPP	74.12969	30.21771	13:24:00	D	5.50
257	FIROZPUR	FAZILKA	S-NPP	74.05896	30.23790	13:24:00	D	3.80
258	FIROZPUR	FAZILKA	AQUA-1	73.99547	30.26727	13:41:00	D	19.08
259	FIROZPUR	FAZILKA	S-NPP	73.99985	30.26760	13:24:00	D	2.70
260	FIROZPUR	FAZILKA	S-NPP	74.03303	30.28804	13:24:00	D	3.50
261	FIROZPUR	FAZILKA	S-NPP	74.29942	30.29117	13:24:00	D	2.90
262	FIROZPUR	FAZILKA	S-NPP	73.98412	30.29408	13:24:00	D	3.20
263	FIROZPUR	FAZILKA	AQUA-1	74.18987	30.29422	13:41:00	D	11.47
264	FIROZPUR	FAZILKA	S-NPP	74.25684	30.29457	13:24:00	D	2.00
265	FIROZPUR	FAZILKA	S-NPP	73.95501	30.29629	13:24:00	D	8.20
266	FIROZPUR	FAZILKA	S-NPP	73.95197	30.29832	13:24:00	D	5.00
267	FIROZPUR	FAZILKA	S-NPP	73.95655	30.29914	13:24:00	D	5.00
268	FIROZPUR	FAZILKA	S-NPP	74.18558	30.30021	13:24:00	D	18.10
269	FIROZPUR	FAZILKA	S-NPP	73.99847	30.30300	13:24:00	D	4.80
270	FIROZPUR	FAZILKA	S-NPP	73.99619	30.30349	13:24:00	D	5.70
271	FIROZPUR	FAZILKA	S-NPP	74.07440	30.31350	13:24:00	D	3.90
272	FIROZPUR	FAZILKA	S-NPP	74.07893	30.31429	13:24:00	D	4.60
273	FIROZPUR	FAZILKA	AQUA-1	74.23284	30.32027	13:41:00	D	15.01
274	FIROZPUR	FAZILKA	S-NPP	74.13776	30.32452	13:24:00	D	3.30
275	FIROZPUR	FAZILKA	S-NPP	74.14227	30.32531	13:24:00	D	2.80
276	FIROZPUR	FAZILKA	S-NPP	74.14677	30.32609	13:24:00	D	2.80
277	FIROZPUR	FAZILKA	S-NPP	74.13445	30.32730	13:24:00	D	3.90
278	FIROZPUR	FAZILKA	S-NPP	74.32096	30.33821	13:24:00	D	4.10
279	FIROZPUR	FAZILKA	S-NPP	74.04406	30.35127	13:24:00	D	8.60
280	FIROZPUR	FAZILKA	S-NPP	74.20240	30.39731	13:24:00	D	3.60
281	FIROZPUR	FAZILKA	S-NPP	74.18858	30.41662	13:24:00	D	10.90
282	FIROZPUR	FAZILKA	AQUA-1	74.16941	30.43795	13:41:00	D	10.10
283	FIROZPUR	FAZILKA	AQUA-1	74.28741	30.44754	13:41:00	D	22.39
284	FIROZPUR	FAZILKA	S-NPP	74.01637	30.45557	13:24:00	D	2.00

285	FIROZPUR	FAZILKA	S-NPP	74.23952	30.45799	13:24:00	D	1.90
286	FIROZPUR	FAZILKA	S-NPP	74.24399	30.45876	13:24:00	D	2.30
287	FIROZPUR	FAZILKA	S-NPP	74.24056	30.45897	13:24:00	D	9.50
288	FIROZPUR	FAZILKA	AQUA-1	74.13053	30.46400	13:41:00	D	13.90
289	FIROZPUR	FAZILKA	AQUA-1	74.04526	30.47149	13:41:00	D	6.61
290	FIROZPUR	FIROZPUR	AQUA-1	74.88937	30.76793	13:41:00	D	11.54
291	FIROZPUR	FIROZPUR	S-NPP	74.50153	30.76903	13:24:00	D	8.60
292	FIROZPUR	FIROZPUR	S-NPP	74.50075	30.77246	13:24:00	D	8.60
293	FIROZPUR	FIROZPUR	S-NPP	74.85226	30.78309	13:24:00	D	10.80
294	FIROZPUR	FIROZPUR	S-NPP	74.83869	30.78430	13:24:00	D	2.50
295	FIROZPUR	FIROZPUR	S-NPP	74.45150	30.78898	13:24:00	D	3.60
296	FIROZPUR	FIROZPUR	S-NPP	74.80923	30.79691	13:24:00	D	3.30
297	FIROZPUR	FIROZPUR	S-NPP	74.85465	30.81169	13:24:00	D	3.40
298	FIROZPUR	FIROZPUR	S-NPP	74.56410	30.81180	13:24:00	D	44.30
299	FIROZPUR	FIROZPUR	S-NPP	74.58659	30.81208	13:24:00	D	3.90
300	FIROZPUR	FIROZPUR	AQUA-1	74.53467	30.81435	13:41:00	D	9.89
301	FIROZPUR	FIROZPUR	S-NPP	74.56332	30.81522	13:24:00	D	61.00
302	FIROZPUR	FIROZPUR	S-NPP	74.56767	30.81596	13:24:00	D	11.50
303	FIROZPUR	FIROZPUR	S-NPP	74.33992	30.82113	13:24:00	D	2.90
304	FIROZPUR	FIROZPUR	S-NPP	74.59804	30.82113	13:24:00	D	1.90
305	FIROZPUR	FIROZPUR	S-NPP	74.59726	30.82455	13:24:00	D	1.90
306	FIROZPUR	FIROZPUR	AQUA-1	74.56844	30.83142	13:41:00	D	19.68
307	FIROZPUR	FIROZPUR	S-NPP	74.69309	30.83727	13:24:00	D	4.20
308	FIROZPUR	FIROZPUR	S-NPP	74.87059	30.83905	13:24:00	D	4.80
309	FIROZPUR	FIROZPUR	AQUA-1	74.36244	30.83980	13:41:00	D	16.36
310	FIROZPUR	FIROZPUR	AQUA-1	74.41906	30.84220	13:41:00	D	13.82
311	FIROZPUR	FIROZPUR	S-NPP	74.65902	30.84921	13:24:00	D	4.70
312	FIROZPUR	FIROZPUR	AQUA-1	74.45282	30.85028	13:41:00	D	13.31
313	FIROZPUR	FIROZPUR	AQUA-1	74.71884	30.85926	13:41:00	D	14.45
314	FIROZPUR	FIROZPUR	S-NPP	74.56731	30.86057	13:24:00	D	7.90
315	FIROZPUR	FIROZPUR	S-NPP	74.63457	30.86151	13:24:00	D	1.90
316	FIROZPUR	FIROZPUR	S-NPP	74.68356	30.86286	13:24:00	D	2.00

317	FIROZPUR	FIROZPUR	AQUA-1	74.63699	30.86376	13:41:00	D	11.17
318	FIROZPUR	FIROZPUR	AQUA-1	74.76693	30.86735	13:41:00	D	11.17
319	FIROZPUR	FIROZPUR	S-NPP	74.70782	30.87410	13:24:00	D	1.90
320	FIROZPUR	FIROZPUR	AQUA-1	74.82286	30.87573	13:41:00	D	6.77
321	FIROZPUR	FIROZPUR	AQUA-1	74.41360	30.87873	13:41:00	D	6.05
322	FIROZPUR	FIROZPUR	AQUA-1	74.49204	30.88472	13:41:00	D	7.29
323	FIROZPUR	FIROZPUR	S-NPP	74.75700	30.89312	13:24:00	D	11.20
324	FIROZPUR	FIROZPUR	S-NPP	74.76556	30.89458	13:24:00	D	10.90
325	FIROZPUR	FIROZPUR	S-NPP	74.50927	30.89684	13:24:00	D	1.70
326	FIROZPUR	FIROZPUR	S-NPP	74.76051	30.89725	13:24:00	D	11.20
327	FIROZPUR	FIROZPUR	S-NPP	74.76479	30.89799	13:24:00	D	10.90
328	FIROZPUR	FIROZPUR	S-NPP	74.77181	30.90624	13:24:00	D	7.50
329	FIROZPUR	FIROZPUR	S-NPP	74.79594	30.91740	13:24:00	D	1.70
330	FIROZPUR	FIROZPUR	S-NPP	74.82234	30.91836	13:24:00	D	6.40
331	FIROZPUR	FIROZPUR	S-NPP	74.44978	30.91874	13:24:00	D	2.70
332	FIROZPUR	FIROZPUR	AQUA-1	74.80581	30.92439	13:41:00	D	9.73
333	FIROZPUR	FIROZPUR	S-NPP	74.51287	30.94016	13:24:00	D	13.00
334	FIROZPUR	FIROZPUR	S-NPP	74.50975	30.94197	13:24:00	D	12.80
335	FIROZPUR	FIROZPUR	S-NPP	74.51410	30.94272	13:24:00	D	10.40
336	FIROZPUR	FIROZPUR	AQUA-1	74.80786	30.95359	13:41:00	D	7.59
337	FIROZPUR	FIROZPUR	S-NPP	74.79600	30.95620	13:24:00	D	10.00
338	FIROZPUR	FIROZPUR	S-NPP	74.54492	30.96583	13:24:00	D	5.50
339	FIROZPUR	FIROZPUR	S-NPP	74.52007	30.97577	13:24:00	D	10.00
340	FIROZPUR	FIROZPUR	S-NPP	74.54535	30.98367	13:24:00	D	5.80
341	FIROZPUR	FIROZPUR	AQUA-1	74.69122	30.98413	13:41:00	D	23.87
342	FIROZPUR	FIROZPUR	AQUA-1	74.80376	30.98952	13:41:00	D	14.14
343	FIROZPUR	FIROZPUR	S-NPP	74.79340	30.99430	13:24:00	D	2.50
344	FIROZPUR	FIROZPUR	S-NPP	74.79263	30.99769	13:24:00	D	2.50
345	FIROZPUR	FIROZPUR	AQUA-1	74.79046	31.03443	13:41:00	D	10.89
346	FIROZPUR	FIROZPUR	S-NPP	74.68362	31.04623	13:24:00	D	4.90
347	FIROZPUR	FIROZPUR	S-NPP	74.80829	31.08487	13:24:00	D	5.00
348	FIROZPUR	JALALABAD	S-NPP	74.23003	30.46433	13:24:00	D	3.40

349	FIROZPUR	JALALABAD	S-NPP	74.24548	30.47789	13:24:00	D	8.30
350	FIROZPUR	JALALABAD	S-NPP	74.26170	30.48796	13:24:00	D	32.70
351	FIROZPUR	JALALABAD	S-NPP	74.12164	30.55394	13:24:00	D	3.00
352	FIROZPUR	JALALABAD	S-NPP	74.12533	30.55822	13:24:00	D	2.30
353	FIROZPUR	JALALABAD	S-NPP	74.33768	30.55880	13:24:00	D	2.80
354	FIROZPUR	JALALABAD	S-NPP	74.35378	30.56876	13:24:00	D	4.20
355	FIROZPUR	JALALABAD	S-NPP	74.36103	30.57719	13:24:00	D	24.30
356	FIROZPUR	JALALABAD	S-NPP	74.41660	30.59868	13:24:00	D	5.20
357	FIROZPUR	JALALABAD	S-NPP	74.16254	30.61906	13:24:00	D	7.90
358	FIROZPUR	JALALABAD	AQUA-1	74.20215	30.62121	13:41:00	D	12.14
359	FIROZPUR	JALALABAD	S-NPP	74.19834	30.62531	13:24:00	D	8.90
360	FIROZPUR	JALALABAD	S-NPP	74.30473	30.62582	13:24:00	D	3.80
361	FIROZPUR	JALALABAD	AQUA-1	74.40337	30.63319	13:41:00	D	34.64
362	FIROZPUR	JALALABAD	S-NPP	74.16378	30.63374	13:24:00	D	6.40
363	FIROZPUR	JALALABAD	S-NPP	74.23813	30.65385	13:24:00	D	2.90
364	FIROZPUR	JALALABAD	AQUA-1	74.32834	30.66313	13:41:00	D	7.18
365	FIROZPUR	JALALABAD	AQUA-1	74.25126	30.67152	13:41:00	D	14.19
366	FIROZPUR	JALALABAD	S-NPP	74.28463	30.67269	13:24:00	D	4.60
367	FIROZPUR	JALALABAD	S-NPP	74.28383	30.67614	13:24:00	D	4.60
368	FIROZPUR	JALALABAD	AQUA-1	74.45998	30.68409	13:41:00	D	20.36
369	FIROZPUR	JALALABAD	AQUA-1	74.42213	30.68858	13:41:00	D	16.43
370	FIROZPUR	JALALABAD	S-NPP	74.40035	30.68899	13:24:00	D	3.40
371	FIROZPUR	JALALABAD	S-NPP	74.39436	30.69512	13:24:00	D	5.40
372	FIROZPUR	JALALABAD	S-NPP	74.33310	30.70761	13:24:00	D	5.20
373	FIROZPUR	JALALABAD	S-NPP	74.44265	30.70883	13:24:00	D	2.70
374	FIROZPUR	JALALABAD	S-NPP	74.44552	30.71103	13:24:00	D	2.70
375	FIROZPUR	JALALABAD	S-NPP	74.31383	30.71142	13:24:00	D	2.50
376	FIROZPUR	JALALABAD	S-NPP	74.39882	30.74056	13:24:00	D	29.50
377	FIROZPUR	JALALABAD	S-NPP	74.44867	30.74205	13:24:00	D	1.70
378	FIROZPUR	JALALABAD	AQUA-1	74.30105	30.76195	13:41:00	D	9.09
379	FIROZPUR	ZIRA	S-NPP	75.02323	30.86472	13:24:00	D	22.20
380	FIROZPUR	ZIRA	S-NPP	75.03167	30.86613	13:24:00	D	12.90

381	FIROZPUR	ZIRA	S-NPP	74.98292	30.86848	13:24:00	D	6.20
382	FIROZPUR	ZIRA	AQUA-1	75.00703	30.89669	13:41:00	D	7.55
383	FIROZPUR	ZIRA	AQUA-1	74.84674	30.91316	13:41:00	D	13.01
384	FIROZPUR	ZIRA	S-NPP	74.99479	30.91595	13:24:00	D	1.90
385	FIROZPUR	ZIRA	AQUA-1	74.91836	30.92215	13:41:00	D	6.61
386	FIROZPUR	ZIRA	S-NPP	74.92096	30.93154	13:24:00	D	1.60
387	FIROZPUR	ZIRA	AQUA-1	75.33990	30.93562	13:41:00	D	7.04
388	FIROZPUR	ZIRA	AQUA-1	74.87061	30.94161	13:41:00	D	8.72
389	FIROZPUR	ZIRA	S-NPP	74.85959	30.94931	13:24:00	D	20.00
390	FIROZPUR	ZIRA	S-NPP	74.86384	30.95003	13:24:00	D	20.00
391	FIROZPUR	ZIRA	S-NPP	75.28939	30.95771	13:24:00	D	25.90
392	FIROZPUR	ZIRA	S-NPP	74.88093	30.99157	13:24:00	D	5.00
393	FIROZPUR	ZIRA	S-NPP	75.29369	31.01825	13:24:00	D	2.20
394	FIROZPUR	ZIRA	S-NPP	75.28091	31.03699	13:24:00	D	5.90
395	FIROZPUR	ZIRA	S-NPP	75.13042	31.09665	13:24:00	D	5.60
396	FIROZPUR	ZIRA	S-NPP	74.81760	31.12469	13:24:00	D	5.50
397	GURDASPUR	BATALA	S-NPP	75.36542	31.62571	13:24:00	D	2.70
398	GURDASPUR	BATALA	S-NPP	75.36552	31.62704	13:24:00	D	5.20
399	GURDASPUR	BATALA	S-NPP	75.34377	31.64767	13:24:00	D	3.80
400	GURDASPUR	BATALA	S-NPP	75.22796	31.68408	13:24:00	D	3.70
401	GURDASPUR	BATALA	S-NPP	75.43155	31.69655	13:24:00	D	3.60
402	GURDASPUR	BATALA	S-NPP	75.23670	31.70283	13:24:00	D	4.90
403	GURDASPUR	BATALA	S-NPP	75.23595	31.70617	13:24:00	D	4.90
404	GURDASPUR	BATALA	AQUA-1	75.31227	31.71266	13:41:00	D	9.60
405	GURDASPUR	BATALA	AQUA-1	75.22019	31.71491	13:41:00	D	6.81
406	GURDASPUR	BATALA	S-NPP	75.20415	31.71627	13:24:00	D	8.20
407	GURDASPUR	BATALA	S-NPP	75.25945	31.71693	13:24:00	D	2.20
408	GURDASPUR	BATALA	S-NPP	75.28514	31.71765	13:24:00	D	2.00
409	GURDASPUR	BATALA	S-NPP	75.29761	31.71968	13:24:00	D	2.10
410	GURDASPUR	BATALA	S-NPP	75.34618	31.73622	13:24:00	D	2.90
411	GURDASPUR	BATALA	S-NPP	75.39224	31.73849	13:24:00	D	4.80
412	GURDASPUR	BATALA	S-NPP	75.38832	31.73968	13:24:00	D	2.10

413	GURDASPUR	BATALA	S-NPP	75.39246	31.74036	13:24:00	D	3.10
414	GURDASPUR	BATALA	S-NPP	75.29610	31.74874	13:24:00	D	4.30
415	GURDASPUR	BATALA	AQUA-1	75.29181	31.75758	13:41:00	D	7.29
416	GURDASPUR	BATALA	S-NPP	75.30217	31.76012	13:24:00	D	3.50
417	GURDASPUR	BATALA	S-NPP	75.22891	31.77925	13:24:00	D	3.80
418	GURDASPUR	BATALA	S-NPP	75.23308	31.77994	13:24:00	D	3.80
419	GURDASPUR	BATALA	S-NPP	75.23724	31.78062	13:24:00	D	2.10
420	GURDASPUR	BATALA	AQUA-1	75.24065	31.82046	13:41:00	D	6.78
421	GURDASPUR	BATALA	AQUA-1	75.22019	31.85639	13:41:00	D	9.49
422	GURDASPUR	BATALA	AQUA-1	75.14345	31.86538	13:41:00	D	9.19
423	GURDASPUR	BATALA	AQUA-1	75.05137	31.87436	13:41:00	D	9.24
424	GURDASPUR	BATALA	AQUA-1	75.07183	31.87436	13:41:00	D	6.50
425	GURDASPUR	BATALA	S-NPP	75.04587	31.88199	13:24:00	D	3.00
426	GURDASPUR	BATALA	S-NPP	75.05007	31.88268	13:24:00	D	4.20
427	GURDASPUR	DERA BABA NANAK	S-NPP	75.02577	31.93894	13:24:00	D	10.60
428	GURDASPUR	DERA BABA NANAK	S-NPP	75.02501	31.94230	13:24:00	D	10.60
429	GURDASPUR	DERA BABA NANAK	AQUA-1	75.03432	31.95371	13:41:00	D	8.28
430	GURDASPUR	DERA BABA NANAK	S-NPP	75.03038	31.95709	13:24:00	D	2.10
431	GURDASPUR	DERA BABA NANAK	S-NPP	74.97343	31.95810	13:24:00	D	2.10
432	GURDASPUR	DERA BABA NANAK	AQUA-1	75.09912	31.97168	13:41:00	D	10.79
433	GURDASPUR	DERA BABA NANAK	S-NPP	75.08418	32.00761	13:24:00	D	4.50
434	GURDASPUR	DERA BABA NANAK	AQUA-1	75.07695	32.02258	13:41:00	D	22.92
435	GURDASPUR	DERA BABA NANAK	S-NPP	75.08943	32.04413	13:24:00	D	2.90
436	GURDASPUR	GURDASPUR	S-NPP	75.44158	31.82771	13:24:00	D	4.60
437	GURDASPUR	GURDASPUR	S-NPP	75.30719	31.89363	13:24:00	D	5.60
438	GURDASPUR	GURDASPUR	S-NPP	75.34718	31.90705	13:24:00	D	2.10
439	GURDASPUR	GURDASPUR	S-NPP	75.35814	31.91574	13:24:00	D	1.60
440	GURDASPUR	GURDASPUR	S-NPP	75.20671	31.94456	13:24:00	D	4.80
441	GURDASPUR	GURDASPUR	S-NPP	75.22337	31.94730	13:24:00	D	2.40
442	GURDASPUR	GURDASPUR	S-NPP	75.18327	31.97187	13:24:00	D	4.20
443	GURDASPUR	GURDASPUR	S-NPP	75.31180	31.97564	13:24:00	D	2.80
444	GURDASPUR	GURDASPUR	AQUA-1	75.14857	32.02258	13:41:00	D	10.43

445	GURDASPUR	GURDASPUR	AQUA-1	75.20825	32.03755	13:41:00	D	6.76
446	GURDASPUR	GURDASPUR	S-NPP	75.21572	32.04072	13:24:00	D	2.10
447	GURDASPUR	GURDASPUR	S-NPP	75.20248	32.04200	13:24:00	D	4.10
448	GURDASPUR	GURDASPUR	S-NPP	75.20440	32.05270	13:24:00	D	4.60
449	GURDASPUR	GURDASPUR	S-NPP	75.30907	32.06642	13:24:00	D	1.70
450	HOSHIARPUR	DASUYA	AQUA-1	75.58341	31.62283	13:41:00	D	8.49
451	HOSHIARPUR	GARHSHANKAR	S-NPP	76.14515	31.15578	13:24:00	D	5.00
452	HOSHIARPUR	GARHSHANKAR	S-NPP	76.14919	31.15642	13:24:00	D	18.80
453	HOSHIARPUR	GARHSHANKAR	S-NPP	76.05093	31.24961	13:24:00	D	2.10
454	JALANDHAR	JALANDHAR II	AQUA-1	75.50497	31.39077	13:41:00	D	9.85
455	JALANDHAR	JALANDHAR II	S-NPP	75.47313	31.40166	13:24:00	D	6.60
456	JALANDHAR	JALANDHAR II	S-NPP	75.56934	31.41035	13:24:00	D	6.70
457	JALANDHAR	JALANDHAR II	AQUA-1	75.49644	31.41622	13:41:00	D	8.79
458	JALANDHAR	JALANDHAR II	S-NPP	75.45768	31.43508	13:24:00	D	1.90
459	JALANDHAR	JALANDHAR II	AQUA-1	75.54931	31.45065	13:41:00	D	23.24
460	JALANDHAR	JALANDHAR II	S-NPP	75.48670	31.47780	13:24:00	D	2.40
461	JALANDHAR	JALANDHAR II	AQUA-1	75.47598	31.48808	13:41:00	D	13.99
462	JALANDHAR	JALANDHAR II	S-NPP	75.71259	31.51435	13:24:00	D	2.20
463	JALANDHAR	JALANDHAR II	S-NPP	75.67885	31.53298	13:24:00	D	4.30
464	JALANDHAR	JALANDHAR II	S-NPP	75.58346	31.54173	13:24:00	D	3.60
465	JALANDHAR	NAKODAR	S-NPP	75.50975	30.99022	13:24:00	D	4.20
466	JALANDHAR	NAKODAR	S-NPP	75.48147	31.00411	13:24:00	D	7.70
467	JALANDHAR	NAKODAR	S-NPP	75.46422	31.00474	13:24:00	D	5.30
468	JALANDHAR	NAKODAR	S-NPP	75.43269	31.08959	13:24:00	D	4.50
469	JALANDHAR	NAKODAR	S-NPP	75.44295	31.16553	13:24:00	D	4.90
470	JALANDHAR	NAKODAR	S-NPP	75.43394	31.16752	13:24:00	D	9.30
471	JALANDHAR	NAKODAR	S-NPP	75.44222	31.16887	13:24:00	D	4.90
472	JALANDHAR	NAKODAR	AQUA-1	75.36343	31.17817	13:41:00	D	7.93
473	JALANDHAR	NAKODAR	S-NPP	75.38400	31.18013	13:24:00	D	3.00
474	JALANDHAR	NAKODAR	AQUA-1	75.52202	31.18266	13:41:00	D	6.87
475	JALANDHAR	NAKODAR	S-NPP	75.39081	31.18817	13:24:00	D	2.00
476	JALANDHAR	PHILLAUR	S-NPP	75.59164	30.98624	13:24:00	D	15.60

477	JALANDHAR	PHILLAUR	S-NPP	75.73220	31.02273	13:24:00	D	1.70
478	JALANDHAR	PHILLAUR	AQUA-1	75.56977	31.11828	13:41:00	D	9.28
479	JALANDHAR	PHILLAUR	S-NPP	75.61337	31.12771	13:24:00	D	3.70
480	JALANDHAR	PHILLAUR	AQUA-1	75.71983	31.13624	13:41:00	D	6.58
481	JALANDHAR	PHILLAUR	S-NPP	75.71648	31.14106	13:24:00	D	2.10
482	JALANDHAR	SHAHKOT	S-NPP	75.38830	30.99915	13:24:00	D	5.30
483	JALANDHAR	SHAHKOT	AQUA-1	75.39413	31.00299	13:41:00	D	7.67
484	JALANDHAR	SHAHKOT	S-NPP	75.40265	31.01192	13:24:00	D	2.60
485	JALANDHAR	SHAHKOT	S-NPP	75.37646	31.05269	13:24:00	D	3.20
486	JALANDHAR	SHAHKOT	S-NPP	75.22156	31.07697	13:24:00	D	3.30
487	JALANDHAR	SHAHKOT	S-NPP	75.25728	31.11073	13:24:00	D	2.70
488	JALANDHAR	SHAHKOT	AQUA-1	75.29181	31.11079	13:41:00	D	16.16
489	JALANDHAR	SHAHKOT	AQUA-1	75.33274	31.11079	13:41:00	D	8.07
490	JALANDHAR	SHAHKOT	S-NPP	75.33022	31.11236	13:24:00	D	4.60
491	JALANDHAR	SHAHKOT	S-NPP	75.28493	31.12225	13:24:00	D	5.50
492	JALANDHAR	SHAHKOT	AQUA-1	75.28328	31.13924	13:41:00	D	23.20
493	KAPURTHALA	BHOLATH	S-NPP	75.49834	31.48314	13:24:00	D	49.30
494	KAPURTHALA	BHOLATH	S-NPP	75.46814	31.52311	13:24:00	D	3.90
495	KAPURTHALA	BHOLATH	AQUA-1	75.52714	31.57342	13:41:00	D	15.07
496	KAPURTHALA	BHOLATH	S-NPP	75.52205	31.57521	13:24:00	D	4.30
497	KAPURTHALA	BHOLATH	S-NPP	75.51647	31.58120	13:24:00	D	8.50
498	KAPURTHALA	BHOLATH	S-NPP	75.51573	31.58453	13:24:00	D	12.20
499	KAPURTHALA	KAPURTHALA	AQUA-1	75.21848	31.41472	13:41:00	D	6.36
500	KAPURTHALA	SULTANPUR LODHI	AQUA-1	75.29011	31.19314	13:41:00	D	7.75
501	KAPURTHALA	SULTANPUR LODHI	AQUA-1	75.25088	31.27249	13:41:00	D	12.06
502	KAPURTHALA	SULTANPUR LODHI	S-NPP	75.24668	31.27658	13:24:00	D	3.20
503	KAPURTHALA	SULTANPUR LODHI	S-NPP	75.26260	31.28266	13:24:00	D	4.50
504	KAPURTHALA	SULTANPUR LODHI	S-NPP	75.26643	31.28810	13:24:00	D	3.70
505	LUDHIANA	JAGRAON	AQUA-1	75.42312	30.60624	13:41:00	D	16.74
506	LUDHIANA	JAGRAON	AQUA-1	75.43505	30.66163	13:41:00	D	10.79
507	LUDHIANA	JAGRAON	S-NPP	75.45686	30.68105	13:24:00	D	3.50
508	LUDHIANA	JAGRAON	AQUA-1	75.38219	30.68110	13:41:00	D	6.47

509	LUDHIANA	JAGRAON	S-NPP	75.45585	30.70517	13:24:00	D	2.50
510	LUDHIANA	JAGRAON	AQUA-1	75.39413	30.74248	13:41:00	D	11.84
511	LUDHIANA	JAGRAON	S-NPP	75.49147	30.77688	13:24:00	D	14.50
512	LUDHIANA	JAGRAON	S-NPP	75.49159	30.77796	13:24:00	D	16.80
513	LUDHIANA	JAGRAON	AQUA-1	75.53737	30.81435	13:41:00	D	12.41
514	LUDHIANA	JAGRAON	AQUA-1	75.49474	30.83082	13:41:00	D	7.09
515	LUDHIANA	JAGRAON	AQUA-1	75.55783	30.87274	13:41:00	D	7.47
516	LUDHIANA	JAGRAON	S-NPP	75.58306	30.88636	13:24:00	D	6.10
517	LUDHIANA	JAGRAON	AQUA-1	75.46575	30.97155	13:41:00	D	12.69
518	LUDHIANA	JAGRAON	AQUA-1	75.38219	30.97754	13:41:00	D	14.75
519	LUDHIANA	KHANNA	AQUA-1	76.13933	30.64217	13:41:00	D	7.79
520	LUDHIANA	KHANNA	S-NPP	76.14040	30.65715	13:24:00	D	2.90
521	LUDHIANA	KHANNA	AQUA-1	76.23619	30.70745	13:41:00	D	15.38
522	LUDHIANA	KHANNA	S-NPP	76.24834	30.76194	13:24:00	D	2.10
523	LUDHIANA	LUDHIANA EAST	S-NPP	75.76489	30.73155	13:24:00	D	3.00
524	LUDHIANA	LUDHIANA EAST	S-NPP	76.11592	30.91696	13:24:00	D	1.70
525	LUDHIANA	PAYAL	S-NPP	76.09724	30.58518	13:24:00	D	4.60
526	LUDHIANA	PAYAL	S-NPP	76.09653	30.58849	13:24:00	D	4.60
527	LUDHIANA	PAYAL	S-NPP	75.97614	30.60354	13:24:00	D	4.00
528	LUDHIANA	PAYAL	S-NPP	75.98019	30.60419	13:24:00	D	4.30
529	LUDHIANA	PAYAL	S-NPP	75.87224	30.68142	13:24:00	D	3.20
530	LUDHIANA	RAIKOT	S-NPP	75.57774	30.63363	13:24:00	D	3.20
531	LUDHIANA	RAIKOT	AQUA-1	75.67208	30.75296	13:41:00	D	9.50
532	LUDHIANA	SAMRALA	S-NPP	76.17912	30.75442	13:24:00	D	1.50
533	LUDHIANA	SAMRALA	S-NPP	76.13630	30.78105	13:24:00	D	2.50
534	LUDHIANA	SAMRALA	S-NPP	76.15507	30.79089	13:24:00	D	4.90
535	LUDHIANA	SAMRALA	AQUA-1	76.12057	30.79638	13:41:00	D	9.06
536	LUDHIANA	SAMRALA	S-NPP	76.14822	30.80349	13:24:00	D	2.50
537	LUDHIANA	SAMRALA	S-NPP	76.14752	30.80680	13:24:00	D	2.50
538	LUDHIANA	SAMRALA	S-NPP	76.26425	30.84580	13:24:00	D	1.70
539	LUDHIANA	SAMRALA	S-NPP	76.19362	30.88705	02:06:00	N	0.50
540	LUDHIANA	SAMRALA	AQUA-1	76.22595	30.96616	13:41:00	D	15.46

541	MANSA	BUDHLADA	S-NPP	75.63992	29.79189	13:24:00	D	3.60
542	MANSA	BUDHLADA	AQUA-1	75.62093	29.80674	13:41:00	D	6.48
543	MANSA	BUDHLADA	S-NPP	75.70010	29.80870	13:24:00	D	5.80
544	MANSA	BUDHLADA	S-NPP	75.72327	29.81942	13:24:00	D	1.80
545	MANSA	BUDHLADA	S-NPP	75.73219	29.83962	13:24:00	D	4.50
546	MANSA	BUDHLADA	S-NPP	75.44169	29.84017	13:24:00	D	1.70
547	MANSA	BUDHLADA	S-NPP	75.62526	29.84277	13:24:00	D	5.00
548	MANSA	BUDHLADA	S-NPP	75.64655	29.84281	13:24:00	D	20.60
549	MANSA	BUDHLADA	S-NPP	75.64583	29.84617	13:24:00	D	3.80
550	MANSA	BUDHLADA	S-NPP	75.37829	29.85409	13:24:00	D	6.70
551	MANSA	BUDHLADA	S-NPP	75.73657	29.87846	13:24:00	D	2.90
552	MANSA	BUDHLADA	S-NPP	75.50954	29.92512	13:24:00	D	3.20
553	MANSA	BUDHLADA	AQUA-1	75.63798	29.92651	13:41:00	D	7.25
554	MANSA	BUDHLADA	S-NPP	75.52728	29.94200	13:24:00	D	10.30
555	MANSA	BUDHLADA	S-NPP	75.52655	29.94536	13:24:00	D	10.30
556	MANSA	BUDHLADA	AQUA-1	75.56295	29.96993	13:41:00	D	19.69
557	MANSA	BUDHLADA	S-NPP	75.62938	29.98320	13:24:00	D	7.00
558	MANSA	BUDHLADA	S-NPP	75.59499	29.98449	13:24:00	D	9.60
559	MANSA	BUDHLADA	S-NPP	75.56736	29.99384	13:24:00	D	9.30
560	MANSA	MANSA	S-NPP	75.38995	29.90165	13:24:00	D	5.40
561	MANSA	MANSA	S-NPP	75.33132	29.91281	13:24:00	D	6.70
562	MANSA	MANSA	S-NPP	75.37500	29.93061	13:24:00	D	3.90
563	MANSA	MANSA	S-NPP	75.43933	29.95179	13:24:00	D	4.90
564	MANSA	MANSA	S-NPP	75.42220	29.99082	13:24:00	D	0.80
565	MANSA	MANSA	AQUA-1	75.49815	30.08522	13:41:00	D	20.16
566	MANSA	MANSA	S-NPP	75.36242	30.08985	13:24:00	D	5.50
567	MANSA	MANSA	S-NPP	75.61325	30.09984	13:24:00	D	6.30
568	MANSA	MANSA	S-NPP	75.61567	30.12799	13:24:00	D	15.40
569	MANSA	MANSA	S-NPP	75.61979	30.12867	13:24:00	D	15.40
570	MANSA	MANSA	S-NPP	75.56818	30.13065	13:24:00	D	3.20
571	MANSA	MANSA	S-NPP	75.56746	30.13400	13:24:00	D	13.90
572	MANSA	SARDULGARH	S-NPP	75.27165	29.62243	13:24:00	D	3.60

573	MANSA	SARDULGARH	AQUA-1	75.27135	29.62857	13:41:00	D	22.40
574	MANSA	SARDULGARH	S-NPP	75.29610	29.63003	13:24:00	D	3.00
575	MANSA	SARDULGARH	AQUA-1	75.20996	29.63755	13:41:00	D	8.72
576	MANSA	SARDULGARH	AQUA-1	75.30204	29.64205	13:41:00	D	13.70
577	MANSA	SARDULGARH	S-NPP	75.20598	29.64600	13:24:00	D	12.20
578	MANSA	SARDULGARH	S-NPP	75.23130	29.64734	13:24:00	D	4.90
579	MANSA	SARDULGARH	S-NPP	75.30496	29.64906	13:24:00	D	1.80
580	MANSA	SARDULGARH	S-NPP	75.22702	29.64957	13:24:00	D	9.20
581	MANSA	SARDULGARH	S-NPP	75.32097	29.65523	13:24:00	D	8.00
582	MANSA	SARDULGARH	S-NPP	75.24656	29.65992	13:24:00	D	1.60
583	MANSA	SARDULGARH	AQUA-1	75.29011	29.66600	13:41:00	D	22.51
584	MANSA	SARDULGARH	AQUA-1	75.35150	29.66600	13:41:00	D	6.81
585	MANSA	SARDULGARH	S-NPP	75.20075	29.66976	13:24:00	D	2.90
586	MANSA	SARDULGARH	S-NPP	75.23443	29.67545	13:24:00	D	26.30
587	MANSA	SARDULGARH	AQUA-1	75.27135	29.69145	13:41:00	D	13.34
588	MANSA	SARDULGARH	AQUA-1	75.31227	29.70044	13:41:00	D	13.43
589	MANSA	SARDULGARH	S-NPP	75.26481	29.71571	13:24:00	D	5.20
590	MANSA	SARDULGARH	S-NPP	75.23736	29.72165	13:24:00	D	2.90
591	MANSA	SARDULGARH	S-NPP	75.31930	29.72483	13:24:00	D	20.50
592	MANSA	SARDULGARH	AQUA-1	75.24577	29.73637	13:41:00	D	6.17
593	MANSA	SARDULGARH	S-NPP	75.26455	29.73674	13:24:00	D	3.60
594	MANSA	SARDULGARH	S-NPP	75.29586	29.75249	13:24:00	D	3.00
595	MANSA	SARDULGARH	S-NPP	75.40644	29.78132	13:24:00	D	6.70
596	MANSA	SARDULGARH	S-NPP	75.22415	29.82488	13:24:00	D	2.40
597	MANSA	SARDULGARH	S-NPP	75.33752	29.88232	13:24:00	D	1.60
598	MANSA	SARDULGARH	S-NPP	75.31833	29.89312	13:24:00	D	2.90
599	MANSA	SARDULGARH	S-NPP	75.32251	29.89382	13:24:00	D	3.70
600	MANSA	SARDULGARH	S-NPP	75.31611	29.90325	13:24:00	D	2.10
601	MOGA	BAGHA PURANA	S-NPP	74.91196	30.72997	13:24:00	D	3.50
602	MOGA	BAGHA PURANA	S-NPP	74.95020	30.73642	13:24:00	D	5.50
603	MOGA	BAGHA PURANA	AQUA-1	74.92347	30.74248	13:41:00	D	8.89
604	MOGA	BAGHA PURANA	S-NPP	74.92165	30.74568	13:24:00	D	2.80

605	MOGA	BAGHA PURANA	S-NPP	75.09309	30.76393	13:24:00	D	3.60
606	MOGA	MOGA	S-NPP	75.15598	30.73599	13:24:00	D	7.30
607	MOGA	MOGA	AQUA-1	75.09571	30.78890	13:41:00	D	13.98
608	MOGA	MOGA	S-NPP	75.31557	30.79746	13:24:00	D	7.60
609	MOGA	MOGA	S-NPP	75.31482	30.80082	13:24:00	D	7.60
610	MOGA	MOGA	AQUA-1	75.05648	30.82333	13:41:00	D	27.63
611	MOGA	MOGA	S-NPP	75.03200	30.84517	13:24:00	D	14.20
612	MOGA	MOGA	S-NPP	75.01858	30.84641	13:24:00	D	4.30
613	MOGA	MOGA	S-NPP	75.03124	30.84854	13:24:00	D	14.20
614	MOGA	MOGA	AQUA-1	74.98998	30.85926	13:41:00	D	8.33
615	MOGA	NIHAL SINGH WALA	S-NPP	75.36767	30.59562	13:24:00	D	4.80
616	MOGA	NIHAL SINGH WALA	S-NPP	75.29487	30.63235	13:24:00	D	4.40
617	MOGA	NIHAL SINGH WALA	S-NPP	75.24675	30.71589	13:24:00	D	2.80
618	MUKTSAR	GIDDARBAHA	S-NPP	74.72777	30.18325	13:24:00	D	7.70
619	MUKTSAR	GIDDARBAHA	S-NPP	74.55176	30.22596	13:24:00	D	3.00
620	MUKTSAR	GIDDARBAHA	AQUA-1	74.55343	30.22895	13:41:00	D	27.76
621	MUKTSAR	GIDDARBAHA	S-NPP	74.55456	30.23360	13:24:00	D	4.70
622	MUKTSAR	GIDDARBAHA	S-NPP	74.55377	30.23704	13:24:00	D	4.70
623	MUKTSAR	GIDDARBAHA	S-NPP	74.67448	30.24357	13:24:00	D	2.30
624	MUKTSAR	GIDDARBAHA	S-NPP	74.67727	30.25118	13:24:00	D	1.30
625	MUKTSAR	GIDDARBAHA	AQUA-1	74.53160	30.25290	13:41:00	D	13.70
626	MUKTSAR	GIDDARBAHA	S-NPP	74.53514	30.25888	13:24:00	D	18.20
627	MUKTSAR	GIDDARBAHA	S-NPP	74.53952	30.25964	13:24:00	D	18.20
628	MUKTSAR	GIDDARBAHA	S-NPP	74.66036	30.26609	13:24:00	D	3.60
629	MUKTSAR	GIDDARBAHA	S-NPP	74.58011	30.28090	13:24:00	D	3.20
630	MUKTSAR	GIDDARBAHA	S-NPP	74.74105	30.28699	13:24:00	D	4.30
631	MUKTSAR	GIDDARBAHA	AQUA-1	74.53297	30.30081	13:41:00	D	28.50
632	MUKTSAR	GIDDARBAHA	AQUA-1	74.72140	30.30455	13:41:00	D	12.85
633	MUKTSAR	GIDDARBAHA	S-NPP	74.53008	30.30627	13:24:00	D	11.40
634	MUKTSAR	GIDDARBAHA	S-NPP	74.52930	30.30971	13:24:00	D	4.90
635	MUKTSAR	GIDDARBAHA	S-NPP	74.66952	30.36960	13:24:00	D	20.80
636	MUKTSAR	GIDDARBAHA	S-NPP	74.78558	30.37170	13:24:00	D	14.60

637	MUKTSAR	GIDDARBAHA	S-NPP	74.66441	30.37228	13:24:00	D	20.80
638	MUKTSAR	GIDDARBAHA	S-NPP	74.66874	30.37302	13:24:00	D	20.80
639	MUKTSAR	GIDDARBAHA	S-NPP	74.72771	30.39021	13:24:00	D	8.50
640	MUKTSAR	MALAUT	S-NPP	74.61525	29.91048	13:24:00	D	16.60
641	MUKTSAR	MALAUT	S-NPP	74.50092	29.95179	13:24:00	D	2.70
642	MUKTSAR	MALAUT	S-NPP	74.51523	29.97670	13:24:00	D	2.20
643	MUKTSAR	MALAUT	AQUA-1	74.53160	29.99598	13:41:00	D	12.47
644	MUKTSAR	MALAUT	S-NPP	74.53329	29.99781	13:24:00	D	7.50
645	MUKTSAR	MALAUT	S-NPP	74.69949	30.00518	13:24:00	D	2.50
646	MUKTSAR	MALAUT	AQUA-1	74.45453	30.03132	13:41:00	D	13.51
647	MUKTSAR	MALAUT	AQUA-1	74.52444	30.06875	13:41:00	D	5.77
648	MUKTSAR	MALAUT	AQUA-1	74.62983	30.06964	13:41:00	D	8.61
649	MUKTSAR	MALAUT	S-NPP	74.52115	30.07612	13:24:00	D	3.30
650	MUKTSAR	MALAUT	AQUA-1	74.43543	30.08222	13:41:00	D	12.65
651	MUKTSAR	MALAUT	S-NPP	74.38001	30.09103	13:24:00	D	3.30
652	MUKTSAR	MALAUT	S-NPP	74.43838	30.09761	13:24:00	D	10.60
653	MUKTSAR	MALAUT	S-NPP	74.39174	30.10029	13:24:00	D	2.70
654	MUKTSAR	MALAUT	S-NPP	74.43237	30.10376	13:24:00	D	4.60
655	MUKTSAR	MALAUT	S-NPP	74.43079	30.11069	13:24:00	D	16.70
656	MUKTSAR	MALAUT	S-NPP	74.46249	30.11260	13:24:00	D	11.70
657	MUKTSAR	MALAUT	AQUA-1	74.39655	30.12264	13:41:00	D	19.16
658	MUKTSAR	MALAUT	S-NPP	74.48656	30.12754	13:24:00	D	3.00
659	MUKTSAR	MALAUT	S-NPP	74.48578	30.13100	13:24:00	D	3.00
660	MUKTSAR	MALAUT	S-NPP	74.38901	30.13225	13:24:00	D	8.80
661	MUKTSAR	MALAUT	AQUA-1	74.57390	30.13911	13:41:00	D	24.51
662	MUKTSAR	MALAUT	S-NPP	74.44699	30.16024	13:24:00	D	4.00
663	MUKTSAR	MALAUT	AQUA-1	74.44259	30.16756	13:41:00	D	18.93
664	MUKTSAR	MALAUT	AQUA-1	74.52274	30.16906	13:41:00	D	9.45
665	MUKTSAR	MALAUT	S-NPP	74.36185	30.17491	13:24:00	D	10.00
666	MUKTSAR	MALAUT	S-NPP	74.36105	30.17838	13:24:00	D	9.50
667	MUKTSAR	MALAUT	S-NPP	74.41421	30.18768	13:24:00	D	4.20
668	MUKTSAR	MALAUT	S-NPP	74.35342	30.19147	13:24:00	D	13.10

669	MUKTSAR	MALAUT	S-NPP	74.35263	30.19493	13:24:00	D	13.10
670	MUKTSAR	MALAUT	S-NPP	74.47210	30.25521	13:24:00	D	11.60
671	MUKTSAR	MALAUT	S-NPP	74.41443	30.26684	13:24:00	D	3.00
672	MUKTSAR	MALAUT	AQUA-1	74.38120	30.27536	13:41:00	D	11.55
673	MUKTSAR	MALAUT	S-NPP	74.36887	30.31051	13:24:00	D	12.60
674	MUKTSAR	MALAUT	S-NPP	74.40427	30.31667	13:24:00	D	12.40
675	MUKTSAR	MALAUT	S-NPP	74.40709	30.32435	13:24:00	D	12.10
676	MUKTSAR	MALAUT	AQUA-1	74.32697	30.33375	13:41:00	D	33.54
677	MUKTSAR	MUKTSAR	S-NPP	74.46720	30.34193	13:24:00	D	5.00
678	MUKTSAR	MUKTSAR	S-NPP	74.42361	30.35235	13:24:00	D	16.50
679	MUKTSAR	MUKTSAR	S-NPP	74.45524	30.35421	13:24:00	D	32.60
680	MUKTSAR	MUKTSAR	AQUA-1	74.44259	30.35770	13:41:00	D	9.06
681	MUKTSAR	MUKTSAR	S-NPP	74.56122	30.36885	13:24:00	D	2.70
682	MUKTSAR	MUKTSAR	AQUA-1	74.53638	30.39963	13:41:00	D	26.30
683	MUKTSAR	MUKTSAR	S-NPP	74.32204	30.42180	13:24:00	D	4.30
684	MUKTSAR	MUKTSAR	S-NPP	74.39368	30.43065	13:24:00	D	3.60
685	MUKTSAR	MUKTSAR	S-NPP	74.30553	30.43334	13:24:00	D	7.60
686	MUKTSAR	MUKTSAR	AQUA-1	74.38427	30.45412	13:41:00	D	12.28
687	MUKTSAR	MUKTSAR	S-NPP	74.39694	30.45635	13:24:00	D	1.90
688	MUKTSAR	MUKTSAR	S-NPP	74.69417	30.48594	13:24:00	D	5.40
689	MUKTSAR	MUKTSAR	S-NPP	74.69849	30.48668	13:24:00	D	5.40
690	MUKTSAR	MUKTSAR	S-NPP	74.69772	30.49010	13:24:00	D	7.30
691	MUKTSAR	MUKTSAR	S-NPP	74.45735	30.49706	13:24:00	D	5.00
692	MUKTSAR	MUKTSAR	AQUA-1	74.45282	30.51790	13:41:00	D	10.81
693	MUKTSAR	MUKTSAR	AQUA-1	74.59913	30.51880	13:41:00	D	7.42
694	MUKTSAR	MUKTSAR	S-NPP	74.60060	30.52557	13:24:00	D	3.90
695	MUKTSAR	MUKTSAR	S-NPP	74.62274	30.54720	13:24:00	D	15.10
696	MUKTSAR	MUKTSAR	AQUA-1	74.55514	30.55384	13:41:00	D	7.96
697	MUKTSAR	MUKTSAR	S-NPP	74.55048	30.56682	13:24:00	D	16.50
698	MUKTSAR	MUKTSAR	S-NPP	74.45388	30.57165	13:24:00	D	1.80
699	MUKTSAR	MUKTSAR	AQUA-1	74.57560	30.58977	13:41:00	D	12.97
700	MUKTSAR	MUKTSAR	AQUA-1	74.60459	30.60025	13:41:00	D	9.37

701	MUKTSAR	MUKTSAR	AQUA-1	74.47840	30.60100	13:41:00	D	7.41
702	MUKTSAR	MUKTSAR	S-NPP	74.48781	30.60249	13:24:00	D	2.20
703	MUKTSAR	MUKTSAR	S-NPP	74.50532	30.60547	13:24:00	D	4.20
704	MUKTSAR	MUKTSAR	S-NPP	74.49060	30.61011	13:24:00	D	3.60
705	MUKTSAR	MUKTSAR	S-NPP	74.50466	30.63190	13:24:00	D	5.00
706	MUKTSAR	MUKTSAR	AQUA-1	74.54661	30.63319	13:41:00	D	7.41
707	MUKTSAR	MUKTSAR	S-NPP	74.56645	30.63904	13:24:00	D	4.00
708	MUKTSAR	MUKTSAR	AQUA-1	74.49886	30.64367	13:41:00	D	6.01
709	MUKTSAR	MUKTSAR	S-NPP	74.50150	30.64563	13:24:00	D	4.80
710	MUKTSAR	MUKTSAR	S-NPP	74.54669	30.64631	13:24:00	D	15.20
711	MUKTSAR	MUKTSAR	S-NPP	74.49635	30.64831	13:24:00	D	4.80
712	NAWASHAHR	NAWASHAHR	S-NPP	76.20777	31.03684	13:24:00	D	3.60
713	NAWASHAHR	NAWASHAHR	S-NPP	76.12683	31.04456	13:24:00	D	2.80
714	NAWASHAHR	NAWASHAHR	S-NPP	76.13087	31.04519	13:24:00	D	3.50
715	PATIALA	NABHA	S-NPP	76.12677	30.32233	13:24:00	D	4.20
716	PATIALA	NABHA	S-NPP	76.13081	30.32298	13:24:00	D	4.40
717	PATIALA	NABHA	S-NPP	76.18864	30.32532	13:24:00	D	5.60
718	PATIALA	NABHA	AQUA-1	76.19219	30.32926	13:41:00	D	9.81
719	PATIALA	NABHA	S-NPP	76.07856	30.35477	13:24:00	D	4.10
720	PATIALA	NABHA	S-NPP	76.17941	30.37093	13:24:00	D	3.20
721	PATIALA	NABHA	AQUA-1	76.23005	30.38226	13:41:00	D	25.14
722	PATIALA	NABHA	AQUA-1	76.06941	30.38316	13:41:00	D	17.60
723	PATIALA	NABHA	S-NPP	76.05060	30.38805	13:24:00	D	2.60
724	PATIALA	NABHA	S-NPP	76.05798	30.39267	13:24:00	D	2.50
725	PATIALA	NABHA	S-NPP	76.16838	30.40344	13:24:00	D	3.90
726	PATIALA	NABHA	AQUA-1	76.27575	30.42059	13:41:00	D	9.25
727	PATIALA	NABHA	S-NPP	76.20989	30.42374	13:24:00	D	27.50
728	PATIALA	NABHA	AQUA-1	76.31497	30.44604	13:41:00	D	7.65
729	PATIALA	NABHA	S-NPP	76.28547	30.45966	13:24:00	D	5.90
730	PATIALA	NABHA	S-NPP	76.33105	30.46001	13:24:00	D	3.50
731	PATIALA	NABHA	S-NPP	76.28477	30.46297	13:24:00	D	5.90
732	PATIALA	NABHA	S-NPP	76.17082	30.49159	13:24:00	D	3.40

733	PATIALA	NABHA	S-NPP	76.17485	30.49224	13:24:00	D	3.40
734	PATIALA	NABHA	AQUA-1	76.14956	30.49844	13:41:00	D	6.74
735	PATIALA	NABHA	S-NPP	76.16872	30.50154	13:24:00	D	4.50
736	PATIALA	NABHA	S-NPP	76.19745	30.52322	13:24:00	D	5.40
737	PATIALA	NABHA	AQUA-1	76.19219	30.54036	13:41:00	D	11.84
738	PATIALA	PATIALA	S-NPP	76.47524	30.09889	13:24:00	D	3.00
739	PATIALA	PATIALA	S-NPP	76.46657	30.10094	13:24:00	D	4.20
740	PATIALA	PATIALA	AQUA-1	76.33236	30.10917	13:41:00	D	14.02
741	PATIALA	PATIALA	S-NPP	76.31413	30.11787	13:24:00	D	3.10
742	PATIALA	PATIALA	S-NPP	76.47044	30.12205	13:24:00	D	11.90
743	PATIALA	PATIALA	S-NPP	76.33749	30.12499	13:24:00	D	2.00
744	PATIALA	PATIALA	S-NPP	76.30193	30.13647	13:24:00	D	8.00
745	PATIALA	PATIALA	AQUA-1	76.48038	30.14810	13:41:00	D	10.27
746	PATIALA	PATIALA	S-NPP	76.52158	30.15399	13:24:00	D	6.50
747	PATIALA	PATIALA	AQUA-1	76.30167	30.15678	13:41:00	D	24.61
748	PATIALA	PATIALA	S-NPP	76.29152	30.16824	13:24:00	D	3.30
749	PATIALA	PATIALA	AQUA-1	76.37563	30.16949	13:41:00	D	8.61
750	PATIALA	PATIALA	S-NPP	76.34962	30.18773	13:24:00	D	4.00
751	PATIALA	PATIALA	S-NPP	76.43579	30.19112	13:24:00	D	5.30
752	PATIALA	PATIALA	S-NPP	76.35695	30.19232	13:24:00	D	1.50
753	PATIALA	PATIALA	S-NPP	76.53778	30.19696	13:24:00	D	2.00
754	PATIALA	PATIALA	S-NPP	76.52911	30.19901	13:24:00	D	6.10
755	PATIALA	PATIALA	S-NPP	76.35487	30.20225	13:24:00	D	6.60
756	PATIALA	PATIALA	AQUA-1	76.55030	30.20349	13:41:00	D	9.34
757	PATIALA	PATIALA	S-NPP	76.36689	30.20415	13:24:00	D	2.60
758	PATIALA	PATIALA	S-NPP	76.54440	30.20482	13:24:00	D	6.90
759	PATIALA	PATIALA	S-NPP	76.51109	30.20641	13:24:00	D	6.30
760	PATIALA	PATIALA	S-NPP	76.43636	30.20830	13:24:00	D	2.20
761	PATIALA	PATIALA	S-NPP	76.55569	30.21001	13:24:00	D	3.90
762	PATIALA	PATIALA	S-NPP	76.37684	30.21598	13:24:00	D	2.80
763	PATIALA	PATIALA	AQUA-1	76.30474	30.22146	13:41:00	D	7.32
764	PATIALA	PATIALA	S-NPP	76.43359	30.22153	13:24:00	D	2.00

765	PATIALA	PATIALA	S-NPP	76.43760	30.22216	13:24:00	D	2.00
766	PATIALA	PATIALA	S-NPP	76.20542	30.24575	13:24:00	D	8.30
767	PATIALA	PATIALA	S-NPP	76.20403	30.25238	13:24:00	D	5.80
768	PATIALA	PATIALA	S-NPP	76.54943	30.26021	13:24:00	D	3.50
769	PATIALA	PATIALA	S-NPP	76.27708	30.26062	13:24:00	D	2.80
770	PATIALA	PATIALA	AQUA-1	76.19048	30.26488	13:41:00	D	39.17
771	PATIALA	PATIALA	S-NPP	76.56735	30.27324	13:24:00	D	1.60
772	PATIALA	PATIALA	S-NPP	76.24879	30.27666	13:24:00	D	4.00
773	PATIALA	PATIALA	S-NPP	76.23202	30.27740	13:24:00	D	4.30
774	PATIALA	PATIALA	S-NPP	76.59529	30.27760	13:24:00	D	2.40
775	PATIALA	PATIALA	AQUA-1	76.50189	30.28054	13:41:00	D	15.49
776	PATIALA	PATIALA	S-NPP	76.49461	30.28575	13:24:00	D	4.50
777	PATIALA	PATIALA	S-NPP	76.49861	30.28638	13:24:00	D	4.50
778	PATIALA	PATIALA	S-NPP	76.48613	30.29033	13:24:00	D	4.50
779	PATIALA	PATIALA	S-NPP	76.53410	30.29788	13:24:00	D	2.30
780	PATIALA	PATIALA	S-NPP	76.51606	30.30528	13:24:00	D	2.80
781	PATIALA	PATIALA	S-NPP	76.47927	30.32339	13:24:00	D	3.50
782	PATIALA	PATIALA	S-NPP	76.49857	30.32984	13:24:00	D	1.70
783	PATIALA	PATIALA	S-NPP	76.37576	30.38504	13:24:00	D	1.50
784	PATIALA	PATIALA	AQUA-1	76.28734	30.38765	13:41:00	D	7.82
785	PATIALA	PATIALA	S-NPP	76.42177	30.40256	13:24:00	D	2.20
786	PATIALA	PATIALA	S-NPP	76.38033	30.40285	13:24:00	D	11.40
787	PATIALA	PATIALA	S-NPP	76.37618	30.42269	13:24:00	D	4.20
788	PATIALA	PATIALA	AQUA-1	76.50681	30.42583	13:41:00	D	10.06
789	PATIALA	PATIALA	S-NPP	76.39346	30.43908	13:24:00	D	7.40
790	PATIALA	PATIALA	S-NPP	76.45493	30.44192	13:24:00	D	1.60
791	PATIALA	RAJPURA	S-NPP	76.61446	30.30446	13:24:00	D	5.70
792	PATIALA	RAJPURA	S-NPP	76.61065	30.30647	13:24:00	D	3.60
793	PATIALA	RAJPURA	S-NPP	76.61463	30.30710	13:24:00	D	3.30
794	PATIALA	RAJPURA	S-NPP	76.69830	30.34060	13:24:00	D	1.10
795	PATIALA	RAJPURA	S-NPP	76.67769	30.34079	13:24:00	D	3.40
796	PATIALA	RAJPURA	S-NPP	76.63225	30.38143	13:24:00	D	7.40

797	PATIALA	RAJPURA	AQUA-1	76.57246	30.41759	13:41:00	D	13.46
798	PATIALA	RAJPURA	S-NPP	76.57048	30.42251	13:24:00	D	2.80
799	PATIALA	RAJPURA	S-NPP	76.57379	30.42644	13:24:00	D	2.80
800	PATIALA	RAJPURA	S-NPP	76.71487	30.44160	13:24:00	D	2.00
801	PATIALA	RAJPURA	S-NPP	76.68288	30.45707	13:24:00	D	2.60
802	PATIALA	RAJPURA	S-NPP	76.71877	30.46264	13:24:00	D	2.10
803	PATIALA	RAJPURA	S-NPP	76.68745	30.47481	13:24:00	D	1.10
804	PATIALA	RAJPURA	S-NPP	76.73796	30.48944	13:24:00	D	4.20
805	PATIALA	RAJPURA	S-NPP	76.74195	30.49006	13:24:00	D	7.20
806	PATIALA	RAJPURA	S-NPP	76.50672	30.49098	13:24:00	D	2.80
807	PATIALA	RAJPURA	S-NPP	76.61469	30.50780	13:24:00	D	2.50
808	PATIALA	RAJPURA	S-NPP	76.76649	30.51088	13:24:00	D	2.50
809	PATIALA	RAJPURA	S-NPP	76.64062	30.52205	13:24:00	D	4.00
810	PATIALA	RAJPURA	S-NPP	76.63993	30.52535	13:24:00	D	4.00
811	PATIALA	RAJPURA	AQUA-1	76.50937	30.52689	13:41:00	D	10.28
812	PATIALA	RAJPURA	S-NPP	76.62611	30.55306	13:24:00	D	2.60
813	PATIALA	RAJPURA	S-NPP	76.67005	30.55989	13:24:00	D	4.50
814	PATIALA	RAJPURA	S-NPP	76.57998	30.57655	13:24:00	D	4.60
815	PATIALA	RAJPURA	S-NPP	76.59997	30.57966	13:24:00	D	1.80
816	PATIALA	RAJPURA	S-NPP	76.53780	30.60065	13:24:00	D	5.50
817	PATIALA	RAJPURA	S-NPP	76.56651	30.60172	13:24:00	D	2.70
818	PATIALA	RAJPURA	S-NPP	76.53711	30.60396	13:24:00	D	5.50
819	PATIALA	RAJPURA	AQUA-1	76.52813	30.60624	13:41:00	D	17.00
820	PATIALA	RAJPURA	S-NPP	76.52374	30.60869	13:24:00	D	2.10
821	PATIALA	RAJPURA	S-NPP	76.53905	30.61448	13:24:00	D	2.40
822	PATIALA	RAJPURA	S-NPP	76.53837	30.61779	13:24:00	D	2.40
823	PATIALA	RAJPURA	AQUA-1	76.64067	30.62420	13:41:00	D	8.91
824	PATIALA	SAMANA	S-NPP	76.15088	29.84384	13:24:00	D	4.90
825	PATIALA	SAMANA	S-NPP	76.06262	29.84683	13:24:00	D	2.10
826	PATIALA	SAMANA	S-NPP	76.19920	29.85159	13:24:00	D	2.10
827	PATIALA	SAMANA	S-NPP	76.23066	29.86006	13:24:00	D	3.50
828	PATIALA	SAMANA	AQUA-1	76.21485	29.86149	13:41:00	D	27.89

829	PATIALA	SAMANA	S-NPP	76.23329	29.86735	13:24:00	D	11.20
830	PATIALA	SAMANA	S-NPP	76.07052	29.86875	13:24:00	D	14.10
831	PATIALA	SAMANA	S-NPP	76.23260	29.87066	13:24:00	D	11.20
832	PATIALA	SAMANA	S-NPP	76.20971	29.88073	13:24:00	D	1.90
833	PATIALA	SAMANA	S-NPP	76.14983	29.88833	13:24:00	D	2.10
834	PATIALA	SAMANA	S-NPP	76.14440	29.89433	13:24:00	D	2.20
835	PATIALA	SAMANA	AQUA-1	76.14103	29.91716	13:41:00	D	8.30
836	PATIALA	SAMANA	S-NPP	76.15556	29.92245	13:24:00	D	3.30
837	PATIALA	SAMANA	S-NPP	76.15958	29.92310	13:24:00	D	3.30
838	PATIALA	SAMANA	S-NPP	76.12454	29.93120	13:24:00	D	3.80
839	PATIALA	SAMANA	S-NPP	76.12858	29.93185	13:24:00	D	3.90
840	PATIALA	SAMANA	S-NPP	76.11894	29.95779	13:24:00	D	4.60
841	PATIALA	SAMANA	S-NPP	76.17869	29.97080	13:24:00	D	1.80
842	PATIALA	SAMANA	S-NPP	76.04868	29.97401	13:24:00	D	16.70
843	PATIALA	SAMANA	S-NPP	76.19936	29.99126	13:24:00	D	2.20
844	PATIALA	SAMANA	S-NPP	76.11052	29.99767	13:24:00	D	7.10
845	PATIALA	SAMANA	S-NPP	76.19114	30.01054	13:24:00	D	13.20
846	PATIALA	SAMANA	AQUA-1	76.11886	30.01335	13:41:00	D	7.60
847	PATIALA	SAMANA	S-NPP	76.19044	30.01386	13:24:00	D	13.20
848	PATIALA	SAMANA	S-NPP	76.22334	30.01567	13:24:00	D	13.80
849	PATIALA	SAMANA	S-NPP	76.19283	30.02311	13:24:00	D	13.20
850	PATIALA	SAMANA	S-NPP	76.19212	30.02643	13:24:00	D	13.20
851	PATIALA	SAMANA	S-NPP	76.23936	30.07857	13:24:00	D	4.50
852	PATIALA	SAMANA	S-NPP	76.11435	30.07917	13:24:00	D	3.70
853	PATIALA	SAMANA	S-NPP	76.22661	30.07997	13:24:00	D	5.10
854	PATIALA	SAMANA	S-NPP	76.29128	30.12794	13:24:00	D	4.10
855	PATIALA	SAMANA	S-NPP	76.25635	30.13610	13:24:00	D	4.50
856	PATIALA	SAMANA	AQUA-1	76.25460	30.15588	13:41:00	D	10.44
857	PATIALA	SAMANA	AQUA-1	76.12773	30.16307	13:41:00	D	23.13
858	PATIALA	SAMANA	AQUA-1	76.07112	30.16606	13:41:00	D	7.52
859	PATIALA	SAMANA	S-NPP	76.12358	30.17569	13:24:00	D	4.30
860	PATIALA	SAMANA	S-NPP	76.26658	30.18823	13:24:00	D	2.40

861	PATIALA	SAMANA	S-NPP	76.16653	30.18942	13:24:00	D	5.60
862	PATIALA	SAMANA	S-NPP	76.17056	30.19007	13:24:00	D	5.60
863	PATIALA	SAMANA	S-NPP	76.15707	30.19477	13:24:00	D	2.30
864	PATIALA	SAMANA	S-NPP	76.16109	30.19542	13:24:00	D	2.30
865	PATIALA	SAMANA	AQUA-1	76.11204	30.19601	13:41:00	D	8.98
866	PATIALA	SAMANA	S-NPP	76.20068	30.20515	13:24:00	D	6.40
867	PATIALA	SAMANA	S-NPP	76.13813	30.20547	13:24:00	D	3.50
868	PATIALA	SAMANA	S-NPP	76.13200	30.21479	13:24:00	D	10.80
869	PATIALA	SAMANA	AQUA-1	76.19390	30.21996	13:41:00	D	12.47
870	PATIALA	SAMANA	S-NPP	76.13293	30.23412	13:24:00	D	3.50
871	RUPNAGAR	ANANDPUR SAHIB	S-NPP	76.51276	31.16903	13:24:00	D	2.40
872	RUPNAGAR	CHAMKOR SAHIB	S-NPP	76.47408	30.85485	13:24:00	D	4.00
873	RUPNAGAR	RUPNAGAR	AQUA-1	76.55797	30.89295	13:41:00	D	14.95
874	SANGRUR	DHURI	AQUA-1	75.72324	30.29183	13:41:00	D	6.44
875	SANGRUR	DHURI	AQUA-1	75.75394	30.29482	13:41:00	D	25.09
876	SANGRUR	DHURI	S-NPP	75.77789	30.32681	13:24:00	D	3.50
877	SANGRUR	DHURI	S-NPP	75.68262	30.35623	13:24:00	D	4.10
878	SANGRUR	DHURI	S-NPP	75.68671	30.35689	13:24:00	D	9.20
879	SANGRUR	DHURI	S-NPP	75.68190	30.35957	13:24:00	D	4.10
880	SANGRUR	DHURI	S-NPP	75.68600	30.36024	13:24:00	D	9.20
881	SANGRUR	DHURI	S-NPP	75.71716	30.39422	13:24:00	D	7.20
882	SANGRUR	DHURI	S-NPP	75.96770	30.42466	13:24:00	D	3.40
883	SANGRUR	MALERKOTLA	S-NPP	75.82044	30.56473	13:24:00	D	2.60
884	SANGRUR	MALERKOTLA	AQUA-1	75.80339	30.58528	13:41:00	D	7.44
885	SANGRUR	MOONAK	AQUA-1	75.88354	29.75284	13:41:00	D	34.49
886	SANGRUR	MOONAK	S-NPP	75.85732	29.78592	13:24:00	D	7.30
887	SANGRUR	MOONAK	S-NPP	75.92860	29.78719	13:24:00	D	9.10
888	SANGRUR	MOONAK	S-NPP	75.92789	29.79053	13:24:00	D	7.70
889	SANGRUR	MOONAK	S-NPP	76.02044	29.80901	13:24:00	D	1.70
890	SANGRUR	MOONAK	S-NPP	76.09460	29.81413	13:24:00	D	2.80
891	SANGRUR	MOONAK	S-NPP	76.03027	29.84161	13:24:00	D	4.30
892	SANGRUR	MOONAK	S-NPP	75.80968	29.85079	13:24:00	D	29.00

893	SANGRUR	MOONAK	AQUA-1	75.81055	29.85225	13:41:00	D	36.58
894	SANGRUR	MOONAK	S-NPP	75.80984	29.85241	13:24:00	D	30.30
895	SANGRUR	MOONAK	S-NPP	75.87004	29.88648	13:24:00	D	6.50
896	SANGRUR	MOONAK	S-NPP	75.83247	29.90454	13:24:00	D	24.40
897	SANGRUR	MOONAK	AQUA-1	75.90571	29.91154	13:41:00	D	7.80
898	SANGRUR	MOONAK	S-NPP	75.88449	29.93718	13:24:00	D	1.90
899	SANGRUR	MOONAK	S-NPP	75.88377	29.94052	13:24:00	D	3.40
900	SANGRUR	SANGRUR	S-NPP	75.62854	30.15191	13:24:00	D	7.40
901	SANGRUR	SANGRUR	AQUA-1	75.91764	30.19601	13:41:00	D	7.44
902	SANGRUR	SANGRUR	S-NPP	75.95501	30.20538	13:24:00	D	2.70
903	SANGRUR	SANGRUR	S-NPP	75.96555	30.23463	13:24:00	D	2.00
904	SANGRUR	SANGRUR	AQUA-1	76.06941	30.29332	13:41:00	D	6.67
905	SANGRUR	SUNAM	S-NPP	75.68188	29.93538	13:24:00	D	2.70
906	SANGRUR	SUNAM	S-NPP	75.97386	29.95163	13:24:00	D	4.40
907	SANGRUR	SUNAM	S-NPP	75.68783	29.96853	13:24:00	D	2.60
908	SANGRUR	SUNAM	AQUA-1	75.99950	29.97143	13:41:00	D	6.77
909	SANGRUR	SUNAM	S-NPP	75.72088	30.01207	13:24:00	D	2.10
910	SANGRUR	SUNAM	S-NPP	75.86215	30.06269	13:24:00	D	2.20
911	SANGRUR	SUNAM	S-NPP	75.86144	30.06602	13:24:00	D	5.50
912	SANGRUR	SUNAM	S-NPP	76.02879	30.06888	13:24:00	D	2.40
913	SANGRUR	SUNAM	S-NPP	75.63431	30.12064	13:24:00	D	2.10
914	SANGRUR	SUNAM	S-NPP	75.70237	30.16408	13:24:00	D	2.20
915	SAS NAGAR	DERABASSI	AQUA-1	76.83507	30.43556	13:41:00	D	12.16
916	SAS NAGAR	DERABASSI	S-NPP	76.76077	30.43851	13:24:00	D	3.90
917	SAS NAGAR	DERABASSI	S-NPP	76.78867	30.44283	13:24:00	D	4.80
918	SAS NAGAR	DERABASSI	S-NPP	76.83185	30.45289	13:24:00	D	5.00
919	SAS NAGAR	DERABASSI	S-NPP	76.79395	30.45725	13:24:00	D	1.80
920	SAS NAGAR	DERABASSI	S-NPP	76.91088	30.46846	13:24:00	D	3.40
921	SAS NAGAR	DERABASSI	S-NPP	76.90622	30.47114	13:24:00	D	1.60
922	SAS NAGAR	DERABASSI	S-NPP	76.89690	30.47652	13:24:00	D	2.70
923	SAS NAGAR	DERABASSI	S-NPP	76.77582	30.50551	13:24:00	D	1.20
924	SAS NAGAR	DERABASSI	S-NPP	76.75708	30.53666	13:24:00	D	1.70

925	SAS NAGAR	DERABASSI	S-NPP	76.78765	30.54817	13:24:00	D	4.50
926	SAS NAGAR	DERABASSI	S-NPP	76.78725	30.55080	13:24:00	D	2.30
927	SAS NAGAR	DERABASSI	S-NPP	76.76926	30.55823	13:24:00	D	2.50
928	SAS NAGAR	DERABASSI	S-NPP	76.85439	30.56455	13:24:00	D	1.70
929	SBS NAGAR	KHARAR	S-NPP	76.61050	30.60855	13:24:00	D	2.80
930	SBS NAGAR	KHARAR	S-NPP	76.64123	30.70151	13:24:00	D	15.60
931	SBS NAGAR	KHARAR	S-NPP	76.64054	30.70481	13:24:00	D	3.40
932	SBS NAGAR	KHARAR	S-NPP	76.54906	30.70765	13:24:00	D	3.50
933	SBS NAGAR	MOHALI	S-NPP	76.71721	30.59103	13:24:00	D	2.40
934	SBS NAGAR	MOHALI	S-NPP	76.74502	30.63618	13:24:00	D	0.90
935	SBS NAGAR	MOHALI	S-NPP	76.65604	30.66975	13:24:00	D	3.40
936	TARN TARAN	KHADOOR SAHIB	S-NPP	74.95929	31.18016	13:24:00	D	3.00
937	TARN TARAN	KHADOOR SAHIB	S-NPP	74.95853	31.18354	13:24:00	D	3.00
938	TARN TARAN	KHADOOR SAHIB	S-NPP	74.96664	31.20590	13:24:00	D	6.60
939	TARN TARAN	KHADOOR SAHIB	S-NPP	74.95319	31.20716	13:24:00	D	5.20
940	TARN TARAN	KHADOOR SAHIB	AQUA-1	74.97156	31.21050	13:41:00	D	8.82
941	TARN TARAN	KHADOOR SAHIB	S-NPP	75.01727	31.21433	13:24:00	D	3.50
942	TARN TARAN	KHADOOR SAHIB	S-NPP	74.97778	31.21475	13:24:00	D	3.90
943	TARN TARAN	KHADOOR SAHIB	S-NPP	74.95859	31.22206	13:24:00	D	5.80
944	TARN TARAN	KHADOOR SAHIB	S-NPP	75.01078	31.22374	13:24:00	D	3.10
945	TARN TARAN	KHADOOR SAHIB	S-NPP	75.04524	31.22596	13:24:00	D	2.30
946	TARN TARAN	KHADOOR SAHIB	S-NPP	75.01003	31.22711	13:24:00	D	3.10
947	TARN TARAN	KHADOOR SAHIB	S-NPP	74.96129	31.22951	13:24:00	D	3.50
948	TARN TARAN	KHADOOR SAHIB	S-NPP	74.96552	31.23021	13:24:00	D	6.10
949	TARN TARAN	KHADOOR SAHIB	S-NPP	74.96899	31.23429	13:24:00	D	6.10
950	TARN TARAN	KHADOOR SAHIB	S-NPP	75.03982	31.25375	13:24:00	D	20.30
951	TARN TARAN	KHADOOR SAHIB	S-NPP	75.03906	31.25711	13:24:00	D	20.30
952	TARN TARAN	KHADOOR SAHIB	AQUA-1	74.92347	31.26351	13:41:00	D	9.06
953	TARN TARAN	KHADOOR SAHIB	S-NPP	75.02610	31.27590	13:24:00	D	2.00
954	TARN TARAN	KHADOOR SAHIB	S-NPP	74.99508	31.27770	13:24:00	D	2.30
955	TARN TARAN	KHADOOR SAHIB	AQUA-1	75.04625	31.28147	13:41:00	D	13.12
956	TARN TARAN	KHADOOR SAHIB	S-NPP	74.97669	31.28161	13:24:00	D	2.90

957	TARN TARAN	KHADOOR SAHIB	AQUA-1	74.96156	31.28996	13:41:00	D	14.55
958	TARN TARAN	KHADOOR SAHIB	S-NPP	75.00890	31.29399	13:24:00	D	3.50
959	TARN TARAN	KHADOOR SAHIB	S-NPP	75.09373	31.30464	13:24:00	D	2.40
960	TARN TARAN	KHADOOR SAHIB	S-NPP	75.01852	31.30956	13:24:00	D	7.30
961	TARN TARAN	KHADOOR SAHIB	AQUA-1	75.03091	31.31112	13:41:00	D	12.33
962	TARN TARAN	KHADOOR SAHIB	S-NPP	74.94566	31.32191	13:24:00	D	2.20
963	TARN TARAN	KHADOOR SAHIB	S-NPP	74.99709	31.32696	13:24:00	D	3.00
964	TARN TARAN	KHADOOR SAHIB	S-NPP	74.97370	31.33356	13:24:00	D	2.70
965	TARN TARAN	KHADOOR SAHIB	AQUA-1	74.99339	31.33687	13:41:00	D	14.79
966	TARN TARAN	KHADOOR SAHIB	S-NPP	74.99405	31.34043	13:24:00	D	9.90
967	TARN TARAN	KHADOOR SAHIB	AQUA-1	74.94564	31.34286	13:41:00	D	9.23
968	TARN TARAN	KHADOOR SAHIB	S-NPP	75.09805	31.34369	13:24:00	D	2.80
969	TARN TARAN	KHADOOR SAHIB	S-NPP	74.85316	31.34491	13:24:00	D	5.20
970	TARN TARAN	KHADOOR SAHIB	S-NPP	74.78975	31.35175	13:24:00	D	2.80
971	TARN TARAN	KHADOOR SAHIB	S-NPP	74.92485	31.37801	13:24:00	D	8.80
972	TARN TARAN	KHADOOR SAHIB	AQUA-1	75.10691	31.39119	13:41:00	D	12.74
973	TARN TARAN	KHADOOR SAHIB	S-NPP	74.99166	31.39268	13:24:00	D	5.50
974	TARN TARAN	KHADOOR SAHIB	S-NPP	75.09633	31.39271	13:24:00	D	3.00
975	TARN TARAN	KHADOOR SAHIB	S-NPP	74.86287	31.39914	13:24:00	D	4.10
976	TARN TARAN	KHADOOR SAHIB	S-NPP	74.86211	31.40252	13:24:00	D	3.00
977	TARN TARAN	KHADOOR SAHIB	AQUA-1	74.93064	31.40274	13:41:00	D	9.40
978	TARN TARAN	KHADOOR SAHIB	S-NPP	75.04983	31.40588	13:24:00	D	5.10
979	TARN TARAN	KHADOOR SAHIB	S-NPP	74.86906	31.41069	13:24:00	D	2.50
980	TARN TARAN	KHADOOR SAHIB	S-NPP	75.03990	31.41120	13:24:00	D	16.20
981	TARN TARAN	KHADOOR SAHIB	S-NPP	75.04411	31.41190	13:24:00	D	16.20
982	TARN TARAN	KHADOOR SAHIB	S-NPP	75.04755	31.41596	13:24:00	D	4.30
983	TARN TARAN	KHADOOR SAHIB	AQUA-1	75.03773	31.41772	13:41:00	D	8.17
984	TARN TARAN	KHADOOR SAHIB	AQUA-1	75.17756	31.41772	13:41:00	D	7.65
985	TARN TARAN	KHADOOR SAHIB	S-NPP	75.15538	31.41993	13:24:00	D	2.80
986	TARN TARAN	KHADOOR SAHIB	S-NPP	75.15955	31.42062	13:24:00	D	3.30
987	TARN TARAN	KHADOOR SAHIB	S-NPP	75.07199	31.42350	13:24:00	D	7.80
988	TARN TARAN	KHADOOR SAHIB	S-NPP	75.15881	31.42397	13:24:00	D	2.10

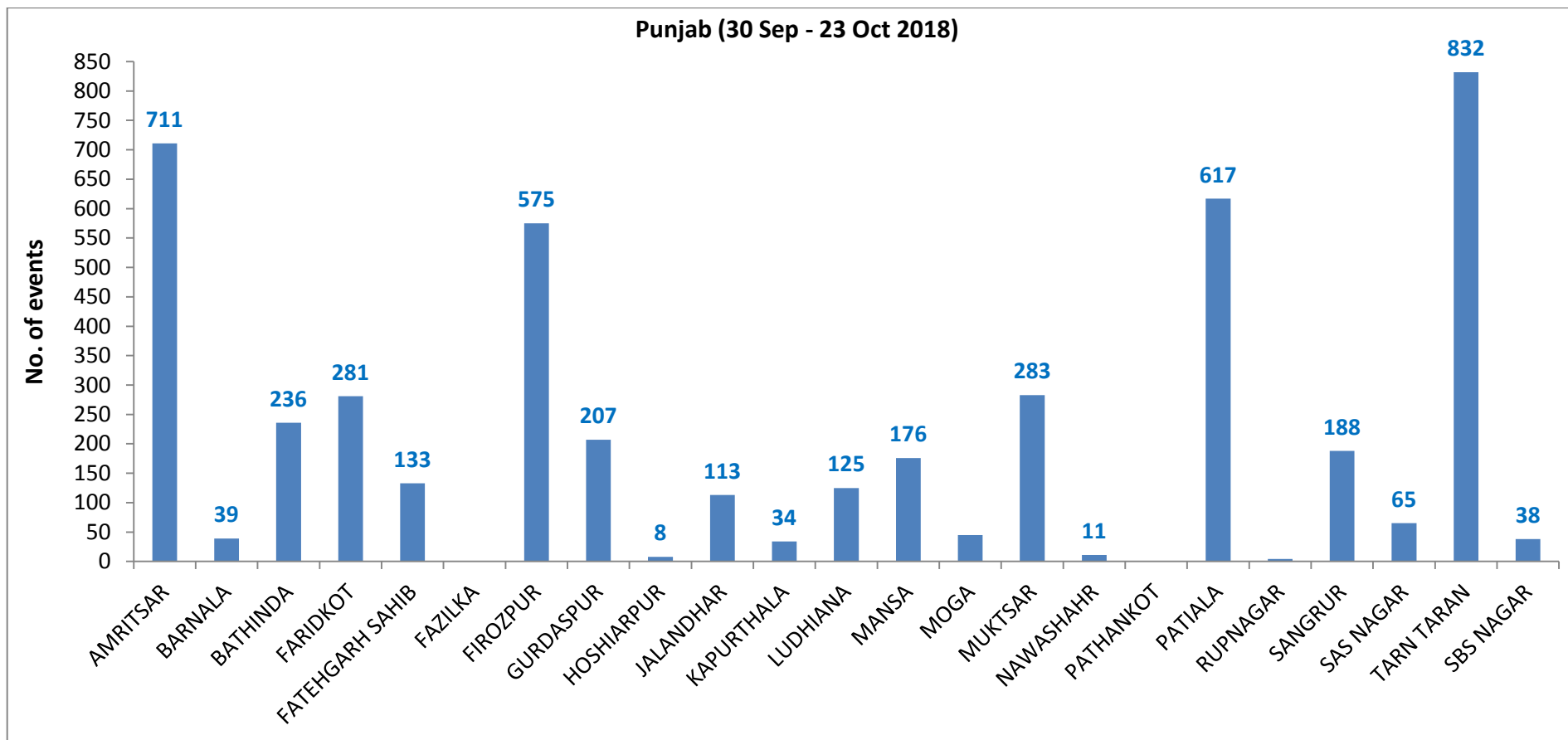
989	TARN TARAN	KHADOOR SAHIB	S-NPP	75.07124	31.42686	13:24:00	D	7.80
990	TARN TARAN	KHADOOR SAHIB	S-NPP	74.83819	31.43007	13:24:00	D	4.00
991	TARN TARAN	KHADOOR SAHIB	S-NPP	74.83971	31.43067	13:24:00	D	4.10
992	TARN TARAN	KHADOOR SAHIB	S-NPP	74.71499	31.43410	13:24:00	D	2.60
993	TARN TARAN	KHADOOR SAHIB	S-NPP	74.82118	31.43455	13:24:00	D	4.60
994	TARN TARAN	KHADOOR SAHIB	S-NPP	74.70061	31.43869	13:24:00	D	2.30
995	TARN TARAN	KHADOOR SAHIB	S-NPP	75.12500	31.43925	13:24:00	D	2.90
996	TARN TARAN	KHADOOR SAHIB	S-NPP	75.10672	31.44319	13:24:00	D	3.80
997	TARN TARAN	KHADOOR SAHIB	AQUA-1	74.81604	31.45215	13:41:00	D	9.84
998	TARN TARAN	KHADOOR SAHIB	AQUA-1	75.00533	31.45215	13:41:00	D	8.85
999	TARN TARAN	KHADOOR SAHIB	S-NPP	75.14292	31.45612	13:24:00	D	2.90
1000	TARN TARAN	KHADOOR SAHIB	S-NPP	75.08198	31.45651	13:24:00	D	1.60
1001	TARN TARAN	KHADOOR SAHIB	AQUA-1	75.08974	31.45739	13:41:00	D	21.47
1002	TARN TARAN	KHADOOR SAHIB	S-NPP	74.67374	31.45880	13:24:00	D	2.50
1003	TARN TARAN	KHADOOR SAHIB	AQUA-1	75.15368	31.46113	13:41:00	D	7.43
1004	TARN TARAN	KHADOOR SAHIB	S-NPP	75.16308	31.46292	13:24:00	D	6.20
1005	TARN TARAN	KHADOOR SAHIB	S-NPP	75.16726	31.46361	13:24:00	D	12.70
1006	TARN TARAN	KHADOOR SAHIB	S-NPP	75.08466	31.46392	13:24:00	D	4.90
1007	TARN TARAN	KHADOOR SAHIB	S-NPP	75.07130	31.46521	13:24:00	D	2.40
1008	TARN TARAN	KHADOOR SAHIB	AQUA-1	75.19120	31.46862	13:41:00	D	18.87
1009	TARN TARAN	KHADOOR SAHIB	S-NPP	74.97973	31.47178	13:24:00	D	1.70
1010	TARN TARAN	KHADOOR SAHIB	S-NPP	74.86098	31.47283	13:24:00	D	2.50
1011	TARN TARAN	KHADOOR SAHIB	AQUA-1	74.70861	31.47461	13:41:00	D	10.43
1012	TARN TARAN	KHADOOR SAHIB	S-NPP	74.87640	31.48242	13:24:00	D	5.20
1013	TARN TARAN	KHADOOR SAHIB	S-NPP	74.69477	31.48347	13:24:00	D	3.40
1014	TARN TARAN	KHADOOR SAHIB	AQUA-1	74.97156	31.48359	13:41:00	D	27.88
1015	TARN TARAN	KHADOOR SAHIB	S-NPP	75.17110	31.48509	13:24:00	D	2.00
1016	TARN TARAN	KHADOOR SAHIB	S-NPP	75.08558	31.48601	13:24:00	D	6.20
1017	TARN TARAN	KHADOOR SAHIB	S-NPP	75.21285	31.49193	13:24:00	D	5.60
1018	TARN TARAN	KHADOOR SAHIB	S-NPP	75.01804	31.49565	13:24:00	D	1.60
1019	TARN TARAN	KHADOOR SAHIB	S-NPP	74.75386	31.49693	13:24:00	D	1.70
1020	TARN TARAN	KHADOOR SAHIB	AQUA-1	75.11276	31.49707	13:41:00	D	6.05

1021	TARN TARAN	KHADOOR SAHIB	S-NPP	74.78371	31.50193	13:24:00	D	3.70
1022	TARN TARAN	KHADOOR SAHIB	S-NPP	74.88876	31.50549	13:24:00	D	4.90
1023	TARN TARAN	KHADOOR SAHIB	S-NPP	74.91761	31.51381	13:24:00	D	8.50
1024	TARN TARAN	KHADOOR SAHIB	AQUA-1	75.08718	31.51503	13:41:00	D	11.39
1025	TARN TARAN	KHADOOR SAHIB	S-NPP	74.73563	31.51847	13:24:00	D	2.90
1026	TARN TARAN	KHADOOR SAHIB	S-NPP	74.73558	31.52163	13:24:00	D	5.10
1027	TARN TARAN	KHADOOR SAHIB	S-NPP	74.73484	31.52185	13:24:00	D	2.90
1028	TARN TARAN	KHADOOR SAHIB	S-NPP	75.16820	31.52409	13:24:00	D	6.20
1029	TARN TARAN	KHADOOR SAHIB	S-NPP	74.82073	31.53609	13:24:00	D	2.80
1030	TARN TARAN	PATTI	AQUA-1	74.70861	31.12427	13:41:00	D	8.96
1031	TARN TARAN	PATTI	S-NPP	74.67525	31.12518	13:24:00	D	12.70
1032	TARN TARAN	PATTI	S-NPP	74.61459	31.13609	13:24:00	D	10.20
1033	TARN TARAN	PATTI	S-NPP	74.70805	31.13782	13:24:00	D	14.10
1034	TARN TARAN	PATTI	S-NPP	74.64476	31.14121	13:24:00	D	3.40
1035	TARN TARAN	PATTI	AQUA-1	74.54746	31.14448	13:41:00	D	22.59
1036	TARN TARAN	PATTI	S-NPP	74.82150	31.14646	13:24:00	D	1.40
1037	TARN TARAN	PATTI	S-NPP	74.81647	31.14912	13:24:00	D	1.90
1038	TARN TARAN	PATTI	S-NPP	74.62950	31.14923	13:24:00	D	3.90
1039	TARN TARAN	PATTI	S-NPP	74.54697	31.15650	13:24:00	D	6.50
1040	TARN TARAN	PATTI	AQUA-1	74.86720	31.16469	13:41:00	D	7.05
1041	TARN TARAN	PATTI	S-NPP	74.71899	31.16789	13:24:00	D	4.30
1042	TARN TARAN	PATTI	AQUA-1	74.59606	31.17367	13:41:00	D	5.48
1043	TARN TARAN	PATTI	AQUA-1	74.67280	31.17367	13:41:00	D	7.37
1044	TARN TARAN	PATTI	AQUA-1	74.71884	31.17367	13:41:00	D	25.10
1045	TARN TARAN	PATTI	AQUA-1	74.54661	31.17517	13:41:00	D	6.87
1046	TARN TARAN	PATTI	AQUA-1	74.83310	31.17517	13:41:00	D	13.50
1047	TARN TARAN	PATTI	S-NPP	74.69013	31.17714	13:24:00	D	22.40
1048	TARN TARAN	PATTI	S-NPP	74.54704	31.18052	13:24:00	D	2.60
1049	TARN TARAN	PATTI	S-NPP	74.68935	31.18054	13:24:00	D	22.40
1050	TARN TARAN	PATTI	S-NPP	74.63221	31.18100	13:24:00	D	2.20
1051	TARN TARAN	PATTI	S-NPP	74.72314	31.19305	13:24:00	D	2.80
1052	TARN TARAN	PATTI	S-NPP	74.72215	31.19310	13:24:00	D	2.00

1053	TARN TARAN	PATTI	S-NPP	74.79292	31.19441	13:24:00	D	4.00
1054	TARN TARAN	PATTI	S-NPP	74.69785	31.20637	13:24:00	D	4.10
1055	TARN TARAN	PATTI	S-NPP	74.57971	31.21447	13:24:00	D	4.70
1056	TARN TARAN	PATTI	S-NPP	74.52539	31.21582	13:24:00	D	5.40
1057	TARN TARAN	PATTI	S-NPP	74.52972	31.21656	13:24:00	D	5.40
1058	TARN TARAN	PATTI	S-NPP	74.67758	31.21703	13:24:00	D	2.70
1059	TARN TARAN	PATTI	S-NPP	74.67173	31.22309	13:24:00	D	3.20
1060	TARN TARAN	PATTI	AQUA-1	74.78330	31.22667	13:41:00	D	9.29
1061	TARN TARAN	PATTI	S-NPP	74.68383	31.22868	13:24:00	D	3.50
1062	TARN TARAN	PATTI	S-NPP	74.78108	31.23111	13:24:00	D	31.70
1063	TARN TARAN	PATTI	AQUA-1	74.65916	31.23805	13:41:00	D	8.05
1064	TARN TARAN	PATTI	S-NPP	74.63187	31.24104	13:24:00	D	7.30
1065	TARN TARAN	PATTI	S-NPP	74.68502	31.24300	13:24:00	D	7.40
1066	TARN TARAN	PATTI	S-NPP	74.64909	31.24397	13:24:00	D	6.80
1067	TARN TARAN	PATTI	S-NPP	74.68424	31.24640	13:24:00	D	7.40
1068	TARN TARAN	PATTI	AQUA-1	74.54746	31.24778	13:41:00	D	23.14
1069	TARN TARAN	PATTI	S-NPP	74.82487	31.25258	13:24:00	D	3.10
1070	TARN TARAN	PATTI	AQUA-1	74.69180	31.25645	13:41:00	D	7.20
1071	TARN TARAN	PATTI	S-NPP	74.67683	31.25926	13:24:00	D	12.90
1072	TARN TARAN	PATTI	S-NPP	74.76559	31.26015	13:24:00	D	5.40
1073	TARN TARAN	PATTI	S-NPP	74.67606	31.26265	13:24:00	D	6.10
1074	TARN TARAN	PATTI	S-NPP	74.77336	31.26498	13:24:00	D	5.00
1075	TARN TARAN	PATTI	S-NPP	74.54501	31.27114	13:24:00	D	15.30
1076	TARN TARAN	PATTI	S-NPP	74.54393	31.27214	13:24:00	D	22.10
1077	TARN TARAN	PATTI	S-NPP	74.65575	31.27334	13:24:00	D	5.10
1078	TARN TARAN	PATTI	S-NPP	74.66005	31.27406	13:24:00	D	5.10
1079	TARN TARAN	PATTI	S-NPP	74.56231	31.27412	13:24:00	D	15.60
1080	TARN TARAN	PATTI	S-NPP	74.54422	31.27455	13:24:00	D	15.30
1081	TARN TARAN	PATTI	S-NPP	74.56125	31.27506	13:24:00	D	25.80
1082	TARN TARAN	PATTI	S-NPP	74.82375	31.27698	13:24:00	D	7.50
1083	TARN TARAN	PATTI	S-NPP	74.56152	31.27753	13:24:00	D	15.60
1084	TARN TARAN	PATTI	S-NPP	74.71661	31.28007	13:24:00	D	4.40

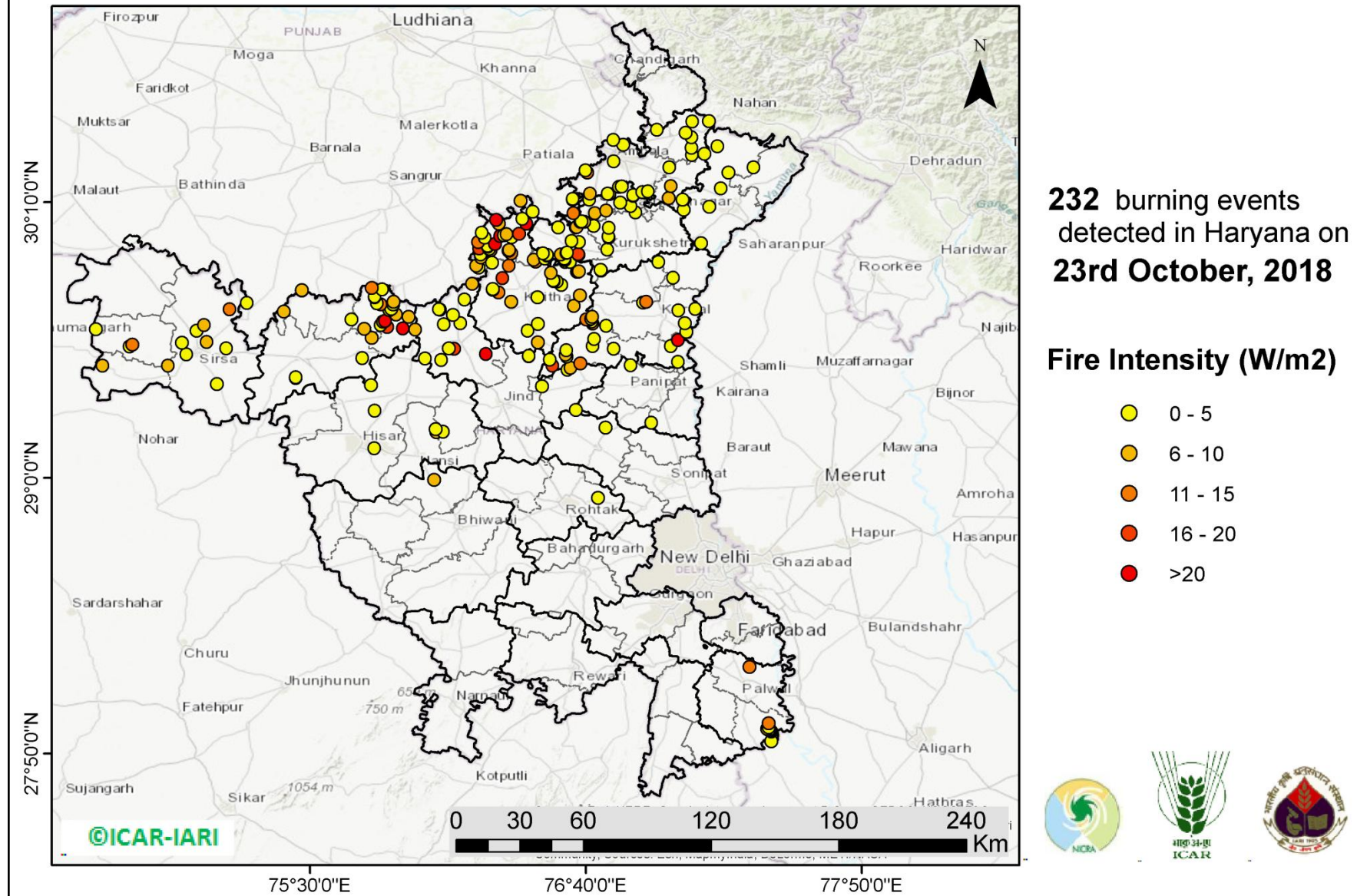
1085	TARN TARAN	PATTI	S-NPP	74.71584	31.28346	13:24:00	D	12.70
1086	TARN TARAN	PATTI	S-NPP	74.88324	31.28697	13:24:00	D	5.40
1087	TARN TARAN	PATTI	S-NPP	74.63990	31.28747	13:24:00	D	1.30
1088	TARN TARAN	PATTI	S-NPP	74.74152	31.28778	13:24:00	D	7.70
1089	TARN TARAN	PATTI	AQUA-1	74.88620	31.28981	13:41:00	D	10.13
1090	TARN TARAN	PATTI	AQUA-1	74.74442	31.29045	13:41:00	D	12.93
1091	TARN TARAN	PATTI	S-NPP	74.82414	31.29461	13:24:00	D	3.70
1092	TARN TARAN	PATTI	S-NPP	74.61526	31.29737	13:24:00	D	7.10
1093	TARN TARAN	PATTI	S-NPP	74.73415	31.30062	13:24:00	D	8.70
1094	TARN TARAN	PATTI	AQUA-1	74.59709	31.30707	13:41:00	D	14.30
1095	TARN TARAN	PATTI	AQUA-1	74.71714	31.30992	13:41:00	D	9.87
1096	TARN TARAN	PATTI	S-NPP	74.56743	31.31041	13:24:00	D	10.20
1097	TARN TARAN	PATTI	S-NPP	74.66101	31.31227	13:24:00	D	2.20
1098	TARN TARAN	PATTI	S-NPP	74.66023	31.31566	13:24:00	D	2.20
1099	TARN TARAN	PATTI	AQUA-1	74.86038	31.31890	13:41:00	D	7.77
1100	TARN TARAN	PATTI	S-NPP	74.73504	31.33896	13:24:00	D	6.30
1101	TARN TARAN	PATTI	S-NPP	74.55527	31.34373	13:24:00	D	11.20
1102	TARN TARAN	PATTI	S-NPP	74.88364	31.34655	13:24:00	D	7.80
1103	TARN TARAN	PATTI	S-NPP	74.58040	31.35153	13:24:00	D	5.90
1104	TARN TARAN	PATTI	S-NPP	74.61842	31.36151	13:24:00	D	2.80
1105	TARN TARAN	PATTI	S-NPP	74.64776	31.37000	13:24:00	D	4.50
1106	TARN TARAN	PATTI	S-NPP	74.61215	31.38870	13:24:00	D	10.90
1107	TARN TARAN	PATTI	S-NPP	74.60889	31.39130	13:24:00	D	1.80
1108	TARN TARAN	PATTI	S-NPP	74.70395	31.39709	13:24:00	D	2.30
1109	TARN TARAN	PATTI	S-NPP	74.63391	31.39912	13:24:00	D	3.80
1110	TARN TARAN	PATTI	S-NPP	74.65616	31.39940	13:24:00	D	5.10
1111	TARN TARAN	PATTI	S-NPP	74.65871	31.40006	13:24:00	D	5.10
1112	TARN TARAN	PATTI	S-NPP	74.63157	31.40931	13:24:00	D	2.30
1113	TARN TARAN	PATTI	S-NPP	74.72237	31.42128	13:24:00	D	4.60

District-wise cumulative number of residue burning events in Punjab (30-Sep-2018 to 21-Oct-2018)



(b) Haryana

PADDY RESIDUE BURNING IN HARYANA



<http://geoportal.icar.gov.in:8080/geoexplorer/composer/>

Details of residue burning events in Haryana on 23-Oct-2018

Event S. No.	District	Tehsil / Block	Satellite	Longitude	Latitude	Time (IST)	Day/Night	Fire Power (W/m²)
1	AMBALA	AMBALA	AQUA-1	76.61339	30.12115	13:41	D	10.86
2	AMBALA	AMBALA	S-NPP	76.61133	30.17827	13:24	D	3.70
3	AMBALA	AMBALA	S-NPP	76.68114	30.17892	13:24	D	2.90
4	AMBALA	AMBALA	S-NPP	76.61065	30.18157	13:24	D	3.70
5	AMBALA	AMBALA	S-NPP	76.76672	30.20242	13:24	D	7.70
6	AMBALA	AMBALA	AQUA-1	76.68331	30.20349	13:41	D	7.32
7	AMBALA	AMBALA	S-NPP	76.75809	30.20449	13:24	D	2.50
8	AMBALA	AMBALA	AQUA-1	76.91863	30.20798	13:41	D	12.61
9	AMBALA	AMBALA	S-NPP	76.90459	30.21010	13:24	D	1.40
10	AMBALA	AMBALA	S-NPP	76.92846	30.21377	13:24	D	4.60
11	AMBALA	AMBALA	S-NPP	76.80615	30.23203	13:24	D	1.70
12	AMBALA	AMBALA	S-NPP	76.81808	30.23388	13:24	D	1.90
13	AMBALA	AMBALA	AQUA-1	76.67307	30.29332	13:41	D	14.85
14	AMBALA	AMBALA	S-NPP	76.66438	30.30199	13:24	D	3.00
15	AMBALA	AMBALA	S-NPP	77.01882	30.31579	13:24	D	2.60
16	AMBALA	AMBALA	S-NPP	76.78470	30.34038	13:24	D	4.10
17	AMBALA	AMBALA	S-NPP	76.82367	30.41107	13:24	D	3.20
18	AMBALA	AMBALA	S-NPP	76.78238	30.43193	13:24	D	0.90
19	AMBALA	BARARA	S-NPP	77.07495	30.17839	13:24	D	2.90
20	AMBALA	BARARA	AQUA-1	77.01583	30.18553	13:41	D	9.04
21	AMBALA	BARARA	S-NPP	77.02652	30.23561	13:24	D	5.80
22	AMBALA	NARAYANGARH	S-NPP	77.11497	30.36786	13:24	D	1.60
23	AMBALA	NARAYANGARH	S-NPP	77.16739	30.37242	13:24	D	4.20
24	AMBALA	NARAYANGARH	S-NPP	77.11375	30.39765	13:24	D	2.20
25	AMBALA	NARAYANGARH	S-NPP	77.11307	30.44175	13:24	D	3.80
26	AMBALA	NARAYANGARH	S-NPP	77.08849	30.46182	13:24	D	2.10
27	AMBALA	NARAYANGARH	S-NPP	76.96733	30.47371	13:24	D	3.60
28	AMBALA	NARAYANGARH	S-NPP	77.11608	30.50996	13:24	D	3.20
29	AMBALA	NARAYANGARH	S-NPP	77.18581	30.51033	13:24	D	1.40

30	BHIWANI	BAWANI_KHERA	S-NPP	76.02507	28.99274	13:24	D	6.20
31	FARIDABAD	HODAL	S-NPP	77.45078	27.88603	13:24	D	2.40
32	FARIDABAD	HODAL	S-NPP	77.45084	27.92687	13:24	D	4.90
33	FARIDABAD	HODAL	AQUA-1	77.44556	27.93076	13:41	D	30.34
34	FARIDABAD	HODAL	S-NPP	77.43723	27.93497	13:24	D	5.80
35	FARIDABAD	HODAL	S-NPP	77.44112	27.93558	13:24	D	3.90
36	FARIDABAD	HODAL	S-NPP	77.43268	27.93768	13:24	D	5.80
37	FARIDABAD	HODAL	S-NPP	77.43936	27.94523	13:24	D	4.20
38	FARIDABAD	HODAL	S-NPP	77.44003	27.96234	13:24	D	11.40
39	FARIDABAD	PALWAL	AQUA-1	77.35859	28.20025	13:41	D	12.18
40	FATEHABAD	FATEHABAD	S-NPP	75.43896	29.42284	02:06	N	0.90
41	FATEHABAD	FATEHABAD	S-NPP	75.43960	29.42616	02:06	N	2.30
42	FATEHABAD	FATEHABAD	S-NPP	75.72038	29.50719	13:24	D	3.90
43	FATEHABAD	FATEHABAD	S-NPP	75.72919	29.63219	13:24	D	8.70
44	FATEHABAD	RATIA	S-NPP	75.38858	29.70489	13:24	D	5.80
45	FATEHABAD	RATIA	S-NPP	75.46392	29.79430	13:24	D	9.70
46	FATEHABAD	RATIA	S-NPP	75.46439	29.79508	13:24	D	6.90
47	FATEHABAD	TOHANA	AQUA-1	75.76076	29.59414	13:41	D	9.32
48	FATEHABAD	TOHANA	S-NPP	75.94423	29.62777	13:24	D	9.80
49	FATEHABAD	TOHANA	S-NPP	75.89260	29.63322	13:24	D	31.80
50	FATEHABAD	TOHANA	AQUA-1	75.82556	29.63905	13:41	D	17.26
51	FATEHABAD	TOHANA	S-NPP	75.79802	29.64702	13:24	D	1.00
52	FATEHABAD	TOHANA	S-NPP	75.80741	29.66242	13:24	D	3.50
53	FATEHABAD	TOHANA	AQUA-1	75.81669	29.66540	13:41	D	22.19
54	FATEHABAD	TOHANA	S-NPP	75.67397	29.67171	13:24	D	2.00
55	FATEHABAD	TOHANA	AQUA-1	75.91594	29.68247	13:41	D	7.00
56	FATEHABAD	TOHANA	S-NPP	75.86431	29.69250	13:24	D	5.60
57	FATEHABAD	TOHANA	S-NPP	75.83485	29.71192	13:24	D	3.20
58	FATEHABAD	TOHANA	S-NPP	75.84230	29.71659	13:24	D	2.80
59	FATEHABAD	TOHANA	S-NPP	75.85096	29.73530	13:24	D	4.90
60	FATEHABAD	TOHANA	AQUA-1	75.79888	29.73558	13:41	D	14.59
61	FATEHABAD	TOHANA	S-NPP	75.78287	29.73909	13:24	D	2.90

62	FATEHABAD	TOHANA	AQUA-1	75.85284	29.74685	13:41	D	8.72
63	FATEHABAD	TOHANA	S-NPP	75.77306	29.76519	13:24	D	3.70
64	FATEHABAD	TOHANA	S-NPP	75.77234	29.76854	13:24	D	3.70
65	FATEHABAD	TOHANA	S-NPP	75.80410	29.79798	13:24	D	2.90
66	FATEHABAD	TOHANA	S-NPP	75.76035	29.80468	13:24	D	12.10
67	HISAR	HANSI	S-NPP	76.03381	29.19405	13:24	D	5.20
68	HISAR	HANSI	S-NPP	76.06284	29.19532	13:24	D	3.30
69	HISAR	HANSI	S-NPP	76.03098	29.20742	13:24	D	2.10
70	HISAR	HISAR	S-NPP	75.77169	29.12587	02:06	N	0.70
71	HISAR	HISAR	S-NPP	75.77298	29.28451	02:06	N	0.40
72	HISAR	HISAR	S-NPP	75.75683	29.39387	13:24	D	2.20
73	HISAR	HISAR	S-NPP	75.78319	29.49284	02:06	N	0.30
74	JIND	JIND	AQUA-1	76.52472	29.47586	13:41	D	17.93
75	JIND	JIND	S-NPP	76.42505	29.51519	13:24	D	2.70
76	JIND	JIND	S-NPP	76.42489	29.51772	13:24	D	2.10
77	JIND	NARWANA	S-NPP	76.05496	29.49938	13:24	D	2.20
78	JIND	NARWANA	S-NPP	75.98664	29.50555	13:24	D	1.30
79	JIND	NARWANA	AQUA-1	76.24335	29.52527	13:41	D	20.40
80	JIND	NARWANA	AQUA-1	76.10778	29.54772	13:41	D	18.92
81	JIND	NARWANA	S-NPP	76.08625	29.54925	13:24	D	3.20
82	JIND	NARWANA	S-NPP	76.06509	29.65075	13:24	D	3.70
83	JIND	NARWANA	S-NPP	76.13512	29.65513	13:24	D	4.00
84	JIND	NARWANA	S-NPP	76.10386	29.69007	13:24	D	2.80
85	JIND	NARWANA	S-NPP	76.04906	29.71219	13:24	D	3.40
86	JIND	NARWANA	S-NPP	76.04430	29.71486	13:24	D	2.10
87	JIND	NARWANA	S-NPP	76.15243	29.75639	13:24	D	2.30
88	JIND	NARWANA	S-NPP	76.18466	29.82178	13:24	D	6.30
89	JIND	SAFIDON	S-NPP	76.62292	29.28841	13:24	D	3.00
90	JIND	SAFIDON	S-NPP	76.48009	29.38821	13:24	D	2.50
91	JIND	SAFIDON	S-NPP	76.58897	29.45902	13:24	D	5.00
92	JIND	SAFIDON	AQUA-1	76.60145	29.46687	13:41	D	9.16
93	KAITHAL	GUHLA	S-NPP	76.21162	29.89134	13:24	D	3.10

94	KAITHAL	GUHLA	AQUA-1	76.20242	29.89807	13:41	D	8.55
95	KAITHAL	GUHLA	S-NPP	76.26983	29.91090	13:24	D	4.00
96	KAITHAL	GUHLA	AQUA-1	76.22288	29.93400	13:41	D	7.52
97	KAITHAL	GUHLA	S-NPP	76.22120	29.94672	13:24	D	3.90
98	KAITHAL	GUHLA	AQUA-1	76.35078	29.95197	13:41	D	10.24
99	KAITHAL	GUHLA	S-NPP	76.33829	29.96200	13:24	D	2.60
100	KAITHAL	GUHLA	S-NPP	76.34229	29.96264	13:24	D	2.60
101	KAITHAL	GUHLA	AQUA-1	76.26279	29.96364	13:41	D	10.76
102	KAITHAL	GUHLA	S-NPP	76.34161	29.96596	13:24	D	8.00
103	KAITHAL	GUHLA	S-NPP	76.25790	29.96974	13:24	D	2.90
104	KAITHAL	GUHLA	AQUA-1	76.21436	29.97143	13:41	D	17.17
105	KAITHAL	GUHLA	S-NPP	76.25180	29.97905	13:24	D	3.00
106	KAITHAL	GUHLA	S-NPP	76.25111	29.98237	13:24	D	3.00
107	KAITHAL	GUHLA	S-NPP	76.28253	29.99080	13:24	D	24.40
108	KAITHAL	GUHLA	AQUA-1	76.21095	29.99838	13:41	D	10.85
109	KAITHAL	GUHLA	S-NPP	76.23942	30.01822	13:24	D	2.60
110	KAITHAL	GUHLA	S-NPP	76.35126	30.01884	13:24	D	3.00
111	KAITHAL	GUHLA	S-NPP	76.30437	30.02511	13:24	D	23.20
112	KAITHAL	GUHLA	S-NPP	76.32043	30.02765	13:24	D	1.60
113	KAITHAL	GUHLA	S-NPP	76.33176	30.03287	13:24	D	7.10
114	KAITHAL	GUHLA	AQUA-1	76.38352	30.03371	13:41	D	17.90
115	KAITHAL	GUHLA	S-NPP	76.22694	30.03887	13:24	D	4.20
116	KAITHAL	GUHLA	AQUA-1	76.41509	30.07709	13:41	D	35.75
117	KAITHAL	GUHLA	S-NPP	76.29768	30.07759	13:24	D	6.70
118	KAITHAL	GUHLA	S-NPP	76.28618	30.09288	13:24	D	21.10
119	KAITHAL	GUHLA	S-NPP	76.39718	30.09681	13:24	D	1.00
120	KAITHAL	GUHLA	S-NPP	76.44038	30.12756	13:24	D	3.60
121	KAITHAL	GUHLA	S-NPP	76.38982	30.17359	13:24	D	8.60
122	KAITHAL	KAITHAL	AQUA-1	76.46333	29.57467	13:41	D	8.66
123	KAITHAL	KAITHAL	S-NPP	76.41955	29.62305	13:24	D	2.00
124	KAITHAL	KAITHAL	S-NPP	76.46308	29.65267	13:24	D	3.50
125	KAITHAL	KAITHAL	S-NPP	76.66889	29.67155	13:24	D	13.20

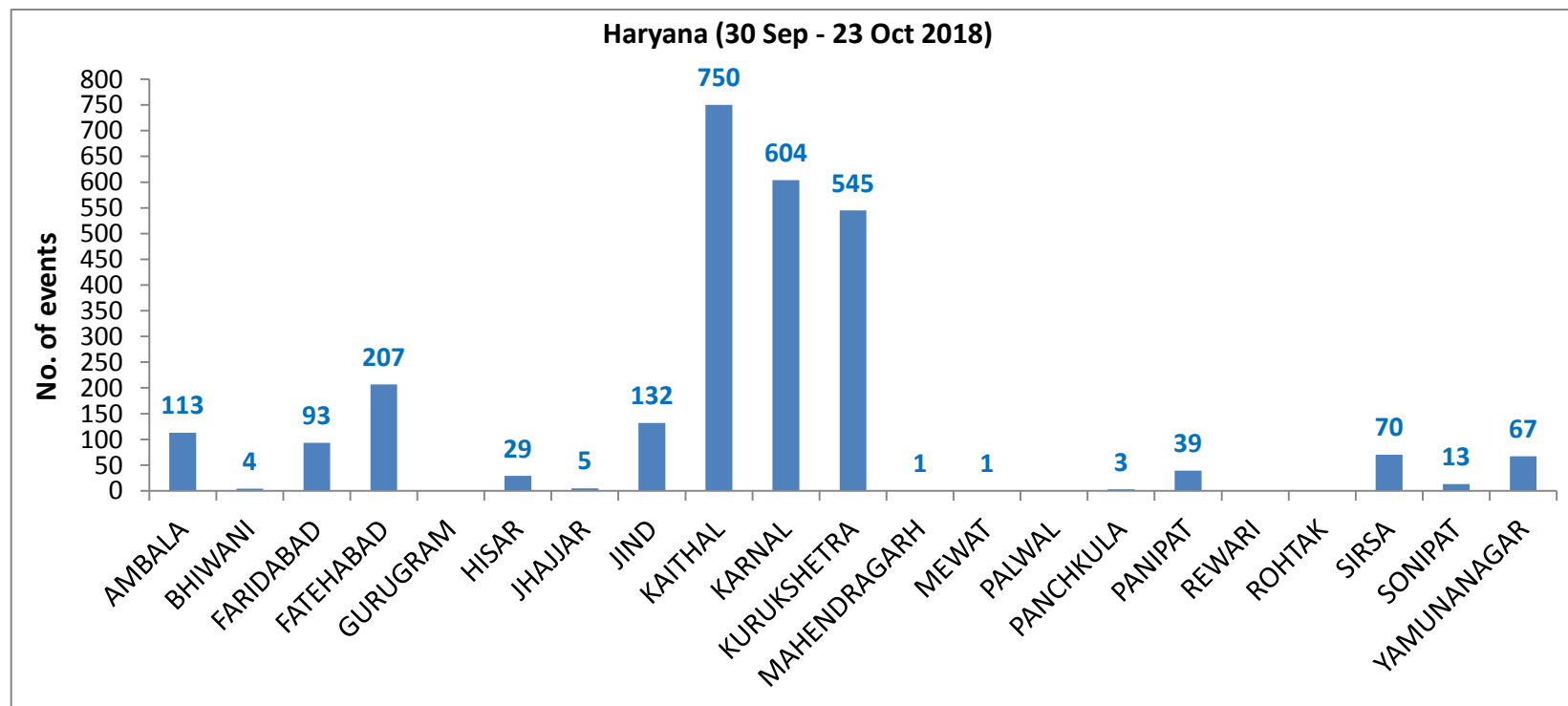
126	KAITHAL	KAITHAL	S-NPP	76.68876	29.67467	13:24	D	4.80
127	KAITHAL	KAITHAL	AQUA-1	76.69354	29.68247	13:41	D	9.91
128	KAITHAL	KAITHAL	S-NPP	76.61623	29.72812	13:24	D	5.20
129	KAITHAL	KAITHAL	S-NPP	76.34956	29.74676	13:24	D	5.80
130	KAITHAL	KAITHAL	S-NPP	76.46153	29.76458	13:24	D	1.30
131	KAITHAL	KAITHAL	S-NPP	76.64096	29.77244	13:24	D	5.80
132	KAITHAL	KAITHAL	S-NPP	76.29578	29.78617	13:24	D	10.80
133	KAITHAL	KAITHAL	S-NPP	76.27294	29.79625	13:24	D	6.90
134	KAITHAL	KAITHAL	S-NPP	76.27225	29.79957	13:24	D	3.60
135	KAITHAL	KAITHAL	S-NPP	76.56171	29.81801	13:24	D	3.50
136	KAITHAL	KAITHAL	S-NPP	76.54235	29.83204	13:24	D	2.50
137	KAITHAL	KAITHAL	S-NPP	76.52970	29.83347	13:24	D	3.60
138	KAITHAL	KAITHAL	S-NPP	76.52902	29.83678	13:24	D	3.60
139	KAITHAL	KAITHAL	AQUA-1	76.31326	29.84566	13:41	D	16.82
140	KAITHAL	KAITHAL	S-NPP	76.51850	29.86820	13:24	D	5.40
141	KAITHAL	KAITHAL	S-NPP	76.62852	29.87287	13:24	D	9.00
142	KAITHAL	KAITHAL	S-NPP	76.63251	29.87349	13:24	D	9.00
143	KAITHAL	KAITHAL	S-NPP	76.63648	29.87411	13:24	D	7.20
144	KAITHAL	KAITHAL	AQUA-1	76.34055	29.89807	13:41	D	10.72
145	KAITHAL	KAITHAL	S-NPP	76.59937	29.91509	13:24	D	2.30
146	KAITHAL	KAITHAL	AQUA-1	76.45310	29.91603	13:41	D	10.55
147	KAITHAL	KAITHAL	S-NPP	76.44488	29.92493	13:24	D	5.10
148	KARNAL	ASSANDH	AQUA-1	76.64238	29.48484	13:41	D	12.62
149	KARNAL	ASSANDH	S-NPP	76.51434	29.50194	13:24	D	2.20
150	KARNAL	ASSANDH	S-NPP	76.58603	29.51325	13:24	D	2.30
151	KARNAL	ASSANDH	S-NPP	76.58001	29.52256	13:24	D	6.10
152	KARNAL	ASSANDH	S-NPP	76.58456	29.54036	13:24	D	1.70
153	KARNAL	ASSANDH	S-NPP	76.69588	29.55782	13:24	D	2.50
154	KARNAL	ASSANDH	S-NPP	76.70209	29.58898	13:24	D	4.40
155	KARNAL	ASSANDH	AQUA-1	76.69524	29.65402	13:41	D	11.75
156	KARNAL	ASSANDH	S-NPP	76.69118	29.66234	13:24	D	1.90
157	KARNAL	ASSANDH	S-NPP	76.68149	29.67011	13:24	D	2.10

158	KARNAL	GHARAUNDA	S-NPP	77.05624	29.49192	13:24	D	1.80
159	KARNAL	GHARAUNDA	S-NPP	76.78393	29.54769	13:24	D	2.90
160	KARNAL	GHARAUNDA	S-NPP	77.02664	29.55812	13:24	D	4.30
161	KARNAL	GHARAUNDA	AQUA-1	77.05676	29.58366	13:41	D	20.85
162	KARNAL	INDRI	S-NPP	77.03493	29.84735	13:24	D	4.80
163	KARNAL	INDRI	S-NPP	76.97382	29.91441	02:06	N	0.40
164	KARNAL	KARNAL	S-NPP	77.09180	29.61919	13:24	D	1.90
165	KARNAL	KARNAL	S-NPP	76.75217	29.64458	13:24	D	4.40
166	KARNAL	KARNAL	S-NPP	77.08482	29.65527	13:24	D	2.80
167	KARNAL	KARNAL	S-NPP	77.05772	29.70895	13:24	D	1.90
168	KARNAL	KARNAL	S-NPP	77.12960	29.71657	13:24	D	4.70
169	KARNAL	KARNAL	S-NPP	76.90811	29.74298	13:24	D	2.80
170	KARNAL	NILOKHERI	AQUA-1	76.92034	29.74685	13:41	D	14.78
171	KURUKSHETRA	PEHOWA	AQUA-1	76.57928	29.91454	13:41	D	5.74
172	KURUKSHETRA	PEHOWA	S-NPP	76.57739	29.92188	13:24	D	16.60
173	KURUKSHETRA	PEHOWA	S-NPP	76.57671	29.92519	13:24	D	16.60
174	KURUKSHETRA	PEHOWA	S-NPP	76.57204	29.92787	13:24	D	4.60
175	KURUKSHETRA	PEHOWA	S-NPP	76.57603	29.92850	13:24	D	3.50
176	KURUKSHETRA	PEHOWA	S-NPP	76.49351	29.92918	13:24	D	1.20
177	KURUKSHETRA	PEHOWA	S-NPP	76.50343	29.94099	13:24	D	2.00
178	KURUKSHETRA	PEHOWA	S-NPP	76.50275	29.94430	13:24	D	2.70
179	KURUKSHETRA	PEHOWA	S-NPP	76.63442	29.94448	13:24	D	19.20
180	KURUKSHETRA	PEHOWA	S-NPP	76.55997	29.94646	13:24	D	6.50
181	KURUKSHETRA	PEHOWA	S-NPP	76.63374	29.94778	13:24	D	19.20
182	KURUKSHETRA	PEHOWA	S-NPP	76.48472	29.95172	13:24	D	2.50
183	KURUKSHETRA	PEHOWA	S-NPP	76.58321	29.95352	13:24	D	4.40
184	KURUKSHETRA	PEHOWA	S-NPP	76.58719	29.95414	13:24	D	4.80
185	KURUKSHETRA	PEHOWA	S-NPP	76.63589	29.99879	13:24	D	3.20
186	KURUKSHETRA	PEHOWA	S-NPP	76.60596	30.00433	13:24	D	2.50
187	KURUKSHETRA	PEHOWA	S-NPP	76.54913	30.06026	13:24	D	1.70
188	KURUKSHETRA	PEHOWA	S-NPP	76.62296	30.06158	13:24	D	7.50
189	KURUKSHETRA	PEHOWA	S-NPP	76.62695	30.06220	13:24	D	7.50

190	KURUKSHETRA	PEHOWA	S-NPP	76.65940	30.08431	13:24	D	6.00
191	KURUKSHETRA	PEHOWA	S-NPP	76.64278	30.08514	13:24	D	4.90
192	KURUKSHETRA	PEHOWA	S-NPP	76.64677	30.08576	13:24	D	4.90
193	KURUKSHETRA	PEHOWA	S-NPP	76.70531	30.12134	13:24	D	5.60
194	KURUKSHETRA	PEHOWA	S-NPP	76.75240	30.13208	13:24	D	6.00
195	KURUKSHETRA	SHAHABAD	S-NPP	76.85512	30.15141	13:24	D	4.00
196	KURUKSHETRA	SHAHABAD	S-NPP	76.81131	30.16506	13:24	D	3.80
197	KURUKSHETRA	SHAHABAD	S-NPP	76.86693	30.19408	13:24	D	2.20
198	KURUKSHETRA	SHAHABAD	S-NPP	76.86625	30.19738	13:24	D	2.40
199	KURUKSHETRA	THANESAR	S-NPP	76.73001	29.87847	13:24	D	3.70
200	KURUKSHETRA	THANESAR	S-NPP	76.72933	29.88177	13:24	D	3.70
201	KURUKSHETRA	THANESAR	S-NPP	76.75706	29.96701	13:24	D	3.10
202	KURUKSHETRA	THANESAR	S-NPP	76.76321	30.01869	13:24	D	3.60
203	KURUKSHETRA	THANESAR	S-NPP	76.76254	30.02199	13:24	D	3.60
204	KURUKSHETRA	THANESAR	S-NPP	76.76306	30.05955	13:24	D	4.80
205	KURUKSHETRA	THANESAR	S-NPP	76.69999	30.06677	13:24	D	2.10
206	KURUKSHETRA	THANESAR	S-NPP	76.87686	30.12483	13:24	D	1.90
207	PANIPAT	PANIPAT	S-NPP	76.85550	29.47705	13:24	D	2.10
208	PANIPAT	SAMALKHA	S-NPP	76.94349	29.23353	02:06	N	0.50
209	ROHTAK	ROHTAK	S-NPP	76.71745	28.91663	02:06	N	0.40
210	SIRSA	ELLENABAD	S-NPP	74.62270	29.47627	13:24	D	5.90
211	SIRSA	RANIA	NOAA-18	74.89790	29.47586	20:13	N	9.00
212	SIRSA	RANIA	S-NPP	74.73634	29.55684	13:24	D	2.10
213	SIRSA	RANIA	AQUA-1	74.74783	29.56419	13:41	D	14.23
214	SIRSA	RANIA	S-NPP	74.59348	29.63016	13:24	D	3.90
215	SIRSA	SIRSA	S-NPP	75.10486	29.39803	02:06	N	0.70
216	SIRSA	SIRSA	S-NPP	74.97694	29.52310	13:24	D	2.90
217	SIRSA	SIRSA	S-NPP	74.95982	29.54138	02:06	N	0.30
218	SIRSA	SIRSA	S-NPP	75.14494	29.54861	02:06	N	0.70
219	SIRSA	SIRSA	S-NPP	74.95699	29.57297	13:24	D	2.70
220	SIRSA	SIRSA	S-NPP	75.06253	29.57667	13:24	D	5.30
221	SIRSA	SIRSA	S-NPP	75.01987	29.62337	02:06	N	2.90

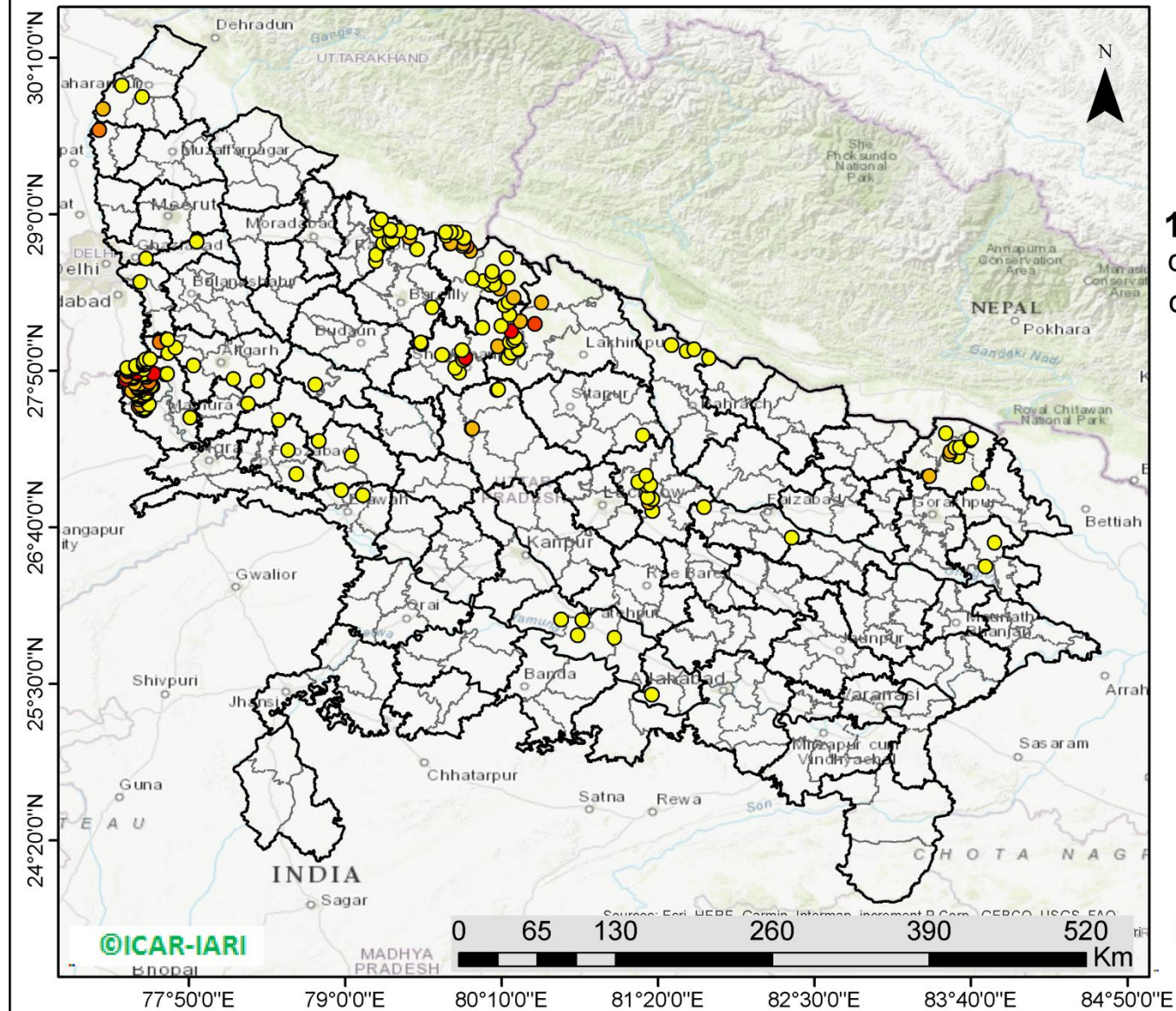
222	SIRSA	SIRSA	S-NPP	75.05182	29.64800	13:24	D	6.70
223	SIRSA	SIRSA	AQUA-1	75.15880	29.71391	13:41	D	10.99
224	SIRSA	SIRSA	S-NPP	75.23289	29.74200	13:24	D	1.70
225	SONIPAT	GOHANA	S-NPP	76.74860	29.21363	13:24	D	3.90
226	YAMUNANAGAR	JAGADHRI	S-NPP	77.15260	29.99391	13:24	D	3.20
227	YAMUNANAGAR	JAGADHRI	S-NPP	77.07943	30.13551	13:24	D	2.60
228	YAMUNANAGAR	JAGADHRI	S-NPP	77.18732	30.14854	13:24	D	3.90
229	YAMUNANAGAR	JAGADHRI	S-NPP	77.23721	30.22686	13:24	D	2.50
230	YAMUNANAGAR	JAGADHRI	S-NPP	77.26906	30.29286	13:24	D	2.00
231	YAMUNANAGAR	JAGADHRI	S-NPP	77.37559	30.31543	13:24	D	2.80
232	YAMUNANAGAR	JAGADHRI	S-NPP	77.22323	30.40405	13:24	D	2.10

District-wise cumulative number of residue burning events in Haryana (30-Sep-2018 to 23-Oct-2018)



(c) Uttar Pradesh

PADDY RESIDUE BURNING IN UTTAR PRADESH



193 burning events detected in Uttar Pradesh on **23rd October, 2018**

Fire Intensity (W/m²)

- 0 - 5
- 6 - 10
- 11 - 15
- 16 - 20
- >20

©ICAR-IARI



<http://geoportal.icar.gov.in:8080/geoexplorer/composer/>

Details of residue burning events in Uttar Pradesh on 23-Oct-2018

Event S. No.	District	Tehsil / Block	Satellite	Longitude	Latitude	Time (IST)	Day/Night	Fire Power (W/m²)
1	ALIGARH	IGLAS	S-NPP	77.86982	27.87251	13:24:00	D	3.50
2	ALIGARH	KHAIR	S-NPP	77.54422	27.92082	13:24:00	D	1.60
3	ALIGARH	KHAIR	S-NPP	77.67980	27.96537	13:24:00	D	4.80
4	ALIGARH	KHAIR	S-NPP	77.73196	28.00709	13:24:00	D	4.00
5	ALIGARH	KHAIR	S-NPP	77.61604	28.04719	13:24:00	D	11.10
6	ALIGARH	KHAIR	S-NPP	77.67253	28.06601	13:24:00	D	3.80
7	ALIGARH	KHAIR	S-NPP	77.67642	28.06660	13:24:00	D	3.80
8	ALIGARH	KOL	S-NPP	78.34705	27.76069	13:24:00	D	1.70
9	ALIGARH	KOL	S-NPP	78.16489	27.77104	13:24:00	D	2.60
10	BAHRAICH	NANPARA	S-NPP	81.71187	27.92690	13:24:00	D	3.60
11	BAHRAICH	NANPARA	S-NPP	81.54694	27.98016	13:24:00	D	4.10
12	BAHRAICH	NANPARA	S-NPP	81.60378	27.99458	13:24:00	D	2.80
13	BAHRAICH	NANPARA	S-NPP	81.43243	28.02542	13:24:00	D	1.70
14	BARABANKI	NAWABGANJ	S-NPP	81.28932	26.78799	13:24:00	D	2.90
15	BARABANKI	NAWABGANJ	S-NPP	81.26499	26.85398	13:24:00	D	5.90
16	BARABANKI	NAWABGANJ	S-NPP	81.29002	26.87725	13:24:00	D	2.00
17	BARABANKI	NAWABGANJ	S-NPP	81.25549	26.89104	13:24:00	D	2.50
18	BARABANKI	NAWABGANJ	S-NPP	81.24735	26.97958	13:24:00	D	4.80
19	BARABANKI	NAWABGANJ	S-NPP	81.27458	26.98304	13:24:00	D	4.70
20	BARABANKI	NAWABGANJ	S-NPP	81.18352	27.00411	13:24:00	D	3.60
21	BARABANKI	NAWABGANJ	S-NPP	81.24506	27.05211	13:24:00	D	4.30
22	BAREILLY	BAHERI	S-NPP	79.53330	28.74109	13:24:00	D	2.10
23	BAREILLY	BAHERI	S-NPP	79.47656	28.82705	13:24:00	D	7.60
24	BAREILLY	BAHERI	S-NPP	79.48663	28.86674	13:24:00	D	3.40
25	BAREILLY	BAHERI	S-NPP	79.40400	28.88001	13:24:00	D	2.90
26	BAREILLY	FARIDPUR	S-NPP	79.64888	28.30803	13:24:00	D	1.30
27	DEORIA	BARHAJ	S-NPP	83.77431	26.37675	13:24:00	D	2.80
28	DEORIA	DEORIA	S-NPP	83.84397	26.55309	13:24:00	D	2.40

29	ETAH	JALESAR	S-NPP	78.50522	27.46649	13:24:00	D	1.70
30	ETAH	KASGANJ	S-NPP	78.77486	27.73229	13:24:00	D	3.10
31	ETAWAH	ETAWAH	S-NPP	79.13177	26.90549	13:24:00	D	3.60
32	ETAWAH	SAIFAI	S-NPP	78.96813	26.94336	13:24:00	D	2.50
33	FAIZABAD	FAIZSBAD	S-NPP	82.32943	26.59163	13:24:00	D	3.30
34	FAIZABAD	RUDAULI	S-NPP	81.67452	26.81835	13:24:00	D	3.00
35	FATEHPUR	BINKI	S-NPP	80.61115	25.98007	13:24:00	D	2.90
36	FATEHPUR	FATEHPUR	S-NPP	81.00817	25.84312	13:24:00	D	1.60
37	FATEHPUR	FATEHPUR	S-NPP	80.73250	25.86422	13:24:00	D	2.40
38	FATEHPUR	FATEHPUR	S-NPP	80.76620	25.97632	13:24:00	D	1.40
39	FIROZABAD	JASRANA	S-NPP	78.57397	27.24042	13:24:00	D	2.20
40	FIROZABAD	SIKOHABAD	S-NPP	78.63451	27.06311	13:24:00	D	1.80
41	GAUTAMBUDHNAGAR	GAUTAMBUDHNAGAR	S-NPP	77.47009	28.49497	13:24:00	D	1.90
42	GHAZIABAD	GHAZIABAD	S-NPP	77.51481	28.67073	02:06:00	N	0.50
43	GHAZIABAD	HAPUR	S-NPP	77.89172	28.79569	13:24:00	D	2.50
44	GORAKHPUR	CAMPIERGANJ	S-NPP	83.35528	27.04941	13:24:00	D	5.80
45	HARDOI	HARDOI	S-NPP	79.94380	27.40190	13:24:00	D	6.40
46	HARDOI	HARDOI	S-NPP	79.94793	27.40247	13:24:00	D	6.50
47	HARDOI	SHAHABAD	S-NPP	80.13190	27.69155	13:24:00	D	2.90
48	HARDOI	SHAHABAD	S-NPP	80.14034	27.69268	13:24:00	D	2.20
49	KAUSHAMBI	MANJHANPUR	S-NPP	81.28768	25.42106	13:24:00	D	3.00
50	KHERI	GOLA	AQUA-1	80.41272	28.18228	13:41:00	D	16.08
51	KHERI	GOLA	S-NPP	80.30704	28.20251	13:24:00	D	5.50
52	KHERI	MOHMADI	S-NPP	80.21472	27.93220	13:24:00	D	4.60
53	KHERI	MOHMADI	S-NPP	80.23940	27.96732	13:24:00	D	2.40
54	KHERI	MOHMADI	S-NPP	80.29227	27.99211	13:24:00	D	5.70
55	KHERI	MOHMADI	S-NPP	80.29169	27.99558	13:24:00	D	3.90
56	KHERI	MOHMADI	S-NPP	80.22632	28.04837	13:24:00	D	4.50
57	KHERI	MOHMADI	S-NPP	80.25518	28.05929	13:24:00	D	4.00
58	KHERI	MOHMADI	S-NPP	80.26946	28.07890	13:24:00	D	4.60
59	KHERI	PALIA KALAN	S-NPP	80.46304	28.34149	13:24:00	D	5.90
60	MAHAMAYANAGAR	SIKANDRA RAO	S-NPP	78.27457	27.58792	13:24:00	D	2.00

61	MAHARAJGANJ	MAHARAJGANJ	S-NPP	83.72359	26.99614	13:24:00	D	3.10
62	MAHARAJGANJ	MAHARAJGANJ	S-NPP	83.56661	27.19646	13:24:00	D	1.60
63	MAHARAJGANJ	MAHARAJGANJ	S-NPP	83.50867	27.21037	13:24:00	D	3.80
64	MAHARAJGANJ	MAHARAJGANJ	S-NPP	83.51373	27.23142	13:24:00	D	8.10
65	MAHARAJGANJ	MAHARAJGANJ	S-NPP	83.54982	27.26069	13:24:00	D	2.70
66	MAHARAJGANJ	MAHARAJGANJ	S-NPP	83.58549	27.26462	13:24:00	D	1.90
67	MAHARAJGANJ	NAUTANWA	S-NPP	83.47941	27.36777	13:24:00	D	3.10
68	MAHARAJGANJ	NICHLAUL	S-NPP	83.65993	27.31411	13:24:00	D	3.20
69	MAHARAJGANJ	NICHLAUL	S-NPP	83.65937	27.31818	13:24:00	D	3.20
70	MAHARAJGANJ	NICHLAUL	S-NPP	83.67033	27.32768	13:24:00	D	4.60
71	MAINPURI	MAINPURI	S-NPP	79.04665	27.20171	13:24:00	D	1.40
72	MAINPURI	MAINPURI	S-NPP	78.80222	27.31069	13:24:00	D	2.40
73	MATHURA	CHHATA	AQUA-1	77.45784	27.57053	13:41:00	D	10.63
74	MATHURA	CHHATA	S-NPP	77.47474	27.57839	13:24:00	D	5.90
75	MATHURA	CHHATA	S-NPP	77.46252	27.62001	13:24:00	D	2.50
76	MATHURA	CHHATA	S-NPP	77.47938	27.63623	13:24:00	D	3.10
77	MATHURA	CHHATA	S-NPP	77.45413	27.64253	13:24:00	D	2.50
78	MATHURA	CHHATA	S-NPP	77.45802	27.64314	13:24:00	D	3.40
79	MATHURA	CHHATA	S-NPP	77.45737	27.64644	13:24:00	D	13.40
80	MATHURA	CHHATA	S-NPP	77.46127	27.64704	13:24:00	D	13.40
81	MATHURA	CHHATA	S-NPP	77.49687	27.64915	13:24:00	D	3.50
82	MATHURA	CHHATA	S-NPP	77.45673	27.64974	13:24:00	D	13.40
83	MATHURA	CHHATA	AQUA-1	77.47966	27.65378	13:41:00	D	11.28
84	MATHURA	CHHATA	S-NPP	77.51820	27.66265	13:24:00	D	4.30
85	MATHURA	CHHATA	S-NPP	77.43344	27.66655	13:24:00	D	1.20
86	MATHURA	CHHATA	S-NPP	77.51303	27.66866	13:24:00	D	2.10
87	MATHURA	CHHATA	S-NPP	77.40625	27.68277	13:24:00	D	5.70
88	MATHURA	CHHATA	S-NPP	77.47363	27.68639	13:24:00	D	4.90
89	MATHURA	CHHATA	S-NPP	77.45940	27.69780	13:24:00	D	7.20
90	MATHURA	CHHATA	S-NPP	77.46589	27.70560	13:24:00	D	8.60
91	MATHURA	CHHATA	AQUA-1	77.45579	27.70618	13:41:00	D	14.73
92	MATHURA	CHHATA	AQUA-1	77.54105	27.70767	13:41:00	D	28.74

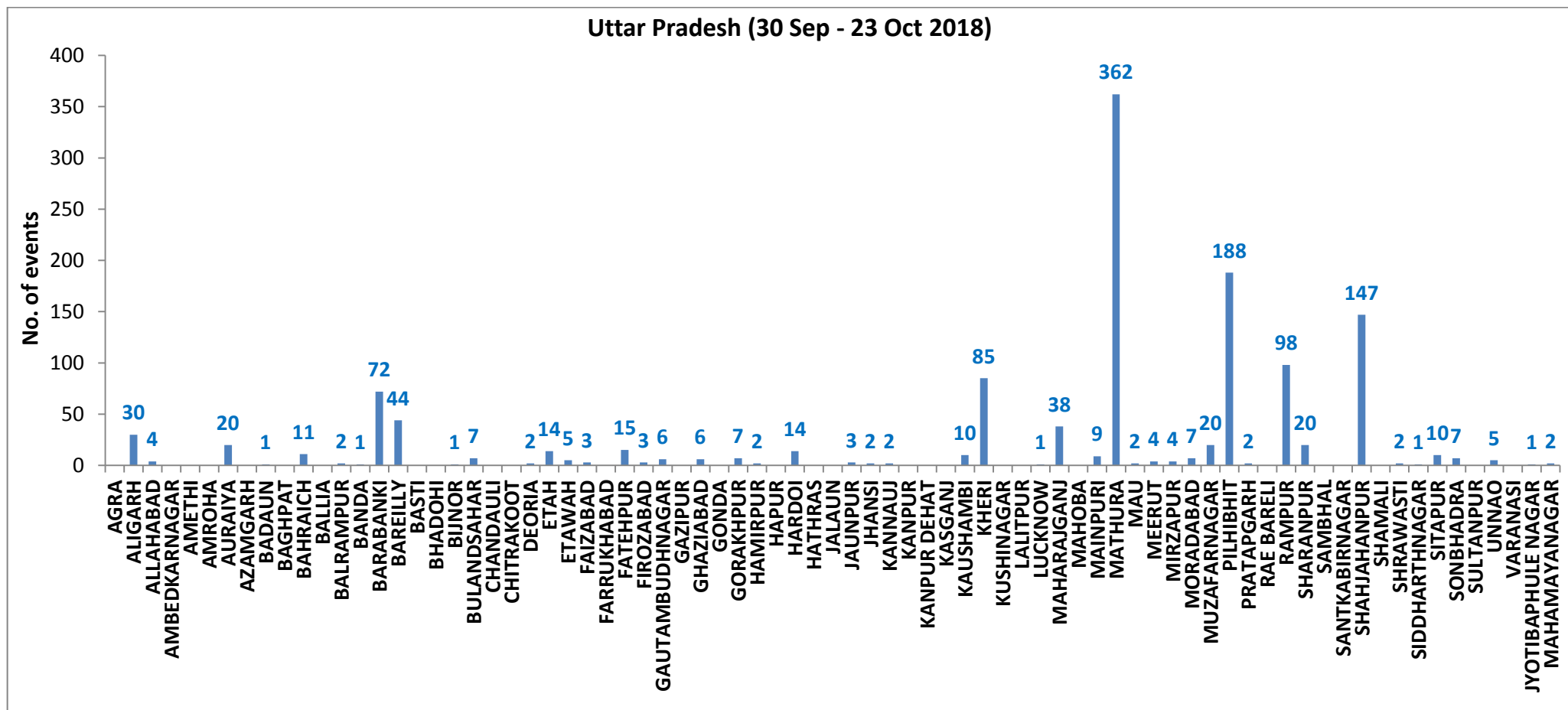
93	MATHURA	CHHATA	S-NPP	77.46136	27.70831	13:24:00	D	24.80
94	MATHURA	CHHATA	S-NPP	77.46525	27.70891	13:24:00	D	24.80
95	MATHURA	CHHATA	S-NPP	77.44841	27.71312	13:24:00	D	3.20
96	MATHURA	CHHATA	S-NPP	77.44777	27.71642	13:24:00	D	3.20
97	MATHURA	CHHATA	S-NPP	77.56299	27.72057	13:24:00	D	2.50
98	MATHURA	CHHATA	S-NPP	77.55069	27.72208	13:24:00	D	1.90
99	MATHURA	CHHATA	S-NPP	77.52157	27.72781	13:24:00	D	6.80
100	MATHURA	CHHATA	S-NPP	77.45317	27.73056	13:24:00	D	2.70
101	MATHURA	CHHATA	S-NPP	77.45706	27.73116	13:24:00	D	2.30
102	MATHURA	CHHATA	S-NPP	77.47261	27.73357	13:24:00	D	4.80
103	MATHURA	CHHATA	S-NPP	77.51595	27.73686	13:24:00	D	1.80
104	MATHURA	CHHATA	S-NPP	77.47197	27.73687	13:24:00	D	5.80
105	MATHURA	CHHATA	AQUA-1	77.43021	27.74211	13:41:00	D	7.13
106	MATHURA	CHHATA	S-NPP	77.53735	27.75037	13:24:00	D	12.00
107	MATHURA	CHHATA	AQUA-1	77.35859	27.76906	13:41:00	D	27.74
108	MATHURA	CHHATA	S-NPP	77.41564	27.77920	13:24:00	D	2.00
109	MATHURA	CHHATA	S-NPP	77.51801	27.78820	13:24:00	D	0.70
110	MATHURA	CHHATA	S-NPP	77.41695	27.79301	13:24:00	D	2.00
111	MATHURA	CHHATA	AQUA-1	77.36882	27.79601	13:41:00	D	14.69
112	MATHURA	CHHATA	S-NPP	77.51868	27.80532	13:24:00	D	1.50
113	MATHURA	CHHATA	S-NPP	77.65855	27.80639	13:24:00	D	3.60
114	MATHURA	CHHATA	AQUA-1	77.51377	27.80649	13:41:00	D	9.22
115	MATHURA	CHHATA	S-NPP	77.49343	27.81163	13:24:00	D	4.10
116	MATHURA	CHHATA	S-NPP	77.67345	27.81206	13:24:00	D	1.80
117	MATHURA	CHHATA	AQUA-1	77.44556	27.81397	13:41:00	D	8.70
118	MATHURA	CHHATA	AQUA-1	77.56834	27.81397	13:41:00	D	20.04
119	MATHURA	CHHATA	TERRA-1	77.44556	27.81847	10:31:00	D	33.40
120	MATHURA	CHHATA	S-NPP	77.37747	27.83043	13:24:00	D	2.60
121	MATHURA	CHHATA	S-NPP	77.38136	27.83104	13:24:00	D	2.80
122	MATHURA	CHHATA	S-NPP	77.38721	27.84216	13:24:00	D	2.40
123	MATHURA	CHHATA	S-NPP	77.49480	27.84519	13:24:00	D	2.10
124	MATHURA	CHHATA	AQUA-1	77.42100	27.85260	13:41:00	D	12.52

125	MATHURA	CHHATA	S-NPP	77.37295	27.85356	13:24:00	D	2.60
126	MATHURA	CHHATA	S-NPP	77.43907	27.86380	13:24:00	D	2.40
127	MATHURA	CHHATA	S-NPP	77.43778	27.87041	13:24:00	D	2.30
128	MATHURA	CHHATA	S-NPP	77.49680	27.87612	13:24:00	D	2.30
129	MATHURA	CHHATA	S-NPP	77.49940	27.88332	13:24:00	D	4.80
130	MATHURA	CHHATA	AQUA-1	77.51377	27.88734	13:41:00	D	11.21
131	MATHURA	CHHATA	S-NPP	77.49555	27.90314	13:24:00	D	1.60
132	MATHURA	CHHATA	S-NPP	77.51955	27.90343	13:24:00	D	4.60
133	MATHURA	CHHATA	S-NPP	77.51245	27.91934	13:24:00	D	3.10
134	MATHURA	MAHABAN	S-NPP	77.84451	27.48443	02:06:00	N	0.50
135	MATHURA	MATHURA	S-NPP	77.49861	27.53785	13:24:00	D	39.40
136	MATHURA	MATHURA	S-NPP	77.47276	27.54745	13:24:00	D	2.20
137	MATHURA	MATHURA	S-NPP	77.50057	27.54836	13:24:00	D	4.00
138	MATHURA	MATHURA	S-NPP	77.51604	27.55075	13:24:00	D	2.30
139	MATHURA	MATHURA	S-NPP	77.51540	27.55405	13:24:00	D	3.90
140	MATHURA	MATHURA	S-NPP	77.50311	27.55556	13:24:00	D	4.40
141	MATHURA	MATHURA	S-NPP	77.53357	27.58408	13:24:00	D	3.30
142	MUZAFARNAGAR	KAIRANA	AQUA-1	77.16419	29.62857	13:41:00	D	13.16
143	PILHIBHIT	PILHIBHIT	S-NPP	79.93228	28.72613	13:24:00	D	6.60
144	PILHIBHIT	PILHIBHIT	S-NPP	79.90487	28.76351	13:24:00	D	10.80
145	PILHIBHIT	PILHIBHIT	S-NPP	79.87382	28.76639	13:24:00	D	3.50
146	PILHIBHIT	PILHIBHIT	S-NPP	79.87997	28.78129	13:24:00	D	9.60
147	PILHIBHIT	PILHIBHIT	S-NPP	79.77987	28.78180	13:24:00	D	2.40
148	PILHIBHIT	PILHIBHIT	S-NPP	79.78834	28.78295	13:24:00	D	5.60
149	PILHIBHIT	PILHIBHIT	S-NPP	79.88625	28.82086	13:24:00	D	2.30
150	PILHIBHIT	PILHIBHIT	S-NPP	79.88567	28.82431	13:24:00	D	1.60
151	PILHIBHIT	PILHIBHIT	S-NPP	79.75353	28.84026	13:24:00	D	1.90
152	PILHIBHIT	PILHIBHIT	S-NPP	79.82761	28.86426	13:24:00	D	1.70
153	PILHIBHIT	PILHIBHIT	S-NPP	79.79238	28.86654	13:24:00	D	4.50
154	PILHIBHIT	PILHIBHIT	S-NPP	79.74877	28.86767	13:24:00	D	2.50
155	PILHIBHIT	PURANPUR	S-NPP	80.18597	28.32223	13:24:00	D	2.60
156	PILHIBHIT	PURANPUR	S-NPP	80.21818	28.34589	13:24:00	D	2.90

157	PILHIBHIT	PURANPUR	S-NPP	80.25677	28.37936	13:24:00	D	7.90
158	PILHIBHIT	PURANPUR	S-NPP	80.14995	28.44441	13:24:00	D	5.70
159	PILHIBHIT	PURANPUR	S-NPP	80.07897	28.47388	13:24:00	D	2.50
160	PILHIBHIT	PURANPUR	S-NPP	80.11333	28.47847	13:24:00	D	1.90
161	PILHIBHIT	PURANPUR	S-NPP	80.03024	28.50264	13:24:00	D	2.80
162	PILHIBHIT	PURANPUR	S-NPP	79.94862	28.52566	13:24:00	D	3.10
163	PILHIBHIT	PURANPUR	S-NPP	80.21112	28.52698	13:24:00	D	2.80
164	PILHIBHIT	PURANPUR	S-NPP	80.09422	28.54496	13:24:00	D	1.80
165	PILHIBHIT	PURANPUR	S-NPP	80.09811	28.57377	13:24:00	D	2.30
166	PILHIBHIT	PURANPUR	S-NPP	80.20151	28.67365	13:24:00	D	2.60
167	RAMPUR	BILASPUR	S-NPP	79.28114	28.78274	13:24:00	D	1.60
168	RAMPUR	BILASPUR	S-NPP	79.32812	28.80311	13:24:00	D	4.70
169	RAMPUR	BILASPUR	S-NPP	79.35166	28.81330	13:24:00	D	2.30
170	RAMPUR	BILASPUR	S-NPP	79.34129	28.87490	13:24:00	D	4.40
171	RAMPUR	BILASPUR	S-NPP	79.25168	28.87989	13:24:00	D	1.70
172	RAMPUR	BILASPUR	S-NPP	79.33533	28.88449	13:24:00	D	3.00
173	RAMPUR	BILASPUR	S-NPP	79.23791	28.93337	13:24:00	D	5.00
174	RAMPUR	BILASPUR	S-NPP	79.27075	28.96222	13:24:00	D	1.70
175	RAMPUR	MILAK	S-NPP	79.22826	28.65038	13:24:00	D	2.10
176	RAMPUR	MILAK	S-NPP	79.23209	28.69931	13:24:00	D	3.60
177	SHAHJAHANPUR	PUWANYA	S-NPP	80.14008	28.01570	13:24:00	D	8.80
178	SHAHJAHANPUR	PUWANYA	AQUA-1	80.23622	28.13063	13:41:00	D	29.36
179	SHAHJAHANPUR	PUWANYA	S-NPP	80.02190	28.15361	13:24:00	D	2.20
180	SHAHJAHANPUR	PUWANYA	S-NPP	80.16299	28.16908	13:24:00	D	4.50
181	SHAHJAHANPUR	PUWANYA	S-NPP	80.22266	28.24919	02:06:00	N	0.50
182	SHAHJAHANPUR	SHAHJAHANPUR	S-NPP	79.84917	27.82033	13:24:00	D	2.90
183	SHAHJAHANPUR	SHAHJAHANPUR	S-NPP	79.81908	27.85448	13:24:00	D	1.80
184	SHAHJAHANPUR	SHAHJAHANPUR	S-NPP	79.88097	27.91530	13:24:00	D	3.10
185	SHAHJAHANPUR	SHAHJAHANPUR	AQUA-1	79.89602	27.93076	13:41:00	D	21.74
186	SHAHJAHANPUR	SHAHJAHANPUR	S-NPP	79.86910	27.98635	13:24:00	D	2.60
187	SHAHJAHANPUR	TILHAR	S-NPP	79.72188	27.95240	13:24:00	D	1.70
188	SHAHJAHANPUR	TILHAR	S-NPP	79.56883	28.03208	13:24:00	D	1.80

189	SHAHJAHANPUR	TILHAR	S-NPP	79.56282	28.04565	13:24:00	D	1.60
190	SHARANPUR	NAKUR	S-NPP	77.19308	29.78680	13:24:00	D	5.90
191	SHARANPUR	NAKUR	S-NPP	77.33479	29.96108	13:24:00	D	2.20
192	SHARANPUR	RAMPUR MANIHARRAN	S-NPP	77.48557	29.87529	13:24:00	D	4.90
193	SITAPUR	MAHMUDABAD	S-NPP	81.21987	27.35320	13:24:00	D	2.40

District-wise cumulative number of residue burning events in Uttar Pradesh (30-Sep-2018 to 23-Oct-2018)



State wise, date wise and district-wise number of residue burning events detected in 2017 and 2018
(Period: 30-Sep-2018 to 23-Oct-2018)

Date	Punjab		Haryana		UP		Total	
	2017	2018	2017	2018	2017	2018	2017	2018
30-Sep-18	--	11	---	7	---	13	---	31
1-Oct-18	54	16	13	9	2	11	69	36
2-Oct-18	50	9	27	23	8	21	85	53
3-Oct-18	62	4	40	9	17	12	119	25
4-Oct-18	103	32	60	16	22	5	185	53
5-Oct-18	106	56	68	30	20	10	194	96
6-Oct-18	138	87	75	65	39	13	252	165
7-Oct-18	105	162	97	180	31	69	233	411
8-Oct-18	215	39	218	40	75	54	508	133
9-Oct-18	163	75	148	47	87	32	398	154
10-Oct-18	164	23	151	37	126	21	441	81
11-Oct-18	177	30	87	78	74	24	338	132
12-Oct-18	342	67	123	133	51	22	516	222
13-Oct-18	470	62	207	147	69	61	746	270
14-Oct-18	582	112	333	153	137	57	1052	322
15-Oct-18	943	90	458	110	237	35	1638	235
16-Oct-18	465	174	186	138	71	20	722	332
17-Oct-18	807	272	244	268	69	94	1120	634

18-Oct-18	970	263	306	255	108	163	1384	681
19-Oct-18	1591	254	541	208	128	108	2260	570
20-Oct-18	2653	496	597	141	255	49	3505	686
21-Oct-18	1139	618	233	217	168	66	1540	901
22-Oct-18	1356	656	186	134	151	149	1693	939
23-Oct-18	994	1113	155	232	72	193	1221	1538
Total	13649	4721	4553	2677	2021	1302	20223	8700

(a) Punjab

Districts	01 - 23 Oct	
	2017	2018
AMRITSAR	870	711
BARNALA	59	39
BATHINDA	1042	236
FARIDKOT	1397	281
FATEHGARH SAHIB	566	133
FAZILKA	0	0
FIROZPUR	1921	575
GURDASPUR	591	207
HOSHIARPUR	138	8
JALANDHAR	572	113
KAPURTHALA	396	34
LUDHIANA	765	125
MANSA	349	176
MOGA	199	45
MUKTSAR	945	283
NAWASHAHR	169	11
PATHANKOT	0	0
PATIALA	1357	617
RUPNAGAR	69	4
SANGRUR	444	188
SAS NAGAR	79	65
TARN TARAN	1655	832
SBS NAGAR	66	38
Total	13649	4721

(b) Haryana

Districts	01 - 23 Oct	
	2017	2018
AMBALA	317	113
BHIWANI	3	4
FARIDABAD	116	93
FATEHABAD	440	207
GURUGRAM	0	0
HISAR	42	29
JHAJJAR	4	5
JIND	217	132
KAITHAL	971	750
KARNAL	1126	604
KURUKSHETRA	955	545
MAHENDRAGARH	0	1
MEWAT	0	1
PALWAL	0	0
PANCHKULA	0	3
PANIPAT	40	39
REWARI	0	0
ROHTAK	4	1
SIRSA	119	70
SONIPAT	20	13
YAMUNANAGAR	179	67
Total	4553	2677

(c) Uttar Pradesh

Districts	01 - 23 Oct		FIROZABAD	2	3	PRATAPGARH	0	2
	2017	2018						
AGRA	0	0	GAZIPUR	0	0	RAMPUR	336	98
ALIGARH	21	30	GHAZIABAD	6	6	SHARANPUR	43	20
ALLAHABAD	0	4	GONDA	0	0	SAMBHAL	0	0
AMBEDKAR NAGAR	4	0	GORAKHPUR	4	7	SANTKABIR NAGAR	1	0
AMETHI	0	0	HAMIRPUR	0	2	SHAHJAHANPUR	467	147
AMROHA	0	0	HAPUR	0	0	SHAMALI	0	0
AURAIYA	61	20	HARDOI	25	14	SHRAWASTI	5	2
AZAMGARH	0	0	HATHRAS	0	0	SIDDHARTH NAGAR	2	1
BADAUN	1	1	JALAUN	0	0	SITAPUR	19	10
BAGHPAT	0	0	JAUNPUR	0	3	SONBHADRA	1	7
BAHRAICH	7	11	JHANSI	0	2	SULTANPUR	0	0
BALLIA	0	0	KANNAUJ	1	2	UNNAO	4	5
BALRAMPUR	0	2	KANPUR	3	0	VARANASI	0	0
BANDA	1	1	KANPUR DEHAT	1	0	JYOTIBAPHULE NAGAR	0	1
BARABANKI	43	72	KASGANJ	0	0	MAHAMAYA NAGAR	1	2
BAREILLY	74	44	KAUSHAMBI	5	10	Total	2021	1302
BASTI	1	0	KHERI	129	85			
BHADOHI	0	0	KUSHINAGAR	1	0			
BIJNOR	4	1	LALITPUR	0	0			
BULANDSAHAR	9	7	LUCKNOW	6	1			
CHANDAULI	0	0	MAHARAJGANJ	38	38			
CHITRAKOOT	0	0	MAHOBA	0	0			
DEORIA	1	2	MAINPURI	9	9			
ETAH	12	14	MATHURA	190	362			
ETAWAH	10	5	MAU	0	2			
FAIZABAD	1	3	MEERUT	14	4			
FARRUKHABAD	0	0	MIRZAPUR	3	4			
FATEHPUR	8	15	MORADABAD	12	7			
			MUZAFARNAGAR	56	20			
			PILHIBHIT	373	188			

The study used images received from following Satellites at IARI Satellite Ground Station

S. No.	Satellite Name	Sensor	Resolution (meter)	Day / Night Passes
1.	Suomi NPP	VIIRS	375 / 1000	Both
2.	Terra	MODIS	1000	Both
3.	Aqua	MODIS	1000	Both
4.	NOAA – 18	AVHRR	1000	Night
5.	NOAA – 19	AVHRR	1000	Night
6.	Metop - 1	AVHRR	1000	Night
7.	Metop - 2	AVHRR	1000	Night

Study Team

ICAR – HQ	Dr K. Alagusundaram	DDG (Agril. Engg.)	ddgengg@icar.org.in
	Dr S. Bhaskar	ADG (NRM)	adgagroandaf@gmail.com
ICAR - IARI	Dr V.K. Sehgal	Professor & Nodal Scientist	iaricreams@gmail.com vk.sehgal@icar.gov.in
	Dr Rajkumar Dhakar	Scientist	rajdhakar.iari@gmail.com
	Shri Rakeshwar Verma	Chief Technical Officer	rakeshwar.verma@icar.gov.in
	Mr Aakash Chhabra	SRF (NICRA)	aakash.chhabra7489@gmail.com
ICAR - ATARI	Dr Rajbir Singh	Director ATARI (Zone-1)	rajbirsingh.zpd@gmail.com
	Dr U.S. Gautam	Director ATARI (Zone-IV)	zpdicarkanpur@gmail.com
ICAR - IASRI	Dr RajenderParsad	Principal Scientist	rajender.parsad@icar.gov.in

GIS Maps of fire events can be visualized online on ICAR KRISHI Geoportal

websites:<http://geoportal.icar.gov.in:8080/geoexplorer/composer/>

<http://creams.iari.res.in:8080/geoexplorer/composer/>
