

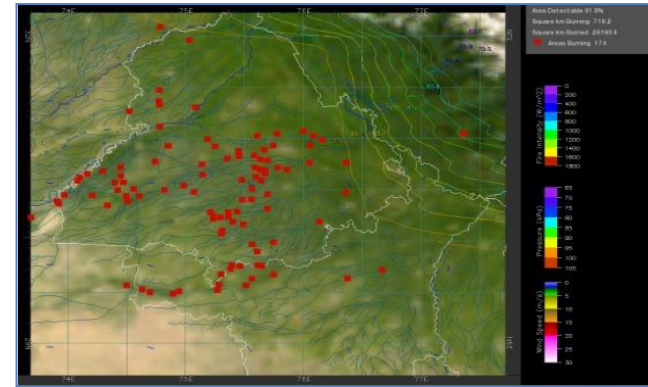
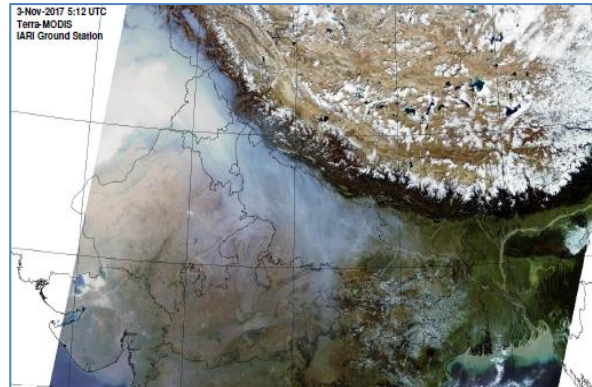


MONITORING PADDY RESIDUE BURNING IN NORTH INDIA USING SATELLITE REMOTE SENSING DURING 2018

**Bulletin
No. 22**

**Events Date:
22-Oct-2018**

**Issued on:
23-Oct-2018**



Prepared by:

**Consortium for Research on Agroecosystem Monitoring and Modeling from Space (CREAMS) Laboratory,
Division of Agricultural Physics, ICAR – Indian Agricultural Research Institute, New Delhi – 110012**

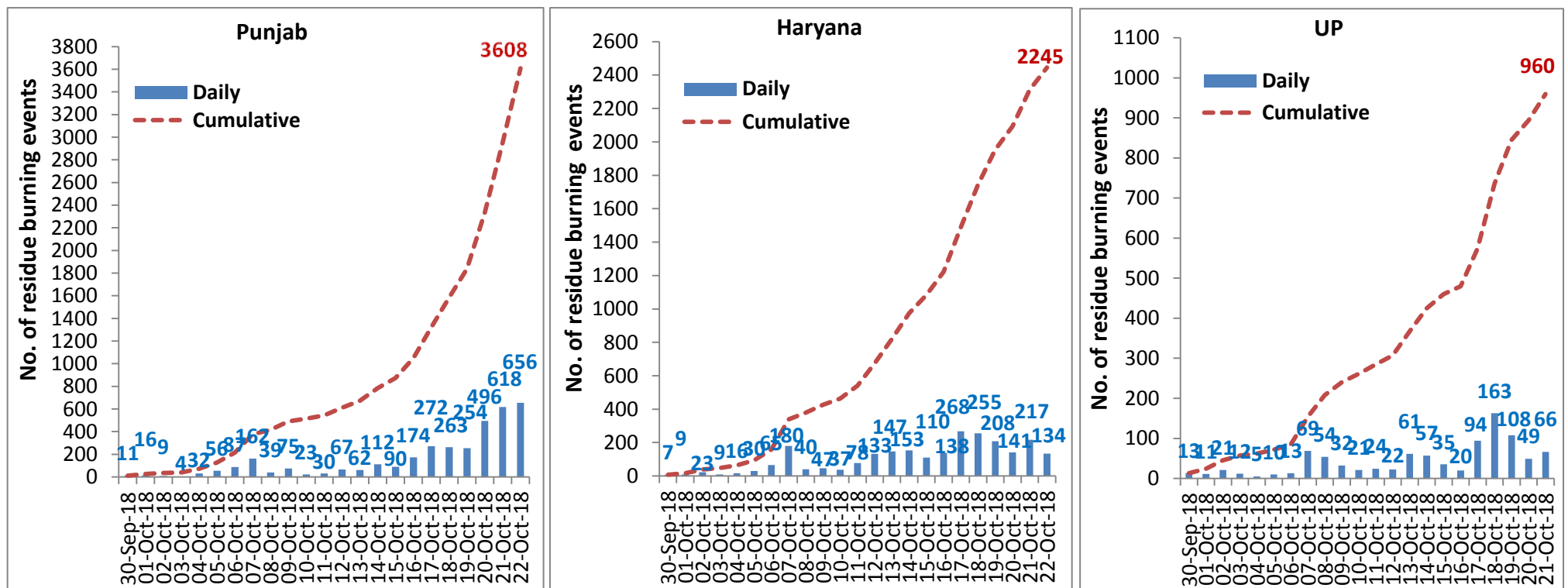
<http://creams.iari.res.in>



Highlights for 22-October-2018

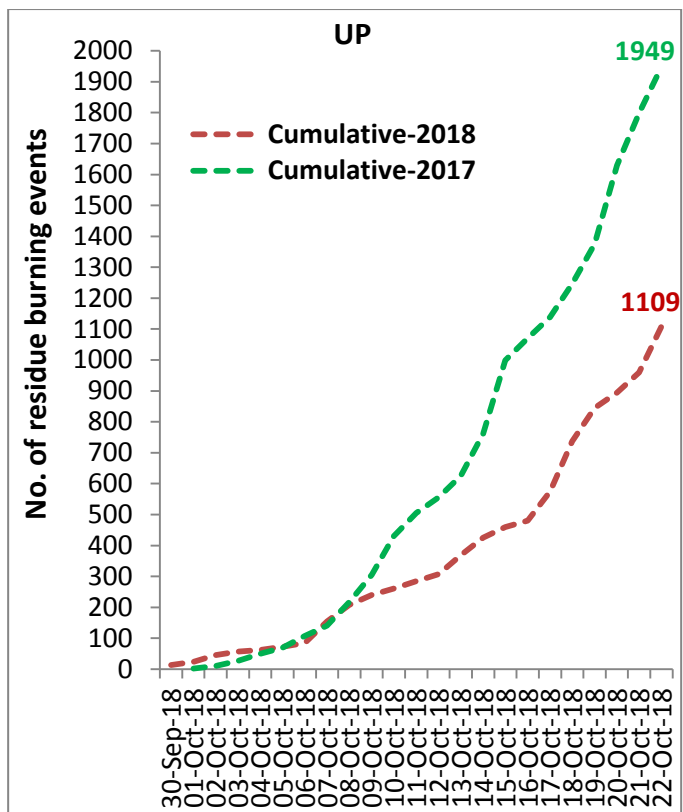
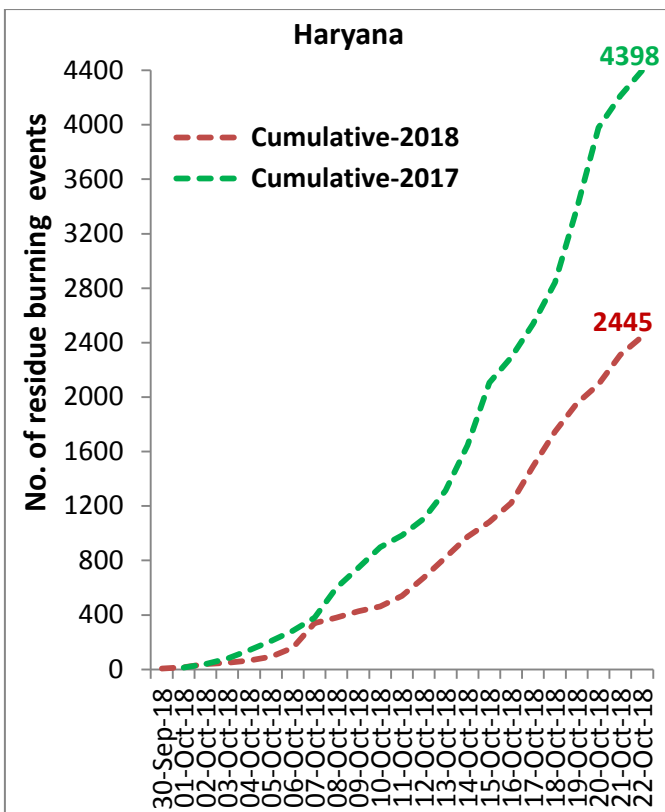
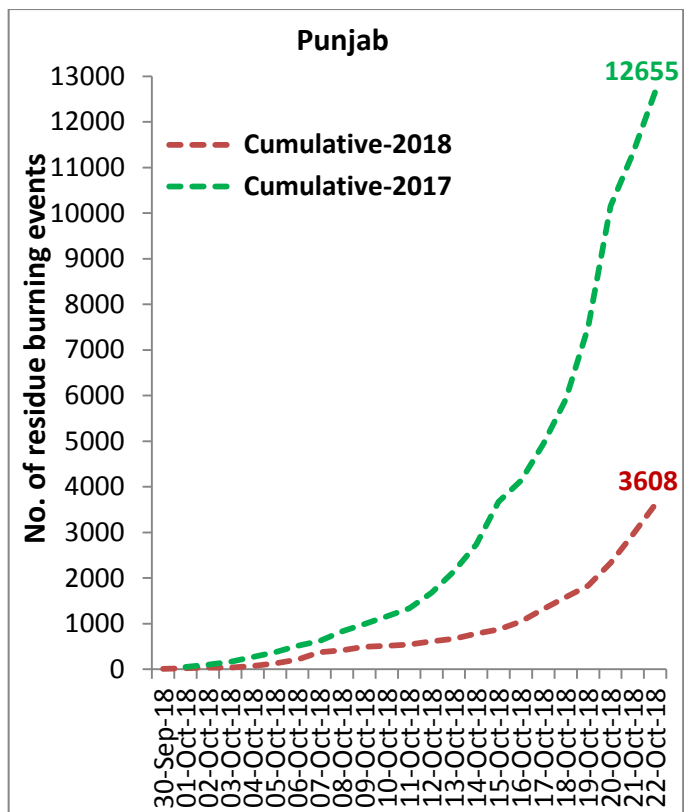
- Satellites detected 939 residue burning events in the three States (Punjab, Haryana & UP) on 22-Oct-2018.
- The burning events detected on 22-Oct-2018 are 656, 134 and 149 in Punjab, Haryana, and UP, respectively.
- The number of events increased from 901 on 21-Oct-2018 to 939 on 22-Oct-2018 in the three States.
- Total 7162 burning events were detected in the three States between 30-Sept-2018 and 22-Oct-2018, which were distributed as 3608, 2445 and 1109 in Punjab, Haryana and UP, respectively.
- Till 22-Oct-2018, the burning events in the current year are about 37.6% of the events detected in 2017.

Temporal distribution of residue burning events for the three study States



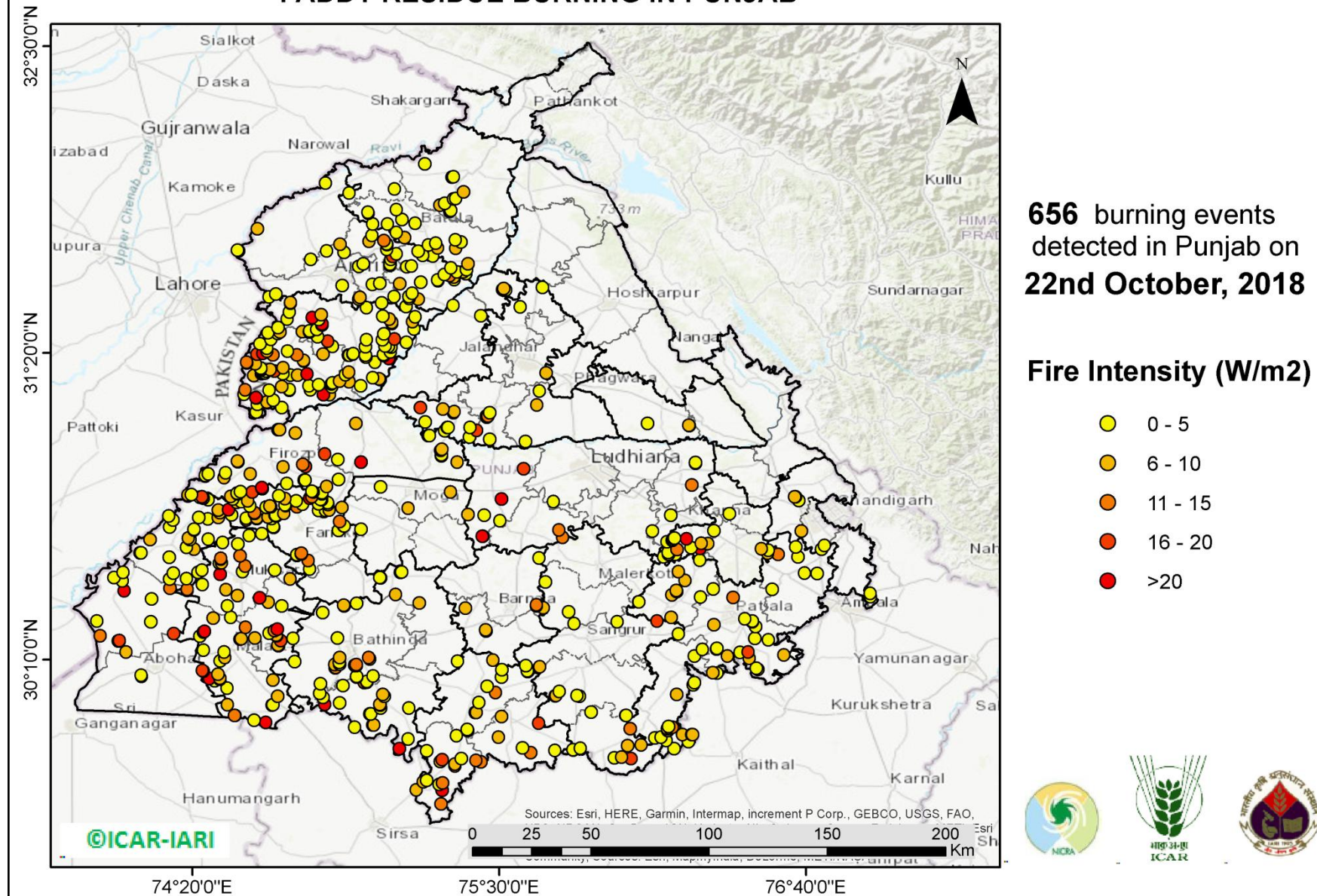
Comparison of residue burning events in current year (2018) with previous year (2017) for the three study States

(30-Sep-2018 to 22-Oct-2018)



(a) Punjab

PADDY RESIDUE BURNING IN PUNJAB



<http://geoportal.icar.gov.in:8080/geoexplorer/composer/>

Details of residue burning events in Punjab on 22-Oct-2018

Event S.No.	District	Tehsil / Block	Satellite	Longitude	Latitude	Time (IST)	Day/Night	Fire Power (W/m²)
1	AMRITSAR	AJNALA	S-NPP	74.78357	31.68935	13:42:00	D	3.20
2	AMRITSAR	AJNALA	S-NPP	74.50864	31.72187	13:42:00	D	4.40
3	AMRITSAR	AJNALA	S-NPP	74.84267	31.72205	13:42:00	D	4.00
4	AMRITSAR	AJNALA	S-NPP	74.50358	31.72474	13:42:00	D	4.40
5	AMRITSAR	AJNALA	S-NPP	74.58012	31.80564	13:42:00	D	8.70
6	AMRITSAR	AJNALA	S-NPP	74.92914	31.94147	13:42:00	D	3.40
7	AMRITSAR	AJNALA	S-NPP	74.83909	31.97993	13:42:00	D	1.70
8	AMRITSAR	AMRITSAR I	S-NPP	75.05232	31.52313	13:42:00	D	4.30
9	AMRITSAR	AMRITSAR I	S-NPP	74.96571	31.53699	13:42:00	D	5.20
10	AMRITSAR	AMRITSAR I	S-NPP	74.96905	31.54459	13:42:00	D	3.90
11	AMRITSAR	AMRITSAR I	S-NPP	74.97012	31.54469	13:42:00	D	6.10
12	AMRITSAR	AMRITSAR I	S-NPP	75.09990	31.54728	13:42:00	D	2.10
13	AMRITSAR	AMRITSAR I	S-NPP	75.01771	31.59380	13:42:00	D	2.00
14	AMRITSAR	AMRITSAR I	S-NPP	75.04528	31.59733	13:42:00	D	4.10
15	AMRITSAR	AMRITSAR I	S-NPP	75.08596	31.67075	13:42:00	D	6.10
16	AMRITSAR	AMRITSAR I	S-NPP	75.08441	31.67076	13:42:00	D	4.20
17	AMRITSAR	AMRITSAR I	S-NPP	75.08755	31.68896	13:42:00	D	2.50
18	AMRITSAR	AMRITSAR I	S-NPP	75.09496	31.70071	13:42:00	D	16.10
19	AMRITSAR	AMRITSAR I	S-NPP	75.10767	31.70954	13:42:00	D	4.30
20	AMRITSAR	AMRITSAR I	S-NPP	75.07156	31.72656	13:42:00	D	1.40
21	AMRITSAR	AMRITSAR I	S-NPP	75.07313	31.74478	13:42:00	D	3.40
22	AMRITSAR	AMRITSAR I	S-NPP	75.07253	31.74830	13:42:00	D	3.40
23	AMRITSAR	AMRITSAR I	S-NPP	75.00482	31.75754	13:42:00	D	8.30
24	AMRITSAR	AMRITSAR I	S-NPP	75.06082	31.76121	13:42:00	D	11.20
25	AMRITSAR	AMRITSAR I	S-NPP	75.01626	31.78010	13:42:00	D	2.00
26	AMRITSAR	AMRITSAR II	S-NPP	74.62424	31.54631	13:42:00	D	4.00
27	AMRITSAR	AMRITSAR II	S-NPP	74.64970	31.55674	13:42:00	D	3.50
28	AMRITSAR	AMRITSAR II	S-NPP	74.90170	31.58961	13:42:00	D	2.70

29	AMRITSAR	AMRITSAR II	S-NPP	74.96501	31.66265	13:42:00	D	2.50
30	AMRITSAR	AMRITSAR II	S-NPP	74.98212	31.67200	13:42:00	D	2.60
31	AMRITSAR	AMRITSAR II	S-NPP	74.90887	31.71636	13:42:00	D	4.40
32	AMRITSAR	AMRITSAR II	S-NPP	74.89422	31.74669	13:42:00	D	7.80
33	AMRITSAR	BABA BAKALA	S-NPP	75.14414	31.50973	13:42:00	D	2.40
34	AMRITSAR	BABA BAKALA	S-NPP	75.19150	31.53744	13:42:00	D	5.40
35	AMRITSAR	BABA BAKALA	S-NPP	75.15780	31.54033	13:42:00	D	4.90
36	AMRITSAR	BABA BAKALA	S-NPP	75.15657	31.54739	13:42:00	D	2.90
37	AMRITSAR	BABA BAKALA	S-NPP	75.16867	31.55978	13:42:00	D	3.40
38	AMRITSAR	BABA BAKALA	S-NPP	75.12097	31.59616	13:42:00	D	6.00
39	AMRITSAR	BABA BAKALA	S-NPP	75.20056	31.60262	13:42:00	D	3.00
40	AMRITSAR	BABA BAKALA	S-NPP	75.26663	31.60731	13:42:00	D	3.20
41	AMRITSAR	BABA BAKALA	S-NPP	75.26602	31.61086	13:42:00	D	4.60
42	AMRITSAR	BABA BAKALA	S-NPP	75.32839	31.61140	13:42:00	D	3.40
43	AMRITSAR	BABA BAKALA	S-NPP	75.32657	31.62207	13:42:00	D	10.00
44	AMRITSAR	BABA BAKALA	S-NPP	75.31120	31.62741	13:42:00	D	10.40
45	AMRITSAR	BABA BAKALA	S-NPP	75.29115	31.63215	13:42:00	D	1.50
46	AMRITSAR	BABA BAKALA	S-NPP	75.14770	31.66092	13:42:00	D	3.00
47	AMRITSAR	BABA BAKALA	S-NPP	75.16631	31.66332	13:42:00	D	1.60
48	AMRITSAR	BABA BAKALA	S-NPP	75.08502	31.66724	13:42:00	D	4.20
49	AMRITSAR	BABA BAKALA	S-NPP	75.20860	31.70420	13:42:00	D	4.70
50	AMRITSAR	BABA BAKALA	S-NPP	75.19151	31.72015	13:42:00	D	1.70
51	BARNALA	BARNALA	S-NPP	75.66643	30.36363	13:42:00	D	5.20
52	BARNALA	BARNALA	S-NPP	75.64132	30.37138	13:42:00	D	7.20
53	BARNALA	BARNALA	S-NPP	75.64072	30.37494	13:42:00	D	13.70
54	BARNALA	BARNALA	S-NPP	75.65078	30.55313	13:42:00	D	2.80
55	BARNALA	TAPPA	S-NPP	75.44885	30.27563	13:42:00	D	14.10
56	BARNALA	TAPPA	S-NPP	75.44825	30.27916	13:42:00	D	6.50
57	BARNALA	TAPPA	S-NPP	75.37020	30.36211	13:42:00	D	5.70
58	BATHINDA	BATHINDA	S-NPP	74.81706	30.03870	13:42:00	D	3.10
59	BATHINDA	BATHINDA	S-NPP	74.81967	30.07426	13:42:00	D	3.60
60	BATHINDA	BATHINDA	S-NPP	74.99615	30.08360	13:42:00	D	2.50

61	BATHINDA	BATHINDA	S-NPP	74.95753	30.09973	13:42:00	D	3.00
62	BATHINDA	BATHINDA	S-NPP	74.95693	30.10318	13:42:00	D	3.00
63	BATHINDA	BATHINDA	S-NPP	75.01945	30.10441	13:42:00	D	1.60
64	BATHINDA	BATHINDA	S-NPP	74.87563	30.13469	13:42:00	D	14.80
65	BATHINDA	BATHINDA	S-NPP	74.87626	30.13685	13:42:00	D	13.70
66	BATHINDA	BATHINDA	S-NPP	74.95104	30.14312	13:42:00	D	28.90
67	BATHINDA	BATHINDA	S-NPP	74.95542	30.14370	13:42:00	D	13.70
68	BATHINDA	BATHINDA	S-NPP	74.94971	30.14468	13:42:00	D	8.50
69	BATHINDA	BATHINDA	S-NPP	74.95409	30.14527	13:42:00	D	37.10
70	BATHINDA	BATHINDA	S-NPP	74.95482	30.14716	13:42:00	D	13.70
71	BATHINDA	BATHINDA	TERRA-1	74.87402	30.14810	11:25:00	D	8.58
72	BATHINDA	BATHINDA	S-NPP	74.89185	30.14950	13:42:00	D	4.90
73	BATHINDA	BATHINDA	S-NPP	74.89066	30.15640	13:42:00	D	5.00
74	BATHINDA	BATHINDA	S-NPP	74.72183	30.15860	13:42:00	D	3.00
75	BATHINDA	BATHINDA	TERRA-1	75.00703	30.16906	11:25:00	D	9.27
76	BATHINDA	BATHINDA	S-NPP	74.89198	30.17424	13:42:00	D	7.70
77	BATHINDA	BATHINDA	S-NPP	75.00383	30.17483	13:42:00	D	10.10
78	BATHINDA	BATHINDA	S-NPP	74.88422	30.24895	13:42:00	D	2.10
79	BATHINDA	BATHINDA	S-NPP	74.82810	30.34597	13:42:00	D	3.80
80	BATHINDA	BATHINDA	S-NPP	74.90881	30.37070	13:42:00	D	2.40
81	BATHINDA	BATHINDA	S-NPP	74.90820	30.37416	13:42:00	D	5.80
82	BATHINDA	BATHINDA	S-NPP	74.95658	30.38050	13:42:00	D	2.00
83	BATHINDA	RAMPURA PHUL	S-NPP	75.34174	30.16105	13:42:00	D	2.30
84	BATHINDA	RAMPURA PHUL	S-NPP	75.19595	30.38239	13:42:00	D	5.30
85	BATHINDA	RAMPURA PHUL	S-NPP	75.10489	30.41408	13:42:00	D	9.30
86	BATHINDA	RAMPURA PHUL	S-NPP	75.04831	30.47788	13:42:00	D	2.60
87	BATHINDA	RAMPURA PHUL	S-NPP	75.04538	30.47821	13:42:00	D	2.60
88	BATHINDA	RAMPURA PHUL	S-NPP	75.12392	30.49903	13:42:00	D	3.90
89	BATHINDA	RAMPURA PHUL	S-NPP	75.12840	30.49961	13:42:00	D	3.90
90	BATHINDA	TALWANDI SABO	AQUA-1	75.11958	29.82770	12:59:00	D	33.86
91	BATHINDA	TALWANDI SABO	S-NPP	75.15273	29.86395	13:42:00	D	4.20
92	BATHINDA	TALWANDI SABO	S-NPP	74.95033	29.90893	02:24:00	N	0.90

93	BATHINDA	TALWANDI SABO	S-NPP	75.01795	29.91706	13:42:00	D	7.00
94	BATHINDA	TALWANDI SABO	S-NPP	75.02232	29.91765	13:42:00	D	7.00
95	BATHINDA	TALWANDI SABO	S-NPP	75.00713	29.95987	13:42:00	D	4.90
96	BATHINDA	TALWANDI SABO	S-NPP	75.01150	29.96045	13:42:00	D	2.00
97	BATHINDA	TALWANDI SABO	S-NPP	75.15595	29.98293	13:42:00	D	3.30
98	BATHINDA	TALWANDI SABO	S-NPP	75.04789	29.98296	13:42:00	D	3.20
99	BATHINDA	TALWANDI SABO	S-NPP	75.04610	29.99335	13:42:00	D	5.10
100	BATHINDA	TALWANDI SABO	S-NPP	75.04549	29.99682	13:42:00	D	8.20
101	BATHINDA	TALWANDI SABO	AQUA-1	74.83651	29.99688	12:59:00	D	37.92
102	BATHINDA	TALWANDI SABO	S-NPP	74.89302	30.00123	13:42:00	D	1.80
103	BATHINDA	TALWANDI SABO	S-NPP	74.82874	30.02265	13:42:00	D	3.10
104	BATHINDA	TALWANDI SABO	S-NPP	75.06263	30.02747	13:42:00	D	4.40
105	BATHINDA	TALWANDI SABO	S-NPP	75.05704	30.03382	13:42:00	D	8.50
106	BATHINDA	TALWANDI SABO	S-NPP	74.90508	30.06801	13:42:00	D	2.50
107	BATHINDA	TALWANDI SABO	TERRA-1	74.98657	30.07923	11:25:00	D	10.33
108	BATHINDA	TALWANDI SABO	S-NPP	74.99675	30.08015	13:42:00	D	1.70
109	FARIDKOT	FARIDKOT	S-NPP	74.77836	30.51047	13:42:00	D	3.20
110	FARIDKOT	FARIDKOT	TERRA-1	74.77307	30.54395	11:25:00	D	10.60
111	FARIDKOT	FARIDKOT	S-NPP	74.73005	30.56261	13:42:00	D	7.60
112	FARIDKOT	FARIDKOT	S-NPP	74.72944	30.56606	13:42:00	D	3.10
113	FARIDKOT	FARIDKOT	S-NPP	74.74689	30.56836	13:42:00	D	13.90
114	FARIDKOT	FARIDKOT	S-NPP	74.74628	30.57181	13:42:00	D	13.90
115	FARIDKOT	FARIDKOT	S-NPP	74.88834	30.65787	13:42:00	D	4.20
116	FARIDKOT	FARIDKOT	S-NPP	74.64075	30.66888	13:42:00	D	4.20
117	FARIDKOT	FARIDKOT	S-NPP	74.64014	30.67232	13:42:00	D	4.20
118	FARIDKOT	FARIDKOT	S-NPP	74.90802	30.67469	13:42:00	D	3.50
119	FARIDKOT	FARIDKOT	S-NPP	74.90873	30.67581	13:42:00	D	3.20
120	FARIDKOT	FARIDKOT	S-NPP	74.89240	30.69142	13:42:00	D	12.00
121	FARIDKOT	FARIDKOT	S-NPP	74.53819	30.69732	13:42:00	D	11.40
122	FARIDKOT	FARIDKOT	S-NPP	74.57706	30.70256	13:42:00	D	8.20
123	FARIDKOT	FARIDKOT	S-NPP	74.63464	30.70326	13:42:00	D	1.50
124	FARIDKOT	FARIDKOT	S-NPP	74.53696	30.70417	13:42:00	D	3.00

125	FARIDKOT	FARIDKOT	S-NPP	74.57645	30.70599	13:42:00	D	8.20
126	FARIDKOT	FARIDKOT	S-NPP	74.62039	30.70839	13:42:00	D	6.90
127	FARIDKOT	FARIDKOT	S-NPP	74.65080	30.71247	13:42:00	D	3.50
128	FARIDKOT	FARIDKOT	TERRA-1	74.64722	30.71553	11:25:00	D	8.47
129	FARIDKOT	FARIDKOT	S-NPP	74.65019	30.71591	13:42:00	D	3.50
130	FARIDKOT	FARIDKOT	S-NPP	74.48159	30.71770	13:42:00	D	1.90
131	FARIDKOT	FARIDKOT	S-NPP	74.56907	30.72256	13:42:00	D	12.90
132	FARIDKOT	FARIDKOT	S-NPP	74.68007	30.72344	13:42:00	D	8.20
133	FARIDKOT	FARIDKOT	S-NPP	74.56845	30.72600	13:42:00	D	12.90
134	FARIDKOT	FARIDKOT	S-NPP	74.83151	30.72950	13:42:00	D	10.00
135	FARIDKOT	FARIDKOT	S-NPP	74.81269	30.73408	13:42:00	D	3.80
136	FARIDKOT	FARIDKOT	S-NPP	74.83972	30.73413	13:42:00	D	2.30
137	FARIDKOT	FARIDKOT	S-NPP	74.85294	30.73588	13:42:00	D	5.60
138	FARIDKOT	FARIDKOT	S-NPP	74.47032	30.73661	13:42:00	D	20.70
139	FARIDKOT	FARIDKOT	S-NPP	74.61485	30.74527	13:42:00	D	4.90
140	FARIDKOT	FARIDKOT	S-NPP	74.61368	30.74619	13:42:00	D	4.30
141	FARIDKOT	FARIDKOT	S-NPP	74.72943	30.74771	13:42:00	D	13.50
142	FARIDKOT	FARIDKOT	S-NPP	74.63104	30.74854	13:42:00	D	1.10
143	FARIDKOT	FARIDKOT	S-NPP	74.62728	30.75042	13:42:00	D	5.40
144	FARIDKOT	FARIDKOT	S-NPP	74.55169	30.75096	13:42:00	D	3.00
145	FARIDKOT	FARIDKOT	S-NPP	74.68828	30.75276	13:42:00	D	3.30
146	FARIDKOT	FARIDKOT	S-NPP	74.68457	30.75445	13:42:00	D	2.70
147	FARIDKOT	FARIDKOT	S-NPP	74.75011	30.75756	13:42:00	D	1.40
148	FARIDKOT	FARIDKOT	S-NPP	74.81283	30.75889	13:42:00	D	3.30
149	FARIDKOT	FARIDKOT	S-NPP	74.51775	30.76750	13:42:00	D	2.20
150	FARIDKOT	FARIDKOT	S-NPP	74.72649	30.77054	13:42:00	D	1.90
151	FARIDKOT	FARIDKOT	S-NPP	74.54369	30.77096	13:42:00	D	6.00
152	FARIDKOT	FARIDKOT	S-NPP	74.68465	30.77914	13:42:00	D	5.80
153	FARIDKOT	FARIDKOT	S-NPP	74.77856	30.78090	13:42:00	D	21.40
154	FARIDKOT	FARIDKOT	S-NPP	74.78676	30.78552	13:42:00	D	11.90
155	FARIDKOT	FARIDKOT	S-NPP	74.66038	30.79003	13:42:00	D	2.00
156	FATEHGARH SAHIB	ALMOH	S-NPP	76.12452	30.55747	13:42:00	D	3.00

157	FATEHGARH SAHIB	ALMOH	S-NPP	76.16821	30.56654	13:42:00	D	3.30
158	FATEHGARH SAHIB	ALMOH	S-NPP	76.14299	30.56717	13:42:00	D	5.10
159	FATEHGARH SAHIB	ALMOH	S-NPP	76.14181	30.57447	13:42:00	D	3.40
160	FATEHGARH SAHIB	ALMOH	S-NPP	76.17513	30.58602	13:42:00	D	12.00
161	FATEHGARH SAHIB	ALMOH	AQUA-1	76.26381	30.58977	12:59:00	D	27.94
162	FATEHGARH SAHIB	ALMOH	S-NPP	76.22955	30.59271	13:42:00	D	4.10
163	FATEHGARH SAHIB	ALMOH	S-NPP	76.29311	30.60800	13:42:00	D	5.40
164	FATEHGARH SAHIB	ALMOH	S-NPP	76.26756	30.60860	13:42:00	D	5.40
165	FATEHGARH SAHIB	ALMOH	S-NPP	76.13806	30.61422	13:42:00	D	2.80
166	FATEHGARH SAHIB	ALMOH	S-NPP	76.15718	30.62023	13:42:00	D	4.70
167	FATEHGARH SAHIB	ALMOH	S-NPP	76.15935	30.62132	13:42:00	D	4.30
168	FATEHGARH SAHIB	ALMOH	TERRA-1	76.21265	30.62570	11:25:00	D	23.26
169	FATEHGARH SAHIB	ALMOH	S-NPP	76.16093	30.62813	13:42:00	D	8.60
170	FATEHGARH SAHIB	ALMOH	S-NPP	76.16586	30.62872	13:42:00	D	3.10
171	FATEHGARH SAHIB	ALMOH	S-NPP	76.31625	30.65693	02:24:00	N	0.80
172	FATEHGARH SAHIB	FATEHGARH SAHIB	S-NPP	76.52048	30.57134	13:42:00	D	6.50
173	FATEHGARH SAHIB	FATEHGARH SAHIB	S-NPP	76.52382	30.58309	13:42:00	D	3.10
174	FATEHGARH SAHIB	FATEHGARH SAHIB	S-NPP	76.49709	30.58748	13:42:00	D	8.60
175	FATEHGARH SAHIB	KHAMANOH	S-NPP	76.37521	30.72144	13:42:00	D	4.30
176	FIROZPUR	ABOHAR	S-NPP	74.13879	30.10327	13:42:00	D	4.40
177	FIROZPUR	ABOHAR	S-NPP	74.13818	30.10664	13:42:00	D	4.40
178	FIROZPUR	ABOHAR	S-NPP	74.37531	30.12208	13:42:00	D	17.20
179	FIROZPUR	ABOHAR	S-NPP	74.37049	30.12490	13:42:00	D	17.20
180	FIROZPUR	FAZILKA	S-NPP	74.07972	30.19588	13:42:00	D	8.10
181	FIROZPUR	FAZILKA	S-NPP	74.05510	30.23739	13:42:00	D	28.80
182	FIROZPUR	FAZILKA	S-NPP	74.05140	30.23788	13:42:00	D	18.60
183	FIROZPUR	FAZILKA	S-NPP	74.05554	30.23845	13:42:00	D	18.60
184	FIROZPUR	FAZILKA	TERRA-1	73.98217	30.25739	11:25:00	D	11.21
185	FIROZPUR	FAZILKA	TERRA-1	74.26149	30.26548	11:25:00	D	16.27
186	FIROZPUR	FAZILKA	S-NPP	74.17475	30.31030	13:42:00	D	2.50
187	FIROZPUR	FAZILKA	S-NPP	73.96963	30.31284	13:42:00	D	3.10
188	FIROZPUR	FAZILKA	S-NPP	74.17716	30.39754	13:42:00	D	1.80

189	FIROZPUR	FAZILKA	S-NPP	74.07298	30.42818	13:42:00	D	42.90
190	FIROZPUR	FAZILKA	S-NPP	74.24722	30.43844	13:42:00	D	13.70
191	FIROZPUR	FAZILKA	S-NPP	74.06670	30.46621	13:42:00	D	3.00
192	FIROZPUR	FAZILKA	S-NPP	74.03441	30.47906	13:42:00	D	3.10
193	FIROZPUR	FAZILKA	S-NPP	74.06947	30.49775	13:42:00	D	2.40
194	FIROZPUR	FIROZPUR	S-NPP	74.90100	30.74579	13:42:00	D	8.60
195	FIROZPUR	FIROZPUR	S-NPP	74.84933	30.75667	13:42:00	D	5.40
196	FIROZPUR	FIROZPUR	S-NPP	74.84811	30.76360	13:42:00	D	2.30
197	FIROZPUR	FIROZPUR	S-NPP	74.50050	30.76518	13:42:00	D	9.80
198	FIROZPUR	FIROZPUR	S-NPP	74.82362	30.77450	13:42:00	D	1.10
199	FIROZPUR	FIROZPUR	S-NPP	74.82005	30.77571	13:42:00	D	3.40
200	FIROZPUR	FIROZPUR	S-NPP	74.48511	30.77714	13:42:00	D	1.80
201	FIROZPUR	FIROZPUR	S-NPP	74.47895	30.78683	13:42:00	D	9.10
202	FIROZPUR	FIROZPUR	S-NPP	74.50360	30.79717	13:42:00	D	2.40
203	FIROZPUR	FIROZPUR	S-NPP	74.82523	30.79764	13:42:00	D	2.90
204	FIROZPUR	FIROZPUR	S-NPP	74.50298	30.80060	13:42:00	D	3.00
205	FIROZPUR	FIROZPUR	S-NPP	74.82462	30.80110	13:42:00	D	2.40
206	FIROZPUR	FIROZPUR	S-NPP	74.79252	30.80396	13:42:00	D	13.10
207	FIROZPUR	FIROZPUR	S-NPP	74.55983	30.80474	13:42:00	D	16.20
208	FIROZPUR	FIROZPUR	S-NPP	74.51532	30.80577	13:42:00	D	3.70
209	FIROZPUR	FIROZPUR	S-NPP	74.78750	30.80684	13:42:00	D	3.80
210	FIROZPUR	FIROZPUR	S-NPP	74.59766	30.81686	13:42:00	D	1.70
211	FIROZPUR	FIROZPUR	S-NPP	74.59704	30.82030	13:42:00	D	31.90
212	FIROZPUR	FIROZPUR	S-NPP	74.84306	30.82479	13:42:00	D	8.20
213	FIROZPUR	FIROZPUR	S-NPP	74.69238	30.83662	13:42:00	D	4.80
214	FIROZPUR	FIROZPUR	S-NPP	74.75758	30.84887	13:42:00	D	3.30
215	FIROZPUR	FIROZPUR	S-NPP	74.76199	30.84946	13:42:00	D	3.30
216	FIROZPUR	FIROZPUR	S-NPP	74.88818	30.85203	13:42:00	D	2.40
217	FIROZPUR	FIROZPUR	S-NPP	74.45331	30.85948	13:42:00	D	8.40
218	FIROZPUR	FIROZPUR	S-NPP	74.38202	30.86391	13:42:00	D	3.90
219	FIROZPUR	FIROZPUR	S-NPP	74.38139	30.86732	13:42:00	D	3.90
220	FIROZPUR	FIROZPUR	S-NPP	74.39366	30.87248	13:42:00	D	3.10

221	FIROZPUR	FIROZPUR	S-NPP	74.55284	30.87277	13:42:00	D	6.00
222	FIROZPUR	FIROZPUR	S-NPP	74.45886	30.87776	13:42:00	D	2.10
223	FIROZPUR	FIROZPUR	S-NPP	74.67747	30.89989	13:42:00	D	6.20
224	FIROZPUR	FIROZPUR	S-NPP	74.76281	30.90054	13:42:00	D	16.60
225	FIROZPUR	FIROZPUR	S-NPP	74.75217	30.90975	13:42:00	D	10.60
226	FIROZPUR	FIROZPUR	S-NPP	74.75658	30.91034	13:42:00	D	67.20
227	FIROZPUR	FIROZPUR	AQUA-1	74.82968	30.91167	12:59:00	D	67.97
228	FIROZPUR	FIROZPUR	S-NPP	74.50459	30.91902	13:42:00	D	7.60
229	FIROZPUR	FIROZPUR	S-NPP	74.50397	30.92244	13:42:00	D	8.80
230	FIROZPUR	FIROZPUR	S-NPP	74.72415	31.02810	13:42:00	D	5.10
231	FIROZPUR	FIROZPUR	S-NPP	74.65884	31.04065	13:42:00	D	10.50
232	FIROZPUR	FIROZPUR	S-NPP	74.66324	31.04123	13:42:00	D	7.50
233	FIROZPUR	JALALABAD	S-NPP	74.24527	30.47294	13:42:00	D	4.60
234	FIROZPUR	JALALABAD	S-NPP	74.30981	30.47490	13:42:00	D	3.50
235	FIROZPUR	JALALABAD	S-NPP	74.25916	30.49599	13:42:00	D	4.70
236	FIROZPUR	JALALABAD	S-NPP	74.35413	30.49841	13:42:00	D	3.90
237	FIROZPUR	JALALABAD	S-NPP	74.36989	30.50751	13:42:00	D	2.50
238	FIROZPUR	JALALABAD	S-NPP	74.24383	30.55651	13:42:00	D	2.30
239	FIROZPUR	JALALABAD	S-NPP	74.13349	30.57264	13:42:00	D	2.40
240	FIROZPUR	JALALABAD	S-NPP	74.13726	30.57302	13:42:00	D	4.00
241	FIROZPUR	JALALABAD	S-NPP	74.13770	30.57321	13:42:00	D	3.50
242	FIROZPUR	JALALABAD	S-NPP	74.33815	30.58690	13:42:00	D	5.10
243	FIROZPUR	JALALABAD	S-NPP	74.31083	30.59360	13:42:00	D	3.60
244	FIROZPUR	JALALABAD	S-NPP	74.32350	30.62281	13:42:00	D	3.50
245	FIROZPUR	JALALABAD	S-NPP	74.17171	30.62300	13:42:00	D	6.90
246	FIROZPUR	JALALABAD	S-NPP	74.39290	30.62521	13:42:00	D	1.90
247	FIROZPUR	JALALABAD	S-NPP	74.31802	30.62905	13:42:00	D	7.60
248	FIROZPUR	JALALABAD	S-NPP	74.33861	30.65975	13:42:00	D	4.50
249	FIROZPUR	JALALABAD	S-NPP	74.33800	30.66315	13:42:00	D	5.00
250	FIROZPUR	JALALABAD	S-NPP	74.24515	30.67135	13:42:00	D	3.30
251	FIROZPUR	JALALABAD	S-NPP	74.25855	30.69769	13:42:00	D	2.10
252	FIROZPUR	JALALABAD	S-NPP	74.39217	30.70199	13:42:00	D	3.40

253	FIROZPUR	JALALABAD	S-NPP	74.43069	30.70725	13:42:00	D	6.10
254	FIROZPUR	JALALABAD	S-NPP	74.35616	30.70754	13:42:00	D	1.80
255	FIROZPUR	JALALABAD	S-NPP	74.24273	30.71296	13:42:00	D	1.60
256	FIROZPUR	JALALABAD	S-NPP	74.43717	30.72518	13:42:00	D	5.30
257	FIROZPUR	JALALABAD	S-NPP	74.43104	30.73485	13:42:00	D	7.80
258	FIROZPUR	JALALABAD	S-NPP	74.39302	30.77521	13:42:00	D	1.60
259	FIROZPUR	JALALABAD	S-NPP	74.37466	30.77971	13:42:00	D	1.30
260	FIROZPUR	JALALABAD	S-NPP	74.36976	30.78254	13:42:00	D	16.00
261	FIROZPUR	JALALABAD	S-NPP	74.36059	30.78479	13:42:00	D	2.40
262	FIROZPUR	JALALABAD	S-NPP	74.36914	30.78595	13:42:00	D	16.00
263	FIROZPUR	JALALABAD	S-NPP	74.31604	30.78918	13:42:00	D	7.60
264	FIROZPUR	JALALABAD	S-NPP	74.31541	30.79259	13:42:00	D	7.60
265	FIROZPUR	JALALABAD	S-NPP	74.32822	30.79434	13:42:00	D	2.70
266	FIROZPUR	ZIRA	S-NPP	74.97353	30.91734	13:42:00	D	22.00
267	FIROZPUR	ZIRA	S-NPP	75.33942	30.91806	13:42:00	D	5.50
268	FIROZPUR	ZIRA	S-NPP	74.88502	30.92719	13:42:00	D	3.70
269	FIROZPUR	ZIRA	S-NPP	75.28006	30.94215	13:42:00	D	3.70
270	FIROZPUR	ZIRA	S-NPP	75.27879	30.94267	13:42:00	D	4.60
271	FIROZPUR	ZIRA	S-NPP	75.27945	30.94567	13:42:00	D	4.40
272	FIROZPUR	ZIRA	S-NPP	74.83570	30.94912	13:42:00	D	18.20
273	FIROZPUR	ZIRA	S-NPP	75.27643	30.96331	13:42:00	D	7.00
274	FIROZPUR	ZIRA	S-NPP	75.28043	30.96742	13:42:00	D	9.80
275	FIROZPUR	ZIRA	S-NPP	75.22943	31.01852	13:42:00	D	4.00
276	FIROZPUR	ZIRA	S-NPP	75.23402	31.01912	13:42:00	D	4.70
277	FIROZPUR	ZIRA	S-NPP	74.95439	31.06547	13:42:00	D	5.20
278	GURDASPUR	BATALA	S-NPP	75.37262	31.63511	13:42:00	D	3.80
279	GURDASPUR	BATALA	S-NPP	75.35720	31.64046	13:42:00	D	5.20
280	GURDASPUR	BATALA	S-NPP	75.36194	31.64105	13:42:00	D	5.20
281	GURDASPUR	BATALA	S-NPP	75.33768	31.64164	13:42:00	D	2.50
282	GURDASPUR	BATALA	S-NPP	75.37493	31.64996	13:42:00	D	2.40
283	GURDASPUR	BATALA	S-NPP	75.31577	31.65705	13:42:00	D	1.80
284	GURDASPUR	BATALA	S-NPP	75.38076	31.67256	13:42:00	D	5.60

285	GURDASPUR	BATALA	S-NPP	75.24732	31.70180	13:42:00	D	3.90
286	GURDASPUR	BATALA	S-NPP	75.33390	31.73077	13:42:00	D	5.70
287	GURDASPUR	BATALA	S-NPP	75.26596	31.73316	13:42:00	D	7.30
288	GURDASPUR	BATALA	S-NPP	75.23062	31.74321	13:42:00	D	4.60
289	GURDASPUR	BATALA	S-NPP	75.25820	31.75033	13:42:00	D	2.10
290	GURDASPUR	BATALA	S-NPP	75.35394	31.75512	13:42:00	D	2.60
291	GURDASPUR	BATALA	S-NPP	75.33315	31.76343	13:42:00	D	3.20
292	GURDASPUR	BATALA	S-NPP	75.13975	31.77141	13:42:00	D	5.40
293	GURDASPUR	BATALA	S-NPP	75.10899	31.79180	13:42:00	D	3.40
294	GURDASPUR	BATALA	S-NPP	75.01814	31.82352	13:42:00	D	2.90
295	GURDASPUR	BATALA	S-NPP	75.07497	31.82357	13:42:00	D	2.30
296	GURDASPUR	BATALA	S-NPP	75.17945	31.82597	13:42:00	D	3.90
297	GURDASPUR	BATALA	S-NPP	75.12900	31.84128	13:42:00	D	2.40
298	GURDASPUR	BATALA	S-NPP	75.00156	31.86457	13:42:00	D	1.70
299	GURDASPUR	BATALA	S-NPP	75.00095	31.86809	13:42:00	D	1.70
300	GURDASPUR	BATALA	S-NPP	75.10828	31.87838	13:42:00	D	3.70
301	GURDASPUR	DERA BABA NANAK	S-NPP	75.10198	31.95648	13:42:00	D	4.60
302	GURDASPUR	GURDASPUR	S-NPP	75.31134	31.87165	13:42:00	D	5.50
303	GURDASPUR	GURDASPUR	S-NPP	75.31547	31.87581	13:42:00	D	3.70
304	GURDASPUR	GURDASPUR	S-NPP	75.27329	31.89594	13:42:00	D	7.60
305	GURDASPUR	GURDASPUR	S-NPP	75.29163	31.90191	13:42:00	D	2.40
306	GURDASPUR	GURDASPUR	S-NPP	75.32523	31.91917	13:42:00	D	3.10
307	GURDASPUR	GURDASPUR	S-NPP	75.33475	31.92035	13:42:00	D	3.00
308	GURDASPUR	GURDASPUR	TERRA-1	75.36343	31.94622	11:25:00	D	8.89
309	GURDASPUR	GURDASPUR	S-NPP	75.32075	32.00246	13:42:00	D	3.20
310	GURDASPUR	GURDASPUR	S-NPP	75.32552	32.00307	13:42:00	D	3.20
311	GURDASPUR	GURDASPUR	S-NPP	75.21656	32.05295	13:42:00	D	2.80
312	JALANDHAR	JALANDHAR I	S-NPP	75.67718	31.25772	13:42:00	D	8.50
313	JALANDHAR	JALANDHAR II	S-NPP	75.57999	31.50823	13:42:00	D	3.20
314	JALANDHAR	JALANDHAR II	S-NPP	75.66400	31.58235	13:42:00	D	1.80
315	JALANDHAR	NAKODAR	S-NPP	75.46361	31.00509	13:42:00	D	2.80
316	JALANDHAR	NAKODAR	TERRA-1	75.41459	31.03893	11:25:00	D	17.30

317	JALANDHAR	NAKODAR	S-NPP	75.45181	31.08950	13:42:00	D	13.10
318	JALANDHAR	NAKODAR	S-NPP	75.45120	31.09305	13:42:00	D	13.10
319	JALANDHAR	NAKODAR	S-NPP	75.45589	31.09364	13:42:00	D	13.10
320	JALANDHAR	NAKODAR	S-NPP	75.46348	31.10549	13:42:00	D	3.80
321	JALANDHAR	PHILLAUR	S-NPP	75.59961	30.99661	13:42:00	D	4.80
322	JALANDHAR	PHILLAUR	S-NPP	75.64220	31.13513	13:42:00	D	6.60
323	JALANDHAR	PHILLAUR	S-NPP	75.65295	31.18779	13:42:00	D	3.40
324	JALANDHAR	SHAHKOT	S-NPP	75.38598	31.01338	13:42:00	D	4.70
325	JALANDHAR	SHAHKOT	S-NPP	75.29201	31.03745	13:42:00	D	2.70
326	JALANDHAR	SHAHKOT	S-NPP	75.30183	31.04898	13:42:00	D	2.80
327	JALANDHAR	SHAHKOT	S-NPP	75.30405	31.04984	13:42:00	D	3.10
328	JALANDHAR	SHAHKOT	S-NPP	75.38928	31.05002	13:42:00	D	3.10
329	JALANDHAR	SHAHKOT	S-NPP	75.21807	31.07083	13:42:00	D	3.90
330	JALANDHAR	SHAHKOT	S-NPP	75.32519	31.10613	13:42:00	D	3.70
331	JALANDHAR	SHAHKOT	S-NPP	75.32922	31.11026	13:42:00	D	8.80
332	JALANDHAR	SHAHKOT	S-NPP	75.28514	31.11907	13:42:00	D	5.60
333	JALANDHAR	SHAHKOT	S-NPP	75.19923	31.12601	13:42:00	D	15.90
334	KAPURTHALA	BHOLATH	S-NPP	75.51818	31.57154	13:42:00	D	3.90
335	KAPURTHALA	BHOLATH	S-NPP	75.52297	31.57214	13:42:00	D	3.30
336	KAPURTHALA	BHOLATH	S-NPP	75.51279	31.57452	13:42:00	D	3.90
337	KAPURTHALA	BHOLATH	S-NPP	75.51698	31.57871	13:42:00	D	5.20
338	KAPURTHALA	KAPURTHALA	S-NPP	75.42984	31.47456	13:42:00	D	4.00
339	KAPURTHALA	KAPURTHALA	S-NPP	75.32438	31.51445	13:42:00	D	0.90
340	LUDHIANA	JAGRAON	S-NPP	75.43638	30.63576	13:42:00	D	32.50
341	LUDHIANA	JAGRAON	S-NPP	75.43475	30.63623	13:42:00	D	33.90
342	LUDHIANA	JAGRAON	S-NPP	75.50211	30.69474	13:42:00	D	3.90
343	LUDHIANA	JAGRAON	S-NPP	75.44167	30.71600	13:42:00	D	2.70
344	LUDHIANA	JAGRAON	S-NPP	75.50852	30.77748	13:42:00	D	29.10
345	LUDHIANA	JAGRAON	S-NPP	75.59158	30.89195	13:42:00	D	17.20
346	LUDHIANA	KHANNA	S-NPP	76.08121	30.65564	13:42:00	D	2.50
347	LUDHIANA	KHANNA	S-NPP	76.15168	30.71643	13:42:00	D	4.40
348	LUDHIANA	LUDHIANA WEST	S-NPP	75.70559	30.76797	13:42:00	D	2.10

349	LUDHIANA	RAIKOT	S-NPP	75.74095	30.63179	13:42:00	D	13.00
350	LUDHIANA	RAIKOT	S-NPP	75.72672	30.65926	13:42:00	D	13.20
351	LUDHIANA	SAMRALA	S-NPP	76.23192	30.83024	13:42:00	D	13.90
352	LUDHIANA	SAMRALA	S-NPP	76.24629	30.91293	13:42:00	D	5.70
353	LUDHIANA	SAMRALA	S-NPP	76.24570	30.91661	13:42:00	D	3.90
354	MANSA	BUDHLADA	S-NPP	75.42898	29.77762	13:42:00	D	14.80
355	MANSA	BUDHLADA	S-NPP	75.43017	29.77809	13:42:00	D	10.40
356	MANSA	BUDHLADA	S-NPP	75.61869	29.81290	13:42:00	D	13.30
357	MANSA	BUDHLADA	S-NPP	75.71106	29.82095	13:42:00	D	2.90
358	MANSA	BUDHLADA	S-NPP	75.58775	29.83062	13:42:00	D	4.10
359	MANSA	BUDHLADA	TERRA-1	75.49644	29.87112	11:25:00	D	9.04
360	MANSA	BUDHLADA	TERRA-1	75.64992	29.92502	11:25:00	D	17.64
361	MANSA	BUDHLADA	S-NPP	75.50844	29.94946	13:42:00	D	5.90
362	MANSA	MANSA	S-NPP	75.37890	29.89684	13:42:00	D	2.60
363	MANSA	MANSA	S-NPP	75.37830	29.90035	13:42:00	D	2.60
364	MANSA	MANSA	S-NPP	75.40865	29.96525	13:42:00	D	5.50
365	MANSA	MANSA	S-NPP	75.41316	29.96584	13:42:00	D	5.50
366	MANSA	MANSA	S-NPP	75.42207	30.00303	13:42:00	D	2.90
367	MANSA	MANSA	TERRA-1	75.48621	30.04180	11:25:00	D	12.90
368	MANSA	MANSA	S-NPP	75.45330	30.06457	13:42:00	D	3.60
369	MANSA	MANSA	S-NPP	75.50769	30.10048	13:42:00	D	3.70
370	MANSA	MANSA	S-NPP	75.60733	30.12070	13:42:00	D	4.70
371	MANSA	MANSA	S-NPP	75.60895	30.12321	13:42:00	D	9.40
372	MANSA	MANSA	S-NPP	75.60674	30.12424	13:42:00	D	4.70
373	MANSA	MANSA	S-NPP	75.50956	30.12872	13:42:00	D	2.40
374	MANSA	MANSA	S-NPP	75.47562	30.16405	13:42:00	D	9.70
375	MANSA	SARDULGARH	S-NPP	75.27780	29.61793	13:42:00	D	12.70
376	MANSA	SARDULGARH	TERRA-1	75.28158	29.66900	11:25:00	D	23.47
377	MANSA	SARDULGARH	S-NPP	75.18407	29.67040	13:42:00	D	5.50
378	MANSA	SARDULGARH	S-NPP	75.27042	29.69241	13:42:00	D	5.00
379	MANSA	SARDULGARH	S-NPP	75.28310	29.69764	13:42:00	D	10.10
380	MANSA	SARDULGARH	S-NPP	75.21008	29.70226	13:42:00	D	5.10

381	MANSA	SARDULGARH	S-NPP	75.22269	29.70749	13:42:00	D	1.90
382	MANSA	SARDULGARH	TERRA-1	75.33103	29.76182	11:25:00	D	10.61
383	MANSA	SARDULGARH	S-NPP	75.33114	29.76895	13:42:00	D	5.60
384	MANSA	SARDULGARH	S-NPP	75.27481	29.77950	13:42:00	D	6.40
385	MANSA	SARDULGARH	S-NPP	75.41102	29.78280	13:42:00	D	12.10
386	MANSA	SARDULGARH	TERRA-1	75.28158	29.78578	11:25:00	D	16.56
387	MANSA	SARDULGARH	S-NPP	75.35492	29.78989	13:42:00	D	3.10
388	MANSA	SARDULGARH	S-NPP	75.22277	29.81900	13:42:00	D	4.60
389	MANSA	SARDULGARH	S-NPP	75.33649	29.87707	13:42:00	D	2.10
390	MOGA	BAGHA PURANA	S-NPP	74.97372	30.66211	13:42:00	D	5.00
391	MOGA	MOGA	S-NPP	75.37991	30.71888	13:42:00	D	6.50
392	MOGA	MOGA	S-NPP	75.15321	30.74307	13:42:00	D	7.50
393	MOGA	MOGA	S-NPP	75.31509	30.80348	13:42:00	D	6.80
394	MOGA	MOGA	S-NPP	75.04855	30.82311	13:42:00	D	3.60
395	MUKTSAR	GIDDARBAHA	S-NPP	74.65901	30.21917	13:42:00	D	7.40
396	MUKTSAR	GIDDARBAHA	S-NPP	74.65841	30.22260	13:42:00	D	7.40
397	MUKTSAR	GIDDARBAHA	TERRA-1	74.66768	30.23943	11:25:00	D	17.73
398	MUKTSAR	GIDDARBAHA	S-NPP	74.71564	30.24779	13:42:00	D	2.20
399	MUKTSAR	GIDDARBAHA	S-NPP	74.57030	30.24932	13:42:00	D	5.20
400	MUKTSAR	GIDDARBAHA	S-NPP	74.65233	30.25687	13:42:00	D	4.60
401	MUKTSAR	GIDDARBAHA	S-NPP	74.65172	30.26030	13:42:00	D	5.80
402	MUKTSAR	GIDDARBAHA	S-NPP	74.62413	30.26711	13:42:00	D	2.50
403	MUKTSAR	GIDDARBAHA	S-NPP	74.64438	30.27686	13:42:00	D	14.60
404	MUKTSAR	GIDDARBAHA	TERRA-1	74.65575	30.28284	11:25:00	D	32.46
405	MUKTSAR	GIDDARBAHA	TERRA-1	74.53467	30.28883	11:25:00	D	10.56
406	MUKTSAR	GIDDARBAHA	S-NPP	74.67271	30.37112	13:42:00	D	2.60
407	MUKTSAR	GIDDARBAHA	S-NPP	74.62165	30.38533	13:42:00	D	9.10
408	MUKTSAR	GIDDARBAHA	S-NPP	74.58790	30.40180	13:42:00	D	26.30
409	MUKTSAR	MALAUT	S-NPP	74.61154	29.92813	13:42:00	D	22.40
410	MUKTSAR	MALAUT	S-NPP	74.56669	29.93601	13:42:00	D	3.50
411	MUKTSAR	MALAUT	S-NPP	74.49417	29.95400	13:42:00	D	2.80
412	MUKTSAR	MALAUT	TERRA-1	74.49272	29.95466	11:25:00	D	11.18

413	MUKTSAR	MALAUT	S-NPP	74.63615	29.99353	13:42:00	D	4.00
414	MUKTSAR	MALAUT	S-NPP	74.63892	29.99485	13:42:00	D	3.70
415	MUKTSAR	MALAUT	S-NPP	74.46647	29.99510	13:42:00	D	7.10
416	MUKTSAR	MALAUT	S-NPP	74.65630	30.02775	13:42:00	D	6.20
417	MUKTSAR	MALAUT	S-NPP	74.46393	30.05750	13:42:00	D	2.90
418	MUKTSAR	MALAUT	S-NPP	74.41634	30.08591	13:42:00	D	4.00
419	MUKTSAR	MALAUT	TERRA-1	74.63870	30.08821	11:25:00	D	7.66
420	MUKTSAR	MALAUT	S-NPP	74.43683	30.09217	13:42:00	D	18.70
421	MUKTSAR	MALAUT	S-NPP	74.39766	30.09381	13:42:00	D	21.40
422	MUKTSAR	MALAUT	S-NPP	74.43622	30.09557	13:42:00	D	9.40
423	MUKTSAR	MALAUT	S-NPP	74.42894	30.11200	13:42:00	D	5.30
424	MUKTSAR	MALAUT	S-NPP	74.43729	30.16195	13:42:00	D	3.70
425	MUKTSAR	MALAUT	S-NPP	74.45661	30.17507	13:42:00	D	5.70
426	MUKTSAR	MALAUT	S-NPP	74.45362	30.19512	13:42:00	D	2.00
427	MUKTSAR	MALAUT	S-NPP	74.37446	30.20181	13:42:00	D	4.80
428	MUKTSAR	MALAUT	S-NPP	74.51426	30.24523	13:42:00	D	5.20
429	MUKTSAR	MALAUT	S-NPP	74.51851	30.24581	13:42:00	D	5.20
430	MUKTSAR	MALAUT	S-NPP	74.36043	30.25560	13:42:00	D	3.70
431	MUKTSAR	MALAUT	S-NPP	74.37486	30.27152	13:42:00	D	3.80
432	MUKTSAR	MALAUT	TERRA-1	74.37950	30.27386	11:25:00	D	30.05
433	MUKTSAR	MALAUT	TERRA-1	74.41190	30.32477	11:25:00	D	8.94
434	MUKTSAR	MALAUT	S-NPP	74.47856	30.32747	13:42:00	D	4.70
435	MUKTSAR	MUKTSAR	S-NPP	74.46636	30.37124	13:42:00	D	1.70
436	MUKTSAR	MUKTSAR	TERRA-1	74.50398	30.41011	11:25:00	D	6.83
437	MUKTSAR	MUKTSAR	S-NPP	74.31356	30.43015	13:42:00	D	12.60
438	MUKTSAR	MUKTSAR	S-NPP	74.46098	30.43273	13:42:00	D	8.10
439	MUKTSAR	MUKTSAR	S-NPP	74.31294	30.43354	13:42:00	D	12.60
440	MUKTSAR	MUKTSAR	S-NPP	74.37038	30.45185	13:42:00	D	3.60
441	MUKTSAR	MUKTSAR	S-NPP	74.70491	30.47246	13:42:00	D	9.80
442	MUKTSAR	MUKTSAR	TERRA-1	74.43747	30.49095	11:25:00	D	22.88
443	MUKTSAR	MUKTSAR	S-NPP	74.52326	30.50066	13:42:00	D	3.00
444	MUKTSAR	MUKTSAR	S-NPP	74.64565	30.50674	13:42:00	D	4.10

445	MUKTSAR	MUKTSAR	S-NPP	74.53348	30.52246	13:42:00	D	10.50
446	MUKTSAR	MUKTSAR	S-NPP	74.43497	30.53375	13:42:00	D	4.10
447	MUKTSAR	MUKTSAR	S-NPP	74.44351	30.53490	13:42:00	D	8.80
448	MUKTSAR	MUKTSAR	S-NPP	74.44106	30.54855	13:42:00	D	12.40
449	MUKTSAR	MUKTSAR	S-NPP	74.44044	30.55197	13:42:00	D	12.40
450	MUKTSAR	MUKTSAR	S-NPP	74.51324	30.56180	13:42:00	D	10.30
451	MUKTSAR	MUKTSAR	S-NPP	74.50529	30.60627	13:42:00	D	3.40
452	MUKTSAR	MUKTSAR	S-NPP	74.44712	30.61234	13:42:00	D	2.90
453	MUKTSAR	MUKTSAR	S-NPP	74.54860	30.63906	13:42:00	D	1.90
454	MUKTSAR	MUKTSAR	S-NPP	74.59612	30.64537	13:42:00	D	2.00
455	NAWASHAHR	NAWASHAHR	S-NPP	76.22231	31.05721	13:42:00	D	8.10
456	NAWASHAHR	NAWASHAHR	S-NPP	76.22009	31.05860	13:42:00	D	5.50
457	NAWASHAHR	NAWASHAHR	S-NPP	76.06307	31.06437	13:42:00	D	3.80
458	PATIALA	NABHA	S-NPP	76.15283	30.32756	13:42:00	D	6.00
459	PATIALA	NABHA	S-NPP	76.02937	30.38629	13:42:00	D	5.30
460	PATIALA	NABHA	S-NPP	76.03107	30.38661	13:42:00	D	4.70
461	PATIALA	NABHA	S-NPP	76.26571	30.40475	13:42:00	D	4.70
462	PATIALA	NABHA	S-NPP	76.15585	30.41283	13:42:00	D	5.70
463	PATIALA	NABHA	S-NPP	76.17371	30.42614	13:42:00	D	7.20
464	PATIALA	NABHA	S-NPP	76.17312	30.42979	13:42:00	D	7.20
465	PATIALA	NABHA	S-NPP	76.31337	30.43550	13:42:00	D	3.60
466	PATIALA	NABHA	S-NPP	76.20716	30.46745	13:42:00	D	7.40
467	PATIALA	NABHA	S-NPP	76.18156	30.50154	13:42:00	D	6.90
468	PATIALA	NABHA	S-NPP	76.26266	30.54442	13:42:00	D	2.70
469	PATIALA	PATIALA	S-NPP	76.32738	30.11543	13:42:00	D	2.80
470	PATIALA	PATIALA	S-NPP	76.31199	30.11730	13:42:00	D	7.80
471	PATIALA	PATIALA	S-NPP	76.48223	30.13021	13:42:00	D	8.50
472	PATIALA	PATIALA	S-NPP	76.47664	30.13331	13:42:00	D	3.50
473	PATIALA	PATIALA	S-NPP	76.45015	30.17145	13:42:00	D	5.70
474	PATIALA	PATIALA	S-NPP	76.36749	30.18010	13:42:00	D	5.90
475	PATIALA	PATIALA	S-NPP	76.58177	30.18358	13:42:00	D	10.00
476	PATIALA	PATIALA	S-NPP	76.41607	30.19357	13:42:00	D	3.20

477	PATIALA	PATIALA	TERRA-1	76.44627	30.19601	11:25:00	D	16.38
478	PATIALA	PATIALA	S-NPP	76.32550	30.20733	13:42:00	D	5.20
479	PATIALA	PATIALA	S-NPP	76.32755	30.20881	13:42:00	D	4.90
480	PATIALA	PATIALA	S-NPP	76.52389	30.24218	13:42:00	D	3.00
481	PATIALA	PATIALA	S-NPP	76.47169	30.24728	13:42:00	D	4.00
482	PATIALA	PATIALA	S-NPP	76.18095	30.26423	13:42:00	D	4.00
483	PATIALA	PATIALA	S-NPP	76.47469	30.29281	13:42:00	D	5.00
484	PATIALA	PATIALA	S-NPP	76.31574	30.29958	13:42:00	D	5.90
485	PATIALA	PATIALA	S-NPP	76.46170	30.31005	13:42:00	D	2.90
486	PATIALA	PATIALA	S-NPP	76.46112	30.31375	13:42:00	D	4.40
487	PATIALA	PATIALA	S-NPP	76.43425	30.32173	13:42:00	D	4.70
488	PATIALA	PATIALA	TERRA-1	76.38830	30.40262	11:25:00	D	12.71
489	PATIALA	RAJPURA	S-NPP	76.53732	30.43442	13:42:00	D	4.80
490	PATIALA	RAJPURA	S-NPP	76.70867	30.49360	13:42:00	D	2.60
491	PATIALA	RAJPURA	S-NPP	76.66079	30.49561	13:42:00	D	4.50
492	PATIALA	RAJPURA	S-NPP	76.63531	30.55727	13:42:00	D	3.90
493	PATIALA	RAJPURA	TERRA-1	76.56053	30.56731	11:25:00	D	12.93
494	PATIALA	RAJPURA	S-NPP	76.62672	30.59523	13:42:00	D	4.10
495	PATIALA	SAMANA	S-NPP	76.16417	29.82862	13:42:00	D	4.10
496	PATIALA	SAMANA	S-NPP	76.21909	29.85399	13:42:00	D	2.20
497	PATIALA	SAMANA	S-NPP	76.13492	29.85817	13:42:00	D	3.30
498	PATIALA	SAMANA	S-NPP	76.09119	29.86821	13:42:00	D	2.00
499	PATIALA	SAMANA	S-NPP	76.11511	29.87115	13:42:00	D	4.70
500	PATIALA	SAMANA	S-NPP	76.19695	29.88116	13:42:00	D	6.20
501	PATIALA	SAMANA	S-NPP	76.23141	29.88164	13:42:00	D	5.30
502	PATIALA	SAMANA	S-NPP	76.23435	29.88187	13:42:00	D	6.30
503	PATIALA	SAMANA	S-NPP	76.14039	29.89640	13:42:00	D	5.80
504	PATIALA	SAMANA	S-NPP	76.13921	29.90364	13:42:00	D	7.30
505	PATIALA	SAMANA	S-NPP	75.99781	29.90443	13:42:00	D	11.80
506	PATIALA	SAMANA	S-NPP	76.14883	29.90483	13:42:00	D	7.30
507	PATIALA	SAMANA	S-NPP	76.15788	29.90965	13:42:00	D	10.40
508	PATIALA	SAMANA	S-NPP	76.14285	29.91148	13:42:00	D	2.40

509	PATIALA	SAMANA	S-NPP	76.17393	30.03368	13:42:00	D	7.10
510	PATIALA	SAMANA	S-NPP	76.23729	30.07125	13:42:00	D	3.50
511	PATIALA	SAMANA	S-NPP	76.24099	30.07915	13:42:00	D	3.70
512	PATIALA	SAMANA	S-NPP	76.24187	30.17949	13:42:00	D	2.90
513	PATIALA	SAMANA	S-NPP	76.27272	30.20569	13:42:00	D	2.60
514	SANGRUR	DHURI	S-NPP	75.78494	30.30401	13:42:00	D	5.00
515	SANGRUR	DHURI	S-NPP	75.94867	30.30981	13:42:00	D	2.90
516	SANGRUR	DHURI	S-NPP	75.76312	30.34872	13:42:00	D	3.70
517	SANGRUR	DHURI	S-NPP	75.67564	30.46155	13:42:00	D	2.80
518	SANGRUR	MOONAK	S-NPP	76.00034	29.78968	13:42:00	D	16.70
519	SANGRUR	MOONAK	S-NPP	75.93733	29.79272	13:42:00	D	2.00
520	SANGRUR	MOONAK	S-NPP	75.96557	29.79629	13:42:00	D	6.10
521	SANGRUR	MOONAK	S-NPP	75.78159	29.82254	13:42:00	D	3.00
522	SANGRUR	MOONAK	S-NPP	75.77986	29.82361	13:42:00	D	3.10
523	SANGRUR	MOONAK	S-NPP	75.80886	29.82958	13:42:00	D	2.30
524	SANGRUR	MOONAK	S-NPP	75.98741	29.83939	13:42:00	D	6.50
525	SANGRUR	MOONAK	S-NPP	76.04010	29.84244	13:42:00	D	5.60
526	SANGRUR	MOONAK	S-NPP	75.84937	29.96748	13:42:00	D	3.70
527	SANGRUR	SANGRUR	S-NPP	75.60075	30.14391	13:42:00	D	3.50
528	SANGRUR	SANGRUR	S-NPP	76.10044	30.31374	13:42:00	D	18.70
529	SANGRUR	SUNAM	S-NPP	75.98010	29.95358	13:42:00	D	4.30
530	SANGRUR	SUNAM	S-NPP	75.98141	29.95460	13:42:00	D	4.20
531	SANGRUR	SUNAM	S-NPP	75.80598	30.02765	13:42:00	D	2.80
532	SANGRUR	SUNAM	S-NPP	75.71233	30.02890	13:42:00	D	9.30
533	SANGRUR	SUNAM	S-NPP	75.79604	30.03002	13:42:00	D	3.50
534	SANGRUR	SUNAM	S-NPP	75.71521	30.03049	13:42:00	D	8.20
535	SANGRUR	SUNAM	S-NPP	75.72853	30.04547	13:42:00	D	2.80
536	SANGRUR	SUNAM	S-NPP	75.65336	30.13966	13:42:00	D	5.50
537	SAS NAGAR	DERABASSI	S-NPP	76.91218	30.40644	13:42:00	D	3.40
538	SAS NAGAR	DERABASSI	S-NPP	76.91043	30.41778	13:42:00	D	4.60
539	SBS NAGAR	KHARAR	S-NPP	76.64899	30.65501	13:42:00	D	9.50
540	SBS NAGAR	KHARAR	S-NPP	76.63903	30.77234	13:42:00	D	4.80

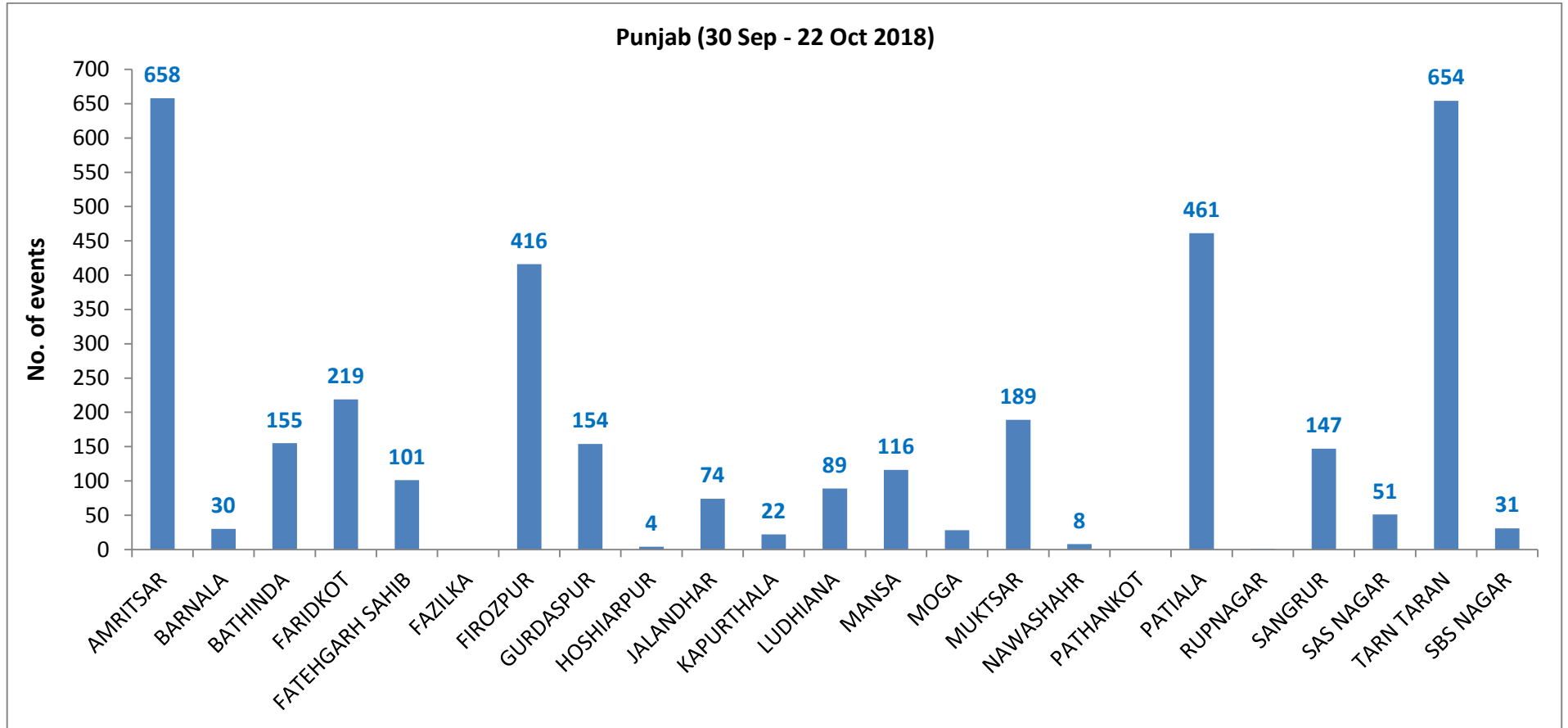
541	SBS NAGAR	KHARAR	S-NPP	76.62628	30.78605	13:42:00	D	9.50
542	SBS NAGAR	KHARAR	S-NPP	76.62364	30.78642	13:42:00	D	5.10
543	SBS NAGAR	MOHALI	S-NPP	76.72589	30.58734	13:42:00	D	3.40
544	SBS NAGAR	MOHALI	S-NPP	76.73724	30.60052	13:42:00	D	1.80
545	TARN TARAN	KHADOOR SAHIB	S-NPP	74.97209	31.20737	13:42:00	D	3.50
546	TARN TARAN	KHADOOR SAHIB	S-NPP	75.04670	31.23149	13:42:00	D	3.20
547	TARN TARAN	KHADOOR SAHIB	S-NPP	75.04154	31.23440	13:42:00	D	3.20
548	TARN TARAN	KHADOOR SAHIB	S-NPP	75.04288	31.23491	13:42:00	D	6.50
549	TARN TARAN	KHADOOR SAHIB	S-NPP	75.01892	31.23901	13:42:00	D	2.80
550	TARN TARAN	KHADOOR SAHIB	S-NPP	74.91514	31.25068	13:42:00	D	2.90
551	TARN TARAN	KHADOOR SAHIB	S-NPP	74.92744	31.25941	13:42:00	D	5.30
552	TARN TARAN	KHADOOR SAHIB	S-NPP	75.02736	31.29740	13:42:00	D	3.30
553	TARN TARAN	KHADOOR SAHIB	S-NPP	75.08092	31.31153	13:42:00	D	21.00
554	TARN TARAN	KHADOOR SAHIB	S-NPP	74.99129	31.31777	13:42:00	D	3.00
555	TARN TARAN	KHADOOR SAHIB	S-NPP	75.06017	31.32319	13:42:00	D	5.60
556	TARN TARAN	KHADOOR SAHIB	S-NPP	74.92650	31.32389	13:42:00	D	2.80
557	TARN TARAN	KHADOOR SAHIB	S-NPP	74.92999	31.32402	13:42:00	D	2.90
558	TARN TARAN	KHADOOR SAHIB	S-NPP	74.99007	31.32477	13:42:00	D	2.70
559	TARN TARAN	KHADOOR SAHIB	S-NPP	75.05956	31.32670	13:42:00	D	3.30
560	TARN TARAN	KHADOOR SAHIB	S-NPP	74.94294	31.32930	13:42:00	D	3.80
561	TARN TARAN	KHADOOR SAHIB	S-NPP	74.94398	31.32969	13:42:00	D	4.50
562	TARN TARAN	KHADOOR SAHIB	S-NPP	75.08577	31.33730	13:42:00	D	2.80
563	TARN TARAN	KHADOOR SAHIB	S-NPP	75.08855	31.35527	13:42:00	D	2.40
564	TARN TARAN	KHADOOR SAHIB	S-NPP	74.99023	31.35707	13:42:00	D	3.00
565	TARN TARAN	KHADOOR SAHIB	S-NPP	75.07878	31.35762	13:42:00	D	2.80
566	TARN TARAN	KHADOOR SAHIB	S-NPP	74.86501	31.35877	13:42:00	D	5.00
567	TARN TARAN	KHADOOR SAHIB	S-NPP	75.06444	31.35939	13:42:00	D	1.60
568	TARN TARAN	KHADOOR SAHIB	S-NPP	75.14651	31.37341	13:42:00	D	2.40
569	TARN TARAN	KHADOOR SAHIB	S-NPP	74.84784	31.37792	13:42:00	D	16.60
570	TARN TARAN	KHADOOR SAHIB	S-NPP	74.99506	31.38276	13:42:00	D	2.80
571	TARN TARAN	KHADOOR SAHIB	S-NPP	75.05560	31.38338	13:42:00	D	2.80
572	TARN TARAN	KHADOOR SAHIB	S-NPP	75.10203	31.38574	13:42:00	D	18.10

573	TARN TARAN	KHADOOR SAHIB	S-NPP	74.80824	31.39409	13:42:00	D	3.30
574	TARN TARAN	KHADOOR SAHIB	S-NPP	75.06110	31.40563	13:42:00	D	1.70
575	TARN TARAN	KHADOOR SAHIB	S-NPP	74.77496	31.41228	13:42:00	D	2.60
576	TARN TARAN	KHADOOR SAHIB	S-NPP	74.77945	31.41286	13:42:00	D	2.60
577	TARN TARAN	KHADOOR SAHIB	TERRA-1	74.75124	31.41472	11:25:00	D	6.92
578	TARN TARAN	KHADOOR SAHIB	S-NPP	74.77706	31.41487	13:42:00	D	6.70
579	TARN TARAN	KHADOOR SAHIB	S-NPP	74.77884	31.41634	13:42:00	D	2.60
580	TARN TARAN	KHADOOR SAHIB	S-NPP	74.80515	31.42329	13:42:00	D	2.80
581	TARN TARAN	KHADOOR SAHIB	S-NPP	75.17553	31.42396	13:42:00	D	4.70
582	TARN TARAN	KHADOOR SAHIB	S-NPP	74.65791	31.42901	13:42:00	D	3.60
583	TARN TARAN	KHADOOR SAHIB	S-NPP	74.82517	31.44011	13:42:00	D	21.90
584	TARN TARAN	KHADOOR SAHIB	S-NPP	74.82456	31.44359	13:42:00	D	21.90
585	TARN TARAN	KHADOOR SAHIB	S-NPP	75.09168	31.44554	13:42:00	D	6.90
586	TARN TARAN	KHADOOR SAHIB	S-NPP	75.09107	31.44905	13:42:00	D	6.90
587	TARN TARAN	KHADOOR SAHIB	S-NPP	75.17064	31.45218	13:42:00	D	7.90
588	TARN TARAN	KHADOOR SAHIB	S-NPP	74.81250	31.45984	13:42:00	D	3.20
589	TARN TARAN	KHADOOR SAHIB	S-NPP	74.69302	31.46198	13:42:00	D	2.60
590	TARN TARAN	KHADOOR SAHIB	S-NPP	75.08168	31.46219	13:42:00	D	7.70
591	TARN TARAN	KHADOOR SAHIB	S-NPP	74.78818	31.46735	13:42:00	D	25.20
592	TARN TARAN	KHADOOR SAHIB	S-NPP	75.17923	31.47089	13:42:00	D	3.40
593	TARN TARAN	KHADOOR SAHIB	S-NPP	75.05628	31.47334	13:42:00	D	1.90
594	TARN TARAN	KHADOOR SAHIB	S-NPP	74.82293	31.47901	13:42:00	D	6.80
595	TARN TARAN	KHADOOR SAHIB	S-NPP	74.70210	31.48802	13:42:00	D	3.00
596	TARN TARAN	KHADOOR SAHIB	S-NPP	74.99462	31.50490	13:42:00	D	3.00
597	TARN TARAN	KHADOOR SAHIB	S-NPP	74.70620	31.52154	13:42:00	D	3.10
598	TARN TARAN	KHADOOR SAHIB	S-NPP	74.70558	31.52501	13:42:00	D	7.40
599	TARN TARAN	PATTI	S-NPP	74.57566	31.10888	13:42:00	D	3.80
600	TARN TARAN	PATTI	S-NPP	74.67168	31.12514	13:42:00	D	3.70
601	TARN TARAN	PATTI	S-NPP	74.57948	31.13759	13:42:00	D	3.00
602	TARN TARAN	PATTI	S-NPP	74.61895	31.14286	13:42:00	D	33.70
603	TARN TARAN	PATTI	TERRA-1	74.61653	31.14672	11:25:00	D	8.44
604	TARN TARAN	PATTI	S-NPP	74.63971	31.15269	13:42:00	D	2.40

605	TARN TARAN	PATTI	S-NPP	74.57518	31.16169	13:42:00	D	1.60
606	TARN TARAN	PATTI	TERRA-1	74.57390	31.16319	11:25:00	D	21.96
607	TARN TARAN	PATTI	S-NPP	74.85384	31.17399	13:42:00	D	5.50
608	TARN TARAN	PATTI	S-NPP	74.83089	31.17453	13:42:00	D	21.40
609	TARN TARAN	PATTI	S-NPP	74.52903	31.17541	13:42:00	D	1.70
610	TARN TARAN	PATTI	S-NPP	74.70185	31.19100	13:42:00	D	10.20
611	TARN TARAN	PATTI	S-NPP	74.62492	31.19156	13:42:00	D	2.00
612	TARN TARAN	PATTI	S-NPP	74.78201	31.19292	13:42:00	D	3.70
613	TARN TARAN	PATTI	TERRA-1	74.53297	31.19314	11:25:00	D	10.14
614	TARN TARAN	PATTI	S-NPP	74.70123	31.19446	13:42:00	D	4.50
615	TARN TARAN	PATTI	S-NPP	74.86235	31.20359	13:42:00	D	4.50
616	TARN TARAN	PATTI	S-NPP	74.67222	31.20482	13:42:00	D	5.60
617	TARN TARAN	PATTI	S-NPP	74.77609	31.20775	13:42:00	D	3.30
618	TARN TARAN	PATTI	S-NPP	74.81177	31.21237	13:42:00	D	2.60
619	TARN TARAN	PATTI	S-NPP	74.86160	31.21526	13:42:00	D	3.30
620	TARN TARAN	PATTI	S-NPP	74.86547	31.21931	13:42:00	D	3.30
621	TARN TARAN	PATTI	S-NPP	74.92903	31.22393	13:42:00	D	5.30
622	TARN TARAN	PATTI	S-NPP	74.89181	31.22627	13:42:00	D	9.80
623	TARN TARAN	PATTI	S-NPP	74.56550	31.24722	13:42:00	D	9.30
624	TARN TARAN	PATTI	S-NPP	74.70529	31.24812	13:42:00	D	2.00
625	TARN TARAN	PATTI	S-NPP	74.73254	31.24816	13:42:00	D	7.70
626	TARN TARAN	PATTI	AQUA-1	74.76830	31.25302	12:59:00	D	39.10
627	TARN TARAN	PATTI	S-NPP	74.59563	31.25477	13:42:00	D	4.30
628	TARN TARAN	PATTI	S-NPP	74.67688	31.25498	13:42:00	D	2.50
629	TARN TARAN	PATTI	S-NPP	74.60004	31.25536	13:42:00	D	3.80
630	TARN TARAN	PATTI	S-NPP	74.60444	31.25595	13:42:00	D	3.80
631	TARN TARAN	PATTI	S-NPP	74.60884	31.25654	13:42:00	D	3.60
632	TARN TARAN	PATTI	S-NPP	74.61201	31.26402	13:42:00	D	2.00
633	TARN TARAN	PATTI	S-NPP	74.64349	31.26469	13:42:00	D	15.40
634	TARN TARAN	PATTI	S-NPP	74.59318	31.26857	13:42:00	D	1.60
635	TARN TARAN	PATTI	S-NPP	74.62902	31.26983	13:42:00	D	6.00
636	TARN TARAN	PATTI	S-NPP	74.59257	31.27202	13:42:00	D	4.10

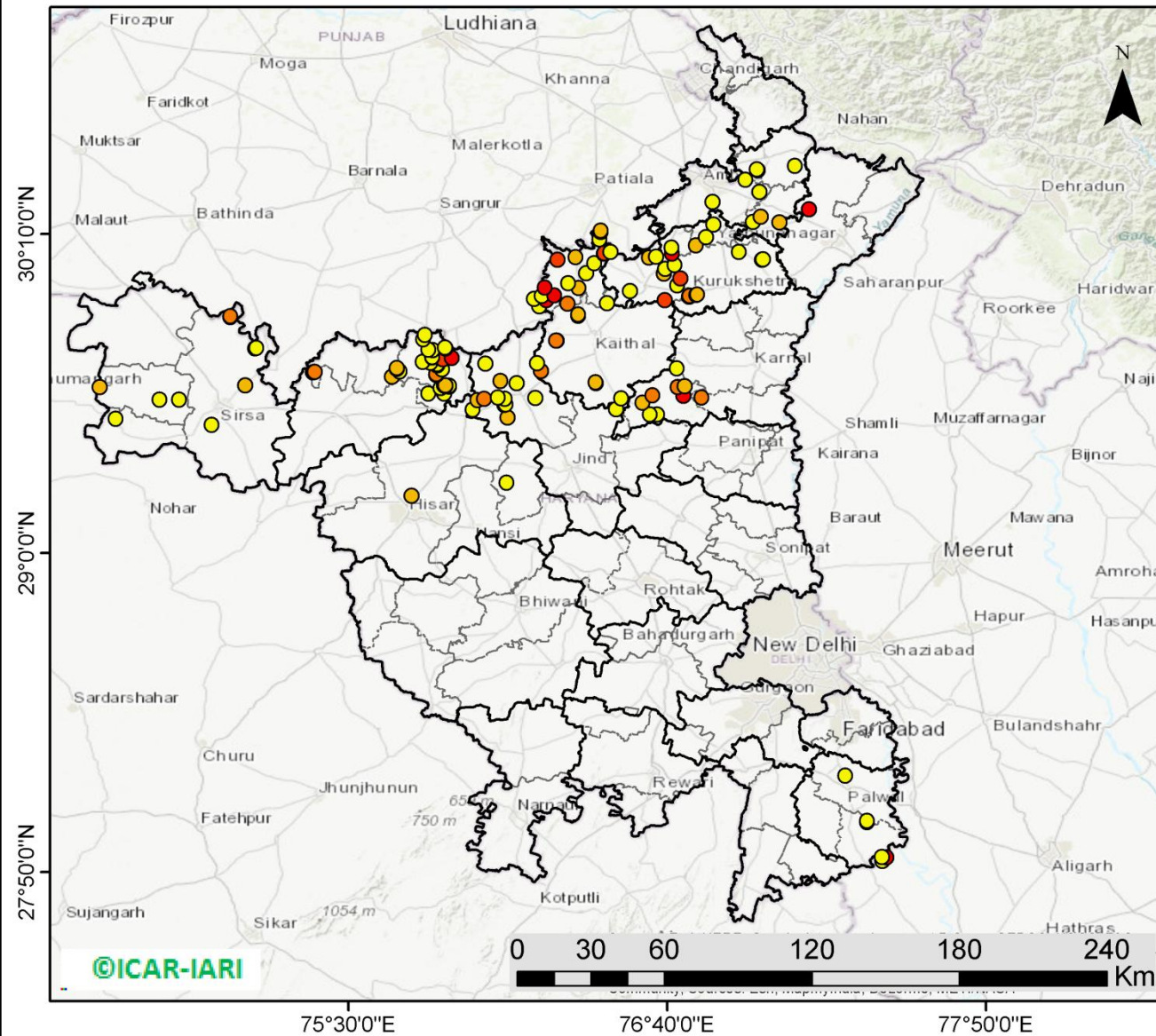
637	TARN TARAN	PATTI	S-NPP	74.59195	31.27547	13:42:00	D	4.10
638	TARN TARAN	PATTI	TERRA-1	74.67792	31.27698	11:25:00	D	7.79
639	TARN TARAN	PATTI	S-NPP	74.57182	31.29210	13:42:00	D	8.30
640	TARN TARAN	PATTI	S-NPP	74.53983	31.29495	13:42:00	D	11.00
641	TARN TARAN	PATTI	S-NPP	74.53922	31.29839	13:42:00	D	11.00
642	TARN TARAN	PATTI	S-NPP	74.75587	31.30194	13:42:00	D	5.10
643	TARN TARAN	PATTI	S-NPP	74.75449	31.30430	13:42:00	D	5.70
644	TARN TARAN	PATTI	S-NPP	74.63808	31.32555	13:42:00	D	10.80
645	TARN TARAN	PATTI	TERRA-1	74.72907	31.32639	11:25:00	D	13.51
646	TARN TARAN	PATTI	S-NPP	74.57886	31.32833	13:42:00	D	20.00
647	TARN TARAN	PATTI	S-NPP	74.82886	31.32915	13:42:00	D	6.00
648	TARN TARAN	PATTI	S-NPP	74.60089	31.33125	13:42:00	D	21.20
649	TARN TARAN	PATTI	TERRA-1	74.61653	31.33986	11:25:00	D	9.59
650	TARN TARAN	PATTI	S-NPP	74.69447	31.34005	13:42:00	D	4.90
651	TARN TARAN	PATTI	S-NPP	74.61547	31.35085	13:42:00	D	2.60
652	TARN TARAN	PATTI	S-NPP	74.58971	31.36863	13:42:00	D	3.50
653	TARN TARAN	PATTI	S-NPP	74.63203	31.38489	13:42:00	D	3.80
654	TARN TARAN	PATTI	S-NPP	74.65716	31.40766	13:42:00	D	3.30
655	TARN TARAN	PATTI	S-NPP	74.62043	31.40994	13:42:00	D	1.80
656	TARN TARAN	PATTI	S-NPP	74.66543	31.41228	13:42:00	D	6.00

District-wise cumulative number of residue burning events in Punjab (30-Sep-2018 to 21-Oct-2018)



(b) Haryana

PADDY RESIDUE BURNING IN HARYANA



134 burning events detected in Haryana on 22nd October, 2018

Fire Intensity (W/m²)

- 0 - 5
- 6 - 10
- 11 - 15
- 16 - 20
- >20

<http://geoportal.icar.gov.in:8080/geoexplorer/composer/>

Details of residue burning events in Haryana on 22-Oct-2018

Event S.No.	District	Tehsil / Block	Satellite	Longitude	Latitude	Time (IST)	Day/Night	Fire Power (W/m²)
1	AMBALA	AMBALA	S-NPP	76.60044	30.08208	13:42	D	7.30
2	AMBALA	AMBALA	S-NPP	76.83144	30.28585	13:42	D	4.70
3	AMBALA	AMBALA	S-NPP	77.00362	30.32119	13:42	D	2.90
4	AMBALA	AMBALA	S-NPP	76.95342	30.36550	13:42	D	1.90
5	AMBALA	BARARA	S-NPP	77.07684	30.21114	13:42	D	9.50
6	AMBALA	BARARA	S-NPP	76.97904	30.21144	13:42	D	4.90
7	AMBALA	BARARA	S-NPP	77.00860	30.23031	13:42	D	7.70
8	AMBALA	NARAYANGARH	S-NPP	76.99672	30.40156	13:42	D	5.50
9	AMBALA	NARAYANGARH	S-NPP	76.99385	30.40424	13:42	D	4.40
10	AMBALA	NARAYANGARH	S-NPP	77.13476	30.41636	13:42	D	3.00
11	FARIDABAD	HODAL	S-NPP	77.45355	27.87423	13:42	D	2.80
12	FARIDABAD	HODAL	TERRA-1	77.46943	27.88734	11:25	D	27.58
13	FARIDABAD	HODAL	S-NPP	77.45127	27.88933	13:42	D	3.30
14	FARIDABAD	HODAL	S-NPP	77.39856	28.01694	13:42	D	2.10
15	FARIDABAD	HODAL	S-NPP	77.39798	28.02071	13:42	D	2.70
16	FARIDABAD	PALWAL	S-NPP	77.31847	28.18585	02:24	N	1.00
17	FATEHABAD	RATIA	S-NPP	75.65804	29.64608	13:42	D	7.10
18	FATEHABAD	RATIA	S-NPP	75.36996	29.66228	13:42	D	8.10
19	FATEHABAD	RATIA	S-NPP	75.37440	29.66287	13:42	D	24.40
20	FATEHABAD	RATIA	S-NPP	75.37526	29.66321	13:42	D	12.20
21	FATEHABAD	RATIA	S-NPP	75.67673	29.67379	13:42	D	2.80
22	FATEHABAD	RATIA	S-NPP	75.67613	29.67733	13:42	D	7.50
23	FATEHABAD	TOHANA	S-NPP	75.79234	29.58456	13:42	D	3.30
24	FATEHABAD	TOHANA	S-NPP	75.84889	29.58458	13:42	D	4.00
25	FATEHABAD	TOHANA	S-NPP	75.83612	29.60476	13:42	D	2.30
26	FATEHABAD	TOHANA	S-NPP	75.86852	29.60895	13:42	D	3.00
27	FATEHABAD	TOHANA	S-NPP	75.85867	29.61131	13:42	D	15.10
28	FATEHABAD	TOHANA	S-NPP	75.86794	29.61251	13:42	D	3.00
29	FATEHABAD	TOHANA	S-NPP	75.85136	29.61260	13:42	D	7.50

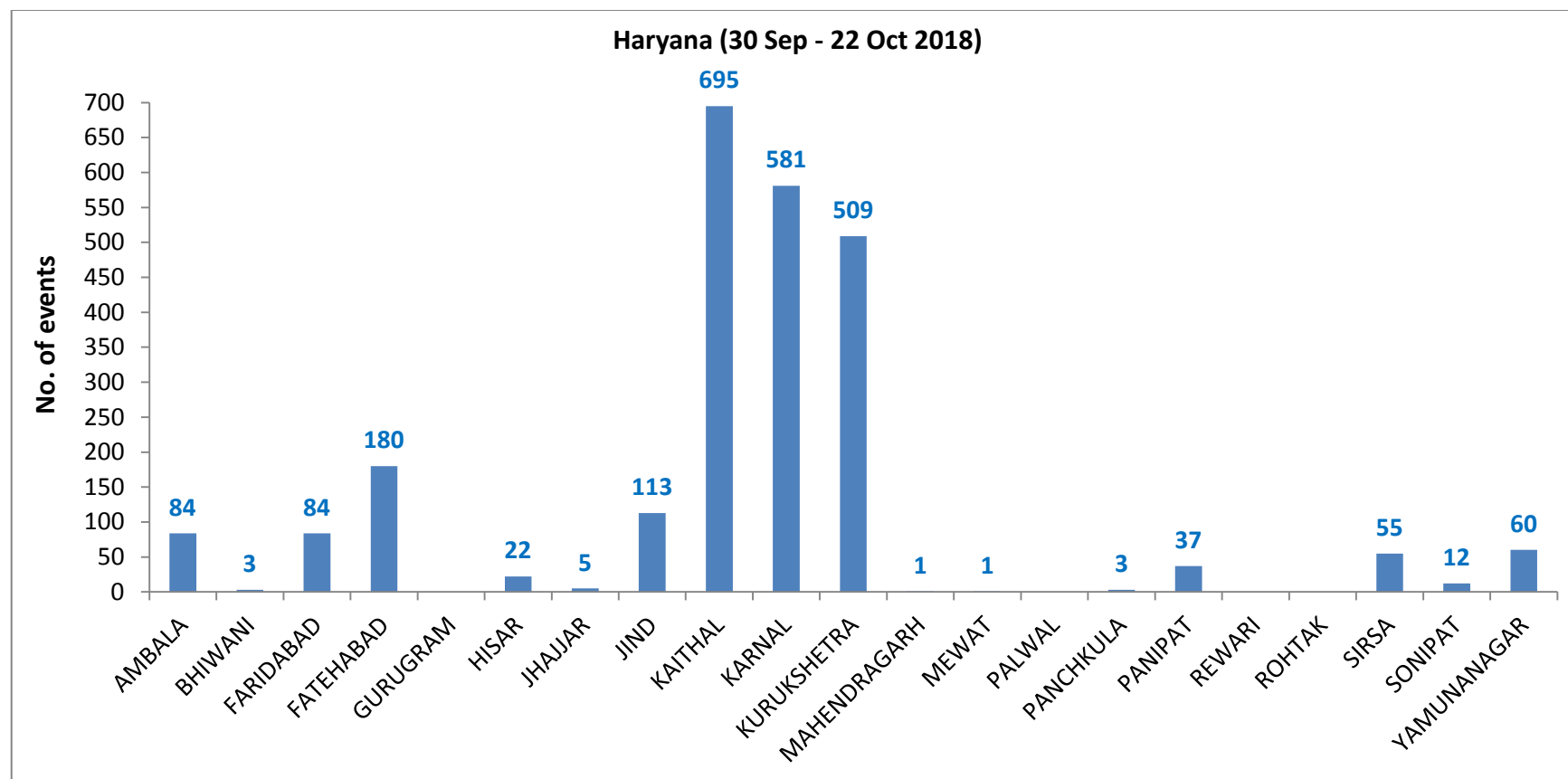
30	FATEHABAD	TOHANA	S-NPP	75.85600	29.61318	13:42	D	7.40
31	FATEHABAD	TOHANA	S-NPP	75.84882	29.61367	13:42	D	2.90
32	FATEHABAD	TOHANA	S-NPP	75.85345	29.61428	13:42	D	5.40
33	FATEHABAD	TOHANA	S-NPP	75.82113	29.65243	13:42	D	11.60
34	FATEHABAD	TOHANA	S-NPP	75.82054	29.65599	13:42	D	11.60
35	FATEHABAD	TOHANA	S-NPP	75.68763	29.66435	13:42	D	4.20
36	FATEHABAD	TOHANA	S-NPP	75.84135	29.67319	13:42	D	3.70
37	FATEHABAD	TOHANA	AQUA-1	75.82385	29.68696	12:59	D	41.51
38	FATEHABAD	TOHANA	S-NPP	75.82392	29.69279	13:42	D	3.90
39	FATEHABAD	TOHANA	S-NPP	75.79960	29.69694	13:42	D	4.40
40	FATEHABAD	TOHANA	S-NPP	75.77074	29.70047	13:42	D	3.50
41	FATEHABAD	TOHANA	TERRA-1	75.84432	29.70942	11:25	D	18.01
42	FATEHABAD	TOHANA	S-NPP	75.87730	29.71423	13:42	D	38.70
43	FATEHABAD	TOHANA	S-NPP	75.80592	29.71593	13:42	D	2.40
44	FATEHABAD	TOHANA	S-NPP	75.80680	29.71797	13:42	D	3.30
45	FATEHABAD	TOHANA	S-NPP	75.80730	29.74348	13:42	D	2.20
46	FATEHABAD	TOHANA	S-NPP	75.79282	29.74528	13:42	D	4.20
47	FATEHABAD	TOHANA	S-NPP	75.85378	29.74933	13:42	D	2.20
48	FATEHABAD	TOHANA	S-NPP	75.85319	29.75290	13:42	D	2.20
49	FATEHABAD	TOHANA	S-NPP	75.77245	29.78266	13:42	D	4.60
50	FATEHABAD	TOHANA	S-NPP	75.77934	29.79809	13:42	D	2.90
51	HISAR	HISAR	S-NPP	75.72938	29.21041	13:42	D	7.10
52	HISAR	NARNAUND	S-NPP	76.07851	29.25853	13:42	D	2.60
53	JIND	JIND	S-NPP	76.47874	29.52693	13:42	D	1.60
54	JIND	NARWANA	S-NPP	76.08138	29.49592	13:42	D	5.30
55	JIND	NARWANA	S-NPP	75.95360	29.52495	13:42	D	3.20
56	JIND	NARWANA	S-NPP	76.07037	29.54311	13:42	D	2.30
57	JIND	NARWANA	S-NPP	76.07508	29.54370	13:42	D	3.40
58	JIND	NARWANA	S-NPP	75.97166	29.56008	13:42	D	9.60
59	JIND	NARWANA	TERRA-1	75.99608	29.56419	11:25	D	14.31
60	JIND	NARWANA	S-NPP	76.07157	29.56528	13:42	D	3.60
61	JIND	NARWANA	S-NPP	76.18256	29.56801	13:42	D	3.90

62	JIND	NARWANA	S-NPP	76.04681	29.56952	13:42	D	2.40
63	JIND	NARWANA	S-NPP	76.11548	29.62224	13:42	D	2.60
64	JIND	NARWANA	S-NPP	76.05630	29.62942	13:42	D	5.30
65	JIND	NARWANA	S-NPP	76.00024	29.69336	13:42	D	3.00
66	KAITHAL	GUHLA	S-NPP	76.19825	29.90352	13:42	D	3.80
67	KAITHAL	GUHLA	AQUA-1	76.22459	29.92651	12:59	D	31.30
68	KAITHAL	GUHLA	S-NPP	76.17906	29.93077	13:42	D	4.40
69	KAITHAL	GUHLA	S-NPP	76.20690	29.94164	13:42	D	1.80
70	KAITHAL	GUHLA	AQUA-1	76.25358	29.94298	12:59	D	26.64
71	KAITHAL	GUHLA	S-NPP	76.34172	29.96955	13:42	D	7.90
72	KAITHAL	GUHLA	AQUA-1	76.21777	29.97218	12:59	D	35.38
73	KAITHAL	GUHLA	S-NPP	76.30388	29.98719	13:42	D	2.70
74	KAITHAL	GUHLA	S-NPP	76.36997	30.02421	13:42	D	3.10
75	KAITHAL	GUHLA	S-NPP	76.39933	30.06143	13:42	D	2.00
76	KAITHAL	GUHLA	TERRA-1	76.26381	30.07324	11:25	D	16.73
77	KAITHAL	GUHLA	S-NPP	76.33041	30.08284	13:42	D	6.60
78	KAITHAL	GUHLA	S-NPP	76.43443	30.09572	13:42	D	2.60
79	KAITHAL	GUHLA	TERRA-1	76.43604	30.09719	11:25	D	18.66
80	KAITHAL	GUHLA	S-NPP	76.45877	30.10247	13:42	D	2.70
81	KAITHAL	GUHLA	S-NPP	76.41811	30.14881	13:42	D	3.40
82	KAITHAL	GUHLA	S-NPP	76.42398	30.17578	13:42	D	7.80
83	KAITHAL	GUHLA	S-NPP	76.42341	30.17945	13:42	D	5.80
84	KAITHAL	KAITHAL	S-NPP	76.49751	29.56663	13:42	D	4.80
85	KAITHAL	KAITHAL	S-NPP	76.40558	29.62140	13:42	D	3.80
86	KAITHAL	KAITHAL	S-NPP	76.40499	29.62506	13:42	D	7.60
87	KAITHAL	KAITHAL	S-NPP	76.20344	29.66712	13:42	D	13.70
88	KAITHAL	KAITHAL	S-NPP	76.70077	29.67621	13:42	D	1.60
89	KAITHAL	KAITHAL	S-NPP	76.18914	29.69491	13:42	D	1.80
90	KAITHAL	KAITHAL	S-NPP	76.26101	29.77763	13:42	D	18.90
91	KAITHAL	KAITHAL	S-NPP	76.25936	29.77773	13:42	D	13.70
92	KAITHAL	KAITHAL	S-NPP	76.34068	29.86920	13:42	D	6.40
93	KAITHAL	KAITHAL	S-NPP	76.34010	29.87286	13:42	D	6.40

94	KAITHAL	KAITHAL	S-NPP	76.30092	29.91238	13:42	D	10.90
95	KAITHAL	KAITHAL	S-NPP	76.44603	29.91501	13:42	D	3.20
96	KARNAL	ASSANDH	S-NPP	76.62806	29.50756	13:42	D	2.10
97	KARNAL	ASSANDH	S-NPP	76.60258	29.50826	13:42	D	3.00
98	KARNAL	ASSANDH	S-NPP	76.57573	29.55005	13:42	D	5.60
99	KARNAL	ASSANDH	TERRA-1	76.72594	29.57617	11:25	D	37.49
100	KARNAL	ASSANDH	S-NPP	76.61204	29.57705	13:42	D	15.00
101	KARNAL	ASSANDH	S-NPP	76.70435	29.60729	13:42	D	13.90
102	KARNAL	ASSANDH	S-NPP	76.72957	29.61041	13:42	D	9.40
103	KARNAL	GHARAUNDA	S-NPP	76.79282	29.56888	13:42	D	12.80
104	KURUKSHETRA	PEHOWA	TERRA-1	76.65773	29.92502	11:25	D	15.16
105	KURUKSHETRA	PEHOWA	S-NPP	76.74531	29.93918	13:42	D	5.80
106	KURUKSHETRA	PEHOWA	S-NPP	76.74755	29.94210	13:42	D	10.10
107	KURUKSHETRA	PEHOWA	S-NPP	76.53053	29.95897	13:42	D	2.70
108	KURUKSHETRA	PEHOWA	S-NPP	76.70252	29.97966	13:42	D	4.50
109	KURUKSHETRA	PEHOWA	S-NPP	76.65418	30.02308	13:42	D	8.00
110	KURUKSHETRA	PEHOWA	S-NPP	76.65884	30.03986	13:42	D	3.90
111	KURUKSHETRA	PEHOWA	S-NPP	76.62582	30.08514	13:42	D	3.60
112	KURUKSHETRA	PEHOWA	AQUA-1	76.68331	30.09570	12:59	D	38.42
113	KURUKSHETRA	PEHOWA	S-NPP	76.68294	30.11856	13:42	D	2.50
114	KURUKSHETRA	SHAHABAD	S-NPP	76.92848	30.10199	13:42	D	4.90
115	KURUKSHETRA	SHAHABAD	S-NPP	76.77092	30.12538	13:42	D	5.60
116	KURUKSHETRA	SHAHABAD	S-NPP	76.80830	30.15661	13:42	D	3.20
117	KURUKSHETRA	SHAHABAD	S-NPP	76.83576	30.20238	13:42	D	2.50
118	KURUKSHETRA	THANESAR	S-NPP	76.77318	29.94524	13:42	D	6.80
119	KURUKSHETRA	THANESAR	S-NPP	76.77553	29.94652	13:42	D	7.50
120	KURUKSHETRA	THANESAR	TERRA-1	76.71400	30.00586	11:25	D	16.33
121	KURUKSHETRA	THANESAR	S-NPP	76.69286	30.05523	13:42	D	2.30
122	KURUKSHETRA	THANESAR	S-NPP	77.01351	30.07336	13:42	D	2.70
123	KURUKSHETRA	THANESAR	S-NPP	77.01619	30.07463	13:42	D	4.50
124	SIRSA	ELLENABAD	S-NPP	74.64752	29.49110	13:42	D	4.70
125	SIRSA	RANIA	S-NPP	74.87899	29.56125	02:24	N	0.90

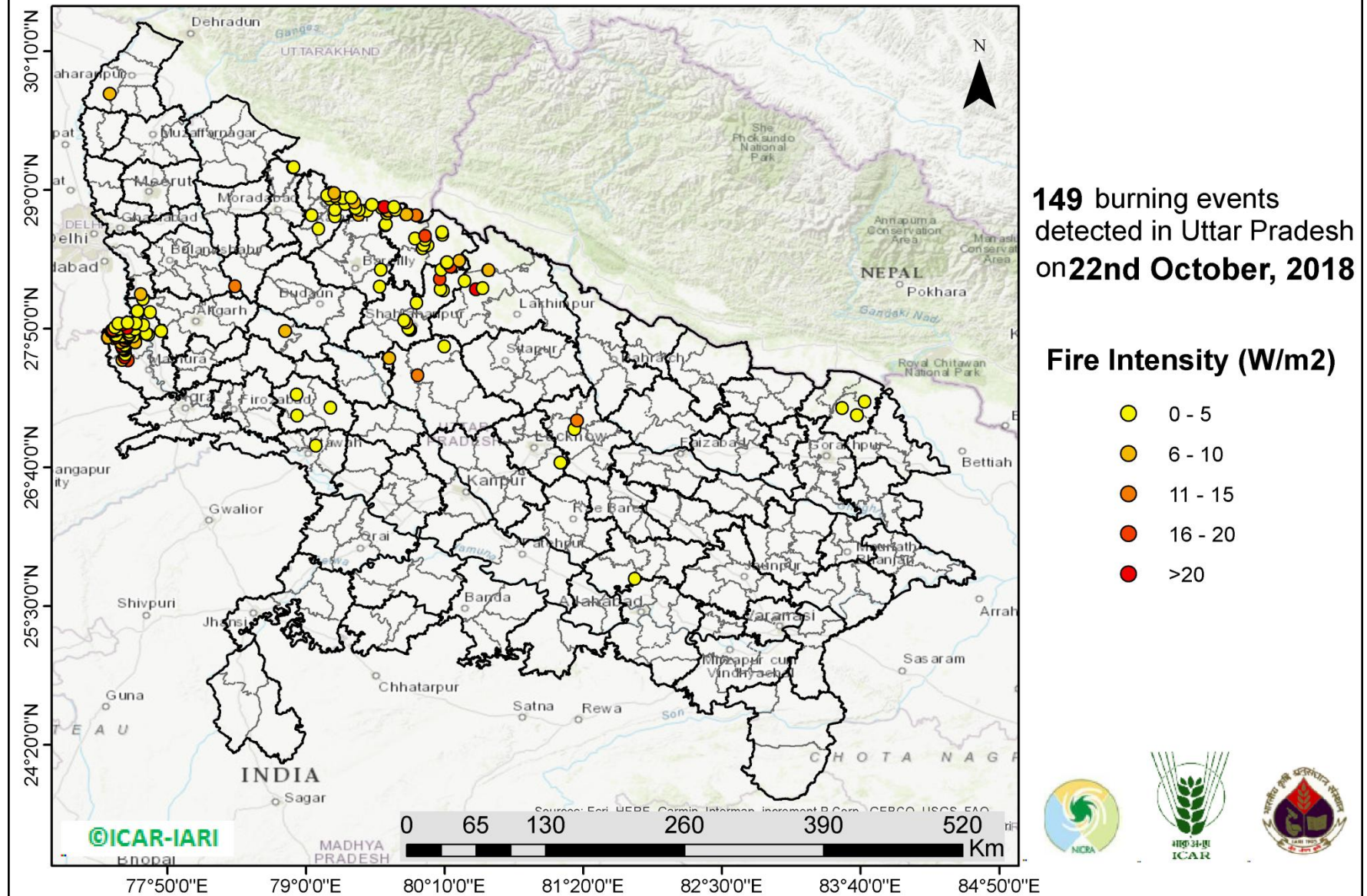
126	SIRSA	RANIA	S-NPP	74.80850	29.56197	13:42	D	3.90
127	SIRSA	RANIA	S-NPP	74.58842	29.60815	13:42	D	8.40
128	SIRSA	SIRSA	S-NPP	74.99848	29.46912	13:42	D	1.80
129	SIRSA	SIRSA	S-NPP	75.12128	29.61483	13:42	D	5.20
130	SIRSA	SIRSA	S-NPP	75.15800	29.75005	13:42	D	6.80
131	SIRSA	SIRSA	S-NPP	75.16239	29.75063	13:42	D	4.10
132	SIRSA	SIRSA	S-NPP	75.06749	29.86342	13:42	D	11.40
133	SIRSA	SIRSA	S-NPP	75.06689	29.86689	13:42	D	11.40
134	YAMUNANAGAR	JAGADHRI	AQUA-1	77.18465	30.25739	12:59	D	27.28

District-wise cumulative number of residue burning events in Haryana (30-Sep-2018 to 22-Oct-2018)



(c) Uttar Pradesh

PADDY RESIDUE BURNING IN UTTAR PRADESH



Details of residue burning events in Uttar Pradesh on 22-Oct-2018

Event S.No.	District	Tehsil / Block	Satellite	Longitude	Latitude	Time (IST)	Day/Night	Fire Power (W/m²)
1	ALIGARH	KHAIR	S-NPP	77.68941	27.97169	13:42:00	D	5.00
2	ALIGARH	KHAIR	S-NPP	77.58047	27.98193	13:42:00	D	4.30
3	ALIGARH	KHAIR	S-NPP	77.62782	28.08297	13:42:00	D	2.40
4	ALLAHABAD	SORAWN	S-NPP	81.76808	25.73103	13:42:00	D	3.70
5	BADAUN	GUNNAUR	AQUA-1	78.40392	28.18977	12:59:00	D	13.76
6	BARABANKI	NAWABGANJ	S-NPP	81.25749	26.98883	13:42:00	D	2.60
7	BARABANKI	RAMNAGAR	AQUA-1	81.27899	27.06089	12:59:00	D	13.25
8	BAREILLY	BAHERI	S-NPP	79.44287	28.79156	13:42:00	D	5.10
9	BAREILLY	BAHERI	S-NPP	79.50832	28.82447	13:42:00	D	2.40
10	BAREILLY	BAHERI	S-NPP	79.44697	28.83110	13:42:00	D	4.50
11	BAREILLY	BAHERI	S-NPP	79.41789	28.84761	13:42:00	D	2.90
12	BAREILLY	BAHERI	S-NPP	79.63688	28.85102	13:42:00	D	4.10
13	BAREILLY	BAHERI	AQUA-1	79.65850	28.85666	12:59:00	D	21.84
14	BAREILLY	BAHERI	S-NPP	79.55438	28.87434	13:42:00	D	3.10
15	BAREILLY	FARIDPUR	S-NPP	79.61894	28.18768	13:42:00	D	1.70
16	BAREILLY	FARIDPUR	S-NPP	79.63049	28.33018	13:42:00	D	3.10
17	ETAH	KASGANJ	S-NPP	78.82477	27.81439	13:42:00	D	6.80
18	ETAWAH	ETAWAH	S-NPP	79.08150	26.84808	13:42:00	D	3.30
19	GAUTAMBUDHNAGAR	JEVAR	S-NPP	77.60871	28.12206	13:42:00	D	6.20
20	GHAZIABAD	GHAZIABAD	S-NPP	77.30743	28.73038	02:24:00	N	0.30
21	HARDOI	HARDOI	S-NPP	79.93898	27.43964	13:42:00	D	12.00
22	HARDOI	SHAHABAD	S-NPP	80.16535	27.68462	13:42:00	D	3.20
23	KHERI	GOLA	AQUA-1	80.42806	28.16432	12:59:00	D	23.71
24	KHERI	GOLA	S-NPP	80.48783	28.17421	13:42:00	D	1.90
25	KHERI	GOLA	S-NPP	80.33313	28.23346	13:42:00	D	4.70
26	KHERI	PALIA KALAN	S-NPP	80.53489	28.32688	13:42:00	D	5.30
27	KHERI	PALIA KALAN	S-NPP	80.53827	28.32712	13:42:00	D	8.00
28	LACKNOW	MOHANLAL GANJ	S-NPP	81.14088	26.70831	13:42:00	D	3.80

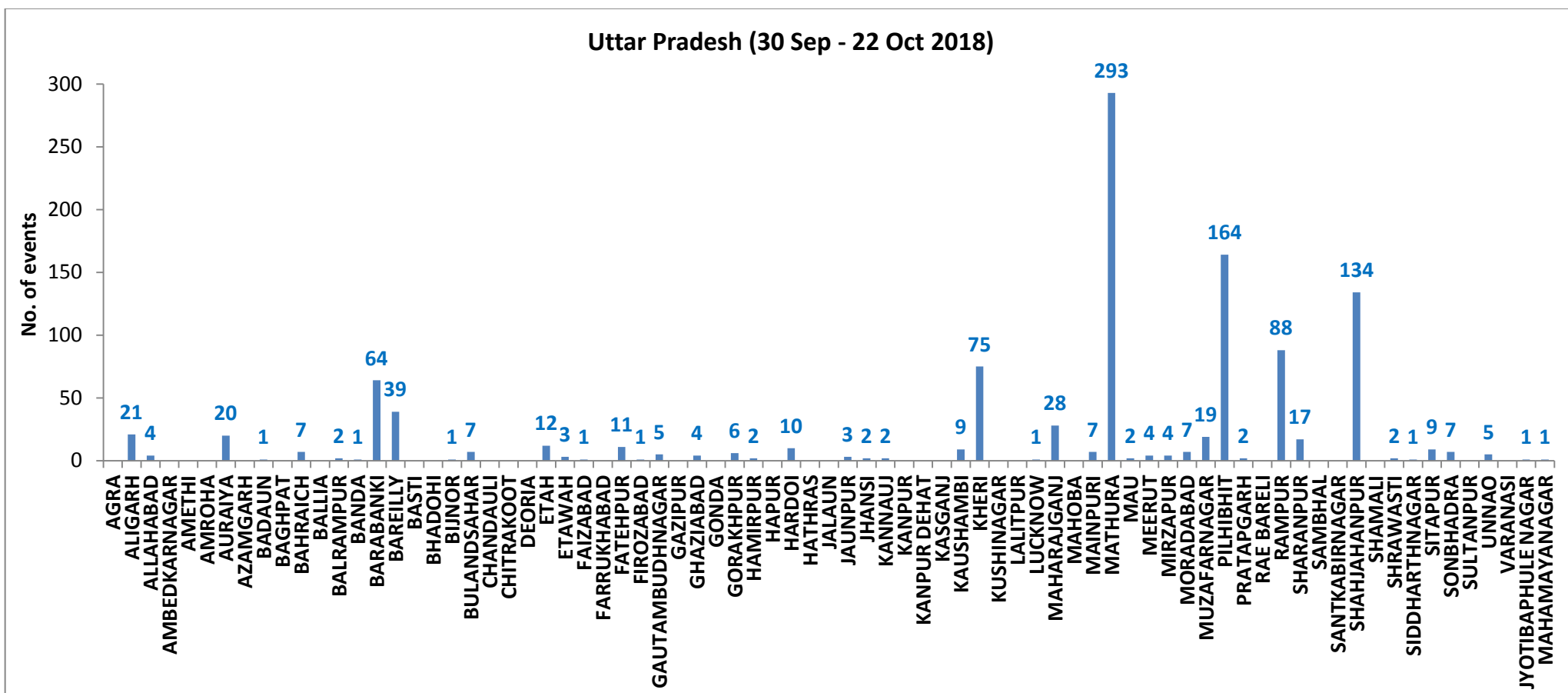
29	MAHARAJGANJ	MAHARAJGANJ	S-NPP	83.63374	27.10408	13:42:00	D	2.70
30	MAHARAJGANJ	MAHARAJGANJ	S-NPP	83.51176	27.16630	13:42:00	D	3.00
31	MAHARAJGANJ	NICHLAUL	S-NPP	83.70278	27.22037	13:42:00	D	2.40
32	MAINPURI	BHOGAON	S-NPP	79.20510	27.16965	13:42:00	D	4.50
33	MAINPURI	KARHAL	S-NPP	78.92435	27.10134	13:42:00	D	2.00
34	MAINPURI	MAINPURI	S-NPP	78.92174	27.27843	13:42:00	D	2.00
35	MATHURA	CHHATA	TERRA-1	77.50183	27.56694	11:25:00	D	15.24
36	MATHURA	CHHATA	S-NPP	77.45504	27.57183	13:42:00	D	5.10
37	MATHURA	CHHATA	S-NPP	77.47265	27.59309	13:42:00	D	23.60
38	MATHURA	CHHATA	S-NPP	77.47951	27.61693	13:42:00	D	4.80
39	MATHURA	CHHATA	TERRA-1	77.47625	27.65228	11:25:00	D	28.12
40	MATHURA	CHHATA	S-NPP	77.45680	27.66404	13:42:00	D	3.10
41	MATHURA	CHHATA	S-NPP	77.45930	27.66441	13:42:00	D	6.20
42	MATHURA	CHHATA	S-NPP	77.46194	27.66467	13:42:00	D	3.10
43	MATHURA	CHHATA	S-NPP	77.47218	27.66593	13:42:00	D	18.80
44	MATHURA	CHHATA	S-NPP	77.47469	27.66622	13:42:00	D	19.80
45	MATHURA	CHHATA	S-NPP	77.45874	27.66818	13:42:00	D	3.60
46	MATHURA	CHHATA	S-NPP	77.46136	27.66844	13:42:00	D	3.70
47	MATHURA	CHHATA	S-NPP	77.48212	27.68629	13:42:00	D	12.70
48	MATHURA	CHHATA	AQUA-1	77.44897	27.68671	12:59:00	D	32.18
49	MATHURA	CHHATA	S-NPP	77.47528	27.69700	13:42:00	D	3.00
50	MATHURA	CHHATA	S-NPP	77.56138	27.71881	13:42:00	D	7.90
51	MATHURA	CHHATA	S-NPP	77.44054	27.71969	13:42:00	D	5.50
52	MATHURA	CHHATA	AQUA-1	77.47966	27.73163	12:59:00	D	30.72
53	MATHURA	CHHATA	S-NPP	77.46906	27.73850	13:42:00	D	11.70
54	MATHURA	CHHATA	S-NPP	77.38330	27.75483	13:42:00	D	6.90
55	MATHURA	CHHATA	S-NPP	77.48737	27.75610	13:42:00	D	3.80
56	MATHURA	CHHATA	S-NPP	77.33289	27.76028	13:42:00	D	5.10
57	MATHURA	CHHATA	S-NPP	77.33595	27.76042	13:42:00	D	5.40
58	MATHURA	CHHATA	S-NPP	77.47595	27.76240	13:42:00	D	5.90
59	MATHURA	CHHATA	S-NPP	77.42574	27.76360	13:42:00	D	11.40
60	MATHURA	CHHATA	S-NPP	77.42355	27.76362	13:42:00	D	30.70

61	MATHURA	CHHATA	AQUA-1	77.39952	27.76457	12:59:00	D	25.98
62	MATHURA	CHHATA	S-NPP	77.47538	27.76617	13:42:00	D	5.90
63	MATHURA	CHHATA	S-NPP	77.54310	27.77061	13:42:00	D	3.30
64	MATHURA	CHHATA	S-NPP	77.45371	27.77118	13:42:00	D	3.10
65	MATHURA	CHHATA	S-NPP	77.51270	27.77764	13:42:00	D	11.00
66	MATHURA	CHHATA	S-NPP	77.51551	27.77880	13:42:00	D	10.40
67	MATHURA	CHHATA	S-NPP	77.40243	27.78000	13:42:00	D	5.00
68	MATHURA	CHHATA	S-NPP	77.67436	27.78271	13:42:00	D	1.40
69	MATHURA	CHHATA	S-NPP	77.51156	27.78521	13:42:00	D	2.60
70	MATHURA	CHHATA	S-NPP	77.51438	27.78637	13:42:00	D	4.70
71	MATHURA	CHHATA	S-NPP	77.65423	27.79025	13:42:00	D	2.60
72	MATHURA	CHHATA	S-NPP	77.65685	27.79223	13:42:00	D	2.20
73	MATHURA	CHHATA	S-NPP	77.51333	27.80853	13:42:00	D	3.70
74	MATHURA	CHHATA	S-NPP	77.36163	27.80955	13:42:00	D	4.60
75	MATHURA	CHHATA	S-NPP	77.39677	27.81762	13:42:00	D	6.00
76	MATHURA	CHHATA	S-NPP	77.39620	27.82138	13:42:00	D	21.40
77	MATHURA	CHHATA	S-NPP	77.36501	27.82143	13:42:00	D	14.50
78	MATHURA	CHHATA	S-NPP	77.37521	27.82267	13:42:00	D	15.50
79	MATHURA	CHHATA	S-NPP	77.55779	27.82924	13:42:00	D	4.70
80	MATHURA	CHHATA	S-NPP	77.42577	27.83263	13:42:00	D	3.20
81	MATHURA	CHHATA	TERRA-1	77.49467	27.84003	11:25:00	D	23.43
82	MATHURA	CHHATA	S-NPP	77.39281	27.84396	13:42:00	D	4.90
83	MATHURA	CHHATA	S-NPP	77.45151	27.87033	13:42:00	D	24.80
84	MATHURA	CHHATA	S-NPP	77.45666	27.87097	13:42:00	D	24.80
85	MATHURA	CHHATA	S-NPP	77.42152	27.87815	13:42:00	D	3.60
86	MATHURA	CHHATA	S-NPP	77.49955	27.88345	13:42:00	D	2.10
87	MATHURA	MAT	S-NPP	77.77911	27.81281	02:24:00	N	0.50
88	MATHURA	MAT	S-NPP	77.63242	27.86526	13:42:00	D	3.80
89	MATHURA	MAT	S-NPP	77.56673	27.87670	13:42:00	D	3.10
90	MATHURA	MAT	S-NPP	77.56615	27.88049	13:42:00	D	3.50
91	MORADABAD	THAKUR DWARA	S-NPP	78.89113	29.19035	02:24:00	N	0.40
92	MORADABAD	THAKUR DWARA	S-NPP	78.89476	29.19044	02:24:00	N	1.40

93	PILHIBHIT	PILHIBHIT	S-NPP	79.91684	28.59110	13:42:00	D	2.30
94	PILHIBHIT	PILHIBHIT	AQUA-1	79.66581	28.70331	12:59:00	D	23.03
95	PILHIBHIT	PILHIBHIT	S-NPP	79.67213	28.71266	13:42:00	D	2.80
96	PILHIBHIT	PILHIBHIT	S-NPP	79.93449	28.78391	13:42:00	D	11.70
97	PILHIBHIT	PILHIBHIT	S-NPP	79.92611	28.78692	13:42:00	D	10.80
98	PILHIBHIT	PILHIBHIT	S-NPP	79.84202	28.79213	13:42:00	D	3.20
99	PILHIBHIT	PILHIBHIT	S-NPP	79.84508	28.79248	13:42:00	D	5.30
100	PILHIBHIT	PILHIBHIT	S-NPP	79.68119	28.80273	13:42:00	D	3.10
101	PILHIBHIT	PILHIBHIT	S-NPP	79.68785	28.82545	13:42:00	D	8.40
102	PILHIBHIT	PILHIBHIT	S-NPP	79.69258	28.82593	13:42:00	D	8.40
103	PILHIBHIT	PILHIBHIT	S-NPP	79.75432	28.83221	13:42:00	D	4.50
104	PILHIBHIT	PILHIBHIT	S-NPP	79.74146	28.85745	13:42:00	D	3.70
105	PILHIBHIT	PURANPUR	AQUA-1	80.21320	28.35296	12:59:00	D	19.51
106	PILHIBHIT	PURANPUR	S-NPP	80.18510	28.38824	13:42:00	D	4.50
107	PILHIBHIT	PURANPUR	S-NPP	80.18189	28.39062	13:42:00	D	4.60
108	PILHIBHIT	PURANPUR	S-NPP	80.18687	28.39110	13:42:00	D	6.10
109	PILHIBHIT	PURANPUR	S-NPP	80.18456	28.39270	13:42:00	D	4.50
110	PILHIBHIT	PURANPUR	S-NPP	80.28983	28.40351	13:42:00	D	4.10
111	PILHIBHIT	PURANPUR	S-NPP	80.29182	28.40568	13:42:00	D	6.40
112	PILHIBHIT	PURANPUR	S-NPP	79.97935	28.50843	13:42:00	D	2.30
113	PILHIBHIT	PURANPUR	S-NPP	80.02048	28.53492	13:42:00	D	2.50
114	PILHIBHIT	PURANPUR	S-NPP	79.99062	28.53639	13:42:00	D	3.30
115	PILHIBHIT	PURANPUR	S-NPP	80.00176	28.58149	13:42:00	D	2.80
116	PILHIBHIT	PURANPUR	AQUA-1	80.00345	28.61348	12:59:00	D	19.70
117	PILHIBHIT	PURANPUR	S-NPP	80.14680	28.62252	13:42:00	D	2.70
118	PILHIBHIT	PURANPUR	S-NPP	80.14404	28.64486	13:42:00	D	3.30
119	RAMPUR	BILASPUR	S-NPP	79.24361	28.77942	13:42:00	D	2.60
120	RAMPUR	BILASPUR	S-NPP	79.24599	28.83457	13:42:00	D	3.00
121	RAMPUR	BILASPUR	S-NPP	79.24525	28.83543	13:42:00	D	2.80
122	RAMPUR	BILASPUR	S-NPP	79.33060	28.88202	13:42:00	D	3.20
123	RAMPUR	BILASPUR	S-NPP	79.40715	28.89425	13:42:00	D	6.30
124	RAMPUR	BILASPUR	S-NPP	79.26490	28.93115	13:42:00	D	3.70

125	RAMPUR	BILASPUR	S-NPP	79.31036	28.93171	13:42:00	D	3.40
126	RAMPUR	BILASPUR	S-NPP	79.37876	28.93466	13:42:00	D	3.20
127	RAMPUR	BILASPUR	S-NPP	79.24092	28.94948	13:42:00	D	5.80
128	RAMPUR	BILASPUR	S-NPP	79.23753	28.97493	13:42:00	D	6.20
129	RAMPUR	MILAK	S-NPP	79.10513	28.67482	13:42:00	D	3.50
130	RAMPUR	RAMPUR	S-NPP	79.04677	28.78826	13:42:00	D	2.90
131	RAMPUR	SUAR	S-NPP	79.19859	28.92800	13:42:00	D	2.80
132	RAMPUR	SUAR	S-NPP	79.17688	28.95578	13:42:00	D	2.40
133	SHAHJAHANPUR	JALALABAD	S-NPP	79.69858	27.58677	13:42:00	D	5.30
134	SHAHJAHANPUR	PUWANYA	S-NPP	79.93108	28.05143	13:42:00	D	1.60
135	SHAHJAHANPUR	PUWANYA	S-NPP	80.15414	28.15418	13:42:00	D	2.10
136	SHAHJAHANPUR	PUWANYA	S-NPP	80.13287	28.16548	13:42:00	D	3.50
137	SHAHJAHANPUR	PUWANYA	S-NPP	80.12451	28.24880	13:42:00	D	17.30
138	SHAHJAHANPUR	PUWANYA	S-NPP	80.13721	28.32925	13:42:00	D	3.60
139	SHAHJAHANPUR	SHAHJAHANPUR	S-NPP	79.87633	27.82359	13:42:00	D	9.80
140	SHAHJAHANPUR	SHAHJAHANPUR	S-NPP	79.87257	27.82378	13:42:00	D	5.90
141	SHAHJAHANPUR	SHAHJAHANPUR	S-NPP	79.87724	27.82425	13:42:00	D	7.10
142	SHAHJAHANPUR	SHAHJAHANPUR	S-NPP	79.86589	27.83129	13:42:00	D	3.50
143	SHAHJAHANPUR	SHAHJAHANPUR	S-NPP	79.86211	27.83154	13:42:00	D	3.00
144	SHAHJAHANPUR	SHAHJAHANPUR	S-NPP	79.86677	27.83201	13:42:00	D	5.70
145	SHAHJAHANPUR	SHAHJAHANPUR	S-NPP	79.86534	27.83563	13:42:00	D	3.50
146	SHAHJAHANPUR	SHAHJAHANPUR	S-NPP	79.86154	27.83589	13:42:00	D	3.00
147	SHAHJAHANPUR	SHAHJAHANPUR	S-NPP	79.84087	27.88658	13:42:00	D	5.10
148	SHAHJAHANPUR	SHAHJAHANPUR	S-NPP	79.82469	27.90248	13:42:00	D	2.90
149	SHARANPUR	NAKUR	S-NPP	77.34613	29.80952	13:42:00	D	6.40

District-wise cumulative number of residue burning events in Uttar Pradesh (30-Sep-2018 to 22-Oct-2018)



State wise, date wise and district-wise number of residue burning events detected in 2017 and 2018
(Period: 30-Sep-2018 to 22-Oct-2018)

Date	Punjab		Haryana		UP		Total	
	2017	2018	2017	2018	2017	2018	2017	2018
30-Sep-18	--	11	---	7	---	13	---	31
1-Oct-18	54	16	13	9	2	11	69	36
2-Oct-18	50	9	27	23	8	21	85	53
3-Oct-18	62	4	40	9	17	12	119	25
4-Oct-18	103	32	60	16	22	5	185	53
5-Oct-18	106	56	68	30	20	10	194	96
6-Oct-18	138	87	75	65	39	13	252	165
7-Oct-18	105	162	97	180	31	69	233	411
8-Oct-18	215	39	218	40	75	54	508	133
9-Oct-18	163	75	148	47	87	32	398	154
10-Oct-18	164	23	151	37	126	21	441	81
11-Oct-18	177	30	87	78	74	24	338	132
12-Oct-18	342	67	123	133	51	22	516	222
13-Oct-18	470	62	207	147	69	61	746	270
14-Oct-18	582	112	333	153	137	57	1052	322
15-Oct-18	943	90	458	110	237	35	1638	235
16-Oct-18	465	174	186	138	71	20	722	332

17-Oct-18	807	272	244	268	69	94	1120	634
18-Oct-18	970	263	306	255	108	163	1384	681
19-Oct-18	1591	254	541	208	128	108	2260	570
20-Oct-18	2653	496	597	141	255	49	3505	686
21-Oct-18	1139	618	233	217	168	66	1540	901
22-Oct-18	1356	656	186	134	151	149	1693	939
Total	12655	3608	4398	2445	1949	1109	19002	7162

(a) Punjab

Districts	01 - 22 Oct	
	2017	2018
AMRITSAR	856	658
BARNALA	49	30
BATHINDA	984	155
FARIDKOT	1335	219
FATEHGARH SAHIB	515	101
FAZILKA	0	0
FIROZPUR	1765	416
GURDASPUR	535	154
HOSHIARPUR	116	4
JALANDHAR	520	74
KAPURTHALA	336	22
LUDHIANA	726	89
MANSA	296	116
MOGA	189	28
MUKTSAR	863	189
NAWASHAHR	152	8
PATHANKOT	0	0
PATIALA	1239	461
RUPNAGAR	57	1
SANGRUR	367	147
SAS NAGAR	76	51
TARN TARAN	1613	654
SBS NAGAR	66	31
Total	12655	3608

(b) Haryana

Districts	01 - 22 Oct	
	2017	2018
AMBALA	299	84
BHIWANI	2	3
FARIDABAD	111	84
FATEHABAD	410	180
GURUGRAM	0	0
HISAR	36	22
JHAJJAR	4	5
JIND	202	113
KAITHAL	948	695
KARNAL	1106	581
KURUKSHETRA	936	509
MAHENDRAGARH	0	1
MEWAT	0	1
PALWAL	0	0
PANCHKULA	0	3
PANIPAT	40	37
REWARI	0	0
ROHTAK	4	0
SIRSA	115	55
SONIPAT	20	12
YAMUNANAGAR	165	60
Total	4398	2445

(c) Uttar Pradesh

Districts	01 - 22 Oct		FIROZABAD	2	1	PRATAPGARH	0	2
	2017	2018						
AGRA	0	0	GAZIPUR	0	0	RAMPUR	316	88
ALIGARH	21	21	GHAZIABAD	6	4	SHARANPUR	40	17
ALLAHABAD	0	4	GONDA	0	0	SAMBHAL	0	0
AMBEDKAR NAGAR	4	0	GORAKHPUR	4	6	SANTKABIR NAGAR	1	0
AMETHI	0	0	HAMIRPUR	0	2	SHAHJAHANPUR	460	134
AMROHA	0	0	HAPUR	0	0	SHAMALI	0	0
AURAIYA	57	20	HARDOI	25	10	SHRAWASTI	5	2
AZAMGARH	0	0	HATHRAS	0	0	SIDDHARTH NAGAR	2	1
BADAUN	1	1	JALAUN	0	0	SITAPUR	19	9
BAGHPAT	0	0	JAUNPUR	0	3	SONBHADRA	1	7
BAHRAICH	7	7	JHANSI	0	2	SULTANPUR	0	0
BALLIA	0	0	KANNAUJ	1	2	UNNAO	4	5
BALRAMPUR	0	2	KANPUR	3	0	VARANASI	0	0
BANDA	1	1	KANPUR DEHAT	1	0	JYOTIBAPHULE NAGAR	0	1
BARABANKI	41	64	KASGANJ	0	0	MAHAMAYA NAGAR	1	1
BAREILLY	72	39	KAUSHAMBI	5	9	Total	1949	1109
BASTI	1	0	KHERI	128	75			
BHADOHI	0	0	KUSHINAGAR	1	0			
BIJNOR	4	1	LALITPUR	0	0			
BULANDSAHAR	9	7	LUCKNOW	6	1			
CHANDAULI	0	0	MAHARAJGANJ	38	28			
CHITRAKOOT	0	0	MAHOBA	0	0			
DEORIA	1	0	MAINPURI	9	7			
ETAH	12	12	MATHURA	166	293			
ETAWAH	10	3	MAU	0	2			
FAIZABAD	1	1	MEERUT	14	4			
FARRUKHABAD	0	0	MIRZAPUR	3	4			
FATEHPUR	8	11	MORADABAD	12	7			
			MUZAFARNAGAR	55	19			
			PILHIBHIT	365	164			

The study used images received from following Satellites at IARI Satellite Ground Station

S. No.	Satellite Name	Sensor	Resolution (meter)	Day / Night Passes
1.	Suomi NPP	VIIRS	375 / 1000	Both
2.	Terra	MODIS	1000	Both
3.	Aqua	MODIS	1000	Both
4.	NOAA – 18	AVHRR	1000	Night
5.	NOAA – 19	AVHRR	1000	Night
6.	Metop - 1	AVHRR	1000	Night
7.	Metop - 2	AVHRR	1000	Night

Study Team

ICAR – HQ	Dr K. Alagusundaram	DDG (Agril. Engg.)	ddgengg@icar.org.in
	Dr S. Bhaskar	ADG (NRM)	adgagroandaf@gmail.com
ICAR - IARI	Dr V.K. Sehgal	Professor & Nodal Scientist	iaricreams@gmail.com vk.sehgal@icar.gov.in
	Dr Rajkumar Dhakar	Scientist	rajdhakar.iari@gmail.com
	Shri Rakeshwar Verma	Chief Technical Officer	rakeshwar.verma@icar.gov.in
	Mr Aakash Chhabra	SRF (NICRA)	aakash.chhabra7489@gmail.com
ICAR - ATARI	Dr Rajbir Singh	Director ATARI (Zone-1)	rajbirsingh.zpd@gmail.com
	Dr U.S. Gautam	Director ATARI (Zone-IV)	zpdicarkanpur@gmail.com
ICAR - IASRI	Dr RajenderParsad	Principal Scientist	rajender.parsad@icar.gov.in

GIS Maps of fire events can be visualized online on ICAR KRISHI Geoportal

websites:<http://geoportal.icar.gov.in:8080/geoexplorer/composer/>

<http://creams.iari.res.in:8080/geoexplorer/composer/>
