

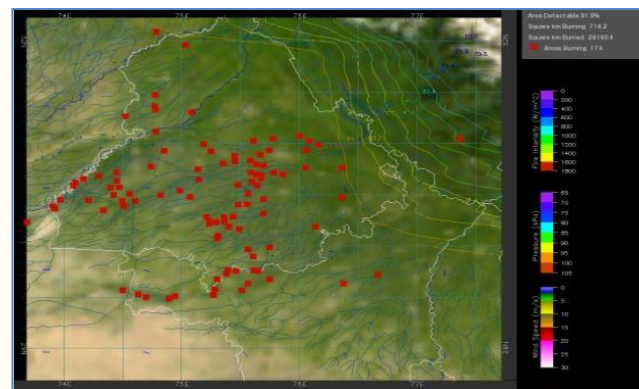
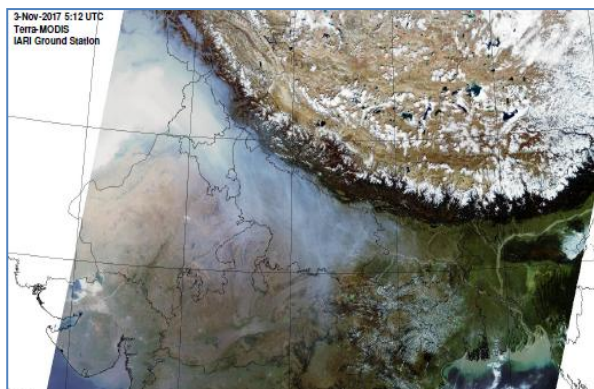


MONITORING PADDY RESIDUE BURNING IN NORTH INDIA USING SATELLITE REMOTE SENSING DURING 2018

**Bulletin
No. 21**

**Events Date:
21-Oct-2018**

**Issued on:
22-Oct-2018**



Prepared by:

**Consortium for Research on Agroecosystem Monitoring and Modeling from Space (CREAMS) Laboratory,
Division of Agricultural Physics, ICAR – Indian Agricultural Research Institute, New Delhi – 110012**

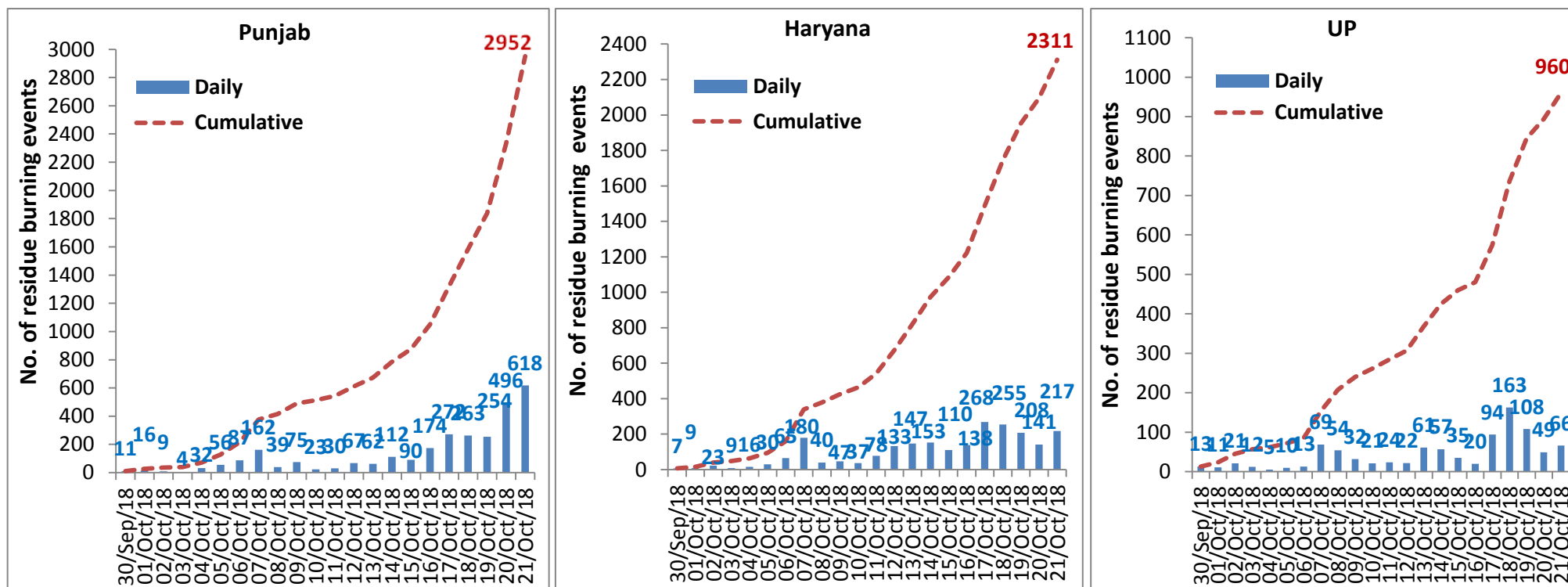
<http://creams.iari.res.in>



Highlights for 21-October-2018

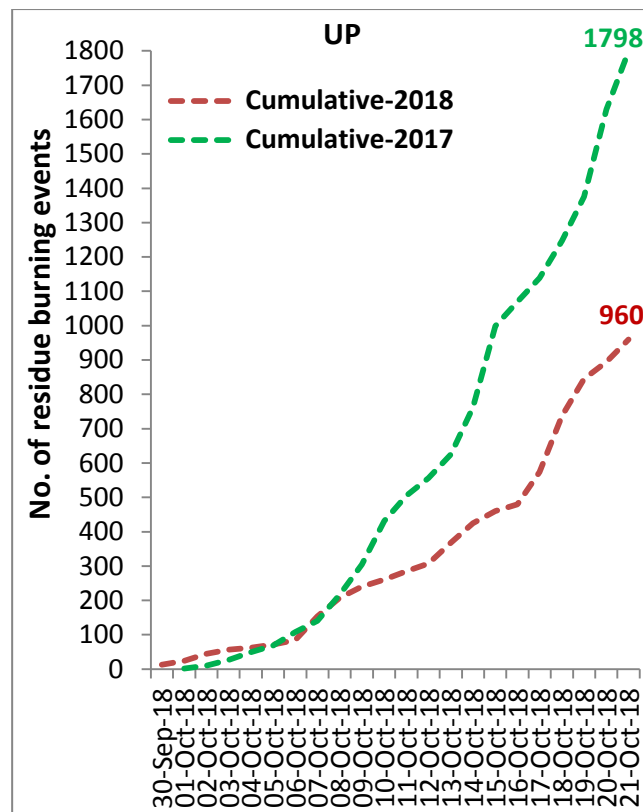
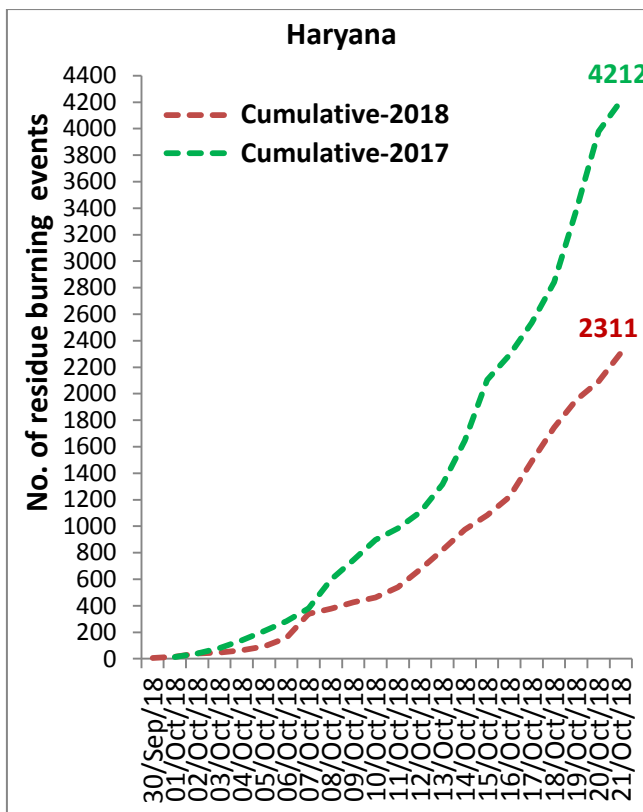
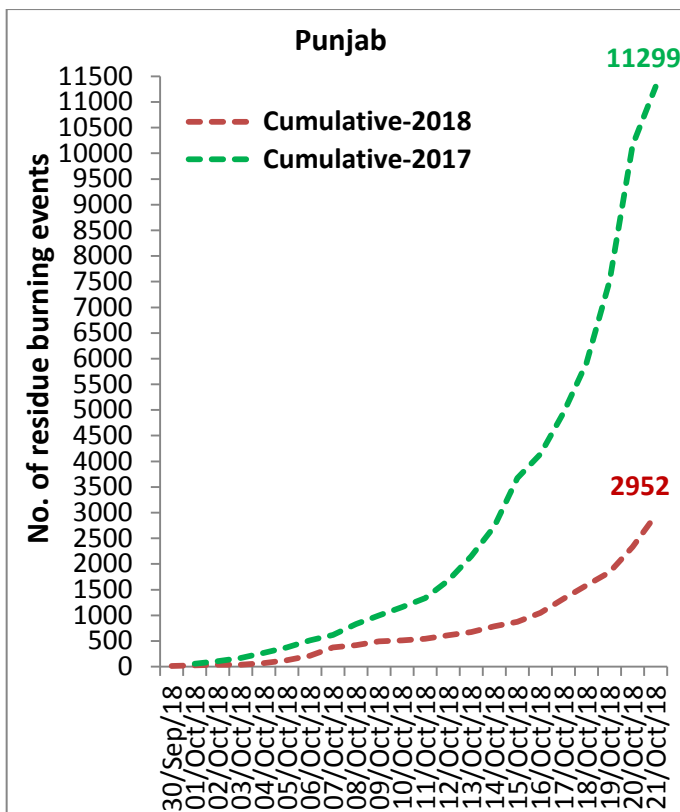
- Satellites detected 901 residue burning events in the three States (Punjab, Haryana & UP) on 21-Oct-2018.
- The burning events detected on 21-Oct-2018 are 618, 217 and 66 in Punjab, Haryana, and UP, respectively.
- The number of events increased from 686 on 20-Oct-2018 to 901 on 21-Oct-2018 in the three States.
- Total 6223 burning events were detected in the three States between 30-Sept-2018 and 21-Oct-2018, which were distributed as 2952, 2311 and 960 in Punjab, Haryana and UP, respectively.
- Till 21-Oct-2018, the burning events in the current year are about 35.9% of the events detected in 2017.

Temporal distribution of residue burning events for the three study States



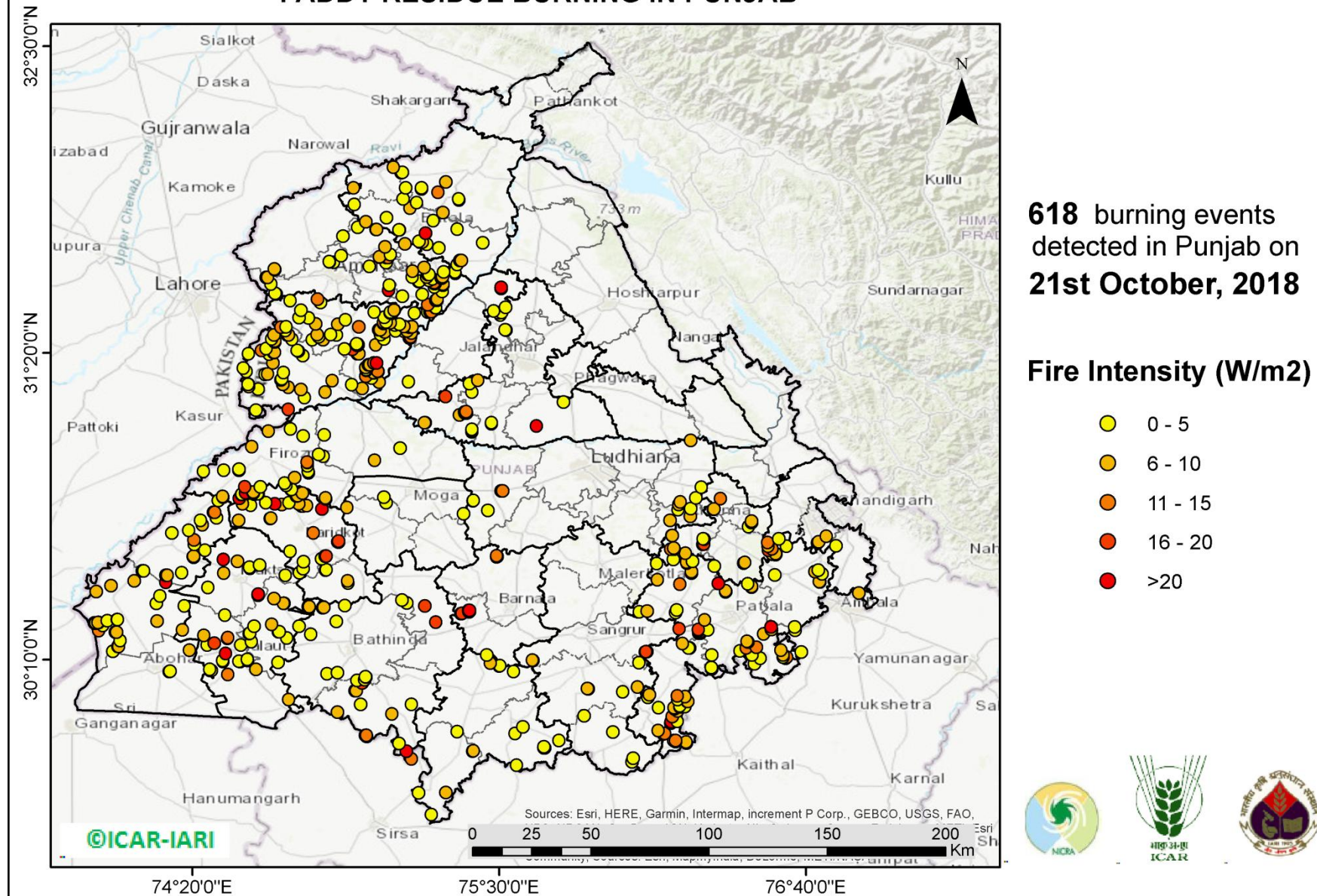
Comparison of residue burning events in current year (2018) with previous year (2017) for the three study States

(30-Sep-2018 to 21-Oct-2018)



(a) Punjab

PADDY RESIDUE BURNING IN PUNJAB



<http://geoportal.icar.gov.in:8080/geoexplorer/composer/>

Details of residue burning events in Punjab on 21-Oct-2018

Event S.No.	District	Tehsil /Block	Satellite	Longitude	Latitude	Time (IST)	Day/Night	Fire Power (W/m2)
1	AMRITSAR	AJNALA	S-NPP	74.64569	31.64997	14:00:00	D	4.20
2	AMRITSAR	AJNALA	S-NPP	74.64370	31.65326	14:00:00	D	6.40
3	AMRITSAR	AJNALA	S-NPP	74.90486	31.77714	14:00:00	D	3.40
4	AMRITSAR	AJNALA	S-NPP	74.94624	31.96156	14:00:00	D	7.20
5	AMRITSAR	AMRITSAR I	S-NPP	75.07922	31.57190	14:00:00	D	30.40
6	AMRITSAR	AMRITSAR I	S-NPP	75.08237	31.59059	14:00:00	D	2.10
7	AMRITSAR	AMRITSAR I	S-NPP	75.00577	31.66187	14:00:00	D	4.80
8	AMRITSAR	AMRITSAR I	S-NPP	75.06867	31.67695	14:00:00	D	2.60
9	AMRITSAR	AMRITSAR I	S-NPP	75.07183	31.69565	14:00:00	D	15.90
10	AMRITSAR	AMRITSAR I	S-NPP	75.07719	31.69616	14:00:00	D	15.00
11	AMRITSAR	AMRITSAR I	S-NPP	75.07055	31.69622	14:00:00	D	13.80
12	AMRITSAR	AMRITSAR I	S-NPP	75.07591	31.69669	14:00:00	D	13.80
13	AMRITSAR	AMRITSAR I	S-NPP	75.04453	31.69764	14:00:00	D	3.10
14	AMRITSAR	AMRITSAR I	S-NPP	75.04317	31.69839	14:00:00	D	5.10
15	AMRITSAR	AMRITSAR I	S-NPP	75.08556	31.70675	14:00:00	D	2.50
16	AMRITSAR	AMRITSAR I	S-NPP	75.06555	31.73716	14:00:00	D	5.90
17	AMRITSAR	AMRITSAR I	S-NPP	75.14059	31.74858	14:00:00	D	6.30
18	AMRITSAR	AMRITSAR I	S-NPP	75.03051	31.80285	14:00:00	D	7.60
19	AMRITSAR	AMRITSAR I	S-NPP	75.03278	31.80338	14:00:00	D	9.60
20	AMRITSAR	AMRITSAR I	S-NPP	74.96171	31.81078	14:00:00	D	3.30
21	AMRITSAR	AMRITSAR II	S-NPP	74.65060	31.55769	14:00:00	D	7.70
22	AMRITSAR	AMRITSAR II	S-NPP	74.64675	31.56044	14:00:00	D	4.50
23	AMRITSAR	AMRITSAR II	S-NPP	74.63219	31.59490	14:00:00	D	3.70
24	AMRITSAR	AMRITSAR II	S-NPP	74.61373	31.61998	14:00:00	D	6.20
25	AMRITSAR	AMRITSAR II	S-NPP	74.61877	31.62047	14:00:00	D	6.20
26	AMRITSAR	AMRITSAR II	S-NPP	74.86935	31.67826	14:00:00	D	2.30
27	AMRITSAR	AMRITSAR II	S-NPP	74.85481	31.67938	14:00:00	D	5.30
28	AMRITSAR	AMRITSAR II	S-NPP	74.85314	31.68134	14:00:00	D	2.80

29	AMRITSAR	AMRITSAR II	S-NPP	74.89796	31.70360	14:00:00	D	3.50
30	AMRITSAR	BABA BAKALA	S-NPP	75.25667	31.50496	14:00:00	D	4.50
31	AMRITSAR	BABA BAKALA	S-NPP	75.25897	31.50552	14:00:00	D	3.70
32	AMRITSAR	BABA BAKALA	S-NPP	75.22771	31.51630	14:00:00	D	12.90
33	AMRITSAR	BABA BAKALA	S-NPP	75.25882	31.53299	14:00:00	D	17.50
34	AMRITSAR	BABA BAKALA	S-NPP	75.26430	31.53348	14:00:00	D	17.50
35	AMRITSAR	BABA BAKALA	S-NPP	75.26376	31.53807	14:00:00	D	9.70
36	AMRITSAR	BABA BAKALA	S-NPP	75.13077	31.54910	14:00:00	D	4.00
37	AMRITSAR	BABA BAKALA	S-NPP	75.20645	31.55606	14:00:00	D	3.60
38	AMRITSAR	BABA BAKALA	S-NPP	75.28239	31.56763	14:00:00	D	5.00
39	AMRITSAR	BABA BAKALA	S-NPP	75.25280	31.58350	14:00:00	D	3.40
40	AMRITSAR	BABA BAKALA	S-NPP	75.28516	31.59114	14:00:00	D	2.80
41	AMRITSAR	BABA BAKALA	S-NPP	75.28463	31.59575	14:00:00	D	8.30
42	AMRITSAR	BABA BAKALA	S-NPP	75.25365	31.59664	14:00:00	D	10.10
43	AMRITSAR	BABA BAKALA	S-NPP	75.25116	31.59728	14:00:00	D	10.50
44	AMRITSAR	BABA BAKALA	S-NPP	75.25664	31.59779	14:00:00	D	10.50
45	AMRITSAR	BABA BAKALA	S-NPP	75.25310	31.60124	14:00:00	D	10.10
46	AMRITSAR	BABA BAKALA	S-NPP	75.19193	31.60515	14:00:00	D	3.40
47	AMRITSAR	BABA BAKALA	S-NPP	75.19501	31.60590	14:00:00	D	4.50
48	AMRITSAR	BABA BAKALA	S-NPP	75.23312	31.60951	14:00:00	D	3.10
49	AMRITSAR	BABA BAKALA	S-NPP	75.24595	31.61454	14:00:00	D	3.70
50	AMRITSAR	BABA BAKALA	S-NPP	75.27892	31.61743	14:00:00	D	3.70
51	AMRITSAR	BABA BAKALA	S-NPP	75.28189	31.61876	14:00:00	D	6.70
52	AMRITSAR	BABA BAKALA	S-NPP	75.16798	31.62152	14:00:00	D	4.20
53	AMRITSAR	BABA BAKALA	S-NPP	75.22295	31.62178	14:00:00	D	6.80
54	AMRITSAR	BABA BAKALA	S-NPP	75.28387	31.62251	14:00:00	D	7.60
55	AMRITSAR	BABA BAKALA	S-NPP	75.22732	31.63145	14:00:00	D	4.40
56	AMRITSAR	BABA BAKALA	S-NPP	75.23279	31.63193	14:00:00	D	4.40
57	AMRITSAR	BABA BAKALA	S-NPP	75.33258	31.63611	14:00:00	D	7.70
58	AMRITSAR	BABA BAKALA	S-NPP	75.28719	31.64142	14:00:00	D	3.00
59	AMRITSAR	BABA BAKALA	S-NPP	75.17064	31.64487	14:00:00	D	5.70
60	AMRITSAR	BABA BAKALA	S-NPP	75.21309	31.65799	14:00:00	D	8.20

61	BARNALA	BARNALA	S-NPP	75.49029	30.55678	14:00:00	D	10.20
62	BARNALA	BARNALA	S-NPP	75.49301	30.55820	14:00:00	D	16.90
63	BARNALA	BARNALA	S-NPP	75.48974	30.56138	14:00:00	D	10.20
64	BARNALA	TAPPA	S-NPP	75.35309	30.34155	14:00:00	D	14.90
65	BARNALA	TAPPA	S-NPP	75.35491	30.34155	14:00:00	D	27.20
66	BARNALA	TAPPA	S-NPP	75.35839	30.34204	14:00:00	D	15.10
67	BARNALA	TAPPA	S-NPP	75.38443	30.34900	14:00:00	D	21.40
68	BARNALA	TAPPA	S-NPP	75.38620	30.34921	14:00:00	D	25.90
69	BARNALA	TAPPA	S-NPP	75.38387	30.35357	14:00:00	D	10.60
70	BARNALA	TAPPA	S-NPP	75.38567	30.35377	14:00:00	D	25.90
71	BATHINDA	BATHINDA	S-NPP	74.95782	30.08792	14:00:00	D	1.90
72	BATHINDA	BATHINDA	S-NPP	74.98775	30.09074	14:00:00	D	3.10
73	BATHINDA	BATHINDA	S-NPP	74.99163	30.10009	14:00:00	D	2.70
74	BATHINDA	BATHINDA	S-NPP	74.98989	30.10160	14:00:00	D	2.10
75	BATHINDA	BATHINDA	S-NPP	74.84471	30.11285	14:00:00	D	2.60
76	BATHINDA	BATHINDA	S-NPP	74.88403	30.11666	14:00:00	D	1.40
77	BATHINDA	BATHINDA	S-NPP	74.65777	30.15625	14:00:00	D	5.00
78	BATHINDA	BATHINDA	S-NPP	74.78311	30.26243	14:00:00	D	2.40
79	BATHINDA	BATHINDA	S-NPP	74.87945	30.31118	14:00:00	D	2.40
80	BATHINDA	BATHINDA	S-NPP	74.82769	30.36425	14:00:00	D	7.40
81	BATHINDA	BATHINDA	S-NPP	74.83263	30.36474	14:00:00	D	7.40
82	BATHINDA	BATHINDA	S-NPP	74.91207	30.37258	14:00:00	D	3.50
83	BATHINDA	RAMPURA PHUL	S-NPP	75.25774	30.30918	14:00:00	D	15.20
84	BATHINDA	RAMPURA PHUL	S-NPP	75.21674	30.37023	14:00:00	D	16.20
85	BATHINDA	RAMPURA PHUL	S-NPP	75.14718	30.38185	14:00:00	D	4.30
86	BATHINDA	RAMPURA PHUL	S-NPP	75.13008	30.39385	14:00:00	D	4.30
87	BATHINDA	TALWANDI SABO	S-NPP	75.16589	29.78889	14:00:00	D	10.70
88	BATHINDA	TALWANDI SABO	S-NPP	75.14680	29.81872	14:00:00	D	29.20
89	BATHINDA	TALWANDI SABO	S-NPP	75.11774	29.84753	14:00:00	D	4.60
90	BATHINDA	TALWANDI SABO	S-NPP	74.99589	29.87448	14:00:00	D	13.20
91	BATHINDA	TALWANDI SABO	S-NPP	74.99294	29.87560	14:00:00	D	24.30
92	BATHINDA	TALWANDI SABO	S-NPP	74.99036	29.87844	14:00:00	D	13.20

93	BATHINDA	TALWANDI SABO	S-NPP	74.99532	29.87890	14:00:00	D	13.20
94	BATHINDA	TALWANDI SABO	S-NPP	75.09146	29.96012	14:00:00	D	5.70
95	BATHINDA	TALWANDI SABO	S-NPP	74.88451	29.96639	14:00:00	D	9.30
96	BATHINDA	TALWANDI SABO	S-NPP	74.97271	29.99669	14:00:00	D	3.60
97	BATHINDA	TALWANDI SABO	S-NPP	75.16628	29.99683	14:00:00	D	3.40
98	BATHINDA	TALWANDI SABO	S-NPP	74.95116	30.04837	14:00:00	D	6.30
99	BATHINDA	TALWANDI SABO	S-NPP	74.95612	30.04886	14:00:00	D	6.30
100	BATHINDA	TALWANDI SABO	S-NPP	74.97767	30.07791	14:00:00	D	17.10
101	FARIDKOT	FARIDKOT	S-NPP	74.73988	30.49720	14:00:00	D	1.90
102	FARIDKOT	FARIDKOT	S-NPP	74.75294	30.51179	14:00:00	D	2.50
103	FARIDKOT	FARIDKOT	S-NPP	74.75451	30.53865	14:00:00	D	3.10
104	FARIDKOT	FARIDKOT	S-NPP	74.82317	30.54977	14:00:00	D	3.00
105	FARIDKOT	FARIDKOT	S-NPP	74.83696	30.56006	14:00:00	D	18.60
106	FARIDKOT	FARIDKOT	S-NPP	74.84194	30.56054	14:00:00	D	18.60
107	FARIDKOT	FARIDKOT	S-NPP	74.70480	30.57823	14:00:00	D	2.70
108	FARIDKOT	FARIDKOT	S-NPP	74.88820	30.61321	14:00:00	D	5.40
109	FARIDKOT	FARIDKOT	S-NPP	74.88589	30.61421	14:00:00	D	12.60
110	FARIDKOT	FARIDKOT	S-NPP	74.88765	30.61765	14:00:00	D	17.70
111	FARIDKOT	FARIDKOT	S-NPP	74.79269	30.64897	14:00:00	D	14.40
112	FARIDKOT	FARIDKOT	S-NPP	74.50775	30.69661	14:00:00	D	8.00
113	FARIDKOT	FARIDKOT	S-NPP	74.62911	30.70383	14:00:00	D	3.60
114	FARIDKOT	FARIDKOT	S-NPP	74.63147	30.70418	14:00:00	D	5.60
115	FARIDKOT	FARIDKOT	S-NPP	74.82444	30.74022	14:00:00	D	25.30
116	FARIDKOT	FARIDKOT	S-NPP	74.74749	30.75075	14:00:00	D	6.10
117	FARIDKOT	FARIDKOT	S-NPP	74.75244	30.75122	14:00:00	D	6.10
118	FARIDKOT	FARIDKOT	S-NPP	74.76733	30.75266	14:00:00	D	5.40
119	FARIDKOT	FARIDKOT	S-NPP	74.55396	30.75399	14:00:00	D	1.00
120	FARIDKOT	FARIDKOT	S-NPP	74.67185	30.75676	14:00:00	D	8.40
121	FARIDKOT	FARIDKOT	S-NPP	74.73647	30.75860	14:00:00	D	6.40
122	FARIDKOT	FARIDKOT	TERRA-1	74.64552	30.75895	10:43:00	D	49.23
123	FARIDKOT	FARIDKOT	S-NPP	74.52393	30.75982	14:00:00	D	7.60
124	FARIDKOT	FARIDKOT	S-NPP	74.70081	30.76404	14:00:00	D	4.40

125	FARIDKOT	FARIDKOT	S-NPP	74.61157	30.76413	14:00:00	D	3.30
126	FARIDKOT	FARIDKOT	S-NPP	74.72765	30.78896	14:00:00	D	4.40
127	FARIDKOT	FARIDKOT	S-NPP	74.73258	30.78945	14:00:00	D	8.80
128	FARIDKOT	FARIDKOT	S-NPP	74.56830	30.79518	14:00:00	D	5.60
129	FARIDKOT	FARIDKOT	S-NPP	74.58282	30.79665	14:00:00	D	2.70
130	FARIDKOT	FARIDKOT	S-NPP	74.57970	30.79688	14:00:00	D	3.10
131	FARIDKOT	FARIDKOT	S-NPP	74.56290	30.79905	14:00:00	D	13.70
132	FARIDKOT	FARIDKOT	S-NPP	74.75130	30.80023	14:00:00	D	5.90
133	FARIDKOT	FARIDKOT	S-NPP	74.70656	30.81329	14:00:00	D	4.40
134	FARIDKOT	FARIDKOT	S-NPP	74.70950	30.81390	14:00:00	D	3.70
135	FARIDKOT	FARIDKOT	S-NPP	74.68950	30.82949	14:00:00	D	4.00
136	FARIDKOT	JAITO	S-NPP	74.92393	30.45792	14:00:00	D	4.40
137	FARIDKOT	JAITO	S-NPP	74.92282	30.46680	14:00:00	D	6.60
138	FARIDKOT	JAITO	S-NPP	74.83868	30.50653	14:00:00	D	5.00
139	FARIDKOT	JAITO	S-NPP	74.84184	30.50812	14:00:00	D	4.60
140	FATEHGARH SAHIB	ALMOH	S-NPP	76.16223	30.54746	14:00:00	D	2.90
141	FATEHGARH SAHIB	ALMOH	S-NPP	76.20808	30.57080	14:00:00	D	8.00
142	FATEHGARH SAHIB	ALMOH	S-NPP	76.16393	30.58636	14:00:00	D	6.60
143	FATEHGARH SAHIB	ALMOH	S-NPP	76.15208	30.58664	12:24:00	D	13.50
144	FATEHGARH SAHIB	ALMOH	S-NPP	76.16341	30.59116	14:00:00	D	6.60
145	FATEHGARH SAHIB	ALMOH	S-NPP	76.27334	30.60542	12:18:00	D	5.60
146	FATEHGARH SAHIB	ALMOH	S-NPP	76.27744	30.60605	14:00:00	D	19.30
147	FATEHGARH SAHIB	ALMOH	S-NPP	76.27926	30.62393	14:00:00	D	9.30
148	FATEHGARH SAHIB	ALMOH	S-NPP	76.27533	30.62539	14:00:00	D	4.70
149	FATEHGARH SAHIB	ALMOH	S-NPP	76.15569	30.63796	14:00:00	D	6.90
150	FATEHGARH SAHIB	ALMOH	S-NPP	76.15804	30.63915	14:00:00	D	9.00
151	FATEHGARH SAHIB	BASSI PATHANAN	S-NPP	76.44828	30.67219	14:00:00	D	1.90
152	FATEHGARH SAHIB	BASSI PATHANAN	S-NPP	76.45918	30.68790	14:00:00	D	6.30
153	FATEHGARH SAHIB	BASSI PATHANAN	S-NPP	76.45865	30.69280	14:00:00	D	6.30
154	FATEHGARH SAHIB	FATEHGARH SAHIB	S-NPP	76.44449	30.45541	14:00:00	D	4.90
155	FATEHGARH SAHIB	FATEHGARH SAHIB	S-NPP	76.42976	30.53287	14:00:00	D	4.90
156	FATEHGARH SAHIB	FATEHGARH SAHIB	S-NPP	76.43402	30.53600	14:00:00	D	8.80

157	FATEHGARH SAHIB	FATEHGARH SAHIB	S-NPP	76.53945	30.56726	14:00:00	D	6.80
158	FATEHGARH SAHIB	FATEHGARH SAHIB	S-NPP	76.54574	30.56782	14:00:00	D	7.70
159	FATEHGARH SAHIB	FATEHGARH SAHIB	S-NPP	76.53764	30.56915	14:00:00	D	7.10
160	FATEHGARH SAHIB	FATEHGARH SAHIB	S-NPP	76.52347	30.58283	14:00:00	D	17.30
161	FATEHGARH SAHIB	FATEHGARH SAHIB	S-NPP	76.53551	30.58879	14:00:00	D	14.30
162	FATEHGARH SAHIB	FATEHGARH SAHIB	S-NPP	76.52024	30.61227	14:00:00	D	10.20
163	FATEHGARH SAHIB	KHAMANOH	S-NPP	76.31429	30.73774	14:00:00	D	5.40
164	FATEHGARH SAHIB	KHAMANOH	S-NPP	76.31591	30.73951	14:00:00	D	6.90
165	FATEHGARH SAHIB	KHAMANOH	S-NPP	76.34084	30.77915	14:00:00	D	10.40
166	FIROZPUR	ABOHAR	S-NPP	74.24421	30.12125	14:00:00	D	4.70
167	FIROZPUR	ABOHAR	S-NPP	74.24744	30.12225	14:00:00	D	5.00
168	FIROZPUR	ABOHAR	S-NPP	74.32119	30.20234	14:00:00	D	5.10
169	FIROZPUR	FAZILKA	S-NPP	74.03024	30.19758	14:00:00	D	2.90
170	FIROZPUR	FAZILKA	S-NPP	74.05006	30.21672	14:00:00	D	10.20
171	FIROZPUR	FAZILKA	S-NPP	74.05171	30.21695	14:00:00	D	8.30
172	FIROZPUR	FAZILKA	S-NPP	74.05775	30.23886	14:00:00	D	3.50
173	FIROZPUR	FAZILKA	S-NPP	74.03996	30.27110	14:00:00	D	11.70
174	FIROZPUR	FAZILKA	S-NPP	74.04439	30.27156	14:00:00	D	7.90
175	FIROZPUR	FAZILKA	S-NPP	73.97655	30.27720	14:00:00	D	12.60
176	FIROZPUR	FAZILKA	S-NPP	74.29442	30.28009	14:00:00	D	6.50
177	FIROZPUR	FAZILKA	S-NPP	73.99190	30.29581	14:00:00	D	1.60
178	FIROZPUR	FAZILKA	S-NPP	73.96385	30.30555	14:00:00	D	6.90
179	FIROZPUR	FAZILKA	S-NPP	73.96036	30.30609	14:00:00	D	3.30
180	FIROZPUR	FAZILKA	S-NPP	73.97263	30.30648	14:00:00	D	4.00
181	FIROZPUR	FAZILKA	S-NPP	73.96474	30.30653	14:00:00	D	3.30
182	FIROZPUR	FAZILKA	S-NPP	73.97701	30.30696	14:00:00	D	5.00
183	FIROZPUR	FAZILKA	S-NPP	73.97354	30.30741	14:00:00	D	5.60
184	FIROZPUR	FAZILKA	S-NPP	74.19773	30.31325	14:00:00	D	5.50
185	FIROZPUR	FAZILKA	S-NPP	74.00826	30.31516	14:00:00	D	1.20
186	FIROZPUR	FAZILKA	S-NPP	74.04709	30.31872	14:00:00	D	3.70
187	FIROZPUR	FAZILKA	S-NPP	74.04814	30.31917	14:00:00	D	3.60
188	FIROZPUR	FAZILKA	S-NPP	74.30257	30.37041	14:00:00	D	2.70

189	FIROZPUR	FAZILKA	S-NPP	74.19463	30.38109	14:00:00	D	3.70
190	FIROZPUR	FAZILKA	S-NPP	74.20948	30.40844	14:00:00	D	4.80
191	FIROZPUR	FAZILKA	S-NPP	73.96713	30.42583	14:00:00	D	9.10
192	FIROZPUR	FAZILKA	S-NPP	74.02250	30.44846	14:00:00	D	5.70
193	FIROZPUR	FAZILKA	S-NPP	74.11092	30.46600	14:00:00	D	9.80
194	FIROZPUR	FAZILKA	S-NPP	74.14256	30.50357	14:00:00	D	4.50
195	FIROZPUR	FAZILKA	S-NPP	74.14709	30.50403	14:00:00	D	4.50
196	FIROZPUR	FIROZPUR	S-NPP	74.84007	30.77759	14:00:00	D	2.60
197	FIROZPUR	FIROZPUR	S-NPP	74.51153	30.78060	14:00:00	D	22.60
198	FIROZPUR	FIROZPUR	S-NPP	74.83952	30.78203	14:00:00	D	7.10
199	FIROZPUR	FIROZPUR	S-NPP	74.44968	30.78448	14:00:00	D	7.10
200	FIROZPUR	FIROZPUR	S-NPP	74.44770	30.78727	14:00:00	D	7.50
201	FIROZPUR	FIROZPUR	S-NPP	74.51949	30.79462	14:00:00	D	4.10
202	FIROZPUR	FIROZPUR	S-NPP	74.52108	30.79571	14:00:00	D	4.60
203	FIROZPUR	FIROZPUR	S-NPP	74.56459	30.79986	14:00:00	D	9.90
204	FIROZPUR	FIROZPUR	S-NPP	74.53819	30.80094	14:00:00	D	32.70
205	FIROZPUR	FIROZPUR	S-NPP	74.53500	30.80145	14:00:00	D	48.30
206	FIROZPUR	FIROZPUR	S-NPP	74.56235	30.80341	14:00:00	D	13.70
207	FIROZPUR	FIROZPUR	S-NPP	74.56403	30.80422	14:00:00	D	9.90
208	FIROZPUR	FIROZPUR	S-NPP	74.53220	30.82323	14:00:00	D	19.70
209	FIROZPUR	FIROZPUR	S-NPP	74.59093	30.82448	14:00:00	D	2.80
210	FIROZPUR	FIROZPUR	S-NPP	74.68344	30.83781	14:00:00	D	2.60
211	FIROZPUR	FIROZPUR	S-NPP	74.72079	30.85923	14:00:00	D	6.30
212	FIROZPUR	FIROZPUR	S-NPP	74.77386	30.87777	14:00:00	D	2.00
213	FIROZPUR	FIROZPUR	S-NPP	74.37445	30.88214	14:00:00	D	2.40
214	FIROZPUR	FIROZPUR	S-NPP	74.77331	30.88219	14:00:00	D	4.00
215	FIROZPUR	FIROZPUR	S-NPP	74.45234	30.88648	14:00:00	D	4.20
216	FIROZPUR	FIROZPUR	S-NPP	74.50934	30.88711	14:00:00	D	3.00
217	FIROZPUR	FIROZPUR	S-NPP	74.50878	30.89146	14:00:00	D	4.40
218	FIROZPUR	FIROZPUR	S-NPP	74.77052	30.90431	14:00:00	D	4.40
219	FIROZPUR	FIROZPUR	S-NPP	74.77073	30.91639	14:00:00	D	11.10
220	FIROZPUR	FIROZPUR	S-NPP	74.76888	30.91758	14:00:00	D	11.40

221	FIROZPUR	FIROZPUR	S-NPP	74.81259	30.94720	14:00:00	D	2.50
222	FIROZPUR	FIROZPUR	S-NPP	74.55821	30.97613	14:00:00	D	7.70
223	FIROZPUR	FIROZPUR	S-NPP	74.75294	31.01768	14:00:00	D	2.80
224	FIROZPUR	FIROZPUR	S-NPP	74.62204	31.03567	14:00:00	D	5.30
225	FIROZPUR	FIROZPUR	S-NPP	74.70632	31.04365	14:00:00	D	4.00
226	FIROZPUR	JALALABAD	S-NPP	74.23125	30.46091	14:00:00	D	28.40
227	FIROZPUR	JALALABAD	S-NPP	74.23245	30.48692	14:00:00	D	2.50
228	FIROZPUR	JALALABAD	S-NPP	74.23704	30.48738	14:00:00	D	6.70
229	FIROZPUR	JALALABAD	S-NPP	74.29168	30.49723	14:00:00	D	3.30
230	FIROZPUR	JALALABAD	S-NPP	74.33709	30.55640	14:00:00	D	5.70
231	FIROZPUR	JALALABAD	S-NPP	74.33541	30.55813	14:00:00	D	8.10
232	FIROZPUR	JALALABAD	S-NPP	74.33653	30.56069	14:00:00	D	5.70
233	FIROZPUR	JALALABAD	S-NPP	74.34023	30.60454	14:00:00	D	3.60
234	FIROZPUR	JALALABAD	S-NPP	74.33799	30.62172	14:00:00	D	13.50
235	FIROZPUR	JALALABAD	S-NPP	74.25457	30.64791	14:00:00	D	2.10
236	FIROZPUR	JALALABAD	S-NPP	74.31896	30.65892	14:00:00	D	3.30
237	FIROZPUR	JALALABAD	S-NPP	74.37067	30.67895	14:00:00	D	8.30
238	FIROZPUR	JALALABAD	S-NPP	74.36371	30.69571	14:00:00	D	4.40
239	FIROZPUR	JALALABAD	S-NPP	74.42450	30.70605	14:00:00	D	4.00
240	FIROZPUR	JALALABAD	S-NPP	74.41222	30.72672	14:00:00	D	13.10
241	FIROZPUR	JALALABAD	S-NPP	74.41695	30.72719	14:00:00	D	10.70
242	FIROZPUR	JALALABAD	S-NPP	74.43035	30.77234	14:00:00	D	2.00
243	FIROZPUR	ZIRA	S-NPP	75.02531	30.92464	14:00:00	D	6.90
244	FIROZPUR	ZIRA	S-NPP	74.82880	30.93973	14:00:00	D	3.20
245	FIROZPUR	ZIRA	S-NPP	75.12196	30.97130	14:00:00	D	2.20
246	FIROZPUR	ZIRA	S-NPP	74.83401	31.02118	14:00:00	D	2.10
247	GURDASPUR	BATALA	S-NPP	75.33203	31.64074	14:00:00	D	2.30
248	GURDASPUR	BATALA	S-NPP	75.33981	31.66944	14:00:00	D	3.30
249	GURDASPUR	BATALA	S-NPP	75.34930	31.68431	14:00:00	D	4.10
250	GURDASPUR	BATALA	S-NPP	75.35486	31.68482	14:00:00	D	6.70
251	GURDASPUR	BATALA	S-NPP	75.26979	31.73228	14:00:00	D	4.90
252	GURDASPUR	BATALA	S-NPP	75.22353	31.74678	14:00:00	D	2.30

253	GURDASPUR	BATALA	S-NPP	75.43681	31.75155	14:00:00	D	5.00
254	GURDASPUR	BATALA	S-NPP	75.20600	31.75449	14:00:00	D	5.60
255	GURDASPUR	BATALA	S-NPP	75.19450	31.75809	14:00:00	D	4.00
256	GURDASPUR	BATALA	S-NPP	75.21863	31.78813	14:00:00	D	29.10
257	GURDASPUR	BATALA	S-NPP	75.12019	31.80186	14:00:00	D	3.40
258	GURDASPUR	BATALA	S-NPP	75.11774	31.80190	14:00:00	D	1.90
259	GURDASPUR	BATALA	S-NPP	75.33986	31.80389	14:00:00	D	3.20
260	GURDASPUR	BATALA	S-NPP	74.99146	31.83179	14:00:00	D	5.20
261	GURDASPUR	BATALA	S-NPP	75.24890	31.83630	14:00:00	D	2.50
262	GURDASPUR	BATALA	S-NPP	75.07082	31.84819	14:00:00	D	4.00
263	GURDASPUR	BATALA	S-NPP	75.15981	31.88403	14:00:00	D	8.10
264	GURDASPUR	BATALA	S-NPP	74.94861	31.89769	14:00:00	D	3.70
265	GURDASPUR	BATALA	S-NPP	75.18501	31.90491	14:00:00	D	2.40
266	GURDASPUR	DERA BABA NANAK	S-NPP	75.13365	31.91865	14:00:00	D	4.40
267	GURDASPUR	DERA BABA NANAK	S-NPP	75.09715	32.03972	14:00:00	D	6.80
268	GURDASPUR	GURDASPUR	S-NPP	75.28439	31.86740	14:00:00	D	6.30
269	GURDASPUR	GURDASPUR	S-NPP	75.34645	31.91508	14:00:00	D	2.60
270	GURDASPUR	GURDASPUR	S-NPP	75.34592	31.91971	14:00:00	D	3.70
271	GURDASPUR	GURDASPUR	S-NPP	75.26735	31.94420	14:00:00	D	11.00
272	GURDASPUR	GURDASPUR	S-NPP	75.20428	31.95728	14:00:00	D	4.40
273	GURDASPUR	GURDASPUR	S-NPP	75.14275	31.96106	14:00:00	D	2.80
274	GURDASPUR	GURDASPUR	S-NPP	75.20374	31.96188	14:00:00	D	4.40
275	GURDASPUR	GURDASPUR	S-NPP	75.29648	31.98413	14:00:00	D	7.30
276	GURDASPUR	GURDASPUR	S-NPP	75.12725	32.01923	14:00:00	D	5.20
277	GURDASPUR	GURDASPUR	S-NPP	75.13023	32.02013	14:00:00	D	4.30
278	JALANDHAR	JALANDHAR II	S-NPP	75.52452	31.41974	14:00:00	D	3.10
279	JALANDHAR	JALANDHAR II	S-NPP	75.52151	31.42174	14:00:00	D	3.10
280	JALANDHAR	JALANDHAR II	S-NPP	75.52312	31.50667	14:00:00	D	3.60
281	JALANDHAR	NAKODAR	S-NPP	75.39593	31.03785	14:00:00	D	3.80
282	JALANDHAR	NAKODAR	S-NPP	75.39539	31.04245	14:00:00	D	3.80
283	JALANDHAR	NAKODAR	S-NPP	75.47070	31.06337	14:00:00	D	3.70
284	JALANDHAR	NAKODAR	S-NPP	75.47015	31.06800	14:00:00	D	3.70

285	JALANDHAR	NAKODAR	S-NPP	75.39527	31.18467	14:00:00	D	3.20
286	JALANDHAR	NAKODAR	S-NPP	75.38592	31.21646	14:00:00	D	3.30
287	JALANDHAR	NAKODAR	S-NPP	75.41793	31.22865	14:00:00	D	5.50
288	JALANDHAR	PHILLAUR	S-NPP	75.64125	31.05535	14:00:00	D	32.00
289	JALANDHAR	PHILLAUR	S-NPP	75.74400	31.14689	14:00:00	D	2.80
290	JALANDHAR	SHAHKOT	S-NPP	75.39646	31.03325	14:00:00	D	3.30
291	JALANDHAR	SHAHKOT	S-NPP	75.21754	31.06744	14:00:00	D	5.80
292	JALANDHAR	SHAHKOT	S-NPP	75.21503	31.06764	14:00:00	D	5.80
293	JALANDHAR	SHAHKOT	S-NPP	75.34775	31.09795	14:00:00	D	6.10
294	JALANDHAR	SHAHKOT	S-NPP	75.34719	31.10255	14:00:00	D	101.20
295	JALANDHAR	SHAHKOT	S-NPP	75.36902	31.10449	14:00:00	D	9.50
296	JALANDHAR	SHAHKOT	S-NPP	75.37449	31.10498	14:00:00	D	10.40
297	JALANDHAR	SHAHKOT	S-NPP	75.36847	31.10909	14:00:00	D	9.50
298	JALANDHAR	SHAHKOT	S-NPP	75.37394	31.10958	14:00:00	D	10.40
299	JALANDHAR	SHAHKOT	S-NPP	75.29553	31.16737	14:00:00	D	17.90
300	KAPURTHALA	BHOLATH	S-NPP	75.50372	31.47665	14:00:00	D	3.50
301	KAPURTHALA	BHOLATH	S-NPP	75.49702	31.48546	14:00:00	D	4.80
302	KAPURTHALA	BHOLATH	S-NPP	75.50830	31.48648	14:00:00	D	2.90
303	KAPURTHALA	BHOLATH	S-NPP	75.47906	31.49324	14:00:00	D	4.20
304	KAPURTHALA	BHOLATH	S-NPP	75.50687	31.57850	14:00:00	D	27.80
305	KAPURTHALA	BHOLATH	S-NPP	75.50632	31.58317	14:00:00	D	27.80
306	KAPURTHALA	SULTANPUR LODHI	S-NPP	75.15527	31.22331	14:00:00	D	4.30
307	LUDHIANA	JAGRAON	S-NPP	75.45568	30.73446	14:00:00	D	2.70
308	LUDHIANA	JAGRAON	S-NPP	75.40022	30.77028	14:00:00	D	3.80
309	LUDHIANA	JAGRAON	S-NPP	75.40189	30.77122	14:00:00	D	2.80
310	LUDHIANA	JAGRAON	S-NPP	75.50625	30.80767	14:00:00	D	9.10
311	LUDHIANA	JAGRAON	S-NPP	75.51176	30.80817	14:00:00	D	11.60
312	LUDHIANA	KHANNA	S-NPP	76.14925	30.69556	14:00:00	D	5.30
313	LUDHIANA	KHANNA	S-NPP	76.22654	30.71208	14:00:00	D	6.60
314	LUDHIANA	KHANNA	S-NPP	76.22765	30.74038	14:00:00	D	4.40
315	LUDHIANA	KHANNA	S-NPP	76.24767	30.78106	14:00:00	D	3.30
316	LUDHIANA	SAMRALA	S-NPP	76.17921	30.73635	14:00:00	D	3.80

317	LUDHIANA	SAMRALA	S-NPP	76.18311	30.75611	14:00:00	D	7.70
318	LUDHIANA	SAMRALA	S-NPP	76.18806	30.76625	14:00:00	D	5.80
319	LUDHIANA	SAMRALA	S-NPP	76.26790	30.82188	14:00:00	D	4.30
320	LUDHIANA	SAMRALA	S-NPP	76.22698	31.00077	14:00:00	D	7.10
321	MANSA	BUDHLADA	S-NPP	75.56582	29.76558	14:00:00	D	3.10
322	MANSA	BUDHLADA	S-NPP	75.67001	29.83036	14:00:00	D	3.10
323	MANSA	BUDHLADA	S-NPP	75.67238	29.83147	14:00:00	D	9.00
324	MANSA	BUDHLADA	S-NPP	75.66946	29.83497	14:00:00	D	3.10
325	MANSA	BUDHLADA	S-NPP	75.72731	29.85886	14:00:00	D	3.70
326	MANSA	BUDHLADA	S-NPP	75.55973	29.88535	14:00:00	D	2.80
327	MANSA	BUDHLADA	S-NPP	75.58925	29.91134	14:00:00	D	4.80
328	MANSA	MANSA	S-NPP	75.34007	29.89195	14:00:00	D	2.50
329	MANSA	MANSA	S-NPP	75.55479	30.12043	14:00:00	D	3.50
330	MANSA	MANSA	S-NPP	75.50002	30.14242	14:00:00	D	2.30
331	MANSA	MANSA	S-NPP	75.50307	30.14333	14:00:00	D	2.80
332	MANSA	MANSA	S-NPP	75.46623	30.15324	14:00:00	D	6.50
333	MANSA	MANSA	S-NPP	75.45168	30.18426	14:00:00	D	3.80
334	MANSA	SARDULGARH	S-NPP	75.24213	29.57671	14:00:00	D	3.30
335	MANSA	SARDULGARH	S-NPP	75.19318	29.66032	14:00:00	D	3.20
336	MANSA	SARDULGARH	S-NPP	75.29598	29.66135	14:00:00	D	6.40
337	MANSA	SARDULGARH	S-NPP	75.39919	29.81870	14:00:00	D	3.70
338	MANSA	SARDULGARH	S-NPP	75.40160	29.81988	14:00:00	D	5.40
339	MOGA	BAGHA PURANA	S-NPP	74.92073	30.74479	14:00:00	D	6.80
340	MOGA	BAGHA PURANA	S-NPP	75.06879	30.76314	14:00:00	D	2.10
341	MOGA	MOGA	S-NPP	75.36411	30.72132	14:00:00	D	4.80
342	MOGA	MOGA	S-NPP	75.06086	30.78514	14:00:00	D	4.50
343	MUKTSAR	GIDDARBAHA	S-NPP	74.55765	30.23525	14:00:00	D	3.30
344	MUKTSAR	GIDDARBAHA	S-NPP	74.69146	30.24879	14:00:00	D	2.90
345	MUKTSAR	GIDDARBAHA	S-NPP	74.54903	30.26507	14:00:00	D	3.30
346	MUKTSAR	GIDDARBAHA	S-NPP	74.55122	30.26637	14:00:00	D	4.00
347	MUKTSAR	GIDDARBAHA	S-NPP	74.65926	30.27203	14:00:00	D	6.30
348	MUKTSAR	GIDDARBAHA	S-NPP	74.66170	30.27262	14:00:00	D	4.80

349	MUKTSAR	GIDDARBAHA	S-NPP	74.73747	30.29316	14:00:00	D	2.80
350	MUKTSAR	GIDDARBAHA	S-NPP	74.56685	30.29422	14:00:00	D	1.60
351	MUKTSAR	GIDDARBAHA	S-NPP	74.63373	30.30079	14:00:00	D	7.00
352	MUKTSAR	GIDDARBAHA	S-NPP	74.77250	30.36767	14:00:00	D	5.00
353	MUKTSAR	GIDDARBAHA	S-NPP	74.77740	30.36816	14:00:00	D	7.30
354	MUKTSAR	GIDDARBAHA	S-NPP	74.68210	30.38073	14:00:00	D	4.70
355	MUKTSAR	GIDDARBAHA	S-NPP	74.67908	30.38091	14:00:00	D	5.60
356	MUKTSAR	GIDDARBAHA	S-NPP	74.64243	30.39949	14:00:00	D	5.80
357	MUKTSAR	MALAUT	S-NPP	74.69891	30.01444	14:00:00	D	7.30
358	MUKTSAR	MALAUT	S-NPP	74.46758	30.11051	14:00:00	D	11.50
359	MUKTSAR	MALAUT	S-NPP	74.39988	30.12527	14:00:00	D	4.20
360	MUKTSAR	MALAUT	S-NPP	74.40451	30.12576	14:00:00	D	4.20
361	MUKTSAR	MALAUT	S-NPP	74.39931	30.12956	14:00:00	D	4.20
362	MUKTSAR	MALAUT	S-NPP	74.57438	30.13015	14:00:00	D	5.40
363	MUKTSAR	MALAUT	S-NPP	74.44864	30.15878	14:00:00	D	3.30
364	MUKTSAR	MALAUT	S-NPP	74.51344	30.15889	14:00:00	D	2.90
365	MUKTSAR	MALAUT	S-NPP	74.50999	30.16045	14:00:00	D	3.20
366	MUKTSAR	MALAUT	S-NPP	74.44808	30.16308	14:00:00	D	3.30
367	MUKTSAR	MALAUT	S-NPP	74.54295	30.16367	14:00:00	D	5.20
368	MUKTSAR	MALAUT	S-NPP	74.54240	30.16799	14:00:00	D	2.00
369	MUKTSAR	MALAUT	S-NPP	74.45868	30.19027	14:00:00	D	20.90
370	MUKTSAR	MALAUT	S-NPP	74.51627	30.22229	14:00:00	D	3.00
371	MUKTSAR	MALAUT	S-NPP	74.38860	30.22230	14:00:00	D	4.80
372	MUKTSAR	MALAUT	S-NPP	74.41585	30.22946	14:00:00	D	15.40
373	MUKTSAR	MALAUT	S-NPP	74.46544	30.24766	14:00:00	D	8.80
374	MUKTSAR	MALAUT	S-NPP	74.46748	30.24949	14:00:00	D	12.30
375	MUKTSAR	MALAUT	S-NPP	74.37666	30.25801	14:00:00	D	7.20
376	MUKTSAR	MUKTSAR	S-NPP	74.45625	30.33567	14:00:00	D	3.10
377	MUKTSAR	MUKTSAR	S-NPP	74.58253	30.41127	14:00:00	D	28.10
378	MUKTSAR	MUKTSAR	S-NPP	74.58199	30.41562	14:00:00	D	28.10
379	MUKTSAR	MUKTSAR	S-NPP	74.39207	30.44026	14:00:00	D	3.80
380	MUKTSAR	MUKTSAR	S-NPP	74.68667	30.48771	14:00:00	D	3.00

381	MUKTSAR	MUKTSAR	S-NPP	74.45259	30.49587	14:00:00	D	7.30
382	MUKTSAR	MUKTSAR	S-NPP	74.55128	30.51437	14:00:00	D	5.00
383	MUKTSAR	MUKTSAR	S-NPP	74.55074	30.51871	14:00:00	D	5.00
384	MUKTSAR	MUKTSAR	S-NPP	74.58859	30.52685	14:00:00	D	2.20
385	MUKTSAR	MUKTSAR	S-NPP	74.50444	30.54046	14:00:00	D	5.40
386	MUKTSAR	MUKTSAR	S-NPP	74.45066	30.54817	14:00:00	D	29.10
387	MUKTSAR	MUKTSAR	S-NPP	74.38104	30.58245	14:00:00	D	2.90
388	PATIALA	NABHA	S-NPP	76.16980	30.34587	14:00:00	D	4.80
389	PATIALA	NABHA	S-NPP	76.03289	30.34829	14:00:00	D	2.60
390	PATIALA	NABHA	S-NPP	76.06210	30.35087	14:00:00	D	9.30
391	PATIALA	NABHA	S-NPP	76.17464	30.35596	14:00:00	D	1.50
392	PATIALA	NABHA	S-NPP	76.18677	30.45308	14:00:00	D	13.70
393	PATIALA	NABHA	S-NPP	76.33273	30.45584	14:00:00	D	24.20
394	PATIALA	NABHA	S-NPP	76.10093	30.46974	14:00:00	D	6.10
395	PATIALA	NABHA	S-NPP	76.23044	30.49572	14:00:00	D	9.50
396	PATIALA	NABHA	S-NPP	76.22989	30.50053	14:00:00	D	9.50
397	PATIALA	NABHA	S-NPP	76.31758	30.52157	14:00:00	D	2.00
398	PATIALA	NABHA	S-NPP	76.09785	30.53228	14:00:00	D	3.70
399	PATIALA	NABHA	S-NPP	76.21417	30.53313	14:00:00	D	5.80
400	PATIALA	NABHA	S-NPP	76.21184	30.53713	14:00:00	D	5.90
401	PATIALA	NABHA	S-NPP	76.23515	30.54002	12:18:00	D	4.30
402	PATIALA	PATIALA	S-NPP	76.30698	30.13128	14:00:00	D	16.90
403	PATIALA	PATIALA	S-NPP	76.30644	30.13610	14:00:00	D	3.60
404	PATIALA	PATIALA	S-NPP	76.47060	30.15009	14:00:00	D	4.60
405	PATIALA	PATIALA	S-NPP	76.59002	30.17128	12:18:00	D	5.00
406	PATIALA	PATIALA	S-NPP	76.49306	30.17167	14:00:00	D	4.10
407	PATIALA	PATIALA	S-NPP	76.59307	30.17525	14:00:00	D	11.90
408	PATIALA	PATIALA	S-NPP	76.57944	30.17587	12:18:00	D	4.80
409	PATIALA	PATIALA	S-NPP	76.46069	30.18362	14:00:00	D	2.90
410	PATIALA	PATIALA	S-NPP	76.57949	30.18399	14:00:00	D	7.70
411	PATIALA	PATIALA	S-NPP	76.30711	30.18479	14:00:00	D	3.80
412	PATIALA	PATIALA	S-NPP	76.64805	30.19478	14:00:00	D	4.10

413	PATIALA	PATIALA	S-NPP	76.41570	30.19930	14:00:00	D	4.80
414	PATIALA	PATIALA	S-NPP	76.57114	30.20305	14:00:00	D	7.80
415	PATIALA	PATIALA	S-NPP	76.43910	30.21117	14:00:00	D	11.30
416	PATIALA	PATIALA	TERRA-1	76.47697	30.21397	10:43:00	D	14.97
417	PATIALA	PATIALA	S-NPP	76.44644	30.23401	14:00:00	D	6.10
418	PATIALA	PATIALA	S-NPP	76.44259	30.23602	14:00:00	D	7.00
419	PATIALA	PATIALA	S-NPP	76.50552	30.26354	14:00:00	D	5.80
420	PATIALA	PATIALA	S-NPP	76.25899	30.26680	14:00:00	D	10.70
421	PATIALA	PATIALA	S-NPP	76.26498	30.26732	14:00:00	D	10.70
422	PATIALA	PATIALA	S-NPP	76.25845	30.27161	14:00:00	D	10.70
423	PATIALA	PATIALA	S-NPP	76.26443	30.27214	14:00:00	D	10.70
424	PATIALA	PATIALA	S-NPP	76.25790	30.27641	14:00:00	D	17.80
425	PATIALA	PATIALA	S-NPP	76.62388	30.27843	14:00:00	D	4.30
426	PATIALA	PATIALA	S-NPP	76.29395	30.27959	14:00:00	D	4.40
427	PATIALA	PATIALA	S-NPP	76.53500	30.28084	14:00:00	D	6.20
428	PATIALA	PATIALA	S-NPP	76.25738	30.28123	14:00:00	D	17.80
429	PATIALA	PATIALA	S-NPP	76.53394	30.29062	14:00:00	D	40.70
430	PATIALA	PATIALA	S-NPP	76.62265	30.29085	12:18:00	D	3.60
431	PATIALA	PATIALA	S-NPP	76.28106	30.31700	12:18:00	D	7.50
432	PATIALA	PATIALA	S-NPP	76.36092	30.42396	14:00:00	D	8.30
433	PATIALA	PATIALA	S-NPP	76.36159	30.42599	14:00:00	D	13.50
434	PATIALA	PATIALA	S-NPP	76.36038	30.42881	14:00:00	D	5.30
435	PATIALA	PATIALA	S-NPP	76.45850	30.44180	14:00:00	D	6.40
436	PATIALA	PATIALA	S-NPP	76.45902	30.44450	14:00:00	D	6.80
437	PATIALA	RAJPURA	S-NPP	76.71828	30.46235	14:00:00	D	6.70
438	PATIALA	RAJPURA	S-NPP	76.71764	30.46284	14:00:00	D	5.10
439	PATIALA	RAJPURA	S-NPP	76.54793	30.48873	14:00:00	D	2.40
440	PATIALA	RAJPURA	S-NPP	76.72681	30.49305	12:18:00	D	2.20
441	PATIALA	RAJPURA	S-NPP	76.70048	30.50144	14:00:00	D	5.10
442	PATIALA	RAJPURA	S-NPP	76.71282	30.50746	14:00:00	D	3.90
443	PATIALA	RAJPURA	S-NPP	76.55080	30.56527	14:00:00	D	7.40
444	PATIALA	RAJPURA	S-NPP	76.55203	30.56837	14:00:00	D	7.70

445	PATIALA	RAJPURA	S-NPP	76.55025	30.57018	14:00:00	D	7.80
446	PATIALA	RAJPURA	S-NPP	76.52185	30.59755	14:00:00	D	5.70
447	PATIALA	RAJPURA	S-NPP	76.59190	30.59844	14:00:00	D	3.70
448	PATIALA	RAJPURA	S-NPP	76.78022	30.59889	14:00:00	D	2.40
449	PATIALA	RAJPURA	S-NPP	76.56338	30.62585	14:00:00	D	3.00
450	PATIALA	SAMANA	S-NPP	76.21190	29.84851	14:00:00	D	6.00
451	PATIALA	SAMANA	S-NPP	76.21136	29.85328	14:00:00	D	6.00
452	PATIALA	SAMANA	S-NPP	76.16990	29.85434	14:00:00	D	12.10
453	PATIALA	SAMANA	S-NPP	76.16356	29.85856	14:00:00	D	13.80
454	PATIALA	SAMANA	S-NPP	76.16937	29.85910	14:00:00	D	12.10
455	PATIALA	SAMANA	S-NPP	76.12552	29.88386	14:00:00	D	12.50
456	PATIALA	SAMANA	S-NPP	76.12326	29.88439	14:00:00	D	11.50
457	PATIALA	SAMANA	S-NPP	76.12907	29.88490	14:00:00	D	11.50
458	PATIALA	SAMANA	S-NPP	76.10423	29.89711	14:00:00	D	7.00
459	PATIALA	SAMANA	TERRA-1	76.15126	29.92502	10:43:00	D	32.81
460	PATIALA	SAMANA	S-NPP	76.15331	29.93024	14:00:00	D	27.40
461	PATIALA	SAMANA	S-NPP	76.17669	29.93232	14:00:00	D	3.60
462	PATIALA	SAMANA	S-NPP	76.15698	29.94980	14:00:00	D	13.70
463	PATIALA	SAMANA	S-NPP	76.17825	29.97098	14:00:00	D	5.40
464	PATIALA	SAMANA	S-NPP	76.16547	29.97944	14:00:00	D	4.80
465	PATIALA	SAMANA	S-NPP	76.10485	29.98371	14:00:00	D	4.90
466	PATIALA	SAMANA	S-NPP	76.16374	29.98395	14:00:00	D	7.10
467	PATIALA	SAMANA	S-NPP	76.18723	29.98595	14:00:00	D	13.40
468	PATIALA	SAMANA	S-NPP	76.18836	29.98636	14:00:00	D	11.30
469	PATIALA	SAMANA	S-NPP	76.20599	29.98798	14:00:00	D	4.00
470	PATIALA	SAMANA	S-NPP	76.18668	29.99072	14:00:00	D	4.30
471	PATIALA	SAMANA	S-NPP	76.21449	30.00758	14:00:00	D	8.70
472	PATIALA	SAMANA	S-NPP	76.21564	30.00819	14:00:00	D	5.60
473	PATIALA	SAMANA	S-NPP	76.17809	30.01407	14:00:00	D	4.10
474	PATIALA	SAMANA	S-NPP	76.06519	30.02335	14:00:00	D	3.80
475	PATIALA	SAMANA	S-NPP	76.20645	30.02620	14:00:00	D	6.80
476	PATIALA	SAMANA	S-NPP	76.17645	30.02839	14:00:00	D	14.80

477	PATIALA	SAMANA	S-NPP	76.06989	30.03334	14:00:00	D	8.50
478	PATIALA	SAMANA	S-NPP	76.06107	30.19626	14:00:00	D	12.60
479	PATIALA	SAMANA	S-NPP	76.22305	30.21037	14:00:00	D	8.60
480	PATIALA	SAMANA	S-NPP	76.21969	30.21088	14:00:00	D	4.40
481	PATIALA	SAMANA	S-NPP	76.19713	30.22750	14:00:00	D	7.50
482	SANGRUR	MOONAK	S-NPP	76.00426	29.77732	14:00:00	D	3.30
483	SANGRUR	MOONAK	S-NPP	76.00832	29.79195	14:00:00	D	5.00
484	SANGRUR	MOONAK	S-NPP	75.93162	29.89136	14:00:00	D	2.70
485	SANGRUR	MOONAK	S-NPP	75.82253	29.95222	14:00:00	D	1.90
486	SANGRUR	SANGRUR	S-NPP	76.03058	30.15514	14:00:00	D	3.50
487	SANGRUR	SANGRUR	S-NPP	75.62905	30.16332	14:00:00	D	14.80
488	SANGRUR	SANGRUR	S-NPP	75.62649	30.16457	14:00:00	D	9.60
489	SANGRUR	SANGRUR	S-NPP	76.05526	30.19572	14:00:00	D	8.90
490	SANGRUR	SANGRUR	S-NPP	76.05824	30.19629	14:00:00	D	18.20
491	SANGRUR	SANGRUR	S-NPP	76.18474	30.28444	14:00:00	D	17.70
492	SANGRUR	SUNAM	S-NPP	75.97004	30.04340	14:00:00	D	4.60
493	SANGRUR	SUNAM	S-NPP	75.83730	30.05481	14:00:00	D	5.40
494	SANGRUR	SUNAM	S-NPP	75.83488	30.05693	14:00:00	D	7.20
495	SANGRUR	SUNAM	S-NPP	76.02571	30.06281	14:00:00	D	6.30
496	SAS NAGAR	DERABASSI	S-NPP	76.86684	30.41967	14:00:00	D	6.70
497	SBS NAGAR	MOHALI	S-NPP	76.71002	30.61075	12:18:00	D	5.30
498	SBS NAGAR	MOHALI	S-NPP	76.71381	30.61431	12:18:00	D	6.80
499	SBS NAGAR	MOHALI	S-NPP	76.74316	30.63560	12:18:00	D	6.00
500	TARN TARAN	KHADOOR SAHIB	S-NPP	74.97722	31.19762	14:00:00	D	8.40
501	TARN TARAN	KHADOOR SAHIB	S-NPP	75.04295	31.22200	14:00:00	D	5.40
502	TARN TARAN	KHADOOR SAHIB	S-NPP	75.01452	31.23757	14:00:00	D	3.80
503	TARN TARAN	KHADOOR SAHIB	S-NPP	74.99252	31.24458	14:00:00	D	14.60
504	TARN TARAN	KHADOOR SAHIB	S-NPP	75.02279	31.25661	14:00:00	D	4.40
505	TARN TARAN	KHADOOR SAHIB	S-NPP	75.02137	31.25804	14:00:00	D	5.80
506	TARN TARAN	KHADOOR SAHIB	S-NPP	75.03797	31.26263	14:00:00	D	10.50
507	TARN TARAN	KHADOOR SAHIB	S-NPP	75.03657	31.26396	14:00:00	D	10.20
508	TARN TARAN	KHADOOR SAHIB	S-NPP	74.99500	31.26760	14:00:00	D	5.00

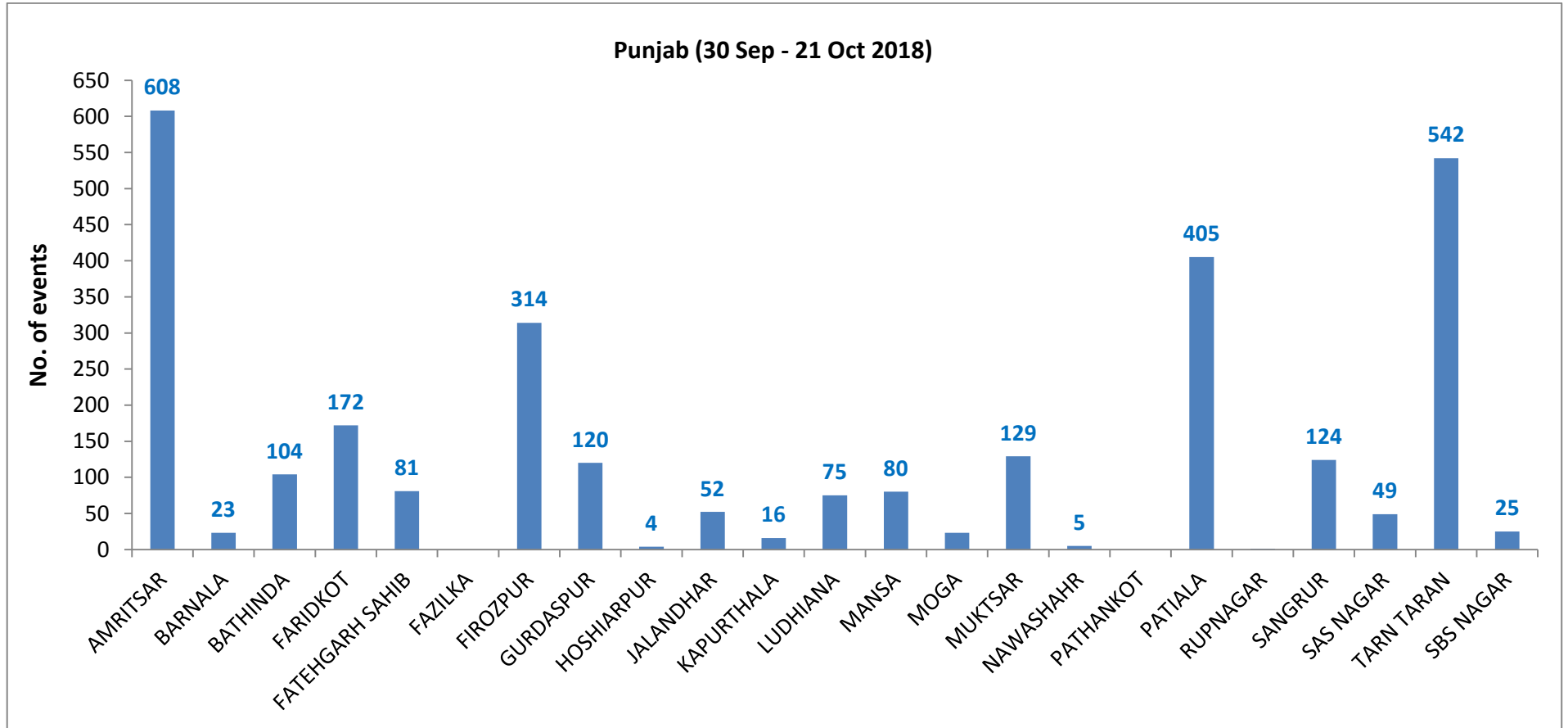
509	TARN TARAN	KHADOOR SAHIB	S-NPP	74.99350	31.26920	14:00:00	D	3.40
510	TARN TARAN	KHADOOR SAHIB	S-NPP	74.99239	31.27821	14:00:00	D	9.40
511	TARN TARAN	KHADOOR SAHIB	S-NPP	75.00175	31.28817	14:00:00	D	7.20
512	TARN TARAN	KHADOOR SAHIB	S-NPP	75.00700	31.28866	14:00:00	D	7.20
513	TARN TARAN	KHADOOR SAHIB	S-NPP	75.02217	31.29461	14:00:00	D	12.30
514	TARN TARAN	KHADOOR SAHIB	S-NPP	75.03269	31.29557	14:00:00	D	23.90
515	TARN TARAN	KHADOOR SAHIB	S-NPP	74.95963	31.32979	14:00:00	D	7.80
516	TARN TARAN	KHADOOR SAHIB	S-NPP	74.96484	31.33029	14:00:00	D	6.90
517	TARN TARAN	KHADOOR SAHIB	S-NPP	74.94182	31.34628	14:00:00	D	18.70
518	TARN TARAN	KHADOOR SAHIB	S-NPP	74.91016	31.34778	14:00:00	D	4.50
519	TARN TARAN	KHADOOR SAHIB	S-NPP	74.96100	31.36178	14:00:00	D	5.70
520	TARN TARAN	KHADOOR SAHIB	S-NPP	74.95773	31.36283	14:00:00	D	4.10
521	TARN TARAN	KHADOOR SAHIB	S-NPP	74.96295	31.36331	14:00:00	D	5.40
522	TARN TARAN	KHADOOR SAHIB	S-NPP	75.02967	31.36383	14:00:00	D	7.80
523	TARN TARAN	KHADOOR SAHIB	S-NPP	74.96044	31.36628	14:00:00	D	5.70
524	TARN TARAN	KHADOOR SAHIB	S-NPP	74.95716	31.36733	14:00:00	D	4.10
525	TARN TARAN	KHADOOR SAHIB	S-NPP	74.82956	31.38284	14:00:00	D	5.60
526	TARN TARAN	KHADOOR SAHIB	S-NPP	74.78805	31.38348	14:00:00	D	3.80
527	TARN TARAN	KHADOOR SAHIB	S-NPP	75.06129	31.38585	14:00:00	D	2.40
528	TARN TARAN	KHADOOR SAHIB	S-NPP	75.15802	31.38992	14:00:00	D	2.80
529	TARN TARAN	KHADOOR SAHIB	S-NPP	75.16101	31.39017	14:00:00	D	13.60
530	TARN TARAN	KHADOOR SAHIB	S-NPP	75.15746	31.39448	14:00:00	D	11.50
531	TARN TARAN	KHADOOR SAHIB	S-NPP	75.16048	31.39473	14:00:00	D	13.60
532	TARN TARAN	KHADOOR SAHIB	S-NPP	74.81250	31.39479	14:00:00	D	4.30
533	TARN TARAN	KHADOOR SAHIB	S-NPP	75.16283	31.39495	14:00:00	D	13.60
534	TARN TARAN	KHADOOR SAHIB	S-NPP	74.87940	31.40106	14:00:00	D	4.90
535	TARN TARAN	KHADOOR SAHIB	S-NPP	75.04846	31.40300	14:00:00	D	3.10
536	TARN TARAN	KHADOOR SAHIB	S-NPP	74.80627	31.40323	14:00:00	D	8.00
537	TARN TARAN	KHADOOR SAHIB	S-NPP	74.85821	31.40360	14:00:00	D	3.50
538	TARN TARAN	KHADOOR SAHIB	S-NPP	75.16653	31.40911	14:00:00	D	6.20
539	TARN TARAN	KHADOOR SAHIB	S-NPP	75.06326	31.41352	14:00:00	D	5.70
540	TARN TARAN	KHADOOR SAHIB	S-NPP	75.13845	31.41579	14:00:00	D	9.20

541	TARN TARAN	KHADOOR SAHIB	S-NPP	75.14920	31.41676	14:00:00	D	5.70
542	TARN TARAN	KHADOOR SAHIB	S-NPP	75.10582	31.41741	14:00:00	D	4.00
543	TARN TARAN	KHADOOR SAHIB	S-NPP	75.04098	31.42062	14:00:00	D	5.60
544	TARN TARAN	KHADOOR SAHIB	S-NPP	75.04625	31.42111	14:00:00	D	5.60
545	TARN TARAN	KHADOOR SAHIB	S-NPP	74.66933	31.43052	14:00:00	D	11.80
546	TARN TARAN	KHADOOR SAHIB	S-NPP	75.15828	31.43141	14:00:00	D	9.80
547	TARN TARAN	KHADOOR SAHIB	S-NPP	74.96510	31.43181	14:00:00	D	10.40
548	TARN TARAN	KHADOOR SAHIB	S-NPP	75.16367	31.43190	14:00:00	D	9.80
549	TARN TARAN	KHADOOR SAHIB	S-NPP	75.16905	31.43239	14:00:00	D	6.50
550	TARN TARAN	KHADOOR SAHIB	S-NPP	74.68947	31.43249	14:00:00	D	4.70
551	TARN TARAN	KHADOOR SAHIB	S-NPP	75.13625	31.43399	14:00:00	D	6.60
552	TARN TARAN	KHADOOR SAHIB	S-NPP	75.10307	31.44013	14:00:00	D	4.00
553	TARN TARAN	KHADOOR SAHIB	S-NPP	75.11908	31.44161	14:00:00	D	4.50
554	TARN TARAN	KHADOOR SAHIB	S-NPP	74.88478	31.44238	14:00:00	D	5.20
555	TARN TARAN	KHADOOR SAHIB	S-NPP	74.80128	31.44338	14:00:00	D	8.50
556	TARN TARAN	KHADOOR SAHIB	S-NPP	75.05939	31.44523	14:00:00	D	3.10
557	TARN TARAN	KHADOOR SAHIB	S-NPP	75.08598	31.44772	14:00:00	D	5.90
558	TARN TARAN	KHADOOR SAHIB	S-NPP	75.05884	31.44977	14:00:00	D	10.50
559	TARN TARAN	KHADOOR SAHIB	S-NPP	75.06946	31.45076	14:00:00	D	2.90
560	TARN TARAN	KHADOOR SAHIB	S-NPP	74.91426	31.45883	14:00:00	D	2.30
561	TARN TARAN	KHADOOR SAHIB	S-NPP	74.77502	31.46621	14:00:00	D	4.50
562	TARN TARAN	KHADOOR SAHIB	S-NPP	74.73875	31.46737	14:00:00	D	3.20
563	TARN TARAN	KHADOOR SAHIB	S-NPP	75.06197	31.46840	14:00:00	D	1.60
564	TARN TARAN	KHADOOR SAHIB	S-NPP	75.17680	31.48407	14:00:00	D	2.00
565	TARN TARAN	KHADOOR SAHIB	S-NPP	75.08691	31.48455	14:00:00	D	4.60
566	TARN TARAN	KHADOOR SAHIB	S-NPP	75.09224	31.48505	14:00:00	D	4.60
567	TARN TARAN	KHADOOR SAHIB	S-NPP	75.08437	31.48511	14:00:00	D	9.90
568	TARN TARAN	KHADOOR SAHIB	S-NPP	75.08971	31.48558	14:00:00	D	7.40
569	TARN TARAN	KHADOOR SAHIB	S-NPP	75.22792	31.48869	14:00:00	D	3.00
570	TARN TARAN	KHADOOR SAHIB	S-NPP	75.02478	31.48894	14:00:00	D	3.00
571	TARN TARAN	KHADOOR SAHIB	S-NPP	75.08636	31.48908	14:00:00	D	3.00
572	TARN TARAN	KHADOOR SAHIB	S-NPP	75.23649	31.48929	14:00:00	D	7.90

573	TARN TARAN	KHADOOR SAHIB	S-NPP	75.23879	31.48971	14:00:00	D	15.50
574	TARN TARAN	KHADOOR SAHIB	S-NPP	75.24194	31.48976	14:00:00	D	11.00
575	TARN TARAN	KHADOOR SAHIB	S-NPP	74.74560	31.49501	14:00:00	D	2.70
576	TARN TARAN	KHADOOR SAHIB	S-NPP	75.10182	31.49516	14:00:00	D	4.80
577	TARN TARAN	KHADOOR SAHIB	S-NPP	75.09928	31.49562	14:00:00	D	5.90
578	TARN TARAN	KHADOOR SAHIB	S-NPP	74.81968	31.52457	14:00:00	D	3.10
579	TARN TARAN	KHADOOR SAHIB	S-NPP	74.70499	31.53161	14:00:00	D	3.00
580	TARN TARAN	KHADOOR SAHIB	S-NPP	74.80772	31.53699	14:00:00	D	12.00
581	TARN TARAN	PATTI	S-NPP	74.57346	31.11494	14:00:00	D	2.40
582	TARN TARAN	PATTI	S-NPP	74.69686	31.11870	14:00:00	D	15.60
583	TARN TARAN	PATTI	S-NPP	74.75880	31.16359	14:00:00	D	2.50
584	TARN TARAN	PATTI	S-NPP	74.83817	31.18457	14:00:00	D	6.00
585	TARN TARAN	PATTI	S-NPP	74.74472	31.19366	14:00:00	D	5.20
586	TARN TARAN	PATTI	S-NPP	74.58308	31.19578	14:00:00	D	5.00
587	TARN TARAN	PATTI	S-NPP	74.69786	31.20256	14:00:00	D	9.90
588	TARN TARAN	PATTI	S-NPP	74.54699	31.20552	14:00:00	D	5.60
589	TARN TARAN	PATTI	S-NPP	74.93869	31.21218	14:00:00	D	2.40
590	TARN TARAN	PATTI	S-NPP	74.67619	31.21386	14:00:00	D	5.90
591	TARN TARAN	PATTI	S-NPP	74.54588	31.21428	14:00:00	D	6.10
592	TARN TARAN	PATTI	S-NPP	74.54420	31.21435	14:00:00	D	2.80
593	TARN TARAN	PATTI	S-NPP	74.86383	31.22766	14:00:00	D	6.70
594	TARN TARAN	PATTI	S-NPP	74.66898	31.23102	14:00:00	D	1.80
595	TARN TARAN	PATTI	S-NPP	74.67194	31.23516	14:00:00	D	4.40
596	TARN TARAN	PATTI	S-NPP	74.60936	31.25159	14:00:00	D	4.20
597	TARN TARAN	PATTI	S-NPP	74.61929	31.25252	14:00:00	D	9.30
598	TARN TARAN	PATTI	S-NPP	74.67913	31.25818	14:00:00	D	4.90
599	TARN TARAN	PATTI	S-NPP	74.53802	31.26254	14:00:00	D	2.70
600	TARN TARAN	PATTI	S-NPP	74.52651	31.27472	14:00:00	D	2.50
601	TARN TARAN	PATTI	S-NPP	74.63914	31.29457	14:00:00	D	6.40
602	TARN TARAN	PATTI	S-NPP	74.75250	31.32348	14:00:00	D	4.20
603	TARN TARAN	PATTI	S-NPP	74.62474	31.32886	14:00:00	D	4.20
604	TARN TARAN	PATTI	S-NPP	74.54601	31.32951	14:00:00	D	4.20

605	TARN TARAN	PATTI	S-NPP	74.64095	31.33391	14:00:00	D	8.00
606	TARN TARAN	PATTI	S-NPP	74.64412	31.33524	14:00:00	D	5.70
607	TARN TARAN	PATTI	S-NPP	74.73512	31.33976	14:00:00	D	3.30
608	TARN TARAN	PATTI	S-NPP	74.73151	31.34226	14:00:00	D	2.40
609	TARN TARAN	PATTI	S-NPP	74.59440	31.34294	14:00:00	D	11.00
610	TARN TARAN	PATTI	S-NPP	74.61375	31.34922	14:00:00	D	4.10
611	TARN TARAN	PATTI	S-NPP	74.64591	31.37457	14:00:00	D	7.50
612	TARN TARAN	PATTI	S-NPP	74.64536	31.37898	14:00:00	D	7.50
613	TARN TARAN	PATTI	S-NPP	74.71074	31.38520	14:00:00	D	3.40
614	TARN TARAN	PATTI	S-NPP	74.63423	31.38686	14:00:00	D	1.50
615	TARN TARAN	PATTI	S-NPP	74.64258	31.40107	14:00:00	D	5.20
616	TARN TARAN	PATTI	S-NPP	74.69337	31.40148	14:00:00	D	3.60
617	TARN TARAN	PATTI	S-NPP	74.69840	31.40196	14:00:00	D	8.30
618	TARN TARAN	PATTI	S-NPP	74.68610	31.41871	14:00:00	D	4.70

District-wise cumulative number of residue burning events in Punjab (30-Sep-2018 to 21-Oct-2018)



Details of residue burning events in Haryana on 21-Oct-2018

Event S.No.	District	Tehsil /Block	Satellite	Longitude	Latitude	Time (IST)	Day/Night	Fire Power (W/m²)
1	AMBALA	AMBALA	S-NPP	76.61721	30.12775	14:00	D	7.50
2	AMBALA	AMBALA	S-NPP	76.66134	30.28654	14:00	D	9.50
3	AMBALA	BARARA	S-NPP	77.04116	30.13706	14:00	D	15.10
4	AMBALA	BARARA	S-NPP	76.94553	30.20965	14:00	D	3.70
5	AMBALA	BARARA	S-NPP	77.00256	30.21609	12:18	D	2.50
6	AMBALA	BARARA	S-NPP	77.00309	30.21807	12:18	D	2.80
7	AMBALA	BARARA	S-NPP	77.09026	30.22147	14:00	D	2.10
8	AMBALA	NARAYANGARH	S-NPP	77.15929	30.39395	14:00	D	1.90
9	AMBALA	NARAYANGARH	S-NPP	77.15777	30.39713	14:00	D	3.90
10	AMBALA	NARAYANGARH	S-NPP	77.15877	30.39904	14:00	D	1.90
11	AMBALA	NARAYANGARH	S-NPP	77.11324	30.52467	14:00	D	1.50
12	FARIDABAD	HODAL	S-NPP	77.43725	27.89477	14:00	D	8.80
13	FARIDABAD	HODAL	S-NPP	77.43865	27.89555	14:00	D	10.90
14	FARIDABAD	HODAL	S-NPP	77.43564	27.90987	14:00	D	4.70
15	FARIDABAD	HODAL	S-NPP	77.42783	27.91958	12:18	D	5.70
16	FARIDABAD	HODAL	S-NPP	77.43354	27.93001	14:00	D	8.70
17	FARIDABAD	HODAL	S-NPP	77.43196	27.94511	14:00	D	6.40
18	FARIDABAD	HODAL	S-NPP	77.43847	27.94569	14:00	D	18.00
19	FARIDABAD	HODAL	S-NPP	77.51904	27.98340	14:00	D	2.50
20	FARIDABAD	PALWAL	S-NPP	77.34498	28.11359	14:00	D	7.30
21	FARIDABAD	PALWAL	S-NPP	77.36880	28.13592	14:00	D	6.40
22	FARIDABAD	PALWAL	S-NPP	77.33894	28.19114	12:18	D	5.70
23	FATEHABAD	FATEHABAD	S-NPP	75.64639	29.43628	14:00	D	4.90
24	FATEHABAD	FATEHABAD	S-NPP	75.42297	29.43822	14:00	D	5.00
25	FATEHABAD	FATEHABAD	S-NPP	75.49979	29.56080	14:00	D	8.80
26	FATEHABAD	FATEHABAD	S-NPP	75.37694	29.59607	14:00	D	3.30
27	FATEHABAD	FATEHABAD	S-NPP	75.37920	29.59949	14:00	D	5.30
28	FATEHABAD	FATEHABAD	S-NPP	75.34487	29.60222	14:00	D	5.10
29	FATEHABAD	FATEHABAD	S-NPP	75.34718	29.60543	14:00	D	10.30

30	FATEHABAD	FATEHABAD	S-NPP	75.34432	29.60673	14:00	D	5.50
31	FATEHABAD	FATEHABAD	S-NPP	75.68113	29.61990	14:00	D	3.30
32	FATEHABAD	FATEHABAD	S-NPP	75.69505	29.62045	14:00	D	3.70
33	FATEHABAD	FATEHABAD	S-NPP	75.69733	29.62147	14:00	D	4.10
34	FATEHABAD	FATEHABAD	S-NPP	75.68368	29.62409	14:00	D	3.70
35	FATEHABAD	FATEHABAD	S-NPP	75.71738	29.63740	14:00	D	3.30
36	FATEHABAD	RATIA	S-NPP	75.61360	29.66413	14:00	D	3.90
37	FATEHABAD	TOHANA	S-NPP	75.95973	29.56609	14:00	D	9.90
38	FATEHABAD	TOHANA	S-NPP	75.79580	29.57938	14:00	D	3.10
39	FATEHABAD	TOHANA	S-NPP	75.68258	29.63330	14:00	D	12.50
40	FATEHABAD	TOHANA	S-NPP	75.87856	29.63415	14:00	D	15.20
41	FATEHABAD	TOHANA	S-NPP	75.68491	29.63424	14:00	D	10.90
42	FATEHABAD	TOHANA	S-NPP	75.68524	29.65683	14:00	D	2.70
43	FATEHABAD	TOHANA	S-NPP	75.84392	29.67135	14:00	D	3.30
44	FATEHABAD	TOHANA	S-NPP	75.81964	29.68793	14:00	D	5.60
45	FATEHABAD	TOHANA	S-NPP	75.86390	29.69200	14:00	D	7.20
46	FATEHABAD	TOHANA	S-NPP	75.81908	29.69257	14:00	D	5.60
47	FATEHABAD	TOHANA	S-NPP	75.87448	29.69769	14:00	D	5.50
48	FATEHABAD	TOHANA	S-NPP	75.85618	29.71013	14:00	D	2.80
49	FATEHABAD	TOHANA	S-NPP	75.91534	29.73454	14:00	D	3.80
50	FATEHABAD	TOHANA	S-NPP	75.76907	29.80788	14:00	D	3.10
51	HISAR	ADAMPUR	S-NPP	75.56658	29.30854	14:00	D	2.40
52	HISAR	ADAMPUR	S-NPP	75.56992	29.30877	14:00	D	2.60
53	HISAR	HISAR	S-NPP	75.94829	29.54428	14:00	D	4.00
54	HISAR	HISAR	S-NPP	75.94514	29.54588	14:00	D	4.90
55	HISAR	NARNAUND	S-NPP	76.05506	29.24243	14:00	D	3.70
56	JIND	NARWANA	S-NPP	76.08891	29.50995	14:00	D	4.40
57	JIND	NARWANA	S-NPP	76.01373	29.51728	14:00	D	9.20
58	JIND	NARWANA	S-NPP	76.05109	29.53977	14:00	D	2.80
59	JIND	NARWANA	S-NPP	76.13083	29.54723	14:00	D	4.60
60	JIND	NARWANA	S-NPP	75.99253	29.55323	14:00	D	3.80
61	JIND	NARWANA	S-NPP	75.98945	29.55454	14:00	D	5.90

62	JIND	NARWANA	S-NPP	76.06705	29.57569	14:00	D	4.20
63	JIND	NARWANA	S-NPP	76.05487	29.63173	14:00	D	5.60
64	JIND	NARWANA	S-NPP	76.03822	29.70791	14:00	D	9.50
65	JIND	NARWANA	S-NPP	76.09989	29.77565	14:00	D	3.40
66	JIND	NARWANA	S-NPP	76.16238	29.79110	14:00	D	12.50
67	JIND	NARWANA	S-NPP	76.16527	29.79145	14:00	D	9.50
68	JIND	SAFIDON	S-NPP	76.68192	29.45672	14:00	D	7.40
69	KAITHAL	GUHLA	S-NPP	76.42067	29.90003	14:00	D	4.40
70	KAITHAL	GUHLA	S-NPP	76.43063	29.92041	14:00	D	5.00
71	KAITHAL	GUHLA	S-NPP	76.43671	29.92093	14:00	D	5.00
72	KAITHAL	GUHLA	S-NPP	76.43243	29.92195	14:00	D	12.20
73	KAITHAL	GUHLA	S-NPP	76.43849	29.92250	14:00	D	8.00
74	KAITHAL	GUHLA	S-NPP	76.43618	29.92577	14:00	D	13.00
75	KAITHAL	GUHLA	S-NPP	76.25639	29.96357	14:00	D	4.70
76	KAITHAL	GUHLA	S-NPP	76.26178	29.96889	14:00	D	27.80
77	KAITHAL	GUHLA	S-NPP	76.21240	29.98375	14:00	D	4.00
78	KAITHAL	GUHLA	S-NPP	76.28392	29.98542	14:00	D	18.00
79	KAITHAL	GUHLA	S-NPP	76.20487	29.98745	14:00	D	6.70
80	KAITHAL	GUHLA	S-NPP	76.33061	29.99937	14:00	D	4.90
81	KAITHAL	GUHLA	S-NPP	76.29326	29.99979	14:00	D	3.90
82	KAITHAL	GUHLA	S-NPP	76.29924	30.00029	14:00	D	3.90
83	KAITHAL	GUHLA	S-NPP	76.30020	30.00146	14:00	D	5.80
84	KAITHAL	GUHLA	S-NPP	76.35157	30.01931	14:00	D	3.30
85	KAITHAL	GUHLA	S-NPP	76.34650	30.02029	14:00	D	6.40
86	KAITHAL	GUHLA	S-NPP	76.39472	30.02472	14:00	D	11.60
87	KAITHAL	GUHLA	S-NPP	76.39331	30.02773	14:00	D	6.00
88	KAITHAL	GUHLA	S-NPP	76.30196	30.02964	14:00	D	4.20
89	KAITHAL	GUHLA	S-NPP	76.33138	30.03704	14:00	D	8.60
90	KAITHAL	GUHLA	S-NPP	76.29984	30.04888	14:00	D	6.60
91	KAITHAL	GUHLA	S-NPP	76.28682	30.05745	14:00	D	3.50
92	KAITHAL	GUHLA	S-NPP	76.42653	30.05991	14:00	D	6.90
93	KAITHAL	GUHLA	S-NPP	76.30421	30.06384	14:00	D	3.90

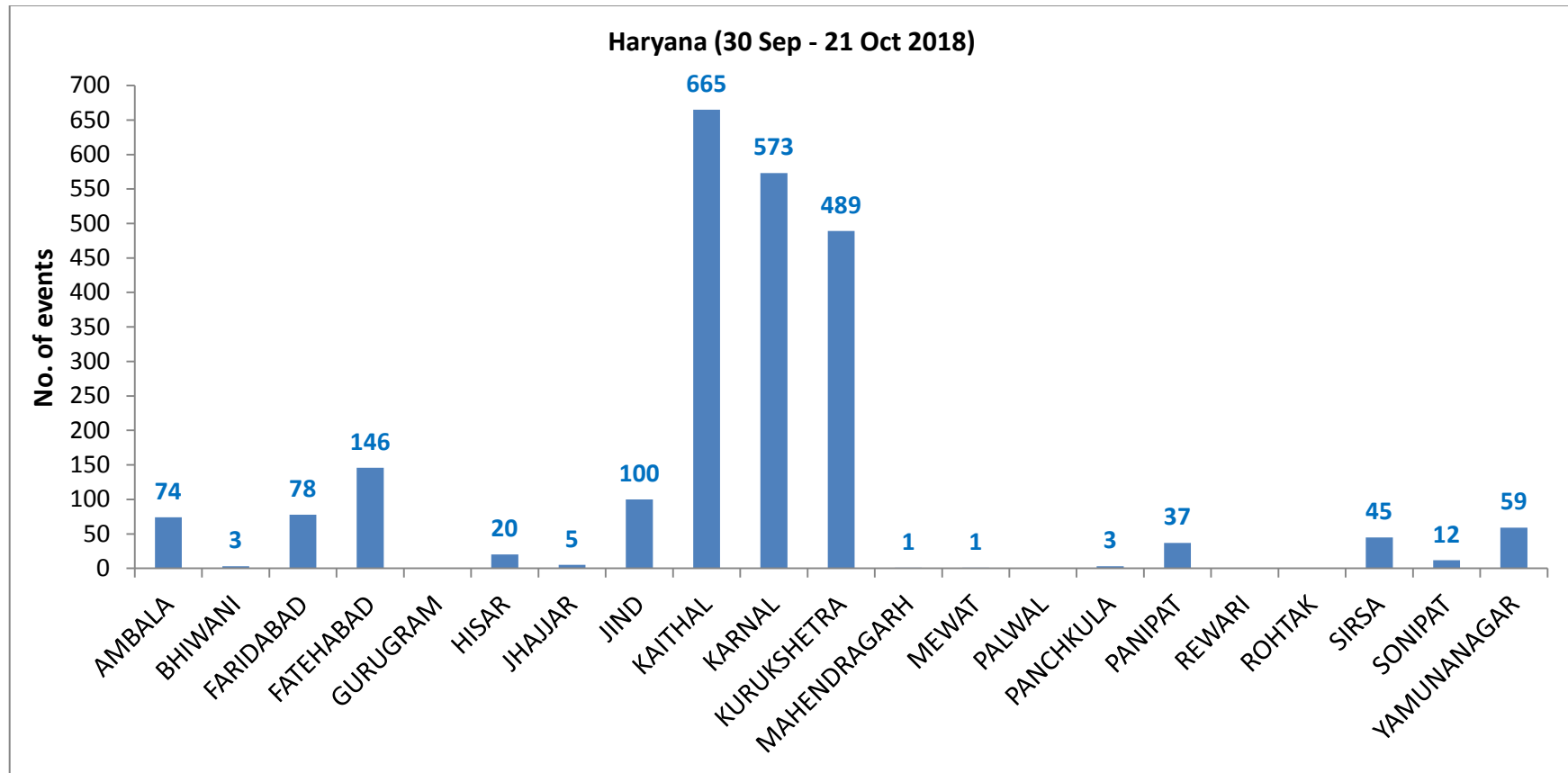
94	KAITHAL	GUHLA	S-NPP	76.42599	30.06475	14:00	D	6.90
95	KAITHAL	GUHLA	S-NPP	76.40270	30.07521	12:18	D	9.30
96	KAITHAL	GUHLA	S-NPP	76.40156	30.07705	12:18	D	7.90
97	KAITHAL	GUHLA	S-NPP	76.40973	30.07947	12:18	D	9.60
98	KAITHAL	GUHLA	S-NPP	76.40817	30.08457	12:18	D	9.30
99	KAITHAL	GUHLA	S-NPP	76.40704	30.08645	12:18	D	9.60
100	KAITHAL	GUHLA	S-NPP	76.42284	30.09384	14:00	D	2.70
101	KAITHAL	GUHLA	S-NPP	76.41622	30.09815	14:00	D	11.50
102	KAITHAL	GUHLA	S-NPP	76.42230	30.09869	14:00	D	11.50
103	KAITHAL	GUHLA	S-NPP	76.27604	30.10015	14:00	D	2.70
104	KAITHAL	GUHLA	S-NPP	76.38323	30.10360	14:00	D	8.80
105	KAITHAL	GUHLA	S-NPP	76.38479	30.10511	14:00	D	10.80
106	KAITHAL	GUHLA	S-NPP	76.43172	30.11704	12:18	D	5.40
107	KAITHAL	KAITHAL	S-NPP	76.52285	29.55383	14:00	D	2.10
108	KAITHAL	KAITHAL	S-NPP	76.46803	29.55384	14:00	D	6.40
109	KAITHAL	KAITHAL	S-NPP	76.61998	29.70013	14:00	D	4.00
110	KAITHAL	KAITHAL	S-NPP	76.63377	29.70106	12:18	D	6.20
111	KAITHAL	KAITHAL	S-NPP	76.64573	29.71483	12:18	D	7.50
112	KAITHAL	KAITHAL	S-NPP	76.64471	29.71968	12:18	D	5.10
113	KAITHAL	KAITHAL	S-NPP	76.30838	29.75631	14:00	D	3.60
114	KAITHAL	KAITHAL	S-NPP	76.64918	29.77666	14:00	D	13.40
115	KAITHAL	KAITHAL	S-NPP	76.44699	29.84503	14:00	D	3.20
116	KAITHAL	KAITHAL	S-NPP	76.51989	29.85212	12:18	D	9.30
117	KAITHAL	KAITHAL	S-NPP	76.51865	29.85727	12:18	D	18.60
118	KAITHAL	KAITHAL	S-NPP	76.31226	29.85751	14:00	D	4.60
119	KAITHAL	KAITHAL	S-NPP	76.51729	29.85912	12:18	D	5.30
120	KAITHAL	KAITHAL	S-NPP	76.46655	29.92185	12:18	D	7.10
121	KAITHAL	KAITHAL	S-NPP	76.46884	29.92528	14:00	D	4.90
122	KARNAL	ASSANDH	S-NPP	76.60399	29.48920	14:00	D	3.30
123	KARNAL	ASSANDH	S-NPP	76.60342	29.49211	14:00	D	4.10
124	KARNAL	ASSANDH	S-NPP	76.66928	29.57165	14:00	D	12.30
125	KARNAL	ASSANDH	S-NPP	76.68625	29.58797	14:00	D	5.30

126	KARNAL	ASSANDH	S-NPP	76.55557	29.59106	14:00	D	6.70
127	KARNAL	ASSANDH	S-NPP	76.55280	29.59346	14:00	D	7.70
128	KARNAL	ASSANDH	S-NPP	76.71573	29.64168	14:00	D	5.20
129	KARNAL	GHARAUNDA	S-NPP	77.05188	29.58212	12:18	D	3.80
130	KARNAL	INDRI	S-NPP	76.97733	29.91553	02:42	N	0.80
131	KARNAL	INDRI	S-NPP	77.15229	29.96427	14:00	D	3.00
132	KARNAL	INDRI	S-NPP	77.15566	29.96453	14:00	D	3.00
133	KARNAL	INDRI	S-NPP	77.15340	29.96570	14:00	D	5.70
134	KARNAL	KARNAL	S-NPP	76.86944	29.61567	12:18	D	3.60
135	KARNAL	KARNAL	S-NPP	76.88445	29.61579	14:00	D	3.30
136	KARNAL	KARNAL	S-NPP	76.75549	29.62516	14:00	D	2.80
137	KARNAL	KARNAL	S-NPP	76.84826	29.65281	14:00	D	6.10
138	KARNAL	KARNAL	S-NPP	76.87857	29.67037	14:00	D	8.20
139	KARNAL	KARNAL	S-NPP	76.88498	29.67091	14:00	D	15.10
140	KARNAL	KARNAL	S-NPP	76.76483	29.71544	14:00	D	25.30
141	KARNAL	KARNAL	S-NPP	76.76314	29.71684	14:00	D	30.00
142	KARNAL	KARNAL	S-NPP	76.76945	29.71736	14:00	D	21.70
143	KARNAL	KARNAL	S-NPP	76.76431	29.72038	14:00	D	25.30
144	KARNAL	KARNAL	S-NPP	76.81485	29.77097	14:00	D	3.60
145	KARNAL	NILOKHERI	S-NPP	76.86595	29.77527	14:00	D	10.20
146	KURUKSHETRA	PEHOWA	S-NPP	76.47044	29.91072	14:00	D	7.30
147	KURUKSHETRA	PEHOWA	S-NPP	76.46821	29.91380	14:00	D	6.60
148	KURUKSHETRA	PEHOWA	S-NPP	76.48331	29.94448	14:00	D	9.40
149	KURUKSHETRA	PEHOWA	S-NPP	76.63216	29.95219	14:00	D	1.90
150	KURUKSHETRA	PEHOWA	S-NPP	76.60048	29.95445	14:00	D	4.50
151	KURUKSHETRA	PEHOWA	S-NPP	76.49397	29.96011	14:00	D	4.80
152	KURUKSHETRA	PEHOWA	S-NPP	76.60512	29.96967	14:00	D	8.20
153	KURUKSHETRA	PEHOWA	S-NPP	76.62381	29.97127	14:00	D	9.40
154	KURUKSHETRA	PEHOWA	S-NPP	76.68705	29.97169	14:00	D	2.50
155	KURUKSHETRA	PEHOWA	S-NPP	76.56574	29.98602	14:00	D	6.20
156	KURUKSHETRA	PEHOWA	S-NPP	76.45358	29.99090	14:00	D	2.40
157	KURUKSHETRA	PEHOWA	S-NPP	76.45306	29.99575	14:00	D	14.10

158	KURUKSHETRA	PEHOWA	S-NPP	76.57603	30.00665	14:00	D	5.20
159	KURUKSHETRA	PEHOWA	S-NPP	76.64387	30.00681	12:18	D	7.50
160	KURUKSHETRA	PEHOWA	S-NPP	76.65033	30.01814	14:00	D	5.90
161	KURUKSHETRA	PEHOWA	S-NPP	76.64941	30.01951	14:00	D	8.90
162	KURUKSHETRA	PEHOWA	S-NPP	76.52276	30.02883	14:00	D	7.60
163	KURUKSHETRA	PEHOWA	S-NPP	76.52340	30.03152	14:00	D	6.80
164	KURUKSHETRA	PEHOWA	S-NPP	76.62634	30.05723	14:00	D	23.10
165	KURUKSHETRA	PEHOWA	S-NPP	76.62049	30.06919	12:18	D	3.20
166	KURUKSHETRA	PEHOWA	S-NPP	76.67612	30.08545	12:18	D	2.30
167	KURUKSHETRA	PEHOWA	S-NPP	76.67867	30.10136	14:00	D	7.30
168	KURUKSHETRA	PEHOWA	S-NPP	76.68498	30.10190	14:00	D	7.30
169	KURUKSHETRA	PEHOWA	S-NPP	76.66554	30.10520	14:00	D	3.30
170	KURUKSHETRA	PEHOWA	S-NPP	76.70344	30.10846	14:00	D	8.60
171	KURUKSHETRA	PEHOWA	S-NPP	76.71508	30.11943	14:00	D	7.50
172	KURUKSHETRA	PEHOWA	S-NPP	76.69508	30.12547	12:18	D	7.30
173	KURUKSHETRA	PEHOWA	S-NPP	76.75481	30.13129	12:18	D	7.30
174	KURUKSHETRA	PEHOWA	S-NPP	76.68415	30.13374	12:18	D	12.60
175	KURUKSHETRA	PEHOWA	S-NPP	76.68208	30.13696	12:18	D	13.30
176	KURUKSHETRA	PEHOWA	S-NPP	76.68153	30.14063	12:18	D	3.70
177	KURUKSHETRA	SHAHABAD	S-NPP	76.84579	30.15620	14:00	D	2.90
178	KURUKSHETRA	SHAHABAD	S-NPP	76.79684	30.18732	14:00	D	3.10
179	KURUKSHETRA	SHAHABAD	S-NPP	76.80328	30.18785	14:00	D	6.20
180	KURUKSHETRA	SHAHABAD	S-NPP	76.82806	30.19994	14:00	D	9.30
181	KURUKSHETRA	THANESAR	S-NPP	76.82956	29.91271	14:00	D	7.80
182	KURUKSHETRA	THANESAR	S-NPP	76.86497	29.94586	14:00	D	5.60
183	KURUKSHETRA	THANESAR	S-NPP	76.86337	29.94635	14:00	D	4.20
184	KURUKSHETRA	THANESAR	S-NPP	76.90034	29.96473	12:18	D	4.10
185	KURUKSHETRA	THANESAR	S-NPP	76.90031	29.96779	12:18	D	6.30
186	KURUKSHETRA	THANESAR	S-NPP	76.94807	30.01369	14:00	D	5.70
187	KURUKSHETRA	THANESAR	S-NPP	76.74450	30.03137	14:00	D	4.80
188	KURUKSHETRA	THANESAR	S-NPP	76.74374	30.03212	14:00	D	2.30
189	KURUKSHETRA	THANESAR	S-NPP	76.90823	30.05818	12:18	D	3.50

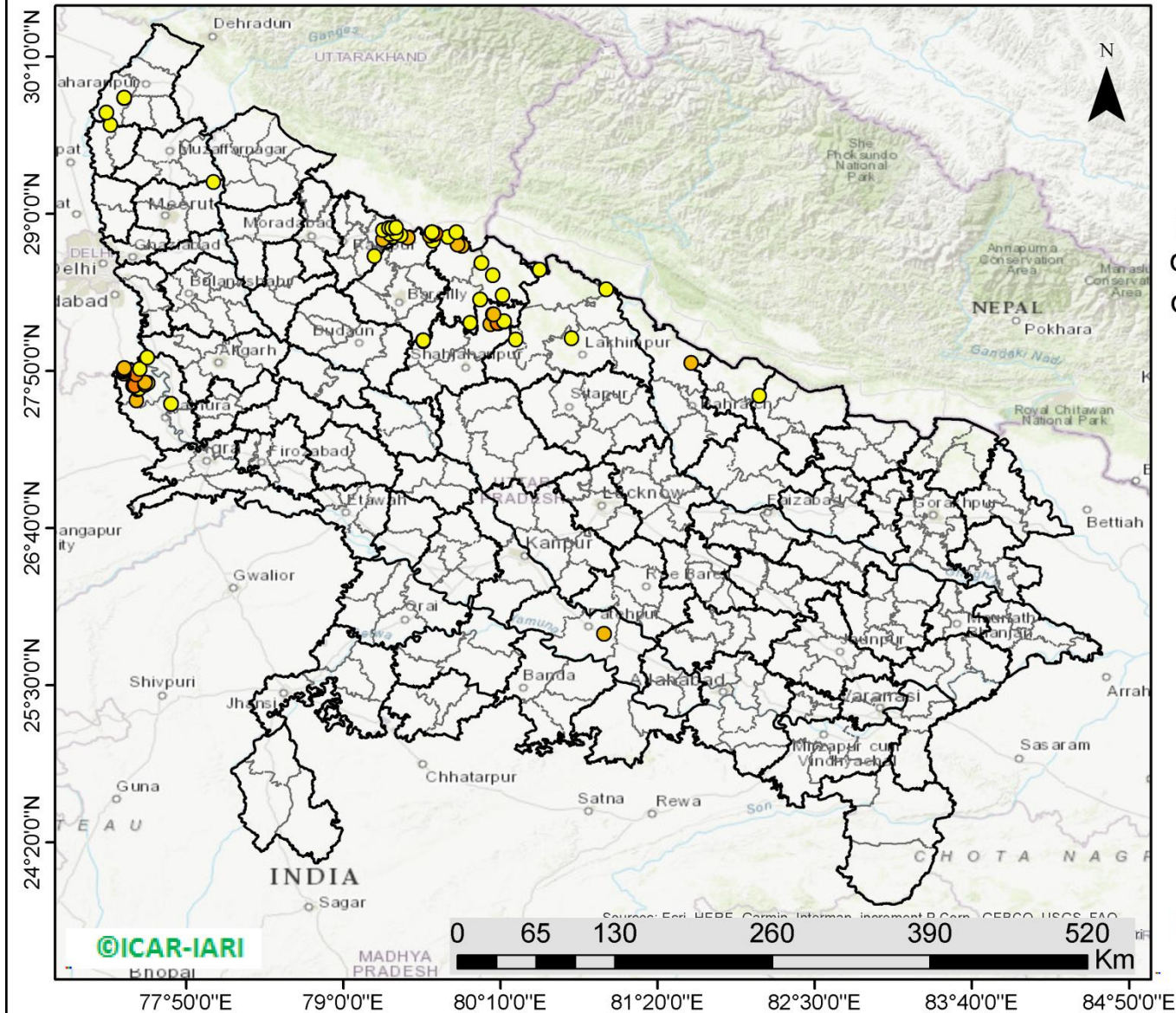
190	KURUKSHETRA	THANESAR	S-NPP	76.73414	30.06124	14:00	D	4.20
191	KURUKSHETRA	THANESAR	S-NPP	76.79008	30.08086	14:00	D	3.00
192	SIRSA	DABWALI	S-NPP	74.83600	29.88151	14:00	D	1.80
193	SIRSA	DABWALI	S-NPP	74.92767	29.93947	14:00	D	26.50
194	SIRSA	ELLENABAD	S-NPP	74.81683	29.47612	14:00	D	3.10
195	SIRSA	RANIA	S-NPP	74.79612	29.48728	14:00	D	3.60
196	SIRSA	RANIA	S-NPP	74.59234	29.60390	14:00	D	2.40
197	SIRSA	SIRSA	S-NPP	74.96690	29.44646	14:00	D	2.90
198	SIRSA	SIRSA	S-NPP	75.28373	29.53089	14:00	D	2.60
199	SIRSA	SIRSA	S-NPP	75.09288	29.56947	14:00	D	4.00
200	SIRSA	SIRSA	S-NPP	75.13540	29.57501	14:00	D	2.20
201	SIRSA	SIRSA	S-NPP	74.93762	29.57692	14:00	D	1.50
202	SIRSA	SIRSA	S-NPP	75.13724	29.57817	14:00	D	4.10
203	SIRSA	SIRSA	S-NPP	75.17394	29.74644	14:00	D	6.90
204	SIRSA	SIRSA	S-NPP	75.16901	29.78667	14:00	D	8.00
205	SIRSA	SIRSA	S-NPP	75.17094	29.78936	14:00	D	9.60
206	SIRSA	SIRSA	S-NPP	75.16846	29.79113	14:00	D	8.00
207	SONIPAT	GOHANA	S-NPP	76.77848	29.14771	14:00	D	6.50
208	YAMUNANAGAR	CHHACHHRAULII	S-NPP	77.34522	30.22636	14:00	D	2.30
209	YAMUNANAGAR	CHHACHHRAULII	S-NPP	77.34469	30.23150	14:00	D	1.70
210	YAMUNANAGAR	CHHACHHRAULII	S-NPP	77.30088	30.24871	14:00	D	10.80
211	YAMUNANAGAR	CHHACHHRAULII	S-NPP	77.30434	30.24899	14:00	D	10.80
212	YAMUNANAGAR	JAGADHRI	S-NPP	77.16724	30.01655	14:00	D	1.60
213	YAMUNANAGAR	JAGADHRI	S-NPP	77.18362	30.02300	14:00	D	3.30
214	YAMUNANAGAR	JAGADHRI	S-NPP	77.12733	30.16975	14:00	D	1.80
215	YAMUNANAGAR	JAGADHRI	S-NPP	77.22933	30.26868	14:00	D	2.60
216	YAMUNANAGAR	JAGADHRI	S-NPP	77.32288	30.32409	12:18	D	2.50
217	YAMUNANAGAR	JAGADHRI	S-NPP	77.16927	30.36399	14:00	D	2.80

District-wise cumulative number of residue burning events in Haryana (30-Sep-2018 to 21-Oct-2018)



(c) Uttar Pradesh

PADDY RESIDUE BURNING IN UTTAR PRADESH



66 burning events detected in Uttar Pradesh on **21st October, 2018**

Fire Intensity (W/m²)

- 0 - 5
- 6 - 10
- 11 - 15
- 16 - 20
- >20

©ICAR-IARI



<http://geoportal.icar.gov.in:8080/geoexplorer/composer/>

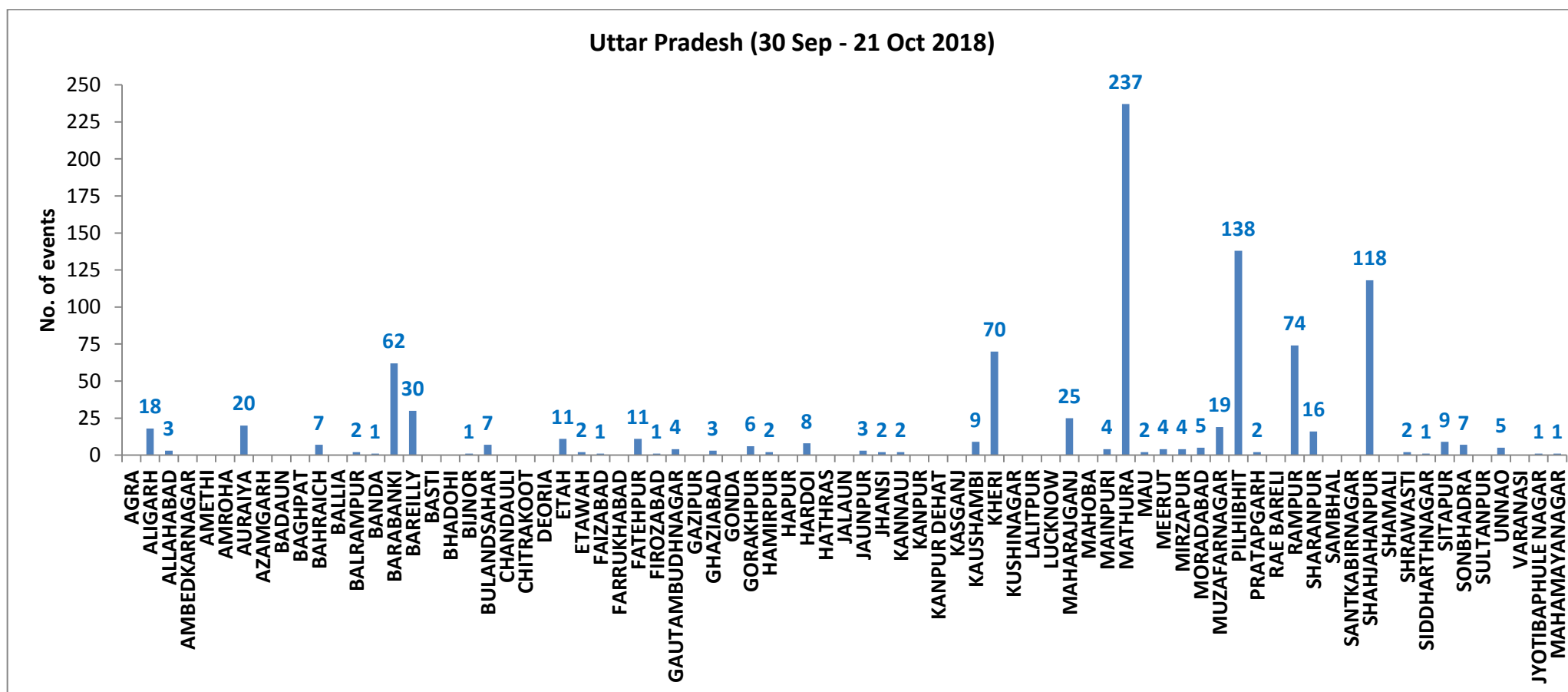
Details of residue burning events in Uttar Pradesh on 21-Oct-2018

Event S.No.	District	Tehsil /Block	Satellite	Longitude	Latitude	Time (IST)	Day/Night	Fire Power (W/m²)
1	ALIGARH	KHAIR	S-NPP	77.54415	27.93447	14:00:00	D	4.00
2	BAHRAICH	NANPARA	TERRA-1	81.58253	27.89333	10:43:00	D	7.27
3	BALRAMPUR	BALRAMPUR	S-NPP	82.08897	27.65019	02:42:00	N	0.90
4	BAREILLY	BAHERI	S-NPP	79.66352	28.79860	14:00:00	D	2.50
5	BAREILLY	BAHERI	S-NPP	79.66576	28.79950	14:00:00	D	2.90
6	BAREILLY	BAHERI	S-NPP	79.47807	28.82107	14:00:00	D	6.00
7	BAREILLY	BAHERI	S-NPP	79.36944	28.83080	14:00:00	D	2.90
8	BAREILLY	BAHERI	S-NPP	79.64170	28.83808	14:00:00	D	6.30
9	BAREILLY	BAHERI	S-NPP	79.42683	28.84061	14:00:00	D	2.00
10	BAREILLY	BAHERI	S-NPP	79.67359	28.84610	14:00:00	D	10.30
11	BAREILLY	BAHERI	S-NPP	79.68237	28.85256	14:00:00	D	14.20
12	BAREILLY	BAHERI	S-NPP	79.39417	28.85559	14:00:00	D	1.60
13	BAREILLY	BAHERI	S-NPP	79.65361	28.86229	14:00:00	D	2.20
14	BAREILLY	BAHERI	S-NPP	79.65826	28.86261	14:00:00	D	2.20
15	FATEHPUR	FATEHPUR	TERRA-1	80.93453	25.88260	10:43:00	D	6.69
16	KHERI	LAKHIMPUR	S-NPP	80.69373	28.07618	14:00:00	D	3.50
17	KHERI	MOHMADI	S-NPP	80.28069	28.06720	14:00:00	D	4.20
18	KHERI	NIGHASAN	S-NPP	80.94991	28.43887	12:18:00	D	2.80
19	KHERI	PALIA KALAN	S-NPP	80.45929	28.58407	14:00:00	D	4.10
20	MATHURA	CHHATA	S-NPP	77.46356	27.61514	14:00:00	D	6.10
21	MATHURA	CHHATA	S-NPP	77.47318	27.69654	14:00:00	D	6.90
22	MATHURA	CHHATA	S-NPP	77.48564	27.70269	14:00:00	D	4.70
23	MATHURA	CHHATA	S-NPP	77.43755	27.72389	14:00:00	D	10.10
24	MATHURA	CHHATA	S-NPP	77.45051	27.72503	14:00:00	D	11.60
25	MATHURA	CHHATA	S-NPP	77.52873	27.73188	14:00:00	D	10.60
26	MATHURA	CHHATA	S-NPP	77.54572	27.74357	14:00:00	D	2.90
27	MATHURA	CHHATA	S-NPP	77.52715	27.74704	14:00:00	D	9.70
28	MATHURA	CHHATA	S-NPP	77.46117	27.80608	14:00:00	D	10.70

29	MATHURA	CHHATA	S-NPP	77.36904	27.81330	14:00:00	D	7.90
30	MATHURA	CHHATA	S-NPP	77.36745	27.82833	14:00:00	D	10.80
31	MATHURA	CHHATA	S-NPP	77.36588	27.84335	14:00:00	D	8.70
32	MATHURA	CHHATA	S-NPP	77.48957	27.84926	14:00:00	D	3.20
33	MATHURA	CHHATA	S-NPP	77.37125	27.85395	14:00:00	D	6.00
34	MATHURA	MAT	S-NPP	77.71954	27.58857	14:00:00	D	1.90
35	MEERUT	MAWANA	S-NPP	78.03536	29.23604	14:00:00	D	1.80
36	MUZAFARNAGAR	KAIRANA	S-NPP	77.27174	29.65900	14:00:00	D	1.50
37	PILHIBHIT	BISALPUR	S-NPP	79.94327	28.18840	14:00:00	D	3.40
38	PILHIBHIT	PILHIBHIT	S-NPP	79.88098	28.76152	14:00:00	D	6.90
39	PILHIBHIT	PILHIBHIT	S-NPP	79.84681	28.77103	14:00:00	D	5.10
40	PILHIBHIT	PILHIBHIT	S-NPP	79.77821	28.82962	14:00:00	D	2.10
41	PILHIBHIT	PILHIBHIT	S-NPP	79.83727	28.86306	14:00:00	D	2.50
42	PILHIBHIT	PURANPUR	S-NPP	80.18317	28.39529	14:00:00	D	3.60
43	PILHIBHIT	PURANPUR	S-NPP	80.10945	28.54342	14:00:00	D	2.80
44	PILHIBHIT	PURANPUR	S-NPP	80.02458	28.63634	14:00:00	D	2.50
45	RAMPUR	BILASPUR	S-NPP	79.29595	28.80840	14:00:00	D	5.10
46	RAMPUR	BILASPUR	S-NPP	79.34541	28.85208	14:00:00	D	1.70
47	RAMPUR	BILASPUR	S-NPP	79.29514	28.87913	14:00:00	D	2.10
48	RAMPUR	BILASPUR	S-NPP	79.33826	28.89353	14:00:00	D	2.20
49	RAMPUR	BILASPUR	S-NPP	79.36192	28.89390	12:18:00	D	3.80
50	RAMPUR	BILASPUR	S-NPP	79.39156	28.89716	14:00:00	D	2.10
51	RAMPUR	MILAK	S-NPP	79.23000	28.68762	14:00:00	D	4.00
52	SHAHJAHANPUR	PUWANYA	S-NPP	80.09256	28.18026	14:00:00	D	6.10
53	SHAHJAHANPUR	PUWANYA	S-NPP	80.14520	28.18684	14:00:00	D	6.40
54	SHAHJAHANPUR	PUWANYA	S-NPP	80.15006	28.18718	14:00:00	D	6.40
55	SHAHJAHANPUR	PUWANYA	S-NPP	80.14533	28.18959	14:00:00	D	12.40
56	SHAHJAHANPUR	PUWANYA	S-NPP	80.19364	28.19865	14:00:00	D	1.90
57	SHAHJAHANPUR	PUWANYA	S-NPP	80.19297	28.20217	14:00:00	D	3.10
58	SHAHJAHANPUR	PUWANYA	S-NPP	80.11102	28.25308	14:00:00	D	6.60
59	SHAHJAHANPUR	PUWANYA	S-NPP	80.11586	28.25341	14:00:00	D	6.60
60	SHAHJAHANPUR	PUWANYA	S-NPP	80.01682	28.36359	14:00:00	D	2.70

61	SHAHJAHANPUR	TILHAR	S-NPP	79.59425	28.05457	14:00:00	D	3.10
62	SHAHJAHANPUR	TILHAR	S-NPP	79.59295	28.05923	14:00:00	D	5.30
63	SHAHJAHANPUR	TILHAR	S-NPP	79.59373	28.06032	14:00:00	D	3.20
64	SHARANPUR	NAKUR	S-NPP	77.23979	29.75150	14:00:00	D	1.70
65	SHARANPUR	NAKUR	S-NPP	77.37251	29.85817	14:00:00	D	2.30
66	SHARANPUR	NAKUR	S-NPP	77.37198	29.86329	14:00:00	D	3.60

District-wise cumulative number of residue burning events in Uttar Pradesh (30-Sep-2018 to 21-Oct-2018)



State wise, date wise and district-wise number of residue burning events detected in 2017 and 2018
(Period: 30-Sep-2018 to 21-Oct-2018)

Date	Punjab		Haryana		UP		Total	
	2017	2018	2017	2018	2017	2018	2017	2018
30-Sep-18	--	11	---	7	---	13	---	31
1-Oct-18	54	16	13	9	2	11	69	36
2-Oct-18	50	9	27	23	8	21	85	53
3-Oct-18	62	4	40	9	17	12	119	25
4-Oct-18	103	32	60	16	22	5	185	53
5-Oct-18	106	56	68	30	20	10	194	96
6-Oct-18	138	87	75	65	39	13	252	165
7-Oct-18	105	162	97	180	31	69	233	411
8-Oct-18	215	39	218	40	75	54	508	133
9-Oct-18	163	75	148	47	87	32	398	154
10-Oct-18	164	23	151	37	126	21	441	81
11-Oct-18	177	30	87	78	74	24	338	132
12-Oct-18	342	67	123	133	51	22	516	222
13-Oct-18	470	62	207	147	69	61	746	270
14-Oct-18	582	112	333	153	137	57	1052	322
15-Oct-18	943	90	458	110	237	35	1638	235
16-Oct-18	465	174	186	138	71	20	722	332
17-Oct-18	807	272	244	268	69	94	1120	634
18-Oct-18	970	263	306	255	108	163	1384	681

19-Oct-18	1591	254	541	208	128	108	2260	570
20-Oct-18	2653	496	597	141	255	49	3505	686
21-Oct-18	1139	618	233	217	168	66	1540	901
Total	11299	2952	4212	2311	1798	960	34618	6223

(a) Punjab

Districts	01 - 21 Oct	
	2017	2018
AMRITSAR	823	608
BARNALA	38	23
BATHINDA	838	104
FARIDKOT	1228	172
FATEHGARH SAHIB	494	81
FAZILKA	0	0
FIROZPUR	1505	314
GURDASPUR	473	120
HOSHIARPUR	101	4
JALANDHAR	459	52
KAPURTHALA	282	16
LUDHIANA	673	75
MANSA	259	80
MOGA	176	23
MUKTSAR	701	129
NAWASHAHR	143	5
PATHANKOT	0	0
PATIALA	1164	405
RUPNAGAR	51	1
SANGRUR	321	124
SAS NAGAR	75	49
TARN TARAN	1435	542
SBS NAGAR	60	25
Total	11299	2952

(b) Haryana

Districts	01 -21 Oct	
	2017	2018
AMBALA	275	74
BHIWANI	2	3
FARIDABAD	96	78
FATEHABAD	360	146
GURUGRAM	0	0
HISAR	36	20
JHAJJAR	3	5
JIND	195	100
KAITHAL	922	665
KARNAL	1087	573
KURUKSHETRA	911	489
MAHENDRAGARH	0	1
MEWAT	0	1
PALWAL	0	0
PANCHKULA	0	3
PANIPAT	40	37
REWARI	0	0
ROHTAK	4	0
SIRSA	104	45
SONIPAT	19	12
YAMUNANAGAR	158	59
Total	4212	2311

(c) Uttar Pradesh

Districts	01 - 21 Oct		FIROZABAD	2	1	PRATAPGARH	0	2
	2017	2018						
AGRA	0	0	GAZIPUR	0	0	RAMPUR	296	74
ALIGARH	20	18	GHAZIABAD	5	3	SHARANPUR	36	16
ALLAHABAD	0	3	GONDA	0	0	SAMBHAL	0	0
AMBEDKAR NAGAR	2	0	GORAKHPUR	4	6	SANTKABIR NAGAR	0	0
AMETHI	0	0	HAMIRPUR	0	2	SHAHJAHANPUR	439	118
AMROHA	0	0	HAPUR	0	0	SHAMALI	0	0
AURAIYA	54	20	HARDOI	21	8	SHRAWASTI	4	2
AZAMGARH	0	0	HATHRAS	0	0	SIDDHARTH NAGAR	2	1
BADAUN	1	0	JALAUN	0	0	SITAPUR	16	9
BAGHPAT	0	0	JAUNPUR	0	3	SONBHADRA	1	7
BAHRAICH	3	7	JHANSI	0	2	SULTANPUR	0	0
BALLIA	0	0	KANNAUJ	1	2	UNNAO	4	5
BALRAMPUR	0	2	KANPUR	3	0	VARANASI	0	0
BANDA	1	1	KANPUR DEHAT	1	0	JYOTIBAPHULE NAGAR	0	1
BARABANKI	39	62	KASGANJ	0	0	MAHAMAYA NAGAR	1	1
BAREILLY	69	30	KAUSHAMBI	5	9	Total	1798	960
BASTI	0	0	KHERI	127	70			
BHADOHI	0	0	KUSHINAGAR	1	0			
BIJNOR	4	1	LALITPUR	0	0			
BULANDSAHAR	9	7	LUCKNOW	6	0			
CHANDAULI	0	0	MAHARAJGANJ	34	25			
CHITRAKOOT	0	0	MAHOBAB	0	0			
DEORIA	0	0	MAINPURI	9	4			
ETAH	12	11	MATHURA	128	237			
ETAWAH	10	2	MAU	0	2			
FAIZABAD	1	1	MEERUT	14	4			
FARRUKHABAD	0	0	MIRZAPUR	2	4			
FATEHPUR	8	11	MORADABAD	12	5			
			MUZAFARNAGAR	52	19			
			PILHIBHIT	334	138			

The study used images received from following Satellites at IARI Satellite Ground Station

S. No.	Satellite Name	Sensor	Resolution (meter)	Day / Night Passes
1.	Suomi NPP	VIIRS	375 / 1000	Both
2.	Terra	MODIS	1000	Both
3.	Aqua	MODIS	1000	Both
4.	NOAA – 18	AVHRR	1000	Night
5.	NOAA – 19	AVHRR	1000	Night
6.	Metop - 1	AVHRR	1000	Night
7.	Metop - 2	AVHRR	1000	Night

Study Team

ICAR – HQ	Dr K. Alagusundaram	DDG (Agril. Engg.)	ddgengg@icar.org.in
	Dr S. Bhaskar	ADG (NRM)	adgagroandaf@gmail.com
ICAR - IARI	Dr V.K. Sehgal	Professor & Nodal Scientist	iaricreams@gmail.com vk.sehgal@icar.gov.in
	Dr Rajkumar Dhakar	Scientist	rajdhakar.iari@gmail.com
	Shri Rakeshwar Verma	Chief Technical Officer	rakeshwar.verma@icar.gov.in
	Mr Aakash Chhabra	SRF (NICRA)	aakash.chhabra7489@gmail.com
ICAR - ATARI	Dr Rajbir Singh	Director ATARI (Zone-1)	rajbirsingh.zpd@gmail.com
	Dr U.S. Gautam	Director ATARI (Zone-IV)	zpdicarkanpur@gmail.com
ICAR - IASRI	Dr RajenderParsad	Principal Scientist	rajender.parsad@icar.gov.in

GIS Maps of fire events can be visualized online on ICAR KRISHI Geoportal

websites:<http://geoportal.icar.gov.in:8080/geoexplorer/composer/>

<http://creams.iari.res.in:8080/geoexplorer/composer/>
