



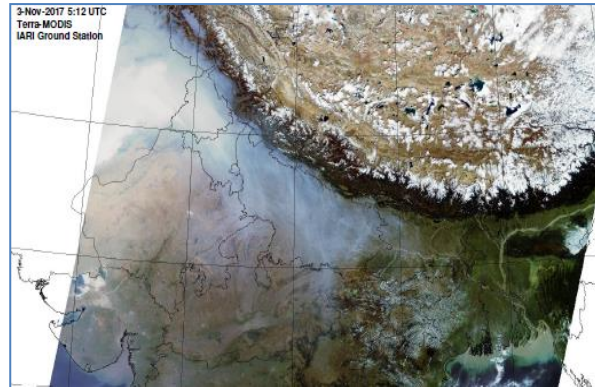
**Bulletin
No. 20**

**Events Date:
20-Oct-2018**

**Issued on:
21-Oct-2018**



MONITORING PADDY RESIDUE BURNING IN NORTH INDIA USING SATELLITE REMOTE SENSING DURING 2018



Prepared by:

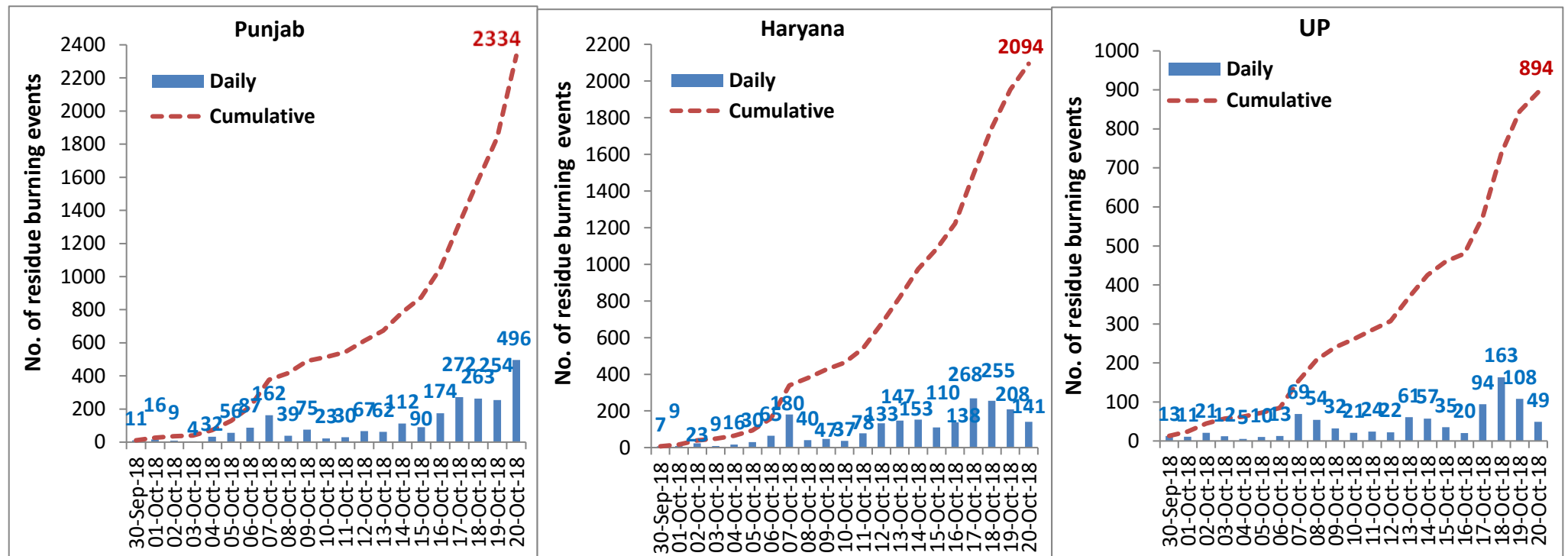
**Consortium for Research on Agroecosystem Monitoring and Modeling from Space (CREAMS) Laboratory,
Division of Agricultural Physics, ICAR – Indian Agricultural Research Institute, New Delhi – 110012**

<http://creams.iari.res.in>

Highlights for 20-October-2018

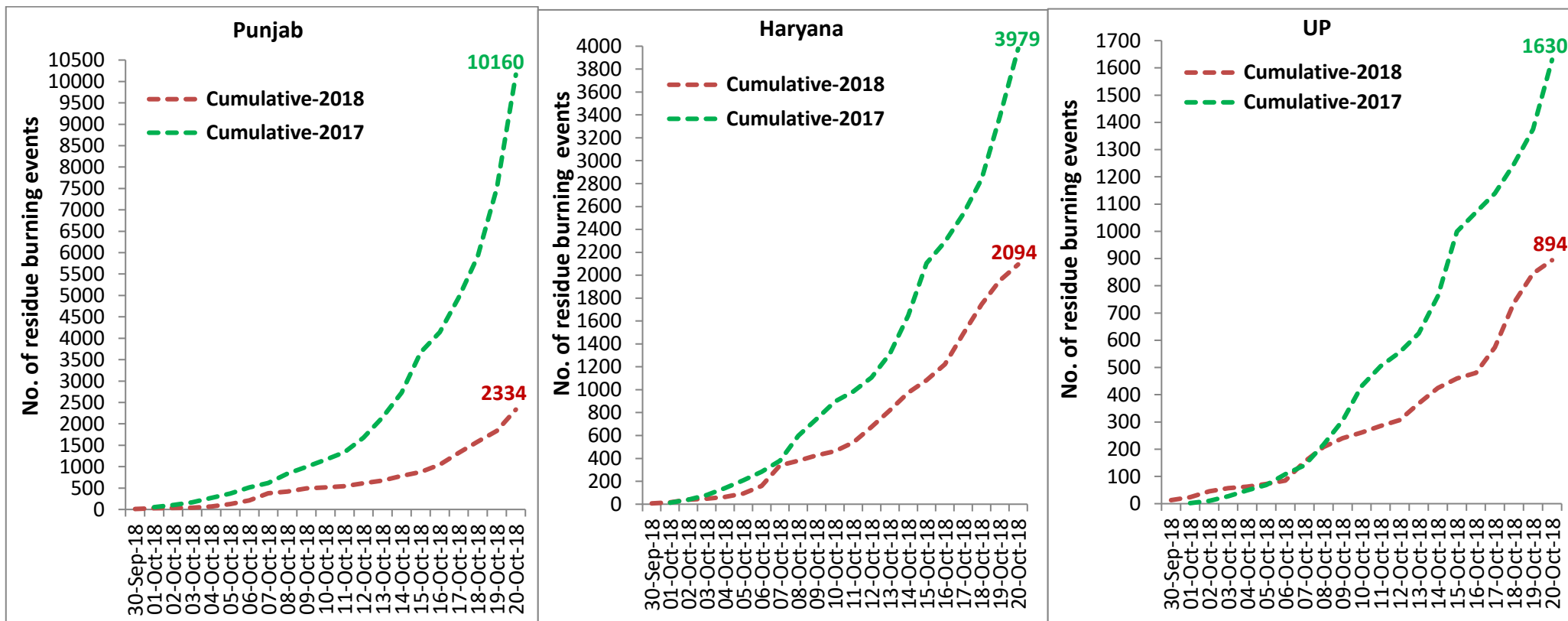
- Satellites detected 686 residue burning events in the three States (Punjab, Haryana & UP) on 20-Oct-2018.
- The burning events detected on 20-Oct-2018 are 496, 141 and 49 in Punjab, Haryana, and UP, respectively.
- The number of events increased from 570 on 19-Oct-2018 to 686 on 20-Oct-2018 in the three States.
- Total 5322 burning events were detected in the three States between 30-Sept-2018 and 20-Oct-2018, which were distributed as 2334, 2094 and 894 in Punjab, Haryana and UP, respectively.
- Till 20-Oct-2018, the burning events in the current year are about 33.7% of the events detected in 2017.

Temporal distribution of residue burning events for the three study States



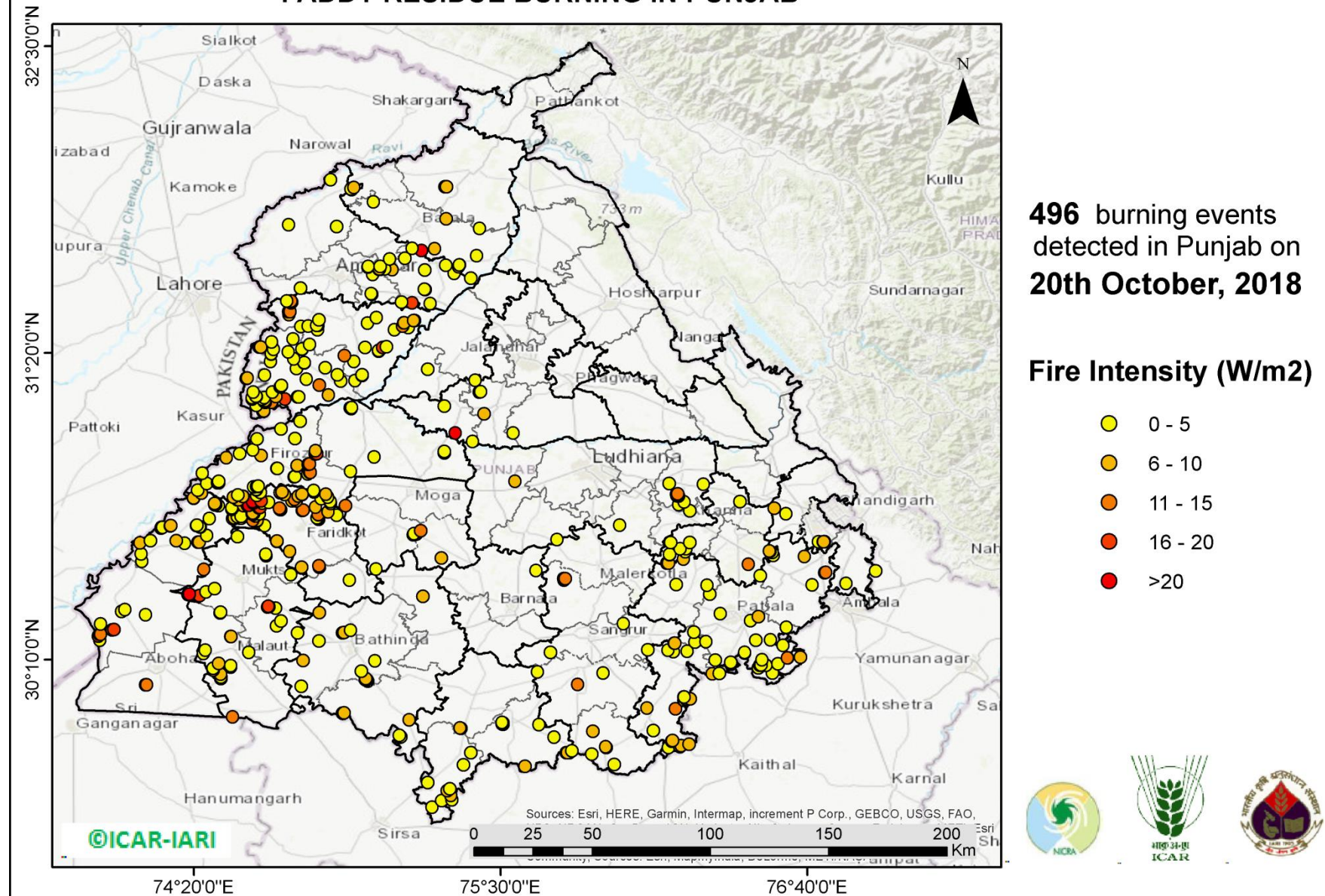
Comparison of residue burning events in current year (2018) with previous year (2017) for the three study States

(30-Sep-2018 to 20-Oct-2018)



(a) Punjab

PADDY RESIDUE BURNING IN PUNJAB



<http://geoportal.icar.gov.in:8080/geoexplorer/composer/>

Details of residue burning events in Punjab on 20-Oct-2018

Event S. No.	District	Tehsil / Block	Satellite	Longitude	Latitude	Time (IST)	Day/Night	Fire Power (W/m2)
1	AMRITSAR	AJNALA	S-NPP	74.87503	31.81423	14:18:00	D	2.90
2	AMRITSAR	AJNALA	S-NPP	74.69376	31.82159	14:18:00	D	3.00
3	AMRITSAR	AJNALA	S-NPP	74.93255	31.95414	14:18:00	D	8.40
4	AMRITSAR	AJNALA	S-NPP	74.93006	31.95761	14:18:00	D	4.90
5	AMRITSAR	AJNALA	S-NPP	74.94137	31.96230	12:42:00	D	7.60
6	AMRITSAR	AJNALA	S-NPP	74.85294	31.99194	14:18:00	D	3.70
7	AMRITSAR	AMRITSAR I	S-NPP	75.01066	31.55647	14:18:00	D	4.90
8	AMRITSAR	AMRITSAR I	S-NPP	75.00751	31.55866	14:18:00	D	4.80
9	AMRITSAR	AMRITSAR I	S-NPP	75.01274	31.63125	14:18:00	D	3.90
10	AMRITSAR	AMRITSAR I	S-NPP	75.08752	31.65054	12:42:00	D	5.30
11	AMRITSAR	AMRITSAR I	S-NPP	75.03722	31.65076	14:18:00	D	4.30
12	AMRITSAR	AMRITSAR I	S-NPP	75.04237	31.65107	14:18:00	D	6.20
13	AMRITSAR	AMRITSAR I	S-NPP	75.05785	31.65197	14:18:00	D	3.20
14	AMRITSAR	AMRITSAR I	S-NPP	75.03821	31.65236	14:18:00	D	5.30
15	AMRITSAR	AMRITSAR I	S-NPP	74.99529	31.66035	14:18:00	D	3.40
16	AMRITSAR	AMRITSAR I	S-NPP	74.99615	31.66220	14:18:00	D	4.50
17	AMRITSAR	AMRITSAR I	S-NPP	75.04155	31.66309	14:18:00	D	3.90
18	AMRITSAR	AMRITSAR I	S-NPP	75.07716	31.69069	14:18:00	D	4.80
19	AMRITSAR	AMRITSAR II	S-NPP	74.73840	31.57954	14:18:00	D	3.60
20	AMRITSAR	BABA BAKALA	S-NPP	75.23221	31.52073	14:18:00	D	2.20
21	AMRITSAR	BABA BAKALA	S-NPP	75.16354	31.52299	14:18:00	D	19.90
22	AMRITSAR	BABA BAKALA	S-NPP	75.12239	31.52649	12:42:00	D	2.00
23	AMRITSAR	BABA BAKALA	S-NPP	75.21278	31.57446	14:18:00	D	4.10
24	AMRITSAR	BABA BAKALA	S-NPP	75.20982	31.57544	14:18:00	D	3.50
25	AMRITSAR	BABA BAKALA	S-NPP	75.32314	31.63649	14:18:00	D	2.80
26	AMRITSAR	BABA BAKALA	S-NPP	75.21016	31.64856	14:18:00	D	4.30
27	AMRITSAR	BABA BAKALA	S-NPP	75.29066	31.66726	12:42:00	D	2.90
28	AMRITSAR	BABA BAKALA	S-NPP	75.13449	31.69378	14:18:00	D	2.30

29	AMRITSAR	BABA BAKALA	TERRA-1	75.19802	31.72314	11:38:00	D	25.56
30	AMRITSAR	BABA BAKALA	S-NPP	75.16347	31.73182	14:18:00	D	2.80
31	BARNALA	BARNALA	S-NPP	75.63403	30.50546	14:18:00	D	2.70
32	BATHINDA	BATHINDA	S-NPP	74.74055	30.06507	12:42:00	D	4.20
33	BATHINDA	BATHINDA	S-NPP	74.99532	30.08494	14:18:00	D	2.10
34	BATHINDA	BATHINDA	S-NPP	74.98711	30.08829	14:18:00	D	6.30
35	BATHINDA	BATHINDA	S-NPP	74.98515	30.09022	14:18:00	D	7.40
36	BATHINDA	BATHINDA	S-NPP	74.99001	30.09054	14:18:00	D	7.40
37	BATHINDA	BATHINDA	S-NPP	74.98667	30.09420	14:18:00	D	6.30
38	BATHINDA	BATHINDA	S-NPP	74.96979	30.12289	14:18:00	D	1.90
39	BATHINDA	BATHINDA	S-NPP	75.02088	30.16175	14:18:00	D	3.10
40	BATHINDA	BATHINDA	S-NPP	74.74782	30.16353	12:42:00	D	8.80
41	BATHINDA	BATHINDA	S-NPP	74.80839	30.23767	12:42:00	D	3.20
42	BATHINDA	BATHINDA	S-NPP	74.89775	30.26806	12:42:00	D	6.60
43	BATHINDA	BATHINDA	S-NPP	74.90309	30.26948	12:42:00	D	8.00
44	BATHINDA	BATHINDA	S-NPP	74.92947	30.27812	14:18:00	D	2.10
45	BATHINDA	BATHINDA	S-NPP	74.80956	30.34581	14:18:00	D	9.90
46	BATHINDA	RAMPURA PHUL	S-NPP	75.20330	30.40661	12:42:00	D	7.00
47	BATHINDA	TALWANDI SABO	S-NPP	75.11663	29.87190	12:42:00	D	4.60
48	BATHINDA	TALWANDI SABO	S-NPP	75.11916	29.87245	12:42:00	D	3.40
49	BATHINDA	TALWANDI SABO	S-NPP	75.11460	29.87788	12:42:00	D	4.60
50	BATHINDA	TALWANDI SABO	S-NPP	75.15141	29.93676	14:18:00	D	5.70
51	BATHINDA	TALWANDI SABO	S-NPP	74.89806	29.96303	12:42:00	D	5.40
52	BATHINDA	TALWANDI SABO	S-NPP	74.90347	29.96446	12:42:00	D	6.70
53	FARIDKOT	FARIDKOT	S-NPP	74.74212	30.51805	12:42:00	D	7.70
54	FARIDKOT	FARIDKOT	S-NPP	74.80819	30.52383	12:42:00	D	12.60
55	FARIDKOT	FARIDKOT	S-NPP	74.69756	30.57830	12:42:00	D	6.30
56	FARIDKOT	FARIDKOT	S-NPP	74.64832	30.61684	12:42:00	D	8.30
57	FARIDKOT	FARIDKOT	S-NPP	74.64804	30.61771	12:42:00	D	7.30
58	FARIDKOT	FARIDKOT	S-NPP	74.60274	30.67591	14:18:00	D	3.80
59	FARIDKOT	FARIDKOT	S-NPP	74.57059	30.69278	12:42:00	D	5.00
60	FARIDKOT	FARIDKOT	S-NPP	74.57307	30.69547	12:42:00	D	6.80

61	FARIDKOT	FARIDKOT	S-NPP	74.55756	30.69586	12:42:00	D	10.20
62	FARIDKOT	FARIDKOT	S-NPP	74.80688	30.70087	14:18:00	D	4.90
63	FARIDKOT	FARIDKOT	S-NPP	74.48323	30.70220	12:42:00	D	10.50
64	FARIDKOT	FARIDKOT	S-NPP	74.47984	30.70386	12:42:00	D	5.50
65	FARIDKOT	FARIDKOT	S-NPP	74.51132	30.70483	14:18:00	D	10.40
66	FARIDKOT	FARIDKOT	S-NPP	74.50758	30.70497	14:18:00	D	6.30
67	FARIDKOT	FARIDKOT	S-NPP	74.80312	30.70505	14:18:00	D	12.70
68	FARIDKOT	FARIDKOT	S-NPP	74.51224	30.70526	14:18:00	D	6.30
69	FARIDKOT	FARIDKOT	S-NPP	74.48538	30.70532	12:42:00	D	5.50
70	FARIDKOT	FARIDKOT	S-NPP	74.80164	30.70645	14:18:00	D	4.50
71	FARIDKOT	FARIDKOT	S-NPP	74.49784	30.71018	14:18:00	D	2.30
72	FARIDKOT	FARIDKOT	S-NPP	74.51178	30.71104	14:18:00	D	5.00
73	FARIDKOT	FARIDKOT	S-NPP	74.56667	30.71354	12:42:00	D	3.50
74	FARIDKOT	FARIDKOT	S-NPP	74.87574	30.71519	14:18:00	D	1.20
75	FARIDKOT	FARIDKOT	S-NPP	74.80719	30.71711	14:18:00	D	15.40
76	FARIDKOT	FARIDKOT	S-NPP	74.55906	30.71812	12:42:00	D	8.30
77	FARIDKOT	FARIDKOT	S-NPP	74.80573	30.71854	14:18:00	D	11.20
78	FARIDKOT	FARIDKOT	S-NPP	74.58149	30.72117	14:18:00	D	1.90
79	FARIDKOT	FARIDKOT	S-NPP	74.55457	30.72144	12:42:00	D	8.30
80	FARIDKOT	FARIDKOT	S-NPP	74.56005	30.72292	12:42:00	D	13.50
81	FARIDKOT	FARIDKOT	S-NPP	74.55694	30.72414	12:42:00	D	8.30
82	FARIDKOT	FARIDKOT	S-NPP	74.84352	30.72779	12:42:00	D	5.50
83	FARIDKOT	FARIDKOT	S-NPP	74.74514	30.73347	12:42:00	D	10.60
84	FARIDKOT	FARIDKOT	S-NPP	74.74811	30.73512	12:42:00	D	10.20
85	FARIDKOT	FARIDKOT	S-NPP	74.66186	30.73719	12:42:00	D	7.60
86	FARIDKOT	FARIDKOT	S-NPP	74.65915	30.73786	12:42:00	D	8.60
87	FARIDKOT	FARIDKOT	S-NPP	74.47704	30.73792	14:18:00	D	3.90
88	FARIDKOT	FARIDKOT	TERRA-1	74.65745	30.74248	11:38:00	D	14.80
89	FARIDKOT	FARIDKOT	S-NPP	74.47659	30.74370	14:18:00	D	3.70
90	FARIDKOT	FARIDKOT	S-NPP	74.57970	30.74442	14:18:00	D	16.20
91	FARIDKOT	FARIDKOT	S-NPP	74.58440	30.74471	14:18:00	D	16.20
92	FARIDKOT	FARIDKOT	S-NPP	74.79527	30.74597	14:18:00	D	7.50

93	FARIDKOT	FARIDKOT	S-NPP	74.52261	30.75246	14:18:00	D	6.40
94	FARIDKOT	FARIDKOT	S-NPP	74.53662	30.75336	14:18:00	D	10.00
95	FARIDKOT	FARIDKOT	S-NPP	74.54130	30.75366	14:18:00	D	23.10
96	FARIDKOT	FARIDKOT	S-NPP	74.55827	30.76198	12:42:00	D	21.10
97	FARIDKOT	FARIDKOT	S-NPP	74.59247	30.76276	14:18:00	D	1.80
98	FARIDKOT	FARIDKOT	S-NPP	74.61681	30.76447	12:42:00	D	3.00
99	FARIDKOT	FARIDKOT	S-NPP	74.55613	30.76799	12:42:00	D	21.10
100	FARIDKOT	FARIDKOT	S-NPP	74.70640	30.76997	14:18:00	D	7.80
101	FARIDKOT	FARIDKOT	S-NPP	74.72076	30.77088	14:18:00	D	9.20
102	FARIDKOT	FARIDKOT	TERRA-1	74.58754	30.77093	11:38:00	D	15.67
103	FARIDKOT	FARIDKOT	S-NPP	74.71555	30.77644	14:18:00	D	10.60
104	FARIDKOT	FARIDKOT	S-NPP	74.72910	30.78908	14:18:00	D	7.40
105	FARIDKOT	FARIDKOT	S-NPP	74.57154	30.79183	12:42:00	D	3.70
106	FARIDKOT	FARIDKOT	S-NPP	74.67731	30.79371	12:42:00	D	5.50
107	FARIDKOT	FARIDKOT	S-NPP	74.74352	30.79413	14:18:00	D	7.50
108	FARIDKOT	FARIDKOT	S-NPP	74.74306	30.79586	14:18:00	D	6.10
109	FARIDKOT	FARIDKOT	S-NPP	74.66118	30.80111	14:18:00	D	2.80
110	FARIDKOT	FARIDKOT	S-NPP	74.58572	30.80216	12:42:00	D	3.40
111	FARIDKOT	FARIDKOT	S-NPP	74.66084	30.80232	14:18:00	D	2.80
112	FARIDKOT	FARIDKOT	S-NPP	74.66775	30.80425	12:42:00	D	8.30
113	FARIDKOT	JAITO	S-NPP	74.92464	30.46927	14:18:00	D	4.90
114	FARIDKOT	JAITO	S-NPP	74.81028	30.51785	12:42:00	D	4.00
115	FATEHGARH SAHIB	ALMOH	S-NPP	76.13232	30.53276	14:18:00	D	6.70
116	FATEHGARH SAHIB	ALMOH	S-NPP	76.13813	30.53307	14:18:00	D	9.70
117	FATEHGARH SAHIB	ALMOH	S-NPP	76.14146	30.56601	12:42:00	D	5.00
118	FATEHGARH SAHIB	ALMOH	S-NPP	76.14188	30.56776	12:42:00	D	4.40
119	FATEHGARH SAHIB	ALMOH	S-NPP	76.20168	30.57703	12:42:00	D	2.10
120	FATEHGARH SAHIB	ALMOH	S-NPP	76.20517	30.58763	14:18:00	D	4.90
121	FATEHGARH SAHIB	ALMOH	S-NPP	76.18246	30.58829	12:42:00	D	2.80
122	FATEHGARH SAHIB	ALMOH	S-NPP	76.14681	30.61139	12:42:00	D	3.00
123	FATEHGARH SAHIB	ALMOH	S-NPP	76.21915	30.61163	12:42:00	D	3.10
124	FATEHGARH SAHIB	FATEHGARH SAHIB	S-NPP	76.48759	30.48618	14:18:00	D	2.20

125	FATEHGARH SAHIB	FATEHGARH SAHIB	S-NPP	76.48708	30.48629	14:18:00	D	2.90
126	FATEHGARH SAHIB	FATEHGARH SAHIB	S-NPP	76.44185	30.52938	14:18:00	D	12.00
127	FATEHGARH SAHIB	FATEHGARH SAHIB	S-NPP	76.53549	30.56309	12:42:00	D	2.40
128	FATEHGARH SAHIB	FATEHGARH SAHIB	S-NPP	76.53192	30.57404	12:42:00	D	4.10
129	FATEHGARH SAHIB	FATEHGARH SAHIB	S-NPP	76.52454	30.57887	14:18:00	D	8.50
130	FATEHGARH SAHIB	FATEHGARH SAHIB	S-NPP	76.52254	30.57923	14:18:00	D	9.50
131	FATEHGARH SAHIB	KHAMANOH	S-NPP	76.41000	30.76815	14:18:00	D	2.60
132	FIROZPUR	ABOHAR	S-NPP	74.14880	30.06997	14:18:00	D	12.40
133	FIROZPUR	ABOHAR	S-NPP	74.15313	30.07026	14:18:00	D	12.40
134	FIROZPUR	FAZILKA	S-NPP	73.97524	30.23997	14:18:00	D	2.40
135	FIROZPUR	FAZILKA	S-NPP	73.96956	30.25644	14:18:00	D	17.30
136	FIROZPUR	FAZILKA	S-NPP	73.97333	30.26231	14:18:00	D	17.30
137	FIROZPUR	FAZILKA	S-NPP	73.97758	30.26260	14:18:00	D	11.80
138	FIROZPUR	FAZILKA	S-NPP	74.02177	30.27974	12:42:00	D	13.70
139	FIROZPUR	FAZILKA	S-NPP	74.02776	30.28137	12:42:00	D	18.80
140	FIROZPUR	FAZILKA	S-NPP	73.97770	30.30219	12:42:00	D	2.80
141	FIROZPUR	FAZILKA	S-NPP	74.14880	30.33654	14:18:00	D	3.40
142	FIROZPUR	FAZILKA	S-NPP	74.05795	30.35012	14:18:00	D	2.90
143	FIROZPUR	FAZILKA	S-NPP	74.07043	30.35659	14:18:00	D	3.20
144	FIROZPUR	FIROZPUR	S-NPP	74.90961	30.75170	12:42:00	D	12.90
145	FIROZPUR	FIROZPUR	S-NPP	74.85275	30.76130	14:18:00	D	4.50
146	FIROZPUR	FIROZPUR	S-NPP	74.85234	30.76721	14:18:00	D	3.20
147	FIROZPUR	FIROZPUR	S-NPP	74.49757	30.77412	14:18:00	D	4.20
148	FIROZPUR	FIROZPUR	S-NPP	74.50220	30.77442	14:18:00	D	6.60
149	FIROZPUR	FIROZPUR	S-NPP	74.81625	30.77866	12:42:00	D	3.50
150	FIROZPUR	FIROZPUR	S-NPP	74.84129	30.78432	14:18:00	D	2.40
151	FIROZPUR	FIROZPUR	S-NPP	74.48283	30.78468	14:18:00	D	7.30
152	FIROZPUR	FIROZPUR	S-NPP	74.48276	30.78477	14:18:00	D	7.80
153	FIROZPUR	FIROZPUR	S-NPP	74.52009	30.78691	14:18:00	D	9.30
154	FIROZPUR	FIROZPUR	S-NPP	74.51994	30.78722	14:18:00	D	7.90
155	FIROZPUR	FIROZPUR	S-NPP	74.49953	30.79250	12:42:00	D	4.90
156	FIROZPUR	FIROZPUR	S-NPP	74.83554	30.79582	14:18:00	D	5.20

157	FIROZPUR	FIROZPUR	S-NPP	74.36139	30.79976	14:18:00	D	7.30
158	FIROZPUR	FIROZPUR	S-NPP	74.36117	30.80042	14:18:00	D	7.20
159	FIROZPUR	FIROZPUR	S-NPP	74.79008	30.80415	12:42:00	D	6.60
160	FIROZPUR	FIROZPUR	S-NPP	74.78799	30.81010	12:42:00	D	4.20
161	FIROZPUR	FIROZPUR	S-NPP	74.34655	30.81104	14:18:00	D	2.50
162	FIROZPUR	FIROZPUR	S-NPP	74.56984	30.81322	14:18:00	D	5.10
163	FIROZPUR	FIROZPUR	S-NPP	74.56973	30.81387	14:18:00	D	4.60
164	FIROZPUR	FIROZPUR	S-NPP	74.55951	30.82427	14:18:00	D	2.70
165	FIROZPUR	FIROZPUR	S-NPP	74.57179	30.82475	12:42:00	D	4.30
166	FIROZPUR	FIROZPUR	S-NPP	74.57490	30.82475	12:42:00	D	8.20
167	FIROZPUR	FIROZPUR	S-NPP	74.57724	30.82618	12:42:00	D	4.30
168	FIROZPUR	FIROZPUR	S-NPP	74.38130	30.83635	14:18:00	D	4.10
169	FIROZPUR	FIROZPUR	S-NPP	74.42266	30.83899	14:18:00	D	11.70
170	FIROZPUR	FIROZPUR	S-NPP	74.42728	30.83928	14:18:00	D	11.70
171	FIROZPUR	FIROZPUR	S-NPP	74.42684	30.84505	14:18:00	D	4.10
172	FIROZPUR	FIROZPUR	S-NPP	74.71443	30.86234	12:42:00	D	7.20
173	FIROZPUR	FIROZPUR	S-NPP	74.71720	30.86295	12:42:00	D	5.00
174	FIROZPUR	FIROZPUR	S-NPP	74.76674	30.87226	14:18:00	D	4.30
175	FIROZPUR	FIROZPUR	S-NPP	74.36437	30.87570	14:18:00	D	4.50
176	FIROZPUR	FIROZPUR	S-NPP	74.77268	30.87797	12:42:00	D	7.70
177	FIROZPUR	FIROZPUR	S-NPP	74.77560	30.87824	12:42:00	D	11.30
178	FIROZPUR	FIROZPUR	S-NPP	74.64847	30.89354	14:18:00	D	2.40
179	FIROZPUR	FIROZPUR	S-NPP	74.64934	30.89432	14:18:00	D	1.70
180	FIROZPUR	FIROZPUR	S-NPP	74.72479	30.90384	14:18:00	D	6.60
181	FIROZPUR	FIROZPUR	S-NPP	74.72553	30.90509	14:18:00	D	5.70
182	FIROZPUR	FIROZPUR	S-NPP	74.76757	30.90908	12:42:00	D	12.00
183	FIROZPUR	FIROZPUR	S-NPP	74.77283	30.91049	12:42:00	D	12.00
184	FIROZPUR	FIROZPUR	S-NPP	74.45599	30.93453	14:18:00	D	5.90
185	FIROZPUR	FIROZPUR	S-NPP	74.58734	30.94266	14:18:00	D	6.50
186	FIROZPUR	FIROZPUR	S-NPP	74.79441	30.94927	14:18:00	D	13.40
187	FIROZPUR	FIROZPUR	S-NPP	74.50640	30.94932	14:18:00	D	2.40
188	FIROZPUR	FIROZPUR	S-NPP	74.79929	30.94956	14:18:00	D	18.10

189	FIROZPUR	FIROZPUR	S-NPP	74.79504	30.96172	12:42:00	D	6.40
190	FIROZPUR	FIROZPUR	S-NPP	74.55718	30.96418	14:18:00	D	3.00
191	FIROZPUR	FIROZPUR	S-NPP	74.57298	31.00613	14:18:00	D	3.50
192	FIROZPUR	FIROZPUR	S-NPP	74.71744	31.00774	14:18:00	D	3.00
193	FIROZPUR	FIROZPUR	S-NPP	74.66416	31.04389	12:42:00	D	2.40
194	FIROZPUR	FIROZPUR	S-NPP	74.73685	31.07383	14:18:00	D	2.90
195	FIROZPUR	JALALABAD	S-NPP	74.36996	30.50985	14:18:00	D	11.40
196	FIROZPUR	JALALABAD	S-NPP	74.13467	30.53990	14:18:00	D	2.70
197	FIROZPUR	JALALABAD	S-NPP	74.13237	30.56817	14:18:00	D	1.60
198	FIROZPUR	JALALABAD	S-NPP	74.29826	30.60980	14:18:00	D	2.20
199	FIROZPUR	JALALABAD	S-NPP	74.12840	30.61006	14:18:00	D	7.90
200	FIROZPUR	JALALABAD	S-NPP	74.34795	30.61301	14:18:00	D	6.40
201	FIROZPUR	JALALABAD	S-NPP	74.35247	30.61330	14:18:00	D	6.40
202	FIROZPUR	JALALABAD	S-NPP	74.16760	30.61837	14:18:00	D	4.90
203	FIROZPUR	JALALABAD	S-NPP	74.26591	30.61916	14:18:00	D	5.90
204	FIROZPUR	JALALABAD	S-NPP	74.38242	30.63831	14:18:00	D	3.00
205	FIROZPUR	JALALABAD	S-NPP	74.20823	30.66679	14:18:00	D	6.50
206	FIROZPUR	JALALABAD	S-NPP	74.20872	30.66911	14:18:00	D	2.90
207	FIROZPUR	JALALABAD	S-NPP	74.21318	30.66939	14:18:00	D	2.90
208	FIROZPUR	JALALABAD	S-NPP	74.35698	30.67122	14:18:00	D	3.90
209	FIROZPUR	JALALABAD	S-NPP	74.35320	30.67234	14:18:00	D	4.40
210	FIROZPUR	JALALABAD	S-NPP	74.24343	30.67495	14:18:00	D	4.20
211	FIROZPUR	JALALABAD	S-NPP	74.34293	30.67603	14:18:00	D	2.90
212	FIROZPUR	JALALABAD	S-NPP	74.24398	30.67705	14:18:00	D	5.30
213	FIROZPUR	JALALABAD	S-NPP	74.34363	30.67751	14:18:00	D	2.40
214	FIROZPUR	JALALABAD	S-NPP	74.39191	30.70358	14:18:00	D	2.80
215	FIROZPUR	JALALABAD	S-NPP	74.42493	30.75196	14:18:00	D	4.20
216	FIROZPUR	JALALABAD	S-NPP	74.41338	30.75444	12:42:00	D	7.30
217	FIROZPUR	JALALABAD	S-NPP	74.41534	30.75690	12:42:00	D	14.90
218	FIROZPUR	JALALABAD	S-NPP	74.41127	30.76051	12:42:00	D	7.30
219	FIROZPUR	JALALABAD	S-NPP	74.33086	30.78037	14:18:00	D	6.60
220	FIROZPUR	JALALABAD	S-NPP	74.33067	30.78124	14:18:00	D	7.30

221	FIROZPUR	ZIRA	S-NPP	74.92836	30.88213	14:18:00	D	3.50
222	FIROZPUR	ZIRA	S-NPP	75.01828	30.93715	12:42:00	D	2.60
223	FIROZPUR	ZIRA	S-NPP	75.28557	30.95317	14:18:00	D	8.00
224	FIROZPUR	ZIRA	S-NPP	75.28561	30.95800	14:18:00	D	3.40
225	FIROZPUR	ZIRA	S-NPP	74.93119	31.12134	14:18:00	D	5.40
226	FIROZPUR	ZIRA	S-NPP	74.92804	31.12444	14:18:00	D	3.20
227	FIROZPUR	ZIRA	S-NPP	74.93303	31.12471	14:18:00	D	3.20
228	GURDASPUR	BATALA	S-NPP	75.38547	31.61757	12:42:00	D	3.80
229	GURDASPUR	BATALA	S-NPP	75.33910	31.66160	14:18:00	D	7.70
230	GURDASPUR	BATALA	S-NPP	75.34407	31.66799	14:18:00	D	7.70
231	GURDASPUR	BATALA	S-NPP	75.34259	31.66824	14:18:00	D	3.80
232	GURDASPUR	BATALA	S-NPP	75.40814	31.70369	12:42:00	D	2.10
233	GURDASPUR	BATALA	S-NPP	75.24850	31.73038	14:18:00	D	7.10
234	GURDASPUR	BATALA	S-NPP	75.41933	31.80699	14:18:00	D	4.90
235	GURDASPUR	BATALA	S-NPP	75.29192	31.84339	14:18:00	D	7.10
236	GURDASPUR	BATALA	S-NPP	75.01614	31.90818	14:18:00	D	2.60
237	GURDASPUR	GURDASPUR	S-NPP	75.28809	31.96561	14:18:00	D	3.90
238	GURDASPUR	GURDASPUR	S-NPP	75.29346	31.96590	14:18:00	D	5.80
239	JALANDHAR	NAKODAR	S-NPP	75.43600	31.10214	14:18:00	D	8.50
240	JALANDHAR	NAKODAR	S-NPP	75.41896	31.18434	12:42:00	D	3.70
241	JALANDHAR	NAKODAR	S-NPP	75.42373	31.18559	12:42:00	D	3.70
242	JALANDHAR	NAKODAR	S-NPP	75.40349	31.22958	14:18:00	D	2.90
243	JALANDHAR	PHILLAUR	S-NPP	75.54775	31.02791	12:42:00	D	2.80
244	JALANDHAR	SHAHKOT	S-NPP	75.39370	30.99573	14:18:00	D	3.80
245	JALANDHAR	SHAHKOT	S-NPP	75.32781	31.02868	14:18:00	D	22.00
246	JALANDHAR	SHAHKOT	S-NPP	75.28522	31.13037	14:18:00	D	4.90
247	KAPURTHALA	SULTANPUR LODHI	S-NPP	75.22174	31.27140	01:24:00	N	0.60
248	LUDHIANA	JAGRAON	S-NPP	75.55434	30.84439	14:18:00	D	5.70
249	LUDHIANA	KHANNA	S-NPP	76.21979	30.73282	14:18:00	D	3.80
250	LUDHIANA	PAYAL	S-NPP	75.95326	30.67814	12:42:00	D	3.80
251	LUDHIANA	RAIKOT	S-NPP	75.71400	30.62311	12:42:00	D	2.90
252	LUDHIANA	SAMRALA	S-NPP	76.17706	30.75616	14:18:00	D	4.90

253	LUDHIANA	SAMRALA	S-NPP	76.19764	30.76580	14:18:00	D	4.90
254	LUDHIANA	SAMRALA	S-NPP	76.17501	30.78855	12:42:00	D	7.10
255	LUDHIANA	SAMRALA	S-NPP	76.17062	30.78991	12:42:00	D	5.70
256	LUDHIANA	SAMRALA	S-NPP	76.17314	30.79409	12:42:00	D	7.10
257	LUDHIANA	SAMRALA	S-NPP	76.16878	30.79546	12:42:00	D	5.70
258	LUDHIANA	SAMRALA	S-NPP	76.17319	30.79659	12:42:00	D	11.30
259	LUDHIANA	SAMRALA	S-NPP	76.27094	30.83333	14:18:00	D	3.70
260	LUDHIANA	SAMRALA	S-NPP	76.14070	30.83647	12:42:00	D	2.70
261	MANSA	BUDHLADA	S-NPP	75.59173	29.76038	14:18:00	D	5.10
262	MANSA	BUDHLADA	S-NPP	75.70248	29.87106	14:18:00	D	2.70
263	MANSA	BUDHLADA	S-NPP	75.64550	29.91896	12:42:00	D	4.60
264	MANSA	BUDHLADA	S-NPP	75.50807	29.92073	14:18:00	D	2.30
265	MANSA	BUDHLADA	S-NPP	75.50515	29.92135	14:18:00	D	4.40
266	MANSA	BUDHLADA	S-NPP	75.50765	29.92682	14:18:00	D	9.80
267	MANSA	BUDHLADA	S-NPP	75.50471	29.92744	14:18:00	D	4.40
268	MANSA	MANSA	S-NPP	75.34881	29.90456	14:18:00	D	6.40
269	MANSA	MANSA	S-NPP	75.34570	29.90616	14:18:00	D	6.20
270	MANSA	SARDULGARH	S-NPP	75.23933	29.60554	12:42:00	D	1.80
271	MANSA	SARDULGARH	S-NPP	75.27459	29.63038	14:18:00	D	1.60
272	MANSA	SARDULGARH	S-NPP	75.31472	29.63286	14:18:00	D	3.20
273	MANSA	SARDULGARH	S-NPP	75.31004	29.64994	12:42:00	D	5.70
274	MANSA	SARDULGARH	S-NPP	75.29698	29.66792	14:18:00	D	6.20
275	MANSA	SARDULGARH	S-NPP	75.30663	29.67456	14:18:00	D	4.30
276	MANSA	SARDULGARH	S-NPP	75.22213	29.69869	12:42:00	D	3.10
277	MANSA	SARDULGARH	S-NPP	75.35799	29.76653	12:42:00	D	3.20
278	MANSA	SARDULGARH	S-NPP	75.38721	29.81264	12:42:00	D	4.00
279	MANSA	SARDULGARH	S-NPP	75.38608	29.81292	12:42:00	D	4.50
280	MOGA	BAGHA PURANA	S-NPP	75.02545	30.51139	14:18:00	D	3.10
281	MOGA	BAGHA PURANA	S-NPP	75.16684	30.64202	01:24:00	N	3.20
282	MOGA	BAGHA PURANA	S-NPP	75.17030	30.64529	03:00:00	N	3.50
283	MOGA	NIHAL SINGH WALA	S-NPP	75.27322	30.55296	14:18:00	D	5.20
284	MOGA	NIHAL SINGH WALA	S-NPP	75.17213	30.64172	01:24:00	N	3.20

285	MOGA	NIHAL SINGH WALA	AQUA-1	75.17926	30.64367	02:12:00	N	20.77
286	MOGA	NIHAL SINGH WALA	S-NPP	75.17519	30.64401	03:00:00	N	2.90
287	MOGA	NIHAL SINGH WALA	NOAA-19	75.19461	30.65714	05:22:00	D	12.00
288	MUKTSAR	GIDDARBAHA	S-NPP	74.54196	30.19464	14:18:00	D	2.70
289	MUKTSAR	GIDDARBAHA	S-NPP	74.72641	30.26853	12:42:00	D	5.00
290	MUKTSAR	GIDDARBAHA	S-NPP	74.64706	30.29457	14:18:00	D	2.50
291	MUKTSAR	GIDDARBAHA	S-NPP	74.66442	30.31318	14:18:00	D	3.70
292	MUKTSAR	GIDDARBAHA	S-NPP	74.64218	30.36263	12:42:00	D	3.50
293	MUKTSAR	GIDDARBAHA	S-NPP	74.61373	30.36659	12:42:00	D	8.90
294	MUKTSAR	GIDDARBAHA	S-NPP	74.61923	30.36808	12:42:00	D	8.90
295	MUKTSAR	GIDDARBAHA	S-NPP	74.61587	30.36889	12:42:00	D	15.60
296	MUKTSAR	MALAUT	S-NPP	74.48003	29.94891	12:42:00	D	10.10
297	MUKTSAR	MALAUT	S-NPP	74.43544	30.09479	14:18:00	D	6.80
298	MUKTSAR	MALAUT	S-NPP	74.43497	30.10052	14:18:00	D	2.90
299	MUKTSAR	MALAUT	S-NPP	74.43404	30.11198	14:18:00	D	7.80
300	MUKTSAR	MALAUT	S-NPP	74.40566	30.12734	14:18:00	D	5.20
301	MUKTSAR	MALAUT	S-NPP	74.40520	30.13306	14:18:00	D	2.70
302	MUKTSAR	MALAUT	S-NPP	74.47292	30.13767	14:18:00	D	2.80
303	MUKTSAR	MALAUT	S-NPP	74.47248	30.14341	14:18:00	D	2.80
304	MUKTSAR	MALAUT	S-NPP	74.42635	30.15265	14:18:00	D	5.10
305	MUKTSAR	MALAUT	S-NPP	74.36908	30.18923	14:18:00	D	3.50
306	MUKTSAR	MALAUT	S-NPP	74.37598	30.20208	12:42:00	D	3.10
307	MUKTSAR	MALAUT	S-NPP	74.47289	30.25379	14:18:00	D	7.00
308	MUKTSAR	MALAUT	S-NPP	74.47388	30.25481	14:18:00	D	5.20
309	MUKTSAR	MUKTSAR	S-NPP	74.43233	30.34400	12:42:00	D	3.90
310	MUKTSAR	MUKTSAR	S-NPP	74.43389	30.34732	12:42:00	D	4.10
311	MUKTSAR	MUKTSAR	S-NPP	74.34969	30.40911	14:18:00	D	9.50
312	MUKTSAR	MUKTSAR	S-NPP	74.35419	30.40941	14:18:00	D	15.70
313	MUKTSAR	MUKTSAR	S-NPP	74.31464	30.41295	12:42:00	D	30.50
314	MUKTSAR	MUKTSAR	S-NPP	74.31090	30.41430	12:42:00	D	18.30
315	MUKTSAR	MUKTSAR	S-NPP	74.31660	30.41585	12:42:00	D	26.60
316	MUKTSAR	MUKTSAR	S-NPP	74.37962	30.42356	12:42:00	D	2.20

317	MUKTSAR	MUKTSAR	S-NPP	74.41111	30.43620	14:18:00	D	3.20
318	MUKTSAR	MUKTSAR	S-NPP	74.70222	30.48981	14:18:00	D	4.30
319	MUKTSAR	MUKTSAR	S-NPP	74.60834	30.56113	12:42:00	D	3.30
320	MUKTSAR	MUKTSAR	S-NPP	74.60622	30.56716	12:42:00	D	3.70
321	MUKTSAR	MUKTSAR	S-NPP	74.49813	30.63421	14:18:00	D	3.10
322	PATIALA	NABHA	S-NPP	76.29453	30.41625	12:42:00	D	4.20
323	PATIALA	NABHA	S-NPP	76.28509	30.44975	14:18:00	D	5.00
324	PATIALA	NABHA	S-NPP	76.16663	30.45185	14:18:00	D	3.90
325	PATIALA	NABHA	S-NPP	76.19575	30.54885	14:18:00	D	7.20
326	PATIALA	PATIALA	S-NPP	76.30520	30.11213	12:42:00	D	5.30
327	PATIALA	PATIALA	S-NPP	76.33125	30.11415	14:18:00	D	2.90
328	PATIALA	PATIALA	S-NPP	76.53326	30.11549	12:42:00	D	1.70
329	PATIALA	PATIALA	S-NPP	76.47939	30.13474	14:18:00	D	3.30
330	PATIALA	PATIALA	S-NPP	76.50510	30.14429	12:42:00	D	2.20
331	PATIALA	PATIALA	S-NPP	76.50948	30.14540	12:42:00	D	2.20
332	PATIALA	PATIALA	S-NPP	76.48586	30.14545	12:42:00	D	4.00
333	PATIALA	PATIALA	S-NPP	76.49023	30.14655	12:42:00	D	4.00
334	PATIALA	PATIALA	S-NPP	76.37659	30.14861	14:18:00	D	2.80
335	PATIALA	PATIALA	S-NPP	76.37453	30.15014	14:18:00	D	4.40
336	PATIALA	PATIALA	S-NPP	76.55469	30.15076	12:42:00	D	4.30
337	PATIALA	PATIALA	S-NPP	76.37619	30.15501	14:18:00	D	2.80
338	PATIALA	PATIALA	S-NPP	76.37412	30.15654	14:18:00	D	4.40
339	PATIALA	PATIALA	S-NPP	76.31635	30.16455	14:18:00	D	2.20
340	PATIALA	PATIALA	S-NPP	76.49358	30.16535	12:42:00	D	2.90
341	PATIALA	PATIALA	S-NPP	76.59280	30.17305	14:18:00	D	12.40
342	PATIALA	PATIALA	S-NPP	76.59093	30.17329	14:18:00	D	13.40
343	PATIALA	PATIALA	S-NPP	76.64012	30.17559	14:18:00	D	5.70
344	PATIALA	PATIALA	S-NPP	76.42822	30.19106	12:42:00	D	3.10
345	PATIALA	PATIALA	S-NPP	76.42829	30.19349	12:42:00	D	3.20
346	PATIALA	PATIALA	S-NPP	76.57385	30.22105	12:42:00	D	2.00
347	PATIALA	PATIALA	S-NPP	76.47000	30.24002	12:42:00	D	3.00
348	PATIALA	PATIALA	S-NPP	76.52576	30.24210	12:42:00	D	2.70

349	PATIALA	PATIALA	S-NPP	76.23435	30.27147	12:42:00	D	2.00
350	PATIALA	PATIALA	S-NPP	76.58691	30.28967	14:18:00	D	4.70
351	PATIALA	PATIALA	S-NPP	76.45062	30.31507	12:42:00	D	2.70
352	PATIALA	PATIALA	S-NPP	76.48055	30.32985	14:18:00	D	5.30
353	PATIALA	PATIALA	S-NPP	76.33555	30.34171	14:18:00	D	3.50
354	PATIALA	RAJPURA	S-NPP	76.68412	30.45057	12:42:00	D	2.30
355	PATIALA	RAJPURA	S-NPP	76.73265	30.49691	12:42:00	D	10.00
356	PATIALA	RAJPURA	S-NPP	76.73216	30.49756	12:42:00	D	12.50
357	PATIALA	RAJPURA	S-NPP	76.73681	30.49796	12:42:00	D	10.00
358	PATIALA	RAJPURA	S-NPP	76.73632	30.49858	12:42:00	D	12.50
359	PATIALA	RAJPURA	S-NPP	76.65585	30.55939	14:18:00	D	6.40
360	PATIALA	SAMANA	S-NPP	76.13715	29.83234	14:18:00	D	3.30
361	PATIALA	SAMANA	S-NPP	76.18281	29.83467	14:18:00	D	12.50
362	PATIALA	SAMANA	S-NPP	76.18050	29.83832	14:18:00	D	7.30
363	PATIALA	SAMANA	S-NPP	76.18623	29.83864	14:18:00	D	7.30
364	PATIALA	SAMANA	S-NPP	76.21637	29.84498	12:42:00	D	6.60
365	PATIALA	SAMANA	S-NPP	76.15082	29.85559	14:18:00	D	3.80
366	PATIALA	SAMANA	S-NPP	76.15260	29.85844	14:18:00	D	6.00
367	PATIALA	SAMANA	S-NPP	76.08073	29.89641	12:42:00	D	2.30
368	PATIALA	SAMANA	S-NPP	76.16389	29.97902	12:42:00	D	11.90
369	PATIALA	SAMANA	S-NPP	76.05672	29.98296	14:18:00	D	5.80
370	PATIALA	SAMANA	S-NPP	76.19607	30.01134	12:42:00	D	3.90
371	PATIALA	SAMANA	S-NPP	76.19768	30.01196	12:42:00	D	5.60
372	PATIALA	SAMANA	S-NPP	76.20681	30.01425	12:42:00	D	6.90
373	PATIALA	SAMANA	S-NPP	76.20974	30.01486	12:42:00	D	14.40
374	PATIALA	SAMANA	S-NPP	76.21138	30.01539	12:42:00	D	6.90
375	PATIALA	SAMANA	S-NPP	76.22083	30.01719	14:18:00	D	8.00
376	PATIALA	SAMANA	S-NPP	76.19695	30.02380	12:42:00	D	3.20
377	PATIALA	SAMANA	S-NPP	76.19853	30.02439	12:42:00	D	2.90
378	PATIALA	SAMANA	S-NPP	76.15603	30.19721	12:42:00	D	3.00
379	PATIALA	SAMANA	S-NPP	76.20966	30.19856	12:42:00	D	2.70
380	PATIALA	SAMANA	S-NPP	76.13665	30.20192	14:18:00	D	3.30

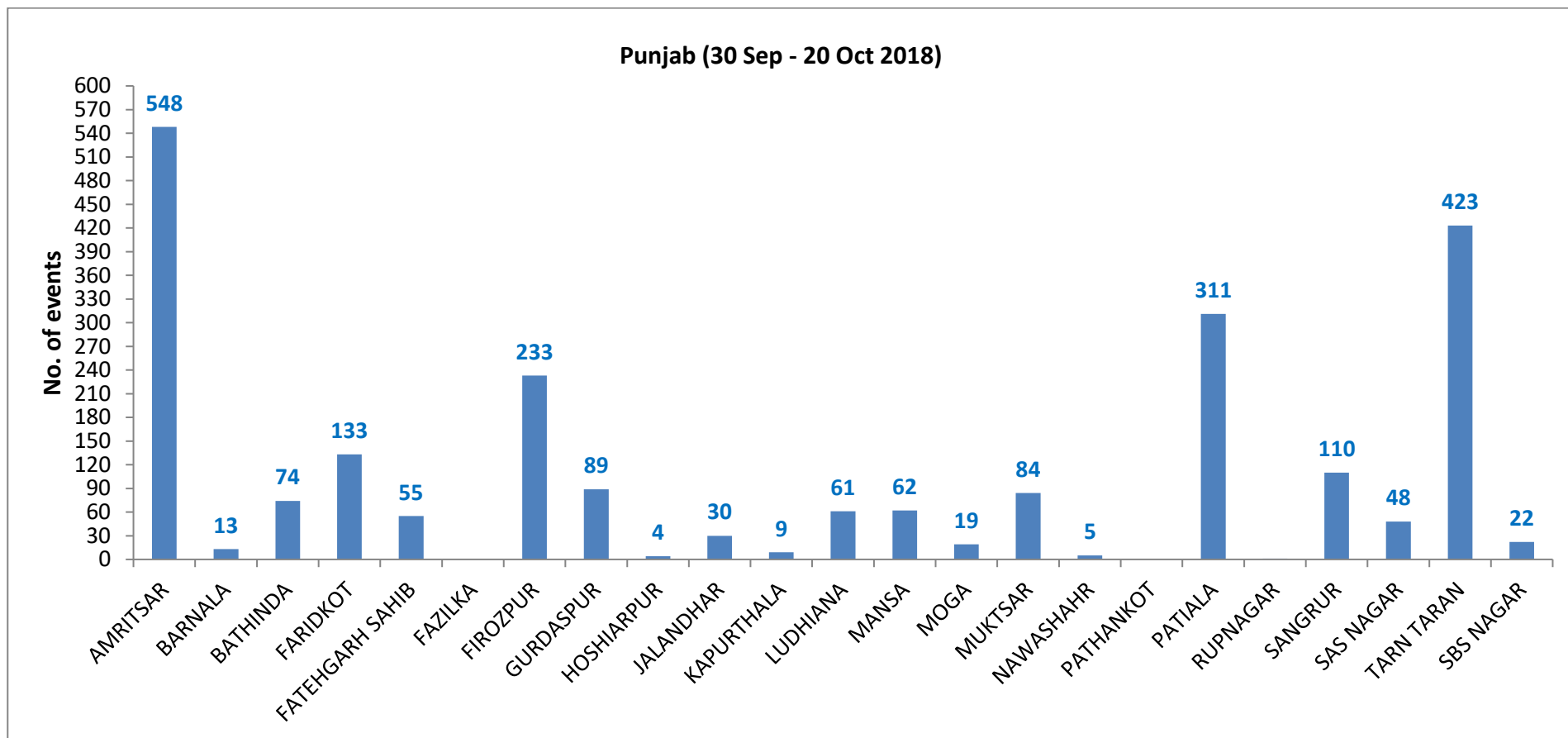
381	PATIALA	SAMANA	S-NPP	76.16042	30.22878	12:42:00	D	7.40
382	PATIALA	SAMANA	S-NPP	76.16107	30.22907	12:42:00	D	7.40
383	PATIALA	SAMANA	S-NPP	76.23939	30.23284	14:18:00	D	2.50
384	PATIALA	SAMANA	S-NPP	76.28042	30.23503	14:18:00	D	2.30
385	SANGRUR	DHURI	S-NPP	75.74157	30.46963	14:18:00	D	8.70
386	SANGRUR	DHURI	S-NPP	75.73993	30.47412	14:18:00	D	7.90
387	SANGRUR	DHURI	S-NPP	75.74542	30.47441	14:18:00	D	11.50
388	SANGRUR	MOONAK	S-NPP	75.93146	29.76758	14:18:00	D	3.00
389	SANGRUR	MOONAK	S-NPP	75.84637	29.80675	12:42:00	D	4.80
390	SANGRUR	MOONAK	S-NPP	75.74972	29.81191	14:18:00	D	4.40
391	SANGRUR	MOONAK	S-NPP	75.75512	29.81220	14:18:00	D	4.40
392	SANGRUR	MOONAK	S-NPP	75.76054	29.81249	14:18:00	D	10.50
393	SANGRUR	MOONAK	S-NPP	75.75356	29.81318	14:18:00	D	7.50
394	SANGRUR	MOONAK	S-NPP	75.77088	29.81925	14:18:00	D	2.80
395	SANGRUR	MOONAK	S-NPP	75.90126	29.83251	14:18:00	D	6.40
396	SANGRUR	MOONAK	S-NPP	75.89949	29.83441	14:18:00	D	7.10
397	SANGRUR	MOONAK	S-NPP	75.85085	29.89343	12:42:00	D	7.90
398	SANGRUR	SANGRUR	S-NPP	75.68929	30.19460	12:42:00	D	2.30
399	SANGRUR	SANGRUR	S-NPP	76.05954	30.20350	12:42:00	D	2.40
400	SANGRUR	SANGRUR	S-NPP	75.96676	30.30296	14:18:00	D	2.00
401	SANGRUR	SUNAM	S-NPP	75.79340	30.07244	14:18:00	D	11.30
402	SANGRUR	SUNAM	S-NPP	75.88986	30.11528	14:18:00	D	4.20
403	SANGRUR	SUNAM	S-NPP	75.64053	30.11925	12:42:00	D	3.00
404	SAS NAGAR	DERABASSI	S-NPP	76.81361	30.45686	14:18:00	D	2.10
405	SAS NAGAR	DERABASSI	S-NPP	76.92593	30.50414	12:42:00	D	2.90
406	SBS NAGAR	KHARAR	S-NPP	76.58504	30.72159	12:42:00	D	1.60
407	SBS NAGAR	KHARAR	S-NPP	76.54027	30.74216	14:18:00	D	7.10
408	SBS NAGAR	MOHALI	S-NPP	76.70928	30.61443	14:18:00	D	4.50
409	SBS NAGAR	MOHALI	S-NPP	76.72632	30.61455	14:18:00	D	6.00
410	SBS NAGAR	MOHALI	S-NPP	76.73267	30.61483	14:18:00	D	7.50
411	SBS NAGAR	MOHALI	S-NPP	76.72821	30.61540	14:18:00	D	8.60
412	TARN TARAN	KHADOOR SAHIB	S-NPP	74.94559	31.22712	14:18:00	D	2.60

413	TARN TARAN	KHADOOR SAHIB	S-NPP	74.97203	31.24799	12:42:00	D	6.40
414	TARN TARAN	KHADOOR SAHIB	S-NPP	74.97283	31.24995	12:42:00	D	4.30
415	TARN TARAN	KHADOOR SAHIB	S-NPP	74.94117	31.30123	14:18:00	D	2.20
416	TARN TARAN	KHADOOR SAHIB	S-NPP	75.03513	31.33921	14:18:00	D	3.80
417	TARN TARAN	KHADOOR SAHIB	S-NPP	75.03490	31.34283	14:18:00	D	3.20
418	TARN TARAN	KHADOOR SAHIB	TERRA-1	75.05137	31.35334	11:38:00	D	19.02
419	TARN TARAN	KHADOOR SAHIB	S-NPP	74.98290	31.35441	14:18:00	D	1.80
420	TARN TARAN	KHADOOR SAHIB	S-NPP	75.06477	31.35668	14:18:00	D	3.40
421	TARN TARAN	KHADOOR SAHIB	S-NPP	75.09639	31.42104	14:18:00	D	2.90
422	TARN TARAN	KHADOOR SAHIB	S-NPP	74.80193	31.42163	14:18:00	D	2.40
423	TARN TARAN	KHADOOR SAHIB	S-NPP	75.14777	31.43004	14:18:00	D	2.10
424	TARN TARAN	KHADOOR SAHIB	S-NPP	74.73910	31.43432	12:42:00	D	3.30
425	TARN TARAN	KHADOOR SAHIB	S-NPP	75.12661	31.43488	14:18:00	D	13.30
426	TARN TARAN	KHADOOR SAHIB	S-NPP	74.76691	31.43533	12:42:00	D	4.00
427	TARN TARAN	KHADOOR SAHIB	S-NPP	74.80344	31.43743	12:42:00	D	3.20
428	TARN TARAN	KHADOOR SAHIB	S-NPP	74.79972	31.43770	12:42:00	D	3.90
429	TARN TARAN	KHADOOR SAHIB	S-NPP	74.99274	31.44713	14:18:00	D	2.50
430	TARN TARAN	KHADOOR SAHIB	S-NPP	75.13097	31.44725	14:18:00	D	4.90
431	TARN TARAN	KHADOOR SAHIB	S-NPP	75.13206	31.44849	14:18:00	D	7.20
432	TARN TARAN	KHADOOR SAHIB	S-NPP	75.17216	31.45572	14:18:00	D	4.80
433	TARN TARAN	KHADOOR SAHIB	S-NPP	75.16813	31.45645	14:18:00	D	5.60
434	TARN TARAN	KHADOOR SAHIB	S-NPP	74.80888	31.45936	12:42:00	D	3.50
435	TARN TARAN	KHADOOR SAHIB	S-NPP	75.02718	31.46705	14:18:00	D	2.40
436	TARN TARAN	KHADOOR SAHIB	S-NPP	74.69471	31.47805	14:18:00	D	7.90
437	TARN TARAN	KHADOOR SAHIB	S-NPP	74.69385	31.48983	14:18:00	D	6.40
438	TARN TARAN	KHADOOR SAHIB	S-NPP	74.69874	31.49012	14:18:00	D	11.60
439	TARN TARAN	KHADOOR SAHIB	S-NPP	74.70293	31.52419	14:18:00	D	11.00
440	TARN TARAN	KHADOOR SAHIB	S-NPP	74.70106	31.52577	14:18:00	D	23.50
441	TARN TARAN	KHADOOR SAHIB	S-NPP	74.70597	31.52607	14:18:00	D	23.20
442	TARN TARAN	KHADOOR SAHIB	S-NPP	74.69756	31.52981	14:18:00	D	11.00
443	TARN TARAN	KHADOOR SAHIB	S-NPP	74.70248	31.53009	14:18:00	D	11.00
444	TARN TARAN	KHADOOR SAHIB	S-NPP	74.68592	31.53076	14:18:00	D	3.30

445	TARN TARAN	PATTI	S-NPP	74.59975	31.11134	12:42:00	D	3.40
446	TARN TARAN	PATTI	S-NPP	74.59544	31.11150	14:18:00	D	6.70
447	TARN TARAN	PATTI	S-NPP	74.59859	31.11227	14:18:00	D	6.60
448	TARN TARAN	PATTI	S-NPP	74.56969	31.13343	14:18:00	D	3.90
449	TARN TARAN	PATTI	S-NPP	74.63060	31.14502	12:42:00	D	16.20
450	TARN TARAN	PATTI	S-NPP	74.62868	31.14505	12:42:00	D	12.80
451	TARN TARAN	PATTI	S-NPP	74.60529	31.14538	12:42:00	D	6.30
452	TARN TARAN	PATTI	S-NPP	74.59991	31.14975	12:42:00	D	6.50
453	TARN TARAN	PATTI	S-NPP	74.60522	31.15118	12:42:00	D	6.50
454	TARN TARAN	PATTI	S-NPP	74.60317	31.15133	12:42:00	D	6.30
455	TARN TARAN	PATTI	S-NPP	74.67881	31.15757	14:18:00	D	16.50
456	TARN TARAN	PATTI	S-NPP	74.55402	31.15793	12:42:00	D	4.50
457	TARN TARAN	PATTI	S-NPP	74.59175	31.15820	14:18:00	D	3.70
458	TARN TARAN	PATTI	S-NPP	74.60103	31.16309	12:42:00	D	2.90
459	TARN TARAN	PATTI	S-NPP	74.55417	31.16351	12:42:00	D	4.20
460	TARN TARAN	PATTI	S-NPP	74.72684	31.16635	14:18:00	D	2.80
461	TARN TARAN	PATTI	S-NPP	74.73170	31.16664	14:18:00	D	2.80
462	TARN TARAN	PATTI	S-NPP	74.64404	31.16725	14:18:00	D	6.00
463	TARN TARAN	PATTI	S-NPP	74.57020	31.16783	12:42:00	D	3.70
464	TARN TARAN	PATTI	S-NPP	74.56796	31.16811	12:42:00	D	3.50
465	TARN TARAN	PATTI	S-NPP	74.84452	31.17333	14:18:00	D	6.80
466	TARN TARAN	PATTI	S-NPP	74.55853	31.18428	12:42:00	D	2.40
467	TARN TARAN	PATTI	S-NPP	74.63192	31.18489	12:42:00	D	3.90
468	TARN TARAN	PATTI	S-NPP	74.66064	31.20360	14:18:00	D	2.00
469	TARN TARAN	PATTI	S-NPP	74.66575	31.20815	14:18:00	D	3.30
470	TARN TARAN	PATTI	S-NPP	74.66505	31.20977	14:18:00	D	3.20
471	TARN TARAN	PATTI	TERRA-1	74.80922	31.21110	11:38:00	D	14.64
472	TARN TARAN	PATTI	S-NPP	74.89124	31.22666	14:18:00	D	4.60
473	TARN TARAN	PATTI	S-NPP	74.76093	31.23354	14:18:00	D	2.60
474	TARN TARAN	PATTI	S-NPP	74.53130	31.23568	12:42:00	D	4.30
475	TARN TARAN	PATTI	S-NPP	74.53406	31.23648	12:42:00	D	9.90
476	TARN TARAN	PATTI	S-NPP	74.53662	31.23712	12:42:00	D	6.20

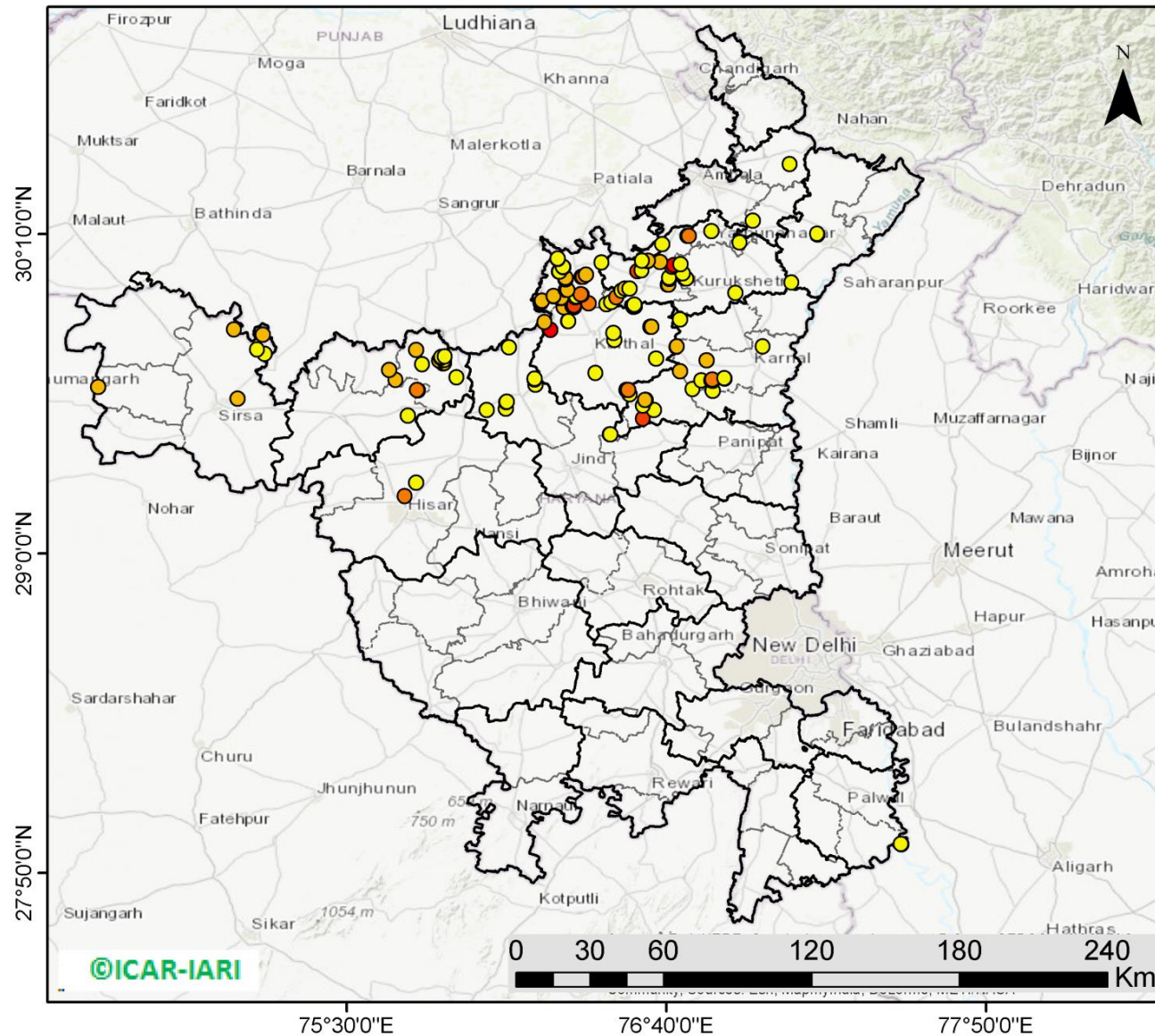
477	TARN TARAN	PATTI	S-NPP	74.60252	31.24848	12:42:00	D	3.40
478	TARN TARAN	PATTI	S-NPP	74.87833	31.25032	12:42:00	D	3.90
479	TARN TARAN	PATTI	S-NPP	74.72335	31.27353	12:42:00	D	4.60
480	TARN TARAN	PATTI	S-NPP	74.83260	31.27696	14:18:00	D	2.60
481	TARN TARAN	PATTI	S-NPP	74.75225	31.29542	12:42:00	D	2.70
482	TARN TARAN	PATTI	S-NPP	74.75205	31.29592	14:18:00	D	2.50
483	TARN TARAN	PATTI	S-NPP	74.62484	31.29999	12:42:00	D	2.40
484	TARN TARAN	PATTI	S-NPP	74.71277	31.31062	12:42:00	D	3.10
485	TARN TARAN	PATTI	S-NPP	74.90430	31.32297	14:18:00	D	14.50
486	TARN TARAN	PATTI	S-NPP	74.62714	31.32847	14:18:00	D	2.10
487	TARN TARAN	PATTI	S-NPP	74.62758	31.32952	14:18:00	D	4.00
488	TARN TARAN	PATTI	S-NPP	74.69191	31.33733	12:42:00	D	4.30
489	TARN TARAN	PATTI	S-NPP	74.63546	31.34661	14:18:00	D	4.10
490	TARN TARAN	PATTI	S-NPP	74.74305	31.34692	14:18:00	D	2.00
491	TARN TARAN	PATTI	S-NPP	74.74336	31.34870	14:18:00	D	3.60
492	TARN TARAN	PATTI	S-NPP	74.58161	31.35520	14:18:00	D	8.00
493	TARN TARAN	PATTI	S-NPP	74.58641	31.35548	14:18:00	D	8.00
494	TARN TARAN	PATTI	S-NPP	74.77282	31.36528	12:42:00	D	3.60
495	TARN TARAN	PATTI	S-NPP	74.62844	31.37564	14:18:00	D	3.90
496	TARN TARAN	PATTI	S-NPP	74.71059	31.38646	14:18:00	D	3.20

District-wise cumulative number of residue burning events in Punjab (30-Sep-2018 to 20-Oct-2018)



(b) Haryana

PADDY RESIDUE BURNING IN HARYANA



141 burning events detected in Haryana on 20th October, 2018

Fire Intensity (W/m²)

- 0 - 5
- 6 - 10
- 11 - 15
- 16 - 20
- >20



<http://geoportal.icar.gov.in:8080/geoexplorer/composer/>

Details of residue burning events in Haryana on 20-Oct-2018

Event S. No.	District	Tehsil / Block	Satellite	Longitude	Latitude	Time (IST)	Day/Night	Fire Power (W/m2)
1	AMBALA	BARARA	S-NPP	76.98092	30.21687	12:42	D	3.10
2	AMBALA	NARAYANGARH	S-NPP	77.11692	30.42382	12:42	D	2.70
3	FARIDABAD	HODAL	S-NPP	77.52425	27.93808	12:36	D	4.60
4	FARIDABAD	HODAL	S-NPP	77.52123	27.94029	12:36	D	3.80
5	FATEHABAD	FATEHABAD	S-NPP	75.72282	29.50394	14:18	D	1.90
6	FATEHABAD	RATIA	S-NPP	75.65366	29.67169	14:18	D	5.10
7	FATEHABAD	TOHANA	S-NPP	75.75916	29.59604	12:42	D	11.90
8	FATEHABAD	TOHANA	S-NPP	75.75507	29.59813	12:42	D	12.60
9	FATEHABAD	TOHANA	S-NPP	75.67823	29.63530	12:42	D	5.60
10	FATEHABAD	TOHANA	S-NPP	75.89958	29.64440	14:18	D	2.40
11	FATEHABAD	TOHANA	S-NPP	75.77534	29.69130	14:18	D	3.40
12	FATEHABAD	TOHANA	S-NPP	75.85102	29.69580	14:18	D	6.00
13	FATEHABAD	TOHANA	S-NPP	75.85645	29.69612	14:18	D	6.00
14	FATEHABAD	TOHANA	S-NPP	75.83820	29.70435	12:42	D	5.20
15	FATEHABAD	TOHANA	S-NPP	75.83590	29.70700	12:42	D	5.70
16	FATEHABAD	TOHANA	S-NPP	75.85307	29.70720	14:18	D	6.00
17	FATEHABAD	TOHANA	S-NPP	75.85561	29.70850	14:18	D	5.00
18	FATEHABAD	TOHANA	S-NPP	75.84372	29.71525	12:42	D	2.50
19	FATEHABAD	TOHANA	S-NPP	75.84412	29.71844	12:42	D	2.40
20	FATEHABAD	TOHANA	S-NPP	75.85768	29.71989	14:18	D	2.70
21	FATEHABAD	TOHANA	S-NPP	75.75280	29.74508	14:18	D	7.70
22	HISAR	HISAR	S-NPP	75.71091	29.20993	12:42	D	13.50
23	HISAR	HISAR	S-NPP	75.75227	29.25989	14:18	D	2.00
24	JIND	JIND	S-NPP	76.46059	29.43583	12:42	D	3.40
25	JIND	JIND	S-NPP	76.46112	29.43590	12:42	D	3.50
26	JIND	NARWANA	S-NPP	76.01057	29.52487	12:42	D	2.00
27	JIND	NARWANA	S-NPP	76.07915	29.52961	14:18	D	3.50

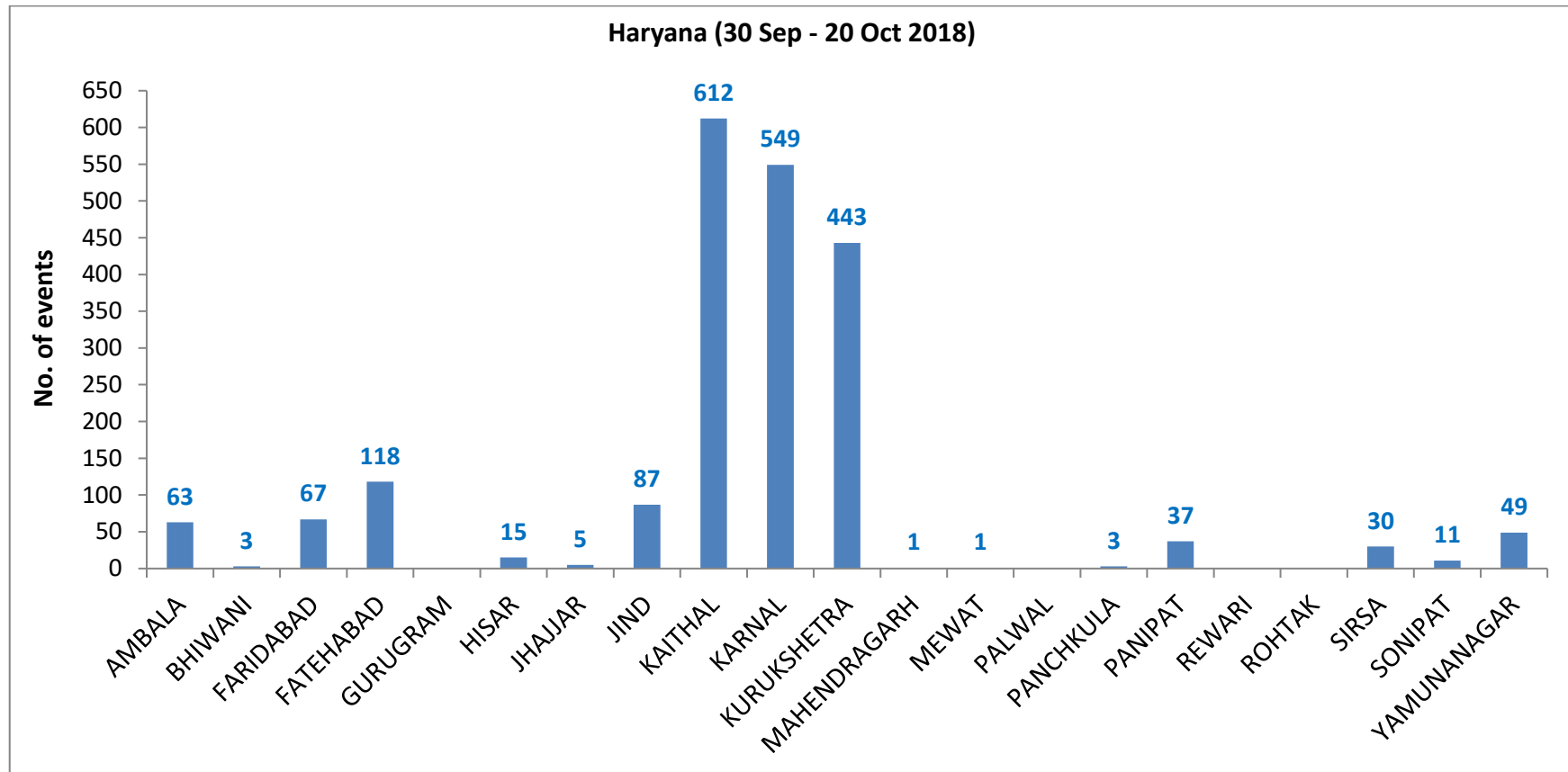
28	JIND	NARWANA	S-NPP	76.08220	29.55319	12:42	D	3.00
29	JIND	NARWANA	S-NPP	76.08307	29.55553	12:42	D	3.00
30	JIND	NARWANA	S-NPP	76.18828	29.61748	12:42	D	2.50
31	JIND	NARWANA	S-NPP	76.18539	29.63649	14:18	D	3.30
32	JIND	NARWANA	S-NPP	76.18425	29.63912	14:18	D	3.90
33	JIND	NARWANA	S-NPP	76.09161	29.75390	14:18	D	3.70
34	KAITHAL	GUHLA	S-NPP	76.38183	29.91514	14:18	D	10.60
35	KAITHAL	GUHLA	TERRA-1	76.20754	29.91603	11:38	D	27.11
36	KAITHAL	GUHLA	S-NPP	76.21063	29.92307	12:42	D	7.40
37	KAITHAL	GUHLA	S-NPP	76.21175	29.92384	12:42	D	8.20
38	KAITHAL	GUHLA	S-NPP	76.27638	29.93334	12:42	D	6.90
39	KAITHAL	GUHLA	S-NPP	76.28092	29.93447	12:42	D	13.20
40	KAITHAL	GUHLA	S-NPP	76.27728	29.93449	12:42	D	8.90
41	KAITHAL	GUHLA	S-NPP	76.28181	29.93565	12:42	D	9.90
42	KAITHAL	GUHLA	S-NPP	76.33506	29.93711	12:42	D	4.10
43	KAITHAL	GUHLA	S-NPP	76.33908	29.93843	14:18	D	6.00
44	KAITHAL	GUHLA	S-NPP	76.25449	29.94008	12:42	D	5.50
45	KAITHAL	GUHLA	S-NPP	76.33676	29.94028	14:18	D	4.80
46	KAITHAL	GUHLA	S-NPP	76.25547	29.94112	12:42	D	6.40
47	KAITHAL	GUHLA	S-NPP	76.35634	29.94578	14:18	D	12.00
48	KAITHAL	GUHLA	S-NPP	76.35401	29.94753	14:18	D	11.30
49	KAITHAL	GUHLA	S-NPP	76.30001	29.96401	14:18	D	8.60
50	KAITHAL	GUHLA	S-NPP	76.30586	29.96430	14:18	D	5.40
51	KAITHAL	GUHLA	S-NPP	76.29756	30.00219	14:18	D	9.60
52	KAITHAL	GUHLA	S-NPP	76.29716	30.00855	14:18	D	9.60
53	KAITHAL	GUHLA	S-NPP	76.35589	30.01165	14:18	D	6.40
54	KAITHAL	GUHLA	S-NPP	76.36180	30.01196	14:18	D	12.70
55	KAITHAL	GUHLA	S-NPP	76.37321	30.01897	14:18	D	9.40
56	KAITHAL	GUHLA	S-NPP	76.27318	30.03115	12:42	D	3.70
57	KAITHAL	GUHLA	S-NPP	76.27505	30.03130	12:42	D	2.00
58	KAITHAL	GUHLA	S-NPP	76.28903	30.04642	14:18	D	3.60
59	KAITHAL	GUHLA	S-NPP	76.28827	30.04804	14:18	D	3.60

60	KAITHAL	GUHLA	S-NPP	76.42900	30.06360	12:42	D	3.80
61	KAITHAL	GUHLA	S-NPP	76.26964	30.07723	14:18	D	5.50
62	KAITHAL	GUHLA	S-NPP	76.26871	30.07896	14:18	D	3.30
63	KAITHAL	KAITHAL	S-NPP	76.53143	29.58243	12:42	D	1.80
64	KAITHAL	KAITHAL	S-NPP	76.52074	29.59767	14:18	D	6.70
65	KAITHAL	KAITHAL	S-NPP	76.52671	29.59798	14:18	D	10.20
66	KAITHAL	KAITHAL	S-NPP	76.40723	29.66078	12:42	D	3.40
67	KAITHAL	KAITHAL	S-NPP	76.62772	29.71350	14:18	D	5.00
68	KAITHAL	KAITHAL	S-NPP	76.47501	29.78072	12:42	D	3.10
69	KAITHAL	KAITHAL	S-NPP	76.47262	29.80605	12:42	D	4.90
70	KAITHAL	KAITHAL	TERRA-1	76.24335	29.81722	11:38	D	26.37
71	KAITHAL	KAITHAL	S-NPP	76.60831	29.82809	12:42	D	5.20
72	KAITHAL	KAITHAL	S-NPP	76.61267	29.82919	12:42	D	5.30
73	KAITHAL	KAITHAL	S-NPP	76.22096	29.84615	12:42	D	8.30
74	KAITHAL	KAITHAL	S-NPP	76.30772	29.84981	12:42	D	5.70
75	KAITHAL	KAITHAL	S-NPP	76.30850	29.85007	12:42	D	4.60
76	KAITHAL	KAITHAL	S-NPP	76.71653	29.85518	12:42	D	1.60
77	KAITHAL	KAITHAL	S-NPP	76.32973	29.89957	14:18	D	18.00
78	KAITHAL	KAITHAL	S-NPP	76.29200	29.90072	12:42	D	5.60
79	KAITHAL	KAITHAL	S-NPP	76.32349	29.90563	14:18	D	11.30
80	KAITHAL	KAITHAL	S-NPP	76.32934	29.90594	14:18	D	18.00
81	KAITHAL	KAITHAL	S-NPP	76.44732	29.91217	14:18	D	2.90
82	KAITHAL	KAITHAL	S-NPP	76.46515	29.91995	12:42	D	3.10
83	KARNAL	ASSANDH	TERRA-1	76.58099	29.49382	11:38	D	19.54
84	KARNAL	ASSANDH	S-NPP	76.62102	29.52462	12:42	D	3.80
85	KARNAL	ASSANDH	S-NPP	76.58041	29.54171	14:18	D	3.10
86	KARNAL	ASSANDH	S-NPP	76.59126	29.56170	14:18	D	4.80
87	KARNAL	ASSANDH	S-NPP	76.58899	29.56246	14:18	D	5.20
88	KARNAL	ASSANDH	S-NPP	76.76150	29.60134	12:42	D	5.00
89	KARNAL	KARNAL	S-NPP	76.83466	29.59481	14:18	D	4.00
90	KARNAL	KARNAL	S-NPP	76.83540	29.63132	12:42	D	14.40
91	KARNAL	KARNAL	S-NPP	76.79327	29.63292	12:42	D	2.70

92	KARNAL	KARNAL	S-NPP	76.83059	29.63367	12:42	D	15.60
93	KARNAL	KARNAL	S-NPP	76.83486	29.63474	12:42	D	15.60
94	KARNAL	KARNAL	S-NPP	76.83365	29.63683	12:42	D	14.40
95	KARNAL	KARNAL	S-NPP	76.87913	29.63991	12:42	D	2.40
96	KARNAL	KARNAL	S-NPP	76.87807	29.64173	12:42	D	4.60
97	KARNAL	KARNAL	S-NPP	76.71634	29.66594	14:18	D	6.50
98	KARNAL	KARNAL	S-NPP	76.81210	29.70626	12:42	D	6.20
99	KARNAL	KARNAL	S-NPP	76.70283	29.75643	14:18	D	7.60
100	KARNAL	KARNAL	S-NPP	76.70477	29.75656	14:18	D	9.70
101	KARNAL	KARNAL	S-NPP	77.01837	29.75685	12:42	D	4.40
102	KURUKSHETRA	PEHOWA	S-NPP	76.54635	29.90261	12:42	D	6.30
103	KURUKSHETRA	PEHOWA	S-NPP	76.55074	29.90369	12:42	D	4.30
104	KURUKSHETRA	PEHOWA	S-NPP	76.54635	29.90429	12:42	D	7.70
105	KURUKSHETRA	PEHOWA	S-NPP	76.55073	29.90540	12:42	D	7.80
106	KURUKSHETRA	PEHOWA	S-NPP	76.54892	29.90924	12:42	D	4.30
107	KURUKSHETRA	PEHOWA	S-NPP	76.48363	29.93663	12:42	D	10.40
108	KURUKSHETRA	PEHOWA	S-NPP	76.50234	29.96119	14:18	D	2.70
109	KURUKSHETRA	PEHOWA	S-NPP	76.51604	29.96874	12:42	D	5.20
110	KURUKSHETRA	PEHOWA	S-NPP	76.53208	29.96909	14:18	D	3.00
111	KURUKSHETRA	PEHOWA	S-NPP	76.67200	29.98232	14:18	D	5.50
112	KURUKSHETRA	PEHOWA	S-NPP	76.67397	29.98246	14:18	D	6.20
113	KURUKSHETRA	PEHOWA	S-NPP	76.67844	30.00300	12:42	D	1.70
114	KURUKSHETRA	PEHOWA	S-NPP	76.67667	30.00850	12:42	D	3.30
115	KURUKSHETRA	PEHOWA	TERRA-1	76.56053	30.03281	11:38	D	19.69
116	KURUKSHETRA	PEHOWA	S-NPP	76.57672	30.03606	14:18	D	3.10
117	KURUKSHETRA	PEHOWA	S-NPP	76.64217	30.06499	14:18	D	5.20
118	KURUKSHETRA	PEHOWA	S-NPP	76.59885	30.06946	14:18	D	10.40
119	KURUKSHETRA	PEHOWA	S-NPP	76.59921	30.06968	14:18	D	9.60
120	KURUKSHETRA	PEHOWA	S-NPP	76.57817	30.07076	12:42	D	1.80
121	KURUKSHETRA	PEHOWA	S-NPP	76.65062	30.13050	14:18	D	4.40
122	KURUKSHETRA	PEHOWA	S-NPP	76.74220	30.16122	14:18	D	8.90
123	KURUKSHETRA	PEHOWA	S-NPP	76.74846	30.16154	14:18	D	11.20

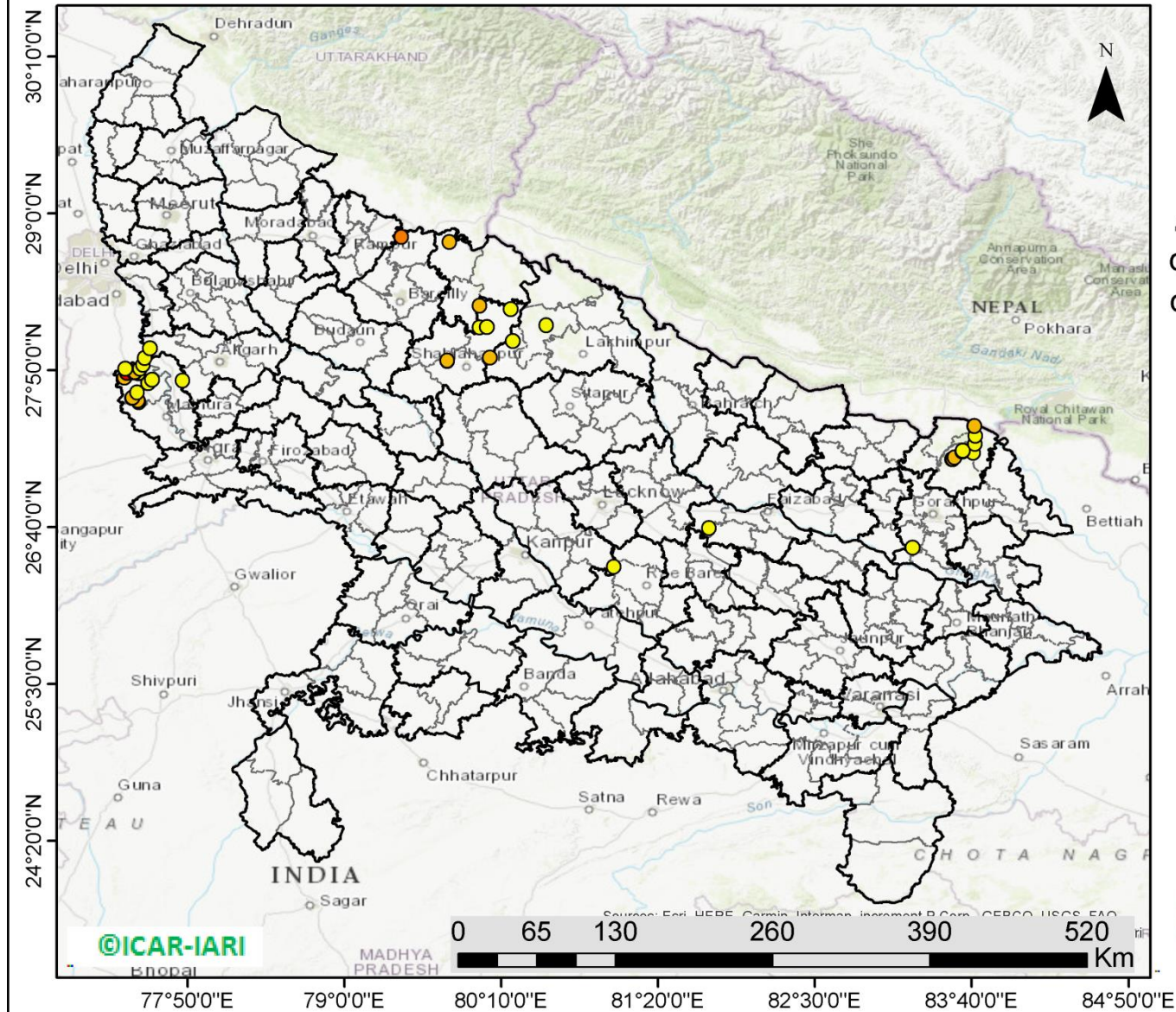
124	KURUKSHETRA	SHAHABAD	S-NPP	76.93402	30.13774	14:18	D	3.50
125	KURUKSHETRA	SHAHABAD	S-NPP	76.83035	30.17848	12:42	D	1.70
126	KURUKSHETRA	THANESAR	S-NPP	76.91826	29.95237	12:42	D	1.50
127	KURUKSHETRA	THANESAR	S-NPP	76.73331	30.00471	12:42	D	4.80
128	KURUKSHETRA	THANESAR	S-NPP	76.73759	30.00577	12:42	D	4.80
129	KURUKSHETRA	THANESAR	S-NPP	76.72538	30.02406	14:18	D	3.40
130	KURUKSHETRA	THANESAR	S-NPP	76.68674	30.04822	14:18	D	15.70
131	KURUKSHETRA	THANESAR	TERRA-1	76.69354	30.05527	11:38	D	37.20
132	KURUKSHETRA	THANESAR	S-NPP	76.71688	30.05786	12:42	D	2.00
133	SIRSA	RANIA	S-NPP	74.59201	29.60964	14:18	D	5.70
134	SIRSA	SIRSA	S-NPP	75.10098	29.56595	14:18	D	7.50
135	SIRSA	SIRSA	S-NPP	75.19903	29.73052	14:18	D	2.10
136	SIRSA	SIRSA	S-NPP	75.17290	29.74686	14:18	D	3.70
137	SIRSA	SIRSA	S-NPP	75.19259	29.80071	12:42	D	5.80
138	SIRSA	SIRSA	S-NPP	75.08842	29.81896	12:42	D	7.10
139	YAMUNANAGAR	JAGADHRI	S-NPP	77.12295	29.99078	12:42	D	1.60
140	YAMUNANAGAR	JAGADHRI	S-NPP	77.21860	30.16539	12:42	D	1.60
141	YAMUNANAGAR	JAGADHRI	S-NPP	77.21726	30.16933	12:42	D	2.20

District-wise cumulative number of residue burning events in Haryana (30-Sep-2018 to 20-Oct-2018)



(c) Uttar Pradesh

PADDY RESIDUE BURNING IN UTTAR PRADESH



49 burning events detected in Uttar Pradesh on **20th October, 2018**

Fire Intensity (W/m²)

- 0 - 5
- 6 - 10
- 11 - 15
- 16 - 20
- >20

©ICAR-IARI



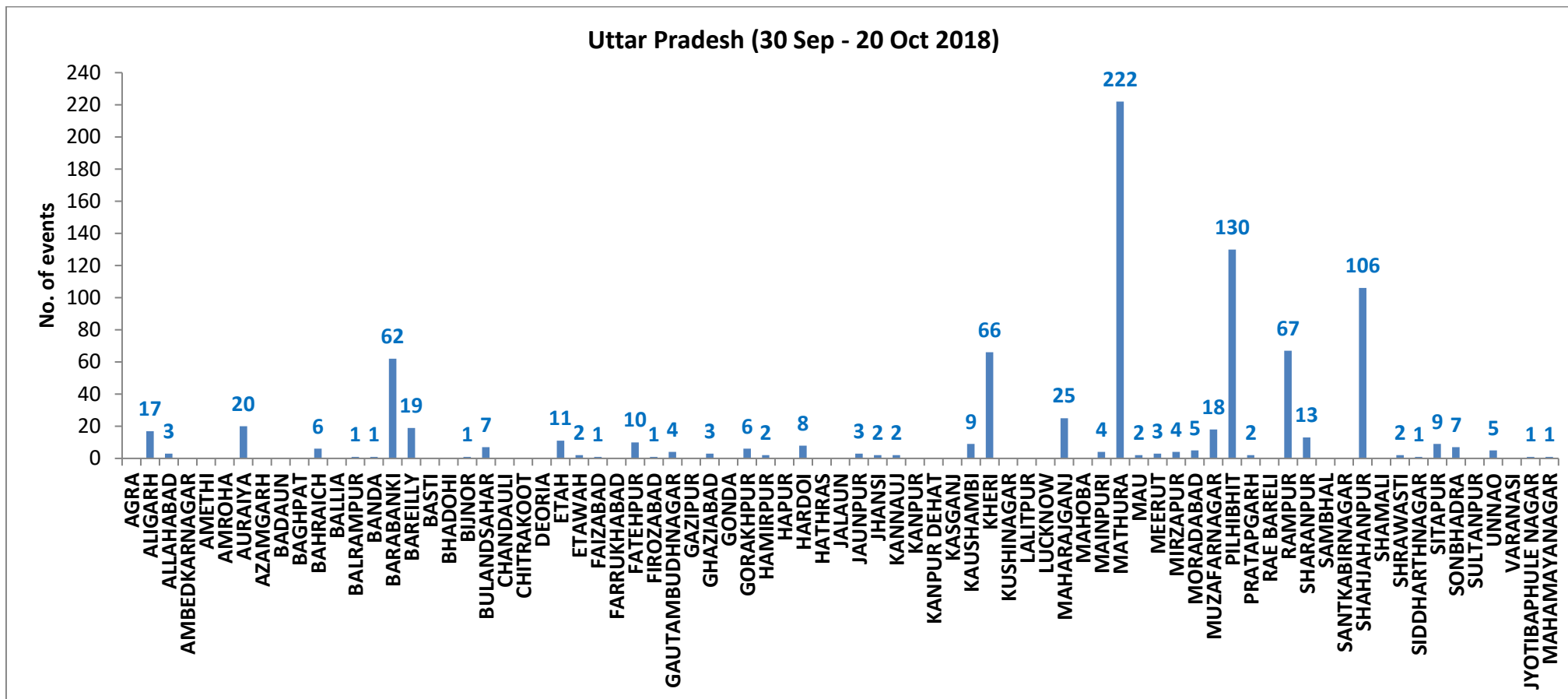
<http://geoportal.icar.gov.in:8080/geoexplorer/composer/>

Details of residue burning events in Uttar Pradesh on 20-Oct-2018

Event S. No.	District	Tehsil / Block	Satellite	Longitude	Latitude	Time (IST)	Day/Night	Fire Power (W/m2)
1	ALIGARH	KHAIR	S-NPP	77.55399	27.99563	14:18:00	D	2.80
2	BAREILLY	BAHERI	S-NPP	79.42486	28.82458	12:36:00	D	5.40
3	BAREILLY	BAHERI	S-NPP	79.42429	28.82513	12:42:00	D	14.90
4	FAIZABAD	RUDAULI	S-NPP	81.71252	26.65888	12:36:00	D	4.10
5	GORAKHPUR	KHAJNI	S-NPP	83.22785	26.51357	12:36:00	D	2.80
6	KHERI	GOLA	S-NPP	80.50110	28.16792	12:36:00	D	4.90
7	KHERI	MOHMADI	S-NPP	80.08105	27.92695	12:36:00	D	6.30
8	KHERI	MOHMADI	S-NPP	80.25157	28.04930	12:36:00	D	4.00
9	MAHARAJGANJ	MAHARAJGANJ	S-NPP	83.52221	27.17169	12:36:00	D	6.30
10	MAHARAJGANJ	MAHARAJGANJ	S-NPP	83.52609	27.17246	12:36:00	D	7.00
11	MAHARAJGANJ	MAHARAJGANJ	S-NPP	83.53966	27.18343	12:36:00	D	7.20
12	MAHARAJGANJ	MAHARAJGANJ	S-NPP	83.59750	27.22784	12:36:00	D	1.20
13	MAHARAJGANJ	MAHARAJGANJ	S-NPP	83.59944	27.23648	12:36:00	D	4.60
14	MAHARAJGANJ	NICHLAUL	S-NPP	83.67851	27.21877	12:36:00	D	4.60
15	MAHARAJGANJ	NICHLAUL	S-NPP	83.69191	27.28714	12:36:00	D	3.30
16	MAHARAJGANJ	NICHLAUL	S-NPP	83.69388	27.34711	12:36:00	D	3.70
17	MAHARAJGANJ	NICHLAUL	S-NPP	83.68658	27.41825	12:36:00	D	2.90
18	MAHARAJGANJ	NICHLAUL	S-NPP	83.68830	27.41985	12:36:00	D	5.50
19	MATHURA	CHHATA	S-NPP	77.47107	27.59631	12:36:00	D	2.50
20	MATHURA	CHHATA	S-NPP	77.46552	27.60890	14:18:00	D	7.30
21	MATHURA	CHHATA	S-NPP	77.41953	27.62627	14:18:00	D	6.60
22	MATHURA	CHHATA	S-NPP	77.42244	27.63005	14:18:00	D	7.40
23	MATHURA	CHHATA	S-NPP	77.45944	27.66771	12:36:00	D	3.90
24	MATHURA	CHHATA	S-NPP	77.53931	27.73689	12:36:00	D	4.50
25	MATHURA	CHHATA	S-NPP	77.56874	27.76190	14:18:00	D	2.90
26	MATHURA	CHHATA	S-NPP	77.36204	27.77739	12:36:00	D	6.40
27	MATHURA	CHHATA	S-NPP	77.36195	27.77968	12:36:00	D	7.50
28	MATHURA	CHHATA	S-NPP	77.47191	27.80969	12:36:00	D	3.30

29	MATHURA	CHHATA	S-NPP	77.46729	27.81162	12:36:00	D	4.20
30	MATHURA	CHHATA	TERRA-1	77.38076	27.81248	11:38:00	D	36.40
31	MATHURA	CHHATA	S-NPP	77.47153	27.81267	12:36:00	D	5.80
32	MATHURA	CHHATA	S-NPP	77.47022	27.81523	12:36:00	D	3.30
33	MATHURA	CHHATA	S-NPP	77.44175	27.81537	14:18:00	D	16.70
34	MATHURA	CHHATA	S-NPP	77.43519	27.81836	14:18:00	D	9.40
35	MATHURA	CHHATA	S-NPP	77.44165	27.81869	14:18:00	D	9.40
36	MATHURA	CHHATA	S-NPP	77.48019	27.84452	12:36:00	D	3.90
37	MATHURA	CHHATA	S-NPP	77.36929	27.84457	14:18:00	D	3.60
38	MATHURA	CHHATA	S-NPP	77.50315	27.87384	12:36:00	D	1.70
39	MATHURA	CHHATA	S-NPP	77.51373	27.92295	14:18:00	D	2.60
40	MATHURA	MAT	S-NPP	77.79691	27.75203	01:24:00	N	0.30
41	MATHURA	MAT	S-NPP	77.79751	27.75709	01:24:00	N	0.60
42	PILHIBHIT	PILHIBHIT	S-NPP	79.78046	28.78652	12:36:00	D	5.10
43	SHAHJAHANPUR	PUWANYA	S-NPP	80.00578	28.15082	01:24:00	N	0.60
44	SHAHJAHANPUR	PUWANYA	S-NPP	80.05872	28.15627	12:36:00	D	2.60
45	SHAHJAHANPUR	PUWANYA	S-NPP	80.23777	28.28647	01:24:00	N	0.40
46	SHAHJAHANPUR	PUWANYA	S-NPP	80.00456	28.31305	12:36:00	D	5.20
47	SHAHJAHANPUR	TILHAR	S-NPP	79.76527	27.90341	12:36:00	D	10.00
48	SHAHJAHANPUR	TILHAR	S-NPP	79.76472	27.90472	12:36:00	D	5.80
49	UNNAO	PURWA	S-NPP	81.00592	26.37176	12:36:00	D	4.80

District-wise cumulative number of residue burning events in Uttar Pradesh (30-Sep-2018 to 20-Oct-2018)



State wise, date wise and district-wise number of residue burning events detected in 2017 and 2018
(Period: 30-Sep-2018 to 20-Oct-2018)

Date	Punjab		Haryana		UP		Total	
	2017	2018	2017	2018	2017	2018	2017	2018
30-Sep-18	--	11	---	7	---	13	---	31
1-Oct-18	54	16	13	9	2	11	69	36
2-Oct-18	50	9	27	23	8	21	85	53
3-Oct-18	62	4	40	9	17	12	119	25
4-Oct-18	103	32	60	16	22	5	185	53
5-Oct-18	106	56	68	30	20	10	194	96
6-Oct-18	138	87	75	65	39	13	252	165
7-Oct-18	105	162	97	180	31	69	233	411
8-Oct-18	215	39	218	40	75	54	508	133
9-Oct-18	163	75	148	47	87	32	398	154
10-Oct-18	164	23	151	37	126	21	441	81
11-Oct-18	177	30	87	78	74	24	338	132
12-Oct-18	342	67	123	133	51	22	516	222
13-Oct-18	470	62	207	147	69	61	746	270
14-Oct-18	582	112	333	153	137	57	1052	322
15-Oct-18	943	90	458	110	237	35	1638	235
16-Oct-18	465	174	186	138	71	20	722	332
17-Oct-18	807	272	244	268	69	94	1120	634
18-Oct-18	970	263	306	255	108	163	1384	681
19-Oct-18	1591	254	541	208	128	108	2260	570
20-Oct-18	2653	496	597	141	255	49	3505	686
Total	10160	2334	3979	2094	1630	894	15769	5322

(a) Punjab

Districts	01 - 20 Oct	
	2017	2018
AMRITSAR	788	548
BARNALA	35	13
BATHINDA	751	74
FARIDKOT	1141	133
FATEHGARH SAHIB	427	55
FAZILKA	0	0
FIROZPUR	1333	233
GURDASPUR	394	89
HOSHIARPUR	79	4
JALANDHAR	412	30
KAPURTHALA	253	9
LUDHIANA	614	61
MANSA	221	62
MOGA	161	19
MUKTSAR	617	84
NAWASHAHR	123	5
PATHANKOT	0	0
PATIALA	1060	311
RUPNAGAR	46	1
SANGRUR	282	110
SAS NAGAR	73	48
TARN TARAN	1294	423
SBS NAGAR	56	22
Total	10160	2334

(b) Haryana

Districts	01 - 20 Oct	
	2017	2018
AMBALA	248	63
BHIWANI	2	3
FARIDABAD	92	67
FATEHABAD	336	118
GURUGRAM	0	0
HISAR	33	15
JHAJJAR	3	5
JIND	176	87
KAITHAL	872	612
KARNAL	1055	549
KURUKSHETRA	854	443
MAHENDRAGARH	0	1
MEWAT	0	1
PALWAL	0	0
PANCHKULA	0	3
PANIPAT	40	37
REWARI	0	0
ROHTAK	3	0
SIRSA	97	30
SONIPAT	18	11
YAMUNANAGAR	150	49
Total	3979	2094

(c) Uttar Pradesh

Districts	01 - 20 Oct		FIROZABAD	2	1	PRATAPGARH	0	2
	2017	2018						
AGRA	0	0	GAZIPUR	0	0	RAMPUR	274	67
ALIGARH	17	17	GHAZIABAD	5	3	SHARANPUR	32	13
ALLAHABAD	0	3	GONDA	0	0	SAMBHAL	0	0
AMBEDKAR NAGAR	1	0	GORAKHPUR	2	6	SANTKABIR NAGAR	0	0
AMETHI	0	0	HAMIRPUR	0	2	SHAHJAHANPUR	415	106
AMROHA	0	0	HAPUR	0	0	SHAMALI	0	0
AURAIYA	52	20	HARDOI	16	8	SHRAWASTI	3	2
AZAMGARH	0	0	HATHRAS	0	0	SIDDHARTH NAGAR	1	1
BADAUN	1	0	JALAUN	0	0	SITAPUR	14	9
BAGHPAT	0	0	JAUNPUR	0	3	SONBHADRA	1	7
BAHRAICH	2	6	JHANSI	0	2	SULTANPUR	0	0
BALLIA	0	0	KANNAUJ	1	2	UNNAO	4	5
BALRAMPUR	0	1	KANPUR	3	0	VARANASI	0	0
BANDA	0	1	KANPUR DEHAT	1	0	JYOTIBAPHULE NAGAR	0	1
BARABANKI	30	62	KASGANJ	0	0	MAHAMAYA NAGAR	1	1
BAREILLY	64	19	KAUSHAMBI	4	9	Total	1630	894
BASTI	0	0	KHERI	119	66			
BHADOHI	0	0	KUSHINAGAR	1	0			
BIJNOR	2	1	LALITPUR	0	0			
BULANDSAHAR	9	7	LUCKNOW	5	0			
CHANDAULI	0	0	MAHARAJGANJ	22	25			
CHITRAKOOT	0	0	MAHOBA	0	0			
DEORIA	0	0	MAINPURI	8	4			
ETAH	12	11	MATHURA	113	222			
ETAWAH	10	2	MAU	0	2			
FAIZABAD	1	1	MEERUT	11	3			
FARRUKHABAD	0	0	MIRZAPUR	2	4			
FATEHPUR	7	10	MORADABAD	11	5			
			MUZAFARNAGAR	49	18			
			PILHIBHIT	298	130			

The study used images received from following Satellites at IARI Satellite Ground Station

S. No.	Satellite Name	Sensor	Resolution (meter)	Day / Night Passes
1.	Suomi NPP	VIIRS	375 / 1000	Both
2.	Terra	MODIS	1000	Both
3.	Aqua	MODIS	1000	Both
4.	NOAA – 18	AVHRR	1000	Night
5.	NOAA – 19	AVHRR	1000	Night
6.	Metop - 1	AVHRR	1000	Night
7.	Metop - 2	AVHRR	1000	Night

Study Team

ICAR – HQ	Dr K. Alagusundaram	DDG (Agril. Engg.)	ddgengg@icar.org.in
	Dr S. Bhaskar	ADG (NRM)	adgagroandaf@gmail.com
ICAR - IARI	Dr V.K. Sehgal	Professor & Nodal Scientist	iaricreams@gmail.com vk.sehgal@icar.gov.in
	Dr Rajkumar Dhakar	Scientist	rajdhakar.iari@gmail.com
	Shri Rakeshwar Verma	Chief Technical Officer	rakeshwar.verma@icar.gov.in
	Mr Aakash Chhabra	SRF (NICRA)	aakash.chhabra7489@gmail.com
ICAR - ATARI	Dr Rajbir Singh	Director ATARI (Zone-1)	rajbirsingh.zpd@gmail.com
	Dr U.S. Gautam	Director ATARI (Zone-IV)	zpdicarkanpur@gmail.com
ICAR - IASRI	Dr RajenderParsad	Principal Scientist	rajender.parsad@icar.gov.in

GIS Maps of fire events can be visualized online on ICAR KRISHI Geoportal

websites:<http://geoportal.icar.gov.in:8080/geoexplorer/composer/>

<http://creams.iari.res.in:8080/geoexplorer/composer/>
