



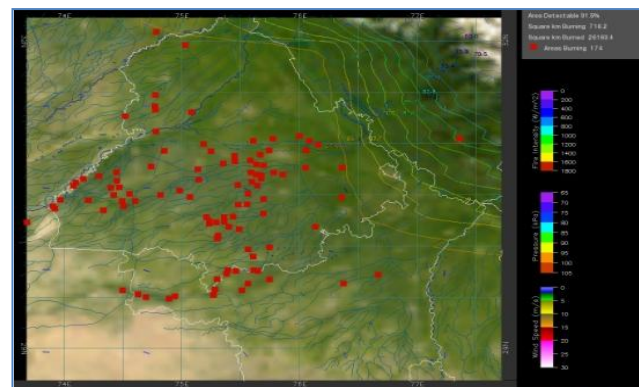
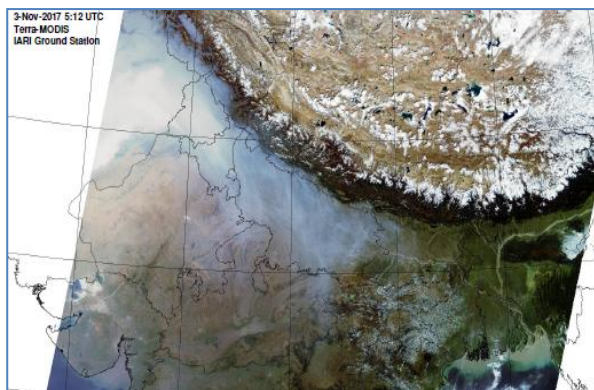
**Bulletin
No. 19**

**Events Date:
19-Oct-2018**

**Issued on:
20-Oct-2018**



MONITORING PADDY RESIDUE BURNING IN NORTH INDIA USING SATELLITE REMOTE SENSING DURING 2018



Prepared by:

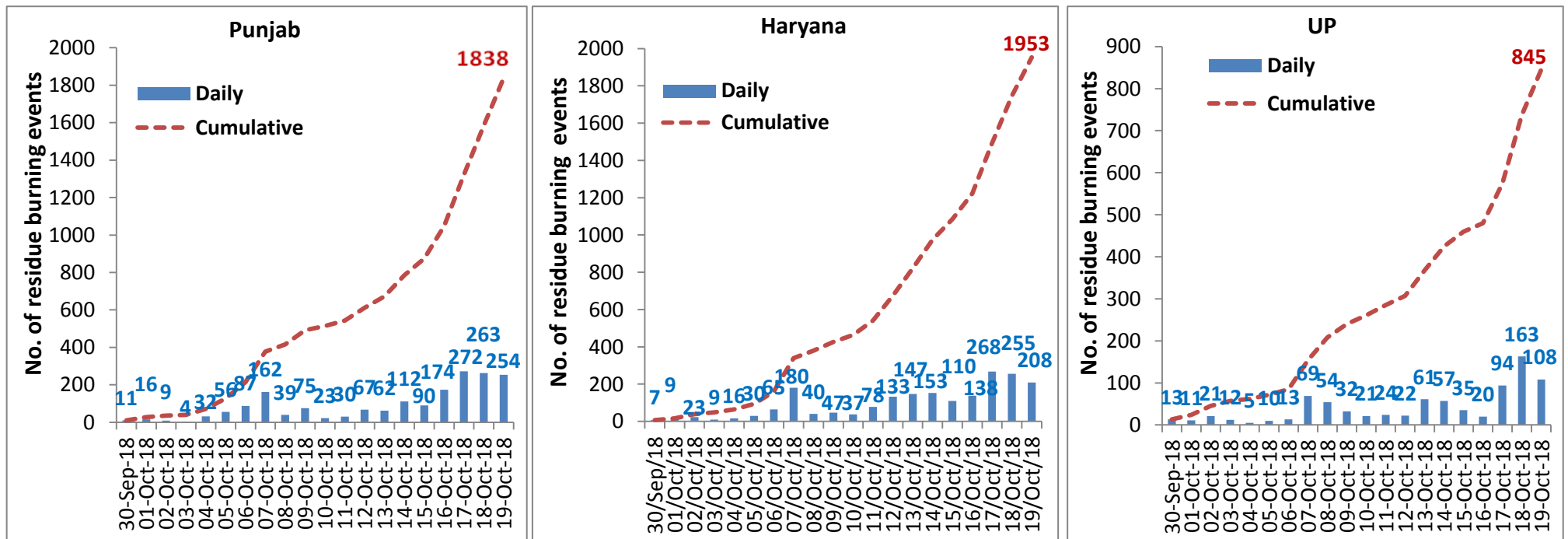
**Consortium for Research on Agroecosystem Monitoring and Modeling from Space (CREAMS) Laboratory,
Division of Agricultural Physics, ICAR – Indian Agricultural Research Institute, New Delhi – 110012**

<http://creams.iari.res.in>

Highlights for 19-October-2018

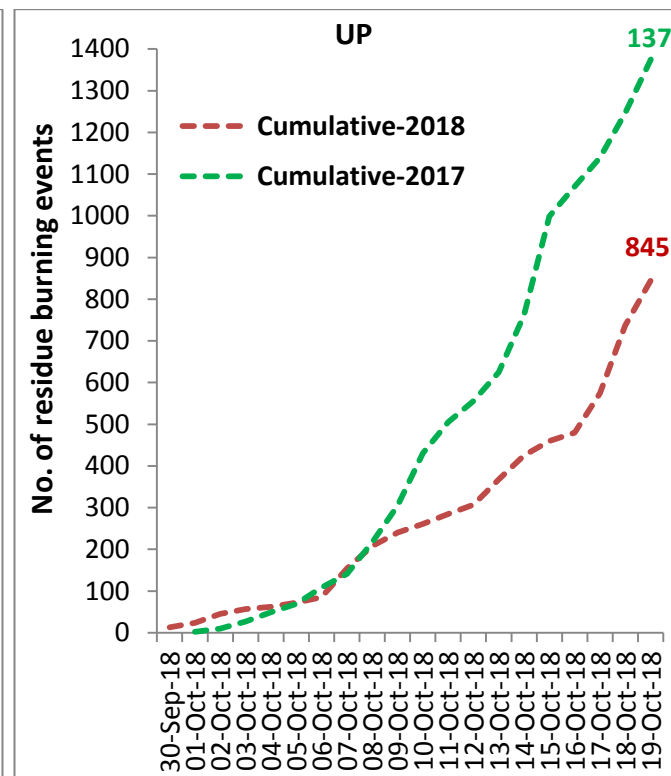
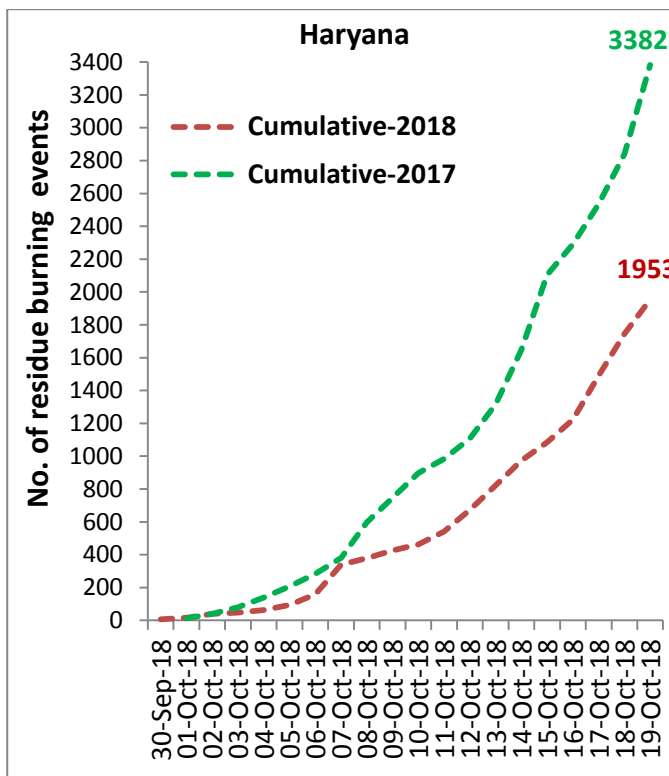
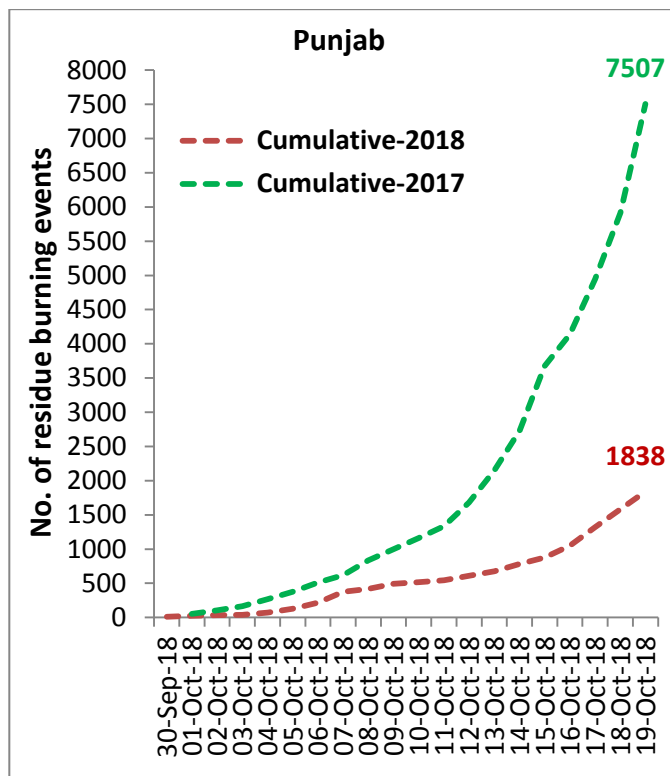
- Satellites detected 570 residue burning events in the three States (Punjab, Haryana & UP) on 19-Oct-2018.
- The burning events detected on 19-Oct-2018 are 254, 208 and 108 in Punjab, Haryana, and UP, respectively.
- The number of events decreased from 681 on 18-Oct-2018 to 570 on 19-Oct-2018 in the three States.
- Total 4636 burning events were detected in the three States between 30-Sept-2018 and 19-Oct-2018, which were distributed as 1838, 1953 and 845 in Punjab, Haryana and UP, respectively.
- Till 19-Oct-2018, the burning events in the current year are about 37.8% of the events detected in 2017.

Temporal distribution of residue burning events for the three study States



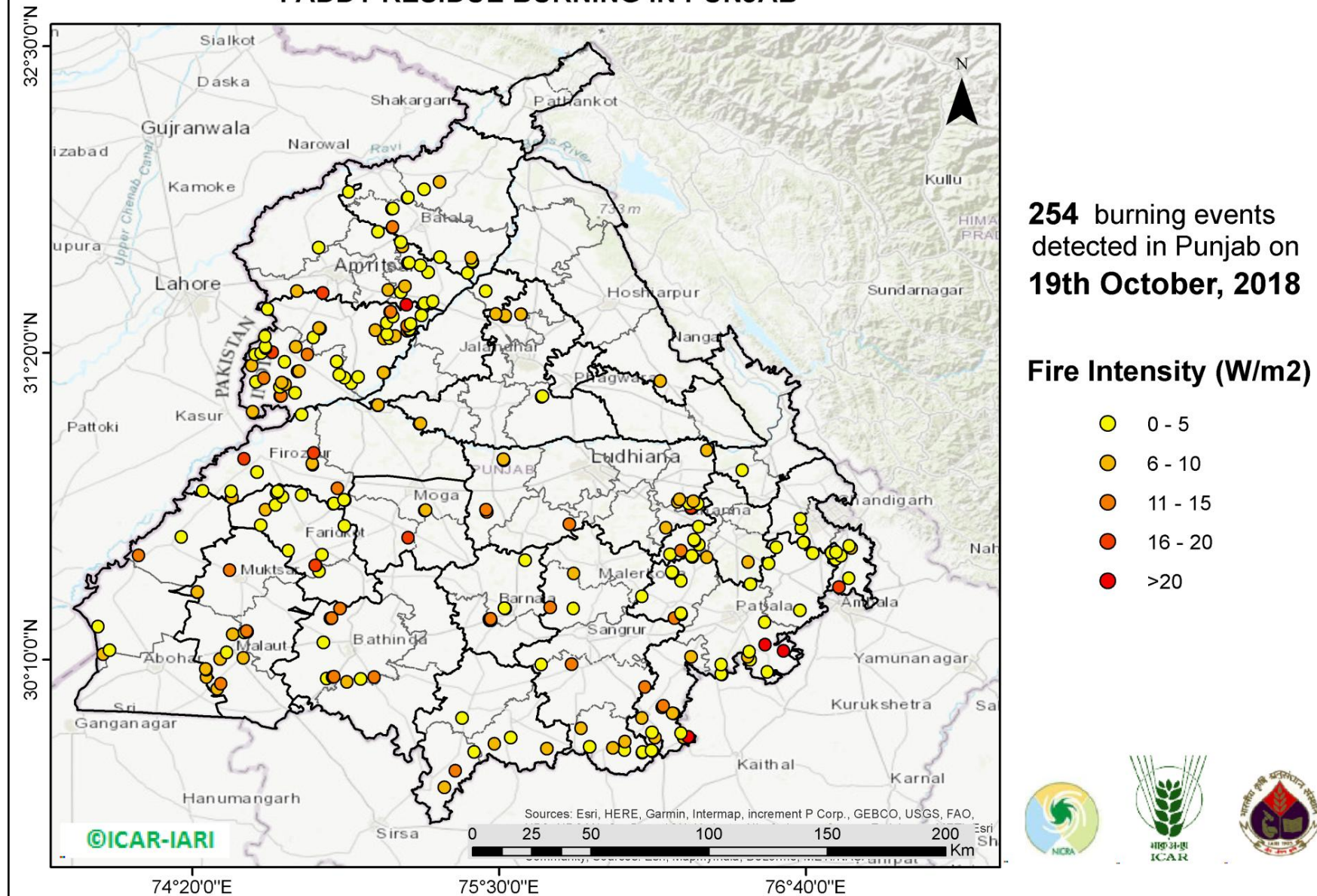
Comparison of residue burning events in current year (2018) with previous year (2017) for the three study States

(30-Sep-2018 to 19-Oct-2018)



(a) Punjab

PADDY RESIDUE BURNING IN PUNJAB



<http://geoportal.icar.gov.in:8080/geoexplorer/composer/>

Details of residue burning events in Punjab on 19-Oct-2018

Event S. No.	District	Tehsil /Block	Satellite	Longitude	Latitude	Time (IST)	Day/Night	Fire Power (W/m2)
1	AMRITSAR	AJNALA	S-NPP	74.81237	31.73467	13:00:00	D	4.80
2	AMRITSAR	AJNALA	S-NPP	74.92773	31.94626	13:00:00	D	3.20
3	AMRITSAR	AMRITSAR I	S-NPP	75.07711	31.57275	13:00:00	D	6.90
4	AMRITSAR	AMRITSAR I	S-NPP	75.03838	31.79452	13:00:00	D	3.60
5	AMRITSAR	AMRITSAR II	AQUA-1	74.82832	31.56085	14:06:00	D	18.08
6	AMRITSAR	AMRITSAR II	S-NPP	74.72988	31.56823	13:00:00	D	5.90
7	AMRITSAR	BABA BAKALA	AQUA-1	75.14686	31.51653	14:06:00	D	25.13
8	AMRITSAR	BABA BAKALA	S-NPP	75.21547	31.52246	13:00:00	D	4.80
9	AMRITSAR	BABA BAKALA	S-NPP	75.24675	31.52936	13:00:00	D	4.50
10	AMRITSAR	BABA BAKALA	S-NPP	75.12482	31.56413	13:00:00	D	5.00
11	AMRITSAR	BABA BAKALA	S-NPP	75.14069	31.58653	13:00:00	D	5.60
12	AMRITSAR	BABA BAKALA	S-NPP	75.22934	31.64052	13:00:00	D	2.40
13	AMRITSAR	BABA BAKALA	S-NPP	75.19941	31.66693	13:00:00	D	3.60
14	AMRITSAR	BABA BAKALA	S-NPP	75.15234	31.67554	13:00:00	D	3.30
15	AMRITSAR	BABA BAKALA	S-NPP	75.15757	31.67668	13:00:00	D	3.20
16	AMRITSAR	BABA BAKALA	S-NPP	75.13086	31.73787	13:00:00	D	7.60
17	BARNALA	BARNALA	S-NPP	75.46824	30.31658	13:00:00	D	10.30
18	BARNALA	BARNALA	S-NPP	75.46165	30.31993	13:00:00	D	14.90
19	BARNALA	BARNALA	S-NPP	75.46696	30.32107	13:00:00	D	11.30
20	BARNALA	BARNALA	S-NPP	75.52266	30.36161	13:00:00	D	4.20
21	BARNALA	BARNALA	S-NPP	75.51994	30.36176	13:00:00	D	3.70
22	BARNALA	BARNALA	S-NPP	75.59750	30.54503	13:00:00	D	2.80
23	BARNALA	TAPPA	S-NPP	75.46294	30.31543	13:00:00	D	8.90
24	BATHINDA	BATHINDA	S-NPP	74.97215	30.09375	13:00:00	D	2.10
25	BATHINDA	BATHINDA	S-NPP	74.84298	30.09499	13:00:00	D	4.10
26	BATHINDA	BATHINDA	S-NPP	74.86620	30.10010	13:00:00	D	13.70
27	BATHINDA	BATHINDA	S-NPP	75.02473	30.10044	13:00:00	D	14.20
28	BATHINDA	BATHINDA	S-NPP	74.87102	30.10128	13:00:00	D	20.20

29	BATHINDA	BATHINDA	S-NPP	74.87199	30.10138	13:00:00	D	13.70
30	BATHINDA	BATHINDA	S-NPP	74.83070	30.23224	13:00:00	D	3.20
31	BATHINDA	BATHINDA	S-NPP	74.85686	30.32296	13:00:00	D	11.70
32	BATHINDA	BATHINDA	S-NPP	74.85940	30.32296	13:00:00	D	21.70
33	BATHINDA	BATHINDA	S-NPP	74.86259	30.32425	13:00:00	D	12.00
34	BATHINDA	BATHINDA	S-NPP	74.89446	30.36113	13:00:00	D	11.40
35	BATHINDA	TALWANDI SABO	S-NPP	74.92057	30.08233	13:00:00	D	5.90
36	FARIDKOT	FARIDKOT	S-NPP	74.80149	30.52474	13:00:00	D	17.80
37	FARIDKOT	FARIDKOT	S-NPP	74.80036	30.52512	13:00:00	D	17.30
38	FARIDKOT	FARIDKOT	S-NPP	74.82515	30.56535	13:00:00	D	3.10
39	FARIDKOT	FARIDKOT	S-NPP	74.69767	30.58139	13:00:00	D	2.70
40	FARIDKOT	FARIDKOT	S-NPP	74.91127	30.67532	13:00:00	D	4.40
41	FARIDKOT	FARIDKOT	S-NPP	74.59225	30.67799	13:00:00	D	3.90
42	FARIDKOT	FARIDKOT	S-NPP	74.60990	30.73661	13:00:00	D	7.20
43	FARIDKOT	FARIDKOT	S-NPP	74.64783	30.75514	13:00:00	D	3.70
44	FARIDKOT	FARIDKOT	S-NPP	74.67564	30.78621	13:00:00	D	3.00
45	FARIDKOT	FARIDKOT	S-NPP	74.74735	30.79236	13:00:00	D	2.90
46	FARIDKOT	FARIDKOT	S-NPP	74.65275	30.80094	13:00:00	D	4.40
47	FARIDKOT	FARIDKOT	S-NPP	74.65716	30.80688	13:00:00	D	4.40
48	FARIDKOT	JAITO	S-NPP	74.81410	30.50279	13:00:00	D	4.70
49	FATEHGARH SAHIB	ALMOH	S-NPP	76.28888	30.55604	13:00:00	D	5.20
50	FATEHGARH SAHIB	ALMOH	S-NPP	76.14945	30.56738	13:00:00	D	3.70
51	FATEHGARH SAHIB	ALMOH	S-NPP	76.19141	30.58076	13:00:00	D	11.00
52	FATEHGARH SAHIB	ALMOH	S-NPP	76.26047	30.60428	13:00:00	D	4.50
53	FATEHGARH SAHIB	ALMOH	S-NPP	76.24146	30.61841	13:00:00	D	4.80
54	FATEHGARH SAHIB	ALMOH	S-NPP	76.24026	30.62268	13:00:00	D	4.70
55	FATEHGARH SAHIB	ALMOH	S-NPP	76.25800	30.67246	13:00:00	D	1.90
56	FATEHGARH SAHIB	FATEHGARH SAHIB	S-NPP	76.45406	30.45410	13:00:00	D	2.30
57	FATEHGARH SAHIB	FATEHGARH SAHIB	S-NPP	76.44582	30.53749	13:00:00	D	9.80
58	FIROZPUR	FAZILKA	S-NPP	73.99371	30.18671	13:00:00	D	7.60
59	FIROZPUR	FAZILKA	S-NPP	74.01660	30.20244	13:00:00	D	2.60
60	FIROZPUR	FAZILKA	S-NPP	73.97398	30.29243	13:00:00	D	4.60

61	FIROZPUR	FIROZPUR	S-NPP	74.86864	30.75896	13:00:00	D	11.10
62	FIROZPUR	FIROZPUR	S-NPP	74.87142	30.76124	13:00:00	D	2.90
63	FIROZPUR	FIROZPUR	S-NPP	74.90936	30.77472	13:00:00	D	3.50
64	FIROZPUR	FIROZPUR	S-NPP	74.48108	30.78261	13:00:00	D	5.40
65	FIROZPUR	FIROZPUR	S-NPP	74.48307	30.78310	13:00:00	D	7.30
66	FIROZPUR	FIROZPUR	S-NPP	74.47999	30.80746	13:00:00	D	4.30
67	FIROZPUR	FIROZPUR	S-NPP	74.37173	30.80794	13:00:00	D	4.50
68	FIROZPUR	FIROZPUR	S-NPP	74.88464	30.81810	13:00:00	D	11.40
69	FIROZPUR	FIROZPUR	S-NPP	74.57755	30.87949	13:00:00	D	3.10
70	FIROZPUR	FIROZPUR	S-NPP	74.78982	30.90723	13:00:00	D	9.40
71	FIROZPUR	FIROZPUR	S-NPP	74.78846	30.91184	13:00:00	D	8.40
72	FIROZPUR	FIROZPUR	AQUA-1	74.52956	30.93023	14:06:00	D	17.21
73	FIROZPUR	FIROZPUR	S-NPP	74.79448	30.95243	13:00:00	D	15.10
74	FIROZPUR	FIROZPUR	S-NPP	74.74763	31.09808	13:00:00	D	3.20
75	FIROZPUR	JALALABAD	S-NPP	74.12847	30.56322	13:00:00	D	12.50
76	FIROZPUR	JALALABAD	S-NPP	74.29039	30.63319	13:00:00	D	4.80
77	FIROZPUR	ZIRA	S-NPP	75.03790	31.13410	13:00:00	D	8.50
78	FIROZPUR	ZIRA	S-NPP	75.03879	31.13477	13:00:00	D	7.40
79	GURDASPUR	BATALA	S-NPP	75.37935	31.63791	13:00:00	D	3.20
80	GURDASPUR	BATALA	S-NPP	75.39875	31.67771	13:00:00	D	2.40
81	GURDASPUR	BATALA	S-NPP	75.39747	31.68209	13:00:00	D	2.40
82	GURDASPUR	BATALA	S-NPP	75.39362	31.69522	13:00:00	D	5.40
83	GURDASPUR	BATALA	S-NPP	75.27328	31.69711	13:00:00	D	4.40
84	GURDASPUR	BATALA	S-NPP	75.12562	31.75563	13:00:00	D	4.10
85	GURDASPUR	BATALA	S-NPP	75.09271	31.80991	13:00:00	D	8.30
86	GURDASPUR	BATALA	S-NPP	75.09498	31.81188	13:00:00	D	13.90
87	GURDASPUR	BATALA	S-NPP	75.09093	31.88189	13:00:00	D	5.00
88	GURDASPUR	BATALA	S-NPP	75.09618	31.88303	13:00:00	D	5.00
89	GURDASPUR	BATALA	S-NPP	75.15091	31.92315	13:00:00	D	2.40
90	GURDASPUR	BATALA	S-NPP	75.15285	31.92505	13:00:00	D	4.30
91	GURDASPUR	GURDASPUR	S-NPP	75.21297	31.95522	13:00:00	D	3.90
92	GURDASPUR	GURDASPUR	S-NPP	75.27224	31.98419	13:00:00	D	6.00

93	HOSHIARPUR	GARHSHANKAR	S-NPP	76.11189	31.22647	13:00:00	D	8.60
94	JALANDHAR	JALANDHAR II	S-NPP	75.52038	31.47169	13:00:00	D	5.60
95	JALANDHAR	JALANDHAR II	S-NPP	75.52168	31.47538	13:00:00	D	9.00
96	JALANDHAR	JALANDHAR II	S-NPP	75.58437	31.47980	13:00:00	D	9.50
97	JALANDHAR	JALANDHAR II	S-NPP	75.58201	31.48011	13:00:00	D	6.50
98	JALANDHAR	JALANDHAR II	S-NPP	75.48756	31.48188	13:00:00	D	5.60
99	JALANDHAR	PHILLAUR	S-NPP	75.66162	31.16651	13:00:00	D	4.00
100	JALANDHAR	PHILLAUR	S-NPP	75.66426	31.16878	13:00:00	D	3.90
101	JALANDHAR	SHAHKOT	S-NPP	75.19709	31.06410	13:00:00	D	7.40
102	JALANDHAR	SHAHKOT	S-NPP	75.19984	31.06499	13:00:00	D	8.00
103	KAPURTHALA	BHOLATH	S-NPP	75.44799	31.56892	13:00:00	D	3.70
104	LUDHIANA	JAGRAON	S-NPP	75.45204	30.72825	13:00:00	D	12.10
105	LUDHIANA	JAGRAON	S-NPP	75.44949	30.73717	13:00:00	D	13.50
106	LUDHIANA	JAGRAON	S-NPP	75.51662	30.92426	13:00:00	D	6.40
107	LUDHIANA	JAGRAON	S-NPP	75.51534	30.92867	13:00:00	D	6.40
108	LUDHIANA	KHANNA	S-NPP	76.13297	30.66872	13:00:00	D	9.90
109	LUDHIANA	KHANNA	S-NPP	76.22827	30.74300	13:00:00	D	9.20
110	LUDHIANA	KHANNA	S-NPP	76.23301	30.74398	13:00:00	D	12.00
111	LUDHIANA	KHANNA	S-NPP	76.22957	30.74485	13:00:00	D	16.40
112	LUDHIANA	KHANNA	S-NPP	76.25550	30.75941	13:00:00	D	2.20
113	LUDHIANA	RAIKOT	S-NPP	75.76651	30.68221	13:00:00	D	14.60
114	LUDHIANA	SAMRALA	S-NPP	76.22009	30.76090	13:00:00	D	1.60
115	LUDHIANA	SAMRALA	S-NPP	76.17854	30.76566	13:00:00	D	5.20
116	LUDHIANA	SAMRALA	S-NPP	76.23781	30.76918	13:00:00	D	6.70
117	LUDHIANA	SAMRALA	S-NPP	76.18566	30.77622	13:00:00	D	8.80
118	LUDHIANA	SAMRALA	METOP-1	76.28939	30.96257	21:17:00	N	7.00
119	MANSA	BUDHLADA	S-NPP	75.67992	29.82852	13:00:00	D	6.00
120	MANSA	BUDHLADA	S-NPP	75.48116	29.84693	13:00:00	D	9.10
121	MANSA	BUDHLADA	S-NPP	75.54297	29.87005	13:00:00	D	4.60
122	MANSA	MANSA	S-NPP	75.35869	29.94463	13:00:00	D	3.00
123	MANSA	SARDULGARH	S-NPP	75.29121	29.68109	13:00:00	D	5.20
124	MANSA	SARDULGARH	S-NPP	75.33221	29.74378	13:00:00	D	12.80

125	MANSA	SARDULGARH	S-NPP	75.40375	29.81543	13:00:00	D	2.60
126	MOGA	BAGHA PURANA	METOP-1	75.15368	30.63019	21:17:00	N	18.33
127	MOGA	BAGHA PURANA	S-NPP	74.91230	30.77342	13:00:00	D	3.90
128	MOGA	MOGA	S-NPP	75.21637	30.73401	13:00:00	D	11.00
129	MOGA	MOGA	S-NPP	75.21864	30.73484	13:00:00	D	9.90
130	MUKTSAR	GIDDARBAHA	S-NPP	74.53027	30.27041	13:00:00	D	3.90
131	MUKTSAR	GIDDARBAHA	S-NPP	74.54230	30.27307	13:00:00	D	7.40
132	MUKTSAR	GIDDARBAHA	S-NPP	74.53926	30.27576	13:00:00	D	11.20
133	MUKTSAR	MALAUT	S-NPP	74.42704	30.05582	13:00:00	D	8.50
134	MUKTSAR	MALAUT	S-NPP	74.44118	30.07436	13:00:00	D	11.00
135	MUKTSAR	MALAUT	S-NPP	74.38580	30.10030	13:00:00	D	6.20
136	MUKTSAR	MALAUT	S-NPP	74.38580	30.12836	13:00:00	D	4.30
137	MUKTSAR	MALAUT	S-NPP	74.38347	30.13050	13:00:00	D	7.10
138	MUKTSAR	MALAUT	S-NPP	74.43768	30.16844	13:00:00	D	6.70
139	MUKTSAR	MALAUT	S-NPP	74.52686	30.17347	13:00:00	D	5.40
140	MUKTSAR	MALAUT	S-NPP	74.46251	30.19443	13:00:00	D	2.80
141	MUKTSAR	MALAUT	S-NPP	74.48510	30.26340	13:00:00	D	5.50
142	MUKTSAR	MUKTSAR	S-NPP	74.35106	30.42204	13:00:00	D	9.10
143	MUKTSAR	MUKTSAR	S-NPP	74.35087	30.42458	13:00:00	D	7.90
144	MUKTSAR	MUKTSAR	S-NPP	74.47460	30.50617	13:00:00	D	12.10
145	PATIALA	NABHA	S-NPP	76.16623	30.32424	13:00:00	D	12.20
146	PATIALA	NABHA	S-NPP	76.19283	30.33902	13:00:00	D	3.70
147	PATIALA	NABHA	S-NPP	76.19163	30.34333	13:00:00	D	3.70
148	PATIALA	NABHA	S-NPP	76.04287	30.40736	13:00:00	D	4.20
149	PATIALA	NABHA	S-NPP	76.19096	30.46622	13:00:00	D	3.40
150	PATIALA	NABHA	S-NPP	76.15726	30.49559	13:00:00	D	4.90
151	PATIALA	NABHA	S-NPP	76.15901	30.49649	13:00:00	D	8.40
152	PATIALA	NABHA	S-NPP	76.15606	30.49990	13:00:00	D	4.90
153	PATIALA	NABHA	S-NPP	76.23315	30.55781	13:00:00	D	3.60
154	PATIALA	NABHA	S-NPP	76.23196	30.56209	13:00:00	D	3.60
155	PATIALA	PATIALA	S-NPP	76.34705	30.11055	13:00:00	D	2.40
156	PATIALA	PATIALA	S-NPP	76.34384	30.11071	13:00:00	D	2.20

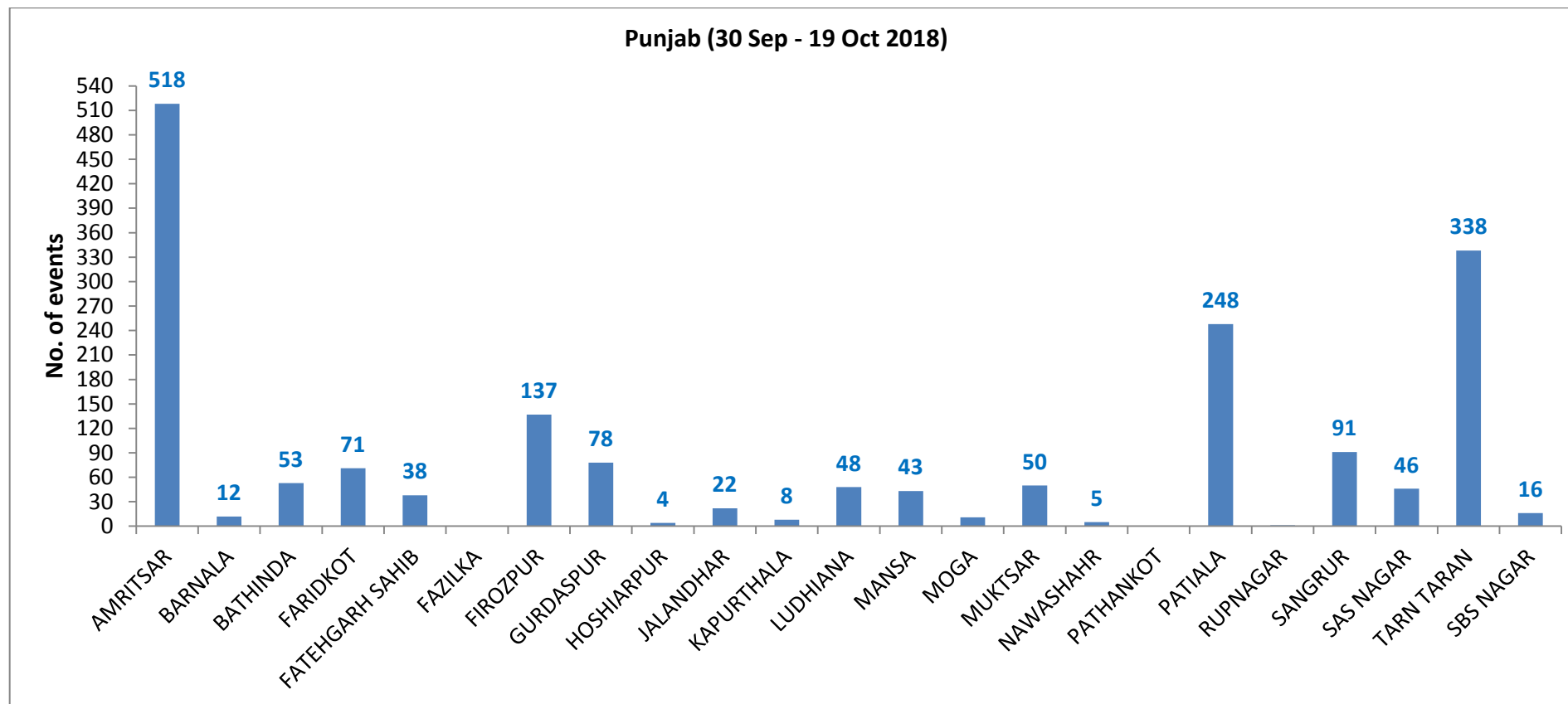
157	PATIALA	PATIALA	S-NPP	76.51931	30.11904	13:00:00	D	4.90
158	PATIALA	PATIALA	S-NPP	76.34392	30.14708	13:00:00	D	3.80
159	PATIALA	PATIALA	S-NPP	76.45380	30.16570	13:00:00	D	2.80
160	PATIALA	PATIALA	S-NPP	76.44559	30.17751	13:00:00	D	5.60
161	PATIALA	PATIALA	S-NPP	76.45032	30.19653	13:00:00	D	2.60
162	PATIALA	PATIALA	AQUA-1	76.58099	30.19900	14:06:00	D	23.62
163	PATIALA	PATIALA	TERRA-1	76.51107	30.22296	10:55:00	D	23.43
164	PATIALA	PATIALA	S-NPP	76.50950	30.30916	13:00:00	D	3.00
165	PATIALA	RAJPURA	S-NPP	76.64278	30.35461	13:00:00	D	4.80
166	PATIALA	RAJPURA	S-NPP	76.52554	30.53171	13:00:00	D	4.30
167	PATIALA	RAJPURA	S-NPP	76.76296	30.57205	13:00:00	D	2.60
168	PATIALA	RAJPURA	S-NPP	76.55347	30.59408	13:00:00	D	2.20
169	PATIALA	RAJPURA	S-NPP	76.65740	30.61202	13:00:00	D	4.80
170	PATIALA	SAMANA	S-NPP	76.09100	29.86952	13:00:00	D	8.30
171	PATIALA	SAMANA	S-NPP	76.20066	29.86987	13:00:00	D	5.40
172	PATIALA	SAMANA	AQUA-1	76.21777	29.87336	14:06:00	D	21.79
173	PATIALA	SAMANA	S-NPP	76.19093	29.88623	13:00:00	D	4.00
174	PATIALA	SAMANA	S-NPP	76.07997	29.89036	13:00:00	D	3.40
175	PATIALA	SAMANA	S-NPP	76.04173	29.94510	13:00:00	D	5.90
176	PATIALA	SAMANA	S-NPP	76.16283	29.96193	13:00:00	D	5.80
177	PATIALA	SAMANA	S-NPP	76.15942	29.96252	13:00:00	D	7.20
178	PATIALA	SAMANA	S-NPP	76.11998	29.98505	13:00:00	D	8.60
179	PATIALA	SAMANA	S-NPP	76.12370	29.99046	13:00:00	D	11.00
180	PATIALA	SAMANA	S-NPP	76.05360	30.06231	13:00:00	D	14.20
181	PATIALA	SAMANA	S-NPP	76.22891	30.17760	13:00:00	D	5.30
182	RUPNAGAR	CHAMKOR SAHIB	S-NPP	76.42432	30.88678	13:00:00	D	1.80
183	SANGRUR	DHURI	S-NPP	75.78094	30.36047	13:00:00	D	4.30
184	SANGRUR	DHURI	S-NPP	75.69286	30.36499	13:00:00	D	12.50
185	SANGRUR	DHURI	S-NPP	75.78320	30.49428	13:00:00	D	5.10
186	SANGRUR	MOONAK	S-NPP	76.04330	29.81276	13:00:00	D	4.20
187	SANGRUR	MOONAK	S-NPP	76.04548	29.81499	13:00:00	D	3.40
188	SANGRUR	MOONAK	S-NPP	76.08176	29.81796	13:00:00	D	2.40

189	SANGRUR	MOONAK	S-NPP	76.07828	29.82035	13:00:00	D	2.20
190	SANGRUR	MOONAK	S-NPP	75.97687	29.82170	13:00:00	D	3.10
191	SANGRUR	MOONAK	S-NPP	75.93143	29.83061	13:00:00	D	6.10
192	SANGRUR	MOONAK	S-NPP	75.84348	29.83519	13:00:00	D	3.30
193	SANGRUR	MOONAK	S-NPP	75.97839	29.85474	13:00:00	D	9.20
194	SANGRUR	MOONAK	S-NPP	75.81140	29.90463	13:00:00	D	7.00
195	SANGRUR	SANGRUR	S-NPP	75.66000	30.14803	13:00:00	D	2.20
196	SANGRUR	SUNAM	S-NPP	75.77482	30.14910	13:00:00	D	11.20
197	SAS NAGAR	DERABASSI	S-NPP	76.79145	30.44227	13:00:00	D	17.60
198	SAS NAGAR	DERABASSI	S-NPP	76.82911	30.47639	13:00:00	D	3.20
199	SAS NAGAR	DERABASSI	S-NPP	76.77863	30.54896	13:00:00	D	1.80
200	SAS NAGAR	DERABASSI	S-NPP	76.79859	30.56187	13:00:00	D	2.60
201	SAS NAGAR	DERABASSI	S-NPP	76.78072	30.57571	13:00:00	D	4.40
202	SAS NAGAR	DERABASSI	TERRA-1	76.83848	30.59127	10:55:00	D	9.93
203	SAS NAGAR	DERABASSI	S-NPP	76.83050	30.59907	13:00:00	D	3.60
204	SBS NAGAR	KHARAR	S-NPP	76.64389	30.70138	13:00:00	D	2.60
205	SBS NAGAR	MOHALI	S-NPP	76.69244	30.57069	13:00:00	D	2.70
206	SBS NAGAR	MOHALI	S-NPP	76.65885	30.61184	13:00:00	D	3.20
207	SBS NAGAR	MOHALI	S-NPP	76.64854	30.66706	13:00:00	D	2.80
208	TARN TARAN	KHADOOR SAHIB	S-NPP	74.96290	31.24146	13:00:00	D	3.40
209	TARN TARAN	KHADOOR SAHIB	S-NPP	75.06175	31.25875	13:00:00	D	9.70
210	TARN TARAN	KHADOOR SAHIB	S-NPP	75.05886	31.25883	13:00:00	D	7.90
211	TARN TARAN	KHADOOR SAHIB	S-NPP	75.06094	31.38807	13:00:00	D	6.30
212	TARN TARAN	KHADOOR SAHIB	S-NPP	75.08367	31.38834	13:00:00	D	4.30
213	TARN TARAN	KHADOOR SAHIB	S-NPP	74.79248	31.39140	13:00:00	D	2.50
214	TARN TARAN	KHADOOR SAHIB	S-NPP	75.10369	31.39754	13:00:00	D	5.90
215	TARN TARAN	KHADOOR SAHIB	S-NPP	75.07304	31.40509	13:00:00	D	4.00
216	TARN TARAN	KHADOOR SAHIB	TERRA-1	75.15027	31.41772	10:55:00	D	11.41
217	TARN TARAN	KHADOOR SAHIB	S-NPP	75.02884	31.41926	13:00:00	D	5.80
218	TARN TARAN	KHADOOR SAHIB	S-NPP	75.15944	31.41938	13:00:00	D	6.90
219	TARN TARAN	KHADOOR SAHIB	S-NPP	75.15814	31.42385	13:00:00	D	4.50
220	TARN TARAN	KHADOOR SAHIB	S-NPP	74.81757	31.42599	13:00:00	D	6.50

221	TARN TARAN	KHADOOR SAHIB	S-NPP	74.81400	31.42817	13:00:00	D	6.70
222	TARN TARAN	KHADOOR SAHIB	S-NPP	75.14890	31.43607	13:00:00	D	12.90
223	TARN TARAN	KHADOOR SAHIB	S-NPP	75.16346	31.44400	13:00:00	D	4.00
224	TARN TARAN	KHADOOR SAHIB	S-NPP	75.07181	31.44778	13:00:00	D	3.10
225	TARN TARAN	KHADOOR SAHIB	S-NPP	75.09556	31.47207	13:00:00	D	4.60
226	TARN TARAN	KHADOOR SAHIB	S-NPP	75.20426	31.47658	13:00:00	D	3.60
227	TARN TARAN	KHADOOR SAHIB	S-NPP	75.08496	31.48878	13:00:00	D	15.40
228	TARN TARAN	KHADOOR SAHIB	S-NPP	75.08788	31.48938	13:00:00	D	12.60
229	TARN TARAN	KHADOOR SAHIB	S-NPP	74.61897	31.49944	13:00:00	D	3.90
230	TARN TARAN	PATTI	S-NPP	74.56109	31.11053	13:00:00	D	5.50
231	TARN TARAN	PATTI	S-NPP	74.66617	31.16835	13:00:00	D	15.70
232	TARN TARAN	PATTI	S-NPP	74.66908	31.17038	13:00:00	D	11.20
233	TARN TARAN	PATTI	S-NPP	74.72297	31.18083	13:00:00	D	3.20
234	TARN TARAN	PATTI	S-NPP	74.66525	31.20395	13:00:00	D	4.80
235	TARN TARAN	PATTI	S-NPP	74.68658	31.21365	13:00:00	D	7.40
236	TARN TARAN	PATTI	S-NPP	74.93763	31.21807	13:00:00	D	3.50
237	TARN TARAN	PATTI	S-NPP	74.67248	31.22032	13:00:00	D	7.50
238	TARN TARAN	PATTI	S-NPP	74.57412	31.22299	13:00:00	D	3.30
239	TARN TARAN	PATTI	AQUA-1	74.60459	31.23805	14:06:00	D	12.85
240	TARN TARAN	PATTI	S-NPP	74.91093	31.23950	13:00:00	D	3.60
241	TARN TARAN	PATTI	S-NPP	74.89041	31.24946	13:00:00	D	3.40
242	TARN TARAN	PATTI	S-NPP	74.73205	31.26297	13:00:00	D	6.70
243	TARN TARAN	PATTI	S-NPP	74.73767	31.26421	13:00:00	D	8.80
244	TARN TARAN	PATTI	S-NPP	74.55910	31.28548	13:00:00	D	5.40
245	TARN TARAN	PATTI	S-NPP	74.68281	31.29863	13:00:00	D	3.70
246	TARN TARAN	PATTI	S-NPP	74.88104	31.30066	13:00:00	D	4.90
247	TARN TARAN	PATTI	S-NPP	74.57095	31.32762	13:00:00	D	4.90
248	TARN TARAN	PATTI	S-NPP	74.76985	31.32798	13:00:00	D	11.60
249	TARN TARAN	PATTI	S-NPP	74.59383	31.33272	13:00:00	D	4.20
250	TARN TARAN	PATTI	AQUA-1	74.63699	31.33537	14:06:00	D	15.95
251	TARN TARAN	PATTI	S-NPP	74.61246	31.35162	13:00:00	D	2.90
252	TARN TARAN	PATTI	S-NPP	74.61108	31.35623	13:00:00	D	2.90

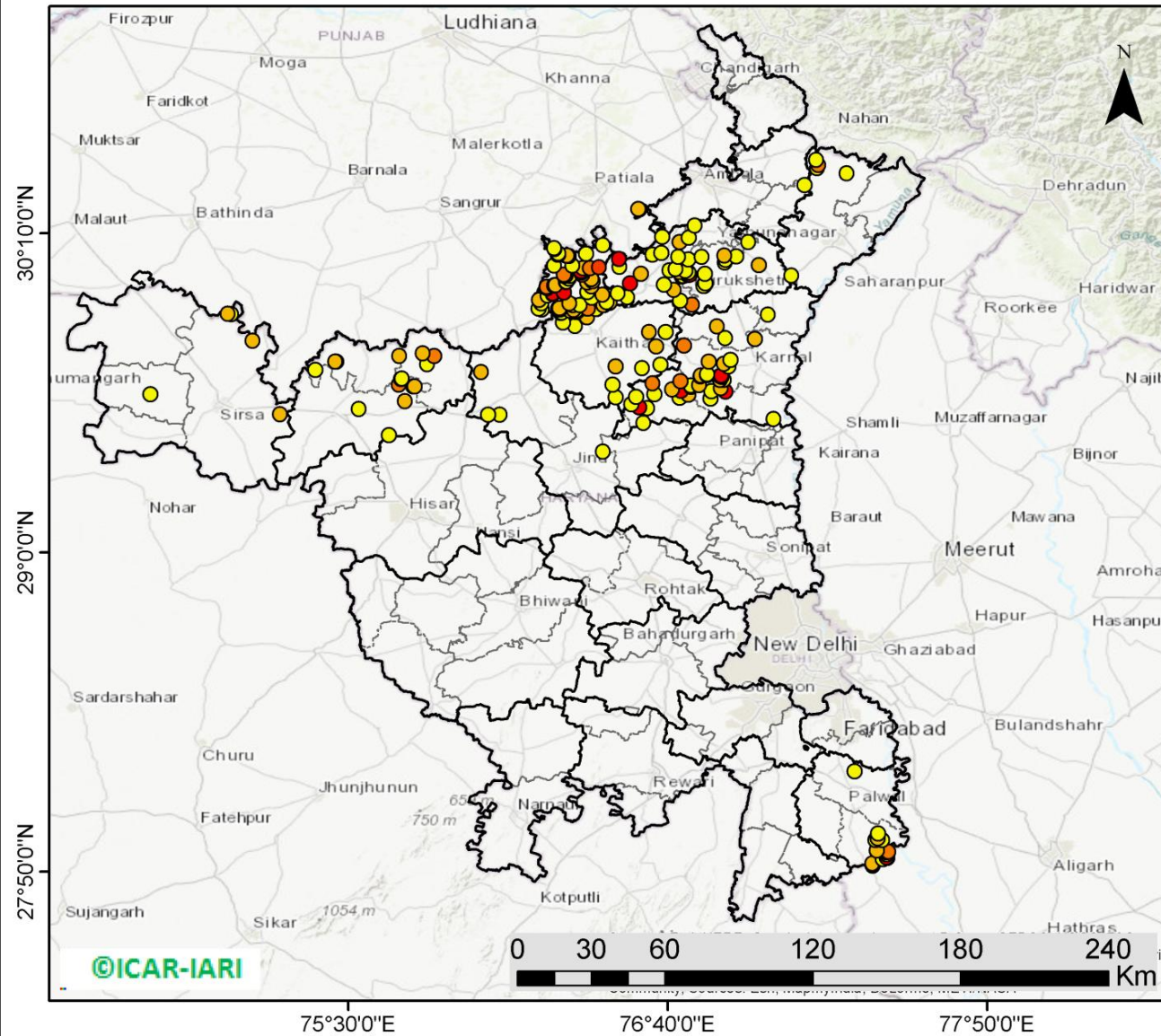
253	TARN TARAN	PATTI	S-NPP	74.72539	31.35709	13:00:00	D	5.80
254	TARN TARAN	PATTI	S-NPP	74.60837	31.39647	13:00:00	D	4.50

District-wise cumulative number of residue burning events in Punjab (30-Sep-2018 to 19-Oct-2018)



(b) Haryana

PADDY RESIDUE BURNING IN HARYANA



208 burning events detected in Haryana on 19th October, 2018

Fire Intensity (W/m²)

- 0 - 5
- 6 - 10
- 11 - 15
- 16 - 20
- >20



<http://geoportal.icar.gov.in:8080/geoexplorer/composer/>

Details of residue burning events in Haryana on 19-Oct-2018

Event S. No.	District	Tehsil / Block	Satellite	Longitude	Latitude	Time (IST)	Day/Night	Fire Power (W/m2)
1	AMBALA	AMBALA	S-NPP	76.61093	30.08877	13:00	D	3.20
2	AMBALA	AMBALA	S-NPP	76.64654	30.15418	13:00	D	4.40
3	AMBALA	AMBALA	S-NPP	76.56208	30.25553	13:00	D	3.10
4	AMBALA	AMBALA	S-NPP	76.55810	30.25669	13:00	D	6.60
5	AMBALA	BARARA	S-NPP	77.16603	30.34344	13:00	D	2.50
6	FARIDABAD	HODAL	S-NPP	77.41538	27.85515	13:00	D	4.50
7	FARIDABAD	HODAL	S-NPP	77.41430	27.85938	13:00	D	4.50
8	FARIDABAD	HODAL	S-NPP	77.41322	27.86362	13:00	D	5.60
9	FARIDABAD	HODAL	S-NPP	77.45144	27.88028	13:00	D	4.70
10	FARIDABAD	HODAL	TERRA-1	77.46943	27.88434	10:55	D	12.05
11	FARIDABAD	HODAL	AQUA-1	77.46602	27.88584	14:06	D	37.13
12	FARIDABAD	HODAL	S-NPP	77.46610	27.89655	13:00	D	3.80
13	FARIDABAD	HODAL	S-NPP	77.46395	27.90499	13:00	D	2.60
14	FARIDABAD	HODAL	S-NPP	77.47288	27.90678	13:00	D	10.50
15	FARIDABAD	HODAL	S-NPP	77.42937	27.91135	13:00	D	9.40
16	FARIDABAD	HODAL	S-NPP	77.42568	27.94912	13:00	D	1.20
17	FARIDABAD	HODAL	S-NPP	77.44910	27.94948	13:00	D	1.80
18	FARIDABAD	HODAL	S-NPP	77.43356	27.95517	13:00	D	5.60
19	FARIDABAD	HODAL	S-NPP	77.43372	27.97296	13:00	D	3.50
20	FARIDABAD	PALWAL	S-NPP	77.34904	28.20120	13:00	D	4.90
21	FATEHABAD	FATEHABAD	S-NPP	75.64793	29.43000	13:00	D	2.60
22	FATEHABAD	FATEHABAD	S-NPP	75.53846	29.52574	13:00	D	3.30
23	FATEHABAD	FATEHABAD	S-NPP	75.70685	29.55295	13:00	D	5.10
24	FATEHABAD	FATEHABAD	S-NPP	75.73647	29.60708	13:00	D	8.10
25	FATEHABAD	FATEHABAD	S-NPP	75.74174	29.60821	13:00	D	8.10
26	FATEHABAD	FATEHABAD	S-NPP	75.68387	29.61488	13:00	D	12.30
27	FATEHABAD	RATIA	S-NPP	75.37934	29.66836	13:00	D	3.80

28	FATEHABAD	RATIA	S-NPP	75.45574	29.69810	13:00	D	2.40
29	FATEHABAD	RATIA	S-NPP	75.45216	29.69857	13:00	D	5.20
30	FATEHABAD	TOHANA	S-NPP	75.69199	29.63529	13:00	D	4.10
31	FATEHABAD	TOHANA	S-NPP	75.69468	29.63628	13:00	D	2.50
32	FATEHABAD	TOHANA	S-NPP	75.78807	29.68959	13:00	D	3.70
33	FATEHABAD	TOHANA	S-NPP	75.81300	29.71866	13:00	D	10.10
34	FATEHABAD	TOHANA	S-NPP	75.68511	29.71970	13:00	D	8.10
35	FATEHABAD	TOHANA	S-NPP	75.77158	29.72871	13:00	D	7.70
36	JIND	NARWANA	S-NPP	76.05239	29.50378	13:00	D	3.30
37	JIND	NARWANA	S-NPP	76.00934	29.50385	13:00	D	3.80
38	JIND	NARWANA	S-NPP	75.98477	29.66018	13:00	D	8.70
39	JIND	SAFIDON	S-NPP	76.42922	29.36995	13:00	D	3.00
40	KAITHAL	GUHLA	S-NPP	76.20563	29.88937	13:00	D	1.30
41	KAITHAL	GUHLA	S-NPP	76.19464	29.89163	13:00	D	1.70
42	KAITHAL	GUHLA	S-NPP	76.43394	29.90502	13:00	D	7.60
43	KAITHAL	GUHLA	S-NPP	76.43078	29.90534	13:00	D	8.10
44	KAITHAL	GUHLA	S-NPP	76.20454	29.91215	13:00	D	3.60
45	KAITHAL	GUHLA	S-NPP	76.44265	29.91695	13:00	D	3.70
46	KAITHAL	GUHLA	S-NPP	76.19603	29.92415	13:00	D	5.20
47	KAITHAL	GUHLA	S-NPP	76.38805	29.93263	13:00	D	4.80
48	KAITHAL	GUHLA	S-NPP	76.22784	29.94003	13:00	D	2.70
49	KAITHAL	GUHLA	TERRA-1	76.42752	29.94298	10:55	D	9.01
50	KAITHAL	GUHLA	S-NPP	76.24732	29.94412	13:00	D	5.90
51	KAITHAL	GUHLA	S-NPP	76.24612	29.94845	13:00	D	24.70
52	KAITHAL	GUHLA	AQUA-1	76.28598	29.95047	14:06	D	29.28
53	KAITHAL	GUHLA	S-NPP	76.37260	29.95213	13:00	D	2.70
54	KAITHAL	GUHLA	S-NPP	76.22550	29.96708	13:00	D	2.80
55	KAITHAL	GUHLA	S-NPP	76.22263	29.97018	13:00	D	16.40
56	KAITHAL	GUHLA	S-NPP	76.22430	29.97141	13:00	D	13.10
57	KAITHAL	GUHLA	S-NPP	76.38699	29.97333	13:00	D	5.10
58	KAITHAL	GUHLA	S-NPP	76.25176	29.97644	13:00	D	9.00
59	KAITHAL	GUHLA	S-NPP	76.25351	29.97748	13:00	D	11.20

60	KAITHAL	GUHLA	S-NPP	76.25660	29.97748	13:00	D	9.00
61	KAITHAL	GUHLA	S-NPP	76.37269	29.98853	13:00	D	5.50
62	KAITHAL	GUHLA	S-NPP	76.29403	29.99008	13:00	D	4.00
63	KAITHAL	GUHLA	S-NPP	76.29590	29.99084	13:00	D	2.80
64	KAITHAL	GUHLA	S-NPP	76.39182	29.99249	13:00	D	9.50
65	KAITHAL	GUHLA	S-NPP	76.38466	30.00009	13:00	D	14.50
66	KAITHAL	GUHLA	S-NPP	76.38732	30.00091	13:00	D	9.90
67	KAITHAL	GUHLA	S-NPP	76.30609	30.00179	13:00	D	2.00
68	KAITHAL	GUHLA	S-NPP	76.30853	30.01144	13:00	D	1.90
69	KAITHAL	GUHLA	S-NPP	76.28810	30.01167	13:00	D	12.40
70	KAITHAL	GUHLA	S-NPP	76.29292	30.01269	13:00	D	18.20
71	KAITHAL	GUHLA	S-NPP	76.28691	30.01598	13:00	D	12.40
72	KAITHAL	GUHLA	S-NPP	76.35284	30.01630	13:00	D	13.50
73	KAITHAL	GUHLA	AQUA-1	76.39853	30.02233	14:06	D	56.69
74	KAITHAL	GUHLA	S-NPP	76.35048	30.02490	13:00	D	34.10
75	KAITHAL	GUHLA	S-NPP	76.34929	30.02921	13:00	D	34.10
76	KAITHAL	GUHLA	S-NPP	76.35648	30.03982	13:00	D	6.00
77	KAITHAL	GUHLA	S-NPP	76.38148	30.04056	13:00	D	10.40
78	KAITHAL	GUHLA	S-NPP	76.41589	30.04328	13:00	D	19.80
79	KAITHAL	GUHLA	S-NPP	76.25202	30.04976	13:00	D	2.20
80	KAITHAL	GUHLA	S-NPP	76.31824	30.04997	13:00	D	1.50
81	KAITHAL	GUHLA	AQUA-1	76.30644	30.08522	14:06	D	29.71
82	KAITHAL	GUHLA	S-NPP	76.29482	30.08656	13:00	D	4.80
83	KAITHAL	GUHLA	S-NPP	76.29790	30.08673	13:00	D	5.50
84	KAITHAL	GUHLA	S-NPP	76.26359	30.08899	13:00	D	7.00
85	KAITHAL	GUHLA	S-NPP	76.26662	30.08936	13:00	D	3.50
86	KAITHAL	GUHLA	S-NPP	76.36730	30.09205	13:00	D	1.90
87	KAITHAL	GUHLA	S-NPP	76.26541	30.09367	13:00	D	3.50
88	KAITHAL	GUHLA	S-NPP	76.25282	30.10954	13:00	D	7.00
89	KAITHAL	GUHLA	S-NPP	76.25163	30.11386	13:00	D	3.90
90	KAITHAL	GUHLA	S-NPP	76.43028	30.12460	13:00	D	3.10
91	KAITHAL	KAITHAL	S-NPP	76.47558	29.56730	13:00	D	3.80

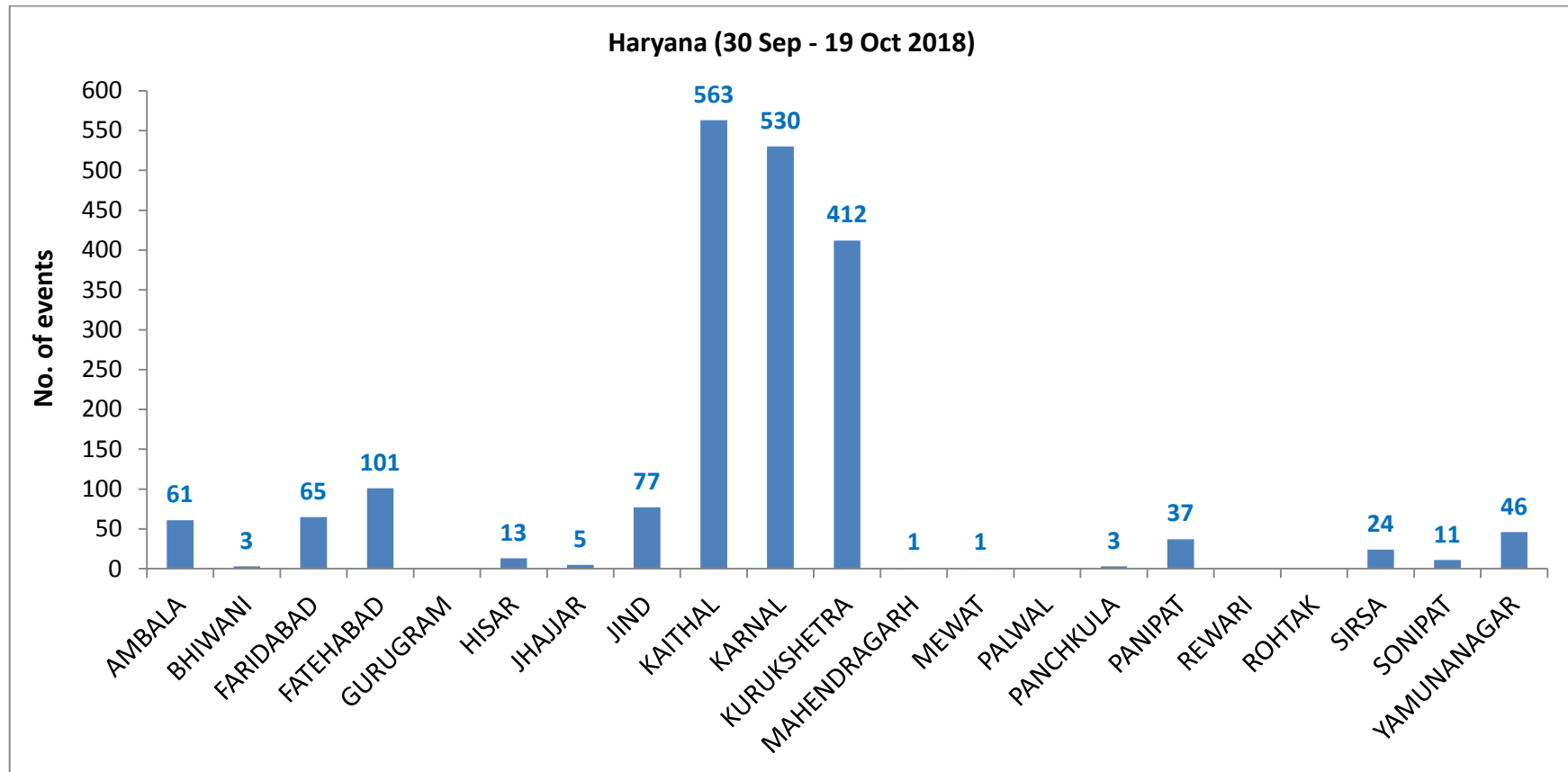
92	KAITHAL	KAITHAL	S-NPP	76.46432	29.61493	13:00	D	3.10
93	KAITHAL	KAITHAL	S-NPP	76.57356	29.67413	13:00	D	2.20
94	KAITHAL	KAITHAL	S-NPP	76.47653	29.68119	13:00	D	7.80
95	KAITHAL	KAITHAL	S-NPP	76.63918	29.68775	13:00	D	2.40
96	KAITHAL	KAITHAL	S-NPP	76.62296	29.75375	13:00	D	5.40
97	KAITHAL	KAITHAL	S-NPP	76.65791	29.80596	13:00	D	1.90
98	KAITHAL	KAITHAL	S-NPP	76.59860	29.80718	13:00	D	6.10
99	KAITHAL	KAITHAL	S-NPP	76.32828	29.82834	13:00	D	3.80
100	KAITHAL	KAITHAL	S-NPP	76.28358	29.84185	13:00	D	4.70
101	KAITHAL	KAITHAL	S-NPP	76.37049	29.86003	13:00	D	7.60
102	KAITHAL	KAITHAL	S-NPP	76.27611	29.87685	13:00	D	5.20
103	KAITHAL	KAITHAL	S-NPP	76.27886	29.87752	13:00	D	4.70
104	KAITHAL	KAITHAL	S-NPP	76.33163	29.87959	13:00	D	1.60
105	KAITHAL	KAITHAL	S-NPP	76.33452	29.87991	13:00	D	5.90
106	KAITHAL	KAITHAL	S-NPP	76.33643	29.88062	13:00	D	4.50
107	KAITHAL	KAITHAL	S-NPP	76.30997	29.88410	13:00	D	5.80
108	KAITHAL	KAITHAL	S-NPP	76.33331	29.88423	13:00	D	4.30
109	KAITHAL	KAITHAL	TERRA-1	76.32350	29.88759	10:55	D	8.02
110	KAITHAL	KAITHAL	S-NPP	76.27254	29.88985	13:00	D	5.30
111	KAITHAL	KAITHAL	S-NPP	76.40768	29.89051	13:00	D	3.70
112	KAITHAL	KAITHAL	S-NPP	76.40459	29.89066	13:00	D	3.50
113	KAITHAL	KAITHAL	S-NPP	76.37180	29.89218	13:00	D	17.80
114	KAITHAL	KAITHAL	S-NPP	76.37360	29.89314	13:00	D	12.50
115	KAITHAL	KAITHAL	S-NPP	76.26650	29.89315	13:00	D	6.00
116	KAITHAL	KAITHAL	S-NPP	76.27135	29.89418	13:00	D	5.30
117	KAITHAL	KAITHAL	S-NPP	76.31969	29.90447	13:00	D	2.20
118	KAITHAL	KAITHAL	S-NPP	76.34491	29.90527	13:00	D	2.10
119	KAITHAL	KAITHAL	S-NPP	76.30768	29.91106	13:00	D	5.20
120	KAITHAL	KAITHAL	S-NPP	76.45175	29.91322	13:00	D	6.20
121	KAITHAL	KAITHAL	S-NPP	76.45330	29.91467	13:00	D	9.20
122	KARNAL	ASSANDH	S-NPP	76.57817	29.47422	13:00	D	4.70
123	KARNAL	ASSANDH	S-NPP	76.59169	29.52797	13:00	D	1.90

124	KARNAL	ASSANDH	AQUA-1	76.56223	29.53125	14:06	D	28.60
125	KARNAL	ASSANDH	S-NPP	76.53265	29.54280	13:00	D	2.90
126	KARNAL	ASSANDH	S-NPP	76.70987	29.56626	13:00	D	2.00
127	KARNAL	ASSANDH	S-NPP	76.55056	29.56923	13:00	D	3.20
128	KARNAL	ASSANDH	S-NPP	76.74112	29.57726	13:00	D	6.30
129	KARNAL	ASSANDH	S-NPP	76.61777	29.57864	13:00	D	3.60
130	KARNAL	ASSANDH	AQUA-1	76.71400	29.59264	14:06	D	25.13
131	KARNAL	ASSANDH	S-NPP	76.68208	29.59646	13:00	D	5.80
132	KARNAL	ASSANDH	S-NPP	76.75272	29.60655	13:00	D	4.20
133	KARNAL	ASSANDH	S-NPP	76.75158	29.61079	13:00	D	4.20
134	KARNAL	ASSANDH	S-NPP	76.78033	29.61224	13:00	D	6.00
135	KARNAL	ASSANDH	TERRA-1	76.61168	29.61959	10:55	D	10.73
136	KARNAL	ASSANDH	TERRA-1	76.71230	29.62707	10:55	D	14.11
137	KARNAL	GHARAUNDA	S-NPP	77.05299	29.48886	13:00	D	2.30
138	KARNAL	GHARAUNDA	S-NPP	76.82260	29.56294	13:00	D	3.50
139	KARNAL	GHARAUNDA	AQUA-1	76.87771	29.58815	14:06	D	24.51
140	KARNAL	INDRI	S-NPP	77.03186	29.86954	13:00	D	3.40
141	KARNAL	KARNAL	S-NPP	76.82494	29.59021	13:00	D	3.60
142	KARNAL	KARNAL	S-NPP	76.86026	29.60199	13:00	D	6.90
143	KARNAL	KARNAL	S-NPP	76.87165	29.63101	13:00	D	3.70
144	KARNAL	KARNAL	S-NPP	76.85690	29.63243	13:00	D	5.40
145	KARNAL	KARNAL	S-NPP	76.86372	29.64271	13:00	D	4.60
146	KARNAL	KARNAL	S-NPP	76.78614	29.64468	13:00	D	2.80
147	KARNAL	KARNAL	S-NPP	76.85805	29.64600	13:00	D	35.50
148	KARNAL	KARNAL	S-NPP	76.78683	29.64687	13:00	D	5.50
149	KARNAL	KARNAL	S-NPP	76.86259	29.64692	13:00	D	35.50
150	KARNAL	KARNAL	S-NPP	76.80905	29.64936	13:00	D	6.10
151	KARNAL	KARNAL	S-NPP	76.80967	29.65168	13:00	D	4.60
152	KARNAL	KARNAL	S-NPP	76.88796	29.68145	13:00	D	1.30
153	KARNAL	KARNAL	S-NPP	76.87105	29.69123	13:00	D	5.40
154	KARNAL	KARNAL	S-NPP	76.81659	29.69770	13:00	D	5.60
155	KARNAL	KARNAL	S-NPP	76.89587	29.70527	13:00	D	4.80

156	KARNAL	KARNAL	S-NPP	76.72472	29.75718	13:00	D	10.50
157	KARNAL	KARNAL	S-NPP	76.98434	29.78082	13:00	D	6.60
158	KARNAL	NILOKHERI	S-NPP	76.87598	29.78444	13:00	D	2.90
159	KARNAL	NILOKHERI	S-NPP	76.84552	29.82687	13:00	D	7.50
160	KURUKSHETRA	PEHOWA	S-NPP	76.51806	29.93294	13:00	D	3.50
161	KURUKSHETRA	PEHOWA	S-NPP	76.48404	29.94835	13:00	D	3.50
162	KURUKSHETRA	PEHOWA	TERRA-1	76.68842	29.96095	10:55	D	7.57
163	KURUKSHETRA	PEHOWA	S-NPP	76.65282	29.97930	13:00	D	1.70
164	KURUKSHETRA	PEHOWA	S-NPP	76.52873	29.98479	13:00	D	22.50
165	KURUKSHETRA	PEHOWA	AQUA-1	76.64067	29.99538	14:06	D	55.63
166	KURUKSHETRA	PEHOWA	S-NPP	76.56837	30.01999	13:00	D	5.90
167	KURUKSHETRA	PEHOWA	AQUA-1	76.42752	30.02383	14:06	D	51.67
168	KURUKSHETRA	PEHOWA	S-NPP	76.67237	30.03250	13:00	D	2.70
169	KURUKSHETRA	PEHOWA	S-NPP	76.49005	30.04539	13:00	D	2.00
170	KURUKSHETRA	PEHOWA	AQUA-1	76.48891	30.07324	14:06	D	29.40
171	KURUKSHETRA	PEHOWA	S-NPP	76.64314	30.09550	13:00	D	2.10
172	KURUKSHETRA	PEHOWA	S-NPP	76.70942	30.13598	13:00	D	8.90
173	KURUKSHETRA	PEHOWA	S-NPP	76.74345	30.15187	13:00	D	3.00
174	KURUKSHETRA	SHAHABAD	S-NPP	76.96015	30.13501	13:00	D	3.30
175	KURUKSHETRA	SHAHABAD	S-NPP	76.76485	30.19607	13:00	D	3.00
176	KURUKSHETRA	THANESAR	TERRA-1	76.75493	29.90705	10:55	D	13.98
177	KURUKSHETRA	THANESAR	S-NPP	76.71053	29.92162	13:00	D	2.90
178	KURUKSHETRA	THANESAR	S-NPP	76.79872	29.97430	13:00	D	6.40
179	KURUKSHETRA	THANESAR	S-NPP	76.79707	29.97492	13:00	D	4.80
180	KURUKSHETRA	THANESAR	S-NPP	76.80550	29.98459	13:00	D	3.40
181	KURUKSHETRA	THANESAR	S-NPP	76.80385	29.98516	13:00	D	2.60
182	KURUKSHETRA	THANESAR	S-NPP	76.71700	30.01054	13:00	D	4.80
183	KURUKSHETRA	THANESAR	S-NPP	76.72157	30.01149	13:00	D	4.80
184	KURUKSHETRA	THANESAR	S-NPP	76.73978	30.01527	13:00	D	3.10
185	KURUKSHETRA	THANESAR	AQUA-1	76.74640	30.01634	14:06	D	43.85
186	KURUKSHETRA	THANESAR	S-NPP	76.80096	30.01909	13:00	D	2.00
187	KURUKSHETRA	THANESAR	S-NPP	76.74205	30.02463	13:00	D	2.70

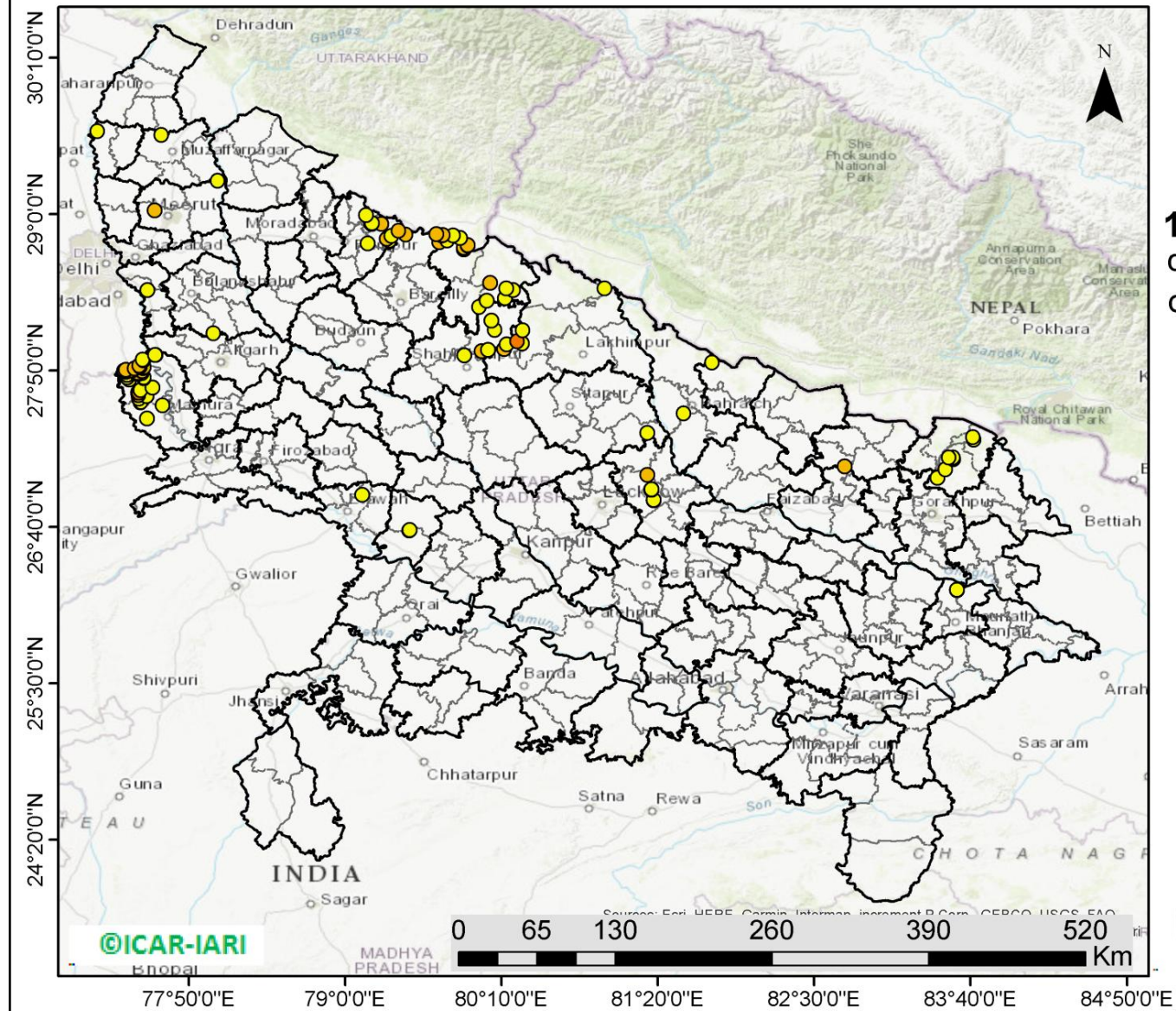
188	KURUKSHETRA	THANESAR	S-NPP	76.70786	30.02645	13:00	D	6.80
189	KURUKSHETRA	THANESAR	S-NPP	76.73067	30.03116	13:00	D	2.90
190	KURUKSHETRA	THANESAR	S-NPP	76.69528	30.03721	13:00	D	4.10
191	KURUKSHETRA	THANESAR	S-NPP	76.99918	30.05132	13:00	D	9.80
192	KURUKSHETRA	THANESAR	S-NPP	76.87503	30.06087	13:00	D	2.40
193	KURUKSHETRA	THANESAR	S-NPP	76.87726	30.07014	13:00	D	2.00
194	KURUKSHETRA	THANESAR	S-NPP	76.74128	30.07156	13:00	D	2.80
195	KURUKSHETRA	THANESAR	S-NPP	76.70491	30.08169	13:00	D	4.90
196	KURUKSHETRA	THANESAR	S-NPP	76.79096	30.08203	13:00	D	2.40
197	KURUKSHETRA	THANESAR	S-NPP	76.91621	30.08250	13:00	D	3.20
198	KURUKSHETRA	THANESAR	S-NPP	76.87275	30.08683	13:00	D	5.90
199	SIRSA	RANIA	S-NPP	74.77650	29.57978	01:42	N	1.00
200	SIRSA	SIRSA	S-NPP	75.25060	29.50659	13:00	D	6.30
201	SIRSA	SIRSA	S-NPP	75.15031	29.77400	13:00	D	6.00
202	SIRSA	SIRSA	S-NPP	75.07175	29.87156	13:00	D	4.80
203	SIRSA	SIRSA	S-NPP	75.05903	29.87368	13:00	D	6.40
204	YAMUNANAGAR	JAGADHRI	S-NPP	77.11862	30.01387	13:00	D	4.40
205	YAMUNANAGAR	JAGADHRI	S-NPP	77.31932	30.38713	13:00	D	2.70
206	YAMUNANAGAR	JAGADHRI	S-NPP	77.21246	30.40630	13:00	D	2.20
207	YAMUNANAGAR	JAGADHRI	TERRA-1	77.21705	30.41759	10:55	D	12.38
208	YAMUNANAGAR	JAGADHRI	S-NPP	77.20912	30.43564	13:00	D	2.00

District-wise cumulative number of residue burning events in Haryana (30-Sep-2018 to 19-Oct-2018)



(c) Uttar Pradesh

PADDY RESIDUE BURNING IN UTTAR PRADESH



108 burning events detected in Uttar Pradesh on **19th October, 2018**

Fire Intensity (W/m²)

- 0 - 5
- 6 - 10
- 11 - 15
- 16 - 20
- >20

©ICAR-IARI



<http://geoportal.icar.gov.in:8080/geoexplorer/composer/>

Details of residue burning events in Uttar Pradesh on 19-Oct-2018

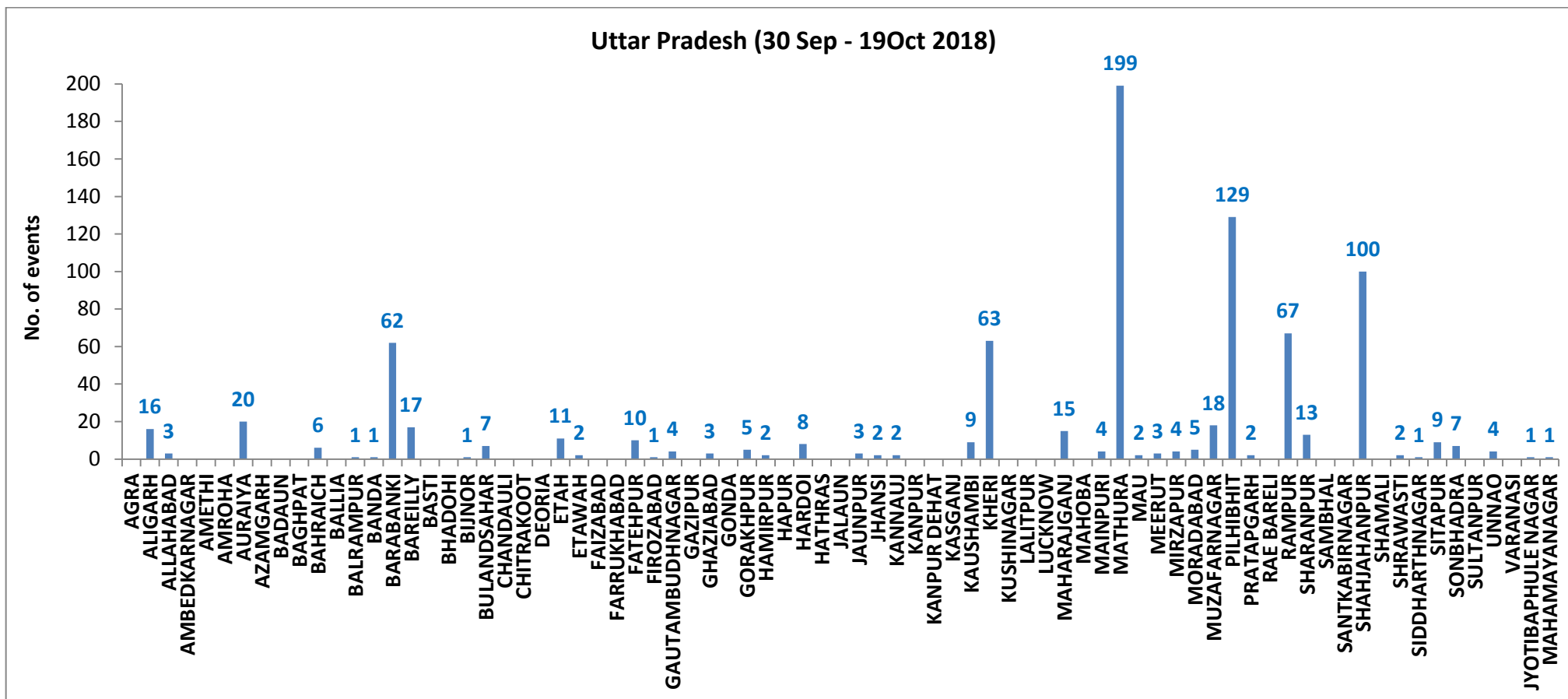
Event S. No.	District	Tehsil /Block	Satellite	Longitude	Latitude	Time (IST)	Day/Night	Fire Power (W/m2)
1	ALIGARH	KHAIR	S-NPP	77.58372	27.95064	13:00:00	D	4.00
2	ALIGARH	KHAIR	S-NPP	77.58264	27.95081	13:00:00	D	1.70
3	AURAIYA	BIDHUNA	S-NPP	79.47765	26.64111	01:42:00	N	0.70
4	AURAIYA	BIDHUNA	S-NPP	79.48173	26.64352	13:00:00	D	3.40
5	BAHRAICH	MAHASI	S-NPP	81.52549	27.51211	13:00:00	D	4.40
6	BARABANKI	NAWABGANJ	S-NPP	81.30334	26.86409	13:00:00	D	2.50
7	BARABANKI	NAWABGANJ	S-NPP	81.30259	26.86761	13:00:00	D	3.60
8	BARABANKI	NAWABGANJ	S-NPP	81.28274	26.94396	13:00:00	D	6.00
9	BARABANKI	NAWABGANJ	S-NPP	81.28719	26.94474	13:00:00	D	3.50
10	BARABANKI	NAWABGANJ	S-NPP	81.28643	26.94826	13:00:00	D	3.50
11	BARABANKI	NAWABGANJ	S-NPP	81.25585	27.05518	13:00:00	D	5.20
12	BAREILLY	BAHERI	S-NPP	79.45266	28.84680	13:00:00	D	5.60
13	BAREILLY	BAHERI	S-NPP	79.67915	28.84989	13:00:00	D	6.70
14	BAREILLY	BAHERI	S-NPP	79.39993	28.87575	13:00:00	D	5.30
15	BULANDSAHAR	KHURJA	S-NPP	78.01684	28.11170	13:00:00	D	3.80
16	ETAWAH	ETAWAH	S-NPP	79.12578	26.90723	13:00:00	D	4.60
17	GAUTAMBUDHNAGAR	GAUTAMBUDHNAGAR	S-NPP	77.52474	28.43337	13:00:00	D	2.50
18	KHERI	GOLA	S-NPP	80.32581	28.13326	13:00:00	D	2.50
19	KHERI	MOHMADI	S-NPP	80.18549	27.99515	13:00:00	D	8.90
20	KHERI	MOHMADI	S-NPP	80.20506	28.02831	13:00:00	D	2.60
21	KHERI	MOHMADI	S-NPP	80.32343	28.03492	13:00:00	D	3.00
22	KHERI	MOHMADI	TERRA-1	80.28482	28.05203	10:55:00	D	10.51
23	KHERI	NIGHASAN	S-NPP	80.93506	28.44730	13:00:00	D	1.00
24	MAHARAJGANJ	MAHARAJGANJ	S-NPP	83.41873	27.03290	13:00:00	D	2.10
25	MAHARAJGANJ	MAHARAJGANJ	S-NPP	83.47891	27.09631	13:00:00	D	1.40
26	MAHARAJGANJ	MAHARAJGANJ	S-NPP	83.54012	27.17321	13:00:00	D	4.20
27	MAHARAJGANJ	MAHARAJGANJ	S-NPP	83.53817	27.18316	13:00:00	D	2.50
28	MAHARAJGANJ	MAHARAJGANJ	S-NPP	83.50568	27.18485	13:00:00	D	3.60

29	MAHARAJGANJ	NICHLAUL	S-NPP	83.69285	27.31616	13:00:00	D	1.90
30	MAHARAJGANJ	NICHLAUL	S-NPP	83.68509	27.33540	13:00:00	D	2.70
31	MATHURA	CHHATA	S-NPP	77.47338	27.59479	13:00:00	D	3.60
32	MATHURA	CHHATA	S-NPP	77.47632	27.59784	13:00:00	D	4.00
33	MATHURA	CHHATA	S-NPP	77.46136	27.62354	13:00:00	D	1.90
34	MATHURA	CHHATA	S-NPP	77.51754	27.64396	13:00:00	D	3.20
35	MATHURA	CHHATA	S-NPP	77.45940	27.64990	13:00:00	D	5.40
36	MATHURA	CHHATA	S-NPP	77.45509	27.66685	13:00:00	D	6.90
37	MATHURA	CHHATA	S-NPP	77.45959	27.66776	13:00:00	D	12.50
38	MATHURA	CHHATA	S-NPP	77.47327	27.68834	13:00:00	D	2.80
39	MATHURA	CHHATA	S-NPP	77.56261	27.70630	13:00:00	D	2.70
40	MATHURA	CHHATA	S-NPP	77.38923	27.76755	13:00:00	D	3.60
41	MATHURA	CHHATA	S-NPP	77.50038	27.77674	13:00:00	D	8.10
42	MATHURA	CHHATA	S-NPP	77.49930	27.78096	13:00:00	D	4.60
43	MATHURA	CHHATA	S-NPP	77.37128	27.78179	13:00:00	D	4.50
44	MATHURA	CHHATA	S-NPP	77.37144	27.79970	13:00:00	D	2.90
45	MATHURA	CHHATA	S-NPP	77.37204	27.80161	13:00:00	D	1.90
46	MATHURA	CHHATA	S-NPP	77.45936	27.80842	13:00:00	D	6.80
47	MATHURA	CHHATA	S-NPP	77.44479	27.80995	13:00:00	D	4.80
48	MATHURA	CHHATA	S-NPP	77.45969	27.81087	13:00:00	D	5.30
49	MATHURA	CHHATA	S-NPP	77.44070	27.81138	13:00:00	D	6.80
50	MATHURA	CHHATA	S-NPP	77.48174	27.81290	13:00:00	D	5.30
51	MATHURA	CHHATA	S-NPP	77.45414	27.81417	13:00:00	D	5.30
52	MATHURA	CHHATA	S-NPP	77.45270	27.81597	13:00:00	D	5.30
53	MATHURA	CHHATA	S-NPP	77.36209	27.82191	13:00:00	D	6.90
54	MATHURA	CHHATA	S-NPP	77.48327	27.82907	13:00:00	D	3.10
55	MATHURA	CHHATA	S-NPP	77.48773	27.82999	13:00:00	D	5.40
56	MATHURA	CHHATA	S-NPP	77.40727	27.83121	13:00:00	D	4.60
57	MATHURA	CHHATA	S-NPP	77.34975	27.83278	13:00:00	D	3.30
58	MATHURA	CHHATA	S-NPP	77.41069	27.83637	13:00:00	D	1.60
59	MATHURA	CHHATA	S-NPP	77.36227	27.83983	13:00:00	D	5.60
60	MATHURA	CHHATA	S-NPP	77.43102	27.84945	13:00:00	D	7.10

61	MATHURA	CHHATA	S-NPP	77.49128	27.85290	13:00:00	D	5.90
62	MATHURA	CHHATA	S-NPP	77.49911	27.85894	13:00:00	D	5.70
63	MATHURA	CHHATA	S-NPP	77.47022	27.86190	13:00:00	D	2.70
64	MATHURA	CHHATA	S-NPP	77.46362	27.86943	13:00:00	D	6.40
65	MATHURA	CHHATA	S-NPP	77.49616	27.90704	13:00:00	D	3.00
66	MATHURA	CHHATA	S-NPP	77.48957	27.91456	13:00:00	D	3.00
67	MATHURA	MATHURA	S-NPP	77.52046	27.47489	13:00:00	D	3.10
68	MATHURA	MATHURA	S-NPP	77.63741	27.57262	13:00:00	D	1.60
69	MAU	MADHUBAN	S-NPP	83.56503	26.19538	12:54:00	D	2.80
70	MAU	MADHUBAN	S-NPP	83.56466	26.19774	12:54:00	D	2.90
71	MEERUT	MAWANA	S-NPP	78.04896	29.24839	13:00:00	D	2.90
72	MEERUT	MAWANA	S-NPP	78.04885	29.24890	13:00:00	D	3.40
73	MEERUT	MEERUT	TERRA-1	77.57857	29.02670	10:55:00	D	8.00
74	MUZAFARNAGAR	KAIRANA	S-NPP	77.15215	29.61834	13:00:00	D	2.70
75	MUZAFARNAGAR	MUZAFFARNAGAR	S-NPP	77.62716	29.59039	13:00:00	D	3.60
76	PILHIBHIT	PILHIBHIT	S-NPP	79.88442	28.73637	13:00:00	D	3.20
77	PILHIBHIT	PILHIBHIT	TERRA-1	79.88579	28.74822	10:55:00	D	8.68
78	PILHIBHIT	PILHIBHIT	S-NPP	79.91358	28.76460	13:00:00	D	2.90
79	PILHIBHIT	PILHIBHIT	S-NPP	79.91273	28.76824	13:00:00	D	5.80
80	PILHIBHIT	PILHIBHIT	S-NPP	79.70117	28.79075	13:00:00	D	6.70
81	PILHIBHIT	PILHIBHIT	S-NPP	79.76272	28.80401	13:00:00	D	1.80
82	PILHIBHIT	PILHIBHIT	S-NPP	79.85641	28.82149	13:00:00	D	2.90
83	PILHIBHIT	PILHIBHIT	S-NPP	79.80527	28.84254	13:00:00	D	2.50
84	PILHIBHIT	PILHIBHIT	S-NPP	79.72255	28.84255	13:00:00	D	7.30
85	PILHIBHIT	PILHIBHIT	S-NPP	79.72752	28.84347	13:00:00	D	7.30
86	PILHIBHIT	PURANPUR	S-NPP	80.19284	28.37186	13:00:00	D	2.10
87	PILHIBHIT	PURANPUR	S-NPP	80.25373	28.43184	13:00:00	D	2.10
88	PILHIBHIT	PURANPUR	S-NPP	80.20097	28.44497	13:00:00	D	2.90
89	PILHIBHIT	PURANPUR	S-NPP	80.08283	28.48754	13:00:00	D	5.60
90	RAMPUR	BILASPUR	S-NPP	79.32806	28.80421	13:00:00	D	4.20
91	RAMPUR	BILASPUR	S-NPP	79.30885	28.81631	13:00:00	D	5.90
92	RAMPUR	BILASPUR	S-NPP	79.34425	28.83786	13:00:00	D	3.60

93	RAMPUR	BILASPUR	TERRA-1	79.27190	28.92789	10:55:00	D	6.73
94	RAMPUR	MILAK	S-NPP	79.16888	28.78237	13:00:00	D	4.10
95	RAMPUR	SUAR	S-NPP	79.19712	28.92798	13:00:00	D	3.20
96	RAMPUR	SUAR	S-NPP	79.19398	28.93051	13:00:00	D	5.00
97	RAMPUR	SUAR	S-NPP	79.19923	28.93151	13:00:00	D	5.00
98	RAMPUR	SUAR	S-NPP	79.15656	28.99435	13:00:00	D	4.30
99	SHAHJAHANPUR	PUWANYA	TERRA-1	80.01710	27.97717	10:55:00	D	6.74
100	SHAHJAHANPUR	PUWANYA	S-NPP	80.06548	27.98690	01:42:00	N	0.90
101	SHAHJAHANPUR	PUWANYA	S-NPP	80.11664	28.13604	13:00:00	D	1.20
102	SHAHJAHANPUR	PUWANYA	S-NPP	80.09010	28.20724	13:00:00	D	4.40
103	SHAHJAHANPUR	PUWANYA	S-NPP	79.99869	28.30759	13:00:00	D	2.20
104	SHAHJAHANPUR	PUWANYA	S-NPP	80.05595	28.35441	13:00:00	D	3.30
105	SHAHJAHANPUR	SHAHJAHANPUR	S-NPP	79.88939	27.94539	13:00:00	D	4.10
106	SHRAWASTI	BHINGA	S-NPP	81.73982	27.89348	13:00:00	D	3.00
107	SIDDHARTHANAGAR	DOMARIYAGANJ	S-NPP	82.72720	27.11827	13:00:00	D	5.20
108	SITAPUR	MAHMUDABAD	S-NPP	81.25607	27.36743	13:00:00	D	3.50

District-wise cumulative number of residue burning events in Uttar Pradesh (30-Sep-2018 to 19-Oct-2018)



State wise, date wise and district-wise number of residue burning events detected in 2017 and 2018

(Period: 30-Sep-2018 to 19-Oct-2018)

Date	Punjab		Haryana		UP		Total	
	2017	2018	2017	2018	2017	2018	2017	2018
30-Sep-18	--	11	---	7	---	13	---	31
1-Oct-18	54	16	13	9	2	11	69	36
2-Oct-18	50	9	27	23	8	21	85	53
3-Oct-18	62	4	40	9	17	12	119	25
4-Oct-18	103	32	60	16	22	5	185	53
5-Oct-18	106	56	68	30	20	10	194	96
6-Oct-18	138	87	75	65	39	13	252	165
7-Oct-18	105	162	97	180	31	69	233	411
8-Oct-18	215	39	218	40	75	54	508	133
9-Oct-18	163	75	148	47	87	32	398	154
10-Oct-18	164	23	151	37	126	21	441	81
11-Oct-18	177	30	87	78	74	24	338	132
12-Oct-18	342	67	123	133	51	22	516	222
13-Oct-18	470	62	207	147	69	61	746	270
14-Oct-18	582	112	333	153	137	57	1052	322
15-Oct-18	943	90	458	110	237	35	1638	235
16-Oct-18	465	174	186	138	71	20	722	332
17-Oct-18	807	272	244	268	69	94	1120	634
18-Oct-18	970	263	306	255	108	163	1384	681
19-Oct-18	1591	254	541	208	128	108	2260	570
Total	7507	1838	3382	1953	1375	845	12264	4636

(a) Punjab

Districts	01 - 19 Oct	
	2017	2018
AMRITSAR	638	518
BARNALA	26	12
BATHINDA	560	53
FARIDKOT	945	71
FATEHGARH SAHIB	298	38
FAZILKA	0	0
FIROZPUR	986	137
GURDASPUR	248	78
HOSHIARPUR	48	4
JALANDHAR	313	22
KAPURTHALA	165	8
LUDHIANA	471	48
MANSA	154	43
MOGA	115	11
MUKTSAR	402	50
NAWASHAHR	80	5
PATHANKOT	0	0
PATIALA	801	248
RUPNAGAR	28	1
SANGRUR	223	91
SAS NAGAR	57	46
TARN TARAN	914	338
SBS NAGAR	35	16
Total	7507	1838

(b) Haryana

Districts	01 - 19 Oct	
	2017	2018
AMBALA	209	61
BHIWANI	2	3
FARIDABAD	71	65
FATEHABAD	239	101
GURUGRAM	0	0
HISAR	27	13
JHAJJAR	1	5
JIND	147	77
KAITHAL	733	563
KARNAL	962	530
KURUKSHETRA	735	412
MAHENDRAGARH	0	1
MEWAT	0	1
PALWAL	0	0
PANCHKULA	0	3
PANIPAT	37	37
REWARI	0	0
ROHTAK	3	0
SIRSA	73	24
SONIPAT	17	11
YAMUNANAGAR	126	46
Total	3382	1953

(c) Uttar Pradesh

Districts	01 - 19 Oct		FIROZABAD	1	1	PRATAPGARH	0	2
	2017	2018						
AGRA	0	0	GAZIPUR	0	0	RAMPUR	211	67
ALIGARH	14	16	GHAZIABAD	5	3	SHARANPUR	28	13
ALLAHABAD	0	3	GONDA	0	0	SAMBHAL	0	0
AMBEDKAR NAGAR	1	0	GORAKHPUR	2	5	SANTKABIR NAGAR	0	0
AMETHI	0	0	HAMIRPUR	0	2	SHAHJAHANPUR	374	100
AMROHA	0	0	HAPUR	0	0	SHAMALI	0	0
AURAIYA	50	20	HARDOI	13	8	SHRAWASTI	3	2
AZAMGARH	0	0	HATHRAS	0	0	SIDDHARTH NAGAR	1	1
BADAUN	1	0	JALAUN	0	0	SITAPUR	10	9
BAGHPAT	0	0	JAUNPUR	0	3	SONBHADRA	1	7
BAHRAICH	2	6	JHANSI	0	2	SULTANPUR	0	0
BALLIA	0	0	KANNAUJ	1	2	UNNAO	3	4
BALRAMPUR	0	1	KANPUR	3	0	VARANASI	0	0
BANDA	0	1	KANPUR DEHAT	1	0	JYOTIBAPHULE NAGAR	0	1
BARABANKI	27	62	KASGANJ	0	0	MAHAMAYA NAGAR	0	1
BAREILLY	53	17	KAUSHAMBI	4	9	Total	1375	845
BASTI	0	0	KHERI	105	63			
BHADOHI	0	0	KUSHINAGAR	1	0			
BIJNOR	1	1	LALITPUR	0	0			
BULANDSAHAR	6	7	LUCKNOW	5	0			
CHANDAULI	0	0	MAHARAJGANJ	21	15			
CHITRAKOOT	0	0	MAHOBAB	0	0			
DEORIA	0	0	MAINPURI	6	4			
ETAH	9	11	MATHURA	75	199			
ETAWAH	10	2	MAU	0	2			
FAIZABAD	1	0	MEERUT	9	3			
FARRUKHABAD	0	0	MIRZAPUR	2	4			
FATEHPUR	5	10	MORADABAD	10	5			
			MUZAFARNAGAR	44	18			
			PILHIBHIT	252	129			

The study used images received from following Satellites at IARI Satellite Ground Station

S. No.	Satellite Name	Sensor	Resolution (meter)	Day / Night Passes
1.	Suomi NPP	VIIRS	375 / 1000	Both
2.	Terra	MODIS	1000	Both
3.	Aqua	MODIS	1000	Both
4.	NOAA – 18	AVHRR	1000	Night
5.	NOAA – 19	AVHRR	1000	Night
6.	Metop - 1	AVHRR	1000	Night
7.	Metop - 2	AVHRR	1000	Night

Study Team

ICAR – HQ	Dr K. Alagusundaram	DDG (Agril. Engg.)	ddgengg@icar.org.in
	Dr S. Bhaskar	ADG (NRM)	adgagroandaf@gmail.com
ICAR - IARI	Dr V.K. Sehgal	Professor & Nodal Scientist	iaricreams@gmail.com vk.sehgal@icar.gov.in
	Dr Rajkumar Dhakar	Scientist	rajdhakar.iari@gmail.com
	Shri Rakeshwar Verma	Chief Technical Officer	rakeshwar.verma@icar.gov.in
	Mr Aakash Chhabra	SRF (NICRA)	aakash.chhabra7489@gmail.com
ICAR - ATARI	Dr Rajbir Singh	Director ATARI (Zone-1)	rajbirsingh.zpd@gmail.com
	Dr U.S. Gautam	Director ATARI (Zone-IV)	zpdicarkanpur@gmail.com
ICAR - IASRI	Dr RajenderParsad	Principal Scientist	rajender.parsad@icar.gov.in

GIS Maps of fire events can be visualized online on ICAR KRISHI Geoportal

websites:<http://geoportal.icar.gov.in:8080/geoexplorer/composer/>

<http://creams.iari.res.in:8080/geoexplorer/composer/>
