

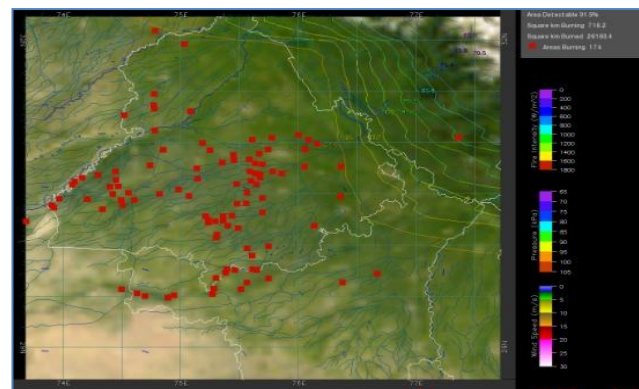
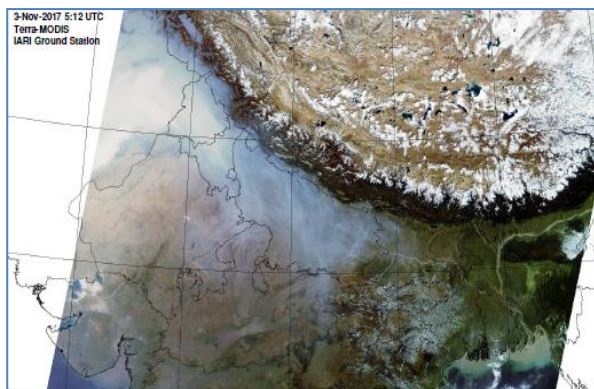


# MONITORING PADDY RESIDUE BURNING IN NORTH INDIA USING SATELLITE REMOTE SENSING DURING 2018

**Bulletin  
No. 18**

**Events Date:  
18-Oct-2018**

**Issued on:  
19-Oct-2018**



**Prepared by:**

**Consortium for Research on Agroecosystem Monitoring and Modeling from Space (CREAMS) Laboratory,  
Division of Agricultural Physics, ICAR – Indian Agricultural Research Institute, New Delhi – 110012**

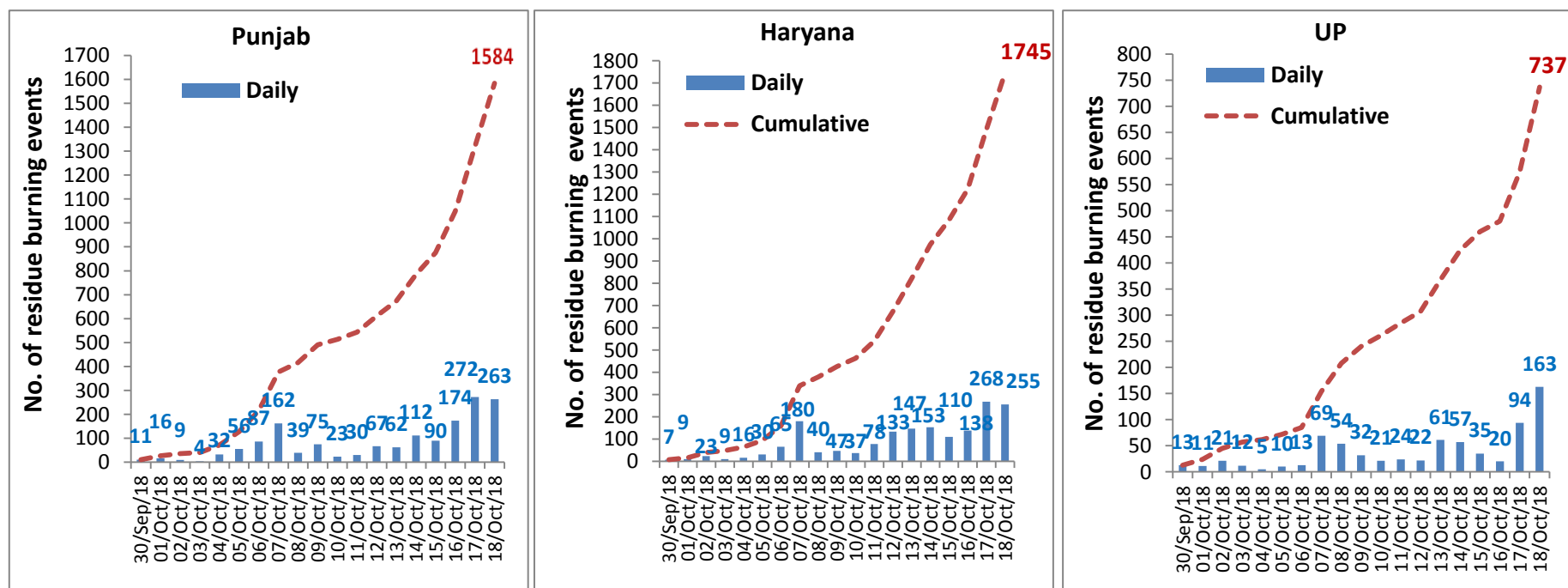
<http://creams.iari.res.in>



## Highlights for 18-October-2018

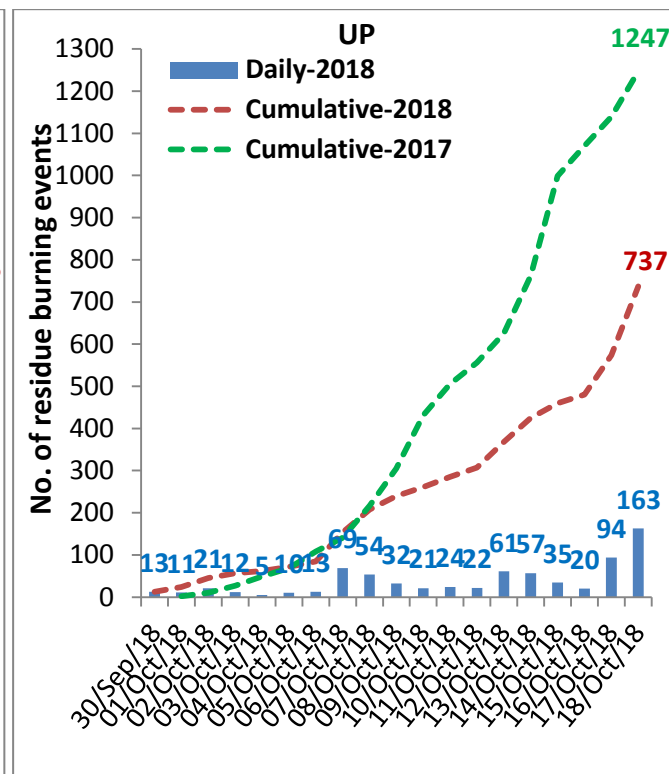
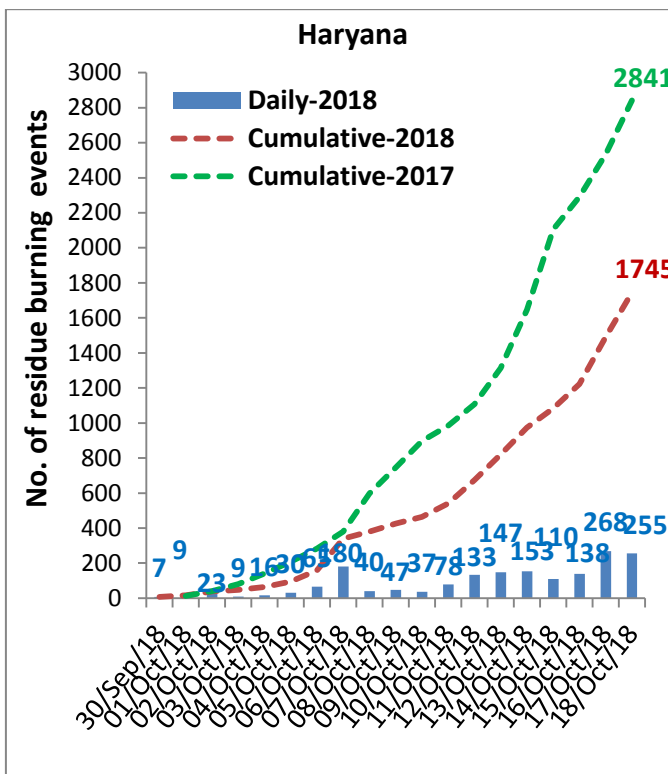
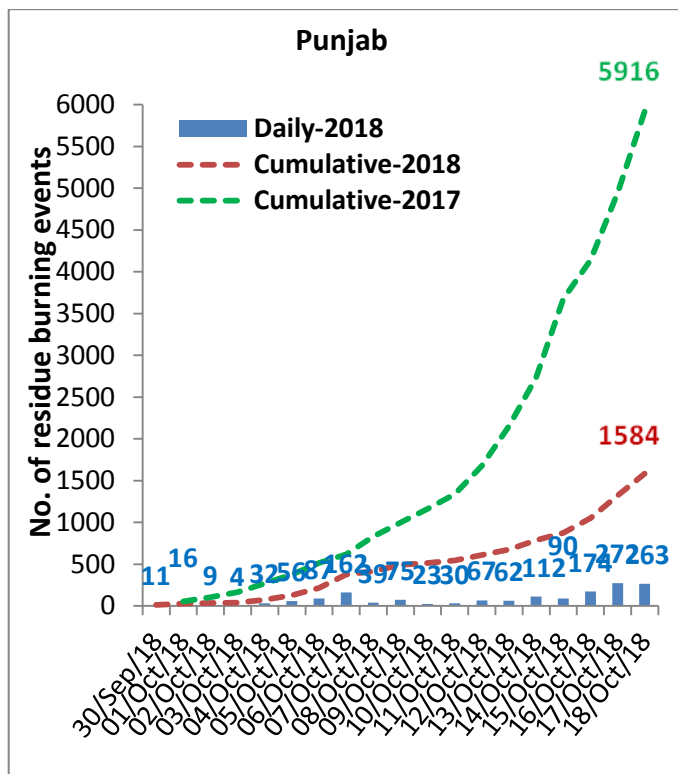
- Satellites detected 681 residue burning events in the three States (Punjab, Haryana & UP) on 18-Oct-2018.
- The burning events detected on 18-Oct-2018 are 263, 255 and 163 in Punjab, Haryana, and UP, respectively.
- The number of events increased from 634 on 17-Oct-2018 to 681 on 18-Oct-2018 in the three States.
- Total 4066 burning events were detected in the three States between 30-Sept-2018 and 17-Oct-2018, which were distributed as 1584, 1745 and 737 in Punjab, Haryana and UP, respectively.
- Till 18-Oct-2018, the burning events in the current year are about 40.6% of the events detected in 2017.

Temporal distribution of residue burning events for the three study States



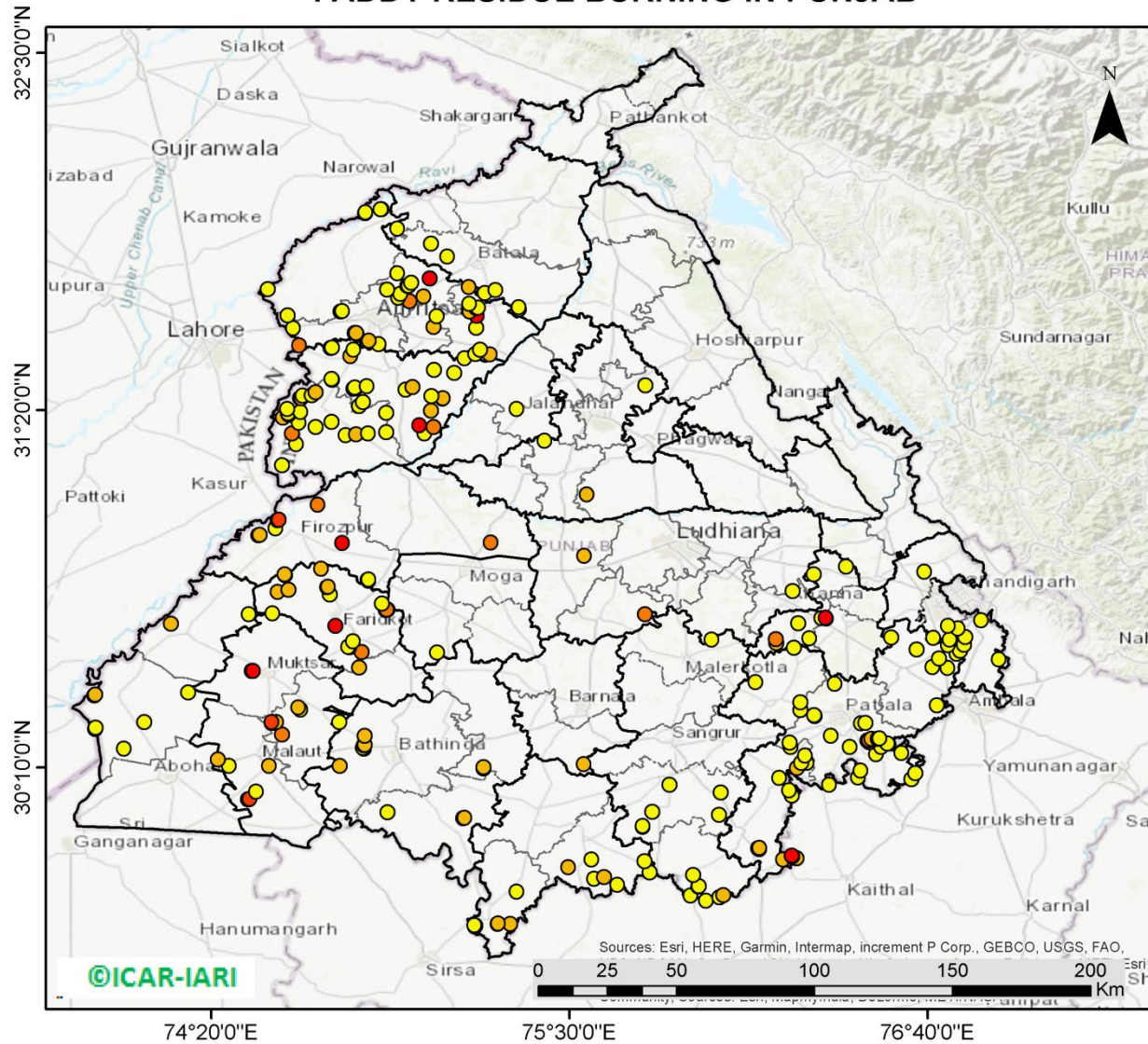
**Comparison of residue burning events in current year (2018) with previous year (2017) for the three study States**

**(30-Sep-2018 to 18-Oct-2018)**



(a) Punjab

**PADDY RESIDUE BURNING IN PUNJAB**



**263** burning events detected in Punjab on **18th October, 2018**

**Fire Intensity (W/m<sup>2</sup>)**

- 0 - 5
- 6 - 10
- 11 - 15
- 16 - 20
- >20



<http://geoportal.icar.gov.in:8080/geoexplorer/composer/>

**Details of residue burning events in Punjab on 18-Oct-2018**

<b>Event S.No.</b>	<b>District</b>	<b>Tehsil/Block</b>	<b>Satellite</b>	<b>Longitude</b>	<b>Latitude</b>	<b>Time (IST)</b>	<b>Day/Night</b>	<b>Fire Power (W/m2)</b>
1	AMRITSAR	AJNALA	S-NPP	74.75401	31.65565	13:18:00	D	3.20
2	AMRITSAR	AJNALA	S-NPP	74.51628	31.72883	13:18:00	D	2.20
3	AMRITSAR	AJNALA	S-NPP	74.83323	31.97716	13:18:00	D	5.80
4	AMRITSAR	AJNALA	S-NPP	74.83447	31.97969	13:18:00	D	3.10
5	AMRITSAR	AJNALA	S-NPP	74.88633	31.98916	13:18:00	D	3.60
6	AMRITSAR	AJNALA	S-NPP	74.88432	31.98993	13:18:00	D	3.10
7	AMRITSAR	AMRITSAR I	S-NPP	75.05599	31.60532	13:18:00	D	6.00
8	AMRITSAR	AMRITSAR I	S-NPP	75.06696	31.64036	13:18:00	D	4.10
9	AMRITSAR	AMRITSAR I	S-NPP	74.94807	31.71316	13:18:00	D	2.00
10	AMRITSAR	AMRITSAR I	S-NPP	74.97108	31.73941	13:18:00	D	7.90
11	AMRITSAR	AMRITSAR I	S-NPP	74.97578	31.74025	13:18:00	D	4.50
12	AMRITSAR	AMRITSAR I	S-NPP	74.98344	31.74898	13:18:00	D	2.00
13	AMRITSAR	AMRITSAR I	S-NPP	75.04338	31.76335	13:18:00	D	22.50
14	AMRITSAR	AMRITSAR I	S-NPP	74.93913	31.78037	13:18:00	D	2.20
15	AMRITSAR	AMRITSAR II	S-NPP	74.61845	31.54422	13:18:00	D	11.20
16	AMRITSAR	AMRITSAR II	S-NPP	74.87630	31.54866	13:18:00	D	2.50
17	AMRITSAR	AMRITSAR II	S-NPP	74.84570	31.55974	13:18:00	D	9.00
18	AMRITSAR	AMRITSAR II	S-NPP	74.80537	31.58210	13:18:00	D	7.10
19	AMRITSAR	AMRITSAR II	S-NPP	74.79971	31.58479	13:18:00	D	23.60
20	AMRITSAR	AMRITSAR II	S-NPP	74.80448	31.58566	13:18:00	D	7.10
21	AMRITSAR	AMRITSAR II	S-NPP	74.59935	31.60073	13:18:00	D	3.20
22	AMRITSAR	AMRITSAR II	S-NPP	74.58071	31.64252	13:18:00	D	3.80
23	AMRITSAR	AMRITSAR II	S-NPP	74.75880	31.65653	13:18:00	D	3.70
24	AMRITSAR	AMRITSAR II	S-NPP	74.97847	31.68918	13:18:00	D	10.80
25	AMRITSAR	AMRITSAR II	S-NPP	74.94126	31.70086	13:18:00	D	2.50
26	AMRITSAR	AMRITSAR II	S-NPP	75.02356	31.70471	13:18:00	D	6.80
27	AMRITSAR	AMRITSAR II	S-NPP	74.90518	31.72758	13:18:00	D	4.30
28	AMRITSAR	BABA BAKALA	S-NPP	75.24075	31.51462	13:18:00	D	5.60

29	AMRITSAR	BABA BAKALA	S-NPP	75.19209	31.51684	13:18:00	D	1.50
30	AMRITSAR	BABA BAKALA	S-NPP	75.20802	31.53067	13:18:00	D	3.60
31	AMRITSAR	BABA BAKALA	S-NPP	75.19570	31.60159	13:18:00	D	1.70
32	AMRITSAR	BABA BAKALA	S-NPP	75.19728	31.64169	13:18:00	D	27.80
33	AMRITSAR	BABA BAKALA	S-NPP	75.17458	31.65591	13:18:00	D	6.50
34	AMRITSAR	BABA BAKALA	S-NPP	75.19597	31.66702	13:18:00	D	2.90
35	AMRITSAR	BABA BAKALA	S-NPP	75.20058	31.66784	13:18:00	D	2.90
36	AMRITSAR	BABA BAKALA	S-NPP	75.17326	31.68125	13:18:00	D	3.80
37	AMRITSAR	BABA BAKALA	S-NPP	75.17128	31.73496	13:18:00	D	5.50
38	BARNALA	TAPPA	S-NPP	75.54639	30.17745	13:18:00	D	7.00
39	BATHINDA	BATHINDA	S-NPP	74.75092	30.17203	13:18:00	D	6.90
40	BATHINDA	BATHINDA	S-NPP	74.82975	30.22810	13:18:00	D	11.30
41	BATHINDA	BATHINDA	S-NPP	74.82616	30.23089	13:18:00	D	4.40
42	BATHINDA	BATHINDA	S-NPP	74.82931	30.23904	13:18:00	D	11.50
43	BATHINDA	BATHINDA	S-NPP	74.83202	30.23985	13:18:00	D	8.90
44	BATHINDA	BATHINDA	S-NPP	74.83209	30.26982	13:18:00	D	8.50
45	BATHINDA	BATHINDA	S-NPP	74.74931	30.31525	13:18:00	D	4.60
46	BATHINDA	RAMPURA PHUL	S-NPP	75.21982	30.16332	13:18:00	D	6.00
47	BATHINDA	RAMPURA PHUL	S-NPP	75.21897	30.16689	13:18:00	D	8.10
48	BATHINDA	TALWANDI SABO	S-NPP	75.15263	30.00090	13:18:00	D	5.80
49	BATHINDA	TALWANDI SABO	S-NPP	75.15740	30.00177	13:18:00	D	8.40
50	BATHINDA	TALWANDI SABO	S-NPP	74.90646	30.02015	13:18:00	D	3.40
51	FARIDKOT	FARIDKOT	S-NPP	74.82184	30.54278	13:18:00	D	11.20
52	FARIDKOT	FARIDKOT	S-NPP	74.78242	30.55828	13:18:00	D	3.10
53	FARIDKOT	FARIDKOT	S-NPP	74.77866	30.56076	13:18:00	D	4.20
54	FARIDKOT	FARIDKOT	S-NPP	74.79464	30.57881	13:18:00	D	3.90
55	FARIDKOT	FARIDKOT	S-NPP	74.73661	30.62856	13:18:00	D	35.30
56	FARIDKOT	FARIDKOT	S-NPP	74.53239	30.67009	13:18:00	D	2.70
57	FARIDKOT	FARIDKOT	S-NPP	74.90137	30.68091	13:18:00	D	2.80
58	FARIDKOT	FARIDKOT	S-NPP	74.90620	30.68177	13:18:00	D	3.40
59	FARIDKOT	FARIDKOT	S-NPP	74.90317	30.68195	13:18:00	D	10.90
60	FARIDKOT	FARIDKOT	S-NPP	74.88835	30.70171	13:18:00	D	1.20

61	FARIDKOT	FARIDKOT	S-NPP	74.71890	30.73089	13:18:00	D	2.60
62	FARIDKOT	FARIDKOT	S-NPP	74.54942	30.74030	13:18:00	D	5.30
63	FARIDKOT	FARIDKOT	S-NPP	74.58414	30.74678	13:18:00	D	5.90
64	FARIDKOT	FARIDKOT	S-NPP	74.71072	30.75522	13:18:00	D	6.30
65	FARIDKOT	FARIDKOT	S-NPP	74.71271	30.75619	13:18:00	D	6.40
66	FARIDKOT	FARIDKOT	S-NPP	74.57253	30.79402	13:18:00	D	8.60
67	FARIDKOT	FARIDKOT	S-NPP	74.57162	30.79765	13:18:00	D	8.80
68	FARIDKOT	FARIDKOT	S-NPP	74.69079	30.81574	13:18:00	D	6.20
69	FARIDKOT	JAITO	S-NPP	74.81376	30.49231	13:18:00	D	7.10
70	FATEHGARH SAHIB	ALMOH	S-NPP	76.17233	30.57297	13:18:00	D	5.30
71	FATEHGARH SAHIB	ALMOH	S-NPP	76.17117	30.58521	13:18:00	D	13.10
72	FATEHGARH SAHIB	ALMOH	S-NPP	76.28151	30.58795	13:18:00	D	1.90
73	FATEHGARH SAHIB	ALMOH	S-NPP	76.24496	30.63707	13:18:00	D	4.90
74	FATEHGARH SAHIB	ALMOH	S-NPP	76.31960	30.65384	02:00:00	N	0.60
75	FATEHGARH SAHIB	ALMOH	S-NPP	76.33475	30.65597	13:18:00	D	20.90
76	FATEHGARH SAHIB	FATEHGARH SAHIB	S-NPP	76.54765	30.59056	13:18:00	D	2.10
77	FATEHGARH SAHIB	FATEHGARH SAHIB	S-NPP	76.33552	30.65256	13:18:00	D	20.90
78	FATEHGARH SAHIB	KHAMANOH	S-NPP	76.29469	30.79718	13:18:00	D	2.30
79	FATEHGARH SAHIB	KHAMANOH	S-NPP	76.40044	30.82210	13:18:00	D	3.60
80	FIROZPUR	FAZILKA	S-NPP	74.04796	30.22782	13:18:00	D	1.20
81	FIROZPUR	FAZILKA	S-NPP	73.95351	30.29274	13:18:00	D	1.80
82	FIROZPUR	FAZILKA	S-NPP	73.95581	30.29607	13:18:00	D	3.90
83	FIROZPUR	FAZILKA	S-NPP	74.11462	30.31497	13:18:00	D	2.20
84	FIROZPUR	FAZILKA	S-NPP	73.95162	30.40184	13:18:00	D	3.70
85	FIROZPUR	FAZILKA	S-NPP	73.95374	30.40473	13:18:00	D	5.10
86	FIROZPUR	FAZILKA	S-NPP	74.25692	30.41204	13:18:00	D	3.40
87	FIROZPUR	FIROZPUR	S-NPP	74.84499	30.77630	13:18:00	D	5.00
88	FIROZPUR	FIROZPUR	S-NPP	74.84190	30.77957	13:18:00	D	9.30
89	FIROZPUR	FIROZPUR	S-NPP	74.84412	30.77989	13:18:00	D	5.00
90	FIROZPUR	FIROZPUR	S-NPP	74.75905	30.90004	13:18:00	D	39.90
91	FIROZPUR	FIROZPUR	S-NPP	74.48532	30.92546	13:18:00	D	5.60
92	FIROZPUR	FIROZPUR	S-NPP	74.49032	30.92637	13:18:00	D	5.60

93	FIROZPUR	FIROZPUR	S-NPP	74.54231	30.94724	13:18:00	D	3.70
94	FIROZPUR	FIROZPUR	S-NPP	74.54824	30.97376	13:18:00	D	19.00
95	FIROZPUR	FIROZPUR	S-NPP	74.55319	30.97468	13:18:00	D	19.00
96	FIROZPUR	FIROZPUR	S-NPP	74.67961	31.02445	13:18:00	D	13.90
97	FIROZPUR	JALALABAD	S-NPP	74.35326	30.60600	13:18:00	D	62.20
98	FIROZPUR	JALALABAD	S-NPP	74.20109	30.63546	13:18:00	D	8.70
99	FIROZPUR	JALALABAD	S-NPP	74.45454	30.66714	13:18:00	D	3.80
100	FIROZPUR	ZIRA	S-NPP	75.24291	30.90087	13:18:00	D	10.70
101	GURDASPUR	BATALA	S-NPP	75.33569	31.66271	13:18:00	D	4.70
102	GURDASPUR	BATALA	S-NPP	75.33403	31.66968	13:18:00	D	2.60
103	GURDASPUR	BATALA	S-NPP	75.22267	31.71551	13:18:00	D	2.00
104	GURDASPUR	BATALA	S-NPP	75.25860	31.72545	13:18:00	D	4.30
105	GURDASPUR	BATALA	S-NPP	75.10113	31.83537	13:18:00	D	3.70
106	GURDASPUR	BATALA	S-NPP	75.04734	31.87701	13:18:00	D	2.80
107	GURDASPUR	DERA BABA NANAK	S-NPP	74.93928	31.92616	13:18:00	D	3.00
108	JALANDHAR	JALANDHAR I	S-NPP	75.74599	31.41493	13:18:00	D	3.60
109	JALANDHAR	NAKODAR	S-NPP	75.41768	31.23385	13:18:00	D	3.80
110	JALANDHAR	PHILLAUR	S-NPP	75.55595	31.05852	13:18:00	D	5.40
111	KAPURTHALA	KAPURTHALA	S-NPP	75.32742	31.33753	13:18:00	D	1.70
112	LUDHIANA	JAGRAON	S-NPP	75.54796	30.85726	13:18:00	D	8.40
113	LUDHIANA	RAIKOT	S-NPP	75.74503	30.66675	13:18:00	D	10.40
114	LUDHIANA	SAMRALA	S-NPP	76.22635	30.74300	13:18:00	D	2.70
115	MANSA	BUDHLADA	S-NPP	75.65563	29.78290	13:18:00	D	3.50
116	MANSA	BUDHLADA	S-NPP	75.57936	29.80245	13:18:00	D	3.40
117	MANSA	BUDHLADA	S-NPP	75.61158	29.80813	13:18:00	D	6.40
118	MANSA	BUDHLADA	S-NPP	75.49480	29.84091	13:18:00	D	5.20
119	MANSA	BUDHLADA	S-NPP	75.74345	29.85973	13:18:00	D	2.50
120	MANSA	BUDHLADA	S-NPP	75.57084	29.86556	13:18:00	D	4.10
121	MANSA	SARDULGARH	S-NPP	75.19041	29.64700	13:18:00	D	2.30
122	MANSA	SARDULGARH	S-NPP	75.19258	29.65057	13:18:00	D	6.70
123	MANSA	SARDULGARH	S-NPP	75.18956	29.65059	13:18:00	D	2.60
124	MANSA	SARDULGARH	S-NPP	75.30551	29.65576	13:18:00	D	6.90



125	MANSA	SARDULGARH	S-NPP	75.26586	29.65616	13:18:00	D	2.60
126	MANSA	SARDULGARH	S-NPP	75.26748	29.65740	13:18:00	D	5.10
127	MANSA	SARDULGARH	S-NPP	75.32684	29.76135	13:18:00	D	3.30
128	MOGA	BAGHA PURANA	S-NPP	75.06796	30.54242	13:18:00	D	2.10
129	MUKTSAR	GIDDARBAHA	S-NPP	74.56208	30.27342	13:18:00	D	11.80
130	MUKTSAR	GIDDARBAHA	S-NPP	74.52972	30.31118	13:18:00	D	9.40
131	MUKTSAR	GIDDARBAHA	S-NPP	74.53474	30.31212	13:18:00	D	9.40
132	MUKTSAR	GIDDARBAHA	S-NPP	74.54478	30.31400	13:18:00	D	6.70
133	MUKTSAR	GIDDARBAHA	S-NPP	74.52882	30.31485	13:18:00	D	17.50
134	MUKTSAR	GIDDARBAHA	S-NPP	74.62353	30.35541	13:18:00	D	3.90
135	MUKTSAR	GIDDARBAHA	S-NPP	74.61676	30.36179	13:18:00	D	9.80
136	MUKTSAR	MALAUT	S-NPP	74.45547	30.06258	13:18:00	D	21.50
137	MUKTSAR	MALAUT	S-NPP	74.45244	30.06274	13:18:00	D	8.40
138	MUKTSAR	MALAUT	S-NPP	74.45753	30.06371	13:18:00	D	16.20
139	MUKTSAR	MALAUT	S-NPP	74.47846	30.08696	13:18:00	D	2.70
140	MUKTSAR	MALAUT	S-NPP	74.52124	30.17190	13:18:00	D	5.60
141	MUKTSAR	MALAUT	S-NPP	74.39077	30.17222	13:18:00	D	3.90
142	MUKTSAR	MALAUT	S-NPP	74.35364	30.19234	13:18:00	D	6.40
143	MUKTSAR	MUKTSAR	S-NPP	74.46407	30.48131	13:18:00	D	10.40
144	MUKTSAR	MUKTSAR	S-NPP	74.46912	30.48224	13:18:00	D	39.90
145	PATIALA	NABHA	S-NPP	76.25181	30.35461	13:18:00	D	2.10
146	PATIALA	NABHA	S-NPP	76.10517	30.44529	13:18:00	D	4.30
147	PATIALA	NABHA	S-NPP	76.22991	30.55787	13:18:00	D	4.60
148	PATIALA	PATIALA	S-NPP	76.34573	30.11032	13:18:00	D	3.80
149	PATIALA	PATIALA	S-NPP	76.61294	30.12766	13:18:00	D	2.20
150	PATIALA	PATIALA	S-NPP	76.43891	30.13337	13:18:00	D	1.50
151	PATIALA	PATIALA	S-NPP	76.62613	30.14753	13:18:00	D	1.40
152	PATIALA	PATIALA	S-NPP	76.44718	30.15605	13:18:00	D	2.50
153	PATIALA	PATIALA	S-NPP	76.27201	30.18133	13:18:00	D	1.90
154	PATIALA	PATIALA	S-NPP	76.49809	30.20958	13:18:00	D	2.10
155	PATIALA	PATIALA	S-NPP	76.58048	30.21388	13:18:00	D	2.20
156	PATIALA	PATIALA	S-NPP	76.51485	30.23366	13:18:00	D	3.10

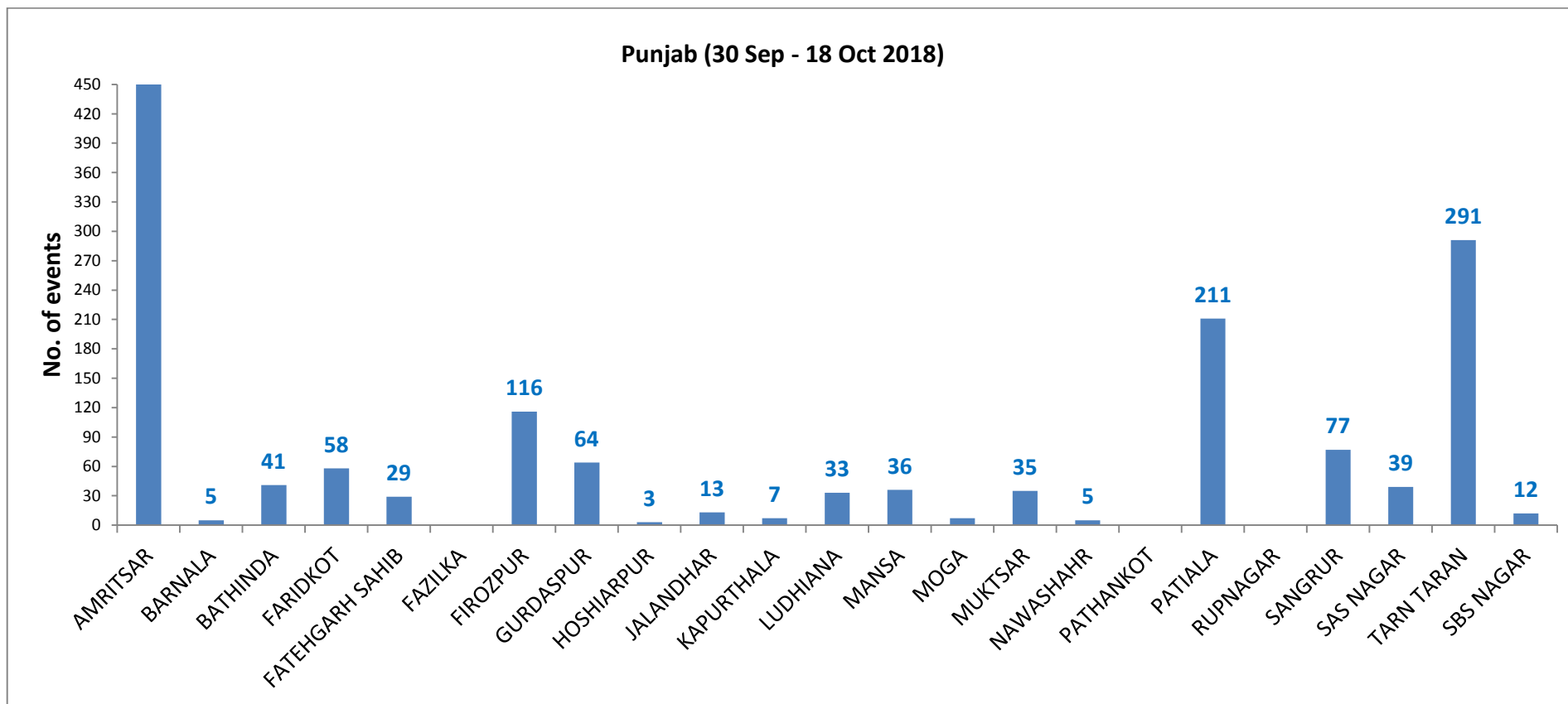
157	PATIALA	PATIALA	S-NPP	76.41257	30.23391	13:18:00	D	2.50
158	PATIALA	PATIALA	S-NPP	76.53465	30.24409	13:18:00	D	2.70
159	PATIALA	PATIALA	S-NPP	76.21657	30.24670	13:18:00	D	4.70
160	PATIALA	PATIALA	S-NPP	76.47610	30.24828	13:18:00	D	8.10
161	PATIALA	PATIALA	S-NPP	76.47029	30.25437	13:18:00	D	4.50
162	PATIALA	PATIALA	S-NPP	76.47457	30.25509	13:18:00	D	10.30
163	PATIALA	PATIALA	S-NPP	76.48236	30.25996	13:18:00	D	8.00
164	PATIALA	PATIALA	S-NPP	76.50449	30.26017	13:18:00	D	2.50
165	PATIALA	PATIALA	S-NPP	76.50875	30.26089	13:18:00	D	4.10
166	PATIALA	PATIALA	S-NPP	76.35091	30.26955	13:18:00	D	4.20
167	PATIALA	PATIALA	S-NPP	76.44975	30.31036	13:18:00	D	3.30
168	PATIALA	PATIALA	S-NPP	76.46259	30.31256	13:18:00	D	1.90
169	PATIALA	PATIALA	S-NPP	76.29700	30.33387	13:18:00	D	2.90
170	PATIALA	PATIALA	S-NPP	76.29623	30.33729	13:18:00	D	2.90
171	PATIALA	PATIALA	S-NPP	76.25069	30.37934	13:18:00	D	2.70
172	PATIALA	PATIALA	S-NPP	76.36337	30.43962	13:18:00	D	3.70
173	PATIALA	RAJPURA	S-NPP	76.69652	30.36996	13:18:00	D	2.30
174	PATIALA	RAJPURA	S-NPP	76.73119	30.49136	13:18:00	D	2.80
175	PATIALA	RAJPURA	S-NPP	76.68264	30.49372	13:18:00	D	2.60
176	PATIALA	RAJPURA	S-NPP	76.70265	30.52162	13:18:00	D	1.80
177	PATIALA	RAJPURA	S-NPP	76.63028	30.55164	13:18:00	D	2.50
178	PATIALA	RAJPURA	S-NPP	76.73225	30.56508	13:18:00	D	1.70
179	PATIALA	RAJPURA	S-NPP	76.68407	30.58896	13:18:00	D	3.60
180	PATIALA	SAMANA	S-NPP	76.19485	29.86654	13:18:00	D	7.60
181	PATIALA	SAMANA	S-NPP	76.23934	29.87066	13:18:00	D	6.80
182	PATIALA	SAMANA	S-NPP	76.22469	29.87529	13:18:00	D	4.10
183	PATIALA	SAMANA	S-NPP	76.22390	29.87874	13:18:00	D	23.80
184	PATIALA	SAMANA	S-NPP	76.11877	29.90008	13:18:00	D	3.20
185	PATIALA	SAMANA	S-NPP	76.11359	29.90278	13:18:00	D	5.00
186	PATIALA	SAMANA	S-NPP	76.11799	29.90354	13:18:00	D	8.30
187	PATIALA	SAMANA	S-NPP	76.22302	30.07491	13:18:00	D	2.30
188	PATIALA	SAMANA	S-NPP	76.21475	30.09136	13:18:00	D	2.50

189	PATIALA	SAMANA	S-NPP	76.18276	30.13235	13:18:00	D	4.70
190	PATIALA	SAMANA	S-NPP	76.23963	30.16501	13:18:00	D	6.10
191	PATIALA	SAMANA	S-NPP	76.25389	30.18176	13:18:00	D	1.30
192	PATIALA	SAMANA	S-NPP	76.26659	30.20534	13:18:00	D	4.20
193	PATIALA	SAMANA	S-NPP	76.21970	30.23296	13:18:00	D	4.80
194	SANGRUR	MALERKOTLA	S-NPP	75.96181	30.58460	13:18:00	D	2.10
195	SANGRUR	MOONAK	S-NPP	75.94371	29.73171	13:18:00	D	1.80
196	SANGRUR	MOONAK	S-NPP	75.98757	29.74298	13:18:00	D	2.30
197	SANGRUR	MOONAK	S-NPP	75.89330	29.74831	13:18:00	D	2.70
198	SANGRUR	MOONAK	S-NPP	76.00013	29.74879	13:18:00	D	5.30
199	SANGRUR	MOONAK	S-NPP	75.91909	29.77819	13:18:00	D	4.10
200	SANGRUR	MOONAK	S-NPP	75.92033	29.77877	13:18:00	D	5.00
201	SANGRUR	MOONAK	S-NPP	75.90257	29.81554	13:18:00	D	2.30
202	SANGRUR	MOONAK	S-NPP	75.76009	29.82327	13:18:00	D	4.30
203	SANGRUR	SUNAM	S-NPP	75.73862	29.97179	13:18:00	D	7.90
204	SANGRUR	SUNAM	S-NPP	75.73782	29.97529	13:18:00	D	4.20
205	SANGRUR	SUNAM	S-NPP	75.98594	30.01196	13:18:00	D	1.90
206	SANGRUR	SUNAM	S-NPP	75.76962	30.02099	13:18:00	D	2.80
207	SANGRUR	SUNAM	S-NPP	75.99223	30.08519	13:18:00	D	4.00
208	SANGRUR	SUNAM	S-NPP	75.82509	30.11041	13:18:00	D	2.50
209	SAS NAGAR	DERABASSI	S-NPP	76.89864	30.51937	13:18:00	D	2.60
210	SAS NAGAR	DERABASSI	S-NPP	76.76001	30.53820	13:18:00	D	3.40
211	SAS NAGAR	DERABASSI	S-NPP	76.77110	30.54704	13:18:00	D	1.50
212	SAS NAGAR	DERABASSI	S-NPP	76.78414	30.56668	13:18:00	D	3.80
213	SAS NAGAR	DERABASSI	S-NPP	76.78787	30.59240	13:18:00	D	2.40
214	SAS NAGAR	DERABASSI	S-NPP	76.76439	30.61993	13:18:00	D	2.30
215	SAS NAGAR	DERABASSI	S-NPP	76.84093	30.64665	13:18:00	D	1.90
216	SBS NAGAR	KHARAR	S-NPP	76.65546	30.80524	13:18:00	D	2.10
217	SBS NAGAR	MOHALI	S-NPP	76.73754	30.58394	13:18:00	D	2.70
218	SBS NAGAR	MOHALI	S-NPP	76.73201	30.62852	13:18:00	D	2.40
219	TARN TARAN	KHADOOR SAHIB	S-NPP	75.02687	31.25768	13:18:00	D	3.50
220	TARN TARAN	KHADOOR SAHIB	S-NPP	74.90251	31.26099	13:18:00	D	4.60

221	TARN TARAN	KHADOOR SAHIB	S-NPP	75.05633	31.27781	13:18:00	D	12.90
222	TARN TARAN	KHADOOR SAHIB	S-NPP	75.01058	31.28431	13:18:00	D	30.30
223	TARN TARAN	KHADOOR SAHIB	S-NPP	75.04817	31.33169	13:18:00	D	5.90
224	TARN TARAN	KHADOOR SAHIB	S-NPP	74.81450	31.34687	13:18:00	D	2.50
225	TARN TARAN	KHADOOR SAHIB	S-NPP	74.82623	31.36019	13:18:00	D	4.60
226	TARN TARAN	KHADOOR SAHIB	S-NPP	75.08543	31.37033	13:18:00	D	8.00
227	TARN TARAN	KHADOOR SAHIB	S-NPP	75.08735	31.37182	13:18:00	D	8.00
228	TARN TARAN	KHADOOR SAHIB	S-NPP	75.04925	31.37850	13:18:00	D	4.20
229	TARN TARAN	KHADOOR SAHIB	S-NPP	74.96535	31.40026	13:18:00	D	2.60
230	TARN TARAN	KHADOOR SAHIB	S-NPP	74.79570	31.40308	13:18:00	D	4.80
231	TARN TARAN	KHADOOR SAHIB	S-NPP	74.80050	31.40395	13:18:00	D	4.80
232	TARN TARAN	KHADOOR SAHIB	S-NPP	74.79962	31.40751	13:18:00	D	2.30
233	TARN TARAN	KHADOOR SAHIB	S-NPP	74.98808	31.40806	13:18:00	D	5.20
234	TARN TARAN	KHADOOR SAHIB	S-NPP	74.83878	31.41084	13:18:00	D	2.50
235	TARN TARAN	KHADOOR SAHIB	S-NPP	74.72507	31.43196	13:18:00	D	4.20
236	TARN TARAN	KHADOOR SAHIB	S-NPP	74.72420	31.43553	13:18:00	D	4.80
237	TARN TARAN	KHADOOR SAHIB	S-NPP	75.12351	31.45439	13:18:00	D	2.20
238	TARN TARAN	KHADOOR SAHIB	S-NPP	75.05765	31.46474	13:18:00	D	2.10
239	TARN TARAN	KHADOOR SAHIB	S-NPP	75.15675	31.50316	13:18:00	D	2.70
240	TARN TARAN	KHADOOR SAHIB	S-NPP	74.78613	31.51021	13:18:00	D	9.30
241	TARN TARAN	KHADOOR SAHIB	S-NPP	74.79611	31.53061	13:18:00	D	4.40
242	TARN TARAN	KHADOOR SAHIB	S-NPP	74.72134	31.53694	13:18:00	D	4.00
243	TARN TARAN	KHADOOR SAHIB	S-NPP	74.72615	31.53782	13:18:00	D	4.70
244	TARN TARAN	PATTI	S-NPP	74.56279	31.15396	13:18:00	D	3.30
245	TARN TARAN	PATTI	S-NPP	74.60947	31.22235	13:18:00	D	2.80
246	TARN TARAN	PATTI	S-NPP	74.76973	31.25171	13:18:00	D	2.90
247	TARN TARAN	PATTI	S-NPP	74.80428	31.25427	13:18:00	D	7.80
248	TARN TARAN	PATTI	S-NPP	74.59566	31.25750	13:18:00	D	11.20
249	TARN TARAN	PATTI	S-NPP	74.84350	31.25769	13:18:00	D	4.00
250	TARN TARAN	PATTI	S-NPP	74.67199	31.27889	13:18:00	D	3.90
251	TARN TARAN	PATTI	S-NPP	74.61789	31.29165	13:18:00	D	3.50
252	TARN TARAN	PATTI	S-NPP	74.72359	31.29571	13:18:00	D	3.90

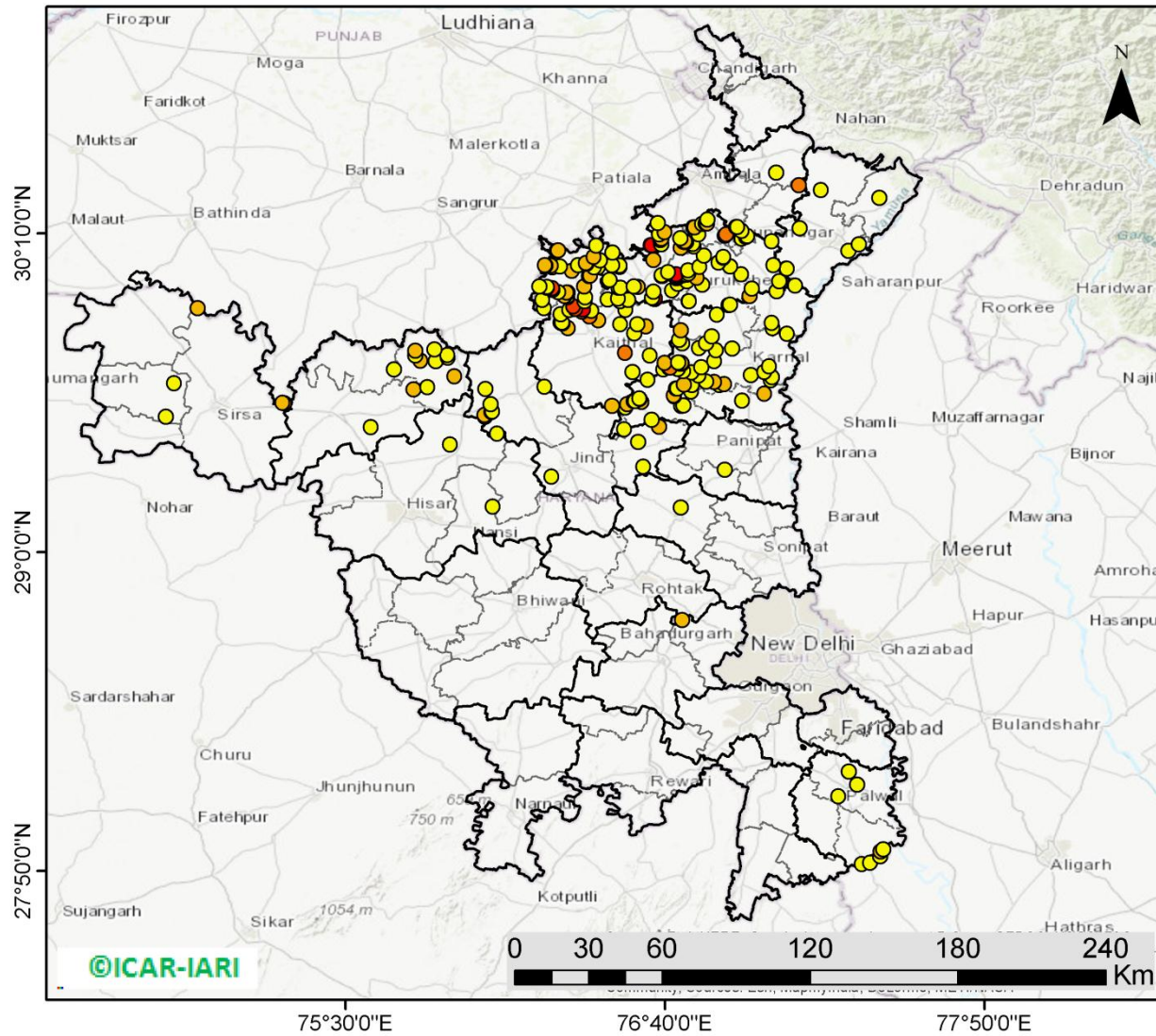
253	TARN TARAN	PATTI	S-NPP	74.56558	31.30860	13:18:00	D	5.90
254	TARN TARAN	PATTI	S-NPP	74.58340	31.31943	13:18:00	D	5.20
255	TARN TARAN	PATTI	S-NPP	74.58252	31.32303	13:18:00	D	2.80
256	TARN TARAN	PATTI	S-NPP	74.90202	31.32405	13:18:00	D	3.00
257	TARN TARAN	PATTI	S-NPP	74.62250	31.32662	13:18:00	D	2.80
258	TARN TARAN	PATTI	S-NPP	74.57894	31.33745	13:18:00	D	3.40
259	TARN TARAN	PATTI	S-NPP	74.62158	31.37156	13:18:00	D	9.40
260	TARN TARAN	PATTI	S-NPP	74.62646	31.37245	13:18:00	D	9.40
261	TARN TARAN	PATTI	S-NPP	74.62955	31.38052	13:18:00	D	2.20
262	TARN TARAN	PATTI	S-NPP	74.65963	31.38222	13:18:00	D	4.00
263	TARN TARAN	PATTI	S-NPP	74.67243	31.39204	13:18:00	D	5.20

**District-wise cumulative number of residue burning events in Punjab (30-Sep-2018 to 18-Oct-2018)**



(b) Haryana

PADDY RESIDUE BURNING IN HARYANA



255 burning events detected in Haryana on 18th October, 2018

Fire Intensity (W/m<sup>2</sup>)

- 0 - 5
- 6 - 10
- 11 - 15
- 16 - 20
- >20



<http://geoportal.icar.gov.in:8080/geoexplorer/composer/>

**Details of residue burning events in Haryana on 18-Oct-2018**

<b>Event S.No.</b>	<b>District</b>	<b>Tehsil/Block</b>	<b>Satellite</b>	<b>Longitude</b>	<b>Latitude</b>	<b>Time (IST)</b>	<b>Day/Night</b>	<b>Fire Power (W/m2)</b>
1	AMBALA	AMBALA	S-NPP	76.61370	30.12426	13:18	D	6.60
2	AMBALA	AMBALA	S-NPP	76.61794	30.12498	13:18	D	22.70
3	AMBALA	AMBALA	S-NPP	76.64430	30.16470	13:18	D	1.50
4	AMBALA	AMBALA	S-NPP	76.66472	30.17166	13:18	D	7.10
5	AMBALA	AMBALA	S-NPP	76.63947	30.20614	13:18	D	1.70
6	AMBALA	BARARA	S-NPP	77.05672	30.13864	13:18	D	4.10
7	AMBALA	BARARA	S-NPP	76.96288	30.15450	13:18	D	3.20
8	AMBALA	BARARA	S-NPP	76.96630	30.15856	13:18	D	2.20
9	AMBALA	BARARA	S-NPP	76.94640	30.17695	13:18	D	1.50
10	AMBALA	BARARA	S-NPP	77.15485	30.34441	13:18	D	10.10
11	AMBALA	NARAYANGARH	S-NPP	77.07229	30.38986	13:18	D	4.80
12	FARIDABAD	HODAL	S-NPP	77.38577	27.85841	13:18	D	1.90
13	FARIDABAD	HODAL	S-NPP	77.41464	27.86326	13:18	D	1.70
14	FARIDABAD	HODAL	S-NPP	77.45224	27.88710	13:18	D	4.80
15	FARIDABAD	HODAL	S-NPP	77.45281	27.90471	13:18	D	9.20
16	FARIDABAD	HODAL	S-NPP	77.46371	27.91353	13:18	D	2.40
17	FARIDABAD	PALWAL	S-NPP	77.30010	28.10709	13:18	D	2.20
18	FARIDABAD	PALWAL	S-NPP	77.36806	28.14998	13:18	D	3.40
19	FARIDABAD	PALWAL	S-NPP	77.33710	28.19715	13:18	D	1.80
20	FATEHABAD	FATEHABAD	S-NPP	75.59106	29.45893	13:18	D	3.00
21	FATEHABAD	FATEHABAD	S-NPP	75.74826	29.59593	13:18	D	6.80
22	FATEHABAD	FATEHABAD	S-NPP	75.79825	29.60474	13:18	D	1.70
23	FATEHABAD	TOHANA	S-NPP	75.89731	29.64394	13:18	D	6.70
24	FATEHABAD	TOHANA	S-NPP	75.67548	29.66985	13:18	D	2.80
25	FATEHABAD	TOHANA	S-NPP	75.82926	29.70072	13:18	D	3.00
26	FATEHABAD	TOHANA	S-NPP	75.77250	29.70165	13:18	D	6.30
27	FATEHABAD	TOHANA	S-NPP	75.87354	29.71215	13:18	D	2.10



28	FATEHABAD	TOHANA	S-NPP	75.75401	29.72033	13:18	D	2.20
29	FATEHABAD	TOHANA	S-NPP	75.87112	29.72264	13:18	D	5.00
30	FATEHABAD	TOHANA	S-NPP	75.75449	29.73868	13:18	D	6.30
31	FATEHABAD	TOHANA	S-NPP	75.82410	29.74353	13:18	D	3.10
32	HISAR	HANSI	S-NPP	76.03735	29.16745	13:18	D	2.80
33	HISAR	HISAR	S-NPP	75.88065	29.39409	13:18	D	1.70
34	HISAR	HISAR	S-NPP	76.05322	29.43518	13:18	D	2.80
35	JHAJJAR	BAHADURGARH	METOP-1	76.72935	28.75271	21:37	N	8.00
36	JIND	JIND	S-NPP	76.25228	29.27722	13:18	D	1.40
37	JIND	JIND	S-NPP	76.51765	29.45106	13:18	D	4.40
38	JIND	JIND	S-NPP	76.47196	29.53584	13:18	D	5.10
39	JIND	NARWANA	S-NPP	76.00809	29.49608	13:18	D	2.50
40	JIND	NARWANA	S-NPP	76.00651	29.50306	13:18	D	5.30
41	JIND	NARWANA	S-NPP	76.03169	29.51472	13:18	D	3.90
42	JIND	NARWANA	S-NPP	76.03614	29.51550	13:18	D	4.50
43	JIND	NARWANA	S-NPP	76.02982	29.54337	13:18	D	4.60
44	JIND	NARWANA	S-NPP	76.01014	29.59837	13:18	D	1.80
45	JIND	NARWANA	S-NPP	76.22684	29.60620	13:18	D	3.00
46	JIND	SAFIDON	S-NPP	76.58678	29.31291	13:18	D	4.70
47	JIND	SAFIDON	S-NPP	76.56729	29.40393	13:18	D	4.90
48	JIND	SAFIDON	S-NPP	76.64375	29.45948	13:18	D	5.10
49	KAITHAL	GUHLA	S-NPP	76.22515	29.89328	13:18	D	1.70
50	KAITHAL	GUHLA	S-NPP	76.37289	29.91862	13:18	D	1.90
51	KAITHAL	GUHLA	S-NPP	76.21813	29.92429	13:18	D	2.30
52	KAITHAL	GUHLA	S-NPP	76.31117	29.93303	13:18	D	5.30
53	KAITHAL	GUHLA	S-NPP	76.37412	29.93307	13:18	D	3.80
54	KAITHAL	GUHLA	S-NPP	76.31039	29.93647	13:18	D	2.20
55	KAITHAL	GUHLA	NOAA-18	76.29962	29.93849	19:31	N	6.00
56	KAITHAL	GUHLA	S-NPP	76.31162	29.95095	13:18	D	7.40
57	KAITHAL	GUHLA	S-NPP	76.30771	29.95188	13:18	D	5.10
58	KAITHAL	GUHLA	S-NPP	76.27578	29.95347	13:18	D	2.00
59	KAITHAL	GUHLA	S-NPP	76.25606	29.96077	13:18	D	5.70

60	KAITHAL	GUHLA	S-NPP	76.25450	29.96765	13:18	D	16.80
61	KAITHAL	GUHLA	S-NPP	76.23630	29.96807	13:18	D	2.20
62	KAITHAL	GUHLA	S-NPP	76.23552	29.97152	13:18	D	2.20
63	KAITHAL	GUHLA	S-NPP	76.37029	29.97341	13:18	D	5.50
64	KAITHAL	GUHLA	S-NPP	76.20777	29.97387	13:18	D	1.90
65	KAITHAL	GUHLA	S-NPP	76.38848	30.01212	13:18	D	5.90
66	KAITHAL	GUHLA	S-NPP	76.39279	30.01286	13:18	D	7.60
67	KAITHAL	GUHLA	S-NPP	76.32613	30.02993	13:18	D	6.50
68	KAITHAL	GUHLA	S-NPP	76.42187	30.04269	13:18	D	4.40
69	KAITHAL	GUHLA	S-NPP	76.25556	30.04286	13:18	D	2.60
70	KAITHAL	GUHLA	S-NPP	76.40818	30.04392	13:18	D	3.70
71	KAITHAL	GUHLA	S-NPP	76.28165	30.04730	13:18	D	2.90
72	KAITHAL	GUHLA	S-NPP	76.24965	30.04899	13:18	D	5.50
73	KAITHAL	GUHLA	S-NPP	76.23144	30.04947	13:18	D	3.60
74	KAITHAL	GUHLA	S-NPP	76.22847	30.05083	13:18	D	5.80
75	KAITHAL	GUHLA	S-NPP	76.34822	30.05150	13:18	D	4.30
76	KAITHAL	GUHLA	S-NPP	76.37846	30.05664	13:18	D	9.90
77	KAITHAL	GUHLA	S-NPP	76.37769	30.06006	13:18	D	9.90
78	KAITHAL	GUHLA	S-NPP	76.42939	30.06882	13:18	D	3.20
79	KAITHAL	GUHLA	S-NPP	76.40591	30.08157	13:18	D	5.70
80	KAITHAL	GUHLA	S-NPP	76.27053	30.10454	13:18	D	24.20
81	KAITHAL	GUHLA	S-NPP	76.27488	30.10529	13:18	D	8.60
82	KAITHAL	GUHLA	S-NPP	76.41467	30.12214	13:18	D	3.10
83	KAITHAL	KAITHAL	S-NPP	76.60295	29.63108	13:18	D	2.30
84	KAITHAL	KAITHAL	S-NPP	76.54755	29.66070	13:18	D	2.60
85	KAITHAL	KAITHAL	S-NPP	76.68130	29.67614	13:18	D	6.80
86	KAITHAL	KAITHAL	S-NPP	76.68555	29.67686	13:18	D	13.30
87	KAITHAL	KAITHAL	S-NPP	76.66574	29.69418	13:18	D	5.40
88	KAITHAL	KAITHAL	S-NPP	76.61140	29.72028	13:18	D	1.50
89	KAITHAL	KAITHAL	S-NPP	76.52060	29.72965	13:18	D	11.80
90	KAITHAL	KAITHAL	S-NPP	76.55424	29.80148	13:18	D	1.80
91	KAITHAL	KAITHAL	S-NPP	76.31284	29.82068	13:18	D	7.00

92	KAITHAL	KAITHAL	S-NPP	76.59739	29.82654	13:18	D	5.70
93	KAITHAL	KAITHAL	S-NPP	76.56449	29.83511	13:18	D	3.10
94	KAITHAL	KAITHAL	S-NPP	76.50230	29.83517	13:18	D	1.30
95	KAITHAL	KAITHAL	S-NPP	76.29079	29.83836	13:18	D	4.20
96	KAITHAL	KAITHAL	S-NPP	76.28710	29.83959	13:18	D	12.20
97	KAITHAL	KAITHAL	S-NPP	76.28565	29.84106	13:18	D	4.20
98	KAITHAL	KAITHAL	S-NPP	76.29001	29.84180	13:18	D	4.20
99	KAITHAL	KAITHAL	S-NPP	76.42307	29.85014	13:18	D	5.70
100	KAITHAL	KAITHAL	S-NPP	76.38953	29.86450	13:18	D	10.90
101	KAITHAL	KAITHAL	S-NPP	76.28446	29.87131	13:18	D	2.30
102	KAITHAL	KAITHAL	S-NPP	76.36330	29.88135	13:18	D	14.20
103	KAITHAL	KAITHAL	S-NPP	76.39863	29.88388	13:18	D	1.60
104	KAITHAL	KAITHAL	S-NPP	76.52270	29.88745	13:18	D	2.60
105	KAITHAL	KAITHAL	S-NPP	76.31689	29.88762	13:18	D	4.60
106	KAITHAL	KAITHAL	S-NPP	76.36608	29.88896	13:18	D	20.20
107	KAITHAL	KAITHAL	S-NPP	76.33857	29.89136	13:18	D	16.30
108	KAITHAL	KAITHAL	S-NPP	76.33192	29.90091	13:18	D	17.00
109	KAITHAL	KAITHAL	S-NPP	76.45631	29.92575	13:18	D	1.50
110	KARNAL	ASSANDH	S-NPP	76.61665	29.48585	13:18	D	3.10
111	KARNAL	ASSANDH	S-NPP	76.52237	29.53015	13:18	D	4.20
112	KARNAL	ASSANDH	S-NPP	76.72471	29.53608	13:18	D	4.20
113	KARNAL	ASSANDH	S-NPP	76.73318	29.53752	13:18	D	2.20
114	KARNAL	ASSANDH	S-NPP	76.52866	29.54189	13:18	D	5.30
115	KARNAL	ASSANDH	S-NPP	76.58012	29.55058	13:18	D	6.30
116	KARNAL	ASSANDH	S-NPP	76.55289	29.55309	13:18	D	3.60
117	KARNAL	ASSANDH	S-NPP	76.55718	29.55381	13:18	D	3.60
118	KARNAL	ASSANDH	S-NPP	76.57386	29.56227	13:18	D	4.70
119	KARNAL	ASSANDH	S-NPP	76.57279	29.56354	13:18	D	4.30
120	KARNAL	ASSANDH	S-NPP	76.69948	29.57069	13:18	D	7.30
121	KARNAL	ASSANDH	S-NPP	76.69873	29.57410	13:18	D	8.10
122	KARNAL	ASSANDH	S-NPP	76.76154	29.58815	13:18	D	3.80
123	KARNAL	ASSANDH	S-NPP	76.70708	29.59925	13:18	D	3.20

124	KARNAL	ASSANDH	S-NPP	76.71132	29.59998	13:18	D	3.60
125	KARNAL	ASSANDH	S-NPP	76.76556	29.61273	13:18	D	2.70
126	KARNAL	ASSANDH	S-NPP	76.73447	29.61451	13:18	D	7.70
127	KARNAL	ASSANDH	S-NPP	76.66080	29.66916	13:18	D	4.10
128	KARNAL	GHARAUNDA	S-NPP	76.94728	29.55597	13:18	D	3.70
129	KARNAL	GHARAUNDA	S-NPP	77.02847	29.58007	13:18	D	5.20
130	KARNAL	INDRI	S-NPP	77.11147	29.80082	13:18	D	2.00
131	KARNAL	INDRI	S-NPP	77.06004	29.82019	13:18	D	1.10
132	KARNAL	INDRI	S-NPP	77.05566	29.84040	13:18	D	3.60
133	KARNAL	INDRI	S-NPP	76.97437	29.93898	13:18	D	6.70
134	KARNAL	KARNAL	S-NPP	76.86610	29.61219	13:18	D	2.80
135	KARNAL	KARNAL	S-NPP	76.86541	29.61252	13:18	D	2.00
136	KARNAL	KARNAL	S-NPP	76.88288	29.61503	13:18	D	5.40
137	KARNAL	KARNAL	S-NPP	76.88221	29.61531	13:18	D	5.50
138	KARNAL	KARNAL	S-NPP	76.84634	29.62291	13:18	D	5.80
139	KARNAL	KARNAL	S-NPP	76.81540	29.62471	13:18	D	1.60
140	KARNAL	KARNAL	S-NPP	77.05220	29.62947	13:18	D	1.20
141	KARNAL	KARNAL	S-NPP	77.05831	29.64096	13:18	D	2.70
142	KARNAL	KARNAL	S-NPP	76.78837	29.64831	13:18	D	1.90
143	KARNAL	KARNAL	S-NPP	76.97952	29.64887	13:18	D	2.70
144	KARNAL	KARNAL	S-NPP	76.76428	29.65834	13:18	D	2.50
145	KARNAL	KARNAL	S-NPP	77.02875	29.66063	13:18	D	2.00
146	KARNAL	KARNAL	S-NPP	76.73244	29.66356	13:18	D	3.20
147	KARNAL	KARNAL	S-NPP	76.71324	29.67092	13:18	D	2.40
148	KARNAL	KARNAL	S-NPP	76.79926	29.67831	13:18	D	2.10
149	KARNAL	KARNAL	S-NPP	77.04586	29.68097	13:18	D	3.40
150	KARNAL	KARNAL	S-NPP	76.72220	29.69006	13:18	D	6.20
151	KARNAL	KARNAL	S-NPP	76.72643	29.69077	13:18	D	4.70
152	KARNAL	KARNAL	S-NPP	76.71721	29.69275	13:18	D	6.40
153	KARNAL	KARNAL	S-NPP	76.72144	29.69346	13:18	D	6.40
154	KARNAL	KARNAL	S-NPP	76.72567	29.69417	13:18	D	5.60
155	KARNAL	KARNAL	S-NPP	76.71387	29.69533	13:18	D	2.40

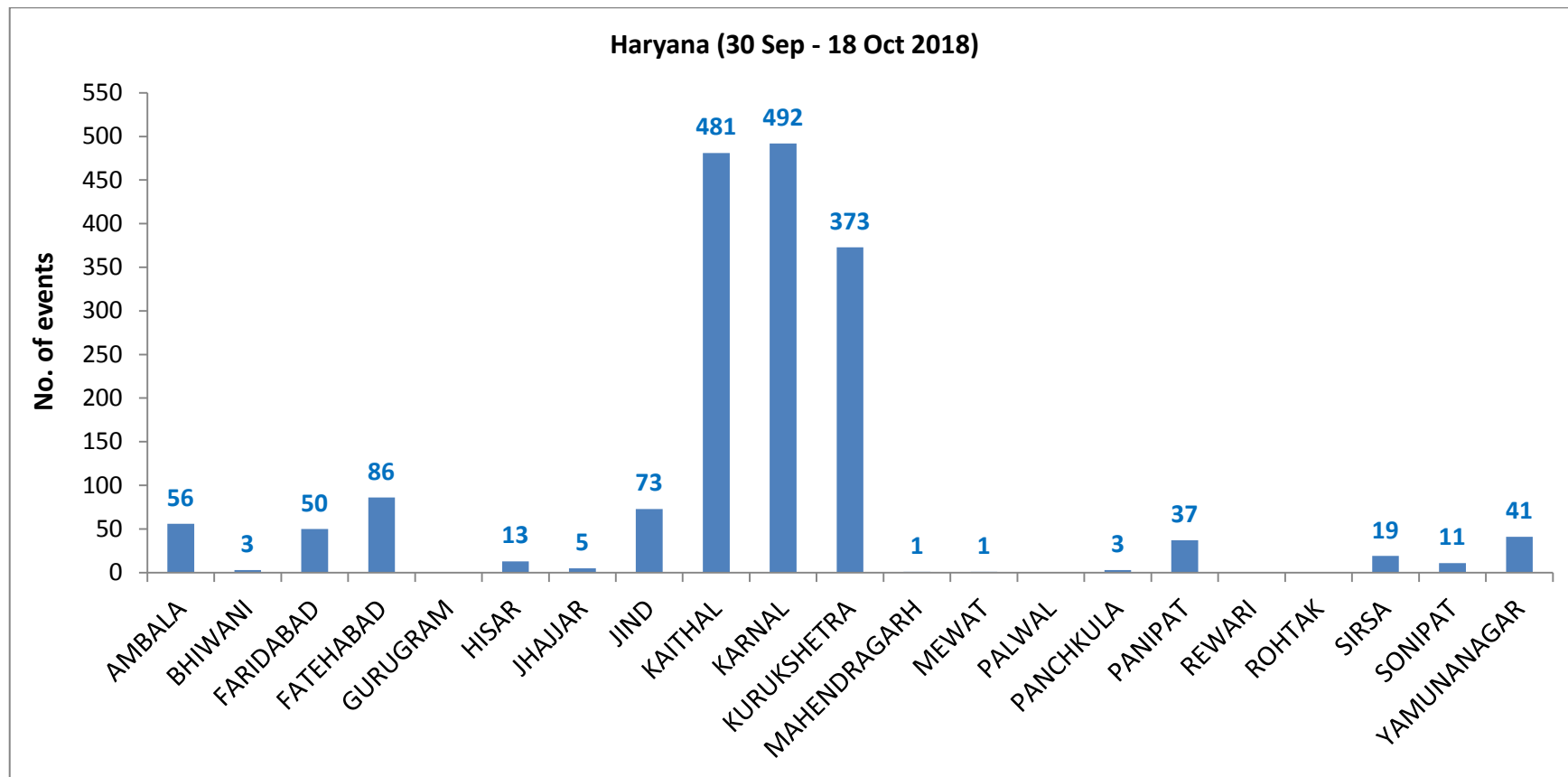
156	KARNAL	KARNAL	S-NPP	76.84679	29.70032	13:18	D	2.70
157	KARNAL	KARNAL	S-NPP	76.85268	29.74001	13:18	D	4.90
158	KARNAL	KARNAL	S-NPP	76.79009	29.74703	13:18	D	2.10
159	KARNAL	KARNAL	S-NPP	76.72923	29.76495	13:18	D	1.80
160	KARNAL	KARNAL	S-NPP	76.81658	29.76556	13:18	D	1.70
161	KARNAL	KARNAL	S-NPP	76.71777	29.77712	13:18	D	2.90
162	KARNAL	NILOKHERI	S-NPP	76.91209	29.74652	13:18	D	3.70
163	KARNAL	NILOKHERI	S-NPP	76.83734	29.79012	13:18	D	1.50
164	KARNAL	NILOKHERI	S-NPP	76.72374	29.81272	13:18	D	6.30
165	KARNAL	NILOKHERI	S-NPP	76.85518	29.87010	13:18	D	3.80
166	KARNAL	NILOKHERI	S-NPP	76.89949	29.90555	13:18	D	2.60
167	KARNAL	NILOKHERI	S-NPP	76.90367	29.90625	13:18	D	2.60
168	KURUKSHETRA	PEHOWA	S-NPP	76.50224	29.91940	13:18	D	3.00
169	KURUKSHETRA	PEHOWA	S-NPP	76.53220	29.92451	13:18	D	1.30
170	KURUKSHETRA	PEHOWA	S-NPP	76.62896	29.92683	13:18	D	22.60
171	KURUKSHETRA	PEHOWA	S-NPP	76.49567	29.92892	13:18	D	2.80
172	KURUKSHETRA	PEHOWA	S-NPP	76.62395	29.92951	13:18	D	22.60
173	KURUKSHETRA	PEHOWA	S-NPP	76.62821	29.93023	13:18	D	22.60
174	KURUKSHETRA	PEHOWA	S-NPP	76.61895	29.93219	13:18	D	4.80
175	KURUKSHETRA	PEHOWA	S-NPP	76.62291	29.95405	13:18	D	4.50
176	KURUKSHETRA	PEHOWA	S-NPP	76.69227	29.95872	13:18	D	1.40
177	KURUKSHETRA	PEHOWA	S-NPP	76.49583	29.96794	13:18	D	3.70
178	KURUKSHETRA	PEHOWA	S-NPP	76.50440	29.96939	13:18	D	4.60
179	KURUKSHETRA	PEHOWA	S-NPP	76.56577	29.97266	13:18	D	6.80
180	KURUKSHETRA	PEHOWA	S-NPP	76.55220	29.97391	13:18	D	5.00
181	KURUKSHETRA	PEHOWA	S-NPP	76.71312	29.98336	13:18	D	2.40
182	KURUKSHETRA	PEHOWA	S-NPP	76.46342	29.99656	13:18	D	3.50
183	KURUKSHETRA	PEHOWA	S-NPP	76.65479	30.01161	13:18	D	4.40
184	KURUKSHETRA	PEHOWA	S-NPP	76.65403	30.01220	13:18	D	5.60
185	KURUKSHETRA	PEHOWA	S-NPP	76.65402	30.01501	13:18	D	4.40
186	KURUKSHETRA	PEHOWA	S-NPP	76.67791	30.02613	13:18	D	1.70
187	KURUKSHETRA	PEHOWA	S-NPP	76.50138	30.04558	13:18	D	3.70

188	KURUKSHETRA	PEHOWA	S-NPP	76.50062	30.04899	13:18	D	3.80
189	KURUKSHETRA	PEHOWA	S-NPP	76.47340	30.05145	13:18	D	2.00
190	KURUKSHETRA	PEHOWA	S-NPP	76.62421	30.06990	13:18	D	7.60
191	KURUKSHETRA	PEHOWA	S-NPP	76.47381	30.09681	13:18	D	4.30
192	KURUKSHETRA	PEHOWA	S-NPP	76.72399	30.11482	13:18	D	5.90
193	KURUKSHETRA	PEHOWA	S-NPP	76.65261	30.12736	13:18	D	3.60
194	KURUKSHETRA	PEHOWA	S-NPP	76.73856	30.13492	13:18	D	5.30
195	KURUKSHETRA	PEHOWA	S-NPP	76.74133	30.13527	13:18	D	8.00
196	KURUKSHETRA	PEHOWA	S-NPP	76.74277	30.13564	13:18	D	5.30
197	KURUKSHETRA	PEHOWA	S-NPP	76.73360	30.13759	13:18	D	4.70
198	KURUKSHETRA	PEHOWA	S-NPP	76.73782	30.13831	13:18	D	5.30
199	KURUKSHETRA	PEHOWA	S-NPP	76.64884	30.14433	13:18	D	6.70
200	KURUKSHETRA	PEHOWA	S-NPP	76.65232	30.14845	13:18	D	8.30
201	KURUKSHETRA	PEHOWA	S-NPP	76.72218	30.14972	13:18	D	3.40
202	KURUKSHETRA	SHAHABAD	S-NPP	76.76885	30.12932	13:18	D	1.70
203	KURUKSHETRA	SHAHABAD	S-NPP	76.94695	30.14838	13:18	D	2.10
204	KURUKSHETRA	SHAHABAD	S-NPP	76.88406	30.15894	13:18	D	2.60
205	KURUKSHETRA	SHAHABAD	S-NPP	76.88877	30.16379	13:18	D	11.70
206	KURUKSHETRA	SHAHABAD	S-NPP	76.78873	30.16446	13:18	D	1.30
207	KURUKSHETRA	SHAHABAD	S-NPP	76.77015	30.18940	13:18	D	6.00
208	KURUKSHETRA	SHAHABAD	S-NPP	76.77435	30.19010	13:18	D	6.00
209	KURUKSHETRA	SHAHABAD	S-NPP	76.92605	30.19100	13:18	D	3.70
210	KURUKSHETRA	SHAHABAD	S-NPP	76.93022	30.19170	13:18	D	3.70
211	KURUKSHETRA	SHAHABAD	S-NPP	76.80226	30.20179	13:18	D	2.80
212	KURUKSHETRA	SHAHABAD	S-NPP	76.81484	30.20389	13:18	D	6.40
213	KURUKSHETRA	SHAHABAD	S-NPP	76.81904	30.20460	13:18	D	8.30
214	KURUKSHETRA	SHAHABAD	S-NPP	76.82025	30.21881	13:18	D	3.00
215	KURUKSHETRA	THANESAR	S-NPP	76.75266	29.91969	13:18	D	1.60
216	KURUKSHETRA	THANESAR	S-NPP	76.75345	29.91979	13:18	D	2.00
217	KURUKSHETRA	THANESAR	S-NPP	77.07407	29.95544	13:18	D	2.80
218	KURUKSHETRA	THANESAR	S-NPP	76.98223	29.96540	13:18	D	4.30
219	KURUKSHETRA	THANESAR	S-NPP	76.80115	29.98056	13:18	D	3.90

220	KURUKSHETRA	THANESAR	S-NPP	76.74614	29.99242	13:18	D	2.40
221	KURUKSHETRA	THANESAR	S-NPP	77.08377	29.99282	13:18	D	2.40
222	KURUKSHETRA	THANESAR	S-NPP	76.70860	30.00372	13:18	D	9.30
223	KURUKSHETRA	THANESAR	S-NPP	76.78256	30.00554	13:18	D	6.00
224	KURUKSHETRA	THANESAR	S-NPP	76.71208	30.00782	13:18	D	30.00
225	KURUKSHETRA	THANESAR	S-NPP	76.71631	30.00853	13:18	D	30.00
226	KURUKSHETRA	THANESAR	S-NPP	76.73245	30.01474	13:18	D	6.60
227	KURUKSHETRA	THANESAR	S-NPP	76.71480	30.01531	13:18	D	3.30
228	KURUKSHETRA	THANESAR	S-NPP	76.74511	30.01685	13:18	D	4.30
229	KURUKSHETRA	THANESAR	S-NPP	76.70559	30.01729	13:18	D	27.20
230	KURUKSHETRA	THANESAR	S-NPP	76.94470	30.01855	13:18	D	2.90
231	KURUKSHETRA	THANESAR	S-NPP	76.75279	30.02165	13:18	D	4.00
232	KURUKSHETRA	THANESAR	S-NPP	76.75117	30.03152	13:18	D	2.30
233	KURUKSHETRA	THANESAR	S-NPP	76.79175	30.04542	13:18	D	3.30
234	KURUKSHETRA	THANESAR	S-NPP	76.90390	30.04674	13:18	D	2.90
235	KURUKSHETRA	THANESAR	S-NPP	77.06231	30.05197	13:18	D	3.90
236	KURUKSHETRA	THANESAR	S-NPP	76.86229	30.06082	13:18	D	2.00
237	KURUKSHETRA	THANESAR	S-NPP	76.88024	30.07784	13:18	D	3.80
238	KURUKSHETRA	THANESAR	S-NPP	76.87950	30.08121	13:18	D	3.80
239	KURUKSHETRA	THANESAR	S-NPP	76.80874	30.08687	13:18	D	1.70
240	KURUKSHETRA	THANESAR	S-NPP	76.77110	30.11917	13:18	D	3.20
241	PANIPAT	PANIPAT	S-NPP	76.88389	29.30318	13:18	D	4.40
242	SIRSA	RANIA	S-NPP	74.84288	29.49605	13:18	D	4.50
243	SIRSA	RANIA	S-NPP	74.87273	29.61864	13:18	D	3.40
244	SIRSA	SIRSA	S-NPP	75.27534	29.54533	13:18	D	13.20
245	SIRSA	SIRSA	S-NPP	75.26974	29.54807	13:18	D	10.00
246	SIRSA	SIRSA	METOP-1	74.95928	29.89357	21:37	N	8.00
247	SONIPAT	GOHANA	S-NPP	76.72435	29.16345	13:18	D	2.50
248	YAMUNANAGAR	CHHACHHRAULII	S-NPP	77.44857	30.29784	13:18	D	2.90
249	YAMUNANAGAR	JAGADHRI	S-NPP	77.14220	29.97707	13:18	D	3.80
250	YAMUNANAGAR	JAGADHRI	S-NPP	77.10809	30.03864	13:18	D	2.90
251	YAMUNANAGAR	JAGADHRI	S-NPP	77.11223	30.03932	13:18	D	3.20

252	YAMUNANAGAR	JAGADHRI	S-NPP	77.33669	30.10383	13:18	D	2.50
253	YAMUNANAGAR	JAGADHRI	S-NPP	77.37398	30.12716	13:18	D	1.60
254	YAMUNANAGAR	JAGADHRI	S-NPP	77.15760	30.18652	13:18	D	2.40
255	YAMUNANAGAR	JAGADHRI	S-NPP	77.23540	30.32650	13:18	D	1.80

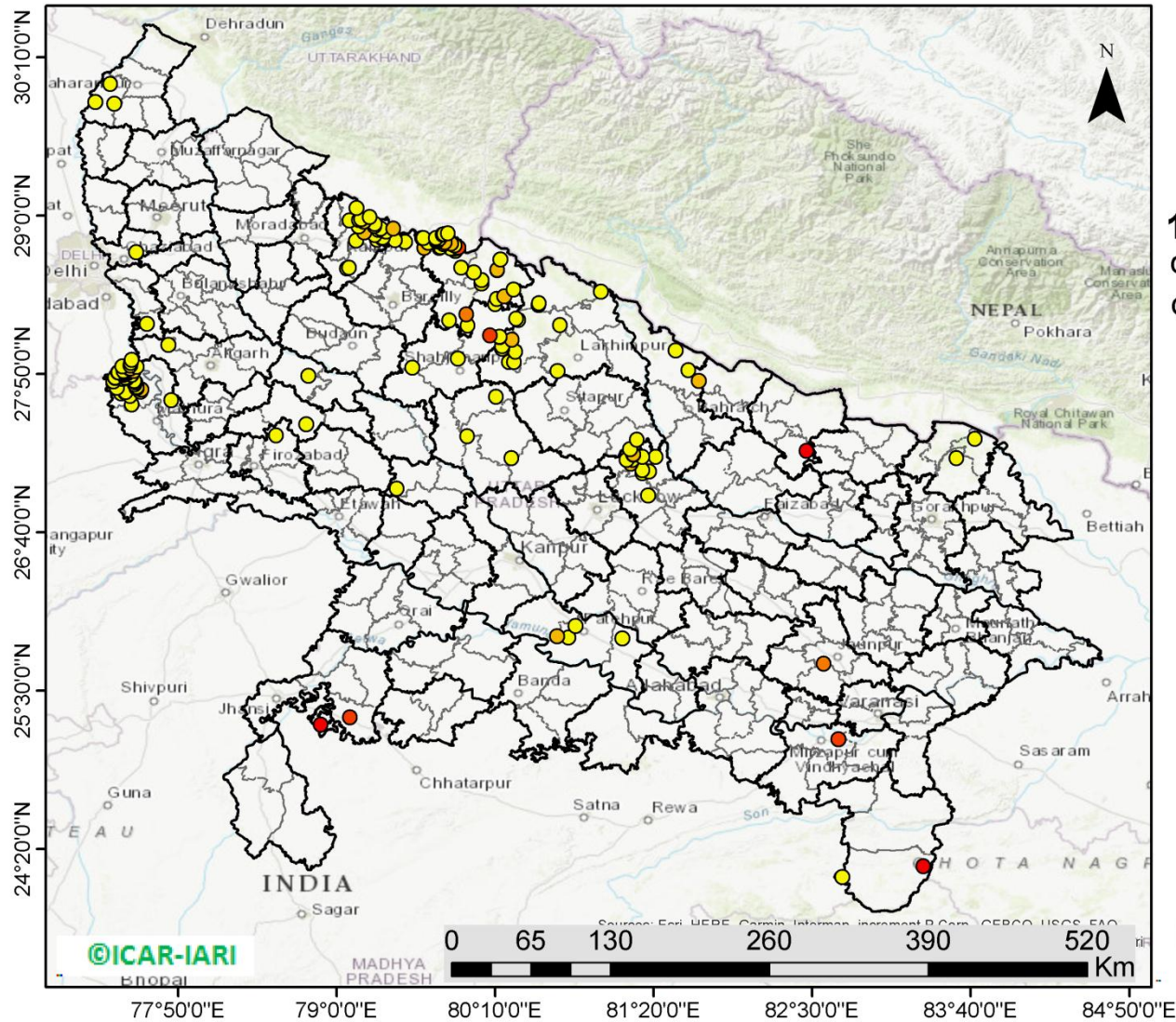
**District-wise cumulative number of residue burning events in Haryana (30-Sep-2018 to 18-Oct-2018)**





### (c) Uttar Pradesh

#### PADDY RESIDUE BURNING IN UTTAR PRADESH



**163** burning events detected in Uttar Pradesh on **18th October, 2018**

#### Fire Intensity (W/m<sup>2</sup>)

- 0 - 5
- 6 - 10
- 11 - 15
- 16 - 20
- >20



<http://geoportal.icar.gov.in:8080/geoexplorer/composer/>

**Details of residue burning events in Uttar Pradesh on 18-Oct-2018**

<b>Event S.No.</b>	<b>District</b>	<b>Tehsil/Block</b>	<b>Satellite</b>	<b>Longitude</b>	<b>Latitude</b>	<b>Time (IST)</b>	<b>Day/Night</b>	<b>Fire Power (W/m2)</b>
1	ALIGARH	KHAIR	S-NPP	77.76074	28.04667	13:18:00	D	1.30
2	BAHRAICH	NANPARA	S-NPP	81.58894	27.86149	13:18:00	D	3.60
3	BAHRAICH	NANPARA	S-NPP	81.49615	28.00553	13:18:00	D	2.60
4	BALRAMPUR	UTRAULA	NOAA-19	82.45903	27.26600	04:05:00	D	36.00
5	BARABANKI	FATEHPUR	S-NPP	81.25291	27.10163	13:18:00	D	2.70
6	BARABANKI	FATEHPUR	S-NPP	81.25284	27.12584	13:18:00	D	1.50
7	BARABANKI	FATEHPUR	S-NPP	81.16640	27.17346	13:18:00	D	7.90
8	BARABANKI	FATEHPUR	S-NPP	81.17840	27.19933	13:18:00	D	4.40
9	BARABANKI	FATEHPUR	S-NPP	81.13293	27.19983	13:18:00	D	1.50
10	BARABANKI	FATEHPUR	S-NPP	81.34852	27.22314	13:18:00	D	1.70
11	BARABANKI	FATEHPUR	S-NPP	81.25280	27.22361	13:18:00	D	1.70
12	BARABANKI	FATEHPUR	S-NPP	81.18402	27.23813	13:18:00	D	3.70
13	BARABANKI	FATEHPUR	S-NPP	81.18343	27.24151	13:18:00	D	3.70
14	BARABANKI	FATEHPUR	S-NPP	81.18347	27.24214	13:18:00	D	9.30
15	BARABANKI	NAWABGANJ	S-NPP	81.29301	26.93721	13:18:00	D	0.90
16	BARABANKI	RAMNAGAR	S-NPP	81.30025	27.11519	13:18:00	D	4.30
17	BAREILLY	BAHERI	S-NPP	79.64465	28.76086	13:18:00	D	5.30
18	BAREILLY	BAHERI	S-NPP	79.67378	28.79918	13:18:00	D	4.90
19	BAREILLY	BAHERI	S-NPP	79.50230	28.80772	13:18:00	D	3.10
20	BAREILLY	BAHERI	S-NPP	79.43171	28.81756	13:18:00	D	2.90
21	BAREILLY	BAHERI	S-NPP	79.63079	28.83364	13:18:00	D	5.20
22	BAREILLY	BAHERI	S-NPP	79.63866	28.83481	13:18:00	D	2.50
23	ETAH	ETAH	S-NPP	78.77618	27.46408	13:18:00	D	1.50
24	ETAH	KASGANJ	S-NPP	78.79149	27.81891	13:18:00	D	1.40
25	FATEHPUR	BINKI	S-NPP	80.62265	25.89995	13:18:00	D	8.70
26	FATEHPUR	FATEHPUR	S-NPP	80.70723	25.89187	13:18:00	D	2.00
27	FATEHPUR	FATEHPUR	S-NPP	80.75941	25.97791	13:18:00	D	2.90

28	FATEHPUR	KHAGA	S-NPP	81.10297	25.88564	13:18:00	D	2.40
29	FIROZABAD	JASRANA	S-NPP	78.55420	27.38195	13:18:00	D	2.40
30	GAUTAMBUDHNAGAR	JEVAR	S-NPP	77.60291	28.20259	13:18:00	D	4.30
31	GHAZIABAD	GHAZIABAD	S-NPP	77.52454	28.72901	13:18:00	D	1.60
32	HARDOI	HARDOI	S-NPP	79.96281	27.37475	13:18:00	D	2.00
33	HARDOI	SANDILA	S-NPP	80.28755	27.21326	13:18:00	D	4.20
34	HARDOI	SHAHABAD	S-NPP	80.17341	27.66594	13:18:00	D	1.60
35	JAUNPUR	MARIAHU	NOAA-19	82.58693	25.69844	04:05:00	D	11.00
36	JHANSI	MAURANIPUR	NOAA-19	78.88310	25.24928	04:05:00	D	34.00
37	JHANSI	MAURANIPUR	NOAA-19	79.09796	25.30318	04:05:00	D	20.00
38	KANNAUJ	CHHIBRAMAU	S-NPP	79.44245	26.98795	13:18:00	D	4.20
39	KHERI	GOLA	S-NPP	80.30478	27.92180	13:18:00	D	2.50
40	KHERI	GOLA	S-NPP	80.64341	28.19342	13:18:00	D	3.20
41	KHERI	GOLA	S-NPP	80.33790	28.23023	13:18:00	D	3.00
42	KHERI	GOLA	S-NPP	80.32355	28.24184	13:18:00	D	3.50
43	KHERI	LAKHIMPUR	S-NPP	80.62482	27.85609	13:18:00	D	2.70
44	KHERI	MOHMADI	S-NPP	80.26870	27.91998	13:18:00	D	1.70
45	KHERI	MOHMADI	S-NPP	80.31525	27.99708	13:18:00	D	4.30
46	KHERI	MOHMADI	S-NPP	80.21777	28.02051	13:18:00	D	1.90
47	KHERI	MOHMADI	S-NPP	80.21866	28.03770	13:18:00	D	2.30
48	KHERI	MOHMADI	S-NPP	80.29089	28.08577	13:18:00	D	6.20
49	KHERI	NIGHASAN	S-NPP	80.94577	28.43809	13:18:00	D	3.80
50	KHERI	PALIA KALAN	S-NPP	80.48608	28.34253	13:18:00	D	2.20
51	KHERI	PALIA KALAN	S-NPP	80.48825	28.35312	13:18:00	D	3.70
52	MAHARAJGANJ	MAHARAJGANJ	S-NPP	83.56264	27.21446	13:18:00	D	2.20
53	MAHARAJGANJ	NICHLAUL	S-NPP	83.69762	27.35486	13:18:00	D	2.70
54	MATHURA	CHHATA	S-NPP	77.49115	27.60934	13:18:00	D	2.20
55	MATHURA	CHHATA	S-NPP	77.47890	27.67064	13:18:00	D	1.30
56	MATHURA	CHHATA	S-NPP	77.41485	27.69151	13:18:00	D	2.80
57	MATHURA	CHHATA	S-NPP	77.44300	27.69972	13:18:00	D	2.90
58	MATHURA	CHHATA	S-NPP	77.44712	27.70041	13:18:00	D	2.90
59	MATHURA	CHHATA	S-NPP	77.55669	27.70463	13:18:00	D	4.40

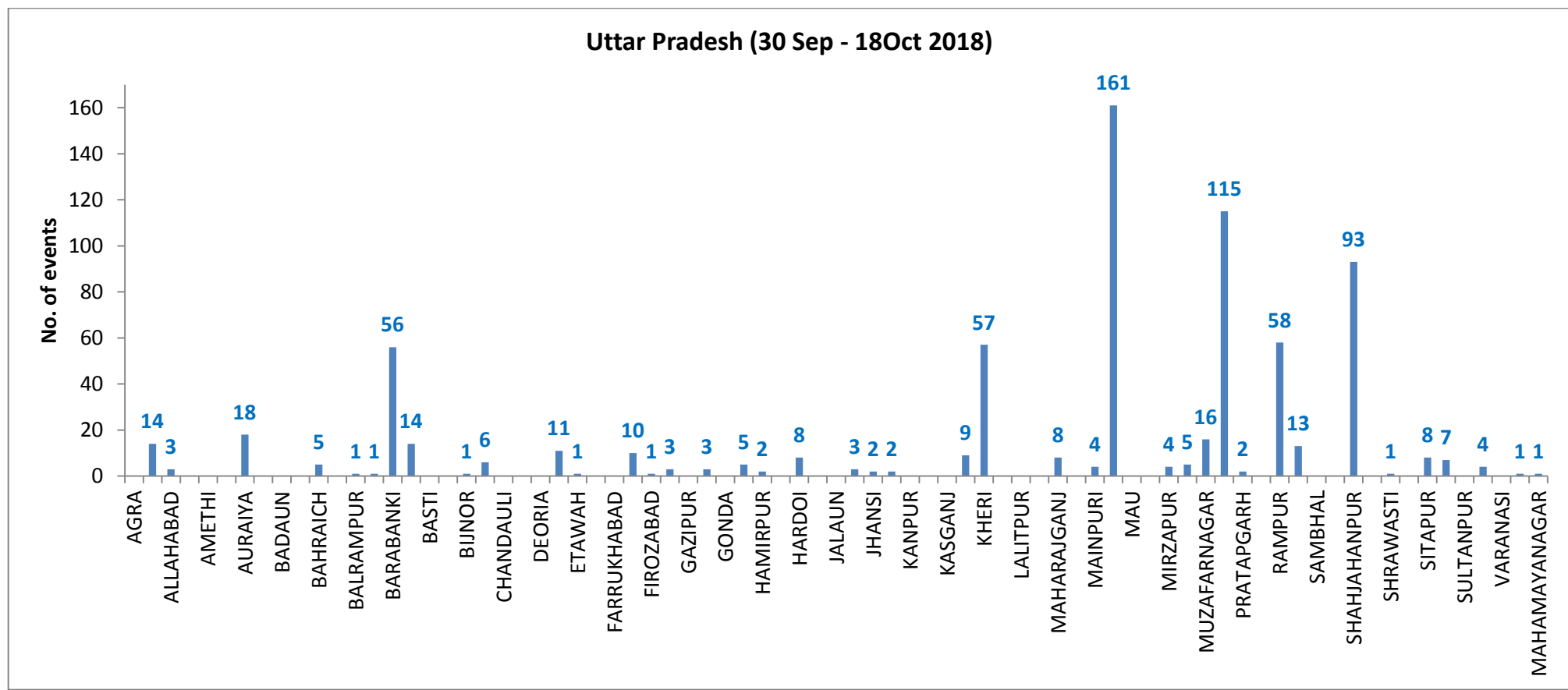
60	MATHURA	CHHATA	S-NPP	77.56207	27.71951	13:18:00	D	7.10
61	MATHURA	CHHATA	S-NPP	77.52647	27.72761	13:18:00	D	2.60
62	MATHURA	CHHATA	S-NPP	77.38078	27.73153	13:18:00	D	3.50
63	MATHURA	CHHATA	S-NPP	77.52845	27.73843	13:18:00	D	3.20
64	MATHURA	CHHATA	S-NPP	77.51600	27.75738	13:18:00	D	2.40
65	MATHURA	CHHATA	S-NPP	77.51764	27.77160	13:18:00	D	6.90
66	MATHURA	CHHATA	S-NPP	77.35817	27.77998	13:18:00	D	4.70
67	MATHURA	CHHATA	S-NPP	77.51142	27.78107	13:18:00	D	4.70
68	MATHURA	CHHATA	S-NPP	77.42282	27.79782	13:18:00	D	4.60
69	MATHURA	CHHATA	S-NPP	77.42694	27.79850	13:18:00	D	4.60
70	MATHURA	CHHATA	S-NPP	77.37042	27.80312	13:18:00	D	2.80
71	MATHURA	CHHATA	S-NPP	77.45988	27.80399	13:18:00	D	2.90
72	MATHURA	CHHATA	S-NPP	77.36971	27.80651	13:18:00	D	2.80
73	MATHURA	CHHATA	S-NPP	77.45916	27.80738	13:18:00	D	2.90
74	MATHURA	CHHATA	S-NPP	77.44611	27.80871	13:18:00	D	4.30
75	MATHURA	CHHATA	S-NPP	77.49331	27.82706	13:18:00	D	2.30
76	MATHURA	CHHATA	S-NPP	77.43361	27.82767	13:18:00	D	6.50
77	MATHURA	CHHATA	S-NPP	77.42323	27.83647	13:18:00	D	3.10
78	MATHURA	CHHATA	S-NPP	77.46099	27.83922	13:18:00	D	4.40
79	MATHURA	CHHATA	S-NPP	77.46028	27.84260	13:18:00	D	4.40
80	MATHURA	CHHATA	S-NPP	77.45135	27.84463	13:18:00	D	6.70
81	MATHURA	CHHATA	S-NPP	77.39149	27.84525	13:18:00	D	4.40
82	MATHURA	CHHATA	S-NPP	77.45546	27.84531	13:18:00	D	3.40
83	MATHURA	CHHATA	S-NPP	77.39562	27.84594	13:18:00	D	2.70
84	MATHURA	CHHATA	S-NPP	77.43828	27.84598	13:18:00	D	0.90
85	MATHURA	CHHATA	S-NPP	77.50887	27.85413	13:18:00	D	5.20
86	MATHURA	CHHATA	S-NPP	77.43203	27.85546	13:18:00	D	3.40
87	MATHURA	CHHATA	S-NPP	77.47633	27.87361	13:18:00	D	5.70
88	MATHURA	CHHATA	S-NPP	77.48453	27.87499	13:18:00	D	6.10
89	MATHURA	CHHATA	S-NPP	77.52888	27.88590	13:18:00	D	4.40
90	MATHURA	CHHATA	S-NPP	77.42202	27.88905	13:18:00	D	4.40
91	MATHURA	CHHATA	S-NPP	77.48439	27.89597	13:18:00	D	3.60

92	MATHURA	CHHATA	S-NPP	77.48495	27.91356	13:18:00	D	5.00
93	MATHURA	CHHATA	S-NPP	77.49299	27.93588	13:18:00	D	3.90
94	MATHURA	MAT	S-NPP	77.78293	27.64044	02:00:00	N	0.40
95	MIRZAPUR	MIRZAPUR	NOAA-19	82.69436	25.14149	04:05:00	D	20.00
96	PILHIBHIT	BISALPUR	S-NPP	79.96444	28.18961	13:18:00	D	2.40
97	PILHIBHIT	BISALPUR	S-NPP	79.82846	28.22740	13:18:00	D	2.30
98	PILHIBHIT	BISALPUR	S-NPP	79.95387	28.27258	13:18:00	D	13.50
99	PILHIBHIT	PILHIBHIT	S-NPP	79.91824	28.61543	13:18:00	D	3.60
100	PILHIBHIT	PILHIBHIT	S-NPP	79.87463	28.74123	13:18:00	D	3.10
101	PILHIBHIT	PILHIBHIT	S-NPP	79.86361	28.75664	13:18:00	D	3.50
102	PILHIBHIT	PILHIBHIT	S-NPP	79.87547	28.75838	13:18:00	D	1.70
103	PILHIBHIT	PILHIBHIT	S-NPP	79.83867	28.75979	13:18:00	D	1.50
104	PILHIBHIT	PILHIBHIT	S-NPP	79.75726	28.76141	13:18:00	D	2.20
105	PILHIBHIT	PILHIBHIT	S-NPP	79.89462	28.76460	13:18:00	D	16.50
106	PILHIBHIT	PILHIBHIT	S-NPP	79.76472	28.76834	13:18:00	D	3.10
107	PILHIBHIT	PILHIBHIT	S-NPP	79.86716	28.78101	13:18:00	D	2.40
108	PILHIBHIT	PILHIBHIT	S-NPP	79.78922	28.78896	13:18:00	D	1.90
109	PILHIBHIT	PILHIBHIT	S-NPP	79.84120	28.79316	13:18:00	D	7.90
110	PILHIBHIT	PILHIBHIT	S-NPP	79.79462	28.80337	13:18:00	D	3.80
111	PILHIBHIT	PILHIBHIT	S-NPP	79.79857	28.80395	13:18:00	D	5.30
112	PILHIBHIT	PILHIBHIT	S-NPP	79.73685	28.80849	13:18:00	D	2.00
113	PILHIBHIT	PILHIBHIT	S-NPP	79.73434	28.82174	13:18:00	D	2.90
114	PILHIBHIT	PILHIBHIT	S-NPP	79.75739	28.82854	13:18:00	D	0.90
115	PILHIBHIT	PILHIBHIT	S-NPP	79.72852	28.83109	13:18:00	D	2.40
116	PILHIBHIT	PILHIBHIT	S-NPP	79.73183	28.83498	13:18:00	D	2.40
117	PILHIBHIT	PILHIBHIT	S-NPP	79.78004	28.85911	13:18:00	D	2.00
118	PILHIBHIT	PILHIBHIT	S-NPP	79.79126	28.86417	13:18:00	D	2.30
119	PILHIBHIT	PILHIBHIT	S-NPP	79.81893	28.86824	13:18:00	D	3.60
120	PILHIBHIT	PURANPUR	S-NPP	80.16668	28.34794	13:18:00	D	4.40
121	PILHIBHIT	PURANPUR	S-NPP	80.17973	28.38739	13:18:00	D	3.20
122	PILHIBHIT	PURANPUR	S-NPP	80.23367	28.40405	13:18:00	D	5.40
123	PILHIBHIT	PURANPUR	S-NPP	80.30184	28.45486	13:18:00	D	2.50

124	PILHIBHIT	PURANPUR	S-NPP	80.06597	28.49837	13:18:00	D	4.30
125	PILHIBHIT	PURANPUR	S-NPP	80.06499	28.52552	13:18:00	D	4.50
126	PILHIBHIT	PURANPUR	S-NPP	80.00974	28.58226	13:18:00	D	2.90
127	PILHIBHIT	PURANPUR	S-NPP	80.18204	28.59714	13:18:00	D	9.70
128	PILHIBHIT	PURANPUR	S-NPP	80.18143	28.60047	13:18:00	D	5.40
129	PILHIBHIT	PURANPUR	S-NPP	80.20399	28.67743	13:18:00	D	3.10
130	RAMPUR	BILASPUR	S-NPP	79.29798	28.82094	13:18:00	D	2.30
131	RAMPUR	BILASPUR	S-NPP	79.33139	28.83615	13:18:00	D	2.80
132	RAMPUR	BILASPUR	S-NPP	79.33924	28.83734	13:18:00	D	3.90
133	RAMPUR	BILASPUR	S-NPP	79.28311	28.85608	13:18:00	D	2.90
134	RAMPUR	BILASPUR	S-NPP	79.20277	28.87454	13:18:00	D	6.80
135	RAMPUR	BILASPUR	S-NPP	79.36301	28.88169	13:18:00	D	3.20
136	RAMPUR	BILASPUR	S-NPP	79.30812	28.89383	13:18:00	D	3.80
137	RAMPUR	BILASPUR	S-NPP	79.32256	28.90280	13:18:00	D	2.30
138	RAMPUR	BILASPUR	S-NPP	79.41933	28.90372	13:18:00	D	6.50
139	RAMPUR	BILASPUR	S-NPP	79.27824	28.92266	13:18:00	D	5.70
140	RAMPUR	BILASPUR	S-NPP	79.28290	28.94035	13:18:00	D	2.60
141	RAMPUR	BILASPUR	S-NPP	79.24514	28.98904	13:18:00	D	3.10
142	RAMPUR	MILAK	S-NPP	79.09074	28.61716	13:18:00	D	2.80
143	RAMPUR	RAMPUR	S-NPP	79.14182	28.81432	13:18:00	D	2.60
144	RAMPUR	SHAHBAD	S-NPP	79.07572	28.61147	13:18:00	D	3.00
145	RAMPUR	SUAR	S-NPP	79.16181	28.91867	13:18:00	D	1.20
146	RAMPUR	SUAR	S-NPP	79.19921	28.95492	13:18:00	D	5.70
147	RAMPUR	SUAR	S-NPP	79.09653	28.96315	13:18:00	D	1.90
148	RAMPUR	SUAR	S-NPP	79.16457	28.96667	13:18:00	D	1.20
149	RAMPUR	SUAR	S-NPP	79.17964	28.97235	13:18:00	D	4.80
150	RAMPUR	SUAR	S-NPP	79.14742	29.05565	13:18:00	D	1.70
151	SHAHJAHANPUR	JALALABAD	S-NPP	79.55718	27.87859	13:18:00	D	2.60
152	SHAHJAHANPUR	PUWANYA	S-NPP	80.19830	28.10557	13:18:00	D	4.20
153	SHAHJAHANPUR	PUWANYA	S-NPP	80.19770	28.10889	13:18:00	D	3.00
154	SHAHJAHANPUR	PUWANYA	S-NPP	80.12763	28.11575	13:18:00	D	15.80
155	SHAHJAHANPUR	SHAHJAHANPUR	S-NPP	79.89320	27.94568	13:18:00	D	1.90

156	SHARANPUR	NAKUR	S-NPP	77.36182	29.82480	13:18:00	D	2.20
157	SHARANPUR	NAKUR	S-NPP	77.22337	29.83672	13:18:00	D	2.90
158	SHARANPUR	NAKUR	S-NPP	77.33516	29.97048	13:18:00	D	3.30
159	SHRAWASTI	BHINGA	S-NPP	81.66635	27.78149	13:18:00	D	6.50
160	SITAPUR	MAHMUDABAD	S-NPP	81.16025	27.28037	13:18:00	D	2.40
161	SITAPUR	MAHMUDABAD	S-NPP	81.21030	27.34965	13:18:00	D	3.00
162	SONBHADRA	DUDHI	S-NPP	82.72054	24.12681	02:00:00	N	0.60
163	SONBHADRA	DUDHI	NOAA-19	83.31849	24.20724	04:05:00	D	36.00

**District-wise cumulative number of residue burning events in Uttar Pradesh (30-Sep-2018 to 18-Oct-2018)**



**State wise, date wise and district-wise number of residue burning events detected in 2017 and 2018**  
**(Period: 30-Sep-2018 to 18-Oct-2018)**

Date	Punjab		Haryana		UP		Total	
	2017	2018	2017	2018	2017	2018	2017	2018
<b>30-Sep-18</b>	--	11	---	7	---	13	---	31
<b>1-Oct-18</b>	54	16	13	9	2	11	69	36
<b>2-Oct-18</b>	50	9	27	23	8	21	85	53
<b>3-Oct-18</b>	62	4	40	9	17	12	119	25
<b>4-Oct-18</b>	103	32	60	16	22	5	185	53
<b>5-Oct-18</b>	106	56	68	30	20	10	194	96
<b>6-Oct-18</b>	138	87	75	65	39	13	252	165
<b>7-Oct-18</b>	105	162	97	180	31	69	233	411
<b>8-Oct-18</b>	215	39	218	40	75	54	508	133
<b>9-Oct-18</b>	163	75	148	47	87	32	398	154
<b>10-Oct-18</b>	164	23	151	37	126	21	441	81
<b>11-Oct-18</b>	177	30	87	78	74	24	338	132
<b>12-Oct-18</b>	342	67	123	133	51	22	516	222
<b>13-Oct-18</b>	470	62	207	147	69	61	746	270
<b>14-Oct-18</b>	582	112	333	153	137	57	1052	322
<b>15-Oct-18</b>	943	90	458	110	237	35	1638	235



<b>16-Oct-18</b>	465	174	186	138	71	20	722	332
<b>17-Oct-18</b>	807	272	244	268	69	94	1120	634
<b>18-Oct-18</b>	970	263	306	255	108	163	1384	681
<b>Total</b>	5916	1584	2841	1745	1247	737	<b>10004</b>	<b>4066</b>

**(a) Punjab**

Districts	01 - 18 Oct	
	2017	2018
AMRITSAR	575	502
BARNALA	19	5
BATHINDA	464	41
FARIDKOT	799	58
FATEHGARH SAHIB	216	29
FAZILKA	0	0
FIROZPUR	774	116
GURDASPUR	160	64
HOSHIARPUR	25	3
JALANDHAR	213	13
KAPURTHALA	79	7
LUDHIANA	366	33
MANSA	112	36
MOGA	85	7
MUKTSAR	306	35
NAWASHAHR	40	5
PATHANKOT	0	0
PATIALA	675	211
RUPNAGAR	16	0
SANGRUR	193	77
SAS NAGAR	52	39
TARN TARAN	716	291
SBS NAGAR	31	12
<b>Total</b>	<b>5916</b>	<b>1584</b>

**(b) Haryana**

Districts	01 - 18 Oct	
	2017	2018
AMBALA	196	56
BHIWANI	2	3
FARIDABAD	52	50
FATEHABAD	160	86
GURUGRAM	0	0
HISAR	23	13
JHAJJAR	1	5
JIND	116	73
KAITHAL	622	481
KARNAL	854	492
KURUKSHETRA	624	373
MAHENDRAGARH	0	1
MEWAT	0	1
PALWAL	0	0
PANCHKULA	0	3
PANIPAT	33	37
REWARI	0	0
ROHTAK	1	0
SIRSA	44	19
SONIPAT	15	11
YAMUNANAGAR	98	41
<b>Total</b>	<b>2841</b>	<b>1745</b>

**(c) Uttar Pradesh**

Districts	01 - 18 Oct	
	2017	2018
AGRA	0	0
ALIGARH	14	14
ALLAHABAD	0	3
AMBEDKAR NAGAR	1	0
AMETHI	0	0
AMROHA	0	0
AURAIYA	50	18
AZAMGARH	0	0
BADAUN	1	0
BAGHPAT	0	0
BAHRAICH	2	5
BALLIA	0	0
BALRAMPUR	0	1
BANDA	0	1
BARABANKI	27	56
BAREILLY	44	14
BASTI	0	0
BHADOHI	0	0
BIJNOR	0	1
BULANDSAHAR	6	6
CHANDAULI	0	0
CHITRAKOOT	0	0
DEORIA	0	0
ETAH	7	11
ETAWAH	8	1
FAIZABAD	1	0
FARRUKHABAD	0	0
FATEHPUR	4	10

FIROZABAD	0	1
GAUTAMBUDH NAGAR	4	3
GAZIPUR	0	0
GHAZIABAD	5	3
GONDA	0	0
GORAKHPUR	2	5
HAMIRPUR	0	2
HAPUR	0	0
HARDOI	11	8
HATHRAS	0	0
JALAUN	0	0
JAUNPUR	0	3
JHANSI	0	2
KANNAUJ	1	2
KANPUR	3	0
KANPUR DEHAT	1	0
KASGANJ	0	0
KAUSHAMBI	4	9
KHERI	101	57
KUSHINAGAR	1	0
LALITPUR	0	0
LUCKNOW	5	0
MAHARAJGANJ	13	8
MAHOBAB	0	0
MAINPURI	6	4
MATHURA	55	161
MAU	0	0
MEERUT	9	0
MIRZAPUR	2	4
MORADABAD	8	5
MUZAFARNAGAR	44	16
PILHIBHIT	235	115

PRATAPGARH	0	2
RAE BARELI	0	0
RAMPUR	183	58
SHARANPUR	23	13
SAMBHAL	0	0
SANTKABIR NAGAR	0	0
SHAHJAHANPUR	348	93
SHAMALI	0	0
SHRAWASTI	3	1
SIDDHARTH NAGAR	1	0
SITAPUR	10	8
SONBHADRA	1	7
SULTANPUR	0	0
UNNAO	3	4
VARANASI	0	0
JYOTIBAPHULE NAGAR	0	1
MAHAMAYA NAGAR	0	1
<b>Total</b>	<b>1247</b>	<b>737</b>

## The study used images received from following Satellites at IARI Satellite Ground Station

S. No.	Satellite Name	Sensor	Resolution (meter)	Day / Night Passes
1.	Suomi NPP	VIIRS	375 / 1000	Both
2.	Terra	MODIS	1000	Both
3.	Aqua	MODIS	1000	Both
4.	NOAA – 18	AVHRR	1000	Night
5.	NOAA – 19	AVHRR	1000	Night
6.	Metop - 1	AVHRR	1000	Night
7.	Metop - 2	AVHRR	1000	Night

### Study Team

ICAR – HQ	Dr K. Alagusundaram	DDG (Agril. Engg.)	<a href="mailto:ddgengg@icar.org.in">ddgengg@icar.org.in</a>
	Dr S. Bhaskar	ADG (NRM)	<a href="mailto:adgagroandaf@gmail.com">adgagroandaf@gmail.com</a>
ICAR - IARI	Dr V.K. Sehgal	Professor & Nodal Scientist	<a href="mailto:iaricreams@gmail.com">iaricreams@gmail.com</a> <a href="mailto:vk.sehgal@icar.gov.in">vk.sehgal@icar.gov.in</a>
	Dr Rajkumar Dhakar	Scientist	<a href="mailto:rajdhakar.iari@gmail.com">rajdhakar.iari@gmail.com</a>
	Shri Rakeshwar Verma	Chief Technical Officer	<a href="mailto:rakeshwar.verma@icar.gov.in">rakeshwar.verma@icar.gov.in</a>
	Mr Aakash Chhabra	SRF (NICRA)	<a href="mailto:aakash.chhabra7489@gmail.com">aakash.chhabra7489@gmail.com</a>
ICAR - ATARI	Dr Rajbir Singh	Director ATARI (Zone-1)	<a href="mailto:rajbirsingh.zpd@gmail.com">rajbirsingh.zpd@gmail.com</a>
	Dr U.S. Gautam	Director ATARI (Zone-IV)	<a href="mailto:zpdicarkanpur@gmail.com">zpdicarkanpur@gmail.com</a>
ICAR - IASRI	Dr RajenderParsad	Principal Scientist	<a href="mailto:rajender.parsad@icar.gov.in">rajender.parsad@icar.gov.in</a>

GIS Maps of fire events can be visualized online on ICAR KRISHI Geoportal

websites:<http://geoportal.icar.gov.in:8080/geoexplorer/composer/>

<http://creams.iari.res.in:8080/geoexplorer/composer/>

\*\*\*