



Bulletin No. 33

Events Date:
17-Oct-2022

Issued on:
17-Oct-2022



MONITORING PADDY RESIDUE BURNING IN INDIA USING SATELLITE REMOTE SENSING DURING 2022



Prepared by:

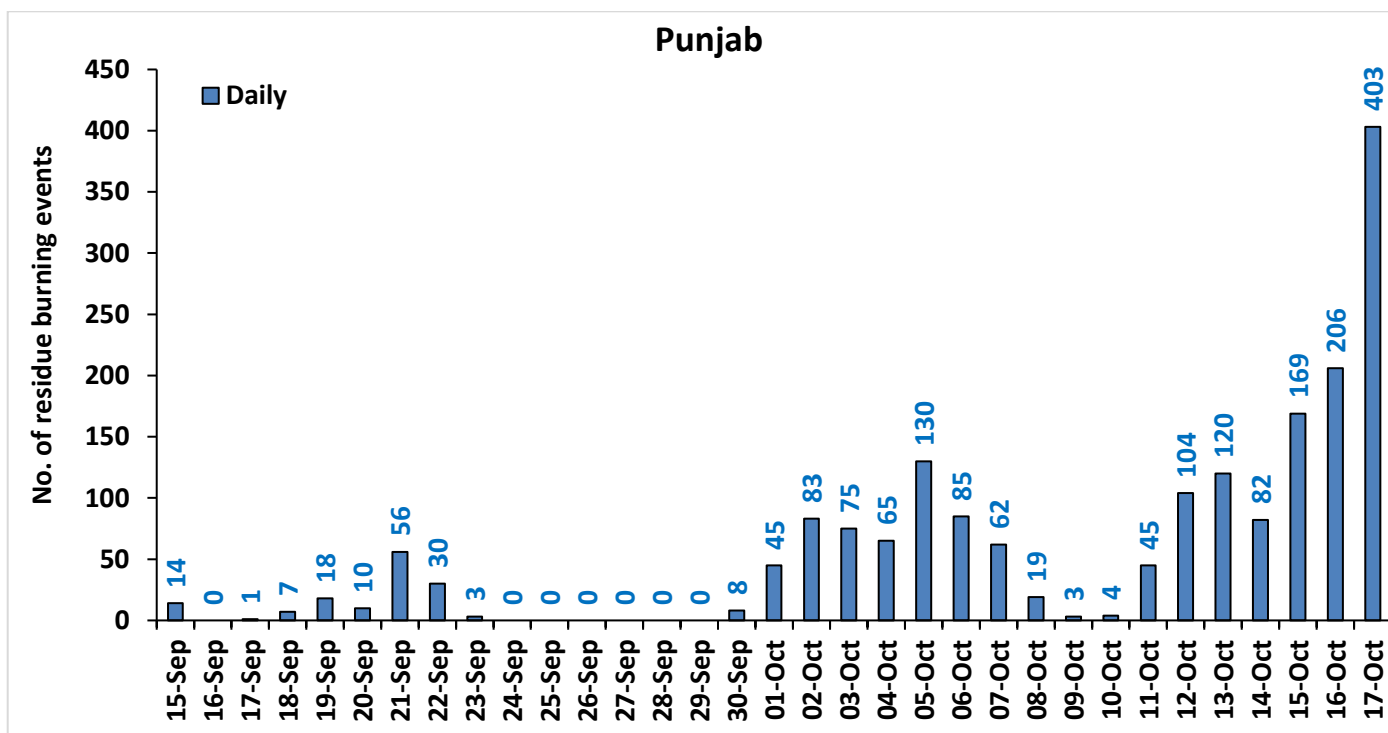
Consortium for Research on Agroecosystem Monitoring and Modeling from Space (CREAMS) Laboratory,
Division of Agricultural Physics, ICAR – Indian Agricultural Research Institute, New Delhi – 110012

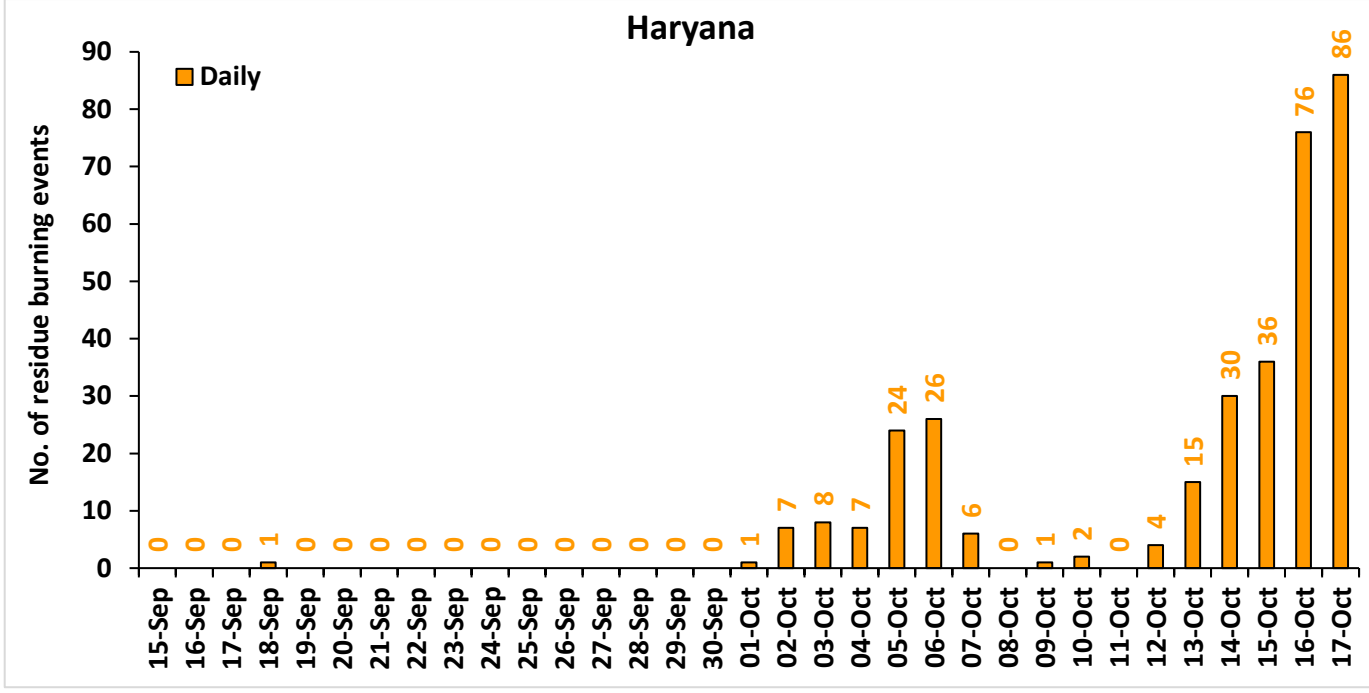
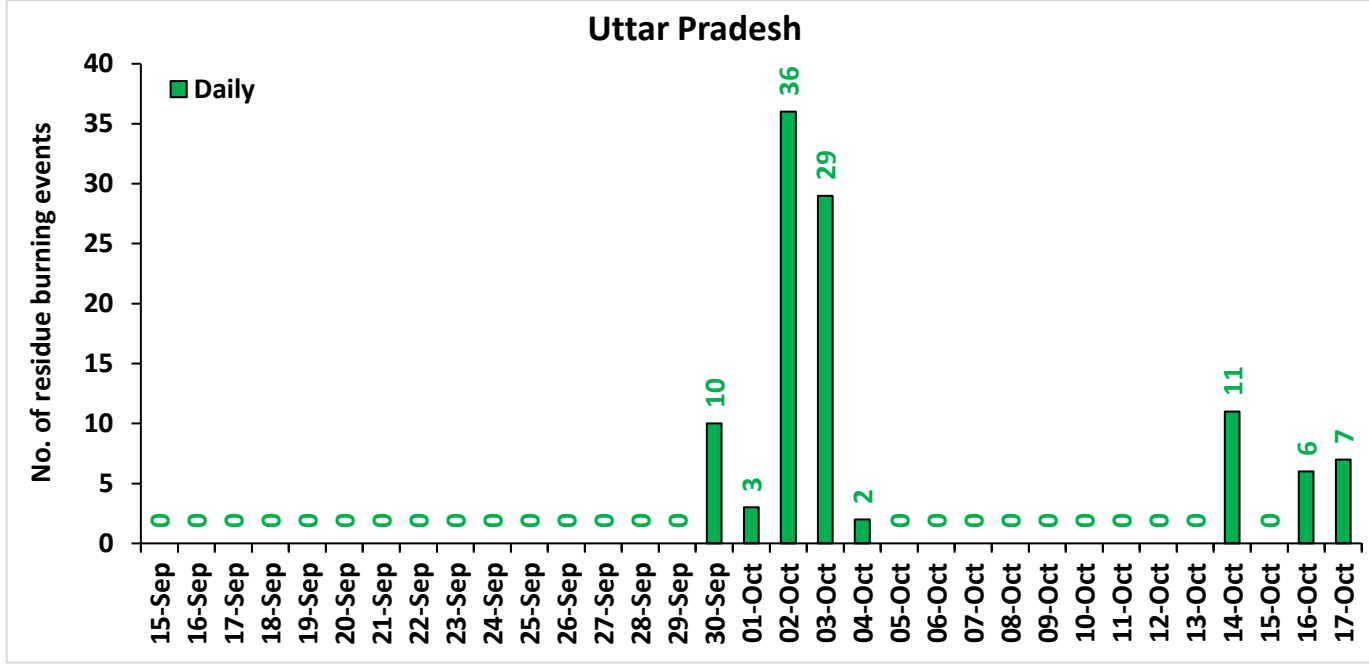
<http://creams.iari.res.in>

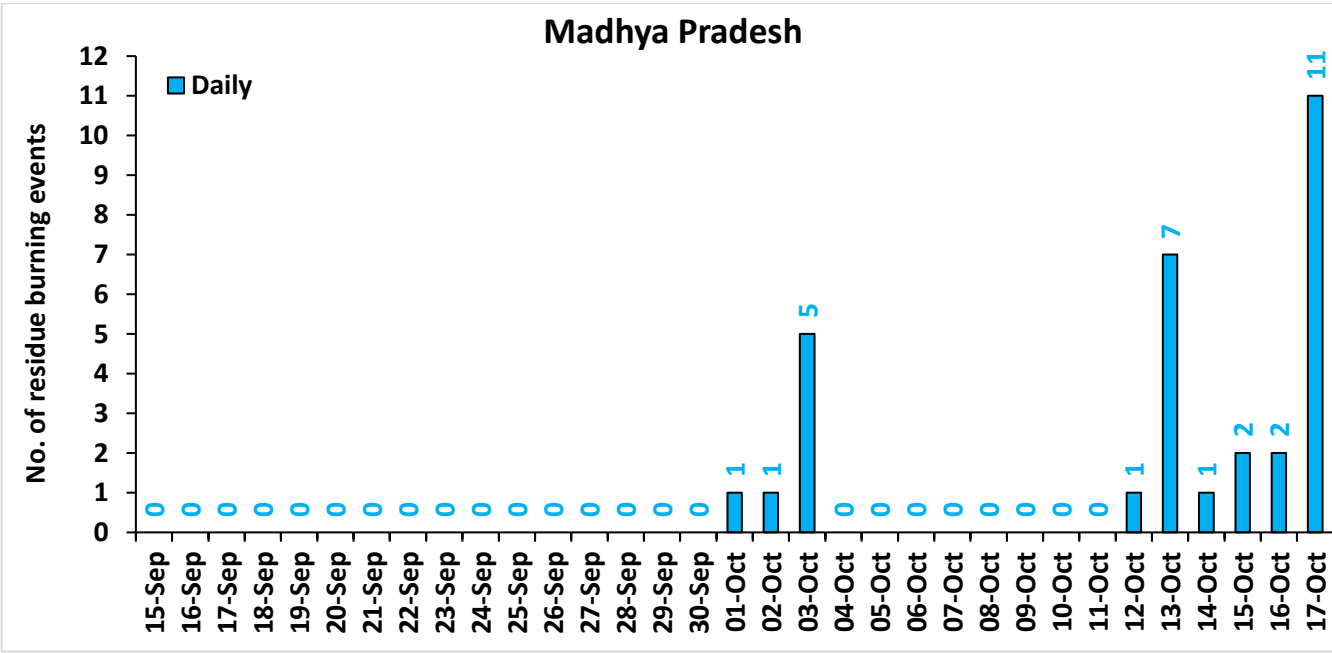
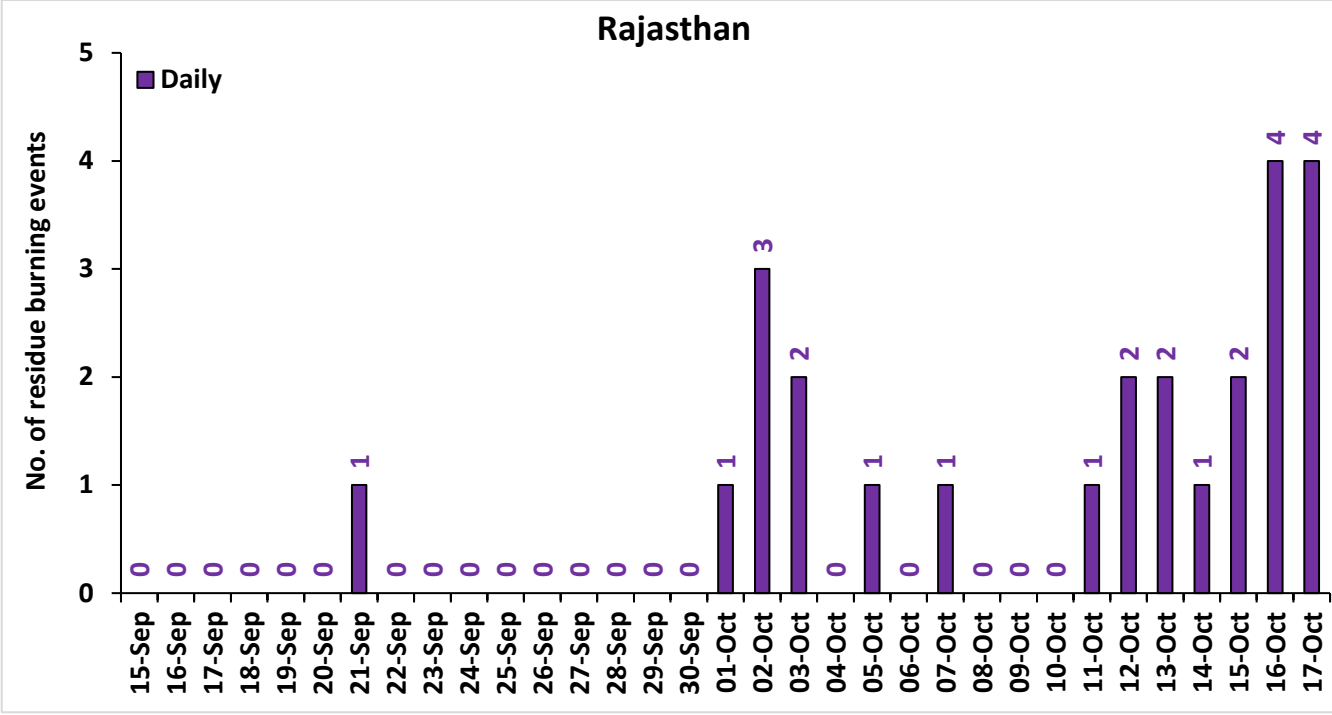
Highlights for 17-Oct-2022

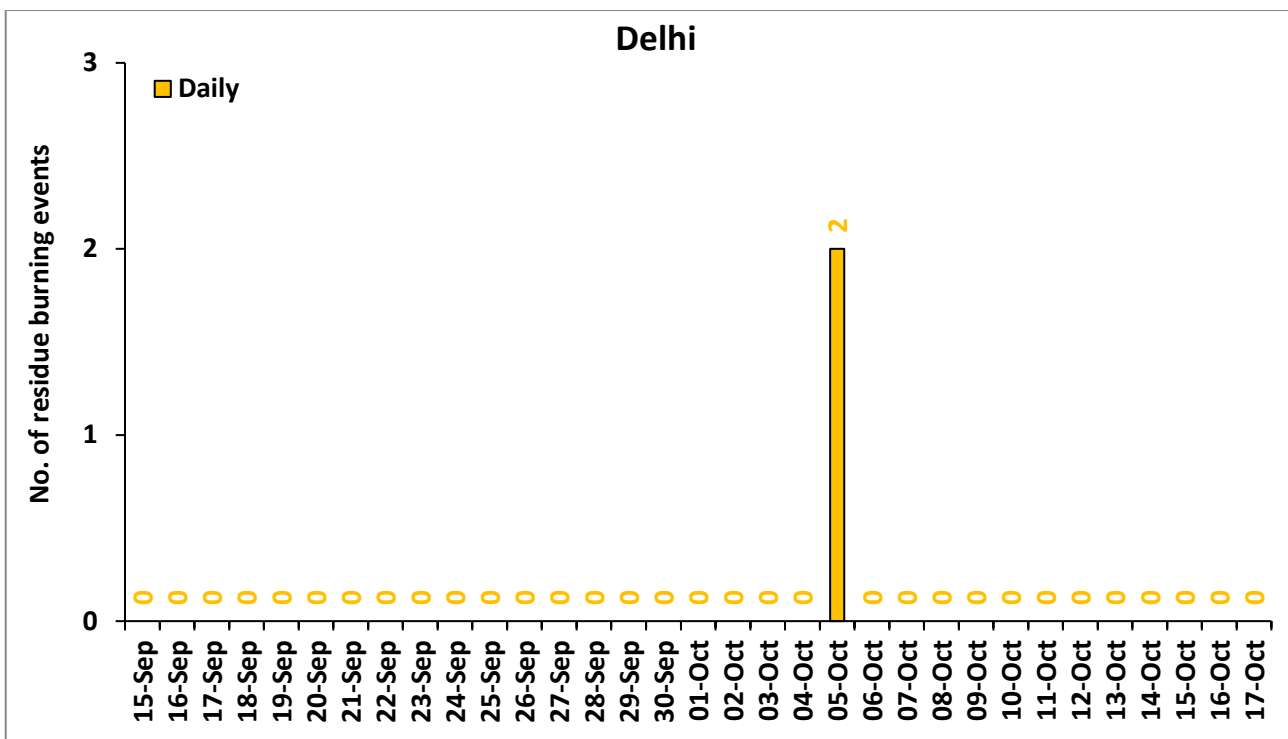
- The active fire events due to rice residue burning were monitored using satellite remote sensing, following the "Standard Protocol for Estimation of Crop Residue Burning Fire Events using Satellite Data".
- Satellites detected **511** residue burning events in the six study States on 17-Oct-2022.
- The state wise events detected on 17-Oct-2022 were **403** in Punjab, **86** in Haryana, **7** in UP, **0** in Delhi, **4** in Rajasthan and **11** in MP.
- Total **2339** burning events were detected in the six states between 15-Sept-2022 and 17-Oct-2022, which are distributed as **1847**, **330**, **104**, **2**, **25** and **31** in Punjab, Haryana, UP, Delhi, Rajasthan and MP, respectively.
- Detection of fire events was hampered by the presence of clouds over eastern Madhya Pradesh.

Temporal distribution of rice residue burning events for the study States in 2022

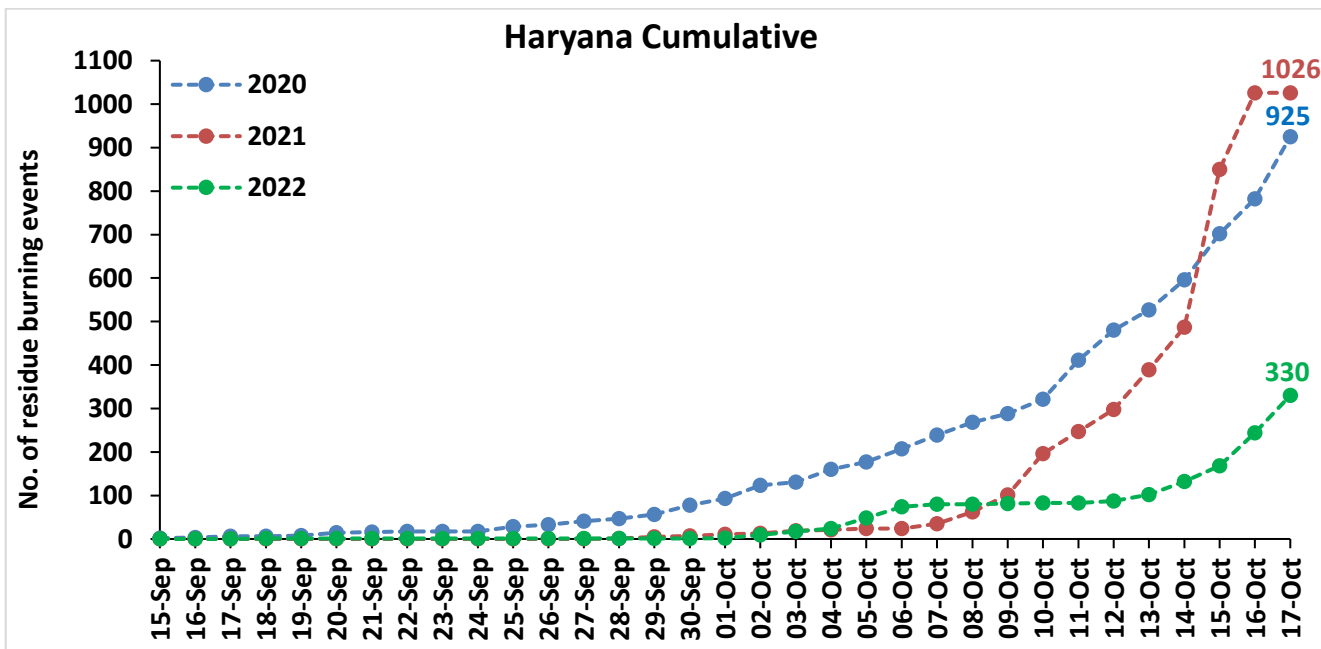
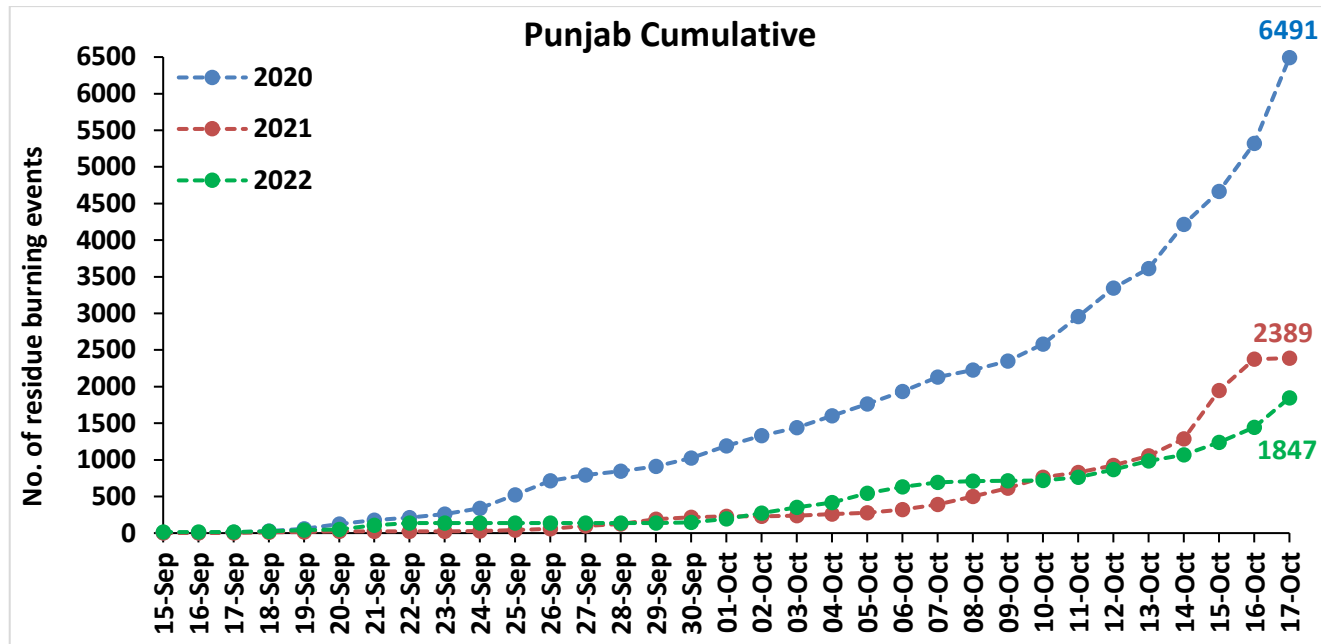


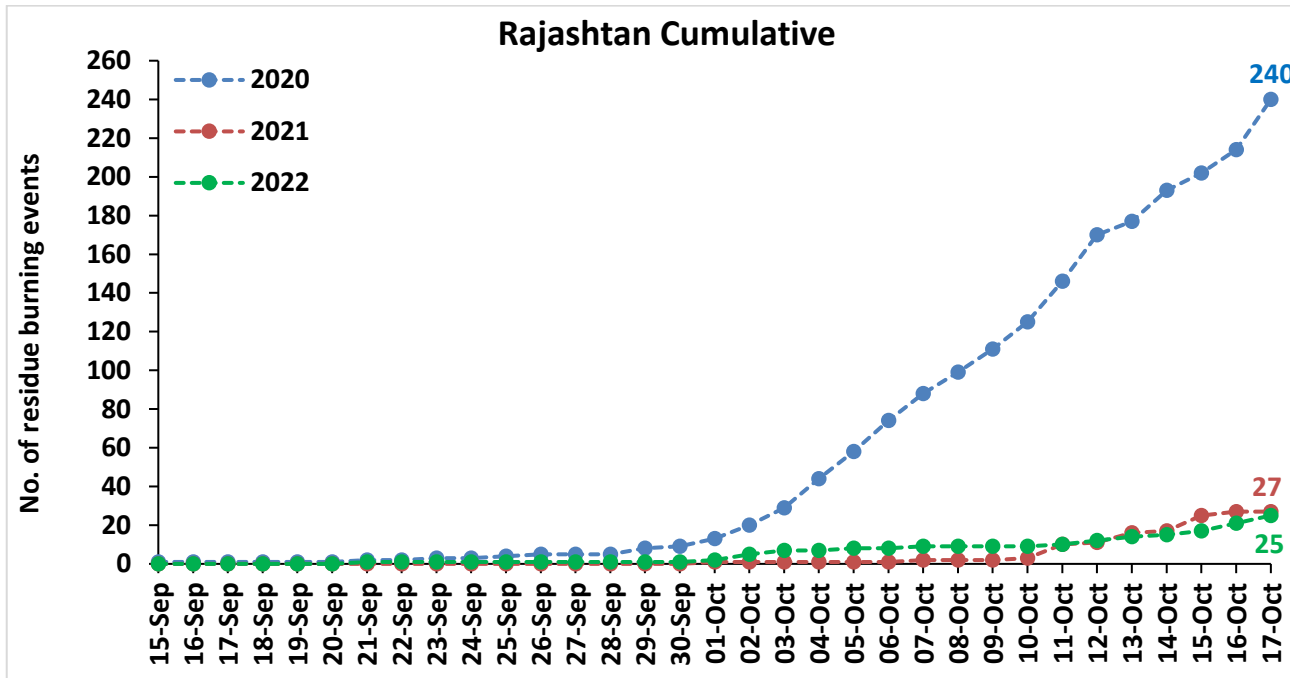
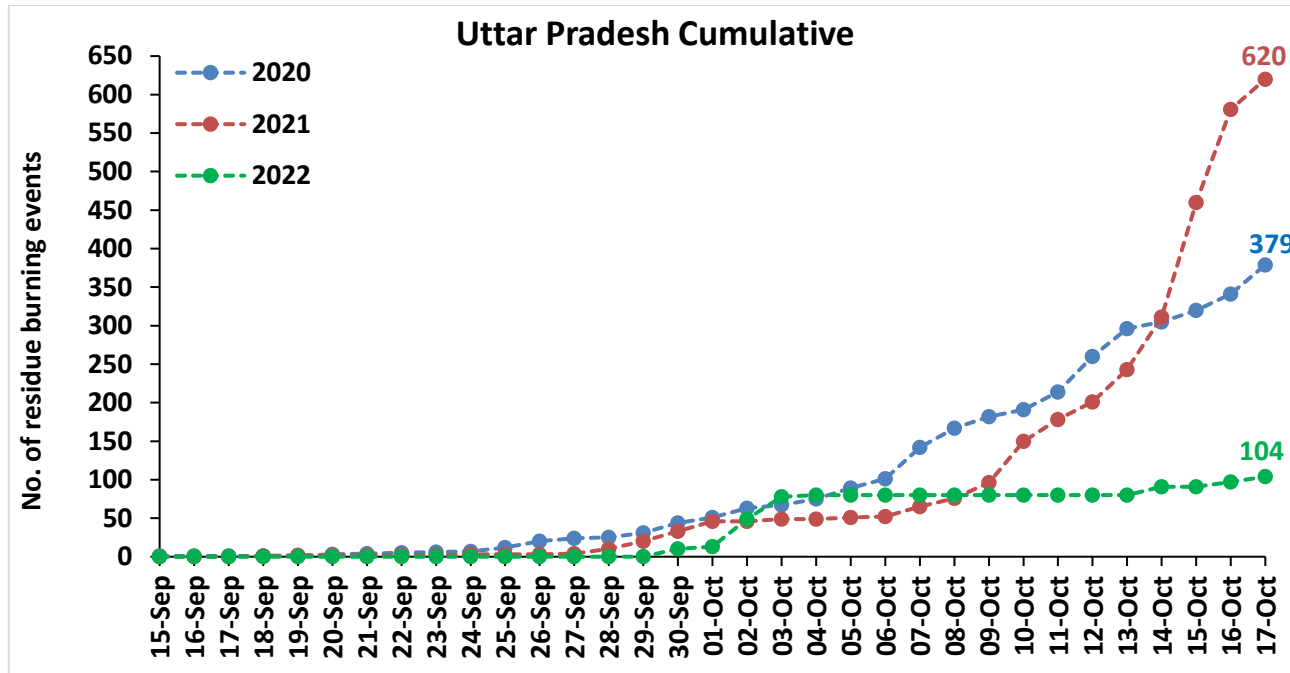


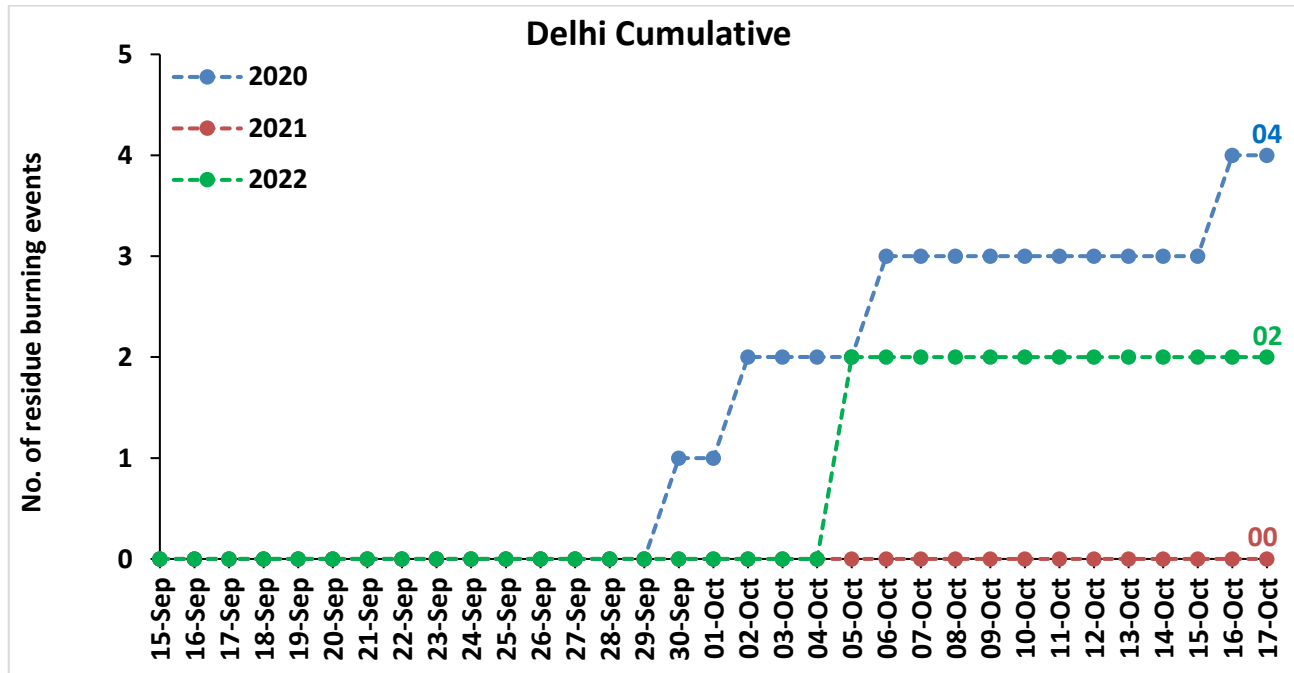
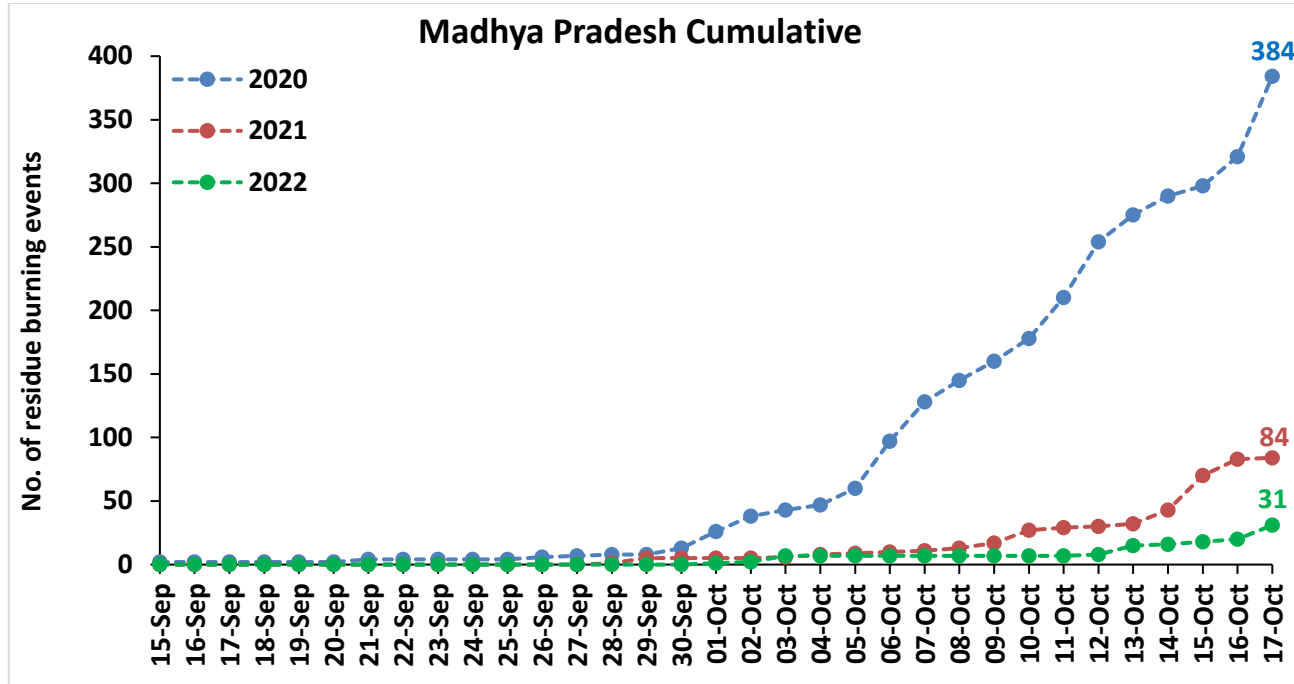




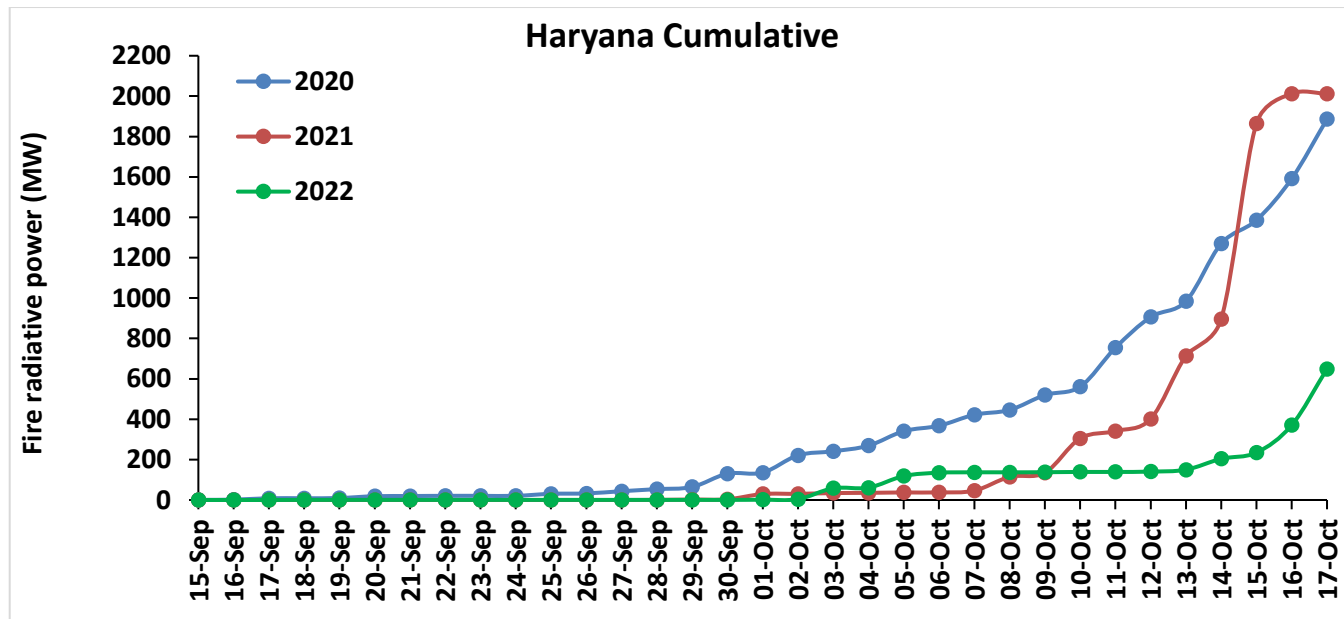
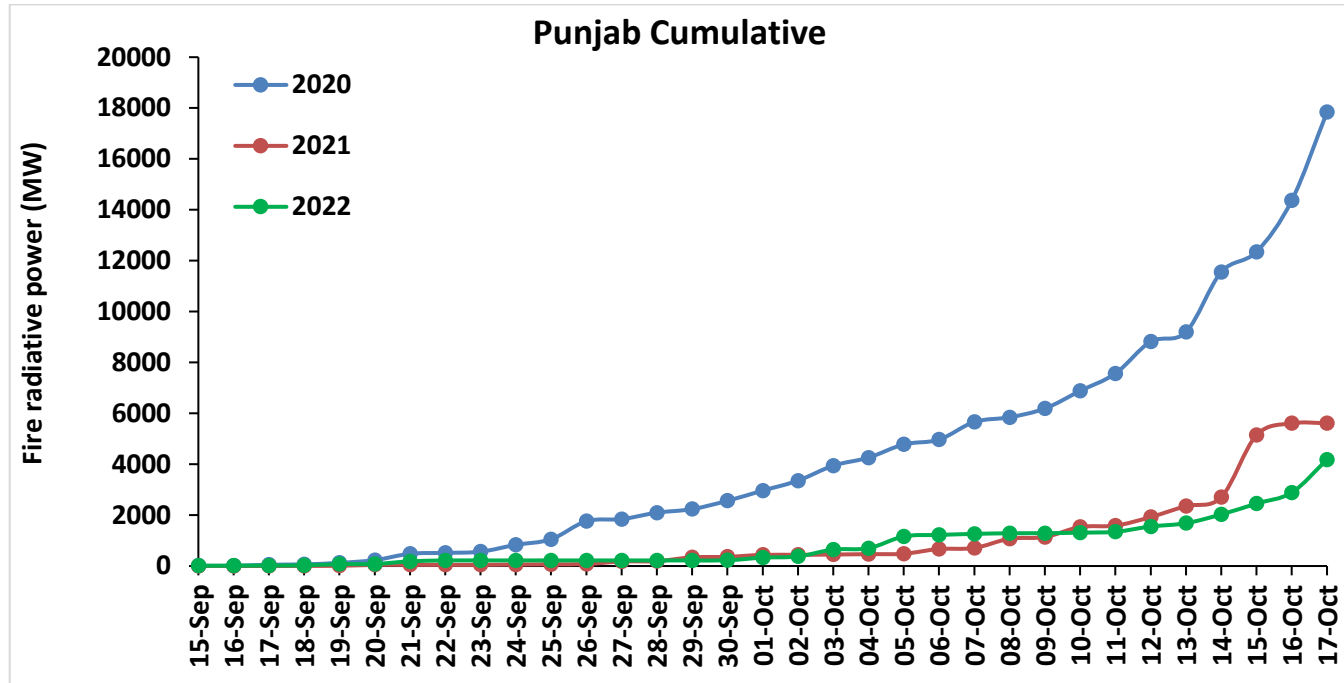
Comparison of residue burning events in current year (2022) with previous years (2020 and 2021) for the study States

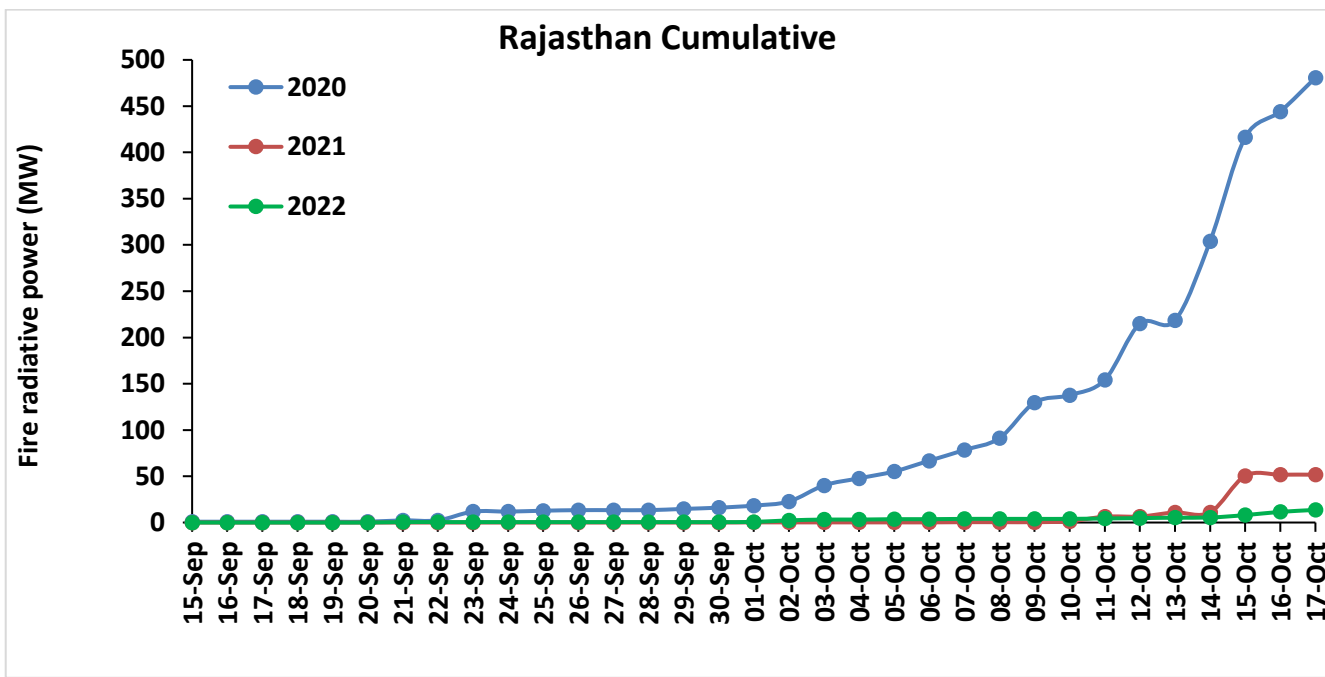
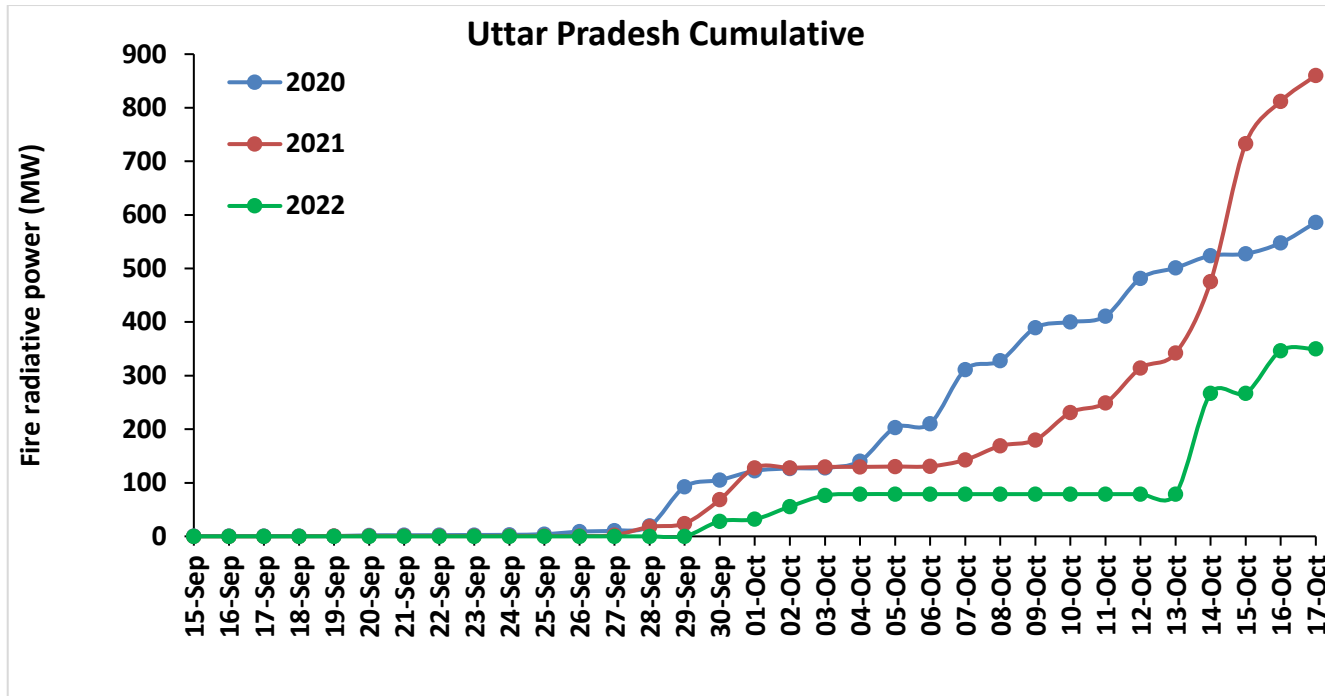


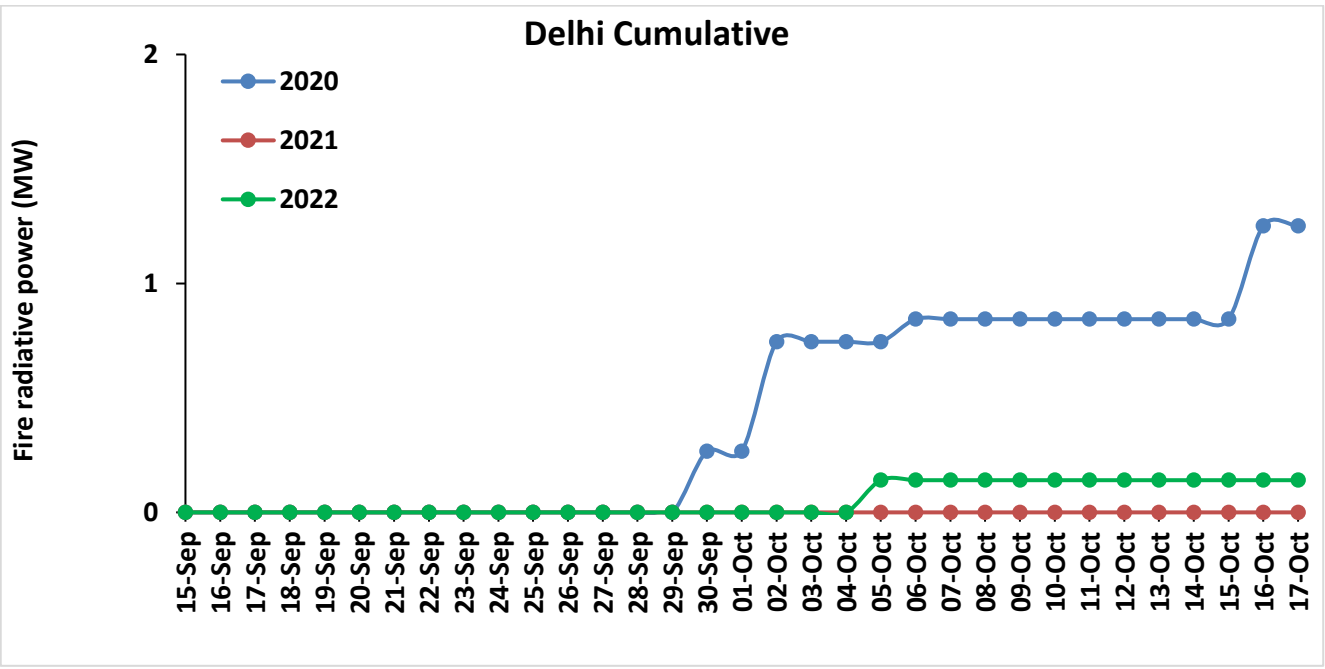
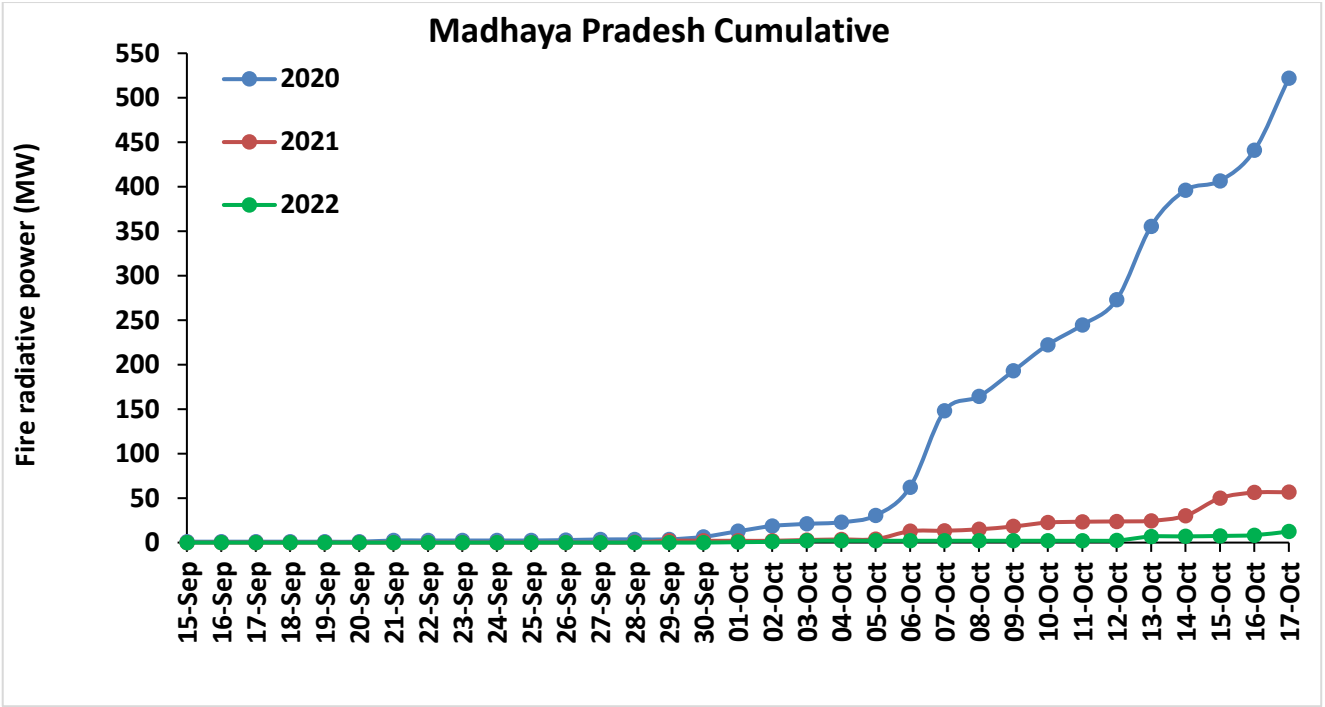




Comparison of residue burning fire power in current year (2022) with previous years (2021 and 2020) for the study States

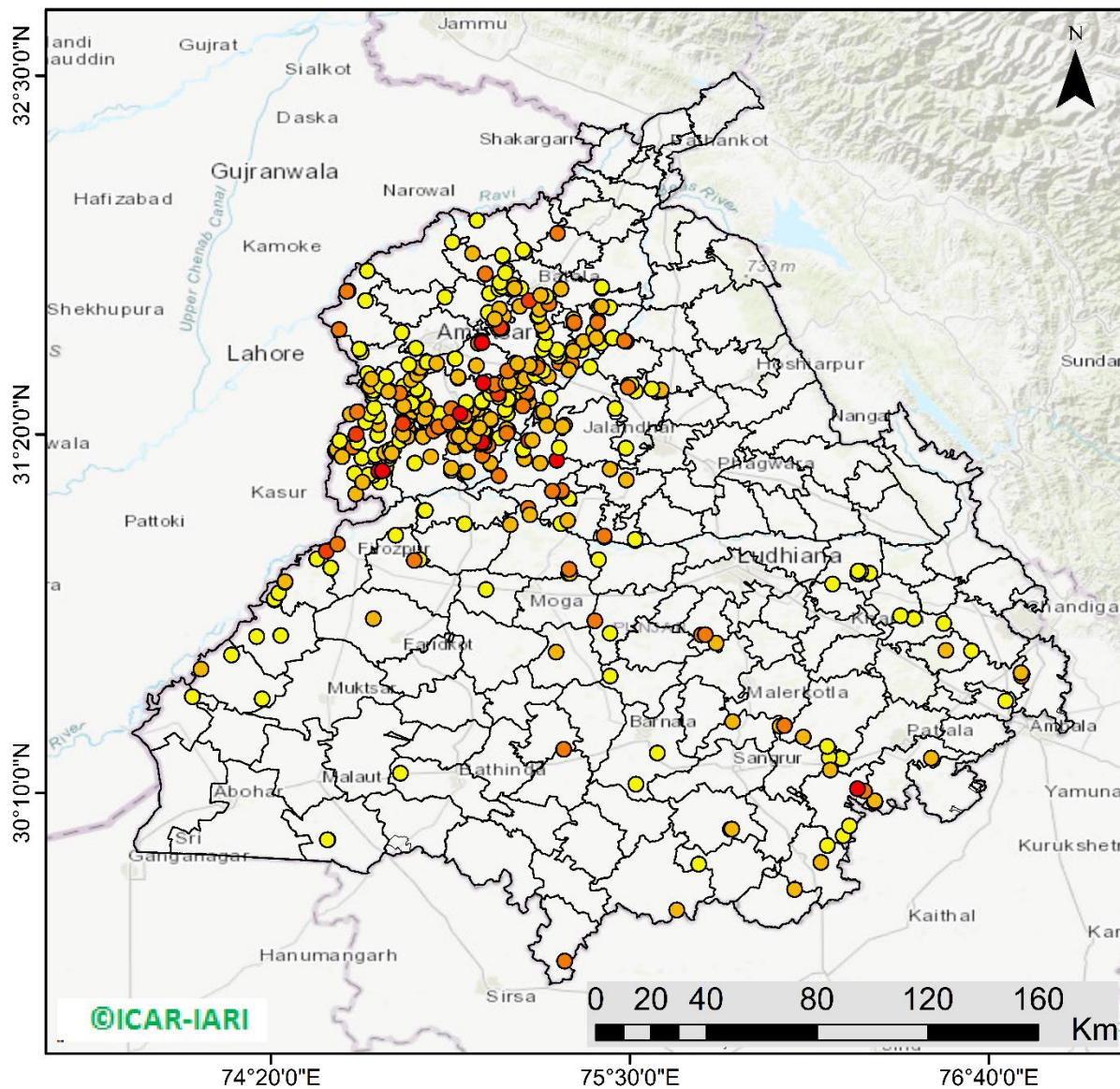






Punjab

RICE RESIDUE BURNING IN PUNJAB



403 burning events detected in Punjab during (17th Oct 2022)

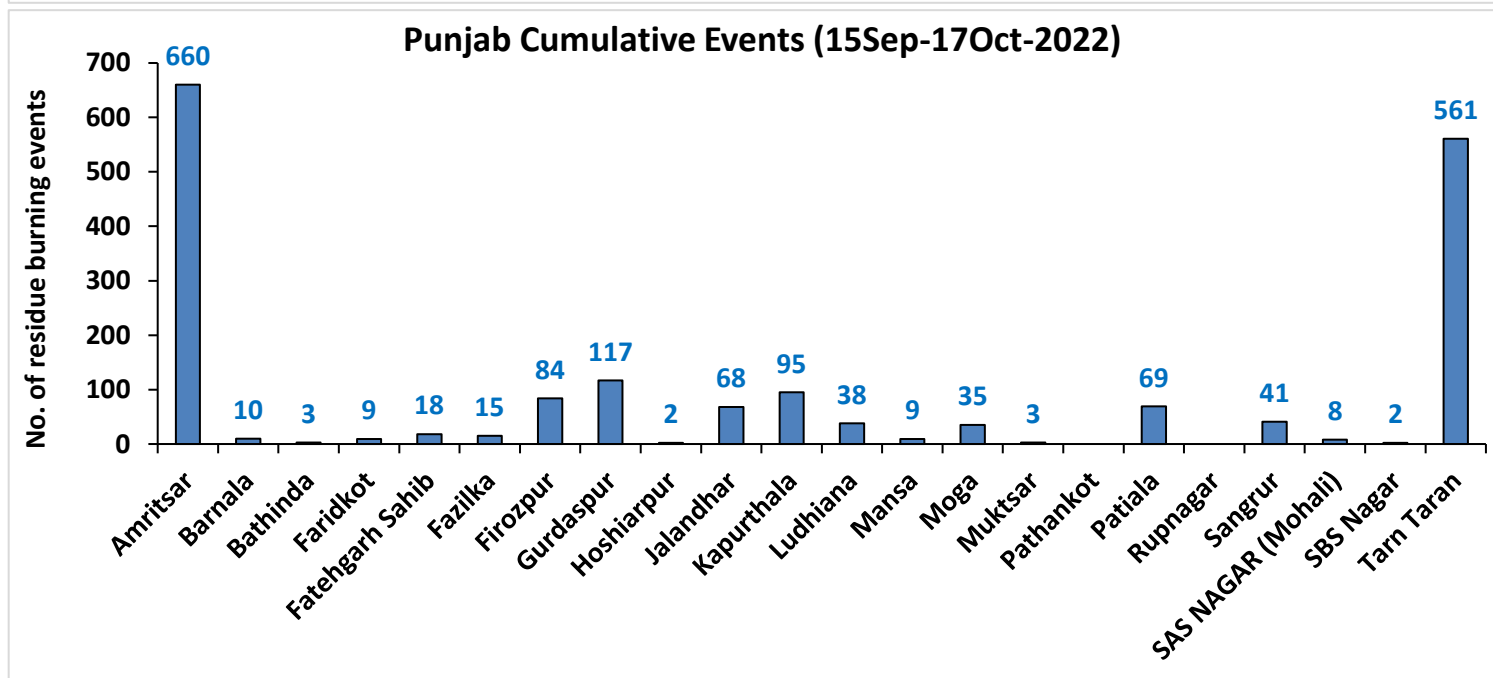
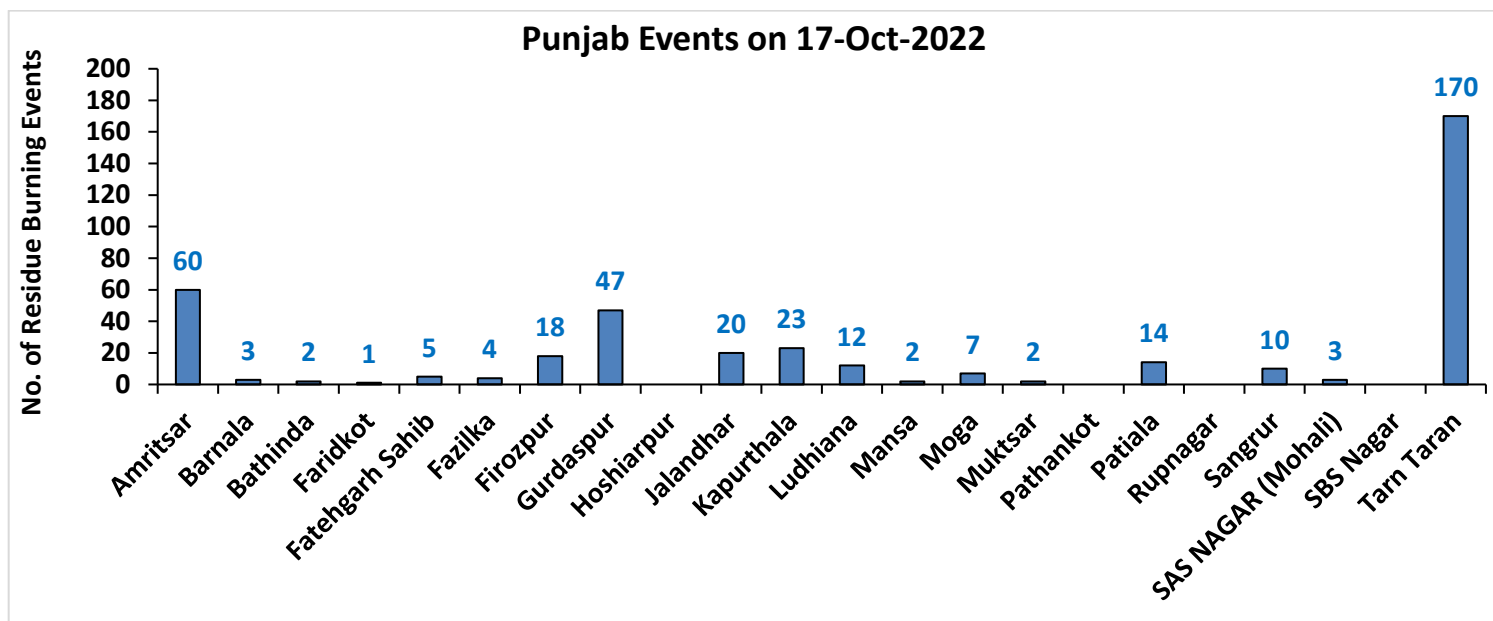
Fire Intensity (W/m²)

- 0 - 5
- 6 - 10
- 11 - 15
- 16 - 20
- >20



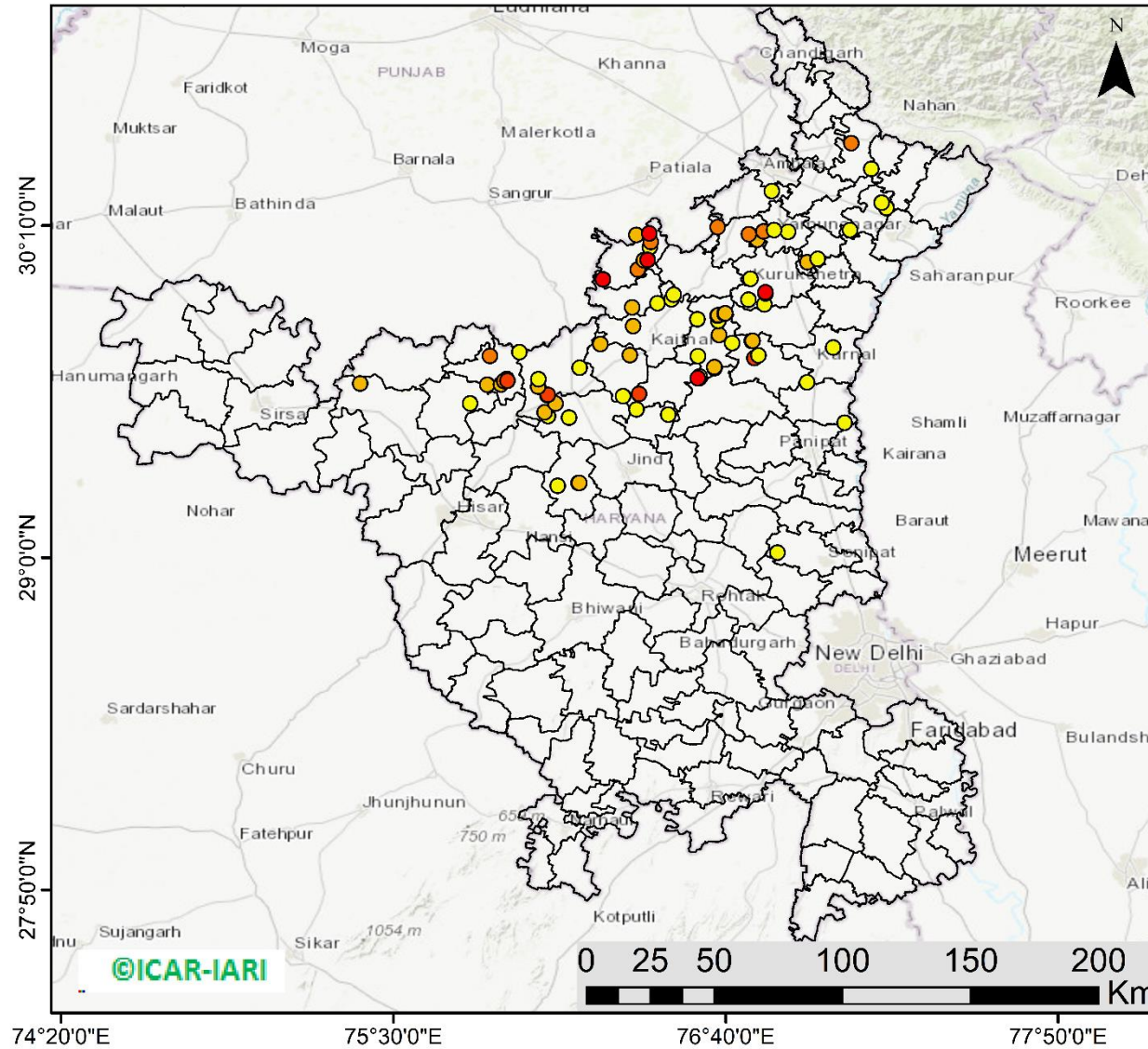
<http://geoportal.icar.gov.in:8080/geoexplorer/composer/>

District-wise cumulative number of residues burning events in Punjab (15Sep- 17Oct-2022)



Haryana

RICE RESIDUE BURNING IN HARYANA



86 burning events detected in Haryana on (17th Oct 2022)

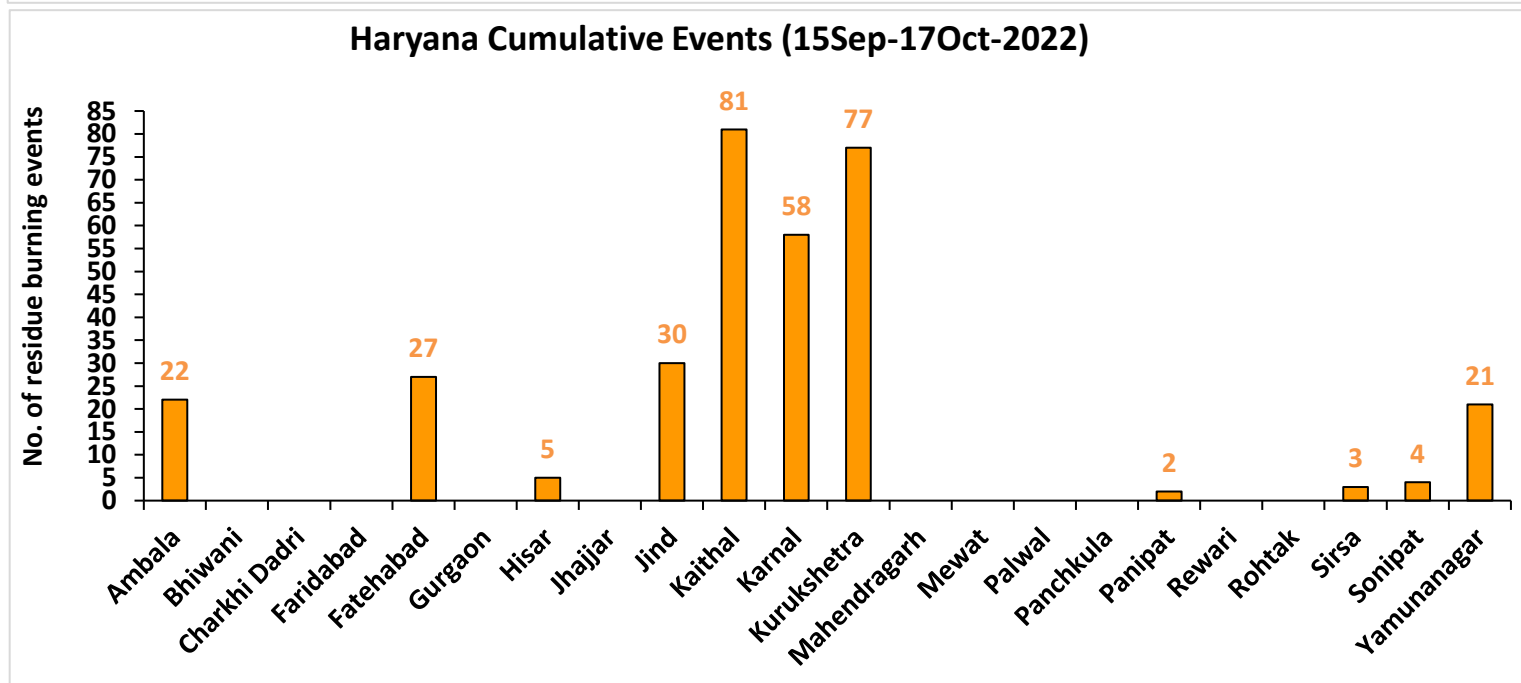
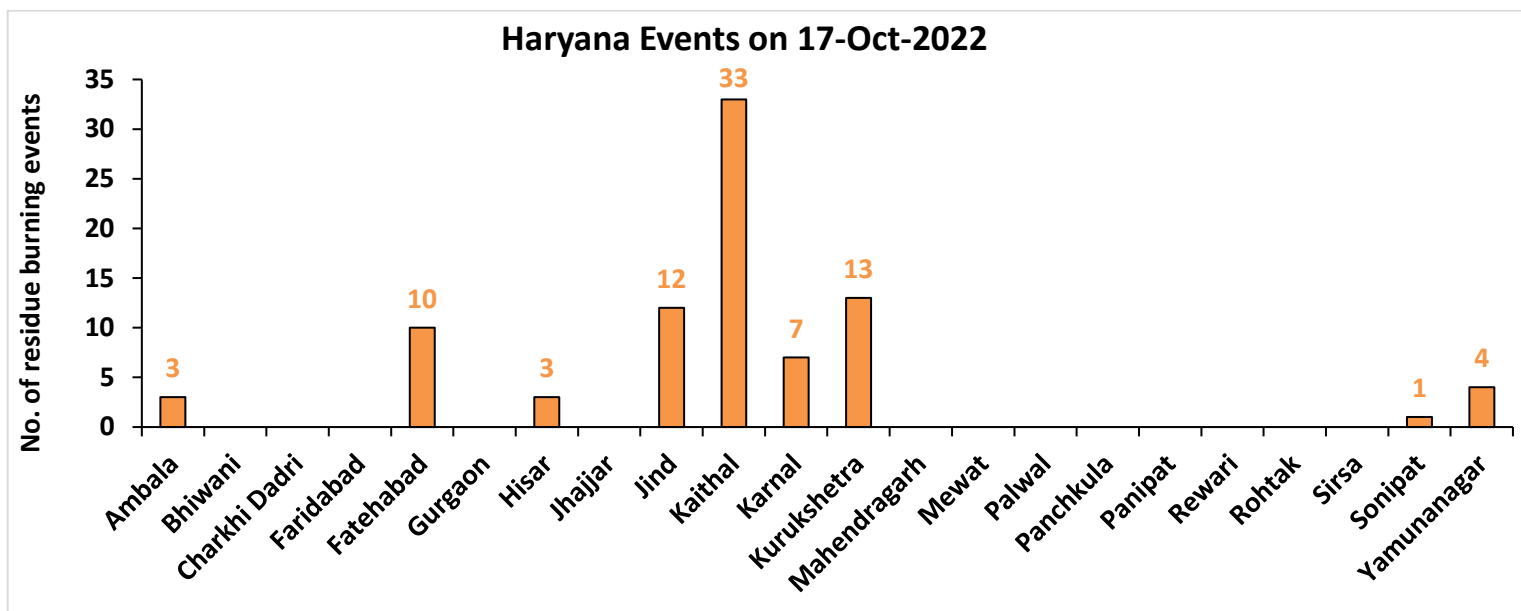
Fire Intensity (W/m²)

- 0 - 5
- 6 - 10
- 11 - 15
- 16 - 20
- >20



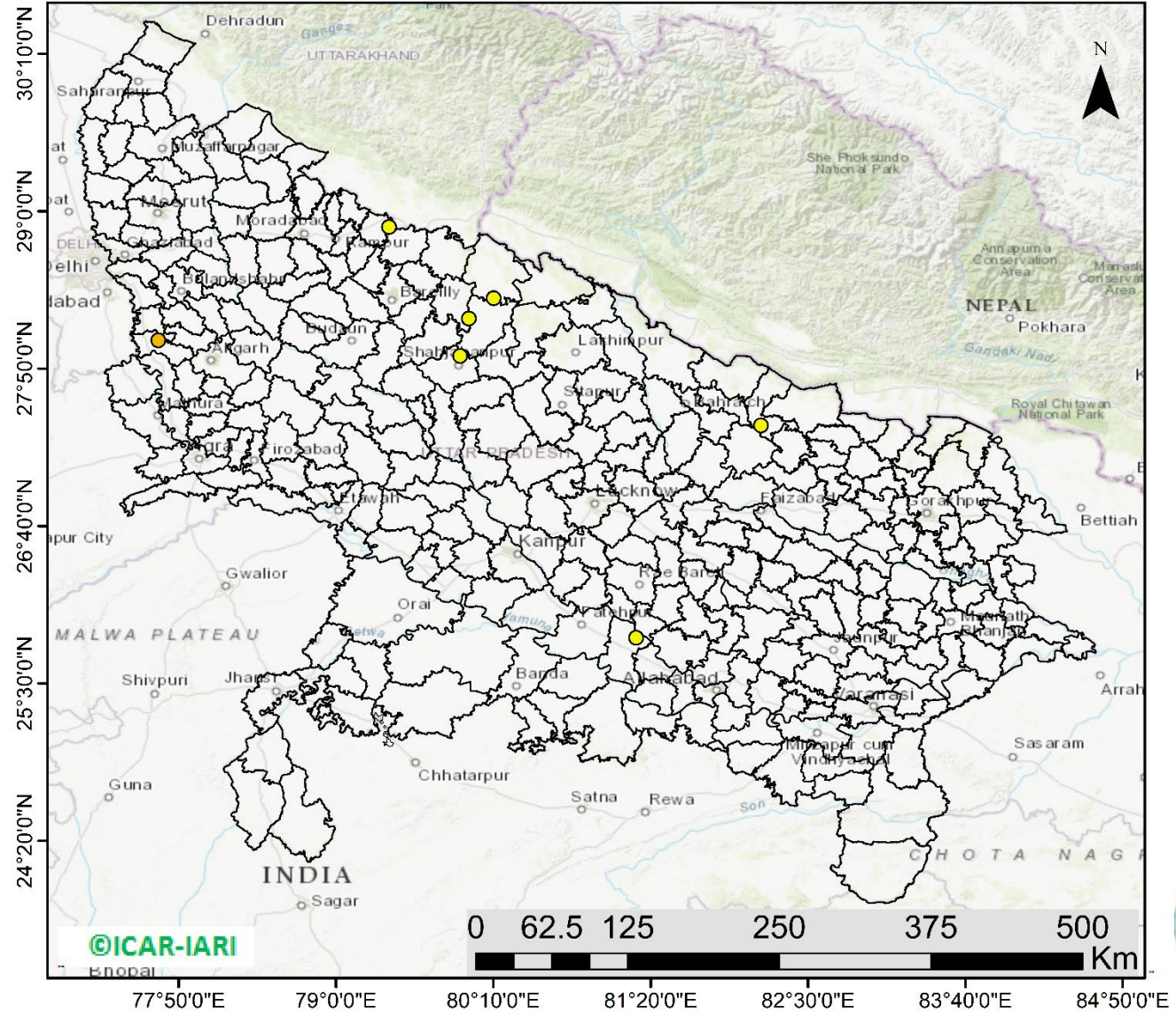
<http://geoportal.icar.gov.in:8080/geoexplorer/composer/>

District-wise cumulative number of residues burning events in Haryana (15Sep- 17Oct-2022)



Uttar Pradesh

RICE RESIDUE BURNING IN UTTAR PRADESH



07 burning events detected in Uttar Pradesh on (17th Oct 2022)

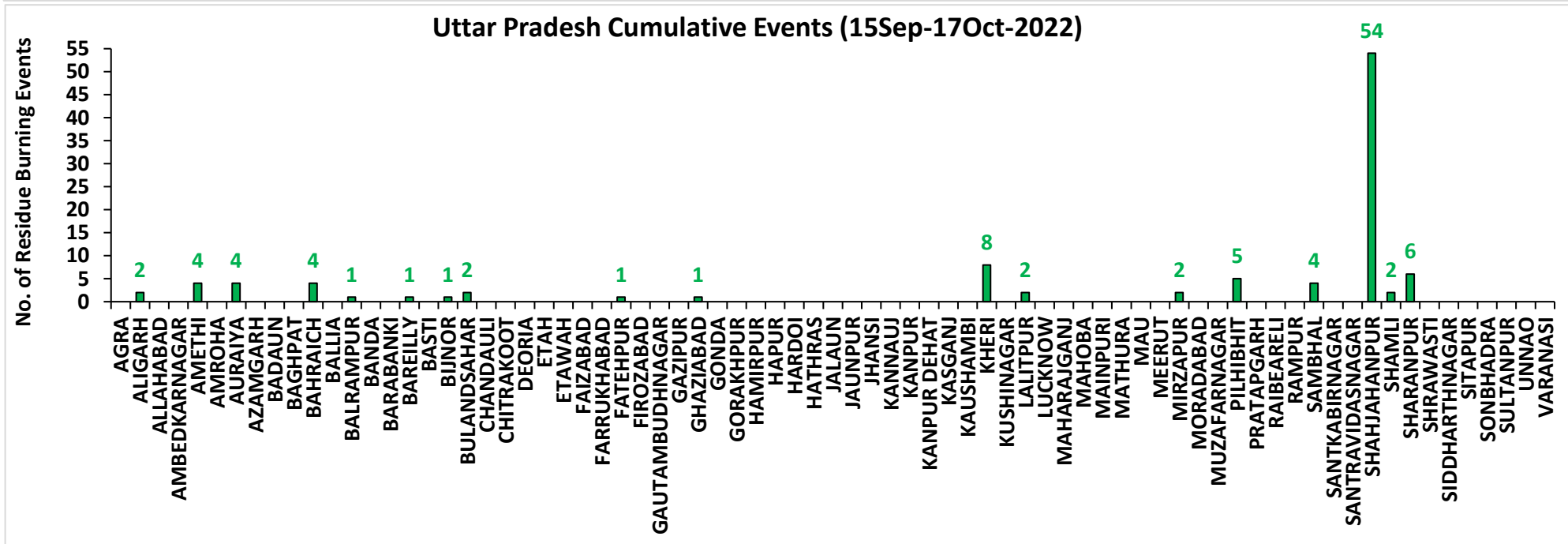
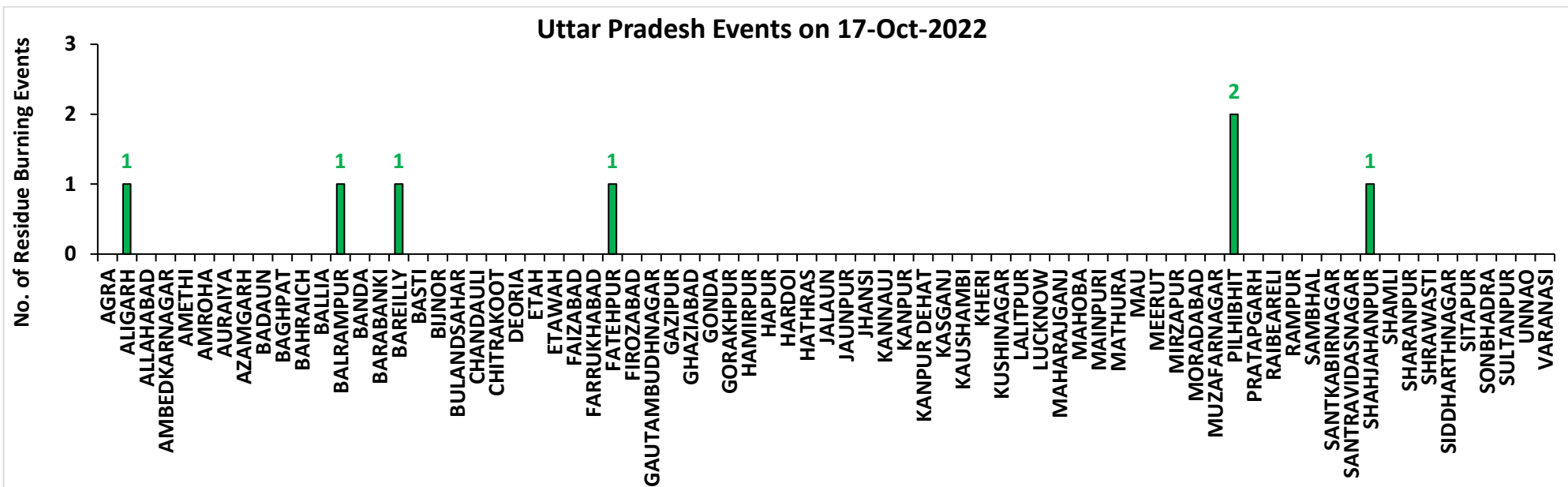
Fire Intensity (W/m2)

- 0 - 5
- 6 - 10
- 11 - 15
- 16 - 20
- >20



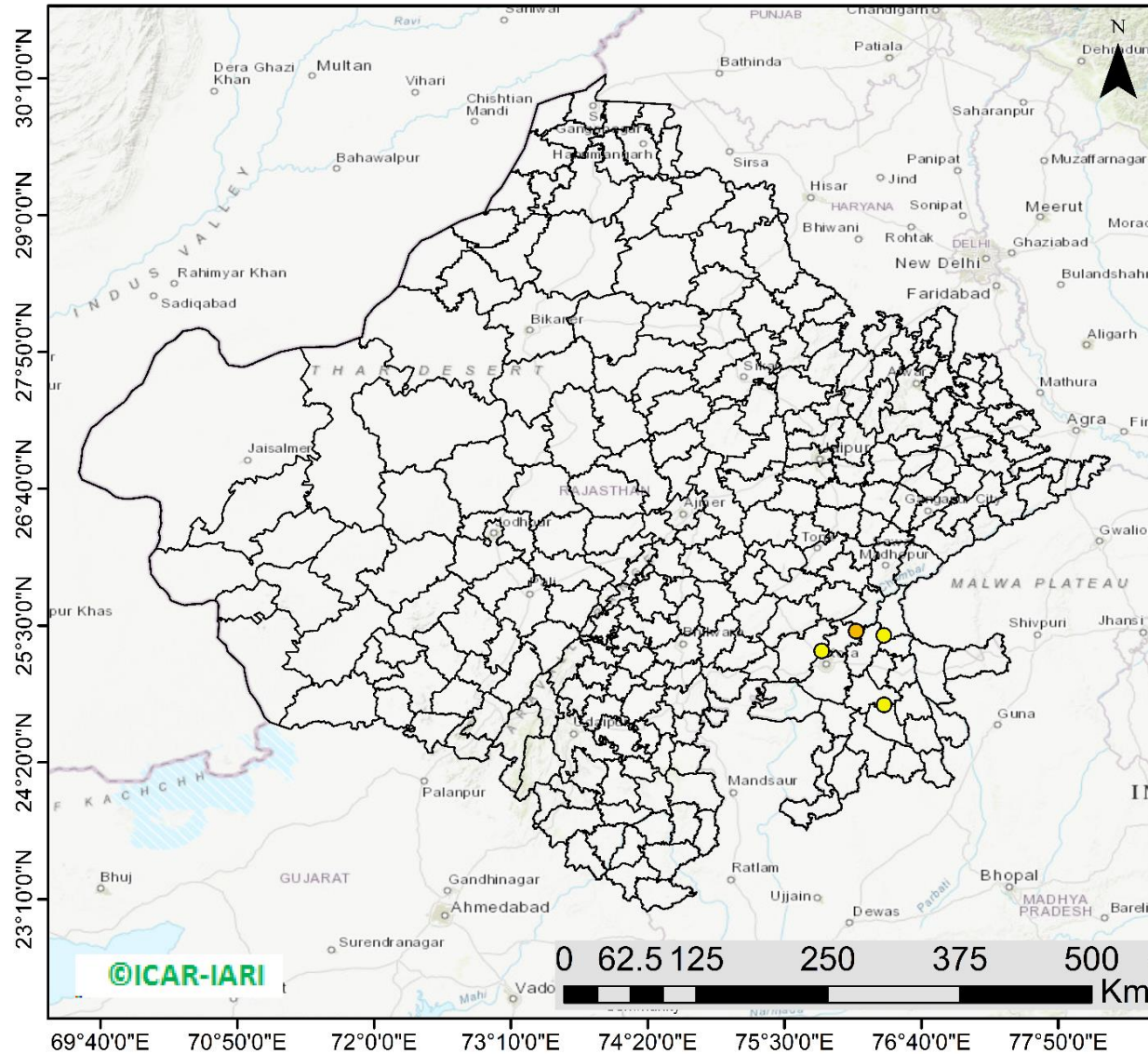
<http://geoportal.icar.gov.in:8080/geoexplorer/composer/>

District-wise cumulative number of residues burning events in Uttar Pradesh (15Sep- 17Oct -2022)



Rajasthan

RICE RESIDUE BURNING IN RAJASTHAN



04 burning events
detected in Rajasthan on
(17th Oct 2022)

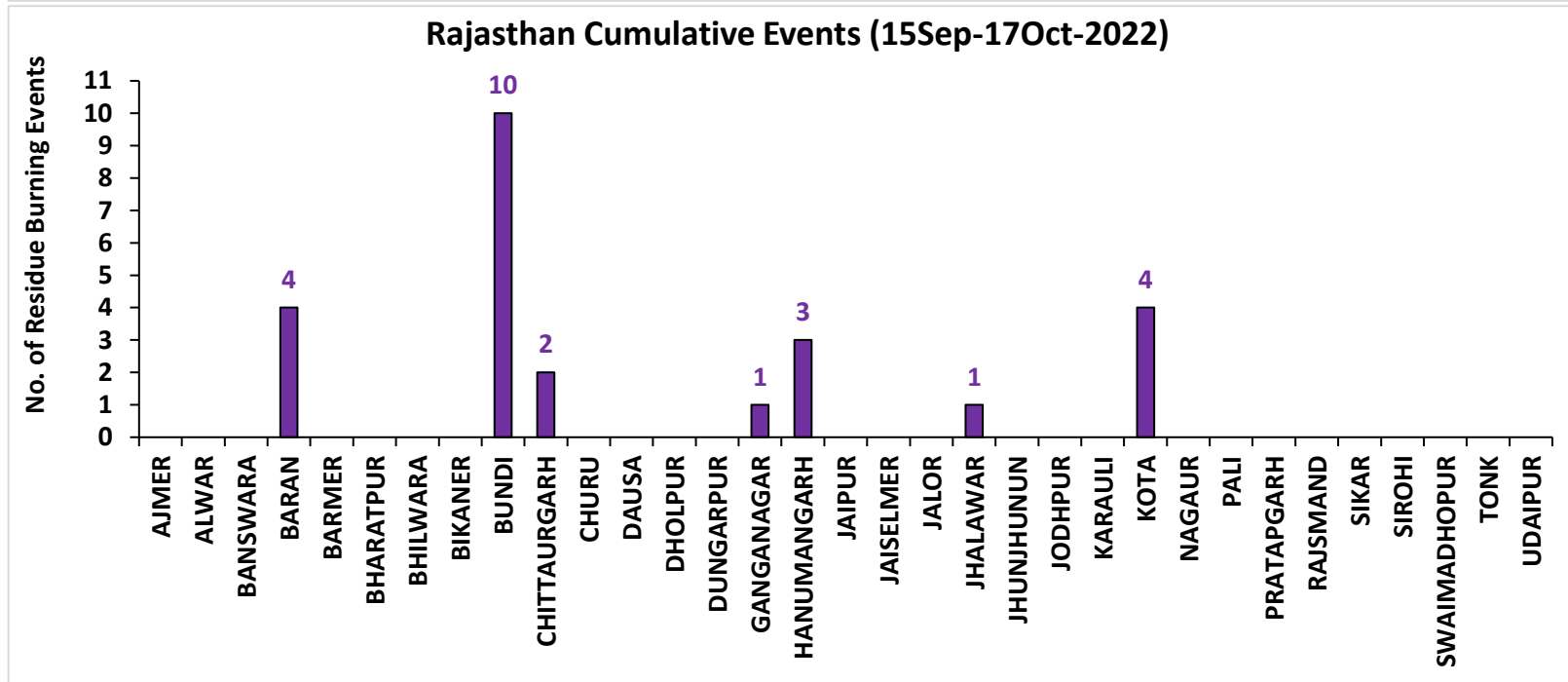
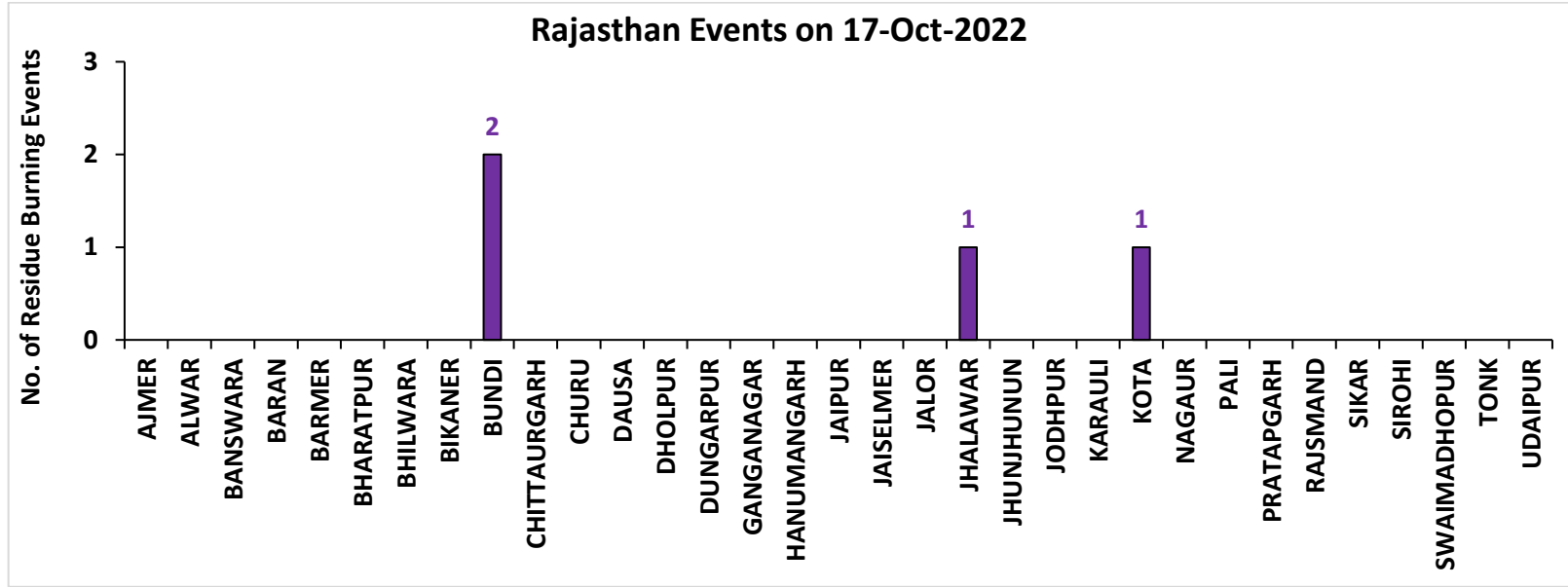
Fire Intensity (W/m²)

- 0 - 5
- 6 - 10
- 11 - 15
- 16 - 20
- >20



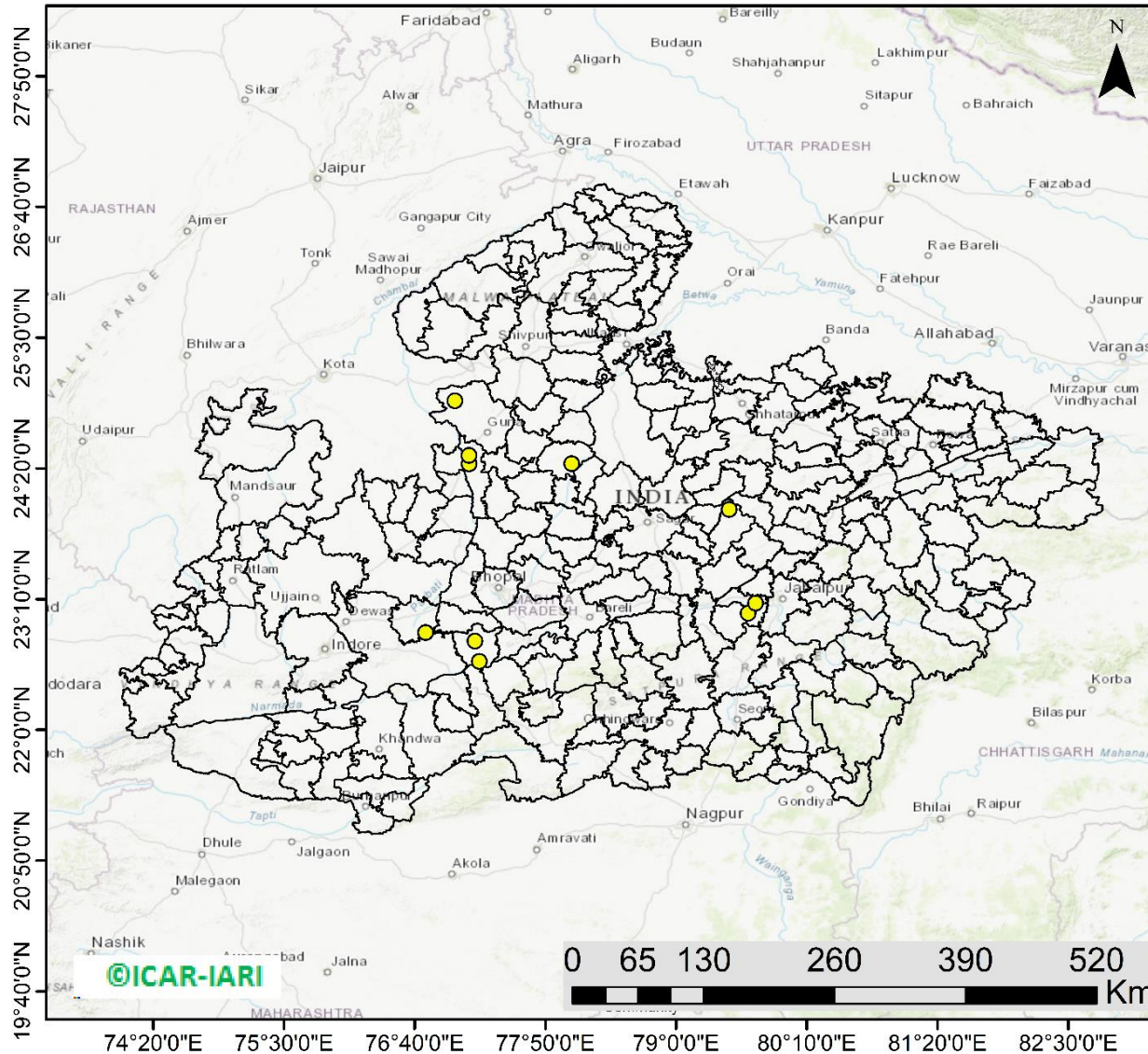
<http://geoportal.icar.gov.in:8080/geoexplorer/composer/>

District-wise cumulative number of residues burning events in Rajasthan (15Sep- 17Oct -2022)



Madhya Pradesh

RICE RESIDUE BURNING IN MADHYA PRADESH



11 burning events detected in MP on (17th Oct 2022)

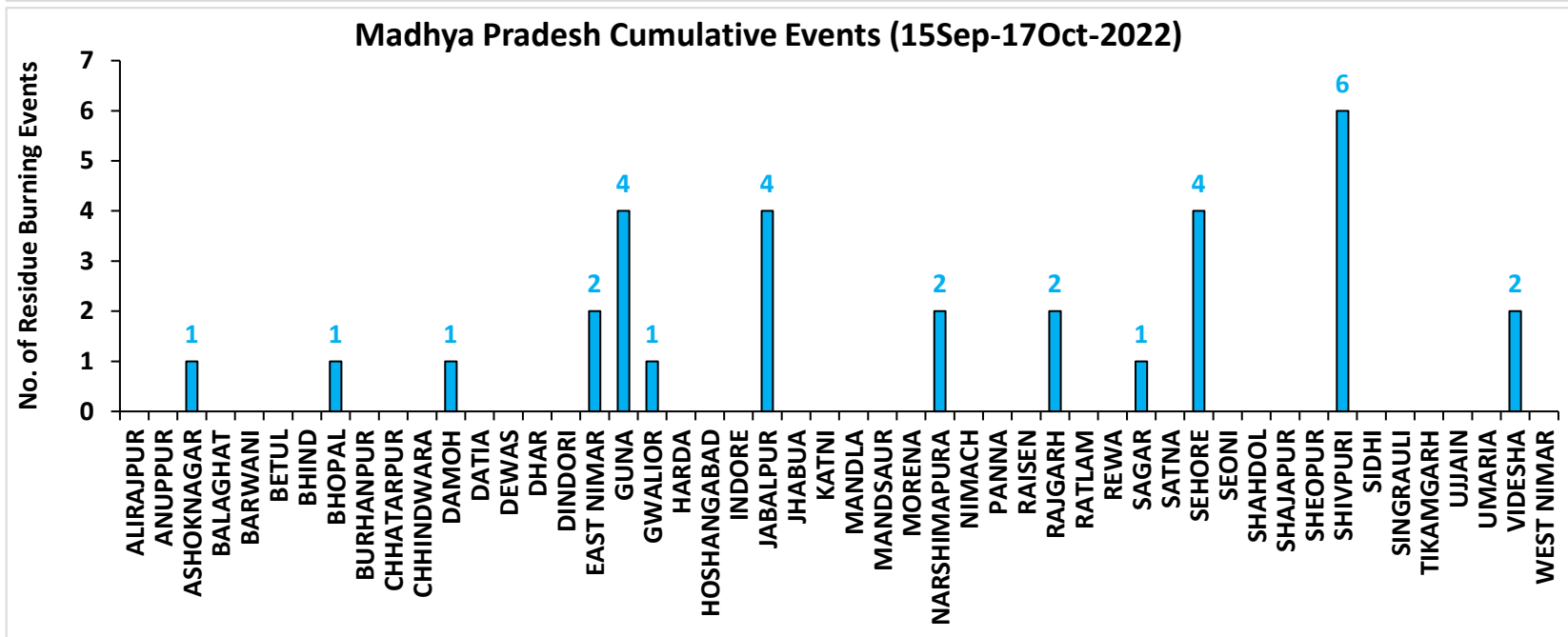
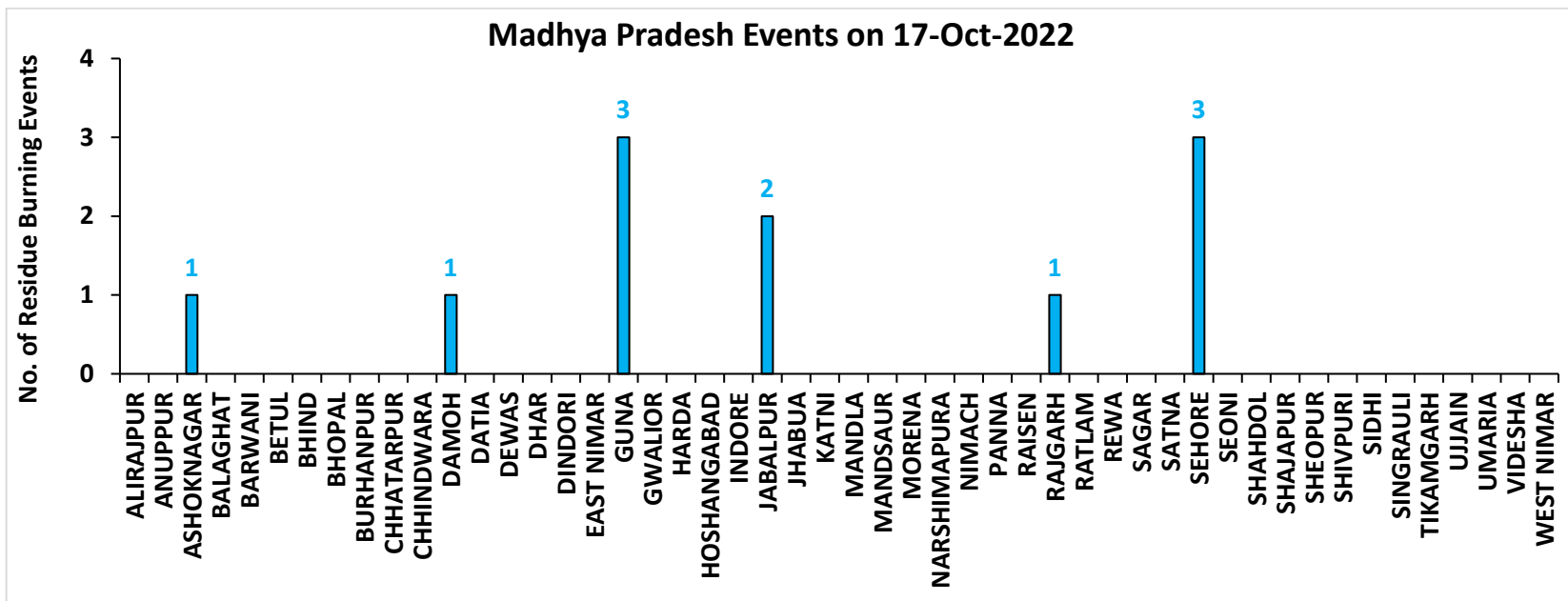
Fire Intensity (W/m²)

- 0 - 5
- 6 - 10
- 11 - 15
- 16 - 20
- >20



<http://geoportal.icar.gov.in:8080/geoexplorer/composer/>

District-wise cumulative number of residues burning events in Madhya Pradesh (15Sep- 17Oct -2022)



District-wise cumulative number of residues burning events detected in 2020 ,2021 and 2022
(Period: 15 September-17 October)

(a) Punjab

District	15 Sep-17 Oct 2022		
	2020	2021	2022
Amritsar	1905	606	660
Barnala	22	13	10
Bathinda	69	8	3
Faridkot	214	70	9
Fatehgarh Sahib	136	101	18
Fazilka	52	31	15
Firozpur	485	79	84
Gurdaspur	460	143	117
Hoshiarpur	52	11	2
Jalandhar	115	77	68
Kapurthala	245	95	95
Ludhiana	158	148	38
Mansa	51	2	9
Moga	58	39	35
Muktsar	29	21	3
Pathankot	3	0	0
Patiala	564	256	69
Rupnagar	29	16	0
Sangrur	147	45	41
SAS NAGAR (Mohali)	45	27	8
SBS Nagar	12	9	2
Tarn Taran	1640	592	561
Total	6491	2389	1847

(b) Haryana

District	15 Sep-17 Oct 2022		
	2020	2021	2022
AMBALA	107	54	22
BHIWANI	0	0	0
CHARKHI DADRI	0	0	0
FARIDABAD	0	1	0
FATEHABAD	56	49	27
GURGAON	0	0	0
HISAR	6	1	5
JHAJJAR	1	0	0
JIND	29	30	30
KAITHAL	171	249	81
KARNAL	267	343	58
KURUKSHETRA	202	205	77
MAHENDRAGARH	0	0	0
MEWAT	0	0	0
PALWAL	11	25	0
PANCHKULA	0	0	0
PANIPAT	9	15	2
REWARI	0	0	0
ROHTAK	0	0	0
SIRSA	9	4	3
SONIPAT	11	5	4
YAMUNANAGAR	46	45	21
Total	925	1026	330

(c) Uttar Pradesh

District	15 Sep-17 Oct 2022										
	2020	2021	2022	GAUTAMBUDHNAGAR	2	7	0	MUZAFARNAGAR	3	2	0
AGRA	1	0	0	GAZIPUR	0	0	0	PILHIBHIT	8	108	5
ALIGARH	28	21	2	GHAZIABAD	3	2	1	PRATAPGARH	0	0	0
ALLAHABAD	0	1	0	GONDA	0	0	0	RAIBEARELI	1	0	0
AMBEDKARNAGAR	0	0	0	GORAKHPUR	0	0	0	RAMPUR	22	50	0
AMETHI	0	1	4	HAMIRPUR	1	0	0	SAMBHAL	6	7	4
AMROHA	1	0	0	HAPUR	3	1	0	SANTKABIRNAGAR	0	0	0
AURAIYA	17	6	4	HARDOI	9	6	0	SANTRAVIDASNAGAR	0	0	0
AZAMGARH	0	0	0	HATHRAS	0	0	0	SHAHJAHANPUR	37	181	54
BADAUN	1	1	0	JALAUN	0	0	0	SHAMLI	19	11	2
BAGHPAT	3	1	0	JAUNPUR	0	0	0	SHARANPUR	22	17	6
BAHRAICH	2	2	4	JHANSI	9	6	0	SHRAWASTI	2	0	0
BALLIA	0	0	0	KANNAUJ	3	1	0	SIDDHARTHANAGAR	0	0	0
BALRAMPUR	1	1	1	KANPUR	0	7	0	SITAPUR	9	9	0
BANDA	0	0	0	KANPUR DEHAT	6	1	0	SONBHADRA	0	0	0
BARABANKI	12	20	0	KASGANJ	1	2	0	SULTANPUR	0	0	0
BAREILLY	10	15	1	KAUSHAMBI	7	3	0	UNNAO	4	0	0
BASTI	2	1	0	KHERI	38	54	8	VARANASI	0	0	0
BIJNOR	4	3	1	KUSHINAGAR	0	0	0	Total	379	620	104
BULANDSAHAR	8	2	2	LALITPUR	0	1	2				
CHANDAULI	0	0	0	LUCKNOW	2	0	0				
CHITRAKOOT	0	0	0	MAHARAJGANJ	0	0	0				
DEORIA	0	0	0	MAHOBA	2	0	0				
ETAH	5	6	0	MAINPURI	6	7	0				
ETAWAH	2	7	0	MATHURA	16	27	0				
FAIZABAD	1	0	0	MAU	0	0	0				
FARRUKHABAD	0	0	0	MEERUT	11	4	0				
FATEHPUR	16	6	1	MIRZAPUR	5	5	2				
FIROZABAD	4	4	0	MORADABAD	4	3	0				

(d) Delhi

District	15 Sep-17 Oct 2022		
	2020	2021	2022
CENTRAL	0	0	0
EAST	0	0	0
NEW DELHI	0	0	0
NORTH	2	0	2
NORTH EAST	0	0	0
NORTH WEST DELHI	1	0	0
SHAHADRA	0	0	0
SOUTH	1	0	0
SOUTH EAST	0	0	0
SOUTH WEST DELHI	0	0	0
WEST DELHI	0	0	0
Total	4	0	2

(e) Rajasthan

District	15 Sep-17 Oct 2022		
	2020	2021	2022
AJMER	0	0	0
ALWAR	1	0	0
BANSWARA	0	0	0
BARAN	82	0	4
BARMER	2	0	0
BHARATPUR	1	0	0
BHILWARA	2	0	0
BIKANER	1	0	0
BUNDI	5	0	10
CHITTAURGARH	0	2	2
CHURU	0	0	0
DAUSA	0	0	0
DHOLPUR	0	0	0
DUNGARPUR	0	0	0
GANGANAGAR	2	0	1
HANUMANGARH	100	24	3
JAIPUR	1	0	0
JAISELMER	2	0	0
JALOR	0	0	0
JHALAWAR	1	0	1
JHUNJHUNUN	1	0	0
JODHPUR	1	0	0
KARAULI	1	0	0
KOTA	24	1	4
NAGAUR	0	0	0
PALI	1	0	0
PRATAPGARH	4	0	0
RAJSMAND	0	0	0
SIKAR	0	0	0
SIROHI	1	0	0
SWAIMADHOPUR	6	0	0
TONK	1	0	0
UDAIPUR	0	0	0
Total	240	27	25

(f) Madhya Pradesh

District	15 Sep-17 Oct 2022						
	2020	2021	2022				
				PANNA	2	0	0
ALIRAJPUR	0	0	0	RAISEN	12	1	0
ANUPPUR	0	0	0	RAJGARH	7	1	3
ASHOKNAGAR	11	1	1	RATLAM	0	0	0
BALAGHAT	0	0	0	REWA	3	0	0
BARWANI	0	0	0	SAGAR	13	6	1
BETUL	0	0	0	SATNA	3	6	0
BHIND	6	1	0	SEHORE	5	3	4
BHOPAL	6	5	1	SEONI	15	5	0
BURHANPUR	0	0	0	SHAHDOL	0	0	0
CHHATARPUR	4	0	0	SHAJAPUR	5	0	0
CHHINDWARA	1	3	0	SHEOPUR	14	0	0
DAMOH	19	4	1	SHIVPURI	8	0	6
DATIA	50	8	0	SIDHI	0	0	0
DEWAS	3	0	0	SINGRAULI	0	0	0
DHAR	20	0	0	TIKAMGARH	1	0	0
DINDORI	0	0	0	UJJAIN	5	0	0
EAST NIMAR	2	1	2	UMARIA	0	0	0
GUNA	15	1	4	VIDESHA	55	8	2
GWALIOR	34	0	1	WEST NIMAR	6	0	0
HARDA	8	9	0	Total	384	84	31
HOSHANGABAD	20	8	0				
INDORE	2	0	0				
JABALPUR	7	4	3				
JHABUA	0	0	0				
KATNI	1	0	0				
MANDLA	0	0	0				
MANDSAUR	3	0	0				
MORENA	15	5	0				
NARSHIMAPURA	3	4	2				
NIMACH	0	0	0				

State-wise and date-wise number of paddy residue burning events detected in 2020, 2021 and 2022
(Period: 15 September - 17 October 2022)

Number of Paddy Residue Burning Events Detected

	Punjab			Haryana			Uttar Pradesh			Delhi			Rajasthan			Madhya Pradesh		
	2020	2021	2022	2020	2021	2022	2020	2021	2022	2020	2021	2022	2020	2021	2022	2020	2021	2022
15-Sep	5	0	14	2	0	0	1	0	0	0	0	0	1	0	0	2	0	0
16-Sep	0	2	0	1	0	0	0	0	0	0	0	0	0	0	0	0	0	0
17-Sep	5	0	1	3	0	0	0	0	0	0	0	0	0	0	0	0	0	0
18-Sep	17	9	7	0	0	1	0	1	0	0	0	0	0	0	0	0	0	0
19-Sep	30	5	18	2	0	0	0	1	0	0	0	0	0	0	0	0	0	0
20-Sep	67	8	10	6	0	0	2	0	0	0	0	0	0	0	0	0	0	0
21-Sep	54	0	56	2	0	0	1	0	0	0	0	0	1	0	1	2	0	0
22-Sep	34	0	30	1	0	0	1	0	0	0	0	0	0	0	0	0	0	0
23-Sep	49	0	3	0	0	0	1	0	0	0	0	0	1	0	0	0	0	0
24-Sep	78	5	0	0	0	0	1	1	0	0	0	0	0	0	0	0	0	0
25-Sep	184	11	0	11	0	0	5	0	0	0	0	0	1	0	0	0	0	0
26-Sep	190	19	0	5	0	0	8	0	0	0	0	0	1	0	0	2	0	0
27-Sep	78	37	0	8	0	0	4	1	0	0	0	0	0	0	0	1	0	0
28-Sep	55	28	0	6	1	0	1	6	0	0	0	0	0	0	0	1	1	0
29-Sep	63	64	0	9	4	0	6	10	0	0	0	0	3	0	0	0	4	0
30-Sep	116	27	8	22	2	0	13	13	10	1	0	0	1	0	0	5	0	0
01-Oct	165	13	45	15	4	1	7	13	3	0	0	0	4	1	1	13	0	1
02-Oct	141	0	83	30	2	7	12	0	36	1	0	0	7	0	3	12	0	1
03-Oct	110	9	75	8	6	8	4	3	29	0	0	0	9	0	2	5	1	5
04-Oct	162	23	65	29	2	7	8	0	2	0	0	0	15	0	0	4	2	0
05-Oct	161	18	130	17	3	24	14	2	0	0	0	2	14	0	1	13	1	0
06-Oct	171	42	85	30	0	26	12	1	0	1	0	0	16	0	0	37	1	0
07-Oct	197	72	62	32	11	6	41	13	0	0	0	0	14	1	1	31	1	0
08-Oct	95	108	19	29	27	0	25	11	0	0	0	0	11	0	0	17	2	0

09-Oct	121	114	3	20	39	1	15	20	0	0	0	0	12	0	0	15	4	0
10-Oct	232	150	4	33	95	2	9	54	0	0	0	0	14	1	0	18	10	0
11-Oct	377	64	45	90	51	0	23	28	0	0	0	0	21	7	1	32	2	0
12-Oct	388	97	104	69	51	4	46	23	0	0	0	0	24	1	2	44	1	1
13-Oct	266	132	120	47	91	15	36	42	0	0	0	0	7	5	2	21	2	7
14-Oct	605	229	82	69	98	30	9	68	11	0	0	0	16	1	1	15	11	1
15-Oct	449	660	169	106	363	36	15	149	0	0	0	0	9	8	2	8	27	2
16-Oct	654	429	206	80	176	76	21	121	6	1	0	0	12	2	4	23	13	2
17-Oct	1172	14	403	143	0	86	38	39	7	0	0	0	26	0	4	63	1	11
Total	6491	2389	1847	925	1026	330	379	620	104	4	0	2	240	27	25	384	84	31

Details of residue burning events in Punjab on 17-Oct-2022

S. No.	District	Tehsil / Block	Satellite	Latitude	Longitude	ACQ_TIME	Day / Night	Fire Power (W/m ²)
1	AMRITSAR	AJNALA	S-NPP	31.86490	74.64660	13:41:45	D	1.50
2	AMRITSAR	AJNALA	S-NPP	31.95810	74.92290	13:41:45	D	1.80
3	AMRITSAR	ATTARI	AQUA	31.56400	74.87200	13:57:39	D	6.70
4	AMRITSAR	ATTARI	S-NPP	31.56700	74.83930	13:41:45	D	3.60
5	AMRITSAR	ATTARI	S-NPP	31.56750	74.84070	13:41:45	D	3.00
6	AMRITSAR	ATTARI	S-NPP	31.60040	74.62660	13:41:45	D	3.00
7	AMRITSAR	ATTARI	S-NPP	31.61030	74.62030	13:41:45	D	3.20
8	AMRITSAR	CHOGAWAN	AQUA	31.79800	74.58000	13:57:39	D	11.10
9	AMRITSAR	CHOGAWAN	S-NPP	31.66420	74.75850	13:41:45	D	1.60
10	AMRITSAR	CHOGAWAN	S-NPP	31.67360	74.55500	13:41:45	D	10.40
11	AMRITSAR	CHOGAWAN	S-NPP	31.76780	74.64070	13:41:45	D	2.50
12	AMRITSAR	CHOGAWAN	S-NPP	31.79960	74.58430	13:41:45	D	5.10
13	AMRITSAR	HARSHA CHHINA	S-NPP	31.77940	74.89850	13:41:45	D	2.40
14	AMRITSAR	JANDIALA GURU	AQUA	31.53900	75.10200	13:57:39	D	12.70
15	AMRITSAR	JANDIALA GURU	AQUA	31.55600	75.00100	13:57:39	D	6.60
16	AMRITSAR	JANDIALA GURU	AQUA	31.56300	75.13500	13:57:39	D	6.50
17	AMRITSAR	JANDIALA GURU	AQUA	31.62900	75.00700	13:57:39	D	10.50
18	AMRITSAR	JANDIALA GURU	AQUA	31.63100	75.01900	13:57:39	D	20.10
19	AMRITSAR	JANDIALA GURU	S-NPP	31.51570	74.94180	13:41:45	D	12.80
20	AMRITSAR	JANDIALA GURU	S-NPP	31.55570	75.00070	13:41:45	D	5.20
21	AMRITSAR	JANDIALA GURU	S-NPP	31.57900	74.93070	13:41:45	D	2.60
22	AMRITSAR	JANDIALA GURU	S-NPP	31.57910	74.93230	13:41:45	D	2.40
23	AMRITSAR	JANDIALA GURU	S-NPP	31.63670	75.01660	13:41:45	D	9.90
24	AMRITSAR	MAJITHA	AQUA	31.67800	75.08400	13:57:39	D	10.10
25	AMRITSAR	MAJITHA	AQUA	31.68000	75.07800	13:57:39	D	15.50
26	AMRITSAR	MAJITHA	AQUA	31.70800	75.06100	13:57:39	D	6.50
27	AMRITSAR	MAJITHA	S-NPP	31.71720	75.08970	13:41:45	D	5.30
28	AMRITSAR	MAJITHA	S-NPP	31.72900	75.03990	13:41:45	D	2.10
29	AMRITSAR	MAJITHA	S-NPP	31.74090	75.07600	13:41:45	D	5.50
30	AMRITSAR	MAJITHA	S-NPP	31.74920	75.14160	13:41:45	D	7.70

31	AMRITSAR	MAJITHA	S-NPP	31.79100	75.04340	13:41:45	D	4.50
32	AMRITSAR	MAJITHA	S-NPP	31.80590	75.07430	13:41:45	D	4.20
33	AMRITSAR	RAYYA	AQUA	31.54300	75.30100	13:57:39	D	7.00
34	AMRITSAR	RAYYA	AQUA	31.54900	75.18700	13:57:39	D	6.60
35	AMRITSAR	RAYYA	AQUA	31.55100	75.19900	13:57:39	D	10.90
36	AMRITSAR	RAYYA	AQUA	31.55700	75.17300	13:57:39	D	8.40
37	AMRITSAR	RAYYA	AQUA	31.60400	75.31600	13:57:39	D	7.90
38	AMRITSAR	RAYYA	S-NPP	31.51460	75.15980	13:41:45	D	6.30
39	AMRITSAR	RAYYA	S-NPP	31.52040	75.23550	13:41:45	D	6.80
40	AMRITSAR	RAYYA	S-NPP	31.52580	75.19140	13:41:45	D	3.10
41	AMRITSAR	RAYYA	S-NPP	31.54000	75.21770	13:41:45	D	2.40
42	AMRITSAR	RAYYA	S-NPP	31.55070	75.30270	13:41:45	D	7.40
43	AMRITSAR	RAYYA	S-NPP	31.55430	75.30200	13:41:45	D	7.40
44	AMRITSAR	RAYYA	S-NPP	31.55960	75.19990	13:41:45	D	4.90
45	AMRITSAR	RAYYA	S-NPP	31.56130	75.18520	13:41:45	D	3.00
46	AMRITSAR	RAYYA	S-NPP	31.56260	75.31030	13:41:45	D	11.90
47	AMRITSAR	RAYYA	S-NPP	31.56500	75.27120	13:41:45	D	11.10
48	AMRITSAR	RAYYA	S-NPP	31.58640	75.26750	13:41:45	D	3.30
49	AMRITSAR	RAYYA	S-NPP	31.59650	75.26100	13:41:45	D	4.20
50	AMRITSAR	RAYYA	S-NPP	31.60670	75.34160	13:41:45	D	3.60
51	AMRITSAR	RAYYA	S-NPP	31.60780	75.26380	13:41:45	D	3.40
52	AMRITSAR	RAYYA	S-NPP	31.60880	75.21540	13:41:45	D	4.50
53	AMRITSAR	RAYYA	S-NPP	31.61440	75.31600	13:41:45	D	7.00
54	AMRITSAR	RAYYA	S-NPP	31.62670	75.22380	13:41:45	D	3.00
55	AMRITSAR	RAYYA	S-NPP	31.63300	75.34680	13:41:45	D	2.50
56	AMRITSAR	RAYYA	S-NPP	31.66350	75.22710	13:41:45	D	2.30
57	AMRITSAR	TARSIKKA	AQUA	31.67700	75.07200	13:57:39	D	7.00
58	AMRITSAR	TARSIKKA	S-NPP	31.56480	75.12720	13:41:45	D	2.40
59	AMRITSAR	TARSIKKA	S-NPP	31.68730	75.21340	13:41:45	D	6.80
60	AMRITSAR	VERKA	S-NPP	31.61300	74.80470	13:41:45	D	1.90
61	BARNALA	BARNALA	S-NPP	30.19470	75.51950	13:41:45	D	2.80
62	BARNALA	BARNALA	S-NPP	30.29630	75.58920	13:41:45	D	2.00
63	BARNALA	MAHAL KALAN	S-NPP	30.54660	75.43600	13:41:45	D	3.00

64	BATHINDA	BATHINDA	S-NPP	30.23020	74.75380	13:41:45	D	2.50
65	BATHINDA	RAMPURA	AQUA	30.30800	75.28500	13:57:39	D	10.20
66	FARIDKOT	FARIDKOT	S-NPP	30.73310	74.66630	13:41:45	D	5.60
67	FATEHGARH SAHIB	BASSI PATHANAN	S-NPP	30.71770	76.52050	13:41:45	D	3.30
68	FATEHGARH SAHIB	BASSI PATHANAN	S-NPP	30.73280	76.42330	13:41:45	D	4.30
69	FATEHGARH SAHIB	KHAMANON	S-NPP	30.74280	76.37990	13:41:45	D	4.60
70	FATEHGARH SAHIB	KHERA	AQUA	30.63000	76.52700	13:57:39	D	6.40
71	FATEHGARH SAHIB	KHERA	S-NPP	30.62840	76.61040	13:41:45	D	3.00
72	FAZILKA	FAZILKA	S-NPP	30.47910	74.07790	13:41:45	D	3.20
73	FAZILKA	JALALABAD	AQUA	30.56900	74.10600	13:57:39	D	6.10
74	FAZILKA	JALALABAD	S-NPP	30.47200	74.30440	13:41:45	D	3.40
75	FAZILKA	JALALABAD	S-NPP	30.61500	74.20500	13:41:45	D	3.00
76	FIROZPUR	FIROZPUR	S-NPP	30.95280	74.51320	13:41:45	D	15.30
77	FIROZPUR	FIROZPUR	S-NPP	30.97530	74.54950	13:41:45	D	10.20
78	FIROZPUR	GHALL KHURD	AQUA	30.92300	74.79900	13:57:39	D	12.50
79	FIROZPUR	GHALL KHURD	S-NPP	30.92560	74.81630	13:41:45	D	2.60
80	FIROZPUR	GHALL KHURD	S-NPP	31.00430	74.73860	13:41:45	D	3.90
81	FIROZPUR	GURUHAR SAHAI	S-NPP	30.67490	74.28660	13:41:45	D	4.50
82	FIROZPUR	GURUHAR SAHAI	S-NPP	30.67850	74.36490	13:41:45	D	1.90
83	FIROZPUR	MAKHU	S-NPP	31.08480	74.83060	13:41:45	D	2.70
84	FIROZPUR	MAKHU	S-NPP	31.08540	74.83500	13:41:45	D	3.20
85	FIROZPUR	MAMDOT	AQUA	30.85400	74.37900	13:57:39	D	5.60
86	FIROZPUR	MAMDOT	S-NPP	30.79390	74.34470	13:41:45	D	5.00
87	FIROZPUR	MAMDOT	S-NPP	30.79730	74.34410	13:41:45	D	5.00
88	FIROZPUR	MAMDOT	S-NPP	30.81680	74.35820	13:41:45	D	4.80
89	FIROZPUR	MAMDOT	S-NPP	30.85120	74.37850	13:41:45	D	2.70
90	FIROZPUR	MAMDOT	S-NPP	30.89830	74.52750	13:41:45	D	3.40
91	FIROZPUR	MAMDOT	S-NPP	30.92740	74.48210	13:41:45	D	2.30
92	FIROZPUR	ZIRA	S-NPP	31.04110	74.96160	13:41:45	D	3.70
93	FIROZPUR	ZIRA	S-NPP	31.04120	74.96280	13:41:45	D	3.20
94	GURDASPUR	BATALA	AQUA	31.78500	75.21000	13:57:39	D	7.90
95	GURDASPUR	BATALA	AQUA	31.80600	75.27600	13:57:39	D	5.90
96	GURDASPUR	BATALA	S-NPP	31.71650	75.20020	13:41:45	D	1.70

97	GURDASPUR	BATALA	S-NPP	31.71870	75.20310	13:41:45	D	3.30
98	GURDASPUR	BATALA	S-NPP	31.73910	75.20600	13:41:45	D	8.40
99	GURDASPUR	BATALA	S-NPP	31.75750	75.23670	13:41:45	D	13.70
100	GURDASPUR	BATALA	S-NPP	31.76760	75.17210	13:41:45	D	19.10
101	GURDASPUR	BATALA	S-NPP	31.78190	75.22770	13:41:45	D	2.10
102	GURDASPUR	DERA BABA NANAK	S-NPP	31.91160	75.08650	13:41:45	D	2.80
103	GURDASPUR	DERA BABA NANAK	S-NPP	31.91520	75.08590	13:41:45	D	2.80
104	GURDASPUR	DERA BABA NANAK	S-NPP	31.92620	75.15860	13:41:45	D	3.10
105	GURDASPUR	DERA BABA NANAK	S-NPP	31.93280	75.15260	13:41:45	D	4.30
106	GURDASPUR	DERA BABA NANAK	S-NPP	32.02900	75.00290	13:41:45	D	4.10
107	GURDASPUR	DHARIWAL	S-NPP	31.98690	75.26490	13:41:45	D	11.30
108	GURDASPUR	FATEHGARH CHURIAN	AQUA	31.80800	75.12500	13:57:39	D	8.00
109	GURDASPUR	FATEHGARH CHURIAN	AQUA	31.85500	75.03000	13:57:39	D	11.90
110	GURDASPUR	FATEHGARH CHURIAN	AQUA	31.92100	74.98800	13:57:39	D	5.50
111	GURDASPUR	FATEHGARH CHURIAN	S-NPP	31.80480	75.12240	13:41:45	D	1.90
112	GURDASPUR	FATEHGARH CHURIAN	S-NPP	31.80780	75.14590	13:41:45	D	1.10
113	GURDASPUR	FATEHGARH CHURIAN	S-NPP	31.80950	75.10240	13:41:45	D	10.90
114	GURDASPUR	FATEHGARH CHURIAN	S-NPP	31.81340	75.08430	13:41:45	D	3.20
115	GURDASPUR	FATEHGARH CHURIAN	S-NPP	31.81460	75.12250	13:41:45	D	3.50
116	GURDASPUR	FATEHGARH CHURIAN	S-NPP	31.81550	75.12050	13:41:45	D	5.20
117	GURDASPUR	FATEHGARH CHURIAN	S-NPP	31.81750	75.11720	13:41:45	D	5.00
118	GURDASPUR	FATEHGARH CHURIAN	S-NPP	31.81810	75.12190	13:41:45	D	3.50
119	GURDASPUR	FATEHGARH CHURIAN	S-NPP	31.81900	75.11990	13:41:45	D	5.20
120	GURDASPUR	FATEHGARH CHURIAN	S-NPP	31.82700	75.07720	13:41:45	D	4.30
121	GURDASPUR	FATEHGARH CHURIAN	S-NPP	31.85360	75.02950	13:41:45	D	7.40
122	GURDASPUR	FATEHGARH CHURIAN	S-NPP	31.85840	75.09570	13:41:45	D	3.00
123	GURDASPUR	KAHNUWAN	S-NPP	31.81190	75.40810	13:41:45	D	3.10
124	GURDASPUR	QADIAN	S-NPP	31.74840	75.39920	13:41:45	D	2.00
125	GURDASPUR	QADIAN	S-NPP	31.80830	75.40870	13:41:45	D	3.10
126	GURDASPUR	SRI HARGOBINDPUR	AQUA	31.64600	75.39100	13:57:39	D	8.60
127	GURDASPUR	SRI HARGOBINDPUR	AQUA	31.69700	75.31900	13:57:39	D	14.90
128	GURDASPUR	SRI HARGOBINDPUR	AQUA	31.69700	75.39500	13:57:39	D	14.20
129	GURDASPUR	SRI HARGOBINDPUR	AQUA	31.74900	75.40700	13:57:39	D	7.00

130	GURDASPUR	SRI HARGOBINDPUR	S-NPP	31.62960	75.40600	13:41:45	D	4.60
131	GURDASPUR	SRI HARGOBINDPUR	S-NPP	31.63360	75.35160	13:41:45	D	3.20
132	GURDASPUR	SRI HARGOBINDPUR	S-NPP	31.63490	75.34840	13:41:45	D	5.80
133	GURDASPUR	SRI HARGOBINDPUR	S-NPP	31.64530	75.44260	13:41:45	D	2.20
134	GURDASPUR	SRI HARGOBINDPUR	S-NPP	31.64670	75.44440	13:41:45	D	3.10
135	GURDASPUR	SRI HARGOBINDPUR	S-NPP	31.66830	75.38180	13:41:45	D	2.50
136	GURDASPUR	SRI HARGOBINDPUR	S-NPP	31.69340	75.31890	13:41:45	D	4.80
137	GURDASPUR	SRI HARGOBINDPUR	S-NPP	31.70050	75.31770	13:41:45	D	2.50
138	GURDASPUR	SRI HARGOBINDPUR	S-NPP	31.70300	75.39540	13:41:45	D	3.90
139	GURDASPUR	SRI HARGOBINDPUR	S-NPP	31.70770	75.31650	13:41:45	D	2.40
140	GURDASPUR	SRI HARGOBINDPUR	S-NPP	31.74540	75.43420	13:41:45	D	3.10
141	JALANDHAR	BHOGPUR	S-NPP	31.47330	75.60230	13:41:45	D	8.10
142	JALANDHAR	BHOGPUR	S-NPP	31.47690	75.60170	13:41:45	D	8.10
143	JALANDHAR	JALANDHAR WEST	S-NPP	31.28810	75.48720	13:41:45	D	3.50
144	JALANDHAR	JALANDHAR WEST	S-NPP	31.41670	75.45240	13:41:45	D	3.20
145	JALANDHAR	JALANDHAR WEST	S-NPP	31.47150	75.58770	13:41:45	D	11.00
146	JALANDHAR	JALANDHAR WEST	S-NPP	31.47400	75.51820	13:41:45	D	2.50
147	JALANDHAR	JALANDHAR WEST	S-NPP	31.48060	75.57140	13:41:45	D	3.20
148	JALANDHAR	LOHIAN	AQUA	31.14800	75.24800	13:57:39	D	11.10
149	JALANDHAR	LOHIAN	S-NPP	31.09270	75.16890	13:41:45	D	11.00
150	JALANDHAR	LOHIAN	S-NPP	31.12400	75.30110	13:41:45	D	3.70
151	JALANDHAR	LOHIAN	S-NPP	31.14650	75.27820	13:41:45	D	12.30
152	JALANDHAR	LOHIAN	S-NPP	31.15000	75.27750	13:41:45	D	12.30
153	JALANDHAR	MEHATPUR	S-NPP	30.98750	75.51730	13:41:45	D	23.20
154	JALANDHAR	MEHATPUR	S-NPP	30.99110	75.51670	13:41:45	D	4.60
155	JALANDHAR	MEHATPUR	S-NPP	30.99850	75.41680	13:41:45	D	14.00
156	JALANDHAR	MEHATPUR	S-NPP	31.00210	75.41620	13:41:45	D	14.00
157	JALANDHAR	NAKODAR	S-NPP	31.18420	75.48830	13:41:45	D	7.60
158	JALANDHAR	NAKODAR	S-NPP	31.21940	75.43560	13:41:45	D	5.50
159	JALANDHAR	SHAHKOT	S-NPP	31.04240	75.27560	13:41:45	D	4.50
160	JALANDHAR	SHAHKOT	S-NPP	31.05250	75.29760	13:41:45	D	8.90
161	KAPURTHALA	DHILWAN	AQUA	31.36200	75.23100	13:57:39	D	7.40
162	KAPURTHALA	DHILWAN	S-NPP	31.40270	75.21030	13:41:45	D	4.40

163	KAPURTHALA	DHILWAN	S-NPP	31.40390	75.21970	13:41:45	D	8.60
164	KAPURTHALA	DHILWAN	S-NPP	31.40740	75.21910	13:41:45	D	8.60
165	KAPURTHALA	DHILWAN	S-NPP	31.45010	75.24050	13:41:45	D	2.80
166	KAPURTHALA	DHILWAN	S-NPP	31.55190	75.37050	13:41:45	D	3.40
167	KAPURTHALA	KAPURTHALA	AQUA	31.35800	75.28100	13:57:39	D	5.70
168	KAPURTHALA	KAPURTHALA	S-NPP	31.36280	75.28730	13:41:45	D	7.50
169	KAPURTHALA	NADALA	AQUA	31.48600	75.49400	13:57:39	D	11.20
170	KAPURTHALA	NADALA	AQUA	31.63500	75.48900	13:57:39	D	14.80
171	KAPURTHALA	NADALA	AQUA	31.63700	75.48200	13:57:39	D	12.50
172	KAPURTHALA	NADALA	S-NPP	31.49320	75.49530	13:41:45	D	5.30
173	KAPURTHALA	NADALA	S-NPP	31.49380	75.50010	13:41:45	D	2.60
174	KAPURTHALA	NADALA	S-NPP	31.49440	75.50490	13:41:45	D	2.60
175	KAPURTHALA	SULTANPUR LODHI	AQUA	31.19800	75.07400	13:57:39	D	12.00
176	KAPURTHALA	SULTANPUR LODHI	AQUA	31.23900	75.20800	13:57:39	D	6.70
177	KAPURTHALA	SULTANPUR LODHI	AQUA	31.31200	75.17100	13:57:39	D	17.90
178	KAPURTHALA	SULTANPUR LODHI	AQUA	31.31400	75.18300	13:57:39	D	7.40
179	KAPURTHALA	SULTANPUR LODHI	S-NPP	31.24860	75.26230	13:41:45	D	22.00
180	KAPURTHALA	SULTANPUR LODHI	S-NPP	31.25320	75.15690	13:41:45	D	8.00
181	KAPURTHALA	SULTANPUR LODHI	S-NPP	31.28150	75.15200	13:41:45	D	4.60
182	KAPURTHALA	SULTANPUR LODHI	S-NPP	31.28410	75.15290	13:41:45	D	4.50
183	KAPURTHALA	SULTANPUR LODHI	S-NPP	31.28950	75.26970	13:41:45	D	5.00
184	LUDHIANA	JAGRAON	S-NPP	30.68550	75.43550	13:41:45	D	3.00
185	LUDHIANA	JAGRAON	S-NPP	30.72640	75.38580	13:41:45	D	11.60
186	LUDHIANA	MACHHIWARA	S-NPP	30.87840	76.24100	13:41:45	D	3.00
187	LUDHIANA	MACHHIWARA	S-NPP	30.87910	76.27710	13:41:45	D	3.00
188	LUDHIANA	MACHHIWARA	S-NPP	30.88110	76.27930	13:41:45	D	4.20
189	LUDHIANA	MACHHIWARA	S-NPP	30.88490	76.24760	13:41:45	D	3.10
190	LUDHIANA	MACHHIWARA	S-NPP	30.88700	76.24990	13:41:45	D	3.80
191	LUDHIANA	MACHHIWARA	S-NPP	30.88800	76.24190	13:41:45	D	3.10
192	LUDHIANA	PAKHOWAL	AQUA	30.68000	75.73200	13:57:39	D	11.40
193	LUDHIANA	PAKHOWAL	AQUA	30.68100	75.74500	13:57:39	D	10.50
194	LUDHIANA	SAMRALA	S-NPP	30.84560	76.15880	13:41:45	D	2.60
195	LUDHIANA	SIDHWAN BET	S-NPP	30.92490	75.39790	13:41:45	D	3.60

196	MANSA	BUDHLADA	S-NPP	29.78500	75.65250	13:41:45	D	5.20
197	MANSA	SARDULGARH	AQUA	29.61900	75.28800	13:57:39	D	13.90
198	MOGA	KOT ISE KHAN AT DHARAMKOT	AQUA	30.89400	75.30200	13:57:39	D	11.20
199	MOGA	KOT ISE KHAN AT DHARAMKOT	AQUA	31.07100	75.17500	13:57:39	D	7.60
200	MOGA	KOT ISE KHAN AT DHARAMKOT	S-NPP	30.87990	75.30090	13:41:45	D	4.90
201	MOGA	KOT ISE KHAN AT DHARAMKOT	S-NPP	30.88050	75.30550	13:41:45	D	5.30
202	MOGA	KOT ISE KHAN AT DHARAMKOT	S-NPP	31.03920	75.11100	13:41:45	D	7.50
203	MOGA	MOGA-2	S-NPP	30.82790	75.03240	13:41:45	D	4.40
204	MOGA	NIHAL SINGH	S-NPP	30.62440	75.26040	13:41:45	D	5.30
205	MUKTSAR	LAMBI	S-NPP	30.01360	74.51820	13:41:45	D	2.00
206	MUKTSAR	LAMBI	S-NPP	30.01390	74.51650	13:41:45	D	1.90
207	PATIALA	NABHA	S-NPP	30.31750	76.14140	13:41:45	D	3.00
208	PATIALA	NABHA	S-NPP	30.34800	76.06330	13:41:45	D	5.40
209	PATIALA	PATRAN	S-NPP	29.94030	76.12100	13:41:45	D	9.60
210	PATIALA	PATRAN	S-NPP	29.99490	76.14190	13:41:45	D	3.70
211	PATIALA	SAMANA	AQUA	30.18000	76.24000	13:57:39	D	23.60
212	PATIALA	SAMANA	AQUA	30.24100	76.15100	13:57:39	D	7.90
213	PATIALA	SAMANA	S-NPP	30.02710	76.19360	13:41:45	D	4.10
214	PATIALA	SAMANA	S-NPP	30.05930	76.21340	13:41:45	D	2.50
215	PATIALA	SAMANA	S-NPP	30.17250	76.26260	13:41:45	D	13.60
216	PATIALA	SANAUR	S-NPP	30.13700	76.29670	13:41:45	D	7.40
217	PATIALA	SANAUR	S-NPP	30.13880	76.29340	13:41:45	D	14.00
218	PATIALA	SANAUR	S-NPP	30.14070	76.29610	13:41:45	D	7.40
219	PATIALA	SANAUR	S-NPP	30.27980	76.47930	13:41:45	D	9.30
220	PATIALA	SHAMBU KALAN	S-NPP	30.46520	76.72140	13:41:45	D	2.40
221	SANGRUR	ANDANA	S-NPP	29.85190	76.03530	13:41:45	D	5.10
222	SANGRUR	BHAWANIGARH	S-NPP	30.27850	76.18800	13:41:45	D	2.60
223	SANGRUR	BHAWANIGARH	S-NPP	30.28100	76.14740	13:41:45	D	3.30
224	SANGRUR	DHURI	AQUA	30.39800	75.83400	13:57:39	D	5.50
225	SANGRUR	LEHRA GAGA	S-NPP	29.93430	75.72370	13:41:45	D	3.90
226	SANGRUR	MALERKOTLA-1	S-NPP	30.38320	75.98790	13:41:45	D	7.30
227	SANGRUR	MALERKOTLA-1	S-NPP	30.38510	76.00250	13:41:45	D	12.80
228	SANGRUR	MALERKOTLA-2	AQUA	30.65400	75.78000	13:57:39	D	7.70

229	SANGRUR	SUNAM	S-NPP	30.04800	75.82660	13:41:45	D	5.70
230	SANGRUR	SUNAM	S-NPP	30.04850	75.83130	13:41:45	D	5.70
231	SAS NAGAR (MOHALI)	DERABASSI	AQUA	30.54600	76.77300	13:57:39	D	12.70
232	SAS NAGAR (MOHALI)	DERABASSI	AQUA	30.55700	76.77100	13:57:39	D	8.40
233	SAS NAGAR (MOHALI)	DERABASSI	S-NPP	30.55210	76.77540	13:41:45	D	6.00
234	TARN TARAN	BHIKHIWIND	AQUA	31.27100	74.72600	13:57:39	D	9.30
235	TARN TARAN	BHIKHIWIND	AQUA	31.32500	74.77600	13:57:39	D	8.70
236	TARN TARAN	BHIKHIWIND	AQUA	31.33300	74.61000	13:57:39	D	17.10
237	TARN TARAN	BHIKHIWIND	AQUA	31.33300	74.76300	13:57:39	D	7.60
238	TARN TARAN	BHIKHIWIND	AQUA	31.36800	74.76200	13:57:39	D	15.60
239	TARN TARAN	BHIKHIWIND	AQUA	31.40600	74.61400	13:57:39	D	11.70
240	TARN TARAN	BHIKHIWIND	S-NPP	31.26420	74.71860	13:41:45	D	5.10
241	TARN TARAN	BHIKHIWIND	S-NPP	31.26530	74.67270	13:41:45	D	2.70
242	TARN TARAN	BHIKHIWIND	S-NPP	31.27290	74.70330	13:41:45	D	8.90
243	TARN TARAN	BHIKHIWIND	S-NPP	31.28220	74.72000	13:41:45	D	2.80
244	TARN TARAN	BHIKHIWIND	S-NPP	31.28740	74.73280	13:41:45	D	2.50
245	TARN TARAN	BHIKHIWIND	S-NPP	31.30740	74.61510	13:41:45	D	1.70
246	TARN TARAN	BHIKHIWIND	S-NPP	31.31130	74.75150	13:41:45	D	2.60
247	TARN TARAN	BHIKHIWIND	S-NPP	31.33020	74.67940	13:41:45	D	3.10
248	TARN TARAN	BHIKHIWIND	S-NPP	31.33150	74.68050	13:41:45	D	4.00
249	TARN TARAN	BHIKHIWIND	S-NPP	31.33910	74.76640	13:41:45	D	2.80
250	TARN TARAN	BHIKHIWIND	S-NPP	31.34430	74.75170	13:41:45	D	7.90
251	TARN TARAN	BHIKHIWIND	S-NPP	31.35130	74.77810	13:41:45	D	6.00
252	TARN TARAN	BHIKHIWIND	S-NPP	31.36400	74.68390	13:41:45	D	7.70
253	TARN TARAN	BHIKHIWIND	S-NPP	31.37220	74.77440	13:41:45	D	1.70
254	TARN TARAN	BHIKHIWIND	S-NPP	31.37260	74.64120	13:41:45	D	2.30
255	TARN TARAN	BHIKHIWIND	S-NPP	31.37800	74.76410	13:41:45	D	5.50
256	TARN TARAN	BHIKHIWIND	S-NPP	31.37860	74.76860	13:41:45	D	7.40
257	TARN TARAN	BHIKHIWIND	S-NPP	31.39180	74.67890	13:41:45	D	2.50
258	TARN TARAN	BHIKHIWIND	S-NPP	31.39790	74.59100	13:41:45	D	5.20
259	TARN TARAN	BHIKHIWIND	S-NPP	31.39930	74.65470	13:41:45	D	2.80
260	TARN TARAN	BHIKHIWIND	S-NPP	31.41910	74.66950	13:41:45	D	2.50
261	TARN TARAN	CHOHLA SAHIB	AQUA	31.26400	75.02000	13:57:39	D	10.40

262	TARN TARAN	CHOHLA SAHIB	AQUA	31.29400	75.02700	13:57:39	D	61.40
263	TARN TARAN	CHOHLA SAHIB	AQUA	31.29600	75.03900	13:57:39	D	11.60
264	TARN TARAN	CHOHLA SAHIB	AQUA	31.29700	74.96600	13:57:39	D	6.70
265	TARN TARAN	CHOHLA SAHIB	AQUA	31.30100	74.97200	13:57:39	D	7.80
266	TARN TARAN	CHOHLA SAHIB	AQUA	31.30200	75.01400	13:57:39	D	18.00
267	TARN TARAN	CHOHLA SAHIB	AQUA	31.30400	75.02600	13:57:39	D	9.90
268	TARN TARAN	CHOHLA SAHIB	AQUA	31.30700	75.01900	13:57:39	D	21.10
269	TARN TARAN	CHOHLA SAHIB	AQUA	31.33600	75.10000	13:57:39	D	10.60
270	TARN TARAN	CHOHLA SAHIB	S-NPP	31.21000	74.96250	13:41:45	D	8.80
271	TARN TARAN	CHOHLA SAHIB	S-NPP	31.21110	74.97160	13:41:45	D	5.40
272	TARN TARAN	CHOHLA SAHIB	S-NPP	31.23530	75.04690	13:41:45	D	12.40
273	TARN TARAN	CHOHLA SAHIB	S-NPP	31.23880	75.04620	13:41:45	D	6.20
274	TARN TARAN	CHOHLA SAHIB	S-NPP	31.29180	74.93070	13:41:45	D	10.00
275	TARN TARAN	CHOHLA SAHIB	S-NPP	31.30060	75.02740	13:41:45	D	4.90
276	TARN TARAN	CHOHLA SAHIB	S-NPP	31.30120	75.03200	13:41:45	D	9.20
277	TARN TARAN	CHOHLA SAHIB	S-NPP	31.30180	75.03660	13:41:45	D	9.20
278	TARN TARAN	CHOHLA SAHIB	S-NPP	31.30410	74.97060	13:41:45	D	1.70
279	TARN TARAN	CHOHLA SAHIB	S-NPP	31.32120	75.07550	13:41:45	D	3.30
280	TARN TARAN	CHOHLA SAHIB	S-NPP	31.34600	75.09960	13:41:45	D	7.30
281	TARN TARAN	CHOHLA SAHIB	S-NPP	31.34660	75.10420	13:41:45	D	7.30
282	TARN TARAN	CHOHLA SAHIB	S-NPP	31.34950	75.09900	13:41:45	D	7.30
283	TARN TARAN	CHOHLA SAHIB	S-NPP	31.37870	75.04830	13:41:45	D	10.60
284	TARN TARAN	CHOHLA SAHIB	S-NPP	31.37880	75.04670	13:41:45	D	15.00
285	TARN TARAN	GANDIWIND TATLA	AQUA	31.46700	74.75100	13:57:39	D	12.20
286	TARN TARAN	GANDIWIND TATLA	AQUA	31.47200	74.71500	13:57:39	D	6.40
287	TARN TARAN	GANDIWIND TATLA	AQUA	31.51300	74.66000	13:57:39	D	8.80
288	TARN TARAN	GANDIWIND TATLA	S-NPP	31.46520	74.66310	13:41:45	D	4.70
289	TARN TARAN	GANDIWIND TATLA	S-NPP	31.47170	74.71260	13:41:45	D	62.70
290	TARN TARAN	GANDIWIND TATLA	S-NPP	31.47570	74.66130	13:41:45	D	2.60
291	TARN TARAN	GANDIWIND TATLA	S-NPP	31.47570	74.71650	13:41:45	D	28.60
292	TARN TARAN	GANDIWIND TATLA	S-NPP	31.47620	74.66580	13:41:45	D	2.60
293	TARN TARAN	GANDIWIND TATLA	S-NPP	31.48840	74.64980	13:41:45	D	5.80
294	TARN TARAN	GANDIWIND TATLA	S-NPP	31.48900	74.65430	13:41:45	D	5.80

295	TARN TARAN	GANDIWIND TATLA	S-NPP	31.49020	74.69090	13:41:45	D	3.30
296	TARN TARAN	GANDIWIND TATLA	S-NPP	31.51020	74.78890	13:41:45	D	8.70
297	TARN TARAN	GANDIWIND TATLA	S-NPP	31.52110	74.70840	13:41:45	D	2.50
298	TARN TARAN	GANDIWIND TATLA	S-NPP	31.52710	74.80910	13:41:45	D	6.00
299	TARN TARAN	GANDIWIND TATLA	S-NPP	31.53070	74.64690	13:41:45	D	3.80
300	TARN TARAN	GANDIWIND TATLA	S-NPP	31.54940	74.81450	13:41:45	D	5.30
301	TARN TARAN	GANDIWIND TATLA	S-NPP	31.54990	74.81910	13:41:45	D	5.30
302	TARN TARAN	GANDIWIND TATLA	S-NPP	31.55990	74.78160	13:41:45	D	2.90
303	TARN TARAN	KHADUR SAHIB	AQUA	31.42500	75.15200	13:57:39	D	13.10
304	TARN TARAN	KHADUR SAHIB	AQUA	31.46400	75.07200	13:57:39	D	18.70
305	TARN TARAN	KHADUR SAHIB	AQUA	31.49500	75.06100	13:57:39	D	13.40
306	TARN TARAN	KHADUR SAHIB	AQUA	31.49700	75.10300	13:57:39	D	24.30
307	TARN TARAN	KHADUR SAHIB	AQUA	31.49900	75.09700	13:57:39	D	9.30
308	TARN TARAN	KHADUR SAHIB	AQUA	31.50000	75.02300	13:57:39	D	25.90
309	TARN TARAN	KHADUR SAHIB	AQUA	31.50100	75.10900	13:57:39	D	9.40
310	TARN TARAN	KHADUR SAHIB	S-NPP	31.38220	75.04770	13:41:45	D	9.60
311	TARN TARAN	KHADUR SAHIB	S-NPP	31.39980	75.10130	13:41:45	D	2.90
312	TARN TARAN	KHADUR SAHIB	S-NPP	31.41340	75.09420	13:41:45	D	2.40
313	TARN TARAN	KHADUR SAHIB	S-NPP	31.42810	75.15340	13:41:45	D	2.10
314	TARN TARAN	KHADUR SAHIB	S-NPP	31.43400	75.14280	13:41:45	D	3.20
315	TARN TARAN	KHADUR SAHIB	S-NPP	31.43760	75.17080	13:41:45	D	6.50
316	TARN TARAN	KHADUR SAHIB	S-NPP	31.43980	75.01880	13:41:45	D	4.10
317	TARN TARAN	KHADUR SAHIB	S-NPP	31.44700	75.10260	13:41:45	D	4.50
318	TARN TARAN	KHADUR SAHIB	S-NPP	31.45400	75.07300	13:41:45	D	2.40
319	TARN TARAN	KHADUR SAHIB	S-NPP	31.46060	75.15250	13:41:45	D	4.60
320	TARN TARAN	KHADUR SAHIB	S-NPP	31.46240	75.16650	13:41:45	D	4.40
321	TARN TARAN	KHADUR SAHIB	S-NPP	31.46510	75.04740	13:41:45	D	1.80
322	TARN TARAN	KHADUR SAHIB	S-NPP	31.46950	75.16530	13:41:45	D	15.00
323	TARN TARAN	KHADUR SAHIB	S-NPP	31.48990	75.05000	13:41:45	D	5.40
324	TARN TARAN	KHADUR SAHIB	S-NPP	31.49190	75.14230	13:41:45	D	2.70
325	TARN TARAN	KHADUR SAHIB	S-NPP	31.50450	75.13770	13:41:45	D	5.10
326	TARN TARAN	NAUSHERA PANNUAN	AQUA	31.32300	74.99200	13:57:39	D	9.10
327	TARN TARAN	NAUSHERA PANNUAN	AQUA	31.32500	74.93200	13:57:39	D	11.30

328	TARN TARAN	NAUSHERA PANNUAN	AQUA	31.32700	74.94400	13:57:39	D	7.80
329	TARN TARAN	NAUSHERA PANNUAN	AQUA	31.35400	75.01100	13:57:39	D	6.30
330	TARN TARAN	NAUSHERA PANNUAN	AQUA	31.37100	74.91200	13:57:39	D	14.70
331	TARN TARAN	NAUSHERA PANNUAN	AQUA	31.39200	74.96200	13:57:39	D	13.50
332	TARN TARAN	NAUSHERA PANNUAN	AQUA	31.40000	74.94800	13:57:39	D	20.50
333	TARN TARAN	NAUSHERA PANNUAN	S-NPP	31.32460	74.99040	13:41:45	D	8.50
334	TARN TARAN	NAUSHERA PANNUAN	S-NPP	31.32810	74.98980	13:41:45	D	8.50
335	TARN TARAN	NAUSHERA PANNUAN	S-NPP	31.33160	74.93310	13:41:45	D	10.00
336	TARN TARAN	NAUSHERA PANNUAN	S-NPP	31.34410	75.02920	13:41:45	D	2.10
337	TARN TARAN	NAUSHERA PANNUAN	S-NPP	31.34700	75.02400	13:41:45	D	2.10
338	TARN TARAN	NAUSHERA PANNUAN	S-NPP	31.37110	75.01510	13:41:45	D	2.30
339	TARN TARAN	NAUSHERA PANNUAN	S-NPP	31.37110	75.01670	13:41:45	D	4.60
340	TARN TARAN	NAUSHERA PANNUAN	S-NPP	31.37170	75.01970	13:41:45	D	2.80
341	TARN TARAN	NAUSHERA PANNUAN	S-NPP	31.37520	74.96430	13:41:45	D	3.00
342	TARN TARAN	NAUSHERA PANNUAN	S-NPP	31.38630	74.85510	13:41:45	D	3.10
343	TARN TARAN	NAUSHERA PANNUAN	S-NPP	31.39980	74.96000	13:41:45	D	4.40
344	TARN TARAN	NAUSHERA PANNUAN	S-NPP	31.41450	74.99030	13:41:45	D	5.60
345	TARN TARAN	NAUSHERA PANNUAN	S-NPP	31.41510	74.96670	13:41:45	D	4.80
346	TARN TARAN	NAUSHERA PANNUAN	S-NPP	31.41620	74.91970	13:41:45	D	13.90
347	TARN TARAN	PATTI	AQUA	31.22300	74.91900	13:57:39	D	7.50
348	TARN TARAN	PATTI	AQUA	31.35700	74.87800	13:57:39	D	12.00
349	TARN TARAN	PATTI	S-NPP	31.21520	74.91970	13:41:45	D	3.00
350	TARN TARAN	PATTI	S-NPP	31.23870	74.80010	13:41:45	D	3.70
351	TARN TARAN	PATTI	S-NPP	31.23930	74.80110	13:41:45	D	3.90
352	TARN TARAN	PATTI	S-NPP	31.25320	74.71600	13:41:45	D	2.10
353	TARN TARAN	PATTI	S-NPP	31.26020	74.85280	13:41:45	D	6.00
354	TARN TARAN	PATTI	S-NPP	31.32490	74.82750	13:41:45	D	8.90
355	TARN TARAN	PATTI	S-NPP	31.34360	74.86120	13:41:45	D	11.80
356	TARN TARAN	PATTI	S-NPP	31.35710	74.87890	13:41:45	D	7.60
357	TARN TARAN	PATTI	S-NPP	31.35710	74.88200	13:41:45	D	5.90
358	TARN TARAN	PATTI	S-NPP	31.35770	74.88340	13:41:45	D	5.30
359	TARN TARAN	PATTI	S-NPP	31.36060	74.87830	13:41:45	D	3.70
360	TARN TARAN	TARN TARAN	AQUA	31.38600	74.83100	13:57:39	D	6.20

361	TARN TARAN	TARN TARAN	AQUA	31.41500	74.83800	13:57:39	D	7.30
362	TARN TARAN	TARN TARAN	AQUA	31.42500	74.76400	13:57:39	D	5.70
363	TARN TARAN	TARN TARAN	S-NPP	31.39550	74.78870	13:41:45	D	5.40
364	TARN TARAN	TARN TARAN	S-NPP	31.39850	74.81130	13:41:45	D	5.30
365	TARN TARAN	TARN TARAN	S-NPP	31.40030	74.88060	13:41:45	D	3.90
366	TARN TARAN	TARN TARAN	S-NPP	31.40720	74.79590	13:41:45	D	5.90
367	TARN TARAN	TARN TARAN	S-NPP	31.41280	75.00470	13:41:45	D	7.00
368	TARN TARAN	TARN TARAN	S-NPP	31.41710	74.81730	13:41:45	D	3.30
369	TARN TARAN	TARN TARAN	S-NPP	31.41990	74.75670	13:41:45	D	1.40
370	TARN TARAN	TARN TARAN	S-NPP	31.42060	74.81660	13:41:45	D	3.30
371	TARN TARAN	TARN TARAN	S-NPP	31.42770	74.84320	13:41:45	D	10.70
372	TARN TARAN	TARN TARAN	S-NPP	31.43100	74.78700	13:41:45	D	5.30
373	TARN TARAN	TARN TARAN	S-NPP	31.43450	74.78640	13:41:45	D	2.90
374	TARN TARAN	TARN TARAN	S-NPP	31.43510	74.79090	13:41:45	D	2.90
375	TARN TARAN	TARN TARAN	S-NPP	31.43630	75.01940	13:41:45	D	4.10
376	TARN TARAN	TARN TARAN	S-NPP	31.43680	74.96760	13:41:45	D	2.90
377	TARN TARAN	TARN TARAN	S-NPP	31.46180	74.82990	13:41:45	D	2.90
378	TARN TARAN	TARN TARAN	S-NPP	31.47000	74.75440	13:41:45	D	11.00
379	TARN TARAN	TARN TARAN	S-NPP	31.47700	74.80870	13:41:45	D	4.10
380	TARN TARAN	TARN TARAN	S-NPP	31.48050	74.80810	13:41:45	D	3.20
381	TARN TARAN	TARN TARAN	S-NPP	31.48920	74.76480	13:41:45	D	4.30
382	TARN TARAN	TARN TARAN	S-NPP	31.51920	74.94120	13:41:45	D	5.40
383	TARN TARAN	VALTOHA	AQUA	31.13900	74.60900	13:57:39	D	6.00
384	TARN TARAN	VALTOHA	AQUA	31.17700	74.63100	13:57:39	D	5.50
385	TARN TARAN	VALTOHA	AQUA	31.21300	74.68300	13:57:39	D	20.50
386	TARN TARAN	VALTOHA	AQUA	31.21400	74.69500	13:57:39	D	20.40
387	TARN TARAN	VALTOHA	AQUA	31.26000	74.56400	13:57:39	D	6.30
388	TARN TARAN	VALTOHA	S-NPP	31.17740	74.68730	13:41:45	D	2.70
389	TARN TARAN	VALTOHA	S-NPP	31.18480	74.63590	13:41:45	D	3.00
390	TARN TARAN	VALTOHA	S-NPP	31.19940	74.66520	13:41:45	D	4.40
391	TARN TARAN	VALTOHA	S-NPP	31.20110	74.65120	13:41:45	D	4.10
392	TARN TARAN	VALTOHA	S-NPP	31.20550	74.60500	13:41:45	D	2.60
393	TARN TARAN	VALTOHA	S-NPP	31.21450	74.69890	13:41:45	D	5.40

394	TARN TARAN	VALTOHA	S-NPP	31.21740	74.69380	13:41:45	D	5.40
395	TARN TARAN	VALTOHA	S-NPP	31.22620	74.70600	13:41:45	D	3.80
396	TARN TARAN	VALTOHA	S-NPP	31.22710	74.70690	13:41:45	D	6.10
397	TARN TARAN	VALTOHA	S-NPP	31.23630	74.69610	13:41:45	D	2.40
398	TARN TARAN	VALTOHA	S-NPP	31.25590	74.62880	13:41:45	D	4.60
399	TARN TARAN	VALTOHA	S-NPP	31.27650	74.54350	13:41:45	D	2.80
400	TARN TARAN	VALTOHA	S-NPP	31.28000	74.54280	13:41:45	D	2.00
401	TARN TARAN	VALTOHA	S-NPP	31.28400	74.54660	13:41:45	D	5.30
402	TARN TARAN	VALTOHA	S-NPP	31.29110	74.59980	13:41:45	D	10.50
403	TARN TARAN	VALTOHA	S-NPP	31.31180	74.55650	13:41:45	D	1.80

Details of residue burning events in Haryana on 17-Oct-2022

S. No.	District	Tehsil / Block	Satellite	Latitude	Longitude	ACQ_TIME	Day / Night	Fire Power (W/m2)
1	AMBALA	AMBALA-II	S-NPP	30.16040	76.63860	13:41:45	D	10.60
2	AMBALA	AMBALA-II	S-NPP	30.28660	76.82880	13:41:45	D	4.80
3	AMBALA	NARAINGARH	AQUA	30.45500	77.10800	13:57:39	D	14.90
4	FATEHABAD	BHUNA	S-NPP	29.54100	75.76970	13:41:45	D	3.90
5	FATEHABAD	FATEHABAD	AQUA	29.61100	75.38400	13:57:39	D	7.00
6	FATEHABAD	TOHANA	AQUA	29.60800	75.87800	13:57:39	D	9.90
7	FATEHABAD	TOHANA	AQUA	29.62000	75.88900	13:57:39	D	13.90
8	FATEHABAD	TOHANA	AQUA	29.62100	75.90100	13:57:39	D	19.10
9	FATEHABAD	TOHANA	S-NPP	29.60700	75.82990	13:41:45	D	5.50
10	FATEHABAD	TOHANA	S-NPP	29.62310	75.89900	13:41:45	D	11.00
11	FATEHABAD	TOHANA	S-NPP	29.62670	75.89840	13:41:45	D	8.00
12	FATEHABAD	TOHANA	S-NPP	29.70830	75.83930	13:41:45	D	12.00
13	FATEHABAD	TOHANA	S-NPP	29.72140	75.94290	13:41:45	D	1.70
14	HISAR	NARNAUND	S-NPP	29.25240	76.07730	13:41:45	D	3.60
15	HISAR	NARNAUND	S-NPP	29.26210	76.15070	13:41:45	D	6.10
16	HISAR	NARNAUND	S-NPP	29.26220	76.15310	13:41:45	D	6.00
17	JIND	ALEWA	S-NPP	29.50190	76.46550	13:41:45	D	3.60
18	JIND	ALEWA	S-NPP	29.52050	76.35400	13:41:45	D	4.20

19	JIND	NARWANA	S-NPP	29.49680	76.04310	13:41:45	D	4.90
20	JIND	NARWANA	S-NPP	29.51010	76.03130	13:41:45	D	7.00
21	JIND	NARWANA	S-NPP	29.57030	76.04080	13:41:45	D	6.20
22	JIND	NARWANA	S-NPP	29.57130	76.04260	13:41:45	D	17.80
23	JIND	NARWANA	S-NPP	29.60030	76.00880	13:41:45	D	8.20
24	JIND	NARWANA	S-NPP	29.62610	76.00940	13:41:45	D	2.30
25	JIND	NARWANA	S-NPP	29.66660	76.15420	13:41:45	D	2.20
26	JIND	UCHANA	S-NPP	29.49130	76.11690	13:41:45	D	3.50
27	JIND	UCHANA	S-NPP	29.54080	76.06990	13:41:45	D	7.80
28	JIND	UCHANA	S-NPP	29.56690	76.30660	13:41:45	D	3.30
29	KAITHAL	GUHLA	AQUA	29.97700	76.23600	13:57:39	D	29.50
30	KAITHAL	GUHLA	AQUA	30.01100	76.35800	13:57:39	D	10.70
31	KAITHAL	GUHLA	AQUA	30.04400	76.38000	13:57:39	D	8.40
32	KAITHAL	GUHLA	AQUA	30.04500	76.39300	13:57:39	D	24.10
33	KAITHAL	GUHLA	AQUA	30.10800	76.40400	13:57:39	D	10.10
34	KAITHAL	GUHLA	AQUA	30.13800	76.39900	13:57:39	D	21.90
35	KAITHAL	GUHLA	S-NPP	30.01100	76.36030	13:41:45	D	1.70
36	KAITHAL	GUHLA	S-NPP	30.04730	76.39250	13:41:45	D	14.90
37	KAITHAL	GUHLA	S-NPP	30.08970	76.40100	13:41:45	D	1.90
38	KAITHAL	GUHLA	S-NPP	30.13280	76.35330	13:41:45	D	5.30
39	KAITHAL	KAITHAL	S-NPP	29.81250	76.34230	13:41:45	D	5.10
40	KAITHAL	KAITHAL	S-NPP	29.90680	76.47690	13:41:45	D	2.80
41	KAITHAL	KALAYAT	S-NPP	29.71120	76.33070	13:41:45	D	5.20
42	KAITHAL	KALAYAT	S-NPP	29.74960	76.22740	13:41:45	D	5.60
43	KAITHAL	PUNDRI	AQUA	29.63000	76.56900	13:57:39	D	29.30
44	KAITHAL	PUNDRI	S-NPP	29.63030	76.57430	13:41:45	D	5.80
45	KAITHAL	PUNDRI	S-NPP	29.63230	76.57640	13:41:45	D	10.10
46	KAITHAL	PUNDRI	S-NPP	29.63400	76.57370	13:41:45	D	9.60
47	KAITHAL	PUNDRI	S-NPP	29.63600	76.57590	13:41:45	D	3.20
48	KAITHAL	PUNDRI	S-NPP	29.66500	76.62790	13:41:45	D	6.20
49	KAITHAL	PUNDRI	S-NPP	29.66870	76.62730	13:41:45	D	6.20
50	KAITHAL	PUNDRI	S-NPP	29.70710	76.56970	13:41:45	D	3.30
51	KAITHAL	PUNDRI	S-NPP	29.75290	76.68980	13:41:45	D	1.30
52	KAITHAL	PUNDRI	S-NPP	29.78160	76.64370	13:41:45	D	6.70

53	KAITHAL	PUNDRI	S-NPP	29.83070	76.64120	13:41:45	D	3.20
54	KAITHAL	PUNDRI	S-NPP	29.83680	76.56770	13:41:45	D	4.30
55	KAITHAL	PUNDRI	S-NPP	29.84930	76.63820	13:41:45	D	7.50
56	KAITHAL	PUNDRI	S-NPP	29.85080	76.64060	13:41:45	D	6.00
57	KAITHAL	PUNDRI	S-NPP	29.85620	76.66320	13:41:45	D	5.10
58	KAITHAL	PUNDRI	S-NPP	29.85750	76.66560	13:41:45	D	7.80
59	KAITHAL	RAJOUND	AQUA	29.57500	76.36300	13:57:39	D	17.60
60	KAITHAL	SIWAN	S-NPP	29.87860	76.33900	13:41:45	D	5.10
61	KAITHAL	SIWAN	S-NPP	29.89330	76.42790	13:41:45	D	3.50
62	KARNAL	CHIRAO	S-NPP	29.61530	76.95290	13:41:45	D	3.80
63	KARNAL	CHIRAO	S-NPP	29.70080	76.76790	13:41:45	D	18.20
64	KARNAL	CHIRAO	S-NPP	29.71010	76.78220	13:41:45	D	2.80
65	KARNAL	CHIRAO	S-NPP	29.76070	76.75860	13:41:45	D	2.30
66	KARNAL	CHIRAO	S-NPP	29.76130	76.76180	13:41:45	D	5.60
67	KARNAL	GHARAUNDA	S-NPP	29.47350	77.08480	13:41:45	D	3.80
68	KARNAL	KARNAL	S-NPP	29.73740	77.04460	13:41:45	D	3.90
69	KURUKSHETRA	BABAIN	S-NPP	30.03680	76.95370	13:41:45	D	6.40
70	KURUKSHETRA	BABAIN	S-NPP	30.04870	76.98990	13:41:45	D	3.10
71	KURUKSHETRA	ISMAILABAD	S-NPP	30.13530	76.74820	13:41:45	D	13.20
72	KURUKSHETRA	PEHOWA	S-NPP	29.92290	76.48460	13:41:45	D	4.90
73	KURUKSHETRA	SHAHBAD	S-NPP	30.14400	76.88610	13:41:45	D	3.50
74	KURUKSHETRA	SHAHBAD	S-NPP	30.14530	76.79990	13:41:45	D	10.80
75	KURUKSHETRA	SHAHBAD	S-NPP	30.14970	76.83670	13:41:45	D	4.50
76	KURUKSHETRA	THANESAR	S-NPP	29.88890	76.80260	13:41:45	D	4.90
77	KURUKSHETRA	THANESAR	S-NPP	29.90530	76.74720	13:41:45	D	4.40
78	KURUKSHETRA	THANESAR	S-NPP	29.92780	76.80720	13:41:45	D	4.10
79	KURUKSHETRA	THANESAR	S-NPP	29.93150	76.80660	13:41:45	D	34.30
80	KURUKSHETRA	THANESAR	S-NPP	29.97880	76.75400	13:41:45	D	3.30
81	KURUKSHETRA	THANESAR	S-NPP	30.11580	76.77780	13:41:45	D	7.80
82	SONIPAT	SONIPAT	S-NPP	29.01740	76.84860	13:41:45	D	2.30
83	YAMUNANAGAR	BILASPUR	S-NPP	30.22730	77.23120	13:41:45	D	2.20
84	YAMUNANAGAR	MUSTAFABAD	S-NPP	30.14990	77.10360	13:41:45	D	3.20
85	YAMUNANAGAR	MUSTAFABAD	S-NPP	30.24590	77.21470	13:41:45	D	2.70
86	YAMUNANAGAR	SADHAURA	S-NPP	30.36480	77.17840	13:41:45	D	2.80

Details of residue burning events in Uttar Pradesh on 17-Oct-2022

S. No.	District	Tehsil / Block	Satellite	Latitude	Longitude	ACQ_TIME	Day / Night	Fire Power (W/m ²)
1	ALIGARH	KHAIR	S-NPP	28.04190	77.68430	13:41:45	D	9.00
2	BALRAMPUR	BALRAMPUR	S-NPP	27.41120	82.15140	02:32:28	N	1.00
3	BAREILLY	BAHERI	S-NPP	28.88230	79.39390	13:41:45	D	3.00
4	FATEHPUR	KHAGA	S-NPP	25.83720	81.22650	13:41:45	D	3.80
5	PILHIBHIT	BISALPUR	S-NPP	28.20260	79.98600	13:41:45	D	2.50
6	PILHIBHIT	PURANPUR	S-NPP	28.35420	80.16970	13:41:45	D	2.70
7	SHAHJAHANPUR	SHAHJAHANPUR	S-NPP	27.92590	79.92170	13:41:45	D	2.00

Details of residue burning events in Rajasthan on 17-Oct-2022

S. No.	District	Tehsil / Block	Satellite	Latitude	Longitude	ACQ_TIME	Day / Night	Fire Power (W/m ²)
1	BUNDI	BUNDI	S-NPP	25.28240	75.81700	13:41:45	D	3.00
2	BUNDI	KESHORAIPATAN	S-NPP	25.45130	76.11030	13:41:45	D	6.20
3	JHALAWAR	KHANPUR	S-NPP	24.82280	76.34920	13:41:45	D	4.00
4	KOTA	PIPALDA	S-NPP	25.41520	76.34710	13:41:45	D	1.80

Details of residue burning events in Madhya Pradesh on 17-Oct-2022

S. No.	District	Tehsil / Block	Satellite	Latitude	Longitude	ACQ_TIME	Day / Night	Fire Power (W/m ²)
1	ASHOKNAGAR	MUNGAOLI	S-NPP	24.37430	78.06860	13:41:45	D	3.00
2	DAMOH	DAMOH	S-NPP	23.96580	79.47450	13:41:45	D	3.30
3	GUNA	GUNA	S-NPP	24.93490	77.02650	13:41:45	D	4.00
4	GUNA	RAGHOGARH	S-NPP	24.37310	77.15280	13:41:45	D	2.50
5	GUNA	RAGHOGARH	S-NPP	24.44740	77.15170	13:41:45	D	1.10
6	JABALPUR	SAHPURA	S-NPP	23.03880	79.64410	13:41:45	D	2.90
7	JABALPUR	SAHPURA	S-NPP	23.12930	79.71060	13:41:45	D	2.90
8	RAJGARH	NARSINGHGAR	S-NPP	23.66810	76.89410	02:32:28	N	0.30

9	SEHORE	AASHTA	S-NPP	22.86730	76.76560	13:41:45	D	2.60
10	SEHORE	NASRULLAHGANJ	S-NPP	22.60940	77.24400	13:41:45	D	3.10
11	SEHORE	NASRULLAHGANJ	S-NPP	22.79070	77.20510	13:41:45	D	3.40

The study used data received from following Satellites at NRSC Ground Station

S. No.	Satellite Name	Sensor	Resolution (meter)	Day / Night Passes
1.	Suomi NPP	VIIRS	375 / 750	Both
2.	Terra	MODIS	1000	Both
3.	Aqua	MODIS	1000	Both

**The rice mask for the Punjab and Haryana were provided by MNCFC, MoA&FW, Govt of India
The kharif crop mask for Delhi, Uttar Pradesh, Rajasthan and Madhya Pradesh were provided by NRSC**

Study Team

ICAR - IARI	Dr V.K. Sehgal	Principal & Nodal Scientist	iaricreams@gmail.com
	Dr Rajkumar Dhakar	Scientist	rajdhakar.iari@gmail.com
	Mr Mohd Jahangir	Lab Assistant (KRISHI)	mjahangir198@gmail.com
ICAR - ATARI	Dr Rajbir Singh	Director ATARI (Zone-I) Ludhiana	rajbirsingh.zpd@gmail.com
	Dr S.K. Singh	Director ATARI (Zone-II) Jodhpur	sushilsinghiipr@yahoo.co.in
	Dr Atar Singh	Director ATARI (Zone-III) Kanpur	zpdicarkanpur@gmail.com
ICAR - IASRI	Dr Rajender Parsad	Director	rajender.parsad@icar.gov.in

GIS Maps of fire events can be visualized online on ICAR KRISHI Geoportal website: <http://geoportal.icar.gov.in:8080/geoexplorer/composer/>

(Part of KRISHI Portal: <https://krishi.icar.gov.in> initiative)

and on IARI CREAMS website (<http://creams.iari.res.in/cms2/index.php>)
