



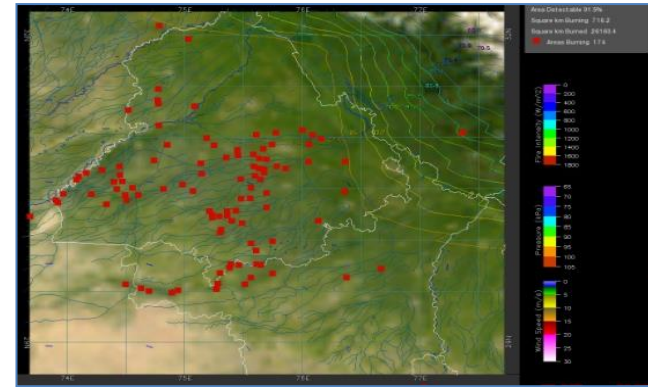
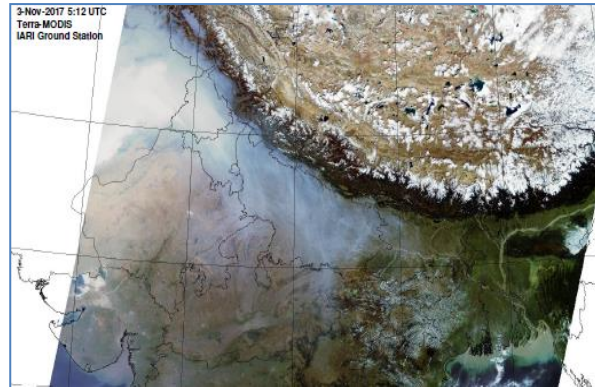
**Bulletin
No. 50**

**Events Date:
19-Nov-2020**

**Issued on:
20-Nov-2020**



MONITORING PADDY RESIDUE BURNING IN NORTH INDIA USING SATELLITE REMOTE SENSING DURING 2020



Prepared by:

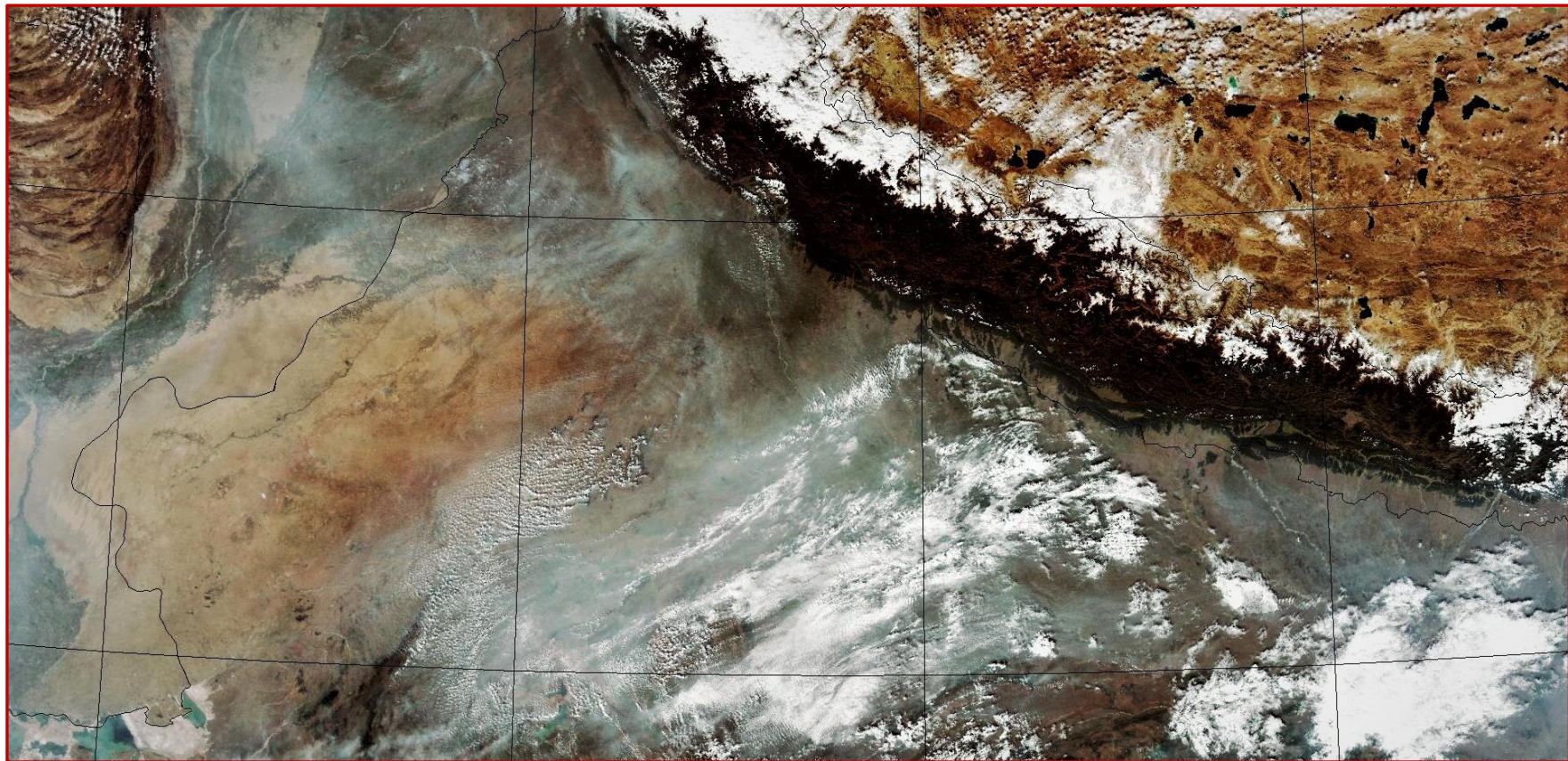
**Consortium for Research on Agroecosystem Monitoring and Modeling from Space (CREAMS) Laboratory,
Division of Agricultural Physics, ICAR – Indian Agricultural Research Institute, New Delhi – 110012**

<http://creams.iari.res.in>

Highlights for 19-November-2020

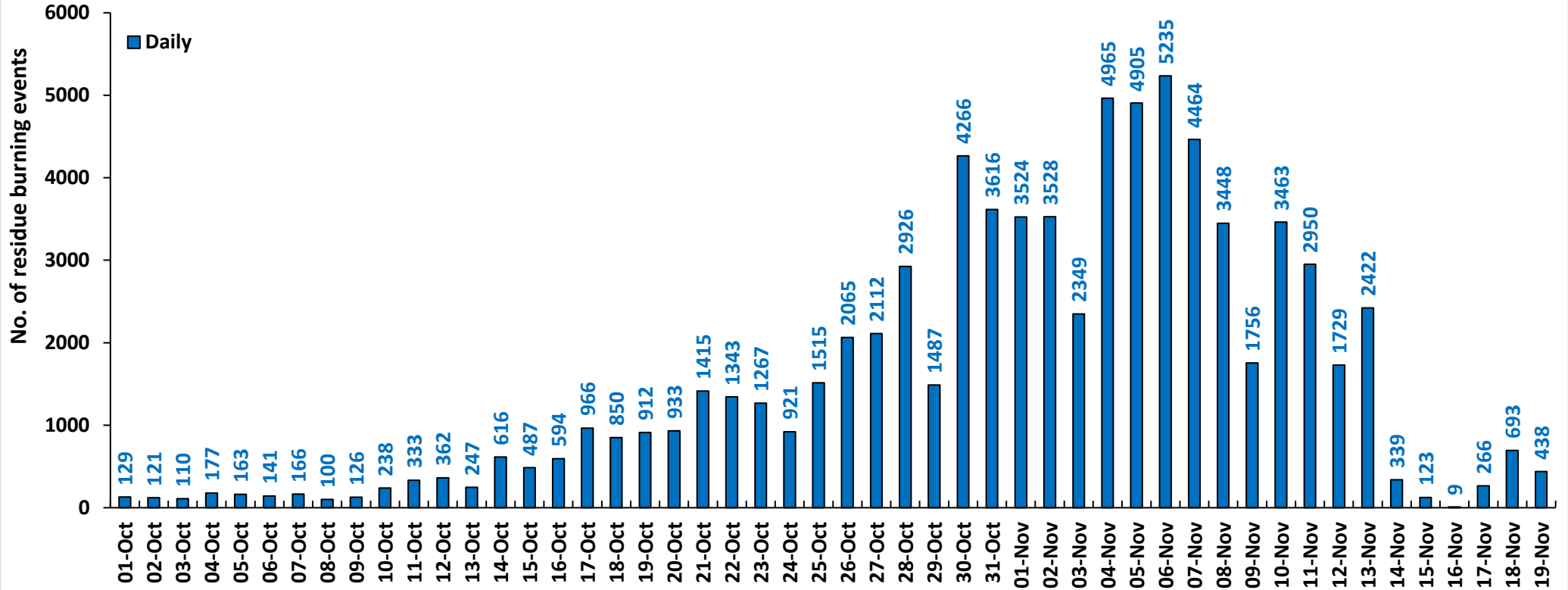
- Satellites detected **594** residue burning events in the three study States on **19-Nov-2020**.
- The state wise events detected on **19-Nov-2020** were **438** in Punjab, **44** in Haryana and **112** in UP.
- The number of events has decreased from **818** on **18-Nov-2020** to **594** on **19-Nov-2020** in the three states.
- Fazilka in Punjab, Fatehabad in Haryana and Kushinagar in UP reported the highest number of events on **19-Nov-2020**.
- Total **85509** burning events were detected in the three States between **01-Oct-2020** and **19-Nov-2020**, which are distributed as **77310**, **5126** and **3073** in Punjab, Haryana and UP, respectively.
- In Haryana and UP, the cumulative number of burning events between **01-Oct** and **19-Nov 2020** were lower than in **2019**, while in Punjab the cumulative number of events were more than in **2019**.

[SNPP \(VIIRS\) Satellite image of North India Acquired on 19-Nov-2020 at 13:12 IST by IARI Ground Station](#)

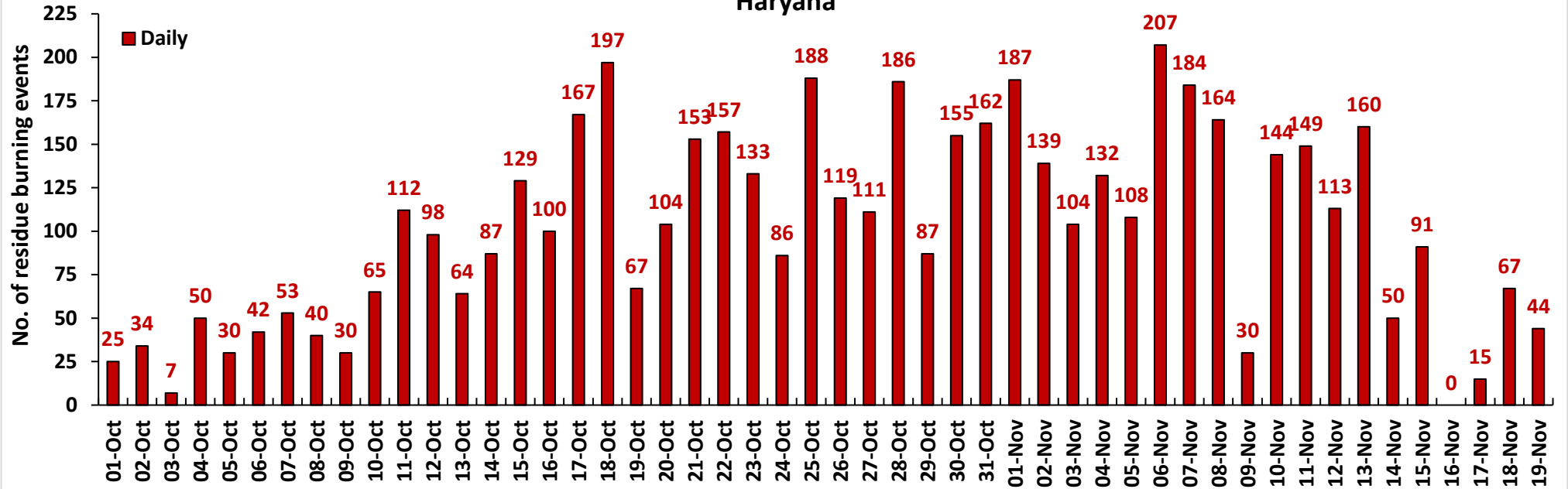


Temporal distribution of residue burning events for the three study States in 2020.

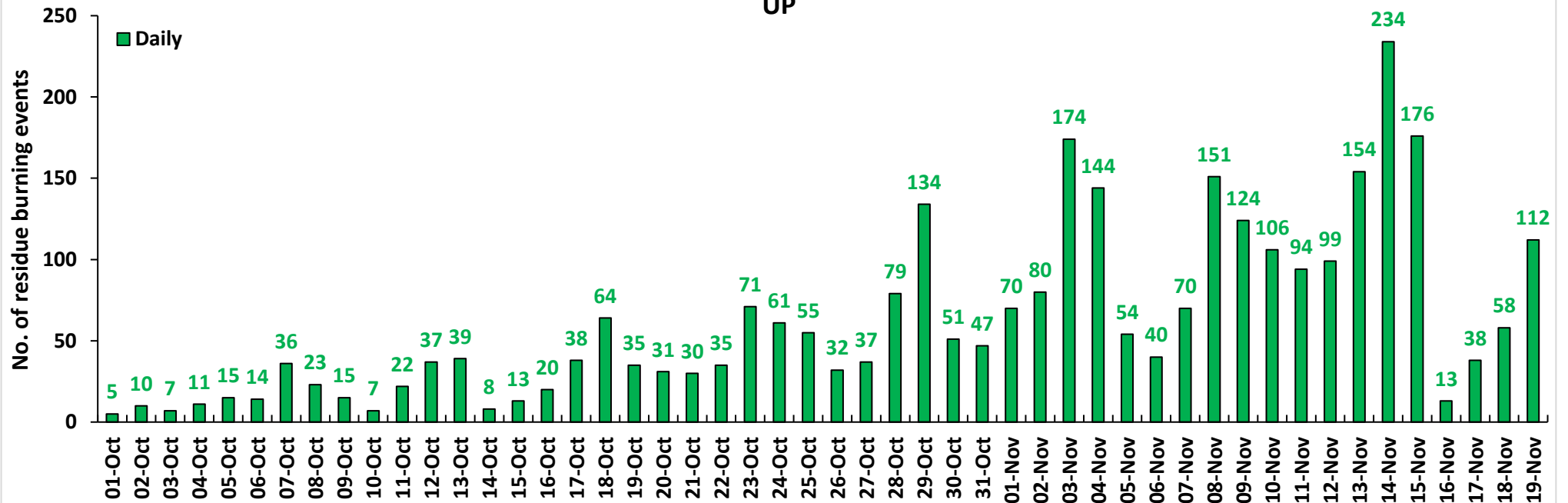
Punjab



Haryana



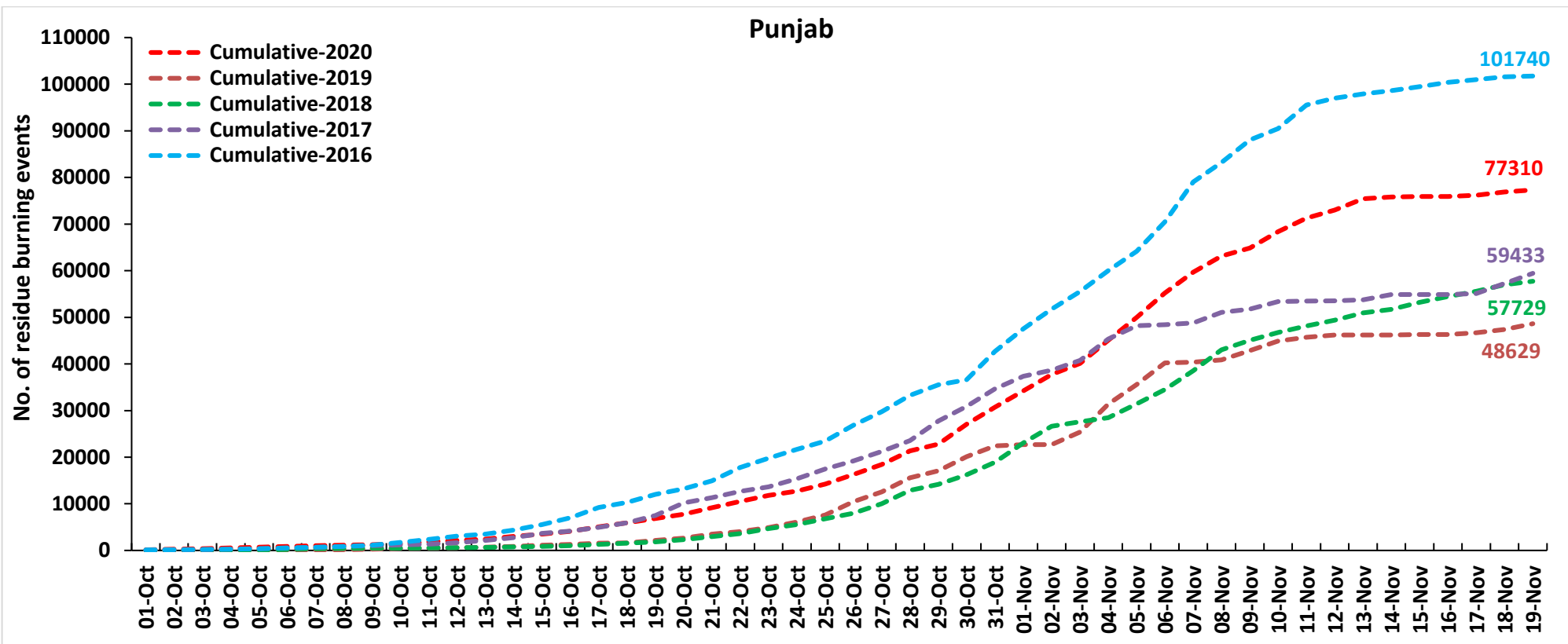
UP

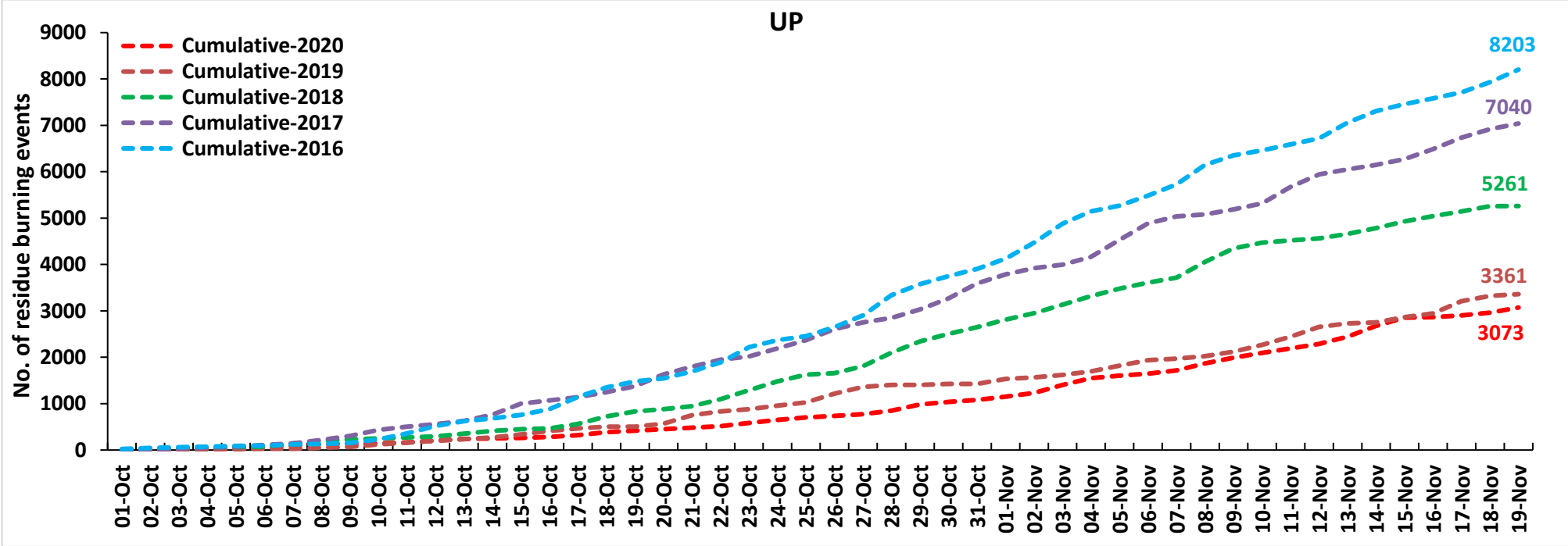
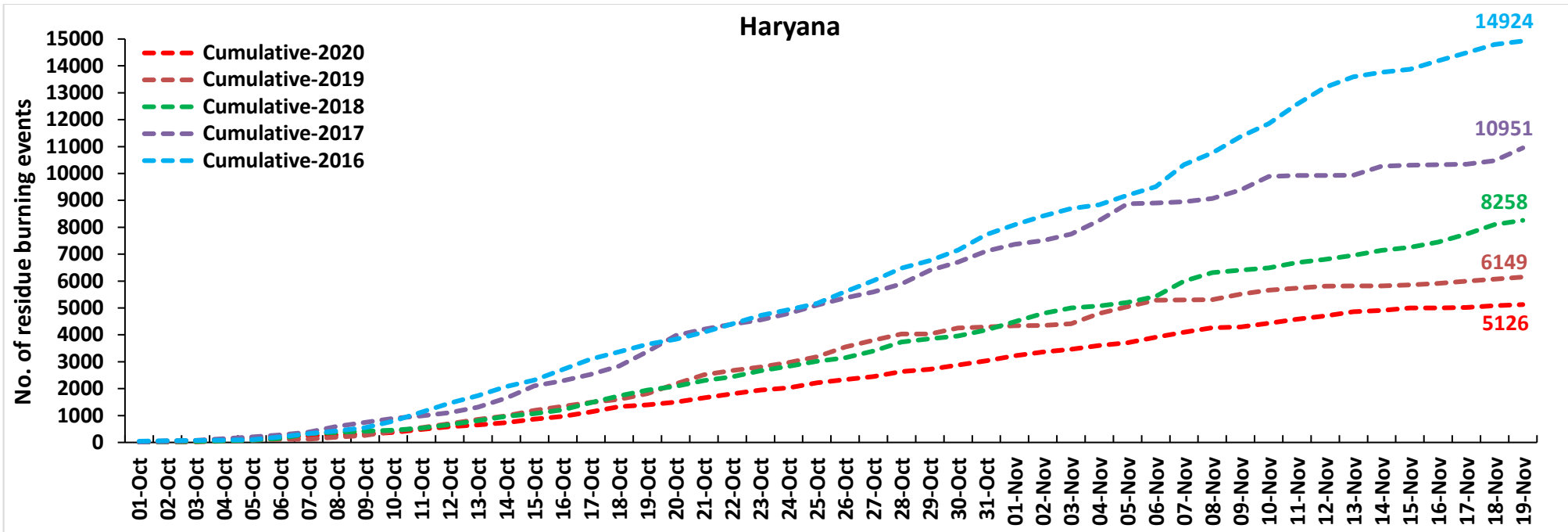


Comparison of residue burning events in current year (2020) with previous years (2019, 2018, 2017 & 2016) for the three study States

(01-Oct to 19-Nov)

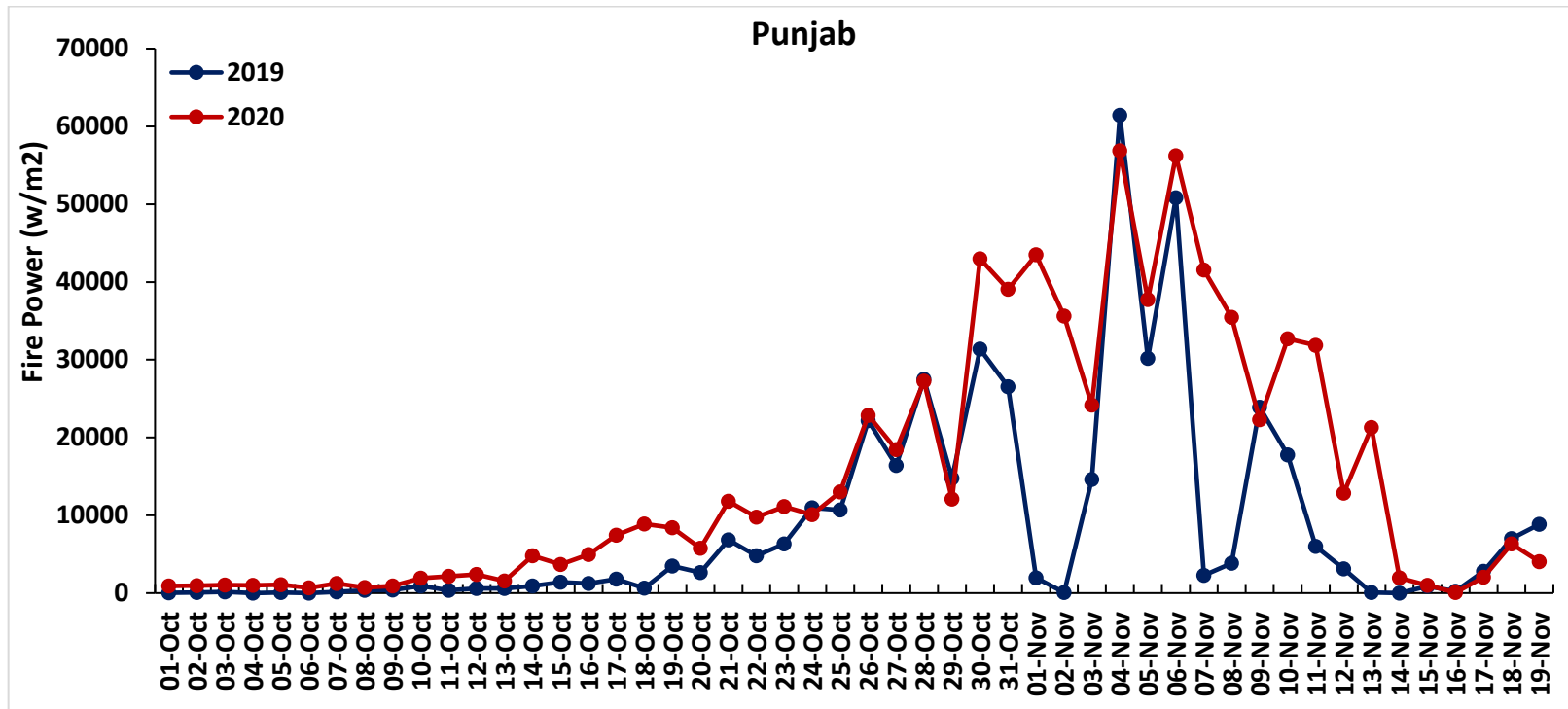
Punjab

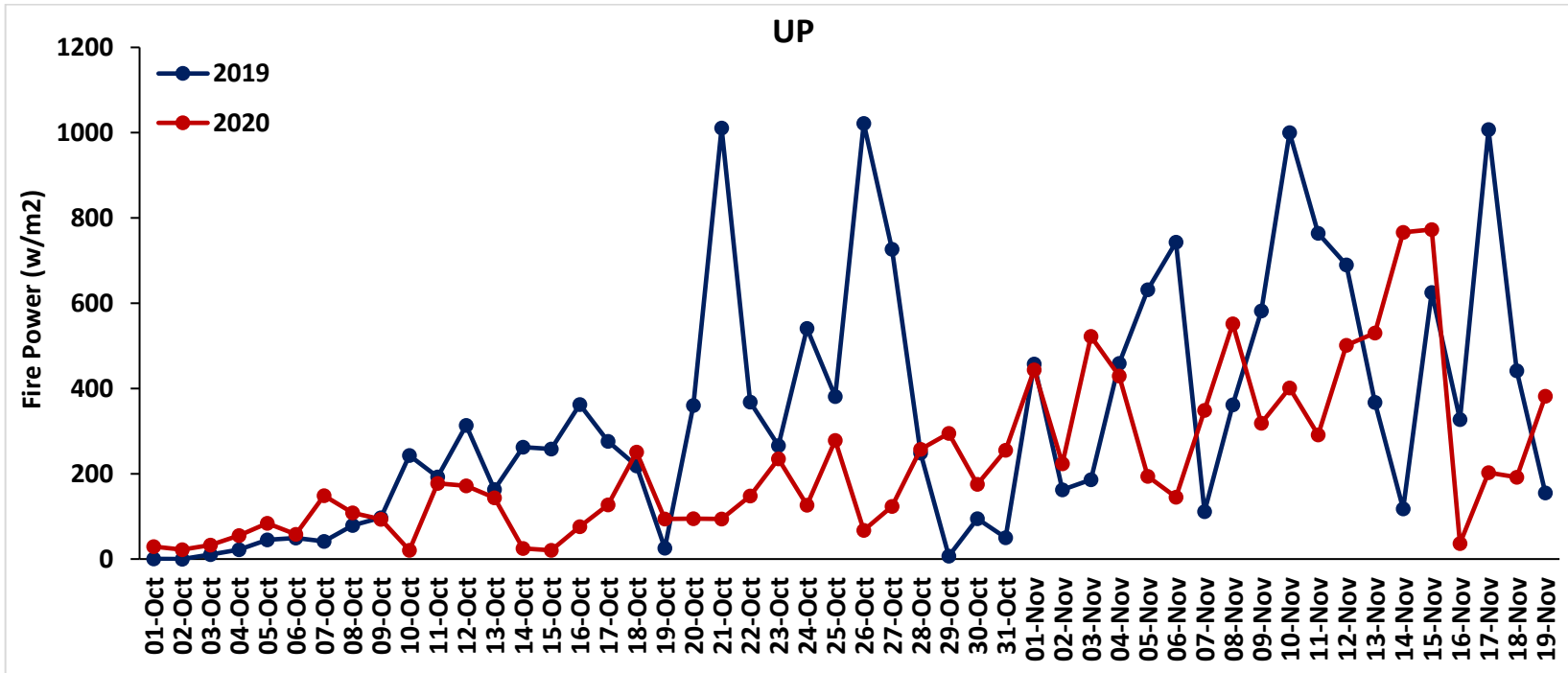
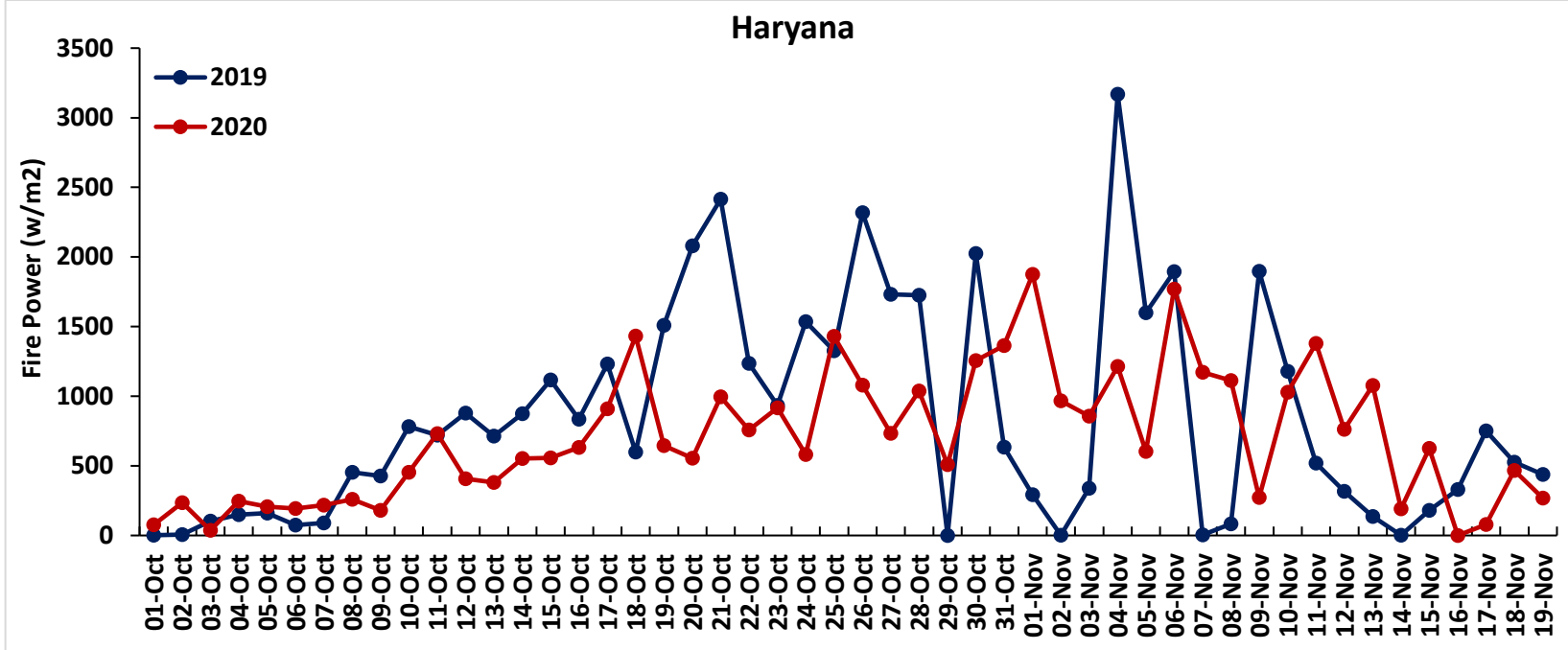




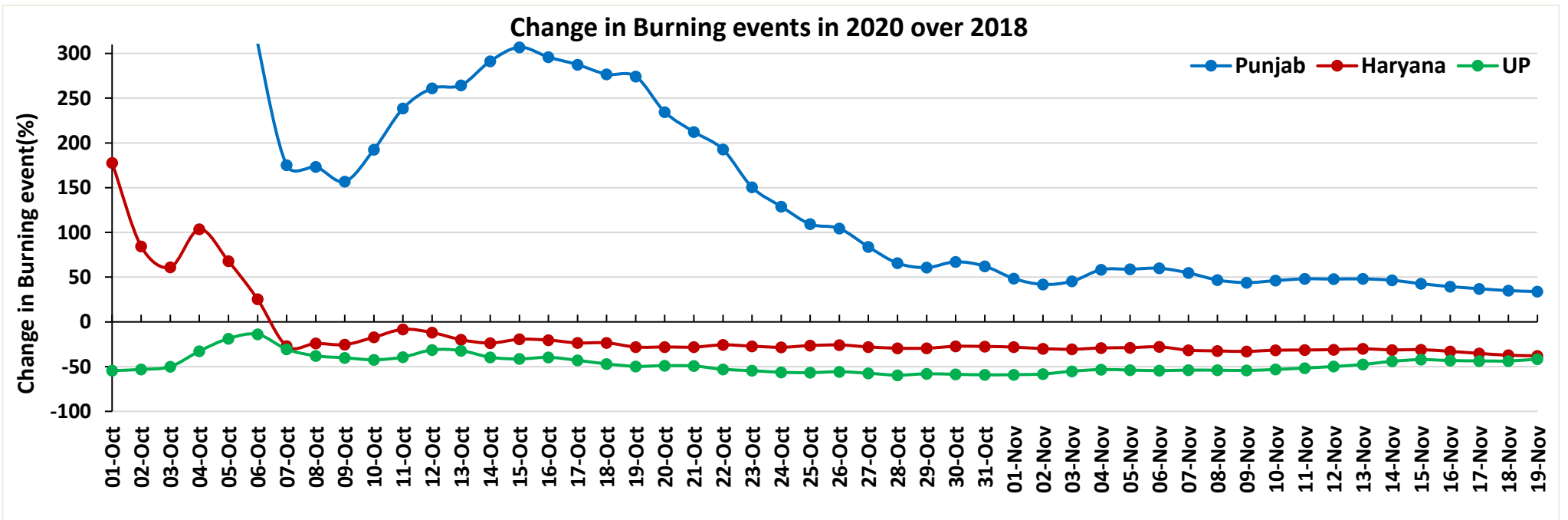
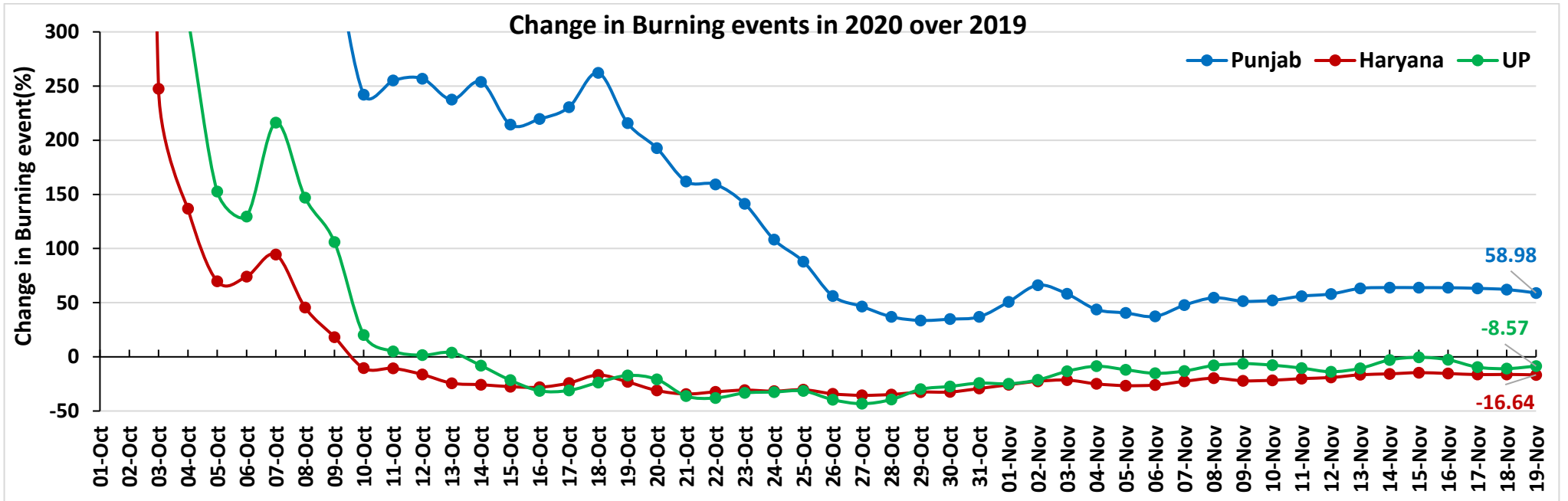
Comparison of Fire Intensity of residue burning events in current year (2020) with previous year (2019)
For the three study States

(01-Oct to 19-Nov)

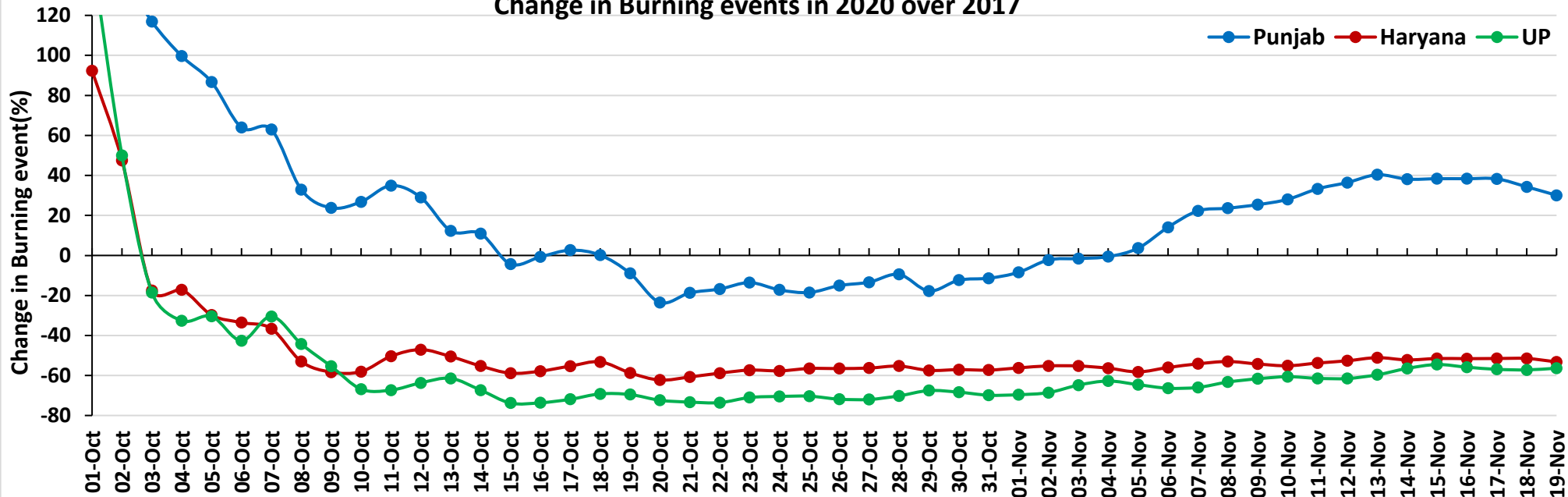




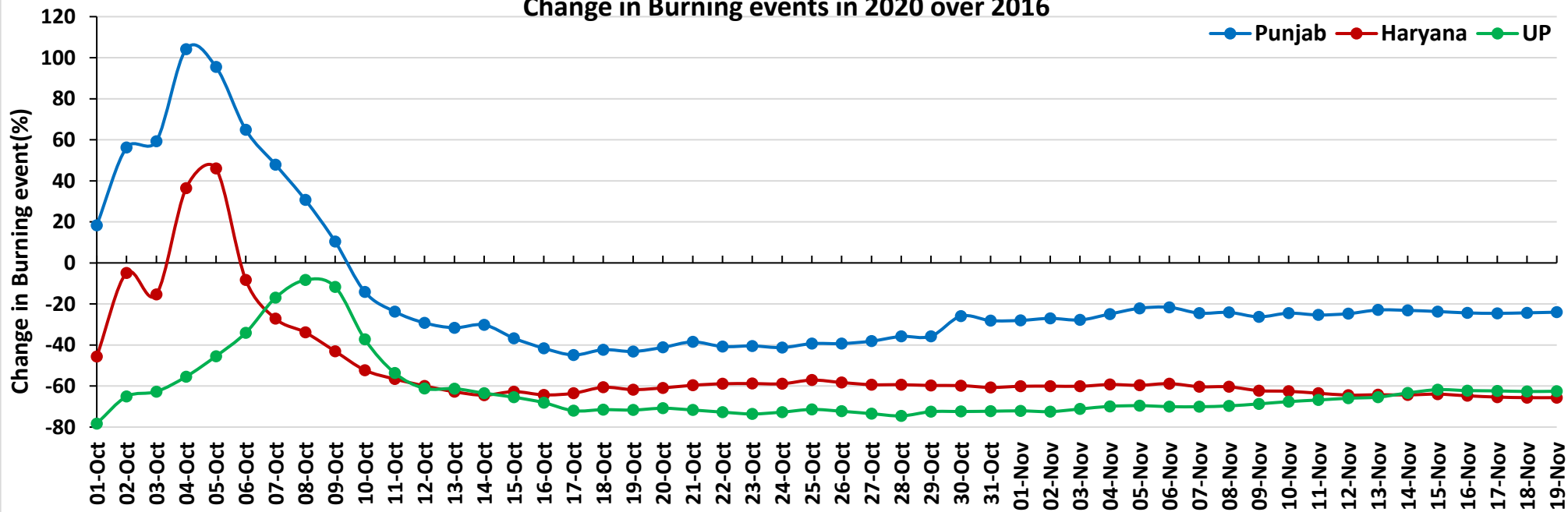
Percent Change in Burning events in 2020 over 2019, 2018, 2017 and 2016 (Daily Cumulative)



Change in Burning events in 2020 over 2017

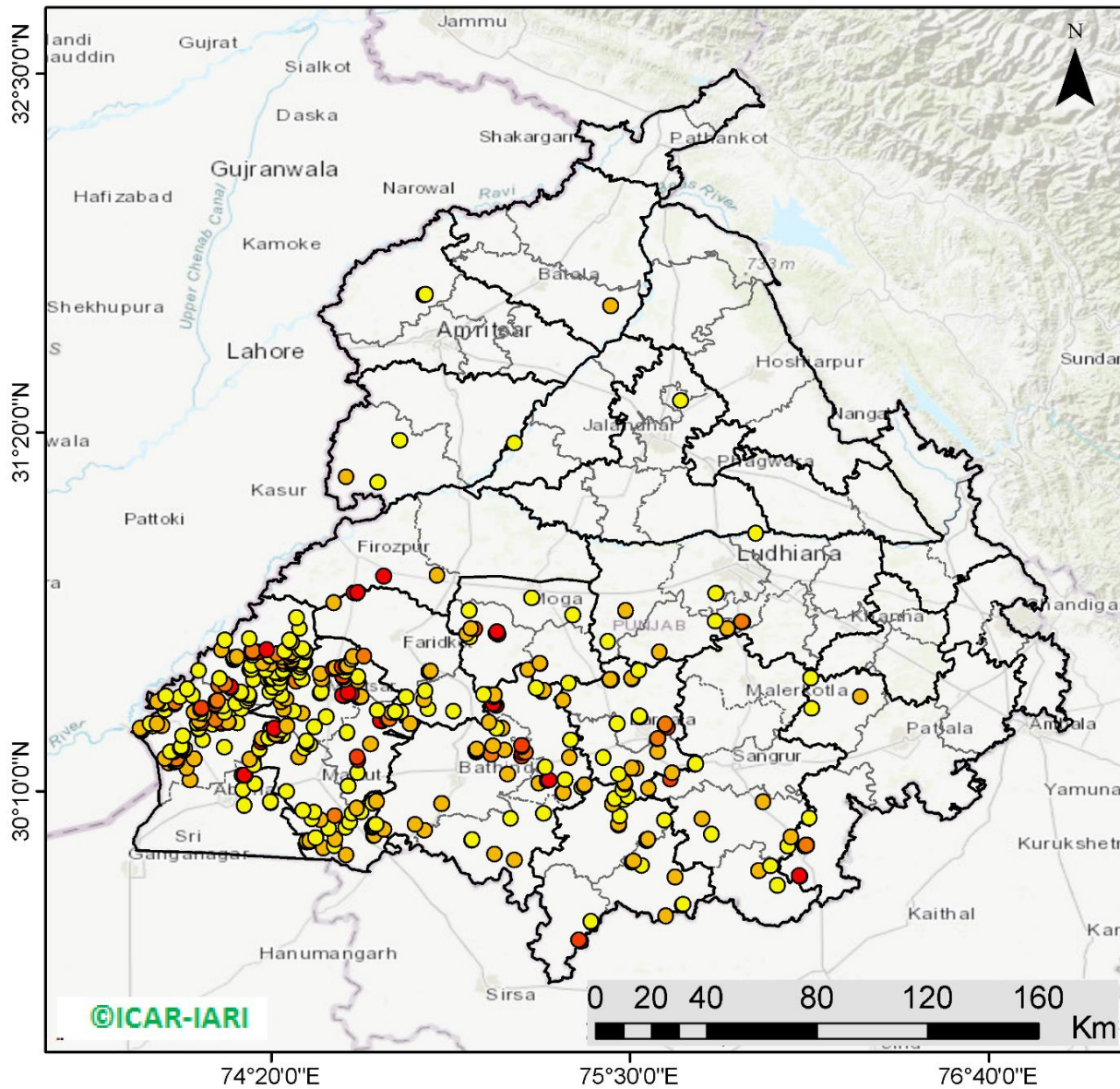


Change in Burning events in 2020 over 2016



(a) Punjab

RICE RESIDUE BURNING IN PUNJAB



438 burning events detected in Punjab on 19th November 2020

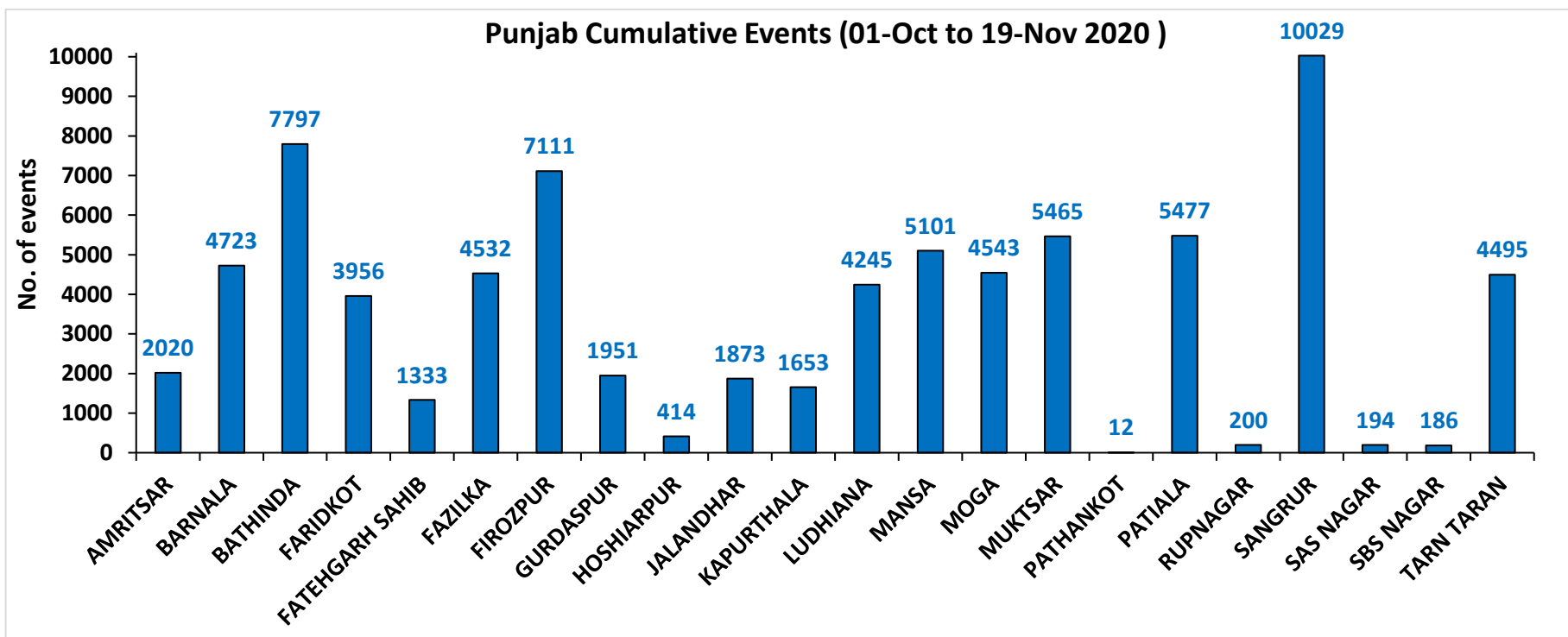
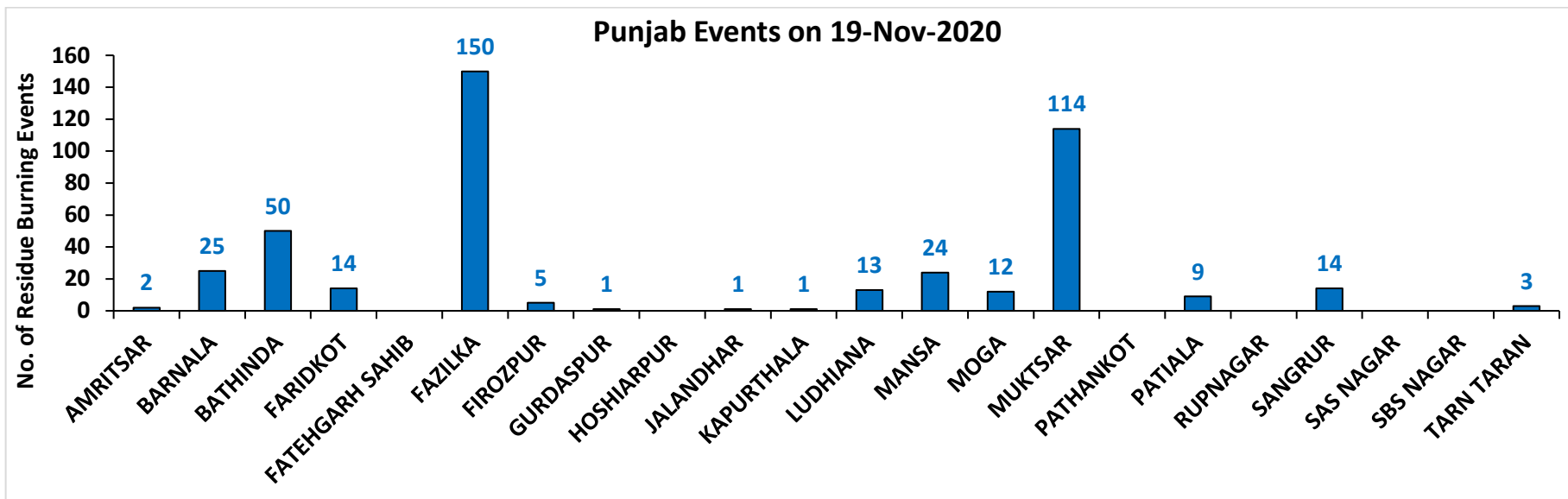
Fire Intensity (W/m²)

- 0 - 5
- 6 - 10
- 11 - 15
- 16 - 20
- >20



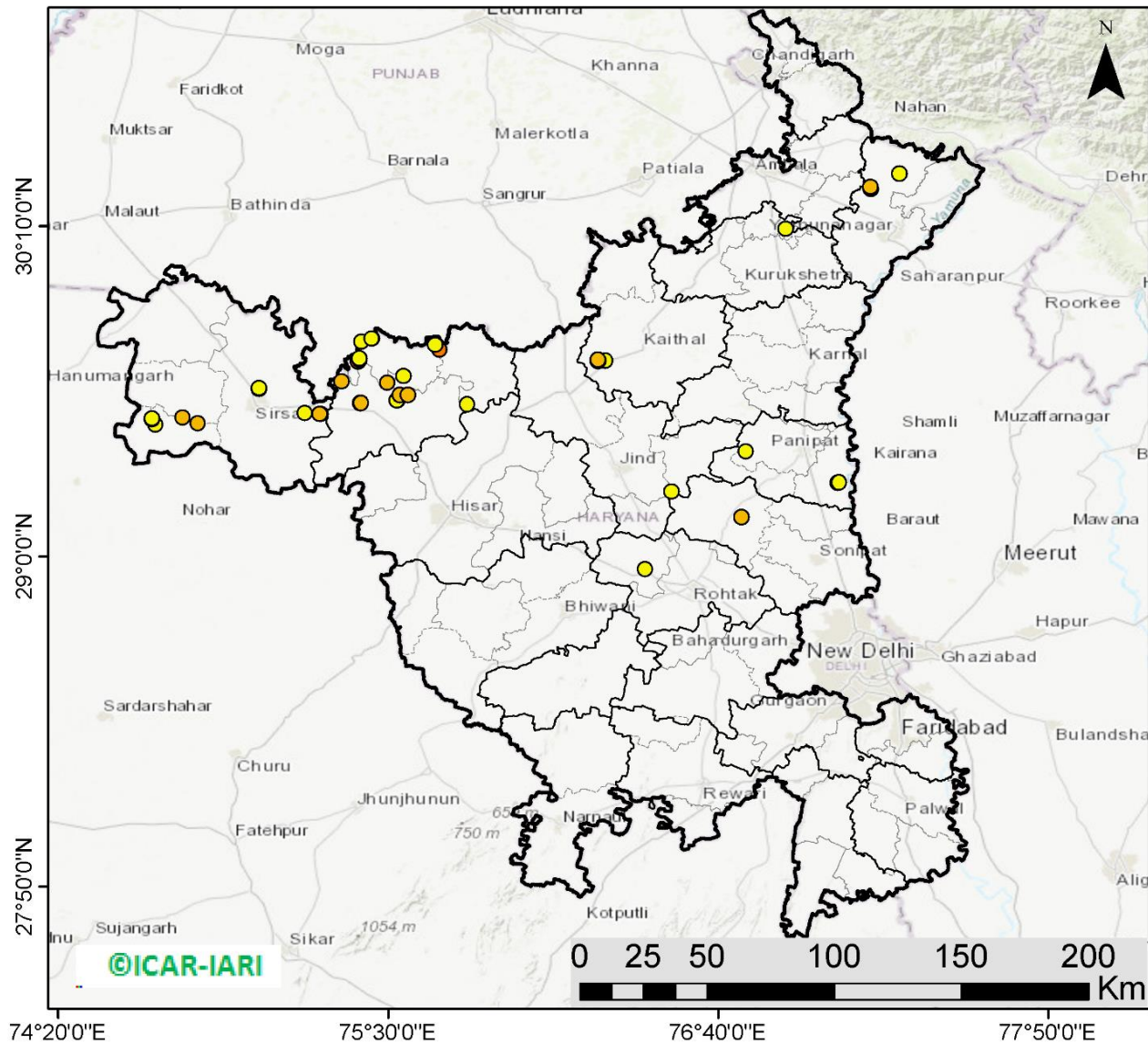
<http://geoportal.icar.gov.in:8080/geoexplorer/composer/>

District-wise number of residue burning events in Punjab (01-Oct to 19-Nov 2020)



(b) Haryana

RICE RESIDUE BURNING IN HARYANA



44 burning events detected in Haryana on 19th November 2020

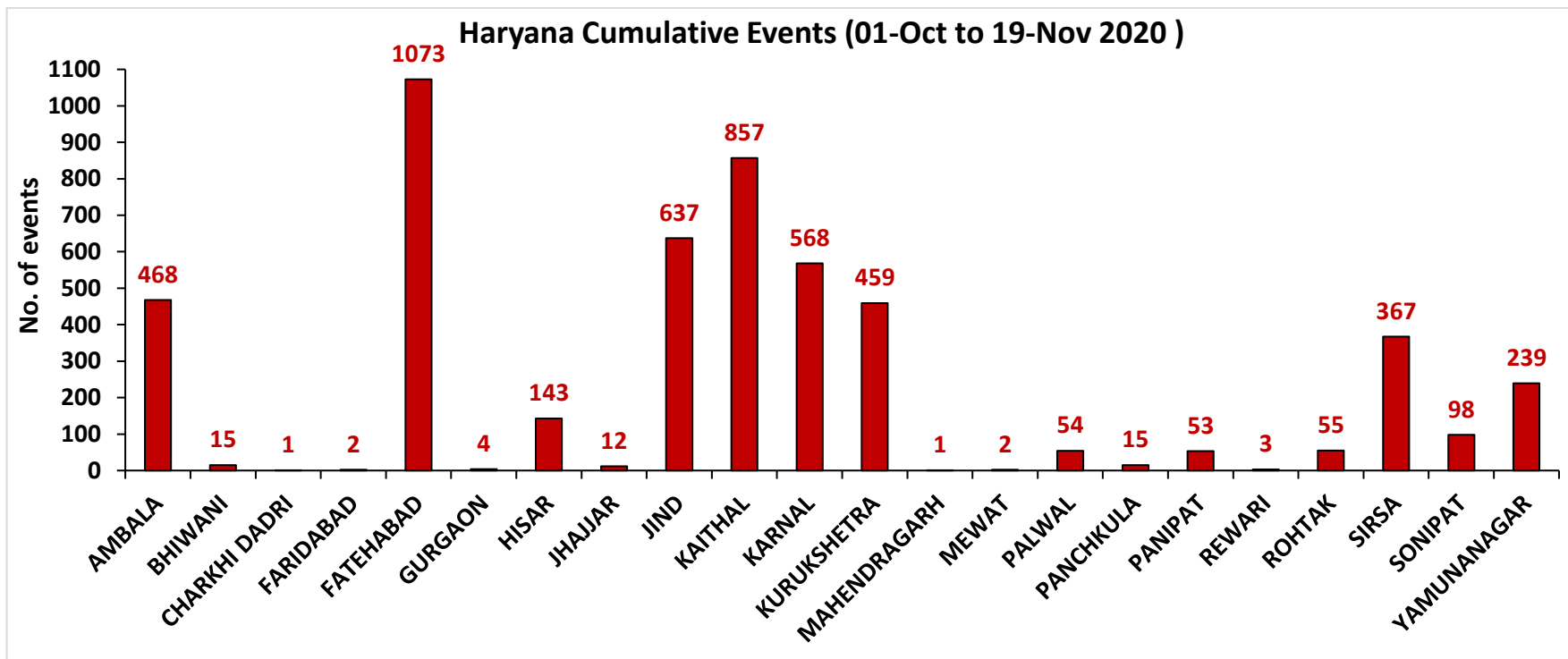
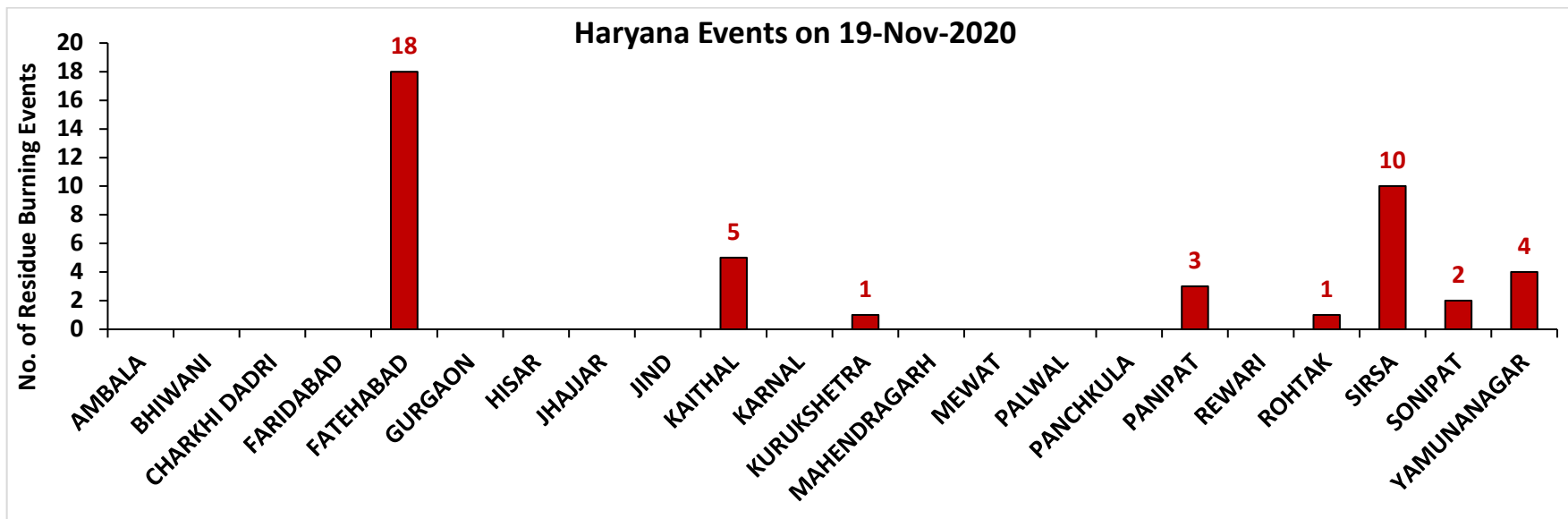
Fire Intensity (W/m²)

- 0 - 5
- 6 - 10
- 11 - 15
- 16 - 20
- >20



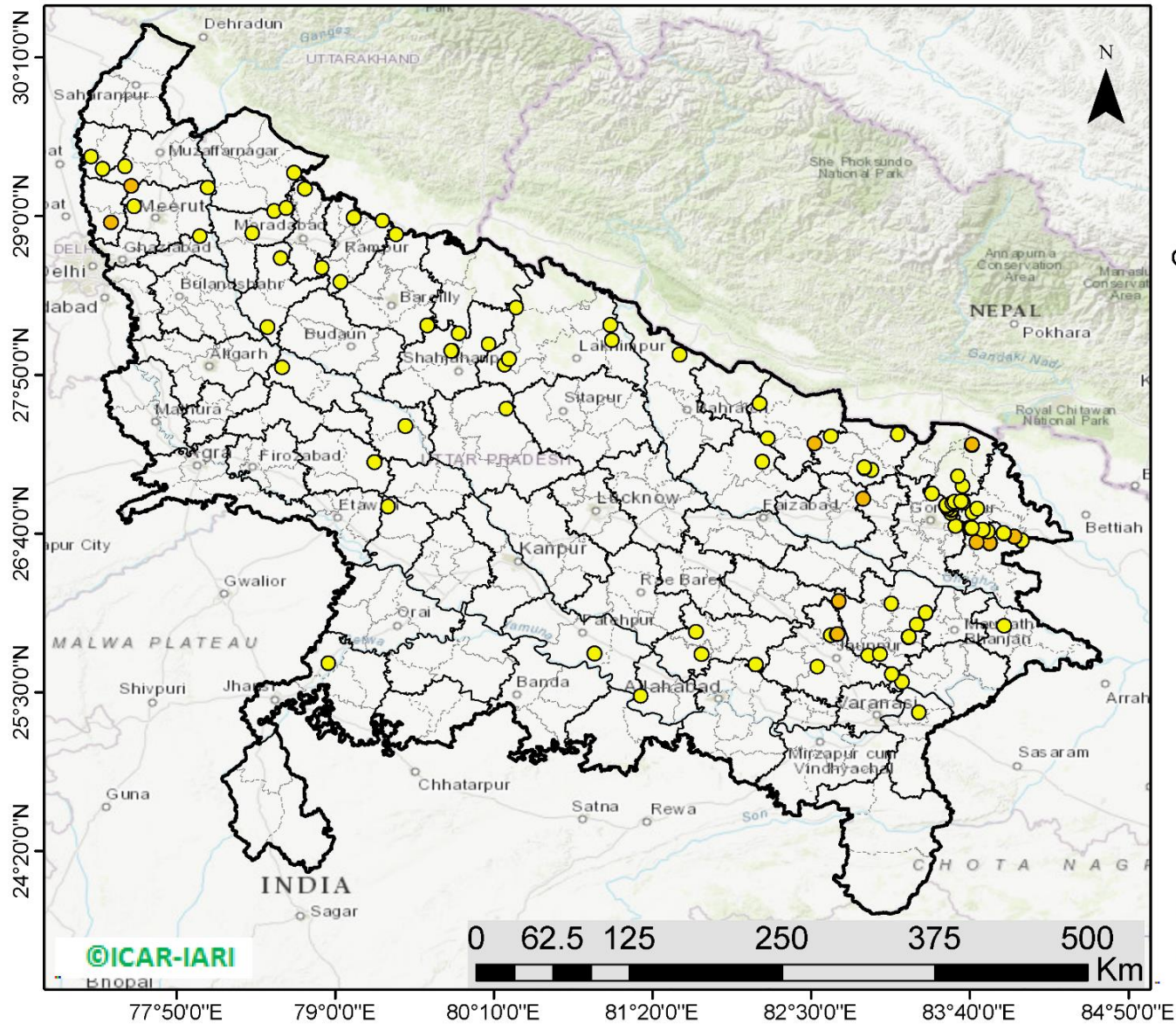
<http://geoportal.icar.gov.in:8080/geoexplorer/composer/>

District-wise number of residue burning events in Haryana (01-Oct to 19-Nov 2020)



(c) Uttar Pradesh

RICE RESIDUE BURNING IN UTTAR PRADESH



112 burning events detected in Uttar Pradesh on 19th November 2020

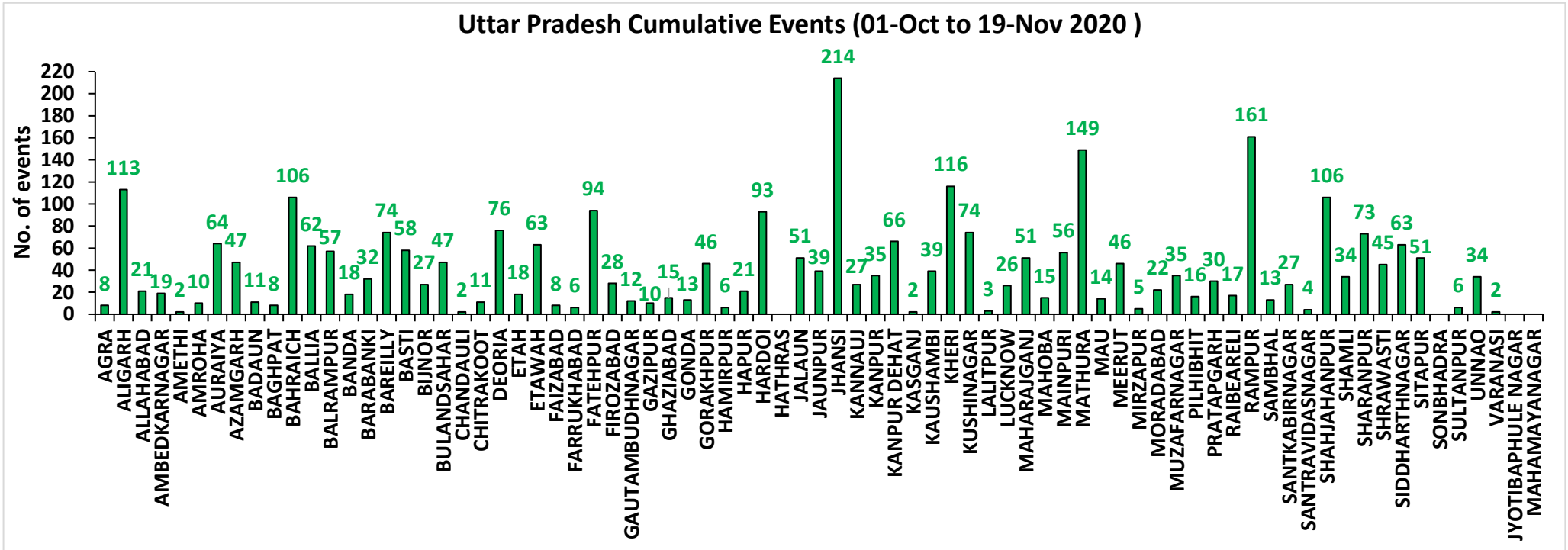
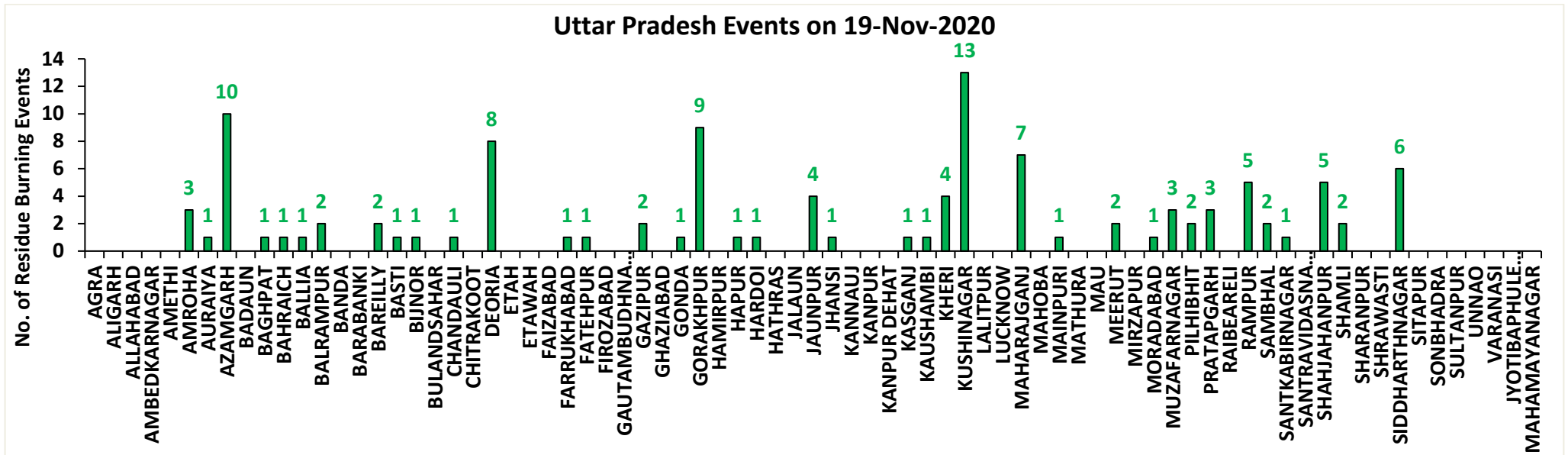
Fire Intensity (W/m²)

- 0 - 5
- 6 - 10
- 11 - 15
- 16 - 20
- >20



<http://geoportal.icar.gov.in:8080/geoexplorer/composer/>

District-wise number of residue burning events in Uttar Pradesh (01-Oct to 19-Nov 2020)



State-wise and date-wise number of residue burning events detected in 2016, 2017, 2018, 2019 and 2020
(Period: 01-October to 19-November)

Date	Punjab					Haryana					UP					Total				
	2020	2019	2018	2017	2016	2020	2019	2018	2017	2016	2020	2019	2018	2017	2016	2020	2019	2018	2017	2016
01-Oct	129	3	16	54	109	25	1	9	13	46	5	1	11	2	23	159	5	36	69	178
02-Oct	121	20	9	50	51	34	2	23	27	16	10	0	21	8	20	165	22	53	85	87
03-Oct	110	37	4	62	66	07	16	9	40	16	07	3	12	17	16	124	56	25	119	98
04-Oct	177	3	32	103	37	50	30	16	60	7	11	4	5	22	15	238	37	53	185	59
05-Oct	163	16	56	106	95	30	37	30	68	15	15	11	10	20	14	208	64	96	194	124
06-Oct	141	0	87	138	152	42	22	63	75	105	14	8	13	39	6	197	30	163	252	263
07-Oct	166	27	162	105	171	53	16	180	97	126	36	4	69	33	24	255	47	411	235	321
08-Oct	100	59	39	215	166	40	69	40	218	94	23	18	54	76	14	163	146	133	509	274
09-Oct	126	93	75	163	270	30	70	47	148	121	15	17	32	88	22	171	180	154	399	413
10-Oct	238	172	23	164	597	65	157	37	151	242	07	53	21	126	74	310	382	81	441	913
11-Oct	333	78	30	177	652	112	126	78	87	336	22	38	24	74	128	467	242	132	338	1116
12-Oct	362	99	67	342	694	98	154	133	123	338	37	42	22	51	164	497	295	222	516	1196
13-Oct	247	108	62	470	467	64	159	147	207	284	39	33	61	69	102	350	300	270	746	853
14-Oct	616	141	112	582	812	87	133	153	333	328	08	39	57	137	60	711	313	322	1052	1200
15-Oct	487	262	90	943	1215	129	203	110	458	248	13	63	35	237	76	629	528	235	1638	1539
16-Oct	594	168	174	465	1478	100	148	138	186	385	20	77	20	71	125	714	393	332	722	1988
17-Oct	966	250	272	807	2173	167	152	268	244	399	38	53	94	69	261	1171	455	634	1120	2833
18-Oct	850	100	263	970	1065	197	103	255	306	270	64	39	163	108	204	1111	242	681	1384	1539
19-Oct	912	529	254	1591	1762	67	220	208	541	276	35	3	108	128	132	1014	752	570	2260	2170
20-Oct	933	490	496	2653	1175	104	360	141	597	188	31	62	49	255	62	1068	912	686	3505	1425
21-Oct	1415	852	618	1139	1726	153	339	217	233	257	30	185	66	168	152	1598	1376	901	1540	2135
22-Oct	1343	555	656	1356	2837	157	158	134	186	309	35	78	149	151	194	1535	791	939	1693	3340
23-Oct	1267	827	1113	994	2040	133	131	232	155	313	71	48	193	72	331	1471	1006	1538	1221	2684
24-Oct	921	1220	844	1714	1836	86	165	166	244	221	61	79	192	171	152	1068	1464	1202	2129	2209
25-Oct	1515	1463	1247	2104	1813	188	212	182	303	229	55	67	142	175	83	1758	1742	1571	2582	2125
26-Oct	2065	2861	1173	1715	3390	119	366	132	276	434	32	189	33	240	195	2216	3416	1338	2231	4019
27-Oct	2112	2135	2040	2069	2904	111	249	252	224	417	37	145	154	145	255	2260	2529	2446	2438	3576
28-Oct	2926	3007	2864	2318	3493	186	238	330	292	458	79	45	290	99	435	3191	3290	3484	2709	4386
29-Oct	1487	1504	1321	4184	2258	87	0	124	502	278	134	1	243	180	237	1708	1505	1688	4866	2773
30-Oct	4266	3017	2008	3152	1076	155	222	103	307	395	51	19	158	238	175	4472	3258	2269	3697	1646
31-Oct	3616	2325	2715	3743	6132	162	36	229	413	575	47	4	148	321	153	3825	2365	3092	4477	6860
01-Nov	3524	293	4140	2736	4843	187	50	306	250	362	70	105	161	199	223	3781	448	4607	3185	5428
02-Nov	3528	6	3550	1246	4183	139	2	306	145	332	80	33	142	131	345	3747	41	3998	1522	4860

03-Nov	2349	2646	972	2109	3806	104	68	202	240	375	174	56	181	75	409	2627	2770	1355	2424	4490
04-Nov	4965	6001	882	4603	4477	132	383	77	499	146	144	75	183	168	265	5241	6459	1142	5270	4888
05-Nov	4905	4199	2989	2876	4137	108	253	129	625	345	54	124	163	367	125	5067	4576	3281	3868	4607
06-Nov	5235	4642	3071	171	6303	207	243	222	26	322	40	118	130	357	215	5482	5003	3423	554	6840
07-Nov	4464	189	4033	420	8575	184	2	568	46	821	70	33	108	149	244	4718	224	4709	615	9640
08-Nov	3448	462	4450	2256	4129	164	16	313	128	432	151	54	338	43	419	3763	532	5101	2427	4980
09-Nov	1756	2003	2083	675	4857	30	199	96	311	608	124	96	294	107	205	1910	2298	2473	1093	5670
10-Nov	3463	2046	1675	1642	2468	144	151	85	509	484	106	147	125	131	109	3713	2344	1885	2282	3061
11-Nov	2950	783	1364	103	5040	149	78	196	29	716	94	174	45	358	129	3193	1035	1605	490	5885
12-Nov	1729	520	1256	33	1477	113	68	122	3	634	99	210	45	269	129	1941	798	1423	305	2240
13-Nov	2422	10	1563	237	885	160	16	146	7	389	154	79	94	109	338	2736	105	1803	353	1612
14-Nov	339	0	765	1101	692	50	1	189	340	171	234	22	128	95	247	623	23	1082	1536	1110
15-Nov	123	92	1480	5	871	91	29	107	40	107	176	111	146	123	154	390	232	1733	168	1132
16-Nov	9	23	1250	8	911	0	59	204	17	318	13	79	112	218	123	22	161	1566	243	1352
17-Nov	266	332	1132	217	638	15	85	289	12	299	38	265	103	249	130	319	682	1524	478	1067
18-Nov	693	740	1400	2147	568	67	70	356	139	312	58	113	111	180	217	818	923	1867	2466	1097
19-Nov	438	1221	752	2200	168	44	82	159	471	125	112	39	3	122	273	594	1342	914	2793	566
Total	77310	48629	57729	59433	101740	5126	6149	8258	10951	14924	3073	3361	5261	7040	8203	85509	58139	71248	77424	124867

District-wise and date-wise cumulative number of residue burning events detected in 2016, 2017, 2018, 2019 and 2020
(Period: 01-Oct to 19-Nov)

(a) Punjab

Districts	01-Oct to 19-Nov				
	2016	2017	2018	2019	2020
AMRITSAR	2153	1249	1246	1377	2020
BARNALA	5689	2844	3205	2951	4723
BATHINDA	8807	4862	6225	5213	7797
FARIDKOT	4616	3183	2997	2190	3956
FATEHGARH SAHIB	2456	1614	846	817	1333
FAZILKA	0	0	0	1996	4532
FIROZPUR	13415	8170	9520	4543	7111
GURDASPUR	2206	1510	1124	1465	1951
HOSHIARPUR	899	478	195	308	414
JALANDHAR	4653	2003	1359	1502	1873
KAPURTHALA	3133	1545	739	1349	1653
LUDHIANA	9490	4008	2777	2253	4245
MANSA	5603	4199	4244	3511	5101
MOGA	6391	2045	2653	2125	4543
MUKTSAR	6930	4296	5501	3078	5465
PATHANKOT	0	0	0	6	12
PATIALA	6535	5016	4200	3842	5477
RUPNAGAR	713	326	82	118	200
SANGRUR	11850	8263	7743	6328	10029
SAS NAGAR	114	107	104	150	194
SBS NAGAR	1601	793	369	263	186
TARN TARAN	4486	2922	2600	3244	4495
Total	101740	59433	57729	48629	77310

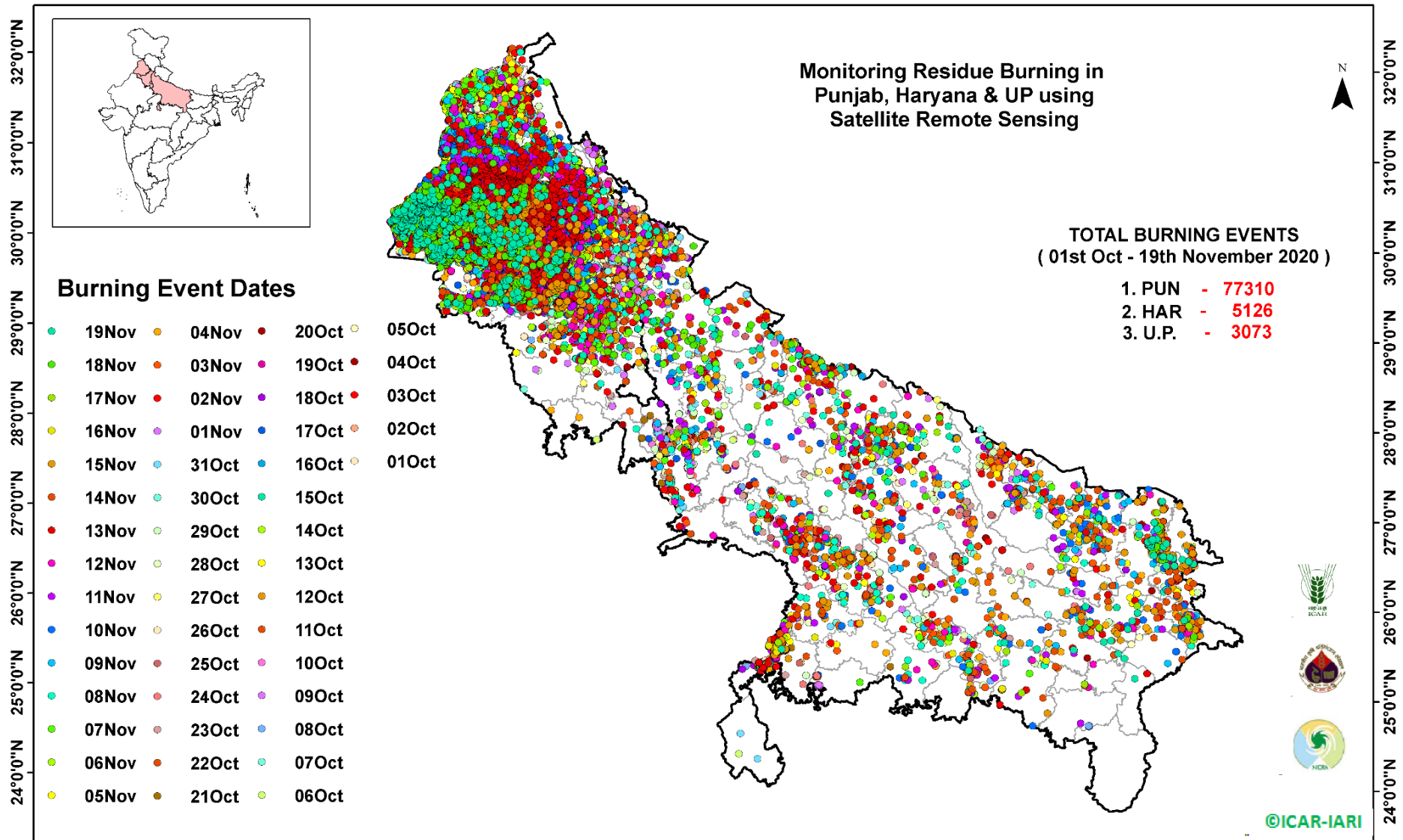
(b) Haryana

Districts	01-Oct to 19-Nov				
	2016	2017	2018	2019	2020
AMBALA	530	492	326	336	468
BHIWANI	74	27	13	11	15
CHARKHI DADRI	0	0	0	0	1
FARIDABAD	284	341	185	10	2
FATEHABAD	4710	3148	2268	1137	1073
GURGAON	0	0	0	4	4
HISAR	372	168	168	111	143
JHAJJAR	28	16	17	3	12
JIND	840	911	827	559	637
KAITHAL	1746	1499	1286	1247	857
KARNAL	1624	1487	841	1076	568
KURUKSHETRA	1076	1141	680	737	459
MAHENDRAGARH	0	0	0	2	1
MEWAT	0	0	0	3	2
PALWAL	0	0	0	188	54
PANCHKULA	0	0	3	21	15
PANIPAT	79	78	55	34	53
REWARI	0	0	0	3	3
ROHTAK	84	53	27	18	55
SIRSA	3158	1224	1347	369	367
SONIPAT	80	58	30	30	98
YAMUNANAGAR	239	308	185	250	239
Total	14924	10951	8258	6149	5126

(C)
Uttar Pradesh

Districts	01-Oct to 19-Nov																
	2016	2017	2018	2019	2020	GAUTAMBUDHNAGAR	20	34	11	16	12	MUZAFARNAGAR	116	120	34	24	35
AGRA	0	0	0	4	8	GAZIPUR	13	8	10	9	10	PILHIBHIT	925	710	426	341	16
ALIGARH	52	76	92	90	113	GHAZIABAD	65	42	27	12	15	PRATAPGARH	35	34	25	15	30
ALLAHABAD	5	8	11	9	21	GONDA	45	33	18	8	13	RAIBEARELI	69	53	32	18	17
AMBEDKARNAGAR	66	29	14	7	19	GORAKHPUR	56	96	79	11	46	RAMPUR	614	618	220	310	161
AMETHI	0	0	0	6	2	HAMIRPUR	0	0	1	28	6	SAMBHAL	0	0	0	8	13
AMROHA	0	0	0	7	10	HAPUR	0	0	0	9	21	SANTKABIRNAGAR	53	59	48	11	27
AURAIYA	207	177	52	37	64	HARDOI	235	192	108	78	93	SANTRAVIDASNAGAR	0	0	0	0	4
AZAMGARH	32	26	20	2	47	HATHRAS	0	0	0	1	0	SHAHJAHANPUR	1124	676	373	333	106
BADAUN	6	7	9	22	11	JALAUN	0	0	0	111	51	SHAMLI	0	0	0	22	34
BAGHPAT	0	0	0	10	8	JAUNPUR	15	12	14	6	39	SHARANPUR	93	109	52	63	73
BAHRAICH	63	39	57	41	106	JHANSI	0	0	2	121	214	SHRAWASTI	32	29	35	20	45
BALLIA	17	21	12	16	62	KANNAUJ	28	14	6	8	27	SIDDHARTHANAGAR	232	165	434	43	63
BALRAMPUR	30	27	39	5	57	KANPUR	11	7	10	6	35	SITAPUR	115	70	36	39	51
BANDA	2	14	8	9	18	KANPUR DEHAT	47	47	19	32	66	SONBHADRA	14	13	10	0	0
BARABANKI	212	151	171	59	32	KASGANJ	0	0	0	5	2	SULTANPUR	50	24	23	14	6
BAREILLY	240	199	114	107	74	KAUSHAMBI	19	36	35	14	39	UNNAO	59	46	37	28	34
BASTI	135	180	106	17	58	KHERI	407	256	183	166	116	VARANASI	1	0	0	0	2
BIJNOR	49	39	8	13	27	KUSHINAGAR	39	89	73	20	74	JYOTIBAPHULE NAGAR	10	13	4	0	0
BULANDSAHAR	24	28	12	23	47	LALITPUR	0	0	0	6	3	MAHAMAYANAGAR	2	2	8	0	0
CHANDAULI	6	5	0	0	2	LUCKNOW	60	30	26	22	26	Total	8203	7040	5261	3361	3073
CHITRAKOOT	0	0	0	4	11	MAHARAJGANJ	530	852	791	209	51						
DEORIA	52	53	43	5	76	MAHOBA	0	0	0	9	15						
ETAH	17	28	24	4	18	MAINPURI	79	82	43	39	56						
ETAWAH	120	96	41	48	63	MATHURA	1441	1082	1048	461	149						
FAIZABAD	13	10	7	5	8	MAU	11	8	9	6	14						
FARRUKHABAD	0	0	0	6	6	MEERUT	67	68	16	23	46						
FATEHPUR	52	36	70	51	94	MIRZAPUR	3	12	5	3	5						
FIROZABAD	23	18	9	14	28	MORADABAD	45	32	11	12	22						

Map of Cumulative Burning Events (01-Oct to 19-Nov 2020)



[\(http://geoportal.icar.gov.in:8080/geoexplorer/composer/\)](http://geoportal.icar.gov.in:8080/geoexplorer/composer/)

Details of residue burning events in Punjab on 19-Nov-2020

S. No.	District	Tehsil / Block	Satellite	Latitude	Longitude	Time (IST)	Day / Night	Fire Power (W/m ²)
1	AMRITSAR	AJNALA	S-NPP	31.78057	74.83076	13:12:00	D	3.80
2	AMRITSAR	AJNALA	S-NPP	31.78165	74.83633	13:12:00	D	3.80
3	BARNALA	BARNALA	AQUA	30.37500	75.62100	13:10:00	D	17.50
4	BARNALA	BARNALA	AQUA	30.38200	75.61400	13:10:00	D	20.90
5	BARNALA	BARNALA	S-NPP	30.38477	75.61643	13:12:00	D	11.80
6	BARNALA	BARNALA	S-NPP	30.38638	75.45887	13:12:00	D	3.10
7	BARNALA	BARNALA	S-NPP	30.40822	75.53229	13:12:00	D	3.70
8	BARNALA	BARNALA	S-NPP	30.41199	75.53134	13:12:00	D	4.10
9	BARNALA	BARNALA	S-NPP	30.46180	75.28281	13:12:00	D	6.00
10	BARNALA	BARNALA	S-NPP	30.51889	75.30053	13:12:00	D	2.30
11	BARNALA	BARNALA	S-NPP	30.52700	75.43763	13:12:00	D	5.40
12	BARNALA	BARNALA	S-NPP	30.52903	75.43476	13:12:00	D	6.50
13	BARNALA	BARNALA	S-NPP	30.53008	75.44015	13:12:00	D	6.50
14	BARNALA	BARNALA	S-NPP	30.53078	75.43667	13:12:00	D	5.40
15	BARNALA	BARNALA	S-NPP	30.53125	75.50739	13:12:00	D	5.50
16	BARNALA	BARNALA	S-NPP	30.53261	75.50945	13:12:00	D	10.50
17	BARNALA	BARNALA	S-NPP	30.53502	75.50644	13:12:00	D	5.50
18	BARNALA	BARNALA	S-NPP	30.55899	75.52838	13:12:00	D	2.60
19	BARNALA	TAPPA	S-NPP	30.18868	75.48450	13:12:00	D	6.30
20	BARNALA	TAPPA	S-NPP	30.19247	75.48354	13:12:00	D	5.70
21	BARNALA	TAPPA	S-NPP	30.22183	75.46214	13:12:00	D	2.00
22	BARNALA	TAPPA	S-NPP	30.24086	75.51964	13:12:00	D	6.10
23	BARNALA	TAPPA	S-NPP	30.24257	75.50791	13:12:00	D	6.40
24	BARNALA	TAPPA	S-NPP	30.27633	75.41418	13:12:00	D	5.00
25	BARNALA	TAPPA	S-NPP	30.29397	75.59058	13:12:00	D	9.60
26	BARNALA	TAPPA	S-NPP	30.33627	75.58958	13:12:00	D	13.90
27	BARNALA	TAPPA	S-NPP	30.33739	75.59083	13:12:00	D	14.60
28	BATHINDA	BATHINDA	S-NPP	30.04164	74.69901	13:12:00	D	7.20
29	BATHINDA	BATHINDA	S-NPP	30.05753	74.80170	13:12:00	D	8.90
30	BATHINDA	BATHINDA	TERRA	30.12600	74.88800	11:35:00	D	7.30

31	BATHINDA	BATHINDA	S-NPP	30.12720	74.66418	13:12:00	D	2.50
32	BATHINDA	BATHINDA	S-NPP	30.13350	74.67509	13:12:00	D	6.70
33	BATHINDA	BATHINDA	S-NPP	30.22069	75.10243	13:12:00	D	6.00
34	BATHINDA	BATHINDA	S-NPP	30.28737	75.04861	13:12:00	D	11.00
35	BATHINDA	BATHINDA	AQUA	30.29300	75.00100	13:10:00	D	22.90
36	BATHINDA	BATHINDA	S-NPP	30.29790	74.99809	13:12:00	D	5.30
37	BATHINDA	BATHINDA	S-NPP	30.29901	75.00378	13:12:00	D	5.30
38	BATHINDA	BATHINDA	S-NPP	30.30004	75.09286	13:12:00	D	6.70
39	BATHINDA	BATHINDA	S-NPP	30.30289	75.00278	13:12:00	D	9.60
40	BATHINDA	BATHINDA	S-NPP	30.31279	75.05398	13:12:00	D	6.90
41	BATHINDA	BATHINDA	S-NPP	30.37096	75.08408	13:12:00	D	6.10
42	BATHINDA	BATHINDA	S-NPP	30.37150	75.06617	13:12:00	D	3.80
43	BATHINDA	RAMPURA PHUL	S-NPP	30.16265	75.28168	13:12:00	D	8.70
44	BATHINDA	RAMPURA PHUL	S-NPP	30.16266	75.28423	13:12:00	D	9.20
45	BATHINDA	RAMPURA PHUL	S-NPP	30.17804	75.34404	13:12:00	D	4.30
46	BATHINDA	RAMPURA PHUL	S-NPP	30.18394	75.35408	13:12:00	D	7.00
47	BATHINDA	RAMPURA PHUL	S-NPP	30.18433	75.35142	13:12:00	D	12.40
48	BATHINDA	RAMPURA PHUL	S-NPP	30.18776	75.35311	13:12:00	D	7.00
49	BATHINDA	RAMPURA PHUL	S-NPP	30.19183	75.20418	13:12:00	D	5.10
50	BATHINDA	RAMPURA PHUL	S-NPP	30.20109	75.23109	13:12:00	D	20.50
51	BATHINDA	RAMPURA PHUL	S-NPP	30.20217	75.23666	13:12:00	D	20.50
52	BATHINDA	RAMPURA PHUL	S-NPP	30.20419	75.28856	13:12:00	D	4.40
53	BATHINDA	RAMPURA PHUL	S-NPP	30.24441	75.22591	13:12:00	D	2.20
54	BATHINDA	RAMPURA PHUL	S-NPP	30.27663	75.30359	13:12:00	D	7.50
55	BATHINDA	RAMPURA PHUL	AQUA	30.28100	75.14800	13:10:00	D	18.80
56	BATHINDA	RAMPURA PHUL	AQUA	30.29100	75.15000	13:10:00	D	24.00
57	BATHINDA	RAMPURA PHUL	S-NPP	30.29278	75.15961	13:12:00	D	14.70
58	BATHINDA	RAMPURA PHUL	S-NPP	30.31094	75.14908	13:12:00	D	4.40
59	BATHINDA	RAMPURA PHUL	S-NPP	30.31479	75.14809	13:12:00	D	17.80
60	BATHINDA	RAMPURA PHUL	S-NPP	30.33331	75.30653	13:12:00	D	3.60
61	BATHINDA	RAMPURA PHUL	AQUA	30.44400	75.06500	13:10:00	D	22.30
62	BATHINDA	RAMPURA PHUL	AQUA	30.44800	75.05900	13:10:00	D	27.60
63	BATHINDA	RAMPURA PHUL	S-NPP	30.45075	75.05552	13:12:00	D	37.40

64	BATHINDA	RAMPURA PHUL	S-NPP	30.45088	75.05759	13:12:00	D	50.30
65	BATHINDA	RAMPURA PHUL	AQUA	30.47200	75.05700	13:10:00	D	13.80
66	BATHINDA	RAMPURA PHUL	S-NPP	30.47997	75.05986	13:12:00	D	9.50
67	BATHINDA	RAMPURA PHUL	S-NPP	30.49028	75.21545	13:12:00	D	5.30
68	BATHINDA	RAMPURA PHUL	S-NPP	30.49518	75.21998	13:12:00	D	5.30
69	BATHINDA	RAMPURA PHUL	S-NPP	30.50233	75.19490	13:12:00	D	2.30
70	BATHINDA	RAMPURA PHUL	S-NPP	30.56143	75.16811	13:12:00	D	6.10
71	BATHINDA	TALWANDI SABO	S-NPP	29.94146	75.12486	13:12:00	D	5.80
72	BATHINDA	TALWANDI SABO	S-NPP	29.96138	75.05993	13:12:00	D	5.20
73	BATHINDA	TALWANDI SABO	S-NPP	30.00726	74.98586	13:12:00	D	2.40
74	BATHINDA	TALWANDI SABO	S-NPP	30.00872	74.98749	13:12:00	D	4.50
75	BATHINDA	TALWANDI SABO	S-NPP	30.03851	74.83130	13:12:00	D	5.90
76	BATHINDA	TALWANDI SABO	S-NPP	30.07697	75.11198	13:12:00	D	4.70
77	BATHINDA	TALWANDI SABO	S-NPP	30.09390	75.21992	13:12:00	D	3.70
78	FARIDKOT	FARIDKOT	AQUA	30.55400	74.84600	13:10:00	D	25.50
79	FARIDKOT	FARIDKOT	S-NPP	30.55536	74.84657	13:12:00	D	7.40
80	FARIDKOT	FARIDKOT	S-NPP	30.55649	74.85233	13:12:00	D	7.40
81	FARIDKOT	FARIDKOT	S-NPP	30.77902	74.53773	13:12:00	D	6.30
82	FARIDKOT	FARIDKOT	S-NPP	30.80991	74.61141	13:12:00	D	3.70
83	FARIDKOT	FARIDKOT	AQUA	30.81100	74.60300	13:10:00	D	35.80
84	FARIDKOT	FARIDKOT	S-NPP	30.81295	74.61500	13:12:00	D	30.10
85	FARIDKOT	JAITO	S-NPP	30.39137	75.04326	13:12:00	D	6.50
86	FARIDKOT	JAITO	S-NPP	30.42575	74.92669	13:12:00	D	3.00
87	FARIDKOT	JAITO	S-NPP	30.43338	74.84412	13:12:00	D	3.40
88	FARIDKOT	JAITO	S-NPP	30.46345	74.83022	13:12:00	D	7.00
89	FARIDKOT	JAITO	S-NPP	30.47275	74.77286	13:12:00	D	3.10
90	FARIDKOT	JAITO	S-NPP	30.48105	75.02402	13:12:00	D	3.90
91	FARIDKOT	JAITO	S-NPP	30.49301	74.83467	13:12:00	D	4.10
92	FAZILKA	ABOHAR	S-NPP	30.00461	74.45004	13:12:00	D	3.10
93	FAZILKA	ABOHAR	S-NPP	30.00628	74.45820	13:12:00	D	6.70
94	FAZILKA	ABOHAR	S-NPP	30.12001	74.24712	13:12:00	D	2.90
95	FAZILKA	ABOHAR	S-NPP	30.12873	74.33244	13:12:00	D	3.30
96	FAZILKA	ABOHAR	S-NPP	30.13276	74.33137	13:12:00	D	3.30

97	FAZILKA	ABOHAR	S-NPP	30.17030	74.24261	13:12:00	D	4.30
98	FAZILKA	ABOHAR	S-NPP	30.18944	74.28182	13:12:00	D	3.20
99	FAZILKA	ABOHAR	S-NPP	30.19071	74.28110	13:12:00	D	2.60
100	FAZILKA	ABOHAR	S-NPP	30.21668	74.24833	13:12:00	D	10.80
101	FAZILKA	ABOHAR	AQUA	30.21800	74.23900	13:10:00	D	24.50
102	FAZILKA	ABOHAR	AQUA	30.21900	74.24600	13:10:00	D	25.20
103	FAZILKA	FAZILKA	S-NPP	30.20195	74.07014	13:12:00	D	7.50
104	FAZILKA	FAZILKA	S-NPP	30.24279	74.05920	13:12:00	D	5.40
105	FAZILKA	FAZILKA	S-NPP	30.25898	74.00164	13:12:00	D	6.70
106	FAZILKA	FAZILKA	AQUA	30.26200	74.02000	13:10:00	D	29.60
107	FAZILKA	FAZILKA	AQUA	30.26400	74.02300	13:10:00	D	28.70
108	FAZILKA	FAZILKA	S-NPP	30.26427	74.02732	13:12:00	D	6.20
109	FAZILKA	FAZILKA	S-NPP	30.27102	74.26459	13:12:00	D	9.30
110	FAZILKA	FAZILKA	S-NPP	30.27157	74.02085	13:12:00	D	13.00
111	FAZILKA	FAZILKA	S-NPP	30.27157	74.08379	13:12:00	D	7.80
112	FAZILKA	FAZILKA	S-NPP	30.27244	74.02513	13:12:00	D	13.00
113	FAZILKA	FAZILKA	S-NPP	30.27361	73.98868	13:12:00	D	6.10
114	FAZILKA	FAZILKA	S-NPP	30.29202	74.01539	13:12:00	D	8.50
115	FAZILKA	FAZILKA	S-NPP	30.29436	74.00573	13:12:00	D	2.20
116	FAZILKA	FAZILKA	S-NPP	30.29897	74.04953	13:12:00	D	4.50
117	FAZILKA	FAZILKA	S-NPP	30.30227	74.29620	13:12:00	D	3.20
118	FAZILKA	FAZILKA	S-NPP	30.30263	74.29549	13:12:00	D	3.50
119	FAZILKA	FAZILKA	S-NPP	30.30392	74.05270	13:12:00	D	7.40
120	FAZILKA	FAZILKA	S-NPP	30.30540	74.03881	13:12:00	D	5.40
121	FAZILKA	FAZILKA	S-NPP	30.30627	74.04308	13:12:00	D	4.40
122	FAZILKA	FAZILKA	S-NPP	30.30850	74.18061	13:12:00	D	4.00
123	FAZILKA	FAZILKA	S-NPP	30.31035	74.04199	13:12:00	D	4.40
124	FAZILKA	FAZILKA	AQUA	30.32500	74.30100	13:10:00	D	25.10
125	FAZILKA	FAZILKA	S-NPP	30.33309	74.11195	13:12:00	D	3.10
126	FAZILKA	FAZILKA	S-NPP	30.33380	74.30526	13:12:00	D	9.80
127	FAZILKA	FAZILKA	S-NPP	30.33782	74.30418	13:12:00	D	9.80
128	FAZILKA	FAZILKA	S-NPP	30.34557	74.04601	13:12:00	D	1.30
129	FAZILKA	FAZILKA	AQUA	30.36300	73.91300	13:10:00	D	31.60

130	FAZILKA	FAZILKA	S-NPP	30.36673	73.90978	13:12:00	D	11.20
131	FAZILKA	FAZILKA	S-NPP	30.36883	74.09791	13:12:00	D	2.80
132	FAZILKA	FAZILKA	S-NPP	30.37084	73.90868	13:12:00	D	8.60
133	FAZILKA	FAZILKA	S-NPP	30.37094	74.09789	13:12:00	D	2.30
134	FAZILKA	FAZILKA	S-NPP	30.37880	73.94749	13:12:00	D	2.40
135	FAZILKA	FAZILKA	S-NPP	30.37998	73.97437	13:12:00	D	9.30
136	FAZILKA	FAZILKA	S-NPP	30.38086	73.97865	13:12:00	D	8.30
137	FAZILKA	FAZILKA	S-NPP	30.38452	74.14307	13:12:00	D	4.70
138	FAZILKA	FAZILKA	S-NPP	30.38612	73.94099	13:12:00	D	3.20
139	FAZILKA	FAZILKA	S-NPP	30.38641	73.96358	13:12:00	D	7.20
140	FAZILKA	FAZILKA	S-NPP	30.38720	74.09354	13:12:00	D	2.50
141	FAZILKA	FAZILKA	S-NPP	30.38796	74.17262	13:12:00	D	16.90
142	FAZILKA	FAZILKA	S-NPP	30.38979	74.10621	13:12:00	D	18.10
143	FAZILKA	FAZILKA	S-NPP	30.38984	74.22493	13:12:00	D	4.20
144	FAZILKA	FAZILKA	S-NPP	30.39053	74.17240	13:12:00	D	16.00
145	FAZILKA	FAZILKA	S-NPP	30.39077	74.19434	13:12:00	D	5.20
146	FAZILKA	FAZILKA	S-NPP	30.39211	74.19353	13:12:00	D	5.50
147	FAZILKA	FAZILKA	S-NPP	30.39705	74.09982	13:12:00	D	6.90
148	FAZILKA	FAZILKA	S-NPP	30.39925	74.15242	13:12:00	D	12.50
149	FAZILKA	FAZILKA	S-NPP	30.41759	74.11653	13:12:00	D	6.10
150	FAZILKA	FAZILKA	S-NPP	30.41908	74.10284	13:12:00	D	2.90
151	FAZILKA	FAZILKA	S-NPP	30.42225	74.18154	13:12:00	D	1.80
152	FAZILKA	FAZILKA	S-NPP	30.42378	74.08377	13:12:00	D	5.40
153	FAZILKA	FAZILKA	S-NPP	30.43018	73.98795	13:12:00	D	2.70
154	FAZILKA	FAZILKA	S-NPP	30.43211	74.10378	13:12:00	D	4.50
155	FAZILKA	FAZILKA	S-NPP	30.43322	74.23561	13:12:00	D	3.10
156	FAZILKA	FAZILKA	S-NPP	30.43702	74.10690	13:12:00	D	19.50
157	FAZILKA	FAZILKA	S-NPP	30.44229	74.15416	13:12:00	D	3.20
158	FAZILKA	FAZILKA	S-NPP	30.44246	74.17616	13:12:00	D	2.60
159	FAZILKA	FAZILKA	AQUA	30.44800	74.15300	13:10:00	D	17.90
160	FAZILKA	FAZILKA	AQUA	30.44900	74.01900	13:10:00	D	20.00
161	FAZILKA	FAZILKA	S-NPP	30.45060	73.98244	13:12:00	D	3.70
162	FAZILKA	FAZILKA	S-NPP	30.45086	74.21779	13:12:00	D	4.60

163	FAZILKA	FAZILKA	AQUA	30.45100	74.02300	13:10:00	D	15.50
164	FAZILKA	FAZILKA	S-NPP	30.45284	73.98380	13:12:00	D	4.20
165	FAZILKA	FAZILKA	S-NPP	30.45422	74.02195	13:12:00	D	10.30
166	FAZILKA	FAZILKA	S-NPP	30.45620	73.96738	13:12:00	D	3.30
167	FAZILKA	FAZILKA	S-NPP	30.45748	73.96453	13:12:00	D	9.60
168	FAZILKA	FAZILKA	S-NPP	30.45931	74.15402	13:12:00	D	10.30
169	FAZILKA	FAZILKA	S-NPP	30.46015	74.15820	13:12:00	D	10.30
170	FAZILKA	FAZILKA	S-NPP	30.47242	74.03690	13:12:00	D	4.00
171	FAZILKA	FAZILKA	S-NPP	30.47589	73.99113	13:12:00	D	4.60
172	FAZILKA	FAZILKA	S-NPP	30.47829	74.07803	13:12:00	D	3.00
173	FAZILKA	FAZILKA	S-NPP	30.49883	74.06105	13:12:00	D	3.80
174	FAZILKA	JALALABAD	S-NPP	30.45836	74.25508	13:12:00	D	3.00
175	FAZILKA	JALALABAD	S-NPP	30.46807	74.26121	13:12:00	D	4.00
176	FAZILKA	JALALABAD	S-NPP	30.47694	74.26319	13:12:00	D	4.10
177	FAZILKA	JALALABAD	S-NPP	30.48096	74.26212	13:12:00	D	4.10
178	FAZILKA	JALALABAD	S-NPP	30.48405	74.23515	13:12:00	D	2.30
179	FAZILKA	JALALABAD	S-NPP	30.48808	74.23408	13:12:00	D	3.50
180	FAZILKA	JALALABAD	S-NPP	30.49007	74.32897	13:12:00	D	3.90
181	FAZILKA	JALALABAD	S-NPP	30.50296	74.35137	13:12:00	D	2.70
182	FAZILKA	JALALABAD	S-NPP	30.50327	74.20377	13:12:00	D	4.90
183	FAZILKA	JALALABAD	S-NPP	30.50452	74.33804	13:12:00	D	2.60
184	FAZILKA	JALALABAD	S-NPP	30.50599	74.20039	13:12:00	D	20.10
185	FAZILKA	JALALABAD	TERRA	30.51100	74.16400	11:35:00	D	10.40
186	FAZILKA	JALALABAD	S-NPP	30.51555	74.18472	13:12:00	D	13.10
187	FAZILKA	JALALABAD	S-NPP	30.51738	74.36040	13:12:00	D	2.70
188	FAZILKA	JALALABAD	S-NPP	30.53004	74.27668	13:12:00	D	4.00
189	FAZILKA	JALALABAD	S-NPP	30.53119	74.32388	13:12:00	D	2.20
190	FAZILKA	JALALABAD	S-NPP	30.53285	74.33204	13:12:00	D	9.20
191	FAZILKA	JALALABAD	S-NPP	30.53319	74.16685	13:12:00	D	3.00
192	FAZILKA	JALALABAD	S-NPP	30.53368	74.33612	13:12:00	D	4.50
193	FAZILKA	JALALABAD	S-NPP	30.53417	74.36023	13:12:00	D	3.60
194	FAZILKA	JALALABAD	S-NPP	30.53451	74.34020	13:12:00	D	4.50
195	FAZILKA	JALALABAD	S-NPP	30.53465	74.36160	13:12:00	D	2.70

196	FAZILKA	JALALABAD	S-NPP	30.54746	74.36249	13:12:00	D	12.30
197	FAZILKA	JALALABAD	S-NPP	30.54898	74.34924	13:12:00	D	11.30
198	FAZILKA	JALALABAD	S-NPP	30.55298	74.34819	13:12:00	D	3.50
199	FAZILKA	JALALABAD	S-NPP	30.55775	74.09853	13:12:00	D	4.00
200	FAZILKA	JALALABAD	S-NPP	30.55791	74.37257	13:12:00	D	3.50
201	FAZILKA	JALALABAD	S-NPP	30.55839	74.31236	13:12:00	D	4.90
202	FAZILKA	JALALABAD	S-NPP	30.55921	74.31644	13:12:00	D	4.90
203	FAZILKA	JALALABAD	S-NPP	30.56131	74.26402	13:12:00	D	2.60
204	FAZILKA	JALALABAD	S-NPP	30.56214	74.26814	13:12:00	D	3.40
205	FAZILKA	JALALABAD	S-NPP	30.57500	74.26904	13:12:00	D	1.90
206	FAZILKA	JALALABAD	S-NPP	30.57932	74.33260	13:12:00	D	7.00
207	FAZILKA	JALALABAD	S-NPP	30.58241	74.30598	13:12:00	D	6.00
208	FAZILKA	JALALABAD	S-NPP	30.59323	74.21205	13:12:00	D	3.90
209	FAZILKA	JALALABAD	S-NPP	30.59725	74.21098	13:12:00	D	3.90
210	FAZILKA	JALALABAD	S-NPP	30.60105	74.37820	13:12:00	D	27.30
211	FAZILKA	JALALABAD	S-NPP	30.60186	74.38226	13:12:00	D	27.30
212	FAZILKA	JALALABAD	S-NPP	30.60210	74.21404	13:12:00	D	3.50
213	FAZILKA	JALALABAD	S-NPP	30.60342	74.36903	13:12:00	D	8.90
214	FAZILKA	JALALABAD	S-NPP	30.60374	74.22231	13:12:00	D	8.40
215	FAZILKA	JALALABAD	S-NPP	30.60411	74.33030	13:12:00	D	2.00
216	FAZILKA	JALALABAD	S-NPP	30.60428	74.39441	13:12:00	D	11.50
217	FAZILKA	JALALABAD	S-NPP	30.60811	74.32924	13:12:00	D	4.70
218	FAZILKA	JALALABAD	S-NPP	30.60955	74.27283	13:12:00	D	2.00
219	FAZILKA	JALALABAD	S-NPP	30.60987	74.40144	13:12:00	D	3.30
220	FAZILKA	JALALABAD	S-NPP	30.61148	74.40952	13:12:00	D	2.40
221	FAZILKA	JALALABAD	S-NPP	30.61296	74.35367	13:12:00	D	10.30
222	FAZILKA	JALALABAD	S-NPP	30.61756	74.27068	13:12:00	D	21.30
223	FAZILKA	JALALABAD	S-NPP	30.61783	74.39933	13:12:00	D	6.00
224	FAZILKA	JALALABAD	S-NPP	30.61838	74.27480	13:12:00	D	21.30
225	FAZILKA	JALALABAD	AQUA	30.61900	74.29000	13:10:00	D	27.70
226	FAZILKA	JALALABAD	S-NPP	30.62089	74.27007	13:12:00	D	23.20
227	FAZILKA	JALALABAD	S-NPP	30.62157	74.26962	13:12:00	D	11.50
228	FAZILKA	JALALABAD	S-NPP	30.62172	74.27417	13:12:00	D	23.20

229	FAZILKA	JALALABAD	S-NPP	30.62178	74.37697	13:12:00	D	1.80
230	FAZILKA	JALALABAD	S-NPP	30.62238	74.27373	13:12:00	D	11.50
231	FAZILKA	JALALABAD	S-NPP	30.62649	74.17297	13:12:00	D	5.60
232	FAZILKA	JALALABAD	S-NPP	30.62729	74.31983	13:12:00	D	20.90
233	FAZILKA	JALALABAD	S-NPP	30.62741	74.42652	13:12:00	D	2.80
234	FAZILKA	JALALABAD	S-NPP	30.62900	74.43459	13:12:00	D	2.40
235	FAZILKA	JALALABAD	S-NPP	30.65126	74.39896	13:12:00	D	8.00
236	FAZILKA	JALALABAD	S-NPP	30.65137	74.39909	13:12:00	D	7.30
237	FAZILKA	JALALABAD	S-NPP	30.65803	74.18199	13:12:00	D	2.40
238	FAZILKA	JALALABAD	S-NPP	30.65851	74.39294	13:12:00	D	2.50
239	FAZILKA	JALALABAD	S-NPP	30.66179	74.26351	13:12:00	D	2.60
240	FAZILKA	JALALABAD	S-NPP	30.69444	74.42584	13:12:00	D	1.30
241	FAZILKA	JALALABAD	S-NPP	30.73015	74.41635	13:12:00	D	3.00
242	FIROZPUR	FIROZPUR	AQUA	30.86000	74.67200	13:10:00	D	76.40
243	FIROZPUR	FIROZPUR	AQUA	30.86600	74.70000	13:10:00	D	34.80
244	FIROZPUR	FIROZPUR	S-NPP	30.86857	74.87387	13:12:00	D	8.80
245	FIROZPUR	FIROZPUR	AQUA	30.87100	74.67600	13:10:00	D	106.30
246	FIROZPUR	FIROZPUR	S-NPP	30.87612	74.68442	13:12:00	D	89.60
247	GURDASPUR	BATALA	S-NPP	31.74437	75.43747	13:12:00	D	5.10
248	JALANDHAR	JALANDHAR I	S-NPP	31.43653	75.66494	13:12:00	D	2.60
249	KAPURTHALA	SULTANPUR LODHI	S-NPP	31.29774	75.12489	13:12:00	D	3.10
250	LUDHIANA	JAGRAON	S-NPP	30.65289	75.42892	13:12:00	D	2.20
251	LUDHIANA	JAGRAON	S-NPP	30.75370	75.48602	13:12:00	D	7.40
252	LUDHIANA	JAGRAON	S-NPP	30.75477	75.48730	13:12:00	D	7.90
253	LUDHIANA	LUDHIANA EAST	S-NPP	30.71547	75.86174	13:12:00	D	7.40
254	LUDHIANA	LUDHIANA EAST	S-NPP	30.71641	75.86687	13:12:00	D	7.40
255	LUDHIANA	LUDHIANA EAST	S-NPP	30.71669	75.86394	13:12:00	D	14.40
256	LUDHIANA	LUDHIANA EAST	S-NPP	30.71953	75.77695	13:12:00	D	4.60
257	LUDHIANA	LUDHIANA EAST	S-NPP	31.00520	75.90980	13:12:00	D	4.20
258	LUDHIANA	LUDHIANA WEST	S-NPP	30.80954	75.78141	13:12:00	D	3.70
259	LUDHIANA	LUDHIANA WEST	S-NPP	30.81008	75.77953	13:12:00	D	3.60
260	LUDHIANA	RAIKOT	S-NPP	30.61922	75.59668	13:12:00	D	5.30
261	LUDHIANA	RAIKOT	S-NPP	30.69210	75.81909	13:12:00	D	8.80

262	LUDHIANA	RAIKOT	S-NPP	30.69580	75.81816	13:12:00	D	8.80
263	MANSA	BUDHLADA	S-NPP	29.76151	75.61757	13:12:00	D	8.00
264	MANSA	BUDHLADA	S-NPP	29.79542	75.67112	13:12:00	D	4.30
265	MANSA	BUDHLADA	S-NPP	29.79795	75.67434	13:12:00	D	2.60
266	MANSA	BUDHLADA	S-NPP	29.88769	75.64642	13:12:00	D	8.60
267	MANSA	BUDHLADA	S-NPP	29.92498	75.53866	13:12:00	D	3.30
268	MANSA	BUDHLADA	S-NPP	29.93498	75.50771	13:12:00	D	10.10
269	MANSA	BUDHLADA	S-NPP	29.93982	75.51219	13:12:00	D	5.40
270	MANSA	BUDHLADA	S-NPP	30.00540	75.55560	13:12:00	D	7.90
271	MANSA	BUDHLADA	S-NPP	30.00919	75.55464	13:12:00	D	4.20
272	MANSA	BUDHLADA	S-NPP	30.01024	75.56004	13:12:00	D	6.40
273	MANSA	MANSA	S-NPP	30.05538	75.46350	13:12:00	D	6.40
274	MANSA	MANSA	S-NPP	30.05919	75.46255	13:12:00	D	6.40
275	MANSA	MANSA	S-NPP	30.07178	75.61221	13:12:00	D	4.00
276	MANSA	MANSA	S-NPP	30.08408	75.46769	13:12:00	D	3.40
277	MANSA	MANSA	S-NPP	30.12512	75.44360	13:12:00	D	6.80
278	MANSA	MANSA	S-NPP	30.14004	75.47971	13:12:00	D	3.70
279	MANSA	MANSA	S-NPP	30.14243	75.45063	13:12:00	D	3.90
280	MANSA	MANSA	S-NPP	30.15075	75.49406	13:12:00	D	3.80
281	MANSA	MANSA	S-NPP	30.17145	75.47748	13:12:00	D	3.60
282	MANSA	SARDULGARH	AQUA	29.67800	75.34100	13:10:00	D	15.90
283	MANSA	SARDULGARH	AQUA	29.68200	75.33300	13:10:00	D	19.70
284	MANSA	SARDULGARH	S-NPP	29.73952	75.37483	13:12:00	D	4.60
285	MANSA	SARDULGARH	S-NPP	29.73972	75.37636	13:12:00	D	2.80
286	MANSA	SARDULGARH	S-NPP	29.74336	75.37387	13:12:00	D	4.60
287	MOGA	BAGHA PURANA	S-NPP	30.66653	74.97852	13:12:00	D	2.50
288	MOGA	BAGHA PURANA	AQUA	30.67600	75.07100	13:10:00	D	19.50
289	MOGA	BAGHA PURANA	S-NPP	30.67699	74.96987	13:12:00	D	5.70
290	MOGA	BAGHA PURANA	AQUA	30.68000	75.06500	13:10:00	D	24.40
291	MOGA	BAGHA PURANA	S-NPP	30.68424	75.06847	13:12:00	D	24.50
292	MOGA	BAGHA PURANA	S-NPP	30.69410	74.99510	13:12:00	D	15.50
293	MOGA	BAGHA PURANA	S-NPP	30.69574	74.98281	13:12:00	D	5.20
294	MOGA	BAGHA PURANA	S-NPP	30.75498	74.97693	13:12:00	D	4.70

295	MOGA	MOGA	S-NPP	30.74027	75.31446	13:12:00	D	1.30
296	MOGA	MOGA	S-NPP	30.79417	75.18002	13:12:00	D	3.00
297	MOGA	NIHAL SINGH WALA	S-NPP	30.58138	75.20950	13:12:00	D	8.80
298	MOGA	NIHAL SINGH WALA	S-NPP	30.58176	75.20691	13:12:00	D	9.30
299	MUKTSAR	GIDDARBAHA	S-NPP	30.09870	74.62550	13:12:00	D	3.20
300	MUKTSAR	GIDDARBAHA	S-NPP	30.18338	74.58372	13:12:00	D	2.10
301	MUKTSAR	GIDDARBAHA	S-NPP	30.22703	74.61436	13:12:00	D	2.20
302	MUKTSAR	GIDDARBAHA	AQUA	30.26900	74.61600	13:10:00	D	47.30
303	MUKTSAR	GIDDARBAHA	AQUA	30.27000	74.60800	13:10:00	D	59.80
304	MUKTSAR	GIDDARBAHA	S-NPP	30.27770	74.61372	13:12:00	D	16.50
305	MUKTSAR	GIDDARBAHA	S-NPP	30.31961	74.65702	13:12:00	D	5.60
306	MUKTSAR	GIDDARBAHA	S-NPP	30.35592	74.58099	13:12:00	D	4.70
307	MUKTSAR	GIDDARBAHA	S-NPP	30.35853	74.57998	13:12:00	D	4.80
308	MUKTSAR	GIDDARBAHA	S-NPP	30.38606	74.78505	13:12:00	D	5.20
309	MUKTSAR	GIDDARBAHA	AQUA	30.39500	74.69400	13:10:00	D	27.70
310	MUKTSAR	GIDDARBAHA	AQUA	30.39600	74.68900	13:10:00	D	23.30
311	MUKTSAR	GIDDARBAHA	S-NPP	30.40281	74.71111	13:12:00	D	14.20
312	MUKTSAR	GIDDARBAHA	AQUA	30.40300	74.71800	13:10:00	D	14.40
313	MUKTSAR	GIDDARBAHA	S-NPP	30.42043	74.73737	13:12:00	D	4.40
314	MUKTSAR	GIDDARBAHA	S-NPP	30.42159	74.74322	13:12:00	D	4.40
315	MUKTSAR	GIDDARBAHA	S-NPP	30.42203	74.72462	13:12:00	D	6.80
316	MUKTSAR	GIDDARBAHA	S-NPP	30.42391	74.75491	13:12:00	D	4.80
317	MUKTSAR	GIDDARBAHA	S-NPP	30.42436	74.73634	13:12:00	D	4.40
318	MUKTSAR	GIDDARBAHA	S-NPP	30.42960	74.67934	13:12:00	D	3.10
319	MUKTSAR	GIDDARBAHA	S-NPP	30.47133	74.61758	13:12:00	D	7.90
320	MUKTSAR	GIDDARBAHA	S-NPP	30.47288	74.62550	13:12:00	D	7.00
321	MUKTSAR	GIDDARBAHA	S-NPP	30.47413	74.62514	13:12:00	D	6.60
322	MUKTSAR	MALAUT	S-NPP	29.95903	74.57732	13:12:00	D	5.10
323	MUKTSAR	MALAUT	S-NPP	29.98211	74.50304	13:12:00	D	5.10
324	MUKTSAR	MALAUT	S-NPP	29.98936	74.53963	13:12:00	D	2.50
325	MUKTSAR	MALAUT	S-NPP	30.00130	74.45069	13:12:00	D	2.30
326	MUKTSAR	MALAUT	S-NPP	30.00291	74.45889	13:12:00	D	6.20
327	MUKTSAR	MALAUT	S-NPP	30.01095	74.54250	13:12:00	D	7.40

328	MUKTSAR	MALAUT	S-NPP	30.01443	74.47757	13:12:00	D	3.10
329	MUKTSAR	MALAUT	S-NPP	30.02272	74.66626	13:12:00	D	8.50
330	MUKTSAR	MALAUT	S-NPP	30.02350	74.67026	13:12:00	D	9.40
331	MUKTSAR	MALAUT	S-NPP	30.04431	74.52111	13:12:00	D	2.00
332	MUKTSAR	MALAUT	S-NPP	30.04689	74.57570	13:12:00	D	4.20
333	MUKTSAR	MALAUT	AQUA	30.04700	74.66200	13:10:00	D	25.00
334	MUKTSAR	MALAUT	S-NPP	30.05268	74.66683	13:12:00	D	6.80
335	MUKTSAR	MALAUT	S-NPP	30.05745	74.66978	13:12:00	D	4.50
336	MUKTSAR	MALAUT	S-NPP	30.05824	74.67375	13:12:00	D	4.50
337	MUKTSAR	MALAUT	S-NPP	30.06606	74.58763	13:12:00	D	4.60
338	MUKTSAR	MALAUT	S-NPP	30.07224	74.49242	13:12:00	D	6.20
339	MUKTSAR	MALAUT	S-NPP	30.07538	74.46589	13:12:00	D	2.40
340	MUKTSAR	MALAUT	S-NPP	30.08592	74.54002	13:12:00	D	12.40
341	MUKTSAR	MALAUT	S-NPP	30.09314	74.59745	13:12:00	D	4.80
342	MUKTSAR	MALAUT	S-NPP	30.09784	74.47286	13:12:00	D	3.60
343	MUKTSAR	MALAUT	S-NPP	30.10342	74.43703	13:12:00	D	2.80
344	MUKTSAR	MALAUT	TERRA	30.11200	74.61200	11:35:00	D	5.60
345	MUKTSAR	MALAUT	S-NPP	30.16447	74.38377	13:12:00	D	3.30
346	MUKTSAR	MALAUT	S-NPP	30.25251	74.27824	13:12:00	D	2.40
347	MUKTSAR	MALAUT	S-NPP	30.27730	74.42319	13:12:00	D	8.20
348	MUKTSAR	MALAUT	S-NPP	30.30614	74.44128	13:12:00	D	1.30
349	MUKTSAR	MALAUT	S-NPP	30.31814	74.45947	13:12:00	D	2.30
350	MUKTSAR	MALAUT	S-NPP	30.32452	74.44925	13:12:00	D	2.60
351	MUKTSAR	MALAUT	S-NPP	30.32852	74.44820	13:12:00	D	5.20
352	MUKTSAR	MALAUT	S-NPP	30.32908	74.44849	13:12:00	D	2.80
353	MUKTSAR	MALAUT	S-NPP	30.33797	74.32584	13:12:00	D	3.70
354	MUKTSAR	MALAUT	S-NPP	30.34625	74.36684	13:12:00	D	4.80
355	MUKTSAR	MALAUT	S-NPP	30.34707	74.37093	13:12:00	D	4.80
356	MUKTSAR	MALAUT	S-NPP	30.34778	74.35352	13:12:00	D	3.30
357	MUKTSAR	MALAUT	S-NPP	30.35014	74.34425	13:12:00	D	9.30
358	MUKTSAR	MALAUT	S-NPP	30.35096	74.34835	13:12:00	D	8.70
359	MUKTSAR	MALAUT	S-NPP	30.36629	74.36155	13:12:00	D	3.10
360	MUKTSAR	MALAUT	AQUA	30.36700	74.35300	13:10:00	D	24.50

361	MUKTSAR	MALAUT	S-NPP	30.36711	74.36564	13:12:00	D	3.10
362	MUKTSAR	MALAUT	S-NPP	30.37102	74.34304	13:12:00	D	21.50
363	MUKTSAR	MUKTSAR	S-NPP	30.37629	74.47441	13:12:00	D	4.90
364	MUKTSAR	MUKTSAR	S-NPP	30.37921	74.38394	13:12:00	D	6.40
365	MUKTSAR	MUKTSAR	S-NPP	30.40898	74.51237	13:12:00	D	1.40
366	MUKTSAR	MUKTSAR	S-NPP	30.41849	74.43348	13:12:00	D	6.10
367	MUKTSAR	MUKTSAR	S-NPP	30.42565	74.40594	13:12:00	D	3.20
368	MUKTSAR	MUKTSAR	S-NPP	30.43180	74.37455	13:12:00	D	6.20
369	MUKTSAR	MUKTSAR	TERRA	30.45600	74.36500	11:35:00	D	7.20
370	MUKTSAR	MUKTSAR	S-NPP	30.46706	74.38237	13:12:00	D	5.40
371	MUKTSAR	MUKTSAR	S-NPP	30.47254	74.61725	13:12:00	D	8.20
372	MUKTSAR	MUKTSAR	AQUA	30.47600	74.57300	13:10:00	D	40.20
373	MUKTSAR	MUKTSAR	S-NPP	30.47660	74.36696	13:12:00	D	4.30
374	MUKTSAR	MUKTSAR	AQUA	30.47800	74.56600	13:10:00	D	29.00
375	MUKTSAR	MUKTSAR	AQUA	30.48400	74.59500	13:10:00	D	23.30
376	MUKTSAR	MUKTSAR	S-NPP	30.48496	74.49248	13:12:00	D	4.40
377	MUKTSAR	MUKTSAR	S-NPP	30.48671	74.58437	13:12:00	D	25.10
378	MUKTSAR	MUKTSAR	S-NPP	30.48974	74.49543	13:12:00	D	3.20
379	MUKTSAR	MUKTSAR	S-NPP	30.52384	74.41429	13:12:00	D	10.80
380	MUKTSAR	MUKTSAR	S-NPP	30.52617	74.61566	13:12:00	D	7.00
381	MUKTSAR	MUKTSAR	S-NPP	30.53016	74.57293	13:12:00	D	2.10
382	MUKTSAR	MUKTSAR	S-NPP	30.53181	74.43346	13:12:00	D	3.70
383	MUKTSAR	MUKTSAR	S-NPP	30.53181	74.49697	13:12:00	D	8.50
384	MUKTSAR	MUKTSAR	S-NPP	30.53728	74.56688	13:12:00	D	19.70
385	MUKTSAR	MUKTSAR	S-NPP	30.53878	74.61649	13:12:00	D	4.30
386	MUKTSAR	MUKTSAR	S-NPP	30.54123	74.56583	13:12:00	D	19.70
387	MUKTSAR	MUKTSAR	S-NPP	30.54767	74.49277	13:12:00	D	5.80
388	MUKTSAR	MUKTSAR	S-NPP	30.55179	74.42532	13:12:00	D	3.50
389	MUKTSAR	MUKTSAR	S-NPP	30.55543	74.57463	13:12:00	D	1.90
390	MUKTSAR	MUKTSAR	AQUA	30.56300	74.54000	13:10:00	D	34.90
391	MUKTSAR	MUKTSAR	AQUA	30.56400	74.53500	13:10:00	D	38.10
392	MUKTSAR	MUKTSAR	S-NPP	30.56735	74.54353	13:12:00	D	5.60
393	MUKTSAR	MUKTSAR	S-NPP	30.56882	74.57945	13:12:00	D	5.20

394	MUKTSAR	MUKTSAR	AQUA	30.56900	74.56900	13:10:00	D	22.90
395	MUKTSAR	MUKTSAR	S-NPP	30.56933	74.42917	13:12:00	D	3.40
396	MUKTSAR	MUKTSAR	AQUA	30.57100	74.56400	13:10:00	D	18.00
397	MUKTSAR	MUKTSAR	S-NPP	30.57277	74.57840	13:12:00	D	9.50
398	MUKTSAR	MUKTSAR	S-NPP	30.57354	74.58237	13:12:00	D	9.50
399	MUKTSAR	MUKTSAR	S-NPP	30.57809	74.43111	13:12:00	D	8.30
400	MUKTSAR	MUKTSAR	S-NPP	30.57949	74.37538	13:12:00	D	6.60
401	MUKTSAR	MUKTSAR	S-NPP	30.57957	74.39670	13:12:00	D	13.70
402	MUKTSAR	MUKTSAR	S-NPP	30.58436	74.39970	13:12:00	D	9.00
403	MUKTSAR	MUKTSAR	S-NPP	30.58450	74.44213	13:12:00	D	38.70
404	MUKTSAR	MUKTSAR	S-NPP	30.58767	74.43705	13:12:00	D	3.70
405	MUKTSAR	MUKTSAR	TERRA	30.58800	74.37500	11:35:00	D	8.80
406	MUKTSAR	MUKTSAR	S-NPP	30.58835	74.39864	13:12:00	D	9.00
407	MUKTSAR	MUKTSAR	S-NPP	30.59233	74.39758	13:12:00	D	9.00
408	MUKTSAR	MUKTSAR	S-NPP	30.59429	74.59480	13:12:00	D	3.30
409	MUKTSAR	MUKTSAR	S-NPP	30.60376	74.60064	13:12:00	D	6.10
410	MUKTSAR	MUKTSAR	S-NPP	30.60670	74.63609	13:12:00	D	10.80
411	MUKTSAR	MUKTSAR	S-NPP	30.61868	74.44579	13:12:00	D	4.20
412	MUKTSAR	MUKTSAR	S-NPP	30.62265	74.44473	13:12:00	D	2.20
413	PATIALA	NABHA	S-NPP	30.43584	76.09099	13:12:00	D	2.30
414	PATIALA	NABHA	S-NPP	30.47316	76.24921	13:12:00	D	5.70
415	PATIALA	SAMANA	S-NPP	29.88987	76.05200	13:12:00	D	5.70
416	PATIALA	SAMANA	AQUA	29.89100	76.05100	13:10:00	D	27.30
417	PATIALA	SAMANA	S-NPP	29.89358	76.05109	13:12:00	D	54.30
418	PATIALA	SAMANA	AQUA	29.98800	76.06900	13:10:00	D	15.80
419	PATIALA	SAMANA	S-NPP	29.98833	76.01443	13:12:00	D	1.40
420	PATIALA	SAMANA	S-NPP	29.99103	76.07541	13:12:00	D	11.90
421	PATIALA	SAMANA	S-NPP	29.99159	76.07254	13:12:00	D	11.10
422	SANGRUR	MALERKOTLA	S-NPP	30.53492	76.08769	13:12:00	D	2.00
423	SANGRUR	MOONAK	S-NPP	29.86087	75.98023	13:12:00	D	3.80
424	SANGRUR	MOONAK	S-NPP	29.90739	75.91801	13:12:00	D	5.90
425	SANGRUR	MOONAK	S-NPP	29.92264	75.95772	13:12:00	D	4.90
426	SANGRUR	SANGRUR	S-NPP	30.17549	75.56133	13:12:00	D	6.00

427	SANGRUR	SANGRUR	S-NPP	30.20476	75.63242	13:12:00	D	18.50
428	SANGRUR	SANGRUR	S-NPP	30.22558	75.63836	13:12:00	D	7.40
429	SANGRUR	SANGRUR	S-NPP	30.25411	75.71166	13:12:00	D	3.10
430	SANGRUR	SANGRUR	S-NPP	30.25546	75.71412	13:12:00	D	3.10
431	SANGRUR	SUNAM	S-NPP	30.01718	76.02348	13:12:00	D	5.50
432	SANGRUR	SUNAM	S-NPP	30.02723	75.76513	13:12:00	D	2.50
433	SANGRUR	SUNAM	S-NPP	30.07522	75.73392	13:12:00	D	7.70
434	SANGRUR	SUNAM	S-NPP	30.07860	76.08324	13:12:00	D	4.00
435	SANGRUR	SUNAM	S-NPP	30.13236	75.93303	13:12:00	D	5.30
436	TARN TARAN	PATTI	S-NPP	31.17071	74.68034	13:12:00	D	3.90
437	TARN TARAN	PATTI	S-NPP	31.18742	74.57838	13:12:00	D	5.60
438	TARN TARAN	PATTI	S-NPP	31.30676	74.75088	13:12:00	D	2.90

Details of residue burning events in Haryana on 19-Nov-2020

S. No.	District	Tehsil / Block	Satellite	Latitude	Longitude	Time (IST)	Day / Night	Fire Power (W/m ²)
1	FATEHABAD	FATEHABAD	S-NPP	29.53814	75.77921	13:12:00	D	3.30
2	FATEHABAD	FATEHABAD	S-NPP	29.54231	75.40150	13:12:00	D	5.50
3	FATEHABAD	FATEHABAD	S-NPP	29.54294	75.40470	13:12:00	D	6.80
4	FATEHABAD	FATEHABAD	S-NPP	29.55102	75.53251	13:12:00	D	2.60
5	FATEHABAD	FATEHABAD	S-NPP	29.55130	75.52986	13:12:00	D	3.20
6	FATEHABAD	FATEHABAD	METOP-2	29.57127	75.54091	20:39:00	N	8.00
7	FATEHABAD	FATEHABAD	METOP-2	29.57127	75.57003	20:39:00	N	8.00
8	FATEHABAD	FATEHABAD	S-NPP	29.61318	75.49723	13:12:00	D	6.00
9	FATEHABAD	FATEHABAD	TERRA	29.61800	75.33500	11:35:00	D	8.10
10	FATEHABAD	RATIA	S-NPP	29.63660	75.55357	01:54:00	N	1.20
11	FATEHABAD	RATIA	AQUA	29.68900	75.39400	13:10:00	D	16.80
12	FATEHABAD	RATIA	S-NPP	29.69573	75.39904	13:12:00	D	33.10
13	FATEHABAD	RATIA	S-NPP	29.69956	75.39808	13:12:00	D	4.70
14	FATEHABAD	RATIA	S-NPP	29.73008	75.68176	13:12:00	D	12.10
15	FATEHABAD	RATIA	S-NPP	29.74696	75.66632	13:12:00	D	4.50
16	FATEHABAD	RATIA	S-NPP	29.75754	75.40515	13:12:00	D	5.00
17	FATEHABAD	RATIA	S-NPP	29.76868	75.44441	13:12:00	D	3.40
18	FATEHABAD	RATIA	S-NPP	29.76890	75.44276	13:12:00	D	4.00
19	KAITHAL	KAITHAL	AQUA	29.69000	76.24300	13:10:00	D	14.40
20	KAITHAL	KAITHAL	S-NPP	29.69080	76.24135	13:12:00	D	3.90
21	KAITHAL	KAITHAL	S-NPP	29.69174	76.26751	13:12:00	D	2.50
22	KAITHAL	KAITHAL	S-NPP	29.69224	76.24331	13:12:00	D	9.90
23	KAITHAL	KAITHAL	S-NPP	29.69449	76.24045	13:12:00	D	9.20
24	KURUKSHETRA	SHAHABAD	S-NPP	30.15746	76.90548	13:12:00	D	4.30
25	PANIPAT	PANIPAT	S-NPP	29.37120	76.76441	13:12:00	D	5.00
26	PANIPAT	SAMALKHA	S-NPP	29.26072	77.08934	13:12:00	D	3.70
27	PANIPAT	SAMALKHA	S-NPP	29.26156	77.09402	13:12:00	D	3.70
28	ROHTAK	MAHAM	S-NPP	28.95449	76.40752	13:12:00	D	3.90
29	SIRSA	ELLENABAD	S-NPP	29.46582	74.67715	13:12:00	D	3.40
30	SIRSA	ELLENABAD	S-NPP	29.47048	74.82785	13:12:00	D	8.10
31	SIRSA	ELLENABAD	S-NPP	29.48400	74.66501	01:54:00	N	3.30

32	SIRSA	ELLENABAD	S-NPP	29.48787	74.66562	01:54:00	N	3.30
33	SIRSA	ELLENABAD	METOP-2	29.49042	74.77415	20:39:00	N	8.00
34	SIRSA	SIRSA	S-NPP	29.50270	75.26185	13:12:00	D	10.20
35	SIRSA	SIRSA	S-NPP	29.50290	75.25825	13:12:00	D	5.80
36	SIRSA	SIRSA	S-NPP	29.50656	75.20562	01:54:00	N	0.80
37	SIRSA	SIRSA	S-NPP	29.59087	75.04338	01:54:00	N	1.50
38	SIRSA	SIRSA	S-NPP	29.59466	75.04399	01:54:00	N	1.50
39	SONIPAT	GOHANA	S-NPP	29.13879	76.74948	13:12:00	D	5.20
40	SONIPAT	GOHANA	S-NPP	29.22926	76.50093	01:54:00	N	0.60
41	YAMUNANAGAR	JAGADHRI	AQUA	30.29800	77.20600	13:10:00	D	9.50
42	YAMUNANAGAR	JAGADHRI	S-NPP	30.30264	77.20411	13:12:00	D	3.40
43	YAMUNANAGAR	JAGADHRI	S-NPP	30.30551	77.20474	13:12:00	D	5.20
44	YAMUNANAGAR	JAGADHRI	S-NPP	30.35294	77.30724	13:12:00	D	2.10

Details of residue burning events in Uttar Pradesh on 19-Nov-2020

S. No.	District	Tehsil / Block	Satellite	Latitude	Longitude	Time (IST)	Day / Night	Fire Power (W/m ²)
1	AMROHA	AMROHA	S-NPP	28.87339	78.39082	13:12:00	D	3.30
2	AMROHA	AMROHA	S-NPP	29.03654	78.55017	13:12:00	D	2.10
3	AMROHA	AMROHA	S-NPP	29.05889	78.64083	13:12:00	D	1.70
4	AURAIYA	BIDHUNA	S-NPP	26.86671	79.39099	13:12:00	D	4.30
5	AZAMGARH	AZAMGARH	AQUA	25.90500	83.21900	13:05:00	D	7.00
6	AZAMGARH	AZAMGARH	S-NPP	25.90730	83.22129	13:06:00	D	4.20
7	AZAMGARH	AZAMGARH	S-NPP	25.99551	83.27668	13:06:00	D	2.40
8	AZAMGARH	AZAMGARH	AQUA	26.08100	83.34500	13:05:00	D	5.50
9	AZAMGARH	AZAMGARH	S-NPP	26.08484	83.34443	13:06:00	D	4.50
10	AZAMGARH	LALGANJ	S-NPP	25.76690	82.91934	13:06:00	D	2.30
11	AZAMGARH	LALGANJ	S-NPP	25.77931	83.00610	13:06:00	D	2.10
12	AZAMGARH	NIZAMABAD	S-NPP	26.15075	83.09029	13:06:00	D	4.70
13	AZAMGARH	PHULPUR	AQUA	26.16400	82.70300	13:05:00	D	5.10
14	AZAMGARH	PHULPUR	S-NPP	26.16846	82.70547	13:06:00	D	5.40
15	BAGHPAT	BAGHPAT	S-NPP	28.95084	77.34918	13:12:00	D	8.70
16	BAHRAICH	NANPARA	S-NPP	27.98033	81.53411	13:12:00	D	3.30
17	BALLIA	RASRA	S-NPP	25.98653	83.92094	13:06:00	D	3.70
18	BALRAMPUR	BALRAMPUR	S-NPP	27.36575	82.18171	01:54:00	N	0.50
19	BALRAMPUR	BALRAMPUR	S-NPP	27.62048	82.11927	01:54:00	N	0.70
20	BAREILLY	BAHERI	S-NPP	28.83510	79.66557	01:54:00	N	0.30
21	BAREILLY	BAHERI	S-NPP	28.86309	79.44501	01:54:00	N	0.80
22	BASTI	HARRAIYA	S-NPP	26.70706	82.47651	01:54:00	N	0.20
23	BIJNOR	AFZALGARH	S-NPP	29.31757	78.69833	13:12:00	D	2.80
24	CHANDAULI	SHAKALDIHA	S-NPP	25.35027	83.29392	13:06:00	D	3.30
25	DEORIA	DEORIA	S-NPP	26.59432	83.81655	13:06:00	D	5.70
26	DEORIA	DEORIA	AQUA	26.59600	83.81700	13:05:00	D	8.20
27	DEORIA	DEORIA	S-NPP	26.59779	83.81598	13:06:00	D	5.70
28	DEORIA	DEORIA	S-NPP	26.60198	83.71593	13:06:00	D	7.80
29	DEORIA	DEORIA	AQUA	26.66700	83.91800	13:05:00	D	5.30
30	DEORIA	DEORIA	S-NPP	26.66824	83.91756	13:06:00	D	4.70

31	DEORIA	DEORIA	S-NPP	26.68268	83.80273	13:06:00	D	3.40
32	DEORIA	DEORIA	S-NPP	26.69489	83.76165	13:06:00	D	1.90
33	FARRUKHABAD	KARIMGANJ	S-NPP	27.45526	79.51562	13:12:00	D	2.70
34	FATEHPUR	FATEHPUR	S-NPP	25.78312	80.90618	13:06:00	D	1.80
35	GAZIPUR	SAIDPUR	S-NPP	25.57634	83.17033	13:06:00	D	2.70
36	GAZIPUR	SAIDPUR	S-NPP	25.63216	83.09591	13:06:00	D	3.90
37	GONDA	GONDA	S-NPP	27.19533	82.14231	01:54:00	N	0.40
38	GORAKHPUR	CHAURI CHAURA	S-NPP	26.72094	83.56389	13:06:00	D	4.40
39	GORAKHPUR	GORAKHPUR	S-NPP	26.81359	83.53162	13:06:00	D	2.30
40	GORAKHPUR	GORAKHPUR	S-NPP	26.83821	83.53545	01:54:00	N	1.00
41	GORAKHPUR	GORAKHPUR	S-NPP	26.83957	83.53402	01:54:00	N	0.80
42	GORAKHPUR	GORAKHPUR	S-NPP	26.85129	83.50530	13:06:00	D	3.30
43	GORAKHPUR	GORAKHPUR	AQUA	26.87000	83.49500	13:10:00	D	11.80
44	GORAKHPUR	GORAKHPUR	S-NPP	26.87076	83.49349	13:06:00	D	6.20
45	GORAKHPUR	GORAKHPUR	S-NPP	26.87132	83.49767	13:06:00	D	6.20
46	GORAKHPUR	GORAKHPUR	S-NPP	26.87476	83.49709	13:06:00	D	2.50
47	HAPUR	GARHMUKTESAR	S-NPP	28.85193	78.00349	13:12:00	D	3.10
48	HARDOI	HARDOI	S-NPP	27.58149	80.25964	01:54:00	N	1.00
49	JAUNPUR	MARIAHU	S-NPP	25.68604	82.54881	01:54:00	N	0.50
50	JAUNPUR	SHHGANJ	S-NPP	25.91621	82.64524	13:06:00	D	2.00
51	JAUNPUR	SHHGANJ	AQUA	25.92400	82.68900	13:05:00	D	6.00
52	JAUNPUR	SHHGANJ	S-NPP	25.92687	82.69543	13:06:00	D	7.70
53	JHANSI	MOTH	S-NPP	25.71150	78.94893	13:06:00	D	4.80
54	KASGANJ	KASGANJ	S-NPP	27.88593	78.60954	13:12:00	D	2.10
55	KAUSHAMBI	MANJHANPUR	S-NPP	25.47064	81.24837	13:06:00	D	2.10
56	KHERI	DHAURAHRA	S-NPP	28.08580	81.03704	13:12:00	D	2.10
57	KHERI	GOLA	S-NPP	27.94959	80.27654	01:54:00	N	0.40
58	KHERI	MOHMADI	S-NPP	27.90639	80.24707	01:54:00	N	0.60
59	KHERI	NIGHASAN	S-NPP	28.19860	81.02337	13:12:00	D	1.90
60	KUSHINAGAR	HATA	S-NPP	26.70655	83.66484	13:06:00	D	2.90
61	KUSHINAGAR	HATA	S-NPP	26.70826	83.67744	13:06:00	D	3.40
62	KUSHINAGAR	HATA	S-NPP	26.70883	83.68166	13:06:00	D	4.00
63	KUSHINAGAR	HATA	AQUA	26.81700	83.69000	13:05:00	D	5.20

64	KUSHINAGAR	HATA	S-NPP	26.81750	83.68983	13:06:00	D	2.30
65	KUSHINAGAR	HATA	S-NPP	26.85032	83.72331	13:06:00	D	2.50
66	KUSHINAGAR	HATA	S-NPP	26.88212	83.55145	13:06:00	D	2.80
67	KUSHINAGAR	HATA	S-NPP	26.89464	83.61809	13:06:00	D	2.20
68	KUSHINAGAR	HATA	S-NPP	26.90327	83.60373	13:06:00	D	3.20
69	KUSHINAGAR	KASAYA	AQUA	26.61200	84.04800	13:05:00	D	5.70
70	KUSHINAGAR	KASAYA	S-NPP	26.61517	84.05370	13:06:00	D	4.20
71	KUSHINAGAR	KASAYA	AQUA	26.64100	83.99500	13:05:00	D	6.10
72	KUSHINAGAR	KASAYA	S-NPP	26.64322	83.99622	13:06:00	D	6.10
73	MAHARAJGANJ	MAHARAJGANJ	S-NPP	26.89130	83.54133	13:06:00	D	3.10
74	MAHARAJGANJ	MAHARAJGANJ	S-NPP	26.90045	83.55694	13:06:00	D	2.80
75	MAHARAJGANJ	MAHARAJGANJ	S-NPP	26.96071	83.38934	13:06:00	D	3.00
76	MAHARAJGANJ	MAHARAJGANJ	S-NPP	27.01422	83.61686	01:54:00	N	0.70
77	MAHARAJGANJ	MAHARAJGANJ	S-NPP	27.08781	83.58272	13:06:00	D	2.80
78	MAHARAJGANJ	NICHLAUL	AQUA	27.31400	83.68400	13:10:00	D	11.60
79	MAHARAJGANJ	NICHLAUL	S-NPP	27.32049	83.68504	13:12:00	D	6.50
80	MAINPURI	BHOGAON	S-NPP	27.18996	79.28871	13:12:00	D	2.70
81	MEERUT	MAWANA	S-NPP	29.20650	78.06304	13:12:00	D	3.40
82	MEERUT	MEERUT	S-NPP	29.07217	77.52258	13:12:00	D	3.30
83	MORADABAD	THAKUR DWARA	S-NPP	29.19742	78.77534	13:12:00	D	1.30
84	MUZAFARNAGAR	BUDHANA	S-NPP	29.22118	77.49948	13:12:00	D	7.70
85	MUZAFARNAGAR	BUDHANA	S-NPP	29.36555	77.45581	13:12:00	D	2.60
86	MUZAFARNAGAR	BUDHANA	S-NPP	29.36579	77.45429	13:12:00	D	2.00
87	PILHIBHIT	BISALPUR	S-NPP	28.13501	79.90781	01:54:00	N	0.80
88	PILHIBHIT	PURANPUR	S-NPP	28.37704	80.19461	01:54:00	N	0.30
89	PRATAPGARH	KUNDA	S-NPP	25.77908	81.69371	13:06:00	D	2.00
90	PRATAPGARH	LALGANJ	S-NPP	25.94175	81.65173	13:06:00	D	3.30
91	PRATAPGARH	PATTI	S-NPP	25.70315	82.09232	13:06:00	D	1.80
92	RAMPUR	BILASPUR	S-NPP	28.96543	79.34685	13:12:00	D	3.10
93	RAMPUR	SHAHBAD	S-NPP	28.51509	79.03981	13:12:00	D	4.40
94	RAMPUR	SHAHBAD	S-NPP	28.61897	78.90403	13:12:00	D	2.20
95	RAMPUR	SUAR	S-NPP	28.98658	79.13696	13:12:00	D	1.40
96	RAMPUR	SUAR	S-NPP	28.98993	79.13625	13:12:00	D	4.60

97	SAMBHAL	GUNNAUR	S-NPP	28.18262	78.50019	13:12:00	D	3.30
98	SAMBHAL	SAMBHAL	S-NPP	28.69092	78.60002	13:12:00	D	2.50
99	SANTKABIRNAGAR	KHALILABAD	S-NPP	26.92182	82.88174	13:06:00	D	5.10
100	SHAHJAHANPUR	PUWANYA	S-NPP	28.05709	80.12952	13:12:00	D	1.90
101	SHAHJAHANPUR	PUWANYA	S-NPP	28.32726	80.33109	01:54:00	N	0.40
102	SHAHJAHANPUR	TILHAR	S-NPP	28.01063	79.85930	01:54:00	N	1.10
103	SHAHJAHANPUR	TILHAR	S-NPP	28.01126	79.85539	01:54:00	N	1.90
104	SHAHJAHANPUR	TILHAR	S-NPP	28.19524	79.67743	13:12:00	D	2.40
105	SHAMLI	KAIRANA	S-NPP	29.34661	77.28900	13:12:00	D	2.00
106	SHAMLI	KAIRANA	S-NPP	29.43512	77.20602	13:12:00	D	2.40
107	SIDDHARTHANAGAR	BANSI	S-NPP	27.13276	82.94498	13:12:00	D	5.00
108	SIDDHARTHANAGAR	BANSI	AQUA	27.14600	82.89100	13:10:00	D	4.70
109	SIDDHARTHANAGAR	BANSI	S-NPP	27.15301	82.89168	13:12:00	D	2.60
110	SIDDHARTHANAGAR	ITWA	AQUA	27.32800	82.52500	13:10:00	D	6.40
111	SIDDHARTHANAGAR	ITWA	S-NPP	27.38054	82.64689	13:12:00	D	4.40
112	SIDDHARTHANAGAR	NAUGARH	S-NPP	27.39638	83.13973	13:12:00	D	1.70

The study used images received from following Satellites at IARI Satellite Ground Station

S. No.	Satellite Name	Sensor	Resolution (meter)	Day / Night Passes
1.	Suomi NPP	VIIRS	375 / 750	Both
2.	Terra	MODIS	1000	Both
3.	Aqua	MODIS	1000	Both
4.	NOAA – 18	AVHRR	1000	Night
5.	NOAA – 19	AVHRR	1000	Night
6.	Metop - 1	AVHRR	1000	Night
7.	Metop - 2	AVHRR	1000	Night

Study Team

ICAR – HQ	Dr K. Alagusundaram	DDG (AG. ENGG.)	ddgengg@icar.org.in
	Dr S. Bhasker	ADG (NRM)	adgagroandaf@gmail.com
	Dr K.K. Singh	ADG (AG. ENGG)	kanchansingh044@gmail.com
ICAR - IARI	Dr V.K. Sehgal	Professor & Nodal Scientist	iaricreams@gmail.com
	Dr Rajkumar Dhakar	Scientist	raidhakar.iari@gmail.com
	Mr Rakeswer Verma	Chief Technical Officer	rakeshwar.verma@icar.gov.in
	Mr Mohd Jahangir	Lab Assistant (KRISHI)	mjahangir198@gmail.com
ICAR - ATARI	Dr Rajbir Singh	Director ATARI (Zone-I) Ludhiana	rajbirsingh.zpd@gmail.com
	Dr S.K. Singh	Director ATARI (Zone-II) Jodhpur	sushilsinghiipr@yahoo.co.in
	Dr Atar Singh	Director ATARI (Zone-III) Kanpur	zpdicarkanpur@gmail.com
ICAR - IASRI	Dr Rajender Parsad	Director IASRI	rajender.parsad@icar.gov.in

Softcopy of this report and latest statistics can be seen on <http://creams.iari.res.in>

GIS Maps of fire events can be visualized online on ICAR KRISHI Geoportal website: <http://geoportal.icar.gov.in:8080/geoexplorer/composer/>

(Part of KRISHI Portal: <https://krishi.icar.gov.in> initiative)
