

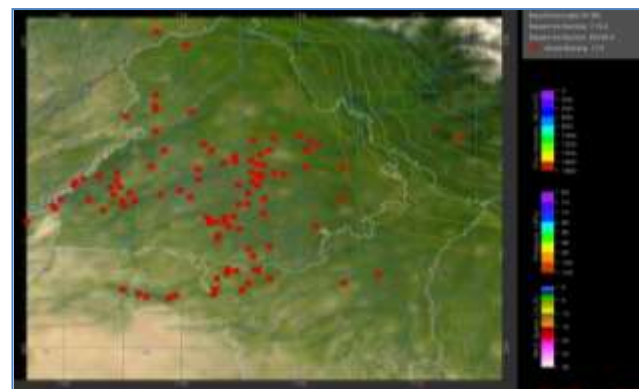


MONITORING PADDY RESIDUE BURNING IN NORTH INDIA USING SATELLITE REMOTE SENSING DURING 2020

**Bulletin
No. 14**

**Events Date:
14-Oct-2020**

**Issued on:
15-Oct-2020**



Prepared by:

**Consortium for Research on Agroecosystem Monitoring and Modeling from Space (CREAMS) Laboratory,
Division of Agricultural Physics, ICAR – Indian Agricultural Research Institute, New Delhi – 110012**

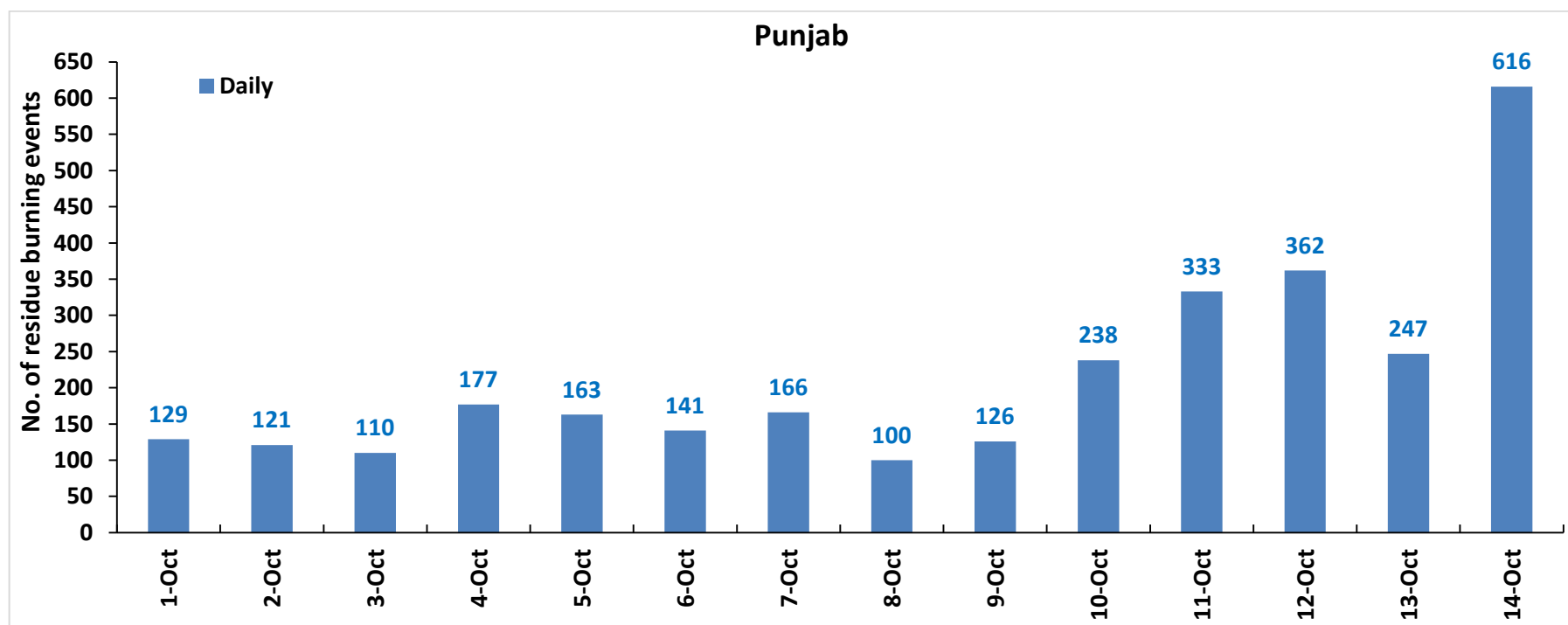
<http://creams.iari.res.in>

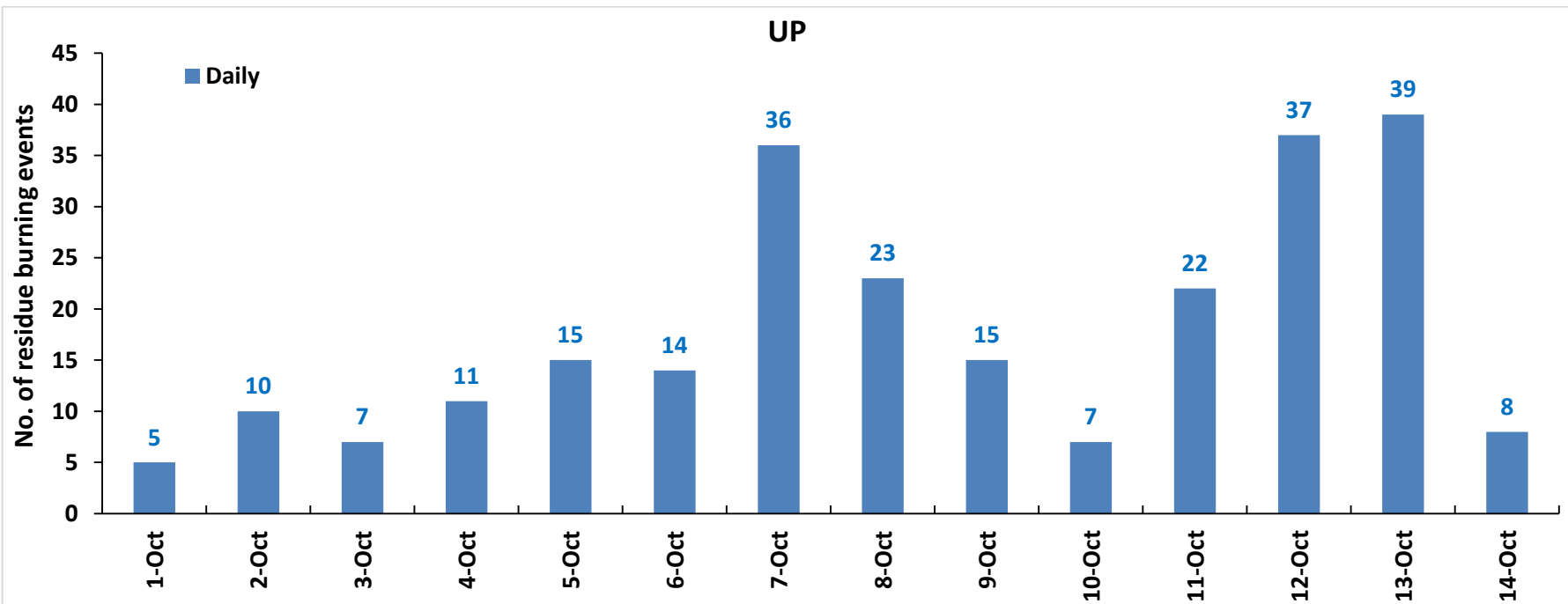
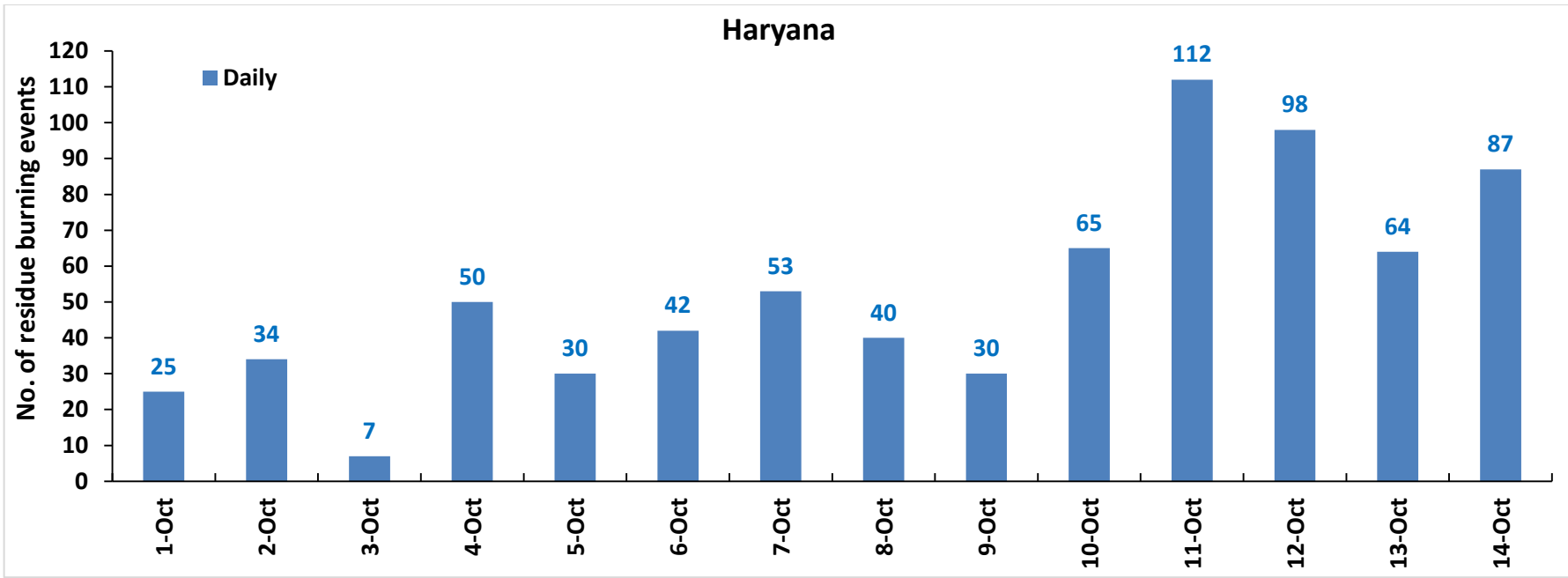


Highlights for 14-October-2020

- Satellites detected **711** residue burning events in the three study States on **14-Oct-2020**.
- The state wise events detected on **14-Oct-2020** were **616** in Punjab, **87** in Haryana and **08** in UP.
- The number of events has increased from **350** on **13-Oct-2020** to **711** on **14-Oct-2020** in the three states.
- Total **4015** burning events were detected in the three States between **01-Oct-2020** and **14-Oct-2020**, which are distributed as **3029**, **737** and **249** in Punjab, Haryana and UP, respectively.
- Amritsar, Tarn Taran and Patiala in Punjab; Kurukshetra, Karnal and Ambala in Haryana; and Shahjhanpur, Kheri and Aligarh in UP were the top three districts with burning events during **1-Oct to 14-Oct 2020**
- In Haryana and UP, the cumulative number of burning events between **1-Oct** and **14-Oct 2020** were lower than in **2019**, while in Punjab the cumulative number of events were more than in 2019.

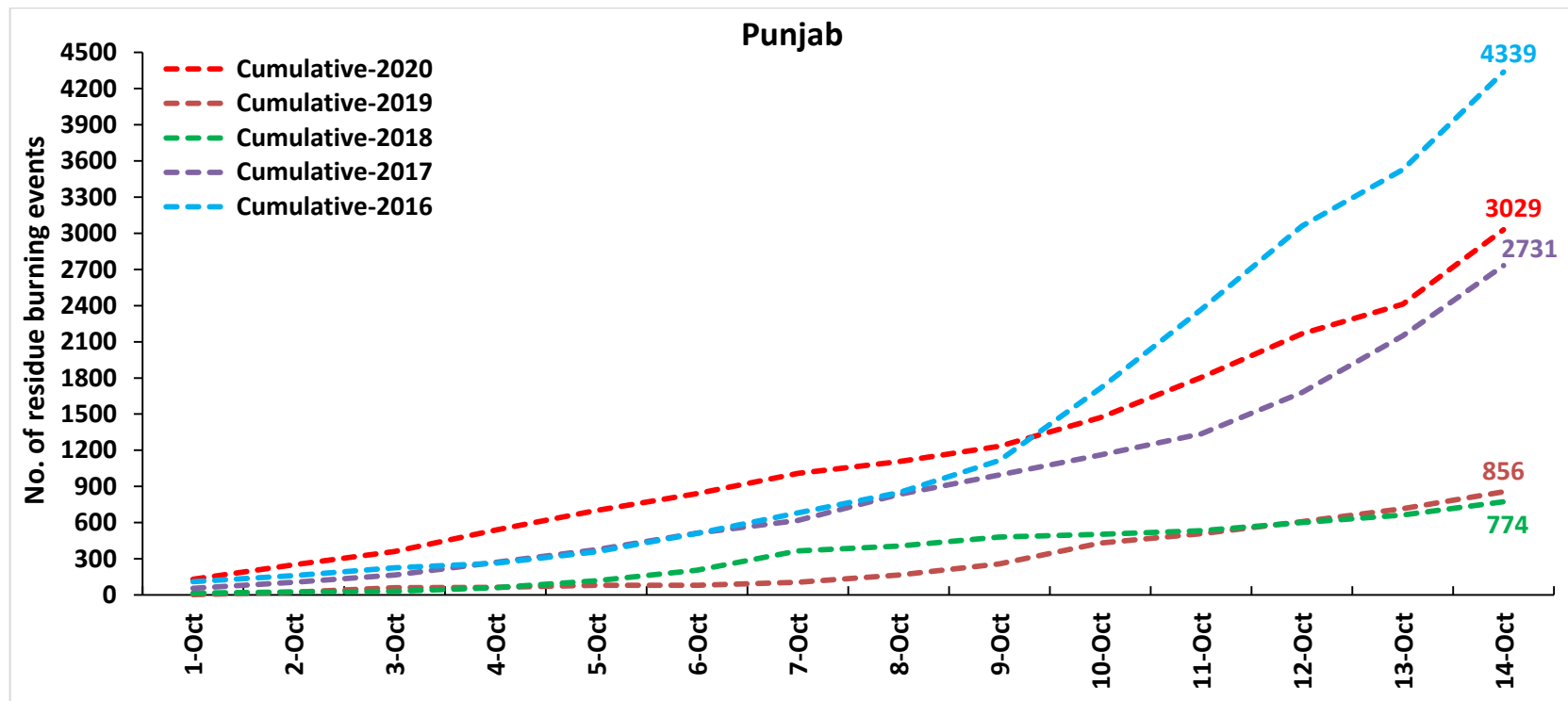
Temporal distribution of residue burning events for the three study States in 2020

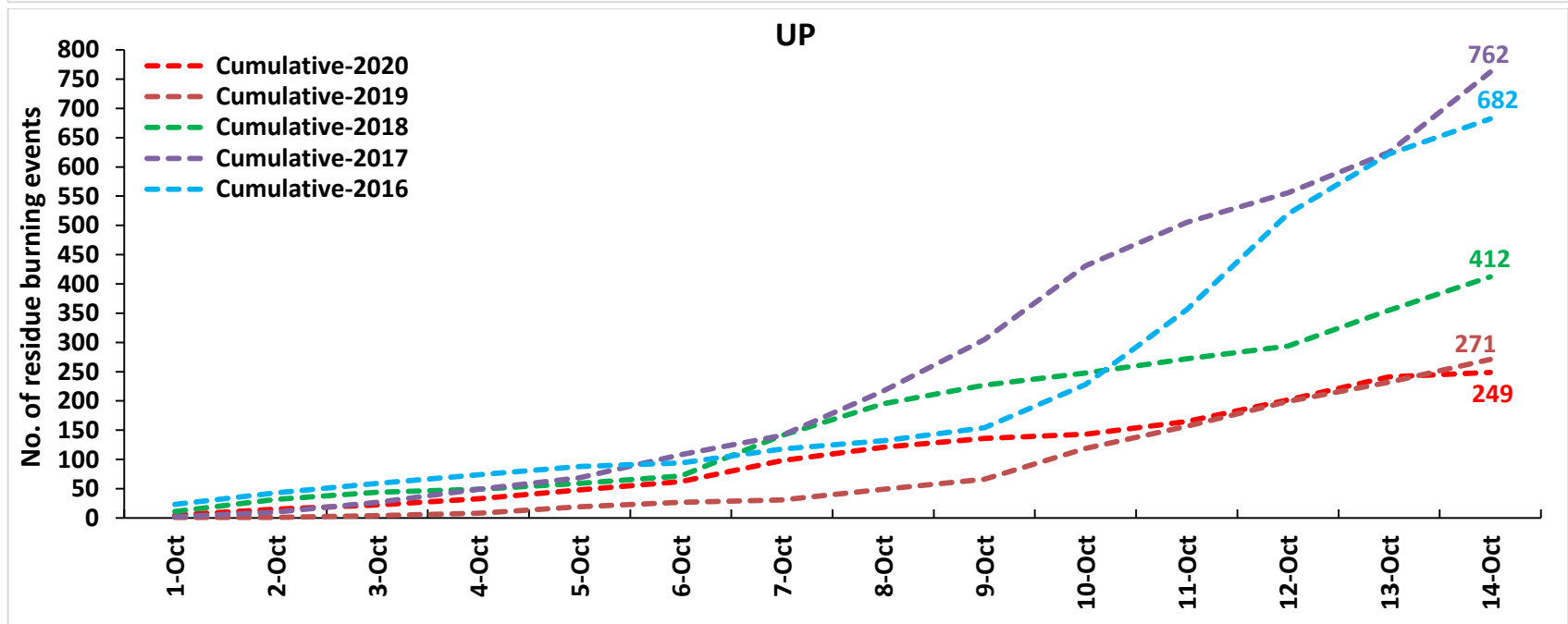
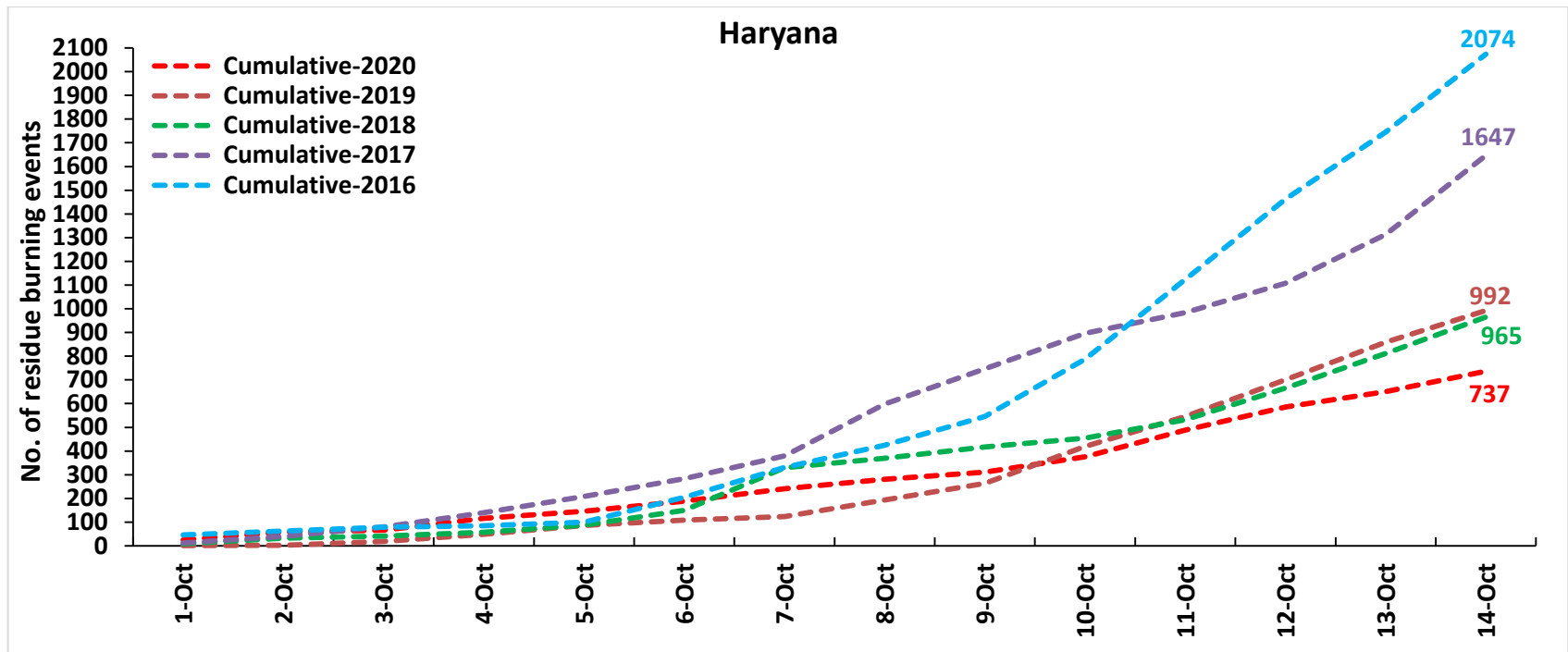




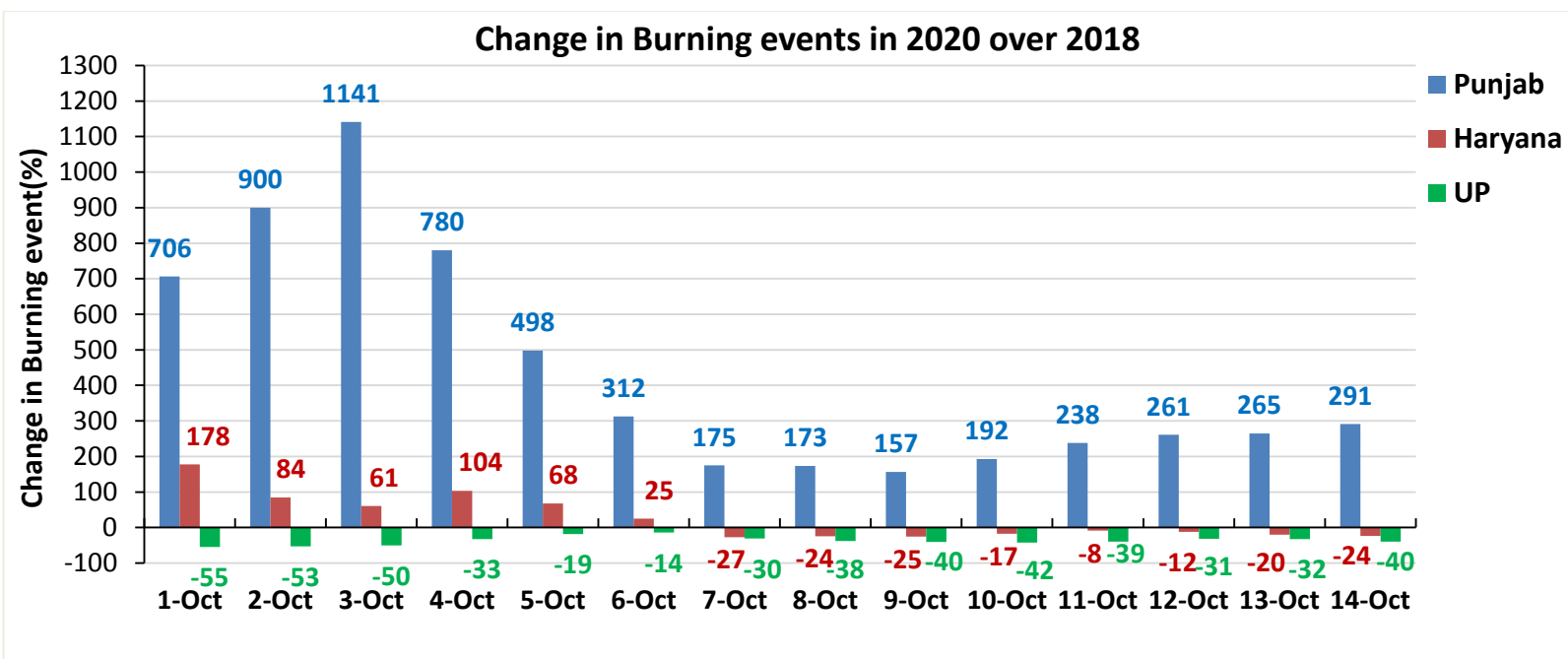
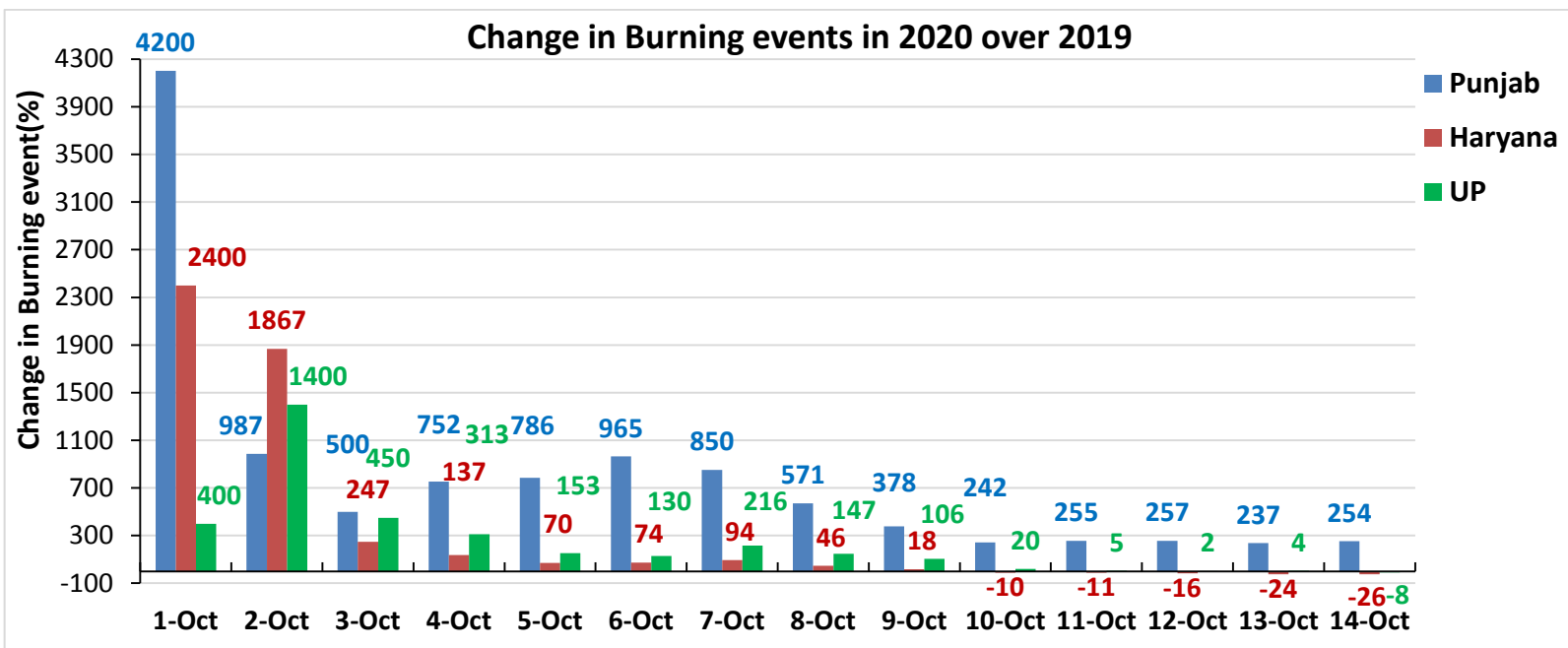
Comparison of residue burning events in current year (2020) with previous years (2019, 2018, 2017 & 2016) for the three study States

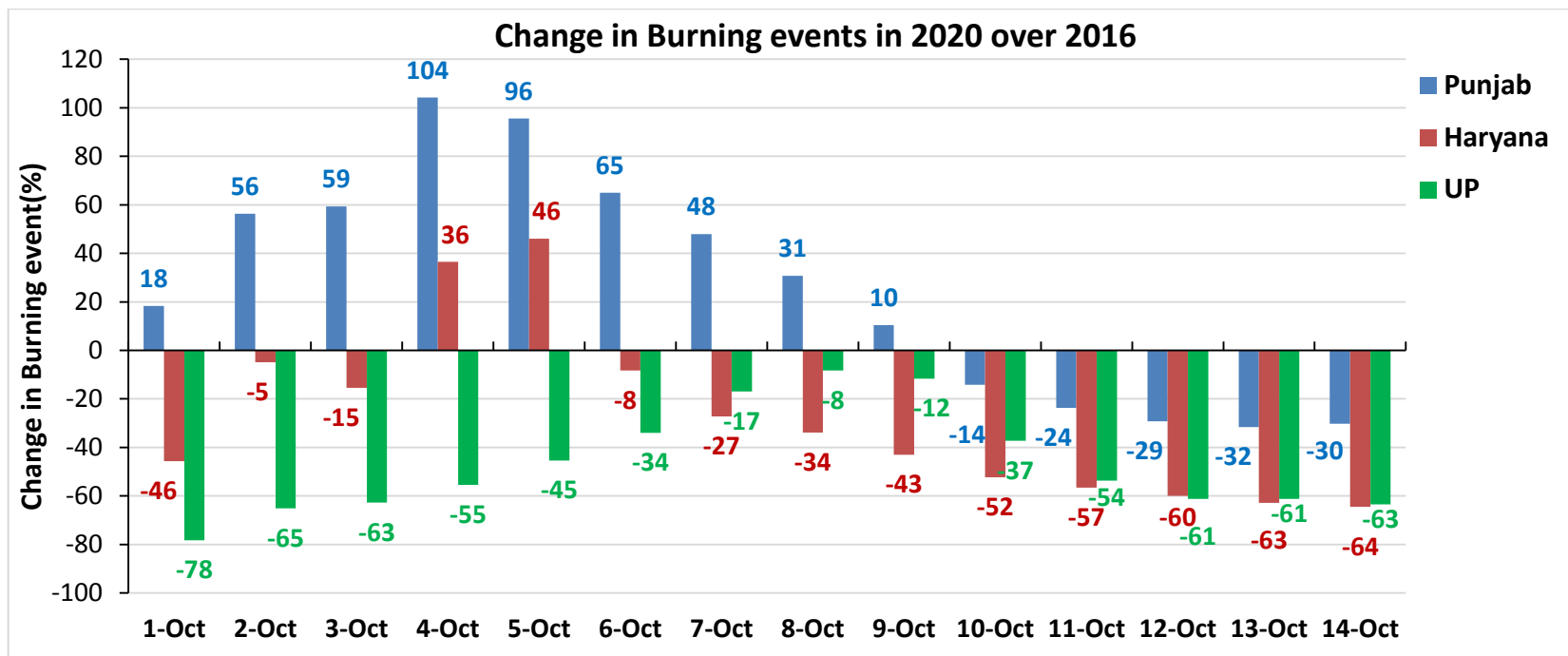
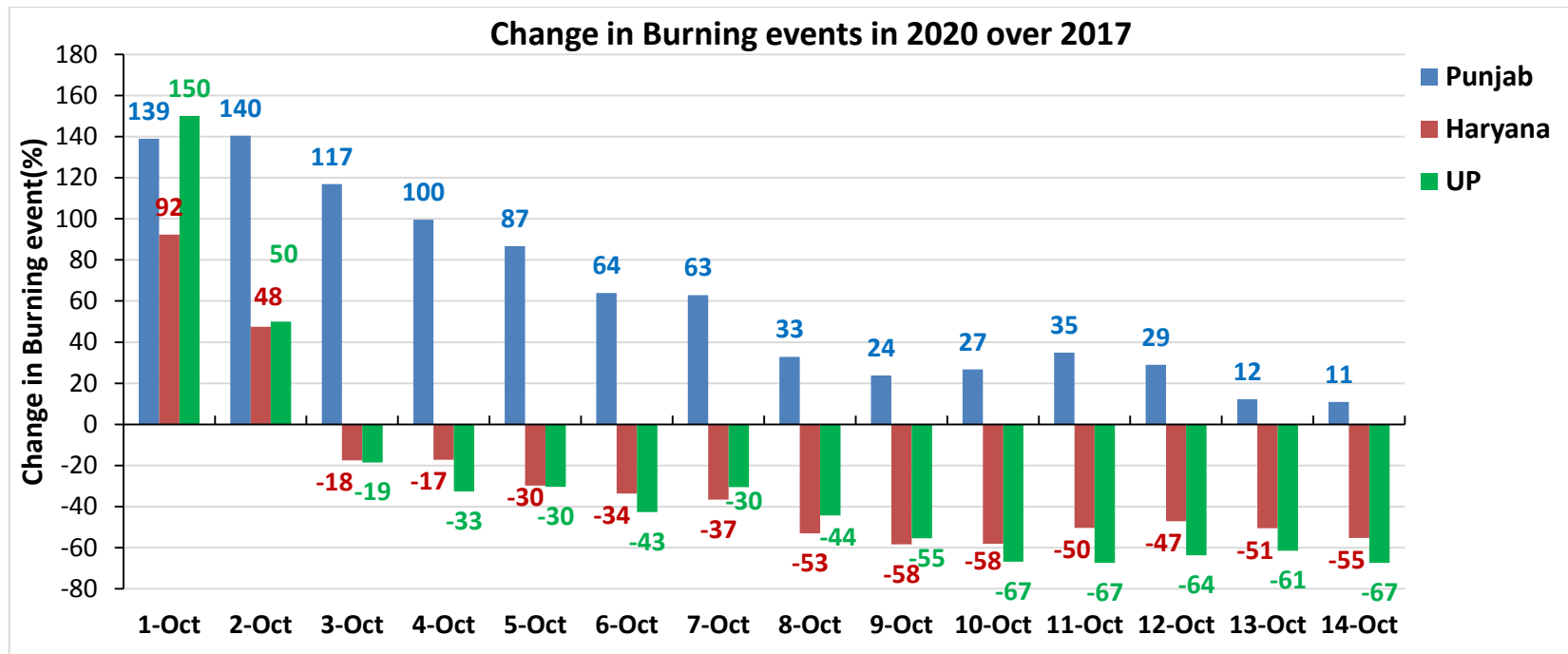
(01-Oct to 14-Oct)





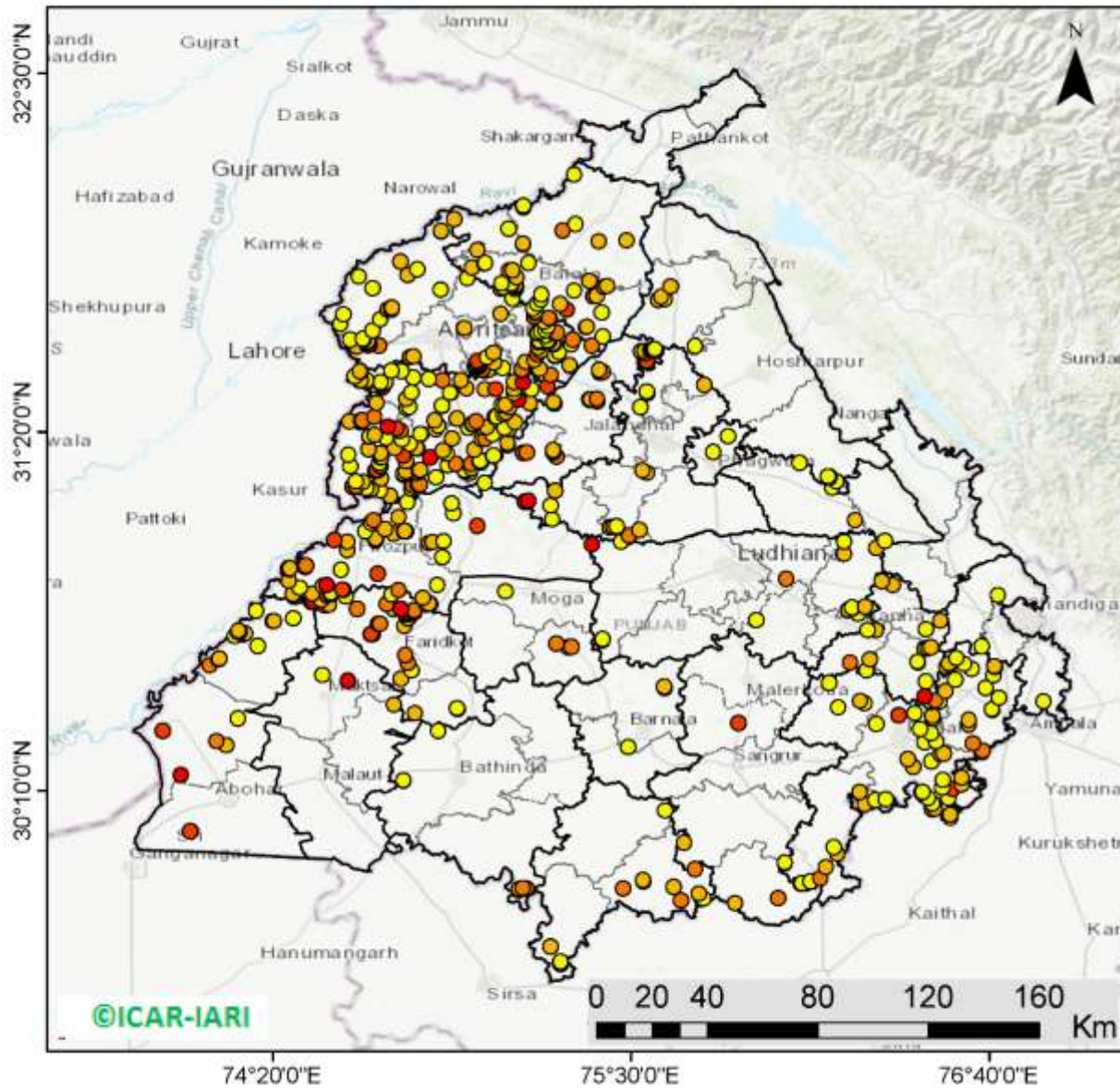
Percent Change in Burning events in 2020 over 2019, 2018, 2017 and 2016 (Daily Cumulative)





(a) Punjab

RICE RESIDUE BURNING IN PUNJAB



616 burning events detected in Punjab on 14th October 2020

Fire Intensity (W/m²)

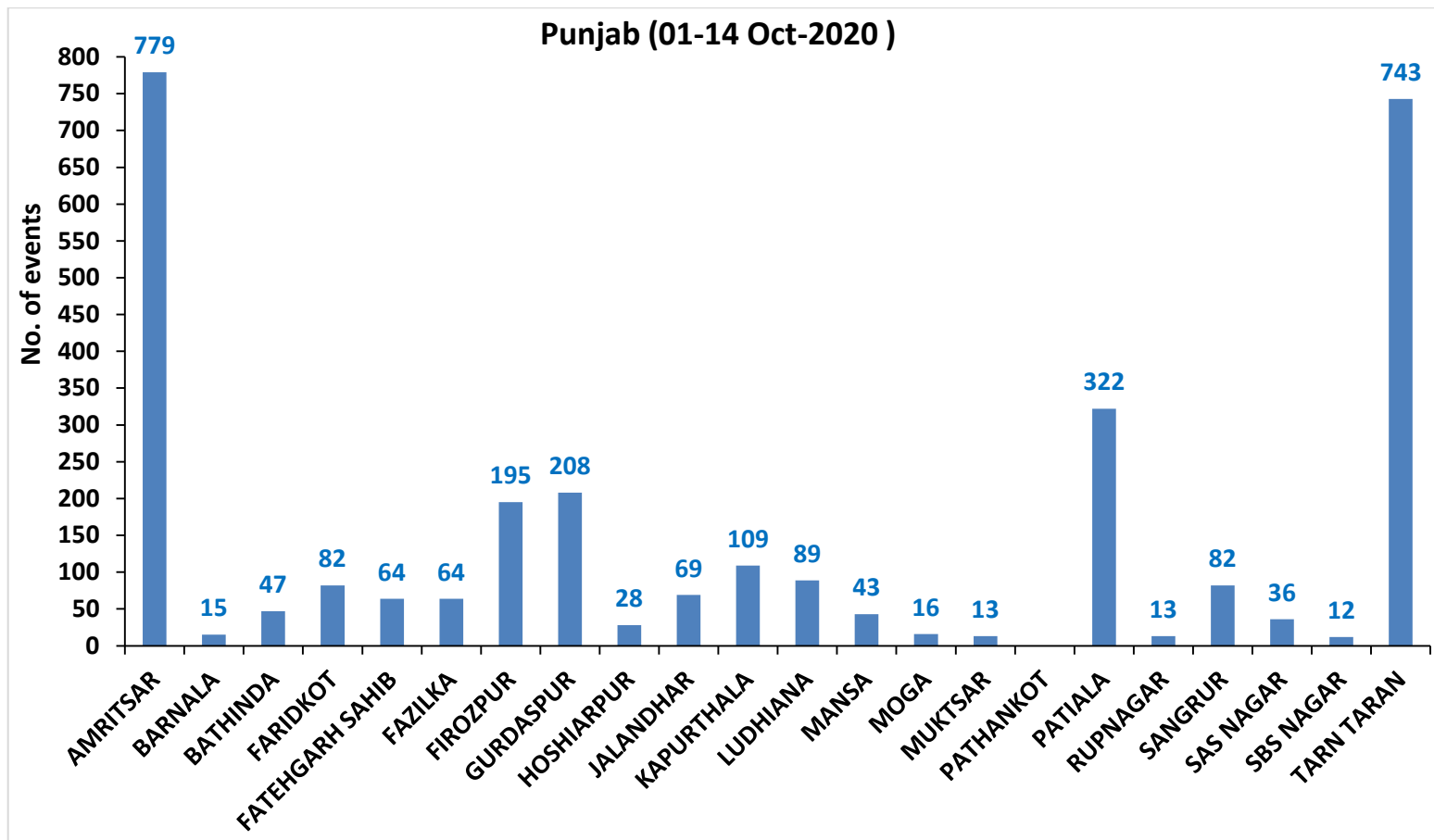
- 0 - 5
- 6 - 10
- 11 - 15
- 16 - 20
- >20

©ICAR-IARI



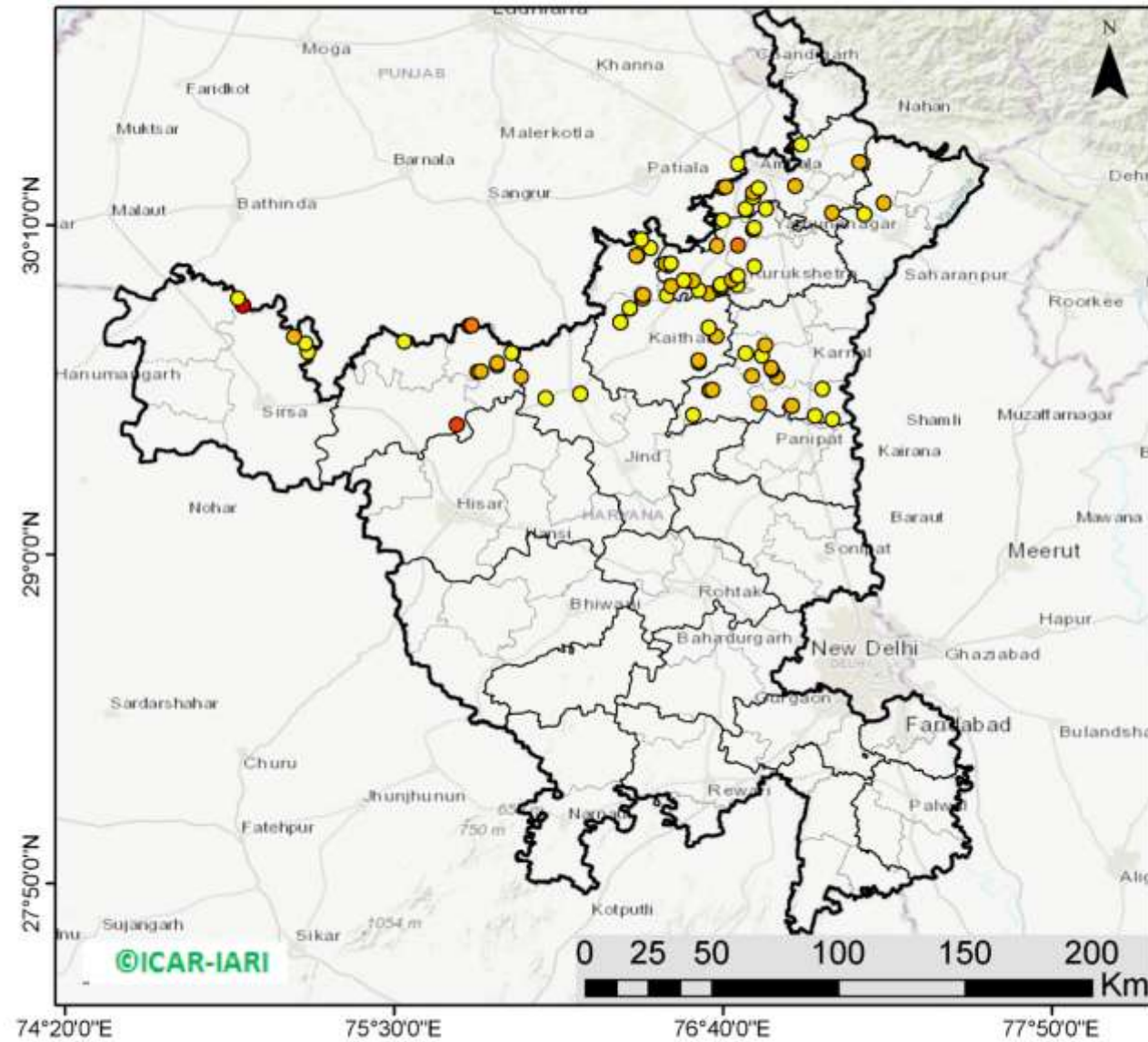
<http://geoportal.icar.gov.in:8080/geoexplorer/composer/>

District-wise cumulative number of residue burning events in Punjab (01-14 Oct-2020)



(b) Haryana

RICE RESIDUE BURNING IN HARYANA



87 burning events detected in Haryana on 14th October 2020

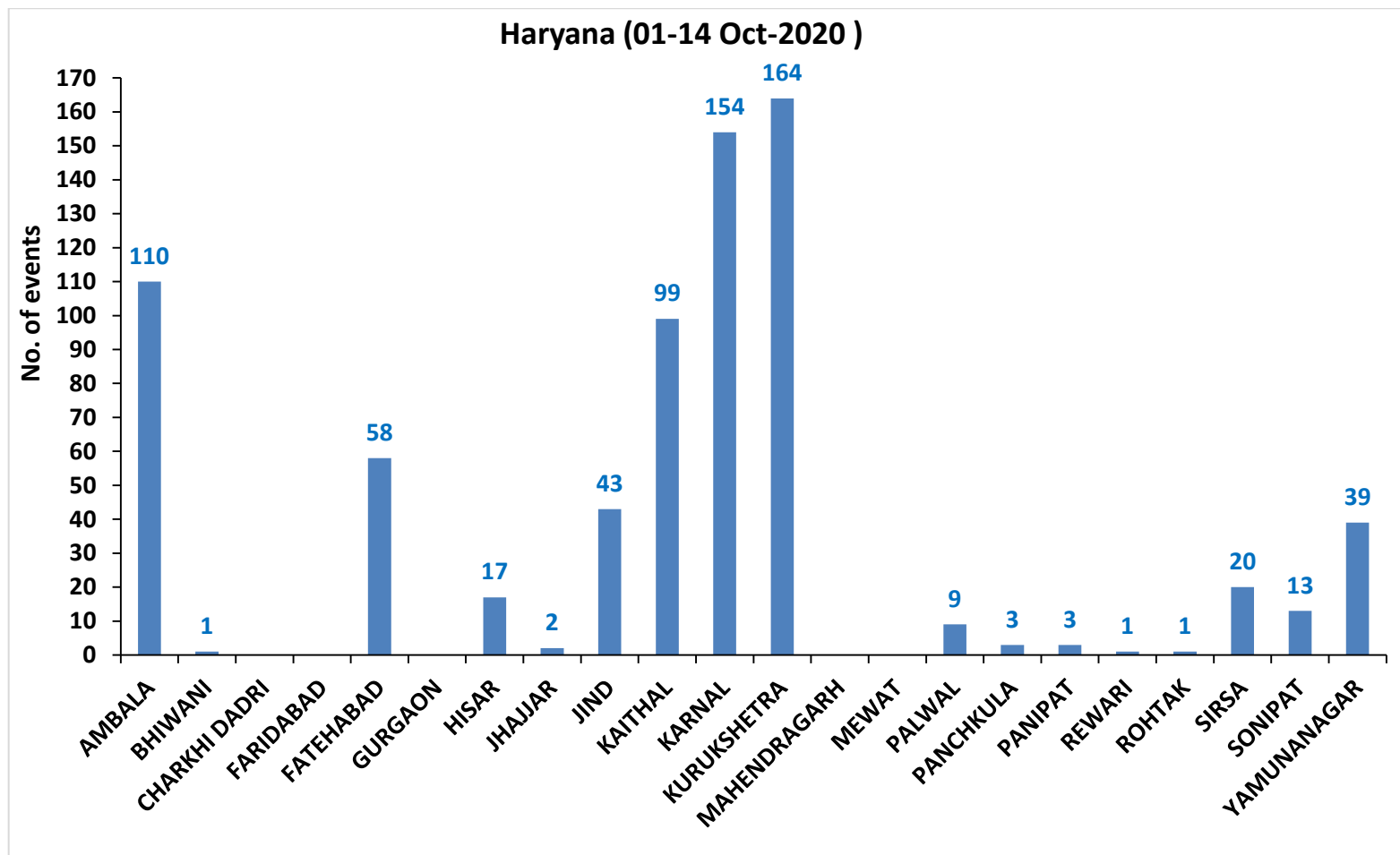
Fire Intensity (W/m²)

- 0 - 5
- 6 - 10
- 11 - 15
- 16 - 20
- >20



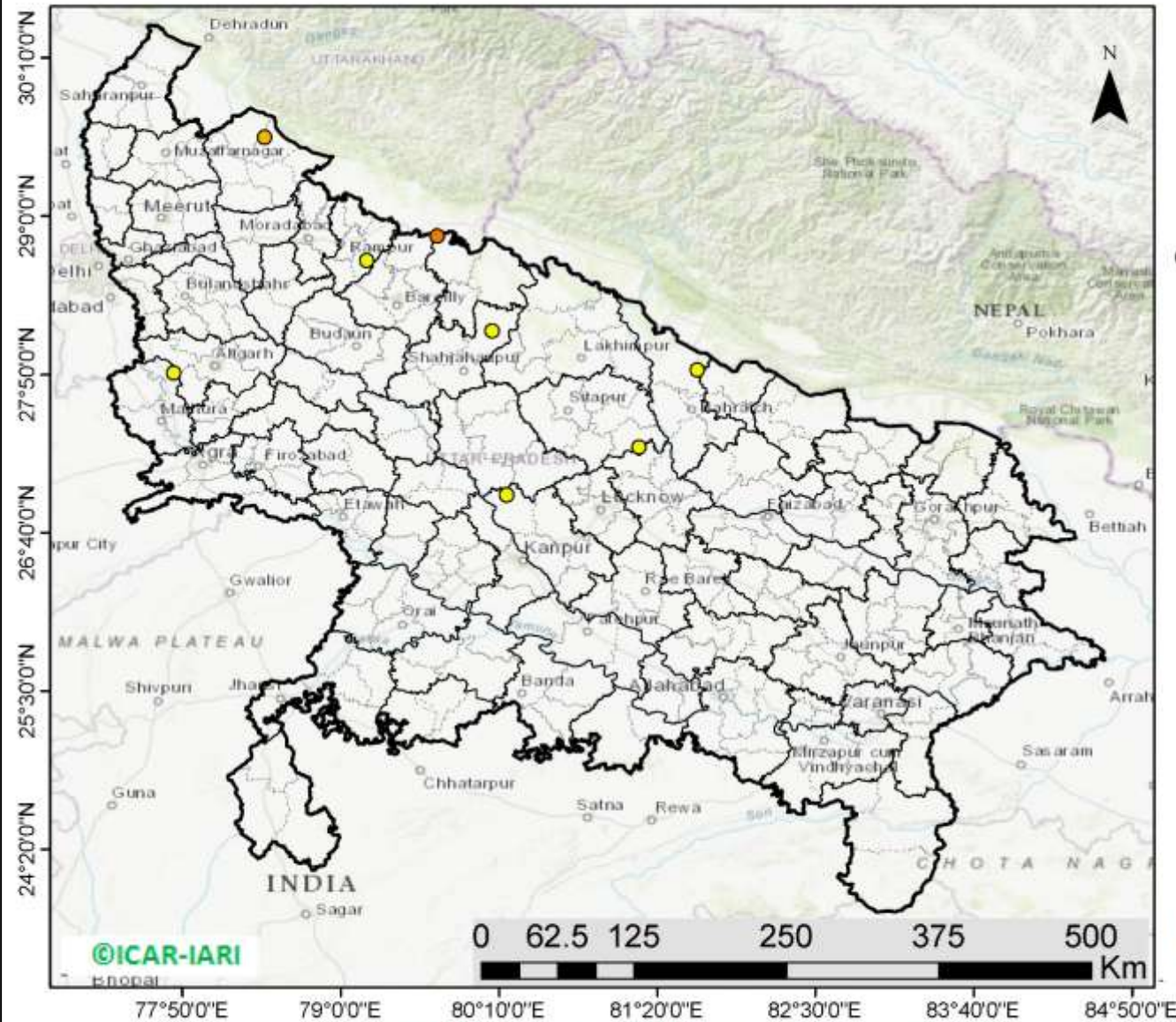
<http://geoportal.icar.gov.in:8080/geoexplorer/composer/>

District-wise cumulative number of residue burning events in Haryana (01-14 Oct-2020)








(c) Uttar Pradesh

RICE RESIDUE BURNING IN UTTAR PRADESH



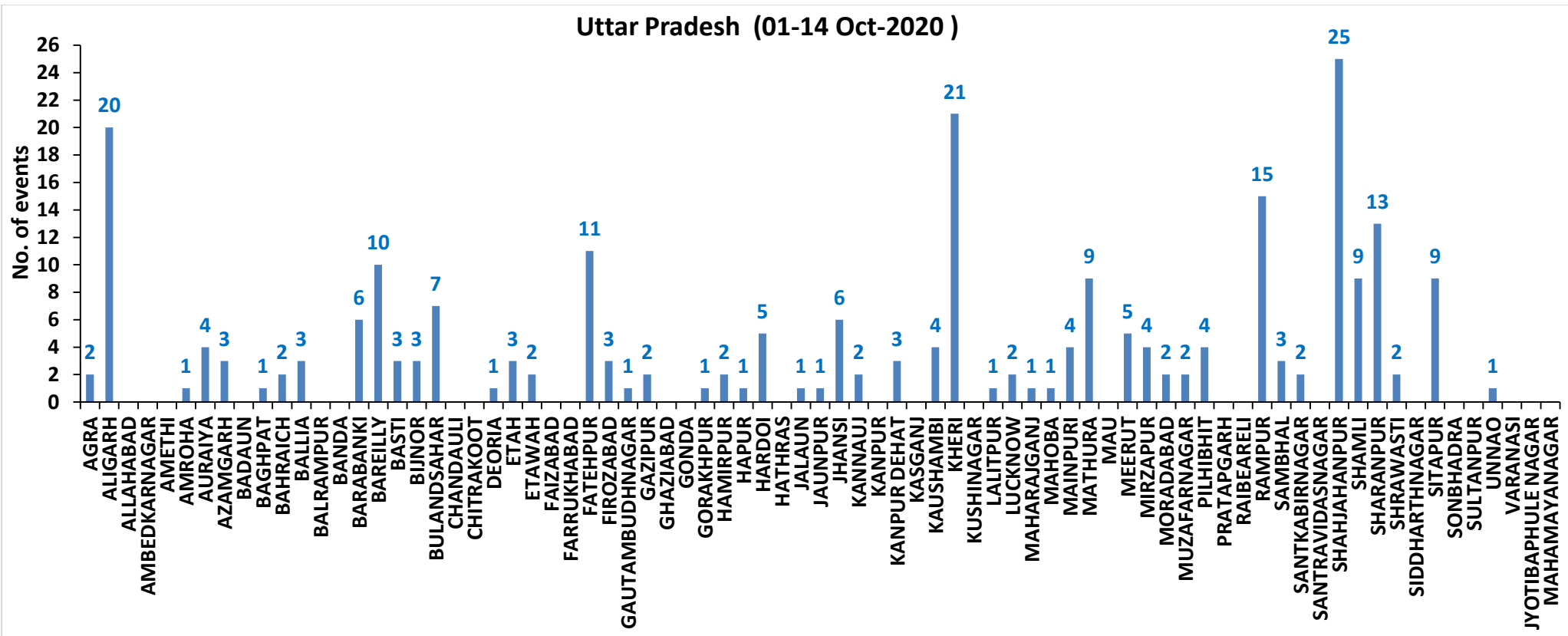
08 burning events detected in Uttar Pradesh on 14th October 2020

Fire Intensity (W/m²)

-  0 - 5
-  6 - 10
-  11 - 15
-  16 - 20
-  >20

<http://geoportal.icar.gov.in:8080/geoexplorer/composer/>

District-wise cumulative number of residue burning events in Uttar Pradesh (01-14 Oct-2020)



State-wise and date-wise number of residue burning events detected in 2016, 2017, 2018, 2019 and 2020
(Period: 01-14 October)

Date	Punjab					Haryana					UP					Total				
	2020	2019	2018	2017	2016	2020	2019	2018	2017	2016	2020	2019	2018	2017	2016	2020	2019	2018	2017	2016
01-Oct	129	3	16	54	109	25	1	9	13	46	5	1	11	2	23	159	5	36	69	178
02-Oct	121	20	9	50	51	34	2	23	27	16	10	0	21	8	20	165	22	53	85	87
03-Oct	110	37	4	62	66	07	16	9	40	16	07	3	12	17	16	124	56	25	119	98
04-Oct	177	3	32	103	37	50	30	16	60	7	11	4	5	22	15	238	37	53	185	59
05-Oct	163	16	56	106	95	30	37	30	68	15	15	11	10	20	14	208	64	96	194	124
06-Oct	141	0	87	138	152	42	22	63	75	105	14	8	13	39	6	197	30	163	252	263
07-Oct	166	27	162	105	171	53	16	180	97	126	36	4	69	33	24	255	47	411	235	321
08-Oct	100	59	39	215	166	40	69	40	218	94	23	18	54	76	14	163	146	133	509	274
09-Oct	126	93	75	163	270	30	70	47	148	121	15	17	32	88	22	171	180	154	399	413
10-Oct	238	172	23	164	597	65	157	37	151	242	07	53	21	126	74	310	382	81	441	913
11-Oct	333	78	30	177	652	112	126	78	87	336	22	38	24	74	128	467	242	132	338	1116
12-Oct	362	99	67	342	694	98	154	133	123	338	37	42	22	51	164	497	295	222	516	1196
13-Oct	247	108	62	470	467	64	159	147	207	284	39	33	61	69	102	350	300	270	746	853
14-Oct	616	141	112	582	812	87	133	153	333	328	08	39	57	137	60	711	313	322	1052	1200
Total	3029	856	774	2731	4339	737	992	965	1647	2074	249	271	412	762	682	4015	2119	2151	5140	7095

District-wise and date wise cumulative number of residue burning events detected in 2016, 2017, 2018, 2019 and 2020
(Period: 01-14 October)

(a) Punjab

Districts	01-14 Oct				
	2016	2017	2018	2019	2020
AMRITSAR	649	442	345	269	779
BARNALA	11	8	1	3	15
BATHINDA	229	127	15	7	47
FARIDKOT	304	393	16	20	82
FATEHGARH SAHIB	247	88	13	8	64
FAZILKA	0	0	0	18	64
FIROZPUR	365	326	44	38	195
GURDASPUR	178	70	28	28	208
HOSHIARPUR	33	6	3	7	28
JALANDHAR	275	96	4	38	69
KAPURTHALA	237	34	3	28	109
LUDHIANA	200	165	23	8	89
MANSA	21	46	4	20	43
MOGA	61	39	0	12	16
MUKTSAR	318	59	5	9	13
PATHANKOT	0	0	0	0	0
PATIALA	396	327	73	107	322
RUPNAGAR	46	5	0	1	13
SANGRUR	71	110	39	34	82
SAS NAGAR	29	35	25	10	36
SBS NAGAR	50	27	10	15	12
TARN TARAN	619	328	123	176	743
Total	4339	2731	774	856	3029

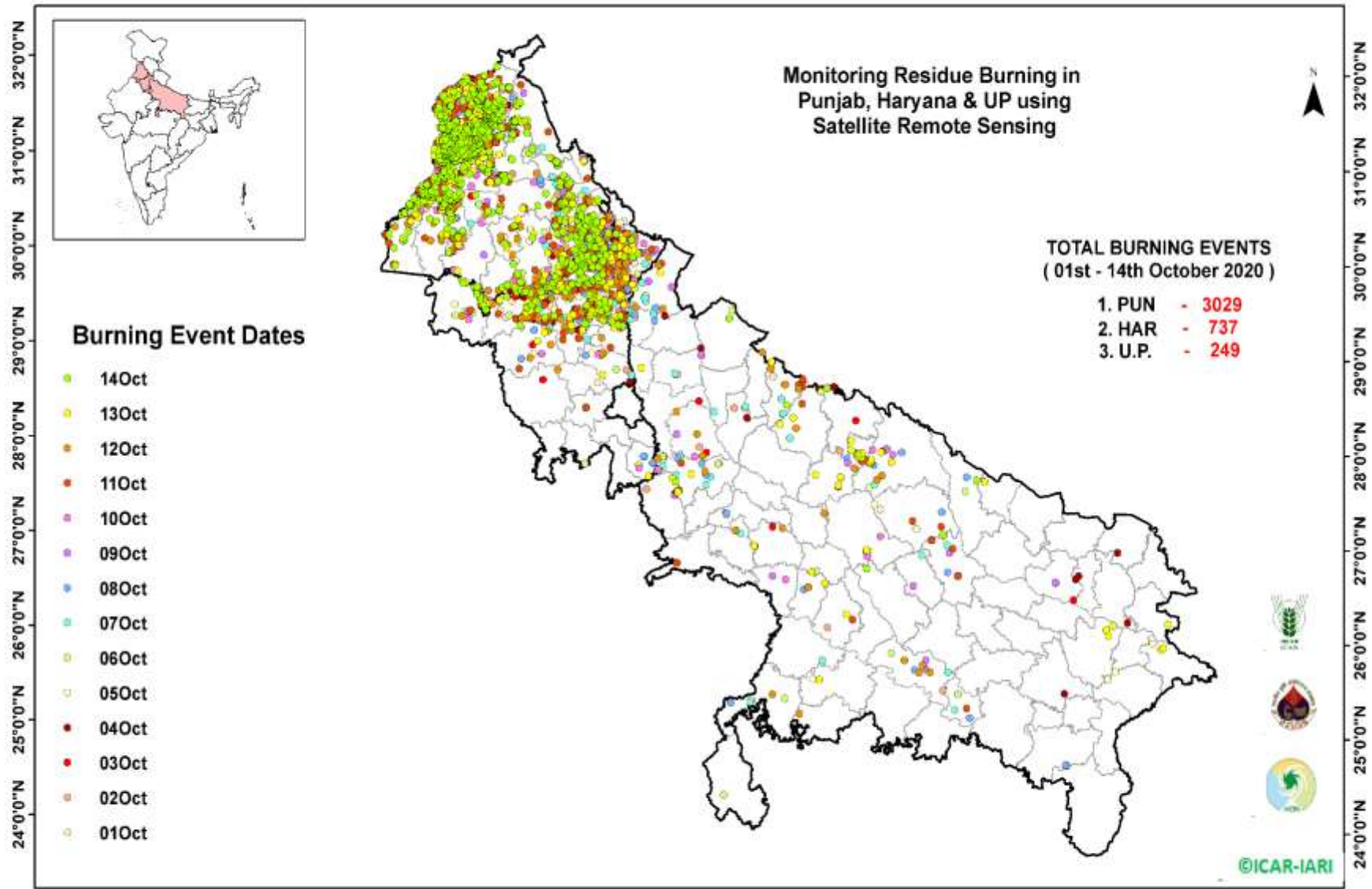
(b) Haryana

Districts	01-14 Oct				
	2016	2017	2018	2019	2020
AMBALA	124	118	39	35	110
BHIWANI	0	2	2	0	1
CHARKHI DADRI	0	0	0	0	0
FARIDABAD	5	20	31	1	0
FATEHABAD	67	68	30	61	58
GURGAON	0	0	0	0	0
HISAR	13	14	8	13	17
JHAJJAR	4	0	3	1	2
JIND	45	81	42	41	43
KAITHAL	561	368	204	238	99
KARNAL	736	536	326	310	154
KURUKSHETRA	421	347	209	222	164
MAHENDRAGARH	0	0	0	1	0
MEWAT	0	0	0	0	0
PALWAL	0	0	0	15	9
PANCHKULA	0	0	3	8	3
PANIPAT	17	22	31	6	3
REWARI	0	0	0	0	1
ROHTAK	1	1	0	0	1
SIRSA	35	15	7	9	20
SONIPAT	3	8	8	1	13
YAMUNANAGAR	42	47	22	30	39
Total	2074	1647	965	992	737

(C)
Uttar Pradesh

Districts	01-14 Oct																
	2016	2017	2018	2019	2020	GAUTAMBUDHNAGAR	1	1	2	0	1	MUZAFARNAGAR	13	34	11	4	2
AGRA	0	0	0	0	2	GAZIPUR	0	0	0	0	2	PILHIBHIT	121	137	56	72	4
ALIGARH	0	10	10	12	20	GHAZIABAD	6	1	2	1	0	PRATAPGARH	0	0	2	0	0
ALLAHABAD	0	0	3	0	0	GONDA	0	0	0	0	0	RAIBEARELI	0	0	0	0	0
AMBEDKARNAGAR	0	1	0	0	0	GORAKHPUR	0	2	4	0	1	RAMPUR	144	100	33	21	15
AMETHI	0	0	0	0	0	HAMIRPUR	0	0	1	0	2	SAMBHAL	0	0	0	1	3
AMROHA	0	0	0	0	1	HAPUR	0	0	0	2	1	SANTKABIRNAGAR	0	0	0	0	2
AURAIYA	35	33	14	0	4	HARDOI	5	2	2	0	5	SANTRAVIDASNAGAR	0	0	0	0	0
AZAMGARH	0	0	0	0	3	HATHRAS	0	0	0	0	0	SHAHJAHANPUR	200	249	78	39	25
BADAUN	0	1	0	0	0	JALAUN	0	0	0	0	1	SHAMLI	0	0	0	8	9
BAGHPAT	0	0	0	2	1	JAUNPUR	0	0	2	0	1	SHARANPUR	9	13	7	4	13
BAHRAICH	0	0	2	0	2	JHANSI	0	0	0	2	6	SHRAWASTI	0	0	0	0	2
BALLIA	0	0	0	1	3	KANNAUJ	0	0	1	0	2	SIDDHARTHANAGAR	1	0	0	0	0
BALRAMPUR	0	0	0	0	0	KANPUR	0	0	0	0	0	SITAPUR	12	4	4	2	9
BANDA	0	0	1	0	0	KANPUR DEHAT	0	1	0	0	3	SONBHADRA	3	1	4	0	0
BARABANKI	13	17	39	1	6	KASGANJ	0	0	0	0	0	SULTANPUR	0	0	0	0	0
BAREILLY	36	21	7	13	10	KAUSHAMBI	0	2	7	1	4	UNNAO	3	0	1	3	1
BASTI	0	0	0	0	3	KHERI	62	74	29	38	21	VARANASI	0	0	0	0	0
BIJNOR	1	0	1	0	3	KUSHINAGAR	0	1	0	0	0	JYOTIBAPHULE NAGAR	0	0	1	0	0
BULANDSAHAR	0	4	5	3	7	LALITPUR	0	0	0	0	1	MAHAMAYANAGAR	0	0	1	0	0
CHANDAULI	0	0	0	0	0	LUCKNOW	2	4	0	1	2	Total	682	762	412	271	249
CHITRAKOOT	0	0	0	0	0	MAHARAJGANJ	0	5	3	0	1						
DEORIA	0	0	0	0	1	MAHOBA	0	0	0	0	1						
ETAH	0	2	7	0	3	MAINPURI	0	2	4	1	4						
ETAWAH	0	3	1	0	2	MATHURA	8	20	60	30	9						
FAIZABAD	0	1	0	0	0	MAU	1	0	0	0	0						
FARRUKHABAD	0	0	0	0	0	MEERUT	4	5	0	4	5						
FATEHPUR	1	4	4	0	11	MIRZAPUR	0	1	1	3	4						
FIROZABAD	0	0	0	0	3	MORADABAD	1	6	2	2	2						

Map of Cumulative Burning Events (01-14 Oct 2020)



[\(http://geoportal.icar.gov.in:8080/geoexplorer/composer/\)](http://geoportal.icar.gov.in:8080/geoexplorer/composer/)

Details of residue burning events in Punjab on 14-Oct-2020

S. No.	District	Tehsil / Block	Satellite	Longitude	Latitude	Time (IST)	Day / Night	Fire Power (W/m2)
1	AMRITSAR	AJNALA	S-NPP	74.64323	31.62910	14:24:00	D	9.20
2	AMRITSAR	AJNALA	S-NPP	74.63075	31.63490	14:24:00	D	5.40
3	AMRITSAR	AJNALA	S-NPP	74.62872	31.63633	14:24:00	D	3.50
4	AMRITSAR	AJNALA	S-NPP	74.65993	31.66369	12:48:00	D	2.80
5	AMRITSAR	AJNALA	S-NPP	74.55347	31.68415	14:24:00	D	3.90
6	AMRITSAR	AJNALA	S-NPP	74.68446	31.69915	12:48:00	D	2.60
7	AMRITSAR	AJNALA	S-NPP	74.56456	31.71530	12:48:00	D	2.50
8	AMRITSAR	AJNALA	AQUA	74.70900	31.73000	13:35:00	D	10.30
9	AMRITSAR	AJNALA	AQUA	74.72100	31.73200	13:35:00	D	11.90
10	AMRITSAR	AJNALA	S-NPP	74.72101	31.73730	14:24:00	D	3.20
11	AMRITSAR	AJNALA	S-NPP	74.72361	31.73764	14:24:00	D	5.30
12	AMRITSAR	AJNALA	S-NPP	74.88136	31.79510	12:48:00	D	2.10
13	AMRITSAR	AJNALA	S-NPP	74.65881	31.79924	14:24:00	D	3.00
14	AMRITSAR	AJNALA	S-NPP	74.61477	31.83817	12:48:00	D	2.30
15	AMRITSAR	AJNALA	AQUA	74.77300	31.84300	13:35:00	D	6.10
16	AMRITSAR	AJNALA	S-NPP	74.80493	31.86286	12:48:00	D	2.30
17	AMRITSAR	AJNALA	S-NPP	74.75039	31.88827	14:24:00	D	5.50
18	AMRITSAR	AJNALA	S-NPP	74.88245	31.98624	12:48:00	D	9.50
19	AMRITSAR	AJNALA	S-NPP	74.88218	31.98752	12:48:00	D	9.90
20	AMRITSAR	AJNALA	S-NPP	74.92556	32.02575	14:24:00	D	7.60
21	AMRITSAR	AMRITSAR I	AQUA	75.02400	31.53300	13:35:00	D	7.50
22	AMRITSAR	AMRITSAR I	AQUA	75.03500	31.53500	13:35:00	D	7.90
23	AMRITSAR	AMRITSAR I	S-NPP	75.01571	31.53579	14:24:00	D	12.90
24	AMRITSAR	AMRITSAR I	S-NPP	75.01550	31.53698	14:24:00	D	13.80
25	AMRITSAR	AMRITSAR I	AQUA	74.99200	31.54300	13:35:00	D	7.30
26	AMRITSAR	AMRITSAR I	S-NPP	74.99885	31.54420	12:48:00	D	4.20
27	AMRITSAR	AMRITSAR I	S-NPP	75.00699	31.54621	12:48:00	D	7.30
28	AMRITSAR	AMRITSAR I	S-NPP	75.00519	31.55154	12:48:00	D	7.30
29	AMRITSAR	AMRITSAR I	S-NPP	75.00298	31.55800	12:48:00	D	18.00
30	AMRITSAR	AMRITSAR I	S-NPP	75.05553	31.55816	12:48:00	D	6.40

31	AMRITSAR	AMRITSAR I	S-NPP	75.00159	31.56220	12:48:00	D	33.20
32	AMRITSAR	AMRITSAR I	S-NPP	75.00565	31.56320	12:48:00	D	26.20
33	AMRITSAR	AMRITSAR I	S-NPP	75.00121	31.56334	12:48:00	D	16.30
34	AMRITSAR	AMRITSAR I	S-NPP	75.03275	31.57586	14:24:00	D	4.80
35	AMRITSAR	AMRITSAR I	AQUA	75.05300	31.59100	13:35:00	D	8.30
36	AMRITSAR	AMRITSAR I	AQUA	75.07700	31.71700	13:35:00	D	8.40
37	AMRITSAR	AMRITSAR I	AQUA	75.07600	31.79900	13:35:00	D	7.00
38	AMRITSAR	AMRITSAR I	S-NPP	74.96771	31.83234	14:24:00	D	3.50
39	AMRITSAR	AMRITSAR II	S-NPP	74.60176	31.51521	12:48:00	D	3.30
40	AMRITSAR	AMRITSAR II	AQUA	74.62000	31.53000	13:35:00	D	5.60
41	AMRITSAR	AMRITSAR II	S-NPP	74.61882	31.53043	14:24:00	D	9.70
42	AMRITSAR	AMRITSAR II	S-NPP	74.61842	31.53157	14:24:00	D	6.10
43	AMRITSAR	AMRITSAR II	AQUA	74.78100	31.57600	13:35:00	D	13.40
44	AMRITSAR	AMRITSAR II	AQUA	74.79200	31.57800	13:35:00	D	5.70
45	AMRITSAR	AMRITSAR II	AQUA	74.60700	31.61100	13:35:00	D	8.50
46	AMRITSAR	AMRITSAR II	AQUA	74.68000	31.61400	13:35:00	D	11.00
47	AMRITSAR	AMRITSAR II	S-NPP	74.64392	31.61628	14:24:00	D	22.20
48	AMRITSAR	AMRITSAR II	S-NPP	74.64999	31.61657	14:24:00	D	22.20
49	AMRITSAR	AMRITSAR II	S-NPP	74.64198	31.61764	14:24:00	D	18.90
50	AMRITSAR	AMRITSAR II	S-NPP	74.64806	31.61790	14:24:00	D	45.80
51	AMRITSAR	AMRITSAR II	S-NPP	74.64161	31.62405	14:24:00	D	4.90
52	AMRITSAR	AMRITSAR II	S-NPP	74.58720	31.63364	12:48:00	D	3.30
53	AMRITSAR	AMRITSAR II	S-NPP	74.95601	31.67015	14:24:00	D	10.60
54	AMRITSAR	AMRITSAR II	S-NPP	74.95777	31.67064	14:24:00	D	9.50
55	AMRITSAR	BABA BAKALA	AQUA	75.23800	31.51900	13:35:00	D	10.50
56	AMRITSAR	BABA BAKALA	S-NPP	75.14471	31.53446	14:24:00	D	7.70
57	AMRITSAR	BABA BAKALA	S-NPP	75.14433	31.53642	14:24:00	D	12.00
58	AMRITSAR	BABA BAKALA	S-NPP	75.19680	31.53654	14:24:00	D	7.70
59	AMRITSAR	BABA BAKALA	S-NPP	75.19630	31.53880	14:24:00	D	6.00
60	AMRITSAR	BABA BAKALA	S-NPP	75.20283	31.53909	14:24:00	D	6.00
61	AMRITSAR	BABA BAKALA	S-NPP	75.08276	31.54184	12:48:00	D	2.20
62	AMRITSAR	BABA BAKALA	S-NPP	75.30178	31.54731	14:24:00	D	7.40
63	AMRITSAR	BABA BAKALA	S-NPP	75.30119	31.55019	14:24:00	D	7.80

64	AMRITSAR	BABA BAKALA	S-NPP	75.15628	31.56134	14:24:00	D	6.00
65	AMRITSAR	BABA BAKALA	S-NPP	75.18654	31.56743	12:48:00	D	5.30
66	AMRITSAR	BABA BAKALA	S-NPP	75.25377	31.57860	14:24:00	D	2.10
67	AMRITSAR	BABA BAKALA	S-NPP	75.25340	31.58120	14:24:00	D	2.60
68	AMRITSAR	BABA BAKALA	AQUA	75.19500	31.58500	13:35:00	D	19.40
69	AMRITSAR	BABA BAKALA	S-NPP	75.26629	31.59240	14:24:00	D	4.50
70	AMRITSAR	BABA BAKALA	S-NPP	75.20680	31.59652	14:24:00	D	6.40
71	AMRITSAR	BABA BAKALA	S-NPP	75.19798	31.61019	12:48:00	D	4.60
72	AMRITSAR	BABA BAKALA	AQUA	75.37400	31.61400	13:35:00	D	10.20
73	AMRITSAR	BABA BAKALA	S-NPP	75.24591	31.61904	12:48:00	D	3.70
74	AMRITSAR	BABA BAKALA	S-NPP	75.30530	31.61927	12:48:00	D	1.80
75	AMRITSAR	BABA BAKALA	S-NPP	75.24982	31.62002	12:48:00	D	3.70
76	AMRITSAR	BABA BAKALA	S-NPP	75.24526	31.62170	12:48:00	D	5.80
77	AMRITSAR	BABA BAKALA	S-NPP	75.24920	31.62265	12:48:00	D	5.80
78	AMRITSAR	BABA BAKALA	AQUA	75.19800	31.62400	13:35:00	D	15.30
79	AMRITSAR	BABA BAKALA	AQUA	75.20900	31.62600	13:35:00	D	20.40
80	AMRITSAR	BABA BAKALA	S-NPP	75.22997	31.62936	12:48:00	D	4.10
81	AMRITSAR	BABA BAKALA	S-NPP	75.23390	31.63031	12:48:00	D	5.10
82	AMRITSAR	BABA BAKALA	S-NPP	75.20361	31.63128	12:48:00	D	3.40
83	AMRITSAR	BABA BAKALA	S-NPP	75.22894	31.63190	12:48:00	D	3.20
84	AMRITSAR	BABA BAKALA	AQUA	75.31200	31.63300	13:35:00	D	11.80
85	AMRITSAR	BABA BAKALA	S-NPP	75.22372	31.64768	12:48:00	D	2.00
86	AMRITSAR	BABA BAKALA	S-NPP	75.19588	31.65379	14:24:00	D	1.70
87	AMRITSAR	BABA BAKALA	S-NPP	75.19732	31.65569	14:24:00	D	2.60
88	AMRITSAR	BABA BAKALA	TERRA	75.24900	31.65600	23:00:00	N	11.60
89	AMRITSAR	BABA BAKALA	TERRA	75.26000	31.65600	23:00:00	N	12.00
90	AMRITSAR	BABA BAKALA	S-NPP	75.20670	31.66056	12:48:00	D	4.40
91	AMRITSAR	BABA BAKALA	S-NPP	75.22241	31.66444	12:48:00	D	1.60
92	AMRITSAR	BABA BAKALA	S-NPP	75.22918	31.67704	14:24:00	D	3.20
93	AMRITSAR	BABA BAKALA	S-NPP	75.21759	31.69171	12:48:00	D	2.10
94	AMRITSAR	BABA BAKALA	AQUA	75.18500	31.70600	13:35:00	D	16.60
95	AMRITSAR	BABA BAKALA	S-NPP	75.18812	31.72065	12:48:00	D	4.60
96	AMRITSAR	BABA BAKALA	S-NPP	75.18956	31.72469	12:48:00	D	3.20

97	AMRITSAR	BABA BAKALA	S-NPP	75.18205	31.73675	14:24:00	D	2.50
98	BARNALA	BARNALA	S-NPP	75.49096	30.30755	14:24:00	D	4.30
99	BARNALA	BARNALA	S-NPP	75.60999	30.50000	12:48:00	D	3.00
100	BARNALA	BARNALA	S-NPP	75.60931	30.50101	12:48:00	D	7.80
101	BARNALA	BARNALA	S-NPP	75.60828	30.50529	12:48:00	D	5.20
102	BATHINDA	BATHINDA	S-NPP	74.75993	30.19762	14:24:00	D	4.50
103	BATHINDA	BATHINDA	S-NPP	74.76080	30.19957	14:24:00	D	3.30
104	BATHINDA	BATHINDA	S-NPP	74.87325	30.36047	14:24:00	D	4.50
105	BATHINDA	TALWANDI SABO	S-NPP	75.13538	29.84189	14:24:00	D	5.90
106	BATHINDA	TALWANDI SABO	S-NPP	75.16196	29.84537	12:48:00	D	12.40
107	BATHINDA	TALWANDI SABO	AQUA	75.13600	29.84600	13:35:00	D	7.20
108	BATHINDA	TALWANDI SABO	S-NPP	75.16036	29.84759	12:48:00	D	12.90
109	BATHINDA	TALWANDI SABO	AQUA	75.14800	29.84800	13:35:00	D	14.30
110	FARIDKOT	FARIDKOT	S-NPP	74.75212	30.53031	12:48:00	D	8.60
111	FARIDKOT	FARIDKOT	S-NPP	74.78602	30.55686	12:48:00	D	3.20
112	FARIDKOT	FARIDKOT	AQUA	74.77300	30.58000	13:35:00	D	10.10
113	FARIDKOT	FARIDKOT	AQUA	74.76700	30.60800	13:35:00	D	14.00
114	FARIDKOT	FARIDKOT	S-NPP	74.65284	30.67430	14:24:00	D	8.40
115	FARIDKOT	FARIDKOT	S-NPP	74.65875	30.67461	14:24:00	D	8.40
116	FARIDKOT	FARIDKOT	S-NPP	74.65508	30.67568	14:24:00	D	16.20
117	FARIDKOT	FARIDKOT	AQUA	74.76400	30.70100	13:35:00	D	7.50
118	FARIDKOT	FARIDKOT	S-NPP	74.68058	30.70776	14:24:00	D	17.20
119	FARIDKOT	FARIDKOT	S-NPP	74.67680	30.70869	14:24:00	D	12.90
120	FARIDKOT	FARIDKOT	S-NPP	74.68272	30.70897	14:24:00	D	12.90
121	FARIDKOT	FARIDKOT	S-NPP	74.77591	30.72469	12:48:00	D	2.60
122	FARIDKOT	FARIDKOT	S-NPP	74.77557	30.72721	12:48:00	D	4.00
123	FARIDKOT	FARIDKOT	S-NPP	74.77627	30.73932	12:48:00	D	2.40
124	FARIDKOT	FARIDKOT	AQUA	74.76700	30.74100	13:35:00	D	11.40
125	FARIDKOT	FARIDKOT	S-NPP	74.77474	30.74227	12:48:00	D	4.90
126	FARIDKOT	FARIDKOT	AQUA	74.77900	30.74300	13:35:00	D	12.20
127	FARIDKOT	FARIDKOT	S-NPP	74.77644	30.74565	14:24:00	D	20.70
128	FARIDKOT	FARIDKOT	S-NPP	74.79450	30.74654	14:24:00	D	13.00
129	FARIDKOT	FARIDKOT	S-NPP	74.79414	30.75296	14:24:00	D	13.00

130	FARIDKOT	FARIDKOT	S-NPP	74.72803	30.75694	12:48:00	D	5.90
131	FARIDKOT	FARIDKOT	AQUA	74.60900	30.75700	13:35:00	D	14.60
132	FARIDKOT	FARIDKOT	AQUA	74.75100	30.75800	13:35:00	D	21.30
133	FARIDKOT	FARIDKOT	AQUA	74.70500	30.77400	13:35:00	D	10.10
134	FARIDKOT	FARIDKOT	S-NPP	74.57222	30.79791	12:48:00	D	3.60
135	FARIDKOT	FARIDKOT	S-NPP	74.72211	30.80324	12:48:00	D	3.90
136	FARIDKOT	FARIDKOT	AQUA	74.74400	30.81900	13:35:00	D	14.80
137	FARIDKOT	JAITO	AQUA	74.79700	30.41800	13:35:00	D	6.50
138	FARIDKOT	JAITO	S-NPP	74.93517	30.43097	12:48:00	D	4.30
139	FARIDKOT	JAITO	S-NPP	74.93385	30.43304	12:48:00	D	3.60
140	FATEHGARH SAHIB	ALMOH	AQUA	76.21400	30.58200	13:35:00	D	13.40
141	FATEHGARH SAHIB	ALMOH	AQUA	76.27800	30.59200	13:35:00	D	9.90
142	FATEHGARH SAHIB	BASSI PATHANAN	S-NPP	76.46146	30.69077	12:48:00	D	4.50
143	FATEHGARH SAHIB	BASSI PATHANAN	AQUA	76.50800	30.71900	13:35:00	D	8.20
144	FATEHGARH SAHIB	FATEHGARH SAHIB	AQUA	76.45700	30.47200	13:35:00	D	24.00
145	FATEHGARH SAHIB	FATEHGARH SAHIB	S-NPP	76.46081	30.52076	12:48:00	D	2.20
146	FATEHGARH SAHIB	FATEHGARH SAHIB	S-NPP	76.52825	30.56917	12:48:00	D	1.90
147	FATEHGARH SAHIB	FATEHGARH SAHIB	S-NPP	76.53823	30.57502	14:24:00	D	7.10
148	FATEHGARH SAHIB	FATEHGARH SAHIB	S-NPP	76.53569	30.57931	14:24:00	D	5.70
149	FATEHGARH SAHIB	FATEHGARH SAHIB	S-NPP	76.43535	30.58165	12:48:00	D	4.00
150	FATEHGARH SAHIB	FATEHGARH SAHIB	S-NPP	76.43333	30.58482	12:48:00	D	3.10
151	FATEHGARH SAHIB	FATEHGARH SAHIB	AQUA	76.45600	30.62800	13:35:00	D	6.00
152	FATEHGARH SAHIB	FATEHGARH SAHIB	AQUA	76.46700	30.63000	13:35:00	D	6.70
153	FATEHGARH SAHIB	FATEHGARH SAHIB	AQUA	76.47700	30.63200	13:35:00	D	7.90
154	FATEHGARH SAHIB	KHAMANOH	AQUA	76.35200	30.83400	13:35:00	D	5.20
155	FATEHGARH SAHIB	KHAMANOH	AQUA	76.31700	30.84700	13:35:00	D	6.00
156	FAZILKA	ABOHAR	S-NPP	74.06724	30.03358	14:24:00	D	15.90
157	FAZILKA	ABOHAR	S-NPP	74.06596	30.03417	14:24:00	D	16.30
158	FAZILKA	FAZILKA	AQUA	74.03500	30.21700	13:35:00	D	22.10
159	FAZILKA	FAZILKA	AQUA	74.18200	30.31400	13:35:00	D	5.80
160	FAZILKA	FAZILKA	S-NPP	74.15171	30.32730	14:24:00	D	11.40
161	FAZILKA	FAZILKA	AQUA	73.97600	30.36100	13:35:00	D	15.10
162	FAZILKA	FAZILKA	S-NPP	74.22202	30.40079	12:48:00	D	3.00

163	FAZILKA	JALALABAD	AQUA	74.12900	30.57300	13:35:00	D	12.30
164	FAZILKA	JALALABAD	S-NPP	74.15762	30.59258	12:48:00	D	6.20
165	FAZILKA	JALALABAD	S-NPP	74.16058	30.59489	12:48:00	D	7.00
166	FAZILKA	JALALABAD	S-NPP	74.28488	30.63781	12:48:00	D	3.00
167	FAZILKA	JALALABAD	S-NPP	74.21152	30.66891	14:24:00	D	2.50
168	FAZILKA	JALALABAD	S-NPP	74.24068	30.67432	14:24:00	D	7.90
169	FAZILKA	JALALABAD	S-NPP	74.24446	30.67705	14:24:00	D	9.20
170	FAZILKA	JALALABAD	S-NPP	74.22356	30.67969	14:24:00	D	7.30
171	FAZILKA	JALALABAD	S-NPP	74.22184	30.68199	14:24:00	D	11.20
172	FAZILKA	JALALABAD	S-NPP	74.22739	30.68231	14:24:00	D	12.00
173	FAZILKA	JALALABAD	S-NPP	74.22318	30.68591	14:24:00	D	7.30
174	FAZILKA	JALALABAD	S-NPP	74.33368	30.71673	14:24:00	D	5.40
175	FAZILKA	JALALABAD	S-NPP	74.33932	30.71702	14:24:00	D	6.90
176	FAZILKA	JALALABAD	S-NPP	74.40146	30.72657	14:24:00	D	4.40
177	FAZILKA	JALALABAD	S-NPP	74.28061	30.75152	14:24:00	D	3.30
178	FIROZPUR	FIROZPUR	AQUA	74.50500	30.77000	13:35:00	D	18.00
179	FIROZPUR	FIROZPUR	AQUA	74.51800	30.77200	13:35:00	D	7.40
180	FIROZPUR	FIROZPUR	AQUA	74.83400	30.77200	13:35:00	D	6.50
181	FIROZPUR	FIROZPUR	AQUA	74.84600	30.77400	13:35:00	D	18.50
182	FIROZPUR	FIROZPUR	S-NPP	74.84147	30.77468	14:24:00	D	6.50
183	FIROZPUR	FIROZPUR	S-NPP	74.46144	30.78031	14:24:00	D	9.40
184	FIROZPUR	FIROZPUR	S-NPP	74.46719	30.78063	14:24:00	D	9.40
185	FIROZPUR	FIROZPUR	S-NPP	74.45871	30.78298	14:24:00	D	13.40
186	FIROZPUR	FIROZPUR	S-NPP	74.46447	30.78326	14:24:00	D	25.60
187	FIROZPUR	FIROZPUR	S-NPP	74.49213	30.78787	12:48:00	D	6.40
188	FIROZPUR	FIROZPUR	AQUA	74.82300	30.79300	13:35:00	D	7.40
189	FIROZPUR	FIROZPUR	AQUA	74.40400	30.79600	13:35:00	D	15.40
190	FIROZPUR	FIROZPUR	S-NPP	74.40866	30.79635	14:24:00	D	6.00
191	FIROZPUR	FIROZPUR	AQUA	74.51100	30.80100	13:35:00	D	16.90
192	FIROZPUR	FIROZPUR	S-NPP	74.40257	30.80232	14:24:00	D	8.30
193	FIROZPUR	FIROZPUR	AQUA	74.52300	30.80300	13:35:00	D	11.90
194	FIROZPUR	FIROZPUR	S-NPP	74.39969	30.80532	14:24:00	D	5.30
195	FIROZPUR	FIROZPUR	S-NPP	74.46278	30.80622	12:48:00	D	6.60

196	FIROZPUR	FIROZPUR	S-NPP	74.52477	30.80993	12:48:00	D	5.00
197	FIROZPUR	FIROZPUR	S-NPP	74.56408	30.81770	14:24:00	D	5.00
198	FIROZPUR	FIROZPUR	S-NPP	74.56139	30.81975	14:24:00	D	16.60
199	FIROZPUR	FIROZPUR	S-NPP	74.42142	30.82537	14:24:00	D	4.20
200	FIROZPUR	FIROZPUR	AQUA	74.49700	30.83200	13:35:00	D	9.90
201	FIROZPUR	FIROZPUR	AQUA	74.51000	30.83400	13:35:00	D	23.40
202	FIROZPUR	FIROZPUR	S-NPP	74.87057	30.83434	12:48:00	D	2.30
203	FIROZPUR	FIROZPUR	S-NPP	74.38550	30.84874	14:24:00	D	8.10
204	FIROZPUR	FIROZPUR	AQUA	74.67600	30.87200	13:35:00	D	15.60
205	FIROZPUR	FIROZPUR	S-NPP	74.55766	30.88454	12:48:00	D	2.30
206	FIROZPUR	FIROZPUR	S-NPP	74.38894	30.88676	14:24:00	D	8.80
207	FIROZPUR	FIROZPUR	S-NPP	74.38496	30.88923	14:24:00	D	6.70
208	FIROZPUR	FIROZPUR	S-NPP	74.39071	30.88951	14:24:00	D	8.10
209	FIROZPUR	FIROZPUR	AQUA	74.43900	30.89400	13:35:00	D	13.20
210	FIROZPUR	FIROZPUR	S-NPP	74.43793	30.89730	12:48:00	D	11.20
211	FIROZPUR	FIROZPUR	S-NPP	74.44243	30.89845	12:48:00	D	11.20
212	FIROZPUR	FIROZPUR	AQUA	74.57800	30.94800	13:35:00	D	6.80
213	FIROZPUR	FIROZPUR	S-NPP	74.57781	30.97507	14:24:00	D	5.80
214	FIROZPUR	FIROZPUR	S-NPP	74.66924	30.98012	12:48:00	D	7.50
215	FIROZPUR	FIROZPUR	S-NPP	74.53520	30.98231	12:48:00	D	17.10
216	FIROZPUR	FIROZPUR	S-NPP	74.67230	30.98633	14:24:00	D	6.80
217	FIROZPUR	FIROZPUR	S-NPP	74.67023	30.98791	14:24:00	D	6.90
218	FIROZPUR	FIROZPUR	AQUA	74.72700	31.00200	13:35:00	D	8.10
219	FIROZPUR	FIROZPUR	S-NPP	74.63510	31.01001	14:24:00	D	3.00
220	FIROZPUR	FIROZPUR	S-NPP	74.76141	31.01021	14:24:00	D	4.60
221	FIROZPUR	FIROZPUR	S-NPP	74.76746	31.01052	14:24:00	D	4.60
222	FIROZPUR	FIROZPUR	S-NPP	74.76539	31.01152	14:24:00	D	8.80
223	FIROZPUR	FIROZPUR	AQUA	74.69900	31.01700	13:35:00	D	6.10
224	FIROZPUR	FIROZPUR	S-NPP	74.65521	31.03847	14:24:00	D	4.10
225	FIROZPUR	FIROZPUR	AQUA	74.66200	31.04500	13:35:00	D	10.90
226	FIROZPUR	FIROZPUR	S-NPP	74.74461	31.05563	14:24:00	D	7.60
227	FIROZPUR	FIROZPUR	S-NPP	74.77299	31.10482	12:48:00	D	3.10
228	FIROZPUR	ZIRA	S-NPP	74.88706	30.92535	12:48:00	D	1.40

229	FIROZPUR	ZIRA	AQUA	74.84400	30.97200	13:35:00	D	12.30
230	FIROZPUR	ZIRA	AQUA	74.85600	30.97400	13:35:00	D	6.60
231	FIROZPUR	ZIRA	S-NPP	74.89155	30.97796	14:24:00	D	4.40
232	FIROZPUR	ZIRA	AQUA	75.00100	31.02700	13:35:00	D	15.60
233	FIROZPUR	ZIRA	S-NPP	74.92239	31.06716	12:48:00	D	2.00
234	FIROZPUR	ZIRA	S-NPP	74.91573	31.10070	12:48:00	D	3.60
235	GURDASPUR	BATALA	S-NPP	75.40969	31.64466	12:48:00	D	2.10
236	GURDASPUR	BATALA	S-NPP	75.35381	31.67424	12:48:00	D	8.40
237	GURDASPUR	BATALA	S-NPP	75.35767	31.67520	12:48:00	D	8.40
238	GURDASPUR	BATALA	S-NPP	75.23545	31.70177	12:48:00	D	2.00
239	GURDASPUR	BATALA	AQUA	75.23200	31.70400	13:35:00	D	13.10
240	GURDASPUR	BATALA	S-NPP	75.40498	31.72066	12:48:00	D	3.90
241	GURDASPUR	BATALA	S-NPP	75.29126	31.73076	14:24:00	D	17.20
242	GURDASPUR	BATALA	S-NPP	75.27038	31.74981	14:24:00	D	7.90
243	GURDASPUR	BATALA	S-NPP	75.19510	31.75087	12:48:00	D	2.80
244	GURDASPUR	BATALA	S-NPP	75.20697	31.76422	14:24:00	D	2.40
245	GURDASPUR	BATALA	S-NPP	75.11504	31.76713	14:24:00	D	4.50
246	GURDASPUR	BATALA	AQUA	75.37800	31.77400	13:35:00	D	15.40
247	GURDASPUR	BATALA	AQUA	75.38900	31.77600	13:35:00	D	8.30
248	GURDASPUR	BATALA	S-NPP	75.20945	31.78025	14:24:00	D	2.90
249	GURDASPUR	BATALA	S-NPP	75.31609	31.79214	12:48:00	D	1.90
250	GURDASPUR	BATALA	AQUA	75.12400	31.79700	13:35:00	D	8.10
251	GURDASPUR	BATALA	S-NPP	75.08354	31.80324	12:48:00	D	2.50
252	GURDASPUR	BATALA	S-NPP	75.12589	31.80470	12:48:00	D	8.30
253	GURDASPUR	BATALA	AQUA	75.41200	31.80500	13:35:00	D	12.60
254	GURDASPUR	BATALA	AQUA	75.12200	31.80700	13:35:00	D	11.80
255	GURDASPUR	BATALA	AQUA	75.42300	31.80700	13:35:00	D	6.90
256	GURDASPUR	BATALA	S-NPP	75.12499	31.80766	12:48:00	D	17.30
257	GURDASPUR	BATALA	S-NPP	75.12415	31.80998	12:48:00	D	8.30
258	GURDASPUR	BATALA	S-NPP	75.11054	31.81227	12:48:00	D	6.40
259	GURDASPUR	BATALA	S-NPP	75.10957	31.81530	12:48:00	D	4.80
260	GURDASPUR	BATALA	S-NPP	75.07932	31.81589	12:48:00	D	2.80
261	GURDASPUR	BATALA	S-NPP	75.36414	31.82383	14:24:00	D	7.70

262	GURDASPUR	BATALA	AQUA	75.12700	31.83600	13:35:00	D	8.10
263	GURDASPUR	BATALA	AQUA	75.10300	31.85800	13:35:00	D	10.30
264	GURDASPUR	BATALA	AQUA	75.11500	31.86000	13:35:00	D	9.10
265	GURDASPUR	BATALA	AQUA	74.98300	31.86800	13:35:00	D	6.60
266	GURDASPUR	BATALA	S-NPP	75.02263	31.88197	12:48:00	D	3.20
267	GURDASPUR	BATALA	S-NPP	75.02663	31.88296	12:48:00	D	3.20
268	GURDASPUR	BATALA	S-NPP	75.16779	31.88349	12:48:00	D	4.50
269	GURDASPUR	BATALA	AQUA	75.00100	31.92400	13:35:00	D	6.00
270	GURDASPUR	BATALA	S-NPP	75.15018	31.94287	14:24:00	D	7.20
271	GURDASPUR	BATALA	S-NPP	75.15002	31.94529	14:24:00	D	6.80
272	GURDASPUR	DERA BABA NANAK	S-NPP	75.10175	31.99384	14:24:00	D	3.70
273	GURDASPUR	GURDASPUR	AQUA	75.39600	31.95300	13:35:00	D	5.90
274	GURDASPUR	GURDASPUR	S-NPP	75.48666	31.95518	14:24:00	D	6.10
275	GURDASPUR	GURDASPUR	AQUA	75.27900	31.98800	13:35:00	D	10.60
276	GURDASPUR	GURDASPUR	S-NPP	75.32001	32.00929	14:24:00	D	4.80
277	GURDASPUR	GURDASPUR	S-NPP	75.15099	32.06206	14:24:00	D	3.70
278	GURDASPUR	GURDASPUR	S-NPP	75.14938	32.06668	14:24:00	D	10.30
279	GURDASPUR	GURDASPUR	S-NPP	75.15070	32.06867	14:24:00	D	3.70
280	GURDASPUR	GURDASPUR	S-NPP	75.31542	32.16976	14:24:00	D	4.00
281	HOSHIARPUR	DASUYA	S-NPP	75.70982	31.61262	12:48:00	D	1.90
282	HOSHIARPUR	DASUYA	S-NPP	75.58956	31.76351	14:24:00	D	8.50
283	HOSHIARPUR	DASUYA	S-NPP	75.60989	31.76505	12:48:00	D	3.70
284	HOSHIARPUR	DASUYA	S-NPP	75.59908	31.77353	12:48:00	D	5.30
285	HOSHIARPUR	DASUYA	S-NPP	75.62947	31.80582	14:24:00	D	6.80
286	HOSHIARPUR	GARHSHANKAR	S-NPP	76.15690	31.15263	12:48:00	D	3.30
287	HOSHIARPUR	GARHSHANKAR	S-NPP	76.17120	31.17126	14:24:00	D	4.40
288	HOSHIARPUR	GARHSHANKAR	S-NPP	76.16958	31.17215	14:24:00	D	3.50
289	HOSHIARPUR	GARHSHANKAR	S-NPP	76.14246	31.18331	12:48:00	D	4.40
290	HOSHIARPUR	GARHSHANKAR	S-NPP	76.14602	31.18418	12:48:00	D	8.40
291	HOSHIARPUR	GARHSHANKAR	S-NPP	76.14197	31.18722	12:48:00	D	8.70
292	HOSHIARPUR	GARHSHANKAR	S-NPP	76.14553	31.18806	12:48:00	D	8.00
293	HOSHIARPUR	GARHSHANKAR	S-NPP	76.14086	31.18838	12:48:00	D	4.40
294	HOSHIARPUR	GARHSHANKAR	S-NPP	76.04990	31.23211	12:48:00	D	2.20

295	JALANDHAR	JALANDHAR I	AQUA	75.53900	31.20700	13:35:00	D	6.30
296	JALANDHAR	JALANDHAR II	S-NPP	75.53176	31.41434	12:48:00	D	2.50
297	JALANDHAR	JALANDHAR II	S-NPP	75.55408	31.45905	12:48:00	D	2.50
298	JALANDHAR	JALANDHAR II	S-NPP	75.55238	31.46424	12:48:00	D	2.50
299	JALANDHAR	JALANDHAR II	S-NPP	75.73923	31.48699	12:48:00	D	6.50
300	JALANDHAR	NAKODAR	AQUA	75.49400	30.99600	13:35:00	D	13.90
301	JALANDHAR	NAKODAR	S-NPP	75.45383	31.02360	12:48:00	D	1.90
302	JALANDHAR	NAKODAR	AQUA	75.43100	31.02400	13:35:00	D	7.70
303	JALANDHAR	NAKODAR	AQUA	75.44200	31.02500	13:35:00	D	13.60
304	JALANDHAR	NAKODAR	S-NPP	75.45316	31.02570	12:48:00	D	3.50
305	JALANDHAR	NAKODAR	AQUA	75.55200	31.20000	13:35:00	D	6.40
306	JALANDHAR	PHILLAUR	S-NPP	75.52814	31.01409	14:24:00	D	6.60
307	JALANDHAR	SHAHKOT	S-NPP	75.24400	31.04868	12:48:00	D	4.20
308	JALANDHAR	SHAHKOT	S-NPP	75.23788	31.09329	12:48:00	D	3.10
309	JALANDHAR	SHAHKOT	AQUA	75.16300	31.10200	13:35:00	D	85.40
310	JALANDHAR	SHAHKOT	AQUA	75.15500	31.10700	13:35:00	D	43.20
311	JALANDHAR	SHAHKOT	AQUA	75.16600	31.10900	13:35:00	D	35.00
312	JALANDHAR	SHAHKOT	AQUA	75.25300	31.14200	13:35:00	D	7.50
313	KAPURTHALA	BHOLATH	S-NPP	75.54402	31.56092	14:24:00	D	10.10
314	KAPURTHALA	BHOLATH	S-NPP	75.55088	31.56121	14:24:00	D	10.10
315	KAPURTHALA	BHOLATH	S-NPP	75.54465	31.56331	14:24:00	D	12.90
316	KAPURTHALA	BHOLATH	S-NPP	75.55151	31.56357	14:24:00	D	16.50
317	KAPURTHALA	BHOLATH	AQUA	75.54600	31.58700	13:35:00	D	7.50
318	KAPURTHALA	BHOLATH	AQUA	75.53300	31.59500	13:35:00	D	9.00
319	KAPURTHALA	BHOLATH	S-NPP	75.57717	31.59591	12:48:00	D	4.00
320	KAPURTHALA	BHOLATH	AQUA	75.54400	31.59600	13:35:00	D	9.30
321	KAPURTHALA	BHOLATH	S-NPP	75.57690	31.59608	14:24:00	D	9.10
322	KAPURTHALA	BHOLATH	S-NPP	75.58379	31.59639	14:24:00	D	7.50
323	KAPURTHALA	BHOLATH	S-NPP	75.57755	31.59758	12:48:00	D	3.90
324	KAPURTHALA	BHOLATH	S-NPP	75.57738	31.59828	14:24:00	D	21.10
325	KAPURTHALA	BHOLATH	S-NPP	75.56794	31.59922	12:48:00	D	13.40
326	KAPURTHALA	BHOLATH	S-NPP	75.56450	31.60004	12:48:00	D	10.60
327	KAPURTHALA	BHOLATH	S-NPP	75.57171	31.60014	12:48:00	D	13.40

328	KAPURTHALA	BHOLATH	S-NPP	75.56828	31.60094	12:48:00	D	13.50
329	KAPURTHALA	BHOLATH	S-NPP	75.57205	31.60184	12:48:00	D	13.50
330	KAPURTHALA	BHOLATH	S-NPP	75.57922	31.60199	12:48:00	D	4.00
331	KAPURTHALA	KAPURTHALA	S-NPP	75.25000	31.42373	14:24:00	D	6.80
332	KAPURTHALA	KAPURTHALA	S-NPP	75.24813	31.42843	14:24:00	D	10.60
333	KAPURTHALA	KAPURTHALA	S-NPP	75.24968	31.43034	14:24:00	D	6.50
334	KAPURTHALA	KAPURTHALA	AQUA	75.39200	31.43200	13:35:00	D	17.80
335	KAPURTHALA	KAPURTHALA	S-NPP	75.36613	31.43618	12:48:00	D	5.20
336	KAPURTHALA	KAPURTHALA	S-NPP	75.37003	31.43712	12:48:00	D	5.20
337	KAPURTHALA	KAPURTHALA	S-NPP	75.36522	31.43882	12:48:00	D	5.40
338	KAPURTHALA	KAPURTHALA	S-NPP	75.36909	31.43979	12:48:00	D	5.40
339	KAPURTHALA	KAPURTHALA	AQUA	75.39000	31.44100	13:35:00	D	10.90
340	KAPURTHALA	KAPURTHALA	AQUA	75.39900	31.52600	13:35:00	D	20.90
341	KAPURTHALA	KAPURTHALA	AQUA	75.41000	31.52800	13:35:00	D	13.00
342	KAPURTHALA	KAPURTHALA	AQUA	75.39700	31.53500	13:35:00	D	6.50
343	KAPURTHALA	PHAGWARA	S-NPP	75.76926	31.26876	12:48:00	D	1.60
344	KAPURTHALA	PHAGWARA	S-NPP	75.81689	31.31901	12:48:00	D	1.60
345	KAPURTHALA	SULTANPUR LODHI	S-NPP	75.02439	31.16788	12:48:00	D	2.00
346	KAPURTHALA	SULTANPUR LODHI	AQUA	75.25800	31.25400	13:35:00	D	10.20
347	KAPURTHALA	SULTANPUR LODHI	AQUA	75.15000	31.26500	13:35:00	D	17.20
348	KAPURTHALA	SULTANPUR LODHI	S-NPP	75.24795	31.26694	14:24:00	D	6.70
349	KAPURTHALA	SULTANPUR LODHI	AQUA	75.16100	31.26700	13:35:00	D	13.00
350	KAPURTHALA	SULTANPUR LODHI	S-NPP	75.24950	31.26865	14:24:00	D	9.50
351	KAPURTHALA	SULTANPUR LODHI	S-NPP	75.24761	31.27355	14:24:00	D	6.20
352	KAPURTHALA	SULTANPUR LODHI	S-NPP	75.10056	31.29082	12:48:00	D	8.40
353	LUDHIANA	JAGRAON	S-NPP	75.40600	30.65445	14:24:00	D	4.80
354	LUDHIANA	JAGRAON	S-NPP	75.40748	30.65884	14:24:00	D	3.70
355	LUDHIANA	JAGRAON	AQUA	75.37400	30.96700	13:35:00	D	22.00
356	LUDHIANA	JAGRAON	S-NPP	75.46935	30.97613	12:48:00	D	1.60
357	LUDHIANA	KHANNA	AQUA	76.29700	30.68700	13:35:00	D	5.30
358	LUDHIANA	KHANNA	S-NPP	76.27065	30.68730	14:24:00	D	4.10
359	LUDHIANA	KHANNA	S-NPP	76.23904	30.74264	12:48:00	D	4.20
360	LUDHIANA	LUDHIANA EAST	S-NPP	75.90782	30.72102	14:24:00	D	3.30

361	LUDHIANA	LUDHIANA EAST	AQUA	76.00700	30.85500	13:35:00	D	10.70
362	LUDHIANA	SAMRALA	S-NPP	76.20610	30.75297	14:24:00	D	9.10
363	LUDHIANA	SAMRALA	S-NPP	76.20872	30.75430	14:24:00	D	9.00
364	LUDHIANA	SAMRALA	S-NPP	76.22183	30.76047	12:48:00	D	3.20
365	LUDHIANA	SAMRALA	S-NPP	76.22083	30.76117	12:48:00	D	3.10
366	LUDHIANA	SAMRALA	AQUA	76.26300	30.76500	13:35:00	D	5.20
367	LUDHIANA	SAMRALA	S-NPP	76.19132	30.93505	12:48:00	D	6.00
368	LUDHIANA	SAMRALA	S-NPP	76.19489	30.93589	12:48:00	D	6.80
369	LUDHIANA	SAMRALA	AQUA	76.29900	30.95500	13:35:00	D	10.00
370	LUDHIANA	SAMRALA	S-NPP	76.19495	30.97548	12:48:00	D	1.90
371	MANSA	BUDHLADA	S-NPP	75.66398	29.80798	12:48:00	D	11.30
372	MANSA	BUDHLADA	S-NPP	75.73143	29.81286	12:48:00	D	2.40
373	MANSA	BUDHLADA	S-NPP	75.73543	29.81383	12:48:00	D	2.40
374	MANSA	BUDHLADA	S-NPP	75.72150	29.83036	14:24:00	D	7.20
375	MANSA	BUDHLADA	AQUA	75.47500	29.84700	13:35:00	D	10.50
376	MANSA	BUDHLADA	S-NPP	75.64022	29.85347	14:24:00	D	6.90
377	MANSA	BUDHLADA	S-NPP	75.54133	29.87034	12:48:00	D	8.10
378	MANSA	BUDHLADA	S-NPP	75.53963	29.87573	12:48:00	D	8.10
379	MANSA	BUDHLADA	AQUA	75.71000	29.91100	13:35:00	D	11.40
380	MANSA	MANSA	S-NPP	75.61156	30.10164	12:48:00	D	2.70
381	MANSA	SARDULGARH	S-NPP	75.27177	29.60266	14:24:00	D	4.60
382	MANSA	SARDULGARH	S-NPP	75.26920	29.60853	14:24:00	D	10.00
383	MANSA	SARDULGARH	S-NPP	75.27141	29.60919	14:24:00	D	4.60
384	MANSA	SARDULGARH	AQUA	75.23800	29.65800	13:35:00	D	9.10
385	MOGA	MOGA	S-NPP	75.09151	30.81320	12:48:00	D	2.90
386	MOGA	MOGA	S-NPP	75.09105	30.81420	12:48:00	D	2.90
387	MOGA	NIHAL SINGH WALA	AQUA	75.29600	30.63200	13:35:00	D	12.00
388	MOGA	NIHAL SINGH WALA	AQUA	75.30700	30.63400	13:35:00	D	11.30
389	MOGA	NIHAL SINGH WALA	AQUA	75.25800	30.64500	13:35:00	D	10.50
390	MUKTSAR	GIDDARBAHA	AQUA	74.72900	30.44600	13:35:00	D	9.10
391	MUKTSAR	MUKTSAR	AQUA	74.57900	30.52500	13:35:00	D	37.80
392	MUKTSAR	MUKTSAR	S-NPP	74.49650	30.54250	14:24:00	D	3.20
393	PATIALA	NABHA	S-NPP	76.17549	30.43599	12:48:00	D	4.40

394	PATIALA	NABHA	AQUA	76.26000	30.45000	13:35:00	D	4.40
395	PATIALA	NABHA	AQUA	76.24700	30.45700	13:35:00	D	7.60
396	PATIALA	NABHA	S-NPP	76.14598	30.51741	12:48:00	D	1.70
397	PATIALA	NABHA	S-NPP	76.26991	30.55753	12:48:00	D	3.10
398	PATIALA	NABHA	S-NPP	76.26733	30.55756	12:48:00	D	3.00
399	PATIALA	PATIALA	AQUA	76.54100	30.07800	13:35:00	D	5.70
400	PATIALA	PATIALA	AQUA	76.53900	30.08700	13:35:00	D	9.20
401	PATIALA	PATIALA	AQUA	76.48100	30.10600	13:35:00	D	6.60
402	PATIALA	PATIALA	AQUA	76.49100	30.10800	13:35:00	D	6.00
403	PATIALA	PATIALA	S-NPP	76.48129	30.12440	12:48:00	D	4.50
404	PATIALA	PATIALA	S-NPP	76.32975	30.13823	12:48:00	D	2.10
405	PATIALA	PATIALA	S-NPP	76.53295	30.14198	12:48:00	D	4.80
406	PATIALA	PATIALA	S-NPP	76.46782	30.14310	12:48:00	D	1.70
407	PATIALA	PATIALA	S-NPP	76.44719	30.16015	12:48:00	D	3.60
408	PATIALA	PATIALA	S-NPP	76.44638	30.16073	12:48:00	D	3.20
409	PATIALA	PATIALA	S-NPP	76.44996	30.16159	12:48:00	D	3.90
410	PATIALA	PATIALA	AQUA	76.54900	30.17100	13:35:00	D	16.90
411	PATIALA	PATIALA	S-NPP	76.51492	30.17590	12:48:00	D	2.80
412	PATIALA	PATIALA	AQUA	76.57800	30.18500	13:35:00	D	7.20
413	PATIALA	PATIALA	S-NPP	76.51532	30.20063	14:24:00	D	4.50
414	PATIALA	PATIALA	S-NPP	76.57603	30.20803	12:48:00	D	6.10
415	PATIALA	PATIALA	AQUA	76.41900	30.24400	13:35:00	D	7.10
416	PATIALA	PATIALA	S-NPP	76.47897	30.26175	12:48:00	D	2.30
417	PATIALA	PATIALA	AQUA	76.40200	30.26900	13:35:00	D	9.20
418	PATIALA	PATIALA	AQUA	76.50800	30.28500	13:35:00	D	6.60
419	PATIALA	PATIALA	AQUA	76.51800	30.28700	13:35:00	D	6.90
420	PATIALA	PATIALA	S-NPP	76.45663	30.32187	12:48:00	D	4.10
421	PATIALA	PATIALA	S-NPP	76.49358	30.32516	12:48:00	D	2.90
422	PATIALA	PATIALA	S-NPP	76.47705	30.35390	12:48:00	D	1.80
423	PATIALA	PATIALA	AQUA	76.44200	30.36700	13:35:00	D	4.60
424	PATIALA	PATIALA	S-NPP	76.29843	30.38350	12:48:00	D	2.10
425	PATIALA	PATIALA	AQUA	76.48300	30.40100	13:35:00	D	4.10
426	PATIALA	PATIALA	AQUA	76.48100	30.41000	13:35:00	D	7.70

427	PATIALA	PATIALA	AQUA	76.37100	30.41200	13:35:00	D	17.50
428	PATIALA	PATIALA	S-NPP	76.42412	30.41767	14:24:00	D	4.60
429	PATIALA	PATIALA	S-NPP	76.47568	30.45278	12:48:00	D	2.00
430	PATIALA	PATIALA	AQUA	76.48200	30.45700	13:35:00	D	5.10
431	PATIALA	PATIALA	S-NPP	76.47411	30.45784	12:48:00	D	3.10
432	PATIALA	PATIALA	AQUA	76.49200	30.45900	13:35:00	D	10.90
433	PATIALA	RAJPURA	S-NPP	76.64156	30.29027	14:24:00	D	4.40
434	PATIALA	RAJPURA	S-NPP	76.64486	30.29497	14:24:00	D	10.80
435	PATIALA	RAJPURA	AQUA	76.61400	30.31900	13:35:00	D	10.30
436	PATIALA	RAJPURA	AQUA	76.60100	30.38200	13:35:00	D	7.60
437	PATIALA	RAJPURA	S-NPP	76.59974	30.39622	14:24:00	D	5.10
438	PATIALA	RAJPURA	S-NPP	76.67814	30.42769	12:48:00	D	2.90
439	PATIALA	RAJPURA	S-NPP	76.67632	30.43003	12:48:00	D	2.40
440	PATIALA	RAJPURA	S-NPP	76.50531	30.45432	12:48:00	D	1.40
441	PATIALA	RAJPURA	S-NPP	76.69783	30.46731	12:48:00	D	2.40
442	PATIALA	RAJPURA	AQUA	76.52400	30.49000	13:35:00	D	6.40
443	PATIALA	RAJPURA	S-NPP	76.65475	30.50010	12:48:00	D	1.90
444	PATIALA	RAJPURA	S-NPP	76.55618	30.52719	12:48:00	D	1.10
445	PATIALA	RAJPURA	S-NPP	76.68102	30.54075	12:48:00	D	1.60
446	PATIALA	RAJPURA	S-NPP	76.60870	30.56118	12:48:00	D	1.60
447	PATIALA	RAJPURA	S-NPP	76.68544	30.56670	14:24:00	D	6.00
448	PATIALA	RAJPURA	S-NPP	76.68316	30.57020	14:24:00	D	6.60
449	PATIALA	RAJPURA	S-NPP	76.58524	30.57717	12:48:00	D	4.70
450	PATIALA	RAJPURA	S-NPP	76.56036	30.59707	14:24:00	D	2.70
451	PATIALA	SAMANA	AQUA	76.05400	29.86300	13:35:00	D	8.30
452	PATIALA	SAMANA	S-NPP	76.05619	29.86546	14:24:00	D	4.90
453	PATIALA	SAMANA	S-NPP	76.08556	29.87034	12:48:00	D	3.10
454	PATIALA	SAMANA	AQUA	76.11700	29.88200	13:35:00	D	10.20
455	PATIALA	SAMANA	S-NPP	76.13568	29.91679	14:24:00	D	7.60
456	PATIALA	SAMANA	S-NPP	76.00170	29.92916	12:48:00	D	3.20
457	PATIALA	SAMANA	S-NPP	76.00212	29.93163	12:48:00	D	4.00
458	PATIALA	SAMANA	S-NPP	76.17241	29.95995	14:24:00	D	5.30
459	PATIALA	SAMANA	S-NPP	76.16123	29.98161	12:48:00	D	1.90

460	PATIALA	SAMANA	S-NPP	76.26160	30.12215	14:24:00	D	5.10
461	PATIALA	SAMANA	S-NPP	76.29546	30.13551	12:48:00	D	2.40
462	PATIALA	SAMANA	AQUA	76.24500	30.16200	13:35:00	D	7.60
463	RUPNAGAR	CHAMKOR SAHIB	AQUA	76.32700	30.97800	13:35:00	D	4.60
464	SANGRUR	DHURI	AQUA	75.85100	30.38600	13:35:00	D	18.60
465	SANGRUR	MOONAK	S-NPP	75.83932	29.79953	14:24:00	D	6.70
466	SANGRUR	MOONAK	AQUA	75.98000	29.81600	13:35:00	D	14.70
467	SANGRUR	SUNAM	AQUA	75.67400	29.99700	13:35:00	D	8.40
468	SAS NAGAR	DERABASSI	S-NPP	76.84403	30.45527	12:48:00	D	1.20
469	SAS NAGAR	KHARAR	S-NPP	76.64133	30.63637	12:48:00	D	2.20
470	SAS NAGAR	KHARAR	S-NPP	76.69473	30.80141	12:48:00	D	2.90
471	SBS NAGAR	SBS NAGAR	AQUA	76.23000	31.04600	13:35:00	D	8.70
472	TARN TARAN	KHADOOR SAHIB	AQUA	74.97400	31.19800	13:35:00	D	7.10
473	TARN TARAN	KHADOOR SAHIB	S-NPP	74.96301	31.20509	12:48:00	D	3.10
474	TARN TARAN	KHADOOR SAHIB	S-NPP	74.95783	31.20854	14:24:00	D	3.70
475	TARN TARAN	KHADOOR SAHIB	S-NPP	74.98190	31.21558	12:48:00	D	2.20
476	TARN TARAN	KHADOOR SAHIB	AQUA	74.98000	31.22800	13:35:00	D	14.30
477	TARN TARAN	KHADOOR SAHIB	S-NPP	75.01134	31.23446	12:48:00	D	6.60
478	TARN TARAN	KHADOOR SAHIB	S-NPP	75.00762	31.23852	12:48:00	D	7.20
479	TARN TARAN	KHADOOR SAHIB	S-NPP	75.01173	31.23955	12:48:00	D	7.20
480	TARN TARAN	KHADOOR SAHIB	S-NPP	75.00954	31.23983	12:48:00	D	4.00
481	TARN TARAN	KHADOOR SAHIB	S-NPP	75.05087	31.25521	12:48:00	D	2.60
482	TARN TARAN	KHADOOR SAHIB	S-NPP	75.05292	31.25624	12:48:00	D	3.40
483	TARN TARAN	KHADOOR SAHIB	S-NPP	74.90052	31.26418	12:48:00	D	3.50
484	TARN TARAN	KHADOOR SAHIB	S-NPP	74.99020	31.27531	14:24:00	D	8.30
485	TARN TARAN	KHADOOR SAHIB	S-NPP	75.09879	31.29616	12:48:00	D	8.40
486	TARN TARAN	KHADOOR SAHIB	AQUA	75.01500	31.30800	13:35:00	D	8.40
487	TARN TARAN	KHADOOR SAHIB	AQUA	75.02600	31.31000	13:35:00	D	11.00
488	TARN TARAN	KHADOOR SAHIB	AQUA	74.91800	31.31100	13:35:00	D	9.90
489	TARN TARAN	KHADOOR SAHIB	S-NPP	75.04996	31.32457	12:48:00	D	2.80
490	TARN TARAN	KHADOOR SAHIB	S-NPP	74.81900	31.32566	14:24:00	D	6.10
491	TARN TARAN	KHADOOR SAHIB	AQUA	75.10200	31.34100	13:35:00	D	7.90
492	TARN TARAN	KHADOOR SAHIB	S-NPP	75.08829	31.34542	14:24:00	D	3.00

493	TARN TARAN	KHADOOR SAHIB	S-NPP	74.97054	31.34558	14:24:00	D	3.80
494	TARN TARAN	KHADOOR SAHIB	AQUA	75.01800	31.34700	13:35:00	D	6.50
495	TARN TARAN	KHADOOR SAHIB	AQUA	75.03000	31.34900	13:35:00	D	9.30
496	TARN TARAN	KHADOOR SAHIB	S-NPP	74.98242	31.35916	14:24:00	D	6.80
497	TARN TARAN	KHADOOR SAHIB	S-NPP	74.98874	31.35944	14:24:00	D	6.80
498	TARN TARAN	KHADOOR SAHIB	S-NPP	74.98575	31.36003	14:24:00	D	5.10
499	TARN TARAN	KHADOOR SAHIB	S-NPP	75.12259	31.36528	14:24:00	D	6.50
500	TARN TARAN	KHADOOR SAHIB	AQUA	74.99600	31.36800	13:35:00	D	10.30
501	TARN TARAN	KHADOOR SAHIB	S-NPP	74.86086	31.37084	12:48:00	D	6.70
502	TARN TARAN	KHADOOR SAHIB	AQUA	74.93400	31.37700	13:35:00	D	8.50
503	TARN TARAN	KHADOOR SAHIB	S-NPP	75.05748	31.38214	14:24:00	D	4.40
504	TARN TARAN	KHADOOR SAHIB	S-NPP	75.06387	31.38242	14:24:00	D	4.40
505	TARN TARAN	KHADOOR SAHIB	AQUA	75.08600	31.39200	13:35:00	D	7.30
506	TARN TARAN	KHADOOR SAHIB	S-NPP	75.09515	31.39696	14:24:00	D	5.50
507	TARN TARAN	KHADOOR SAHIB	S-NPP	74.77005	31.41127	12:48:00	D	3.90
508	TARN TARAN	KHADOOR SAHIB	S-NPP	75.10394	31.41394	12:48:00	D	8.00
509	TARN TARAN	KHADOOR SAHIB	S-NPP	74.77983	31.41470	14:24:00	D	4.10
510	TARN TARAN	KHADOOR SAHIB	S-NPP	74.88568	31.41714	12:48:00	D	2.60
511	TARN TARAN	KHADOOR SAHIB	S-NPP	74.88564	31.41787	12:48:00	D	3.00
512	TARN TARAN	KHADOOR SAHIB	AQUA	75.07900	31.42000	13:35:00	D	10.00
513	TARN TARAN	KHADOOR SAHIB	AQUA	75.09100	31.42200	13:35:00	D	6.80
514	TARN TARAN	KHADOOR SAHIB	AQUA	75.17200	31.42500	13:35:00	D	7.30
515	TARN TARAN	KHADOOR SAHIB	S-NPP	74.67260	31.42792	12:48:00	D	5.20
516	TARN TARAN	KHADOOR SAHIB	AQUA	75.13400	31.43800	13:35:00	D	24.50
517	TARN TARAN	KHADOOR SAHIB	S-NPP	74.76935	31.44047	12:48:00	D	5.60
518	TARN TARAN	KHADOOR SAHIB	S-NPP	75.11972	31.45813	12:48:00	D	4.00
519	TARN TARAN	KHADOOR SAHIB	S-NPP	74.91413	31.46032	14:24:00	D	6.20
520	TARN TARAN	KHADOOR SAHIB	S-NPP	74.91199	31.46037	14:24:00	D	4.80
521	TARN TARAN	KHADOOR SAHIB	S-NPP	74.78489	31.46198	12:48:00	D	3.30
522	TARN TARAN	KHADOOR SAHIB	S-NPP	75.17574	31.47189	12:48:00	D	2.80
523	TARN TARAN	KHADOOR SAHIB	S-NPP	75.02528	31.47190	14:24:00	D	5.40
524	TARN TARAN	KHADOOR SAHIB	AQUA	75.06100	31.47200	13:35:00	D	17.00
525	TARN TARAN	KHADOOR SAHIB	AQUA	75.12000	31.47200	13:35:00	D	5.80

526	TARN TARAN	KHADOOR SAHIB	AQUA	74.96500	31.47500	13:35:00	D	9.00
527	TARN TARAN	KHADOOR SAHIB	S-NPP	74.68848	31.47602	14:24:00	D	1.90
528	TARN TARAN	KHADOOR SAHIB	AQUA	75.23000	31.48200	13:35:00	D	15.60
529	TARN TARAN	KHADOOR SAHIB	S-NPP	74.68814	31.48244	14:24:00	D	7.50
530	TARN TARAN	KHADOOR SAHIB	S-NPP	74.69421	31.48273	14:24:00	D	23.60
531	TARN TARAN	KHADOOR SAHIB	S-NPP	74.66354	31.48769	14:24:00	D	2.10
532	TARN TARAN	KHADOOR SAHIB	S-NPP	74.68822	31.49079	12:48:00	D	3.40
533	TARN TARAN	KHADOOR SAHIB	AQUA	74.70200	31.49500	13:35:00	D	16.50
534	TARN TARAN	KHADOOR SAHIB	S-NPP	74.68700	31.49546	12:48:00	D	6.90
535	TARN TARAN	KHADOOR SAHIB	S-NPP	74.64087	31.49554	12:48:00	D	3.30
536	TARN TARAN	KHADOOR SAHIB	S-NPP	75.12045	31.49579	14:24:00	D	5.10
537	TARN TARAN	KHADOOR SAHIB	S-NPP	74.69958	31.49587	14:24:00	D	4.50
538	TARN TARAN	KHADOOR SAHIB	AQUA	75.15000	31.49600	13:35:00	D	23.20
539	TARN TARAN	KHADOOR SAHIB	S-NPP	74.68638	31.49622	12:48:00	D	3.40
540	TARN TARAN	KHADOOR SAHIB	S-NPP	74.63903	31.50098	12:48:00	D	3.30
541	TARN TARAN	KHADOOR SAHIB	AQUA	74.88700	31.50100	13:35:00	D	11.40
542	TARN TARAN	KHADOOR SAHIB	AQUA	74.94700	31.50100	13:35:00	D	7.10
543	TARN TARAN	KHADOOR SAHIB	S-NPP	74.61584	31.50102	12:48:00	D	7.90
544	TARN TARAN	KHADOOR SAHIB	S-NPP	74.62013	31.50211	12:48:00	D	8.60
545	TARN TARAN	KHADOOR SAHIB	S-NPP	74.84259	31.50559	12:48:00	D	4.00
546	TARN TARAN	KHADOOR SAHIB	S-NPP	74.79151	31.51027	12:48:00	D	2.40
547	TARN TARAN	KHADOOR SAHIB	S-NPP	74.75285	31.53074	14:24:00	D	3.30
548	TARN TARAN	KHADOOR SAHIB	S-NPP	74.75265	31.53110	14:24:00	D	3.30
549	TARN TARAN	KHADOOR SAHIB	S-NPP	74.72012	31.53328	12:48:00	D	2.80
550	TARN TARAN	PATTI	S-NPP	74.71655	31.12500	14:24:00	D	2.50
551	TARN TARAN	PATTI	S-NPP	74.71627	31.12588	14:24:00	D	6.60
552	TARN TARAN	PATTI	S-NPP	74.68501	31.14369	14:24:00	D	3.80
553	TARN TARAN	PATTI	AQUA	74.64600	31.14400	13:35:00	D	29.00
554	TARN TARAN	PATTI	S-NPP	74.65227	31.14577	12:48:00	D	3.60
555	TARN TARAN	PATTI	S-NPP	74.64959	31.14770	12:48:00	D	3.80
556	TARN TARAN	PATTI	S-NPP	74.65446	31.14864	14:24:00	D	5.60
557	TARN TARAN	PATTI	S-NPP	74.78583	31.14939	12:48:00	D	3.70
558	TARN TARAN	PATTI	S-NPP	74.63912	31.15098	12:48:00	D	2.70

559	TARN TARAN	PATTI	AQUA	74.59400	31.15500	13:35:00	D	16.50
560	TARN TARAN	PATTI	AQUA	74.60600	31.15700	13:35:00	D	12.60
561	TARN TARAN	PATTI	AQUA	74.79000	31.15800	13:35:00	D	13.20
562	TARN TARAN	PATTI	S-NPP	74.80556	31.16230	14:24:00	D	10.90
563	TARN TARAN	PATTI	S-NPP	74.81167	31.16259	14:24:00	D	13.70
564	TARN TARAN	PATTI	AQUA	74.62800	31.17100	13:35:00	D	6.50
565	TARN TARAN	PATTI	S-NPP	74.60391	31.17183	12:48:00	D	4.30
566	TARN TARAN	PATTI	AQUA	74.68700	31.18000	13:35:00	D	7.50
567	TARN TARAN	PATTI	S-NPP	74.86574	31.18460	14:24:00	D	3.40
568	TARN TARAN	PATTI	S-NPP	74.76087	31.19242	14:24:00	D	5.10
569	TARN TARAN	PATTI	S-NPP	74.76049	31.19886	14:24:00	D	4.10
570	TARN TARAN	PATTI	AQUA	74.80500	31.20000	13:35:00	D	8.00
571	TARN TARAN	PATTI	AQUA	74.76800	31.20400	13:35:00	D	8.00
572	TARN TARAN	PATTI	S-NPP	74.66757	31.20577	12:48:00	D	8.40
573	TARN TARAN	PATTI	S-NPP	74.67512	31.20741	14:24:00	D	19.00
574	TARN TARAN	PATTI	S-NPP	74.80894	31.20773	14:24:00	D	4.60
575	TARN TARAN	PATTI	S-NPP	74.81507	31.20803	14:24:00	D	4.60
576	TARN TARAN	PATTI	S-NPP	74.81319	31.20889	14:24:00	D	8.10
577	TARN TARAN	PATTI	S-NPP	74.67304	31.20908	14:24:00	D	15.60
578	TARN TARAN	PATTI	S-NPP	74.68645	31.22084	14:24:00	D	4.40
579	TARN TARAN	PATTI	S-NPP	74.58727	31.22130	12:48:00	D	2.70
580	TARN TARAN	PATTI	S-NPP	74.68435	31.22245	14:24:00	D	7.90
581	TARN TARAN	PATTI	S-NPP	74.90477	31.22427	12:48:00	D	3.40
582	TARN TARAN	PATTI	AQUA	74.93100	31.23000	13:35:00	D	10.20
583	TARN TARAN	PATTI	S-NPP	74.68172	31.23306	12:48:00	D	3.00
584	TARN TARAN	PATTI	S-NPP	74.76845	31.23919	14:24:00	D	7.30
585	TARN TARAN	PATTI	S-NPP	74.68600	31.25006	12:48:00	D	6.60
586	TARN TARAN	PATTI	AQUA	74.84700	31.25100	13:35:00	D	21.40
587	TARN TARAN	PATTI	S-NPP	74.68481	31.25159	12:48:00	D	4.90
588	TARN TARAN	PATTI	S-NPP	74.68910	31.25266	12:48:00	D	4.90
589	TARN TARAN	PATTI	AQUA	74.76100	31.25700	13:35:00	D	19.40
590	TARN TARAN	PATTI	S-NPP	74.58016	31.25872	12:48:00	D	4.80
591	TARN TARAN	PATTI	AQUA	74.68600	31.26400	13:35:00	D	7.30

592	TARN TARAN	PATTI	S-NPP	74.88857	31.27291	12:48:00	D	7.30
593	TARN TARAN	PATTI	AQUA	74.64600	31.27700	13:35:00	D	9.90
594	TARN TARAN	PATTI	S-NPP	74.80479	31.28041	12:48:00	D	7.40
595	TARN TARAN	PATTI	AQUA	74.73100	31.28100	13:35:00	D	8.70
596	TARN TARAN	PATTI	S-NPP	74.80398	31.28121	12:48:00	D	7.00
597	TARN TARAN	PATTI	S-NPP	74.78158	31.29330	12:48:00	D	1.50
598	TARN TARAN	PATTI	S-NPP	74.75410	31.30878	12:48:00	D	2.40
599	TARN TARAN	PATTI	S-NPP	74.70341	31.31339	14:24:00	D	3.00
600	TARN TARAN	PATTI	S-NPP	74.64872	31.31703	14:24:00	D	5.20
601	TARN TARAN	PATTI	S-NPP	74.65122	31.31842	14:24:00	D	4.50
602	TARN TARAN	PATTI	AQUA	74.66700	31.32300	13:35:00	D	6.20
603	TARN TARAN	PATTI	S-NPP	74.81563	31.32578	14:24:00	D	3.70
604	TARN TARAN	PATTI	S-NPP	74.74496	31.33596	12:48:00	D	2.90
605	TARN TARAN	PATTI	AQUA	74.75000	31.33700	13:35:00	D	10.90
606	TARN TARAN	PATTI	S-NPP	74.86433	31.34090	14:24:00	D	5.90
607	TARN TARAN	PATTI	AQUA	74.73600	31.34400	13:35:00	D	20.00
608	TARN TARAN	PATTI	AQUA	74.71000	31.35000	13:35:00	D	25.30
609	TARN TARAN	PATTI	S-NPP	74.87320	31.35435	14:24:00	D	4.80
610	TARN TARAN	PATTI	AQUA	74.62100	31.36500	13:35:00	D	6.70
611	TARN TARAN	PATTI	AQUA	74.58300	31.36800	13:35:00	D	5.60
612	TARN TARAN	PATTI	S-NPP	74.62315	31.36803	12:48:00	D	8.90
613	TARN TARAN	PATTI	S-NPP	74.62745	31.36913	12:48:00	D	11.30
614	TARN TARAN	PATTI	S-NPP	74.62223	31.37034	12:48:00	D	7.40
615	TARN TARAN	PATTI	S-NPP	74.62653	31.37140	12:48:00	D	12.70
616	TARN TARAN	PATTI	AQUA	74.66600	31.38200	13:35:00	D	11.20

Details of residue burning events in Haryana on 14-Oct-2020

S. No.	District	Tehsil / Block	Satellite	Longitude	Latitude	Time (IST)	Day / Night	Fire Power (W/m ²)
1	AMBALA	AMBALA	S-NPP	76.66647	30.18400	12:48:00	D	2.60
2	AMBALA	AMBALA	S-NPP	76.74640	30.22150	12:48:00	D	3.70
3	AMBALA	AMBALA	S-NPP	76.74657	30.22407	12:48:00	D	1.90
4	AMBALA	AMBALA	S-NPP	76.77326	30.26541	12:48:00	D	2.30
5	AMBALA	AMBALA	S-NPP	76.77411	30.28156	14:24:00	D	7.40
6	AMBALA	AMBALA	S-NPP	76.79285	30.29675	12:48:00	D	2.50
7	AMBALA	AMBALA	S-NPP	76.66715	30.29970	12:48:00	D	1.90
8	AMBALA	AMBALA	AQUA	76.66700	30.30000	13:35:00	D	19.60
9	AMBALA	AMBALA	AQUA	76.67700	30.30200	13:35:00	D	9.90
10	AMBALA	AMBALA	S-NPP	76.92338	30.30590	12:48:00	D	9.80
11	AMBALA	AMBALA	S-NPP	76.72092	30.38404	12:48:00	D	1.00
12	AMBALA	BARARA	AQUA	77.05500	30.21000	13:35:00	D	7.90
13	AMBALA	NARAYANGARH	AQUA	77.15000	30.39000	13:35:00	D	5.50
14	AMBALA	NARAYANGARH	S-NPP	76.94495	30.45208	12:48:00	D	2.10
15	FATEHABAD	FATEHABAD	AQUA	75.72200	29.45900	13:35:00	D	16.70
16	FATEHABAD	RATIA	S-NPP	75.53677	29.75366	12:48:00	D	3.70
17	FATEHABAD	TOHANA	S-NPP	75.95171	29.62846	12:48:00	D	8.60
18	FATEHABAD	TOHANA	AQUA	75.79600	29.64600	13:35:00	D	11.00
19	FATEHABAD	TOHANA	AQUA	75.80700	29.64800	13:35:00	D	9.20
20	FATEHABAD	TOHANA	S-NPP	75.86587	29.67054	14:24:00	D	6.30
21	FATEHABAD	TOHANA	S-NPP	75.86552	29.67730	14:24:00	D	6.30
22	FATEHABAD	TOHANA	S-NPP	75.91838	29.71370	14:24:00	D	4.10
23	FATEHABAD	TOHANA	AQUA	75.76600	29.81100	13:35:00	D	32.00
24	FATEHABAD	TOHANA	AQUA	75.77700	29.81200	13:35:00	D	12.50
25	JIND	NARWANA	S-NPP	76.03848	29.55408	14:24:00	D	4.60
26	JIND	NARWANA	S-NPP	76.16114	29.56839	12:48:00	D	3.70
27	KAITHAL	GUHLA	S-NPP	76.38156	29.91949	12:48:00	D	4.80
28	KAITHAL	GUHLA	S-NPP	76.38259	29.91958	12:48:00	D	5.40
29	KAITHAL	GUHLA	S-NPP	76.36297	30.05792	12:48:00	D	2.70
30	KAITHAL	GUHLA	AQUA	76.36000	30.06000	13:35:00	D	8.90

31	KAITHAL	GUHLA	S-NPP	76.41034	30.08659	14:24:00	D	3.60
32	KAITHAL	GUHLA	S-NPP	76.37602	30.11609	12:48:00	D	3.40
33	KAITHAL	KAITHAL	S-NPP	76.58224	29.68005	12:48:00	D	5.20
34	KAITHAL	KAITHAL	AQUA	76.58000	29.68700	13:35:00	D	9.10
35	KAITHAL	KAITHAL	S-NPP	76.64103	29.77181	12:48:00	D	5.20
36	KAITHAL	KAITHAL	S-NPP	76.64456	29.77265	12:48:00	D	5.20
37	KAITHAL	KAITHAL	S-NPP	76.61601	29.80411	12:48:00	D	4.20
38	KAITHAL	KAITHAL	S-NPP	76.30226	29.82299	12:48:00	D	3.20
39	KAITHAL	KAITHAL	S-NPP	76.33554	29.87033	14:24:00	D	7.20
40	KAITHAL	KAITHAL	S-NPP	76.33654	29.87101	14:24:00	D	4.90
41	KAITHAL	KAITHAL	AQUA	76.38200	29.90600	13:35:00	D	7.10
42	KAITHAL	KAITHAL	S-NPP	76.46870	29.91772	12:48:00	D	2.90
43	KARNAL	ASSANDH	S-NPP	76.56173	29.49387	12:48:00	D	3.20
44	KARNAL	ASSANDH	AQUA	76.61900	29.58100	13:35:00	D	7.80
45	KARNAL	ASSANDH	AQUA	76.62900	29.58300	13:35:00	D	7.70
46	KARNAL	GHARAUNDA	S-NPP	77.05550	29.47769	12:48:00	D	1.80
47	KARNAL	GHARAUNDA	S-NPP	76.99350	29.49019	12:48:00	D	3.00
48	KARNAL	GHARAUNDA	S-NPP	76.91130	29.52671	12:48:00	D	5.40
49	KARNAL	GHARAUNDA	AQUA	76.79500	29.53500	13:35:00	D	7.80
50	KARNAL	KARNAL	AQUA	77.02000	29.58700	13:35:00	D	4.90
51	KARNAL	KARNAL	S-NPP	76.85986	29.62788	14:24:00	D	7.30
52	KARNAL	KARNAL	AQUA	76.77000	29.63200	13:35:00	D	6.90
53	KARNAL	KARNAL	AQUA	76.84100	29.65200	13:35:00	D	8.60
54	KARNAL	KARNAL	AQUA	76.83900	29.66100	13:35:00	D	9.00
55	KARNAL	KARNAL	S-NPP	76.80495	29.70545	12:48:00	D	2.00
56	KARNAL	KARNAL	S-NPP	76.74654	29.71336	12:48:00	D	3.10
57	KARNAL	KARNAL	AQUA	76.81700	29.74100	13:35:00	D	9.70
58	KURUKSHETRA	PEHOWA	AQUA	76.61700	29.92300	13:35:00	D	9.20
59	KURUKSHETRA	PEHOWA	AQUA	76.58200	29.93700	13:35:00	D	4.60
60	KURUKSHETRA	PEHOWA	AQUA	76.65500	29.94800	13:35:00	D	10.70
61	KURUKSHETRA	PEHOWA	AQUA	76.66600	29.94900	13:35:00	D	6.10
62	KURUKSHETRA	PEHOWA	S-NPP	76.48449	29.95106	14:24:00	D	8.00
63	KURUKSHETRA	PEHOWA	S-NPP	76.71913	29.95453	12:48:00	D	1.90
64	KURUKSHETRA	PEHOWA	S-NPP	76.65863	29.95666	12:48:00	D	2.60

65	KURUKSHETRA	PEHOWA	AQUA	76.54800	29.96800	13:35:00	D	13.50
66	KURUKSHETRA	PEHOWA	AQUA	76.55900	29.96900	13:35:00	D	6.30
67	KURUKSHETRA	PEHOWA	S-NPP	76.52792	29.97107	12:48:00	D	2.30
68	KURUKSHETRA	PEHOWA	AQUA	76.69800	29.97200	13:35:00	D	6.10
69	KURUKSHETRA	PEHOWA	S-NPP	76.71680	29.98642	12:48:00	D	2.80
70	KURUKSHETRA	PEHOWA	S-NPP	76.72028	29.98722	12:48:00	D	2.80
71	KURUKSHETRA	PEHOWA	S-NPP	76.47337	30.02387	12:48:00	D	2.30
72	KURUKSHETRA	PEHOWA	AQUA	76.46400	30.02900	13:35:00	D	7.00
73	KURUKSHETRA	PEHOWA	S-NPP	76.48253	30.03149	12:48:00	D	4.30
74	KURUKSHETRA	PEHOWA	AQUA	76.64600	30.09400	13:35:00	D	7.30
75	KURUKSHETRA	PEHOWA	AQUA	76.72100	30.09600	13:35:00	D	11.00
76	KURUKSHETRA	SHAHABAD	AQUA	76.77400	30.15000	13:35:00	D	6.30
77	KURUKSHETRA	SHAHABAD	S-NPP	76.77833	30.15634	12:48:00	D	2.90
78	KURUKSHETRA	SHAHABAD	S-NPP	76.81942	30.22481	12:48:00	D	3.90
79	KURUKSHETRA	THANESAR	S-NPP	76.77921	30.01993	12:48:00	D	2.30
80	SIRSA	DABWALI	S-NPP	74.94669	29.90692	01:30:00	N	1.00
81	SIRSA	SIRSA	S-NPP	75.19537	29.71684	12:48:00	D	4.00
82	SIRSA	SIRSA	S-NPP	75.18611	29.74703	14:24:00	D	4.80
83	SIRSA	SIRSA	S-NPP	75.14580	29.77072	14:24:00	D	5.50
84	SIRSA	SIRSA	AQUA	74.96500	29.88100	13:35:00	D	28.00
85	YAMUNANAGAR	JAGADHRI	S-NPP	77.16781	30.20533	12:48:00	D	6.30
86	YAMUNANAGAR	JAGADHRI	S-NPP	77.16792	30.20568	12:48:00	D	4.30
87	YAMUNANAGAR	JAGADHRI	AQUA	77.23800	30.24600	13:35:00	D	7.10

Details of residue burning events in Uttar Pradesh on 14-Oct-2020

S. No.	District	Tehsil / Block	Satellite	Longitude	Latitude	Time (IST)	Day / Night	Fire Power (W/m²)
1	BIJNOR	NAGINA	AQUA	78.44000	29.58000	13:35:00	D	6.30
2	MATHURA	MAT	S-NPP	77.77113	27.84261	01:30:00	N	0.80
3	PILHIBHIT	PILHIBHIT	AQUA	79.71300	28.85000	13:35:00	D	10.50
4	RAMPUR	MILAK	S-NPP	79.19355	28.67123	12:42:00	D	3.10
5	SHAHJAHANPUR	PUWANYA	S-NPP	80.11755	28.15047	01:30:00	N	0.60
6	SHRAWASTI	BHINGA	S-NPP	81.63133	27.86518	01:30:00	N	0.80
7	SITAPUR	MAHMUDABAD	S-NPP	81.20071	27.29402	01:30:00	N	0.80
8	UNNAO	SAFIPUR	S-NPP	80.22334	26.94503	01:30:00	N	2.00

The study used images received from following Satellites at IARI Satellite Ground Station

S. No.	Satellite Name	Sensor	Resolution (meter)	Day / Night Passes
1.	Suomi NPP	VIIRS	375 / 750	Both
2.	Terra	MODIS	1000	Both
3.	Aqua	MODIS	1000	Both
4.	NOAA – 18	AVHRR	1000	Night
5.	NOAA – 19	AVHRR	1000	Night
6.	Metop - 1	AVHRR	1000	Night
7.	Metop - 2	AVHRR	1000	Night

Study Team

ICAR – HQ	Dr K. Alagusundaram	DDG (AG. ENGG.)	ddgengg@icar.org.in
	Dr S. Bhasker	ADG (NRM)	adgagroandaf@gmail.com
	Dr K.K. Singh	ADG (AG. ENGG)	kanchansingh044@gmail.com
ICAR - IARI	Dr V.K. Sehgal	Professor & Nodal Scientist	iaricreams@gmail.com
	Dr Rajkumar Dhakar	Scientist	raidhakar.iari@gmail.com
	Mr Rakeswer Verma	Chief Technical Officer	rakeshwar.verma@icar.gov.in
	Mr Mohd Jahangir	Lab Assistant (KRISHI)	mjahangir198@gmail.com
ICAR - ATARI	Dr Rajbir Singh	Director ATARI (Zone-I) Ludhiana	rajbirsingh.zpd@gmail.com
	Dr S.K. Singh	Director ATARI (Zone-II) Jodhpur	sushilsinghiipr@yahoo.co.in
	Dr Atar Singh	Director ATARI (Zone-III) Kanpur	zpdicarkanpur@gmail.com
ICAR - IASRI	Dr Rajender Parsad	Director IASRI	rajender.parsad@icar.gov.in

Softcopy of this report and latest statistics can be seen on <http://creams.iari.res.in>

GIS Maps of fire events can be visualized online on ICAR KRISHI Geoportal website: <http://geoportal.icar.gov.in:8080/geoexplorer/composer/>

(Part of KRISHI Portal: <https://krishi.icar.gov.in> initiative)
