

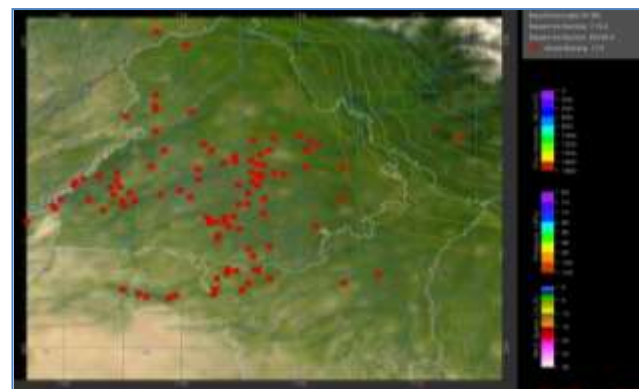


MONITORING PADDY RESIDUE BURNING IN NORTH INDIA USING SATELLITE REMOTE SENSING DURING 2020

**Bulletin
No. 11**

**Events Date:
11-Oct-2020**

**Issued on:
12-Oct-2020**



Prepared by:

**Consortium for Research on Agroecosystem Monitoring and Modeling from Space (CREAMS) Laboratory,
Division of Agricultural Physics, ICAR – Indian Agricultural Research Institute, New Delhi – 110012**

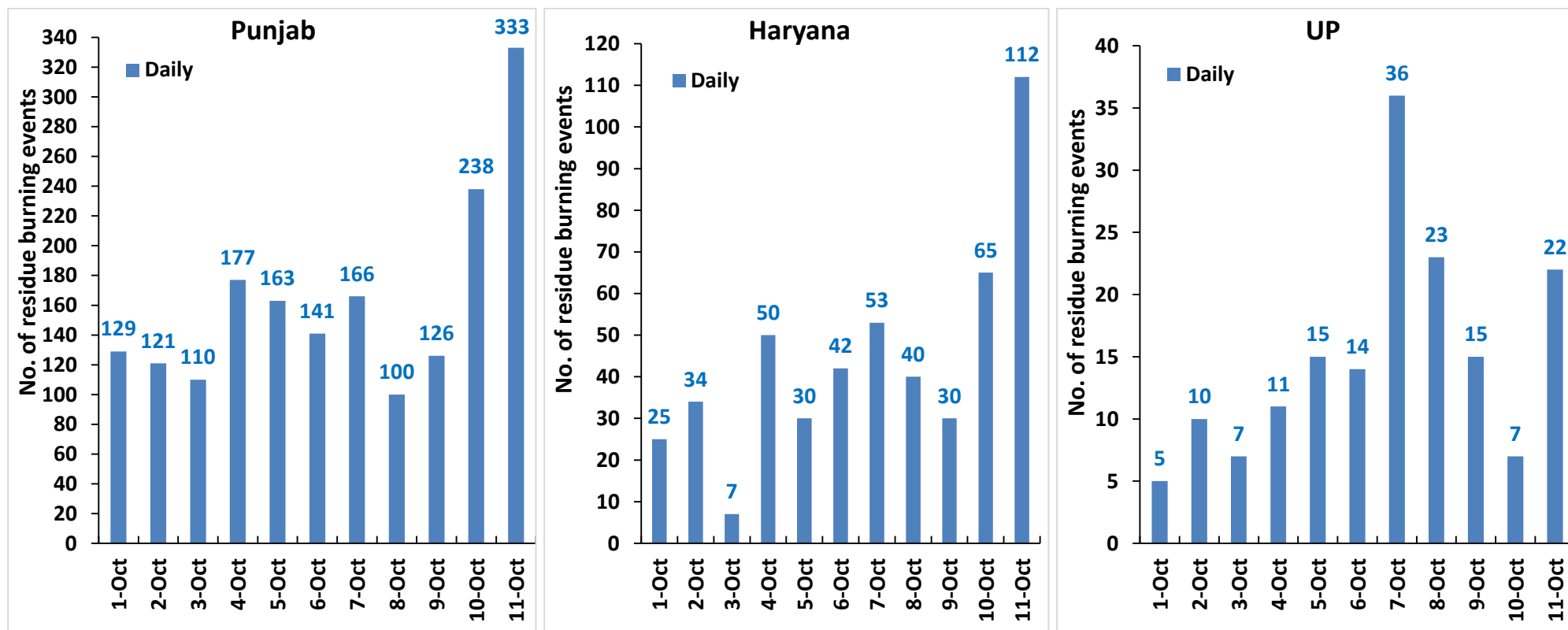
<http://creams.iari.res.in>



Highlights for 11-October-2020

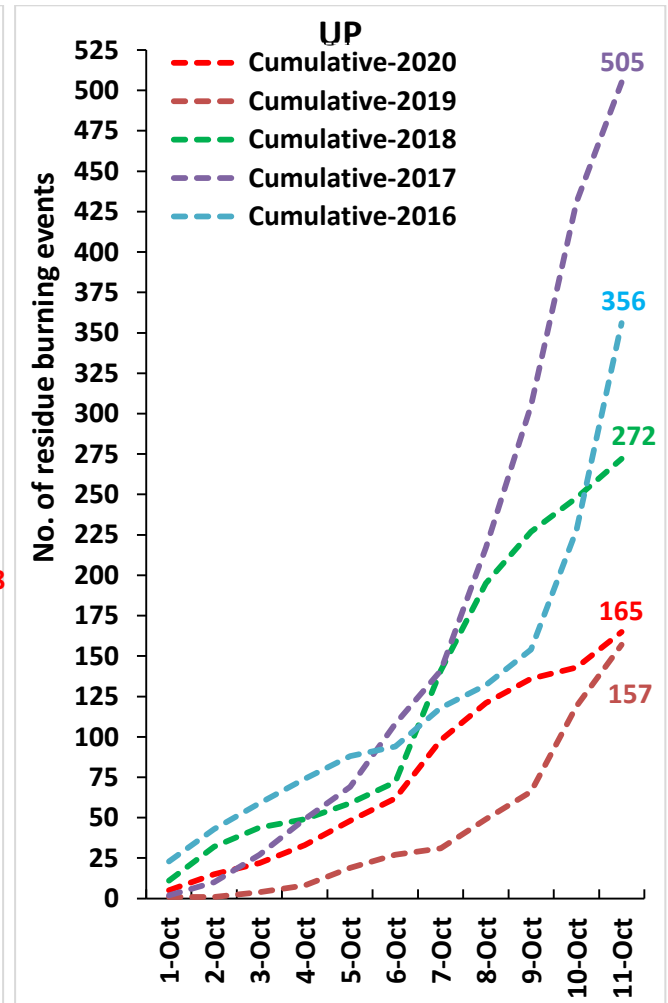
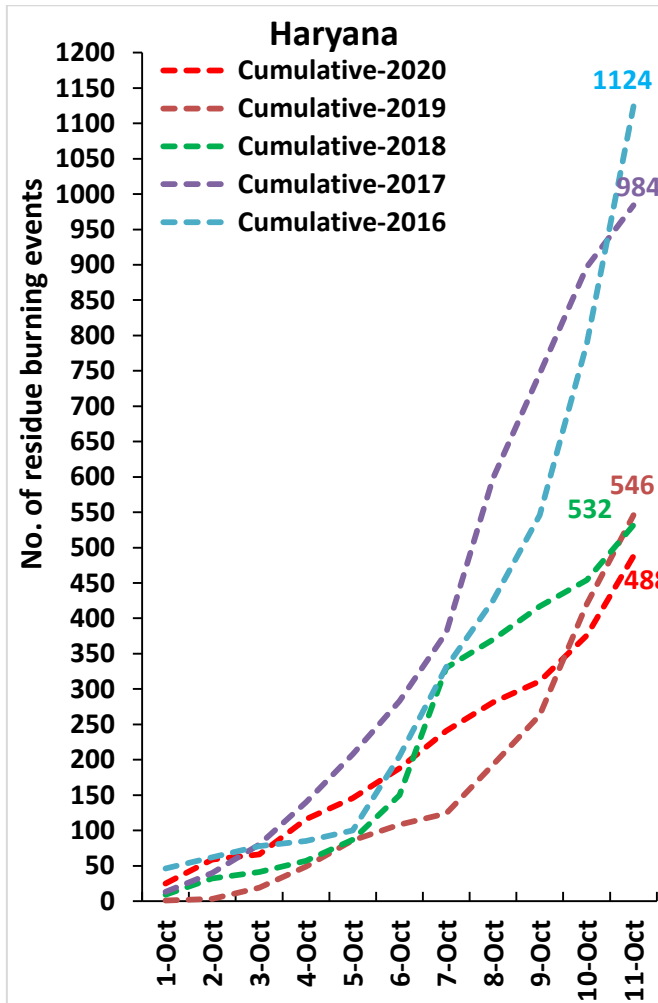
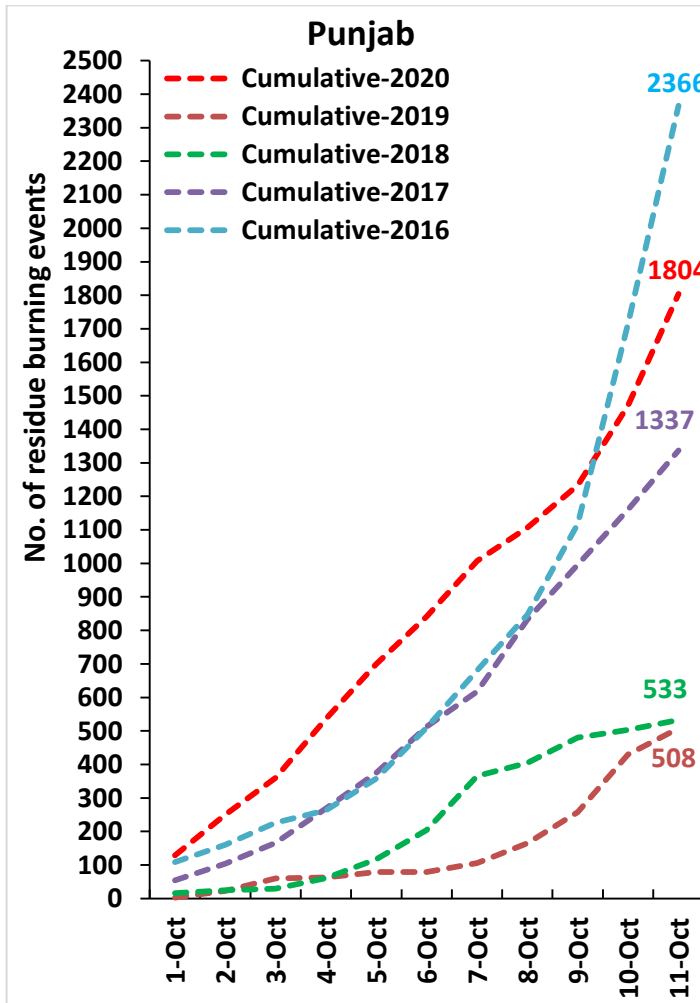
- Satellites detected **467** residue burning events in the three study States on **11-Oct-2020**.
- The state wise events detected on **11-Oct-2020** were **333** in Punjab, **112** in Haryana and **22** in UP.
- In Punjab, the burning events were concentrated in Amritsar, Tarn Taran and Patiala districts.
- In Haryana, the burning events were concentrated in Karnal, kaithal and Ambala.
- Total **2457** burning events were detected in the three States between **01-Oct-2020** and **11-Oct-2020**, which are distributed as **1804**, **488** and **165** in Punjab, Haryana and UP, respectively.
- Amritsar, Tarn Taran and Patiala in Punjab; Kurukshetra, Karnal and Ambala in Haryana; and Aligarh, Kheri and Saharanpur in UP were the top three districts with burning events during **1-Oct to 11-Oct 2020**
- In Punjab and UP, the cumulative number of burning events between **1-Oct** and **11-Oct 2020** were higher than in **2019**.

Temporal distribution of residue burning events for the three study States in 2020

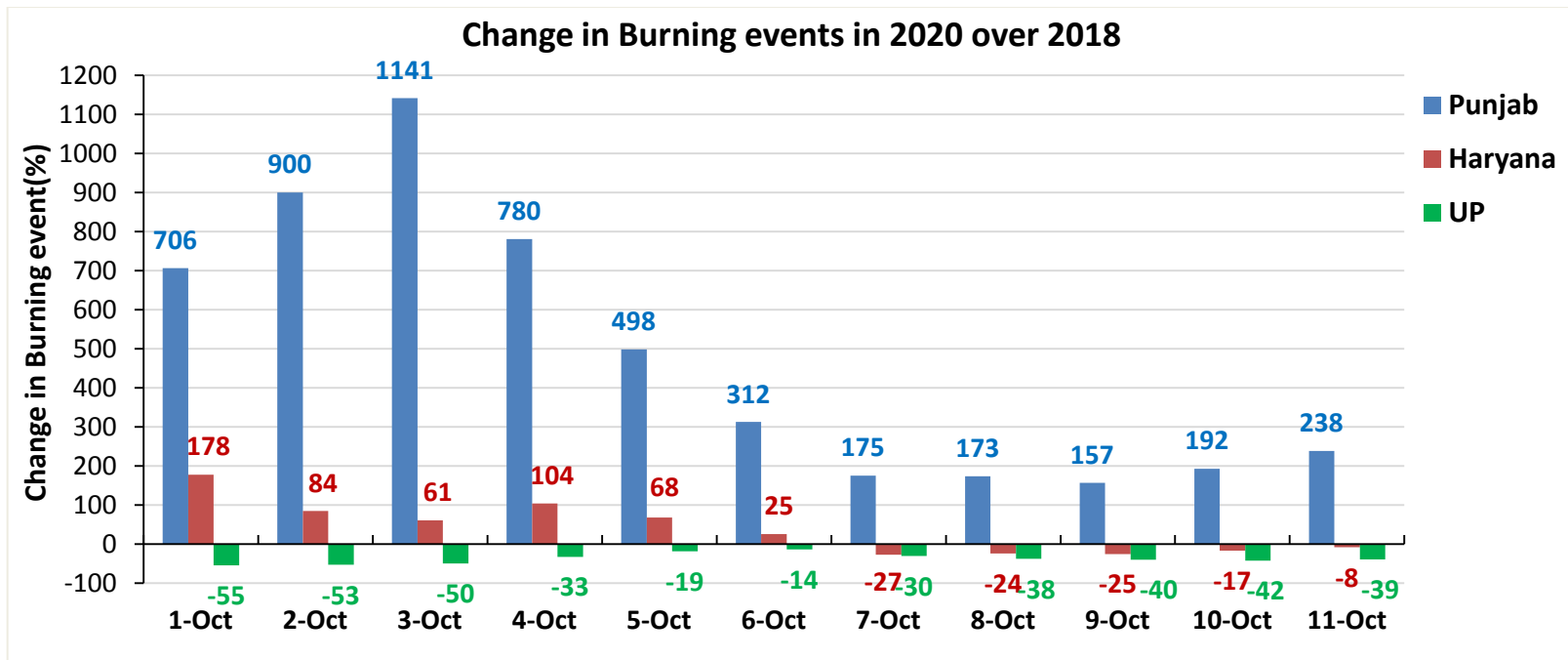
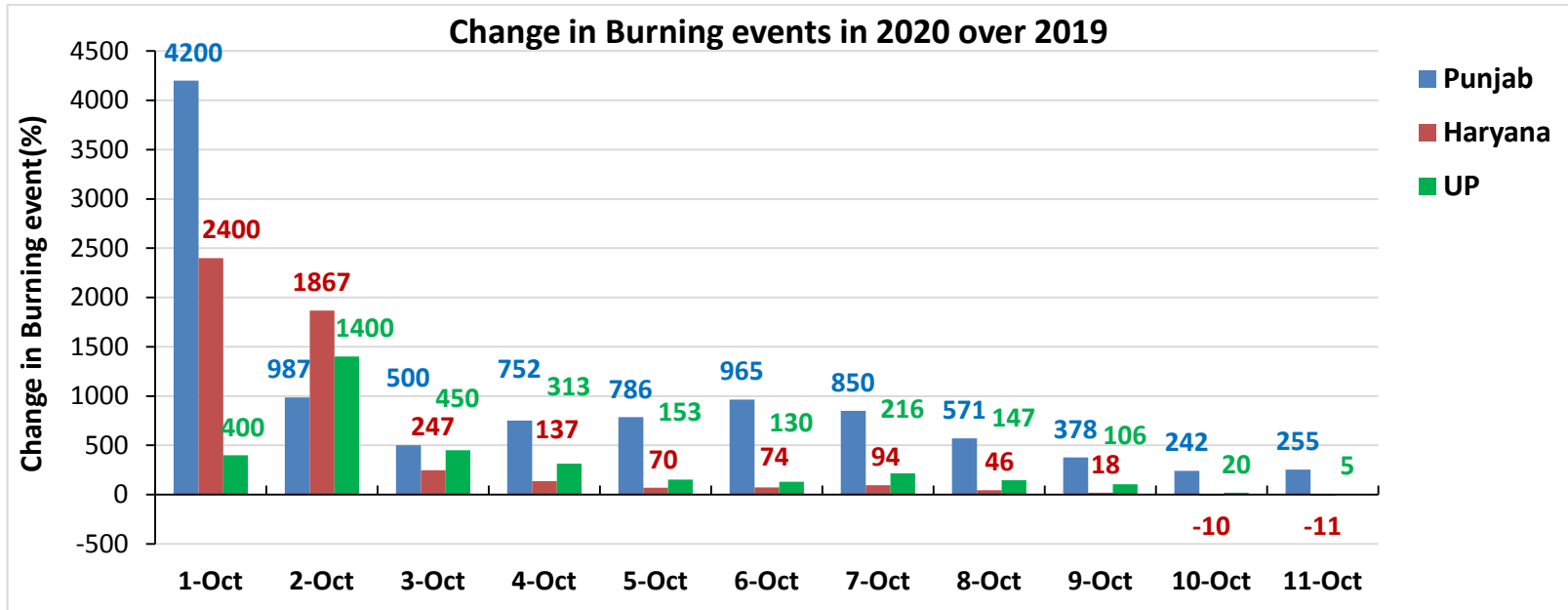


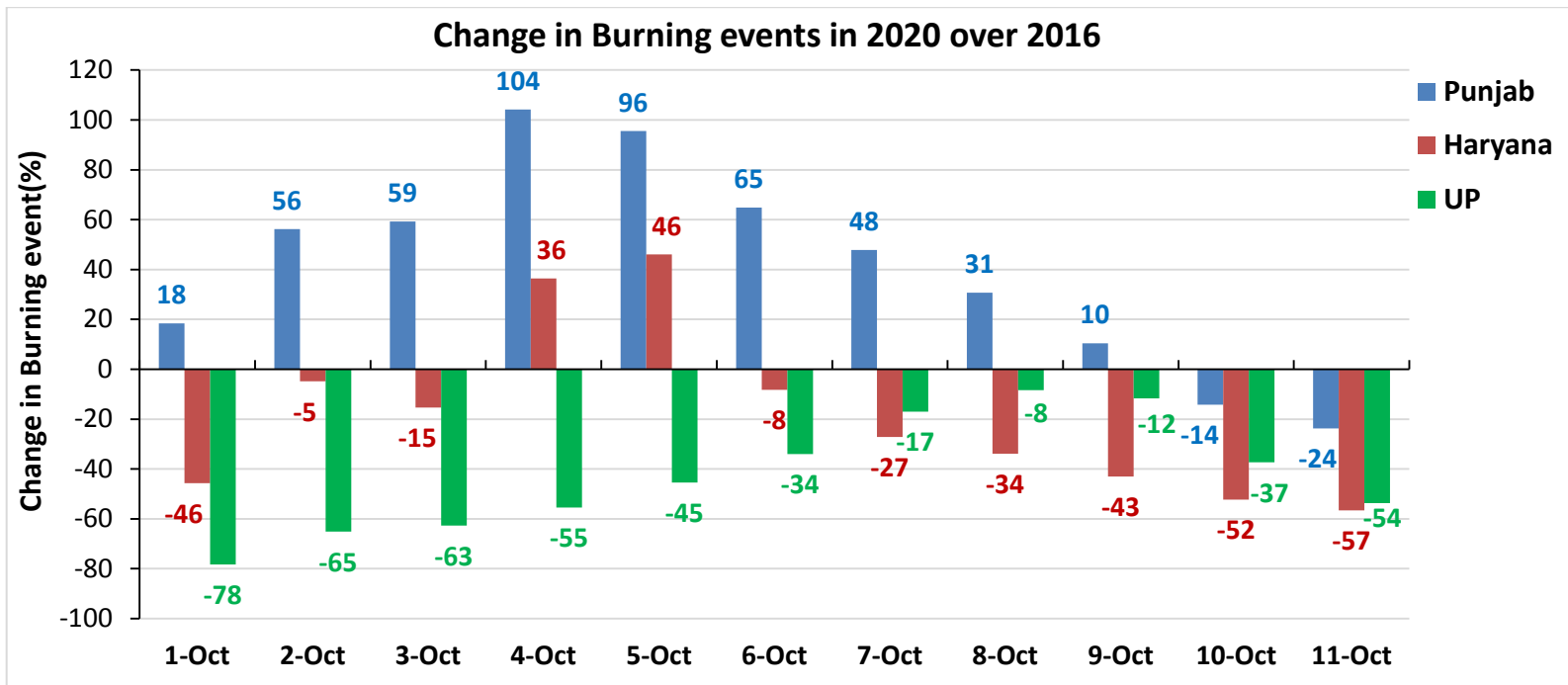
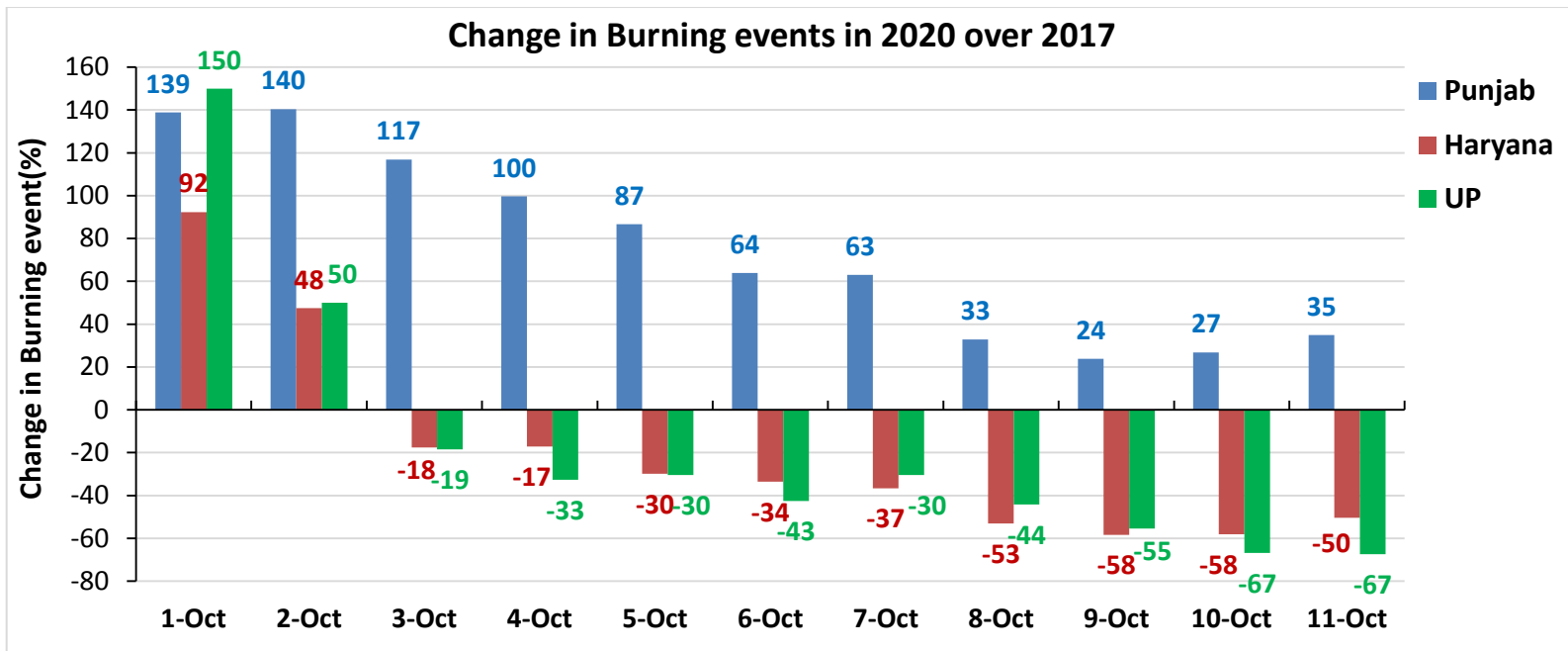
Comparison of residue burning events in current year (2020) with previous years (2019, 2018, 2017 & 2016) for the three study States

(01-Oct to 11-Oct)

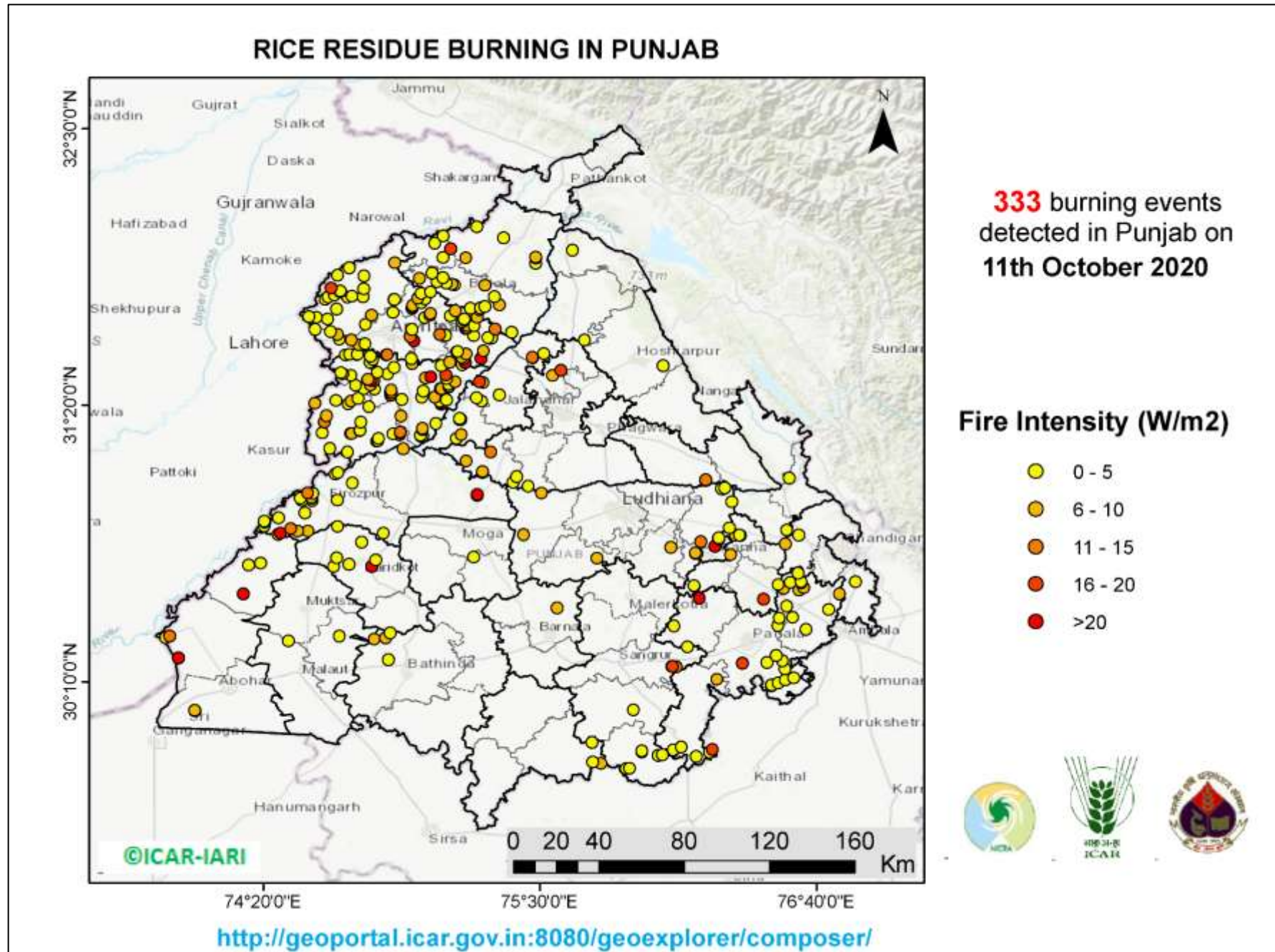


Percent Change in Burning events in 2020 over 2019, 2018, 2017 and 2016 (Daily Cumulative)

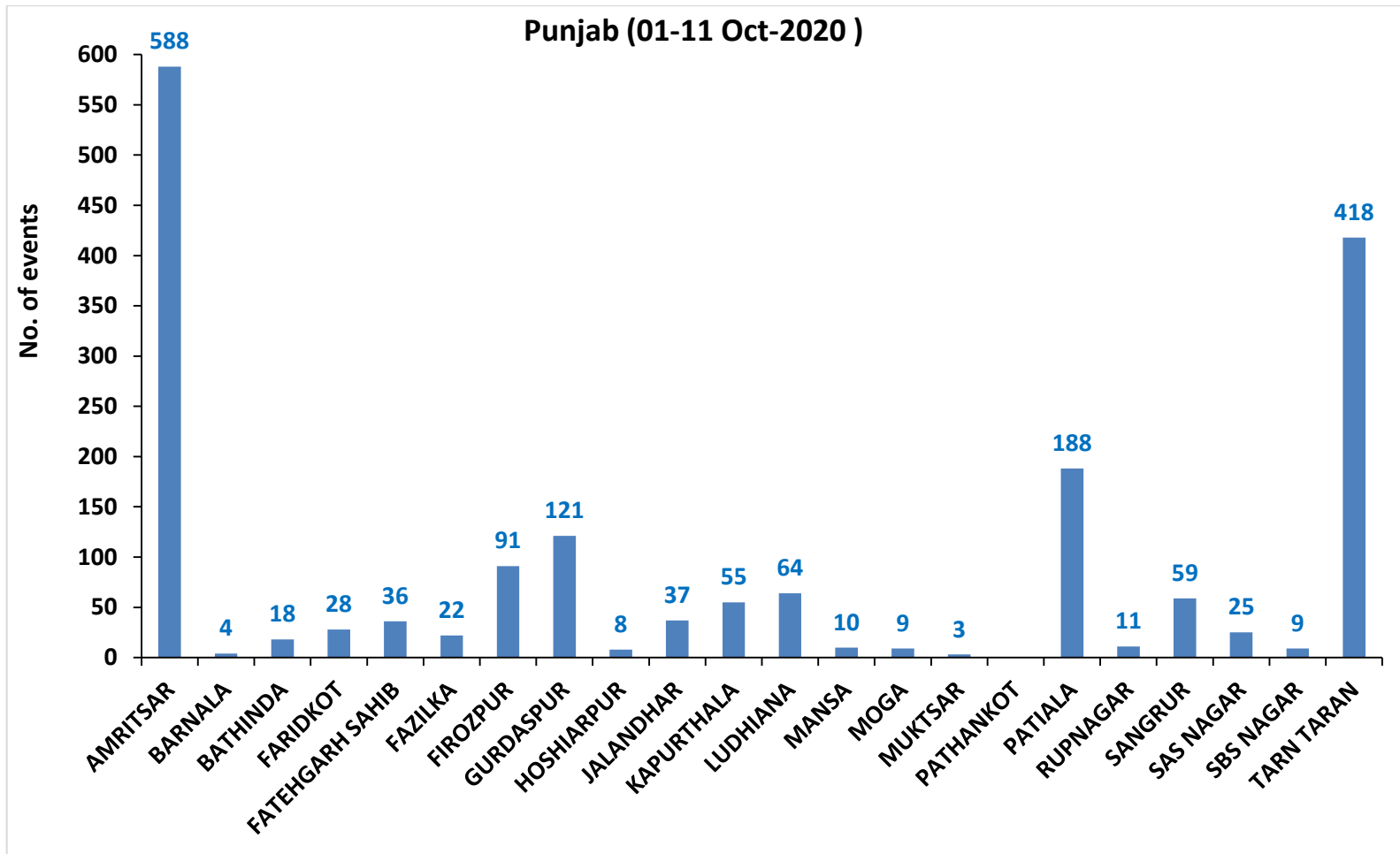




(a) Punjab

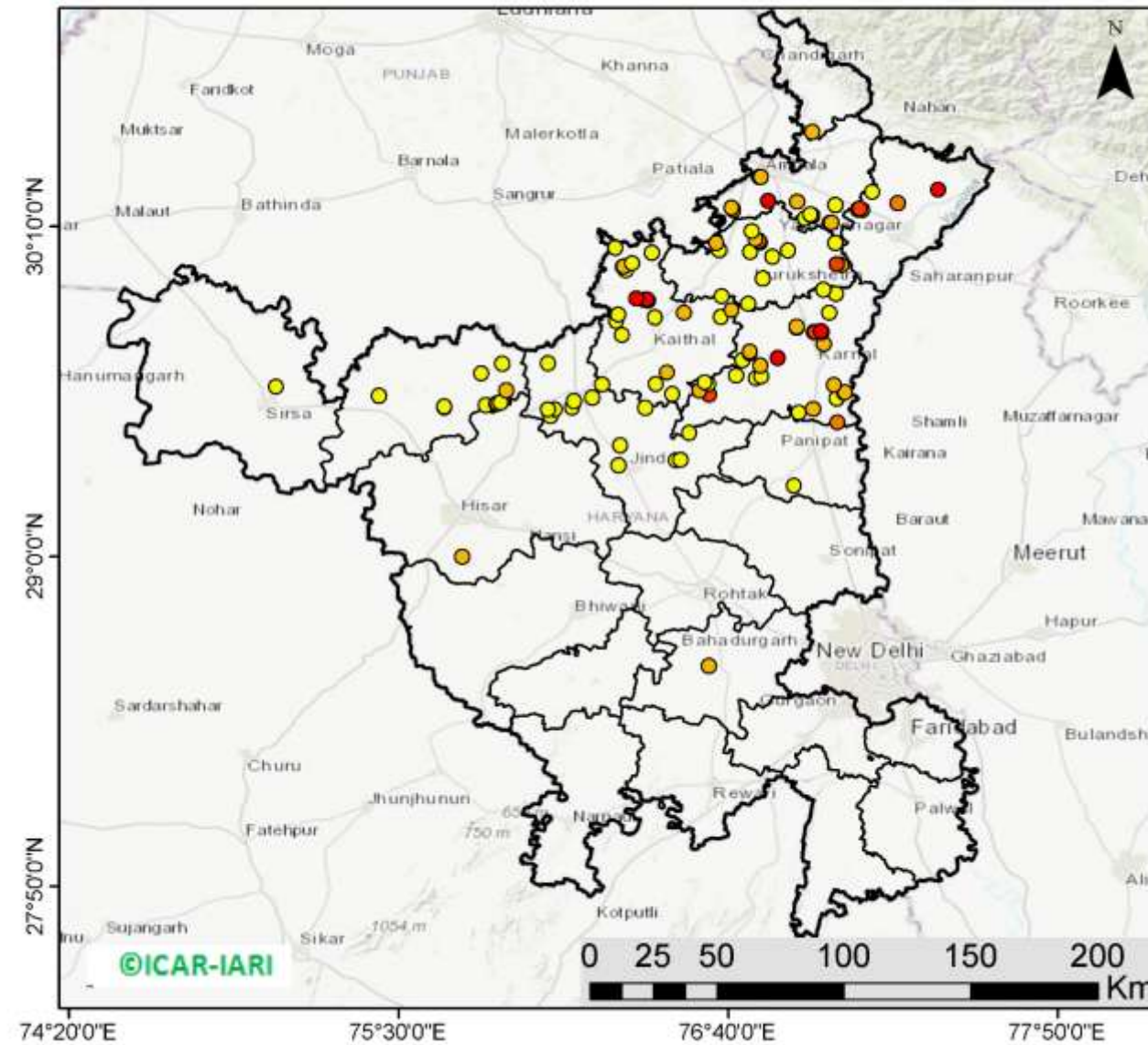


District-wise cumulative number of residue burning events in Punjab (01-11 Oct-2020)



(b) Haryana

RICE RESIDUE BURNING IN HARYANA



112 burning events detected in Haryana on 11th October 2020

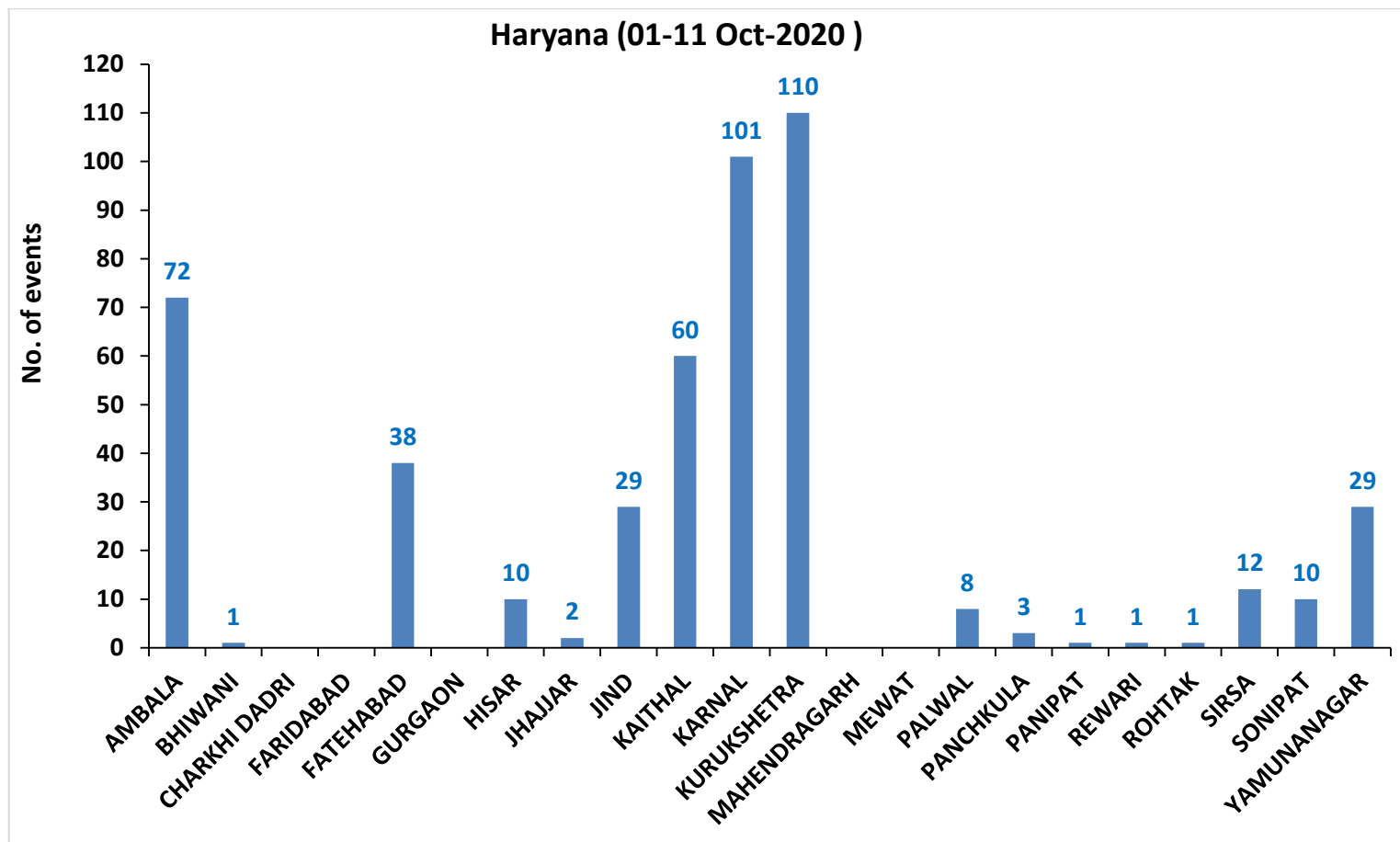
Fire Intensity (W/m²)

- 0 - 5
- 6 - 10
- 11 - 15
- 16 - 20
- >20



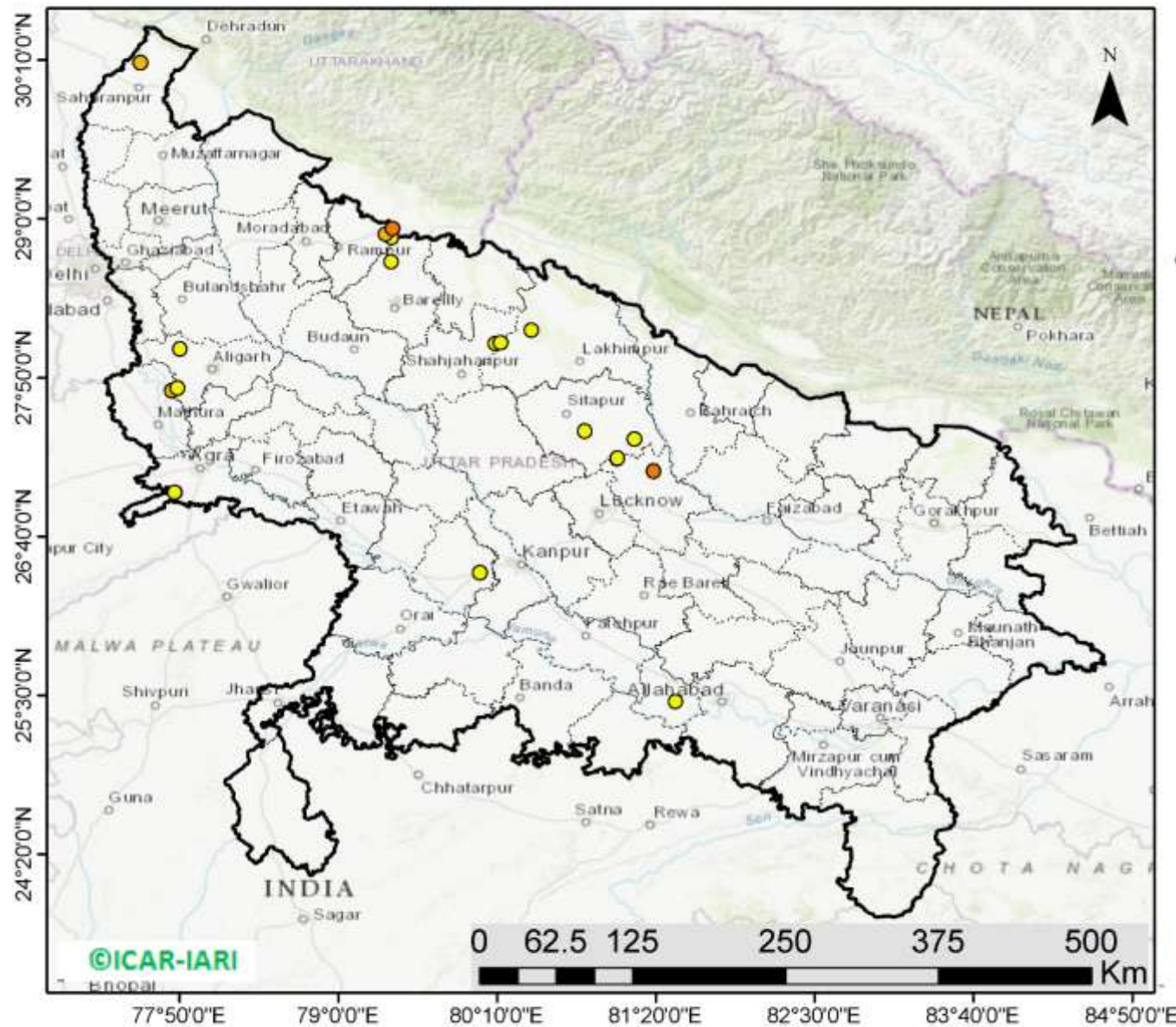
<http://geoportal.icar.gov.in:8080/geoexplorer/composer/>

District-wise cumulative number of residue burning events in Haryana (01-11 Oct-2020)



(c) Uttar Pradesh

RICE RESIDUE BURNING IN UTTAR PRADESH



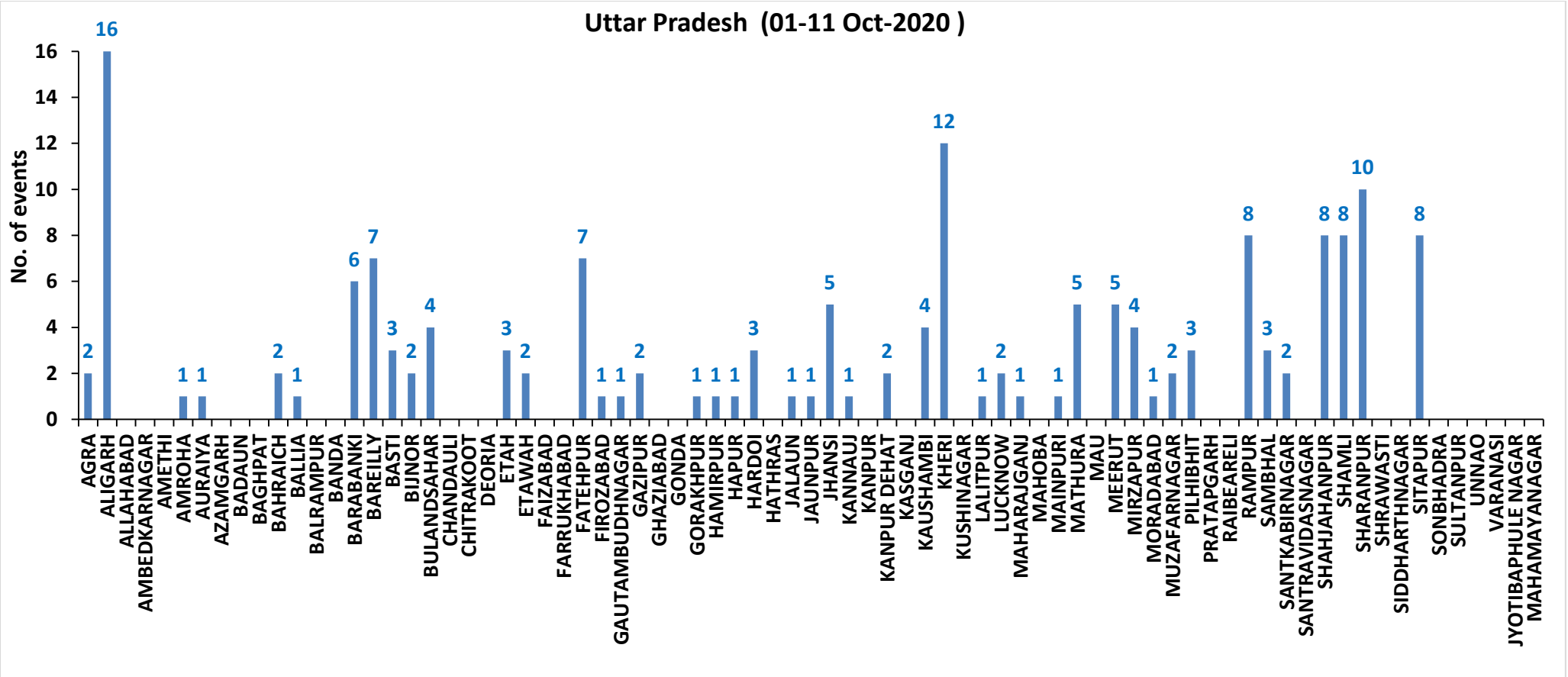
22 burning events detected in Uttar Pradesh on 11th October 2020

Fire Intensity (W/m²)

- 0 - 5
- 6 - 10
- 11 - 15
- 16 - 20
- >20

<http://geoportal.icar.gov.in:8080/geoexplorer/composer/>

District-wise cumulative number of residue burning events in Uttar Pradesh (01-11 Oct-2020)



State-wise and date-wise number of residue burning events detected in 2016, 2017, 2018, 2019 and 2020
(Period: 01-11 October)

Date	Punjab					Haryana					UP					Total				
	2020	2019	2018	2017	2016	2020	2019	2018	2017	2016	2020	2019	2018	2017	2016	2020	2019	2018	2017	2016
01-Oct	129	3	16	54	109	25	1	9	13	46	5	1	11	2	23	159	5	36	69	178
02-Oct	121	20	9	50	51	34	2	23	27	16	10	0	21	8	20	165	22	53	85	87
03-Oct	110	37	4	62	66	07	16	9	40	16	07	3	12	17	16	124	56	25	119	98
04-Oct	177	3	32	103	37	50	30	16	60	7	11	4	5	22	15	238	37	53	185	59
05-Oct	163	16	56	106	95	30	37	30	68	15	15	11	10	20	14	208	64	96	194	124
06-Oct	141	0	87	138	152	42	22	63	75	105	14	8	13	39	6	197	30	163	252	263
07-Oct	166	27	162	105	171	53	16	180	97	126	36	4	69	33	24	255	47	411	235	321
08-Oct	100	59	39	215	166	40	69	40	218	94	23	18	54	76	14	163	146	133	509	274
09-Oct	126	93	75	163	270	30	70	47	148	121	15	17	32	88	22	171	180	154	399	413
10-Oct	238	172	23	164	597	65	157	37	151	242	07	53	21	126	74	310	382	81	441	913
11-Oct	333	78	30	177	652	112	126	78	87	336	22	38	24	74	128	467	242	132	338	1116
Total	1804	508	533	1337	2366	488	546	532	984	1124	165	157	272	505	356	2457	1211	1337	2826	3846

District-wise and date wise cumulative number of residue burning events detected in 2016, 2017, 2018, 2019 and 2020
(Period: 01-11 October)

(a) Punjab

Districts	01-11 Oct				
	2016	2017	2018	2019	2020
AMRITSAR	503	324	288	205	588
BARNALA	8	4	1	0	4
BATHINDA	89	44	12	2	18
FARIDKOT	130	151	1	4	28
FATEHGARH SAHIB	130	38	9	4	36
FAZILKA	0	0	0	6	22
FIROZPUR	172	131	22	16	91
GURDASPUR	107	31	26	17	121
HOSHIARPUR	16	4	3	5	8
JALANDHAR	153	49	0	19	37
KAPURTHALA	127	15	2	11	55
LUDHIANA	95	85	17	6	64
MANSA	10	17	1	12	10
MOGA	27	8	0	7	9
MUKTSAR	136	17	3	2	3
PATHANKOT	0	0	0	0	0
PATIALA	196	149	35	59	188
RUPNAGAR	15	2	0	0	11
SANGRUR	40	64	23	20	59
SAS NAGAR	20	22	16	4	25
SBS NAGAR	28	15	6	6	9
TARN TARAN	364	167	68	103	418
Total	2366	1337	533	508	1804

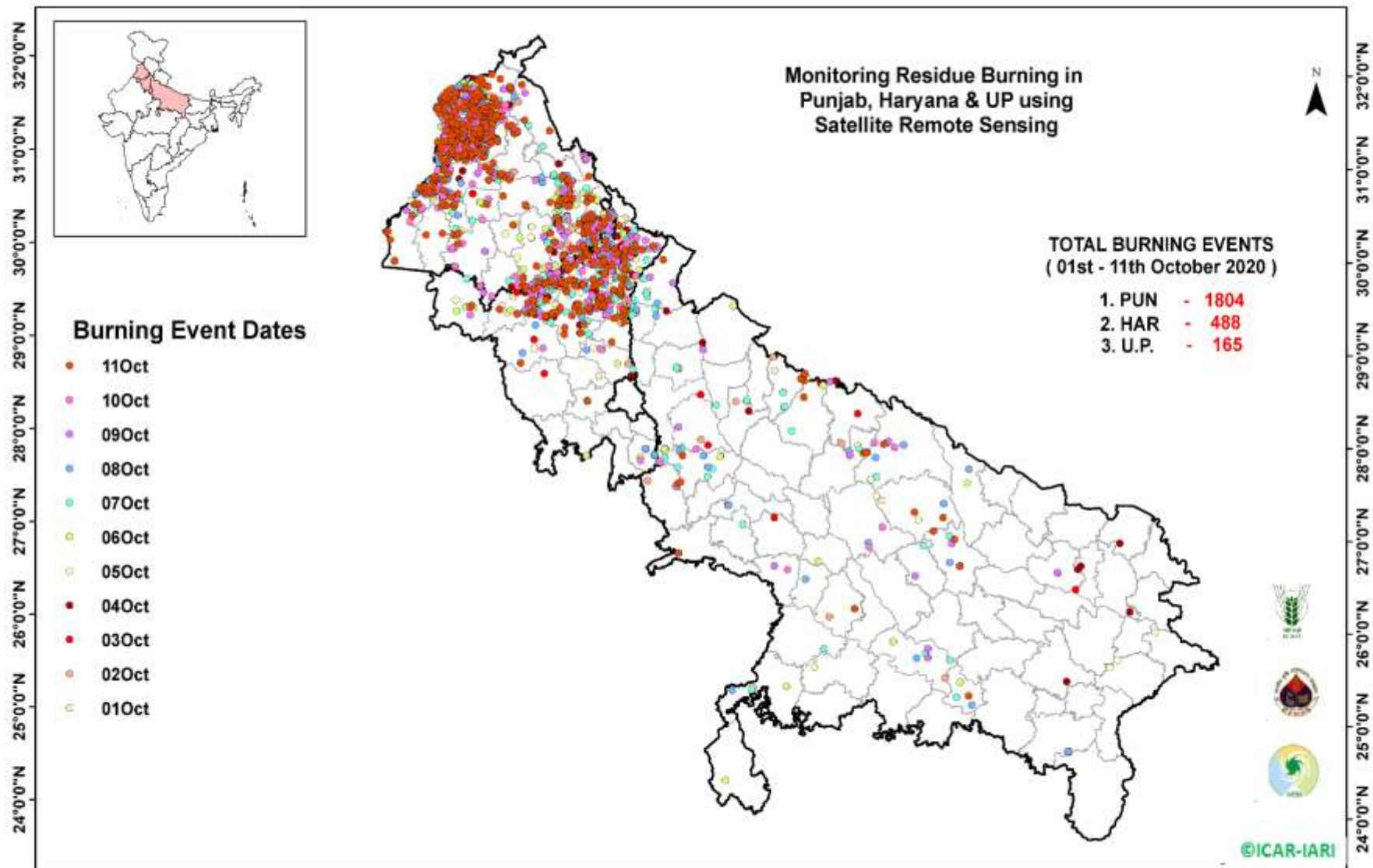
(b) Haryana

Districts	01-11 Oct				
	2016	2017	2018	2019	2020
AMBALA	70	74	35	20	72
BHIWANI	0	2	0	0	1
CHARKHI DADRI	0	0	0	0	0
FARIDABAD	3	8	19	1	0
FATEHABAD	19	41	10	28	38
GURGAON	0	0	0	0	0
HISAR	7	6	6	8	10
JHAJJAR	1	0	3	1	2
JIND	22	43	24	24	29
KAITHAL	315	185	84	125	60
KARNAL	416	341	157	189	101
KURUKSHETRA	220	221	136	117	110
MAHENDRAGARH	0	0	0	1	0
MEWAT	0	0	0	0	0
PALWAL	0	0	0	3	8
PANCHKULA	0	0	3	5	3
PANIPAT	11	18	25	3	1
REWARI	0	0	0	0	1
ROHTAK	0	1	0	0	1
SIRSA	21	9	7	5	12
SONIPAT	0	7	4	0	10
YAMUNANAGAR	19	28	19	16	29
Total	1124	984	532	546	488

(C)
Uttar Pradesh

Districts	01-11 Oct																
	2016	2017	2018	2019	2020	GAUTAMBUDHNAGAR	1	0	1	0	1	MUZAFARNAGAR	5	27	5	4	2
AGRA	0	0	0	0	2	GAZIPUR	0	0	0	0	2	PILHIBHIT	42	76	28	32	3
ALIGARH	0	8	6	7	16	GHAZIABAD	1	1	2	1	0	PRATAPGARH	0	0	0	0	0
ALLAHABAD	0	0	3	0	0	GONDA	0	0	0	0	0	RAIBEARELI	0	0	0	0	0
AMBEDKARNAGAR	0	1	0	0	0	GORAKHPUR	0	0	3	0	1	RAMPUR	94	64	31	12	8
AMETHI	0	0	0	0	0	HAMIRPUR	0	0	1	0	1	SAMBHAL	0	0	0	1	3
AMROHA	0	0	0	0	1	HAPUR	0	0	0	2	1	SANTKABIRNAGAR	0	0	0	0	2
AURAIYA	31	29	14	0	1	HARDOI	0	2	2	0	3	SANTRAVIDASNAGAR	0	0	0	0	0
AZAMGARH	0	0	0	0	0	HATHRAS	0	0	0	0	0	SHAHJAHANPUR	101	173	67	26	8
BADAUN	0	0	0	0	0	JALAUN	0	0	0	0	1	SHAMLI	0	0	0	5	8
BAGHPAT	0	0	0	2	0	JAUNPUR	0	0	2	0	1	SHARANPUR	6	6	5	4	10
BAHRAICH	0	0	2	0	2	JHANSI	0	0	0	2	5	SHRAWASTI	0	0	0	0	0
BALLIA	0	0	0	1	1	KANNAUJ	0	0	1	0	1	SIDDHARTHANAGAR	0	0	0	0	0
BALRAMPUR	0	0	0	0	0	KANPUR	0	0	0	0	0	SITAPUR	3	4	1	0	8
BANDA	0	0	1	0	0	KANPUR DEHAT	0	1	0	0	2	SONBHADRA	3	1	3	0	0
BARABANKI	7	13	24	1	6	KASGANJ	0	0	0	0	0	SULTANPUR	0	0	0	0	0
BAREILLY	20	11	4	6	7	KAUSHAMBI	0	2	6	0	4	UNNAO	0	0	0	0	0
BASTI	0	0	0	0	3	KHERI	30	55	21	25	12	VARANASI	0	0	0	0	0
BIJNOR	0	0	1	0	2	KUSHINAGAR	0	1	0	0	0	JYOTIBAPHULE NAGAR	0	0	0	0	0
BULANDSAHAR	0	2	2	2	4	LALITPUR	0	0	0	0	1	MAHAMAYANAGAR	0	0	0	0	0
CHANDAULI	0	0	0	0	0	LUCKNOW	2	4	0	1	2	Total	356	505	272	157	165
CHITRAKOOT	0	0	0	0	0	MAHARAJGANJ	0	1	1	0	1						
DEORIA	0	0	0	0	0	MAHOBA	0	0	0	0	0						
ETAH	0	1	2	0	3	MAINPURI	0	2	2	1	1						
ETAWAH	0	2	0	0	2	MATHURA	7	9	27	14	5						
FAIZABAD	0	1	0	0	0	MAU	0	0	0	0	0						
FARRUKHABAD	0	0	0	0	0	MEERUT	2	2	0	4	5						
FATEHPUR	0	2	2	0	7	MIRZAPUR	0	1	1	3	4						
FIROZABAD	0	0	0	0	1	MORADABAD	1	3	1	1	1						

Map of Cumulative Burning Events (01-11 Oct 2020)



(<http://geoportal.icar.gov.in:8080/geoexplorer/composer/>)

Details of residue burning events in Punjab on 11-Oct-2020

S. No.	District	Tehsil / Block	Satellite	Longitude	Latitude	Time (IST)	Day / Night	Fire Power (W/m2)
1	AMRITSAR	AJNALA	S-NPP	74.64684	31.63280	13:42:00	D	7.00
2	AMRITSAR	AJNALA	S-NPP	74.61833	31.64449	13:42:00	D	2.50
3	AMRITSAR	AJNALA	S-NPP	74.55309	31.65365	13:42:00	D	2.10
4	AMRITSAR	AJNALA	S-NPP	74.60461	31.69580	13:42:00	D	2.30
5	AMRITSAR	AJNALA	S-NPP	74.53557	31.70080	13:42:00	D	1.60
6	AMRITSAR	AJNALA	S-NPP	74.55772	31.70375	13:42:00	D	3.00
7	AMRITSAR	AJNALA	S-NPP	74.52547	31.70653	13:42:00	D	5.00
8	AMRITSAR	AJNALA	S-NPP	74.78958	31.71294	13:42:00	D	5.10
9	AMRITSAR	AJNALA	S-NPP	74.64239	31.73979	13:42:00	D	2.90
10	AMRITSAR	AJNALA	S-NPP	74.88461	31.77892	13:42:00	D	1.70
11	AMRITSAR	AJNALA	S-NPP	74.88604	31.77971	13:42:00	D	2.90
12	AMRITSAR	AJNALA	S-NPP	74.59525	31.78129	13:42:00	D	2.30
13	AMRITSAR	AJNALA	S-NPP	74.60739	31.78997	13:42:00	D	2.50
14	AMRITSAR	AJNALA	S-NPP	74.68982	31.79009	13:42:00	D	4.20
15	AMRITSAR	AJNALA	S-NPP	74.75407	31.79132	13:42:00	D	4.70
16	AMRITSAR	AJNALA	S-NPP	74.70780	31.79243	13:42:00	D	2.90
17	AMRITSAR	AJNALA	S-NPP	74.63358	31.79695	13:42:00	D	4.40
18	AMRITSAR	AJNALA	S-NPP	74.65858	31.81088	13:42:00	D	3.50
19	AMRITSAR	AJNALA	S-NPP	74.65797	31.81434	13:42:00	D	2.20
20	AMRITSAR	AJNALA	S-NPP	74.75756	31.82383	13:42:00	D	4.10
21	AMRITSAR	AJNALA	TERRA	74.61900	31.82700	11:30:00	D	18.00
22	AMRITSAR	AJNALA	S-NPP	74.75839	31.87802	13:42:00	D	3.40
23	AMRITSAR	AJNALA	S-NPP	74.64710	31.88144	13:42:00	D	2.70
24	AMRITSAR	AJNALA	S-NPP	74.69675	31.91277	13:42:00	D	4.30
25	AMRITSAR	AJNALA	S-NPP	74.88822	31.93399	13:42:00	D	9.60
26	AMRITSAR	AMRITSAR I	S-NPP	74.96118	31.50910	13:42:00	D	6.80
27	AMRITSAR	AMRITSAR I	S-NPP	74.97012	31.60379	13:42:00	D	21.00
28	AMRITSAR	AMRITSAR I	S-NPP	74.95275	31.62304	13:42:00	D	12.60
29	AMRITSAR	AMRITSAR I	S-NPP	75.12234	31.70896	13:42:00	D	2.00
30	AMRITSAR	AMRITSAR I	S-NPP	75.03670	31.71252	13:42:00	D	6.80

31	AMRITSAR	AMRITSAR I	S-NPP	75.04008	31.72014	13:42:00	D	8.10
32	AMRITSAR	AMRITSAR I	S-NPP	74.96109	31.74232	13:42:00	D	2.90
33	AMRITSAR	AMRITSAR I	S-NPP	74.96444	31.74993	13:42:00	D	17.60
34	AMRITSAR	AMRITSAR I	S-NPP	74.96383	31.75343	13:42:00	D	5.40
35	AMRITSAR	AMRITSAR I	S-NPP	74.99930	31.76520	13:42:00	D	3.80
36	AMRITSAR	AMRITSAR I	S-NPP	75.01524	31.78164	13:42:00	D	4.80
37	AMRITSAR	AMRITSAR I	S-NPP	74.98643	31.78508	13:42:00	D	6.30
38	AMRITSAR	AMRITSAR I	S-NPP	74.99874	31.80477	13:42:00	D	3.60
39	AMRITSAR	AMRITSAR II	S-NPP	74.95751	31.53009	13:42:00	D	2.10
40	AMRITSAR	AMRITSAR II	S-NPP	74.85299	31.54500	13:42:00	D	12.50
41	AMRITSAR	AMRITSAR II	S-NPP	74.85749	31.54559	13:42:00	D	12.50
42	AMRITSAR	AMRITSAR II	S-NPP	74.69852	31.54741	13:42:00	D	3.00
43	AMRITSAR	AMRITSAR II	S-NPP	74.73708	31.58792	13:42:00	D	6.50
44	AMRITSAR	AMRITSAR II	S-NPP	74.76399	31.59143	13:42:00	D	4.10
45	AMRITSAR	AMRITSAR II	S-NPP	74.70592	31.60870	13:42:00	D	5.70
46	AMRITSAR	AMRITSAR II	S-NPP	74.65498	31.61262	13:42:00	D	1.60
47	AMRITSAR	AMRITSAR II	S-NPP	74.96155	31.65284	13:42:00	D	2.50
48	AMRITSAR	AMRITSAR II	S-NPP	74.76419	31.67404	13:42:00	D	1.90
49	AMRITSAR	AMRITSAR II	S-NPP	75.01492	31.70258	13:42:00	D	4.80
50	AMRITSAR	AMRITSAR II	S-NPP	74.88018	31.72470	13:42:00	D	2.20
51	AMRITSAR	BABA BAKALA	S-NPP	75.11925	31.51499	13:42:00	D	5.50
52	AMRITSAR	BABA BAKALA	S-NPP	75.17808	31.52966	13:42:00	D	3.80
53	AMRITSAR	BABA BAKALA	AQUA	75.25200	31.53100	13:05:00	D	37.50
54	AMRITSAR	BABA BAKALA	S-NPP	75.17222	31.53613	13:42:00	D	6.00
55	AMRITSAR	BABA BAKALA	S-NPP	75.18894	31.54908	13:42:00	D	5.70
56	AMRITSAR	BABA BAKALA	S-NPP	75.14946	31.55845	13:42:00	D	4.70
57	AMRITSAR	BABA BAKALA	S-NPP	75.15408	31.55905	13:42:00	D	4.70
58	AMRITSAR	BABA BAKALA	S-NPP	75.26279	31.56209	13:42:00	D	5.70
59	AMRITSAR	BABA BAKALA	S-NPP	75.28960	31.61530	13:42:00	D	4.60
60	AMRITSAR	BABA BAKALA	S-NPP	75.29170	31.61650	13:42:00	D	3.30
61	AMRITSAR	BABA BAKALA	S-NPP	75.29639	31.61711	13:42:00	D	3.30
62	AMRITSAR	BABA BAKALA	S-NPP	75.28173	31.61884	13:42:00	D	3.60
63	AMRITSAR	BABA BAKALA	S-NPP	75.10201	31.62781	13:42:00	D	3.10

64	AMRITSAR	BABA BAKALA	S-NPP	75.22046	31.62837	13:42:00	D	3.30
65	AMRITSAR	BABA BAKALA	S-NPP	75.07774	31.63191	13:42:00	D	13.90
66	AMRITSAR	BABA BAKALA	S-NPP	75.18702	31.65666	13:42:00	D	6.10
67	AMRITSAR	BABA BAKALA	TERRA	75.19300	31.65900	11:30:00	D	11.20
68	AMRITSAR	BABA BAKALA	TERRA	75.19500	31.66800	11:30:00	D	9.90
69	AMRITSAR	BABA BAKALA	S-NPP	75.22309	31.66848	13:42:00	D	4.70
70	AMRITSAR	BABA BAKALA	S-NPP	75.17285	31.68374	13:42:00	D	4.90
71	AMRITSAR	BABA BAKALA	S-NPP	75.18093	31.69200	13:42:00	D	3.60
72	AMRITSAR	BABA BAKALA	S-NPP	75.18032	31.69554	13:42:00	D	3.80
73	AMRITSAR	BABA BAKALA	TERRA	75.14300	31.73100	11:30:00	D	7.80
74	BARNALA	BARNALA	S-NPP	75.57297	30.47873	13:42:00	D	5.50
75	BATHINDA	BATHINDA	S-NPP	74.86095	30.25998	13:42:00	D	2.20
76	BATHINDA	BATHINDA	S-NPP	74.80236	30.34595	13:42:00	D	6.50
77	BATHINDA	BATHINDA	S-NPP	74.85021	30.35239	13:42:00	D	6.00
78	BATHINDA	BATHINDA	S-NPP	74.86899	30.37257	13:42:00	D	1.40
79	FARIDKOT	FARIDKOT	S-NPP	74.63064	30.65307	13:42:00	D	1.20
80	FARIDKOT	FARIDKOT	S-NPP	74.79093	30.65348	13:42:00	D	30.70
81	FARIDKOT	FARIDKOT	S-NPP	74.69569	30.66186	13:42:00	D	2.00
82	FARIDKOT	FARIDKOT	S-NPP	74.80856	30.68057	13:42:00	D	1.80
83	FARIDKOT	FARIDKOT	S-NPP	74.64374	30.68903	13:42:00	D	2.80
84	FARIDKOT	FARIDKOT	S-NPP	74.74786	30.75574	13:42:00	D	4.20
85	FATEHGARH SAHIB	ALMOH	S-NPP	76.15167	30.56857	13:42:00	D	2.50
86	FATEHGARH SAHIB	ALMOH	S-NPP	76.15108	30.57222	13:42:00	D	2.50
87	FATEHGARH SAHIB	FATEHGARH SAHIB	S-NPP	76.44249	30.51535	13:42:00	D	15.60
88	FATEHGARH SAHIB	FATEHGARH SAHIB	S-NPP	76.52850	30.55970	13:42:00	D	10.00
89	FATEHGARH SAHIB	FATEHGARH SAHIB	S-NPP	76.50520	30.57576	13:42:00	D	3.80
90	FATEHGARH SAHIB	KHAMANOH	S-NPP	76.34444	30.78395	13:42:00	D	3.30
91	FATEHGARH SAHIB	KHAMANOH	S-NPP	76.32369	30.78524	13:42:00	D	9.90
92	FATEHGARH SAHIB	KHAMANOH	S-NPP	76.34216	30.78547	13:42:00	D	3.00
93	FATEHGARH SAHIB	KHAMANOH	S-NPP	76.29825	30.81597	13:42:00	D	4.20
94	FAZILKA	ABOHAR	S-NPP	74.04578	30.04325	13:42:00	D	9.20
95	FAZILKA	ABOHAR	S-NPP	74.04515	30.04661	13:42:00	D	8.60
96	FAZILKA	FAZILKA	S-NPP	73.97665	30.26758	13:42:00	D	26.00

97	FAZILKA	FAZILKA	S-NPP	73.92271	30.35310	13:42:00	D	2.30
98	FAZILKA	FAZILKA	S-NPP	73.93859	30.35880	13:42:00	D	12.00
99	FAZILKA	JALALABAD	S-NPP	74.24891	30.53827	13:42:00	D	34.70
100	FAZILKA	JALALABAD	S-NPP	74.27160	30.65992	13:42:00	D	5.00
101	FAZILKA	JALALABAD	S-NPP	74.32248	30.66685	13:42:00	D	1.70
102	FAZILKA	JALALABAD	S-NPP	74.39722	30.78816	13:42:00	D	4.20
103	FAZILKA	JALALABAD	S-NPP	74.40517	30.79273	13:42:00	D	20.90
104	FIROZPUR	FIROZPUR	S-NPP	74.84022	30.79284	13:42:00	D	3.00
105	FIROZPUR	FIROZPUR	S-NPP	74.52248	30.80153	13:42:00	D	9.70
106	FIROZPUR	FIROZPUR	S-NPP	74.47815	30.80259	13:42:00	D	6.30
107	FIROZPUR	FIROZPUR	S-NPP	74.44990	30.81278	13:42:00	D	13.50
108	FIROZPUR	FIROZPUR	S-NPP	74.64759	30.82178	13:42:00	D	3.30
109	FIROZPUR	FIROZPUR	S-NPP	74.33854	30.82209	13:42:00	D	2.20
110	FIROZPUR	FIROZPUR	S-NPP	74.33971	30.83970	13:42:00	D	1.70
111	FIROZPUR	FIROZPUR	S-NPP	74.33910	30.84311	13:42:00	D	2.60
112	FIROZPUR	FIROZPUR	S-NPP	74.39872	30.85801	13:42:00	D	2.90
113	FIROZPUR	FIROZPUR	S-NPP	74.50945	30.87980	13:42:00	D	2.90
114	FIROZPUR	FIROZPUR	S-NPP	74.54041	30.92957	13:42:00	D	3.90
115	FIROZPUR	FIROZPUR	S-NPP	74.49590	30.93060	13:42:00	D	3.90
116	FIROZPUR	FIROZPUR	S-NPP	74.64669	30.93322	13:42:00	D	2.70
117	FIROZPUR	FIROZPUR	S-NPP	74.53857	30.93986	13:42:00	D	3.50
118	FIROZPUR	FIROZPUR	S-NPP	74.48972	30.94029	13:42:00	D	2.10
119	FIROZPUR	FIROZPUR	S-NPP	74.53795	30.94329	13:42:00	D	5.10
120	FIROZPUR	FIROZPUR	S-NPP	74.54356	30.96162	13:42:00	D	3.80
121	FIROZPUR	FIROZPUR	S-NPP	74.52126	30.96211	13:42:00	D	13.70
122	FIROZPUR	FIROZPUR	S-NPP	74.71013	31.00523	13:42:00	D	3.50
123	FIROZPUR	FIROZPUR	S-NPP	74.63688	31.04303	13:42:00	D	2.00
124	FIROZPUR	FIROZPUR	S-NPP	74.64941	31.04822	13:42:00	D	2.20
125	FIROZPUR	ZIRA	S-NPP	75.23555	30.95262	13:42:00	D	11.90
126	FIROZPUR	ZIRA	S-NPP	75.23495	30.95614	13:42:00	D	31.60
127	FIROZPUR	ZIRA	S-NPP	74.92367	31.14952	13:42:00	D	5.50
128	GURDASPUR	BATALA	S-NPP	75.38140	31.64122	13:42:00	D	3.60
129	GURDASPUR	BATALA	S-NPP	75.31169	31.65432	13:42:00	D	12.10

130	GURDASPUR	BATALA	S-NPP	75.23631	31.70274	13:42:00	D	5.80
131	GURDASPUR	BATALA	S-NPP	75.24642	31.73536	13:42:00	D	11.50
132	GURDASPUR	BATALA	S-NPP	75.20714	31.74129	13:42:00	D	2.10
133	GURDASPUR	BATALA	S-NPP	75.24990	31.74303	13:42:00	D	4.20
134	GURDASPUR	BATALA	S-NPP	75.26807	31.74894	13:42:00	D	1.80
135	GURDASPUR	BATALA	S-NPP	75.32935	31.75660	13:42:00	D	5.60
136	GURDASPUR	BATALA	S-NPP	75.30909	31.79040	13:42:00	D	3.20
137	GURDASPUR	BATALA	S-NPP	75.04026	31.81002	13:42:00	D	2.20
138	GURDASPUR	BATALA	S-NPP	75.26895	31.83868	13:42:00	D	7.40
139	GURDASPUR	BATALA	S-NPP	75.13931	31.84054	13:42:00	D	3.10
140	GURDASPUR	BATALA	S-NPP	75.12937	31.84290	13:42:00	D	5.30
141	GURDASPUR	BATALA	S-NPP	75.10487	31.84701	13:42:00	D	4.30
142	GURDASPUR	BATALA	S-NPP	75.06592	31.85287	13:42:00	D	4.50
143	GURDASPUR	BATALA	S-NPP	74.99232	31.86861	13:42:00	D	8.20
144	GURDASPUR	BATALA	S-NPP	75.09130	31.87053	13:42:00	D	2.30
145	GURDASPUR	BATALA	S-NPP	75.04529	31.88984	13:42:00	D	2.60
146	GURDASPUR	DERA BABA NANAK	S-NPP	75.09209	31.95644	13:42:00	D	2.00
147	GURDASPUR	DERA BABA NANAK	TERRA	75.12400	31.99300	11:25:00	D	17.60
148	GURDASPUR	DERA BABA NANAK	S-NPP	75.05779	32.01699	13:42:00	D	3.60
149	GURDASPUR	DERA BABA NANAK	S-NPP	75.09254	32.04620	13:42:00	D	3.20
150	GURDASPUR	GURDASPUR	S-NPP	75.48209	31.93091	13:42:00	D	4.30
151	GURDASPUR	GURDASPUR	S-NPP	75.48328	31.95305	13:42:00	D	4.40
152	GURDASPUR	GURDASPUR	S-NPP	75.18813	31.95409	13:42:00	D	9.90
153	GURDASPUR	GURDASPUR	S-NPP	75.48267	31.95663	13:42:00	D	6.70
154	GURDASPUR	GURDASPUR	S-NPP	75.34766	32.03965	13:42:00	D	2.10
155	GURDASPUR	GURDASPUR	S-NPP	75.23476	32.08581	13:42:00	D	2.40
156	HOSHIARPUR	DASUYA	S-NPP	75.68782	31.60801	13:42:00	D	2.50
157	HOSHIARPUR	HOSHIARPUR	S-NPP	76.02011	31.50041	13:42:00	D	4.70
158	HOSHIARPUR	MUKERIAN	S-NPP	75.63800	31.98756	13:42:00	D	3.30
159	JALANDHAR	JALANDHAR II	S-NPP	75.55388	31.45858	13:42:00	D	5.40
160	JALANDHAR	JALANDHAR II	S-NPP	75.58915	31.48125	13:42:00	D	15.30
161	JALANDHAR	NAKODAR	S-NPP	75.45049	30.99138	13:42:00	D	2.90
162	JALANDHAR	SHAHKOT	S-NPP	75.38759	31.00791	13:42:00	D	3.10

163	JALANDHAR	SHAHKOT	S-NPP	75.40256	31.03151	13:42:00	D	3.40
164	JALANDHAR	SHAHKOT	S-NPP	75.25797	31.04907	13:42:00	D	2.90
165	JALANDHAR	SHAHKOT	S-NPP	75.25737	31.05260	13:42:00	D	9.20
166	JALANDHAR	SHAHKOT	S-NPP	75.19002	31.09740	13:42:00	D	7.80
167	JALANDHAR	SHAHKOT	S-NPP	75.29146	31.13559	13:42:00	D	10.20
168	KAPURTHALA	BHOLATH	S-NPP	75.46984	31.53351	13:42:00	D	9.50
169	KAPURTHALA	BHOLATH	S-NPP	75.46803	31.53543	13:42:00	D	13.90
170	KAPURTHALA	BHOLATH	S-NPP	75.51569	31.55011	13:42:00	D	2.80
171	KAPURTHALA	KAPURTHALA	S-NPP	75.23206	31.36473	13:42:00	D	4.10
172	KAPURTHALA	KAPURTHALA	S-NPP	75.32964	31.37725	13:42:00	D	3.70
173	KAPURTHALA	KAPURTHALA	S-NPP	75.26052	31.42917	13:42:00	D	7.90
174	KAPURTHALA	KAPURTHALA	S-NPP	75.24598	31.43095	13:42:00	D	18.20
175	KAPURTHALA	SULTANPUR LODHI	S-NPP	75.14770	31.19257	13:42:00	D	2.60
176	KAPURTHALA	SULTANPUR LODHI	S-NPP	75.16814	31.20955	13:42:00	D	5.10
177	KAPURTHALA	SULTANPUR LODHI	TERRA	75.16600	31.27300	11:30:00	D	11.30
178	KAPURTHALA	SULTANPUR LODHI	S-NPP	75.16180	31.27345	13:42:00	D	4.60
179	KAPURTHALA	SULTANPUR LODHI	S-NPP	75.16639	31.27405	13:42:00	D	4.00
180	KAPURTHALA	SULTANPUR LODHI	S-NPP	75.16246	31.27662	13:42:00	D	3.30
181	KAPURTHALA	SULTANPUR LODHI	S-NPP	75.16120	31.27697	13:42:00	D	2.40
182	KAPURTHALA	SULTANPUR LODHI	S-NPP	75.25361	31.34945	13:42:00	D	5.00
183	LUDHIANA	JAGRAON	S-NPP	75.43156	30.78741	13:42:00	D	5.60
184	LUDHIANA	JAGRAON	S-NPP	75.50782	30.96244	13:42:00	D	8.80
185	LUDHIANA	KHANNA	S-NPP	76.30431	30.70204	13:42:00	D	7.40
186	LUDHIANA	KHANNA	S-NPP	76.15662	30.70650	13:42:00	D	8.10
187	LUDHIANA	KHANNA	S-NPP	76.16155	30.70711	13:42:00	D	2.60
188	LUDHIANA	KHANNA	S-NPP	76.15603	30.71015	13:42:00	D	8.10
189	LUDHIANA	KHANNA	S-NPP	76.23731	30.73880	13:42:00	D	26.30
190	LUDHIANA	KHANNA	S-NPP	76.25251	30.77060	13:42:00	D	11.80
191	LUDHIANA	PAYAL	S-NPP	76.05193	30.73440	13:42:00	D	5.10
192	LUDHIANA	RAIKOT	S-NPP	75.74065	30.68773	13:42:00	D	9.30
193	LUDHIANA	SAMRALA	TERRA	76.17900	30.75800	11:30:00	D	12.70
194	LUDHIANA	SAMRALA	S-NPP	76.25465	30.76954	13:42:00	D	3.80
195	LUDHIANA	SAMRALA	S-NPP	76.25405	30.77321	13:42:00	D	4.00

196	LUDHIANA	SAMRALA	S-NPP	76.30983	30.92493	13:42:00	D	3.30
197	LUDHIANA	SAMRALA	S-NPP	76.27013	30.98019	13:42:00	D	16.30
198	LUDHIANA	SAMRALA	S-NPP	76.26678	30.98188	13:42:00	D	3.90
199	LUDHIANA	SAMRALA	S-NPP	76.27962	30.98512	13:42:00	D	3.40
200	MANSA	BUDHLADA	S-NPP	75.72249	29.82845	13:42:00	D	4.10
201	MANSA	BUDHLADA	S-NPP	75.72037	29.91029	13:42:00	D	4.30
202	MOGA	NIHAL SINGH WALA	S-NPP	75.22109	30.69227	13:42:00	D	3.30
203	MUKTSAR	GIDDARBAHA	S-NPP	74.65458	30.35988	13:42:00	D	4.00
204	MUKTSAR	MUKTSAR	S-NPP	74.43975	30.33803	13:42:00	D	4.30
205	PATIALA	NABHA	S-NPP	76.06560	30.40247	13:42:00	D	1.90
206	PATIALA	NABHA	S-NPP	76.17282	30.51976	13:42:00	D	22.50
207	PATIALA	PATIALA	S-NPP	76.47585	30.15037	13:42:00	D	1.90
208	PATIALA	PATIALA	S-NPP	76.47746	30.15254	13:42:00	D	3.70
209	PATIALA	PATIALA	S-NPP	76.50468	30.16147	13:42:00	D	1.70
210	PATIALA	PATIALA	S-NPP	76.53535	30.17447	13:42:00	D	3.80
211	PATIALA	PATIALA	S-NPP	76.57011	30.18238	13:42:00	D	4.70
212	PATIALA	PATIALA	S-NPP	76.53336	30.21943	13:42:00	D	4.70
213	PATIALA	PATIALA	S-NPP	76.35323	30.24515	13:42:00	D	16.80
214	PATIALA	PATIALA	S-NPP	76.45718	30.24771	13:42:00	D	3.40
215	PATIALA	PATIALA	S-NPP	76.52245	30.25578	13:42:00	D	1.60
216	PATIALA	PATIALA	S-NPP	76.49577	30.27718	13:42:00	D	4.10
217	PATIALA	PATIALA	S-NPP	76.50414	30.40400	13:42:00	D	4.80
218	PATIALA	PATIALA	S-NPP	76.50957	30.43482	13:42:00	D	4.40
219	PATIALA	RAJPURA	S-NPP	76.65087	30.31073	13:42:00	D	56.40
220	PATIALA	RAJPURA	S-NPP	76.62322	30.38702	13:42:00	D	3.30
221	PATIALA	RAJPURA	S-NPP	76.56606	30.43787	13:42:00	D	3.50
222	PATIALA	RAJPURA	S-NPP	76.71796	30.47133	13:42:00	D	2.30
223	PATIALA	RAJPURA	S-NPP	76.54026	30.48551	13:42:00	D	4.80
224	PATIALA	RAJPURA	S-NPP	76.59220	30.55225	13:42:00	D	5.60
225	PATIALA	RAJPURA	S-NPP	76.61156	30.56217	13:42:00	D	5.30
226	PATIALA	RAJPURA	S-NPP	76.60291	30.58390	13:42:00	D	4.20
227	PATIALA	RAJPURA	S-NPP	76.55560	30.58571	13:42:00	D	3.10
228	PATIALA	RAJPURA	S-NPP	76.60233	30.58762	13:42:00	D	4.20

229	PATIALA	RAJPURA	S-NPP	76.58824	30.62468	13:42:00	D	3.80
230	PATIALA	SAMANA	S-NPP	76.15961	29.85124	13:42:00	D	4.40
231	PATIALA	SAMANA	S-NPP	76.21555	29.86932	13:42:00	D	3.00
232	PATIALA	SAMANA	S-NPP	76.06306	29.87588	13:42:00	D	2.30
233	PATIALA	SAMANA	S-NPP	76.06247	29.87948	13:42:00	D	2.70
234	PATIALA	SAMANA	TERRA	76.22800	29.88200	11:30:00	D	18.30
235	PATIALA	SAMANA	S-NPP	76.09692	29.89183	13:42:00	D	2.40
236	PATIALA	SAMANA	S-NPP	76.24660	30.17688	13:42:00	D	5.50
237	RUPNAGAR	CHAMKOR SAHIB	S-NPP	76.54121	30.80618	13:42:00	D	4.30
238	RUPNAGAR	RUPNAGAR	S-NPP	76.55168	31.02660	13:42:00	D	4.50
239	SANGRUR	MOONAK	S-NPP	75.86434	29.79941	13:42:00	D	2.90
240	SANGRUR	MOONAK	S-NPP	75.87832	29.80118	13:42:00	D	4.40
241	SANGRUR	MOONAK	S-NPP	75.75649	29.82198	13:42:00	D	5.70
242	SANGRUR	MOONAK	S-NPP	75.99850	29.85665	13:42:00	D	3.30
243	SANGRUR	MOONAK	S-NPP	76.01740	29.85905	13:42:00	D	2.50
244	SANGRUR	MOONAK	S-NPP	75.93114	29.87138	13:42:00	D	2.60
245	SANGRUR	MOONAK	S-NPP	75.93055	29.87496	13:42:00	D	2.90
246	SANGRUR	SANGRUR	TERRA	76.07400	30.23000	11:30:00	D	11.70
247	SANGRUR	SANGRUR	S-NPP	76.05672	30.23144	13:42:00	D	7.90
248	SANGRUR	SANGRUR	TERRA	76.06000	30.23200	11:30:00	D	18.90
249	SANGRUR	SANGRUR	S-NPP	76.12218	30.31349	13:42:00	D	2.40
250	SANGRUR	SUNAM	S-NPP	75.89427	30.04763	13:42:00	D	2.50
251	SAS NAGAR	DERABASSI	S-NPP	76.76321	30.53828	13:42:00	D	7.60
252	SAS NAGAR	DERABASSI	S-NPP	76.83018	30.58831	13:42:00	D	2.50
253	SAS NAGAR	KHARAR	S-NPP	76.53463	30.74850	13:42:00	D	9.90
254	SAS NAGAR	KHARAR	S-NPP	76.59171	30.78572	13:42:00	D	2.10
255	SBS NAGAR	SBS NAGAR	S-NPP	76.19995	31.01513	13:42:00	D	12.10
256	SBS NAGAR	SBS NAGAR	S-NPP	76.19936	31.01880	13:42:00	D	10.90
257	TARN TARAN	KHADOOR SAHIB	S-NPP	74.99735	31.20186	13:42:00	D	6.00
258	TARN TARAN	KHADOOR SAHIB	S-NPP	75.00640	31.20303	13:42:00	D	4.70
259	TARN TARAN	KHADOOR SAHIB	S-NPP	74.99674	31.20535	13:42:00	D	3.00
260	TARN TARAN	KHADOOR SAHIB	S-NPP	75.00603	31.23158	13:42:00	D	8.20
261	TARN TARAN	KHADOOR SAHIB	S-NPP	75.00543	31.23508	13:42:00	D	6.30

262	TARN TARAN	KHADOOR SAHIB	S-NPP	75.06194	31.25680	13:42:00	D	3.70
263	TARN TARAN	KHADOOR SAHIB	S-NPP	74.91421	31.28777	13:42:00	D	6.50
264	TARN TARAN	KHADOOR SAHIB	AQUA	75.08400	31.33700	13:05:00	D	34.60
265	TARN TARAN	KHADOOR SAHIB	AQUA	75.08800	31.33900	13:05:00	D	34.90
266	TARN TARAN	KHADOOR SAHIB	S-NPP	75.08035	31.34511	13:42:00	D	1.90
267	TARN TARAN	KHADOOR SAHIB	S-NPP	75.07973	31.34862	13:42:00	D	1.90
268	TARN TARAN	KHADOOR SAHIB	S-NPP	75.10656	31.35570	13:42:00	D	2.30
269	TARN TARAN	KHADOOR SAHIB	S-NPP	74.91728	31.35677	13:42:00	D	1.30
270	TARN TARAN	KHADOOR SAHIB	S-NPP	75.00203	31.36712	13:42:00	D	2.50
271	TARN TARAN	KHADOOR SAHIB	S-NPP	75.05784	31.36728	13:42:00	D	6.40
272	TARN TARAN	KHADOOR SAHIB	S-NPP	74.87244	31.37595	13:42:00	D	18.40
273	TARN TARAN	KHADOOR SAHIB	S-NPP	74.87061	31.38640	13:42:00	D	6.00
274	TARN TARAN	KHADOOR SAHIB	S-NPP	74.87511	31.38698	13:42:00	D	6.00
275	TARN TARAN	KHADOOR SAHIB	S-NPP	75.00815	31.39344	13:42:00	D	3.00
276	TARN TARAN	KHADOOR SAHIB	S-NPP	74.87327	31.39743	13:42:00	D	7.80
277	TARN TARAN	KHADOOR SAHIB	S-NPP	74.80350	31.40255	13:42:00	D	4.10
278	TARN TARAN	KHADOOR SAHIB	S-NPP	75.08116	31.40279	13:42:00	D	6.80
279	TARN TARAN	KHADOOR SAHIB	S-NPP	75.08574	31.40337	13:42:00	D	6.80
280	TARN TARAN	KHADOOR SAHIB	S-NPP	74.75760	31.40361	13:42:00	D	2.70
281	TARN TARAN	KHADOOR SAHIB	S-NPP	75.11722	31.41098	13:42:00	D	2.50
282	TARN TARAN	KHADOOR SAHIB	S-NPP	75.11661	31.41450	13:42:00	D	3.10
283	TARN TARAN	KHADOOR SAHIB	TERRA	74.78500	31.41900	11:30:00	D	5.20
284	TARN TARAN	KHADOOR SAHIB	S-NPP	75.11539	31.42153	13:42:00	D	2.00
285	TARN TARAN	KHADOOR SAHIB	S-NPP	75.14175	31.43210	13:42:00	D	5.20
286	TARN TARAN	KHADOOR SAHIB	TERRA	74.80100	31.43600	11:30:00	D	6.30
287	TARN TARAN	KHADOOR SAHIB	TERRA	74.78900	31.43800	11:30:00	D	23.70
288	TARN TARAN	KHADOOR SAHIB	S-NPP	74.77379	31.44127	13:42:00	D	8.50
289	TARN TARAN	KHADOOR SAHIB	S-NPP	74.77460	31.44226	13:42:00	D	9.40
290	TARN TARAN	KHADOOR SAHIB	S-NPP	75.10654	31.44555	13:42:00	D	3.70
291	TARN TARAN	KHADOOR SAHIB	S-NPP	75.01720	31.44833	13:42:00	D	9.80
292	TARN TARAN	KHADOOR SAHIB	AQUA	75.04100	31.45200	13:05:00	D	25.90
293	TARN TARAN	KHADOOR SAHIB	S-NPP	74.70332	31.45785	13:42:00	D	2.10
294	TARN TARAN	KHADOOR SAHIB	S-NPP	75.10410	31.45961	13:42:00	D	17.20

295	TARN TARAN	KHADOOR SAHIB	S-NPP	74.85807	31.46369	13:42:00	D	2.20
296	TARN TARAN	KHADOOR SAHIB	S-NPP	74.67034	31.46416	13:42:00	D	6.80
297	TARN TARAN	KHADOOR SAHIB	S-NPP	74.66023	31.46992	13:42:00	D	2.00
298	TARN TARAN	KHADOOR SAHIB	S-NPP	74.81513	31.47238	13:42:00	D	2.40
299	TARN TARAN	KHADOOR SAHIB	S-NPP	74.88536	31.49216	13:42:00	D	5.00
300	TARN TARAN	KHADOOR SAHIB	S-NPP	75.08427	31.49976	13:42:00	D	4.60
301	TARN TARAN	KHADOOR SAHIB	S-NPP	75.17308	31.50379	13:42:00	D	4.10
302	TARN TARAN	KHADOOR SAHIB	TERRA	74.78800	31.51200	11:30:00	D	8.70
303	TARN TARAN	KHADOOR SAHIB	S-NPP	75.18576	31.51260	13:42:00	D	21.60
304	TARN TARAN	KHADOOR SAHIB	S-NPP	74.78472	31.51466	13:42:00	D	4.40
305	TARN TARAN	KHADOOR SAHIB	S-NPP	74.79633	31.52686	13:42:00	D	3.00
306	TARN TARAN	KHADOOR SAHIB	S-NPP	74.78491	31.53958	13:42:00	D	2.20
307	TARN TARAN	KHADOOR SAHIB	S-NPP	74.68069	31.54510	13:42:00	D	1.50
308	TARN TARAN	KHADOOR SAHIB	S-NPP	74.72871	31.54634	13:42:00	D	1.20
309	TARN TARAN	KHADOOR SAHIB	S-NPP	74.73042	31.54800	13:42:00	D	1.80
310	TARN TARAN	PATTI	S-NPP	74.68940	31.13672	13:42:00	D	3.20
311	TARN TARAN	PATTI	S-NPP	74.61474	31.15156	13:42:00	D	3.60
312	TARN TARAN	PATTI	S-NPP	74.81292	31.18131	13:42:00	D	3.80
313	TARN TARAN	PATTI	S-NPP	74.81738	31.18189	13:42:00	D	3.80
314	TARN TARAN	PATTI	S-NPP	74.81999	31.19289	13:42:00	D	2.80
315	TARN TARAN	PATTI	S-NPP	74.90875	31.20812	13:42:00	D	12.00
316	TARN TARAN	PATTI	S-NPP	74.88065	31.21155	13:42:00	D	5.00
317	TARN TARAN	PATTI	S-NPP	74.70296	31.21279	13:42:00	D	6.10
318	TARN TARAN	PATTI	S-NPP	74.70738	31.21338	13:42:00	D	7.50
319	TARN TARAN	PATTI	S-NPP	74.91203	31.21568	13:42:00	D	12.70
320	TARN TARAN	PATTI	S-NPP	74.58161	31.21591	13:42:00	D	5.00
321	TARN TARAN	PATTI	S-NPP	74.91142	31.21916	13:42:00	D	12.70
322	TARN TARAN	PATTI	S-NPP	74.74155	31.22503	13:42:00	D	2.60
323	TARN TARAN	PATTI	S-NPP	74.74223	31.22634	13:42:00	D	2.20
324	TARN TARAN	PATTI	S-NPP	74.74496	31.26213	13:42:00	D	2.10
325	TARN TARAN	PATTI	S-NPP	74.59116	31.26301	13:42:00	D	11.70
326	TARN TARAN	PATTI	S-NPP	74.60003	31.28889	13:42:00	D	9.30
327	TARN TARAN	PATTI	S-NPP	74.77904	31.32692	13:42:00	D	2.60

328	TARN TARAN	PATTI	S-NPP	74.69183	31.33827	13:42:00	D	1.50
329	TARN TARAN	PATTI	S-NPP	74.55136	31.34100	13:42:00	D	7.60
330	TARN TARAN	PATTI	TERRA	74.70400	31.35000	11:30:00	D	6.30
331	TARN TARAN	PATTI	S-NPP	74.63943	31.35262	13:42:00	D	3.30
332	TARN TARAN	PATTI	S-NPP	74.73315	31.36138	13:42:00	D	2.60
333	TARN TARAN	PATTI	S-NPP	74.72333	31.41682	13:42:00	D	1.60

Details of residue burning events in Haryana on 11-Oct-2020

S. No.	District	Tehsil / Block	Satellite	Longitude	Latitude	Time (IST)	Day / Night	Fire Power (W/m²)
1	AMBALA	AMBALA	S-NPP	76.62614	30.10846	13:42:00	D	6.30
2	AMBALA	AMBALA	TERRA	76.68600	30.22500	11:30:00	D	7.80
3	AMBALA	AMBALA	TERRA	76.67900	30.23300	11:30:00	D	8.00
4	AMBALA	AMBALA	S-NPP	76.91085	30.25318	13:42:00	D	6.80
5	AMBALA	AMBALA	S-NPP	76.80919	30.25644	13:42:00	D	21.30
6	AMBALA	AMBALA	S-NPP	76.77752	30.34096	13:42:00	D	5.50
7	AMBALA	AMBALA	S-NPP	76.78272	30.34158	13:42:00	D	5.50
8	AMBALA	BARARA	S-NPP	77.02737	30.17921	13:42:00	D	3.80
9	AMBALA	BARARA	S-NPP	77.03269	30.17983	13:42:00	D	6.50
10	AMBALA	BARARA	S-NPP	76.96451	30.20253	13:42:00	D	2.80
11	AMBALA	BARARA	S-NPP	76.96392	30.20630	13:42:00	D	6.00
12	AMBALA	BARARA	S-NPP	76.95807	30.20944	13:42:00	D	1.80
13	AMBALA	BARARA	TERRA	77.14200	30.22500	11:30:00	D	10.90
14	AMBALA	BARARA	TERRA	77.12700	30.22700	11:30:00	D	8.40
15	AMBALA	BARARA	TERRA	77.13400	30.23000	11:30:00	D	18.50
16	AMBALA	BARARA	S-NPP	77.04738	30.24216	13:42:00	D	3.80
17	FATEHABAD	FATEHABAD	S-NPP	75.66300	29.52592	13:42:00	D	2.30
18	FATEHABAD	FATEHABAD	S-NPP	75.66241	29.52945	13:42:00	D	2.30
19	FATEHABAD	FATEHABAD	S-NPP	75.43101	29.56761	13:42:00	D	4.40
20	FATEHABAD	TOHANA	S-NPP	75.80920	29.53458	13:42:00	D	2.10
21	FATEHABAD	TOHANA	S-NPP	75.84774	29.53844	13:42:00	D	5.10
22	FATEHABAD	TOHANA	S-NPP	75.85060	29.53998	13:42:00	D	5.70
23	FATEHABAD	TOHANA	S-NPP	75.88228	29.58640	13:42:00	D	10.00
24	FATEHABAD	TOHANA	S-NPP	75.79350	29.64629	13:42:00	D	4.00
25	FATEHABAD	TOHANA	S-NPP	75.86797	29.68111	13:42:00	D	4.70
26	HISAR	HISAR	S-NPP	75.72559	28.99934	13:42:00	D	6.30
27	HISAR	HISAR	S-NPP	75.86100	29.54373	13:42:00	D	3.10
28	JHAJJAR	JHAJJAR	S-NPP	76.59937	28.61251	13:42:00	D	8.30
29	JIND	JIND	S-NPP	76.27956	29.32107	13:42:00	D	3.00
30	JIND	JIND	S-NPP	76.28526	29.39254	13:42:00	D	2.10

31	JIND	JIND	S-NPP	76.37357	29.52543	13:42:00	D	3.00
32	JIND	NARWANA	S-NPP	76.03831	29.49478	13:42:00	D	3.50
33	JIND	NARWANA	S-NPP	76.05356	29.51866	13:42:00	D	4.80
34	JIND	NARWANA	S-NPP	76.02953	29.51927	13:42:00	D	3.40
35	JIND	NARWANA	S-NPP	76.11478	29.52641	13:42:00	D	2.60
36	JIND	NARWANA	S-NPP	76.12072	29.54919	13:42:00	D	5.00
37	JIND	NARWANA	S-NPP	76.18653	29.56124	13:42:00	D	2.10
38	JIND	NARWANA	S-NPP	76.22005	29.60673	13:42:00	D	4.80
39	JIND	NARWANA	S-NPP	76.02990	29.68317	13:42:00	D	4.00
40	JIND	SAFIDON	S-NPP	76.48304	29.33892	13:42:00	D	3.60
41	JIND	SAFIDON	S-NPP	76.49766	29.34072	13:42:00	D	2.70
42	JIND	SAFIDON	S-NPP	76.53009	29.43738	13:42:00	D	2.40
43	KAITHAL	GUHLA	S-NPP	76.30446	30.01006	13:42:00	D	4.00
44	KAITHAL	GUHLA	S-NPP	76.29451	30.02353	13:42:00	D	5.40
45	KAITHAL	GUHLA	S-NPP	76.29723	30.02404	13:42:00	D	5.60
46	KAITHAL	GUHLA	S-NPP	76.32764	30.03498	13:42:00	D	2.60
47	KAITHAL	GUHLA	S-NPP	76.39687	30.07322	13:42:00	D	3.50
48	KAITHAL	GUHLA	S-NPP	76.26868	30.09101	13:42:00	D	4.30
49	KAITHAL	KAITHAL	S-NPP	76.47008	29.57454	13:42:00	D	3.80
50	KAITHAL	KAITHAL	S-NPP	76.41208	29.60796	13:42:00	D	2.70
51	KAITHAL	KAITHAL	S-NPP	76.45026	29.64985	13:42:00	D	9.40
52	KAITHAL	KAITHAL	S-NPP	76.29163	29.78218	13:42:00	D	4.30
53	KAITHAL	KAITHAL	S-NPP	76.27092	29.83174	13:42:00	D	2.20
54	KAITHAL	KAITHAL	S-NPP	76.40819	29.84476	13:42:00	D	3.80
55	KAITHAL	KAITHAL	S-NPP	76.64121	29.84644	13:42:00	D	2.50
56	KAITHAL	KAITHAL	S-NPP	76.27711	29.85475	13:42:00	D	3.60
57	KAITHAL	KAITHAL	S-NPP	76.51141	29.86101	13:42:00	D	6.70
58	KAITHAL	KAITHAL	S-NPP	76.67869	29.86976	13:42:00	D	5.80
59	KAITHAL	KAITHAL	TERRA	76.38300	29.90400	11:30:00	D	9.70
60	KAITHAL	KAITHAL	TERRA	76.37000	29.90700	11:30:00	D	8.70
61	KAITHAL	KAITHAL	TERRA	76.37900	29.90800	11:30:00	D	20.60
62	KAITHAL	KAITHAL	S-NPP	76.34256	29.91121	13:42:00	D	30.30
63	KARNAL	ASSANDH	S-NPP	76.60124	29.57195	13:42:00	D	18.20
64	KARNAL	ASSANDH	TERRA	76.56600	29.58600	11:30:00	D	9.10

65	KARNAL	ASSANDH	S-NPP	76.59543	29.60877	13:42:00	D	2.70
66	KARNAL	ASSANDH	S-NPP	76.58433	29.61490	13:42:00	D	3.90
67	KARNAL	ASSANDH	S-NPP	76.69505	29.63806	13:42:00	D	3.40
68	KARNAL	GHARAUNDA	S-NPP	77.05442	29.47339	13:42:00	D	11.80
69	KARNAL	GHARAUNDA	S-NPP	76.91779	29.50688	13:42:00	D	2.80
70	KARNAL	GHARAUNDA	S-NPP	76.96806	29.52054	13:42:00	D	7.30
71	KARNAL	GHARAUNDA	S-NPP	77.05212	29.55744	13:42:00	D	4.10
72	KARNAL	GHARAUNDA	S-NPP	77.07777	29.57924	13:42:00	D	5.70
73	KARNAL	GHARAUNDA	S-NPP	77.08055	29.58007	13:42:00	D	6.20
74	KARNAL	GHARAUNDA	S-NPP	77.04176	29.60574	13:42:00	D	7.30
75	KARNAL	INDRI	S-NPP	77.02389	29.86041	13:42:00	D	2.20
76	KARNAL	INDRI	S-NPP	77.04849	29.92856	13:42:00	D	3.80
77	KARNAL	INDRI	S-NPP	77.00346	29.94251	13:42:00	D	2.90
78	KARNAL	KARNAL	S-NPP	76.76590	29.62976	13:42:00	D	2.20
79	KARNAL	KARNAL	S-NPP	76.78559	29.63596	13:42:00	D	3.40
80	KARNAL	KARNAL	S-NPP	76.78203	29.67483	13:42:00	D	5.40
81	KARNAL	KARNAL	S-NPP	76.71715	29.69354	13:42:00	D	2.10
82	KARNAL	KARNAL	AQUA	76.84400	29.70100	13:05:00	D	27.30
83	KARNAL	KARNAL	S-NPP	76.74403	29.71949	13:42:00	D	6.50
84	KARNAL	KARNAL	S-NPP	76.74345	29.72320	13:42:00	D	6.50
85	KARNAL	KARNAL	S-NPP	77.00625	29.75114	13:42:00	D	5.60
86	KARNAL	KARNAL	S-NPP	76.99988	29.79255	13:42:00	D	4.10
87	KARNAL	KARNAL	S-NPP	76.97041	29.79274	13:42:00	D	12.00
88	KARNAL	KARNAL	S-NPP	76.97562	29.79334	13:42:00	D	18.00
89	KARNAL	KARNAL	S-NPP	76.99650	29.79577	13:42:00	D	23.70
90	KARNAL	NILOKHERI	S-NPP	76.90980	29.80856	13:42:00	D	5.70
91	KARNAL	NILOKHERI	S-NPP	76.90922	29.81230	13:42:00	D	5.70
92	KURUKSHETRA	PEHOWA	S-NPP	76.64526	29.91861	13:42:00	D	4.70
93	KURUKSHETRA	PEHOWA	S-NPP	76.63531	30.08310	13:42:00	D	2.60
94	KURUKSHETRA	PEHOWA	S-NPP	76.74978	30.14989	13:42:00	D	4.40
95	KURUKSHETRA	SHAHABAD	S-NPP	76.76473	30.12124	13:42:00	D	7.80
96	KURUKSHETRA	SHAHABAD	S-NPP	76.93875	30.19558	13:42:00	D	2.90
97	KURUKSHETRA	THANESAR	S-NPP	76.73732	29.89187	13:42:00	D	3.60
98	KURUKSHETRA	THANESAR	S-NPP	76.78898	29.98235	13:42:00	D	1.70

99	KURUKSHETRA	THANESAR	TERRA	77.06700	30.03000	11:30:00	D	9.30
100	KURUKSHETRA	THANESAR	TERRA	77.05100	30.03300	11:30:00	D	15.30
101	KURUKSHETRA	THANESAR	S-NPP	76.82431	30.05891	13:42:00	D	2.20
102	KURUKSHETRA	THANESAR	S-NPP	76.74543	30.07714	13:42:00	D	3.00
103	KURUKSHETRA	THANESAR	S-NPP	76.87903	30.08080	13:42:00	D	3.40
104	KURUKSHETRA	THANESAR	S-NPP	77.04601	30.10863	13:42:00	D	1.70
105	KURUKSHETRA	THANESAR	TERRA	76.78000	30.11000	11:30:00	D	12.10
106	KURUKSHETRA	THANESAR	TERRA	76.77500	30.11600	11:30:00	D	12.50
107	PANCHKULA	PANCHKULA	S-NPP	76.96503	30.50077	13:42:00	D	5.50
108	PANIPAT	ISRANA	S-NPP	76.90047	29.24843	13:42:00	D	2.70
109	SIRSA	SIRSA	S-NPP	75.06731	29.59852	13:42:00	D	4.70
110	YAMUNANAGAR	CHHACHHRAULII	S-NPP	77.41121	30.29544	13:42:00	D	26.40
111	YAMUNANAGAR	JAGADHRI	TERRA	77.26800	30.24900	11:30:00	D	13.20
112	YAMUNANAGAR	JAGADHRI	S-NPP	77.17725	30.28820	13:42:00	D	3.60

Details of residue burning events in Uttar Pradesh on 11-Oct-2020

S. No.	District	Tehsil / Block	Satellite	Longitude	Latitude	Time (IST)	Day / Night	Fire Power (W/m ²)
1	AGRA	KHAIRIGARH	S-NPP	77.80161	26.98859	13:42:00	D	1.70
2	AGRA	KHAIRIGARH	S-NPP	77.79877	26.98898	13:42:00	D	2.20
3	ALIGARH	GABHANA	S-NPP	77.83868	28.04317	02:24:00	N	0.70
4	BARABANKI	NAWABGANJ	S-NPP	81.37872	26.85746	02:24:00	N	0.30
5	BARABANKI	RAMNAGAR	S-NPP	81.31841	27.14759	13:42:00	D	10.60
6	BAREILLY	BAHERI	S-NPP	79.38953	28.68384	13:42:00	D	2.40
7	BAREILLY	BAHERI	S-NPP	79.39227	28.86098	02:24:00	N	0.50
8	KANPUR DEHAT	AKBARPUR	S-NPP	80.04220	26.40195	13:42:00	D	3.80
9	KAUSHAMBI	MANJHANPUR	S-NPP	81.47868	25.45175	13:42:00	D	1.00
10	KHERI	GOLA	S-NPP	80.42159	28.18014	13:42:00	D	2.90
11	MATHURA	MAT	METOP-2	77.77811	27.73871	20:46:00	N	7.50
12	MATHURA	MAT	S-NPP	77.81834	27.75752	02:24:00	N	0.60
13	RAMPUR	BILASPUR	S-NPP	79.34811	28.88398	13:42:00	D	6.90
14	RAMPUR	BILASPUR	S-NPP	79.39737	28.92795	13:42:00	D	11.40
15	RAMPUR	BILASPUR	AQUA	79.40200	28.94300	13:00:00	D	95.60
16	SHAHJAHANPUR	PUWANYA	S-NPP	80.15385	28.08262	13:42:00	D	2.70
17	SHAHJAHANPUR	PUWANYA	S-NPP	80.19303	28.08879	02:24:00	N	1.60
18	SHARANPUR	BEHAT	S-NPP	77.54610	30.14802	13:42:00	D	8.70
19	SITAPUR	MAHMUDABAD	S-NPP	81.05035	27.23825	13:42:00	D	4.50
20	SITAPUR	MAHMUDABAD	S-NPP	81.05325	27.24017	13:42:00	D	5.00
21	SITAPUR	MAHMUDABAD	S-NPP	81.17452	27.38013	13:42:00	D	3.70
22	SITAPUR	SITAPUR	S-NPP	80.81139	27.44217	13:42:00	D	3.50

The study used images received from following Satellites at IARI Satellite Ground Station

S. No.	Satellite Name	Sensor	Resolution (meter)	Day / Night Passes
1.	Suomi NPP	VIIRS	375 / 750	Both
2.	Terra	MODIS	1000	Both
3.	Aqua	MODIS	1000	Both
4.	NOAA – 18	AVHRR	1000	Night
5.	NOAA – 19	AVHRR	1000	Night
6.	Metop - 1	AVHRR	1000	Night
7.	Metop - 2	AVHRR	1000	Night

Study Team

ICAR – HQ	Dr K. Alagusundaram	DDG (AG. ENGG.)	ddgengg@icar.org.in
	Dr S. Bhasker	ADG (NRM)	adgagroandaf@gmail.com
	Dr K.K. Singh	ADG (AG. ENGG)	kanchansingh044@gmail.com
ICAR - IARI	Dr V.K. Sehgal	Professor & Nodal Scientist	iaricreams@gmail.com
	Dr Rajkumar Dhakar	Scientist	raidhakar.iari@gmail.com
	Mr Rakeswer Verma	Chief Technical Officer	rakeshwar.verma@icar.gov.in
	Mr Mohd Jahangir	Lab Assistant (KRISHI)	mjahangir198@gmail.com
ICAR - ATARI	Dr Rajbir Singh	Director ATARI (Zone-I) Ludhiana	rajbirsingh.zpd@gmail.com
	Dr S.K. Singh	Director ATARI (Zone-II) Jodhpur	sushilsinghiipr@yahoo.co.in
	Dr Atar Singh	Director ATARI (Zone-III) Kanpur	zpdicarkanpur@gmail.com
ICAR - IASRI	Dr Rajender Parsad	Director IASRI	rajender.parsad@icar.gov.in

Softcopy of this report and latest statistics can be seen on <http://creams.iari.res.in>

GIS Maps of fire events can be visualized online on ICAR KRISHI Geoportal website: <http://geoportal.icar.gov.in:8080/geoexplorer/composer/>

(Part of KRISHI Portal: <https://krishi.icar.gov.in> initiative)
