

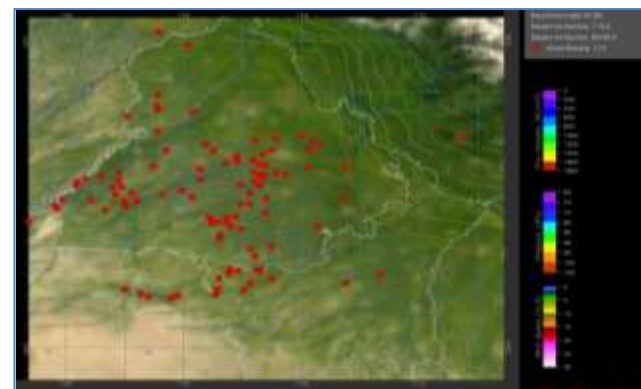


MONITORING PADDY RESIDUE BURNING IN NORTH INDIA USING SATELLITE REMOTE SENSING DURING 2020

**Bulletin
No. 6**

**Events Date:
06-Oct-2020**

**Issued on:
07-Oct-2020**



Prepared by:

**Consortium for Research on Agroecosystem Monitoring and Modeling from Space (CREAMS) Laboratory,
Division of Agricultural Physics, ICAR – Indian Agricultural Research Institute, New Delhi – 110012**

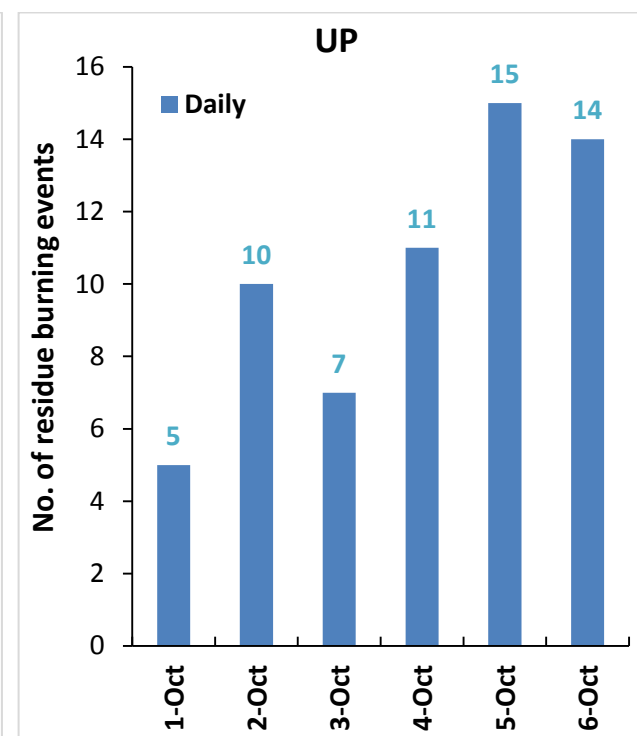
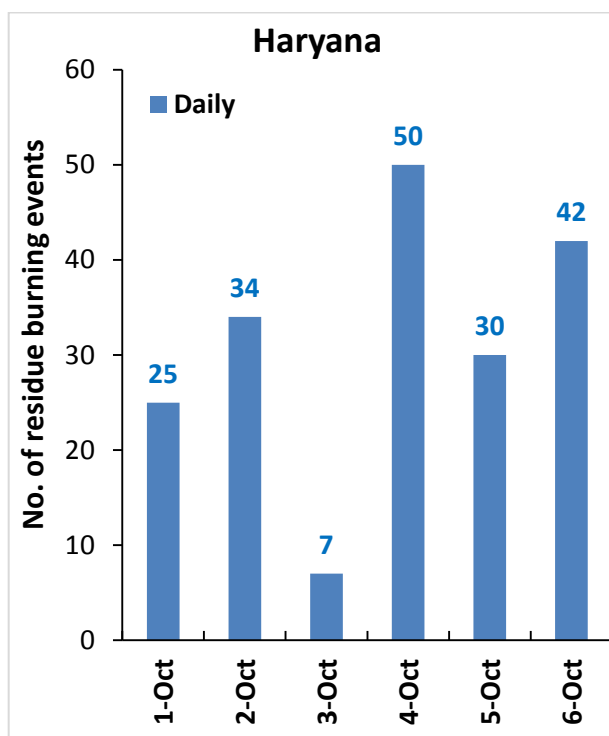
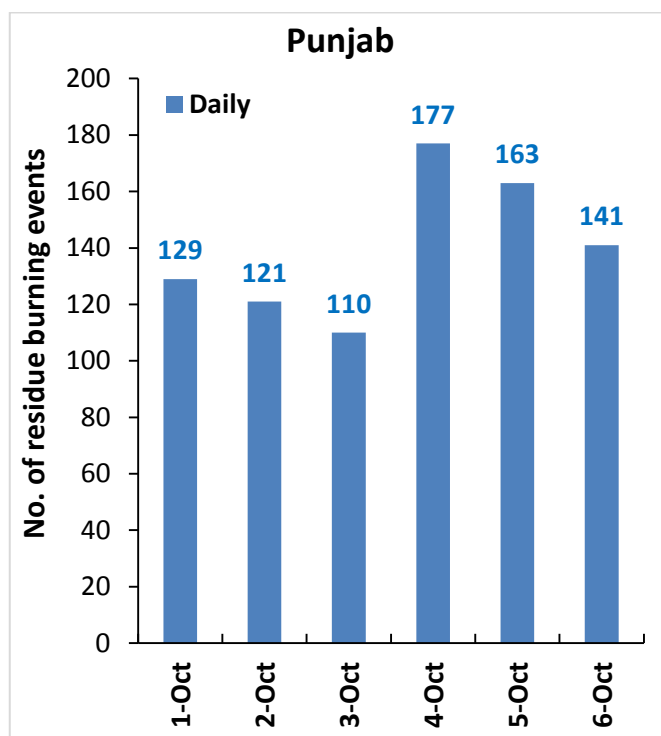
<http://creams.iari.res.in>



Highlights for 06-October-2020

- Satellites detected **197** residue burning events in the three study States on **06-Oct-2020**.
- The state wise events detected on **05-Oct-2020** were **141** in Punjab, **42** in Haryana and **14** in UP.
- In Punjab, burning/fire events were concentrated in Amritsar and Tarn Taran districts.
- In Haryana, burning/fire events were concentrated in Kurukshetra district.
- In Uttar Pradesh, the burning events were scattered.
- Total **1091** burning events were detected in the three States between **01-Oct-2020** and **06-Oct-2020**, which are distributed as **841**, **188** and **62** in Punjab, Haryana and UP, respectively.

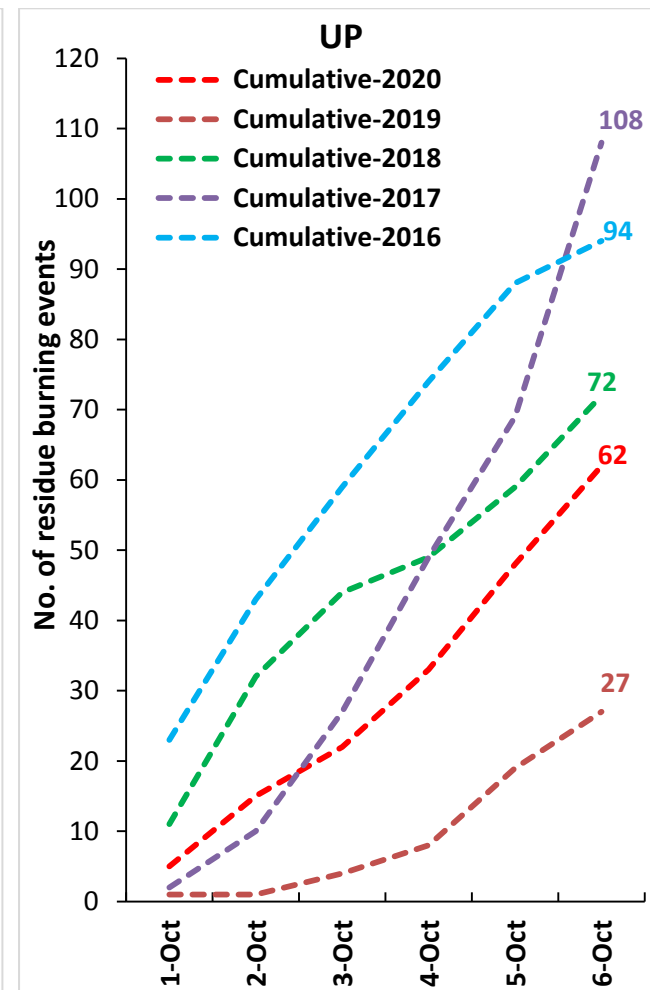
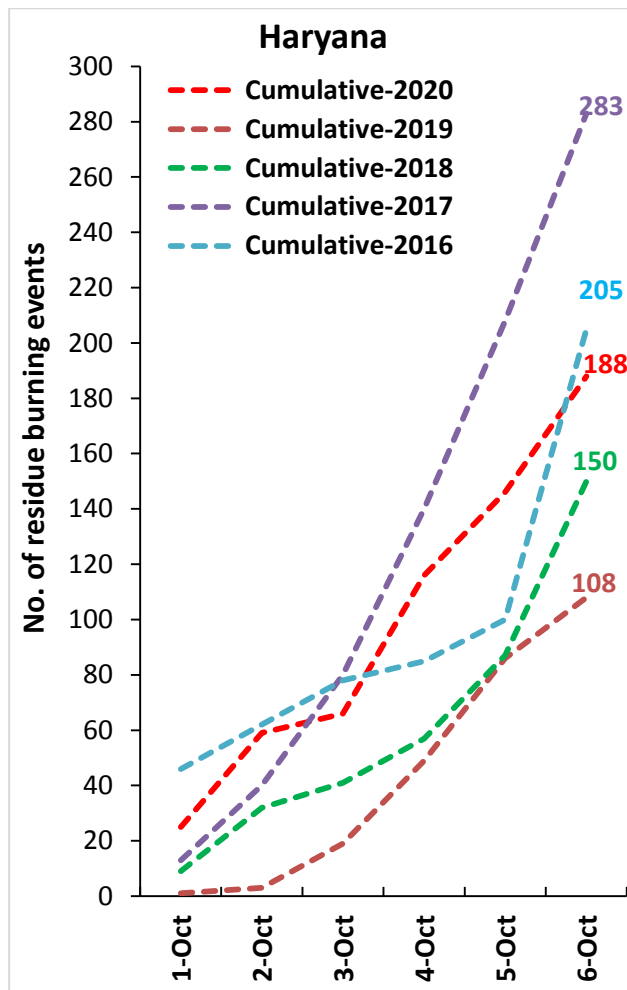
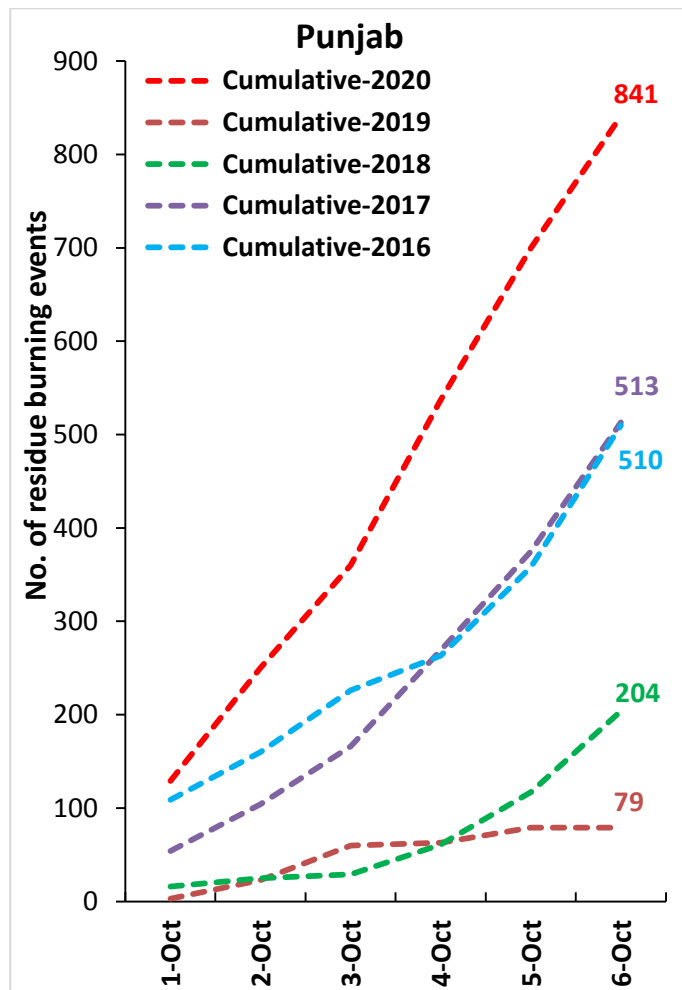
Temporal distribution of residue burning events for the three study States in 2020



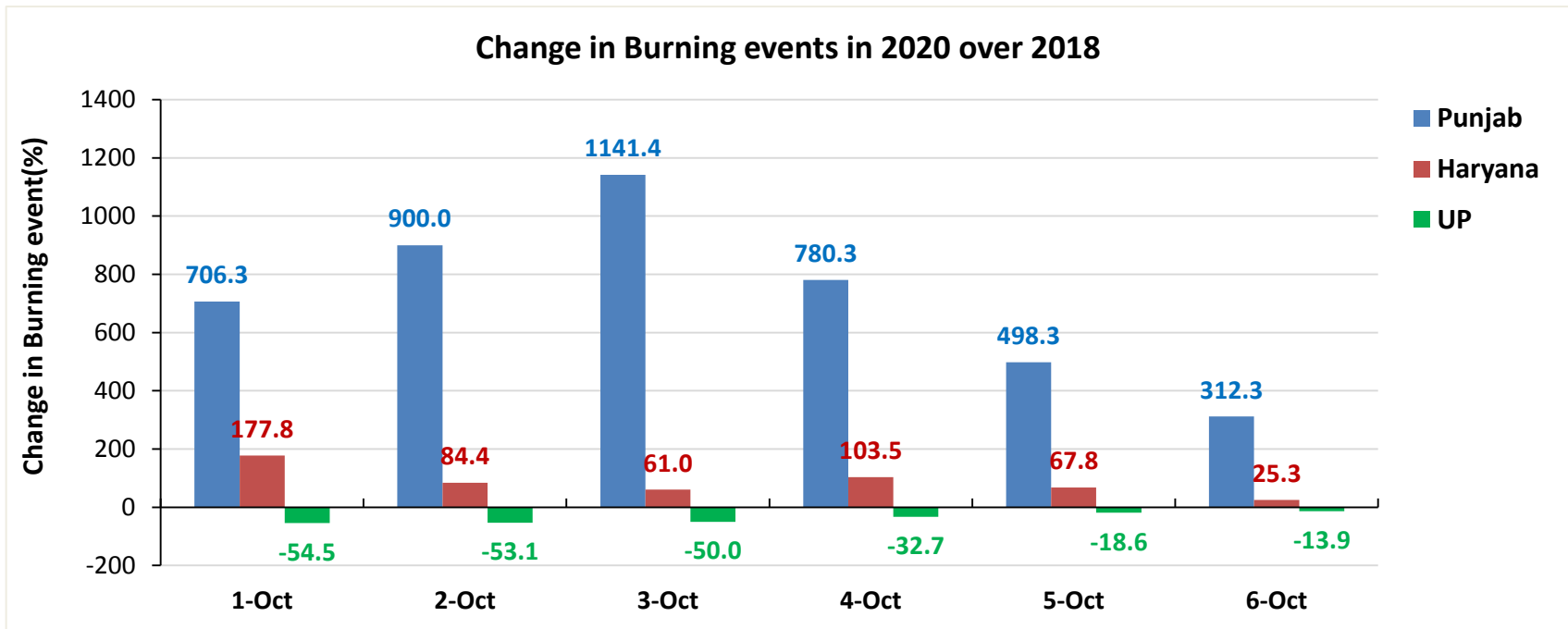
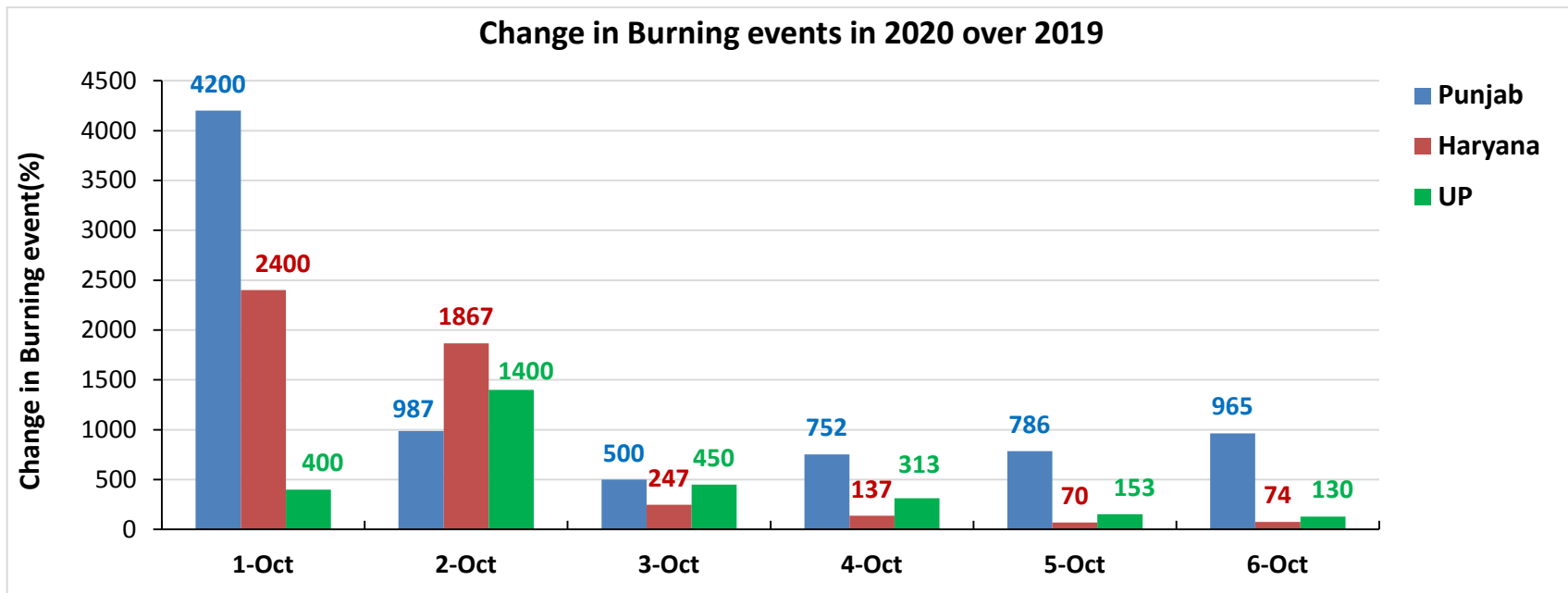
Comparison of residue burning events in current year (2020) with previous years (2019, 2018, 2017 & 2016) for the three study

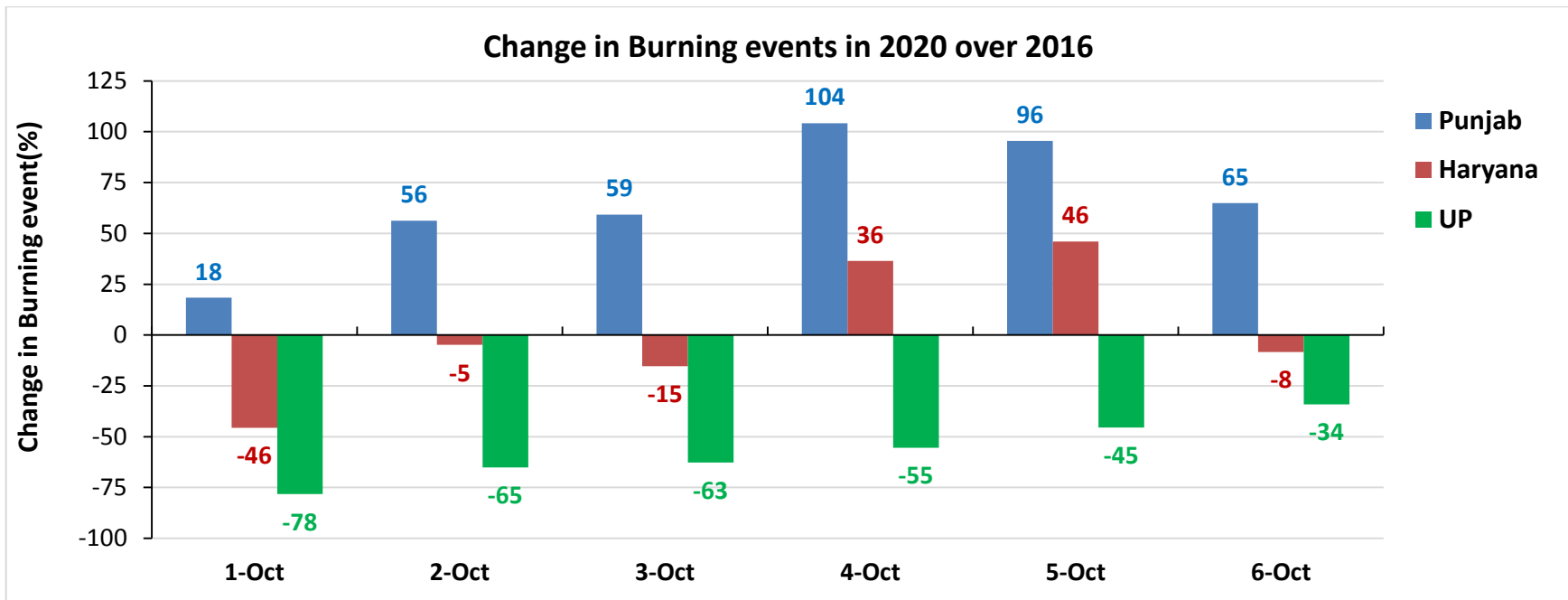
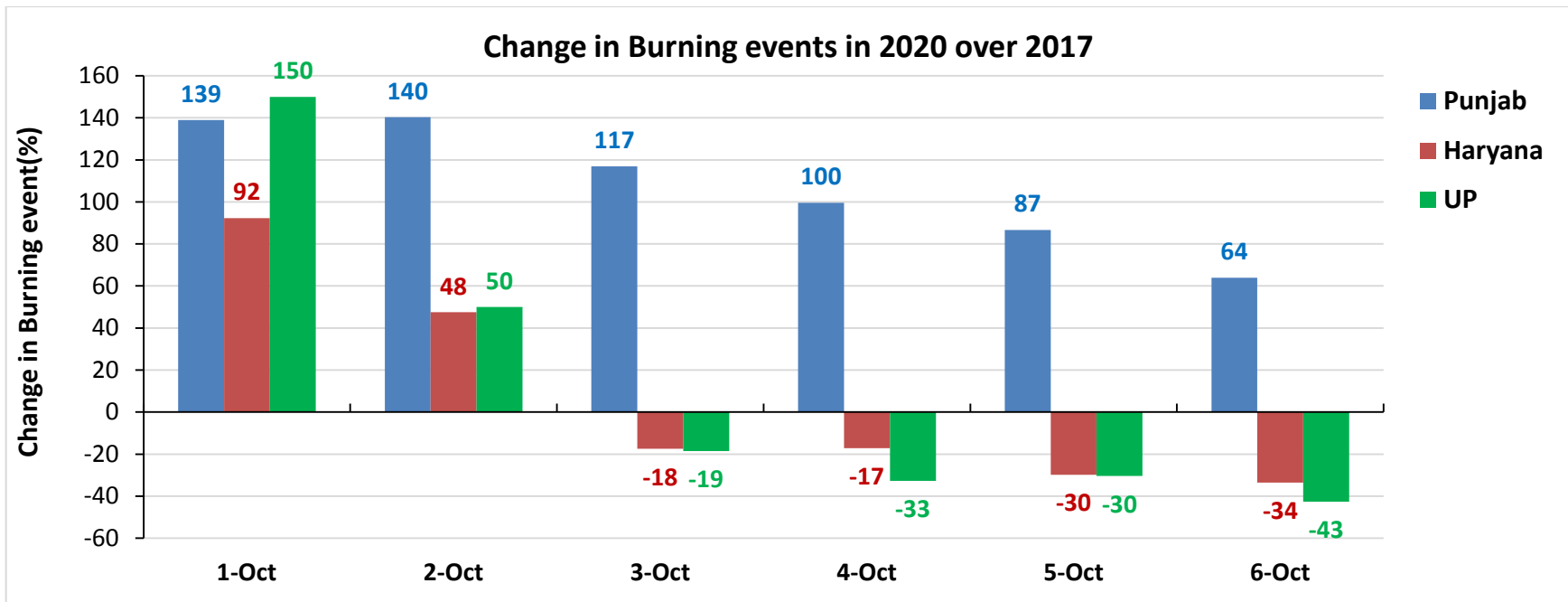
States

(01-Oct to 06-Oct)

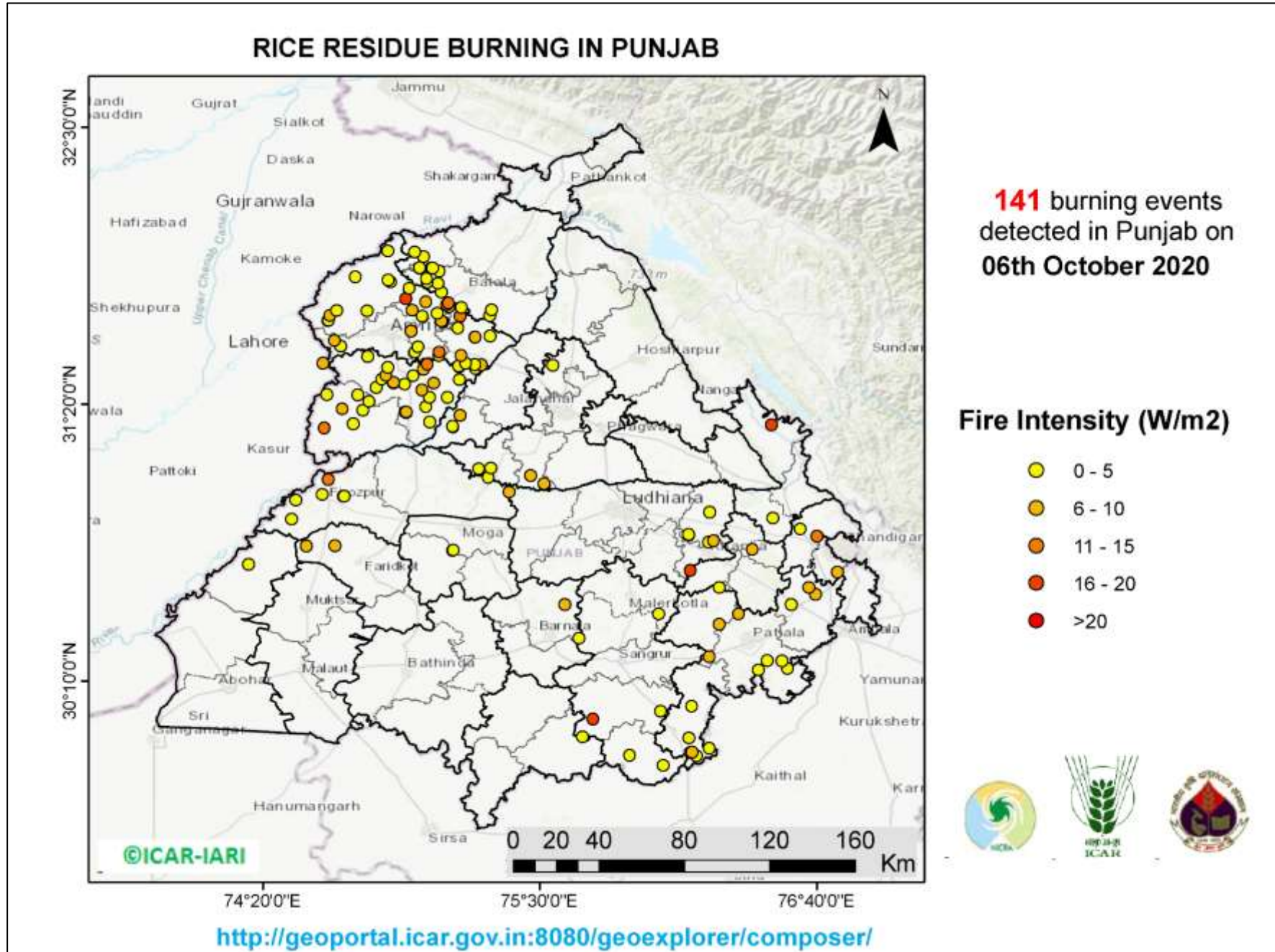


Percent Change in Burning events in 2020 over 2019, 2018, 2017 and 2016 (Daily Cumulative)

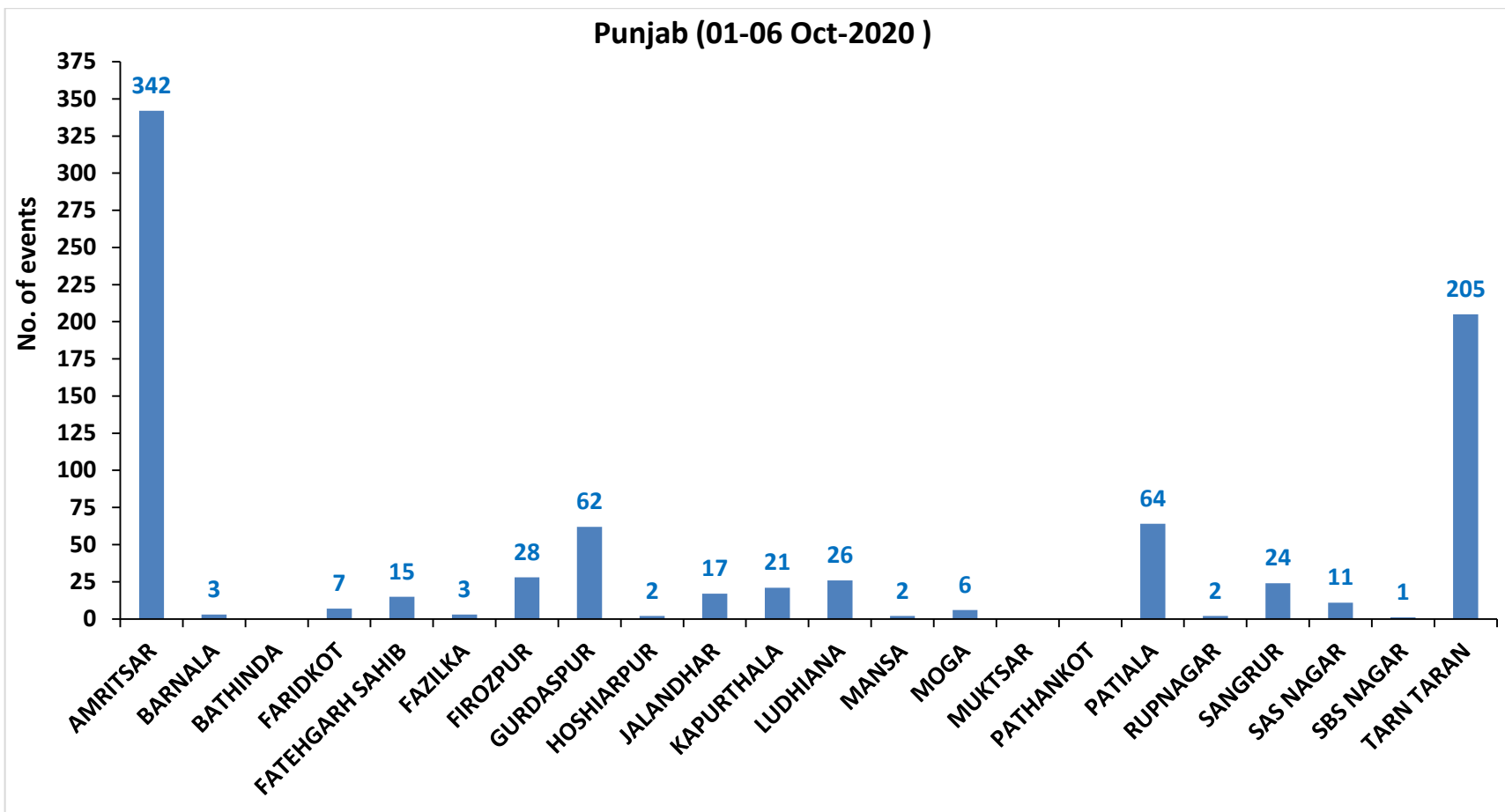




(a) Punjab

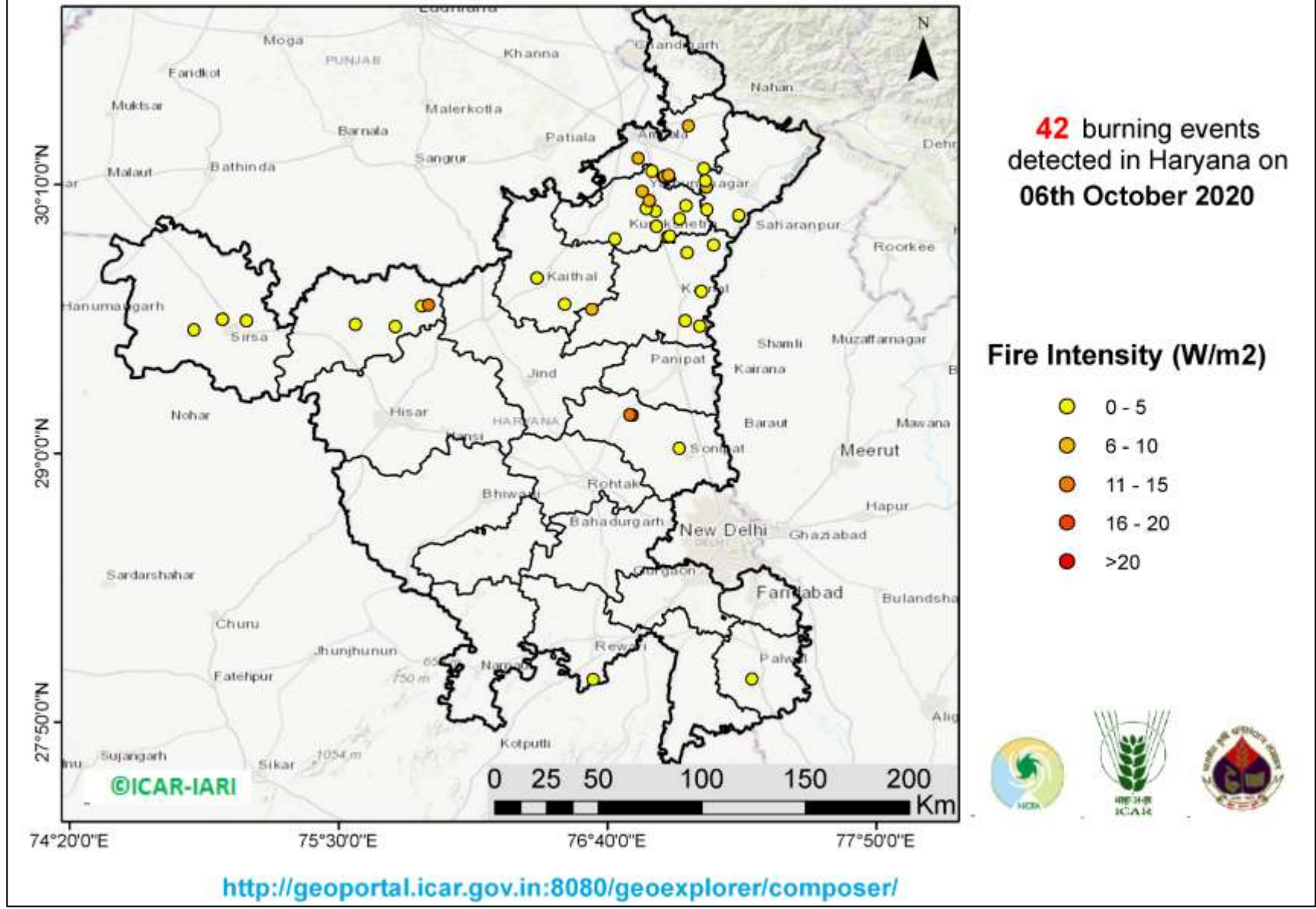


District-wise cumulative number of residue burning events in Punjab (01-06 Oct-2020)

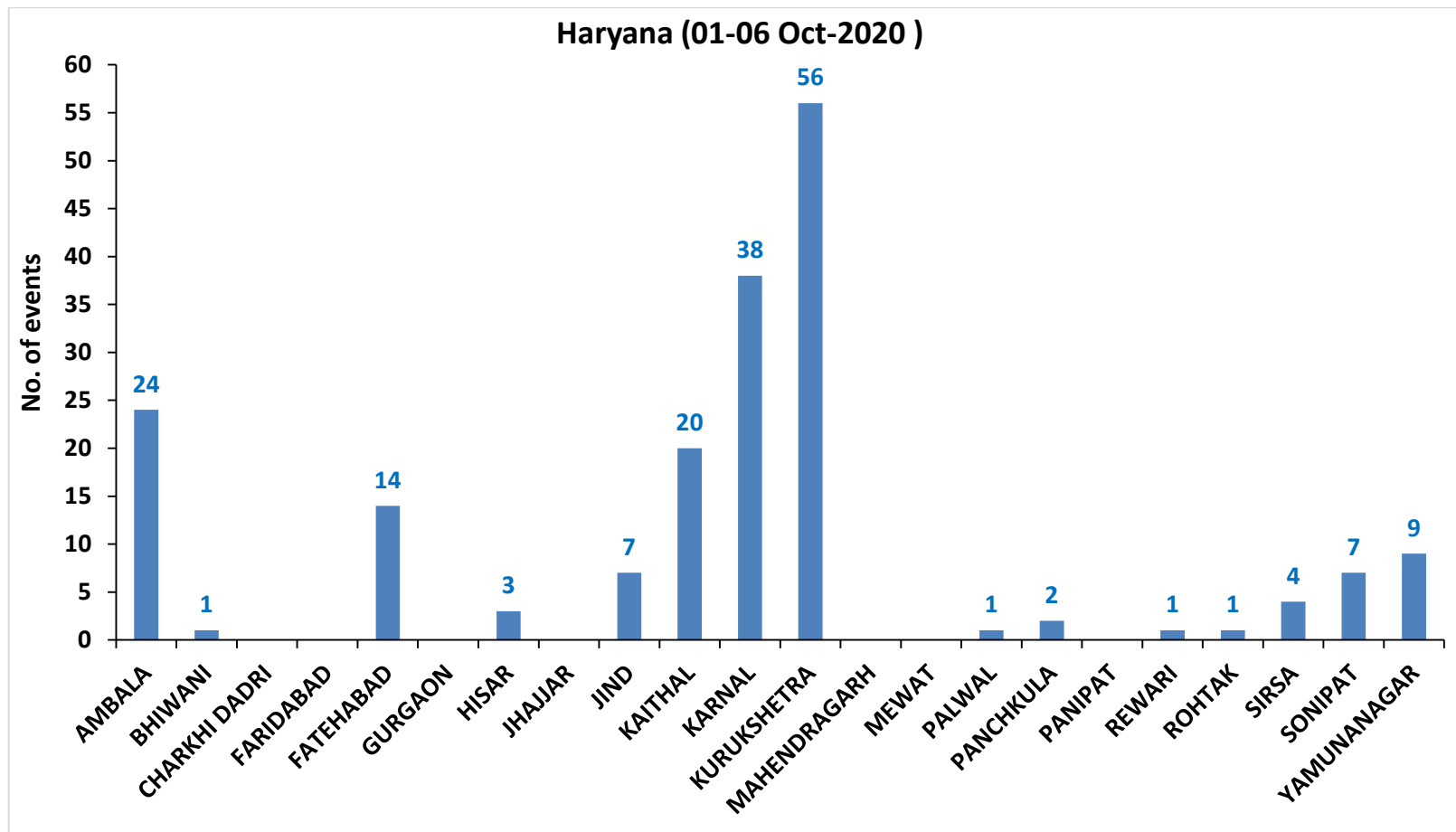


(b) Haryana

RICE RESIDUE BURNING IN HARYANA

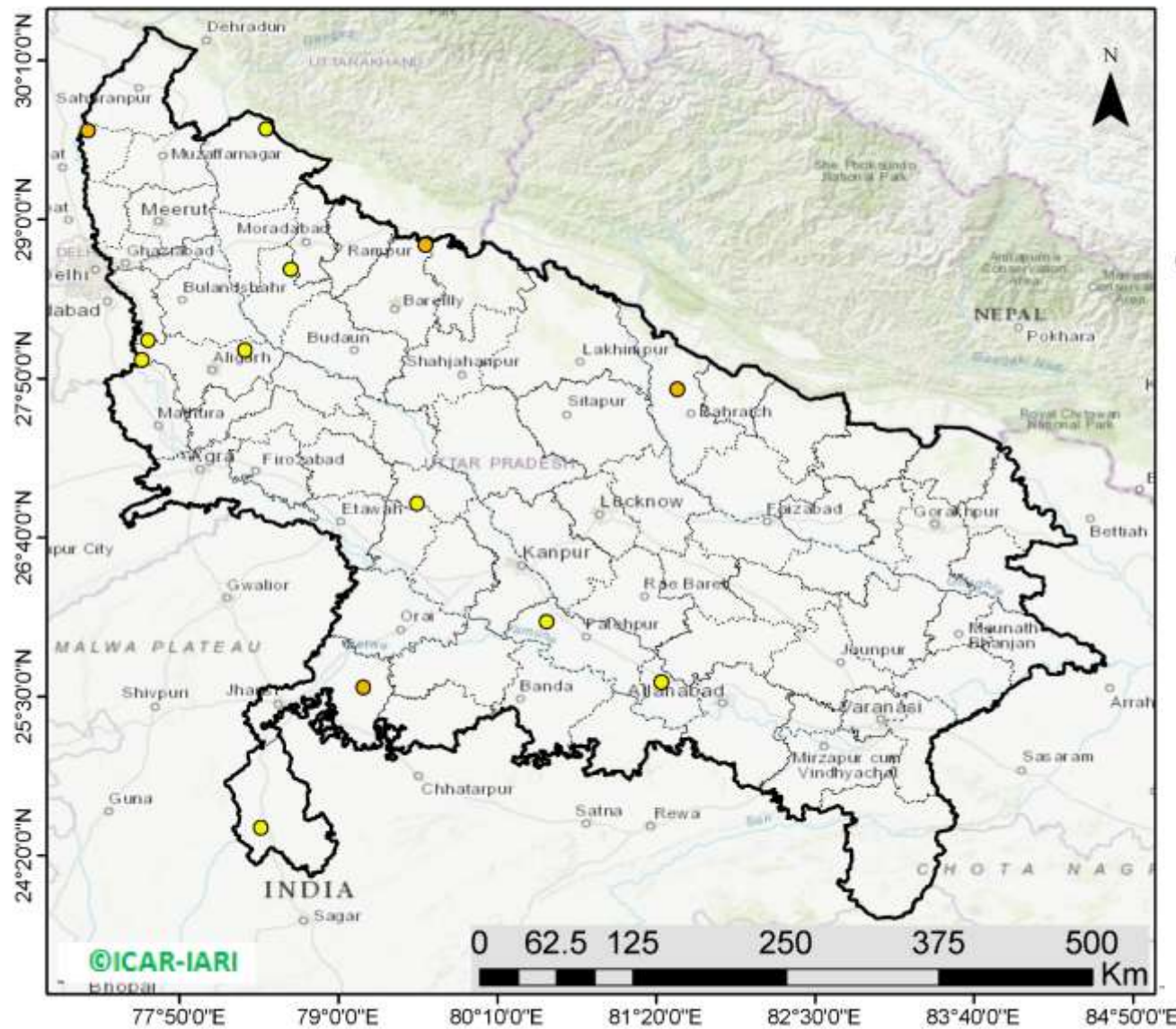


District-wise cumulative number of residue burning events in Haryana (01-06 Oct-2020)



(c) Uttar Pradesh

RICE RESIDUE BURNING IN UTTAR PRADESH



14 burning events detected in Uttar Pradesh on **06th October 2020**

Fire Intensity (W/m²)

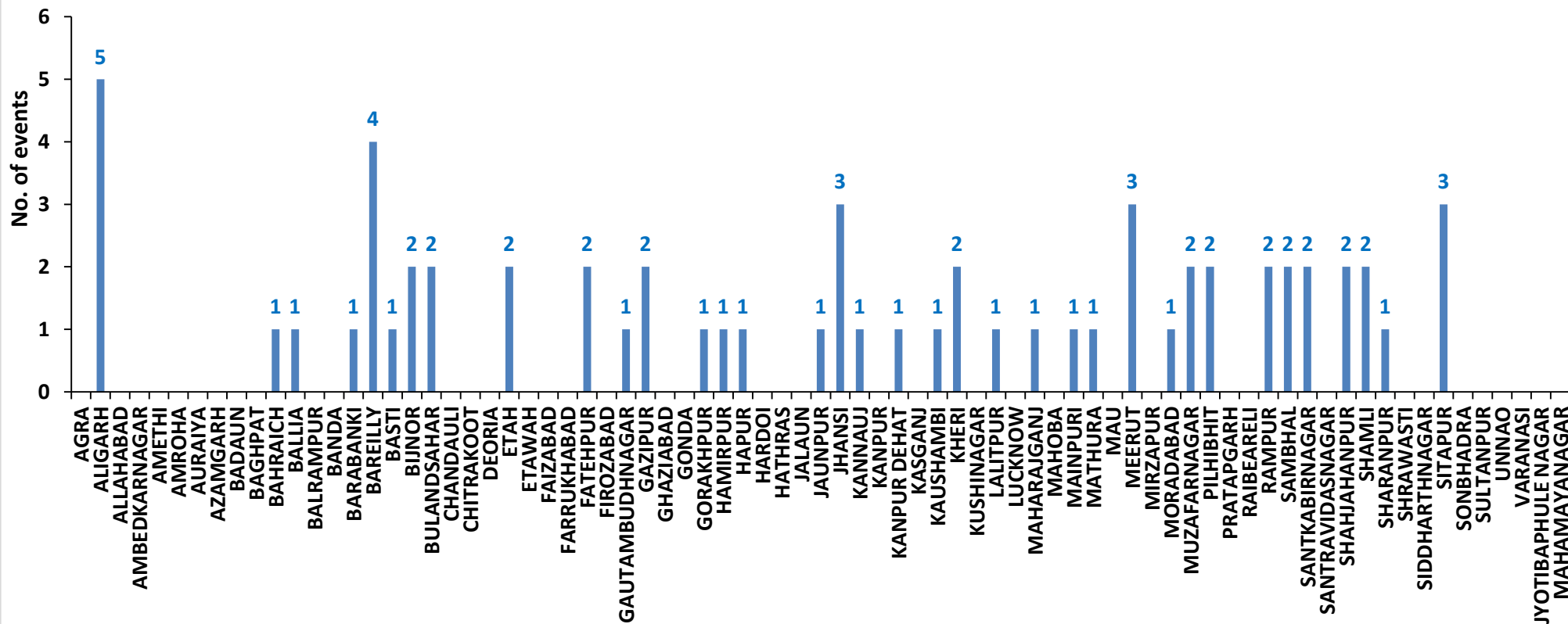
- 0 - 5
- 6 - 10
- 11 - 15
- 16 - 20
- >20



<http://geoportal.icar.gov.in:8080/geoexplorer/composer/>

District-wise cumulative number of residue burning events in Uttar Pradesh (01-06 Oct-2020)

Uttar Pradesh (01-06 Oct-2020)



State-wise and date-wise number of residue burning events detected in 2016, 2017, 2018, 2019 and 2020
(Period: 01-06 October)

Date	Punjab					Haryana					UP					Total				
	2020	2019	2018	2017	2016	2020	2019	2018	2017	2016	2020	2019	2018	2017	2016	2020	2019	2018	2017	2016
01-Oct	129	3	16	54	109	25	1	9	13	46	5	1	11	2	23	159	5	36	69	178
02-Oct	121	20	9	50	51	34	2	23	27	16	10	0	21	8	20	165	22	53	85	87
03-Oct	110	37	4	62	66	07	16	9	40	16	07	3	12	17	16	124	56	25	119	98
04-Oct	177	3	32	103	37	50	30	16	60	7	11	4	5	22	15	238	37	53	185	59
05-Oct	163	16	56	106	95	30	37	30	68	15	15	11	10	20	14	208	64	96	194	124
06-Oct	141	0	87	138	152	42	22	63	75	105	14	8	13	39	6	197	30	163	252	263
Total	841	79	204	513	510	188	108	150	283	205	62	27	72	108	94	1091	214	426	904	809

District-wise and date wise cumulative number of residue burning events detected in 2016, 2017, 2018, 2019 and 2020
(Period: 01-06 October)

(a) Punjab

Districts	01-06 Oct				
	2016	2017	2018	2019	2020
AMRITSAR	176	221	134	43	342
BARNALA	1	0	0	0	3
BATHINDA	10	8	11	0	0
FARIDKOT	14	16	0	0	7
FATEHGARH SAHIB	25	9	2	0	15
FAZILKA	0	0	0	1	3
FIROZPUR	34	29	9	0	28
GURDASPUR	12	14	8	0	62
HOSHIARPUR	3	3	3	0	2
JALANDHAR	24	9	0	0	17
KAPURTHALA	19	0	0	0	21
LUDHIANA	14	29	6	2	26
MANSA	4	5	0	0	2
MOGA	2	2	0	2	6
MUKTSAR	12	3	2	1	0
PATHANKOT	0	0	0	0	0
PATIALA	35	34	5	7	64
RUPNAGAR	1	1	0	0	2
SANGRUR	12	28	3	0	24
SAS NAGAR	1	8	2	0	11
SBS NAGAR	9	2	1	2	1
TARN TARAN	102	92	18	21	205
Total	510	513	204	79	841

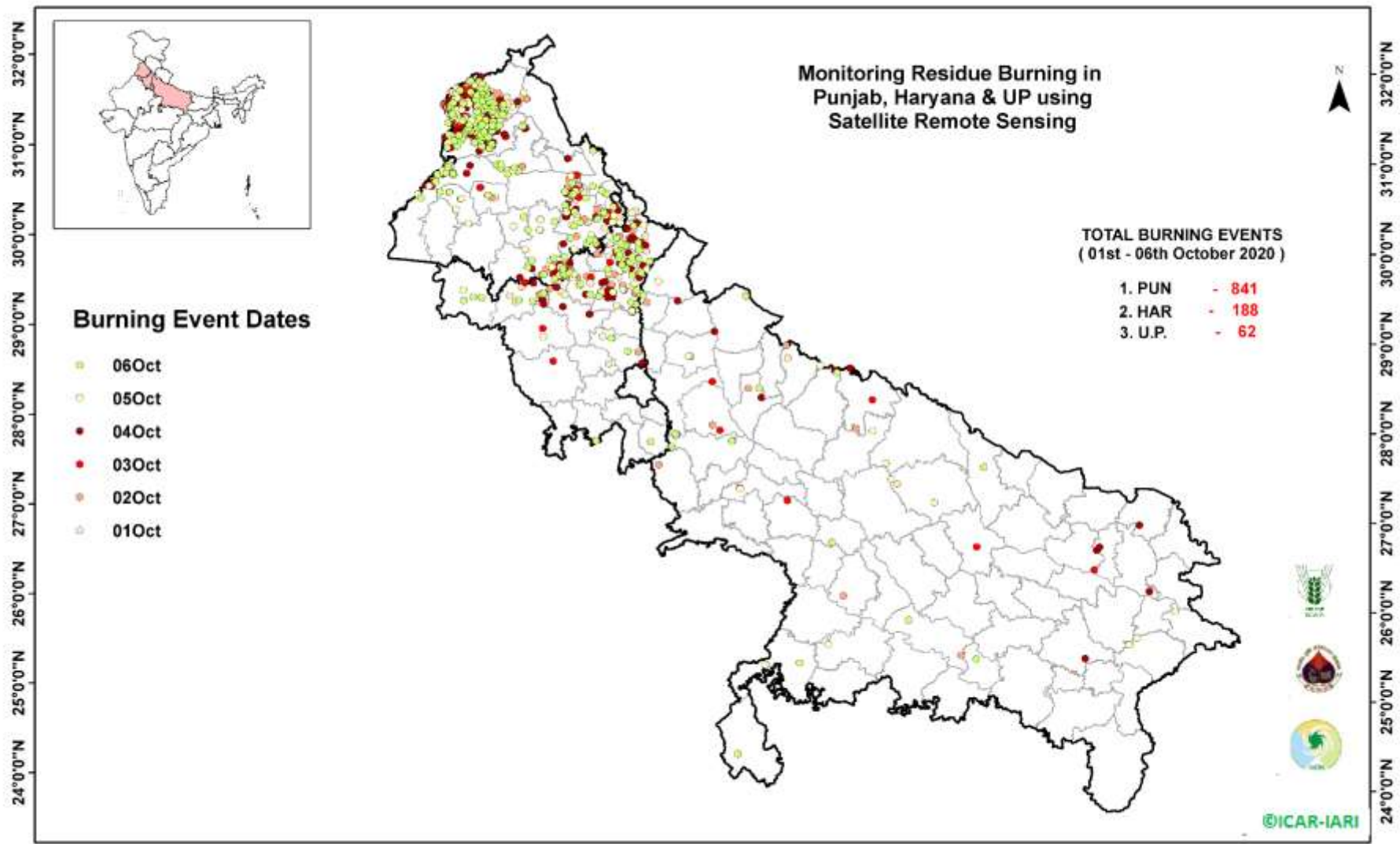
(b) Haryana

Districts	01-06 Oct				
	2016	2017	2018	2019	2020
AMBALA	12	21	16	1	24
BHIWANI	0	1	0	0	1
CHARKHI DADRI	0	0	0	0	0
FARIDABAD	1	0	3	1	0
FATEHABAD	4	20	2	3	14
GURGAON	0	0	0	0	0
HISAR	3	3	2	0	3
JHAJJAR	0	0	1	1	0
JIND	7	17	2	3	7
KAITHAL	54	35	16	17	20
KARNAL	77	98	31	56	38
KURUKSHETRA	37	67	47	21	56
MAHENDRAGARH	0	0	0	0	0
MEWAT	0	0	0	0	0
PALWAL	0	0	0	1	1
PANCHKULA	0	0	3	0	2
PANIPAT	3	9	17	1	0
REWARI	0	0	0	0	1
ROHTAK	0	0	0	0	1
SIRSA	3	1	3	0	4
SONIPAT	0	2	2	0	7
YAMUNANAGAR	4	9	5	3	9
Total	205	283	150	108	188

(C)
Uttar Pradesh

Districts	01-06 Oct																	
	2016	2017	2018	2019	2020	GAUTAMBUDHNAGAR	1	0	1	0	1	MUZAFARNAGAR	3	7	0	0	2	
AGRA	0	0	0	0	0	GAZIPUR	0	0	0	0	2	PILHIBHIT	6	9	2	6	2	
ALIGARH	0	2	1	0	5	GHAZIABAD	0	1	1	0	0	PRATAPGARH	0	0	0	0	0	
ALLAHABAD	0	0	0	0	0	GONDA	0	0	0	0	0	RAIBEARELI	0	0	0	0	0	
AMBEDKARNAGAR	0	0	0	0	0	GORAKHPUR	0	0	3	0	1	RAMPUR	25	10	7	1	2	
AMETHI	0	0	0	0	0	HAMIRPUR	0	0	1	0	1	SAMBHAL	0	0	0	0	2	
AMROHA	0	0	0	0	0	HAPUR	0	0	0	0	1	SANTKABIRNAGAR	0	0	0	0	2	
AURAIYA	19	9	9	0	0	HARDOI	0	0	0	0	0	SANTRAVIDASNAGAR	0	0	0	0	0	
AZAMGARH	0	0	0	0	0	HATHRAS	0	0	0	0	0	SHAHJAHANPUR	21	44	24	3	2	
BADAUN	0	0	0	0	0	JALAUN	0	0	0	0	0	SHAMLI	0	0	0	2	2	
BAGHPAT	0	0	0	0	0	JAUNPUR	0	0	0	0	1	SHARANPUR	2	1	0	0	1	
BAHRAICH	0	0	0	0	1	JHANSI	0	0	0	0	3	SHRAWASTI	0	0	0	0	0	
BALLIA	0	0	0	0	1	KANNAUJ	0	0	0	0	1	SIDDHARTHANAGAR	0	0	0	0	0	
BALRAMPUR	0	0	0	0	0	KANPUR	0	0	0	0	0	SITAPUR	2	0	0	0	3	
BANDA	0	0	1	0	0	KANPUR DEHAT	0	0	0	0	1	SONBHADRA	3	1	2	0	0	
BARABANKI	2	0	2	0	1	KASGANJ	0	0	0	0	0	SULTANPUR	0	0	0	0	0	
BAREILLY	4	0	1	3	4	KAUSHAMBI	0	1	3	0	1	UNNAO	0	0	0	0	0	
BASTI	0	0	0	0	1	KHERI	3	18	4	4	2	VARANASI	0	0	0	0	0	
BIJNOR	0	0	1	0	2	KUSHINAGAR	0	0	0	0	0	JYOTIBAPHULE NAGAR	0	0	0	0	0	
BULANDSAHAR	0	1	0	0	2	LALITPUR	0	0	0	0	1	MAHAMAYANAGAR	0	0	0	0	0	
CHANDAULI	0	0	0	0	0	LUCKNOW	2	0	0	1	0	Total	94	108	72	27	62	
CHITRAKOOT	0	0	0	0	0	MAHARAJGANJ	0	0	0	0	1							
DEORIA	0	0	0	0	0	MAHOBA	0	0	0	0	0							
ETAH	0	1	0	0	2	MAINPURI	0	0	1	0	1							
ETAWAH	0	0	0	0	0	MATHURA	1	1	7	2	1							
FAIZABAD	0	1	0	0	0	MAU	0	0	0	0	0							
FARRUKHABAD	0	0	0	0	0	MEERUT	0	0	0	1	3							
FATEHPUR	0	0	0	0	2	MIRZAPUR	0	1	0	3	0							
FIROZABAD	0	0	0	0	0	MORADABAD	0	0	1	1	1							

Map of Cumulative Burning Events (01-06 Oct 2020)



[\(http://geoportal.icar.gov.in:8080/geoexplorer/composer/\)](http://geoportal.icar.gov.in:8080/geoexplorer/composer/)

Details of residue burning events in Punjab on 06-Oct-2020

S. No.	District	Tehsil / Block	Satellite	Longitude	Latitude	Time (IST)	Day / Night	Fire Power (W/m ²)
1	AMRITSAR	AJNALA	S-NPP	74.60680	31.68458	13:36:00	D	2.30
2	AMRITSAR	AJNALA	S-NPP	74.61090	31.68517	13:36:00	D	2.30
3	AMRITSAR	AJNALA	TERRA	74.61700	31.70600	11:10:00	D	8.70
4	AMRITSAR	AJNALA	S-NPP	74.77199	31.72540	13:36:00	D	2.50
5	AMRITSAR	AJNALA	S-NPP	74.64473	31.72765	13:36:00	D	1.90
6	AMRITSAR	AJNALA	S-NPP	74.87206	31.84796	13:36:00	D	2.70
7	AMRITSAR	AJNALA	S-NPP	74.86184	31.85681	13:36:00	D	2.60
8	AMRITSAR	AJNALA	S-NPP	74.72377	31.86966	13:36:00	D	2.80
9	AMRITSAR	AJNALA	S-NPP	74.97228	31.97344	13:36:00	D	2.60
10	AMRITSAR	AJNALA	S-NPP	74.86011	31.97819	13:36:00	D	2.70
11	AMRITSAR	AMRITSAR I	S-NPP	75.07479	31.53850	13:36:00	D	3.30
12	AMRITSAR	AMRITSAR I	S-NPP	74.97432	31.55178	13:36:00	D	1.90
13	AMRITSAR	AMRITSAR I	S-NPP	75.07638	31.55249	13:36:00	D	10.60
14	AMRITSAR	AMRITSAR I	S-NPP	74.98702	31.57419	13:36:00	D	1.90
15	AMRITSAR	AMRITSAR I	S-NPP	75.09108	31.68002	13:36:00	D	5.20
16	AMRITSAR	AMRITSAR I	S-NPP	75.08628	31.68278	13:36:00	D	6.60
17	AMRITSAR	AMRITSAR I	S-NPP	75.00580	31.70361	13:36:00	D	1.50
18	AMRITSAR	AMRITSAR I	S-NPP	75.06761	31.71570	13:36:00	D	4.20
19	AMRITSAR	AMRITSAR I	S-NPP	74.96262	31.72847	13:36:00	D	7.50
20	AMRITSAR	AMRITSAR I	S-NPP	75.11803	31.74339	13:36:00	D	5.80
21	AMRITSAR	AMRITSAR I	S-NPP	75.10775	31.75230	13:36:00	D	10.80
22	AMRITSAR	AMRITSAR I	S-NPP	75.01984	31.76404	13:36:00	D	7.10
23	AMRITSAR	AMRITSAR I	TERRA	74.93600	31.77700	11:10:00	D	17.90
24	AMRITSAR	AMRITSAR I	S-NPP	74.94975	31.82116	13:36:00	D	3.80
25	AMRITSAR	AMRITSAR II	S-NPP	74.58638	31.50630	13:36:00	D	6.00
26	AMRITSAR	AMRITSAR II	S-NPP	74.66113	31.57764	13:36:00	D	3.10
27	AMRITSAR	AMRITSAR II	S-NPP	74.63546	31.60129	13:36:00	D	5.10
28	AMRITSAR	AMRITSAR II	S-NPP	74.95781	31.64055	13:36:00	D	6.30
29	AMRITSAR	BABA BAKALA	S-NPP	75.22631	31.50023	13:36:00	D	2.20
30	AMRITSAR	BABA BAKALA	S-NPP	75.18781	31.50612	13:36:00	D	5.00
31	AMRITSAR	BABA BAKALA	S-NPP	75.16891	31.53794	13:36:00	D	6.70

32	AMRITSAR	BABA BAKALA	S-NPP	75.22720	31.61507	13:36:00	D	5.30
33	AMRITSAR	BABA BAKALA	S-NPP	75.22762	31.61637	13:36:00	D	6.00
34	AMRITSAR	BABA BAKALA	S-NPP	75.29076	31.62055	13:36:00	D	4.20
35	AMRITSAR	BABA BAKALA	S-NPP	75.15591	31.65467	13:36:00	D	3.60
36	AMRITSAR	BABA BAKALA	S-NPP	75.16369	31.70403	13:36:00	D	12.90
37	AMRITSAR	BABA BAKALA	S-NPP	75.17018	31.74032	13:36:00	D	3.20
38	BARNALA	BARNALA	S-NPP	75.66460	30.34604	13:36:00	D	3.90
39	BARNALA	BARNALA	S-NPP	75.60545	30.48794	13:36:00	D	6.00
40	FARIDKOT	FARIDKOT	S-NPP	74.51735	30.73563	13:36:00	D	6.00
41	FARIDKOT	FARIDKOT	S-NPP	74.63731	30.73620	13:36:00	D	5.30
42	FATEHGARH SAHIB	BASSI PATHANAN	S-NPP	76.39542	30.71981	13:36:00	D	8.00
43	FAZILKA	JALALABAD	S-NPP	74.27263	30.65856	13:36:00	D	4.60
44	FIROZPUR	FIROZPUR	S-NPP	74.45408	30.84797	13:36:00	D	4.20
45	FIROZPUR	FIROZPUR	S-NPP	74.47183	30.92837	13:36:00	D	2.30
46	FIROZPUR	FIROZPUR	S-NPP	74.67232	30.94405	13:36:00	D	5.00
47	FIROZPUR	FIROZPUR	S-NPP	74.67637	30.94464	13:36:00	D	5.00
48	FIROZPUR	FIROZPUR	S-NPP	74.58350	30.95156	13:36:00	D	2.80
49	FIROZPUR	FIROZPUR	S-NPP	74.60936	31.01558	13:36:00	D	10.50
50	FIROZPUR	ZIRA	S-NPP	75.28336	31.02447	13:36:00	D	3.60
51	GURDASPUR	BATALA	S-NPP	75.28857	31.70426	13:36:00	D	2.00
52	GURDASPUR	BATALA	S-NPP	75.29675	31.72961	13:36:00	D	4.90
53	GURDASPUR	BATALA	S-NPP	75.11484	31.76017	13:36:00	D	13.00
54	GURDASPUR	BATALA	S-NPP	75.08496	31.80421	13:36:00	D	2.60
55	GURDASPUR	BATALA	S-NPP	75.07002	31.84146	13:36:00	D	2.70
56	GURDASPUR	BATALA	S-NPP	75.02633	31.84567	13:36:00	D	2.20
57	GURDASPUR	BATALA	S-NPP	75.02311	31.86243	13:36:00	D	3.20
58	GURDASPUR	BATALA	S-NPP	75.07713	31.89413	13:36:00	D	2.80
59	GURDASPUR	BATALA	S-NPP	74.99325	31.90639	13:36:00	D	1.90
60	GURDASPUR	BATALA	S-NPP	75.04464	31.90678	13:36:00	D	3.60
61	GURDASPUR	BATALA	S-NPP	75.04882	31.90737	13:36:00	D	3.70
62	GURDASPUR	BATALA	S-NPP	74.99352	31.90762	13:36:00	D	2.30
63	GURDASPUR	DERA BABA NANAK	S-NPP	75.01021	31.95469	13:36:00	D	3.00
64	JALANDHAR	JALANDHAR II	S-NPP	75.55522	31.49752	13:36:00	D	1.00
65	JALANDHAR	NAKODAR	S-NPP	75.51911	30.99411	13:36:00	D	2.50

66	JALANDHAR	NAKODAR	S-NPP	75.51849	30.99748	13:36:00	D	6.60
67	JALANDHAR	NAKODAR	S-NPP	75.46131	31.03203	13:36:00	D	8.70
68	JALANDHAR	SHAHKOT	S-NPP	75.24265	31.06005	13:36:00	D	2.90
69	JALANDHAR	SHAHKOT	S-NPP	75.29300	31.06371	13:36:00	D	3.00
70	KAPURTHALA	SULTANPUR LODHI	S-NPP	75.13441	31.23678	13:36:00	D	3.80
71	KAPURTHALA	SULTANPUR LODHI	S-NPP	75.13377	31.24013	13:36:00	D	3.40
72	KAPURTHALA	SULTANPUR LODHI	S-NPP	75.16357	31.28682	13:36:00	D	7.10
73	LUDHIANA	JAGRAON	S-NPP	75.37085	30.96298	13:36:00	D	6.30
74	LUDHIANA	KHANNA	S-NPP	76.13336	30.63320	13:36:00	D	16.70
75	LUDHIANA	SAMRALA	S-NPP	76.21114	30.75166	13:36:00	D	3.30
76	LUDHIANA	SAMRALA	S-NPP	76.23222	30.75802	13:36:00	D	8.10
77	LUDHIANA	SAMRALA	S-NPP	76.12682	30.78118	13:36:00	D	3.50
78	LUDHIANA	SAMRALA	S-NPP	76.12620	30.78461	13:36:00	D	3.50
79	LUDHIANA	SAMRALA	S-NPP	76.21616	30.87749	13:36:00	D	3.60
80	MOGA	MOGA	S-NPP	75.13271	30.71658	13:36:00	D	2.80
81	MOGA	MOGA	S-NPP	75.13680	30.71716	13:36:00	D	2.80
82	PATIALA	NABHA	S-NPP	76.25599	30.40619	13:36:00	D	8.50
83	PATIALA	NABHA	S-NPP	76.25622	30.55988	13:36:00	D	2.40
84	PATIALA	PATIALA	S-NPP	76.42057	30.21266	13:36:00	D	4.70
85	PATIALA	PATIALA	S-NPP	76.54431	30.21853	13:36:00	D	3.50
86	PATIALA	PATIALA	S-NPP	76.52078	30.25076	13:36:00	D	2.90
87	PATIALA	PATIALA	S-NPP	76.45794	30.25293	13:36:00	D	2.70
88	PATIALA	PATIALA	S-NPP	76.21390	30.26842	13:36:00	D	5.30
89	PATIALA	PATIALA	S-NPP	76.33698	30.44874	13:36:00	D	5.10
90	PATIALA	RAJPURA	S-NPP	76.55817	30.48901	13:36:00	D	1.10
91	PATIALA	RAJPURA	S-NPP	76.66072	30.53221	13:36:00	D	6.50
92	PATIALA	RAJPURA	S-NPP	76.63302	30.56062	13:36:00	D	7.20
93	PATIALA	SAMANA	S-NPP	76.15859	29.85036	13:36:00	D	4.20
94	PATIALA	SAMANA	S-NPP	76.13448	29.86449	13:36:00	D	3.80
95	PATIALA	SAMANA	TERRA	76.14200	29.86600	11:10:00	D	8.90
96	PATIALA	SAMANA	S-NPP	76.21357	29.88230	13:36:00	D	3.90
97	PATIALA	SAMANA	S-NPP	76.12830	29.92605	13:36:00	D	3.70
98	PATIALA	SAMANA	S-NPP	76.13979	30.06015	13:36:00	D	3.40
99	RUPNAGAR	ANANDPUR SAHIB	S-NPP	76.47507	31.24641	13:36:00	D	15.90

100	RUPNAGAR	CHAMKOR SAHIB	S-NPP	76.48129	30.85269	13:36:00	D	2.60
101	SANGRUR	MALERKOTLA	S-NPP	75.99973	30.44813	13:36:00	D	3.20
102	SANGRUR	MOONAK	S-NPP	76.01939	29.81045	13:36:00	D	2.20
103	SANGRUR	MOONAK	S-NPP	75.87918	29.85350	13:36:00	D	1.50
104	SANGRUR	SUNAM	S-NPP	75.67901	29.92982	13:36:00	D	2.90
105	SANGRUR	SUNAM	S-NPP	75.72482	30.00651	13:36:00	D	16.70
106	SANGRUR	SUNAM	S-NPP	76.00954	30.03889	13:36:00	D	3.80
107	SAS NAGAR	KHARAR	S-NPP	76.66683	30.77661	13:36:00	D	14.10
108	SAS NAGAR	KHARAR	S-NPP	76.59754	30.80675	13:36:00	D	2.30
109	SAS NAGAR	MOHALI	TERRA	76.75300	30.62600	11:10:00	D	7.30
110	TARN TARAN	KHADOOR SAHIB	S-NPP	75.03718	31.25733	13:36:00	D	3.60
111	TARN TARAN	KHADOOR SAHIB	S-NPP	74.93707	31.29607	13:36:00	D	3.10
112	TARN TARAN	KHADOOR SAHIB	S-NPP	74.93231	31.29882	13:36:00	D	5.80
113	TARN TARAN	KHADOOR SAHIB	S-NPP	74.93642	31.29940	13:36:00	D	5.80
114	TARN TARAN	KHADOOR SAHIB	S-NPP	75.02097	31.32171	13:36:00	D	2.90
115	TARN TARAN	KHADOOR SAHIB	S-NPP	75.03458	31.36141	13:36:00	D	3.00
116	TARN TARAN	KHADOOR SAHIB	S-NPP	75.11095	31.36195	13:36:00	D	2.70
117	TARN TARAN	KHADOOR SAHIB	S-NPP	75.00367	31.39316	13:36:00	D	6.90
118	TARN TARAN	KHADOOR SAHIB	S-NPP	74.81145	31.40351	13:36:00	D	1.80
119	TARN TARAN	KHADOOR SAHIB	S-NPP	74.93128	31.41720	13:36:00	D	2.50
120	TARN TARAN	KHADOOR SAHIB	S-NPP	74.88409	31.42076	13:36:00	D	6.20
121	TARN TARAN	KHADOOR SAHIB	S-NPP	75.05357	31.42081	13:36:00	D	6.00
122	TARN TARAN	KHADOOR SAHIB	S-NPP	74.88344	31.42409	13:36:00	D	6.20
123	TARN TARAN	KHADOOR SAHIB	S-NPP	75.16146	31.43599	13:36:00	D	3.00
124	TARN TARAN	KHADOOR SAHIB	S-NPP	74.83438	31.43762	13:36:00	D	2.10
125	TARN TARAN	KHADOOR SAHIB	S-NPP	74.96672	31.45313	13:36:00	D	4.60
126	TARN TARAN	KHADOOR SAHIB	S-NPP	74.85233	31.45390	13:36:00	D	5.60
127	TARN TARAN	KHADOOR SAHIB	S-NPP	75.00912	31.48116	13:36:00	D	6.00
128	TARN TARAN	KHADOOR SAHIB	S-NPP	75.22949	31.48344	13:36:00	D	1.80
129	TARN TARAN	KHADOOR SAHIB	S-NPP	74.85957	31.48745	13:36:00	D	5.00
130	TARN TARAN	KHADOOR SAHIB	S-NPP	75.15959	31.49082	13:36:00	D	2.10
131	TARN TARAN	KHADOOR SAHIB	S-NPP	75.15896	31.49417	13:36:00	D	4.40
132	TARN TARAN	KHADOOR SAHIB	TERRA	75.25300	31.49800	11:10:00	D	6.10
133	TARN TARAN	KHADOOR SAHIB	S-NPP	75.02662	31.50078	13:36:00	D	15.00

134	TARN TARAN	KHADOOR SAHIB	S-NPP	74.77461	31.53351	13:36:00	D	3.60
135	TARN TARAN	PATTI	S-NPP	74.59247	31.23287	13:36:00	D	11.50
136	TARN TARAN	PATTI	S-NPP	74.71453	31.25052	13:36:00	D	3.90
137	TARN TARAN	PATTI	S-NPP	74.75381	31.30745	13:36:00	D	1.70
138	TARN TARAN	PATTI	S-NPP	74.66898	31.31225	13:36:00	D	5.50
139	TARN TARAN	PATTI	S-NPP	74.78083	31.34438	13:36:00	D	3.40
140	TARN TARAN	PATTI	S-NPP	74.73347	31.37179	13:36:00	D	4.40
141	TARN TARAN	PATTI	S-NPP	74.60309	31.37346	13:36:00	D	2.50

Details of residue burning events in Haryana on 06-Oct-2020

S. No.	District	Tehsil / Block	Satellite	Longitude	Latitude	Time (IST)	Day / Night	Fire Power (W/m ²)
1	AMBALA	AMBALA	S-NPP	76.93094	30.20819	13:36:00	D	6.90
2	AMBALA	AMBALA	S-NPP	76.80028	30.28069	13:36:00	D	5.60
3	AMBALA	BARARA	S-NPP	77.09284	30.18247	13:36:00	D	3.00
4	AMBALA	BARARA	S-NPP	77.08389	30.23539	13:36:00	D	2.50
5	AMBALA	NARAYANGARH	TERRA	77.01800	30.42100	11:10:00	D	8.00
6	FATEHABAD	FATEHABAD	S-NPP	75.74683	29.54990	13:36:00	D	1.50
7	FATEHABAD	FATEHABAD	S-NPP	75.57330	29.55992	13:36:00	D	1.50
8	FATEHABAD	TOHANA	S-NPP	75.86147	29.63845	13:36:00	D	2.00
9	FATEHABAD	TOHANA	TERRA	75.89200	29.64400	11:10:00	D	11.80
10	KAITHAL	KAITHAL	S-NPP	76.48013	29.64652	13:36:00	D	2.40
11	KAITHAL	KAITHAL	S-NPP	76.36092	29.75922	13:36:00	D	3.40
12	KARNAL	ASSANDH	TERRA	76.59900	29.62500	11:10:00	D	7.10
13	KARNAL	GHARAUNDA	S-NPP	77.06734	29.55121	13:36:00	D	4.00
14	KARNAL	GHARAUNDA	S-NPP	77.00404	29.57508	13:36:00	D	2.10
15	KARNAL	INDRI	S-NPP	77.01249	29.87040	13:36:00	D	3.70
16	KARNAL	INDRI	S-NPP	77.12686	29.90327	13:36:00	D	2.80
17	KARNAL	KARNAL	S-NPP	77.07470	29.70263	13:36:00	D	2.80
18	KURUKSHETRA	PEHOWA	S-NPP	76.69933	29.93004	13:36:00	D	2.70
19	KURUKSHETRA	SHAHABAD	TERRA	76.81800	30.13700	11:10:00	D	5.70
20	KURUKSHETRA	SHAHABAD	S-NPP	76.91414	30.19882	13:36:00	D	6.10
21	KURUKSHETRA	SHAHABAD	S-NPP	76.91354	30.20232	13:36:00	D	5.20
22	KURUKSHETRA	SHAHABAD	S-NPP	76.86033	30.22419	13:36:00	D	4.00
23	KURUKSHETRA	THANESAR	S-NPP	76.92877	29.93876	13:36:00	D	4.20
24	KURUKSHETRA	THANESAR	S-NPP	76.93711	29.94342	13:36:00	D	2.30
25	KURUKSHETRA	THANESAR	S-NPP	76.87967	29.98592	13:36:00	D	3.50
26	KURUKSHETRA	THANESAR	S-NPP	76.98059	30.01712	13:36:00	D	4.20
27	KURUKSHETRA	THANESAR	S-NPP	76.87420	30.04989	13:36:00	D	4.40
28	KURUKSHETRA	THANESAR	S-NPP	76.83555	30.06268	13:36:00	D	3.10
29	KURUKSHETRA	THANESAR	S-NPP	77.00771	30.07440	13:36:00	D	2.30
30	KURUKSHETRA	THANESAR	S-NPP	76.84798	30.09644	13:36:00	D	8.00

31	PALWAL	HATHIN	S-NPP	77.29453	28.01954	13:36:00	D	2.40
32	REWARI	BAWAL	S-NPP	76.60459	28.01811	13:36:00	D	4.30
33	SIRSA	RANIA	S-NPP	74.87322	29.53625	13:36:00	D	3.20
34	SIRSA	SIRSA	S-NPP	75.09926	29.57600	13:36:00	D	3.70
35	SIRSA	SIRSA	S-NPP	74.99561	29.58140	13:36:00	D	2.10
36	SONIPAT	GOHANA	TERRA	76.77400	29.16500	11:10:00	D	16.20
37	SONIPAT	GOHANA	TERRA	76.76400	29.16700	11:10:00	D	12.80
38	SONIPAT	SONIPAT	S-NPP	76.97923	29.02198	13:36:00	D	2.30
39	YAMUNANAGAR	JAGADHRI	S-NPP	77.23767	30.02913	13:36:00	D	4.90
40	YAMUNANAGAR	JAGADHRI	S-NPP	77.23708	30.03268	13:36:00	D	4.90
41	YAMUNANAGAR	JAGADHRI	S-NPP	77.09860	30.05734	13:36:00	D	3.40
42	YAMUNANAGAR	JAGADHRI	S-NPP	77.09762	30.15425	13:36:00	D	5.70

Details of residue burning events in Uttar Pradesh on 06-Oct-2020

S. No.	District	Tehsil / Block	Satellite	Longitude	Latitude	Time (IST)	Day / Night	Fire Power (W/m ²)
1	ALIGARH	ATRAULI	S-NPP	78.31577	28.04106	13:36:00	D	3.00
2	ALIGARH	KHAIR	S-NPP	77.55733	27.96730	13:36:00	D	3.50
3	ALIGARH	KHAIR	S-NPP	77.60423	28.11005	13:36:00	D	4.40
4	BAHRAICH	NANPARA	S-NPP	81.48891	27.75273	13:36:00	D	5.20
5	BAREILLY	BAHERI	S-NPP	79.63861	28.81204	13:36:00	D	6.90
6	BIJNOR	NAGINA	S-NPP	78.47322	29.66199	13:36:00	D	5.20
7	BIJNOR	NAGINA	S-NPP	78.47052	29.66251	13:36:00	D	4.50
8	FATEHPUR	BINKI	S-NPP	80.53098	26.04499	13:36:00	D	1.10
9	JHANSI	GARAUTHA	NOAA-18	79.18545	25.56478	21:16:00	N	8.50
10	KANNAUJ	TIRWA	S-NPP	79.57851	26.91494	02:18:00	N	1.50
11	KAUSHAMBI	SIRATHU	S-NPP	81.37096	25.60319	13:36:00	D	2.50
12	LALITPUR	LALITPUR	S-NPP	78.43311	24.53696	13:36:00	D	1.80
13	SAMBHAL	SAMBHAL	S-NPP	78.65097	28.63386	13:36:00	D	2.30
14	SHAMLI	KAIRANA	S-NPP	77.16190	29.64937	13:36:00	D	7.50

The study used images received from following Satellites at IARI Satellite Ground Station

S. No.	Satellite Name	Sensor	Resolution (meter)	Day / Night Passes
1.	Suomi NPP	VIIRS	375 / 750	Both
2.	Terra	MODIS	1000	Both
3.	Aqua	MODIS	1000	Both
4.	NOAA – 18	AVHRR	1000	Night
5.	NOAA – 19	AVHRR	1000	Night
6.	Metop - 1	AVHRR	1000	Night
7.	Metop - 2	AVHRR	1000	Night

Study Team

ICAR – HQ	Dr K. Alagusundaram	DDG (AG. ENGG.)	ddgengg@icar.org.in
	Dr S. Bhasker	ADG (NRM)	adgagroandaf@gmail.com
	Dr K.K. Singh	ADG (AG. ENGG)	kanchansingh044@gmail.com
ICAR - IARI	Dr V.K. Sehgal	Professor & Nodal Scientist	iaricreams@gmail.com
	Dr Rajkumar Dhakar	Scientist	raidhakar.iari@gmail.com
	Mr Rakeswer Verma	Chief Technical Officer	rakeshwar.verma@icar.gov.in
	Mr Mohd Jahangir	Lab Assistant (KRISHI)	mjahangir198@gmail.com
ICAR - ATARI	Dr Rajbir Singh	Director ATARI (Zone-I) Ludhiana	rajbirsingh.zpd@gmail.com
	Dr S.K. Singh	Director ATARI (Zone-II) Jodhpur	sushilsinghiipr@yahoo.co.in
	Dr Atar Singh	Director ATARI (Zone-III) Kanpur	zpdicarkanpur@gmail.com
ICAR - IASRI	Dr Rajender Parsad	Principal Scientist	rajender.parsad@icar.gov.in

Softcopy of this report and latest statistics can be seen on <http://creams.iari.res.in>

GIS Maps of fire events can be visualized online on ICAR KRISHI Geoportal website: <http://geoportal.icar.gov.in:8080/geoexplorer/composer/>

(Part of KRISHI Portal: <https://krishi.icar.gov.in> initiative)
